

Georgia Southern University

Digital Commons@Georgia Southern

---

The George-Anne

Student Media

---

10-29-1991

## The George-Anne

Georgia Southern University

Follow this and additional works at: <https://digitalcommons.georgiasouthern.edu/george-anne>

---

### Recommended Citation

Georgia Southern University, "The George-Anne" (1991). *The George-Anne*. 1245.  
<https://digitalcommons.georgiasouthern.edu/george-anne/1245>

This newspaper is brought to you for free and open access by the Student Media at Digital Commons@Georgia Southern. It has been accepted for inclusion in The George-Anne by an authorized administrator of Digital Commons@Georgia Southern. For more information, please contact [digitalcommons@georgiasouthern.edu](mailto:digitalcommons@georgiasouthern.edu).





# Have a SPOOKY Halloween

-From the George-Anne



## The George-Anne

Vol. 64 No. 14 • Tuesday, October 29, 1991

For 65 years, Georgia Southern's Official Student Newspaper

Georgia Southern University • Statesboro, GA 30460

# Students injured in off-campus incidents

By Brent Parrott  
Assistant News Editor

Several fights on Thursday and during the weekend claimed numerous injuries.

On Oct. 24, according to Jessica Peterman, a senior majoring in Interior Design, she was waiting for a friend at the Rockin' Eagle when Randy Summer came in and hit Matt White in the face with a bottle, then hit her in the head.

According to Peterman, both were taken to Bulloch Memorial Hospital Emergency room where White received stitches near his eye, and Peterman received staples to close her head wound. Peterman also sustained damage to muscles in her neck.

An incident report was filed with the Statesboro Police. Randy Summer was arrested and charged with two counts of aggravated assault according to the re-

*"I've never seen so much blood on one guy's face."*

Robby Weatherly, senior business major

port.

Peterman said the fight may have been the result of White bumping into somebody spilling beer.

Peterman stated that Summer was "very drunk and picks

fights."

"I've never seen so much blood on one guy's face," said Robby Weatherly, a senior business major, referring to White. "That is the first physical outbreak I have seen at the Eagle since I've

been here. There have been push and shoves, but this is the first full-on fight."

In another incident beginning at University Village Apartments on Chandler Road, and ending in front of the Southern Center, two students were involved in a fight Oct. 26, according to police reports.

Dwayne Grier reportedly received cuts to the face. According

to Captain Russel of the Statesboro Police Department, Hiram Cox, an international student from Murray University in Kentucky was arrested and charged with aggravated assault in the incident.

It is unknown why the fight started, but words were reportedly exchanged between the two.

The incident is still under investigation.

## Local witch speaks out

By Teresa Roach  
Features Editor

Think about a witch. What comes to your mind? Probably images of women with long black hair and pointy noses, or black cats and broomsticks, or Samantha from *Bewitched*.

In reality witchcraft differs immensely from this concept. Witchcraft is a religion of nature, according to Anna, (not her real name) a practicing witch and college student.

"Our Lord and Lady is one supreme being, similar to a Christian's God," said Anna.

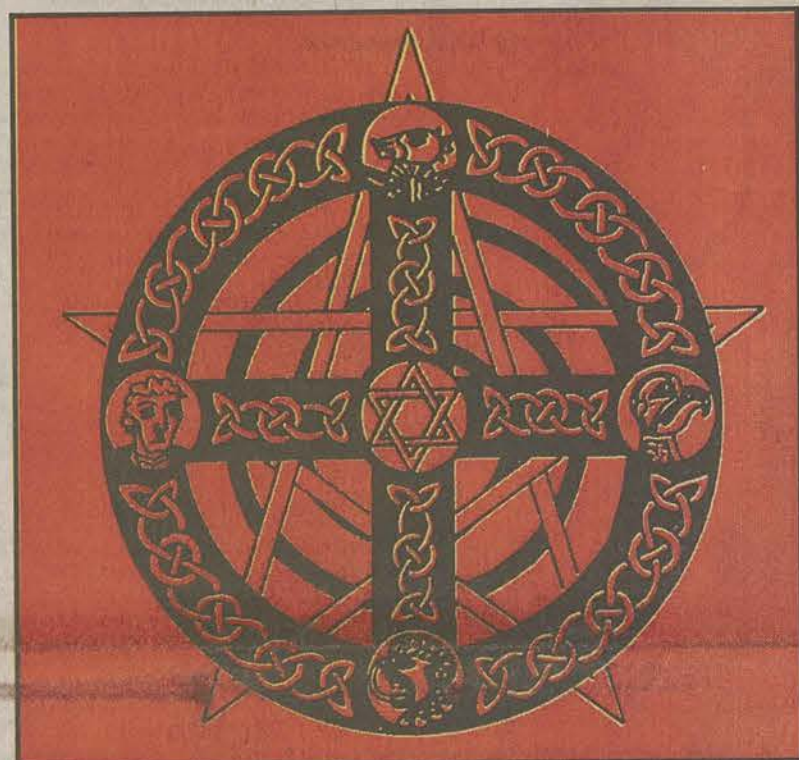
The god of Witchcraft is represented by one supreme being comprised of two separate entities: a masculine and a feminine side.

The masculine side, called the Lord, represents passage, death, and hunting. The feminine side, called the Lady, represents life, birth, renewal, and gathering. The Lord and Lady are of equal significance and together form the complete deity called the Lord and Lady.

One form of Witchcraft is called Wicca, which means "wise." Anna is a practitioner of Wicca.

Wiccans, Anna said, are tolerant of other religions and "wish that they would be tolerant of us." One of the principles established by the Council of American Witches is "Our only animosity towards Christianity, or towards any other religion or philosophy of life, is ... that its institutions have claimed to be 'the only way' and have sought to deny freedom to others and to suppress other ways of religious practice and belief."

According to Anna, there is one witch group, or coven, practicing in Statesboro and several in Savannah.



However, Wiccans do not recruit members, Anna stressed.

"If someone is interested, I will give them information," she said. "If they are no longer interested after that, then that's fine. We do not try to get people to do something they don't want to do."

"We do not brainwash," she said.

The Witches League for Public Awareness (WLFA), based in Salem, Massachusetts, compiled a list of "Do's and Don'ts of Witches." Many of them are contrary to popular ideas held about Witches. An excerpt of the rules is as follows: "Witches do not do evil. Witches do not worship Satan. Many Witches do wear black [because it] is the culmination of all things on the material

plane...

"Witches do use spells," continues the pamphlet. "A 'spell' is a thought projection used to produce a desired result. Christians use prayer to achieve the same result. Witches do use the natural psychic ability that all human beings possess. Witches use these abilities to heal and to improve their surroundings."

"Witches do wear a Pentacle, which is a five-pointed star in a circle, with the single-point upwards. The five points stand for the four elements of Earth, Air, Fire, and Water, and the top point for the Divine Spirit."

Anna pointed out the difference in the witches' use of the pentacle (also called pentagram) and of the Satanists' use of the pentacle. The pentacle was used

See Witch, page 3

## Students have a "Right to Know"

By Stacy Graham  
Staff Writer

The Student Right-to-Know and Campus Security Act Public Law 101-542, will require GSU to publish crime statistics and graduation rates on a yearly basis.

This information will be available to students, prospective students, employees, prospective employees, and anyone else wanting access to this information.

The law consists of two parts. Title I is the Student Right-to-Know Act. Section 103 of this title requires GSU to produce, and make readily available, the graduation rates of the university. This will be published annually beginning June 1, 1993.

Section 104 of this act requires the university to report annually the number of students who receive athletically-related student aid.

Title II of Public Law 101-542 is the Crime Awareness and Campus Security Act of 1990.

## Use of logo is closely monitored

G-A Staff Reports

As GSU's academic and athletic success have mounted, so have the requests from students and businesses to use the University's name and logo in the promotion of their goods and services.

Student organizations' and the business community's interest in the use of the school's trademark is something that is encouraged, but must be monitored, said Connie Lipsey, coordinator of licensing and trademark administration at the University.

The designs must comply with the Board of Regents' policy and federal trademark law and project a positive image of this, written approval must be obtained before anyone can use the trademark.

"The important thing is to keep the GSU logo separate from the organizations' logo," Lipsey said.

If students just have an idea about a design, Lipsey said her office is more than happy to work with them. "I think that students that have come by find it helpful. I do want students to know we're here to help and that 9.9 times out of ten we can work with them."

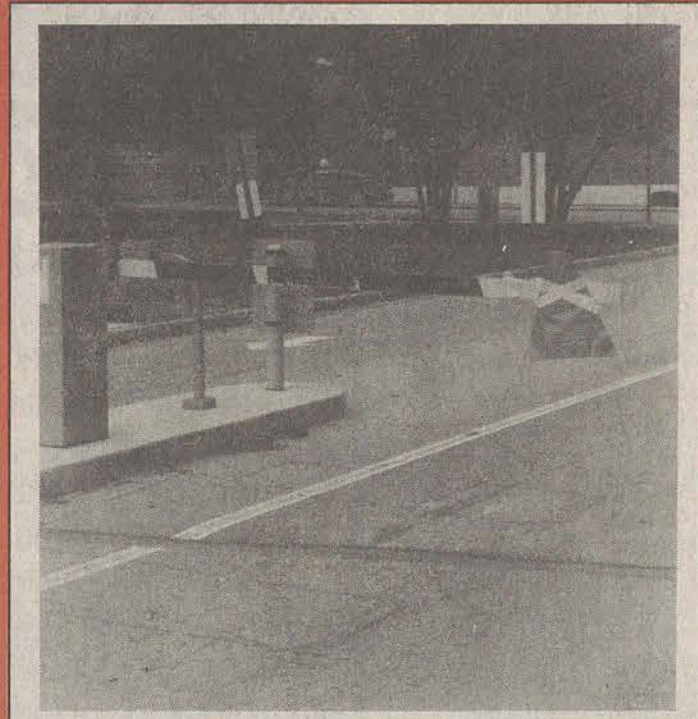
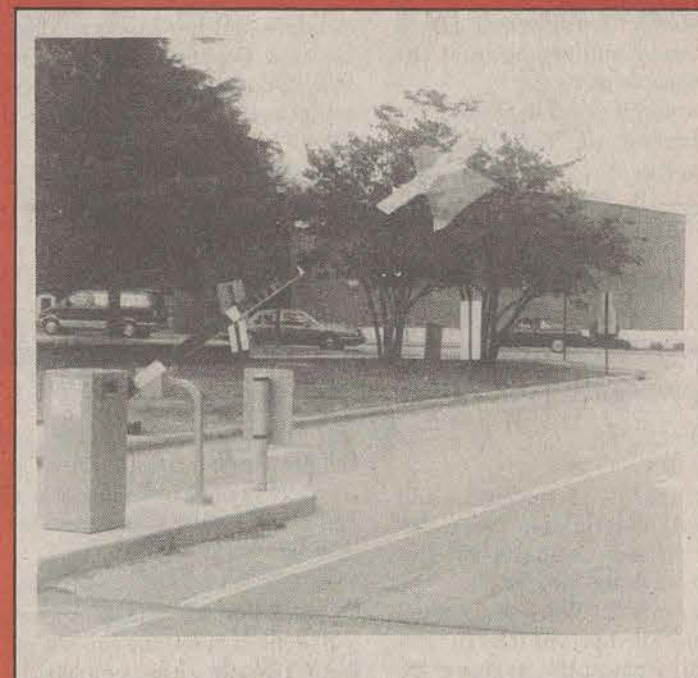
The logo was designed by Roy Parcels of Dixon Parcels in 1970.

The school wanted a logo to represent both the academics and the athletics of the school.

The cost of the logo, including the registration fees, attorney fees, camera ready art and preparing of art slicks, cost between \$30,000-\$40,000, said Lipsey.

Even though a bank in North Carolina and a van line have similar logos, Lipsey said we have held the registration mark long enough so no one can challenge it.

## Chop 'til you drop



Even the faculty gates seemed to be rooting for the Braves as they played in the World Series. But alas, fate didn't go the Braves' way as the Minnesota Twins won game seven Sunday night with a tenth inning score of 1-0. (Photos by Brice Orrell)

## Bypass to add new entrance to university

By Dennis Smith  
Staff Writer

Students entering GSU next fall quarter may see some relief from Statesboro traffic with the proposed east and west bypasses around the city.

GSU may also see some new changes with the completion of the road. At least one new entrance off the bypass is planned on the southwest quadrant of campus according to GSU spokesman David Thompson.

"This will be a winding road landscaped with trees that will provide a buffer between campus and the bypass" Thompson said.

"Most visitors will probably enter campus from this new road when it's complete" he said.

Bulloch County Commission Chairman Robert Cox said that other access to GSU may be a possibility.

"There will be one (exit) to get on below the stadium. There is also a plan to get directly to the parking lot of Paulson Stadium, but it will only be open during events held at the stadium" Cox said.

He added that the stadium access is just a proposal and is not finalized.

The new road should also help with traffic flow on the highways

around campus making it easier on commuters.

Cox said the completion date for the bypass, which makes a three-quarter loop around Statesboro, is slated for September, 1992.

A spokesman for the Georgia Department of Transportation said the bypass will be limited access.

The road loops around from U.S. 301 north, down across U.S. 80 east, and comes closest to campus between Highway 67 and U.S. 301 south.

From there it continues up through the country club and back to U.S. 80 west.

## Valdosta mayor is alumnus of the year

GSU News Service

Valdosta Mayor Jimmy Rainwater has been selected as the GSU School of Health and Professional Studies 1991 Alumnus of the Year.

Rainwater, who graduated from GSU in 1964 with a degree in recreation, will receive his award at the University Union Auditorium Nov. 16 at 10:30 am. as part of the Homecoming ceremonies on the Statesboro campus.

He began his professional recreation career at Central State Hospital in Milledgeville where he began a program in therapeutic recreation, said Acting Health Professional Studies Dean Leo Parrish. He later became director of recreation therapy at Southwestern State Hospital in Thomasville, and became active in the Georgia Recreation and Parks Association.

"Mr. Rainwater was the second section chair chosen for the

recreation therapy section in the state professional association where he distinguished himself in leadership role," said Parrish.

In 1969 he left Thomasville and became the recreation planner for the South Georgia Area Planning and Development Commission (APDC) in Valdosta.

He is serving his second term as mayor of Valdosta, and is on the board of directors of the Georgia Municipal Association.



## Senator hopeful speaks to students

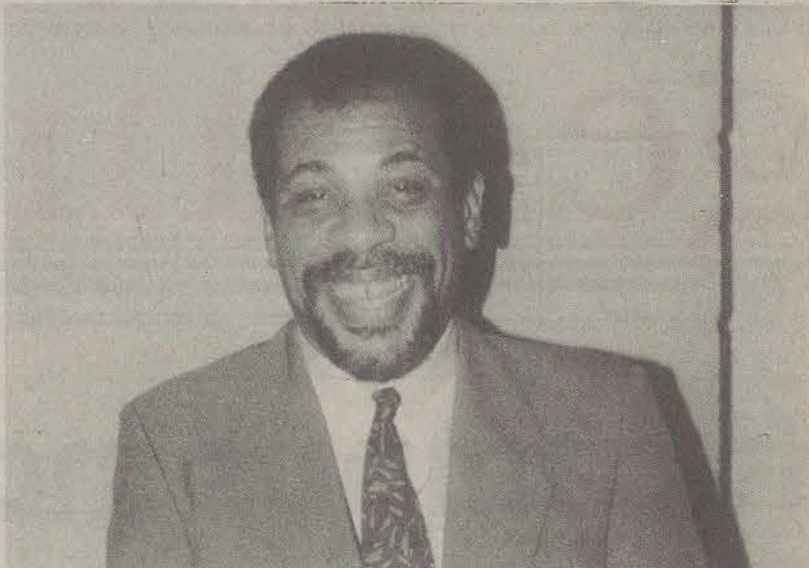
GSU News Release

Bob Barr, candidate for the republican nomination for the U.S. Senate spoke at GSU October 23.

Barr's is running for Wyche Fowler's seat, who as Bob stated is a "liberal and while in office he has removed himself from the common man." However, Barr said of Fowler, that "he is no fool, he knows how to campaign."

"We need a Senator who will go out and talk in the schools," said Barr. "We have to go far behind the traditional confines of Atlanta and Buckhead."

Barr also said that his experience as U. S. Attorney would give him an advantage as Senator. He said he fears no one in Washington, and if elected he would not succumb to the pressures of national party politics as Fowler had. "I've taken on the Colombian drug cartel .. and



beaten them," he said.

"I've taken on powerful political figures, and I have beaten them. I've taken on the drug traffickers and money launders and

I've beaten them."

Barr said he is an advocate of strong law enforcement, anti-quota laws, continued strong defense, free enterprise interna-

tional trade and he is for cutting the size of the federal government.

Barr said Fowler's liberalism placed him in the same category with Jane Fonda. He said Fowler failed to represent the true needs of his Georgia constituency, rather he preferred to serve the needs of the Liberal wing of the Democratic party.

He said he is fully committed to the campaign. "You don't beat them by namby-pamby tactics - by holding your finger to the wind," he said. "I am not testing the waters. If you have to test the waters, you are going to lose. I'm not afraid to stand up to the forces that are in Washington or the good old boys in Georgia."

He went on to say that he loves the interplay on the campaign trail, he loves meeting and interacting with the people he hopes to represent.

## Announcements

### Tuesday October 29

The first women's colloquium, "The Woman's Quest for Self in Zora Neale Hurston the Eye's were Watching God," will be held today in the University Union room 270 at 5 p.m.

It is presented by Georgene Bess.

Debra Sabia, Department of Political Science, Criminal Justice and Public Administration will give a presentation, "The Faces of Nicaragua" on Nov. 1 at R.J.'s Steakery. If you wish to reserve seats for the dinner contact Tomasz Warchol at 681-582. Today is the deadline.

### Wednesday, October 30

The University Police now offers a uniformed, radio equipped Service Officer to accompany you between 6 p.m. and 2 a.m. Sunday through Friday. To use this service, call 681-5234.

A spades tournament will be held in the music room. It is sponsored by the University Union.

Rocky Horror Picture Show will be shown at 9 p.m. outside the University Union.

### Thursday, October 31

A blood drive will be held from 12:30-5:30 p.m. at the First Presbyterian Church on Fair Road. Over 250 students registered to give blood at the school's blood drive Oct. 23.

The motto is "Don't get spooked, give blood."

Zero for Conduct and Simon of the Desert will be shown at the Union theater at 7 p.m.

The movie is presented by the Department of English and Philosophy.

### Friday, November 1

Debra Sabia, Department of Political Science, Criminal Justice and Public Administration will present the "Faces of Nicaragua" Friday at R.J.'s Steakery. A seated dinner will be from 6-7 p.m. And Sabia will speak from 7-8 p.m.

For more information contact Tomasz Warchol at 681-5823.

The Southern Center for Continuing Education at GSU will be presenting "Historic Resources: Foundations for Development in Rural Georgia" Friday and Saturday at the Southern Center Conference Center.

The conference is designed to create an alliance of the community developers and historic preservation proponents with a common goal of the improvement of rural economics.

For more information call Maria Center at 681-555.

Robin Hood: Prince of Thieves will be shown at 7 and 9:30 p.m. in the University Union Theater. The movie runs through Saturday.

### Saturday, November 2

GSU Eagles vs. Youngstown at Paulson Stadium at 1 p.m.

### Sunday, November 3

New Jack City will be shown at 7 and 9:30 p.m. in the Union Theater. The movie runs through Monday.

Artist and alumna Betty Foy Sanders and her husband, former Georgia Governor Carl Sanders, will dedicate an environmental sculpture in a ceremony at the Foy Fine Arts Building. The sculpture, "Reunion" will be

dedicate at 2 p.m. The exhibit will run through Nov. 15.

### Tuesday, November 5

"Stolen Kisses will be shown at the Union Theater at 7 p.m.

There will be a faculty recital series at 8 p.m. in Foy.

McClain as soprano and J. Ward as Tenor.

### Wednesday, November 6

A "Midsummer Night's Dream" will be presented at McCroan at 8 p.m. It will run through Saturday.

A fashion show will be held at 7 p.m. in the Union Ballroom.

The GSU Pilot's Association meets tonight in the Student Union at 8 p.m. Pilots and want to be's are welcome. For more information call Jim at 681-1284.

### Thursday, November 7

"Archeological Work on St. Catherine's Isl: Recent Investigations" will be at the Museum at 7 p.m.

Also J. Steers "British Politics and Censorship in the Arts" will be shown at Foy at 7 p.m.

A Nintendo Challenge will be held from 11 am.- 5 p.m. at Landrum.

The movie Naked Gun 2 1/2 will be shown in the Union at 7 and 9:30 p.m.

John Steers will presents, "British Politics and Censorship in the Arts," at 7 p.m. in the Foy Recital Hall. For more information call 681-5299.

GSU's CSRA alumni chapter will meet at 6 p.m. at the Shoney's Inn on Washington Road in Augusta.

Guest speaker will be Eagle head football coach Tim Stowers. Refreshments will be offered in the form of hors d'oeuvres and a cash bar.

For more information call Bob Stoddard at 803-649-1490 or Tammy Shepherd at 404-724-3315.

## Police Beat

### GSU Division of Public Safety

10/22/91

Mark E. Leachman and Heather A. Olejcek were involved in an accident in the Library parking lot.

Jeremy B. Worley reported someone hit his vehicle in the Newton Commuter parking lot and left the scene.

Jeremy P. Harvey reported his bike was missing from the bike rack at the Herty Building.

An employee of the University Store reported a subject had been seen shoplifting and had already left the area.

Jennifer K. Lowe was charged with Minor In Possession.

Brian L. Attaway was charged with Minor In Possession.

William S. Willis was charged with Minor In Possession.

10/23/91

Derrick L. Rowan was charged with Minor In Possession.

A resident of Hendricks Hall reported receiving harassing phone calls.

10/24/91

Kimberly D. McClure and Joyce D. Croft were involved in an accident in Hanner Commuter parking lot.

Angela N. Simmons and Adrienne F. McCulloch were involved in an accident in Landrum 10 minute parking lot.

A resident of Veazey Hall reported receiving harassing phone calls.

A resident of Johnson Hall reported a case of harassment in the Landrum Center.

10/25/91

Sean C. Aiken reported someone had let the air out of his tires while his vehicle was

parked in Oxford Hall parking lot.

Eric L. Speegle was charged with D. U. I.

Joseph L. Layden was charged with Minor In Possession.

### Statesboro Police

10/22/91

Preston May III, 19, of Statesboro was charged with Reporting A False Crime.

10/25/91

Robert Irvin Granger III, 19,

See Police, page 8



## Pizza Inn

### Weekly Specials

**Monday** - Monday Night Football /Beverage Specials

**Tuesday** - All U Can Eat Buffet \$3.<sup>99</sup>  
5 p.m. - 9:30 p.m.

**Wednesday** - Live Entertainment from Honest Bob/Beverage Specials

**Thursday** - All U Can Eat Buffet \$3.<sup>99</sup>  
5 p.m. - 9:30 p.m.

**Sunday thru Friday** - Lunch Buffet \$3.<sup>99</sup>  
11 a.m. - 2 p.m.

**HWY 301 South Statesboro**  
**FREE Delivery of all menu items**  
**681 - 9066**

## Question Authority!

\*COUPON\*



\*COUPON\*

Buy 1 lunch or dinner (# 1 - #30 Combinations), get the second for half price with this coupon.

Phone: 764-9828

## The George-Anne

### STATEMENT OF OPERATIONS

The George-Anne is the official student newspaper of Georgia Southern University, owned and operated by GSU students and utilizing the facilities provided by GSU. The newspaper is the oldest continuously published weekly newspaper in Bulloch County and Statesboro, Ga. The ideas expressed herein are those of the editor or the individual authors and do not necessarily represent the views of the Student Media Committee, the administration, the faculty and staff of Georgia Southern University, or the University System of Georgia. The George-Anne is published twice weekly during the academic year and three times during summers. Any questions regarding content should be directed to the editor (681-5246).

### OFFICES, MAIL, PHONES

Room 111, F. I. Williams Center, The George-Anne, Landrum Center Box 8001, Georgia Southern University, Statesboro, Ga. 30460. 912/681-5246 (News) or 912/618-5418 (Advertising)

### ADVERTISING INFORMATION

The George-Anne reserves the right to refuse any advertisement. The George-Anne's advertising rates are as follows:

•Students and student groups:	\$2 per column inch
•GSU faculty, departments or affiliates:	\$3 per column inch
•Statesboro area businesses & groups:	\$4 per column inch*
•National rate	\$7 per column inch

\*Five inch minimum ad size, otherwise classified display rates (\$5.00 per column inch) apply.

DEADLINE: The deadline for reserving space and submitting advertising copy is Noon, one-week prior to the intended publication date. For more information, rate cards, sample publications, contact: Stacy Graham, Advertising Manager, ADS, (912) 681-5418; or Bill Neville, Student Publications Coordinator, (912) 681-0069.

### CLASSIFIED ADVERTISING INFORMATION

The George-Anne reserves the right to refuse any advertisement. The George-Anne's classified advertising rates are as follows:

•Students and student groups:	Free (25 words or less)
•GSU faculty, departments or affiliates:	Free (25 words or less)
•Others groups or businesses:	\$5.00 (25 words or less, 2 issues)*
•Retail classified display:	\$5.00 per column inch

DEADLINE: The deadline for reserving space and submitting classified advertising copy is Noon, one-week prior to the intended publication date. Free classified ads from students, faculty and staff must be submitted in writing, with the name of the sender, a local address and telephone number. No free ads will be accepted via telephone. Only one free ad per person per week.

### CIRCULATION INFORMATION

Subscription rates for home delivery of The George-Anne are six dollars per quarter, or \$18 per year, delivered bulk mail. Please address all inquiries to Jeff White, Business Manager. The George-Anne is distributed free of charge on the Georgia Southern University campus through delivery sites located in campus buildings and residence halls.

\*We gratefully acknowledge the theft of our slogan from Robert Williams of the Blackshear Times. Call Bob and he can tell you who he stole it from originally.

UNION  
PRODUCTIONS  
GEORGIA SOUTHERN UNIVERSITY

## Homecoming Concert:

## drivin' n' cryin'

November 14 at 8 p.m. in  
Hanner Fieldhouse

Presented by:

Union Productions and I-95

•Ticket Sales•

Start Monday, October 21  
Sold from 1 pm to 4 pm in  
Union Theatre concession  
stand.

\$8 per student with student  
I.D. (one ticket only with I.D.)  
\$10 for non-students





## Rocky Horror

By Doug Gross

Staff Writer

Madness will once again take its toll on Statesboro Wednesday night as Union Productions presents *The Rocky Horror Picture Show*, perhaps the most well reknowned cult classic film of all time.

Since its first release in 1975, *Rocky Horror* has engrossed late night movie goers with the tale of Brad and Janet, an All-American couple thrust abruptly into a world of sex, insanity and dance numbers populated by mutants, androids and transvestite aliens from the planet Transsexual.

Perhaps the most entertaining aspect of this film is the audience participation which has evolved and grown over the years. Crowd responses range from humorous comments intermingled with movie dialogue to the hurling of such objects as toilet paper, rice and toast at precise moments in the film. The *Rocky Horror Picture Show* features performances by such notables as Susan Sarandon, seventies rock star Meatloaf and *Rocky Horror* screenwriter Richard O'Bryan, and stars Tim Curry (Clue, *The Hunt for Red October*) as the flamboyant Frank N. Furter, a mad scientist intent on creating the "perfect" man for less than moral reasons.

While the movie's plot may seem a bit thin to the most discerning movie critic, the magic of seeing *Rocky Horror* in a group of screaming, costumed fanatics is a joy not to be missed. Veterans and "virgins" alike should find Wednesday night's showing a perfect opportunity to "do the Time Warp again".

The *Rocky Horror Picture Show* will be shown at 9 p.m. on Wednesday, Oct. 30, between Foy Fine Arts Building and the University Union.

## Rip Us Off.

That's right — you heard right. Rip us off. Get something for nothing. Say hello to a friend. Find a roommate. Get a job. Find a home for a litter of kittens. Buy a wombat. Or sell your Beamer (right, like you expect us to believe you — and not your folks — actually have the title to that BMW). Regardless of your purpose (or even if you are a congenital liar like the Beamer owner), Georgia's liveliest classified ad section is for you. Students, faculty and staff can have 25-word action ads published for nothing. Fill out the little rectangles at left, and send your ad to G-A Action Ads, LB 8001, GSU or drop it by the Williams Center, Room 111. You MUST include your name and Landrum Box number to qualify for a freebie. Remember, keep it short: students, faculty and staff will be billed at 10 cents a word for words in excess of the 25 word limit.

## Political Science Club looks past partisan

By Teresa Roach

Features Editor

The GSU Political Science Club has made a strong start this academic year after electing its officers on October 21.

The results of the elections were as follows: president: Robert Croft; vice president: Fatih Lengeri; assistant: Nicole Henderson; and secretary/treasurer: Heather Martin. The group's advisor is Debbie Sabia.

President Robert Croft stressed that the Political Science Club is a "non-partisan organization that is open to anyone who is interested in politics of the field of political science. It is designed to enhance student awareness and participation in politics." He reiterated the fact that all majors are welcome.

Advisor Debbie Sabia said that the group hopes to encourage people to "put partisan behind and come together for a common interest."

The club will sponsor a service-oriented event once each quarter. These events include career choice seminars, academic advisement workshops, LSAT and GRE test taking seminars, a forum for the presentation of student research, and a forum for political debates.

At regular biweekly meetings, the group holds political discussions, hosts speakers from the field of political science, or views and discussed politically controversial films, among other activities.

Meetings are held every other Monday at 7 p.m. in Union room 254. The next meeting will be held on November 4.

## A bit of Halloween history

### The spirits and ghosts

The 2,000-year-old Celtic Feast of the Dead is probably the source of today's Halloween celebration. The feast began on Oct. 31, the eve of winter and of the Celtic New Year. The Celts thought this night a "crack in time" when the dead could revisit the living.

### The tricks or treats

In the 9th century, the church christianized the feast by naming Nov. 1 the Feast of All Saints (or All Hallows) and Nov. 2 the Feast of All Souls. Children would go "a-souling" or begging for sweet soul cakes in return for prayers for the dead.

They would chant:

Soul, soul, for a souling cake  
I pray, good missus, for a souling cake  
Apple or pear, plum or cherry  
Any good thing to make us merry

Since the alternative was to make them mad, we can see the origin of "treats" or "tricks."

### The jack-o-lanterns

Jack-o-lanterns have various origins. An old Irish tale goes like this: There was once a mischievous man named Jack who was barred from heaven for his stinginess and from hell for his practical jokes on the devil. He was condemned to walk the earth with his lantern until Judgment Day.

■ In northern England and Scotland, the term, jack-o-lantern, was used to describe the night watchman.

■ A story from rural England insists that "long ago" the menfolk would go to the annual fall fair and get too tipsy on cider to find their way home. The womenfolk would make lanterns from pumpkins, or "punkies," and set off in the night to find them.

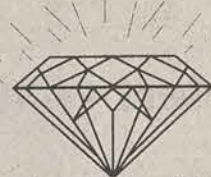
SOURCE: U.S. Naval Observatory; World Book

Knight Ridder-Tribune News/MARTY WESTMAN

GEORGIA SOUTHERN UNIVERSITY  
Strutting Eagle Watch

\$48.00

Bring In This Ad and receive \$5.00 off the price



The Jewelry Corner  
of Crystal Etc.

Jewelry Repair  
764-5510 28 East Main Street  
Statesboro, Georgia 30458

764-3411

## Witchcraft practiced in Statesboro

Continued from page 1

originally by Witches to symbolize the elements and the Divine Spirit. Inside the star is the self, and the circle surrounding the five points of the pentacle signify protection and safety.

Satanism uses the inverted pentacle, which symbolizes Satan and pictures the head of a goat. According to legend, Satan has the face of a goat and the body of a man.

Practicers of Wicca can be called Wiccans or Witches, and both male and female followers can be called Witches. According to legend, male Witches were called Warlocks. This term, according to the WLFPA, means "traitor" and was used by the Christian Church.

Wiccans can worship alone or in covens. A coven may be comprised of as few as two people and usually does not grow above 15. Wiccans come together in a way similar to Christian Church ceremonies. The Wiccan meetings are called Esbats, and they may be held weekly, biweekly, or monthly.

Esbats, Anna said, are "mainly a time of getting together and sharing what you know and being able to worship the same thing together."

Esbats are usually held outside, she explained. A circle is arranged and the four points of north, south, east, and west are established. Each direction corresponds with one of the four elements. There is usually a fire burning for light.

The Wiccans come inside the circle and to begin the ceremony, call on the Lord and Lady to protect them in the circle. "This is similar to the House of God," Anna said.

"No harm will come to you when you're in the house of God. As long as we're in the circle, no harm will come to us."

Anna explained that during the ceremony the Wiccans thank the Lord and Lady and share something to eat. Traditionally it is wine, bread or fruit.

The remaining food is thrown into the fire as an offering. This is the only kind of offering Wiccans make. Following the offering, the members talk about problems anyone is having and discuss plans for upcoming Esbats.

Major holidays are called

Sabbaths, and there are five of these. One of the Sabbaths is Halloween.

"The myth that Halloween is the time when Witches are the strongest ... came about because on All Hallow's Eve, normally two covens get together to celebrate," Anna said.

"It's a time when we thank the Lord and Lady for letting us all be here. We write down the weaknesses we want to overcome

See Witch, page 8



Four Seasons Florist

Flowers for any occasion!

373 Savannah Avenue  
Statesboro, GA 30458  
Phone (912)764-9839



• Call about our November free tanning

764-4206

423 Fair Road



Dé Ja Vu'

We  
resale  
formals!

Wed., Oct. 30th

What to bring:  
birdseed, water  
guns, newspapers,  
toast, toilet paper,  
hotdogs, cards, & a  
blanket to sit on

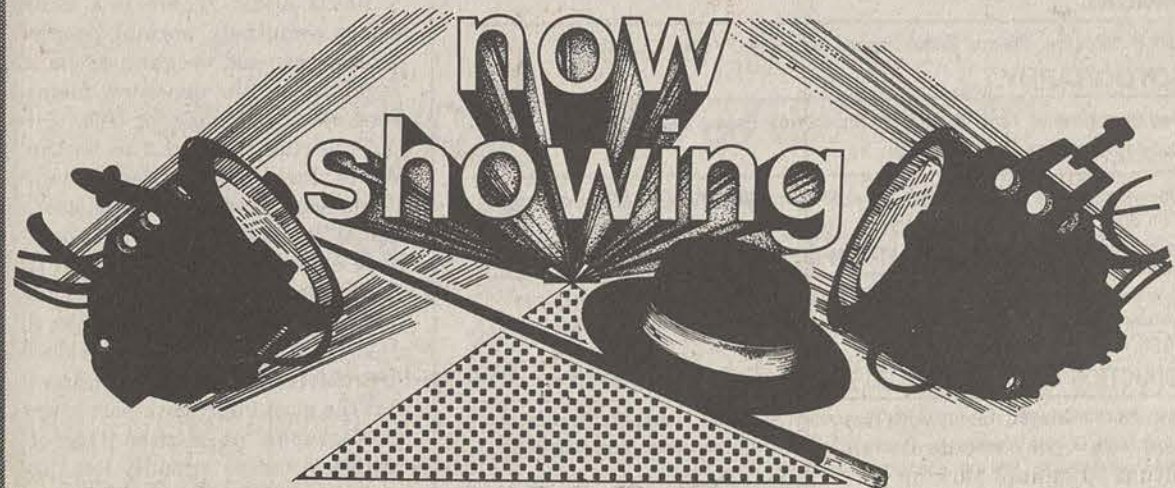
"Rocky Horror  
Picture Show"

Outside:

Between Foy & The Union

UNION  
PRODUCTIONS  
GEORGIA SOUTHERN UNIVERSITY

now  
showing



## FLU SHOTS

Available to Eligible Students at the  
Health Center

8 a.m. - 4 p.m. • Monday thru Friday  
available thru November 26

You will be required to wait in the  
Health Center

20 minutes after receiving a flu shot.

Those persons who are allergic to eggs  
should not receive a flu shot.

Cost: \$5.00





**The George-Anne**

Since 1927, Georgia Southern's Official Student Newspaper

**Gary A. Witte**  
Editor

**Kevin Hudson**  
Managing Editor

**Misty McPherson**  
News Editor

# Opinions

Liked By Many,  
Cussed By Some...  
Read By Them All

Tuesday, October 29, 1991

## Bike paths needed

Q: When is a pedestrian not a pedestrian?  
A: When it's a bike path.

The paved walkways, while made with pedestrians in mind, have become a favorite of bicyclists speeding to class. The lack of parking has made riding a bike the vehicle of choice.

We are not saying that these people do not have a right to ride their bikes. But it is only a matter of time before someone is seriously injured because of a collision between bikers and pedestrians.

Near misses can be seen every day in front of Henderson library and other places on campus. One student even witnessed two bikes colliding on the sidewalk in front of In-the-Pines Friday.

Bike paths would help stop this dangerous habit of bicycle riding on sidewalks that aren't designed for it.

As we understand it, bike paths are to eventually be included in the 20-year plan. But a specific place or time has neither been set nor planned.

This is neither acceptable nor safe. How long will the students have to wait?

Facilities Planning, which created the 20-year plan, needs to quickly figure out where they are going to put bike paths and start building them - before someone gets hurt.

## Letters to the Editor

### Core classes are not harder than Education classes

Dear Editor,

I am writing in response to "An educational subject" printed in the Tuesday issue of the *George-Anne* [Oct. 22]. I am an early childhood senior and was shocked and infuriated at the article and the opinions expressed.

While I took my core classes I worked hard and was even placed in honors English classes. However, my last year and a half of major classes have required much more work and time than any core class I've ever been enrolled in.

One of the education classes discussed was ART 370, Art for teachers. I took this class last year and don't quite remember coloring with crayons as Chris described.

I recall an intelligent professor, stimulating discussions, learning to appreciate new art forms and to identify various visual elements as well as learning art history.

In addition to this, we were also required to learn how to produce many different art forms ourselves and had art projects due

each week. I found ART 370 to be one of the most time consuming and yet interesting classes I have ever taken.

Perhaps Chris should reevaluate her goals since she is so bored and uninterested in her education classes.

As far as the "dumb blondes" being education majors comments, I will be the first to admit that the early childhood department has their fair share of simpletons just as other majors do.

However, the majority of early childhood majors that I have encountered are intelligent individuals with a deeply motivated concern for children and their futures.

These people, who are well suited for their future careers, represent what education professionals should be, unlike the dumb blondes, most of whom will never see there [sic] graduation day.

In conclusion, I would like to say that I feel confident that because of my educational experiences and the program prepared for education majors here at GSU I will be a well prepared professional at the end of this year.

I would also like to remind the other students here at GSU who think that early childhood majors spend their days coloring that we, unlike other majors, must be well informed in every subject area of knowledge as well as experts in behavioral management.

I appreciate the time given to responding to my letter.

**Cheree Gaddy**

Senior, Early Childhood Education

#### LETTER AND SUBMISSION POLICY

The *George-Anne* welcomes letters to the editor, story submissions and guest columns from people both inside and outside the Georgia Southern University Community. All copy submitted should be typed (double-spaced, please), preferably on Macintosh disk in Microsoft Word or Microsoft Works format. All submissions must be signed and include a mailing address and phone number for verification. The editors reserve the right to reject any submission. There is no word limit on submissions. A writer may request to remain anonymous. However, it will be the editor's decision whether or not to print the name. Submissions are run on a space-available basis.

#### STAFF

##### NEWS

Assistant News Editor: Brent Parrott; Copy Editor: Missy Lukehart; News Staff: Rob Bohn, Jennifer Booth, Roger Lee, Amy Scaff, Dennis Smith, Ben Walker

##### FEATURES

Features Editor: Teresa Roach; Staff: Nancy Rowell, Angela McConnell, Donna D'Ambrosio, Doug Gross, Carolyn McWilliams, Trey Decker

##### SPORTS

Sports Editor: Michael Strong; Assistant Sports Editor: Eric Weisenmiller; Staff: Ricky Coolidge, Cris Smith, Rod Swinson

##### OPINIONS

Staff: B. Birdseye, Philana Griffin, Jason Lewis, Pat O'Kelley, D.J. Smith

##### PHOTOGRAPHY

Head Photographer: Tony Tocco; Staff: Brice Orrell, Robby Weatherly

##### CIRCULATION

Supervisor: Glenn Burgess; Staff: Laura Morgan, Cindy Kever, Mike Bowden, Chris Shelnutt, Robby Weatherly

##### ADVERTISING/DISTRIBUTION SERVICES (ADS)

Advertising Manager: Stacy Graham; Business Manager: Jeff White; Business Assistant: Kelley Hare; Sales Representatives: Kerry Calhoun, Kelly Dotson, Jay Knight, Clint Rushing, Brent Sammons

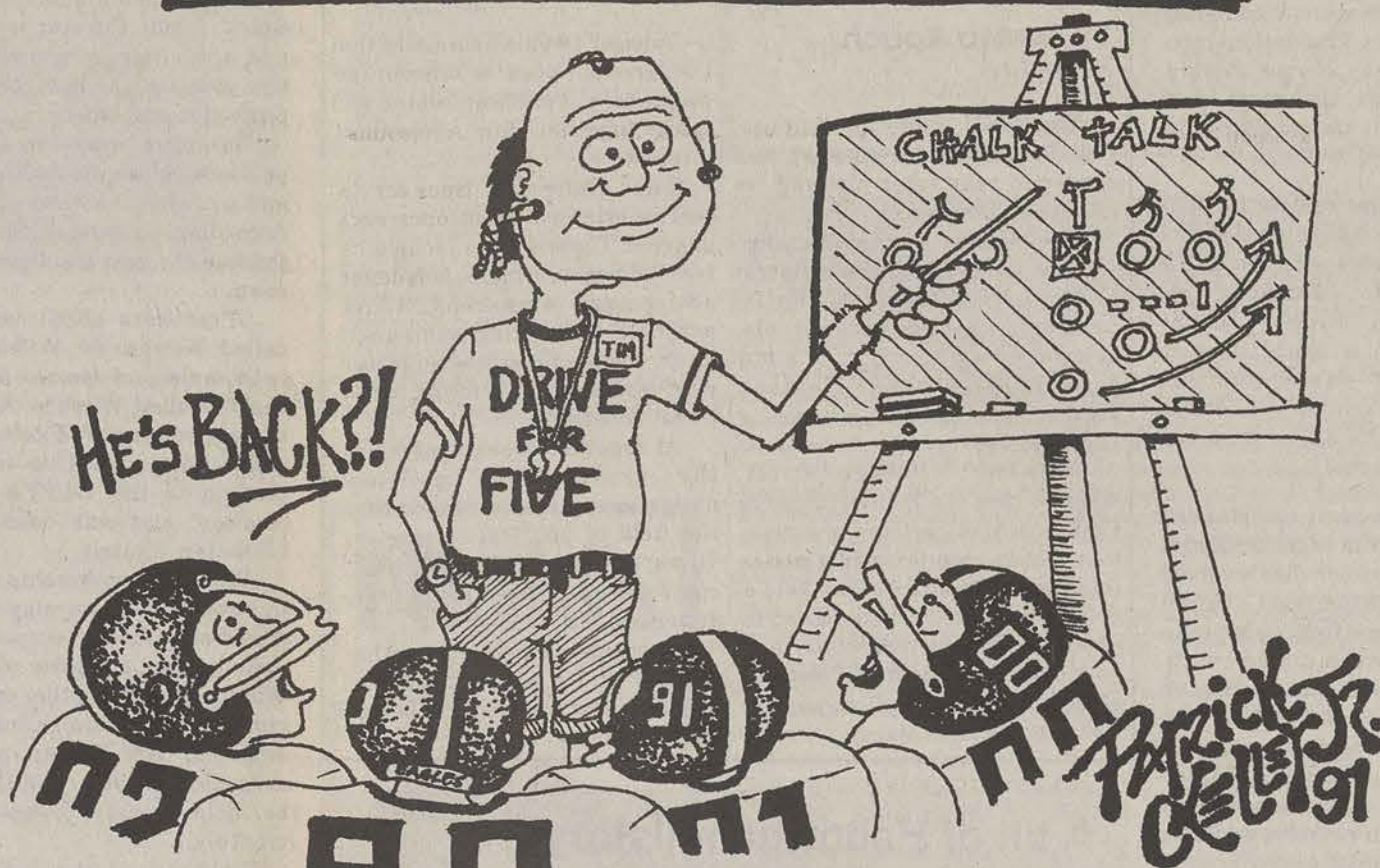
##### PRODUCTION AND GRAPHICS EDITORIAL SERVICES (PAGES)

Production Manager: Sherry Dyal; Production Assistant Managers: Stephen Gundersen, Barbie Westberry; Production Staff: Keisha Davis, Kelly Kendrick, Debi Dow, Brenda Dowling; Darkroom Manager: Tony Tocco

##### STUDENT PUBLICATIONS COORDINATOR

Bill Neville

AS A CRUEL TRICK ON HALLOWEEN, STOWERS GIVES HIS EAGLES A FALSE SENSE OF HOPE ....



## Before we ban Halloween, let's look at Christmas

### From the editor's desk...

Gary A. Witte



...I guess the school people figure - in their own twisted logic - that if it isn't Christian, then it must be satanic.

Gooooood.

The fundamentalists point to Halloween's pagan origins, and say, "Isn't that evil? Dead walking the earth. Hmph."

Well then, how about Christmas? It too, has its fair share of pagan origins. Both the Yule-feast of the ancient Norsemen and the Roman celebration of their god Saturn, are the major basis for the modern celebration of Christmas.

The winter celebration held by the Norsemen introduced the Yule-log, the evergreen decorations, and the Christmas feast.

The Roman Saturnalia cel-

ebrated the golden age of liberty when the god Saturn ruled, and equality was to have existed among human beings. To celebrate this, slaves exchanged clothing with their masters, and gifts were given. And of course, everyone had a massive party, where everyone got stinking drunk and had a good time (without driving, of course).

Sound familiar?

Of course, when the early Christian church came along it tried to strongly discourage this silliness, but finding out that you just can't stop a good party, they Christianized it to celebrate the birth of Christ.

Yet the pagan elements remained largely undisturbed - including the giving of gifts, the decorating of trees (which many historians believe came from ancient tree worship, not Martin Luther, leader of the Reformation), the Yule-log, and of course, the partying. I won't even go into Santa Claus.

When the Puritans came into power, they too tried to stop it - being the Grinches they were and recognizing Christmas' pagan origins.

But the parties and festive laughter continued, and in 1836 it became a legal holiday in the U.S.

So before these modern-day Puritans (i.e. fundamentalists) start condemning Halloween, maybe they should think twice before buying a Christmas tree or having a good time at Christmas.

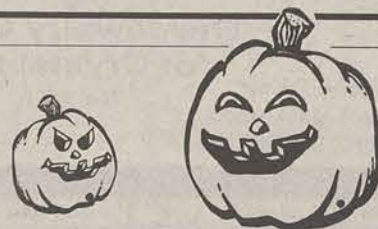
I don't think the Puritans appreciated the sound of children laughing at all.

**Recommended Reading:**  
*Bloodcurdling Tales of Horror and the Macabre* - By H.P. Lovecraft

## World Pumpkin Confederation is serious business

### For alert readers only...

Dave Barry



Halloween is here, and when we think of Halloween, we think of pumpkins, which are big vegetables; and when we think of big vegetables, we must, as responsible citizens, resist the childish temptation to make gratuitous references to the vice president.

So instead let's focus our attention on the World Pumpkin Confederation. This is a real organization that I found out about when alert reader Paula Linter sent me a letter stating that her husband had become obsessed with growing an enormous pumpkin in their back yard.

"I should have had a clue," she writes, "when the pumpkin began to dominate conversations with friends and family:

"FRIEND: How are you?"  
"HUSBAND: Well, it's two pounds heavier today!"  
"FRIEND: Ooooooh kayeeeeee..."

Paula adds: "There is a club where seemingly normal people get together and weigh their giant vegetables. We are now members. He sent money for this."

This club turns out to be the World Pumpkin Confederation. Paula sent me a WPC newsletter, and it is the finest publication I have ever seen that is devoted to the topic of growing enormous pumpkins. It has, for example, a detailed article entitled "Fertilizing With Bat Guano." But the most impressive part is the photographs: page after page of people standing proudly next to pumpkins that are significantly larger than Charles Kuralt.

I called the World Pumpkin

Confederation founder and president, Ray Waterman of Collins, N.Y. He told me that the WPC has 2,000 members from 30 nations.

"Basically," he said, "we're in this to grow the largest possible pumpkin."

Ray Waterman has grown a pumpkin weighing more than 600 pounds. The world record is more than 800 pounds.

But that's not good enough for the growers of the WPC. Their goal -- their quest, their obsession, their Mount Everest -- is the 1,000-pound pumpkin.

"We'll do it by the turn of the century," states Waterman, with quiet confidence.

Each year the WPC sponsors an annual weigh-off, featuring cash prizes, at official sites around the world; each year, the winning weights creep closer to the Big Mother Pumpkin. Whoever finally grows it will be, quite simply, a legend.

Of course when the emotional stakes are this high, you inevitably have conflict. There was, for example, the incident at

the 1989 WPC All New England Weigh-off, held in Topsfield, Mass. According to the WPC newsletter, the weigh-off went normally until the arrival of Robert Gancarz, a New Jersey resident who at the time just happened to be the defending world record holder. He trucked in a pumpkin weighing 619.5 pounds -- the heaviest at Topsfield. But some other competitors, objecting to an "outsider" competing, threatened to walk out. With trouble brewing and the press on the scene, the local WPC official asked Gancarz to withdraw his pumpkin in an effort, as the newsletter puts it, "to defuse an inflammatory situation and to stem possible international embarrassment for the WPC."

Gancarz did withdraw his pumpkin, even though, under WPC rules, he was allowed to compete wherever he chose. This incident outraged WPC president Ray Waterman, who declared Gancarz the Topsfield winner. Waterman still sounded ticked off when I asked him about this.

"Those people in New England

are fruity," he said. "They bounced out the world record holder! They're out of the World Pumpkin Confederation. If you don't have any more brain cells than that, you don't belong in a world organization."

Waterman also has strong views on other topics, including the sloppy way some organizations establish "world records" in the vegetable arena.

"The Guinness Book of World Records," he snorts, "is listing a 66-pound cucumber THAT'S ACTUALLY A GOURD."

Blunt words? Yes. But sometimes blunt words are needed. In a world of mealy-mouthed mumblers, Ray Waterman's voice rings out loud and clear, sounding the charge as the WPC seeks to go where no gardener has gone before. You can become part of this by sending \$15 to the World Pumpkin Confederation, 14050 Gowanda State Rd., Collins, N.Y. 14034. The newsletter alone is worth it. You can also buy official T-shirts, caps, etc. And who knows? You might even grow an actual pumpkin.

"Even if you don't have much space," Waterman notes, "you can compete in the Long Gourd category."

Waterman has the world record here, with a gourd measuring eight feet, three inches. To give you a totally nongratuitous idea of how long that is, if you were to lay such a gourd down next to the vice president, you would have a very strong ticket for 1996.



## Health & Fitness

By Donald Jordan

Staff Writer

We pay a significant price for poor posture, whether in physical appearance, wear and tear on the body, or maybe even work performance.

As we get older we tend to droop, sag, and hunch over - becoming everyday slouches almost unnoticeably. If you consistently sit at a typewriter or a computer you probably have a stoop - or "forward-head" - posture. Dr. Rene Caillet, a professor emeritus of physical medicine at the University of Southern California, says that any activity that requires one to look down for extended periods, even reading or simple desk work, can result in chronic forward head. Caillet also says that this position contributes to tension headaches, vision problems, and jaw and neck pain.

Poor posture primarily affects the neck and lower back - and even the shoulders. Howard Muson of *American Health* magazine says that when the lower back is curved, the vertebrae supported by the pelvic bone tilt and pull on the surrounding muscle tissue, possibly wearing out the cushioning discs between them and pinching nerves. Rounded shoulders also cause a strain on the trapezius muscles, which run from the shoulder blades to the base of the skull, and the extra strain often leads to tension headaches.

Sloping stance causes chronic shortness of breath because when the head drops forward and the shoulders hunch over, the chest cavity is constricted, limiting the space for lung expansion during inhalation. However, only people with severe scoliosis or osteoporosis might experience acute breathing problems.

Posture apparently improves with our moods. When we feel happy and confident, we tend to stand tall and relaxed - head erect, chest out. When we are tired or stressed, we slump over.

Both standing and sitting posture can be improved with exercises that strengthen the neck, back, and abdominal muscles. People who spend much time at a desk should sit on the two bony points of the buttocks, with most of their weight just back of these points - in a slight slumping position. However, the head and neck should remain straight, with feet planted firmly on the floor. Armrests can help alleviate some of the stress off the back. It is also helpful to place a small pillow in the small of the back against the chair.

Fit abdominal muscles are also important to good posture. The abdominals can be strengthened by way of various sit-ups, walking, cycling, or even side bends. When doing sit-ups be sure not to pull on your neck.

If we practice good posture it will become second nature. So sit up straight during class, and stand up straight when it's finally over.

## The eclectic column

GSU News Service

Bernie Solomon is a storyteller. We are all used to the traditional stories of our youth and the typical interpretations of biblical stories. As a printmaker and member of GSU's faculty, Professor Solomon translates not only literal interpretations. This use of figurative imagery is illustrated in Bernie Solomon's art; specifically the books presently displayed in Gallery 303. Among the various books in the gallery are *Song of Songs*, *The Legend of St. Julian*, and *Lilith*.

Storytelling has perpetually played an influential role in the history of man. Professor Solomon does not look for the traditional translations, but instead deciphers stories as a way to create new images. Through Professor Solomon's interpretation and corresponding images, we are left with a fresh translation and a visual image to support the story.

Professor Solomon's exhibit, as well as other GSU faculty members' art, will be on display on Gallery 303 of the Foy Fine Arts building until October 31.

## LRC workshops provide help and guidance for students

By Donna D'Ambrosio

Staff Writer

The key to finding what you want is often looking in the right place. So when you need help in your classes or guidelines to surviving college, look into the Learning Resource Center (LRC) in Henderson Library.

The LRC, according to Carole Brown, the Tutorial Program Coordinator, aims to ensure success for the college student in areas they have the most problems.

In addition, the LRC also offers workshops for computer programs, math skills, and for survival skills such as note taking, career choices, study and note taking skills, and preparation for the Regents Test.

These workshops are taught primarily by faculty, but in the past, speakers from the Administrative Office and the Registrar's Office have also conducted workshops. Student tutors can also teach a workshop, but generally, there are no more than two sessions of this type per quarter, according to Brown.

Topics for the LRC workshops develop from student and faculty suggestions. "We are constantly inviting new ideas to improve our department," Brown said. One way to determine what programs to develop is by the use of student evaluation forms; students check what they want or need in terms of help.

The Non-Traditional Student Group, sponsored by the LRC, re-

sulted from a perceived student need. The group, designed for students over the age of 25 working towards their bachelor's degree, helps these students to become a part of campus life.

"We help them feel at home and offer support to help them be successful [in their studies]," Brown said.

Along with the increase of variety in topics for the workshops, student attendance has also risen sharply in the past few years. However, "some [workshops] are well attended, while others are not so well attended," Brown said.

To publicize the workshops, the LRC sends out calendars and newsletters to teachers in hope the

information will be relayed to the students. "Many teachers see that these workshops are helpful [to the students]," Brown said.

Brown also said the LRC would like to eventually send out the calendars and newsletters to each student at GSU.

The LRC also posts signs of

upcoming workshops in the library to reach a greater number of students.

Students frequently call the LRC to inquire about tutorial sessions and workshops. "We try to find out what is bothering them or what they are interested in," Brown said.

## Classic films good for Halloween scares

By Trey Decker

Staff writer

Halloween

Starring: Jamie Lee Curtis, Donald Pleasence.

When *Halloween*, originally titled *The Babysitter Murders*, first came out, it was expected to be just another low-budget horror movie trying to compete with the classics. But what the public never knew, and what Director John Carpenter never dreamt of, was that *Halloween* would become one of the most successful independent movies of all time.

It became a classic among the public, and a top-renter the days surrounding Halloween.

The movie was made in the spring of 1977, and it was Jamie Lee Curtis' first major motion picture.

It only cost \$540,000 dollars to make, but grossed over millions in the next months it came out.

The story, which was originally a short story written by Carpenter, tells of a young boy who is committed to a mental institution after he murders his sister on Halloween night.

Fifteen years later, Michael Myers, now one of the most infamous and popular horror movie murderers, escapes the night before Halloween and returns to the town where he once killed.

Curtis plays Laurie, a young girl who baby-sits two children on Halloween night, only to encounter the killer alone.

Near the end of the movie

Laurie finds out the striking truth of why Michael Myers has returned to kill again.

Dr. Sam Loomis, played by Donald Pleasence, tracks the killer back to his hometown. Loomis knows what the killer is capable of and will stop at nothing to destroy him. The climax is stunning, even in this decade. We find out just what Michael Myers is capable of.

The film is wonderfully directed, and the script is beautifully written. The characters are real, and the plot is very believable, almost to the point where you go and make sure your door is locked.

*Halloween* was never expected to make any money by the industry, but it soon spawned a sequel, *Halloween II*, which is a continuation of the original, but not as well done.

Soon followed *Halloween III*, which has nothing to do with the storyline. But in 1988 came the best sequel of any horror that I have ever seen - *Halloween 4: The Return of Michael Myers*. This sequel is the perfect sequel and goes right along with the plot. The movie brings back Michael Myers in a believable way, and with classic modern terror that is hard to find.

*Halloween* is definitely a classic, and will remain one. As is said on the back of the video box: "Halloween is a classic that will scare you out of your wits."

See it again... and watch it with somebody.

The Exorcist

Starring: Linda Blair, Max Von Sydow.

"See the movie... it's the most shocking thing that will ever happen to you."

From paperback book cover.

In case you have missed out on what a horror movie really is, then I invite you to come watch *The Exorcist*.

Adapted from the best-selling novel by William Peter Blatty, *The Exorcist* is among the classic horror movies that rank up there with *Dracula*, *Frankenstein*, and *Dr. Jeckyll and Mr. Hyde*.

It is the story of a little girl, played by the now infamous Linda Blair, who becomes possessed by a demon.

In the movie the characters try to deny this fact, saying it is in her mind, and this is where it is up to the moviegoer - to decide if it is real or not.

Two priests try to drive the demon out, but it turns into a war where it is good against evil... And we ask the question is good strong enough?

See Films, page 10

UNIVERSITY UNION  
THEATER

UNION  
PRODUCTIONS  
GEORGIA SOUTHERN UNIVERSITY



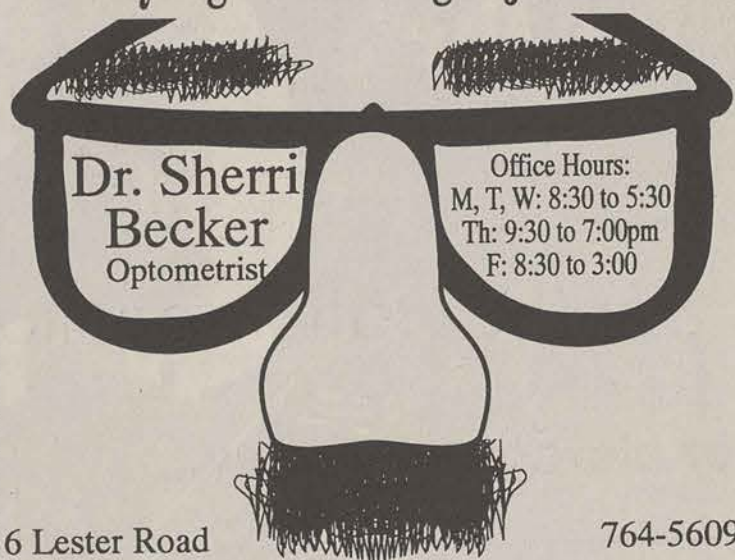
Nov. 1 & 2, "Robin Hood: Prince of Thieves"



Nov. 3 & 4, "New Jack City"

Movies shown at 7 & 9:30 p.m.  
Admission is just \$1 with your GSU Student I.D.

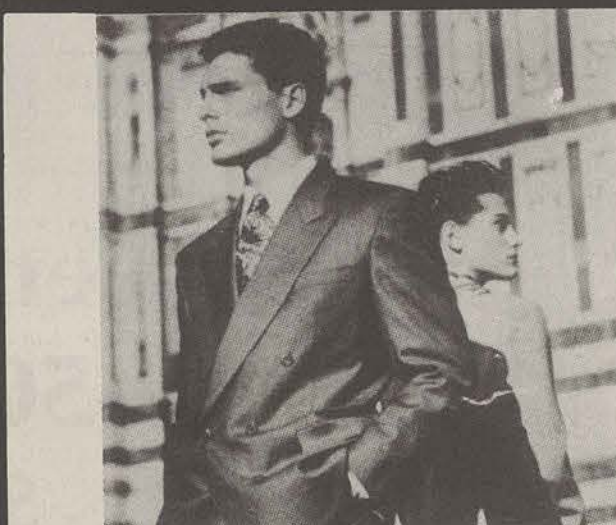
Good eyesight is nothing to joke about...



6 Lester Road

764-5609

...Have a happy and safe Halloween



Hart Shaffner & Marx • Corbin • Bay Hill  
10 % off interview suits to Graduating Seniors!

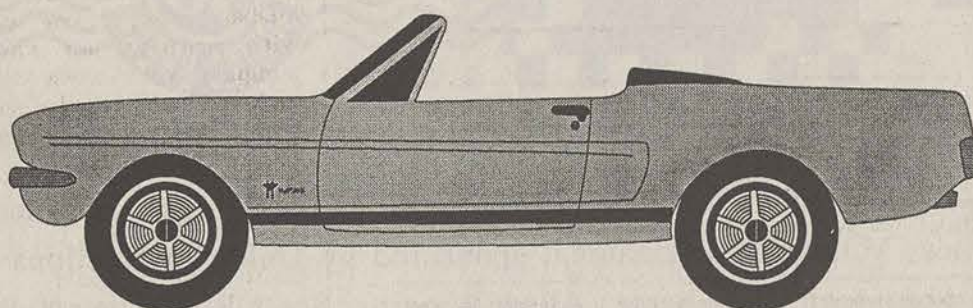
420 Gentilly Place  
across from Winn Dixie  
764 - 6924

The Sir Shop

We specialize in hard to fit sizes!

UNION  
PRODUCTIONS  
GEORGIA SOUTHERN UNIVERSITY

Union Productions is looking  
for Convertable Cars to ride in  
the Homecoming Parade on  
November 15th.

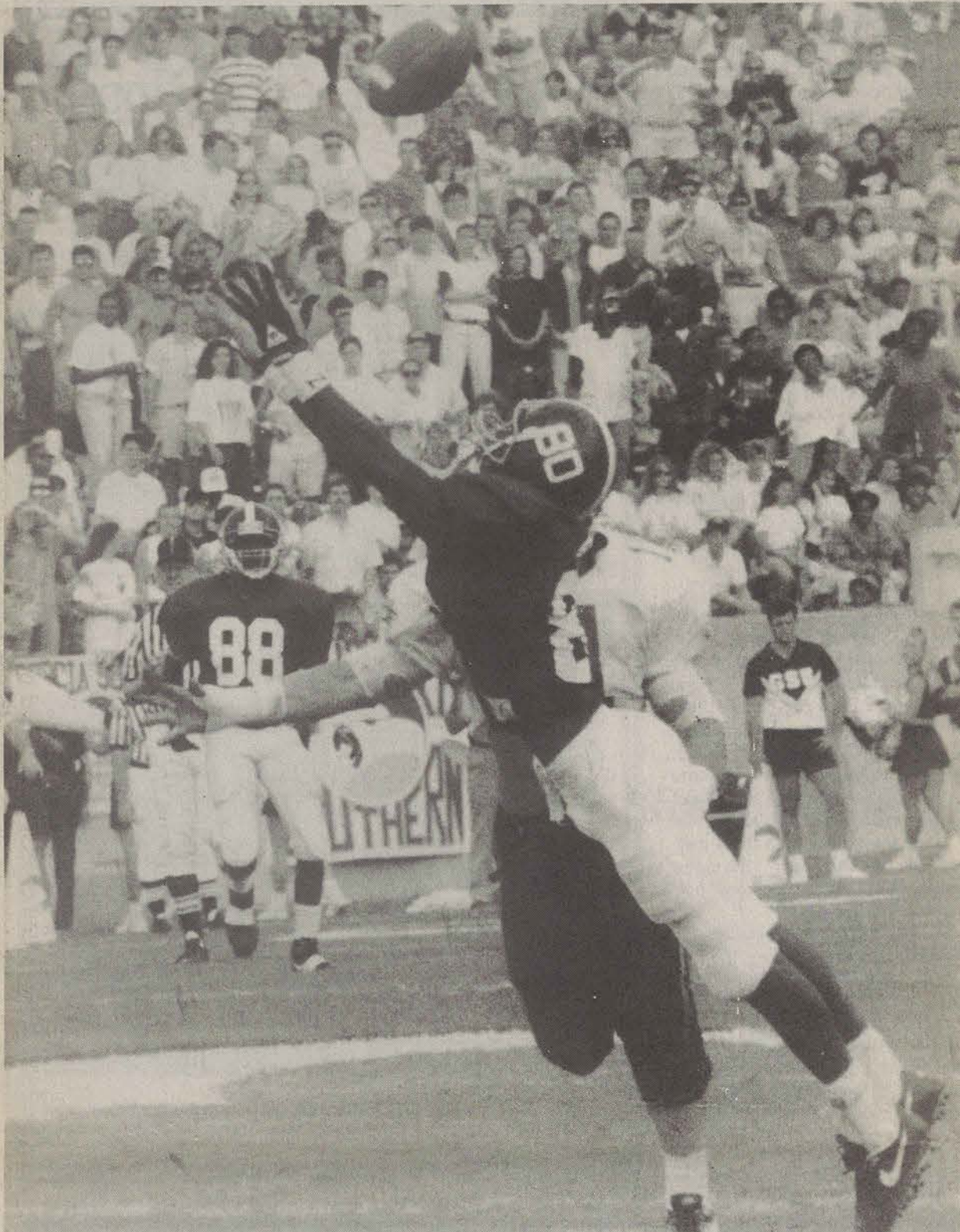


This is your opportunity to  
show off your beauty.  
Please call: 681-5442





## Eagles bomb Knights for 20-6 win



Eagle receiver Deryl Belser makes another spectacular catch against the University of Central Florida. The Eagles defeated the Knights at Paulson Stadium 20-6. It was a must win for GSU to keep their playoff hopes alive. (Photo by Tony Tocco)

By Rod Swinson  
Staff Writer

The Eagles battled fiercely to keep their playoffs hopes alive and did so with a 20-6 victory over the Knights of Central Florida raising their record to 5-3.

The home crowd of 19,063 was treated to a defensive struggle for three quarters Saturday before the Eagle offense got on track in the fourth quarter ringing the Knights up for 17 points in the last stanza.

The Eagles offense started out sluggish and after a delay of game penalty and a quarterback sack, punted to give the Knights the ball at the GSU 41 yard line.

The Knights took the ball and behind the running of their star running back Willie English, who highlighted the drive with a 21 yard burst up the middle, marched down the field to a first and goal at the nine yard line.

The Eagle defense rose to the occasion.

After a couple of runs by English, the Knights were third and goal from the one yard line. English took the ball off tackle and was stopped for no gain and the Knights had to settle for a field goal by Franco Grilla to give them a 3-0 lead.

Eagle coach Tim Stowers praised the defense for their effort.

"I am really proud of the defense for not letting them in the end zone," he said.

Knights' head coach Gene McDowell commented on the magnitude of that drive also. "We didn't make the big plays when we had to."

The Eagle's next possession featured running by fullback Lester Efford until the Eagles

went to the air and quarterback Derrick McGrady was picked off by UCF's Penn Holsapple at the Eagle 46 yard line.

The Eagle defense stopped the Knights for losses on a couple of plays before the Knights slipped a screen to English on third down to pick up 17 yards and place them in field goal range. Grilla booted the last points of the day for the Knights to give them a 6-0 lead at the end of the first quarter.

The teams traded possessions at the beginning of the second quarter.

The Knights had another opportunity to score early in the second quarter, but key defensive plays by Michael Berry, Curtis Gordon and Jim Mutimer held the Knights to a 44 yard field goal attempt which failed.

The frustration just mounted on the Knights sideline.

"We had plenty of opportunities to win the game, but we let those opportunities slip away," said McDowell.

With 10:13 left in the first half, the Eagles finally got on the score board.

Following an interception and 28 yard return by Jim Mutimer to the Knights 17, the Eagles had their first real scoring opportunity. But the Eagles got two of a record high 15 penalties and were forced to settle for a David Cool 25 yard field goal.

The Eagles went into the locker room at half time trailing 6-3 and knowing they were going to have to fight to keep their playoff hopes alive.

"It was a tight game. I had been telling our football team all week that UCF has a fine team," said Stowers.

The Eagles came back out with determination in their eyes.

"We knew if we wanted to keep our dream alive, we would have to pick it up in the second half," said Efford.

The teams traded hard hits, interceptions, and punts for the entire third quarter.

The Eagle defense continued to impress their fans and coaches by refusing to give up any more points.

"I thought we did a better job in the second half than we did in the first half," said Stowers. "I thought we did a much better job striking out on defense."

The fourth quarter belonged to the Eagles.

The Eagles pounded a worn down UCF defense as they constantly ran the ball up the middle.

"Going up the middle wore them down and we just wanted to destroy them," said Efford.

With 9:53 left in the game Efford dazzled the spectators and added to his game and career high 142 yards rushing with a 20 yard burst up the middle to the endzone to cap a 10 play, 84 yard drive. Cool added the extra point to give the Eagles a 10-6 lead. A lead that they would not relinquish.

"Lester did a fine job," said Stowers. "He just had a nose for the end zone on that touchdown run."

The second interception by Mutimer gave the Eagles their next scoring opportunity.

After being penalized a couple of times the Eagles went up 13-6 behind a 25 yard field goal by Cool who has a streak of seven consecutive field goals, including a 53 yarder against Western Carolina.

The most exciting play of the day came when Rodney Oglesby took a punt on the Eagle's 49 and galloped 51 yards to the end zone.

## FREE GUIDE TO SPRING BREAK '92



**Y**ou're Invited to the 30th Anniversary Party at the World's #1 Spring Break Destination, on the *Hottest* beach on earth, Feb. 22 - April 19, 1992!

Call 1-800-854-1234 for your FREE 30th Anniversary Official Spring Break 1992 Guide!

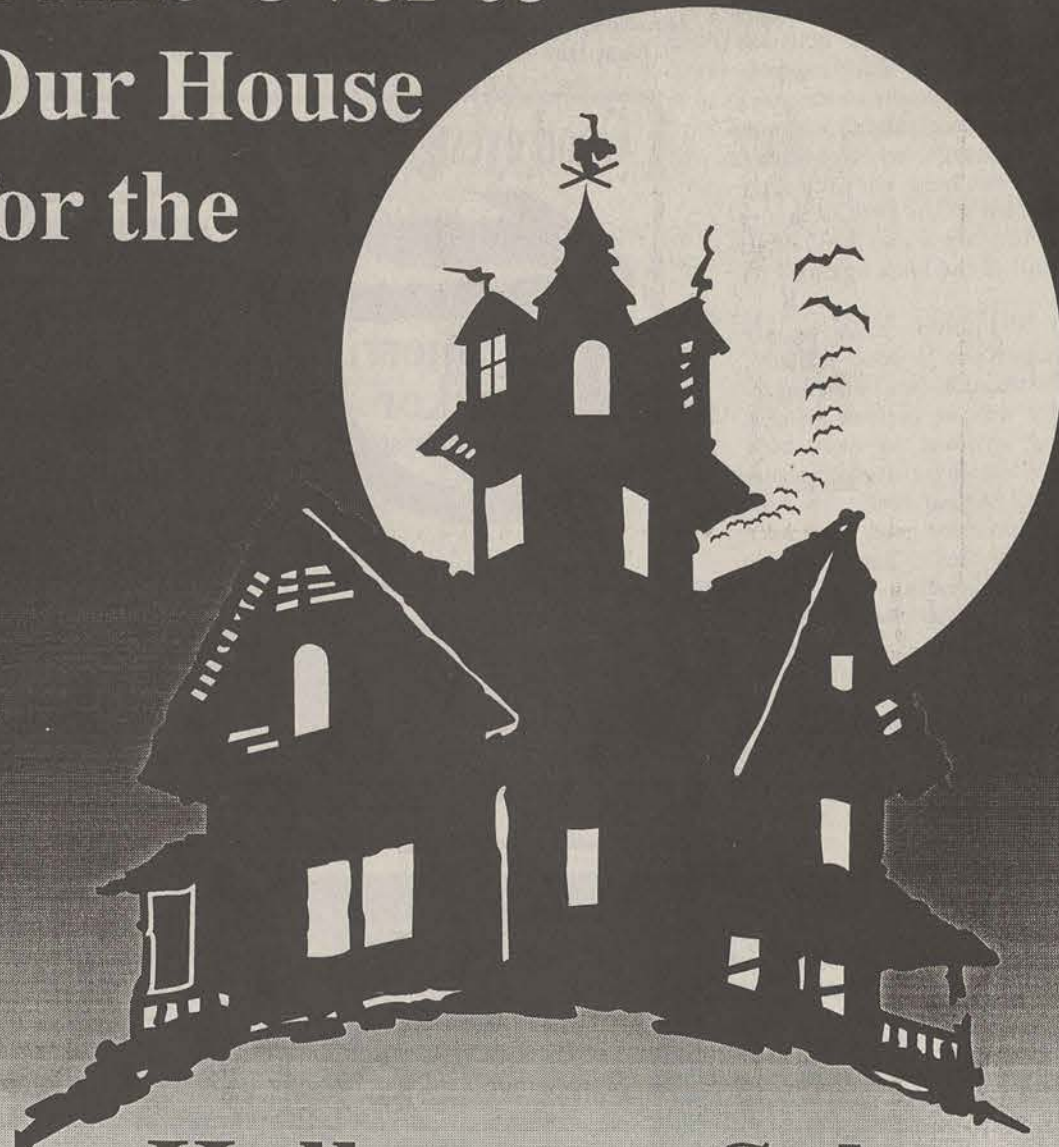
DESTINATION DAYTONA!  
Convention & Visitor's Bureau  
P. O. Box 910  
Daytona Beach, FL 32115



CONGRATULATIONS ΠΚΦ on winning first place in Alcohol Awareness Volleyball Tournament sponsored by Union Productions and CRI. Your team members: Allen Wiggins, Scott Robinson, Nichole Calandra, Elizabeth Merritt, McClaine Emerick, Richard Hall, and Scott Johnson, played superbly. Congratulations also go out to the team members of Side out who came in second place. Third place was captured by residents of Campus Courtyard, who had to battle AOP.

Union Productions' special thanks go out to ΑΦΩ, ΔΣΠ, ΑΟΠ, the Wesley Foundation, the Residence Life Teams from Oxford/Warwick and Oxford/Johnson, and Guys & Gals for participating in the tournament. Union Productions would also like to thank all the committee members who made the event a success!

## Come Over to Our House for the



## Halloween Sale

UNIVERSITY

20-50% OFF

Store wide

October 31st

ONLY

Store Hours

7:45am - 7:00pm





## CAMPUS RECREATION &amp; INTRAMURAL

## STUDENT RECREATION CENTER

## FEEDBACK

## DEMOGRAPHIC INFORMATION

GENDER: M \_\_\_\_\_ F \_\_\_\_\_

CLASSIFICATION: FR \_\_\_\_\_ SOPH \_\_\_\_\_ JR \_\_\_\_\_ SR \_\_\_\_\_  
GRAD \_\_\_\_\_ FACULTY/STAFF \_\_\_\_\_

RESIDENCE: ON CAMPUS \_\_\_\_\_ OFF CAMPUS \_\_\_\_\_

1. HAVE YOU UTILIZED CRI SERVICES IN THE PAST? YES \_\_\_\_\_ NO \_\_\_\_\_
2. WOULD YOU UTILIZE THE SERVICES WITH THE NEW STUDENT RECREATION CENTER? YES \_\_\_\_\_ NO \_\_\_\_\_
3. LISTED BELOW ARE SIX MAJOR ACTIVITY AREAS WHICH ARE NORMALLY INCLUDED IN A STUDENT RECREATION CENTER. PLEASE RANK IN ORDER OF YOUR PREFERENCE THE AREAS YOU WOULD ENJOY/USE THE MOST. (1 = first choice; 6 = last choice).

\_\_\_\_\_ AEROBIC FITNESS AREAS  
 \_\_\_\_\_ COURT ACTIVITIES/GYMNASIUMS (BASKETBALL, VOLLEYBALL)  
 \_\_\_\_\_ INDOOR WALKING/JOGGING TRACK  
 \_\_\_\_\_ RACQUETBALL/HANDBALL COURTS (WALLEYBALL)  
 \_\_\_\_\_ RECREATIONAL SWIMMING POOL  
 \_\_\_\_\_ WEIGHT TRAINING AREAS:  
 free weights, step machines, bicycles, rowers,  
 nautilus type equipment

4. THE FOLLOWING SPECIAL EVENT ACTIVITY AREAS ARE ALSO COMMON AREAS INCLUDED IN NEW STUDENT RECREATION CENTERS. PLEASE INDICATE THE LEVEL YOU WOULD USE THESE AREAS.

AREA	SOME OF				
	ALWAYS	THE TIME	OCCASIONALLY	SELDOM	NEVER
A) INDOOR ARCHERY RANGE	_____	_____	_____	_____	_____
B) INDOOR GOLF DRIVING RANGE	_____	_____	_____	_____	_____
C) BATTING CAGE AREA	_____	_____	_____	_____	_____
D) FENCING AREA	_____	_____	_____	_____	_____
E) MARTIAL ARTS/WRESTLING AREAS	_____	_____	_____	_____	_____
F) CLIMBING WALL	_____	_____	_____	_____	_____

PLEASE LIST ANY OTHER AREAS OF INTEREST:

5. THE MOST THAT YOU WOULD BE WILLING TO PAY PER QUARTER FOR THIS FACILITY IS:

\$20 \_\_\_\_\_ \$25 \_\_\_\_\_ \$30 \_\_\_\_\_ \$35 \_\_\_\_\_

6. IT HAS BEEN ESTABLISHED THAT A SWIMMING POOL IS EXTREMELY EXPENSIVE. WOULD YOU BE IN SUPPORT OF AN ADDITIONAL \$5 TO THE ABOVE FEE TO INCLUDE A NEW INDOOR AQUATICS AREA? YES \_\_\_\_\_ NO \_\_\_\_\_

7. TO EXPEDITE THE DEVELOPMENT OF NEW OUTDOOR RECREATIONAL FIELDS WOULD YOU SUPPORT AN ADDITIONAL \$5 TO THE ABOVE FEE FOR NEW LIGHTED OUTDOOR FACILITIES? YES \_\_\_\_\_ NO \_\_\_\_\_

8. WHEN WOULD YOU UTILIZE THESE AREAS? (Check all that apply).

## WEEKDAYS

## WEEKENDS

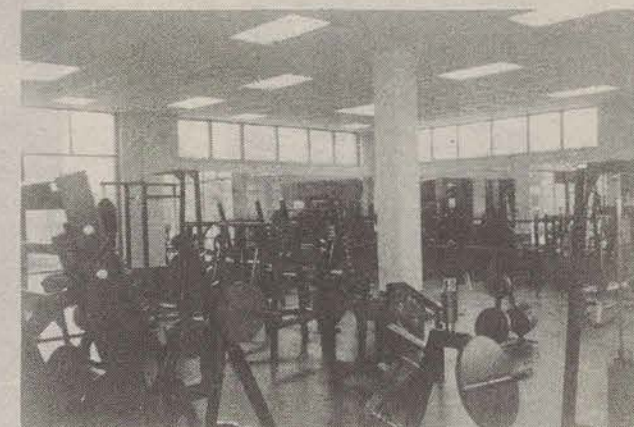
\_\_\_\_\_ MORNINGS  
 \_\_\_\_\_ AFTERNOONS  
 \_\_\_\_\_ EVENINGS

\_\_\_\_\_ MORNINGS  
 \_\_\_\_\_ AFTERNOONS  
 \_\_\_\_\_ EVENINGS

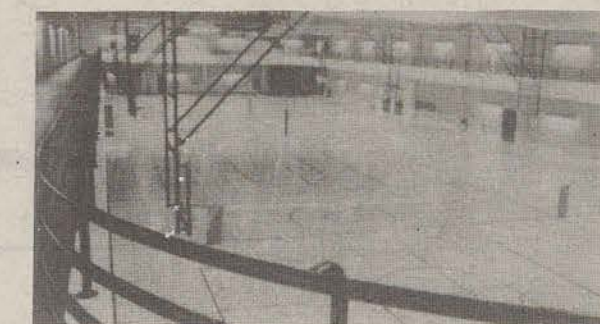
AFTER PROVIDING THE ABOVE REQUESTED INFORMATION, TEAR OUT THE COMPLETED SURVEY FORM AND DEPOSIT IT IN THE DROP BOX AT THE INFORMATION DESK IN THE UNIVERSITY UNION OR MAIL IT DIRECTLY TO THE CAMPUS RECREATION AND INTRAMURAL OFFICE AT LB 8078.



A dance studio/aerobic room, above, would be a much needed addition on this campus.



The weight room above is a state of the art facility that GSU doesn't have, but should.



Modern facilities, like the one above, would be provided with a new recreation center.

CR/I Review is a publication designed to inform the student body of Georgia Southern about the needs for new and updated recreation facilities. The editorial content and design of the publication was done by Michael Strong. Additional help was provided by Bill Neville, Student Publications Coordinator, Tony Tocco and Suzanne Blackburn. The final approval of the publication was given by the Program Services Committee, Dr. George Lynch, Assistant Dean of Students and William Ehling, Director of CR/I.

Tour gives insight  
• See page 2

CR/I growth  
• See page 2

Have v. have not  
• See page 3

# CR/I Review

A publication designed to inform students of the changing needs of recreation facilities for students.



## Can we have a new recreational facility? University looking to students for answer

Campus Recreation and Intramurals (CR/I) is seeking approval for a new 85,000 square foot recreation building.

"We are filled beyond capacity," said William Ehling, Director of CR/I. "The building would be a bit smaller than the [University] Union. But, in the past three years we've gone from just servicing 22 percent of the students to over 70 percent."

Normal construction time for such a building is 12-15 months. Another 12 months is needed for architectural design.

"From the ground breaking to unlocking the door," said Dr. George Lynch, Assistant Dean of Students and coordinator of the project. "I think that they [the contractors] could have it finished within that time period."

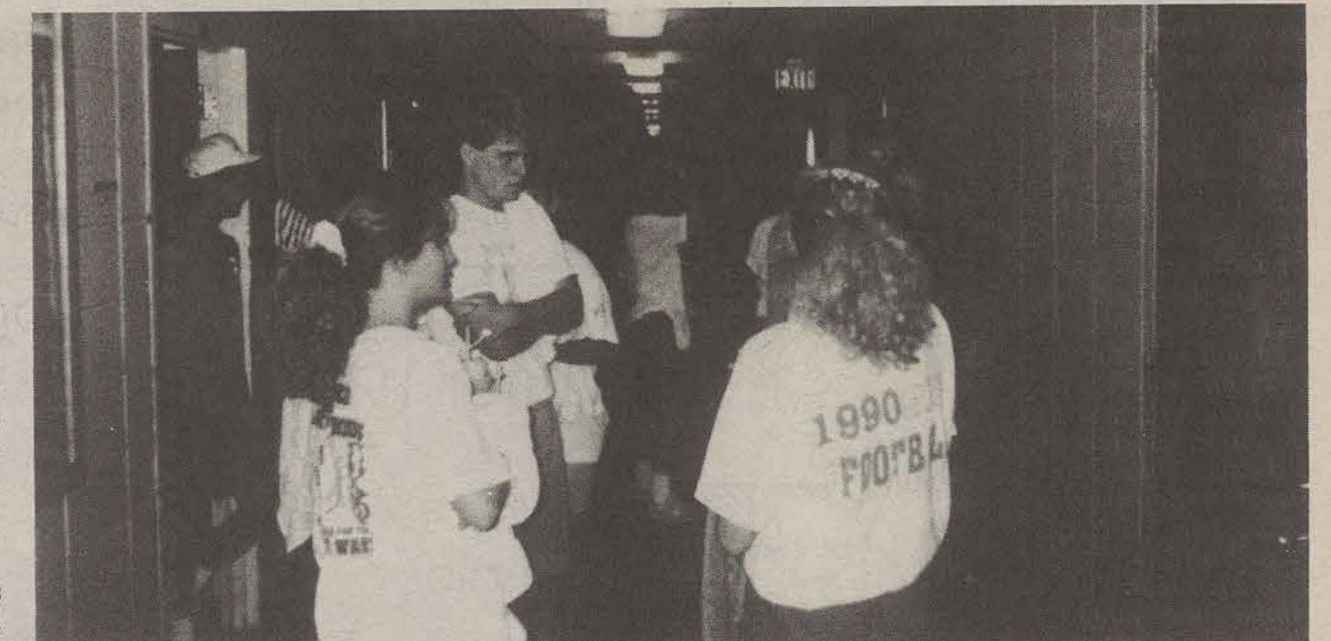
The building normally would contain such facilities as free weight rooms, aerobics rooms, additional racquetball and volleyball courts, an indoor track, multipurpose activity rooms and limited office space. These types of facilities are greatly needed on the GSU campus.

The building would address the indoor recreational needs for the university and would be run by a committee where the students would have the majority vote. The actual administrating body has not been finalized, but Dr. Lynch has definite ideas about the formulation of the governing body.

"Ideally, I'd like to see the committee composed of a majority of students with members of three faculty and staff, specifically the coordinator of CR/I," he said. "The students would probably be elected or appointed from some of the [student] organizations."

The building would be financed by the students. An additional fee would be tacked onto their activity fees. The proposed fee would not exceed \$20 per quarter.

The building must be financed by the students because the state will not put up the



GSU students wait in the hallway at Hanner Fieldhouse for the next aerobics session. The lines are common due a shortages of space. A new student facility could be the answer. (Photo by T. Tocco)

money for the construction of such a facility.

According to Ehling, student financing of such facilities is quite common. "That is how Vanderbilt and St. Louis University financed theirs," he said. "Actually, that is how most facilities like that are financed."

The final cost of the building will be between \$7-8 million. Bonds will be sold to get enough money to build the facility, then the student fees would be collected as payment on those bonds.

The bonds would be for 20 years at an interest rate of 8.5 percent. There has been an interest expressed in purchasing large quantities of the bonds from companies such as Wachovia and others, according to Dr. Lynch.

The details for paying back the bonds haven't been finalized, but a prorated fee is a possibility. The fee would be prorated accord-

ing to the student's academic standing. For example, seniors would pay less than juniors, juniors would pay less than sophomores, etc.

The University of Georgia has just completed construction of a student facility. The \$39.5 million tab was picked up by the students. However, the building is used by the university for athletics, physical education classes, in addition to the students. The Georgia Southern facility will be designed as a purely student recreation facility.

"With the students being involved in the decision making process, especially those on the [the facilities administrative] board, we can insure that it will stay that way," said Dr. Lynch. "If the students wanted to allow classes to be taught in the building, then they could, but they would have the right to refuse to allow it."



## Tour of facilities provides insight into problem

In order to determine if what you have is obsolete or no longer practical, you must compare it to something comparable.

That is exactly what the Campus Recreation and Intramural department (CR/I) did recently. They took along with them several students from various organizations.

They are Chris Clark, President of SGA; Steve Young, Residence Life; Penny Palmer, Panhellenic Council; Paige Worley, Panhellenic Council; Charisse Chisolm; NAACP; Doug Odom, Interfraternity Council; and Justin Pettigrew.

Along with members of CR/I, they toured the facilities of Appalachian State and Vanderbilt. Both schools are comparable in size with Georgia Southern.

"We felt it was important that some of the student leaders look at what other schools that are about the same size we are had," said William Ehling, director of CR/I. "And to see what they are missing out on in this case."

*"We need to accomodate the students," said SGA President Chris Clark.*

All of the schools visited had recently (within the last five years) built new recreation facilities.

The students on the visting team agreed that it's time for Georgia Southern to have

facilities similar, if not better than those that they saw.

"As enrollment increases," said Clark. "We need to accommodate the students. I was content with what we had until I saw what we could have and need."

Do we need a new building?

"Yes, I think we do," he said.

From that tour of the schools, Ehling, Clark and Dr. George Lynch, Assistant Dean of Students and the project coordinator, have made presentations about the building to nearly 15 student organizations and over 20 GSU 120 classes.

"The response has been very positive," said Clark. "Everybody sees the facilities and feels we should have the same thing."

## Shortage of space hinders intramurals

The increase in the number of students who attend Georgia Southern has increased by 60 percent in the last five years.

This has caused various problems: a lack of affordable housing, cramped classrooms and poor parking facilities.

The number of students using the recreation facilities has more than kept pace with the increases in enrollment.

"It has more than doubled in the past three years," said William Ehling. "We just don't have the capacity to service everybody. We have to turn away 20-30 people for every session of aerobics. They line up an hour in advance sometimes so they can get into the

sessions."

Users of the recreation facilities are divided into two types: Formal and informal. Formal are those who are involved in the leagues. For example, the flag football teams or soccer teams. Informal are those who use the weight rooms or participate in the aerobics sessions.

"I have to stop taking registration for teams earlier and earlier everytime," said Ehling. "It used to be that we would have maybe, 70 teams for flag football, now we have over 125! I could, if I had the capability, to sign up at least 180."

"We have to play at all hours as well. For

softball, we start at 4 p.m. and stop at 1 a.m. It's impossible to make up rain-outs. We're just overloaded."

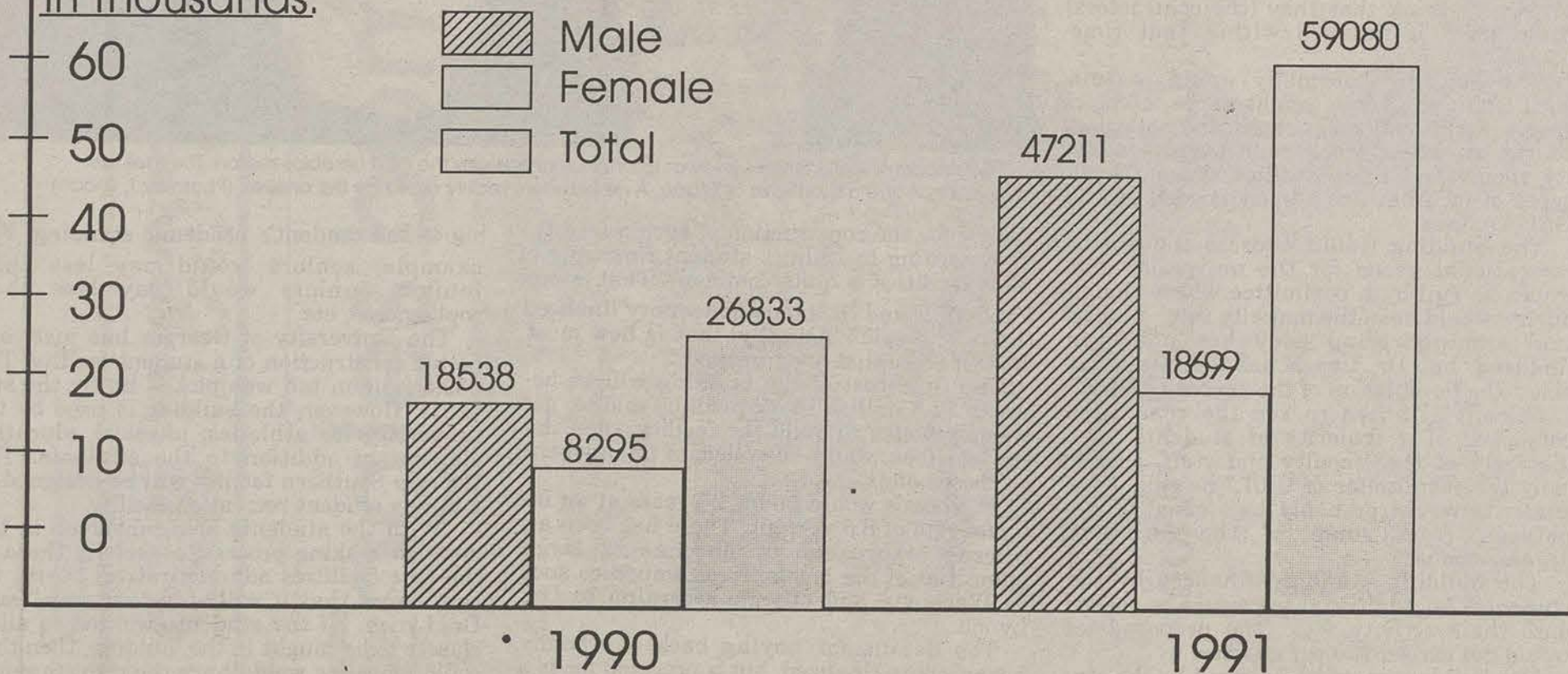
The latest facilities were built when the population of the university were around 6,000 people. The current enrollment for Georgia Southern is 12,344.

"It just does not make sense to try to squeeze twice as many people into a space than it can hold," said Ehling.

The department also has plans to expand the number of programs it offers. In the future wellness programs and additional sports for individuals and teams will be added.

### Campus Recreation and Intramural Program Participations Winter 1990 v. 1991

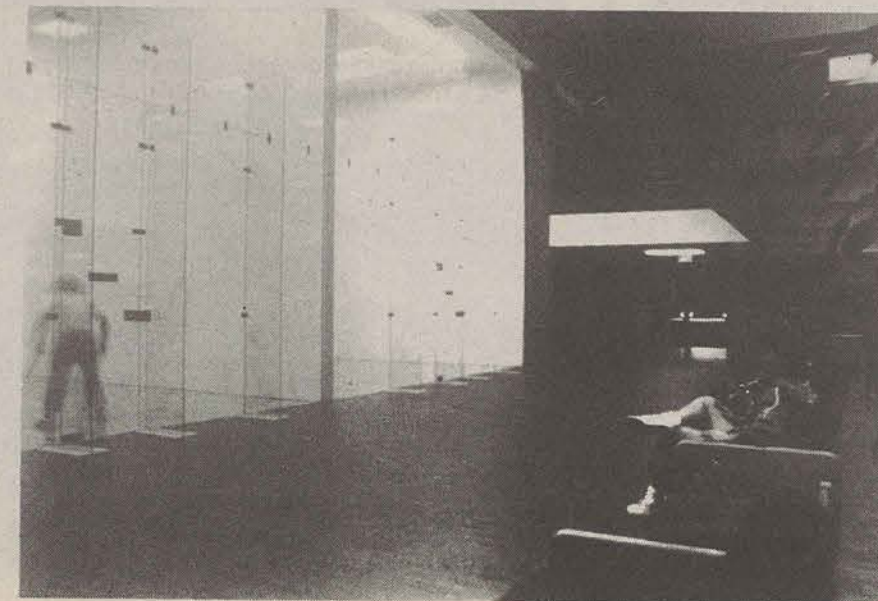
In thousands:



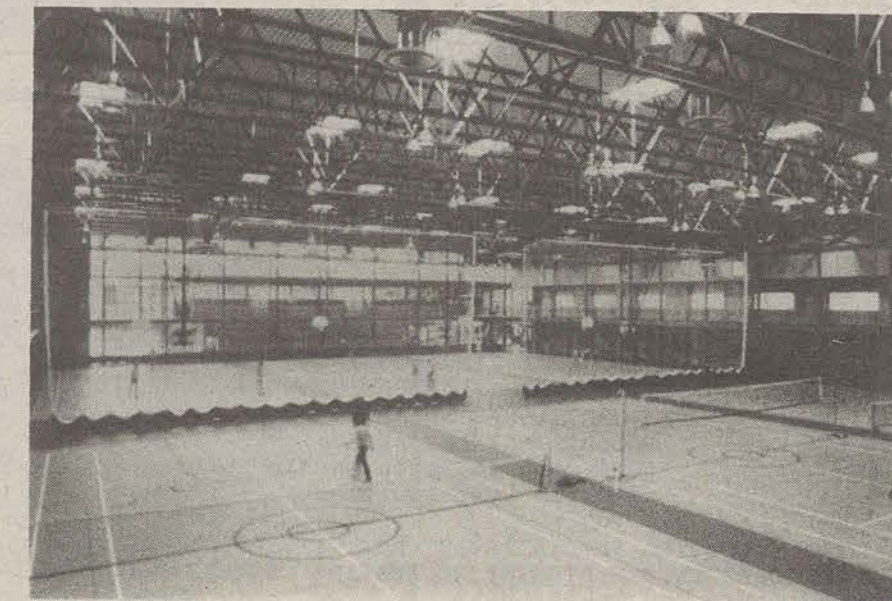
# Have v. Have Not

The following pictures are of the recreation facilities at Georgia Southern and of facilities at other colleges and universities of comparable size.

## The Haves

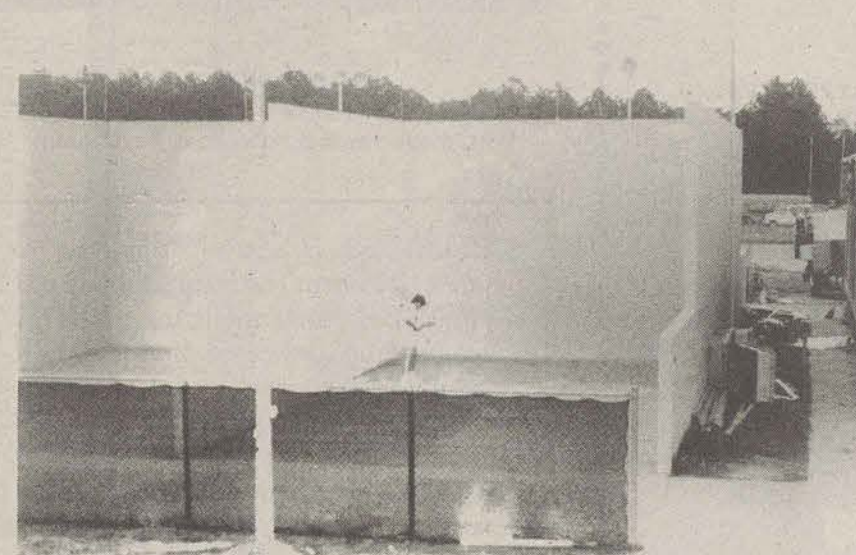


Students at Vanderbilt enjoy indoor racquetball courts. (Photo T. Tocco)

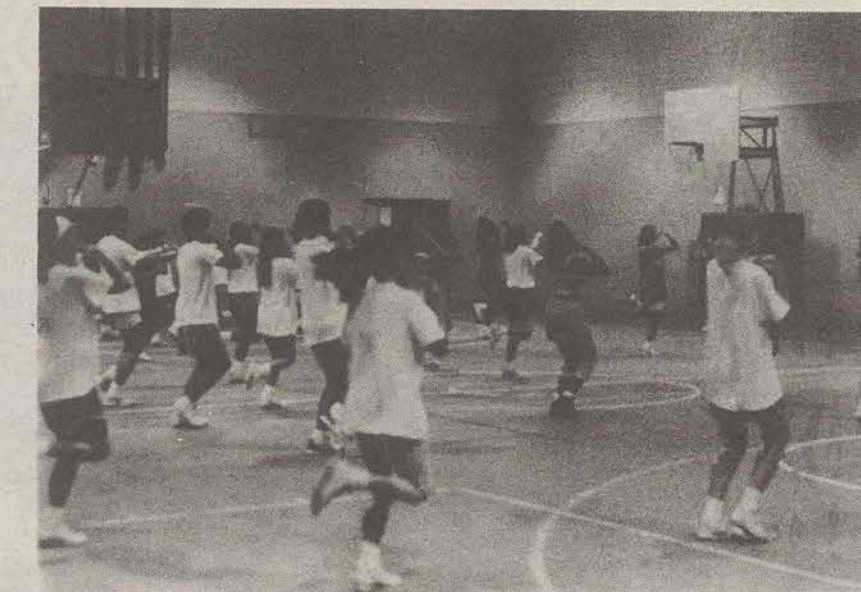


The multipurpose facility at St. Louis University can handle basketball, volleyball, tennis and jogging on the indoor track. (Photo by T. Tocco)

## versus The Have Nots



A GSU student plays on the outdoor courts. (Photo by T. Tocco)



Old Hanner is used for aerobics and is usually overcrowded causing students to be turned away or wait in long lines.



## Rod's Review

By Rod Swinson

Staff Writer

Again the season that I have been waiting for is rapidly approaching. Yes, I'm referring to the basketball season.

My eyes are going to be focussed on the NBA. Things are going to be interesting this year.

There has been changes in personnel as well as personalities across the hills and valleys of the league.

I guess the reality of the situation is the Detroit Pistons really did think that even the Bulls "has-beens" could contribute more to their team than the incumbent players.

The Pistons are very determined to avenge their humiliating defeat in the Eastern Conference Finals at the hands of the awesome Chicago Bulls.

The Pistons have aquired the likes of former Bull Brad Sellers and Orlando Woolridge.

Sellers, a 7 foot potentially great front court player, will never amount to anything for a couple of reasons:

First, because he can't overcome his addiction to the three-point line.

Second, because he views a rebound, offensive or defensive, as a fatal acquisition.

Isiah Thomas has a very different opinion about his team than mine.

Recently, he was quoted saying, "If we stay healthy, we have a chance of winning the championship. We would've been in the finals last season if not for the injuries, or, at least, it would have been a much better series against Chicago. I got hurt and maybe I shouldn't have played, but you only get a chance to three-peat once.

Poor, poor Isiah. We all know he's not a cry baby don't we. He is certainly justified in thinking Chuck Daly should bench Michael Jordan to make space for him on the Olympic team.

By the way, there will not be as many kisses in the NBA this year.

It's no secret that Jordan and Thomas are not close, but where does the Magic Johnson/Thomas relationship stand.

Consider what Magic said when asked about Thomas being on the Olympic team:

"Isiah deserved being on the team, but Bird deserves it in a different way. Bird and myself helped the league change over from what it was to where it is now in terms of it going from the "I" syndrome to the "we" syndrome, and we brought the TV back. And then comes Jordan, who helped take it to the next level. So when you're talking about three guys who really deserve it, it's Michael and me and Larry."

The statement is totally true, but personally, I don't think Mr. Thomas is going to be very happy with the statement.

Back to the original point.

I don't think the Pistons are going to be the same dominant team in the East.

The youth and vigor of the Bulls will overcome the cheap shots and rugged tactics of the innocent Detroit Pistons.

I know James Edwards and Vinnie Johnson are old, but I don't think Sellers and Woolridge can fill the gaps left by two such formidable players.

The Bulls are definitely the team to beat.

Sure they had a few problems in the media, but I really don't think that just because Jordan did not have the pleasure of meeting Mr. Bush, he won't have the same invitation next year.

Everyone thinks the Bulls will not be able to stand up to the pressure of every team in the NBA gunning for them.

Thomas was quoted in a major paper to express his opinion about the matter.

"As for the Bulls, now they're going to find out what it means to go out every night and have to take everyone's best shot."

I think the Bulls will have their work cut out for them, but as long as they don't have to take on the cheap shot athletes in Detroit every night, they'll be alright.

LET'S GO BULLS!!!

# Senators vote down GSU 8-2

By Michael Strong

Sports Editor

The Eagles kept it close for the first half against the Lander College Senators, but lost 8-2 after giving up six goals in the second half.

For the first half, it was a defensive struggle with GSU limiting the Senators, ranked #9 in the NAIA, just two goals in the first half.

Lander got on the board first with a goal by defender Noel Auguste at the 10:03 mark. Auguste put the ball in off of a cross from Ashton Payne, who had three assists in the game.

The Eagles got their first goal at the 28:30 mark. Midfielder Chris Chambers took a cross from midfielder Andy Edwards and ripped it passed the Senator's Chris Wynne to knot the score at

1-1.

Lander did not waste any time in reestablishing their lead when Auguste put in the second of his three goals.

The teams went into the half at 2-1 and the Eagles looked as if they may have a shot, but it was not to be as the Eagles were ambushed in the second half.

The Senators got on the board for a third time at the 49:05 mark.

As Zeljko Cvijovic scored with a header off of a rebound to put Lander up for good at 3-2.

The Eagles got one more goal from Ken Wilson with just under a minute left, but it was too little far too late for the team. Ryan Welch got the assist.

The Eagles fell to 4-8-4, but remain hopeful of getting the final playoff spot in the Trans

America Athletic Conference (TAAC), as this was not a conference match.

The Eagles play Mercer at Eagle Field at 3 p.m. tomorrow in a must win match-up for them.

Register to Vote!



## AT&T's long distance savings plan can take you to this location.



AT&T has always helped college students call the places they want to call. In fact, one of our savings

plans, the *SelectSaver<sup>SM</sup> Plan*, lets you direct-dial the one out-of-state area code you call most often. For just \$1.90 a month,

and 12 cents a minute, evenings, nights and weekends. 20 cents a minute, weekdays.\* ☐ And now AT&T can take you to

another place you've always wanted to go. Just enter the AT&T "It Can Happen to Me" Sweepstakes. You could win a trip for

you and a guest to any U.S. and any European rock concert. All you have to do is fill out the coupon below. ☐ So let us help

choose the savings plan that's right for you. And then try your luck at our Sweepstakes. Both will be music to your ears.

To sign up for an AT&T savings plan, call 1 800 654-0471, Ext. 7437.

To enter the AT&T "It Can Happen to Me" Sweepstakes, fill out the coupon below.



\*Includes continental U.S., Alaska, Hawaii, Puerto Rico and the U.S. Virgin Islands. Savings based on calls over 56 miles. Actual savings potential depends on subscriber calling patterns. Processing fee of \$2.00 applies. Day rates apply from 8 am to 5 pm.  
© 1991 AT&T

### OFFICIAL RULES—NO PURCHASE NECESSARY

1. To enter, handprint your name, address, phone number and zip code on an official entry form or a plain piece of paper. Official entry forms can be found in the October 31st, 1991 issue of *Rolling Stone*, the October 18th, 1991 issue of *Entertainment Weekly*, the November 1991 issue of *US* magazine, the November/December 1991 issue of *U. The National College Newspaper* and the Fall issue of *Directory of Classes*. You may enter as often as you wish, but each entry must be mailed separately to: AT&T "IT CAN HAPPEN TO ME" SWEEPSTAKES, P.O. Box 4870, Grand Central Station, New York, NY 10163. All entries must be received by December 30, 1991.

2. Winners will be selected in a random drawing from among all entries received. Drawing will be conducted on or about January 15, 1992 by MediaAmerica, Inc., an independent organization whose decisions are final on all matters relating to this sweepstakes. (1) Grand Prize: A 4-day/3-night trip for two to see the concert of winner's choice anywhere in the continental U.S., including roundtrip coach air transportation to and from the nearest major city, first class hotel accommodations, hotel and airport transfers, tickets to the concert, backstage/VIP passes, limousine service to and from the concert, meal allowance and sightseeing; plus a 5-day/4-night trip for two to see the concert of winner's choice anywhere in Europe, including roundtrip coach air transportation to and from the nearest major city, first class hotel accommodations, hotel and airport transfers, tickets to the concert, backstage/VIP passes, limousine service to and from the concert, meal allowance, and sightseeing, plus one year's worth of AT&T Long Distance Service awarded as \$800 in AT&T Long Distance Gift Certificates and an AT&T Cordless Phone (total approximate retail value of Grand Prize = \$15,940.00); (15) First Prizes: An AT&T Cordless Phone, \$25 in AT&T Long Distance Gift Certificates and five compact discs of winner's choice (total retail value = \$200). All prizes will be awarded and winners notified by mail. Trips subject to availability and confirmation of reservations and must be taken by December 31, 1992. Choice of concert locations is subject to artists' performance schedules, availability of tickets and backstage/VIP passes, and final approval by MediaAmerica, Inc. Limit of one prize per person. Prizes are nontransferable and no substitutions or cash equivalents are allowed. Taxes, if any, are the responsibility of the individual winners. Grand Prize Winner and travel companion may be asked to execute an affidavit of eligibility and release. Grand Prize Winner and travel companion consent to the use of their names and likenesses for publicity or trade purposes without further compensation. No responsibility is assumed for lost, misdirected or late entries or mail.

3. Sweepstakes open to residents of the U.S., 18 years of age or older, except employees and their families of AT&T, its affiliates, subsidiaries, advertising agencies, MEDIAAMERICA, INC. and their program suppliers. This offer is void wherever prohibited, and subject to all federal, state and local laws.

4. For a list of winners, send a stamped, self-addressed envelope to: AT&T "IT CAN HAPPEN TO ME" WINNERS LIST, P.O. Box 5018, Grand Central Station, New York, NY 10163 by January 30th, 1992.

### Enter the AT&T "It Can Happen To Me" Sweepstakes.

To enter, complete this form and mail to:  
AT&T "It Can Happen To Me" Sweepstakes,  
Box 2501, Cedar Grove, New Jersey 07009-2501

Name \_\_\_\_\_

College \_\_\_\_\_ Year in school \_\_\_\_\_

Address \_\_\_\_\_

City \_\_\_\_\_ State \_\_\_\_\_ Zip \_\_\_\_\_

Phone ( ) \_\_\_\_\_

Current Long Distance Company AT&T \_\_\_ MCI \_\_\_ SPRINT \_\_\_ OTHER \_\_\_

Current Calling Card Company AT&T \_\_\_ MCI \_\_\_ SPRINT \_\_\_ OTHER \_\_\_

☐ On Campus Student ☐ Off Campus Student (7437)

All entries must be received by 12/30/91. No purchase necessary. Void where prohibited. You must be 18 years of age or older to enter.  
© 1991 AT&T



# Official recipe for 'Super Gross Melting Face with Dripping Blood

By Susan M. Barbieri  
Orlando Sentinel

Mike Davy of RTM Make-Up and Special Effects in Orlando, Fla., has given us his recipe for "Super Gross Melting Face with Dripping Blood," using ordinary kitchen ingredients.

Take some Knox gelatin, mix with water and corn syrup. Add oatmeal for texture, strength and the extra-gross-'n'-goopy effect. (These are important aspects of a Face Melt.) Mix well, singing "great big gobs of greasy grimy gopher guts" to set the mood. Apply to child's face, consulting child as to the degree of ickiness desired.

For the blood, take Karo or corn syrup, add red and blue food coloring and some water. Blend. Drip blood on the Melted Face until maximum grossness is attained.

Indeed, Davy's rented garage resembles a Little Shop of Horrors: mysterious jars, bottles and buckets; paint, dismembered latex arms, foam skulls and plaster torsos; and the fierce, rubber-baby "chest mutant" from the movie "Total Recall" and various baboon heads created for the crazed-monkey movie, "Shakma."

Davy has worked on films such as "Witch Story," "The Dead Next Door" and "Vampire Cop," as well as TV shows such as "Rescue 911," "Swamp Thing" and "The New Mickey Mouse Club." He supplies Universal Studios Florida with buckets of

fake blood and has been making dismembered arms to gore-ify the theme park's Earthquake ride for Halloween.

Blood and guts are Davy's bread and butter.

Davy, whose father was a stage makeup artist, has been fascinated with horror makeup since he saw "Planet of the Apes" at age 9. And although he is best known for creating masks and body parts from custom molds, he says some makeup effects are easy enough for people to create at home.

"They can mix stuff like cornmeal and oatmeal into liquid latex that they can buy at the store, or even Karo syrup, and that gives a nice texture to the skin," says Davy.

Want a peeling face? Pie dough is the way to go.

"Pie dough is good for building up bony areas of the face. That works really good. You can mix up the pie crust and put it on and that gives a nice fleshy look, a peeling flesh look."

Yum!  
Beryl Maley, assistant supervisor of cosmetology at Disney, notes that it's easy to make up a child's face into a rabbit's, cat's or dog's. Pink lipstick on the nose, eye-pencil whiskers, some cream makeup to build up the upper lip — and voila, a critter.

Yeah, but what about the cool, awesome, rad and totally gross stuff?

"Peanut butter can look pretty gross if you put it on the face," said Maley, in a refined British

accent. Otherwise, cream makeup from a theatrical supply store is good for building up a face.

"People can use Karo syrup, crush up some cereal and stick that on it. That will hold for a while. It'll look like somebody has had an accident and their face is pretty much a mess."

Cool.  
Use eye shadow to create a "bruised effect," Maley says. "You can buy wax, which you can put on the nose to make the nose misshapen. You can put wax on the forehead, chin or cheekbone, and run the back of a knife through it to make a cut. Then you can put a little bit of imitation blood through it."

But Maley says people should be careful when using household items for Halloween makeup.

"There are certain things you should never use — like shoe polish, ink, permanent hair color, glue and spray paint," Maley said. "You've got to be very careful. If it's food like Karo syrup, peanut butter and stuff like that, it comes off. But if you use things like food coloring and shoe polish, it may not come off."

If you apply hair to the face to make a werewolf, for instance, use spirit gum and remover, which are available from theatrical supply stores, Maley says.

The most important ingredient in creating horror makeup is a sense of fun, Mike Davy says.

## Witch

Continued from page 3

in the coming years on a piece of parchment and ritualistically throw it into the fire to show that we are going to overcome these weaknesses."

In order to become initiated as a Wiccan, she explained, a person must read books about the subject and go through an extensive training period. Ana read 36 books, including the Bible, for her initiation.

The initiates are tested on what they know. This is done to ensure that becoming a Wiccan is what that person truly wants.

Initiation into a group is finalized with a symbolic ceremony parallels to Christian Baptism. The ceremony signifies a focal point in the initiate's life; a birth

into Wicca. Members may take on a new name at initiation to signify their new identity as a Wiccan.

## Attention!

### Student Organizations

Deadlines for Homecoming Entries and Fees:  
November 1, 1991 • 5 p.m.  
Room 207 • Student Union

UNION PRODUCTIONS  
GEORGIA SOUTHERN UNIVERSITY

What are you looking at?



• COSTUME RENTALS •  
• MASKS • TATTOOS •  
• PLASTIC BUTTS •  
• LEATHER WHIPS •  
• OTHER SEASONAL ACCOUTREMENTS •

GET  
BLOOD  
ON  
HALLOWEEN

THE EMPORIUM  
1607 CHANDLER ROAD  
MON-SAT 10-8  
681-4441

## Police

Continued from page 2

of St. Marys, Georgia was charged with Failure To Yield Right of Way and D.U.I.

• Randy Warren Summer, 18, of Savannah was charged with two counts of Aggravated Assault.

10/26/91

• Edward Gerald Ramsey, 18, of St. Simmons Island was charged with Failure To Obey Traffic Light and D.U.I. (.21 GMS).

• Stewart Marshall Applbaum, 18, of Marietta was charged with Speeding and D.U.I. (.13GM).

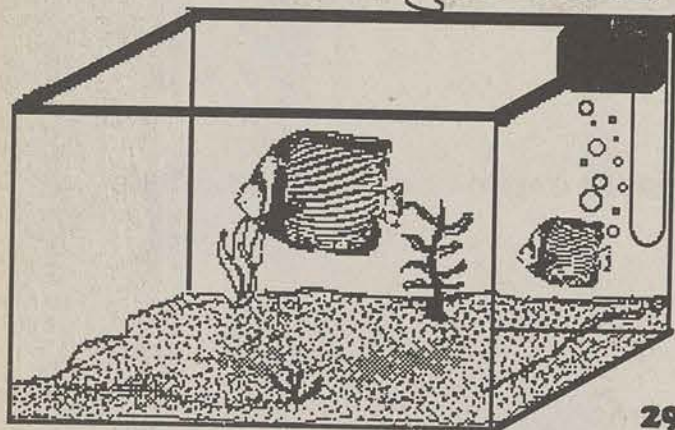
• Scott Thomas Haggard, 24, of Statesboro was charged with following Too Close and D.U.I. (.18GM).

## Solution to "PAIR"-A-DOX

A	L	A	S		N	O	N	O	S		B	A	T	S
L	I	F	T		O	P	I	N	E		A	M	E	N
E	S	A	U		M	E	T	E	D		N	O	R	A
C	A	R	D	I	A	C		W	A	R	N	I	N	G
				I	N	D		R	A	N	E	E		
A	C	H	E	S		W	H	Y		F	R	A	N	C
R	U	E	S		S	A	Y		P	E	S	T	E	R
A	T	L		B	A	R	M	A	I	D		T	R	E
B	U	L	L	E	T		I	N	G		C	A	V	E
S	P	O	I	L		I	N	N		C	A	R	E	S
				C	L	A	N	G		A	P	R		
B	U	R	E	A	U	S			S	T	U	D	E	N
I	R	A	N		T	A	B	O	O		E	P	E	E
K	I	T	S		O	N	I	O	N		R	I	B	S
E	S	S	E		S	E	N	T	E		S	C	O	T

Puzzle Solution From Page 10

## Tropical Fish

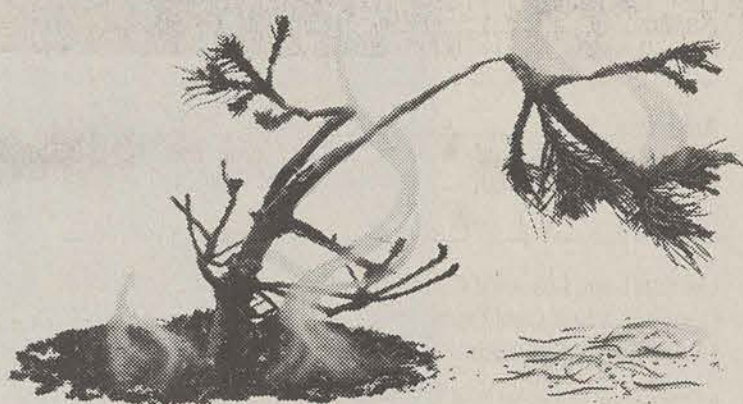


### Thompsons Pools

10 Gallon Tank \$12  
Goldfish 2 for .59

29 N. Zetterower 764-3442  
(NEXT TO BUS STATION)

# WASTED YOUTH.



Ad Council A Public Service of the USDA Forest Service and your State Forester.

ONLY YOU CAN PREVENT FOREST FIRES.

## DON'T BE LEFT OUT MAKE YOUR PLANS TO BE IN YOUR MAGAZINE

ATTENTION: GEORGIA SOUTHERN  
1991-1992

SOUTHERN REFLECTOR PORTRAITS

will be taken

November 11th -15th & November 18th - 22nd

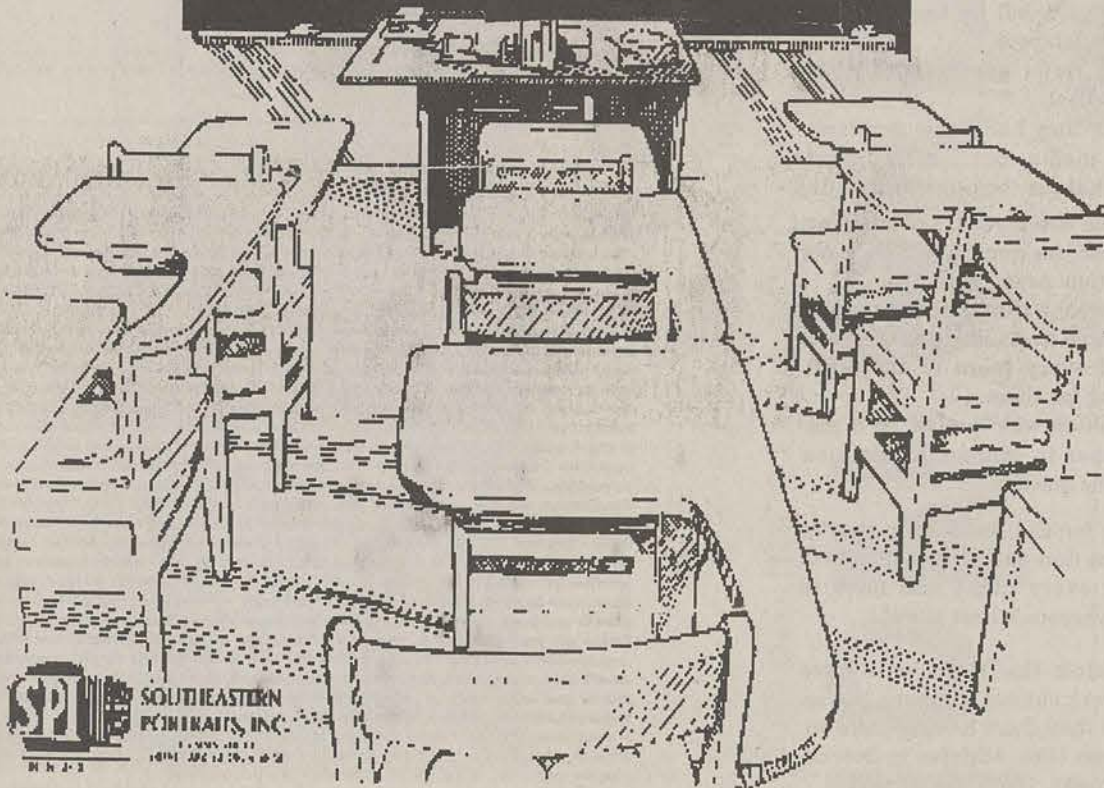
8:30 - 11:00 a.m. - 5:00 p.m.

Room 108 - Williams Center

## SOUTHERN REFLECTOR

Today's Assignment

Get your  
Southern  
Reflector pictures  
made!



SOUTHEASTERN PORTRAITS, INC.  
1-800-368-1111  
1001 202 17th St. S.E.  
Atlanta, GA 30334



Nintendo  
**CAMPUS  
CHALLENGE**

SPONSORED BY

**GEO**®

**PLAY NINTENDO VIDEO GAMES  
WIN CASH & GREAT PRIZES**

**Georgia Southern  
University**

**November 7 & 8/11-5  
Front of Landrum**

Hosted by:  
**Union  
Productions**

UNION  
PRODUCTIONS  
GEORGIA SOUTHERN UNIVERSITY

SUPER NINTENDO  
EXPERIMENTAL SYSTEM  
**POWERDOME**  
PLAY THE NINTENDO SUPER N.E.S. SYSTEM  
IN THE POWERDOME.

DISNEY VILLAGE MARKETPLACE

**Delco Electronics**  
WORLD LEADER IN AUTOMOTIVE ELECTRONICS  
*It's who we are.*

**GMAC**  
FINANCIAL SERVICES



## Weekly Crossword

"PAIR"-A-DOX

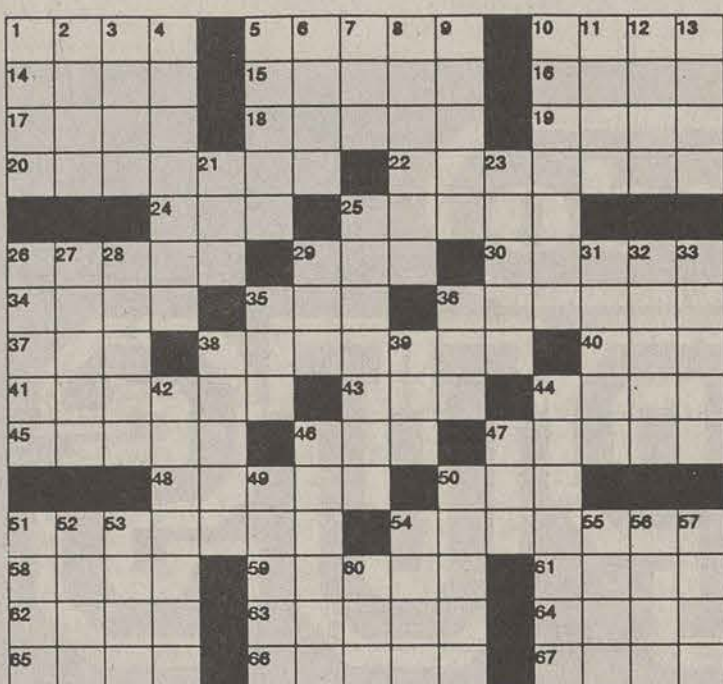
By Gerry Frey

## ACROSS

- 1 Woe is me  
5 Parental admonitions  
10 Belfry denizens  
14 London elevator  
15 State  
16 So be it  
17 Jacob's twin  
18 Allotted  
19 Nick & Charles  
20 Med. school topics (with 4 down)  
22 Red flags (with 10 down)  
24 Hoosier St.  
25 Rajah's wife  
26 Pain's partner  
29 For what reason?  
30 100 Centimes  
34 Regrets  
35 Articulate  
36 Harass  
37 Md.'s ocean  
38 See 25 down  
40 Precedes "BLE": 3  
41 Ammo  
43 Gerund ending  
44 Spelunker's challenge  
45 Decay  
46 Follows Holiday or Quality  
47 Concerns  
48 Trolley sound  
50 Follows Mar.  
51 See 42 down  
54 Freshman bouncers (with 44 down)  
58 Tehran's country  
59 No-no  
61 Fencing sword  
62 Mr. Carson & others  
63 Tear jerker?  
64 Barbecued treats  
65 Existence: Latin  
66 Lesotho monetary unit  
67 Highlander

## DOWN

- 1 Actor Baldwin  
2 Bart Simpson's sister  
3 Distant  
4 See 20 across



- 5 Wanderer  
6 Oil cartel  
7 pick: Petty criticism  
8 Street sign  
9 Car type  
10 See 22 across  
11 "To me" in Paree  
12 Small sea gull  
13 Hook  
21 Outs antithesis  
23 Served breakfast again  
25 Poetic beverage server (with 38 across)  
26 Middle East people  
27 Prankster  
28 Telephone word  
29 Desert Storm for one  
31 Fragrant floral oil  
32 Chutzpah  
33 Montana Indian tribe  
35 College ent. exam  
36 Porker  
38 Ms. Abzug  
39 Actress Margaret  
42 Motor Vehicle Depts. (with 51 across)

See Puzzle Solution, Page 8

© 1991 GFR Associates All Rights reserved

## Films

Continued from page 5

The screenplay, written by Blatty, is just incredible, with everything fitting in place and devoid of useless information.

The special effects are wild, and the part where she rolls her eyes back and turns her head

completely around is just... WOW! horror movie, then I encourage to rent *The Exorcist*.

*The Exorcist* is regarded as a top rental year around, especially near Halloween.

If you have never seen a good

Afterwards, you'll be sleeping with the lights on and the covers over your head.



1516 University Plaza  
Statesboro, Ga.  
681 - 6300

Come in and see the  
new  
*Rollerblades*  
&  
OAKLEYS

We have Fall Clothing  
for all your Cool  
Weather Activities

Look and Feel  
your Best for  
Formals!

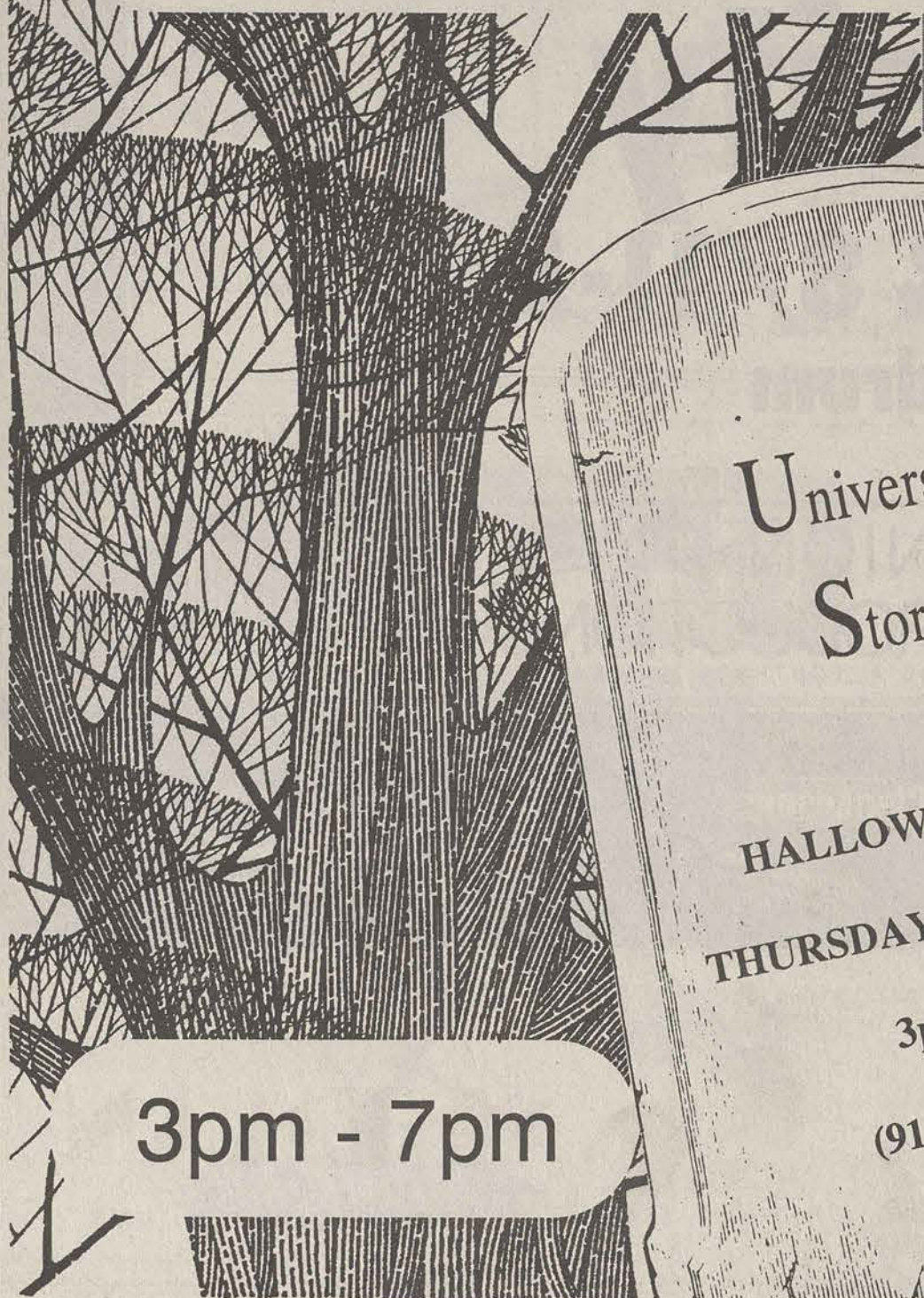


50% OFF All Programs



Physicians Weight Loss  
601 Brannen  
(across from Winn  
Dixie)  
764-9019

## MOONLIGHT MADNESS



University  
Store

HALLOWEEN NIGHT  
THURSDAY OCTOBER 31st

3pm - 7pm

(912) 681 - 5181

3pm - 7pm

Major Prize Drawings at 4, 5, 6pm  
Grand Prize - ARTCARVED RING  
(must be present to win)

SUB EATING CONTEST - 5:30pm  
(must sign up by mid day)  
COSTUME CONTEST - 6:30pm

Save  
25%

on all items  
(except text books and sale items)

Prizes...Prizes...Prizes...  
Prizes for Best Costume  
Students, Faculty/Staff, Children

FUN...FUN...FUN...  
Piñata Pokin  
Free Candy  
Costume Contest  
Sub Eating Contest

SUB PROVIDED BY THE PINES  
PRIZES DONATED BY ARTCARVED, B&J  
AWARDS, STRINGER OPTICAL,  
JOSTENS, SOFFE, GEAR & MGM SALES





Hey, Georgia Southern!

Don't just sit there...



...Read Something!

The George-Anne

## George-Anne Action Ads

### 01-Announcements

An informal political discussion group is held Mondays noon, rm 1 of Political Sci Bldg. Open to students and faculty.

Does White Magic interest you? Would you like to learn more about it? If so write: CRD, PO Box 2799, Statesboro, GA 30458

GSU's Non-Traditional Student Organization will meet Tuesday, October 22, 1991, at 5:15 p.m. In Room 271, Student Union Bldg.

Habitat for Humanity needs more volunteers. For more info, write c/o LB 12502. Meetings 1st & 3rd Wednesday ea month at Union

STUDENTS, FACULTY & STAFF ONLY: YOU can put your own message in this space for FREE! 25 words or less, please. Drop by the Wms Center, Rm 111, or send your classified ad to LB 8001. For free ads you MUST include your name and Landrum Box number.

The "Stop the Chop" fan club; and anti-Brave organization, would like to thank all the wonderful phone calls and new members. For info call 681-1130.

TO ANYBODY: I want mail! Send me anything! I live off campus and never get mail at my LB. J.R. LB # 15060

### 03-Autos for Sale

1979 Pontiac Sunbird, Body good but painted by morons. \$850 OBO. 764-8231.

### CLASSIFIED AD POLICY

• **FREE CLASSIFIEDS** - The George-Anne provides free classified listings to students faculty and staff members of Georgia Southern University as a campus-community service. Free classified ads MUST be written in 25 words or less. Students, faculty and staff will be billed 10¢ a word for ads in excess of 25 words. The advertiser's name, Landrum Box, and the classified category (listed below), **MUST BE INCLUDED** with your ad copy. All communication regarding free classified ads must be in writing (absolutely NO free classified ads will be accepted by phone... at this price we don't take dictation). Free classified ads (except personals and dated submissions) will be inserted into the newspaper in four consecutive issues. Ads must be resubmitted in writing for additional insertions. Free ads should be non-commercial in nature. Free classified listings should be mailed to The George-Anne, Landrum Box 8001, GSU. Deadline is noon TUESDAY or noon FRIDAY prior to publication.

• **COMMERCIAL LISTINGS** - are available at \$2.50 per 25 words with a minimum charge of \$5.00. Classified display advertising is available at \$5.00 per column inch per edition, with a one inch minimum size required. Payment should accompany ad, unless advertiser has established credit. Tear sheets will be mailed upon written request. A charge of \$1.00 per tear sheet requested is assessed to cover mailing and handling. Contact the Advertising Department: ADS, L.B. 8001, GSU, Statesboro, GA 30460 or call 912/681-5418.

• **GENERAL CLASSIFIED POLICY** - The advertiser is responsible for proof-reading ads upon publication. Any errors will be corrected upon written notice. Ads should be in good taste, and are subject to standard editing procedures. The editors reserve the right to refuse any classified ad.

### CLASSIFIED CATEGORIES

- |                             |                            |
|-----------------------------|----------------------------|
| 01 - Announcements          | 15 - Musical               |
| 02 - Arts & Crafts          | 16 - Personal              |
| 03 - Autos for Sale         | 17 - Pets & Supplies       |
| 04 - Auto Parts, Repair     | 18 - Photography           |
| 05 - Business Opportunities | 19 - Rentals & Real Estate |
| 06 - Child Care             | 20 - Roommates             |
| 07 - Education              | 21 - Services              |
| 08 - Freebies               | 22 - Sporting Goods        |
| 09 - Furniture/Appliances   | 23 - Stereo & Sound        |
| 10 - Garage Sales           | 24 - Swap & Trade          |
| 11 - Help Wanted            | 25 - Television & Radio    |
| 12 - Lost & Found           | 26 - Vans & Trucks         |
| 13 - Miscellaneous for Sale | 27 - Wanted                |
| 14 - Motorcycles            | 28 - Weekend Entertainment |

bought for \$65 will sell for \$35/OBO. Cal 681-4243.

FOR SALE: Double Bed, mattress and box spring, and matching chest of drawers - \$75, great condition, contact Joshua at 489-1884, leave message.

Hide-a-bed couch. Ugly but functional. \$25. 681-3631.

Household refrigerator (model GR-23) \$50. Call 681-7434 after 6 pm.

Household refrigerator, Model GR-23 \$50.

Panasonic VHS VCR w/ remote. Excellent condition. Barely used. Asking \$200 but will negotiate. Ask for Jeff or leave message 681-9056.

### 11-Help Wanted

EARN \$500 or more weekly stuffing envelopes at home. Send SASE to Country Living Shoppers, Dept. D18, PO Box 1779, Denham Springs, LA 70727-1779.

Gymnastics instructor for beginning Winter qtr. Experience in teaching pre-school and instructional gymnastics preferred. Call Gay at 681-5555, or go to Gymnastics Ctr on HWY 301, Wednesdays between 4 to 6pm.

Habitat for Humanity needs more volunteers next meeting 10/30, 6 pm at the Union. Savannah trip on 11/9. Credit for Gamma Beta Phi. All groups invited.

### WE NEED HELP!

**THE HONEY BAKED HAM CO.** is in search of help during the holidays to fill our Sales Counter and Production positions. We have stores located in the following states: Alabama, Arkansas, Colorado, Florida, Georgia, Louisiana, Mississippi, Missouri, Nevada, North and South Carolina, Tennessee and Utah. Please stop by during your Thanksgiving break to inquire about Christmas help. Check the white pages for information on the store nearest you.

RAISE \$500...\$1000...\$1500

### FOOL PROOF FUND RAISING

For your fraternity, sorority, team or other campus organization. **ABSOLUTELY NO INVESTMENT REQUIRED!** CALL 1-800-950-8472, ext. 50

### 12-Lost & Found

3 1/2 mth old male Rottweiler/German Shepherd mix. Approx. 20-30 lbs. Black w/ tan markings. Answers to Jake. Lost around Gentilly Dr. on Oct. 16. If found call 681-2467 after 5pm.

Found: women's watch. If yours call to identify. 681-7928.

LOST: gray/white kitten. Lost near Southern Villas. Gray with white paws, belly, and chest. If found PLEASE call

1986 Saab 900S two-door black all -options 5,500. 681-8952. 912-294-0019.

1987 BMW 528e -- Automatic transmission, electric sunroof, very clean, excellent condition. \$8750 or best offer. Call 1-826-2890 after 4 pm.

FOR SALE: 1982 blue Toyota Corolla hatchback. Great condition, fairly new paint job. One owner. \$1000 OBO. Call 488-2295.

For sale: 1984 Mazda 626 LX 2DR 5 speed. AM FM cassette. PW, good condition. \$3000 firm. 681-2232

FOR SALE: 1986 Ford Taurus, loaded, excellent condition. \$3985, call 681-5226, ask for Rudd.

### 06-Child Care

Are you looking for an experienced babysitter? I'm majoring in Early childhood & references. Call Jennifer any time & leave a message. 681-1755

### 07-Education

Financial Aid Available immediately! Special grants program. Every student eligible. No one turned down. Simple application. Send name, address and \$1 P&H fee (refundable) to: Student Services, POB 22-4026, Hollywood, FL 33022.

**COLLEGE SCHOLARSHIPS GRANTS • LOANS** Results Guaranteed 1-800-527-1496

### 09-Furniture & Appliances

Dorm size refrigerator used one year

### APPLIED INNOVATIONS

#### Need Cash?

50 Student Jobs Available NOW!

Contact:  
**Stewart Carswell**  
for Applications

7 B South Main Street  
Statesboro, Georgia 30458

The George-Anne  
We're looking out for you...



**The George-Anne Personals... Why not?**

09-Furniture and appliances  
10-Motorcycles  
11-Pets & Supplies  
12-Lost & Found  
13-For Sale  
14-Motorcycles  
15-Musical  
16-Personals  
17-Pets & Supplies  
18-Photography  
19-Rentals & Real Estate  
20-Roommates  
21-Service  
22-Stereo & Sound  
23-Swap & Trade  
24-Swaps  
25-Television & Radio  
26-Vans & Trucks  
27-Wanted  
28-Weekend Entertainment

**14-Motorcycles**  
**16-Personals**  
**18-Photography**  
**20-Roommates**  
**22-Stereo & Sound**  
**24-Swaps**  
**26-Vans & Trucks**  
**28-Weekend Entertainment**

### Pro Sound ENTERTAINMENT

#### Disc Jockeys For Any Occasion

Book Now For:

-Homecoming (Nov 16)

-Halloween Parties

Light Show  
Included

681 - 7665

### OUTDOORS & MORE

WINN DIXIE SHOPPING CENTER  
489-2585



NEW-USED  
6 POCKET PANTS-JACKETS  
WE RENT MILITARY CLOTHING FOR  
**HALLOWEEN**

-EUROPEAN CLOTHING

-W. GERMAN FIELD JACKETS

-E. GERMAN IKE JACKETS

T-SHIRTS O.D. CAMO-MARINE

COVERALLS, JACKETS,

RAIN SUITES

STUDENT DISCOUNT ON CASH PURCHASE

### Seniors

Come find out about  
**The College Graduate Program**

-Easy Financing

-A low Down Payment,  
(if you purchase)

-A \$500 Certificate

**ALTMAN**



PONTIAC BUICK GMC



