

Georgia Southern University

Georgia Southern Commons

The George-Anne

10-11-1991

The George-Anne

Georgia Southern University

Follow this and additional works at: <https://digitalcommons.georgiasouthern.edu/george-anne>

Recommended Citation

Georgia Southern University, "The George-Anne" (1991). *The George-Anne*. 1241.
<https://digitalcommons.georgiasouthern.edu/george-anne/1241>

This newspaper is brought to you for free and open access by Georgia Southern Commons. It has been accepted for inclusion in The George-Anne by an authorized administrator of Georgia Southern Commons. For more information, please contact digitalcommons@georgiasouthern.edu.

Inside Today

Classifieds.....8
Comics.....9
Sports.....7
Features.....5

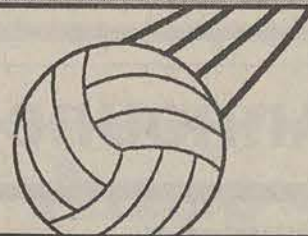
Museum presents Columbus Display

See Story, Page 3



Lady Eagles continue to win

See Story, Page 7



Liked By Many,
Cussed By Some,
...Read By Them All



The George-Anne

912/681-5246

Vol. 64 No. 9 • Friday, October 11, 1991

For 65 years, Georgia Southern's Official Student Newspaper

Georgia Southern University • Statesboro, GA 30460

Campus Recreation seeks input on facility

By Kevin Hudson

Managing Editor

A plan to increase the student activities fee to pay for a new \$8 million Campus Recreation and Intramurals facility is being presented to student groups by representatives from the Student Government Association and CRI. It is an effort to receive input from students as to the need and desire for such a facility.

The 80,000 square foot building, which would be funded, operated and used exclusively by GSU students, is expected to cost approximately \$8 million. The money would be raised through General Obligation Bonds which would be paid off through an increase in student activities fees.

Under the proposed plan, the present \$116 student activity fee would probably be increased by

approximately \$20 per quarter for freshmen and sophomores and incrementally lower amounts for juniors, seniors and graduate students. "These figures are only an example," said Chris Clark, SGA president, "We won't know the real amounts for a while."

According to Clark, "It will be built by students, run by students; all the decisions made about it will be by students."

Presently, \$30 of each student's activity fee goes to student activity groups such as SGA and CRI, according to Clark. Of this money, \$8.50 goes to CRI.

The funds that would be raised through the increase in student activity fees would subsidize those funds so that the new facility could be built.

SGA and CRI, along with Assistant Dean of Students George

Lynch, have put together a presentation describing their idea and are addressing student groups on campus to obtain student input.

The concept was presented to Pi Sigma Epsilon's membership Tuesday night. Many students there were in favor of the idea, but some were unsure about paying for a facility which most the juniors and seniors might never have the opportunity to use.

"We're all stuck paying for facilities that will be used by the next generations," replied Lynch, while reiterating that the fee increase would likely be lower for the upperclassmen initially.

Among the amenities being discussed for the new facility are three to four basketball/volleyball courts, a three to four lane indoor jogging area, approximately 7,000

square feet for fitness/weight room use, three to four multipurpose areas and 12 indoor racquetball courts.

The building would be designed for use by 17,000 students.

The success of the plans being discussed are based on certain assumptions mentioned in a report being circulated by the projects organizers. One such assumption states "There would not be a reduction in the current indoor space or usage appropriations for CRI."

Also, the facility would provide adequate space as long as plans to renovate the current aquatics facility are continued successfully.

Several new outdoor facilities are also planned; the cost of which will come from existing CRI and other funds. The outdoor recreation areas include three to five multipurpose fields, eight lighted

tennis courts and a central office for CRI, which is now located in the Williams Center.

New outdoor fields are especially needed according to statistics released by CRI. The "overuse of outdoor facilities [is] resulting in high maintenance cost and inefficient care..." according to the report.

In addition, the report stated that flag football ankle and knee injuries increased 100 percent from 1989 to 1990, indicating the need for better, well kept fields.

Many of these new facilities would likely be built on land being considered for acquisition by GSU on the south side of campus near the stadium.

The optimistic estimate indicates the facility could be built within 24 months, according to Clark.

Brown wins SGA election

By Kevin Hudson

Managing Editor

Jonathan Brown was elected as the new Student Government Association vice president of auxiliary affairs in a special election held Wednesday.

Approximately three percent of the student population voted in the election. The 425 voters chose Brown out of three candidates running for the position.

The other two candidates were Andy Mealor, a junior majoring in international business and Robert Hedstrom, a senior communication arts major.

"This is the largest turnout for a one-person election we have ever had," said Jeff Barker, SGA publicity coordinator,

"In the past, student apathy has hurt election turnout. This year it seems that student awareness has increased," said Barker. "This is promising for SGA and I hope this sets a precedent for future elections."

Brown received 60.1 percent of the votes to win the election.

"The vice president of auxiliary affairs works with food services, traffic and safety - anything that makes money on campus," said Chris Clark, SGA president.

According to Clark, the vice president of auxiliary affairs sits on the faculty senate committee that deals with money-making projects.

In other student government business, three new senators were elected by the SGA earlier this week.

The three positions had become vacant for varying reasons. Jeff Barker resigned his senate seat to take on the responsibilities of publicity coordinator.

Jonathan Brown released his seat when he was elected to a higher position this week. Another seat was vacated by resignation at the beginning of the quarter, according to Clark.

"Applications for the positions," said Clark "were taken for one week at the beginning of the quarter."

SGA took the applications under consideration, and, according to SGA rules, elected three to fill the vacant seats this week.

The new senators are Niles Dixon, junior, accounting; Joshua Edmonds, junior, math; Andy Mealor, junior, international business.

Pedestrium, landscaping progress to continue

By Kevin Hudson

Managing Editor

The first phase of the GSU pedestrian is almost complete. Decisions are now being made as to which part of the campus will see phase two begin soon.

"We are looking at where buildings will be put in the future so that we don't build the pedestrian where they will be," said David Hainley, campus landscape architect.

Hainley joined the Georgia Southern staff two and one half years ago and soon developed plans for the new parking lots and pedestrian.

The lights around the finished sections are being erected this week, and with a little more "greenscaping" the first phase will be nearly finished.

According to Hainley, the lights being installed cost approximately \$2000 each including installation and constituted one-fourth of the cost of the pedestrian.

The bricks being used for the walkways are more solid than normal concrete and cost about the same as poured concrete. They can also be removed for underground maintenance on pipes and conduit, then they can be replaced.

The two sections of the pedestrian now being completed near the Union and by the Lakeside Cafe will eventually be joined by a large plaza in the area between the Williams Center and the Lakes.

It is hoped that a fountain can be built as part of the plaza. According to Hainley, they are now looking for a person or group to subsidize all or part of the cost of a fountain.

Due to the size and location of the open-air plaza, several trees will have to be moved and some will likely be cut down.

The Crepe Myrtles near the Blue building are becoming old and stressed, according to Hainley. He stated they would probably try to relocate the trees rather than cut them down.

Two larger trees in the Carruth building lot will likely be cut down soon. One of the trees is dead and rotting and "needs to be cut down before it falls on someone," said Hainley.

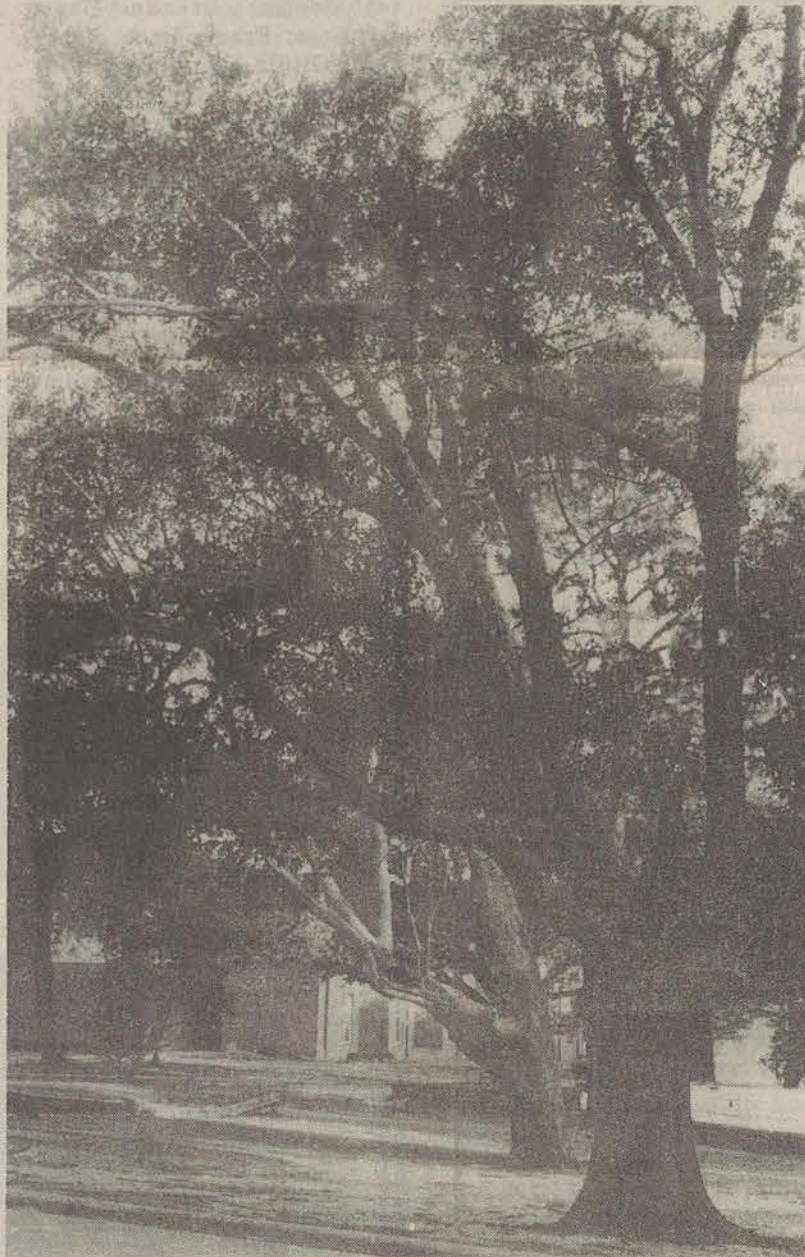
Another nearby tree is becoming hollow and has some deadwood. It is also expected to be cut down at a later date. Both trees have been hit by lightning more than once.

With the exception of a pine tree, the other trees in the area are expected to be spared and become part of the walkway.

Hainley said they have done their best to preserve what they could of the existing plant-life.

The circle walkway between the Lakeside Cafe and the Carroll Building replaced several tall pines in that area. According to Hainley, two people came out and asked them to leave the trees.

Hainley said if they had moved the walkway either



These two trees on the lawn of the Carruth Building are to be removed eventually to make room for the pedestrian's central plaza. (Photo by Kevin Hudson)



Stratford renovation approved

By Kevin Hudson

Managing Editor

The Georgia Board of Regents approved funding for the renovation of Stratford Hall on Wednesday.

The residence hall was severely damaged by fire in January 1989. Reports say the facility should be available for students by summer quarter.

According to Michael Baxter, a spokesman for the BOR, a bid by Statesboro's Pope Construction Company of \$1,177,000 to renovate the building was approved at the Regents monthly meeting. Pope's bid was one of 10 submitted for the project.

Donnie Pope of Pope Construction Company estimated that it would take approximately 200 days to complete the project which could begin as early as the first week in November.

Several new features will be added to the residence hall including outdoor staircases and a divider separating the building near the middle.

Alcohol Awareness Week planned

G-A Reports

The second annual alcohol awareness week is planned for October 13-19.

The theme for this year is CHOICES, choosing healthy options independently creates exceptional students.

During the week there will be displays, seminars, exhibits and other alcohol related activities in the Union.

"We want to make it a fun time and be as informative as we can," said Ed Bayens---

Students won't be the only ones involved.

Faculty members were asked to address an alcohol-related topic in their classes during this week. Over 75 faculty members pledged a few minutes of their time to the topic said Bayens.

"I'm really excited about the response faculty has shown ... about encouraging students in their classes to attend one of the programs," said Bayens.

The organizations involved with Alcohol Awareness week are: Office of Special

Programming, SGA, Residence Life, Department of Public Safety, Health Services, Mothers Against Drunk Driving (MADD), Pi Kappa Phi, Willingway Hospital and Union Productions.

"I just want to emphasize to students that alcohol and substance abuse are important issues on college campuses today," said Ed Bayens. "I want to encourage students to attend one of the programs that are sponsored and also become involved and aware of these important issues."

Health Services issues challenge

By Brent Parrott

Assistant News Editor

Did you know 8,000 people in their teens and twenties are killed each year due to alcohol-related accidents? This is equivalent to approximately two-thirds of the GSU student population.

Did you know an additional 40,000 young people are permanently crippled or injured in drinking and driving accidents? This is nearly equal to

the size of the population of Bulloch County.

GSU Health Services is hoping to increase alcohol and substance abuse awareness by setting up a petition table in the Student Union on Thursday, October 17 from 9 am until 4 pm.

There will be sign up sheets for students to commit to one day free of alcohol during the week.

The students can choose the day, but Whitney Himes, health educator of Health Services issued a challenge to the students. "I hope the students will take the challenge and choose a night in which they would usually drink," she said.

Himes urged campus organizations to sign on to promote healthy drinking behavior.

The goal of the sign up is to promote responsible drinking behavior and to give students other social options other than drinking.

See ALCOHOL, page 10

Once revered by all, Columbus now faulted by many groups

By Todd J. Gillman

Dallas Morning News

NEW YORK - Christopher Columbus sure has changed lately.

A century ago, during the 400th anniversary of his landfall in the Americas, Columbus was feted as a bold visionary. As the quincentenary year begins this month, he is increasingly being pilloried, accused of sins ranging from genocide to just plain bad navigation.

During most of the United States' relatively brief tenure as a nation, Columbus has been a revered, almost mythic figure. His bold, adventurous spirit and westward push resonated with the American self-image. His lesser deeds - introducing slavery to the hemisphere, exploiting its natural wealth and paving the way for the brutal conquistadors - were brushed aside, as was his insistence even unto death that he'd

reached Asia.

Now the gloves are off.

American Indian activists have likened Columbus to Adolf Hitler for his treatment of the natives he encountered. And leaders of the National Council of Churches have called for penitence rather than celebration during the next year, in light of Columbus' legacy of "genocide, slavery, ecocide and exploitation."

"He was treated in the past as such a superhero, (so) he becomes the ideal whipping boy" for the legacy of European activity in the New World, said historian John Hebert.

Hebert, who is coordinating quincentenary activities for the Library of Congress, added that the more balanced, realistic interpretation of Columbus that is emerging is neither "detrimental" nor entirely unexpected.

CHOICES
Choosing Healthy Options Independently Creates Exceptional Students
GEORGIA SOUTHERN UNIVERSITY'S
Alcohol Awareness Week
OCTOBER 13 - 19, 1991

Announcements

Friday, October 11

• ID validation will be held from 9 a.m. to 4 p.m. today at Hanner Fieldhouse, Student Union, and the Paulson Stadium ticket booth.

The validation is required for admittance to football and basketball games.

• Union Productions presents, *BackDraft* which will be shown at 7 and 9:30 p.m. in the Union Theatre. The movie will run through Saturday.

• The Southern Center for Continuing Education at GSU will be presenting "Grant Proposal Writing for Public and Non-Profit Organizations."

This introductory program will address the process of identifying potential funding sources, making contracts and developing proposals.

The seminar will be held at Georgia College in Milledgeville, on Friday from 9 a.m. to 4:30 p.m. it will be held at West Georgia College in Carrollton. On Friday, October 18 the seminar will be held at Coastal Georgia Center for Continuing Education in Savannah from 9 a.m. to 4:30 p.m..

The fee for each seminar is \$79. For more information, call Maria Center at 681-5555.

Sunday, October 13

• *Hudson Hawk* will be shown at 7 and 9:30 p.m. today and tomorrow at the University Union.

• The Third Annual Jewish Food Festival is sponsored by Temple Mickve Israel which will be at "The Hard Lox Cafe" in Monterey Square in Historic Downtown Savannah, from 11 a.m. to 3 p.m.

Enjoy "noshing" Jewish foods, (pastrami) and corned beef sandwiches, kosher hot dogs, blintzes, matzo ball soup, Rabbi Belzer's Ah-Mein, Lo-Mein, strudel, potato pancakes, home baked goodies, lox and bagels, and new, a Russian food booth.

Monday, October 14

• Apollo Night Talent Show is tonight at the Union Ballroom at 7 p.m.

• GSU College Bowl team meeting at 8 p.m. in Room 273 of the Union.

• Due to conflicting events by the English and History departments, Miscellany has rescheduled "Evening of the Arts." It will be held Monday, Oct. 14 at 7:30 p.m. in the Foy Art Gallery, room 303.

Tuesday, October 15

• The movie *Kramer vs. Kramer* will be shown by the Department of English and Philosophy at 7 p.m. in the University Union Theater.

• Comedian Carrot Top will be in the Union Ballroom at 8 p.m. Mocktails will be served at 7:30 p.m. The event is sponsored by the Alpha Delta Pi sorority.

Wednesday, October 16

• A volleyball tournament will be played at Sweetheart Circle at 3:00 p.m.

Thursday, October 17

• "I Can, You Can, Too," is a lecture given by Mamie McCullough. The event is part of the CLEC Performing Arts Series events and is sponsored by the CLEC and the School of Education. It starts at 7:30 p.m. in the Union Theater.

• Arnold Mitchem gives a lecture, "Educational Equality: An Agenda for the 90's." The event is part of the CLEC Performing Arts Series events and is in part sponsored by the Multicultural Office.

The event starts at 1 pm in the Foy Recital Hall.

Friday, October 18

• Blood pressure checked for free and cholesterol screening for \$2 for faculty and staff at the GSU Nursing Faculty's clinic from 12:30 until 2:30 pm.

• *Don't Tell Mom the Babysitter's Dead* will be shown through Saturday at the University Union at 7 and 9:30 pm.

Saturday, October 19

• Volleyball Tournament will be played at 3 pm at Sweetheart Circle.

• The University Union is sponsoring a Leadership Retreat at the W.W. Mann Center on Saturday, Oct. 19, from 9 am to 7 pm

The workshop is designed to improve leadership skills.

There will be a van pick-up at 7 am in front of the University Union parking lot on Oct. 19.

Registration is \$15. The deadline for this is Oct. 8.

For more information and to register call 681-0399.

...Read
Something!
The
George-Anne

The George-Anne

STATEMENT OF OPERATIONS

The *George-Anne* is the official student newspaper of Georgia Southern University, owned and operated by GSU students and utilizing the facilities provided by GSU. The newspaper is the oldest continuously published weekly newspaper in Bulloch County and Statesboro, Ga. The ideas expressed herein are those of the editor or the individual authors and do not necessarily represent the views of the Student Media Committee, the administration, the faculty and staff of Georgia Southern University, or the University System of Georgia. The *George-Anne* is published twice weekly during the academic year and three times during summers. Any questions regarding content should be directed to the editor (681-5246).

OFFICES, MAIL, PHONES

Room 111, F.I. Williams Center. The *George-Anne*, Landrum Center Box 8001, Georgia Southern University, Statesboro, Ga. 30460. 912/681-5246 (News) or 912/618-5418 (Advertising)

ADVERTISING INFORMATION

The *George-Anne* reserves the right to refuse any advertisement. The *George-Anne's* advertising rates are as follows:

• Students and student groups:	\$2 per column inch
• GSU faculty, departments or affiliates:	\$3 per column inch
• Statesboro area businesses & groups:	\$4 per column inch*
• National rate:	\$7 per column inch

*Five inch minimum ad size, otherwise classified display rates (\$5.00 per column inch) apply.

DEADLINE: The deadline for reserving space and submitting advertising copy is Noon, one-week prior to the intended publication date. For more information, rate cards, sample publications, contact: Stacy Graham, Advertising Manager, ADS, (912) 681-5418; or Bill Neville, Student Publications Coordinator, (912) 681-0069.

CLASSIFIED ADVERTISING INFORMATION

The *George-Anne* reserves the right to refuse any advertisement. The *George-Anne's* classified advertising rates are as follows:

• Students and student groups:	Free (25 words or less)
• GSU faculty, departments or affiliates:	Free (25 words or less)
• Others groups or businesses:	\$5.00 (25 words or less, 2 issues)*
• Retail classified display:	\$5.00 per column inch

DEADLINE: The deadline for reserving space and submitting classified advertising copy is Noon, one-week prior to the intended publication date. Free classified ads from students, faculty and staff must be submitted in writing, with the name of the sender, a local address and telephone number. No free ads will be accepted via telephone. Only one free ad per person per week.

CIRCULATION INFORMATION

Subscription rates for home delivery of *The George-Anne* are six dollars per quarter, or \$18 per year, delivered bulk mail. Please address all inquiries to Jeff White, Business Manager. The *George-Anne* is distributed free of charge on the Georgia Southern University campus through delivery sites located in campus buildings and residence halls.

*We gratefully acknowledge the theft of our slogan from Robert Williams of the *Blackshear Times*. Call Bob and he can tell you who he stole it from originally.

Police Beat

G-A Staff Reports

Bulloch County Sheriff

Skye Baxley reported that between 8:30 p.m. on October 1 and 2:30 a.m. the next day, someone broke the window on the drivers side of a 1990 Geo Storm while it was parked at her friends house.

According to the report filed by the Sheriff's Department, nothing seemed to be missing.



Statesboro Police

Amy Robrer, 21, of Bermuda Run Apartments reported an unknown person(s) used her Mastercard at Peppermints Records and Tapes, Belk, and Revco.

Gary Randall Allen, 27, from Savannah was arrested on October 7 at the intersection of O'Neil Drive and Gently Road and charged with stop sign violation, no insurance and driving without a licence.

Bradley Kyle Couch, 19, of Jonesboro, Georgia was arrested on October 4 and charged with DUI (.24 GMS) and possession of alcohol by an underage person. Bond was set for Couch at \$770.

• John Parker Mills, 21, of Marietta was arrested on Lanier Road on October 4 and charged with DUI (.14 GMS) and improper left turn.

'Midsummer Night's Dream' cast announced

By Amy Scalf

Staff Writer

Rehearsals have already begun for the November performances of William Shakespeare's "A Midsummer Night's Dream."

The cast includes Christina Churchward as Titania, Scott Garner as Egeus, Heather Hart as Hermia, Allison Lind as Helena, Keri Mercer as Hippolyta, Dan Prince as Puck, Rohan Quince as Oberon, David Ray as Demetrius, Frank Reed as Lysander and Jeremy Williams as Theseus. Others are Carlton Dickerson as Starveling and Moonshine, Eric Gulley as Snug and Lion, Hollie

Hunt as the Talking Fairy, Kail Kemp as Francis Flute and Thysbe, Matt McCall as Tom Snout and Wall, Robert Meguiar as Nick Bottom and Pyramus, Jeff Sewell as Peter Quince and Prologue, and Tripp Smith as Phisistrate. The fairies (Peaseblossom, Cobweb, Moth, and Mustardseed) are not yet cast.

Shakespeare wrote "A Midsummer Night's Dream" around 1595. Much of its humor and satire relate directly to current events of his day, but is not lost on contemporary audiences.

As the title suggests, the action occurs mostly in a dream-like state. It shows a fairy world in contrast to a somewhat realistic lifestyle. The fairies confuse and enchant the mortals and create some unfortunate and humorous love entanglements. As in dreams, the actions and characters are sometimes contradictory and often symbolic.

Theatre South's production of "A Midsummer Night's Dream" will entwine traditional and modern sets, costumes and music.

The director of this production is Dando Kluever; Tyler Bagwell is stage manager. Others involved are Gary Dartt, set design; Brenda Dartt, costumes; Frank Hart, lights; Chris Griffin, sound design.

"A Midsummer Night's Dream" will be performed in McCroan Auditorium on November 1-2 and 6-9.

If you would like to help with set decoration or anything else, come by the Scene Shop (by Skate-R-Bowl on 301) from 3 pm to 5 pm daily.

Alcohol awareness week

Sunday, October 13

• An Alcohol Liability Seminar will be presented to the Greek organizations and other interested student organizations at 7 p.m. in room 270 of the Union. Local attorney Jim Rutledge will be speaking.

Monday, October 14

• The student organization Banner Contest begins!
• The "Wrecked Car Exhibit" will be placed in front of the University Union through Thursday. Information on traffic fatalities resulting in the abuse of alcohol will be displayed next to the car.
• There will be a panel discussion on drinking and driving in the Union Commons area at noon.
• Apollo Night student talent show is at 7 p.m. in the Union Ballroom.

Tuesday, October 15

• A drug display and picture board will be displayed from 11 a.m. - 2 p.m. in the Union Commons area.
• A coffeehouse comedy program with "mocktails" will be at 8 p.m. in the Union Ballroom

Wednesday, October 16

• An alcohol/drug video will run continuously from 9 a.m. - 4 p.m. in the Commons Area.
• The Georgia State Patrol will have a drinking and driving booth set up from 10 a.m. - 3 p.m. in the Commons area.

Thursday, October 17

• Speakers from Willingway Hospital will speak on recovery and the addiction process at 4 p.m. in the Union room 242.
• Banner contest winners will be announced at 2 p.m. on Sweetheart Circle. The winning poster will be displayed in the Union October 21-25 and at half-time at the October 26th football game.

Friday, October 18

• There will be an information table with literature available on the misuse and abuse of alcohol and drugs from 9 a.m. - 4 p.m. in the Union Commons area.

Saturday, October 19

• A volleyball challenge match will be played today. Winners of the student organizations will play the Statesboro Police. This will be held at 3 p.m. in Sweetheart Circle.

Racial interaction questioned

Wire Service

Nadine Gordimer says that there's less interaction between blacks and whites in the United States than in her native South Africa. The newly minted Nobel Prize winner for literature said, while promoting her new book, "Jump," in Amherst, Mass., that she's rarely been introduced to blacks by her white acquaintances in 20 years of regular visits here.

"It's always been strange to me," said Gordimer, who is 67 and white, "that very few people have any real relations with blacks or black friends. Very different from my experience at home."

Don't just sit there...
Register to
Vote!

Khaki's



Statesboro
Mall

489 - 2881

**ALCOHOL
AWARENESS
WEEK**

**Saturday, Oct. 13
thru Sunday, Oct. 19**

- Apollo Night - Monday, October 14
- Carrot Top with "Mocktails" - Tuesday, October 15
- Volleyball Tournament - Wednesday, October 16

Exhibit highlights influence of Columbus

By Amy Scalf
Staff Writer

1992 marks the 500th anniversary of the arrival of Christopher Columbus in America.

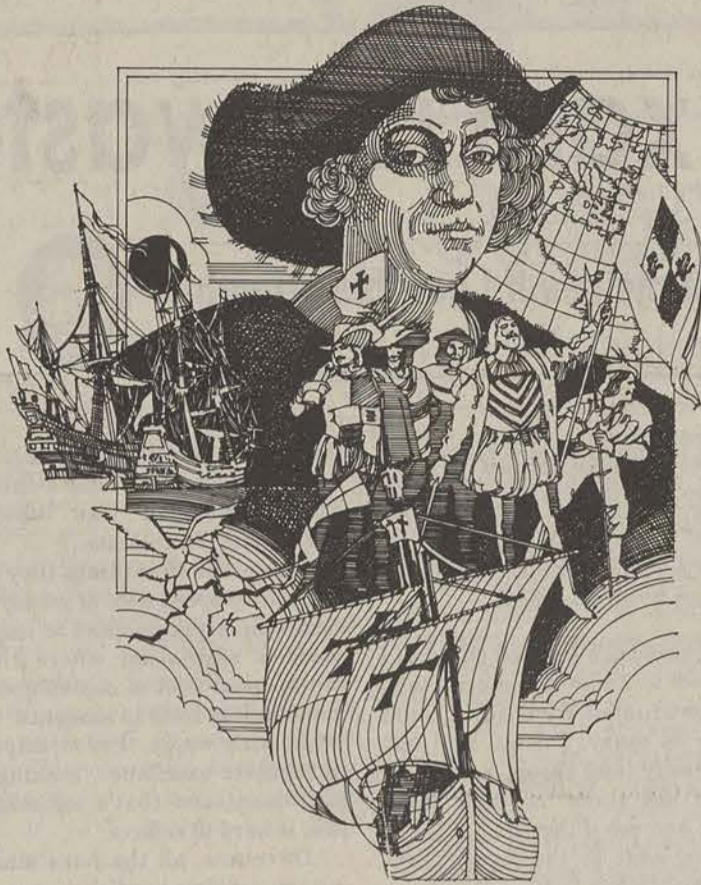
The effect of his voyage is depicted in an exhibit at the GSU museum, entitled "The Legacy of Columbus: Spanish Influence in Georgia and the Southeast."

The exhibit consists of thirteen panels outlining the major events and people relevant to Columbus' arrival and the Spanish legacy in Georgia, including: Columbus' voyages to the new world, Columbus the man, Spain in 1492, Spanish Exploration of the Southeast, the end of Spanish Georgia and the arrival of the English.

Each set will tour Georgia separately.

Nancy Shumaker, Associate Professor of Spanish, directed the project and obtained the grant scholarship for the project.

Last spring, art and anthropology students researched and produced the exhibit for credit. Final touches were added this summer by art students. Producing this exhibit was an invaluable experience for the students.



Others involved in the development of the project are Laura Hale, Instructor of Art; Robert

Haney, Associate Professor of Spanish and Assistant Vice President of Academic Affairs;

Sue Moore, Associate Professor of Anthropology; Richard Persico, Associate Professor of Anthropology; Judy Schomber, Associate Professor of Spanish; and Bernie Solomon, Professor of Art.

The project was designed to provide information that could travel to small communities, banks, libraries, or other public areas so that many different people, including school children, could attend and learn about the Spanish heritage of Georgia. Shumaker explains, "Most Georgians think of Georgia as an English colony, but the Spanish actually explored much of Georgia."

The exhibit will be open at the GSU Museum through November 17. It will then be presented to the Georgia Humanities Council for tours around Georgia.

This project is supported by the Georgia Humanities Council and the National Endowment of the Humanities and through appropriations from the Georgia General Assembly.

Henderson exhibit features fine books

GSU News Service

More than one dozen fine limited-edition books currently on exhibit at GSU's Henderson Library, will comprise a traveling exhibit at other public institutions around Georgia this year.

Jointly sponsored by the Goethe-Institute of Atlanta and the University's library, the exhibit consists of books with "press runs" of as few as 30 books, and no more than 250.

The books, which are all in German, include original writings as well as classic works. Some are translations into German from other languages such as passages from the Homer's "Odyssey," the biblical "Song of Songs," and soliloquies of Shakespeare's "Hamlet."

All of the books were produced and are on loan from the private

press Aldus-Press of printer Arno Piechorowski of Reicheneck, Germany.

"Private press books are often much more elaborate than your average book," said Henderson Library's Dr. Rebecca Ziegler, one of three curators of the exhibit. "They sometimes serve as a laboratory for design, influencing the commercial designs of the future."

"The tradition of the private press is to stress the beauty and quality of the hand-made product," she said. "In Germany, Great Britain and the United States, there is a flourishing tradition of small private presses which traces its roots to the nineteenth century Arts and Crafts Movement. Arno Piechorowski and his Aldus-Press are a part of this tradition."

Piechorowski has stated his chief pleasure from small press printing is the contacts with the creative human beings that it affords -with authors, illustrators, papermakers and collectors.

"A number of artists, including Bernard Solomon of GSU, have enriched the works of the Aldus-Press with etchings, woodcuts and linoleum block prints."

"Lyrical poetry is a staple of small private presses for several reasons: even the best of it is seldom commercially viable for regular trade publishers, hence it is left to small presses which do not operate for profit; and, by its very nature, it cries out for an attractive graphic presentation."

Some of Aldus-Press's best examples of this subject are included in the exhibit, she said.

Included with each example in the exhibit is an English translation of the page open to display, facts about the author, illustrator, binding and the size of the press run.

From GSU, the exhibit will travel during the next year to Armstrong State College, the University of Georgia, North Georgia College, West Georgia College, Georgia State University, Fort Valley State College, Columbus College, Clayton State College, Augusta College, Georgia Southwestern College and Valdosta State College.

Charges withdrawn in fraternity rape case

Knight-Ridder Newspapers

PHILADELPHIA - The Philadelphia District Attorney's Office on Tuesday withdrew all criminal charges against two men accused of raping a Temple University student at a fraternity house, saying "serious credibility doubts arose" about the woman's account after other witnesses came forward.

While the 19-year-old woman "did indeed have sexual intercourse with some or all of those she had accused," the Sept. 12 incident at Alpha Phi Delta house

"did not rise to the level" of rape under the law, Diane Granlund, chief of the office's Rape Unit, said in court.

"No, she didn't lie. She didn't have enough evidence to give us," Granlund told reporters after Municipal Court Judge Louis J. Prezenta approved prosecutors' request to drop the charges against Michael Derita and Raymond Evers.

Granlund told reporters the investigation was over.

Granlund said the woman had been unable to answer questions

raised by other witnesses' accounts. She said the witnesses included suspects and two other women who had been at the frat house during the incident, but declined to say what questions had been raised about the woman's account.

Granlund said the two former defendants "are hardly angels. They took advantage of a young woman in that fraternity house. But I can't, as a matter of law, prove them guilty."

Some details of prosecutors' decision to drop the widely publicized case were murky.

The George-Anne

We're looking out for you...

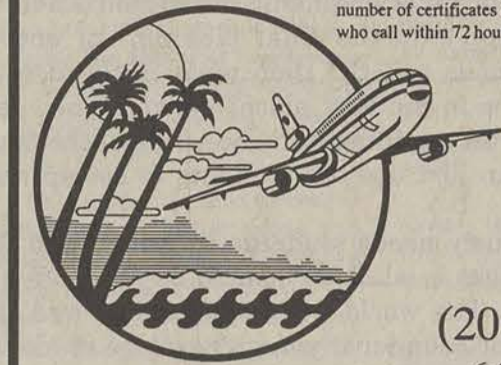
AS A SPECIAL MARKETING TEST A MAJOR TRAVEL BROKER IS OFFERING EVERYONE WHO CALLS WITHIN 72 HOURS OF THIS PUBLICATION DATE.

*** FREE * FREE * FREE ***
A DREAM VACATION TO HAWAII

As a special marketing test, we will send to each person a vacation certificate valid for a free vacation to Honolulu, Hawaii. This certificate entitles the user to receive 8 days and 7 nights of lodging for two people and one free airline ticket, transfers, baggage handling and all taxes. You need pay for only one airline ticket at the regular coach price.

There is no other product to purchase and there is no charge for the special certificate offer. We will however limit the number of certificates to be issued in this market to those who call within 72 hours of the publication date of this ad.

The reason for this special offer is that we wish to test the drawing power of this type of advertising and inform you of our special travel programs. But please remember that there is absolutely no obligation in order to receive this special vacation offer.



call now
(206) 781 - 7384
6:00 am - 10:00 pm

Seniors

Come find out about
The College Graduate
Program

- Easy Financing
- A low Down Payment,
(if you purchase)
- A \$500 Certificate

ALTMAN
GM PONTIAC BUICK GMC

Students are Special! at Eagle Health Club

For all your fitness needs!
Co-Ed Facility Featuring:

- Pool
- Free Weights
- Nautilus
- Life Cycles



Watch for our
Grand Opening
Special!

- Life Step
- Steam Room
- Aerobics
- Much More!

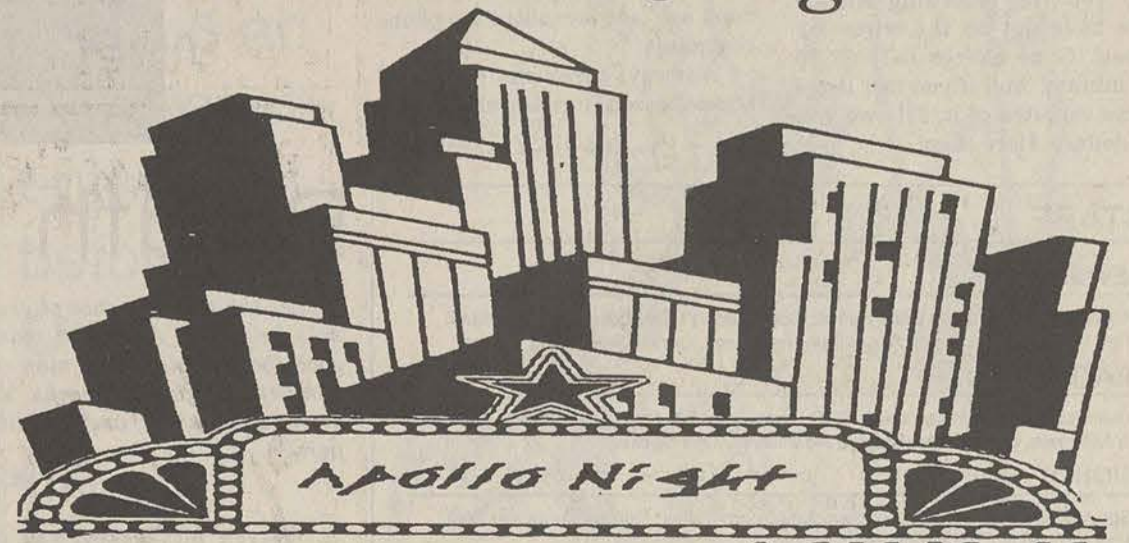
Student Fee Only
\$50per/quarter.
Plus a one time \$25
enrollment fee.

Located Behind Bruger King
come by or call 681-7871

UNION PRODUCTIONS

GEORGIA SOUTHERN UNIVERSITY

Apollo Night
Talent Show
You be the Judge!



Oct. 14, Mon.
7 p.m.

\$1 admission

Union Ballroom



Gary A. Witte Editor

Kevin Hudson Managing Editor

Misty McPherson News Editor

Stepping on students

When Earl Cashon, director of the University Union, "told" (his words) Union Productions they needed to change their name, he may have not been stepping on any clear-cut rules, but he certainly stepped on the concept of a student-run organization.

If students "don't do the final picking," of entertainment that comes to GSU then what is the use in having them there in the first place? Perhaps they can create a faculty-run organization who will do "the final picking." They can just use the students to set up and run the event.

UP very obviously needs students to run it, and for better or worse, that is what UP should be - a student-run organization. The world will not crumble, and the earth will not split asunder if you give college students authority to sign contracts.

How many more "decisions" will be made for UP by Cashon?

Unfortunately, according to Dr. John Nolen, UP, which has been shifted from department to department in the past, has no written constitution to protect it from the union director's decisions.

Perhaps it is time for one.

1-900 nasty numbers only somewhat nasty listening

I was over to Landrum to see if the geiger counter I inherited from a distant dead relative would make that scratchy noise if I put it over an order of nachos. Anyway, I didn't have neither the scratch nor the will to go and BUY an order, so I took my geiger counter over to a pert, young coed, and I stuck my geiger counter over her nachos.

Anyway, after the campus policeman and them fraternity boys and sorority girls was done with me, the young lady in question apologized for all the trouble.

"Ain't no trouble, gal," says Buck. "It cain't be ever' day that some feller shove his geiger counter into your nachos, though I must tell you that as nachos go, yours is well worth geiger-countering."

She done fluffed up her blonde hair a bit, and given me one of them little I'm-just-so-well - desirable looks, and she says:

"First off, I didn't take you for no serious scholar or nothing. I took you for one of them people who might be found calling one of those 1-900 nasty phone numbers."

Well, Ole Buck's thinking he might have to resort to one of them politically-incorrect words like "hooters," but then this feller with a plate of steroids and a side of raw meat come up, and Buck's new gal friend was history.

But, since the issue come up, I reckon that a whole lot of GSU gals is interested in what exactly goes on on them 1-900 phone lines. So Buck's gone give it to you straight. It ain't nothing worth no \$3.90 per minute.

Tell you what - Buck's gone give you the recording Buck's gone have put on the wires for hisself. Gone charge only \$2.50 per minute. And if you can listen to five minutes of it, I'll owe you ten dollars. Here it go:

Man about campus...

Buck Birdseye



"Hey there, sweet thang. I just been thinking on y'all. You know what I mean. I'm jest here in the mobile home, and, well, a feller can get to thinking. You know what I'm thinking 'bout. Fact is, if you was here right now, Ole Buck'd ask you to sit right down on the divan. Can I git you some Old Mr. Boston, darling? On the rocks?"

"Course now, that IS a fetching dress y'all is wearing. You mind if Ole Buck sets down next to you. There you go. Boy howdy! What you doing, gal? That ain't what I meant by "rock," you naughty thang you."

"Hey, I know. Let's have us some whatchacall yer romantic music. You like Randy Travis or Merle Haggard? I even got a Dolly Parton album. I'll tell you what, Ole Buck's got to say that you suck down that gin right nice. You mind if I, well, show you my tattoo?..."

Anyhow - that's 'bout what you gone get for your 1-900 call to anybody. Namely, you gone get some voice talking almost-nasty to you.

Frankly, folks, they is all thieves and charlatans. And don't ask me none about the phone company.

Anyway, here's the results of some personal research Buck's

See BUCK, page 10

Regents Exam is a waste of time

A while back, I had the distinct pleasure of listening to Terry Kay, author of some books being read by GSU English students, who gave a little talk about writers and writing.

Now, I like to consider myself a writer, an opinion you may or may not agree with, so it was with some amazement that I heard him say that some students were actually afraid of writing.

I knew that there were folks who didn't like to write, that there were folks who didn't think their writing was very good, and even some who would write even if they didn't have somebody hanging a grade on everything they wrote. But actually afraid? He said it, and it was verified by some students and faculty who were present.

Then I got to thinking about it some more. I thought about how confusing it must be to some freshmen here to go to a class one quarter where they are told that they won't get a good grade if they don't do their essays according to very strict rules and formats.

Then, the next quarter they go to a literature class and they are told how great some writer is because of an innovative and fresh writing style.

Also, what is the great bugaboo that is lurking on the horizon of

Let me see if I got this straight

D. J. Smith



every freshman and sophomore at every college and university in Georgia? Right - the Regents Exam! The good folks up in Atlanta want to make sure that you can write an essay.

I think that's a good thing. If I wanted to know if someone who had graduated from GSU could write an essay, I could find out real easily (and cheap, too).

I'd ask them for their transcript and see if they had a "C," or higher, next to the lines "ENG 151" and "ENG 152."

We pay our college professors to teach our students how to write an essay. If a professor says that someone can write an essay, then that's good enough for me. After all, the professors are supposed to be the experts- that's why they were hired.

But you see, a few years back a bandwagon was created, and almost every politician in this great land jumped on it. They jumped aboard because it involved something where they could look like

they were doing a lot when, in fact, they weren't doing a thing. The bandwagon was labeled "Academic Excellence."

One of the first things they did (after they spent a lot of money to study the program) was to implement a regulation where they could spend a lot of money giving meaningless tests to students.

In other words, they attempted to regulate excellence, making it mandatory, and that's something that is hard to enforce.

Of course, all the folks studying the problem studied it in all the wrong places; but, since they were hired by the politicians, their mistakes are understandable.

If they wanted to know why there was a problem, what the problem was, and what to do about it, it would have been easy to find out (and cheap, too). All they had to do was to get some public school-teachers and some college professors in a room and talk to them about 15 minutes.

They would have found out, at very little expense, that the money they wasted on studying the prob-

lem and the money spent on printing and administering the Regents Exam, would serve us better if it were spent instead on new schools, school equipment, hiring additional teachers and professors, and paying them higher salaries.

That would bring about academic excellence more quickly and surely than any Regents Exam devised. I guess that solution just wasn't dramatic enough.

Meanwhile, we have an exam that doesn't really mean a thing when you think about it. Can you imagine William Faulkner or James Joyce taking the exam? What grade would they get on their exam if their essays were written in their typical literary writing style?

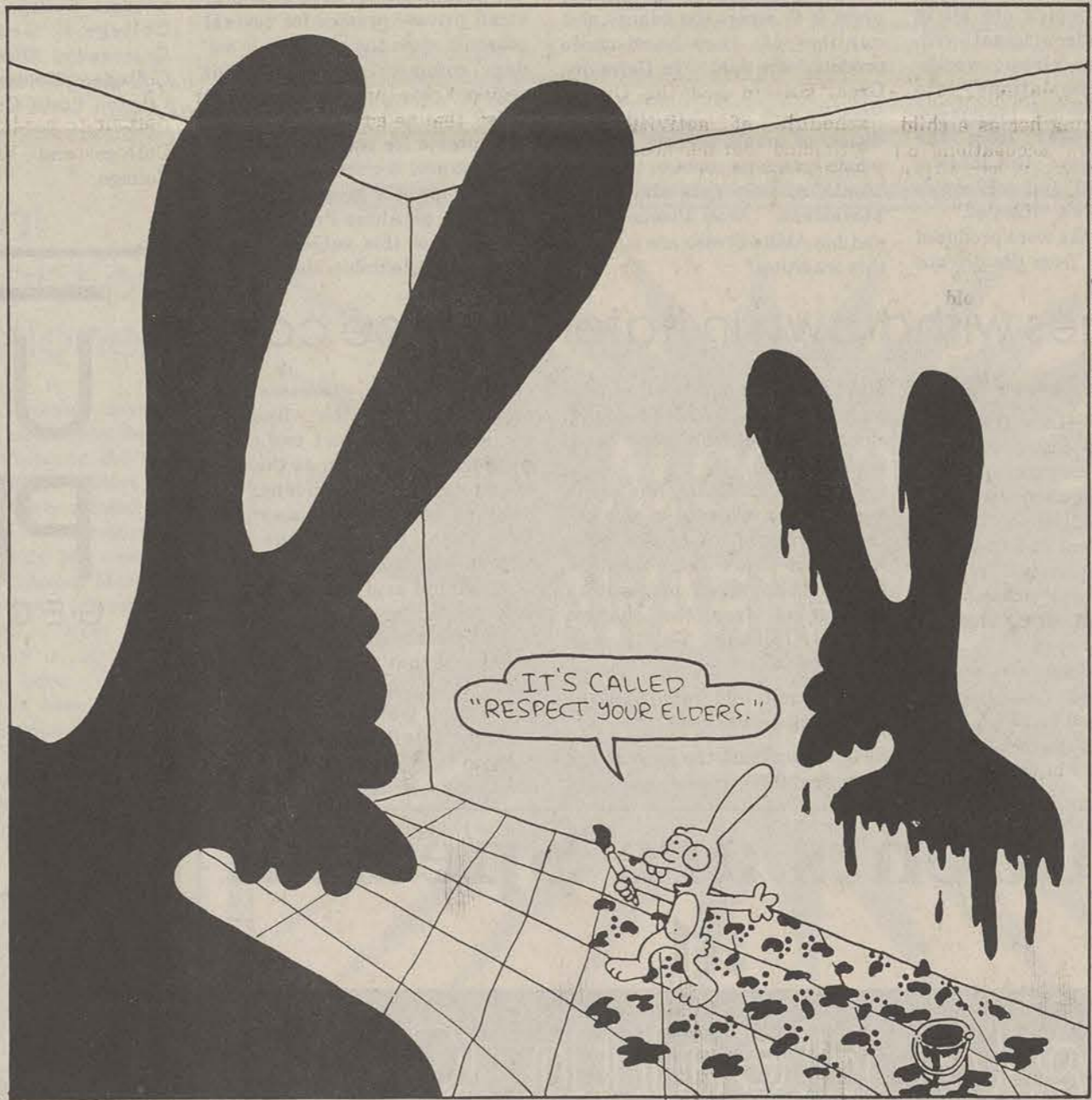
All the Regents exam really gives us are students who are afraid to write, because their entire academic career is hanging on that one essay.

The heart of the problem is that we have legislators regulating the excellence of students, while no one regulates the excellence of legislators. The results are predictable.

I think I got that straight. Y'all let me know if I got anything wrong.

LIFE IN HELL

©1991BY MATT GREENING



STAFF

NEWS

Assistant News Editor: Brent Parrott; Copy Editor: Missy Lukehart; News Staff: Rob Bohn, Jennifer Booth, Roger Lee, Amy Scaff, Dennis Smith, Ben Walker

FEATURES

Features Editor: Teresa Roach; Staff: Nancy Rowell, Angela McConnell, Donna D'Ambrosio, Doug Gross, Carolyn McWilliams, Trey Decker

SPORTS

Sports Editor: Michael Strong; Assistant Sports Editor: Eric Weisenmiller; Staff: Ricky Coolidge, Cris Smith, Rod Swinson

OPINIONS

Staff: B. Birdseye, Philana Griffin, Jason Lewis, Pat O'Kelly, D.J. Smith

PHOTOGRAPHY

Head Photographer: Tony Tocco; Staff: Brice Orrell, Robby Weatherly

CIRCULATION

Supervisor: Glenn Burgess; Staff: Laura Morgan, Cindy Keever, Mike Bowden, Chris Shelnut, Robby Weatherly

ADVERTISING/DISTRIBUTION SERVICES (ADS)

Advertising Manager: Stacy Graham; Business Manager: Jeff White; Business Assistant: Kelley Hare; Sales Representatives: Kerry Calhoun, Kelly Dotson, Jay Knight, Clint Flushing, Brent Sammons

PRODUCTION AND GRAPHICS EDITORIAL SERVICES (PAGES)

Production Manager: Sherry Dyal; Production Assistant Managers: Steven Gundersen, Barbie Westberry; Production Staff: Keisha Davis, Kelly Kendrick, Debi Dow, Brenda Dowling; Darkroom Manager: Tony Tocco

STUDENT PUBLICATIONS COORDINATOR

Bill Neville

Death penalty inherently unjust

Let the punishments of criminals be useful. A hanged man is good for nothing, but a man condemned to public works still serves the country, and is a living person.

-Voltaire

Warren McCleskey was pronounced dead at 3:13 a.m. on Wednesday, September 25.

He was put to death by the state of Georgia for his role in the death of Atlanta policeman Frank Schlatt in 1978. Some believe it shouldn't take 13 years to bring a killer to justice. I agree. The question is, what is justice?

It astonishes me that the United States of America, keeping company with countries like South Africa and Iraq, still has the death penalty.

Obviously, anyone convicted of murder should be dealt with harshly, but should the government have the awesome responsibility of deciding who lives and

Points to ponder...

Jason Lewis



who dies? Does the government have the moral right to take a life? Some say it does because the Bible says, "an eye for an eye, a tooth for a tooth." But the Bible also says, "Thou shalt not kill."

If you want to take the Bible literally, you better lay off the pork. That's right, no more bacon-cheeseburgers. Also, you women should just keep your mouth shut and do as your told.

By the way, is it possible that we're devaluing life when we allow our government to extinguish it.

Alright, enough of the big morality question. You may be

saying, "If capital punishment deters crime, we should have it."

There is a growing body of evidence showing that it does not prevent killing. Legal and criminal experts tell us the death penalty is not a deterrent for murder, and the statistics back them up.

States that have the death penalty continue to have higher murder rates than those that don't. Texas, which has one of the most prolific capital punishment programs, also has the highest murder rate in the nation.

Now, if you believe the death penalty is moral and effective, shouldn't we at least ensure

government sanctioned murder is imposed fairly?

A recent study by the American Bar Association (a national organization for lawyers) found that 40 percent of death row prisoners suffered "serious constitutional violations" during their prosecutions.

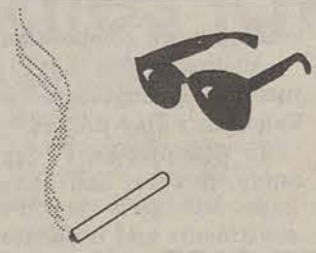
In Georgia, a black who murders a white is eleven times more likely to be sentenced to death than a white who murders a black, according to an article in the Atlanta Constitution.

In fact, McCleskey's attorneys argued before the Supreme Court that Georgia's death penalty was unconstitutional based on statistics that proved its racial bias. Unfortunately, the court refused to overturn the sentence based on statistical evidence.

It's sad that the Supreme Court—once a haven where the individual could find justice—has become a conduit for inherently unjust governmental policies.



People in the news



David Brenner's son returned

Charisse Brody, missing for a week with David Brenner's son, surfaced with the boy Wednesday at a Manhattan courthouse, where a judge ordered their son placed in the comedian's care for the next few weeks, until permanent custody can be decided.

State Supreme Court Justice David Saxe refused a request by Brenner's lawyer to jail Brody. The weeping, apologetic Brody pleaded with Saxe to give her custody until Brenner ends a Las Vegas stand Oct. 17; otherwise, she said, 9-year-old Cole Brenner will be in "an empty house in the care of hired help or one of (Brenner's) girlfriends."

She insisted that she was drug-free. Brody appeared in court with her mother and stepfather. Saxe refused a request by her lawyer, Raoul Felder, to withdraw from the case because of his client's behavior.

Saxe said he will make his decision after Brenner and Brody undergo psychiatric counseling.

Roseanne accuses father

Roseanne Arnold accused her father of molesting her 14-year-old daughter, Jessica, at the comedian's wedding last year and said he also molested Arnold's sister, Stephanie, when she was 17.

The entertainer, who previously accused both parents of sexually abusing her as a child, made the new accusations on Sally Jessy Raphael's TV show to be aired nationally Thursday. Her husband, Tom Arnold, said Jerome Barr "was all over" his granddaughter a few hours after the ceremony as the Arnolds left on a honeymoon.

The Barrs have denied their daughter's accusations and their lawyer has cited lie detector tests. But Arnold said of the tests: "Everyone knows that you have to have a conscience and feel guilt to fail one and they have never had either."

'Cats' celebrate anniversary

Andrew Lloyd Webber, in the Big Apple this week marking the ninth anniversary of his musical, "Cats," announced that his wife, Madeleine Gurdon, 28, is expecting their first little bundle in June. They wed in February. Webber, 43, has two kids by the first of his three marriages.

People in the news

Susan Sarandon, 45, expects her second child by Tim Robbins, 32, in May. Jack Henry is 2. She had daughter, Eva, 6, by director Franco Amurri.

Movie star Greta Scacchi ("Presumed Innocent") expects her first child by movie star Vincent D'Onofrio ("Dying Young") next spring. The duo have no plans to wed.

Annie Potts, 38, of TV's "Designing Woman," will have her first child by director husband, Jim Hayman, next spring. She has a 10-year-old son by a previous husband.

When last we left Kim "Alley Cat" Alley, she had been dumped by both Donald Trump and her modeling agency and never quite got the 15 minutes of fame from her Trump encounter that she might have parlayed into some scratch. Fact is, the model-at-liberty is broke, with no immediate prospects. So her publicist has organized a benefit on her behalf. Canned goods and condolences will be accepted Saturday at Manhattan's ExSpo Club, 11th Avenue and 23rd Street.

Marla Maples turned up Tuesday as the pitcher of beau-of-the-moment Michael Bolton's softball team, which played a charity game with folks from Salt Lake City radio station KISN-FM. The Trumpmeister's ex-fiance, who still lords over the ring, brought shouts of surprise when she also hit a ball over the shortstop's head.

But not everybody was amused. Complained spectator Sheila Healy: "Why doesn't she go out and get a real job instead of glomming these rich guys?" No honor among groupies.

Princess Caroline's year of mourning for late husband, Stefano Casiraghi, ended last week and she has informed Monaco officials that on National Day, Nov. 19, she'll resume a full schedule of activities. It's estimated that her absence from public functions has cost the country at least \$30 million in tourist dollars. It remains to be seen if her constant companion, actor Vincent Lindon, will be her escort.

Queen Elizabeth is touring Namibia, the only member of the British Commonwealth she has never visited. The year-old African desert nation has about 2 million people. The queen and Prince Philip hit Zimbabwe next week.

Prince Charles and Princess Diana, with Prince William, 9, and Prince Harry, 7, in tow, will begin a six-day Canadian visit Oct. 23 when they land in Toronto. It'll mark the first time the brood has traveled together.

Oprah Winfrey is producing an off-Broadway play, "From the Mississippi Delta," to open at Manhattan's Circle-in-the-Square Theater Oct. 29. Playwright Endesha Ida Mae Holland tells of her rise from a life of prostitution to earning a doctorate from the University of Minnesota in 1985; she's now a professor of women's studies at the University of New York in Buffalo.

Said Winfrey: "It is ... about a black female ... coming into herself in the most barren circumstances. The characters in her life were all people I grew up with."

Scott Harris, the uninvited parachutist at Sunday's Elizabeth and Larry Fortensky wedding, has sold his story to the National Enquirer. The debit report: His take won't cover his fines and damaged equipment.

Camping equipment available through CRI

By Donna D'Ambrosio

Staff Writer

Want to go camping but don't feel like buying tents or sleeping bags? The Campus Recreation and Intramural (CRI) Outdoor Recreation Center can now help you with all your camping needs.

The center is located in the Sports Complex and is easily accessible from the road leading out of Sanford parking lot and past the baseball field.

Students are allowed to rent tents, sleeping bags, lanterns, dining canopies, and cooking equipment. In addition, the Outdoor Recreation Center has a resource center which offers students brochures to all of the state parks in GA.

Although the center has recently opened, many students are already using the facility. "This is our first quarter in operation, and it has been real popular," said Laurie Lester, Student Coordinator of CRI. "Last weekend, all of our sleeping bags and tents were rented out."

Not many students, however, are aware of the center's services. "We've been trying to educate (the students) by going to freshmen orientations and dorms," Lester said. The center is also circulating a brochure around campus and is posting it on various billboards.

The Outdoor Recreation Center will celebrate their grand opening Thursday and Friday 4-6

p.m. In addition to giving out door prizes and refreshments, there will be a speaker from a GA state park on Thursday and a cooking for camping demonstration on Friday. "We're hoping to attract students to look around and see what we've got," Lester said.

The center is also planning workshops on hunter safety and camping for students. "We're planning these [events] slowly. Since we just [got established], we don't want to go too fast," Lester said.

There is a group camping trip November 8-10 at Hard Labor Creek Park. The cost of the weekend trip includes transportation to and from the park and one meal

but does not include equipment. Lester says the exact cost of the trip has not yet been determined, but she anticipates it will cost between \$5 and \$10.

Approximately 20 students can go on the trip, but another trip may be planned if interest is great.

The Outdoor Recreation Center is also planning a ski trip to Boone, GA in February and a water rafting trip in May.

For any interested students, faculty or staff, the Outdoor Recreation Center can provide the basics for an exciting camping adventure. "It's a real nominal fee (to rent equipment)," said Steve Sanders, Assistant Coordinator of CRI. "It's a cheap weekend, but it's fun."

Exercise tips given at Aerobic Seminar

By Carolyn McWilliams

Staff Writer

The Campus Recreation and Intramurals department sponsored an aerobic awareness seminar last Monday, October 7. The instructor of the course was Mark Brunetz, an exercise physiologist from Los Angeles, California.

Brunetz develops personal fitness programs for people in the Los Angeles area, and he recently choreographed an exercise tape for Jane Fonda.

During the seminar he discussed four parameters of exercise that he advises people to follow in their own workout programs.

The first step in exercising is to establish a personal goal, according to Brunetz. The easiest way to achieve your personal goal is to determine which exercise you enjoy the most.

The two types of exercise are

aerobic and anaerobic. Aerobic activities such as running or swimming are the only way to burn fat.

Anaerobic exercises help to tone, strengthen, and develop muscles. These include exercises such as basketball and weight lifting.

The second part of establishing the personal fitness program deals with the frequency of exercise. How often an individual exercises depends on the individual goals.

For example, in order to burn fat, exercise must be performed five or six times a week. For improving cardiovascular fitness the frequency is three times per week.

"Exercising a couple of times a week maintains your body at whatever shape it is in now,"

Brunetz said.

Duration is also an important part of the fitness program. Brunetz said that in order to really receive cardiovascular fitness and burn fat, one must exercise for 45 minutes.

The most critical point of the exercise program is the intensity

at which the workout is performed.

"Consistency is the main objective in burning fat" Brunetz said. "The same amount of calories are burned in a one mile walk as in a one mile run, as long as a constant pace is kept."

Pizza Inn

Special through October 31 Medium Cheese Pizza \$4.99 \$1.29 for each additional topping	Free Delivery on all menu items 681-9066 HWY 301 South Statesboro
---	--

Look-alike discovered

By Carlton Dickerson

Staff Writer

Last Friday at the Union there was a Marilyn Monroe look alike contest and the film *Some Like It Hot* was played at the theater.

Only two contestants participated in the contest. The category of talent determined the winners of the first and second place prizes.

The first contestant, Tina Haegan, did a rendition of Marilyn singing at President Kennedy's birthday party. The next contestant, Carolyn Noltey, threw kisses to the audience. The audience went crazy with excitement and someone even said, "Ms. Monroe can I have your autograph?"

The judges then made their choice. The winner was Ms. Carolyn Noltey.

She won a lovely *Some Like It Hot* poster, a t-shirt, and two movie passes.

The runner-up, Tina Haegan, won a poster and two movie passes to the Union Theatre.

To cap off this night of excitement Union Productions played the movie *Some Like It Hot*. This was one of Marilyn's best-known films, and it's a great one to see if you're a newcomer to her movies.

VOLLEYBALL TOURNAMENT

"Spike the ball, not your drink"

Wednesday, October 16 at 3 pm

8 PER TEAM

(4 male / 4 female)

Pick up an application-
enter before

Oct. 14th

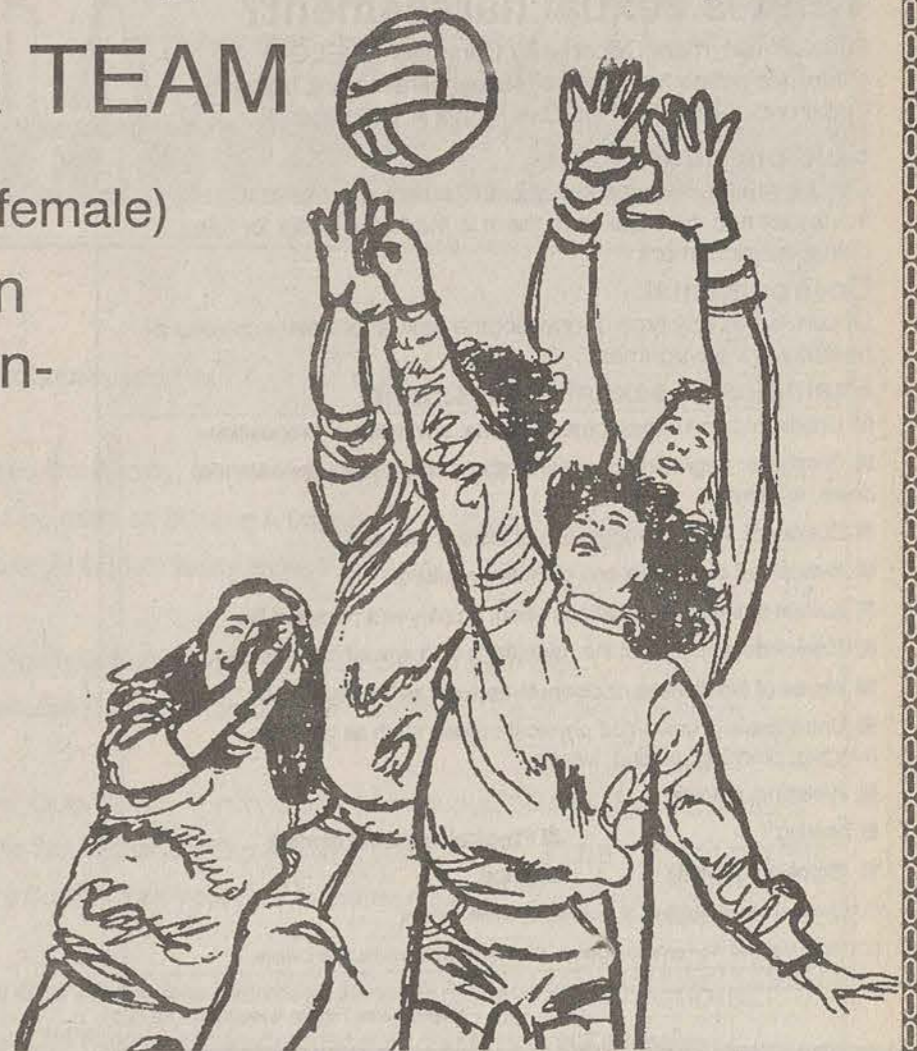
at

Union

213

or

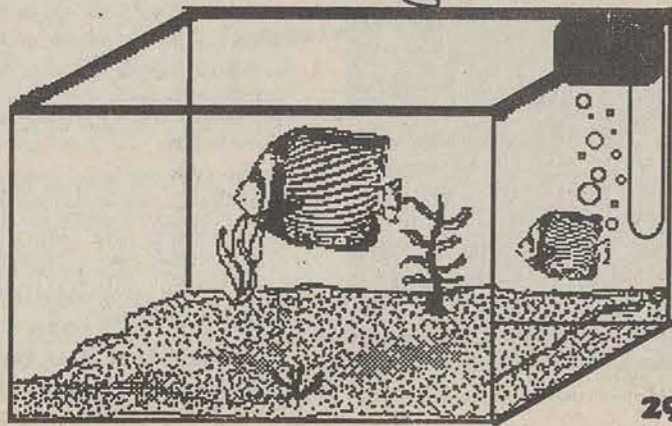
214.



UNION PRODUCTIONS

GEORGIA SOUTHERN UNIVERSITY

Tropical Fish



Thompsons Pools

**10 Gallon Tank \$10
Goldfish 2 for .59**

**29 N. Zetterower 764-3442
(NEXT TO BUS STATION)**



Food and sexism

By Mindy Aleman
Knight-Ridder Newspapers

Let's get one thing straight. There will be sexism in this world as long as men and women are perceived as eating different things.

You think this isn't so? Then why don't we see Hearty Woman Dinners on the shelf along with the Swanson's? Too many Lady Fingers to package in one tray?

Food manufacturers are hip to these differences and hold classes for all new employees who'll be involved in the development or marketing of new meals, snacks or food products.

"OK, class, take some notes. We're now going to discuss how to market foods to men and women. If we're going to introduce a new product aimed at men, it should have a macho name and a picture of a guy wearing a flannel shirt on the package. On the other hand, if we're targeting women, we need to follow these basics: Use the word 'lite,' show it topped with a pimento, and package it with a recipe. Any questions?"

Yes, many. What about all the other ways that men differ from women when it comes to the foods they eat?

If we're going to "come out of the pantry" on this one, let's really talk turkey (thigh or breast?). Let's make an official list of the foods that men will eat that women won't:

1. Anything their mom drops off.
 2. Sardines.
 3. Anything with the tail still on it.
 4. Big, fat sausage things.
 5. Anything you made while you were dating.
 6. Black licorice.
 7. Ribs in front of anyone.
 8. Something raw that comes in a shot glass.
 9. Clams.
 10. Anything on a dare, after a six-pack.
- And, to be fair, let's make an official list of the foods women will eat that men won't:
1. Jello molded like the Eiffel Tower.
 2. Lean Cuisines.
 3. Melba toast rounds, lots at a time.
 4. Petit fours.
 5. Little pastel mints.
 6. Lime-colored punch with things floating in it.
 7. Anything their children make.
 8. Anything on a dare, after a couple of wine spritzers.
 9. A virgin strawberry daiquiri, decorated with a fan and an umbrella.
 10. Anything for which Cheryl Tiegs is a spokesperson.
- Now, if you'll excuse me, I've got to rustle up some Manwich on a Hearty Sesame Bun for my future anchovy eaters and for my all-the-mussels-I-can-eat husband, while I munch on some rice cakes ... only 20 calories each!

Gamma Lambda chapter of Pi Sigma Epsilon is tops

By Gary Wofford

Guest Writer

In recognizing successful organizations at GSU, most people usually think of our superb sports teams.

However, GSU has one organization not associated with sports that has recently achieved national recognition by being ranked the number one chapter out of 112 chapters.

This organization is the Gamma Lambda chapter of Pi Sigma Epsilon.

Pi Sig is a national sales, sales management and marketing fraternity which was established in 1977. This chapter has been awarded the Top Chapter in the nation twice.

Last year they were third runner-up at the Pi Sigma Epsilon national convention in Anaheim, California.

In receiving number one honors, they had to complete several marketing projects and service projects, along with many other activities in which Pi Sig is involved.

Pi Sigma Epsilon began accumulating points for all of their activities around the third week in April this year.

So far this year, Pi Sig has done their annual Miss Eagle Beast Pageant in which contestants are selected among fraternity men.

These men dress in drag and compete in talent, interview, and

evening gown competitions.

Another project that Pi Sig has successfully engineered is their Valentine's Day project.

In this project, Pi Sig sends candy, flowers, and balloons to guys and girls in on-campus apartments and residence halls.

Pi Sig is currently involved with several projects. One of these is selling football programs at the home games. This is one of Gamma Lambda's top marketing projects.

Pi Sig is also selling coupon

books valued from \$50 to \$75 for one dollar each.

As of July, Gamma Lambda has earned approximately 4,500 points. The chapter in second place is the Pi Sig chapter at the University of Central Florida.

This chapter will host the Southeast Regional convention, which will be held November 8-10 in Orlando, Florida. The GSU chapter of Pi Sig will be attending the conference which will present speakers and entertainers.

Nominations for students to be named to *Who's Who Among Students in American Universities and Colleges* are needed by Friday, October 11, 1991.



Any member of the faculty, staff, or student body may nominate students for *Who's Who*. In fact, we depend upon you to make us aware of worthy students. We have been given a short time to complete the entire selection process and ask your help in meeting this nomination deadline.

Criteria for selection include:

1. Grade Point Average (2.80 Minimum)
2. Campus Leadership and Service
3. Outstanding Achievement in athletics, debate, music, art, literature.
4. Junior or Senior Status

Nomination forms can be picked up at the Office of Special Programs, Rosenwald Building, Room 289.

Women's studies

By Angela McConnell
Staff Writer

G.S.U. now offers new courses in Women's Studies.

The Head of the Department of Psychology, Dr. Margaret A. Lloyd, is teaching a class this quarter called "Psychology of Women."

Half the Human Experience: The Psychology of Women, by Janet Shibely Hyde, is the textbook Dr. Lloyd is using this quarter.

Some of the topics this course focuses on are Gender Differences in Personality and Behavior, Women and Language (Body Language and Nonverbal Communications), Women and Work, and Women of Color.

The chapter on Women of Color in the text isn't just about Black and White women, but Hispanic, Asian and other nationalities. Therefore, all

women of color are encouraged to take this and other courses that deal specifically with the roles of women.

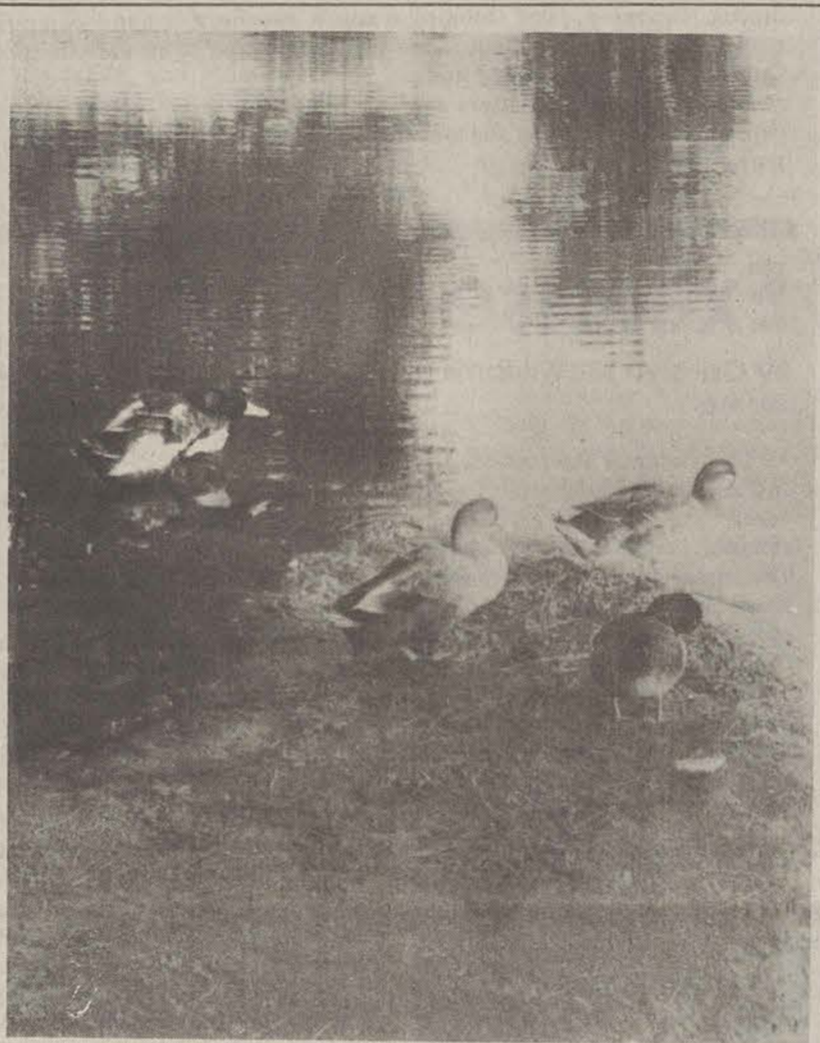
The course even goes so far as to breakdown common fallacies of women such as Gender, Race and Sexuality.

The text also discusses the Lesbian Experience and Bisexual Women.

This course not only helps a student academically, but it helps a student learn personally about herself or himself said Dr. Lloyd. Hyde says the text was designed to provide a text on the psychology of women for undergraduates who have little or no background in psychology.

There are also other courses available here at G.S.U. that emphasize in women's studies.

Women and men alike are encouraged to partake in these courses for their own knowledge of women.



GSU's ducks enjoy a sunny day on the shores of Lake Ruby. (Photo by Robby Weatherly.)

Maybe there is a substitute for experience.



After you're done with school, you face one of the hardest lessons in life:

Without experience, it's tough to get a job. And without a job, it's tough to get experience.

At The Wall Street Journal, we recognize that experience is something you don't start earning until after graduation.

But while you're waiting, we can give you a head start by providing some of the same competitive advantages that experience brings.

For instance, our wide-ranging news coverage gives you a clearer understanding of the whole complex world of business.

Our tightly focused feature reporting prepares you for your more specific ambitions - whether in management, accounting, finance, technology, marketing or small business.

And our in-depth analysis helps you formulate your ideas in a sharper and more persuasive way.

Mail the coupon - and start your subscription to The Wall Street Journal at student savings of up to \$64.50 off the regular subscription price.

That's a pretty generous offer. Especially when you consider what it actually represents. Tuition for the real world.

The Wall Street Journal.

228 East 45th Street, Suite 1515
New York, NY 10017

- Send me one year of The Wall Street Journal for \$74.50 - a savings of \$64.50 off the regular subscription price.
- Send me 15 weeks for \$27.
- Payment enclosed. Bill me later.

Name _____
Student ID. # _____ Grad. Mo./Yr. _____
Address _____
City _____ State _____ Zip _____
School _____ Major _____

These prices are valid for a limited time for students only in the continental U.S. By placing your order, you authorize The Wall Street Journal to verify the enrollment information supplied above.

© 1991 Dow Jones & Company, Inc. 1GSUM/75EG

What is sexual harassment?

Equal Employment Opportunity Commission (EEOC) guidelines define two types of sexual harassment; both are illegal under Title VII of the Civil Rights Act of 1964:

Quid pro quo*

Occurs when employee is subject to unwelcome sexual advances and submission to them is made the basis for firing, hiring, advancement

Environmental

Occurs when any type of unwelcome sexual behavior creates a hostile work environment

Examples of sexual harassment

- Unsolicited and unwelcome flirtations, advances or propositions
- Graphic or degrading comments about employee's appearance, dress, anatomy
- Display of sexually suggestive objects or pictures
- Ill-received dirty jokes and offensive gestures
- Sexual or intrusive questions about employee's personal life
- Explicit descriptions of the harasser's own sexual experiences
- Abuse of familiarities or diminutives such as "honey," "baby," "dear"
- Unnecessary, unwanted physical contact such as touching, hugging, pinching, patting, kissing
- Whistling, catcalls
- Leering
- Physical or sexual assault
- Exposing genitalia
- Rape

*Quid pro quo: something given or received for something else

SOURCE: National Women's Law Center, Capitol Hill Women's Political Caucus

Knight-Ridder Tribune News/JUDY TREIBLE



Free Classified Advertisements...

...It just doesn't make sense, but it works. Try it out in the next edition of the George-Anne!



Friday, October 11, 1991

Strong Points

By Michael Strong

Sports Editor

Ladies and gentlemen, it is my pleasure to introduce to you the new and improved men's basketball team for this year!

This is a team that aspires to greatness instead of perspiring to mediocrity.

Head coach Frank Kerns says that this team is going back to the style of play that got them to the NCAA's not so many years ago.

They are going to bump, hassle, pound, pummel, and grind their way through the season.

Ladies and gentlemen, we will be the Detroit Pistons of the Trans America Athletic Conference. Except, we won't have a white center who can't jump, run, post up or defend - he graduated.

"We had a couple of players in the last couple of years who were a little soft," said Kerns at media day press conference. "These guys will be physical."

The team doesn't have anybody over 6-7, which means that anybody over 6-9 who plays for the other team is going to get the hell beat out of him when he gets the ball.

Since nobody is over 6-7, that means the running game is going to be a little more prevalent in the Eagle offense.

The dunk will be a common sight, not something to search for like some rare bird or cure to a disease. We could have a high-light film!

"We want to go to the NCAA's," junior guard Charlton Young.

Someone on the team with high standards to lead the team? Life is good in Hanner Fieldhouse.

"We owe Georgia State one," said senior forward Tony Windless. "A big one."

Too sweet! A team that wants not only to win, but to avenge losses to teams who are too insecure about the image of their school, that they have to resort to stupid and childish actions. (Last year's pasting of Hanner Fieldhouse with Georgia State bumper stickers.)

We could get the cheerleaders to learn new cheers like "G...S...U...We'll...abuse...you!" or "GO BLUE! KILL (Fill in name of opponent here)." It'd be awesome!

To top it all off, the coach of the team wants them to aggressive and nasty.

"Its been a while since we've had a bloody practice," said Kerns. "Or one where we had to break up a fight."

I can see the first game (that counts) already. Blood, gore, dismemberment...oh sorry.

It's good to see the coach and the team think about how they're perceived by other teams and by the media.

It could be this aura of toughness that could give them an advantage late in the game. Or the beginning, or the middle, you get the idea.

Ladies and gentlemen, I give you the 1991-92 Eagle basketball team!

The Pistons of the TAAC, I like it. Physical, abusive, tough and nasty.

I just have one question. If this is the way the team used to be, why was it changed?

Since my last column about Deion being overrated, I have caught nothing but hell from "Deionites" rushing to his defense.

You people need to pay you power bills because you've all been in the dark too long.

The man hit .193 with three home-runs! He didn't do any better with the Yankees! Yeah, I gotta admit, he is faster than hell, but if speed was what they were after they could've gone after Carl Lewis.

The guy is only going to have potential for the rest of his life, nothing more! He hasn't done much and he never will do much. Facts are facts and the fact is Deion is a waste of space in a batting lineup.

Another thing, the Tomahawk Chop has got to be the dumbest act of fan participation ever

Eagles take on Catamounts

By Eric Weisenmiller

Assistant Sports Editor

The long awaited return of Georgia Southern football to Paulson Stadium is slated for this Saturday at 1p.m.

The Eagles (2-3) will take the field against the Catamounts of Western Carolina University (1-4) who are members of the Southern Conference.

GSU will become an official member of the Southern Conference next season.

This weekend's game will also be the first under the newly revised procedures concerning student's I.D. cards and their validation. Validation of cards can still be done today at Hanner Fieldhouse, the University Union and Paulson Stadium.

After a disappointing offensive performance against Eastern Kentucky last weekend Coach Tim Stowers looks to his offense to eliminate mistakes in execu-

tion and to costly turnovers which have plagued the team so far this season.

The GSU offense is yet to play as a cohesive unit this season. They have had difficulty putting the ball into the end zone also.

"Our offense needs to gel and (Charles) Bostic needs to find his own personality as a Georgia Southern quarterback," said Coach Stowers.

If history actually does repeat itself the Eagles are due to begin to "click" offensively.

In their last meeting with Western Carolina in 1987 GSU changed the course of their season with an offensive explosion which resulted in a 37-16 victory over the Catamounts who were then ranked no. 9 in I-AA.

This year WCU is struggling, and the gears of the Eagle offense are due to mesh.

"Our guys are really excited about playing at home. We just

can't hang our heads and allow Eastern Kentucky to beat us twice," said Coach Stowers.

The Eagle defense was rock solid last week and has been consistent so far this year. Shane Maxwell was in on 16 tackles against EKV. The GSU secondary picked off three passes.

Injuries have also hampered the team of late. Four offensive starters will not see action this week.

The Eagles play five of their six remaining games at home. After next week's game against James Madison in Harrisonburg GSU plays four consecutive weeks in Paulson.

Considering all precedents one would suspect that the Eagles are about to turn their season around against a fairly young Western Carolina team.

Volleyball team streaks

By Michael Strong

Sports Editor

The Lady Eagle volleyball team continued their winning ways Tuesday against Paine College in three straight 15-4, 15-10, 16-14 at Hanner Fieldhouse.

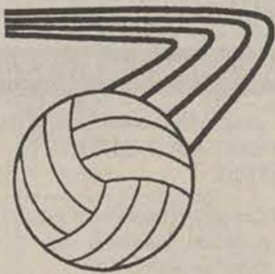
The win extended the team's winning streak to nine games: a school record.

Coach J.B. Claiborne had plenty to worry about going into the contest since GSU had beaten Paine twice over the weekend to win Paine's own tournament.

"I wasn't sure how they would come out," he said. "Would they be thinking 'Oh, they beat us twice this weekend' and be flat or be very emotional and want some revenge."

Fortunately, for the Lady Eagles, Paine came out flat. GSU blew them out in the first game 15-4.

The second game was a bit



more of a struggle. Both teams looked pretty flat, according to Claiborne.

"It wasn't much a game to watch," he said.

The Lady Eagles turned out to be a little less flat and took the second game, 15-10.

Then, the third game looked as if nobody wanted it, then GSU wanted it, then Paine wanted it, finally the Lady Eagles just took it.

GSU built an early lead of 5-1, but Paine fought back to 5-4.

Eagles fight to draw with Flagler at Eagle Field

By Eric Weisenmiller

Assistant Sports Editor

In a very hard fought match the GSU soccer team held the Flagler College Saints to a 1-1 draw Wednesday afternoon at Eagle Field.

The contest was full of missed opportunities on the part of both teams. Neither team could manage to get any momentum offensively throughout the game.

Seemingly any advance by either team into the opposition's goal area met with a denial of any easy shots on goal.

The Flagler Saints from St. Augustine are currently ranked number 9 in the Southern region by the ISSA weekly coaches poll.

They came into the game with a record of 9-1 after losing their first match of the season only last week to Florida International. GSU also dropped a game to FIU last week (4-0).

The first half was basically a see-saw battle. Neither team was able to post a score.

The stubborn Eagle defense bent often but would not break. GSU held off several Saint advances into their goal area. Despite taking more shots on goal

Flagler was unsuccessful in penetrating the GSU goal.

The score at intermission was 0-0.

In the second half the Eagles came out playing with a little higher intensity level. GSU put an added measure of pressure on their opposition by keeping the ball on Flagler's side of the field more.

Despite several opportune advances into the Flagler goal area the Eagles still could not manage to put it in the back of the net.

The first score of the game came at the 57:30 mark. Flagler's Jean-Paul Treacy rolled a shot past goalkeeper Kevin Chambers.

The Eagle miscue looked as if it might cost them the game, but they would strike back late in the game. With three minutes remaining a "dangerous kick" penalty set up an indirect kick deep in Saint territory. Joey DeSandre evened things up with his goal.

The remainder of the game was a stand-off. At the end of regulation the score was tied at 1-1.

See SOCCER, page 10

SGA Logo Contest

* Design the SGA logo
*\$50 prize for the best entry
*All students are eligible
*Winning entry to be used for New SGA Banners & Publicity
*Entries are due Oct. 23rd in the SGA office, Union 207 by 5:00 p.m.

*For more information call 681-5631

UNIVERSITY UNION UNION PRODUCTIONS
GEORGIA SOUTHERN UNIVERSITY

THEATER

7:00 p.m. & 9:30 p.m. OCT. 11, FRI.

"A 'STAR WARS' OF PYROTECHNICS!"
"AWESOME!"
"BACKDRAFT IS HOT!"

7:00 p.m. & 9:30 p.m. OCT. 14, MON.

HUDSON HAWK

COME EARLY FOR SEATING & VISIT THE CONCESSION STAND

\$1 WITH STUDENT ID
\$2 GENERAL ADMISSION

Question Authority!

CHOICES

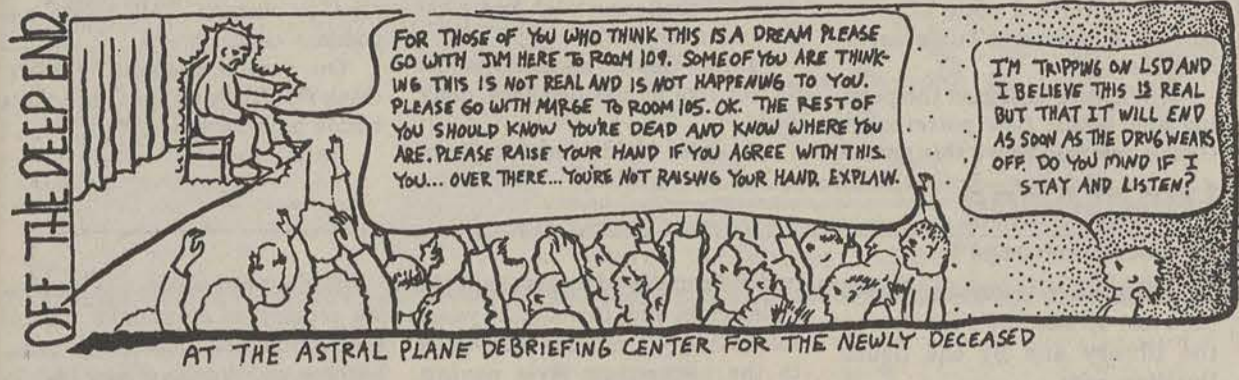
Choosing Healthy Options Independently Creates Exceptional Students

GEORGIA SOUTHERN UNIVERSITY'S

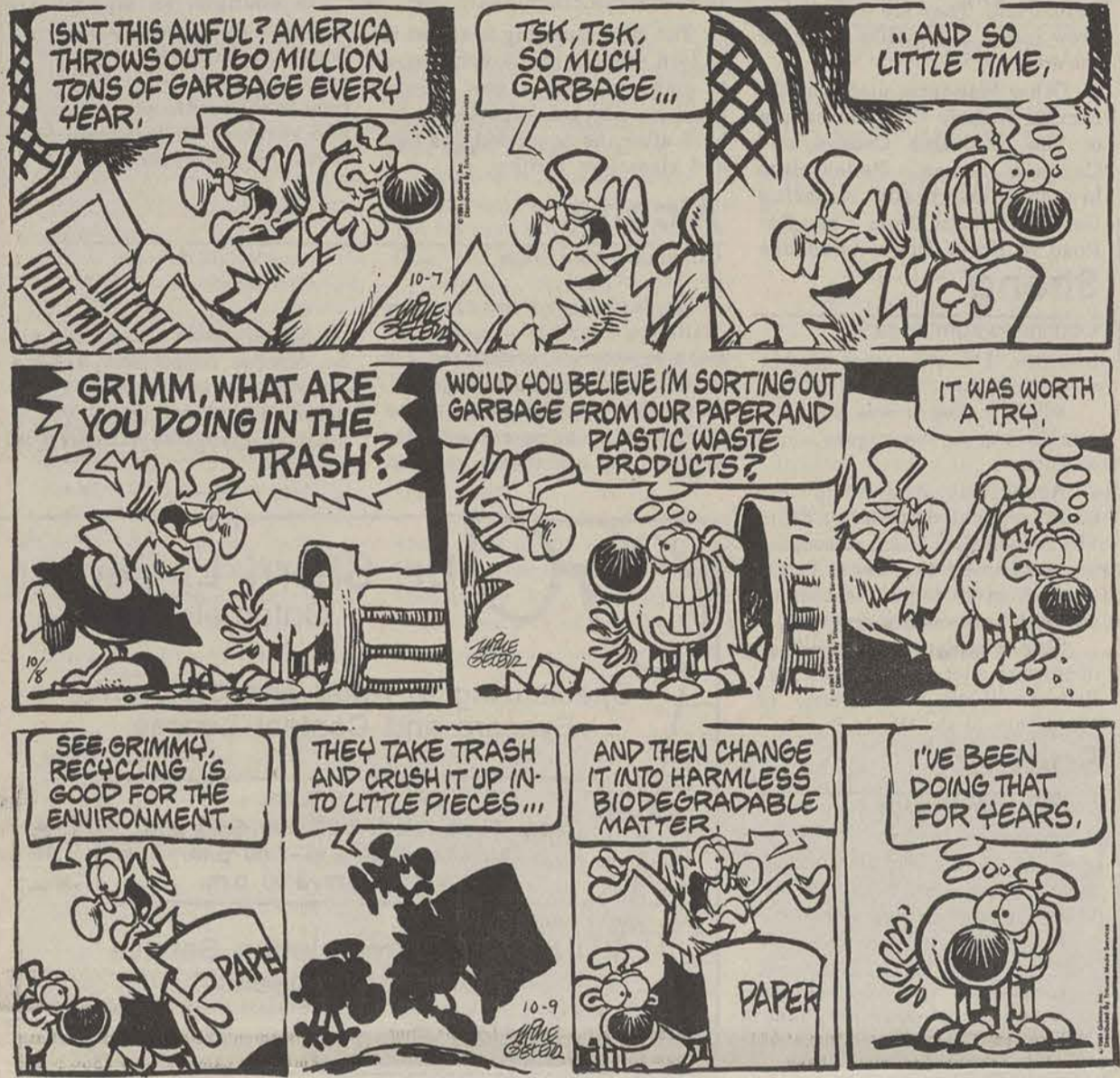
Alcohol Awareness Week

OCTOBER 13 - 19, 1991

October 13	Alcohol Liability Seminar, 7 p.m., Union 270
October 14	Wrecked Car Display, Next to Union (through 10/17) Panel Discussion on Drinking & Driving, Noon, Union Commons Apollo Night Student Talent Show, 7 p.m., Union Ballroom
October 15	Drug Display & Poster Board, 11 a.m.-2 p.m., Union Lobby Coffeeshouse Comedy Program with "Mocktalls," 8 p.m., Union Ballroom
October 16	Alcohol/Drug Videos, 11 a.m.-2 p.m. (Continuous Showing), Union Commons Georgia State Patrol Drinking & Driving Booth, 10 a.m. - 3 p.m., Union Commons Student Organization Volleyball Tournament, 3 p.m., Sweetheart Circle
October 17	Banner Contest Judging - Winners Announced, 2 p.m., Sweetheart Circle Pi Kappa Phi Fraternity-Sponsored Program, 1 p.m., Union Commons Alcohol Education Seminar, 4 p.m., Union 242
October 18	Alcohol & Drug Literature Tables, 9 a.m.-4 p.m., Union Commons
October 19	Volleyball Challenge Match, 3 p.m., Sweetheart Circle



Mother Goose and Grimm By Mike Peters

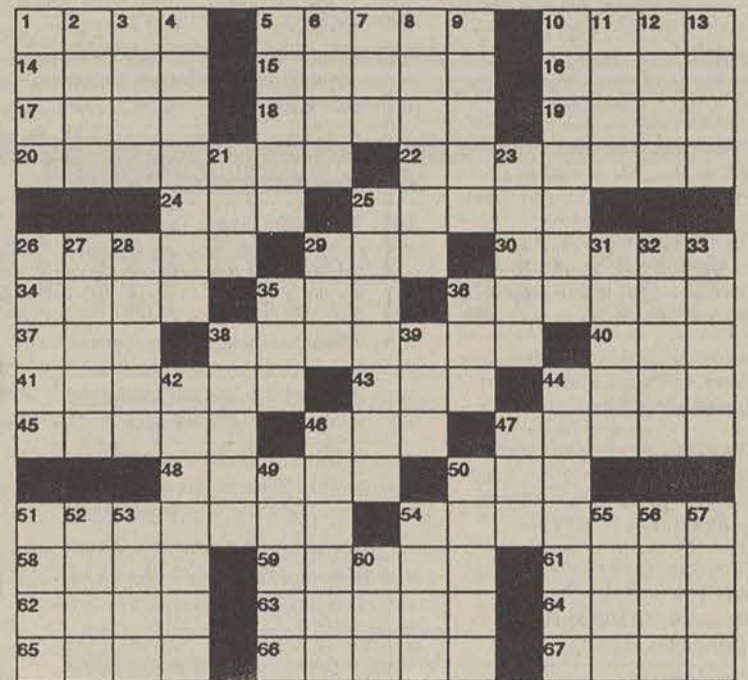


Weekly Crossword

"THE COUP FLU"

By Gerry Frey

- ACROSS**
- 1 St. Petersburg, eg
 - 5 Color separator
 - 10 Naval non-coms
 - 14 Garfield's pal
 - 15 Adjust the ascot
 - 16 City of seven hills
 - 17 Pell
 - 18 Trump's former wife
 - 19 College in New York
 - 20 Estonia, Latvia and Lithuania
 - 22 Russian Building
 - 24 Bishopric
 - 25 Stop
 - 26 Immigrant's island
 - 29 Neither's partner
 - 30 Squirrel, eg
 - 34 Type of shark
 - 35 ND's Coach Holtz
 - 36 Woman of poem: The Raven
 - 37 Business abbrev.
 - 38 Russian Sea
 - 40 Catch some rays
 - 41 "_____ first love...": Tennyson
 - 43 Fed. regulatory agcy.
 - 44 Head: French
 - 45 Blundered
 - 46 Actor Gallagher
 - 47 Tell's missile
 - 48 Vanna White sale items
 - 50 To's partner
 - 51 War And Peace Author
 - 54 Russian Turks
 - 58 On the Caspian
 - 59 Breakfast food
 - 61 Peter Pan's pirate
 - 62 Stanislaus for short
 - 63 Molecules
 - 64 Ms. Hepburn
 - 65 Transmitted
 - 66 Horse or Common word
 - 67 River to the North Sea



- DOWN**
- 1 Stylist's tool
 - 2 Cartoon light bulb, eg
 - 3 Cultivate
 - 4 Coup flu antidote

- 5 Cost
- 6 Accts. concern
- 7 Call _____ day
- 8 Fisherman's tool
- 9 Still's wife
- 10 _____ War : 1853
- 11 Football kitty, eg
- 12 Atlanta arena
- 13 Actor Penn
- 21 Plural ending
- 23 Ruhr River Valley City
- 25 Gorb's 8/18/91 malady
- 26 Pass over
- 27 Hermit
- 28 Shoe salesman ?
- 29 Cardinal & ordinal: abrv.
- 31 Balloter
- 32 Muse of love poetry
- 33 Subscribe again
- 35 _____ Vegas
- 36 Lancelot du _____
- 38 West Pointer
- 39 Spec hosp. unit
- 42 Russian social class
- 44 Bolshevik revolutionary leader
- 46 Small No. American wolf
- 47 Timetable Abbrev.
- 49 Greek letters
- 50 Test answer
- 51 Soviet news agency
- 52 Bone combining form
- 53 Jack Sprat's choice
- 54 Highlanders' hats
- 55 Amo, _____, amat
- 56 Network of blood vessels
- 57 Crystal ball gazer, ie
- 60 2,000 pounds

© 1991 GFR Associates
All Rights reserved
P.O. Box 461,
Schenectady, NY 12301

GEORGIA SOUTHERN UNIVERSITY STORE
(912) 681 - 5181

HOURS:
MON - FRI 7:45 - 7:00
SAT 10:00 - 4:00
GAME SAT 9:00 - 6:00

HURRY! HURRY! HURRY!
GET YOUR 1990 CHAMPIONSHIP COKE BOTTLES WHILE SUPPLIES LAST AT THE UNIVERSITY STORE

UNION PRODUCTIONS
GEORGIA SOUTHERN UNIVERSITY

Carrot Top Comedian

with mocktails

Tuesday, October 15

• 8 pm •

Union Ballroom

George-Anne Action Ads

New 14x72 furnished mobile home 2 bedrm, 2 bath, central heat & air, 2 miles from GSU. Call 681-6710.

REPOSSESSED & IRS FORECLOSED HOMES available at below market value. Fantastic savings. You repair. Also S&L bailout. Properties. Call (805) 682-7555, ext H-6146.

20-Roommates

1 or 2 female roommates needed immediately in Park Place. Furnished except for your bedroom. Call Amy 681-3232 & leave a message.

Female roommate needed immediately. Park Place. Fully furnished. \$225/mo plus 1/4 util. 681-1888

Female roommate needed immediately. Furnished except for your bedroom. I have washer, dryer, TV, VCR, microwave. Call 764-5251 & leave message.

Female roommate needed to share two bedroom house. \$175/mo plus 1/2 utilities. Call Kelly at 764-5116.

Female roommate needed winter qtr. \$225/mo. Own bedrm & bath. Very nice condo 3 mi from campus. Call & leave message anytime. 764-8879.

Female roommate needed. Private room. 3 mi. From campus. Washer/dryer. Non-smoker. Only \$150 per month. Call 764-4447.

Female roommate(s) need starting winter qtr. Park Place. Fully furnished, washer/dryer, 2 bedrm, 2 bath. Call Krista/Shelly 681-3511. Leave message is no answer.

Female roommate. Will have own rm & bath. 3-BR house to share w/ 2 girls. Pay 1/3 utilities. Rent \$208/mo. 24 University Place. Call Peggy or Lynn, 681-4720.

Female roommates needed in roomy house next to McDonalds. Washer & dryer, lg kitchen and baths. \$150/mo. Call Heather or Anne, 489-1373, leave message

HELPI! Roommates needed badly! Apt. in Stadium Walk. \$140.00 per month. Private or semi-private room. Call now! 489-1362. Ask for Jody.

Help! Roommates needed badly! Apt in Stadium Walk. \$140/mo. Pvt or semi-pvt rm. 489-1362 ask for Jody.

Male roommate needed immediately. \$300 per qtr/ Stop by Hawthorne! No 48 anytime after 6pm Mon-Fri, or anytime on Sat or Sun

Male roommate needed! ASAPI 3 bdrm house, \$113/mo., #3 Crescent Av. Call 681-9212 3-6pm or after 8pm

Male roommate needed. 2 bedrm duplex \$150/mo water included. Must be serious about school. 764-8525, leave message.

Need a place to live winter qtr? Own rm, bath, phone line & its furnished. Will reduce rent. Bermuda Run Apts, contact Michelle at 681-7697

Non-smoking female roommate needed to share spacious townhouse starting winter qtr. Own bedrm, \$195/mo. Call 489-3286

Roommate needed to share two bedrm duplex adjacent City Limits bar. \$150 plus utilities need bedroom furniture. Call Sarah 681-7926 leave message

Roommate needed. \$200/mo. Own bedrm. Have washer/dryer. Must like cats. Please call Cynthia, Karlin or Kim at 681-3616.

Roommate needed. ASAP. \$175 + 1/2 Utilities. No deposit, no lease, own rm! Call 681-1732.

Roommate wanted ASAPI 4BR house, 2-3 mi from campus. Furn washer, dryer, big yard, pvt rm. Great landlord. Only \$140 + 1/4 util. 764-3621 Kelly.

ROOMMATE WANTED: ASAP. 4BR House, 2-3 miles from campus. Furnished, washer/dryer, big yard, private rm. Great landlord. Only \$140.00 + 1/4 utilities. Call 764-3621 for Kelly.

Wanted: Female roommate ASAP for furnished. Campus Courtyard Apt. Will negotiate rent. Call Heather 681-9745.

21-Services

Bills Pressing You? Need spending \$\$\$? Need money for college? Send SASE to Campbell LB 9208 or DeLoach LB 9206.

CAKES, PIES, DESSERTS. Need something baked for that special occasion? Call Wendy at 681-7522.

Calligraphy - excellent work, great for wedding invitations, baby showers, formal parties, or anything that needs a formal touch. Call 764-8408.

Daily announcement of Intramurals available on CR/1 Hotline at 681-5261.

I type write. Great prices and sharp results. For a job done write, contact Jennifer ext 5520 or 681-2512

Need hair cut, permed, relaxed, or just styled? Come by Johnson 323A & ask for Shemicka. Guy haircuts, tool Very good & licensed. 681-2624.

Oily, dry skin problems? Try Artistry by Amway! 100% guaranteed. Call Connie at 681-1393.

Party DJ, Best service and fair prices. All types of music, lightning and fog machine. 6 years experience. Call Rob for references. 681-9513.

TERRI'S TIPS: Sculptured acrylic nails & manicures (Guys, too). All work done by a licensed manicurist. Guaranteed. All types of nail art. Waxing, too. Appt: call 681-4238.

TYPING - Drop-off & pick-up on campus. See Peggy 116 South Bldg., call 681-5586 or 681-6520. Quick service (usually overnight), very good rates

TYPING - Fast & Reasonable. Call Jean 852-5405

TYPING - Reasonable rate. Resumes, term papers, etc. Letter quality or Dot Matrix printers. Call Brenda, 681-5301, or drop by Carroll, Rm 86

University Typing Svc - Word proc. for faculty & students. Term papers to books. Editing included. Letter quality printing. Majorie Bell, Ed.D. 681-3716

22-Sports & Stuff

1990 Trek 1000, 56cm. Excellent cond. New 120psi rear. Computer, 2 cages, pump, patch kit. \$425/OBO. 764-2777. Leave number for Jay.

Almost new Soloflex Machine. Several accessories, extra bands & fly attachment. \$300 OBO. Must sell. 764-8882 ask for Sudah or leave message.

Average tennis player wanted for partner in doubles or mixed doubles in tourney or for general practice. Call Wendy at 681-7522.

Bike for sale. 22in frame -- Trek 1 yr old, asking \$200. Call Steve 681-2656. Must Sell!

For sale white Trek 8000 nearly new plus several accessories. \$650/OBO call 681-6395 after 7 ask for Chuck.

For sale: Raleigh Road bike, 58cm. Reynolds 501, Shimano 105 comp. Cateye cyclocomputer. Like new. \$250. 764-3621. Ask for Kelly.

For sale: white stag shortie dive suit. Sz lg. Only \$100. Call Michelle, 681-3616.

Ladies bicycle, Univega, 12-speed; Mixte Frame (no top bar) OR front wheel, bottle cages, foam cushioned handlebars. \$75 681-5423 or 764-7281.

Lakeview Golf Driving Range

OPEN 10 am-10 pm
Sunday 1 pm-6 pm
Free Golf Instruction
5 Miles North on Lakeview Road

Martial Arts Club open to all ranks and styles. Beginners, too. Contact Eric, LB 13455; Mark, LB 18029; Bill, LB 8041

Mens Trek bike for sale. 1989 model. 1100. Hardly ridden w/ extras. \$450 neg. Call 764-2777 ask for Bryant.

Murray Foxriver mountasin bike. Only ridden 5 months. Paid \$160, asking \$75. 764-8717 ask for Jim.

Needed: Goal keeper for the Women's Soccer Club. Call Jay at 681-7907.

Surfboard: 6'4" Richenberg Fat Boy Thruster. Great cond. \$175 OBO. Call Matt, 681-6512, leave message

Fly high with..

The George-Anne

Serving Southern for over sixty years

Solution to "The Coup Flu"

R	E	S	Y	S	E	S	N	S	I	N	E	S
E	L	V	K	S	W	O	L	V	N	V	L	S
E	B	S	M	E	T	V	L	O	L	V	E	S
S	A	R	S	T	A	R	T	A	R	S	T	O
W	O	R	A	R	V	C	L	U	C	L	D	E
E	L	E	T	E	C	F	C	S	V	S	D	E
N	T	A	N	N	I	V	A	S	V	C	N	I
E	N	O	R	E	N	O	T	O	N	V	O	T
R	E	V	S	A	R	N	O	R	S	I	S	E
N	I	N	E	C	E	V	A	S	E	S	E	S
V	A	N	O	I	V	A	V	A	I	L	T	M
E	R	O	M	E	R	E	L	E	R	E	L	O
P	O	S	C	P	O	S	M	P	R	I	S	M

EAGLE TANNING CENTER

De Ja Vu
764-4206

New! Fragrances and Eel Skin!

Buck

Continued from page 4

been doing:
FIVE FAMOUS PEOPLE IN AMERICA WHO OUGHT TO WORK AT SHONEY'S WASHING DISHES.

1. Heather Locklear - hey, she can't act worth a plate of grits, and the fellers what buses needs love, too.
2. Whoever designed the parking and traffic flow patterns at GSU - you cain't give this person

Landscape

Continued from page 1

direction, more trees would have been lost up and down the line by the library and by the South Building area.

Dozens of Japanese Zelkovas are being planted along the pedestrian. They are expected to grow into a canopy-like cover for the area.

Other long-term plans for the campus include the landscaping of the Williams Center and Carruth areas, Pedestrium branches eventually replacing Georgia Avenue from Chandler Road to Herty Drive, telephone

Strong

Continued from page 7

invented! I would rather see the wave anytime.

What makes it worse is the mindless chant that goes along with it!

Apparently, the Chop and Chant originated at Florida State. The reason they chant is because after spending four hours drinking beer in 90 degree heat that's about all the fans can say!

Stupid chants and mindless idiots with a lot of speed aside, the Braves will still beat Toronto or Minnesota in the World Series.

Soccer

Continued from page 7

In each of the two the subsequent 15-minute overtime periods neither team could break the tie. The final outcome was a draw.

The Eagles run their record to 3-6-3 on the year. Their next match will take place in Statesboro versus inter-conference rival Stetson on Saturday at noon.

a skillet and fire without worrying Big Time about the havoc it would create.

3. Ed McMahon - just what has this sumbitch ever done besides kiss Carson's butt and drool over TV spokesmodels? And what dishwasher don't?

4. Ray Geoff - sheeoot, he just LOOK like he belong there, don't he?

5. Jesse Helms, senator from

Carolina - here is a man what would have the entire nation populated by cigarette-smoking, Christian virgins who 'bout pee themselves at the thought of anything involving civil rights for all U.S. citizens. Talk about yer goddam cancer ward.

On second thought, I don't think Ole Buck wants that feller's hands anywhere near food. Later.

Student convenience is also being considered as a major part of the planning process. Trash cans, benches and dozens of new bicycle racks are being installed all around campus.

In addition, an account has been established with the Georgia Southern Foundation so interested persons can make donations to the landscaping of campus and earmark their money for a particular use on campus.

and information kiosks along the pedestrian and, in about 20 years, converting all campus sidewalks to the pedestrian-style paving stones.

Also, more trees are expected to be planted on campus each year.

The Blue Building is slated to be torn down in about eight years to make way for a new library addition, which is expected to be built after the new residence hall and classroom facility.

Alcohol

Continued from page 1

Students who accept the challenge and sign up will be given wristbands to wear the day of their abstinence from alcohol. Himes is hopeful that many students will sign up and wear the wristbands, promoting campus

unity. Also available at the table will be Alcohol Awareness quizzes. Students can test their knowledge about alcohol and prizes will be given for those who do the best on the quiz.

Dr. Sherri L. Becker
Optometrist

Specializing in Adult and Children's Eyecare and Contact Lenses

OFFICE HOURS
Mon. Tues. Wed. 8:30 a.m.-5:30 p.m.
Thursday 9:30 a.m.-7:00 p.m.
Friday 8:30 a.m.-3:00 p.m.

Same Day Prescription Service on Most Glasses

6 Lester Road 764-5609

LOOKING FOR YOUR FIRST FULL-TIME PROFESSIONAL JOB???

ATTEND THE

EAGLE EXPO JOB FAIR

Bulloch Memorial Boeing, Georgia Chatham Cty. DFCS Datagraphic Emro Marketing FBI Georgia Power GTE J.B. White K-Mart

Mohawk Carpet Parisian Piggly Wiggly Prudential Southern Bell State Farm Ins. Taco Bell TOC Retail Wachovia Bank and others...

Thursday, Oct. 17th
10:30 am - 2:30 pm
Union Ballroom

Appropriate Attire Recommended