

Georgia Southern University

Digital Commons@Georgia Southern

The George-Anne

Student Media

1-8-1991

The George-Anne

Georgia Southern University

Follow this and additional works at: <https://digitalcommons.georgiasouthern.edu/george-anne>

Recommended Citation

Georgia Southern University, "The George-Anne" (1991). *The George-Anne*. 1203.
<https://digitalcommons.georgiasouthern.edu/george-anne/1203>

This newspaper is brought to you for free and open access by the Student Media at Digital Commons@Georgia Southern. It has been accepted for inclusion in The George-Anne by an authorized administrator of Digital Commons@Georgia Southern. For more information, please contact digitalcommons@georgiasouthern.edu.

Inside Today

Classified	8
Comics	7
Features	5
News	2-3
Opinions	4
Sports	6

Lady Eagles stand at 8-3

See Story, page 6



Liked By Many,
Cussed By Some,
...Read By Them All



The George-Anne

912/681-5246

Vol. 63, No. 20 • Tuesday, January 8, 1991

Since 1927, Georgia Southern's Official Student Newspaper

Georgia Southern University • Statesboro, GA 30460

News Briefs

©Copyright 1991, USA TODAY/Apple College Information Network

YEUTTER EXPECTED TO HEAD RNC:

President Bush this week is expected to name Agriculture Secretary Clayton Yeutter as chairman of the Republican National Committee. Yeutter, 60, has demonstrated strong administrative and negotiating skills in previous jobs. He was the U.S. trade representative under President Reagan. But many note Yeutter has limited political experience.

WOMEN STILL NOT GETTING TESTED:

Most women in the age group at peak risk for breast cancer still are not getting yearly mammograms, says a UCLA survey out Monday. Despite alarm over soaring U.S. breast cancer rates, fewer than one in five women over 49 is getting adequate screening, the study says. Cited: doctors do not recommend it, says Dr. Sarah Fox, UCLA Medical School.

BANK OF NEW ENGLAND SEIZED:

Federal regulators seized Bank of New England and two related banks Sunday. The collapse could cost as much as \$2.3 billion, making it the third-costliest bank failure ever. The Boston-based bank announced Friday it would post a loss of up to \$450 million in the fourth quarter of 1990. Regulators met all weekend and announced the takeover in a rare Sunday night action.

SNIPER KILLS ONE IN MASS.:

Stunned and grieving high school students in New Bedford, Mass., go back to class Monday, learning to cope with the Saturday death of a basketball star killed when a sniper fired on a team bus. Robyn Dabrowski, 14, leading scorer on the freshman girls team, was shot while traveling with her mother and teammates to a game. Police had few clues on Sunday and no motive and no suspects.

JOHNSON TO CHALLENGE ORDER:

Darlene Johnson, who was convicted of child abuse, will challenge a Visalia, Calif., judge's order that she use a new birth control implant as a condition of probation. County Judge Howard Broadman ordered Darlene Johnson to have the Norplant device - which was recently approved by the Food and Drug Administration - implanted in her arm after serving a year in the county jail.

BELL MADE CONTRIBUTIONS:

Former attorney general Griffin Bell, a witness in the Keating Five ethics hearings, made contributions to two senators who will weigh his testimony on whether their colleagues were improperly influenced by \$1.5 million in campaign contributions. According to the Federal Election Commission, Bell made contributions to Sen. Howell Heflin, D-Ala., and Sen. Terry Sanford, D-N.C.

TEMPERATURES ACROSS THE USA

Rain, snow, freezing rain or sleet will fall on almost all of the USA at some time or another Monday through Wednesday. Two storms, one Monday and another Wednesday, will hit the Pacific Northwest and move eastward across the Rockies and Plains to the northern Midwest. To the east, a warm-cold air boundary running from Texas into the Northeast will help stir up rain.

Sports Briefs

BENGALS POUND OILERS:

Boomer Esiason passed for two touchdowns and ran for another as the Cincinnati Bengals lived up to coach Sam Wyche's great expectations with Sunday's 41-14 AFC first-round playoff rout of the Houston Oilers. Cincinnati

See BRIEFS, page 8

'We are the champions'-Again!

By PAUL FLOECKHER

Sports Editor

The 1990 Georgia Southern Eagles proved that a football season truly is two seasons in one.

The Eagles won their fourth Division I-AA championship in six years by playing their best football when it mattered most -- playoff time.

GSU opened the 1990 campaign by dropping three of its first four games, including a 48-6 shellacking by Florida State and a 42-34 home loss to Eastern Kentucky.

However, the Eagles regained their winning ways and, after routs of Central Florida (38-17), Savannah State (54-7) and James Madison (31-13), their record stood at 6-3.

The roller coaster ride contin-

ued with narrow escapes over Tennessee-Chattanooga and Samford to close the regular season.

The 1990 Eagles finished the regular season with an 8-3 record and a number three national ranking, but their up-and-down ways left many Eagle fans thinking they had watched two different teams during the year.

Then came "the second season" -- the Division I-AA playoffs.

The Eagles blew through the playoffs with the consistency they lacked earlier in the year. After downing The Citadel and Idaho, GSU bombed Central Florida 44-7 in the semifinals.

The Eagles finished their improbable national championship ride with a 36-13 destruction of Nevada before 23,204 fans at

Paulson Stadium in the I-AA title game.

"After a 1-3 start, I never imagined I would be in this spot," GSU head coach Tim Stowers said. "Our 14 seniors did a great job leading us back from the 1-3 start."

GSU quarterback Raymond Gross, one of the 14 seniors, shredded the Nevada defense with a game-high 145 yards rushing on 31 carries. Gross added 69 yards passing on two completions.

Another senior, fullback Joe Ross, opened the scoring with a 14-yard touchdown run in the first quarter.

Ross' run capped a seven-play, 43-yard drive. Karl Miller returned the opening kickoff 51 yards to the Nevada 43-yard line to set GSU up with outstanding field position.

GSU needed only two plays to push the lead to 14-3 in the second quarter. After hitting Terrance Sorrell with a 49-yard bomb down the right sideline, Gross scored on an eight-yard keeper.

Nevada recovered three GSU fumbles in the first half, but could only manage two Kevin McKelvie field goals and trailed 14-6 at halftime.

"We had some opportunities we didn't take advantage of," said Nevada wingback Ross Ortega. "To win a game like this, you have to take advantage of the other team's mistakes."

Nevada began the second half by letting another scoring opportunity slip away.

Fred Gatlin completed a 41-yard pass to Joe King to set up first-and-goal at the GSU one-yard line, but the Eagle defense stuffed fullback Ray Whalen on three straight runs.



Defensive end Alex Mash shows lineman can score too: The freshman intercepts a pass and races untouched into the end zone to seal GSU's 36-13 championship victory. (Photo by Tony Tocco)

McKelvie lined up for a 19-yard field goal attempt, but Nevada was penalized for delay of game. McKelvie shanked the ensuing 24-yard attempt wide to the right.

"The goal-line stand was a big boost to our entire team," GSU defensive end Giff Smith said. "The defense has been up and down all year, but we proved in front of the nation how good we really are."

GSU opened a 20-6 lead in the third quarter, with slotback Daryl Hopkins doing the honors. Hopkins dashed down the right sideline for 28 yards to the Nevada three, then one play later went in for the score.

Hopkins finished the day with 86 yards and two touchdowns on just five carries.

"I've been overshadowed all year but knew I was capable of do-

ing so well," Hopkins said.

Nevada scored in the final period on a three-yard pass to Ortega from Chris Vargas, but GSU scored 16 points to blow open the game.

Hopkins' second touchdown, from 18 yards out, closed a five-play drive early in the fourth quarter. Hopkins took a late pitch from Gross, ran down the right side, and dove over the goal line for a 21-point GSU advantage.

Senior Mike Dowis nailed the final field goal of his career, a 41-yarder, to put GSU ahead 30-13 with just 1:06 left.

The celebration started with 44 seconds remaining when freshman defensive lineman Alex Mash intercepted a Vargas pass at the Nevada 15 and went the distance.

See CHAMPIONSHIP, page 8

Famed scientist to visit Savannah

G-A Staff Reports

Dr. Richard E. Leakey, internationally renowned paleoanthropologist, will discuss human origins on Monday, February 4 at 7 p.m.

The lecture, which is free to the public, will be held in Armstrong State College's Fine Arts Auditorium.

Leakey has followed in the footsteps of his famous parents, Drs. Louis S.B. and Mary Leakey, by searching for fossil evidence that sheds light on human origins. His work centers around the northern Frontier District of Kenya known as Koobi Fora, where, in the 1970s, skull fragments were re-assembled to represent the most distant direct human ancestor, Homo ha-

bilis.

As a result of his international reputation, Leakey was recently appointed Director of Wildlife by the President of the Republic of Kenya. Leakey will deal especially with survival strategies for the elephant and rhinoceros, as well as continue to serve as Chairman of the National Museums of Kenya.



Pat Courtney, "Pistol," one of many art works on display in Georgia Southern's Gallery 303 January exhibit, "Words Will Never Hurt Me." (Special Photo)

New art exhibit opens

G-A Staff Reports

The new art exhibit "Words will never hurt me," will open Friday, Jan. 10 and will be on display at Foy Gallery 303 until the end of the month.

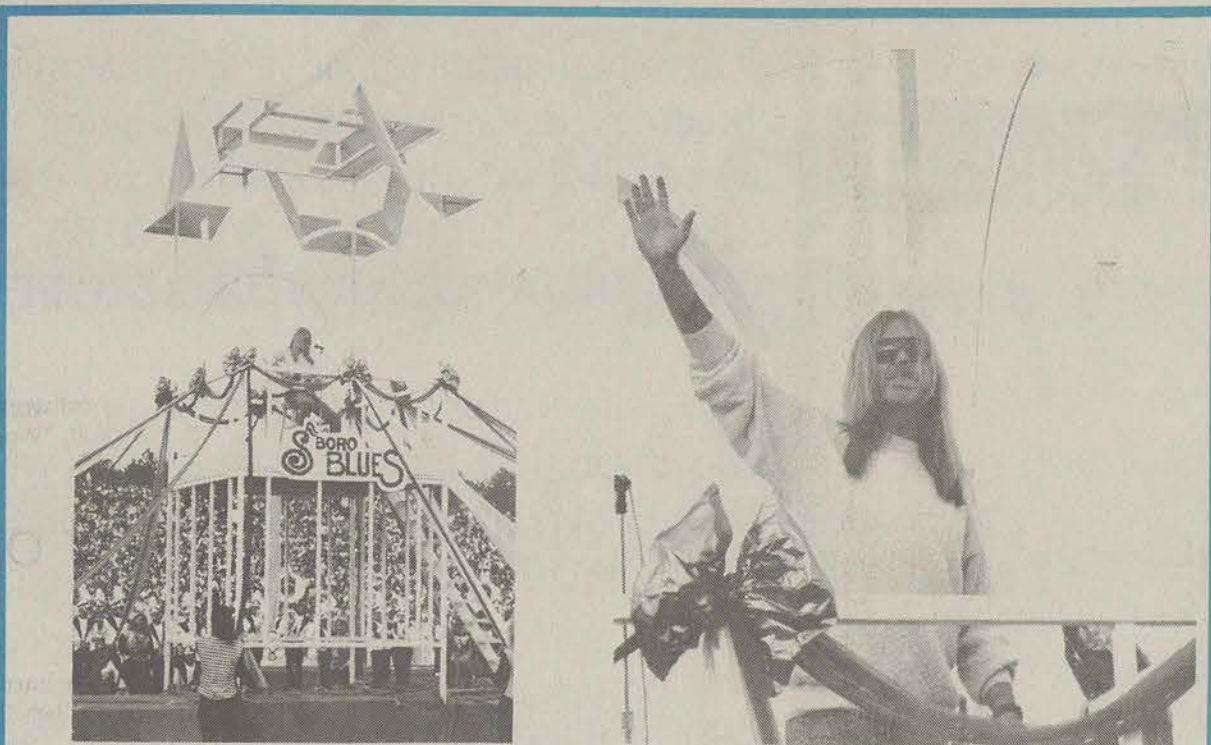
This exhibit features work from artists Eugenia Comer, Pat Courtney, Joan Farrell, and Barbara Lansdale.

Each art work attempts to communicate a different definition for ordinary words.

There will be an opening reception Jan. 10 at noon, and all are invited to attend.

Also featured at Foy will be the exhibit "South African Mail: Message from inside," shown in the Small Gallery and presented by Janet Goldner, curator.

Admission to both exhibits is free and the gallery is open Monday through Friday from 8:00 am until 5:00 pm.



Yes, he was actually here...

Gregg Allman performed the song "Statesboro blues" in tribute to 'Blind Willie' McTell during the championship halftime show. However, many students were disappointed by the staging of the performance. The stage and both speakers were turned to face the South Side bleachers, away from the student and visitor side. Many complained that they could not hear the singing, and some wondered if that was Gregg Allman at all. (Photos by Tony Tocco)

Campus News Briefs

Jump Rope for Heart to be held

GSU will be participating in a "Jump Rope for Heart," on Feb. 20. All students, faculty, and staff are eligible to participate by:

- 6 individuals forming a team
- Getting sponsors to pledge money for length of time a team jumps.

• Turn in money on February 20 at Hanner Field house during the jump from 5:45 - 9:00 pm.

JRFH is sponsored by the American Heart Association and AAHPERD. The money is used for research and education to fight heart disease.

For more information contact JRFH Coordinator Dee Ramsey at Hanner Office #153 or phone 681-0200.

Insurance Help visits Statesboro

David Oxley, an investigator with the Consumer Services section of the Georgia Insurance Department will be visiting Statesboro on Thursday, Jan. 10.

If you, or someone you know, has an insurance problem, you are encouraged to meet with Mr. Oxley between 9:00 am - 2:30 pm at the County Commissioner's Office, 11 Main St., Fulton Federal Building on that day.

If you cannot meet with him that day, you should write to the Commissioner of Insurance, 2 M.L.K., Jr. Drive, Atlanta, GA. 30458.

There will be no fee for this service.

Toll-free AIDS Information line offered

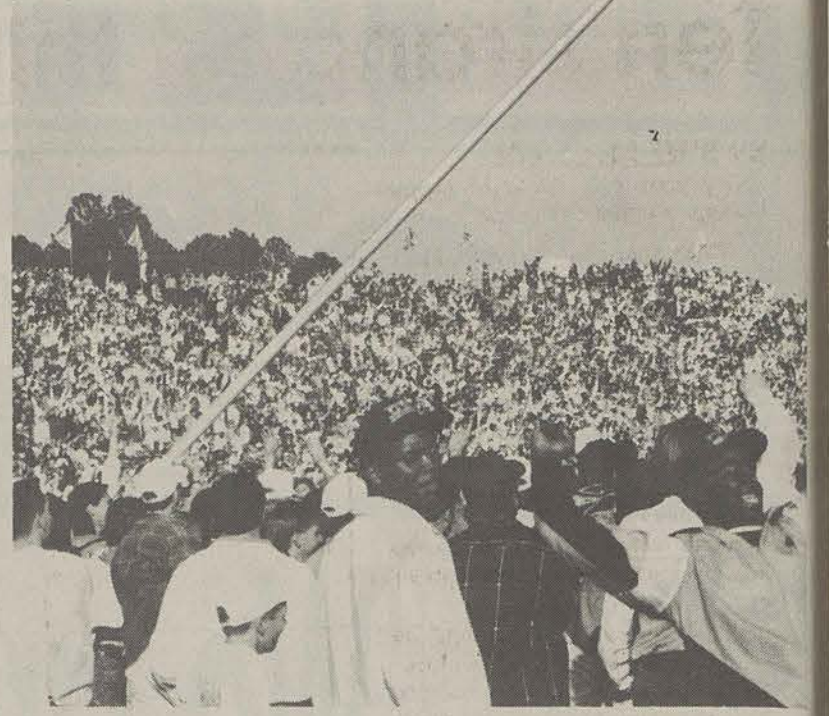
One fourth of the people with AIDS in Georgia are under age 30. Most were infected with the virus in their teens and early twenties.

For up to date information on this deadly disease, one may now call the Georgia AIDS Information Line at 1-800-551-2728, Mon.-Fri. 9 am-9 pm, Sat.-Sun. 9 am-5 pm.

It is staffed by well-informed and sensitive trained personnel who provide confidential information about AIDS prevention, symptoms, testing, transmission of the disease, and help for infected family members or friends.



Three GSU students have been awarded scholarships by the national, state, and local Homebuilders Associations. John Duncan of Statesboro, Angela Groover of Savannah, and Vanessa Nelson Stroud of Warner Robins, were the recipients. Pictured are, Left to right, Nelson Lightsey, outgoing president of the Statesboro Homebuilders Association, Duncan, Nelson, Groover; Dr., Thomas Singleterry. (Special photo)



With 44 seconds left in the game, GSU students brought the goal post down after the Eagles won their fourth championship title. The goal post would have been replaced anyway because of new NCAA regulations reducing the width of goal posts for next year's games. (Photo: Tony Tocco)

First Amendment under siege

By TONY MAURO

©Copyright 1990, USA TODAY/Apple College Information Network

WASHINGTON — Imagine the United States in 1990, minus the First Amendment.

It would have been a calmer place. No 2 Live Crew lyrics to provoke prosecutors, no Maplethorpe exhibit to scintillate Cincinnati, no flag-burners to prod patriots.

Calmer for sure, but also: less interesting, less free?

The First Amendment, with its promise to protect free speech from government intrusion, is lurching toward its 200th birthday in 1991 — look for celebrations next fall.

At the same time, the debate intensifies over just how much speech, however obscene, offensive or false, it should protect.

"I think the First Amendment will make it through the year," says columnist Nat Hentoff, who writes on free speech issues for the Village Voice. "But I'm not optimistic about it right now. It's an uphill struggle."

"We're seeing more people exercising their First Amendment

rights in more interesting ways, and we're seeing a greater level of intolerance at the same time," says Judith Krug, who monitors censorship for the Chicago-based American Library Association.

Conservative legal scholar and former Supreme Court nominee Robert Bork says: "While the First Amendment allows the expression of any opinion or emotion, it has never been interpreted to allow any and all means of expressing them."

More than any year in recent memory, 1990 saw dozens of re-plays of the classic battle between free speech and other values that are deeply held across the political spectrum: family, decency, patriotism and equality.

Cincinnati: The Contemporary Arts Center and its director Dennis Barrie are prosecuted on obscenity charges for displaying 175 photographs, some displaying homosexual practices and nude children. The furor also fuels efforts in Congress to forbid federal arts funding for exhibits that include "obscene" works.

Fort Lauderdale: Members of the rap group 2 Live Crew go on trial on obscenity charges for

their songs, replete with crude and abusive references to women and sex.

Seattle and Washington, D.C.: Within hours after passage of a federal law banning the burning of American flag, leftist protesters challenge the law by burning flags. Their appeal goes swiftly to the Supreme Court.

College campuses: At Stanford University and dozens of other institutions, codes are adopted to purge speech that supposedly offends minorities. A University of Connecticut sophomore is forced to move off campus for posting a sign on her door that used the word "homos." The movement to enforce "politically correct" speech divides civil liberties and civil rights groups, including the American Civil Liberties Union.

Miami: A federal judge bars CNN from airing tapes it obtained that contained conversations between former Panama-

nian dictator Manuel Noriega and his lawyers — a rare "prior restraint" on the news media.

In the end, in most of those episodes, the free speech side was upheld.

The flag-burning statute was struck down by the Supreme Court, Jesse Helms' anti-obscenity arts funding campaign fizzled, the CNN ban was lifted. Jurors found 2 Live Crew and the Cincinnati museum not guilty on obscenity charges.

The public is enormously ambivalent about free speech issues, according to a comprehensive survey conducted the Jefferson Center last fall.

Asked if the government had any power of censorship, 60 percent of those polled said yes, and 72 percent felt that tax money should not be spent for arts projects that were objectionable to

See AMENDMENT, page 8

What Has a Hundred Legs and Never Stops Asking Questions?

Fifty Unitarian Universalists. UU's have a keen sense of the world and their own responsibility in it. Come join us and discover questions you've never imagined.

2nd and 4th Sundays each month

GSU Developmental Studies Building

10:30 a.m.

Unitarian Universalist Fellowship of Statesboro, Inc.

Officials propose enrollment cap; ensure academic quality

G-A Staff Reports

GSU officials have established a new faculty-administrative group on campus, charged with ensuring that the institution is maintaining services and academic offerings needed by undergraduate students, and have created a new position-dean of enrollment services.

The enrollment Management Council is the product of an interim Enrollment Management Committee appointed in December 1989 by GSU President Nicholas Henry, and is responsible for recommending a method for controlling enrollment for Fall 91, as well as developing a long-term strategy for GSU.

The committee was chaired by Dr. Jack Nolen, vice president for Student Affairs, Dr. Harry Carter, vice president for Academic Affairs, Dr. Richard Armstrong, vice president for Business and Finance, Dr. Charlene Black, Academic Affairs, Dale Wasson, director of admissions, Dr. Carl Gooding, dean of the School of Business, Dr. Jerry Lafferty, dean of the school of Health and Professional Studies, Dr. Norman Wells, faculty representative to the Strategic Planning Council, Dr. Dale Grant, assistant professor of Student Development programs, Jackie Cooper, assistant registrar, and Dr. Lane Van Tassel, chair of the Strategic Planning

Council.

While the group will examine all undergraduate offerings, it will focus special attention on freshmen. "Providing a good experience in the freshman year is particularly critical," said Dr. Black, dean of enrollment services. "We will be looking at our strengths and at what areas can be improved. GSU needs to maintain the good reputation for undergraduate education that we have enjoyed for so many years."

She said the group will examine recruitment and retention efforts, academic offerings, student services, and the profile of the undergraduate student body.

See GROUP, page 8

NOTICE

REGENTS' TEST REGISTRATION Winter Quarter 1991

DATES: January 9th & 10th (Wednesday & Thursday)

TIMES: 9:00 A.M. to 4:00 P.M. (Each day)

PLACE: Williams Center, T.V. Lobby (Upstairs)

Due to large numbers of students taking the Regents' Test, a three day registration period is being used rather than the standard two day registration. **NOTE: NO LATE REGISTRATION OR STANDBY REGISTRATION WILL BE AVAILABLE DURING SPRING QUARTER.**

Students with forty-five hours or more are eligible to register. Those with less than forty-five hours who have successfully completed their first English course and are presently enrolled in their second English course are also eligible.

First time registrants or those who have taken and failed both parts of the test must register for sections labeled "Both."

When registering, choose a time that will not conflict with your schedule. You will not be allowed to change or alter your selected registration time, place, or section.

The Miss GSU Scholarship Pageant

February 9, 1991

"Carnival"

Application Deadline January 18, 1991 • Applications Available in 289 Rosenwald



Eligibility:

- Must be enrolled full-time
- Must have attended GSU at least one quarter
- Must have a 2.0 cumulative GPA

An Official
Miss America Scholarship Pageant

Winner will receive a cash award of \$1,000⁰⁰ & will compete in the Miss Georgia Pageant

Ten strangest things of 1990 listed

By BUZZ McCLAIN

©Copyright 1990, USA TODAY/Apple College Information Network

Each year the Rockville, Md.-based magazine Strange (that's its name as well as its mandate) presents its "10 Strangest List."

The list is a year-end collection of the most anomalous activities around the world, as reported by mainstream publications.

The magazine's editor, Mark Chorvinsky, chooses the list — and the content of the magazine for that matter — with a skeptical eye.

"I don't believe anything," he says flatly. "My job is to be objective about it. When you start to believe things, then you set out to prove them; when you don't believe things, you try to disprove them. I have a completely open mind."

The new edition of Strange, on newsstands now, is 64 pages of more than 100, well, strange things, as well as four in-depth feature articles by experts who study such occurrences.

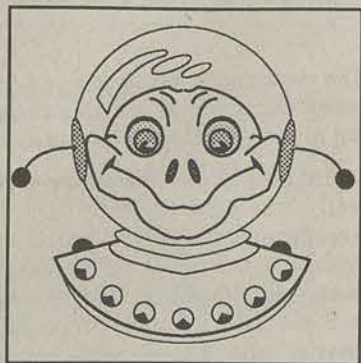
"I don't have any scientific pretension at all," Chorvinsky says. "I look at this as modern folklore."

Here are this year's 10 strangest news items, as reported in Strange magazine:

1. Cropfield Circles. England's Hampshire and Wiltshire regions have had their share of these mysterious, perfectly circular depressions found in crop fields, some of them up to 100 feet in diameter. They've been spotted in other parts of the world, but there have been more than 1,000 of them in Britain since 1980.

Even Margaret Thatcher has studied them. Explanations have linked the phenomenon to whirlwinds, strange vortices, UFOs and electrically charged spinning balls of air, but nothing has been proven.

2. Chinese Wildman. A legendary "wildman" standing 6-foot-7 and weighing 500 to 600 pounds, with a reddish pelt and possessing human-like features, made the mainstream press last year with stories in the Wall Street Journal, the New York Times and a widely seen PBS segment in August. Wildman hairs have ostensibly been found — they weren't human or known ape, but definitely primate.



3. Snake Shoots Man. An Iranian hunter was shot in the head on April 23 when the snake he held under the butt of his shotgun pulled the trigger with its tail. The hunter fell dead. A second hunter tried to get the shotgun, but the snake coiled around it and fired the other barrel.

4. Exploding Cactus. The owner of a saguaro cactus in Arizona called the plant store to complain the arms of the cactus she had bought were drooping. The plant store employee warned, "Get your kids and get out of the house immediately. We'll be over right away."

She did, but before the store employees arrived, the cactus exploded, showering the living room with hundreds of deadly scorpions. Scorpions can reproduce inside the cactus, building up pressure until it explodes.

5. Australian Fish Fall. On Jan. 2, it rained fish in Jerildie. A woman heard thudding outside and found 30 little fish on her roof and front lawn. Naturalists in Sydney explained that small fish and tadpoles can be swept up by wind and transported some distance. Chorvinsky asks, if the fish are scooped out of the water, why does no debris fall with the fish?

6. Thai Widow Ghost Scare. The men in a rural area of northeastern Thailand fear that a group of ghostly widows are out to catch husbands for life in the spirit world by killing them while they sleep. During the last

two years, many Thai workers have died in their sleep all over the world. Men in Thailand have taken to painting their fingernails red in hopes of warding off the widow ghosts.

7. "Thing in the Window" Video. On Halloween 1989, Gina Jones and her husband viewed orange lights in a "W" formation outside their Greenville, S.C., home. Mrs. Jones videotaped the lights. When they played back the tape, they found that the camera recorded a small alien-like figure scurrying past the lit bathroom window at the southwest corner of her house.

It was a biped about 2 feet tall, with its arms held up as if to cover its face. "It's not a cat, it's not a squirrel, it's not a bird... Everybody laughs at me until they see the tape," she says.

8. Saved by a Stingray. Pacific Island Radio Vanuatu reported that on Feb. 7, Lottie Stevens washed up in New Caledonia. The 18-year old's boat reportedly overturned on Jan. 15 during a fishing trip. Stevens claimed a stingray came and carried him on its back for almost two weeks, keeping him safe from menacing sharks.

9. Japanese Anti-gravity Device. Scientists Hideo Hayasaka and Sakae Takeuchi of Tohoku University have claimed that their special gyroscope, when spun between 3,000 and 13,000 rpm, lost between 20 and 60 millionths of its 11.3 — ounce weight, violating the laws of physics. Senior scientists cannot prove them wrong and have asked for a repeat of the experiment: If it's true, the discovery could lead to invention of an anti-gravity device.

10. "Hard to Believe" Award: Claims that parts of a crashed UFO were used to build the Stealth bomber. Former NASA mission specialist Robert Oechsler said this year, "The Stealth bomber you see flying around actually had its primary propulsion system removed from a recovered flying saucer." He said his sources are highly placed intelligence officers and also claimed to have received information from a physicist who does government work at a secret Nevada lab. This physicist says he has seen the crashed UFOs and states that some have been put back together and successfully flown.

Fads for 1991 predicted

By REBECCA POWERS

©Copyright 1990, USA TODAY/Apple College Information Network

Happy New Gear.

Trend followers say the coveted acquisitions for 1991 will be Slime Green orthodontic hardware and World War II-era clothes.

"More and more kids are getting into colored braces," said Dr. Charles Munk of Clarkston, Mich., who discusses the merits of Hot Pink or Monster Purple right along with overbites and wisdom teeth. "I'm even getting some adults who get hardware to match their clothes."

Barbara Brusse, whose Rocky Mountain Orthodontic in Denver

manufactures and sells orthodontic hardware, said they're big in some parts of the country. "They like them in Florida and California."

Brackets, the orthodontic piece that is bonded to the tooth, come in Monster Purple, Brilliant Blue, Slime Green, Hot Pink and Stoplight Red.

Some youngsters outfit their incisors to match their school colors. Adults usually select traditional brackets but request tinted rubber bands or ties.

Alan Teitel, a manufacturers representative and noted barometer of trends, said other coming fads are equally frivolous.

"Bubble necklaces will carry into 1991," Teitel said. "They're getting hotter by the minute."

For the fad-ignorant, bubble necklaces are decorative vials holding bubbles and a bubble wand.

Also look for hats and 1940s-style duds — a nod to the 50th anniversary of Pearl Harbor.

"Every time 50 years of something comes along, you see a lot of promotions," Teitel said.

And men are going for ear piercing in a big way.

"25 percent of all piercing is being done on males. Surprisingly enough, you see a lot of older men with pierced ears," Teitel said.

Other doodads that will worm their way into pop culture: mood rings (again), environmentally friendly packaging.

Middle Georgia
Gold and Silver Exchange
Fine Jewelry at wholesale prices
• Open to Public • Buy & Sell • Shop & Compare!
Hrs. 10 to 6 764-4599
#6 Gentilly Square Statesboro (next to Winn Dixie)



**PROFESSIONAL
LAUNDRY
and
DRY CLEANER
FLUFF TOO**

101 West Main St
Statesboro
764-6126

Welcome Back GSU Students!

Fall and Winter Merchandise

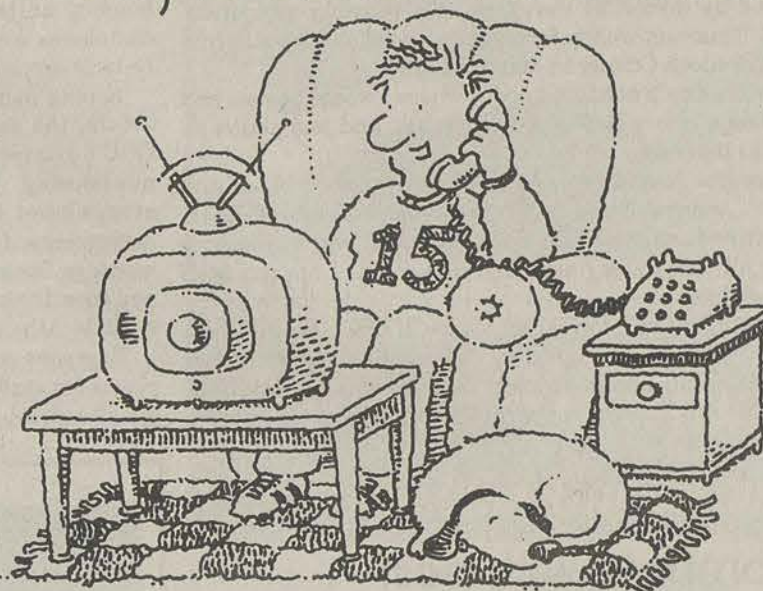
Up to **75% Off**
Reg. Price



The Sir Shop

420 Gentilly Place
Across from Winn Dixie
764-6924

HELLO, DOMINO'S PIZZA®



HOT, DELICIOUS PIZZA, WITHOUT THE HIKE.



IT'S TIME FOR DOMINO'S PIZZA®

DOMINO'S PIZZA GUARANTEE*

SERVICE: We guarantee your pizza will arrive in 30 minutes or less from the time you order, or the driver will refund \$3.00 off your order.

PRODUCT: We guarantee satisfaction with your pizza, or call the store manager within 30 minutes after delivery for a new pizza or for a full refund.

PIZZA TAKE-OUT: We guarantee your pizza take-out order will be ready in 12 minutes or you'll receive \$3.00 off.
*Certain restrictions apply. Call store for details.

CALL US!
Serving Georgia Southern:
681-4326
College Plaza



Coca-Cola® classic and diet Coke® available in 12 oz. cans.

<p>Birthday Special 30¢ Pizza! <small>V22</small></p> <p>For a limited time, receive a medium pan or original-style one topping pizza for 30¢ when you purchase any large original-style pizza at regular price. (Tax not included.)</p> <p><small>Limited delivery area designed with safety in mind. Drivers are never penalized for late deliveries. Valid at participating stores only. Not valid with any other offer. Our drivers carry less than \$20.00. ©1991 Domino's Pizza, Inc. Expires 1/21/91.</small></p>	<p>Late Night Special \$6.00! <small>V23</small></p> <p>Order ONE large original-style pizza with ONE topping for just \$6.00! (Tax not included.) Valid after 10 p.m. anyday.</p> <p><small>Limited delivery area designed with safety in mind. Drivers are never penalized for late deliveries. Valid at participating stores only. Not valid with any other offer. Our drivers carry less than \$20.00. ©1991 Domino's Pizza, Inc. Expires 1/21/91.</small></p>	<p>Build Your Own \$6.99! <small>V24</small></p> <p>Order a small original-style pizza covered with your favorite toppings for just \$6.99! Limit 5 toppings. No double portions, please. (Tax not included.)</p> <p><small>Limited delivery area designed with safety in mind. Drivers are never penalized for late deliveries. Valid at participating stores only. Not valid with any other offer. Our drivers carry less than \$20.00. ©1991 Domino's Pizza, Inc. Expires 1/21/91.</small></p>
--	--	---

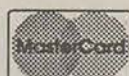


ONLY TWO PERFORMANCES: January 29, 8 p.m., and January 30, 12:15 p.m., McCroan Auditorium. **FREE** reserved seat tickets for GSU students beginning January 9th; for GSU others, January 16th. University Union Information desk. A CLEC event.

american
Fastphoto
and camera

STATESBORO'S TOTAL PHOTO CENTER

- Color print Processing
- 110/120/35mm.
- Enlargements
- Wallet • Poster Size
- Portrait Studio
- Slide Processing
- Black & White
- Old Photos Copied & Restored
- Video Transfers
- Cameras, Films, Accessories



1 HOUR COLOR PRINT PROCESSING



(No Extra Charge)
NIGHT DROP

INSTANT PASSPORT PHOTO SERVICE
Chris Carter - Photographer

Next to Turtle's
Southern Square
715 Northside Dr. E.
Statesboro

764-2108

10% Discount
to GSU Students
& Faculty with ID!



The George-Anne

Since 1927, Georgia Southern's Official Student Newspaper

Clint Rushing
Editor

Gary A. Witte
Managing Editor

Laura McAbee
News Editor

Opinions

Liked By Many,
Cussed By Some...
Read By Them All

Tuesday, January 8, 1991

Letters to the Editor

Former employee claims victory

Editor's Note: The following letter is from a former GSU student and employee, Richard Peters. Peters brought a case against the Board of Regents to the Office of Fair Employment Practices; it was determined that Peters' termination from his employment at GSU was "retaliation for having opposed Respondent's alleged racially discriminatory employment practices." Peters is an outspoken civil rights advocate who claims he was terminated from his position at GSU Plant Operations for speaking out against apparent racially discriminatory treatment of GSU employees by Plant Op. Administrator Ken LeCain, and others.

Dear Editor,

Enclosed are the Georgia Office for Fair Employment Practices' findings in the case of Richard A. Peters versus Georgia Southern University/ Board of Regents. The findings are in MY favor.

The United States Department of Education is reopening their case and is currently conducting a thorough inquiry into this matter.

The multitude of charges I have brought (against GSU) were evident in 1988, and most of them have been documented before the summer 1989.

After the classroom incident concerning black students not being allowed to do student projects at Forest Heights Country Club, (which I strongly protested) Vice-Presidents Richard Armstrong and Jack Nolen were informed by myself at that time of a possible conspiracy against me in 1988. This was well before my termination and elimination from the area of Bulloch County in March of 1989.

As I write this I cannot help but think about where I would be now had GSU President Nicholas Henry took the proper, fair, and just action at the time (spring 1988) It's sad.

There are good people in that area of the country, both black and white. It's no secret I enjoyed living in Brooklet and Statesboro, Georgia. I have a lot of friends there, again both black and white. I cannot help but think that all this could have been prevented. I am guilty of standing up for my rights.

As a middle aged student and former employee of GSU, I would be a senior, working in athletics and building my small locksmith and video business. For the GSU administration to allow this to have happened in this era of our history concerning civil rights is utterly ridiculous... End of Statement.

Richard Peters

We can compete with best

Dear Editor,

I am a graduate and an interested fan of GSU and its athletics. I write to you to express a feeling of concern as to the direction of current conference or non-conference alignment for the Eagles and all the sporting programs.

While I am sure the public opinion does not sway (the decisions of the athletic office), I would still like to voice an opinion that I know a growing segment of followers feel. In this, the summer of great changes in conference alignments nationwide, the name Georgia Southern is being blown about the winds of rumor. The hot topic in this area, southern South Carolina, is that GSU will be soon offered an invitation to join the Southern Conference.

The Southern Conference is a strong, respectable league in all the "Big 3" sports; baseball, basketball, and football. In fact, I am a fan of schools such as Furman, Marshall, and The Citadel. However, to align in a league with these schools I feel would be a mistake at the present time.

It is my understanding that GSU's athletic department is operating "in the black." If this is true, that is quite an accomplishment for any institution. Regardless, I am sure that at the very least Eagle athletics are very close to holding its collective head above the surface of financial strife.

It is my feeling that our ultimate goal is to produce not only a first class academic institution, but also to nurture a "top drawer" program in athletics. In particular our football program has made stupendous strides toward being contemporaries of the finest schools participating in NCAA sanctioned football. With this in mind, aren't we, GSU, aiming for the sky?

As legend would have it, when Dale Lick and the powers-that-be invited Erk Russell to be our football coach they asked Erk on what level would he like to play football. Erk's response was that he wanted GSU to play with the big boys; Division 1-A!

In light of all of our accomplishments on the gridiron, hardwood floors, and ball diamond it would seem that we are in reach of that goal. WE CAN COMPETE WITH THE BEST!

So to you, Bucky Wagner and other deciding members of the GSU family, I urge you to exercise patience. We aren't quite ready to make the jump to division 1-A, but we shouldn't tie into a league that collectively will not gain this coveted status. We've yet to notch a football win over a Division 1-A opponent, but that milestone is right in front of us on the horizon.

Let's stay the course, to borrow a famous phrase, and we'll get to where we are headed with our athletics. THE TOP!

Gary McCullough
'88 GSU Graduate

GSU administration snaps under pressure

From The Editor's Desk Clint Rushing

Just as the holidays were getting under way and we stopped publishing for the Christmas break a major story evolved concerning the housing situation here in Statesboro. Now that it has been discussed, debated, and ultimately dropped it seems as though the issue is dead. But for those of you who are unaware of what transpired between the GSU administration and the Statesboro Off-Campus Housing Authority in November and December, let me fill you in.

Back in 1985 GSU was showing signs of an oncoming enrollment spurt which would create "growing pains" within the community in terms of where students would live. The GSU administration saw this growth spurt about to happen and planned for it, somewhat, by meeting with local developers and reaching an agreement for more off-campus housing units such as apartment complexes and condominiums to be built around Statesboro.

Seeing lucrative results in the future, the developers jumped at GSU's request for more off-campus housing. Apartments went up everywhere! One of the largest movements for building apartments in Statesboro was launched and soon the city was being called a "little Athens."

Everyone was happy. GSU had places for students to live off campus; the developers were on their

way to the big money; and the students had new apartments.

For four years the developers built like madmen, obviously never thinking that eventually GSU enrollment would slow down and other dorms would be built. And with the coming of university status it seemed to these developers as though the need for off-campus housing was even more urgent. Once again, these money hungry builders were blinded by profit. They didn't look far enough down the road to see that GSU was indeed projecting a slack off in enrollment.

Now just last November when word got out that GSU had plans to build a 520 bed dormitory for its students all hell broke loose. The developers quickly united to form what is now called the Off-Campus Housing Authority, which is comprised mainly of a bunch of goo goo eyed money grubbers who are alarmed at the fact that GSU would ever even consider building a dorm.

"GSU is guilty of attempting to ruin the housing economy in Statesboro," one developer said.

The developers felt that this proposed dorm would create a housing glut in Statesboro-hogwash!

In reality, the developers finally realized that they had overdeveloped Statesboro. And with one unofficial projection of next year's enrollment at merely a 2 percent increase over this year's, the developers began choking. They hired a local attorney and threatened to take GSU to court for breach of contract. Talk about biting the hand that feeds you!

One of the developers had the ignorance to even suggest that GSU had a binding contract with the developers! Laura Hendley of Hendley Properties claimed that GSU had "broken a verbal contract," referring back to the 1985 unofficial, undocumented agreement between GSU and the developers. Isn't it sickening to see how the greedy desperately seek excuses and defenses when their money is threatened?

So after the housing authority met and threw their little temper tantrum, GSU administrators, namely Dr. Henry and Dr. Armstrong, seemed to have broken under the pressure applied by the developers and agreed to postpone the construction of the 520 bed dorm.

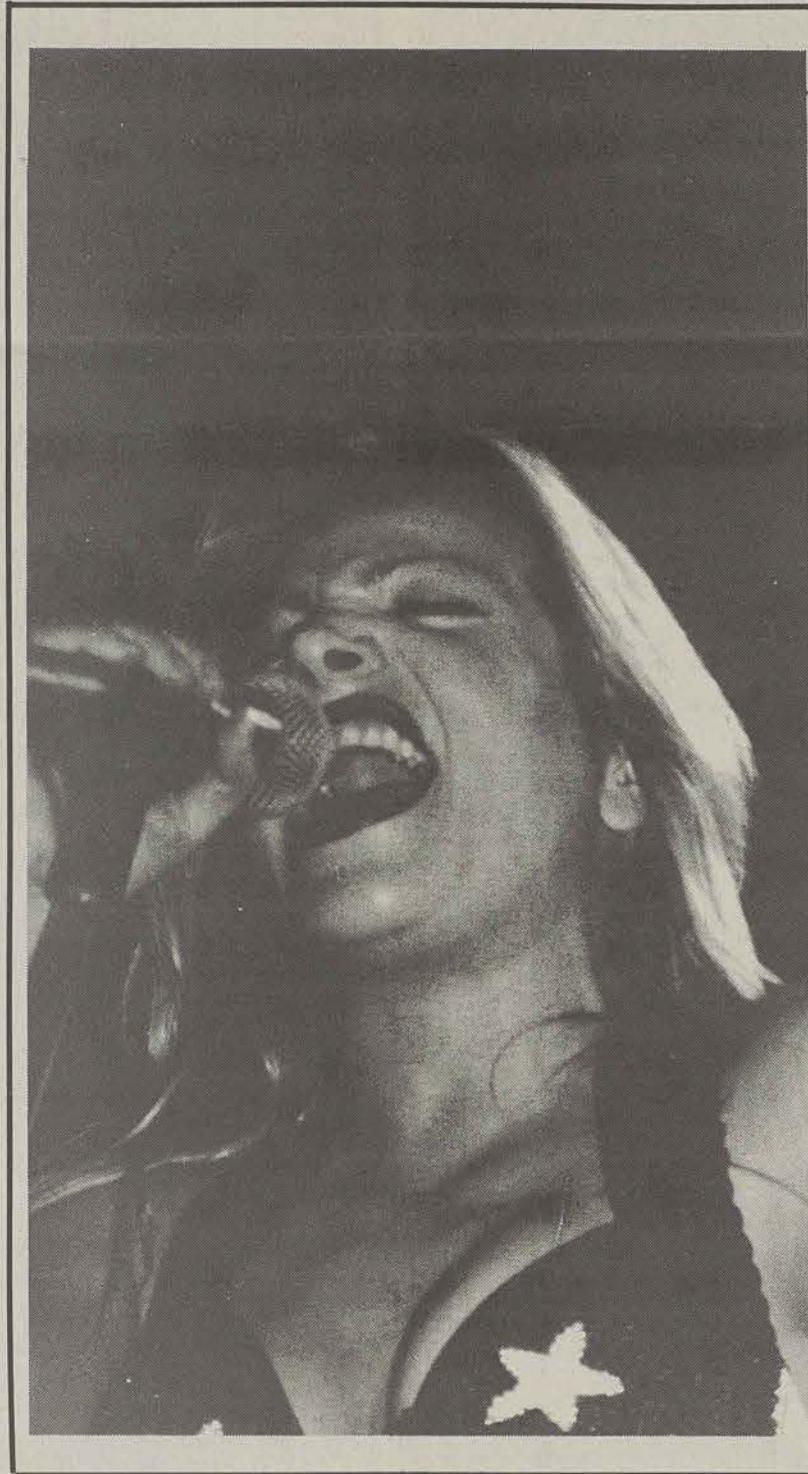
Now I respect both of these administrators very much, but in this case I think they look timid.

Granted the decision to postpone the building was in an effort to appease angry developers and sooth tension, but those developers are in existence ONLY because GSU is. GSU has the foremost responsibility to housing its students first, and worrying about those crybaby developers later.

To drive my point home, no contract ever existed between the developers and GSU-it was a mutual understanding not binding anywhere. To say GSU breached contract is a crock!

Secondly, those developers make their money as a result of 75% of GSU students living off campus. Without those students, the developers are broke.

Yes I agree that GSU and area businesses and developers all need to have a good rapport. But the interest of the students comes first. That's what we're all here for. The proposed dorm would have provided a cost effective housing alternative to students who perhaps are not financially sound enough to afford the already ridiculously high rents here in Statesboro. It's a damned shame that such a great institution has had to alter its expansion progress because of a few rich developers want to get even richer. It's not GSU's fault that they've overdeveloped the community already. And the real losers are the students; who's gonna stand up for US?



How "bout them hooters!! as Buck Birdseye would say - last quarter Taylor Dayne's concert drew only 1,200 die hard fans - apparently many of us missed quite an eyefull. (Photos: Kim Perry)

NEWS

Assistant News Editor: Charles C. White; Copy Editor: Antoinette Burke; News Staff: Charlotte Dupree, J.J. Gregory, Wendi King, Wendi Wright

FEATURES

Features Editor: Yolanda Wallace; Staff: Donna D'Ambrosio, Bill Johnson, Kevin Hudson, Elizabeth Tilley

SPORTS

Sports Editor: Paul Floecker; Assistant Sports Editor: James Drinkard; Staff: Charles C. White

PHOTOGRAPHY

Chief Photographer: Kim Perry; Staff: Clint Horne

CIRCULATION

Supervisor: Glenn Burgess; Staff: Laura Morgan, Cindy Keever, Mike Bowden, Chris Shelmutt, Robby Weatherly

ADVERTISING/DISTRIBUTION SERVICES (ADS)

Advertising Manager: Stacy Graham; Business Manager: Jeff White; Managing Editor/Business: Jenny Parr; Sales Representatives: Kevin Hudson, Bill Hensley, Jay Knight, Lance Nizinski

PRODUCTION AND GRAPHICS EDITORIAL SERVICES (PAGES)

Production Managers: Traci Cobb, Van Ellison; Production Staff: Sherry Dyal, Dean Thames, Kevin Westberry, Barbie Westberry, Tag Spivey, Keisha Davis, Natalie Bailey

STUDENT PUBLICATIONS COORDINATOR

Bill Neville

The George-Anne

STATEMENT OF OPERATIONS

The George-Anne is the official student newspaper of Georgia Southern University, owned and operated by GSU students and utilizing the facilities provided by GSU. The newspaper is the oldest continuously published weekly newspaper in Bulloch County and Statesboro, Ga. The ideas expressed herein are those of the editor or the individual authors and do not necessarily represent the views of the Student Media Committee, the administration, the faculty and staff of Georgia Southern University, or the University System of Georgia. The George-Anne is published twice weekly during the academic year and twice during summers. Any questions regarding content should be directed to the Clint Rushing, Editor (681-5246).

OFFICES, MAIL, PHONES

Room 111, F. I. Williams Center. The George-Anne, Landrum Center Box 8001, Georgia Southern University, Statesboro, Ga. 30460. 912/681-5246 (News) or 912/618-5418 (Advertising)

ADVERTISING INFORMATION

The George-Anne reserves the right to refuse any advertisement. The George-Anne's advertising rates are as follows:

Students and student groups \$2 per column inch
GSU faculty, departments or affiliates \$3 per column inch
Statesboro-area businesses and groups \$4 per column inch
National rate \$7 per column inch

*Five inch minimum ad size, otherwise classified display rates (\$5.50 per column inch) apply. DEADLINE: The deadline for reserving space and submitting advertising copy is Noon, one-week prior to the intended publication date. For more information, rate cards, sample publications, contact: Stacy Graham, Advertising Manager, ADS, (912) 681-5418; or Bill Neville, Student Publications Coordinator, (912) 681-0069.

CLASSIFIED ADVERTISING INFORMATION

The George-Anne reserves the right to refuse any advertisement. The George-Anne's classified advertising rates are as follows:

Students and student groups Free (25 words or less)
GSU faculty, departments or affiliates Free (25 words or less)
Others \$5.50 (50 words or less, two issues)
Retail classified display \$5.50 per column inch

DEADLINE: The deadline for reserving space and submitting classified advertising copy is Noon, one-week prior to the intended publication date. Free classified ads from students, faculty and staff must be submitted in writing, with the name of the sender, a local address and telephone number. No free ads will be accepted via telephone. Only one free ad per person per week.

LETTERS TO THE EDITOR AND SUBMISSIONS

The George-Anne welcomes letters to the editor, story submissions and guest columns from people both inside and outside the Georgia Southern University Community. All copy submitted should be typed (double-spaced, please), preferably on Macintosh disk in Microsoft Word or Microsoft Works format. All submissions must be signed and include a mailing address and phone number for verification. The editors reserve the right to reject any submission. There is no word limit on submissions. A writer may request to remain anonymous. However, it will be the editor's decision whether or not to print the name. Submissions are run on a space-available basis.

CIRCULATION INFORMATION

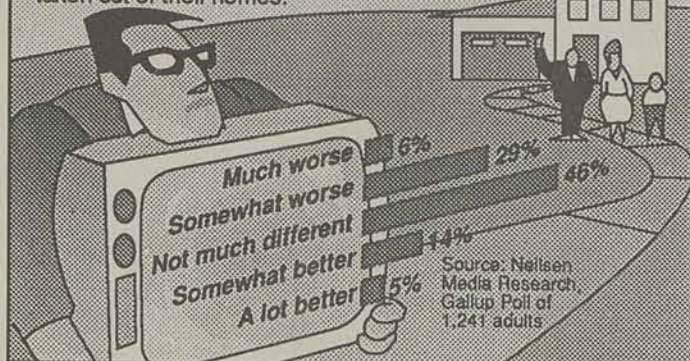
Subscription rates for home delivery of The George-Anne are six dollars per quarter, or \$18 per year, delivered bulk mail. Please address all inquiries to Jeff White, Business Manager. The George-Anne is distributed free of charge on the Georgia Southern University campus through delivery sites located in campus buildings and residence halls.

*We gratefully acknowledge the theft of our slogan from Robert Williams of the Blackshear Times. Call Bob and he can tell you who he stole it from originally.

Trends across the USA

No TV? So what?

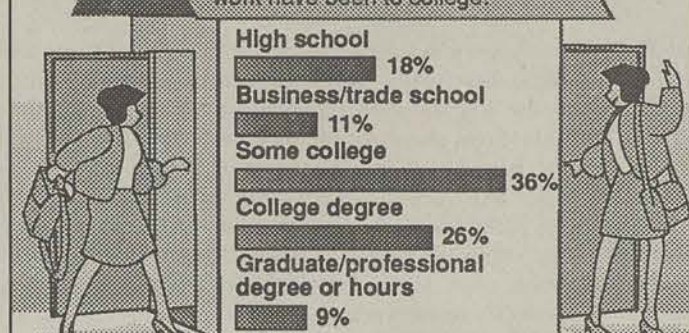
Although the average household watches nearly seven hours of television per day, here's how people said their lives would be if television were taken out of their homes:



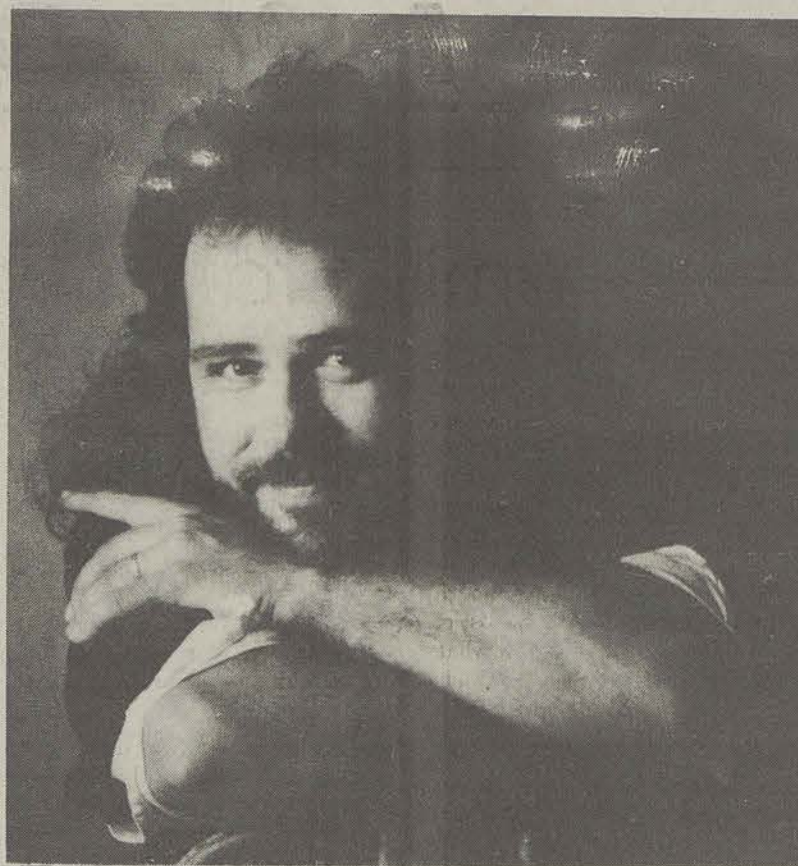
Web Bryant, USA TODAY

'Temping' is smart

Most people who do temporary work have been to college.



Web Bryant, USA TODAY



David Payton and The Basics will perform Jan. 12th at the Foy Fine Arts Building at 7:30 p.m. (Special Photo)

Christian rockers to play Foy Fine Arts Building

G-A Staff Reports

Back Door Records recording artist David Payton will appear in concert with his band, The Basics on Jan. 12th, at 7:30 p.m. in the Foy Fine Arts Building. Payton is currently touring in support of his debut album, "I Got Wise."

Payton is a former member of the Grammy Award winning band Mylon & Broken Heart with whom he toured nationally for over two years. Payton's music is an appealing blend of rock, blues, country, and R&B Gospel. His

presentation includes songs from his album release, contemporary remakes of Gospel classics, and a healthy dose of disarming humor and story telling.

"I Got Wise" is almost exclusively original material with the exception of two exciting cover tunes by former Mason Proffitt member Terry Talbot and Lenny LeBlanc, two highly esteemed veterans of the secular and Christian music industry.

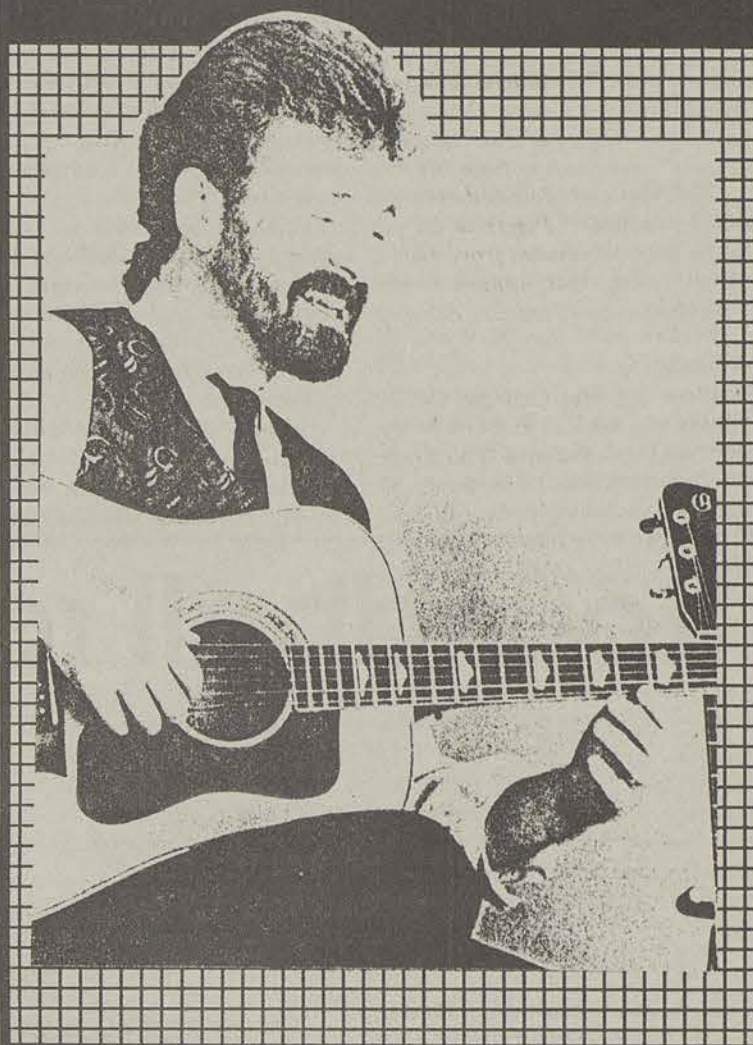
David Payton and The Basics is a group on the way up. Their appeal lies not only in their energetic stage performance, but in the fact that they take time after shows to meet and talk with their audiences.

The show is sponsored by Life Ministries and admission is \$5 at the door.

CAB PRESENTS

Brian Huskey

Full Tilt Music & Humor



Noon • Wednesday
January 9th • Union Commons



CAB Column of Events

G-A Staff Reports

The Campus Activities Board (CAB) hopes that everyone had a happy and safe holiday break. The campus is once again filled with the hustle and bustle of students everywhere, getting used to new classes and new schedules, seeing old friends, and participating in an entire new quarter of activities planned by CAB.

Just because it's Winter Quarter, don't let the "Winter Blues" get you down. Put on your hat and coat and let's get rid of those "Winter Blues." Hopefully, you have received a CAB calendar with all of the activities planned for Winter Quarter. If not, just stop by the CAB office in Room 207 of the University Union and pick one up; CAB certainly has several remedies to keep entertained.

The first of many special events takes place on Wed., Jan. 9th at 12 p.m. in the Union Commons where Brian Huskey will perform. Huskey has been touring as a professional singer/songwriter/guitarist/hum

orist for 15 years. His early musical career had its roots in London in the early seventies while he attended school there as an exchange student. He made enough money to live on for a while and eventually bought a return ticket to the U.S..

In 1980, Huskey began performing on college campuses and his tours started covering a lot more ground. To date, he has logged over 3,000 shows at almost 500 campuses in 22 states. The

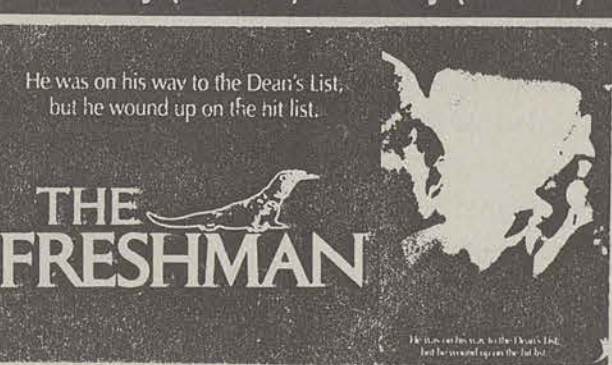
early eighties also brought about duty as a major concert opening act. Touring with two dozen national acts, as well as performances in some of the nation's premier showcase clubs gave Huskey enough prominence to be featured on National Public Radio's "All Things Considered" in 1985. Huskey released his second and third recorded projects during this time as well. He remains one of the busiest touring acts in the country.

UNIVERSITY UNION THEATER

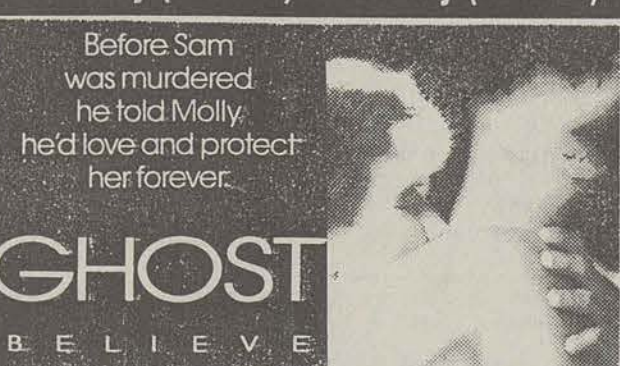


NEW NIGHTS!

Thursday (Jan. 10) & Friday (Jan. 11)



Saturday (Jan. 12) & Sunday (Jan. 13)



Show Times
7 & 9:30
PM

Come early for seating
&
get your popcorn and
drinks at the
concession stand

\$1 with
Student ID
\$2 General
Admission

TRIANGLE

GAY
AND
LESBIAN
SUPPORT
GROUP

LB 12502

"For more
information
write to LB 12502"

CR/I INFORMAL RECREATION FACILITY HOURS WINTER 1991

DROP-IN AEROBICS

(MARVIN PITTMAN GYM)

MONDAY-THURSDAY: 4:15 (HIGH), 5:15 (LOW), 6:15 (HIGH) & 7:15 (TONING)
FRIDAY: 4:15 (HIGH) & 5:15 (LOW)
SUNDAY: 4:15 (HIGH) & 5:15 (TONING)

FREE PLAY

(ACTIVITY ROOM AND/OR OLD HANNER)

MONDAY-THURSDAY: 3:00-5:00 P.M. & 6:00-10:00 P.M.
FRIDAY: 3:00-8:00 P.M.
SATURDAY: 10:00-6:00 P.M.
SUNDAY: 1:00-10:00 P.M.

WEIGHT ROOM 1 (FREE WEIGHT)

HANNER

MONDAY & WEDNESDAY: 1:00-10:00 P.M.
TUESDAY & THURSDAY: 12:00-2:00 P.M. & 4:00-10:00 P.M.
FRIDAY: 1:00-8:00 P.M.
SATURDAY: 1:00-6:00 P.M.
SUNDAY: 4:00-10:00 P.M.

WEIGHT ROOM 2 (MACHINES)

HANNER

MONDAY, TUESDAY, THURSDAY: 3:00-5:00 P.M. & 6:00-10:00 P.M.
WEDNESDAY: 1:00-5:00 & 6:00-10:00 P.M.
FRIDAY: 1:00-5:00 & 6:00-8:00 P.M.
SATURDAY: 1:00-6:00 P.M.
SUNDAY: 4:00-10:00 P.M.

MARVIN PITTMAN WEIGHT ROOM

MONDAY-THURSDAY: 4:00-8:00 P.M.

SWIMMING POOL

HANNER

MONDAY-FRIDAY: 12:00 NOON-1:00 P.M. & 6:00-8:00 P.M.
SATURDAY: 1:00-3:00 P.M.
SUNDAY: 6:00-8:00 P.M.

NOTE: ALL HANNER FACILITIES WILL CLOSE AT 7:00 P.M. ON THE DAYS OF HOME BASKETBALL GAMES--JANUARY 24, FEBRUARY 14, & FEBRUARY 28.
*EXCEPT OLD HANNER WHICH WILL BE OPEN FOR FREE PLAY.

MARTIN LUTHER KING WEEKEND, HANNER WILL BE OPEN ON SAT., 1/19 FROM 4:00-6:00 P.M.; SUN., 1/20 FROM 1:00-10:00 P.M.; AND MON. 1/21 FROM 6:00-10:00 P.M.

CR/I OFFICE RESERVES THE RIGHT TO MAKE CHANGES IN SCHEDULED HOURS.

A DAILY NOTICE OF FACILITY HOURS IS AVAILABLE ON THE CR/I HOTLINE AT 681-5261.



Tuesday, January 8, 1991

6

Lady Eagles snakebitten in NSWAC opener, fall to 8-3

By PAUL FLOECKHER
Sports Editor

The GSU Lady Eagle basketball team opened the season with eight wins in ten games, but let possibly the biggest game so far slip away.

In the New South Women's Athletic Conference (NSWAC) opener for both schools, the Florida A&M Rattlerettes downed the Lady Eagles 86-85 in double overtime Saturday at Hanner Fieldhouse.

The Lady Eagles held four-point leads in both overtime periods, but nevertheless saw their five-game winning streak snapped by a team that dressed out only seven players.

GSU led 78-74 with 1:01 left in the first overtime, but the Lady Eagles were held scoreless the rest of the period. Layups by FAMU's Theodora Allen and Polly Innerarity sent the game to a second overtime.

After GSU grabbed a quick 82-78 lead on jumpers by Stephanie Christmas and Tracy Wilson, FAMU outscored the Lady Eagles

8-3 to take the win and join Miami atop the conference standings.

Sherrie Barnes' 16-footer with 37 seconds left accounted for the winning points.

"We were up by four points in both of the overtimes and then we gave it away," GSU head coach Drema Greer said. "I'm just real concerned right now about what this loss is going to do to us."

The Lady Eagles also led 71-67 with just 28 seconds remaining in regulation; however, Allen hit two free throws to trim the lead to two and GSU's Jill Dunn trav-

elled with 8.6 seconds left to give the ball back to FAMU for a final shot.

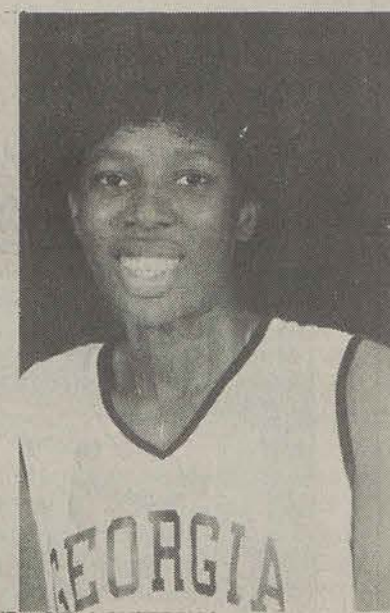
Despite tough GSU defense, Shelly Boston managed to fire up a shot from just short of the three-point line. The shot bounced on the rim twice before falling in with only four-tenths of a second on the clock.

GSU led by as many as seven points in the second half. Two Trina Simmons free throws put GSU ahead 65-58 with four minutes to play, but FAMU closed with a 13-6 run.

See LADY EAGLES, page 8



Trina Simmons scored 18 points and dished out a game-high 11 assists against Florida A&M.



Gwen Thomas chipped in 10 points and pulled down six rebounds as GSU dropped its NSWAC opener, 86-85.

Roundball roundup

Both the Lady Eagles and the Eagles saw action over the month-long break. The Lady Eagles won four straight to improve their record to 8-2, while the Eagles dropped two of three during a tough road trip to fall to a 3-6 mark.

Women

Lady Jag Classic (Dec. 15-17)
GSU 107, UNC-Asheville 60 (Dec. 15): After jumping to a 42-18 halftime lead, the Lady Eagles exploded for 65 second-half points to rout the Lady Bulldogs, 107-60.

Trina Simmons led six Lady Eagles in double figures with 19 points. Toy Williams topped the team in rebounds with 12.

GSU sizzled at the charity stripe, nailing 21 of 23 free throws (.913). Simmons was a perfect 9-9, while Gwen Thomas finished 6-6.

Two Lady Eagles established career scoring highs: Andrea Stults (18) and Williams (16). Also in double figures were Thomas (16), Tracy Wilson (14) and Jill Dunn (14).

GSU 72, Nicholls St. 53 (Dec. 16): Gwen Thomas and Tracy Wilson combined for 43 points and 26 rebounds to lead the Lady Eagles over NSU in Mobile, Ala.

Thomas finished with a game-high 25 points, followed by Wilson's 18. Wilson was the top rebounder with 17, while Thomas pulled down nine.

Leading 57-46, GSU went on a 15-3 run to open a 23-point lead, their largest of the game, 72-49.

The Lady Eagles trailed most of the first half, but took a 34-31 halftime lead on a basket in the paint and a free throw by Thomas.

GSU 81, S. Alabama 72 (Dec. 17): Behind Tracy Wilson's 29 points, the Lady Eagles defeated South Alabama 81-72 in the championship game of the Lady Jag Classic.

Wilson was named MVP of the tourney. Jill Dunn, who scored a career-high 17 points, joined Wilson on the all-tournament team.

Southern opened the game with an 18-4 run, but the Lady Jags trimmed the margin to 33-29 at halftime.

"We knew it was going to be a dogfight," GSU head coach Drema Greer said. "They used a couple of spurts to come back at us, but we held them off."

GSU 70, Augusta 58 (Jan. 2): Tracy Wilson sat out the game with an illness, but Gwen Thomas picked up the slack with 33 points and 14 rebounds in GSU's win over Augusta.

Wilson's replacement, Stephanie Christmas, finished second to Thomas with 16 points and seven boards.

Only four other Lady Eagles cracked the scoring column: Trina Simmons (seven points), Toy Williams (six), Andrea Stults (four) and Beverly Copeland (four).

Gladys Burke led Augusta with 20 points and 10 rebounds.

Men

Illini Classic

GSU 84, Long Beach State 67 (Dec. 7): Tony Windless scored 21 points to lead the Eagles to victory in the first round of the Illini Classic.

Southern ended the first half with a 15-4 run and never relinquished control of the game.

The win advanced the Eagles to the championship game the following night.

GSU 67, Illinois 85 (Dec. 8): The Eagles fell victim to illness and a strong Fighting Illini team.

With almost the entire team sick, Southern recorded a season-low 35 percent from the field and hit a dismal 5-10 from the charity line.

The Illini dropped a cool 37-43 from the line to clinch the Illini Classic, a tournament in which they have never lost a game.

GSU 67, Augusta 69 (Dec. 17): Tony Windless once again led a tired Eagle team with 25 points and 10 rebounds.

After leading for the majority of the game, Southern slumped in the final stretch. With eleven minutes remaining in the contest, the Eagles fell victim to foul trouble and cold shooting to lose a lead that they would never regain.

Charlton Young and Emmett Smith also posted double figures on the night with 12 and 10 points, respectively.

GSU 76, Middle Tennessee 80 (Dec. 20): The Eagles traveled to Murfreesboro seeking revenge on a MTSU team that had dropped them 80-77 in Hanner Fieldhouse Dec. 1.

Southern ended the first half down by three points but came back in the opening minutes of the second. The Eagles continued to control the second half until the last minute and a half of regulation time when the Blue Raiders tied the game at 68.

The Raiders dominated the five-minute overtime period. The Eagles could only watch as MTSU opened with a 9-3 run and walked away with the victory.

All five Eagle starters hit double figures in the contest. Tony Windless once again led Southern's scoring effort, posting 19 points. Other Eagle leaders were Emmett Smith (16), Charlton Young (15), Cal Ferguson (11), and Wendell Charles (10).

Albertson's Classic

GSU 65, Northeastern 63 (Dec. 28): Charlton Young dropped a jumper from 17 feet with only three seconds remaining in the game to break a 63-63 tie and win the game.

The Eagles dominated the game, holding the lead until the final seven minutes of the game when the Huskies tied the game at 55. Southern regained the lead, only to lose it when Northeastern tied the game at 63 with 1:28 on the clock.

The Eagles shot 48 percent from the floor with two Eagles posting double figures. Charlton Young hit for 16 while Emmett Smith posted 13 points on the night.

GSU 65, Boise State 68 (Dec. 29): With only 6:20 remaining in the game, the Eagles led Boise State by nine points.

Trailing 31-26 at the end of the first half, Southern came out fighting in the second half, outscoring the Broncos 39-37.

Led by Cal Ferguson's 11 rebounds, the Eagles dominated the boards, pulling down 38 rebounds on the night compared to the Broncos' 22.

Charlton Young took top scoring honors for the night, shooting 43 percent from the field and 50 percent from the charity line to post a total of 20 points.

Cal Ferguson dropped 12 points while Wendell Charles and Emmett Smith recorded 10 points each to aid in the Eagle scoring effort.

Eagles hand Pirates the ball and the game in 60-59 loss

By JAMES DRINKARD
Assistant Sports Editor

Despite capturing a 13-point lead with 4:25 left in the first half and three Eagles scoring in double figures, the GSU men's basketball team dropped their sixth straight road game this season.

The Eagles fell to the Pirates of East Carolina 59-60 in Greenville Wednesday night.

While committing 34 turnovers, the Eagles fell to a 3-7 mark, the worst start for the Eagles since Frank Kerns first took the helm of the team eight years ago and the second worst start in the history of the program.

Senior Cal Ferguson, playing from the forward position, led the Eagles' scoring effort with 15 points on the night. Charlton Young and Tony Windless also

hit for double figures, scoring 13 and 12 points, respectively.

Combined the Eagles were 52 percent from the floor, shooting 63 percent from three-point range. Throw in 57 percent from the line and Southern looks like a team that should have won the game.

As has been said time and again, however, turnovers are a major factor in any ball game. East Carolina ran up 20 points off of Eagle turnovers. That was 33 percent of the Pirates' 60 total points.

ECU's Robin House hit 35 percent of the Pirates' remaining points. House posted a total of 16 points on the evening hitting 50 percent from the field, including two three pointers from long range.

The Pirates also managed to shut down starting center Emmett

Smith. Playing 38 minutes of the 40-minute contest, Smith was able to get away only three shots due to a constant ECU double-team effort.

Despite all the problems, Southern was still "in the game" when they received the ball with only 21 seconds remaining in the game.

Kerns' Eagles were unable to get the ball inside to Smith and attempted a long three-point shot that fell short. The Pirates pulled down the rebound, and the Eagles could only watch the remaining few seconds tick off the clock.

The good news is that the match-up with the Pirates ended Southern's long road trip. After a five-day rest period, the Eagles return to action tonight in Hanner Fieldhouse when they face the Murray State Racers at 7:30 p.m.

CAMPUS RECREATION & INTRAMURAL CALENDAR OF EVENTS WINTER 1991

REC REP MEETING: TUESDAY, JANUARY 8, AT 6:00 P.M. IN HANNER, ROOM 171.

EVENT ENTRIES DUE PLAY BEGINS

TEAM SPORTS

BASKETBALL	JANUARY 8	JANUARY 14
SOCCER	JANUARY 22	JANUARY 28
BOWLING	JANUARY 29	FEBRUARY 4

SPECIAL EVENTS

BASKETBALL TOURNAMENT	JANUARY 15	JANUARY 18-21
5'10" & UNDER BASKETBALL TOURNAMENT	JANUARY 29	FEBRUARY 1-3
FREE THROW SHOOTING	FEBRUARY 5	FEBRUARY 7
BADMINTON TOURNAMENT	FEBRUARY 12	FEBRUARY 18
HOT SHOT BASKETBALL	FEBRUARY 19	FEBRUARY 21
4 PERSON BEACH VOLLEYBALL	FEBRUARY 26	MARCH 4
SPRING SOFTBALL CLASSIC	MARCH 5	MARCH 8-10

MEETING WHEN WHERE

MANDATORY MEETINGS

BASKETBALL CAPTAIN'S MEETING	JANUARY 9 9:00 P.M.	MARVIN PITTMAN GYMNASIUM
SOCCER CAPTAIN'S MEETING	JANUARY 23 7:00 P.M.	UNIVERSITY UNION ROOM 242
BOWLING CAPTAIN'S MEETING	JANUARY 30 7:00 P.M.	UNIVERSITY UNION ROOM 254

OFFICIAL'S CLINICS

BASKETBALL (1ST MEETING)	JANUARY 7 9:00-11:00 P.M.	UNIVERSITY UNION ROOM 270
SOCCER (1ST MEETING)	JANUARY 22 9:00-11:00 P.M.	UNIVERSITY UNION ROOM 275

A DAILY NOTICE OF INTRAMURAL GAMES IS AVAILABLE ON THE CRH HOTLINE AT 681-5261.

FOR MORE INFORMATION, CALL 681-5436 OR VISIT OUR OFFICE AT 140 HANNER.

8 Ball Tournament

In The Union Gameroom

Wednesday, January 16, 1991

7pm to until we have our winners!
The Campus Champion will then advance to the Region IV Games to be held at Troy State February 8-10

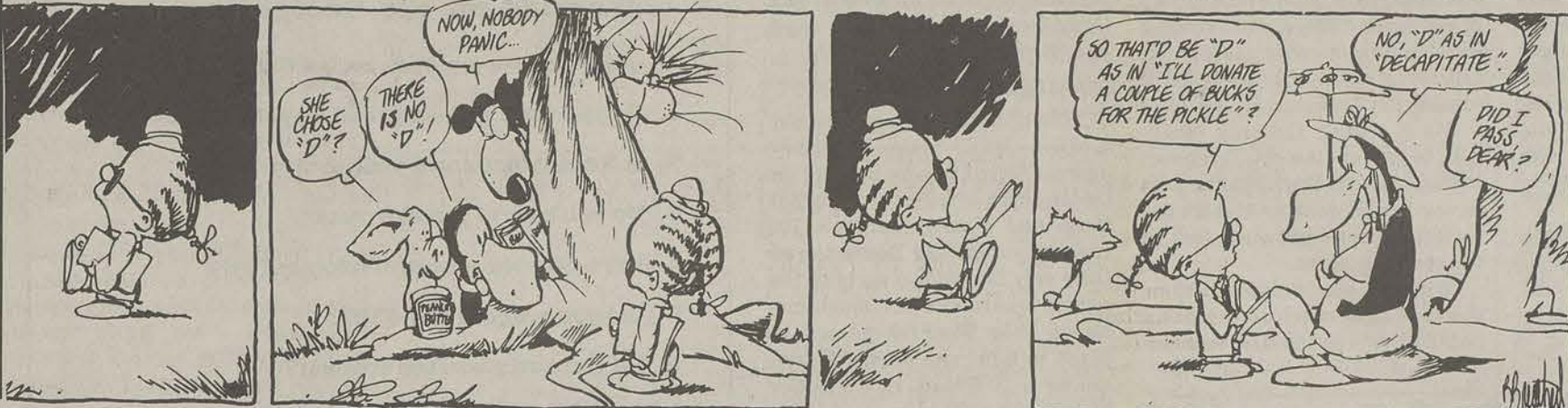
Prizes to be awarded!



Entry fee is \$1.00 and must be turned in with a registration form. Deadline for entry is Tuesday Jan. 15!

Those winners that advance to the region must meet eligibility rules as made up by the ACU-I Recreation Committee!

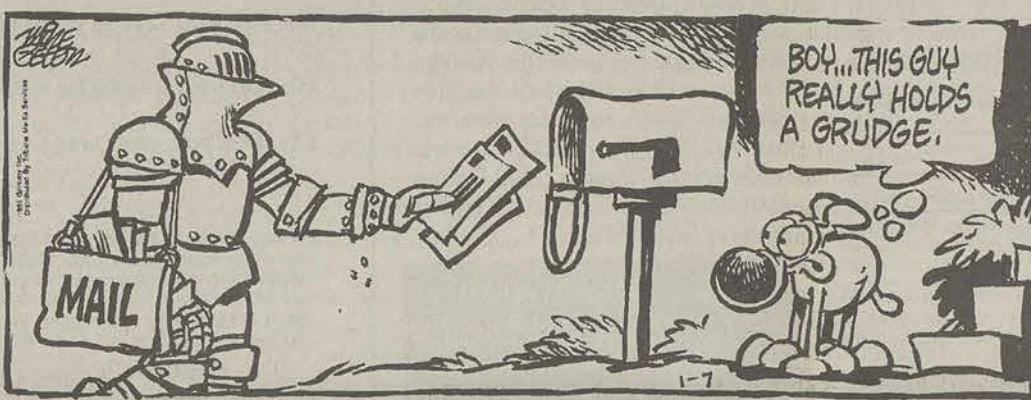
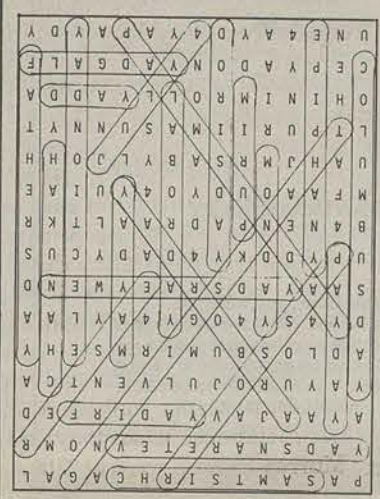




collegiate camouflage

P A S A M T S I R H C A G A L
Y A D S N A R E T E V N O M R
A Y A A J A V Y A D I R F E D
Y A Y U R O J U L V E N T C A
A D L O S B U M I R M S E H Y
D Y 4 S Y 4 O G Y 4 A Y L A A
S A A Y A D S R A E Y W E N D
U P Y D D K Y 4 D A D Y C U S
B 4 N E N P A D R A A L T K R
M F A A O U D Y O 4 Y U I A E
U A H J M R S A B Y L J O H H
L T P U R I I M A S U N N Y T
O H I N I M R O L L Y A D D A
C E P Y A D O N Y A D G A L F
U N E 4 A Y D 4 Y A P A Y D Y

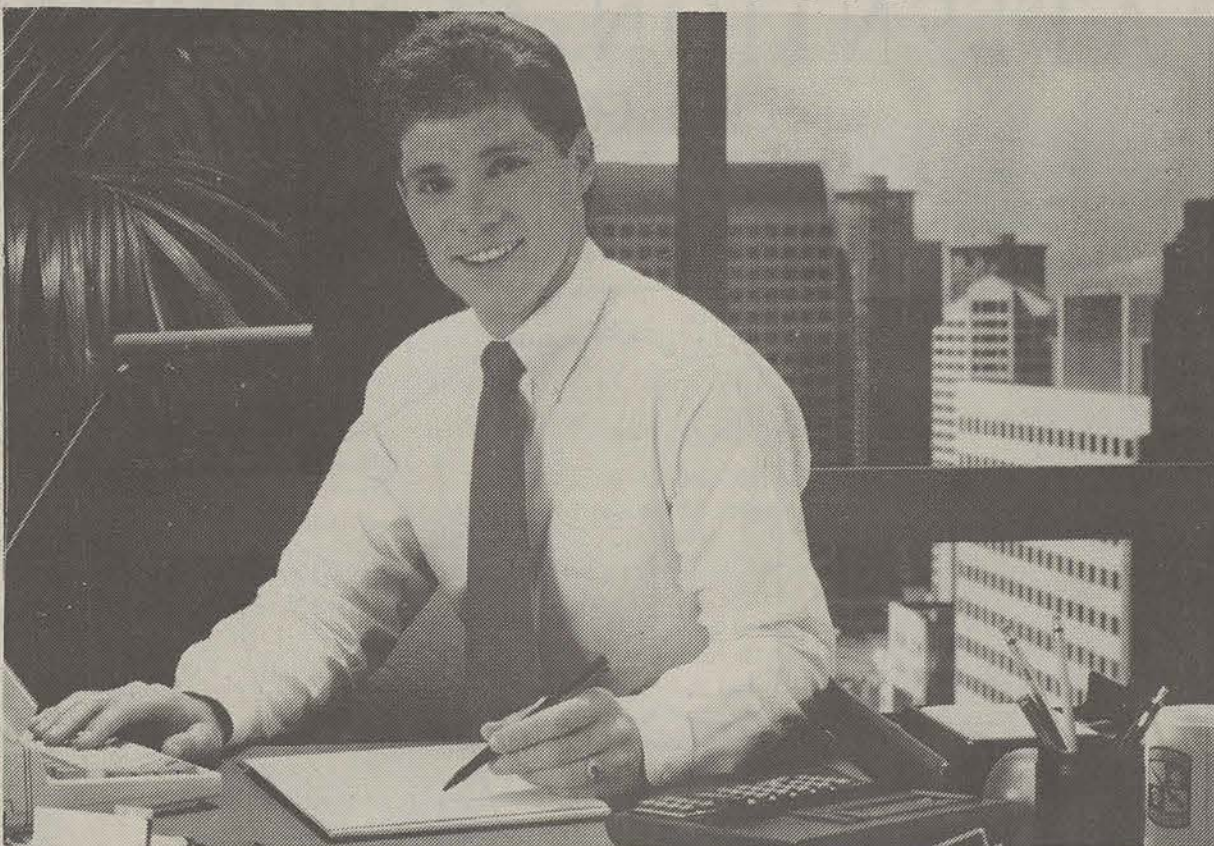
Can you find the hidden days? MAY DAY
MONDAY
NEW YEAR'S DAY
PALM SUNDAY
PASSOVER
PAY DAY
PURIM
THANKSGIVING
VETERAN'S DAY
ARBOR DAY
CHANUKAH
CHRISTMAS
COLUMBUS DAY
D-DAY
DORIS DAY
EASTER
ELECTION DAY
EPIPHANY
FATHER'S DAY
FLAG DAY
FRIDAY
JULY 4
LABOR DAY



Mother Goose
& GRIMM



RESERVE OFFICERS' TRAINING CORPS



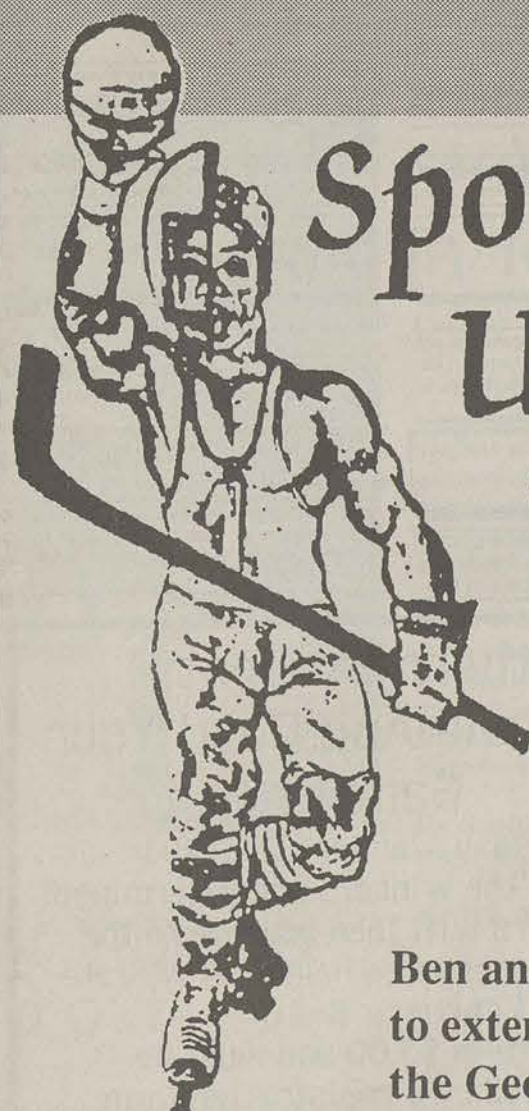
MY DEGREE GOT ME THE INTERVIEW. ARMY ROTC GOT ME THE JOB.

Things got pretty competitive for this job. I'm sure my college degree and good grades kept me in the running. But in the end it was the leadership and management experience I got through Army ROTC that won them over. Army ROTC taught me responsibility, self-discipline and leadership. Those are things you just can't learn from a textbook. I don't know where I'd be right now if I hadn't enrolled in Army ROTC, but I do know one thing for sure... I wouldn't be here.



ARMY ROTC
THE SMARTEST COLLEGE
COURSE YOU CAN TAKE.

CONTACT:
MAJ JOHN FARRELL
SOUTH BUILDING ROOM 134
OR CALL 681-5320



Sports Cards Unlimited

Burton, South Carolina
(803) 522-9699

Ben and Agnes Garvin would like to extend their congratulations to the Georgia Southern Eagles for completing another great season and to say thanks for the many enjoyable afternoons we spent at the games, both at home and away.

Once again, you've proven to the nation, that this is truly "Our House." Maybe now the Atlanta sports writer who said that the Eagles would struggle to win 6 games will print a retraction, while we reload for next season.

Amendment

Continued from page 2

them. But only 3 percent volunteered that flag-burning should be banned; and when asked if the government should be able to tell you what you can and cannot read, 94 per cent of the same sample said no.

Complicating the issue is the retirement of William Brennan Jr. from the Supreme Court.

Brennan, more than any other justice, saw the need for a generous view of the First Amendment, one that would afford wide "breathing space" for obnoxious, even false, so as to protect the "marketplace of ideas."

With him gone, no obvious champion of the First Amendment has emerged.

"This is going to be the press' worst nightmare," says Michael

McDonald of the conservative Center for Individual Rights. "Now that Brennan is retired, the court is ready to make clear to the press that they don't enjoy any greater right to engage in wrongdoing than the public at large."

Which is why press advocates are dreading January, when the Supreme Court will hear arguments in a case that cast the media in an unfavorable light. At issue: whether a New Yorker magazine writer who allegedly altered or fabricated quotations from a source deserves protection from libel lawsuits under the First Amendment.

Also on deck in January: an Indiana case testing whether nude barroom dancing is a form of protected "speech."

Lady Eagles

Continued from page 6

"We just didn't play the mental ballgame that it takes to win this kind of tough game," Greer said.

FAMU never trailed in the first half. The Rattlerettes jumped to a 7-0 lead and led by 11 three times, at 18-7, 22-11 and 26-15.

The Rattlerettes shot just 37 percent from the field in the opening half, but held a 37-32 halftime lead thanks to a 28-18 rebounding advantage over GSU. Innerarity had nine rebounds by halftime, with Allen grabbing seven.

The Lady Eagles didn't grab their first lead, 42-41, until Wilson hit a turnaround jumper in the lane with 14:59 to play in regulation.

Wilson led GSU with 35 points and a career-high 20 rebounds. Simmons scored 18 and Gwen Thomas added 10 to join Wilson in double figures.

Allen paced a balanced FAMU attack with 19 points. Innerarity added 18, followed by Boston's 17.

Greer will see how this loss affected her team tonight when the Lady Eagles host Virginia Commonwealth in a non-conference game.

"The way we respond now will be a big factor," Greer said. "If we come back and play well against VCU, I'll be pleased."

Tip-off is set for 7:30 p.m. at Hanner Fieldhouse.

Championship

Continued from page 1

"I won a state championship in high school, but the feeling of this championship is unbelievable," Mash said. "There was nothing like capping my first season by returning an interception for a touchdown."

Mash wasn't the only freshman to get into the act. Freshman Darius Dawson intercepted a pass in the fourth quarter and sacked Gatlin for an eight-yard loss in the second quarter.

With the win, Stowers became the first I-AA coach to capture a national title in his first season.

Briefs

Continued from page 1

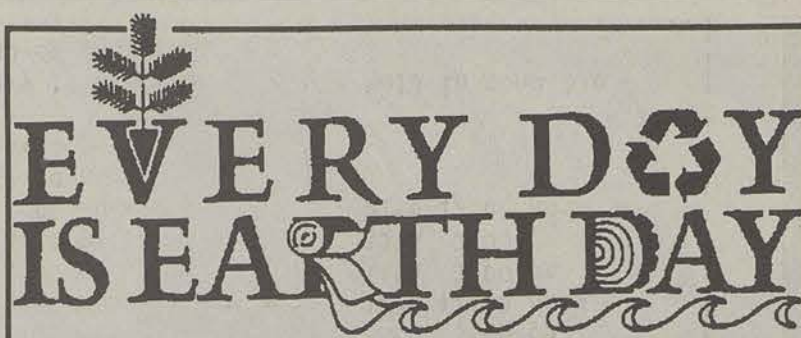
took a 20-0 halftime lead at rainy Riverfront Stadium, holding Houston and backup quarterback Cody Carlson to one first down and 36 yards in the first half.

BEARS BEAT SAINTS:

The Chicago Bears ground out a 16-6 NFC playoff victory against New Orleans Sunday on the strength of a run-stuffing defense and Neal Anderson's 102 rushing yards. The Bears scored their only touchdown early in the second quarter when much-maligned Mike Tomczak passed 18 yards to tight end James Thornor for a 10-0 lead. Kevin Butler kicked three field goals for the Bears.

KNICKS TOP CLIPPERS:

Mark Jackson ignited New York's slumbering offense in the second quarter and the Knicks went on to hand the Los Angeles Clippers their seventh consecutive loss Sunday, 99-90. In other NBA games: Boston 127, Dallas 110; Seattle at Portland; Golden State at LA Lakers.



AIDS Information Line

Get the facts, testing information and help.
CONFIDENTIAL



1-800-551-2728

Mon - Fri 9-9 & Sat - Sun 9-5

Toll Free • Voice /TTY

INFORMACION SOBRE EL SIDA EN ESPANOL
Georgia Department of Human Resources and AID Atlanta

Group

Continued from page 2

"We'll be looking at what kind of person is best-suited to be a student at GSU, and whom we are best-suited to serve."

Nolen will chair the Enrollment Management Council, to be composed of the vice presidents of Academic Affairs and Business and Finance, the dean of Enrollment Services, the chair of the Strategic Planning Council, representatives from the Registrar's and Admissions offices and two additional at-large members

from the faculty.

GSU officials have also elected to limit the entering freshman class of 1991 to 2,858 students. This decision is based on the belief that GSU is equipped to provide that number of students with personal attention.

Nolen said, "The council will ensure that the institution is offering what students need and that they are receiving a quality undergraduate education."

Classified Ads

00 • Classified Policy

• **FREE CLASSIFIEDS** - The George-Anne provides free classified listings to students faculty and staff members of Georgia Southern University as a campus-community service. Free classified ads should be written in 25 words or less. The advertiser's name, Landrum Box, and the classified category (listed below), must be included with your ad copy. All communication regarding free classified ads must be in writing (absolutely NO free classified ads will be accepted by phone... at this price we don't take dictation). Free classified ads will be inserted into the newspaper in four consecutive issues, unless we are instructed otherwise. Ads must be re-submitted in writing for additional insertions. Free ads should be non-commercial in nature. Free classified listings should be mailed to The George-Anne, Landrum Box 8001, GSU. Deadline is noon TUESDAY or noon FRIDAY one week prior to publication.

• **COMMERCIAL LISTINGS** - are available at \$5.50 per 50 words for two insertions in consecutive editions. Classified display advertising is available at \$5.50 per column inch per edition, with a one inch minimum size required. Payment should accompany ad, unless advertiser has established credit. Tear sheets will be mailed upon written request. Contact the Advertising Department: ADS, L.B. 8001, GSU, Statesboro, GA 30460 or call 912-681-5418.

• **GENERAL CLASSIFIED POLICY** - The advertiser is responsible for proofreading ads upon publication. Any errors will be corrected upon written notice. Ads should be in good taste, and are subject to standard editing procedures. The editors reserve the right to refuse any classified ad.

CLASSIFIED CATEGORIES

- 01 - Announcements
- 02 - Arts & Crafts
- 03 - Autos for Sale
- 04 - Auto Parts, Repair
- 05 - Business Opportunities
- 06 - Child Care
- 07 - Education
- 08 - Freebies
- 09 - Furniture/Appliances
- 10 - Garage Sales
- 11 - Help Wanted
- 12 - Lost & Found
- 13 - Miscellaneous for Sale
- 14 - Motorcycles
- 15 - Musical
- 16 - Personal
- 17 - Pets & Supplies
- 18 - Photography
- 19 - Rentals/Real Estate
- 20 - Roommates
- 21 - Services
- 22 - Sporting Goods
- 23 - Stereo & Sound
- 24 - Swap & Trade
- 25 - Television & Radio
- 26 - Vans & Trucks
- 27 - Wanted
- 28 - Weekend Entertainment
- 29 - Too Late to Classify

01 • Announcements

FUND RAISING PROGRAM - \$1000 in just one week. Earn up to \$1000 for your organization. Plus a chance at \$5000 more! This program works! No investment needed. Call 1-800-932-0528 Ext. 50. (1/29)

Best Fundraiser On-Campus Looking for a fraternity, sorority or student organizations that would like to earn \$500-\$1000 for a one week on-campus marketing project. Must be organized and hardworking. Call Marcy or Dave at 1-800-592-2121, ext. 123. (2/8)

Gay and Lesbian Alliance. For information write: Triangle, LB 12502. (1/26)

GSU's non traditional student meeting January 15, 1991, noon, Rm 275 Student Union Bldg. Topic: Financial aid for non-traditional students. (1/15)

03 • Autos For Sale

1985 Black GTI. New teardrop alloy wheels, only 35,000 miles on new engine. Good gas mileage. Call 681-9499. (1/15)

19 • Rentals/Real Estate

For rent: 1 BR large, unfurnished apartment at University Village. \$940 per quarter. Call 681-3931. (1/26)

For Rent: 2 BR apartment at Stadium Walk. No. 199. Call 681-1693 and leave message on answering machine. (1/26)

Room for Rent. Private room in The Lodge Apartments. Only \$150/month plus utilities. Apartment already furnished. Must see! Call 681-9499 (Ask for Tod or Willie). (1/15)

For Rental Information Call 764-5003 - Now available

3BR 2BA house, C/H/A good location, LR, DR, Kit (furnished) nice large utility room, large deck. Available immediately! (1/29)

20 • Roommates

Female roommate needed: close to campus with your own bedroom. \$200 per month plus half utilities. Only need to provide your own bedroom furniture. 681-7999. (1/26)

ASAP: Female roommate needed for Winter Quarter & on. \$100 for rent plus utilities. Close to campus. Washer & dryer available. Call Pam or Tami at 681-3372. (1/15)

Female Roommate needed immediately at University Village. \$470 per quarter. Call 681-3931. (1/26)

21 • Services

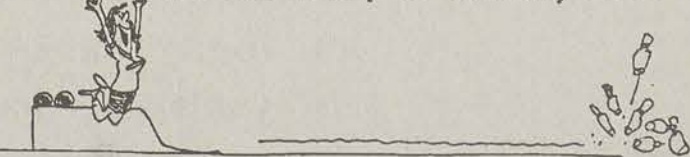
NAILS BY PAM - Sculptured nails \$25.00; manicures \$6.00. By appointment only. 764-3844. Pam Hendrix, owner and operator. (1/29)

TOP OF THE LINE TYPING SERVICE - Word processing. Reports, resumes, theses, term papers, articles, books. Henry Bell. 764-6544 or 681-3716. (1/29)

UNIVERSITY TYPING SERVICE - Word processing for faculty and students. Term papers to books. Editing included. Letter quality printing. Marjorie Bell, Ed.D. 681-3716. (1/26)

Southern Students Find A Lane And Bowl Your Game!

Wednesday, January 23 1991
6pm to until the winners are determined!
The winners will then advance to the Region IV Games to be held at Troy State February 8-10
Entry fee is \$3.00 and must be accompanied by a registration form.
Deadline for entry is January 21!



ENTER YOURSELF OR A TEAM OF (4).

Those winners that advance to the region must meet eligibility rules as made up by the ACU-I

Recreation Committee!

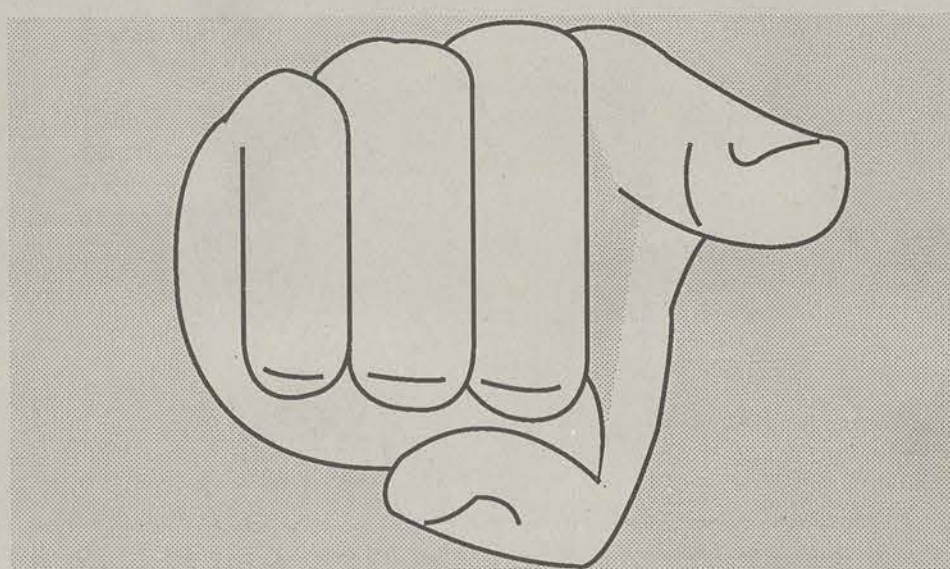
This Tournament is being Sponsored by:



CAMPUS RECREATION & ENTERTAINMENT

ATTENTION SENIORS!

The GSU
PLACEMENT OFFICE
Wants You!



If you are a senior or graduate student finishing your studies Winter, Spring or Summer Quarter 1991, and have not yet attended a PLACEMENT OFFICE ORIENTATION SESSION, do so now.

All students except education majors who plan on participating in on-campus interviews must attend a Placement orientation at one of the dates and times listed below. All sessions will take place in the University Union, room 247.

January

10th 12:00 noon
15th 12:00 noon
17th 3:00 pm
22nd 3:00 pm
24th 12:00 noon
29th 12:00 noon
31st 3:00 pm

February

5th 3:00 pm
12th 12:00 noon
*14th 3:00 pm
19th 3:00 pm
21st 12:00 noon

*February 14th session will be held in room 270 instead of room 247.

For more information and times contact the GSU Placement Office at 681-5197 or stop by room 282 Rosenwald.