

Georgia Southern University

Digital Commons@Georgia Southern

The George-Anne

Student Media

11-9-1990

The George-Anne

Georgia Southern University

Follow this and additional works at: <https://digitalcommons.georgiasouthern.edu/george-anne>

Recommended Citation

Georgia Southern University, "The George-Anne" (1990). *The George-Anne*. 1199.
<https://digitalcommons.georgiasouthern.edu/george-anne/1199>

This newspaper is brought to you for free and open access by the Student Media at Digital Commons@Georgia Southern. It has been accepted for inclusion in The George-Anne by an authorized administrator of Digital Commons@Georgia Southern. For more information, please contact digitalcommons@georgiasouthern.edu.

Inside Today

Classified9
Comics9
Features6-7
News2-3
Opinions4-5
Sports8

Yo & Laura go shopping

See Photo Essay, page 7



Black student opinions surveyed at GSU

See Results, page 4



Liked By Many,
Cussed By Some,
...Read By Them All



The George-Anne

912/681-5246

Vol. 63, No. 16 • Friday, November 9, 1990

Since 1927, Georgia Southern's Official Student Newspaper

Georgia Southern University • Statesboro, GA 30460

News briefs

©Copyright 1990, USA TODAY/Apple
College Information Network

FEW UPSETS IN ELECTIONS:

The 1990 election hurtled an improbable cast of political outsiders into power. Though voters returned most insiders to office, there were some surprises. Their victories carried a common thread, says the Gallup Organization's Larry Huguick: "I think people are looking for honesty and straight-talking these days rather than a prepackaged message."

WILSON DEFEATED FEINSTEIN:

California's new governor Republican Sen. Pete Wilson, who narrowly defeated Democrat Dianne Feinstein, used his victory speech to tackle a state budget shortfall as high as \$2 billion. Californians appeared in a tight-fisted mood at the polls, rejecting tax hikes up and down the state. That may have hurt Feinstein.

RICHARDS UPSETS WILLIAMS:

Texas Gov.-elect Ann Richards was still marveling Wednesday at her historic win. "I thought we were going to win the race, but I was never really confident," she confessed. Richards, a Democrat, becomes the state's first female governor since 1935. Richards' priorities: put the nation's third most populous state in the black without raising taxes and convene an "education summit."

HELMS WINS AGAIN:

Jesse Helms is back, but the scars left by his election triumph may take longer to heal this time around. The no-holds-barred brawl between Helms, the staunch-conservative three-term senator, and Democrat challenger Harvey Gantt held the nation rapt and shook this politically divided state. Helms' won with 53 percent to Gantt's 47 percent.

CONGRESS BRACES FOR 1992:

Democrats and Republicans each claimed victory Wednesday from the electoral wreckage of the 101st Congress, but agreed it will be tough in 1992. The Democrats defeated 10 House and Senate GOP incumbents and picked up six non-incumbent House seats. For the GOP, the lesson learned was historic: Seldom has the party holding the White House kept its losses so low in a midterm election.

DEMOCRATS WIN REDISTRICTING:

Democratic victories Tuesday in key gubernatorial and state legislative races allow Democrats to keep an iron hand on redrawing congressional district lines, and shape them to their advantage for the 1992, 1994, 1996, 1998 and 2000 elections. Redistricting was "the greatest area of Democratic victory," crowed Democratic National Committee Chairman Ron Brown.

BENNETT SAYS HE WILL RESIGN:

Drug czar William Bennett confirmed Wednesday that he will resign later this week as the USA's first drug policy director. Bennett's aides denied the departure was the result of drug traffickers' threats, but questions swirled about why the publicity-conscious Bennett announced his decision to leave while national election news dominated the media.

MOODY INDICTED FOR BOMBINGS:

Walter Leroy Moody Jr., 56, of Rex, Ga., was indicted in the mail-bombing deaths of a federal judge and a civil rights lawyer and is accused of sending other bombs and threats to federal judges last year. Moody is self-employed, running a proofreading business out of his home. The FBI searched Moody's home in February and set up intense surveillance.

Flag sparks controversy

By LAURA McABEE
News Editor

The GSU chapter of the NAACP met recently to discuss the presence of the Confederate flag at football games.

Because of its historical connotations, the flag is viewed by some as offensive, especially in regard to Afro-Americans and women.

"We noticed that they (Kappa Alpha members) had been flying the flag at the home games, and we took action by meeting with Dr. Orr," said Kevin McWhorter, president of GSU's chapter of the NAACP.

McWhorter told the George-Anne that he spoke to Dr. Orr as early as last year about the feelings of animosity created by the flag's presence and was told on two occasions that the flag would no longer be displayed. McWhorter added that the Confederate flag was displayed on several occasions after he spoke

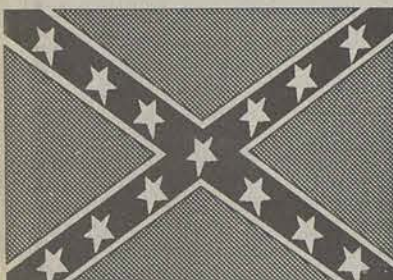
to Orr.

McWhorter said that he did not feel that adequate efforts to prevent the display of the Confederate flag had been made, and says that if the situation does not improve, the NAACP will take further action such as circulating petitions and staging protests.

Members of Kappa Alpha claim that their intent is not to insult or offend other students, and deny that they are sending a racially oriented message.

Hal Fulmer, Kappa Alpha faculty advisor, says he has encouraged sensitivity to these issues among the fraternity members. "Part of being at a University," says Fulmer, "is understanding differences and tolerating these as much as you can."

Randy Gunter, MAP coordinator, upward bound director and faculty advisor to the Black Student Alliance, agrees that a university environment should be a place where persons of all cultures meet with acceptance.



"From my vantage point, I see that the Kappa Alphas have a right to display the flag, but also that we as educators have a right, a responsibility, to examine our symbols," said Gunter, who continued, "We are failing as educators if we do not point out these things."

Fulmer said that some chapters of Kappa Alpha are on record as not being displaying the flag publicly because of its association with various right wing groups.

Fulmer says he is not aware of any similar policies being considered by GSU's Kappa Alpha



Members of Kappa Alpha fraternity are pictured here attired in full Confederate regalia. (file photo)

chapter, but says, "One of the things I have encouraged them to do is to just leave the flag back at the house."

Orr said, "I think it's certainly not a secret that the Confederate flag carries different connotations based on one's heritage."

However, "some people see it

(in reference) to a time when they were oppressed," said Orr, who added that that he is "convinced that (to the Kappa Alphas) the Confederate flag does not stand for oppression."

See FLAG, page 10

New parking system working

By LAURA McABEE
News Editor

According to Chief of University Police Ken Brown, GSU's new parking system is successful, and has met with relatively few complaints.

The grievances that Brown has fielded deal primarily with the lack of parking spaces for students.

Due to the reconstruction of GSU's tennis courts, new modular buildings being placed in parking lots and the implementation of gated faculty lots, there are fewer student parking spaces.

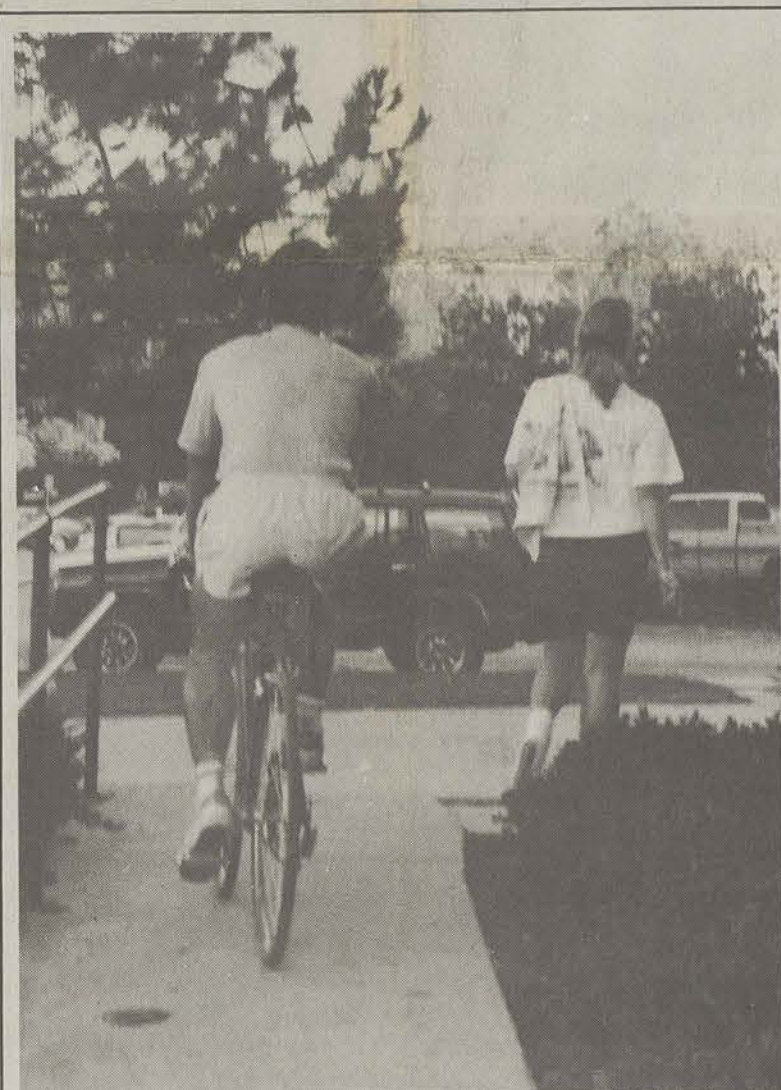
"(Parking is at) more or less an acceptable level, but acceptable might not be adequate," said Brown, who added that problems may be alleviated with the completion of the parking lot on Perimeter road.

"We are happy with the progress of the new lot. Maybe we can start parking cars there as early as Winter quarter," Brown said.

Despite a few initial computer-related glitches, the gated locks that separate faculty parking lots apparently have been effective. "The arm (of the gate) would go up for no reason," said Brown, who added that these problems had been corrected.

"We had a few people try to go around the gates, and some people ran xerox copies of the cards (that open the gates)," said Brown, but these cars were ticketed because "they didn't have a hang tag." Brown added that replicating the hang tags was difficult because the gold paint embossed on the tags does not copy well.

Numbers of stolen cards are removed from the computers, thus



Bicycle concerns on campus

By WENDY WRIGHT
Staff Writer

GSU officials are concerned bicycle riders are a potential hazard to pedestrians.

"Bicycle riders need to be more considerate of other people," said Dr. Jack Nolen, Vice-President of Student Affairs. "They ride at high rates of speed and weave in and out of cars. And I am concerned this may cause someone to have a serious accident."

According to Dr. Nolen, the long term solution to this problem may be the installation of bike paths or extra-wide sidewalks.

"Bicycle riders complain that automobile drivers are careless in traffic. But I also feel, in the same respect, that bicycle riders need to pay attention to pedestrians," said Dr. Nolen.

The University Police regulations state that bicyclists must obey and use the same highway signs, traffic signals, and pavement markings as other vehicle drivers.

No fire alarms at In-the-pines apartments

By LAURA McABEE
News Editor

The Pines Apartments, located on Chandler Road, currently are not equipped with either smoke detectors or fire alarms.

"The fire codes simply don't require alarms," said Ted Wynn, safety coordinator with the GSU public safety department, in reference to the late 1960's fire codes that were in effect when the Pines Apartments were constructed.

The apartments are exempt from inspections by the Fire Marshall as well, says Wynn, attributing this primarily to the fact that the Fire Marshall is required to inspect buildings of three stories or more.

Since the Pines is a two-story complex with doors opening directly onto the street, inspections are not deemed necessary.

Wynn, who said that the building currently meets applicable fire codes stated: "The only type of smoke detectors we could put in (the apartments) are individual fire alarms."

"If the University put (an alarm) in there, you've got to be sure it'll work all the time," said Wynn. He added that students could not always be relied on to check batteries or otherwise keep the smoke alarms in working order.

The installation of alarms is not legally required for the Pines. If a fire occurred in an apartment, GSU could be subject to greater liability (than if no alarm was installed) if voluntarily installed fire alarms malfunctioned.

'If the University were to put (fire alarms) in there, you've got to be sure it will work all the time.'

Ted Wynn

Robert Perry, manager of the Pines Apartments, said he feels that if something happened "we'd be able to handle it." And he stated that fire extinguishers are already ordered for each apartment.

The Housing Department encourages students to purchase and install alarms on their own, according to Wynn. Apparently, if students purchase the alarms, GSU is not liable for any damages incurred.

Wynn said the high cost of installing a central alarm is one reason why one had not been implemented. "It (an alarm system) would cost upwards of fifty to sixty thousand dollars," said Wynn.

He continued, saying, "Other (off campus) apartments don't have these alarms. They (the other apartment complexes) are the same as the Pines as far as I am concerned."

Wynn cited brick fire walls that divide the length and width of the buildings as existing fire protection devices. And added: "From a safety standpoint, I'd like to have them (smoke alarms), but from a cost standpoint, I understand."

See PARKING, page 10

911 program being considered for Bulloch county

By CHARLES WHITE
Associate News Editor

GSU students and local residents have long wished for a county wide 911 system. Bulloch county has responded by creating a committee to look into the possible options and costs of installing such a system.

A "911 Steering Committee" has been created to determine what variation of an enhanced 911 system would be most ideal both practically and economically.

The committee is comprised of twelve people representing nearby towns, the college, and experts in various technical and medical fields.

The 911 committee will make a recommendation to the Bulloch county commission which will make the final decision as to whether or not a system will be installed and, if so, which one.

The 911 committee hired Hambric and Associates from Alabama to help determine the possible options and operating costs.

The firm will present several master plans each having various options. Which ever option is chosen, 11 to 13 full time employees will be required to operate the system.

The master plan will describe exactly what services will be available. It will also give a start-up and operating cost breakdown for the first, second, third, fourth, fifth, and tenth years.

The 911 committee is presently waiting for the final report, which is due next month, from Hambric and Associates.

"The main issue," says 911 Steering Committee Chairman Lee Eckles, "is annual operating costs."

The additional money required to operate the system would come from an increase in phone service subscribers monthly phone bills. The increase has not yet been determined but it's estimated to range from as little as five cents up to, but not more than \$1.50.

"I feel the operating costs will be in a range which will be easily accepted by the County Commission," said Eckles.

"If the county commission grants approval, work will begin immediately installing the system. Depending on several variables, it could take anywhere from 9-24 months to complete."

The Statesboro Telephone Company gave Bulloch county \$400,000 to pay for the initial start-up costs involved with offering the service. The money is for items such as computer hardware, computer software, and the cost of creating a data base. The money will not pay for the cost of buildings or for salaries.



Farmers and Merchants Bank recently held a drawing for a VCR and \$30 in gift certificates from Little Caesar's Pizza. Those eligible for the drawing were F&MB's newest Eagle Account customers. Pictured above are Billy Tyson, President of F&MB, and Lisa Glisson, Assistant Banking Officer and ATM Coordinator, presenting the VCR and gift certificates to Sophia McRae, freshman at GSU from Alamo, Georgia. The photo was taken in the Union's Banking Facility where F&MB's newest ATM is located. (Photo special to the George-Anne.)

Campus Announcements

From G-A staff reports

Theatre South will present the play *The Prom Party* tonight and tomorrow at 8 p.m. in McCroan Auditorium in the Administration Building. *The Prom Party* was written by Rebecca Morehouse and will be directed by David Addington.

Admission is \$1 for GSU students and faculty, \$2.50 for pre-college attendees, and \$4.50 for general admission.

The play takes place in the summer of 1933 during the middle of the Great Depression in south Georgia. Few will fail to recognize Bulloch County as the thinly-disguised setting for the play; well-known names and places are abundant.

Morehouse is a native of Bulloch County and wife of the late Ward Morehouse, respected New York

theatric critic. The familiar prom party is seen from the eyes of the daughter of a sharecropper who is invited by the daughter of the plantation owner.

The film *The Go-Between* will play Monday, November 12 at 7 p.m. in the University Union. The internationally-acclaimed movie, winner of the Grand Prix for Best Picture at the Cannes Film Festival in 1973, portrays the emotional complications of puberty as well as the social and class distinctions of the turn-of-the-century England. Julie Christie and Alan Bates star in the film directed by Joseph Losey. In English

Recording artist Taylor Dayne will sing in the Hanner gym Friday, November 16 at 8 p.m. Some of Dayne's hits include "Every Beat of my Heart," "Love will Lead us Back," "Prove Your Love," "Heart of Stone," and "Shelter."

Professional artists of all types—painters and poets, actors and architects, filmmakers and

invited by the daughter of the plantation owner. The Georgia Council of the Arts. December 1, 1990 is the application deadline for artists wishing to conduct residencies during the 1991-92 school year. For more information and an application packet, contact the AIE Program, Suite 100, 2082 East Exchange Place, Tucker, GA 30084; (404) 493-5788 or 89.

Southern news briefs

Art Show

An art show titled "A New Vocabulary" will be on display from November 2-30. The show will feature works of drawing and printmaking. The opening will be Friday, November 2 from 7 p.m. until 9 p.m.

Fall Music Festival

The Second Annual Statesboro Fall Music Festival will be presented Saturday, November 10, from 12 noon until midnight, at the Kiwanis-Ogeechee Fair Grounds near Statesboro.

Among the bands scheduled to perform are Me an' Mills, Old Man's Beard, Love Agnes, Never Mind, Axe Angel, Nervis Rex, Dandelion Wine, and Fire Yard (formally Subject to Change). There also will be food booths, and arts and crafts booths with items for display and for sale.

Admission to the Festival is \$5 per person at the gate. For further information, interested persons should contact Robb Fowler at 489-3323 in Statesboro after 6 p.m.

Tour of Pretty Flowers

GSU's Southern Center for Continuing Education will host a tour of the American Camellia Society Gardens near Fort Valley on Friday, November 9 and 30 departing from Statesboro at 8 a.m.

The trip will include tours of the internationally famous collection of Camellias, an authentic Japanese Garden, and formal rose garden. The Society also houses

the most complete and extensive collection of Edward Marshall Boehm porcelain in the world. The fee is \$25. To register, call 681-5551.

Pianist Performs in Foy

Susan Thomson, instructor of music at GSU, will present a free piano recital at 8 p.m. November 16 in the Foy Recital Hall.

Thomson will play works by Mozart, Schubert, Chopin, and contemporary female composers Boulanger, Erkmann, and Heller.

She is a graduate of the Eastman School of Music and the Florida State University School of Music, and has been a member of GSU's music faculty since 1985.

Commissioner named alumnus of year

Lonice C. Barrett, commissioner of the Georgia Department of Natural Resources and director of environmental protection, has been named the Alumnus of the Year for the GSU of Health and Professional Studies.

Barrett is a native of Macon who earned a B.S. degree in recreation from GSU and a Master of Education from Georgia State. From 1967-70 he was director of parks and recreation in Statesboro. He joined the Georgia Department of Natural Resources in 1972, and has served in various capacities with that agency until his August 1990 appointment as commissioner.

Now residing in Dunwoody,

Barrett is married to the former Carol Hicks of Decatur. The couple have two children, ages 23 and 21.

International pianist to visit

Pianist Tian Ying, a rising star of international piano performance, will perform at 8 p.m. November 13 in the Foy Recital Hall.

Ying, 21, was the fifth place finalist in the prestigious 1989 Van Cliburn International Piano Competition, where he was praised by critics as having "the most fascinating piece of the finals."

"His quality of sound is intensely imaginative, achieved and beautiful, with the capacity for largeness and fullness," wrote Paul Griffith of the *London Times*. "He showed in his phrasing a courtesy towards the music, inviting it rather than applying force, that was rare."

Ying will also perform at the Hong Kong Philharmonic, the Chicago Sinfonietta, the Fort Worth Symphony, and the Pennsylvania Sinfonietta.

His GSU performance will highlight selected works by Liszt, Schumann, Chopin, and Rachmaninov.

Tickets for the CLEC sponsored concert are available in Room 111 of the Foy Fine Arts Building.

NOW OPEN

Lakeview Driving Range
Weekdays 9-6, Sunday 1-6
5 miles out on Lakeview Rd.
587-2636

Campus Briefs

©Copyright 1990, USA TODAY/Apple College Information Network

Indy 500 for kids?

Indianapolis 500 veteran race car driver Tony Bettenhausen is steering toward a new goal — helping young people understand physics.

Bettenhausen's Gasoline Alley garage at the racetrack was used recently to create a video project, Physics at the 500. It was developed by three professors at Ball State University, Muncie, Ind., to show that physics and science can be fun.

The project uses Indy 500 cars to demonstrate principles such as friction and the Doppler effect, the change in sound waves you hear when a racing car comes toward you and then speeds away. The video will be on permanent display at the Children's Museum of Indianapolis and will be available to schools.

Financial need met

DePauw University, Greencastle, Ind., has announced it will meet the financial needs of all qualified Hispanic students who are admitted to the liberal arts school beginning the fall of 1991.

The school says there will be 12 Hispanic Student Leadership Awards that will provide a full-ride scholarship for winners. (This is similar to an existing scholarship program for blacks.) The other financial needs for Hispanic students will be met through a combination of scholarships, loans and work-study jobs. The school says it also will match scholarship monies given to Hispanic students by local business and community organizations.

Hispanic students who want more information should phone John Mosquera, DePauw's director of Hispanic and international admissions at 800-447-2495.

Minorities at Smith get cultural center

Smith College students have reached a compromise with the administration in their weeklong protest over the lack of a multicultural center on campus.

Under the agreement reached last Thursday, the Northampton, Mass., women's college will convert a center for commuter students, Hampshire House, into a temporary home for minority groups. The students had had their eye on another building, Lilly Hall.

The protest involved about 60 students who occupied the main halls of the administration building, refusing to move until administrators developed a plan to better serve minority and foreign students.

About 17% of the 2,600 students are non-white. School choice debated on cable show

Those who are interested in the parent's right to choose a school for their child may want to tune in for Communities and Their Schools: Should Parents Choose? on cable's The Education Network (11:30 a.m. EST/8:30 a.m. PST) Nov. 17.

Rockin' Eagle Cafe

Live bands almost every night!

Wed. - Fri. Draft specials 'til 10:00 pm!

Doors open at 7 pm

For more info. call 681-7204

SPECIAL OFFER!

The George-Anne
Georgia Southern University
A Southern Tradition For Over Sixty Years

It's the university newspaper that's ...

READ HOT!

student (stoo'dənt) *n.* 1. one who attends a learning institution. 2. one who never writes home except for money.

Now, let your parents and friends know what is going on at your home-away-from-home with a special \$12.00 student rate subscription to the George-Anne, GSU's only official newspaper. That's 33% off of the regular subscription rate! Order today, this offer is only valid during fall quarter of this year.

☐ Yes, send a subscription of the George-Anne to this address: _____

☐ Check here if this is a gift subscription, and we will send a gift card in your name and a pocket calendar to the recipient.
Subscription sent by: _____

Mail to the George-Anne, LB 8001, Statesboro, GA 30460
Please enclose \$12 check or money order with subscription.



presents in concert

Taylor Dayne

Friday,
Nov. 16

Showtime 8 pm in
the Hanner
Fieldhouse

Tickets go on
sale Nov. 5
Union
concession
stand &
Peppermint
Records &
Tapes

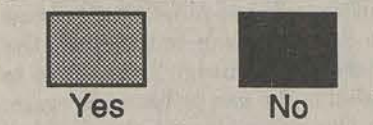
Tickets:
\$8 with GSU
student ID
\$12 General
Admission



Black Students Speak Out on Racial Issues

About the survey

(Editor's note: This survey was completed in Spring quarter, 1990. It was conducted by Harry Carter, Vice President for Academic Affairs, and Randy Gunter, MAP Director, Upward Bound Chairman, and faculty advisor to the Black Student Alliance. Graphics were designed by Charles C. White, Assistant News Editor.)



Number represent percentages.

Do you spend most of your social time with other black students?



Have you ever lived with a roommate of another race?



Have you ever run for office in a campus organization?



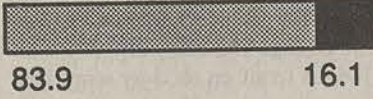
In your opinion, are there sufficient social opportunities on campus for black students?



Do you believe that black students have the same housing opportunities off campus as white students?

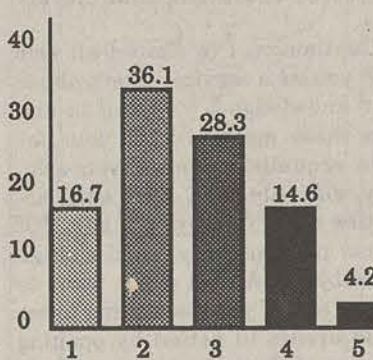


Do you believe black students have the same housing opportunities on campus as white students?

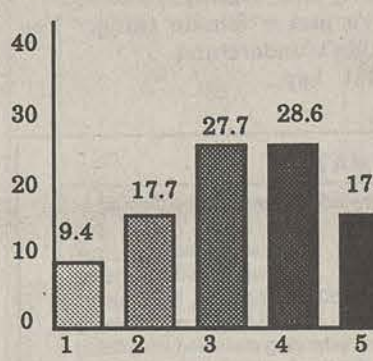


The following graphs were based on a scale from 1 to 5, 1 meaning none and 5 meaning a great deal.

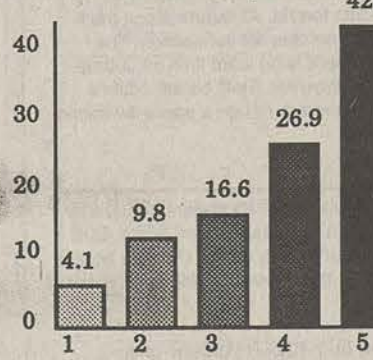
How much racial discrimination (if any) do you feel there is in the classroom?



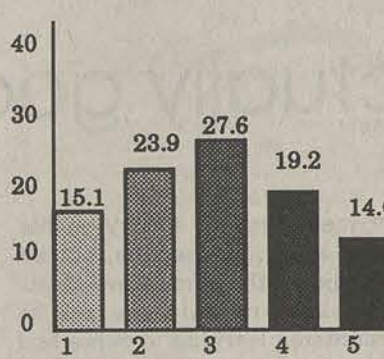
How much racial discrimination (if any) do you feel there is in campus activities?



How much racial discrimination (if any) do you feel there is in the Statesboro community?

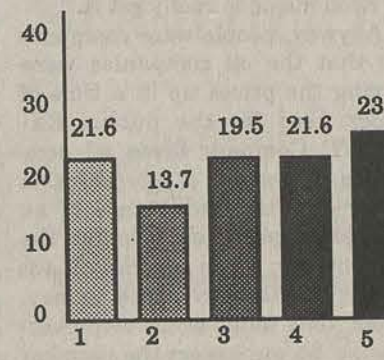


How much racial discrimination (if any) do you feel there is in the College administration?

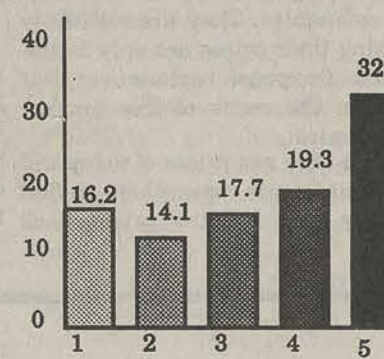


The following graphs were based on a scale from 1 to 5, 1 meaning strongly disagree and 5 meaning strongly agree.

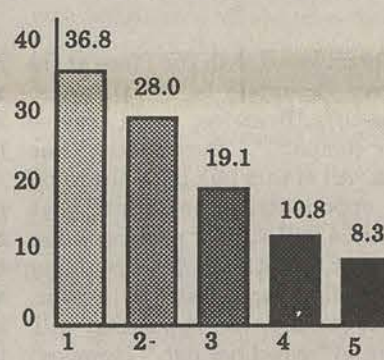
I am sometimes limited by false assumptions or expectations that others hold about me because of my race.



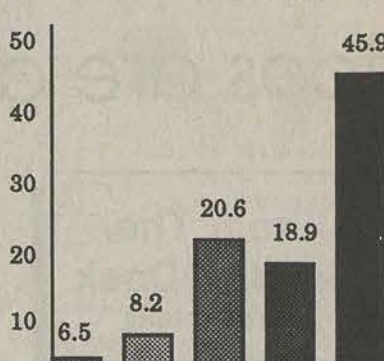
At GSU, I socialize primarily with my own race.



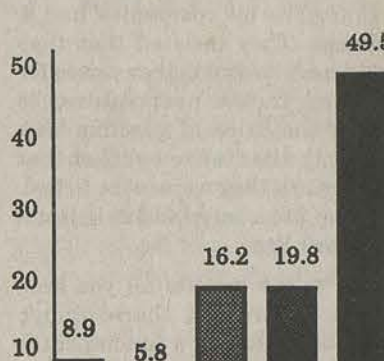
Blacks have the same opportunities as Whites at GSU.



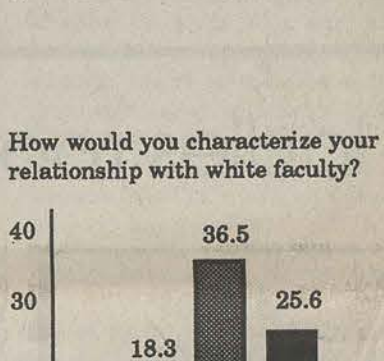
Black students are more likely to seek help from black faculty/staff than from white faculty/staff.



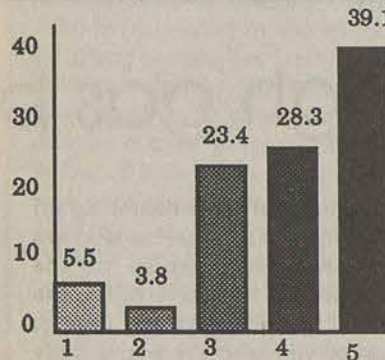
GSU should establish a special office for dealing with the needs of black students.



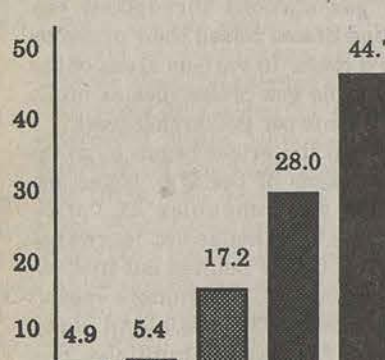
The following graphs were based on a scale from 1 to 5, 1 meaning poor and 5 meaning excellent.



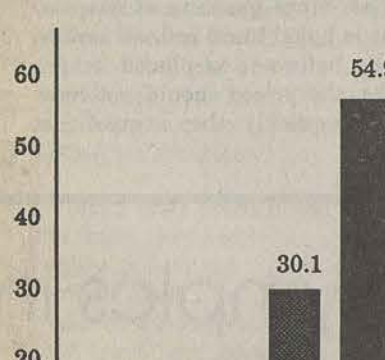
How would you characterize your relationship with white faculty?



How would you characterize your relationship with black staff?



How would you characterize your relationship with black students?



-Radical Rap- E.T.W.

Coming to Georgia Southern
November 12 11:00 - 3:00 p.m.

Outside the Student Union
at Rotunda

7:00 from Commons Stage - Union

Open to All Students



HERE'S WHY THE SMART MONEY AT GEORGIA SOUTHERN IS GOING WITH TIAA-CREF AS IF THE FUTURE DEPENDED ON IT.

Because it does. Smart investors know that your future depends on how well your retirement system performs. TIAA-CREF has been the premier retirement system for people in education and research for over 70 years. We have enabled over 200,000 people like you to enjoy a comfortable retirement. And over 1,000,000 more are now planning for the future with TIAA-CREF.

SMART MONEY LOOKS FOR SECURITY, GROWTH AND DIVERSITY FOR RETIREMENT SAVINGS.

Security—so the resources are there when it is time to retire. Growth—so you'll have enough income for the kind of retirement you want. And diversity—to help protect you against market volatility and to let you benefit from several types of investments.

THAT'S EXACTLY WHAT YOU GET WITH TIAA-CREF.

TIAA offers you the safety of a traditional annuity that guarantees your principal plus a specified rate of interest, and provides for additional

growth through dividends. CREF's variable annuity offers opportunities for growth through four different investment accounts, each managed with the long-term perspective essential to sound retirement planning:

- The CREF Stock Account
- The CREF Money Market Account
- The CREF Bond Market Account
- The CREF Social Choice Account

CALL 1-800-842-2776
TO FIND OUT MORE

Our experienced retirement counselors will be happy to answer your questions and tell you more about retirement annuities from TIAA-CREF.

Experience. Performance. Strength. Your future is protected by the largest private retirement system in the world. We have done so well, for so many, for so long, that we currently manage some \$85 billion in assets.



Ensuring the future
for those who shape it.™

For more complete information, including charges and expenses, call 1 800 842-2733, ext 5509 for a prospectus. Read the prospectus carefully before you invest or send money.

18 HOLES PUBLIC Meadow Lakes GOLF CLUB

Church
Langston Chapel Road
Paulson Stadium
CAMPUS

LOCATED NEAR CAMPUS • OPEN 7 DAYS A WEEK
839-3191

OPEN
7 Days A Week
M - F • 8 AM until...
Sat-Sun • 7 AM until...
Wednesdays
Georgia Southern Student Day
(STUD ALL DAY • 8 AM until...)

PERFORMANCE /WORKS PRESENTS



BY
REBECCA BROWN

NOV 14, 15, 16 & 17
AT 8 p.m.
COMM. ARTS 'BUILDING'

ROOM 101
FREE ADMISSION



George-Anne

Since 1927, Georgia Southern's Official Student Newspaper

Clint Rushing
Editor

Gary A. Witte
Managing Editor

Laura McAbee
News Editor

Opinions

Liked By Many,
Cussed By Some...
Read By Them All

Friday, November 9, 1990

Reader responds to 2 Live Crew letter

Dear Editor,

This is a response to Ms. Deborah Davis and her views on 2 Live Crew (October 30, 1990).

First I will correct a few errors of fact in the letter. There has NEVER been any serious effort to criminalize organized religion. Perhaps there should be an effort to control the business of religion (Bakker, Falwell, Swaggert, Robertson, et al), but not the practice of religion. The Constitution guarantees that no official religion will be created. Additionally, the 14th amendment says, "No state shall make or enforce any law which shall abridge the privileges or immunities of citizens." As we all know one of the privileges is the right to free speech. Rap or any other singing is definitely speech and should be protected.

Furthermore, Mrs. Davis errs in her letter because there is no mention of the "pursuit of happiness" in the U.S. Constitution; however, Thomas Jefferson did want assure your right to pursue happiness in the Declaration of Independence.

Now that I have fixed a few of the errors of fact I will attempt to fix the errors of substance and logic.

"Expressions of filth?" What does that mean? Is nudity filth? Are swearing and cursing filth? Are pictures of sexual activity filth? What about a song that is by most standards suggestive or even filth? Should this filth be allowed? YOU BET! Mrs. Davis if all the above is filth then where will you draw the line? Is the annual swimsuit issue filth?

If you will censor the filth then where will it stop? What about the communists? Do we censor them? When does the filth become un-American? (because we know

communists are un-American) Censorship at any level, whether it be music, newspapers, or movies is bad for the country, but censoring what paying adults are allowed to view is horrific.

Finally, is sex meant to be a public spectacle? No one would make that claim. But I sure as hell do not want to dictate everyone's sexual habits. If 2 Live Crew wants to hold a concert in which they talk vulgar and act lewd for adults only then they have every right. I would not attend the concert but then I am not one of their fans.

Sex is different for each American and human. Some view it as a private thing between consenting people. But as we all know some view it as a thing to share with a group. Some might wish to pay for it on a street corner or in a high class, Nevada ranch. Sex is quite distinct in that there are no rules for it; everyone has his own rules and we should all hope the individuals with similar views find each other.

But making sex a public spectacle has nothing to do with the music of 2 Live Crew. They sing songs mentioning sex, often in very graphic detail, but that alone does not make it a spectacle.

Bottom Line: If you do not like 2 Live Crew then do not go listen to them; do not allow your children to go to their concerts or buy their albums. Eventually, if enough people begin to let the 2 Live Crew members change and/or disappear, either way you will win. But Mrs. Davis you absolutely cannot censor them or any other free speakers without taking some of everyone else's rights away also. Everyone loses when some one group is not allowed to be heard.

Joseph C. Hayes

Student angry with local wrecker service

Dear Editor,

I am writing to you in response to the towing articles in the November 2 edition of *The George-Anne*. I have recently had a conflict with Howell's Wrecker service here in Statesboro myself.

Two friends and I decided to go to Thursday's one night; upon arrival we had no place to park. Knowing that it is illegal to park along the road, we parked at the Statesboro Bowling Center. After we were in Thursday's I got the message that someone was towing cars in the bowling center's parking lot. I immediately left Thursday's and returned to my vehicle. Signs were pointed out to me that stated the parking lot was for bowling patrons only. There were approximately ten cars in the lot. Del Howell had his wrecker hooked to another car before stopping me and telling me that I had to pay him fifty dollars in cash before I could move my vehicle. Mr. Howell leaned against the door of my vehicle and demanded money or he would tow it. He refused to move until I paid the fee. Now I ask, what service did he provide

myself or the Statesboro Bowling Center regarding me? When I realized I was illegally parked, I was more than willing to move but was forced to pay a towing fee when my vehicle was not in process of being towed.

Notice the section of the article that states, "Howell admits that sometimes he gets irritated with what he considers to be disrespectful students and raises the initial price of the tow." Also notice that Mr. Howell told *The George-Anne* staff that when an "irate" student comes to pick up his automobile, he normally will charge him the initial quoted price. Here are two prime examples of the underhandedness of this so-called businessman. I understand that no one is going to be happy about having his car towed, but other wrecker services seem to do the job with a little respect than Howell's Wrecker Service.

Being a Bulloch County native I am aware of the reputation Howell has as a person and a businessman. He acted very irresponsibly

See WRECKER, page 10

High gas prices are actually good for us!

From The Editor's Desk Clint Rushing

This column is dedicated to all the consumers in America who are down on oil companies in the United States who have raised the price of gasoline at the pump. Those of you who gripe and belly ache about high gas prices need to sit back and listen to the logistics of the increase.

On the second of August, Saddam Hussein's troops seized the tiny nation of Kuwait. The next day gas stations throughout the United States raised their prices by 2 to 6 cents. In various areas of the U.S. some gas prices rose as much as 20 cents per gallon that week.

When the prices began to go up the citizens of the U.S. began accusing oil companies of "price gouging." As economic journalist Charles Oliver pointed out in a recent article, "U.S. Senators Joseph Lieberman (D-Conn.) and John Kerry (D-Mass.) publicly denounced oil companies in a hastily arranged public hearing."

Many state attorneys were calling for federal investigations in domestic oil pricing. Even President Bush was a bit skeptical of the dramatic and seemingly unfair price increase in gasoline.

Most legislators had this specific complaint about the oil companies: Since gasoline at gas stations is bought and refined several weeks before it is placed in the tanks, the prices should not have risen so quickly; they argued that

the increase in the crude oil price wouldn't have showed up at the pump for at least those several weeks. An overnight increase such as the one which occurred could not have been caused by higher oil prices.

Fine. The oil companies had a response. They insisted that they would have to pay higher prices for crude oil in the near future, so raising the price of gasoline was their only alternative to offset that future pinch they were sure to feel. But from \$14 a barrel to \$29 in just a few days? Yep.

But wait a minute all you economics majors out there; didn't both sides overlook a fundamental principle that all business students were drilled on over and over again in Econ 250?

The price of a good is totally unrelated to the costs of manufacturing it. Prices are determined by the law of supply and demand, remember? To put it in perspective for college students, there is only one M.C. Hammer, but there are millions of Hammer fans. Hammer makes mucho money on his record sales and concerts, but no one believes that the money Hammer makes is related to the costs he encountered learning to dance and sing.

In the competitive market record store owners mark up Hammer's records until some competition comes along and stabilizes the market thus driving the prices down and causing an equilibrium price for Hammer's albums. Get it? I guess you have to be an Econ major to really get it.

Anyway, people were complaining that the oil companies were driving the prices up in a time of major need for the public. EX-ACTLY! Compare these oil companies to doctors or plumbers. A doctor will take advantage of an emergency situation to make the most money; when you're sick the doctor is there to make money. When your toilet won't stop overflowing do you expect the plumber to cut his prices? Hell no, you bitch about it for a while then you finally break down and pay him. The same thing has happened with the oil companies. They are rightfully raising their prices not only in the name of expense replacement, but also in the name of free market economics.

The high gas prices of today will eventually stir researchers to find a way to bring the prices back

down. It's actually good for us. Prices will eventually level off and we will see relief. But for now we need to hang tough until the prices create enough competition to stabilize the gas prices once again.

One other thing, beware of bureaucrats in election year calling for price ceilings on gasoline in the U.S. We also learn in Econ 250 that such would reduce incentive to produce oil and take away the competitive research for more cost effective ways of refining oil. High prices, believe it or not, will attract new competitors and draw new resources into the production of a commodity. Trust me, it's all economically sound. Just like in the early 1970's when the government imposed price ceilings on oil, the prices at the pump went as high as they could and then the oil companies became discouraged and cut production. While consumers had a strong incentive to use oil, the companies had little incentive to produce it. Once the price controls were lifted in 1981, the prices began to fall as the supply was brought in line with the demand.

So the next time you go to the pump and bitch about the gas prices just remember that you're experiencing free market economics which makes this nation as great as it is. Also, you don't have to buy the gas- you can always walk.

Olympics in ladies room: Restroom follies

Guest Column Lynne Starling

Okay guys, here's your chance. Just in case you've never seen the inside of one, or always wondered "just what in the heck do they do in there?" I am about to enlighten you by sharing with you the dark realm of...the ladies' room.....!

For instance, I know you're all going to know why it is we tend to go to the ladies' room in groups of 2 or more. I also know that many of you have asked your fathers this question. Well, I assure you that any logical explanation he gave like, "They need someone to hold the door," is a complete lie. The thing is, your father doesn't know. Neither does his father. Or his. And so on. But your mother knows. However, you needn't bother to ask her. She won't tell you the truth. She might tell you something like, "We need someone to hold the door, of course," but that is, as before, a lie. The real reason we go in groups is.....well.....See, there are these games women play in the bathroom, not unlike the Olympic games. There are generally 3 to 4 events involved in the "Restroom Follies." These range from the ever-popular Wait for a Stall Marathon to the death defying Scramble for a Place at the Mirror. By going in groups, we increase our chances of winning each individual event.

For example, if a lady manages to capture a stall, then she can stall-sit for her friends....and increase their chances of landing the stall for their own use....."Betty?

I'm coming out now....." Zap! quicker than a speeding bullet Betty zooms into the stall Beatrice has left vacant. Almost too fast for the naked eye to behold. On occasion, a lady may encounter an opponent who is not quite the good sport that she should be. This person will often attempt to improve her friend's chances of gaining the stall by opening the door in such a manner as to smash the nose of another lady. This is unacceptable behavior, but it often goes unpunished.

The Scramble for a Place at the Mirror is by far the most dangerous of all ladies' room events. The opponents will try to thwart a lady's efforts by jabbing her in the ribs with a bony elbow, obscuring her view of the mirror with BIG HAIR, "accidentally bumping the lady as she tries to put on lipstick so that a red line extends from the corner of her mouth to her temple, or spraying Final Net (Or worse yet, Aqua Net) right in her eyes, nose and mouth. This spraying action will generally render a player helpless in that her mouth now tastes terrible and her tongue is securely fastened to the top of her mouth, thus enabling her to cry out for help.

Intertwined with the Place at the Mirror Scramble is the Compact Pass-Off..Beatrice, can I borrow your compact?" "Sure, Betty," Bea says. All of this talk is to throw off the opponents. They think that Beatrice will simply pass back her compact to Betty, and therein, her reason for a space at the mirror. Consequently, the opposition will begin to "crowd her out." However, in reality, Beatrice quickly exchanges places with Betty, the compact slides from palm to palm, and Betty takes her rightful place at the mirror, opening the compact.

The next event tests individual rather than group skills, yet still depends on women entering the bathroom in groups. The Perfume Conservation Game is probably the most difficult event in which to succeed. Especially if the ladies who are accompanying each other are "best friends." (For some reason, some idiot somewhere decided that "best friends" should have to share EVERYTHING.) The object of this competition is for one lady to put on expensive perfume without having to share even a molecule of it with members of the group she entered with. This involves the same principle behind getting a pack of gum or candy back in your pocket (minus only one piece) in a room full of starving people. The lady has to be fast enough so that her group members do not see the perfume bottle. In certain instances, she will be deft enough so that they will neither see the bottle,

nor smell the perfume. These instances are rare, however. Usually, she will have to share, thus losing points in this event.

In general, the nicer ladies' rooms will be equipped with a couch. This couch is not, contrary to popular belief, to sit on while waiting for a stall or to nurse and/or change the baby on. It is for the judges to sit on as they score the different events. If your date is taking a particularly long time in the bathroom, chances are, they have named her a judge and she must wait until all events have been completed to leave the room. Her duties as judge require her to score each event with impartiality in the areas of form, style, gracefulness of execution, and cleverness.

Gentlemen, I've shared all this with you as a service. Don't abuse your knowledge by trying to discuss these matters with your female acquaintances. If you ask, they will only deny that such activities occur. They will say, "Of course not, you silly," and change the subject. Also, I don't want to hear of any of you men trying to see these events in action by opening the door of the ladies' room. It will simply be a waste of your time and will leave you feeling extremely embarrassed, for all you will see is a couple of women in line, at the mirror, and nursing babies.

It's just a female thing. You wouldn't understand. But hey....

NEWS

Assistant News Editor: Charles C. White; Copy Editor: Antoinette Burke; News Staff: Charlotte Dupree, J.J. Gregory, Wendi King, Wendi Wright

FEATURES

Features Editor: Yolanda Wallace; Staff: Donna D'Ambrosio, Bill Johnson, Kevin Hudson, Elizabeth Tilley

SPORTS

Sports Editor: Paul Floeckher; Assistant Sports Editor: James Drinkard; Staff: Charles C. White

PHOTOGRAPHY

Chief Photographer: Kim Perry; Staff: Clint Horne

CIRCULATION

Supervisor: Glenn Burgess; Staff: Laura Morgan, Cindy Keever, Mike Bowden, Chris Shelnuft, Robby Weatherly

ADVERTISING/DISTRIBUTION SERVICES (ADS)

Advertising Manager: Stacy Graham; Business Manager: Jeff White; Managing Editor/Business: Jenny Parr; Sales Representatives: Kevin Hudson, Bill Hensley, Jay Knight, Lance Nizinski

PRODUCTION AND GRAPHICS EDITORIAL SERVICES (PAGES)

Production Managers: Traci Cobb, Van Ellison; Production Staff: Sherry Dyal, Dean Thames, Kevin Westberry, Barbie Westberry, Tag Spivey, Keisha Davis, Natalie Bailey

STUDENT PUBLICATIONS COORDINATOR

Bill Neville

The George-Anne

STATEMENT OF OPERATIONS

The *George-Anne* is the official student newspaper of Georgia Southern University, owned and operated by GSU students and utilizing the facilities provided by GSU. The newspaper is the oldest continuously published weekly newspaper in Bulloch County and Statesboro, Ga. The ideas expressed herein are those of the editor or the individual authors and do not necessarily represent the views of the Student Media Committee, the administration, the faculty and staff of Georgia Southern University, or the University System of Georgia. The *George-Anne* is published twice weekly during the academic year and twice during summers. Any questions regarding content should be directed to the Clint Rushing, Editor (681-5246).

OFFICES, MAIL, PHONES

Room 111, F. I. Williams Center. The *George-Anne*, Landrum Center Box 8001, Georgia Southern University, Statesboro, Ga. 30460. 912/681-5246 (News) or 912/618-5418 (Advertising)

ADVERTISING INFORMATION

The *George-Anne* reserves the right to refuse any advertisement. The *George-Anne's* advertising rates are as follows:

Students and student groups \$2 per column inch
GSU faculty, departments or affiliates \$3 per column inch
Statesboro-area businesses and groups \$4 per column inch*
National rate \$7 per column inch

*Five inch minimum ad size, otherwise classified display rates (\$5.50 per column inch) apply.

DEADLINE: The deadline for reserving space and submitting advertising copy is Noon, one-week prior to the intended publication date. For more information, rate cards, sample publications, contact: Stacy Graham, Advertising Manager, ADS, (912) 681-5418; or Bill Neville, Student Publications Coordinator, (912) 681-0069.

CLASSIFIED ADVERTISING INFORMATION

The *George-Anne* reserves the right to refuse any advertisement. The *George-Anne's* classified advertising rates are as follows:

Students and student groups Free (25 words or less)
GSU faculty, departments or affiliates Free (25 words or less)
Others \$5.50 (50 words or less, two issues)*

Retail classified display \$5.50 per column inch
DEADLINE: The deadline for reserving space and submitting classified advertising copy is Noon, one-week prior to the intended publication date. Free classified ads from students, faculty and staff must be submitted in writing, with the name of the sender, a local address and telephone number. No free ads will be accepted via telephone. Only one free ad per person per week.

LETTERS TO THE EDITOR AND SUBMISSIONS

The *George-Anne* welcomes letters to the editor, story submissions and guest columns from people both inside and outside the Georgia Southern University Community. All copy submitted should be typed (double-spaced, please), preferably on Macintosh disk in Microsoft Word or Microsoft Works format. All submissions must be signed and include a mailing address and phone number for verification. The editors reserve the right to reject any submission. There is no word limit on submissions. A writer may request to remain anonymous. However, it will be the editor's decision whether or not to print the name. Submissions are run on a space-available basis.

CIRCULATION INFORMATION

Subscription rates for home delivery of *The George-Anne* are six dollars per quarter, or \$18 per year, delivered bulk mail. Please address all inquiries to Jeff White, Business Manager. The *George-Anne* is distributed free of charge on the Georgia Southern University campus through delivery sites located in campus buildings and residence halls.

*We gratefully acknowledge the theft of our slogan from Robert Williams of the *Blackshear Times*. Call Bob and he can tell you who he stole it from originally.

PLEBES

L.T. Horton

Birdseye's results in: Large hooters popular

ADVENTURES IN PARTY-TIME URINATION

ELEMENTARY SKILL-LEVEL
WAIT IN LINE FOR SEVERAL MINUTES TO USE THE BATHROOM.

INTERMEDIATE SKILL-LEVEL
YOU'RE STUCK WITH A DOOR THAT DOESN'T SHUT OR LOCK. TRY TO HOLD IT SHUT AND STILL GET CLOSE ENOUGH TO THE TOILET.

JUST FOR FUN...
"CROSS STREAMS" (EXCELLENT FOR MALE BONDING.)

ADVANCED SKILL-LEVEL
THE BATHROOM LINE IS TOO LONG AND YOU CAN'T WAIT. THE BUSHES OUTSIDE SHOULD PROVIDE ADEQUATE COVER. KEEP OUT OF SIGHT OF CARS AND PASSERS-BY.

MASTER SKILL-LEVEL
YOU JUST CAN'T HOLD IT IN. WITH SUFFICIENT DIVERSION, RELIEVE YOURSELF IN A BEER CUP, AND PLACE IT SLICELY ON AN OUT-OF-THE-WAY SHELF.

From a high level administrator: "Personally, I have always been a good, God fearing Christian who is interested in the education of young people, but lately I would love to rub the margarine over a few of the phys ed instructors. Maybe it's the pressure of my job, being as how I have to make everyone here appear intelligent."

From an English Professor: "Just what is a hooter, Mr. Birdseye? And where did you learn to use the active voice so magnificently? My cousin Bernice says a hooter is a kind of snack food sold in Brazil. Is this so? Have you ever REALLY enjoyed an essay? Not a silly essay, but the kind of essay that really makes a reader's legs go like a cricket's? Neither have I. My job is so boring. Send me pictures of hooters please."

From an anonymous professor: "I know what the average GSU faculty male is interested in. He's interested in me. How do I know this? I keep accurate records. The men think I am interested in them. Hah! What turns me on is a neat ledger and good market analysis. I know my big business and I sure do know a large firm when I see one. What I like is a hostile takeover."

Man About Campus Buck Birdseye

Whew! Them faculty folks is just pitiful.

As for the rest of the survey, it done looked like Coach Stowers was in some thick stuff, but them Eagles done us proud again, so Buck will just keep his mouth shut about it. One thing, though--why is it that football coaches got to wear them pants what went out of style back in the 1970's? Miss Emmy-line, she be askin bout it. "Why they buns be like to pop out the top, and they tryin to say they can't find no material except for double-knit polyester?" Shoot. I'd rather watch a "Baretta" re-run.

Well, ole Buck has been done fixin' to eat him road kill over it all-- imagine, 12,000 responses to that there opinion poll I done given y'all.

Anyway, here them highlights is:

Question 1: Overwhelming majority (11,890- 110 for all other answers) A. hooters. Now, Buck, he has it figured that when it come

right down to it, hooters is, pound for pound, more effective than any advertisement used by either Zell Miller or Johnny Isakson, neither of whom used hooters in they ads. (Buck reckons we can count on a lottery, but little state funding for the research and development of hooters or hooter-related studies.)

Question 2: Tight race here. Big hooters and Pendulous hooters was in a dead heat, with a token vote for the "quality of education" cast by non-tenured faculty who was scared someone was looking. The main point, again, is that given any reasonable context, your basic Georgia person is more interested in hooters, preferably large ones. Buck on second reckoning, thinks that the question ought to have included more details--for instance, big, fat, sweaty hooters might not have gotten so many votes (5, 870) as, say, "pendulous, voluptuous, nipple-erect taunting hooters." (5,798) In any event this question revealed just how much like the famous Italian movie director Federico Fellini, Georgia folks is.

Question 3: This was the faculty question. Them faculty folks is downright weird. The BEST an-

See BUCK, page 10

Pit Bulls should be banned

Guest Column Kristy Short

An unattended child curiously wanders over to pet the big "doggie" that lives next door. Minutes later, the panic stricken mother begins frantically searching for the child. She soon discovers what could only be described as her worst nightmare.

Her child was a bloody ragdoll clamped in the jaws of the pit bull. Such attacks are not uncommon. In the 1980's, the Humane Society reported that pit bulls were involved in about two-thirds of all deaths that were the results of dog bites. Due to their "natural aggressiveness" and their reputation for mauling and killing, pit bulls should be prohibited in neighborhoods.

I know first hand how vicious pit bulls can be. When I lived in Colorado, my next door neighbors owned a black pit bull. One day my golden retriever picked up one of my shoes, and passed it under the fence to the pit bull. The pit bull ate my shoe, sole and all. I have to admit, the incident was funny. However, a week later, the pit bull did something that was no laughing matter. The dog somehow broke loose from its chain, and ran to the house across the street from my house. The Birdens lived there, and they owned a small schnauzer who was simply minding his own business in his owner's yard.

As you might have guessed, the pit bull tore towards the defenseless schnauzer like a black beast from Hell. The pit bull locked its jaws on the hind quarters of the unsuspecting schnauzer. In violent, jerky motions, the pit bull shook its

prey in an attempt to snap the schnauzer's neck. The pit bull caused \$200 in damage in the form of a vet bill.

After this incident, our neighbors got rid of the pit bull. Their only reason for having the dog was to serve as a "guard dog." A security system would have served the same purpose without the problem of liability. I can understand owners of, for example, a junk yard owning a pit bull to deter burglars, but a pit bull in a neighborhood is just asking for trouble.

The pit bull attacking the schnauzer was like de ja vue for me. When I lived in Texas, an almost identical situation took place. Our family owned a dachshund named Missy. Missy was without a doubt the fattest dachshund I have ever seen, and she was no spring chicken, either.

One day Missy was out in the yard, doing her business, when two pit bulls wandered into "Missy's Kingdom." Missy, ignoring the fact that the pit bulls were three times her size, charged the intruders in an attempt to defend her territory. The pit bulls would have no part of this nonsense, and began biting and ripping apart my poor dachshund. My mother heard the commotion and upon seeing the blood bath, instructed me to retrieve a baseball bat. Bat in hand, she began wailing away on the pit bulls to

try to get them away from Missy. The blows by the bat merely made the pit bulls flinch. The problem is, they have such a high threshold of pain. Finally, the pit bulls retreated. Missy survived, but her back looked like train tracks after the veterinarian finished sewing her up.

Pit bulls attack other dogs, but even more disturbing is the fact that they also attack people. In a horrifying story, a three year old girl was killed by a pit bull that she had been around several times before. The little girl was almost decapitated. This case alone should prohibit the ownership of pit bulls. What could have provoked such an attack?

Perhaps the little girl let out a scream. Pit bulls were once used for wild boar hunting, and a scream might sound like a high pitched noise a wild boar makes. Who knows what caused the pit bull to suddenly lock its jaws on the throat of the little girl, and practically rip her head off.

Some kind of legislation needs to be passed to prohibit the ownership of pit bulls in neighborhoods. pit bulls have seen the tragic news stories about children being mauled by pit bulls, and it's time to do something to prevent these horrible attacks. Don't get me wrong, I'm a dog owner and an animal lover, but there is no place in our neighborhoods for such dangerous dogs. Let me conclude by asking the owners of pit bulls one question: How could you live with yourselves if your dog mutilated and killed a three year old girl?

Women journalists only doing the job

Staff Writer David Bernay

Much has been said lately about the controversy surrounding female reporters entering the locker rooms of professional male athletes. The most recent incident involved several New England Patriot football players who accosted female reporter Lisa Olson inside the locker room as she attempted to obtain an interview.

Since most professional athletes are men, especially in the most highly publicized sports such as football, basketball, and baseball, much of the animosity involved in this issue has been directed towards female reporters. This resentment is largely undeserved. They are only trying to do their jobs and are merely carrying out their assignments. It is unfortunate that the real issue is being clouded by the malevolent cloak of discrimination.

The prominent issue at hand is the athlete's right to privacy. While they are public figures and are subjected to a higher degree of scrutiny and through implied consent, to a certain degree of invasion of privacy, there are bounds to a free press. Just as freedom of religion does not entitle one to prac-

tice polygamy or engage in human sacrifices and freedom of speech does not entitle one to falsely yell "Fire!" in a crowded theater or for businessmen to discuss prices--a violation of anti-trust laws-- individuals, even though public figures, have a "reasonable expectation of privacy."

The legal concept is grounded in the simple idea that an individual has the right to be "left alone." Though the press has a definite right to cover sports stories after games it, should not go as far as to invade the privacy of the players by sending a reporter of the opposite sex into a locker room to cover the story. A locker room is not intended to be an interview room but rather a place to shower, dress or undress, and to perform basic bodily functions. This is where the element of discrimination arises.

In 1978, the US District Court ruled that pursuant to the 14th amendment, women have the right to enter an all male locker room to obtain interviews. The 14th amendment provides citizens with "... equal protection of the laws." The courts ruling is sound in the fact that women should have an equal opportunity to perform their jobs but the logistics of the precedent is backwards. Instead of allowing female reporters into the locker rooms of naked men in light of the fact that male reporters are allowed, the argument would be more meritorious should it be to restrict male as well as female reporters since female reporters have no ethical or legal place in a men's locker room.

The most obvious solution would be to arrange for an interview room or if it would be more practical, allow all reporters in the locker room one-half hour after games, after the players and coaches have had time to clean, dress, and to use the facilities in the locker room as they were meant to be used. This would alleviate the problem and protect the player's right to privacy, provide equal opportunity for reporters, and protect the ethical dignity of the athletes.

I'M GOING TO HOLD MY BREATH TILL YOU TELL ME YOU LOVE ME.

WELL, I'M GOING TO HOLD MY BREATH TILL YOU TELL ME YOU LOVE ME.

FWIP

WHAT WAS THE QUESTION AGAIN?

I FORGET.

Corrections & Amplifications

- The correct winner of first place (double entry) float for the Homecoming parade was Chi Omega and Pi Kappa Phi.
- In the article titled 'Health lecture focuses on minorities,' we neglected to mention a major contributor, the Georgia Health Sciences Consortium of GSU.

We regret these errors.

EAGLE GOLF CENTER

LOCATED BEHIND PAULSON STADIUM NEXT TO THE SOUTHERN BOOSTERS WATER TOWER



- LARGE PUTTING GREEN
- RANGE BALLS \$2.00 PER BUCKET
- PRIVATE GOLF LESSONS
- GOLF SUPPLIES FOR SALE
- RANGE IS OPEN DURING GOLF CLASSES

GEORGIA SOUTHERN GOLF COUCH DOUG GORDIN WILL BE GLAD TO ASSIST YOU IN ANY WAY, FROM CHURCH GROUPS TO PRIVATE INSTRUCTION

OPEN DAILY, MONDAY-SATURDAY (except for home football games)

PRO SHOP - 681-9100

"Party"--affectionate look at south GA

By ROHAN QUINCE
Guest Writer

The first production of *The Prom Party* by Bulloch County native Rebecca Franklin Morehouse offers an enjoyable evening's entertainment which should go down well with local audiences.

We are ever eager to see ourselves portrayed on the stage, and this play gives us a sympathetic, affectionate view of south Georgia during the Great Depression. Director David Addington has done a fine job of welding the often very short scenes into a coherent and intriguing whole.

Gary Dartt's highly mobile set provides the perfect Southern atmosphere: newspaper-lined walls in sharecroppers' cottages, elegant columns, towering live oaks, even a night sky of twinkling stars. They all evoke a slower, quieter time, when having visited Savannah, Macon and Augusta meant that you'd "been around." Brenda Dartt's costumes capture perfectly the different flavors of bright finery and simpler homemade fashions.

The play follows the fortunes of Laura Jenkins, a sharecropper's daughter, played with innocent charm by Stephanie Hayes, as she attends her first prom party held at the mansion of her parents' employers. We see her in her own humble home, putting on the party dress made by her dear mother, who is played with nice flashes of

humor by Renee McMillian (she should spit with more gusto, I thought!), before moving to the "big house" for the party itself.

The large cast of guests does a good job of capturing the mood of adolescent excitement and awkwardness on such an important occasion.

Denise Clark gives a superbly malicious performance as Dorothy, the town belle who feels threatened by Laura and responds with a mixture of spite, witty sarcasm and coquettish determination. Mike Sarver as her good-looking quarterback boyfriend is suitably charming ("I love you more than grits!"), stubborn, and easily manipulated. We are treated to numerous entertaining vignettes as the youthful couples promenade together.

Among the most memorable is the sight of the chattering girls primping themselves while being spied on by Jack (Dan Prince) and Michael (Chad Current) perched on a precarious ladder. The awkward but sincere attempts of Will (Derek Abramo), the other sharecropper, the other outsider at the party, to woo the lovely Laura are sensitive and touching--a fine performance from an actor who gets better with every production.

Dorothy's contempt for these "white trash," contrasted with the kindness of the other characters, offers an interesting insight into class differences in Southern society in the 1930s. The host family (played by Holly McDowell, Stuart

Johnson, Kim Reed, and Scotty Daffron, who gives his usual strong performance) dispense hospitality with gracious ease.

Providing a parallel commentary on the white folks' celebrations are the scenes among the black servants in the kitchen. Jackie E. Hull is particularly strong as Cora, while young Mark Grant as Lester delights everyone with his dance routine.

At times in the second act, the scenes seem too brief, and we find ourselves watching numerous set changes (handled efficiently by the backstage crew) rather than actual scenes.

Addington helps to smooth over these frequent transitions in the script with the superb music of Louis Armstrong and other musicians of the period. Throughout the play, the music functions as an evocative unifying force.

The director also makes effective use of tableaux--at the end of many scenes the actors freeze into position, evoking the feeling that we are looking at pictures in an old photograph album--much fingered and much loved. This nostalgic quality, together with the enthusiasm exuded by the entire cast, suggests that *The Prom Party* will be a definite crowd-pleaser on the Georgia Southern stage.

The Prom Party will be presented tonight and tomorrow at 8 p.m. in McCroan Auditorium. Admission is \$1 for GSU students and faculty, \$2.50 for pre-college students, and \$4.50 for general admission attendees.

Bad to the Bone bears down

By YOLANDA WALLACE
Features Editor

What may be good news to one intramural flag football team at Georgia Southern may be bad news to another.

"It's going to be difficult for us to reach the height we were last year because a lot of the teams are after us," Ron Jennings recently said of her intramural team Bad to the Bone.

The team finished second in the nation in 1989, losing to defending and state champions Georgia Tech on a fourth down play during the last 36 seconds of the championship game.

"This year," Jennings continued, "we have only five returning players."

Despite the many new players, Bad to the Bone is undefeated and is again heading to the state championships.

"They had to teach me how to play," said team member Cathy Stinson. "I thought we played with 11 people instead of seven."

After demolishing the Pink Panthers and Sports Buff by identical 26-0 scores, Bad to the Bone defeated Stubbs Oil 34-18 in the local championship game to qualify for the state playoffs.

Bad to the Bone derives its success and unblemished record (7-0) from a diversified offense and an outstanding defense.

During the three-game stretch leading to the championship, every team member got her hands on the

ball.

In the game against the Pink Panthers, four players scored the four touchdowns--on a rain-soaked field--Jennings, Deb Blackshear, Tammy Lanier, and Amanda Maddox--while Maddox and Lisa Parrish provided the two successful extra point attempts.

On defense, Jennings, Parrish, and Markisha Vereen all came away with interceptions.

"This team still ain't ready," Coach Sherry Richards said at the time, "but I was proud of you tonight. You started talking a lot better on defense."

Before the game against Sports Buff, Richards told her squad, "This team is ready to beat ya'll's butts. Let's not let it happen."

It didn't.

Quarterback Julie Jordan threw TD passes to Blackshear, Jennings, and Maddox, who also scored a rushing touchdown on a drive kept alive via a diving 20-yard reception by Stinson.

"2-4-6-8! Who do we appreciate? Us! Us! Us!" the reserve players shouted on the sidelines during a game that exposed Sports Buff's weaknesses--among other things.

Buff defender Frances Moore lost her pants on one play and would have been in the buff if not

for the psychedelic shorts she was wearing underneath her sweats.

Bad to the Bone's defense met its first real test in the championship game against Stubbs Oil as it gave up a quick TD to fall behind 6-0, then 12-7.

"We're being too conservative on defense," QB Jordan said.

"This is it. No more points," the defenders said at halftime.

In the second half, they were almost true to their word as the offense rolled off 24 points and the defense gave up only six.

In its next game after the championship, Bad to the Bone's offense sputtered for a while, before coming away with a 21-0 victory over the Green Team.

Bad to the Bone doesn't come by its success by happenstance.

Blackshear and Markisha Vereen played basketball for Georgia Southern, while Jordan is an assistant basketball coach. Jennings played softball for a while and Lanier and Stinson are currently on the Lady Eagle softball roster.

The members of Bad to the Bone are Katie Bitner, Blackshear, Patricia Goss, Linda Harris, Jennings, Jordan, Lanier, Maddox, Parrish, Stinson, Markisha Vereen, Raquel Vereen, and Stephanie West.

Prowling around backstage at CATS



Two of the cast members of CATS (special photo)
Special to the George-Anne

It's the opening day of *Cats* and in the dawn hours of the morning five huge tractor trailer trucks pull up to the loading dock of the theatre. One entire truck is filled with sound equipment and the rest contain winches, miles of electrical cable, costumes, wigs, steel forms, and huge fiberglass pieces of scenery that look amazingly like oversized coffee pots and frying pans and other items one would find in a junkyard. And they are.

British designer John Napier used a junkyard motif for the set and scaled all items to four times normal size to create the illusion from a cat's eye view. It makes the actors appear small and more cat-like in comparison.

After everything is unloaded, a huge steel arch is erected over the stage, which will be the principal support for the set. A specially treated non-skid wooden floor painted with lion posters and other cat art is placed on its supports so that the performers will be able to dance, crawl and tumble about in safety.

Miles of cable are strung through all the scenery and strings of electric lights are hung out into the auditorium so that the set doesn't end with the proscenium arch of the stage area. The massive pieces of familiar-looking junk are fitted into place and the once bare stage begins to look like a playful junkyard. Tracks are laid for the moving machinery and once a gigantic tire is placed on top of it, the many stage hands are well into their exhausting day.

Deep in a basement near the dressing rooms, \$45,000 worth of costumes are being carefully unpacked, cleaned, and checked for any needed repairs. Across the hall, a complete beauty shop is being set up and \$35,000 worth of special wigs--each made from yak hair from China and valued at about \$1,400--are being fluffed into cat ears.

Preparations varied and extensive

It's now later in the day and every light cue and special effect for the show is carefully checked. Late in the afternoon, the actors begin to arrive at the theatre and find their dressing rooms. Soon the theatre is even more alive as excited voices

the virtues or drawbacks of the new city.

As in the Broadway version of the play, the feline performers do not just perform on the stage but use the whole theatre for their playing area. Each new theatre has its own challenges and the actors quickly adapt and claim their territory.

After the cast and orchestra run through selected portions of the show to check the sound, the actors retire behind the set to their dressing rooms to continue preparing for the show. These preparations vary, depending on the performers and the characters they play. Since *Cats* is about a tribe of felines of various ages and personalities, each performer has a particular skill which must be honed in order to prepare for the show.

Karen Webster and Enrique Segura, who play the mischievous Mungojerrie and Rumpleteaser, have a very difficult duet to perform, which includes dancing, singing, and tumbling. They can be found practicing their double cartwheel, which requires perfect timing between them.

Linda Mays portrays the sleek and elegant Absynnyan cat Cassandra. She can be found stretching her legs for maximum extension, since her role requires that she be a featured dancer throughout most of the two hour and forty-five minute show.

Vince Pesce, the magical Mr. Mistofelees, is over in a corner practicing his jumps for another heavy dancing role. Others are beginning their makeup and will warm up closer to show time.

Makeup takes time

The makeup for *Cats* is the basis for that unique feline look which fascinates audiences. Each character in the show has a basic makeup design which originated with the costume and set designer. This design is adapted to each face by the hair stylist supervisor. Each layer of color is powdered with a translucent powder then sprayed with a mist of water to set it. The dancers in the show sometimes perspire heavily, and this keeps the colors from running together.

One performer who spends a lot of time at the makeup table is Jan Horvath, who plays the demanding role of Grizabella--the faded glamor cat who sings Andrew Lloyd Webber's haunting signature song "Memory." Jan does a complete makeup to begin the show, where she participates in the opening song "Jellicle Cats" as a regular cat--sort of a foreshadowing of the character Grizabella.

After the first number, she runs back to her dressing room to transform herself into the proud and once-beautiful Grizabella.

Meanwhile, several performers can be found in the orchestra pit by the piano singing scales to warm up their voices to sing the songs which Webber set to the poems of T. S. Eliot. Several of the roles, such

as Growltiger, Griddlebone, Munkustrap, and Grizabella require vocal pyrotechnics which place heavy demands on the voice and can strain the voice if it isn't carefully exercised each night prior to the show.

On the way to the wig room, the singers are given the transistor for the wireless microphone which fits into a belt under their unitard and rests just above their tailbone. The wire goes up their back; and as the wig is placed on their head, it is threaded through the wig so that the microphone is hidden in the bangs of the wig.

Handmade shoes, handknitted leg and arm warmers and a tail complete the costume. The cats are ready for a last-minute warmup before the show begins. As the stage manager calls "places," the performers wind their way through a maze of tunnels, fog machines, and quick-change stations that lead to the set and the show begins.

Standbys at the ready

In addition to the performers on stage, a second cast waits for their moment in the spotlight. They are the dozen standbys. The four members of the "Cats Chorus" watch the

See CATS, page 10

GSU ski trip

Special to the George-Anne

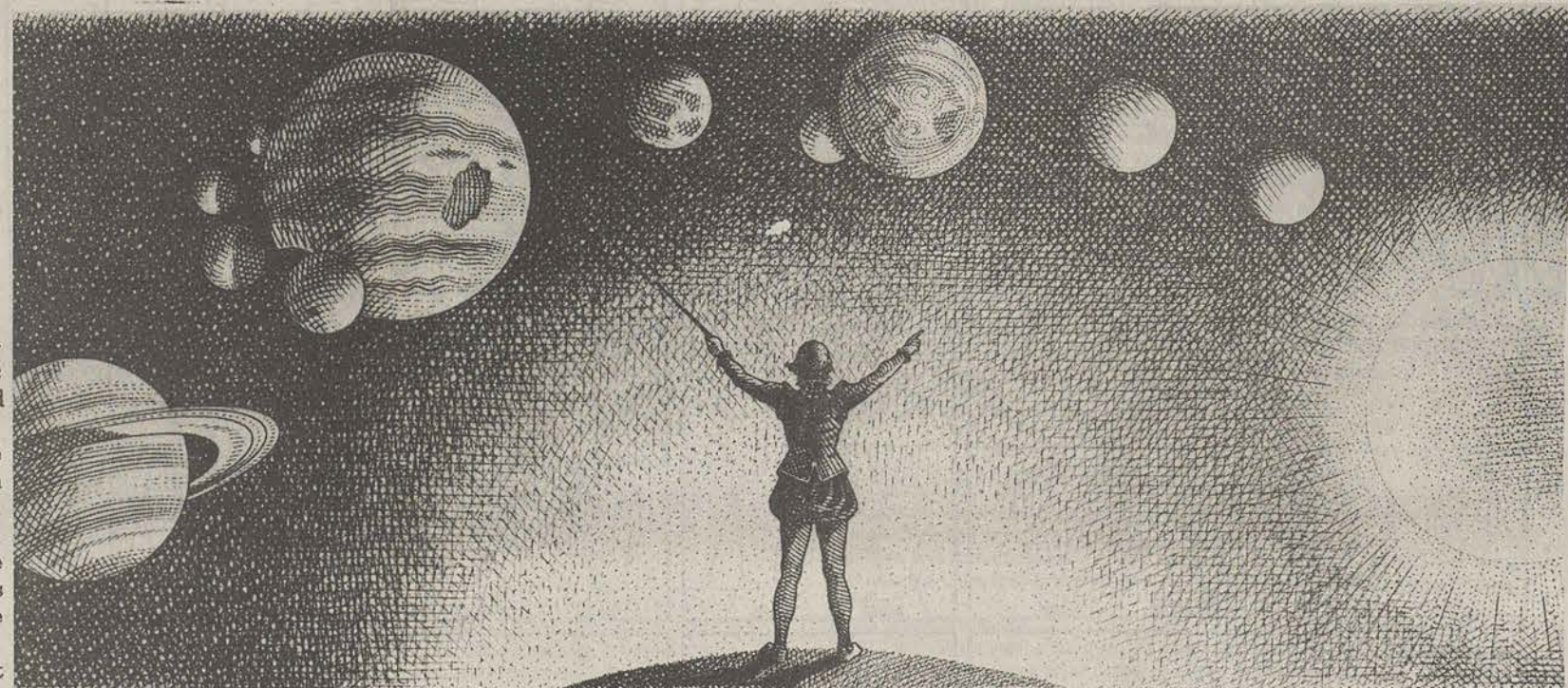
Each December, some 50 to 60 Georgia Southern students and guests celebrate the end of the quarter by traveling to Steamboat Springs, Colorado, for a week of skiing and related activities.

This year will be the ninth consecutive year that Georgia Southern has participated in College Week at Steamboat. Last year, the group enjoyed 100 inches of snowfall, making skiing conditions perfect.

The group also enjoyed college parties in the evening, a picnic on the mountain, evening hot tubs in the snow, and the private use of a local pub for the championship football game. This year, the group will be staying directly on the mountain, making the accommodations even more attractive.

The champagne powder of Steamboat Springs is home base of more Olympic skiers than any other resort. The 130 runs and 25 lifts offer challenging skiing for every level of skier. The beginners

See SKI, page 10



It took Galileo 16 years to master the universe. You have one night.

It seems unfair. The genius had all that time. While you have a few short hours to learn your sun spots from your satellites before the dreaded astronomy exam.

On the other hand, Vivarin gives you the definite advantage. It helps keep you awake and mentally alert for hours. Safely and conveniently. So even when the subject matter's dull, your mind will stay razor sharp.

If Galileo had used Vivarin, maybe he could have mastered the solar system faster, too.

Revive with VIVARIN®



Use as directed. Contains caffeine equivalent of two cups of coffee. © 1990 SmithKline Beecham

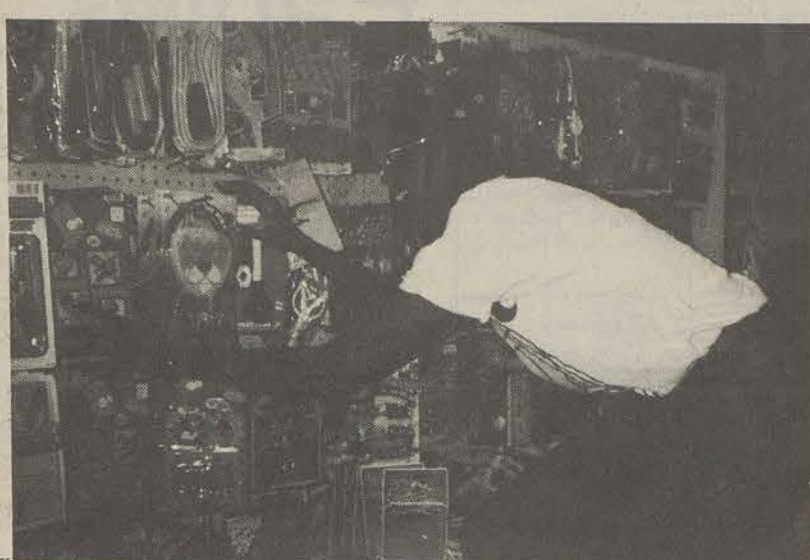
Laura and Yo in "Supermarket Finds": the Dynamic Duo strikes yet again



1. The adventure begins as Yo visits the instant teller.



2. "Hmm. I wonder if this is fresh? Better yet, can we afford it?" Laura muses from her perch on the meat counter.



3. "Yes, but only if we buy this . . . and this . . . and this . . ."

All photos by Laura Mcabee and Yolanda Wallace



4. Health-conscious Laura picks up some bran cereal and, for a refreshing change, a box of the Barbie.



5. Health-conscious Yo forgets the cereal and climbs the aisle for exercise.



6. "Yo, back up off me. Smell the coffee. You want eggs with that?"



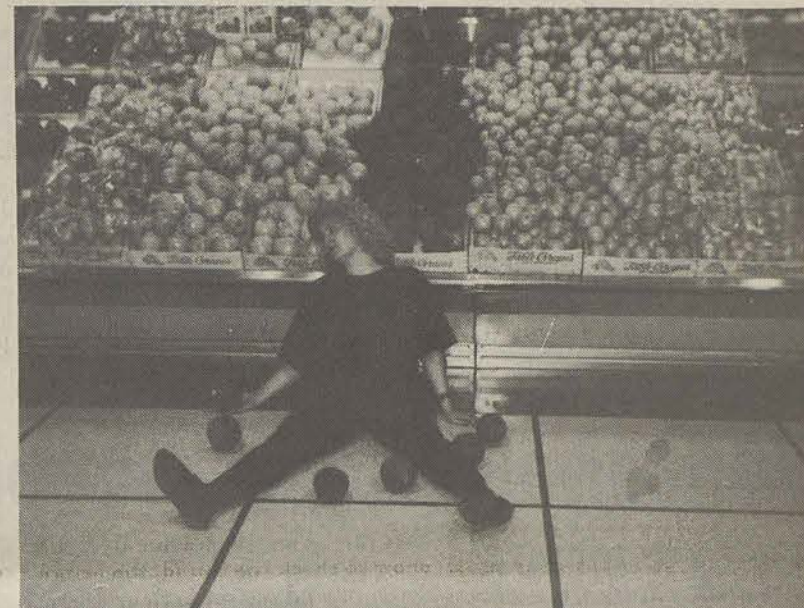
7. "No, but I think I need a friend. I'm lonely and confused."



8. And everybody's goin' surfin'. Surfin' USA. Hey, where's the water? The waves are terrible around here.



9. "Help, I've fallen and I can't get up. No, wait, I think I hurt myself."



10. "I think I've knocked myself unconscious, but, hey, the coconuts are fresh."



11. The diet even Oprah wouldn't try: pork and beans, mustard, and tomato sauce. Mmm, that's good eatin'.

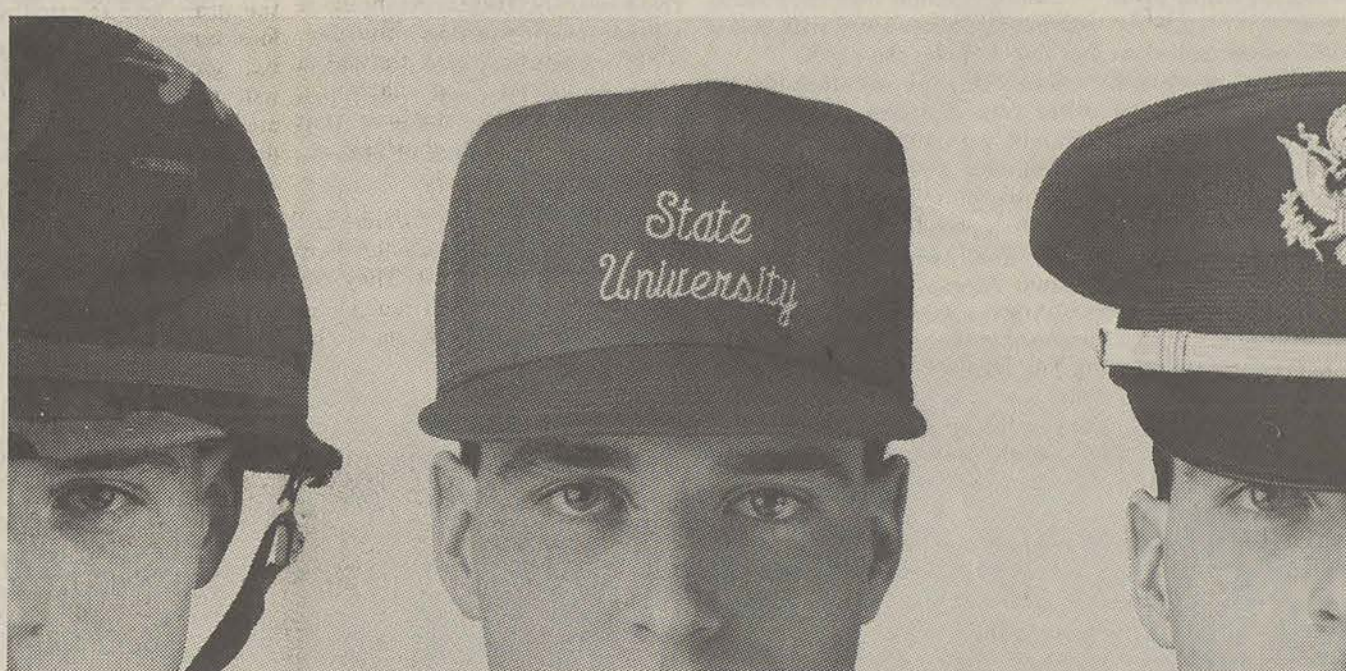


12. Oh, Laura seems to be feeling better. Must be the cookies. The cookies. The coo-coo-cookies. Oreo-reo.



13. "I don't think I have enough. Wait a minute. Yo, I thought you were paying for all this stuff."

RESERVE OFFICERS' TRAINING CORPS



THE MORE YOU USE YOUR HEAD, THE MORE MONEY YOU CAN GET FOR COLLEGE.

Enroll in Army ROTC as a college elective and serve part-time in the Army Reserve or National Guard, and you can get as much as \$4000 a year for college. That includes your Guard or Reserve pay, the GI Bill and up to a \$1000 grant each school year from ROTC.

Add it all up, and you'll graduate with a college degree plus an Army Officer's commission. And all you have to do is use your head.



ARMY ROTC

THE SMARTEST COLLEGE COURSE YOU CAN TAKE.

CONTACT:
MAJ JOHN FARRELL
SOUTH BUILDING ROOM 134
OR CALL 681-5320

Sports briefs

©Copyright 1990, USA TODAY/Apple College Information Network

I-AA PLAYOFFS TAKING SHAPE:

Two down and 14 to go. That is how the field for the I-AA playoffs shapes up. No. 1 Eastern Kentucky (9-0) and No. 14 Northern Iowa (6-3) are in, having clinched automatic berths. That leaves five automatic berths - they will go to the champions of the Big Sky, Southland, Southern and Yankee Conferences and the top-rated independent - and nine at-large slots to be filled.

ARIZONA MAY LOSE '93 SUPERBOWL:

Arizona voters rejected a Martin Luther King Jr. holiday Tuesday at a painful price for sports fans and business. The 1993 Super Bowl, awarded to Tempe and worth \$200 million in revenue, may be moved out of the state. National Football League Commissioner Paul Tagliabue said Wednesday that is what he will suggest to team owners. Owners meet next week, but action is more likely in March.

ILLINI GET 3 YEARS PROBATION:

The NCAA placed Illinois' basketball program on probation for three years Wednesday, barring the Illini from this season's NCAA tournament and handing out stiff scholarship and recruiting restrictions. Illinois' violations: illegal recruiting, misuse of complimentary tickets, improper sale of NCAA tournament tickets and "favorable credit consideration" for three players buying cars.

Eagles aim for 6th straight win

By PAUL FLOECKHER

Sports Editor

Don't let Georgia Southern's 5-0 series record with Tennessee-Chattanooga fool you.

GSU pounded the Moccasins 34-14 in 1986, but struggled to win 24-17 in 1984, 19-14 in 1985 and 13-3 in 1988.

Last year GSU led only 17-10 at the end of the third quarter before exploding for 17 fourth-period points and a 34-13 win.

In that game, victory wasn't assured until Taz Dixon returned an interception 22 yards for a TD and Joe Ross ran seven yards to paydirt to open the final 21-point margin.

The Eagles and Mocs will kick off meeting number six Saturday at 3:00 p.m. at UTC's Chamberlain Field.

UTC (5-4) has won four of its last five. The Moccasins edged Southern Conference foe Western Carolina 23-21 last week.

However, the Eagles (6-3) are on a hot streak of their own. Last week's 31-13 win over James Madison, their fifth straight, pushed GSU to number seven in the latest Division I-AA poll.

The Eagles and Mocs have two common opponents this season -- Marshall and Middle Tennessee State.

Both teams won at Marshall, with the Eagles winning 17-14 October 6 and the Mocs winning 29-23 two weeks later. GSU fell 16-13 at MTSU while UTC lost 24-17 at home to the Blue Raiders.

UTC sophomore running back James Roberts has picked up where he finished last season. After gaining 1,067 yards as a freshman, Roberts has rushed for 659 yards on 130 carries so far this season.

Joining Roberts in the back-

field is junior Muhammed Shamsid-Deen, who has gained 615 yards on 114 carries. Shamsid-Deen raced 90 yards for UTC's first touchdown in their win over Western Carolina.

Moccasin quarterback Stan Nix has completed 43 percent of his passes (60-140) for 923 yards with six TD's and 10 interceptions. His back-up, Vince Carelli, has thrown eight interceptions in just four games.

Their counterpart, GSU's Raymond Gross, has reached the 1,000-

yard milestone in passing yards during the regular season for the first time in his career. His 197-yard effort against James Madison pushed his season total to 1,157.

In four seasons, Gross has tallied 235 completions in 460 attempts for 3,429 yards and 17 touchdowns.

Gross' favorite target this season has been slotback Karl Miller, who leads GSU receivers with 26 catches and three TD's. Split end Terrance Sorrell burned JMU for

two scores last week and leads the Eagles with 25.4 yards per reception.

Buddy Nix stands 34-40-1 in his seventh season at the UTC helm. Nix has guided the Mocs back from a 3-7-1 record last year.

The game will be televised by SportSouth Network and 10 Georgia Southern Sports Network affiliates, including Savannah's WJCL.

GSU is 14-4 all-time in television games, including 10-3 in regionally-televised contests.

Athletic Shorts

G-A Staff Reports

The golf team will compete in its final fall tournament this weekend. The event is the Southern Intercollegiate Classic sponsored by UGA.

The Eagles are coming off a third place finish at the Dixie Intercollegiate in Columbus, Ga. Georgia Southern fired a three-day total 879 in the event, while Bo Fennel led all individuals with a two-under 214 to finish third.

The GSU men's and women's swimming teams will be in action against Georgia State in Atlanta. The event will begin Saturday at 1:00.

The Lady Eagle volleyball team will be in action this weekend in the New South Women's Athletic Conference tournament.

The tournament begins today in Hanner Fieldhouse with the championship game to be played

Saturday evening.

The Georgia Southern women's soccer team is scheduled to take on Georgia Tech Saturday at 3:00. The match will take place on Eagle Field.

The GSU men's basketball team will play exhibition games next week against St. Petersburg (Nov. 15) and the Newcastle Falcons (Nov. 17). Both will begin at 7:30 at Hanner Fieldhouse.

December 8 - December 15 is College Week at Steamboat Springs ski resort in Colorado. For the ninth consecutive year, Georgia Southern will participate.

A special rate of \$548 is being offered to students who wish to take part in the fun; however, reservations must be made before Nov. 10.

Anyone interested in taking part in this year's trip should contact Joe Blankenbaker at 681-5925.

The Eagles and Mocs will kick off meeting number six Saturday at 3:00 p.m. at UTC's Chamberlain Field.

UTC (5-4) has won four of its last five. The Moccasins edged Southern Conference foe Western Carolina 23-21 last week.

However, the Eagles (6-3) are on a hot streak of their own. Last week's 31-13 win over James Madison, their fifth straight, pushed GSU to number seven in the latest Division I-AA poll.

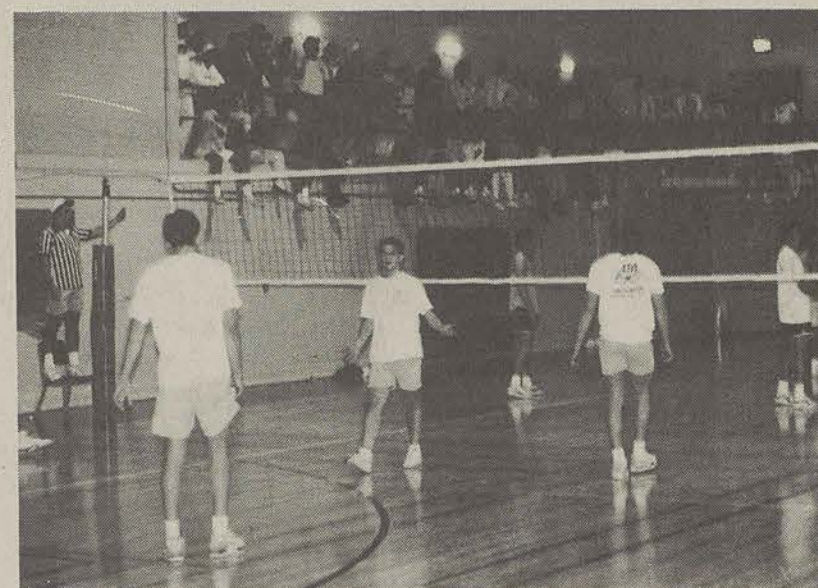
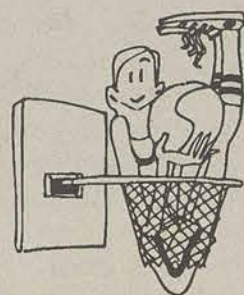
The Eagles and Mocs have two common opponents this season -- Marshall and Middle Tennessee State.

Both teams won at Marshall, with the Eagles winning 17-14 October 6 and the Mocs winning 29-23 two weeks later. GSU fell 16-13 at MTSU while UTC lost 24-17 at home to the Blue Raiders.

UTC sophomore running back James Roberts has picked up where he finished last season. After gaining 1,067 yards as a freshman, Roberts has rushed for 659 yards on 130 carries so far this season.

Joining Roberts in the back-

A large crowd packs Hanner Gymnasium for a volleyball game. (Special photo)



The Marvin Pittman Gymnasium is coming soon! The gymnasium will be available to students winter quarter. (Special photo)

Volleyball Eagles win big at home

By CHARLES WHITE
Sports Writer

The GSU Lady Eagle volleyball team soundly defeated the Savannah College of Art and Design's Lady Bees Monday night, 15-5, 15-1, 15-3.

Game one began as any blow-out should -- with a service ace courtesy of starting freshman Julie Ciekowski.

SCAD had GSU concerned when the Lady Bees tied the score 4-4. Starting senior Jill Eisel won the service back for Southern with a well-placed pack.

After two service aces, a kill, and another pack, SCAD tried to slow the onslaught by calling a time-out, but to no avail. GSU exchanged points with SCAD before

wrapping the game up with six straight points.

Game two began appropriately -- GSU scored 14 consecutive points which were broken only by two SCAD time-outs at the 4-0 and 13-0 marks.

SCAD momentarily rallied to score their lone point, but GSU wasted no time regaining the serve.

Starting junior Michelle Jackson put the game away with one of her four kills on the night.

Game three began much like the other two. Southern recorded 10 straight points before SCAD was able to score.

Three of GSU's early points came from service aces -- one from Eisel and two from freshman Aileen Vargas.

With the score 13-3, Eisel nailed

a shot through the Lady Bees' defense. GSU scored two quick points to wrap the game and match.

Sophomore Mendy Crook earned six of the team's 20 kills along with 10 digs. Of the team's 19 service aces, Eisel led with five, followed by Ciekowski and Crook who each had four.

The Lady Eagles enter this weekend's NSWAC tournament 13-15 overall. They are coming off a three-match winning streak.

"If we can keep our momentum going and a good attitude," said head coach J.B. Claiborne, "I think we have a strong shot at Georgia State."

Southern's first game will begin today at 11:30 a.m. They will be playing Georgia State, who beat them earlier this season.



The Lady Eagles spiked SCAD in Hanner Monday. GSU will take a 13-15 record into this weekend's NSWAC tournament, which Southern is hosting for the first time. (Photo by Tony Tocco)



1515 University Plaza
Statesboro, Ga.
681-6300

25% OFF
ALL TREK WEAR
CLOTHING



Designed to fit.
Designed to last.

Sale good
until Nov. 30.

Receive 10% Student Discount With ID*
*On Accessories Only



**Club CAB
Presents**

The Comedy Of...

Tuesday,
November 13th
8 p.m.
Union Ballroom

free with valid
student ID



ANTHONY CLARK

**DON'T GET LEFT OUT IN THE
COLD WINTER QUARTER
COME TO
BERMUDA RUN**



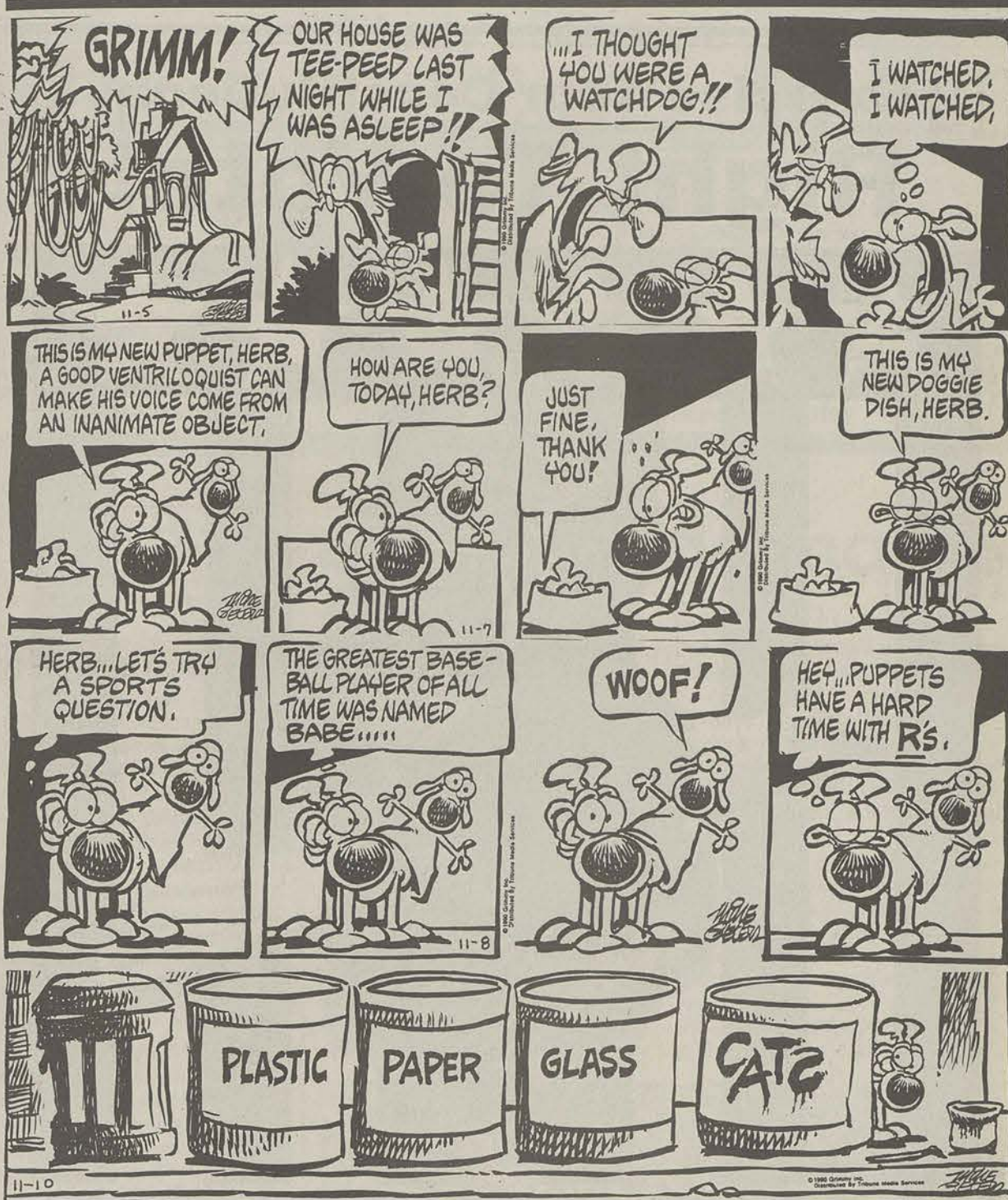
"THE PLACE TO LIVE"

LOCATED ON HWY 67 1 MILE FROM GSU CAMPUS

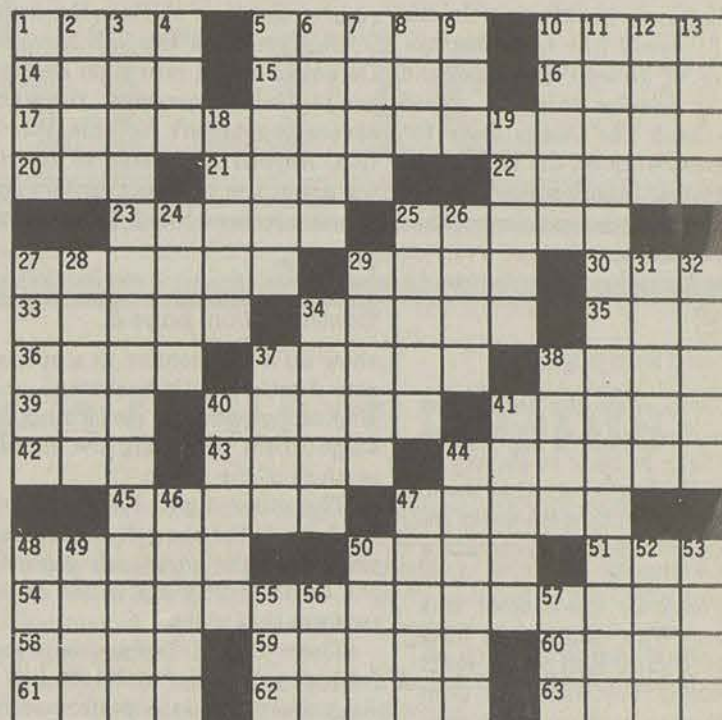
**GREEN
DEVELOPMENT**



**CALL: Déana Martin
MANAGER
681-6994**



collegiate crossword



© Edward Julius Collegiate CW83-5

ACROSS

- 1 Edible root
5 Molokai greeting
10 Culture medium
14 Mr. Stravinsky
15 Like Dolly Parton
16 Like some TV shows
17 Grammatical taboos (2 wds.)
20 Reproductive cell
21 — Bator
22 Oust
23 Baseball feat
25 Ambulance component
27 Greek philosopher
29 Spasms
30 Cumberland —
33 Arrested (2 wds.)
34 Pocahontas's craft
35 " — lazy river..."
36 Actor — Ray
37 Greek physician of old
38 "Out, damned —"
39 Telephone company
40 Baseball's Rod
41 Church recesses
42 College in Baton Rouge
43 Fermented drinks
44 Like some neighbor-hoods
45 French revolu-tionary
47 "West Side Story" character
48 Zodiac sign
50 Captain of the Pequod
51 — Gardens
54 Grammatical taboo (2 wds.)
58 On the Adriatic
59 Laughing
60 Unique person
61 Turn's partner
62 — gun
63 Make eyes at

DOWN

- 1 Turn the —
2 Eager
3 Free-for-all fights (hyph.)
4 Sphere
5 White poplars
6 Of the moon
7 Draft animals
8 Gluttonous person
9 Society of doctors
10 Full of spirit
11 Breaking a nasty habit (3 wds.)
12 — plaisir
13 Repose
18 Unit of light
19 Concise
24 Sundry assortment
25 Muscular power
26 Religious image
27 Oregon or Chesapeake
28 Stops
29 " — of the South Seas"
31 " — lovely as a tree"
32 One who is duped
34 Proofreader's mark
37 Festive
38 — silk
40 Gem weight
41 Likely story
44 Hut
46 Plácido Domingo solos
47 Dishes
48 Exam for prospec-tive lawyers
49 — facto
50 At a distance
52 Mr. Knievel
53 " — in the Money"
55 Tax collectors
56 — in the bud
57 Overly

Classified Ads

00 • Classified Policy

• **FREE CLASSIFIEDS** — The George-Anne provides free classified listings to students faculty and staff members of Georgia Southern University as a campus-community service. Free classified ads should be written in 25 words or less. The advertiser's name, Landrum Box, and the classified category (listed below), must be included with your ad copy. All communication regarding free classified ads must be in writing (absolutely NO free classified ads will be accepted by phone... at this price we don't take dictation). Free classified ads will be inserted into the newspaper in four consecutive issues, unless we are instructed otherwise. Ads must be resubmitted in writing for additional insertions. Free ads should be non-commercial in nature. Free classified listings should be mailed to The George-Anne, Landrum Box 8001, GSU, Statesboro, GA 30460 or call 912/681-5418.

• **COMMERCIAL LISTINGS** — are available at \$5.50 per 50 words for two insertions in consecutive editions. Classified display advertising is available at \$5.50 per column inch per edition, with a one inch minimum size required. Payment should accompany ad, unless advertiser has established credit. Tear sheets will be mailed upon written request. Contact the Advertising Department: ADS, L.B. 8001, GSU, Statesboro, GA 30460 or call 912/681-5418.

• **GENERAL CLASSIFIED POLICY** — The advertiser is responsible for proofreading ads upon publication. Any errors will be corrected upon written notice. Ads should be in good taste, and are subject to standard editing procedures. The editors reserve the right to refuse any classified ad.

CLASSIFIED CATEGORIES

- ◊ 01 — Announcements
- ◊ 02 — Arts & Crafts
- ◊ 03 — Autos For Sale
- ◊ 04 — Auto Parts, Repair
- ◊ 05 — Business Opportunities
- ◊ 06 — Child Care
- ◊ 07 — Education
- ◊ 08 — Freebies
- ◊ 09 — Furniture/Appliances
- ◊ 10 — Garage Sales
- ◊ 11 — Help Wanted
- ◊ 12 — Lost & Found
- ◊ 13 — Miscellaneous For Sale
- ◊ 14 — Motorcycles
- ◊ 15 — Musical
- ◊ 16 — Personal
- ◊ 17 — Pets & Supplies
- ◊ 18 — Photography
- ◊ 19 — Rentals/Real Estate
- ◊ 20 — Roommates
- ◊ 21 — Services
- ◊ 22 — Sporting Goods
- ◊ 23 — Stereo & Sound
- ◊ 24 — Swap & Trade
- ◊ 25 — Television & Radio
- ◊ 26 — Vans & Trucks
- ◊ 27 — Wanted
- ◊ 28 — Weekend Entertainment
- ◊ 29 — Too Late to Classify

01 • Announcements

GSU's NTS (Non-Traditional Student) Group will meet Tuesday, November 20th, 2 p.m. Student Union, Room 275. Contact Carol Brown, 681-5269. (11/16)

If you are driving from Savannah to GSU and need to share the ride with somebody, call Hassan at 920-4363. (11/13)

03 • Autos For Sale

1987 Pontiac Firebird Formula, black, V8, 5-speed, T-tops, A/C, AM/FM, cassette, power windows/doors, 52,000 miles. Worth \$7,900. Reduced to \$7,100 or best offer. 764-7421 (11/16)

1982 Camaro Z28, 305 V8, FI, black, gold stripes, tan cloth int., T-tops, AC, PW, PS, PB, tilt recline seats, louvers, \$3,500. 681-6851. (11/16)

For Sale: 1988 Ford Thunderbird Turbo Coupe. Loaded, 45,000 miles. Great condition, asking \$9,500. 681-3199. Ask for Matt. (11/9)

1985 Black GTI, new engine, new teardrop wheels, great gas mileage. \$4300. Call 681-9499. (11/9)

1989 Camaro, V-6, P/S, P/B, AM/FM stereo cassette, cruise, tilt steering, red w/ black/gray interior. 15,000 miles. Call Stan 1-564-2545 b/w 6-9 pm. (11/9)

04 • Auto Parts, Repair

For Sale - Jeep CJ-7 hardtop. Excellent condition, black door, glass window. \$800 OBO Call Steve at 489-2780 after 5:00. (11/13)

11 • Help Wanted

Temporary part-time morning and afternoon positions available stacking lumber. Barnes Lumber 764-8875. (11/13)

Hiring students to work part-time at Christmas tree lots near Cumberland Mall and in Sandy Springs area. Call immediately 404-924-2824 (evenings) (11/13)

ATTENTION: Excellent income for home assembly work. 504-646-1700. Dept. P6330. (11/16)

12 • Lost & Found

LOST: Black leather wallet; 10/1/90 at the Student Union Theater. Please call 681-3189. (11/16)

Lost: A girl's Fitzgerald High School class ring, and a heart-shaped amethyst ring between the far right parking lot behind the Newton Building and Newton. Call Darchelle, 681-7278. (11/16)

13 • Misc. For Sale

For Sale - Laser 128 computer. Keyboard, Monitor, 1 Internal, 1 External, 5 1/4 disk drive. Citizen 120-D printer. GEOS Software includes work processor, etc. Printshop Software. Bought \$1200. Sale \$600. Call 587-5161 after 6:00. (11/13)

14 • Motorcycles

SHOEI RF-200 Helmet. Red, White & Blue. Mint Condition w/ smoke shield. Very Comfortable. Call Tag @ 681-6428

Beat the gas prices. 1986 Honda "Rebel" 450 low mileage, excellent condition, saddle bags, two helmets, 681-3127. Ask for Mike (11/16)

1988 Suzuki GN 250. Excellent condition. 169 miles. Asking \$1600. Call 587-5870 or send message to GSU LB 16076. (11/13)

For Sale: '86 Honda Night Hawk 450. Good condition, asking \$850. 764-6468. Ask for Matt. (11/9)

1986 Honda "Rebel" 450. Very low mileage. Great condition. \$1350 includes Honda Saddle bags, Honda helmet, and Arthur Fulmer Helmet. 681-3217. (11/9)

16 • Personal

To the Pledge of Chi Omega - Good Luck and Congratulations on your Initiation. Chi-O love, your big sisters. (11/9)

H.M. Trammell and Jive Socket - change of heart - Now that I've heard it, it's got a great beat but the lyrics could use some work. Roses. (11/9)

To: The Middle East Support Group (MESS) Thanks for writing letters to the soldiers! Love, Debbie VanDyke. (11/13)

17 • Pets & Supplies

For Sale: 6-foot female Red Tale Boa. 55 gallon tank, stand, and hot rock. \$700. 681-3199. Ask for Matt. (11/9)

19 • Rentals/Real Estate

Need someone to take over lease at Pinehaven Apartments. Only two payments left - winter through summer quarters. Call 681-2305 anytime. (11/16)

Assume lease for remaining six months. (Jan-June). The Barn Mobile Home. Two Bedroom, one bath. Rent \$210 or \$250 for two. Call 681-9306. (11/13)

20 • Roommates

Roommate Wanted - Female, non-smoker. Winter, Spring Ctrs. Hawthorne II \$182.50/month plus 1/4 utilities. Call Teresa 681-2259. (11/16)

Wanted - roommate or sublease. 2BR, 2.5 bath townhouse. Available to sublease or roommate is needed for winter and spring quarters. Five minutes from GSU. Call 489-3052 (11/16)

Looking for a fun, female, Christian roommate in University Village Apartments. For information, call 681-3319. (11/13)

FEMALE ROOMMATE NEEDED! Move in immediately! Fully furnished, own room, 1/3 utilities. 5 min. from GSU. \$160 a month. Call Amy or Sheila 489-1664, leave a message. (11/13)

Roommate Wanted: Southern Villas #65. Rent only \$133 a month with own bedroom. CLOSE TO CAMPUS. Call 681-7680. (11/9)

FEMALE ROOMMATE NEEDED. Sussex Commons Townhouse. 4 bedroom, 3 bathroom. Fully furnished. \$215 per month. 681-2959. (11/9)

FEMALE ROOMMATE NEEDED - 2 BR, 2 bath apartment at Sagebrush. Fully furnished \$530/quarter. This includes water and electricity for the quarter. Available Winter and Spring quarters. Ask for Emily, 681-4292. (11/9)

Female and kitty need a place to live immediately! Call 681-1863 or 681-3926 any time. Thanks. (11/9)

Female roommate needed ASAP. \$146 rent must share room in a Stadium Walk Apt. Call 681-1549 for more info. (11/9)

Male roommate needed. Fully furnished Stadium Walk Apt. Rent \$115/month. Call Johnny, 681-9290. (11/9)

21 • Services

TYPING - Call Sharon, 764-7868 (Statesboro) or 653-2565 (Pembroke). Quick service, good rates. (11/16)

UNIVERSITY TYPING SERVICE. Word processing for faculty and students. Term papers to books. Editing included. Letter quality printing. Marjorie Bell, Ed.D. 681-3716. (11/1)

SECRET LOANS! We lend money by mail - \$300 to \$5000 in absolute privacy. Borrow for any good reason. No co-signers. No mortgages. Write for details and application - no obligation. Financial Services, Dept. L, Box 454, Nichols, GA 31554. Enclose envelope! (11/16)

22 • Sporting Goods

For Sale: Diamond Back Mountain Bike. Good condition. \$300. 681-3199. Ask for Matt. (11/9)

23 • Stereo & Sound

For sale: Alpine 7903 CD Player. '90-model \$400. Also, Alpine 3522 amplifier '89 model 100. Call 681-3700. Ask for Stan. (11/16)

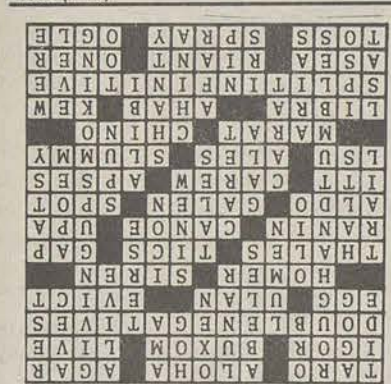
For Sale: KEH-5070 QR Cassette player, Supertower 25w x 2 Pulout. \$150. Two Soundstream 10" woofers, \$200 for both. ALCHASONIK PEO-7A seven band Eq. \$75. 681-3700, Chris. (11/13)

For Sale: 10" Subwoofer (Pyle) in birch cabinet tight, handles 150-200 watts; Asking \$175. Call 489-1011 (9-5) or 564-9386 (3-10). Ask for Russ or leave name and #. (11/9)

For Sale: 150 watt Pioneer truck speakers. Sound great. \$150. Ask for Matt. (11/9)

24 • Swap & Trade

You put away your childish things long ago but the social life of an adult is expensive. I will pay cash for your cartoon glasses, 1 or 100. Interested in all kinds but especially Pepsi (Twelve and Sylvester, Tasmanian Devil, Superheroes, etc.) and Welch's (Porky Pig, Flintstones, Archie, etc.) Must be in good condition. 681-1086. (11/13)



Middle Georgia Gold and Silver Exchange
Fine Jewelry at wholesale prices
• Open to Public • Buy & Sell • Shop & Compare!
Hrs. 10 to 6 764-4599
#6 Gentry Square Statesboro (next to Winn Dixie)

WE NEED HELP!
THE HONEY BAKED HAM CO. is in search of help during the holidays to fill our Sales Counter and Production positions. We have stores located in the following states: Alabama, Arkansas, Colorado, Florida, Georgia, Louisiana, Mississippi, Missouri, Nevada, North and South Carolina, Tennessee and Utah. Please check the white pages for information on the store nearest you.

MEISEL GRAPHICS

Wild Things

- T-Shirts
- Hats, Caps
- Custom Screen Printing For All Happenings...

Where Quality, Service and Style Will Suit You To A "T"

60 East Main • 912/489-8843

NOW OPEN

ROB'S Drive Thru

BEER & WINE
Newly remodeled Convenience Store with Drive-Thru for your convenience Food & Drinks

Store Hours
Mon.-Sat. 6:30 - 12:00 Midnight
Sunday 9:00 - 8:00 p.m.

Coupon

FREE Car Wash with coupon
Expires Nov. 30

Coupon

452 S. Main Statesboro 764-9553



THE BOOK HOUSE

"With the newest and Best Titles"

Bo Knows Bo
Bo JacksonGet to the Heart
Barbara MandrellAlso the popular Cliff Notes
and
The Wall Street JournalStatesboro Mall
764 - 4436Owners:
Evelyn & Howard Winn

Heath Chester

Orr said, "I do not think that (Kappa Alphas) saw the flag as saying 'let's go back to slavery.' I don't think that occurred to them. I seriously doubt that the use of the flag is an attempt to denigrate a race."

McWhorter questioned this attitude. "Why would they have the Old South Ball each year? Why would they march in Confederate garb each year? To want to go back to the antebellum period is ludicrous. This isn't Gone With the Wind," he said.

"The confederate flag is insulting to black and white students. It is so symbolic of what the south needs to leave behind," said McWhorter, who added, "If the administration and students think that there are no racist acts (at GSU), they need to wake up and get out of their sheltered lives."

rendering the cards ineffective.

Although students who receive tickets may appeal, Brown said that the majority pay the fine.

Most students' complaints are handled in the University police office, but those with more complex cases are sent to the Traffic and Safety Commission.

Brown says that in the future he would like to see more parking spaces on campus. "I realize that they've got limited space, but it would be nice to have adequate parking around each building."

are eligible to take the "Never Ever" all-day lesson and the advanced skiers can try the mogul runs or test their skills in the trees.

This year, the trip will leave on December 8 and return on December 15. Unlike years past, there are several spots left for this year's trip. Anyone interested in learning about the trip may contact Joe Blankenbaker at 681-5925 in the

show on a TV monitor in a special sound-proof booth backstage and sing along with the performers on stage to fill in during the choral sections of the music.

The other eight, however, are ready to do the show at a moment's notice or take someone's place in the booth if they are called on to perform that night.

There is a difference between "standbys" and "understudies." An understudy is a performer in the show who learns a larger part and can take it over if called upon. A standby, on the other hand, learns several roles and is waiting in the wings, always prepared to perform.

Besides having a makeup design, wig, and costume for each character they cover, standbys also have a generic makeup that can be applied quickly in the event of an emergency. Dancers in the play have been known to twirl offstage with an injury; and before the audience knows it, a standby twirls back onstage to replace them before that dance sequence is finished.

After the tribe of cats have danced their Jellicle Ball, sung about the various idiosyncracies of cats, and sent Grizabella to the heavieside layer, the show ends and the hours of preparation take minutes to undo as the performers remove their makeup and costumes.

As the actors leave the theatre for their hotel rooms and dinner, the anxious fans at the stage door ask each one, "Who were you in the show?" Without the mask of the feline makeup, no one ever recog-

Hanner Building. All reservations must be made before November 10.

The total price for the trip is \$548. The price includes round trip air fare, a chartered bus from Denver to Steamboat and back, a 5-day lift ticket, seven nights at Ski Inn Condominiums, a picnic on the mountain, two parties, and discounts on lessons, skis, and gifts.

swer was hooters, of course, but them ejerated folk had to go and write in they own answers. The question started "The average GSU faculty male is most concerned with...." I give you some of the written-in responses:

From a Biology professor: "I often muse over the fact that spermatazoa, while infused with sucrose, tastes salty. This irony seems to me to prove that God exists."

25 Words or Less
Students & Faculty

November 12–16 ★ 8 a.m. to 5 p.m.

[illegible]

Trying to stretch dollars when you're computer shopping doesn't mean you're willing to make sacrifices.

That's why you should consider the new, affordable Macintosh® Classic® computer.

It has everything you need—including a monitor, keyboard, mouse, 2 megabytes of RAM, and a 40-megabyte hard disk. Just plug everything in and the Macintosh Classic is ready to run, because the system software is already installed.* And, thanks to the Macintosh computer's legendary ease of use, you'll be up and running in no time.

Like every Macintosh, the Classic can run thousands of available applications that all work in the same, consistent way—so once you've learned one program, you're well on your way to learning them all. And this is one cheap roommate that doesn't have trouble sharing. The Apple® SuperDrive™—standard equipment with every Macintosh—reads from and writes to Macintosh,

MS-DOS, OS/2, and Apple II floppy disks, which means you can share information with someone who uses a different type of computer.

See the Macintosh Classic for yourself. It'll change your mind about cheap roommates.

For further information visit

EAGLE'S
LOGICUNIVERSITY
COMPUTER
STORE

University Computer Store
University Union Building
681-0454

The power to be your best.™

* Macintosh Classic computers purchased before January 1991 include system software on floppy disks; software is not installed. ©1990 Apple Computer, Inc. Apple, the Apple logo, and Macintosh are registered trademarks of Apple Computer, Inc. SuperDrive and "The power to be your best" are trademarks of Apple Computer, Inc. Classic is a registered trademark licensed to Apple Computer, Inc. MS-DOS is a registered trademark of Microsoft Corporation. OS/2 is a registered trademark of International Business Machines Corporation.