

Georgia Southern University

Digital Commons@Georgia Southern

---

The George-Anne

Student Media

---

5-22-1990

## The George-Anne

Georgia Southern University

Follow this and additional works at: <https://digitalcommons.georgiasouthern.edu/george-anne>

---

### Recommended Citation

Georgia Southern University, "The George-Anne" (1990). *The George-Anne*. 1181.  
<https://digitalcommons.georgiasouthern.edu/george-anne/1181>

This newspaper is brought to you for free and open access by the Student Media at Digital Commons@Georgia Southern. It has been accepted for inclusion in The George-Anne by an authorized administrator of Digital Commons@Georgia Southern. For more information, please contact [digitalcommons@georgiasouthern.edu](mailto:digitalcommons@georgiasouthern.edu).





# The George-Anne

912/681-5246

Vol. 62, No. 45 • Tuesday, May 22, 1990

Since 1927, Georgia Southern's Official Student Newspaper

Georgia Southern College • Statesboro, GA 30460

## Vote registration slated Thursday

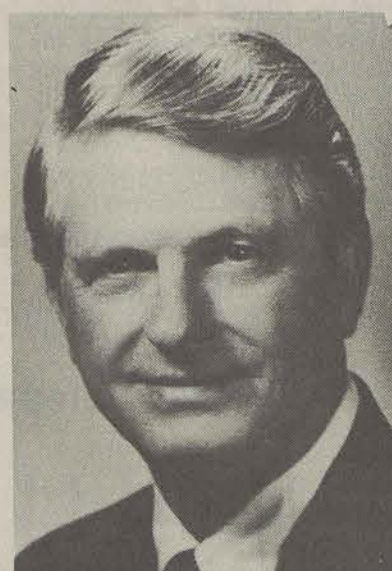
G-A Staff Reports

Students now may register on campus to vote in the upcoming primary season and general elections by signing up at one of two sites open on Thursday.

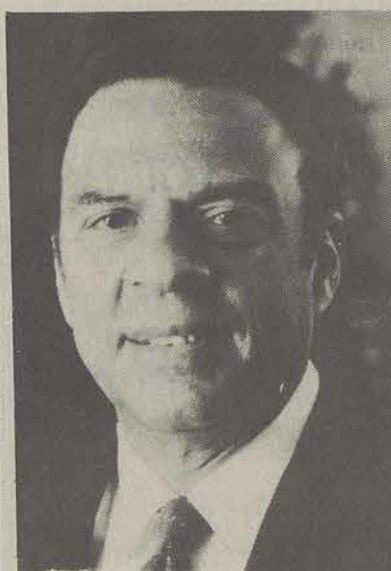
Registration booths will help students register to vote in Georgia from 10 a.m. to 10 p.m. at both Landrum and Williams Centers in an event sponsored by the Political Science Association.

Previously, students had to register in their home counties; however, under a new Georgia law, college and university presidents have been appointed deputy registrars and may coordinate on-campus voter registration for students regardless of the location their home counties in Georgia.

## Gubernatorial candidates to appear



Zell Miller (D)



Andy Young (D)



Johnny Isakson (R)

By ALLEN ALLNOCH  
Managing Editor

Leading gubernatorial candidates Lt. Gov. Zell Miller, former Atlanta mayor Andrew Young and Johnny Isakson will head a gubernatorial forum Thursday night at the Williams Center beginning at 7:30 p.m.

The forum, co-sponsored by the Student Government Association and the Statesboro/Bulloch County Chamber of Commerce, will also include former governor Lester Maddox, senator Roy Barnes, representative Lauren McDonald and judge Greeley Ellis.

"Everything is moving along really well," said Sean Schuur, SGA president. "The college has been a great assistance in rolling out the red carpet for these people."

Former U.S. Representative Bo Ginn will serve as moderator for a question and answer format which begins at 8 p.m. after candidates in the Lt. Governor's race open the forum with three-minute statements.

The panelists for the event will include Dr. John Daily, professor of political science at GSC, Bill Nigut of WSB TV in Atlanta, Cynthia Tucker, political columnist for the *Atlanta Journal and Constitution*, Phil Kent, editor of the *Augusta Chronicle*, and Doug Weathers, anchorman for WTOG-TV News in Savannah.

Each gubernatorial candidate will have three minutes for opening remarks and one minute to respond to each of the panelists' questions with no rebuttal from opposing candidates. Following the ques-

tions from the panelists, each candidate will have three minutes for closing remarks.

A capacity crowd of over 500 people is expected to attend the forum, including students, school officials, key political figures, community VIPs and other statewide elected officials.

The forum idea first was presented by two political science students, Shawn Davis and Hank Burnham. They approached SGA with the idea last fall and, together with the Chamber of Commerce, were able to bring the candidates and panelists to GSC.

"Sean (Schuur) has been a tremendous help with this," Burnham said. "We told him what we needed and he's come through."

"As we approach university status, we felt like it was time to start acting like a university," said Davis, whose father, Guy, was the Republican candidate for governor in 1986. "As the July 17 primary nears, we felt like this was the best time to get the candidates down here. We want them to see what our college has to offer."

Burnham said the group of panelists from major media outlets around the state made for a newsworthy event and was a "major factor in getting the candidates to come here."

## Police arrest nine at Hat Party

By KEVIN HUDSON  
Staff Writer

Statesboro police officers arrested 9 people when a shut-down order was disobeyed during the sixth annual hat party on May 19.

However, the party did raise about \$1400 for a local charity. Dave Harris, who helped found and organize the first party, is an alumni of GSC who came back to "give something back to the community."

Students began arriving at the house near Western Sizzlin' shortly after noon, and by the time the party was over, at least 700 people had paid to attend, raising about \$1400 for the Statesboro/Bulloch County Humane Society. There were also about 300 non-paying guests, including the bands and staff, bringing the total attendance to about 1000.

This was the first time the hat party proceeds were donated to charity, and Harris plans to donate the income from future parties to different nonprofit assistance organizations.

Three local bands highlighted the event with music. First, *Gigi's Playhouse*, a mainstream progressive rock band, performed for about 45 minutes. When the band music was heard by students in the area, a tide of people came through the gate, each with their own style of hat. Since baseball caps were not accepted to satisfy the entrance criteria of wearing a hat, many people had been forced to make their own hats, using everything from aluminum foil and paper plates to baskets and beer cans.

Another local band, *Old Man's Beard*, performed next and brought a little faster beat to the scene, along with a few mellow songs. They performed both original and cover songs during their set. *Gunpowder Plot's* time on stage also got the crowd moving with some original thrash music that brought thoughts of *Metallica* to some in the audience.

As the fourth band, *Me an' Mills*, was setting up for their set shortly after midnight, the Statesboro Police came in and announced that a complaint had been made about the loud music. The bands were told to stop playing or at least keep the sound low.

Around 1:00, *Me an' Mills* got on stage to play despite the shut-down order. Brad Bacon, Dodd Ferrelle, Clint Jones, and Jon Mills, all members of the band, were subse-

See Hat page 2

## National News Briefs

©Copyright 1990, USA TODAY/Apple College Information Network

### ACCORD GOOD PRECURSOR TO SUMMIT:

President Bush said the U.S.-Soviet agreement to eliminate thousands of nuclear-tipped warheads carried aboard long-range missiles and bombers makes for a "good" summit with President Mikhail Gorbachev. The summit will still have rough spots with European conventional troop and tank cuts and the fate of independence movements in the Baltics to be considered.

### MORE AIDS PROGRAMS NEEDED:

A system to get experimental AIDS drugs to patients with no other treatment option is expected to be proposed by federal officials Monday. Monday, ACT UP, the AIDS Coalition to Unleash Power, protests at the National Institutes of Health in Bethesda, Md. It charges officials have delayed testing AIDS drugs other than AZT.

### FIRST PHOTOS FROM HUBBLE:

The Hubble Space Telescope snapped and relayed its first photo Sunday. NASA managers say the "first light" photo - which included a rare double star - came out twice as good as they expected. Hubble actually took two photographs of the universe: a one-second exposure and a 30-second exposure, which NASA selected to release.

### LOTUS-NOVELL DEAL CRASHES:

The marriage between software giants Lotus Development and Novell Inc. collapsed over the weekend. Reason: Novell executives insisted on more management control over the combined company. The \$1.4 billion deal would have created the largest personal computer software company.

### HUNDREDS FLEE HOMES AFTER FLOOD:

Between 200 and 500 homes were evacuated in the resort city of Hot Springs, Ark., after flash flooding Sunday that left some roads under at least 4 feet of water and sent vehicles crashing into downtown buildings. No injuries or deaths were reported. More flooding is expected downstream. Flooding also continues in Southeast Texas and Louisiana.

### ARIZONA SEEKS TIPS ON TUNNELS:

Arizona law enforcement officials are planning telephone tip-lines to make it easier for informants to report smugglers tunnels between the United States and Mexico. A tunnel, estimated to cost \$1 million, between Douglas, Ariz. and Agua Prieta, Mexico was closed Thursday, but other tunnels in the area are suspected.

### HEALTH AND DRUG INDUSTRIES UP:

The pharmaceutical and health care industries are currently among the strongest in the economy, analysts say. Reasons: rapid advances in technology and the needs of an aging population.

See News, page 6

By MISTY McPHERSON  
Staff Writer

Lee Johnson, owner of Cable Television in Statesboro, claims that he offered to install cable television on behalf of Statesboro Cable TV in all residence halls at GSC, for \$4 per month, but was turned down.

No one at the school remembers the proposal.

"He never made any offer to me, (and) I'm the one dealing with this," said Fred Shroyer, Director of Administration.

Neither Dr. Armstrong, Vice-President of Business and Finance,

nor Larry Davis, Division Head of Administration, could recall the proposal.

Each had spoken with Johnson concerning putting cable into the residence halls, but no agreement was ever reached and no one recalls the price of \$4 being quoted.

Although there was never a written proposal on the matter, Johnson said he had spoken with the administration about the installation.

"I would place cable in the ground, sell the service, and guarantee the rate (of \$4) for five years," said Johnson. "We offer this service to Mississippi State, and they love

it. I would like to do the same for GSC."

Students are presently able to rent cable in certain dorms, on an individual basis, but Davis says experience has been low with this. Students don't want to pay a high price for it.

"I am very interested in getting cable put into the residence halls...at an economic and reasonable price," said Davis. "We have to get our residence halls more competitive with the amenities offered off campus."

Shroyer said he had no idea when cable would be placed in the dorms, but he was looking into it.

## Foundation donates

George-Anne Staff Reports

The Georgia Southern Foundation has donated funds for a new \$17,000 van to the Georgia Southern Museum for use in its Science Education Network for the Southeast—Project SENSE—for the upcoming year. "Georgia Power had previously helped us by funding the development of science experiment kits," said Lynn Futch, Project SENSE director. "Now the company's foundation has funded a van so that we can continue to take those kits, STARLAB, and other equipment into next year's 13-county service area. We are extremely grateful for their support. We could not carry out our mission of hands-on learning without the van." She expressed appreciation to John Varner, head of Georgia Power corporate communications in Atlanta, who has worked closely with the Museum on both the science kits and the van funding.



Pictured are, L-R, Frank Beacham, district manager for Georgia Power, Dr. Nicholas Henry, Georgia Southern president, Lynn Futch, and Museum Director Del Presley.

## TKE sits for Special Olympics

By C.E. Logan  
Guest Writer

Approximately \$1000 was raised as of Sunday night from the Tau Kappa Epsilon (TKE) scaffold sit on the front lawn of the Landrum Center. The sit was held to raise money for Georgia Special Olympics.

For 48 hours sophomore Rex Benton, TKE's co-rush chairman, voluntarily sat atop a 15 foot high scaffold that provided no more room to move around than the interior of a Yugo.

Between 5:30 and 10 a.m. on Friday morning, Benton shared his scaffold with radio station 1-95's morning broadcast team, the Breakfast Flakes. During the broadcast, Dr. Henry, president of GSC, joined Benton and the Flakes atop the scaffold.

TKE spent over a month planning and getting contributions from local businesses. Arrow Rental provided the scaffolding free of charge.

Charity drives are not unusual at GSC. Each quarter, a Greek organization sponsors its own drive for their national philanthropy.

## Marathon walker here today

By KEVIN HUDSON  
Staff Writer

mas he walks to keep his mind off of the pain.

Among the other obstacles the walker faces are wildlife, especially snakes; thieves, as his tent and fishing pole, among other things, have been stolen recently, and bad weather.

Weather poses a special threat to Loughheed, due to electronics in his body. During a surgery 12 years ago, doctors implanted a system of wires in his body to improve his arm and back muscle control, and the electrical impulses cause him to be a favorable target for lightning.

The 36 year-old Loughheed is planning on writing a book at the end of the trip around the continent. He hopes to be home around the spring of 1992.

All proceeds from the book will be donated to MS. No staff or follow group is accompanying Loughheed, as he plans on completing the entire trip solo on foot. "all of the money goes to MS this way, I don't have to pay a driver, staff or anything."

The names of the towns in the Southeast United States seem to have added humor to his otherwise hot, slow day. Cities such as Hogs Holler, Virginia; and Hopulikit,

Georgia, just north of Statesboro. He did fail to mention towns like Pouce Coupe (pronounced "Putes Coo-pay"), Canada in his list of oddly named cities.

The hat party last Saturday night was one of the reasons for Loughheed's three-day stay in the 'Boro. "Those people were friendly to me and I had a good time. It must have been 50 people that blew their horns at me when I walked down the sidewalk the next day." Loughheed was introduced at the annual hat party and spoke briefly there about his trip. He said he's had a great time, and would like to thank everyone for their help and hospitality over the weekend.

"Every day Loughheed stays behind in a city is one more day away from home, and one more day to pay for food and shelter. He is staying an extra day so he can come out to the college today, so help him out with a dollar or two and check with your place of business or club about a donation to help fight MS. You'll see him, he's the one with the American and Canadian Flags on his backpack. He plans to add Mexico and Honduras in the coming year, so give him a helping hand."



CAMPUS  
BRIEFS

George-Anne Staff Reports

•Pi Sigma Epsilon will be holding a *Back to Campus Battle of the Bands* on September 29 from 5:00 'til 8:30, after the football game. Any local bands who wish to participate or want more information should contact Gary Wofford as soon as possible at L.B. 9864. Tentative plans call for the contest to take place at the Collegiate with all-star judges, possibly including I-95's Virgil Thompson. The contest will be open to 6-8 bands and the winner could net a cash prize and studio time at Marty Sheridan Studios to produce a 4 song digital demo tape.

•Phi Mu Alpha Sinfonia will host a musicale on May 22 at Foy Recital Hall. The musicale starts at 8 p.m. The public is invited and there is no admission charge.

•Also on May 22, CAB will present "SHAGTIME" in concert. They will be performing in front of Landrum Center at 4 p.m.

•The GSC Wind Symphony will be at Foy Recital Hall on May 23 at 8 p.m. The public is welcome and there is no admission charge.

•Marshall Samuelson will be in piano concert at Foy Recital Hall on May 24. The concert starts at 8 p.m. Public is welcome, free.

•The Statesboro-Georgia Southern Symphony will present their "Pops" concert at the Sports Complex on May 25. The concert starts at 7:30 p.m. Free and the public is welcome.

•Georgia Southern College's Southern Center for Continuing Education is hosting a free day long interactive teleconference on May 30, 1990 from 10:15 to 5 p.m. The program, *New Georgia Visions*, will examine current issues and future problems facing Georgia in the areas of the economy, education, health, governance, communications and the environment.

The teleconference facilitator will be Dr. George Cox, Associate Professor in the Political Science, Public Administration and Criminal Justice Department at Georgia Southern. Call 681-5551 to register.

•Everyone should make plans now to attend the May Business After Hours and Silent Auction May 31 at ERA Landmark Realty beginning at 5:30 p.m.

The Silent Auction, to benefit the Muscular Dystrophy Association, is free to the public. It will include one hour of silent bidding, wine hors d'oeuvres and a live auction held by celebrity guest auctioneer Erk Russell. He will auction a personally autographed "The Legend of Erk" poster.

Everyone is invited to enjoy a fun-filled evening of bidding on gift certificates, GSU materials, trips and much more. All proceeds will benefit children and adults with muscular disease.

•The 1990 Golden Olympics will be held at Fair Road Park. In its third year, this festival of events will be co-sponsored by the Statesboro Recreation Department and the Department of Recreation and Leisure Services of Georgia Southern University. The schedule of events will start off with a bang at 10 a.m. on Thursday, May 24. It will conclude with an awards ceremony at 2 p.m.

•For more information of the newly organized badminton club, contact Dee Ramsey at 681-0200. The badminton club meets on Tuesdays and Thursdays from 8 to 10 p.m. in the Hanner Gym.

•Kevin Bolling, a sophomore at Georgia Southern, has been named the Southeast Regional Student Representative for the National Association of Campus Activities (NACA).

Bolling, currently the student director of the Campus Activities Board, has been involved with the board for two years. He will serve as the director next year.

He is a member of Gamma Beta Phi Honor Society, the Georgia Southern Student Orientation, Advisement, and Registration (SOAR) Team, and was recently awarded a Leadership Service Award during Honors Day.

NACA is the nation's largest collegiate organization for campus activities programmers, which includes more than 1,100 schools. The Southeast Region is comprised of Alabama, Georgia, Florida, South Carolina, Tennessee, North Carolina, Mississippi, and Virginia.

•Amy Dorfman, a senior communication arts major at Georgia

See Briefs, page 6

## CAB Spring Fling set

By APRIL STEPHENS  
Staff Writer

The long-awaited Spring Fling sponsored by CAB is finally here. Today from 1:00 until 7:00 pm, GSC's campus will be alive with springtime excitement.

The annual event will be outside of the Landrum Center where the cooking is scheduled to take place. CAB has many activities planned for this year's Spring Fling. There will be beach music—compliments of Shagtime—and a caricature artist will be there to draw you and your friends in a new and fun light. Along with this, the "cosmic orbiter" ride and a dunking booth will be set up all day. From 4:00 until

7:00 three contests will be held for the best legs, the limbo, and the Shag.

However, with even this much excitement, there is always room for more. This year CAB has added the "Air Walk." This is a volleyball game played on an air mattress with a helium-filled ball. These games will be held all day. However, in order to play, you must have a team of 16 people, and you had to have registered with the CAB office by May 18. Trophies will be awarded to the winning teams of the volleyball tournament.

This year's Spring Fling is expected to be the best ever; so come out to Landrum and be ready for lots of food, fun, and entertainment.

## 'Boro Beat

By KEVIN HUDSON  
Staff Writer

The biggest story in the news this weekend concerning the local music scene seems to be the hat party. One local band was arrested, along with members of at least one other band. Some of those arrested claim to have only been trying to get their instruments and leave when they were approached by the Statesboro Police and taken to jail.

The bands which did get to play were well received by the 1000+ estimated crowd. I was with some members of Pi Sigma Epsilon from Kennesaw State College and Texas. They all seemed impressed by the show of local talent. As far as the goal went, \$1400 was raised by the event and will be donated to the Humane Society.

One of the cancelled parts of the show that a few people got a preview of last Wednesday was the appearance of *Live Bait*, a group of students, many already in other bands, who get together occasionally and just have fun, and play various instruments such as the dulcimer, banjo, harmonica (that's some Amazin' Grace, Christy), and bongo drums. The get-together took on a hillbilly atmosphere with Brad Bacon singing *HeeHaw's Where, Oh Where, are you Tonight*, and *Take Me Home, Country Roads*.

In other news...

•Pi Sigma Epsilon will be holding a *Back to Campus Battle of the Bands* on September 29 from 5:00 'til 8:30, after the football game. Any local bands who wish to

participate or want more information should contact Gary Wofford as soon as possible at L.B. 9864. Tentative plans call for the contest to take place at the Collegiate with all-star judges, possibly including I-95's Virgil Thompson. The contest will be open to 6-8 bands and the winner could net a cash prize and studio time at Marty Sheridan Studios to produce a 4 song digital demo tape.

•Michelle Malone will be back at the Rockin' Eagle this Wednesday. Be sure to look for her premiere album, *Relentless*, which is set to go on sale on June 1.

•Friday will be the last show in Statesboro for a while for the local band, *Subject to Change*. They are all about to graduate, and will be moving to Atlanta. Check this column Friday for another announcement by this band.

•Gunpowder Plot and Placidyl Domingo will co-headline at the Grand Opening of The President's Street Club in Savannah on Friday, May 25. According to Placidyl Domingo's lead singer, Elmer Perdue, the club will feature live music on a regular basis, and reportedly already has plans to invite other groups from the 'Boro down to the "Big City".

•The 'Boro Beat is a twice-weekly music column in the *George-Anne*. If you have announcements, comments or questions you would like to see addressed here in the last two editions of this quarter, please write Kevin Hudson at L.B. 11802 or call 681-6840 and leave a message.

Hat continued from page 1

quently arrested and charged with Disorderly

Conduct. Also charged were Thomas D. Borck, Graham Forbes, Braxton L. Haynes, Preston Jefferson and John W. Patterson. All were given \$300 fines the next morning, as well as the previous night in jail. Jefferson was also charged with Possession of an Alcoholic Beverage by an Underage Person.

One attendant of the party claimed to have asked an officer why they had "busted" an event that had raised so much money for a worthy cause. The officer was reported to have said "I don't care how much money you made for

anyone, the party is over!" The police outside of the band area were simply directing traffic and helping hundreds of students cross South Main Street to go toward the college.

Many party-goers were surprised to find that their cars had been towed. Most of these students has parked at the Western Sizzlin' restaurant and along the street after police had warned that cars would be towed from these areas if left unattended.

It is presently unknown if the hat party tradition will continue but due to its relative financial success, many people have expressed an interest in continuing the tradition for a few more years

## Greek News

BY MATT MAYBERRY  
Staff Writer

•Tau Kappa Epsilon has gotten off to a good start on "Teke Week '90." Starting on the morning of May 18, a TKE sat on a scaffold at Landrum Commons to raise money for every hour he stayed up there.

To aid in the fundraising, WXIV radio (I-95) from Savannah broadcasted their Friday morning show live from atop the scaffold.

"Teke Week" is just beginning, though. A two man volley ball tour-

nament will take place May 24-26 at the TKE House on Highway 67. The finals will be played on Saturday, May 26.

Also on May 26, Tau Kappa Epsilon will sponsor a "Battle of the Bands" at their house. This event is being co-sponsored by WVGS, 91.9 FM.

•Pi Kappa Phi is having its Fifth Annual Miss Greek GSC Pageant on May 24, beginning at 7 p.m. at the Southern Center for Continuing Education. The proceeds from this event will benefit P.U.S.H. (People Understanding the Severely

Handicapped), the national philanthropy of Pi Kappa Phi. The pageant is the culmination of P.U.S.H. for the Roses week, a week long effort by Pi Kappa Phi and the sororities at GSC to raise money for P.U.S.H. and educate the public about the needs of the severely handicapped. Various awards will be given out at the pageant recognizing those sororities who have given an extra effort in raising money for various charities and for performing a multitude of service projects for the community throughout the academic year.

Miscellany  
to hold  
readingsMELISSA LUKEHART  
Copy editor

The *Miscellany* is holding its third **Evening of the Arts** program of the year on May 24 at 4 p.m. in the Foy Gallery 303. The program will feature readings by some of the students published in this year's magazine.

Student artwork will also be shown around the gallery. Free refreshments will be served to all those who attend the program, and copies of the limited edition *Miscellany 1990* magazine will be available.

The staff of the *Miscellany* cordially invites all interested students, faculty and staff members of GSC to attend the final reading of the 1989-1990 academic year.

Letter  
policy

All letters to the editor are subject to standard editing policies for taste, libel, etc. The editor reserves the right to reject any letter. There is no word limit on letters and are published on a first come, first served basis. Letters should address certain issues and not attack individuals. All letters MUST BE SIGNED. The letter writer may request to remain anonymous. However, it will be the editor's decision whether or not to print the name.

Don't Miss  
The Fun  
Today!1pm - 7pm  
Landrum  
Commons

## - Featuring -

- Volleyball Tournament
- Dunking Booth
- Twister Game
- Caricaturist
- Cosmic Orbiter

Dance to the Music of  
SHAGTIME

- Best Legs Contest
- Shag Contest
- Limbo Contest

Frisbees will be given out throughout the day!  
Landrum will be serving a picnic dinner outside

## COMING SOON...

SATURN®

THE LASER LIGHT ROCK CONCERT  
Featuring the Music of Guns & Roses, U2, Pink Floyd and Led ZeppelinAn Experience You'll Never Forget!  
FREE Glow Neon NecklacesFriday, May 25  
10:00 p.m.

Near the Carroll Building &amp; Lakes

• A CAB EVENT •





## Dingus Magee's fought for fourth Silver Saucer

By MICHELLE O'NEAL  
Guest Writer

Stephanie Slaton-Owens stood behind the cash register at Dingus Magee's last week with a sparkle in her eyes and a smile on her face. She was excited because two great things were going on in her life. Not only was she pregnant with twins, but she was also anticipating the annual Bite of the 'Boro that week-end.

The twins aren't here yet, but this year's Bite of the 'Boro festival was held Saturday at the courthouse in downtown Statesboro, providing food, fun, and entertainment for the crowd that attended. Several restaurants in the area

competed for the Silver Saucer Award and had food booths set up for hungry customers. Also, quality arts and crafts were displayed.

Dingus Magee's has participated in the festival all four years of its existence. "We had won the Silver Saucer Award the previous three years, and I anticipated winning again this year," said Will Howell, owner and manager of Dingus Magee's.

To win the award, Dingus Magee's didn't have to whip up its best dish and compete against other establishments. It had to compete against approximately 12 other restaurants in the community in several fun, child-like events.

Lisa Sanders, a waitress at Dingus Magee's, said the popular Tracy

Ham and several other Georgia Southern football players helped Dingus Magee's win the first year, when the Bite of the 'Boro was held out at the Kiwanis Ogeechee Fairgrounds.

"It's a square of entertainment," said Kim Haas, a Dingus Magee's waitress, a Georgia Southern student, and a participant in the events.

The food booths, arts, and crafts are set up around the sidewalk of the courthouse while competitions are going on at the same time on the grass area. A dance is held that night.

"I've never been to the dance, but I hear people love it," said Haas. This year's dance featured four bands, including the popular

Okaysions, and was held behind and beside the courthouse. The streets were roped off to provide a street dance effect.

"It's great advertisement for the restaurants, and also for the downtown stores," said Slaton-Owens. "We don't make much money, but we're out there for the fun and publicity."

Said Dingus owner Larry Owens, husband of Slaton-Owens, "One of our guys also competed in the bike race."

Added Slaton-Owens in a happy and hopeful tone, "We can't compete in the diaper derby this year because we have no Dingus babies, but next year we'll have the twins out there."

## Speech presents idea for new major

By PATRICK SCOTT  
Guest Writer

Blair Miller, an international credit analyst for Manufacturers National Bank of Detroit, will speak Wednesday, May 23, at 7 p.m. in Room 213 of the Southern Center for Continuing Education. She will discuss an area of study called Foreign Languages and International Trade (FLINT), in support of efforts by the Georgia Southern foreign language and business departments to initiate such a program at our college.

If established, this new major will allow students who are interested in a foreign language to apply that skill in the business community. The major would involve an overseas internship for students, who will spend time overseas, either with an American or a foreign company in the country of their language specialty.

"We have spent a lot of time

speaking to administrators and faculty," said Dr. David Alley, a professor in the Foreign Language Department at GSC. "We hope Mrs. Miller will show the practical applications of this program to the students."

Miller graduated cum laude from Eastern Michigan with a double major in the Language and International Trade German Program and International Marketing. She has continued to study international trade in a variety of locations. her travels have included trips to Austria, Yugoslavia, and the Middle East.

Other interesting aspects of Miller's career include the facts that she has worked as a financial analyst for Daimler-Benz, the famous automobile manufacturer, and she is currently the first violinist with the Birmingham-Bloomfield and Grosse Pointe Symphony orchestras.

Miller's visit is sponsored by the Foreign Language Department and CLEC.

## X-rated films hot topics

By JERRY BOKAMPER  
©Copyright 1990, USA TODAY/Apple College Information Network.

X marks the spot where the ratings board of the Motion Picture Association of America puts its collective foot down on sex, violence or extraordinary unseemliness in the movies.

Filmmakers argue that the X, which means no one under 17 will be admitted, is a scarlet letter that condemns worthwhile, adult-themed productions to a short and profitless existence. Most chain theaters forbid X-rated films, many newspapers won't advertise them, and shopping malls often contractually forbid resident multiplexes from showing them.

Backers of the MPAA guidelines respond that the moviemakers' outrage is often calculated, a ploy to gain maximum publicity by hollering censorship.

They assert that a film will be submitted with material guaranteed to draw an X from the nine parents) and a chairman who sit on

the board. Then the offending footage, which was sure to be cut anyway, is excised with much public indignation.

This year the battle of the X is especially fierce because four new releases, defended by industry insiders and critics, have run into rating trouble:

—"The Cook, the Thief, His Wife & Her Lover" — Sex, violence and cannibalism in a restaurant setting.

—"Wild Orchid" — A steamy love triangle starring Mickey Rourke.

—"Henry: Portrait of a Serial Killer" — What it sounds like, in spades.

—"Tie Me Up! Tie Me Down!" — A comedy of bondage.

"Wild Orchid" was re-edited to fetch an R. "The Cook, the Thief, His Wife & Her Lover" and "Henry: Portrait of a Serial Killer" opted to go unrated rather than accept the X. Miramax, the distributor of "Tie Me Up!" as well as "The Cook," is appealing the X on "Tie Me Up!"

(Bokamper writes for the Arkansas Gazette in Little Rock.)

## Professor gives new definitions of the South

By ELIZABETH TILLEY  
Features Writer

"The South is an idea we carry around in our heads, and where people talk about it frequently," said Dr. John Shelton Reed, professor of history at Chapel Hill, NC.

According to Reed, there are various ways to determine the South, and with each determinant, the geography of the South changes. These types of classifications are relative to "persisting regional differences that reflect things other than morality and economy."

The per capita income of the South has been a means to term it a poor agricultural region, but this is changing due to an increasing

number of metropolitan areas, said Reed. "Life in a poor state is not all bad news—burglary rates are higher in richer states than poorer."

Another determinant of "the South" is the movement of classical Southern values and ethics that families take with them when they move to outlying areas. One of the easiest to identify is religion. Traditionally, the South is viewed as being a Baptist society, but the number of denominations is larger now than 50 years ago, said Reed.

The South is also depicted by what crops and vegetation are grown. The "Cotton South" is smaller than the "Kudzu South," said Dr. Reed. "This is known better as the Deep South or the Plantation South. It is largely the same area with a dense black population. Racial tensions are found in the

same pattern that the 'Cotton South' once followed."

Also following the same general path are the political attitudes, educational levels, and a lower life expectancy rate than in other areas. These attitudes also align with the Rocky Mountain area and places with a high Mormon population, said Dr. Reed.

"The homicide rates in the South were high in 1970 and 1971, but these rates have stabilized; this is more a result of an increased number of homicides in other states than a decrease in murder in the South," said Reed. "This is proportional to the suicide rates. In places with high suicide rates, the number of homicides is lower, and vice versa."

Fifty years ago, women were more likely to work in the South

than in other regions because the families were "poor."

The south is characterized also by the low number of white women in traditional white male jobs. These same areas were slow to ratify the ERA amendment, Reed said.

"Living outside the South raises regional consciousness," said Reed. "This is based on the number of higher-educated people who are able to move away to find jobs or those who are able to travel outside of the South."

The people of the South have been called anti-institutional because they stress individualism. According to Reed, "Just on speculation, this is due to the rural isolationism and the unreliability of institutions, such as government, in the South."

## This week's announcements and campus briefs

From George-Anne staff reports

begin June 4 and end June 7.

•The annual **Spring Fling** will take place today in front of Landrum from 1-7 p.m. The band Shag-time will provide music. Entertainment will also be provided by you as you take part in the best legs contest.

•The **Phi Mu Alpha Sinfonia Musicale** will take place today at 8 p.m. in the Foy Recital Hall. Phi Mu Alpha Sinfonia is the GSC music fraternity. Admission is free.

•The **GSC Wind Symphony** will perform tomorrow, May 23, at 8 p.m. in the Foy Recital Hall. Admission is free.

•The Statesboro-Georgia Southern Symphony **"Pops" concert** will take place Friday, May 25, at 7:30 p.m. at the Sports Complex. Admission is free.

•The Roseanne Barr/Meryl Streep collaboration **She Devil** will be shown in the Biology Lecture Hall at 8 and 10 p.m. this Friday and Sunday, May 25 and 27. Admission is \$1.

•Fall quarter **registration** began Friday, May 19 and will continue until Thursday, May 25 in Williams Center. Good luck finding classes. Just remember: the last day of classes is June 1. **Exams**

•As part of the **Visiting Artist Series** sponsored by the Campus Life Enrichment Committee (CLEC), Dennis Behm, horn; Margaret Stevens, flute; and Natalia da Roza, piano, will perform Monday, May 28 at 8 p.m. in Foy Recital Hall. Admission is free.

•The **General Student Recital** will take place Wednesday, May 30 at 1 p.m. in the Foy Recital Hall. At 8 p.m., the GSC Chorus and Chamber Singers will perform. Admission is free for both events.

•As part of the **Faculty Recital Series**, Susan Thomson will play the piano Thursday, May 31, at 8 p.m. in the Foy Recital Hall. Admission is free.

•A **Juried Student Exhibit** will be on display through May 31 in Gallery 303 on the third floor of Foy. The Gallery is open 9 a.m.-5 p.m. weekdays. Admission is free.

•"**Ecos del Espiritu/Echoes of the Spirit**" will be on view from June 4-July 14, and "**New History: Beverly Buchanan/Mel Edwards/Maren Hassinger**" will be displayed July 25-August 25 at the Atlanta College of Art Gallery, located at the Peachtree Street entrance of the Memorial Arts Building in the Woodruff Arts Center, 1280 Peachtree Street, NE. Sum-

mer gallery hours are Monday-Saturday, 12 p.m.-5 p.m. The Gallery is open to the public free of charge.

"**Ecos del Espiritu/Echoes of the Spirit**" features paintings, drawings, sculpture and installations by seven contemporary Hispanic artists whose work explores spirituality, culture and ritual.

"**New History: Beverly Buchanan/Mel Edwards/Maren Hassinger**" will feature sculptural installations by three nationally-prominent black artists. The public is invited to attend artists' talks in the Rich Auditorium at 7 p.m. July 25, followed by a reception in the college gallery. The exhibition is organized with the support of, and in collaboration with the National Black Arts Festival.

During the festival, July 27-August 5, gallery hours will be extended to Monday-Saturday, 10 a.m.-5 p.m., Sunday 2 p.m.-5 p.m., and until 8 p.m. on Wednesday, August 1.

•The deadline for entering the **American Poetry Association's contest** is June 30. The contest is open to everyone and entry is free. The grand prize is \$1,000 and the first prize, \$500. There are 152 prizes worth \$11,000 in all.

"Every student who writes poetry should enter this contest. Twelve students won prizes in our last contest," said Robert Nelson, publisher for the association. "The

June 30 deadline allows plenty of time to enter after finals are over."

Poets may send one original poem, no more than 20 lines, name and address on the top of the page, to American Poetry Association, Dept. CO-57, 250-A Potrero St., P.O. Box 1803, Santa Cruz, CA 95061. Poems postmarked by June 30 are eligible to win. A new contest opens July 1.

Poems are judged on originality, sincerity, and feeling. Each poem is also considered for publication in the *American Poetry Anthology*, a leading collection of contemporary verse.

Every poet will receive a copy of the "Poet's Guide to Getting Published," a four-page booklet full of useful information.

During eight years of sponsorship, the American Poetry Association has run 36 contests and awarded over \$180,000 in contest prizes to 3,300 winning poets.

•"Maps and Minds" will be on display at the GSC Museum until June 3, along with the "Folklore of South Georgia's Wiregrass" exhibit. Museum hours are 9 a.m.-5 p.m. Monday through Friday and 2-5 p.m. on Sundays. The museum is closed on Saturdays. Admission is free.

•Orville and Gary Redenbacher  
See Announcements, page 5

## The eCLECtic column

As the Campus Life Enrichment Committee's year comes to an end, we are pleased to announce two of the remaining three events planned for spring quarter. The following events are for the week of May 21-25.

Tuesday, May 22, the biology department is sponsoring a lecture by Dr. Ken Ross from the Department of Entomology at the University of Georgia. Ross will be addressing the topic of "Kin Selection and Social Evolution in Hymenoptera." Hymenoptera refers to insects which have four membranous wings, and includes wasps, bees, ants, sawflies, etc. . . The lecture will begin at noon in Biology Room 218. For more information, contact Dr. Sara Bennett at 681-5487.

CLEC's final event for the week is on Wednesday, May 23, and is

sponsored by the Foreign Language Department. Blaire Houchens Miller will be visiting Georgia Southern to speak on "Foreign Language and International Trade." Miller is currently the Second Vice President in charge of the International Banking Department of the Manufacturers National Bank of Detroit. her lecture will begin at 7 p.m. in Southern Center Room 213. For more information, contact Dr. David Alley at 681-5281.

As with all CLEC departmental lectures, both of these are free to the public. Please keep reading the *George-Anne* for more information on the CLEC's final event of the year. For more information on these events, contact Leslie Tichich or Buddy Hall at 681-5434.

## Music News

By ANGELA COBRIN  
Guest Writer

The Visiting Artist Series will present Dr. Margaret Stevens, flutist, and horn player Dennis Behm, in the Foy Recital Hall on May 28 at 8 p.m.

Stevens obtained her doctorate of Musical Arts in flute performance from Boston University and has performed extensively throughout the United States. At her home in Birmingham, Alabama, she performs in solo and chamber music recitals and is flutist with the Red Mountain Chamber Orchestra.

Behm has developed the reputation as one of the finest horn players and teachers in the South since he joined the faculty at the University of Southern Mississippi in 1974. He has Bachelor of Arts and Master of Fine Arts degrees from the University of Iowa. At present, he is prin-

See Music, page 5

## At the Movies with CAB



Fri., May 25  
Sun., May 27  
Biology Lecture Hall  
8 & 10 pm  
Admission - \$1.00

## 10% Discount on all Interview Suits for Graduating GSU Seniors



"HE'S WEARING MY FAVORITE CORBIN AGAIN."



The Sir Shop

across from Winn Dixie  
Phone: 674-6924

Club CAB

Presents

Comedian

WALLI COLLINS

Featured Performer  
On MTV Half Hour  
Comedy Show &  
Showtime At the  
Apollo

Tuesday, May 29

Williams'  
Coffeehouse  
8 pm

Cotton Candy Will Be Served!





## The George-Anne

Since 1927, Georgia Southern's Official Student Newspaper

Clint Rushing  
EditorLaura McAbee  
News EditorAllen Allnoch  
Managing EditorStacy Graham  
Advertising ManagerJeff White  
Business Manager

## Judge for yourself

O.K. students, this Thursday night presents a golden opportunity to you. An opportunity for you to get involved, to learn something, and to make an impression on a lot of people. And no, we're not talking about picking up at the nightclubs or swilling beer at the keg parties. We're talking about the Gubernatorial Forum, co-sponsored by the SGA and the Statesboro/Bulloch County Chamber of Commerce, being held at the Williams Center at 7:30 p.m.

Come to the forum and you can hear, in person, what the Gubernatorial contenders have to say about themselves and what they intend to accomplish in office. What each man has to say could influence your vote, and your vote does make a difference on who is going to lead our state for the next four years. As college students, it's time to become aware of important issues and the politicians who address the issues. This is your chance.

By attending the forum and showing you care, you can make a favorable impression on both yourselves and your school. In addition to the candidates, some pretty prominent journalists from around the state are among the group of panelists. Their eyes have already been opened because of the efforts of two GSC students, Shawn Davis and Hank Burnham, in coming up with the forum idea and getting the ball rolling towards making it a reality. Now GSC will be in the spotlight, and it's up to you to do your part by attending and making it a success.

And by the way, congratulations to Shawn and Hank, the SGA, and the Chamber of Commerce for making this event possible. We thank them all for their hard work in bringing such a beneficial opportunity to us here at GSC.

## Some banking advice

By MARK BRAYKOVICH

©Copyright 1990, USA TODAY/Apple College Information Network

The hometown bank may feel like the most secure place to put money, but it doesn't always pay the best.

Banks and thrifts elsewhere in the United States often offer higher rates on certificates of deposits than local financial institutions. All of them are more than willing to take anyone's deposit.

There are many ways to find the best rates but among the most widely used are:

— 100 Highest Yields. The Florida-based weekly newsletter surveys thousands of federally insured banks and S&Ls throughout the nation each Wednesday. The next day it mails its findings on the 100 highest rates for six-month CDs, one-year CDs, two-year CDs, three-year CDs, four-year CDs, five-year CDs, as well as jumbo CDs (for deposits of more than \$100,000). Using ratings on the health of the individual institutions from Veribanc, a Massachusetts consulting firm, it also alerts readers to institutions that might be troubled. The one-year subscription cost is \$98; the newsletter can be faxed for an additional \$130. To subscribe, phone 1-800-327-7717 or write 100 Highest Yields, P.O. Box 088888, N. Palm Beach, Fla. 33408.

— Money magazine. The monthly magazine publishes "The Top Savings Yields in the U.S." in each issue. It lists the top three or four institutions' rates for six-month, one-year, two-year and five-year CDs. It also provides Veribanc's ratings.

— The Wall Street Journal. Each Friday, the daily business newspaper lists, under the heading Bankquote Money Markets, high-yield savings for three-month, six-month, one-year, two-year and five-year CDs.

— Investors Daily. For big savers, the daily business newspaper lists each Wednesday the top 25 rates on jumbo CDs for terms ranging from 30 days to two years.

If you've found an out-of-town institution that offers a great rate on savings, here are some simple steps for opening an account, according to 100 Highest Yields:

— Call the institution or write a letter. Direct the call or letter to the person in charge of consumer deposit accounts. Some institutions have a national desk that handles inquiries from people outside the local area. Many banks and S&Ls have toll-free phone numbers for this purpose.

— Explain how much you plan to invest and for how long.

— Ask for the latest rate and yield on the account in which you are interested. Rates often change daily, so the last rate you heard may not be the current one.

## Staff

YOLANDA WALLACE FEATURES EDITOR

MIKE STRONG SPORTS EDITOR

LAURA MCABEE ASSISTANT NEWS EDITOR

SONYA MESOMMONTA COPY EDITORS

MISSY LUKEHART

STAFF WRITERS

EDDIE COLEMAN, LIA NEEL

MICHELLE ROSS, KEVIN HUDSON,

JAMES GREGORY, APRIL STEPHENS,

GARY WITTE

PHOTOGRAPHERS

DANIEL HOLLINGSWORTH,

PAT MALONE

DAVID SCOTT STAFF ARTIST

BUSINESS STAFF

JERI STANDROD, KIM MOONEY, ADVERTISING REPRESENTATIVES

ALLISON MOONEY, JAY KNIGHT

PUBLICATION COORDINATOR

RENE RENTERIA CIRCULATION SUPERVISOR

GLENN BURGESS, LAURA MORGAN, CIRCULATION DEPARTMENT

CINDY KEEVER, MIKE BOWDEN,

TINA GLASS

PRODUCTION &amp; GRAPHICS EDITORIAL SERVICES (PAGES)

LISA TIPTON PRODUCTION MANAGER

VAN ELISON AD PRODUCTION MANAGER

JERI STANDROD, TRACI COBB PRODUCTION ASSISTANTS

TOM MULLIS, KEISHA DAVIS

TIM MASSEY, SONYA MESOMMONTA

Bill Neville, Student Publications Advisor

The GEORGE-ANNE is the official student newspaper of Georgia Southern College, owned and operated by GSC students and utilizing the facilities provided by GSC. The newspaper is the oldest continuously published weekly newspaper in Bulloch County and Statesboro, Ga. The ideas expressed herein are those of the editor or the individual authors and do not necessarily represent the views of the Student Media Committee, the administration, the faculty and staff of Georgia Southern College, or the University System of Georgia. The GEORGE-ANNE is published twice weekly during the academic year and twice during summer quarter.

OFFICE: Room 110, F. L. Williams Center. • MAIL: The GEORGE-ANNE, Landrum Center Box 8001, Georgia Southern College, Statesboro, Ga. 30460. • PHONE: 912/681-5246 or 912/618-5418

## Follow your dreams.....

From The Editor's Desk  
Clint Rushing

I'm still kicking myself in the butt for not majoring in music with emphasis in jazz performance. Like so many other students around the nation I have been lured into another field of study by money, a field I'm sure I can make money in, but not necessarily what I want to do. So you say I should practice what I preach? Believe me, I would if I could.

Maybe someone reading this column is on the verge of making that all important decision of what to major in while here at GSC. And maybe that person is torn between two different career choices which do not relate to each other in the least. My advice to that student would be, do what makes you happy. A few weeks ago I wrote a column similar to this one where I portrayed an unhappy, stressed-out businessman to a satisfied educator. The reasons for their outlooks on life were their choices of careers. If you don't go into the field of study which makes you happy, you'll never enjoy your career.

I had this dream of being a professional musician. Playing at gala events in concert halls and opera houses all over the world. For a while I was pursuing that dream with all the vigor I had in me. Then one day I realized that I was in a very competitive field of study. The realization was a heart breaker for me because I love performing so much. Needless to say I gave in to modern logic and gave up my dream of becoming a musician.

Since then I have been a very unhappy individual and I feel the need to pass this story on to those of you out there struggling to make a decision about your futures. FOLLOW YOUR DREAMS!!

Don't let competition, money, people, or your fears keep you from

pursuing the career of your choice. I did, and it is not too late for me to redirect my path, but in regards to financial difficulty, I cannot start over and do it all again. But those of you who aren't too far into a major may still have time to change without setting yourselves too far behind.

I've read too many books and seen too many movies in which people have held onto their dreams but never really followed them and paid for it with heartache and regret all their lives. The key to happiness is, of course doing that which makes you happy. Since careers last for the majority of our lives, we should do something which will be personally rewarding and fulfilling.

I could be well on my way to fulfilling my dream of becoming a professional musician and later a music teacher, but I let my baser desires get in the way of my thinking. Now I am a finance major, and there is nothing wrong with it, it's just that there is something else I

would rather do with my life. Perhaps I will find a way to weave music into my life later, but I for now I am stuck in the business world. Those of you out there in a similar situation stop and think. Don't let this happen to you.

If my column is the persuasion you need, then by all means listen to what I am saying. Don't let yourself get 10 or 15 years down the road and suddenly regret your decision not to follow your dreams. Do it now and there will be no regrets in the future.

## EDITOR'S NOTE

We would like to remind you that we will be publishing only two more issues of The George-Anne this quarter. If you want a letter published or need to insert an ad, our last issues are set to come out on May 25th and 29th. After then we will not be printing a full issue again until next fall.



## Letters to the editor

## Student deems SAP ignorant

Dear Editor,

I am writing in response to the "vandals" confession printed in the May 15 issue of the George-Anne. I agree with the issues behind their action regarding parking and housing. I think that I can say without contradiction that I can agree with the acronym that they employ, SAP. However should this not read Spoiled Angry Prepubescent. The acts they have perpetrated do not smack of anyone remotely resembling an enlightened person seeking to augment their knowledge of the world in which we live or an understanding of what makes up a tolerant society. What else would this stupid, rotten, empty, boring, selfish person like to indulge his/her self-centered self in. How does an act of this nature promote a solution of the issues of parking and housing. Might I suggest an alternative scenario. Possibly one or more unfortunate drunk individuals who thought it would be "fun" or even "neat" to break a few windows for "laughs" tried to justify their actions by citing parking and housing. I also hope that any "further action" is not of equivalent ignorance.

These issues can be taken up through appropriate channels. I realize that sometimes it takes time to get results. But, we do not make fast food decisions in a civilized society. We work with each other and hopefully reach an amicable solution.

If the students involved in this SAP organization would use the intelligence that they have come to college to enhance, they would have found that the Student Government Association was created to

give the student a voice in such matters. And, if this organization would go through proper procedures they would find their group would get both results and gain respect.

Jeff Shrader

## Problems about GSC

Dear Editor,

I have a complaint about the college that I would like to express on your editorial page. For a change, the issue is not parking. My peeve is about the lighting on and around the campus.

I have noticed that our campus has some especially dark areas; but not until I started riding my bicycle

did I notice how bad the problem really is. It is bad enough that there are no bike trails and few ramps for bikes to get over the curbs, but when you can't see the curbs or other obstacles at night riding a bike can be very dangerous.

There are several especially bad areas which need attention drawn to on campus including: 1) That area between the Williams Center, the Marvin Pittman School, the Carroll Building and Foy; 2) Near the ROTC Tower and 3) along Chandler road near Johnson Hall and near the stadium.

Since some of these areas, especially near the library, are frequently used at night, GSC should at least look into purchasing some lights for the campus. Even the type used at the Student Union Building would be helpful, and would help the campus look more organized, instead of several sections (ie mod-

ern, out-of-date and temporary).

While I'm on the subject of buildings, this college has built a nice, modern building, the University Union, right next to the most visually deteriorated building on campus, the Foy Fine Arts Building. The broken windows, graffiti, and that black whatever it is around the top makes the "fine arts" building an eye sore. It would be great if GSC could clean it up this summer like they did the library last fall, especially before most students return this fall to the Student Union area.

Clint, your column gets the attention of many college students and officials, maybe they will see this and since they cannot help the parking problem right now, maybe they can take these problems of lighting and deterioration and do something about them.

Jim Bibby

## Mills College may 'bow to the dollar'

By LINDA WITT

©Copyright 1990, USA TODAY/Apple College Information Network

There is more than one irony to the decision of historic, pioneering Mills College in Oakland, Calif., to abandon its 138-year mission — educating women — and do what increasingly seems to be the U.S. ethic: Bow to the dollar. The college is trying to save its neck, abandon its mission. In this case, go coed.

The student strike that shut down the private school last week, is not the least of the ironies.

Mills should be proud of its student body. One hopes it also deplores and is willing to reconsider the decision its board made: to admit men to its undergrad school so that it can raise funds that will prevent the school from borrowing from its endowment in order to subsidize its operating budget.

That's surprising, considering that in the last five years, the school

doubled its endowment to \$72 million.

Admit men? Why?

Much of that \$35 million-plus was raised from alumnae and others who believe in the continuing mission of women's colleges. The donors, it should be noted, include men, who have been admitted to the school's graduate programs since the 1930s.

As an inducement to give money to the school, alums and donors have been inundated with studies that show the merits of a women's college education.

Already students and their parents pay at least \$17,000 (\$12,000 for tuition and about \$5,000 in other fees) each year to Mills.

These studies show nearly half of the women now in Congress are graduates of women's colleges — yet women's school alumnae are but two percent of college graduates.

Even now, with all the advances women have made in the last two decades, co-education for women is a second-class education — as well as an education in being the second class.

Here is another irony: One of Mills' best rationales for turning coed was the "success" of Wheaton College in Norton, Mass.

Two-years ago it bowed to economics and tried what Wheaton's president touted as a "gender-balanced" curriculum, which includes women's studies integrated into general studies.

It now makes its recruitment goals.

Wheaton's recruitment goals for this year are 30 percent men. By the end of this decade, it would like to see its enrollment at roughly 40 percent male students and 60 percent women.



## Sports Briefs

©Copyright 1990, USA TODAY/Apple College Information Network

## TENNIS TOP-SEEDS LOSE:

Brad Gilbert and Aaron Krickstein of the United States, the top two seeds, were upset Thursday in the men's Italian Tennis Open at Rome. Alberto Mancini of Argentina beat No. 1 Gilbert 6-2, 6-1, and Guy Forget of France ousted Krickstein 6-4, 7-6 (7-4). In the women's German Open at West Berlin, No. 3 seed Gabriela Sabatini fell to No. 16 Sandra Cecchini 6-4, 3-6, 6-4.

## BIG EIGHT TEAM TO PLAY SOVIETS:

The Big Eight Conference has reached an agreement to play a home-and-home basketball series with the Soviet Union. A Big Eight team will travel to Moscow, Leninigrad, and Kiev in July, playing Spartacus Dynamo, Dynamo and a national All-Star team to be formed for the series. A Soviet all-star team will play four Big Eight teams in the United States in November.

## ALL-DEFENSIVE TEAM NAMED:

Detroit Pistons Dennis Rodman and Joe Dumars were named to the NBA's All-Defensive team Thursday. The league's 27 coaches also selected Michael Jordan of Chicago, Akeem Olajuwon of Houston and Buck Williams of Portland.

## BROWN NAMED TO NFL DRUG POST:

The National Football League continued to revamp its drug-testing program with the appointment Thursday of Dr. Lawrence S. Brown Jr. as its adviser on drug abuse. Brown, 40, teaches clinical medicine at Columbia University's medical school in New York and is a staff member in the division of endocrinology at Harlem Hospital Medical Center.

## GOODWILL GIVES FREE CONDOMS:

Free condoms will be available for all participants in the Goodwill Games in Seattle this summer, organizers said Thursday. They said the decision was made because the Soviet Union feared its athletes could contract AIDS or other sexually transmitted diseases while visiting the United States.

## GSC Range is a hit

By CHRIS BARRY  
Sports writer

Since its opening on January 3, 1990 the Georgia Southern driving range has seen great success.

Most of the customers are students and faculty who get a discount of fifty cents off a bucket of balls. The driving range also welcomes the public to come out and hit. The cost for non-students and faculty is \$2.00.

Doug Gordin who is the director of the range and also the GSC golf coach says that he gets most of his business on Mondays and Tuesdays. On Monday through Friday from eight until three there are classes but individuals are allowed to hit while classes are in progress. The range is open until six Monday through Saturday, and is closed on Sunday.

Last Thursday the GSC driving range had its first contest. Gordin was very pleased with the turnout for the long drive contest and hopes that it can be something that can be done each quarter.

Twenty-seven people participated in the contest. Keith Burke won the men's division after he crushed one for 340 yards, and Tracey Kelly won the women's division when she sent one soaring 168 yards. Gordin hopes that having such contests will encourage people to use this fine facility.

Those students staying summer quarter will have this facility available to them to improve their game. It will be open the entire summer quarter and there are also a few job openings available for those who may be interested. Gordin said he is looking for a pro-shop manager this summer and also people to pick up range balls. Gordin also said he hopes for the new practice putting green to be ready for use by summer along with a sand trap.

Practice makes perfect in the game of golf. So next time you need to practice visit the G.S.C. driving range and hit a couple buckets of balls. The range is located behind Paulson Stadium in the large parking lot.

## Baseball team has record season for Stallings at 46-16

By PAUL FLOECKHER  
Assistant Sports Editor

With baseball season completed, the Eagles and their fans can reflect on an outstanding season that saw GSC chalk up 46 wins against just 16 losses.

The 46 victories matched the 1979 squad's total for the most wins by a Jack Stallings-coached GSC team. The Eagles finished one win shy of the school-record 47 by the 1974 club.

Sophomore pitcher Joey Hamilton established single-season records for wins (16) and strikeouts (124) while pitching 134.33 innings. The old victory record of 12 fell in GSC's 14-5 pounding of Centenary April 27. Hamilton struck out 10 Campbell University Camels in his final start of the year May 9 to break Jimmy Dobson's mark of 118.

Right fielder Todd Greene was named the Trans America Athletic Conference player of the year. The first freshman ever to win the award, Greene led the TAAC with 25 home runs and 70 runs batted in. He also led the Eagles in hits (90), tied for the team lead in doubles (16) and finished third on the team with a .352 batting average.

Senior catcher Rob Fitzpatrick led GSC in five offensive categories: batting average (.390), runs (67), on-base percentage (.490), walks (42) and doubles (16, tied with Greene). Fitzpatrick set personal

bests with 18 homers and 54 RBI.

The Eagles struggled through the first two weeks of the season, dropping six of eight games. The two wins, 7-5 over Florida and 8-4 over Georgia, were Hamilton's first two starts. GSC let one win get away, blowing a 5-3 ninth-inning lead against Florida and losing 6-5 in the tenth.

Following 14-1 and 4-0 routs of Furman, the Eagles dominated the annual Hall of Fame Tournament to improve their record to 10-6. GSC swept Youngstown State (6-1, 8-5), West Virginia (13-4, 6-3) and James Madison as five different pitchers picked up wins.

The Eagles closed out winter quarter with a three-game sweep of TAAC rival Mercer. A 14-run first inning highlighted the March 9 15-2 blowout, which was followed by a 9-1, 8-4 twin killing the following afternoon.

The Mercer series was a sign of what was in store for the rest of the conference schedule. GSC finished first in the TAAC Eastern Division with a 17-1 record, the best in conference history. The Eagles won their last 13 TAAC contests after a 4-3 loss at Samford March 24.

During spring break, GSC played nine games in nine days and came away with six wins. In the first game of the road swing, the Eagles set a season high for runs in a 16-8 pounding of Augusta. GSC split with both South Carolina and



Freshman Todd Greene led the team in home runs and was one of the leaders in batting average at .346.

Alabama, then took two out of three from Samford. Greene's two-run homer broke a 4-4 tie and sent GSC to a 6-5 victory over Augusta in the final game of the road trip.

Back in J.I. Clements Stadium, the Eagles extended their winning streak to five with a sweep of Stetson. Hamilton and Scott Ryder each shut out the Hatters, and Jay Berkner improved to 3-0 in the 8-7 thriller keyed by Greene's grand slam of Hatter relief ace Tom Hickox.

The winning streak continued as the Eagles pounded Augusta 13-1 and took three more TAAC wins from Samford, 9-6, 8-0 and 12-0. The streak reached 11 after 10-0 and 3-2 wins over Baptist.

Mike Miller's three-run homer on a 3-0 pitch led GSC to a 5-4 win before 1,775 fans in their first meeting with their rivals from Savannah, Armstrong State. Chris Abner also homered and Hamilton improved to 10-3 in the win over the Pirates.

Another three-game sweep of a TAAC rival — this time at Mercer — pushed the winning streak to 16 and GSC's record to 33-9, but the Clemson Tigers issued a rude awakening with a 13-0 pounding April 17. On the bright side, the Eagles entered the Clemson series ranked 25th nationally by Baseball America and 29th by ESPN/Colligate Baseball.

The Eagles returned to form the next day, though, with a 9-6 triumph over Clemson. Fitzpatrick's three-run homer in the first inning gave GSC a lead they never relinquished, and Hamilton picked up his 12th win to tie the school record.

GSC wrapped up the conference schedule with three wins over Stetson in DeLand, FL, and entered the April 26-29 TAAC tournament as the favorite. GSC jumped to a 6-3 lead in their opener against Arkansas-Little Rock, but the Trojans scored twice in the seventh and twice more in the eighth to put Stallings and company in the losers' bracket.

With their backs to the wall in the double-elimination tourney, the

Eagles responded with wins over Centenary (14-5), UALR (14-4) and Stetson (5-2). Against the Hatters, Mike Yuro's two-run homer closed out a four-run first inning that gave the Eagles the lead for good and sent GSC into the championship game.

Although GSC (40-11) had won all seven games against Stetson (30-27) during the year, the Hatters belted 21 hits, including 10 homers, against GSC to take the title 15-4. GSC's Chad Sumner knocked a two-run homer in the fourth inning and Greene sewed up tournament MVP honors with his 22nd homer, but it was too little too late.

Just as they had after the tough loss to Clemson, the Eagles won four in a row. Hamilton (14-3) took over the national lead in wins in GSC's 6-2 triumph over Baptist. One more win over the Buccaneers and two over Armstrong State upped the Eagle mark to 44-12.

Batting .318 as a team, the Eagles had six players hit over the .300 mark: Fitzpatrick, Yuro (.374), Greene, Miller (.346), Sumner (.328) and Doug Eder (.317). Abner (.294) and part-time DH Paul Frias (.291) narrowly missed.

Ryder (10-7) joined Hamilton in double-figure wins, while Peter Bouma finished 9-2 and Berkner 5-1. Abner led the way with 27 stolen bases, followed by Yuro's 24 and Fitzpatrick's 23.

## Spieth's Lady Eagles suffer through rollers coaster season

By LARRY TILLMAN  
Sports writer

For the GSC Lady Eagles women's softball team it was definitely a season to remember.

The Lady Eagles experienced many ups and downs en route to compiling a 23-25 record overall, including a 6-9 mark and a fifth place finish in the New South Women's Athletic Conference. Coach Bill Spieth's most recent edition flirted with success throughout the season and appeared to be headed toward a banner season after opening with a no-hitter against Valdosta State and coming away victorious in five of their first six games.

But adversity quickly changed things for Spieth's hot squad. Pitching which was already a big question mark after Julie Jones, the centerpiece of the 1989 pitching contingent, chose not to come back this year. Another problem arose when Tammie Lanier the team's other top gun on the mound in 1989 was injured just before the season and did not return to play until the March 7 game against Furman. Freshman Gretchen Koehler unexpectedly stepped in as the starting pitcher for the first three weeks of the season. Under the circumstances Koehler put in some spectacular performances, including the opening day no-hitter. But eventually the adversity caught up with Koehler and the Lady Eagles.

After the 5-1 start, the Lady Eagles managed to lose six in a row in doubleheaders against South Carolina, Baptist, and Furman. In those six losses a lack of offense was quite evident. The Lady Eagles were shut out three times and

managed a total of six runs scored. Koehler's record dropped to 5-6, while the team fell to 5-7.

The following week, however, the Lady Eagles rebounded. They ripped apart UNC Wilmington 15-4 and 11-6 in a doubleheader, swept conference rival Samford 2-1 and 7-0, and finished with a split against UNC Charlotte before spring break.

The Lady Eagles returned to their losing ways once more after the break, dropping a doubleheader at Winthrop and coming away with a split against the Florida A&M Lady Rattlers in Tallahassee. During the week of April 8-14 the Lady Eagles experienced the taste of victory only once downing Winthrop 8-2 behind the strong pitching of Koehler and a medley of hits on offense. Losing seemed to be the rule in effect that week for the Lady Eagles and once again the offense, or more accurately, lack of offense would be the obvious blame for the team's woes. The Lady Eagles left the field with nine consecutive setbacks including four conference defeats to Georgia State, the NSWAC's top team, and Florida A&M. Lanier was the losing pitcher in six of the losses during the streak while Koehler came away the loser in the other three. The losses were even more hard to swallow considering that six of the losses were by two runs or less and three of the defeats came in the last inning after the Lady Eagles had relinquished the lead. The team ended the streak with a 3-5 mark in conference play and 12-21 overall. The preseason dream of many victories and few losses had turned into a nightmare of few triumphs and many setbacks. The Lady Eagles found themselves nine games below an

even .500 with only 12 games remaining on the regular season schedule including four conference contests.

Undoubtedly the team was under enormous pressure to produce plenty of wins in order to salvage a potentially disastrous season and restore any hop of success in the postseason conference tournament.

The Lady Eagles proved that they could win by doing just that. They overcame their midseason slump by recovering to come away victorious in 10 of their final 12 games, including eight in a row after losing a doubleheader to conference foe Mercer in Macon. The highlight of the spectacular season capping win streak was Tammie Lanier's pitching display against the Georgia College Lady Colonials. Lanier threw a no-hitter while the Lady Eagles knocked in 13 runs of their own to blast Georgia College 13-0 in the first game of their April 30 doubleheader.

So, as it was, GSC ended the regular season and entered the conference tournament on a high note. They ran past fourth seed Florida A&M in the opening round of the playoffs and then lost back to back contests against the NSWAC champions and first seed Georgia State and second seed Mercer. Thus, GSC was eliminated from the tournament and the season was over. The Lady Eagles due to the first round victory had to play three games back to back on the first day of the tournament. The players suffered from physical exhaustion as a result of the demanding schedule.

Despite the early exit from the tournament and a mediocre showing over the course of the season, GSC had its share of talented, hard

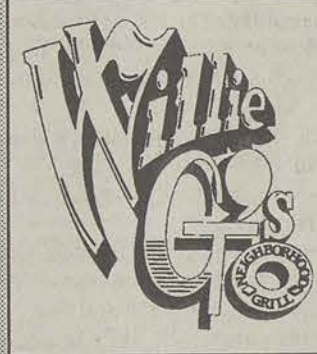
working, and dedicated players. Pitchers Gretchen Koehler and Tammie Lanier in spite of their losing records, 11-13 and 8-12 respectively, were a productive tandem on the mound. Koehler allowed only 2.17 earned runs per game and struck out 40 opposing batters. She also gave up 78 walks. Lanier allowed and even lower 1.50 earned runs per outing. She finished with an impressive 70 strikeouts in 130+ innings pitched and walked 41.

The Lady Eagles poured on the offense in their wins. They had six games—all of them victories—in which they scored 11 or more runs. GSC averaged well over three runs a game. Freshman Margina Kemp provided punch on offense hitting .327, pacing the squad in home runs with three, runs scored with 26, and steals with 10. Junior Christy Hill, the starting shortstop and one of the conferences premier hitters

topped the Lady Eagles with a .345 average, hits (51), RBI's (28), and doubles (11). Junior Beth Williams batted .292 and had 16 RBI's. She was a two way player, starting at catcher almost all season long. She tossed out 24 attempted base stealers while fielding at a .904 average. Williams' performance earned her a spot on the All-NSWAC second team this year.

Also making the All-NSWAC second team was the Lady Eagles' third baseman, senior Christine Koehler. Koehler compiled a .237 batting average, had 14 RBI's, and led the squad in triples with four. She was outstanding on defense.

Technically, it was a losing season for the Lady Eagles, but by overcoming adversity, youth, and inexperience, the Lady Eagles proved that they are willing to work to improve their fortunes for next year.



## END OF THE QUARTER PATIO BASH!

THURS. 4-UNTIL      FRI. 5-UNTIL      SAT. 6-UNTIL

Live Music, 20¢ Buffalo Wings  
Door Prizes, and other "Specials"

DON'T MISS THE BIGGEST PATIO PARTY OF THE YEAR!

CAB presents:

DR. JOAGVE

TOMORROW  
At the  
Registration Line,  
Williams Center  
12:30 - 1:30 p.m.

He will attempt  
to juggle any three  
objects students  
bring with them!



## Music continued from pg 3

cipal horn with the Meridian, Miss., Symphony Orchestra and performs regularly with the Mississippi Opera Company, and the St. Andrews Chamber Orchestra.

These performers will be assisted by Georgia Southern piano professor Natalia da Roza. The program will include compositions by Schumann, Strauss, and others.

The Visiting Artist Series is sponsored by the Music Department and the Campus Life Enrichment Committee. It is open to all students, faculty, staff, and the general public, free of charge.

## Announcements from page 3

want to give students a Second Start—a Second Start on their education, that is. A new scholarship program, the Orville Redenbacher's Second Start Scholarship Program, is aimed specifically at students over the age of 30 who are returning to college or beginning post-secondary education for the first time.

During the first year of the program, \$1,000 scholarships will be made available to 10 qualifying students. An information packet and applications for the program are available at the financial aid

office. Additional applications and information can be obtained by writing: "The Orville Redenbacher's Second Start Scholarship Program," Suite 1300, 211 E. Ontario, Chicago, IL 60611.

The deadline for receipt of applications is September 1.

**George-Anne  
Classified  
are Always  
Free  
(25 words or less)  
for students & staff**

## STUDENT STORAGE

"YOUR LOCAL NORTH AMERICAN VAN LINES"  
STATESBORO TRANSFER AND STORAGE

IS HAVING A COLLEGE STUDENT SPECIAL ON STORAGE

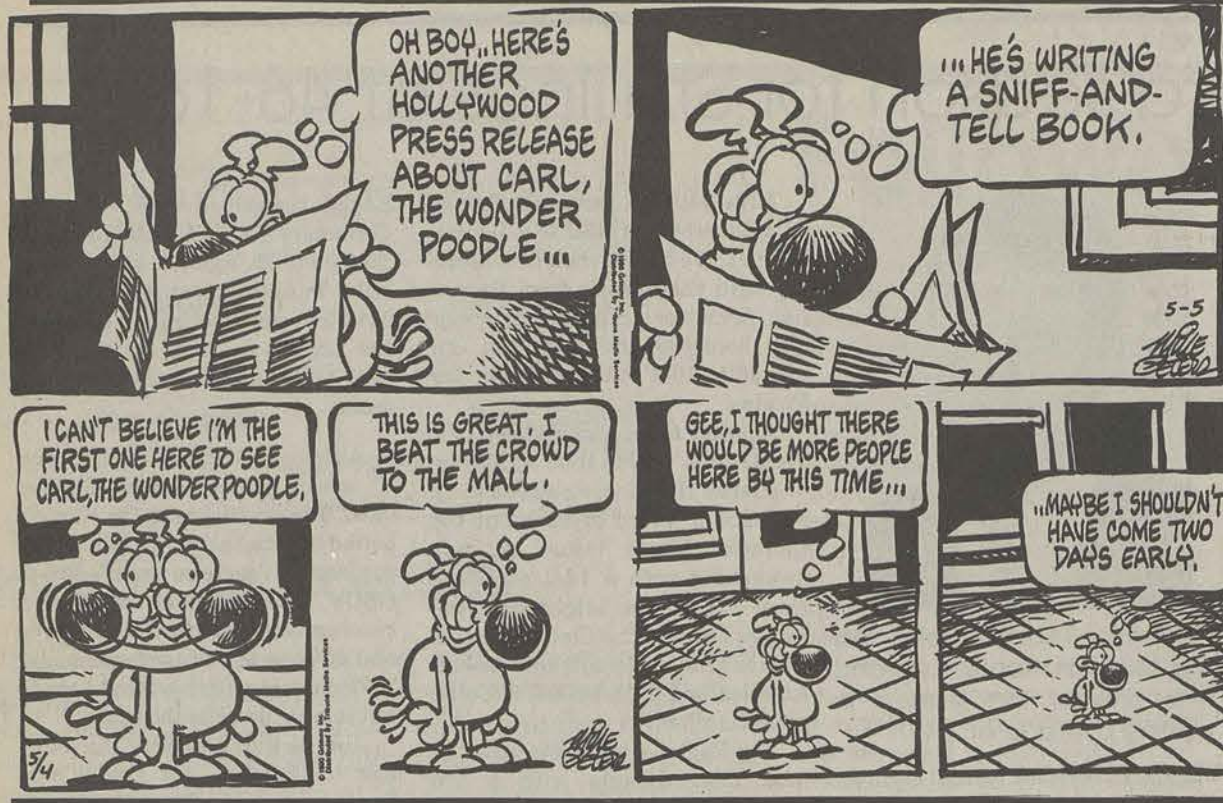
280 CU. FT. FOR 19.50 PER MONTH

FOR MORE INFO:  
764-6011

(ASK ABOUT OUR  
SPECIAL PICKUP RATES  
TOO!)







## News from page 1

Spending has risen faster in the health care sector over the past two decades than in any other part of the economy. Also, the pharmaceutical industry is particularly immune to economic slumps.

## MICROSOFT ROLLS OUT NEW PC:

The personal computer industry anticipates the arrival Tuesday of a new product by Microsoft Corp. This is probably the most anticipated product in the history of the computer world, says an analyst. The software program, Windows 3.0, promises to make IBM PCs and machines that work like them as easy to use as the popular Apple Macintosh, at a fraction of the cost. BAILOUT COST IS UNDERESTIMATED:

According to two former government economists, The Federal agencies overseeing the S&L bailout have underestimated its cost by at

least \$62 billion. Reason: They are unable to count accurately the number of insolvent S&Ls. Economists James Barth and R. Dan Brumbaugh Jr. said there are over 200 insolvent thrifts that have yet to be closed, in a Stanford Law & Policy Review article.

## COMPAQ TO UNVEIL LOW-COST PCS:

Compaq Computer Corp. of Houston, Monday introduces two aggressively priced desktop machines weeks before IBM Corp. is scheduled to cut prices on similar, competing models. Compaq's DeskPro 386N personal computer is based on Intel Corp.'s high-speed 386SX chip and costs \$2,299-\$3,199. The firm will also introduce a PC based on Intel's 286 chip that costs \$1,699-\$2,599.

## SHOWERS SPAN THE NATION:

Except for the desert Southwest, most of the United States is going to see more rain and thunderstorms this week. Rain is likely

Monday throughout much of the Pacific Northwest south to San Francisco. Rain and thunderstorms should hit much of the eastern third of the nation Monday. Worst storms: the Southeast north to Pennsylvania.

## Briefs continued from page 2

Southern, has been named the winner of a \$1,000 award from the Georgia Association of Newscasters (GAN).

Ms. Dorfman received the award for winning a television-radio news writing competition at the recent GAN Spring Workshop at the Georgia Southern campus.

A candidate for graduation this spring, she is employed by Statesboro Cable Television, where she anchors the Cable 3 news show weekday evenings.

## Classified Ads

## ROOMMATES

TWO FEMALE ROOMMATES NEEDED FOR FALL QUARTER, in Hawthorne 2, \$541.66 per quarter, share utilities. Call Summer or Dotti at 681-681-3806.

MALE ROOMMATE NEEDED FOR SPRING QUARTER at Plantation Villas. Own bedroom and share 1/2 cost of utilities. Call 681-6307; if no answer leave message.

ROOMMATE NEEDED FOR SPRING QUARTER. The rest of Spring Quarter Free! Male roommate needed to take over my lease. New 3 Bedroom Mobile Home. Will have your own room. It has dishwasher, icemaker, and is fully furnished. \$140/mo. after Spring Quarter. Call Jeff at 681-6623.

FEMALE ROOMMATE NEEDED FOR EAGLES COURT. Must share room and bath with one person. Call for more info. Debbie at 681-6623.

FEMALE ROOMMATE NEEDED IMMEDIATELY. Completely furnished, washer/dryer hook-up, must share bedroom. \$100/mo., plus utilities. Call 681-6273.

ROOMMATE NEEDED FOR SUMMER QUARTER. Male or female, 3 bedroom house very close to campus. Call 681-6729.

FEMALE ROOMMATE WANTED TO SHARE APARTMENT. \$306.66 a quarter at University Village. Call 681-4141 and ask for Lisa or Nichole.

FEMALE ROOMMATE, NON-SMOKER, NEEDED SUMMER QUARTER. Sussex Townhouse, own bedroom, share bathroom, washer/dryer. \$207/mo. plus utilities. Sign Summer Lease. Call Jennifer at 681-4200, leave message.

FEMALE ROOMMATES NEEDED. Lodge Apts. located on campus. For info call 681-2718.

FEMALE ROOMMATE NEEDED. For Spring quarter. \$125/mo., must share room. Stop by in person Apt. 23 Knights Village Apts. Ask for Kelly.

FEMALE ROOMMATE WANTED. For Summer quarter. Furnished Stadium Walk Apartment. Half utilities. Call if interested 681-6463 ask for Polly.

ROOMMATE IN DEMAND A.S.A.P. For Spring and/or Summer quarter at Sussex Commons. Move in now. Please call 681-6485.

FEMALE ROOMMATE NEEDED 90-91 NEEDED FOR NEXT YEAR. 2 Bedroom, 2 1/2 Bath. Close to Campus. Reasonable rent Call 681-7151.

LOOKING FOR AN APARTMENT OF ROOMMATE? The Office of Special Programs in Rosenwald Room 289 has a listing of apartments and people in need of roommates. We can include your name on the list in our weekly update. Come by the office between 8-5 weekdays and let us help you.

2 ROOMMATES NEEDED. For Summer quarter and next year. Located near Stadium. Private room Washer & Dryer. \$175/mo., plus utilities. Call 681-7448.

NEED A PLACE TO LIVE SUMMER QUARTER? Only \$450.00 plus 1/4 utilities. Call Bill at 681-2223.

MALE ROOMMATE NEEDED. Southern Villa. \$200 plus utilities. 2BR, 1 Bath can move in now. Contact Joel Landin at 681-7382.

TWO FEMALE ROOMMATES NEEDED. For Fall Quarter at Hawthorne II. If interested call Traci after 5:00 at 681-2733.

ROOMMATE NEEDED. For Summer Quarter. \$100 a month plus utilities. Will have own room. Call 681-3232.

CHRISTIAN FEMALE ROOMMATE NEEDED. Stadium Walk starting Fall Quarter, own bedroom, \$225/mo., plus 1/2 utilities (very low); Call Sylvia at 681-6120.

ROOMMATE NEEDED. Male or Female, Summer Quarter until... Rent \$110/mo., plus utilities (free water). Please call Tracey at 489-1050 after 5:00.

ONE OR TWO FEMALE ROOMMATES NEEDED. Summer Quarter and next school year. University Place Condominium by the pond. One large bedroom available. Fully Furnished with Washer. Call 681-6606, leave message.

SUBLEASE APARTMENT FOR SUMMER QUARTER AT SUSSEX COMMONS. Rent negotiable for the quarter, Master bedroom, private bathroom. Call Susan or Carole at 681-7355.

NEED FEMALE TO SUBLEASE ROOM AT SUSSEX FOR SUMMER QUARTER. Flat, private bedroom. Rent \$210. Washer/Dryer equip. Call Stefanie at 681-9200.

FEMALE ROOMMATE NEEDED TO SUBLEASE SUMMER QUARTER. Sussex Commons. Private bedroom, Washer/Dryer. Call Debra at 681-7960.

MALE ROOMMATE NEEDED. For Fall Quarter, Lanier Residences (Fair Rd. Apts.) 2BR, \$115/mo. also if interested, roommate needed for Summer. Ask for Mike Fry at 764-8411.

ROOMMATE NEEDED SUMMER QUARTER. \$167/mo. plus 1/3 utilities. 1.5 miles from campus. Private room in house call 764-8258. Ask for Amee.

FEMALE ROOMMATE NEEDED. For 90-91 School year. Prefer upperclassman. \$167/mo. plus 1/3 utilities. 1.5 miles from campus. Private room in house. Call 764-8258. Ask for Amee.

FEMALE ROOMMATE NEEDED. For Fall Quarter to live at Hawthorne 2. Must be a non-smoker. \$541.66 per quarter plus 1/4 utilities. Please call either Christy 681-3699 or Teresa 681-1975 (after 2).

FEMALE ROOMMATE NEEDED. Fall Quarter. \$186/mo. plus 1/4 utilities. Furnished house in Sherwood Forest, across from the Stadium. Call 681-6267.

FEMALE ROOMMATE NEEDED. The rest of this month free. Sussex Apts., own room, own bathroom, washer/dryer. \$170/mo. plus 1/4 utilities. Stop by Apt. #33 or Call Brenda at 681-7850 or 681-6937.

ROOMMATE NEEDED FOR REST OF SPRING QUARTER. Call and make offer. Call 681-COOL(2665).

TWO FEMALE ROOMMATES NEEDED SUMMER QUARTER. Eagles Court Condos. \$150/mo. plus 1/4 utilities. Call Amy or Nikki at 681-6064.

ONE OR TWO FEMALE ROOMMATES NEEDED. Summer and/or next school year. College Vue Apartments. Call 681-3165, leave message.

TWO FEMALE ROOMMATES NEEDED. For Fall Quarter in Bermuda Run. Brand new apts, 4 Bedroom, 4 Bath, Washer/Dryer, Fully Furnished. \$225/mo. plus 1/2 utilities. Call either Shana, 681-1531 and leave message if no answer, or Allison at 681-6877.

THREE FEMALE ROOMMATES NEEDED. For Hawthorne Court, Fall Quarter. 2BR, 2 Bath. Unfurnished. \$500/quarter plus 1/4 utilities. Ask for Jennifer at 681-3712.

TWO FEMALE ROOMMATES NEEDED. At Park Place, Summer Quarter. \$119/mo. plus 1/4 utilities. Large Bedroom with Bath. Furnished. Call 681-6340 or 681-1945.

TWO MALE STUDENTS AVAILABLE FOR ROOMMATES. For Fall Quarter. Call collect "About Apartment." 537-0609 or contact Martin at LB9 14862.

WANTED: Responsible Female Roommate for 12 month lease at Plantation Villas. Starting June 15th. Contact Cindy at 681-4502.

2-3 FEMALE ROOMMATES. Needed for Summer Quarter at College Vue Apts. For more info, Call 681-6935.

FEMALE ROOMMATE NEEDED. Colony #19 NON-Smoker. Must share room. \$120/mo. plus 1/3 utilities. Call Kim at 681-2630 or Wendy at 681-4311.

ROOMMATE NEEDED SUMMER, POSSIBLY FALL QUARTER. Townhouse 5 minutes from campus. Rent includes own bath and bedroom, tennis courts, swimming pool. \$225/mo. plus 1/2 utilities. Summer. Fall. \$150/mo. plus 1/3 utilities. Call Doy at 1-868-6620.

ROOMMATE WANTED. Non-Smoker, Non-Slob, House across Stadium, with Washer/Dryer. \$200/mo. Call 764-2241, Days and 681-4692 Nights.

FEMALE ROOMMATE NEEDED. Summer Quarter, partly furnished. Eagles Court Condos. \$165/mo. Includes Washer/Dryer, Microwave and Dishwasher. Call Allison at 681-2140.

FEMALE ROOMMATE NEEDED TO SUBLEASE ROOM AT STADIUM WALK. Summer Quarter. Rent negotiable, 1/2 utilities. Call Rhonda at 681-7881 after 1:00.

FEMALE ROOMMATE NEEDED. Beginning Fall Quarter. Eagles Nest, Rent \$425/mo. NON-Smoker, would share a bedroom. If interested Call 681-6538 or 681-1999.

EXCELLENT DEAL. FEMALE ROOMMATE NEEDED. For 2 bed, 1 bath Trailer. \$162.50/mo. (including water) plus 1/2 utilities. NON-Smoker. Fireplace, Garden Tub. Call 489-1823 ask for Pam.

TWO FEMALE ROOMMATES NEEDED. For Summer Quarter only at Sussex #92. Rent \$142/mo. Call Carrie or Shannon at 681-4263. Furnished bedroom.

NEEDED. Male to take over contract for Summer. Possible contract for next year. Call Brian at 681-1729.

WANTED: Responsible Female roommate to share condo at Plantation Villas. One year lease, starting June 15, 1990. Call Cindy at 681-4502.

FEMALE ROOMMATE NEEDED-FALL... \$200/mo. own room, close to campus. Call 681-6257 ask for Christy.

FEMALE ROOMMATE NEEDED. Summer Quarter. \$50/mo plus utilities. Prefer Non-Smoker. Call 681-6091 ask for Susan or Connie.

## RENTALS

WANTED: Two roommates to share large three bedroom house in Portia. House includes kitchen privileges, large playroom with pool table, private bedroom. Worth the drive. \$250 per month includes utilities (except long distance calls). If interested, please call 681-5194 or 764-7096 (after 5 p.m.)

Female college student — large room near college with bath. Kitchen privileges. 681-6437 (after 6 p.m.) 84202141 (Ask for Ann).

FOR RENT — One bedroom, unfurnished apartment. Practically on campus. Available immediately or soon. Call 681-1881.

FOR RENT — Beds, single, double, queen and king. Chests, desks, nightstands, coffee tables, sofas, sofas, dinettes, IBM Selectric typewriters, girls bicycles. University Furniture-Leasing Company, Call 764-2525.

FOR RENT — Unfurnished Apartment. Available immediately at Stadium Walk #199. Call 681-3000.

ROOM FOR RENT — Private home, one mile from college. Call 764-4418 ask for Howard.

RENTALS AVAILABLE. For information Call Nadine at 764-6525 (Day), or 764-5003 (Night), Two and Three bedrooms, furnished and unfurnished.

NEED TO TAKE OVER LEASE. 2BR, 2 Bath, townhouse with furniture. Rent negotiable-low utilities. conveniently located to college. Call Cathi at 681-6114.

NOW RENTING FOR FALL, 1990 — GREENBRIAR AND HAWTHORNE APTS. Large units with lots of extras. Sign up now to guarantee. Call Hendley Properties at 21 Greenbriar, 681-1166.

ROOM FOR RENT. All furnished except for bedroom. Available for spring and summer quarters. For more information, Call 681-4563.

1 AND 2 BEDROOM APTS. Houses for rent furnished and unfurnished. Call 764-6772.

NEED TO TAKE OVER LEASE FOR SUMMER. 4 BR, 3 Bath townhouse. Rent \$170/mo. Sussex Commons. Poolside. Call Crisli at 681-6806. (3 rooms Av.)

FOR RENT: 1-Br Apartment, Fully Furnished, to sublet Summer quarter. \$200/mo. includes water. Call 681-4180 and leave message.

LOOKING TO SUBLEASE ENTIRE APARTMENT OR OWN ROOM FOR Summer and Fall Quarters. Call Geoff after 5:00 pm at 681-7219.

NOW LEASING. Best deal in "Boro". New carpet, paint, blinds, Refectormaker. Dishwasher. Central Heat/Air. Townhouses, 1BR, \$250; 2BR \$400; 3BR \$600. Phone 764-9486 between 8-5 for appointment.

FOR RENT. Summer Quarter only. Apartment in Eagles Nest. \$375/mo. Call 681-1999.

SUBLEASING. May-Aug. (any months) Park Place 2BR, 2 Bath, \$300/mo. plus utilities. Call for info. Gave at 681-1905.

ONE MONTH FREE. Need 3 or 4 people to take over lease immediately or Summer Quarter. Stadium Club, 4Br, 2 Bath, furnished. Call 681-1601.

AVAILABLE FOR SUMMER QUARTER. 2BR, 2 Bath, Trailer. \$300/mo. Furnished, Washer & Dryer, Excellent Condition. Call 681-7826.

NEED SOMEONE TO SUBLEASE. Apartment at Stadium Walk. Call 681-1729, ask for Brian.

ATTENTION! Room for Rent remainder of Spring Quarter. Share a room in Eagles Court Condos for only \$175/mo. Call Dave at 681-1856.

HELP ME PLEASE! Must Sublease condo in Eagles Court for Summer or my Mom will kill me! Take over lease for next year! Call Dave at 681-1856.

SUBLEASING APT FOR SUMMER QUARTER. At Pinewood Ct. Very clean. Call 681-3437.

APARTMENT FOR RENT. Summer Quarter, Males Preferred. 2BR, 1 Bath. Furnished, \$97.50/mo. to share room or \$195/mo. for own room. Plus shared utilities. Plantation Villas #15. Call 681-9019.

SUBLEASE FOR SUMMER. 3BR House. New washer/dryer, Central a/c, refridg., carpet, kitchen, paint, AND MORE. \$500/mo. plus utilities. NEGOTIABLE Call 681-2937.

FOR RENT. 2BR, 2 Bath, trailer for rent available for Summer Quarter. \$300/mo. Call 681-7826.

DESPERATELY NEEDING SOMEONE TO TAKE OVER RENT OF STADIUM WALK APARTMENT. For June to June. \$450/mo. Call Maurea at 681-6824.

FOR RENT. 2 Bedroom, 2 Bath mobile home, with washer and dryer, air conditioning and fully furnished. For Summer Quarter, \$150/person/mo. Call Scott at 681-6748.

APARTMENT FOR RENT. Summer Quarter at Stadium Walk. \$133/mo. plus utilities. Furnished, Washer/Dryer. Call 681-6233 and ask for Ben.

NEW RENTALS. 3 Bedroom 2 Bath apartments. Walk to GSU. Swimming pool. Exclusive Adult Community. \$660/mo. Available starting in June... ERA Landmark Realty... Call Matt at 489-8380.

SUBLEASE AN APARTMENT FOR SUMMER QUARTER ONLY. 2 Bedroom, 1 Bath at Eagles Nest. Rent \$425/mo. but negotiable. Call 681-6538 or 681-1999.

FURNISHED APARTMENT AT EAGLES COURT. Two females to share a bedroom with twin beds. Two closets and bath. \$175 each and share utilities with 4 people. Can pay monthly-12 Month contract. Deposit \$100, with washer/dryer. Contact Nan Crumney at 681-6227 for more info.

APARTMENT FOR RENT. Summer Quarter, Walking distance to campus. Dings, Bash's. Fully furnished!! Rent \$310/mo. (negotiable) Call 681-4317 ask for Beth or Suzanne.

## FOR SALE

Eye of the Storm. Absolutely Cool! Less than a year old. Adjustable power and focus. Can be set to audio. Call Alison at 681-2739.

SPANISH 151 AND 152 DIMELO TO BOOK AND LAB BOOK. BIOLOGY/The Unity and Diversity of Life, HISTORY/The Western Heritage 3rd ed. Fair prices and for more information call Cassandra at 681-2636.

TOSHIBA 1200P COMPUTER. Laptop, 640K memory, 2 1/2 1/2" Floppy Drives, Backlit Screen, Battery Pak, Parallel/Serial ports, MS Dos 3.3, plus many software programs. Like-new, \$2400 list price. Must sell. \$1100. Call Mary at 764-4848.

MUST SELL! 14x70 Mobile home with 2BR, 1 Bath, 2 Large decks, fireplace, central heat & air and 10x8 playhouse, 1 mile from college. Only \$11,000. Call 681-4654 after 4pm.

EAGLE CTS 1 Set of 4, P215R16 65 Comp. Will Fit most Firebirds, Camaros, Mustangs, etc. \$250 obo. Call 681-7339.

MUST SELL! Futon that's fun for frolicking. Bought in Fall of 89. Comes with navy cover. Asking for \$150. For info. Call 764-8284 or 681-2885.

SPARK LAP-TOP COMPUTER, 640 KEM, 2 3 1/2 drives, backlit screen, parallel, serial ports, MS Dows 3.3. Works word processing, 1.05. Owners manual and carrying case. 9.47 Mhz. \$800 Obo. Call Mike at 681-3828.

FOR SALE. Trek 400 Bicycle bought in Feb. Very nice, must sell at great price. Call 681-1094.

FOR SALE. Mountain Bike, Shimano Components, great for around campus and serious fun. Call 681-1094.

MUST SELL! Cool double loft. Lots of shelves underneath. All wood-great condition. Call 681-1993.

FOR SALE. R.E.M. Flexi-Disc Song "Dark Globe" Included inside January 1990 issue of Sassy Magazine. \$5.00 each. Mint condition. Send \$5.00 to L.C., Landrum Box #11111 or Call 489-2521.

FOR SALE. Brother self-correcting electric typewriter. \$75 or best offer. Call 764-3749 after 4pm.

FOR SALE. Prince Tennis Racquets. Three Prince GRAPHTECH DB 90 WIDEBODY. Completely Brand New. (Retail Price \$150). You get them for \$100 Each. Call Now at 681-6873.

FOR SALE. Byrning Surfboard. 6' 8". Double wing, square tail, thruster with channels, shaped in Australia, excellent condition. ONLY \$250. Must see to appreciate. Call 681-7419 ask for Tom.

FOR SALE. Peugeot X. Express Mountain Bike. Never used. \$175 or best offer. 764-8407 ask for Heather.

FOR SALE. Sofa, 2 Chairs, 2 Tables. \$250. Call 681-1999.

FOR SALE. Epson laptop computer. Comes with printer, modem, expanded memory and software. \$600 obo. Call Jimbo at 764-8886.

FOR SALE. Oscar Fish. 7 inches long. \$20. Call Paul at 489-2765 after 12:00pm.

FOR SALE. APPLE IIe, Two 5 1/4 drives, 1MB memory, mouse, monochrome monitor, new modem, some software. Excellent condition. \$975, negotiable. Donna Hodnicki, Work-681-5242, Home-681-2162.

FOR SALE. 10 Speed USA Huffy Bike. Good condition. \$20. Call Lew at 681-1213.

FOR SALE. Mag wheel/Tire set (P215/70R14) and restap bumper for Toyota Pick-up. Call Cynthia at 764-7435 after 6pm.

FOR SALE. GSU Championship Posters, Printed on 18" X 24" plastic. A collectors item, limited quantity, \$10, for info. Call 681-3422.

FOR SALE. IBM PCXT computer, 640K, two 360K drives, Mono Monitor, Hercules Monographics Card, Printer Port, Lots of Software, \$660. Call: Work-681-5242; Home-865-2063, ElDenna Hilde.

TIE DYES ARE BACK AND THEY'RE COOL. Call 681-COOL(2665) for info on purchasing shirts or NOW AVAILABLE! Kite to do your own. All permanent bright dyes.

SNAKES for sale. I have about 80 for sale. Baby

py photos, which will be ready in about 6 weeks. Call now to reserve. 651-COOL(2665).

FOR SALE. Black Lab puppies, 4 months old, \$30 Call 681-6748.

FOR SALE. PRO Kennex Ceramic 110 Tennis Racquet with Prime Prism; reg. \$140. Want \$80. Also leather jacket. Call 489-2054.

FOR SALE. 14K GOLD, 8-inch chain bracelet. \$50. Call 681-2886.

FOR SALE. CAMPER, 26', 5th-Wheel, 89' Trailseeker, purchased in Sept. \$13,000. Call Nina at 681-5487. (8am-5pm)

FOR SALE. Nice, 3 piece Living Room furniture. Set includes matching couch, loveseat and chair. Also available, used washer and dryer. For more information call 681-7833.

FOR SALE. Brand new double bed with frame-brand new pine dresser, microwave and answering machine. Call Caroline at 681-6935.

FOR SALE. Mc Call, Butterick and Simplicity Patterns. \$5 to 75 each at the Harty Building Room 112 from 12:00-1:00 or 4:30-6:00. Mon-Fri. sponsored by SHEA.

FOR SALE. 1989 Korton 14 X 70, 2 Bedrooms, 2 Full baths. Full kitchen with dishwasher, large round tub, deck, owners must sacrifice. Low equity, assume loan. Call 764-7689.

FOR SALE. WOOFERS Pair of 12" M&M woofers used for 2 weeks-brand new sacrifice \$100. Call 852-5545.

MOBILE HOME FOR SALE. 1978-12X60, Peachtree. 2 BR, 2 Bath. Expanded living/dining area. Stove and Refrid. \$500 or best offer. After 6:00 Call 681-7147 during Days Call 764-6285.

PULSAR BRA AND CAR COVER W/LOCK FOR SALE \$100. Both are in excellent condition. A great deal for both! Call 489-1157 after 4:00.

FOR SALE. Loaded Sharp Home Stereo, 125 Watts X-Bass, S.S.) \$1000 Retail. Will neg. Call Carl at 681-6656.

MUST SELL. Bunk Beds. Call 681-1236.

FOR SALE. Harmony electric acoustic guitar. Exc. condition. Call Scott at 681-6493.

FOR SALE. 1/8 ct. Marquise cut diamond on wide 14K gold Band. New! Bought for \$205. Asking \$125. Call Scott at 681-6493.

FOR SALE. Avanti Refrigerator. Dorm size. It's in great condition. Asking \$70 Call Michelle at 681-3249.

FOR SALE. White Spring Semiformal Dress. never worn still has tags on it. Size 8-10, color. At Jarronds in the Savannah Mall. Paid \$170 but will sell for \$80. Call 681-7607.

## LOST AND FOUND

LOST. Keys in vicinity of Health/Counseling Center. Keys were on ring with chain. Reward offered. Contact Mrs. Newelle Anderson at 764-2045 or Campus Security.

LOST. Human Sexuality textbook. Last seen in MPP building room 131. If found