

Georgia Southern University

Digital Commons@Georgia Southern

The George-Anne

Student Media

1-30-1990

The George-Anne

Georgia Southern University

Follow this and additional works at: <https://digitalcommons.georgiasouthern.edu/george-anne>

Recommended Citation

Georgia Southern University, "The George-Anne" (1990). *The George-Anne*. 1158.
<https://digitalcommons.georgiasouthern.edu/george-anne/1158>

This newspaper is brought to you for free and open access by the Student Media at Digital Commons@Georgia Southern. It has been accepted for inclusion in The George-Anne by an authorized administrator of Digital Commons@Georgia Southern. For more information, please contact digitalcommons@georgiasouthern.edu.



The George-Anne

912/681-5246

Vol. 62, No. 23 • Tuesday, January 30, 1990

Since 1927, Georgia Southern's Official Student Newspaper

Georgia Southern College • Statesboro, GA 30460

National News Briefs

News Briefs
©Copyright 1990, USA TODAY/Apple
College Information Network.

INVESTIGATORS PROBE CRASH:

Investigators are focusing on miscommunication between air traffic controllers and pilots over a fuel shortage aboard Avianca Flight 52 before it crashed Thursday, killing 73. The flight's cockpit crew raised fuel concerns three times with controllers at Kennedy International Airport, which controls flights on their initial entry into the New York area.

NASA TO DELAY STAR WARS PLANS:

NASA is expected to announce Monday it will delay a "Star Wars" military mission from November to January - settling for nine flights this year instead of a record 10 - in order to keep on target for a high-priority mission to launch a nuclear-powered sun probe in October.

SHY GUYS MAY BE DRAWN TO DRUGS:

Shy teen-age boys are more likely than gregarious ones to take drugs, says a University of Idaho study. It found that 8.8 percent of shy boys surveyed used cocaine, compared with 2.3 percent among non-shy ones. Researchers say drugs may be a coping mechanism for shy males who want to participate in social activities but lack the confidence.

GULF STORM TO HIT EAST:

A storm from the Gulf of Mexico moving northeast along the Appalachians could dump up to 6 inches of snow on parts of Pennsylvania, New York and New England and bring rain to the south Monday. That storm is expected to combine with a storm expected to hit the West Coast midweek and bring more bad weather to the East.

49ERS WIN FOURTH SUPER BOWL:

The San Francisco 49ers crushed the Denver Broncos 55-10 Sunday winning their second straight Super Bowl and fourth title, putting them in the same company with the Pittsburgh Steelers, who won four Super Bowls in the 1970s. San Francisco quarterback Joe Montana threw a record five touchdown passes and became the first man to win the Most Valuable Player award three times.

SCHRADER STILL THE FASTEST:

Two-time defending Daytona 500 pole winner Ken Schrader closed out nearly two months of off-season testing at Daytona International Speedway with a lap of 195.101 mph, fastest lap of the winter. Also topping the 195 mph at 2 1/2-mile oval were defending Daytona 500 champion Darrell Waltrip at 195.101 and Dale Earnhardt and Derricke Cope, who both ran 195.016. All were driving the new Chevy Lumina.

DOUGLAS SAYS TYSON WILL LOSE:

Heavyweight boxer James "Buster" Douglas predicted Sunday he will defeat champion Mike Tyson at their bout Feb. 11 in Tokyo. Douglas, who is 29-4-1, said after a workout he will win either by decision or a knockout. Tyson, who also worked out Sunday is 37-0.

SUNDAY SILENCE TOP HORSE:

Kentucky Derby and Preakness winner Sunday Silence was voted the 1989 Horse of the Year by race writers and track secretaries, receiving 223 of 242 votes. Easy Goer, who denied Sunday Silence the Triple Crown by winning the Belmont Stakes, came in second in the voting. The 4-year-olds will meet later this year. Charles Whittingham won the Trainer of the Year.

SAVARD OUT FOR SIX WEEKS:

Denis Savard, leading scorer for hockey's Chicago Blackhawks with 63 points (21 goals), might miss up to six weeks from a broken left index finger. Savard, who was forced to skip last week's All-Star Game because of the injury, broke his finger when hit by a slap shot Friday at Buffalo.

By LAURA MCABEE
Assistant News Editor

Several GSC students have brought allegations of racism against a local restaurant, resulting in its removal from a college job referral list.

The students claim that Mel Woods, the manager of JD's Cafe, instructed them to give poor service and inedible food to any black patrons.

The GSC Financial Aid Office immediately removed JD's cafe from the job referral lists and apologized to the students who had reported the incident. GSC had the students' statements notarized as well.

GSC President Dr. Nicholas Henry was told of the situation. The owner of JD's, David Colley, who also is the owner of a restaurant called 'Boyd's Barbecue', was confronted. GSC's Vice President of Student Affairs Dr. John Nolen met with Colley and presented the students' notarized statements with the students names concealed.



Nolen: investigating charges of alleged racism

Colley, previously unaware of any blatant racism, asked for some time to investigate this for himself. In a week, he and Nolen met again. Colley said he had addressed the matter, and that Woods had denied the charges. Colley reported that a black cook had been hired to combat the 'image problem,' but Nolen did not feel that the action taken on Colley's part was sufficient.

One of the disgruntled students, who wishes to remain anonymous, got a job at the restaurant through the GSC Financial Aid Department. The student subsequently reported being fired for failing to comply with Woods' instructions.

"One day he (Woods) called an employee meeting," the student said. "He called us together and said 'today we're going to start something a little different.'" The student alleged that Woods gave employees direct instructions to give substandard food and service to black patrons.

The student reported that Woods then showed the employees a box that contained leftover, burnt steaks. The box was marked 'BL' for black. "That was to keep the burnt steaks in. The cooks were supposed to put the burnt steaks in the 'BL' box," said the student.

"Baked potatoes that were old, yellow, and rotting were supposed to go to blacks too," the student continued. "Any freezer burned salads were to be served to the black people as well."

The student said that the manager stressed that the lesser quality food was only for blacks.

When the next black came into the restaurant, contrary to instructions, the student served the patron a quality salad.

"When I went back to the kitchen, he (Woods) asked me which salad I had served the man. I told him that I had served a good salad, an edible salad. He said 'Are you going to have a problem with this in the future? Didn't you hear a word that I said?'"

"I told him that I did hear what he said, but that I definitely had a



J.D.'s Cafe

problem with it. That's when he told me to get out."

The apparent reason for discrimination, sources said, was that the presence of blacks might deter white patronage.

The restaurant had been open previously, but went out of business. Woods apparently felt that blacks were responsible for the closing.

In addition to instructing employees to discriminate against blacks, ex-employees say that Woods constantly ridiculed blacks and made racial slurs when referring to them.

When asked to comment on these allegations, Woods declined to be interviewed.

Since this particular incident, the student in question has reported Woods' conduct to the GSC Financial Aid Office, the Department of Labor, and the NAACP.

ment of Labor, and the NAACP.

The Department of Labor told the complainant that there was nothing that they could do because there were so few employees at the restaurant. They replied that unless there are 15 employees or more at a particular place of employment, the discrimination is not covered under federal law. This comment was echoed by Harris Williams of the Atlanta Equal Employment Opportunity Commission.

The Board of Regents' attorney was also contacted in order to determine if any legal action could be taken. The attorney told GSC officials that the only recourse possible was to strike JD's from the employment list at financial aid. The owner was not aware of the alleged racism at JD's, and made some changes, such as hiring a few

blacks. GSC was not satisfied with these token employments, however, and JD's remains off of the job referral list until GSC feels that sufficient changes have been made, Nolen said.

"It's not a step GSC likes to take, but unless there are significant changes, it will stay that way."

Nolen did not cite any specific changes that would have to take place, but said that GSC would leave that up to Colley. He did, however, say that Colley had no intention of replacing Woods.

As a result of this situation, businesses wishing to be placed on the Financial Aid office's list of prospective employers will have to sign a form stating that they will be an equal opportunity employer, and that they will not ask students to discriminate while on the job.

Students attend All-College Chorus

By SANDY HANBERRY
News Editor

Twenty-four students from GSC participated in the Georgia All College Chorus from January 25-27. The event was held in conjunction with the Georgia Music Educators Association's annual convention. The All College Chorus' performance was an integral part of the convention's final day festivities held on Saturday, January 27.

The performance culminated nine months of planning for David Matthew, Choral Director at GSC and Organizing Director of the All College Chorus.

Matthew began organizing for the in March. He acquired world renowned choral conductor and clinician Rod Eichenberger to conduct the All College chorus.

Eichenberger, who conducts the University of Southern California Chamber Singers, spent all three days of the convention with the group helping them to fine tune their voices and preparing them for the performance.

"We were truly lucky to get him," said Matthew. "When I contacted him in last March he already had most of January and February filled up."

Matthew then spent the next



Conductor Rod Eichenberger several months preparing information and sending it to the choral directors of all the colleges and universities in Georgia.

The members of the All College Chorus were selected by their director to represent their institution at the performance. Seventeen institutions were represented. Their representatives formed an 175 member Georgia All College Chorus.

The Music for the performance was selected by Eichenberger and prepared by the All College members before their arrival at the convention.

Michael Braz and Natalia da Rosa from the GSC music department served as selected as accompanists for the 1990 Georgia All College Chorus.

The group performed selections

in German, Italian, and Latin as well as in English.

Representatives from GSC were pleased by the performance, the director, and the event as a whole.

Matthew described the event as "spectacular." "In all my years of association with the event this year's performance was certainly as good as any I've ever heard."

Randy McQuaig, a member of the chorus, described Eichenberger as "one of the finest conductors in the nation. No one could have gotten any more out of us."

McQuaig added, "Dr. Braz did a superb job with the accompaniments."

George Evans stated, "the event was well organized. Eichenberger motivated us to do our best and we had great accompanists. I think that everyone learned alot."

GSC's 24 representatives were: Sydna Armstrong, Lori Boykin, Levita Carter, Stacy Davis, David Draper, George Evans, Linda Glass, Alison Godwin, Eric Haymans, Sandy Hanberry, Leigh Jackson, Chris Lee, Adrian McDaniel, Randy McQuaig, Barry Millsapp, Michelle Newsome, Jenni Parker, Carolyn Parsons, Carol Richardson, Jacinda Roseberry, Greg Ryan, Paula Simmons, Mena West, Sean Williams.

Childcare center under study

By KEVIN HUDSON
Staff Writer

GSC is looking at the possibilities of putting a child care center on campus. College President, Dr. Nicholas Henry has set up a committee to study the feasibility of the idea and to establish guidelines for the proposed center.

The committee, chaired by Jackie Cooper, has compiled a survey to determine the child care needs of the faculty, staff, and students at GSC. The questionnaire is a simple eight-question form that will be used to determine the types of facilities needed. Undergraduate students may pick up the form in the Registrars Office in the Rosenwald Building. The committee will

contact faculty, staff, and graduate students.

Students who do not have a need for child care are also invited to complete the survey because it includes questions pertaining to the funding of the proposed facility. Anyone wishing to give their opinion as to the child care center proposal should turn in a completed survey from by February 16, 1990.

Conference Center to be expanded

By KEVIN HUDSON
Staff Writer

GSC has been given preliminary approval to expand the Southern Center for Continuing Education. Governor Harris included the \$17 million project in his budget proposal for the 1991 fiscal year. If the budget is approved by the state legislature, construction could begin as early as late fall in 1990.

The approximately 140,000 gross square foot building will be about four and one-half times the size of the present center, which was opened in April of 1981. The addition will almost completely encircle the existing building, covering all except the north wall.

Three meeting rooms in the conference center will be retained and renovated, as will the present 412 seat auditorium. The remaining rooms will be converted into office space and a work area for use by the University of Georgia Cooperative Extension Service.

A computer training center, double the size of the existing one will be included in the expansion along with several more meeting rooms. The first and second floors will each have two large conference rooms which are designed to subdivide into two separate rooms each. The first floor will have an approximately 800 person capacity conference/banquet room complete with a full preparation kitchen to replace the existing catering kitchen. The banquet room will have dividers to split it so that three separate functions may be held at one time.

When entering through the Center's main entrance, which will face Plant Drive, students and guests will find a massive lobby. To



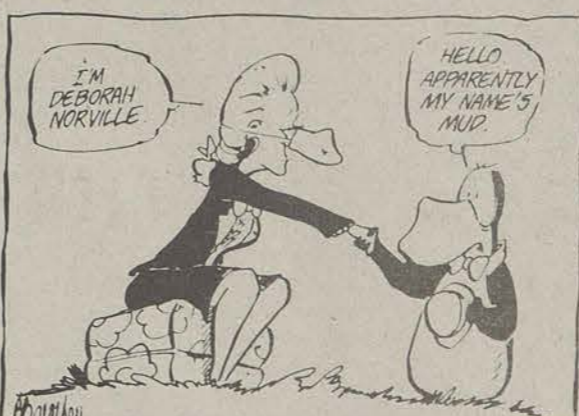
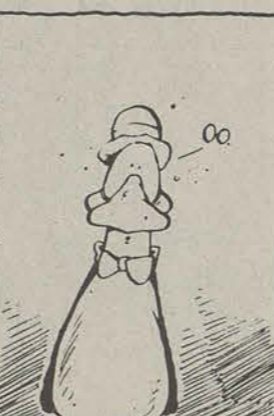
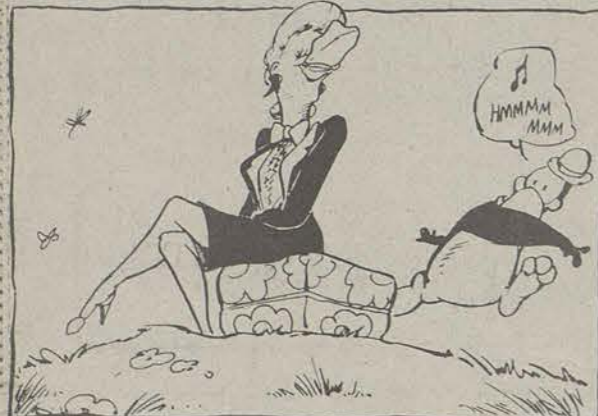
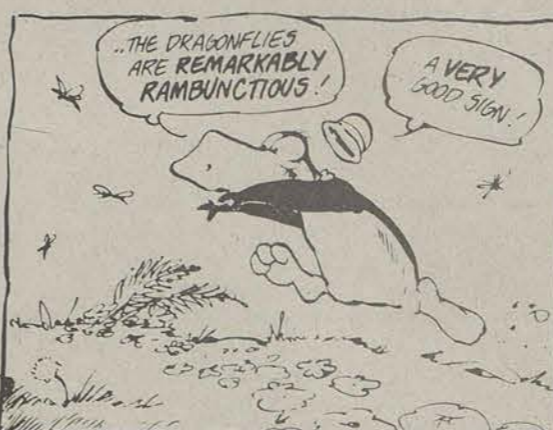
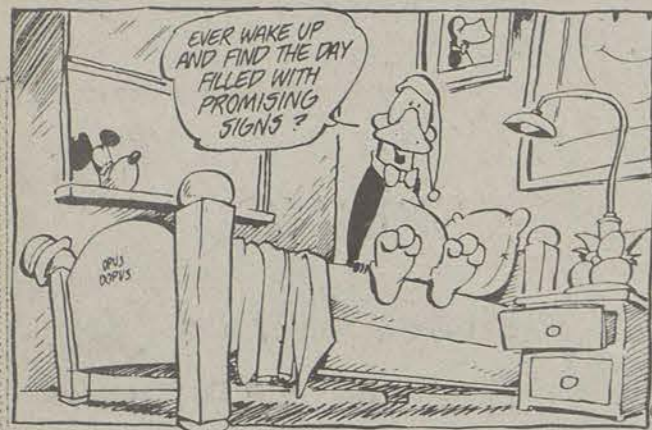
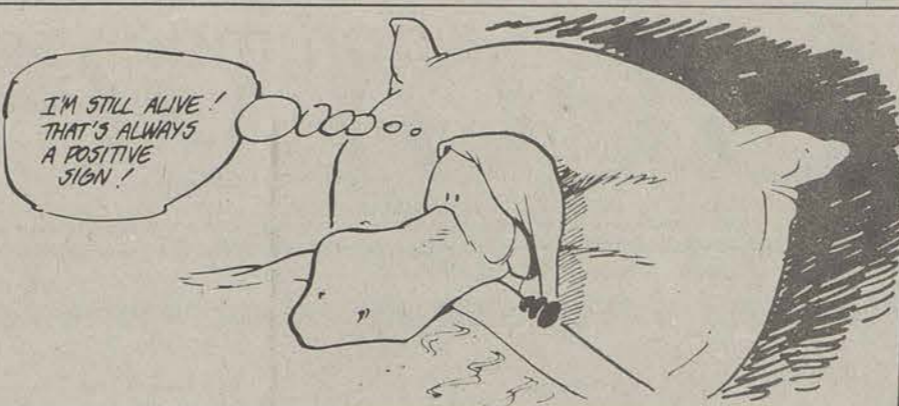
Gene Waters

the left will be what may, according to Dr. Waters, be the most celebrated feature of the conference center; a 1200 seat performing arts theater, complete with a third floor balcony. The theater will be used for Campus Life Enrichment Committee (CLEC) lectures, presentations and "other relate cultural activities." A rehearsal hall, dressing room, and wardrobe room will be built adjacent to the theater. The balcony may be reached by elevator or by one of several curving staircases. The area above the stage will rise five to six stories and serve as a highlight on the outside of the red brick building.

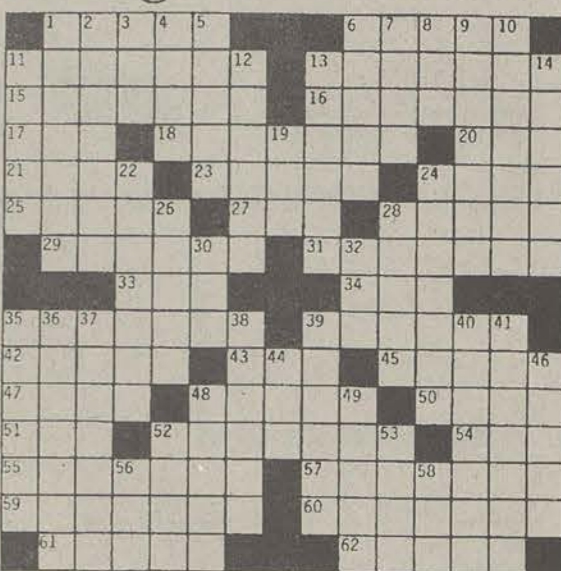
The conference center's purpose is to meet the south Georgia area's learning needs. It serves as a training center to improve the skills of area residents and provides meeting space for businesses, civic organizations, and other related groups. If all goes well, the expanded conference center could be completed in 1992.

Ostland

by Berkeley Brantley



collegiate crossword



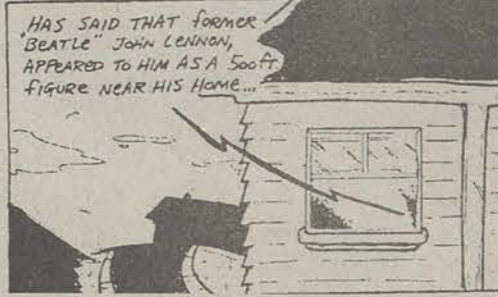
© Edward J. J. Collegiate Crossword

ACROSS

- 1 Amulet
- 4 Glass bottle
- 11 Skull
- 13 Station
- 15 Exit rays
- 16 Making sense
- 17 Tally
- 18 Libraries and banks
- 20 Wood sorrel
- 21 Gin
- 23 Tree for Julia
- 24 Chitic
- 25 Type of cheese
- 26 Prefix for gram or grain
- 27 A majority of
- 28 A Scala offering
- 29 Roasting pin
- 31 Withstands
- 32 Accelerate
- 34 Not's ailment, for short
- 36 Wrench
- 39 Maroon
- 42 Units of verse measurement
- 43 Bangle
- 45 Accustom

DOWN

- 1 Baby beds
- 2 Food fish
- 3 Black cuckoo
- 4 Money of Iran
- 5 Muffles
- 6 Task
- 7 Jupiter pieces
- 8 Prefix for cycle
- 9 Works with secret messages
- 10 Afternoon server (2 wds.)
- 11 1920 occurrence
- 12 Adviser
- 13 Ingenious
- 14 Relatives of the camel
- 19 Corleone
- 22 Everlasting
- 24 Incident
- 26 Buck
- 28 Rome's ancient port
- 30 All About
- 32 Mr. Byrnes
- 35 Refines metal
- 36 Major's items
- 37 Harley's beard
- 38 Tennis play
- 39 Presser
- 40 Labeling
- 41 Hot
- 42 Like Caesar (abbr.)
- 43 Ice device
- 44 Driving hazard
- 45 Tropical fruit
- 52 Calgary's province (abbr.)
- 53 Reverberate
- 56 Scottish tree
- 58 Chinese dynasty



The George-Anne CLASSIFIED

The George-Anne provides free classified listings to students faculty and staff members of Georgia Southern College as a campus-community service. Free classified ads should be written in 25 words or less. The advertiser's name and Landrum Box must be included with the ads. Ads should be non-commercial in nature, should be in good taste and are subject to standard editing procedures. The editors reserve the right to refuse any free classified ad. Free classified listing should be mailed to The George-Anne, Landrum Box 8001, GSC. Deadline is noon Monday or Thursday prior to publication. Commercial listings are available at \$4.50 per column inch, with a one inch minimum. Contact the Advertising Department at 681-5418 for more information.

ROOMMATES

Desperately seeking female roommate to share room. Move in any time. Eagle's Nest. Rent \$110 per month plus 1/3 of utilities. Call Angie 681-7064.

ROOMMATE WANTED ONLY \$125/MONTH + UTILITIES. Must share bedroom. Access to washer and dryer. Apt. is furnished. Ga Villas #16 Call 681-3234.

FEMALE ROOMMATE NEEDED IMMEDIATELY FOR WINTER QUARTER AND ON. Your own room for \$135 a month and 1/3 utilities. Located near campus. Call 681-3372 and ask for Tami or Lisa.

MALE ROOMMATE wanted to share a large one bedroom apartments across the street from campus. Move in anytime! \$150/month plus 1/2 utilities. Call anytime 681-6991.

Female roommate needed for winter and spring quarter. \$160 a month plus utilities. Call Ann at 681-3712.

Roommate needed — choice of two rooms, \$175/month plus 1/2 utilities. Call Dav at 681-9013. If no answer, leave message on answering machine.

Female roommate needed to share 4 bedroom apartment at Hawthorne Court II. \$200/month plus 1/4 utilities. Please call Angie at 681-5428 or 681-3224.

TWO FEMALE ROOMMATES NEEDED at Hawthorne Court #18 immediately. Non-smoker preferred. Partly furnished. Come by if interested and ask for Kim.

FEMALE ROOMMATE NEEDED FOR SPRING QUARTER at Hawthorne 2. Call immediately. 681-7483.

TWO FEMALE ROOMMATES NEEDED at Collegeview Apts. for Spring quarter. For more information call 681-7306.

TWO FEMALE ROOMMATES NEEDED at Southern Villa beginning now and through Spring quarter. \$90/month plus 1/4 utilities. \$100 deposit that is refundable. Really nice and clean. For more information call 681-6610 and ask for Cindy or Lisa.

ONE FEMALE ROOMMATE WANTED—Call now—Hawthorne 2. \$500 a quarter. Call Amelia King at 681-7483 or 489-1284.

MALE ROOMMATES NEEDED—Brand new Eagles Court Condos—\$133/month. Spring quarter only. Call Dan or Paul at 681-7136.

TWO FEMALE ROOMMATES NEEDED for Spring Quarter. 2 bdrm, 2 1/2 bath apartment. \$500/month plus utilities. Call 681-6691.

RENTALS

WANTED: Two roommates to share large three bedroom house in Port. House includes kitchen privileges, large playroom with pool table, private bedroom. Worth the drive. \$250 per month includes utilities (except long distance calls). If interested, please call 681-5194 or 764-7096 (after 5 p.m.).

Female college student — large room near college with bath. Kitchen privileges. 681-6437 (after 6 p.m.) 84202141 (Ask for Ann).

DUPLEX FOR RENT—across from Stadium Walk in Sherwood Forest—available immediately. \$400/month. For more information call Billy at 764-8181 after 5:30 p.m.

WANTED TO BUY—Good condition Mountain Bike needed. Call Melissa at 681-7198.

FOR SALE

RALEIGH RECORD for sale. fair cond. \$50 Call 681-7481.

FOR SALE—EARLY AMERICAN SOFA—Brown print fabric. \$150. Call 865-5212.

Sectional couch with hide-a-way bed. Neutral color. Excellent condition. \$100 or best offer. Call 489-1574.

One B.C. Rich guitar, warlock body, plum color, one chip \$150. One Kramer Aerostar guitar, red color, like new \$200. One B.C. Rich Amp (rare) \$100. Call 681-3316.

Car CD player with AM/FM tuner. Pull out all electronic controls, and less than one year old. Asking \$450. Call 681-3576.

FOR SALE: Sunkong 100 watt amp. Like new — used only two weeks. Still in box with instructions. \$100. Call Stephen 681-1306.

GOVERNMENT HOMES Delinquent tax property. Repossessions. Call (1) 805-687-6000 Ext. Q-5385. (1/26)

FOR SALE: New men's 10-speed bicycle. great condition—only rode twice. With combination lock. \$70 or best offer. Call 681-6610 ask for Lisa.

GOLD FOR SALE: 18 inch 14k quintuple herringbone necklace. Over 1/4 inch wide, 20 grams in weight. Bought for \$850. Must sell, asking \$450. Call 681-3017 leave message.

FOR SALE—3bdrm and 2 bath mobile home. Located next to stadium. Phone 1-375-2116. Unfurnished but includes stove, refrigerator, dish washer and central air and heat.

MILE, 12 speed racing bike, 3 months old. Shimano components, Vetta computer, immaculate. Must sell. Call David 681-1519.

FOR SALE—COUCH AND LOVESEAT—will sell separate. Must sell!! Cheap but in good shape! Call Tim at 764-8812. BEST OFFER TAKES 'em HOME!!

FOR SALE—BLACK GIBSON "MEL-O-DY MAKER" GUITAR. Excellent condition. \$300 or best offer. Call Tim at 764-8812.

FOR SALE—ONE FULL SIZE BED. Excellent condition. Frame included. \$175.

1 night stand with lamp attached. \$40. Call Deryl 681-6231.

FOR SALE—15" Rockford Fosgate Bass Box with Steel Grille. 8" Bazooka, both new. Call Brian 681-7153.

WANTED TO BUY

Box spring mattress needed. Call Ana 681-3330.

"ATTENTION"—GOVERNMENT SEIZED VEHICLES from \$100. Fords, Mercedes, Corvettes, Chevys. Surplus Buyers Guide. 1-602-838-8885 Ext. A5920.

"ATTENTION"—GOVERNMENT HOMES from \$1 (u-repair). Delinquent tax property. Repossessions. Call 1-602-838-8885 Ext. GH5920.

LOST AND FOUND

LOST—A large computer box full of shoes. Last seen in the Johnson Parking lot. If found, please call 681-3648.

LOST—Brown Hazel datebook/phone book — must find — very important. Call Anna at 681-3330.

FOUND—Dog found near Taco Bell on Hwy 301, Thursday, Jan.11. Call 681-1888 abd give description.

LOST—Grey eelskin keychain. Includes keys and student I.D. inside. Very important. If found please call Regina at 681-3107.

NOTICES

Student from Savannah seeking someone to commute with. Classes 10-2, can negotiate hours. Please call Kathy 352-2415.

Best fundraisers on campus! Is your fraternity, sorority or club interested in earning \$1,000+ for a one-week, on-campus marketing project? You must be well organized and hard working. Call Lisa G. or Myra at (800) 592-2121.

I will type reports, term papers, etc. for you. Rates are reasonable. Call Eric at 681-6452.

Will type just about anything. Fees are reasonable. And will exactly as written, so I in no way will influence your grade. Call 681-2286.

Pregnant? If you need help, call The Crisis Pregnancy Center of Statesboro, 764-4303. Free pregnancy testing and counseling.

WANTED: Good students interested in pursuing graduate work in economics. The department of economics at Clemson University offers coursework leading to the M.A. and Ph.D. degrees, with specialty areas that include Industrial Organization/Regulation, Public Choice, Financial Economics and Labor Economics. We have one of the top research and teaching facilities in the South and encourage close working relationships between faculty and graduate students. Financial aid in the form of research and teaching assistantships is available. For more information, contact Prof. David N. Laband, Department of Economics, Clemson University, 242 Sirring Hall, Clemson, SC 29634-1309 (803) 656-3969.

8:00-5:00 Professional employee seeking someone to commute with from Savannah. Please call Maria at 681-5555 (GSC) or 234-4863 (Savannah).

Personal Touch Catering. Specializing in Romantic dinners for two. Capable of serving up to 100 people. Gourmet food served. Call 681-4016 for more info.

Spring Break vacations to Cancun, Bahamas, etc. at guaranteed low prices! Call Carl at 681-6695.

WIN A HAWAIIAN VACATION OR BIG SCREEN TV PLUS RAISE UP TO \$1,400 IN JUST 10 DAYS!!! Objective: Fundraiser. Commitment: Minimal. Money: Raise \$1,400. Cost: Zero Investment. Campus organizations, clubs, frats, sororities call OCMC: (1600)932-0528 / (1600)950-8472, ext. 10. (3/2)

A FREE GIFT JUST FOR CALLING. PLUS RAISE UP TO \$1700 IN ONLY 10 DAYS. Student groups, frats and sororities needed for marketing project on campus. For details plus your FREE GIFT, Group officers call 1-800-765-8472 Ext. 50. (2/2)

NASSAU/PARADISE ISLAND, CANCUN, MEXICO.—From \$299.00. R.t. air, R.t. transfers, 7 nights hotel, cruise beach parties, free lunch, free admissions, hotel taxes and more. Organize small group earn FREE TRIP. For more information call toll free (800) 344-8360 or in Ct. (800) 522-6286. (3/3)

SPECIAL PROGRAMS NEEDS YOUR ASSISTANCE—All student organizations are being reminded to notify the Office of Special Programs of any changes in the lists of officers or advisors for the organizations. Include, as well, any changes in addresses or phone numbers. For more information, contact Anthony Rice at the Office of Special Programs, 289 Rosenwald, at 681-5409.

ATTENTION- EARN MONEY READING BOOKS! \$32,000/year income potential. Details 1-602-838-8885 Ext. Bk5920.

ATTENTION- HIRING! Government jobs-your area. \$17,840-\$69,485. Call 1-602-838-8885 Ext. R5920.

ATTENTION- EASY WORK EXCELLENT PAY! Assemble products at home. Details. 1-602-838-8885 Ext. W5920.

ALL GAMMA BETA PHI MEMBERS interested in earning points. We highly encourage you to help sell candy bars. If interested see Sonya at next Thursday's meeting (Feb.1) or call 681-6895 (rm.115) and leave a message.

"ATTENTION"—EARN MONEY TYPING AT HOME! 32,000/yr income potential. Details, (1) 602-838-8885 Ext. T5920.

WINDOW TINTING, 35% meets New Georgia requirements, 3 years exp. free estimates, call Rusty at 489-1321.

TYPING—\$2.00 a page. Fast, accurate, guaranteed error proof. Will even check for spelling. Call me at 489-1898; or leave message.

MARKET DISCOVER CREDIT CARDS on you campus. Flexible Hours. Earn as Much As \$10.00 per hour. Only ten positions available. Call 1-800-950-8472, ext. 3.

HELP WANTED

EARN \$2,000 - \$4,000 Searching for employment that permits working own hours, but still challenging enough for your entrepreneurial skills? Manage programs for Fortune 500 Companies. Earn \$2,000 to \$4,000. Call 1-800-932-0528 ext 3006.

WANTED: Bass guitar and keyboard player for original music band. Call Tom at 681-3268 or Keith at 681-6586.

CAMPUS Representative needed for Spring Break 90s programs to Mexico-Bahamas-Florida & S. Padre Island - Earn Free Vacation Plus \$\$\$\$. Call 800-448-2421.

ATTENTION: EXCELLENT INCOME FOR HOME ASSEMBLY WORK. call 1-504-646-1700 Dept. P6330.

EXCELLENT SUMMER & CAREER OPPORTUNITIES now available for college student & graduates with Resort Hotels, Cruise lines, Airlines, Amusement Parks and Camps. For more information and an application; write National Collegiate recreation Service; PO Box 8074; Hilton Head SC 29938.

STOCKBROKER — Attention seniors and recent grads. Entry level positions available for a sales career in one of today's highest paying industries. Send resume to F.N. Wolf & Company, Inc. 5775 Peachtree Dunwoody Rd., Suite 450, Building G, Atlanta, GA 30342. Attention Vince Reinstein.

Lifeguards: Summer jobs available at outdoor pools in Atlanta area. Openings for swimming and diving coaches and lifeguards. Certification classes available. Register now. Call SwimAtlanta Pool Management, 404/992-8818, for more information. (5/1)

AUTOS FOR SALE

For sale — 1980 Ford Thunderbird. PS, PB, AC. High miles but in good shape. \$1800 firm. Call Rob at 681-1111.

Is it true you can buy Jeeps for \$44 through the U.S. Government? Get the facts today! Call 1-708-742-1142 Ext. 9600-A.

1983 Saab Turbo, red, loaded, excellent, stick shift, all service records available. \$5,200 or best offer. 681-5260.

For sale: Buick Regal Limited. Loaded, 4 door, jade. \$2,500 firm. Call 764-2804 or 489-8052 (after 4 p.m.)

1985 Nissan Pulsar, loaded. Excellent condition, red, alloy wheels, one owner, car cover and bra included. Call 489-1157.

For sale: 1983 red 280ZX, good condition, with bra and car cover. Call 237-9870 after 6 p.m.

WANTED—1975-1982 Corvette; must be in fair condition; willing to pay reasonable price. Call Glen 681-3987.

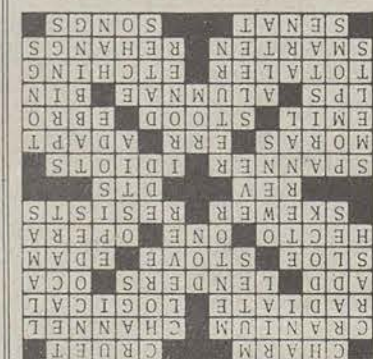
1989 DODGE DAYTONA SHELBY, Power doors and windows, PS,PB,AM/FM Cass., Cruise, Auto Trans., Loaded, Red/Silver, Under High-Tech 7yr/70,000 Warranty. 9,000 miles, \$11,500, Home 489-2071 Work 681-5899.

1974 VW Superbeetle. Red, runs great, ready to sell. \$1000. Call 489-1157.

PERSONALS

Bruce, Thank you for the most fantastic time of my life! This summer will be tremendously hard but well worth the wait! Happy Anniversary! I LOVE YOU VERY, VERY MUCH! Forever yours, Kristen.

Nanny, How bout a game of tennis sometime? Love Ya! Craig



Contrary to popular opinion, sport management 's for women, too!



Five of GSC's female sport management majors (special photo)

George-Anne staff reports

Sport management is not just for men. As the number of sport management majors grows, the number of women is also increasing.

There are now almost 50 sport management majors at GSC. About 20 percent of them are women planning to go into some area of the sport business field.

Pictured are five young sport management majors.

On the left is Amanda Maddox, a junior from Macon. She plans to go into athletic training or run a fitness center.

Second from the left is Robyn Dixon from Waycross and in the middle is Alexa Bache, a sophomore from Annandale, Va. Both Robyn and Alexa are interested in administrative positions with a professional sports team.

Ellice Ann Fancher, from Brooks, Ga., is second from the right. A junior, she is interested in administering a health club or possibly becoming a sports agent.

On the far right is Francine Amaker of Orangeburg, SC. Her emphasis is in sport communication. She wants to enter the field of sports broadcasting.

The field of sport management is a wide-open area for women as well as men. All three areas of emphasis—sport administration, sport

promotion, and sport communication—offer varied opportunities for ambitious young ladies with an interest in sports.

It's time to
THINK SPRING!

We now have a full line of

Duck Head • Bugle Boy • B.D. Baggies

shorts, shirts, and slacks



CAB Column

The Campus Activities Board often receives a lot of criticism about its programming of multicultural events. Some organizations complain that CAB only plans multicultural events or has movies with black actors in February, while some of the same organizations only have events in February because of Black Awareness Month.

First, the purpose of the Campus Activities Board is pleased everyone with the numerous projects we sponsor. So we try to program a variety of events to try to appeal to all. We feel that if you take an honest look at all the activities that we have over the entire year, you will see that we do cover a variety of tastes and preferences.

Instead of complaining about the events we have or don't have, come and have a say in our programs. We have several different committees that provide us ideas for school projects throughout the year. Please, get involved!

On the same note... on Wednesday, Jan. 31, at 6 p.m. in the CAB office, Room 103, Williams Center, there will be a Films/Special Events Meeting—you're invited.

PROFILE: Bertice Berry is (a) a Kent State Ph.D. graduate in sociology who happens to be funny; (b) a comedienne who happens to be scholarly; (c) a former teacher with a humorous approach in the classroom; (d) a comic with a serious message on stage; (e) all of the above—and more.

No one fails the Bertice Berry Profile Quiz, because there are no incorrect answers. If you look up the definition of Renaissance Woman in a new, improved non-sexist Webster's, it would be illustrated with a photo of Bertice Berry.

Knowing exactly what to make of her hasn't been easy for anyone. Near the conclusion of her high school career in Wilmington, Del., a counselor told her that she was not college material. Since then, she has earned her doctorate and is now winning the hearts and minds of

"students" in universities and premiere comedy clubs across the U.S. and Canada.

Bertice has recently been signed as one of the stars on the new NBC television show *Talk Back*. She is either the Bill Cosby of sociology or the doctor of comedy, or both.

TWO-WEEK PREVIEW

At the Movies: *TAP*. Friday, Feb. 2 and Sunday, Feb. 4 at 8 and 10 p.m. Admission is only \$1. Biology Lecture Hall. Watch Gregory Hines strut his stuff!

At the Movies: *LEAN ON ME*. Friday, Feb. 9 and Sunday, Feb. 11 at 8 and 10 p.m. Biology Lecture Hall. The true story of Joe Clark, America's most provocative educator, who sought to transform "a cauldron of terror and violence."

Club CAB: Bertice Berry. 8 p.m. in Sarah's Coffeehouse. The show not to miss! GSC ID is required for free admission. Refreshments will be served. (With the increasing popularity of Club CAB, we suggest you get there early to get a seat.)

CAB Spectacular: February 14, Valentine's Day brings the ever-popular Video Buttons back to Sarah's Coffeehouse from 11 a.m. to 3 p.m. Get your picture and a message for your loved one on a button.

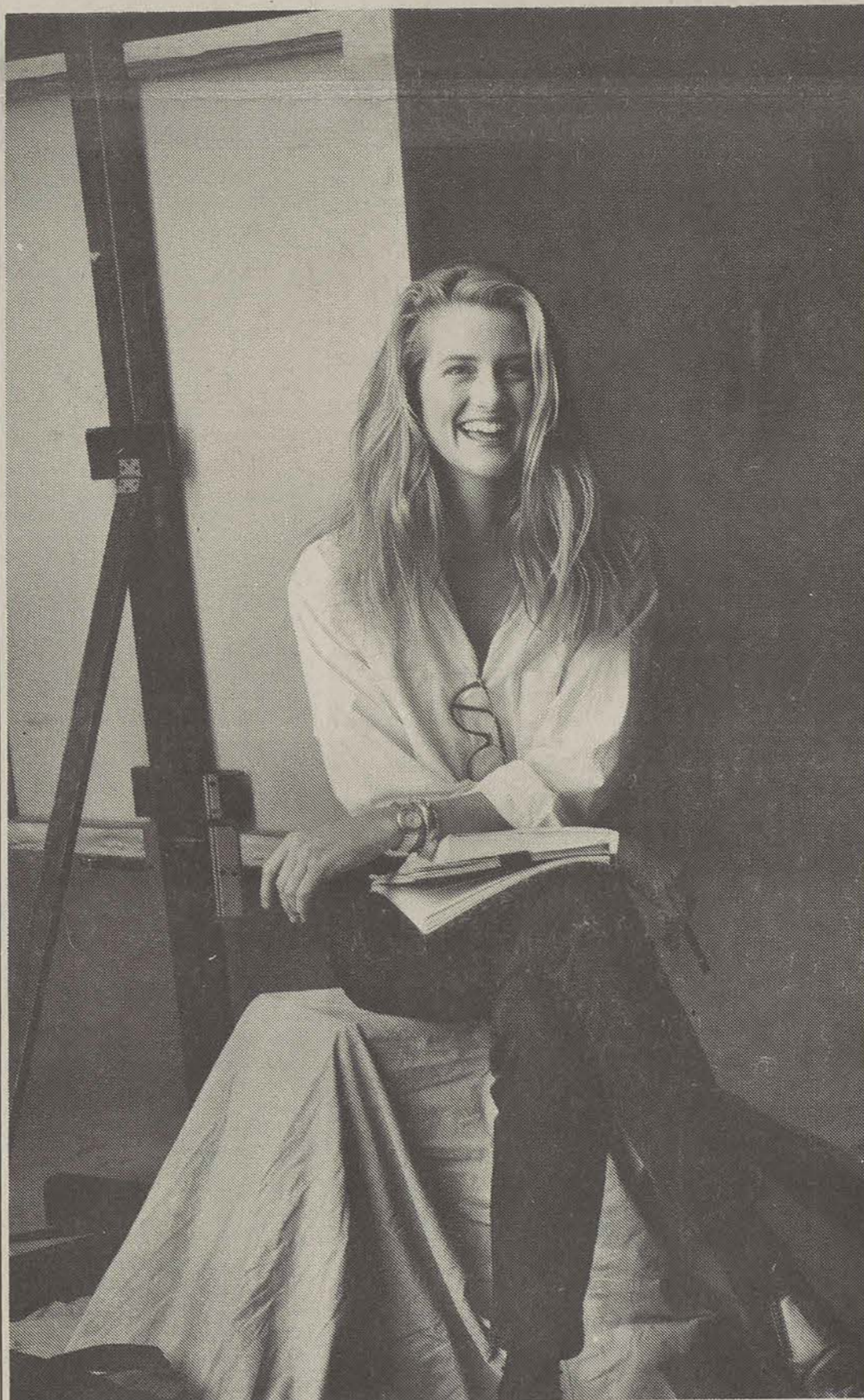
Comedy Competition: Do other think that you are funny? Or perhaps they don't, but you think that you are funny. You will have the chance to prove it soon. On March 5, GSC will host the US College Comedy Competition.

You will have your chance to get up and show your stuff.

Each performance will be videotaped, the tapes will be sent to New York to be judged, and a winner will be chosen out of each of the four regions in the competition. The four winners will go to Florida to battle each other, and the winner will fly to New York to perform in a famous comedy club.

If you think that you have what it takes, get your material ready and keep a lookout for more information. Good luck!

"When I call Mom,
she either wants
to talk art or football.
Usually football?"



Go ahead, call her up and let her know the score.

A 10-minute coast-to-coast call, dialed direct anytime, any day with AT&T, costs less than \$3.00.* And with fast connections and immediate credit for wrong numbers, how can you miss?

For more information on AT&T Long Distance Service, and products like the AT&T Card, call 1 800 525-7955, Ext. 100.

*Add applicable taxes and surcharges.



AT&T
The right choice.

Announcements

George-Anne staff reports

—The **GSC French Club** will host a **cookout** today at 3 p.m. at University Village 103. Everyone is invited to attend, but **BYOM** (bring your own meat) to be grilled.

—As part of the Visiting Artist Series, **pianist Kevin Vogelsang** will perform at 8 p.m. today in Foy Recital Hall.

—**Gamma Beta Phi** will meet Thursday at 7 p.m. in the Biology Lecture Hall.

—The Ninth Triennial National Conference of the **National Council for International Visitors** will take place Feb. 5-8 at the Omni Shoreham Hotel in Washington, D.C. Expected attendance is 1,000.

For more information, contact Mary Seng, conference coordinator, or Brian Kick, public affairs coordinator, at (202) 842-1414.

The National Council for International Visitors is a national network of 103 local and 38 national non-governmental organizations and institutions located in 43 states. The organizations work together to create professional and personal opportunities for international leaders to meet and exchange ideas with American citizens.

—The paintings of Janice Williams and Sharon Hardin, and the sculpture of Jack King will be on display in the Art Gallery in the Foy Recital Hall until January 31.

**HAPPY
BIRTHDAY
MIKE
BOWDEN**

Jacqueline Reinhard · Arizona State University · Class of 1991



The George-Anne

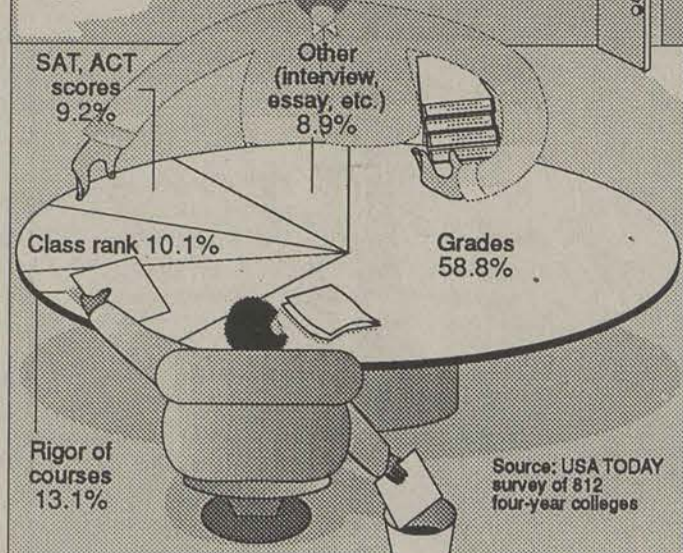
Since 1927, Georgia Southern's Official Student Newspaper

Clint Rushing
EditorSandy Hanberry
News EditorAllen Allnoch
Managing EditorStacy Graham
Advertising Manager

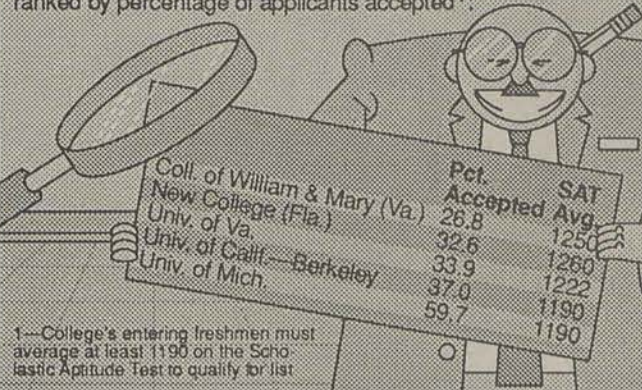
USA SNAPSHOTS®

What counts most

What admissions officers consider most when appraising college applications:

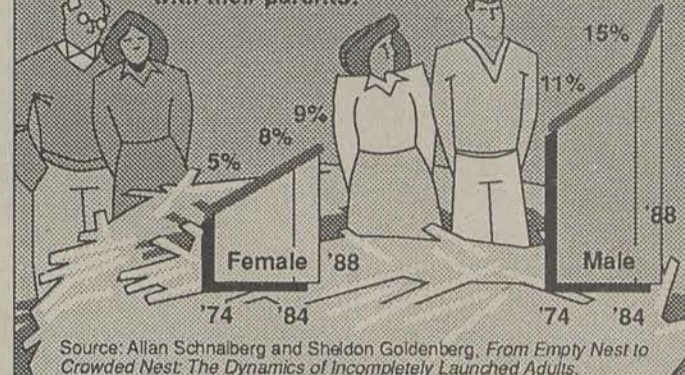


Choosiest state universities

The five most selective state universities, ranked by percentage of applicants accepted¹:

Staying at home

Percentage of young adults (ages 25-29) living with their parents:



More courts needed

Individual sports are a major part of a college student's extra curricular life. Not everyone can be on a varsity or intramural sports team; hence, GSC has facilities for enjoyable sports which do not require teams to compete. Without wasting too much space, we at *The George-Anne* would like to bring attention to a troubling matter: the GSC raquetball courts.

A great sport, raquetball is growing in popularity here at GSC at such a rapid rate that the school's mere six courts are not enough to facilitate the growing desire of students to play raquetball. Often students find themselves waiting 45 minutes to an hour just to play. What student has that kind of time to waste? Sure, it's a leisure activity, but after a long day of studying and classes, students like to get out and be active; raquetball is an excellent way to release pressure, but waiting on a court to come open for an hour is ridiculous. We hope that the administration will look into this problem, and possibly, allocate some of the funds which will come with university status to building at least 3 more raquetball courts for the student body.

Re-evaluation necessary

When the GSC Eagles are mentioned in conversation, it is usually safe to assume that the subject is football. After such an incredible season this past year the Eagles are talked about quite often. But GSC is headed toward a position of notoriety which could possibly be detrimental to the overall sports program. The GSC Eagles not only means Erk's national championship football team; GSC Eagles means Frank Kerns' men's basketball, Drema Greer's women's basketball, Jack Stallings' baseball, Del Presley's cross country runners, Joe Blankenbaker's and Pat Breen's tennis teams, Buddy Floyd's and Scott Farmer's swim teams, and every other varsity athletic team sanctioned by GSC. It is not fair for these other coaches and athletes to have to struggle for notoriety. GSC athletics supporters need not spread themselves so thin as to support only Erk's fabulous football team. And we aren't talking financial support only; how about someone showing up for the basketball games this quarter? Our men's team just defeated the TAAC 1st place team Centenary 109-86. This was a blow out! Where were you? Frank Kerns was voted Trans American Athletic Conference coach of the year; give this man some respect and congratulations!

The morale of a college athletic team is contingent upon fan support and press coverage. No one wants to practice hard, play hard, and not at least be commended for their efforts. Just ask the players. We at *The George-Anne* renew our pledge to support all GSC athletic teams with as much press coverage as possible. Sure, football this year was great; and sure, it's put GSC and Statesboro on the map, no one should ever forget the memories Erk has given GSC and the Southeast Georgia region, but it is time to wake up and see that we have been neglecting our other varsity athletes. Imagine how it feels to play in the shadow of Joe Ross, or coach in the shadow of Erk. GSC football is awesome, but let us not market one endeavor to the exclusion of all the others!

Letter policy . . .

All letters to the editor are subject to standard editing policies for style, libel, etc. The editor reserves the right to reject any letter. There is no word limit on letters and are published on a first come, first served basis. Letters should address certain issues and not attack individuals. All letters MUST BE SIGNED. The letter writer may request to remain anonymous. However, it will be the editor's decision whether or not to print the name.

Staff

YOLANDA WALLACE FEATURES EDITOR
MIKE STRONG SPORTS EDITOR
JAMES PERDUE COPY EDITORS
CAROLYN SAMODEN STAFF WRITERS
EDDIE COLEMAN, MATT WILLIS, CAROL KLEINGINNA, LIA NEEL, MICHELLE ROSS
DANIEL HOLLINGSWORTH, PHOTOGRAPHERS
PAT MALONE, MARK PRIESTER
DAVID SCOTT STAFF ARTIST

BUSINESS STAFF

JERI STANROD ADVERTISING REPRESENTATIVES
DON MAILLOH PUBLICATION COORDINATOR
GLENN BURGESS, RENE RENTERIA, CIRCULATION DEPARTMENT
LAURA MORGAN, CINDY KEEVER,

PRODUCTION & GRAPHICS EDITORIAL SERVICES (PAGES)
LISA TIPTON PRODUCTION MANAGER
TRACY SMITH AD PRODUCTION MANAGER
JERI STANDROD, TRACY COBB PRODUCTION ASSISTANTS
SHERRY DYAL, VAN ELLIS
KEISHA DAVIS, SONYA MESOMMONTA
MARGIE MILLER PRINTING METHOD

Bill Neville, Student Publications Advisor

The *GEORGE-ANNE* is the official student newspaper of Georgia Southern College, owned and operated by GSC students and utilizing the facilities provided by GSC. The newspaper is the oldest continuously published weekly newspaper in Bulloch County and Statesboro, Ga. The ideas expressed herein are those of the editor or the individual authors and do not necessarily represent the views of the Student Media Committee, the administration, the faculty and staff of Georgia Southern College, or the University System of Georgia. The *GEORGE-ANNE* is published twice weekly during the academic year and twice during summer quarter.

OFFICE: Room 110, F. L. Williams Center.
MAIL: The *GEORGE-ANNE*, Landrum Center Box 8001,
Georgia Southern College, Statesboro, Ga. 30460.
PHONE: 912/681-5246 (News) or 912/618-5418 (Advertising)

Recently I was sitting in Sarah's having a bite to eat when I overheard two people at another table talking. Discussing handedness—as in left or right—one seemingly unintelligent fellow spouted out, "Left handers are socially handicapped." Hearing this made me cringe and I suppressed the urge to give him a piece of my mind. You see, I happen to belong to said category—I'm a lefty. For as long as I can remember I have been pestered by comments like, "No, your other right." or, "Sorry, we don't have any left-handed golf clubs/baseball gloves/guitars..." It seems that most cultures make no special effort to correct this obvious imbalance toward my left-winged minority. Rarely does a design for a product have ambidextrous use or a left-handed counterpart. We go through life dealing with wine bottle corkscrews that turn the wrong way or scissors that work. Ever seen a record player with an arm on the left side? Probably most discouraging of all are the thousands of right-hand desks with a left-hand one

It's Miller Time

By Ashley Miller

being near nonexistent. It would seem to reason that if ten percent of the population was left-handed, so then would be the world. This is not the case, however. The only thing I know of that favors left-handers is a toll booth. This does not mean, however, that I have to lie down and let some right-handed big mouth step on my personal rights. Socially Handicapped Huh? Well let me say a few things 'about us. First, the technical stuff. Left-handedness is attribute to the right side of the brain and so the left brain conversely controls the right hand. Easily recognized distinctions of a lefty include visual intuitiveness, artistic ability, inherent leadership and just plain ol' greatness. Have Doubts? Read on.

When thinking of great artists in history, who comes to mind? Pablo

Picasso? How about Michaelangelo? Or even Leonardo De Vinci? They are some of the most prevalent and recognized names in art. They are also all left-handed. In the area of music we have some more legends. There is Bob Dylan, Paul McCartney, and the master guitarist of his time—Jimi Hendrix. As far as sports go, the lefty is just about everywhere. In swimming we have Mark Spitz; in tennis there is Martina Navratilova and Jimmy Connors. For soccer chalk up Pele'. Not good enough? Where's baseball? Easy. Babe Ruth.

Incidentally, the term southpaw refers back to baseball. Way back when in the Windy City, The pitcher faced west to home plate. Thusly, his left hand faced south. Shazaam! Southpaw.

Back to the task at hand. Next up we have Entertainers. The first is the king of mime, Marcel Mareau. Great Lefties in slaps stick include Harpo Marx of the Marx Brothers and the ever popular Charlie Chaplin.

Expanding comedy we find the

likes of Richard Pryor, the insult king Don Rickles, Carol Burnett, and Dick Van Dyke. An honorable mention for entertainment goes to Marilyn Monroe and Cary Grant.

So where are all the great left-handed leaders? For one there is the Great. Ever better is of the franks and the first emperor of Western Europe. The List also includes such as heavy names as Queen Elizabeth and Benjamin Franklin. To top off the list of left-handed leaders we have the likes of Joan of Arc and Neolean Boneparte.

To the gentleman in Sarah's that day, the whole subject is as simple as he was. If he had considered that statement before saying it, he probably would not have. You see, in being a lefty and thus visually intuitive, I noticed that the young lady he was trying so hard to impress was eating with—you guessed it—her left hand. As she walked away from him rolling her eyes, I just had to laugh.

Letters to the Editor

Questions life column

Dear Editor,

In the Tuesday, January 16, 1990 edition of *The George-Anne* appeared a very provocative article by Clint Rushing entitled "Life: too short to be taken for granted." In the article Mr. Rushing pointed out that we as humans need to make the most of life because we don't know when we will die. On this point, I am in full agreement. In fact, what we do with our lives and the choices we make during them have eternal consequences. Mr. Rushing should be commended for causing us to reflect on the significance of our fleeting lives on this planet.

However, I wish to comment on two points in Mr. Rushing's article. First, we are told by the author of the January 16th article that life is a precious gift by "someone," but we are not told who that special someone is. Well, according to Psalm 139:13 it was the Lord God of Israel that gave us the gift of life. The verse says "For thou (God) didst form my inward parts, thou didst knit me together in my mother's womb." It should be noted that the rest of Psalm 139 gives us a lot of information on the nature and character of this God who created us.

This information may prove helpful for those who were moved to contemplate their role in the universe by Mr. Rushing's article.

Second, at the end of the last paragraph, Mr. Rushing asked the rhetorical question "When is the next time we'll get a chance to live?" to which he answered "as far as we know, never." Here we should know that according to Matthew 22:23-32

Jesus was confronted on the issue of life after death by the Sadducees (a first century Jewish sect who denied the resurrection) who asked if

a woman was married and widowed seven consecutive times, whose wife will she be in the resurrection.

To this Jesus replied, "You are wrong, not knowing the scriptures or the power of God. People are not married after the resurrection but are like the angels of heaven." But

as touching the resurrection of the dead, have you not read (in the Old Testament) that which was told to you by God, saying, "I am the God of Abraham, Isaac, and Jacob? God is not God of the dead but the living."

Now the question before us is not whether we will live again, but rather, what will our next life be like? The God of the Old and New Testaments is a loving God, but he is also a holy God, and his holiness requires absolute holiness and obedience from those who will live with him in eternal bliss. The only problem is, according to Romans 3:10-12 and Isaiah 53:6, all have sinned and all are unholiness, unprofitable and none do good. This means that no one can enter heaven on their own

merit except the son of God, himself. Therefore all who stand before the judgment seat of God by their own merit will be doomed to the

eternal fires of hell. HOWEVER, Romans chapters 4 and 5 explain how Jesus, the son of God and the only truly good and holy person, died on the cross enduring the wrath of God in the place of those who will accept him as Savior and Lord! Everybody who believes in

this Jesus Christ will enter heaven and the presence of God himself not because they are good but because there sins were paid for by Jesus on the cross. John 3:18 states the situation plainly "He that believeth in him (Jesus) is not condemned, but he that believeth not is condemned already, because he hath not believed in the name of the only begotten son of God."

Marcus A. Toole, Jr.

Reader unhappy with speaker

Dear Editor,

On Monday evening, my wife and I attended the Martin Luther King Day Assembly held at the Conference Center. We were pleased with the program, and even amused, when the emcee recited a poem by heart to use up time while waiting for the speaker to arrive from the airport. Our good feelings changed drastically when the speaker took the platform.

Conrad X. Muhammed is a follower of Louis Farrakhan and his "speech" was a thinly veiled pitch for the Nation of Islam. He opened with an apology for Louis Farrakhan, and every time Farrakhan's name was mentioned, it was prefaced with "Honorable." It is hard for me to listen to a man of Farrakhan's leanings to be called honorable when he has made a career of preaching separatism and has referred to Judaism as a "gutter religion" on numerous occasions. (This, I might add, with kosher food in his mouth)

My wife and I did not stay for the entire speech. After almost an hour and a half of Mr. Muhammed's unrelated ramblings, we decided to go home to our dinner. It was clear to us, however, that Mr. Muhammed's "speech" was just a random listing of confusing half truths, misstatements and clichés, which were condescending to the audience and designed to elicit cheap emotional responses.

Martin Luther King, Jr. preached non-violence, brotherhood, and built an important international movement based upon positive virtues; not isolated negativisms. We feel that Mr. Muhammed, while he very well may have been of interest to a segment of our

student body for the one reason or another, was a poor choice of speakers to honor the memory of Dr. King.

Thank you for your consideration.

Bernard Solomon
Professor of ArtPaula Solomon
Cashier, Food Services

Mistake cited

Dear Editor,

In your Tuesday 1-9-90 issue of *The George-Anne* my letter was printed titled "GSC parent disagrees with professor." Please note that whoever wrote the copy for your paper typed "but unfortunately they will be extinct in a few more years." This is in reference to the KKK. My letter to your paper used the word "fortunately" not "unfortunately." Since this error does not reflect my sentiments at all I ask that you print a retraction. I am not in sympathy at all with the KKK, but this statement makes it appear that I am.

Bill Kimbell
Hull, GA

**George-Anne
Classified
are Always
Free
(25 words of less)
for students & staff**

Eagles blow out Mercer by 20, but squeak by lowly Panthers at buzzer

By ALLEN ALLNOCH
Managing Editor

When Jeff Sanders, a two-time TAAC Player-of-the-Year, ended his collegiate career after last season, the Mercer Bears thought they had seen the last of a dominating center from GSC.

Emmett Smith made them think again Thursday night.

Smith, a 7-0 junior transfer from Jacksonville University, had a career-high 24 points in leading the Eagles to a 71-50 victory over Mercer before a small crowd of 1,000 in the Macon Coliseum.

The win, GSC's fifth in a row, raised the Eagle's record to 11-5 overall and 5-2 in the conference. Mercer fell to 5-11 overall, 1-6 in the TAAC, resulting in their fifth lost in a row.

Smith used a repertoire of baseline layups, short hook shots, and even two three-pointers from the top of the key in going 8 for 15 from the field (53 percent). He was also 6 of 9 from the free-throw line and pulled down eight rebounds.

"Emmett can score and he's getting better day by day," said GSC head coach Frank Kerns. "He played pretty good defense on (Mercer center Scott) Bailey in the first half (1 for 10 from the field). I'd like to see Emmett get to the offensive boards a little more, but he's really contributed in the last two weeks."

In 12 games with the Eagles this season, Smith had averaged only four points per contest, but he had 10 points and 12 rebounds against Centenary week before last to go with his performance against the Bears.

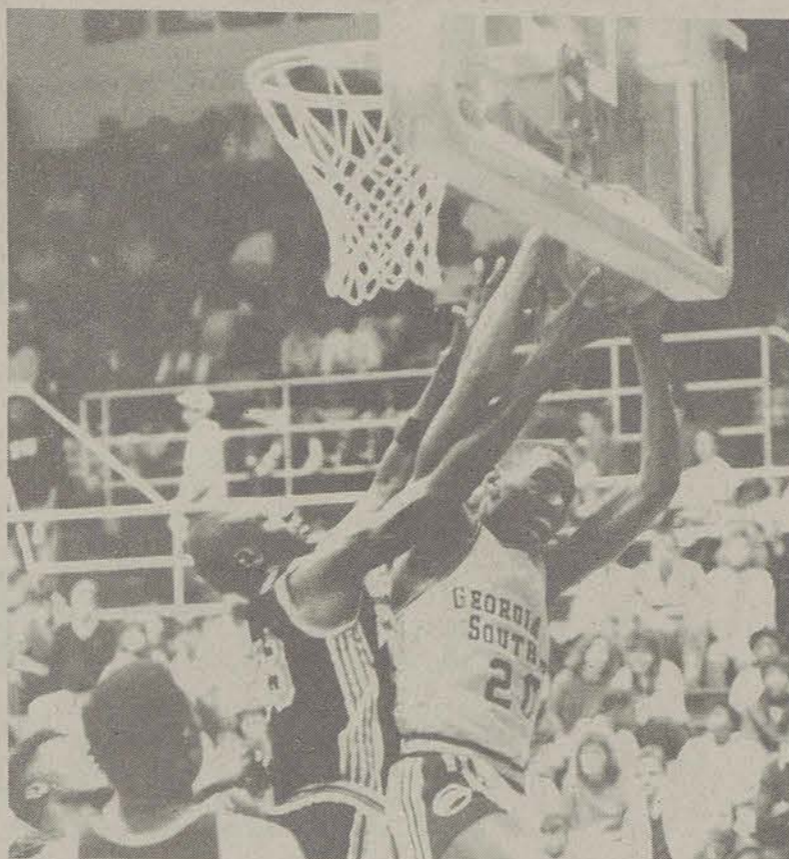
Mercer, who was held to only 33 percent shooting from the field, was never really in the game. The 50-point total was the lowest the Eagles have held an opponent since limiting Augusta College to 48 in the second game of the 1988-89 season.

GSC also outrebounded Mercer 47-36, with 23 of the rebounds coming off of the offensive glass. "We were outmanned, outlasted and outrebounded," said Mercer coach Brad Siegfried. "It was a little bit of everything."

The Eagles started the contest quickly, jumping out to a 7-0 lead before Mercer could come back and tie with 14:30 left in the half. The Bears could not stay close, though, and trailed 35-23 at the half.

Smith opened the second half with his second three-point shot of the evening and the Eagles consistently maintained a comfortable lead throughout the remainder of the game. Kerns was able to pull the starters and empty his bench by the 2:51 mark.

"We could have played harder," Kerns said. "But all in all, I thought we brought it tonight. I learned a



Mike Curry led the Eagles with 12 points and 10 rebounds in Saturday's 68-66 victory over Georgia State. Charlton Young sank the game winner with one second left for the win.

Senior Mike Curry added 11 points for GSC and 6'10" Cal Ferguson came off the bench to chip long time ago to be happy with a win.

in nine points and 10 rebounds in only 16 minutes of playing time. Bailey was the only bright spot for the Bears, winding up with 21 points and 12 rebounds.

By MICHAEL STRONG
Sports Editor

The Eagles flew into Saturday's match up against the Crimson Panthers of Georgia State expecting a tough game, but they had no idea what was in store for them. The Panthers fought GSC down to the final second when Eagle guard Charlton Young grabbed his own rebound and put it back in with one tick on the clock to give the Eagles a 68-66 victory.

The win over the last place Panthers in Atlanta extended the GSC winning streak to five games. It also raised their record to 12-5 overall and 6-2 in the TAAC.

The Eagles started the game on a 7-0 run on two baskets, one a three pointer, by Ben Pierce and a jumper by Emmett Smith. The Panthers narrowed the margin to 7-4, but the Eagles raised their lead to 11-4 with a basket and two free throws. But, GSU was undaunted and put together a 12-6 run that tied the score at 16-16 with 9:35 remaining in the first half.

After exchanging baskets for a while, GSC went on an 8-2 sprint for a six point lead, but with less than a minute remaining in the half the Panthers hit a three point bucket to trim the Eagles lead to three at the half, 32-29.

Shortly after the half, GSU tied the score twice, but the Eagles went on 13-4 run to grab a nine point lead.

The Eagles appeared to have the game in hand opening a ten point lead 64-54 with about five minutes remaining. But, the Panthers ran wild in those five minutes and exploded with a 12-2 run that tied the game at 66-66 with :27 left. Then

Young played the hero's role. He drove the lane and put up a six footer with four seconds left, missed, grabbed the rebound and sank the game winner.

Mike Curry led the Eagles with 12 points and 10 rebounds. Smith, the hero of the Mercer game, and Horace Burton chipped in with 11 points and snagged nine and six rebounds. The Eagle face the Samford Bulldogs in Hanner Fieldhouse Thursday at 7:30 p.m.

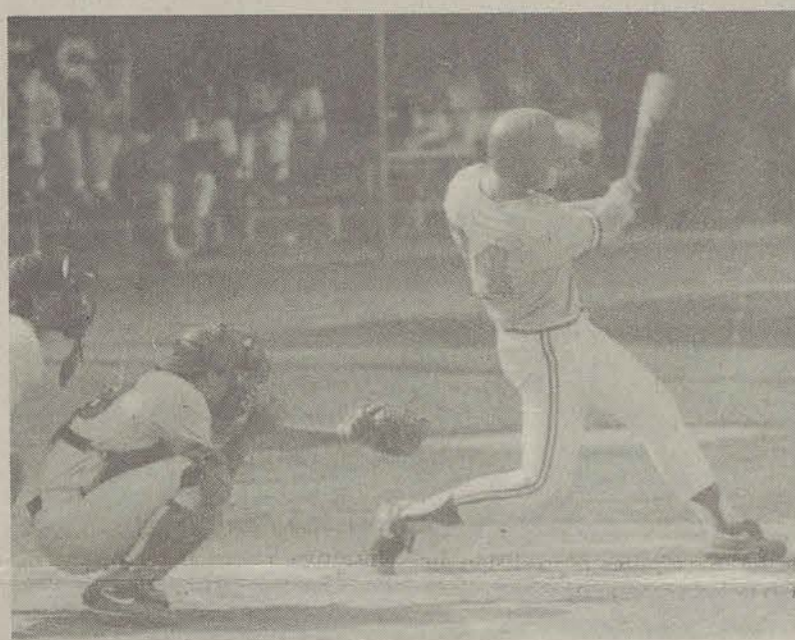
TYPESETTING FOR RESUMES

- ✓ CLUB FLYERS
- ✓ CERTIFICATES
- ✓ LOGOS
- ✓ PROJECT PAPERS
- ✓ ILLUSTRATIONS
- ✓ NEWSLETTERS

Also Scan artwork for Macintosh files

BONNEVILLE Graphics & COMPUTER SERVICES

489-1879



The Eagles will be looking to swing past the first place Stetson Hatters. The team finished 33-27 last season, but looks to improve on that record with many returning starters and juco transfers. The first game is Feb. 9 against the Florida Gators in Florida.

Baseball team swinging for first

By MICHELE ROSS
Sports writer

Great things can be expected of the GSC baseball team this year. The team has been practicing since the beginning of the quarter and they are ready for the 1990 season.

Last year, the Eagles ended up with a record of 33-27, 12-6 in the TAAC. The return of several starters from last season's squad bodes well for the team. Returning starters include: right fielder Thad Clayton, center fielder Chris Abner, first baseman Mike Yuro, second baseman Doug Eder, shortstop Jeff Coughlin, and catcher Rob Fitzpatrick.

Returning pitchers are Peter Bouma, Jay Berkner, Kevin Thompson, Joey Hamilton, and Scott Ryder.

Also returning are first baseman Ben Hayslip, right fielder Brian Wiggins, and Mike Miller at designated hitter.

When asked about the upcoming season, Abner said, "I believe we'll have a good team. We have a lot of transfers coming in that will help us a lot. As far as hitting, we've come together as a team. We have good veteran starters, and we are looking for a more consistent year."

The Eagles do have some promising young junior college transfers. Chad Sumner will be taking over at third base, Steve Sebert will be filling the void in left field, Matt Harris and Tim Wilder both transferred in as pitchers, and Paul Frias may start at designated hitter.

Coming in as true freshman are Johnny Brown and Buddy Holder at catcher, Kevin Hallman at third base, Chris Peterson at shortstop, and Todd Green in right field. Green has a chance at the starting job in right field.

Freshman pitchers include: Dave Massey, Chris Rampone, Jim Carragher, Chris Tomey, and Russ Russell. "There will be some spots for the rookies to step in and have their chance," said pitcher Peter Bouma.

The coaching staff has had two new additions: coach John Barlow and coach Dennis Goad.

Darrin Van Tassell and Russell Hendrix graduated last year. It will be difficult to fill their shoes. Also, first baseman Brett Hendley was drafted by the World Series champion Oakland A's. Hendrix is being looked at by the Cincinnati Reds.

This is the first season that a weight program has been required for all players. The new weight facility is giving the players a chance to enhance their performances.

This year's home games should be exciting. Every game will be sponsored by a Statesboro establishment and prizes will be given away throughout the game. There will be sound effects and music done by Van Tassell.

Ma Futch is also sponsoring a contest for all Greeks. The most participation at the home games is rewarded with three points for first, two points for second, and one point for third. At the end of the season, the point will be tallied and the fraternity or sorority with the most points will receive a gift of money for the charity of their choice. Participation includes the number of people attending, signs, and enthusiasm throughout the game.

The team is looking for a winning season. Signs will be posted all over campus to let the students know when the games will be played.

The first three games will be Feb. 9, 10, and 11, against the Florida Gators at Florida. The first home game will be against the Georgia Bulldogs, Feb. 12 at 3 p.m.

Retired Erk named Coach of the Year

By PAUL FLOECKHER
Sports Writer

Although GSC's football season ended over a month ago, Erk's (well, now Tim's) Eagles are still in the news. Since the Eagles wrapped up their unprecedented third Division I-AA national championship with a 37-34 victory over Stephen F. Austin December 16, the awards for Erk Russell and his players have poured in.

Coach Russell closed out his legendary career in style with four Coach-of-the-Year selections. On top of winning the Eddie Robinson Award for the top coach in I-AA, he was named 1989's best I-AA coach by the Kodak/American Football Coaches Association and Football News magazine. The fourth award came from the state in which Erk coached for 33 years as the Georgia Sports Hall of Fame voted him the Division I Coach-of-the-Year, his fifth such designation in six years.

All Russell did to earn the recognition was lead the Eagles to the only undefeated record in all of college football this past season. In addition, GSC became the first school in the 20th century to finish 15-0.

Fencing Club improving

By REBECCA ROSS
Sports writer

The GSC Fencing Club meets Monday and Wednesday from 5:30 until. Dr. French, professor of Biology coaches the club and also teaches a beginning fencing class during Fall Quarter and an advanced fencing class Winter Quarter. Additional beginning classes are taught by Karen Corsetti throughout the school year.

The Fencing Club participates in many tournaments during the year. Georgia Southern sponsors the Geoff Elder here at the Skate-R-Bowl. This year former GSC student Mark Fiquett took first place in both Men's Open Foil and Men's Open Epee. Dr. French came second in Men's Open Saber. Karen Corsetti swept the women's events by winning first place in both Women's Open Foil and Women's D and under. Second and third place winners were former GSC students DeDe Fiquett and Diane Wisham. Other awards were given to Mitch Joiner and Rebecca Ross for the Best Unclassified fencer in the men and woman's respectively.

On January 20 the team went to Columbia, S.C., where Dr. French won first place in the sabre competition. Other fencers; Mitch Joiner, Eric Grube and Denise Layson, represented GSC well by winning the first round of Men's Open Foil. New fencers representing GSC in tournaments include Eric Grube and Kevin Cleveland.

Although GSC did not field a football team until 1982, the Eagles were so impressive throughout the rest of the 1980's that USA Today named them Georgia's Team-of-the-Decade and Russell Georgia's Coach-of-the-Decade. The Eagles finished the decade with an 83-22-1 overall record, five I-AA playoff appearances, a 16-2 playoff record, and — of course — the three national titles. Since joining I-AA in 1984, GSC has won more games (70) and had a higher winning percentage (.833) than any school at that level.

One of the reasons behind the 1989 national championship was the strong running of All-American fullback Joe Ross. The Georgia Sports Hall of Fame acknowledged his success by naming him the Division I Co-Athlete-of-the-Year with Georgia Tech's Jerry Mays. Ross finished fourth nationally in rushing at 135.4 yards per game and came in fourth in balloting for the Walter Payton Award for I-AA's top player.

Along with Ross, five other Eagles earned All-America status: offensive guard Sean Gainey, strong safety Randall Boone, free safety Taz Dixon, linebacker Darrell Hendrix, and defensive end Giff Smith.

Boone, Dixon, Hendrix and Smith led a defense that finished second nationally in scoring defense at 12.1 points per game and third nationally in total defense at 255.9 yards per game.

GSC's offense kept pace, leading the nation in rushing at 329.2 yards per game and finishing second nationally in scoring at 36.8 points per game.

WIDESPREAD PANIC

Performing TONIGHT

Jan. 30., 9:00 p.m.

at the

ROCKIN' EAGLE

AT THE MOVIES WITH CAB

"A DAZZLING, INNOVATIVE 10 OUT OF 10!"

TAP

"A driving, compassionate, sensational movie. You're gonna love it and you gotta go!"

GREGORY HINES TAP

"Gregory Hines is superb."

"Join the crowd and see 'TAP'!"

"Superb. A 10 out of 10!"

Biology Lecture Hall

\$1.00

Fri., Feb. 2

8 p.m. & 10 p.m.

Sun., Feb. 4

Buckle Up For Spring Break '90

