

Georgia Southern University

## Georgia Southern Commons

---

The George-Anne

---

11-7-1989

### The George-Anne

Georgia Southern University

Follow this and additional works at: <https://digitalcommons.georgiasouthern.edu/george-anne>

---

#### Recommended Citation

Georgia Southern University, "The George-Anne" (1989). *The George-Anne*. 1150.  
<https://digitalcommons.georgiasouthern.edu/george-anne/1150>

This newspaper is brought to you for free and open access by Georgia Southern Commons. It has been accepted for inclusion in The George-Anne by an authorized administrator of Georgia Southern Commons. For more information, please contact [digitalcommons@georgiasouthern.edu](mailto:digitalcommons@georgiasouthern.edu).



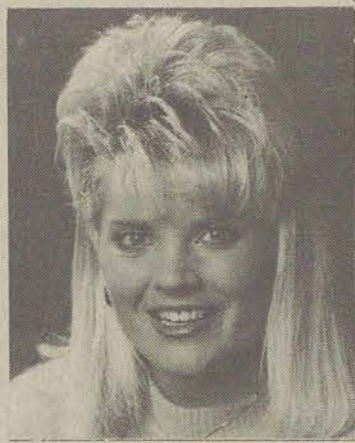
# Homecoming Queen finalists announced

George-Anne staff reports

Homecoming week has arrived, and included in the festivities is the opportunity to vote for the 1989 GSC Homecoming Queen. Students can cast their vote from 10 a.m. to 6 p.m. tomorrow in Landrum Center. Students may vote one time for one candidate.

The College Activities Board is sponsoring the voting and the Student Government Association will be conducting the actual voting process.

The Homecoming Queen will be crowned Thursday night in the Williams Center at a homecoming dance being sponsored by CAB. The dance begins at 8 p.m.



**Kimberly Dollnig** - Senior from Dalton, Ga.  
Major- Early Childhood Education  
Sponsoring Organization- Zeta Tau Alpha Sorority  
Future Career Goals- Teaching kindergarten in the Atlanta Area  
Hobbies- tennis, horseback riding  
Other Activities- Kappa Sigma little sister, pledge trainer of Zeta Tau Alpha



**Leah Fowler** - Senior from Danielsville, Ga.  
Major- Middle Grades Education  
Sponsoring Organization- Sigma Chi Fraternity  
Future Career Goals- Teach mathematics and language arts in middle grades  
Hobbies- being with friends, cheerleading, aerobics  
Other Activities- Gamma Beta Phi, Alpha Delta Pi Sorority, Sigma Chi little sister, Varsity Cheerleader, Co-rush chair for Alpha Delta Pi



**Julie Kicklighter** - Junior from Brunswick, Ga.  
Major- Communication Arts  
Sponsoring Organization- Phi Mu Sorority  
Future Career Goals- Public Relations  
Hobbies- dancing, cheerleading, bicycling  
Other Activities- Sigma Chi little sister, Varsity cheerleader captain, Gamma Beta Phi



**Vanamey Roberts** - Sophomore from Thomasville, Ga.  
Major- History  
Sponsoring Organization- Kappa Kappa Gamma Sorority  
Future Career Goals- Achieve a Master's degree in History and a double minor in Business and Spanish; pursue a career in International Business  
Hobbies- playing the trumpet and the piano, softball, basketball, swimming  
Other Activities- Gamma Beta Phi, GSC Marching Band, works at Clifton's Homemade Ice Cream



**Wendy Ward** - Senior from Port Orange, Fla.  
Major- Commercial Recreation with a minor in business  
Sponsoring Organization- Chi Omega Sorority  
Future Career Goals- To set up conventions and banquets for a major hotel or resort  
Hobbies- reading, dancing, being with friends, college activities  
Other Activities- Delta Tau Alpha little sister, church, community service, Chi Omega



# The George-Anne

912/681-5246

Vol. 62, No. 15 • Tuesday, November 7, 1989

Since 1927, Georgia Southern's Official Student Newspaper

Georgia Southern College • Statesboro, GA 30460

## Late News

©Copyright 1989, USA TODAY/Apple College Information Network

### BUSH BACKS OFF GAINS TAX CUT:

President Bush backed off his yearlong crusade for a capital gains tax cut but said he'll try again in 1990. Bush asked Congress to pass a deficit-reduction bill without new spending. If not, he said he would allow current across-the-board budget cuts to stand. Democrats are against that idea.

### NYSE CHANGES RULES:

New York Stock Exchange Chairman John Phelan announced Thursday several changes aimed at cutting the extreme volatility caused by program trading. New rules: Program trading using the NYSE's computers will be suspended for 15 minutes when the Dow has fallen 30 points. If the Dow drops 75 points, program trading will be delayed for 30 minutes; a 100-point drop, a delay of an hour.

### ELECTIONS SET FOR TODAY:

Elections are scheduled today in several states and cities throughout the nation. Up for grabs: governors' mansions and state legislative seats in Virginia and New Jersey, mayors offices in New York City, Houston, Detroit, Seattle, Cleveland, Minneapolis, Miami and several hundred other cities; plus hundreds of city, county, town and village posts.

### VA. GOVERNOR'S RACE HEATS UP:

The hottest election in the USA is the Virginia governor's race. Democratic Lt. Gov. Douglas Wilder is making a bid to be the USA's first elected black governor. Wilder holds a 48 percent to 44 percent lead over Republican Marshall Coleman, according to a Mason-Dixon poll released Thursday. The poll has an error margin of 3.5 percentage points.

### ACLU CONSIDERS LEGAL ACTION:

The American Civil Liberties Union said Thursday that it is studying the possibility of legal action that would force the removal of hand and wrist shackles worn by more than 1,200 inmates at the Camp Hill, Pa., state prison. The medium-security prison was overrun by inmates Oct. 25, after officials announced new restrictions on medical attention and food brought in by inmates' families.

### DRUG LEADER JAILED IN MEXICO:

The leader of a drug ring responsible for at least 25 percent of the cocaine coming into the USA was in a Mexican jail Thursday. Fifty federal police Wednesday stormed a Ciudad Juarez, Mexico, hotel, and arrested Rafael Munoz Talavera. He is the leader of a drug ring that stored 21.4 tons of cocaine in a Los Angeles warehouse raided in September, officials say.

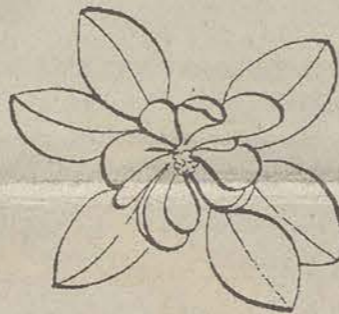
## Botanical Garden holds open house

GSC News Service

Magnolia Gardens, Georgia Southern's botanical garden in development, will host an Open House from 10 a.m. to noon November 11 so that visitors who come to campus for the Homecoming festivities can tour the house and grounds.

The Open House will give Homecoming visitors to campus, especially those who do not live in the immediate area, a chance to see the developing garden and wildlife area, said Garden Director and biology professor Lisa Wagner.

The Bland house will be open for tours, and visitors will be able to walk throughout the grounds to see



not only the plants that have been preserved on the property by the late Dan Bland, but also those areas that have been added since last spring's reception introduced the public to the garden.

Wagner said that a garden

manager was hired this summer to handle day-to-day upkeep of the property, and student assistants continue to help in the development of the garden.

The property was left to the Georgia Southern Foundation by Bland with the expressed purpose of developing a botanical garden. He was a lifelong resident of Bulloch County who was an avid naturalist and amateur botanist. Bland worked closely with Georgia Southern biology faculty members for decades in collecting and preserving various plant specimens, both rare and common, from the Southeast.

A formal opening for the garden See Gardens, page 6

## 2 held, charged in rape

By CAROLYN SAMODEN  
Staff Writer

On November 1 at approximately 11 p.m., a GSC coed was allegedly assaulted and raped by two college students. The incident occurred in the vicinity of Olympic Drive near the Sigma Nu house.

Both suspects were arrested within hours of the crime and are being held in the Bulloch County Jail pending formal charges and further court action.

The suspects were identified as Nicholas Andreas Tipaldos, 21, of Marietta, and Jon Gregory Chaput, 20, of Atlanta.

The coed told the investigating officer, Sargent Nesmith, she had

left the Collegiate and was walking toward campus when she was approached by two men. She said the suspects forcibly took her to the area where the rape occurred. The suspects left her at the scene and the victim returned to the Collegiate where she notified the Bulloch County Sheriff's office.

One suspect was apprehended by deputies in the vicinity, and the second was picked up later at his residence. According to police, the coed made a positive identification of the suspects.

GSC Campus police collected evidence from the victim, suspects and the crime scene. Captain See Charged, page 6

## Chanticleer singers to perform at GSC

GSC News Service

Literally an "orchestra of voices," Chanticleer, an eight-man vocal ensemble that has received glowing reviews in major cities around the world, will perform in Georgia Southern's Foy Recital Hall at 8 p.m. November 14.

Singing a diverse repertoire from Renaissance to folk music, the all-male group sings a capella—without musical accompaniment—in voices that range from counter-tenor to bass.

Chanticleer has been featured on five albums, and their accomplishments have been recognized with significant foundation and government grants. For the last three years, the National Endowment for the Arts has given the group the largest choral grant it has ever awarded.

The San Francisco Chronicle, in reviewing the singers, said that



Chanticleer, an eight man vocal ensemble, will perform in Foy Recital Hall at 8 p.m. November 14.

their performance was "not only pleasant, but astounding. They are, to put it directly, currently one of the world's best."

At the Salzburg Festival in West Germany, considered one of the top

annual music festivals in the world and notoriously selective in their invited performers, critics praised Chanticleer for "rich vocal colors and moving clarity. Line after line and voice after voice, they created a

work of art in the true sense of the word."

Chanticleer, based in San Francisco, was originally formed in 1978.

See Singers, page 6

## GSC mathematics professor awarded

GSC News Service

J. Norman Wells, professor of mathematics at Georgia Southern, has been awarded the 1989 Gladys M. Thomason Award for Distinguished Service by the Georgia Council of Teachers of Mathematics (GCTM).

A member of the GSC faculty since 1968, Wells received the 18th annual award for "distinguished service in the field of mathematics education at the local, regional, and state levels." Selection for the honor is based on significant job services rendered, service beyond normal

job requirements, and services for the improvement of mathematics instruction.

He was honored at the recent Georgia Mathematics Conference at Rock Eagle, Georgia, where award namesake Gladys M. Thomason, and Jane Barnard, National Council of Teachers of Mathematics representative for the GCTM, made the presentation.

A native of Kingsland, Georgia, the professor received his bachelors degree from Georgia Tech, his master's degree from Clemson University, and his Ph.D. from Florida State University.

## Police Report

By CAROLYN SAMODEN  
Staff Writer

Last week the following incidents occurred at GSC:

On October 30, at 8:56 p.m., the following people were involved in a four-vehicle accident on Herty Drive: Michael C. Mauney, Anthony L. Brown, Thomas E. McCarthy and Anne M. Sherwood. No injuries were reported.

Also on October 30, Melissa Esinosa reported a case of Financial Transaction Card Theft. The report stated that someone has been using a credit card assigned to her.

On October 31, Brian D. Tate

taken from the lobby of Brannen Hall.

Also on October 31, Michael Parker reported that his vehicle had been damaged by someone who threw an object at his vehicle while Parker was driving on Forest Drive.

On November 2, Brian K. Daniel and Patricia Blackwood were involved in an accident on Southern Drive. No injuries were reported.

Also on November 2, Kimberly S. Allie and William M. Bobo were involved in an accident in the gravel parking lot near the South Building. Bobo was charged with leaving the scene of an accident. Campus Security reported no injuries.

## Campus Briefs

G-A Staff Reports

The GSC Campus Life Enrichment Committee, in conjunction with the department of biology, will sponsor the next of its departmental lectures today at noon in Room 218 of the Biology Building. Kenneth W. McLeod will give a presentation on "High Temperature Flood Stress of Swamp Forests." Tonight at 7:30 p.m. in the Foy Recital Hall, CLEC and the department of engineering technology will host Michael Matthews and his lecture on "Recycling: Community-Wide Source Separation Programs." For more information, contact Sara Bennett at 681-5487. Both events are free to GSC students, staff and faculty, and are paid for with student activity funds through the Student Budget Committee.

The GSC Counseling Center will sponsor two of its Personal Development Workshops this week. "Ready for Marriage," which will be held on Wednesday, November 8, from 3-4 p.m., will address some important factors to be considered prior to taking this major step. On Thursday, November 9, also from 3-4 p.m., "Being Single" will explore the real story about being single. Both workshops will be held in the Counseling Center, Health Services Building, beside the lake, and they are open to all GSC students.

Show your spirit at Homecoming by releasing balloons at the kick-off of the game on Saturday. The American Society of Civil Engineers' student club will be selling blue-and-white balloons with long ribbons before the game. You can get your balloon on the way to the game. The ASCE members will be in front of the Body Shop and near the Collegiate in time for all the

See Briefs, page 6



# Dangerous drug "Ice" epidemic in Hawaii

By **KEN MILLER**  
©Copyright, 1989, USA TODAY/Apple  
College Information Network

WASHINGTON — It's possible a more treacherous drug than crystal methamphetamine has come down the pike over the years, but Dr. Joseph Giannasio in Honolulu can't think of one.

"It's an extraordinarily dangerous drug, psychologically and physically," said Giannasio, who as director of Castle Medical Center's Alcohol and Addictions Program in Hawaii has become one of the nation's experts on the exotic stimulant.

"It's dominating the environment here, and the rest of the world is frightened, for good reason."

On Tuesday, the House Select Committee on Narcotics Abuse and Control will hold a hearing to learn how crystal "meth" gained such popularity in Hawaii and how drug fighters can counter its inevitable proliferation on the West Coast.

Committee Chairman Charles Rangel, D-N.Y., called the hearing amid reports of a "particularly severe crisis" in Hawaii and the threat of a new national drug epidemic.

Police, prosecutors and drug experts from Hawaii, California, Texas, Pennsylvania and Florida will address crystal meth, better known as "ice," and the less potent but more popular methamphetamine, known as "speed" or "crank."

Unlike cocaine and its smokable derivative, "crack," which flows primarily from South America, meth is brewed in thousands of clandestine labs across the United States. Using mostly commercial ingredients, "crack cookers" produce enough meth to satisfy the country's craving for what's been dubbed the working man's cocaine.

## Ice: Mainland drug threat

"Ice," a highly addictive drug, is turning up in Hawaii in epidemic proportions. Officials want to counter its arrival on the mainland.



**SOURCE:** Most ice entering the United States originates in the Philippines, South Korea and other Asian nations. For now, the drug seems to be limited to Hawaii, where Filipino gangs created the demand.



**PRICE:** Expensive. About \$50 for a tenth of a gram. Sold on the street for up to \$400 a gram, about three times the cost of crack cocaine.



**CHEMISTRY:** Ice is the purest form of methamphetamine. Its most important ingredient is ephedrine, a legal component sharply controlled by states.



**EFFECTS:** Smoked in glass pipes, a modest dose of ice can carry the user for an average of seven to 10 hours. Early stages of abuse result in a lack of sleep and appetite and a feeling of increased energy. Eventually, users suffer lethargy, weight loss, increased agitation and irritation, and ultimately paranoia and visual and audio hallucinations.

Research: GNS

Frank Pompa, Gannett News Service

The significance of the white, powdery meth is that it's close to the nearly pure form of ice.

The seduction of ice is as clear as the pea-sized crystals: It delivers an immediate blast to the central nervous system without the risks of using needles. Unlike crack, which debilitates the addict for 30 minutes, ice triggers a flow of brain transmitters and a sense of euphoria for up to 10 hours. The effects of ice seem to be more cumulative; new users are not incapacitated.

"You feel energized," said Giannasio. "But you also get a loss of appetite and a loss of sleep. Then, as

said, the U.S. Customs Service made their third-largest crystal-meth bust at the Honolulu Airport, where a couple was stopped after flying in from Manila. Two pounds of ice were seized in that arrest. Customs officers seized another pound at the airport last week, arresting three men who had arrived from Manila.

One reason most ice is imported is because Americans don't know the formula, "and whoever has the formula is keeping it pretty secret," Carvalho said.

the use becomes more chronic, you develop paranoid thinking and auditory and visual hallucinations. Your frustration tolerance drops very low, and you can become aggressive and violent in toxic states."

Giannasio said the drug has been in Hawaii for years, but the number of users didn't increase significantly until recently. Most of those he treats are severely addicted. Many haven't slept in three to five days.

Ice and cocaine have much in common, but Giannasio said ice "is at least as addictive and has more dangerous effects."

"You can kill yourself with a gun or kill yourself with a knife, but you still die. The intensity seems to be greater with cocaine, but crystal has a longer high."

Ice came to Hawaii largely with the help of Filipino gangs. Once confined to ethnic Oahu neighborhoods, it now blankets Oahu and has crossed the channels to neighbor islands.

Giannasio said many women are lured to ice as a weight-loss method, realizing too late how quickly the addictive hook takes hold. Queen's Medical Center in Honolulu averages six ice-related emergency room treatments daily.

While speed is swallowed, snorted or injected, ice is smoked through a glass pipe.

At \$5,000 an ounce or \$50 for a tenth-of-a-gram dose that lasts a user a couple days, the drug is expensive. Police say the burgeoning group of young users typically pitch in for a dose to share.

"We know it's coming from the Philippines," said Honolulu Police Department Maj. Mike Carvalho, commander of the Narcotics Division. In the past week alone, he

TYPESETTING FOR

**RESUMES**

- ✓ CLUB FLYERS
- ✓ CERTIFICATES
- ✓ LOGOS
- ✓ PROJECT PAPERS
- ✓ ILLUSTRATIONS
- ✓ NEWSLETTERS

Also Scan artwork for Macintosh files

**BONNEVILLE**  
*Graphics*  
& COMPUTER SERVICES

**489-1879**

**CAB Presents**

**THIRTY EIGHT SPECIAL**

**Tickets On Sale Now**  
11 am - 3pm  
November 8, 9 & 10  
Student \$8.00 • Non Student \$12.00  
Hanner Fieldhouse Box Office

**MEISEL GRAPHICS**

58 East Main • Statesboro • 489-8843

**1/2 OFF SALE**

On all existing summer shirts and shorts, including neon t's, rock 'n roll shirts from San Francisco, etc.

**CUSTOM PRINTING FOR ALL YOUR T-SHIRT NEEDS! LOWEST PRICES, BEST DESIGNS**

## National Campus Briefs

©Copyright 1989, USA TODAY/Apple  
College Information Network

### ABORTION ADS SPARK NO DEBATES

One place abortion doesn't seem to cause much controversy is in college newspaper ads.

"We would treat (abortion) ads like any other ad... as long as the ads are paid for up front," says Candy Naff, office manager of the newspaper, East Tennessean, at Eastern Tennessee State University (ETSU) in Johnson City, Tenn.

Most public colleges consider abortion advertisements acceptable as long as they do not discriminate against anyone and are done in good taste. Often, many public colleges run ads promoting free pregnancy testing, birth control and counseling.

The only problem college newspapers sometimes encounter is that "pro and anti (abortion advertisers) don't like to be on the same page," says Lynne Nennstiel, advertising director of The Record at the University of Tennessee.

### LASERS CAN REMOVE BIRTHMARKS

Physicians at the University of Texas Southwestern Medical Center at Dallas are among the first five health-care institutions in the United States to experiment with a tunable dye argon laser to remove birthmarks called port wine stains.

"Before this type of laser was developed, there was no acceptable treatment for port wine stains," said Dr. Lynne Roberts, assistant professor of dermatology at Children's Medical Center.

The dye laser can be tuned to the specific wavelength of light that will give the desired biological effect of absorbing blood vessels.

**RESERVE OFFICERS' TRAINING CORPS**

**ARMY ROTC**

**OPPORTUNITY KNOCKS ON THESE DOORS FIRST.**

Why? Because Army ROTC teaches you the leadership and management skills you need for success - in college and in life.

**ARMY ROTC**

**THE SMARTEST COLLEGE COURSE YOU CAN TAKE.**

CONTACT:  
CPT JOHN FARRELL  
SOUTH BUILDING ROOM 134  
OR CALL 681-5320

**RESERVE OFFICERS' TRAINING CORPS**

**OPPORTUNITY KNOCKS ON OUR DOORS FIRST.**

Why? Because Army ROTC teaches you the leadership and management skills you need for success - in college and in life.

**ARMY ROTC**

**THE SMARTEST COLLEGE COURSE YOU CAN TAKE.**

**Focus On:**  
**NSNA Mid-Year Conference**  
**November 16-19, 1989**  
**Hyatt Regency • New Orleans**

Nursing at Detroit Receiving Hospital is the most dramatic, professionally rewarding test of skills and decision making abilities imaginable.

We offer a variety of orientation programs, depending on your area of interest, involving both classroom instruction and clinical orientation.

Detroit Receiving can help you gain the poise and experience that nursing demands. And offer you the unique opportunity to practice in a Level I Trauma Center. Nurses at DRHJHC also enjoy the advantages of our affiliation with Wayne State University and our location in the Detroit Medical Center.

We offer exceptional opportunities in these areas:

Med/Surg	Surgical ICU
Psychiatry	Medical ICU
Emergency Room	Coronary Care
Burn Center	Pulmonary Care
Spinal Cord Injury Center	Stepdown Units

If you are interested in taking on this intense career challenge, please see Judy Kohut at our booth at the NSNA Mid-Year Conference and Career Planning Seminar.

If you cannot attend, call Paulette Griffin, RN, MS, Employment Manager, collect at (313) 745-3400.

**Detroit Receiving Hospital and University Health Center**  
4201 St. Antoine • Detroit, MI 48201

A subsidiary of The Detroit Medical Center  
The Academic Health Center of Wayne State University  
We Are An Equal Opportunity Employer

---

Yes, I would like more information on nursing at DRHJHC.

Name \_\_\_\_\_

Address \_\_\_\_\_

City \_\_\_\_\_ State \_\_\_\_\_ Zip Code \_\_\_\_\_

Phone \_\_\_\_\_

Status: RN \_\_\_\_\_ Graduate Nurse \_\_\_\_\_ Student \_\_\_\_\_

School \_\_\_\_\_ Year of Graduation \_\_\_\_\_

Area of Interest: \_\_\_\_\_

Position Desired: GN/RN \_\_\_\_\_ Extern \_\_\_\_\_

Call to Set Up Appointment \_\_\_\_\_



# Reel to reel: movie reviews by Bill Johnson



John Travolta shines in "Look Who's Talking" (Special Photo)

### Look Who's Talking

Anyone ever wondered what a baby thinks about when it can't speak? If you have, look no farther than the newest comedy by Amy Heckerling, *Look Who's Talking*.

Heckerling, the director of *Fast Times at Ridgemont High* and *Johnny Dangerously*, has brought a warm and funny movie to the theaters.

The plot revolves around Kirstie Alley, the bar owner on television's *Cheers*, who gets pregnant while conducting an affair with a married man. Alley's character then attempts to find the perfect father for her son. The one catch is that the baby's thoughts are given to the audience through the voice of Bruce Willis.

The filmmakers must have followed the baby around for days to capture the correct facial expres-

sions to accompany Willis' voice. The result is hilarious and hits a spot in the hearts of parents.

The other main character is James, played by John Travolta. James is a cabbie that Alley eventually falls in love with. He baby-sits the infant Mikey, and shows an acting ability he has never shown before.

This is the best movie I have seen Travolta in since *Blow Out*, and he gives a great leading man performance. The movie is warm and funny, and has many funny, touching moments.

The acting is fairly good overall, with Travolta giving his best performance in many years. For a funny, uplifting movie, go see *Look Who's Talking*, straight from the baby's mouth.

Rating: B+  
(Now showing at College Cinemas)

### Shocker

Wes Craven, you've done it again.

After starting the *Nightmare on Elm Street* series and introducing the character of Freddy Krueger, he has once again made a horror film with an excellent killer.

The bad guy this time is Horace Pinker, one of the best murderers I have seen in a horror film.

The plot concerns a mad serial killer, Pinker, who goes on a murdering spree. The police are unable to stop him. The hero senses where Pinker is and helps the police capture him, but not before his parents are killed by Pinker.

Pinker is sent to the electric chair, but, as he is being electrocuted, his body melts and his soul turns to electricity. He hops from one body to the next, murdering

people. This is similar to the plot of *The Hidden*, a horror film from a couple of years back, but *Shocker* has an added catch. When Pinker's form runs out of bodies to occupy, he enters electrical sockets and moves in and out of television sets.

The hero and his policeman father track Pinker down and try to kill him, but to no avail.

The effects are excellent, with an amazing scene as Pinker climbs out of a television, but the characters are basic horror heroes and guinea pigs for the killer. Pinker is an excellent character, who has a fierce wit and a bloodthirsty act. He is like Freddy in some ways, but he deserves to be prosperous. *Shocker 5: The Revenge of Horace Pinker*, a reality? Maybe.

Rating: B  
(Now showing at College Cinemas)

## A student dilemma : where to eat

By SARAH SWEETING  
Staff Writer

Okay. It's two in the afternoon and your stomach is having an ongoing argument with your brain. What can a starving college student do in this situation? At GSU, we just might have the answer to this predicament. Is there also a place to meet friends, make jokes, and meet your love-of-the-week? The favorite places are right here on campus at the various eateries and restaurants.

The obvious place is Landrum Center on Georgia Avenue and Forest Drive. Right next door is the new mail center, which has to be the most popular place on campus, because here is where students get contact from the outside world! Enough food to keep you indoors for hours for the price of one meal card.

Nestled in right next door to Landrum is Blanche's Deli, where

your meal card could also do some good. Although \$2.70 doesn't seem like much, it buys a lot of stomach satisfaction.

Over underneath the Williams Center is a little tiny place called Sarah's. Its specialties are burgers, chicken fingers, and the biggest breakfast I've ever had for \$2! Another establishment that honors meal cards, Sarah's also sports a connected dining room with a big sofa and, for all you morning video-heads, a color television.

It's a terrific central location for meeting friends or picking up that ten-cent test form needed for the biology mid-term. Don't forget the CAB comedians who light up the night each month on Sarah's tiny stage.

Directly off-campus are two of the more popular places. They mainly serve residents in Oxford and the Pines, plus the apartment population.

The Pines Deli and the Deck Shoppe cater to more of the sandwich and pizza palates.

The Pines Deli is located in the Pines apartment complex off Chandler Road. Got a craving for a submarine? This is the place to haunt for some of the better sandwiches and pizza on campus. It's also a good place to plan parties or sit and watch laundry spin.

The Deck Shoppe serves up some really mean fried chicken and decent hamburgers. Look for it near College Cinemas, right behind Bash Riprock's. Both the Pines Deli and the Deck Shoppe accept meal cards, so don't leave home without them!

So there you have it in a nutshell. Some of the better meal card spots on the GSU campus. Try to catch all of them before the year is up, or you'll be missing out on fun!

## The small screen: Good, bad, and really awful video

By GARY A. WITTE  
Staff Writer

**FRIGHT NIGHT II** (Rated R, Starring William Ragsdale, Roddy McDowall, and Julie Carmen)

Grade: C  
Charlie Brewster (William Ragsdale) has seen the light. No more vampires for him, nosiree. His psychologist has managed to convince him that the guy in the first movie wasn't really a vampire at all, just a cult murderer, and that he and Peter Vincent (Roddy McDowall) were just suffering from mass hypnosis.

Right.  
We KNOW that the moment Charlie throws his protection-from-vampire kit away, that some more vampires will show up. And sure enough, they do.

Only this time there are more than one of them, and are headed by a female baddie (Julie Carmen)

heck-bent for revenge on Charlie.

All together, it adds up to an average horror movie. There are a few suspenseful moments, a few interesting ones, and a liberal sprinkling of macabre humor throughout.

Unfortunately, there seems to be a trend in horror movies of late to think that "more monsters mean a more frightening movie," thus ripping off the excellent *ALIENS*, and, at the same time, replacing suspense with numbers.

Roddy McDowall is excellent as the retired B-movie actor, Peter Vincent, who again has to overcome his cowardice to help Charlie.

While it doesn't match the original for humor and terror, it at least gives an honest effort. It even manages to take a few funny, if not subtle, swings at clinical psychology.

**THIS WEEK'S VIDEO TO AVOID:**

**MOONTRAP** (Rated R, Starring Walter Koenig of "Star Trek" fame)

Grade: D-  
Sometime in the 1990's, a space shuttle is sent up to explore the dark side of the moon (why it never

occurs to the makers of the movie that the moon rotates just like the Earth, I don't know). Our intrepid explorers discover a spacecraft with human bodies that pre-dates man. (Why no one else has discovered it before now, I don't know.) So, naturally, they bring back an egg-like metal thing from the craft, hoping to solve this mystery. (Sound familiar?)

Well, once they discover that the "egg" contains a deadly mechanical creature that makes bodies for itself out of any spare parts it can find (including humans), they send astronaut Jason Grant (Walter Koenig) and his expendable partner (oops, foreshadowing) to see if there are any more of the nasty buggers up there on the moon.

What starts off as a promising *ALIENS* rip-off slowly slides into interesting special effects, but few thrills. The monsters show potential, but are seemingly only used to pop up and say "boo."

The only other reason to see this movie is to see Mr. Chekov act without an accent. It's not worth it. The only thing I can figure is that he is a better actor WITH the accent. (Kaptien, Kaptien, there's an alien vessel approaching...)

## For Awakening,, less was more

By MARK RUSSELL  
Guest Contributor

If you haven't attended Theatre South's "Spring Awakening" this week and you're planning to, don't be alarmed if you look up at the stage and think someone forgot to finish the set. The stark, industrial-style setting is being used to visually carry out the play's underlying theme—individuality versus group conformity.

According to the set's designer, Professor Gary Dartt, "A machine world is strictly a 'yes-and-no' environment; it dehumanizes people and crushes their creativity." He

added that in the play, several attempts are made to drive out individuality and to require group conformity.

"Spring Awakening," written by German playwright Frank Wedekind, is a tragedy about adolescents who must confront societal norms in their search for individuality. The social issues these nineteenth century teens face are of the same nature that present-day teens face, which identifies the play and its author as being ahead of their time.

The set that is representing Theatre South's production is also ahead of its time in its own way.

First, the time period of the set being used is the 1920s. This is around 30 years before the play was written, which was in the 1890s.

Second, the set does not conform to conventional sets in that this one appears to be unfinished. For example, the set is painted only with illumination.

Third, the primary setting for the development of the original version of the play is centered around a nineteenth century German boarding school. Theatre South's version represents the school and more. Additional features such as gears, pipes, and tubes are included to industrialize the look and offer a factory flavor.

The adaptation of the set from an 1890, traditional boarding school to a 1920 factory may seem odd, but it fits the play's theme... breaking out of digital thinking and entering the realm of individual creativity, according to Dartt.

The Theatre South set may seem obscure and unconventional at first, but, then again, in "Spring Awakening," less is more.

## Campus Briefs

From G-A Staff Reports

—Dr. Kenneth W. McLeod will speak at noon today on "High Temperature Flood Stress of Swamp Forests" in Room 218 of the Biology Building. McLeod works at the Savannah River Ecology Laboratory in Aiken, South Carolina.

—Dr. Richard L. Osburn will give the Biology Distinguished Alumnus Lecture Nov. 10 at 11 AM in the Biology Auditorium. Osburn is the Board of Regents' assistant vice chancellor for Academic Affairs for the university system of Georgia.

—The GSC French Club will meet tonight at 7 in Room 161 of the South Building.

—Gamma Beta Phi honors society will hold an executive officers' meeting Thursday at 5 p.m. in the Math-Physics-Psychology Building.

25 Words or Less for Students and Faculty.  
Landrum Box 8001

The George-Anne is currently accepting applications for advertising sales representatives. If you would like to work your own hours and have an unlimited income potential. Please come by Room 110 Williams Center and talk with us.

The George-Anne  
"A Tradition Ahead of its Time."

You'll be JAMMIN' when you leave Beverly's

- \*New releases weekly
- \*CD's
- \*Videos
- \*Tapes
- \*Albums
- \*Singles

**BEVERLY'S**  
Records & Tapes

Statesboro Junction Mon.-Thurs. till 9 p.m. Open till 10 p.m. Friday & Saturday Mon.-Sat. 764-6007

<p>MOVIE WITH ALL THE RIGHT STUFF— Timothy Dalton is 007 in LICENCE TO KILL</p> <p><b>CAB</b> The Right Stuff Fri., Nov. 10 6:00 p.m.</p> <p>Licence To Kill Sun., Nov. 12 2:00 (\$0.50 Matinee) 9:30 p.m.</p>	<p>Timothy Dalton is 007 in LICENCE TO KILL</p> <p>BIOLOGY LECTURE HALL \$1.00</p>
--	--

## SCHOLARSHIPS

The First Annual "Know When To Say When" Student Poster Competition

WIN A \$5,000 SCHOLARSHIP!

NEED MORE IDEAS FOR "KNOW WHEN TO SAY WHEN" POSTER!

ENTRY DEADLINE: 11/16/89

\$20,000 IN SCHOLARSHIPS!

Announcing a Student Poster Competition with \$20,000 in Scholarship Prizes to be held in conjunction with the National Collegiate Alcohol Awareness Week.

We're looking for the best poster concepts that creatively express the need for responsible decision making about alcohol.

A grand prize scholarship of \$5,000 will be awarded in each of two categories. Five runners-up in each category will receive \$1,000 scholarships.

The competition is open to all undergraduate students (not just fine art students) enrolled in a U.S. college or university for the Fall 1989 term.

Entry Forms may be obtained:

From: The Office of Special Programs  
at: 289 Rosenwald 681-5409



## The George-Anne

Since 1927, Georgia Southern's Official Student Newspaper

Clint Rushing  
Editor

Sandy Hanberry  
News Editor

Al Alnoh  
Managing Editor

Stacy Graham  
Business Manager

Lance Nizinski  
Advertising Manager

## Rape report should make people think

Last Wednesday night a GSC coed was allegedly raped after leaving a local nightclub and attempting to return to campus. Of course, many people were shocked by the incident, but some simply shrugged it off as if it were nothing important. We feel an incident of this magnitude should make everyone sit down and think for a moment. While date rape has been a much publicized issue on many campuses, including GSC's, lately we have not heard of many rapes similar to what allegedly occurred last week.

Of course, we never like to hear news of rapes, or any other kind of attacks, but when they don't occur for a long period of time, people tend to forget that such a possibility even exists and they no longer concern themselves with it. Well, it apparently happened to someone here last week, and we need to do our best to prevent it from happening again.

Think about where you are going before you leave for somewhere, especially if you intend to walk. Is the area well-lighted? Is it populated? Will there be help nearby if something does go wrong? To lessen the chances of an attack, walk with another person, or even better, with a group.

Last Wednesday night's incident allegedly occurred near a nightclub where many people had been drinking. That is something else to think about. Alcohol can sometimes cause a person to do something he or she may not be normally prone to do. If you leave a party or other gathering where alcohol is being served, keep a careful eye on suspicious-looking people around you.

Rape is a serious matter, and the possibility of it should never slip anyone's mind. Let's do all we can to lessen that possibility.

## Poverty in America: Conflicting or Functional?

### From The Editor's Desk Clint Rushing

There are approximately 35,000,000 people in the United States who are living at or below the poverty level. According to one of my sources in the sociology department, the United States Department of Agriculture defines the poverty level as the amount of money required to purchase a minimally nutritious diet, multiplied by three. So there are that many people living in the U.S. who cannot afford three meals a day? A shame.

But what I want to get at is this: Is poverty a socially transmitted disease which should be addressed seriously, or does the society in the U.S. need poor people?

There are two basic theories which answer that question. These theories are the functional and conflict theories of poverty as stated in sociological teachings here at GSC.

The functional theory, as I understand it, states that poverty is

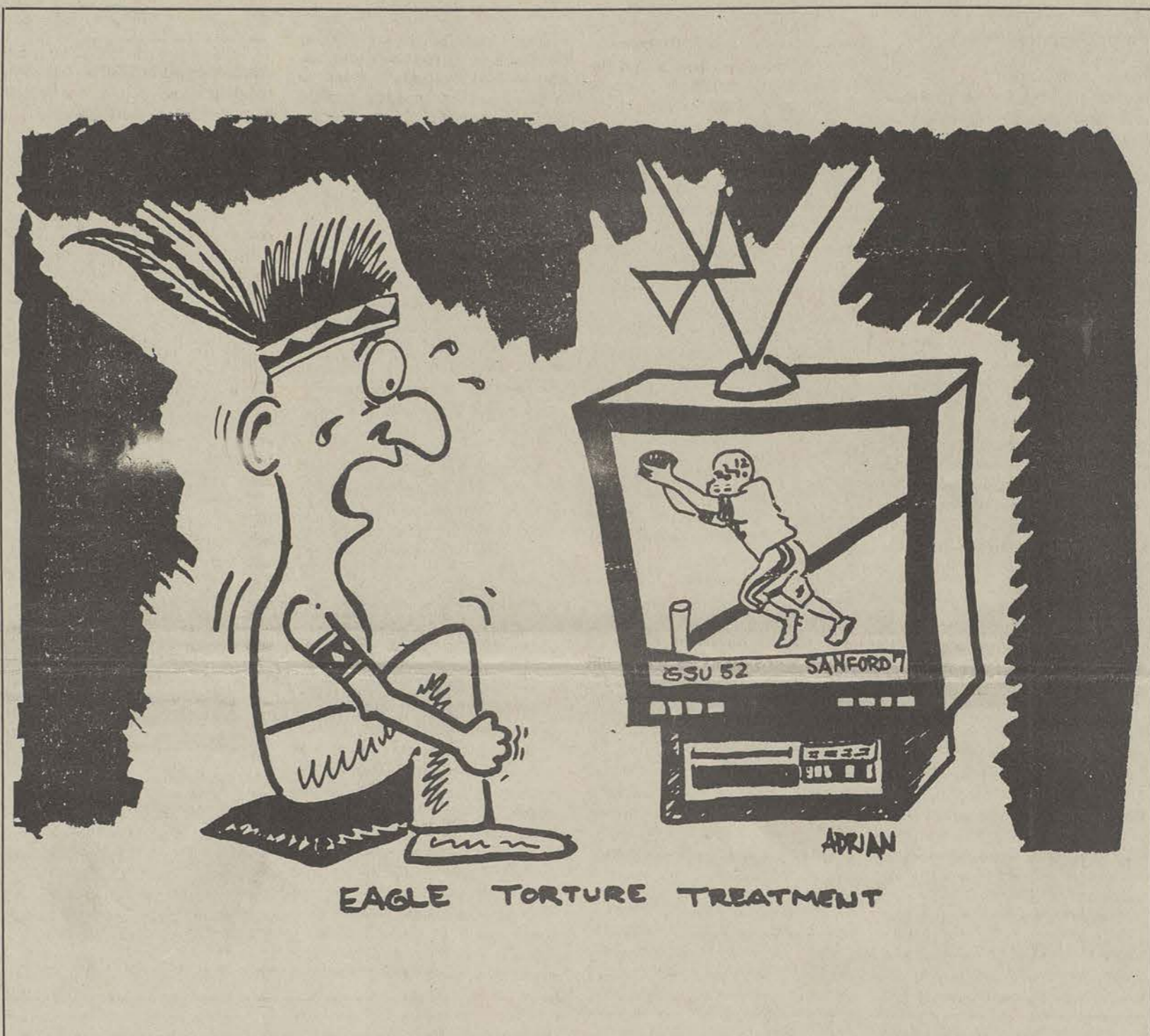
transmitted through the socialization process. That is, the poor people adapt to being poor and teach their children (knowingly or not) that poor is the only lifestyle available. "We don't have to do anything, the government will provide," could sum up a functionalist's view of how poor people think. So the functional theory of poverty more or less states that the culture of poverty is developed through the mode of adaptation. This theory blames the victim, much as many people in society do.

The conflict theory, on the other hand, presents another outlook on the impoverished. This theory attempts to justify poverty by saying that poverty is necessary to keep

capitalism thriving. According to this theory, poor people are needed in a society for a number of reasons. One reason is that poor people provide a cheap labor market for the society. What poor person used to being unemployed is going to ask for high wages? He'll take minimum wage and feel blessed that he got it. Another reason poor people are needed in a society, according to the conflict theory, is that poor people do society's "dirty work." Janitors, sanitation workers (garbage men), and various other members of the blue-collar work force in America are all there because they need their jobs too badly and do not have the developed skills to vie for competitive wages. Besides, if the poor didn't take our trash out, clean our bathrooms, and get their hands dirty doing our work, who would? Poor people are very easily exploited in America, and I think it's a true shame. I think I can make a fairly accurate state-

ment about society's attitude toward poor people in that, if poverty didn't exist already, we'd have to invent it.

So which theory is true? I tend to side with the conflict theory. True poverty is a social disease. True, a person can be "brainwashed" by his peers or relatives into believing that he must remain poor since he was born poor, but what if all poor people changed their minds about being poor? What if they all said "We're not going to work for low wages anymore, we're not going to clean your bathrooms anymore, and we're going to rise out of poverty and compete in the capitalistic society." Then what would America do? The conflict theory of poverty would then be proven as true, I believe. We'd have to either respect the poor and try to help them instead of taking advantage of them, or we'd have to invent poverty all over again.



## Last Queen for GSC

Homecoming is almost here and, in case you missed the chance to vote in the preliminary election for the 1989-90 Homecoming court, you can still help decide who will be GSC's last Homecoming Queen, since the next one will be GSU's. The final election is scheduled for Wednesday, November 8. These votes will decide the fate of some fortunate young lady, so be sure and participate in the election.

The senate convened again this week. The most important business centered around the formulation of goals for the whole SGA to work toward. President Sean Schuur led the meeting as the senators suggested ideas for both long- and short-term goals that SGA can begin to achieve. While this brainstorming produced many ideas that will be beneficial to the GSC student body, the senate decided to further focus its resources upon these goals in the next meeting to be held at 5:30 p.m. in Room 111 of the Williams Center.

Among other business of interest, the senate has supported a program in which the SGA will increase the student interest in sports besides football. Working with Greg Van Zandt, the newly-appointed Athletic Promotor for Baseball and Basketball, SGA will



be distributing information such as schedules, contests, promotional activities and other programs of interest. The senate is also currently working with the Statesboro Chamber of Commerce to consider the lengthening of the GSC Homecoming Parade route. Local businesses feel that both the school and the city would benefit from a route that would extend into downtown Statesboro.

Finally, what would an SGA update be without an Earth Day mention? Executive Vice President Tom McLean said in the meeting Monday that President Henry has approved Earth Week celebration for the week of April 16-22. Thus, Earth Day will fall on the April 18 rather than on the previously mentioned April 25.

In closing, please feel free to stop in at the SGA office in the Williams Center and tell us what you think of our job so far. The suggestion boxes are also available anytime for your suggestion, criticism, and comments.

## Drive to Dixie controversial

Dear Editor,

I am a black artist/instructor on the faculty at GSC. Along with many persons on campus, I am disappointed with the selection of the NCAA theme "The Drive to Dixie" and its accompanying poster. Before I analyze the theme poster, I would like to state that I do not get the impression that the selection committee meant to imply a racist attitude with its choices; but, this action does display racial insensitivity which suggests ignorance and blindness. Regardless of who the people were who made the selections, their choices were not well-conceived for the following reasons.

First, problems with the theme are obvious. Shouldn't someone have remembered the reason why the song "Dixie" is not played at many southern football games? The lyrics suggest a longing for the "Old South," which conjures images of black slaves in the cotton fields. Black people were property and prisoners of a no-pay system that scattered our families, robbed us of our culture, and many times cost us our lives. Therefore, it is obvious that "Dixie" does not represent the "good ole days" to everyone—especially Black people.

As for the symbolic message of two silhouetted football players ready for a stand-off in front of a large plantation home, the concept suggests a battle waged to protect an obsolete tradition. This is especially upsetting if you consider the fact that the majority of college

football players are young black men, who certainly would not appreciate being placed in the role of gladiators in front of an antebellum mansion. Also, is the image of such a home truly representative of contemporary architecture in south Georgia where the championship contest is to be staged?

There are some people who might think such concerns are trivial until they examine the facts. A theme that promotes a "Drive to Dixie" has nothing to do with the time and place we live in today...even less to do with football. Rather, it is a detour into a nostalgia of partial truths when, in effect, we should be looking ahead to establish new goals and to forge mutual respect and understanding.

Marie T. Cochran  
Art Instructor

## New policy from CLEC

Dear Editor,

As we approach the second event in the 1989-1990 Performing Arts Series, I wish to respond to Sherri Barber's letter of October 24 and to elaborate upon the circumstances surrounding CLEC's presentation of the Celeste Miller performance on October 17.

The members of the Campus Life Enrichment Committee are aware of the complications that arose regarding available seating (or, more appropriately, the lack thereof) for this concert. We also understand that this may have

caused some inconvenience with class assignments. However, the often-heard comment that night from the overflow crowd in the lobby to the effect that they had to be at this performance has to be incorrect. To our knowledge, this specific event was not and could not be required for attendance by teachers. Rather, it is our understanding that this was one choice among many on lists of activities for attendance. Regardless of whether attendance at this event was teacher- or student-motivated, approximately 400 students did arrive before 7:45 p.m. and squeezed into every available inch of space in Foy Recital Hall.

The "outsiders" seated in the audience to whom Ms. Barber referred could be no one else but the Elderhostel class, which is a group of senior citizens who are guests of the college. By special request, their coordinator had purchased their tickets two weeks in advance of the performance. These reservations consisted of 28 tickets, and were the only "advanced" tickets released. GSC faculty, staff, and students were admitted to the hall on a first-come-first-serve basis by showing their i.d.'s. Adding the Elderhostel patrons to the number of community members, faculty, and staff present would show that the students in the audience still outnumbered every one else by a four-to-one ratio.

In the future, tickets will be printed for each Performing Arts Series event and will be available at no cost to students at the box office in the Administration Building, for several days prior to the event. This will ensure that we are aware of any capacity crowds in advance of the

performance. The limited space of Foy Recital Hall and in McCroan Auditorium is unavoidable at this time—we realize this, and this problem will be eradicated with the arrival of the new Performing Arts Center. Until that time, sellout situations may occur. We should also mention that we are addressing the parking dilemmas at these events with appropriate administrators in an effort to serve as many patrons as possible in both the college community and in Statesboro, which brings us to another topic in our discussion.

It might help your readers to understand our positions on some of these issues if I clarify the purpose of CLEC. We present campus programs, lectures, and performances for the Statesboro and GSC communities. We exist neither solely for one nor the other. We try to provide equal access to CLEC events for students, staff, faculty, visitors, and townspeople.

In closing, I would like to invite all members of our community to the second event in the season. The all-male vocal ensemble Chanticleer will be performing on Tuesday, November 14, at 8 p.m. in the Foy Recital Hall. A memo to faculty, staff, and administrators regarding the new ticket distribution policy should be received by November 7. If there are additional questions, please feel free to contact the CLEC Executive Director, Leslie Tichich at 681-5434.

Lauren C. Shuff  
Secretary and Student Member  
Campus Life Enrichment Committee

### Staff

YOLANDA WALLACE	FEATURES EDITOR
MIKE STRONG	SPORTS EDITOR
TINA HOWARD, JAMES PERDUE	COPY EDITORS
MARTY WILDES, CAROLYN SAMODEN	STAFF WRITERS
EDDIE COLEMAN, MATT WILLIS, CAROL KLEINGINNA, LIA NEEL, MICHELLE ROSS	PHOTOGRAPHERS
DANIEL HOLLINGSWORTH, PAT MALONE, MARK PRIESTER	STAFF ARTIST
DAVID SCOTT	
BUSINESS STAFF	
TOMMY COLE, SHARI STUART, LYDIA BROOKS	ADVERTISING REPRESENTATIVES
DON MAILLHO	PUBLICATION COORDINATOR
GLENN BURGESS, RENE RENTERIA, LAURA MORGAN, CINDY KEEVER, VAN ELLIS	CIRCULATION DEPARTMENT
PRODUCTION & GRAPHICS EDITORIAL SERVICES (PAGES)	
LISA TIPTON	PRODUCTION MANAGER
LEIGH HORTON	ASSISTANT MANAGER
TRACY SMITH	AD PRODUCTION MANAGER
JERI STANDROD, TRACI COBB, KARI KESSNER, KEISHA DAVIS	PRODUCTION ASSISTANTS

Bill Neville, Student Publications Advisor

The GEORGE-ANNE is the official student newspaper of Georgia Southern College, owned and operated by GSC students and utilizing the facilities provided by GSC. The newspaper is the oldest continuously published weekly newspaper in Bulloch County and Statesboro, Ga. The ideas expressed herein are those of the editor or the individual authors and do not necessarily represent the views of the Student Media Committee, the administration, the faculty and staff of Georgia Southern College, or the University System of Georgia. The GEORGE-ANNE is published twice weekly during the academic year and twice during summer quarter.

OFFICE: Room 110, F. I. Williams Center.  
MAIL: The GEORGE-ANNE, Landrum Center Box 8001,  
Georgia Southern College, Statesboro, Ga. 30460.  
PHONE: 912/681-5246 (News) or 912/618-5418 (Advertising)



## Poster critics should find real problems

By MIKE STRONG  
Sports Editor

Recently the NCAA and GSC has come under fire for the poster promoting the Division I-AA final. The poster depicts two shadowy football players lined up in front of an old southern mansion with slogan of "The Drive to Dixie." One of the members of the faculty here at GSC, Marie Cochran, an art instructor, said the poster and the committee who conceived the promotion showed "racial insensitivity" in creating it. Adding further, in a letter to the editor of the Statesboro Herald, "which suggests ignorance and blindness."

The poster, according to Cochran and others, suggests a longing for a return to the old South, the days of slavery and large plantations. She also thinks that is an unreal representation of the present South and feels that the South has more to offer than that. She goes on to explain that the slogan, "Drive to Dixie", has utterly nothing to do with the South and even less with football and that it is time to progress from that type of thinking.

It would seem to me that maybe Ms. Cochran is living a bit in the past. I have seen the poster and I didn't think twice about any racial implications that it might be exuding. This could be that I am a white male from Michigan, but then again, aside from Ms. Cochran, I haven't heard from any blacks, students or faculty, that really share her interpretation of the poster. Although, if you sat down and studied the poster and really analyzed and pondered it, I guess if you did it long enough you might reach the same conclusion that Ms. Cochran has. The problem is that I'm only going to be in college for another two years and I don't have that much time to waste on trying to reach that conclusion because it would take me at least that long to agree with her!

According to Alfred White, who, like Ms. Cochran, is black and the NCAA Director of Promotions and approved the use of the poster and slogan, he was not offended and was surprised that other blacks were, the promotion was used to draw national attention to the game and

used something that everyone can identify. I think that the NCAA has done this nicely by using the mansion in the background. Unfortunately, Ms. Cochran and others are reading more into the poster than is actually there. Ms. Cochran views the house in the background as having racist overtones, does this mean that all of the people who live in those mansions on Victory Drive in Savannah are racists or display racial insensitivity by owning those homes?

"The Drive to Dixie" has little to do with football, hmmm... lets think about that one for a moment. Well, any time a team wins all of its play-off games and achieves its goal of making it to the championship game, the phrase that is most often used to describe this feat is: "GSC's drive to the championship was a rough one. First, ...." I think that the word drive suddenly takes on a meaning within the realm of sports that Ms. Cochran apparently has overlooked. Since this "drive" has brought them to Georgia and the South, I guess "Dixie" might be somewhat appropriate too, call me goofy.

It is unfortunate that Ms. Cochran and others have chosen such a simple idea and blown it out of proportion. How anyone can take that poster and instantly draw the many things that Ms. Cochran and others are interpreting the poster to symbolize suggests to me that they don't want "to establish new goals and to forge mutual respect and understanding" as Ms. Cochran suggests. But, to take the injustices of the past and stick people's nose's in a mistake that they had nothing to do with and say that it is okay because they are doing in the name of equality. This is not one of the goals that Ms. Cochran says that she wishes the South should accomplish, and if this is her way of trying to accomplish those goals, it goes against what she (heavily) implies are her principles. I'm sorry, but this is not the way to accomplish any goal. To Ms. Cochran and the others who support her I have but one thing to say: You are causing more problems than you are solving, so please concentrate on real racist problems and not on football posters.

## Eagles come from behind at JMU 36-21

By MATT WILLIS  
Sports writer

With James Madison holding a 21-6 lead just three minutes into the second quarter, head coach Erk Russell thought the game might be over. "I could visualize that score reaching 45-6." No one would have disputed him either. Up to that point in the game JMU had dominated the game on both sides of the ball. But GSC turned it around as they scored 30 straight, unanswered points and once again proved that they are a championship caliber team.

In the first half Southern was hurt by a punishing option attack similar to the offense run by the Eagles. Led by quarterback Eric

Williams and fullback Willie Lanier, JMU reached the end zone three times in the first 18 minutes.

Williams scored first on a 34 yard run to make it 7-0. The run was set up by a 68 yard kickoff return allowed by GSC in as many weeks. Lanier scored the next two Duke touchdowns on runs of 12 and 15 yards.

At that point the Eagles took a "gut check" and turned the game around. After a Mike Dowis field goal of 40 yards and a David Cool kick of 54 yards made it a 21-6, Raymond Gross and the Eagles got the offense rolling.

Joe Ross, who had 32 rushes for 116 yards on the day, scored on runs of 8 and one yards to pull Southern

within two at the half.

The second half was all GSC. The defense set the tone by shutting down the JMU ground game. They consistently stopped the Dukes and gave the Eagle offense good field position.

After a scoreless third quarter, the Eagles took their first lead of the game with an 18 yard Dowis field goal early in the fourth quarter. Four minutes later GSC stopped a Duke drive at the Eagle's 36 yard line when linebacker Darrell Hendrix recovered a fumble. Southern then took it the remaining 64 yards to take a 29-21 lead. The Eagles put the icing on the cake minutes later when Rodney Oglesby returned a punt 69 yards

for a touchdown. It was the Eagles first punt return for a touchdown since 1984.

Russell said the game showed him that the Eagles might be a better team than he previously thought. Defensive coordinator, Mike Healy, was also pleased by the way the defense made the necessary adjustments in attitude and play to stop JMU. Also encouraging to the coaching staff was the improved passing of Gross who completed five of 11 passes for 118 yards.

Next week the Eagles take on the University of Tennessee-Chattanooga Moccasins in the Homecoming game at Paulson Stadium. Kickoff is set for 1 p.m..

## Soccer team loses final game to Stetson 1-0

By PAUL FLOECKHER  
Sports writer

Coming off two straight wins, including one over conference foe Mercer, the GSC soccer team looked to make it three in a row against Stetson. The Hatters had other plans, however, and edged the Eagles 1-0 in the final game of the season for both teams.

GSC could've avoided a losing record with a win, but instead finished 8-9-1 overall and 2-4 in the TAAC.

The game's lone score came at the 19:30 mark of the first half on a goal by the Hatter's Jon Valdez. The Stetson forward scored the game winner off an assist from Nick Yocca.

GSC was not without chances to score; in fact, the Eagles actually outshot the Hatters 13-12. GSC's John Regan and Jeff DeRose led the way with four shot each, but were shut out by goalkeeper Kevin Johnson and the rest of the tough Stetson defense. The frustration of the afternoon was evident in GSC head coach John Rafters' voice as he said, "We never took advantage of our scoring opportunities."

The Hatter attack was domi-

nated by three players-Valdez (four shots on goal), Kevin Dixon, and Eddy Piloto (three shots).

Sophomore Kevin Chambers started in goal for GSC and was the tough luck loser. Chambers started 11 games this season, allowing just two goals per game while posting two shutouts. Rafters calls Chambers the most improved player from last season, adding that he "became a much better keeper over the course of the year."

Rafters also praised three other Eagles: Regan, Jay Dingbaum, and Scott DeAmbrose, for their solid play against the Hatter and throughout the season. For the year Regan, one of the team co-captains, started 17 games and scored a team high 10 goals. Dingbaum, the other co-captain, also started 17 games, scoring three goals and adding an assist. DeAmbrose chipped in two assists while playing stiff defense.

Darryl Watson, who led GSC with five assists, was one of only two seniors on this year's squad. Although the young team didn't finish with a winning record, it gained valuable experience hat should lead to a more consistent season next year.



Eagle defenders move into position for a corner kick against Stetson. The Eagles lost 1-0 to the Hatters at home.

## National Sports Briefs

©Copyright 1989, USA TODAY/Apple College Information Network

### REDS REPORTED TO HIRE PINIELLA:

Former New York Yankee outfielder and manager Lou Piniella will become the next manager of the Cincinnati Reds, according to reports published Friday. He was freed Thursday from contract obligations to the Yankees. An announcement of the new agreement could come as soon as Friday. Piniella, Reds general manager Bob Quinn and owner Marge Schott would not confirm the hire.

### FRAUD FIGURED IN UF DEPARTURE:

Florida University's decision to ask basketball coach Norm Sloan to retire was influenced by the possibility of a federal indictment against him, according to Charles Reed, chancellor of Florida's state university system. Mail fraud charges were to be brought against Sloan, according to newspaper accounts. Sloan resigned Tuesday.

### OILERS SEND CARSON BACK HOME:

The Edmonton Oilers traded center Jimmy Carson to Detroit Thursday in a six-player NHL trade. Carson, a native of the Detroit area, who was acquired last season by Edmonton from Los Angeles in the Wayne Gretzky deal, was traded with Kevin McClelland for Petr Klima, Joe Murphy, Adam Graves, Jeff Sharples, and the Oilers fifth-round draft choice in 1991.

### JURY AWARDS MARCUM \$250,000:

Bob Marcum, former athletic director at the University of South Carolina, was awarded nearly \$250,000 by a federal jury in Columbia, S.C. The jury in his breach-of-contract lawsuit found that he was fired unjustly. Marcum was fired after an inquiry into testing for anabolic steroid use at USC.

### HENDERSON FILES AS FREE AGENT:

Rickey Henderson filed for free agency on Thursday, reportedly is seeking \$3 million a year. Henderson, 30, said he hopes to return to the World Series champion Oakland Athletics, but may return to the New York Yankees, the team that traded him to the Athletics in June.

### ROSE TO SEEK REINSTATEMENT:

Pete Rose, who has hired a public relations agent to help him improve his image after his suspension from baseball in August for gambling, said he has always considered himself a model citizen and will do everything he can to be reinstated to baseball next year.

### MAKAROV IS NHL ROOKIE OF MONTH:

The Calgary Flames Soviet import Sergei Makarov was named National Hockey League Rookie of the Month for October on Thursday. Thirty-one-year-old Makarov had three goals and 18 assists for 21 points.

### GARVEY EX'S SENTENCE SUSPENDED:

The former Cyndy Garvey — Cynthia Truhan — has had her 126-day jail sentence suspended. The ex-wife of former major leaguer Steve Garvey spent one night in jail in October for violating a child visitation order. A Superior Court judge reinstated probation for Truhan. The judge said she would make a final ruling Dec. 8 on the sentence.

### DEADLINE SET IN HORSE EVENTS:

After talks between the International Equestrian Federation and International Olympic Committee president Juan Antonio Samaranch, a deadline of the end of 1991 has been set for the federation to recommend whether equestrian events at the 1992 Barcelona Olympics should be moved to another site because of the prevailing African horse sickness in Spain.

### BRUINS DEFEAT KINGS 5-4:

The Boston Bruins rallied with 38 seconds left in regulation to defeat the Los Angeles Kings 5-4 Thursday in Boston. In other games: Sabres 4, Canadiens 3; Rangers 6, Nordiques 1; Penguins 5, Islanders 2; Blackhawks 4, North Stars 3.

### USA TODAY SPORTS HOT LINE:

For 24-hour scores every day, call the USA TODAY Sports Hot Line: (900) 850-1414. For games in progress, the 2-minute report is updated every 10 minutes. You pay 60 cents for the first minute and 45 cents for each additional minute. For calls from outside the United States, dial the access code for the United States and then (900) 850-1414. You pay the long-distance call charges.

Don't get BUGGED! Write a letter to your editor.



☆☆☆ VOTE ☆☆☆

for Homecoming Queen & Court  
Wed., Nov. 8, 1989

Landrum Center  
11:00 a.m. - 6:00 p.m.

voting sponsored by CAB and SGA

## PRECISION AUTO



TIRE SALES

•FRONT END ALIGNMENTS ON MOST CARS \$19.95  
•BRAKES •TUNE-UPS •MUFFLERS  
•OIL CHANGE AND LUBE \$19.95

HOURS: MON - FRI 8-6 SAT 8-12

764-8691

ADJACENT TO PAUL'S AUTO SUPPLY

64-B E MAIN

THIS COUPON IS GOOD FOR

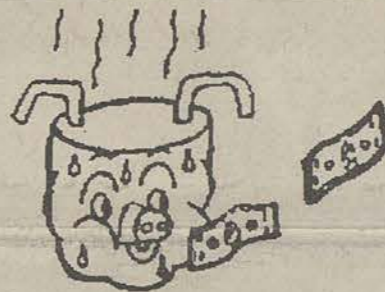
Two Free Games

AT

TAKE 10

WE RESERVE RIGHT TO LIMIT USE OR INVALIDATE PASS.

GAME ROOM IN THE MALL



STOP FEEDING YOUR PIG!

Water heaters, in most homes, are the biggest energy wasters. . . but not in the Hodgepodge Lodge. Dave Hodges' homemade instantaneous water heater heats water only when it is flowing. Not only does this water heater lower Dave's electric bill, it also lowers your electric bill by reducing the peak demand because showers are usually taken either in the morning or at night. Also, there's no wasted heat to be absorbed by an air conditioner. If you'd like to read about this and many other novel creations, get your copy of How To Build a Hodgepodge Lodge at the College Book Store or the G.S.C Book Store.

CAB GEORGIA SOUTHERN COLLEGE ACTIVITIES BOARD PRESENTS

HOMECOMING 1989

Celebrate The Eagle Way: Coming Home To An American Tradition

★ Schedule of Activities ★

Thursday, November 9  
Semi-Formal Dance  
8:00 p.m.  
Williams Dining Hall

Friday, November 10  
Parade  
1:30 p.m.  
Grand Marshal - Brigadier General James Livingston

Tuesday, November 7  
Video Buttons  
11:00 a.m. - 3:00 p.m.  
Landrum Center

"38 Special" Concert  
8:00 p.m.  
Hanner Fieldhouse

Wednesday, November 8  
Banner Contest  
3:00 p.m.  
Sweetheart Circle

Saturday, November 11  
Southern Spirit Run  
1 Mile Fun Run - 8:30 a.m.  
5 K Road Race - 8:45 a.m.  
Hanner Fieldhouse

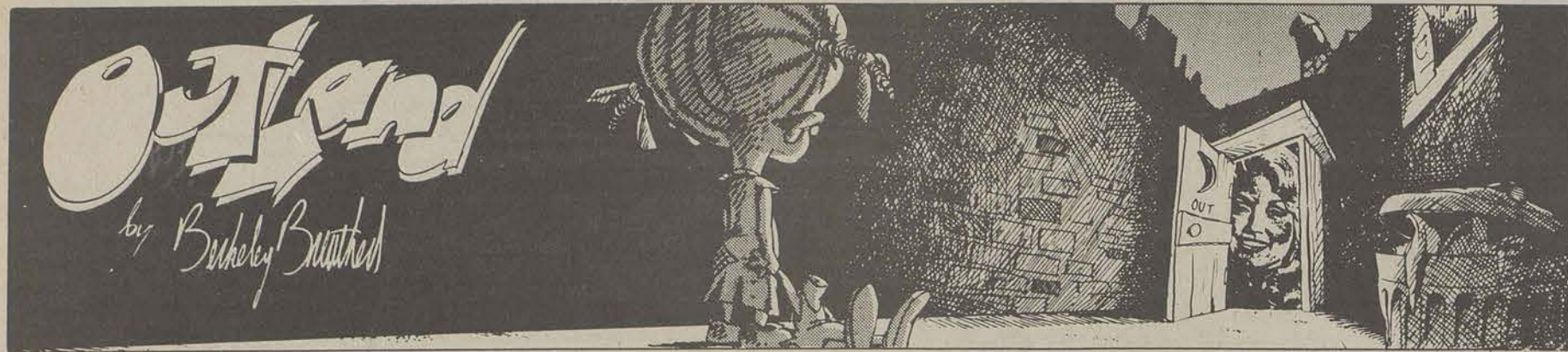
Spirit Games  
4:00 p.m.  
Sweetheart Circle

Football Game  
GSC Eagles vs UT-Chattanooga Mocs  
Kickoff - 1:00 p.m.  
Paulson Stadium

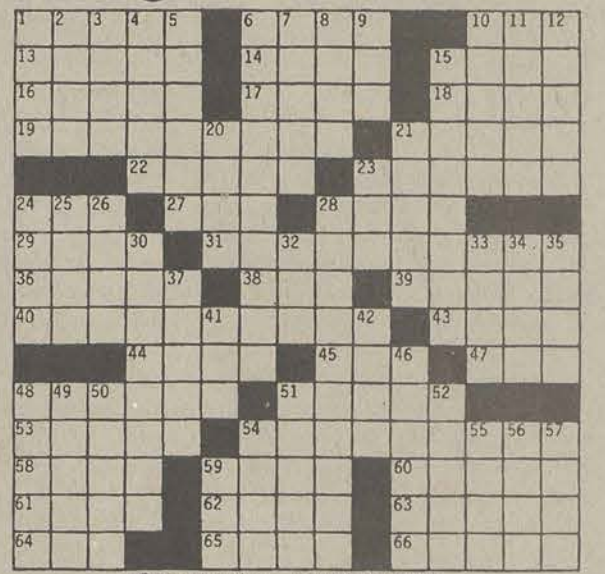
Voting For Homecoming Queen Finalists  
11:00 a.m. - 6:00 p.m.  
Landrum Center

Come & Join The Festivities!





collegiate crossword



ACROSS
1 Nodded off
6 Leaf through
10 Extinct bird
13 Private-eye term
14 Ten-commandment word
15 Bondman
16 "What's \_\_\_ girl like you..."
17 \_\_\_ of the litter
18 The Kingston
19 Little-known or abstruse
21 One who attempts
22 Mis-en-\_\_\_
23 \_\_\_ Bailly
24 Popular tree
27 Crane
28 Popular sandwich
29 Constructors
31 In an awesome manner
36 \_\_\_ flush
38 Thirties agency
39 Kind of show
40 Like October's stone
43 Miss Moreno
44 Nobel prizewinner in Chemistry
45 Droop
47 "\_\_\_ Miserables"
48 \_\_\_ through the tulips"
51 Bowler's nemesis
53 Ease
54 Consigned
58 Funeral item
59 Anna Moffo, for one
60 Slur, in music
61 Infant
62 Word with house or shop
63 Arthur Miller character
64 Football measures (abbr.)
65 Forwarded
66 Foe
DOWN
1 Lesion mark
2 Alley
3 "Odyssey" or "Aeneid"
4 River to the Rio Grande
5 \_\_\_ coat
6 Strictness
7 Laundry
8 First-rate
9 Enthusiast
10 badge
11 Bay window
12 In front of
15 Banner
20 Turn a \_\_\_ ear
21 Voice part
23 Ralph Kramden's vehicle
24 River in Spain
25 Downtown Chicago
26 Mexican Indian
28 Certain operation
30 Conducive to health
32 Exist
33 Satanic
34 Apollo's instrument
35 Certain votes
37 Director Mervyn
41 Meet a poker bet
42 Saga
46 Lough
48 Kind of cat
49 Honer work
50 The common people
51 Mickey Mantle's number
52 Claw
56 Ready
58 Struck
59 End-ending word
56 Dutch cheese
57 Disavow
59 Two, in Toledo

Puzzle solution below



The George-Anne CLASSIFIED

The George-Anne provides free classified listings to students faculty and staff members of Georgia Southern College as a campus-community service. Free classified ads should be written in 25 words or less. The advertiser's name and Landrum Box must be included with the ads. Ads should be non-commercial in nature, should be in good taste and are subject to standard editing procedures. The editors reserve the right to refuse any free classified ad. Free classified listing should be mailed to The George-Anne, Landrum Box 8001, GSC. Deadline is noon Monday or Thursday prior to publication. Commercial listings are available at \$4.50 per column inch, with a one inch minimum. Contact the Advertising Department at 681-5418 for more information.

ROOMMATES
ROOMMATE NEEDED \$175 a month and half utilities. Call Dave 681-9013 on weekends (404) 541-2374. Winter and Spring -flexible.
2 and 3 BEDROOM APARTMENTS AVAILABLE. 3 bedroom available Nov. 1. 2 bedroom available Nov. 15. Please call 764-8190.
FEMALE ROOMMATE NEEDED: 2 bedroom, 2 bath trailer—Have own bedroom and bath. \$150 a month and utilities. Off of 301. Call 681-3467.
FEMALE ROOMMATE needed to take over lease at Sussex Commons. Washer and dryer and will have own room. \$170 a month. Call Suzanne at 681-2561.
FEMALE ROOMMATE NEEDED AFTER FALL QUARTER. Duplex close to campus. Private bedroom, \$150 month plus utilities. Non smoker please. Call Beth for information at 764-6537.
ROOM FOR RENT IN PRIVATE HOME Call 764-4416. Available in starting in January.
FEMALE ROOMMATE NEEDED FOR NEW APT. fully furnished kitchen and family room area. Monthly rent \$150-\$175neg. security deposit \$135neg. 1/2 utilities. Please Call 681-2286.
FEMALE ROOMMATE NEEDED at Winburn Hall winter and spring quarter. Non smoker and preferably non drinker desired. If interested call Gina at 681-2846 as soon as possible.
2 MALE ROOMMATES NEEDED IMMEDIATELY to share 3brdm/2 bath new mobile home located 2 miles from campus. \$150/mon. each and 1/3 utilities each. All electric. Call between 10:30-2:30 or after 6:30 at 681-9064.
MALE ROOMMATE OR ROOMMATES NEEDED at Southern Villa

#56. Call Jeff at 681-4077.
FEMALE ROOMMATE NEEDED AT Southern Villa. \$90 month plus 1/4 utilities. Completely furnished, must share a bedroom. If interested call 681-6610.
FOR SALE
FOR SALE: Double bed; mattress, box springs and bed frame. It's used but very comfortable. \$35 negotiable. Call Krystle 681-9078 or 764-3513 leave message.
FOR SALE—B&CH -STRAD. 42-B Trigger Trombone: brass with extras... leather case! New \$895.. sacrifice for \$650 Call 681-7510.
FOR SALE—TRUMPET. Call Glenn at 681-4674.
FOR SALE LEFT HANDED GOLF CLUBS in good condition. 2 pw, sw. Asking \$100. Contact Shane 681-4760.
FOR SALE 18 speed Schwinn Sierra Mountain Bike. Shimano parts. Bought one year ago for \$350. Asking \$200. Call Sarah at 681-7926.
FOR SALE NEVER USED PAIR 10" subwoofers \$140, pair 6 1/2" coaxials \$80, 250 watt amp \$190, 45 watt amp \$40. Call 681-2347.
CHARVEL ELECTRIC GUITAR single pickup, floyd rose tremolo, white with black hardware, hard case included, new condition. One year old. Asking \$285 Call 681-6137.
FOR SALE LIFESTYLER ROWING MACHINE/bench press. Excellent condition. \$70 Call Lee 489-1645.
DRUMS FOR SALE nice 1987 Pearl Kit. White, clean, high quality, heavy duty hardware, double base four boom stands, cymbals. \$500 or reasonable offer. Call 681-7697.
LOST AND FOUND
REWARD! Lost boxer puppy. Brown with dark brown stripes and white on face and paws. 11 weeks old. GREAT SENTIMENTAL VALUE. Please call 681-4284.
LOST: Buff male cocker spaniel with blue bandana and Alabama rabies tag. Last seen Oct. 21 12:30p.m. at the stadium. \$100 if found. Call 681-7843.
LOST: Pair of reading glasses. Call 764-6179. After 5:30, call 839-2090 ask for Jenny.
LOST: A 3/4 carat garnet from a ring setting. May have been lost near the Political Science or South Building. If found, please call 681-2291.
FOUND young male black labrador retriever in Sagebrush/Hawthorne area. Blue collar. Call 681-3985.
FOUND: 1987 Lassiter High School Class Ring found at Paulson Stadium. Call Stephanie at 681-2857.
NOTICES
TYPING-Theses, papers, letters, etc.. Drop off on campus. Contact Peggy Smith in room 116, South Building or call 587-5359.

CAMPUS Representatives Needed for "Spring Break 90s" programs to Mexico-Bahamas-Florida and S.Padre Island-Earn free vacation Plus\$\$\$ Call 800-448-2421.
INPUT/OUTPUT TYPING—Research papers, desktop publishing. 489-8300 Jeffrey Lariscy.
EXPERIENCED TYPIST. \$1.50 a page. Call Harriet at 852-5417 from 4-10p.m.
"ATTENTION - GOVERNMENT HOMES FROM \$1 (U-repair). Delinquent tax property. Repossessions. Call 1-602-838-8885 ext. GH5920.
CYBERGENICS-60 day kit. 50% off. Call Carl 681-6695.
WOULD LIKE TO BUY USED COMPUTER. Must include printer and owners manual.—Call 681-3290 and leave message.
TYPING—LETTERS, TERM PAPERS, ANYTHING! Will type exactly as written in order not to influence your grade at all. Call 681-2286.
MATURE FEMALE DESPERATELY seeks Saturday job. Experience in all secretarial skills, radio, and baby sitting. Call Michelle at 681-5266.
TERRF'S TIPS beautiful sculptured nails and manicures. Salon experienced. Guaranteed work. Low prices. Call Terri at 681-3295.
IS IT TRUE You can buy jeeps for \$44 through the U.S. Government? Get the facts today! Call 1-312-742-1142 Ext. 9600A.
"ATTENTION"— GOVERNMENT SEIZED VEHICLES from \$100. Fords, Mercedes, Corvettes, Chevys. Surplus buyers guide. Call 1-800-838-8885 ext. A5920.
JOBS
ATTENTION—HIRING! Government jobs - your area. \$17,840- \$69,485. Call 1-602-838-8885. Ext. R5920.
ATTENTION: EARN MONEY READING BOOKS! \$32,000/year income potential. Details 1-602-838-8885 Ext Bk 5920.
WOULD YOU LIKE TO OFFER DISCOVER CREDIT CARDS? Are you available for only a few hours/week. If so call 1-800-932-0528 ext 3. We will pay you as much as \$10 hour. Only 10 positions available.
LOOKING FOR A FRATERNITY, SORORITY OR STUDENT ORGANIZATION that would like to make \$500-\$1000 for a one week on-campus marketing project. Must be organized and hardworking. Call Ken or Myra at (800) 592-2121.
INPUT/OUTPUT TYPING— Research papers, desktop publishing. 489-8300 Jeffrey Lariscy.
ATTENTION: EXCELLENT INCOME FOR HOME ASSEMBLY WORK. call 1-504-646-1700 Dept. P6330.
EXCELLENT SUMMER & CAREER OPPORTUNITIES now available for college student & graduates with Resort Hotels, Cruise lines, Airlines, Amusement Parks and Camps. For

more information and an application; write National Collegiate recreation Service; PO Box 8074; Hilton Head SC 29938.
AUTOS FOR SALE
FOR SALE: 1986 Jeep Comanche Truck. Only 47,000 miles. In very good condition. For sale by owner. Call 681-1922.
FOR SALE: 1979 Honda CM400T. New paint, mirrors, and battery. Very clean. Asking \$800. Call 681-2246 after 9:00p.m.
FOR SALE: 1976 Buick Electra, 455 eng. Good condition, minor repairs needed. Four new tires and new battery. \$1375. Call 764-7771.
FOR SALE 1981 Chevy Malibu Station Wagon. Great condition mostly new parts. For more info. Call 681-6596 ask for Kristy.
1983 SAAB 900s Turbo, Red, Loaded, Excellent service. Stick shift. All records available. \$5200 or best offer. 681-5260.
1973 VOLKSWAGON BUS (camper) New tires, brakes, hoses, and engine seal. 89,000 original miles; bed, refrigerator, sink, air conditioner. Drives great. \$2500 Call 681-4399 John.
1987 HONDA CIVIC SEDAN, all options, 5 speed, a.c., a/m-fm digital radio-tape deck, 3 years left on warranty, 41K miles, new: tires, brakes. all service records...\$7,000 call 681-7510
1969 MUSTANG, new motor, transmission, metallic blue paint, tires, dual exhaust, bumper, grill, and interior. Less than 200 miles on new parts. 1-829-3382 after 5:00 p.m.
TOYOTA CAMRY LE 1986 moderate mileage, 85% highway, electric sunroof, very clean, serviced regularly. All options. Call 681-1252.
RED 1981 2 DOOR PINTO looks good, runs well. reasonable price. Call 681-3261 after 5.
PERSONALS
KARY MELLY—Is you is or is you ain't my baby?—Bud.
PHYLLIS, DIANA, MANDY, WENDI, KERRY, AND MOLLY: Our favorite hall buddies! there is never a second of loneliness or silence with you guys. We love ya'll—Jennifer & Holly.
SPENCER- CONGRATULATIONS! You made it! I can't wait to see you Saturday night. I miss you. Love Always—Kelli
BILLY LEE: thanks for the best 2 years of my life. You are everything to me. I'll love you always. Love—Krystle.
DEEDEE MCGAHEE: To the best big sis in the world. Work hard! Party hard! That's our motto. Love, Krystle.
HAPPY BIRTHDAY TO MIMI FLOURNEY!! We love you! Tawana, Raina, Max.
D.V.T.—You are the best friend in the whole world. Thanks for being there

for me. Your the best.—R.B.
PAUL BARGER & WILL BUCKY— You guys are the absolute greatest when it comes to PARTYING! But no more yacking in my car at the mill!!!
Willie G's rules. See ya dudes! C.W. & L.C.
TONI SMITH "THE KD GIRL"— well you sure are doing things your way. Paul who? LUV YA'.....me
Brieves continued from page 1
tail-gaters. Enjoy Homecoming and let your spirit soar!
The Georgia Southern Residence Hall Advisors and the Muscular Dystrophy Association are teaming up to "kick" neuromuscular disease. From now until November 10, RHA will sell GSC paper footballs to students, faculty and area residents for a \$1 donation To MDA. The blue-and-gold footballs can be signed by the purchaser and used to decorate residence halls, windows, cars, homes and businesses just in time for the GSC Homecoming weekend.
The money raised will be used by MDA to support patients in the local community through clinics, summer camp and research. So, get the "Eagle Spirit" and cover the campus and town with GSC footballs. With your support, RHA and MDA will score in the fight against neuromuscular disease.
Singers continued from page 1
Tickets are available at the Georgia Southern Box Office in the Administration Building November 7-14, weekdays from 3-5 p.m. for \$5 adults and \$3 for children.
Concert organizers are urging the public to get their tickets early and arrive for the performance early. This is likely to be a sell-out, said a spokesman, citing the Celeste Miller performance earlier this fall when people were turned away at the door for lack of seats. Any seats vacant after 7:50 p.m. the night of the performance will be released to walk-up ticket buyers.
Chanticleer's concert is sponsored by the Campus Life Enrichment Committee (CLEC).
Charged continued from page 1
Russell took this evidence to the Crime Lab in Savannah to be processed.
The victim was not admitted to the hospital, but college counseling officials met with her at the hospital immediately upon notification of the alleged assault.
Gardens continued from page 1
is planned for next spring, when Phase I of the development plan will be well under way.
The garden is located on Fair Road, just south of the Gently Road-Fair Road intersection. There is no admission charge.
Coming Home to an American Tradition
Participate in Homecoming Activities

Puzzle solution from above

