

Georgia Southern University

Digital Commons@Georgia Southern

---

The George-Anne

Student Media

---

4-28-1989

## The George-Anne

Georgia Southern University

Follow this and additional works at: <https://digitalcommons.georgiasouthern.edu/george-anne>

---

### Recommended Citation

Georgia Southern University, "The George-Anne" (1989). *The George-Anne*. 1128.  
<https://digitalcommons.georgiasouthern.edu/george-anne/1128>

This newspaper is brought to you for free and open access by the Student Media at Digital Commons@Georgia Southern. It has been accepted for inclusion in The George-Anne by an authorized administrator of Digital Commons@Georgia Southern. For more information, please contact [digitalcommons@georgiasouthern.edu](mailto:digitalcommons@georgiasouthern.edu).





## The George-Anne

912/681-5246

Vol. 61, No. 27, Friday, April 28, 1989

Since 1927, Georgia Southern's Official Student Newspaper

Georgia Southern College • Statesboro, GA 30460

### Oliver awarded Phi Kappa Phi research prize

A top scholarly honor, one so highly regarded that it is only bestowed every three years, has been given to Dr. James Oliver, Jr., Callaway Professor of Biology at GSC.

Oliver has been named winner of the Phi Kappa Phi National Scholar Award, a triennial honor of which there have been only five previous winners, each representing a major research institution.

Oliver, the director of GSC's Institute of Arthropodology and Parasitology, has been engaged for nearly two decades in researching reproductive systems of ticks and mites in hopes of finding means of controlling the spread of diseases carried by those insects.

"The fact that this award is given only once every three years makes it very exclusive," said Dr. Roger

Branch, immediate past president of the GSC chapter of the society. "It's certainly a rare and high honor and even more so in that there's only been one other person chosen out of the southeast in 18 years," said Branch. "It also makes a strong comment about Georgia Southern, not only that he is a faculty member, but in that he has deep undergraduate ties here."

The award is based on achieve-

ment in teaching, research, and public service, honors and other demonstrated evidence of excellence in scholarship, publications, patents, inventions, and other creative activities.

Oliver was selected from a field of 30 national finalists nominated by their colleagues who are members of the honors society.

He will make a presentation to the delegates and guests at Phi Kappa

Phi's Triennial Convention at Salt Lake City in August, where he will receive a plaque and a cash award of \$1,500.

The professor is the president-elect of the Entomological Society of America, the oldest and largest professional organization of its kind, is a fellow of the American Association for the Advancement of Science, and received the 1988 Biologist of the Year Award in Georgia from the

State of the Art in Biology. He has been awarded about \$3 million in research grants during his career including a recent \$700,000 award from the National Institutes for Health.

He is a graduate of GSC, received his masters from Florida State University, and earned his Ph.D. from the University of Kansas. He also has a post-doctoral training at the University of Melbourne.

### Faculty Senate gives student reps a vote

By Clint Rushing  
News Editor

Last Monday at its regular meeting, the faculty senate voted 20-16-1 to give student representatives voting rights on issues the senate addresses. This decision, unprecedented at GSC, allows the student government association president and whomever else he appoints as a representative to have a say in issues involving the student body, as well as any other issue addressed by the Senate.

"The Faculty Senate is the strongest advisory board to President Henry," said current SGA president Tai Federico. "We still have to send this proposition through the general

faculty, and it's gonna be tough getting it through because some of the faculty think that students can't handle that sort of responsibility." Federico refers to the decision making responsibility which will be given to the two student representatives should this bill pass the general faculty.

The bill, proposed by faculty member David Speak, resolves that the student representatives should be given the same voting rights that the representatives of the faculty currently possess.

The bill must still go through the general faculty and carries the requirement that two-thirds of the faculty vote in favor of it in order for it to pass.



Students, seeking respite from the rigors of spring quarter activities, often take a break from academics at one of the popular watering holes around campus. Pictured above a group goes for the gusto at Dingus MacGees. (Photo: Pat Malone)

### Agency removes asbestos

By Edward Tillman  
Staff Writer

The Georgia Agency for the Removal of Hazardous Material is clearing asbestos from Anderson Hall, currently being renovated for office space, and Landrum Center this week.

Asbestos, a fire retardant material, was last removed in 1987 from the stairwells and ceilings of the Foy building and Hanner Fieldhouse.

According to Fred Shroyer, director of the Physical Plant, the existence of asbestos in the buildings was confirmed up to 6 months ago. When asked about the delay in removal from Landrum and Anderson, Shroyer stated, "We knew where the asbestos was, but we did not have enough money to get it all out at one time."

In addition, in 1987, the asbestos in Foy and Hanner was termed as friable (fibers in the air) or more

dangerous to students and faculty than the type of asbestos found in Anderson and Landrum.

In Anderson, the asbestos was being used as an insulator for the pipes that ran beneath the building. Construction on the building, especially where asbestos is located, requires removal of the hazardous material by the Environmental Protection Agency.

In Landrum, Shroyer said tiles which contained asbestos were mistakenly placed in the building.

Shroyer said the cost of removing asbestos is expensive. The Physical Plant's budget is \$2 million and with the many other projects that take place, that is not enough. "It was there, it was tested, and we're removing it," he said.

The removal process, completed by men in protective suits, involves a giant vacuum takes the asbestos from the building and the soil.

### GSC Model U.N. delegation shows spunk in NYC

GSC news service

International relations stresses subtlety, tact, and diplomacy, but there was nothing subtle in how the GSC delegation burst to prominence at the recent 1989 Model United Nations in New York City.

Representing one of the five major world powers, a significant honor in itself, the 18-member delegation sufficiently impressed the organization body to be named among the top 20 of the 152 participating colleges and universities.

Along with the honor of representing the Peoples Republic of China came the responsibility of chairing influential policy-making committees. Students from GSC chaired three prestigious panels.

"The administration of the United Nations Collegiate Conference realized that Georgia Southern can not only handle representing major powers, but can do it very well," said Dr. Zia Hashmi, faculty adviser for the group and director of GSC's Center for International Studies. Strong preparation for the role of

representing the People's Republic of China was the key to success, he said, along with support from the Center and the Political Science Club.

Perhaps the biggest recognition of GSC's presence among the elite of participants was the selection of GSC graduate Jenny Jensen as the Secretary General of the 1990 Model United Nations.

Overall, GSC's performance was, said Hashmi, "something of a diplomatic coup."

Very helpful was a two-hour session prior to the Model U.N. spent at

the Chinese mission, conferring with the Second Secretary from the PRC. "He made very useful suggestions and corrections to our policy papers the students developed to represent his nation," said Hashmi.

One of the highest points of the session occurred when, before 1,600 students and faculty advisors from around the country, Jenny Jensen was named to lead next year's session, and was introduced as a graduate of Georgia Southern "University." It was, Hashmi said, "a moment of great exhilaration."

Students leading important panels were Tai Federico, president of the Student Government Association who was selected to chair the Economic and Social Commission on Asia and the Pacific, Amee Adkins, who chaired the Governing Council on Development Programs, and William Smith, chairman of the 1945 Conference on International Organizations.

"Georgia Southern," said Hashmi, "has two graduates in distinguished positions of foreign service: Mike Oreste, with the U.S. State Depart-

ment in Saudi Arabia, and Minas Hadjimichael, a Greek national who serves the Ministry of Foreign Affairs in the European Economic Community.

Those were strongly influenced by their model U.N. experiences in high school and at GSC, said Hashmi, who is already looking to pull together next year's delegation, a delegation with a good chance of representing another major power. "We hope students will come to us who want to be See U.N., page 4

### Jensen wins Model UN honor

By Clint Rushing  
News Editor

Former GSC co-ed Jenny Jensen has recently been elected to serve as Secretary General of the 1990 session of the Model United Nations. Jensen, a graduate of GSC with a degree in political science, is currently attending law school at Mercer University in Macon.

"I'm very excited about the election; it has been a very good year for the model U.N.," said Jensen. "I ran

when I was a senior at GSC but did not get the position. I am happy about the honor."

Jensen states that she has several goals for the next session, one being internationalizing the conference. "I would like to try to internationalize the conference next hopefully; I want to make the conference more uniform and improve the materials distributed to the delegations."

When asked whom her inspirations were Jensen said, "My parents,

Dr. Hashmi, Dr. Van Tassell, and Barbara Strickland."

Jensen has many long term goals for her career. Among them she wants to become an attorney for international and corporate business affairs in Atlanta.

Jensen said that for anyone who plans to apply for a position on the GSC model U.N. team should definitely do so. Her advice to students is, "be involved, read the newspaper and be involved in the international studies program."

### Krug gets "in-your-face"

By Yolanda Wallace  
Special submission

Experts say English is the most difficult language to learn. Someone should tell that to Clara Krug.

An associate professor in the Department of Foreign Languages, Krug has the unenviable task of teaching French to GSC students who are much more comfortable with another language.

Standing over her students until she is certain they fully comprehend the strange words written on the chalkboard, she has what can be called an "in-your-face" style of teaching.

While asking a student to repeat a word or sentence, she applies subtle but relentless pressure until that student's pronunciation is perfect, or as close to it as possible.

Krug decided to become a teacher because she has "always loved school." She says, "I like English and history and French. When I was in high school, we started French in the eighth grade."

After majoring in French and minoring in German, she received her

Bachelor of Arts degree from James Madison University in 1968. She earned a Master of Arts from Michigan State University in 1970, and a Ph.D. in French from Michigan State in 1978.

"Counting being a teaching assistant in grad school, I've been teaching since 1968," Krug says, running her hand through her short, dark hair.

She taught French for one year at Western Michigan University and for three years at Western Illinois University before becoming a lecturer at the University of Wisconsin-La Crosse.

The Baltimore native joined the GSC faculty in 1978. "I didn't know Statesboro existed before I applied here. I didn't even know about the 'Statesboro Blues,'" she says with a laugh.

In 1982, Krug took a leave of absence from GSC to become associate director of a national project dedicated to strengthening the humanities through foreign languages.

"That's the only time in my life when I haven't taught," she says of the two years she spent on the project

at the University of Pennsylvania.

Krug recently presented a workshop in New York City at the Northeast Conference on the teaching of foreign languages, the nation's largest professional meeting of foreign language educators.

"I was invited by the board of the Northeast Conference and the college board to assist with the one-and-a-half day sessions on helping students become more proficient in language learning," says Krug, lectured on reading and writing.

Named the Foreign Language Association of Georgia's Teacher of the Year, she has been to France four times and would like to go back.

"But," she points out, "I have to be able to afford to go."

When she taught at Michigan State, Krug had her most embarrassing moment as a teacher. "I was in front of the class, when I whirled around at my desk to make a point on the board, my leg flew up and came down in the trash can," she recalls.

"One of the students in that class now works for the Center for Applied

See Experts, page 4

#### Letters, letters and more letters...

Page 2

FRIDAY  
GOLD EDITION

Cartoon	2
Comics	4
Classified	4
Editorials	2
Letters	2
Sports	3



## The George-Anne

Since 1927, Georgia Southern's Official Student Newspaper

Cathy McNamara  
EditorClint Rushing  
News EditorMike Mills  
Managing EditorLeigh Veteto  
Business ManagerDon Mailho  
Associate Editor/Business

## Good Luck!

McClellan's support of  
The G-A will be missed

We at the George-Anne would like to extend a special note of congratulations and thanks to the departing Mark McClellan from the GSC Sports Information Department. Over the last five years, Mark and his crew have been of invaluable assistance to the George-Anne in the preparation of sports related stories and were a gold mine of obscure sports information. The affable McClellan leaves to assume a position with Memphis State as SID for their nationally ranked basketball program and is well deserved of this type of promotion.

McClellan has served the GSC athletic program with a diligence and perseverance that has marked Southern as one of the fastest growing and most successful sports programs in the Southeast. Five years ago, the name Georgia Southern College was as unknown to the nation as a whole as University of Georgia was famous. Due to the exploits of the Southern football team, basketball, golf and baseball, GSC has become a household name.

While the success of the various sports programs had much to do with GSC's recent fame, without the motivating and helpful influence of McClellan's efforts, our college might be just as obscure in the media as it was before. The dissemination of information about the wide ranging GSC sports programs has been efficient, prompt and comprehensive. Mark's efforts have gone well past the scope of his job responsibilities and his loss will be sorely felt.

To many, Mark was more than just a SID, he was a friend. "Mark always had time to help me with my career decisions since we are in the same field of study. He helped me as Sports Director and as a student. I guess you might say he was my mentor," said Terry Harvin, former Sports Editor of The George-Anne, football player and hopeful future SID.

So, good luck to you Mark McClellan. Thank-you for all you have done to aid the George-Anne in our ultimate aim to properly inform the Southern student body. May your press releases be clean of errors, the Tennessee media respectful of your privacy, and the prying eyes of the NCAA investigators be absent from your campus.

## Guadalcanal Diary tells their story

From the  
editor's desk

Cathy McNamara

The band was flattered by my interest. I was flattered by their flattery. When I asked them what they would categorize their music as they all gave different responses.

Progressive? No. Retrospective. Regressive. Quick Buck (joke). Alternative. Spiritual. Mystical. Anything and Everything.

Let me take this chance to share the interview (raw and unchanged-like-you-were-there-and-you-heard-it-here-first) with the general public:

Part 1-The Observation of  
Guadalcanal Diary groupies

Groupie: Hi I'm Allison, what's your name?

Lead singer Murray Attaway: Allison.

M: Allison. We're all Allison. Everyone is Allison, someday.

G: How old are you?

M: 53.

G: No way, you don't have any wrinkles.

M: I use Oil of Olay.

G: Is the music business really as lucrative as a lot of people think it is?

M: Well, I guess it depends on who you are—I guess if you're Michael Jackson...

[Enter Jeff Walls, vocals and guitar]

G: Hey you look like someone out of...um

M: A horror movie...

G: No, what's that group? They're Mexican...

M: Los Lobos

J: Oh, I'm not Mexican, I'm Chinese.

M: Are you Allison?

G: Where do you play next?

M: Charlotte

G: North Carolina?

M: No, Charlotte, Germany.... Charlotte, Japan right next to Allison, Denmark.

G: Oh, I've heard of that place. Man, I danced too much—that was too fun—I have yet to dance like that.

M: Really, I can't dance so I just can't relate.

G: My name's Allison.

M: I like your ensemble, by the way.

G: My who?

M: Your shorts and your shirt—I'm big on lime green. You should get

lipstick to match your shorts...you oughta do that, that'd be real cool. They used to do that some back in the 60s.

G: I think I should have lived back then. How old are you?

M: I'm old enough to know not to answer that question.

Part 2: The Mobile Home  
Interview

Reporter: What exactly does the song let the Big Wheel roll mean?

Jeff: If you were to watch TV they'd have you believe every kid breakdances on his way down to breakfast...you know...and wears 501 Levis all the time...you know...and is out buying wine coolers and stuff. It's a satire on the entire consumer generation.

R: Who influences you the most?

Murray: I read a lot and I don't listen to music that much.

R: Who is your role model?

M: God

Rhett Crowe (vocals, bass): My dad

M: George Michael

J: Everything in the past 52 years.

R: Your songs deal with a great deal of suburban themes—why?

M: We grew up in the suburbs so why shouldn't we write about it—people are always deromanticizing suburbs so I think it's our job to mysticize them.

J: Spiritualize them.

R: What's the band's philosophy?

M: That's like asking what the nation's philosophy is? We're all pretty different.

R: What do you have in common?

M: We travel in a motor home together.

R: What is your goal as musicians.

All: To make it through the next few months.

## Part 3-Loose Ends

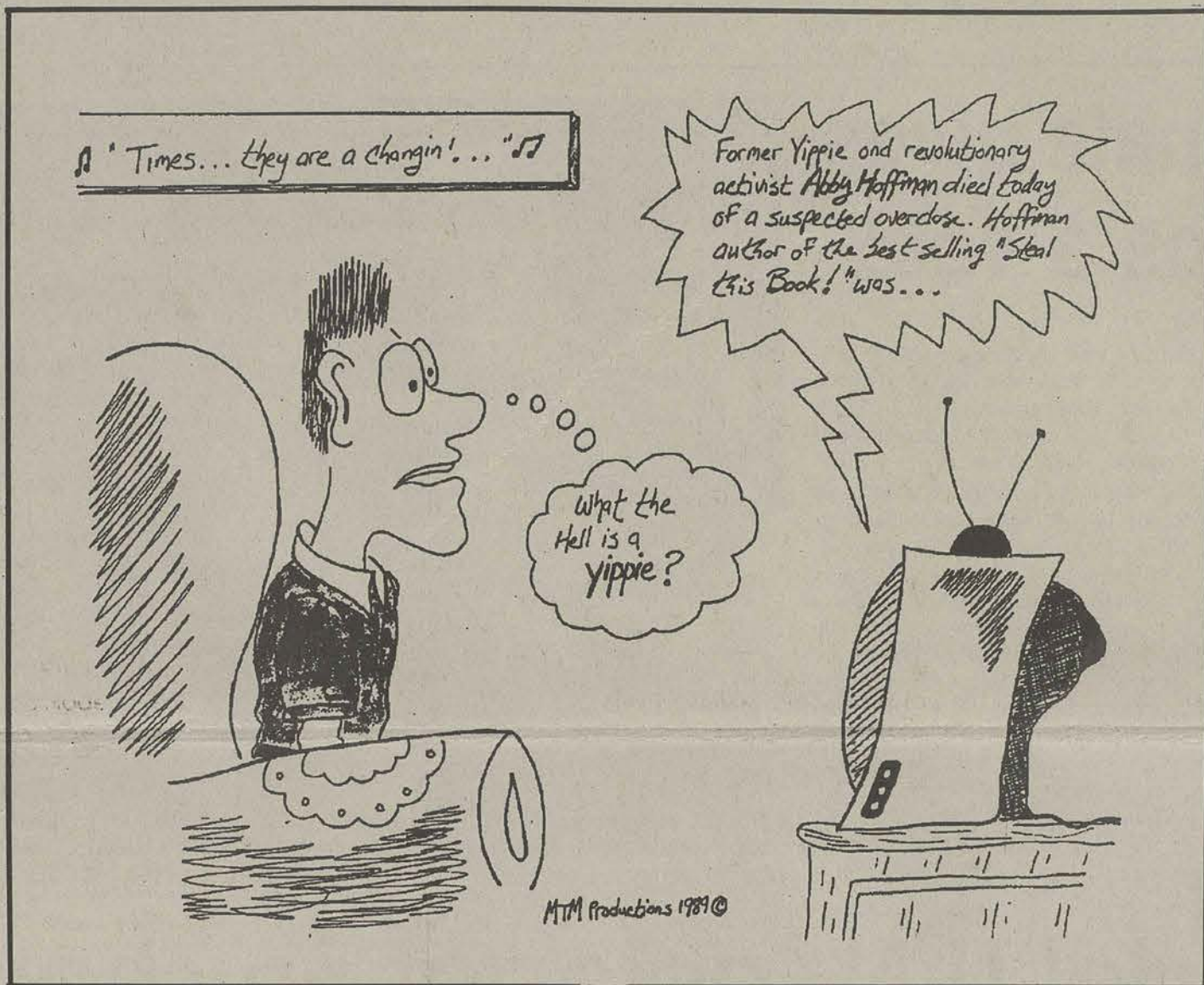
Murray: I worked at Burger King when I was 12. I only worked there for eight days.

Jeff: Rhett tells some round-a-bout story about something or another that about a month later a song winds up getting written about it.

Rhett: It's kind of hard to write lyrics when you're in labor.

John Poe (drummer): Regressive.

M: Read the Road to Xanadu.



## Letter policy...

All letters to the editor are subject to standard editing policies for taste, libel, etc. The editor reserves the right to reject any letter. There is no word limit on letters and are published on a first come, first served basis. Letters should address certain issues and not attack individuals. All letters MUST BE SIGNED. The letter writer may request to remain anonymous. However, it will be the editor's decision whether or not to print the name.

## Staff

AL ALLNOCH SPORTS EDITOR  
ESTHER HOWELL COPY EDITOR  
JACQUES deBROEKERT FEATURES EDITOR  
DAL CANADY STAFF WRITERS  
TERRY SNYDER

## BUSINESS STAFF

STACY GRAHAM ASSISTANT AD MANAGER  
LANCE NIZINSKI, STEVE STIVAL ADVERTISING REPRESENTATIVE  
ADDISON WILLS, JON WILSON ADVERTISING REPRESENTATIVE  
KRISTIN BRICAULT, TINA GLASS CIRCULATION DEPARTMENT  
ERIC EVANS, LEIGH HORTON, KIM LAVOIE

PRODUCTION & GRAPHICS EDITORIAL SERVICES (PAGES)  
LISA TIPTON PRODUCTION MANAGER, PAGES  
KARI KESSNER, JAY OWENS ASSISTANT MANAGER, PAGES  
LEIGH HORTON, TRACY SMITH PRODUCTION ASSISTANT  
JERI STANDROD PRODUCTION ASSISTANT  
ANDY FAW, KEN LOCURTO PRINTING METHODS STUDENTS

Bill Neville, Student Publications Advisor

The GEORGE-ANNE is the official student newspaper of Georgia Southern College, owned and operated by GSC students and utilizing the facilities provided by GSC. The newspaper is the oldest continuously published weekly newspaper in Bulloch County and Statesboro, Ga. The ideas expressed herein are those of the editor or the individual authors and do not necessarily represent the views of the Student Media Committee, the administration, the faculty and staff of Georgia Southern College, or the University System of Georgia. The GEORGE-ANNE is published weekly during the academic year and twice during summer quarter.

OFFICE: Room 110, F. I. Williams Center.  
MAIL: The GEORGE-ANNE, Landrum Center Box 8001,  
Georgia Southern College, Statesboro, Ga. 30460.  
PHONE: 912/681-5246 (News) or 912/618-5418 (Advertising)

## Letters to the editor

## Slams Myer's letter Defends Pi Kapp

## Editor:

A question for Mr. Myers, who publicly declared that he sees no racism at GSC—how would you know, since you are not the object of discrimination and racism, whether or not such a thing is present at GSC?

You have to close your mouth and open your eyes and ears and listen to people who are in a position to know, by experience, whether there is still discrimination at this college.

Catherine Carter  
Graduate Assistant  
English department

## Editor:

White this White that. . . . History repeats itself.

This letter is to John Myers and to all other students who echo his sentiments.

It is hard to believe Myers can not see the racism thriving on GSC's campus. Perhaps it's a matter of his not seeing the forest for the trees. He sees two black star athletes (Raymond Gross and Jeff Sanders) and thinks that blacks have arrived.

Even though Myers claims that racism does not exist on this campus, I, a black student, am here to tell him otherwise. Racism, does, in fact, exist and thrives, on GSC's campus, in Statesboro, everywhere.

When I first read his letter, I was filled with anger, and I wanted to respond "tit for tat" to his comments. But after giving his argument second thought, I realized with a sinking feeling of sadness, despair and pity that Myers spoke for many whites on GSC's campus.

Your own experience is invalid because racist whites will not treat you the same way they do black people. White people on this campus need to listen seriously and thoughtfully to black people on this same campus if they (the whites) want to know what's going on.

## Editor:

I'm glad to finally see a positive article about Pi Kappa Phi that doesn't question "Christian Ideals" or "Rude Behavior."

It seemed for awhile that the incident between Pi Kappa and the baseball players was going to be splattered over the paper forever. I think we all got sick of it. If one doesn't consider PUSH a product of Christian ideals then what is it?

The trouble last quarter was not a

question of ideals either. Any organization does what it feels important to make it the best. Pi Kappa Phi is no exception.

The problems between Pi Kappa and the baseball team occurred while they were supporting GSC at a sports event. Why should they be condemned for overexcitement when half of GSC doesn't even support our sports activities other than football?

Needless to say, this seems ridiculous. I just wanted to say-Thanks!

See Letter, page 4

## Discrimination is thriving on GSC's campus

rica. Look at Forsyth County, a county where no blacks have been allowed to reside since 1928.

To respond to Myers' charge that blacks discriminate themselves, I say bull—! Just look around campus, Kappa Alpha (the representatives of the "Old South"), Phi Mu, Kappa Sigma, to name only a few.

Are there any blacks in those organizations? The answer is no. There are Miss Black America Pageants because there are too few blacks in the Miss America Pageant, which is synonymous with white.

It is the whites too, who continue to place emphasis on the "black this black that."

For example, there are two most beautiful women in the world: the most beautiful woman and the most beautiful black woman. The black music awards, black radio stations, black magazines, black newspapers continue to exist because blacks do not get proper recognition, or positive play in the white world.

How many songs by black artist are played on Z-102? How many blacks are featured in Glamour Magazine? How many black commercials are shown on prime time television (with the exception of The Cosby Show and Soul Train)?

America is discriminatory because black successes such as Bill Cosby, Eddie Murphy, Michael Jackson (who is now classified as pop rather than soul) and Mike Tyson are limited to the entertainment field. Even so, these are just four men out of millions who have attained success.

There are not enough black successes in other fields. Where are the black CEOs, decision-makers, producers, promoters, judges? To bring the question closer to home, where are the blacks in high-ranking positions at GSC? How many black campus police do we have?

So no, blacks do not discriminate against themselves; whites discriminate.

See Racism, page 4



# Lady Eagles fall in NSWAC, look to next season

By Sandy Hanberry  
Sports Writer

The Georgia Southern Lady Eagles softball team traveled to Florida last weekend to participate in the New South Women's Athletic Conference Championship.

The Lady Eagles, winners of the conference's South region with a 10-4 conference mark, entered the tournament as the No. 2 seed.

In the first game the Lady Eagles wasted a strong pitching performance from Julie Jones. The Eagles made several critical errors as Samford came back from a 1-0 deficit to win 2-1.

The Eagles loss in the double-elimination tourney plunged them into the losers bracket against South division rival Florida A&M. Tammie Lanier took the mound for GSC and hurled shutout ball for 7 innings as the Eagles blanked the Lady Rattlers 4-0 for their only win of the tournament.

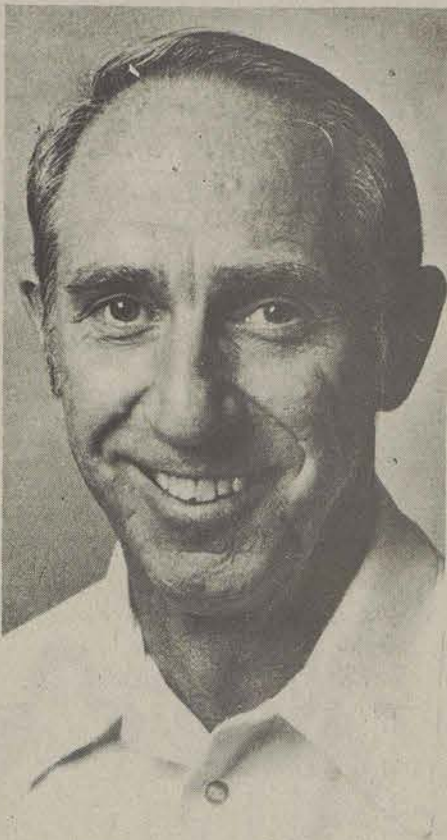
The Eagles next opponent was the Mercer Teddy Bears. Julie Jones turned in another fine pitching performance. However, the offense stalled. GSC wasted several golden

scoring opportunities. They had the bases loaded with one out in the second inning, but failed to score. Again in the fourth the Eagles had a scoring opportunity with runners on second and third and one out, but couldn't plate a run.

Mercer broke the scoreless dead lock in the top of the seventh as their leadoff batter walked and stole second. Then, after there were two out in the inning, the Mercer runner was doubled in. GSC entered the bottom of the seventh trailing 1-0. They loaded the bases with one out but could not score. The Lady Eagles lost 1-0 and were eliminated.

Coach William Spieth's Lady Eagles concluded their season with a record of 21-20. Coach Spieth summed up the tournament performance as being typical of the Lady Eagle's season: "Good pitching", inconsistent defense, and "failure to drive in runs when in scoring position".

Coach Spieth's comments are reflective of his team's statistics. Throughout the season. Through the first 36 games of the season, Lady Eagle pitchers yielded only 38 earned runs and had a conference



Lady Eagle Softball Coach Bill Spieth leading 1.53 earned run average. However, Eagle defensive miscues

accounted for 78 unearned runs over this same period. Eagle offense struggled to a cumulative .198 batting average.

In spite of its difficulties Coach Spieth is proud of his team. His team's 21-20 record represents a one game improvement over last season's 19-20 mark. This comes after having "rebuilt half a team" due to losses from last year's squad. Also the Lady Eagles "faced a tougher schedule this season."

Coach Spieth should have good squad to work with next season. Of the thirteen girls who finished the season, he expects twelve to return.

This leaves four or five roster positions open with which coach Spieth hopes to fill out next year's roster.

Coach Spieth's shopping list includes a starting shortstop, some players "who can run and run well," and "added depth, especially hitting."

The need for a starting shortstop is due to the graduation of star shortstop Debbie Tomkiewicz.

According to Spieth, "the schedule should be even tougher next year." However, he expects that next year's team will be improved over this

year's version. He has three goals for his team. Coach Spieth wants his team to be "representative of a top division one school," he wants to finish over .500, and he wants to win the New South Women's Conference's softball championship.

Summing up the season, Coach Spieth said, "I'm disappointed when I know they can do it, but don't. But I'm pleased with the girls' performance overall. I think the girls did better than a lot of people expected us to do."

Members of the 1989 Lady Eagles are: Staci Anderson, outfield, shortstop; Elizabeth Brechin, infield, outfield; Gina Byron, outfield; Emily Hogg, infield; Julie Jones, pitcher; Lisa Jones, outfield; Tracey Kelley, outfield/infield; Christine Koehler, infield/catcher; Tammie Lanier, pitcher; Julie Lockwood, catcher/infield/outfield; Suzette Savage, infield/outfield; Cathy Stinson, infield/outfield; Debbie Tomkiewicz, infield; and, Beth Williams, catcher/infield.

**Read Bloom County**  
Only in...  
The George-Anne



## Baseball Eagles win two from Baptist

George-Anne staff reports

CHARLESTON, S.C.- The Eagles continued their winning ways Monday and Tuesday, sweeping a pair of games from Baptist College, 4-1 and 11-6, to up their record to 27-22. The wins were the sixth and seventh in a row for GSC.

The Eagles ran their way to victory in game two. Chris Abner stole four bases in the contest to tie the GSC single-season stolen base record at 30, and Rob Fitzpatrick broke the record with his 31st steal of the year. GSC scored in the first when Abner

came home on a wild pitch. The Eagles added five more runs in the second, highlighted by a double steal by Abner and Doug Eder and an RBI singles by Mike Yuro and Jerry Shepard.

Eder had two steals in the game and Mike Miller and Jeff Coughlin had one each. Fitzpatrick gave the Eagles their final run when he hit his 12th roundtripper of the year in the ninth.

Miller and Coughlin each had two hits in three at-bats for GSC. Start-

ing pitcher Peter Bouma picked up his first win of the season, giving up three hits and one run in two innings of work.

Pitchers Kevin Thompson, Kirwin, Michael Wilkerson and Jay Berkner also saw action on the mound for GSC. The Eagle pitchers had nine strikeouts between them.

Game two saw another dominant pitching performance from Russell Hendricks. Hendricks (8-1) went the full nine innings in game one, scattering eight hits, striking out one and walking none.

Doug Eder opened the scoring for GSC with an RBI single in the top of the third. In the fourth, Rob Fitzpatrick scored on a passed ball after reaching third on a single, a stolen base and an error.

The Eagles added a couple of insurance runs in the final two innings. In the eighth, Mike Yuro scored on a sacrifice fly by Jerry Shepard, and in the ninth, Chris Abner scored on another RBI single by Eder.

The only run Hendricks gave up was a home run in the fourth. Abner led GSC See Baseball, page 4

## SPORTS BRIEFS

George-Anne staff reports

•TERRY YOUNG-Former GSC cornerback Terry Young was drafted by the Tampa Bay Buccaneers Monday in the 12th round. Young received calls from Atlanta, Seattle and San Francisco about joining their clubs as a free agent before the Bucs called with news of his pick.

•MEN'S TENNIS-The Eagles traveled to Atlanta last weekend to compete in the Trans America Athletic Conference Tennis Championships. Coach Joe Blankenbaker's squad dropped two matches to finish in fourth place.

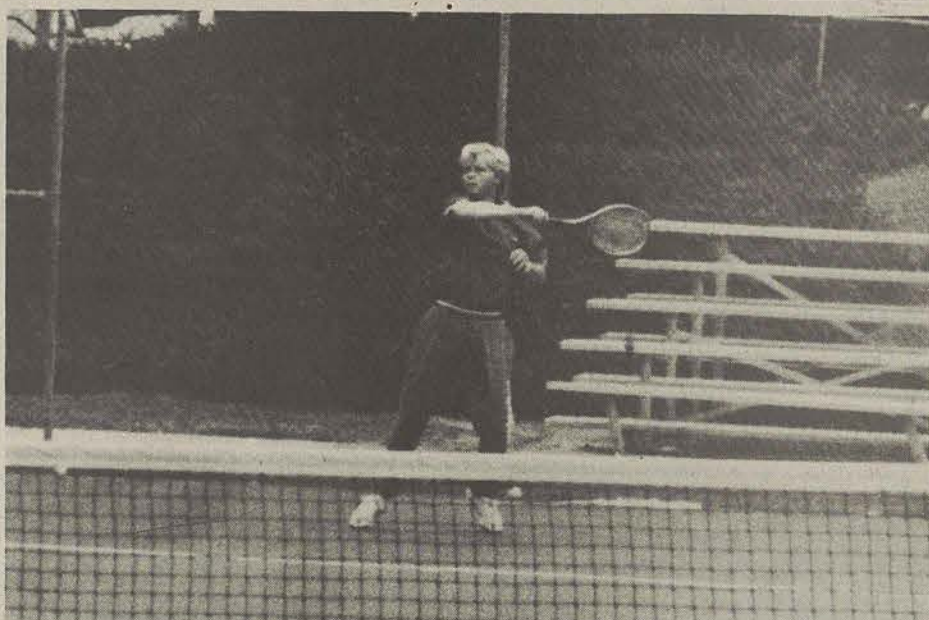
On Friday, the Eagles lost to Arkansas-Little Rock 5-4, winning eight of 21 sets. GSC individual winners were Jerker Hansson (6-1, 6-1), and Anibal Gomez (3-6, 6-3, 6-4). Doubles winners were J.J. Cherry-Alex Porcella (6-3, 3-6, 7-6) and Gomez-Jerome Lopez (2-6, 6-1, 4-1).

On Saturday, GSC dropped a 5-4 decision to Houston Baptist in the consolation match. Individual winners were Porcella (6-0, 6-2) and Harry Anderson (6-2, 6-1). In doubles action, winners were Anderson-Hansson (6-3, 7-5) and Gomez-Lopez (3-3, retired). UALR beat host Georgia State in the championship match.

Southern finished the season at 11-6. Individually, Hansson finished at 17-3 in the No. 4 position. Cherry (No. 1) finished at 10-9. Anderson (No. 2) was 9-6, Porcella (No. 3) 14-6, Lopez (No. 5) 13-7 and Gomez (No. 6) at 12-6. In doubles, Anderson-Hansson finished at 9-6, Lopez-Cherry were 3-3, Porcella-Cherry were 10-3 and Gomez-Lopez were 5-4.

•WOMEN'S TENNIS-The Lady Eagles tennis team won two matches last week, defeating Armstrong State in Savannah 9-0 and Georgia College 6-3 in a match in Statesboro. In the Savannah State match, GSC won in straight sets.

Against Georgia College, singles winners were Lori Martin (6-4, 4-6, 6-4), Almuth Steinbach (6-1, 6-1),



Jerker Hanson finished the season at 17-3 for the Eagle tennis team. (Photo: Pat Malone)

Monika Brock (6-3, 6-0) and Michelle Strasser (6-0, 6-1). Doubles winners were Wuest-Steinbach (6-0, 6-1) and Brock-Strasser (3-6, 6-2, 6-1).

Last weekend the Lady Eagles travelled to Orlando to compete in the New South Women's Athletic Conference Tournament. GSC finished in 6th place of the eight teams in the NSWAC. Strasser led the Lady Eagles in singles with a fourth place finish. The doubles team of Strasser-Brock also finished in fourth place. The team ended the season with a 6-9 record.

•GOLF-The Eagles begin play today in the Billy Hitchcock Intercol-

legiate in Auburn, Ala. at Saugahatchee Country Club. Other teams participating in the 12-team field are Auburn, Alabama, Augusta, Central Florida, Columbus, Florida Southern, Florida State, Georgia, Memphis State, Miami and South Florida.

The tournament marks the end of the Eagles' regular season. The NCAA introduces a new format this season concerning post-season play. There will be regional playoffs (East, Central and West) consisting of 10 to 11 teams each. The top seven will qualify for the NCAA Championships in Edmond, Okla. June 7-10.

★★★★ THE ZANIEST, SEXIEST  
ADULT MOVIE ENTERTAINMENT  
OF THE SUMMER.  
— Joseph Gettis, NEWSDAY

*A Fish Called Wanda*

Sponsored by: **CAB**

Saturday, April 29 at 9:00 p.m.  
Sunday, April 30 at 8:00 & 10:00 p.m.  
Biology Lecture Hall \$1.00

The East Regional (where GSC would go if it qualifies) will be played May 26-28 at the Long Bay Country Club in Myrtle Beach, S.C.

The Eagles accomplishments in the 1989 Chris Schenkel Invitational included:

•Third-place finish was best since 1980, when Eagles finished third behind Oklahoma State and Florida.

•Richie Bryant's top finish of 208 was the first time a GSC player earned medalist honors since Jimmy Ellis won the 1973 Schenkel with a 208 also.

•Bryant's first round score of 63 tied a Schenkel record for lowest round (Andy Bean/Florida in 1975, Darren Cole/Mississippi in 1985 and Chris Kite/Wake Forest in 1986).

•AEROBIC MARATHON-The GSC Recreation Department will host the 3rd Annual Aerobic Marathon, to be held Tuesday, May 2, 2 p.m. to 4 p.m. in Hanner Fieldhouse.

GEORGIA SOUTHERN COLLEGE

CR/I CAMPUS RECREATION/  
INTRAMURALS

ENTRIES DUE:  
WED., MAY 3

\$50.00 ENTRY FEE PLUS  
2 THUNDER RED SOFTBALLS

## STATE QUALIFIER

INTRAMURAL SOFTBALL TOURNAMENT

MAY 5 - 7

THE TOP TWO MEN'S AND WOMENS TEAMS WILL QUALIFY TO REPRESENT G.S.C. IN THE GEORGIA STATE INTRAMURAL SOFTBALL TOURNAMENT IN ATLANTA ON MAY 10-21



Ralph Lauren Polo Knit Shirts  
Assorted Solids and Stripes

now \$29.88

5 South Main Street

Downtown Statesboro

Gigi's Books & Gifts

10% DISCOUNT  
Classic Literature for English Classes

681-3092

College Plaza



You are cordially  
invited to attend  
a concert by the  
Emory University  
Concert Choir.

First United Methodist Church

101 South Main Street • Statesboro

Saturday, April 29

Free Admission

8:00 p.m.



## Experts

Continued from page 1  
Linguistics," she says. "She always reminds me of the trash can incident whenever I run into her at conventions, so I guess I'll never live it down."

"Now I always make certain I know where the trash can is in all of my classrooms," she says with a smile.

When former students cannot remember her name, they say instead, "Oh, she's the one who throws erasers."

"I don't mind that," Krug says, her

intense green eyes softening behind her glasses as she laughs.

"I'd rather be bizarre than dull. If people began to say I were dull, then I'd worry."

## Baseball

Continued from page 3

at the plate, going 3-for-4 with two runs scored, and Eder was 2-for-4. The Eagles began play in the TAAC Tournament in Deland, Fla., yesterday.

## Racism

Continued from page 2  
nate against the blacks. Racism is the enemy, and if we don't teach our children this and embrace the enslaver, we will slowly but "sholey" find ourselves in bondage again—

## U.N.

Continued from page 1  
part of this experience," he said, "and who want to be actively involved in learning how the international political process operates."

history does repeat itself.

Melanie Robinson

GSC student

## Letter

Continued from page 2

for finally printing a positive article and ending the constant slander of Pi Kapp. I'm sure the brothers are out to be the best they can be for themselves and for others.

Melissa Borum

Psychology major

## BLOOM COUNTY



## Classified Ads

## FOR SALE

ONE MAN'S BICYCLE, one speed, \$15. 764-7875 evenings.  
NINTENDO! Control deck with controllers, light gun, joystick, three game cartridges, and Nintendo players guide. All for \$140! Call 764-8631. Call again if no answer.

SUMMERSUN tanning bed like new. 300 hours left on bulbs \$200 or best offer. 764-7051 home, 764-9131 work, ask for Richard Stewart.

TROMBONE 42B Strad. Trigger. \$750. Many extras Call Don 681-4738.

CARRERA SUNGLASSES New with 4 sets of lenses new \$85 asking \$50 call Don 681-4738

SONY CD PLAYER AND RECEIVER. Excellent Condition. Two EPI Speakers, great condition. \$200 for each component. \$50 for both speakers. 1989 GIANT TEN SPEED, barely ridden. Racing frame, index shifting, Shimano components, chrome alloy-very nice bike. \$500. Call Smith at 681-7654.

2 BIKES, BOYS AND GIRLS, Single speed, \$15. each. 764-7875 evenings.

FOR SALE: PEAVEY TKO 65 BASS AMP AND MEMPHIS BASS GUITAR, \$200. Call Al at 764-5794 after 9 p.m.

FOR SALE 6 piece den furniture \$250. Call 865-2440.

FOR SALE Sony Receiver and CD Player, 2 EPI speakers, \$450. OBO 681-7654

FOR SALE Bunkbed-sturdy, great condition-\$150. Dresser-\$50. Please call 681-2634, ask for Mandy.

Automobiles

1979 MERCURY Cougar. Good condition: clean, new engine, \$1,200 negotiable. 764-8376

1986 GRAND AM — 5 speed, 65,000 miles. 681-1061.

1985 HONDA INTERSTATE V700 F, new chain, sprockets, front fork seals, battery, and brakes. \$2,650. 681-3811 Phil.

1983 TOYOTA CAMRY LE-beautiful, dependable car. 4 door, A.C., AM/FM cassette, cruise, 73,000 miles, \$4,900. Call Susan at 764-3081.

1970 VOLKSWAGON KARMEN GHIA SPORTS CAR, good paint, tires, runs good, excellent gas mileage, \$1,750. Call 681-5187 (day) or 852-5370 (night)

1985 WHITE PONTIAC FIERRO, 59,000 miles, great condition, \$5,000. Call 681-1661-Ask for Stacy.

## HELP WANTED

ATTENTION MARKETING MAJORS — Southeast Marketing Company is offering a Summer Internship to applicable students. If chosen, \$400 a week. Must be willing to work overtime/travel. Great resume experience. Interviews May 11-12 at 6 p.m.

HELP WANTED: Male college student for part-time help on local farm, must have experience. Call 489-8408 and leave a message.

MAKE \$300. OR MORE at group meeting. Student organization, fraternity, sorority, needed to conduct marketing project at your next meeting. Call 1-800-932-0528 Ext. 120.

TYPIST: Needed at once work at home, earn as much as \$500/wk. Send self-addressed stamped envelope to: James Co., P.O. Box 51, McRae, GA 31065

GAIN EXPERIENCE AND EARN MONEY by working on Fortune 500 Companies' marketing program on campus. 2-4 FLEXIBLE hours each week. Applications being taken for immediate and Fall 89 openings. Call 1-800-821-1543.

ATTENTION-HIRING! Government job-your area. \$17,840-\$69,485. Call 1-602-838-8885. Ext R 5920.

GOVERNMENT JOBS! Now hiring in your area, both skilled and unskilled. For a list of jobs and application, Call 1-(615) 383-2627 Ext. P 691

SOCCER MANAGER, wanted to work with team during season. Duties will include scorekeeping/running/video tape. Contact Coach Rafter 681-5298.

SUMMER JOBS! Atlanta area, \$5-6/hr. & up. COLLEGE STUDENTS! Call now! Norcross/Dun-

woody area-458-1042. Smyrna/Marietta-433-8813. Airport/Southside-768-2997.

"WANTED: Group Leaders. Seeking mature adults for residential adolescent program in SE Ga. Live-in position, must be 21 or over, high school diploma or GED required. For more information or application, contact Deborah Collier or Irvin Oglesby, 912-367-6691."

## SERVICES

RESUME WRITING AND EFFECTIVE JOB SEARCH SKILLS WORKSHOP, MAY 1 AND 3, 6:30-8:30 P.M., Southern Center for Continuing Education, GSC, \$15 (includes both days). Contact: Registrations, LB 8157, GSC, Statesboro, GA 30460. 681-5555 for further information.

Typing Done, no job too big or too small-word processor. 681-6695 Ask for Lisa.

"FAST, ACCURATE AND CHEAP TYPING available, Call Karen at 839-2088.

Lost and Found

LOST — Reward for Levi Blue Jean Jacket lost in Oxford gameroom the night of Tuesday, April 11. Call Kelly at 764-7086.

LOST-EYEGLASSES lost 1st week of Spring quarter. If found, please put a note in LB 10467.

MENS CLASS RING FOUND, S.C. 1986 ring, blue stone with initials T.H. Notify security.

FOUND. Female High School class ring: Found in Hanner Gym on Fri. 3/3. Call 681-2377 Ask for Carolyn.

REWARD! Lost tennis bracelet in Bash's. Very sentimental. Large reward. Please call Kim if found. 681-6268.

FOUND. One silver Ford key found on Sweetheart Circle last Tuesday morning. Come by George-Anne office to claim.

## PERSONALS

TO ANN NAPPO, Someone in the G-A office has a crush on you. Guess who?

SEYMOUR, Watch "Piggies" with us and show us your "Rob thang". Sneak us to Stuckey's for strawberry sundaes! Your babes, Trixie and Lola J.D. In silence and sound, you always understand.

I'm looking forward to the future-whatever it may hold. In friendship, love, and laughter, Mool Moo!

LATE NIGHT CALLER JEFF, It won't be long till I'm out of here. I miss our conversations. I deserve one last call. Please, M.

POOH-BEAR, I can't wait to be with you. We are going to have so much fun, day and night. Will you keep me warm?

ROB, Give me a call when you get a cup of ice and a flip-up-I can't wait! Love you, Your one and only "Turtle".

NISA, AMY, DARRIN, Just wanted to wish ya'll the best birthday ever!! Love, Stacy

KEYS found in Oxford field Thurs. April 20th in the evening. Call campus security to retrieve them.

## ROOMMATES

FEMALE ROOMMATE needed for fall quarter. Sussex Commons, 4 bedroom, 2 bath. \$200 per month. Please call immediately. 681-1580 (Dawn) or 681-2515 (Mary).

ROOMMATE WANTED: M/F 35-year-old male wants to share 2-bedroom house; 12x12 bedroom available. 1 mile from campus 319 S. College Street, call 764-7387 anytime. Non-smoker preferred.

FEMALE ROOMMATE needed immediately! 1/2 rent-only \$220. a quarter! Available Spring Quarter-University Village -1 bedroom. Call Andrea at 489-8855.

FEMALE ROOMMATE wanted to share University Village Apartment #106-Fully furnished with low rent and no water and utility payments! Available Spring Quarter. Call 681-6245 after 1:00 p.m.

FEMALE ROOMMATE NEEDED for Spring quarter-Hawthorne II #89. Four bedrooms, three large baths and large den and kitchen-Brand New Apartment! Please call immediately! 681-6091.

FEMALE ROOMMATE NEEDED IMMEDIATELY for Spring quarter at Hawthorne Court-Price Nego. Call Pam at 681-6237.

FEMALE ROOMMATE WANTED to share 2-bedroom, 2-bath trailer located off of 301-\$135. a month plus 1/2 utilities. Furnished and washer and dryer. Call 681-7223.

SUMMER QUARTER! 3 BEDROOM APARTMENT, fully furnished, free water, 2 single rooms- \$160. each. 1 double room \$125. per person. Call 681-6107.

URGENT! FEMALE ROOMMATE WANTED! ASAP! College-Vue Apts. \$105. per month, close to campus with own washer and dryer, Call 681-2953.

FEMALE ROOMMATE NEEDED for Spring quarter. 1 bedroom partially furnished Apt., lots of room. Please call 4898-1211.

FEMALE ROOMMATE wanted for a 4 bedroom house Spring Quarter. Own bedroom and bath. \$115. a month. Call 681-2377.

MALE ROOMMATE NEEDED for Spring quarter in Stadium Club. Have own bedroom and share bathroom. Call 681-1783 or office 681-2437.

MALE ROOMMATE NEEDED for Stadium Club #702. Own room and furnished. \$175. a month including water. Call 681-6240 Leslie.

MALE ROOMMATE wanted to share 4 bedroom, 2 bath apartment at Stadium Club for Spring quarter. 681-1783.

2 MALE ROOMMATES NEEDED for Spring quarter. 2 bedroom furnished apartment at Greenbriar. Call 681-2870 ask for Jason.

NEEDED FEMALE ROOMMATE. Private bedroom in house with 3 girls. Low utilities, furnished or unfurnished. Spring and/or summer quarter. \$150 per month. Call 912-897-4616

FEMALE ROOMMATE NEEDED IMMEDIATELY! Sussex Commons Townhouse, own bedroom. \$200. per month. Share utilities, Spring-Summer (Take over lease). Call 681-2535 ASAP!

MASTER BEDROOM WITH PERSONAL BATH- room for rent for the months April-July, \$100. per month for 3 roommates, or \$150. per month for 2 roommates. Only \$50. for the month of April! For more info contact Tina or Trish at 681-2422.

FEMALE ROOMMATE needed at Eagle's Court, Call 681-6227 or 1-826-4139.

TWO FEMALE ROOMMATES NEEDED to share large house in Grove Lakes subdivision. Pay only \$240. for the entire summer-June, July, and August. Summer Quarter rental only-Master bedroom with large master bath available. Only four miles from campus. Many extras! No lease required! If interested, call 764-3870.

SUMMER QUARTER, 2 bedroom, 1 bath, Plantation Villas, 2-3 occupants needed, Unfurnished. \$375. per month. Call Amy at 681-7657.

FEMALE ROOMMATES: Summer and/or 989-90 school year. # bedrooms, 1 and a half bath house. \$150. per month. Private bedrooms. 377 N. ... 764-7070 10N 5027 ... 601 2279

## HOUSING

MOBILE HOME spaces for rent. Right by Paulson Stadium. \$85 per month. Call 764-3826 or 842-9356.

HOUSE FOR RENT — 4-bedrooms, 1-bath brick house living room, dining room, carport, fireplace, stove and refrigerator in kitchen. Right by Paulson Stadium. \$600 per month. Call 764-3826 or 842-9356.

SUMMER QUARTER! 2 bedroom, Stadium Walk. 2. 4 occupants needed. Large, unfurnished, \$400 total per month. Call Candace at 681-2153.

HOUSE FOR SALE. Only 2 years old! 3 bedroom, 2 baths. Only 3 miles from campus. Great neighborhood. Good price. 764-5314 or 681-2342.

FOR RENT — Southern Villa Apartments. Available now through Aug. 31, \$375 per month. Has dishwasher, refrigerator, 2 bids, 2 student desks, ceiling fans, and mini blinds. No Pets. Call Raymond at 681-7769.

THREE BEDROOMS, 1-bath brick house with living room, dining room, carport, stove and refrigerator in kitchen. Right by Paulson Stadium. \$400 per month. Call 764-3826 or 842-9356

ONE BEDROOM APARTMENT in Knight Village. Available immediately!! 681-7556 or 681-1927.

GOVERNMENT HOMES. Delinquent tax property. Repossessions. Call (1) 805-687-6000 Ext. Q-5385 for current repo list.

CONDO IN SOUTHERN VILLA FOR RENT. Partially furnished. \$440. per month. 681-7769 Brenda Steinberg.

HOUSE FOR RENT OR SALE, near the Stadium. 681-3936.

APTS FOR RENT, 1 and 2 bedroom, furnished, call 681-6407.

POND HOUSE FOR RENT, available now, Call 681-6407.

DO YOU NEED A ROOM FOR SUMMER QUARTER? 4 Br, 2 bath, washer, dryer, volleyball courts, tennis, basketball, weightroom, pool, and big screen T.V. lounge room at Sussex Commons, \$206. per month. Call Joel Landing at 681-1872.

FOR RENT, summer quarter-Southern Villas-\$300. per month-fully furnished, washer/dryer. Call 681-7580.

NOW RENTING FOR FALL 1989. Eagle Gate Apartments. 1,2, and 3 bedroom, 2-story, 1 and a half bath apartments with fully equipped kitchens. on site management. 12 month negotiable lease required. \$200. security deposit. CALL 764-6398. Also now renting month to month from now through August.

SUMMER QUARTER, Stadium Walk, unfurnished, rent: \$400. per month. Call 681-1766.

The George-Anne provides free classified listings to students faculty and staff members of Georgia Southern College as a campus-community service. Free classified ads should be written in 25 words or less. The advertiser's name and Landrum Box must be included with the ads. Ads should be non-commercial in nature, should be in good taste and are subject to standard editing procedures. The editors reserve the right to refuse any free classified ad. Free classified listing should be mailed to The George-Anne, Landrum Box 8001, GSC. Deadline is noon Monday or Thursday prior to publication. Commercial listings are available at \$4.50 per column inch, with a one inch minimum. Contact the Advertising Department at 681-5418 for more information.

IDEAL Cleaners

"We Care"

13 Northside Dr. E. 764-2524

CLEAN EAGLE COIN LAUNDRY & CARWASH

• Complete Vending Center • Pay Telephone

• Drinks & Snacks • Video Games

• Soap Dispenser • Wash & Wax

• Laundry Bag • Foaming Brush

• Soft Water • Car Aides Vendor

• Waiting Area with TV • Self-Service CarWash

New Coin Changer for \$1, \$5, \$10, and \$20

Coming soon ANOTHER Clean Eagle Located at Statesboro Square

230 Lanier Road

Be a part of a special group...

# STING

Student interest group  
and help RECRUIT STUDENTS for GSC

Pick up applications at ADMISSIONS OFFICE  
(Rosenwald Building)

**"Deadline... Thursday, May 4"**

## ODYSSEY RECORDS & TAPES

Statesboro's Music Store

- Tapes
- Albums
- 45's
- Cassingles
- C.D.'s
- Discos
- Posters
- Accessories

Renting Radar Detectors  
Open Until 9:00 P.M.

681-3371 College Plaza

## DELOACH'S

Insrtuments & Equipment

- Peavy Guitars & Amplifiers
- Ludwig - CB .700 Drums
- Zildjian Cymbals
- Charvel Guitars

The largest selection of Drumsticks and Guitar strings in the area.

Hours: 9-7 Mon.-Fri.  
10-6 Sat.

764-2527  
254 Northside Dr. East

# NAVY NURSING: FAR AND AWAY ONE OF THE BEST JOBS AROUND.

You can really go far as a Navy Nurse. Naples, Bermuda and Hawaii are just a few of the locations you could be assigned after your first tour of duty. And as a Navy Nurse, you're also a Navy Officer.

You'll work in a professional environment with excellent opportunities for career advancement. Earn a top salary with comprehensive benefits. Plus you can keep up with the latest medical advancements with free in-service training and qualify for further education.

Call Navy Medical Programs  
TODAY!

1-800-922-2135

YOU ARE TOMMOROW.  
YOU ARE THE NAVY.