

Georgia Southern University

Digital Commons@Georgia Southern

The George-Anne

Student Media

9-26-1985

The George-Anne

Georgia Southern University

Follow this and additional works at: <https://digitalcommons.georgiasouthern.edu/george-anne>

Recommended Citation

Georgia Southern University, "The George-Anne" (1985). *The George-Anne*. 1032.
<https://digitalcommons.georgiasouthern.edu/george-anne/1032>

This newspaper is brought to you for free and open access by the Student Media at Digital Commons@Georgia Southern. It has been accepted for inclusion in The George-Anne by an authorized administrator of Digital Commons@Georgia Southern. For more information, please contact digitalcommons@georgiasouthern.edu.



**Football Eagles off to 2-1
start. . .** —see pg. 6

NON-PROFIT
ORGANIZATION
U.S. POSTAGE
PAID
STATESBORO, GA.
PERMIT NO. 286

The George-Anne

VOLUME 66, NUMBER 1

Georgia Southern College's Official Student Newspaper
Georgia Southern College, Statesboro, Georgia 30460

THURSDAY, SEPTEMBER 26, 1985

Residence halls receive improvement and repair

By BO JOYNER
News Editor

Several dormitories on campus received much needed renovations and repairs this summer, according to Director of Housing, Pat Burkett.

The changes cost GSC an estimated \$500,000 and took place in almost all on-campus residences.

"We tried to do something in every building," said Burkett, "but some buildings needed more work than others."

Oxford Hall was the main benefactor, receiving renovations costing approximately \$250,000. The lobbies and halls in Oxford were completely remodeled with newly painted walls, new carpet, ceilings and light fixtures. There are plans to renovate the rooms in Oxford next year.

The main lobby in Johnson Hall was remodeled over the summer, according to Burkett. She added that new lobby furniture is on order and should be in place before the Thanksgiving break.

Many dorms were painted this

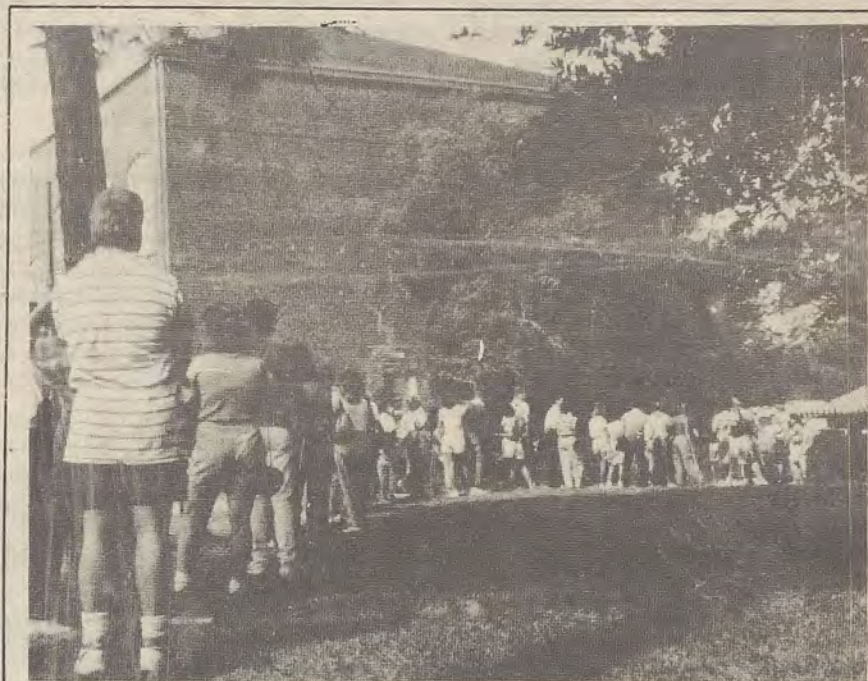
summer: Warwick Hall, Lewis Hall, Sanford Hall, and The Pines Apartments received exterior painting while the interiors of Olliff, Johnson, Hendricks, and Cone Halls were painted.

At The Pines, phones were installed and six sets of wooden steps were replaced with metal steps at a cost of \$35,000.

Exhaust fans were installed in the bathrooms in Brannen Hall, Veazey Hall, Hendricks Hall, and the old section of Lewis Hall. Shower partitions were installed in Brannen and Dorman Halls and the old bathroom partitions in Dorman and Stratford Halls were replaced.

Burkett added that the roofs on several buildings were patched and several light fixtures in buildings throughout the campus were replaced with more efficient fluorescent lighting.

Burkett said that the steps taken towards renovation and repair were the most extensive at the college in several years and they were needed to accommodate the large underclassmen enrollment this year.



Long lines and confusion were common sights during the first few days of school. According to some students, the average wait in the Drop-Add line was one-and-a-half hours.

On-campus housing at capacity

By BO JOYNER
News Editor

A surprisingly high number of students requesting on-campus

housing has caused a problem with overcrowding in several GSC dormitories.

"We are having to temporarily put some students in study halls and storage closets," said Assistant Director of Housing Assignments, Louise Screws.

Screws added that the problem should be alleviated in the days to come when some students decide to leave the college and no-shows are discovered.

Screws believes that the "temporary overflow" now will result in a favorable near capacity situation in the dorms for Fall Quarter.

School officials were expecting as much as a 500 student reduction in enrollment this year over last year and even considered closing Oxford Hall at one time. The decision to keep the dorm open came this Summer when the Housing Department received approximately 250 more housing applications than they received last year.

As of September 13, the Housing Department had assigned 3,519 students to dorms that have a full capacity of 3,500. Initially, GSC received about 4,500 housing applications, however, several hundred people cancelled their request for housing over the Summer.

Student Appreciation Day scheduled for September 26 at Paulson Stadium

Special to the George-Anne

Georgia Southern College has a message for students, and to make sure it's heard over the hubbub of the new school year and the humdrum of daily activities, campus officials are bringing in a marching band, cheerleaders, the football team and a radio announcer to deliver it.

Billed as "Student Appreciation Day," the September 26 rally at Paulson Stadium is the college's way of showing "what we hope our students already know—that we're glad they're here at Southern," said Randy Gunter, GSC staffer and chairman of the student affairs subcommittee on pride.

The event begins at the stadium at 4 p.m. with a picnic dinner, followed by music and entertainment, door prizes and greetings from college, city and county officials, ending at 7 p.m.

Emceeing the program will be Savannah radio personality Mike Miller, host of the "Morning Madness" show on WAEV-97. Also making appearances will be Miss GSC Tammy Russell, Head Football Coach Erk Russell and the Eagle squad, GSC President Dale W. Lick, vice presidents Dr. Harry Carter and Dr. Richard Armstrong, Dean of Students Jack Nolen, and city and county leaders. The marching band, cheerleaders and other entertainment is planned.

"We wanted to start the academic year on a positive note," Gunter said, letting students know they're appreciated, building pride in the school and promoting the warmth and friendliness of the campus and community.

Gunter said that community participation in the event was

especially important, because the "warm relationship between the college and the town is one of the assets that make Southern a 'home-away-from-home' for our students." Local merchants donated the door prizes for the rally.

**'We wanted to start
the academic year on a
positive note.'**

—Gunter

The picnic supper will be provided by the GSC Food Services for contracted students and on a cash basis for others. The meal will be served by faculty and staff.

NEWS

Pi Kappa Phi receives award at convention

Pi Kappa Phi of GSC was one out of three chapters to receive the Fraternity's Champion Master Chapter Award at their national convention in August.

The award is given to those chapters in Pi Kappa Phi Fraternity that have attained 400 points in such categories as membership, educational programs, alumni relations, community service and student activities.

The criteria for the award includes: upper 50 percent in membership size of fraternities on their campus; must initiate 80 percent of those affiliated; must rank in the upper 50 percent scholastically of fraternities on campus; must operate on a budget that shows no deficit; and 50 percent of the chapter members must be involved in activities outside the chapter, to name just a few.

Pi Kappa Phi is a non-profit Greek letter organization with more than 100 chapters located on college campuses throughout the United States. Total membership exceeds 47,000. It was founded in 1904 at the College of Charleston in Charleston, South Carolina.

CLEC opens cultural season Oct. 4

Special to the George-Anne

GSC will raise the curtain on its cultural season October 4 with the appearance of the North Carolina Shakespeare Festival drama company, the opening event on the 1985-86 Campus Life Enrichment Committee playbill.

CLEC performances will run through April featuring world renowned acts like the Norman Luboff Choir and the Joffrey II Dancers as well as "home grown" talent like mezzo-soprano Laura Brooks Rice, a GSC alumna who has sung with the San Francisco Opera.

Season tickets for the seven-performance series are \$20 and can be purchased from GSC education professor John DeNitto at 681-5247. Admission at the door will be \$5 for adults and \$2 for all students except those from Georgia Southern who are admitted free with ID cards. All events begin at 8:15 p.m.

The series begins with Shakespeare's classic comedy on the battle of the sexes "Taming of the Shrew" presented by the North Carolina Shakespeare Festival in the McCroan Auditorium. The Festival will visit

Statesboro as part of its 24-city OUTREACH '85 tour.

A star of several GSC opera theater performances during her student years, Rice will return to her alma mater Nov. 19 for an encore performance in the Foy Recital Hall, where she studied under GSC music professor Joseph Robbins. Described as "charming, flexible and artful as singer and actress," she was a finalist in the Metropolitan Opera national auditions and winner in the New York Regional San Francisco Opera Auditions.

The series returns to the McCroan Auditorium December 3 when the Norman Luboff Choir will present a Christmas Concert. Performing Bach chorales and Beatle tunes with "equal artistry and understanding," the Choir has been described as the "unquestionable leader in its field."

Pepe and Celine Romero, classical guitarists from Spain, will bring their talents to the Foy Recital Hall January 21. The Romeros have played to rave reviews with most of America's leading symphonies since their U.S. debut in 1961.

The February 3 performance of The Joffrey II Dancers will bring the

McCroan stage to life. A young company which bridges the gap between advanced ballet students and fully professional dancers, the troupe is a showcase for emerging talents with repertoire including favorite classics as well as specially-commissioned works.

Combining a "fresh approach" with "awesome technical accomplishment," the "Top Brass" quintet will play to a GSC audience February 18 in the Foy Recital Hall. The five young virtuosos, who move easily from classical masterworks to their own jazz and pop programs, have played to audiences across the country including two appearances in Carnegie Hall.

The series will conclude April 29 with a concert in Foy Recital Hall by pianist Panayis Lyras, silver medalist of the 1981 Van Cliburn International Piano Competition. The Greek-born artist has been heard in more than 50 solo appearances with leading symphonies around the world. He will also judge Georgia Southern's Esther Wilburn Barnes Piano Competition April 28.

GSC, Armstrong sign Med. Tech. agreement

Special to the George-Anne

Georgia Southern and Armstrong State colleges have signed an agreement bridging their medical technology degree programs so students who have completed two years of college at GSC can complete their B.S. degree in Medical Technology at Armstrong State College.

In the past, Georgia Southern has awarded a bachelor's degree in MT by offering students a three-year program on campus with a final year of study at an approved hospital-based medical technology program. A majority of students finished their professional training at Memorial Medical Center in Savannah which has since discontinued its school, according to Dr. Richard Osburn,

head of the GSC Biology Department which administers the pre-professional program.

ASC established an academic-based MT program in 1982 at the request of Savannah pathologists at Candler General and St. Joseph's Hospitals, according to Armstrong's MT program director Lester Hardegree. The program graduated its first class in 1984. Recently accredited by the American Medical Association, the program is one of only four within the University System of Georgia. Students enrolled in the professional courses complete their practicum at AMA approved clinical laboratories of Candler General Hospital, St. Joseph's Hospital and the South Atlantic Red Cross Blood Center, all in Savannah.

Hardegree said that as one of three regional health professions education centers in the state, "ASC welcomes the opportunity to work with GSC in order to meet the increasing employment demands for medical technologists in the rural areas of Georgia." To do this, he added, the Medical Technology

program will develop rural components and emphases as part of the professional curriculum.

"Given the close cooperation of Armstrong's School of Health Professions with the urban health care facilities of Savannah and acknowledging that Georgia Southern's rural-based campus fulfills the responsibility to serve rural areas, the agreement helps resolve rural as well as urban needs in the state," Hardegree said.

This cooperative effort benefits GSC students, Osburn said, by offering "an excellent preparation in prerequisite science and core courses" at Southern, plus access to a reserved slot in Armstrong's junior Medical Technology class. Armstrong has agreed to set aside 40 percent of the positions in its medical technology class for GSC transfers who meet program requirements and to accept direct transfer of credits for comparable courses.

For more information on this program, contact Dr. Wayne Krissinger, GSC Medical Technology Advisor at (912) 681-5498.

POPEYES

FAMOUS FRIED CHICKEN

Free Medium Drinks

When you buy any size order of our delicious cajun nuggets.

Good thru Oct. 3, 1985.

526 Fair Road Statesboro, Ga. 681-1078



2 Chicken Biscuits

Only \$1.50

Good thru Oct. 3, 1985.

526 Fair Road Statesboro, Ga. 681-1078



GSC FOUNDATION PHONATHON

Needs Student Callers two, three, or four nights per week. Three hours per night. \$3.35 per hour. Contact Bobbie Howard at 681-5163.

Amy Swann

Letter to Freshmen

Dear Freshmen,

This letter is to you great people who are beginning your college career here at good ole GSC. (If you're an upperclassman and you're reading this, go mind your own business. You probably have some accounting homework to do anyway.)

First, let me introduce myself. I am a Senior. I have studied, not studied, partied, slept, not slept, eaten, gone to class, not gone to class and generally survived at GSC since 1982.

Along the way and quite often by accident, I have made a few discoveries that I would like to share.

Beginning your college career is tough. It is a time of upheaval and transition. You may think that the decisions you make your first quarter will dictate your life. Which brings me to my first point, I believe the most frequently asked and most abused question at any college is "What's your major?" I distinctly remember feeling embarrassed because I didn't have a major when I entered college. It appeared everyone knew exactly what to do with their life except me. It was at least a year before I realized that we were all in the same boat. Many of my friends who have come here set on one particular major were changing their minds. The important factor that I realized later is that the status of freshman is one of change.

You may have arrived in the 'Boro knowing you were going to major in Elementary Education, but after your Introduction to Education class you are not so sure. Well take an Intro to Anthropology course, or a business course. Follow your interests. When you enjoy what you're doing then naturally you'll excel.

The next point I would like to discuss may sound very elementary to you and may even insult you, but that is not my purpose. Remember I am speaking from experience.

Make a concentrated effort to attend class every day, I know, it is so easy not to go. Many freshmen classes have more than 100 students and there is no way the professor can check the attendance. It will show up in your grades. It is hard to think about graduation at this point, but when you realize you only have four quarters left pull up your GPA believe me, panic strikes.

Above all, it is not too much for your professor to expect you to attend class. They show up everyday and so can you. If you have a legitimate excuse for missing a class explain it to your professor. They understand and are willing to help.

Enough about the school issues. Let's talk roommates. If you're living in campus housing then you have probably just moved into a four by four room with some weirdo who has an entire collection of Elvis albums. (Not Costello, Presley) Don't panic. They probably aren't too sold on your Smurf collection. The key to successful roommate relations is communication. That may sound corny, but if you can discuss your problems when they're small you can avoid a major confrontation later.

If you have irreconcilable differences, discuss the problem with your Resident Assistant. They are trained to work with you, not against you.

Take it from me, you make your own college experience. A positive attitude can go a long way. Remember, this is your home for the next four years.

The George-Anne

DONNA BREWTON
Editor



BO JOYNER
News Editor

KARA KING
Managing Editor

LEIGH ANN KITCHENS
Business Manager

Editorial views expressed in the *George-Anne* are not necessarily those of the Georgia Southern College administration and / or faculty. Signed columns are solely the viewpoint of the writer.

Support the Eagles

Welcome back! Fall quarter is getting into swing, everybody's glad to be back, and it's football time! So far the Eagles are 2-1, with wins on the road over Troy State and Florida A&M, and a loss at home to Middle Tennessee.

The turnout was great for the first home game, even though school wasn't in session yet. Upcoming home games are Oct. 5 and Oct. 12—so let's get out there and support our Eagles!

G-A needs reporters

Are you a responsible, fairly intelligent individual who is interested in adventure, excitement, and "getting a piece of the action?" If so, we have a perfect assignment for you. Join the G-A staff as a reporter or photographer and enjoy covering the people and events that make GSC a special place to attend college.

Openings are available in all departments including news, features, sports and photography. Come by the office, meet our staff and fill out an application. We are located on the second floor of the Williams Center (above Sarah's Place). Or call 681-5246 anytime between 9:00 a.m. and 5:00 p.m.

Start the year off right

Getting back into the swing of things fall quarter requires some adjustments for all students.

New students are busy learning where things are. Trying to adjust to changes like the remodeled Sarah's Place keeps old students occupied.

It takes a bit of self-discipline for most of us to get back into our old routine of getting up early, making it to class on time and forfeiting some afternoon leisure time for studying.

But cold weather is almost here so the warm, sunny afternoon can't be blamed for unfinished homework.

We at the *George-Anne* would like to challenge all students to start this year off right and not put off until tomorrow what we can do today.

AMY SWANN Features Editor
CHRIS NAIL Sports Editor
CATHERINE CARTER Copy Editor
JEFF ALMOND Advertising Manager
SUSAN WITTE Assistant News Editor

Editorial views expressed in the *George-Anne* are not necessarily those of the Georgia Southern college administration and / or faculty. Signed columns are sole viewpoints of the writer.

FRED RICHTER, Faculty Advisor

The *George-Anne* is the official newspaper of Georgia Southern College and is owned and operated by GSC. The office is located in Room 110, Williams Center, the telephone numbers are 912/681-5246 and 681-5418 and the mailing address is GSC, L.B. 8001, Statesboro, Ga. 30458.

The George-Anne is now accepting applications for a GRAPHIC ARTIST

The artist will be required to
draw graphics based on the
content of articles.

Apply in Person
at the George-Anne office

Second Floor — Williams Center

WEEKEND!



**DOMINO'S
PIZZA
DELIVERS
FREE.**

You work hard all week to arrive at those special days when you can lie back, relax or just celebrate: You've made it through another week!

It's the perfect time for pizza from Domino's Pizza. You don't have to waste your precious time on carry-out pizza because Domino's Pizza Delivers® in 30 minutes or less, or we'll take **\$3.00 OFF** the price of your pizza!

So this weekend – and all week long – make the most of your time with pizza delivery from America's originator of free, 30 minute service.

Have a great weekend!

Serving Statesboro & Georgia Southern College:

681-4326

College Plaza

Hours:

4PM-1AM Sun-Thurs.
4PM-2AM Fri. & Sat.

**DINNER
FOR
FOUR
\$9.99!**



Order a delicious 16" pizza with any **TWO** toppings and **FOUR** servings of Coke® and **you pay only \$9.99!** (Tax included!)

One coupon per pizza.
Offer good thru 10/6/85.

Our 16" pizza has 12 slices, serving 4-6 persons.

**\$2.00
OFF!**



Order a delicious 16" pizza with any **ONE** topping of your choice and get **\$2.00 OFF** the price!

One coupon per pizza.
Offer good thru 10/6/85.

Our 16" pizza has 12 slices, serving 4-6 persons.

Limited delivery areas. Drivers carry under \$20. ©1985 Domino's Pizza, Inc.

*One call
does it all!*



**DOMINO'S
PIZZA
DELIVERS
FREE.**



FEATURES

Aspiring vocalists get their chance in new ensemble starting at GSC this fall

By AMY SWANN
Features Editor

Attention future Bruce Springsteens, this is your chance! A new vocal ensemble is starting under the direction of Dr. Mary Jane Ayers. No, Bruce probably didn't start in a choir, but this is an excellent opportunity for all aspiring vocalists to flex their chords while earning one hour of class credit.

The group will be composed of 12-16 members (male and female) and will be performing a variety of selections ranging from 15th century madrigals to modern pop and jazz tunes. Some choreographed movement is planned to accompany the modern selections.

According to Ayers, the vocal ensemble will have a diverse musical format because of the size of the group. She stated, "Basically, we'll be doing all the things you can't do with a big group."

The ensemble will perform its first concert on November 20th at 1:00 in the Foy Fine Arts Auditorium. Future performance dates will be scheduled as the opportunities present themselves.

"As word gets out about our group, I feel the opportunities for performance will increase," Ayers said.

Ayers has worked with groups like this in the past and has also performed in several similar ensembles.

An added plus is this group will be directed by students. Ayers will serve as advisor and consultant giving the students the opportunity to direct in a simulated professional atmosphere.

If you are interested in joining the group, can sight read, and have had some musical experience, then contact Dr. Ayers at the music department, room 125 or by calling 681-5396.

CAMPUS PAPERBACK BESTSELLERS

1. "... and Ladies of the Club", by Helen Hoover Santmyer. (Berkley, \$5.95.) Life in a small Ohio town.
2. **Penguin Dreams and Stranger Things**, by Berke Breathed. (Little, Brown, \$6.95.) Collection of the comic strips of the 80's.
3. **The Road Less Traveled**, by M. Scott Peck. (Touchstone, \$8.95.) Psychological and spiritual inspiration by a psychiatrist.
4. **Lincoln**, by Gore Vidal. (Ballantine, \$4.95.) Lincoln as seen by his loved ones, rivals and enemies.
5. **Bride of the Far Side**, by Gary Larson. (Andrews, McMeel & Parker, \$5.95.) More cartoons from the Far Side.
6. **FullCircle**, by Danielle Steel. (Dell, \$4.50.) Four decades of a mother/daughter relationship.
7. **In Search of Excellence**, by T.J. Peters & R.H. Waterman Jr. (Warner, \$8.95.) A look at the secrets of successful business.
8. **The Haj**, by Leon Uris. (Bantam, \$4.95.) Middle East Conflice streams the story of vengeance and forgiveness.
9. **Though Guys Don't Dance**, by Norman Mailer. (Ballantine, \$3.95.) Cape Cod murder mystery.
10. **The Witches of Eastwick**, by John Updike. (Fawcett, \$4.50.) Contemporary Rhode Island town is ravaged by three witches.

MARCENA'S FOR HAIR
OPEN MONDAY THRU SATURDAY

\$2.00 OFF REG. HAIRCUT!
With Student I.D.

NEXUS

NATURE AND EARTH UNITED WITH SCIENCE

Appointments Appreciated

764-9673

7 MULBERRY STREET
STATESBORO, GEORGIA

Expansion at WVGS is nearing completion

By AMY SWANN
Features Editor

Dr. Russell Dewey, advisor to the campus radio station, has the proud look of an expectant father as he describes the facelift his pride and joy WVGS has been undergoing. The renovation which has been in the works since May 31, 1982 is in its final stages and the station has officially changed, with the addition of a new transmitter, from a 10 watt campus station to a 3,000 watt operation which will be heard in Augusta, Savannah and possibly Macon.

The most noticeable difference will be the move down the FM dial from 107.7 to 91.9. Physical expansion of the station includes the addition of several new rooms which will encompass the length of the balcony at the stations' old home in the Williams Center.

Clay Scales, station manager, said, "Dr. Dewey has been the driving force in the expansion."

Dewey commented, "Students move on so the advisor has to watch over the growth of the stations."

The expansion, which was approved by the Federal Communications Commission and James Orr, Associate Dean of Students, will have

many "positive effects" said Scales. "A lot more people will notice us

Paula Edmondson, music director, described the additional rooms. "We will have a computer room, library, staff room, and social room. The old production room will serve as the new control room and it will be twice the size," she added.

The expansion was funded by the station using a transfer of funds from the 1984 budget to the 1985 budget.

"We have done a lot of scrimping," laughed Edmondson.

When the original plan of expansion was born, the big question was, where to put the station? The balcony on the street side of Williams Center was considered in the beginning, but due to technical complications in adapting that side of the building to accommodate the station, it was scrapped. Dewey credits Orr with suggesting the expansion of the old facility.

"Jim Orr is responsible for the plan of enclosing our balcony space," said Dewey.

Because of the expansion the station will be receiving more albums from a wider variety of labels. However, they plan to continue with the new music format playing albums from mainly import and domestically independent labels.

Specialty shows this year will include urban contemporary, jazz, oldies, and hopefully a classical show. Students can call 681-5525 and request a song; however, it is up to the DJ to decide whether or not to honor the request.

WVGS Schedule of DJs:

	MONDAY	TUESDAY	WEDNESDAY	THURSDAY	FRIDAY	SATURDAY	SUNDAY
7-9	Chris	Mike D.	Madeline	Chris	Eddy	Tom R.	
9-11	Gary M.	Andy O.	Dawn	Gary	Davey	Scott	Alex (Gospel) J.T.
11-1 p.m.	Greg W.	Clay	Mark (guitar greats) Bill J.	Mason Mason Tom R.	Joe Joe Sam P.	Phil	Shelley/Paula (Classical) John T. (Jazz)
1-3	Jim L.	Paula				Bill	Dave D. (Blues)
3-5	Pam	Jim W.	Mike M.	Fred	Tracey	Leah	Todd
5-7	Flash	Aileen	Chuck	Will C.	Shelby	Amy	
7-9	Susie	Stacey	Andre (U.C.*)	Fletcher	Dave/Shan	Jeff	
9-12	Glenn	Andy H.	Dave C.	Sandra Zack (UC)*	Randall Dan (70's rock)		Dave H. Dan (70's rock)
12-1							

*UC: Urban Contemporary

ATTENTION

Are you a mover and a shaker?

Well if you are, we want you to join the 1986 Reflector staff.

The Reflector yearbook now has openings for photographers, staff members, and writers.

If you're a dynamic and dedicated person, stop by for our Orientation meeting on Sept. 26 at 7:00 p.m. Our office

is located on the 2nd floor of Williams Center above Sarah's.

For more information, give us a call at 681-5305.

— We've Moved —

The 1985 Reflector is available at our new office on the second floor of Williams Center from 9-5 Monday thru Friday. Books are available to Sophomores, Juniors and Seniors.

Please bring I.D.

The George-Anne CLASSIFIED ADS

FOR SALE

FOR SALE: Various short draperies and sheers. All cotton and lined complete with hardware. Good condition. Plus other household items. Call 764-4834.

FOR SALE: 1977 Toyota Celica, 4-speed, 54,000 miles, good mechanically, needs paint. Come by Room 184 in the Math/Physics/Psych. bldg. or call 764-7669 after 5 p.m. 10-10

FOR SALE: Two twin mattresses \$65 each; Western Flyer ten-speed bicycle \$70; round white Formica table plus 4 white chairs \$360. All in impeccable condition. Phone 681-7428 after 12:30 p.m. 10-10

WANTED

HELP WANTED: Need some extra money? Part time crew members needed. Apply on Tuesdays between 10:00 a.m. and 2:00 p.m. Popeye's Fried Chicken, 526 Fair Road, 681-6139. 10-10

HELP WANTED: Two students with artistic talent who would be interested in doing promotions for the bookstore and Sarah's Place. Please call 681-4093 and ask to speak to Nancy. 10-10

WANTED: One C.K. exterminator for apartment complex. Start-up fee \$14. Inquire at the G-A office. 10-10

WANTED TO BUY: Football and baseball cards. Paying top dollar (I've paid \$50 for one card). Call 587-2294, ext. 227 from 8:00 a.m. to 4:00 p.m. 10-10

MISCELLANEOUS

BUSINESS OPPORTUNITY: Are you tired of Brokers? Looking to buy, sell, franchise, or invest in a business? Statewide business exchange is your answer! We are not brokers. We advertise in over 30 newspapers statewide, 20 nationally, every week for 12 months. Call now for details! 404-951-8444. 10-10

TYPING

TYPING: \$1 per page. Call 489-1755 after 5:00 p.m. and ask for Susan. 10-10

Eagles lose home opener to MTS

By CHRIS NAIL
Sports Editor

Normally when the term execution is mentioned in a football conversation, it is used to refer to excellent play by a team in carrying out its game plan. But after the 35-10 plucking of his Eagles by Middle Tennessee State, GSC head coach Erk Russell used the word to refer to the ineptness of his team's play. "We executed ourselves," a grim-faced Russell stated.

The game statistics verify Russell's remarks as the Eagles were penalized ten times for 100 yards, lost a fumble, had two passes intercepted and had a punt blocked. Therefore, the Eagles came out 25 points on the downside despite trailing in total yards by only three, 289 to 286.

Neither the Eagle nor Blue Raider offenses looked sharp in the first quarter as the score stood at 0-0 after one period of play.

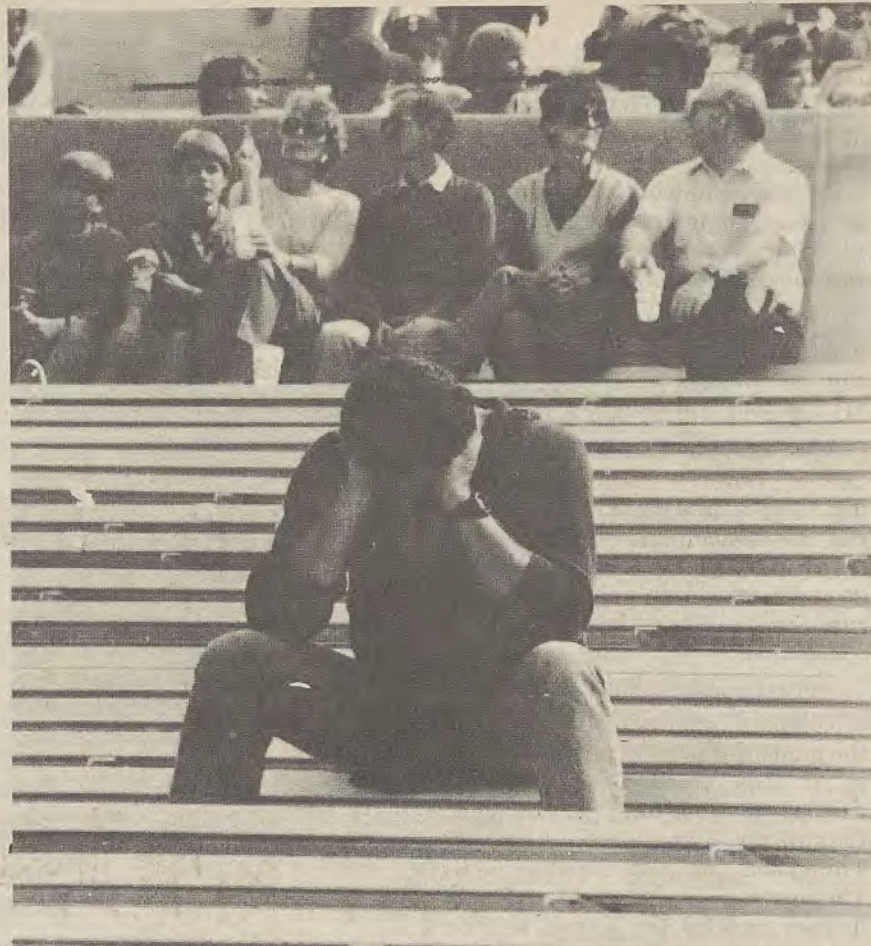
However, the Eagles started making the crucial mistakes in the second quarter. Quarterback Tracy Ham fumbled at his own 42 yard line after Southern had picked up its fourth and fifth first downs of the game.

MTS promptly marched in to score the game's first touchdown on an 8 yard pass, and never relinquished the lead.

Southern, upon receiving the ensuing kickoff, marched down the field behind the running and throwing of Ham to set up a 23 yard field goal by Tim Foley to make it a 7-3 game.

But GSC's side of the scoreboard wouldn't change its reading again until six minutes were remaining the game. The Blue Raiders meanwhile started rolling up touchdowns, due in large part to Eagle mistakes.

See HOME, p. 7



Lone Eagle fan hangs his head as GSC is humiliated by Middle Tennessee.



Ricky Harris and Ernest Thompson follow through with fake as Eagle runner is tackled.

GSC STUDENTS
You can rent a VCR & 2 movies for only
\$5.00
C&W TV Sales & Service

SAM COWANN
JIMMY WARD
OWNERS

SIMMONS SHOPPING CENTER
STATESBORO, GEORGIA 30458

764-9106

Latest Releases

Desperately Seeking Susan, Fraternity Vacation, Friday 13th Part V, The Killing Fields, Certain Fury, Lust in the Dust.

GSC Student Special

Show Student I.D.

VCR Rental \$4.00 per day

Movie Rental \$1.00 each

Rent One Get One Free w/this Ad.

Expires 10-3-85

Coupon

ARBY'S

Now accepting applications for all positions at our Statesboro unit. Excellent training program and opportunity for advancement.

Applications and interviews 2pm to 5pm daily.

622 Fair Road

HOME

Continued from p. 6

With less than a minute remaining in the first half MTS blocked Rob Whitton's punt attempt, and the ball rolled out of bounds at the Southern 10. Three plays later State had a 14-3 lead. "We had a breakdown in punt protection," Russell determined. "There's a lot of difference going in at the half 7-3 and 14-3, but even so I didn't think we were out of the game at 14-3."

The halftime stats showed why Russell felt his team still had a chance. Southern had outgained MTS in total yardage, 151 to 131.

Blue Raider quarterback Willie Collier however quickly opened things up with a 54 yard touchdown run after attempting to pass on the fourth play of the second half. "A good defense doesn't allow a 54 yard run on a scramble," Russell commented.

MTSU soon added two more touchdowns, and with 14:55 to go in the game the score read 35-3.

At this point Coach Russell decided it was time for heralded freshman quarterback Ernest Thompson to get his feet wet. Thompson played the entire fourth quarter and led the Eagles to their only touchdown, a 9 yard pass to Monty Sharpe.

Despite the poor team performance, Russell felt his players weren't to blame. "The continuous mistakes in penalties led to an inability to score," said Russell. "The penalties were from a lack of concentration. All of these fall in the category of a poorly coached team."

The Eagles have now lost their only two meetings with Middle Tennessee by scores of 42-7 (1984) and

35-10. "I thought we had incentive," Russell stated, "revenge and extending our home winning streak."

Despite the loss before 9, 227 fans at Paulson Stadium, Russell still feels that he has a good team. "We don't need to be a lot better," he commented, "We just need to execute."

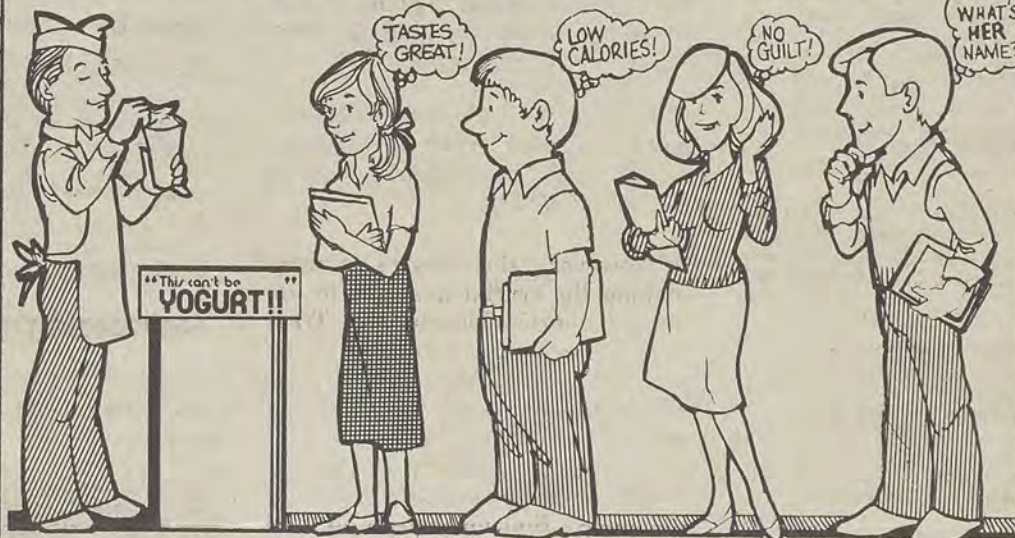
This time, unlike earlier, Russell used the term in a positive context.

Student bodies needed

The Cross Country team is looking for runners to compete in the upcoming season. Anyone interested in being a member of the team should contact Coach Sean McCormack at 681-7585.

An organizational meeting for junior varsity cheerleading will be held Monday, September 30th at 6:30 P.M. in room 152 of Hanner Complex. Anyone interested (male or female) is encouraged to attend this meeting. Final selections will be made Tuesday, October 15 at 6:30 p.m. for additional information call John Ratliff at 681-5376.

Welcome Back!



All the Pleasure, Half the Calories, None of the Guilt.

To help you get your year off to a smooth start, "This can't be Yogurt!!" is offering a great Welcome Back special. Two of our delicious, low-calorie, high nutrition Smoothies for the price of one. Bring a friend. Try one of our other great taste treats; shake, sundae, banana split, Yogwich®, crepe and Belgian waffle, or strawberry shortcake.

"This can't be YOGURT!!"

Welcome Back! BUY ONE SMOOTHIE GET ONE FREE!

This coupon entitles the bearer to one free small, medium, or large Smoothie with the purchase of the same size Smoothie at the regular price, from participating "This can't be YOGURT!!" stores. Only one coupon redeemable per family. Void where prohibited by law.

"This can't be YOGURT!!"

Offer Expires
10-10-85



Quarterback Tracy Ham rushed for 129 yards and a touchdown as Eagles bounced back from Middle Tennessee loss to edge Troy State 17-10. For complete story and statistics see next week's George-Anne.

Eagles open season with victory over FAMU

By CHRIS NAIL
Sports Editor

The football Eagles of Georgia Southern let what once looked like a blowout turn into a last-minute dogfight, but hung on to defeat the Florida A&M Rattlers, 27-21, in their season opener on September 7. The game, played under sunny skies and 80 degree weather at the Gator Bowl in Jacksonville, Florida attracted some 18,000 plus fans, many of whom traveled from Statesboro to support Erk Russell's Eagles.

In the first few minutes of the game, it appeared that Erk's Eagles would be in for a long afternoon. FAMU won the coin toss, and upon receiving the kickoff promptly picked up a couple of first downs with a mixture of run and pass. A big third down sack by the GSC defense forced the Rattlers to punt, thus giving quarterback Tracy Ham and company their first offensive opportunity of the 1985 season.

Unfortunately, the opportunity was soon thrown away. On the first play from scrimmage, Ham tossed an errant pitchout towards tailback Ricky Harris, and the loose ball was quickly slithered upon by the Rattlers at the Southern 36 yard line. However, GSC got the ball back four plays later when middle linebacker Tyrone Hull intercepted a first down pass, and returned it two yards to the GSC 28 yard line.

Again the Hambone offense couldn't click, and after an exchange



Quarterback Tracy Ham prepares to release the ball as he is pursued by a defensive lineman.

Harrises, Ricky and Gerald, and Ham capped it with a 39 yard scoring strike to wide receiver Monty Sharpe.

The lead didn't last for long as A&M connected for a 17 yard TD pass to tie the game at 7-7 with 4:49 left in the first half.

After two punts by each team, GSC's Tim Foley made a 50 yard field goal on the final play of the half. The field goal was described by Russell as a "very key play," as it gave the Eagles momentum going into the second half, and a 10-7 lead.

GSC received the second half kickoff and, behind the running of Ricky Harris and passing of Ham, drove down to the A&M 8 yard line. Once again Ricky Harris got the call and trotted into the endzone as Southern went up 17-7.

The Eagles, sparked by a 42 yard completion from Ham to Tony Belser, stretched their lead to 20-7 on a 33 yard Foley field goal on their next possession.

After forcing FAMU to punt again, the Eagles scored their final TD of the game on a 3 yard run by Gerald Harris with 13:10 to go in the game. Key plays in the drive were 11 and 9 yard runs by Steve McCray and a 17 yard Ham to Delano Little pass. The score now stood at 27-7.

At this point, FAMU started a valiant comeback attempt that left them six points shy of tying the game. They drove for two quick touchdowns by passing for 110 yards against the Eagle defense. With 4:20 to go, the scoreboard read GSC 27, FAMU 21.

GSC was able to pick up just one first down on its next possession, and

the Rattlers took over at their own 20 with 1:13 to go in the game. A couple of big sacks kept A&M from advancing beyond Southern's 38 yard line, and the Eagle defense left the field with a sign of relief as the final gun sounded.

Ricky Harris' 117 yard rushing performance earned him most valuable player honors for the game, and Tracy Ham finished up with 169 yards passing.

Coach Russell, while happy with the victory, was obviously displeased with the first and fourth quarter performances. "In the first quarter our offense wasn't any good, but our defense played well," Russell stated. "In the second and third quarters both offense and defense played well, but in the fourth quarter neither one played well."

Despite the poor first and fourth quarters, GSC raised its record to 3-0 in the Gator Bowl prompting Russell to comment, "It would be nice if we could play all of our games in the Gator Bowl."

Perhaps if GSC football continues on the upswing, the Eagles will one day be playing the University of Florida Gators in the Gator Bowl. Only time will tell.

'In the first quarter, our offense wasn't any good, but our defense played well.'

—Coach Russell

of punts, the Eagles made what could have been another critical first quarter mistake. Ricky Harris fumbled on a first and ten play, and FAMU recovered at the Southern 42 yard line as the first quarter expired. Things weren't looking good for the Eagles as they still had not recorded a first down on offense, and the Rattlers were getting the ball in good field position.

The second quarter turned out better for GSC. The defense held their ground after the fumble, forcing FAMU to punt.

Starting from their own 20, the Eagles conducted their first scoring drive of the season. The drive was sparked by several good runs by the

The George-Anne Sports

Football Summaries

GSC	0	10	10	7	-	27
FAMU	0	7	0	14	-	21
GSC - Sharpe 39 pass from Ham (Foley Kick)						
FAMU - Gentile 17 pass from Kelly (Freeman Kick)						
GSC - FG Foley 50						
GSC - R. Harris 8 run (Foley kick)						
GSC - FG Foley 33						
GSC - G. Harris 4 run (Foley kick)						
FAMU - Kelly 29 run (Freeman kick)						
FAMU - Barber 3 run (Freeman kick)						

	GSC	FAMU
First downs	16	19
Rushes - Yards	42-196	36-136
Passing	169	236
Return - Yards	87	0
Comp - AH	9-16-0	18-31-1
Punts	5-36.8	7-39.1
Fumbles - Lost	3-2	1-0
Penalties - Yards	8-89	10-85

GSC Individual Statistics
RUSHING - Ham 8 - (-25), R. Harris 18-117, G. Harris 11-45, McCray 4-24.
PASSING - Ham 9-16-0-169.
RECEIVING - Barron 4-25, Sharpe 2-66, Little 2-36, Belser 1-42.

MTSU	0	14	14	7	-	35
GSC	0	3	0	7	-	10
MTSU - Lofton 8 pass from Collier (Martin kick)						
GSC - FG Foley 23						
MTSU - Anderson 2 run (Martin kick)						
MTSU - Collier 54 run (Martin kick)						
MTSU - Stone 4 run (Martin kick)						
MTSU - Pittman 18 pass from Barnes (Martin kick)						
GSC - Sharpe 9 pass from Thompson (Foley kick)						

	MTSU	GSC
First Downs	16	17
Rushes - Yards	54-200	40-146
Passing	89	140
Return - Yards	38	15
Comp - AH	9-16-1	14-31-2
Punts	4-39.0	7-24.0
Fumbles - Lost	0-0	1-1
Penalties - Yards	3-20	10-100

GSC Individual Statistics
RUSHING - Ham 11-30, R. Harris 11-51, G. Harris 11-34, Thompson 6-25.
PASSING - Ham 8-18-2-81, Thompson 6-13-0-59.
RECEIVING - Barron 2-18, Sharpe 4-56, McWhorter 2-23, R. Harris 4-26.

— REMAINDER OF EAGLE SCHEDULE —

DATE	OPPONENT	SITE	TIME
Sept. 28	U.T.-Chattanooga	Chattanooga, TN	7:00 P.M.
Oct. 5	Tennessee Tech	Statesboro	1:30 P.M.
Oct. 12	Bethune-Cookman	Statesboro	1:30 P.M.
Oct. 19	O P E N		
Oct. 26	Newberry (Homecoming)	Statesboro	1:30 P.M.
Nov. 2	James Madison	Harrisonburg, VA	1:30 P.M.
Nov. 9	Central Florida	Statesboro	1:30 P.M.
Nov. 16	East Tennessee State	Statesboro	1:30 P.M.
Nov. 23	South Carolina State	Orangeburg, S.C.	7:30 P.M.