

Georgia Southern University

Digital Commons@Georgia Southern

The George-Anne

Student Media

4-11-1974

The George-Anne

Georgia Southern University

Follow this and additional works at: <https://digitalcommons.georgiasouthern.edu/george-anne>

Recommended Citation

Georgia Southern University, "The George-Anne" (1974). *The George-Anne*. 740.
<https://digitalcommons.georgiasouthern.edu/george-anne/740>

This newspaper is brought to you for free and open access by the Student Media at Digital Commons@Georgia Southern. It has been accepted for inclusion in The George-Anne by an authorized administrator of Digital Commons@Georgia Southern. For more information, please contact digitalcommons@georgiasouthern.edu.

the george-anne

published by students of georgia southern college

Vol. 54 No. 27 26

Statesboro, Georgia

Thursday, April 11, 1974

Frosh And Sophs Affected

Housing Policy Changed

All freshmen and sophomore students will be required to live in on-campus dorms beginning Summer Quarter of this year, Larry Davis, Director of Housing, announced recently.

Previously, some freshmen and sophomores were allowed to live in the approved off-campus dorms at Windsor Village.

Currently, only sophomores are living in Windsor Village, and most of these will be juniors by Summer, so that very few, if any, students will be required to move on-campus when the policy change goes into effect, Davis said. Juniors are permitted to live off-campus.

According to Board of Regents

policy, the residence halls on campus must be filled before students can be permitted to live off campus.

Last fall, due to the declining number of students living in residence halls, the dorms were opened with vacancies.

Davis said that the Regents' policy was one factor determining the policy change regarding Windsor Village, but that economic considerations and the college's ability to house all freshmen and sophomore students were also important in making the decision.

"We believe we will have adequate housing for all who apply," Davis said.

Students were first permitted to live in Windsor Village in the mid-sixties, when the college was growing at a tremendous rate.

Dorms could not be built fast enough to keep pace with growing enrollment, according to Davis. "Three persons to a dorm room was standard," he said.

A businessman approached the college at this time. He said he would build off-campus dorms as a private venture if the college would agree to allow freshmen and sophomores to live in them. The college agreed with the stipulation that it could supervise the dorms.

CCC Sponsors Drive

Campus Clean-Up Urged

The CCC and Student Volunteer Services are coordinating a special campaign, "Pitch-In," to clean up our campus and community. The week, April 29-May 4, is GSC's "Pitch-In" Week. The planned activities, which include a rally, a lake clean-up, a concert, a frisbee festival, culminate on Saturday, May 4, with Pitch-In Days, a day-long campaign to collect recyclable papers and all litter from the surrounding area.

National College "Pitch In!" Week will find Georgia Southern right in the middle of the country-wide effort of concerned students to do something about litter. During the week of Monday, April 29, through Saturday, May 4, which is designated as the "Pitch In!" week, Georgia Southern students are asked to do their part toward making and

keeping Southern litter-free.

All across the nation, the slogan "Pitch In!" symbolizes the concerted effort of Americans concerned about litter and ecology in general. During this special week, Apr. 29-May 4, Southern will be helping "Pitch In!" to make our college cleaner and prettier. The objective of this student effort, coordinated by the CCC, the GSC Volunteer Program, and a few specially concerned students is to help clear out the litter on our campus. Research shows that littered areas attract more litter; a clean area influences people to help keep it clean.

Thanks to cooperation from the Maintenance Department, a trash truck will be provided for the disposal of all trash collected. A special "Pitch-In!" Week

Rally is tentatively scheduled for Monday, April 29 at 5:30 p.m. in front of Landrum Center. All interested students present will find out what type of materials can be recycled and how much recycling helps our environment.

Other activities for the week include a clean-up campaign by the lake, a frisbee festival, and an outdoor concert.

The CCC and Student Volunteer Program will designate special collection centers and as many collection containers as possible. If any organization should have trash barrels, please contact the CCC.

Let's all "Pitch In" together to help save our environment. If we don't try to recycle all materials, who will? Help GSC and yourself by participating in National "Pitch In" Week.

Judicial Board Seeks Nominations

Student members of the College Judicial Board for the academic year 1974-75 must be nominated and appointed during Spring Quarter. Student assistance in nominating students to this board is requested, said Dr. James Orr, Chairman of the Board.

All regularly enrolled students who have completed at least 15 hours of academic credit at Georgia Southern College are eligible for appointment provided they meet the following criteria: (1) They must not have a disciplinary record for the last three quarters of college attendance. (2) They must have a cumulative grade point average

of 2.0 or better. (3) They must not hold the top executive office in any other campus organization. (4) They must be full-time student (12 hours or more). (5) They must be planning to attend Georgia Southern for the entire academic year.

The term of office for student members of the College Judicial Board is from September 1, 1974 through August 31, 1975.

Continued on Page 5

Enrollment Down Again

According to the latest figures from the Registrar's Office, the total enrollment at Georgia Southern College Spring Quarter is 5,308 students. This is a decrease of 372 students from Winter Quarter and 618 from Fall Quarter. Male students total 2,626 and females total 2,682.

There is a decrease in the number of freshman, but they still represent the largest classification on campus, with a total of 1,264. There are 645 men and 619 women.

There are 995 sophomores—484 men and 511 women.

The junior class has a total of 1,011 students. There are 515 men and 496 women.

The number of seniors total slightly more than those Winter Quarter. There are 963 students—503 men and 460 women.

There are 754 graduate students now attending Georgia Southern—317 men and 437 women.

Those students working on their six-year degree total 72—36 men and 36 women.

Ten To Attend Model UN

Ten GSC students will attend the National Convention of the Model United Nations next week, April 15-21, in New York.

Several colleges send groups to the Convention each year, and each group represents a country. GSC's group will represent Malaysia, and the students will participate in different committees and conventions.

Mickey Womble, a delegate from GSC, will be on the International Court of Justice. The court will consist of 15 students from different schools, and it will have mock sessions and trials.

GSC has participated in the Model UN for the past three years. The group is chosen in the fall, and they spend the year raising money and preparing themselves of the convention.

The students receive three hours of credit from the Political Science Department for working in the group one year. Their faculty advisor, Dr. Lane Van Tassell, estimates that the students spend as much time each quarter working with the group as they do with each of their other courses. The group has met daily this quarter as a

class.

Dr. Van Tassell stated, "The Model UN is not a part of the Political Science Department. All

interested students are encouraged to participate."

This year's delegation, headed by Danny Johnson, includes Jim

Sams, Mary Turner, Ellen Gross, Helen McMahon, Peter Raskin, High Waters, Mickey Womble, Brent Stein, and Don Bytner.



\$1,450 will always bring smiles, as Ellen Gross, (R), presents check in that amount to Danny Johnson, (C), and Lane Van Tassell. The total is the result of three contributions to support expenses of the Georgia Southern delegation to the National Model United Nations. Johnson, head of the GSC delegation, received the check from

Miss Gross, who was instrumental in obtaining the donations from ABC Management Services of El Paso, Texas (\$1,200); Space Services of Roswell, Ga. (\$150); and Federal Food Service of North Miami Beach (\$100). Van Tassell is Assistant Professor of Political Science at GSC and coordinator of the GSC delegation.

Nottoli's Fashions

Design Show Set

A display of fashion designs by Tony Nottoli will be in the upstairs display case of Williams Center from April 17 to April 23. The display is sponsored by the CUB.

Titled "Kaleidoscope of Fashion Design," the display shows the rebirth of fashion trends through design as seen through the designer's eyes of different eras of the past.

Included are finished designs and rough sketches of patchwork ideas showing how the designer may go through five or ten rough sketches and then select a certain detail from each sketch to utilize in the final design.

Many of the styles are reminiscent of the thirties and

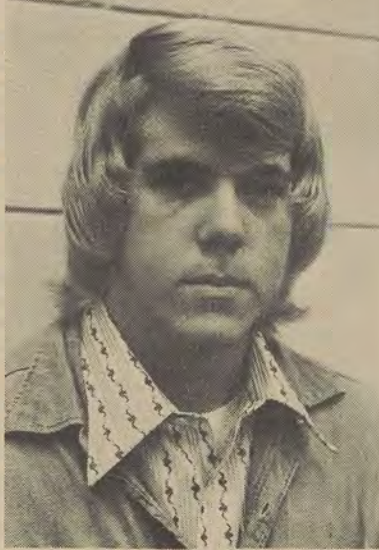
forties.

The materials used in the designs include water colors, pastels, charcoal, and felt-tip pens.

The purpose of the designs is that the theme of design is pleasing to individual taste, rather than condoning the mass clothes market.

Nottoli said, "My designs are not meant to please everyone's tastes. I am aesthetically content if only one design catches the fancy of each person."

Nottoli explained his personal reasons for designing: "The purpose of delving into actual clothing design is to increase in my knowledge of design so that I can use that knowledge in my design work for theatres."



Tony Nottoli

the george-anne/second front

New Planetarium Shows Planned For Spring Quarter Audiences

By SUE COX
G-A Staff Writer

A group of students studying planetarium operations have created several planetarium shows to be presented in the near future. One of the most recent productions, a show concerning UFO's, was presented April 4.

Under the direction of Chip Mobley, Assistant Professor of Physics, a show concerned strictly with astrology is now being developed. It will be presented later in the spring.

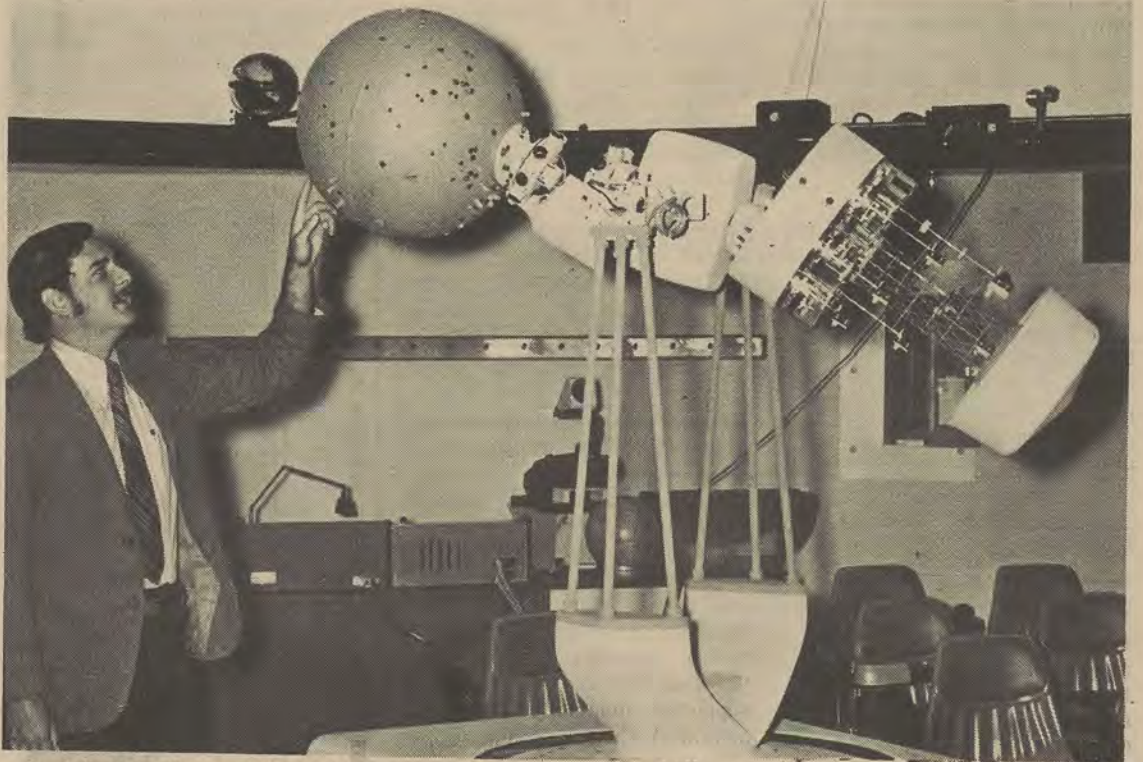
The shows are usually presented on Thursday evenings and last from thirty minutes to an hour. A telescope viewing session on the roof of the Physics-Math Building follows the planetarium

shows.

About 6,000 people have visited the planetarium this year. There is no admission charge, and GSC students and faculty as well as the general public are invited to attend.

The course in planetarium operations is relatively new, and is not listed in the bulletin. The two-quarter sequence is under Mobley's direction and is offered each quarter. Anyone interested in taking the course should contact Mobley.

A repeat production of "Mythology Through the Ages" was presented on March 28. The award-winning show was created by Mobley and Dr. Kathleen Dahir, Assistant Professor of French.



Assistant Professor Chip Mobley examines the GSC Planetarium's projector. Several new

planetarium shows are planned for this quarter.

Cast Chosen For 'Little Sheba'

The cast for the Masquers' Spring Quarter production has been announced. The play, **Come Back Little Sheba**, will be presented May 8-11.

The cast is as follows: Doc—Carlyle Dukes; Marie—Lane Loyd; Lola—Becki Bailey;

Turk—Ron Pittman; Postman—Mike Partridge; Mrs. Coffman—Trenice Mullis; Milkman—Kerry Loudermilk; Messenger—Stewart Nelson; Bruce—Al Wallace; Ed Anderson—Michael Warren; Elmo Huston—Allen Greene.

Come Back, Little Sheba was written by William Inge. The Little Sheba of the title is a puppy who disappears from the home of Doc and Lola. The play focuses on the problems of Doc, Lola, a boarder named Marie, and a track star named Turk.



GSC students relax and enjoy the action as the

Eagles mark another victory, bringing their season record to 26-1.

New CCC Officers Attend SAC Meeting

By DON WOOD
G-A News Editor

Three of the recently elected CCC officers for 1974-75 attended the April meeting of the Student Advisory Council to the Board of Regents. Those attending were Larry Abbott, President; Helen McMahon, Vice-President; and Bert Roughton, Coordinator of Auxiliary Affairs. The meeting was held at Clayton Junior College at Morrow, Ga.

The Student Bill of Rights passed SAC, and will be put into final form to be sent to the Board of Regents for approval. The Bill lists the rights of students as SAC sees them. These rights include the right to see college records concerning the students, the right to live wherever the student wishes, and the right to buy or not buy the school's meal plan, as the student wishes.

A representative of Western Union told SAC that his company supports the bill that would increase veterans benefits by 23 per cent. In order that veterans may contact their congressmen in support of this bill, Western Union is offering special rates whereby a veteran may send a 100-word mailgram for about a dollar. The normal cost would be about \$15. He said that local Directors of Veterans Affairs would be given information about this.

Larry Abbott was named to the research sub-committee of the Student Regent committee. The committee is trying to get a full-time student position on the Board of Regents.

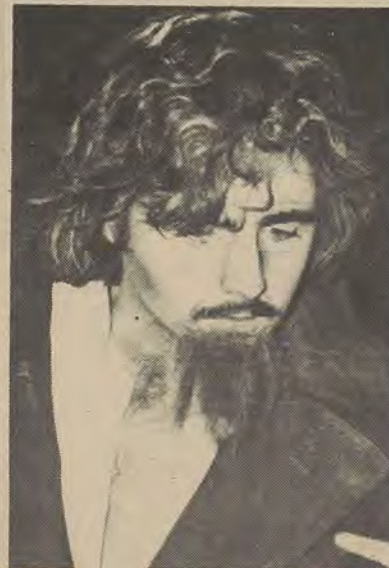
Elections for next year's SAC officers will be held at the May meeting.

Board Of Regents Holds Meeting On GSC Campus

The Board of Regents met at Georgia Southern on Tuesday and Wednesday of this week.

Tuesday morning, the Regents were divided into small groups and given a tour of the campus by students. At 4:30 Tuesday afternoon, a special program was held at the Education Building, including a film and a display of faculty publications.

Details of the Regents' visit will appear in next week's George-Anne.



Carlyle Dukes as Niko in "The Heath Cobblers."

Internship Applications Due Monday, April 15

The deadline for applications for the Georgia Internship Program for summer quarter is Monday, April 15. Applications should be turned in to Dr. Mann of the Political Science Department, Newton 115.

Students interested in a fall quarter internship but who will not be on campus during summer quarter may also apply at this time.

Interviews are scheduled for April 17.

people at southern

Career Education News, published by McGraw-Hill, announced in a recent issue that the Career Education Units for Kindergarten through Grade 6, developed by Mr. Ed Woodall, Department of Instruction, and his colleagues in the Lincoln County, West Virginia Career Education Project, have been selected for dissemination by the U.S. Office of Education to school systems throughout the country. The units were selected along with those developed in two other projects, the Cobb County, Georgia, Career Education Program and the Allied Health Project at UCLA, by an educator committee appointed by the U.S. Office of Education. They will be sent to the curriculum laboratories in each state for dissemination through state research coordinating unit directors. Woodall was a member of the West Virginia project staff prior to coming to Georgia Southern College.

Dr. M.I. Ellaissi, of the Department of Secondary Education, participated in the 12th Annual Convention of the Conference on English Education, March 28-30, 1974. He spoke on "Methods Classes: What Is Actually Happening in Them and What Ought To Be." Dr. Ellaissi also participated in the meeting of the Committee on Ends and Means in the English Methods Course, a CEE standing committee.

Dr. John Graham, Professor of Music at Georgia Southern, was recently awarded a citation plaque by the Georgia Association of Educators at its annual convention in Atlanta.

The award recognized Graham for his work as Editor of the Georgia Music News.

Dr. Walter Peach, Associate Professor of Exceptional Child Education, was recently installed as President-Elect of the Georgia Federation Council for Exceptional Children at the GAE-CEC meeting.

The Council for Exceptional Children is composed of over a thousand members and is the professional organization for those working with the exceptional child.

Dr. Frieda Gernant, Vice-President of the National Art Education Association, recently attended the Association Board of Directors meeting in Chicago.

She will also participate in the annual conference of the Association this week in Chicago.

The Georgia Southern Science Explorer post recently held a field trip to the Edwin I. Hatch nuclear power plant in Baxley, Ga.

The group, which consisted of 14 high school students from the Statesboro area studies small scale reproductions of the power plant and viewed a filmstrip presenting the journey by barge of the nuclear reactor from Chattanooga, Tenn. to its present location outside of Baxley.

The field trip was led by Georgia Southern professors Dr. Bill Lovejoy, Gordon Mayfield, and Arthur Woodrum. Advisors for the Explorer Post are Lovejoy, Mayfield, Woodrum, and Dr. James Darrell.

Dr. Ernest R. Moser, Assistant Professor of Economics, will present a paper at the upcoming meeting of the Rocky Mountain Social Science Association.

The paper is entitled "Recent United States Foreign Aid in Theory and in Practice: A Critical Evaluation."

Moser received his B.S. Degree from St. Louis University and his M.S. and Ph.D. Degrees from Texas A&M.

The new slate of officers for the Georgia Southern Chapter of the Association of Childhood Education (ACE) were recently installed.

The new officers include Karen Chambers, President; Brenda Alford, Vice-President; Carol McDowell, Secretary; Julia Bailey, Treasurer; Linda Stone, Historian; Sherry Frazier, Project Chairman; and Linda Stadnick, Social Chairman.

Dr. Richard Stapleton, Associate Professor of Management, has recently published five case studies at the Intercollegiate Case Clearing House at Harvard University.

Problems, facts, and data for the cases were taken from business situations in Georgia, South Carolina, and North Carolina. The research effort was supported financially by a grant in 1973 by Georgia Southern.

A choral composition by Dr. David Mathew, Assistant Professor of Music, has been accepted for publication by the Edward B. Marks Music Corporation, one of the five largest in the United States.

"I Carry Your Heart With Me" is composed on a text by E.E. Cummings and was premiered at the recent GSC College Chorus concert in February.

Dr. Larry Price, Professor of Finance GSC, was the featured

speaker at a recent amateur radio convention in Jacksonville, Fla.

Price is a long-time radio enthusiast and is currently serving as a member of the Board of Directors of the national organization of "Hams," the American Radio Relay League of Newington, Conn.

Dr. Clarence McCord, Head of the Department of Speech at Georgia Southern, has been selected for listing in the Sixth Edition of The Directory of American Scholars.

McCord holds degrees from Louisiana College, Golden Gate Baptist Theological Seminary, and Louisiana State University.

An article by Dr. F.C. Ellenburg, Associate Professor of Professional Laboratory Experiences at GSC, will be highlighted as part of the feature section in the September 1974, issue of the W.E.S. Bulletin.

The article is entitled "Should Corporal Punishment Be Permitted in the Schools?"

An article by Dr. Del Presley, Associate Professor of English at Georgia Southern, has been published in the Spring issue of the Georgia Review.

The article, entitled "Carson McCullers and the South," discusses the writer's quality measured against her hatred of the South.

Dr. Howard F. Mosely and Dr. X.L. Garrison, GSC Department of School Services—School of Education, recently

chaired visiting committees of the Southern Association of Colleges and Schools (SACS).

They served as co-chairman of the visiting committee at Emanuel County Institute. Garrison chaired the SACS committee which visited Camden County High School. Mosely also recently served as chairman of the Finance Committee for the comprehensive survey conducted by the State Department of Education in Wayne County.

Georgia Southern Music Professors Sterling Adams and Jack Broucek recently served as piano judges for the District IV Festival held at Dekalb Junior College.

The festival was sponsored by the Georgia Music Educators association.

Broucek is Head of the Department of Music at Georgia Southern while Adams is Associate Professor of Music. Broucek also recently served as piano judge at the Savannah Music Teacher's Association auditions for state competition.

Dr. Lynn Dellenbarger, Callaway Professor of Banks and Finance, was recently elected to the Executive Committee of the Southern Case Research Association at the Spring Case Workshop in Dallas.

He will hold the position for a two-year term.

Dr. Frederick K. Sanders, Assistant Professor of English, recently attended the Orientation Exercises for the third class to

enter the Sherman College of Chiropractic at Spartanburg, S.C.

Sanders, who is a member of the Board of Trustees for the college, serves as advisor on academic affairs. Sherman College is the first chiropractic college to be established in the Southeast. The college is named for Dr. Lyle W. Sherman, a distinguished chiropractor of international reputation, who has made numerous contributions to chiropractic technique and science.

One hundred and thirty state employees from Georgia Southern recently attended a Driver Improvement Program at GSC.

The program was offered to drivers of state vehicles in an effort to encourage good judgement, driving practices, and techniques. The teaching method used, known as the "Drivocator System," integrates programs developed from testing which are produced into a multimedia teaching system.

Used in the system are color motion picture, filmstrip, and audio tape to present classroom instruction. The program provides individual involvement and full class participation by illustrating the problems and hazards of every day driving.

Dr. John Van Deusen, Department of Elementary Education; Dr. Ed Wynn, Head, Department of Instruction; and Mr. Charles Bonds, Department of Educational Psychology and Guidance, served on a Southern Association Visiting Committee to Long County Elementary School, Ludowici, Ga., April 2-4. During the past year Dr. Wynn has served as consultant to the school. Dr. Van Deusen served as chairman of the Visiting Committee.



Our new Bermuda Bag of Tricks changes colors and patterns to go with any outfit.

New bermuda Bag of Tricks by Tilli's

\$16.00

The new 4 button bermuda found at

Tilli's

**STOP
BY
TODAY!**

**Uptown
Statesboro**

CONCERT

**Roy Buchanan
Special Guest Star**

Jim Stafford

April 18, 1974

GSC Students - \$3.00 with I.D.
Tickets at McCroan between 2 & 4 o'clock



Patricia Hearst's kidnapping is supposed to be over. She is now a part of the group that set out not only to kidnap her but to kill her if her parents did not comply to their outrageous demands, or so the tapes say. But the whole incident hardly seems over, the evidence seems conflicting and, worst of all, the terrorists seem to have won.

America has been through many bad times. The McCarthy trials and Watergate to name important ones, looked like they could ruin the nation. But the Hearst kidnapping to me is even more serious; it's underground, it's professional and it strikes at the heart of the country through political blackmail. These people are dedicated and believe they are right and are willing to kill others and die themselves for a cause.

Reviewing the facts, 20-year-old Patricia Hearst was kidnapped by the Symbionese Liberation Army, a group that seemed to spring up from nowhere. After two weeks, Randolph Hearst was told that the kidnappers had sent radio

One Demand Leads To Another

station KDFA in Berkeley a radio tape. The tape contained the reason for her capture (her mother, a member of the University of California Board of Regents was supposed to be influential in lending money to corporations the SLA did not approve of and father, editor of the San Francisco Examiner was accused of being the chairman of a fascist media empire.) The Hearsts were told to distribute \$70 worth of meat, vegetables and dairy products to all those in California welfare, social security, or food stamps, and every convict on parole, every disabled veteran—approximately 5.9 million people. And as everyone knows, the food distribution was a fiasco—people not actually being helped at all by the \$70 worth of goods, and money who were enabled to receive the food refusing it on moral grounds.

And finally, two months later, Patricia Hearst's final message through tape to her parents that said she had joined the SLA and would not see them again.

I'm baffled by the way the story ended, if indeed it has, and more than just a little concerned. Some say that Patricia was in on the kidnapping from the beginning, that she knew beforehand that she would be captured and

also knew the demands on her parents. Another theory is that Patricia is dead, the tape made several weeks ago and sent to cover up the murder. The final is that Patricia did actually join the SLA but is not as happy with her decision as she pretends (voice wavers on the tape). Whatever the real ending to the story, it remains a tragic one. One kidnapping forced the hand of an influential editor; and the indications are that through kidnappings, a reactionary group like the SLA can get almost anything they want. Compromising with a group like this will not get the victim back, as was shown. And one demand could lead to another, until what?



LETTERS TO THE EDITOR

Portia Warns

Pfaffenberger

Dear Editor,

Lies! You have printed lies about me!

I am referring to the letter from Dr. Pfaffenberger in which he quotes from the well-known secret "Faculty Evaluation Booklets of Students" and lists some unkind faculty comments on my character and beauty.

In reality I am no more and no less than a typical, well-meaning GSC coed (Full name? Same as when empty; Sex? Never on Sunday; County? Up to a hundred; Present Address? No, slacks; Hobbies? 38") who is

struggling valiantly with her difficult studies in Gerwoman (the German course for girls), Mrs. Shakespeare: The Female Behind, and the math course for females, Algebrassiere, and getting some of my kicks by writing vicious comments about faculty members on the CCC Evaluation Sheets.

Let the faculty beware. I am a very good friend of Ms. Mary-Annette "Strings" Giddy, a very influential person when she is sober.

I must add that Mrs. Pfaffenberger's so-called "cupcakes," passed out by Dr. Pfaffenberger to his students precisely two days before the CCC Evaluation was given, tasted like dried-out dogfood rolled in rancid coconut; even the

cafeteria food was better.

But I forgive you all. To quote another Portia, the famous Portia of Ovid's Anthology of English Literature, "The quality of mercy is not ruptured. It droppeth as the Gentiles reign, from heaven. Upon the place beneath a stitch in time keeps the doctors away. 'Tis nobler in the mind to suffer the slings and arrows of outrageous fortune than to burn."

In closing, I would like to wish an early Merry Christmas to all my good friends and say "hello" to my mother. Hello, Mother.

Sincerely,
Portia Puke

Other Side Of Story Wanted

Editor,
George-Anne:

With reference to your editorial in the April 4th issue, I would like to hear the other side of the story—the police officer's side. And more of the "quotes" between student and Judge besides the ones "well worth remembering." If there was an injustice done I would like to see it corrected.

I know that a police officer's lot is not wholly pleasant, with all the situations he is faced with daily. They take a lot of verbal abuse. I know for a fact that too many times when a suspect is stopped for good reason, the officer gets a lot of smart-alec lip, plus an attempt to assault.

I believe that if a person is innocent of any wrongdoing, he will get a fair shake 98 per cent of the time.

E.Z. Martin

G-A Congratulated

Dear Editor
and Staff of
the George-Anne,

I for one, am a member of the silent majority. I am sick and tired of hearing and seeing nothing but complaints about the G-A. The dependable staff has never yet failed to put out an issue, and even been known to put out a few which were not mandatory. I would like to congratulate the G-A staff, and commend them for their efforts. If it were not for such an outstanding minority of GSC students, there wouldn't be a G-A to criticize.

Sincerely,
Jan Daniel

Breakers Appear Without Warning

GSC motorists ran into quite an unpleasant surprise last week—speed breakers. Now, speed breakers themselves are not a bad idea—but speed breakers without any warning are more of a safety hazard than a help. Warning signs need to be posted before the driver gets to the breaker so he can reduce his speed. Also, the G-A suggests that the speed breakers be painted yellow so that motorists can see them well in advance. The ideal situation would be for motorists to be driving so slow that the breakers are no cause for alarm; but then there wouldn't be any need for a speed breaker, right?

Other comments on traffic and safety are bravo, bravo! Thumbs up to the safety committee for the following: (1) investigating sites for bicycle ramps; (2) searching for safety hazards; (3) removing the barrier, even if temporarily.

Freshmen Sophomores Back To Campus Dorms

Freshmen and Sophomores have been dealt a blow by the housing office—they now must live on campus when formerly they could live in Windsor Village housing. This is a definite advantage to the school but is an infringement of student rights. Housing has long been a debate at Georgia Southern and with this most recent move, the debate will probably become more heated in the near future.

Living in the dorm, as most students will admit only after leaving it, can be a valuable experience. To most, it is the first living quarters away from home. Living in the dorm one learns to wash his own clothes when the washers are available and in working order, learns to study amid the noise of screaming females or yelling boys and loud music. He should learn quite a bit of sharing, phones, bathrooms, washers, irons, and most important—dorm life encourages friendship. Many a student will remember late night talks or other fond memories of people he met in the dorm. But the student should be able to choose the dorm he chooses to live in.

As related in the news story on page 1, the school built so many dorms to accommodate a growing GSC student body and then agreed with Windsor Village that students could live there under GSC regulations only after campus dorms were filled. Now that the enrollment is decreasing, the housing office is following their regulations to the hilt. The problem will probably not be solved in the immediate future—housing will remain a sore spot as it always has. But if the housing office intends to capture people on campus, they must make dorm life very appetizing. The present intervisitation will help some; but good dorm maintenance, helpful dorm mothers and pleasant eating facilities would be some careful considerations for smart housing officials.

Dear Safety Committee:

At the four-way stop, after everyone has stopped, who makes the first move, and in what order do you go from there?

Baffled

the george-anne

Thursday, April 11, 1974

MARTHA ALICE GIDDENS
editor

MARGO LEMACKS
managing editor

DON WOOD
news editor

CARROLL POLLETT
business manager

STAFF

SALLEY COTTEN Features Editor
TONY BARNHART Sports Editor
GARY CREW Copy Editor
TONI NOTTOLI Cartoonist
JOHN GOLD Cartoonist
BARBARA MANN Typist
MARTY FISCHER Asst. Sports Editor

BUSINESS STAFF

MICKIE WOMBLE Accountant
KAY THOMAS Circulation Manager
DAYNA JONES Advertising Assistant

STAFF WRITERS

Marci Wendelken, Jimmy Cason, Rachel Rhodes, Linda Kay Williams, Brenda Bethel, Lisa Torch, Sue Cox.

The George-Anne is the official newspaper of Georgia Southern College. Published weekly, except during examinations and holidays, and bi-weekly from June to August. Subscription rate is \$3.50 per year. Office located in room 112, Frank I. Williams Center. Telephone 764-6611, extension 246 and business extension 418. Printed by the Statesboro Herald Publishing Company, Statesboro, Georgia. The opinions expressed on these pages are those of the editors or student writers and not those of Georgia Southern College.

Safety Committee Responds To Students

Barrier Removed On Trial Basis

The campus community is keenly aware of the fact that early during the 1972-73 academic year a barrier was placed across Georgia Avenue as a campus safety measure. This action was taken because of the sincere belief that vehicle traffic on Georgia Avenue was excessive and was endangering the lives of both pedestrians and drivers. The decision to take that action was not made hastily. On the contrary, it was made following a study of reports voiced by both pedestrians and drivers who had witnessed or been involved in accidents or near-accidents blamed on both traffic congestion and on the reckless driving habits of too many drivers. To follow up these complaints, the Safety Committee conducted a study of traffic conditions on Georgia Avenue and found that most drivers neglected to give pedestrians the right of way, to drive defensively, or to move within the safe speed limit. Based on this evidence, the committee's recommendation for closing

Georgia Avenue to through traffic was approved by the college administration.

Since the placement of the barrier, many individuals have voiced their support of it expressing the belief that the campus has been made less hazardous for all concerned. However, many have more loudly expressed their disapproval of it indicating that through traffic convenience should be given greater consideration.

The college administration has approved this action on a trial basis starting in mid-April. Speed breaks have been installed to encourage vehicle operators (those who would not otherwise do so) to move at a rate below the speed limit. The college administration stresses that the new arrangement will be conducted and closely observed on a trial basis; and also stated that, should traffic hazards again warrant the closing of Georgia Avenue to through traffic, it will be closed permanently.

The committee would like to express its appreciation to those individuals who have made both pro and con suggestions concerning the issue at hand. We believe that there will be no need for closing the roadway again in

the foreseeable future if vehicle operators will drive defensively, yield the right of way to pedestrians, move within the posted speed limit, and attempt to reduce traffic congestion to a minimum by walking or bicycling to and from classes when possible.

Lewis Selvidge
Safety Committee Chairman

Bicycle Ramps To Be Installed

During recent weeks the campus Safety Committee has surveyed the campus to determine where bicycle curb-ramps are to be placed. Approximately 19 sites were identified on campus; the ramps will, hopefully, be installed during spring quarter. Those areas of heavy travel are to be installed on a first priority basis.

The Safety Committee encourages the use of bicycles on campus to help alleviate the increasing motor vehicle traffic. Bicyclists are urged to observe all safety precautions and yield the right of way to pedestrians at all times.

John Versaggi
Safety Committee.

Safety Committee Soliciting Aid

The campus Safety Committee is interested in isolating potential safety hazards on the campus. In doing so, we are soliciting the aid of the entire college community. We are interested in all safety hazards whether they pertain to:

1. Traffic and parking
2. Buildings (within or without), or
3. Grounds.

Hazardous conditions that are brought to our attention will receive prompt attention in the form of evaluation by the com-

mittee, and, if conditions warrant, immediate notification will be made to the proper authorities for rectification.

If something of this nature comes to mind, please contact one of the committee members below, or place a message in the CCC suggestion box in the Williams Center noting the location and nature of the potential safety hazard.

Paul Carr, Box 8073
Joseph Franklin, Box 8584
Paul Herrick, 213 E. Savannah Ave., Statesboro

Richard Petkewich, Box 8064
Lewis Selvidge, Box 8044
John Versaggi, Box 10949

Stafford To Appear April 18th



Jim Stafford is a rare talent, a true original. His musicianship is impeccable, as singer, writer and guitar-banjoist; and his natural wit is inseparable from his music.

Born in Winter Haven, Florida, Jim has the Southern-bred charm, soft drawl and easygoing manner that characterize so many of his show business landmen.

Jim started playing guitar when he was 14, and growing up in Florida. Seven years later he was working with the Grand Ole Opry in Nashville. Shortly after that, he moved to Atlanta and began performing as part of a singing duo. Then, five years ago, his partner decided to pack it in and Jim went out on his own. He is now a regular at some of the country's top clubs, including Mr. Kelly's in Chicago and the Cellar Door in Washington, and is presently making plans to embark on a countrywide tour which includes New York's Bitter End and the Troubadour in Los Angeles. And wherever he goes, critics jump on the Stafford bandwagon...giving out rave reviews and predictions of stardom.

John Huddy, writing in the

Miami Herald, gave flat-out predictions that Stafford will become a superstar within the year. He's that good. And best of all, everything is his own. There's not an unoriginal, hackneyed, ordinary moment in his show." Other reviewers agree: "(The show) is a total delight, wonderfully original and absolutely on the mark." (Chicago Today)... "His original material often borders on the brilliant..." (Variety)

In 1973, Jim signed with MGM Records. His first single, "Swamp Witch," made the top 40 across the country; the second, "Spiders and Snakes," makes it two for two as it's heard across

the radio dial. The single "Spiders and Snakes" is a simple ditty of country courting customs...and if that doesn't sound compatible with arachnids and serpents, it may give insight to the pixilated Stafford humor.

On the Merv Griffin Show, Jim was asked by the genial host, "Would you consider yourself a hippie?" Undaunted, Jim replied, "Well, I'm sort of a cross between a hick and a hippie...I guess you might call me a hickie."

Whether the story of his life or the story in his songs, if Jim Stafford tells it, it's bound to be zany, entertaining, winsome...and good.

Why You Should Shop Instant Marts

Reason No. 9:

"What may be normal, sane, healthful for the vast majority affords us no criterion of behavior where the exceptional individual is concerned."

Henry Miller

Beverage Special every weekend.

We cash checks.

Open til 1 a.m. Friday and Saturday.

Sandwiches at all hours.

Gasoline on West MAIN — Sundays included.

step into
fashion with
Keds' grasshoppers

Foot-flattery is back in style. With great new tops to enchant your eye and bottoms to comfort your sole, Keds Grasshoppers are made to glorify your foot. Pick a style. Any style. And be a light-hearted step ahead of fashion.



\$14⁹⁹

TAHOE
(espadrille)
Yellow
White

PATTERSON
-GRIFFIN
SHOES

STATESBORO MALL

CONCERT

Roy Buchanan

Special Guest Star

Jim Stafford

April 18, 1974

GSC Students - \$3.00 with I.D.

Tickets at McCroan between 2 & 4 o'clock

Schedule Of Events

April 12-14	West German Gymnastic Meet and Exhibition, Hanner Fieldhouse, 7:30 p.m. 7:30 p.m.	April 17-23	CUB Art Exhibition
April 14	CUB Free Movie—"High Plains Drifter"—50 cents admission, McCroan Aud., 9 p.m.	April 18	CUB Arts & Crafts Exhibition; Williams Center, 9 a.m.-5 p.m.

-Classified Ads-

Expert work done on your TV and radio. Fast dependable service plus low prices. Call 764-2849.

Students with experience in either Cobol Programming or Computer Operations interested in working Part-Time, please apply at the Computer Center Office.

American Lawn Service needs part-time workers for outdoor work, paid by job. Good earnings for hard workers. Call 764-9888.

Planning to come to Cape Cod this summer to work or play? Write now for valuable information pamphlet covering where to stay, what to expect to pay for it, where to start looking for work, what types of jobs are available, average wages and much more.

Send \$1 and a self-addressed, stamped envelope to me. Ms. E. Ambeel, Pleasant Ave., Craigville, Mass. 02636.

10 week-old puppies, mixed breed. Contact Fred Richter, ext. 560 or 865-2564.

LOST

Gold wire frame glasses, in vicinity of library, call 764-7969.

FOR SALE:

1973 Kawasaki 500, call 764-7314 from 8-9:30 a.m. Best offer.

Sylvania turntable and speakers, like new; \$95, call 764-5580.

1973 Ford Torino, A-C, automatic trans., low mileage. Equity and take over payments. Call 764-5580.

FOR SALE

Flex 7s Petri 35 mm Camera, Sony Mirco T.V., Two Cassette Tape Recorders, Water Skis, and an AeroDyne Flight Computer. Call for prices—Paul A. Herrick, 764-6907.

Harley Davidson 350cc. 1970—Sprint 4,500 miles. Excellent condition. \$375.00. Sylvania, Ga. 863-4713.

1971 Oldsmobile Cutlass in top-notch condition. Asking \$1,200, must sell, moving to Nashville. Call Gary West at 764-9954.

Complete scuba diving set. In excellent condition—has been used only twice. Contact Jimmy Parrish, 764-3316. After 5 p.m. call 764-9927.

Banjo in excellent condition, only \$25. Call Gary West, 764-9954.

Texas Instrument Calculator: Features Functions; square roots; scientific notations; division; multiplication; features floating decimal, reciprocal. For information contact Ron Eaman, Room 171, Physics-Math Building Ext. 292 or at night at 764-6080.

Canoe; 17 inch Grumman Square Stern, adaptable for sail. MUST SELL; price: \$285. Contact Ronnie Owens. 764-6024.

Men's 10-speed Canadian Bike, Excellent Condition—Like new. 764-7812. Call Ronnie—\$80.

LOST:

LOST in Stratford Hall: a man's star sapphire ring set in silver. If found, please contact Keith in room 187. Phone 764-9835. Reward offered.

Good Friday services will be held at the Trinity Episcopal Mission at 12 noon and 6 p.m. Sunday's Easter celebration will be at 8:30 a.m.

WANTED:

Poetry, short stories, artwork, photography for Miscellany, GSC Literary Magazine. Send Contributions to Michael McCall, Box 11219 Landrum.

Baby-sitting services available at this phone number—764-3262. Hours are available for full-time 5 days a week, or part-time.

FOR PROFESSIONAL TYPING SERVICES CALL: 764-9460 or 764-6858.

Expert repair on your TV and radio; fast dependable service plus reasonable prices; call 764-2849.

50 cents per page, for double-spaced pages. GUARANTEED WORK. Will type TERM PAPERS, THESES, OUTLINES, FOOTNOTES, FAMILY HISTORIES, etc. Call Marcia after 4:30 p.m. weekdays at 865-2252. Weekends—any time.

FOR RENT

Nice two-bedroom mobile home—with large carpeted living room and kitchen—furnished—located close to GSC on a large spacious lot in a quiet area. Rent is \$110 a month for two. Call 764-2849.

Unique College Housing—3 bedroom, 2 bath, fully-carpeted house with color TV, washer-dryer, and all cooking utensils provided. This house is not like any other college housing available. Will accommodate six easily—\$270 monthly—a steal at this price. Call 764-3104 after 5 p.m.

Announcements

The Spring Quarter School of Education Faculty Meeting has been scheduled for 4-5 p.m. Thursday, April 18, 1974, in 228-229 of the Education Building.

A varied program of chamber music for flute and strings will be presented in The Foy Recital Hall Wednesday evening, April 17, beginning at 8:15. John Kolpitke, GSC violist, will be joined by Savannah Symphony members Barbara Hofer, flutist, Robert Rimer, violinist, and Walter Rumpel, cellist, for the final Faculty Chamber Concert of the 1973-74 series.

The program, open to the public without charge, includes music by Beethoven, Roussel, Huybrechts, and Mozart.

Plans are now being made for sorority rush this fall. Any girls who think they might be interested in participating in fall rush, should sign up today, April 11, to receive more information this summer. Tables will be set up in Williams and Landrum centers during lunch and dinner. You are under no obligation so if you are undecided about sorority life sign up to receive their information this summer.

"Alcoholism and Possible Recovery," a non-credit course taught by Dr. David Ruffin, is being presented daily at 11 a.m. in the Student Counseling Center on the Ground Floor of Williams Center. There is no charge.

WANTED:**GSC STUDENTS**

The GSCIDFS (Georgia Southern College Internal Department of Food Services) is seeking students for the crime of idleness and general waste of muscle power. These students are armed with ability and should be considered helpful. These individuals were last seen on the campus of Georgia Southern College practicing flagrant otiosity and gross misuse of exertion. All efforts are being made to apprehend these criminals and sentence their excess energy to honest hard labor. Their trial will be immediately, but their sentence will begin starting Fall Quarter 1974.

Their crime of idleness must "be paid" top wages for the work sentenced them. They will furthermore be advanced in pay for effectiveness; i.e., the better they become at breaking rocks, the more "pay" they will receive.

If you have seen the above-stated students, please report them immediately to the Captain of Labor Punishment, Ben S. Dixon (an honest man), at extension 299 or 360 and you can rest assured that the said individuals will receive their just reward.



Associated Photographers

"Natural Color Photography"

Sturgis McKeever
Clyde E. Currie III Douglas A. Currie

*Arrange for a
Natural Color Portrait
for Mother's Day.
We have a special offer for you!*

call or come by for an appointment
9 a.m. till noon and 1 p.m. till 6 p.m.
Monday thru Saturday University Plaza
TELEPHONE 764-2425 Statesboro, Ga. 30458

Judicial Board

stitution require that the present College Judicial Board review nominations from the student body and the faculty and prepare a list of 12 nominees which will be submitted to the Central Coordinating Committee. The CCC will choose any four of these 12 nominees for appointment to the College Judicial Board.

If anyone is interested in becoming a member of the College Judicial Board or knows someone he feels is qualified to be on the College Judicial Board he is urged to submit names to the Chairman of the College Judicial Board before Wednesday, April 17, 1974. All nominations should

include: 1. Full name of nominee, 2. Address and telephone number of nominee. 3. A paragraph stating the reasons why the person making the nomination feels the person being nominated will be effective as a member of the College Judicial Board.

All nominations must be signed by the person making the nomination. A complete description of the procedures for appoint members to the College Judicial Board may be found on page 90 of the Eagle-Eye, Student Handbook.

All nominations should be submitted before Wednesday, April 17, to:

Continued from Page 1

Dr. James D. Orr, Jr.
Chairman, College Judicial Board
Office of Student Personnel
Georgia Southern College

How come so many people get sick the day the boss takes off?



Practicing at the bar doesn't necessarily lead to a law degree.

CONCERT

Roy Buchanan

Special Guest Star

Jim Stafford

April 18, 1974

GSC Students - \$3.00 with I.D.
Tickets at McCroan between 2 & 4 o'clock

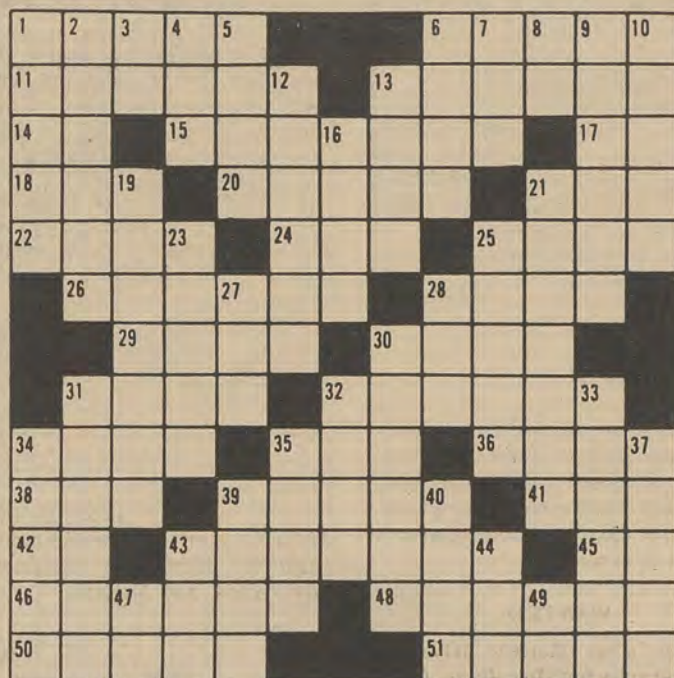
george-anne crossword puzzle

ACROSS

1. Sign of the Zodiac.
6. Icy coating.
11. Colors reddish-brown.
13. Treeless plain.
14. Continent (ab.).
15. Sign of the Zodiac.
17. Bovine.
18. "La-la"'s companion.
20. Certain tactics.
21. Saratoga Springs.
22. Cheer
24. Oriental game
25. Candid.
26. Sign of the Zodiac.
28. South African lily.
29. Dutch river.
30. Combining form: pertaining to Mars.
31. Word.
32. Sign of the Zodiac.
34. Helps.
35. Contemptible person.
36. Verne's Captain ----.
38. Befuddled (Scot.).
39. Elementary.
41. Rensselaer Polytechnic Institute (ab.).
42. Prefix: not.
43. Rigorous.
45. Man's nickname.
46. Pass.
48. Anemia of a certain cell.
50. Pampered one.
51. Purchaser.

DOWN

1. Robust.
2. Turkish inn.
3. Pellet.
4. Research (ab.).
5. Curves.
6. Jail (coll.).
7. Sign of the Zodiac.
8. Epistle (ab.).
9. Epic poem.



10. Native of Houston.
12. God of sleep.
13. Mess hall regular.
16. Old Portuguese coins.
19. With ice cream.
21. Oxford minister famous for unintentional interchange of sounds: "It is kistumary to cuss the bride."
23. Waikiki bashes.
25. Liquid part of any fat.
27. Sprinted.
28. Long -- of the law.
30. High perched strongholds.
31. Deep black alloy.
32. Outburst.
33. Transfix.
34. Sign of the Zodiac.
35. Examine carefully (coll.).
37. Lubricator.
39. A certain body.
40. Baby bed.
43. Quick to learn.
44. Old French coin.
47. Air Force (ab.).
49. State (ab.).

Answer to Puzzle on Page 8.

DIAL 511
GEORGIA SOUTHERN NEWS

Georgia Southern College Bookstore



we concentrate
on you!

Majoring
in
Service

Landrum Center



Invisible Dragon

Continued from Page 11

Robin and Rhonda Blankenship, Marilyn McKinney, and Sherwood Carter was good filler even if not of concert perfection. The townspeople gave nice body to the cast allowing for much interaction with the major characters.

The play achieved its goal of providing 2,500 Bulloch County school children with a pleasant break from the normal routine of the classroom.

It was produced under the auspices of the Statesboro Regional Library, Bulloch County School District and GSC.

COS COB

Brings On Spring With
Soft Pastel Knits



So pretty. In easy-care doubleknit polyester with the rich-grained texture of linen. And so perfectly tailored. See how the blazer's pocket detailing is repeated on the braid-belted, pleat eased skirt. Deliciously plaided partners in toffee/white, aqua/white, shrimp/white, born to be worn with the long-sleeved dooby knit shirt in solid toffee, aqua, shrimp, cream. All, 8 to 18. The blazer, \$24⁹⁰ The skirt, \$15⁴⁰ The Shirt, \$11⁹⁰

DISCOUNT PRICED - Second Floor

at

Minkovitz
Quality Discount World
Uptown Statesboro
Park Free - Midtown Plaza - Rear of Store

CONCERT

Roy Buchanan
Special Guest Star

Jim Stafford

April 18, 1974

GSC Students - \$3.00 with I.D.
Tickets at McCroan between 2 & 4 o'clock

ORGANIZATIONAL NEWS

Kappa Delta

Kappa Delta sorority had a dinner honoring the baseball players Sunday afternoon after their victory over Georgia Tech. The sorority has been supporting the team by selling cushions and ushering at the games.

White Rose is coming up at the end of the month. It will be held at Jekyll Island.

Initiation for Amy Wilson will be held at the end of the month. Bonnie Martin was wildcatted Tuesday night.

Softball season starts Monday, and we are looking forward to a good season.

Alpha Delta Pi

Susan Garner and Dayle Weinkauff represented ADPi at a Panhellenic Convention in Tallahassee, Fla. last weekend.

Tommy Glisson, an ADPi big brother, pledged Sigma Chi this quarter. Bob Hook and Lee Clark, who are also ADPi big brothers, have recently been elected as president and vice-president of Sigma Chi, respectively.

Friendship week, the week preceding initiation, is this week for eight pledges.

Delta Tau Delta

The Deltas, with the leadership of a new slate of officers, are looking forward to another great year at GSC. Henry Hayward was elected President, with Mitchell Bohannon as Vice-President, Tom McMillan as Second Vice-President, Rick Barr as Treasurer, Paul Heron as Corresponding Secretary, Dennis Ray as Recording Secretary, and Steve O'Rear as Sergeant of Arms. Brother Paul Heron was also elected Vice-President of the Interfraternity Council.

Delta Tau Delta was undefeated this season in fraternity basketball, and we expect a good showing in softball.

Plans are being made for our annual Founder's Day weekend at Daytona Beach, and with the help of our alumni and new pledges, we hope to celebrate in traditional Delt fashion.

Delta Tau Delta is currently having rush functions with a Smoker planned for 7 p.m. Thursday night at the House. All interested men are invited. Dress is informal.

Kappa Alpha

Delta Theta Chapter of Kappa Alpha Order recently selected as their 1974-75 Rose, Bonnie Martin, a Kappa Delta pledge.

New little sisters for the year are Joette Williams, Betty Gladden, Darby Adams, Pam Granger, Evelyn Sausey, Susie Iron, Karen Smith, Debra Durrent, Wendy Wingfield, Celeste Byington, Janeen Brown, Angela Chodnicki, and Linda Strickland.

Officers for 1974-75 are Mike Trexler, President; Mike Turner, Vice-President; and Alex Bidez, Secretary.

Congratulations to our new faculty advisor, Bill Olbrich.

Kappa Alpha held a beer bust Wednesday with Zeta Tau Alpha Sorority. The pledge class also sponsored a hotdog sale Tuesday to raise funds.

Kappa Delta

Epsilon

Kappa Delta Epsilon, a national honorary Sorority, issued invitations last week to outstanding girls in Professional Education. Selection is made on the basis of high academic achievement and superior personal and professional qualities.

The screening committee wishes to give consideration to all Education Majors with a minimum GPA of 3.0. As available records may not be complete at this time, the committee requests that qualified girls who do not receive an invitation contact Dr. Sara Riggs, Kappa Delta Epsilon advisor, in the School of Education.

Chemistry Club

The Chemistry Club is currently reorganizing. Jeff King, club president, announced recently.

"We are now in the process of forming an American Chemical Society Student Affiliate Chapter. It is felt that this action will greatly benefit the club and its members," he said.

Student affiliation with the ACS is open to all undergraduate chemistry majors, and majors in related disciplines. Anyone interested in joining is urged to contact Jeff King.

The club has already put up a bulletin board for news of interest to members. Arrangements have been made to obtain a showcase for the chemistry department. The Chemistry Club will be in charge of developing displays when the showcase is installed.

Baptist Student

Union

The Baptist Student Union recently installed its new officers for 1974-75. They are as follows: President—Kathy Carswell; Devotional Chairman—Horace Lariscy; Program Chairman—Lydia Barrow; Outreach Chairman—Susan Webb; Missions Chairman—Steve Holloway; Music Chairman—Jim Elkins; Involvement Chairman—Jimmy Howard; Social Chairman—Harriet Woodward; Communications Chairman—Joan Williams.

BSU Spring Conference is April 26-28 at the FFA-FHA Camp in Covington. "Preparing to Share" is the theme, with Dr. Harold Longer as Bible Study leader. The deadline for paying is April 17. Make your plans to go.

The BSU is presently working on the musical "Lightshine" to present at the convention and area churches. Practices are every Monday at 7 p.m. and Thursday at 8 p.m. at the Center.

Delta Zeta

The sisters honored the new pledges at a Rosebuddy party on March 26. At this time the pledges learned who their secret rosebuddies were.

Dale Nesbit and Widget Bennet are members of the GSC tennis team. DZ would like to congratulate the team on a successful season so far.

Last weekend Joni Banks, President of Panhellenic, and Janie Herring represented DZ at the National Panhellenic Convention at Tallahassee, Fla.

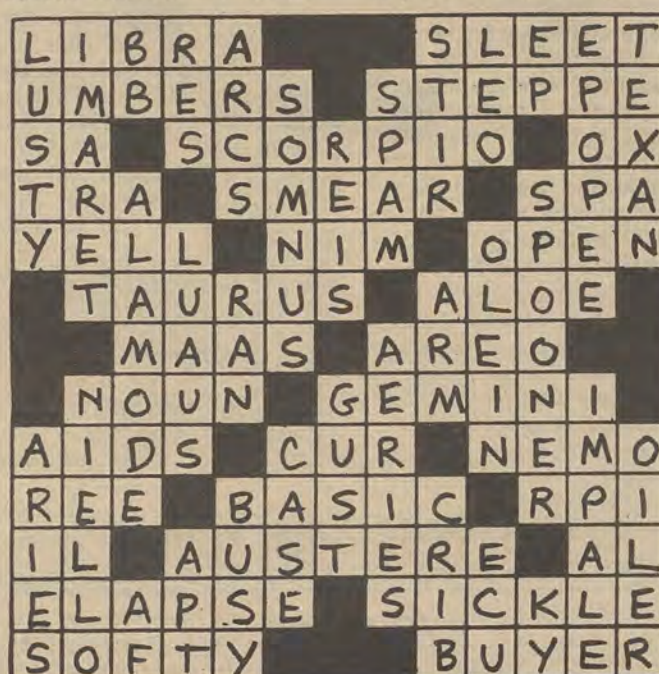
Also, Peggy Thurmond is a new little sister for Pi Kappa Phi fraternity.

GSCA

The student chapter of the Georgia Speech Communication Association is being reorganized this quarter for those interested in Speech and Communication.

The Student Georgia Speech Communication Association serves to communicate student opinion in the formation and carrying out of departmental policy and to assist in the evaluation of teachers and courses within the department. The student GSCA helps to devise and carry out special departmental projects and is the local arm of the Georgia Speech Communication Association.

A reorganization meeting for election of officers and ratification of the constitution will be held the week of April 15. All persons interested in Speech or Communication are urged to attend the meeting. The exact date and time of the meeting will be posted around campus.



gort

Well, here we are, Masters of the Animal World!

Yep. MAN, a defenseless, unimposing, slow-moving two-legged creature.



And we didn't have even a chance, Gort, against wild predators!

Nope...yet today, even th' fiercest animal gives us a wide berth when they see us.



Sabre toothed tigers...cave bears...even th' tyrannosaurus: all have fallen to us!

We've whipped 'em all! Thing is, there's no challenge left...no one to give us a good fight!



Friday is Clam Special.

Our famous fried Tendersweet clams, French fries, cole slaw. Tell the whole family to clam up!

SECONDS ON THE HOUSE!

\$1.99

And we've got these other special days, too:

MON.	TUES.	WED.
Fish Fry	Spaghetti Spree	Deep Sea Dinner
\$1.99	\$1.99	\$1.99

Special prices for children!

109 N. Main Street

Statesboro, Ga.





G-A Concert Review

Madrigals Perform

By RACHEL RHODES
G-A Staff Writer

The Madrigals, a 16-voice ensemble, gave a widely varied and a very well-done concert last night in the Foy Recital Hall.

A madrigal is a musical form where a short non-strophic poem, usually sentimental or erotic in nature, is set in four-voice harmony. The style was very popular as chamber music in the sixteenth century. The Madrigals not only did a fine job on the "true madrigal" songs they sang, they also impressed the audience with their renditions of folksongs, religious songs, and blues numbers. Selections included "Now April Has Come," arranged by Shaw and Parker, "I Gave My Love a Cherry," arranged by Niles and Sheppard, "All About the Blues," by C. Strommen, "I Know a Young Maiden Wondrous Fair," by diLasso, and Morley's "Now Is the Month of Maying".

The group consists of Paula Cauthen, Nancy Beatty, Kim Rickard, Ellen Gross, Julie Wilde, Sunny Lester, Gail Fussell, Candy Hinson, Bill Smith, Sonny Walden, Brad Krantz, Steve Jacobs, Yogi Clark, Bruce Allen, Tony Chancey, and Ken Lott. Rehearsal accompanist is Cathy McLain, and the group is directed by Dr. David Mathew.

As well as giving this fine concert last night, they were also part of the entertainment for the Board of Regents Banquet held at the Holiday Inn Tuesday.

Easter Egg Legend

By SALLEY COTTEN
G-A Features Editor

The majority of American children go to bed on Easter Eve in great anticipation of the Easter Bunny slipping in during the night to fill their baskets with brightly colored eggs. The egg, symbolic of new life and resurrection, has been meaningful to many nationalities and cultures in a variety of ways.

Polynesians, Greeks, and South Americans at one time had myths concerning the universe being born from an egg. The Samoans believed that their god, Tangaloa-Langi, had lived in an egg which he shattered and from which the earth was created. In some places, eggs have been used to adorn New Years trees, Maypoles, and Saint John's trees in midsummer.

How the custom of dying eggs at Easter came to originate, is impossible to trace exactly. During spring festivals of ancient Egypt, Rome, Persia, and Greece, eggs were dyed and eaten. The Persians exchanged eggs as gifts in celebration of the vernal equinox. It was not until the 15th century that Easter eggs were first recorded in Western Europe.

A game played with Easter eggs, which has since been banned as unacceptable practice, was once used in Chester Cathedral in England. It consisted of the bishop and dean

having egg-throwing matches with the choir members at intervals during the Easter Sunday service.

During the late medieval period, people believed the church bells were sent to Rome between Holy Thursday and Easter to be blessed and that the bells returned on Easter Eve with colored eggs for all.

The Balkans and Russians create elaborate designs for their eggs. In fact, it is something of an art for them.

A favorite egg game with the English is that of rolling hard-boiled eggs down a hill without breaking the shells. This has also been practiced from time to time since 1890 on the White House lawn.

A special favorite of American children is the Easter egg hunt which originally came from Europe. The children are told that the Bunny laid eggs and hid them. Whoever finds the most eggs often wins a prize—sometimes a "golden" egg!

Women's Accent Sponsors Singer



On Monday, April 1, the Women's Accent Group, in conjunction with the College Union Board, sponsored a coffeehouse featuring folk singer Mary Beth Solan. Ms. Solan, who writes songs as well as sings them, presented several original compositions, including "Goodbye, My Friend, Goodbye," a moving song of friendship.

Another area of emphasis was folk songs for children, including several originally sung by Peter, Paul, and Mary. Several times the audience spontaneously joined in on some of the old familiar folk songs. Toward the end of the evening Ms. Solan was joined by Bonnie Evans and together they sang several songs, both old and new standards.

The Women's Accent Group is planning another coffeehouse to be announced in the future.

GSC Students Narrate Career Programs Film

The voices of several Georgia Southern students will soon be heard over a large part of Georgia and possibly nationwide as part of a project involving production of Career Guidance filmstrips being produced by the GSC Division of Public Services and Continuing Education.

The project, being carried out in conjunction with Liberty County, involves production of filmstrips narrated by GSC speech students. The narrators heard on the filmstrips are past and present students in oral interpretation classes taught by Dr. Maryland Wilson, Professor of Speech at Georgia Southern.

The scripts for the audio portion of the filmstrips cover many career areas and are written by professors in those subjects. Work on the project was begun in early February and is now being completed. When the visual materials are complete, they are sent to a Minnesota firm for final processing. Audio recordings accompanying the strips are processed locally. When completed the filmstrips will be used to explain various career programs by guidance counselors and educators.

Principal artists on the recordings include Mary

Hulihan, of Macon, and Ken Brown of Jonesboro.

"Doing the narration for these filmstrips is great practical use of speech training," says Miss Hulihan. "And since I'm working my way through school, I can sure use the money."

"The experience is invaluable," adds Brown. "With the recording industry growing and voice work in such demand, it may prove a lucrative field to get interested in—either as a sideline or a full-time profession—even if you don't

have a gold label release."

In addition to Brown and Miss Hulihan, students involved in the project include: Jane Cronin and Peggy Thurmond of Atlanta; Lydia Barrow, Cochran; Gary Mikell, Statesboro; and Becki Bailey, Swainsboro.

Hallmark
"WITH LOVE
FROM BETSEY"

The whimsical waifs of Hallmark artist Betsey Clark adorn a very special collection of gifts for Christmas.



Town and
Campus

Phone 764-6451
Statesboro, Ga.

If you don't read—
There's a new world
waiting for you now!



Fact or Fiction at...

KENAN'S 25 Seibald St.
Phone 764-2514

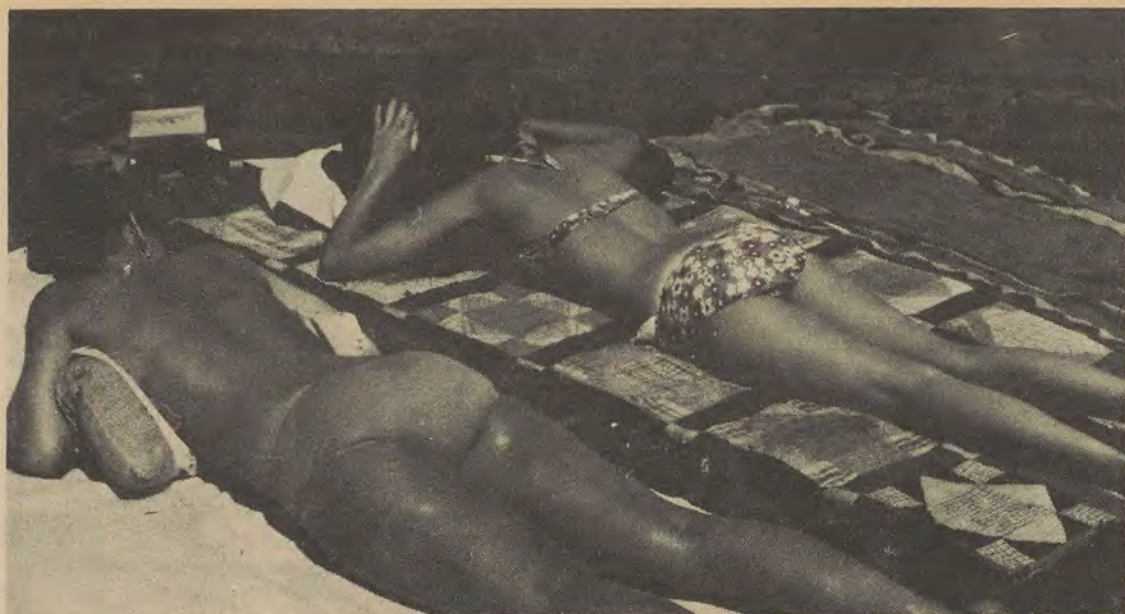
—Something More Than Just A Store—



It's the real thing. Coke.

Real life calls for real taste.
For the taste of your life—Coca-Cola.

Statesboro Coca-Cola



Sunners come in all shapes and sizes, but they all have one common goal - a beautiful, deep, dark tan!

GSC Student Works With Elderly Lady

Georgia Southern College Volunteer Services, a new organization at GSC, is interested in getting students involved in community activities to a mutual advantage of community agencies and the students themselves. The primary aim of the course is to give students an opportunity for involvement in experiential learning activities as well as helping meet the needs of residents in the community. Volunteer Services seeks to involve students in the major project areas of health education, Handicapped - Disadvantaged, Aging, and Drugs.

Connie Boole, a GSC student involved with the Volunteer effort on the campus of GSC since the Fall of '73, tells of her relationship with an elderly resident in this community.

Connie writes: "I met Viola Ferrell several years ago. At first it shocked me to know that someone could spend her entire life in bed. Ms. Ferrell has been bedridden since her youth. Despite her handicaps, she is still happy. I've grown to know her as a warm, fun-loving person who is interested in everyone she meets. She is able to bring some light into my life; the important thing is our friendship we've developed. I would encourage any student to become involved in a like experience through the aging project."

Execution Of WWII Private Reviewed

'THE EXECUTION OF' PRIVATE SLOVAK

By William
Bradford Huie
Book Review By
Ms. Bonnie J. Ford

Only one American serviceman has been executed for desertion since the Civil War. During the final year of World War II, Private Eddie Slovik was shot to death by a firing squad in St. Marie, France. Out of 40,000 desertions during this war (49 convictions), why was this one man chosen to be executed?

Eddie Slovik was a shy, nervous man. By the time he was twenty-two, Eddie had served five years in the Michigan Reformatory. After his release from prison, Slovik began working for a plumbing company. While employed there, Eddie met and married Antonette Wisniewski. After only 18 months of marriage, Eddie

Continued on Page 15



Connie Boole entertains bed-ridden Viola Ferrell.

Hordes Of Sunners Hit GSC Campus

By RACHEL RHODES
G-A Staff Writer

In spring a young man's fancy may turn to love, but here at Georgia Southern something more than thoughts of love take over the minds of the men and women. What can such a thing be? Sun-worshipping, the thing that turns even the meekest creature into "Super Sunner."

There are several varieties of the species. There are the Dorm Sunners. These sunners would like to stick to dorm areas, then go out and overwhelm the world with their tans. For hours on end this group lies motionless on towels, sweating to death and bored out of their minds. They may like to show off their tans, but more often than not they end up burnt and peeling. When a Dorm Sunner is seen, people either go, "Wow! Where did you get that tan?"

"Oh, I lay out by the dorm for a little while." Or either: "Good grief, how did you get so sunburned?"

"Well, I just laid out by the dorm for a LITTLE while."

This variety is also capable of telling little white lies very well.

The Sports Sunner is an enthusiastic sports fan as well as an enthusiastic sunner. The male of the species will find a good spot and immediately remove any article of clothing covering his upper torso. The female of the species will also find a good spot, but rather than removing any clothes, she leaves on what little she does have on. Sports Sunners usually travel in crowds or roam from crowd to crowd. They are also known to say, "I just got so much sun at the game it is unbelievable!" trying to win sunners over to their side.

An elite group of sunners is the Pool Sunners. Pool Sunners tend to be more in the off-campus category, as the college's pool is indoors. As one sunner said, "There's plenty of room in the pool; it's just getting past all the people on the side that's the problem!"

The Fake Sunners are a small group. These sunners try to tan too quickly and usually have at least one unfortunate experience with a sunlamp or a bottle of "QT".

One thing common to all sunners is that of putting the sun before anything else. The diligent sunner will forego afternoon classes, kiss hopes of Dean's List good-bye, and keep the Solarcaine people in business for awhile. But to the sunner, it is worth it when a good friend says, "Man, that's a fantastic tan you've got there!"

Monday Nites at the Paragon



1/2 lb. ground
Round Steak
\$1.89

Potato-Salad Bar

SOUTH MAIN STREET, STATESBORO
764-2914

BSU Offers Variety Of Student Programs

By SALLEY COTTEN
G-A Features Editor

The Baptist Student Union, which presently offers any interested GSC student a variety of programs in which to participate, first appeared in Statesboro about 1931 on the campus of South Georgia Teacher's College.

According to Nathan C. Byrd, BSU's campus minister and counselor, the ultimate purpose of the Student Union is "to involve students in a growing relationship with Jesus Christ." He stated that although no official membership roster is kept and the group is a rather fluid one, in various aspects of the program, approximately 400 students are involved in BSU.

The building itself offers students recreation rooms, a classroom, kitchen, prayer room, chapel, and living room. BSU provides a place for students "to meet, to share fellowship, to grow together, and to find opportunities for meeting the needs of people in the area," said Byrd.

"We try to provide programs meeting the needs of students in an academic community and also an opportunity for training and leadership," said Byrd. He emphasized the fact that they are student programs, planned and initiated by the students themselves.

BSU has a rather extensive music program, consisting of two groups which sing in local churches and state meetings. Jim Elkins, GSC student, directs one of the groups, composed of 60 to 80 singers, which performed at this year's Georgia Baptist Convention.

Programs are offered in the area of worship and Bible study. A series on the Holy Spirit is presently being presented in the Bible study, each Tuesday at 7 p.m. Byrd said that smaller Bible studies are being developed which will be led by various students on campus. Horace Lariscy is in charge of worship sessions, held Thursdays at 7 p.m.

GSC student, Lydia Barrow, is program chairman for Wednesday night sessions called "Faith in Life" in which a group discusses an issue and how it touches Christian life.

BSU's Mission Committee, headed by Steven Holloway, devotes time to doing volunteer work in local nursing homes. Tutoring and working in the Blackbottom area are done by members of BSU's Outreach Committee, headed by Susan Webb.

Georgia Southern's BSU participates in a summer mission program through which students are sent to various places, world-wide, for ten weeks. Horace Lariscy will be going to Trinidad this summer to work with young people in Bible schools, according to Byrd.

Byrd said that a missions emphasis retreat will be attended by BSU members this May at Brunswick, Ga.



The Baptist Student Union is located on Chandler Road.

"The Invisible Dragon" Entertains 2,500 Children

A fantasy may be child's play to the audience, but behind the sparkle and glitter is quite a bit of work.

Fifteen cast members and numerous production people wrapped up this year's Alpha Psi Omega, honorary drama society, children's production, "The Invisible Dragon" Friday by striking the set they had built over the past several weeks, tearing down the kingdom they had built with their own hands.

The play itself, a 40-minute, one-act play by Patricia Clapp, follows a very common story line: a handsome prince sets out

to find a dragon and ends up with a beautiful princess.

No one cast member could be called the "lead," with five persons sharing major speaking parts.

One of the brightest spots of the play was that cast member "who didn't say anything at all."

Karin Barille, as the Stage Manager, gave the young audience a good idea of what can be done in pantomime. Many of the comedic highlights centered around her action.

Red Southworth, as the princess; Michael Locklair, as Story Teller; Lee Wood, as the prince; Jill Williams, as the queen; and Tony Nottoli, as the king, all gave fine performances keyed especially to the young audience.

Some of the more lengthy dialogue and many one-liners which would have appealed to an

older audience were sometimes lost on the younger group.

Action was the main attraction, and there was enough to keep interest. The play was staged so as to make the most of slap-stick humor.

Director Al Wallace permitted his characters to develop themselves, aiming for and achieving caricatures of the normal fairy tale ensemble.

Set design and construction was under the able guidance of Carl Dukes. Dukes recreated a believable fairy-tale kingdom, candy-cane trees and all. The recreation was very well done, and gave the players a fine platform from which they could perform.

Choral work by Jill Buff, Jimmy Fason, Meridith Nelson,

Continued on Page 7

Wesley Foundation Chooses Student Intern

By JIMMY CASON
G-A Staff Writer

Linda Peacock, graduating Georgia Southern College senior, has been chosen to work as full-time associate with the Wesley Foundation campus minister for spring quarter. Miss Peacock has completed her course work for a BS in Recreation.

The Wesley Foundation Board of Directors approved the intern program in campus ministry for the spring quarter. The program provides a person to train as an associate to the campus minister for a nine-week period. The



program is a pilot project for the Methodist-sponsored ministry made possible by a grant from the South Georgia Conference of the United Methodist Church through its Student Vocational Intern Program.

Miss Peacock's duties as student intern will include a wide variety of responsibilities. Among her duties will be to give supervision and assistance to the Wednesday Night Fellowship, Wesley Weekly Newsletter,

Leadership Development Team, and the Vocational Enlistment Area. Miss Peacock will also give assistance to a promotional piece for publication describing Wesley ministry, and a weekend camping trip.

Additional duties for the student intern include a daily meeting with the campus minister, regular visitation of students and faculty on campus, meetings with the Wesley Student Coordinating Council, and meetings with the Wesley Board of Directors and its Executive Program Committee for reporting and evaluation for all work.

Miss Peacock has been very active in a number of campus, church, and community organizations. At Brunswick Junior College, she was President and Social Activities Chairman of Wesley Foundation and was very active in student government. In the summer of 1969 she was involved in a United Methodist Work Team to Costa Rica. She has been youth director of Taylor United Methodist Church (Brunswick) and Ludowici United Methodist Church. She is presently active in the Leadership Development Team and Christian Vocation and Enlistment in the GSC Wesley Foundation. Miss Peacock's United Methodist Conference activities include being on the Conference Committee on Lay-Life and Work, South Georgia Young Adult Council, and the Leadership Development Committee.

In commenting on Miss Peacock's appointment as campus intern, Bill Jackson-Adams, Wesley Foundation Campus Minister, said, "We are fortunate that the Georgia Southern Wesley Foundation was

chosen for this pilot project, and we are extremely fortunate to have someone of Linda Peacock's ability chosen for this position.

REGISTER NOW FOR:

SUMMER QUARTER:

115.00
150.00

Semi Private Room
Private Room

Men
Women
Coed

STRATFORD
WARWICK

ETON (MimiDorms) YORK (Suites)

FALL QUARTER:

115.00 to 125.00 Semi Private Room
140.00 to 160.00 Private Room

Women
Sororities
Men
Coed

WARWICK
HAMPTON
STRATFORD
ETON

Veterans - Graduates

YORK

AIR CONDITIONING
KITCHEN FACILITIES AVAILABLE
SWIMMING POOL
LAUNDRY FACILITIES
REFRIGERATOR RENTAL AVAILABLE
CALL - 764-5449



tony barnhart
SPORTS EDITOR

Richard Will Be Remembered

It's a damn shame in life when someone gives a great deal of himself and gets practically nothing in return. Case in point: Georgia Southern's Richard Wallace.

Richard grew up in the small South Georgia community of Clyo, where, as a young man, he was required to help pay his family's expenses by working many long, hot hours in the tobacco fields of Effingham County. Incidentally, I've been told that no one during that time could pick tobacco faster than Wallace.

During all rest periods or any type of lull in the working day, one would find the Wallace kid with a basketball in his hand. On non-working days the games would last from dawn until dusk and sometimes on into the moonlight hours. Here his talents developed.

He came to Georgia Southern after a very successful career at Springfield Central High School, where he was the dominant player in South Georgia basketball at the center position. Those who recruited him knew that he would have to switch to the guard or forward position because of his 6-2 height, but on the other hand, they also knew that this young man had a great deal of ability and potential, and if this potential could be realized, GSC would have a superstar on its hands.

Richard Wallace came to Southern, and the switch was made. The rest of the story you can read in the record books of Georgia Southern basketball.

Richard did a fantastic job this past season for Coach J.E. Rowe's Eagles, just as he had the previous three years, with one exception—that is, his scoring output was not as high this year as it had been in the previous seasons. At first glance, one might assume that he just had a poor shooting year. But he shot better than 50 per cent from the floor, so the obvious conclusion there is that he took fewer shots. Why? There's a good answer to that question.

Wallace converted to the point guard this year to quarterback the Eagle offense. As the team's best ballhandler, it was his job to keep the offense moving and to hit the open man with the pass for the easy bucket. He led the team in assists. He did all the other things that go into the making of a great basketball player—team leadership, defense, rebounding, that crucial basket in a tough game, controlling the tempo. All of these things he did, and did them well.

The best example of what I'm talking about came when the Eagles defeated Mercer in the Macon Coliseum. For the first time in his career Richard failed to score in a basketball game. In the post-game interviews, however, Coach Joe Dan Gold of Mercer was questioned about the deciding factor in the game. To this he had a one-word reply: "Wallace."

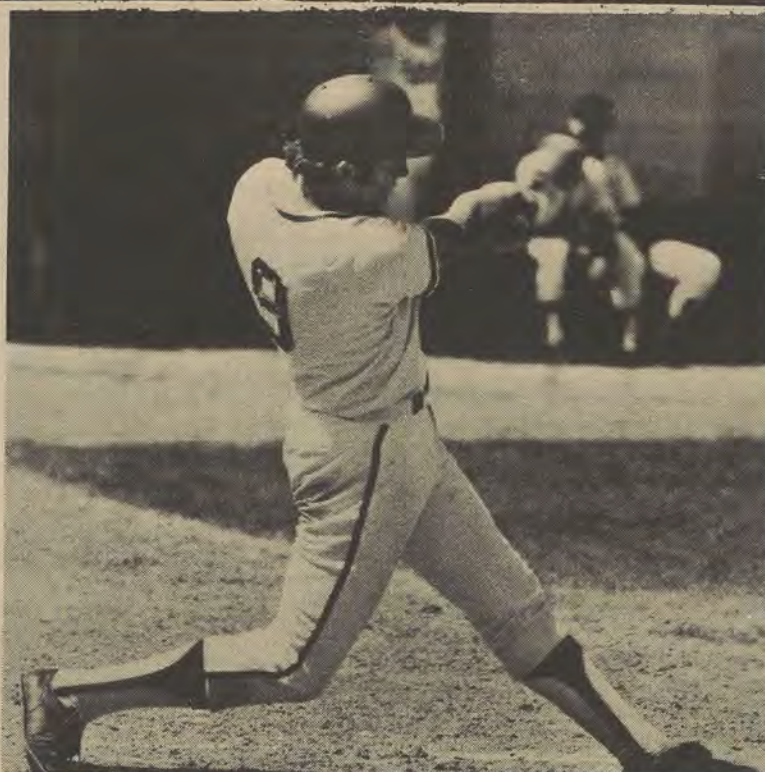
All of this leads up to explaining what I was talking about in the beginning paragraph. Because he contributed in every facet of the game and did not play just a scorer's role, Richard Wallace has been overlooked by every post-season All-America list. Now the big ones, such as the AP or the UPI, can possibly be excused. Georgia Southern is still in the process of making a name for itself nationally in collegiate basketball, and the wire services just weren't aware; but when it gets narrowed down to Southern Independent All-America and Richard Wallace's name is still missing—you tell me. I don't have an answer, but I do have a theory.

It seems as though these picks are going mainly to those players that dominate their respective areas or teams in scoring. Those of you who watched the Eagles this year realize that they had very balanced scoring, a tribute to the fine coaching job of J.E. Rowe. There weren't many 30-point performances that catch the metropolitan sportswriter's eye. All Southern did was win a lot of basketball games. Result: no All-Americans.

If you think I'm blaming the entire situation on the writers that cover sports in the larger cities such as Atlanta, Savannah, and Macon, you're right; I am. It's these men who give the type of publicity that the pollsters read and listen to; and, because of laziness or some other excuse, they simply assumed that only a high scorer could be an All-American and only a team with a high scorer could be considered a threat to anyone. Therefore the best collegiate basketball team in the state of Georgia got about one-tenth the coverage that it deserved. Men like sports information director Dave Deppisch and Statesboro Herald Sports Editor Dan Rahn worked their tails off during the season to get the story to all the papers around the state and it's discouraging to see their efforts go for naught.

South Carolina coach Frank McGuire, who I'm sure you'll agree is a competent judge of basketball talent, calls Richard Wallace, "the closest player to Earl Monroe I've seen in years." In my book, that statement makes him a consensus All-American.

So now what? His collegiate career is over. What lies in the future for Richard Wallace? For those of you who wonder about it, he will make it in the pro ranks because of his many and varied basketball skills. He possesses every tool necessary for the making of a great professional basketball player. The funny thing about it is, when he finally makes it big, a lot of people are going to be scratching their heads and wondering "Where did this guy come from? Georgia Southern? What's a Georgia Southern?"



Georgia Southern third baseman Jim Morrison is shown here doing what he does best—supplying

that needed knock out punch in the Eagle batting lineup. The senior from Temple Terrace,

Fla., has been a big factor in the Eagles' rise to national prominence in collegiate baseball.

Baseball Eagles Roll On

The Georgia Southern baseball team continued its winning habit with recent victories over Birmingham Southern, South Carolina, and Georgia Tech to run its season record to 26-1.

The Eagles' most recent win, a 10-5 outing over the Yellow Jackets of Georgia Tech, was also a milestone for head coach Ron Polk. It was his 100th coaching victory since coming to Georgia Southern in 1972. "I'm elated with the distinction," said Polk. "You have to give the players the credit. They have all been super in their attitudes and performances."

Over the past week the Eagles raised the team batting average 12 points to a respectable .312, while the pitching staff lowered its ERA to 1.47. Included in that

ERA are seven pitchers including four starters with earned run averages under 2.00.

Firstbaseman Carl Person is still the leading hitter on the club batting .374 with two triples, four doubles, and 23 runs batted in. Leftfielder Steve Pietsch is second with a .341 mark, followed by third baseman Jim Morrison at .336 and right-fielder John Butler at .330.

The pitching staff sharpened up even more over the past week as three pitchers kept their ERA's under 1.00. Pete Manos' two hitter against the number four rated small college team in the country, Birmingham Southern, dropped his ERA to 0.29 as he picked up his third win against no defeats.

Southpaw John Gibson, also

without a loss on the year, picked up his fifth win with a five hit shut-out over the University of South Carolina. Gibson walked only three batters while striking out ten. Through 44 and two-thirds innings he has recorded 54 strikeouts.

Bob Gerdes, the other hurler with an ERA under 1.00 (0.77), picked up his sixth victory against no defeats in Southern's 10-5 win over Georgia Tech.

The Eagles, who own the best record in the South, are currently ranked as the number five team in the nation in major college competition. Southern will leave the friendly confines of Eagle field later this month for road games against South Carolina, Jacksonville, Florida State, Stetson, and Armstrong.



DORM STUDENTS
Rent a refrigerator from Lanier's
to keep those snacks cool.

\$20.00 Deposit - \$20.00 per Quarter

LANIER'S

764-4100

Festival Starts Friday



Mel Collins

The National Champion West German Gymnastics team will compete against the Georgia Southern Gymnastic team April 12, and 13 at the International Gymnastics Festival, in a weekend of events recently announced by Athletic Director J.I. Clements.

The Olympic style competition is scheduled for Friday night, April 12, at 7:30 p.m., in the Hanner Fieldhouse. The West German men will compete against the Georgia Southern men's team and the West German women will meet a select women's team from the Southeastern United States.

Perhaps the most talented gymnastics squad in recent years, the West Germans carry the titles and credentials of Champions of the Rhineland, National Youth Champions,

National All-Around, and Event Champions of Germany. A majority of the members on the team represented West Germany in the 1972 Olympic games in Munich.

The event, which is touted to be the biggest gymnastic competition since Georgia Southern sponsored the 1972 United States Gymnastics Federation Championships, is expected to draw enthusiasts from as far away as Atlanta.

Saturday, April 13, has been set aside for an all-day clinic for girls and boys with gymnasts, coaches and the West German team assisting in the teaching.

"Our best hopes in the festival are John Gracik, a senior sidehorse specialist from Butler, Pa., who recently placed 9th in the NCAA Championships, and our all-around champion Mel Collins, also from Butler," said Oertley. "The competition will be tough, but if these boys perform as well as they have all throughout our successful season, then there is a good chance that we'll do very well."

This same fine Southern team, which has not had a losing season in nine consecutive seasons since Oertley took over as head coach, will compete with and teach along side the West German national champs throughout the weekend of the International Gymnastics Festival, and, as with all international competitions, will exchange gifts in a ceremony following the weekend activities.



John Gracik

Gracik Does Well

John Gracik, Georgia Southern's premier sidehorse specialist, captured a very respectable ninth-place finish in the NCAA Gymnastics Championships held at Penn State University in College Park, Pennsylvania April 4, 5, and 6.

Gracik's finish, the highest ever in the NCAA Championships by a GSC gymnast, was rather remarkable, since he was in twentieth place after the compulsory exercises on Thursday.

"John... had some trouble on Thursday," commented Eagle gymnastics coach Ron Oertley. "The immense pressure of the competition had a lot to do with it, but John can do much better than the 8.5 he received in the compulsory exercises. Needless to say, he was somewhat disheartened after his performance," Oertley said.

According to Oertley, only two-tenths of a point separated the first 10 finishers.

Golfers Face Test

The Georgia Southern golf team, ranked fourth in the nation a week ago, retained its top five national ranking dropping to the fifth spot among the nation's top collegiate golf powers.

The weekly poll released by *Golf World* magazine listed the Eagles behind Southern Cal, Florida, Houston, and Wake Forest. Rounding out the top ten were Arizona State, Florida State, Oklahoma State, Alabama, and LSU.

The big switch in the rankings was Wake Forest which moved from the number seven spot to edge out Georgia Southern for fourth place.

The Eagles finished third behind Wake Forest and Furman at the recent Furman Invitational golf tournament in Furman, S.C., and are currently tuning up for the Chris Schenkel Invitational, April 26-28.

Georgia Southern will host the 54-hole event which will field

such teams as Wake Forest, Florida, Florida State, Georgia, Indiana, Kentucky, South Carolina, and Georgia Tech.

The University of Florida, 1973 National Team Champion, which captured first place in last year's Chris Schenkel, is expected to get strong competition from nationally ranked Wake Forest, Georgia Southern, and Georgia.

Some of the top individuals vying for the Schenkel crown are all-Americans Gary Koch and Andy Bean of Florida, all-American Bill Kratzert of the University of Georgia, all-Americans Bob Byman and Curtis Strange of Wake Forest, Kevin Proctor of Indiana, and Billy Mitchell and Buddy Alexander of Georgia Southern.

Some of the former collegiate golfers who played in the Chris Schenkel Invitational and since have turned professional include Jim Simons, Andy North, and Eddy Pearce.

Interstate Tourney Scheduled

The Georgia Collegiate Intramural Sports Championships will be held for the first time this year at Armstrong State College on April 19 and 20.

All students interested in participating in this two day "sports spectacular" are asked to contact Wallace Salter, director of intramurals. All Georgia colleges and universities have been invited to participate in the tournaments which will consist of competition in tennis, badminton, golf, and bowling, and a large field is expected from schools throughout the state.

Both graduate and undergraduate students are eligible, but no student with any

experience on a junior or senior college athletic team will be allowed to participate in that same sport. In addition, there will be a faculty division in tennis, golf, and badminton.

"For years the athletic teams from Georgia's colleges have competed against each other in intercollegiate athletics, but up to now there has been no attempt to organize an intramural tournament on a statewide basis," tournament director George Bedwell said in announcing the event. "We hope that the Georgia Intramural Sports Championships will help fill a void that has been neglected in the past."

Polk's Predictions-A Reality At GSC



Head Baseball Coach Ron Polk is flanked by Carl Person (left) and Steve Pietsch (right) as they hold last year's District Three Championship Award.

New Eagle Coach Ron Polk has set the baseball world on fire at Georgia Southern as he embarks on what he calls a "new era" in GSC diamond history.

"We are going to make Georgia Southern a super power in the baseball world," said Polk, who is in his first year as head coach of the Eagles. "GSC is going to be a showcase for college baseball."

The Eagle season, consisting of a rugged 55-game schedule, doesn't begin until March 11, but Polk has been laying the groundwork for this year's program since fall; and he has added a new dimension to the GSC effort with a big season ticket sales campaign.

"The money from these ticket sales will increase the horizons for the Georgia Southern baseball program," said Polk, who came to GSC from Miami Dade Junior College.

"Those who purchase a season ticket for \$10 will get 40 home games, a complimentary program for each game, preferred seating, and a personal baseball newsletter from me every two weeks."

Polk hopes to sell 500 season tickets before the home opener one month away.

During the season the GSC squad will host such baseball powers as the University of Georgia, Florida State, South Carolina (coached by the former Yankee great Bobby Richardson), Clemson, Jacksonville, and Wake Forest.

"Major university baseball status has begun at Georgia Southern," commented Polk. "The effort put out by the people so far in this area is tremendous. The people are behind us and we are really excited about our program."

Polk will feature "special events days" during the season. Family day, ladies night, senior citizen day, broken bat day, and dirty ball day are only a few of

the surprises the GSC coach has planned for the fans of Georgia Southern baseball.

Five hundred season tickets is a lot to sell, but Polk has already sold 90 and his campaign hasn't even officially begun. People say he could sell the Statue of Liberty if he had a chance. He doesn't know about that, but by listening to him talk about GSC, one can't help but think that some day, his Eagles will be playing in the College World Series.

Latest In Hair Fashions



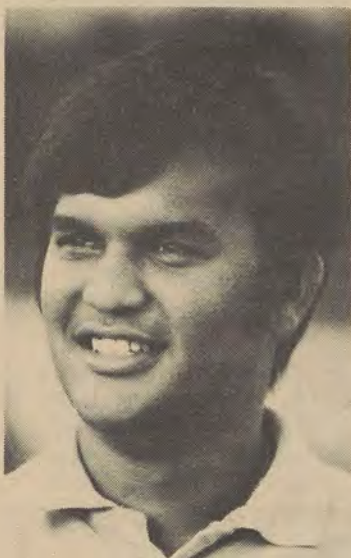
Sims
HOUSE OF STYLES

210 S. Main (5 doors north of Holiday Inn)

Editor's Note: Ron Polk came to Statesboro two years ago making claim that Georgia Southern would become a national power in collegiate baseball. After a dismal 20-21 season the year

before this promise seemed a bit far fetched, but history tends to make liars of us all. The following article appeared in the George-Anne on Feb. 10, 1972 as coach Polk was preparing for his first season at GSC.

GSC Netters Soar



Coach Vishnu Maharaj

Before the 1974 tennis season opened, Georgia Southern's Eagles were expected to be owners of a record in the neighborhood of 8-5 at this point. It's a good thing the Eagle netters don't believe in predictions.

To date, the Eagles are riding the crest of an eight-match winning streak and own a 12-1 season record, losing only to nationally-ranked Florida in Gainesville. The Georgia Southern netmen have already scored impressive victories over four teams who were favored to defeat the Eagles: South Carolina (8-1), Appalachian State (5-4), Jacksonville (6-3), and Wake Forest (6-3).

But there is no secret to the Eagles' sudden success. The simple answer is depth. Georgia Southern returned five players off last year's 11-9 team which featured three freshman (Charlie Ellis, Bunner Smith, and Bill Charles) and two juniors (Drew Fiumano and Ted Dansby). Ellis, the young freshman from New Albany, Ind., made a giant impact on Southern tennis last season as he compiled a 17-5 record and knocked off such number one stars as Bob Tanis and Bill Kopecky of Georgia, Juan Diaz of Florida, Audley Bell



WASHING
Danny Gladman

of Wake Forest, and Kevin McCarthy of South Carolina.

But depth was the problem. However, from the results of the 1974 season to date, that problem has been solved. Recruiting brought in three new players who are currently playing two, three, and four singles in the Eagle lineup. Chuck Cicchese, a junior college All-American from

Miami-Dade North Junior College, joined the Southern team along with Oliver Scott, another JC transfer from Abraham Baldwin College. Miami-Dade finished second in the national junior college tournament while Abraham Baldwin finished fifth.

And then there was the only freshman recruited, Danny Gladman from Lakeland, Fla., who played on the Lakeland High School state championship tennis team a year ago.

Thus far this season, the Eagles have compiled a total singles record of 63-15. Smith and Fiumano, who have been playing five and six, respectively, hold the best records with 12-1 and 11-1 marks. The prospects for the future also seem bright of Georgia Southern. Of this year's top six, only Fiumano is a senior.

Gibson Wants Pro Shot

One of the reasons for Georgia Southern's 18-1 record so far this season has been the performance



John Gibson

of senior pitcher John Gibson.

Don't let the little 5'9" south-paw from Jacksonville fool you. He throws a fast ball with on-target accuracy and delivers a curve with reliability. So far this year John has 44 strike-outs, has allowed only 14 hits and three earned runs through 35 and two-thirds innings, which gives him an ERA of 0.76. Gibson recently achieved a personal high of 13 strike-outs in a game against Western Carolina, to record his 4th win of the season against no losses.

John transferred to Georgia Southern from Brunswick Jr. College where he was All-State and All-Division in 1972.

Gibson is a senior political science major with a grade point average of 3.0 which goes to show he's as serious about school as he is about pitching.

Pitching, supposedly the weak link last year, has proved to be

stronger and more solid. Gibson has been one of the links that has made the pitching staff what it is this year. "Things are definitely different," said Gibson. "The pitching is not only stronger, but the team as a whole has more depth. We are defensively more stable and stronger, but as of yet the hitting is not quite up to par."

This past summer John was invited to Peoria, Ill. to play in the Central Illinois Collegiate League. While there he played ball under NCAA rules with other college players and coaches.

Gibson has stated many times that he would like to play professional ball. "With this being my senior year I have hopes of signing professionally," said John. "However, my size may hinder my chances."

Belk

Your Happy Shopping Store

Mrs.
OUR JUNIOR PLACE

lingerie

Be 'best-dressed' at slumber-time in gingham checks with 'love' embroidery or 'just tops' nightshirt. Easy-care polyester and cotton plissé in white with blue checks. Sizes 5 to 13.

Shirt...\$10 Long gown...\$12

Babydoll with bikini...\$10 (NOT SHOWN)



Lady Netters Lose To UGA

The Women's Tennis Team lost 8-1 to the defending state champion University of Georgia team on Saturday, March 30. Results in singles' competition: Rosemary Hill (UGA) defeated Ann Rumble, 6-2, 6-1; Susan Jackson (UGA) defeated Gale Peterson, 7-5, 7-6; Beth Sutton (GSC) defeated Virginia Wilson (UGA), 6-1, 6-3; Chris Marshburn (UGA) defeated Widget Bennett, 6-2, 6-1; M.E. Houlihan (UGA) defeated Clovis Mattox, 6-2, 6-3; Bibber Kulze (UGA) defeated Phyllis Shuford, 6-4, 6-2; and in an exhibition match Elizabeth Bromm (UGA) defeated Dale Nesbit, 6-2, 4-6, 6-3. Results in doubles' competition: Hill-Jackson (UGA) defeated Rumble-Peterson, 6-2, 1-6, 7-6; Houlihan-Kulzes (UGA) defeated Sutton-Shuford, 6-2, 7-5; and Howard-Marshburn (UGA) defeated Bennett-Mattox, 6-2, 6-1.

The Women's Tennis team defeated Columbia College 9-0 on their home courts Wednesday, April 3. The sweep was virtually a shutout with no matches going beyond straight sets. In singles' competition, Anne Rumble defeated Gave Farr, 6-3, 6-0;

Beth Sutton defeated Ann Dube 6-1, 6-0; Gale Peterson defeated Ann White, 6-1, 6-3; Widget Bennett defeated Sally Cobb, 6-0, 6-0; Phyllis Shuford defeated Marilyn Nease, 6-1, 6-1; and in an exhibition match Norah McGraw defeated Joy Wilson, 6-1, 6-2. In doubles' competition, Rumble and Peterson defeated Farr and Dube, 6-4, 6-1; Sutton and Shuford defeated White and Cobb 6-3, 6-1; and Bennett and Mattox defeated Anderson and Nease, 6-0, 6-3.

"It was a big win for us," said Nancy Dillard, women's tennis coach. "We began our season against Furman University and

the University of Georgia, two of the top teams in Georgia and South Carolina. Those are tough teams to begin a season against. Our win against Columbia will get us into the right frame of mind and off to a good start on the season."



If there were more anti-freeze in radiators and less in drivers the winter accident toll would go down considerably.

Book Review

Continued from Page 10

Slovik was drafted into the United States Army. All efforts to obtain a release from military service were denied. In August, 1944, Pvt. Slovik was sent to France. On Jan. 31, 1945, he was executed.

The events surrounding Eddie Slovik's desertion, court marshal, and execution are presented to the reader accurately with the flair of a good suspense novel. Huie's book is written so that one can place himself in the position of each man involved in this dramatic event, from the arresting officers to the firing squad.

Throughout this exciting analysis of the military judicial system, many questions are

raised. Why was the death penalty involved in the first place, rather than the usual sentence of imprisonment? Why was Mrs. Slovik not informed of the cause of her husband's death for eight years? Was the United States Army just or unjust? Huie presents the facts; the reader must answer the questions himself.

Office Hours

Margo Lemacks 2-3 p.m.
M.A. Giddens 1-2 p.m.
Don Wood 3-4 p.m.

Ann Rumble Asset To Team

Ann Rumble, a senior recreation major from Thomasville, Ga., is a main reason why Georgia Southern is expected to make a fine showing at the State Tennis Tournament May 10, 11, and 12. Ms. Rumble's fast serve and hard slice is topped only by her powerful, controlled backhand. These strokes are the results of many long hours of practice and a love of the game of tennis.

Ann is a four-year veteran of the women's tennis team. She has worked her way up from the number 5 position to the number 1 position. Ms. Rumble is presently playing number 2 position and is partner to Gale Peterson in doubles competition.

Nancy Dillard, team coach, contributes Ann's success to her enthusiasm and dedication to the game. "Ann is a tough competitor and provides team spirit throughout a match," said Ms. Dillard. "She and Gale Peterson stand a good chance of capturing first place in doubles at the State Tournament."

When watching Ann Rumble play, one cannot help but notice the determination in her performance. Ann plays to win, and her skill produces these results. Her movements keep her opponents on the defensive.

"We have an experienced team this year, and I expect a winning season," said Ann. "The support from students and faculty has been great at our first two home matches. I hope it keeps up throughout the season."

George-Anne

Needs

Staff Writers



boogie!

with **Roy Buchanan** "the best rock guitarist in the world"
and special guest star **Jim 'Spiders and Snakes' Stafford**.

April 18, Hanner Fieldhouse, Georgia Southern College.

GSC students \$3, general admission \$4 at Lafayette Electronics,
Music Box, McCroan (2-4 p.m.) and at the door.

a CUB in cooperation with Promoco presentation.



Mrs. Bryant's Kitchen

Owned and Operated by the Bryant Family

Cafeteria

Pay for what you eat

Items priced separately

Times:

LUNCH

11 A.M.-2:30 P.M.

Dinner

5:00-8:30

Breakfast

6:30-9:30

Banquet & Dining Facilities

Home & Business Catering

