

Georgia Southern University

Digital Commons@Georgia Southern

The George-Anne

Student Media

4-5-1973

The George-Anne

Georgia Southern University

Follow this and additional works at: <https://digitalcommons.georgiasouthern.edu/george-anne>

Recommended Citation

Georgia Southern University, "The George-Anne" (1973). *The George-Anne*. 707.
<https://digitalcommons.georgiasouthern.edu/george-anne/707>

This newspaper is brought to you for free and open access by the Student Media at Digital Commons@Georgia Southern. It has been accepted for inclusion in The George-Anne by an authorized administrator of Digital Commons@Georgia Southern. For more information, please contact digitalcommons@georgiasouthern.edu.

CCC Election Nominations Begin

By DON WOOD

G-A Asst. News Editor

Elections of the officers for the newly formed Central Coordinating Committee will be held on Tuesday, April 24, 1973.

The Central Coordinating Committee is the new student government, replacing the current Student Association of Governing Councils.

Nominations for candidates will be accepted during the week of Friday, April 6, to Friday, April 13, 1973. Any student may

nominate himself for office by completing a form available in the current SAGC office in Williams Center. The SAGC office will be open to receive candidates' nominations from 11:00 a.m. to 5:00 p.m. each weekday during the nomination period.

The only eligibility requirements for office on the Central Coordinating Committee are that the nominee must not currently be on academic or disciplinary probation, and he

must expect to be enrolled at Georgia Southern College for the following Spring, Fall, Winter, and Spring quarters.

There are six officers on the Central Coordinating Committee. They are President, Vice-President, Coordinator of Budgetary Affairs, Coordinator of Academic Affairs, Coordinator of Co-Curricular Activities, and Coordinator of Auxiliary Services.

According to the STATUTES of the Central Coordinating Com-

mittee, "The President is the official representative of the Student Body through the Central Coordinating Committee and presides at all meetings. He is in charge of supervising the total operation and function of the Committee and is responsible for

working with the Vice-President and the Coordinators in initiating programs for their areas of concern, and for making committee and special student appointments with the approval of

the Central Coordinating Committee."

"The special emphasis in the President's job is on initiating programs," said Harold Acker, President of the SAGC.

The STATUTES outline the duties of the Vice-President thusly: "The Vice-President assists the President in his duties. The Vice-President is in charge of public announcements and informing the student newspaper of the actions of the

continued on page 12

the george-anne

published by students of georgia southern college

Vol. 53 No. 20

STATESBORO, GEORGIA 30458

Thursday, April 5, 1973

KOG Reopens As 'Knights' Old Location Burns Down

See Page 9

For 'Changes' In Local Night Spots

By RICK BEENE

G-A News Editor

In a swift series of events three students and one GSC graduate student saw their business burn to the ground, only to reopen at another location within a week.

Three brothers, Randy, Jimmy, and Carl Thomas were co-owners of the Knights of Georgia along with GSC graduate Larry Horne. The building, located on 301 South, was completely destroyed by fire Friday, March 22 at 4:45 a.m. By the time the fire was discovered it was too late to try to save the building.

The Thomas brothers and Horne immediately bought the rights to lease Duffie's Tavern, and opened under the name of "The Knights," March 29.

"The first we heard about the fire was around five in the morning when one of our friends woke us up and told us that the KOG had burned," said co-owner Jimmy Thomas.

The four bought the right to lease the local student hangout on December 7. Since then, co-owner Randy Thomas described the business as "really booming. We did a tremendous business."

The Thomas brothers, from Walterboro, S.C., teamed up with co-owner Larry Horne, from Iron

City Ga., and completely remodeled much of the interior of the club. "We completely repainted the inside of the club and redid much of the lighting.

We tried to make the atmosphere one that the students could feel comfortable in," said Horne.

After the fire the four decided to look for another location. Within a matter of days the four had bought the right to lease

another tavern located off Highway 301, formerly known as Duffie's Tavern. "We knew

immediately that we had to get back in business. We still had time left on our beer license so we all decided to reopen at another spot. When we bought the rights to Duffie's we immediately changed the name to The

continued on page 12

Statesboro Serves As Movie Setting

By SALLY EDWARDS

G-A Staff Writer

Renowned Hollywood film director, Daniel Petrie, said in a press conference last Wednesday that areas in and around Statesboro will serve as ideal settings for his new motion picture, "Black Creek Billie," which will go into production April 16.

Petrie said the pre-production crew searched five southern states, California, and Canada before finally deciding on Georgia. "It is a southern story written by a young man named Ron Turbeville of South Carolina. This picture should be shot in the south," he said.

Ed Spivia of the Atlanta Film Commission convinced the producers that Georgia would be the ideal location, according to Petrie. "This area is ideally suited to tell the story and give

the pictorial elements of the south," Petrie explained. He added, "We want a look of lush growth, lovely farms, pretty scenery, and red clay."

Hollywood Set Designer Carol Lynn said in an interview last Tuesday that "Black Creek Billie" is a late high school love story which takes place in 1948.

Joan Goodfellow, who played the featured role as "Sister E" in the movie, "Lolly Madonna XXX," will play the title role in "Black Creek Billie." "She is a powerful and sensitive young actress," Petrie said. Miss Goodfellow received her acting training at the University of Delaware and the American

continued on page 12



Ashes are all that remain of the Knights of Georgia after a fire completely destroyed the building.

Positions Open For Reflector

The editorial position on the REFLECTOR staff is open for the 1973-74 academic year.

The following are the REFLECTOR positions that are open, and the eligibility requirements for them.

EDITOR—2.0 g.p.a. overall; junior standing as of fall, 1973; one year residence at GSC; competence in all phases of the operation and publication of a college yearbook; and previous yearbook experience.

ASSOCIATE EDITOR—2.0 g.p.a. overall; competence at writing, editing, photo-layout, and page design.

BUSINESS MANAGER—2.0 g.p.a. overall; understanding of advertising, sales, layout, and billing; knowledge of bookkeeping; and general clerical procedures.

Applicants who pass a preliminary screening will be notified by mail. They will be told when and where they are to appear before the committee for final consideration. The committee will announce its decisions as soon as possible following this meeting.

George-Anne Filling Positions

The GEORGE-ANNE is now looking for people to fill the staff positions for the 1973-74 paper. These staffers will run the paper next year. They will receive salaries for their work.

People who are interested in positions should come by the GEORGE-ANNE office at 112 Williams center and fill out an application. The most convenient times to come by are Sunday nights, Tuesday nights, Wednesday nights, or any day after 3:00.

All positions are open. They are Editor, Managing Editor, News Editor, Assistant managing Editor, Sports Editor, Features Editor, Associate News Editor, Assistant Features Editor, Copy Editor, Typist, Head Setter, Staff Writers, Production staff, Photographers, Business Manager, Assistant Business Manager, Business Secretary, Circulation manager.

Spring Enrollment Is At 5469

By GEORGETTE LIPFORD
G-A Staff Writer

Last year's Spring quarter enrollment was surpassed this quarter with a total of 5,469 according to Lloyd Joyner, registrar. Presently there are 1,366 freshmen, 1,114 sophomores, 1,067 juniors, 983 seniors, 909 graduate students

and 30 transient students enrolled at GSC. Approximately 50 additional students are expected to be registered.

There are fewer freshmen and juniors enrolled this spring than in the spring of '72 but there are more sophomores, seniors and graduate students.

Joyner said there has been a

decrease from Winter to Spring quarter of about 300 students. "Enrollment goes down each quarter," Joyner said. "It's typical of all colleges and universities."

In explanation of the drop in enrollment between Winter and Spring quarters, Joyner said, "Very few students transfer in the spring and the number of beginning freshmen is smaller too. Students who have stayed out a quarter or two somewhere along the way are out of school in the spring also since they complete degree requirements winter quarter."

Weekly Index

	page
People at Southern	3
Editorials	4
Southern Circus	4
Editor's Viewpoint	4

Columns	5
Eagle Bulletin	6
Comics	7
Crossword Puzzle	8
Sports	14, 15

Refrigerators, TV's

Dorms Allowed
More Appliances

By DON WOOD

G-A Asst. News Editor

Beginning this quarter at GSC, on-campus students can have refrigerators and televisions in their dorm rooms. The change from previous policy was brought about, said Ms. Ann Powell, Assistant Director of Housing, "to make the dorms more like home."

Several individual students had mentioned to the personnel in the Housing Office that they would like to be able to have refrigerators and televisions in their rooms. In response to these requests, the Housing Office reviewed the situation, and decided to allow the refrigerators and TV's in on-campus dorms. "Housing is concerned about students," said Ms. Powell. "We are willing to listen."

Refrigerators must not be more than 2.5 cubic feet and must not draw more than 1.70 amps of electricity. The student must register his refrigerator at the beginning of each quarter. To register, the student must pay a \$4.00 fee to the cashier (to help pay for the electricity) and obtain

a receipt. He then presents the receipt to his house director, who will inspect the refrigerator for the serial number and the proper amps. After filling out a form, the student will be given a decal to place on his refrigerator.

Any refrigerator that has not been properly registered will be confiscated. The student may regain his refrigerator by paying \$10.00 storage and handling fee.

There are no restrictions on TV's, except that they may not be connected to antennae outside the dorm room. This is because connecting several TV's to one antenna disrupts reception on all of them. Any student discovered with his TV in violation of this restriction will have his television removed. He will not be allowed to return a TV to his room.

The Housing Office suggests that students do not overload the circuits and thereby trip a circuit breaker. It is recommended that only the outlets in the walls of the rooms be used to plug appliances into; use of multiple plugs might result in a circuit overload.

Students Travel To England
To Gain Classroom Experience

The approach to British education will become a first-hand experience for several Georgia Southern College students this summer as they journey to the University of London for an experience in the "English Open Classroom."

The students will have the opportunity to examine selected aspects of English education which are of interest and relevance to the American educator. Under the direction of Dr. Andrew Edwards, Associate Professor of Educational Psychology, the group will be in the London area for approximately one month in July.

"This workshop will give the students some notion of English education but the emphasis will zero in on the 'open classroom' or 'informal education' concept," explained Edwards, who will instruct the course under the auspices of the Coastal Area Teacher Education Service (CATES). "The stress will mainly be on the infant and junior school children and those below the high school level."

The concept of the "open classroom" or "informal education" is a trend away from the highly structured teacher-dominated method of instruction. The teacher and child both share the responsibility in the child's activities and school concerns.

"The students will have the opportunity to compare English and Welsh education systems with the American system," said Edwards. "But the big advantage will be the visitation of the schools themselves both in secondary and primary levels and participation in these classes where the informal education concept is being utilized."

Students from five other Georgia colleges and universities will also be participating in the workshop which will include lectures, seminars, group discussions, and independent travel in addition to the visits to the various schools in the London area.

Topics which will be covered during the workshop include "The Philosophy of the Open Classroom," "Role of the Teacher in the Open Classroom," "Aspects of the Curriculum 'Environmental Studies,'" and "The Problems of Educating Immigrants."

Edwards spent two months in England last summer and is hoping to take between 20-25 students to the "English Open Classroom" in July.

"Any student at Georgia Southern, Georgia State, University of Georgia, Savannah State, Georgia College, or Valdosta State is eligible for the trip, but the deadline for registration is the first week of April."

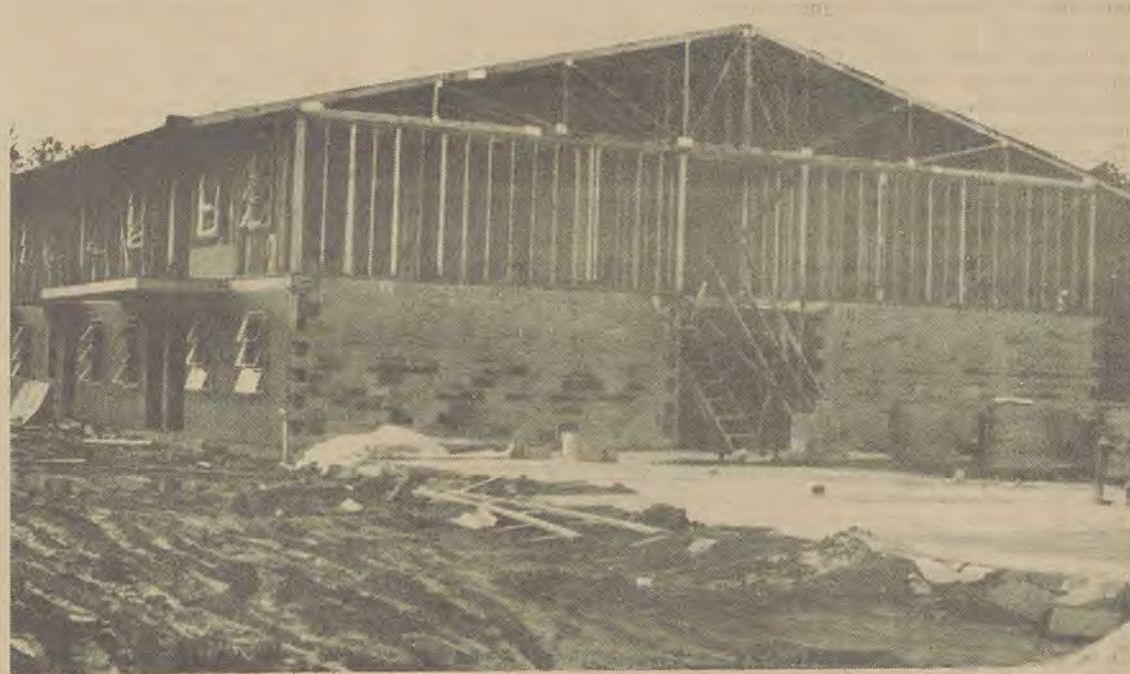
Bloodmobile Returns

The Bloodmobile will be back at GSC again this quarter due to the success of the drive last quarter. The drive will be going on for two consecutive days: Wednesday, April 11—2:00 p.m.-8:00 p.m. and Thursday April 12—1:00 p.m.-6:00 p.m. The Bloodmobile will be located in the Hanner Gym on these two dates. Hotdogs and cokes will be served, door prizes will be given, and a trophy will be awarded to the group or organization who signs up the most donors. Every GSC student and faculty member is being encouraged to make one of these dates for the Bloodmobile.

Martha West Granted
Membership In APO

Mrs. Martha West, Facilities Co-ordinator at Georgia Southern, was recently granted honorary membership into Alpha Psi Omega, the largest honor fraternity in college dramatics.

Membership is usually granted to students and faculty members who have assisted in the production of plays on campus, but it can be awarded to anyone who has assisted sufficiently in the productions. The GSC Theta



Construction is well underway for new units added to the University Apartments scheduled for completion later this year.

Traffic Regulations Are
Revised And Approved

The "Campus Traffic and Parking Regulations" are in the process of being revised, and the revised edition will be made available next Fall.

Immediate needs have dictated that the regulations in Article III, Section 5 on "Parking" be revised now for clarification.

The following list of revised and approved regulations supersedes those in Article III, Section 5 of the current edition of the "Campus Traffic and Parking Regulations." The reference to "color on the campus map" is relevant to the

map which will be placed in the revised regulation booklet.

Reg. A. "Parking on all streets shall be to the right, and parking on all streets and lots shall be within marked spaces designated to vehicle type."

Reg. B. "Stopping on thoroughfares and or parking at yellow curbs, in driveways, walkways, loading zones and entrances, and on athletic fields and lawns are restricted. No parking is permitted on Circle Drive between 12 midnight and 7:00 am."

Reg. C. "A person violating any rule or regulation concerning registration, operation or parking on campus may be subject to having his vehicle towed away and impounded. A clearance from the Campus Security must be secured before

the vehicle is returned to the operator or owner. The owner-operator shall be liable for any and all towing and or storage charges. Georgia Southern College assumes no responsibility for any damage to vehicle or any loss while the car is on campus, or at other times."

Reg. D. "All FACULTY AND STAFF personnel are restricted to parking vehicles in lots and on streets designated by 'FACULTY AND STAFF PARKING ONLY' signs. Faculty and Staff parking lots are indicated in orange on the campus map."

Reg. E. "All OFF-CAMPUS STUDENTS (Commuting) are restricted to parking vehicles in lots and on streets designated by

'OFF-CAMPUS STUDENT PARKING ONLY' signs. Off-Campus parking lots are indicated in green on the campus map."

Reg. F. All ON-CAMPUS STUDENTS (Residence Hall) are restricted to parking vehicles in lots designate by

'RESIDENCE HALL PARKING ONLY' signs. On-Campus parking lots are indicated in blue on the campus map. This parking restriction is lifted between 5:00 pm and 12 midnight Monday through Friday, and between 12 noon Saturday and 12 midnight Sunday.

Reg. G. "All MAINTENANCE personnel are restricted to parking vehicles in parking lot spaces designated by 'MAINTENANCE PARKING ONLY' signs."

CUB Salaried
Positions Open
For Next Year

The College Union Board announces three salaried positions and several committee positions opened for next year (1973-1974). The salaried positions that need filling are:

Student Chairman -- \$175 per quarter

Publicity Chairman -- \$150 per quarter

Assistant Publicity Chairman -- \$100 per quarter

The Committee openings are for:

Major Concert Committee

Directions in Music Committee (Minor Concert)

Film Committee

Williams Center Coffeehouse Committee

All interested students come to the CUB office (Williams 108) and fill out applications this quarter. Those people interested in salaried positions be sure to fill out applications in April.

The George-Anne is the official newspaper of Georgia Southern College. Published weekly, except during examinations and holidays, and bi-weekly from June to August. Subscription rate is 3.50 per year. Office located in room 112, Frank I. Williams Center. Telephone 764-6611, extension 246 and business extension 418. Printed by the Statesboro Herald Publishing Company, Statesboro, Georgia. The opinions expressed on these pages are those of the editors or student writers and not those of Georgia Southern College.

people at southern

Deadline for all students to apply for August 1973 graduation is June 11th. Undergraduate students are seen by appointment only. Deadline for June graduation has already past.

John H. Daily, Assistant Professor of Political Science recently participated as a panelist at the Southern Political Science Association Convention in Atlanta, Georgia.

Daily served as a discussant on a panel dealing with Decision-Making and Linkage politics. The study of political linkages deals with empirical and normative models of the flow of public opinion to political decision-makers, and with the methods by which public opinion is converted by decision-makers into public policies.

Daily received his B.A. degree from Edinboro State University in Pennsylvania, his M.A. degree from Kent State University, and he is currently completing Doctoral work in Political Science at Kent State. He has been on the faculty of Georgia Southern since 1971.

Dr. Cecil G. Howard, Associate Professor of Marketing has had an article published in the February, 1973 issue of the PERSONNEL ADMINISTRATOR, a journal published by the American Society for Personnel Administration.

The article, entitled "Is Your Manager Suitable for Overseas Assignment?", evaluates the factors necessary in 'manager's' success overseas.

Howard received his B.A. degree from Agra University, India, and his M.B.A. and Ph.D. degrees from Ohio State University. He joined the GSC faculty in 1966.

Paul D. Fowler, Assistant Professor of Industrial Technology has had an article entitled "Pitfalls in Assignment of Management Goals" accepted for publication in Managerial Planning, a magazine published by the Planning Executives Institute of Oxford, Ohio.

Fowler received his B.S. and his M.S. degrees from Georgia Tech, and he is a doctoral candidate at the University of Georgia. Fowler joined the GSC faculty in 1971.

Dr. Richard C. Stapleton, Associate Professor of Management has published an article entitled "The Velocity of Mobility" in the March-April issue of the Atlanta Economic Review.

The major conclusion of the article is that young men generally reach a social equilibrium at the age of 28 or 29 wherein geographic, and economic changes become less frequent than previously; at this age they begin to "settle down."

The study data upon which the article is based also indicate that young men tend to move back home when they begin the settling-down process.

The study was supported by a grant from the Office of Manpower Policy, Evaluation, and Research of the U.S. Department of Labor, which followed the provisions of the Manpower Development and Training Act of 1962.

Stapleton received his B.S., his M.B.A. and his D.B.A. degrees from Texas Tech University. He joined the GSC faculty in 1970.

Lecture Series On Women To Be Presented

A lecture series entitled, "Woman: Her Changing Role," will be offered during the Spring Quarter as part of the GSC Short Course Program.

The series, which includes five two-hour sessions, is being presented by the GSC School of Arts and Sciences and Department of Political Science in cooperation with the Georgia Committee for the Humanities, National Endowment for the Humanities, University of Georgia Center for Continuing Education, and the Georgia Southern Division of Continuing Education.

The series is designed for college and community women who want to become better informed about the status and activities of the roles and changing lifestyles of women in today's society. Purpose is to enable each participant to increase the appreciation of her cultural heritage, broaden the understanding of contemporary society, and comprehend her own potential and discover how best to use it.

The lectures will be held in room 209 of the Physics-Math Building on the Georgia Southern campus on Monday, April 9, April 16, April 23, April 30, and May 7. Each session will begin at 7:30 p.m.

The keynote address for the

series will be presented by Martha Gaines, National Board Member of the National Organization for Women.

Programs and speakers during the series will include "Women in Religion," Dr. Jane Cahill, St. Mary's College; "Affirmative Action Programs and Opportunities for Employment,"

Eliza Paschall, Equal Employment Opportunity Commission; "Problems in Change,"

Dr. Justine Mann, Associate Professor of Political Science, Georgia Southern; and "Transition from the Home to Activities Outside the Home," Dr. Mary Wilder, Mercer University.

ROSCOE BROWN'S SNACK BAR

WEST MAIN STREET

REGULAR DINNER: \$1.40

2 vegetables and choice of one meat with tea or coffee.

SANDWICHES:

Sausage, chicken, bologna, porkchop, ham and egg.

ONE MINUTE SERVICE ON SANDWICHES

BIRTHDAY 88¢ DAYS

SUPER SAVINGS-4 FLOORS

APR. 5th Thru. APR. 14th.

Celebrating 37 yrs. in Statesboro

COUPON

\$1 Good for \$1.00 \$1

with purchase \$10 or more!

Use between 9:30 & 12:00

THURS., FRI., or SAT. APR. 5-6-7.

\$1



Minkovitz
STATESBORO'S LARGEST & FINEST
DEPARTMENT STORE

Quality Discount World

Uptown Statesboro

Park Free-Near the Store

DINE IN AT

Pizza inn

SAVE UP TO \$1.00 on
AMERICA'S FAVORITE PIZZA

with these coupons

'Take out orders ready in 20 minutes'

Phone order in and save time

25 25
SAVE 25¢
Pizza
On Any Small
25 25

50 50
SAVE 50¢
On Any Medium
Pizza
50 50

75 75
SAVE 75¢
On Any Large
Pizza
75 75

100 100
SAVE \$1.00
On Any Giant
Pizza
100 100

708 SOUTH MAIN ST.

\$1.39

Noon Day Buffet on Pizza.

Monday-Friday (All you can eat)

FOR TAKE OUT 764-5411

editorials

Meat Boycott Brings RMN Peanut Butter

The wrath of irate housewives struggling to stretch food budgets in the face of rising food costs has fused into a national activism characterized this week by a national meat boycott. Middle American citizens who shun activist tactics such as picketing, leaflet distributing and boycotting when such tactics are directed against foreign wars or domestic racism are proving to be hearty dissenters who will readily embrace the politics of protest when the issue is bringing home the bacon, hamburger or pork chops.

In the wake of this protest, President Nixon stands as the target of sharp criticism from those factions who are his staunchest supporters on most issues. This being the case, the administration is hard pressed to dismiss the meat boycotters as unrepresentative trouble makers. The president has attempted to project an image of deep sympathy with the boycotters and has stated that he is making a concerted effort to improve the food cost situation.

To show that the president is not dining in sirloin steak luxury whilst the masses eat dandelion, paddies and lentil soup, the white house has printed up some of the "president's favorite" meatless recipes to mail to those who send critical letters. One supposes that the midwest housewife who sent the president 400 peanut butter sandwiches in order to dramatize the plight of rising meat costs, received not only a "meatless recipe" but also a "thank you" note from the first family

for the tasty sandwiches which they enjoyed after the sandwiches were chemically tested. When middle America hits the streets with placards, when the American housewife shuns the supermarket meat counter, and when mail to the white house contains 400 peanut butter sandwiches, the president can no longer close his ears to the consumers' howl for meat at a reasonable price.

Quietude Marks King's Commemoration Day

The fifth anniversary of the death of Martin Luther King was marked in Statesboro by a series of events, many of them sponsored by the local SCLC (Southern Christian Leadership Conference). Scheduled for Wednesday was a march downtown and a speech at the William James Vocational High School. Most of the members of GSC's Afro American Club were expected to attend the march.

On campus the black leader's death was commemorated by the showing of a film Tuesday night in the Biology Lecture building concerning King's life. Last year's commemoration ceremonies came on the heels of a walkout by some 28 black employees of the college following the dismissal of the college's sole black administrator, Junius Reed. This year's ceremonies were expected to be relatively quiet.

If there is a subdued atmosphere to the anniversary activities this year it is not because of complacency or satisfaction on the part of Statesboro's blacks. Rather the quietude may indicate a growing alienation on the part of blacks who have seen no significant improvement in their economic or social situation in the five years since Martin Luther King's death. For the majority of Statesboro black citizen's Martin Luther King's dream, proclaiming the end of racism in America, is still a dream.

STAFF

STEVE COLE Assistant Managing Editor
TONY BARNHART Sports Editor
JENNI CRANFORD Features Editor
DON WOOD Assistant News Editor
MIKIE EMERSON Copy Editor
TRIP LAMB Photographer
ROCKY BALL Cartoonist
MARGIE BROWN Typist
RENE KNOWLES Headline Typist

BUSINESS STAFF

CARROLL POLLETT Advertising Manager
CLIFF WISE Assistant Advertising Manager
HUGH R. WATERS Business Secretary
GUY WORKMAN Circulation Manager

STAFFWRITERS

Georgette Lipford, Salley Cotten, Sally Edwards, Kenny Johnson, Martha McBath, Mike Henry, Bill Thomas, Martha Alice Giddens, Howard Thrower, Bill Mills, Cathy McCarty, Steve Hooley, Gerald Pryor.

PRODUCTION STAFF

Peggy McBride, Becky Trowbridge, Cathy McCarty, Rocky Ball, Gerald Pryor.

the george-anne

Thursday, April 5, 1973

MARY MARTIN
editor

LYNN HARRIS
managing editor

RICK BEENE
news editor

It takes two people to speak the truth; one to speak and one to listen. Thoreau



southern circus by lynn harris

G-A To Endorse CCC Candidates

Nominations are being made tomorrow and next week for the administrative offices of the newly formed Central Coordinating Committee. For whomever is unfamiliar with the CCC, it is the new government for GSC students that was recently passed by a stunning turnout of under 40 students. I hope that the voter turnout at the upcoming election will surpass the turnout at the new government election.

I've heard that there will be many people seeking these offices, which will at least give the voter a choice. Last year the offices of president and treasurer were won unopposed. A situation of that sort is absurd at a school of 6000 students.

In the midst of this election the George-Anne has chosen to endorse candidates who the editorial board feels are the most qualified. This is not to say that we will oppose candidates or not

give them an equal voice; in fact, we will encourage candidates to state their reasons for running. All candidates will be given the same limited space in the G-A for these statements.

Our endorsement of candidates is exercising our right to a free press. We hope that endorsements will stir the air of apathy on this campus, and that students will get involved in this election.

editor's viewpoint by mary martin

Student Organizations Offer Involvement

Students who have expressed dissatisfaction with the operation of student organizations and publications, ranging from the CUB (College Union Board), to student government, to the George Anne should seize the opportunity to involve themselves with these organizations in the coming year in order to implement the changes most desired.

Positions on all the major campus organizations for the 1973-1974 school year are open now and will be filled this quarter.

Those who feel that participation in student activities is worthless or that it constitutes a 'selling out' of sorts to the very powers they oppose hold a rather naive conception of the workings of these organizations.

The reorganization of the SAGC has produced a structure for realizing realistic reform within student government. The George-Anne, having

undergone a complete reorganization editorially and graphically, plus having acquired new equipment is now in the position to become an even more excellent production. The Reflector is in a crucial period as the whole concept of a college yearbook and the need for one is

questioned by students and administrators. Dissatisfaction with concert-scheduling this year has raised a host of thorny questions as to how students' musical tastes and activity fees should be correlated.

Involvement for the sake of involvement is not the issue. For those who are genuinely angry, concerned or excited about the operation of campus organizations, involvement in these organizations can be a profound personal experience and a chance to put one's brains and energy where one's gripe are.

CUB Concert Poll Results Discarded

CUB Alleges

Small Returns

By Gerald Pryor

In response to no small amount of bickering, whining and complaining by the GSC student body about the musical entertainment presented this year, the College Union Board published a poll of rock bands in the March 1 issue of the George-Anne, which interested students were asked to fill out and return to the CUB. The poll did little more than take up space in this newspaper.

In the first place, less than four per cent of the student body even bothered to turn in the poll. Only 234 "legitimate" votes reached CUB officials. Other ballots were promptly discarded as "obvious" duplications.

As if this lack of student interest wasn't bad enough, the CUB completely ignored those polls which were submitted, reasoning that the limited

response gave no representation to student desires. Procol Harum ranked first in the poll with 117 votes, followed by Rod Stewart with 93, David Bowie with 70 and Uriah Heep with 20 votes.

In the introductory article to the poll, the College Union Board stated that the list of acts was

"within our price range and available in the spring." The top four finishers turned out to be neither.

But the CUB really can't be blamed if such "big rock singers" as Procol Harum and Rod Stewart aren't booked at Georgia Southern. The major concert committee is allotted about \$21,000 a year with which to operate, and they would have to blow that tiny (?) sum in one big blast for David Bowie or Uriah Heep to "sing about beauty and sing about truth" at Hanner Field House.

Instead, the CUB has chosen to present a series of smaller concerts and coffee houses. No concerts have yet been scheduled for this quarter, with the exception of the Atlanta rock band Hydra, who are tentatively to appear April 16. Two coffee houses are on tap for this month.

April 11 Gritz, a five piece blue grass band from South Carolina, will perform; and Buddy Moss, an original black blues artist from Atlanta, is scheduled to appear April 19.

The simple fact is that Statesboro is no place for a big

name band to get richer, and an appearance here is certainly no way for them to get their picture

on the cover of the Rolling Stone. To get these bands, GSC students are going to have to show a lot of

interest and dole out a lot of money, two things they are not doing now.

REX CHILDS
RES. 764-6510



'Real Estate'

Sales

Brown Childs Realty & Const. Co.

KNIGHT BUILDING N. Main

STATESBORO, GEORGIA 30458

BROWN CHILDS, BROKER
RES. 764-3434

OFFICE PHONE
Phone 764-6157

Sim's

HOUSE OF STYLES

Now offering hair styling for men

and women. Plus a new tricology

treatment for healthier hair

210 S MAIN

5 doors north of Holiday Inn

**JOIN THE
GEORGE-
ANNE**



**3 -Pc.
Chicken
Dinner
Specials**

Only **\$1.10**

Reg. \$1.30

served with
French fries,
cole slaw, biscuit
& honey

Shrimp Boats, Inc.

468 S. Main St.

Statesboro 764-6211

— APPLY TODAY —

GIVE A DAMN

— APPLY TODAY —

**NOW YOU HAVE A CHANCE TO BE A
PART OF COLLEGE AFFAIRS**

Apply for a position on a Standing Committee of Georgia Southern College. These committees are composed of both students and faculty. They cover the following important areas of student interest:

**Auxiliary Services — Lecture Series — Health
Traffic Court — Honors — Religious Activities
Campus Life Enrichment — Traffic Safety**

**IF YOU ARE INTERESTED IN
ENTERTAINMENT, JOIN THE
COLLEGE UNION BOARD
Films — Willams Center — Major Concerts**

These committees need students who care. Pick up an application at the Student Government Office on the second floor of Williams Center between 11:00 a.m. - 5:00 p.m.

EAGLE BULLETIN

Announcements, Activities, Information

Thursday, April 5, 1973

Classified Ads

FOR SALE: Used girl's bicycle, 26", good condition. \$20.00. If interested contact Susan, Landrum Box 8359.

ROOM FOR RENT
1506 O'Neal Drive--Air-conditioned, private entrance, private bath. Located near Weis Theater. Available Spring and Summer Quarter -- Phone 764-4305.

Panasonic Auto Cassette Player - 12 V. Meg Ground -- Laniers Trailer Park No. 30 1971 Fiat 124 Sport Coupe, Yellow with black interior, 5 speed trans, AM-FM Radio, \$2000 or best offer -- 764-5940 (John Versaggi, Box 10949)

FOR SALE:
1965 Olds. Cutlass F-85 Convertible, powersteering, air, and automatic. Great condition! \$600.00 Call 764-7114.

FOR SALE:
1965 Rambler American -- 3 speed trans. Must Sell! Call 764-7222.

FOR SALE: Cliff's Notes on "Tartuffe," "Faust," "Billy Budd," "Notes From Underground," "Invisible Man," and "Scarlet Letter." \$.50 each. John Roberts, Dorman S-108, 764-9751.

Golf clubs- for sale. Acushnet Finalist Woods, 1, 3, and 4. Excellent condition. Ph. 764-7351.

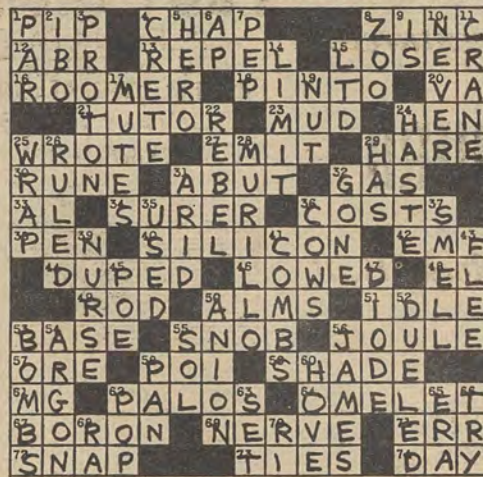
FOR SALE:
2 Ansen one-piece slotted mags 8 x 14", multi-pattern \$80.00--2-Mohawk white lettered G 60 x 14 \$70.00. (Both tires and mags are new) Call: 764-7682.

For Sale: 40 watt Nikko Receiver (AM & FM mpx), Ampex Micor 50 Cassette Stereo Recorder, Female Norwiegian Elkhound puppy - \$25, Mobile Home for Rent near College - call Joey Sapp, 764-2849.

For Sale: Tennis rackets and shoes. Rackets strung. Contact Dr. Frank Ramsey P.E. dept. ext. 452.

FOUND -- Light blue hand-knitted sweater. Call and Identify. 764-2432 or Ext. 496.

Any students interested in trying out for parts in the Ted Man film production of Black Creek Billie, a film being shot in Statesboro, should apply at 25 Siebald St. between 8 a.m. and 6 p.m.



Thursday, April 5, 1973
TENNIS MATCH: GSC vs. Wake Forest College, Tennis Courts, 2 p.m.
MEETINGS: Bio-Science Club, Bio. E202, 7:30 p.m.; Campus Crusade, Hollis 102, 104, 107, 6:30 p.m.-8:30 p.m.
CHILDREN'S THEATRE: "Toad of Toad Hall", McCroan Aud., 8 p.m.

Friday, April 6, 1973
RECRUITING: Coastal Chemical Co., Hollis Conference Rm., 9 a.m.-5 p.m.
FREE MOVIE: Horror Festival No. 2, Bio. Lect. Rm., 8 p.m.
BASEBALL GAME: GSC vs. Abraham Baldwin Agricultural College, Baseball Field, 3 p.m.

Saturday, April 7, 1973
TENNIS MATCH: GSC vs. Florida State Univ., Tennis Courts, 2 p.m.
FREE MOVIE: Horror Festival No. 2, Bio. Lect. Rm., 8 p.m.

Sunday, April 8, 1973
FREE MOVIE: Horror Festival No. 2, Bio. Lect. Rm., 8 p.m.
BASEBALL GAME: GSC vs. Savannah Braves, Baseball Field, 2 p.m.

Monday, April 9, 1973
RECRUITING: Varsity Co., Williams 111, 113, 114, 11 a.m.-5 p.m.
TUTORING: Math, Phys. Math 268, 7 p.m.-9 p.m.
DANCE THEATRE: Carl Radcliff Dance Theatre, McCroan Aud., 8:15 p.m.
ART FILM SERIES: Bio. Lecture Rm., 8 p.m.-10 p.m.

Tuesday, April 10, 1973
BASEBALL GAME: GSC vs. Brewton Parker Univ., Baseball Field, 7:30 p.m.
MEETINGS: ATO, Hollis 107, 7 p.m.-9 p.m.; Kappa Sigma, Bio. E201, 7 p.m.-9 p.m.; Delta Tau Delta, Bio. E202, 7:30 p.m.-9:30 p.m.
NATIONAL HUMANITIES SERIES: "For All Times", McCroan Aud., 8 p.m.
COFFEE HOUSE: "Mississippi John's", Williams Center, 8 p.m.-12 p.m.

Wednesday, April 11, 1973
RECRUITING: Marine Corp, Landrum Lobby, 9 a.m.-3 p.m.; Coop. Extension Service, Herty 218, 9 a.m.-5 p.m.
TUTORING: math, Phys. Math 268, 7 p.m.-9 p.m.
MEETING: Campus Crusade, Olliff Hall, 9 p.m.-10 p.m.
BLOODMOBILE: Hanner Gym, 2 p.m.-8 p.m.

we help.



SEA ISLAND BANK

STATESBORO, GEORGIA / MEMBER F.D.I.C.

...TWO CONVENIENT LOCATIONS TO SERVE YOU - DOWNTOWN AND SOUTHSIDE BRANCH

FREE CUSTOMER PARKING ONLY STEPS FROM THE BANK

ALAMO PLAZA MOTEL

"A SUPERIOR MOTEL"

587-2201

4 miles N. of Statesboro on U.S. 301 A-C, Etc. Heat, w-w carpet, TV, tubs and showers. Pool, restaurant. Lovely Pine Tree setting. Enjoy home cooked food. Open year round.



Randy's

Luncheon Buffet

Different Meal Everyday

(Lunch includes drink and salad)

Hours:

11-2

Free drawing

every night

also

LIVE MUSIC

(No cover charge)

MEL THE TALKING KUALA

by Rocky Ball

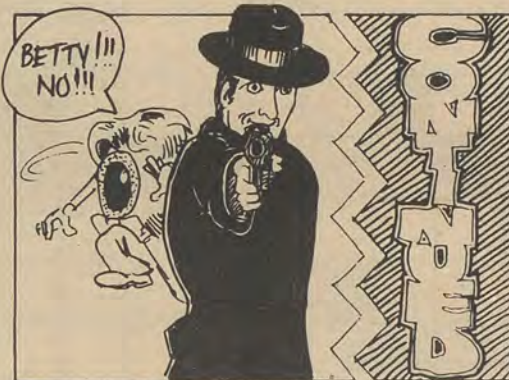
© 88
4-433



the adventures of NURD

by Rocky Ball

© 88
4-4-73



BARBS

By PHIL PASTORET

Difference between the boss and us: We bring our lunch to work—he brings his launch.

For some, falling in love is more like a stumble.

APRIL 12, 8:00 P.M. Featuring a 5 man bluegrass group entitled GRITZ. Standard bluegrass material done extremely well. The members are highly adept at improvisational bluegrass. Group consists of banjo, fiddle, bassist, and dual guitar work.

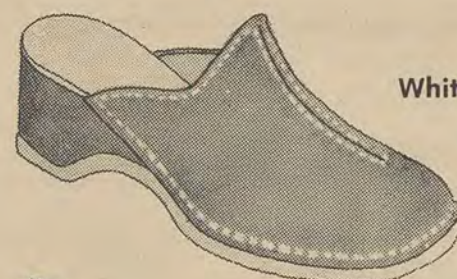
APRIL 19, For the connoisseur of original blues, for those who have developed an appreciation and "art form" from the Mississippi and Chicago prototype blues, the CUB presents Atlanta's own Buddy Moss for an all day engagement. Buddy will perform an strictly acoustical afternoon and evening show on guitar and harmonica. Also on the 19th there will be presented a documentary film citing the evolution of solo blues expression (such as Buddy Moss) to the development of group blues expression.

Georgia Southern College Bookstore

Cap and Gown measurements
are now being taken at the
Bookstore for
Honors Day and
June Graduation

MAJORING IN SERVICE
Landrum Center

OLDMAINE trotters



\$16.00
White Camel
and Navy



\$23.00
Tan

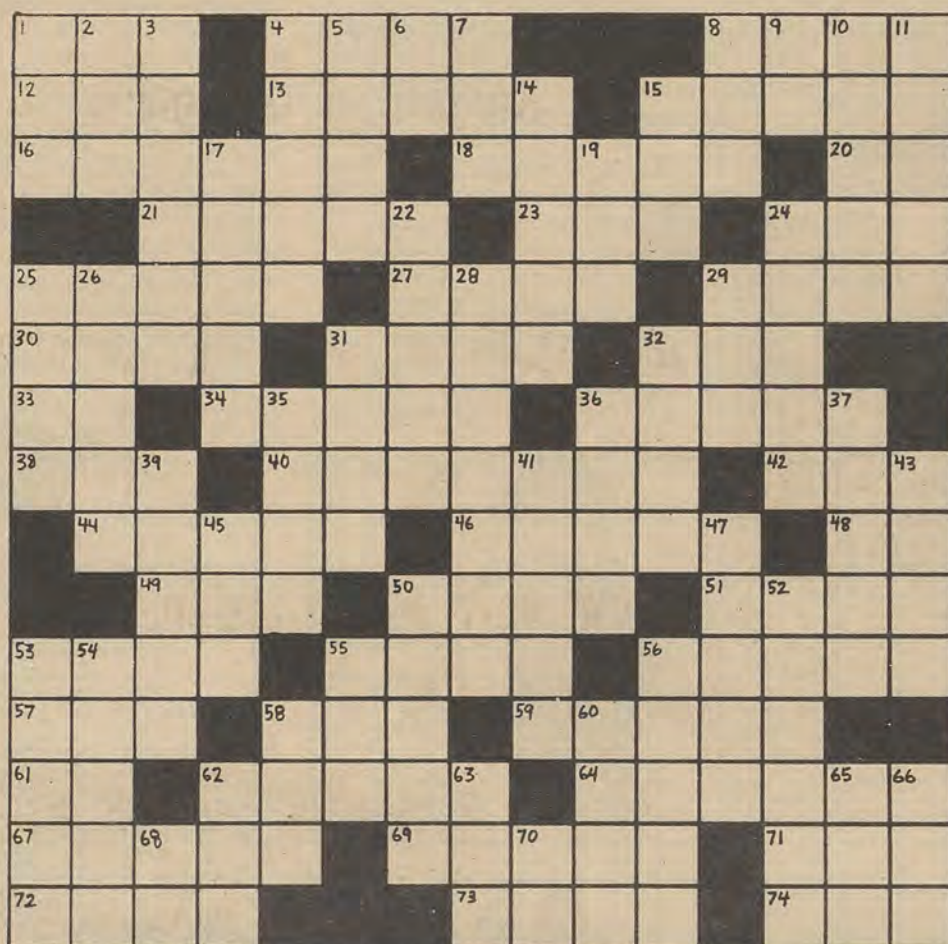


\$18.00
White
Natural

Henry's
Statesboro, Georgia

"We try to make a life long customer—not a one time sale"

george-anne crossword puzzle



ACROSS:

- | | | |
|-----------------------------------|---------------------------------------|--------------------------------------|
| 1. Dickens character. | 20. It's capital is Richmond (abbr.). | 30. Old Germanic alphabet character. |
| 4. Fellow. | 21. Private teacher. | 31. Border on; touch. |
| 8. Bluish-white metallic element. | 23. Wet soil. | 32. A state of matter. |
| 12. Abridged (abbr.). | 24. Egg-producer. | 33. American League (abbr.). |
| 13. Drive away; repulse. | 25. Authored. | 34. More certain. |
| 15. One who is defeated. | 27. Send out; eject. | 36. Prices. |
| 16. Tenant. | 29. Tortoise's opponent. | 38. Writing implement. |
| 18. A spotted horse or pony. | | |

40. Second most abundant on the earth's surface.
42. Electromotive force (abbr.).
44. Conned; deceived.
46. Moored softly.
48. Elevated train.
49. Stick; staff.
50. Charity; something given to relieve the poor.
51. Inactive.
53. Alkaline substance.
55. Offensively superior person.
56. Unit of work or energy.
57. Unrefined metal.
58. Hawaiian dish.
59. Shelter from the sun.
61. Milligram (abbr.).
62. Spanish port from which Columbus sailed.
64. Egg concoction.
67. Light metalloid element.
69. Courage.
71. Make a mistake.
72. Cinch (slang).
73. Draws.
74. 24-hour period.
- DOWN:
1. Average.
2. Biafran tribesman.
3. Subatomic particle.
4. Mediterranean island.
5. One who shows great courage.
6. National wire-service (abbr.).
7. Vim; vigor.
8. Place where animals are displayed.
9. Exists.
10. At no time.
11. Hoisting apparatus.
14. Boundary; confine.
15. Limited (abbr.).
17. Muffles; tones down.
19. Pecan, for example.
22. Revolt (against).
24. Hurry.
25. Envelop; cover.
26. Held sovereignty over.
28. Seventeenth century Spanish painter.
29. Possesses.
31. Very dry.
32. Dissipated.
35. Utilized.
36. Boyines.
37. Use the olfactory sense.
39. Hospital employee.
41. Rearranges the hair.
43. Run from.
45. Author of THE GOLD-BUG.
47. Double-electrode electron tube.
50. Negatively-charged ion.
52. Fought a deadly contest with another.
53. Destructive explosive devices.
54. Fairly light inert gas.
55. Sun (latin).
56. Surname of author-psychologist brothers.
58. Kitchen utensil.
60. Came into sight, as a ship.
62. Sharp, cracking sound.
63. Correct's a clock's time setting.
65. Epoch.
66. Attempt.
68. Egyptian sun god.
70. Smallest state (abbr.).
- answer on page 6

It's the real thing, Coke.

Real life calls for real taste.
For the taste of your life—
Coca-Cola.



*Coca-Cola and Coke are registered trademarks which identify the same product of The Coca-Cola Company.
Bottled under the authority of The Coca-Cola Company by:

Statesboro Coca-Cola Bottling Company

Minkovitz
and
LADY
WRANGLER
think
Americans
spend too
much for
SPORTSWEAR

And Lady Wrangler is doing something about it with a smartly styled three piece outfit at a low, low price you can afford! Long sleeve man-tailored shirt, no-iron 50% polyester, 50% cotton leno print. Pink, lilac, blue. Sizes 30-38...

Dist. Price \$6.40

High rise cuffed flare leg trouser with zip front and swing pockets.

Dist. Price 10.90

Trousers in no-iron 50% Trevira polyester, 50% cotton brushed sateen. Purple, cherry, navy, white.

Minkovitz
Quality Discount World
Park Free-Rear of Store

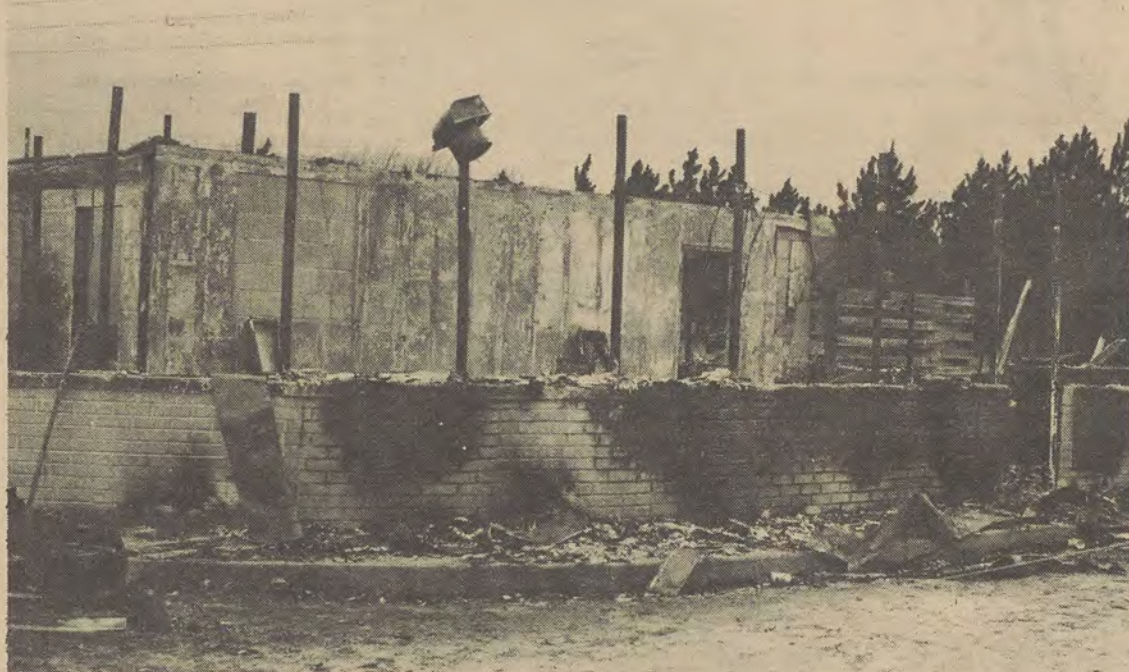
LOCAL ENTERTAINMENT SPOTS

BURN ~~FOLD~~ REOPEN

The Knights of Georgia ,

an institution for GSC students,

now only a charred memory

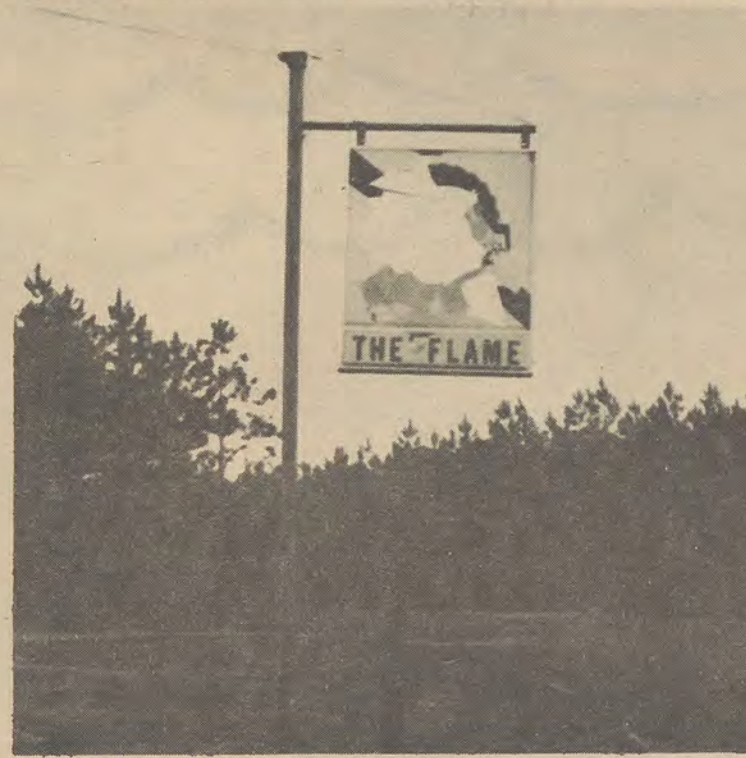
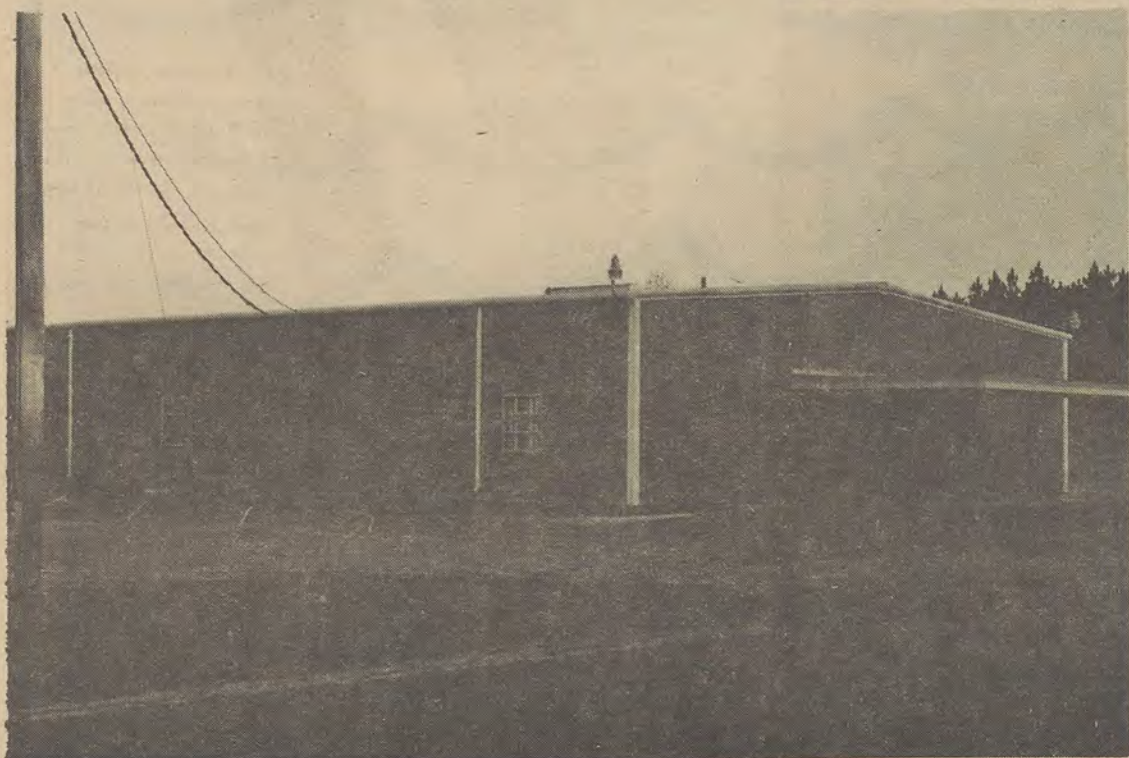


The Knights ,

a rebirth of the old KOG ,

opens in the building that

formerly housed Duffys Tavern



The Flame closes and will reopen under new management

dive right in... *Bali*® Swim Separates
is open for the sea-sun...



Remember last year when you couldn't find a swimsuit to really fit your figure top and bottom? This year, come to our Swim Separates Shop, where swimsuits . . . tops and bottoms . . . are sized and priced individually. Buy the bra in your correct bra size and the bottom in your hip size in the style and print you prefer. Underwire bras 32 to 36B, C, D, DD, \$15 and \$16. Briefs and bikinis S, M, L, \$10 and \$11. Not shown: push up pad bra, 32 to 36B, \$16 and \$17. A. "Sea Fair" navy polyester knit with white piping. B. "Super Circle," navy, red, orange and purple print on white nylon. C. "Moon Petals," navy and white print of nylon.

Tilli's

"For Your Shopping Pleasure"

Uptown Statesboro 764-5678

Toad Of Toad Hall By A. A. Milne To Be Presented On April 5

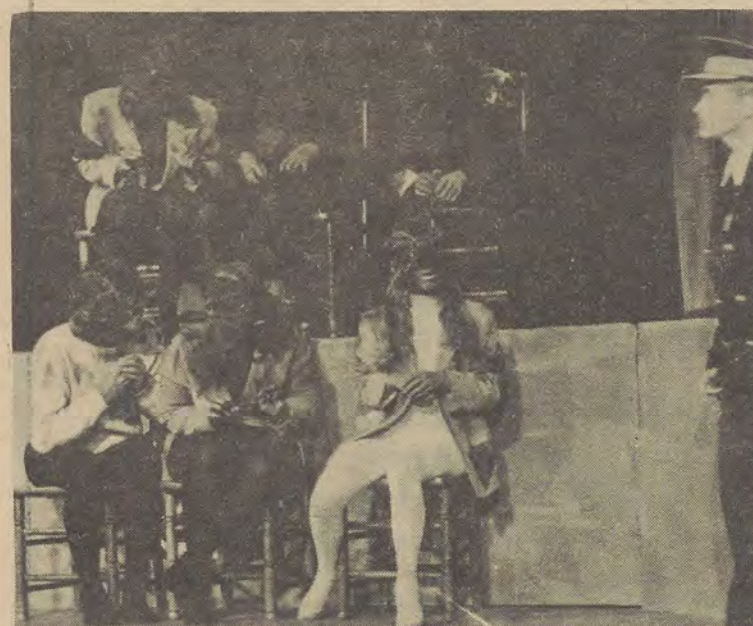
The first annual production of the Bulloch County Children's Theater will be highlighted by an open performance on April 5, at 8:00 p.m. in the McCroan Auditorium at Georgia Southern College.

The play, TOAD OF TOAD HALL, is being produced by Alpha Psi Omega, the honorary dramatic fraternity at Georgia Southern, and is being sponsored by the Statesboro Regional Library, Bulloch County Board of Education, and Department of Speech and Drama at GSC. Production work and design are being undertaken by students under the consultation of Dr. Richard Johnson and Robert West. Directing the play is Stephen Haussmann, vice-president of Alpha Psi Omega. Proceeds over the expenses of production will be used for a dramatic scholarship.

"I think it's extremely exciting that the Statesboro and Bulloch County community are able to work with the college in presenting, what I think will be, a beautiful and valuable experience for the children of the area," commented Johnson, Assistant Professor of Speech and Drama at GSC. "In working together, we receive not only aesthetic benefits, but educational benefits, as well," he continued.

TOAD OF TOAD HALL was written by A.A. Milne, the author of Winnie-the-Pooh fame, and is based on Kenneth Graham's well-known children's novel, WIND IN THE WILLOWS. story deals with the adventures of Toad and his friends, Badger, Rat, and Mole.

On Thursday, April 5, at 8:00 p.m. in McCroan Auditorium, the play is open to the public. Admission is 75 cents for adults and 35 cents for children.



Ratcliff Dance Theatre To Perform

The Carl Ratcliff Dance Theater, from Atlanta, Georgia, will perform on April 9, at 8:15 p.m., in the McCroan Auditorium. The announcement was recently made by a member of the GSC Campus Life Enrichment Committee, sponsors of the performance.

A project of the Atlanta Ballet, the Carl Ratcliff Dance Theater is composed of four members: Carl Ratcliff, Director of the company, Virginia Barnett, Teena Mohr, and Donna Rizzo.

Ratcliff, an Associate Director of the Atlanta Ballet, has studied with Lester Horton, Carmelita Maracchi, Bella Lewitzky, Roland Petite, and Eugene Loring. He has had successes in every major dance media—movies, television, clubs, and stage.

His modern works created for the Atlanta Ballet include "The Abyss," "Dreams," "Fanfare," "Fawn Lake," "Gothic Ode," "Llanto De Pueblo," "Morpheus Circuit," and "Waltz Inventions," duos choreographed and danced with his partner, Virginia Barnett, include "Morpheus Plus One," "Danzon," "Amahl and the Night Visitors," and his solos, "Cowboy's Lament," "Medieval Man," and "The Raven" have met with exceptional success. He has danced leading roles in "Nutcracker," "Sleeping Beauty," and "Giselle," and choreographed dance sequences for Opera in the Park's "Aida."

In 1965, Ratcliff was invited to teach the first modern dance classes offered at the Southeastern Regional Festival, and this honor has been repeated

each successive year. He is presently the head of the Modern Dance Department of the Atlanta School of Ballet.

Virginia Barnett began her dance career in high school as a pupil in the Atlanta Ballet, and she spent the summers studying with Tatiana Chamie and with the School of American Ballet. She has also studied in London with Sadler's Wells School and with Vera Volkova; and in New York, she studied with both the

School of American Ballet and the Ballet Theater School. She has appeared at Radio City Music Hall, with the William Dollar Concert Group, and on television with John Butler.

Teena Mohr received her dance training in Atlanta, New York, and Pittsburgh. She is a graduate of Carnegie Tech and was choreographer in residence for the Drama Department productions. She has performed with the Atlanta Ballet and is an

associate and teacher with the Lottie Hentschel School of Dance. In 1969, she became a founding member of the Carl Ratcliff Dance Theater.

Donna Rizzo began studying dance at Stephens College under Harriette Ann Grey. Her summers were spent in modern dance and choreography classes at Perry Mansfield School of the Dance and Jacob's Pillow Festival of the Dance. In New York, she danced in two Broad-

way productions with the Felix Febich dancers and with the Charles Wiedman's and Valarie Bettis' companies, and performed in Equity summer stock at the Barn Theater.

Tickets will be available in the GSC McCroan Auditorium box office beginning Monday April 2, from 2:30-4:30 p.m. General admission is \$2.00; admission for GSC faculty and staff is \$1.00, and admission is free for GSC students with ID.

Election

continued from page 1

Committee. He is also in charge of all publications produced by the Committee. The Vice-President is further responsible for setting appropriate office procedures and for record-keeping.

Acker said, "The Vice-President should assist the President in initiating programs."

The duties of the other officers as described by the STATUTES are as follows: "The Coordinator of Budgetary Affairs is in charge of all disbursements and financial operations of the Central Coordinating Committee. He is responsible for the publishing of a quarterly financial report; for administering all funds of the Committee, and for drawing up budget procedures for individuals and/or organizations receiving funds from the Central Coordinating Committee. He is to act as liaison between the Central Coordinating Committee and the

Director of Financial Aid and the Scholarships and Loans Committee and shall serve on the Activity Fee Budget Committee.

"The Coordinator of Academic Affairs is responsible for overseeing the total development of the academic program, for formulating policies concerning academic areas that affect the student body, and for advising the Committee on all matters relative to his delegated area of

responsibility. He is also to serve on the Academic Advisory Council.

"The Coordinator of Co-Curricular Activities is responsible for overseeing the work of all standing committees as set forth in the Georgia Southern College Statutes on which students serve. He is responsible for informing the Committee about feelings of individual students and student

groups and is responsible for initiating on behalf of the student body proposals involving co-curricular activities.

"The Coordinator of Auxiliary Services is responsible for investigating, formulating, and initiating policy and programs concerning all auxiliary enterprises of the college."

Statements by the candidates for office will appear in the April 19 issue of the GEORGE-ANNE.

Movie

continued from page 1

Academy of Dramatic Arts in New York City.

The leading man chosen for the film, Jan-Michael Vincent, is currently starring in Walt Disney's "The World's Greatest Athlete." He recently co-starred with Darrin McGavin in "Tribes," a film about a hippie marine and his tough, conservative sergeant.

Nineteen local actors and actresses are soon to be chosen after evaluations of their recent auditions. "We want to cast local amateurs and students who speak authentic accents to

acquaint the professionals with their speech," Petrie said.

Associate Producer Terry Mores, who was also present at the press conference, said the key set will be the interior of the Metter Grammar School. "Another set will be a high school barn dance which will be filmed in Statesboro at Dude Renfro's Cotton Warehouse," Morse added. Filming will also take place

at the New Fellowship Baptist Church near Stilson. "The cooperation we have received locally is helping a great deal," he said.

The filming of "Black Creek Billie," which will cost about \$350,000, will be completed near the end of May. Following its completion, the producers will decide on the best offer made by the major releasing companies.

KOG

continued from page 1

Knights," said Jimmy Thomas. "There are a lot of people who associate us with the Old Knights of Georgia, so, we decided to

change the name to keep our old customers. We think the old KOG had a tradition of good service and low prices. We want people to know that our new place will be the same as the old one," said Jimmy Thomas.

Horne explained that beer prices and happy hours will remain the same.

Spring Fever Hits Students At GSC

By CATHY McCARTY
G-A Staffwriter

There is an obvious transition that takes place in the dress and attitudes of a great many GSC students over Spring Break. The question is: what causes this transition? Suddenly the jackets that everyone wore during exams Winter Quarter turn to bathing suits less than a week later. It is physically impossible for a drastic change in weather to occur in this short amount of time. Could the word "Spring" itself be the cause?

The answer to this question probably cannot be answered by a simple undergraduate, but the change is obvious to anyone with eyes. The chains are finally removed from the bicycles that have been sitting in the storeroom since fall; kites are purchased and seen sailing over many buildings (and into many trees) on campus; and people generally seem happier and more optimistic than the week before. The sales on beer and wine go up, indicating an increase in picnic-going (not to mention those of such nonentities as fried chicken and paper plates). The rain that seemed too depressing winter quarter suddenly brings out a whole team of "puddle-stompers," or students in rolledup jeans and old T-shirts who seem to think that pneumonia is non-existent in the spring.

One of the strongest groups that come out are the sun-bathers. They arrive around 10:00 each day donned with blankets, pillows, and books. By

3:00 they are crawling back into the dorm, wrapped up in their blankets and shivering, but smiling because they know that their skin is darker than it was at 10:00. The number of guys who drive around looking at these

strange beings may soon be decreased by a gas-rationing. The stream of cars driving to the beach every sunny afternoon may be shortened, too.

Sports such as softball, tennis, swimming and wrestling (often

at the lake) have their peak in the springtime. A few weirdos were seen swimming the first week back at the Windsor Village pool. Volleyball games are held every afternoon outside Stratford Hall. (Will someone please buy those people a net!?) Frisbee season starts again, although no official teams have been organized yet.

Probably the most obvious transition from winter to spring can be seen at the lake. For more information, ask the ducks.

1/2 Price SALE

A selection of Famous Brand Cosmetics

Make up...Lipsticks

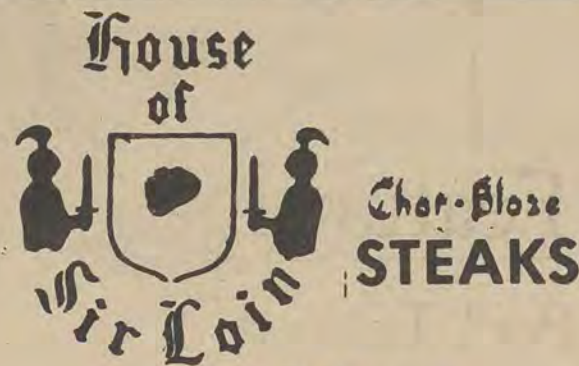
Hair Spray

Fragrances

Eye Shadows & Liners

ALL 1/2 Price

Town & Campus Pharmacy
University Plaza



Hours: 11:00 Mon.- Fri.

4-10:00 Sat.

4-11:00 Sunday Night

Located adj. to the GSC Campus in Windsor Village

SAVE AT THE
MUSIC BOX

★ special this week

THE DOOBIE BROTHERS

'THE CAPTAIN AND ME'

ALBUM REG. \$5.98 NOW \$3.98

TAPE REG. \$6.98 NOW \$4.50

ALSO AVAILABLE THE NEW

'ROLLING STONE' APRIL 12th

YOU CAN DEPEND ON THE MUSIC BOX

764-3641

A
PENNY
SAVED IS
A PENNY
EARNED!



The Knights

(Formerly Duffy's Tavern)



Hours: 2-12

Happy Hour: 2-6

Owners: Larry Horne

Randy Thomas

Jimmy Thomas

Carl Thomas

(Former Owners Of
K.O.G.)

Featuring:

Pool Table

Two Foos Ball Tables

Pinball Machines

Air-Conditioned

Color T.V.

Juke Box

Air Hockey

Live Entertainment to be Announced

Savannah Braves Play Eagles Here

Georgia Southern's baseball team will host the Class AA Savannah Braves in an exhibition game on Thursday, April 12, at 7:30 p.m., at Eagle Field.

The Braves will be tuning up for their April 13 opener in Savannah while the Eagles will be taking a break from their rigorous 59-game regular season schedule.

"We are extremely pleased to have the Savannah Braves visit Eagle Field and the opportunity to play them before our home crowd," commented Georgia Southern head coach Ron Polk. "I think we can compete very well with them offensively; but whether our pitchers can contain the Braves will be another story."

Neither team is expected to throw top pitchers in the contest. The Braves will be opening their 1973 season the following night while the Eagles are scheduled for a crucial two-game series with the University of South Carolina on April 13 and 14.

Colorful Savannah Braves manager Clint "Scrapiron" Courtney will head the Braves team. Courtney took over the Braves last season and turned them into a contender in his first season at the helm.

Tickets for the game will be \$1.50 for adults, \$1.00 for non-GSC students, and \$.50 for Georgia Southern students. No season tickets will be honored.

Intramural Schedule

Monday 9th
Kappa Sig vs Sigma Pi 4:30
Sigma Chi vs Pi Kap 5:30

Tuesday 10th
ATO vs TKE 4:30
Delta Tau Delta vs Sigma Nu 5:30

Wednesday 11th
Phi Delt vs Sigma Pi 4:30
Sigma Chi vs Sig Ep 5:30

Thursday 12th
Kappa Sig vs TKE 4:30
ATO vs Delta Tau Delta 5:30

No. 25 In Country

Eagles Receive National Ranking



Georgia Southern's baseball Eagles are currently riding the

crest of an offensive punch that has won them sixteen of their

first eighteen games and a national ranking of number 25, and one of the quickest starts in collegiate baseball this season.

Averaging nine runs and 12 hits per game, the Eagle offense has blasted seven different opponents for an average winning margin of six runs per outing, and a team batting average of .341.

"We are certainly pleased with the way our offense has been performing thus far," commented Eagle Head Coach Ron Polk.

"We have the personnel to do this kind of job and I just hope

they can continue to hit this way the rest of the season."

The Eagles boast nine regulars hitting over .300 and a total 12 Georgia Southern batters are

currently averaging over the .333 mark. The GSC offensive punch is paced by catcher John

Tamargo, last season's Most Valuable Player, who is currently hitting at a .500 pace.

His 25 hits in 50 at bats is tops on the club. He is also leading the Eagles in runs-batted-in with 23 and has three home runs to his credit. Tamargo set a new school

record in 1972 with 40 RBI's.

He is followed closely by junior first baseman Rolando DeArmas

who is blasting opposing pitchers at a .447 clip with 18 RBI's.

DeArmas is followed by outfielder-third baseman Steve Pietsch at .406, short stop Steve Daniel at .389, outfielders John Butler at .385 and Keith

Chauncey at .371, second

baseman Mike Cash at .352, third baseman Jim Morrison at .348

and outfielder Carl Person at .305. Morrison is also leading the

team in home runs with four in addition to his 19 RBI's.

Freshman catcher Gerald Buchar leads the capable list of

second-line performers with a healthy .545 average followed by

Mike Moore at .364.

The GSC squad has amassed 261 total bases in their 18 games

thus far.

Meanwhile the Eagle pitching

staff has held opposing hitters to only 63 runs in eighteen games--

an average of 3.5 per game, and an Earned Run Average of 2.93.

The mound staff is led by senior hurler Ernie Venet with a 5-0

record and 2.32 ERA. He is followed closely by last year's

Most Valuable Pitcher Norman Sapp with a 4-0 worksheet and

2.14 ERA, and junior lefty John Gibson also with a 4-0 record and 2.65 ERA.

Bad Weather Raises Scores

Eagle Golfers Place Second In Red Fox Invitational



The GSC golf team was led by Jim Ferrelle as they placed second to Wake Forest by six strokes in the Red Fox Invitational.

Bad weather caused low golf scores for GSC's golf team in their last tournament. The team still managed to land their fourth consecutive second place in the three day Red Fox Invitational held March 21, 22, 23 in Tyron, N.C. "Aside from the rain, it was freezing. We had to wipe hail stones off the green in order to putt," commented Ron Roberts, golf coach.

GSC lost by only six strokes to Wake Forest 773-767. Tennessee received third place followed by Ohio State and Wofford University in fourth and fifth place. Other teams participating were Duke, Miami at Ohio, Michigan State, Furman, West Michigan, Virginia Tech, and Northwestern University.

Six golfers represented GSC. Jim Ferrelle led 81-73-154, John Melnick 74-80-154, Gary Dixon 80-75-155, Jimmy Ellis 80-76-156, Pat Lane 83-79-162, and Rick Smith 75-88-163.

The individual leader for the tournament was Larry Galloway from Ohio State who shot a low 70-76-146, GSC's Jim Ferrell

came on strong his second day with a 73, the best round of the whole tournament.

GSC will have a chance to meet

Wake Forrest again for the Furman Invitational April 5, 6, 7.

"We've won it for the last two years," smiled Roberts.

REVLON STOCK REDUCTION SALE AT THE

College Pharmacy
Uptown Statesboro

Come See! Come Save!

97¢ Specials

Colorshine & Great Glissers

Natural Wonder Medicated Make-up

-all shades

Anti-acne Spot Cover -all shades

All Liquid Eye Liner

All Liquid Cheek Color

All styles Revlon Mascara Refills

Plus many more

unbelievable 97¢ Specials

1/2 Price Specials

All Colors Revlon Brush-on Mascara

All in stock: Pearly Lid Shadows

Intimate Body Talc, Body Cologne

Lemon Cologne, Lemon Cleanser

Intimate Concentrated Perfume

All Revlon Gift Sets-including PUB

And more! more!

1/2 Price Specials

The College Pharmacy

19 S. Main St.

Uptown Statesboro

Ph. 764-5421

REX'S PAWN SHOP

- ★ Baggies
- ★ New shipment of body shirts
- ★ Shoes at half-price
- ★ Tank shirts
- ★ New shipment of summer hats
- ★ Windbreakers
- ★ Unredeemed TV's
- ★ Tennis shoes

Hitting Over .500

Tamargo Leads GSC Baseball Team



STATESBORO—The cause of many a nightmare for pitchers who have hurled against the Georgia Southern College Eagles these past two seasons has been John Tamargo, the Eagles' starting catcher, cleanup man, and last year's Most Valuable Player.

Tamargo, at 5'10", 165 lbs., is small compared to some ballplayers, but what he doesn't have in size he makes up in power. Many a pitcher has watched his delivery to Tamargo either hit against the fence or go over it these past two years.

"Most people think I'm the power man on the club," he said. "But all I look for when I go to bat is a base hit, not homers or doubles. Coach Polk tells me I overswing and I guess I do many times but never with two strikes on me; I always cut down then."

Tamargo, a Business major, transferred to GSC last year from Miami Dade North Junior College where he enjoyed two successful seasons catching for the Jaguars, who went to the nationals his sophomore year.

His first year at GSC was a great one also with a .305 batting average, 2 homers, and a team leading 40 RBI's. All this came despite a poor start, but at the end of the season, he was named the team's Most Valuable Player.

This season, he has gotten off to a fast start. Currently, he has a .510 average with 3 homers, one a grand slam, and 22 RBI's tops on the club. He has been a key reason for the Eagles' current 16-2 record.

"The slow start I had last year shook me up quite a bit," he said, "but this season I've started off pretty good and I just hope to be able to keep it up."

"There's only one word for our team and our coach," he added, "and that's fantastic. We shouldn't have lost those two games that we did lose but we're going to win our share. The first game we lost (against George Mason College), I felt like we were just worn out after having played doubleheaders three days in a row before then. For the other game I don't have an excuse except we just didn't play like we could."

Tamargo said his most satisfying game thus far has been

against Lehigh University when he went three for three and had two doubles batting righthanded. Tamargo is the team's only switch-hitter.

Commenting on the position of catcher, he said, "Catching takes an awful lot of work, but I enjoy

it. You have to really be in the game and keep tabs on your pitcher and the defense at all times and not just worry about hitting. If the pitcher's tired,

Coach Polk generally knows but if he asks me then I tell him."

"Right now, I feel like we've really got the team that can go to the nationals. It all depends on if our pitching can hold up which I

think it can. Our defense is spectacular, particularly in the outfield. Those guys are the best I've ever seen."

John is married and has been drafted four times already by major league teams.

air South

STATESBORO TO ATLANTA

Leave	Arrive	Schedule	Stops
8:40 A	9:40A	Except Sunday	0
12:10P	2:25P	Except Sat. & Sun.	2
5:20P	6:20P	DAILY	0

ATLANTA TO STATESBORO

11:00A	12:00N	Except Sat. & Sun.
2:45P	3:45P	SATURDAY ONLY
3:15P	5:05P	Except Sat.
7:15P	8:15P	Except Sat.

FOR RESERVATIONS DIAL DIRECT 1- 800-282-2641

Design Your Ring.

Just because it's your love,
and your day,
make it your very own ring.



Choose the band, the finish, the setting.
And it's all yours.
Sonata.
Let's you be you.

Sonata

Grimes

Statesboro Prestige Jeweler

Uptown Statesboro

Since 1892

GIFTS
FUN
CANDLES
POSTERS
MADNESS
GLORY

little john
Statesboro Mall
764-7524

It takes more than a pretty face
to make a girl.

Cover Girl Shoes.

They make heads turn.

Yes, we have Cover Girl's Piping Hots —
Shoe shown

\$ 17.00



PATTERSON
GRIFFIN
SHOES
STATESBORO MALL

For your convenience



Southeastern



SPORTING GOODS INC.

Special

SALE

GSC Windbreaker Nylon Shirts

\$7.95
Each

\$6.95
Each

DOWNTOWN
764-6281
20 S. MAIN



UNIVERSITY PLAZA
764-6282
UNIVERSITY PLAZA



The Ball

Entertainment nightly-

Band Thurs., Fri., and Sat.

11:00 A.M. til 12:00 P.M.

This week's band The O'kaysions

Located in WINDSOR VILLAGE

the
george-anne

