

Georgia Southern University

Digital Commons@Georgia Southern

The George-Anne

Student Media

12-5-1949

The George-Anne

Georgia Southern University

Follow this and additional works at: <https://digitalcommons.georgiasouthern.edu/george-anne>

Recommended Citation

Georgia Southern University, "The George-Anne" (1949). *The George-Anne*. 596.
<https://digitalcommons.georgiasouthern.edu/george-anne/596>

This newspaper is brought to you for free and open access by the Student Media at Digital Commons@Georgia Southern. It has been accepted for inclusion in The George-Anne by an authorized administrator of Digital Commons@Georgia Southern. For more information, please contact digitalcommons@georgiasouthern.edu.

"WHISKERED
WIZARDS"
GAME
TONIGHT

The George-Anne

ENTER
THE TRAFFIC
SAFETY
CONTEST

VOLUME 22

Georgia Teachers College, Collegeboro, Ga., Monday, December 5, 1949

Number 9

Masquers Take First Place in Annual I.R.C., Teachers College Talent Show

Masquers won first place in the I.R.C.'s annual Teachers College Talent Show Thursday night which featured the best talent on the campus. The Art Club was second place winner and the S.C.A. placed third.

The Masquers' act was a night club scene, Club Masquers. The staging consisted of several tables, chairs, and "patrons," roped off with red and yellow crepe paper.

Betty Lewis, president of Masquers, presided as the mistress of ceremonies. First was a dance team, Ashley Madray and Dot Aycock, alias "Monsieur Hodka and M'amoiselle Vodka," who did an original dance, accompanied by "Bunny" Brown at the piano.

The next performer was a guest star, Miss "Gerry Dale Kay," better known as Gay Kimbrough. She sang "Temptation" and added a bit of humor by coming out on the last chorus in a hillbilly costume and a cap pistol that would "really shoot."

After this was given a little girl performer, "Singapore Sal from Southern Cal," who "might have been bigger but couldn't be better." This was Dan Biggers in a peasant girl outfit, with bracelets, pearls, and a beautiful blonde wig, who sang "Snatch It and Grab It," which was accompanied by all the appropriate motions.

In addition to these acts were Jo Starr, pianist; the "French waiter," Harry Strickland; and cigarette girl, Winnie Eason. The "guests" were members of Masquers Club.

George Parrish, a last year's Talent Show winner, represented the Art Club as Al Jolson. During Jolson's "Let Me Sing and I'm Happy," George "put Larry Parks in the shade." In his encore number he proved that "you ain't seen nothin' yet" by his portrayal of one of Jolson's biggest hits, "Mammy."

The Student Christian Association presented a playlet in three acts, plus a postlude act, "The Fatal Quest." The curtains were represented by Anne Trice and Joyce Blanton; the king and queen were played by George Herndon and Jean Fordham; the Duke, Max Hill, added quite a touch of humor to the skit by his dauntless pursuit of the king and queen's beloved daughter, Trudye Pridgen. Douglas Moore shifted, or rather sifted, the scene.

Other attractions were: The B.D.S. Club's satire on farm life, East Hall, Carnegie Hall numbers; the W.A.A.'s Georgia Teachers College Hoedown; the Freshman Class weeding out of their best talent; Lewis Hall's "A Cheerful Little Earful"; West Hall's Spanish dancers; the B.S.U.'s "Classi-



RABBI ALAN TARSHISH of the Beth Elohim Congregation in Charleston, S. C., will be a visitor on our campus next Monday, December 12. While here he will address the assembly on the Coming Destiny. He is sponsored by the Jewish Chautauqua Society.

cal Ballet"; the Science Club featured Betty Hart as vocalist; the English Club gave a Negro's version of the "Ceration"; the Men's Chorus presented "Roberta's Delima; Mu Sigma, two drums, piano and guitar numbers; the Wesley Foundation featured Stacy "Bad Boy" Sheley in a college student's version of church; the F.B.L.A. presented a typical "New Orleans dance number"; the P.B.Y.F., presented "Shortnin' Bread", and last but not least, The George-Anne presented an Edgar Bergen-Charlie McCarthy show.

The judging was based on originality, presentation and talent involved. All participants of the eighteen clubs are to be commended for the success of the show.

The judges were Mrs. Paul Sauve, Dr. Roger Holland and Mr. Kermit Carr, citizens of the city of Statesboro.

Gunter's Plays Given in Schools

Jimmy Gunter's "Nell's Bells" put on in Millen by the Jenkins County Teachers Association with everyone from county school superintendent to first grade teachers, November 15.

"He Ain't Done Right by Nell" will be presented by the Girl Scouts under direction of Lila Brady, 1949 graduate, soon after Christmas. (Head of English Department at Dawson High).

Masquers Present Comedy Dec. 12

"The Man Who Came to Dinner" will be Masquers' first big production for this quarter Monday night, December 12, in the college auditorium.

"The Man Who Came to Dinner," was written by Moss Hart and George Kaufman and will include a large majority of the Masquers' leading members. The two main characters are Sheridan Whiteside, played by Billy Evans, and Maggie Cutter, played by Martha Wood. The play is an entertaining comedy in three acts. Rehearsals have been going on for more than a month and much is still to be done before presentation.

The most important characters of the play include:

Mrs. Stanley, by Mary Kight.
Miss Preen, by Virginia Morgan.
Richard Stanley, by Ashley Madry.
June Stanley, by Betty Jean West.

Mrs. Dexter, by Ann Neville.
Mrs. McCutcheon, by Charlotte Clements.

Mr. Stanley, by Tillman Newsome.

Maggie Cutter, by Martha Wood.

Dr. Bradley, by Lonnie Ladson.
Sheridan Whiteside, by Billy Evans.

Harriet Stanley, by Edith Carpenter.

Bert Jefferson, by Dan Biggers.
Professor Metz, by Harry Strickland.

The story takes place in Ohio and is centered around Mr. Whiteside and Miss Cutter. When the play opens, Mr. Whiteside, the gruff lecturer and radio orator, finds himself with a broken hip in the Stanley home. Here Mr. Whiteside's secretary, Miss Cutter, promptly falls in love with a young newspaperman. Mr. Whiteside doesn't like this love affair because he dislikes training a new secretary. With help from an old actress friend, the situation becomes more involved, including a mummy case, a distressed nurse, and an old has-been actor, who is too fond of playing practical jokes.

The sale of tickets will be handled by Kathryn Chance. Admission price will be 50 cents for students and 75 cents for adults.

Through the help of the properties and stage setting committees a completely new stage set has been built for the play.

GFCB Hold Meet On Campus Sat.

The Georgia Federation of College Business Students held their semi-annual all-day meeting on our campus Saturday. Dr. Alexander addressed the group on the Historical Aspect of Business Perspective.

Representatives from four colleges, South Georgia, Mercer, G.M.C., and G.S.C.W., were expected to attend.

Russell Mercer is secretary of the organization.



Professors Meet Professionals Tonight At 8:15 in Comical Basketball Contest

Tonight the Blue Tide will play an exhibition game with the "Whiskered Wizards," a professional team, of St. Augustine, Fla., in the college gym at 8:15.

The "Wizards," who boasts of a last year's record of 130 wins and five losses, is composed of all professional players, led by Bill Steinecke. Manager Steinecke has played over 3,000 games of basketball and if that "ain't" experience, I'm Betty Grable. Perhaps the most interesting part of the game will be the duel between the two centers, "Bucky" Helton, the 6 foot-6 inch Teachers center, and Jim Keller, the 6 foot-5 inch "Wizards" center. Keller averaged 22 points per game for the professionals last year.

John Pawlick is the high-scoring and fast-cutting forward for the "Wizards." In one game last season Pawlick scored 50 points.

Another "Wizard" forward is Wheatie Whalen, who also plays defensive guard. Whalen is a great showman and formerly a member of the great Columbus, Ohio, basketball club.

Bill Allen, listed in the publicity, is not with the club now. Jack Garrett, 6 foot-1 inch guard of Kentucky, is replacing him.

Choir to Present Christmas Concert

The Philharmonic Choir will give the annual Christmas concert on Thursday, December 8, in the college auditorium at 8:15. The choir of 60 voices is under the direction of Dr. Ronald J. Neil, with Mr. Jack Broucek as accompanist. Ann Trice, soprano, will be the featured soloist and Mary Brannen organist.

The program will be composed of Christmas music by Bach, Christiansen, Dvorak, Henschel, Noble, Kopolyoff, Murray, Gearhart, Kremser, Spikes, and Liszt.

Art Teachers At Convention

Miss Margaret Strahlman and John Erickson, faculty members of the Fine and Practical Arts Division, are leaving today for Atlantic City, N. J. They are attending held December 6-10 there. In addition to attending the general meetings, Miss Strahlman and Mr. Erickson will attend their respective departmental meetings, Home Economics and Industrial Arts.

**BOOST YOUR
TEAM. SHOUT
WITH YOUR
CHEERLEADERS.**

Readers Invited To Enter Contest

You, the reader, are invited to join The George-Anne staff in entering the nationwide Lumbermens Mutual Casualty Company contest.

The purpose of the contest is to encourage safe driving among college students during the Christmas holiday season through editorial efforts of the collegiate press. Prizes will be awarded to the newspaper, magazines, and individuals who, in the opinion of the judges, do the best job of crusading for safe driving from now until December 31.

The main rule for the contest is material submitted for judging must have appeared in a college publication between November 15 and December 31. (We have only one more issue before Christmas). So hurry. Turn in your material on or before Wednesday, December 14.

The entries will be judged by an imperial panel of men distinguished for the interest in youth and traffic safety. Entries will be judged on the basis of originality of material, method of presentation and general effectiveness and vigorosity of the campaign.

First prize will be \$500, second prize \$250, third prize \$100, provided the entries are sponsored by the college newspaper, The George-Anne.

Prizes for individuals, members of the publication's staff or contributors, in the following classifications:

\$100 for the best news or feature story on traffic safety. \$100 for the best cartoons or news picture on traffic safety; and \$100 for the best editorial on traffic safety.

Remember, you have only a few days to work. For extra information, see the editor.

T. C. CAMPUS CALENDAR

| | |
|--|--|
| Monday, December 5 4:00 p.m. (Browsing room) Creative writers. 6:00 p.m. (aud.) Twilight. 6:15 p.m. (dining hall) B. D. S. Club. 7:00 p.m. (Masquers room) the Masquers. 8:15 p.m. (gym) "Whiskered Wizards" game. 10:00 p.m. (dormitories) House Council. 10:30 p.m. (dormitories) House Meeting. | 5:00 p.m. (McCormick's) Wesley Foundation. 8:00 p.m. (aud.) Twilight. 7:00 p.m. (room 24) Home Ec. Club. 8:00 p.m. (Sanford Lounge) Vets. |
| Tuesday, December 6 6:15 p.m. (aud.) Twilight. 6:30 p.m. (aud.) Chorus. 7:00 p.m. (lab. aud.) DeLand, Fla., Band. 7:30 p.m. (aud.) Dance Orchestra. 8:00 p.m. (room 21) Student Council. | Thursday, December 8 10:00-12:00 a.m. (aud.) Band. 6:00 p.m. (aud.) Twilight. 7:10 p.m. (aud.-vis.) I. R. C. 7:30 p.m. (room 34) English Club. 7:30 p.m. (aud.) Organ Guild. 8:15 p.m. (aud.) Chorus Christmas Concert. |
| Wednesday, December 7 9:00-11:00 a.m. (aud.) Band. 2:00 p.m. (G-A office) George-Anne. | Friday, December 8 6:00 p.m. (aud.) Twilight. 6:15 p.m. (El. Lab.) P.B.Y.F. 6:15 p.m. (aud.) B.S.U. Council. 7:30 p.m. (aud.) Dance Orchestra. |
| | Saturday, December 10 8:15 p.m. (gym) Christmas formal. |

An Invitation—

The faculty of
Georgia Teachers College
requests the pleasure of your company
at the Annual Christmas Dance
on Saturday, the tenth of December,
at 8:15 O'clock, P.M.

FACTS ABOUT DRIVING FOR SAFETY CONTEST

(Compiled by the Central Automobile Safety Committee of Lumbermens Mutual Casualty Company principally from statistics and sources of the National Safety Council).

One person was killed in a traffic accident every 16½ minutes last year. Someone was injured by a car every 29 seconds during 1948.

A recent Ontario study showed that drivers between the ages of 18 and 24 have 83.3 percent more highway fatalities than their share.

A national opinion survey found all classes of people in all parts of the nation substantially agreed on 48 miles an hour as a desirable speed limit.

New York state this year allowed insurance companies to increase automobile premium rates of drivers under 25 years of age from 15 to 20 percent because of the unreasonably high traffic accident rate of this age-group.

There were about twice as many traffic deaths in rural areas last year than in urban areas despite the fact that traffic volume was about the same in both areas.

Traffic accidents accounted for an estimated financial loss of \$2,800,000,000 last year. This figure includes \$1,100,000,000 in direct property damage and about \$1,700,000,000 in medical expenses, insurance claims paid and the value of services lost to the nation.

Fifty-five percent of the fatal highway accidents last year occurred at night despite the fact that traffic is at a minimum during the midnight hours.

The highest percentage of pedestrian traffic accidents at intersections last year occurred at a point where both pedestrian and driver had the best opportunity to see one another.

Despite the fact that high school driving courses have cut the accident rate of their graduates in half, less than one percent of our high schools have behind-the-wheel driving courses, according to James S. Kemper, chairman of Lumbermens Mutual Casualty Company.

One quarter of the drivers involved in fatal accidents last year were exceeding a speed limit or driving too fast for existing conditions.

Women drivers were involved in only six percent of the fatal accidents last year and only nine percent of all accidents.

Seventeen percent of the drivers involved in fatal accidents last year had been drinking and 23 percent of the adult pedestrians killed in traffic accidents had been drinking.

The \$125,000,000 added to private automobile insurance costs annually by the high accident rate of drivers under the 25 years of age group could pay the salaries of several times the number of instructors needed to teach safe driving in every American high school, according to James S. Kemper, chairman of Lumbermens Mutual Casualty Company.

Probably due to Christmas holiday driving, pedestrian deaths in urban areas were 43 percent above average in December of last year.

A national opinion survey found that one person in five admits to having been "bawled out" by a traffic officer in recent years and that two-thirds of these people say they think they deserved the hawling out.

More than half the drivers involved in fatal accidents last year were violating a traffic regulation at the time of the accident.

Comparisons of top cruising speeds of 65 miles an hour and 40 miles an hour (according to Professor R. A. Moyer, Iowa State College) showed at 65 miles an hour:

1. Gasoline consumption more than 30 percent higher.
2. Oil consumption almost four times as great.
3. Tire wear two and on-half times as great.
4. Gain in average speed only 15 miles an hour.

If, for 1,000 miles of operation the cost averages \$20.00 for a top cruising speed of 60 miles an hour, it will cost about \$14.20 for a top cruising speed of 40 miles an hour.

More than one-third of the accidents at highway crossings last year occurred where such warning devices as gates, lights, bells or watchmen were installed.

AUTO ACCIDENTS BY DRIVER AGE GROUP—1948

| All Ages | In Fatal Accidents | In All Accidents |
|-------------------|--------------------|------------------|
| Under 18 years | 37,400 | 15,500,000 |
| 18-20 years | 1,300 | 470,000 |
| 21-24 years | 3,400 | 1,300,000 |
| 25-44 years | 6,700 | 2,360,000 |
| 45-64 years | 18,500 | 7,960,000 |
| 65 years and over | 6,000 | 2,830,000 |
| | 1,500 | 580,000 |

Rural automobile accidents increased one percent last year while urban accidents dropped eight percent.

Traffic accident deaths are highest the last four months of the year, below average from March through August, and about average the first two months of the year according to last year's figures.

Sixty-four percent of the pedestrians killed in traffic accidents in cities last year were using the roadway in an unauthorized or unsafe manner.

Three percent of the drivers involved in fatal automobile accidents last year were found asleep at the wheel.

Unsafe vehicles were contributing causes in 13 percent of the fatal highway accidents last year. That compares with 16 percent in 1947 and eight percent in 1941. Defective brakes, improper lights and bad tires constituted over one-half of all defects reported.

Nine out of 100 drivers involved in fatal traffic accidents last year were driving on the wrong side of the road.

Motor vehicle accidents on Christmas eve and Christmas day, and New Year's day are two to three times the annual daily average.



| 1949 DECEMBER 1949 | | | | | | |
|--------------------|-----|-----|-----|------|-----|-----|
| SUN | MON | TUE | WED | THUR | FRI | SAT |
| | | | | 1 | 2 | 3 |
| 4 | 5 | 6 | 7 | 8 | 9 | 10 |
| 11 | 12 | 13 | 14 | 15 | 16 | 17 |
| 18 | 19 | 20 | 21 | 22 | 23 | 24 |
| 25 | 26 | 27 | 28 | 29 | 30 | 31 |

Letter to Editor

To the Editor:

Something must be done about the disgraceful situation in the supper line. The situation has been growing worse for some time and was culminated in an insane rush for the door last night. There were several sprained ankles and innumerable bruises resulting from supposedly intelligent people acting as a mob.

Surely, we who are training to be leaders of youth should have sense enough and consideration enough for other people to be willing to wait our turn. Some people wait thirty and forty minutes on the steps of the dining hall, and when the door opens are subject to pressure from the rear which has torn several coats, as well as causing personal injuries. The time to stop this is NOW, before someone is seriously hurt.

Since, apparently, the student body is unwilling to discipline itself after one editorial in the paper, someone in authority should be placed in charge of the "chow" line, in order to stop the pushing and the eternal chiseling. It is quite disconcerting to wait in line from thirty to forty-five minutes and have a person call to several of his or her friends to join him or her at the front of the line. In the Army there were means of combatting this, but in a co-educational institution these means would be a little rough.

In addition to being irritating and, at times, dangerous to the students, this lack of orderliness and mob action is a serious reflection on the school, and visitors seeing the supper line would have serious doubts as to our fitness to lead youth in the near future.

DISGUSTED CHOW HOUND.



Back Up Contest

Let's get behind this traffic safety contest. It can mean a better George-Anne if your entry is entered through The George-Anne. Or it may mean some extra spending money for you, individually.

Too many homes are saddened every day by disastrous accidents involving younger members of the family; too often, college students. Automobiles used properly are one of our greatest assets, but used recklessly, one of our greatest hazards.

Remember, turn in your material by Wednesday, December 12. You might be a winner!



THE END IS APPROACHING

AS WE BID ADIEU to another quarter of work, we find ourselves with mingled feelings of sadness and joy.

With Thanksgiving behind us and finals ahead, most of us feel something of a letdown until we remember that after the finals come the holidays and Christmas. For once your reporter would like to get serious and let her hair down. Because after Christmas comes the new year and, somehow, it always suggests a new beginning. But for me it suggests an ending of the 1949 fall quarter at Teachers College. In January, a lot of our old classmates who we take for granted lay by day won't be back. Some of them will finish four years of work, others will transfer to other colleges to go into specialized fields, and there are always those few who will not be back for financial reasons.

Maybe it all sounds a little corny to you who are freshmen for the rest of us to get sentimental over these things, but for those who have been here some time it is a serious matter to part from those who have been our classmates and friends for so long.

Other things come to mind, too—plays, games, parties—things we have all participated in together. But isn't it true that it's the little things that we remember most? Perhaps it was a smile from somebody just at the moment you were feeling most homesick; or it may have been a practical joke just as you had come to the conclusion that the "crowd" was trying to exclude you.

One thing we are not likely to forget are our classes that day by day grind on lessons, and that test coming up tomorrow. Perhaps it will not be until later that we will remember how patient our teachers were with our mistakes. But by then we will realize just how fortunate we were in our chosen teachers. Perhaps also, we will carry that patience and understanding over into our own classrooms on that future "some day" when we stand before our own class to lead them into the mystic realms of education.

DO WE WANT MORE RIGID RULES?

BREAKFAST IS SERVED from 7 to 7:45 o'clock, which gives plenty of time for students to finish eating before classes begin at 8 o'clock. Students have been asked in chapel, and by members of the dining hall staff, not to go to the back door after 7:45 and expect to be admitted. Some few people insist upon late entrance; one even went so far one morning last week as to break out a pane in the back door when he was refused entrance.

We must learn to abide by rules and cooperate with each other and the administration in enforcing said rules. No one has the right to break panes for a breakfast, especially when he could have gotten up a little earlier and gone through the breakfast line as did everyone else. Probably this person did not realize how breakable glass is; certainly, he did not mean to break the pane. I'm not blaming him for shaking his fist at the door, as it was closed on him, but I am blaming him for not going to the back door in the first place, when he and every other student has been asked on occasions not to expect admission there after the front door closes.

And he is not the only guilty one. Others have been just a little luckier than he. There are probably other similar incidents occurring on the campus—they need to be corrected, too. Such incidents as the pane-breaking episode, when exposed, are usually corrected by more forceful and rigid rules made by the administration. We like to feel free to do as we please, but as long as we are guilty of breaking the few rules we do have, we may soon find ourselves under strict discipline at T.C. WE DON'T WANT THIS TO HAPPEN!

The George-Anne

(ESTABLISHED 1927)

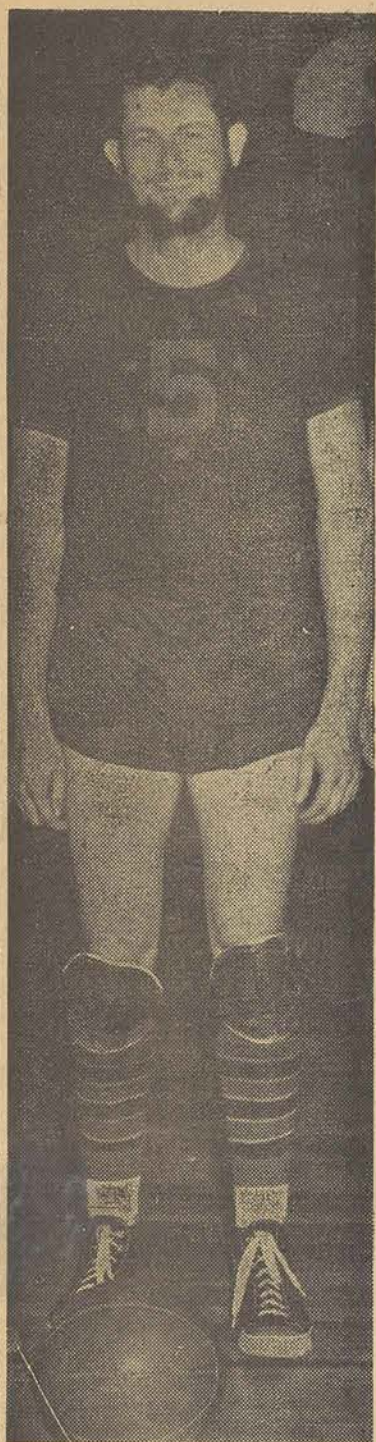
EDITOR-IN-CHIEF Lola Robbins
BUSINESS MANAGER Bo Ware
ASSOCIATE EDITOR Margaret Harrison
SPORTS EDITORS Bud Stone and Richard Strawn
FEATURE EDITOR Edith Carpenter
ART EDITOR George Parrish
MAKEUP EDITOR Jerry Pryor
CIRCULATION MANAGERS—Bobbie Quick and Allene Timmerman.

REPORTERS—Peggy Jo Burke, Jean Fordham, Gay Kimbrough, Ed Mitchell, Shirley Shuman, Charles Stewart, Lewis Strickland, Anna Maria Tippins.
TYPISTS—"Bunny" Brown, Kathryn Chance, Frankie Quick.
PHOTOGRAPHERS—Richard Cohan, I. E. Thigpen.

Monday, December 5, 1949

Published weekly, September to June, except during holidays, by Georgia Teachers College students.
(Entered as second class matter at Postoffice at Collegeboro, Georgia, under temporary permit.)

SUBSCRIPTION: \$1.50 PER YEAR



JIM KELLER—One of the best men on the "Wizard's" team. He has averaged 22 points per game for 135 games. He is from California, and is 6 feet 5 inches tall.

Intramural 'Ball Season Ends

The intramural program came to a nend with Rigdon's team and Peacock's team playing the last two games of the double elimination. In the first game Rigdon's team, which had already lost one game, earned its right to play another by beating Peacock 6 to 0. Rigdon scored the only T.D. by intercepting a pass and doing a tight rope act down the sideline. This came in the first half, but neither team could score again.

The next game was a hard-fought affair by both teams, but Peacock's team came out on the long end of an 18 to 0 score. Rigdon's passing was on; he hit five out of the first six attempted, but his gains seemed to be just too short to ever tally. Peacock's first touchdown was on a pass from Peacock to Musselwhite. Then Bland pitched one to Musselwhite, who in turn lateraled to Woodell and threw the key block for the touchdown. Bland threw another out to Woodell for the final tally.

The lineups: Peacock's—Strickland, Kendrick, Peacock, Littlefield, Tarver, Bland, Musselwhite, Mullis, Woodell. Rigdon's—O'Neal, Bush, Rigdon, Hargaves, Middlebrooks, Johnson, Milligan.

Work on Library Nears Completion

The library remodeling is nearing completion. The main floor and browsing room have been completed. The film library is having another room built and painted. It is certain that the remodeling will be done before Christmas. The film library will begin operation next week.



"Where the Best Fellows Meet"

DARLEY'S BILLIARD HALL

18 S. Main Street
Statesboro, Ga.

CITY DRUG CO.

"The Wisdom of Age with the Efficiency of Youth"
(Sidney L. Lanier)

E. Main St. — Statesboro

STATESBORO DRY CLEANERS

61 East Main Street

"STATESBORO'S OLDEST AND BEST"

§
Bill Bailey

College Representative

Visit

The Soda Shop

MILK SHAKES
SUNDIES
ICE CREAM

Hamburgers—Hot Dogs
Steaks—Oysters—Chicken

'Touch' All-Stars

We would like to make a stab at an intramural all-star team of the past football season. We have probably missed some pretty good players in our pick, but we feel that, at least, we have gotten some of the best.

First string backs: Bullock, Bland, Foreman. First string line-men: R. Brady, J. Brady, Tarver, Le Files, Musselwhite.

Honorable mention: Olliff, Rigdon, Ed Edwards, Powell (backs). Dews, Z. Williams, Strickland, Woodell, Bush, Overstreet (line-men).

LAB DOINGS

The high school band from DeLand, Fla., will present a matinee for the Lab Elementary and High School at 4 o'clock Tuesday afternoon in the Lab High auditorium.

The same performance will be given again at 7 o'clock. A small admission fee will be charged.

The band is presented under the auspices of the Statesboro Blue Devil Band and Phi Mu honorary music fraternity at T.C. The DeLand Band is on its sixth annual tour and will give concerts at Douglas and Cairo in Georgia.

Dr. Little and Mr. Thompson were in Yamassee, S. C., during the Thanksgiving holidays doing a survey of the Yamassee D.A.R. Schools.

Principals of the First District will meet Wednesday at the Lab School for the purpose of organizing a District Principals' Association.

**Patronize
George-Anne
Advertisers**

PORTRAITS

—\$3.50—

ROLL FILM DEVELOPED

10c PER ROLL

5 Cents Per Print

—All Film Printed Oversize—

Dobbs Studio

34 N. Main Phone 535

We Grow As We Serve Our Community

BULLOCH COUNTY BANK

Member Federal Deposit Insurance Corp.

S A L E S—Buick Automobiles—SERVICE

HOKE S. BRUNSON

ALLIS - CHALMERS

TRACTORS AND EQUIPMENT

Statesboro,

Georgia

SKIES CLEAR FASTER FOR THOSE WITH THE
FORETHOUGHT TO SAVE FOR A RAINY DAY

The friendly

SEA ISLAND BANK

Safety - Courtesy - Service

Member F. D. I. C.

Open House Shows Renovation Work

Interest manifested by Statesboro and Bulloch county people in our recent renovation program resulted in the calling by President Henderson of an open house at the college from 3 to 5 p.m. Sunday afternoon.

Visitors were invited to view major improvements in the administration building, gymnasium and laboratory high school. They also toured the industrial arts building which was erected two years ago.

The remodeling, exclusive of the arts building, cost \$80,000, and took place during the administration of Dr. Henderson, which began in July, 1948.

Student guides conducted visitors through the buildings. Exhibits were displayed and refreshments were served in the home economics department of the Lab High School.

ALUMNI NEWS

Miss Martha Morrison, formerly of Savannah, and a graduate of 1944, is a missionary to the Hawaiian Islands. She would appreciate hearing from any alumni or students. Her address is 1711 Clark Street, Honolulu 33, Hawaii.

Mrs. Wynnis Roberts Perkerson, a graduate of 1937, is in Germany at present. Her address is OMGUS, Scientific Research Group, care of P. M., New York City, N. Y.

Mrs. Marie Pitts Mitchell class of 1948) is teaching at Midway Park, N. C.

Ben C. Tillman is attending school in Longview, Texas. He is taking training in building and repairing machinery.

Sam Jossey (class of 1938) and his wife are teaching in Berwyn, Maryland.

10 Cheerleaders For T.C. Selected

The ten cheerleaders who will urge the 1949-50 Blue Tide basketball team on to many victories this year are Betty Ann Beddingfield, Joan Bennett, Betty Fuller and Pasty Madray, from last year's cheering squad; Charlotte Clements, Mary Nell Johnson, Charles Jackson, Mynette May, Ann Nevil, and Sue Simmons, who join the squad for the first time.

Dance Band Plays At Tifton Friday

T.C.'s dance band, lead by Mr. Rasmussen, played at Abac College in Tifton Friday night. There were fourteen instruments, with Anna Maria Tippins as vocalist.

The concert band will perform in Savannah today. They will have supper at Dasher's on their return tonight.

Buy Your

Christmas Gifts

from

Henry's

We Offer You—

- Swank Jewelry
- Royal Robes
- Sport Shirts
- Socks
- Stockings
- Ties
- Initialed Handkerchiefs

DENMARK CANDY CO.

J. E. Denmark
J. T. Denmark

Wholesale
Merchandise

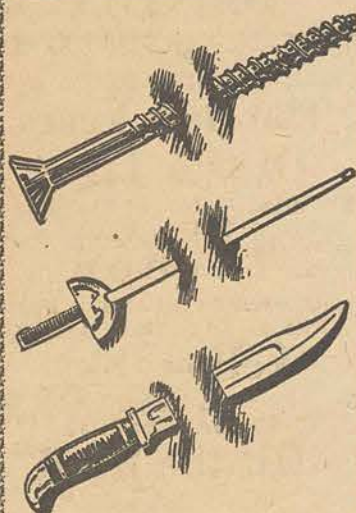
—F. S. Pruitt—

ROYAL TYPEWRITERS

- Sales
 - Rentals
 - Service
- PHONE 520

**HICKOK
CHRISTMAS
HITS**

Here are Hickok's newest Extension Tie-Bars; they're adjustable to fit any width of tie... and do not pierce the tie.



\$2.50 each, plus Fed. Tax.

**H. Minkovitz
SONS**

Statesboro's
Largest Department Store

Have You Heard?

That E. Davidson had a date? Watch out Ed—girls from West Hall are dangerous!

Four of the steadiest steadies on the campus are Bill and Dot, and Burch and Betty C. When many sit in relaxation,

And one dispenses information—This process is called education.

That Ambrose's horse ran away and he hollered, "Whoa! whoa!" but his "whoa's" were fifty yards apart? Also, his horse turned into a Negro house and Ambrose kept on down the road.

Why Alec is always late to History 308? Could his "Chief" be responsible?

How good Bill O. looked on East Hall steps the other night? Watch out "little old girl"!

If Bunny's climbing Chapel Hill calling "Jim" again?

New, Unusual and Different

CORSAGES

—for—

THE CHRISTMAS DANCE

—from—

THE STATESBORO FLORAL SHOP

SHOP OWNED BY

Bill Holloway

FORMER G.T.C. STUDENT

Place Orders With Zack Williams

Chocolate Milk

Orangeade

CITY DAIRY COMPANY

Pastuerized—MILK—Homogenized
ICE CREAM

Phone—269

52 W. Main St

Meet Your Friends At

THE COLLEGE PHARMACY

"Where the Crowds Go"

We carry your favorite merchandises
Yardley, Old Spices, Lucien, Le Long,
Elizabeth, Arden, Du Berry, Revlon
— Norris Exquisite Candies —

BEST IN WEAR

FOR COLLEGE YOUTH

Men's and Boys' Store

EAST MAIN STREET

STATESBORO, GA.

We Invite You—

... to come in and look over our varied assortment
of CHRISTMAS GIFTS.

HALLMARK CARDS — JEWELRY FOR
EVERYONE — THE BEST IN WATCH
REPAIR — ADDED ATTRACTION TOYS
FOR THE YOUNG

LANIER JEWELERS

"ON THE SQUARE"

Around the Corner from the Georgia Theatre

Creative Writing

RIVER OF MY HEART

Flow swiftly, o river of my heart
be not deceived.

Flow swiftly, oh river of my heart
—to often have you believed
the lies by maidens told!

Flow swiftly, deep river,

slow not thy pace.

Flow swiftly deep river,

ignore love's warm face.

For always her heart is cold.

—UPSHAW.

TWO BROWN EYES

The depth that lies
In two brown eyes

Try the LITTLE SHOP

5 N. Main Street

—for—

BELTS
BLOUSES
BUCKLES
ALTERATIONS
COVERED BUTTONS

303—PHONE—334

BUS STATION CAB

Prompt and
Courteous Service

Open: 5 a.m. to 1 a.m.

McGregor Sportswear

Freeman Shoes

Curlee Clothes

DONALDSON-SMITH

CLOTHING STORE

FAVORITE SHOE STORE

Incorporated

Newest styles in collegiate shoes

19 North Main St.

JONES THE FLORIST

"We Telegraph Flowers

For All Occasions"

PHONE 272

COLLEGE REPRESENTATIVE:

EDDIE ORT

Room 124, Sanford

S. W. LEWIS, INC.



SALES & SERVICE

Statesboro

Georgia

Is far deeper to me
Than the deepest sea.
For I cannot believe
What I perceive
In the depth that lies
In two brown eyes.

—UPSHAW.

THE FULL MOON

By Z. L. Strange, Postmaster
Oh, wonderful Queen of the

IDEAL SHOE SHOP

South Main Street

"THE COLLEGE SHOP"

ONE DAY
SERVICE



FOR
PORTRAITS
OF
DISTINCTION

CLIFTON
PHOTO
SERVICE

heavens,
How beautiful you are tonight!
Sparkling like a big crowned
jewel,
And flooding the earth with light.

Shining in your glory and
splendor,
Lovely beyond compare,
Filling every heart with gladness,
Banishing every care.

As I stand in wonder and
amazement,
Marveling at your heavenly glow,
A feeling of sadness comes over
me,
That only the soul can know.

If ever I go sailing, Lady Moon,
Up in the starry blue,
I shall order my pilot to guide our
flight
Fast and direct to you.

As I think of the perfect are you
are,
Your shape and cycle always true,
I know that only God can make
A beautiful moon like you.

GEORGIA
Pick of the Pictures

OPENS

Weekdays, 2:45—Sunday, 1:45
MON., TUES., DEC. 5 & 6

Top O' the
Morning

Bing 'n' Barry & Ann Blyth
WEDNESDAY, DEC. 7

Sergeant York

Gary Cooper
THUR. & FRI., DEC. 8 & 9

Chicago Deadline

Alan Ladd & Donna Reed
SATURDAY, DEC. 10

Girl From
Manhattan

AND

Grand Canyon
Trail

SUNDAY, DEC. 11

Rogue's Regiment

Dick Powell & Marta Toren

STATE

Opens: Weekdays at 2:45
MON. & TUES., DEC. 5 & 6

Tarzan's Desert
Mystery

Johnny Weissmuller
WED. & THUR., DEC. 7 & 8

The Fighting

Douglas Fairbanks Jr.
FRI. & SAT., DEC. 9 & 10

Arizona Bound

Buck Jones & Tim McCoy

FAMILY AUTO
DRIVE-IN

OPENS

MON., & TUES., DEC. 5 & 6

The Best Years
Of Our Lives

Frederich March & Myrna Loy
WED. & THUR., DEC. 7 & 8

Tycoon

John Wayne & Lorraine Day
FRI. & SAT., DEC. 9 & 10

Yellow Sky

Gregory Peck, Richard Widmark
SUNDAY, DEC. 11

Hit the Road

The Deadend Kids

You Will Find a

Welcome at

ROSENBERG'S

South Main Street