

Georgia Southern University

Digital Commons@Georgia Southern

The George-Anne Newsletters

Student Media

4-16-2021

The George-Anne Daily

Georgia Southern University

Follow this and additional works at: <https://digitalcommons.georgiasouthern.edu/george-anne-newsletter>

Recommended Citation

Georgia Southern University, "The George-Anne Daily" (2021). *The George-Anne Newsletters*. 554.
<https://digitalcommons.georgiasouthern.edu/george-anne-newsletter/554>

This newsletter is brought to you for free and open access by the Student Media at Digital Commons@Georgia Southern. It has been accepted for inclusion in The George-Anne Newsletters by an authorized administrator of Digital Commons@Georgia Southern. For more information, please contact digitalcommons@georgiasouthern.edu.

THE GEORGE-ANNE DAILY



Top stories from April 16, 2021

Welcome to The G-A Daily newsletter! Thank you for your present and future readership. Be sure to keep up with us through our social media links above.



YOUR LATEST NEWS FROM THE GEORGE-ANNE

Mr. Georgia Southern crowned and awarded \$1,000

Last Thursday, April 8, was the 15th annual Mr. Georgia Southern University where the 6 initial contestants competed for the title, \$1,000 scholarship, and sponsored prizes.



Three things to remember about wildlife on campus

We reached out to Scott Courding, the wildlife curator of the [Center for Wildlife Education and The Lamar Q Ball, Jr Raptor Center](#), to see what advice he has on how to avoid any

unfortunate encounters with the wildlife that resides on campus.



THE GEORGE-ANNE REFLECTOR

How to Stay Motivated at the End of the Semester

Here are five ways to help manage your stress and your schedule as you approach the final weeks of class:



Support The George-Anne

Your contribution supports us and enhances the quality of student journalism at Georgia Southern

\$3

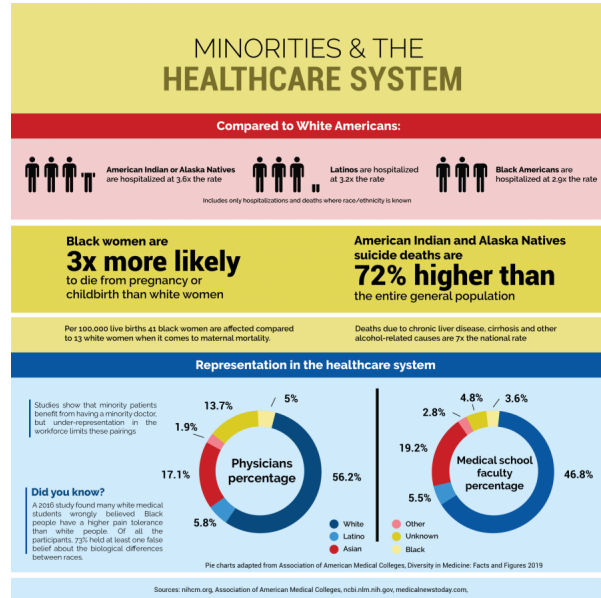
\$5

\$10

THE GEORGE-ANNE CREATIVE

Minorities and the Healthcare system

Discrimination against minorities in the US healthcare system has had a long history. Studies like the Tuskegee syphilis study and false beliefs about specific races such as pain tolerance showcase the unequal treatment of people of color. This infographic highlights those significant racial disparities.



The latest numbers from the Georgia DPH's COVID-19 Daily Status Report for counties with a Georgia Southern University campus:

Bulloch County: 5,208 cases, 63 deaths

Chatham County: 19,869 cases, 405 deaths

Liberty County: 3,341 cases, 60 deaths

Statewide: 866,978 cases, 60,298 hospitalizations, 17,180 deaths