

Georgia Southern University

Digital Commons@Georgia Southern

---

The George-Anne

Student Media

---

1-24-1969

## The George-Anne

Georgia Southern University

Follow this and additional works at: <https://digitalcommons.georgiasouthern.edu/george-anne>



Part of the [Higher Education Commons](#)

---

### Recommended Citation

Georgia Southern University, "The George-Anne" (1969). *The George-Anne*. 519.  
<https://digitalcommons.georgiasouthern.edu/george-anne/519>

This newspaper is brought to you for free and open access by the Student Media at Digital Commons@Georgia Southern. It has been accepted for inclusion in The George-Anne by an authorized administrator of Digital Commons@Georgia Southern. For more information, please contact [digitalcommons@georgiasouthern.edu](mailto:digitalcommons@georgiasouthern.edu).





# THE George-Anne

LIBRARY

JAN 24 1969

Georgia Southern College

Published by Students of Georgia Southern College

Volume 49

Statesboro, Ga. 30458, Friday, Jan. 24, 1969

Number 18



Eddie Floyd Performs Jan. 25

Eddie Floyd, national recording artist, will appear in a dance sponsored by the Interfraternity Council in the Landrum Center, Saturday, Jan. 25, from 8:30 p.m.—12:30 a.m. Admission is \$2 in advance and \$2.50 at the door. "We are expecting a good response even though the dance will be held during the basketball game", said Dallas Tindall, IFC dance Chairman. Floyd has released several hits including "Raise your Hands," and "Knock on Wood." His current hit is "Bring it on Home."

## Classique to appear Wednesday, Jan. 29

The Oukhtomsky Ballet Classique will appear in a program Wednesday, Jan. 29, at 8:15 p.m. in McCroan Auditorium.

This group of seven soloists, under the leadership of Wladimir Oukhtomsky, has created an excitement in the dance world since their first tour in this country in 1964.

This year's program will encompass wide scope of emotions and styles ranging from evanescent romanticism, vivid ballet-drama to comedy and dynamic virtuoso abstraction.

"I always felt that this most exquisite, demanding and mysterious form of expression, the classical ballet, can create all and every form of emotion and this old discipline with its thrust,

vitality, and clarity of design is a perfect tool for the imagination. I have tried to present in every program-romantic reverie, tragedy, comedy and also show virtuosity at its best," states Wladimir Oukhtomsky, artistic director of the company.

This program is the fourth in the current series sponsored by the Campus Life Enrichment Committee. Others have been Clifton Matthews, pianist; The Apple Tree; Masuko Ushioda, violinist.

## Seniors display art work in show

The sixth annual senior art exhibition opened with a reception in the Foy art gallery Tuesday, Jan. 21, and will remain on display until Feb. 7.

The exhibition of 147 items includes paintings, prints, drawings, textile designs, ceramics, weaving and constructive designs.

The senior art students who will exhibit their work are Mary Ackerman, Linda Akers, Ernest Bartlett, William Bishop, Marsha Durham, Ann Hardy, Donna Howard, Dorothy Lanier, Roy Lee, Susan Love, Dean Massey, Gail McGoogan, Terry NeSmith, Rebecca Preston, Gary Riggins, Angela Roesel, Ann Salter, Diane Sinclair, Diane David Smith, Glenn Spell, Chery Teston, Dennis Vaughn, Sue Veteto, Margaret Wiggins and Nancy Williams.

## Guest accommodations rule revised by Boger

By Sara Fountain  
News Editor

A recommendation to allow visitors to stay in dorms during Homecoming weekend has been approved by administrative personnel. The recommendation was voted on and passed at the Jan. 15 meeting of the Women's Student Government Association.

The motion reads that visitors be allowed to stay in women's dorms during Homecoming if they have a vacant bed, a hostess, and are under supervision which includes knowing rules of the college.

Two other recommendations submitted to the Dean of Women have already been approved and are now in effect. The council recommended that dorm restriction be postponed for the week of Homecoming to the following week, and that grace periods be subtracted from the time bank.

The time bank is a new ruling by which women are allowed fifteen minutes total time past the closing hour of the dorm without being penalized for being late. A woman may use her time bank time any night of the week until she has used the allotted fifteen minutes. If a woman is two minutes late one night, she will no longer use a grace period, but she will subtract the two minutes from the total of fifteen.

## Truman, LBJ most unpopular

By Lloyd Shearer

According to the Gallup Poll, Harry S. Truman and Lyndon B. Johnson have been the two most unpopular U.S. Presidents in modern times.

The basic reason behind their low popularity ratings: both men used their presidential power to involve the nation in undeclared wars in Korea and South Vietnam, wars which are still unfinished.

The U.S. foreign policy of committing endless amounts of American men, munitions and money to contain Chinese or Russian Communism in Asia appears to be a policy at odds with the will of the people, or certainly a large segment of it.

Many authorities feel strongly that such a policy is in need of immediate revision. Edwin O. Reischauer, Harvard University professor and former U.S. ambassador to Japan, maintains in a recent book published by the highly regarded Brookings Institution that U.S. policy in Asia has been fallaciously based on a non-existent scare—the threat of a China or Russia-controlled Asia.

Kay Kozojed was appointed chairman of the campus tours committee which gives prospective students a tour of the campus. Anyone wishing to work on this committee may

sign up with Miss Kozojed at the WSGA office.

The new office hours for the WSGA office in the Williams Center are from 11:30 a.m.—4 p.m. weekdays.

## Guitarist appears in concert February 1

The Wesley Foundation will sponsor performing artist, Ed Kilbourne, here at Foy the Foy Building on Feb. 1 at 8 P.M.

Kilbourne has gained a successful professional career that has carried him some 200,000 miles coast-to-coast leaving out only 6 states inbetween! Besides more than 1000 concerts of the past four years, he's managed three long-play albums, several T.V. appearances, numerous coffee-house engagements, his own recording agency (Martin Recordings), a college degree and two years of graduate work in seminary.

A sophisticated entertainer, Ed can take his beat-up callis guitar from folk rock to folk-ballads and contemporary music adding commentary between songs that makes the work "communication" more than just a cliché. He usually

picks his material from current themes, then works in some of his own favorites here and there.

## SAGC presents 'Vouges' concert

SAGC will sponsor a Homecoming concert with the "Vouges", Friday, Jan. 24, at 8:00 p.m. in the Hanner gym. Admission is free for students with I.D.'s and \$2.00 at the door for others.

The Vouges sing some modified rock 'n' roll, specialty numbers and standards. Some of their hits include "Five O'Clock World", "You Are My Special Angel", and "Put Your Head On My Shoulder". Their list also include music of the Tijuana Brass and Mancini and an overwhelming "Impossible Dream".



Ed Kilbourne to Perform

Ed Kilbourne, popular young folk singer-minister, will appear in a concert Saturday, Feb. 1 at 8 p.m. in the Foy Recital Hall. The youthful entertainer, sponsored by the Wesley Foundation, has performed in more than 1,000 concerts on college campuses coast to coast and has traveled 200,000 miles.

## GSC lettermen schedule reunion

The Former Lettermen's Club has completed plans for their annual reunion to be held on Saturday, Jan. 25, according to J.I. Clements, Jr., Athletic Director, and Billy Tyre, president of the Former Lettermen's Club.

Registration will begin on Saturday at 12 p.m. and will be followed by a social hour from 2 until 4:30 p.m. A tour of the college's new Physical Education Building and stadium will also be provided.





Talent Winners

Above is the Phi Mu Alpha Band, winners of the annual Homecoming Talent Night contest. The contest was one of the Homecoming Week activities sponsored by SAGC on Monday, Jan. 20.

## Regents award scholarships

Georgia Southern College has received four scholarships for a total of \$2,000 from the \$13,558 approved by the Board of Regents for the 1968-69 Regent's Scholarships.

The scholarship funds were allocated to all University System institutions last spring. The allocations, which are based on the enrollment of Georgia residents in each institution, total \$200,000.

Other University System institutions receiving grants are: Georgia Tech, Georgia State College, University of Georgia, Albany State, North Georgia, Savannah State, Valdosta State, Gainesville Junior College, Kennesaw Junior College, and Macon Junior College.

## Six Flags now seeks student employment

The mammoth job of interviewing, screening, and hiring 1,500 hosts and hostesses

## 20 organization units will highlight parade

The fifth Annual Homecoming Parade will be held Saturday afternoon, Jan. 25, starting at 2:30 p.m.

Billy Lothridge, football star of the Atlanta Falcons will be grand marshal for the parade that will contain 20 floats and 48 units in all.

Parade judges will be Hill Harty, Mrs. E. B. Turner, Mrs. J. P. Foy, Mrs. E. L. Barnes, and Bill Holloway. The judging will be held from 1:00 to 1:30 p.m. only.

The SAGC requests that each organization with a unit entered in the parade have a representative in the Landrum Center parking lot at 1 p.m. for a brief meeting. Each

representative is asked to bring a 5" x 8" index card describing the float, telling the sponsor and who will ride on the float. This information will be read over WWNS radio.

The floats will not be displayed in Sweetheart Circle after the parade this year, according to Harold Hadden, parade chairman.

## EXIT reopens Friday, Jan. 24

The EXIT coffeehouse, closed since December, will reopen Friday, Jan. 24.

The coffeehouse will be opened at 8 p.m. and coffee will be served.

Plans are being made for five dramatic performances to be held between March and August. Announcements of these plays will be forthcoming.

Ronnie Anderson will manage the coffeehouse, which will be open each Friday night this quarter.

## Silversmiths offer \$2,050 to students

During the months of February and March, Reed and Barton, America's oldest major silversmiths, are conducting a "Silver Opinion Competition" in which valuable scholarships totaling \$2050 are being offered to duly enrolled women students at a few selected colleges and universities.

This college has been selected to enter this Competition in which the First Grand Award is a \$500 scholarship; Second Grand Award, \$300 scholarship; Third Grand Award, \$250 scholarship; Fourth, Fifth and Sixth Awards, \$200 scholarships; and Seventh, Eighth, Ninth and Tenth, \$100 scholarships. In addition, there will be 100 other awards consisting of sterling silver, fine china and crystal with a retail value of approximately \$75.00.

In the 1969 "Silver Opinion Competition", an entry form illustrates twelve designs of sterling with eight designs of both china and crystal. The entrants simply list the three best combinations of sterling, china, and crystal from the patterns illustrated. Scholarships and awards will be made to those entries matching or coming closest to the unanimous selections of Table-setting editors from three of the nation's leading magazines.

Miss Kay Kozojed is the Student Representative who is conducting the "Silver Opinion Competition" for Reed and Barton here. Those interested in entering the "Silver Opinion Competition" should contact Miss Kozojed at WSGA office or Winburn 312 for entry blanks and for complete details concerning the Competition rules. She also has samples of 12 of the most popular Reed and Barton designs so that entrants can see how these sterling patterns actually look.

## U. of Texas prof lectures on poet

Dr. Beverly Whitaker, a specialist in contemporary literature and a faculty member at the University of Texas, will present a program on the works of Theodore Roethke in the Foy Recital Hall on Thursday, Jan. 30 at 8:15 p.m. The program is presented under the sponsorship of the speech department.

Dr. Whitaker received her Ph.D. from Louisiana State University and has taught at Southwest Texas State College and LSU. At the University of Texas she teaches interpretation of poetry, prose, and Romantic literature.

Her subject, Theodore Roethke, who died in 1963, is considered by many to be America's finest poet.

## New Folk finds God thru music

"The New Folk," a folk singing group, performed in concert here Wednesday, Jan. 22, in the Hanner Gym. Co-sponsoring this event were the Campus Crusade for Christ International and Alpha Tau Omega fraternity.

The nine performers have appeared on college campuses throughout the country. They are considered to be a young group as far as their years together are concerned.

They have been compared with such noted groups as "The Lettermen," "Simon and Garfunkel," "The Association," and Glenn Campbell. They performed such numbers as "Cherish," "Never My Love," and "Dangling Conversation."

## Internationals select officers

Bill Kariatoglov, a junior industrial technology major from Athens, Greece, is the newly elected president of the International Club.

Also selected as officers of the club are Magda Riberio, vice president, and Lark Collins, secretary. Miss Riberio is a special student majoring in physical education from Braga, Portugal, and Miss Collins is a junior home economics major from Baxley, Ga.

## Editor request complete forms

All organization pictures for the 1969 REFLECTOR must be group shots, according to Miss Deidre Cowne, editor.

Chip Sary, organizations editor, requests that all campus organizations return the completed form listing three possible dates, as well as two locations for making the group picture. The style of dress used by an organization is the prerogative of the group, Sary added.

An organization which has a sweetheart or housemother is asked to have her present for the picture.

Prices for organization pages are: one page, \$30.00; each succeeding page, \$27.00; half-page, \$15.00.

that will staff Six Flags Over Georgia during the 1969 operating season began on Jan. 18.

The Personnel Office, as in the previous two seasons, will be looking for riverboat captains, train conductors, balloon girls, ride operators, and countless others for the 276-acre family entertainment center.

Interviews will run from now until opening day, April 12, according to Charles Jarrell, Personnel Director.

Applications will be taken daily, Monday through Saturday, 9 to 5, at the Six Flags Personnel Office located at the park off Interstate 20, west of Atlanta.

Six Flags Over Georgia opens for its third year of operation on April 12, and will be open on Saturdays and Sundays until June 6. From June 6 through Labor Day, Six Flags Over Georgia will be open daily from 10 a.m. until 10 p.m. After Labor Day, the family entertainment center will revert back to Saturday and Sunday operations.



Senior Art Show

Twenty-five seniors exhibit their paintings, prints, drawings, textile designs, ceramics, weaving, and constructive designs in an exhibition now in progress in the Foy Art gallery. The 147 items will remain on display until Feb. 7.



# Winter rehearsals to begin for 'Rainbow'

By  
Durwood Fincher

Masquers will present E. Y. Harburg and Burton Lane's delightful musical hit, "Finian's Rainbow" Feb. 19-22 in McCroan Auditorium. Until that date, however, many hours of rehearsing and memorizing lines will take place.

The cast for this quarter's production is as follows: Alan Milton will be playing the role of Finian McLonergan, an Irish immigrant. Sharton, Finian's daughter will be played by Rena Dubberly, with Dot Bennett as

her understudy. Bill Bishop, will be playing the role of Woddy Mahoney, the leader of the sharecroppers. Andy Perryman is Bishop's understudy for the role. Senator Billboard Rawkins will be portrayed by Ernest Ewing and the role of Og, an Irish Leprechaun is to be played by Shelly Boyd with Michael Roberts as understudy. The role of Susan, the mute dancer, is being played by Terry Lynn Stocks. Other members of the cast include: Ulysee Mosley, David Hughes, Marion Jefferson, Janet Carter, Yvonne Smith, Steve Hess, Cynthia Farr, Ginger Pyron, Carey White, Derrill Edwards, Kaye Black, Bill Gibson, Gerald Greene and Dell Payne.

Miss Hazel Hall is directing the musical with Mr. Don Northrip, assistant professor of music and Southern Singers director, conducting the Savannah Symphony. Miss Hall has directed Masquer's productions for the past 2 years. Mr. Northrip conducted "South Pacific" and "West Side Story."

Tickets will go on sale approximately two weeks before opening date. Prices are \$2, \$2.50, and \$1.50. The tickets may be purchased from Mr. and Mrs. Carlton Humphrey at the newly constructed ticket office in the foyer of McCroan Auditorium.

## Open house set for 3 buildings

### Dorman Hall

Dorman Hall, the junior-senior men's dormitory, will hold open house, Sunday, Jan. 26 from 2 until 4:30 p.m.

All dormitory rooms will be open to the public. There will be

fraternity displays and unusual decor featured in many rooms.

Refreshments will be served in the lobby. Visitors may register for a free door prize that will be given away in a drawing at 4:30 p.m.

Miss Carol Brent, sweetheart of Dorman Hall, will serve as hostess and pledges of Pi Kappa Phi will assist in serving.

### Warwick Hall

The students and faculty are invited to attend Open House at Warwick Hall, in Windsor Village, Sunday, Jan. 26 from 2 until 4 p.m. according to Ann Hunter, president.

Refreshments will be served.

### Herty Building

Open House will be held in Herty tomorrow from 9 until noon.

Demonstrations and exhibits will be on display. Alumni, students, and the general public are invited. A special invitation has been sent to all science teachers in the First District and their students.

## Education Dept. plans schedules

Students majoring in elementary and early elementary education will meet in room 8-A, Marvin Pittman School, for advisement and pre-registration in accordance with the following schedule. Such advisement will determine course work for the spring quarter of 1969.

The schedule is as follows: Monday, Jan. 27, 1:30-4:30 p.m., seniors; Tuesday, Jan. 28, 1:30-4:30 p.m., juniors; Monday, Feb. 3, 1:30-4:30 p.m., juniors; Tuesday, Feb. 4, 1:30-4:30 p.m., sophomores; Thursday, Feb. 6, 1:30-4:30 p.m., freshmen and sophomores; Friday, Feb. 7, 1:30-4:30 p.m., freshmen and sophomores.

Students must see an advisor to secure materials for registration.

## Students plan spring issue of 'Miscellany'

Plans for publishing "Miscellany," the college's literary magazine, will be discussed at 8 p.m. Thursday, Jan. 30, at the EXIT coffeehouse, according to Roy F. Powell, faculty editor.

The meeting is open to any student interested in the magazine. Students from Powell's winter quarter creative writing class will read their manuscripts of short stories and poetry.

The magazine will be published this spring quarter for the first since the spring of 1965.

## Geologists here plan field trip

The Georgia Southern Geology Club in conjunction with the geology department will take a field trip to Graves Mountain Saturday, Feb. 1. The trip is on a first come first serve basis and anyone interested in attending should sign the list posted on Dr. Hanson's door in 102 Herty.

## Clemson prof lectures here

Dr. Joe Allen, associate professor of chemistry at Clemson University, lectured here Thursday, Jan. 16, on the production and uses of short-lived radio isotopes.

Dr. Allen received his A.B. from Berry College, his M.S. in physical chemistry from the University of Mississippi, and his Ph.D. in inorganic chemistry from Georgia Tech.

He has been on the staff at Clemson since 1964 and has worked two years in radio chemistry at Oak Ridge National Laboratory.

## Bonfire promotes Saturdays game

The Homecoming bonfire sponsored by Sigma Nu fraternity was held Thursday, Jan. 23 on the athletic field behind the Hanner Gym.

The pep band and cheerleaders were present to add spirit and help the students cheer the Eagles to victory in tomorrow night's game with Tennessee Wesleyan.

Welcome Georgia Southern Alumni

to

The MUSIC BOX

27 W. Main

RECORDS — TAPES — LP'S  
SHEET MUSIC

THE GEORGE-ANNE Friday, Jan. 24, 1969-3A



The cast and understudies of "Finian's Rainbow" prepare to begin rehearsal on their musical hit to be presented Feb. 19-22 in McCroan Auditorium.

### CAMPUS ORGANIZATIONS

All Campus Organizations are asked to submit their ads for the Miss G.S.C. program immediately to

MURPHY SCONYERS  
W-208 Dorman Hall  
or Student Gov't Office

Cut rates for campus organizations are offered. Several fraternities and sororities have already made arrangements for their ads.

...with their men in chains  
the black women were sold  
down the river!

Different!  
Daring!  
Dynamic!  
Defying!  
Dumbfounding!



KROGER BABB presents  
HARRIET BEECHER STOWE'S

UNCLE  
TOM'S CABIN

in COLOR and STEREOPHONIC SOUND

CAST of THOUSANDS + 33 INTERNATIONAL STARS

Distributed by KBA ★ U.S.A. by MJB Agency

— NOW PLAYING —

WEIS STATESBORO

NEXT ATTRACTION

BULLIT

STARTS THURSDAY



## MOMENTUM LOST

Progress is painful, at times impossible, and all too often in a negative direction. If progress is in a negative direction, then deterioration is a more suitable word to describe the action.

Due in part to an incident at the Tams' dance in the Landrum center last Friday night, the editorial that was originally to have appeared here no longer holds true. Yet, to ignore the situation would be insipid. Part of that editorial (on student maturity) follows:

"The traditional 'ivy covered buildings, shaded walks and pathways,' bear witness to the disappearance of GSC's time-honored and cherished tradition, the most noble of all college traditions, the year long paganistic celebration—student hate for the dining hall.

"Student hate for the dining hall, arising in the fall, gathering momentum and support during the winter, and culminating in the annual spring 'food riots', has vanished.

"Today there appears to be an unprecedented spirit of cooperation in regard to student-staff relations concerning the use of the two dining halls for student activities. Student organizations now have a suitable facility to use for larger gatherings, meetings, and dances. This, however is not accomplished without some sacrifices on both student and staffs' part."

The "sacrifices" referred to in the last paragraph did not mean using the dining hall as a symbolic sacrifice to appease the gods, as was the case last Friday night. The dance in question was held in the Landrum Center; this event could have marked the beginning of an expanded social calendar as the original editorial suggests. However, due to the efforts of a minority (jumping up and down on the freezers, cashiers' counters, cash registers, and other equipment) the prospects for more social events using the Landrum Center, were seriously jeopardized.

The fate of literally "years" of progress in obtaining the utilization of these facilities hangs in the balance. The minority of students responsible for this destruction, are those crying loudest for more entertainment. It makes one wonder whether "they" really want it.

## COMMUNICATIONS EFFORTS

In an effort to create better communication and understanding between the administration and students, a council of students is being planned which will meet with the president of the college on a regular basis to discuss pertinent issues with him.

The members of this council will be the presidents of the seven major councils on campus and a representative from the GEORGE-ANNE editorial board.

Student apathy may be derived from a lack of understanding. A council which works closely with the president would prevent much of the misunderstanding which is prevalent on this campus. The GEORGE ANNE supports the student members and their efforts in planning this council.

Dr. John Eidson, president, has proven to be receptive to students and their ideas. He has shown a liberal attitude toward students and their problems.

## NO VISITORS ALLOWED

The administration recently sent out a notice to all dorms stating that no guests could stay in the dorms during Homecoming weekend. The notice brought about unfavorable feelings between students and the administration.

The Women's Student Government Association submitted a recommendation Jan. 15 to the dean of Women requesting that this ruling be changed. The recommendation would allow visitors to stay in dorms during the Homecoming weekend if they had supervision and a vacant bed. An agreement was reached by the two groups and guests can now spend the weekend in a dorm.

The George-Anne lauds this arbitrary action; the SSGA is to be applauded for taking a prominent position in reaching an agreement.

## Southern Scribbles

1-24-69



O-K, ALL  
YOU WILD  
COLLEGE  
TROUBLE-  
MAKERS  
WE'RE GONNA  
DOUBLE THE  
GUARD FOR  
HOMECOMING  
—INSTEAD  
OF ONE 60  
YEAR OLD MAN  
ON DUTY—  
WE'RE GONNA  
HAVE ONE  
120  
YEAR OLD MAN  
ON DUTY!

## Homecoming brings enjoyment, relief

"What's it all about?" Well it's all about Homecoming. Homecoming includes the Eagles basketball game, the parade that



Bond

Yankee tourists cuss, the election of a Homecoming Queen, the dances and concerts, and that pilgrimage of alumni.

This excitement during Homecoming is

as predictable as Old Faithful or Haley's Comet. The campus immediately swells with student guests and the alumni. The traffic problem grows, but who even cares this week? Homecoming is a week to set aside the campus' problems and enjoy the entertainment provided by the SAGC, administration, IFC, and various campus organizations.

The Homecoming basketball game will feature Southern's fightin' Birds hosting Tennessee Wesleyan College on Saturday

night. This will be Wesleyan's second appearance on Homecoming at Southern. The Tennessee team defeated the Eagles on Homecoming of 1967, and the Eagles will be out to avenge that loss.

The Homecoming parade will consist of 20 floats, 12 official cars, 10 organization cars, and six bands. With 48 units, this one parade should have tourists in Jacksonville talking about that Golden Eagle Band and those damn organizational floats. We'll enjoy it just the same, and besides there is a three foot tall trophy for the best float.

The 1969 Homecoming Queen will be announced at half-time of the Homecoming game, and then Eddie Floyd will knock on a little wood in the Landrum Center after the Eagles have embarrassed those skinny-legged dribblers from Tennessee.

It should be a great week for those who have not been a part of Homecoming in the past, and it should be a fabulous week for those old pros on campus.

## Planning events for Homecoming is thankless job

by  
Bill Blankinship  
Managing Editor  
and  
Randy Harber  
Copy Editor

Planning Homecoming activities for 4,300 students and a countless number of college Alumni, who make the annual January return, takes innumerable days and weeks of planning.



Blankinship



Harber

The co-chairmen of the 1969 Homecoming Committee are Sherryl Wilson and Rusty Brown. It has been their major responsibility to assign the various activities concerned with Homecoming to the sixteen other members of their committee.

On Monday night we were dismayed at the poor performance and planning of Talent Night. Tuesday produced a Student-Faculty Basketball game in which the faculty did not play. Also as an added attraction of the week, The New Folk, a nationally acclaimed group of college singers, performed in concert on Wednesday evening in the Hanner Gym to a meager crowd of 500 students.

There have also been many other problems concerned with Homecoming this year. As an example, guests were not to be allowed to say in the dorms this year during the Homecoming Weekend. However Wednesday, the administration relented and gave permission for overnight guests to stay. Others felt that a better selection could have been made in finding a group to perform in the concert tonight; however, booking problems prevented the committee from signing their first choice.

If the activities for the rest of the week continue in this haphazard manner, this should prove to be one of the most disappointing Homecoming weeks in the history of the college.

Harold Hadden, parade chairman, has worked against lack of interest and seeming insurmountable problems to secure fifty units for this year's parade. With football star Billy Lothridge, as grand marshal, this Saturday's parade promises to be the highlight of the entire Homecoming week.

The basketball game should be a real thriller in that the basketball team, and the cheerleaders do not receive tickets to the Saturday night spectacular. We are glad to see that this year's Homecoming IFC dance in the Landrum center will be much warmer than last year's "Eskimo sockhop" at Brannen's Tobacco Warehouse.

In consideration of the entire we can state that the activities were planned with good intentions but executed poorly. The plans may have looked good on the drawing board but when the product was released it was a let down to both committee and students.

## THE George-Anne

The opinions expressed herein are those of the student writers and not necessarily those of the college administration or faculty. Published weekly during four academic quarters by and for the students of Georgia Southern College. Entered as second class matter at Georgia Southern College Post Office, Statesboro, Ga., 30458, under act of Congress. Offices located in Rooms 108 and 110, Frank I. Williams Center, Georgia Southern College. Telephone 7664-6611, ext. 246. —Printed by Bulloch Herald Publishing Co., Statesboro, Ga.



Alan Bond  
Editor

Friday, Jan. 24, 1969



Steve Arnold  
Business Manager

BILL BLANKINSHIP ..... Managing Editor  
RANDY HARBER ..... Copy Editor  
SARA FOUNTAIN ..... News Editor  
SILVA FUERNISS ..... Feature Editor  
MIKE CLARK ..... Sports Editor  
TERRY OWEN ..... National Advertising  
RON BAILEY ..... Assistant Business Manager  
TOMMY DREW ..... Circulation Manager  
EMORY MOODY ..... Photographer

Subscription Rate \$1.00 per year



# Support by Alumni shows necessity for Homecoming II

THE GEORGE-ANNE Friday, Jan. 24, 1969-5A

Homecoming on the Georgia Southern campus, or at least homecoming as we have known it, is approaching a state of change. The reason? The same reason for most of the other changes in our school. Growth.

We haven't outgrown our "down-home" style of annual celebration yet, but we're beginning to move in the direction. We're stretching the seams, and within the next few years we can expect a break—or breakthrough.

The simple fact is that one day a year, in which old grads come back to see what's new and recent grads come back to see who's new, is not sufficient time to present a well-planned, organized homecoming with no overlaps. Homecoming 1969 offers a packed schedule from Monday through Saturday, and there isn't room for anything else.

But we can't level off here, so what is the solution? That, too, is simple. If you can't do it all in one day, take two. Now, let's discuss that.

Homecoming runs one full week, beginning on the Monday before the last Saturday in January (still with me?) and culminating with events for alumni, a basketball game and a

parade—among a number of other things.

Obviously, alumni can't be on campus for the full week of events, so the Alumni Office has geared its festivities for the weekend, concentrating on Big Saturday. On that day, things start buzzing about 9:30 a.m. and don't stop until close to midnight.

A crowd of 400-500 returning alumni can usually be counted on, and by the time it's over we've crammed a year's activities into one long day.

Now don't misunderstand. The Office of Alumni Affairs considers planning a full homecoming program one of its major duties, and so far the arrangement has been well received.

But there are disadvantages. The date, for example. One alumnus, who lives in Florida, returned his reservation form this year with this little note attached: "It's amazing how anyone can attend homecoming at this time of the year!" Granted, the date can be a bit inconvenient.

Next, the weather. We've been fortunate in recent years, but the last week in January can't really be called a time of pleasant weather. Very often it's downright unpleasant.

These and other little complaints have prompted the Alumni Office to take a closer look at homecoming and examine its real value to alumni, to students and to the college.

For some reason, and a good one it is, homecoming programs always are planned around a sports event. Fine. But since Georgia Southern is without a football team (a situation which merits discussion in itself), that leaves us with basketball, gymnastics, cross country and baseball. It won't take you long to conclude that basketball is the only fitting event we have to offer as a homecoming attraction, and your second conclusion will be that it is very difficult to schedule a basketball game in May or September.

So January it is—cold weather and all.

And that leads us to the answer to this riddle. Homecoming as we have it now is a well-attended, annual event. It is vital to the alumni program and needs to be continued in the same format.

But, to alleviate the crowded conditions, do away with the once-a-year syndrome and give more people a chance to participate, the Office of Alumni Affairs has made plans to offer Homecoming II during the summer months.

Nothing is final yet, but plans are in the works to schedule several outdoor activities, coordinate more events at which the graduates can visit with students and generally do the things that we do in January—without the crowded



Cheerleaders Lead Onlookers In Yells During Brief Pause In Last Year's Downtown Trip

conditions, the bad weather and the bad timing.

Meanwhile, the offices of alumni affairs and student activities have put a great deal of work into this week's program. The parade is always a highlight,

and the Eagle basketball team has an old score to settle with Tennessee Wesleyan—the team which knocked us off in last year's homecoming game.

For alumni, the business meeting at 10 a.m. in the

Williams Center is a must. Election of officers and discussion of upcoming projects top the agenda. At 12:30 p.m. at the Nic Nac Grille downtown the classes of 1958-59-60 will hold a joint reunion, and the general alumni banquet gets under way at 5:30 p.m. at Mrs. Bryant's Kitchen, with President John O. Eidson delivering the address.

A small but important part of Saturday's festivities will be the coffee hour at Mrs. Bryant's after the basketball game. Coffee and doughnuts will be served, the only program planned is informal conversation, and it's all free.

A special reminder to seniors. This will be your last homecoming as students. Next year you will be "one of us." Wherever you are then, remember that homecoming is your day. It's the one time of the year when alumni can be students again.

Seniors also are reminded that you will be given a year's free membership in the Alumni Association upon graduation, but all that's free is the price. Your status will be "active", and we expect you to live up to that.

Alumni chapters are now operating in Savannah and Atlanta and several more will be in existence by the time you get your diploma. If you live in an area in which there is an active club, take an active part.

If alumni interest continues to climb, we may have to go to Homecoming III quicker than we think.



PICNIC BY LAKE (ABOVE) IS MID-DAY FEATURE  
And Once Again Miss GSC Will Be Queen For A Day

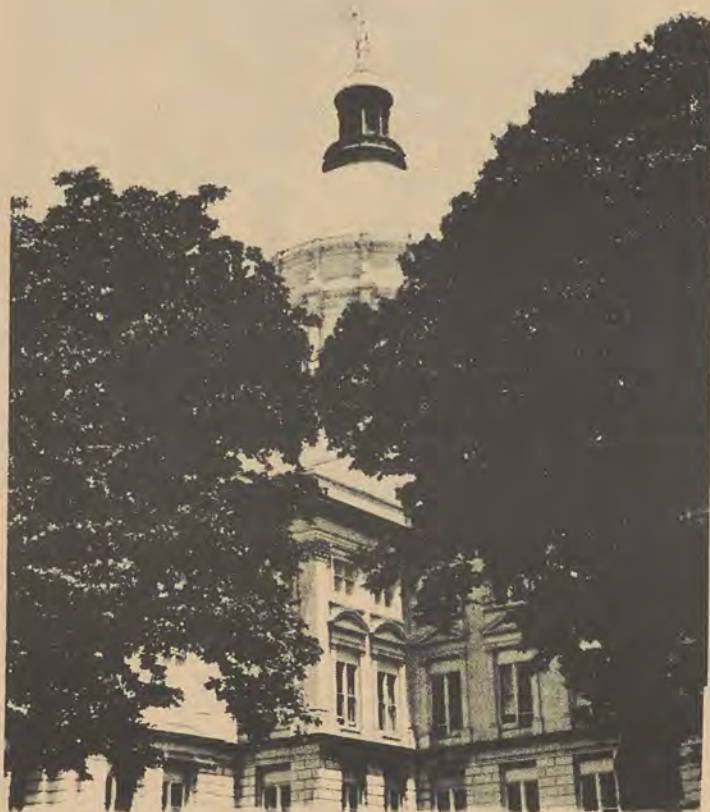


SOUTHERN BEAUTY  
A Parade Natural



PARADE PROVIDES ONE FACET OF HOMECOMING AT WHICH STUDENTS AND ALUMNI MEET





## TOUR GEORGIA

*State of Adventure*

ATLANTA (PRN) — How well do you know your state? The story of Georgia is a fascinating one from its humble beginning to the present. As a test of your knowledge of Georgia's past and present, the Tourist Division of the Department of Industry and Trade is beginning a series of quizzes on the State. This is the first of the series.

1. Georgia ranks..... in land area among the southeastern states.

2. One of the world's best known health springs and clinic for the treatment of Infantile Paralysis is located in....., Georgia.

3. Georgia's signers of the Declaration of Independence were.....and.....

4. .... is the site of Georgia's first actual English settlement.

5. ....% of Georgia's population are Church members.

6. Georgia's seven natural wonders are.....

7. Three favorite playgrounds of American presidents are.....and....., Georgia.

8. The state flower of Georgia is.....

9. Georgia's state tree is the.....

10. ...., Georgia claims the title of Granite Capitol of the World and produces more granite monuments than any other city in the world.

11. The first orphanage in America was established at....., Georgia.

12. .... College

was the first chartered Women's College in the nation.

13. The Girl Scout movement was founded by.....in the city of.....

14. A United States government mint was located in....., Georgia.

15. The.....is Georgia's official state bird.

16. The world's largest carillon is located at.....

17. Berry College located at.....was founded by.....

18. The three islands composing Georgia's Golden Isles are.....and.....

### ANSWERS:

1. First
2. Warm Springs
3. Hall, Gwinnett and Walton
4. Fort King George, Darien
5. 78%
6. The Okefenokee Swamp, Warm Springs, Amicalola Falls, Providence Canyon, Radium Springs, Stone Mountain and Tallulah Gorge
7. Thomasville, Augusta and Warm Springs
8. Cherokee Rose
9. Live Oak
10. Elberton
11. Savannah
12. Wesleyan
13. Juliette Gordon Lowe, Savannah
14. Dalton
15. Brown Thrasher
16. Stone Mountain
17. Rome, Martha Berry
18. St. Simons Island, Sea Island, and Jekyll Island

### Delta Zeta

Delta Zeta Sorority will sell chrysanthemum corsages for the Homecoming game daily in both student centers.

Corsages will be \$2 with or without Greek letters, and all profits will be donated to the Gallaudet College for the Deaf, which is a Delta Zeta national philanthropy.

### Pi Kappa Phi

Gamma Kappa chapter of Pi Kappa Phi fraternity initiated four new brothers fall quarter. The new brothers are Larry Anderson, Pete Hines, Phil Kays and Doug Lambert.

Pi Kappa Phi pledges for winter quarter are Jimmy Albers, Steve Bishop, Robbie Freeman, Lamar James, Ronnie McMahan and Dale Warren.

### Kappa Sigma

The Kappa Zeta Chapter of Kappa Sigma fraternity initiated new pledges for the winter quarter on Jan. 15.

The seven new pledges are: Paul Massey, president; Preston Partain, vice-president; Charlie McCann, secretary; and Alvin Dickson, treasurer. The other three pledges are Tom Graves, Danny Gordon, and David Blum.



Alpha Tau Omega fraternity collected \$609.70 in their recent "March of Dimes" fund raising drive. Brothers Ken Tollison and Sam Nisbet are shown here soliciting donations from students.

### Phi Delta Theta

The officers of the winter pledge class of Phi Delta Theta have been announced by Mike Macomson, pledge chairman. The officers are: Jimmy Fields, president and Willie Wiel, secretary-treasurer.

Scott Waters, pledgemaster, explained that the first major project for the pledges would be the completion of a Homecoming float co-sponsored by Phi Delta Theta and Kappa Delta.

## National College Queen finals combine brains with beauty

One of our students, here on this campus, could be the next National College Queen.

The annual search is now underway to select and to honor "the nation's most outstanding college girl." Young women attending this school are eligible as candidates. A special invitation has been extended to our students. The winner will receive more than \$5,000 in prizes, including a trip to Europe and an automobile.

The 1969 National College Queen Pageant will be held this year in April, and Pageant officials will again award 50 free trips to Florida. One college girl from every State will be chosen and then will be flown to West Palm Beach to compete for high honors.

This Pageant is the annual

event which gives recognition to students for their scholastic ability. It is not a "beauty contest". Judging is based on academic accomplishments, on leadership qualities—as well as poise and personality. The judges are seeking a typical American college girl.

The National Finals will be held from April 11 through April 21. The 50 State Winners will live at the Palm Beach Towers, one of the most exclusive resorts in America.

All undergraduate girls, from freshmen through and including seniors, are eligible to participate. A candidate may send in her own name, or she can be recommended. Classmates, friends, sororities, fraternities or campus club groups can nominate the girl of

their choice.

For full details—and a free entry blank—just write to: National College Queen Contest Committee, P.O. Box 935, Ansonia Station, N.Y., N.Y. 10023.

### Instructor plans continental tour

A five-week trip to Europe is currently being planned for interested students by Mrs. Gaye Crannell, instructor in art.

The trip is scheduled for the five-week interim between the summer and fall quarters, and will include visits to both major and minor cities in eight countries which are important for their great art.

The estimated cost for the trip for each person will be approximately \$850.

GSC students will be accompanied by Mrs. Crannell and by Harry Hendren, chairman of the art department at Lindenwood College, St. Charles, Missouri, and by a group of students from Lindenwood.

Interested students should contact Mrs. Crannell in the Foy Building for details of the trip by Friday, Jan. 24.

Persons other than GSC students may also participate, though the trip is being planned for students.

## Peace Corps expands program; plans training for 1,465 volunteers

During the spring of 1969 the Peace Corps will train 1,465 volunteers for service in 25 of the 59 nations where volunteers are at work. This represents an increase of 300 more openings than were available during the same training cycle in 1968.

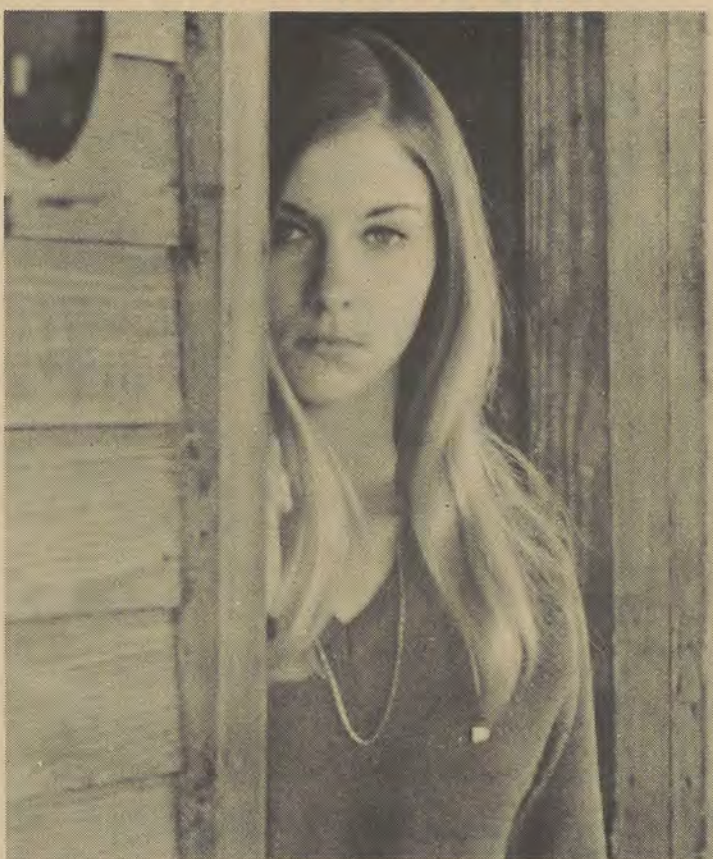
These volunteers are needed to work in 55 programs in such varied job areas as agriculture, education, health, cooperatives, fisheries and community

development. In many cases a portion of the training will take place in the country where the volunteers are to serve.

These programs, and many more, begin training Jan. to May 1969. To find out more about how your skill or background can be used in the Peace Corps, contact your Peace Corps liaison on campus or write to: Peace Corps Information Center, Room 715, Washington, D.C. 20525.



## Southern Belle



"I can't wait until Homecoming weekend!" exclaimed Cynthia Farr, this week's Southern Belle selection. Miss Farr, a hazel-eyed sophomore, is a native of Statesboro, Ga.

### EARL GINN'S Seafood Restaurant

SEAFOOD AT IT'S BEST  
AT PRICES YOU CAN AFFORD

Breakfast Is A Real Treat  
(Beginning At 6:30 A.M.)

At Lunch A Menu to Choose From  
That Will Suit Your Taste and Pocketbook

WATCH FOR SPECIALS ON BOARD  
IN COFFEE SHOP

"Meet Your Friends At Earl Ginn's"

## GSC CLASS RINGS

(MEN ONLY)

WILL DISPLAY AT YOUR  
CONVENIENCE

Contact

**Randy Stelk**

SALES REPRESENTATIVE

764-4745

THE GEORGE-ANNE Friday, Jan. 24, 1969-7A

## Student work-study program commences January 30 at WGC

A Conference on Student Work and Study Abroad Programs will be held at West Georgia College Jan. 30.

The purpose of the conference, according to Dr. R. P. Vichas, chairman of the conference sub-committee, is to inform students and faculty advisors of some of the many opportunities to participate in an international experience, and to encourage foreign travel.

"An Overview of Programs for Student Work and Travel Abroad," and "The Role of Work and Study Abroad Programs in International Education" will be discussed in general sessions, followed by special informational sessions on various overseas programs.

Covered in the informal

group sessions will be the Experiment in International Living, International Farm Youth Exchange, University System Study Abroad, and National Student Association programs. There will also be a general advisory session on other programs.

Serving as speakers on special consultants at the conference are Dr. Marshall K. Powers, regional director, Institute of International Education, Leo J. Bourne, coordinator, U.S. National Student Association-Education Travel, Inc., Mrs. Jay Solomon, director of Southern Office, The Experiment in International Living, Dr. Rhonwyn Lowry, associate state 4-H leader on International Farm Youth

Exchange Program, Professor S. C. Mangiafice, director, Study Abroad Programs, University System of Georgia, and Professor C. C. Murray, director, Inter-Institutional Programs in International Affairs for the University System of Georgia.

### Rockwell airs space special

"The View From Space," one of North American Rockwell's "Man and His Universe" series of Specials, will be seen in color on Sunday, Feb. 9 on ABC-TV, 7:00 - 8:00 PM, offering views of earth as seen from outer space during the world's first decade of space exploration.

# WELCOME!

## Georgia Southern

- \*STUDENTS
- \*FACULTY
- \*PERSONNEL
- \*ALUMNI

**Be Sure to Visit Minkovitz all 4  
floors During Home Coming  
Week-End - We invite you to open  
a Charge Account - See our Credit  
Manager . Mr. Brannen  
office Second Floor**



**Minkovitz**  
STATESBORO'S LARGEST & FINEST  
DEPARTMENT STORE



"Serving Southeast Georgia for over 55 years with Dependable

Merchandise for the Entire Family"



# DONALDSON RAMSEY

## PRE-INVENTORY SALE

OUR INVENTORY MUST BE REDUCED FAST !

All Our Famous - Traditional Wear Is Included In This Sale!

- ★CRICKETEER SUITS
- ★CRICKETEER SPORT COATS
- ★NOTTINGHAM SUITS
- ★VARSITY SUITS
- ★VARSITY SPORT COATS
- ★GANT SHIRTS
- ★MANHATTAN SHIRTS
- ★CORBIN TROUSERS
- ★HIGGINS TROUSERS

★SWEATERS 20% OFF

SPECIAL GROUP <b>JACKETS</b> 1/2 OFF	SPECIAL GROUP <b>KNIT SHIRTS</b> 1/2 PRICE
SPECIAL GROUP <b>ALL WEATHER COATS</b> 1/3 OFF	SPECIAL GROUP <b>SHOES</b> 1/3 OFF
SPECIAL GROUP <b>CASUAL TROUSERS</b> \$5.00 pr.	SPECIAL GROUP <b>JEANS</b> \$3.00 pr.

**20%**  
TO  
**50%**  
**OFF!**

USE YOUR C & S  
CHARGE ACCOUNT

No Refunds  
No Exchanges

**DONALDSON-RAMSEY**

S. Main St. - Downtown Statesboro, Ga.



HOLLYWOOD

*Vassarette*

### JANUARY PROMOTION

**BRAS REG \$5.00 NOW \$3.99**  
**GIRDLES REG \$9.00 NOW \$6.99**

ALL COLORS, including white.  
We invite your charge account.



WHERE SHOPPING FOR FASHIONS  
IS ALWAYS A PLEASURE.

**"GO EAGLES"**

### TILLI'S ANNOUNCES THAT HER COMPLETE SPRING COLLECTION IS HERE.

*A Tremendous Selection of Flair  
Leg Slacks, Pant Dresses, Dresses,  
Arriving Daily. Now is The Time to  
Lay Away For Spring and Summer  
Choose From Tilli's Many Fine  
Brands Such as Villager, John Meyer,  
Hollywood Vassarette, Collegetown,  
and London Fog.*

WE INVITE YOUR CHARGE ACCOUNT

*"Welcome 'Home' Alumni"*







# THE George-Anne

*Published by Students of Georgia Southern College*

Vol. 47, No. 18—Statesboro, Ga. 30458, Friday, Jan. 24, 1969



## Southern's Eagles out for Homecoming win

By Mike Clark  
Sports Editor

Southern's Eagles, currently on a three game winning streak, will host Tennessee Wesleyan on Saturday night, January 27th. Game time for this Homecoming contest will be at 7:45 p.m.

This will mark the second time that Tennessee Wesleyan has been Southern's Homecoming opponent. The Eagles fell to Wesleyan during the 1966-67 season by the score of 68-53. Also, the Eagles have not won a Homecoming game for the last two seasons as they were beaten by a strong Guilford College team 87-74 last year.

Southern split with Tennessee Wesleyan last season winning 79-72, in overtime, and losing 82-72. The last three seasons have seen the Eagles win two and lose three against Wesleyan.

Wesleyan is a short team in comparison with Southern as their tallest player stands 6'5" tall. This should enable the Eagles to control the boards with ease but, somehow Wesleyan always comes up with a good game against the Eagles.

Probable starters for the Tennessee club will be: Gene Raymer (6-1) and Bruce Mullins (6-4) at forwards; John Barker (6-5) at center; and Jimmy Stewart (6-1) and Bob Shorter (6-1) at the guards.

The Eagles are coming off of a great 86-80 overtime win over

Tampa University and should be ready for Saturday night's encounter with Tennessee Wesleyan.

Roger Moore, Southern's outstanding sophomore center, took a bad spill in the opening minutes of the Tampa game and was not at top form for the remainder of the contest. However, big "Rog's" injury was not serious and he will be at full strength Saturday night. Roger scored only three points, his lowest points production of the season.

Southern's starting line-up will come from Moore, Dave Westerfield, John Norman, Phil Sisk (who seems to have gotten back into his early season stride), John Helm and Steve Buckler. Westerfield, Norman, Sisk and Helm all scored in double figures against Tampa. Westerfield got 26 points while Norman added 23. Sisk and Helm scored 14 and 10 respectively.

The Eagles should be "sky-high" for this encounter as they will be trying hard to snap the Homecoming "jinx". And from the way the Eagles have played in their last two games, against Oglethorpe and Tampa, victory number 10 should come their way Saturday night.

Also, Coach Radovich's cagers will be out to keep their perfect record at home unblemished. Southern is currently 5-0 at home.



The Eagle varsity is primed and ready for Homecoming game against Tennessee Wesleyan Saturday night.

Photo by Currie

## Eagles will be at home Mon. and Thurs.

By Mike Clark  
Sports Editor

Another band of Eagles will invade Hanner Gym on Monday night, January 27th, when Southern's Eagles host the powerful Eagles of Carson-Newman College from Jefferson City, Tennessee. Game time for this old rivalry is 8:00 p.m.

A preliminary game between Coach Allan Johnson's junior varsity quintet and Middle Georgia Junior College is slated for 6:15 p.m.

Georgia Southern lost both games to Carson-Newman last season. The Eagles lost a heartbreaking 89-86 overtime verdict and then bowed a second time by the score of 100-89. Southern's Eagles are still licking their wounds from that 89-86 loss and are out to derail Carson-Newman.

The Eagles of Carson-Newman will be no pushovers as they have played a rugged schedule to date. They have faced Morehead State, Murray State (a team which defeated Southern) and Middle Tennessee State of the tough Ohio Valley Conference.

The defending Eastern Division Volunteer State Athletic Conference Champs are led by 6-6 junior Tommy Everette. Everette is currently averaging 25.6 points a game and is the team's leading rebounder. Everette was named on the NAIA All-American Honorable Mention list last year and is a top candidate for making the elite list this season.

Rounding out Carson-Newman's starting line-up will be Co-Captains Buddy Sivills and Les Spitzer; and Tony Mills and Steve Bowling.

### AC HERE THURSDAY

Southern will be at home again on Thursday night, January 30th, when Atlanta Christian College, from Wilson, North Carolina, will invade "Eagleland". The game will get underway at 8:00 p.m.

The JV's will also be a home on Thursday night. The junior varsity will take on ABAC Junior College, ranked number one in the state, at 6:15 p.m.

Atlantic Christian earlier in the season took powerhouse North Carolina State University

down to the wire before succumbing. Atlantic Christian has been ranked in the NAIA Top Twenty off and on this season and will bring one of their best teams, in quite sometime, to Statesboro. Atlantic Christian is a member of the tough Carolinas Conference which has produced numerous All-Americans and pro players in recent years.

If tradition holds true, the game promises to be a real "cliff-hanger". Southern eked out a 85-84 thriller at home last season and then lost to Atlantic

Christian up there 77-74 in overtime.

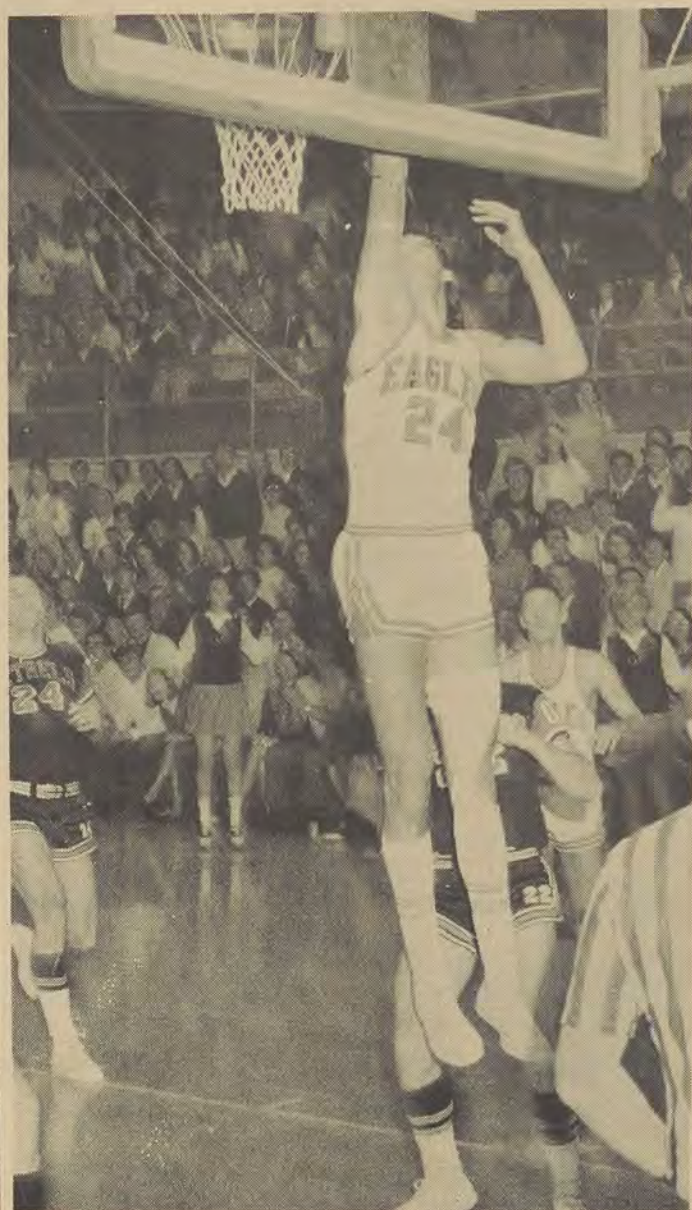
The Atlantic Christian contest and every game that Southern plays from now on will be very important in determining whether or not a post-season tourney bid will come Southern's way. Southern is presently in first place for the post-season tournament with Berry College close behind.

After meeting Atlantic Christian, the Eagles will have only three remaining home games and six (very important games) on the road.



Phil Sisk, left, Roger Moore, center, and John Norman, right, form the heart of Southern's "jumping-jack." Southern has outrebounded opponents in every game except one.

Photo by Currie



John Norman, number 24, is one of the reasons for Southern's 9-3 record to date. Norman is averaging 14.2 points a game.

Photo by Currie



## Eagles run win record to nine with 86-80 score over Tampa U.

The GSC Eagles scored a big 14 points in overtime last Monday night to down Tampa University's Spartans 86-80 behind the scoring of Dave Westerfield and John Norman.

Westerfield pumped in 26 points and Norman added another 23 as the Eagles collected their ninth victory against three setbacks. Phil Sisk and John Helm were also in double figures for the evening. Sisk hit for 14 markers while Helm had 10. Westerfield, Norman and Sisk each had four points in the overtime to spark the Eagle win.

After the regulation 40 minutes of playing time the score was deadlocked at 72-all. The Eagles had almost pulled the game out at the close of the second half. With the score tied Coach Frank Radovich's Birds had possession of the ball with 42 seconds remaining. Southern managed to run the clock down to 10 seconds then called timeout. When play resumed Westerfield took the toss inbounds and dribbled in, taking a jump shot with only three seconds to go, but the ball went in and out of the bucket, forcing the game into overtime.

John Napier of the Spartans was mainly responsible for keeping his injury-ridden team in the game. The sharp-shooting

Tampan captured all scoring honors in the bout with 40 important points. Many of his tallies came at crucial points of the game, including six points in the closing minutes of regulation play to put the Spartans in the overtime, and also four points of Tampa's six in the overtime.

Roger Moore, the Eagles' 6'6" center with an average of 15 points per game thus far this season, suffered a fall during the opening minutes of the game

and never regained his form during the contest. Moore was

able to play during much of the game but scored only three points for the evening. Assistant coach J. E. Rowe stated at halftime that Moore had been shaken up on the fall but had suffered no serious injury.

The score was close during the early part of the game with neither team being able to mount any sizable lead. Two baskets by Napier gave Tampa a 30-24 margin with 8:41 to go in the first half, but the Spartans were unable to hold onto the lead as the Eagles came roaring back to take over 35-34 with 4:00 remaining before intermission. The Eagles then mounted a five point advantage, but again the score tightened, leaving the Eagles ahead by one, 46-45, at halftime.

In the first half neither team stood out on offense as each quintet hit for only 42 percent of their field goal attempts. Tampa outrebounded the Eagles 28-21 during the period.

Georgia Southern scored ten straight points at one time during the early second half to take a 59-50 lead, but again the Spartans battled back, closing the gap at 63-all with eight minutes to go. From then on it was a neck-and-neck contest with the score being tied at 64-all, 66-all, 68-all, 70-all, and finally 72-all as the buzzer sounded to end regulation play.

The victory was the Eagles' third in a row for the season. The win puts GSC out in front 16-8 in the Tampa series which stretches back several years. GSC has won the last seven games with Tampa. The Eagles and the Spartans last battled in 1966.

### GSC 86-Tampa 80

#### GEORGIA SOUTHERN—

Westerfield 12-2-26; Norman 9-5-23; Sisk 4-6-14; Helm 4-2-10; Buckler 4-0-8; Moore 1-1-3; Brown 1-0-2; TOTALS: 35-16-86

#### TAMPA UNIVERSITY—

Napier 18-4-40; Sprietsman 6-5-17; Henley 1-7-9; Smith 3-0-6; Bradley 3-0-6; Johnson 0-2-2; TOTALS: 31-18-80.

#### SCORE BY QUARTERS:

GSC 24 22 15 11 14 — 86  
TAMPA 22 23 12 15 6 — 80

GSC record 9 wins 3 losses

TAMPA record 10 wins 4 losses



Phil Sisk shown here against Wilmington scored 14 points in win over Tampa.

Photo by Currie



Senior guard John Helm scored 10 points against Tampa and has been instrumental in current Eagle win streak

Photo by Currie

## JV's win 75-67

The JV's, led by big Charlie Gibbons and Rob "Trash-man" Bergbom, won their fourth game of the season Saturday night, January 11th, defeating Brunswick Junior College 75-67. The Baby Eagles, who have lost only once, trailed 35-32 at the half.

Gibbons led all scorers with 27 points, his best point production of the year. He also pulled down 14 rebounds and blocked six shots.

Bergbom came off the bench in the second half and scored 15 big points, many of them at crucial stages of the game.

Jim Turngate scored 20 points for the surprising Brunswick team which has only freshmen players this year, JV coach Allan Johnson said that the Brunswick team was one of the best coached teams his squad has faced this season.

Bergbom is noted for his ability to score many so-called "cheap" baskets and getting rebounds by being in the right place at the proper time. Often the basketball will go through two or three player's hands and the "Trash-man" somehow gets it and puts it in the basket for two points.

Eugene Brown, guard for the Eagle varsity, also has this unique ability to be where the ball is. Brown, at an even 6', was the second leading rebounder on last year's frosh squad.

The Baby Eagles' next home game will be against Middle Georgia on January 27th, at six o'clock in Hanner Gym.

## GYMNASTICS

Meet

Tonight

LSU

VS

GSC



Miss Sandy Richardson shown here as a Baby Eagle cheerleader in 1965-66 will be leading the cheers for Saturday's Homecoming game.

## JV's win 4th straight

The Georgia Southern junior varsity won its fourth straight game since the holidays by defeating Brewton-Parker 74-62 on the losers' home court January 14.

The Baby Eagles were led by three double figure scorers: Danny Gordon with 23 points; Buddy Pinkston with 13 points; and Steve Melton with 12 points.

Hope Brantley led Brewton-Parker with 25 points followed by Fred Hooks with 14.

The JV record is now a fine 5-1 slate, but they have some tough road games in the near future.

"That one was a good win for us," commented Coach Johnson. "Brewton-Parker is noted for

being tough on their home court, and our players stayed in there pretty good."

"Our defense is getting better and the guards, Pinkston and Ronald Gwin, are doing a better job of running the offense and handling the ball. Another big help has been the blocking of shots by Charlie Gibbons. I think he has been averaging about six blocked shots per game during this winning streak."

Coach Johnson also had praise for the junior varsity cheerleaders and a group of faithful students who have been following the team. "They sat behind our bench and really yelled and gave the team a big lift morale-wise."



## Wadubee is back

Winter quarter proved to be full of surprises for the Eagle basketball fans. First it looked as if Dave Westerfield was lost to "Uncle Sam" and then he appeared to save the day for us against Georgetown.

Next came the most unbelievable of all, with the loss of Guy Bennett on the cheerleading team, Jimmy "Wadubee" Rawlins showed up on the court as a surprise to everyone.

"Wadubee" as he is known to those who saw him last year, is a veteran senior from Stone Mountain, Georgia. The wild "Wadubee" missed the first game this quarter but appeared to save the day against Oglethorpe and Homecoming should prove to be even a bigger surprise.

When interviewed "Wadubee" was asked how he liked being back and what his impression of the team was this year. "This year's team has shown me the pep and spirit that last year's team had and with Ricky Smith and Sandy Richardson as Captains we should do even better than last year. Oh, I miss "Fat Al" (Al Bostick) and others from last year, but I'm glad to be back." And from all indications the entire cheerleading squad along with the fans are glad to see "Wadubee" back.

The addition of "Wadubee" to the team brings the number of vets to five—a good core to lead the cheerleading squad.

So, let us back the Birds when the cheerleaders hit the court and show even more spirit for Homecoming.

Oh, by the way welcome back "Wadubee".

## 2 former Eagles now playing for Macon Movers

Coach Allan Johnson, junior varsity coach, and former Southern star Leahman Stanley are currently playing for the Macon Movers' AAU cage team. The Movers will be participating in the World Tournament to be held in Macon later this month.

The Movers have played two games to date and have been victorious in both with the latest being over Robbins of Macon. In the Robbins encounter, Coach Johnson and Stanley played key roles in the win.

Coach Johnson, former captain of the University of Georgia cagers, came off the bench to score 14 points while Stanley, who signed a pro baseball contract with the Minnesota Twins, added 10 points. Also, both players set up numerous baskets by their teammates, with their fine passing.

The Movers have only been together for a short period of time and are considered as a "darkhorse" in the tournament. Teams from all over the world are entered in the three day affair.



Jimmy "Wadubee" Rawlins shown here with Becky Ray returns to his old cheerleading spot.

## Baby Eagles face test

The Baby Eagles will barely have time to catch their breath during the days between January 25 and February 1st. During this eight day span the junior varsity will be playing five games, three of which will be on the road.

"We play four teams this season that are really tough and we play three of them during this coming period," stated JV coach Allan Johnson. The four teams referred to by Coach Johnson are the Citadel, University of Georgia Frosh, South Carolina freshmen and Abraham Baldwin Junior College.

The JV's suffered their only loss of the season against The Citadel 75-65. Since that loss the Baby Eagles have reeled off four straight wins in posting a fine 5-1 record to date.

ABAC has a 14-2 record and is the number one junior college team in the state. ABAC will

come to "Eagleland" on Thursday, January 30th. Many remember the fantastic comeback that Coach Johnson's squad made last season when they came from 25 points down to defeat ABAC. But, the JV's will have to play errorless ball this time around as ABAC is still smarting from that loss.

When the junior varsity travels to the University of South Carolina on Saturday, February 1, they will be meeting one of the best freshman teams in the land. South Carolina reportedly recruited the number one high school player in the nation last year and is currently undefeated.

The JV's start the eight days off with the University of Georgia Bullpups. Georgia's shortest starting player is 6'5" tall. It could be a long week for the hustling junior varsity quintet.



Phi Delta Theta and Kappa Delta are in the swing for the Homecoming parade. Let's get in the swing and support the Eagles Saturday night.

## Moore to be ready Sat.

by Mike Clark  
Sports Editor

Roger Moore, Southern's versatile center, is nursing a sprained left hand that he suffered in the Eagles' 86-80 overtime win on Monday night. Trainer Mickey Cobb, however, assured Coach Frank Radovich and Roger that the sprain was only slight and that he will be ready for Saturday night's Homecoming game against Tennessee Wesleyan.

In an interview with the sophomore from Savannah, Roger said concerning his injury. "It really scared me when I fell on my wrist. I thought that I had hurt it more than it really was."

This was evident as Roger scored only three points and got only five rebounds. This is way below his season's average of 15 points and 15.5 rebounds a game.

Asked about Saturday's encounter with Wesleyan, Roger had this to say. "Though we do not know much about them (Wesleyan) we should win and besides that we should beat anyone on our schedule."

When Roger looked at the Tennessee club's height (only one man 6-5) one could see he was thinking "sorry about that." But he added, "Height is not everything. They may be fast and this could be trouble."

Roger stated that the club is closer together now than at the beginning of the season. He also thought Southern's best game was against Oglethorpe and the worst game was against Mercer.

When the game gets underway Saturday night "Big Rog" will be there blocking shots, rebounding and scoring better than in his last game for he is a man with pride for he knows he is better than Wesleyan's center.



Moore in action against Oglethorpe suffered a sprained wrist against Tampa but will be ready for Saturday night.

Photo by Currie

## CLASS RINGS

**Official Class Rings May  
Be Ordered At  
Williams Student Center  
Thursday, January 30th**

**8 am to 3 pm**

★  
The  
George-Anne  
**SPORTS**  
★



# Southern basketball revisited 1965-1967 seasons

## NAIA SECOND PLACE IN 1965-66 SEASON



First row: J. B. Searce (coach), Jim Seeley, Dave Christiansen, Bill Pickens, Ronnie Bailey, Elden Carmichael, Frank Radovich (assist. coach). Second row: Tommy Dial, Mike Rickard, Robert Jordan, Bill Whitehead, Lehman Stanley, Frank Waters. Third row: George Watson (manager), Jimmy Searce, Don Adler, Jimmy Rose, Tim O'leary, Mary Comer (trainer).

The Eagle cagers got off to a sluggish start dropping three of their first five games, including an opening game to Shorter 87-80.

GSC then won their next contest including the Chattanooga Invitational Championship. Arch-rival Oglethorpe snapped Southern's

six game winning streak with a 71-67 victory in Atlanta.

They knocked off their next ten opponents, including a 94-80 victory over the "Stormy Petrels" of Oglethorpe in Statesboro. Carson-Newman broke the Eagles' winning streak at ten even with a 81-72 win in

Jefferson City, Tennessee. GSC closed out the regular season with a 97-79 win over Mercer to finish up with a 20-5 record.

Southern then earned the right to compete in the NAIA National Tournament by downing Shorter 76-66 and Valdosta State 63-57.

## No tournament in 66-67

### from GSC alumni record

The Georgia Southern dressing room was quiet after the Eagles had bowed to Lenoir Rhyne in the championship game of the Lenoir Rhyne Holiday Classic in Hickory, North Carolina. Dressing rooms usually are sullen after defeats, and often the silence is broken by heated tempers. The Georgia Southern players are no different from any other players when they lose, and senior center Dave Christiansen and sophomore guard Ken Sotkiewicz became involved in a minor argument over a tape cutter.

The dressing room remained silent as the two players exchanged words. Suddenly All-America guard Jimmy Rose walked over to the scene of the argument, and said, while vigorously rubbing his head with a towel, "Boys, there's nothing to get excited about. This just looks like the year of the second place trophy."

Rose, the elder statesman, had settled the argument with his sage advice. He also summarized Georgia Southern's basketball season for 1966-1967, a year in which Coach J. B. Searce's Eagles did not participate in the NAIA District Playoff for the first time since 1954. Even in their "off" year, the Eagles managed to win 17 games out of 28 starts.

When the season opened, Searce had only two basketball players—Rose and forward Jim Seeley. They were the only lettermen back from the 1965-1966 team that finished runnerup in the NAIA Tournament in Kansas City.

Gone were six lettermen, and you don't set your sights too high when you lose six lettermen. You don't throw in the towel either, and Searce had his troops fired up and optimistic when the campaign opened.

Rose, who was to GSC basketball what tragedy was to Shakespeare, turned his ankle in a scrimmage game just before the season began and did not function at full capacity until after the New Year's break. By that time, the Eagles had played eleven games. Chalk it up to tradition or plain hard luck, but in three years Georgia Southern's three-year All-American had not been in the lineup at the start of the season.

The Eagles opened with victories over Lincoln Memorial and Cumberland in the Southern



Jimmy Rose

States Tournament in Williamsburg, Kentucky, before dropping two in a row on the road to Murray State and Northwestern Louisiana. Next came victories over Samford and Stetson, and a loss to Lenoir Rhyne. The second place trophies followed at Atlantic Christian's Tournament and Lenoir Rhyne's Classic to make the record 6-5 at the Christmas break.

In January, GSC beat The Citadel and lost to Valdosta, before reeling five straight from Wilmington, Guilford, Oglethorpe, Mercer, and Carson-Newman. Another loss to Valdosta snapped the skein, and Tennessee Wesleyan made it two losses in a row with a Homecoming setback. An easy victory over Cumberland closed out the January slate, and the season record stood at 13-8.

February saw the Eagles lose to Tennessee Wesleyan, beat Wilmington and Stetson, beat Carson-Newman and forward Robert Johnson bomb in 51 points to spark the Eagles to their last victory of the season, a 127-92 verdict over Atlantic Christian. Road defeats by Mercer and Oglethorpe ended the season.

Rose was the leader, scoring 475 points for a 17.6 average to give him a career total of 1,430 points, and his performance earned him second team All-America honors. He was a first team selection in each of his first two years. Seeley scored 380 points and finished his four-year career with 1,043 points. "Soc" scored 475 points and Jordan finished with 354.



FILL IN  
AND DEPOSIT  
NOW AT  
KENAN'S

## Announcing a New "QUICK COPY" SERVICE

Now At Kenan's

LOW COST • HIGH QUALITY • QUICK SERVICE

From 10 to a Thousand copies in minutes  
(Workload permitting)

Ideal for letters, reports, bulletins, resume's,  
Announcements, tests, business forms, etc.

### Kenan's Print Shop

25 Siebald Street Phone 764-2514  
(Behind the new Bulloch County Bank)  
Statesboro, Georgia

## SWEEPSTAKES ENTRY

NATIONAL OFFICE PRODUCT WEEKS  
**Special values**

JAN. 17 - FEB. 10, 1969

Ten-day, all-expense trip to Mexico  
for TWO VIA AMERICAN AIRLINES  
plus hundreds of other prizes

Name \_\_\_\_\_  
Address \_\_\_\_\_  
City \_\_\_\_\_ State \_\_\_\_\_ Zip \_\_\_\_\_  
Dealer's Name Kenan's Print Shop  
Dealer's City and State Statesboro, Georgia 30458

Winners Drawn by independent judging firm. Judges decision final. One prize per person. Sweepstakes closed to employees of sponsoring companies. Restricted continental U.S. Void where prohibited, taxed or restricted by federal, state or local laws. Sweepstakes closes February 10, 1969. Entries property of sponsors. None Returned. Winners must accept prizes within specified time. No cash equivalent. Liability for federal, state or other taxes sole responsibility of winners.



## Intramural Soccer League

1. Sigma Nu
2. Sigma Phi Epsilon
3. Cone Hall
4. Phi Delta Theta Colony
5. Phi Epsilon Kappa
6. Tau Kappa Epsilon
7. Tau Epsilon Pi
8. Kappa Sigma
9. Falcons
10. Sigma Pi
11. Delta Tau Delta

Jan.	20	A-2-11	4	A-8-11	20	A-11-5
		B-3-10	5	B-9-10		B-2-3
	21	A-4-9		A-6-4	24	A-10-8
		B-5-8	6	B-7-3		B-11-7
	22	A-6-7		A-8-2	25	A-1-6
		B-3-1	10	B-9-1		B-2-5
	23	A-4-11		A-10-11	26	A-3-4
		B-5-10	11	B-8-4		B-11-9
	27	A-6-9		A-7-5	27	A-1-8
		B-7-8	Feb. 12	B-9-3		B-2-7
	28	A-4-2		A-10-2	March 3	A-3-6
		B-5-1	13	B-11-1		B-4-7
	29	A-6-11		A-8-6	4	A-1-10
		B-7-10	17	B-9-5		B-2-9
	30	A-8-9		A-10-4	5	A-3-8
		B-5-3	18	B-11-3		B-4-5
Feb.	3	A-6-2		A-1-2	6	A-5-6
		B-7-1	19	B-9-7		
				A-10-6		
				B-1-4		

All games will start at 4:30.  
Game A is played on the field  
directly behind the gym.  
Game B is played on the field  
nearest highway.

## Auburn student to compete in two sports car races

From Daytona International  
Speedway Press Dept.

A week's vacation in sunny Daytona Beach would satisfy just about any college student this time of year. But not Auburn University's Steve Pieper. He'll be spending a week here soon, but not exactly vacationing.

Pieper has entered two of the world's major races—the Daytona 250-mile World Championship for Formula Vees, January 31, and the 24-Hours of Daytona, February 1 and 2.

Just 21, Pieper will be getting his first taste of international competition as he attempts to qualify his Volkswagen-based Zink racer for one of the 60 starting positions in the Formula Vee classic. Nearly 200 entries are expected for the inaugural running of the event.

Featuring the richest purse in the world for Vee's (\$28,000), the event will be run over the demanding 3.81-mile international road-track circuit—same one used for the 24-Hours of Daytona the following day.

Winner of the race will be crowned world champion, and will claim more than \$7,000 in prize money.

In the renowned 24-Hours of Daytona, Pieper will drive a Porsche 911R entered by the

HRH Corp. of Annandale, Virginia. This car was driven to an impressive 14th overall (4th in class) finish in last year's 14-Hour by Jim McDaniel and Glen Sullivan both of Arlington, Virginia.

Pieper will team with McDaniel in this year's running of the Western Hemisphere's longest race—which is also a world championship event—with points going toward the international manufacturer's championship.

Last year, in his first season of Sports Car Club of America racing, Pieper captured the Washington Region Formula Vee class crown. He is a former NASCAR drag champion (1966), and began racing go-karts at Marlboro Speedway, Maryland nine years ago.

Pieper's home is in Alexandria, Virginia.

★  
The  
George-Anne  
**SPORTS**  
★

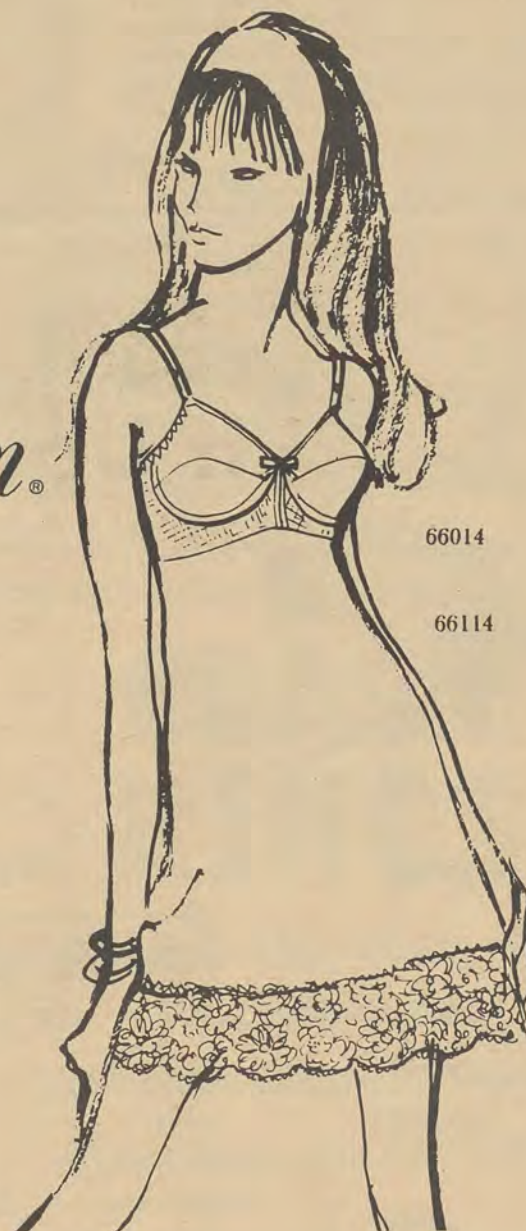
**Belk**  
of Statesboro

INSTANT UNDERDRESSING

FROM *maidenform*®

For today's fitted styles, Maidenform slips you into something smooth and comfortable...their gentle new bra slip in an uninterrupted flow of luscious nylon tricot. The cups are lightly lined with fiberfill for smooth shaping. The back stretches all across for perfect, uncluttered fit. At the hem, a light spray of lace. All in all—a sleek silhouette in an instant! Available in pretty pastels of pink, blue, pearl beige, lemon yellow plus white. Short and average length. A-B-C cups, \$8.00

All Nylon Tricot.  
Backs: Nylon, "Lycra" Spandex  
Lining: Polyester Fiberfill  
Exclusive of Decoration.



66014

66114



## Georgia Southern College Baseball Schedule

1969

March	18	Virginia Tech	Statesboro
	19	Virginia Tech	Statesboro
	19	Kentucky University	Statesboro
	20	Virginia Tech	Statesboro
	20	Kentucky University	Statesboro
	21	Kentucky University	Statesboro
	21	Rutgers	Statesboro
	22	Kentucky University	Statesboro
	22	Rutgers	Statesboro
	27	Springfield	Statesboro
	28	Pembroke	Statesboro
	29	Pembroke	Statesboro
	29	Wake Forest	Statesboro
April	3	Erskine	Statesboro
	4	West Liberty	Statesboro
	4	Lewis College	Statesboro
	5	West Liberty	Statesboro
	5	Lewis College	Statesboro
	7	Carson-Newman	Statesboro
	8	Carson-Newman	Statesboro
	9	Erskine	Statesboro
	11	Furman	Statesboro
	12	Furman	Statesboro
	14	Eastern Kentucky	Statesboro
	15	Eastern Kentucky	Statesboro
	16	Eastern Kentucky	Statesboro
	18	Mercer University	Statesboro
	19	Mercer University	Statesboro
	22	Valdosta State College	Statesboro
	25	St. Leo College	Statesboro
	26	St. Leo College	Statesboro
May	2	Florida State University	Tallahassee, Fla.
	3	Florida State University	Tallahassee, Fla.
	6	Valdosta State College	Statesboro
	9	Florida State University	Statesboro
	10	Florida State University	Statesboro
	13	South Carolina	Columbia, S. C.

## PITCHERS MUST CARRY LOAD

By Mike Clark  
Sports Editor

It is that time of the year when Georgia Southern's baseball team begins preparation for another long, long season of America's number one sport. Coach Bill Speith has been sending his crew through daily workouts for the last couple of days and each player is slowly but surely rounding into shape.

Coach Speith has scheduled an attractive 37 game slate with the first 26 games being at home. At the start of the 1969 campaign, Southern will play nine games in five days. Most of the strain and toil from these games will fall on the pitching staff.

The Eagles' mound staff will be led by sophomore Herbie Hutson a native of Savannah, Georgia. Herbie, who is a member of Phi Delta Theta, compiled a perfect slate last year when he went 4-0. Two of his wins were big ones as he captured two important victories in the Nationals at St. Joseph.

Herbie was the number one relief man last year as he posted a 2.12 regular season earned run average.

Hutson listed the game against Florida State (ranked number one at that time) as his best regular season game. But, as everyone recalls, Herbie turned in a tremendous performance against Central Washington at the National Tourney. Hutson came on for starter Allen Simmons and pitched seven innings of flawless ball in route to 11 strikeouts. This performance earned him a high praise from the umpire behind the plate. "This was the best game that I have ever seen a college pitcher pitch," the umpire stated. He must have known what he was talking about as he had umpired in the Major Leagues.

Hutson came to GSC by way of Savannah High where he was a standout in baseball. Ironically Herbie did not start out as a pitcher but he began as a third baseman.

His senior year Hutson compiled a 11-4 record in leading his team to second place in the state. This was the first time in 20 years that a baseball squad from Savannah High had gone that far in the state. Hutson struck out 135, walked only 60, compiled a fantastic .027 earned run average and even batted .311 which was tops on the team.

This great year earned Hutson a spot on the All-State First Team and a trip to Atlanta for the High School All-State game.

Besides an offer from Southern, Herbie had an offer from the University of Georgia and South Carolina. Also, he had numerous offers from junior colleges.

Hutson had this to say about the 1969 team. "We lost six pitchers and several other key players from last year's NAIA second place team and it will be hard to replace them, but we are not going to roll over and play dead. This year's squad also has the ability to make it to the Nationals." He went on to say that the pitching staff will have to prove itself and that the catching department will be questionable at the start.

Hutson emphasized that the defense will be their strongest point.

Herbie has already had offers from two big league clubs, the Kansas City Royals and the Baltimore Orioles. He indicated that he would like to sign with the New York Mets.

If Hutson comes through along with the rest of the players look for the 1969 baseball team to once again make another trip to St. Joe.



Herbie Hutson heads mound staff for 1969 baseball team.

Photo by Emory Moody



# **Cee-K DISCOUNT**

**HEALTH & BEAUTY AIDS**

**WINDSOR VILLAGE**

**"Where You Save Everyday,  
On Everything"**

**LADY SUNBEAM  
ELECTRIC MANICURE SET**

Name \_\_\_\_\_

Address \_\_\_\_\_

Telephone \_\_\_\_\_

**REMINGTON 250  
SELECTRONIC**

Name \_\_\_\_\_

Address \_\_\_\_\_

Telephone \_\_\_\_\_

**GENERAL ELECTRIC  
PORTABLE HAIR DRYER**

Name \_\_\_\_\_

Address \_\_\_\_\_

Telephone \_\_\_\_\_

**REMINGTON 300  
SELECTRONIC**

Name \_\_\_\_\_

Address \_\_\_\_\_

Telephone \_\_\_\_\_

**REGISTER NOW FOR FREE DRAWING OF  
THESE PRIZES TO BE HELD FEB. 2.**

**NO LIMIT ON THE NUMBER OF COUPONS SO  
GET MORE IN THE NEXT GEORGE - ANNE**

**HURRY NOW! FILL-OUT AND SEND IN YOUR  
COUPONS FOR THESE PRIZES TO: Cee K Discount**

***"The 20th Century Store With  
19th Century Prices"***