

Georgia Southern University

## Digital Commons@Georgia Southern

---

The George-Anne

Student Media

---

11-11-1966

### The George-Anne

Georgia Southern University

Follow this and additional works at: <https://digitalcommons.georgiasouthern.edu/george-anne>

Part of the [Higher Education Commons](#)  
Digital Commons

---

#### Network Recommended Citation

Logo

Georgia Southern University, "The George-Anne" (1966). *The George-Anne*. 490.  
<https://digitalcommons.georgiasouthern.edu/george-anne/490>

This newspaper is brought to you for free and open access by the Student Media at Digital Commons@Georgia Southern. It has been accepted for inclusion in The George-Anne by an authorized administrator of Digital Commons@Georgia Southern. For more information, please contact [digitalcommons@georgiasouthern.edu](mailto:digitalcommons@georgiasouthern.edu).





# THE George-Anne

SEE  
DORMS  
PAGE 5

PUBLISHED BY STUDENTS OF GEORGIA SOUTHERN COLLEGE

VOLUME 45

STATESBORO, GEORGIA FRIDAY, NOVEMBER 11, 1966

NUMBER 9



**COUNTESS IS WILLING TO DEFEND VAGABOND**  
"The Madwoman of Chaillot" Is Known As The Champion Of Dogs And Flowers, Too

## 'Madwoman of Chaillot' Opens Three-day Run Thursday in McCroan

The Madwoman of Chaillot, produced by Masquers, begins a three-day run in McCroan Thursday night at 8:15 under the direction of Robert Overstreet.

The play, written by Jean Giraudoux and translated and adapted by Maurice Valency began its run on Broadway in 1948. Two of the leading stars were John Carradine and Marjita Hunt.

### Blood Donations Require Permits

Students under 21 are reminded to have permit slips signed by their parents if they wish to donate blood, stressed James Stapleton, president of Student Congress.

Permits must be presented at the door of the bloodmobile.

The Student Congress, in conjunction with the Red Cross, will sponsor blood donations in the Alumni Gym on November 17. Donations can be made from 6:00 to 8:00 p.m. A trophy will be awarded to the fraternity, club, organization, or house council which secures the largest number of donations in its name.

Unlike previous years, the donations will not be counted on a percentage basis. Don McDougald will award the trophy during Homecoming Weekend.

Admission for the production is \$1. Tickets may be purchased prior to curtain time from members of Masquers and members of Overstreet's Speech 252 class. Tickets will also be sold at the box office.

#### Early Performance on Sat.

The Friday night presentation also begins at 8:15 but the Saturday night show starts at 6:15. The time change was made to facilitate attendance at the play and also at the Starlight Ball.

Leading the cast in a play that has 40 roles is Ginger Miles, playing the Countess or Madwoman. The male lead is Mike Martsoff, playing the raggicker.

#### Plot Thickens

The Countess, the champion of dogs, flowers and vagabonds, had always thought the world to be beautiful and good; but she discovers that there is an evil plot afoot.

During the course of the play the Countess discovers that her cellar is a very particular place for it contains a secret by which she can destroy all the evil in the world. This is revealed to her by the sewer man who is the legendary Parisian King of the Sewers.

Other female leads are the three other madwomen, Lynn Willey, Donnie Evans and Ann Ferguson and "Irma, the waitress" played by Sue Sims.

Secondary male leads are Joe Knox, president; Harold Wright, prospector, and Allen Brown, Pierre.

(continued on page 2)

### Hepatitis Rumor Not Supported

Contrary to the recent campus rumor, there are less than a dozen cases of hepatitis here, according to Dr. A. B. Daniel, director of student health services.

"These cases have been adequately handled," he said. "No more cases are expected except an occasional case which is not unusual."

"The State Dept. of Public Health has made a study of the situation and has reassured us that there is no cause for undue alarm," added Dr. Daniel.

The best protection against hepatitis, according to Dr. Daniel, is to observe good rules of cleanliness and personal hygiene. Do not eat or drink after anyone, or, as Dr. Daniel recommended, "Wash your hands and quit kissing each other."

Anyone who thinks he is sick should report to the health cottage and let them decide. Don't lie around the dorm and wait.

"There is no indication or thought at the present time for the closure of the college for this or any other reason," he added.

## Probation Status Hits DPA, ΣEX, 4 Housing Units

By RON MAYHEW  
Managing Editor

Delta Pi Alpha, service fraternity for men, has been placed on social probation for the remainder of fall quarter and Sigma Epsilon Chi, service fraternity for men, has been placed on social probation for the remainder of fall quarter and all of winter quarter, according to the director of student activities.

The action was taken by the Activities and Organizations Committee, the Housing Committee, and the Discipline Committee, acting as a committee of the whole.

#### Flagrant Violation

According to a spokesman for this committee the disciplinary measures were enacted due

to flagrant violation of college regulations at social events sponsored by both organizations.

It was further said by the committee spokesman that during the probationary period these groups may sponsor only their individual organizational activities which consist of regular meetings. All other activities, social and otherwise, are prohibited, including both those for closed membership and those for the entire student body.

#### Housing Units Also

The three committees also revealed that four off-campus housing units have been put on probation for the remainder of the school year. The action comes as a result of evidence presented through the offices of the Dean of Men and Dean of Women.

According to the committee, the evidence included cases of intervisitation and drinking in three of the units and the failure of a house supervisor to attend supervisors' in-service meetings and to submit required periodic reports in the fourth.

#### No More Assignments

Probation for housing units will automatically result in no more students being assigned to

(continued on page 2)

## King David and Slaves to Play At Annual APT Starlight Ball

King David and The Slaves have been contracted to play for the Starlight Ball, according to Pam Williams, president of Alpha Rho Tau, the sponsoring organization.

The theme for the night is "Carnaby Street South". This theme was derived from Carnaby Street in London which is the street of mod fashion houses. This idea will be carried out through pop art and camp decorations. Completing the atmosphere will be Go-Go Girls.

Tickets may be purchased in the lobby of Williams Center beginning Monday. Cost is \$1.75 stag and \$3.50 drag. The dance will last from 8-12 p.m.

Sandra Fleming, 1965 Miss Starlight Ball, will crown the new queen at the intermission. Miss Fleming is from Evans and attends Augusta College this year.

Contestants for Miss Starlight Ball will wear long formals. Contestants will be representing all the organizations and dorms on campus who wish to participate in the contest. Deadline for entries is 5 p.m. Monday.

Entry blanks may be given to Pam Williams or Betty Lee in the Carruth Building or turned in to Fred Fagnant's office in the same building.

The winner will be selected by closed balloting next week in the Williams Center.



## ... Social Probation

(Continued from Page 1)

these quarters for the remainder of this academic year. The burden of a responsibility will be placed on the owners of these units to rectify the offenses or the quarters will be permanently removed from the college's approved housing list.

When asked to comment on the above action, Dean of Students Ralph K. Tyson said, "This action was based upon the recommendations of the professional staff members in the office of student personnel

charged with the responsibility for these facets of the college program and we feel that this is in the best interest of the college and that it reflects our general concern and that of a majority of the students for

maintaining high standards generally associated with Georgia Southern College."

### McBride

Richard McBride, president of Delta Phi Alpha, has this to say regarding the disciplinary measures: "I'm very surprised on being notified of the matter. I suppose that those who put us on probation have

just cause in doing so. I only regret that we were not called in on the matter and did not have any voice in the action."

"Since I guess they have just cause in rendering this punishment, though I may not agree with it, Delta Phi Alpha, to follow the rules and regulations of Georgia Southern, will go with it, although I would like the

chance to appear before the administration to discuss the matter.

### HILLIARD

Also commenting on the administrative action was Jimmy Hilliard, president of Sigma Epsilon Chi, who said: "Sigma Epsilon Chi, in accordance with the rules and regulations of Georgia Southern College, accepts the action that was taken by the administration. During the period of probation we will work to re-evaluate our objectives and policies to bring them into line with the school's social activity regulations."

"We ask that students work with all organizations to maintain the proper and desirable atmosphere which is necessary for good social functions. It lies solely with the student body at large to determine the success or failure of any organization's activities."

### Honorary Fraternity To Hold General Meet

Kappa Phi Kappa, an honorary educational fraternity for men, will hold its 21st General Assembly in Atlanta, Nov. 11-12.

Dr. William A. McKenney, professor of education, and Mike Maguire, fraternity president, will represent the local chapter at the Assembly.

The Assembly will include business meetings, a panel discussion, a banquet and entertainment.

## ... Madwoman

(Continued from Page 1)

### Using Two Sets

According to Overstreet the Masquers are excited about the use of two sets for the show. Previously only single-set plays have been presented. The two sets are a sidewalk cafe in the Chaillot district of Paris and the cellar of the countess' house at 21 Rue de Chaillot.

The time of the play is "a little before noon in the spring of next year," a time which is easily adapted to any date of production.

"The set has been fun to work out," said Overstreet. "We had to work in terms of units that would be usable in both halves but not recognizable as the same. Fortunately, the scene change is made during intermission."

Instrumental in set construction have been Ralph Jones, Sidney Jackson and Alan Milton. The sets for this production were designed by Overstreet.

### Complicated Show

According to Overstreet this has been a complicated show. The large cast has created many costuming problems. He continued, "The show requires almost unlimited props, and the lighting is very intricate, or at least as much so as our limited facilities will permit."

He said, "If our new equipment, bought with the funds granted by Student Congress, arrives, this will be the best lighted show we've ever had."

Backstage managers include Rae Burnsed, costumes; Miss Marjorie Thomas, instructor of speech, lighting; Zebe Chestnut, props; Libby Brannon, stage manager, and Sally Swints, publicity director.

Revealing his excitement over the forthcoming production which is only six days away, Overstreet said, "This play has an excellent script. I hope our production will do it justice."

## Oregon Students Rate Professors

Eugene, Ore. (I.P.)—A report of student reaction at the University of Oregon to courses and instructors has been published by the Associated Students. The 172-page "Course Survey Bulletin" is based on a statistical survey of student opinion.

Only professors who participated voluntarily in the survey are listed in the bulletin.

Students participating in the survey were asked how satisfied they were with the course, whether the course encouraged independent thinking, whether the instructor took a personal interest in the progress of the class and showed respect for student questions and opinions, how difficult were the reading assignments and exams, and how many hours per week they spent studying for the course.

enjoy fabulous savings  
during our  
FIRST  
ANNIVERSARY SALE!



Come,  
help us  
celebrate  
The Oxford Shop  
University Plaza

Dear

Garfunkel

Dear Garfunkel,

I am not Catholic, but I was wondering if it would be a sacrilege if I crossed myself if Maddox wins?

Cris Cross

Dear C2,

If Maddox wins, we'll all be double-crossed.

Garf

JIM'S HAIR

STYLIST

College Gate  
Plaza

Phone 764-2121

Ben

Franklin  
Store

"Your Best  
Place  
To Shop"

E. MAIN ST.



Dear Garfunkel,

All of the girls in Olliff have something in common. They all smell... What has happened to their showers and deodorants?

U. R. Pew

Dear U. R.,

The girls are not allowed to shower after midnight. Their secret has been vetoed, and they must be mum about the situation, or they will be banned. All girls are on their right guard to see that their yodora is not offensive to the house director.

\*\*\*

Dear Garfunkel,

I heard recently that we had a chance to get Little Anthony and the Imperials down here. Why couldn't we find a place to have a concert?

I Wanna Hear

Dear I. Wanna,

There is a place where we could hold concerts; it is a magical land — the wonderful world of Hanner. But we can't use it because it is ruled by a greedy king, and whenever anyone wants to ask permission to hold a concert there, the king always makes himself Scarce...

Dear Garfunkel,  
I heard that there are many cases of hepatitis on campus, and I feel rather bad myself. Can the people in the Health Cottage do anything for me?

I. M. Ill

Dear I. M.,

My friend, ask not what the people in the Health Cottage can do for you; ask what you can do for the people in the Health Cottage.

\*\*\*

Dear Garfunkel,

My fraternity was recently placed on social probation. What can I do about this?

Ima Big Wheel

Dear Ima,

You can do exactly what you've been doing all along — nothing.

The Statesboro  
Telephone Co.

"serving Statesboro and Bulloch County"

9 South Main St.

Statesboro





**THESE THREE LOOK NEEDY**  
Sonny Deavors (m) Collected \$166.56 To Win UMOC

## Deavors Wins UMOC

Results of the Ugly Man on Campus Contest, sponsored by Alpha Pi Omega fraternity, were announced November 4, at the Barbara Lewis Dance, held by Sigma Epsilon Chi. The title of UMOC went to Sonny Deavors, a representative of Delta Sigma Pi fraternity. He collected a total of \$166.56. The grand total collected by all the participants in the contest was \$275.00. The March of Dimes will be the recipient of \$250.00 of the total amount collected. The remaining \$25.00 will be donated to the college chapel fund.

### Changes In Library Schedule

#### Thanksgiving Week

Nov. 22 (Tues.)	7:15 a.m. to 8:00 p.m.
Nov. 23 (Wed.)	8:00 a.m. to 12:00 Noon
Nov. 24 (Thurs.)	CLOSED
Nov. 25 (Fri.)	8:00 a.m. to 12:00 Noon
Nov. 26 (Sat.)	CLOSED
Dec. 3 (Sat.)	8:00 a.m. to 9:00 p.m.
Dec. 10 (Sat.)	8:00 a.m. to 9:00 p.m.

Christmas Holiday schedule will be announced later.

# Dean Announces New Women's Regulations

A clarification of women's regulations has been announced by Mrs. Virginia Boger, Dean of Women.

Freshman women may now leave their residence halls after quiet hours, and they will not have to count this as a night out. In addition, the deadline for signing out for the weekend is 10:00 a.m. Friday.

Students may void or change permit slips until 6:00 p.m. Friday, without penalty. These are the most outstanding of the modifications on previous rules governing women's activities. Further clarifications include:

#### "Nights Out"

Freshman women will be given a night out while attending the following activities, with or without an escort:

Social activities—on or off campus—

All off-campus activities; this includes the bowling alley, theaters, and restaurants off campus; this does not apply to the free movie on campus if held during the week.

Freshmen women may attend the following activities Monday through Thursday without having a night out:

College Library and Snack Bar—with or without being accompanied by males; in this case, the woman must return to the dorm by 10:00; she is to sign out on a regular sign-out sheet, not on a date card.

Organizational meetings — must return immediately following the meeting.

College-sponsored activities — Campus Life Enrichment, Masquers, Choir, etc.

Athletic events — intercollegiate and intramurals as participants or spectators.

In cases where a woman goes to the library or to an organi-

zational meeting, and she wishes to visit the Snack Bar afterwards, she must so indicate on her sign-out sheet. If she is accompanied by a male, she does not have to indicate this. This is not interpreted as a night out.

Freshmen women may leave the residence hall after quiet hours to visit the Snack Bar, Paragon, Eagle, or College Gate Cafeteria. This is not a night out. Women already out to a meeting not interrupted as a night out must return to the dorm by 10:00. They may also elect to go out after quiet hours. All freshman women must be in the dorm by 11:00 a.m.

#### "Quiet Hours"

Quiet hours or study hours are observed in all residence halls according to the time specified in the "Eagle Eye." Enforcement of quiet hours is left to the discretion of the House Council in dormitories of upperclassmen. For observance of quiet hours in freshman dormitories, the following will maintain:

Students assigned to a room will occupy this room unless permission is otherwise granted by the House Director.

The temperate use of vending machines and washing machines during quiet hours is permissible unless the House Council feels that use of such facilities creates a disturbance.

Students may watch television in the dormitories without taking a night-out unless the House Council feels that use of the television creates a disturbance for those trying to study.

#### Signing Out for the Weekend

Deadline for signing out for the weekend is 10:00 a.m. Friday. Students who void or change permit slips may do so until 6:00 p.m. Friday without penalty. Students who return from the weekend on Monday must sign in before attending classes or immediately upon their return to campus. Students who sign out for the weekend after the 10:00 deadline should be allowed to leave the campus for their destination. Said students are subject to appear before the House Council at its next meeting, and reasons for their signing out late be ascertained.

#### Other Business

1. Under item No. 8 on the permission sheet, "groups" will be interpreted to include dates, two or more persons.
2. If women leave the campus on the weekend and visit another city and have no hostess, their permission to leave will be contingent upon parents' knowledge of such activity.

IN ALL QUESTIONABLE CASES, THE OPINION OF THE DEAN OF WOMEN SHALL PREVAIL.

#### PE Fraternity Pledges To Sponsor Car Wash

The pledge class of Phi Epsilon Kappa will hold a car wash at Mac's Standard Oil Station Saturday, November 12, according to Jimmy Dooley, president of the pledge class.

The car wash will last from 9 a.m. until 5 p.m. The price will be \$1.00 per car.

## Nic Nac Grille

It Costs Less To Eat Out

We Cater To Sports

All Orders Available To Go

1 Block off 301  
Open 5:45 a.m. to 11:00 p.m.

Statesboro's Oldest  
R. C. Webb Owner  
63 E. Main Ph. 764-2853

# THE PARAGON

—Tuesday—

**Pizza - 59¢ REGULAR CHEESE PIZZA**  
**BREAKFAST SPECIALS**

**1 Egg — Bacon or Sausage**

**Coffee  
Grits**

**60c**

**2 Eggs — Bacon or Sausage**

**Coffee  
Grits**

**75c**

**Hotcakes Bacon or Sausage**

**Coffee**

**65c**



# The George Anne

ANN VAUGHAN  
Editor

DANNY DIGBY  
Business Manager

## SUPER SNOOPER

Much has recently been said regarding the Citizens Band radios, formerly used by Campus Security, which presently remain unused in several on-campus dormitories.

Before the acquisition of the new security truck these radios were the only form of communications between house directors and on-duty campus security officers. With the addition of the new truck came the mobile telephone which is now used in place of the two-way radio. By dialing a special number house directors can be in immediate touch with an officer in the truck. If, in an emergency, the phone should be tied up and blocking a call, the local telephone operator can interrupt the call in the same manner as regular phone conversations.

With only rare cases of minor technical difficulties, the new phone has proven to be both efficient and reliable, according to Campus Security Chief Harold Howell. He added that formerly troubles with the Citizens Band units was both annoying and frequent.

Another advantage of the new mobile phone is preventing every local farmer, teenager, and snoop from listening in on confidential security conversations as is possible on citizens band channels.

The old radios are not, as has been speculated, standing idle. They are presently under bid and will be sold in the near future.

We hope the transition to more advanced electronic equipment is an indication of the advancements to come in the next few years. Among these we would like to see Campus Security operating on a separate short wave channel of their own, giving them totally foolproof and private inter-campus communications.

## EDUCATION ADDS UP

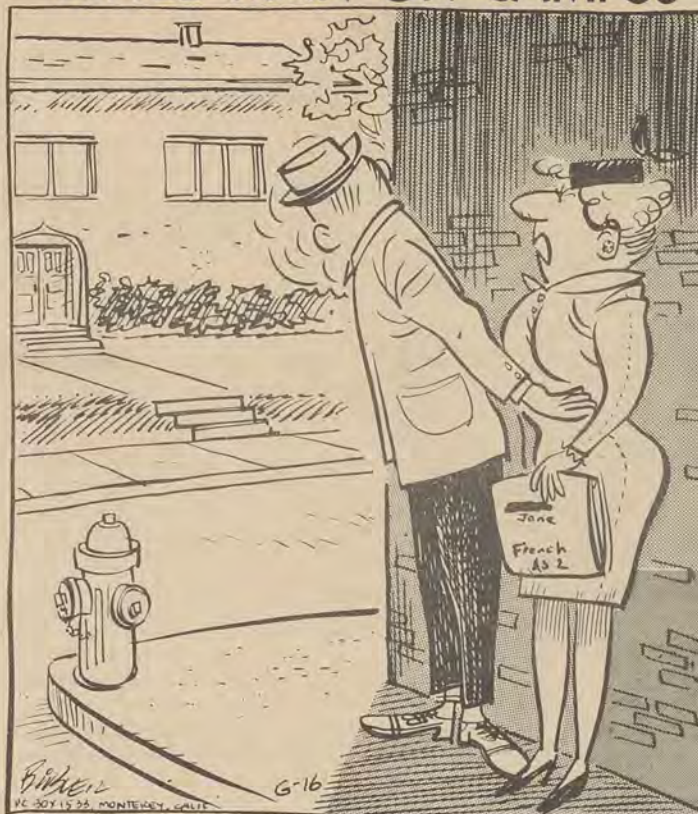
There is a man  
And he says, "Teach me."  
The seeking, searching, uncertain man.  
Teach me to question, to probe, and to find.  
Teach me so that  
When a child come forth  
I will know what to do when he says  
Teach me.

Education is the teacher preparing men and women to teach the future citizens. During American Education Week, the classroom is in the spotlight. The importance and necessity of learning is presented to the public in an effort to improve and evaluate the standards of not only the public schools, but of individual standards and goals concerning knowledge.

The theme of the national observances is Education Adds up—adds up to human dignity, rational thinking, creative spirit and self-reliance. Perhaps most important are the results of educational advancement . . . informed citizenship and lifelong opportunity.

As parents visit the schools of their children, and speakers relate the progress of learning institutions during the past year, students and teachers should also evaluate their progress and plans to better their education.

## LITTLE MAN ON CAMPUS



"IT'S NOT ENOUGH THAT YOU GIVE HARD TESTS BUT YOU HAVE TO GO AND 'SPRING' IT ON THEM."

## Knowledge of Techniques Increases Enjoyment of Arts

By  
MISS ROXIE REMLEY,  
Asst. Professor, Fine Arts

Students have many opportunities to see the work of several artists during any year. The question of "how to look" is often asked. Actually, no one can answer this because, as for any perceptual experience, it is a private thing. However, there are a few general rules which could be followed if one wishes to have a meaningful experience.

Probably the most important point is to have a favorable "set," either toward the work of art or toward the artist. This just might be termed a "want to see" preliminary. It usually isn't too difficult to get some information about the artist, such as where he studied, where he has exhibited his work is permanently exhibited or to put it another way, who buys them for keeps.

"Set" might also include a bit of background about the techniques. For example, the wood cut now on display in the library—the artist first cuts the figure into the wood surface with wood carving tools. He then inks the woodblock and places the paper on the carved ink surface. Pressure is applied for transfer of ink to make the print. Each print is numbered and the artist himself places

the limits on the edition. In the margin just beneath the print you will find the number of that print and the total number in the edition. For example 1/10 means the first print of ten. The title and signature appear in this same margin and all are usually written in pencil.

When actually viewing a work of art be prepared to "focus" on it. One can best do this when unhurried and relaxed and certainly seated if possible. The attention or focus can be done without too much difficulty if one is looking for something. If nothing else comes to mind, look for the signature into the painting in a way unique for them. It's usually quite distinctive. Many art works have a title. You may be able to see why the artist gave it that title, you may not. The message may be delivered through the figure, expressive content, symbolism, through line or color, or space. After all, art is a way of communicating and the work of art is saying something to you. So pull up a chair and contemplate. And better still, come back the second day. You may actually see the double image which is characteristic of much of Modern Art. This is an added dimension of imagination which sets the picture into our time. You'll find the more you look, the more you see and the more you see, the more you look.

## Formal Dance? Not The Trend - But Why Not??

By ANN VAUGHAN

As the date of the annual Starlight Ball draws near, all who are interested in dancing the night away turn their minds to questions of social etiquette, what to wear and how to do it. Sadly enough, after consulting Amy Vanderbilt's book on "gracious living" and Emily Post's "Blue Book" one finds that collegiate dances have come a long way from the original evening of dancing. It no longer matters about social etiquette, what to wear and how to do it.

In asking a young lady of several generations ago to dance with him, the young man would say "May I have the pleasure of this dance?" Then the phrase was shortened to "May I have this dance?" Then the young man began to say "Dance?"

Now the shortened form has been abbreviated even more. A gentleman dressed in the way out mod of the day saunters over amidst the beginning music, nods toward the girl of his choice, and shrugs his shoulders as if to say "Let's transverse to the next world, baby."

Evening apparel has changed a lot in the last years. Though the beautiful long formal evening wear is still loved by many, it is no longer practical. It inhibits the body as it moves through the various contortions that make up the current dance. It would be good if we had at least one dance a year here that required formality. Though current dances are expressive, they are not beautiful and graceful.

Our present status symbol of corsages grew from the custom of sending beautiful flowers to the lady who was to be dined and danced. Though we still cling to the beautiful flowers, I feel that we do put them through an awful ordeal at an evening of the Beatles. The petals of the flowers do every step the girls do; they get crushed; the cigarette smoke and pressure turn them brown. I believe an enterprising writer could write a tragic novel on the life of an orchid who is sent to a college dance.

Gone, too, are the beautiful waltzes and polkas where dancing required teamwork of the two persons. Now the "fast dances" are individual efforts where the two agree to meet after the dance is over. Many of the slow dances are just agonizing throbs where the couple rock back and forth. Little grace or agility is required.

Why doesn't some class sponsor one formal dance. One where formal clothes can be worn and where they won't be ruined with informal dancing . . . a dance where young men pay their respects to chaperones and dance with them while the male chaperones dance with the young ladies. Has our generation gone so far out, that they can't appreciate gracious niceties of life?

## THE George-Anne

The opinions expressed herein are those of the student writers and not necessarily those of the college administration and faculty



Entered as second class matter at Post Office at Georgia Southern College, Georgia Southern Branch, under act of Congress

Friday, November 11, 1966 — Page 4

### EDITORIAL BOARD

ANN VAUGHAN  
Editor

DANNY DIGBY  
Business Manager

Ron Mayhew, Managing Ed.  
Pat Groover, Co-News Ed.

Björn Kjerfve, Sports Ed.  
Cindy Carson, Co-News Ed.





DORMAN ROOM FEATURES CHESS SET, SPECIAL LIGHTING, STEREO



DEAL HALL ROOM DISPLAYS "HOIMAN'S HOIMITS"

## Original Dormitory Rooms Feature Varied Attractions

By KAREN FLESCH  
Feature Writer

When students entered their dormitory rooms on the first day of fall quarter, they found a room designed simply for study and sleep. The walls were plain, probably seafoam green or beige, and essentially bare except for bed, dresser, and desk.

The rooms seemed alien and unfriendly. They just were not like home! After students moved in their clothes books, and made up their beds, the rooms began to look and feel better. Now after eight weeks, the student's room is his private domain.

What happened to bring about this change? All the small articles on shelves collected in the past, a bulletin board covered with cherished high school relics, or some reminder of a pleasant time spent on campus taped on the wall help make a room have more meaning to the individual.

Although all rooms in a dorm are basically alike, they all are different because they reflect

the personalities of the various inhabitants.

Durwood Fincher has a room perfectly suited to his personality. It's big double bed and high-backed rocking chair suggest an air of comfort.

The rug, bedspread, and matching curtains add warmth to the cozy atmosphere. He did not go to great expense in decorating his room, but did spend time arranging furniture and matching colors. His room reflects his own personality — "big", warm, and friendly.

Pam Paxton is a typical freshmen coed, with her room reflecting this status. The alcove above her bed is covered with pictures of Herman from Herman's Hermits. Again a person's room reflects his special interests.

Walls afford the best opportunity for decoration. John Salvaras from Athens, Greece, has his walls covered with picture post cards from various scenic spots in his native country.

Other students have collected campus and state campaign posters. One room in Dorman Hall features an arrangement of

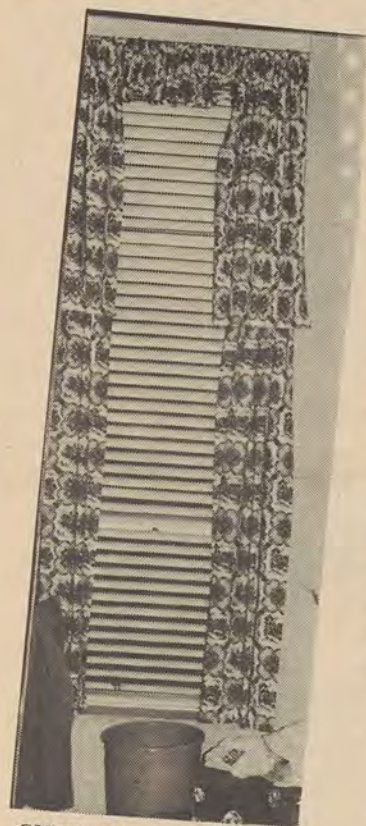
fish net, shells, coral, and drift wood along the wall. Other students use bright college pendants.

Lyn Bradley and Ron Mayhew, in Dorman Hall, have one of the most unusual rooms on campus. The floor is covered with multi-colored scatter rugs, and features a white marble chess set in the center of the floor. The lights in the room are red and blue, and may be dimmed at convenience.

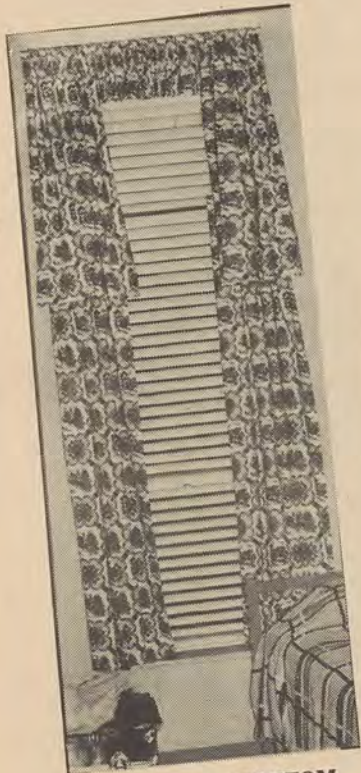
The bulletin board is completely covered with pictures of past Southern Belles. Lyn has his own radio broadcasting system

and Ron enjoys a large stereo with two amplifiers concealed above the desks in cabinets. They keep a guest register for the room which contains the signatures of President Zach Henderson, and Governor Carl Sanders.

A student's dorm room is an important place. There he can study, talk with friends, and spend some time alone. More important, a room is a reflection of the individual himself. All rooms, like people, are different. If the students in the rooms are happy, the room has served its purpose.



CURTAINS HELP—TOP



... AND BOTTOM

STAFF  
PHOTOS  
By  
Ron Mayhew



VARIETY OF SIGNS BEWILDERS VISITORS



DURWOOD'S BED IS LIKE DURWOOD... WIDE



## Averitt Attends VSC Ceremony

Jack N. Averitt, chairman of the division of social science, will serve as the college's official representative Monday and Tuesday at the installation of Dr. Sidney Walter Martin as president of Valdosta State College.

The selection was made by President Zach S. Henderson.

Dr. Martin is a former president of Emory University and former vice chancellor of the University. He is the fifth president of Valdosta State College.

### Wood's Barber Shop

Your Head Is Our Business

We Specialize in Straightening & Styling

—UNIVERSITY— —PLAZA—  
TED HAROLD HENRY

what's  
hot?  
**DOTS**  
!



Big dots, little dots  
... all kinds and colors  
of dots. We've got 'em and  
you'll need 'em if you want to be  
in the "spot" light this season. All  
traditionally tailored with precisely  
flared button-down collar, box  
pleat, hanger loop. 7" taper, long shirt-  
tails. Keep pace with fashion. Choose  
from our wide selection. "Dots" all!

**GV** Golden Vee®  
EXTRA TAPER—7" DROP

*Minkovitz*

\$5.00

### SOCIAL SCIENCE MAJORS

Winter quarter class pre-scheduling for all social science majors will be held Wednesday, Nov. 30, from 2:30 until 6 p.m. in the Hollis Building, according to Dr. Jack N. Averitt, division chairman.

Dr. Averitt said this is the only time majors may plan winter schedules with advisers.

"It is necessary for all majors to have a trial schedule card signed by an advisor in order to register for winter quarter," he added.

### MOCK'S BAKERY

FOR  
The Finest  
IN  
Pastry

41 S. Main ST.

### SPEE-DEE

Dry Cleaners and Shirt Laundry

- Drive-In Window
- Very Close to Campus
- Night Depository
- Quick Service

## Hackett To Head Graduate Institute

The Industrial Arts and Technology Division, under the direction of Dr. Donald Hackett, has been awarded a contract by the U. S. Office of Education in the amount of \$34,385 to provide an NDEA Institute during the summer of 1967. This is one of 29 such institutes to be held in the country next summer. The dates will be June 19 through August 11.

The Institute, entitled "Manufacturing," will have as its

principal purposes: (1) to develop an understanding of the origins and development of industry and its technology; (2) to provide a firsthand study and observation of such functions of industry as research and development, engineering, production planning, materials processing and handling, marketing, and the control of manufacturing costs; (3) to strengthen the teacher's knowledge of the content involved in the study of industry and its technology and to assist him in

developing a new methodology by which he can realistically present the study of Industrial Arts; (4) to acquaint teachers with new instructional resources and media available for a study of industry and its technology; (5) to provide opportunities for sharing experiences and developing instructional materials that will assist in interpreting industry through meaningful activities.

The program will accommodate 24 participants who will be selected from the Southeastern U. S. on the basis of: (1) ability to meet graduate school admission requirements; (2) teaching experience in industrial arts.

A number of guest lecturers, films, and field trips will be provided. One week will be spent in a manufacturing industry studying the many aspects of product development and production.

During the last few weeks of the institute, the participants will be organized into two groups representing two manufacturing companies. They will then proceed to design, tool up, and produce a product under school laboratory conditions.

The final days will be spent in preparing instructional materials that will aid the participants in introducing a similar study into their individual schools.

weach for "WOBBINS"  
\*Robbins\* QUALITY  
MEATS

"Coca-Cola" and "Coke" are registered trade-marks which identify only the product of The Coca-Cola Company



Any game is more fun with ice-cold Coke on hand. Coca-Cola has the taste you never get tired of... always refreshing. That's why things go better with Coke... after Coke... after Coke.





# Inquiring Reporter

By BECKY SWINDELL

Peanuts is a popular cartoon character of Americans of all ages. This week the Inquiring Reporter has borrowed an idea from the comic strip by asking some of our students: "What is your idea of misery?" Surprisingly enough everyone was willing to express their ideas on this subject.

**Charles Bryant**, Fresh., Monroe: Misery is going home after the deficiency reports go out.

**Kay Reeves**, Jr., Winder: Misery is not having grits on Tuesday or Thursday.

**Denny Davis**, Jr., Orlando, Fla.: Misery is not having a date for Twirp Week.

**Autrey Moore**, Soph., Cordele: Misery is lying in a warm, comfy bed at 7:15 and having to get up for a 7:30 class.

**Ginger Miles**, Sr., Waycross: Misery is a dress without pockets.

**Joe McDaniel**, Jr., Macon: Misery is losing by one point to Sigma Epsilon Chi.

**Dan Jenkins**, Soph., Charleston, S. C.: Misery is what ya got when ya ain't got what ya wish you had.

**Mike Joesbury**, Jr., Thomson: Misery is when you study two nights for a test; get it back, and you've failed it.

**David Ennis**, Fresh., Macon: Misery is not knowing the reality of sin.

**Susan Powell**, Fresh., Macon: Misery is being at a dance with another boy and running into your boyfriend's roommate.

**Jimmy Kirkland**, Jr., Glennville: Misery is going home on a weekend and finding out that there is less excitement than is at GSC.

**Gena Pittman**, Soph., Callaway County: Misery is Maddox for Governor.

**Blair Funderburk**, Sr., Chamblee: Misery is hot beer, cold women and smart alecs.

**Louis Valente**, Soph., Brunswick: Misery is the draft.

**Bonnie Ennis**, Jr., Albany: Misery is the GSC health cottage.

**Howard Hinesley**, Soph., Warrenton: Misery is staying at GSC all Fall quarter without

seeing a football game.

**Sherrill LeClair**, Fresh., Atlanta: Misery is quiet hours.

**Tommy Kinchen**, Soph., Thomasville: Misery is winter at GSC and tenth period classes.

**Lynn Davis**, Jr., Macon: Misery is Sunday Afternoons.

**Nancy Jenkins**, Jr., Macon: Misery is going home on a Big weekend to have four teeth pulled. Yippee.

**Mark Blakey**, Fresh., Winder: Misery is the heating system in Sanford Hall.

**Cheryl Newell**, Jr., Winder: Misery is being a chronic victim of circumstances.

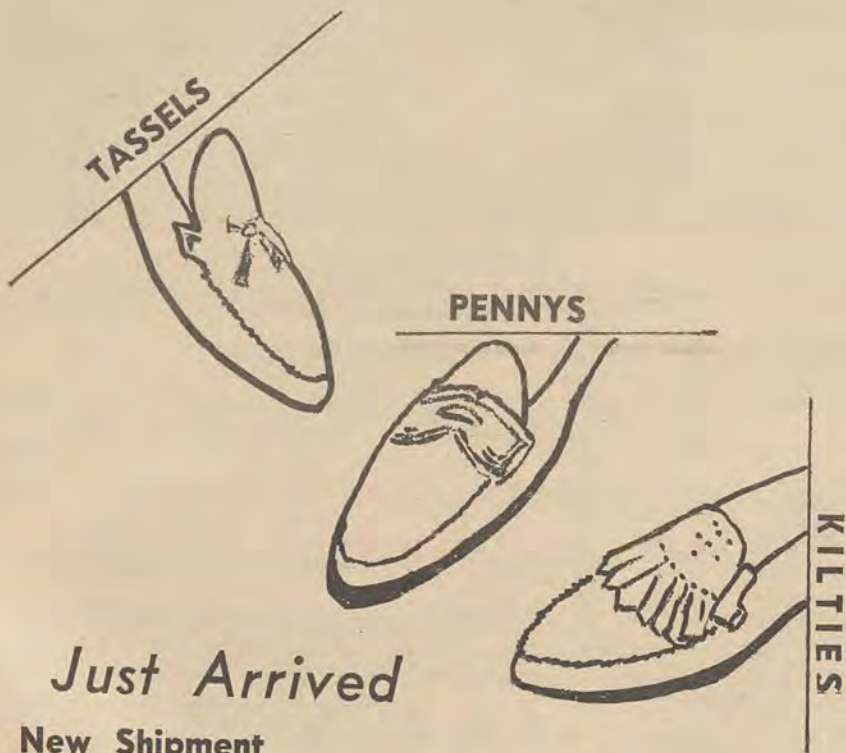
**Myranelle Conely**, Sr., Tifton: Misery is being locked out of your room and having to pay ten cents to get back in — like we have to do in Olliff.

## Q-Stik

## Enjoyable Recreation All New Brunswick Tables

45 East Main — Statesboro, Ga.

## THEY'RE HERE AGAIN



Just Arrived

New Shipment

Bass Weejuns

Lady Bostonians  
Spalding

John Romain

We Have Your Size

# Burtons Shoes

10 E. Main

Statesboro, Georgia



## "M" IS FOR THE MANY THINGS YOU'LL TEACH HER

Nobody will dispute—surely not I—that raising children is a task which requires full time and awesome skills. Nonetheless, a recent nationwide survey has revealed a startling fact: mothers who go back to work after their children are safely through the early years are notably happier, better adjusted, and more fulfilled than mothers who simply remain housewives. Moreover—and mark this well—the children of such working mothers are themselves happier, better adjusted, and more fulfilled!

All very well, you say, but what's it got to do with you? Isn't it obvious? If you are underachieving at college, get your mother a job.

What kind of job? Well sir, your mother is probably between 35 and 50 years of age, so certain occupations must immediately be ruled out. Logging, for example. Or whaling. Or carhopping.

But don't despair. There are other kinds of jobs—not many, to be sure, but some. However, you must not stick Mom in just any old job. You must remember that after the excitement of raising you, she would be bored to tears as a file clerk, for instance, or as a doorman. (A doorman, as we all know, is someone who brings handfuls of water to track layers. With the recent invention of the pail, dolmen are gradually falling into technological unemployment.)

But I digress. I was saying, find Mom a job worthy of her talents, something challenging that uses her vast wisdom and experience but, at the same time, is not too hard on her obsolescing tissues. That's what Walter Sigafos did, and the results were brilliantly successful.

Walter, a sophomore at the Upper Maryland College of Wickerwork and Belles Lettres, majoring in raffia, approached the problem scientifically. First he asked himself what his mother did best. Well sir, what she did best was to keep hollering, "Dress warm, Walter!"

At first glance this seemed a skill not widely in demand, but Walter was not discouraged. He sent out hundreds of inquiries and today, I am pleased to report, his mother is happily employed as wardrobe mistress for the Montreal Canadiens.

Another fortunate venture was that of Frank C. Gransmire, a junior at the Oregon State Conservatory of Music and Optometry, majoring in sties. Frank, like Walter, did a survey in depth of his mother's talents. Chief among them, he found, was her ability to make a roast of beef feed the whole family for three days. So, naturally, Frank got her a job at the Museum of Natural History.

What has one to do with the other, you ask? Isn't it obvious? Anyone who can stretch ribs like that belongs in paleontology.



I cannot conclude this column without saying a few words about Personna Super Stainless Steel Blades. The reason I cannot is that this column is sponsored by the makers of Personna Super Stainless Steel Blades, and they are inclined to get peckish if I omit to mention their product.

Not, mind you, that it is a chore for me to plug Personna. Or, for the matter of that, to shave with Personna. No sir: no chore. Personna takes the pain out of shaving, scraps the scrape, negates the nick, repudiates the rasp, peels the pull, boycotts the burn, blackballs the bite, ousts the ouch. Furthermore, Personna endures and abides, gives you luxury shave after luxury shave, day after day after day. And further furthermore, Personna is available both in double-edge style and Injector style. And as if all this were not bounty enough, Personna is now offering you a chance to grab a fistful of \$100 bills! Stop at your Personna dealer and get an entry blank for the new Personna Super Stainless Steel Sweepstakes. But hurry! Time is limited.

\* \* \*

© 1966, Max Shulman

The makers of Personna who bring you this column all through the school year also bring you the ultimate in luxury shaving with Personna and Personna's partner in shaving comfort—Burma Shave, regular or menthol.



## Willis To Head Pledge Class

Officers for Alpha Pi Omega were elected November 1, according to the new president Randy Garrett, Rec., '68.

The other new officers are: 1st vice-president, Ronnie Braziel, It., '67, 2nd vice-president, Dent Temples, Acc., '68, recording secretary, Dick Steele, Rec., '69, alumni secretary, Randy Reese, Gen. Bus., '69, corresponding secretary, Ferrel Penland, Bio., '69, chaplain, Rick Runyan, Acc., '69, treasurer, Bill Mitchell, Acc., '68, sergeant-at-arms, Eddie Bateman, Pre. Law, '69, and historian, Sonny Massey, P.E., '69.

Alpha Pi Omega has also pledged 12 new members. The president of the pledge class is Speedy Willis. Other members are: Carl Finnecannon, Ronnie Tiller, Tom Copeland, Dale

Chaney, Bob Gifford, Tom Tharpe, Thomas Morris, David English, Guy Clements, Mike Daniel, and Phil Smith.

### OOOOOPS!!!

It was erroneously reported in last week's "George-Anne" that all photographs of Governor Sanders' visit were made by Managing Editor Ron Mayhew. We respectfully must apologize for the error, with one of our staff photographers having been denied a credit line for several of the pictures. Winston Whitlock made all of the airport arrival shots, in addition to several during the banquet and dedication ceremonies.



OFFICERS OF APO LINE UP FOR SERVICE  
Leaders Were Elected At The November 1 Meeting

## Hudgins Directs Activities

By CINDY CARSON

Because of the increase in the number of students on the Georgia Southern campus, and because the tone of campus life is set by the kinds of activities and organizations which make up the college community, the position of Director of Student Activities was created this year. Called to fill this new post is Mrs. Adyle Hudgins, comes from Savannah, with a Masters degree in counseling and guidance from Georgia Southern.

Mrs. Hudgins has three main areas of responsibility, student activities, student organizations and personal and vocational counseling for women students.

As Director of Student Activities, Mrs. Hudgins works closely with Student Congress and other organizations in evaluating their charters, constitutions, purposes, and activities.

She provides the student organizations with leadership activities in planning programs, and in arranging for and scheduling activities.

Mrs. Hudgins acts as coordinator of all activities which concern students in any way. She is in charge of scheduling events in the auditorium and is director of all equipment used for social events at the college. She is faculty adviser for the social committee of Student

Congress and chairman of the Student Personnel Activities Committee.

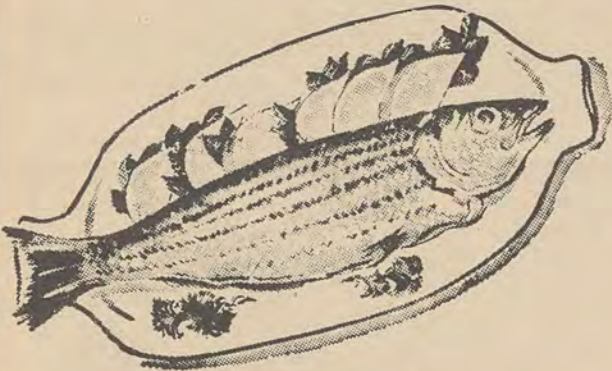
Part of Mrs. Hudgins' duty is to act as an assistant to Dean Boger, Georgia Southern's Dean of Woman. She takes care of some of the counseling formerly handled by the Dean of Students and the Dean of Women, thus becoming a friend, as well as an adviser to students.



MRS. ADYLE HUDGINS  
Her New Job Is Coordination Of Student Activities

## HOWARD JOHNSON'S RESTAURANT

### Wednesday's Menu of Deliciously Fried Fish



A CORDIAL INVITATION  
for Georgia Southern Students

enjoy a hearty dish of Fried  
Fish served with cole slaw,  
hush puppies, hot rolls and  
butter

All You Can Eat!

— 1.19 —

A Wednesday's Delight

Come Early

4:00 P. M. to 10:00 P. M.  
North Main Statesboro, Ga.

## GEORGIA

Fri. Nov. 11  
THE CHOPPERS  
Sat. Nov. 12  
THE MONEY TRAP  
—Plus—  
THE ROAD ALAMO  
Sun. Mon. Nov. 13, 14  
"SWEET ECSTASY"  
—Plus—  
THE TWILIGHT GIRLS  
Wed. Thur. Nov. 16-17-18  
THE NIGHT OF THE GRIZZLY  
—Plus—  
"CAST A GIANT SHADOW"  
Sat. Nov. 19  
REVENGE OF THE GLADIATORS

## DRIVE-IN

Fri. Nov. 11  
PARADISE HAWAIIAN STYLE  
Sat. Nov. 12  
KID RODELO  
—Plus—  
AND NOW MIGUEL  
Sun. Mon. Tues.  
Nov. 13-14-15  
MODESTY BLAISE  
Wed. Thu. Fri.  
Nov. 16-17-18  
AMERICAN DREAM

## STATESBORO

### Buggy & Wagon Co.

'Complete Line of Hardware'

Located in Downtown Statesboro  
1 Courtland St. — 764-3214

## J & J FABRICS

UNIVERSITY PLAZA SHOPPING CENTER

Fine Fabrics for Dressmaking

Services Offered For  
Ladies' and Men's Wear Alterations

Open Mon. thru Sat.

9 A.M. 'til 6 P.M.

—PHONE 764-4542—



## Congress Reviews Suggestions, Recommends Course of Action

The Student Congress has reviewed and taken a course of action on suggestions from the box in the Student Center, according to James Stapleton, student congress president.

The suggestion that juniors and seniors should be able to buy \$20 meal tickets was the most popular; Congress recommended that the suggestion be accepted. However, the administration will have the final word, stressed Stapleton.

Other suggestions which Congress recommended be accepted are: (1) The lunchroom should be opened at 10:45 a.m. instead of 11:00 a.m.; Congress will recommend this to C. R. Pound, director of William's Center. (2) Lights should be put up between Olliff Hall and

the Student Center; this action is being reviewed by C. R. Johnson, director of plant operations.

A suggestion which is most popular with women students is that House Councils should be able to make their own rules, not the House Directors. Congress has appointed a committee to meet with the Standards Committee to present this complaint and to report to the next Congress meeting.

Congress rejected two suggestions that freshmen not be allowed to have cars on campus and that Sweetheart Circle and Marvin Pittman parking lots be opened to all students.

The Theta Pi Omega dance, originally scheduled to be held on Nov. 18, has been cancelled.

## Joyner Initiates New Procedures For Registration

Several new procedures have been added to the winter quarter registration process which will aid students in getting the courses they need, according to Lloyd Joyner, registrar.

Students must contact their advisers before Dec. 1 to plan a trial schedule for winter quarter. To avoid a rush after Thanksgiving, students should begin seeing their advisers now.

Students can draw time cards at the window of the registrar's office from 8:30 a.m.-12 noon and 1:30 p.m.-4:30 p.m. drawing for a time card.

The first students to draw for time cards will get registration times between 8 a.m. and 12 noon. The next ones who

come will get times between 12 noon and 3 p.m., and the last students who draw will get times between 3 p.m. and 6 p.m.

Drawing will be on a first come, first serve basis.

The final day for drawing time cards is Dec. 16. Registration day is Jan. 3. The gym will be arranged as it was for fall quarter registration.

## Dr. Stephens, Ro Attend Meeting

Dr. Otis Stephens, professor of political science, and Chun Whang Ro, assistant professor of political science, are attending the Southern Political Science Association's annual convention at Gatlinburg, Tenn., this week.

The two teachers left Wednesday for the four-day meeting which adjourns tomorrow morning. Among items on the agenda are seminars, panel discussions and readings of papers. Topics will include constitutional law, comparative government, and United States politics.

## Remley Painting Chosen for Show

Miss Roxie Remley, drawing and painting teacher in the fine arts division, has received notice of selection of her oil painting "Broken Light" for showing in the Winston-Salem gallery of Fine Arts.

## Letters to the Editor

### Student Suggests Closed Activities

Dear Editor:

A university or a college is not only judged by the high scholastic standard or achievements but by a lot of other things such as the behavior and attitude of its students, their extracurricular activities, its campus, by the way students treat other (the friendly atmosphere on campus), etc. . . .

For all these reasons a lot of international staff members and students come to Georgia Southern to give it a cosmopolitan atmosphere. I would like to emphasize that these were the reasons that attracted me to Georgia Southern. I have found myself among a lot of friends which made me feel at home. I would like to quote Omar Khayam:

"He who has a thousand friends has not a friend to spare,

And he who has one enemy shall meet him everywhere."

Although I had a great time on Sept. 4, 1966, at the party given by the brothers of the

Sigma Epsilon Chi fraternity I was quite disappointed. At

that successful party I noticed at least four (4) fights. In the prehistoric age and early civilization a man was judged by the strength of his fists, but in the age of rockets and satellites a man is judged by his knowledge, personality and his ability to get along with his fellow man. If a person wants to fight, let him go into a ring. Any public place where ladies and gentlemen are present is not an arena.

Why do such fights occur? Is it because some people cannot hold their liquor? I am not against drinking, but too many drinks turn a man into an animal. A man loses his senses and his self-respect. When he has lost both he automatically turns into a wild beast or, in some cases, into a tamed one, depending on his nature. I have seen both cases and be-

lieve me it's not the best sight I've ever seen.

Therefore, let me suggest that the Student Council pass a law that only students (stag or drag) and their dates if they are not Georgia Southern students be admitted to dances and if it's an open dance on or off campus let there be a security officer to stop such violence.

I hope that a resolution may be reached to solve violence that interferes with pleasure.

Sincerely yours,  
SAMIR M. TAJI  
(The Arab)

Dear Members of the George-Anne Staff,

The Buford Hall House Council would like to thank you for publishing our picture in the October 20 issue of the George-Anne. We are most grateful for this kind gesture.

Sincerely,  
June Tengan,  
Secretary

## THE LONDON FOG PICTURE

The most wanted all weather coat in America



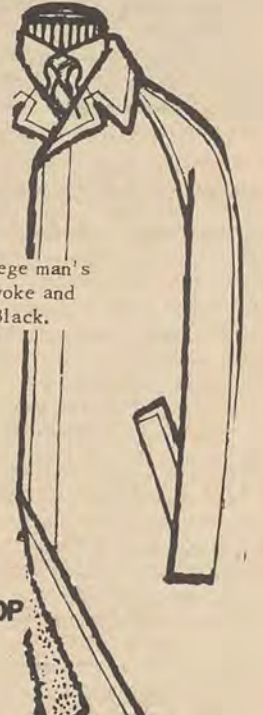
Olive corduroy sherpa-lined jacket  
Also in suede leather

London Fog Jacket

You will probably want the Natural for one, and either Mulberry, Navy, Ivory, Canary, Light Blue for your other jacket \$17.95

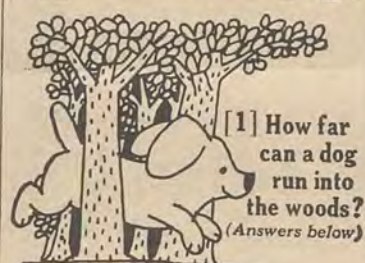
The Andes -

Zip-in or Zip-out the Orlon Pile Liner. College man's favorite with stand-up collar, fly front, self-yoke and made of the finest fabrics. Natural, Olive, Black.



**Varsity and TEEN MAN SHOP**  
**DONALDSON-RAMSEY**  
Store For Men  
STATESBORO, GEORGIA

## Swingline PuzZLeMEnTs



[1] How far can a dog run into the woods?  
(Answers below)



[2] A storekeeper had 17 TOT Staplers. All but 3 were sold. How many did he have left?

## This is the Swingline Tot Stapler



98¢

(including 1000 staples)  
Larger size CUB Desk Stapler only \$1.49

No bigger than a pack of gum—but packs the punch of a big deal! Refills available everywhere. Unconditionally guaranteed. Made in U.S.A. Get it at any stationery, variety, book store!

**Swingline INC.**  
Long Island City, N.Y. 11101

Just a little school item you can own! A notebook and a pencil, they're the hand-buying them like crazy, because next to popularity of TOT Staplers, students are And, that's just about the story of the is running out of the woods! 2. Three

## STATESBORO GUN EXCHANGE

Buy—Sell—Trade  
Guns of Any Condition  
New and Used

36 East Main Street  
P. O. Box 518  
STATESBORO, GEORGIA

Clyde E. Currie, III

Clyde E. Currie, Jr.



The Smart Place To Go... For Good Things To Eat

LOCATED IN SIMMONS SHOPPING CENTER



# Netters Drop to Macon

## Eagles Drop Five out of Six Singles Matches

By TOM KING  
Sports Writer

The Eagle netters evened their preseason record at one win and one loss by dropping a 5-4 decision to the Macon Tennis Center Saturday in Macon.

"As a team we played exceptionally well. In the singles it was just a case of us being outclassed," said David Hall, tennis coach.

The Macon team has the number one junior veterans

player in the state in the form of Landon Brent. "All of the players on the Macon team are seasoned veterans who have played in many tournaments," Hall added.

In the singles matches, Landon Brent, the number one seed for Macon, defeated George Wickham, GSC's number one man, 6-3, 6-3. Brent is a very fine tennis player, who just keeps hitting the ball where you aren't. George played good tennis, but he was simply outclassed," commented Hall.

Bjorn Kjerfve, the number two seed for Southern, picked up GSC's only singles win by downing Ed Fritz 3-6, 6-3, 6-3. "This was a good win for B.J.," Hall said. "B.J. played real good tennis and looked sharp in beating Fritz," he added.

In other singles matches Bill Barbee defeated Southern's Eddie Russell in straight sets, and Jim Leach (M) surprisingly defeated Dan Stiles only dropping four games. "Danny played well but his opponent is a very smart player and was just a little better than Dan," said Hall.

Johnny Rountree showed lack of spirit and dropped an unnecessary decision to Steve Nathanson while John Smith easily defeated James Jackson 6-1, 6-1.

In the doubles competition the Eagle netters won all three matches. "I was very pleased with the play of our doubles teams," said Hall. "They played better than the Macon doubles teams as the results indicate," he added.

Wickham and Rountree teamed together to defeat Brent and Johnny Harrison of Macon 6-3, 3-6, 6-3. Kjerfve and Stiles beat Fritz and Sandy Johnson in a hard-fought match that ended up 7-5, 7-9, 6-3. Hall (that played instead of missing Poss) and Russell defeated Leach and Barbee in three sets.

"As a whole we played well and gained valuable experience in playing these veterans," Hall concluded.



**HALL WATCHES TEAM PLAY**  
Tennis Coach David Hall Is Satisfied with Team Effort

### RESULTS:

Landon Brent, M, defeated George Wickham 6-3, 6-3. Bjorn Kjerfve defeated Ed Fritz, M, 3-6, 6-3, 6-3. Bill Barbee, M, defeated Ed Russell 6-4, 6-2. Jim Leach, M, defeated Dan Stiles 6-1, 6-3. Steve Nathanson, M, defeated Johnny Rountree 6-4, 6-3. John Smith, M, defeated James Jackson, 6-1, 6-1.

Wickham-Rountree defeated Brent-Johnny Harrison, M, 6-3, 3-6, 6-3. Kjerfve-Stiles defeated Fritz-Sandy Johnson, M, 7-5, 7-9, 6-3. Russell-David Hall defeated Leach-Barbee, M, 6-4, 1-6, 6-3.

### PRACTICE DOUBLES:

Nathanson-Mike Pearson, M, defeated Jackson-Sam Nisbet 6-1, 6-2. Smith-Boyne Malory, M, defeated Tom King-Sam Nisbet 6-2, 6-4.

## Score Is 7-4

The tennis match score between Southern and Savannah two weeks ago was 7-4, not 6-4 as was announced in last week's paper.

One doubles match score was omitted from the story: Eagles James Jackson-Sam Nisbet defeated Warren-Sheehan, Savannah, 6-4, 4-6, 6-2.

## J. B. Searce Selects Today's Cage Team

By BJORN KJERFVE  
Sports Editor

"If . . .," said J. B. Searce Jr., athletic director and head basketball coach, "if the season would start today then (Jimmy) Rose, (Jim) Seeley, (Larry) Prichard, (Ken) Szotkiewicz and either (Scott) Waters or (Robert) Jordan would be starting."



**LARRY PRICHARD**  
He Is Looking Good

But basketball season does not start today. It starts on December 1. In other words there are three more weeks to go to the season opener against Murray State at Murray, Ky., and many things can still happen and changes be made.

What does Searce think about the players this year? Who has impressed him during the practice? "I haven't particularly been impressed by any of them," Searce replied settling the questions.

Conclusions can be inferred from last Saturday's scrimmage statistics, though. A red team beat a blue team, 77-64.

Rose scored 28 points, Jordan 22, Prichard 13, Elden Carmichael 10 and Darrell Wise 4 for the winning team.

Szotkiewicz was high scorer, 23, on the losing five. He was followed by Seeley, 21 points, Scott Waters 8, Gregory 7, and Dave Christiansen, 5.

Rose was the outstanding field shot scorer. He sank 11 shots out of 17 tries for a percentage of 65. Perhaps this should be expected of an All-American guard.

Jordan was the only player except for Rose getting a percentage higher than .50. He made 7 field goals out of 13 tries for a .54.

The field goal percentage for the rest were: Prichard .50, Carmichael .27, and Wise, .22. This made a total field goal percentage of .47 for the winning red team. On the blue squad Waters was hottest with .50, Szotkiewicz followed with .47, Christiansen, .40, Seeley, .35, and Gregory .23. The blue team's total percentage was .39.

## Guthrie Is Golf Coach

Mickey Guthrie, graduate assistant in the Division of Health and Physical Education, was named varsity head golf coach by J. B. Searce Jr., athletic director, Wednesday. Guthrie succeeds Frank Radovich, assistant basketball coach.

## Pythons Win

In women's intramural speedball tournament the Yellow Jackets defeated the Panthers-Termmites and the Pythons downed the Yellow Jackets.

A WIA captains meeting is tentatively scheduled for Thursday, November 17, at 4:30 p.m. in the study room on the second floor of Winburn Hall.

# Wounded Hawk Flies High

By JOE CRINE  
Sports Writer

The sensation is a fact. League-leading Sigma Epsilon Chi fell, 19-0, against Robin Olmstead, Ronny Strickland and Co. on the team of the Hawks Tuesday to highlight the week's intramural flag football action.

For Tom King of the Hawks team, victory had more than one side. Just before the game was over three persons landed on top of King after a chaos-like situation. Result: King broke a collarbone.

The loss was the first suffered by league-leading Sigma Epsilon Chi. They have been tied once.

In last Tuesday's contests, APO downed the Hawks, 6-0, and Phi Epsilon Kappa shaded the Rhodents, 13-12.

Wednesday's action saw the Rebels and APO come up with victories. The Rebels defeated the Bulldogs, 12-6, and APO downed DPA, 6-0.

Sigma Epsilon Chi shaded Phi Epsilon Kappa, 7-6, and

the Rhodents downed the Hawks, 13-12, in Thursday's contests while the Bulldogs trounced Phi Epsilon Kappa, 33-7, on Monday. DPA forfeited a game scheduled for Tuesday to the Rhodents.

### Flag Football Standings

Team	W	L	T	P
Sigma Eps	6	1	1	19
Rhodents	6	2	0	18
Phi Epsilon Kappa	4	2	1	13
Bulldogs	4	2	1	13
Hawks	4	3	1	13
APO	3	3	1	10
DPA	1	7	0	3
Rebels	7	0	0	1
Unexpecteds	1	6	0	3

## P. E. Leaders Go to Macon

Sixteen women and four men students from Southern accompanied by Mrs. Brogdon, Mrs. Oertley, Dr. Cotton and Coach Spieth participated in the fourth annual meeting for health and physical education student leaders of Georgia last weekend at Wesleyan College in Macon.

Two hundred students from all over the state were present studying the health displays, listening to the health speeches and taking part in playing lacrosse and drownproofing.



## BUTLER KICKS

Black Belt Karate Holder Roger Butler shows how an aerial side kick should be performed. The strike is aimed for the opponent's face and is supposed to be followed by two fist blows.





## Intramural Corner

By JOE CRINE  
Sports Writer

You might have noticed men participating in flag football games each afternoon about 5:00 p.m. behind the Hanner Gymnasium. If so, you have been witnessing part of the fine intramural program at Georgia Southern.

The program, directed by Coach Charles Exley, has several objectives. It seeks to provide students and faculty members with an opportunity for recreation and relaxation from strenuous work and the rapid pace of modern living. It also promotes better scholarship by regulating the time devoted to intramurals and strictly observing college regulations concerning scholarships. The student's health is safeguarded by requiring medical examinations and choosing wisely two activities to be participated in.

### Variety Of Sports

Coach Exley seeks at all times to carry out the wishes of the students. "The program is the voice and program of the students," he said. "We don't want to participate in a particular sport if the students don't want it."

In addition to flag football, men's intramural activities for the year include horseshoes, cross country, basketball, table tennis, handball, badminton, softball, track, wrestling, swimming, gymnastics, golf, and tennis. Women will participate in badminton, speedball, basketball, table tennis, volleyball, swimming, tennis, golf, archery, softball, horseshoes, and track and field. Outstanding team trophies will be presented at the end of spring quarter in both the men's and women's divisions to the team compiling the most points in all sports. Each team receives three points for a win and one for a tie.

I would like to see the program continue to grow and prosper as it has for the past two years under the able guidance of Coach Exley.

### Fine Job Done

I would also like to give recognition to the fine job done by three student assistants who aid Coach Exley in administering the program. Brenda McPhail lends very able assistance in the women's program while James Stapleton and Donnie Graham help with the men's program.

Coach Exley and his staff hope that the program will improve physical and mental health through the joy of participating in the various activities.

I think that the program gives students a very good opportunity to participate in good clean recreational activities and I would like to see more students take advantage of this opportunity.



### BOY CHEERLEADERS

The cheerleading squad consists of 10 people. The six girls have got company by four "loud-voiced" boy cheerleaders. They are Jerry Garrard, Perry Mitchell, Tommy Anderson and Al Bockick, and can be seen practicing together with Larry Spear, who did not have time to continue. Ruthie Hendrix has been selected captain and Perry Mitchell co-captain of the squad.

## Frosh Cagers Practice

By JOHN EDEN  
Sports Writer

The freshman basketball team has been practicing for about four weeks now, in preparation for what Coach Jack Milam says will be a demanding schedule for the team.

The original team consisted of 13 freshmen, but two of these have been moved up to work with the varsity, Darrell Wise, 6-3 guard and Scott Warrs, 6-4 center. Milam remarked that the number was well-suited to practice sessions, and afforded the team with sufficient depth, but that most of the players were small.

Two sophomores are working with the freshmen at the present. Milam said, he feels the varsity and the freshman teams should work closely together, with the fresh squad functioning mainly as a "B" team, with an exchange of players up and down according to their individual needs and abilities, and the needs of the two teams.

Milam said that his top prospects so far as scrimmage to date has shown are Don Abel, 6-2 forward from East Peoria, Ill., Mark Gladson, 6-2 guard from Indianapolis, Ind., and Charles Bobe, 6-4 forward from Vincennes, Ind.

### GEORGIA SOUTHERN COLLEGE

#### Freshman Basketball Schedule — 1966-67

Nov. 30—Brunswick	Brunswick
Dec. 3—So. Georgia	Douglas
Dec. 10—So. Tech	Statesboro
Jan. 4—Citadel Frosh	Statesboro
Jan. 7—S. Ga. Trade	Statesboro
Jan. 14—Oglethorpe Frosh	Statesboro
Jan. 18—Mercer JV	Statesboro
Jan. 21—So. Georgia	Statesboro
Jan. 30—Brunswick	Statesboro
Feb. 1—S. Ga. Trade	Americus
Feb. 8—Citadel Frosh	Charleston
Feb. 11—Norman Col.	Statesboro
Feb. 22—Mercer JV	Macon
Feb. 25—Oglethorpe Frosh	Atlanta

There are two open dates for extra matches, December 7 and February 18.

These three boys plus Don Roberts, 5-11 guard from Glen-coe, Ky., John Fountain, 6-6 center from Bedford, Ind., and Robert Bergbom, 6-3 guard from Barrington, Ill., will accompany the varsity on a tour later this month, according to Milam.

Finishing out the freshman roster are: Joe Groom, 6-3 guard from Tampa, Fla., Mike McDuffie, 6-1 guard from Sarasota, Fla., John Lawrence, 6-3 forward from Swainsboro, Ga., Richard Guyton, 6-3 forward from Jacksonville, Fla., and Howard Schemer, 6-1 forward from Jacksonville, Fla.

## Thanksgiving Race Continues Tradition

Three lucky GSC males will become the proud recipients of cakes after the annual Thanksgiving Cross Country Race that is scheduled for Nov. 21 at 4:30 p.m.

According to Coach Charles Exley, intramural director who is coordinating the event, the top three finishers will win a cake.

"It should be emphasized that the participants must be a member of an intramural team. The points that the individual wins will count towards the intramural trophy for his team," said Exley.

The race will be run under official cross country rules. A white flag will signify a right turn, a red flag will mark a left turn and the blue flag will mark the course straight ahead.

Any team may have as many entries as it wishes. All men wishing to run in the race must be registered with Coach Exley before 4 p.m. on the day of the race.

The course will be 1.18 miles long. The start will be behind the Hanner Gym and the course will run around the eighth tee and back around the sixth green, through the woods by the baseball field and will terminate at the starting point behind the gymnasium.

The race is a continuation of an old Southern tradition that



**TOMMY BAKER**  
He Won Race Last Year

last year was brought back after an absence of many years.

The race is a continuation of an old Southern tradition that last year was brought back after an absence of many years.

Last Thanksgiving Tommy "Home Run" Baker won the race ahead of David Oglesby and Gordon Caldwell. The winning time was 7:03.9 minutes, but it then was a somewhat different course from the one to be used this year.

—King.

## Weightlifting Started

A weightlifting club is in the process of being formed at Southern.

"One of our purposes is to get equipment," said Raleigh Alligood, '67 Marketing, Gainesville, Fla., initiator and chairman of the organization committee.

"To keep physically fit and get a more well-rounded athletic program here at Southern are other purposes," Alligood continued.

15 persons have attended the two meetings, but before the quarter is over, there will be at least 40 members according to Alligood.

The club will try to equip the weight-room in the Hanner Gym and keep authorized personnel there to show the students how and what to do.

Karl Peace, instructor in mathematics, is the faculty adviser.

The next meeting of the club is Wednesday, November 16 at 7:30 p.m. in the Herty building, room 108.



**WEIGHTLIFTING**  
Raleigh Alligood Is Initiator

### Baseballers Meet

A meeting for all people interested in baseball will be held Wednesday, November 16, at 4 p.m. in the Hanner Gym.

It is very important for everybody to come, according to J. I. Clements, head baseball coach, as the meeting concerns winter quarter registration.

## PEK Wins Volleyball

Phi Epsilon Kappa defeated the Hawks, 15-2, 14-16, 15-8, for the intramural volleyball championship title Thursday.

The winner showed to have the the best team play and completely outplayed the Hawks.

Mainly thanks to Jimmy Dobson's and Jerry Stokes' perfect net play the Hawks managed to come back and snatch the middle set, before falling in the last.

Tommy Dial, Joe McDaniel, Robert Willis, James Stapleton, Mack Poss, Joe Ard, Ronnie

Holbert and Dave Hampton played for the PEK during the tournament.

In the semifinals the Hawks downed the Raiders, 15-6, 16-14. Phi Epsilon Kappa was forced to three sets, 15-8, 13-15, 15-8, by Morgan Hall.



# Southern Belle



*Nancy Layton*



Nancy Layton's interests are, in her own words, "pretty general." This senior elementary education major likes, above all, to get up in time to see the sun rise (6 a.m.). Ironically, though she wants to be a social worker, she thinks a gun is good protection. "Everyone should have one," she affirms.



## It's NEW!



# LET'S

# DINE

at the

College

Gate Cafeteria

on Georgia Ave. in Knight Village

**BREAKFAST — LUNCH — DINNER**

FREE CHANCE ON 1967 PONTIAC

**SPECIAL LUNCH**

**67c**

Meal Tickets At Discount

WE CATER TO PARTIES and BANQUETS

Call 764-5114

# The College Gate Cafeteria

Open Daily 6:30 a.m. until 8:30 p.m.