

Georgia Southern University

Digital Commons@Georgia Southern

African American Funeral Programs, Willow Hill
Heritage & Renaissance Center, Bulloch County,
Georgia

Student Research Projects

6-20-1995

Lee Ethel Butler

Follow this and additional works at: [https://digitalcommons.georgiasouthern.edu/willowhillheritage-
obituaries](https://digitalcommons.georgiasouthern.edu/willowhillheritage-obituaries)



Part of the [Public History Commons](#)

Recommended Citation

"Lee Ethel Butler" (1995). *African American Funeral Programs, Willow Hill Heritage & Renaissance Center, Bulloch County, Georgia*. 498.

<https://digitalcommons.georgiasouthern.edu/willowhillheritage-obituaries/498>

This obituary is brought to you for free and open access by the Student Research Projects at Digital Commons@Georgia Southern. It has been accepted for inclusion in African American Funeral Programs, Willow Hill Heritage & Renaissance Center, Bulloch County, Georgia by an authorized administrator of Digital Commons@Georgia Southern. For more information, please contact digitalcommons@georgiasouthern.edu.

**Mortuary Services
Rendered by**

**DALLAS GRAHAM-ROGERS FUNERAL HOME
Director: Samuel C. Rogers**

**PALLBEARERS
Deacons & Friends of the Family**

**FLOWER ATTENDANTS
Deaconesses & Ushers Ministry**

IN APPRECIATION

We are most grateful to God for the gift of friends like you, who have been so kind and thoughtful during these hours of sorrow.

Special thanks to Rev. Johnny McKinnie and the
Jerusalem Missionary Baptist Church Family.

May God forever bless each of you.

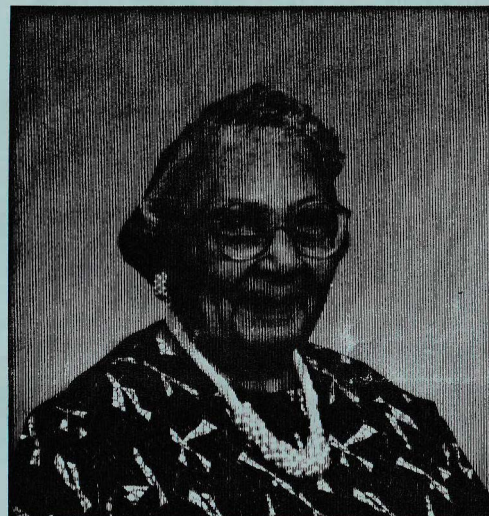
THE FAMILY

HOMEGOING SERVICES

for the late

MRS. LEE ETHEL BUTLER

April 2, 1904 - June 14, 1995



Tuesday, June 20, 1995
11:00 A.M.

JERUSALEM MISSIONARY BAPTIST CHURCH
2935 St. Augustine Road
Jacksonville, Florida 32207
Reverend Johnny McKinnie, Pastor

**INTERMENT:
JERUSALEM CEMETERY**

ONLY ONE STEP

Do not grieve for me, my dear ones
Now that I have gone away,
I've only stepped quietly through the door
In the dawn of a brighter day.
If you could see the beauty
of the garden I am walking through,
If you could feel the touch of his hands
You would want to walk here too.
If you could see the sunshine with no
dark shadows lurking near,
If you could know the joy supreme
I find with my Lord so near,
Where no shadows could ever be.
You would be glad I slipped away
To this beautiful land of eternity.
I will be waiting for you, my dear ones
I'll be watching day by day and I'll
ask my Father to guide you,
Lest you falter along the way.
So when the day is over and night is drawing nigh,
I pray you to find it is only one step,
Where walk my precious Lord and I.

ORDER OF SERVICE

Organ Prelude

Organist

The Processional and Viewing -

"Oh I Want To See Him"

"When I Am Gone"

Selection "Sweet Home"

JBC Choir

When I am gone, remember I'm with Jesus;
Then do not mourn because I've passed away.
Life holds so many griefs and disappointments,
And will you cry because I did not stay?

Scripture:

Old Testament

New Testament

Rev. Roland S. Baker

Invocation

Minister

"Tis only for a spell we must be parted;
not many years on earth to us are given,
And when my Savior tells me you are coming,
I'll go with Him and welcome you to Heaven.

Solo

Sis. Lucille Merritt

Acknowledgments

Sis. Emma Jones

Grieve not because the eyes that looked upon you
shall never see your face on earth again;
Rejoice, because they look upon the Savior,
Who gave His life to ransom sinful men.

Solo

Resolutions

Church Clerk

Weep not because I walk no longer with you;
Remember, I am walking streets of gold,
Weep for yourselves that you awhile must tarry,
Before the blessed Lord you may behold.

Remarks (2 minutes):

Dea. Dozier Joiner
Leader Dist. #1

Rev. Fannie McLeon
Philadelphia, PA

Author: - Unknown

Obituary

(Read Silently)

Hymn "Precious Lord"

JBC Choir

Words of Comfort

Rev. Johnny McKinnie,
Pastor

Recessional

"Victory Is Mine"

(Repast will be served at the church)

OBITUARY

Lee Ethel Butler was born on April 2, 1904, in Southeast Georgia.

Mrs. Butler was released in the care of our Lord and Savior, Jesus Christ, on Wednesday, June 14, 1995.

At an early age, Mrs. Butler accepted Christ in her life. She was a member of the Round Tree Grove Baptist Church in Twin City, Georgia and later the Jerusalem Baptist Church in Jacksonville, Florida.

Mrs. Butler or "Big Mom" as she was fondly called, relocated to Philadelphia, Pennsylvania where she became a member of the Peoples Baptist Church. She was an active member of the Missionary Society, Steward Board, Helping Hand Club and Pulpit Aide Club until her health failed in 1986. In April 1994, she relocated to Jacksonville, Florida and rejoined the Jerusalem Baptist Church under the leadership of Dec. Dozier Joiner, District #1.

She leaves to cherish her memories: one son, Johnny Walker of Philadelphia, PA; three daughters, Queen Overstreet of Sharon Hill, PA, Nadine Brown of Jacksonville, FL, and Mercedine Kane of Philadelphia, PA; one stepdaughter, Roxie Hodges of Pittsburgh, PA; two brothers, R.C. Lanier of Brooklyn, NY and Bill Thomas of Sharon Hill, PA; 14 grandchildren, 28 great grandchildren, 9 great-great grandchildren; a special cousin, Mary Brown of Twin City, GA, several nieces, nephews, cousins and numerous other relatives and friends.

God saw the road was getting rough,
The hills were hard to climb.
He gently closed your weary eyes and whispered,
"Peace Be Thine".
The weary hours, the days of pain,
The sleepless nights have passed,
The ever patient worn-out frame,
Has found sweet peace at last.