

Georgia Southern University

Digital Commons@Georgia Southern

The George-Anne Newsletters

Student Media

1-20-2021

The George-Anne Daily

Georgia Southern University

Follow this and additional works at: <https://digitalcommons.georgiasouthern.edu/george-anne-newsletter>

Recommended Citation

Georgia Southern University, "The George-Anne Daily" (2021). *The George-Anne Newsletters*. 492.
<https://digitalcommons.georgiasouthern.edu/george-anne-newsletter/492>

This newsletter is brought to you for free and open access by the Student Media at Digital Commons@Georgia Southern. It has been accepted for inclusion in The George-Anne Newsletters by an authorized administrator of Digital Commons@Georgia Southern. For more information, please contact digitalcommons@georgiasouthern.edu.

THE GEORGE-ANNE DAILY



Top stories from January 20, 2021

Welcome to The G-A Daily newsletter! Thank you for your present and future readership. Be sure to keep up with us through our social media links above.



YOUR LATEST NEWS FROM THE GEORGE-ANNE

Google Form: How Do You Feel About Joe Biden's Presidency?

The George-Anne wants to hear what you think about Joe Biden becoming America's 46th President.

How Do You Feel About Joe Biden's Presidency?

With the inauguration being today, we here at the George-Anne would like to hear your thoughts about his upcoming presidency.

* Required

What describes you? *

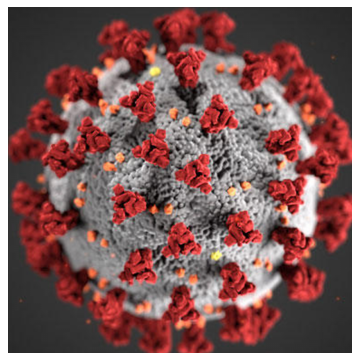
- ☐ Student
- ☐ Faculty
- ☐ Staff
- ☐ Other: _____

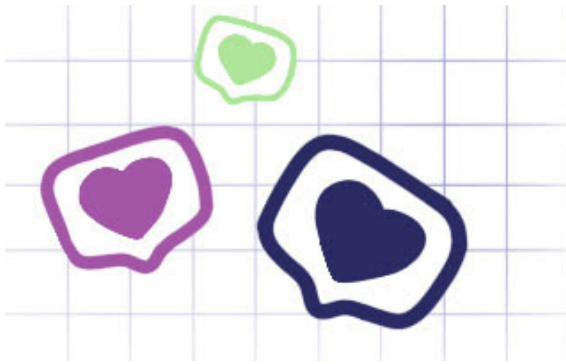
What do you think we can expect from his presidency?

Your answer

ICYMI: Georgia Southern officials report 108 positive COVID-19 cases in the first week

Georgia Southern officials reported a decrease in positive COVID-19 cases Monday, reporting 108 cases over the first week.





#EAGLESMASKON

Send us a selfie in your face mask
to be featured in The George-Anne

[CLICK HERE](#)

THE GEORGE-ANNE REFLECTOR

Six Tips to Slay the Semester

Now that we know what school in a pandemic looks like, we can navigate our future semesters a little better—that is until we return to normalcy. Here are a few crucial tips to successfully slay the semester.



The latest numbers from the Georgia DPH's COVID-19 [Daily Status Report](#) for counties with a Georgia Southern University campus:

Bulloch County: 4,268 cases, 42 deaths

Chatham County: 15,141 cases, 267 deaths

Liberty County: 2,112 cases, 34 deaths

Statewide: 695,400 cases, 47,311 hospitalizations, 11,411 deaths