

Georgia Southern University

Digital Commons@Georgia Southern

The George-Anne Newsletters

Student Media

1-11-2021

The George-Anne Daily

Georgia Southern University

Follow this and additional works at: <https://digitalcommons.georgiasouthern.edu/george-anne-newsletter>

Recommended Citation

Georgia Southern University, "The George-Anne Daily" (2021). *The George-Anne Newsletters*. 484.
<https://digitalcommons.georgiasouthern.edu/george-anne-newsletter/484>

This newsletter is brought to you for free and open access by the Student Media at Digital Commons@Georgia Southern. It has been accepted for inclusion in The George-Anne Newsletters by an authorized administrator of Digital Commons@Georgia Southern. For more information, please contact digitalcommons@georgiasouthern.edu.

THE GEORGE-ANNE DAILY



Top stories from January 11, 2021

Welcome to The G-A Daily newsletter! Thank you for your present and future readership. Be sure to keep up with us through our social media links above.



YOUR LATEST NEWS FROM THE GEORGE-ANNE

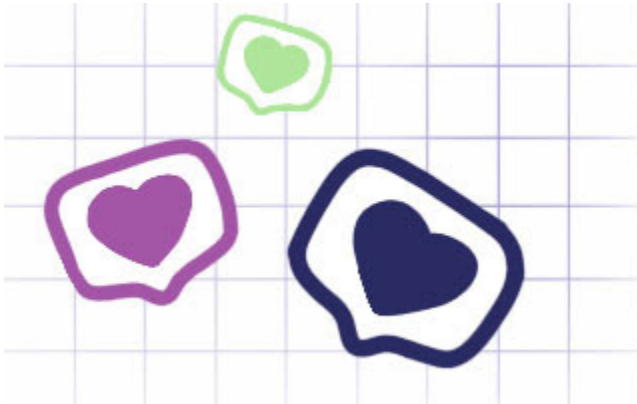
Music professor dies of COVID-19 days before spring semester kicks off

On January 9, Theodore Pierce Dickens, DMA, died from complications of COVID-19. At the time of his death, Dickens was a faculty member in the music department.



Georgia Southern makes mental health fundamental

In preparation for the new semester and alongside other projects to help students through the COVID-19 pandemic, Georgia Southern will be offering students a new wave of mental health services and resources.



#EAGLESMASKON
Send us a selfie in your face mask
to be featured in The George-Anne

[CLICK HERE](#)

We asked, you responded:
How was your first day back?

The George-Anne reached out to the campus community to hear their thoughts about the first day back in the spring semester.

How was your First Day Back?

Your email address (ms10569@georgiasouthern.edu) will be recorded when you submit this form. Not you? [Switch account](#)

* Required

Did you have any in-person classes? *

☐ Yes

☐ No

☐ Other: _____

If you're online, how did that go?

Your answer _____

If you are in-person, are people wearing their masks? *

☐ Yes



The latest numbers from the Georgia DPH's COVID-19 Daily Status Report for counties with a Georgia Southern University campus:

Bulloch County: 4,081 cases, 38 deaths

Chatham County: 14,038 cases, 241 deaths

Liberty County: 1,948 cases, 30 deaths

Statewide: 642,712 cases, 44,742 hospitalizations, 10,299 deaths