

Georgia Southern University

## Digital Commons@Georgia Southern

---

The George-Anne

Student Media

---

4-15-1966

### The George-Anne

Georgia Southern University

Follow this and additional works at: <https://digitalcommons.georgiasouthern.edu/george-anne>



Part of the [Higher Education Commons](#)

---

#### Recommended Citation

Georgia Southern University, "The George-Anne" (1966). *The George-Anne*. 466.  
<https://digitalcommons.georgiasouthern.edu/george-anne/466>

This newspaper is brought to you for free and open access by the Student Media at Digital Commons@Georgia Southern. It has been accepted for inclusion in The George-Anne by an authorized administrator of Digital Commons@Georgia Southern. For more information, please contact [digitalcommons@georgiasouthern.edu](mailto:digitalcommons@georgiasouthern.edu).





# THE George-Anne

SEE  
SOUTHERN  
BELLE  
Page 8

PUBLISHED BY STUDENTS OF GEORGIA SOUTHERN COLLEGE

VOLUME 43

STATESBORO, GEORGIA, FRIDAY, APRIL 15, 1966

NUMBER 4



ART CLUB OFFICERS CONSIDER ENTRIES  
L-R: Ernest Ewing, Pam Williams, Chuck Jones, Carol Russell

## Spring Arts Festival Scheduled April 22-29 by Alpha Rho Tau

The sixth Annual Spring Arts Festival, sponsored by Alpha Rho Tau, will be held April 22-29.

The entry fee is 50 cents for each painting. All students, faculty members and persons from the Southeast Georgia area are urged to exhibit and attend.

The entry divisions are: (1) Painting in all media and colleges, framed or unframed; (2) Sculpture, clay, wood, stone, metal and paper. (3) Graphics, textiles, block painting, stencil, silkscreen and batik. (4) Crafts, mosaics, creative stitchery, rug hooking and jewelry.

Fred Fagnant, Art Instructor, said, "The purpose of the fourth annual Art Festival is to promote talent and appreciation of the following phrases of art: Painting, graphics, sculpture and crafts. It is Alpha Rho Tau's hope that through this festival we will promote a greater public interest and participation in art. We urge students to exhibit and attend."

Fagnant added, "Locked cases will be provided for small valuables only. Even so, the Festival cannot assume any liability for damage or theft to jewelry and other entries." "Members of the club will be on duty at all times," he concluded.

The Festival has six basic rules. They are:

(1) All work must be original. No skits or molds will be accepted. The festival reserves the right to eliminate any work not of a sufficiently high level of quality; (2) The exhibitor must be 16 years of age or older; (3) An entry fee of 50 cents for each piece will be charged. The fee must be included with the application form; (4) The application form must be completed in its entirety and returned to Alpha Rho Tau, Georgia Southern College by Thursday. Additional applications may be obtained by writing to the above address; (5) Each work must have name of work, media, name of artist and address of artist clearly printed on the back. If the exhibitor wishes to sell his work, the price must be clearly dis-

played in the front lower left hand corner on masking tape. No work will be accepted without this information. (6) All work must be in the display area by 9 a.m. And no work can be removed before 6 p.m. Friday, April 29. Each exhibitor is expected to secure his work by 7 p.m. Friday.

## Lecturer To Visit

### Sara Lowrey To Speak in McCroan April 26

Miss Sara Lowrey, former chairman of the Furman University Department of Speech, will present a program of dramatic readings in McCroan Auditorium, April 26 at 8 p.m.

The Tuesday night program, entitled "High Adventure," will include selections from all periods of world literature.

Miss Lowrey will first read a series of selections from the "Holy Bible," followed by "General William Booth Enters into Heaven," by Vachel Lindsey,

"Four Preludes on layings of the Wind" by Carl Sandburg, "Now a Satellite" by Louis Guisberg, The Recessional, by Rudyard Kipling, "America" by the John Church Company 1886, "Stopping by Woods on a Snowy Evening" by Robert Frost, "How They Brought the Good News from Ghent to Aix" by Robert Browning, "The Little Girl and the Wolf," "The Unicorn in the Garden" and "The Owl Who Was God" by James Thurber, "Blue Roses" by Lisa Tarleau, "No Bigger Than a Man's Hand" by Nancy Boyd, a portion of "A Fable" by William Faulkner and "Glat Sense" by an anonymous author.

Miss Lowrey will present "How Do You Say It?" April 27, at 10 a.m. in Marvin Pittman Auditorium. The program is especially for elementary education majors. Others who are interested, however, are invited to attend.

She studied at the Central School of Speech in London, Io-

wa University, Louisiana State University, The University of Wisconsin and the Columbia School of Expression.

She first taught at Baylor University where she served as chairman of the department of speech. In 1959 she became head of the department of speech at Furman University in Greenville, S. C. She founded the Baylor Little Theatre and has appeared on numerous radio and television programs.

Miss Lowrey is the author of "Interpretative Reading" and has contributed articles to "The Quarterly Journal of Speech," "The Southern Speech Bulletin," "Players Magazine," and "The Playbill."

She is listed in "Who's Who in America," "International Blue Book," "Who's Who in Education," and "Who's Who Among Women." She has traveled extensively and is in great demand as a platform reader and lecturer.



SARA LOWREY  
To Read Selections

### Funds To Support 'In-Service Institution'

## Science Foundation Grant Of \$4,890 Made to College

The National Science Foundation has awarded the college a \$4,890 grant for the support of an "in service institute in biological sciences for secondary school teachers."

The institute, scheduled for 1966-67, will be conducted on a semester basis and will offer two courses: Developmental Anatomy, taught by Dr. Leo Weeks, professor of biology, and Biochemistry, taught by Dr. Martha T. Cain, associate professor of chemistry.

Admission to the institute, according to Dr. Weeks who is director of the program, will be decided on a competitive standard. "Fifteen teachers will be enrolled," he said. "There will be no tuition fee and the participants will receive an allowance for travel and books."

The two courses may be applied either toward a Masters in Education degree or a six-year teachers certificate. This will mark the fifth year that an in-service institute has been conducted at the college.

"The institute is strictly a teaching program," Dr. Weeks continued. "These programs have helped many teachers in our district to complete their degrees."

expressed the feeling that the main objective in having an in-service institute is to keep tea-

chers up to date in their respective subject matter, Weeks said.



### CALLAWAY SPEAKS TO STUDENTS

A number of teachers have Congressman's Lecture Sponsored by Young Republicans Club

### Rep. Callaway Talks to Students

Rep. Howard (Bo) Callaway, Republican congressman from Georgia's third district, spoke to several hundred GSC students in the Marvin Pittman auditorium yesterday.

Callaway's talk followed a brief coffee with a few faculty members and officers of the Young Republicans Club, sponsor of the appearance.

John Eckenroth, president of the organization, opened the program and Francis Stubbs, vice president, introduced Callaway.

The congressman praised youth and its ideals and emphasized the idea of raising a standard to follow.

He narrated a number of events which occurred during his recent trip to the Soviet Union, pointing out issues he felt that America must watch with caution.

A brief question and answer session followed the 30-minute speech. After the talk, Callaway left for a 1 p.m. engagement in Savannah.





### PHILHARMONIC CHOIR GIVES INSPIRING CONCERTS

Thirteen members of the Philharmonic Choir performed the concert version of Verdi's opera "Rigoletto" in Savannah and Parris Island, S. C. Members attending the concert were Don Youmans, Harold C. Smith, Larry Scott, Carl Minter, Jerry Walker, Jud Dewberry, Blimp Davis, Charles Riner, Leonard Robertson, Shelly Boyd, Paul Luiz, James Williams and Jerry Elmgren.

### Olliff Hall Selects House Council

Marjorie Davis, junior elementary education major, has been elected president of the Olliff Hall House Council. Other officers are Gail Coleman, vice president, junior business education major; Lynn Jordan, secretary, junior business education major; Marjorie Wade, treasurer, senior history major; Kathy Fowler, social chairman, junior elementary education major, and Dorothy Johnson, fire marshall, senior English major. Floor monitors are Carol Sims, sophomore business education major; Rachel Henry, senior recreation major, and Mickie Fogle, senior French major. Wing monitors are Linda Harrell, Emily Dean, Louise Thompson, Elaine Mitchell, Brenda Wasden, Waylene Fordham, Judy Iler, Eva Rahn, Barbara Bishop and Carolyn Madden.

#### VOTING TO END

The last day to vote for the Calapia print that will remain in the art department's permanent collection is Monday. Voting will end at 5 p.m.

### Bloodmobile

#### To Visit April 28

The Red Cross Bloodmobile will be located in the Alumni Gym April 28 from 2 to 7 p.m. according to Mrs. Emily Hook, Bulloch County Bloodmobile Chairman.

The blood will be sent to the Red Cross Blood Bank of the southeast area which involves the majority of Georgia and South Carolina.

### Social Events Affected

## New Rules Set Up by Congress

New rules concerning price control on social events were set last week by the Student Congress Social Committee following suggestions of several presidents of leading campus organizations.

According to Roger Alderman, chairman of the Social Committee, five steps must be taken in planning social events.

An application should be filed with the committee stating: (1) the cost of events; (2) the proposed price to be charged for tickets, and (3) where the event will be held.

This application will be considered by either the chairman of the committee or the committee itself. The decision reached by either may be appealed to the Student Congress.

The Social Committee Chairman will notify the organization on a written form of the final decision. This form will be attached to the form turned into the Dean of Students' Office to show that the price charged is in the interest of the student body.

If the application is not acted upon within three days it is considered approved by the applying organization.

All applications turned into the Student Congress are closed to the general student body unless the sponsoring organiza-

tion, the Student Congress or the Dean of Students' Office approve otherwise.

This power is granted to the committee by article II, Section 8, of the Constitution of the Georgia Southern College Student Congress.



#### TO PERFORM

Neil P. Schour, pianist, will present a recital Wednesday in the music division recital hall. Schour has played at various recitals in Savannah and New York. His concert will include selections by Bach, Mozart, Brahms, Chopin, Lecouna, Ravel, Dohnanyi and two selections which he has personally composed.

### Group Replaced

Sam the Sham and the Pharoahs, a Texas quintet which produced one of 1965's top ten records and a number of other popular hits, will replace Lou Christy in Sigma Epsilon Chi's entertainment extravaganza, April 28-29.

## New Course Offered!

1. Not Retailing
2. Not Cost Accounting
3. Not Marketing
4. Not Even Required
5. No Registering Either

Course No. 707  
(Crip Course)

"How to Save Money on  
Your School Needs"

Room—Laniers College Book store

Time—9:00 A.M. till 9:00 P.M.

Professor—Dr. U. R. Welcome

## Le Chateau Restaurant and Topiary Coffee Shop



Steaks  
Seafoods  
Chops

A cordial invitation for Students and faculty to Enjoy a delicious

"BUFFET LUNCH"

An appetitions Meal served Daily in the very comfortable, pleasant atmosphere of the Le Chateau.

11:30 A. M.—2:00 P. M. Only ..... 97c

SUNDAY BUFFET LUNCH ..... \$1.25

#### DINNER SPECIAL

Served Mondy Thru Saturday

5:00 P. M.—10:00 P. M. .... 87c

Georgia Ave. and Chandler Road  
Adjacent to GSC Campus

## PARKWOOD RESTURANT

Pleasant - Humble & Courteous Service

**10% OFF To  
College Students**

Highway 301 — Opposite Drive-In



Street Floor

presents

The golf shirt that can take the competition... and make winning look easy. Durable 100% 2-ply cotton lisle that stays as fresh at the 18th hole as it was at tee off.

Designed for swinging action through the shoulders the ARROW Pin-Hi presents two distinctive models in a wide variety of sporting colors. Spectators look good in Pin-Hi, too. \$0.00

**PIN-HI**

by

**ARROW**



**MOCK'S  
BAKERY**

FOR  
The Finest  
IN  
Pastry  
41 S. Main

**Nic Nac  
Grille**

—:—:  
"It Costs Less  
To Eat Out"

—:—:  
We Cater To  
Sports

—:—:  
All Orders  
Available To Go

—:—:  
1 Block off 301  
Open 5:45 a.m. to  
11:00 p.m.

—:—:  
Statesboro's Oldest  
R. C. Webb Owner  
63 E. Main Ph. 764-2853





### ECONOMICS CLUB TO OFFER DUAL MEMBERSHIP

L-R: Jack McLeod, treas.; Charles Nielson, sec., Pete Papadam, pres., Elroy Mestre, advisor

## Delegation To Represent College Young Democrats

A delegation of Young Democrats will represent the college at a platform convention sponsored by the State Young Democratic Party in Athens, April 29-30.

Don Vik, president of the organization, was chosen as chairman of the delegation at the club's Monday night meeting. Jerry Lifsey and John Eden were chosen to represent the club on the convention's resolutions committee and John Bo-

je was selected as a member of the credentials committee.

The convention, according to Vik, will feature prominent democratic speakers, including Gov. Carl Sanders, House Speaker George T. Smith, former governors Ellis Arnall and Earnest Vandiver, and Atlanta Segregationist Lester Maddox. Also included on the program will be concert entertainment, a barbecue and opportunities to talk

with the convention speakers.

The purpose of the convention, Vik added, is to give members of the college clubs the opportunity to voice their opinions and suggestions to the gubernatorial candidates and to formulate issues for the campaign.

The club also voted to invite Atlanta congressman Charles L. Weltner to speak at the college during fall quarter.

## Club Initialed

### Economics Group Organized

Pete Papadam, sophomore exchange student from Athens, Greece, was selected to head the newly formed Economics Club at its organizational meeting Tuesday night.

Other officers are Charles Lee Nielson, secretary and Jack McLeod, treasurer.

The organizational meeting was called at the Howard Johnson Restaurant by Dr. Nathaniel E. Shechter, assistant professor of economics, Edward J. Sedlmeier, assistant professor of economics and Elroy Mestre, assistant professor of economics.

Full membership will be granted to all interested economic majors and minors. Associate membership can be obtained by anyone interested in economics. This dual membership clause has been written into the by-laws of the club, according to the president.

According to Mestre, advisor to the club, the purpose of the club is to provide students with information about world economic opportunities. "In the future, we hope to initiate scholarship and fellowship programs for economic majors.

Next year the economics department will have three foreign teachers, according to Mestre. "This will give the club strength to talk about econo-

mics on an international scale."

Papadam said, "Next year we are expecting 30 economics majors; we hope to have at least half of these in our club."

He continued, "There are economics clubs in most every university. We plan to have an exchange of student speakers from other schools. We also hope to have an industrialist to speak about labor and industrial growth in his field."

### Home Ec. Group Hosts Speaker

Charles L. Brinson, manager of the local Piggly Wiggly store, spoke to the Home Economics Association on "Helpful Hints week in the Herty Building.

Brinson said in this "day of convenience foods" the buyer must decide whether to sacrifice his time or his money. He offered suggestions such as taking a list, making fewer trips to the store and using advertisements to prevent buying unneeded or expensive foods.

He demonstrated the different sizes of cans and different qualities of food that cause variations in prices. He also stated that shopping on Thursdays would be faster and would enable the buyer to select from a larger and fresher group.

### Program Gets Increased Grant

The college's grant for the College Work Study Program has been increased from \$13,851 for this year to \$28,755 for 1966-67, according to Ben G. Waller, Director of Student Placement and aid.

Waller said that the increase came as a result of a study conducted by the office of placement and Student Aid, and he pointed out that in terms of students working, it would mean an increase of about 25 percent.

Waller said that he, President Henderson and Dean Tyson had decided not to branch out and include outside, non-profit agencies in the program, but to increase student assistant help to faculty members within the limits of the program. He said he felt students and faculty would agree to this decision.

### VISIT KENAN'S



STATESBORO, GA.

25 SEIBALD

Free For the asking  
24 page brochure  
Your Guide to Better  
Record Keeping

## SPEE-DEE

Dry Cleaners and Shirt Laundry

- Drive-In Window
- Very Close to Campus
- Night Depository
- Quick Service

## Q-Stik

Enjoyable Recreation  
All New Brunswick  
Tables

45 East Main — Statesboro, Ga.

## DAIRY QUEEN and BRAZIER

Deliciously Cooked Char Broiled  
Brazier Burgers

"Oh! They're So Good!"

### SPECIAL!

Every Monday get five Brazier Burgers  
for only \$1.50

Located in the University Plaza just off  
Campus for your convenience.

### GRADY'S SANDWICH SHOP

"We specialize in Fried Chicken"

1/4 Chicken ..... 40c  
Friday Special—Spaghetti with salad ..... 85c  
39 EAST MAIN

## Half-price to college students and faculty: the newspaper that newspaper people read. . .

At last count, we had more than 3,800 newspaper editors on our list of subscribers to The Christian Science Monitor. Editors from all over the world.

There is a good reason why these "pros" read the Monitor: the Monitor is the world's only daily international newspaper. Unlike local papers, the Monitor focuses exclusively on world news — the important news.

The Monitor selects the news it considers most significant and reports it, interprets it, analyzes it — in depth. It takes you further into the news than any local paper can.

If this is the kind of paper you would like to be reading, we will send it to you right away at half the regular price of \$24.00 a year.

Clip the coupon. Find out why newspapermen themselves read the Monitor — and why they invariably name it as one of the five best papers in the world.

### THE CHRISTIAN SCIENCE MONITOR

FOCUS U.S. goals: Where and how?

The Christian Science Monitor  
1 Norway Street, Boston, Massachusetts 02115  
Please enter a Monitor subscription for the name below.  
I am enclosing \$..... (U. S. funds) for the period  
checked. ☐ 1 year \$12 ☐ 9 months \$9 ☐ 6 months \$6  
Name.....  
Street..... Apt./Rm. #.....  
City..... State..... Zip.....  
☐ College student..... Year of graduation.....  
☐ Faculty member..... P.C.N.-65



## EDITORIAL BOARD:

FRANK TILTON, Editor      ANN VAUGHAN, News Editor  
TOMMY DREW, Man. Ed.      BJORN KJERFVE, Sports Ed.

## DIRTY MINDS AT WORK

The college has many undiscovered artists and poets.

Their work is displayed in prominent places around the campus, always in full view of students. Their drawings and ingeniously contrived sayings are as old as time or as contemporary as the atomic age. A curious thing to note is that these drawings and poems are often reproduced. In fact, if you'll walk in any public restroom in the world you'll probably see an excellent likeness of these college poems and drawings.

Though it is a touchy subject to bring to the attention of the students, it is one that has reached critical proportions.

The problem of cleaning up the walls of restrooms extends much further than the brush which will temporarily cover the filth with a thick coat of paint. This problem originates in the warped, destructive minds of dirty individuals who have nothing better to do than take pen or pencil in hand to inscribe their "words of wit" on every imaginable surface.

When a responsible, clean-thinking person is exposed to this problem he usually shrugs his shoulders in disgust and gives it only a momentary thought.

The connotations associated with this bathroom art are immature, common and crude. How then can we explain the fact when it appears on the campus of an institution of higher learning? The majority of Georgia Southern students are not considered as possessing the previously mentioned traits. It is through the majority that we must go to appeal to this unfortunate minority of depraved individuals.

Only through the reprimands and criticism of a responsible, clean-thinking person can the problem be abolished on our campus.

Along with the dedication of the new Hollis classroom building came hundreds of new expensive desks. In only a short time the top of almost every piece of this student furniture had been damaged by the carvings, initials and drawings of students who have nothing better to do in a lecture than destroy property by their dootlings.

These thoughtless individuals are in approximately the same category as the above mentioned souls who liter bathroom stalls with their filth.

## STUDENTS GRADE TEACHERS

The "New Record" of the University of Cincinnati reported recently that university students throughout the country are demanding a voice in rating their instructors.

While these evaluations are both controversial and complex, they have been well received by the campuses which have undertaken such projects, the "News Record" said.

The university reported that some professors are completely opposed to the plan as an invasion of their freedoms while others favor the system if it is operated without administrative control.

It seems here that a just evaluation of an instructor would be difficult in several respects. First of all, there would always be the student who holds a grudge against an instructor because of grades.

Students elect to attend a college and it should be left up to the college to furnish and evaluate the capabilities of an instructor.

It is true, of course, that instructors have certain demands put on them to keep up with the times, and therefore a check is held on their abilities to a certain extent.

## LITTLE MAN ON CAMPUS



"THESE TESTS INDICATE YOUR STRENGTH LIES IN THREE AREAS AND NONE OF THEM IS HARDLY WORTH THE EFFORT."

## Class Attendance Regulations Need To Be More Standardized

By ANN VAUGHAN  
News Editor

Regulations on class attendance are too diversified. Though the Board of Regents has a standard ruling, many divisions make their own rules, many individual professors have still other rules. The Regents ruling, as found in "the 1966-67 Georgia Southern catalog reads:

"Regular and punctual attendance is expected of students in all classes. Attendance is counted from the first class meeting each term. Students who fail to attend 75 percent of the class meetings in a course will receive a grade of F and must repeat the course for credit, no matter what the reasons are for the absences. This regulation is applied without exception."



VAUGHAN

Some departments and some professors have established an individual ruling which allows a student a particular number of cuts (much less than 25 percent which is allowed in the catalog). Any cuts over this number begin to effect the final course grade adversely.

It is unfair that students in some curriculum are allowed more freedom than students in other areas.

It is unnecessary for divisions to stipulate stricter class attendance than the catalog.

If a professor is good enough, he will make each day's lesson or lecture so interesting and vitally important to the course, that students will find it difficult to be absent and still obtain the desired grade.

You cannot force a student to learn by requiring him to

come to class. The interested, enthusiastic student will learn in most any set of circumstances whereas the apathetic student is usually only throwing time away.

If a professor confronts a student with the admonition "You will receive an automatic letter grade drop for each cut over five," he is not using good teaching methods.

It is realized by a very few that strict class attendance rules are an effort to raise the standards of a division. But what does this really accomplish.

It does present an "image" that says "Our classes are so tough you cannot be absent."

All areas of study are equal in importance so why should a division try to present this image.

A ruling such as this only penalizes the superior students. Mediocre students go to class because they have to in order to pass. Superior students go because they are forced to go. If a student thinks he is intelligent enough to pass without attending class 75 percent of the time, let him try. We are told that experience is the best teacher. It is his own hard-earned money he is jeopardizing. If he fails in his try he won't do it again; if he passes, more power to him.

In the opinion of this writer the division heads and other administrative officials should have a conclave and decide this issue. The first and most important step is making the requirements everywhere the same. The school, if it desires, can make its requirements more strict than the Board of Regents, but they should all be the same.

## Campus Water Tower Blown Off Map Daily

By HUBERT NORTON  
Staff Writer

Did you know Georgia southern was on the map? Really, it is. In fact, Georgia Southern gets blown off the map almost daily.

Georgia Southern's water tower on campus is a practice target for the Armed Forces, and planes actually bomb it almost everyday. The tower is one of the few practice targets in the southeast. Other targets are Lake George, Fla., and south of Norfolk, Fla.

The water tower is bombed on the average of four times during the week on both low level bombings and high altitude bombings via radar. The planes go through a simulated bombing attack and are graded on their performance. And the word is that they are on target every time.

The Navy, the Air Force and the Marine Corps take part in the bombardment of the campus water tower. However, each branch of the service uses its own plan of attack and never work as a team. The only connection the various services have together in the bombings is getting air clearance to avoid a traffic jam or possible collision over the target area.

The water tower is used as a practice target because it is centrally located in the southeast and because our tower is centrally located among the many water towers in the Statesboro area. The planes gage their attacks from the other towers and bomb ours.

The Navy uses two types of aircraft in their attacks on Georgia Southern. It uses an A3D Douglas Skywarrior which travels in the vicinity of 600 miles per hour and RA5C Vigilante, a reconnaissance craft that breezes along in the neighborhood of 1,200 m.p.h. The Navy planes fly from Sanford, Fla., regularly on missions to annihilate the Georgia Southern tower.

The Marine Corps uses an A4D Skyhawk for its mission over GSC. The Skyhawk flies about 600 m.p.h. and is the world's smallest nuclear bomber. The missions over Georgia Southern originate from Cherry Point, N. C.

The Air Force uses the old stand-bys, the B52s, for its simulated attacks on the school's tower. The B52s travel about 200 m.p.h. and are easily identified—they make the most noise.

The planes make either head-on bombings or a roll-type bombing in which the plane peels skyward before releasing its bomb. The attack's usually are between 200 feet and 30,000 feet.

The planes often come in on radar for the attacks on GSC and are computer fed, which means that the pilot and bombardier-navigator feed their information into the computer and just sit back and relax. The bombing then takes place automatically, and it never misses either. Weather conditions do not hamper the simulated attacks, whether the attacks are manual or radar-controlled.

The bombs that the planes carry on the simulated attacks are live nuclear explosives. Rather than releasing the bombs, the bombardier takes a picture of the water tower during the bombing process which indicates whether or not the simulated attack was on target or not.

And they never miss.

## THE George-Anne

The opinions expressed herein are those of the student writers and not necessarily those of the college administration and faculty



Entered as second class matter at Post Office at Georgia Southern College, Georgia Southern Branch, under act of Congress.





**LAST YEAR'S QUEEN POSES WITH ESCORT**  
Doug Geiger (left) Will Crown the 1966 Reverse Beauty Queen

### 'Miss Spring Blossom' Revue Set

The "Miss Spring Blossom" contest, annual reverse beauty pageant sponsored by the Wesley Foundation, will be presented Thursday at 8 p.m. in the Marvin Pittman Auditorium.

Each campus organization may enter one contestant. The entry must be a male dressed as a female and escorted by a female dressed as a male.

The beauty revue includes a parade of contestants and a talent contest. All talent is approved in advance by the Wesley Foundation.

The judges are Mrs. Alethia Bates, housemother of Brannen Hall, Bob Weber, instructor of sociology and Dr. Fielding D.

Russell, Chairman of the language division.

## GEORGIA THEATRE

April 15th - Fri.  
"Sands of the Kalahari"  
with Stuart Whitman

April 16th - Sat.  
"The Family Jewels"  
plus  
"Finger on the Trigger"  
with Rory Calhoun

April 17-19 Sun.-Tues.  
"Lord Love A Duck"

April 20-23 Wed.-Sat.  
"The Singing Nun"  
with Debbie Reynolds

## FAMILY DRIVE-IN

April 15-16 Fri.-Sat.  
"COMMANDO" plus  
"TORPEDO BAY"  
with James Mason

April 17-19 Sun.-Tues.  
"SWAMP COUNTRY"  
Starring Rex Allen

April 20-22 Wed.-Fri.  
"THE NAKED PREY"  
plus  
"SPACEFLIGHT IC-1"

### INTERVIEW SCHEDULE

#### STUDENT PERSONNEL SERVICES

The following companies will interview on campus beginning Monday and continuing through Friday. Please sign up on the various bulletin boards on the campus. For information concerning these companies, please contact the director of placement and student aid.

April 19 — Kraft Foods ..... Room 112, Williams Bldg.

April 19-20 — Air Force Recruiting Officer ..... Room 114  
Williams Bldg.

April 21 — Phillips Petroleum Company ..... Room 115  
Williams Bldg.

April 21 — Dunson School, La Grange, Ga. .. Faculty Lounge  
Williams Bldg.

### Music Festival Set for April 23

The First District Music Festival will be held here Saturday, April 23.

Participating in the Georgia Music Educator's Association sponsored festival will be public school students from the first district.

The festival is divided into the woodwind, brass, and percussion solos and ensembles, the vocal solos and ensembles

and the twirling solos and ensembles.

The woodwind judging will be in room 14 of the Music Building, the brass and percussion judging will be in the band room, the vocal judging will be in the recital hall and the twirling judging will be in the Alumni Gym.

GSC music majors are in charge of handling the assignments for running the festival.

## Phi Beta Lambda To Hold Annual Fashion Show

Phi Beta Lambda will sponsor its third annual Fashion Show Tuesday, at 8 p.m. in the Marvin Pittman Auditorium.

Entitled "Panorama of Fashions," the show will feature Spring and Summer fashions provided by Tilli's and Donaldson-Ramsey.

Miss Jane Lightcap, English instructor, will narrate the show with background music provided by Beverly Maddox.

Scheduled to be coed models are Sandra Fleming, Maudie Walker, Sue Ellis, Helen Fleetwood, Sandra McWhorter, Pat Pape, Mary Ann Mays, Glenda Johnson, Linda Murray, Bobbie Durham, June Tingan, Joanne Biles, Mary Jane Cassidy, Monica Hoover and Sharon Dukes.

Male models are Frank Youngblood, Ricky Murray, Albert Green, Al Blackburn, Roy McWilliams, Billy Griffin, Andy Duffey, Harold Varn, Robin Olmstead and Page Plageler.

Door prizes will be awarded at intermission. An admission fee of 50 cents will be charged.

**Ben Franklin Store**

"Your Best Place To Shop"

E. MAIN ST.

**SUPER PAR**

**SAVE 3c**

**A Gallon On Gas!**

**SERVICE STATION**

431 S. Main Street

Statesboro, Ga.

**HINES**

**DRY CLEANERS & SHIRT LAUNDRY**

A Service to Georgia Southern

For 21 Years

—One Day Service—

34 W. Main St.

**H. W. SMITH JEWELRY**

FOR THE FINEST IN JEWELRY

"WHERE QUALITY COMES FIRST"

FINE DIAMONDS - SILVER  
WATCHES - RINGS - BRACELETS  
CHARMS - REPAIR SERVICE

3 SOUTH MAIN

## THE VARSITY STUDENT SPECIAL BREAKFAST

1 Egg, Orange Juice, Toast  
Bacon, Coffee ..... 52c

## LUNCH SERVED DAILY

2 Veg., Meat any 10c Drink,  
Rolls ..... 90c

Entertainment Scheduled Every Weekend!

**764-5114**

*Sero*  
SHIRTMAKERS

a sporting affair



The Purist® button-down in new zestful colourings... a host of handsome fabrics — all with the full-flared, soft-rolled collar, exclusively Sero of New Haven. Half sleeves — in a wide range of solids, checks, plaids, stripes and paisley.

**Lanier's College Store**





## SOUTHERN SPOTLIGHT

By Hubert Norton  
GSC Sports Publicist

J. B. Searce, nationally known for his basketball feats, was the first baseball coach at Georgia Southern to win 20 games in a single season. J. B. coached baseball in 1948 and posted a 20-10 record in his only season. The Eagles did not win 20 games again until 1960...

J. I. Clements has chalked up four consecutive 20 game seasons and has recorded five such seasons in the last six years. In the last four years, Clements' teams have won 88 and lost only 40. Clements, who succeeded Searce as baseball coach in 1949, has a career record of 259 victories and 160 defeats prior to the present campaign...

Larry Groce, the Eagles' pitcher-centerfielder, collected six hits in eight trips in the first two games this week to push his average to .365. Remember last year when Groce, then a freshmen, went hitless in his first 28 at-bats? However, once Groce started hitting last year, he bated over .400 for the rest of the year to finish the season with a respectable .268 mark...

Baseball teams will always have players with nicknames--there will always be some Whiteys, Leftys, Chiccos, etc. The Eagles' most common monickers are Wormy (Jerry Stephens), The Jew (Jim Nevin), Home Run (Tommy Baker), Catfish (Jackie Hammond), Peanut (Mike Long), and Big Daddy (Groce)...

A new nickname was heard at Tuesday's game with Eastern Kentucky. A fellow with a Missouri accent called Hammond "Jack Physiology"...

Southern's spectators even picked up a nickname. A Carson-Newman player called the area to the left of the visitors' dugout "Muscle Alley" for the way the students cheer for the Eagles and ride the opposing players. "Muscle Alley" is appropriate. A few well conditioned arms have been known to sit in the area described...

A couple of old favorites--Clyde Wright from Carson-Newman and Ken Suarez from Florida State--were in the major leagues at the start of the season last Tuesday. Wright is a pitcher for the California Angels and Suarez is catching for the Kansas City A's...

I wonder if the people in Milwaukee read in the papers that the Braves opened the season in Atlanta this year...

While Ken Szotkiewicz is running away with the individual batting honors this season, few people realize that seven other regulars are batting over .300 and that the Eagles as a team are over the .300 mark...

The new scoreboard that APO donated to the school has increased baseball interest at Georgia Southern. The scoreboard, which replaced the 1920 model we used to have, is a worthwhile project and APO members are to be congratulated for their efforts. The brothers and pledges even operate the scoreboard during the games.

Jim Bragan, brother of Braves manager Bobby Bragan, was at Monday's game scouting for the Cincinnati Reds. Jim formerly played professional ball in Statesboro and Savannah...

## Phantoms Lose to Phi Epsilon Despite King's Two Home Runs

Intramural softball action this week was highlighted by the upset of the season Tuesday when the BSU out-slugged APO 13-11 on two home runs and twenty hits.

In the other American League game Tuesday PhiEK beat the Phantoms 12-6 on Jackie Mullis' homer and a dozen hits, despite Phantom King's two homers.

The Dixie Darlings down the Bandits 17-9 and Happy Homes trounced the Rogues 13-2 in Tuesday's National League play.

On Monday, APO defeated PhiEK 11-9 and Delta Sig forfeited to the APO pledges in American League action. The Sinners shut out the Hawks 15-0 in the National League, and Happy Homes downed the Dixie Darlings 9-5.

Last Thursday, the Sig Eps fell to the BSU 16-6 and the Phantoms chalked up a victory over Delta Sig on a forfeit. The Bugs forfeited to the Rogues in the National League, and the Sinners edged the Bandits 10-9 on six hits and five errors.

In the American League on Wednesday, PhiEK beat the Sig Eps 13-9 and Delta Sig forfeited to APO. The Dixie Darlings won over the Bugs on a forfeit and the Sinners slugged Happy Homes 15-4, in National League play.

In volleyball play, the Rogues forfeited to Delta Sig Tuesday, the Bugs forfeited to the Hawks Monday, the Rogues forfeited to PhiEK last Thursday, and the Hawks beat APO 15-10, 15-7 on Wednesday.

## J.B. Searce Named Coach of The Year

Coach J. B. Searce, who piloted the basketball Eagles to a strong second place in the NAIA tournament in Kansas City, was recently named Coach of the Year by the Atlanta Tip-Off Club.

Searce, who traveled to Atlanta April 9 to receive the award, was selected for the award for the third time in his career.

"It's quite an honor," said Searce, "when you consider the fact that according to the Atlanta newspapers we didn't have a boy good enough to make the All-State team."

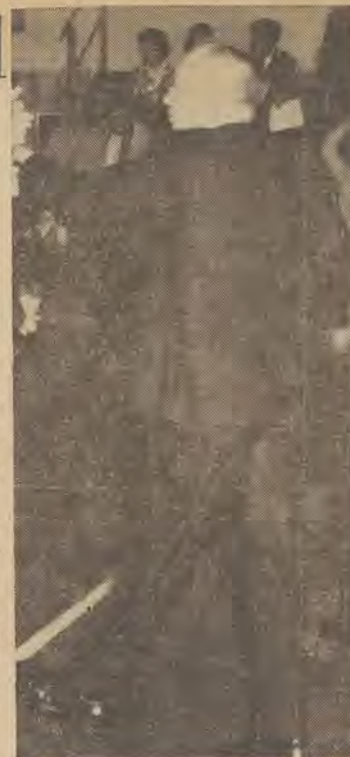
Searce failed to mention that the Atlanta press didn't even consider him for its coach of the year award, although al-

most every coach who had a winning season was considered.

"We must have had some tremendous coaching," laughed Searce, reflecting on the Eagles' season-ending flurry. "We didn't have a boy good enough to make All-State, but we had a boy (Jimmy Rose) good enough to make the All-America first team for the second straight year."

Searce's Eagles started slowly, winning only two of their first five games. However, the Eagles finished with a 26-6 record, only one victory short of Searce's personal high. More surprising, the Eagles posted a 16-5 record on the road.

"That's how teams are measured a lot of the times," continued Searce, "whether or not they can win on the road. We did 16 times."



GOING STRONG

Coach Searce in Action

The George-Anne



Friday, April 15, Page 6

## Eagle Golfers Split Two Meets

The Southern Golfers managed to defeat West Georgia College, 11½ to 6½, last Friday after having lost to Mercer University, 12 to 6. Both matches were played at the Idle Hour Country Club in Macon.

Randy Hill was most successful of the Statesboro golfers against Mercer getting three points. Hank Lehwald got one half while Jimmy Flanders and Wright North did not get any. As teams, though, Flanders-North won half a point and Lehwald-Hill two points.

Flanders and North won two

points each, and two and a half as a team against West Georgia. Lehwald made none, while Hill won three. Lehwald-Hill got three team points.

"I was disappointed with the putting," said Paul Carr, associate coach. "If we had putted well we would have won."

"No I don't think we played much worse than I expected," he added. "It was the putting that got us. The greens were all right, but we were unaccustomed to them."

The golf team's season record is now 2-4.

## Eagle Net Team Drops Two



By BJORN KJERFVE  
Sports Editor

The Eagle netters were expected to beat Furman University, but did not manage to. Furman visited Statesboro and won, 6-3, last Saturday together with Appalachian State College who won, 6-0.

"Everybody played real well," said David Hall, assistant coach, in spite of the defeats. "Inexperience is what hurts us."

"Jack Harvey played his best match this year against Furman although he lost. Several others also showed the best form for the season," Hall also said.

Jonny Roundtree was ill and did not play the match against Appalachian State. He returned for the Furman match, where he, in spite of his illness, won his single match in straight sets.

Danny Stiles won the biggest win so far for the Eagles, when he, against Preston of Furman, won without losing one game.

### Appalachian State 6 - GSC 0

Bob Barbera, A, beat Bjorn Kjerfve 3-6, 7-5, 6-4. Keith Faxuin, A, beat Eddie Russell 6-2, 7-9, 6-1. Ron Moser, A, beat Danny Stiles 6-3, 6-2. Bill Case, A, beat Mack Poss 6-0, 6-1. Gary Boyles, A, beat Charlie George 6-0, 6-0. Hal Templeton, A, beat Jack Harvey 6-2, 6-3.

### Furman 6 - GSC 3

Ed Good, F, beat Bjorn Kjerfve 6-1, 6-4. Jonny Roundtree beat John Phillips, F, 6-4, 6-3. Harry Shucker, F, beat Eddie Russell, 6-2, 5-7, 7-5. Danny Stiles beat Preston Brown, F, 6-0, 6-0. Mack Poss beat Lyle Graham, F, 6-2, 6-2. Branson Isley, F, beat Jack Harvey, 5-7, 6-3, 6-3. Good Phillips, F, beat Roundtree-Kjerfve, 6-1, 2-0, default. Shucker-Brown, F, beat Russell-Stiles 6-4, 7-5. Graham-Isley, F, beat Poss-Harvey 6-1, 7-5.

### DANNY STILES SHINES

Stiles Won in Singles against Furman without Game Loss.

## THIS WEEK:

Activity on the home playing fields is subdued this coming week, with only a few contests scheduled. Competition during the week will be:

**BASEBALL, varsity:** The Eagles play the University of Miami tomorrow at 3 p.m. here. On Thursday, the Southern team travels to Winston-Salem, N. C. to play Wake Forest College, and on Friday, it travels to Davidson, N. C. to play Davidson College.

**BASEBALL, junior varsity:** The junior varsity baseballers play South Georgia College here on Monday at 3 p.m.

**GOLF:** The Southern golf team meets Augusta College at the Forest Heights Country Club in Statesboro on Tuesday at noon.

**TENNIS:** The Tennis team travels to Valdosta to play Valdosta State College tomorrow.

Monday the netters play Augusta College in Augusta.



# Eagles Bring Season Record to 13-5

## Eagles Defeat Pembroke, 18-0

By DAN RAHN  
Staff Writer

Ken Sotkiewicz slammed his fourth and fifth home runs, along with a double, a triple and a single, as Georgia Southern divided a pair of games with the Braves of Pembroke State College, Friday and Saturday.

Also outstanding for the Eagles were Jimmy Dobson, Brent Wells, Mike Long, Jackie Hammond, Leahman Stanley, and Ralph Lynch.

Jimmy Dobson pitched a near no-hitter when Southern won 18-0, allowing only two weak hits, while the Eagles, led by Sotkiewicz, pounded the Braves' pitching for 20 hits, walking away with an overwhelming decision in the first game, Friday.

Sotkiewicz collected two round-trippers, a triple, and a single in six trips to the plate, driving in eight Eagles to tie the school record for RBI's in one game.

Behind Sotkiewicz and Dobson, who also went three-for-four at the plate, Georgia Southern took an 11-0 lead after a big nine-run second inning, then added seven more runs in the last four frames to make the final tally.

Dobson (2-1) was awarded the victory, and Lewis Goodwin (3-1) was charged with the loss.

In Saturday's game, Mike Carruthers tagged a solo homer in the eighth inning as the Braves slipped past Georgia Southern,

Georgia Southern baseball team won four and lost two games during the past week to make its present season record 13 wins against 5 losses. Freshman Ken Sotkiewicz picked up his fourth, fifth and sixth home runs, nearing the twelve-year-old school record of eight home runs in one season. The opponents were Pembroke State, Eastern Kentucky, and Carson-Newman. The Eagles played each of the teams twice.



WHERE DID THE BALL GO?  
GSC Catcher Ralph Lynch Watches Kentucky Batter Drive Ball to Left Field.

3-2. Eagle starting pitcher Allen Simmons held the Braves to seven hits and three runs in seven innings, went two-for-three at the plate, and drove in one of

the Eagles' two runs, while the Southerners failed to take advantage of their 10 hits, costing them the game.

Leading hitters for Georgia Southern were Simmons and

Ralph Lynch (2-3). The leading hitter for Pembroke State was Denton (2-3).

Simmons (0-1) was charged with the loss. Larry Crews (3-0) was the winner.

## Eagles Divide Pair with C-N

By DAN RAHN  
Staff Writer

The Georgia Southern baseballers dropped an 8-6 decision

to the Eagles of Carson-Newman, Monday, then came back to down the visitors 6-3 in Wednesday's game.

Right fielder Larry Groce batted five-for-nine in the two games to lead the hitting for Georgia Southern, followed by Sotkiewicz (3-7). The leading hitter for Carson-Newman was Sonny Hagy, who collected a double and a homer in the two games.

Also outstanding for Georgia Southern was pitcher Jimmy Dobson, who spun a nifty five-hitter in Wednesday's game.

Carson-Newman picked up six runs in a big second inning, then held on to the lead, adding two runs in the seventh, to shade the home team in the first game, Monday afternoon.

The Southerners, led by two doubles and a single in four trips to the plate, picked up 14 hits off pitcher Mark Otis, who managed to hang on for the victory. Backing up Sotkiewicz was Larry Groce (3-5), Butch Davis (2-5), and Brent Wells (2-5).

Leading hitters for Carson-Newman were Danny Pierce (3-4), Mark Otis (2-4), and Sonny Hagy, who tagged a two-run homer in the seventh frame.

Jerry Stephens was charged with the loss for the Eagles, and Otis (1-1) was awarded the victory.

Pitcher Jimmy Dobson allowed only five hits as the Eagles downed Carson-Newman, Wednesday. Dobson fanned 10 batters in the day's performance.

Leading hitters for Southern were Larry Groce (2-4) and Butch Davis (2-4). W. A. Wright (2-4) and Sonny Hagy (2-4) were leading the Carson-Newman hitting.

Southern took the lead on one run in the second inning, then added the icing with a four-run sixth frame to walk away with the win.

The losing pitcher for Carson-Newman was Mike Levi (2-3); Dobson was awarded the victory, his third against one loss.

Charlie O. Butt, Jr., of White's Apartments No. 4 won the baseball contest last week. He has \$5.00 to collect from the George-Anne Office.



WARD JUST MAKES IT  
Rick Ward Sprints to First Base Against Eastern Kentucky.

### Visitors Split Games

Eastern Kentucky and Carson-Newman split two games Monday and Tuesday, Carson-Newman taking the first one, 10-9, and falling to Eastern Kentucky, 6-2, in the second one, Tuesday.

In the first game, Sonny Hagy slammed a solo homer in the final fifth inning to top Eastern Kentucky. In Tuesday's game, Eastern Kentucky took the lead in a big four-run

### JVB Loses Twice

The Southern junior varsity baseballers lost to Savannah High, 3-0, and Barrett Oil, 4-0, last Friday away.

Tim O'Leary was best batter with three hits. Johnny McCrea was catcher in both games; Doak Thomas and Hal Walls pitched one game each.

fourth inning, and added two more in the seventh frame to take the win.

## Baseball Line Scores:

### GSC 18 — PEMBROKE STATE 0 (April 8)

	R	H	E	
Pembroke	00000000	0	2	3
GSC	29002113x	18	20	1

Goodwin, Manning (2), Mabe (6) and Baker, Graham (7), Dobson and Lynch. E - Sotkiewicz, Deaton, R. Davis. 2. LOB - Pembroke State 4, GSC 13. 3B - Sotkiewicz, Wells. HR - Sotkiewicz 2, Hammond. PB - Baker. WP - Mabe. S - Lynch, Long. T: 2:40.

### PEMBROKE STATE 3 — GSC 2 (April 9)

	R	H	E	
Pembroke	000010110	3	7	0
GSC	001000100	2	10	3

Crews and Baker, Simmons, Stephens (8) and Lynch. E - Lynch, Sotkiewicz, Hammond. LOB - Pembroke State 6, GSC 8. 2B - Sotkiewicz. HR - Carruthers. SB - Lawrence. Balk - Stephens. T: 2:10.

### CARSON-NEWMAN 8 — GSC 6 (April 11)

	R	H	E	
Carson-Newman	060000200	8	8	2
GSC	200020101	6	14	4

Otis and Wright, Stephens, Jordan and Lynch. E - Sotkiewicz 2, Lynch, Woolsey 2, Jordan. PO-A-C-N 27-12, GSC 27-12. LOB - C-N 5, GSC 8. DP - Woolsey and Hagy; Marsh and Wright; Stanley, Wells, and Ward. 2B - Sotkiewicz 2, Davis. HR - Hagy. S - Glover. SB - Pierce 2. WP - Stephens. T: 2:30.

### GSC 6 — CARSON-NEWMAN 3 (April 13)

	R	H	E	
Carson-Newman	000001011	3	5	6
GSC	01000410x	6	8	5

Levi and Wright, Dobson and Lynch. E - Rutherford 2, Levi, Hagy, Wells 2, Ward 2, Sotkiewicz, Woolsey, Marsh. LOB - C-N 7, GSC 7. PO-A-C-N 24-9, GSC 27-11. DP - Hammond and Wells. 2B - Hagy, Groce. S - Ward, Wells, Stanley. SF - Lynch. SB - Pierce. WP - Dobson. T: 2:25.

### GSC 15 — EASTERN KENTUCKY 6 (April 12)

	R	H	E	
E. Kentucky	000030021	6	8	4
GSC	25101240x	15	20	5

Price, Andrews, Jones and Gill, Nevlin and Lynch. E - Davis, Yeager, Ward, Chasteen, Hucker, Tucker, Nevlin, Hammond, Groce. 2B - Davis, Groce, Ward, Hammond. 3B - Groce. HR - Sotkiewicz, Ward. S - Groce. SB - Sotkiewicz, Ward. T: 2:48.

### GSC 3 — EASTERN KENTUCKY 0 (April 13)

	R	H	E	
E. Kentucky	000000000	0	4	2
GSC	00010011	3	9	3

Phillips, Marshall (8) and Gill. Groce and Lynch. E - Ward, Davis, Lynch, Phillips, Chasteen. LOB - E-K 4, GSC 9. PO-A-E-K 22-10, GSC 24-9. DP - Sotkiewicz, Ward and Wells. 2B - Hammond, Gill. S - Hammond. SF - Stanley. SB - Hammond, Wells 2. HBP - by Groce (Nylassy). T: 2:15.

### Carson-Newman 10 — Eastern Kentucky 9 (April 11)

		R	H	E			R	H	E
E. Kentucky	00621	9	8	3	Carson-Newman	33211	10	12	2

### Eastern Kentucky 6 — Carson-Newman 2 (April 12)

		R	H	E			R	H	E
Carson-Newman	002000000	2	7	3	E. Kentucky	00040020x	6	7	6



# Southern Belle



Mardee Booth loves to fish. She recalled that on one of her first solo trips to the fishing hole she caught a catfish. "I was able to get it out of the water but I had to carry him all the way home to get it off the hook."

Mardee's real name is Margaret and she is from Madison, Georgia. She is 19, has brown eyes and hair and stands 5 ft. 6 inches.

"I would like to teach in high school but the children would probably run over me. I'm too softhearted," related Mardee.

The staff of the George-Anne proudly names Mardee Booth our "Southern Belle" for this week.



Staff Photos by Tommy Drew

## The College Pharmacy

University Plaza

"Where the Crowds Go"

Special Special Special

REVLON SUPER LUSTROUS  
DEMI LIPSTICKS

**30¢ Each**

BLASE APRICOT, TAWNY PINK,  
NAKED PINK, BARE BEIGE,  
AND MANY OTHERS

When Downtown Shop the  
COLLEGE PHARMACY  
19 South Main Street

## LOVE LINKS

By ANN BADGER

JACKIE RICHARDS, a junior from Augusta, is engaged to MICHAEL NEWMAN, who is working and studying electronics at Vanguard School in Atlanta. Jackie is majoring in home economics. Jackie and Michael plan to marry after graduation.

JO ANN EDMUND, a junior from Baxley, is engaged to RONNIE YOUNG, who is also from Baxley. Jo Ann is majoring in junior high education.

Ronnie, who will be a junior at Georgia Tech next fall, is majoring in chemical engineering. They plan to marry in the near future.

OLIVIA SUGGS, a freshman from Butler, is engaged to RONNIE BRAZIEL, a junior from Suwanee. Olivia is majoring in business education, and Ronnie is majoring in industrial technology. They plan to marry in the near future.

SUE AREHEART, a freshman from Waycross, is engaged to BILL YAWN, also from Waycross. Sue is majoring in secretarial administration. Bill is a freshman at the University of Georgia and is majoring in physics. The wedding will be June 25.

Mr. and Mrs. E. S. Purdom were married February 16. Mrs.

Purdom is the former JOYCE EDMUND a freshman from Baxley. Sue is majoring in math. Steve is a freshman at Emory and is majoring in pre-med.

### Completion Near

"The 1966-67 Eagle Eye is progressing rapidly towards its spring quarter deadline with only a few remaining sections to be completed," according to Danny Broucek, Student Congress president.

According to Broucek, bids are to be let for the printing of the student handbook in the next few weeks and the handbook should be completed in the near future.

### GERRALD'S BARBER SHOP

1 W. Main St.

"Heads We Win"

Beneath  
Bulloch County Bank

## J & J FABRICS

University Plaza Shopping Center

### FINE FABRICS

Granny Prints — Voiles  
Linen Knit — Cotton Knits  
Novelty Weaves  
Wiss Scissors and Shears  
Butterick and Simplicity Patterns  
Dress-Making and Alterations

— 764-4542 —

bass weejuns

SPALDING

Hootenanny

Hush Puppies

apache mocs

WALL STREETER

BRANDS You Know!

BURTONS

Shoe Store

AND BRANDS YOU LIKE!

Phi Bates

Piccolino

John Romain

LADY BOSTONIANS

Hullabaloo

CRUISER BOOT.

edgerton

## INSURANCE

for your every need

764-2100

Lee Insurance Agency

2 SEIBALD STREET