

Georgia Southern University

Digital Commons@Georgia Southern

The George-Anne

Student Media

1-14-1966

The George-Anne

Georgia Southern University

Follow this and additional works at: <https://digitalcommons.georgiasouthern.edu/george-anne>



Part of the [Higher Education Commons](#)

Recommended Citation

Georgia Southern University, "The George-Anne" (1966). *The George-Anne*. 455.
<https://digitalcommons.georgiasouthern.edu/george-anne/455>

This newspaper is brought to you for free and open access by the Student Media at Digital Commons@Georgia Southern. It has been accepted for inclusion in The George-Anne by an authorized administrator of Digital Commons@Georgia Southern. For more information, please contact digitalcommons@georgiasouthern.edu.



Rosenwald Library
Periodical Department
GEORGIA SOUTHERN COLLEGE
Statesboro, Georgia

PUBLISHED BY STUDENTS OF GEORGIA SOUTHERN COLLEGE

VOLUME 42

STATESBORO, GEORGIA, FRIDAY, JANUARY 14, 1966

NUMBER 1

Chancellor To Speak At Dedication



HOLLIS BUILDING TO BE DEDICATED SUNDAY
Dr. George Simpson To Be Featured Speaker at Ceremony

New Million Dollar Building Set For Special Ceremonies Sunday

Dr. George L. Simpson Jr., chancellor of the University System of Georgia, will be the guest speaker Sunday at the dedication of Georgia Southern College's E. V. Hollis Building. The program will begin at 3:30 p.m.

The Hollis Building, completed in August 1965, houses the divisions of business, language and social science. Built at a cost exceeding one million dollars, it contains 33 classrooms, several conference rooms and a language laboratory. It is named for Earnest V. Hollis, president of Georgia Normal School from 1918 until 1924. Mrs. Hollis will be among the guests at the Sunday program.

The dedication message will be delivered on the portico of the building, following introductory remarks by Anton Solms, a State Board of Regents member from Savannah.

Dr. Simpson, who became the sixth chancellor of the University System of Georgia last July, came to the University System from the National Aeronautics and Space Administration where he was assistant deputy administrator.

He has published one book, *The Cokers of Carolina*, which was initiated during his year of doctoral study at Yale University.

The book, which is the story of the Coker family of South Carolina, relates the roles of the Cokers in many developments of vital importance to agriculture and other fields in the South.

The dedication ceremony will be held in conjunction with an open house in the new wing of Rosenwald Library.



DR. SIMPSON
To Visit

Economics Curriculum Expands To Major Status

A major program in economics was officially approved by the Board of Regents in December and will go into effect immediately, according to Paul F. Carroll, academic dean. Dr. Nathaniel E. Shechter is in charge of course curriculum.

According to Dr. Shechter, the economics majors will take six optional courses from the economics section, each of which must be above the 200 level. Money and Banking, will also be required and Statistics while strongly recommended, will not be compulsory.

Dr. Shechter also said that the economics department hopes to work with the placement and aid office to find jobs for the economics graduates.

Edward Sedlmeier and Eloy Mestre are the remaining economics faculty members and Dr. Shechter anticipates the addition of at least one new member next year.

Sedlmeier, when asked about job opportunities available upon graduation, mentioned that economists are employed in three main areas; the academic field, business administration and government work. Mestre, who is currently working on his doctoral degree, mentioned that of the three areas, most graduates in economics entered the business fields.

Dr. Shechter remarked that his main concern with the future of the new program is the apprehension of students who think that a degree in economics will not secure them an adequate salary.

Quoting from a periodical, Shechter revealed that a recent survey has proven that the median salary for trained economists in the United States is \$14,000 annually, placing economics among the two highest paid professions in the social science field. Shechter added that only psychology ranks with economics in terms of salaries that are presently being paid.

Commenting on the future of the major program, Shechter remarked that there are presently 370 students enrolled in economics classes, the vast majority of which are business administration majors. He expressed hope that as students learn of the excellent job opportunities in the economics field, the program will grow rapidly.

Apparel Pageant Plans Announced

The 1966 Best Dressed Coed Contest will be sponsored by the George-Anne in conjunction with *Glamour Magazine*.

Tentative plans include preliminary nomination by the women's dormitories, judging by a nomination board, and an election by the student body.

Every women's dormitory will nominate a girl to represent each floor. The girls will appear before a nomination board dressed for a specific occasion.

The nomination board, members of which will be announced later, will select the ten finalists.

A campus-wide election held in the Student Center will determine the college's Best Dressed Coed.

The winner will represent Georgia Southern College in a national contest sponsored by *Glamour*. *Glamour* will then select ten regional winners, who will be featured in the magazine and newspapers across the country.

Thursday Premiere Slated For 'Book of Job' Drama

The Book of Job, presented by Masquers, will open in McCroan Auditorium Thursday, at 8:15 p.m. with Tommy Kinchen in the title role.

Other cast members are Walter Swift as Eliphaz, Ralph Jones as Bildad, Wyman Hunt as Zophar and Robert Overstreet as the narrator. The play will run three nights and the admission is \$1.

A production in three parts, the play will last one-and-a-half hours with no intermission.

The introduction or prologue will be given by the narrator with live music furnished by the brass choir under the direction of Dr. F. K. Grumey.

The second part comprises the main body of the play. The conclusion is composed of dialogue between Job and the narrator with music.

Robert Overstreet, director of the Masquers, edited the book of Job from the revised standard version of the Bible. From this edited version he wrote the script for "The Book of Job."

The play tells the story of Job, a rich and happy man whom God thought would al-

ways be loyal to him. Satan obtains permission from God to harass Job in many ways, trying to make him curse God. Though Job questions God and wonders why the good have to suffer, he never curses God.

Overstreet says, "One thing we learned from working with this play contradicts a popular belief. Job was not a patient

man. He loses his patience and his temper with his friends."

"I am well pleased with the cast. They have done good work with complicated material. Though the play has been edited, it is still complex material. It would give the listener added insight to read the book of Job before seeing the play."



CAST PRACTICES FOR "BOOK OF JOB"

L-R: Wyman Hunt, Ralph Jones, Tommy Kinchen, Walter Swift

Inside The George-Anne

New Acting Dean	2
Under Milkwood	3
Jon Legere	3
Editorials	4
Highwaymen	5
Press Box	8
Preview	8
Holiday Basketball	9
Gymnastics	9
Baseball Schedule	10
European Tour	11
Housing Predictions	11

Statesboro Native Assumes Acting Dean of Men Post



JESSE QUATTLEBAUM

Jesse Quattlebaum, a native of Statesboro and a veteran of the United States Marine Corps, has recently been appointed to the position of acting dean of men at the College.

The appointment of Quattlebaum was made and announced by Dr. Ralph K. Tyson, dean of students.

Quattlebaum graduated from South Georgia Teachers College High School in Statesboro and is presently completing requirements for the BS Education

degree at GSC. His practice teaching was done at Marvin Pittman High School.

Quattlebaum served for 29 years as a U. S. Marine Corps Warrent Officer W-4. He successfully completed study at several technical schools, a communication officer's school and a department of defense level management school. He also has completed college level work at night school at five different colleges and universities.

According to Dean Tyson, the appointee has had extensive experience in working with young men while with the military. His duties included assignments in the field of instruction, instructor school officer, education officer, special services officer, company commander and electronics supply officer.

This will be the second assignment made on a temporary basis to fill the position of dean of men.

Placement Office Participating In New Governmental Survey

The Office of Placement and Student Aid, under the direction of Ben G. Waller, is one of the 1100 Colleges and Universities in the United States participating in a governmental survey to determine the financial needs of the student body.

According to Waller, a questionnaire was mailed to every student. The questionnaire was

designed to give an accurate indication of each student's family income and to ascertain the students ability to attend college without financial aid.

Information gathered by the Office of Placement and Student Aid on this survey was completely confidential, in that they were to be returned unsigned. The response from the Georgia Southern Student body was reported to be approximately 50 percent.

Waller said surveys of this nature are important because they "determine answers to questions on the college's applications requesting Federal assistance to students."

MOVIE SCHEDULE WINTER QUARTER 1966

All movies will be shown at 8:00 p.m. in McCroan Auditorium on the dates listed below:

Date	Movie Title
1-7-66	Quo Vadis
1-14-66	Butterfield 8
1-19-66	Prize
2-4-66	Hustler
2-11-66	Cobweb
2-25-66	New Kind of Love
3-2-66	Garden of Evil
3-11-66	Long Hot Summer

PLAY THE I. D. GAME With Us

each week at the OXFORD SHOP will be posted ten (10) I. D. numbers. VERY EASY TO WIN ... just stop in and check your I. D. with those posted.

This weeks winner will receive a beautiful LONDON FOG JACKET CONTEST ENDS EVERY THURSDAY

... take a few minutes out each week and check that I. D.

at

The OXFORD SHOP

in the MODERN UNIVERSITY PLAZA

Q-Stik

Enjoyable Recreation All New Brunswick Tables

45 East Main — Statesboro, Ga.

GSC Student Specials

at the convenient

THE

Paragon

RESTAURANT

DINNER

(Supper to home folks)

MONDAY thru FRIDAY

5:00 P. M. till 9:00 P. M.

CHOICE of 1 MEAT
TWO VEGETABLES
SALAD - ROLLS
COFFEE or TEA

95¢

SATURDAY'S and SUNDAY'S

- PIZZA'S **75c**
- CHOP STEAK **98c**
- SHRIMP BASKET **1.25**

BREAKFAST SPECIAL

- 2 Hot Cakes - Bacon - Coffee **50c**
- 1 Egg - Bacon - Toast - Coffee **50c**

Let KENAN'S Help



Get your ducks in a row

Pick up your College Outlines and Paper Tittles now at

KENAN'S

"Ye Olde Shoppe"

(Most Complete Stock in Town

Two Georgia Southern Students to Serve You

-ART
-ENGINEERING
BOOKKEEPING AND
STUDENT SUPPLIES

(Yes, We will be glad to cash your personal check)

Register now for Big Free Prizes
Ask about this at Store

Gibson Greeting Cards
Eaton's Georgia Southern Stationery
Books and Gifts
Homecoming Supplies

You'll Find It at

KENAN'S

"Ye Olde Shoppe"

25 Siebald St.

Statesboro, Ga.

Visit Them Today

NASA Writer Stirs Interest

Zell Skillern, Aerospace Technology Writer and Editor of the Manned Spacecraft Center in Houston, Tex., lectured Thursday night in McCroan Auditorium in the second of five programs sponsored by the Campus Life Enrichment Committee.

At the manned spaceflight center, she is responsible for performing research and writing speeches to be made by all levels of management to the general public and other organizations.

Miss Skillern, a native of Milburn, Okla., received her BA degree from Southern Methodist University and did graduate study at Southern Methodist and Hardin Simmons University.

She is a former sales promotion and advertising manager for a large Texas insurance firm and is presently a member of the staff of U. S. Senate Committee on Aeronautical and Space Sciences.

GEORGIA

Fri. Jan. 14th.

"THE IPCRESS FILE"

Sat. Jan. 15th.

"HAVING A WILD WEEKEND"

—Plus—

"MURIELA"

Sun. Mon. Tue. 16, 17, 18

"THE NANNY"

with Bette Davis

Wed. Thur. Fri.

19, 20, 21

"LOVE and KISSES"

with Rick Nelson

DRIVE-IN

Fri. Jan. 15th.

"NIGHTWALKER"

—Plus—

"BILLIE"

with Patty Duke

Sat. Jan. 15th.

"TICKLE ME"

—Plus—

"FLUFFY"

with Elvis Presley

Sun. Mon. Tue. 16, 17, 18

"WHAT'S NEW PUSSYCAT"

with P. O'Toole and

Ursula Andress

Wed. Thur. Fri. 19, 20, 21

"CIRCUS WORLD"

—Plus—

"CRACK In The WORLD"

with John Wayne

Dr. Harold Johnson Announces Recent Publication of New Book

By TOM KING
Managing Editor

Dr. Harold T. Johnson, associate professor of education, recently announced the publication of a new book "A Theory of Educational Leadership," which he wrote in collaboration with Dr. Robert L. Saunders, assistant dean of the School of Education at Auburn University and Dr. Ray C. Philips, coordinator of laboratory experience of the School of Education at Auburn University.

According to Dr. Johnson, the book, published by the Charles E. Merrill Books, Inc.,

had its beginning in 1960 and is the result of five years work, with about a one year break in the actual writing of the book.

"In recent years a great effort and demand has been made in the field of school administration for a theory that is applicable to the field of school administration. This book represents just such a theory and this theory is one of the few that has been put forth in this field," said Dr. Johnson concerning the purpose of the book.

According to the book's publisher, the text begins by enumerating and communicating in understandable terms of constructs of theory development. It then presents a theory of educational leadership with a detailed philosophical and scientific basis for the theory. The final section is devoted to a practical application of the theory.

In conclusion, Dr. Johnson said, "The book will be used as a text in school administration courses and by current leaders in the public schools."

Under Milkwood Set For Jan. 24

The Kaleidoscope Players, under the direction of actor-producer Bill Fegan, will present the play *Under Milkwood* in McCroan Auditorium, Monday, Jan. 24, at 8:15 p.m.

According to Dr. Jack Broucek, chairman of the Campus Life Enrichment Committee, which will sponsor the performance, all seats will be reserved and tickets will be available in the Office of Student Personnel and in the Frank I. Williams Center during the supper hour.

Organized in 1959, the group has grown from a small band of players touring in two or three southeastern states to a fulltime operation that has now appeared at many colleges and universities.

Last season the Kaleidoscope players toured the country giving over 100 performances. They traveled with three plays, *The World of Carl Sandburg*, *Two by Five* and *Gobblegook*.

They have established permanent residence in Ralton, New Mex., where they present a summer stock season in the historic old Shuler Theater.

The players operate the New Mexico School of Drama in conjunction with a professional group in Ralton.

McBride Elected DPA President

Richard McBride, a junior from Brunswick, has been re-elected president of Delta Pi Alpha for the winter quarter.

Other officers are Ray Heath, vice-president; Larry Duncan, secretary; Henry Brown, corresponding secretary; Jack Harvey Jr., treasurer; Walter Coleman, historian; Jim Kauffmann, chaplain, and Larry Demby, pledge-master.

The Delta Pi Alphas are having intra-fraternity competition to improve their quality points. The winner will receive a steak supper.

Ben Franklin Store

"Your Most
Convenient
Store"

E. MAIN ST.

Jon Legere To Exhibit Water Colors In Library

Jon S. Legere, nationally known painter specializing in Maine subjects, will exhibit 14 of his water colors in the Rosenwald Gallery, beginning Sunday and continuing through March 1.

The exhibition will begin in conjunction with an open house

program of the Rosenwald Library and with the dedication of the E. V. Hollis Building.

Legere is one of the youngest professional painters in the country. He had his first one-man show at Lehigh University in December of 1962. He has won 20 awards for his water colors.

Legere began his study of art in high school. He attended the

school of Fine and Applied Art in Portland, Me., and the Art Students League of New York City. His nationwide exhibitions have included shows in the DeCordova Museum of Lincoln, Mass. and the Museum of Fine Arts Traveling one-man show from Boston. He annually exhibits at the Statler Hilton in Boston and the New York Hilton at Rockefeller Center.



JON LEGERE
Exhibits Here

PLAY THE I. D. GAME With Us

each week at the OXFORD SHOP
will be posted ten (10) I. D. numbers.
VERY EASY TO WIN... just stop in and
check your I. D. with those posted.

This week's winner will receive a
beautiful LONDON FOG JACKET
CONTEST ENDS EVERY THURSDAY

... take a few minutes out each
week and check that I. D.

at

The OXFORD SHOP
in the MODERN UNIVERSITY PLAZA

The OXFORD SHOP University Plaza

our
FIRST

SALE

This is your opportunity to take
advantage of these great savings
on traditional apparel for Men
and Women

Brand New Fall Mdse.
for HER for HIM

25% TO 33 1/3
off

- Fall Dress
- Fall Sweaters
- Fall Skirts
- Fall Long Sleeve Shirts
- Slim Jims
- Bags
- Group All Weather Coats
- Knee Socks
- Sport Coats
- Trousers
- Sport Shirts
- Dress Shirts
- Group Jackets
- Sport Hats

Come play "I. D." with us If your I.D.
No. is listed on our bulletin board you
win a LONDON FOG JACKET

FRANKLIN'S LIGGETT REXALL DRUGS

Cut Cost of Living
SALE

HURRY IN! SALE ENDS
Saturday, January 22nd

Stainless Steel Razor Blades	29 ^c
Pack of five	
four packs	\$1.00
Rexall Aerosol Shave Cream	64 ^c
14-oz., reg \$1.29,	Now
Rexall Toothpaste	59 ^c
6 3/4 - oz. reg 83c	Now
Nylon Gristle Hair Brushes	29 ^c
five popular styles	
Box Stationery	39 ^c
reg. \$1.00	Now
Boxes Notes, asstd.	29 ^c
each	
four boxes	99 ^c
Filler Paper. 500's	66 ^c
300's	
Rexall Facial Tissues	97 ^c
Five Boxes	
Creme Peroxide, for gentle	29 ^c
hair tints, four oz.	
Brite Set Hair Spray	59 ^c
14 oz.	
Fast Home Permanent	1.00
Reg. \$2.00	
Cara Nome Hand Cream or Lotion	87 ^c
8 oz. cream, reg. \$1.75	
Cara Nome Deodorants Cream or Roll-On	50 ^c
Reg. \$1.00	

EDITORIAL BOARD:

FRANK TILTON, Editor RON MAYHEW, News Editor
TOM KING, Managing Editor JOHN EDEN, Sports Editor
ROGER MURPHY, Business Manager

IMPROVEMENTS PREDICTED

Students who sped through registration procedures only to stand in long slow lines waiting to pay their fees are probably wondering in this age of automated registration why a simple matter like payment of tuition, room, board, etc. can be so complex and tedious.

The frustration is increased when, after standing in line for some 30 minutes, one arrives at the window only to be told, "Sorry, We're out for lunch, come back in an hour-and-a-half".

The comptroller has said that with the increased size of the school efficient payment of fees is impossible under present conditions. Realizing this fact, the office plans a new system next quarter. Under the new method, a student will place all necessary data in an envelope, drop it in a box and receive his meal ticket, receipt and identification card in the mail the next morning.

The mailing should prove more efficient if students cooperate by having a mailing address where they can be reached quickly. The eventual solution to the problem, however should come next fall quarter when the comptroller's office begins a new system of having each student's picture on his I. D. card.

We hope that students will realize that the comptroller's office is expanding with all possible haste to keep up with the needs of our rapidly growing school.

BOYS WILL BE BOYS?

When reading the recently published student directory one finds that there are now girls listed as living in Cone, Sanford, Brannen, Knight and Morgan Halls.

Conversely it is also interesting to note that men are listed as living in Hendricks, Deal, Anderson, Lynne, Buford, Veazey and Lewis Halls.

On the basis of our weekly vigil on the copy desk, we would like to stress to the brothers of Alpha Phi Omega that proofreading is also an important part of a publication. While we realize that many of the residents of the above mentioned residence halls would like for such a situation to exist, we are also afraid that administration officials would not approve.

SHAKE-UP COMMENDED

The shake-up of offices in the Administration Building has finally given our administrators room to breathe. In addition, the change of offices has aided students in the process of registration and in the overall services the college renders to the students.

Ralph K. Tyson and his staff in the Office of Student Personnel now have ample space in which to administer their services to the individual student. Included in the dean of student's office is the Director of Placement and Aid and the College Guidance and Testing Center.

The layout of the new offices in the basement of the Administration Building is far superior to the four-room office formerly occupied by Dean Tyson.

Before the shake-up, the registrars office, with the new IBM data system, could not have functioned properly.

Official records of the college are maintained by the registrar's office and the information on each student concerning transcripts are handled through this office.

The public relations director and his staff, now located in the offices formerly occupied by Dean Tyson, has the necessary facilities that enable the office to distribute the news of the college accurately and efficiently.

We commend the maintenance department in their relocation of the offices in the Administration Building.

LITTLE MAN ON CAMPUS



"THEY SAY HE'S PRETTY TOUGH."

Atmosphere Would Be Helpful To Coffee, Culture, Conversation

By HUBERT NORTON
Staff Writer

Our institution, endowed scholastically, socially and athletically, appears lacking in a cultural atmosphere for the individual student who wishes to pursue the arts, either as a recreation or as a livelihood.

Various organizations, such as Campus Life Enrichment Series and the Masquers, produce cultural programs and bring cultural events to our campus. More often than not students are given the opportunity to take part in the programs and to become acquainted with visiting groups or individuals.



NORTON

The cultural setup as it stands is fine from the standpoint of the spectator and the students participating. What is lacking is a place for interested students to meet and discuss their interests in the arts and culture.

Why not a coffee shop? A dimly lighted place to drink coffee, strum guitars and read poetry is the idea.

The above suggestion is not meant derogatorily against the snack bar of the Student Center or the numerous restaurants surrounding the campus. The snack bar and the restaurants are fine for eating or for grabbing a quick cup of coffee before, after, or in between classes. But the atmosphere is not conducive to serious discussion and meditation.

As it stands now, the only way to enjoy a deep discussion of culture or the arts is to get together with fellow students at an off-campus residence or the residence of a professor.

Opponents of the coffee shop suggestion may scream vehemently that such a place could

possibly turn our institution into another Greenwich Village, complete with beards, sweat-shirts, filth and pervers. This charge would be false because not all people interested in the arts and culture are bearded, badly attired, filthy and perverted.

To insure the dignity of such an establishment, the college or some responsible group on campus could supervise it, and maybe secure some special attractions to recite or lecture to the students in the dimly lighted atmosphere who share basically the same interests, whether it be art, music, literature or philosophy.

Professors could be a vital part of a coffee house. They could take part in the conversations, get to know the students who are really interested in the arts and even provide some of the entertainment. Few can deny that it would be a pleasure to hear Dr. Ruffin recite from Shakespeare in a dimly lighted atmosphere over a good cup of coffee.

Such an establishment probably would increase the cultural production of the college. An increase in culture and the arts probably would spur new interest in students who, at the moment, are just aspiring to be artists.

The college coffee house has good possibilities, and would be a worthwhile and challenging project for a campus organization or a fraternity.

Sales Method Gets Criticism From Students

By FRANK TILTON
Editor

In the 1964-65 basketball season, students gave sharp criticism to the method of distributing tickets for the homecoming game.

The question asked by students was whether or not tickets for the game should be sold only during the morning and afternoon hours of the day of the game.



TILTON

Early Lines

During homecoming day last year, students began to form a line early in the morning and the onrush for game tickets continued into the afternoon.

Students could be seen in a long line stretching from the front entrance of the Hanner Gymnasium building to the sidewalk on Herty Drive and along the sidewalk as far down as Sanford Hall.

One of the disheartening factors to the student in addition to standing in line so long was the possibility that tickets would be sold out by the time he reached the ticket window.

Homecoming Anticipated

Homecoming day is one that the student looks forward to with anticipation. Many students have friends down for the occasion and like to take the opportunity to show them around campus.

The day has other activities also, such as last year when the Eagle gymnastics team hosted Auburn and Middle Tennessee State in a three-way meet. Some students were still trying to get tickets for the basketball game and others were too exhausted from standing in line to attend the meet.

Change Needed

It seems that in order to avoid long lines and congestion, it would be more practical to have the tickets available for several hours each weekday before the weekend of the game.

The argument for one day sales stems from the efforts of the school to provide equal opportunities to students, alumni and visitors for the acquisition of tickets.

Allot Tickets

But, would it not be better to allot in advance a certain number of tickets for both alumni and visitors? The interested alumni could mail in their requests before the game and visitors could purchase their tickets the morning or evening of the game.

By following this system, the students, who are the backbone of the team's support and have paid for their admission in the activity fee, would not have to stand in line the better part of an otherwise enjoyable homecoming day.

THE George-Anne

The opinions expressed herein are those of the student writers and not necessarily those of the college administration and faculty



Entered as second class matter at Post Office at Georgia Southern College, Georgia Southern Branch, under act of Congress.

Highwaymen 'Stop Over' For Year's First Concert

By LOUISE McCORD
Feature Editor

The Highwaymen, notable contributors to the revived popularity of folk singing, stopped over in Statesboro Saturday night between Miami Beach and New York engagements to present the Student Congress' first concert of the year in the Hanner Gymnasium.

Opening the show with one of their early hits, "Sing On Brothers," the performers continued with a two hour program, augmenting the vocal renditions with a variety of precise instrumental techniques and highly original, humorous skits.

The ensemble consists of Alan Shaw, Renny Temple, Mose Henry and Roy Connors, who topped over 400 collegiate performers in a national search for the right combination.

Collegiate Background

Before the formation of their quartet, Shaw studied speech and theater at Brooklyn College and the other members attended universities in Florida.

Introduced by Temple as the "small mistake in the group," Shaw is a native New Yorker and currently spends much of his off-time attending and participating in dramatic presentations there. He has appeared in

over 15 summer stock productions and is a veteran of the off-Broadway stage and television.

As the son of a rear admiral, Temple traveled in nearly every state in the United States. While attending the University of Florida, he met Mose Henry and they performed with a local folk group, "The Balladeers." He not only serves as spokesman for the Highwaymen, but has written several of the songs used by the group. "Let's Sing Some More," which initiated the second half of the show was one of his compositions.

Mose Henry, bass vocalist, plays 15 different musical instruments and is a prolific writer and arranger. He worked in a rock 'n roll group called Moses and the Prophets to help pay his tuition at the University of Florida, where he was also a brother in Phi Mu Alpha.

Roy Connors met Henry and Temple on a Fort Lauderdale beach during one of the infamous Easter weekends, while he was a student at the University of Miami. He implements an eight string guitar, which is the only one of its kind, and the banjo during their performances.

Under the management of

Ken Greengrass, who also manages Steve Lawrence and Edie Gorme, the group's first recording, "Michael," sold over a million records. This song, which is an original version of the old spiritual, was presented for the group's first encore Saturday night.

"Mostly we write our own songs, but occasionally we hear one we like and adapt it for our own use, for example, "Turn, Turn, Turn" and "The Sound of Silence," Temple explained.

Increased Interest

Shaw observed, "The current attempt is to bring words back into folk music. Although its popularity decreased for a while, the interest in folk rock seems to be a tremendous boost to the industry."

Commenting on the audience response, the Highwaymen agreed that it was more difficult to perform since the audience was only seated on both sides of the stage. "But their response was great, especially when they participated in the 'sing-alongs,'" Connors praised.

Georgia Southern students considered the concert a welcome finale to their Saturday classes. "The concert was much better than I expected," observed many students.



HIGHWAYMEN BELT OUT SONG ON STAGE
L-R: Scott, Henry, Connors, Shaw, and Temple

BRAGG'S BILLIARDS

and

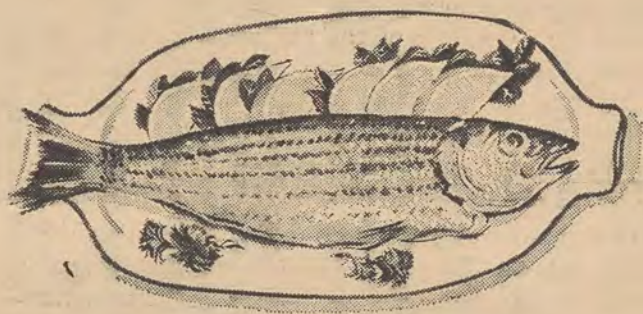
SPORTS CENTER

STUDENTS WELCOMED

East Main Street

HOWARD JOHNSON'S RESTAURANT

Wednesday's Menu of
Deliciously Fried Fish



A CORDIAL INVITATION
for Georgia Southern Students

... enjoy a hearty dish of Fried
Fish served with cole slaw,
hush puppies, hot rolls and tea.

All You Can Eat!
— \$1.00 —

A Wednesday's Delight
Come Early

North Main Statesboro, Ga.



LOUISE McCORD OF GEORGE-ANNE INTERVIEWS HIGHWAYMEN
Group Performed Here Jan. 8 at Hanner Gymnasium

DPA's Schedule Dime Walk Drive

A "Dime Walk," for the National March of Dimes was held Thursday by Delta Pi Alpha.

Henry Brown, corresponding secretary, said when asked about the program, "We're trying to line the sidewalk from the Student Center to the Administration Building with dimes, laid side by side."

The DPA's are also selling tickets to a March of Dimes car wash to be held at Statesboro High School tomorrow.

To conclude the March of Dimes activities, the fraternity has tentative plans to hold a bucket brigade for the March of Dimes on a downtown corner.

J & FABRICS

NOW LOCATED IN THE ALL
NEW UNIVERSITY PLAZA

SALE
1/3 off

The finest of Winter and
Fall Wool Materials.

Phone 764-4542

Dress making and alterations
To Your Satisfaction

ANOTHER and all NEW COLLEGE PHARMACY Now Open For Shopping Convenience in the University Plaza Shopping Center

Same Courteous and Competent Service At The New College Pharmacy

The moment that you enter the all new College Pharmacy, now open in the University Plaza Shopping Center, you will be aware of "red carpet" treatment . . . because not only will you get "red carpet" treatment you will be walking on red carpet.

The all new College Pharmacy is the latest in drug store design and a "first" in the carpet floor covering. Every nook and corner has been thoughtfully planned to allow the customer easy and accessible selection of drugs, cosmetics, notions, candies, magazines, sports equipment, gifts, etc.

Customers will delight in shopping at the all new College Pharmacy where the red carpet highlights the pleasing decor.

The pleasant, friendly, and courteous service that has been a "standard" at the downtown College Pharmacy will be continued at the new College Pharmacy.

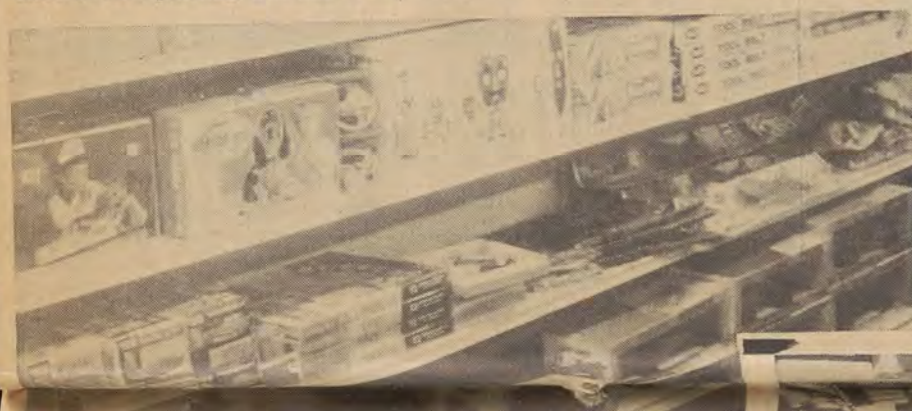
Dr. William (Bill) Hatcher and Mrs. Otis (Lorene) Garvin, both familiar to all citizens of our area, will be at the new store. Dr. Hatcher is a registered pharmacist and Mrs. Garvin has a wide knowledge and several years experience in cosmetics.



DR. WILLIAM HATCHER . . . better known as "Bill".



Infants clothes, supplies and needs are grouped together for ease of selection. The University Plaza College Pharmacy has added many items for the infants care and Mothers will find that the ease of driving out to the new store and the abundance of free parking will add to the enjoyment of shopping at the new store.



Downtown, The College Pharmacy will continue to offer the quality of service and the fine choice of drugs, cosmetics, notions, candies, sports equipment and other merchandise that has made the store truly the drug store "where the crowds go."

The friendly personnel that have been with the downtown store for many years will continue to serve their many friends and customers in the same competent manner.

Prescription service "around the clock" will continue in the same efficient manner.

Mrs. Bobby (Benita) Black, cosmetic consultant, will be assisted by Suzanne Connors who has recently joined the staff at the downtown store.

Dalton Kennedy, with many years of service will continue at the downtown store.

Dr. Robert (Bob) West, who is a registered pharmacist, will answer your prescription needs, and at the same time continue to serve as head of the sports equipment department.

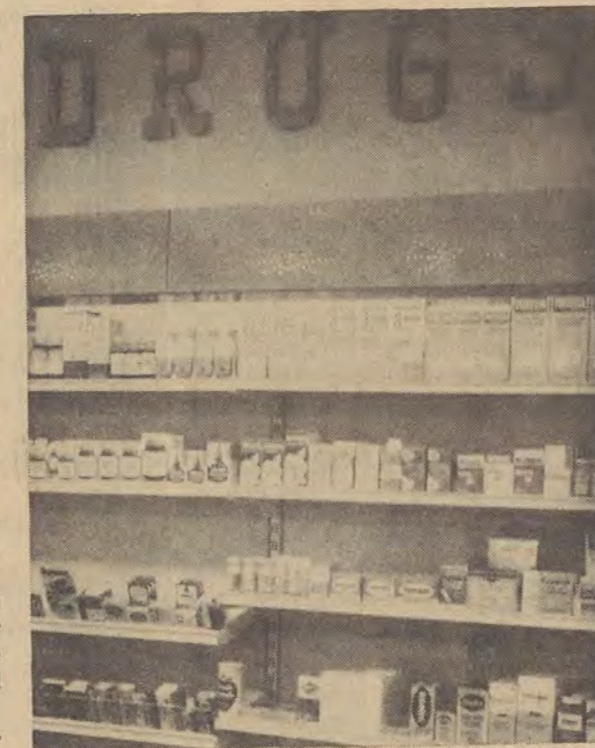
Mrs. Mooney (Dot) Prosser is book-keeper and will continue in the same capacity.

Bobby Clifton will continue in the delivery service.

Of course, Dr. Everett Williams will be at the downtown store and also at The University Plaza Store . . . ready to assist in any manner and in any department that the many friends and customers of The College Pharmacy will need him.



Records . . . all of the latest recordings by your favorite artists. LP Albums for your listening enjoyment . . . at your drug store in the University Plaza — the all new COLLEGE PHARMACY . . . adjacent to the GSC campus on Georgia Avenue.



The Drugs section of the all new COLLEGE PHARMACY affords you a complete selection of drugs . . . displayed for your shopping convenience.



Mrs. Otis (Lorene) Garvin, shown above at the cosmetic center of the new store, will be your cosmetic and toiletries consultant. Mrs. Garvin has had several years experience in the cosmetic field and is well qualified to assist in your cosmetic selections. All the widely known and most desired cosmetic brands will be found at the new store.



School supplies . . . for all ages and all grades . . . notebook fillers, binders, ball point pens, inks, glue, memo pads, tablets, etc. . . . everything to keep the student in the "A" column.





Toys and Games . . . for all members of the family. The all new College Pharmacy offers a wide selection of all the favorites and new toys and games.

Sports equipment and games . . . the downtown College Pharmacy has long been headquarters for sports equipment for shoppers of the Statesboro area and the all new College Pharmacy offers sports equipment for practically all types of sports activities.



Among the many items in the sports equipment line are the golf clubs, balls, bags, carts, and shoes. The College Pharmacy carries Spalding, McGregor and Wilson. Tennis lovers will find a complete selection of racquets, balls, shoes, shorts and socks.



The prescription department of the all new College Pharmacy is most attractive and persons needing prescriptions can have them filled at either of the two College Pharmacy stores. If you already have a prescription on record at the downtown store, but find that the new store is more convenient for you, Dr. Bill Hatcher or the druggist on duty can get your downtown store prescription for you very easily and quickly.

Basketball and football equipment . . . for the beginner, the high schooler and even "the pro" can be found at the new store. This in keeping with the fact that the College Pharmacy, downtown has been sports equipment headquarters for the southeast Georgia area.



Magazines for all ages — male and female — young and old — All of your popular magazines, easily chosen from a large spacious display rack at the University Plaza College Pharmacy.

**DOWNTOWN
COLLEGE PHARMACY**

The new College Pharmacy is located in the University Plaza Shopping Center, south of the Georgia Southern College on Georgia Avenue. A large

paved parking area will be available for all shoppers in the center. Easily accessible, the University Plaza affords the citizens of our area addi-

tional stores, three already open. They are The Oxford Shop, The J & J Fabric Shop, and the College Pharmacy. Opening this week is the all new sec-

ond Dairy Queen and Brazier Burger. Soon to open is a Pure Oil Service Station. Construction began this week on an additional U. S. Postal Office



Gifts . . . a new and wide selection of gifts is an added feature of The College Pharmacy. Shoppers will find gifts for most every occasion. A special section of the all new College Pharmacy features the beautiful and practical gift items which shoppers will find pleasing, particularly price-wise.



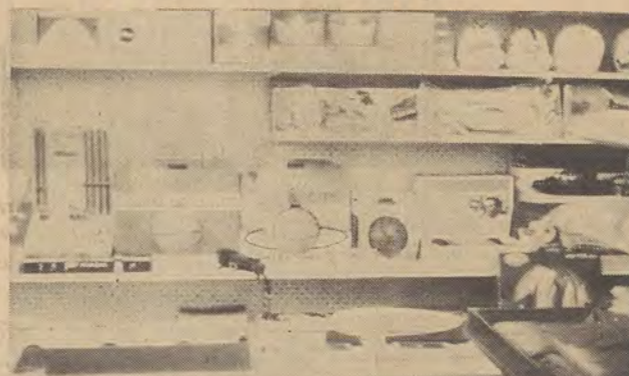
Billfolds, keycases - Buxton, long a favorite brand for those wanting the best in billfolds and keycases, can be seen in the beautiful display case in the all new College Pharmacy. Pens and pencils can be bought individually or in sets. Parker, Shaeffer and Cross - all favorites.



Cards for the sick . . . cards for the birthday greeting . . . cards for the anniversary . . . cards . . . cards . . . for every occasion or reason at the College Pharmacy where "red carpet" treatment awaits you.



Need stationery . . . see the wide choice of designs, papers, colors at the College Pharmacy . . . neatly packaged. In case of doubt as to a gift, you're bound to find in the stationery selection the answer.



**WATCH FOR OUR
GRAND OPENING**

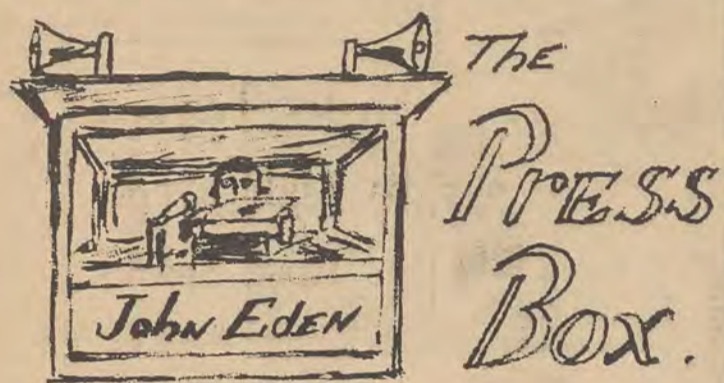
IN THE ALL NEW

UNIVERSITY PLAZA SHOPPING CENTER



Men's toiletries are readily available at the new store. All of the latest colognes are at the new store. All of the shaving needs for men (including electric) are pleasantly and conveniently displayed for easy purchase. Mrs. Garvin will help with gift suggestions for men, because she knows men's cosmetics as well as the ladies'.

**UNIVERSITY PLAZA
COLLEGE PHARMACY**



It's been little more than a month since the last home game during school and since the George-Anne has been published, and things have been breaking rapidly on the basketball scene. The Eagles have been active and on the go, and their record now stands at 9-4 with the best team on the schedule coming up next, the Phillips 66 Oilers, an industrial touring team (which means they are semi-pro but can't legally be called that) tomorrow night.

One of the better games over the holidays was the East Tennessee State game. By all indications, East Tennessee is the best team on our schedule, with the exception of the Phillips team. One member of their team was second leading rebounder in the country last season, and Big Jim Seeley held him to 10 rebounds while stacking up 6 for himself. Georgia Southern played the best game yet against them and won 82-67.

In Atlanta, Pinholster's Petrels tromped on our toes, defeating the Eagles 71-67 in a loose game that was a runaway at the foul line. In this game Jimmy Rose looked more like the sharpshooting All-American he is, leading the Eagle attack with 22 points.

The Valdosta game showed up weaknesses in the defensive and offensive game, and we almost threw the game away along with the bad passes, but the Eagles poured on the coal in the last minute of play to stop the Rebels cold and put the game on ice 81-75.

The next few weeks will bring us up against several other traditional rivals and teams which will put the Eagles to the test. Carson-Newman and Cumberland both contributed to the five games we lost last season and will probably be gunning for us again. We meet them here on Jan. 22 and 27 respectively. Our homecoming opponent is old rival Mercer University, over whom we hold a 32-12 record for the series.

EAGLE BAIT!

Much is said about how fast Georgia Southern is growing. But there appears to be an inverse relationship between the size of a school and its sense of support for its team. Georgia Southern has so many students the gym won't hold them all, but spirit at the games is at a low ebb.

I can remember when spirit was the pride of the campus. The cheerleaders didn't have to urge the students to stand up for Dixie . . . in fact the cheerleaders didn't have to do much leading . . . there was a constant roar during the games, so they were following most of the time.

The Eagles are doing a fine job and the prospects for the rest of the season are good, but the team needs the support of the entire student body, so let's give it to them.

High-scoring Phillips Five Play Eagles Here Saturday

By JOHN EDEN

Sports Editor

The Eagle basketball team will go up against the toughest team on the '65-'66 schedule tomorrow night, Jan. 15, when they meet the Phillips 66 Oilers, top-ranked touring industrial team.

Commenting on the prospects of the contest with the AAU team, Eagle mentor J. B. Searce said, "If we play like we did against East Tennessee State, we have a chance of beating the Oilers." Georgia Southern defeated East Tennessee State 82-67.

The Eagles carry a 9-4 record into the game and a team scoring average of 80 points. The 66ers have lost only one game and are averaging about 100 points per game. They defeated the University of Georgia 93-61 last month.

The probable starting lineup for the Phillips team will be Tom Black (South Dakota State) 6-10 or Kendall Rhine (Rice) 6-10 at center, Tony Cerkvenik (Arizona State) 6-4 and Ray Carey (Missouri) 6-7 at the forward positions, and Bobby Rascoe (Western Kentucky) 6-4 and Darel Carrier (Western Kentucky) 6-4 at guards.

The Oiler reserves consist of Lou Skurcenski (Westminster) 6-6 forward, Tom Patty (Texas Tech) 6-5 forward, Jim Kerwin (Tulane) 6-3 guard, Warren Rustand (Arizona) 6-2 guard, Harold Sergeant (Moorehead) 6-0 guard and Bull Kusleika (Tulsa) 6-4 forward.

The probable starting lineup for Georgia Southern will be Mike Rickard (18.7 average), Bill Pickens (15.2), Jim Seeley (12), Don Adler (11.1), and Jimmy Rose (10.5).

The Eagles go on the road next week to meet Tampa on Monday, Jan. 17 and Stetson on Tuesday, Jan. 18. GSC defeated Tampa 63-57 earlier this season in Statesboro. Both schools are long-time rivals of the Eagles. GSC holds the lead in both series, 21-17 over Stetson and 14-6 over Tampa.

The freshmen meet South Georgia Trade School (Americus) in the preliminary Saturday night at 6:15 in the Hanner Gym. They travel to Douglas to play South Georgia College on Jan. 18.

The Baby Eagles have posted a 5-2 record so far this season, dropping games to The Citadel Freshmen and the Oglethorpe freshmen.



HAROLD SERGENT
Oiler Playmaker



JIMMY ROSE
He Rambles

Adler, Rose Duo Sparks 9th Win

Don Adler and Jimmy Rose led a balanced Eagle scoring attack as the Eagles defeated Valdosta State College, 81-75, Monday night in Valdosta to push their season record to nine victories and four defeats.

Adler tossed in 18 points, and Rose scored 17. Mike Rickard bucketed 15, followed by Bill Pickens with 13 and Jim Seeley with 10.

Bobby Ritch, who is averaging 26 points a game, led Valdosta State with 28 points.

The hot-shooting Eagles, who hit 48 percent of their field goal attempts on 31 goals in 65 tries, battled the Rebels on even terms in the first half, and clung to a 39-38 lead at half-time.

Midway in the second half,

the Eagles pulled in front by seven points on a pair of baskets by Rose and one by Adler, making the score, 58-51. The Southerners maintained their margin until Rich hit a hot streak late in the contest.

Ritch sank three jump shots and a free throw to pull the Rebels into a 68-68 with 3:18 remaining, but Rickard put the Eagles back on top to stay with a pair of gratis tosses. Georgia Southern pulled to a 76-70 bulge with two minutes left to wrap up the contest.

The big difference in the contest was under the boards where the Eagles maintained a 48-36 advantage. Seeley was the leading boardcleaner for the winner with 15, aided by Pickens' 12.

GERRALD'S BARBER SHOP

1 W. Main St.

"Heads We Win"
Beneath

Bulloch County Bank

MOCK'S BAKERY

FOR
The Finest
IN
Pastry

41 S. Main

A NEW IDEA IN GREETING CARDS from

BUZZA
CARDOZO

Mel
Blanc
Blanks

FUN CARDS WITH BLANK SPACES FOR YOUR OWN PUNCH-LINE

Eagle College Store



THE GAME GETS ROUGH UNDER THE BOARDS
Big Jim Seeley Goes Up for a Rebound as Eagles Pickens, Rose and Adler Head Into The Scuffle.

Burton-led Gymnasts Vie Against Paladins Tonight

The Eagle gymnasts meet the Paladins of Furman University tonight at 7:30 in the first competitive meet of the season.

The meet will be held in the Alumni Gym and students will be admitted free on presentation of ID cards. Admission for non-students will be 50 cents.

According to Georgia Southern gymnastics coach Ron Oertley, there will be competition in all regulation events—free exercise, side horse, long horse vaulting, parallel bars, still rings and trampoline—plus ex-

hibitions in tumbling and rope climbing. He said that Furman is one of the strongest teams GSC will meet this season.

Coach Oertley, in his first year with the gymnastics team, said that the team has worked hard for the meet but several problems had come up. He said that half of the team which worked out last quarter has been lost through ineligibility.

The Eagle team consists of eight competitors, headed by senior Kip Burton, who will compete in all events. "Burton is our all-around top man, and he should give a great perform-

ance," Coach Oertley said.

Other competitors in the meet will be: Charles Eunice - free exercise, parallel bars, and horizontal bar; Joe Lumpkin-trampoline, still rings; Rick Ward - horizontal bar, parallel bars and vaulting;

Also Bill Aldrich - side horse, still rings, and exhibition rope climb; Don Johnson - parallel bars, horizontal bar and vaulting; Jimmy Kirkland - vaulting; Denny Davis - side horse, vaulting.

On next Saturday, Jan. 22, the Eagles will compete with the gymnasts from Slippery Rock (Penn.) College here in the second meet of the season.

Eagle Cagers Flying High After Slow, Sluggish Start

The Eagle basketballers will carry a 9-4 record into Saturday night's fracas with the touring Phillips Oilers.

Due to exams and holidays, the George-Anne has not gone to press since Georgia Southern's opening loss to Shorter College at the Hanner Gymnasium. Here is a list of the scores of games played since Dec. 1 to bring the record to date.

GSC 80, Shorter College 87.
GSC 85, Southwestern Louisiana 84.
GSC 75, McNeese State 60.
GSC 76, Lamar Tech 86.

GSC 73, The Citadel 78.

GSC 63, Tampa 57.

GSC 82, East Tennessee State 67.

GSC 78, Southwest Texas State 72.

GSC 85, Lenoir Rhyne 82.

GSC 90, Tennessee Wesleyan 73.

GSC 105, Atlantic Christian 74.

GSC 67, Oglethorpe 71.

GSC 81, Valdosta State 75.

Coach J. B. Scarce's Eagles beat Southwestern Louisiana and McNeese State on the road before dropping a pair to Lamar Tech and The Citadel, al-

so on the road.

The Eagles returned home to defeat Tampa, launching a six game winning streak before bowing to undefeated Oglethorpe College in Atlanta. The Eagles then edged Valdosta State in Valdosta.

The Eagles won the Chattanooga Invitational Tournament in Chattanooga, Tenn., on Dec. 28-29, by defeating Lenoir Rhyne and Tennessee Wesleyan. Mike Rickard was a sensation, hitting 33 points in the first game and 22 in the second contest.

Other outstanding performances during the holidays were a 23-point effort by Jimmy Rose against Lamar Tech, a 25-point showing against McNeese State by Bill Pickens, another 25-point output by Pickens against East Tennessee, and 23-and 30-point efforts against Southwest Texas and Atlantic Christian, respectively by Rickard. Rose turned in a 22-point showing against Oglethorpe.



KIP BURTON

He's Big Man

Eagles Tripped By Oglethorpe As Rose Shines

The Eagles, falling behind by 10 points in the first half on numerous fouls and floor mistakes, battled back to throw a he-man scare into undefeated Oglethorpe College before dropping a 71-67 thriller Saturday night in Atlanta.

Rambling Jimmy Rose was the ringleader in the Eagles' near-miss, bucketing 22 points. Mike Rickard was the only other Southern player in double digits with 14.

Jerry Sams had 17 to lead the Petrels, followed by Doug Alexander and Roger Littell with 14 apiece.

Georgia Southern fell behind early in the games, and spent the rest of the contest trying to catch up to the unbeaten Petrels. Oglethorpe led, 43-33, at halftime, and upped its margin to 55-40 before the Eagles got going.

The Eagles rallied to tie the count at 67-67 on a bucket from underneath by Rickard with 1:01 left. However, attempting to break up Oglethorpe's famous stall game, Don Adler fouled Alexander who hit two free throws to push the Petrels back on top. Petrel Wayne Johnson added two more free throws to wrap up the scoring.

The Eagles had a chance to tie the count with 10 seconds to go, but forward Tommy Dial was charged with offensive charging while driving toward his basket.

Oglethorpe won it at the foul line, sinking 31 of 42 gratis tries. GSC hit 23 out of 43.

Netters Triumph In Practice Tilt

The varsity tennis team won the opening game of the season beating the Augusta Tennis Centre Club in a practice meet 4-2 at the end of last quarter in Augusta.

"It was a very unexpected victory," said David Hall, captain of the Eagle team.

George Wickham lost 5-7, 7-9 to Harvey Jackson, a former national rank player of Augusta. David Hall beat Paul McBride 6-3, 6-1. Johnny Roundtree beat Bill Kreuger 6-0, 6-0. Bjorn Kjerfve beat Bill Dana 6-4, 6-1, and Robin Olmstead lost to David Hall 5-7, 4-6. Hall and Kjerfve beat McBride and Kreuger 6-2, 6-3 in the only played double match.

A return match will be played in Statesboro next month.



DONALDSON-RAMSEY

Store For Men

STATESBORO, GEORGIA

CLEARANCE

SALE

25% TO 33 1/3
off

- SUITS
- SPORT COATS
- SPORT SHIRTS
- DRESS SHIRTS
- All Weather COATS
- TROUSERS
- SWEATERS
- JACKETS
- PAJAMAS
- ROBES

The biggest Sale of the
year most of our famous
name brand is included

GEORGIA SOUTHERN COLLEGE 1966 Varsity Gymnastics Schedule

Date	School	Location
Jan. 14	— Furman	Southern
Jan. 22	— Slippery Rock	Southern
Feb. 5	— Citadel & Va. Military	Citadel
Feb. 11	— Florida	Florida
Feb. 19	— Georgia	U. of Georgia
Feb. 26	— Auburn	Southern
Mar. 4-5	— Southern Intercollegiate League Championship	Greenville, S. C.
Mar. 18-19	— NAIA Championships	Macomb, Ill.

PLAY THE I. D. GAME With Us

each week at the OXFORD SHOP
will be posted ten (10) I. D. numbers.
VERY EASY TO WIN... just stop in and
check your I. D. with those posted.

This weeks winner will receive a
beautiful LONDON FOG JACKET
CONTEST ENDS EVERY THURSDAY

... take a few minutes out each
week and check that I. D.

at

The OXFORD SHOP
in the MODERN UNIVERSITY PLAZA

Organizational Baseball Meeting Scheduled For Monday at Gym

Coach J. I. Clements has announced an organizational meeting for the Eagle baseball team for Monday, 7 p.m. in the gym. He said that all students interested in playing on the baseball team were welcome and should attend the meeting.

Practice for pitchers and catchers will begin Wednesday at 3 p.m., and practice for the entire team will begin Jan. 24, 3 p.m.

Clements, who guided the Eagles to the National Associa-

tion of Intercollegiate Athletics championship in 1962, said, "We are looking forward to a good season. We have some good boys back from last year's team and some real good first year men."

The Eagles compiled a 23-9 record last season and finished runnerup in the NAIA Area VII playoff.

The Eagles will play a 33-game schedule this season, starting March 12 against the University of Kentucky.

SPEE - DEE

Dry Cleaners and Shirt Laundry

- Drive-In Window
- Very Close to Campus
- Night Depository
- Quick Service

A & W Drive In

Hungry for Something Really Delicious?

try the "Mama Burger Basket"

a large delicious hamburger fixed to your likes, French fries, cole slaw, Indeed a filling meal for only **69c**

SPECIALITY FOR YOU ON WEDNESDAY

1/4 chicken broasted just right, served with French fries, cole slaw and hot rolls **49c**

EVERYDAY SPECIALS

BARBECUE BASKET . . . hot barbecue served on a large bun, French fries and coleslaw, hot rolls **89c**

SHRIMP BASKET . . . large basket of delicious golden brown shrimp, French fries, cole slaw, hot rolls **99c**

Mama Burgers on large buns **45c**

Papa Burgers on large buns **55c**

Baby Burgers **19c**

ROOT BEER served in tall frosted mugs

8 oz. **10c**

16 oz. **15c**

ALL FLAVOR MILK SHAKES **30c**

COKE - ORANGE - GRAPE

A & W Drive In

Just Two Blocks from College Gate
Home of "Mama & Papa" Burger

GEORGIA SOUTHERN COLLEGE

1966 Baseball Schedule

Date	Team	Place
March 12	Univ. of Ky. vs. GSC - (DH)	Statesboro
March 21	Univ. of Tennessee vs. GSC	Statesboro
March 22	Univ. of Tennessee vs. GSC	Statesboro
March 26	Wake Forest vs. GSC	Statesboro
	Davidson College vs. GSC	Statesboro
March 30	Amherst College vs. GSC	Statesboro
March 31	Amherst College vs. GSC	Statesboro
April 1	Hampden Sydney vs. GSC	Statesboro
	Amherst College vs. GSC	Statesboro
April 2	Hampden Sydney vs. GSC	Statesboro
April 6	Erskine College vs. GSC	Statesboro
April 7	The Citadel vs. GSC	Statesboro
April 8	Pembroke State vs. GSC	Statesboro
April 9	Pembroke State vs. GSC	Statesboro
April 11	Carson Newman vs. Eastern Ky.	Statesboro
	Carson Newman vs. GSC	Statesboro
April 12	Eastern Ky. vs. Carson Newman	Statesboro
	Eastern Ky. vs. GSC	Statesboro
April 13	Eastern Ky. vs. GSC	Statesboro
	Carson Newman vs. GSC	Statesboro
April 14	Carson Newman vs. GSC	Statesboro
April 15	Univ. of Miami vs. GSC	Statesboro
April 16	Univ. of Miami vs. GSC	Statesboro
April 21	Wake Forest vs. GSC	Winston Salem, N. C.
April 22	Davidson College vs. GSC	Davidson, N. C.
April 23	Davidson College vs. GSC	Davidson, N. C.
April 27	Mercer University vs. GSC	Macon, Ga.
April 29	Fla. State Univ. vs. GSC	Statesboro
April 30	Fla. State Univ. vs. GSC	Statesboro
May 3	Jacksonville vs. GSC	Jacksonville, Fla.
May 6	South Carolina vs. GSC	Statesboro
May 7	South Carolina vs. GSC	Statesboro
May 9	Fla. State Univ. vs. GSC	Tallahassee, Fla.
May 10	Fla. State Univ. vs. GSC	Tallahassee, Fla.
May 13	Mercer Univ. vs. GSC	Statesboro

G. S. C. Organizations and Campus Groups

DON'T WAIT

Homecoming is two weeks away
PLACE YOUR ORDER NOW FOR
DECORATING MATERIALS

For Floats, Parties, Dance
You must Order now to have them
when you need them

KENAN'S

25 Siebald St. Statesboro, Ga.

Plaza Pharmacy

College Gate Plaza

for

Needed Items at Bargain Prices

Lanolin Plus	only 79c
White Rain	only 1.35
Aguanet	only 79c
Top Model	only 1.25

Registered Pharmacist Always on Duty

PHONE 764-4500

Eight Basketball Contests Open Intramural Play

Eight games highlighted the opening of the men's intramural basketball league Tuesday night in the Hanner Gymnasium.

The Rogues opened National League activity for the evening by downing Knight Hall 54-47. George Watson of Knight Hall led both teams in scoring with 18 while Wendell Rogers and James Stapleton shared high point honors for the Rogues with 12.

The Phantoms downed the Vandals 48-30 in the night's first American League action. Bob Sammons captured high point honors for the Phantoms with 13 while John Walters led the Vandals in scoring with 12.

The Bandits continued the nights National League activity by shading the Unknowns 35-33 behind Mike Moore's 14 point performance. Tom King and Don Calloway shared high point honors for the Unknowns with 8.

In other National League activity LaVista Hall trounced the Rhodents 72-54 and the Dixie Darlings rolled over the Hawks 55-40. Bill Parker led LaVista in scoring with 24 while Scotty Carpenter paced the Rhodents attack with 18. Joe McDaniel's 14 point performance led the Dixie Darlings to victory over the Hawks. Peter Stokes led the Hawks in scoring with 17.

The Rebels downed SEX 54-42 in another American League contest. Ronald Brock led the Rebels in scoring with 17 while Carey Trice paced SEX with 14.

The Trojans trounced APO 52-26 and Delta Sigma Pi shaded DPA 34-33 to round out the nights American League activity. Don Larsen led the Trojans in scoring with 11 while Russ Bachman paced APO with 13. Ronnie Floyd's 19 point performance paced Delta Sig to victory. Buck Rogers of DPA led both teams in scoring with 21.

The women's intramural league is currently holding practice sessions on Tuesdays and Thursdays in preparation for its league openers.

Tigers On Top In Point Parade

The Tigers are leading the point parade in the Women's Intramural Association with the completion of the football and speedball activities, intramural director Charles Exley announced.

The Tigers have 50 points, followed by the Yellow Jackets with 35. The Pythons have 25, and the Mustangs have netted 10.

Sixteen women have been selected on the speedball All-Star team. Six members of the Tigers were selected. They were Sandra Ray, captain of the All-Stars, Ginny Sutton, Charlotte Taylor, Judy Scruggs, Judy Brock, and Janie Nixon.

Other members selected were Mary Beth Strickland, Jane Dorman, Jan Printup of the Yellow Jackets; Hannah Teague, Cheryl Theus, Brenda Scruggs, and Elaine Tyre of the Pythons; Micki Williams, Carol Duckworth, and Vivian Brock of the Mustangs.

The All-Stars were selected by the team captains.

GARFUNKEL

Dear Garfunkel,

Have you gotten your copy of the new student directory yet? I hear it's great.

Apple Oh

Dear Apple,

I think the ideas in it are great, but we already have a population explosion in this country.

Garf

Dear Garfunkel,

Why can't the comptroller's office get a machine to make fee paying as easy as registering is?

Lintu Lang

Dear Lintu,

The reason is simple, IBM doesn't stand for International Bungling Machines and that office couldn't exist without bungling.

Garf

Dear Garf,

What are the Young Republicans doing handing out "support the war in Viet Nam" pamphlets in the dorms?

George Cong

Dear George,

Well, they supported a losing

candidate in 64, they might as well support a losing war in 66.

Garfunkel

Dear Garfunkel,

How did the Student Congress manage to get the gym for the concert last week?

Speck Tater

Dear Speck,

God was not in his heaven and so the Highwaymen were.

Garf

Dear Garfunkel,

Why are there new lines painted down the middle of the streets on campus?

Stoon Dryva

Dear Stoon,

I give up, you think of something funny.

garf

Dear Garfunkel,

Why has the Campus Security got the new uniforms?

Gary Baldy

Dear Gary,

Because the seat of justice was gone.

Garfunkel



VISITING ORGANIST
Plays Here

Bene W. Hammel Presents Recital

Bene W. Hammel, staff organist and musical consultant for the Institutional and Church Organ Division of the Baldwin Piano and Organ Co., presented an organ recital Wednesday night in McCroan Auditorium.

The program, which was open to the general public, included both classical and popular music performed on a Baldwin Organ furnished by Hammel's sponsor, the Gale House of Music of Savannah.

Hammel attended the University of Chattanooga and graduated with a Bachelor of Music degree in composition. Several of his choral works have been published with a number of organ compositions presently awaiting publication.

New Women's Residence Halls To Be Ready In Near Future

By TOMMY DREW
Staff Writer

The growing process of reorganization of present housing facilities as well as increased capacity of dormitory accommodations will reach its first stage with the opening of Olliff Hall, a 150-room girls dorm.

Next fall quarter students will return to find three new dormitories in operation. Two of these modern buildings will house 550 girls. Olliff Hall, the larger of the two, should be ready for use spring quarter of this year. It will offer to its female residents such features as modern color schemes in lobbies and rooms, plush carpeting in halls and corridors, modern furniture and tasteful interior decoration.

Winburn Hall will accommodate 250 girls and in its spacious surroundings will feature the same atmosphere as Olliff. Dorman Hall completes the list of new campus housing facilities at the College.

Already many housing assign-

ments for both men and women have been made for the fall quarter of 1966 and an additional 250 applications for women are presently being processed for assignment.

Miss Helen Mikell, Director of Housing, offers the following explanation as to how all dormitories are to be utilized, along with the capacity of each building, beginning in the fall quarter of 1966:

Freshman girls: Anderson, 108; Deal 108, Hendricks, 150; Lewis, 126; Veazy, 160.

Sophomore girls: 250.

Junior and Senior girls: Olliff, 300; Freshmen boys: Sanford, 172; Cone, 152.

Sophomore boys: Brannen 150.

Junior and Senior boys: Dorman, 250.

All new dorms are part of a six million dollar building program. This expansion of student housing facilities is the initial step in an overall 17 million dollar allotment which was realized over a year ago.

Art 555 Highlighted By 3-Week European Tour

By RON MAYHEW
News Editor

Art 555 has a more unusual course content than many of the other art courses available.

Students who enroll in this new course will depart for New York City several days after spring quarter finals and board a plane for Europe to study on-the-scene Renaissance art for 21 days.

The new program, sponsored by the college's division of Arts, is open to either graduates or undergraduates, and any interested student is welcome, according to Vito Caggiano, coordinator of the program. Caggiano added that no art experience is necessary as a prerequisite.

A \$750 fee will cover jet passage to and from Europe, travel between European cities, hotels, meals, ground transportation, tour services, tuition and insurance. The students will study Renaissance art in England, France and Italy.

After leaving New York by jet, the participants will begin a two-day study in London at the National Gallery and the Royal Academy. The group will then fly to Paris for a two-day study in the Louvre. The remaining two weeks of the combination lecture-study itinerary will be spent in two Italian cities, Rome and Florence, with one side trip to Pompeii.

Each day approximately four hours will be spent in museums for observation, lectures and notes. The remaining time will be left to each student. Caggiano added that certain hours will be set up regarding curfew, but there will be many hours for tours, shopping and recreation.

When asked how many students could participate, Caggiano remarked that no maximum would be set. He added that he would like to take about 30 students and two chaperones. He stressed that there would be one chaperone for every 15 students.

"Verbal response has been great so far, but those that are

actually making the trip must pay a \$75 deposit before Feb. 20," said Caggiano. He added that the remainder of the fee will have to be paid before the trip.

Caggiano, who planned the course program, has previously studied in each of the museums the group will visit and also speaks fluent French and Italian.

Queried about the purpose of such a course, Caggiano said, "It's time that Georgia Southern took its place in the educational developments and practices that are currently being used in most major colleges. I hope that this trip will help pave the way for other programs of its type to further the curriculum varieties of the college."

Now in New Location

JIM'S HAIR STYLIST

Knight Village Plaza

Give Your Hair

Body A Radiant, Soft,
Natural Look



NO APPOINTMENT NECESSARY UNLESS
SPECIFIC HAIRDRESSOR DESIRED

PHONE 4-2121

VARSAITY

Sandwiches Grilled To Your Delight

Drinks Deserts

Side Orders Breakfast
of Fluffy Hot Cakes

Now Under New
Management

-College Gate Plaza-

NOTICE:

For your convenience we
are open each night
until 9:00 P M.

For:

Books

Outlines

Gifts

Magazines

School Supplies

Art Materials

Pleasure Reading Paperbacks

Etc., Etc., Etc.

LANIER'S COLLEGE BOOK STORE

Chandler Road

"Your're Treated Fair When
You Trade With Lanier"

BASKETBALL CONTEST

Address or
Dormitory of Student.....

City & State.....

Name

Pick the Winners

Win \$10.00 Cash!

Circle all the winners and receive \$10.00 cash. If no one gets all the winners the person naming the most winners will receive \$5.00 in cash from The George-Anne. In case contestants tie the prize money is equally divided.

1. In each ad on this page you will find two college teams scheduled to compete this week. Check the teams you think will win. Tie games count against you unless indicated.
2. Mail or bring your entry to The George-Anne office located in the Frank I. Williams Center not later than 2 p.m. Friday. Letters must be postmarked before this time.
3. Members of The George-Anne staff are not eligible to win.
4. Members of Faculty, Administration, are Eligible.
5. Only TWO ENTRIES per person.

The Statesboro Telephone Co.

"serving Statesboro and Bulloch County"

9 South Main St. Statesboro

S. Illinois — Arizona State



Rockwell Manufacturing Corporation

UCLA — California

Medical Center Pharmacy

OPPOSITE HOSPITAL

Hours: Mon. - Sat., 9 -9—Sun. 2-7

Duke — Wake Forest

The Singer Co.

Your Singer Service Center For:
Typewriters & Musical Entertainment

Kentucky — Vanderbilt

Sea Island Bank

and it's

SOUTHSIDE BRANCH

Just Off the GSC Campus

W. Kentucky — E. Kentucky

STATESBORO

Buggy & Wagon Co.

"Complete Line of Hardware"

1 Courtland St. 764-3214

Citadel — E. Carolina

WWNS Radio

Hear College Football

EVERY SATURDAY!

E. Tennessee St. — Aust. Peay

Pyrofax Gas Corp.

Bottle - Bulk

6 E. Vine St. 764-2700

Florida — Mississippi

T. J. Morris

WHOLESALE FOOD DISTRIBUTORS

I. G. A.

Franchise for South East Georgia

Florida State — Memphis

SUPPORT THE

Contest Advertisers

UCLA — Stanford

Bulloch County Bank

"service with a smile"

Georgia — Tulane

Johnson's Minit Mart

"When You Run Out of Something Run
Out to the Minit Mart"

"Open 8 Days A Week"—FAIR ROAD

Ga. Tech — V.M.I.

Music Box

"if it's Musical, WE HAVE IT!"

27 W. Main St.—Statesboro, Ga.

Jacksonville — Tampa

Four Points Service Station

Tires

Tubes

Road Service



Accessories

Wash

Polish

Lubrication

Ph. 4-2153

S. Main St.

Stetson — Rollins

City Dairy Co.

Grade A Dairy Products

Pasteurized Homogenized Vitamin D Milk

Ga. Southern — Phillips 66 "Oilers"