

Georgia Southern University

Digital Commons@Georgia Southern

The George-Anne

Student Media

11-19-1965

The George-Anne

Georgia Southern University

Follow this and additional works at: <https://digitalcommons.georgiasouthern.edu/george-anne>



Part of the [Higher Education Commons](#)

Recommended Citation

Georgia Southern University, "The George-Anne" (1965). *The George-Anne*. 453.
<https://digitalcommons.georgiasouthern.edu/george-anne/453>

This newspaper is brought to you for free and open access by the Student Media at Digital Commons@Georgia Southern. It has been accepted for inclusion in The George-Anne by an authorized administrator of Digital Commons@Georgia Southern. For more information, please contact digitalcommons@georgiasouthern.edu.



Happy Thanksgiving!

Bevy Of Beauties Seeking Miss Starlight Ball Honors

Miss Starlight Ball of 1965 will be crowned Saturday night when the results of the student election are revealed at the annual Alpha Rho Tau Starlight Ball in the Alumni gymnasium.

Twenty - two girls vied for the title Thursday in the election held in the student center. Each girl was sponsored by a campus club or organization.

The dance, lasting from 8:15 until midnight will have a "Calypso" theme. Tickets may be purchased from any Alpha Rho Tau member or at the door for \$1.75 per person.

The music will be furnished by the Malibus, a combo from Fort Valley, who recently completed engagements at Auburn and the University of Georgia.

Gloria Lane, Miss Starlight Ball of 1964, will crown her successor at the ball's climax.

Jan. 28 Is Date For '66 Parade

The 1966 Homecoming parade sponsored by Circle K Club, will begin at 2:30 p.m. Jan. 28, according to Roger Alderman, co-chairman with Bill Martin for the homecoming parade activities.

The tentative parade route starts on Southern Drive and leads out the front gate, down U. S. 301 and through town to Highway 80. The positions of the various floats will be determined by the order in which the organizations sign up with CKC.

"We urge all organizations to start planning their floats, and to sign up as soon as possible," said Alderman. "They may do so by contacting CKC, Box 2396, GSC."

There will be three trophies for first, second and third places respectively.

The contestants and their sponsors are:

Claire Hodges, Veazy Hall; Gail McKenzie, Wudie Hall; Pat Prince, Kappa Mu Alpha; Kenille Baumgardner, Concert Band, Mary Tom Burton, Theta Pi Omega; Laura Smith, Phi Beta Lambda; Kay Hendricks, Home Economics Club; Sandra Fleming, Delta Pi Alpha; Suzanne Thomas, Sanford Hall; Ginger Higgins, German Club.

Rae Burnsed, Masquers; Beverly Carlson, Alpha Phi Omega; Gwynn Fain, PEM Club; Julia Flynt, SGEA-SNEA; Linda Harper, Lewis Hall; Valda Roberts, Deal Hall; Donna Grey, Brannen Hall; Faye Arnett, Circle K; Maudie Walker, Anderson Hall; Blitch Ann Bird, Cone Hall; Marilyn Leaverett,

Hendricks Hall; Brenda Scruggs Gamma Sigma Upsilon.

Pictures of the contestants appear on page 9.

Junior High Education Majors Schedule Meet

Students majoring in junior high education are requested to report to Room 204 of the Education Division between 2 and 5 p.m. Tuesday to determine their schedules for summer and fall quarters.

Students unable to report on Tuesday should contact Dr. R. F. Lewis Wednesday between 9 and 12 a.m.

Mayor Clarifies Rumor Implying Denial Of Police

A recent rumor implying that the Statesboro town council has passed a resolution denying police protection to off-campus college activities is definitely untrue, according to Mayor William A. Bowen.

The story, which was widely circulated on campus Tuesday, alleged that the Statesboro town council met Monday night and unanimously approved a motion to cancel local police protection to any off-campus social activity sponsored by the college. The motion was said to have been passed as the result of an alleged racial disturbance at a recent college dance.

Upon hearing the rumor, Mayor Bowen stated, "Nobody introduced any such measure before the council and what's more, the council did not meet Monday night. A motion of this type has not even been discussed to the knowledge of my office."

Arnsdorff Elected Senior President

Keith Arnsdorff, Joe Mercer, Robin Almstead, and Steve Johnson were elected presidents of the senior, junior, sophomore and freshmen classes respectively, in elections held Tuesday.

Other class officers elected are Clayton Mullis, senior vice president; Gloria Lane, senior secretary-treasurer; Gail Elkins, junior vice president; Pam Williams, junior secretary-treasurer; Walter Coleman, sophomore vice president; Connie Dodgen, sophomore secretary-treasurer; Donnie Evans, freshmen vice president, and

Ginny Sutton, freshmen secretary-treasurer.

The Senior Class cast 107 votes. Arnsdorff defeated his opponent by 68 votes while Mathis and Hill captured their posts with decided majorities of 53 and 30 votes, respectively.

Joe Mercer, junior class president, won easily over his opponent by 71 votes. Gail Elkins claimed the junior vice presidency by a narrow 16 vote margin. Pam Williams defeated her opponent by some 30 votes.



ARNSDORFF

The sophomore class presidency was claimed by the largest margin of votes as Robin Olmstead defeated his opponent by 183 votes. Walter Coleman, vice president, had a 55 vote lead while Connie Dodgen won over Sue Hudson by the narrow margin of seven votes.

Steve Johnson secured the freshmen class presidency by winning over his opponent by some 80 votes. Donnie Evans nosed out her opponent by 37 votes as Ginny Sutton won easily with a margin of 57 votes.

The seniors cast 107 votes while the juniors sent only 132 to the polls. The sophomores totaled 196 votes as the freshmen cast 339 ballots.

Danny Broucek, president of Student Congress, had the following remarks to make concerning the election, "The turnout for the elections was horrible. Students on this campus do not realize the importance of class officers. I think the word vote scares them away."

Temporary Decals Go On Sale Wednesday For Family Vehilces

Students may purchase temporary decals for 50 cents beginning Wednesday, according to Harold Howell, Campus Security director.

Howell said the purpose of temporary decals is to enable students to bring family cars on campus when it is necessary.

He said that in many instances students need a way to transport their belongings to and from school at the beginning and end of quarters. Sometimes students may need the family car for the same purpose before and after holidays, he added.

"It is not right for students to have to pay the full registration fee for a car that will

remain on campus for a short-term purpose," said Howell.

Howell said a student must show proof of liability insurance before being issued a temporary decal. He added that the decals will expire ten days after they are purchased.

"In cases of emergency, such as when a student's vehicle breaks down, a decal will be issued free of charge for seven days," Howell said. "The only stipulation is that the student already have his vehicle registered," he concluded.

Billy Joe Royal To Appear Here Dec. 2 At Dance

Billy Joe Royal and his studio band, Joe South and the Believers, will play for Alpha Phi Omega's dance Dec. 2 at the National Guard Armory.

The dance, from 7:30 to 11:00, will be casual and girls will be given late permits until 11:45, according to APO spokesmen. Admission is \$2.00 per person in advance and \$3.00 at the door.

Royal's hit records include: "Down in the Boondocks" and "I Knew You When."

GSC Directory To Be Available In Early Dec.

The 1965-66 Student Directory, compiled by Alpha Phi Omega, will be available the first week of December for 50 cents a copy.

The directory provides information such as names, classes, home and school addresses of all graduate and undergraduate students, names and addresses of all faculty members, a listing of all dormitory phone numbers, the college calendar of events, basketball and baseball schedules, meal schedules and an up to date map of the campus.

INDEX

Shakespeare Company	2
Jr. English Exam	3
Editorials	4-5
Society	6-7
Garfunkel	8
Sports	9-10-11
Contest	12



THE EAGLE SPEAKS ...

Dear Editor:

Now there seems to be a current fad to criticize the administration for every policy that it enacts. Students who do not think it is convenient to obey a college regulation now take the liberty to openly defy the authority of the administrative offices.

All of us might do well to remember one important fact: Whether we like it or not, the administration is the governing body of the college and as such it has complete jurisdiction in all matters of conduct.

Students should remember that when they disagree with a rule, there are proper channels through which to disagree. Open defiance of disciplinary authority is not one of these channels.

Sleep Is A Rare Treat For National Shakespeare Co.

By RON MAYHEW
Managing Editor

The group which had been impatiently waiting sprang forward as a bus inched into the parking lot.

"You fellows gonna give us a hand?" queried a strangely accented voice.

The four GSC Masquers, who had volunteered to help the National Shakespeare Company assemble their stage set, bounded down the metal stairs.

Preferred Sleep

The exhausted actors slowly legs. The troupe which had journeyed over 400 miles that day descended from the bus and stretched their tired arms and would have preferred peaceful sleep to performing "Macbeth" two hours later.

Stored in the rear compartments of the specially adapted bus were piles of canvas, lighting fixtures, electric cords, set frames, props, and costumes.

The volunteers were promptly dispatched carrying equipment into the auditorium.

Wooden frames were strewn on the stage in a seemingly disorganized fashion with piles of folded canvas thrown beside them. Light bars and hundreds

of feet of wire were dropped on the floor.

Rows of Switches

A huge electrical console was carried gingerly up the stairs. Rows of numbered switches adorned the front of the panel with a bewildering maze of wires protruding from the rear.

After placing this master control in the stage wings, the group then split up with several members of the company attending to each of the varied stages of set assembly.

How long does it usually take to assemble up the complete set? "About an hour and a half," said David Bamberger, the company manager and lighting director, "but we're going to try to beat that tonight."

Like a well-oiled machine the crew members in charge of the backdrops deftly hung the canvas over frames and raised them into position, each assembly being stabilized by a set of snug-fitting locks.

Lights Are Last

Only after the backdrops had been fully assembled could the lighting crew begin to mount their equipment. The lamp fixtures were fastened atop tripods, elevated 20 feet, then locked into position.

A bearded crew member nervously paced the stage, barking instructions to his assistant on a step ladder who adjusted each of the dozens of lights.

A shadow was too large here, not enough light was being directed there, the wrong lamps were illuminating a particular spot on stage, one group of lights was not shining from a proper angle. These seemingly endless problems were quickly corrected.

Final Check

For the final lighting check a volunteer manned the control board and flipped switches to the tune of rapid commands: "B-6, A-4, no, hold it, C-4. That's good. . . kill those. D-7 and 8. Okay, the entire top row. . . good—very good. . . now the first three on the bottom row. . . no, kill that third one. . . okay, that'll have to do."

When the lighting director was finally satisfied, the crew changed into their costumes, barely having time to gulp one cup of coffee before the performance.

Last minute items, however, still remained. The company manager then scrutinized the stage as a football coach would inspect a wet field. The floor had to be mopped, a last minute light adjustment needed to be made, and a prop had to be shifted slightly to the left.

Wait Was Worthwhile

Nodding his satisfaction, he signaled that the early arrivals who had been patiently waiting

outside could now enter. Their later applause indicated that the wait was worthwhile.

A number of students rushed to the stage after the play had ended. As they approached, Bamberger appeared from the left stage door. "If anybody would like to help take down props, we'd appreciate it."

Some Were Discouraged

Several admirers were discouraged and moved toward the side door. Most of the students, however, jumped at the chance to work beside the crew. Under meticulous supervision everything was dismantled and reloaded aboard the bus in a mere half hour.

When the stage was empty and a few pleasantries had been exchanged, the troupe started for the door. "There's coffee and cake for everyone backstage," invited Robert Overstreet, coordinator of the Masquers.

One actor looked longingly toward the bus. "We'd rather have sleep," he began softly. A short lady with a long grey pony tail approached him and remarked disarmingly, "You were just wonderful, I've never enjoyed anything so much."



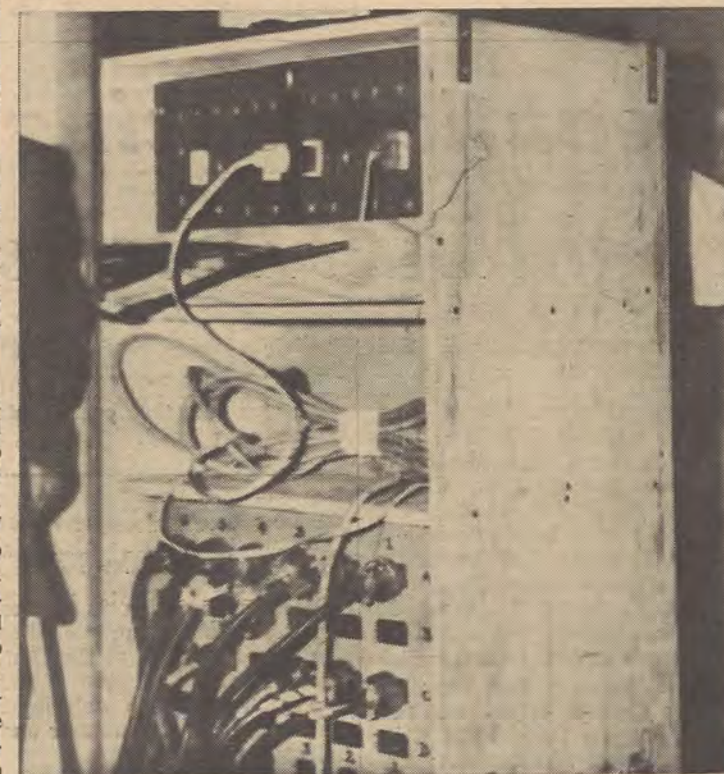
IS IT PLUGGED IN?

Lighting engineer makes final circuit check.



MANAGER LENDS A HAND

Company manager David Bamberger demonstrates assembly of tripod for light bar.



WHICH WIRE?

Rear of light control panel reveals intricate maze of wiring.



CONSTANT CHECK

Even the pros keep notes and script handy.



A REMINDER

enrich YOUR educational background with

BARNES & NOBLE COLLEGE OUTLINE SERIES

KEYED TO YOUR TEXTS

famous educational paperbacks over 100 titles on the following subjects:

ANTHROPOLOGY
ART
BUSINESS
DRAMA
ECONOMICS
EDUCATION
ENGINEERING
ENGLISH
GOVERNMENT
HISTORY
LANGUAGES
LITERATURE
MATHEMATICS
MUSIC
PHILOSOPHY
PSYCHOLOGY
SCIENCE
SOCIOLOGY
SPEECH
STUDY AIDS

On Display at

KENAN'S

"Ye Olde Shoppe"

Books - Pictures
Gifts

25 Siebald St.
Statesboro



Wishing For
You A
Happy and Safe
THANKSGIVING
Fifth Wheel Jewelers
Simmons Shopping Center

SPEE - DEE
Dry Cleaners and Shirt Laundry

- Drive-In Window
- Very Close to Campus
- Night Depository
- Quick Service

Otis Superette
Staple and Fancy Groceries
FRESH MEATS

PHONE 4-2121
— We Deliver —
S. Main — Next to Paragon

MOCK'S BAKERY
FOR
The Finest
IN
Pastry
41 S. Main

Expository English Exam Required For All Juniors

By DEAN POLLARD

Beginning in the fall of 1966 all juniors will be required to take an examination in simple expository English, according to Paul F. Carroll, academic dean. Each test will be examined by three members of the English faculty and agreement by two of them will determine the student's grade.

The papers marked unsatisfactory will be referred to a remedial course in composition, and a passing grade in this course (English 350) will then be mandatory for a student's graduation.

The program had its trial run in the division of business administration, where the exam has been a graduation requirement for the past three years.

Dr. Paul LaGrone, chairman of the business division, explained that the examination is nothing new and is standard in many colleges and universities throughout the country. He ad-

ded that such a requirement is necessary in a state-supported school which accepts so many transfer students from junior colleges.

According to LaGrone's figures, compiled over the past three years, these transfer students have almost twice as many failures on the exam as former GSC students.

Reactions from faculty members in the various divisions have been favorable to the new program.

Dr. Woodrow Powell, professor of English, expressed approval of the examinations and added that the purpose is not just to get students into remedial English courses but to make them aware of the importance of composition in all fields. He hoped that the final result of the testing will be a student body so composition-conscious that the remedial courses will no longer be needed.

"Many students," Powell ad-

ded, "are perfectly willing to take the remedial course several times before passing it and if this attitude continues, I feel that some limitations will eventually have to be placed on this."

John Lindsey, assistant professor of education, felt that the tests will strengthen the total college program by identifying those who need extra help. Lindsey stated that "this will be another tool for teachers to use in preparing students for the professions they hope to enter."

According to Otis Stephens, professor of political science, a person's ability to communicate in writing is essential and he felt that the college has taken a big step in recognizing that the writing ability of many of its students needs improvement.

Duncan Elected To Presidency Of German Club

Larry Duncan, sophomore from Macon, has been elected president of the German Club for winter quarter.

Other officers are: vice president, Sheila Waters; and secretary-treasurer, Connie Waters. The new officers were elected at a Nov. 11 meeting in the audio-visual room of the library.

Miss Ginger Higgins, sophomore from Jacksonville, Fla., was selected to represent the club in the Miss Starlight Ball contest.

The program included a film entitled *Berlin-Test for the West* and a conversation period with Mesdames James Strickland, Walter Lynch and Z. Y. Farkas, members of the Statesboro German Circle.

The conversation after the business meeting is a regular feature of German club, and Dr. Zoltan Farkas, the club's sponsor, encourages all former German students and others interested in the language to attend these sessions.

Availability Of \$2,000 Grants Announced For U. S. Scholars

The availability of Lena Lake Forrest fellowship awards for 1966-67 has been announced by the Business and Professional Women's Foundation.

received by Feb. 1, 1966 and candidates will be notified by April 15, 1966.

Grants up to \$2,000 will be made to United States scholars. Applicants must be within one academic year of their doctorate, must already hold a doctorate or must be scholars of demonstrated ability who wish to do research. Study and research topics should pertain to social, cultural or political activities of United States women.

This grant is the latest in a series established by the National Federation of Business and Professional Women's Clubs, Inc. in 1923 in honor of the late Lena Lake Forrest, Detroit insurance woman and president of the federation from 1920 to 1923.

Previous fellowship winners have contributed research on subjects pertaining to women in business, vocational counseling, the legal position of women in the United States and South America and a study of the woman executive in the U. S.

Application forms may be obtained from Ben Waller, director of student placement and aid. Completed forms must be

Masquers Help With Production

The National Shakespeare Co. arrived on campus late Saturday afternoon for its performances of *Macbeth* and *As You Like It*. With the help of Masquers, the professional touring company assembled the sets and lights.

"It was exciting to watch professionals at work," said Robert Overstreet, director of Masquers. "The sets were temporary collapsible frames to which the various canvases were attached. It was good for those who are interested in the theater to be able to help with the stage management," he added.

"The members of the company were well pleased with the help given them and the stage on which they worked. Masquers served coffee and cake after the performances, and the company appreciated it," Overstreet continued.

Pedal Pushers, Slacks Now 'In' At Shopping Area On Weekends

Women students may now wear slacks, pedal pushers, dungarees, slim jims or Bermuda shorts in the shopping areas adjacent to the Georgia Southern campus on Friday after classes and all day Saturday until the evening meal, according to Dean Lulane McBride.

The Lynne Hall House Council announced the change in the appropriate dress regulations of the college, and the measure has approval from the Office of Student Personnel.

Miss Andrea Mosely, president of the Lynne Hall House Council, said that several coeds living in Knight Village had suggested the change, and it was accepted favorably.

Affected by the change are the areas between the campus and Knight Village: The Eagle and Lanier's College Bookstore, Knight Village and the proposed shopping center on Georgia Ave. between Chandler Road and Knight Drive.

Miss Mosely said the change applies to on-campus and off-campus students. She added that the Lynne House Council has also recommended that the Minit - Mart and the Speedy Laundry be included in the change.

The Lynne Hall House Council also added that a sidewalk from Knight Village to Herty Drive would soon be under construction.

Dr. Zach S. Henderson, president, said the sidewalk would begin at the site of the future Weis Theatre and extend to Chandler Road. The college also plans to construct a sidewalk from the front of Olliff Hall and extend along Georgia Avenue to the Hollis Building.

Two Professors Attend Meeting

Drs. Thomas Harris and William L. Hitchcock will serve as chairmen of group assemblies at the fall conference of the Georgia Association of School Counselors Nov. 18-20. The meetings will be held at the Holiday Inn in Callaway Gardens.

Harris will speak on "The Team Approach to Guidance" and Hitchcock on "Group Guidance in Action."

Harris will also speak to a panel on "Research in Elementary Guidance."

Dance Club Meets Every Friday Night At Varsity

Students interested in dancing are invited to the Varsity every Monday at 6:30 p.m.

Mrs. Reba Barnes' dancing class for physical education majors, which meets in the entertainment room of the Knight Village Varsity, is forming a dance club and all students are invited to join.

Now in New Location

JIM'S HAIR STYLIST

Knight Village Plaza

Give Your Hair

Body A Radiant, Soft,
Natural Look

NO APPOINTMENT NECESSARY UNLESS
SPECIFIC HAIRDRESSOR DESIRED

PHONE 4-2121



Nic Nac Grille

"It Costs Less
To Eat Out"

We Cater To
Sports

All Orders
Available To Go

1 Block off 301
Open 5:45 a.m. to
11:00 p.m.

Statesboro's Oldest
R. C. Webb Owner
63 E. Main Ph. 764-2853

Piping RockTM

*A most distinctive fragrance
for Discriminating Men*



After Shave - 4 oz. - \$3.50 Cologne - 4 oz. - \$4.00



Campus Shop

EDITORIAL BOARD:

Tom King, Editor Ron Mayhew, Managing Editor
Bill Muller, News Editor John Eden, Sports Editor
GARY HANCOCK, Business Manager

NO GREAT DANGER

The Supreme Court decision concerning the registration of individual Communists is not as great a danger to national security as the panic mongers would have us believe.

Gus Hall, leader of the Communist party in the United States, has stated that his party is now free to participate in U. S. politics more freely. This is no indication that the party will automatically increase in strength.

The Communists have been active in Great Britain, France and the Scandinavian countries for many years and have not yet taken over. We do not consider the decision of the Court as an opening for the Communists to take over here.

CLOSER CHECK NEEDED

It really can be done.

Last week a student entered the library, removed a book from the shelf and took it out the door without a second glance from library personnel.

The book was later returned in the same fashion.

If books can be taken from the library this easily, then something is wrong with our present checking system.

Several weeks ago the George-Anne endorsed the system of open stacks which the library presently employs. Our position on this issue is unchanged. We cannot, however, support or condone the current lack of supervision at the exit doors.

Many college libraries post a checker at the door who inspects anything that a patron carries from the building. A librarian at a leading Southern university remarked that when a system of this type is used, book thefts are virtually nonexistent.

This should also be the policy at GSC.

True, a door check sounds juvenile, and ideally one should not be needed. But the existence of any theft suggests the need for regulation.

The checkers, in addition, should grant no favors to their friends. An inspector would always be tempted to let a friend through without having made certain that the book he carried was properly checked out.

Checking patrons as they leave the library sounds expensive when personnel salaries are considered. It is better, however, to pay the additional salaries than to lose a valuable book which is out of print and cannot be replaced.

ONLY ONE-THIRD

With class officers elected, it seems only appropriate to offer congratulations to victors. but considering the size of the Georgia Southern student body in comparison to the number that voted, the George-Anne is doubtful that the student body was represented fairly.

This fault in misrepresentation lies with the students themselves. A college student is supposed to be a responsible individual. The students of GSC are evidently not responsible. This was displayed in the elections since only 1288 students voted.

This is close to only one-third of the student body. Evidently two-thirds of the student body are not concerned with their leaders.

We strongly urge the student body to voice its opinion on campus wide issues. A college is composed of all its parts, not one of its parts.

LITTLE MAN ON CAMPUS



RON MAYHEW

Phony Thanksgiving Gratitude Follows Annual Turkey Feast

Thanksgiving... once again thoughts turn toward that annual carving of the great turkey.

The family clasps hands, a blessing is said, maybe a little longer than the one that is usually recited before a meal.



MAYHEW

Great slabs of meat are hacked off the turkey, covered with thick gravy and pushed into another corner of the plate to make room for a mountain of light, velvety dressing.

The plate starts around the table, pausing briefly at various loading stations. A hunk of cranberry sauce, a pile of rice, a serving of beans, a spoonful of this, a slice of that. By the time it reaches its recipient, it is piled high with a tantalizing array of food.

When dinner is over, everyone migrates to the living room to watch two or three of the many football games being televised.

Turkey sandwiches are served after the games are over, and great slashes of mincemeat pie add the crowning touches to a typical Thanksgiving day, one that has been a pattern in

American homes for the past decade.

Sometime during the day each person might pause and think briefly of what Thanksgiving means to him as an individual.

His thoughts might run like this:

"I'm thankful that we live in a country where we have so much freedom." But is everybody as free as they have a right to be?

"I'm thankful that we have our fighting men in Viet Nam to defend our American way of life." But have we openly voiced any opposition to the rebels who burn their draft cards and oppose the defense of freedom?

"I'm thankful that we live in a land of plenty and don't have to go to bed hungry each night." But have we made any effort to share that wealth with less fortunate neighbors?

"I'm thankful that we have schools and colleges available so that everybody has a chance to get an education." But does everyone use his time and talents sufficiently to merit this blessing?

"I'm thankful for generous parents who are encouraging me to become a mature individual." But have we told them "thank you" lately?

Thanksgiving is a time of gratitude. But gratitude is empty if it isn't expressed.

Tom KING

Recently much has been said and opinions have been varied concerning the social functions of GSC as opposed to the cultural activities that are presented to the students and faculty.

The big name groups that are scheduled for our colleges and universities receive much more publicity and are attended by a larger majority of students than a play or the appearance of a guest lecturer.

Why? This question could be answered in many different ways. First, the socially inclined college male when confronted with the question, will reply something like "get off it!" "Who wants to pay his money to go hear a man talk for an hour and a half or sit through a play for 2 hours



KING

Also, he may offer the excuse that his date would rather go to a dance than attend a lecture or a play. This may be true, but the majority of the time the male is "passing the buck" to avoid deserved criticism. He may state his views concerning the limited amount of knowledge he assumes he will acquire by listening to some "stuffed-shirt."

The GSC Student Congress normally sponsors a "big name" group every quarter. So far, this has failed to materialize this quarter due to circumstances beyond the Congress' control. The Congress had scheduled The Platters for a concert on Oct. 26 but were informed the needed facility could not be made available. Why does Student Congress and the service (?) fraternities of Southern have to sponsor only big name entertainment and not present cultural activities for the student body?

It may be that the frats are concerned about going in the hole financially if they were to sponsor an activity of a higher caliber other than the "usual" entertainment. This is a valid excuse for not sponsoring such activities. Why not face reality with the actual reason? A fraternity would be scared to sponsor such an activity! Why?

The members of the organization would feel like they were the laughing stock of the college. What is wrong with service fraternity losing money on a cultural activity and doing a "true" service to the college.

In this sense of the word, our service fraternities are not holding true to their names. Is service applicable to sponsoring the appearance of a big name group only. I would say no! If a service frat of GSC did sponsor an activity associated with the finer arts, a trend or pattern may be set for the other Greek organizations to follow.

Do you believe it would degrade society, or the society of Georgia Southern College, to combine the cultural with the social and help induce a respect and appreciation for both? Try it!

THE George-Anne

The opinions expressed herein are those of the student writers and not necessarily those of the college administration and faculty



Entered as second class matter at Post Office at Georgia Southern College, Georgia Southern Branch, under act of Congress.

NOV. 19, 1965

Editorial Board: Tom King, Ron Mayhew, Bill Muller, John Eden, Gary Hancock.

Copy Editor: Frank Tilton

Feature Editor: Louise McCord

Co-Society Editors: Ann Vaughan, Rachel Roundtree.

Business Manager: Gary Hancock

Assistant Business Manager: Roger Murphy

Circulation Manager: Gordon Turner

LETTERS TO THE EDITOR

Mr. Editor:

For weeks now, I have contemplated writing this letter, but I now compose it as a last resort.

I have seldom picked up a GEORGE-ANNE near the week's end and not been enlightened by the material therein, until recently that is.

You are quick to criticize the student body for not taking advantage of more enriching entertainment and failing to support such at this institution of learning. I cannot defend the position of the students here, for I do not know whether their attendance is compulsory or not. However, those of us who have been around for several years know that attendance to such affairs far exceed the attendance to performances of past years. It would also help if better plans were made to schedule different events with better order. A student who operates on a minimum allowance cannot possibly take himself and his date to a fine arts performance and likewise to another event later in the week. This has been the experience in the past.

If I may further add, it is not realized by the present staff that the GEORGE-ANNE is an excellent media for conveying more enriching expression other than those of Garfunkel. His ultimate aim must be to have absolutely no friends in the world. Not only does it take over one half a page for these senseless ramblings, but as the weeks' issues progress, I see his critical, trivial insults pop up through out the paper.

If you are truly interested in furthering the enrichment of students here at Georgia Southern College, then print us a poem, write us a selection from a prominent author or better yet, publicize coming events to this school. I am tired of reading the biased opinions of those who write more of their personal feelings into a news article than fact.

Now that you have turned our eagle into a critical hawk, represented the voice of the GEORGE-ANNE as a retarded flunkie, columnized and "gossiperized" our love life with your love links, I ASK YOU TO GIVE US BACK A LITTLE OF OUR PAPER. GRANTED IT IS THREE-QUARTERS ADVERTISING TO BEGIN WITH. WE USE TO ENJOY THAT ONE QUARTER.

If you print this, you will have violated my request again for space devoted to worth while news items. Yet, I ask you to take the exception and do so. I COMPLEMENT YOU IF YOU DO, AND I PROMISE SOME OF MY FAITH WILL BE RESTORED BY THE BELIEF THAT THERE IS STILL A STUDENT NEWSPAPER AT GSC.

Sincerely,
Denny Rushing

(EDITOR'S NOTE): May I be the first to compliment you on your thorough and critical analysis of the George-Anne! After all, how would anything progress or become more efficient if it weren't for constructive criticism.

Concerning the "enriching entertainment" on the GSC campus, I agree with you fully that plans for such activities should be scheduled in a more appropriate fashion. However, I am inclined to disagree with your statement referring to the student's allowance. His allowance has nothing whatsoever to do with his attendance.

It is his choice as to what he wishes to spend his money for, the dance featuring the top vocalists or performers or a lecture to be presented by a noted poet. Your statement about the increase in attendance to the enriching activities is true to a certain extent. You have to take into consideration the enlarged student body that has increased in leaps and bounds over the last few years.

The George-Anne does not suggest that the student body attend only these activities, but holds that students should at least show due consideration and respect for the finer arts.

Garfunkel is parody, not direct criticism! Also, your definition of a news story differs greatly from the accepted one. Might you be referring to the columns that appear on the editorial pages of the George-Anne? I hope some of that faith is restored!

Dear George-Anne,

Upon reading the Inquiring Reporter section in your latest issue, I became rather amused that the males questioned turned angry "thumbs down" on girls who swear. Now, I would like for you to send a reporter out on a mercy mission to save fallen manhood (if such it may be called)! Have her question go something like this: What is your opinion of college boys who (1) let their hair grow halfway down their backs, (2) talk, walk, and act feminine, (3) tell filthy jokes in mixed company and, in general, give no indication that they'll ever grow into strong, decent, dependable and good men?

Is this the big, bad "man's world" that the women are supposed to surrender to so meekly and sweetly? Forget it, boys, wake up and wise up!

Respectfully yours,
Marlina Reisling

P.S. Better yet, why not just print this in the next edition and let these boys decide their own fates?

Dear Editor,

It's not difficult to see why America is leaning constantly toward socialism. Our citizens abuse their right to vote by not doing so at every opportunity.

College students neglect their responsibilities to their school and their class by behaving in a like manner as evidenced by this week's class election.

College students who aren't interested in their school certainly aren't interested in their country.

Did you vote? We did!

Robert Williams
Ralph Jordan
Larry Stephens

Education--Ability To Think; GSC Students Only Accept

By BOB FLANDERS

We are being robbed of an education at Georgia Southern College. We are paying but not receiving, asking for but being denied, demanding and being laughed at, desiring but not pursuing. Rebel! Defeat the culprit! We are paying for an education. We must demand it!

But who is the culprit? It is you. You, the individual student and we the collective student body. We have been molded into a docile, mediocre group, willing to accept, but not question! Lazy and unambitious, we want and desire, but refuse to recognize that we are the way we are. Moreover, we become indignant when someone dares tell us the obvious that we're stupid and lazy!

In the last issue of this paper, we were told that without full seats and exuberant yells at basketball games we would have to recognize "that GSC is still nothing more than a small South Georgia Trade School." But are volume of sound and massive numbers indications of a college or university? Don't academic excellence, and sincere students deserve emphasis? Don't we in fact overemphasize the trivial, the mass, the volume?

What is an education? Isn't it a teaching certificate, a trade, a profession, training which will enable you to enter society and make money? No! An education is the ability to think, to question, to analyze, and to formulate ideas. It is not simply technical training which enables you to realize a secure monetary income. It does not simply teach you a skill.

An education develops a questioning, curious mind. One that moves beyond the often deceitful appearances of things, ideas and situations. One that rejects over-simplification. One that is not afraid to leave the monotonous twang of the Beatles to seek fulfillment in Bach or Beethoven. One that demands

to know why the preacher says that God is good, or that there is a God. One that demands to know why the English professor might say that "T. S. Eliot is the best modern poet," or why the scientist might say that "E equals MC squared in all cases." A mind which not only wants to but does, in a courteous and informed manner, question the sacred words of the teacher.

Here and now, an education of this nature is virtually impossible. Impossible because we accept the text book as the Truth. We view assignments as penalties, as impositions, as hardships, but seldom as a part of the process of acquiring knowledge. We procrastinate, seek outlines, old term papers, old tests, and other short cuts which will allow us more time to amuse ourselves. We consistently and stubbornly avoid work, or we seek means to minimize it.

We assume that our instructors are agents of truth. We are unwilling to question, to give, and to take. When invited by a professor to engage in harmless discussion, we freeze. Afraid! Afraid that we might offend him. Afraid that dissent, discussion, and questions might cause a cut in grades.

When in a discussion another student posits the accepted or unaccepted opinion, (which is rare indeed) we dare not challenge for to do so is to jeopardize a friendship: you are only popular by appeasing the crowd, agreeing with and not arguing against, but rather, hastily defending the accepted opinion. A few venturesome souls do on occasions engage in academic freedom, but are only too quickly shouted down as ing in a dream world, idealists, frauds, fools, radicals, or exceptions to the rule.

When will we realize that we are robbing ourselves? We must work, do research, read, write, discuss, examine, select,

reject and re-evaluate only to begin anew. There is no easy way to learn, no "crip" course, no instant knowledge, no easy path to obtaining an education. To think that there is to be under an illusion.

We have faults. Yes! But! Are we the only guilty culprit? Aren't we, in fact, honest though our endeavors may be, inhibited by limitations imposed on us by the administration, the faculty, the rules by which we must abide, an inadequate library, and by the very idea that everyone should spend four years in college? Yes! But this is not justification for Our complacency, Our irresponsibility.

We must wake up! An individual character can only be formed by experience and hard work, in short, by obtaining an education. We are perpetuating ignorance and mediocrity by allowing and even demanding that standards be lowered.

We must demand more class time, not free cuts! We must demand more assignments and cease our sniveling pleas for free weekends! We must demand more assignments and cease our sniveling pleas for free weekends! We must demand a better library and refuse to accept the rationalization "well it's better than it was." We must demand more responsible rules to be governed by and question the paternalistic and inflexible rules under which we now labor. We must demand a larger and more qualified faculty. We must begin to question the assumptions that everyone can and must spend four years in college—that everyone can be educated.

But we must demand all of this in a responsible, informed, and deliberate manner. We must begin to reject our present inferior standards or else we must recognize that GSC is in fact little more than a Trade School in South Georgia.

BILL MULLER

Faculty Group Concerned With GSC Library Strength

The hobby of a large number of our students seems to be complaining. The favorite victim of these complaints is the library. Since many people believe that our library is inadequate, I did a little research to find out how inadequate.

Students are not the only people concerned about the library. There is a faculty committee working on the problem.



MULLER

Dr. Gordon P. DeWolf is chairman. He and his committee are concerned only with books and materials especially in areas in which majors are offered or in which a major is planned.

After the library attackers finish knocking the book supply, they move on to the lack of funds provided for the purchase of books. Well, according to Dean Paul Carroll, the appropriation for the library this year is twice that of last year.

It must be admitted that the books on hand at the library are not as numerous as we would like them to be, but something is being done about it. Despite the fact that library appropriations are not keeping pace with the growth of the college, the appropriation is growing every year.

All figures used from this point on are drawn from a report delivered to the faculty by the library committee and from College and Research Libraries, 20 (4): 274 - 280, 1959.

A comparison of the growth rates of the library of the University of Georgia and Georgia Southern shows that the University's growth rate is no faster than ours and, in some cases, is smaller. The ideal number of volumes in our library would be 210,000. We have approximately 97,500. The figures on the University are not readily available; but according to Dean Carroll, they are not that much better off than we.

When questioned about the

situation, Dr. DeWolf stated, "This problem is not a problem of Georgia Southern alone. It is a problem of the University system. We would hope that the Board of Regents would take some positive action to strengthen the library system. One of the criteria that can be used as an index for institutional strength is its library."

Strength in our library is the aim of the faculty committee and the goal is being sought actively by the committee. Complaining about the lack does nothing. If a student thinks there is a lack, he could tell someone on the faculty of his division specifically what he thinks is lacking.

A positive attitude toward the needs of the library is much better than negative attitude. This is true in everything concerned with the college. If one takes a positive approach, maybe some of the problems could be solved. Nothing can be done through complaints, but anything can be achieved through work.

Inquiring Reporter

The new graduation requirement in the form of an expository English test has been creating some interest around the campus. Reactions to the question "Did you know, prior to the article in last week's George-Anne, that all departments will adopt the Junior English Exam next year, and what do you think about it?" are found below.

Phyllis Grimes, Statesboro— It ain't fair. We have a good English department here and if a student can pass three courses in it, he should know plenty.

Carol Stewart, Camilla— If you learned what you should have learned in the previous courses, you shouldn't have anything to worry about. We might as well like it, we've got to take it.

Mike Martsoff, Augusta— If

you're required to take so many English courses, I don't think you should be required to take another simply as a result of this test. There are enough courses that we have to take

Brannen Names First Sweetheart

Miss Donna Grey, 18 year old freshman of Waycross, was elected sweetheart of Brannen Hall Monday, Nov. 8. This was the first time this dorm has nominated its sweetheart.

The house council of Brannen Hall and Mrs. Bates, house director, entertained with a party in the dorm lobby for the purpose of electing a sweetheart.

The five girls nominated were Donna Grey, Lewis Hall; Carol Stewart, Anderson Hall; Sharon Dewberry, Hendricks Hall; Faye Youmans, Anderson Hall; and Cathy Carmichael, Veazey Hall.

The house directors and four girls from each of the represented girls' dorms attended the party as special guests.

"It definitely was one of the most successful parties we have arranged," Mrs. Bates said.

to graduate and taking another course would only prolong graduation.

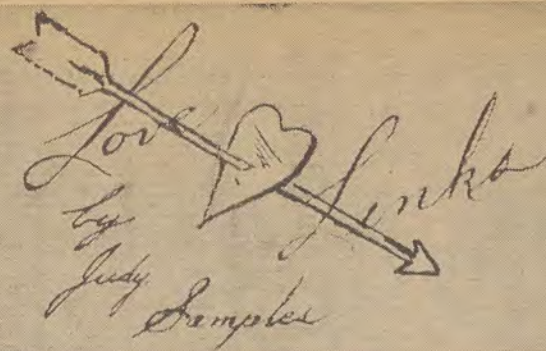
Judy Williams, Cedartown— It's a good way to see how much you know about the English language. That's something you'll use all your life. I'm glad they're putting so much emphasis on it.

Dan Redd, Thomasville— No, I didn't know I had to take it. If it pertains to your field, or if your major leans toward the aesthetics, then I can understand it being a requirement. Why not have a math, science or history exam? I think they're being one-sided.

Don Vik, Summerville, S. C.— I think it's basically a good idea because a thorough comprehension of the English language will be needed long after graduation. However, I'm surely not looking forward to taking it.

CORRECTION

In last week's coverage of the recipients of the Who's Who awards, Miss Linda Lee's activities that were listed were incorrect. This was due to a mix-up that occurred in the Office of Student Personnel as the names became mixed up.



DIANNE CLARK of Marietta is engaged to **ROY CLARK** of Acworth. Diane is a freshman Home Economics major.

Roy is a graduate of GSC and is teaching Science and PE in Kennesaw. Dianne and Roy plan to be married Dec. 19.

BECKY BUSH is engaged to **DICKIE DOZIER**. Both Becky and Dickie are from Colquitt, Ga. Becky is a freshman Home Economics major. Dickie graduated from Gordon Military College in Barnesville, Ga. They plan to be married in the near future.

LINDA THOMAS is engaged to **JOHN OTTS**. Linda is from Warner Robins and John is

from North Carolina. Linda is a freshman elementary major. John attended the University of North Carolina two years and is now in the Air Force and stationed at Warner Robins. He plans to finish at UNC when his period of duty is over. Linda and John plan a June wedding.

RUTH BURCH is engaged to **FREDDY MEEKS**. Ruth is from Pulaski and Freddy is from Waycross. Ruth is a sophomore elementary education major and president of Woody Hall. Freddy attends South Georgia College where he is majoring in Medical Technology. Ruth and Freddy plan a late summer wedding.

Gamma Sigs Sponsor Car Wash Saturday

The 10 pledges of Gamma Sigma Upsilon service sorority are sponsoring a car wash on Saturday, from 8 a.m. until 5 p.m. at Gaudry's Phillips 66 Station.

The cost of the car wash is \$1 per car, and proceeds will be donated to a Korean orphan fund.

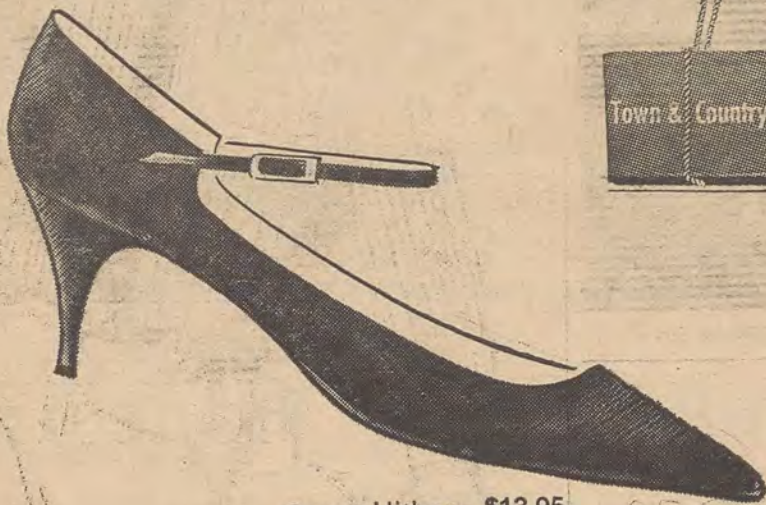


Southern Belle

Southern Belle this week is Betty Hamm, a junior Home Ec major. This brown eyed, brunette beauty is from Savannah and numbers among her hobbies sewing. Betty makes most of her own clothes.

T&C's BLACK VYRENE

THERE'S MAGIC IN



Come Hither \$13.95

With typical wizardry T&C conjures up enchanting beauty and marvelous fit. Vyrene spandex lets these late-day lovelies stretch with your every footstep and return at once to their original shapeliness. You're sure to be charmed by the beauty and spellbound by the feel of these fabulous Town & Country shoes.

Town
& Country
Shoes

Henry's
STATESBORO, GA.

"We try to make a life time customer not a one time sale"

WINN-DIXIE for that Thanksgiving dinner that everyone enjoys...

TURKEYS... TURKEY... TURKEYS

18 to 20 lb. turkey... 35c. lb.

10 to 18 lb. turkey... 39c. lb.

HAPPY THANKSGIVING TO ALL

To Each and All

A Very Happy Thanksgiving

From

Currie Studios



Left to right: Linda Harper, Julia Flynt, Brenda Scruggs, Kay Hendricks, and Suzanne Thomas.

Who Will Be Miss Starlight Ball?



Left to right: Mary Tom Burton, Sandra Fleming, Pat Prince, and Ginger Higgins.



Left to right: Blitch Ann Byrd, Valda Roberts, Claire Hodges, Gwyen Fain, Donna Grey.

Christmas Shop Early....

**For Santa will
soon be here**

A beautiful selection
of Christmas gifts
that will delight
anyone on your
shopping list.
Decorative Gift
Wrapping and
Mailing Service for
your convenience

**H. W. SMITH
JEWELERS**

"the finest of
Quality"
South Main

THE *Paragon*

SUNDAY:

Ribeye Steak, French fries, lettuce
& tomato—garnished with onion
ring. **\$1.49**

MONDAY:

Shrimp Basket—21 shrimp—cole
slaw & French fries—Hush Puppies **\$1.25**

TUESDAY:

Best Pizzas You Ever Tasted—
All 9-Inch Pizzas **75c**

WEDNESDAY:

Italian Spaghetti—All You Can Eat!
Parmesan Cheese, Garlic bread **98c**

THURSDAY:

"From the Grill"—Chopped Sirloin
Steak, French fries, Lettuce &
Tomato garnished with onion ring **98c**

FRIDAY:

All the fish you can eat—served with
cole slaw, French fries, hush puppies
tartar sauce **\$1.00**



Seated: Gail McKenzie, Rae Burnsed. Top: Beverly Carlson.



Bottom to top: Maudie Walker, Kenille Baumgardner, Laura Smith, Faye Arnett, and Marilyn Leverett.

GANT SHIRTMAKERS



Regent Stripe

Luxuriant English broadcloth with a silken
facade; bold multistripings on eggshell
ground; Gant's impeccable workmanship
and unerring fit. What more could one ask
for a button down? Regent Stripe must be
seen to be fully appreciated. \$00.



DONALDSON-RAMSEY

Store For Men

STATESBORO, GEORGIA

Lee Points Importance Of Good Horticulture Care

By RACHEL ROUNDTREE

The beauty of the Georgia Southern Campus is a point of pride to students and faculty alike. The man responsible for the perpetuation of this tradition is W.H. Lee, supervisor of grounds and maintenance.

Upon investigation of the charge made by a student that the tree limbs have been cut by persons without adequate horticultural knowledge, evidence was found to the contrary. Lee revealed his thorough knowledge of horticulture as he talked about his job.

"When a pecan limb is laden with nuts, it becomes heavier and more liable to break. I always paint the stump of the limb with black paint when a tree is pruned," Lee explained. Continuing his description of other pruning methods, Lee asserted that many trees can be saved just by being patient. "If a dogwood dies from draught, I just wait until I see

the little green shoot before I start trimming," he said.

"Keeping the plants on this campus healthy is a very big job. This is a 287-acre campus, including the golf course, wooded areas, the tracts in back of Veazey Hall, Dr. Henderson's house and along 301. So you can see why it is a tremendous task," he revealed. I have three men assigned to caring for shrubbery alone, not to mention the two men a day who pick up litter."

Gamma Sigs Opt 10 New Pledges

The sisters of Gamma Sigma Upsilon have selected their pledge class for Fall Quarter of 1965. This quarter's pledge class has ten girls.

The officers of the pledge class are Sandra Henderson, president; Mary Ann Anderson, vice president; Lilla Ann Durden, secretary; Elaine Morgan, treasurer, and George Martin, projects chairman.

The pledges assisted the sisters in the Gamma Sigma Upsilon Junior-Senior Day. This provided the high school students with an opportunity to become acquainted with GSC.

The pledges are sending the money made during the pledge period to the Korean Children's Home. The first money - making project sponsored by the pledges is a car wash Saturday, Nov. 20, from 8 a.m. to 4:30 p.m. at Gaudry's 66 Service Station.

APO Announces Date For Ugly Man Contest

The Ugly Man on Campus Contest, sponsored by Alpha Phi Omega, will be held Nov. 29-Dec. 1.

Each campus organization is to sponsor an "Ugly Man" candidate. Students vote by contributing money to their favorite ugly man, and the candidate with the most money will receive a trophy at the Billy Joe Royal Dance Dec. 2.

The proceeds from the contest go to the chapel fund.

Lee proudly recalled that very little shrubbery has been lost in the 14 years he has worked here.

"The loyal interest of my men is exhibited by one man who has been working on maintenance for twenty-one years. Mr. Johnson nor President Henderson have complained. We enjoy our work and don't need any students to tell us how to do our job," he declared.

Our trees and shrubbery are indeed being well cared for. Specialized and experienced personnel are employed who do have adequate knowledge of the procedure. Their methodical approach is visible by the scattered parking of the maintenance vehicles all over the sprawling campus.

Plans Announced For Registration

Students will draw registration permits for winter quarter from a box in the registrar's office Dec. 6-10, according to Lloyd Joyner, registrar.

A registration time will be designated on each permit and students will not be allowed to look at the cards until after they are drawn.

Joyner said the new method will give students an equal opportunity for drawing early registration times.

"Students should not get the idea that the earliest times may be drawn on the first day," said Joyner. "An early or late registration time may be drawn on any of the five days," he added.

Joyner said winter quarter registration will be held Jan. 3 from 8 a.m. to 8 p.m.

GARFUNKEL

Dear Garfunkel,
Why aren't there any academic fraternities on campus?

Beta Fie

Dear Beta,
Academic fraternities are not for us, they don't sponsor dances or have parties every week.

Garfunkel

Dear Garfunkel,
What do you think of the Supreme Court decision allowing individual Communists to go free from registration?

Ima Leegonair

Dear Ima,
Since most "loyal" Americans don't register to vote, and quite a few "patriotic" Americans try not to register for the draft, why should the Communists have to register for having a belief.

Garfunkel

Dear Garfunkel,
Why are you so vague?

Pointa Fucus

Dear Pointa,
Why are you so dense?

Garfunkel

Dear Garfunkel,
Why don't you praise something for a change?

Stat Usquo

Dear Stat,
Why don't you change something for some praise?

Garfunkel

Dear Garfunkel,
Why don't more people vote in student elections?

L.O.W. Voters

Dear L.,
Vote for who?

Garfunkel

Dear Garfunkel,
Why do the stop signs at Georgia Ave. and Candler Road face the through street?

Rita Way

Dear Rita,
They are placed in that position to protect you from the job. er, P. E. Majors in Knight Village.

Garfunkel

Dear Garfunkel,
What is the difference between a Georgia Southern dance and a tribal celebration of rites and rituals?

Shim Mee

Dear Shake,
There is very little difference in the actual performance of the dance and that of the rites and rituals. However, there is one notable distinction between the persons participating. The tribal rites and rituals are conducted by more civilized persons.

Garfunkel

Dear Garfunkel,
Cultural Life is creeping into the well-established social atmosphere of the college. Last week we had two plays. That automatically eliminated dances for those nights. What is the purpose of going to college if we can't dance every night.

Ordin Airy

Dear Hairry,
You impress me as definitely being a Roades Scholar. I hope you hit it at the end of this quarter.

Garfukel

Dear Garfie,
Thanksgiving is coming soon, and I have yet to hear you express thanks for anything. Aren't you thankful for something.

Pill Grim

Dear Pill,
Of course, I'm thankful for something. I'm thankful for the movement at Berkeley, the draft card burners, and good, plain, simple people regardless of what service frat they belong to.

KDE Inducts

25 New Pledges

Pledges of the Alpha Lambda chapter of Kappa Delta Epsilon were initiated into full membership Thursday, Nov. 11. Selection for membership in Kappa Delta Epsilon is based upon scholastic average, interest in the profession of Education and good character.

The girls initiated into the chapter included: Mary Anne Anderson, Barbara G. Bishop, Dianne Branch, Gail Brophy, Beverly Coleman, Marinell Conley, Cheryl Dean, Gail Elkins, Dale Harvey, Linda Holton, Nancy Jenkins, Sandra Kicklighter, Judy McDonald, Winona Meeks, Peggy Miller, Sheila Miller, Sue Ellen Poole, Sara Jean Smith, Carol Talton, Sue Ellen Poole, Sara Jean Smith, Carol Talton, Cathi Tucker, Mary Carol Turner, Elaine Tyre, Linda M. Willis, Carol Yawn and Peggy Matheson.

The initiation ceremony was conducted by Gloria Lane, president and the other officers, Patsy Simmons, Jackie Evans, Mary Wilson and Martha Lamb. Miss Constance Cone is the advisor of the organization.

HINES

DRY CLEANERS & SHIRT LAUNDRY

A Service to Georgia Southern
For 21 Years

—One Day Service—

34 W. Main St.

DELICIOUSLY COOKED CHAR BROILED BRAZIER BURGERS

"Oh! They're So Good"

Dairy Queen and Brazier

"The Cone With The Curl On Top"
corner of Noth Main and Highway 80

NOVELS

for your pleasure reading, over 1000
enjoyable paper backs for your selection.

Many New Items Are Arriving Each Day

PERFUME

- SHALIMAR
- CHANEL NO. 5
- INTOXICATION

Evening Bags

- Hand made original
by HAND MATES OF
MIAMI.

by HALLMARK

- Thanksgiving Cards
- Beautifully designed Stationery
- Playing Cards

Large Supply of Blue Test Booklets

Visit Lanier's and when you're there don't forget
to ask about... "WHAT'S NEW PUSSY CAT"

LANIER'S COLLEGE BOOK STORE

"You're always treated FAIR when you trade with LANIER"
just off campus... Georgia Ave. and Chandler Road

Varsity, Freshmen Clash Monday In Benefit Game

The two Eagle basketball squads will clash Monday at 7:30 p.m. in the Hanner gymnasium for this season's benefit game.

Students and adults will be charged admission to the varsity - frosh scrimmage game and proceeds will go to the Georgia Hall of Fame and the NAIA Olympic Fund, according to J. I. Clements. Admission

will be \$1 for adults and 50 cents for students.

The scrimmage will replace the Blue-White game this year, according to Head Coach J. B. Searce. Commenting on the reason for the change, Searce said, "We don't have enough players on the varsity to divide into two equal squads, and since we have a full and what looks like an excellent freshman team, it seems to be the

best idea for them to play each other."

According to Coach Searce, the game will serve a three-fold purpose. Not only will it provide for the fund donations, but also it will give students and the community a chance to see both teams in action; and it will provide statistics important in evaluating the performances of individual players and in determining the most effective team combinations.

Plans are to introduce the entire Georgia Southern basketball family, including all players and coaches with background information on each, Searce said.



EAGLE PRACTICE SESSION

The Basketball Team in a practice scrimmage prepare for game against Shorter College December 1.

SNACK BAR

— Student Center —

NOW SERVING ALL POPULAR BEVERAGES
Coca-Cola—Grape—Orange—Rootbeer—Sprite

— SPECIAL —

5c—10c—20c

mmm! Good! Cheese Burger

30c

Piping Hot French Fries with Large Coke

20c Tax Included

FROM OUR NEW MACHINES

S P O R T S

GEORGIA

Fri. Nov. 19th

Saturday Nov. 20th

"ZBRA IN THE KITCHEN"

"YOUR CHEATIN HEART"

with George Hamilton

Sun. Mon. Tues. 21, 22, 23

"DARLING"

with Laurence Harvey

Wed. Thurs. Fri.

24-25-26

"THE CINCINNATIE KID"

with Steve McQueen and

Anne Margret

DRIVE-IN

Fri. Nov. 19th.

"FORTY ACRE FEUD"

with 25 Country hits

Sat. Nov. 20th.

"JOY IN THE MORNING"

with Richard Chamberlain

"THE TALL STRANGER"

with Joel McCrea

Sun. Mon. Tue. 21-22-23rd

"CLEOPATRA"

with E. Taylor, R. Burton

Wed. Thurs. 24 - 25th.

"JOHN GOLDFARB PLEASE COME HOME"

Fri. Nov. 26th.

with Shirley MacLaine

and Peter Ustinov

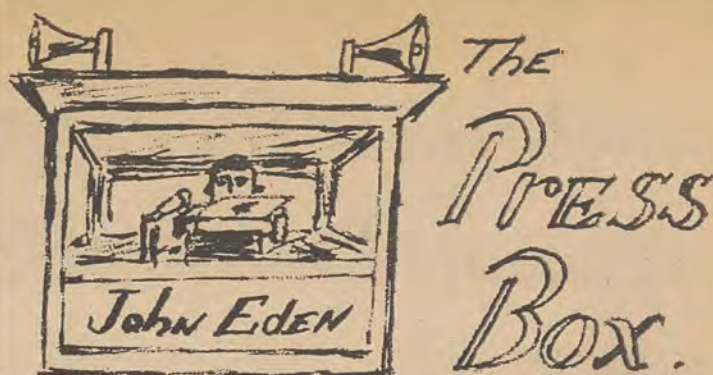
Fri. Nov. 26th.

Sat. Nov. 27th.

"THE FAMILY JEWELS"

"ROUSTABOUT"

with Elvis Presley



Eagle Park (which is, by the way the official name for the mysterious area referred to as "behind the Hanner Building") has been the scene of much extraordinary activity during this quarter. The return of the intramurals program to the Georgia Southern campus has been enthusiastically received by the student body. Individuals and organizations have shown enthusiastic competitive spirit and there has even been an ever-increasing crowd of spectators at the football games.

Coach Charles Exley has done a fine job of organizing the program and has kept it rolling, which was no easy job. Charley knows how to get things done.

The men's touch football league ended play this week, and the program will move on to basketball. The intramural program is also responsible for the revival of a tradition from the old GTC days: The Thanksgiving cross-country race which will be held Tuesday.

The women's program began with a flag-football game; the women are now playing speedball — or at least some form of it.

The major emphasis next quarter will be basketball spring quarter it will be softball. Minor sports are also included in the program.

Much is said about the vitality of athletics to collegiate life, but this need can't be filled by varsity competition alone. Obviously everyone who wants to can't be on the basketball team, and the intramural program is geared to the average athlete. It gives him a chance to exercise and develop his competitive spirit, and it provides a more completely rounded athletic program for the school.

CLAY-PATTERSON FIGHT

"And in this corner, defending champion Muhammad Ali?"

"Yeah, and I'm the Greatest"

Somehow Cassius Clay's black Muslim name (which always makes me think of The Klan) just doesn't fit his mouth. I just can't picture Muhammed anybody standing up and shouting, "I'm the Greatest."

Clay is going to have to prove again again that he's all he says he is when he meets former world champion Floyd Patterson in the Atlanta ring Monday.

He's proved it before, but in my opinion he's still a big-mouthed punk even if he does produce. One of the qualities of the good athlete, of sportsmanship, is humility. A healthy spirit of confidence is an asset, but Ali Cassius is too verbal.

As was said while sitting on the rail fence. "Never was a hoss couldn't be rode, never was a man couldn't be thrown"; sooner or later the Mouth is going to crawl on the wrong "hoss" — and it may well be named Floyd.

EAGLES VS. HAWKS

The Eagles of GSC take the floor Dec. 1 against Shorter College for the first regular season game with a healthy 13-man squad averaging 6-3.

C & F DOLLAR STORE

'The Most Unusual Store'

Bargains upon Bargains in all
Cosmetics and Dry Goods...
Come in and Shop as you Please

5 South Main Street

Travel In Europe Summer '66

ON THE EIGHTH ANNUAL COLLEGE STUDENT TOUR

Choose from SEVEN unique tours to Germany, Spain, France, Scandinavia, Greek Islands, Istanbul, Central Europe

- ★ Small, congenial groups led by young knowledgeable directors, independent leisure time
- ★ Fun places on every tour... night spots, theatres, beach parties, water-skiing, picnics
- ★ Native guides for visits to key cultural and historic points

I am interested; send me the free brochure.

Name _____

College Address _____

City _____ State _____

Osborne Travel Service, Inc.

3379 Peachtree Road, N.E.

Atlanta, Georgia 30326

"Ask the man who's been there."

LaVista Hall Wins Crown, Nips Eta Rho Epsilon, 6-0

The LaVista Hall Bulldogs scored a touchdown in the second quarter and fought off two scoring threats by Eta Rho Epsilon in the second half to defeat the Trojans, 6-0, to capture the Intramural Football League championship Wednesday at Eagle Park in the final game of the best of three play-off between the two division winners.

The Bulldogs, the National League champions, scored the game's only touchdown on a 65-yard pass from tailback Bobby Kelly to end Bobby Stewart. The extra point attempt failed.

LaVista Hall won the first game of the series on Monday, 12-6, and Eta Rho Epsilon rebounded with a 20-6 victory Tuesday to set the stage for Wednesday's show down.

Wind was a big factor in the title game, hampering the passing of quarterbacks Danny Simons of the Trojans and Shack McDaniel of the Bulldogs.

The Trojans marched to the Bulldog seven-yard line late in the second quarter, but couldn't score. They moved inside the LaVista 15 late in the third stanza and early in the fourth, but lost the ball on downs once and lost the ball via an interception on the other.

In Tuesday's contest, Simons, who plays professional baseball during the summer, scampered for a touchdown and hit his favorite target, end Raymond Reynolds, for two touchdowns in handing LaVista its first defeat of the season. Simons ran one PAT and pas-

sed to Dick Van Brunt for the other.

LaVista scored its touchdown on a pass from McDaniel to Kelly.

In Monday's opener, McDaniel accounted for both LaVista tallies in a hotly contested battle. McDaniel set up the first score by leaping into the air at the line of scrimmage and blocking a free kick by Trojan punter Bill Aldrich.

Simons passed to Reynolds for Eta Rho Epsilon's only score.

Leading the LaVista defense throughout the series were McDaniel, Kelly, and Wilson Credle, and Phil Green. Top defenders for Eta Rho Epsilon were Reynolds, Van Brunt, Aldrich, and Ben NeSmith.

McDaniel, a quarterback who thrives on pressure, was instrumental in LaVista's championship. The big quarterback was the offense leader with his long, accurate passes. He guided the Bulldogs to an 8-0 record during the regular season and a 10-1 mark overall.

Etat Rho Epsilon finished with an 8-3 mark, after closing the regular season at 7-1.

Members of the winning team will receive individual medals at a later date, revealed Charles Exley, intramurals director.

Pinsetters, Tenpinners Tied For First Place In Bowling League

The Eagle Tenpinners have completed six weeks of competition with the Pinsetters and the Tenpinners tied for first place with identical percentages of 7.50.

The Go - Gitters, who were once tied for first, have dropped to third with a percentage of 7.08. The Strike-Outs, the Glaciers, the Alley Dodgers, the Pinpushers, the Rolling Pins, the Alley Cats and the Mets rounded out the league standings.

The Strike-Outs, Pinsetters and Tenpinners have been the

three top teams in the three game series for the past three weeks with scores of 2120, 2061, and 2044 respectively.

Vaughn Shields with 587 and Claudis Whitehead with 424 were high scorers in the three game series for men and women.

The Rolling Pins with 739, the Tenpinners with 738 and the Strike-Outs with 729 are the three top teams in the high team game while high individual games went to Andy Cummings with 233 and Claudis Whitehead with 162.

ROBSON'S HOME BAKERY

remember... specials every Wednesday
Simmons Shopping Center

Intramurals To Meet Thursday

A meeting of the men's intramural leagues will be held Thursday at 7:00 p.m. in the dance room of the Hanner matters concerning intramural activities.

The meeting will include discussion on rule changes for next year in touch football, the intramural basketball league and the cross country race scheduled for Tuesday.

A representative from each intramural team should be present at the meeting, said intramural director Charles Exley.

Baby Eagles To Host GMA Tomorrow Night In Opener

The freshman basketball team will open its season tomorrow night against Georgia Military Academy in Wadley, according to Coach Ed Thompson.

The proceeds of the contest, which will be a home game for the baby Eagles, will be donated to the Wadley Lions Club for their community projects.

Thompson stated that he has not yet decided on a starting lineup. He plans to start Bob Bohman of Covington, Ky. and Bobby Meybohm of Harlem at forwards, Larry Pritchard of Decatur at center, with the two guard positions still up for grabs. Candidates for the guard positions include Johnny Helm of Washington and Ken Szotkiewicz of Wilmington, Del.; Tommy Stout of Burlington, N. C. and Ray Gregory of Pa-

ducah, Ky.

The Georgia Military team, from Milledgeville, is coached by Fran Florian, former stand-out Eagle basketball player who holds the GSC record for scoring with 60 points against Jacksonville University in 1964.

The next action for the baby Eagles will be Monday night when they meet the GSC varsity in the freshman-varsity game at the Hanner gymnasium. The next scheduled game on the 17 game slate will be against Georgia Military in Milledgeville, Nov. 30.

Glynn Academy, coached by former GSC assistant coach mage the Baby Eagles here Nov. 30.

Brunswick College, which is in its first year of basketball competition, will be here Dec. 1, to take on the Baby Eagles.



EXPLANATION — The Dunkel system provides a continuous index to the relative strength of all teams. It reflects average scoring margin combined with average opposition rating, weighted in favor of recent performance. Example: a 50.0 team has been 10 scoring points stronger, per game, than a 40.0 team against opposition of identical strength. Originated in 1929 by Dick Dunkel.

GAMES OF WEEK ENDING NOV. 21, 1965

Higher Rating Team	Rating Diff.	Opposing Team	Rating
MAJOR GAMES			
SATURDAY, NOVEMBER 20			
Arkansas*	110.0	(11) Tex.Tech	98.8
Boston U*	54.8	(10) R.Island	44.7
BrigYoung	77.6	(4) Arizona*	73.8
Brown	56.5	(4) Columbia*	52.2
Buffalo	72.6	(11) Villanova*	61.9
Citadel*	60.0	(4) Furman	55.5
Colgate	63.9	(9) Rutgers*	54.9
Colorado	90.5	(1) AirForce*	39.1
Connect't*	57.6	(1) Holy Cross	56.6
Florida	100.4	(9) Miami,Fla*	91.2
Harvard	67.5	(6) Yale*	61.2
Houston	95.0	(1) Florida St	93.8
Idaho*	71.9	(12) Montana St	60.1
Illinois	103.3	(10) N.western*	93.7
Iowa St	82.5	(12) N.Mexico*	70.5
Kentucky*	96.7	(0) Tennessee	96.6
L.S.U.*	93.9	(16) Tulane	78.2
Louisville	71.5	(1) Kent St*	70.5
Marshall*	59.5	(2) Ohio U	57.5
Maryland*	86.0	(9) Virginia	76.7
Memphis*	91.7	(20) WakeForest	71.6
Miami, O	80.0	(10) Cincinnati*	70.1
Michigan*	99.9	(0) Ohio St	99.8
Minnesota*	89.8	(15) Wisconsin	75.1
Missouri	100.6	(19) Kansas*	81.8
Nebraska*	103.9	(22) Oklahoma	82.3
N.Mex.St*	76.1	(10) N.Tex.St	66.4
N.Carolina	89.1	(2) Duke*	87.5
N.C.State	98.9	(16) Iowa*	78.3
NotreDame*	115.0	(3) Mich.St	112.3
Okla.St*	82.4	(21) Kansas St	61.0
Oregon St	90.7	(11) Oregon*	79.9
Penn St	91.5	(12) Pittsb'gh*	79.5
Princeton*	86.4	(16) Dartm'th	80.0
Purdue	105.2	(17) Indiana*	88.1
San Jose	80.7	(14) Fresno St*	66.6
So.Calif	105.7	(3) U.C.L.A.	102.4
S.Carolina*	83.9	(1) Clemson	82.9
S.M.U.	91.1	(2) Baylor*	88.6
Stanford*	89.5	(1) California	88.1
Syracuse*	95.2	(13) BostonCol	82.4
T.C.U.*	96.8	(16) Rice	80.7
Tex.West*	75.7	(0) Xavier	75.2
Toledo*	68.8	(10) Dayton	59.0
Tulsa	94.3	(25) Wichita*	69.2
Utah St	82.8	(5) Utah*	77.9
Wash'gton*	97.5	(8) Wash.St	89.0
W.Virginia*	79.9	(6) G.Wash'n	74.0
Wm.& Mary*	78.1	(29) Richmond	48.9
Wyoming	86.8	(3) Arizona St*	84.0
OTHER SOUTHERN			
SATURDAY, NOVEMBER 20			
AbilChris	56.6	(16) Angelo St*	40.7
Ark.AM&N*	49.5	(30) Wiley	19.0
Ark.St	62.2	(12) Trinity*	50.1
Arlington*	67.0	(0) LamarTech	67.0
Austin*	51.4	(27) S.western	24.9
Aust.Pey*	69.5	(22) UTMartin	47.4
Davidson*	58.7	(6) Wofford	52.6
Delta St*	60.6	(13) La.Coll	47.5
E.Carolina	79.5	(30) Howard*	49.3
Elon*	36.6	(3) Frederick	33.8
Fla.A&M*	59.9	(11) B.Cookman	49.0
Guilford*	53.8	(17) Em.Henry	37.1
Livingston	52.9	(11) Miss.Col*	41.9
La.Tech*	66.7	(17) N.E.La	49.4
McMurry*	53.1	(8) How.Payne	45.4
Murray	58.8	(7) W.Kentucky*	51.4
Prairie V	52.9	(2) Tex.Son*	50.5
R-Macon*	40.0	(2) H-Sydney	38.2
S.E.La*	63.0	(15) N.W.La	48.5
Southern	63.6	(4) Grambling*	59.8
S.W.La*	67.5	(2) McNeese	65.1
S.W.Tex.St	66.1	(3) Tex.A&T*	63.3
S.F.Austin	63.2	(9) E.Tex.St*	53.8
Sul.Ross*	69.7	(16) S.Houston	53.7
Tampa*	68.3	(9) N.Michigan	59.7
Tenn.St	73.7	(34) Ky.State*	40.0
W.Carolina*	51.8	(6) Presbyt'n	45.9

* Home Team

NATIONAL AND SECTIONAL LEADERS

Notre Dame	115.0	Florida	100.4	Houston	95.0	Memphis St	91.7
Michigan St	112.3	Michigan	99.9	Auburn	94.8	Penn St	91.5
Arkansas	110.0	Ohio St	99.8	Tulsa	94.3	Miami,Fla	91.2
S.California	105.7	Texas Tech	98.8	Louisiana St	93.9	So.Methodist	91.1
Purdue	105.2	Washington	97.5	N.C.State	93.9	Oregon St	90.7
Nebraska	103.9	Tex.Christian	96.8	Florida St	93.8	Colorado	90.5
Alabama	103.6	Kentucky	96.7	Northwestern	93.7	Minnesota	89.8
Illinois	103.3	Tennessee	96.6	Georgia Tech	93.5	Stanford	89.5
U.C.L.A.	102.4	Mississippi	96.1	Georgia	93.3	N.Carolina	89.1
Missouri	100.6	Syracuse	95.2	Texas	93.2	Air Force	89.0

Copyright 1965 by Dunkel Sports Research Service

FOR THOSE WHO CAN WRITE

(AND DO)



STATIONERY

The College Book Store

Welcome Students
Your Dollar Buys More Here!
GAS
"GAS FOR LESS"

open 24 hours 500 yds. from college gate

Across from Skate-R-Bowl

South on U. S. 301

Rogers Service Station

Seeley Paces Cage Squad As Eagles Down Newberry

Forward Jim Seeley, playing under combat for the first time since recovering from a minor concussion, sparked in Georgia

Southern's game-type scrimmage Friday night and Saturday morning.

"Jim did a great job," Coach

J. B. Searce said after Saturday's workout. "He did a good job Friday, and I didn't expect him to be able to go at full speed two days in a row after missing a week with his injury. He was better Saturday than he was Friday."

Seeley, a 6-4 junior from Moline, Ill., scored 10 points and did yeoman duty under the boards the first scrimmage and collected 12 points and nine rebounds Saturday.

Seeley also had a good week on the domestic front, becoming the father of a son, Scott Russell, on Wednesday. He thus joined teammates Bill Pickens, Jimmy Searce, Jimmy Rose, and Mike Rickard as a father.

The Eagles scrimmaged Newberry College both practices, winning 109-92 in an 80-minute game Friday and 78-51 in a regulation contest Saturday.

Other Eagles turning in stellar performances were guards Don Adler and Leahman Stanley and center Bill Pickens.

Adler scored 12 and 20 points respectively, hitting 10 of 13 field goal attempts Saturday. Stanley bagged 13 Friday in his best effort of the pre-season practices and had three Saturday. Pickens scored 19 and 10 and led all rebounders with 10 on Saturday.

Forward Tommy Dial was the only other Eagle to reach double figures, scoring 14 Friday.

"I thought we looked much better Saturday than we did on Friday," said Searce, "but we couldn't have looked worse than we did Friday. We looked good on defense at times on Saturday and shot fairly well. I think we hit 50 percent from the field."

All-America guard Jimmy Rose played forward on the Eagles' No. 2 unit Friday and played guard on the second team Saturday. Searce said Rose was out of shape.

OPENING GAME

The Eagle Varsity will meet the Hawks of Shorter College here on Dec. 1 in the opening game of the 1965-66 cage season.

Last season Shorter won the GAIC Championship and turned in a 26-5 record. In NAIA District 25 playoffs in Jacksonville, Georgia Southern eliminated the Hawks.

According to Head Coach J. B. Searce, the Shorter team will consist of about the same men as last year and will be a top competitor.

Cross Country Race Rejuvenates Old Georgia Southern Tradition

A Thanksgiving cross country race will be held Tuesday at 4:30 p.m. at Eagle Park, according to Charles Exley, intramural director.

the race. He emphasized that the race will be an individual affair and not a team participation.

A cake will be presented to the first three finishers.

The 1.6 mile run will start at the Hanner Building, circle around the park twice, and conclude back at the gym.

"This is the second phase of our intramural program," Exley said. "This race is to rejuvenate an old Georgia Southern tradition, being brought back after an absence of many years."

Exley said that no formal entry is required and that participants should be prepared to enter and run at the time of

Support Your
George-Anne
Advertisers!

Georgia Southern College VARSITY BASKETBALL ROSTER 1965 - 1966

No.	Name	Pos.	Ht.	Year	Hometown
3	Jimmy Searce	G	5-7	4	Statesboro, Ga.
4	Frank Waters	G	6-2	2	Mableton, Ga.
5	Jimmy Rose	G	6-2	3	Hi Hat, Ky.
11	Lehman Stanley	G	6-2	4	Durham, N. C.
13	Don Adler	G	6-0	4	Petersburg, Ind.
21	Tommy Dial	F	6-2	4	Waycross, Ga.
24	Robert Jordan	F	6-4	3	Ball Ground, Ga.
25	Jim Seeley	F	6-4	3	Moline, Ill.
31	Elden Carmichael	F	6-5	2	Martinsville, Ind.
32	Ronald Bailey	C	6-5	2	Shelbyville, Ky.
33	Dave Christiansen	C	6-6	3	Louisville, Ky.
34	Mike Rickard	F	6-3	4	Evansville, Ind.
35	Bill Whitehead	F	6-3	2	Louisville, Ky.
50	Bill Pickens	C	6-10	4	Rochester, N. Y.

Head Coach — J. B. Searce, Jr.
Assistant Coach — Frank Radovich
Sports Publicist — Hubert Norton
Equipment Manager — George Watson

GEORGIA SOUTHERN COLLEGE

1965-66 Basketball Schedule

Dec. 1, 1965	— SHORTER COLLEGE	Statesboro, Ga.
Dec. 3, 1965	— SOUTHWESTERN LOUISIANA STATE U.	Lafayette, La.
Dec. 4, 1965	— McNEESE STATE COLLEGE	Lake Charles, La.
Dec. 6, 1965	— LAMAR TECH	Beaumont, Texas
Dec. 9, 1965	— THE CITADEL	Charleston, S. C.
Dec. 11, 1965	— TAMPA UNIVERSITY	Statesboro, Ga.
Dec. 16, 1965	— EAST TENNESSEE STATE UNIVERSITY	Statesboro, Ga.
Dec. 18, 1965	— SOUTHWEST TEXAS STATE COLLEGE	Statesboro, Ga.
Dec. 28-29, 1965	— CHATTANOOGA INVITATION TOURNAMENT	
Dec. 31, 1965	— ATLANTIC CHRISTIAN COLLEGE	Statesboro, Ga.
Jan. 8, 1966	— OGLETHORPE COLLEGE	Atlanta, Ga.
Jan. 10, 1966	— VALDOSTA STATE COLLEGE	Valdosta, Ga.
Jan. 15, 1966	— PHILLIPS '66' OILERS	Statesboro, Ga.
Jan. 17, 1966	— TAMPA UNIVERSITY	Tampa, Fla.
Jan. 18, 1966	— STETSON UNIVERSITY	Deland, Fla.
Jan. 22, 1966	— CARSON-NEWMAN COLLEGE	Statesboro, Ga.
Jan. 27, 1966	— CUMBERLAND COLLEGE	Statesboro, Ga.
Jan. 29, 1966	— MERCER UNIVERSITY (Homecoming)	Statesboro, Ga.
Feb. 2, 1966	— WILMINGTON COLLEGE	Statesboro, Ga.
Feb. 12, 1966	— OGLETHORPE COLLEGE	Statesboro, Ga.
Feb. 14, 1966	— SPRINGHILL COLLEGE	Mobile, Ala.
Feb. 15, 1966	— UNIVERSITY OF SO. MISSISSIPPI	Hattiesburg, Miss.
Feb. 19, 1966	— CARSON-NEWMAN COLLEGE	Jefferson City, Tenn.
Feb. 21, 1966	— STETSON UNIVERSITY	Statesboro, Ga.
Feb. 24, 1966	— MERCER UNIVERSITY	Macon, Ga.



School & VILLAGER®

Made for each other. The alert intelligent look of a VILLAGER has an Honor-Roll air about it... along with a lightness of heart and vitality of spirit that takes it whirling off on extra-curricular activities too. Visit our complete collection of class-going, out-going VILLAGERS soon...skirts & shirts & sweaters, dresses & jumpers & accessories.

Exclusive with us in Statesboro



"For Your Shopping Pleasure"

Ben
Franklin
Store

"Your Most
Convenient
Store"

E. MAIN ST.

just received...
new shipment of
JOHN ROMAIN BAGS &
ACCESSORIES AND
VILLAGER CLOTHES
WE INVITE STUDENT
CHARGE ACCOUNTS



"For Your Shopping Pleasure"

FOOTBALL CONTEST

Address or
Dormitory of Student.....
City & State.....
Name

Pick the Winners
Win \$10.00 Cash!

Circle all the winners and receive \$10.00 cash. If no one gets all the winners the person naming the most winners will receive \$5.00 in cash from The George-Anne. In case contestants tie the prize money is equally divided.

1. In each ad on this page you will find two college teams scheduled to compete this week. Check the teams you think will win. Tie games count against you unless indicated.
2. Mail or bring your entry to The George-Anne office located in the Frank I. Williams Center not later than 2 p.m. Friday. Letters must be postmarked before this time.
3. Members of The George-Anne staff are not eligible to win.
4. Members of Faculty, Administration, are Eligible.
5. Only TWO ENTRIES per person.

Last weeks winners: Garry Otts, Ken Martin, Bill McDuffie, Billy Nicholson

The Statesboro Telephone Co.

"serving Statesboro and Bulloch County"
9 South Main St. Statesboro
Air Force—Colorado



Rockwell Manufacturing Corporation
Duke—North Carolina

Medical Center Pharmacy

OPPOSITE HOSPITAL
Hours: Mon. - Sat., 9 -9—Sun. 2-7
Furman—Citadel

The Singer Co.

Your Singer Service Center For:
Typewriters & Musical Entertainment
Harvard — Yale

Sea Island Bank

and it's
SOUTHSIDE BRANCH
Just Off the GSC Campus
Houston—Florida State

STATESBORO

Buggy & Wagon Co.

"Complete Line of Hardware"
1 Courtland St. 764-3214
Indiana—Purdue

WWNS Radio

Hear College Football
EVERY SATURDAY!
Kentucky—Tennessee

Pyrofax Gas Corp.

Bottle - Bulk
6 E. Vine St. 764-2700
LSU—Tulane

T. J. Morris

WHOLESALE FOOD DISTRIBUTORS
I. G. A.
Franchise for South East Georgia
Michigan State—Notre Dame

SUPPORT THE

Football Contest Advertisers

Michigan—Ohio State

Bulloch County Bank

"service with a smile"
Princeton—Dartmouth

Johnson's Minit Mart

"When You Run Out of Something Run
Out to the Minit Mart"
"Open 8 Days A Week"—FAIR ROAD
Stanford—California

Music Box

"if it's Musical, WE HAVE IT!"
27 W. Main St.—Statesboro, Ga.
UCLA—Southern California

Four Points Service Station

Tires Tubes **ATLANTIC** Wash Polish
Road Service Accessories Lubrication
Ph. 4-2153 S. Main St.
Baylor—Southern Methodist

City Dairy Co.

Grade A Dairy Products
Pasteurized Homogenized Vitamin D Milk
Clemson—South Carolina