

Georgia Southern University

Digital Commons@Georgia Southern

The George-Anne

Student Media

10-29-1965

The George-Anne

Georgia Southern University

Follow this and additional works at: <https://digitalcommons.georgiasouthern.edu/george-anne>



Part of the [Higher Education Commons](#)

Recommended Citation

Georgia Southern University, "The George-Anne" (1965). *The George-Anne*. 450.
<https://digitalcommons.georgiasouthern.edu/george-anne/450>

This newspaper is brought to you for free and open access by the Student Media at Digital Commons@Georgia Southern. It has been accepted for inclusion in The George-Anne by an authorized administrator of Digital Commons@Georgia Southern. For more information, please contact digitalcommons@georgiasouthern.edu.

Is Off-Campus Auto Registration Fair?

There is a new policy currently being enacted regarding automobile registration at Georgia Southern, and away from Georgia Southern.

This week campus security began going to all approved off-campus housing units and ticketing cars. A survey form was first sent to the landlords of these units asking for the number of students living there and the number of cars parked outside.

Slow Registration

Director of Campus Security Harold Howell said that this action was prompted by the slow registration of autos.

Howell made the following statement in an interview last Friday when asked about the new policy. "If a student brings his car to Statesboro from out of town, even if the car is not brought on the campus at any time, he must register the ve-

hicle with the security office."

Periodic Checks

Howell added that periodic checks will be made throughout the year to insure that students do not bring unregistered cars to Statesboro at a later date.

"An estimated 4,000 warnings had been issued as of Friday, Oct. 22, with no results," he added.

Apply Equally

Dean of Students Ralph K. Tyson, when asked about the new policy, stated that the rules in the off-campus housing regulations applied equally to automobiles.

President Henderson stated that the new policy was recommended by the Traffic Safety Committee and had the approval of his office. He added that the only persons who were not being charged this fee were teachers who are on campus for

Saturday classes only. These cars must be registered but no fee is required.

Unfair

The George - Anne asserts that this new policy, is unfair and is definitely not in the best interests of the college itself.

Traffic regulation 24 states that "these regulations are applicable to all persons who regularly operate a vehicle on the campus of GSC."

"Regularly Operated"

If the rule states that application is to cars "regularly operated on campus" then there is a glaring inconsistency in the new policy. The new policy may now be read to mean that campus security is now taking their authority off the college campus and onto the streets of Statesboro.

We hold that many students who never bring a car on campus are being unjustly charged

with the traffic fee, since the fee applies to all students, even those who merely bring their car from out of town into the Statesboro area.

Clarification Needed

Rule 11 of the off-campus housing policy states, "Students permitted to live off-campus are not day students, and shall be subject to regular on-campus rules and regulations." Unless a definite clarification is made, this rule can be stretched and interpreted to mean that on-campus college rules apply to any place that a college student happens to be.

Another inconsistency of rules lies in the previously mentioned teachers who are permitted to park on campus each week without paying the \$5 fee.

Never On Campus

These cars are on campus for a much greater time than ma-

ny of the off-campus student's automobiles which might never be brought to the campus.

The George - Anne strongly recommends that the Traffic Safety Committee reconsider this rash move and restate a new policy, one which will not financially discriminate against students who merely bring a car into the Statesboro area.

Enforcement Consequences

We ask that the committee consider the consequences of enforcing such a policy. The new program will not and cannot make all students register their cars. It will only result in students' hiding their cars in locations surrounding the city.

An unregistered automobile, which is seldom if ever brought on campus, poses a much lesser threat to college security than one which will be hidden when not in use.

12 PAGES
THIS WEEK

THE George - Anne

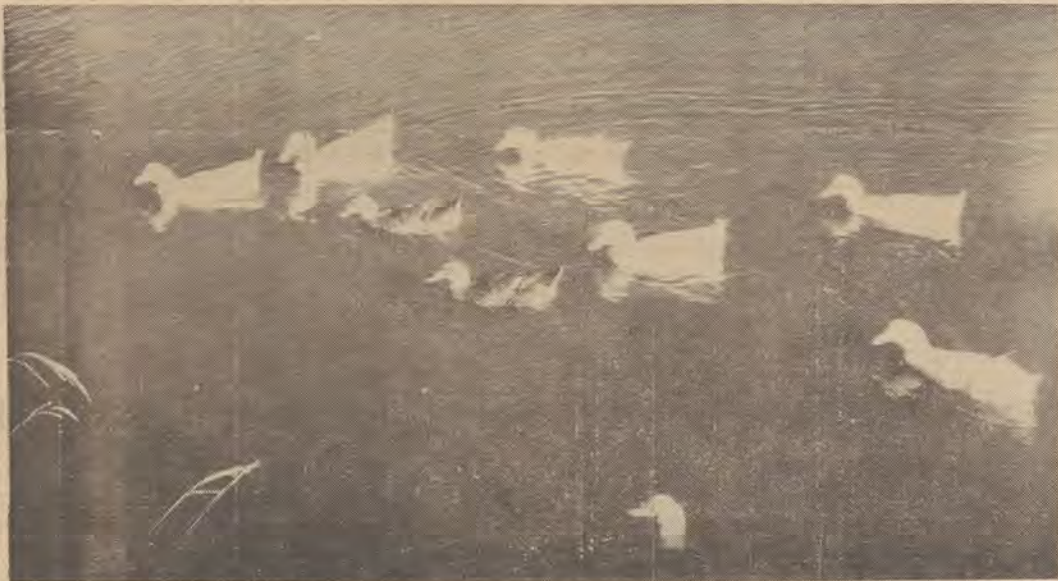
Read Garfunkel
This Week —
Page 5

PUBLISHED BY STUDENTS OF GEORGIA SOUTHERN COLLEGE

VOLUME 41

STATESBORO, GEORGIA, FRIDAY, OCTOBER 29, 1965

NUMBER 5



POPULATION EXPLOSION ON GSC CAMPUS

Our featured friends, who enjoy the peacefulness of Lake Wells in a different manner than the students of Georgia Southern, have increased in number since last spring. The campus quacks are now nine in number. See story on Page 3.

Registration For Winter Quarter Scheduled For Jan. 3 At Hanner

Registration for winter quarter will be held January 3 in the W. S. Hanner building, according to Registrar Lloyd Joyner.

Currently enrolled students will not be required to fill out a former student questionnaire. If the student is in good academic and disciplinary standing, the college will be expecting him to return for winter quarter.

In December, students will draw a card giving them an exact hour of registration.

Students currently enrolled must see their advisers before the end of fall quarter for course approval. Since periods and sections are not to be indicated on this card, the information will be entered after course cards are submitted at registration.

New students, (freshmen and transfers) and former GSC stu-

dents will be notified to see their advisers on January 3, between the hours of 8 a.m. and 12 a.m.

Students will not be permitted in the gym for registration without time cards and adviser cards.

In case of schedule conflicts, advisers or their representatives will be in the gym to make a substitutions or otherwise assist in working out conflicts. If a student has a problem that cannot be solved at registration it should be reported to the registrar's office.

If a senior is unable to get a course needed for graduation because of a scheduling problem, the registrar said that proper arrangements will be made.

Joyner said the college would not use pre-registration winter quarter.



THE EAGLE SPEAKS...

Dear Editor:

Studying in the library has become very difficult lately since many students have discovered the convenient short cut of crossing through the lower level of the library bridge on their way to and from the Hollis Building.

In addition to being annoying to the library staff, the mud tracked onto the floor makes a most unattractive first impression as one enters the otherwise spotless building.

I'd hate to see one set of doors locked, but if that's what it takes to keep the library quiet and clean, then I'm for it.

The Eagle

Shakespeare Co. To Appear Here

The National Shakespeare Co., with a cast of professional actors and actresses, will perform William Shakespeare's *As You Like It* and *Macbeth* in McCroan Auditorium Nov. 13 and 15, respectively.

Tickets go on sale Monday in the auditorium box office at \$1.50 each. All seats are reserved.

The New York based troupe, in three years of existence, has eclipsed the record of the now inactive Walter Hampden Co. as being the most widely-traveled Shakespearean Co. to tour the United States.

Organized in 1962 with a four week itinerary concentrated in New York, the National Shakespeare Co. traveled more than 20,000 miles in an extensive 32-week trip through the East and Midwest.

Founded by producer-director Philip Meister and actress Elaine Sulka, the company exists "to bring quality productions of culturally significant dramatic literature to the nation at large."

The group travels as a self-contained unit with modern theatrical equipment. Productions are fully costumed and performed against a setting with a full complement of light, sound and musical effects.

"Our Motto is 'Have Company, Will Travel!'" declares the producer. "All we need is a place to set up. We perform anywhere, under any circumstances."

The cast includes Howland Chamberlain (Duke Senior, *As You Like It*; Banquo, *Macbeth*); Elaine Sulka (Lady Macbeth); Rosaline, *As You Like It*; and William Metzger (Macbeth, *Macbeth*; Oliver, *As You Like It*).

Other cast members in the current National Shakespeare

productions are Neil Flanagan, D. Keith Mano, Geney Nye, Lennard DeClarl, and Brand Sullivan.

Staff Members

View Dedication

Dr. Fielding Russell, chairman of the division of languages and Miss Hassie McElveen, librarian, attended the dedication of the Eugene W. Stetson Memorial Library at Mercer University Oct. 20. Miss McElveen represented the college and Dr. Russell, the Modern Language Association.

The invitation came from the president, faculty and trustees of Mercer University and from the family of Eugene W. Stetson.

The keynote speaker for the dedication was Louis Wright, director of the Folger Shakespeare Library.

An honorary doctor of law degree was conferred upon Wayne Johnston, president and chairman of the Board of Regents of the Illinois Central Railroad.

INSIDE THE GEORGE-ANNE

New Library Records	2
Student Congress	2
Flu Shots	2
Ducks	3
Parking Lot	3
Editorials	4
Little Man On Campus	4
Letters To The Editor	5
Garfunkel	5
Society News	6-7
Sports	9-12
Football Contest	12



Mrs. Claire Franklin examines new library records.

Library Receives Sixty Albums As Donation From Recording Co.

Miss Hassie McElveen, head librarian, has announced the receipt of a gift from Columbia Records of 60 long - playing Columbia Master-works. The albums were donated to the library for its listening room near the student lounge.

The record collection was started last year by Kappa Delta Epsilon who donated the first two records. This summer the library added 25 new albums.

Miss McElveen said that the library listening room is not

used very much because many students do not know where it is. The room is equipped with four turntables.

The records and stereo headsets can be checked out for use in the listening room only since the present collection is not large enough to allow overnight loans.

The listening room has been set up especially for music appreciation but arrangements will be made for students to work on music class assignments.

Relations Group Policy Clarified By Henderson

The College Community Relations Committee, still in the planning stages, is moving along well toward its proposed goals, said President Zach S. Henderson Monday.

Dr. Henderson said that contrary to some opinions, the committee will not be functioning for the purpose of ironing out small grievances. Such items as traffic violations and check cashing policies, will not be handled by the committee.

"Our relations now are pretty good," said Dr. Henderson, "but there are a lot of things that could be accomplished by having the committee. We eventually hope that the committee, among other things, will work out a program to serve as the middle man between local merchants wishing to hire college students, and students who want these jobs." He pointed out that the placement office will work with the committee in obtaining jobs for students.

Dr. Henderson said the committee will work to coordinate activities of interest to the college and the city as a whole.

He remarked that a jointly supported concert program will be one of the first goals.

The committee is composed of representatives from each of the Statesboro civic groups, the ministerial association, town council, college president, college dean, dean of students, college public relations director, president of student congress, two division heads, elected on a staggered term basis, and the editor of the George-Anne.

Louis Hook, Rotary Club president, is president of the committee; Lewell Akins, of Akins Hardware Co., vice president; and Ric Mandes, GSC public relations director, secretary.



"Isn't This Fun?"

Mrs. Eva Bryant, left, gives GSC coed Jane Patton her flu shot.

Flu Epidemic Of 1959 Recalled To Show Necessity Of Campaign

In 1959 a severe flu epidemic on campus resulted in the absence of a majority of the student body from classes.

In 1960 the flu shot campaign was instigated with a health service program submitted to President Zach S. Henderson by the college physician and Student Congress.

"There was excellent response to the program from the students, faculty and administration," stated Dean Ralph K. Tyson. "Before the health program went into effect, there was not enough vaccine available for students during a flu epidemic."

Tyson said the housemothers could not adequately nurse students during their illnesses. This increased emphasis on

having a supervised Health Cottage and medical program.

Faculty members and the administration are now eligible for flu vaccinations. Records reveal that 192 faculty members were vaccinated last year and 187 are currently registered for the shots. Presently a larger percentage of faculty members than students is participating in the program.

Although a shortage of flu vaccine is anticipated by Dr. John Mooney of the Bulloch Health Service, the college's supply will apparently not be affected.

The Health Service staff has predicted another flu epidemic this year and is stressing the urgency of student vaccinations.

Student Congress Names Date For Various Upcoming Events

Dates for class officer nominations, homecoming and class elections have been set by the Student Congress.

President Danny Broucek announced during the last meeting that room 115 in the Frank I. Williams Center had been designated as the new office.

Charles Johnson, first vice president, stated that Nov. 4 had been set as the date for class elections and nominating meeting would begin Oct. 26.

Jackie Mullis, second vice president, told the Congress that many organizations on the campus had not registered with the Committee of Campus Organizations. He said these organizations would be denied the

use of college facilities unless they registered.

The dates for homecoming are Jan. 28-30, according to Ruby Woodward, committee chairman.

Final plans were made for the student government convention in Atlanta, Nov. 5-6.

A list of recommendations made up by Congress committees during the September retreat were returned by Dean Ralph Tyson for clarification.

Mullis accepted the responsibility of setting standards for the Committee of Campus Organizations awards. A Rules Committee was established and the Social Committee will be modified.

Lanier's College Book Store



Headquarters For
The Most Exclusive
Art Supply ...

Everything you Need
From

"Dry Gesso To Crow
Quill Pens"

Visit Lanier's

— Adjacent To Campus —



'YOUNG LONDON' LOOK
... the drama of wool by
SANDY SHAW. Melon or
Blue ... 3to 11 Jr. Petits

\$14.95

THE OXFORD SHOP
Just Across From
Donaldson-Ramsey

Mrs. Bryant's Kitchen

"Where Eating Is A Pleasure"

Cordially Invites You
to

Pleasant, Relaxed Dining
Courteous Service and
Quality Food

OPEN TO SERVE YOU FROM 6 A.M. - 9 P.M.

South Main St.

Ducks Continue Increase; Keep Tempo With Change

By Louise McCord
Feature Editor

The population explosion at Georgia Southern is not limited to the student enrollment. The number of feathered inhab-

Lot To Open Within Week

The faculty parking lot, presently being constructed behind the music building is scheduled to be completed within the next week, according to President Zach S. Henderson.

"We don't plan to permit use of the lot until it is marked off though," said Dr. Henderson. "The lot should be completely finished before anyone is allowed to use it," he said.

When asked about individually reserved spaces for faculty members, Dr. Henderson said, "If we mark a place for John Jones and he uses that place for three hours a day, the place is wasted for the rest of the day."

Dr. Henderson added the lot will accommodate an estimated 150 faculty automobiles.

itants of the lake adjacent to the Carruth Building has also increased.

Nine ducks can now be seen peacefully paddling across Lake Wells. According to Dr. Tully Pennington, ornithology professor, there are seven white ducks belonging to the Pekin species and two brown Mallard ducks.

The ducks, which receive a phenomenal student interest, were featured last fall quarter in the *George - Anne*, but no one could ascertain "from whence they all came." Recently their sources were established.

Raised in Boiler Room

The first three ducks were donated by Dr. Donald Hackett. He gave them to his children for Easter in 1964. The children's interest in caring for the ducks lagged and raising them became bothersome. Hackett brought the ducks to the Carruth Building, where the janitor cared for them in the boiler room until they were large enough to survive on the lake.

Last fall quarter, two additional ducks were noticed on the pond. Claire Powell, daughter of Roy Powell, assistant professor of English, explained in a letter to the *George-*

Anne editor that she and her sister Mandy had contributed these two Easter ducks. Originally, they had three ducks, but Lughie died when he swallowed a frog. Hughie and Dughie were placed on the lake when the Powells moved to town from their farm.

According to Claire, these ducks had a unique response when someone summoned them with "Here, kitty, kitty, kitty." The ducks had become accustomed to this call when they were fed along with the Powells' cats.

Robert Bump, a student in Dr. Pennington's ornithology class, gave his children's two Easter ducks to the college last spring.

The source of the two brown ducks is a mystery. Security officer Howard Merriman discovered the two "waddling" about the campus one night in early September. He placed them on the lake, but they wandered back to the Alumni Gym. Merriman returned the pair to the lake, where they isolated themselves for a few days. Eventually they were accepted into the flock. "Mallard ducks are traditionally wild, but these are domesticated," Pennington observed.

May Add Swan

President Henderson said he hopes the number of ducks can be increased by hatching their eggs next spring. "They made several nests last spring, but



COLOR DISTINCTION

GSC's two brown ducks apparently live in perfect harmony with the white members of the same species who previously had the lake to themselves.

children and dogs disturbed the nests and broke the eggs." Henderson anticipated that an incubator will probably be used this spring. "I've considered getting a swan for the lake also, but I'm not sure it could survive here," he revealed.

"The students appreciate the presence of the ducks and supply most of their food," commented Charles Johnson, superintendent of plant operations. Many students consider the ducks as essential to the campus as Sweetheart Circle. "They are wonderfully picturesque and make such a peaceful scene," contributed one student.

Since Easter gifts began our duck family, it is likely the flock will increase next spring when another faculty member donates his children's Easter ducks.

Carroll, Miller Attend Meeting

Dr. Paul Carroll, dean of students, and Dr. Starr Miller, chairman of the education division, attended a meeting of the American Association of Colleges for Teacher Education at Hamline College in St. Paul, Minn., Oct. 21-23.

The purpose of the meeting, sponsored by AACTE was to study the ways in which colleges have provided for international understanding.

Miss Golightly Attends Area Textile Conference

Miss Lucile Golightly, assistant professor of home economics, recently served on the Evaluation Committee for the conference of Eastern Region College Teachers of Textiles and Clothing.

The conference was held at the University of Maryland and the Smithsonian Institute.



STOP

The construction of the new faculty parking lot nears completion and this sign will soon be removed to provide entrance to the new lot.



SMILY'S Sinclair Station
Owned and operated by GSC
Student

FOREIGN CAR PARTS AND SERVICE

Road Service — 4-4110

North Main across from Post Office Bldg.

Now in New Location

JIM'S HAIR STYLIST

Knight Village Plaza

Give Your Hair

Body A Radiant, Soft,
Natural Look



NO APPOINTMENT NECESSARY UNLESS
SPECIFIC HAIRDRESSOR DESIRED

PHONE 4-2121

SPEE - DEE

Dry Cleaners and Shirt Laundry

- Drive-In Window
- Very Close to Campus
- Night Depository
- Quick Service



Travel In EUROPE Summer '66

ON THE EIGHTH ANNUAL
COLLEGE STUDENT TOUR

Choose from SEVEN unique tours to Germany, Spain, France, Scandinavia, Greek Islands, Istanbul, Central Europe

- ★ Small, congenial groups led by young knowledgeable directors, independent leisure time
- ★ Fun places on every tour . . . night spots, theatres, beach parties, water-skiing, picnics
- ★ Native guides for visits to key cultural and historic points

I am interested; send me the free brochure.

Name _____

College Address _____

City _____ State _____

Osborne Travel Service, Inc.

3379 Peachtree Road, N.E. Atlanta, Georgia 30326

"Ask the man who's been there."

GEORGIA THEATRE

Fri. Oct. 29

"MIRAGE"

Gregory Peck

Sat. Oct. 30th

"THE HAUNTING"

"7 FACES OF DR. LAD"

Sun. Oct. 31st.

Mon. Nov. 1st.

"RAGE TO LIVE"

SUZANNE PLESBITTE"

Wed. Nov. 3rd

"THE SANDPAPER"

with E. Taylor

and R. Burton

Thurs.-Fri. 4-5th

"KID SHOW" and

DON'T GIVE UP THE

SHIP

with Jerry Lewis

DRIVE-IN THEATRE

Fri. Oct. 29th - Sat. 30th

"LOVE ON A PILLOW"

& "GIRL OF THE NIGHT"

Sun. Oct. 31

Mon. Nov. 1st Tues. Nov. 2

"BRAIN STORM"

"WOMAN WOULDN'T

DIE"

Wed. - Thurs. 3-4th

"NAKED BRIGADE"

"MAJOR DUNDEE"

EDITORIAL BOARD:

Tom King, Editor Ron Mayhew, Managing Editor
Bill Muller, News Editor John Eden, Sports Editor
GARY HANCOCK, Business Manager

INTER-DORMITORY COUNCIL

There is presently underway the formation of an interdormitory council composed of house council presidents in both on and off campus housing projects. The George-Anne adds an enthusiastic word of encouragement. A movement of this sort is long overdue.

It is hoped that such a council will be able to clear up a large majority of the inconsistencies that currently exist in dormitory regulations.

Many of the rules presently being enforced in dormitories reflect the mere whim of a house director, house council, or anyone else exerting a sufficient sphere of influence to dominate others.

In one dormitory students are forbidden to use the soft drink machines before nine a. m. under penalty of dorm restriction. Another dormitory forbids the playing of guitars any time during the day or night. Dormitory rules are even being enforced to prevent a student's ironing his clothes except at a specified hour suitable to a house director.

The George-Anne does not question the fairness of unfairness of these rules. We assert rather that rules should at least be consistent. What is forbidden in one dormitory should not be permitted in the dormitory next door.

The council presently being formed could serve as an excellent deterrent to the unfair partialities that are now being inflicted.

It is our hope that this council, in addition, will not become the puppet of any administrative office. It should be run as are many other student committees, by students themselves.

To the originators of this new council and to the developers who are working to make it a success, we add a sincere, "Well done."

CLASS CUT SYSTEM

"The bell has rung. Everyone take his seat so we can get along with the rool call." These are the opening words that a GSC teacher begins his class with.

Once a college student, the individual is expected to dispose of the high school ways. How can the student leave these havits behind if the administration will not function as a college but as an advanced from of high school?

The George-Anne strongly urges that the college adopt a policy for a system of cuts. At present, the college does not allow a student any cuts.

To be expected to attend class everyoday does not help your grade. This is not to say that we suggest that students cut class indiscriminately, but when a situation arises, the individual should not have to ponder over the problem of attending the class.

Allowances should also be made if the student is ill. Georgia Southern does not excuse a student because he is sick.

The George-Anne fully and heartily supports the adoption of a system of cuts that would be practical to the college and the student.

LITTLE MAN ON CAMPUS

GUESS WHO?



HAD HIS FIRST CLASS IN 'FIGURE DRAWING'?



EATS ALL MEALS AT SCHOOL?



JUST DISSECTED A CAT?



HAD DEODORANT FAILURE?

RON MAYHEW

Should New Facilities Be Built For Present Needs Or Future?

Everywhere one listens he hears the familiar cry concerning a lack of space. This complaint is so imbedded in our day to day routine that we have begun to actually think in terms of lack of space.



MAYHEW

In Atlanta the new expressway system, more than a decade in the making, is obsolete before the final stages are opened for the first time.

When a new building is constructed, the comments aren't about how nice it is to finally have adequate facilities. Instead we before the building is obsolete talk about how long it will be and another new one will have to be constructed.

People are actually thinking in terms of inadequacy!

This is illustrated with the situation of the new annex to the library. The annex is a beautiful building, but before it even opened, the talk was already started about its being inadequate in ten years.

A new gymnasium is being considered for the athletic department. When completed, it will seat 5,000. The estimated student body at that time will Allowances are made for visitors and local townspeople who attend all the Eagle games.

The sum total is that the gym will be obsolete before it even gets on the drawing board.

The same situation holds true for the new dining hall scheduled for completion within the next two years. Helpful though it may be, it is still believed that by the time of completion, both dining halls combined will be unable to feed students as fast as could be desired.

Another fallacy in the space problem is that no one thinks of a facility for the student body as a whole. The housing program doesn't even consider the problem of providing rooms for the entire student body. Instead, they are doing well to keep their heads above water with the problems that only half of this group creates.

Whether the inadequacy of our physical facilities is due to poor planning, unforeseen rapid growth, or any other of a long list of factors, is just cause for lively discussion.

Talk as people will the problems still remain. The health cottage needs a new facility, the school needs a new gymnasium capable of holding the entire student body comfortably at one time and there is always the need for new dormitories. The drastic need for more classroom space can never be overlooked.

Let us, however, hold a steadfast prayer that no one ever discovers a lack of space in Sweetheart Circle.

Tom KING

The "Space Age" is here and with it have come certain changes in the basic social patterns of the country. Among these is a growing lack of appreciation for the fine arts.



KING

Figures contrasting attendance at Broadway play with that at a Beatle performance illustrates this point.

This change in attitude can also be seen over the national television networks. In recent years "rock and roll" groups have dominated radio and television media. Before this, people often attended a play or a concert.

In American colleges and universities performances by drama groups or speeches by guest lecturers are little publicized. Instead the appearances of so-called "big name" groups dominate the scene.

25 Minutes

Last spring such a situation existed at GSC when the Rollingstones, a vocal group from England, attracted students from as far away as Duke University. They drove over 400 miles to hear the Rollingstones perform for 25 minutes.

With all the attention centered on "long-hair music" (which by the way, has acquired a new meaning), cultural events are slighted.

Imagine the feelings of a noted lecturer who is invited to speak at GSC when he gazes into the auditorium to see a mere handful of students for an audience.

When the curtains open and the Masquers see the 50 or 65 interested people, they must feel that their efforts have been in vain. They spend five weeks or more rehearsing for play only to find they are playing to an almost empty house.

These performers have an inherent love for their work, and they strive for perfection. Their labor and its results merit support.

Attendance Required

Unless teachers required their students to attend the lectures presented, attendance would probably be half its present size.

The John Ciardi lecture was well attended by GSC students. The enthusiastic audience packed McCroan Auditorium and even left several students having to stand up. It would, however, be interesting to determine how many students would have attended the lecture had they not been required to do so by their teachers.

Distinct Difference

Ironically, the people who attended the Ciardi lecture were apparently thoroughly enjoying themselves. There is a distinct difference between mere polite applause and a wholehearted burst of laughter. The audience reaction to Ciardi was much more than merely polite.

A re-evaluation of our cultural standards is in order, and American college students must consider the final outcome of their gross neglect of the fine arts.

THE George-Anne

The opinions expressed herein are those of the student writers and not necessarily those of the college administration and faculty



Entered as second class matter at Post Office at Georgia Southern College, Georgia Southern Branch, under act of Congress.

OCT. 29, 1965

Editorial Board: Tom King, Ron Mayhew, Bill Muller, John Eden, Gary Hancock.

Copy Editor: Frank Tilton

Feature Editor: Louise McCord

Co-Society Editors: Ann Vaughan, Rachel Roundtree.

Business Manager: Gary Hancock

Assistant Business Manager: Roger Murphy

Circulation Manager: Gordon Turner

LETTERS TO THE EDITOR

Letters To Editor Take Issue With Auto Registration Policies

Dear Editors:

I really do thank the wonderful people in Georgia Southern College for the nice things they have done for me and they let me feel I am not a long way from home. Therefore, I must thank first all the girls in Anderson Hall of what they did on my birthday last Friday, Oct. 22 and the wonderful cake and party they did.

Also I appreciate their thoughtfulness, because they treat foreigners like their brothers. Also I'm going to thank

the housemother of Brannen Hall, Mrs. Bates, and the health cottage with Dr. Daniel for the wonderful party they did for me in the health cottage, and I thank Miss Dorothy Wiggins and nurses.

These people I think they are born that way in the United States. Between kindness and generosity they treat the foreigners like their sons or brothers. I really do thank them for all their kindness and their thoughtfulness.

Fouad Ahmad

Dear Editor:

Being a student at Georgia Southern College who is not a member of the top ten percent of his class, I need to study. However, I found it all too difficult to take the preprosperous, purely statistical, 3 hour and 40 minute test, which the freshmen were led into this past Monday evening.

Any individual of individuals responsible for scheduling this test at a time when most students are doing their assigned work for the following day has no consideration for a college or for his grades.

If I'm going to be someone's statistical guinea-pig, couldn't I be victimized at a more advantageous time than on a night preceding classes and tests?

After all, what is Orientation Week for?

Sincerely,
Ralph B. Jordan

Ed. Note: The meeting on Monday night was not for nominations of class officers. That meeting was scheduled for Thursday night.

After consulting an authoritative source in the dean's office, I was informed that students were not forced to take the test and that students were informed of the length of the test before it began.

The organization that is making you a "statistic" is the Dept. of Health, Education, and Welfare and this test, which would normally cost a student about 75 cents, was given free as part of a nation-wide survey of colleges.

Editor.

Dear Editor:

A friend of mine complained to me recently that our campus security officers have been paying visits to Knight Village lately at unearthly hours of the morning. The purpose of these visits, I believe, is to distribute tickets for non-registration of automobiles.

I have been under the impression that our campus ended at the crossroads facing the Eagle. Have we annexed Knight Village? If not, the security force has had no authority whatsoever for their actions. Non-registered autos should be ticketed only if they are parked on the campus.

If the security force is to carry on such activities, they should also go into the city proper passing out tickets. They would have equal reason and authority.

Many people have told me that they have been parking off campus and walking to class, because they cannot afford the outrageous fee charged for registration. It would seem that even this is not safe. Many of our motorists pay only \$5.00 for a Georgia license plate.

If I were one of the motorists so ticketed, I would refuse to pay.

Yours truly,
Harold Wright

To the Editor:

Is it possible to clarify the position of campus security on the new parking regulations?

I was led to believe that the registration fee was for the privilege to park an automobile on the GSC campus. Now I find that the jurisdiction of our "men from U.N.C.L.E." is virtually unlimited. Where did these stalwart protectors of the oppressed get the right to sneak through the parking areas of off-campus dormitories in the early morning plastering tickets on unregistered automobiles? If they can legally do this why can't they go through the motels giving tickets to tourists?

I am curious as to whether this fee is strictly for on-campus parking. Why should those students who do not park on the campus be required to pay

a fee for parking off-campus? It seems that campus security is overstepping their jurisdiction. If this is the case it should be rectified.

I realize that off-campus students are subject to the same rule as those who live in on-campus dorms. I am not sure that our campus security has the right to give tickets to cars that are parked on private property.

I also thought that this fee is to improve parking areas on campus. Why should persons who don't use those areas be forced to contribute to their improvement.

The situation is ridiculous if the security forces can give tickets to any automobile that may possibly be parked on campus some day. That is exactly what is happening.

Thomas W. Holbrook Jr.

Did Garfunkel Err On Newspaper Definition?

By Dean Pollard

The question of "What is a George - Anne?" arose recently in connection with a "Garfunkel" letter. The answer, that a George - Anne is a group of students who get together on Tuesday nights to figure out what a George-Anne is, might be good for a few laughs in the Student Center but leaves much to be desired in the way of information.

In fact, a George - Anne is a serious creature who needs examination. For the students and faculty at Georgia Southern the George - Anne is, or should be, a pretty important organism.

The most common part of the definition of any newspaper is that it is a medium for the

speedy and accurate reporting of news. For a college this means, of course, that news which is of direct interest to some groups on the campus.

Next, a college paper must interpret this news and offer opinions. Ideally, these opinions are based on a thorough knowledge of the subject treated.

The George - Anne cannot, as is sometimes assumed, represent the opinions of the entire student body. It must strive to represent its own opinion as one of many voices on campus.

Indeed, it is not just the privilege but the responsibility of any newspaper to serve as a constructive critic of newsworthy issues and to act with courage in serving its readers.

The George - Anne represents what it sees as the best interests of the college and is not beholden to any single group. This does not, however, prevent the paper from supporting those groups which it feels merit support or criticizing those who pose a threat to the well-being of the school.

In short then a George-Anne is a reasonable creature which researches, reports, interprets and usually pleases someone.



GARFUNKEL

Dear Garfunkel,

Why is there no academic atmosphere here at GSC?

Acka Dameeun

Dear Ack,

There can be no academic atmosphere at Georgia Southern until the trade winds stop blowing.

Garfunkel

Dear Garf,

I ride my horse to classes every day and leave him tied on the campus, do I have to register him with the campus security man?

E. Ques Treean

Dear El,

If your horse is left on the campus all day, he does an invaluable service to the plant life of the college, therefore he need not be registered.

Garfunkel

Dear Garfunkel,

Is there really a traffic committee on the campus, or is it just a legend?

Virginia

Yes, Virginia. . .

Dear Garfunkel,

What is the difference between Grand Central Station and the library?

Seekera Quiet

Dear Seeker,

All the doors work at Grand Central, it's quieter, and there are more books there.

Garfunkel

Dear Garfunkel,

What do they sell at the book store?

Buya Text

Dear Buya,

Trash by the pound.

Garfunkel

Dear Garfunkel,

Why are there no demonstra-

tions on this campus?

Plakerd Berra

Dear Plak,

Demonstrations are usually the result of intellectual frustration. There is little frustration on this campus, and moreover. . .

Garfunkel

Dear Garfunkel,

Will anybody that lives outside Bulloch County be elected to Who's Who this year?

Idz Mee

Dear Idz,

No, because nobody outside the Education Division can pass the jargon test.

Garfunkel

Dear Garfunkel,

Are social science majors really a bunch of Communists?

J. B.

Dear J.,

They must be, they're against the repeal of the Fifth Amendment.

Dear Garfunkel,

Does Dean Tyson really smoke pot?

Poppy Blossom

Dear Pop,

No, he only wears it.

Garfunkel

Dear Garfunkel,

Why are the shrimp so tough in the dining hall?

Lessa Tooth

Dear Lessa,

If you had to go through what they do, you'd be tough too!

Garf

Dear Garfunkel,

When are they going to put in some new side walks on the campus?

Wakin Thudirt

Dear Wakin,

As soon as the present supply finishes growing. Despite constant watering, they haven't gotten any bigger since they were put down several years ago.

Garfunkel

Dear Garfunkel,

Did you hear the Sig Ep brothers dedicate a song to you on the radio two weeks ago?

Audio Radiance

Dear Audio,

Yes, and I would like to dedicate a song to them: "The Days of Whine and Noses."

Garfunkel

Dear Garfunkel,

What is the difference between college and an insane asylum?

Meedee Oger

Dear Meed,

In order to get out of an asylum, you have to improve.

Garfunkel





NEW APO SWEETHEART

Miss Beverly Carlson, blue-eyed blonde from Dawson and a former Miss Terrell Co. High, is the new sweetheart of Alpha Phi Omega service fraternity. Beverly is a freshman Elementary Education major and is president of Deal Hall.



Everybody's favorite bra...

Bali Sno-Flake

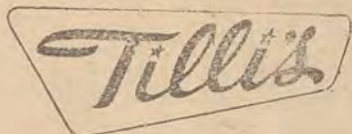
Bali's sno-flake-patterned nylon lace only looks delicate! It's really as strong as can be — never loses its shape. Flat, ribbon-wired undercups give unfelt support, perfect separation and complete containment to even the fullest figure. Shapes average curves to perfection. Lycra® spandex washes easily, dries quickly. white B cup, 32-38. C cup, 32-40. \$6.00. D cup, 32-42. \$7.00. DD cup, 32-42. \$7.50.

WILL YOU SPEND FIVE MINUTES IN OUR FITTING ROOM FOR A BETTER FIGURE FOR LIFE?



Every Bali has a bow

Shop with confidence at the Store that offers you more



"For Your Shopping Pleasure"

Fiber content: nylon/acetate/polyester/spandex

Two Coeds Go To Convention

Rhetta Thompson and Gloria Lane have recently returned from the 56th annual meeting of the American Home Economics Association in Atlantic City, N. J., and both describe the trip as "exciting and rewarding."

Miss Thompson, a senior



MISS GLORIA LANE

home economics major, was accompanied by Dr. Fannie Lee Boyd, professor of home economics at the University of Georgia, Miss Diana Ruff of Athens and Miss Kathy Hardigree of Atlanta, students at the University.

Miss Lane, also a senior home economics major, was accompanied by Dr. Betty Lane, chairman of the division of home economics.

Seven hundred junior and senior college students were among the 6,000 home economists from all over the nation to attend the meeting. Every state was represented. Home economists from other nations were also present.

Headquarters for the college students was the Traymore Hotel. The New Jersey delegation hosted a "college (party) mixer" at the hotel for stud-

ents and foreign guests. Convention delegates were also honored at breakfasts, teas, cocktail parties and receptions by many of the major companies displaying their products in exhibits at Convention Hall.

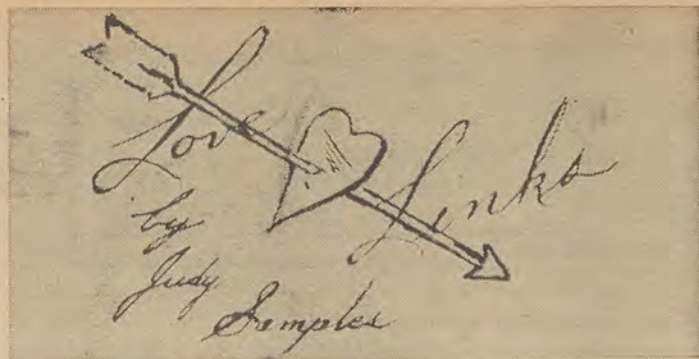
Each day was filled with meetings, tours, and entertainment. In this busy schedule, the Georgia Southern coeds saw over 70 different fall outfits at a fashion show; met the national Pillsbury winner at a reception in the penthouse of the Shelbourne Hotel; and were among guests at a steak supper.

Each girl received a gardenia, baby orchid and long-stemmed red rose daily to enhance her enjoyment of the boardwalk and beach.

Plans are being made for the 1966 convention in San Francisco, Calif.



MISS RHETTA THOMPSON



ENGAGEMENTS

FRANKIE TOMPSON from Vidalia, Ga. is engaged to LOUIS BUCKALEW from Hinesville. Both are still in school here and plan to marry as soon as they graduate.

BECKY MOATS, an elementary major from Brunswick, is engaged to PORKY HAYNES of Waycross. Becky is treasurer of Theta Pi Omega and Porky is a member of Sigma Epsilon Chi. They plan a summer wedding.

CAROLE PITTMAN, an elementary education major from Macon is engaged to DAN SLATTERY of Hollywood, Fla. Dan's major is Economics. The couple plans a summer wedding.

JUDY ROBERTS, a recreation major from Barnesville, is engaged to ROGER COLLINS of Metter. Roger is a graduate of GSC and is now attending law school in Atlanta. They plan to marry Dec. 18.

JANIE RIDGEWAY, a sophomore from Jackson, is engaged to TOMMY CARMICHAEL who attends Tech. Janie is an elementary ed. major and Tommy is majoring in architectural engineering. Tommy is kick off for the Yellow Jackets. Here at Southern, Janie is a member of Gamma Sigma Upsilon. They plan to get married when they both finish school.

SUE QUANTE, an elementary ed. major from Savannah is engaged to CHARLES DREWS, also of Savannah. Sue is a sophomore and member of Sigma Alpha Chi. They plan to marry next summer.

BONNIE THOMPSON, a math major from Douglasville is engaged to LARRY DEMBY of Lithia Springs. Bonnie is a sophomore and Larry is a senior and a member of Delta Phi Alpha. They plan to marry next September.

PAT PRINCE, a math major from Macon, is engaged to TERRY SCOTT of Collins. Pat is a member of Gamma Sigma Epsilon and Sigma Alpha Chi. Terry is a junior and majoring in accounting. They plan to marry next September.

DIANNE SIKES, a business major from Cobbtown is engaged to JACK WATERS of Claxton. They plan to marry in the near future.

SUNNY GAIL WRIGHT is engaged to GARY DUFFY of Dublin. Gary attended Auburn and will attend Southern this winter. They plan to marry in the near future.

THE Paragon

SUNDAY:

Ribeye Steak, French fries, lettuce & tomato—garnished with onion ring. **\$1.49**

MONDAY:

Shrimp Basket—21 shrimp—cole slaw & French fries—Hush Puppies **\$1.25**

TUESDAY:

Best Pizzas You Ever Tasted—All 9-Inch Pizzas **75c**

WEDNESDAY:

Italian Spaghetti—All You Can Eat! Parmesan Cheese, Garlic bread **98c**

THURSDAY:

"From the Grill"—Chopped Sirloin Steak, French fries, Lettuce & Tomato garnished with onion ring **98c**

FRIDAY:

All the fish you can eat—served with cole slaw, French fries, hush puppies tartar sauce **\$1.00**

Be Sure to Ask About Our Breakfast When Here!

THE Paragon

Just Outside the Campus Gates on South 301

Ben Franklin Store

"Your Most Convenient Store"

E. MAIN ST.

Dr. Jones Talks At BSU Meet

Recent Baptist Student Union activities include a Bible Study Retreat, a general meeting, and a Halloween social honoring the international students.

Dr. Estil Jones, formerly a teacher of New Testament and Greek at Southern Seminary, led the discussion groups at the Retreat on Friday and Saturday, October 22-23. Jones, pastor of Thomson First Baptist Church, discussed the topic, "How to Study the Bible," with the students who met at Parker's Pond House.

Summer missionaries sponsored by the state B.S.U. and Home Mission Board were featured at the general meeting last Monday night. Coordinating the program was Herbert Shippey, missions chairman.

Members of the Young Women's Auxiliary had as their honor guests the international students at their Halloween social. Arranged as a Halloween Carnival, a gypsy fortune teller was on the scene to make predictions for the BSU members, who also enjoyed the traditional apple bobbing and other Halloween traditions.

McBride Attends Leadership Meet

Miss Lulane McBride, dean of women, is attending the Georgia Institute on Group Behavior and Group Leadership at Calloway Gardens this week.

Teachers, doctors, ministers, social workers, counselors, legislators and businessmen received invitations to attend the partment of Psychiatry at Emory University.

The institute will demonstrate how the principles used in group therapy can be used by other groups and their leaders.

Speakers for the institute include Dr. David Blau, professor of psychiatry, Boston University; Dr. Alfred Messer and Dr. Bernard C. Holland, professors of psychiatry, Emory University; and Dr. Noah Langdale, president of Georgia State College.



Southern Belle

Mary Tom Burton, a sophomore from Elberton, is this week's Southern Belle. She has blonde hair, green eyes, and is five-feet-three. Mary Tom is a music major and an excellent student. She has made the Dean's List twice and her hobby is music.

English Club Plans Programs; Elects Officers For 1965-1966

English Club members will have their third meeting Wednesday, Nov. 3, in the Audio-visual Room of the Student Center at 8 p.m.

Dr. David Ruffin, club sponsor, will present the program. Anticipated programs for the quarter include a special Humanities study which will be introduced by Dr. Frieda Gernant at the Nov. 17 meeting. Officers who were elected recently are Louise McCord, president; Julia Flynt, vice-president; Amy Miller, secretary - treasurer; and Sylvia Booker, program chairman.

Bimonthly meetings will be held by the English Club on the first and third Wednesdays at 8 p.m. All interested students are invited to join. Membership dues are \$2.

It was stressed by Miss McCord that this is an extra-curricular activity from which "pleasure is derived. There are so many organizations which demand an account of services rendered. On the contrary, we meet together for enjoyment as we increase our knowledge and interest in our major field."

Home Economics Workshop Slated

The annual fall workshop for college chapters of the Georgia Home Economics Association will be held at the University of Georgia Saturday.

Registration will be held from 9:30-10 a.m. on the second floor of Dawson Hall. Registration fee is \$1.

The GSC chapter has been asked to prepare a 20-minute report on the highlights of the American Home Economics Convention.

Attending the convention from the campus Home Economics Club are Betty Allen, chairman; Glenda Helmly, treasurer; Patsy Johnson, projects chairman; Ashton Helmly, Student Congress representative; Susan Walker; Gloria Lane; Rhett Thompson and Mrs. Frances Seymour, sponsor.

THE GEORGE-ANNE OCT. 29, 1965 PAGE 7

**STATESBORO
BEAUTY SCHOOL**
in "THE HEART OF STATESBORO"
Regular Shampoo — Set, Dry, Combout
\$1.00
Tipping and Streaking
\$7.50
24 East Main Street
—NO APPOINTMENTS NECESSARY—

**MOCK'S
BAKERY**
FOR
The Finest
IN
Pastry
41 S. Main

For Fast Delivery
on
WATCH
and
JEWELRY REPAIR
**THE
FIFTH WHEEL**
Simmons Shopping
Center
• DIAMONDS-
• JEWELRY
• WATCHES

the fabulous
HOOT
...with the soft touch of Edith Henry®
• BLACK
• CORDOVAN
• RED
• BLUE
Widths S-N-M's
Sizes 3's to 10's
A born extrovert! Gets you into all sorts of fun. Feels fabulous too—Instant Fit® lined! You've but to choose from a great range of hues; we're sure to have your size. 2½ to 14.
\$10.95

Burton's Shoe Store

OPEN HOUSE*continues at***Kenan's****YE OLE
SHOPPE***Through Saturday.***Be Sure to Register for FREE****PRIZES and for Special Student Drawing.***Free Refreshments
Students and faculty
welcome***SCHOOL BUDGET**

Each quarter students are required to pay a student activity fee which, as part of the total college income, is used to finance college functions. This year the students' money will be allocated as follows:

Proposed Budget 1965-66**INCOME**

Session	No. of Students	Fee Per Student	Total
Summer Quarter	1000	\$10.00	\$ 10,000.00
1st Summer Session	575	3.00	1,000.00
Fall Quarter	3100	10.00	31,000.00
Winter Quarter	3000	10.00	30,000.00
Spring Quarter	2900	10.00	29,000.00
Subtotal			\$101,800.00
George-Anne			3,500.00
Reflector			4,500.00
Athletics (Gate Receipts & Donations)			20,000.00
TOTAL INCOME			\$129,800.00

EXPENDITURES

(The first figure represents the amount of money allocated to the corresponding activity. The second figure represents the income gained by the activity itself.)

REFLECTOR	\$21,378.00
	\$4,500.00
	\$25,878.00
ATHLETICS	\$40,720.00
	20,000.00
	\$60,720.00
STUDENT CONGRESS	\$3,054.00
COLLEGE CONCERT GROUP	\$5,090.00
MOVIES — DANCES — SOCIALS	\$8,144.00
ORCHESTRA	\$5,090.00
GEORGE-ANNE	\$14,252.00
	\$3,500.00
	\$17,752.00
CONTINGENCY FUND (for unexpected purposes)	\$3,054.00
CHEERLEADERS	\$1,018.00
TOTAL EXPENSES	\$81,600.00

**Many Functions, Jobs Handled
By Office Of Student Personnel**

The Office of Student Placement and Aid, which was added to the Office of Student Personnel Services, involves teacher placement as well

as placement of graduates from all other departments.

Its main functions include: maintaining a student folder on each student who applies for services in the placement office, scheduling conferences between prospective employers and employees, gathering and disseminating occupational information, and developing job openings and job opportunities.

Another function of this office is acquiring financial aid for students by administering loan programs, scholarships, and work programs. Among the available loans are: NDEA loans Georgia Higher Education Assistance Corporation and others to be added later.

Among the scholarships are: Georgia State Teachers Scholarships, Regents Scholarships, State Scholarship Commission Scholarships, and various future additions.

Among the programs are: campus - work program, off-campus part-time work, summer work, and the Work Study Program under the Economic

Opportunity Act.

Interested students are encouraged to visit the office and find out more about the opportunities offered by this new service.

Support Your
George-Anne
Advertisers!

**ROBSON'S HOME
BAKERY**

"Quality pastries and Delicacies Come
your way"

OPEN ALL DAY BUT WED. 6 til 12 A. M.
remember . . . Specials every Wednesday
Simmons Shopping Center

Welcome Students**Your Dollar Buys More Here!****G A S****"GAS FOR LESS"****open 24 hours 500 yds. from college gate****Across from Skate-R-Bowl****South on U. S. 301****Rogers Service Station**

Special
INTRODUCTORY FLIGHT LESSON

**Just
\$5
puts
you
here**



Come on out and take our
SPECIAL INTRODUCTORY FLIGHT
LESSON. For just \$5 you'll handle
the controls, you'll see how easy
it is to fly a modern Cherokee...and
you'll see why so many people are
learning to fly—for fun or business.

**GLYNNAIRE
AVIATION**

**Statesboro Airport
Phone 764-4225**

PIPER SALES AND SERVICE

Be A**Blood Donor****MEET THE
SWINGER**

THE NEW
POLAROID LAND CAMERA
FOR ONLY

19⁹⁵

Have you seen it yet? We have the SWINGER, the amazing new low-priced Polaroid camera. It's the camera that "talks" to you — says YES right in the viewfinder when the exposure is perfect. It's full of surprises. And it gives you your black and white pictures in 10 seconds. Come in and see it today. It's the most camera in the world for the price!

**Plaza Pharmacy
College Gate
Plaza In
Knight Village**

Charge Accounts
Welcomed
Phone 764-4500

BURTON'S
*Shipment of
white Boots*

by Capi have
arrived . . .



I talked to Coach J. B. Searce the other day. Seems like his favorite topic is basketaball — Georgia Southern basketball.

He's right pleased with the way his Eagles look this year. They've been practicing for about two weeks now, two hours a day. On Nov. 6 they scrimmage the freshman team in the first open practice, and the Saturday morning practices will be open from then on. The annual Blue and White intra-squad game is scheduled for Nov. 23.

Everybody likes to make pre-season predictions on how the team is going to do, pass judgement on how the players look and such as that. But the best source of information on a team is its coach, so in evaluating the Georgia Southern Eagles let's look back over what Coach Searce has had to say about them since the first of the year.

Before school opened this fall, Searce said "if everybody who is supposed to show up shows up, . . . we could have a good team." Everybody that was supposed to, showed up.

Of the Eagle's 26-game schedule — 12 at home and 14 on the road — Searce said, "It's one of our toughest schedules. We won't play some of the major schools we played last year, but we play more tough opponents on the road than we usually do."

Later on in the quarter, after he had a pretty good idea who would make up the squad, Searce stated, "On paper, we have as good a team as we have ever had here. Our starting team is as good or better than last year, and we have good depth. The only problem right now is that our defense probably won't be as good as last year.

Now that the coach has had two weeks of putting his charges through their paces, he says that they are every bit as good as he expected them to be.

"We came out in better shape than ever before. Only a few of the boys need extra work," Searce said, "and everybody has a fine attitude. I'm real encouraged by their spirit and hard work."

During the first week of practice, the Eagles experimented with offensive tatics, but now have concrete plays that they are working on. "We're going to have a better offense this year," Coach Searce said.

As far as a starting lineup, Searce won't commit himself. But judging from his comments on the various players, would venture to predict that the same group he suggested at the first of the year will take the court on Dec. 1.

Don Adler will definitely start as captain and playmaker at the guard spot. Jimmy Rose at the other guard is a safe prediction, with Mike Rickard and Jim Seely at forwards and Bill Pickens at center.

"Actually, we can't tell what will happen between now and Dec. 1, or Jan. 1 for that matter. One thing for sure, we will have some on the bench as well as on the floor that can score."

**DELICIOUSLY COOKED CHAR BROILED
BRAZIER BURGERS**

"Oh! They're So Good"

Dairy Queen and Brazier

"The Cone With The Curl On Top"

corner of Noth Main and Highway 80

GEORGE-ANNE

S P O R T S



The 1965-66 Version of the Cheerleading Squad.

Six New Varsity Cheerleaders Announced By Miss Colquitt

The six varsity cheerleaders for 1965-66 have been announced by Miss Sue Colquitt, new cheerleader advisor.

They are Sandra Eatman, a senior physical education major from Valdosta and veteran of last year's cheerleader squad; Ruthie Hendrix, junior recreation major from Port Wentworth, and first alternate on last year's squad; Judy Hunnicut, sophomore recreation major from Forsyth and member of last year's freshman squad; Mary Jane Cassady, sophomore elementary education major from Tavares, Fla., and member of last year's freshman squad; Donna Evancic, sophomore elementary education major from Macon; and Janet Henriksen, sophomore physical education major from Albany.

Miss Colquitt, the new advisor, is working toward her Master of Education degree, and already holds a B.S. degree from the Womens College of Georgia. Her home is Ft. Valley, and she spent several years in charge of cheerlead-

ers at Chamblee High School in Dekalb County. Miss Colquitt said, "I think we'll have a good squad this year because all the girls are very eager and work good as a group. We have been practicing for two and a half weeks with the help of the Gymnastics team, which has been a great asset to us."

Commenting on the advantages of being a cheerleader, Miss Eatman, the only senior on the squad, said, "We get to cheer at all the home basketball games and most of the road games. Also, we get to meet a lot of new people."

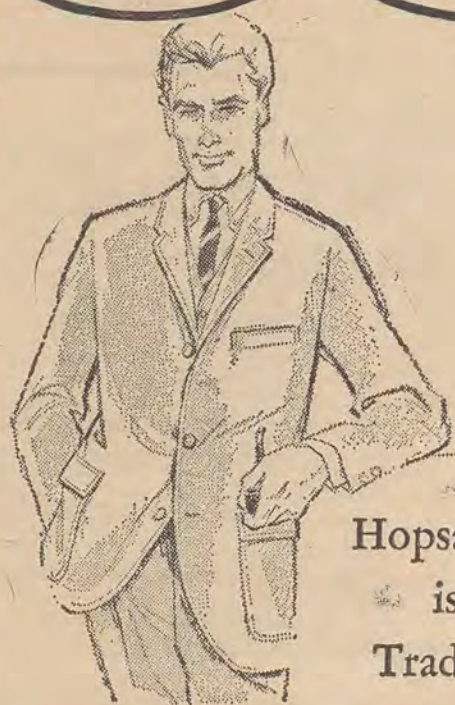
Whe asked what was her biggest thrill while a cheerleader last year, she commented, "My biggest thrill was when we beat Carson - Newman 92-64, after they came to Southern nationally - ranked and sporting a 17-3 record."

Brodersen Returning To Cagers?

Dick Brodersen, a 6-9 center from Clinton, Iowa may return to varsity basketball, according to head Coach J. B. Searce.

"I got a letter from Dick saying he wanted to return to school," Searce said. "I replied to him that he would have to enroll by winter quarter to be eligible next season. We'll have to wait and see if he does return."

Brodersen averaged 3.0 as a sophomore last season and was one of the most popular players ever to play with the Eagles. He ran into scholastic difficulties after basketball last year, and he has been working with a railroad in Iowa since then.



**Hopsacking
is a
Tradition**

Hopsacking is the traditionalist's trademark. Calmly understated by College Hall, it is rugged enough for country or campus wear, and always correct for town. Authentic natural shoulder styling in a wide variety of fabrics and handsome muted tones. By College Hall, naturally.

\$39.95

Minkovitz
"CAMPUS SHOP"



**profile of the
PURIST®**

the button-down collar achieves prominence anew with the classic Purist® flare — exclusively Sero of New Haven. Correct in every detail . . . masterfully tailored . . . properly tapered. In fine-combed oxford and broadcloth . . . in colours and white.

\$6.50

Minkovitz
"CAMPUS SHOP"

Don Adler Named Captain; Eyes Basketball Records

By Hubert Norton
GSC Sports Publicist

Guard Don Adler, beginning his fourth year as a varsity starter with a chance to become the 12th -man in the school's history to earn four letters in basketball, will captain this year's team, Coach J. B. Searce announced.

Adler was one of four co-captains last year.

"I think it is only fitting that Don be our captain," Searce said. "He has started every game since he has been down here, and more important he controls our game on the floor whether on offense or defense."

Adler, a senior, has started 85 consecutive games and, barring injuries, will set a mark for consecutive games started and will tie a record for games played. The playmaker will set another mark for games played should the team participate in any post season tournament.

The 6-0, 175 pound guard averaged 10.3 in his freshman year, 12.1 as a sophomore, and 13.5 last year as a junior. He ranks as the 10th all-time scorer in the school's history with 1,018 career points, but is more famous for his defensive ability. He holds the school mark for assists in a single game with 23.

The Petersburg, Ind., native will join a select group of four-year basketball lettermen. Only 11 other players in 35 years of intercollegiate competition have achieved four-year letterman status.

Other four-year basketball lettermen are John Burton (1961-64), Chester Curry (1957-60), Bo Warren (1954-57), Don Wallen (1954-57), Chester Webb (1953-56), Buddy Ward (1953-56), Sonny Clements (1949-52), Hendry Bagley (1937-40), Hershel Hamil (1937-40), J. C. Hines (1932-35) and Aubrey Pafford (1932-35).

The Eagles play 25 regular season games this year, so Adler has a chance to tie Curry's mark of 110 games played and eclipse Curry's mark of 106 consecutive games started.

Searce, beginning his 19th year as GSC's head basketball coach, called Adler the best freshman guard he has ever had. That was four years ago, and the praise today is basically the same, only augmented.

"Don Adler is the complete ball player," Searce now says. "He is terrific on defense and offense, he is a completely unselfish ball player, and above all he is a tremendous competitor."



Searce Confers With "Ramrod", Captain Don Adler

Two Professors On Committee

Dr. Starr Miller, chairman of the education division and Dr. Donald Hawk, director of student teaching, will serve on a State Department of Education committee at Mercer University Oct. 26-29.

Dr. Miller was named chairman of a committee to evaluate the teacher education program in the state.

THE GEORGE-ANNE OCT. 29, 1965 PAGE 10

Q - Stik Enjoyable Recreation All New Brunswick Tables

45 East Main — Statesboro, Ga.

Nic Nac Grille

"It Costs Less
To Eat Out"

We Cater To
Sports

All Orders
Available To Go

1 Block off 301
Open 5:45 a.m. to
11:00 p.m.

Statesboro's Oldest
R. C. Webb Owner
63 E. Main Ph. 764-2853

Freshman Cage Team Practices For Opener In Wadley Nov. 20

By Joe Crine
Sports Staff

The Eagle freshman basketballers are carrying on one-a-day practice session six-days-a-week in preparation for their Nov. 20 opener with Georgia Military Academy in Wadley, according to Ed Thompson, coach.

A starting line-up has not yet been designated from the sixteen man squad. Coach Thompson added that only a few minor injuries had been incurred during the practice session.

Thompson stated that the Nov. 20 opening date will put

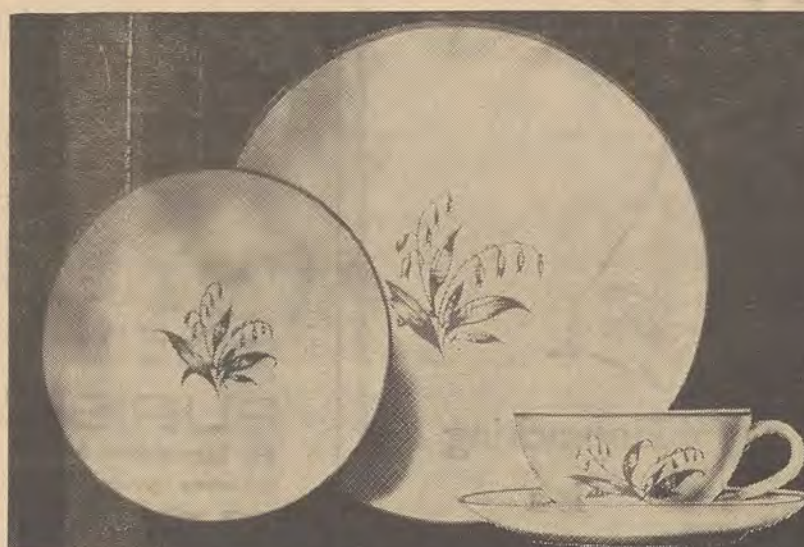
an extra burden on the squad. It is the earliest opening date in recent years.

"The boys seem to have a real good competitive spirit thus far," said Thompson. "I am very well pleased with the progress we have made," he added.

The Oglethorpe freshmen will be on the schedule for the first time this year. Thompson considers them one of his toughest opponents.



GYMNASTICS TEAM practices every day for first exhibition meet on Nov. 11. Shown above, Coach Ron Oertley assists John Peacock doing a back lever on rings.



PICK UP THIS FINE CHINA
AT THE STANDARD OIL SIGN

99¢
PLUS
TAX

A four-piece place setting with
eight gallon gasoline
purchase!

The GOLDEN RHAPSODY pattern, highlights a graceful gold and gray design on white, translucent fine china. Start your set today and increase your service to six, eight or more during this exclusive student offer . . . Your four-piece place setting includes:

DINNER PLATE . . . SALAD PLATE . . . CUP AND SAUCER

ALSO with each eight gallons gasoline purchase you may select . . . 6-piece Coaster Ashtray Set 99c . . . 4-piece Salt and Pepper Shakers 99c and Coffee or Tea Pot \$2.99

STUDENTS . . . delight your parents with this fine china.

MAC'S STANDARD OIL SERVICE STATION Your car is given better care.



BURTON'S Shipment of white Boots

by Capi have
arrived . . .

'Big George' Valuable Man To Varsity Cage Program

One of the most indispensable and one of the generally overlooked men in the varsity basketball program is a 6-3 former basketball player, George Watson, who serves as equipment manager.

George, a senior from Pleasureville, Ky., has the unenviable task of caring for equipment, serving as errand boy for the athletic department, looking after basketball players, and even doubling as a "dummy" in the Eagles' scrimmage sessions. But Big George likes his position, accepts it and does an outstanding job of it.

Watson came to school on a basketball scholarship and played one year of varsity competition. He took over as manager last season.

His work in the pre-season drills consists of distributing and collecting equipment before and after practice, officiating scrimmages, working as a defensive player against the varsity offense, and obtaining anything Coach J. B. Scarce might desire during the course of a practice session.

Last week during picture-taking day for the basketball team served as an example of Watson's versatility. Scarce called for a stool for a particular pose. Watson immediately came up with a stool.

"It's a lot of hard work," said Watson, "but it keeps me a part of the basketball team. I do a lot of work, but so does everyone else connected with the team."

When the basketball season begins, Watson will have the

duty of looking after visiting teams the way he looks after the varsity. He must supply towels and water to the visiting team as he does for the varsity, and he must keep two coaches happy rather than just one.

On road trips his duties become greater. He accounts for all the players when boarding the bus to prepare to travel, he sees that all players show up on time to eat, he sees that all players are in bed at night, he awakens them in the mornings for breakfast, he helps keep the basketball statistics charts during the game, and he accounts for all players and equipment before reboarding the bus for the sojourn home.

But Watson has his moments of glory. At home games he loves to carry the game ball



"BIG GEORGE"

to the officials prior to a game, and when he does, he carries it gripped by his outstretched fingers in typical basketball player fashion.

"The fans go nuts when I palm the ball to start the game," Watson laughs.

On road trips, George is the entertainer for the squad on the long, lonely bus rides. He does imitations of faculty members, coaches, and basketball players and tells jokes. Everyone on the team likes his comedy routine and usually beckons him to do an encore.

In his spare time Watson can be found at the gym, shooting 40-foot jump shots to keep in shape.

"You can't ever tell," Watson laughs, "Somebody might get hurt or two or three boys might flunk out and the Big Man might have to dress out."

Soccer Team Improving Play; Building Interest

The newly established soccer team, formed and coached by Bjorn Kjerfve, Rotary exchange student from Sweden, has shown a vast improvement and eagerness to play since its beginning.

The club meets each Monday behind the Hanner Gym. Students interested may come out to practice with the team. A total of 13 students have shown interest in playing.

"With the help of the foreign students who are presently making up the core of the team, Georgia Southern could build an intercollegiate squad and compete with teams we now challenge in baseball and basketball," said Kjerfve.

To strengthen through practice and playing, Bjorn stresses fundamental plays, team play, competitive spirit, timing, quick thinking and adaptability to changing game situations.



BOB BACKUS

Backus Likes New Cage Post

Bob Backus, a graduate assistant in the Department of Health, Physical Education, and Recreation, is the new assistant freshman basketball coach.

Backus takes over the post vacated by Bill Alexander, who is now head basketball coach at Glynn Academy in Brunswick.

Backus, a native of Charleston, W. Va., was attracted to Georgia Southern by Alexander. "Bill and I went to school together at Morris Harvey," the new coach said. "Last year he suggested that I come here."

In addition to his freshman basketball chores, Backus also teaches several physical education courses.

Graduated from Morris Harvey College in Charleston in 1961, Backus taught for four years in Charleston prior to accepting his present post. He coached junior high football and basketball, was assistant varsity basketball coach, and was head baseball coach.

"I really like it down here," Backus said. "Everybody is friendly and is willing to help, and the students are fun to work with. As far as basketball goes, I like working with Coach Thompson and the boys. We've been practicing for about two weeks."

Backus also serves as a supervisor for Knight Hall, the athletic dormitory.

Three Unbeaten Teams Remain As Grid League Ends First Half

The Intramural Touch Football League reached its halfway point Tuesday afternoon with Sigma Epsilon Chi undefeated in the American League and the LaVista Hall Bulldogs and the Rhodents unbeaten in the National League.

The league opened its second half Wednesday with the Rhodents and the Bulldogs highlighting the action.

The Sig Eps own the best defense in the loop, according to statistics. The Sig Eps have yielded only six points in four games while scoring 63.

The Rhodents own the most potent offense with 105 points in four contests, but the Dixie Darlings claim the game scoring honors with 41.

In Tuesday's NL action the Dixie Darlings beat the Mets, 41-0, and the Unknowns blanked the Hawks, 12-0. In the American League the Sanford Hall Phantoms won their third straight by beating Alpha Phi Omega, 20-0, and the Morgan Hall Rebels tripped the Delta Dogs, 13-0.

Monday's slate had LaVista downing the Bandits, 19-0, and

the Rhodents edging the Rogues, 23-21, in the NL, and in the AL Sigma Epsilon Chi trounced Delta Sigma Pi, 25-6, and DPA handing Eta Rho Epsilon its first defeat, 6-0.

In games of Oct. 21, the Rhodents slipped past the Unknowns, 19-13, and the Hawks trimmed the Mets, 8-0, in the NL, and DPA shutout the Rebels, 7-0, and the Phantoms outscored the Delta Dogs, 14-6, in the AL.

The schedule for Oct. 20 had LaVista nipping the Rogues, 2-0, and the Dixie Darlings tripping the Bandits, 6-2, in the National, and Eta Rho Epsilon blanking Delta Sig, 6-0, and Sig Ep stopping APO, 12-0, in the American.

The standings:
NATIONAL: LaVista 4-0, Rhodents 4-0, Dixie Darlings 3-1, Rogues 2-2, Bandits 1-3, Hawks 1-3, Unknowns 1-3, and Mets 0-4.

AMERICAN: Sigma Epsilon Chi 4-0, Eta Rho Epsilon 3-1, Sanford Hall 3-1, Morgan Hall 2-2, Delta Pi Alpha 2-2, Alpha Phi Omega 1-3, Delta Dogs 1-3, and Delta Sigma Pi 0-4.

Otis Superette
Staple and Fancy Groceries
FRESH MEATS
— We Deliver —
PHONE 4-2121
S. Main — Next to Paragon

HINES DRY CLEANERS & SHIRT LAUNDRY

A Service to Georgia Southern
For 21 Years

—One Day Service—

34 W. Main St.

SNACK BAR — Student Center —

NOW SERVING ALL POPULAR BEVERAGES
FROM OUR NEW MACHINES

Coca-Cola—Grape—Orange—Rootbeer—Sprite

5c—10c—20c

—SPECIAL—

Delicious Chicken Salad Sandwich

only 20c

I'll meet you between classes at
the SNACK BAR

— FREE HEEL COUPON —

Ray's Shoe Shop

Name

Address

\$.....

FREE

ONE PAIR HEELS

ladies or men's
(any type up to \$1.50 value)

with one or more pair at
REGULAR PRICE!

THIS OFFER IS MADE TO ACQUAINT YOU WITH OUR EXPERT SHOE SERVICE AND TOP QUALITY MATERIALS!!

COUPON ABOVE MUST BE FILLED-IN AND USED WITHIN 30 DAYS!

(only One Coupon Per Family)

Save \$10⁰⁰

a Pair on MENS SHOES

QUALITY

FACTORY RETURNS

(slightly worn with minor defects repaired)

\$4⁹⁵ pair

Men's Loafers & Lace-Ups

\$ \$ \$ SAVE \$ \$ \$

FACTORY RETURN

MEN'S SUITS

Fall and Winter
from

\$12⁹⁵

Have Most Sizes — Many were
\$80.00 to \$100.00 Suits!

All Shoe Repairs

100% Guaranteed!

Sample of Our

REGULAR PRICES —

LADIES:

Reg. Heel Lifts50
Dowel Heel Lifts85c
Loafer Heel Lifts75
Loafer FULL Heels 1.00

MENS:

Rubber Heels \$1.25

(Half loafer or whole)

O'SULLIVAN — America's
No. 1 Heel

FREE Shoe Shine

on Brown or Black Shoes
with any Repair Job!

RAY'S SHOE SHOP

Now at 33 West Main

"ACROSS FROM HINES
DRY CLEANERS"

FOOTBALL CONTEST

Address or
Dormitory of Student.....
City & State.....
Name

Pick the Winners
Win \$10.00 Cash!

Circle all the winners and receive \$10.00 cash. If no one gets all the winners the person naming the most winners will receive \$5.00 in cash from The George-Anne. In case contestants tie the prize money is equally divided.

1. In each ad on this page you will find two college teams scheduled to compete this week. Check the teams you think will win. Tie games count against you unless indicated.
2. Mail or bring your entry to The George-Anne office located in the Frank I. Williams Center not later than 2 p.m. Friday. Letters must be postmarked before this time.
3. Members of The George-Anne staff are not eligible to win.
4. Members of Faculty, Administration, are Eligible.
5. Only TWO ENTRIES per person.

Last Week's Winners: Kay Wotherspoon, Mike Eubanks, Hubert Salter

The Statesboro Telephone Co.

"serving Statesboro and Bulloch County"

9 South Main St. Statesboro

AIR FORCE—UCLA



Rockwell Manufacturing Corporation

ARMY—COLGATE

Medical Center Pharmacy

OPPOSITE HOSPITAL

Hours: Mon. - Sat., 9 -9—Sun. 2-7

AUBURN — FLORIDA

The Singer Co.

Your Singer Service Center For:

Typewriters & Musical Entertainment

BOSTON—RUTGERS

Sea Island Bank

and it's

SOUTHSIDE BRANCH

Just Off the GSC Campus

GEORGIA—NORTH CAROLINA

STATESBORO

Buggy & Wagon Co.

"Complete Line of Hardware"

1 Courtland St. 764-3214

GEORGIA TECH—DUKE

WWNS Radio

Hear College Football

EVERY SATURDAY!

FLORIDA STATE—VIRGINIA TECH

Pyrofax Gas Corp.

Bottle - Bulk

6 E. Vine St. 764-2700

HOLY CROSS—BUFFALO

T. J. Morris

WHOLESALE FOOD DISTRIBUTORS

I. G. A.

Franchise for South East Georgia

ILLINOIS—PURDUE

SUPPORT THE

Football Contest Advertisers

Bulloch County Bank

"service with a smile"

MICHIGAN STATE—NORTHWESTERN

Johnson's Minit Mart

"When You Run Out of Something Run Out to the Minit Mart"

"Open 8 Days A Week"—FAIR ROAD

WISCONSIN—MICHIGAN

Music Box

"if it's Musical, WE HAVE IT!"

27 W. Main St.—Statesboro, Ga.

TEXAS—SOUTHERN METHODIST

Four Points Service Station

Tires Tubes  Wash Polish
Road Service Accessories Lubrication

Ph. 4-2153 S. Main St.
South Mississippi—William and Mary

City Dairy Co.

Grade A Dairy Products

Pasteurized Homogenized Vitamin D Milk

KENTUCKY—WEST VIRGINIA