

Georgia Southern University

Digital Commons@Georgia Southern

---

The George-Anne

Student Media

---

10-8-1965

## The George-Anne

Georgia Southern University

Follow this and additional works at: <https://digitalcommons.georgiasouthern.edu/george-anne>



Part of the [Higher Education Commons](#)

---

### Recommended Citation

Georgia Southern University, "The George-Anne" (1965). *The George-Anne*. 447.  
<https://digitalcommons.georgiasouthern.edu/george-anne/447>

This newspaper is brought to you for free and open access by the Student Media at Digital Commons@Georgia Southern. It has been accepted for inclusion in The George-Anne by an authorized administrator of Digital Commons@Georgia Southern. For more information, please contact [digitalcommons@georgiasouthern.edu](mailto:digitalcommons@georgiasouthern.edu).



# THE George-Anne

Two Sections

Twenty Pages

PUBLISHED BY STUDENTS OF GEORGIA SOUTHERN COLLEGE

VOLUME 41

Statesboro, Georgia 30458, October 8, 1965

Number 2



John Ciardi, poetry editor of the *Saturday Review*, will lecture to GSC students Thursday, October 14.

## Campus Life Enrichment To Present John Ciardi

John Ciardi, noted poet and critic, and poetry editor of the *Saturday Review*, will lecture to Georgia Southern students on October 14 at 8:15 p.m. in McCroan Auditorium.

This will be the first in a series of attractions to be presented by the Campus Life Enrichment Committee for the academic year. According to Dr. Jack

Broucek, chairman, the committee will present the most diversified group of attractions in its four year history.

Ciardi will speak on "What Good is A Poem?" He is a former professor of Rutgers and Harvard Universities. He has served as president of the National College English Association and Fellow of the National Institute of Arts and Letters. The former professor is also a Fellow of the American Academy of Arts and Sciences.

ted States. A forty-week tour has been set for this year — the longest ever played by a Flamenco dance company in a single season in the history of U. S. show business. The program consists of songs and dances from all of the Spanish provinces, from the great Spanish operas and ballets, and from gypsy camps. Costumes for the production were designed in Ma-

continued on Page 5



### THE EAGLE SPEAKS...

Dear Editor,

It seems that in spite of all the praise that is being lauded on the new Hollis Building, we are all overlooking one great shortcoming.

I was under the impression that the construction of the building was to help solve the space problem on the Georgia Southern campus.

Any fool can walk through the hallways of the new structure and see that the classes are far too small. The absurd thing is that the teachers' offices all include oversized desks and occupy far too much room.

Next time a classroom building is constructed, the planners should give classrooms the square footage that is currently being wasted on the outer edges of professional desks.

Sincerely,  
The Eagle

In the late Fall, Edward Armstrong, Gemini space flight official from the NASA Manned Spacecraft Center, Houston, Texas, will survey the current and future Gemini space flights. Due to the uncertain schedule of activities for these flights, the exact date of this program will be announced later.

The Winter quarter schedule begins on January 24 with the Kaleidoscope Players performance of "Under Milk Wood" by the eminent author Dylan Thomas. The lyrical drama of life in a small Welsh fishing village unrolls impressively performed by a permanent company organized in 1959; this is theatre at its best and the amazing performance record of this group indicates a masterpiece not soon forgotten.

The Jose Molina Spanish Ballet Company will appear on campus February 9th. This group made it debut at the Caribe-Hilton Hotel in San Juan, Puerto Rico in 1962 and, within an amazingly short span of time, has soared to the number one spot among touring Flamenco dance attractions in the Uni-

## Ogeechee Fair To Open Oct. 11

The Ogeechee Fair opens to the residents of Bulloch and surrounding counties on October 11-17 in new fairgrounds on Highway 67, 2 miles south of the Georgia Southern College campus, due to the efforts of the Statesboro Kiwanis Club.

On Monday, October 11, at 4:00 p.m. there will be a parade and dedication at the fairground site with Senator Herman Talmadge as the featured speaker. The Senator's speech begins at 8:00 p.m.

Tuesday night's main attraction is a beauty contest in which five counties will be represented. On Wednesday, those attending the fair will be treated to a series of women's wrestling matches.

On the grounds throughout the fair are educational exhibits, livestock from the county farms, and the traditional midway.

Admission at the gate is fifty cents for students.

## Student Congress Reveals Plans For Upcoming Year's Activities

By BILL MULLER

After a false start Sunday, September 19, the Student Congress of GSC began its annual retreat Monday, September 20.

First order of business in the Monday meeting was the appointment of committees to evaluate the Constitution of the Congress, the house council special activities fund, and the Congress itself. The committees then met to discuss and draft reports on their topics.

Preliminary reports were delivered to Danny Broucek, president of the Congress, by the committee chairmen Tuesday morning. The preliminary reports were then opened to general discussion by the entire Congress.

Following the reading of the preliminary reports, the Congress was adjourned by Broucek with stipulation that final reports were to be submitted to the office of the Student Congress as soon as possible.

Dean of Women Lulane McBride attended the meetings as the representative of the administration and as advisor to the Congress. In an earlier statement, Dean McBride gave her theory of leadership, "Leadership is not power, glory, or determination of others... Good leaders lead by serving others."

An executive committee meeting ended the retreat. Dean of Students, Ralph K. Tyson and Broucek officiated at this gathering. The theme of the meeting centered around the goals of the Congress for the year.

First concern of the Congress, according to Dean Tyson, should be to present to the student body a constitution, with amendments, for their approval. Tyson explained to the Congress that without a constitution the Con-

gress could not operate efficiently.

Distribution of the "special fund" collected from on-campus students was the next matter brought up by the Dean of Students. The money collected from the summer quarter has been designated by Tyson to construct basketball goals in the area of the men's dormitories along with volleyball and shuffleboard courts for the women's dormitories.

A discussion of the administration of the fund for the year came next. The "Spring Swing" week, sponsored by the sophomore class, has already been allocated the money for spring quarter.

Disbursement of the fall and winter funds came up next on the agenda. The Congress decided through a resolution to administer the monies through to social committee, with the advise and consent of the Congress advisors, Deans Tyson and McBride.

After settling the problems of present concern, the Congress moved on to plan for the year to come. The first problem to be brought up was the matter of office space.

Housing the Student Congress offices at present is a former broom closet in the office space of the Reflector, the GSC year book. The Congress passed a resolution stating that this space is insufficient and petitioned the President of the College to instruct the Director of the Student Center, C. R. Pound, to designate Room 115 of that building as the office of Student Congress. This resolution was passed unanimously by a most enthusiastic Congress.

Distribution of leadership on

continued on Page 18



The Masquers, drama group at Georgia Southern College, will present *The Tragedy of Tragedies*, or *The Life and Death of Tom Thumb The Great* by Henry Fielding on October 22, according to Robert Overstreet, director. Also the author of Tom Jones, Fielding wrote what Overstreet described as a "sassy take-off on 18th Century heroic plays," in the 1730's. The 16-member cast, which will be seen in five performances, is headed by Walter Swift from Atlanta, Tommy Kitchens from Thomasville, Kenn Robbins from Douglasville, Frances Crowe from Marietta, Carolyn Swilley from Alapaha, and Diane Lightsey from Brunswick.

# APO's Help Freshmen During Orientation Week

The Nu Epsilon Chapter of Alpha Phi Omega began its activities early by helping in the orientation of the freshmen. APO was the only men's fraternity to come early and participate in this event. The group arrived on campus Friday, Sept. 17. At a meeting that night, the group was briefed on their responsibilities. The APO's met the freshmen on Sunday morning and helped them bring in their paraphernalia. The fraternity men that participated in the orientation were assigned certain groups of freshmen to instruct. These particular few were advised in their duties by Dean Ralph K. Tyson, Dean LuLane McBride, Don Coleman, and Ben Waller. After their instructions, the APO leaders were made official instructors and advisors to lead their assigned groups.

The purpose of the group assignment was to familiarize the freshmen with the campus. Also, they explained to the freshmen about orientation and what to do when they registered.

## TROUSERED BY CORBIN

the man who put natural shoulders on trousers



### Preferred stock... COUNTRY HARVEST

Take it to town, take it to the country — you will enjoy the Country Harvest trouser. The fabric is a comfortable worsted of choice yarns. The texture is a new homespun all its very own. Rich in Foliage Colors, the cut is classic Corbin with pleatless fronts. Our Country Harvest trouser is a natural with your favorite sweater, or odd jacket.

**GANT**  
SHIRTMAKERS



### Multi-Stripe Oxford

New expression in a cotton oxford button-down! Three varied-color stripes — muted, mellow, distinctively Gant. Available in a variation of color combinations. Great for business and leisure wear.



**DONALDSON-RAMSEY**

Store For Men

STATESBORO, GEORGIA

## Third Annual Jazz Festival Slated October 20 In McCroan

Phi Mu Alpha will present its third annual Jazz Festival, featuring Buddy DeFranco, Oct. 20, at 8:15 p.m. in McCroan Auditorium.

DeFranco has traveled with numerous big name bands including Gene Krupa, Tommy Dorsey, Charlie Barnet and Count Basie. He has appeared before audiences at college and high school concerts, the Hollywood Bowl, Carnegie Hall, and at concert tours in Australia and Europe.

DeFranco was the winner of the Playboy Jazz Poll as solo jazz clarinetist and for eleven consecutive years has won first place in the Down Beat and Me-

tronme Jazz polls.

Also appearing at the Jazz Festival will be musicians from Savannah and the GSC Jazz Band under the direction of Wendell Lewis.

## GSC Student Directory Work Now Underway

The publication of the Student Directory is now underway by Alpha Phi Omega.

The fraternity has undertaken the project and if their plans proceed as scheduled, the handbooks will go on sale the latter part of November. The directories will cost 50 cents.

Information contained in the directory will be the student's name, address, home address, and classification. The baseball and basketball schedules will also be published.

The college calendar, containing important events of the year and their dates, will be featured for the student's convenience.

The faculty and their addresses will also be listed.

Billy Reichert is in charge of the formation of the committee work.

In a recent interview, Reichert issued the following statement regarding APO's purpose in publishing the directory: "We are handling the directory as a result of our request to the dean's office last year. We hope that the directory will be a useful tool to the students and faculty who purchase it."



Dionne Warwick

Popular singer performs here

## Statesboro Beauty School

in "THE HEART OF STATESBORO"

Announces their **OPENING, MONDAY, OCT. 11th**

— Georgia Southern Students Are **CORDIALLY INVITED!** —

Reg.		Only
\$1.50	Hair Cut	\$ .75
\$2.00	Regular Shampoo - set, dry and combout	1.00
\$2.50	Dandruff Shampoo - Set, dry and combout	1.75
.50	Setting Lotion	.25
.50	Creme Rinse	.25
.20	Lacquer	.10
.50	Weekly Color Rinse	.25
\$2.00	Semi-permanent Color Rinse	1.00
.50	Dandruff Rinse	.25
.75	Dandruff Rinse	.40
\$1.00	Tease and Comb - only	.50
\$1.00	Shampoo - only	.50
.25	Dry - only	.25
\$1.00	One Minute Conditioner	.50
\$3.00	Heat Cap Conditioner	1.50
\$2.00	Instant Conditioner and set in tube	1.00
\$15.00	Tipping and Streaking	7.50
\$7.50	One Application Bleach	3.75
\$5.00	Permanent Hair Color	2.50
\$4.00	Touch-Up Permanent Color	2.00
\$1.50	Manicure	.75
\$2.00	Lash and Eye Brow Arch	1.00
\$1.00	Set - only	.50

—:— **COLD WAVES** . . . . . Includes Set, Dry and Combout —:—

\$7.50	WAVES	3.75
\$8.50	WAVES	4.25
\$10.00	WAVES	5.00
\$12.50	WAVES	6.25
\$15.00	WAVES	7.50
\$17.50	WAVES	8.75
\$20.00	WAVES	10.00

**ALL WORK DONE BY STUDENTS AND SUPERVISED BY LICENSED INSTRUCTOR** — so as . . . . . each hair style is fashioned to your likes.

As a **SPECIAL Courtesy** to all GSC Students - Merchandise on display at **20% Discount!**  
**MEN . . . Try PINAUD** after-shave Lotion imported from France, professionally made by Clubman — **YOU'LL LIKE IT!**

24 EAST MAIN STREET

PHONE 764-4340

**NO APPOINTMENTS NECESSARY**



C. R. Pound, Frank I. Williams Center director, is shown here distributing tickets for new dining hall system. The system requires students to be within three spaces of their assigned position in the line.

## New Lunch Line Process Speedier, Helps Clear Hall

For the past week the line going into the Georgia Southern Cafeteria has been greatly accelerated. This is due to a new system developed by C. R. Pound, director of the GSC Student Center.

In this new system, each student receives a numbered card as the line approaches the stairs. The student must be within three numbers of the place in line indicated by the card when he reaches the cafeteria door. It is permissible to leave the line if the student is back in the correct place at the cafeteria door. If a person decides not to eat after receiving a card, he should return it to

the person at the end of the line.

In the cafeteria there are approximately 950 people eating breakfast, 1900 eating lunch, and 1750 eating supper. This is an approximate total of 4,600 meals daily.

Due to many students having limited time for lunch on weekdays, Pound has issued an appeal. He says, "Students not attending classes at 12:00 o'clock should wait until 11:30 a.m. before entering the line. Students without classes at 1:00 o'clock should wait until after 12:30 p.m. This would enable all students to have ample time for lunch."

If the new system is followed

a person can reach the cafeteria door from the bottom of the steps by the game room in approximately fifteen minutes.

According to Pound, the new system has helped tremendously, not only by speeding up the line, but also by helping to keep the halls passable. "The student cooperation has been good, and some students have even expressed their appreciation," remarked Pound.

In answering other questions concerning the cafeteria, Pound said that no off campus meal tickets may be obtained by students living on campus. Also, the prices for visitors are fifty cents for breakfast, sixty-five cents for lunch, and eighty-five cents for supper. Sunday dinner is one dollar.

## Harris Is Prexy

Tommy Harris, a junior music major from Decatur, and the vice-president of the GSC chapter of the Music Educators National Conference (MENC) was elected President of the Student Division of the Georgia Music Educators Association.

Harris will preside at and coordinate the state convention at the University of Georgia this December. He will work with the GMEA and participate in other activities throughout the year.

Until last year and for some years, the Georgia Music Educators Association had been inactive. Last year student representatives from Georgia Southern and from the University of Georgia were active in helping to re-establish the organization. In this group, the students have the chance to understand their duties as future music educators.

This year's other officers are: Jimmy Griner from Savannah, president; Gloria Bridges from Moultrie, secretary; Sara Kessler from Effingham County, treasurer; Beverly Maddox from Savannah, social and programs chairman.

The organization plans to bring to the campus Mr. and Mrs. Michael Malis of Savannah. Both Mr. and Mrs. Malis are graduates of Julliard Conservatory in New York. They will perform and lecture on a chosen subject later this quarter, on a date to be announced by the organization.

Invitations will be sent to members of the faculty, residents of Statesboro and to interested students.

### Welcome Students FORDHAM'S BARBER SHOP

4 Barbers

- Regular
- Flat Tops
- And Other Styles

4 South Main St.

### Ben Franklin Store

"Your Most  
Convenient  
Store"

E. MAIN ST.

### Welcome Students

Your Dollar Buys More Here!

**G A S**

"GAS FOR LESS"

open 24 hours 500 yds. from college gate

Across from Skate-R-Bowl

South on U. S. 301

**Rogers Service Station**

## LITTLE MAN ON CAMPUS



"I'M GONNA HAVE A SNAP THIS SEMESTER--LOOKS LIKE I'LL BE TAKIN' TH SAME COURSES I HAD LAST TERM."

## A & W Drive In



### Hungry for Something Really Delicious?

try the "Mama Burger Basket"

a large delicious hamburger fixed to your likes, French fries, cole slaw. Indeed a filling meal  
for only **69¢**

### SPECIALITY FOR YOU ON WEDNESDAY

¼ chicken broasted just right, served with French fries, cole slaw and hot rolls **49¢**

### EVERYDAY SPECIALS

BARBECUE BASKET . . . hot barbecue served on a large bun, French fries and coleslaw, hot rolls **89¢**

SHRIMP BASKET . . . large basket of delicious golden brown shrimp, French fries, cole slaw, hot rolls **99¢**

Mama Burgers on large buns **45c**

Papa Burgers on large buns **55c**

Baby Burgers **19c**

ROOT BEER served in tall frosted mugs

8 oz. **10c**

16 oz. **15c**

ALL FLAVOR MILK SHAKES **30c**

COKE - ORANGE - GRAPE

## A & W Drive In

Just Two Blocks from College Gate

Home of "Mama & Papa" Burger



# Illegal Student Parking Posing Serious Problem

The parking problem on the Georgia Southern Campus during the first two weeks of classes has proved a serious one. The major areas of congestion, according to Harold Howell, Campus Security Officer, are Georgia Avenue where all parking is illegal, and Herty Drive in front of the Hollis Building.

Howell, working with the campus police force, is using every possible means of clearing out these problem areas. A representative of the security office states that signs placed on Georgia Ave. have been ignored by students. Warning tickets issued to students using faculty parking lots and park-

ing spaces designated "Staff Only" have had little effect.

Howell further explains that sufficient parking space for all campus motorists will be provided when the new parking lots are completed. He expresses hope that the lots will be available not later than October 20, a date quoted him by the State Highway Department.

## Lack of Cooperation

Due to the lack of student cooperation, Howell states that he is issuing tickets for all offenses except non-registration of cars, and that after Oct. 7, these cars will no longer be exempt. The registration of automobiles has been slow, and to date only half of the cars on

campus are properly registered.

Applications for bumper stickers can be secured through the Office of Campus Security after payment of a \$5 registration fee. All members of the faculty and the student body are urged to complete their applications within the next week.

## Rules Disregarded

Unnecessary inconvenience, for both students and faculty, is caused by this disregard for rules. It is imperative that faculty members be provided with ample and immediate access to parking space. Many arrive just in time for classes, conferences with students, or conferences with visitors to the campus. Confusion and disorganization result if failure to find parking space causes them to be late for these appointments, and in the long run it is the student who suffers.

Harold Howell and his staff ask for complete compliance with security regulations in order that they might provide as quickly as possible the needed parking space for all car owners. If the requested cooperation is given, the eradication of campus parking problems will be an efficient and speedy process.

## Tom KING

While attending college or simply going through the daily routines of life the individual will inevitably come into contact with the "square" or the non-conformist.

Close observance of both will prove to be the best indicator as to the basic differences of the two. Some would conclude they are one in the same while others will denote marked distinctions between the terms.

Let us briefly note some of the differences and distinguish them. A "square" goes to an extreme to accomplish whatever he attempts. In college many so called "squares" wear a brand that has been placed there by their cohorts. Why?

Within the close ties that bind together the relationships of respectable college students the do-gooder may make one wrong move and become a social outcast. This is due to the standards set by his fellow mates which he cannot meet.

In order to understand why he would be banished let's look at an example. He will not go along with a certain fad or

may disagree with the gang on a trivial matter that seems like the passing of a bill in the Senate. The "square" will go out of his way to do the job better than anyone else.

Also he is a guy who enjoys living within his means. He doesn't cut corners or goof off. He believes in God and will admit the fact in public. In this modern era of the disorganized world a man who will stand up for what he believes, whether it hurts himself, or someone else is a "real" man. This is the man who wears the label of the "square."

Now that we know a little about the "square" we will break down the non-conformist and compare him with the typical "square." Is a person who believes in non-conformity one who will tend to lean on the dark side of life? Here lies a distinct difference between the two.

The "square" has limited himself to "his" perfect society and is very content with this society. A non-conformist does not have a society with which to turn or be a part of. In simpler terms the "square" has made his own society that suits his own personal needs while the non-conformist has banished himself from all society.

Why would he choose to do something of this nature that would virtually "cut him off" from the society he once was a member? Only he is qualified to answer this question for it is he that knows why he is what he is.

As a result of this banishment the word "non-conformist" takes on an ambiguous meaning. A non-conformist may abstain from anything he pleases. Is this just will power or is he basically a non-conformist? A non-conformist can be easily recognized and distinguished from someone who has the will power to abstain from the temptations thrown at him.

The non-conformist doesn't only non-conform, he lets the public know that he doesn't. A "square" ambles along bothering not a soul with his worries while the non-conformist tries to irritate people and make them a little more uncomfortable exactly like himself.

Which do you prefer?

## Paul Goodman

At a conference a *Time-Life*, where they are preparing a series on "Youth," I was surprised that they hadn't heard of the Free University movement though small dissenting colleges have sprung up in probably several dozen places this year. (I myself have been invited to a dozen.) That is, the *Time-Life* part of the Establishment is no more in touch with what is going on than, say, the Central Intelligence Agency is in touch with Latin America, or the Federal Arts Council is in touch with living theater. Yet how would they know, given the company they keep? So let me spell out this news for a column.

During the Cold War, American education has been increasingly tightly harnessed to (not very ideal) National Goals; it is not unfair to speak of the Factory - University, powered by government, foundation, and corporation money, and processing students. Inevitably, therefore, there are attempts to set up small independent enterprises of higher education, generally in or next to big established institutions. Our situation has historical analogies. In 18th century England there sprang up tiny dissenting academies to escape the Test Acts, a kind of loyalty-oaths. During the Renaissance, the colleges of Oxford and Cambridge withdrew from the Universities, which had rigidified. The very beginning of our present higher education, during the rise of the towns in the 12th and 13th centuries, was the founding of tiny universities of free scholars and clerics in the face of the feudal Church.

And there is an important analogy in our own times. The para-colleges are like the para-politics of the Freedom Democratic Party in Mississippi to by-pass a system of injustice, the para-sociology of militant community-development to combat the patronizing social work of the Welfare State, or even the para-way of life of the Beats to escape the rat race. And these para-movements tend to overlap. People who object to credits and grading are likely to object to gray flannel suits and to police brutality.

All the para-colleges have common themes. They object to the impersonality of faculty-student relations, cash-accounting credits and grading, high tuition-fees, administrative paternalism, extra-mural interference with freedom of speech and inquiry and morals, irrelevant bigness in the rather simple function of teaching and learning. Positively, the dissenters want community, curriculum directly related to social and personal reality, a say in making decisions, intrinsic motivations to study, and tailoring the schedule to individual needs and stages of development.

Naturally, however, each spontaneous group has its own emphases and style. Graduate students at Columbia feel that authentic scholarship is impossible in the routine in which they are getting their degrees, so in their "free university" they set up night courses to which they invite scholars they respect to teach them real subjects for real. The graduate students at Berkeley, on the other hand, are suspicious of "anybody over 30"; they feel they can direct their own studies, and they are especially interested in political subjects avoided in the regular curricu-

lum, including direct action projects like organization migrant farm - labor. An enterprising group of students at Ohio University (Athens) is after foundation support to hire its own professors; and I have been offered a princely salary by a group of students at San Francisco State (I don't know where the money comes from). In these cases, it seems that what is studied will be an agreement of what the teachers want to teach and the students want to learn; but in other cases the curriculum is determined entirely by the students. For example, in the Guild of Independent Students started by a drop-out of Swarthmore, each one studies on his own and presents his work to the others, but admired "veterans" are invited to visit, criticize, and inspire. At Monteith, under-graduates, remaining within the school, choose from their own number teachers who they think have a particular competence and whom they can of course depose. At the new Free University at Rice, professors are welcome but "The problem is to explain to them that we don't want to be taught anything, we want the chance to learn." The free university conference of Students for a Democratic Society, centered in Ann Arbor, has heavily stressed the beneficial effect of interpersonal confrontation, an emphasis coming, no doubt, from the remarkable SDS experiences in community development in poor neighborhoods.

A problem arises in the odd relation of the para - colleges and the regular institutions they are in or next to. President Alden of Ohio has seemed eager for the students to try on their own, so long as it doesn't cost the State anything. When Meyerson was acting-Chancellor at Berkeley, he told me he would give academic credit for the para - courses if they could prove themselves. At Rice, however, there seems to be ill-feeling and rivalry. Swarthmore cannot (Sept. 21) make up its mind if the independent Guild can use the library. At Rice and Columbia it is, interestingly, religious organizations on the campus that sponsor the dissenters and provide shelter or money.

Meantime, the para - colleges enthusiastically branch out into all kinds of extra-curricular community projects, from political and social direct actions (these are sometimes curricular, under the heading "pragmatic sociology") to coffee-houses, little theaters, literary and political journals, co-op bookstores, student housing. What a beautiful Do-It-Yourself populism! What a pity they are so young and inexperienced. If not they, who?

Copyright by Paul Goodman  
1965

## Sig Eps Begin Radio Programs

Pop, Tops, and Preview, a radio program sponsored by Sigma Epsilon Chi, will be heard every Monday evening from 10:05 to 10:45 over WWNS.

Announcements concerning the students will be made by Sigma Epsilon Chi brothers. The program, which will be conducted by a local disc jockey, will be one of Sigma Epsilon Chi's service projects.

The GSC Top Seven By Survey will be held every Wednesday during lunch. A faculty member will be spotlighted on the program each week.

A pick hit and recording artist will be chosen each week and a record given away to a GSC student.

The program will be sponsored by local merchants. Organizations are urged to submit news to the Sigma Epsilon Chi brothers. Suggestions for improving the program will be welcomed.

## CAMPUS LIFE

### ENRICHMENT . . .

continued from Page 1

drid and are appraised at \$80,000.

March 23 will mark the return to this campus of Wittemore and Lowe, universally acknowledged as music's pre-eminent two-piano team. They appeared formerly under different auspices. This team has run up a record of achievement in all media open to duo-pianists, and achievement that has brought them to the pinnacle of prestige and popularity.

Beverly Wolff, Mezzo-soprano, closes the series on May 23. A native of Atlanta, and former member of the Atlanta Symphony Orchestra, Miss Wolff has become one of the finest young singers of our time. She has appeared several times and made recording with the Philadelphia Orchestra as well as performances with the New York City Opera Company, N. B. C. Television Opera, San Francisco and Santa Fe Opera Companies and the Washington, D. C. Opera Society. The meteoric rise of this artist has been spectacular.

All seats in McCroan Auditorium are reserved for these Campus Life Programs. Tickets for students are free upon presentation of their I.D. cards at the office of Student Personnel or at the Box Office before the performance. Tickets are usually at the Student Personnel office two weeks prior to each performance. Faculty and staff tickets are \$1.00 each, childrens tickets 50c; regular admission for other persons is \$1.50 and 75c.

Student members of the Campus Life Enrichment Committee are: Gary Hancock, Martha Lamb, Tom King, Brenda Scruggs, Ruth Gassett and Billy Brodman. Faculty members are Robert Overstreet, Roxie Remley, Martha Cain, Ric Mandes, Fred Wallace, and Jack Broucek, Chairman. Ex-Officio members are Dan Broucek, President of the Student Congress and Lulane McBride, Dean of Women.

# The Most Convenient, the Quickest Food Service For All!

## TAKE-OUT SERVICE

OFFERED BY THE

# Paragon

## RESTAURANT on South Main St.

... Just Outside The Main Entrance of GSC

# PHONE 764-2914

GIVE YOUR ORDER — PICK IT UP IN A JIFFY



**21 SHRIMP**  
IN A BASKET  
with French Fries,  
Cole slaw, Hush Puppies

**\$1.50**

**Homemade  
PIES**  
Whole or By the Pice

COMPLETE  
**FISH  
DINNER**  
Boxed to Go!  
Fish, French Fries  
Cole Slaw, Hush  
Puppies

**\$1.00**

It's Finger - licking  
good fried chicken  
order a box .... **\$1.00**



Complete Meal—Chicken  
French Fries—Slaw and Rolls

You Can Order Larger  
Boxes and Even Buckets

Just ask the folks at

**The Paragon**

Every Take - Out  
Order Packaged  
For Easy Handling  
and  
Convenient  
Serving

ORDER FOR  
**TAKE - OUT**  
Your Favorite  
**Sandwiches**  
and  
**FOUNTAIN  
DRINKS**

Every **SUNDAY** is the Fabulous  
**SMORGASBORA DINNER**  
.... everyone's **FAVORITE**





This Year's GSC Foreign Students

Inserts - Ghalib Maayeh and Fouad Ahmed, Standing (r. to l.) Bjorn Kjerfve, John K. Kontavaras, John S. Salvaras, and "Pete" Papadam.

## Six Foreign Students At GSC From 3 Countries

Among the students at Georgia Southern College there are six foreigners. Three are from Greece, two from Jordan and one is from Sweden.

### Ghalib Maayeh, Jordan

Ghalib, who is in his senior year at GSC, arrived in the U. S. A. in 1960. His major is interior design, and his interests include sports and dancing.

### Pythagoras Papadam, Greece

"Pete" from Athens (born 1943) is a junior majoring in management. He came here a year and a half ago.

"Pete" is the most successful

athlete of the foreign students at GSC. He has been representing Greece in track running 100 meters (10.9 sec) and 400 meters (46.6 sec). He is also an avid soccer and billiards player.

### John Salvaras, Greece

Seven months ago John came to Statesboro and GSC. His home is in Athens, where he was born in 1943. He is here thanks to help and guidance from his close friend "Pete" Papadam.

John is a sophomore majoring in accounting. He used to be a good swimmer, although

he no longer competes. In competition he swam 100 meters in 1.00.6 sec. He likes playing soccer and billiards.

### John Kontaras, Greece

John (born 1945) also is from Athens. He is a good friend of John Salvaras, who helped him to come to study at GSC.

John is a freshman math major. This quarter he is taking algebra, chemistry and history. He is interested in chess, soccer, billiards, and bowling. John has been in the U.S.A. for about two months.

### Fouad Ahmed, Jordan

Fouad was born (1943) in Jerusalem, where he graduated from high school two years ago. After a one year trip through Europe, he went to London, England, and studied English for one year.

Through Kiwanis, Fouad received a scholarship to go to GSC. He arrived in the U.S.A. a couple of months ago and is staying for at least one year. He is majoring in medicine. So far he is concentrating on English, taking freshman courses.

Fouad's first interest is

sports, especially track and table tennis. Another interest (Continued on Page 12)

**Attention**  
**GSC STUDENTS**  
**FREE**  
**"Heel Deal"**  
at  
**RAY'S**  
**SHOE SHOP**

See ad on following page



Congratulation to the

# Students of GSC



You've made a splendid choice in the selection of your college . . .

An outstanding college,  
a superior faculty,  
renowned athletic teams—  
located in THE BEST  
small city in the  
south—STATESBORO!

The Home Of



- Serving Georgia Southern for over 29 years.
- College clothers for campus and dress.
- Sportswear for every occasion.
- Favorite Cosmetics and Men's colognes.
- Customer parking ½ block of store.
- Charge accounts to suit your convenience.
- An extra bonus of S & H Green Stamps.

## INSURANCE

for your every need

**764-2100**

**Lee Insurance Agency**

2 SEIBALD STREET

**Washing — Drying**

**"Make Laundering A  
Pleasure"**

AT

**LAUNDERAMA**

- Coin Operated
- Wash and Dry
- 50 Lb. Clothes Dryers
- Large Capacity Washers
- Open 24 Hours

**Next To Minit Mart**

## AHEA Promotes Three Georgia Southern Coeds New Membership Hold State Peanut Princess Title

"The American Home Economics Association is actively engaged in promoting membership at this time" according to Miss Ewing, sponsor. A preliminary Freshman introduction meeting was held followed by the first meeting of the year.

1965-66 officers of the Home Ec Association are: Betty Allen, chairman; Claire Newell, first vice chairman; Jennifer Williams, second vice chairman; Linda Gale Willis, secretary; Glenda Helmly, treasurer; Brenda Hattaway, publicist; Helen Belcher, co-chairman; Patsy Johnson, projects chairman; Betty Allen, and Ashton Helmly, student Congress representatives. Ashton Helmly is also the state vice president of the American Home Economics Association.

Three beautiful girls, all recipients of the title, "Peanut Princess" have been living in relative obscurity, in dorms surrounding Sweetheart Circle.

Ann Vaughan, the first of the three to be crowned, resides in Hendricks Hall, while Beverly Carlson, last year's princess, and Blitch Ann Bird, the reigning princess, are residents of Deal Hall.

Blitch Ann is a native of Metter and a freshman Home Economics major. Her talent for the contest consisted of a song-skit number.

Beverly Carlson of Dawson,

was the 1964-65 Peanut Princess, and is a freshman Elementary Education major.

Ann Vaughan, the princess for 1962-63, is a transfer student from Abraham Baldwin Agricultural College. A native of Tifton and a Junior home economics major, she is currently co-editor of women's news on the George-Anne staff.

All girls competing in the Peanut Princess Beauty Pageant, must have fathers who grow peanuts. They are chosen from eighty-three peanut-growing counties and are judged on poise, beauty, and talent.



SOUTHERN BELLE

This week's Southern Belle is Miss Sue Hudson. Sue is a sophomore from Eatonton and is majoring in French. Having brains as well as beauty she is a consistent Dean's List student. Her interests include reading, swimming and tennis.

## 5 Dormitories Elect Officers

Five dormitories have elected House Councils. The students in these positions of leadership will help enforce college rules regulating dormitory life and work for the benefit of the students.

### Hendricks Hall

Menzana Mathis, vice-president; Judy Jordan, secretary; Jo Ann Mayo, treasurer; Kay English, safety chairman; and Pat Geiger, social chairman.

### Deal Hall

Beverly Carlson, president; June Allison, vice-president; Mary Nelson, secretary; Suzanne Thomas, treasurer; Kay Grimsley, safety chairman; Arlene Behl, social chairman; Penny Stokham, assistant social chairman; Beverly Fountain, first floor monitor; Becky Manry, second floor monitor; and Jan Harrell, third floor monitor.

### Lewis Hall

Donna Grey, president; Nancy Moore, vice-president; Judith Conoly, secretary; Mary Ann Futch, treasurer; and Connie Chambers, fire marshal.

### Lynn Hall

Alice Smith, president; Claudi Adams, vice-president; Mary Ann Mayo, secretary; Linda Yound, treasurer; Pam Redmond, fire marshal; Linda Barnes, social chairman.

### Cone Hall

Garth Webb, president; Danny Forrester, vice-president; Bobby Brown, secretary; Larry Roberts, treasurer; Dent Temples, fire marshal; Hank Eason, Buz Hankerson, Gary Lairsey, Jimmy Rising, and Mitchell Westmore, hall monitors; Bill Nasworthy, social chairman.

## Reading Class Slates Meeting

A choral reading class for women will be organized at the home of Mrs. Winfield Lee, 336 South Main St., Tuesday night at 7:30.

Sponsored by the Wesley Foundation and taught by Mrs. Lee, the class will receive instruction in the reading of biblical literature for personal and congregational reading.

Mrs. Lee, a former teacher at Georgia Southern College, will meet with the class once a week. The class will be limited in size.

## LOVE LINKS

### Marriages

Judy Champion, formerly an assistant in the Student Personnel office, was married to Ben Rouse, September 18. Both are still in school at GSC.

### Dorm Nears Completion

Jackie Mikell, director of Housing, announced that Olliff Hall, new residence hall for upperclass women, will be completed by January, and will be under the direction of Mrs. Jane Morgan.

Olliff Hall is a three story structure housing 300 junior and senior women. These future occupants are presently living in other dormitories on campus with three girls in a room.

Miss Mikell said "the new dorm will be a beautiful and very modern building." The building is completely air conditioned. Architectural highlights include a central courtyard with a fountain as a focal point, large activity room, complete laundry and kitchen facilities, and a buzzer communication system, such as is presently found in Veazy and Hendricks.

Roxie Dykes, former student assistant in Student Personnel office, married Richard von Brunt.

Fran Ward was married to Frank Waters, GSC basketball player, in June.

Judy Norris, graduate assistant in Student Personnel office, was married during the summer to GSC senior Mills Drury.

Gay Senn was married to Billy Sheppard August 27.

Judy Maddox married Lee MacMillan in August.

Edwina Paul, secretary to the Education Department married Urquit Morris.

### Engagements

Annette Branan is engaged to James Gibbs. The couple, from Ocilla, will be married in June when Annette graduates from GSC.

## JOHNSON'S MINIT MART

If You Run Out Of Anything

Run Out to the Minit Mart

8:00 A.M. to 10:00 P.M.

"Open 8 Days A Week"

Fair Road — Ph. 764-2068

Now in New Location

## JIM'S HAIR STYLIST

Knight Village Plaza

Give Your Hair

Body A Radiant, Soft,

Natural Look



Appointment Not Completely

Necessary Phone 4-2122

## Nic Nac Grille

:"——:":  
"It Costs Less  
To Eat Out"

:"——:":  
We Cater To  
Sports

:"——:":  
All Orders  
Available To Go

:"——:":  
I Block off 301  
Open 5:45 a.m. to  
11:00 p.m.

:"——:":  
Statesboro's Oldest  
R. C. Webb Owner  
63 E. Main Ph. 764-2853

THANK  
YOU  
For Your  
Patronage  
LANIER'S COLLEGE  
BOOK STORE

# Organizations Begin Year's Activities

## German Club

The German Club, advised by Dr. Farkas, will have its first meeting of the year Oct. 13, and following meetings have been tentatively scheduled on the second Wednesday of every month. The president of the German Club is David Hurst.

## Iota Alpha Tau

IAT, Industrial Arts fraternity at Georgia Southern will participate in the Ogeechee fair starting Monday, October 11, in Statesboro. They will have a booth and display concerning Industrial Technology.

The IAT will make paddles for other fraternities at a cost of \$5 per paddle. The paddles will be completely finished, except for lettering. Lettering will be put on if desired. You may get these paddles by contacting Phil Sutherland or C. L. Daughtery.

Officers for 1965-66 are: Doc Elliot, president; Ed Steward, vice-president; Sandy Sanders, secretary; Ed Brown, treasurer; Bob Cawley, pledgemaster; C. L. Daughtery, photographer; and Phil Sutherland, historian.

## Gamma Sigma Upsilon

GSU, service sorority, met Monday, October 4, to make plans for the year. This fall quarter the sorority plans to rush approximately twenty-five girls and expects about ten pledges from their rushees. Rush is to start sometime next week.

Plans are being made for the

annual Junior - Senior Day which is open to all high school students in Georgia. The students who take part in this event will have an opportunity to tour the campus and they also eat at the cafeteria during their visit to Georgia Southern.

The 35 members of Gamma Sigma Upsilon and those holding offices for the coming year are: Ruth Gassett, president; Marcia Townsend, vice - president; Janey Everett, secretary; Sue Hudson, treasurer; Brenda Scruggs, historian; Carol Gregory, publicity chairman; Lydia Phillips, rush chairman; Judith Johnson and Elaine Tyre projects chairmen.

## Circle K International

The Georgia Southern College Chapter of Circle K International held its first meeting for the new school year on Thursday, Sept. 30 with Bob Lackey, president, presiding. Other officers for the year are Jeff Prickett, vice - president; Lynn Bradley, secretary; and Jerry Wilcher, treasurer; Sam Standard, Sargeant-at-Arms; Roger Alderman, chairman of the board of directors; Leonard Robertson, executive secretary of the board; John Boje, James Deal, and Tom Harris, board members.

Committee chairmen are: projects, Wilson Woodard; social, Joe Bostwick; membership, Paul Howard; community relations, Mickey White; and public relations, Charles Riner.

Deputy board members are Wayne Gibbs and Joe Philips.

## Young Democrats

The Young Democrats of GSC will hold a meeting at 7:30 p.m., Monday, Oct. 11, in Room 112 of the Student Center to elect a new slate of officers and plan the yearly activities.

## Theta Pi Omega

Diane Ellis, a junior elementary education major from Atlanta was elected president of Theta Pi Omega at the first meeting of the year, September 23. Maudie Walker, a junior elementary education major from Tifton was elected rush chairman for fall quarter. Joanne Biles, a sophomore elementary education major was selected as pledge master since she was most outstanding pledge of the 1965 winter quarter pledges.

Theta Pi Omega is tentatively planning a dance with "Way Out Willie and the Wild Men" for Oct. 15. When The Eagle had its grand opening, Theta Pi Omega served as hostesses for the occasion.

## Delta Sigma Pi

Business Administration and Economics majors were invited to a smoker held by Delta Sigma Pi Oct. 6, at 7:00 p.m. in room 111-113 of the Student Center. Officers and plans for the year will be announced.

## Delta Pi Alpha

DPAP's are going to bring Otis Redding Oct. 27. The dance and show will be at the Farmer's Warehouse No. 1 on 301 North. It will be 7:30-11:45. The price of tickets is: advance-\$2.00, door-\$2.50.

Officers for this year are: Richard McBride, president; Ray Heath, vice - president; Jimmy Smith, secretary; Bob Pate, corresponding secretary; Jack

Harvey, treasurer; Joe Blanchard, sargent-at-arms; Cliff Lowden, historian; Jim Kauffman, chaplain.

## Alpha Rho Tau

ART, Georgia Southern's Art Club, is now seeking new members to help plan the fall quarter Starlight Ball, according to Linda Holton, treasurer.

The club meets each Tuesday at 7:00 p.m. in the Carruth building. Mr. Fred Fagnant is faculty advisor. ART officers for 1965-66 are: Judy Wilson, president; Leonard Robertson, vice president; Linda Holton, treasurer; Doug Geiger, publicist; Joe Wilkins, parliamentarian.

The Miss GSC contest is the art club's winter quarter project. Spring quarter the club sponsors an art exhibit.

## Alpha Gamma Pi

Alpha Gamma Pi, men's scholastic organization, attempts to promote a higher standard of learning and to encourage scholarship, according to its constitution. Members qualify by having a 2.33 average for two of three quarters work here during the men's freshman year.

The club's 1965-66 members are: Joseph M. Garrison of McRae, president; Benny M. White, Bloomingdale, vice president; Vanderver R. Pool, Winder, secretary; Thomas F. Adams, Lithia Springs, treasurer; James S. Faircloth, Cordele. Dr. Lawrence Huff is faculty advisor.

The active members of the organization are sophomores

continued on page 19

-----  
- FREE HEEL COUPON -

Ray's Shoe Shop

Name .....

Address .....

\$.....

**FREE**

**ONE PAIR HEELS**

ladies or men's  
(any type up to \$1.50 value)

with one or more pair at  
**REGULAR PRICE!**

**THIS OFFER IS MADE TO ACQUAINT YOU WITH OUR EXPERT SHOE SERVICE AND TOP QUALITY MATERIALS!!**

**COUPON ABOVE MUST BE FILLED-IN AND USED WITHIN 30 DAYS!**

(only One Coupon Per Family)

\*\*\*\*\*

**Save \$10<sup>00</sup>**

a Pair on MENS SHOES

**QUALITY**

**FACTORY RETURNS**

(slightly worn with minor defects repaired)

**\$4<sup>95</sup> pair**

Men's Loafers & Lace-Ups

**\$ \$ \$ SAVE \$ \$ \$**

\*\*\*\*\*

**FACTORY RETURN**

**MEN'S SUITS**

Fall and Winter  
from

**\$12<sup>95</sup>**

Have Most Sizes — Many were  
\$80.00 to \$100.00 Suits!

\*\*\*\*\*

**All Shoe Repairs**

**100% Guaranteed!**

\*\*\*\*\*

Sample of Our

**REGULAR PRICES —**

**LADIES:**

Reg. Heel Lifts ..... .50  
Dowel Heel Lifts ..... .80  
Loafer Heel Lifts ..... .75  
Loafer FULL Heels ..... 1.00

**MENS:**

Rubber Heels ..... \$1.25

(Half loafer or whole)

O'Sullivan - America's Heel

**FREE Shoe Shine**

on Brown or Black Shoes  
with any Repair Job!

\*\*\*\*\*

**RAY'S  
SHOE  
SHOP**

Now at 33 West Main

**"ACROSS FROM HINES  
DRY CLEANERS"**



**Tillis**

Features  
**THE  
INCOMPARABLE  
DUCHESS**  
By  
**London Fog**  
... in all the  
leading colors  
and sizes - also  
**LONDON FOGS**  
in **DONNA &  
LADY ACTION**  
... the largest  
selection in all of  
Southeast  
Georgia

**Monogrammed  
FREE**

Shop with  
confidence at  
the store that  
offers you more

**Tillis**

"For Your Shopping Pleasure"



Life's a picnic when you're refreshed.  
Coca-Cola, with its cold crisp taste,  
is always just right,  
never too sweet... refreshes best.

things go  
better  
with  
**Coke**



Bottled under the authority of The Coca-Cola Company by:

**Statesboro Coca-Cola Bottling Company**



NEW PLACEMENT DIRECTOR

## Waller Named To GSC Post

Ben G. Waller has been appointed Director of Placement and Student Aid of Georgia Southern College. Waller is a graduate of GSC.

The former Principal of Cairo High School is currently Chairman of the Georgia Teacher Retirement Research Committee, member of the Second District GEA Board of Directors, member of the State Board of Education's Committee to recommend changes in Minimum Foundation Program and member of the Teacher Education Council.

The Director of Placement and Student Aid is a member of the Office of Student Personnel Services and is responsible for supervising and assisting student employment and payment of student aid.

## Lockwood To Address GSC Recreation Group

Max Lockwood, recreation director for the city of Statesboro, will address the Georgia Southern Recreation Society at the organization's next meeting scheduled for Oct. 28 at the Frank I. Williams Center, Dr. Douglas Leavitt, faculty advisor for the group, announced this week.

The organization, which meets every third Thursday, held a social Thursday night for new recreation majors. Miss Mickey Williams is president of the society.

## LITTLE MAN ON CAMPUS



## The EAGLE Coin Laundermat

Completely New With  
Modern, Spacious,  
Frigidaire Equipment

CONVENIENT TO CAMPUS

Next to Eagle College Store  
and Lanier's Book Store

## BE SURE TO VISIT



## NEW SHOP

"For the Young College Man on the First Floor"



Collegiate clothes in the Traditional Manner

Tailored Naturally with Authentic Detailing

Americas Foremost Nationally Famous Name Brands of Merchandise only . . .

- LONDON FOG
- GOLD CUP
- COLLEGE HALL
- MR. HICKS
- CANTERBURY
- HICKOK
- SERO

- OXONIAN
- ARROW
- GOLDEN VEE
- ENGLISH SQUIRE
- MCGREGOR
- LEE LEESURES



Send The S & H Green Stamps to Mother

## By WINFRED L. Godwin Director, Southern Regional Education Board

During the fifteen years in which she had been teaching math and science in a tiny high school in the hills of Western Maryland, the space age had dawned, the sky was aglow with satellites and the race to the moon was well underway.

Understandably, she felt ill equipped to teach the subjects which had been her college major. Her education had been rendered all but obsolete by the knowledge explosion. Continuing education had become for her not a luxury, but a practical necessity.

Happily, this Fall she will be back in school at a state university, one of 12,800 secondary school teachers across the nation who will be attending In-Service Institutes at colleges and universities under a National Science Foundation program. Some 79 Southern institutions are participating in this program, designed to upgrade the quality of scientific instruction throughout the nation.

The Institutes are tailored to the schedule of the working teacher, with classes set for late afternoons, evenings or Saturdays. Participants receive an allowance for travel and books and pay no tuition or fees.

Opportunities for some 2,800 elementary school personnel to obtain supplementary training in science and math during the extracurricular hours is also being offered at 54 colleges and universities under National Science Foundation funds.

Among the 17 Southern institutions participating in the pro-

gram, two—the University of Georgia and Southeastern Oklahoma State, have been selected for an experimental "multiplier" program, designed to help participating teachers, supervisors and principals to share their knowledge with fellow faculty members.

Established in 1950 by an Act of Congress, the NSF has established a full scale program for strengthening education in the sciences, including Senior Postdoctoral Fellowships, Science Faculty Fellowships, Senior Foreign Scientist Fellowships for nationals of other countries who want to take part in scientific programs at U. S. universities, Graduate Fellowships, Summer Fellowships for Graduate Teaching Assistants, and Science Faculty Fellowships for teachers on the college level.

These are in addition to In-Service Institutes during the Summer and throughout the academic year which now offer supplemental training, often toward the master's degree, to some 13,000 secondary school teachers and 18,000 elementary school teachers.

Today no nation can hope to achieve or maintain a position of world leadership unless it develops to the full its scientific potential. Many Southern institutions, large and small, must help meet this challenge. Through such devices, schools in many Southern communities, no matter how small or geographically remote, must also be drawn into the mainstream of the technological and scientific revolution, if tomorrow's citizens are to be truly educated and responsible.

## Gaudry's Phillips 66

SERVICE STATION

"Give Your Car Observant Care"

South Main — 1 Block From Gate



The era of the "redneck" is gone, in Georgia at least. (Alabama, of course, still has Bear Bryant and George Wallace, but that's not our problem.) A younger generation has taken over and, with the vitality of youth, is beginning to show both our neighboring states and those further north that Georgia is no longer a state to be overlooked. This is true on all levels, and the Georgia Bulldogs, led by our choice for "Hero of the Year", Vince Dooley, are as fine an example as can be found.

The passing of the Wally Butts era from the University of Georgia football scene cleared the air and left the way open for this youthful generation to prove itself. Vince Dooley has been building for the Southeastern Conference Championship, and this year Georgia seems to be well on its way, after taking a stride the defending SEC champs from Alabama and the Big Ten champs from Michigan.

The victory over the Crimson Tide three weeks ago was astounding. Reports on the Bulldog defense, with one of the lightest lines in the conference, had been anything but encouraging. And with Dooley lamenting a painful lack of running backs, I was doubtful about placing too much responsibility on Riddlehuber alone to move the ball. There was certainly little to prepare fans for the dazzling Bulldog performance.

Riddlehuber lived up to his reputation, and George Patton proved the wisdom of those who spotted him as Georgia's All-American. Sophomore Kirby Moore showed he could fill Riddlehuber's potent shoes with ease, and after sophomore Ron Jenkins began gaining ground, people started talking about him as "the best big full-back in University history" like they had known it all along.

I thought the Alabama game was the most exciting I had ever seen . . . well, that was before the Bulldogs chewed up Michigan's highly-rated Wolverines. After rolling over Vandy 24-10, Georgia put on a thrilling show against the Wolverines that equaled or excelled the Alabama game.

Even after beating Alabama and Vanderbilt, there was no "hot-shot us" stuff from the Bulldog General. But that's the way Vince Dooley is. Not a lot of big talk. He just gets the job done. Out-weighed 20 pounds to the man, by the team Dooley had said was the best team he had ever seen — and he has seen a lot of fine teams — the Bulldogs went up to Ann Arbor with their little defense and out-defended the team with the heaviest line in the nation.

The first half went Michigan's way for the most part, but after the half-time rest it was obvious that the superbly conditioned Bulldogs had the upper hand. The plucky defense held the powerful Wolverines in check, and in the crucial fourth down situations, the Riddlehuber-Moore led offense came through time after time to put the Etter toe in scoring range.

# Intramural Athletics Back; Starts With Touch Football

By HUBERT NORTON  
GSC Sports Publicist

Georgia Southern will resume intramural athletics this quarter with two touch football leagues, announced Charles Exley, intramural director, at the program's organizational meeting Tuesday night at the Hanner Building.

Intramurals are returning after a one-year absence.

"I think Georgia Southern is ready for intramurals," said Exley. "In the past the program always had to compete with late afternoon classes. The conflict has been cleared up somewhat with the new class schedule."

Exley said the two leagues would consist of clubs and fraternities in one loop and dormitories and independents in the other. "Whether we realize it or not," the new intramural director added, "Georgia Southern is becoming more club conscious. Our program should aid in this, having clubs play as a team against other clubs, fraternities against other fraternities, and dormitories a-

gainst other dormitories. The club conscious attitude gives an individual a sense of belonging to his club and a desire to compete with similar organizations."

Touch football is scheduled for Monday through Thursday from four p.m. to six p.m., with two games per day on the two football fields behind the Hanner Building.

Jimmy Wilcox, a graduate student, spoke at the meeting on the fundamentals of touch football. Wilcox will be assisting Exley with the intramural program.

Other activities will be offered along with touch football this quarter. They include horseshoes and cross-country running, and maybe others, Exley indicated. In horseshoes individual and dual participation are on tap.

"Intramurals are open to any registered student at Georgia Southern who has not competed in professional or intercollegiate athletics," Exley pointed out. "Our program is geared for the student body in gen-

eral, so we will not allow any ex-pro or ex-college boy dominate play."

The intramural director will supervise play in the leagues and will assign officials.

The sports will vary with each new quarter. Basketball will be the top sport winter quarter, and softball will be the chief activity in the spring. Minor sports also will be available.

"What I'd really like to do," continued Exley, "is to work out a system of points to present to the top teams in each league in the various sports each quarter. We would like to be able to present the club with the most points a trophy at the end of school. The idea of the points is to keep clubs organized athletically and keep them participating together as a team, covering all the sports in our program."

Exley cautioned that the points system is still in the development stage and no definite plans have been made as yet.

Where do girls fit in the program?

"The girls program will be left up to the girls, more or less," said Exley. "Last year the girls were strongly organized and had a good program themselves. They have asked to do it themselves again this year under the supervision of our program."

The girls, incidentally, have their first regulation football game scheduled for next Thursday at 4:15 p.m. behind the Hanner Building.

"They (the girls) have been practicing for two weeks and are ready to open their program," Exley added.

Exley, a new member of the

(Continued on Page 16)

## Eagles List Tough Opponents On 26 Game Basketball Schedule

Georgia Southern College will play a 26-game schedule for the 1965-66 basketball season and Eagle coach and athletic director J. B. Searce says the schedule is one of the toughest in the school's history.

"It's one of our toughest schedules," said Searce. "There's no question about it. We don't play some of the major schools we played last year, but we play more tough opponents on the road than we usually do."

Georgia Southern will play 12 home games and 14 on the road. Two of the road games will be in the Chattanooga Invitational Tournament (Dec. 28-29), and one of the Eagles' home dates will be an exhibition with the touring Phillips Oilers (Jan. 15). GSC's Homecoming game will be Jan. 29 against Mercer University.

The Eagles will be meeting three schools for the first time—Southwestern Louisiana, Southwest Texas State, and Atlantic Christian College.

GSC, which compiled a 22-5 record last year, will begin basketball practice Oct. 15 with a tentative roster of 15 players. There are five new members of the varsity squad, including three from last year's freshman team and two junior college transfers.

The three Eagles promoted to varsity status are: Frank Waters, 6-2 guard from Mableton; Elden Carmichael, 6-5 forward from Martinsville, Ind.; and Bill Whitehead, 6-3 forward from Louisville, Ky.

A transfer student from Southern Tech to the Eagle squad is 6-4 forward Robert Jordan, a junior from Ball Ground.

Ronnie Bailey, from Shelbyville, Ky., a 6-5 center, is a sophomore transfer student from Casper (Wyo.) Junior College.

Only losses to the Georgia Southern cage team from last year's varsity are Raymond Reynolds, David Owens and Dick Brodersen.

## Windy's Restaurant

"The Home of Delicious Potter Burgers"

Meal Tickets at Windy's Can Save You the Much Needed Funds

\$10	20% Off
\$15	30% Off
\$20	40% Off

Thursday & Friday Special  
Shrimp Baskets - \$1.25

Try WINDY'S

IT'S DELIGHTFUL!  
S. MAIN ST.

In Statesboro

It's

Currie Studios

"The Best In Photography"

Be Sure to Have Your  
Yearbook Portrait Made!

P. S.—Please don't forget.

## GEORGIA THEATRE

Thurs. & Fri., Oct. 7-8  
"JOY IN THE MORNING"

Sat., Oct. 9  
"DIE! DIE! MY DARLING TAGGERT"

with Tony Young  
Sun., Mon. & Tues., Oct. 10-12  
"THE AMOROUS ADVENTURE OF MOLL FLANDERS"

Wed., Thurs. & Fri., Oct. 13-15  
"THE SECRET OF MY SUCCESS"  
—Color—  
with Shirley Jones  
—AIR CONDITIONED—

## DRIVE-IN THEATRE

Fri. & Sat., Oct. 8-9  
"BORN TO SPEED"  
"THE DEVIL ON WHEELS"  
"THUNDER IN DIXIE"

Sun., Mon. & Tues., Oct. 10-12  
"HOW TO MURDER YOUR WIFE"  
with Jack Lemmon

Wed., Thurs. & Fri., Oct. 13-15  
"NONE BUT THE BRAVE"  
"ESCAPE BY NIGHT"  
with Frank Sinatra  
Clint Walker  
& Tommy Sands

(Continued from Page 7)

is international correspondence. He has pen-pals in a variety of countries.

Bjorn is here on a Rotary scholarship and is staying for one year. He comes from Skovde, where he was born in 1944. He was graduated from high school and has recently

Bjorn is a junior. This quarter he is taking journalism, calculus, and painting and drawing.

He is a keen athlete, especially interested in handball (not

the American game), tennis, table-tennis, and soccer. In tennis he is a Davis Cup umpire. He is also interested in philately and traveling.

## Journalism Class Now Connected With G-A Staff

By Judy Iler

The first meeting of the George-Anne was held on Sept. 29, for the purpose of orienting new staff members interested in working on the newspaper.

The Editorial Board presented a program aimed at preparing the new staff members with a basic understanding of the techniques involved in journalistic writing. Some of the staff members have had prior newspaper experience but this is not necessary to be one of the writers on the George-Anne.

The editorial board gave assignments to the staff members for the first publication: Linda Luoma, typist; Rachel Rountree and Ann Vaughan, coverage of the Women's Page; Bjorn Kjerfve, news and sports reporter; Ronny Baruch, news reporter; Ricky Parrish and Alice Paul, straight news; Joe Crine, assistant Sports Editor; and Judy Iler, staff writer.

Roy F. Powell's Journalism 253 class is also working with the George-Anne staff. Members of the Journalism class that were not given staff positions are: Wayne Gibbs, Tommy Holton, Manuel Key, Hubert Norton, Ann Perry, Dean Pollard, columnist and staff writer, Margaret Ross, Frank Tilton, Christine Warner and Charles Welch.

The Editor of the George-Anne, Bill Muller, stated that "a student's experience on a college newspaper can be the most rewarding of his college career."

## Debate Team Opens Season

The Georgia Southern debate team is beginning preparations for a new debating season, which is scheduled to open October 20, at Mercer University in Macon, with only one member returning from last year's team, according to Clarence W. McCord, assistant professor of speech.

McCord stated that there are currently eight students in the debating program. Of these eight, five are majoring in speech, one is minoring in speech, and two are majoring in other fields. The team expects to enter at least one intercollegiate debate this year.

McCord also stated that he believes the debating program will grow at GSC. The speech department will again sponsor a high school debate and one-act play workshop on the GSC campus.

Students interested in participating in the intercollegiate debate program are urged to come to room 110-3 of the Hollis Building between 9:00 and 10:00 a.m. or 2:00 and 3:00 p.m.

## GSC Music Professor Appointed State Chm.

Robert Gerken, assistant professor of music at Georgia Southern College has been appointed state chairman of the National Association for College Wind and Percussion Instructors, according to Dr. Ronald J. Neil, chairman of the music division at GSC.

... the proprietors of



seek the favor of your presence at their temporary location

Across the street from Donaldson - Ramsey.  
You are invited to view this Collection of traditional  
Clothing for the ladies — With The Indigenously  
American Look.



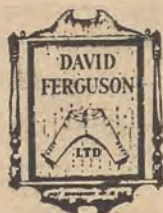
dresses in  
the traditional manner



"The Indigenously American Look"  
in authentically man-tailored shirts



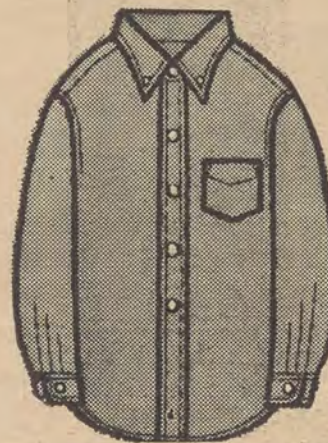
classic sweaters of  
100% Virgin hetland woolens



slim styled slacks, skirts  
and working shorts for ladies



BO-JEFFERSON  
SKIRTS



GANT SHIRTS



Bo - Jefferson

Slacks

Shorts

Wranglers

His for Her

Slacks

Shorts—

Shirts

HANDBAGS—Etienne Aigner and Burlington

HOSE — Archer

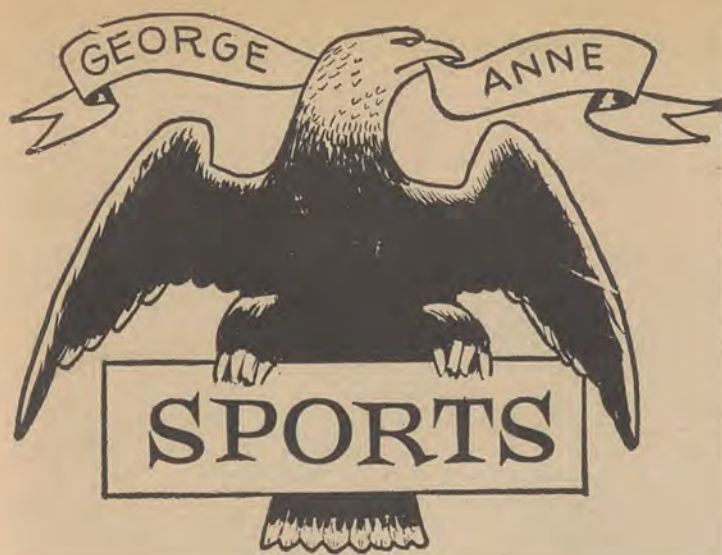
LINGERIE - Kayser

BELTS - Canterbury

SOCK - Gold Cup



Carterers to Ladies of Traditional Taste,  
Resides at Temporary Location, 6 South Main Street  
across from Donaldson - Ramsey



## DUNKEL COLLEGE FOOTBALL INDEX

EXPLANATION — The Dunkel system provides a continuous index to the relative strength of all teams. It reflects average scoring margin relative to index of opposition, and is weighted in favor of recent performance. Example: A 50.0 team has been 10 scoring points stronger, per game, than a 40.0 team against opposition of equal strength. It was originated in 1929 by Dick Dunkel.

### GAMES OF WEEK ENDING OCT. 10, 1965

Higher Rating Team	Rating Diff.	Opposing Team
<b>MAJOR GAMES</b>		
<b>FRIDAY, OCTOBER 8</b>		
Brig. Young*	82.2	(9) San Jose 72.9
<b>SATURDAY, OCTOBER 9</b>		
Alabama	100.8	(19) Vanderbilt* 81.7
Arizona*	85.5	(17) N. Mexico 68.7
Arizona St.*	75.2	(7) Wichita 68.5
Arkansas	107.2	(13) Baylor* 94.5
Auburn*	95.6	(28) Cha'nooka 68.0
Bowl'g Gr'n*	71.4	(16) W. Mich 55.3
Buffalo*	71.1	(18) Boston U 53.1
California	89.7	(6) Air Force* 83.4
Cincinnati	81.4	(8) Xavier 73.0
Colgate*	72.7	(7) Holy Cross 65.8
Colorado*	87.1	(6) Okla. St 87.0
Dartmouth*	73.5	(24) Penn 49.8
Duke*	80.3	(2) Pittsburgh 88.1
E. Carolina	70.8	(15) Richmond* 55.7
Florida	100.4	(8) Miss'sippi* 92.3
Fla. St.	94.8	(2) Kentucky* 93.1
Georgia*	105.4	(28) Clemson 77.7
Ga. Tech.	91.2	(4) Tulane* 86.9
Harvard*	72.7	(24) Columbia 48.7
Idaho	88.0	(4) Utah St* 83.7
Illinois	100.6	(7) Ohio St* 94.2
Kansas*	81.3	(10) Iowa St 71.0
L.S.U.	95.8	(9) Miami, Fla* 86.8
Louisville*	60.5	(0) Dayton 60.2
Marshall*	76.6	(17) Quantico 59.7
Maryland	84.2	(1) Wake Forest* 82.9
Miami, O.	72.6	(4) Kent St* 69.0
Mich. St.	107.1	(7) Michigan* 100.5
Minnesota*	87.4	(1) Indiana 86.3
Miss. St.*	102.0	(18) So. Miss 83.6
Missouri*	94.9	(26) Kans. St 68.9
Navy*	93.3	(21) Wm. & Mary 72.1
Nebraska*	101.6	(13) Wisconsin 88.2
N. Mex. St.	67.6	(27) Pacific* 40.1
N. Carolina	91.0	(13) N.C. State* 78.1
Notre Dame	107.7	(24) Army 84.0
Penn. St.	89.3	(8) Boston Col* 81.3
Oregon St.	90.8	(2) N'western* 88.5
Oregon	95.4	(2) Stanford* 92.9
Princeton	83.4	(9) Cornell* 74.2
Purdue	101.5	(13) Iowa* 88.5
Rutgers*	63.1	(23) Lehigh 40.3

### NATIONAL AND SECTIONAL LEADERS

Texas	107.9	Illinois	100.6	Wyoming	93.5	N. Carolina	91.0
Notre Dame	107.7	Michigan	100.5	Navy	93.3	Tex. Christian	91.0
Arkansas	107.2	Florida	100.4	Washington	93.2	Oregon St	90.8
Michigan St.	107.1	Louisiana St.	95.8	Kentucky	93.1	U.C.L.A.	90.8
Georgia	105.4	Auburn	95.6	Stanford	92.9	Tennessee	90.6
S. California	102.6	Oregon	95.4	Texas Tech	92.9	Syracuse	90.6
Miss'sippi St.	102.0	Missouri	94.9	W. Virginia	92.4	Duke	90.3
Nebraska	101.6	Florida St.	94.8	Miss'sippi	92.3	California	89.7
Purdue	101.5	Baylor	94.5	Tulsa	91.9	Penn St	89.3
Alabama	100.8	Ohio St.	94.2	Georgia Tech	91.2	Iowa	88.5

Copyright 1965 by Dunkel Sports Research Service

## HINES

### DRY CLEANERS & SHIRT LAUNDRY

A Service to Georgia Southern  
For 21 Years

—One Day Service—

34 W. Main St.

## HODGES CAFE & GROCERY

UNDER NEW MANAGEMENT

Fine Home Cooked Meals At  
Reasonable Prices

Open 5 A.M. - 7 P.M. Monday thru Saturday

46 W. Main St.

## Tennis Courts Open For Play; Regulations For Use Announced

The tennis season does not start until Feb. 1, but still there is action on the courts almost every night. The thirteen courts on campus are all in good condition, especially the eight behind the W. S. Hanner Gymnasium.

Anyone connected with Georgia Southern College has access to the courts, but on those behind the Hanner Gymnasium the following rules must be followed.

Player must:

1. not wear basketball or hard sole shoes (as these would destroy the rather soft Tenno-flex surface),
2. not use abusive language,
3. not walk behind players in action,

4. loosen nets one notch after play,

Courts two, three, and four are reserved for the varsity team Monday-Friday 4-6 p.m., and on court one faculty members have preference at any time. The courts are open: Monday - Friday 4-6 p.m. and 7-10 p.m., Saturday 10-12 a.m., 1:30-5 p.m., and 7-10 p.m., and Sunday 2-5 p.m. Four of these courts are excellently lighted at night for play.

The five courts near the lake are open for play at any time. One court has flood-lights, which anyone may use. As the surface on these courts is of a harder type, players are allowed to wear basketball or hard sole shoes.

COMING  
NEXT WEEK -  
The George-Anne  
FOOTBALL  
CONTEST  
\$10 Cash Prize!

Piggly  
Wiggly  
STATESBORO'S  
NEWEST  
and  
FINEST  
Save Your  
Green Stamps  
S. Main

Capable of speeds better than 2,000 mph,  
the YF-12A is the hottest aircraft around.  
Now Maj. Walter F. Daniel, test pilot for the YF-12A,  
answers your questions about the world's fastest  
manned airplane and America's Aerospace Team.



(Maj. Daniel, a test pilot since 1954, is a member of the Society of Experimental Test Pilots. He received a B.S. degree in Aeronautical Engineering from the University of Oklahoma. In February 1962, he set world class time-to-climb records in a T-38 jet trainer.)

### Is the YF-12A the world's fastest manned aircraft?

It certainly is. On May 1 of this year the YF-12A (formerly known as the A-11) reclaimed the world absolute speed record from the USSR. It was clocked at 2,062 mph over Edwards Air Force Base.

### How big is the YF-12A?

The exact dimensions of the YF-12A have not been released yet. But it's approximately 100 feet long, with about a 50-foot wingspan. That's half again as big as our present interceptors!

### Is the Air Force training many men as pilots these days?

Yes, very definitely. In spite of all you hear about unmanned vehicles, the human pilot is still very much in the picture. As a matter of fact, the Air Force pilot quota is on the increase.

### What other kinds of jobs does the Air Force offer?

Since it's one of the world's foremost technological organizations, the Air Force has plenty of openings for scientists and engineers. There are also many challenging and varied administrative-managerial positions.

### What do I have to do to become an Air Force officer?

Air Force ROTC is the best way to get started as an

Air Force officer. The new two-year Air Force ROTC program makes this method available to men who have already completed a year or two of their college education. For college graduates, if you did not take advantage of ROTC, you can still get started through Air Force Officer Training School (OTS), a three-month course open to both men and women.

### Can I keep up my studies while I'm in the Air Force?

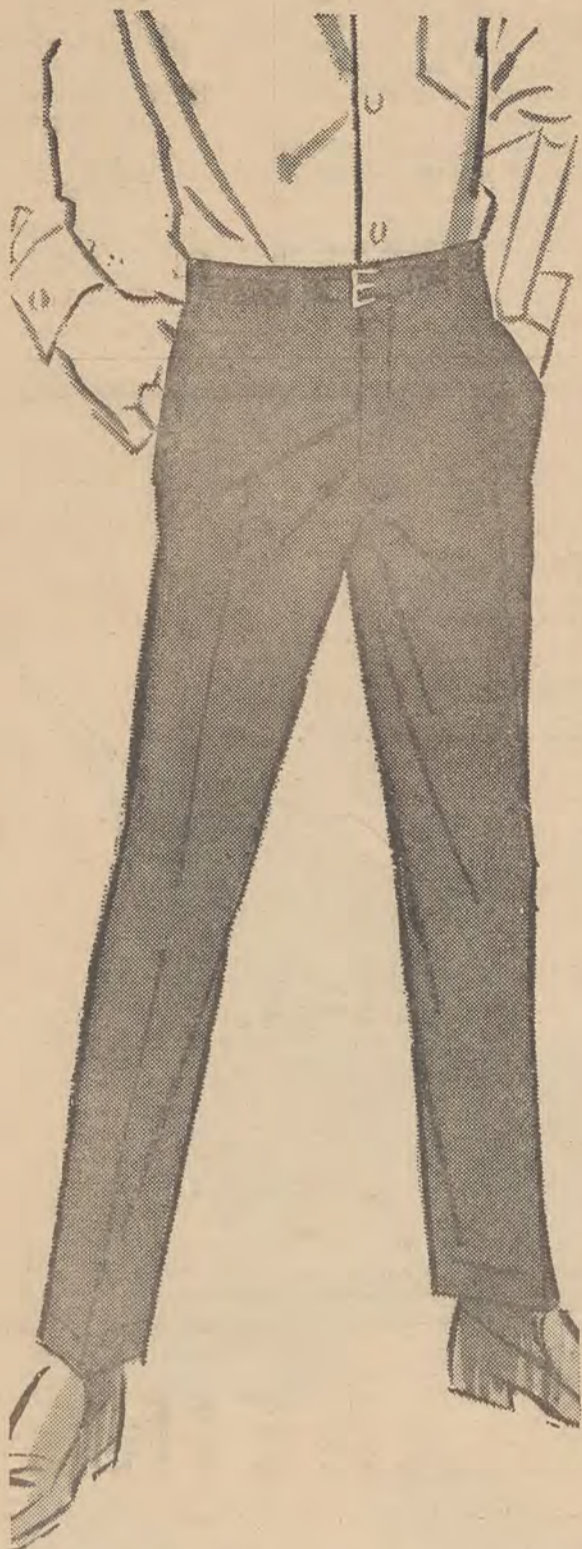
The Air Force encourages its men and women to continue their educations. For instance, you may qualify to study for a graduate degree during off-duty hours, with the Air Force paying a substantial part of the tuition.

### What kind of future do I have in the Air Force?

A bright one. As we move further into the Aerospace Age, the Air Force is going to grow even more important. And you can grow with it!

### United States Air Force.

Hq USAF,  
Dept. SCP-59  
Box A, Randolph AFB, Texas 78148  
Please send me more information on  
☐ Air Force ROTC ☐ Air Force OTS.  
Name \_\_\_\_\_  
Address \_\_\_\_\_  
City \_\_\_\_\_  
State \_\_\_\_\_ Zip Code \_\_\_\_\_

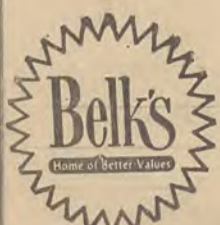


## Boys' Koratron® slacks never need ironing

50% Fortrel® polyester-50% cotton stays wrinkle-free, keeps its press! Built to take the wear and tear only a boy could give. Tailored for dress or sports wear, choose twill or poplin weaves. New colors. 6-20.

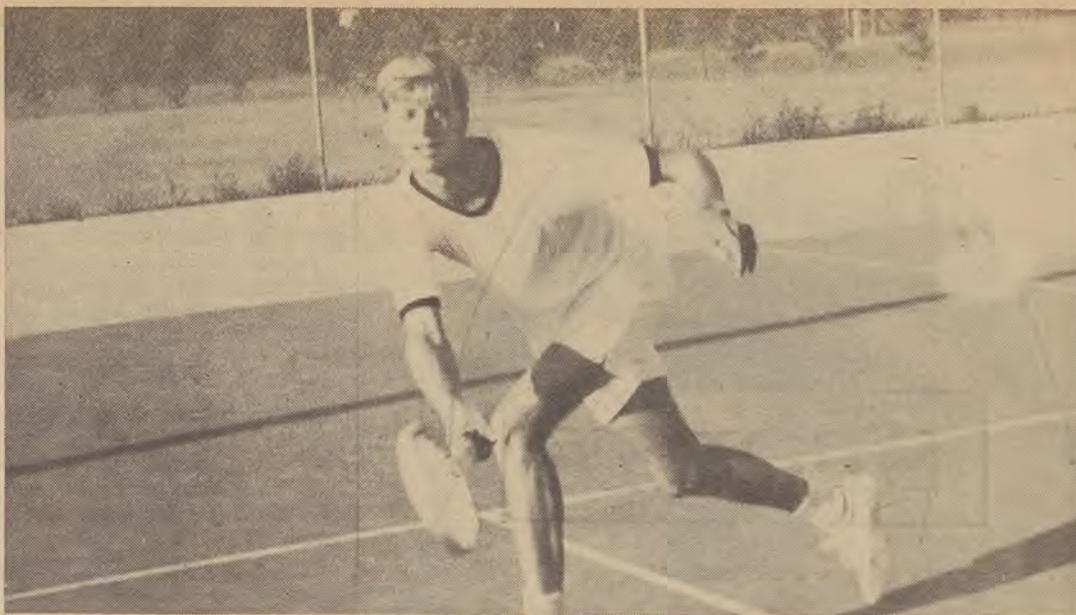
Your Choice  
• TWILL  
• POPLIN

# 5.99



In Statesboro  
**THREE WAYS TO SHOP**

✓ Cash ✓ Charge ✓ Layaway



Eagle Netter Roundtree Delivers A Smashing Forehand

The tennis courts are open and John Roundtree of the GSC Net Team makes use of the few remaining days of tennis weather to get in some pre-season practice.

## Stebbins Announces Start Of Tennis Practice Feb. 1

Dr. Richard Stebbins, coach of the Georgia Southern varsity tennis team, stated that organized practice will begin on Feb. 1. The season will begin with two weeks of conditioning followed by two weeks of trial matches. On March 17 the first varsity match is to be played against Furman in Statesboro.

"Altogether I hope to be able to arrange 12 - 15 matches during the spring quarter against schools within a 200 mile radius," Stebbins said.

"There is one thing I would like to point out," Stebbins added, "To be eligible for play on the varsity team the student must have passed 25 hours the preceding two quarters. That is a ruling from the National Association of Intercollegiate Athletics (NAIA).

Last year we lost some play-

ers because of it, so I really varsity play consider this condition."

THE GEORGE-ANNE OCT. 8, 1965 PAGE 14

### ATTENTION:

## Faculty Members and Student Parents

—Do You Have Pre-School Children?  
—Are You Busy In the Morning or After-  
noons Attending Classes?

If So . . .

your child will enjoy delightful hours of  
indoor and outdoor play at the

## THE LITTLE SCHOOL

Personal Care and Friendly,  
Well-Trained Supervision

Mrs. Joiner, director of the school, has her BS degree in elementary education and years of experience. Her staff is well educated and expertly trained to guide young children in a warm, pleasant manner.

### LET'S SPEND THE DAY

the day includes a lively schedule of indoor and outdoor play. Excellent material to encourage music, art, science and dramatic play.

The children are grouped according to ages and each group properly supervised.

A hot, nutritious meal is served each day. All are encouraged to eat food that builds strong bones and teeth. An appetizing menu prepared with care each week.

After dinner there's NAP TIME with supervision each child is furnished a sleeping mat and cover.

The children are encouraged to learn to do things for themselves. They learn to play and share with others.

**EACH CHILD HAS AN ENJOYABLE  
EXPERIENCE EACH DAY!**

Pleasant atmosphere, attractively decorated rooms, well-equipped and conveniently located NEAR campus.

**EXCELLENT RATING** by Department of Family and Children Services and Georgia State Board of Health.

## THE LITTLE SCHOOL

"Providing A Desirable Program for Children"  
Call Mrs. Joiner for further information—4-5292  
or come by and let's talk—5 Kennedy Street.

## Student Headquarters for Back-to-School NEEDS

## W. C. Akins and Son HARDWARE

30-32 E. Main St.

Clothes Racks  
and Hangers

Extension Cords

Instant Coffee  
Makers

Alarm Clocks

Travel Irons

Browning Shotguns

Shotgun Shells

All Golf and  
Tennis Equipment

# Gymnastics Coach Oertley Optimistic; Team Ready



GSC Gym Coach Oertley

Coach Ronald E. Oertley, of Peoria, Ill., recently assumed his duties as gymnastics coach at Georgia Southern and is optimistic about the team's prospects this season.

Coach Oertley said, "The way it looks now, if everybody will stay eligible and work hard, we can have a very good gymnastics team." Gymnastics practice begins today, with the first competitive meet to be held early in November.

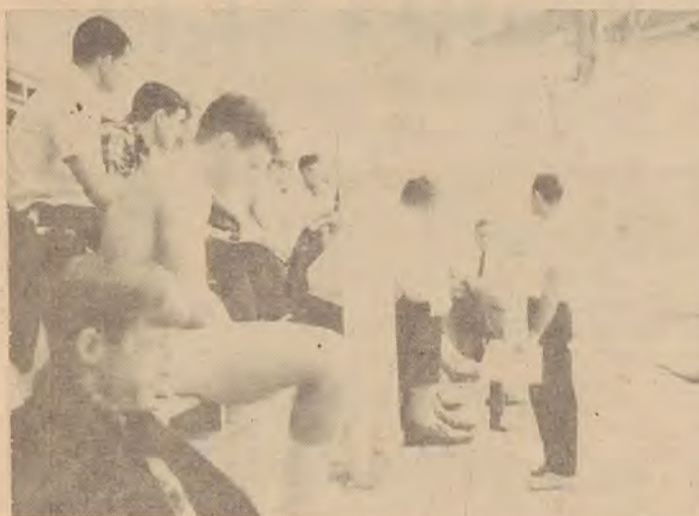
Although the schedule for gymnastics has not been completed, Oertley stated, "We will have a good schedule, competing with basically the same schools as in previous years. There seems to be a lot of interest in gymnastics among the students, and I hope to arrange the schedule so it will provide more home meets."

He also said that students would be asked to pay a small entrance fee to the meets, emphasizing that the money will be used to support the gymnastics program.

The team will be made up largely of the same group as last year, with high-scoring Kip Burton and Jon Peacock as the top returnees.

Coach Oertley added that he hoped to start a program of track and field competition on a club basis. He also expressed hope that this program, which he is aiming for spring quarter, will later be expanded into one of intercollegiate competition.

Oertley obtained a B. S. in Education from Illinois State



Coach Oertley Confers With Prospects

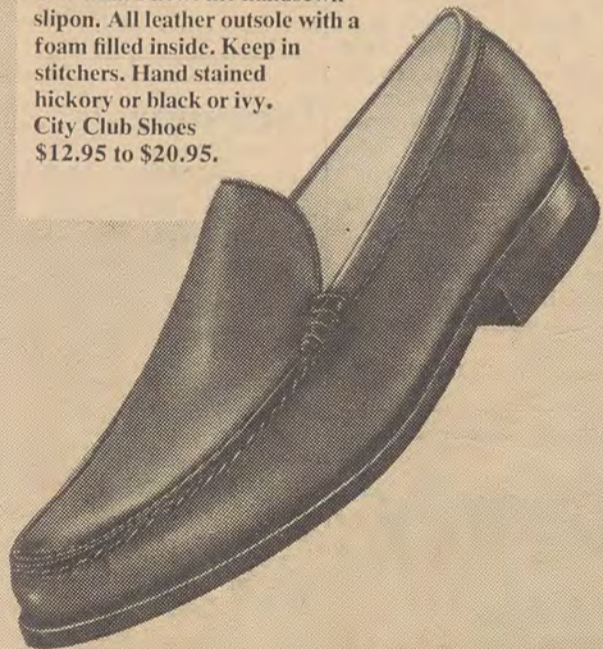
## SPEE - DEE

Dry Cleaners and Shirt Laundry

- Drive-In Window
- Very Close to Campus
- Night Depository
- Quick Service

## CITY CLUB STITCHERS

Sew what's new: the handsewn slip-on. All leather outsole with a foam filled inside. Keep in stitchers. Hand stained hickory or black or ivy. City Club Shoes \$12.95 to \$20.95.



Budget not up to City Club, young man? Ask for Wesboro Shoes \$8.95 to \$10.95. Wouldn't you like to be in our shoes? Most of America is. International Shoe Co., St. Louis, Mo. Available at these fine stores:

FAVORITE SHOE STORE

## GEORGIA SOUTHERN COLLEGE

### Freshman Basketball Schedule

1965-66

Nov. 20 — Georgia Military College	Wadley, Ga.
Nov. 30 — Georgia Military College	Milledgeville, Ga.
Dec. 1 — Brunswick College	Statesboro, Ga.
Dec. 9 — The Citadel Freshmen	Charleston, S. C.
Dec. 11 — South Georgia College	Statesboro, Ga.
Dec. 16 — Brewton Parker College	Statesboro, Ga.
Jan. 8 — Oglethorpe Univ. Freshmen	Atlanta, Ga.
Jan. 11 — Armstrong College	Savannah, Ga.
Jan. 15 — South Ga. Trade School	Statesboro, Ga.
Jan. 18 — South Georgia College	Douglas, Ga.
Jan. 22 — O P E N	Statesboro, Ga.
Jan. 27 — O P E N	Statesboro, Ga.
Feb. 2 — O P E N	Statesboro, Ga.
Feb. 3 — Brewton Parker College	Mt. Vernon, Ga.
Feb. 12 — Southern Tech College	Statesboro, Ga.
Feb. 18 — Brunswick College	Brunswick, Ga.
Feb. 21 — The Citadel Freshmen	Statesboro, Ga.
Feb. 24 — Mercer Univ. Freshmen	Macon, Ga.

— Home Games Begin at 6:15 —

THE GEORGE-ANNE OCT. 8, 1965 PAGE 15

University in 1959 and a M.A. in Physical Education from Colorado State College in 1963. His professional experience includes coaching positions at Lincoln High School (Ill.) and the University of Arkansas, where he was assistant track and field coach.

Besides coaching the Eagle gymnasts, Oertley teaches Health and Physical Education classes and supervises the men graduate assistants in the athletic department.

## GERALD'S BARBER SHOP

"Heads We Win"

1 W. Main St.

Beneath  
Bulloch County Bank

## Otis Superette

Staple and Fancy Groceries

FRESH MEATS

— We Deliver —

PHONE 4-2121

S. Main — Next to Paragon

## FREE DANCING

### Every Night

from

## 6:00 til 8:00

at

# The Varsity

## KNIGHTS VILLAGE

### Music To Your Delight



Whittemore and Lowe, Duo Pianists  
Pair to perform here March 23

## Another FIRST!

### At Georgia Southern

**LINEN RENTAL IS NOW BEING  
OFFERED ALL GSC STUDENTS  
FOR THE FIRST TIME!**

#### HERE'S HOW IT WORKS

Model Rental Service will furnish you with two (2) sheets, one (1) pillowcase, two (2) heavy extra large bath towels, two (2) fluffy face towels and will exchange them each week for a similar freshly laundered and ironed bundle at a cost of only

**\$8.00 Per Quarter**

**(61c per week)**

Students interested in this time-saving (and cost-saving) plan may join in by phoning Model Rental Services at 764-6137 or inquire at Econ-O-Wash Laundry (next to Paragon Restaurant).

**MODEL  
LAUNDRY**

### Miscellany Will Appear In Latter Nov. Says Powell

Miscellany, Georgia Southern literary magazine, will be published and released for sale during the latter part of November revealed Roy E. Powell, faculty editor for the student publication.

The magazine, which will consist of short stories, poems and essays will go on sale for 50 cents. The material that appears in the magazine consists of articles and selections written by GSC students only.

According to Powell, the magazine has a two-fold purpose. He stated the publication provides an outlet for literary writing and encourages such writing on the campus of Georgia Southern.

### Gerken Is Named Chairman of National Music Group

Robert Gerken, assistant professor of music, has been appointed State Chairman of the National Association of College Wind and Percussion Instructors.

### Exley To Speak

Charles Exley, instructor of recreation, will address the Springfield Elementary School Parent - Teacher Association Monday, Oct. 11 at 8 p.m. at School.

Exley will speak on "Community Recreation."

### Religious Drama Group Schedules Initial Tryouts

Tryouts for the "Wesley Players," a religious drama group formed recently by the Wesley Foundation, will be held Thursday at 7 p.m. in the Religious Activities Center.

The purpose of the group, according to Director Willis Moore, is to carry religious drama into the church. Plays adapted for presentation will be performed in churches in the surrounding area.

Moore stated that the group will be limited to eight members due to the small performing areas found in many churches.

Men and women in all classifications are eligible to try out.



Our Man

## GARFUNKEL

Dear Garfunkel,

Where can I get a parking place on campus?

Ida Streed

Dear Ida,

Try those nice spaces by the Hollis building. They are reserved for the faculty, but I never see any faculty cars over there.

Garfunkel

\*\*\*

Dear Garfunkel,

Are the new dormitories really going to be ready by winter quarter?

Tuemenny Innaroom

Dear Tume,

They just might be, nothing has fallen down over there in a good while.

Garf

\*\*\*

Dear Garfunkel,

Why do students have to have liability insurance before they can register their cars?

Idriva Heap

Dear Idriv,

It's all part of a plot to get new cars for the campus security. As soon as all students register, the security officers will run into as many cars as they can, claim it was the students' fault, and sue.

Garfunkel

\*\*\*

Dear Garfunkel,

Why is the college paper named the George-Anne?

Ima Reader

Dear Ura,

Papers are usually named after a quality that they possess, such as Sun or Times. We have a lot of George and as much Anne as we can get.

Garfunkel

\*\*\*

Dear Garfunkel,

What is a Student Congress?

New Freshman

Dear New,

A Student Congress is a group of students who meet regularly to find out what a Student Congress is.

Garfunkel

### New Post Office Facility To Be Awarded To City Near GSC

The Statesboro area has been awarded a new post office facility to be located near the Georgia Southern College campus. John A. Graunosky, postmaster general of the United States, made the announcement Tuesday to Statesboro postmaster, Reppert DeLoach.

The new building is planned in the University Plaza, a shopping center being constructed adjacent to the GSC campus. The new facilities, 3800 lock-boxes, will be available to students and residents of the surrounding area.

According to DeLoach, the

new post office will function as a branch of the Statesboro post office and will employ personnel from that unit.

### Intramurals....

(Continued from Page 11)

and Recreation Division staff, was graduated from Georgia Southern in 1963 and participated in GSC's gymnastics program while doing his undergraduate work. He received his masters' degree from Springfield College in Massachusetts last year.

"The proof of the pudding will be the support we get from the student body, Exley concluded. "If people turn out for our program and show competitive enthusiasm, Georgia Southern can have first-rate intramural activities. We are planning to go slow deliberately at first to kickoff our program. We are striving for success, for success grows on success."

Exley urged all interested people to attend the next meeting, Tuesday at 7 p.m. at the Hanner Building, or to get in touch with him at his office at the Hollis Building.

## Bulloch County Bank



"We're Always Happy to Serve You"

## LITTLE MAN ON CAMPUS



"IT WOULD APPEAR THAT SOME OF YOU MAY BE VICTIMS OF THAT WIDESPREAD RUMOR THAT I TEACH A SNAP COURSE."

## Columnist Goodman Featured On Editorial Pages of George-Anne

Paul Goodman, nationally syndicated columnist will be featured on the editorial pages of the George-Anne during the 1965-66 school year.

Goodman, a native New Yorker, was born in 1911. After graduating from City College of New York, he received his Ph.

D. in Humanities from the University of Chicago.

Mr. Goodman has taught at the University of Chicago, New York University, Black Mountain College, and Sarah Lawrence. Goodman has also lectured widely at various colleges and universities throughout the country.

He was the Knapp Distinguished Scholar in Urban Affairs at the University of Wisconsin in the spring of 1964. He is a Fellow of the New York and Cleveland institutes for Gestalt Therapy and a member of the University Seminar on the City at Columbia. He is also a Fellow of the Institute for Policy Studies in Washington, D. C.

Mr. Goodman has written for *Commentary*, *Politics*, *Kenyon Review*, *Resistance*, *New York Review of Books*, *Partisan Review*, *Liberation* (of which he is editor), and other magazines.

His books include the novels *Making Do* and *The Facts of Life*, poetry, *The Lordly Hudson*, criticism, *Kafka's Prayer* and *The Structure of Literature*, and *People or Personnel* (recently published) *The Society I Live In* *Is Mine*, *Compulsory Mis-Education*, *The Community of Scholars*, *Utopian Essays and Practical Proposals*, *Growing up Absurd*, *Drawing the Line*, *Communitas*, and *Art and Social Nature*.

Mr. Goodman is married and has three children.

## Traffic Problem Handled

"Student cooperation has been excellent in dealing with the traffic control so far this year," revealed Harold Howell, chief of campus security in a recent interview.

Howell remarked that although students have been most uncooperative about the parking regulations, they have appeared to abide by the other regulations remarkably well.

"I'm real happy to say that everyone is observing the speed laws too. We estimate that by the time all cars are registered, that there will be between 2000 and 2500 cars circulating on campus every day. This will make it mandatory for students to obey the traffic regulations," Howell added.

Thursday, Oct. 7, was the final day for registration of automobiles. From that date on, cars parked illegally on campus without the appropriate decal and identification will be ticketed and the owners fined.

Howell said that registration of cars has been slower than

was first anticipated and that many cars have not been registered.

"Since the warnings that we've been issuing for the past weeks aren't doing any good, we're going to start taking it out of the pocketbooks of the car owners," Howell concluded.

## First Meeting Of English Club

The English Club of Georgia Southern will hold its first meeting Oct. 13 at 7:00 p.m. in the Audio Visual room of the Student Center. The Club is open to all students who are interested in literature, history, philosophy, and the fine arts. Officers will be elected at the first meeting. Dues will be \$1.50 for the year.

Lectures by faculty members, a student panel discussion, and the showing of two films will be on the English Club's program for this quarter, according to Dr. David Ruffin, professor of English. The two films to be shown are "The Good Earth" starring Louise Rainer and Paul Muni, and "Goodbye Mr. Chips" starring Greer Garson and the late Robert Donat.



### WORTH QUOTING

In the December-January issue of *The College Store Journal*, Mrs. Rachel Vanderwerf writes: "I want you to make book collectors out of my children . . . I want my youngsters to discover what an opportunity it is to own good books . . . I am sending my six to college to get genuine, solid gold, thought-provoking education . . . an education which distinguishes between ideas - between values and money . . . between books and stuffed animals . . . Where better than in an up-to-the-minute book store can a freshman learn the excitement and importance of putting his money on the line for a stimulating adventure . . . College is . . . with your help . . . a growing appreciation and desire for the tools of learning . . . BOOKS."

Just five minutes to town and "Ye Olde Shoppe" and Kenan's. Visit their Book room today. Students and faculty always welcome. KENAN'S.

## Mrs. Bryant's Kitchen

"Where Eating Is A Pleasure"

Cordially Invites You to

Pleasant, Relaxed Dining  
Courteous Service and  
Quality Food

OPEN TO SERVE YOU FROM 6 A.M. - 9 P.M.

South Main St.

## Reflector Takes Class Pictures

Shutters began snapping individual class pictures for the Reflector October 4, according to Doug Geiger, editor. The pictures are being taken by Currie Studios during the hours of 8:00 a.m. and 5:00 p.m.

They are being taken in Room 107 of the Carruth Building. Seniors had their pictures taken on Oct. 4 and 5, Juniors on the 6 and 7. Sophomores will have their pictures taken on Oct. 11 and 12, Freshmen on Oct. 13, 14, 15.

Men are to wear dark coats and ties. Women will wear dark blouses furnished by the Reflector.

For two dollars each student having his picture taken will receive 3 - 3x5 "high - quality" black and white pictures.

Geiger also emphasized the importance of full cooperation while students are waiting in line to have their pictures taken.

THE GEORGE-ANNE OCT. 8, 1965 PAGE 17

## JOHNSON'S MINIT MART

"When You Run Out of Anything  
Run Out to the Minit Mart"

— OPEN 8 DAYS A WEEK —

FAIR ROAD

## Fashion in the Round

The glow, the gleam, the glamour of rich Cordo-Colt leather in the new fashion round toe makes this handsome sports casual a truly exciting shoe. And that handsewn vamp detailing marks it as a shoe that's crafted by masters in the shoemaking art.



Pepe  
\$12.95

NATURALLY  
*oldmaine trotters*®

Black, Brown, Navy, Green and Red

Sizes 5 to 10  
Widths B to AAAA

**Henry's**  
STATESBORO, GA.



The People Who, Know What To Do  
Student advisors and housemothers



Presidential Press Conference  
GSC President Zach S. Henderson confers with Clyde Currie about registration.

**STUDENT CONGRESS -**  
continued from Page 1  
the campus was then brought up

by Dean Tyson. According to Tyson, two percent of the student body holds and maintains 80% of the leadership posts.

It is the plan of the Dean of Students and his office to try to distribute the leadership responsibility to more of the students at Georgia Southern. How this will be done is the problem, according to Tyson, but the present plan is to attempt to limit the number of executive posts any one student can hold during any one quarter.

The final item of business was planning the agenda for each Congress meeting. It was decided that a definite list of subjects to be discussed at each meeting would be assembled at

each meeting would be assembled at least 24 hours ahead of time and that this agenda would be adhered to, being amended only with the consent of the president of the Congress or the advisors.

Persons outside the Congress wishing to have an item placed on the agenda of the Congress must come to the meeting prior to the time they wish to have the subject discussed and place their question on the agenda at that time.

With the agreement on the agenda procedure, the Congress executive committee adjourned. The regular business of the Congress will begin at the first meeting called by Broucek.

**MOCK'S  
BAKERY**  
FOR  
**The Finest**  
IN  
**Pastry**  
41 S. Main

THE GEORGE-ANNE OCT. 8, 1965 PAGE 18

**BRAGG'S BILLIARDS**  
and  
**SPORTS CENTER**  
STUDENTS WELCOMED  
East Main Street

The

# EAGLE

COLLEGE STORE

"you can buy the unusual at practical prices"

**WHAT'S "IN" FOR**

—GUYS—

- \* Alpaca, Mohair and Lambswool sweaters by JOCKEY
- \* Stay Pressed' Pants by STAGG & SCOTCHGARD
- \* The Traditional look in shirts by WREN LTD.
- \* The very Latest in mens toiletries
- \* Mens Leather Goods by HARNESS HOUSE & SWANK
- \* The One Complete Pipe Collection

—DOLLS—

- \* Exquisite Hand Beaded Gowns from Orient
- \* Wide Assortment of the latest in Jewelry
- \* Complete Lines in Cosmetics by REVLO, MARY SHERMAN, RAPHAEL and Others.
- \* Beautiful Hand Bags by A. E. PHELPS
- \* Hose by HANES And BEAUTY MIST
- \* Cotton Coolie and HAPPI JACKETS from THE FAR EAST

See Walter Garvin

or

Jean Holloway

**And "MEET THE SWINGER"**

by

**POLAROID - Under \$20**

Manager—Fred Grist

Intersection of Georgia Ave. and Chandler Road  
Adjacent to GSC Campus.....



Fill in the Blanks is the same as Before

## ORGANIZATIONS ...

continued from page 9

who are selected spring quarter of each year. Membership in the organization is permanent, however, after the candidate has initially qualified by having a B plus average two quarters of his freshman year.

### Alpha Gamma Omicron

Alpha Gamma Omicron, the organization to recognize outstanding scholastic achievement by freshmen women, has announced its officers for the 1965-66 school year. Evon McDuffie, president; Brenda Taylor, vice president; Joy Walden, secretary; and Rosemary Burgamy, treasurer are upper-classmen who achieved a 2.3

or better average during two out of three quarters of their freshman year. Dr. Betty Lane is the faculty sponsor for the organization. The date for the first meeting of Alpha Gamma Omicron has not yet been announced.

### Phi Beta Lambda

A Get-Acquainted Social for freshmen transfer students, economics and business majors will be held on Thursday night, Oct. 14, at 6:30 in the Student Center, sponsored by Phi Beta Lambda, campus business fraternity. All students—new and old—are invited.

Hot dogs are on the dinner menu, and following the meal the students will attend an informal dance.



Class cards easier to pick up under New System

## Registration Is Quick!

The new, fast moving registration procedure made getting into classes no easier, but it did speed up schedule changing and picking up classes that were open, as can be seen in this series of pictures.

Students entered the gym and where given a set of IBM cards (above). These cards were the students identification and information forms.

After getting the cards at the door, in contrast to the old system, the student filled in no cards, but went straight to the division representatives to get class cards which were the tickets to the student's course.

Only after a student had set

up a definite schedule did he have to stop and fill in the required information on the pile of cards he (or she) had collected. Here again, the old system was improved upon by the provision of tables of a convenient height to be used by students completing their forms.

Writing in the small spaces provided by the IBM system seemed to be the hardest part of the registration procedure in the gym. Hopefully, this is the last time this year some of the cards will have to be inscribed by the students.

Once the cards were completed, students went to a checker who made sure that the task of registration was complete and correct (bottom left). If all

was not well, the checker would help the student to correct errors and then send the weary to the last station in the line.

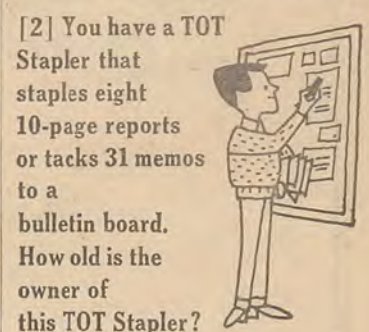
At the last set of tables, another group of checkers relieved the student of all the cards except the class admission tickets and his permit to register.

With the last phase completed, there remained only for the student to pay his fees and registration would be complete.

## Swingline PUZZLEMENTS



[1] Divide 30 by  $\frac{1}{2}$  and add 10. What is the answer? (Answers below)



This is the **Swingline Tot Stapler**



**98¢**

(including 1000 staples)  
Larger size CUB Desk  
Stapler only \$1.49

No bigger than a pack of gum—but packs the punch of a big deal! Refills available everywhere. Unconditionally guaranteed. Made in U.S.A. Get it at any stationery, variety, book store!

**Swingline INC.**

Long Island City, N.Y. 11101

ANSWERS 1. 70 (30 divided by  $\frac{1}{2}$  with a school item you can own! book and a pencil, it's the handiest little idea at all, by the way! Next to a note a TOT Stapler... which is not a bad 10 added is 25). 2. Your age. "You have



Students Enter Gym Through East Door

## FOUR POINTS SERVICE STATION

Tires  
Tubes

**ATLANTIC**

Wash  
Polish

Accessories

Road Service

Lubrication

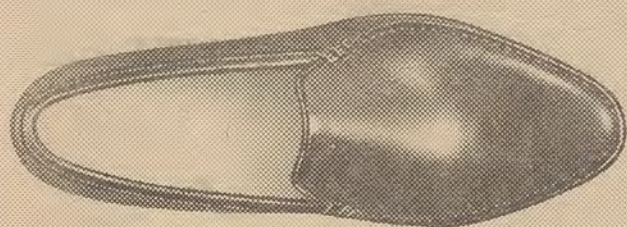
Ph. 4-2153

S. Main St.

## SNACK BAR

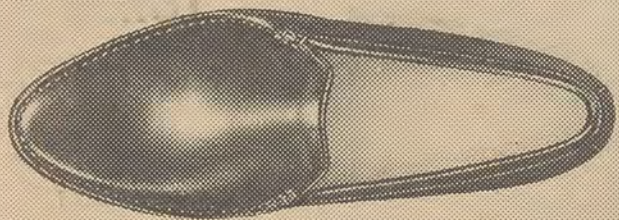
— Student Center —

Hot Dog & Large Coke	15c
Tuna Fish & Large Coke	25c
Coffee	10c



**J.C. ROBERTS slickers**

Out and out loafers with foam insoles inside. Handsewn black or cordo or antiqued ivywood leather. J. C. Roberts Shoes \$12.95 to \$20.95



Budget not up to J. C. Roberts, young man? Ask for Kingsway Shoes \$8.95 to \$10.95. Wouldn't you like to be in our shoes? Most of America is. International Shoe Co., St. Louis, Mo. Available at these fine stores:

**BURTON'S SHOE STORE**

IN THE COLLEGE GATE PLAZA  
SHOPPING CENTER KNIGHT'S VILLAGE

THE  
**PLAZA**  
**PHARMACY**

*Statesboro's First Suburban Drug Store offering for  
your Shopping Pleasure*

**COSMETICS**

**NOTIONS**

**DRUGS**

**CANDIES**

**TOYS**

**GREETING CARDS**

**GIFTS**

**PRESCRIPTIONS**

**MEN'S and LADIES  
TOILETRIES**

**OPEN EARLY and OPEN LATE**  
FOR YOUR CONVENIENCE — FREE PARKING

**Watch For Our Grand Opening**

**the PLAZA PHARMACY**

on GEORGIA AVE. — JUST OFF GSC CAMPUS

SHOP AND SAVE AT STATESBORO'S FINEST DRUG STORES

**THE MEDICAL CENTER and PLAZA PHARMACY'S**

OPPOSITE BULLOCH COUNTY HOSPITAL — IN KNIGHT'S VILLAGE

**Student  
Specials  
at  
PLAZA  
Pharmacy**

Lanolin Plus  
HAIR SPRAY

**79<sup>c</sup>**

Aqua Net  
HAIR SPRAY

**79<sup>c</sup>**

HEAD BANDS  
Reg. \$1.00

**69<sup>c</sup>**

\$1.50 Adjustable  
GILLETTE RAZOR

Special  
for **89<sup>c</sup>**

Reg. \$1.00  
Max Factor

AFTER SHAVE  
LOTION  
only **89<sup>c</sup>**