

Georgia Southern University

Digital Commons@Georgia Southern

---

The George-Anne

Student Media

---

2-12-1965

## The George-Anne

Georgia Southern University

Follow this and additional works at: <https://digitalcommons.georgiasouthern.edu/george-anne>



Part of the [Higher Education Commons](#)

---

### Recommended Citation

Georgia Southern University, "The George-Anne" (1965). *The George-Anne*. 425.  
<https://digitalcommons.georgiasouthern.edu/george-anne/425>

This newspaper is brought to you for free and open access by the Student Media at Digital Commons@Georgia Southern. It has been accepted for inclusion in The George-Anne by an authorized administrator of Digital Commons@Georgia Southern. For more information, please contact [digitalcommons@georgiasouthern.edu](mailto:digitalcommons@georgiasouthern.edu).





# THE George-Anne

PUBLISHED  
WEEKLY

Published by the Students of Georgia Southern College

VOLUME 39

STATESBORO, GEORGIA, FRIDAY, FEBRUARY 12, 1965

NUMBER 15



NANCY McCALL

## Southern Student President-Elect For State SGEA

The Georgia Southern chapter of the Student Georgia Education Association came away from the state convention held last week with two of the organizations highest state offices.

Nancy McCall, sophomore from Brooklet, was named president-elect of the state SGEA. Ken Smathers, a junior from Kennesaw was elected first vice president.

Miss McCall plans to teach in the areas of French and English, and Smathers will teach in the social science field. Both are working toward the B. S. in Education degree.

The annual state convention of the SGEA and the high school Future Teachers of America was held at Rock Eagle. The convention theme was "Quest for Quality".

State and local advisor John Lindsey, and State SGEA President Robert Stephens also attended the three day meet.

## Prague Chamber Orchestra Performs Here On Tuesday Without Conductor

The Prague Chamber Orchestra, an ensemble of 36 virtuoso musicians who perform without benefit of conductor, is scheduled to perform in McCroan Auditorium Tuesday Feb. 16, at 8:15 p.m., according to Dr. Jack Broucek, chairman of the Campus Life Enrichment Committee.

Sold-out concerts wherever they play, repeated invitations, to perform in many cities throughout the world, reviews and enthusiastic audiences have become a part of the regular existence of the Prague Chamber Orchestra, according to Broucek.

### TOURS

Concert tours increase each new season. Broucek stated that Georgia Southern is fortunate to have been included in the debut tour of the United States.

Students may secure tickets by presenting their identification cards at the Office of Student Personnel Services.

Dr. Broucek stated that the public often inquires why the Orchestra performs without conductor and how it prepares its interpretations. He explained that the ensemble chose this method from the beginning of their activities to come as close as possible to the true spirit of chamber music expression.

### MEMBERS

The members take over the full responsibility for the performance of each part, without relying on a conductor. The mutual reaction, understanding, and enthusiastic approach by each player leads to a spontaneous performance.

Each member contributes with observations, advice, and remarks. Preparatory work is coordinated by one member of the ensemble. He then leads study sessions but does not conduct.

It was a purely musical endeavor which led to this method and approach, Broucek said.

## Sweetheart Ball Will Not Be Held

The traditional Sweetheart Ball will not be held this year. Usually sponsored by the sophomore class during the Valentine season, the event was cancelled after several sophomore class officer meetings.

Plans had been made earlier for the event, but comment was declined as to the cancellation. Some indication was given by a class officer that another activity was being considered by the sophomore class.

The event was scheduled for Feb. 19 at the National Guard Armory.

### Inside The GEORGE-ANNE:

DPA Eagle	2
Duck Egge	3
No Grades?	3
Editorials	4
Columns	5
Campus Police	6
Best Dressed	7
Sports	8-9
Activity Cal	11
Contest	12



### Typical Pose

This is a typical pose of members of the Reflector, college yearbook, staff. Unlike the George-Anne workers, the Reflector staff enjoys all the conveniences of home: an office sofa, a genuine popcorn popper, a hangman's rope, wall-to-wall art pictures, and a little "cover-up" work. They are even trying to hatch duck eggs in their office (see story on page 3—).

## Student Congress Publishes Student Organizations Booklet

A booklet entitled "Student Organizations of Georgia Southern College" has been published by the Student Congress.

The booklet was compiled by the Committee of Campus Organizations. It includes all recognized campus organizations, their presidents, faculty advisors, and the dates and places of meetings.

A limited number of the first

edition is available for the administration, faculty, and heads of organizations.

Copies will be available at a later date for the student body.

Those interested in obtaining a copy should contact Pat Blanchard, Student Congress second vice-president, or the Office of Student Personnel Services.

"The booklet was designed to give the student body and the administration some knowledge of the different types of organizations on the GSC campus," Blanchard stated.

He added that this is the second publication put out by the Student Congress, which also publishes the "Eagle Eye."

## Best Dressed Coeds Chosen

Pictured on page seven are GSC's ten best-dressed coeds chosen by a committee sponsored jointly by the George-Anne and the Home Economics Club. The selections will aid Glamour magazine in its ninth annual search for the best dressed college girls in America.

One of the contestants will be chosen by the student body Monday in a special election set for 8 a.m. to 3 p.m. in the George-Anne office. Students

can vote for one of the ten appearing in this issue.

The coed chosen to represent GSC in the national contest will be photographed in three outfits: a campus outfit, an off-campus daytime outfit, and a party dress. The photographs will be sent to GLAMOUR for judging.

The criteria used by the magazine for selections include: (1) Appropriate look for off-campus occasions, (2) A clear under-

standing of her fashion type, (3) Well-kept shiny hair, (4) Imagination in managing a clothes budget, and (5) A workable wardrobe plan.

Also, (6) A deft hand with make-up, (7) Individuality in the use of colors and accessories, (8) A suitable campus look in line with local custom, (9) Impeccable grooming, and (10) Good figure and beautiful posture.

The coeds chosen by GLAMOUR will spend two weeks in New York in June as a guest of the magazine. They will be featured in the August issue of GLAMOUR, and will be in a fashion show before leading members of the fashion industry.

According to information sent to the George-Anne, the magazine is looking for "the young woman who enjoys her looks without being preoccupied with them."

GLAMOUR added, "We hope through this contest to show college women that the development of good taste and good grooming is an integral part of an education that results in a well-rounded mind."

## Lot Purchased For Construction Of Baptist Student Center Building

A lot located on Chandler Road has been purchased by the Georgia Baptist Convention as a proposed site for a Baptist Student Center.

With a frontage of 200 feet, the lot is located on the edge of the campus where numerous proposed college buildings are scheduled to be constructed. Located behind the lot is Knight Village.

Local BSU Director Florrie Coffey stated that no exact building plans have been released. She did indicate that

there was considerable attention being given the matter on the state Baptist level.

In the Christian Index, official publication of The Georgia Baptist Convention, State Student Secretary Aubrey L. Hawkins states, "Georgia Southern College is growing at a rapid rate. The school needs a Baptist Student Center at once."

## Campus Receives Landscape Work

The Georgia Southern campus is being improved by the addition of various trees and shrubbery, according to William Lee, Superintendent of Grounds.

The work has been concentrated along the front entrance to the college and across from the entrance on U. S. Highway 301. Improvements have also been made behind the old tennis courts and behind the Caruth Building.

Approximately 200 dogwood trees have been set out. About 150 of the trees are white, and 50 are pink in color.

In addition, 200 azaleas and 200 sasanquas of four shades have been planted.

## Summer Program Focuses On Aero

An aero-space institute will be held at Georgia Southern College July 26 through August 20 for teachers who wish to study new developments in Aero-space. The study carries five quarter hours of graduate or undergraduate credit.

Representatives of NASA, USAF, Commercial Airlines, CAP, and other agencies will present much of the course content. Several airplane flights are planned.



## Masquers Ready For TV Debut Of 'Libation Bearers'

"The Libation Bearers," the middle play of the only surviving Greek trilogy, will be presented for a three day run on Feb. 25, 26, and 27.

Masquers are in the process of constructing stage props, making costumes and readying for the first dress rehearsals scheduled for next week.

Scenes from the play will be performed Tuesday on "Three For the Show," Savannah's WS-AV-TV, Channel 3, television station.

With a cast of seven actors and actresses and a chorus, the Greek tragedy is being produced by the play production class.

The cast includes Joe Phillips, Orestes; Ginger Miles, Electra; Ann Lewis, Clytemnestra; Russell Dasher, Aegisthus; and Kenn Robbins, Neil Robinson and Hans Ryborg will play the parts of attendants.

Janey Dodson will play the leading role in the chorus. Ray Burnseed is in charge of costumes.

Tickets go on sale next week. Sales will be made by Masquers and from Backstage.



This fiberglass Eagle has been presented to the college by the Delta Pi Alpha Service fraternity. The college will be responsible for erecting it in the triangular square located at the front entrance to the campus. DPA purchased the statue from a firm in California. Official presentation was made during halftime activities at the Homecoming basketball game.

## Congress Studying Procedures

A committee to study the use of parliamentary procedure in the Student Congress meetings was appointed last Thursday night during a congress session.

Congress President L. W. Hartley said that there was need for such a study and that the results of the committee work will be considered in regulating future meetings.

The congress has not been operating by any definite business procedure pattern. Hartley said

that he did feel there was a need for study in this area.

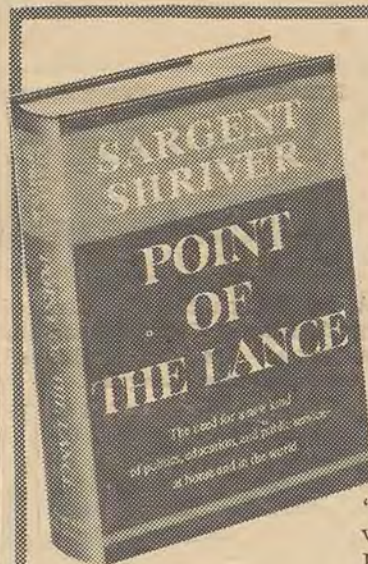
Other actions of the congress included a move to send "thank you" notes to persons connected with homecoming.

The congress was approached by a group of students seeking approval of a new fraternity. The Sigma Epsilon Chi Service Fraternity was referred to the Committee of Campus Organizations. Hartley said that official vote on this group will be withheld until a later date.

The GEORGE-ANNE

Feb. 12, 1965

Page 2



A stirring book  
by the Director  
of the  
Peace Corps  
and the War  
on Poverty

**POINT  
OF THE  
LANCE**  
by Sargent  
Shriver

16 pages of illustrations

At all bookstores.  
Cloth, \$4.95. Paper, \$1.45



Harper & Row, New York, N. Y. 10016

"This book combines the vision and hardheaded, practical touch of its author, one of the ablest new figures in public life of our generation. It is a book to give courage and hope to the anxious and fearful, and to confirm the faith of those who see what a great future lies before mankind. If Sargent Shriver's ringing words could be read by millions — as I hope it will be — it would advance the cause of peace and tell Americans more about their true selves than any book I have seen in many a year. It is a distinguished and thoughtful book by a shining personality."

— DAVID E. LILIENTHAL

"An extremely valuable resource and contribution in the War on Poverty around the world and in our own backyard." — PROFESSOR PATRICIA SEXTON, New York University

## 'Unique' Training Program Aimed At Drawing Industry

A program which could prove to be an "industry booster" to the Statesboro community is being taught here at the college by a group of faculty members.

Five instructors are teaching different phases in a non-credit program designed to upgrade the 35 participants in the area of foremanship.

Enrolled in the course are residents of Bulloch county who are employed by various industries in the Statesboro area.

Dr. Donald F. Hackett, chairman of the art department and one of the program instructors, said that the sessions are aimed at giving occupational foremen and supervisors a knowledge of techniques of industrial proficiency.

The participants in the program will be given nine weeks training in the areas of psychology, job evaluation, communications, supervisor instruction and safety.

"We are trying to get people to recognize that if we are going to attract industry to Bulloch County, we must have people who are trained," Dr. Hackett added.

He continued to say that industries take into consideration the availability and training of community manpower.

"A lot of people lack the background in industrial areas. This program could pave the way to preparing these people, and at the same time help spread an image of enthusiasm."

In the future the training program could be taken over by the local board of education, Dr. Hackett said.

The classes meet from 7-9 p.m. on Tuesday and Thursday. Dr. Thomas L. Harris, professor of education, is meeting with the group in the first session. He will instruct the participants in the area of psychology: "Why people act and react."

In the area of job evaluation and occupational methods, Dr. Ralph K. Tyson will lecture in the second phase.

## Housing Forms Due Monday For Residence Halls

The deadline for housing applications for next fall quarter is Monday, according to the Office of Student Personnel.

Students who apply for housing before the deadline will receive priority when room assignments are made. Each application must be accompanied by a check for \$25.

The deadline for housing applications for summer school has not been set. However, the office will receive applications now. A check for \$25 must also accompany the application for summer school housing.

The program includes a session surveying the oral and written communications field. Mr. Clarence McCord, assistant professor of speech, will deal with this skill area.

Placing emphasis on the supervisor as an instructor, Dr. Hackett is directing the fifth phase of the program.

Mr. H. M. Carmichael, assistant professor of industrial education, will instruct the group in the area of safety and accident prevention.

## Library Science Course Added To Spring Schedule

Dean Paul F. Carroll has approved the addition of a new course, Library Science 303, Administrative Practices, to be offered spring quarter.

It will be scheduled seventh period in the library science classroom. It will be taught by Mrs. Ginter of the library staff.

Any student wishing further information concerning this course, should contact Mrs. Ginter in the library.

## Senior Art Show Date Announced

The annual Senior Art Exhibit will open Sunday February 21, in the Carruth Building. Art majors who are completing their degree programs at Georgia Southern have presented to the art department faculty selections from their work, covering a four year period.

From these art objects the faculty has juried for the exhibit which includes jewelry, weaving, batik, creative stitchery, rug hooking, ceramics, sculpture, drawing and painting.

Seniors whose work will be on display are Jimmy Beasley, Mary Bell, Wayne Dean, Larry Dial, Doug Geiger, Allan Glass, Marjorie Hinson, Ellen Neal, John Ringeling and Dianne Woods.

They will be honored with a reception in the Carruth Building to inaugurate the opening of the exhibit on Sunday afternoon, February 21, from 3 until 5 o'clock.

The honoring reception is sponsored by junior art majors and the public is invited to meet the artists and view their work which will be on display until March 1.

**SPEE-DEE**

**Dry Cleaners &  
Shirt Laundry**

— Opposite MINIT MART —

437 Fair Road

STATESBORO, GA.

## FOUR POINTS SERVICE STATION

In The Forks of the Road  
Between College and Town

Where You Get that

**FAMOUS ATLANTIC**

**RED BALL SERVICE!**

Personal Checks up to

\$5.00 cashed with proper  
identification

PHONE 4-2152

—O—

**Weekly Drawings**

**for FREE Gas and**

**Other Prizes!**

COME IN TODAY !!!

Register Your GSC Decal  
Number and Qualify for  
Weekly Drawings Each  
Tuesday — Check this Ad  
for Winners.

—O—

**WINNERS —**

**For OCTOBER 27**

**1st—**

JAMES GEORGE

10 Gal. Regular Gas

**2nd—**

BILL SATISFIELD

5 Gal. Regular Gas

**3rd—**

WALTER L. SCOTT

\$1.00 In Trade



# One 'Eagle' Duck Is A 'Her'; Proof Found!

If you've been wondering about the sex of the college ducks, here's news for you—at least one of them is a female, and she's proving it every day. Student Congress President L. W. Hartley has the eggs to back her up!

Hartley and Carolyn Day found the first egg on Monday and the number has been increasing since. "They were just lying out in the open," Hartley said. "We figure the first one

we found was laid sometimes on Monday morning."

What's happening to the eggs after they are found? Immediately after the first one was discovered, it was placed near a lightbulb in the Reflector Office. The purpose of placing it near heat was to hatch it.

Monday afternoon, Hartley, Reflector Editor Ann Edge, and George-Anne Editor Tommy Holton made an unsuccessful trip around the lake in hopes of finding more eggs.

"We didn't find any others," reported Miss Edge. "We figured that the duck just couldn't lay one and quit, so we decided to keep an eye open for more."

Holton suggested that they contact the science department in hopes of securing an incubator.

Although the incubator was not available, Dr. Sturgis McKeever gave the special delegation a few suggestions on how to incubate the egg.

It was left under an electrically lighted desk.

On Tuesday, Carolyn Day, who found the first egg, delivered a freshly laid product to boost the egg number to two. And the number has grown ever since.

"We are going to let the eggs stay there as long as we can," Miss Edge said. "We are following Dr. McKeever's directions, and we hope that within

28 days we can raise the duck population here at the college."

The only person who has been able to find the eggs is Miss Day. She refused comment on how she did it, but it was made obvious that something quacky was going on.

So far, credit has been given to everyone but the rightful owner—the duck who produced the object of enthusiasm. So be it!

## University With No Grades?

A proposal to eliminate grades for freshman and sophomores has been announced at Washington University in St. Louis, Mo.

Under the program, students in their first or second year would be informed only if they had failed, passed or passed with honor. Thomas H. Eliot, the university chancellor, said the program was presently being studied.

The chancellor noted that "competition for grades creates a diversion to the true spirit of learning."

"Intense concentration," he added, "is a dispiriting factor that limits the student's chances to get a real education."

Continuation of grades in upper level courses is essential in order to provide some sort of standard for admission to professional and graduate schools, he added.

"From time to time, in recent years, various professors have raised questions about the possible disadvantage of the de-

tailed grading system in effect here and at most American colleges and universities.

"The question has now been raised with new urgency. The swift expansion of the fields of knowledge (there is just much more to learn than there used to be), the proper imposition of rigorous standards, and the competition for places in the

best graduate and professional schools put heavy pressures on all but the brightest and most facile undergraduates."

"This pressure is probably inevitable. However, insofar as it is exemplified by a struggle to reach a particular grade point average, may it not detract from the student's education?"

## Wesley Director Becomes Father

Wesley Foundation Director Willis Moore became the father of a 4 pound 11 ounce baby girl this week.

Born at 4:07 a.m. Thursday morning, the little baby girl became the Moores' first. Melanie Paige Moore was born at the Bulloch County Hospital.

Rev. Moore said that his wife was fine and they hope to take the baby home after it gains a little weight.

## Within 210 Days Of Graduation? Officer Selection Team Is Coming

The Air Force Officer Selection Team will visit Georgia Southern College Wednesday and Thursday to interview senior students interested in making application for the Air Force Commissioning Program.

All seniors, male and female, within 210 days of graduation are eligible to apply for the Officer Training Program.

According to Sgt. Pearson, the local Air Force representative, the team will be especially interested in interviewing male students who would like to apply for pilot or navigator training and female students who would like to fill supervisor or executive-type positions in the Administrative and Technical Fields.

Detailed information concerning all Air Force commissioning programs can be obtained by visiting the team in the

Frank I. Williams Student Center, on the above dates.

New Shipment

**John Romain Bags**

Now at

**BURTONS SHOES STORE**

10 East Main Street

## PARAGON SPECIALS

**Sunday—**

SHRIMP BASKET — Cole Slaw, Hush Puppies French Fries — \$1.25

**Monday—**

ALL THE FISH YOU CAN EAT—served with Cole Slaw, F. F. Hush Puppies, Tartar Sauce—\$1.00

**Tuesday—**

BEST PIZZAS YOU EVER TASTED—All 9" Pizzas—.75

**Wednesday—**

ITALIAN SPAGHETTI—All you can eat Parmesan Cheese, Garlic Butter, French Bread—98c

**Thursday—**

"FROM THE GRILLE"—Chopped Sirloin Steak, F. F., Lettuce and Tomato garnished with Onion Ring—98c

**Friday—**

COLONEL SANDERS Kentucky Fried Chicken—"Finger Lickin' Good"—\$1.25 Ask for more!

### BREAKFAST

Did you know at the Paragon you get—One farm fresh egg (cooked any style) bacon, sausage or ham—grits or potatoes — toast, jelly, coffee and refill for—50c

### THIS WEEKS WINNERS ARE:

#### Specials

Mon.—Edward Ike  
Tues.—Farris Cagie  
Wed.—Clara Duncan  
Thurs.—Gail McKenzie  
Fri.—Royce Exley  
Sun.—Lawrence Valenlino

#### BREAKFAST

Mon.—Glenn Tanner  
Tues.—Allen Smith  
Wed.—Jackie Burch  
Thurs.—Kay Coffey  
Fri.—Paula Moore  
Sun.—Zakie New

## INSURANCE

for your every need

**764-2100**

**Lee Insurance Agency**

2 SEIBALD STREET



# The George-Anne

TOMMY HOLTON, Editor

RICHARD GREEN  
Business Manager  
TOM KING  
Sports Editor

JANICE McNORRILL  
News Editor  
WAYNE WOODWARD  
Layout Editor

## Problems Need To Be Looked At Objectively

In the midst of rapid growth transitions, there are bound to be campus problems. These problems are not limited to any one group; they include the administration, the faculty and the students. Often the George-Anne is criticized for not taking a stand on certain issues, and we have reasons for not doing so.

We are often confronted by students with grievances. These complaints are usually variable; ten students complain and you have ten entirely different problems. What is the college paper to do? That's an easy question to answer. We try to make the best possible judgement. In many cases, we can see two sides to the problem. This, in itself, prevents us from using editorial expression haphazardly.

The trouble with some students is that they refuse to look at a situation objectively. They have the idea that the administration is one big monster which is about to pounce on them. And this line of thinking isn't limited toward the administration. It includes many other areas: parking, early classes, the dining hall and faculty instruction.

And, we aren't discounting the fact that there are student inequities that exist. If the George-Anne does not feel that it should comment on a certain subject which a student feels needs comment, he has the right to publish a letter to the editor.

The George-Anne is one of the most independent college papers in the state. The student editors serve in full responsibility of editorial opinion—not the administration. We value this privilege to the point that we refuse to succumb to every petty grievance that might pop up. We want to make constructive use of the paper by following this standard. When need arises, The George-Anne will speak out.

The editorial board welcomes suggestions, opinions and general news information about campus problems from the student body. But we caution students to carefully consider the value and purpose of their complaints. An objective view of a problem can sometimes place new light on it.

The GEORGE-ANNE Feb. 12, 1965 Page 4

## THE GEORGE-ANNE

The opinions expressed herein are those of the student writers and not necessarily those of the college administration and faculty.



Entered as second class matter at Post Office at Georgia Southern College, Georgia Southern Branch, under act of Congress.

Editorial Board: Tommy Holton, Janice McNorrill, Richard Green.

Organizations Editor: Louise Cox.

Sports Editor: Tom King

Staff Writers: Gayle Phillips, Rosa Jones, Halley Fennell, Jackie Bullington, Paul Allen, Agnes Farkas, Beth Taylor.

Writing Interns: Joanie Hooper, Juanita Hodges, Jane Love, Kenn Robbins, Judy Starr.

Cub Writers: Wayne Woodward, Larry Duncan, Faye Clark, Jen White, Randall Thompson, Carolyn Anderson, Donnie Everson, Jimmy Glisam, Mary Gantner, Suzanne James, David Lockridge, Louise McCord, Patty Miller, Jan Printup, Buddy Purser, Curry Read, Amelia Robson, Leo Sable, James Stapleton.

THE GEORGE-ANNE OFFICE IS LOCATED IN ROOM 108 OF THE FRANK I. WILLIAMS CENTER. HOURS ARE POSTED ON THE DOOR OF OFFICE. —PHONE 764-5133—

## Dr. Farkas Honored

An editorial in the Bulloch Herald and Bulloch Times praised Dr. Zolton Farkas, professor of modern languages, for receiving an honor "that does not come easily."

The editorial stated: "... Dr. Farkas has been accorded one of the finest awards that an adult may desire—'The Silver Beaver Award'—the highest award a Boy Scout Council may award to an adult Scouter."

Dr. Farkas was presented the award by Robert Tye of Savannah. Mr. Tye is district chairman of the Tomo-Chi-Chi Boy Scout district.

Continuing, the editorial said: "Dr. Farkas has been dedicated to the Boy Scout program since his boyhood. He began 'Scouting' as a boy in Hungary..."

"The Silver Beaver Award does not come to a Scouter. It represents years of devotion to young people and constant concern with their growth and development along the guidelines laid down by Scouting."

In closing, commendation was given Dr. Farkas by the Herald: "And we join all Boy Scouts and Scouters in this Council in saluting Dr. Farkas."



## Tommy HOLTON

Georgia Southern is located in a pleasant little town. A Coastal Empire city of approximately 10,000, Statesboro has watched the school grow from a straggling high school in 1907 to the state's fastest growing college in 1965.

Statesboro is a clean, healthy small town. It's a community that seems to be well-rounded in many areas. Rich with educational facilities, civic organizations, recreation programs and churches, it affords a wholesome setting for a thriving institution such as Southern.

### IDEAL

It's an ideal community to educate hundreds of young men and women. For in many respects it is a model community: an example of a setting the college students themselves will someday help make.

And, Georgia Southern does much to help make the city as it is. Members of the college faculty and administration make Statesboro their home.

### CULTURE LEVEL

The culture level of the community is raised by the various programs and activities featured at the college. Community sports fans have available within their own city limits some of the best small college ath-

letics to be found.

Students from Southern boost the city's economy; they attend the local churches; they teach in the schools; and they bring many visitors to the Coastal Empire city.

Thousands of people across the state and nation have either heard or seen Statesboro through thousands of students who have set foot on the college campus. A frequent question asked many Southern students is: "Are you going to school at Statesboro?"

### PROFESSIONAL SERVICE

Many professional services are obtained by the students from community doctors and other professional people. Likewise, Statesboro has access to professional people here at the college.

A course is currently being taught local industry personnel by members of the college faculty. Its aim is to better prepare foremen and supervisors for efficiency in industrial operations. Training programs such as these will serve as an attraction for future industries.

Statesboro and Southern do much for each other. As the college grows, so will the community. Good relations between this institution and the city are a must.

## Student Expresses Opinion

Sir:

I am writing in reply to an Editorial headed "Fraternalities Need to Take Evaluation" which appeared in the February 5, 1965

issue of the George-Anne. I notice that said "editorial" is not signed. Having been the Editor of a school newspaper Ga. Southwestern College), I realize that this is permissible, but it is also a convenient shield. Inasmuch as the author is unknown, I will address my questions to you, Sir.

First, has the author of the editorial read, examined, and evaluated the requirements for membership in the various fraternities (an ironical point is the article on the opposite page re DPA's study hall for pledges)?

Second, is the author a member of a campus fraternity? Does he speak from first-hand knowledge or mere hearsay?

Third, has the author any workable, valid solutions to suggest, rather than unfounded criticisms and generalities?

Sir, as an interested (admittedly, it is a vested interest) party, I request that you reprint this in your newspaper and ask the author of the article to which I have reference to make reply.

Respectfully submitted,  
Leroy J. Delionbach

(Editor's Note: Mr. Delionbach: In reply to your first question, investigation was made into fraternity memberships. Various individuals were questioned concerning fraternity problems, and the prevailing attitudes were studied. If you will note, the editorial was not aimed at any single problem.

You ask if the author of the editorial is a member of a campus fraternity. Mr. Delionbach, must the editorial board join every organization and move-

ment on campus before being allowed editorial opinion?

Thirdly, undoubtedly you must not realize that there are many different types of editorials. The purpose of the fraternity editorial was not to pull an expose on the groups, but to indicate that there does exist a need for re-evaluation. It is a legitimate and reasonable suggestion.

In reply to your statement that the unsigned editorial is a "convenient shield," I would like to bring to your attention a few obvious facts relating to editorials. First of all, the signed editorial was fine in Benjamin Franklin's day. At that time, the editor wrote his personal opinions in this form. He was the sole creator of that work. Today, the newspaper is an institution, not a personal project. It is not the voice of a single person.

A famous English commentator has remarked that "reverence attaches itself more easily to the unknown, and the shadow of corporate responsibility adds somewhat to the freedom of writing and very much to the fertility of invention."

Dear Editor.

The Circle K would like to thank all clubs, organizations and individuals who cooperated in making the homecoming parade the success that it was. We hope this spirit of cooperation will continue all through the year and will again bring about a successful parade next year.

Thanks,  
The Members of Circle K



## Southern Belle

Our Southern Belle for this week is Miss Mary Jo McGee, a freshman chemistry major of Savannah. Miss McGee is a member of the Anderson Hall House Council and the BSU Freshman C



## LITTLE MAN ON CAMPUS



"SEE ANYTHING YOU'D LIKE TO STUDY FOR A WHOLE SEMESTER?"

# American Tourists Explore Europe Armed With Camera

LUTZ SEIDEL

The American tourist is a funny phenomenon in European life. Boats and airplanes are transporting hundreds and thousands of tourists who intend to explore Europe. Is it just plain "homesickness" or is it really a cultural interest which makes them come? The biggest and most impressive skyscraper can not beat a French Cathedral or a German Dome. Indescribable in their beauty you are bound to hold your breath, provided you have got a sense for aesthetics at all.

Today, the normal expectation of man's life is 70 years. These memorials of European culture are standing for centuries and as far as the Dome of Cologne, a paradigm of European architecture, is concerned, it took

generations to accomplish this magnificent landmark.

These impressive buildings are the objects of the American tourists. They are heavily armed with cameras, with straw hats and big cigars and wrapped in colorful clothing which sometimes hurts the eye; they wander like pilgrims from one tourist attraction to the next.

These trigger-happy Americans explore every dusty angle of those time-honored castles. They are walking on beaten tourist trails where souvenir sellers are lurking for them. They don't know that a remote village at the coast or way up in the mountains bears more treasures than a concrete-jungle with pale people.

To earn some money I worked during my summer vacations as a tourist guide for Americans who had strayed to out remote area, admittedly not so attractive as the Southern part of our country with its mountains and wine.

I did not guide these tourists to our big cities. I did not show them the hustle and bustle of a German city life, for they can see that in their own country. I took them to a remote fishing village in our vicinity which is still untouched by civilization.

I lived very close to the sea and arranged an excursion on a shrimpboat. They had to help to sort out the shrimps from eels, soles and flounders. Then they ate the delicious shrimps right away on the boat after they had been boiled in ocean-water.

I lined up, furthermore, for them a sealhunt where a boat carried them far out into the North Sea where they shot (and missed) several seals on sandbanks. It was a risky guide for have definitely shown them I didn't know their reaction.

Another tourist guide would Hamburg's famous or rather infamous night life. But let me tell you—I have never seen more grateful and overwhelmed

people, moved by the virginity of these areas, moved by the plainness of these unspoiled people, overwhelmed by a unique sunset over a calm sea. They are still writing grateful notes for their unforgettable stay in a paradise which is normally shunned by tourists.

The nightlife of Chicago and New York is probably far "better" than ours. They did not pay hundreds of dollars to see a trivial strip show. I took them in my simple country mind to some untouched areas which are still (and fortunately) unmarked on Tourist maps.

I also took them fishing. Fishing like they have never seen and done before. I showed them how to catch fish with their hands and feet, a method which is native to our area, and booked a tremendous success, for their emotions could not be pretended.

For most of the American tourists, European cars seem to be too small. So they bring their Cadillacs and Lincolns along and wish finally that they had a tiny German car. For as soon as they leave our Autobahns to reconnoiter some remote areas, especially in the mountains, they are having some trouble.

Our streets are appropriate for our cars but too narrow for these big American cars. The Germans also get the wrong impression of the Americans due to imprudent generalizations. I was also biased. Not all Americans—as I found out in the meantime—can afford to drive a Cadillac or Lincoln, not all of them can afford to give dollar tips and only very few can afford a trip to Europe.

But that is why I am here to see the real America, also its flipside, and I'm going back to enlighten my countrymen about the true America. It is wrongly represented by those tycoons and plutocrats who are haunting Europe and leaving a one-sided impression.

## Universities Form Research Triangle For Science Study

By WINFRED L. GODWIN  
Director, Southern Regional  
Education Board

North Carolina's Research Triangle Park is getting an important new tenant. A \$25 million National Center for Environmental Sciences will be constructed there by the U. S. Public Health Service.

Employing about 1,000 people, the center will be concerned with basic research on human reaction to environmental contamination of air, water, milk and food.

When the center was first discussed, about 40 areas began competing to attract the big federal installation. North Carolina, however, had some decided advantages resulting from the imaginative planning of its research park.

### TRIANGLE

The Research Triangle is situated in the center of a "triangle" formed by three leading universities—Duke at Durham, the University of North Carolina at Chapel Hill and North Carolina State at Raleigh.

In planning a research park, North Carolina capitalized on the proximity of the three educational centers and developed 4,500 acre plot about a 15-minute drive from any of the three campuses. This location gives the research-park tenants access to academic specialists in a variety of fields.

Governor Terry Sanford announced the arrival of the environmental research center during his last days in office.

Concentrating on improvement of higher education, Governor Sanford made the Research Triangle even more attractive.

### FREE LAND

Free land was offered to the Public Health Service in the research park—which already had an investment of about \$8.8 million in facilities of private and state research units in operation.

Criteria that formed the basis for decision in locating the National Center for Environmental Sciences were such factors as the availability of academic and community resources, transportation and available land.

### IMPORTANCE

The importance of the academic community in the decision was underlined by Dr. Luther L. Terry, Surgeon General of the Public Health Service.

He said: "The work of the mental Sciences will encompass a wide range of scientific disciplines. Its location in the Research Triangle will provide for ample and diverse opportunities for the exchange of ideas and research findings among people engaged in similar research activities and with similar professional interests."

"The broad reservoir of experienced consultants in these distinguished academic institutions will be of great help in supplementing the work of our own people in the Center as needs, now unforeseen, may arise."

### RESEARCH

While the North Carolina center will be the chief installa-

tion for basic environmental research, the Public Health Service is planning a specialized facility for a West Virginia site. The West Va. research center will concentrate on environmental health problems peculiar to the Appalachian region.

While the specific location has not yet been chosen, there is every reason to expect the research facility will be near or in close communication with the University of West Virginia.

All the Southern states will profit from the establishment of major research centers in North Carolina and West Virginia. The most obvious lesson to be learned by research-hungry communities is that attracting research units takes more than a pretty piece of land—a major requirement is a stronger academic community.

## History of 'Libation Bearers' Told By Masquers Director

By ROBERT OVERSTREET  
Masquers Director

The great tragic poets of ancient Greece—and there were three, Aeschylus, Sophocles, and Euripides—drew on the Homeric legends for the subject matter of their plays. Doubtless over the course of their long careers each of them wrote plays about the same people but, unfortunately, most of their works have been lost in the 2500 years that separate us from them.

Only one story has survived as treated by all three and that is what is usually called the Electra story. Euripides' and Sophocles' plays are called simply *Electra*. That by Aeschylus is called *Choephoroi* or *The Libation Bearers*.

Electra and her brother Orestes were the children of Agamemnon and Clytaemestra, rulers of Argos. Agamemnon was the commanding general of the Greek forces during the ten years of the Trojan War. While

he was away at war Clytaemestra sent her son, Orestes, into exile, took Aegisthus as lover, and plotted against her husband.

Upon his triumphant return from the defeat of Troy, Agamemnon was tricked and murdered by Clytaemestra for offenses which she considered sufficient to justify murder. That much of the story is told by Aeschylus in his magnificent play *Agamemnon*, which was presented by the Masquers of Georgia Southern College in the spring of 1962.

### CONTINUES STORY

Aeschylus continues the story of the royal house of Argos in *The Libation Bearers*. The play begins with the return of Orestes, now a young man, who has the god of light, to avenge his father's murder. He sees Electra pray at Agamemnon's tomb and, when she recognizes him, they plot together the death of Clytaemestra, their mother, and her consort, Aegisthus.

Treacherously, as she tricked and slew her husband, Clytaemestra is tricked and slain by her son. But the curse on Agamemnon's house is not put to rest. The Furies that punish matricide rise from the ground and begin to pursue Orestes.

### FURIES

The Furies may be equated with the pangs of conscience following matricide. If they catch Orestes he will be insane. As the play ends he leaves Argos to seek Apollo's help. The action is left uncompleted.

There is something else unique about this play. Not only is the Electra story the only one treated by all three tragedians, *The Libation Bearers* is the middle play of the only surviving trilogy.

Oresteia is the name of the trilogy. The first play, of course, is *Agamemnon*. The third one, which resolves the action (and absolves Orestes of guilt in the world's first jury trial) is named *The Eumenides*, the kindly spirits. We will produce it one day.

### 'A GREAT MIND'

Who is he?

He was always interested in history, and it was he that originated the historical novel. His works cover periods of more than 500 years. Because of his ability to make the past seem alive, his contemporaries referred to him as "The Wizard of the North."

He wrote a history of Scotland and edited the works of Dryden and Swift.

One of his famous quotations is: "Please return this book; I find that though many of my friends are poor arithmeticians, they are nearly all good bookkeepers."

He was born in Scotland.

For Answer, Check In  
The Rosenwald Library—Catalog No. 826Sco86/p



# Security Officer Tells Class Of Campus Policeman's Job

Campus Security Officer Howard Merriman told a class of criminology students Tuesday that "law enforcement on the college campus is a complicated and variable job."

Addressing Dr. Clyde Vedder's Sociology 555 class on the problems of campus law enforcement, Officer Merriman gave indication that the job of a security guard involved more than traffic control.

"We are subject to call at any time during the day or night," he said. "Especially during the night, we check out every call and after midnight we try to check out every car that we see stop on the campus."

## SECURITY FORCE

He added that the security force was used for many different services. He said that this included such things as checking the buildings, watching for

prowlers, carrying students to the hospital, traffic control and any other need that might arise.

Commenting on the number of auto accidents which have occurred on campus, Merriman said that the students must be "lucky." He reported that in the past few years there had been only bad accident and numerous minor ones.

## CAR REGISTRATION FEE

In answer to a question asked by course professor Dr. Clyde Vedder, he told the class that a car registration fee would be charged in the fall of next year.

Because the fee was not included in the current college catalog, Merriman said that it was not required this year. He added that it would be in the new catalog coming out for 1965-66.

## BIGGEST PROBLEM

"Traffic control is our biggest problem," he continued. "I work from 7 a.m. to 3 p.m. and I see approximately 3,000 cars come and go during the day."

He said that a good deal of his time was spent giving tickets which he feels "shouldn't have been necessary to issue in the first place."

He warned the class that parking in the ten-minute parking areas, along yellow marked curbing and on the circle was prohibited.

## SECURITY OFFICER'S ROLE

Commenting on his role on campus, the security officer said that he was interested in helping the students in any way possible and at the same time maintaining a friendly relationship, but they shouldn't expect any favors.

He also mentioned that the security force was expected to grow as the school comes larger. "We hope to add two additional policemen within the next year," he said. "With the new women's dormitories going up on the other side of the campus, it will be difficult for a single officer to cover this additional area, especially if he has to be in two places at once."

The security force is presently composed of three officers. Headquarters are in the Maintenance Building.

## Methodists Go To 'Epworth' Today

A bus will leave this afternoon at 3:30 from the Administration Building for a Methodist Camp Meeting scheduled at Epworth-By-The-Sea on the St. Simons Island.

Wesley Foundation Director Willis Moore said that the bus will return tonight.

The speaker for the special service is Bishop Gerald Kennedy, acclaimed as America's spokesman for Methodism.

Permission for the girls has been granted by the college.

## GSC Elementary Majors Required To Pre-Register

Students majoring in Elementary Education are requested to report to Dr. Mathews' office in the Marvin Pittman School for advisement to determine course work for the spring and summer quarters.

Dr. Mathews will see Seniors on Monday, Juniors on Tuesday, Sophomores on Wednesday, and Freshmen on Thursday. All appointments are from 3 to 5 p.m.

When the George-Anne editor called ten girls to let them know they had been selected as Best-Dressed Girl contestants he received a wide range of responses. One call went something like this:

**Editor:** (after dialing number) Could I speak to Nancy Pancy? (fictitious name)

**Answer:** Yea, just a minute.

... time elapse ...

**First Girl:** Hello.

**Editor:** Is this Nancy Pancy?

**Girl:** No, this is her roommate. She's gone out. Can I give her a message.

**Editor:** No, I'll call back.

**Girl:** Well, you can if you want to, but Nancy already has a date for this weekend.

**Editor:** You don't understand. I'm not calling to ask her for a date.

**Girl:** Sure. I suppose you want to know if she has her term paper finished. I know those sneaky methods you boys use.

**Editor:** No, that's not at all what I wanted her for. You see...

**Girl:** The nerve of you boys—you know good and well Nancy's going steady. Don't you men have any honor for each other?

**Editor:** Listen! I called to tell Nancy that she was nominated as one of the ten best dressed girls on campus.

**Girl:** Are you making fun of my roommate? You just can't take a turn down like a man. You have satirized a poor innocent girl. She goes just as well dressed as you do—and don't you forget it!

**Editor:** But you don't understand!

**Girl:** You've said that once before. Call back and tell Nancy your story and see how she takes it. Better yet, don't call, you'll save yourself a lot of trouble.

**Editor:** For crying out loud, will you be quiet. I need Nancy... I've got to have her.

**Girl:** Now it all comes out in the open.

**Editor:** You're getting the wrong idea. I need to talk to her about a picture appointment.

**Girl:** Honestly. You men will do anything. Don't you ever give up. Can't you understand—Nancy's going steady.

**Editor:** For crying out loud. You are driving me nuts. I'm telling you for the last time, I want to tell Nancy she has been nominated one of the ten best dressed girls on campus.

**Girl:** And you've handed me that line before.

**Editor:** This is Tommy Holton over in the George-Anne office.

**Girl:** Oh, excuse me! I thought it was somebody. Why didn't you say that you were calling for the George-Anne to begin with.

**Editor:** Forget it!

## GSC Delegation Named For State GEA Convention

The GSC unit of the Georgia Education Association recently elected delegates to the state GEA convention in Atlanta, according to Dr. Harold Johnson, president.

The delegation will be composed of the local unit president and four delegates. The four delegates are Dr. Frieda Gernant, Dr. Martha Cain, Dr. Rollin Williams, and Miss Marie Wood.

Alternates who were elected are Dr. Woodrow Powell, Dr. Donald Hawk, Ray Wilson and Lloyd Joyner.

## Strange Turn of Events

An ambulance taking a 60-year-old female heart patient to a hospital in Pasadena, Calif., collided with a hearse summoned by her husband, who thought she was dead.



"The most prolific thing raised on city land is taxes."



Short-Skirt . . . \$12.99

Hooded Top . . . \$8.99

Overblouse . . . \$8.99

Bermudas . . . \$7.99

**INSEPARABLE . . .** the short-skirt combination by Country Set. Rainbow

stripe skirt is attached to solid natural color shorts. Top has attached hood.

Team with stripe overblouse and Bermudas. Sizes 3-15.

**Henry's**  
STATESBORO, GA.

"We try to make a life-time customer—not a one-time sale!"

## PARKWOOD MOTEL & RESTAURANT

For COMPLETE RELAXATION and  
PLEASANT and HUMBLE SERVICE  
FRENCH—AMERICAN COOKING

**10 Per Cent**

Discount To Students

—At Restaurant ONLY—

## Gold Cup Socks

42

Colors

Now at

**BURTON'S**  
SHOE STORE

10 East Main Street



..... Here They Are; Vote For One!



GLORIA LANE



BECKY REDDICK



MARTHA LAMB



KAY CASTLEBERRY



BETTY BENNETT



DIANE WOODS

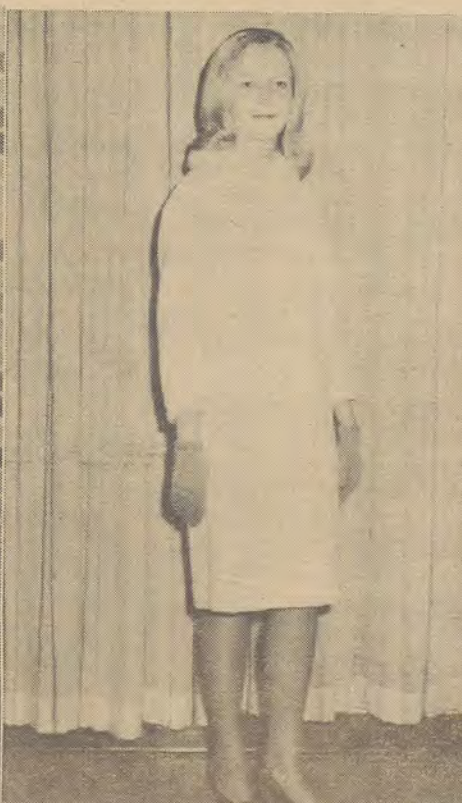
## Georgia Southern's Ten 'Best Dressed' Coeds



CAROLINE PITTS



MARI BOWEN FREEMAN



VICKI MITCHELL



HALLEY FENNELL





## Southern Spotlight

By HUBERT NORTON  
GSC Sports Publicist

The players called the place "Death Valley." The place was Jefferson City, Tennessee on a Saturday night. The date was February 6 and Georgia Southern College was scheduled to meet Carson-Newman College on the latter's home court. Georgia Southern had defeated Carson-Newman 92-64, earlier in the season in Statesboro. But, somehow, the air was different in Death Valley. The players knew it, and so did most of the other people in Holt Field-house.

Prior to the game, Georgia Southern coach J. B. Searce presented a brief pep talk to his Eagles before they took the court for pre-game warmups. Even his encouraging words had less effect in Death Valley than in other places Georgia Southern had displayed its basketball wizardry.

"This place is no different than any other place we have played," Searce began. "We beat Jacksonville in Jacksonville; We beat Tampa in Tampa; We beat Stetson in DeLand; We beat Belmont Abbey in Belmont. Those places were tough, and I don't see why you can't win here, too."

"All we have to do is get out there and play ball like we are capable of playing," continued Searce, "and we don't have anything to worry about. If we sit around and don't play, Carson-Newman will wear us out. They have a much better club than they showed in Statesboro, but they don't have a better club than we do."

"These boys know every crack in the floor," added the veteran GSC coach. "And all of them are pretty good shooters. (Roy) Hill is a good shot—don't let anybody kid you. He can pop it from any place on the court. They won't miss too many, either."

Twenty-five hundred spectators flooded into the field-house and each (and all but a handful of eight or so was loudly cheering for Carson-Newman) spoke of a word called "revenge." It was in the air, and everyone felt it. The pressure was almost enough to cut with a knife as Death Valley awaited to opening tip-off.

The opening tip was grabbed by GSC's Bill Pickens who tipped the ball to Raymond Reynolds. Reynolds immediately fired the ball to Ramblin' Jimmy Rose who tossed in a quick jump shot. Georgia Southern led, 2-0 with only 12 seconds having been played.

However, the next 39 minutes and 48 seconds wasn't that easy. When the sound of 2,500 loudly-cheering Carson-Newman fans ceased and the final buzzer had sounded its blatant roll, Carson Newman had tossed in 75 points, and Georgia Southern had scored only 55 more since Rose's opening bucket.

What happened?

Well, Hill bagged 22 points, Vic Arwood scored 19, Charles Breazeale pulled down 15 rebounds and blocked five Georgia Southern shots. It was that simple, yet other factors were involved.

Don Adler suffered leg pains throughout the contest and wasn't able to go at full speed all the time. He even sat out a few minutes and the GSC attack suffered. It's defense wasn't the same without, either. When the Eagles installed their famous press at the start of the second half, Adler was tremendous. He stole or recovered at least five Carson-Newman mistakes, and, suddenly, Southern was back in the thick of the fight on the short end of a 44-42 score. GSC had trailed, 40-28, at halftime.

But somewhere along the line, Breazeale (GSC players call him the "Human Crane") stuffed in a bucket with two hands, and, after that, Carson-Newman could do no wrong.

Other prominent factors were seven violation calls against Georgia Southern and only one against the home team; 11 personal fouls called against Georgia Southern in the second half and six (two of them offensive charging fouls called against the home team; Carson-Newman, much shorter than Georgia Southern, was not called for fouling under GSC's basket in the second half—and oddity for a small team against a taller team.

### GSC TENNIS SCHEDULE

DATE	OPPONENT AND PLACE	TIME
March 22	City College of Charleston, Charleston	3:00 p.m.
23	Furman University, Charleston	9:00 a.m.
23	The Citadel, Charleston	1:30 p.m.
27	City College of Charleston, Statesboro	1:00 p.m.
April 3	Georgia State College, Statesboro	1:00 p.m.
6	Valdosta State College, Statesboro	3:30 p.m.
10	Mercer University, Macon	2:00 p.m.
14	The Citadel, Statesboro	2:30 p.m.
17	Appalachian State Teachers, Statesboro	1:00 p.m.
23	Valdosta State College, Valdosta	3:30 p.m.
24	Erskine College, Statesboro	1:00 p.m.
28	Mercer University, Statesboro	2:00 p.m.
May 1	Erskine College, Due West, S. C.	2:00 p.m.
7	Emory University, Atlanta	2:00 p.m.
8	Georgia State College, Atlanta	10:00 a.m.

## Southern Pushing To Make It Two Over Belmont Abbey

By TOM KING

Georgia Southern will play host to Belmont Abbey Saturday night in the Hanner Gym with tipoff time set for 8 p.m.

In the last meeting between the two schools, the Eagles rolled to a 92-56 win in Belmont, N. C.

Southern will go with the same five of David Owens (10.5) and Raymond Reynolds (14.3) at forwards, Big Bill Pickens (14.4) at center, and Jimmy Rose (18.8) and Don Adler (13.3) at the guard posts.

Mike Rickard (7.4), who has been nursing a sore foot, will see plenty of action, according to Eagle Coach J. B. Searce.

Belmont Abbey is led in the scoring department by Rick Kailer. In the first meeting he tallied 16 points to pace Belmont Abbey.

GSC displayed an evenly balanced attack with Don Adler pouring in 18. Pickens had 12 and David Owens and Jimmy Rose hit for 11 each.

The Eagles have a big height

advantage and will probably dominate both backboards.

"This will be a big game for us although we expect to have to play heads up ball. We don't want the results similar to those of the game with Carson-Newman," stated Searce.

Georgia Southern's next home game will be Wed. Feb. 17 when Jacksonville University invades "Eagle land."

## Tennis Team Schedules Two New Opponents For Upcoming Season

The Eagle netters opened practice Monday with two returning lettermen and some promising newcomers to prepare for their 13 game schedule.

Dr. Richard Stebbins will coach the tennis team along with Joe Scraggs, last year's captain, serving as assistant coach.

"Practice started Monday and will be open for anyone until Monday, Feb. 15," stated Coach Scraggs.

Returning will be David Hall newly elected captain of this year's squad and Clay Warnock. Both were lettermen last year.

Top prospects to fill in at various positions are Johnny Roundtree, George Wickam and Harry Carter.

"Our first match in Charleston, S. C., with the City College of Charleston, Furman, and The Citadel will probably be the toughest match of the year,"

added Scraggs.

Two new opponents have been added to the schedule, Furman and Emory University.

"The first couple of weeks will be concentrated on basic fundamentals. After this we will work out the positions of the players, such as singles and doubles," said Scraggs.

Anyone interested in coming out is urged to report for practice before Monday. Practice is held on the new courts from 4:30 to 6 p.m.

Lee Silver is the manager. A need for an assistant manager was expressed by Scraggs and anyone interested should contact him or Coach Stebbins.

## Brewton Parker Edges Freshmen

Despite a 21 point effort by Frank Waters, the GSC freshman basketball team dropped a heartbreaker to Brewton-Parker Junior College, 69-67, in the latter's gym Saturday night.

With ten minutes left on the clock the smooth-working freshman, who held a slight edge most of the way, went stale.

Unable to move the ball well, they watched their slim lead dwindle away.

"Our teamwork was great for the first 30 minutes of play but after that we fell apart," stated Coach Ed Thompson.

Leading GSC's attack was Waters with 21. Booty Etheridge collected 17. Mike Davis chipped in 11.

The next freshman game will be Saturday night in a preliminary to the varsity game. They will play host to Abra-

Teaching English to European children  
in a castle is fun.

## 15,000 JOBS IN EUROPE

Grand Duchy of Luxembourg — There are 15,000 summer jobs still available in Europe and the American Student Information Service is giving travel grants up to \$390 to the first 5000 applicants. Wages range to \$400 a month for such jobs as resort, hotel, child care, office, farm, factory, sales and shipboard work. Job and travel grant applications and full details are available in a 36-page illustrated booklet which students may obtain by sending \$2 (for the booklet and airmail postage) to Dept. F, ASIS, 22 Ave. de la Liberte, Luxembourg City, Grand Duchy of Luxembourg.

## Gold Cup Socks

Now at

## BURTON'S

### SHOE STORE

10 East Main Street



Singing goes better refreshed.  
And Coca-Cola — with that special zing,  
but never too sweet —  
refreshes best.

things go  
better  
with  
Coke



Bottled under the authority of The Coca-Cola Company by:

Statesboro Coca-Cola Bottling Co.  
The GEORGE-ANNE Feb. 12, 1965





GSC VARSITY BASEBALL SCHEDULE		
DATE	SCHOOL	PLACE
March 13	University of Kentucky	Statesboro
17	University of Tennessee	Statesboro
18	University of Tennessee	Statesboro
19	University of S. C.	Columbia
20	University of S. C.	Columbia
27	Wake Forest	Statesboro
	Furman University	Statesboro
29	Davidson College	Statesboro
30	Davidson College	Statesboro
April 1	Carson-Newman	Statesboro
2	Hampden Sydney	Statesboro
	Carson-Newman	Statesboro
3	Hampden Sydney	Statesboro
	Carson-Newman	Statesboro
5	Eastern Kentucky	Statesboro
6	Eastern Kentucky	Statesboro
7	Eastern Kentucky	Statesboro
9	Florida State Univ.	Statesboro
10	Florida State Univ.	Statesboro
12	Greenville College	Statesboro
13	Greenville College	Statesboro
15	North Carolina	Statesboro
16	Pembroke State College	Statesboro
17	Pembroke State College	Statesboro
22	Wake Forest	Winston Salem
23	Davidson College	Davidson, N. C.
24	Davidson College	Davidson, N. C.
27	Jacksonville Univ.	Statesboro
28	Mercer University	Macon
May 4	Mercer University	Statesboro
7	Erskine	Statesboro
10	Florida State	Tallahassee
11	Florida State	Tallahassee

## Undefeated Kingpinners Reign

The Kingpinners continued their winning ways Tuesday night on a unblemished record of 40 wins and no losses.

Trailing the Kingpinners are the Runners, 26 - 14; Alley-Cats, 24-16; Tenpins, 20-20; No. 7, 20-20; No. 6, 12-28; Pen Pushers, 10-30; and the Low Bowlers, 8-32.

The Runners rolled the high game of 591 while the Kingpinners had the high series of the night with a 1714 total.

Charles Parker rolled the men's high game of 208. He also rolled the high series of 527.

Veronica Stokes paced the girls with a 173 while Babs Brown had the high series of 478.

Bob Lackey and Babs Brown

continued to lead with high averages of 175 and 161, respectively.

This week's honor roll includes: Men - Charles Parker, 527, Bob Lackey, 511; Women - Babs Brown, 478, Veronica Stokes, 435, and Kathy Fowler, 417.

## Dorm Presented Display Trophy

Official presentation of the homecoming display trophy was made Wednesday night to the Veazy Hall house council.

Veazy Hall won first place in the display judging. Sponsorship of the displays was in the hands of the Student Congress.

# Eagles' Win-Streak Broken As Carson-Newman Romps

Georgia Southern's 12 game winning streak was snapped by Carson-Newman last Saturday night in Tennessee but the Eagles avenged an earlier loss to Cumberland College two nights later.

Carson-Newman bombed Southern 75-57 to end the Eagles' win streak.

"They were not the same team. They knew every crack in the floor because they hit from all over the court," stated Eagle Coach J. B. Searce.

Southern was led by Don Adler with 12. Raymond Reynolds hit for 11 and Bill Pickens contributed 10.

Roy Hill led all scorers with 22 points followed by Vic Anwood with 19.

Jim Shuler, Jerry Cannon, and Charles Breazeale added 10 each for Carson-Newman.

Breazeale grabbed 15 rebounds and was credited with five blocked shots.

GSC hit only 38 percent from the floor while Carson-Newman hit 58 percent of their shots.

"They out rebounded us two to one but I don't think they have a better ball club than we do," added Searce.

### CUMBERLAND

Sparked by the fine play of Raymond Reynolds, GSC out scored Cumberland College, 85-73, to avenge an earlier loss

this season.

Reynolds poured through 28 points. He got strong support from Don Adler with 19, Jimmy Rose with 14, and Mike Rickard with 11.

"We didn't look too sharp. We made too many mistakes. Raymond Reynolds played a terrific ballgame," said Searce.

Jerry Brown paced Cumberland College with 16 followed by

## Pat Vedder Hits High In National Bowling Tourney

Mrs. Clyde B. (Pat) Vedder, junior physical education major scored a 209 to win the High Singles Game in the first round of the 26th Annual National Intercollegiate Portal American Ten Pin Tournament.

Representing Georgia Southern, Mrs. Vedder competed with bowlers from Duke University, Penn State, Washington State, Wells College, University of Wisconsin and South Dakota State. Other colleges were also in competition.

Mrs. Vedder is the wife of Dr. Clyde B. Vedder, professor of sociology.

# Pitching Problem Plagues '65 Team

By JAMES STAPLETON  
Staff Writer

"The success of the 1965 edition of the Georgia Southern College baseball team will depend entirely upon the pitching," stated head baseball mentor J. I. Clements.

"We have the nucleus of a good ball club if our pitching holds up and some promising new comers prove themselves," added Clements.

Returning from last year's national champs are All-Americans Allen Payne and Jack Hammond. Payne is a catcher while Hammond roams the territory around second.

Third will be manned by Royce Exely, junior from Savannah, who played shortstop last season. Newcomer Leahman Stanley will fill the post at short this season.

Jim Seeley and Bobby Butler will be back to provide the long ball needed.

Top prospects for pitching chores include returning lettermen Jerry Stephens, Bob Pierce, and Jim Nevin. Freshmen Barry Brown and Allen Simmons also fit into the plans for

the pitching staff.

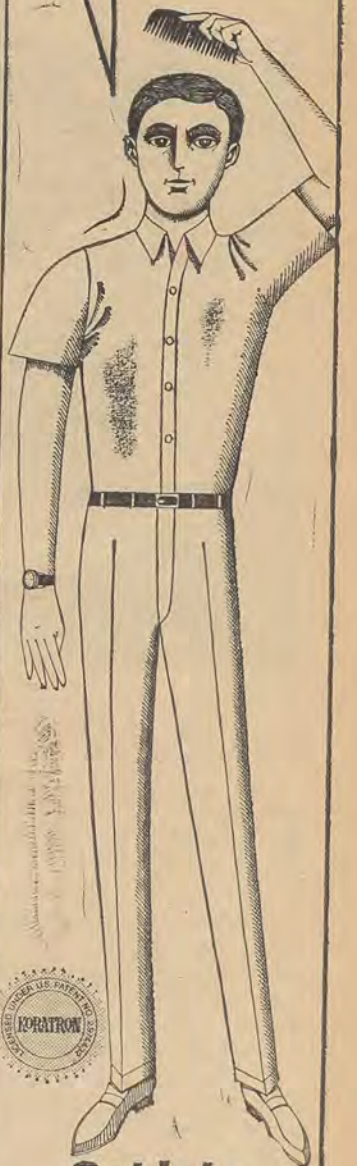
The outfield will be strengthened by the return of Sandy Wells and Chico Jones, both regulars last year.

Allen Payne, senior from Bradenton, Fla. has been elected captain of this years squad.



ALLEN PAYNE

Are you still wearing those creasy kid slacks?



Get into  
**h.i.s.**  
Press-Free  
Post-Grad  
slacks

Get into some wised-up Post-Grads that know where a crease should always be and where it should never be, and how to keep things that way. The reason is the Koratron® fabric of 65% Dacron®/35% cotton. No matter how many times you wash and wear these trimly tapered Post-Grad slacks, they'll stay completely neat and make the iron obsolete. In tan, clay, black, navy or loden, \$6.98 in poplin or gabardine, \$7.98 in oxford. At swinging stores.

KORATRON'S REG. TM FOR POLYESTER FIBER.

**THE VARSITY**  
**DONALDSON-RAMSEY**  
Store For Men  
STATESBORO, GEORGIA

The GEORGE-ANNE Feb. 12, 1965 Page 9

## VALUABLE COUPON

CO-EDS

This Coupon And \$1.39 buy a Regular \$2.00 size

REVLON INTIMATE SPRAY COLOGNE

Thurs. Fri. Sat. Mon. Feb. 11-12-13-15

SHOW YOUR I-D CARD

Franklin-Liggett Rexall Drugs

29 North Main St. — STATESBORO, GA.

STATESBORO'S LARGEST DRUG STORE

WE DEVELOP FILM

## SUPER PAR SERVICE STATION

SAVE  
3c

A Gallon  
On Gas!

431 S. Main Street  
Statesboro, Ga.

New Shipment

John Romain  
BAGS

Now at

**BURTON'S**  
SHOE STORE

10 East Main Street



## GEORGE-ANNE FEATURE



WHAT IS IT!



MY WORD!



I CAN'T LOOK!



AM I SEEING THINGS!



HAVEN'T WE ME  
BEFORE?



MY WORD!



IT LOOKS SO FUNNY!



EXCUSE ME, HAVE SEE  
TARZAN?



HERE I AM!

## Finance Your Trip Abroad

A new organization to revolutionize coed student travel has been launched from New York City. It is the Trans-Atlantic Student Association with offices at 387 Park Avenue South.

The Trans-Atlantic Student Association (TRASA) was formed by a group of recent college graduates to remove the frustrations of student travel and to bring overseas travel within the budget of every student in the United States.

Special features of the TRASA plan include financing for vacations, air transport arrangements, group tours and accommodation in major European cities for TRASA members. In addition, the organization will operate a student nightclub in New York City and will provide students with a wide variety of travel services, advice and

publications.

It has reciprocal club facilities in major European cities where its members can meet European students and take part in genuine European student life. In this way, TRASA's organizers believe a European visit will become more enjoyable and more worthwhile.

The organization will publish twelve travel guides this summer and plans to arrange travel for some twenty thousand students to Europe, the Caribbean and Israel between June and August this year.

A representative of TRASA described its functions this way: "More and more, travel is an integral part of the college curriculum and any student who does not venture abroad finds himself not only having missed

the pleasure and excitement of a vacation overseas, but also is at a decided disadvantage in his studies."

### Education Prof Presents Paper

Dr. Alexander Ashbaugh, assistant professor in the education division, presented a paper before the American Educational Research Association in its annual meeting in Chicago.

Dr. Ashbaugh completed his doctorate in Education at the University of Georgia in August and is one of the few persons to be invited to present a research paper so shortly after completion of the doctorate.

The GEORGE-ANNE Feb. 12, 1965 Page 10

## Farkas Speaks To Ceremony Group

Dr. Zolton J. Farkas, professor of modern languages at Georgia Southern College, addressed the United States District Court Naturalization ceremonies in Savannah last week.

Dr. Farkas, a native of Budapest, Hungary, has traveled extensively in Europe. He came to the United States in 1949 and settled in Savannah as office manager of the Diamond Construction Company and as a teacher of German and French in night classes at Armstrong College.

He came to Georgia Southern College in January, 1955.

**Mac's Standard Station**  
**IS THE COLLEGE STUDENT'S STATION**  
... USE ANY SERVICE FREE —  
Vacuum Cleaner, White Wall Cleaner  
**MAC NEVER CHARGES TO START  
A STUDENT'S CAR!**  
— VISIT MAC'S TODAY! —

## Pre-Med Exam

All pre-medical students who wish to take the Medical College Admission Test should stop by Dr. R. Boxer's office in the Science Division of the Herty Building and get the 1965 announcement.

## Things Happening

THERE WILL BE  
A DANCE FEB. 12  
FRIDAY NIGHT AT  
THE NATIONAL  
GUARD ARMORY  
TICKETS ARE ON SALE  
NOW.

\$2.50 ADVANCE  
\$3.00 AT THE DOOR  
THIS DANCE IS  
SPONCERED BY  
APO  
ADVANCE  
TICKETS ARE  
TO BE ON SALE  
FOR THE  
FEB 16

**Rolling Stones**

**CURRIE  
STUDIOS**

## Fellows Don't Get Caught Short

Sunday Feb. 14th  
is SWEETHEART  
DAY



We have the most  
beautiful selection of  
Valentine Candy in  
Town... see us  
before you buy.

FRANKLIN





# Peddling Individualism May Be Odd; But People Listen

(ACP) -"Individualism" came to K-State, fittingly perhaps, riding in a Volkswagen bus, reports KANSAS STATE COLLEGE, Kansas State University, Manhattan, Kan.

## Power Institute Scheduled Here

Fluid Power Institute will be held at Georgia Southern College June 14 through July 23 for the study of transmission on energy by fluids under pressure and the industrial demands for hydraulics and pneumatics.

The course will carry ten quarter hours credit in graduate or undergraduate study.

Representatives of the fluid power industry will present much of the technical content of the Institute. Some scholarships are expected to be available.

## Finishes Booklet

Dr. William L. Hitchcock, professor of education and director of counselor education, has completed a guidance booklet entitled, "The Placement Service."

This is the tenth booklet in his series of booklets on Guidance for Georgia Schools published by the State Department of Education.

According to Dr. Hitchcock, the actual fruition of guidance may be realized through adequate placement of the student. "If the student is placed effectively, it is an indication that counselors, teachers, and others have been successful in the guidance effort."

Is the booklet the basic elements of the placement service were discussed with illustrated forms that may be used by counselors to better organize and administer this guidance service.

## Education Group Honors Alumnus

Dr. H. Titus Singletary Jr., associate state school superintendent, received an honor award presented by the division of education at a Homecoming School Leadership Conference.

The award will be presented annually to an alumnus of the Georgia Southern College Teacher Education Program who has excelled in the field of education.

Dr. Singletary was chosen for his achievements and contributions to the field of education.

## Ben Franklin Store

Your Most Convenient Store!

E. Main Street

Larc Abel Smith is a sinister-looking individual with black beard spread under his chin like a fan and a touch of auburn in his handlebar moustache.

Smith and his bus materialized a little before noon in the front row of the Union parking lot. Across the back of the bus, in thin, square letters, was labeled: "Independent." On the side was "Individualism."

Smith, from Brecksville, Ohio, spoke to many persons. Some listened intently. Some snickered behind their hands. Some walked around the bus and read his preachings, poorly typed and taped to the windows. Still others asked articulate questions of him and received articulate answers.

He handed out his literature.

He sold some of it for two cents a handful. He explained it would help cover the cost of producing it.

Someone asked: "How can you advocate individualism when you support segregation, which restricts an individual's freedom?"

He explained that to integrate is to give something to someone. It is a gift. It is not earned. Thus the gift obligates the recipient, and a person cannot be an individual if he is to be obligated.

He said women are a detriment and a drain on man and they should be made to pay for half of everything.

About 5 p.m. the campus police came and told him to leave. He did not have a permit to peddle. And, of course, no student parking sticker.

The GEORGE-ANNE

Feb. 12, 1965

Page 11

*We want you to be our Valentines this year for our first Valentine Party. This will be the best old fashioned Valentine Party you have attended in Years.*

Special Date Night—Friday Feb. 12—Register today time is short

**WINDY'S**

Located at the Aldred Motel

Just received a new shipment of

**JOHN ROMAIN BAGS**

also our swim Suits are now on display featuring the best of:

PETTI  
BEACH PARTY  
ROSE MARIE REID  
ROSE MARIE REID JR.

*Tilli's*

For Your Shopping Pleasure

## ACTIVITY CALENDAR

- February 12 Free Movie.  
13 Basketball Game.  
15 Sanford Hall, Cone Hall, Delta Sigma Pi, Young Democrats.  
16 Prague Orchestra Symphony, Delta Pi Alpha, Alpha Pi Omega, Debate Meeting.  
17 Brannen Hall, Mat Dance, Free Movie, German Club, Miscellaneous.  
18 Student Congress.  
19 Free Movie.  
22 Sanford Hall, Cone Hall, Delta Sigma Pi, English Club, Gamma Sigma Upsilon, Young Democrats.  
23 Delta Pi Alpha, Alpha Pi Omega, Debate Meeting.  
24 Brannen Hall, Mat Dance, Free Movie.  
25 Student Congress, Play Libation Bearers, 8:15 p.m.  
26 Free Movie, Play Libation Bearers, 8:15 p.m.  
27 Play Libation Bearers 8:15 p.m.
- March  
1 Sanford Hall, Cone Hall, Gamma Sigma Upsilon, Delta Sigma Pi.  
2 Alpha Pi Omega, Delta Pi Alpha, Debate Meeting.  
3 Mat Dance, Brannen Hall, Free Movie, Miscellaneous.  
4 Student Congress.  
5 Free Movie.  
8 Sanford Hall, Cone Hall, Delta Sigma Pi, Gamma Sigma Upsilon, English Club.  
9 Alpha Pi Omega, Delta Pi Alpha, Debate Meeting.  
10 Mat Dance, Brannen Hall, Free Movie.  
11 Student Congress.  
12 Free Movie.  
15 Sanford Hall, Cone Hall, Gamma Sigma Upsilon, Delta Sigma Pi.  
16 Alpha Pi Omega, Delta Pi Alpha, Debate Meeting.

*Featherlight answerette...*



*never has so little done so much*

Answerette brief looks featherlight, feels featherlight, controls like no lightweight ever has before. Inner bands offer firm support for the tummy and give natural shaping to the derriere. Made of sheerest nylon and Lycra® Spandex power net. Made in two span lengths for average or long torso. White or deb blue, P-S-M-L-XL \$7.95

Featherlight Answerette bras... Regular style \$3.00 Contour style \$3.95

© du Pont's reg. trademark

by Gossard

**Minkovitz**  
STATESBORO'S LARGEST & FINEST DEPARTMENT STORE



# BASKETBALL CONTEST

Address or  
Dormitory of Student .....

City & State .....

Name .....

## Pick the Winners

## Win \$10.00 Cash!

Circle all the winners and receive \$10.00 cash. If no one gets all the winners the person naming the most winners will receive \$5.00 in cash from The George-Anne. In case contestants tie the prize money is equally divided.

1. In each ad on this page you will find two college teams scheduled to compete this week. Check the teams you think will win. Tie games count against you unless indicated.
2. Mail or bring your entry to The George-Anne office located in the Frank I. Williams Center not later than 2 p.m. Friday. Letters must be postmarked before this time.
3. Members of The George-Anne staff are not eligible to win.
4. Members of Faculty, Administration, and Staff are Eligible.
5. Only TWO ENTRIES per person.

LAST WEEK'S WINNER — CAROLINE PITTS

### Pyrofax Gas Corp.

Bottle - Bulk  
6 E. Vine St. 764-2700  
T. C. U. — Ark.

### Franklin Chevrolet Co. Inc.

60 E. Main Street  
STATESBORO, GEORGIA  
Business Phone PoPular 45488  
Colo.—Wake Forest

FORD MERCURY

### GUINN FORD, Inc.

Wrecking Service - 764-5404  
Vanderbilt—Tenn.

### City Dairy Co.

Grade A Dairy Products  
Pasteurized Homogenized Vitamin D Milk  
L. S. U.—Auburn

### Johnson's Minit Mart

"When You Run Out of Something  
Run Out to the Minit Mart"  
"Open 8 Days A Week" — FAIR ROAD  
Miss. State—Fla.

### STATESBORO Buggy & Wagon Co.

"Complete Line of Hardware"  
1 Courtland St. 764-3214  
Temple—St. Joseph

### WWNS RADIO

Hear College Football  
EVERY SATURDAY!  
Texas AM. — Baylor

### Medical Center Pharmacy

OPPOSITE HOSPITAL  
Hours: Mon. - Sat., 9 - 9—Sun. 2 - 7  
Ga. Tech—N. C. State

### MUSIC BOX

"if it's Musical, WE HAVE IT!"  
27 W. Main St. — Statesboro, Ga.  
PHONE 764-3641  
Belmont Abbey—Ga. South

### Sea Island Bank

and it's  
SOUTHSIDE BRANCH  
Just Off the GSC Campus  
Fordham—Boston C.

### "Hobby Headquarters" The Hobbycraft Shop

SCIENCE - ART - CRAFT - MODELS  
SUPPLIES  
43 E. Main St. 764-5274  
Iowa—Ohio St

### Bulloch County Bank

"service with a smile"  
Tulane—Ala.



Rockwell Manufacturing Corporation  
Bradley—Louisville

U. S. 301 Statesboro, Ga.

### Jake's American SERVICE STATION


American Gas and Oils  
— PROMPT, COURTEOUS SERVICE —  
Valdosta—Oglethorpe

### Eagle's Roost

(Next To Dairy Hut)

— Private —  
GSC Students ONLY!  
Now Open from 5 to 12

### Curtis Volkswagen Inc.

Highway 301 North  
 VOLKSWAGEN  
AUTHORIZED DEALER  
PHONE 764-4114  
Clemson—S. C.

### The Statesboro Telephone Co.

"serving Statesboro and Bulloch County"  
9 South Main St. Statesboro  
Miss. — Ga.

