

Georgia Southern University

Georgia Southern Commons

The George-Anne

1-22-1965

The George-Anne

Georgia Southern University

Follow this and additional works at: <https://digitalcommons.georgiasouthern.edu/george-anne>

Recommended Citation

Georgia Southern University, "The George-Anne" (1965). *The George-Anne*. 422.
<https://digitalcommons.georgiasouthern.edu/george-anne/422>

This newspaper is brought to you for free and open access by Georgia Southern Commons. It has been accepted for inclusion in The George-Anne by an authorized administrator of Georgia Southern Commons. For more information, please contact digitalcommons@georgiasouthern.edu.



THE George-Anne

BEAT
Carson-Newman
COLLEGE

Published by the Students of Georgia Southern College

VOLUME 39

STATESBORO, GEORGIA, FRIDAY, JANUARY 22, 1965

NUMBER 12

NOTICE!

Off-campus students will have an opportunity Monday to buy tickets to the student congress concert. Tickets will be on sale in the lobby of the Student Center from 8 a.m. - 2 p.m. Tickets at the door will increase in price.

Application Date Set For Student Teaching Posts

Students who plan to do student teaching in 1965-66 must make application in room 111 of the Student Center Thursday.

Dr. Donald Hawk, director of student teaching, stated that application forms and instructions for their completion will be available at this time.

Application blanks may be secured during any free period of the day. Dr. Hawk indicated that this would allow all students ample time to secure the blank.

In Recital



Dr. Jack Broucek will present an Organ Recital in McCroan Auditorium Tuesday at 8:15 p.m. It will be sponsored by the Zeta Omicron Chapter of Phi Mu Alpha Sinfonia. Dr. Broucek is a professor in the Georgia Southern Music Division. No admission will be charged for the recital. (See story on Page 6).

Seats In Hanner Will Be Reserved At H'Coming Game

Coach J. I. Clements, business manager of the Georgia Southern Athletic Department, has announced that because of the anticipated attendance for the homecoming basketball game with Oglethorpe University a new policy concerning the admission of students to this game is necessary.

Clements stated that the athletic office will issue tickets to all students interested in attending the homecoming game, and he said that this action "may be a prelude to future games" at Southern.

TURNED AWAY

"Last year at homecoming, we had to turn away over one hundred people," he said. "This year it's really going to be a problem."

Students who want to attend the homecoming game must present their I.D. cards at the athletic office in the F. S. Hanner Building on Saturday, Jan. 30, between 9-12 in the morning.

Each student following this procedure will receive a ticket for the game that night. All seats will be reserved, and each ticket will have a corresponding number and section, Clements stated.

STUDENT SECTIONS

Student sections have been designated as the balconies of the east and west stands and the main floor of the east stands. The main floor of the west stands is the traditional reserved section which is already sold out, Clements added.

He said that this will give the student section a seating capacity of approximately 2,000. He also urged students to take advantage of the "hat and coat check" facilities to avoid "over crowding."

Clements pointed out that each student has to secure his own ticket, and that no one could obtain a ticket for someone else with another person's I.D. card.

However, he explained that if

a student wishes to purchase a ticket for someone else when he receives his own ticket he may do so.

Students who do not secure their tickets on Saturday morning will have to pay the full price of \$1.75 if they attend the game that night.

Clements went on to say that a similar policy has been used by athletic departments of major colleges and universities whose gymnasiums or field houses were too small to handle an over-capacity crowd.

He added that the GSC Athletic Department may have to adopt such a policy for all future home games until the annex to the W. S. Hanner Building is completed.

Political Scientist Opening '65 Lecture Series Today

By HOYT CANADY
Staff writer

Dr. William G. Carleton, Professor Emeritus of political science and history at the University of Florida, will open the 1965 Lectures in the Social Sciences this morning at 10:30 in the Marvin Pittman School Auditorium.

Basing his lectures on "The Trend Toward American-Soviet



DR. WILLIAM G. CARLETON

Understanding," Dr. Carleton will speak to students on "Its Development aid Causes."

This afternoon he will address a businessman's seminar in the Civic Room of the First Federal Building where he will speak on "The Contemporary Role of the United States in Southeast Asia."

Dr. Carleton will conclude his lectures tomorrow at 10:30 a.m.

in the Marvin Pittman Auditorium. His topic will be "American - Soviet Understanding: Its Consequences for the Future."

FIRST IN SERIES

Dr. Jack N. Averitt, chairman of the social science division and chairman of the Lecture Series Committee, said that Dr. Carleton will be the first in a series of four lecturers in the social sciences coming to Georgia Southern this year.

Admiral Arthur W. Radford, ret., former chairman of the Joint Chiefs of Staff, will continue the lecture series on April 3.

Dr. Richard L. Walker, director of the Institute of International Studies at the University of South Carolina, will lecture on April 23.

Dr. Kingsley Price, professor of philosophy at the Johns Hopkins University, will conclude the lecture series on May 7.

AUTHOR

Dr. Carleton is the author of "The Revolution in American Foreign Policy," now in its third printing. He is also the author of several hundred articles on world politics, domestic politics, and historical interpretations in both American and foreign periodicals.

He has also lectured to professional, educational, and civic organizations. He was one of the chief speakers at the 1959 Governor's Conference in San Juan, P.R., and he is one of the national lecturers for Phi Beta Kappa.

DEGREES

Dr. Carleton received the Bachelor of Arts degree in history and the Master of Arts degree in political science from

Indiana University. He received the Juris Doctor in Law degree from the University of Florida, and he has done additional graduate work at Indiana and the University of North Carolina.

Dr. Averitt said the series is sponsored by the social science division of Georgia Southern in cooperation with Education for Freedom.

Other members of the Lecture Series Committee in the G S C social science division are: Dr. Otis H. Stephens, professor of political science, Dr. Clyde Veder, Visiting Professor of Sociology, and Bernard Matthews, assistant professor of philosophy.

Homecoming Parade Dignitaries Selected For Judgeships, Posts

The Homecoming Parade will begin at 3:30 p.m. Friday, Jan. 29, according to Roger Alderman, chairman of the parade.

Max Lockwood, Statesboro Recreational Director, has been asked by Circle K to be Grand Marshal. Other dignitaries include Statesboro Mayor Bill Bowen; J. Brantley Johnson, member of the state Board of Education; and Frank Proctor, chairman of the Bulloch County Board of Commissioners.

Students taking part are L. W. Hartley, President of the Student Congress, and Bonnie Bell, Miss National Rural Electric. Ray Wilson, president of the Alumni Association, will also ride in the parade.

The parade will consist of 27 units. Organizations entering floats are asked to have

them in the parking lot by the Hanner Gymnasium by 1 p.m. on Friday. Drivers are asked to meet by 2:30 p.m. Floats will be judged during the parade on originality, use of materials, and presentation of theme. The best entry will be awarded a trophy at the basketball game on Saturday night.

According to Alderman, the parade will follow a route out the back gate of the college and down the Pembroke Highway to Four Points.

The parade will proceed up South Main Street and then turn down East Main and come back to the college by way of South Zetterower.



DEE CLARK

'Rufus Thomas' Will Not Appear For Big Dance

By Nanci Sanders
Staff Writer

The four fraternities sponsoring the Homecoming dance have announced that Rufus Thomas, originally scheduled to perform, cannot appear due to conflicting recording dates.

In place of "Rufus," the fraternities will present Dee Clark. Recording on V-J label, Clark has had such hits as "Raindrops," "Hey, Little Girl," "Nobody But You," and "How About That!"

Dee Clark will be appearing with the "Rocking Masters," an eight piece band recently returned from Europe.

The dance will be held from 9:30 p.m. until 1 a.m. at the National Guard Armory. Tickets will be \$3 per couple in advance and \$4 per couple at the door.

Tickets will go on sale Monday in the Student Center lobby.

Official College H'Coming Activity Schedules Released

The official schedule of all Homecoming activities during the weekend of Jan. 28-31 was released this week by the Student Congress.

Homecoming festivities will be opened on Thursday night at 8 p.m. with a concert featuring the Rooftop Singers. The concert will be held in the W. S. Hanner Gymnasium.

PARADE

A parade through downtown Statesboro will begin at 3:30 p.m. Friday afternoon. Floats will be judged during the parade. The judging of displays in Sweetheart Circle will be at 4 p.m.

Awards for the most original float and display will be presented during halftime at the Oglethorpe game by Master of Ceremonies L. W. Hartley, president of the Student Congress.

BEAUTY REVUE

A tea for the contestants in the Beauty Revue will be held on Friday afternoon at 4:30 p.m. in the lobby of Cone Hall.

Mrs. Maude Davis will be hostess at the tea.

The Beauty Revue will be staged on Friday night at 7:30 p.m. in McCroan Auditorium. A dance featuring Dee Clark will be held after the Beauty Revue, from 9:30 p.m. until 1 a.m. at the National Guard Armory on U. S. Highway 3;1.

ALUMNI COFFEE

Saturday's activities will begin with an alumni coffee from 9:30 to 11 a.m. at Hendricks Hall with Mrs. Archie Jackson acting as hostess. A leadership conference for faculty will be held from 10 a.m. to 1 p.m. in the banquet room of the Holiday Inn.

The Alumni and Senior Class will meet in a general assembly at 11 a.m. in McCroan Auditorium.

GAMES

A gymnastics meet between GSC and Auburn University will

open at 2 p.m. on Saturday afternoon in the Alumni Gym.

Georgia Southern's freshman team will meet South Georgia College in a preliminary game at 6:30 p.m. in the W. S. Hanner Building. The varsity game will begin at 8 p.m., with the GSC Eagles meeting Oglethorpe University for the Homecoming game.

DANCE

A dance will be held after the basketball game in the Alumni Building. There will also be an open house for freshmen at Lewis Hall and closed fraternity parties from 10:30 p.m. to 12:30 a.m. at the National Guard Armory.

Homecoming activities will end on Sunday with church services held in McCroan Auditorium at 11 a.m. President Zach S. Henderson will be the speaker.



Presentation of the new Delta Sig College Directory is made to President Zach S. Henderson and Dean of Students Ralph K. Tyson by fraternity president Don Stokes. Pledges will be selling the directory this quarter. The directory lists the names and addresses of the faculty and students.

THE GEORGE-ANNE JAN. 22, 1965 PAGE 2

FOUR POINTS

SERVICE STATION

In The Forks of the Road
Between College and Town

Personal Checks up to
\$5.00 cashed with proper
identification

Where You Get that
**FAMOUS ATLANTIC
RED BALL SERVICE!**

Weekly Drawings
for **FREE Gas and
Other Prizes!**

COME IN TODAY!!!

Register Your GSC Decal
Number and Qualify for
Weekly Drawings Each
Tuesday — Check this Ad
for Winners.

WINNERS —

For **OCTOBER 27**

1st—

CHARLES N. BROWN

10 Gal. Regular Gas

2nd—

JANE CO-ED

DR. HAWK

3rd—

ED GEORGE

\$1.00 In Trade

Date? History? Important Events?

How Is Your Memory?

*The girls say the fellows
don't remember dates in
history or important
events like Christmas,
Easter, Valentines, birth-
day's, anniversary of first
date or proposal to go
steady.*

*Potter wants to help you
"off the hook" about one
event - Stop at WINDY'S
and ask her about Valen-
tines Day -- when? what's
planned? suggestion for
gifts, etc.*

*Make reservations ear-
ly. for the gala old fash-
ioned Valentine Party.
You haven't attended a
a party like it in years.*

Cast Is Selected For Masquers' Production—'Libation Bearers'

A cast of seven has been selected for the Masquers' production of "The Libation Bearers," to be presented February 25, 26 and 27 in McCroan Auditorium.

"The Libation Bearers" was written by Aeschylus and is the sequel to "Agamemnon," which the Masquers presented in 1962.

The play is a Greek tragedy in which Electra and Orestes, children of Agamemnon, vow to avenge their father's death

by taking the life of his murderer.

The cast according to Robert Overstreet, director, consists of the following: Orestes, Joe Phillips; Pylades, John Mayberry; follower, Kenn Robbins; Aesisthus, Russell Dasher; Electra, Anne Lewis; Cilissea, Zebe Chestnut.

Attendants for the production are Jake Rawl, Neil Robinson, and Hans Ryborg. Those selected for the chorus are Janie Dodson, Jane Larsen, Kay Garvin, and Margaret Hendrix.

Overstreet stated that there are still openings for the chorus, and any girl desiring to read for a part should go by his office backstage, McCroan Auditorium.

GET YOUR
PERSONALIZED

Pinky Ring



WITH
YOUR INITIALS

A lovely pinky ring, so popular now, engraved with your initials. Choice of satin or polished finish.

in 10 Kt. Gold \$6.95
or Sterling Silver \$3.50
Tax Included

H. W. Smith, Jeweler

3 South Main Street
Statesboro, Georgia

STUDENTS

This Coupon is worth \$1.00 with the purchase of a 10 KT. Gold PINKY RING—And 50c with purchase of Sterling Silver Ring



**BE A BLOOD
DONOR**

RED CROSS BLOODMOBILE

**Ben
Franklin
Store**

Your Most
Convenient
Store!

E. Main Street

Theme Selected For Homecoming Beauty Contest

"Champagne Flight" is the theme chosen by Alpha Rho Tau for the Beauty Revue to be held on Friday at 7:30 p.m. in McCroan Auditorium.

Contestants for the revue will be nominated by various organizations and clubs on campus. They will be judged on personality, poise, and stage appearance.

The queen and her court will be presented at the Homecoming game on Saturday night during halftime ceremonies.

Reba Barnes will direct the Beauty Revue. Ric Mandes, public relations director, will be the emcee.

Admission will be \$1 for adults and 75 cents for students.

Scholarship rules Changed By State

Students receiving Georgia State Teacher Scholarships are having their grades "averaged on a yearly, rather than a quarterly, basis as formerly," according to Dean Carolyn Gettys, dean of women.

A yearly average of B and the desire to teach are two of the pre-requisites for the recipient's continuance in the scholarship program.

The State Scholarship program can be entered into after entrance into college as well as after high school graduation. It is designed to meet the needs of any person who has entered the program on the undergraduate level and who desires to continue his education in the Masters program.

Dean Gettys stated that "there is a limited number of M. A. degree Scholarships which can be granted, but that applications should be made now through the Office of Student Personnel Services."

Inquiring Reporter

Most of us are in college primarily to help fulfill an ambition. These ambitions, however, are just as varied as the students themselves. The Inquiring Reporter asked the following GSC students what their greatest ambition is. These are the replies:

Charlie Marshall, Moultrie: Receive a degree and stay out of the service.

Hedy Burrell, Lithonia: To get a M. A. degree and a MRS.

Kay Melvin, Fitzgerald: Man with money—and education, too. I don't want him to think I'm stupid.

Laraine Whelsell, Twin City:



Parking Problem Helped

This might be a crude way of straightening up the parking problem in the Marvin Pittman parking lot, but it gets the job done. Pipes were placed in the lot for car alignment. This helps relieve the random parking problem. Students will not find their cars trapped in a circle of cars as was the problem in the fall quarter.

Old School Letter Taboo Still Around

The "S" Club has announced that students are not permitted to wear high school award letters on the Georgia Southern Campus.

The ruling has been in effect for several years. Enforcement of the regulation has not been strict recently, according to Pat Yeager, "S" Club sponsor and gymnastics coach.

Last year "S" Club stated that a student wearing a letter acquired in high school should not be confused with an athlete who has earned an award letter by Georgia Southern's standards.

An informal survey revealed that the policy is standard on campuses of many leading colleges and universities, Yeager added.

Things Happening

"PEACE CORP"

All those interested in it are advised to seek further information by contacting Mr. L. A. Metts at Post Office

Students will have another chance to buy College Directories next week. Delta Sig pledges will sell them next week and through out the quarter.

Eagles clash with the Carson-Newman Boys Jan. 23, Game time 8:15 Home Game

CURRIE STUDIOS

Art Exhibits Still Open In Carruth

Two art exhibitions are currently being shown in the Carruth Building and are open to both GSC faculty and students at no charge.

Sculpture and "A Garden of Flowers" exhibits will remain open through Friday, Jan. 29.

"Students, faculty and friends are cordially invited to view the works," stated Miss Roxie Remley of the Art Department.

Three Doctorate Degrees Awarded

Three faculty members were awarded their doctorate degrees during fall quarter of 1964, bringing the total number of doctors teaching at Georgia Southern to 57.

Dr. Richard J. Stebbins, assistant professor of health and physical education, Indiana University; Dr. Fred Grumley, assistant professor of music and band director, Florida State University; and Dr. Frieda Gernant, associate professor of fine arts, Columbia University received degrees.

Big Doin's Next Week Homecoming is Almost Here

If you have out-of-town guests for the Homecoming festivities you have a special invitation to bring them to WINDY'S Treat the alumni and other visitors at the newest restaurant in town -- The place where the crowds will gather after the events on the campus.

Reservations can be made by calling
764-4495

Don't Forget Our Special Lunch \$1.00

Complete with Desert
3 Veg. - Meat - Salad

—or—

Try Our
"POTTER BURGER"
A meal in itself

THE GEORGE-ANNE JAN. 22, 1965 PAGE 3

Mac's Standard Station

IS THE COLLEGE STUDENT'S STATION

... USE ANY SERVICE FREE —
Vacuum Cleaner, White Wall Cleaner

MAC NEVER CHARGES TO START
A STUDENT'S CAR!

— VISIT MAC'S TODAY! —

The George-Anne

TOMMY HOLTON, Editor
RICHARD GREEN Business Manager
TOM KING Sports Editor
JANICE McNORRILL News Editor
LOUISE COX Section Editor

Problems Will Accompany Homecoming

Homecoming weekend belongs to the entire student body. It's up to each individual to make it a good, clean and memorable affair.

On the weekend-eve of Homecoming, The George-Anne would like to appeal to the student body on certain problems which have confronted previous homecomings.

Drinking, or the consumption of alcoholic beverages, is up to the individual. But when students who have indulged a little freely with drink begin crowding the dance floor, into the gymnasium and driving automobiles, problems can arise.

Another problem which must have the cooperation of the student body concerns the limited capacity of the Hanner Gym for the ball game.

We urge you to cooperate when entering the Gym. To avoid traffic conflicts try to remain in your seat at least until the halftime.

Check your hats and coats in at the designated area so as to relieve the space problem. Several thousand hats and coats can take up a lot of room.

Another crowded situation will be found at the National Guard Armory where the Homecoming Dance will be held. Students can help in relieving this problem by giving courtesy rights on the dance floor. If the building is full when you arrive, you might leave and go back after a certain lapse of time.

Student courtesy should be extended in every event. There will be a number of alumni and friends of the college present for the various activities. Students should be careful not to cause needless inconvenience to these visitors.

There is no clear-cut solution to the problems brought on by overcrowded conditions. However, students can help by giving careful consideration to the above problems. The success of the weekend also depends on the conduct and cooperation of the student body.

Your Support Important

Homecoming is on the agenda for next weekend. Student turnout will determine many things for this year's events and much more for next year's homecoming.

The Student Congress, in conjunction and cooperation with the administration, alumni, campus organizations and student body, has placed a great deal of effort and planning into this year's gala affair.

With all the planning there will still be the count down moments. It is hoped that the students will actively support the various events with their attendance. This will in a large measure determine the success of the entire weekend.

The George-Anne has contributed space for publicity of the events. This is done in part to encourage you and to inform you of the activities taking place. Consult other articles in this issue for information.

For a good weekend this year and a better one next year, support the 1965 Homecoming activities.

SUPPORT ALL FRATERNITY AND ORGANIZATION ACTIVITIES AND PROJECTS

LITTLE MAN ON CAMPUS



Tommy HOLTON

HOMECOMING IS AROUND

the corner and it's time for students to begin thinking about what they will miss during the three-day activity weekend.

The Student Congress has released the official itinerary of events and it's a full one. It's going to take a good man to stick it out until the end. Those who do should have something to long remember.

The complete schedule is listed on the next page. It might be a good idea to cut it out and post it where you can keep up with the activities going on.



HOLTON

"PLAY A TEAM a hundred miles away without ever seeing them!"

That was my reaction when I heard about the college bowling team which is being organized here.

The unusual thing about it is the way the scores will be determined. The results of each game will be telegraphed to the rival teams. In this way we can play a college in North Georgia without leaving Statesboro.

I understand that the college team will also be in the NAIA competition regionally and, if good enough, nationally.

If you are interested in playing—boys or girls—look for the announcement in this issue.

A YOUNG LADY CAME RUSHING into my office the other day and made this sobering statement: "You made an error in this week's paper."

I almost choked with disbelief. It never occurred to me that we were imperfect. Live and learn.

TIP: IF YOU WANT a seat for the homecoming game against Oglethorpe, then make haste when the tickets go out for distribution.

All seats will be reserved. This means that only 2,000 tickets will be available and there are close to 2,800 students enrolled. Understand.

And boys, if you want to sit with your girl at the game, take her along with you to get the tickets. Each student will have to obtain his own ticket—or pay \$1.75 at the door. Tickets are free if you get them in advance.

SEX EDUCATORS: People who write on bathroom walls?

Bathroom walls aren't supposed to be used as scrolls for sex education, but unfortunately somebody has tried to disprove this decency theory. What type education is it—ignorance or arrogance.

Look for 'Candid Snap' which will appear in the George-Anne beginning this week. The G-A camera will be selecting some prime unposed situations of both faculty and students. Don't laugh, it could be you!

If you've read this far, thanks.

LETTERS TO THE EDITOR

George Anne
 Georgia Southern College
 Statesboro, Georgia

Mr. Tommy Holton, Editor

The following is a letter in reply to an article appearing in your paper of January 15, 1965 by Mr. Lutz Seidel. Your sincere consideration for printing this letter in the "Letter to the Editor" will be greatly appreciated.

Dear Mr. Seidel:

I'm under the impression that the United States and its people are very distasteful to you. In all of your articles there seems to be nothing but sarcasm and ridicule for the United States and its inhabitants.

Your recent article on Christmas and the attitudes of the American people toward Christmas must have been very moving to you indeed.

I know that your observations and findings of our society must be very shocking to you. I do not doubt that in your eyes we Americans must appear as a group of heartless, brutal monsters.

I feel it my duty to point out to you a few facts that your keen observations have failed to pick out. You were right. We do commercialize the Christmas season; but, my dear foreign friend, you must try to understand the way in which our economy operates.

The advertising and pushing of sales at Christmas or any other time of the year is the key factor in our great economy. Our nation is great and prosperous because of the business minded people that make our economy revolve.

If you had looked a little deeper than the surface you would have seen that the American people have at the basis of the Christmas season something that I doubt you are capable of comprehending. That something is love, love for God and their fellow men.

I don't believe that you can honestly say that you did not detect this atmosphere. If this feeling of love, that we Americans have, did escape your wizard mind, it is because you are a very narrow-minded person.

In your letter you talked about Christmas as being the holy celebration of Christ's birth. Recently you announced publicly that you did not believe in God. How can you have the audacity to compare Americans and their feeling toward God to the Christmas season with you and people in your country?

One minute your denounce your belief in God and the next you criticize Americans for their spiritual lacking in celebrating the birthday of Christ.

Lutz, you are a fool and a hypocrite. I PITY you. You don't even have the decency to show respect to the people and the country in which you are visiting, especially since, it is the American people who are footing the bill for your plush stay in the United States.

I only hope that when you leave this great country you carry the STENCH that you brought with you back to Germany.

SAM DIPOLITO

THE GEORGE-ANNE JAN. 22, 1965 PAGE 4

THE GEORGE-ANNE

The opinions expressed herein are those of the student writers and not necessarily those of the college administration and faculty.



Entered as second class matter of Post Office at Georgia Southern College, Georgia Southern Branch, under act of Congress.

THE GEORGE-ANNE OFFICE IS LOCATED IN ROOM 108 OF THE FRANK I. WILLIAMS CENTER. HOURS ARE POSTED ON THE DOOR OF OFFICE. PHONE 764-5133



Student Directors Examine Student File Cards on Hand
Coffey, Moore (l-r) Work With Religious Activities

Here To Help The Students

Georgia Southern's two denominational student directors both agree that without some doubt, rebellion and struggle there is no inward spiritual growth.

Miss Florrie Coffey and Rev. Willis Moore are the only full-time student religious activities directors on the GSC campus. They serve the Baptist and Methodist faiths, respectively.

"Our jobs aren't necessarily to add to the church in numbers, but to aid the spiritual lives of the college students," stated Rev. Moore.

He continued to say, "We aren't here to put down any rebellion against the church, but we are here to encourage thinking in terms of the students' spiritual life."

INTERESTED

BSU Director Florrie Coffey added, "Many students on campus fail to realize that we are interested in them as distinct individuals rather than numbers."

We are here to help students as they face doubts, fears and questions concerning religion. We want them to know that we

are willing to sit down and listen to their problems."

COMMUNICATION SETBACK

Commenting on problems involved in their campus work, the directors indicated that they had an unusual problem brought on by a lack of means of communication.

"We lack a clear cut role as to our work on campus. The church pastor has a worship service where he can make announcements and gain identity, but we do not," Rev. Moore said.

Continuing he added, "We carry on a market place ministry. By walking through campus or having a cup of coffee in the Student Center, I meet and talk with students."

HINDERANCE

Miss Coffey feels that a major hinderance to their work is the lack of a place to be contacted. "We don't have a regular office on campus where we can be reached. We shift back and forth from our offices at the church to the religious activities trailer on campus," she

emphasized.

CHURCH RELATION

Although the student directors are not connected directly to their denominational churches, they do work in cooperation with the local churches.

Both the Baptists and Methodists have plans for the construction of student centers. The exact dates these buildings will be built is not known.

CAMPUS ACTIVITY

Miss Coffey and Rev. Moore indicated that at the present time student activities were carried on both on the GSC campus and in the respective churches.

Buses provide transportation for the two groups. Baptist and Methodist students make up approximately 85 percent of the student body.

Miss Coffey holds an A.B. degree from the Woman's College of Georgia and the M.R.E. from Southwestern Seminary. Rev. Moore holds a B.S. from Georgia Southern and a B.D. from Chandler School of Theology, Emory University.

Official HOMECOMING Activity Schedule

Thursday

Concert—Rooftop Singers—Hanner Gym—8 P. M.

Friday

Parade through downtown Statesboro 3:30 P. M.

Judging of displays in Sweetheart Circle—4 P. M.

Beauty Revue Contestant Tea—Cone Hall—4:30 P. M.

Beauty Revue in McCroan Auditorium—7:30 P. M.

Dance feating Dee Clark at National Guard Armory
9:30 P. M.

Saturday

Alumni Coffee from 9:30 to 11 A. M. at Hendricks Hall.

Leadership conference for faculty members 10 A. M.
Holiday Inn

Meeting of Alumni and Seniors at 11 A. M. in McCroan.

Gymnastics Meet (GSC vs. Auburn) 2 P. M.
Alumni Gym

GSC freshman basketballers vs. South Georgia 6:30
(Hanner)

Eagles vs. Oglethorpe in Homecoming Game at 8 P. M.
(Hanner)

Dance in Alumni Building after Game

Open House For Freshman In Lewis Hall after Game.

Closed Fraternity Parties after Game—National Guard
Armory

Sunday

Activities end with church service in McCroan Aud.
11 A. M. — Dr. Henderson speaker.

Win a Honda just for being born



Your own birth date may have already won you a Honda in Parker Pen's Birthday Sweepstakes!

For example, if your birth date is December 1st, 1942, your entry is 12-1-42. Just fill in the coupon below—take it to your Parker Dealer for his signature—and then send it to us. And you might as well know this: you winners have your choice of Hondas . . . the powerful C-110, or the deluxe CA-102. Congratulations!

PARKER

Maker of the world's most wanted pens

New Compact Jotter. First girl-size ball pen made for girl-size hands. Uses the big 80,000-word Jotter refill. \$1.98.



T-Ball Jotter. The world's first ball pen with stainless steel—writes a clean, clear line up to 80,000 words. \$1.98.

Parker 45 Convertible. The pen that fills two ways—with handy reserve ink cartridges, or from an ink bottle. Standard model—\$5.00.



© 1965 THE PARKER PEN COMPANY, JAMESVILLE, WISCONSIN, U. S. A.

Take this coupon to your Parker Pen Dealer or get a coupon from him

Name _____

Address _____

City _____ State _____

See your Parker Dealer right away for complete Sweepstakes rules. No purchase required. Contest voided in Wisconsin, New Jersey, and wherever else prohibited by law. Contest closes April 30, 1965. Send to "Parker Sweepstakes," P. O. Box 4909, Chicago, Ill. 60677

Birth Date
MONTH DAY YEAR

Dealer Signature _____

Recital Scheduled On Tuesday Night

Dr. Jack Broucek, professor of music, will present an organ recital Tuesday at 8:15 P.M. in McCroan Auditorium.

The program will include "Trumpet Tune" and "Bell Symphony" by Henry Purcell; "Suite for a Musical Clock" by Georgie Friedrich Handel; and

"Fanfare" by Mario Castelnuovo-Tedesco.

Also, "Concerto IV" by Johann Sebastian Bach; "Chorale No. 3 in A Minor" by Cesar Branch; "Fantasia and Fugue on B.A.C.H." by Franz Liszt; and "Euskarien Landscapes" by Ermend Bonnal.

Concluding the program, "Fantasy On A Mountain Song," Joseph Clokey; and "Toccatia by Petiro Allessandro Yon.

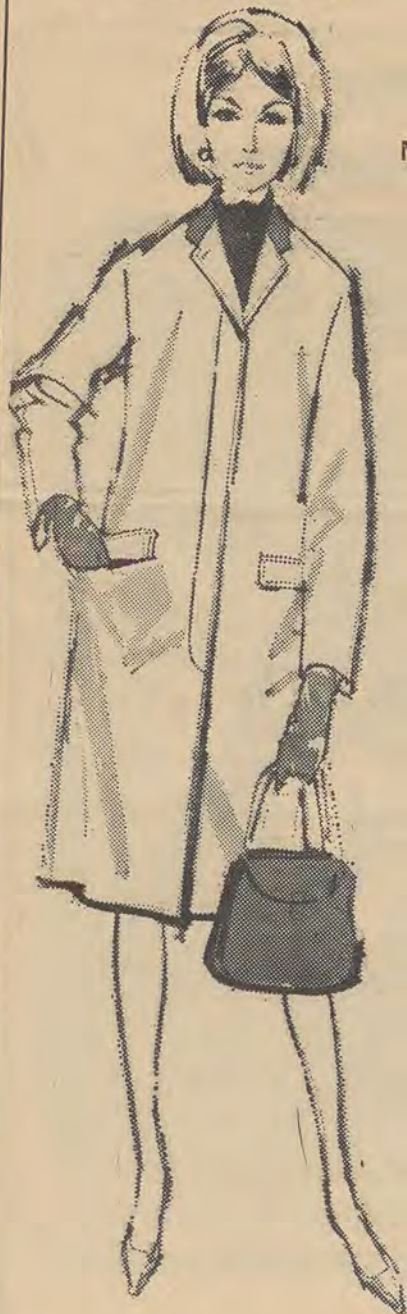
The recital will be presented by the division of music and Zeta Omicron Chapter of Phi Mu Alpha Sinfonia.

Dr. Broucek has presented organ recitals in previous years.

**SUPPORT
THE
GEORGE-ANNE
ADVERTISERS**

THE GEORGE-ANNE JAN. 22, 1965 PAGE 6

Elegant In Any Weather - The Lady Acton



MONOGRAMMED
WITHOUT
CHARGE

by LONDON FOG®

Rain or shine, it's always fair fashion weather when you wear the beautifully tailored Lady Acton. This Chesterfield coat comes in London Fog's exclusive water-repellent Calibre Cloth,® an intimate blend of 65% Dacron* polyester and 35% cotton. And special Third Barrier® construction through the split shoulder gives extra water repellency. The Lady Acton is completely wash-and-wear including the suede collar. Sizes 6-18 Regular, 4-16 Petite. In natural, olive, burgundy, navy or black, fully lined in handsome muted plaid. \$37.50

*Du Pont's reg. t.m.



Other LONDON FOG Coats — \$35. to \$55.



Southern Belle

The George-Anne Southern Belle for this week is Miss Sonja Matthews, a freshman from Brunswick. This brown-eyed, brunette beauty strikes a convenient pose on the steps of the Rosenwald Library. When she isn't posing for the George-Anne photographer, she works as a student assistant in the Public Relations Office.

Pi Omega Pi Elects New Officers

By LOUISE COX

New officers for Pi Omega Pi, national honorary business education society are: Carolyn Haymans, president; Mary Nelson, vice-president; Mrs. Harold Aikens, secretary; Lynne Storey treasurer; and Joanne Peterson, historian.

Gamma Sigma Upsilon formally initiated nineteen coeds into

the ranks of sisterhood.

The girls now in their first quarter of sisterhood are: Mary Bell, Susan Browning, Jackie Bullington, Judy Deal, Janey Everette, Halley Fennell, Ruth Gassett, Judie Hardie, Becky Hobgood, Lu Ann Hogan, Janice James, Gloria Lane, Linda Moody, Bunny Powell, Joyce Sommers, Patsy Symons, Marcie Townsend, Frann Tucker, and Dianne Williams.

Just Arrived
**BEAUTY
MIST**

Domino
Textured
**SEAMLESS
STOCKINGS**

Black Haze
—&—
Brown Mist

Only

\$100

AT

Henry's
STATESBORO, GA.

Student Teaching Posts Announced

Continued from Last Week

Charles Herty Elementary - Meredith Roundtree, 5th Grade; Shirley Lunsford, 6th Grade.

Isle of Hope Elementary - Rosemary Bryant, 1st Grade; Brenda Gooding, 4th Grade; Reba Foskey, 5th Grade; Evelyn Erwin, 6th Grade; Norma Guest, 6th Grade; Rose Marie Bruno, 3rd Grade.

Pulaski Elementary School - Margaret Bell, 2nd Grade.

White Bluff Elementary School - Betty Tonge, 3rd Grade; Marnelle Summerlin, 5th Grade; Sharon Sawyer, 5th Grade.

Swainsboro High School - Katherine Pollett, English; Doris Gibson, Math; Jerry Ann Pevey, Music.

Swainsboro Elementary School - Robbie Jean Crosby, 1st Grade; Sara Frances Liggin, 3rd Grade; Linda Shaw, 3rd Grade; Cynthia Goodman, 4th Grade; Faye Brown, 5th Grade; Kay Osborne, 1st Grade.

Claxton High School - Jackie D. Taylor, Soc. Sci.

Claxton Elementary School - Barbara Brinkley, 1st Grade; Lunie Mae Clifton, 2nd Grade.

Glynn Academy - Winston Willis, Music, Public.

Jenkins County High School - James Wildes, Phys. Ed.; Walter S. Ray, Phys. Ed.; Charles Reeves, Soc. Sci.; Marice Boutwell, Science; Vicki Lynn Poole, Math.

Screven County High - Penelope Hooper, Science; Linda Carter, Phys. Ed.; Barbara Motes, English; Annette Mitchell, Math.

Lyons High School - Robert House, Ind. Arts.

Vidalia High School - Rebecca Simmons, Home Ec.; Mary Jordan, Bus. Ed.; Rosa Lee Jones, English.

College Students Give Definitions Of Word Misery

(ACP) — THE GUSTAVIAN WEEKLY, Gustavus Adolphus College, St. Peter, Minn., gives its own definitions of misery:

A package with \$1.05 due . . . Being locked out of your room . . . all the starch in the lunch menu . . . No date for Homecoming . . . A roommate who snores . . . The cord of an electric blanket which doesn't reach the outlet . . .

And no mail . . . Worn heels on new loafers . . . A pile of ironing . . . An overdrawn checking account with bills left to pay!

Instant coffee made from lukewarm tap water . . . Using up erasers before the rest of the pencil . . . A full wastebasket . . . Missing the kickoff . . . Snagging your nylon . . . Insomnia and not enough sleep . . . Z-ZZ-ZZZZ.

STUDENTS:

NOTE THIS SPECIAL OFFER!

ALL WINTER PANTS—20% off

ALL SWEATERS—20% off

This Tremendous Sale

Is at the

Men and Boys Store



Six Eagles Hit Double Figures As GSC Rolls Over Wilmington

With six Eagles hitting double figures, Coach J. B. Scearce's boys rolled over Wilmington College Saturday night, 101-68.

Led by guard Jimmy Rose with 20 points, the Eagles dominated play throughout the entire game.

Rose received strong support from Mike Richard, 18, and big 6-10 center Bill Pickens, who hit for 16.

Raymond Reynolds added 12 and Don Adler and Lehman Stanley chipped in 10 each. Tommy Dial collected 8 while Jim Seely had 7.

Jay Neary, who took scoring honors for the night, hit on 7 of 16 field goals and 8 of 11

free throws for 22 points.

The only other Seahawk who hit double figures was Wray Ware with 18.

"We looked real good on offense throughout the game and played a real fine second half," stated Eagle Coach J. B. Scearce, who gained his fifth straight victory.

"I was extremely pleased with the play of Mike Richard. Mike came off the bench with a bad ankle and scored 18 points for us," added Scearce.

As a team, the Eagles hit on 44 of 85 field goal attempts for 51 percent and 13 of 20 free throws for 65 percent.

Wilmington hit true on 24 of 53 field goal attempts for 45 percent and 20 of 31 free throws for 65 percent.

Southern picked off 40 rebounds with Bill Pickens getting 12. The Seahawks pulled down 36 errant shots. Marshall Hamilton paced Wilmington with 8 rebounds.

Tampa Bows To Southern, 94-78; Rose Hits For 26

By TOM KING
Sports Editor

Behind the deadly shooting of Jimmy Rose and Raymond Reynolds, the Georgia Southern Eagles breezed to a 94-78 victory over the University of Tampa in Tampa Monday.

Rose, who hit on 11 of 21 from the field and four out of four free throws, accounted for 26 of GSC's points. Reynolds, 6-6 forward, connected for 21 markers.

Rounding out the Eagles' attack was Mike Rickard, who started in the place of David Owens, pitched in 13 with Bill Pickens and Don Adler getting 10 points each.

Pacing Tampa's attack was Dick Pusins with 25. Close behind Pusins was John Pooly with 24. Forward Ron Stone added 11.

As a team the Eagles hit 40 of 72 field goal attempts for 56 per cent. The Spartans hit

43 percent of their shots, sinking 27 of 63 field goal attempts.

Georgia Southern hauled down

Tampa. Pacing the Eagles were Bill Pickens and Raymond Reynolds with 12 each. Ron Stone led Tampa with 8.

GSC Frosh Breeze By Citadel, 83-66, As Ethridge Bags 27

Sparked by the return of 6-1 guard Booty Etheridge and the all-around play of 6-6 center David Christiansen, the GSC freshman squad of Ed Thompson turned back the Citadel frosh, 83-66, Saturday night in the Hanner Gymnasium.

Etheridge hit for 27 points followed by Frank Waters with 21. Close behind was Mike Davis with 16.

Christiansen scored 12 and pulled down 13 rebounds. He also made numerous assists.

The Baby Eagles hit on 32 of 65 field goal attempts for 49

percent and 19 of 27 free throws for 70 percent.

The Citadel freshmen connected on 25 of 65 field goal attempts for 40 percent and 16 of 23 free throws for 70 percent.

NOTICE

Students interested in trying out for the College bowling team meet at 3:30 Wednesday at the Skate-r-Bowl.

PARAGON

SPECIALS

MONDAY -- FISH FILLETS

(From 5 to 9)

all you can eat, with French Fries-Cole Slaw,
Hush Puppies Only—\$1.00

WEDNESDAY -- SPAGHETTI

(From 5 to 9)

with Savory Meat Sauce, Garlic Bread,
Parmesan Cheese Only—\$.98

FRIDAY -- Kentucky Fried Chicken

(From 5 to 9)

It's Fingerlicking Good—All you can eat French Fries,
Cole Slaw, Hot Rolls Only—\$1.25

Have you eaten Breakfast at THE PARAGON lately?

THE STUDENT'S RATE IS GREAT—TRY
IT TOMORROW!

THIS WEEKS WINNERS ARE:

Specials

Monday—Hoyt Canady
Wednesday—Mike Barr
Friday—Patrick Klienpeter

These Winners may
bring a guest

BREAKFAST

MONDAY—Edward Matthews
TUESDAY—Bruce Miller
WEDNESDAY—Kathy Parker
THURSDAY—Bob Winn
FRIDAY—Jewel Underwood
SATURDAY—Alan Hunt
SUNDAY—Bob Morris

For The Smartest In
Wearing Apparel

its



FOR YOUR SHOPPING
PLEASURE

SUPER PAR SERVICE STATION

SAVE
3c

A Gallon
On Gas!

431 S. Main Street
Statesboro, Ga.

BASKETBALL CONTEST

Address or
Dormitory of Student

City & State

Name

Pick the Winners

Win \$10.00 Cash!

Circle all the winners and receive \$10.00 cash. If no one gets all the winners the person naming the most winners will receive \$5.00 in cash from The George-Anne. In case contestants tie the prize money is equally divided.

1. In each ad on this page you will find two college teams scheduled to compete this week. Check the teams you think will win. Tie games count against you unless indicated.
2. Mail or bring your entry to The George-Anne office located in the Frank I. Williams Center not later than 2 p.m. Friday. Letters must be postmarked before this time.
3. Members of The George-Anne staff are not eligible to win.
4. Members of Faculty, Administration, and Staff are Eligible.
5. Only TWO ENTRIES per person.

LAST PREVIOUS WINNER—Harry Herrin

Pyrofax Gas Corp.

Bottle - Bulk

6 E. Vine St. 764-2700

Florida—Kentucky (Sat.)

Franklin Chevrolet Co. Inc.

60 E. Main Street
STATESBORO, GEORGIA
Business Phone PoPular 45488
Michigan—Purdue (Sat.)

FORD MERCURY GUINN FORD, Inc.

Wrecking Service - 764-5404

Oklahoma City—Air Force (Sat.)

City Dairy Co.

Grade A Dairy Products

Pasteurized Homogenized Vitamin D Milk

Miss. St.—Miss. (Sat.)

Johnson's Minit Mart

"When You Run Out of Something
Run Out to the Minit Mart"

"Open 8 Days A-Week" — FAIR ROAD
Va. Tech—East Carolina (Sat.)

STATESBORO Buggy & Wagon Co.

"Complete Line of Hardware"
1 Courtland St. 764-3214
Minnes.—Ohio St. (Sat.)

WWNS RADIO

Hear College Football

EVERY SATURDAY!

Oklahoma—N. Michigan (Sat.)

Medical Center Pharmacy

OPPOSITE HOSPITAL
Hours: Mon. - Sat., 9 - 9—Sun. 2 - 7
Kansas—Iowa (Sat.)

MUSIC BOX

"if it's Musical, WE HAVE IT!"
27 W. Main St. — Statesboro, Ga.
PHONE 764-3641
Xavier—Duquene (Sat.)

Sea Island Bank

and it's

SOUTHSIDE BRANCH

Just Off the GSC Campus

Ga. Southern—Carson Newman (Sat.)

"Hobby Headquarters" The Hobbycraft Shop

SCIENCE - ART - CRAFT - MODELS
SUPPLIES

43 E. Main St. 764-5274
Mercer—Florida Presby. (Sat.)

Bulloch County Bank

"service with a smile"

Washington—Idaho (Sat.)



Rockwell Manufacturing Corporation
Valdosta—West Georgia (Sat.)

U. S. 301 Statesboro, Ga.

Jake's American SERVICE STATION

American Gas and Oils
— PROMPT, COURTEOUS SERVICE —
Notre Dame—Toledo (Sat.)

Eagle's Roost

(Next To Dairy Hut)

— *Private* —

GSC Students ONLY!

Now Open from 5 to 12

Jacksonville—Tampa (Fri.)

Curtis Volkswagen Inc.



Highway 301 North

VOLKSWAGEN

PHONE 764-4114

Tenn.—Ga. Tech (Sat.)

The Statesboro Telephone Co.

"serving Statesboro and Bulloch County"

9 South Main St. Statesboro
Penn. St.—Pittsburg (Sat.)



Auburn — Georgia (Sat.)