

Georgia Southern University

Digital Commons@Georgia Southern

The George-Anne

Student Media

10-8-1964

The George-Anne

Georgia Southern University

Follow this and additional works at: <https://digitalcommons.georgiasouthern.edu/george-anne>

Recommended Citation

Georgia Southern University, "The George-Anne" (1964). *The George-Anne*. 412.
<https://digitalcommons.georgiasouthern.edu/george-anne/412>

This newspaper is brought to you for free and open access by the Student Media at Digital Commons@Georgia Southern. It has been accepted for inclusion in The George-Anne by an authorized administrator of Digital Commons@Georgia Southern. For more information, please contact digitalcommons@georgiasouthern.edu.



THE George Anne

Published by the Students of Georgia Southern College

VOLUME 39

STATESBORO, GEORGIA, THURSDAY, OCTOBER 8, 1964

NUMBER 2

GET OUT
AND VOTE



'Crackdown'

Students are warned that traffic rules and regulations will be enforced now that the school year is underway. A spokesman from the Campus Security Committee stated that "many students have ignored as many as three warning tickets received from breaking college traffic regulations." He added that students have received fair warning and a crackdown on traffic violations will be made.

Constitutional Revision Due For Student Body Approval

A constitutional revision to better define the duties of the Student Congress and to create more representation on the GSC governing body will be completed by the next Congress meeting and will go before a student body vote this month.

L. W. Hartley, president of the Student Congress, said the revised constitution will be voted on along with the election of class officers which is tentatively set for Oct. 20.

The constitution was revised at the annual Student Congress Retreat last spring and parts of the revised sections are still being discussed.

One of these is the section to determine the passage of an amendment, referendum, or ratification of the constitution. The original constitution stated that an amendment must be passed by two thirds of the students voting provided that number equals or exceeds 51 per cent of the on-campus stu-

dents.

There is speculation whether or not to change the last part of this clause to read "51 per cent of the student body."

There is also controversy concerning the increase in representation to the Student Congress. Presently, Student Congress consists of the executive officers, class presidents, and representatives from each academic division.

The question before Congress is whether to increase the number of division representatives or select one member from each of the House Councils, both on and off-campus.

If the constitution is ratified, House Councils will be represented on the Congress Social Committee along with two students at large and two commuting students.

Academic division representation to the Social Committee will be abolished.

Congress agreed to abolish the Finance Committee and felt that expenditures could be handled by the Treasurer and the Executive Committee of Congress.

Congress members also voted to abolish the Ways and Means Committee since the constitution did not define the duties of such a committee, or did it state its purpose for existence.

The Communications Committee which was established three years ago, but ceased to function last year, was abolished. In its place, Congress decided

to name the George Anne and Reflector editors as ex officio members to the governing body; thus, hoping to establish better communications with the students.

The Congress also voted to change Article X of the Constitution which read "...the Dean of Students will be faculty advisor ..." to read: "The Dean of Students along with the

Continued on Page 10

2,969 Register; Figure Shatters Expected Number

Final figures released Tuesday by the registrar's office boosts Georgia Southern's enrollment from a previous all time high of 2,353 to a prediction-shattering 2,969 students enrolled for the fall quarter.

College officials had expected the enrollment to be at a peak with some 2,750 enrolling. With final tabulations, the figure soared 219 above the expected number and 617 above last year's fall enrollment.

In classification breakdown, the freshman class is the largest of the four classes. Breakdown according to sex and number is as follows: freshmen--men, 333, women 441; sophomore--men 329, women 331; juniors--men 369, women 284; seniors--men 312, women 293.

There are 20 special students enrolled, 10 men and 10 women. In the graduate program, 99 men and 113 women make up the total of 212 graduate students.

This gives Georgia Southern an enrollment of 1,450 men and 1,519 women making a total of 2,969 students.

Night Fire Damages Marvin Pittman Laboratory School

A fire ripped through the center section of the Marvin Pittman Laboratory School last night, causing considerable damage to a hallway and two rooms, and necessitating a school let-out for the remainder of the week.

Firemen and a number of GSC students arrived on the scene at 11:30 last night. Although the flames lasted only an hour, firemen and students are reported to have stayed at the school as late as 2 a. m.

Dr. Starr Miller, chairman of the education division, on the scene this morning, reported that the fire is believed to have started either in or above a closet in the guidance counselor's office.

The exact cause of the fire was not determined as of this morning, but Dr. Miller stated that it was probably contained

in the attic and burned through. This occurred in the vicinity of the guidance office and moved toward the high school wing of the building.

Two rooms were completely knocked out and a considerable amount of water and smoke was responsible for much of the damage in two offices and hallway.

Dr. Miller said that adjusters were to come today to evaluate the fire damage to the building. Director of Plant Opera-

tions C. R. Johnson feared that the main rafters in the ceiling were damaged and will have to be taken out and replaced. The floor section will have to undergo considerable woodwork and painting before it will be ready for use.

As a result of the fire, Marvin Pittman School students will not return to their classes this week. Dr. Miller said that arrangements will be made for them to return to classes on Monday.

INSIDE THE GEORGE-ANNE	
Governor Sanders	3
First Class Rating	2
'The Visit' Cast	2
Judiciary	3
Editorials	4-5
Features	6-7
Sports	8-9
Football Contest	12

Off-Campus Flu Shot Schedule Begins Monday

Off-campus students will be able to receive influenza vaccine shots at the College Health Center Monday through Friday of next week.

Nurse Dorothy Wiggins pointed out that the shots are not compulsory. She added that Dr. Bird Daniel, college physician, strongly urges every one to take this vaccine.

The shots will be given from 9 a.m. to 5 p.m. each day at the Cottage.



'It's Not News To Us!'

Georgia Southern students have already felt the impact of the 600 additions to the college family. They come face to face with this increase when they attempt to get in the college dining hall for their meals. Although it won't be ready this year, a new dining hall facility is on the drawing boards for construction sometime within the next year.

GSC Freshmen Give Goldwater Margin Support

Georgia Southern freshmen gave strong indication during orientation week that they favored Senator Barry Goldwater over President Lyndon Johnson in the presidential election campaign.

Voting by a census ballot during the first week of school, the freshmen favored Goldwater with 346 votes as compared to 128 for President Johnson. The number voting was a little more than half of the freshman class.

The breakdown according to sex showed that 213 women voted for the Goldwater-Miller ticket and 82 voted for Johnson-Humphrey. Freshmen men gave the Republican candidates 133 votes and the Democrats received 46 votes.

According to ballot tabulations, registered voters in the freshman class number 410. This indicates that less than half of the freshmen are registered voters.



'We Get Letters'

Postman Ken Bennett sorts through a small bundle of mail going to GSC students. Bennett said that the biggest problem involved in his job is looking up the box numbers for hundreds of letters each day. The Georgia Southern Branch Post Office serves the student body, faculty and film library.

Georgia Governor Accepts GSC Speaking Engagement

Georgia Governor Carl E. Sanders will be the guest of honor at a rally to be held on the Georgia Southern campus October 19, according to Bob Flanders, president of the GSC College Young Democrats.

Governor Sanders will appear at the invitation of the Young Democrats and will speak to the student body in McCroan Auditorium at a time tentatively set for 7 p.m.

"Because of the pressures of the campaign season and state affairs, GSC students are fortunate to have this opportunity to hear the governor," said Flanders.

The Young Democrats President also pointed out that on a recent trip to Tifton for a rally in which Democratic vice presidential nominee Hubert Humphrey spoke, the governor cordially greeted the GSC students attending.

"Governor and Mrs. Sanders were very encouraging to the group," Flanders noted. "They congratulated us for being active in our participation in political affairs."

usually by the division of languages. Its dual aim is to encourage serious literary work by students and to provide them with a publication outlet for their writing.

Last year's Miscellany included 19 student literary pieces, along with a number of drawings.

Looking Forward

Both Gov. Sanders and his wife told the group they were looking forward to speaking to the students of Georgia Southern, Flanders added.

Flanders said that among other guests present for the rally here will be Travis Stewart, executive-secretary of the Georgia Democratic Party.

The College Young Democrats also announced this week the beginning of a "Get Out the Vote" campaign among GSC students.

Purpose

Flanders said the purpose of this campaign was to urge all students to vote in the November presidential election.

George-Anne Rated First Class In Newspaper Critical Services

The winter and spring editions of The George-Anne received a First Class Honor Rating from the Associated Collegiate Press at the University of Minnesota in ACP's Seventy-first All-American Newspaper Critical Service.

The award is the second highest granted by the Associated Collegiate Press, and marked the third successive First Class rating for the Georgia Southern newspaper.

The George - Anne received nine excellents and a total of 3,360 points, the highest in the newspaper's history, in ACP's over - all evaluation.

The GSC publication was analyzed and judged in comparison with newspapers produced by other colleges of approximately similar enrollment, by similar method of publication, and with the same frequency of issue per semester.

Editor of the winter and spring George - Annes was Hoyt Canady, a senior from Decatur. Managing editors were Michaela Dennis, a junior from Helena, and Tommy Holton, a senior from Hahira; news editor was Halley Fennell, a junior from Savannah; and sports editor was Paul Halpern, a sophomore from Statesboro.

The George - Anne received excellents in news sources, vitality - treatment of copy, creativeness, style, editorials, editorial page features, front page make - up, headline schedule and nameplate.

The evaluation of the George-Anne:

Coverage: news sources, excellent; balance, very good; treatment of copy - vitality, excellent; and creativeness, excellent.

Content: news stories, very good; style, excellent; leads, very good; features speech & interview, very good; copy-reading, good; editorials, excellent; editorial page features, excellent; sports coverage, very good; sports writing, very good.

Physical Properties front page, excellent; nameplate, running head, masthead, excellent; editorial page make - up, very good; sports display, very good; inside news pages, very

good; headlines, very good; headline schedule, excellent; typography, very good; printing, very good; photography, very good.

Cast Announced For 'The Visit'

The cast for "The Visit," the Masquers' fall production slated for presentation Nov. 26, 27, and 28, has been announced by Robert Overstreet, director.

Approximately 40 GSC students attended tryouts and the following parts were assigned: Claire Zachanassian, June Farmer; Frau Burgomaster, Carolyn Swilley; Frau Schill, Zebe Chestnut; daughter, Rae Burn-Frau Block, Peggy Castetter; and granddaughter, Melinda Lee.

Also, Hofhauer, Danny Hagan; Helmesberger, Russell Dasher; Wechsler, Bill Muller; Vogel, Dean Aiken; painter, John Mayberry; station master, Larry Duncan; and Burgomaster, Wendell Ramage. Also, Teacher, Woody Bruce; and pastor, Jenn Robbins.

Also, Anton Schill, Guy Bon Giovanni; conductor, Ghalib Ma'ayeh; Pedro Cabral, Jerry Wilkes; Bobby, Harold Wright; Mike, Lewis Anderson; and Max, John Fishback;

Also, first blind man, Thomas Adams; son, Wendell Johnson; Dr. Muslin, Mike Poller; truck driver, Jody Curry; reporter, Robert Flanders; and Athlete, Dan Grinde.

The stage manager is Margaret Hendrix and Ron Slocum will design the set.

Overstreet stated that the Masquers are looking forward to a rousing, good show and that they are always glad to have interested people to help backstage.

Miscellany Staff Meets Tuesday

Students interested in working on the Miscellany, campus literary magazine, are invited to attend a meeting Tuesday at 7 p.m. in room 107 of the Student Center, according to Roy F. Powell, faculty editor.

Fiction, non - fiction, poetry and art work is considered for publication subject to acceptance and editing by the editorial board.

Miscellany is published an-

Orange Blossom
DIAMONDS

SYMMETRY FROM 5125

AT THESE FINE STORES

AUGUSTA —

Casella's Jewelers

COLLEGE PARK —

Travis M. Harbin, Jewelers

COLUMBUS —

Kirven's Fine Jewelry

GAINESVILLE —

Mintz Jewelers

MACON —

Kenaghan, Inc., Jewelers

SAVANNAH —

Desbouillons Jewelers
(2 Stores)



Singing goes better refreshed.
And Coca-Cola — with that special zing,
but never too sweet —
refreshes best.

things go
better
with
Coke



Bottled under the authority of The Coca-Cola Company by:

Statesboro Coca-Cola Bottling Co.

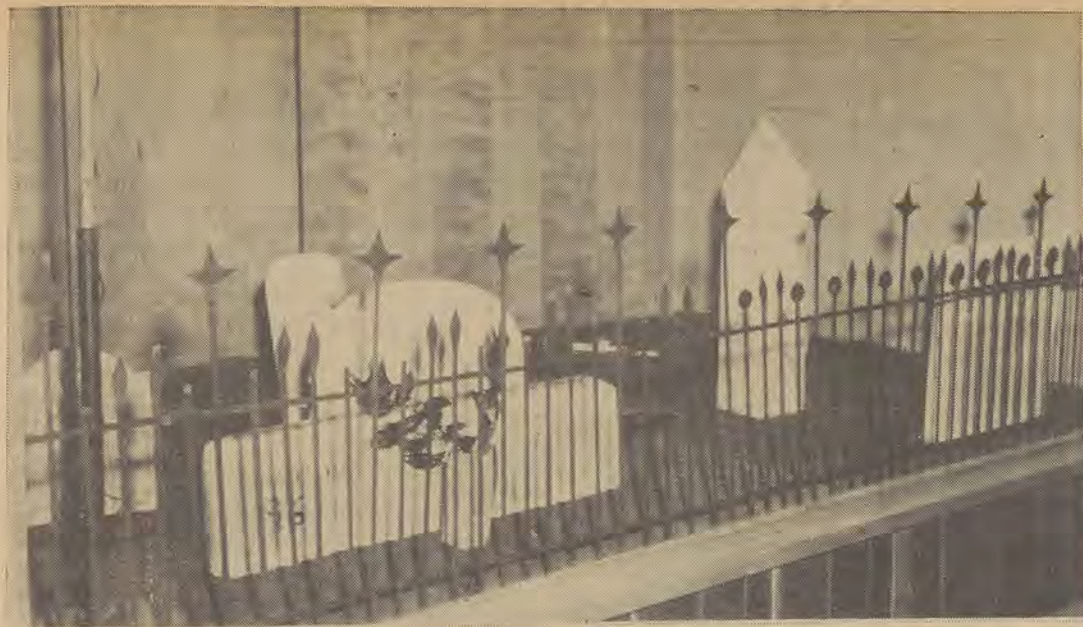
INSURANCE

for your every need

764-2100

Lee Insurance Agency

Bank of Statesboro Building



Toombstone Territory

In order to publicize the forthcoming 'Spoon River' production this realistic looking cemetery scene was arranged in a Student Center display window. The Masquers Fine Arts Series will sponsor the former Broadway production. Masquers Director Robert Overstreet described the play as "haunting, hilarious and heartwarming . . ." It is scheduled for October 24.

Committee To Determine If Judiciary Is Still Needed

A Student Congress committee to determine whether or not the Student Judiciary Amendment is still needed will report its findings to President L. W. Hartley tonight.

The committee's decision will be reported in the regular meeting of Congress next week, and Congress members will then de-

termine the fate of the judicial proposal.

The committee was formed in the Student Congress workshop and pre-planning session held during orientation week.

Hoyt Canady, social science division representative and chairman of the committee, said that if the judiciary is needed it will have to be revised in many sections.

Several functions of the original proposal have already been fulfilled, he said. Students have been placed on previously all-faculty committees, and House Council jurisdiction (both on and off-campus) has been increased.

The amendment received a two-thirds majority "yes" vote from students voting last October, but the measure fell 70 votes short of a needed 51 per cent student body turnout.

The proposal was then revised by the Congress and sent back to the Student Personnel Advisory Council. Later the Congress received the proposal with a list of suggestions, and the governing body attempted to revise the measure again.

Spring quarter ended before revision could be completed, and the new Student Congress

took up the task of revising the proposal.

"There are many factors involving the judiciary which make it difficult to work within its present state. If Congress decides the proposal is still needed, revising it will be a major task," Canady added.

Nominations For Officers Slated

Three slates of officers will be submitted tonight to the Student Congress for the senior, junior, and sophomore classes, according to L. W. Hartley, president.

Nominating committees were appointed Monday night by the Student Congress to select qualified candidates.

Hartley said "this does not hinder additional nominations from being made at the general class meetings scheduled for Monday, Tuesday, and Wednesday of next week." He added that class selections are tentatively set for Oct. 20.

The freshman class election will also be held on Oct. 20. An open class meeting for freshmen nominations will be held during the week of Oct. 12.

Student, Faculty Deadline For Car Registration Is Wednesday

The deadline for Georgia Southern students and faculty members who have failed to register their cars has been set at Wednesday, by the Campus Security Committee.

College regulations require that all vehicles operated on the campus must be registered with the necessary decal properly displayed on the automobile's left-rear bumper. Liability insurance is required also.

Students are reminded that areas marked with yellow curbs and all driveways, walkways, entrances and loading zones must not be used for parking. Parking spaces marked with white curbs are reserved in front of the Administration building for visitor parking only. Students may park in these areas after 5:30 p.m. on weekdays and after 12 p.m. on Saturdays.

College staff parking is designated in a lot between the Frank I. Williams Center and the Herty Building. An area located adjacent to the Alumni Building is also reserved for faculty parking.

Off-campus students may park their automobiles in the Hanner Gymnasium area adjacent to the new tennis courts and in an area in front of the Carruth Building. A lot south of the Health Cottage is also provided for student parking.

Students who reside in the college dormitories should park their cars in the designated dormitory parking lots.

Areas other than those marked for other purposes are general parking areas. Dormitory students are requested to leave the circle parking spaces for off-campus students.

Students who violate the college traffic regulations will be provided with a record of the violation and fine. Fines must be either paid or appealed within three days of the date of the offense.

An appeal may be directed in writing to the Appeals

Board. It must contain a complete description of the circumstances involved. If the appeal is denied, the fine must be paid within three days of notification of denial.

Fines should be paid at the business office. Registration forms, decals, appeal forms and information may be obtained at the Administration Building from 11 a.m. to 12 p.m. and from 3 to 4 p.m.



Dr. John H. Lounsbury will serve as chairman of an evaluation team scheduled to arrive on campus this month. The committee, composed of leading educators from colleges and universities in Georgia and Tennessee, will be here to evaluate GSC's teacher educator program. Dr. Lounsbury is chairman of the education division at the Woman's College of Georgia.

Brown Plays At Armory Friday

James Brown and "The Mighty Sensations" will play at a dance sponsored by Delta Sigma Pi at the National Guard Armory tomorrow night. The dance will begin at 8 p.m. and last until 11:30.

Advance tickets will be on sale at the Student Center at \$2.50 per couple. Tickets will be sold for \$3 at the door.

Boys wear coats and ties and girls wear casual dress and flats.

James Brown and "The Mighty Sensations" first appeared at Georgia Southern last winter. The group is from Savannah and has performed at colleges throughout Georgia and parts of Alabama.

Bandleader James Brown performs on trumpet, baritone, sax and trombone. He is backed by Johnnie Louder on bass; Davis Allen on trumpet; Larry Cast, the drummer; and Freddie Adams, piano; and Frank Butler, guitar and bass. D. D. Riley is the group vocalist.

**Ben
Franklin
Store**

Your Most
Convenient
Store!

E. Main Street

THE GEORGE-ANNE OCT. 8, 1964 PAGE 3

Student Discounts

Friedman's
ART STORE

Artist Materials — Custom Framing

- Gifts
- Pictures
- Mirrors

**Taking Up ART? Don't START
Until You Stop at 116 Whitaker St.
SAVANNAH, GA.**

GENTLEMEN'S TOILETRIES by DANTE



DANTE TOILETRIES herald the return of elegant masculine grooming in the ancient tradition. They are briskly scented, dramatically packaged and specifically intended for men.

The twin pack \$5.00*

Danté Cologne \$2.95*

Danté After-Shave \$2.50*

*Add 10% Fed. tax

Refresher separately available
\$2.95*



— STREET FLOOR —

The George-Anne

TOMMY HOLTON, Editor

HOYT CANADY
Associate Editor

BOB HOLCOMB
Business Manager

PAUL HALPERN
Managing Editor

JANICE McNORRILL
News Editor

Solutions Standing

Last year Georgia Southern was crowded with 2,352 students. This year we have 617 more than we had last year. Therefore, if there is one thing GSC students will have to do this year, it is adjust.

There will be adjustments to be made in the new and longer class schedule. Students are going to have to adjust to the longer dining hall lines. Parking space will be difficult to find if you drive a car. These are only a few, there are many more.

We have pondered over the problems and it is apparent that little can be done to correct the greater portion of these. Since they are not the fault of any one person or group, we feel that it is hardly right to criticize until we can come up with some acceptable solutions ourselves.

In future issues of the George-Anne, we will attempt to offer various suggestions as to how some of the more pressing problems might be solved. Of course, we realize that there is no substitute for an additional dining hall or larger parking areas. These will come in the near future, but at the present time we must be more concerned with solving the problems at hand.

We encourage students to cooperate with the administration, campus security and the Frank I. Williams director. These people are directly faced with the responsibility of handling to the best extent the crowded conditions now present on the campus.

Students Ignore Issues

College students should be more concerned with the presidential elections than any other age group in the United States. The George-Anne questions the amount of interest and consideration being given to the Democratic and Republican tickets by our college population.

Georgia Southern freshmen were given an opportunity to vote for a presidential candidate by census ballot during the orientation week. The outcome indicated that the freshmen preferred Senator Barry Goldwater over President Johnson by giving him 346 votes compared to the latter's 128.

Since the freshmen are out from under the influence of their parents, we wonder how many of these new GSC students voted their own convictions as compared to their parents' feelings toward the two major candidates.

Consideration Needed

There must be greater emphasis placed on the supply and demand facets of a college education. The George-Anne has given careful consideration to reports made by various educational councils and we agree that there must be something done to check the flaws of poor guidance and misplaced educational values.

It is our finding that colleges in the United States are graduating too few trained men and women and a surplus of generally untrained and unskilled workers. This policy, if continued, could prove to be an enormous flaw in the nation's economy.

We feel that it is our responsibility to point out a deficiency which has long existed in the area of higher education: Our society is rapidly growing into a technical and industrial civilization and yet our colleges are graduating fewer trained personnel in these areas.

Georgia Southern has on its campus one of the finest industrial training facilities in the nation and yet it is staggering to note the small number of students enrolled in its program. We live in an industrial age, and yet our industrial training facilities waste.

LITTLE MAN ON CAMPUS



"YOUR BLIND DATE IS AN ALPHA PHI OMEGA - AND ALL I CAN FIND OUT ABOUT HIM IS THAT HE'S TRUSTWORTHY, LOYAL, HELPFUL, FRIENDLY, COURTEOUS, OBEYANT, CHEERFUL, THRIFTY, BRAVE, CLEAN & REVERENT."

Tommy HOLTON

Have you ever met a stubborn man?

Well, I'd like for you to meet Mr. Southerner, who resides south of the Mason Dixon line and slightly north of Cuba. Whether he lives in town or country, he will most likely give you his life story wrapped in hardship, success and southern tradition.



HOLTON

The town is probably the same one in which he grew up and received his education.

Although the character sketch is probably inadequate, I can say with much earnestness that Mr. Southerner is a unique specimen of a stubborn man. After all, since I'm a southerner, I've known him all my life. I'm not always in agreement with his basic actions, but I can understand his attitude - at least partially. Of course, that term "basic" could mean almost anything - that's why I used it to describe the man from the South.

What's basic to Mr. Southerner might be downright unethical for anyone else. Why do I single out Mr. Southerner? Well, for the main reason, I think that he tries to fabricate a pseudo-supremacy attitude. In other words, he places himself on a false pedestal.

To top these unkind and uncomplimentary remarks off, I think he has a bad habit of yelling Communism and NAA-CP everytime something's done to make a change in this country; especially, when it's going against his wishes.

Let's face it. Mr. Southerner is more of a politician than you might think. He may not be fully informed of national events, but he stands ready to repel any effort to change his pseudo-southern reign.

That nasty old Supreme Court and that gigantic federal government, of which he is a part, just frightens him terribly. "They can't take away my rights to take away the rights of others," he shouts. Nobody listens.

The fall of the Southern empire is about to take place. Instead of falling buildings and tumbling columns, the South and Mr. Southerner undergoes the greatest ruin of the southern century; the fall of white supremacy.

Mr. Southerner stands guard. He knows that there is nothing he can do to stop the social landslide, but he refuses to give in completely. He talks a lot about the great malady hanging over the South, but his actions are fewer and less violent. Although he will not admit it, he realizes the significance of what is taking place.

He is now a part of an out going breed. The New South has begun putting forth a younger and more liberal citizen to take on the Southern leadership. A new breed of southerners, more concerned to see that this nation be respectful of every man, regardless of his race, creed or color, conscientiously takes the reins from the outgoing Mr. Southerner.

LETTERS TO THE EDITOR

Dear Editor:

I believe the students of Georgia Southern College are underestimating the administration of the college.

In the relatively short time I have attended GSC, I have grown to respect and admire our administration and it is my opinion that the new ten period class schedule is one of the finest advances that Georgia Southern could have made.

The administration undoubtedly gave a great deal of thought to the lengthening of the school day and I feel it is a real step forward for the college.

With the increased enrollment this year, it is comforting to know that, while the new class arrangement may be a little disconcerting to some students, including myself, it gives just that many more students the opportunity to attend the courses they either choose (through electives) or are required to.

I know a lot has been and will be said both pro and con on this matter, but I would like

to express my appreciation to the administration and faculty (it places an extra burden on them as well) for giving students such as myself a chance to attend GSC.

Allen Sewell

Dear Editor:

In our estimation, the behavior of some students at the recent performance of the Four Freshmen was appalling. Many students talked among themselves; others left during the performance.

We feel that this type of behavior is much more indicative of the breeding of the students rather than of the quality of the performance.

Even though a minority of the students conducted themselves in this manner, their behavior can greatly affect the image others have of our school. If we want to continue to have big-name performers we should ALL learn to conduct ourselves as mature adults.

Doug Geiger
Charles Darling

THE GEORGE-ANNE

The opinions expressed herein are those of the student writers and not necessarily those of the college administration and faculty.



Entered as second class matter at Post Office at Georgia Southern College, Georgia Southern Branch, under act of Congress.

Editorial Board: Tommy Holton, Paul Halpern, Janice McNorrill, Bob Holcomb.

Associate Editor: Hoyt Canady.

Organizations Editor: Louise Cox.

Sports Editor: Lamar Harris.

Staff Writers: Gayle Phillips, Rosa Jones, Halley Fennell, Jackie Bullington, Paul Allen, Agnes Farkas, Beth Taylor.

Writing Interns: Joanie Hooper, Juanita Hodges, Tom King, Jane Love, Kenn Robbins, Judy Starr.

Cub Writers: Wayne Woodward, Larry Duncan, Faye Clark, Jen White, Randall Thompson, Carolyn Anderson, Donnie Everson, Jimmy Glisam, Mary Gantner, Suzanne James, David Lockridge, Louise McCord, Patty Miller, Jan Printup, Buddy Purser, Curry Read, Amelia Robson, Leo Sable, James Stapleton.

THE GEORGE-ANNE OFFICE IS LOCATED IN ROOM 108 OF THE FRANK I. WILLIAMS CENTER. HOURS ARE POSTED ON THE DOOR OF OFFICE.

—PHONE 764-5133—

Johnson Continues Policies Of Communism Containment

Since World War II our basic foreign policy objective has been to halt the advancement of communism over the entire world but more especially to halt Russia's expansion in the Western European countries. In short, it is called the "policy of containment."



YOUMANS

The economic state of affairs in the European countries after World War II was in a near state of collapse. In order to ward off communist advancement, the Marshall Plan was one of the several plans designated to help these countries

economically.

In this manner the countries could build up a resistance in the event of Russian infiltration into the areas. The North Atlantic Treaty Organization was the same.

The main idea of the policy of containment was to prevent Russia and the Chinese from advancing beyond their present boundaries and that they would in turn be isolated with the hope that they would face each other in an internal strife.

MASSIVE RETALIATION

However, the Eisenhower-Dulles foreign policy was that of "massive retaliation." In other words, if threatened, we would threaten back with the bomb.

This policy of the Republicans did not work as the stakes were too high and the problems not that simple. They ignored the underdeveloped nations and demanded allegiance from them when they were too weak to give it to us - hence, the problem in Viet Nam today, plus their failure in South America (Nixon's unsuccessful visit).

With the transition of the Eisenhower Administration to the Kennedy Administration came the Cuban Crisis. Again ours was a policy of containment.

President Kennedy presented firmness in blockading Russian ships and Premier Khrushchev backed down. This was definitely a victory demonstrating the potential strength of the United States in repelling a power like Russia.

FOLLOWED GUIDELINES

The Johnson Administration took over the reins of leadership in an hour of grave crisis. Yet, it has followed the guidelines of President Kennedy's policies - that of diplomacy, restraint but yet not afraid to go to war if necessary.

On the other hand, the Republican candidate, Sen. Barry Goldwater is, in the view of this writer, diametrically opposite in his views on foreign affairs.

The signing of the Nuclear Test Ban Treaty was a sign of diplomacy, and a step toward peace. Yet, Sen. Goldwater voted against it, even though it was a Republican and Democrat effort combined.

INCONSISTENCY

In addition to this, Sen. Goldwater has advocated some other views not consistent in foreign relation. He advocates the idea of severing diplomatic relations with nations such as Russia. This would hamper us in trying to solve our problems without resulting in nuclear war.

Sen. Goldwater's views on foreign affairs are indeed perplexing. His ideas, such as sending the U. S. Marines into Cuba and that nuclear weapons be turned over to the NATO Com-

mander, is not the view of many of his own party. In essence, Sen. Goldwater gives the public the impression that his is a policy of "Why Not Victory?"

For instance, his policy seems to be that of a quick victory in Viet Nam even if it takes dropping a bomb to defoliate the trees; then, bring our boys home.

SOLIDIFY GOVERNMENT

However, this doesn't solve the situation as the Communists would be infiltrating the area again. We must first solidify ties with the government of such

Columnists View Campaign Issues

Leo Sable

As the height of political tension mounts prior to the November 3 Presidential election, many students are still in doubt as to their choice for the nation's highest post.

The George-Anne feels that the Presidential election should be of vital interest to Georgia Southern students; and in an attempt to present a cross-section of opinion to the GSC student body, we have employed the labors of two student writers whom we feel will study the key issues in the campaign and present their analysis and opinions accordingly. Their columns appear on this page.

Leo Sable, a senior social science major from Savannah, will write a series of four columns in favor of Republican nominee Sen. Barry Goldwater of Arizona.

Bryant Youmans, a senior political science major from Oak Park, will comply with a series of four columns endorsing Democratic President Lyndon B. Johnson.

Messrs. Sable's and Youman's first columns deal with the issue of foreign relations in connection with the respective candidate's stands.

We invite and encourage students to follow the issues through the writings of these two students. Agree or disagree with them as you see fit; but study the issues and cast an intelligent vote on November 3.

Paul Halpern

Sight To What Life Is Like

It's an often used statement and might be slightly trite by now, but you can't get away from the fact that college means many things to many people.

Out of the hundreds (better make that thousands) of students who have enrolled in Georgia Southern College for the current Fall quarter, four basic groups emerge.

The first group (and we hope the most abundant) is comprised of the "studiers." They come to school, so they say, to further their education, to make something of themselves. They say they realize the value of a college education in today's world and they want to keep pace, not get thrown to the rear of the line.

The second group could very well be called the "happy set." These boys and girls enroll in school, not for the diploma they will get after four years, but for the sheer fun and kicks they can get out of college.

PARENT PLEASERS

Now we come to the third

group. Most of them didn't want to dent these knowledge-covered buildings at all. They are here simply because their parents insisted they come. "I wish I had your opportunity when I was your age," is an expression well used by these parents. And so the off-springs come, bored with it all, just to make the "old folks" happy.

The fourth group is perhaps the smallest of all. These are the athletes. They come to college on scholarships, put in their weekly study time (most of them are good students), and spend the rest of the clock flexing their over-sized muscles. Enough said about them.

But no matter what the reason, be it for study, kicks, to keep the family happy or for athletic supremacy, all four groups unite once they hit the college campus. And before their four years are up, they all become better people, whether they realize it or not. What is the reason? What is this secret bond that unites these peo-

Leo Sable

Weakness, Indecision Mark Party's Foreign Relations

Weakness and indecision have characterized the Kennedy and Johnson administrations with the result of lowering American prestige throughout the world and encouraging the spread of Communism by following a policy of appeasement and complacency.



SABLE

A complete lack of insight into proper defense methods regarding Cuba was demonstrated by the Kennedy administration. The Bay of Pigs fiasco was the culmination of conflicting and uncertain United States policies toward Cuba initiated by an Administration that was clearly misinformed.

American policy toward the Cuban anti-revolutionary movement is still not clear to the freedom fighters or to the American people. The Johnson administration has made no effort to clarify its position and seems to ignore the fact that a hostile, Communist state exists 90



miles off our coast.

UNAWARE

It is inconceivable that a President of the United States would not be aware of an arms build-up in Cuba before missile installations were constructed and thousands of support personnel were established. Is it possible that the Administration was ignorant of the situation; or did an irresponsible government use the possibility of unclear conflagration to political advantage?

Unlike the Johnson administration, Barry Goldwater does have definite plans for dealing with Cuba and other Communist organizations in the Western hemisphere.

In 1962, Goldwater supported the blockade of Cuba and has ever since challenged the Johnson administration to take a strong policy toward Cuba. The Administration has placed restrictions on ships trading with Cuba but has failed to enforce these restrictions. This is another example of a double standard foreign policy which enables face saving at home and produces distrust abroad.

EFFECTIVE BLOCKADE

It is Goldwater's intention to impose an effective economic-

military blockade of Cuba and to enforce restrictions on ships trading with both Cuba and the United States. Recognition of a legal Cuban government-in-exile would facilitate Cuban liberation and aid the Organization of American States in their fight against Cuban aggression.

In Southeast Asia the Johnson administration has demonstrated its inability to deal with Communist subversion of free countries.

Secretary of Defense Robert McNamara has continually underestimated the Communist Vietcong guerrillas, and, by his self-contradicting statements regarding the war's conclusion, has illustrated his and the Administration's misconception of guerrilla warfare.

CHANGING POLICY

The Administration's policy toward Vietnam changes as often as the Vietnamese government. During the first Gulf of Tonkin incident the Administration was willing to strike back at North Vietnamese patrol boats and naval bases, but would not follow up this action with adequate support of land-based operations.

This show of American military force clearly indicated the respect which the Communist have for United States power when it is used.

Unfortunately, the United States is being led by an administration that fails to recognize that America is at war in Vietnam. Is it possible that the Administration does not realize that war exists, or is it probable that the Administration is more concerned with political repercussions than it is with American soldiers who are losing their lives in a war that is ill-equipped and ill-supported? The United States must give the South Vietnamese sufficient military assistance to crush the Vietcong and to destroy key positions in North Vietnam.

It is the policy of the present Administration to allow the Vietcong to violate the Vietnamese border without taking retaliatory action. This type of indecisive leadership will not and cannot win the war in Vietnam.

American soldiers can no longer be expected to fight a war they will not win. Barry Goldwater offers effective leadership which will not falter in the face

Organization AND Feature Page

LOUISE COX, Section Editor

'Big Name' Attractions Take Planning, Cooperation, Unity

When a "big name" attraction is scheduled for the Georgia Southern campus with only one week's advance notice, organization and planning have to take place almost immediately—a fact to which Jim Blanchard, first vice president of Student Congress, can easily

testify.

Blanchard received notice on Friday, September 25, that "The Four Freshmen" would be available for a concert at GSC the following Friday.

He immediately secured the group and called an emergency meeting of the GSC Student Congress. The Congress okayed Blanchard's actions and went to work on planning for the concert.

"I didn't expect such a big social function so soon," he stated.

His first action would have been to call a meeting of the Congress Social Committee, but this group had not been formed, so the Congress members had to take its place.

The Congress decided to allow several organizations to handle the planning for the attraction. Last year, only one organization was selected to handle the entire program.

Alpha Rho Tau made the decorations; the Industrial Arts Club and Alpha Phi Omega handled seating arrangements in the Hanner Building; Circle K took care of the stage; and Student Congress handled the ticket sales.

I feel this was very successful in permitting several organizations to work together for the

benefit of the college. It drew them closer to the school and the Congress," Blanchard said.

He noted that everything seemed to go smoothly. He also said he received helpful advice from Deans Carolyn Gettys and W. H. Holcomb; Lonice Barrett, former social committee chairman; and Ric Mandes, public relations director.

Commenting on "The Four Freshmen," Blanchard pointed out that the group was extremely cordial and "easy to work with."

"They seemed not to mind working under any conditions, and they made our work a lot easier," he explained.

Blanchard also stated that he didn't anticipate so few college students attending, and it was a disappointment to the Congress that some students walked out after the concert began.

"The Four Freshmen" came to Georgia Southern from Raleigh, N. C., after a concert at North Carolina State. They flew into Savannah and rented a car to travel to Statesboro.

After the concert at GSC, the group headed back to Savannah, where they spent the night. Saturday morning they traveled to Emory, Virginia, for a concert at Emory and Henry College.



Two Georgia Southern Coeds Chat With Four Freshmen During Break
Singing Group Appeared in Two Hour Concert in Hanner Building Friday

Annual Cover Finished

The cover for the new 1964-65 Reflector has been completed and sent to the printer, according to Don Gerger, Art Editor. The annual will come out spring quarter.

Only half of the student body has had pictures taken. All students who missed the original photographing date should look for the make-up days which will be posted, said Editor Ann Edge.

Ship'n Shore

treasure of
a blouse with
button-on bow

4.00



The very picture of fashion. New portrait collar, perfect foil for your jumpers. 65% Dacron® polyester, 35% cotton. White, pastels, lush deeps. 28 to 38.

Henry's
STATESBORO, GA.

Delta Sigs Tie For First Place In Nationwide Efficiency Contest

The Epsilon Chi Chapter of Delta Sigma Pi received a first place national rating in the nationwide "Efficiency Contest."

The GSC chapter tied with 40 other schools for this position, and 131 Delta Sig chapters across the country vied for rating.

The Epsilon Chi's received the maximum combined score of 100,000 points in the five categories judged - administration, scholastic, professional, chapter initiative, and finance. Each of these areas offer 20,000 points and the local Delta Sigs totaled a perfect score.

In Southeast regional judging, the GSC fraternity again tied for first place. They share this position with the chapters of the University of North Caro-

lina and Florida State.

For these honors the fraternity received an engraved plaque from the home office which judged all the fraternities.

President Don Stokes said of this honor, "The Epsilon Chi Chapter is particularly proud of this accomplishment since this was our initial year of organization. We plan to keep this rating of our chapter and will work to maintain it."

LAST WEEK TO REGISTER AT
KENAN'S
for the
REMINGTON ELECTRIC SHAVER
to be given away to a
GSC Student
Saturday, October 10

SEE OUR COMPLETE LINE of
STUDENT SUPPLIES to include:

- ART MATERIALS
- BOOKKEEPING SUPPLIES
- EATON STATIONERY
- and GIFT ITEMS

— One Block Northwest of Courthouse —
No Standing In Line — Savings To Students

STOP IN TODAY!



SOUTHERN BELLE

With the wind and the rain in her hair, our Southern Belle for this week, Miss Diane Ellis, stands in typical coed attire for the weather we have had this week — Fog coat, Rah-Rah's, and an umbrella. Diane is a sophomore biology major from Atlanta.

SPF - DEE
**Dry Cleaners &
Shirt Laundry**

— Opposite MINIT MART —

437 FAIR ROAD

STATESBORO, GA.

Five Dormitories Elect Fall Officers

Five of the eight on-campus residence halls have elected House Council officers for fall quarter, and the three freshmen women's dormitories will hold elections this week.

Hendricks and Veazey Halls, two dormitories housing upper-class women, elected Judy Scruggs and Mary Jane Nicholson presidents respectively.

Other officers in Hendricks are: vice president, Jackie Bulington, Cordele; secretary, Ann Perry, Decatur; treasurer, Donna Diestel Brunswick; and social chairman, Janice James, Waycross.

Wing monitors in Hendricks are: Mary Foehner, Marie Gai-ney, Cheryl McLean, Mary Ann Davis, Sandra Powell, and Sandra Durden. Floor monitors are Carol Margaret Ward, Ann Powell, and Jerry Bundy. Fire marshal is Linda Wilder.

Other officers in Veazey are: vice president, Paulinda King, Lithonia; secretary, Barbara Motes, Brunswick; treasurer, Ruth Brown, Portal; social chairman, Martha McBride, Waynesboro.

Monitors in Veazey are: Beverly Chapman, Patsy Poss, Jonnie Ruth Drury, Sue Belcher, Marcia Smith, Linda Lynn, Veronica Stokes, Frances Trey, Carol Hicks. Fire marshal is Nell Waters.

In the men's residence halls, Holt Johnson, St. Mary's; Glynn Holton, Camilla; and Van Pool, Winder, were elected Presidents

of Brannen, Cone, and Sanford Halls respectively.

Other officers in Brannen are: vice president, Vance James, Atlanta; secretary, Harry Beck, Milledgeville; treasurer, Bill Eberhardt, Dublin; and social chairman, Billy Felder, Waycross.

Monitors in Brannen are Jim Blanchard, Ron Farmer, Mike Nix, Wayne Abbott, Jimmy Hilliard, and Gary Hancock. Fire marshal is Larry Demby.

Executive officers in Cone are vice president, Lance Brown, Glenwood; secretary, Jim Peters, Blakely; treasurer, Glenn Westberry, Odum; and social chairman, John Padgett, Canton. Serving as co-social chairman is Wassell Ward of Union City.

Monitors in Cone are Ronnie McDaniel, Bill Nelson, Robert Armstrong, Randy Harvey, and Bill Dekle.

Other officers in Sanford are: vice president, Dwight Tyler, Macon; secretary - treasurer, James McDaniel, Macon; fire marshal, Buzz Hankison, Waynesboro.

Monitors in Sanford are Tom King, Rufus Fields, Don Collo-way, Ronnie Brazier, Kester Moore, and Larry Murray.

Circle K Seeking New Members

The GSC chapter of the Circle K Club held a "Smoker" this week in the Student Center for the purpose of selecting new members.

Keith Arnsdorff, publicity chairman, stated the "Smoker" was an open rush to anyone desiring to become a member of the GSC Circle K Club.

He added that final acceptance and membership into the club is entirely selective, although any high school Key Club member may become a member automatically.

Sponsored by the Statesboro Kiwanis Club, the Circle K Club is an international organization.

Dr. Henderson, the Circle K Club advisor; Roger Carter, President of the Statesboro Kiwanis Club, form the nucleus of a committee which acts as a co-ordinating body between the Circle K Club and the Kiwanis Club.

Members have been helping the Kiwanis Club complete operations for the Bulloch County Fair being held this week. The Circle K Club also sponsors a soft drink booth at the fair.

Dr. Henderson received an advisor pen this week for his contributing efforts to promote the GSC club. Charles Haimovitz, Circle K Club president, presented the pen.



Circle K vice-president Mike MiGuire presents Georgia Southern College President Zach S. Henderson with advisor pen. Dr. Henderson will serve as sponsor to the organization this year.



'Bed of Roses?'

Freshmen students appear to be finding out rather rapidly that the life of a college student isn't a bed of roses — especially, if he's a freshman. Those new Southerners who are undergoing physical fitness tests probably realize this more than anyone else.

GOP's Map Campaign Strategy

"Eye-ball to eye-ball" campaign strategy was emphasized at the GSC Young Republicans meeting Tuesday night.

Speaking was GOP field work-lee McFadden. McFadden was introduced to the club by president Tim Thomas, and the Young GOP's discussed campus campaign strategy to be used toward acquiring votes for the Republican presidential nominee, Senator Barry Goldwater.

The club will make special efforts to contact all first-time voters at the college. They will provide absentee ballots for all students who will not be able to vote at their home district in the November election.

The Young Republicans will consider each dormitory on the campus a precinct. Each group will have its own group captain.

Membership in this club is open to any interested students. Dues are \$1.00.

SAI RUSHES SEVEN

The Gamma Theta chapter of Sigma Alpha Iota, professional music fraternity for women, rushed seven coed music majors at a party last week in the Frank I. Williams Center.

The theme for the occasion was "Around the World With SAI." Each rushee was pinned with ribbons signifying the fraternity's colors—red and white.

The new SAI rushees are: Carolyn Moore, Adel; Rosalyn Daniel, Savannah; Helen Adams Macon; Becky Joyner, Savannah; Jackie Pope, Fort Valley; Beverly Maddox, Savannah; and Barbara Pound, Montreat, New York.



*West Indian Lime Cologne...
with the eternal freshness of true West Indian limes*

Most masculine. The oil of West Indian limes, discreetly blended with tropical woody spices. A robust cologne of distinction and character imported only to fine shops from the Virgin Islands. Handsomely packaged in hand-woven palm frond jacket. Four ounces, four dollars and fifty cents; eight ounces, seven dollars and fifty cents, plus tax. Request St. Johns West Indian Lime Cologne.

The College Pharmacy

"where the crowds go"

19 South Main St.

Statesboro, Ga.



"Tree of Life"

A traditional Scottish cable pattern... all wool, hand-fashioned and hand-loomed, with the strong individuality and flavor of sweaters patiently home-made. A sweater of character... decisive, but friendly to touch. Ivory, French Blue, and a wide consideration of smokey, softened, heathery tones: Cherry, Green, Blue, Orange, Taupe. Sizes 34 to 40.



"we invite your
Charge Account"



"for Your
Shopping Pleasure"



Athletes' Feats

By LAMAR HARRIS

The question has arisen, "Why doesn't Georgia Southern have boy cheerleaders like other colleges?" I would like to join those who ask, "Why not?"

Opponents to the idea could easily bring out reasons for not having boy cheerleaders. One good excuse is that GSC is not as large as the schools who have male cheerleaders. Certainly we are not as large as, for example, Georgia Tech which has male cheerleaders. But with approximately 2,969 students enrolled and a six to seven million dollar building program in progress, we are on our way.

The first thought that passes through the mind of a male student interested in trying out for the cheerleading squad is, "Everyone will think I am a sissy." During one of the Eagle's home games last winter, Jon Peacock, who made the first team All-America in the NAIA National Championship last year, acted as sort of a gymnast-cheerleader and was well received by the student body. Quoting J. B. Searce, head basketball coach at GSC: "I don't believe anyone thinks of Jon Peacock as a sissy."

Searce said that at North Carolina State the male cheerleader-led Tarheel spectators "rock that Coliseum in Raleigh." Searce added that at Davidson College, which also has a male cheerleader squad, "You can't even hear yourself!" Of course these examples are of other schools and not GSC. One could still not be certain as to how male cheerleaders would be accepted here.

The male members of the squad could either come from the gymnastic team or could be trained by the gymnastic team. Therefore, any male student interested in being a cheerleader, but not gymnastically inclined, could be trained for the role.

Many male students lack the physical size and ability required of an athlete in the different athletic programs offered at GSC. Yet these men are bubbling over with team spirit and energy and would covet the opportunity to display it.

The primary purpose in my writing this column is to bring the idea of Boy cheerleaders into the open. I hope it will be discussed and not just discarded as some far-flung idea of a lame-brain sports editor.

This column is open to any comments, both pro and con, about the idea. Certainly there could be no immediate action taken, but the wheels could be put into motion, or stopped completely.

GIRL SPORTS WRITER

For the first time in the last seven years, the George-Anne Sports Staff has employed the services of a female reporter. Miss Gayle Phillips, a Sophomore Math Education major from Hapeville, will cover some of the action on the sports scene at GSC.

The name of this column is being retained this year for several reasons. First, if you know me very well, or have ever noticed my feet (15AAA, the name of the column is obvious).

Secondly, I simply couldn't think of a more appropriate name for a sports column. Hence, the name remains Athlete's Feats.

Practice Sessions Set For Baby Eagle Basketballers

All freshmen boys who are interested in playing on the freshman basketball team should meet in the Hanner Building at 4:30 Oct. 14, when equipment will be issued with official practice beginning the following Thursday.

"The primary purpose of the freshman basketball team is to develop the fundamentals," stated Coach Ed Thompson. They will play junior colleges and freshman teams for experience. Practice will be held three

nights a week—Monday, Wednesday and Thursday nights. It will also be held Tuesday and Friday afternoons and Saturday morning. The freshman team will practice with the varsity only Friday and Saturday.

Coach Thompson will be assisted by Coach Bill Alexander. Alexander did outstanding work in high school basketball coaching.

The freshman team will travel separately from the varsity. A freshman and varsity game

will be played with the University of Jacksonville and the University of South Carolina. Several of the home freshman games will be played before the varsity home games.

The season will consist of 19 games including two tournaments. The first game will be in a tournament at Milledgeville on Dec. 4 and 5. The second tournament will be played Dec. 18 and 19 at Abraham Baldwin College in Tifton.



Eagle cheerleader hopefuls practice in open session. The cheerleaders are under the direction of physical education instructor Ruth Green. Cheerleaders for the 1964-65 basketball season will be selected on performance by a panel of judges.

EAGLES GYMNASTICS SCHEDULE

January 9	Open
January 16	Open
January 22	Georgia Tech
January 23	David Lipscomb
January 30	Open
February 5	Slippery Rock
February 6	University of West Virginia
*February 13	William & Mary
February 20	Open

* Indicates home game

Freshmen Cheerleader Hopefuls Tryout For New Varsity Squad

The varsity and freshman cheerleader tryouts will be held next Thursday at 7 p.m. in the Hanner Building. and will conduct the tryouts. Anyone may attend the auditions.

Girls participating must have a C average, interest in cheerleading and the ability to do a handspring and a cartwheel.

The six judges from the GSC faculty will judge the girls on co-ordination, tumbling ability, voice, personality, school spirit, appearance, and general cheering ability.

Freshman girls might be allowed to tryout for varsity and freshman squads, but only freshman girls may compete for the positions on the freshman squad.

"Although practice has begun, girls who wish to tryout are urged to do so," stated two of last year's cheerleaders.

Miss Ruth Green is the sponsor of the varsity cheerleaders

College Cleaners

(Next to Paragon)

COIN LAUNDRY

SHIRTS! SHIRTS

Cleaning By
SANITONE

FOUR POINTS

SERVICE STATION

In The Forks of the Road
Between College and Town

Where You Get that

**FAMOUS ATLANTIC
RED BALL SERVICE!**

Weekly Drawings
for **FREE Gas and
Other Prizes!**

COME IN TODAY!!!

Register Your GSC Decal
Number and Qualify for
Weekly Drawings Each
Tuesday — Check this Ad
for Winners.

**WINNERS —
OCTOBER 2nd**

1st — Carl A. Bird
10 Gal. Regular Gas
2nd — Harry A. Bird
1 Oil Change - Medium
Priced Oil.
3rd — Bill Lee
Lurication

MEN'S and BOYS' STORE

22 East Main Street

IVY LEAGUE SLACKS — 28 - 40
SWEATERS — Alpaco - Mohair
(Small to Extra-Large)

"TRIM STYLING" Our Motto

7:45 A.M. SATURDAY
McGREGOR SCORE BOARD
All High School Football Scores

ON

WWNS

Call Station Any Time Your Team's Score!



COACH YEAGER PREPARES GYMNASTS FOR DAILY PRACTICE SESSIONS

Yeager Optimistic As Eagle Gymnasts Initiate Workouts

Eagle Gymnast Coach Pat Yeager stated that there is a schools will be added to this year's gymnastics schedule, including The University of Texas, Army, and The University of Pittsburgh.

The gym team, which placed second in the nation in NAIA last year, is seeking an even better year, according to Coach Yeager.

"The outlook for the upcoming season appears very bright with the loss of only three lettermen, one by graduation, one by ineligibility, and one dropped from the squad for disciplinary reasons," stated Yeager.

With graduation went Al Jameison, rope climber from Key West, Florida. D. C. Tunison, junior from Adel, who specialized on the still rings, will not see action this year due to ineligibility. Donnie Maples, junior from Tuscaloosa, Alabama, has been dropped from the squad for disciplinary reasons.

Returning lettermen include Buddy Harris, senior from Atlanta, who was on the first All-American team last year and served as captain of the gymnastics team this past season. Also returning will be Jon Peacock, junior from Atlanta,

who was also selected to the first All-American team. Kip Burton, sophomore from Atlanta, will be back on the still rings along with Bill Aldrich, rope climber from Statesboro.

Ronnie Mayhew, freshmen from Druid Hills of Atlanta, who last year was the High School State Champion in rope climbing will hopefully, according to

Coach Yeager, give the squad a one-two punch in rope climbing.

Tryouts are still being held in the Alumni Gym and anyone wishing to go out for the team should contact Coach Yeager. A need for either two or three three managers has been expressed by the coach and anyone interested is asked to contact him immediately.

Tenpinners See First Action As New Fall Bowling League Opens

Bob Lackey was named president in the Eagle Ten Pinners League for fall quarter.

Other newly elected officers are: Bob Armenio, vice-president, and Paul Allen, secretary-treasurer.

First night action on Monday saw Bob Morris roll a 199 game to lead his fellow men bowlers. Carol Frankum paced the women bowlers with a 184.

Paul Allen and Carol Frankum lead the league in high average with 179 and 146 respectively. The Pen Pushers rolled the

high team game, 638, while the Kingpinners captured high team series, 176.

Any boy bowling a 500 series gets his name on the week's honor roll. Girls must bowl a 400 series to qualify. This week's honor roll includes: Paul Allen, 539; Bob Armenio, 507; Carol Frankum, 438; and Martha Lansford, 430.

This league, which is operated by Georgia Southern College students, held an organizational meeting at the Skate-R-Bowl Tuesday Sept. 29. The main objectives of the meeting were to elect new officers and vote on a few rulings for the coming year.

This league will see action every Tuesday evening from 6:30 - 8:30 and will continue through Dec. 8.

On that night trophies will be given to the first and second place team members. Individual trophies will also be awarded for the highest average, highest series including handicap, and highest game for men and women.



DUNKEL COLLEGE FOOTBALL INDEX

EXPLANATION — The Dunkel system provides a continuous index to the relative strength of all teams. It reflects average scoring margin relative to index of opposition, and is weighted in favor of recent performance. Example: A 50.0 team has been 10 scoring points stronger, per game, than a 40.0 team against opposition of equal strength. It was originated in 1929 by Dick Dunkel.

GAMES OF WEEK ENDING OCT. 11, 1964

Higher Rating Team	Rating Diff.	Opposing Team	Rating
MAJOR GAMES			
FRIDAY, OCTOBER 9			
California 92.4	(7)	Miami, Fla.*	85.8
Ga. Tech 98.0	(3)	Navy	95.1
SATURDAY, OCTOBER 10			
Alabama*	105.6	(10) N.C. State	95.5
Arizona	83.9	(7) N. Mexico*	77.2
Arizona St.*	93.1	(30) Tex. West'n	63.0
Arkansas*	95.2	(7) Baylor	87.7
Army*	93.6	(2) Penn St.	91.9
Auburn*	92.7	(26) Cha'nooga	66.7
Boston U.*	58.1	(3) Temple	55.2
Bowl Green	79.0	(28) W. Mich.*	51.4
Buffalo	70.4	(6) Marshall*	64.1
Cincinnati	79.7	(8) Xavier	71.9
Clemson	91.1	(9) Georgia*	82.0
Colo St.*	62.9	(2) Br'g. Young	61.0
Cornell*	60.1	(8) Penn	52.2
Dartm'th*	76.3	(2) Princeton	74.3
Dayton*	61.9	(9) Louisv'le	53.1
Harvard	67.2	(0) Columbia*	66.9
Holy Cross*	65.0	(4) Colgate	61.0
Houston*	84.5	(2) Tulsa	82.4
Illinois*	104.6	(7) Ohio St.	97.8
Iowa	100.9	(10) Indiana*	90.4
Kansas	82.0	(2) Iowa St.*	79.9
Kentucky	104.9	(10) Fla. St.*	94.7
Maryland	88.3	(3) Duke*	84.8
Memphis St.*	87.9	(10) So. Miss	78.1
Miami, O.*	77.4	(2) Kent St.	75.2
Michigan	104.0	(0) Mich. St.*	103.8
Minnesota*	95.9	(3) N'western	93.2
Mississippi	98.1	(2) Florida*	96.4
Miss. St.*	91.7	(13) Tulane	78.5
Missouri	89.7	(10) Kans. St.*	79.9
N. Mex. St.*	53.0	(2) Trinity	51.3
Nebraska*	98.4	(19) S. Carolina	79.3
N. Carolina	100.0	(1) L.S.U.*	98.5
Notre Dame	100.0	(14) Air Force*	86.2
Ohio U.*	76.0	(18) Toledo	58.1
Okl. St.*	88.2	(9) Colorado	79.0
Oregon	96.2	(19) Idaho*	77.1
Pittsburgh*	92.3	(16) W. Virginia	76.2
Purdue*	90.8	(9) Wisconsin	82.0
Rice	97.5	(13) Stanford*	84.1
Richmond	70.6	(8) Citadel*	62.3
Rutgers	66.0	(26) Lehigh*	39.6
So. Calif.*	99.9	(13) Tex. A&M	87.2
Syracuse*	98.4	(3) U.C.L.A.	95.3
Tennessee*	92.4	(5) Boston Col	87.1
Texas*	110.3	(15) Oklahoma	94.8
Texas Tech	94.9	(9) T.C.U.*	85.8
Utah	87.6	(3) Wyoming*	84.8
Utah St.*	91.0	(8) Wichita	82.9
Vanderbilt*	82.1	(3) W. Forest	78.7
Villanova*	82.6	(13) Detroit	69.4
V.M.I.*	67.2	(0) Virginia	67.1
Va. Tech*	68.8	(7) G. Wash'n	61.3
Washington	95.1	(4) Oregon St.*	92.0
Wash. St.*	73.8	(19) Pacific	54.6
W. Tex. St.	71.8	(4) N. Tex. St.*	69.2
Wm & Mary*	71.6	(18) Furman	53.6
Yale*	77.9	(19) Brown	59.3
OTHER SOUTHERN			
FRIDAY, OCTOBER 9			
Ark. Tech*	52.3	(30) Ozarks*	22.4
La. Col.	59.1	(3) S.E. La*	56.1
SATURDAY, OCTOBER 10			
Appalach'n	56.5	(10) Len. Rhyne*	46.0
Ark. St.	63.1	(12) Arlington*	51.4
Aust. Peay	68.8	(10) W. Kentucky*	58.5
Bethany*	25.3	(9) Case	15.9
C-Newman	45.0	(4) Newberry*	41.3
Catawba*	57.1	(25) W. Carolina	32.4
Conway St	42.6	(20) Harding*	22.3
Delta St	56.3	(24) Troy St.*	32.8
E. Carolina	75.5	(13) Wofford*	62.5
E. Tenn. St.	60.6	(14) Tenn. Tech*	46.2
Em. Henry	45.4	(6) Maryville*	39.2
Fla. A&M*	68.3	(26) Central St	42.7
Frostburg	25.6	(4) Bridgewater*	22.0
H-Sydney*	33.6	(4) Frederick	30.0
Henderson*	41.2	(8) Southern	33.0
Howard*	58.2	(3) N.E. La	55.2
Jax. Ala*	56.4	(14) S.E. Mo. St.	42.1
La. Tech	71.3	(15) S.W. La*	56.4
McNeese St	68.2	(9) Tampa*	59.3
Martin	50.4	(15) Livingston*	35.0
Mid. Tenn*	63.3	(17) E. Kentucky	46.7
Miss. Coll*	48.5	(7) Florence	41.7
Morehead	68.6	(13) Murray*	50.3
N.W. La*	63.5	(1) Abil. Chr'n	62.0
Presbyt'n*	57.5	(10) Davidson	47.3
R-Macon*	33.4	(3) W. Maryland	30.3
S. Houston	60.0	(10) How. Payne*	50.0
S. Western	33.2	(18) Millsaps*	14.9
S.W. Texas	50.4	(20) McMurry*	40.4
Tex. A&I*	62.9	(4) S.F. Austin	58.7
Wash-Lee	34.9	(15) Centre*	19.4
W.V. Tech	28.4	(2) W. Liberty*	26.0

NATIONAL LEADERS

Texas	110.3	Nebraska	98.4	U.C.L.A.	95.8	Auburn	92.7
Alabama	105.6	Syracuse	98.4	N.C. State	95.5	California	92.4
Kentucky	104.9	Mississippi	98.1	Arkansas	95.2	Tennessee	92.4
Illinois	104.6	Georgia Tech	98.0	Navy	95.1	Pittsburgh	92.3
Michigan	104.0	Ohio State	97.8	Texas Tech	94.9	Oregon St.	92.0
Iowa	100.9	Rice	97.5	Oklahoma	94.8	Penn State	91.9
N. Carolina	100.0	Florida	96.4	Florida St.	94.4	Miss. State	91.7
Notre Dame	100.0	Oregon	96.2	Army	93.6	Clemson	91.1
So. California	99.9	Washington	96.1	Northwestern	95.2	Utah State	91.0
Louisiana St.	98.5	Minnesota	95.5	Arizona St.	93.1	Purdue	90.8

Copyright 1964 by Dunkel Sports Research Service

SNACK BAR

-- Student Center --

HOT DOG and LARGE COKE 15c

Pimiento Cheese & Large Coke 25c

COFFEE - 10c

GIVE +
BLOOD
AT YOUR
RED CROSS
BLOOD
CENTER

FOOTBALL ON THE AIR
TURN YOUR DIAL TO 1240 AND YELL FOR
YOUR FAVORITE TEAM . . .

WWNS

OCTOBER —

9	Tech - Navy	7:45
10	Georgia - Clemson	1:45
10	LSU - North Carolina	7:45
16	Statesboro High	7:45
17	Georgia - FSU	1:45
17	Kentucky - LSU	7:45
24	Georgia - Kentucky	1:45
24	Vandy - Miss.	7:45
31	Georgia - North Carolina	1:45
31	LSU - Miss.	8:45

NOVEMBER —

7	Georgia - Florida	1:45
14	Georgia - Auburn	2:45
14	LSU - Miss. State	8:45
21	Tennessee - Kentucky	1:45
26	Alabama - Auburn	2:45
28	Georgia — Ga. Tech	1:45

(For Your Bulletin Board)

Doctorate Percentages Up

A compilation of faculty number, academic rank, and degrees has been released by Academic Dean Paul F. Carroll.

The report shows that 42.5 per cent of the college faculty hold doctorate degrees in their respective fields.

A total of 127 faculty members make up the college faculty. The

report gave a breakdown of 54 members with doctorates and 73 with master's degree.

The breakdown according to division was listed as follows: with doctorates—Arts, 2; Business, 2; Education, 15; Health and Physical Education, 2; Home Economics, 1; Languages, 5; Music, 3; Science

and Mathematics, 14; Social Science, 10.

Division faculty members with master's: Arts, 8; Business 12; Education, 4; Health and Physical Education, 11; Home Economics, 6; Languages, 13; Music, 3; Science and Mathematics, 9; Social Science, 7.

Total division faculty: Arts, 10; Business, 14; Education, 19; Health and Physical Education, 13; Home Economics, 7; Languages, 18; Music, 6; Science and Mathematics, 23; Social Science, 17.

THE GEORGE-ANNE OCT. 8, 1964 PAGE 10



SPALDING
SHOES



... BACK IN YOUR FAVORITE SPALDING CLASSICS!

Definitely the "in" look for back-to-school wardrobes, the popular saddle shoe is a must for scurrying to classes, strolling on campus, leading the football cheers. And for a change of fashion pace... Spalding handsewn moccasins, of course! Be sure you get the genuine. Look for the famous signature inside every pair.

A. G. Spalding & Bros.

SADDLES - -

Black & White Green & White
Red & White

Penny Loafers - -

Grain — Red, Tan, Green
Smooth — Cordovan, Black, Blue Green
SIZES — 4 to 10 AAAA's to B's

Burton's
Shoe Store

10 EAST MAIN STREET

Constitution Revision

Continued from Page 1

Executive Committee of Student Congress shall determine the faculty advisors at the spring Retreat.

In other measures taken up by the Congress at the Retreat and at the preplanning session held during orientation week, a committee was formed to work out a schedule of activities for Homecoming Week, which will be January 23, 1965.



'Calling Dr. Casey'

A needle in the arm may not be a pleasant idea, but neither is that annual winter visitor Mr. Flu. Students living on campus have been taking their flu shots this week and off-campus students will get their chance next week. College Physician Dr. Bird Daniel stated that the shot was not compulsory but urged students to take it for their own personal safety.

Post Office In Big Dilemma

Georgia Southern students are urged by the college post office to inform their correspondents of their correct box numbers.

According to postal clerk Ken Bennett, the main hindrance to mail distribution is incorrect addresses. Bennett stated that from two to three hundred letters with faulty addresses or with no box numbers have been received daily since the beginning of fall quarter. He stated that such letters are thrown into a box to be separated alphabetically when convenient. This delays the delivery of the letter.

Bennett stated that forms are available at the post office win-

dow for students to notify their correspondents of their correct addresses.

He added that the correct address for Lynne and Buford Halls is Route 6, Box 135, Statesboro, Ga., and not Box 2500, Georgia Southern College.

The post office windows close on Saturdays at noon. Bennett urges students not to "bang on the windows or door after the office has been closed in order to redeem a package or to purchase a stamp."

Students calling for packages should give their name and box number to the postal clerk. If the package is for the student's boxmate, he should return the notice to the box.

There is room for only eight-hundred in the boxes. This forms the problem of long lines in front of the post office windows. The only solution to this, according to post office personnel, is patience on the part of the student.

Barr, Lawson Elected Officers In Off-Campus Student Elections

Off-campus men students elected four new officers for the 1964-65 school year, including a president, vice-president, secretary and treasurer in light voting Tuesday.

Mike Barr, a senior from Brooklyn, N. Y., was elected president over Jim Abbott, a senior from Milledgeville, by a

17 vote plurality.

John Lawson, a senior from Warner Robins, is the new off-campus vice-president, winning over Lee Silver, a senior from Decatur, by 15 votes.

The newly elected secretary is Richard McBride, a sophomore from Brunswick. His opponent was Danny Scott, a junior from Savannah. The margin in this election was close with nine votes.

David Blackshear, a sophomore from Brunswick, was elected treasurer over Eaty Thomas, a freshman from Waycross, by 16 votes.

These four new officers for off-campus men assumed their duties today.

The election was held in the lobby of the Frank I. Williams Student Center.

Attractions Will Be Announced

The Student Life Enrichment Committee plans to announce its schedule of events for the coming year within the next week, according to Dr. Jack Broucek, chairman of the committee.

"The purpose of the committee is to bring music, drama, and lectures to the Georgia Southern campus. It offers a diversified program of attractions to broaden the student's knowledge, and it is apart from events sponsored by the Student groups," Broucek said.

Members of the Student Life Enrichment Committee include Dean Carolyn Gettys; Mrs. Aletha Bates, director of Brannen Hall; Mrs. Mary Kate Evans, director of Veazey Hall; William Totten, Business Department; Rick Mandes, public relations director.

Also Miss Roxie Remley, Art Division; Mrs. Juanice Cain; Science Division; Clayton Hoff, Language Division; and Fred A. Wallace, Science Division.



OXFORD
BUTTON-DOWN



DONALDSON-RAMSEY
Store For Men
STATESBORO, GEORGIA



MULTI-STRIPE
OXFORD

WWNS
7:30 A.M.
NEWS FROM
YOUR HOMETOWN
On
Georgia
News
Network

LITTLE MAN ON CAMPUS



Inquiring Reporter

By MARILYN WOODY

Georgia Southern students were asked this week to express their opinions concerning the advantages and disadvantages of the new class schedule which began this fall. These were the replies:

Gwen Jones, Atlanta: I think the new schedule is fine because it allows those who do not have 4:30 class periods to get out early.

Jackie Pope, Jeffersonville: It would be an advantage for those whose class schedule runs thirty minutes earlier.

Becky Joyner, Savannah: One of the disadvantages is that it is more likely for a student to sleep through a first-period class.

Johnny Durden, Metter: I can't cast a fair opinion because my first class is at 9:30 a.m.

Alynn Plaisted, Atlanta: The only disadvantage I have found is that I have four hours of classes right together, and I seldom have a break for lunch.

Jody Robertson, Metter: Really it doesn't affect me very much because I don't have a first or last period class.

Barbara Thomas, Sylvester: I think one advantage is an extra period which enables students to work out their schedule easier without getting closed out of classes. However, 5:30 is a late hour to get out of class.

Hugh Barr, Marshallville: It's a disadvantage because in order to get to class by 7:30, a student has to get up earlier. When he doesn't get out of class until 5:30, he can't start studying until after supper which, consequently, puts him in bed later only to get up earlier the next morning.

Jimmy Griffin, Savannah: It's an advantage because one more class is offered. My opinion is I don't like to get up so early.

Elizabeth Hughes, Cordele: I find it a disadvantage because I don't get out of class until 5:30 every afternoon. This makes it hard for me to find a ride when I want to go home.

Julia Huxford, Homerville: It's a disadvantage to students who have last period classes when they want to go home on Friday afternoon and have an important date or need to roll their hair.

Mike Barr, Brooklyn, New York: One advantage is you can finish classes early enough to go hunting. A disadvantage is if you come in late the night before and have a first period class, you might as well forget it.

Things Happening -

Friday, Oct. 9

JAMES BROWN
and His
Mighty Sensations
Nat'l. Guard Armory

Saturday, Oct. 10

— FREE MOVIE —
On The Terrace

**CURRIE
STUDIOS**

**SUPER PAR
SERVICE STATION**

**SAVE
3c**

**A Gallon
On Gas!**

431 S. Main Street
Statesboro, Ga.



Religious Activities Center

Even the Religious Activities Center gets a new look for the new year. This 10 x 47 foot trailer made its debut on the Georgia Southern campus last week. Originally intended to serve as an educational annex for the Statesboro Catholic Church, the trailer was placed on the campus by the Catholic Church for the use of all religious groups. Several religious groups combined efforts Saturday to clean it up and get it ready for use.

Office Of Student Personnel Has Unofficial Off-Campus Tabulation

An unofficial tabulation made by the office of Student Personnel services shows that approximately 1,791 GSC students are living in off-campus facilities.

Residence hall facilities on the Georgia Southern campus can accommodate only 1,172 men and

women students. There are three residence halls for men students and five for women.

Preference in filling the campus dormitory is given to former students and students presently enrolled at GSC, Dean of Men enrolled at GSC, W. H. Holcomb,

Dean of Men, stated.

Students who are presently living on campus are assigned rooms for one year. As students graduate or leave school, vacancies are filled.

Freshmen are required to live on campus as long as facilities are available.

Students meeting certain criteria are permitted to live off campus by special arrangements of the Dean of Women or Men, approved by Dean of Students, Holcomb added.

DO YOU NEED?

- A. Paper Back Books
- B. Art Supplies
- C. School Supplies
- D. Slide Rules
- E. Templates
- F. Greeting Cards
- G. Stationery
- H. Jewelry

For The COMPLETE ALPHABET
SEE US!

LANIER JEWELERS

(In Front Of The Georgia Theatre)

FOOTBALL CONTEST

Name

Address or
Dormitory of Student

City & State

Pick the Winners

Win \$10.00 Cash!

Circle all the winners and receive \$10.00 cash. If no one gets all the winners the person naming the most winners will receive \$5.00 in cash from The George-Anne. In case contestants tie the prize money is equally divided.

1. In each ad on this page you will find two college teams scheduled to compete this week. Check the teams you think will win. Tie games count against you unless indicated.
2. Mail or bring your entry to The George-Anne office located in the Frank I. Williams Center not later than 2 p.m. Friday. Letters must be postmarked before this time.
3. Members of The George-Anne staff are not eligible to win.

Pyrofax Gas Corp.

Bottle - Bulk
6 E. Vine St. 764-2700
Kentucky — F.S.U.

City Dairy Co.

Grade A Dairy Products
Pasteurized Homogenized Vitamin D Milk
Mississippi — Florida

WWNS RADIO

Hear College Football
EVERY SATURDAY!
Clemson — Georgia

Sea Island Bank

and it's
SOUTHSIDE BRANCH
Just Off the GSC Campus
Ga. Tech — Navy (Fri.)



Rockwell Manufacturing Corporation
Ohio State — Illinois

Curtis Cars, Inc.



Highway 301 North
VOLKSWAGEN
PHONE 764-4114
Iowa — Indiana

Goodyear Service Store

Tire Headquarters In Statesboro
55 E. Main St. 764-5689
Maryland — Duke

Johnson's Minit Mart

"When You Run Out of Something
Run Out to the Minit Mart"
"Open 8 Days A Week" — FAIR ROAD
Michigan — Michigan State

Medical Center Pharmacy

OPPOSITE HOSPITAL
Hours: Mon. - Sat., 9 - 9—Sun. 2 - 7
North Carolina — L.S.U.

"Hobby Headquarters" The Hobbycraft Shop

SCIENCE - ART - CRAFT - MODELS
SUPPLIES
43 E. Main St. 764-5274
Penn. State — Army

U. S. 301 Statesboro, Ga.

Jake's American SERVICE STATION

American Gas and Oils
— PROMPT, COURTEOUS SERVICE —
Davidson — Presbyterian College

The Statesboro Telephone Co.

"serving Statesboro and Bulloch County"
9 South Main St. Statesboro
Texas — Oklahoma

FORD MERCURY

GUINN FORD, Inc.

Wrecking Service - 764-5404
San Diego — Boston (Fri.)

STATESBORO Buggy & Wagon Co.

"Complete Line of Hardware"
1 Courtland St. 764-3214
Philadelphia — Washington (Sun.)

MUSIC BOX

"if it's Musical, WE HAVE IT!"
27 W. Main St. — Statesboro, Ga.
PHONE 764-3641
Pittsburgh — Cleveland

Bulloch County Bank

"service with a smile"
Rice — Stanford

STUDENTS!

For The Best In Foods It's
Franklin's Restaurant
"Never Closes"
—At Intersection Hwys. 301, 80 & 25—
W. Virginia — Pittsburgh



Virginia — V.M.I.