

Georgia Southern University

Georgia Southern Commons

National Youth Advocacy and Resilience
Conference

27th Annual NYAR Conference (March 6-9,
2016)

Mar 9th, 9:45 AM - 11:00 AM

Brain-based Teaching and Learning in Today's Diverse Classrooms: A Perfect Fit...But Be Careful!

Linda Ann H. McCall Ed. D.

Armstrong Atlantic State University, lindaann.mcall@armstrong.edu

Follow this and additional works at: https://digitalcommons.georgiasouthern.edu/nyar_savannah



Part of the [Curriculum and Instruction Commons](#)

Recommended Citation

McCall, Linda Ann H. Ed. D., "Brain-based Teaching and Learning in Today's Diverse Classrooms: A Perfect Fit...But Be Careful!" (2016). *National Youth Advocacy and Resilience Conference*. 176.
https://digitalcommons.georgiasouthern.edu/nyar_savannah/2016/2016/176

This presentation (open access) is brought to you for free and open access by the Conferences & Events at Georgia Southern Commons. It has been accepted for inclusion in National Youth Advocacy and Resilience Conference by an authorized administrator of Georgia Southern Commons. For more information, please contact digitalcommons@georgiasouthern.edu.

Mind/Brain-based Teaching and Learning in Today's Diverse Classrooms? YES! But Be Careful!

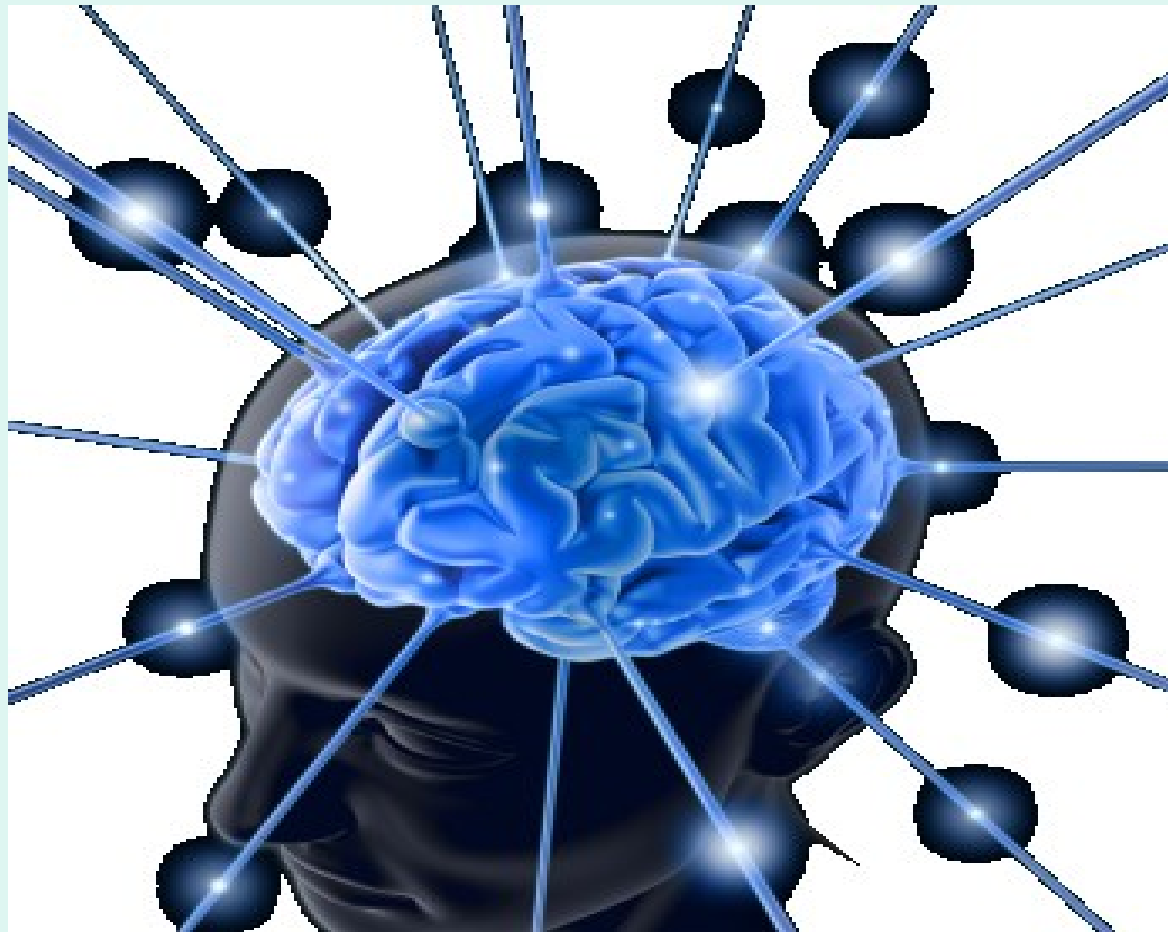


Presented by
Linda Ann McCall, Ed. D.
Armstrong State University

Presentation Objectives

- to offer an introduction
- to offer an overview of mind/brain-based teaching and learning
- to offer cautions to consider when implementing mind/brain-based teaching and learning
- to offer implications for practice
- to offer reform-minded approaches and strategies
- to invite questions and discussion

I. Introduction



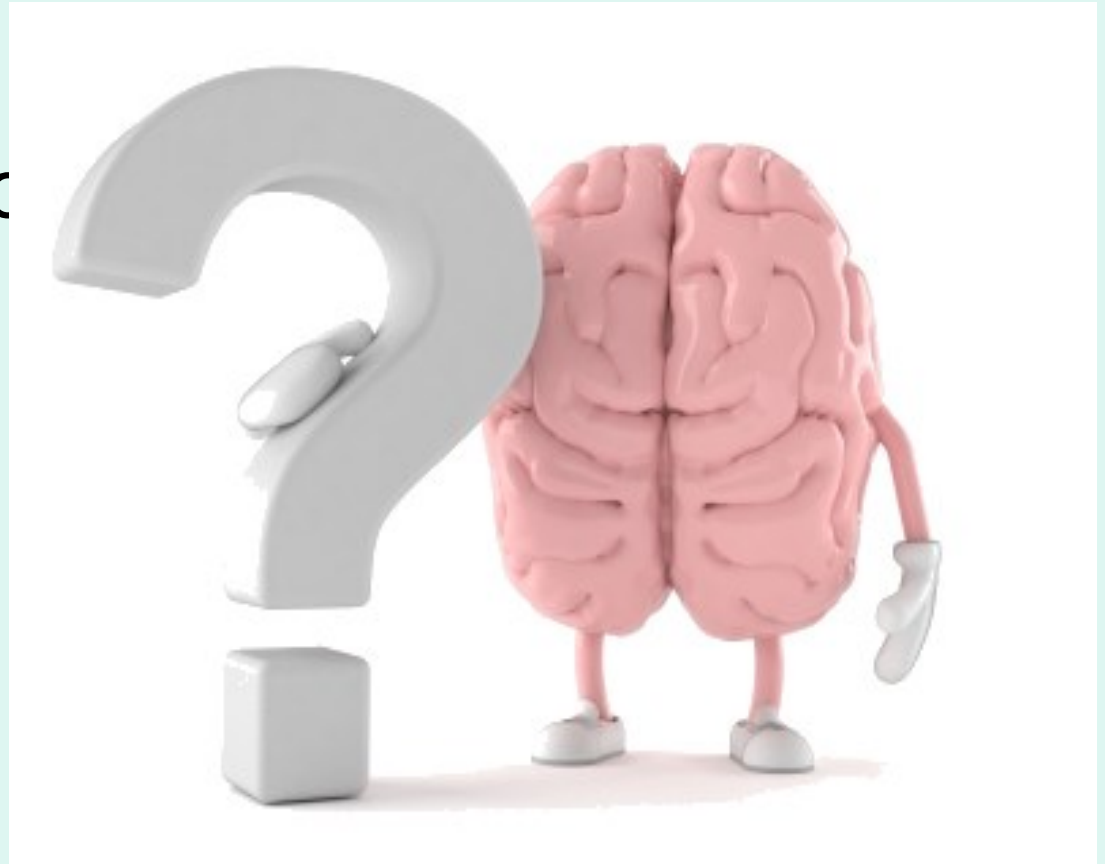
II. Overview: Brain-based Teaching and Learning? YES!



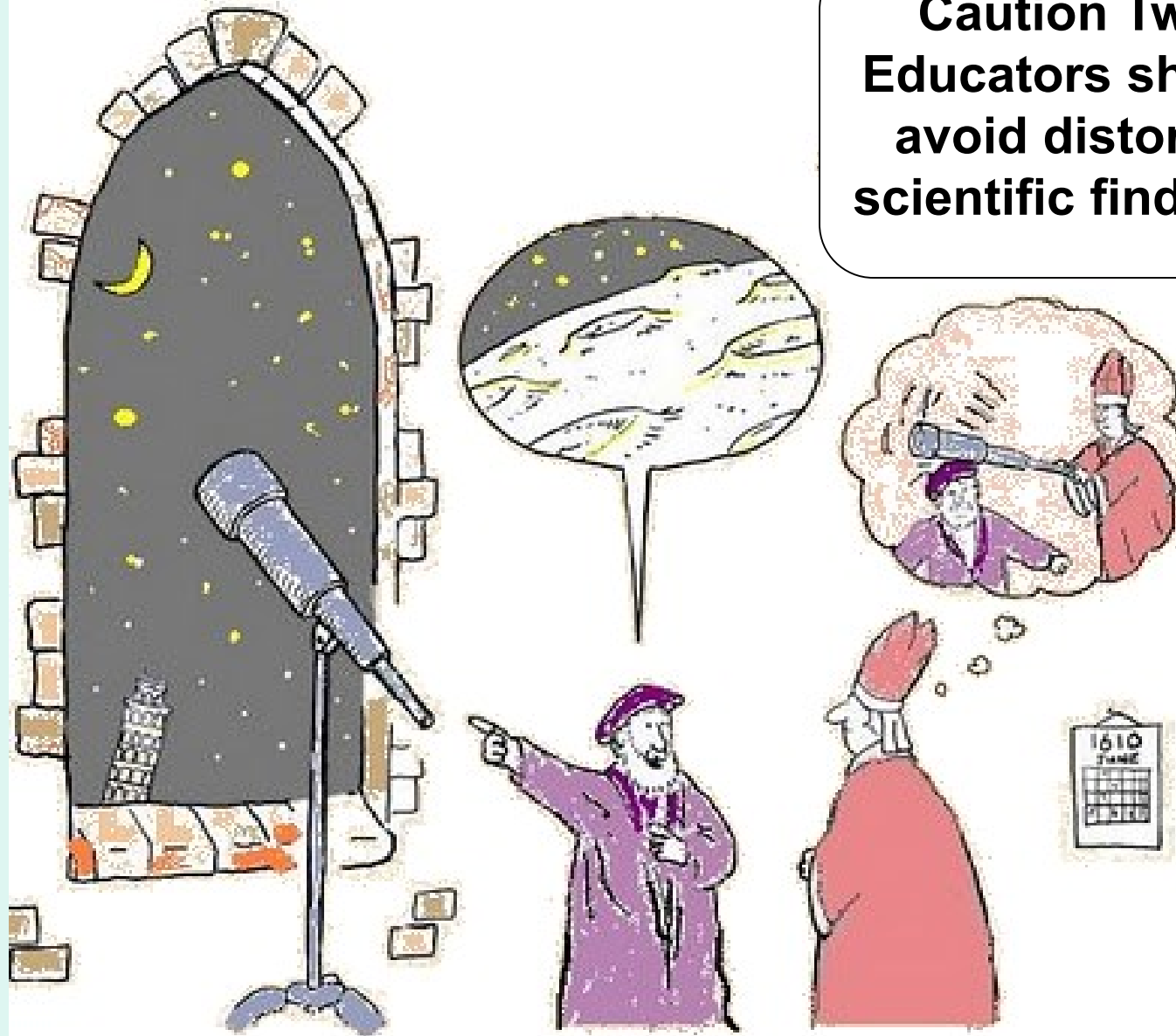
**This is what it looks like in the
neocortex of your brain!**

III. But Be Careful!

Caution One: Much remains to be discovered regarding the science of the brain.



**Caution Two:
Educators should
avoid distorted
scientific findings.**



Kellogg settles Frosted Mini-Wheats claim

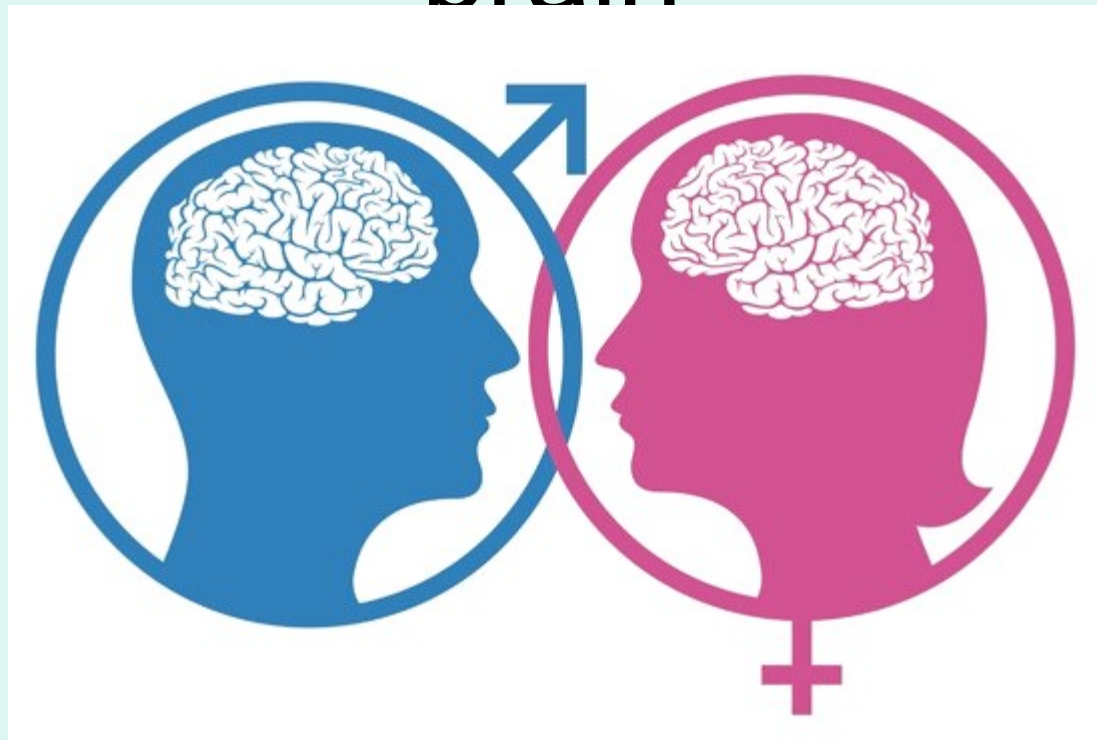
NEW YORK — Kellogg has agreed to pay \$4 million to settle a class action lawsuit over the marketing claims it made for Frosted Mini-Wheats.

The company, which also makes Frosted Flakes, Eggo waffles and Pop Tarts, was sued for saying that the cereal improved children's attentiveness, memory and other cognitive functions.

Kellogg says in a statement that the ad campaign in question ran about four years ago and that it has since adjusted its messaging.

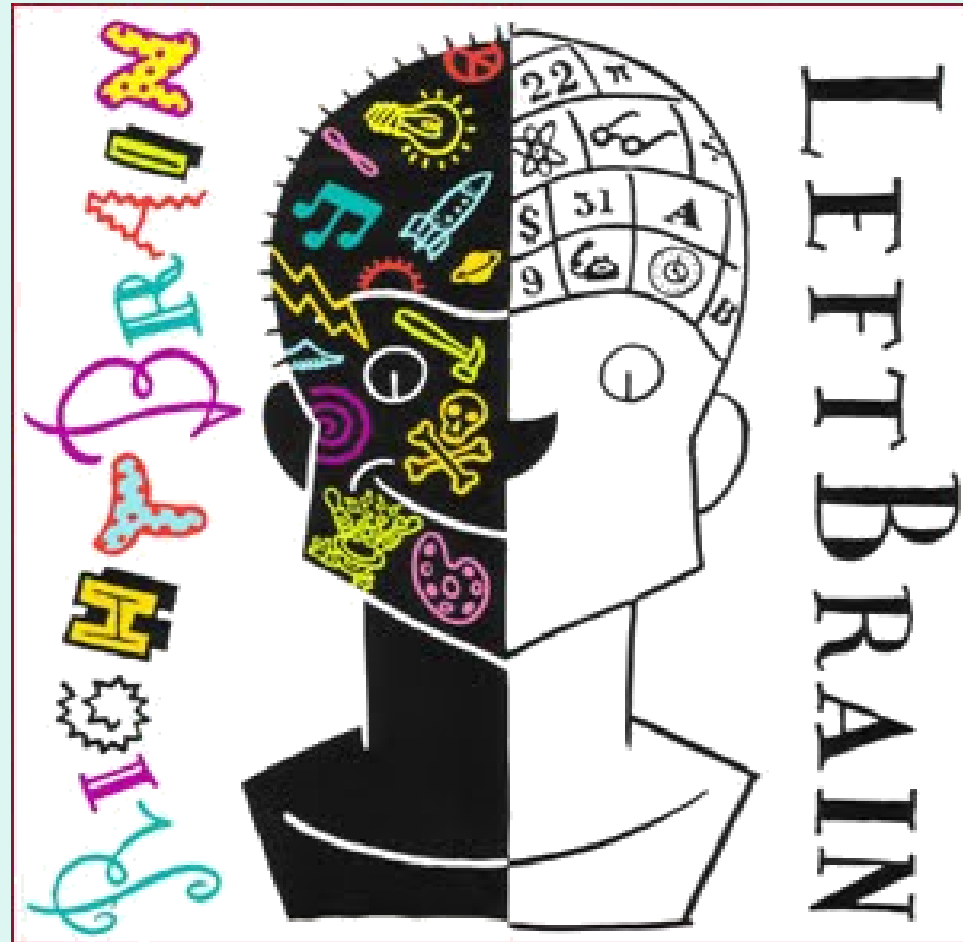
If approved by the court, the law firm representing consumers says the settlement will result in cash refunds for up to three boxes of cereal purchased during the time of the advertising in question.

Caution Three: The notion of the female brain and the male brain



Caution Four: “Neuromyths” abound.

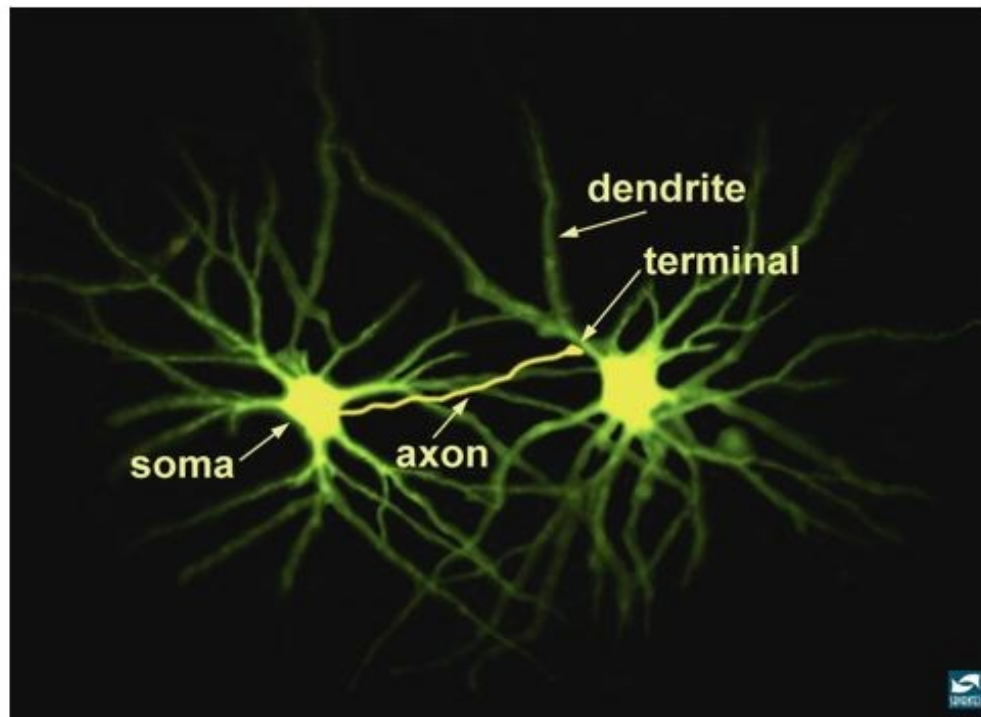
Brain
Laterality



Critical Period



Synapse Preservation

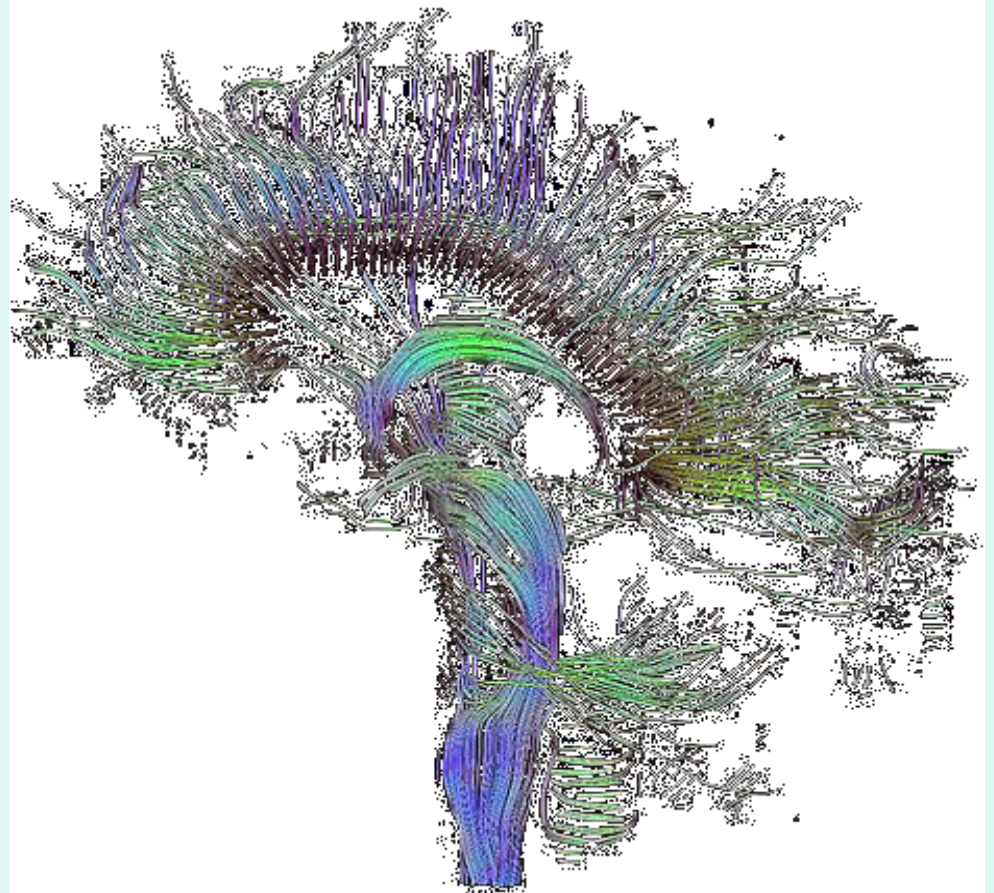


Learning Styles?



Persistent Myths

- We use only 10% of our brains.
- Vaccines cause autism.
- Brain damage is permanent.



Caution Five: Avoid the mind/brain-based bandwagon.



IV. Implications



V. Strategies



Strategies (cont.)

- whole language approach to teaching literacy
- interrelated literacy activities (e.g., KWL strategy)
- portfolios, journals, analogies, metaphors, similes
- Book Share on the Authors' Stool or television
- projects designed and constructed by children, usually from scraps

Mind/Brain-based Thematic Teaching and Learning



Mind/Brain-based Thematic Teaching and Learning (cont.)

Steps:

1. Involve your administrators.
2. Involve your parents.
3. Explain to parents your approach to learning.
4. Show videos of children involved in thematic learning activities.

Mind/Brain-based Thematic Teaching and Learning (cont.)

5. Determine the first theme. IT MUST BE CHOSEN BY THE STUDENTS!!!
6. Integrate the curriculum by clustering the CCGPS (or whatever standards you use) under the “umbrella” theme.
7. Plan your lessons and gather your materials.
8. Teach research skills and build research rubrics WITH your students.
9. Build in plenty of choices.
10. Guide and facilitate research process.
11. When research is complete, the children design and construct projects that reflect their research.
12. Lastly, celebrate!

Questions?



Contact Information

Linda Ann McCall, Ed. D.

Department of Childhood and Exceptional Student
Education

Email: LindaAnn.McCall@armstrong.edu

Phone: 912.344.2692