

Georgia Southern University

Digital Commons@Georgia Southern

The George-Anne

Student Media

2-1-1957

The George-Anne

Georgia Southern University

Follow this and additional works at: <https://digitalcommons.georgiasouthern.edu/george-anne>

Recommended Citation

Georgia Southern University, "The George-Anne" (1957). *The George-Anne*. 341.
<https://digitalcommons.georgiasouthern.edu/george-anne/341>

This newspaper is brought to you for free and open access by the Student Media at Digital Commons@Georgia Southern. It has been accepted for inclusion in The George-Anne by an authorized administrator of Digital Commons@Georgia Southern. For more information, please contact digitalcommons@georgiasouthern.edu.



THE GEORGE-ANNE

PUBLISHED BY STUDENTS OF GEORGIA TEACHERS COLLEGE

MEMBER
INTERCOLLEGIATE
PRESS

VOLUME 30

Collegeboro, Georgia, Suburb of Statesboro, Friday, February 1, 1957

NUMBER 14

Blitch, Mandes Are Featured In Ed. Law Movie

Mr. C. Parrish Blitch, instructor in the business education department and Ric Mandes, president of the sophomore class who is playing the lead in the Masquer's production of Macbeth, played the roles of government inspectors in one of a series of educational films produced by Columbia University. The series is entitled "Decisions," and is based on important Supreme Court decisions. This particular film was based on the actual case of the Darby Lumber Company of Statesboro versus the United States in the issue of whether or not the company was violating the Fair Labor Standards Act, passed in 1933, dealing with minimum hours and maximum wages.

The lumber company was investigated by the Labor Department and Mr. Darby fought the case by taking it to the Court of Appeals and on to the Supreme Court. The Supreme Court judged the Darby Lumber Company not guilty of violating the Wage and Hour Law, but fined them for keeping inadequate records.

The movie was filmed on location at the Darby Lumber Company in Statesboro, the Federal Court in Savannah, and the U. S. Supreme Court Building in Washington, D. C. It will be released soon to law schools and schools where business law is taught.

Band to Perform In Chapel With Student Leaders

The G.T.C. marching band will entertain the student body Monday, February 4, with assorted selections for everyone. The selected pieces will be conducted by many of the music majors of the conducting classes. The junior class members will conduct in chapel.

The seniors of the class will conduct the basketball band at all the basketball games during the winter quarter.

Also, the conducting class will present a pop concert during the spring quarter. This is a part of the college program that is required of all music majors.

The chapel program Monday will consist of the following selections:

1. "Spiritual" from Symphony Number Five and One-Half by Don Gillis. It will be under the direction of Guy Thompson.

2. Under the direction of Stanley Brobston will be the selection from an overture by G. E. Holmes called "Safari."

3. "Malaguena" by Earnesto Lucuona will be under the direction of Ouida Newby.

4. Mell Kelley will be the conductor for "The Pines of Appin Way" from the Pines of Rome by Respighi.

5. "Beguine for Band" by Glenn Osser will be directed by James Jones who is also directing the Philharmonic Choir in a selection.

6. Leroy Anderson's "The Phantom Regiment" will be conducted by Cecile Woodard.



Pictured above is a typical scene at the Little Store after the 10 o'clock rush. Students are not co-operating with the store personnel in keeping candy wrappers, Coke bottles, milk bottles, coffee cups, and the like picked up from the floor. Let's make the Little Store a place we can be proud of!

Pi Omega Pi Being Planned For Business Ed. Students

Phi Omega Pi is a national honorary fraternity for business education students on the junior and senior level. The general purpose of this organization is to recognize outstanding students in the field of business teaching. Students are required to have an A average in business and education courses to be eligible for membership. In addition to having a high scholastic standing, students must show evidence of high moral standards, loyalty, ambition, dependability, honesty and a sincere interest in business.

Three organizational meetings have been held for the purpose of determining chapter activities and drawing up a constitution and by-laws. A tentative project is a follow-up on business graduates for the past five years. A general questionnaire will be sent to the graduates to learn their likes and dislikes and difficulties in teaching.

However, Pi Omega Pi is just at a planning stage. To be a recognized chapter, a petition must be filed and approved by the national organization and this takes staying on a probationary period for about six months. It is hoped that by next September G.T.C. can boast a regular chapter.

The students who qualify and who are working on the organizational plans are: June Brown, president; Norma Joyce Walton, secretary, treasurer; Clifton Baxter, Ellen Blizzard, Patsy Page, Joyce Powell, Jacquelyn Simons, Charles Tyre, Rose Watkins, Frank Woodcock and Junyth Hanson. Mr. Stephen B. Homick will sponsor this group and Miss Jane Martin will be working with him as co-sponsor.

Park Serves As Co-Author of A Bulletin of Ed.

Dr. J. D. Park, director of teacher education at Georgia Teachers College, is working with the State Department of Education as co-author of a new bulletin to be published this spring on "The Use of Testing in the Guidance Program." The bulletin is one of a series to be published by the estate in the area of curriculum.

The State Department has produced two bulletins in the past year and a half which are now in use in the public schools of Georgia. One is a Guide to Curriculum Construction in the Public Schools, and the other deals with the teaching of health and physical education.

When completed, the series will include bulletins in all of the various subject matter fields commonly taught in Georgia public schools, and others having to do with various aspects of teaching related to the curriculum.

Biblical Movie Slated Tonight

The movie for tonight is "David and Bathsheba." The movie is about the famous Biblical figure, David and his love affair with the beautiful Bathsheba. Starring in the production will be Gregory Peck and Susan Hayward.

International Blue Key Fraternity Will Become Local Organization

HOOR EXTENSION

Because of the activities of Homecoming Weekend and the guests present, the women residents are being granted an extension of one hour on Saturday night. This makes the time due in 1:00 a. m.

This is done in an effort to encourage all persons to remain at the Homecoming dance until it is over, the official time being 12 p. m.

Alpha Rho Tau Preparing For Beauty Review

By BOB SPELL

As most of you know, Alpha Rho Tau is deep in paint and ideas again creating the eleventh annual beauty review. The theme, chosen before Christmas, is entitled Orientique, and will use a combination of Chinese, Japanese, and Indian ideas. Details of the sets cannot be disclosed, but it is known that the production will consist of three acts with two complete sets.

The first act takes place in an oriental garden with every contestant and her escort participating. The second scene is within a pagoda or temple, and the ten selected finalists and their escorts will vie for the title. In the last act, the four ladies of the queen's court, and her majesty will be presented and climaxed with the crowning of the queen by the 1956 Miss T.C., Mrs. Emory Clements, the former Miss Janice Mayers.

The queen and her court will head the homecoming parade on the following afternoon. G.T.C.'s crowning beauties will ride on a float designed by the Art Club. It is known that the float will carry out the oriental theme of the beauty review.

HAMILTON TO ATTEND MEET

Dr. Marshall Hamilton will attend the Southeastern Region meeting for the Association of Student Teaching, in Lexington, Kentucky, February 8-9. Mrs. Opal of Glennville will also attend the meet.

Eleven states are involved in the meeting which is concerned with Southeastern problems of student teaching. Dr. Hamilton,

Committees Set For Production Of Play Macbeth

At the regularly scheduled Masquers meeting last week, the various committees dealing with the play Macbeth were set up. These committees are as follows: Stage crew, Emory Cartrett, Emory Giles, Dewayne Dutton, Jimmy Ray Johnson, and Joe Brewer. Properties, Diana Bair, chairman, Jean Fulford, Jimmy Ray Johnson, Emory Giles, Molly Williams, Ruth Odom, Virginia Smith. Costumes, Fred Fagnant, chairman; Martha Tinker, Molly Williams, Ed Ward. Make-up, Ellen Blizzard, chairman; Jean Holmes, Emory Giles, Lynell Bailey, Gladys Brown, Kitty Kelly, Sylvia Gurganus, Jean, Fulford, Glenda Smith, Jimmy Ray Johnson. Sound, Charles McLendon, chairman. Publicity, Diana Bair, chairman; Bobbie Butler, Anne Waters, Joyce Rahn, Ellen Sumner, Barbara Williams, Virginia Smith. Ads, Jean Holmes, chairman; Diana Bair. Lights, Bill Sanders, chairman; Diana Bair, Emory Cartrett. Assistant state managers, Joe Brewer, Wilmath Fowler. House manager, Ruth Odom. The date set for presentation is February 26, Tuesday, in McCroan Auditorium.

A local chapter of the Blue Key, an international honorary fraternity, has just been organized on the G.T.C. campus. Dr. J. D. Park is to be the faculty advisor for the new chapter.

Blue Key was organized by Major Bert C. Riley of the University of Florida to unite the leading students for the benefit of the university on February, 1925. Since then it has expanded rapidly. While the activities of the chapters vary widely in different institutions, Blue Key aims to recognize outstanding qualities in character, scholarship, student activities, leadership, and service.

Membership is composed of graduate and undergraduate students of all departments of American colleges and Universities. Honorary membership is extended to a limited number of distinguished faculty members and alumni.

The society is committed to cooperation with the faculty; to study campus problems, stimulate progress, and promote the interests of the institutions where it has chapters. The plan of meetings and activity is similar to that of Rotary. The legislative powers of the fraternity are vested in the membership of a national chapter. Conventions are held biennially. The national administrative council is made up of five members.

Rogers' English History Class Attends Superior Court Monday

The English History class with Dr. George A. Rogers, professor of social science went to court on Monday, January 28, to sit in on a session of the Superior Court of Bulloch County. The presiding judge was the Honorable J. L. Renfro of Statesboro.

The excursion was in connection with the period of English History which the class is now studying. They are studying the development of the courts under Henry II of England.

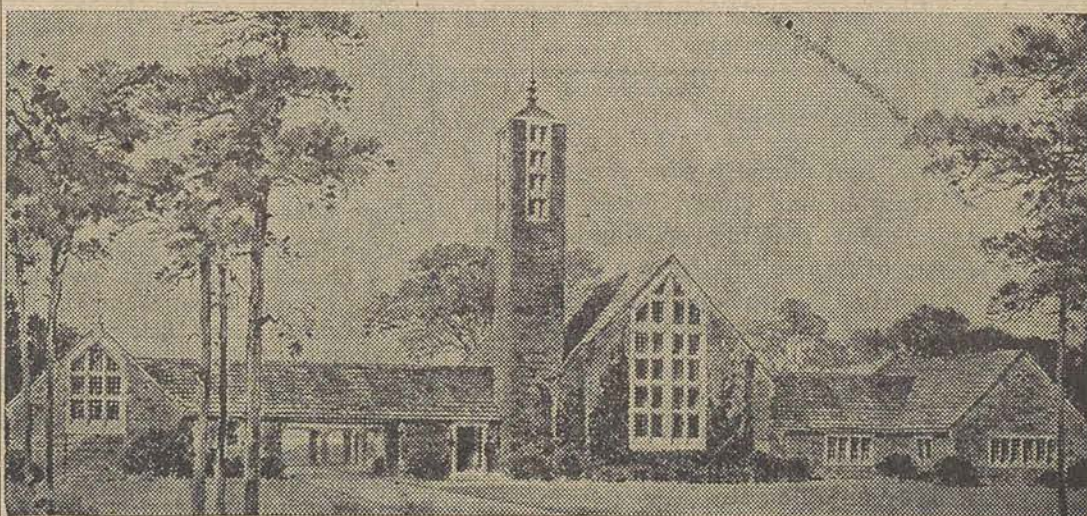
The class as a whole heard the Judge's address to the Grand Jury, and also the swearing in of the Grand Jury. After

president of the Georgia unit will lead a discussion group entitled "How can we best evaluate the work of the student teacher?"

the Grand Jury was dismissed and while preparations were being made to get the first civil case underway, Judge Renfro took court time to recognize the class. He introduced the class to such officials as the solicitor, sheriff, clerk of court, and several lawyers who happened to be on hand.

After the trial jury was chosen the civil case concerning an irrigation problem in the county in May 1956, was started. A few of the class saw the case tried.

An interesting thing that caught the attention of the class was that the Sheriff kept his hat on throughout the court session. They thought the Sheriff was very impolite. It turned out, however, that the sheriff is supposed to keep his hat on in court. There is no explanation.



Pictured above is the proposed structure of the new Pittman Park Methodist Church to be built across from the east gate of the campus. It is being built by Barber and McMurray, architects of Knoxville, Tennessee. Services are now being held in M.P.S. auditorium.

Look Before . . .

Have you noticed the appearance of the Little Store lately? If not, take a look at the picture in this paper. This is the way it looks to our visitors. Trash can be found on the tables and on the floor at any time there is a group of Students in there. The workers in the store cannot keep it clean because they have to wait on customers that are continually coming and going.

A new student center has been approved and funds have been appropriated. However, it will be quite a while before the dream will actually come true. While waiting for this, can't we take better care of the one we have? With a little more effort on the part of all students, we could make it a place to be proud of when we have visitors. The Alumni will soon be back on campus, and maybe this is a good chance some organization to assume the responsibility of decorating the Little Store as a project.

There is an old saying, "Look before you leap." In this case, "Look for the trash can before throwing down your trash."

Watch Your Speed!

There has been much discussion going on about traffic since the driving area around the circle was enlarged. Many students said that it would be impossible to have a two-way drive and to have parking on both sides of the street.

Well it is possible because it has been tried, and it worked because the cars were not driving at an excessive rate of speed. Some of the drivers on campus seem never to have seen the 15 m.p.h. sign at the beginning of the circle, or if they have seen it they have ignored it.

Also, the speed limit should be observed on the road in front of the old gym. There are no sidewalks for the pedestrians, and usually students have to walk in the street. This is very dangerous when a car going at an excessive rate of speed comes around the corner from toward the dining hall, and people are walking in the street.

Naturally some of the responsibility falls on the pedestrian. He should notice for cars if he walks in the street. But the drivers of the cars should show some consideration by driving slower.

We think the people who have been working on the traffic problem are to be commended. We think they are doing a fine job. With a little cooperation from the drivers of cars and the pedestrians the situation could be greatly improved.

A Dime's Worth of Ethics

Providing a refreshing interlude to weeks of book grinding, the mid-week Mat dances have been a success on campus for some time.

The George-Anne joins with Student Council in its delight over the attendance at these dances. We are chagrined, however, to find that some students evidently do not understand or appreciate the way the dances are set up, and are using the side doors as an entrance to the entertainment. This of course eliminates having to pay the dime admission charge.

Set up principally as a means of paying for the free Friday night movies, the small cover charge for the dance also helps take care of records and upkeep of the record player used Wednesday nights.

We prefer to think that students using the side doors did so out of ignorance, rather than deliberately, but hope this situation can be cleared up by next Wednesday.

Hammer Harmony

Crepe paper and chicken wire are starting to peek out from behind closed doors all over campus, as plans start popping for Home-coming.

The alumni of any college form a vital corps that can help the institution keep marching ahead, so all efforts put out for "their day" are well justified.

Home-coming is also a time to buff up our own school spirit, so we urge everyone to roll up your sleeves and get busy—you might surprise yourself by enjoying it.

Even if you aren't in a club, there are dorm projects, and your friends would welcome help on their club projects.

LITTLE MAN ON CAMPUS

by Dick Bible



"I'D LIKE SOME OF YOU TO THINK OF THIS TERM PAPER DUE FRIDAY AS A 'DO-IT-YOURSELF' PROJECT."

George A. Teachas Says . . .

The United States spends millions each year in showing off our commercial, political, and military powers to other nations. Our elected lawmakers have many ways of getting into the international spotlight that citizens of other nations would never try.

Senate and state fights can often get to more of the other peoples of the world than do our gestures of friendliness and our promotion for better international relations.

Because of this, more attention will be placed on the Senate vs. Dulles and the States vs. Wilson affairs than on anything else accomplished by our chosen representatives this still short year.

Many of our law makers have pretty sound proof that the recent trips to ease world tension by our Secretary of State, Mr. John Foster Dulles, have ended in embarrassment for our country putting unusually great pressures on capitol hill. It seems that his office has become more of a ritual than a service. Many speculate that soon the office will be identified as a special embassy to "Gay Paree."

As for Mr. Charles Wilson,

our Secretary of Defense, he must possess more intestinal fortitude than he displays. Is he going to continue to make such rash charges against the young men who gave their lives for the freedom of the Korean people. He seems to think that the National Guard is composed of nothing but draft dodgers, when it is plain to see that during the Korean Conflict that National Guardsmen were the first of American forces sent into battle.

Maybe Mr. Wilson doesn't read the papers, or he would know these things. Or, on the other hand, maybe Mr. Wilson doesn't think that other people read the papers.

Personally, I think that both Mr. Dulles, and Mr. Wilson are trying to do something to supplement their lives since having been taken from their offices in big business. They are missing their money counting, and their places of authority so they will stop at nothing.

I would advise them both to get out of politics while they can, for after the people of America get through with them, they may not have even as much as a flower stand to operate from their ivory towers.

THE GEORGE-ANNE

JENNIE FAY MORGAN

BETTY WATSON

CO-EDITORS

Member Intercollegiate Association Press
Member The Press Club

Associate Editor Britt Fayssoux
Managing Editor Billy Jackson
Assistant Managing Editor Jo Ann Parker
News Editor Bob Mitchell
Assistant News Editor Joyce Kirkland
Business Manager Sammy Powell
Assistant Business Manager Wylene Fowler
Feature Editor Bob Spell
Assistant Feature Editor Jane Jackson
Sports Editor Bob Pollak
Assistant Sports Editor Frank Turner
Woman's Editor Joyce Jackson
Copy Editor Wilma Ricketson

REPORTERS: Loretta Edge, Chip Culpepper, Willene Fisher, Ann Waters, Betty Rahn, Dillard Maxwell, Kenny Giddens, Ellen Blizzard, Marilyn Durrence, Hugh Belcher, Larry Hyde and Hubert Manning.

TYPISTS: Charlie Harper, Ben Norton.

CARTOONISTS: Charles Williams, Bob Belton.

FRIDAY, FEBRUARY 1, 1957

Published weekly, September to June, except during holidays by Georgia Teachers College Students.

(Entered as second class matter at Post Office at Collegeboro, Georgia, under temporary permit.)

MAIL SUBSCRIPTION: \$1.50 PER YEAR



Hyde and Seek

By LARRY HYDE

What are your feelings toward intoxicating beverages in connection with members of the opposite sex?

Last week, the males' answer was printed in the form of a survey and this week we have the females' side of it. We asked 200 G.T.C. women students the same questions that were asked the males and the results are as follows:

Do you drink intoxicating beverages?

YES 24%—NO 76%

Do you associate with men that drink intoxicating beverages?

YES 56%—NO 44%

Would you marry a man that drank intoxicating beverages?

YES 49%—NO 51%

The majority of the girls that answered "yes" to question No. 1 came under the heading of a "social drinker." The general answer that came from the second question was they did not care if their friends drank around them but did not want them to get overly intoxicated. The same answer was given for the third question.

So men, it looks like it is okay for you to drink; that is, as far as the opposite sex is concerned.

It is the policy of The George-Anne not to print letters that are not signed. The editors have given me permission to print this letter because I feel the letter contains the strong convictions of a person who is not afraid to say what he thinks but does not believe in his convictions strong enough to sign his or her name. I admire this person for what he stands for but I will think twice as much of him if he would sign his name to any future letters that he might wish to write to this column.

The following is an excellent example of the utter narrow-mindedness that contributes to so many of the problems that are daily driving more people to drink:

Dear Mr. Hyde:

In reference to your article in the January 25 issue of the George-Anne, I would like to add these comments. First of all, it was the most asinine article that I have ever read. It is horrible to think that over half of the group surveyed drank. I have this to say to this group and also to anyone else to whom this may be of concern. In today's society we are all faced with a very dreaded disease. This disease is not cancer, it is something worse—alcoholism. There is some chance of a cancer victim being cured; if the individual dies, it has been a terrible ordeal for that individual. At the end of an alcoholic's life, he has not only destroyed his own life, but he has destroyed or greatly affected the life of any other individual that he has come in contact with. This is an awful thought, but it is a true fact.

Has there ever been a person that has taken his first drink with the intentions of becoming a sot (or shall we show our respect to such an individual by referring to him as an alcoholic)? No, there is no such thing as a social drink; one drop, one drunk!

The individuals that are plagued with the lack of will power or mentality to allow themselves to indulge in alcohol are usually those individuals that have never seen the life of a loved one destroyed by this horrible plague. There is not a cure for alcoholism, so why should one kid himself any longer; if he takes a drink now, he will take one gallon ten years from now if society should have to be burdened with the effects of such an individual's life for that long.

To those individuals that have become victims of alco-

holism, I have this to say. You might call it "Strength for the days ahead": Any baby can take a drink, but it takes a man to refuse one. Any dead fish can float down stream, but it takes a good one to swim up.

Definition of a BAR: A bar to heaven, a door to Hell. Whoever named it, named it well."

—Letter unsigned

"Why doesn't the Georgia Theatre get newer movies?" That question I have heard more than once from fellow students. Here is your answer, straight from Mr. Hal Macon, owner of the Georgia:

"The movies that we show in Statesboro are booked from six to eight weeks in advance. We acquire these bookings from Atlanta through the different movie company representatives. A copy of the film is left with us to be shown on the date that I booked it. If a new film becomes available, I try to book it as soon as I possibly can."

Mr. Macon went on to say, "There are two big reasons for not getting the newer movies sooner. The first being lack of copies of the film. There are very few copies printed; therefore, the large metropolitan areas receive them first. From there it comes right down the ladder. Second, we cannot get a film that is playing in Savannah for showing here at the same time except in rare cases."

In closing, Mr. Macon said, "We try to give Statesboro people and the G.T.C. students the best in movie entertainment but you see what we are up against. We appreciate your patronage and are very happy to serve you."

Our cheerleaders are to be commended for the wonderful job they are doing in leading the student body in yells at the basketball games.

The cheerleaders want your suggestions, so if you have an idea that might help them, pass it on. The cheerleaders will welcome anything you have to say.

Last week this column printed an advertisement that was being run by a young man in West Union, S. C. As of last Thursday, he had received 143 answers from women of all ages and walks of life. According to a statement in the paper, he is in no hurry to select a companion, so that still leaves time for you girls to make your bid.

A woman who thinks she is smart demands the same rights as a man. But the woman who's intelligent takes care not to do so.

A man may be captain of his soul all right, but there is usually a wife in the background who is commander-in-chief. Selah.

KNOW YOUR HEART

To guard your Heart—follow these simple rules:

- 1 Avoid self-diagnosis—see your doctor.
- 2 Control your weight.
- 3 Get enough rest.
- 4 Keep physically fit.
- 5 Ease up—and relax. and—

HELP YOUR HEART FUND

HELP YOUR HEART



Inquiring Reporter

By KENNY GIDDENS

Those who attended the ball game last week no whether or not he likes the word professors or teachers when cheering with the cheerleaders. The question this week, "Which do you think our cheers should include, Professors or Teachers?", has been asked to several students on campus and here are their answers.

BOBBY FORRESTER—I like teachers because it sounds better than professors when yelling cheers.

JIMMY CONAWAY—I definitely think professors is better. Teachers sounds to common.

RICHARD SMITH—I'd rather say professors, because that is the team's name. Teachers are referred to in high school.

HUGH HAGAN—I think that professors sounds better, because it's the team's name.

CAROL BLANTON—Since the scoreboard reads professors and professors is written on the uniforms, I think we should say professors instead of teachers.

JAMES DENNY—I prefer professors, because it is the name we play under.

DON "ARAB" AVERY—I prefer teachers, because they said teachers at the old school.

DON WALLEN—I like teachers, because visiting teams know us as teachers and not professors.

CHIP CULPEPPER — Professors, because the team is the G.T.C. professors, and not G.T.C. teachers.

PEGGY COWART—The cheerleaders should be more consistent about it. When they get up to yell you don't know whether to say professors or teachers. I prefer professors.

JANE POWELL — Teachers. It's easier to say for the students to yell.

SUE WHALEY—I think we should use professors, because we are known as professors.

Newly Elected Band Officers Begin Work

John Chambliss was named president of the concert band in an election January 17. John Chambliss, along with other newly elected officers, has already begun work on new plans for this year.

Elected to serve with him this year are Ruth Sutton Odom, vice president; Mary Jo Hodges, secretary; Jack Willis, property manager; Earl Smith, senior representative to the planning board; Guy Thompson, junior representative; Denzil Sellers, sophomore representative; and David Powers, freshman representative.

All automatically members of the band's planning board, the new officers have already presented the band with a list of recommendations for improving the afternoon rehearsals.

The George - Anne — Page 3

Collegeboro, Georgia, Friday, February 1, 1957

Miss Wallen Elected Teacher Of the Year for Marvin Pittman

"Education should bring about a change in a child, help him become his best self and therefore a good citizen in society. In order to do this, schools must teach certain basic skills as well as satisfy basic emotional needs of children."

These words are the philosophy of Miss Gladys Waller, newly elected "Teacher of the Year" for Marvin Pittman School.

Miss Waller received her B.S. degree in elementary education from Georgia State College for Women in Milledgeville, and her M.A. from George Peabody College for Teachers in Nashville, Tenn.

"My teaching career began in Pembroke," Miss Waller stated, "from there I went to Swainsboro, my home town, then to Brunswick where I taught the fourth grade for one year, and then to M.P.S. where I've been for the past five years."

Twenty of her twenty-one years of service in the elementary field have been given to the third grade. One year she taught the fourth grade in Brunswick.

Miss Marjorie Crouch, state Teacher of the Year for 1955-56,

presented Miss Waller with an orchid when the report was received that Miss Waller had been elected.

Half-Time Show To Be Given By Savh. Majorettes

The Profs meet Erskine College of Due West, South Carolina, February 6, but the game will not be the only attraction that night.

A half-time show by the majorettes of Savannah High School of Savannah, Georgia, will perform for the entertainment of the G.T.C. students.

The majorettes will be trained and under the direction of Miss Weita Wall. Miss Wall was head majorette of G.T.C.'s band during her four years at Georgia Teachers College. She is now teaching physical education in Savannah, as well as training all the majorettes of the high school systems of Chatham County.

The exhibition will take place during the half on the floor of the new gym.

Revision of Admission Rules Will Ease Enrollment Problem

Along another line, the board just this week received permission from the administration to go ahead with a paint job that will include the entire band rehearsal hall as well as the office of Mr. Dana M. King, band director. All work on this project will be done by the members themselves.

Possible plans in the future call for new draperies for the band room as another step in improvements.

Also in the way of recent improvements are two storage rooms being built for band uniforms and choir robes. It is planned that the white band jackets and spats can be issued for each performance, and checked back in immediately following each one. According to Mr. King, the department feels this will eliminate much of the wear and cleaning problems that arise from improper care of the outfits when they are not being worn. It is estimated that under this plan, uniforms will need cleaning only once a year.

Jaycees Erect Sign Pointing Toward College

At the October meeting of the Statesboro Junior Chamber of Commerce, it was decided that there was a need for signs pointing the way to Georgia Teachers College, particularly at the intersection where Highway 301 and 80 meet. A committee of three with Jerry Howard as chairman was put to work on this project.

It was planned that the signs either be hung from the red light at the intersection or that signs be put on the telephone poles in that area. Approval and permission were sought from the Statesboro Police Department and the Georgia Power Company.

The signs have been hung at the crossroads pointing toward Georgia Teachers College.

Washington, D. C. (I.P.)—American universities and colleges will turn into "four-year country clubs" unless they revise their admission procedures to place greater emphasis on more deserving students. This warning was issued by Robert E. Ifert, a research specialist with the U. S. Office of Education.

"Such a revision will go a long way in easing the enrollment problem which most institutions are or will be failing within the next decade," Ifert said.

"At present, there are two types of admission policies in general use. One is the open door policy whereby any student with a high school diploma is admitted; the other is the 'peep hole policy' whereby admission is granted to anyone with a prep school background or something of equal social value.

"The colleges can go too far, in fact, they can turn into four-year country clubs, if one or the other policy is allowed to go to its fullest extreme. It's time the colleges and universities stopped admitting solely on the basis of intellectual background or social prestige and considered other factors."

These factors, Ifert declared, are "sincerity and strength of purpose, and traits and characteristics as well as intellectual background."

"The student who knows what he is after instead of entering college because it is the thing to do will be the best student in the long run," he said. Along this line, Ifert struck out at scholarship funds. "Many students have the wherewithal to start to college, but do not have the accumulation to stay in college. The student who uses the funds he himself has to start and then demonstrates on the college campus he is a good student is a much better investment than the student who is lured to the campus as a reward for the good grades he earned in high school."

VET'S CORNER

By GENE WILEY

How many times in the past have you heard some older person say, "the younger generation has certainly gone to the dogs."

Well, I've heard it quite a few times and you probably have too. Next Friday and Saturday we get our chance to show them that we really aren't so bad. Homecoming is one of the highlights of the year and shouldn't be missed by any of you. So, let's all be out to greet the older graduates with a friendly smile and a welcome back.

In case some of you veterans haven't heard about the party tonight, I want to remind you.

It is going to be held at Cohen Anderson's pond and if you don't know where that is, there will be a group leaving at 1800 from the front of Cone Hall. There is going to be some fine food, which will be cooked by an expert. This party is free with only one catch to it, you must have your dues paid up.

Our secretary and treasurer is easily found. Just look for a short slim fellow walking around with a rather large fellow. See you there!

Library Spots Favorites Of

Soc. Science Prof

This week the library featured the favorite selections of Dr. George A. Rogers, associate professor of social science. Some of the books and magazines he recommends are: "Ideas and Man," "Memoirs of Hadrian," and Churchill's "Their Finest Hour," "Life" magazine, "The American Historical Review," and "Journal of Geography."

Also featured is a display on religious Emphasis Week which includes such books as "The Silver Chalice" and "The Robe."

The cataloging office of the library has instituted the policy of compiling lists of new books. These lists will be sent to members of the faculty and will also be available in the library for the use of students.

Engraved
Wedding Invitations
And Calling Cards
STATESBORO LITHO
PRINTING COMPANY
43 East Main—Phone 4-2974

More Attends Home Ec. Meet

Mrs. Miriam Moore, assistant professor of education in home economics journeyed to Abraham Baldwin Agricultural College today to attend the meeting of the Georgia Home Economics Association college and university committee meeting of which she is chairman.

While there, she will try to recruit home economic majors who will be graduating there this year. Since A.B.A.C. is a junior college the students have to transfer their junior year and this presents many fine prospects for our campus.



"COKE" IS A REGISTERED TRADE-MARK. COPYRIGHT 1957 THE COCA-COLA COMPANY

Sociology

Spin a platter... have some chatter...

and sip that real great taste of Coke.

Sure, you can have a party without

Coca-Cola—but who wants to!



SIGN OF GOOD TASTE

Bottled Under Authority of The Coca-Cola Company By
Statesboro Coca-Cola Bottling Company

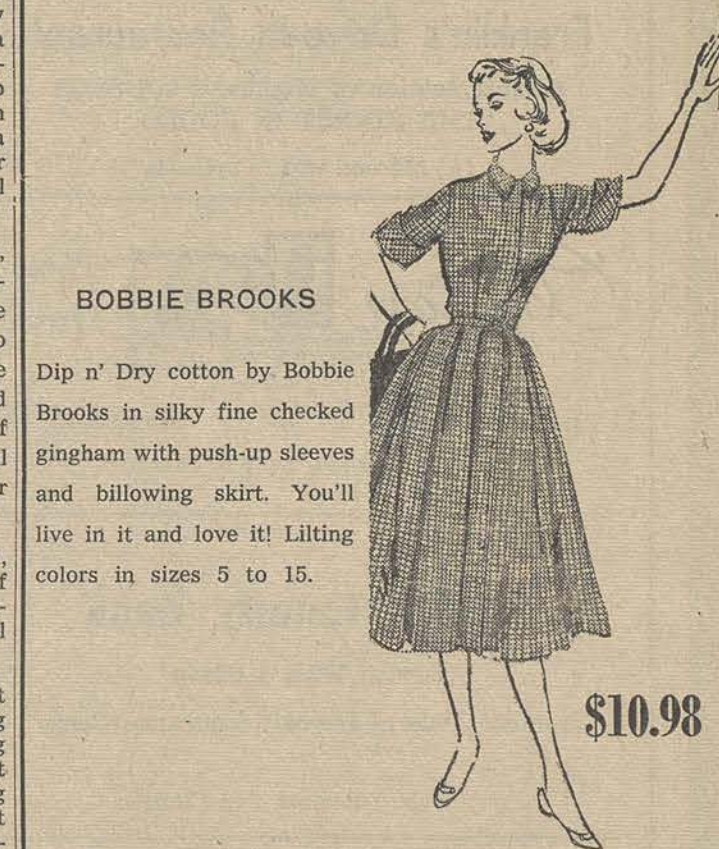


BOBBIE BROOKS

striped Dacron and
Cotton blouse

Bobbie Brooks creates a distinctive blouse of easy-to-care-for dacron and cotton stripe... stays crisp to give you that relaxed and confident air. Such supreme detail! White with red, blue, green or brown in sizes 7 to 15.

\$5.98



BOBBIE BROOKS

Dip n' Dry cotton by Bobbie Brooks in silky fine checked gingham with push-up sleeves and billowing skirt. You'll live in it and love it! Lifting colors in sizes 5 to 15.

\$10.98

Minkovitz
STATESBORO, GEORGIA

Mrs. Bryant's Kitchen

"Where Eating is a Pleasure"

Statesboro, Georgia

() Georgia Teachers vs. () Rollins

For Delicious Foods

EAT AT

Nie Nac Grill

"Our Aim Is to Satisfy Your Hunger"

East Main Street

Statesboro

Soperton

() Alabama vs. () Georgia

Two Blocks North of College Gate on U. S. 301

TRANS OIL COMPANY

—Phillips 66 Oil—

"Friendly Courteous Service"

() Auburn vs. () Florida

HOWARD JOHNSON'S

109 North Main St.

Statesboro, Ga.

LANDMARK FOR HUNGRY AMERICANS

() Duke vs. () North Carolina

Franklin Radio Service

—Zenith—

TV—RADIOS—RECORD PLAYERS

Repair Shop for TV, Radios and Record Players

COMPLETE SELECTION OF RECORDS

46 East Main Street

Statesboro, Ga.

() Georgia Tech vs. () Tulane

STUDENTS!

Bring Your Dates To

Long's Restaurant

Fine Foods — Reasonable Prices

() Illinois vs. () Michigan State

The College Pharmacy

"Where the Crowds Go"

DRUGS—SODAS—COSMETICS

Phone 4-5421

() Kansas vs. () Nebraska

Hagin & Olliff Service Station

"Your First Station From the College"

—TEXACO GAS—

Goodrich Tires and Batteries

—Your A.A.A. Station—

() Louisville vs. () Toledo

Students!

Shop the Modern and Convenient Way

Ben Franklin Store

—Your Most Convenient Store—

East Main Street

Statesboro, Ga.

() Minnesota vs. () Michigan

G. T. C. Basketball Contest

Win \$10.00 CASH!

Pick The Winners!

Name

Address (Dormitory for Students)

City and State

Pick all winners and receive \$10.00 cash. If no one gets all the winners, the person naming the most winners will receive \$5.00 in cash from The George-Anne. In case of ties among contestants, the prize is equally divided.

1. In each ad on this page you will find two college teams scheduled to play basketball this week. Check the teams you think will win. Tie games count against you unless you mark them ties.
2. Mail or bring your entry sheet to the George-Anne, located in the Public Relations Office, not later than Friday noon of each week. Letters postmarked on or before this time will be accepted.
3. Members of the George-Anne staff are not eligible to win.



Support the Sponsors of This Contest by Visiting Them When You Buy!

STUDENTS!

For the Best Foods It's

Franklin's Drive-In Restaurant

At Intersection of Highways 301-80-25

"THE FINEST IN FOODS"

() Missouri vs. () Colorado

Clifton

ANIMALS • CHILD PORTRAITS
WEDDING PICTURES AND ALBUMS



Photo

Service

34 East Main Street

Statesboro, Ga.

() Notre Dame vs. () Loyola

THE DIXIE PIG

SHORT ORDERS — PIT-COOKED BAR-B-Q

—Prompt and Courteous Service—

U. S. 301

() Murray State (Ky.) vs. () Western (Ky.)

DON'T MISS!

Sports News—6:00 p. m.

Radio Ball Room—8:00 to 9:30 p. m.

Late Date—9:30 to 10:30 p. m.

Radio Station WWNS

1240 ON YOUR DIAL

() Ohio State vs. () Indiana

The College Grill

College Students and Families

Are Always Welcome

Soft Drinks — Sandwiches — Short Orders

() Vanderbilt vs. () L.S.U.

Patronize Your Friendly

Sea Island Bank

For

Safety — Courtesy — Service

Member Federal Deposit Insurance Corp.

() Navy vs. () Columbia

H. P. Jones and Son

Distributors

Gulf Oil Products

Gulf Tires, Tubes, Batteries

Statesboro, Georgia

() South Carolina vs. () North Carolina State

Bulloch Flower Shop

—PHONE 4-2324—

Inman and Granade Street

"FLOWERS FOR ALL OCCASIONS"

See Our Campus Representatives

Doug Corry — Sam Rogers

() Tennessee vs. () Mississippi State

Bulloch County Bank

"Service With a Smile"

Member Federal Deposit Insurance Corp.

() Wake Forest vs. () Clemson

See G.T.C. Play Gibbs Vikings Tomorrow Night

SPORTS

As You Like 'EM

By BOB POLLAK
SPORTS EDITOR

After our team's heartbreaking loss to Rollins College, senior guard Don Wallen made the following Statement: "It's getting so bad that you can't win a basketball game away from home." To quote an old saying, "Truer words were never spoken."

It certainly was discouraging to watch our team commit foul after foul and get penalized for them, while Rollins would commit a foul and somehow the referee would be looking the other way.

There were twenty-one fouls called against the Professors and only nine called against Rollins. Doug Corry and Jimmy Long both walked the plant for the Profs after they turned in fine performances. Doug was the victim of two questionable fouls when he was called for blocking. Charging easily could have been called on Rollins forward Dick Bezemer.

The away-from-home refereeing not only concerns our team, but it is also a national problem. Coaches have been trying to do something about it for the past few years; however, they still can't find a suitable remedy.

One solution to the problem is to have one of the game referees from the visiting team's section of the country. If this was done the home team could not be accused of having hired its own referees. This probably is the best solution to the problem but it still has many loopholes.

Some refs are just naturally better than others and therefore call a better game. However, these men are only human and can make several poor calls in a ball game despite the fact they are good officials.

When teams schedule refs they should pick them on their honesty, and not on what kind of break they will give the home team. This may not bring about a victory, but could possibly result in better and fairer refereeing.

At tip of the hat should go to Coach Searce and his basketball teams for their fine showings so far this year. The Profs have come a long way since the beginning of the year and at times give evidence of being a real tough club.

Don Wallen and Bo Warren have really been sparkling in the last few games. Besides turning in fine floor games they have supplied a good bit of the Professors' scoring punch.

Taking into consideration the Profs lost 1,300 odd points and 900 rebounds when they lost Chester Webb and Humpy Campbell, they certainly deserve a good deal of credit for the record they have compiled. Coach Searce and the boys are eyeing another trip to Kansas City this year to the N.A.I.A. scall college tournament and are bent on improving their seasonal slate.

The home-town fans have certainly been getting their money's worth if they have attended G.T.C. home games this season. The Profs have copped ten straight at home and it looks like they might go undefeated on their home hardwood for the entire season.

The George - Anne — Page 5

Collegeboro, Georgia, Friday, February 1, 1957

PLANS FOR TOURNEY

The First District High School Association met Saturday and made plans for the district basketball tournaments.

The boys preliminaries will be held in Hinesville, Metter, Vidalia, and Emanuel County Institute.

The finals will be held in Vidalia for Class B schools and at E.C.I. for C schools.

Girls preliminaries will be held in Adrain, Ludowici, Soperton, and E.C.I.

Finals for B schools will be held at Toombs Central and C schools at E.C.I.

STUDENTS — FACULTY

You're Always Welcome At

THE FAIR STORE

Statesboro's Leading Ladies' Store

Sports Quiz

By FRANK TURNER

1. Who was the female athlete of the year in 1956 and in what sport did she excel?
2. Which of the following is not a major league baseball manager at the present time? Pinky Higgins, Bobby Bragan, Marty Marion.

3. What former National League slugger led or tied for the lead in homers in each of his first seven seasons in N.L.?

4. Bob Pettit, the N.B.A. scoring leader through last Saturday, played his college basketball with what S.E.C. team?

5. What former University of Georgia football great is now employed as an assistant coach with the Chicago Cardinals of the N.F.L.?

6. Who is recognized as the current world champion of pro tennis?

7. Name the recently retired middleweight who holds a victory over middleweight champ Gene Fulmer.

(Answers on Page 6)

Intramurals

After two weeks of fine basketball in the intramural program, the day students (Eagles) and the East Cone boys (Cardinals) are undefeated.

The standings as of Jan. 31:

	Won	Lost
Eagles	4	0
Cardinals	4	0
Wildcats	3	1
Flyers	2	2
Rams	2	2
Colts	1	2
Stallions	1	4
Clodhoppers	0	5

The Wildcats topped the Colts 74-61 behind Dave Esmonde's fine shooting with 27 points. Hall and Wommack had 14 points each. Charlie Head and Ed Brown led the losers with 24 and 21 points respectively.

The Cardinals edged the Clodhoppers 54-47 in a very close ball game with the winners taking a 7-point lead in the last two minutes of the game. Herbert Houston led the winners with 17 points and Ralph Berryhill paced the losers with 25.

The Flyers crushed the Black Stallions 62-46 behind "Skeeter" Griffin's 17 points. Briggs Tyler led the Stallions with 30.

The league-leading Eagles slipped past the Wildcats very easily 85-75. McCloud had 31 points and Pete Clements led the losers with 18.

The Rams tried to even their record by defeating the Clodhoppers 76-67 behind Franklin Pierce's 38 points. Ralph Berryhill again led the losers with 24 points.

The basketball season is almost half over and everyone is looking forward to the play-offs which will begin in about two weeks. The boys will have a double-elimination tourney and the girls will have a single elimination.

GIRLS

	Won	Lost
Red Wings	3	0
Toppers	2	0
Tigers	1	0
Rebels	1	0
Blue Jays	0	1
Rockets	0	3

The Tigers stomped the Rockets 46-13. Kay McCormick led the winners with 16 points. Elina Nevil paced the losers with 5 points.

In the other girls game the Knight twins paced the Red Wings with 20 points each to a 67-11 victory over the hapless Rockets.

INTRAMURAL HIGHLIGHTS

"Bubba" Poppell and Lewis "Doc" Green gained the golf finals, but due to bad weather the playoff was cancelled.

In girls tennis, Sandra Glisson and Louise Westbrook reached the finals and West-

Profs Meet Gibbs AAU From Jax Saturday Night In GTC Home Gym

Perkins, a Former G.T.C. Star Will Start for Visiting Team

Tough opposition is expected to be in store for the Professors tomorrow night as they play host to the Gibbs A.A.U. Vikings piloted by Coach Johnny Geilen. The Vikings represent a Jacksonville, Fla., sporting goods company.

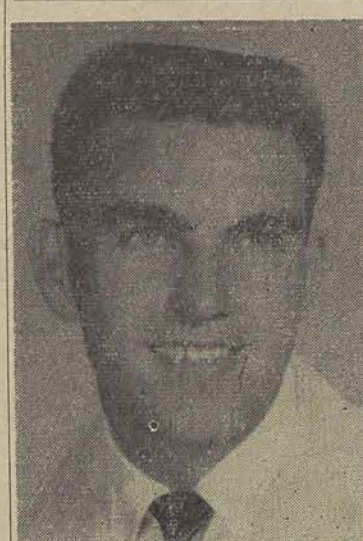
The Vikings, defending champs of the Southeastern A.A.U. territory, thus far this season have averaged 88.7 points per game while allowing their opposition only 56.7 points per encounter.

A former G.T.C. great, Scotty Perkins, sporting a 9.3 scoring average this season, will have somewhat of a homecoming as the 6' 3" forward will be one of the Viking starters in tomorrow night's game.

Perkins, during his two years' tenure with the Professors, scored 570 points and then a record 611. This school record

has contributed to a fine freshman season are: Ty Rdams, Travis Doss, Bill Mallard, Dan Williams, Jerry Rich, and Ken Boyette.

Harley has certainly done an outstanding job with this year's team. He has taught them the fundamental operations of the game. It is now up to the boys to make good on the varsity.



Because of his outstanding performances against Presbyterian and Rollins College, Don Wallen is again the Varsity Player of The Week. Don flipped in 27 points against Presbyterian and 24 points against Rollins.

Freshmen Play Brewton-Parker Monday Night

Jim Harley's freshman squad will close out their 1956-57 home season with a game against Brewton-Parker next Monday night.

The Blue Barons have posted the finest Junior College record in this part of the country with an 18 won and one lost chart. They are rated ninth among junior colleges throughout the nation.

Brewton-Parker defeated the freshmen in the finals of the Brewton - Parker invitational Tournament by the score of 75 to 60. Ronnie Rose, high scoring freshman, missed the game due to a severe ankle injury. Rose will be able to go the whole game, if necessary, on Monday.

Coach Wilkes of the Blue Barons has two fine stars in Gene Wells and Earl Tidwell. Wells is leading his team in scoring with a 20.5 average per game. Tidwell is a 6' 5" center and does most of the rebounding for the Barons.

Donald Bowen, Joe Waters, Bill Criscillis, and Harry Anderson will probably round out the Baby Profs' starting line-up.

Bowen has shown a tremendous improvement since the beginning of the season. Don's shooting eye is much better, and he is a tough rebounder.

Six-foot five-inch center, Waters, has also shown improvement along with Harry Anderson, the 5-11 guard. Bill Criscillis should be one of the top varsity prospects for next year. Bill is probably the best all-around ball player on the Frosh squad.

The remaining players who

brook went on to win in the last match for the second floor Lewis girls. (Toppers)

Badminton, Handball and Table Tennis play-offs will begin on February 13th on each Wednesday night throughout the month of February.

Below is the total team points at the end of the Fall Quarter.

UNIT (Boys)	Total	Rank
Wildcats	135	1
Eagles	118	2
Flyers	114	3
Black Stallions	88	4
Cardinals	78	5
Clodhoppers	53	6
Rams	0	7
Colts	0	7

UNIT (Girls)	Total	Rank
Toppers	135	1
Rebels	115	2
Tigers	80	3
Red Wings	75	4
Blue Jays	64	5
Rockets	15	6

Professors Whip Blue Hose And Lose to Rollins College

Behind superlative performances by Don Wallen, Doug Corry and Bo Warren the Profs played their finest game this year as they whipped Presbyterian College 120 to 94 last Saturday night.

Wallen hit for 27 while Corry dumped in 25 points to follow closely behind Don. Bo Warren added 23 to the attack. These three performers accounted for 75 points out of the 120 scored for the Teachers.

Forward David Thompson of the Blue Hose emerged from the game as high scorer with a total of 29 points. Thompson suffered a severe ankle sprain with eight minutes to go in the game and had to be carried from the court. Bruce Thompson was second high for the visitors as he netted 23 points.

The game marked the first time the Professors reached the century mark this season. G.T.C. led at halftime by a 52 to 48 count.

On Monday the cagers traveled to Orlando, Florida to take on Rollins College. The Profs, sparked by three quick field goals by Don Wallen, pulled out to a 10 to 2 lead.

The Searcemen kept up their drive and carried a 46 to 41 lead to the dressing room at half-time. Disaster struck the visitors in the first few minutes when Bo Warren had to leave the game due to a leg injury. Bo will probably be out for one and a half weeks.

Rollins caught the Professors and forged ahead midway in the second half. The home team received a few assists from the referees and moved ahead at 71 to 69.

Dick Bezemer, Rollins forward, was the games high scorer as he dumped in a total of 27 points. Don Wallen fire up eleven field goals and two foul shots to cap high honors for the Profs with 24 points.

Doug Corry and Jimmy Long fouled out for the Profs early in the second half. The loss of these two fine rebounders plus Warren's injury spelled out defeat for the Profs.

Warren's loss will definitely hurt the team's chances of winning in the next few ball games. Don Avery and Walker Cook will probably see plenty

stood until all-American Chester Webb shattered it with a high 792 in the 1954-55 season.

Completing the rest of the Vikings' starting line-up are: Jim O'Brien, former Canisius College and Camp Gordon jump shot artist; Jim Sugrue, the top rebounder for the visitors; Ed Doherty, former N. Y. U. basketball and the second highest scorer on the Vikings; and Mel "Houdini" Thompson, ex-North Carolina State ball handling wizard and the Vikings' scoring leader.

Our Profs will be risking their fine home winning streak of ten games when they battle the visitors tomorrow night. Coach J. B. Searce has said that captain and leading Prof scorer, Bo Warren, will not dress out for the game as he is recuperating from a leg injury he received in the first part of the game against Rollins College in Orlando, Florida last Monday night.

Searce plans to go along with Walker Cook, a 6' 2" sophomore, at Warren's guard position. The other probable starters for G.T.C. will be Doug Corry and Chester Curry at the forwards, Ronnie Rush at center, and Don Wallen at the other guard.

Avery turned in a fine performance against Rollins as he scored six points and grabbed his share of rebounds. Don almost tied the game when he intercepted an enemy pass and dribbled the length of the court only to slip on the glossy floor. It was a tough break for Avery and the Profs as it could have been the shot in the arm that was needed for victory.

Listed below are box scores of the two ball games:

G.T.C.	FG	FT	PF	TP
Corry, F	9	6	5	24
Curry, F	3	0	5	6
Cook, F	5	0	5	10
Denny, F	1	0	1	2
Rush, C	3	4	1	10
Long, C	2	8	1	12
Avery, C	0	2	0	2
Wallen, G	10	7	4	27
Warren, G	8	7	1	23
Walls, G	0	2	0	2
Massey, G	0	2	2	2
	41	38	26	120

PRESBYTERIAN	FG	FT	PF	TP
D. Thompson, F	9	11	3	29
Adams, F	1	2	3	4
B. Thompson, C	6	11	5	23
Caswell, G	7	4	2	18
Sullivan, G	3	2	5	8
Nichol	0	1	3	1
Aiken, C	1	0	2	2
Chambers, G	3	1	5	7
Wells, G	1	0	0	2
	31	32	28	94

G.T.C.	FG	FT	PF	TP
Corry, F	4	0	5	8
Curry, F	6	3	3	15
Cook, F	2	2	2	6
Rush, C	6	2	3	14
Long, C	1	0	5	2
Avery, C	1	4	2	6
Wallen, G	1	2	1	24
Warren, G	0	0	0	0
	31	13	21	75

ROLLINS	FG	FT	PF	TP
Bezemer, F	7	13	4	27
Lanier, F	1	0	1	2
Coffie, C	7	3	0	17
Gabbard, G	0	1	2	1
Fantuzzi, G	5	2	0	12
Schuder, G	7	2	2	16
Farmer, G	1	0	0	2
	28	21	9	77

HIT PARADE

By DILLARD MAXWELL

"Hit Parade" Magazine which serves as a source of information for this column, listed "Since I Met You Baby" as sung by Ivory Joe Hunter as the number one song in the South. Elsewhere "Gonna Get Along Without Ya Now" by Patience and Prudence was number one in the Mid-West. In the West for many weeks and still listed in "Billboard Magazine" as number one in the U. S., was Guy Mitchell's version of "Singing the Blues." A newcomer to the Hit Parade in the East is "Rock-A-Bye Your Baby" by Jerry Lewis.

At last the Elvis Presley days might be coming to an end. His latest two records, "Love Me Tender" and "Love Me" were listed at the bottom of the "Top Ten" in this week's survey.

Mr. "Moon Light Gambler" Frankie Laine has been selected as this week's popular music star. Through the years, Frankie Laine has developed a style that is distinctly his. Frankie has also learned that by adapting his style to different tempo and mood changes, he can sing any type of song and still retain that Frankie Laine freshness and trademark. "We'll Be Together Again" is a plaintive lover's cutie. "The Gandy Dancer's Ball" is a rousing, rollicking, happy song. Frankie captures the mood of the song he sings, and like any good actor, he lives the song while he is recording it. Frankie has had wonderful success with songs that are classified as out of the ordinary. He took a religious

song called "I Believe" and made it into the number one song in the country. In fact, "I Believe" became one of the top songs of the entire year and now ranks as an American standard. Frankie Laine is a star of stage, radio, television—and, of course, records. To stay on top in the wonderful world of music, you have to be talented and versatile—but then talent and versatility are Frankie Laine trademarks.

Today "Moon Light Gambler" is listed in fifth place on the top ten. Other songs of Frankie Laine that have made the hit parade in the past years are "That's My Desire," "Shine," "Lucky Old Sun," "On the Sunny Side Of The Street" and his greatest one, "I Believe."

Home Ec. Club Plans a Spring Fashion Show

The Home Economics Club members are planning a spring fashion show. "A Dream of Spring's Fashions" has been selected as the theme. It will be held February 27 in the McCroan Auditorium at 8 o'clock p. m. The fashions will be ladies' wearing apparel from Belk's, The Fair Store, Henry's and Minkovitz of Statesboro. Door prizes will be given at the show. Further plans will be publicized later.

G.T.C. TV Show Set Up for Year

G.T.C.'s T.V. program has gotten into full swing this year, with two programs already on record and four more set up to round out the schedule.

Slated for production once each month, the programs for the rest of the school year will be as follows:

February 12—Special scenes from Masquers' play, "Macbeth."

March 15—Alumni program featuring alumni members.

April 12—Public forum.

May 10—Teacher training program.

All programs are shown over WTOC-TV in Savannah, at 3:30 p. m. on Friday afternoons.

DRIVE-IN

SUNDAY & MONDAY
February 3-4

The Proud And Profane

With William Holden and Deborah Kerr

TUESDAY, FEBRUARY 5 They All Kissed The Bride

With John Crawford and Melvyn Douglas

WEDNESDAY & THURSDAY February 6-7

Ransom

With Glen Ford and Donna Reed

FRIDAY & SATURDAY February 8-9

Gunslinger

With John Ireland and Beverly Garland

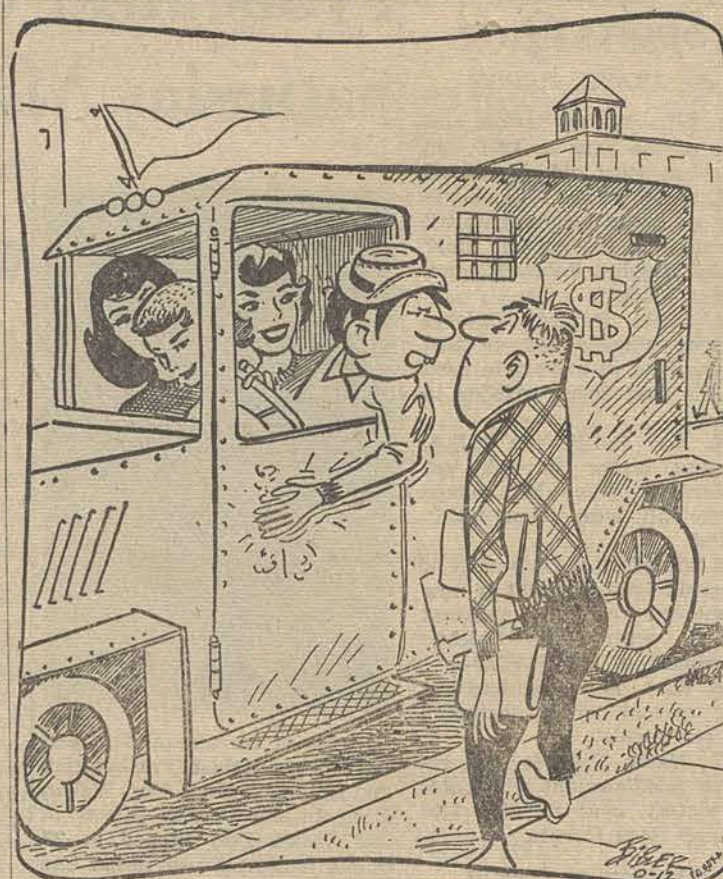
—Plus—

Glory

With Margaret O'Brien

LITTLE MAN ON CAMPUS

by Dick Bibb



"YES, I FIND IT'S A LOT EASIER TO GET DATES NOW THAT I HAVE A CAR"

Carlyle Cartilage is Problem And A Real Pain In The Knee

By JOYCE KIRKLAND and CHIP CULPEPPER

When Carlyle first gets up in the mornings, he's rather uncooperative—particularly on these cold mornings lately. Nothing will do but that he remain in one spot; that is, until he becomes sufficiently thawed out to stand his morning swim. But after about an hour or so, he becomes his usual merry self again—just floating on top of the world.

Who's Carlyle? Everybody, just everybody, knows who Carlyle is. That is, if they're anybody. Carlyle is a floating cartilage who makes his home in the left knee joint of a certain freshman's leg. He has been there for two weeks now causing his poor landlord to think, at least twice a day, "Boy, he sure is a pain in the knee!" Carlyle has always been just a part of the structure of said knee until one afternoon in just the twisting of a knee, he was separated from his home and thrown out into the world to lead a life of his own.

The poor host had to stop playing basketball (which he had been quite proficient at); he had to stop dancing (at Carlyle jumped with glee); and even his walking had to screech to a halting (almost) stop.

But Carlyle was having an immensely enjoyable time exploring the new territory opened up to him.

At this stage in the game, a trip to the local doctor proved that it would probably be necessary to remove Carlyle from his new home or he may cause a sudden halt in articulation for the young lad.

Asked what he's doing now and how things are going with Carlyle the Cartilage, he says—but don't you believe it—"Oh, he acted up in history today."

STATE

Closed Monday Thru Thursday

FRIDAY & SATURDAY
February 8-9

Here Come The Co-eds

With Bud Abbot and Lou Costello

—Plus—

King of The Cowboys

With Roy Rogers and Smiley Burnette

The George-Anne — Page 6

Collegeboro, Georgia, Friday, February 1, 1957

Campus Column

By JOYCE JACKSON

Campus is Host To Music Clinic

February 2, Georgia Teachers College will be host to the music clinic for high school students of the First District.

There will be a picked 75-piece band from all the high schools of this district and also, a picked 100-voice choir. The band will meet in G.T.C.'s rehearsal room. The chorus will be on stage in McCroan Auditorium.

The clinic will consist of all vocal and instrumental teachers. Each group will be under a clinician from some place outside of the First District.

Geechie Gabber

By WILLENE FISHER

Friendliness, what is that? You can imagine some of the answers you would get if you asked this question to some of the students on campus. Some have never even heard the word.

Webster's New Collegiate Dictionary gives the meaning as: kindly disposed, amicable, not hostile. In our every day meaning of the word, we say that a person that has a pleasing disposition and speaks with a gleeful "hi" or "hello" is a friendly person.

The campus of G.T.C. is named the "friendly" campus or at least that is what I was told when I arrived here. It proved true in most cases and I felt that I had never been in such a happy atmosphere.

However, there are some people who just can't seem to be outward and speak to everyone they see whether they know them or not. These are the ones that we see walking around campus by themselves or eating alone and just looking unhappy and unsatisfied. There are the ones that need our friendship.

On campus there are a lot of talkers (of which I am one). If the ones that are not timid would just put out effort, this wonderful campus of G.T.C. could really live up to its name.

Why doesn't everyone of us reading this bit of writing try just a little harder to notice and speak to each and every person we meet during the day. You would be surprised at how much better it would make you feel as well as the students to whom you spoke. Also, this piece of advice works well on teachers and visitors on campus.

I'll be looking for you, a smile, and a big "hi!"

Pres. Conducts Training School

President, Dr. Zach S. Henderson conducted a training school at the First Methodist Church at Fort Valley Monday through Thursday, January 28-31. This was a study course for members of that church and Dr. Henderson was teaching on the subject "Your Home Can be Christian."

Also during this week Dr. Henderson participated in the college day programs at Warner Robbins, Hawkinsville, Fitzgerald and Cordele high schools. This is his second participation in these programs which have been worked out by the Georgia Education Association. The week of January 21 he went to Columbus, Dawson and Americus.

Hi Fellow Students:

With only a week before Home-coming left everyone is really getting in a hustle to get the floats, displays, and Beauty Review set near completion. Friday, all the rooms in the dorms will be cleaned spic and span awaiting the arrival of the visitors who once lived here themselves.

That tumbling class has really influenced the hair cuts on campus. Wonder if the girls can do the duck walk better with the duck tail haircuts?

If you read Larry Hyde's column last week you learned that Shirley Roundtree's dramatics class won first place in the district one-act play competition. This qualified them to enter the state finals where they also won first place.

This being religious emphasis week, the students enjoyed the inspirational talk of Dr. Monroe Swilley of Atlanta.

The ball game Saturday night was really great! It sure looked good when the score went over 100. But we are sorry that the captain of the Presbyterian team was hurt during the game.

We miss Beverly Perkins leading us in the cheers at the games, but Charlotte Owens is doing a fine job taking her place.

I notice that Diana Bair is now wearing the class ring of her "fine-feathered friend," Bob Byrd.

Bob Cordell, class of '56 was visiting on campus Monday and Tuesday. Bob is doing graduate work at the University of Virginia now.

That's the news for this week. I'll be seeing you.

Carroll Attends Various Meets At High Schools

Dean Paul F. Carroll on Wednesday and Thursday, January 30 and 31 attended college day programs at Moultrie, Cairo, and Albany high schools. This is a part of the program set up by the G.E.A. to introduce high school seniors to colleges throughout the state.

The college representative holds three 30-minute sessions in which he discusses the college. The students have time for questions and in this way have an opportunity to find out what they want to know about that particular college.

The high schools selected are visited on the day of the program by surrounding schools so that many more students are reached than if each representative visited each school separately.

MPS Evaluation Program Begins

Marvin Pittchn School is in the process of going through an evaluation of itself.

Faculty meetings have been held and student committees have been appointed in order that various phases of the school activities can be studied.

This program is sponsored by the Southern Association Evaluation Committee, and only schools which have a sufficient program, facilities and faculty members are eligible to be a member.

The purpose of the evaluation is for the school to re-look at itself and see the need for improvement.

Principal J. A. Pafford said "It's like putting silver on a mirror, you look back at yourself."

M.P.S. hopes to have a committee down from the association in the early spring to judge their evaluation.

ANSWERS TO SPORTS QUIZ

1. Mrs. Pat McCormick in diving.
2. Marty Marion.
3. Louisiana State University.
5. Charlie Trippi.
6. Pancho Gonzales.
7. Eduardo Lousse of Argentina.

GEORGIA

SUNDAY & MONDAY
February 3-4

FRAMED!

"BEYOND A REASONABLE DOUBT"
STARRING
NANA ANDREWS JOAN FONTAINE

TUESDAY & WEDNESDAY
February 5-6

ANN SHERIDAN COCHRAN
Come Next Spring
A REPUBLIC PRODUCTION

THURSDAY & FRIDAY
February 7-8

WARNER BROS. PRESENT
TAB HUNTER
and NATALIE WOOD
The Burning Hill
CINEMASCOPE WARNERCOLOR
SCREEN PLAY BY PRODUCED BY DIRECTED BY
IRVING WALLACE RICHARD WHORF STUART HEISLER

SATURDAY, FEBRUARY 9

CARY GRANT
ANN SHERIDAN
I Was a Male War Bride
—Plus—

BURT LANCASTER
TEN TAIL MEN
with JODY LAWRENCE

GILBERT ROLAND KIERON MOORE GEORGE TOBIAS Screen Play by
Robert Kibbee and Frank Davis Produced by Harold Hecht "A Warner
Production Directed by Willis Goldbeck A Columbia Reprint