

Georgia Southern University

Georgia Southern Commons

Interdisciplinary STEM Teaching & Learning
Conference (2012-2019)

2014 Interdisciplinary STEM Conference (March
7, 2014)

Mar 7th, 10:30 AM - 11:15 AM

Developing Collaborative Partnerships: STEM on a Mission

Kania Greer

Georgia Southern University, kagreer@georgiasouthern.edu

Robert L. Mayes

Georgia Southern University, rmayes@georgiasouthern.edu

Debbie Walker

Georgia Southern University, dwalker@georgiasouthern.edu

Follow this and additional works at: <https://digitalcommons.georgiasouthern.edu/stem>



Part of the [Science and Mathematics Education Commons](#)

Recommended Citation

Greer, Kania; Mayes, Robert L.; and Walker, Debbie, "Developing Collaborative Partnerships: STEM on a Mission" (2014). *Interdisciplinary STEM Teaching & Learning Conference (2012-2019)*. 67.
<https://digitalcommons.georgiasouthern.edu/stem/2014/2014/67>

This event is brought to you for free and open access by the Conferences & Events at Georgia Southern Commons. It has been accepted for inclusion in Interdisciplinary STEM Teaching & Learning Conference (2012-2019) by an authorized administrator of Georgia Southern Commons. For more information, please contact digitalcommons@georgiasouthern.edu.

INSTITUTE *for* INTERDISCIPLINARY **STEM** EDUCATION



i²STEM^e

SCIENCE
TECHNOLOGY
ENGINEERING
MATH

GEORGIA SOUTHERN
UNIVERSITY

Funded Grants

- Race to the Top-Real STEM: Mayes
- Teacher Quality-Savannah River Basin: Mayes
- Innovative Engagement In Engineering: Hilpert
- Major Research Instrumentation-
Nanotechnology Spinning and Professional
Development – Khan
- Georgia Department of Education-Complex
Adaptive Systems: Mayes

Submitted Grants in Review

- 1) REAL – PI Mayes
- 2) DR K-12 – PI Mayes
- 3) 5 Teacher Quality Grants – PI's Sturges, Mayes, Hodges,
- 4) REU – PI Aikens
- 5) ITEST – PI Rios-Gutierrez
- 6) National Institute of Health – R21 – PI Samawi
- 7) IUSE - PI Khan
- 8) 5 STAR Restoration Program - PI Colon-Gaud
- 9) 21st Century Learning – PI Boys and Girls Club
- 10) EHR – PI Sturges

Grant Proposals in Process

- STEM CP-MSP
 - Leckie, Schreiber, Arrington, Rivera, Mayes
- CyberSEES
 - Haddad, Samawi, Rogers, Leege, Mayes
- Noyce
 - LoBue (Chemistry)
- Honda Foundation
 - Camden County School System

2013 - I²STEM^e Outreach

- STEM Fest: over 2000 participants
- STEM Café
 - Dr. John Van Stan – Urban Forest Design: An Example of STEM Education in Action
 - Dr. Danny Gleason – Are Coral Reefs on Their Last Breath and Why Should I Care?
- Real STEM Day
 - Students from Bulloch, Camden, Burke, and Ware
- GUS in Space
 - Contributor and assistance

Future Outreach Activities

- **ARTSFEST 2014 – APRIL 5, 2014**
- STEM Café – April 24, 2014
 - Dr. Paul Pressley – Ossabaw Island the Pin Point People: The Tabby Connection
- **STEM Summit – May 28-30 Savannah**
- STEMFest 2014 – September TBD
- Science Olympiad – February or March 2015

I²STEM^e Teaching

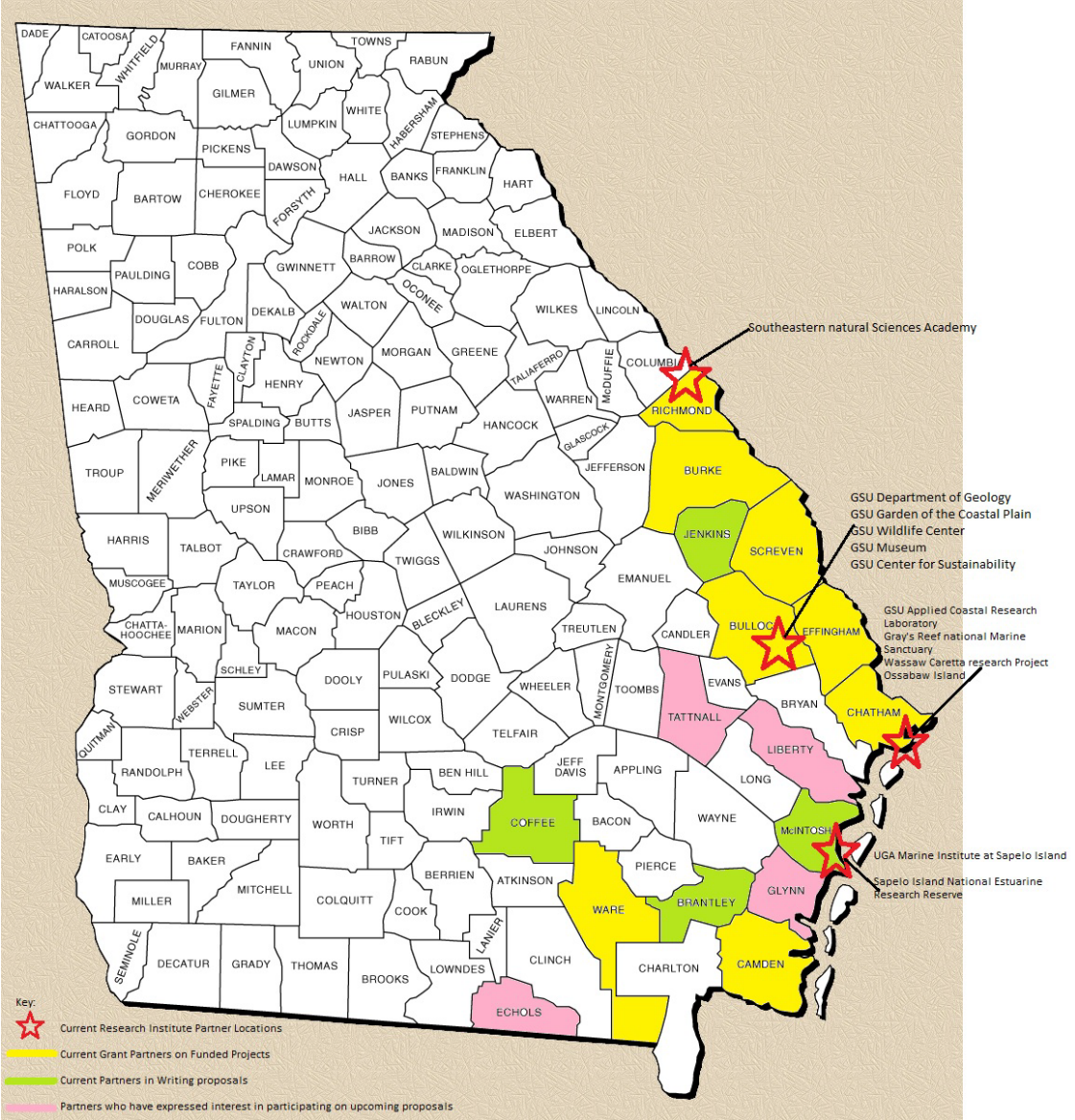
Interdisciplinary FYE Course Fall 2014

Solutions To Epidemic Meltdown: ZombieSTEM

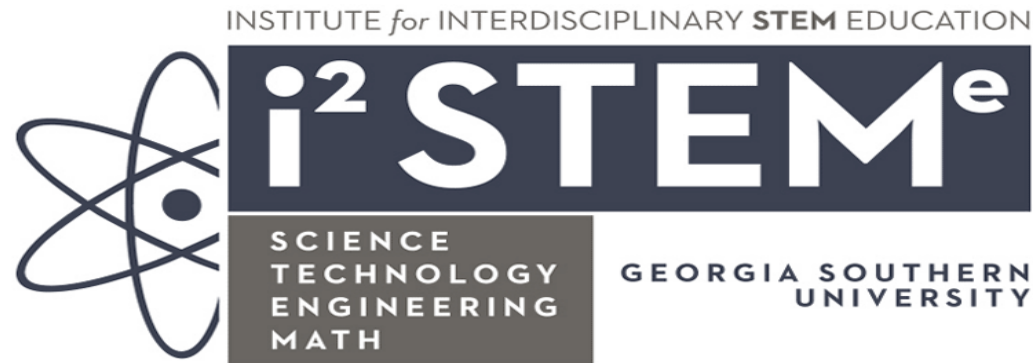
Using the recent focus on a Zombie Apocalypse as a framework, we will investigate real world epidemic threats such as influenza. Student's will take an interdisciplinary approach to creating solutions to the meltdown of society from communications and logistics to simple survival and dissemination of information when an infrastructure is drastically reduced (airline flights shut down; reduction of resources). They will investigate historical epidemics such as the plague and consider epidemic prediction, information, dissemination, pathogen identification, containment, cure, and humanitarian response.

Lead By: Dr. Diana Sturges (Anatomy) with Dr. Jim LoBue (Chemistry), Dr. Joanna Schreiber (Writing and Linguistics), Dr. Robert Mayes (Education), Dr. Fernando Rios-Gutierrez (Engineering), and Dr. Hani Samawi (Public Health)

Current Activities



For more information:



Dr. Robert Mayes, Director: rmayes@georgiasouthern.edu

Dr. Kania Greer, Grants Coordinator: kagreer@georgiasouthern.edu