

Georgia Southern University

## Georgia Southern Commons

---

Art Department Newsletter (2008-2022)

Betty Foy Sanders Department of Art News  
Publications

---

2-19-2013

## Betty Foy Sanders Department of Art Newsletter

Georgia Southern University

Follow this and additional works at: <https://digitalcommons.georgiasouthern.edu/art-news>

---

### Recommended Citation

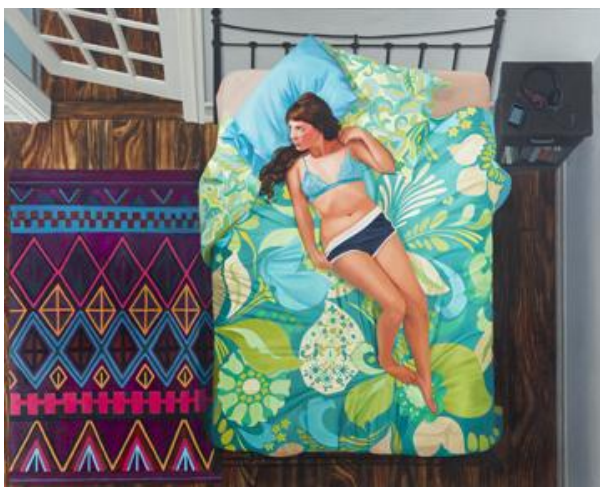
Georgia Southern University, "Betty Foy Sanders Department of Art Newsletter" (2013). *Art Department Newsletter (2008-2022)*. 67.

<https://digitalcommons.georgiasouthern.edu/art-news/67>

This newsletter is brought to you for free and open access by the Betty Foy Sanders Department of Art News Publications at Georgia Southern Commons. It has been accepted for inclusion in Art Department Newsletter (2008-2022) by an authorized administrator of Georgia Southern Commons. For more information, please contact [digitalcommons@georgiasouthern.edu](mailto:digitalcommons@georgiasouthern.edu).



# KAREN ANN MYERS: INTIMATE PATTERNS



Thursday, February 21, 2013

**Artist Talk, 5 p.m.**  
Room 2016, Visual Arts Building

**Artist Reception, 6 p.m.**  
Center for Art & Theatre

*Karen Ann Myers: Intimate Patterns* examines the psychological complexity of women through intimate observations of the bedroom. The paintings, screen prints, and collages are inspired by the cult of beauty popularized in contemporary mass media.

*Intimate Patterns* contains imagery of a mature nature, and parents are encouraged to contact the Betty Foy Sanders Department of Art at (912) 478-2787 before bringing children to this exhibition.

Learn more about [Intimate Patterns](#) →



 Find more images on [BFSDoArt's Flickr Photostream](#).  
© All images by respective artists.

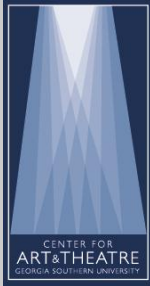
[ Image Credit: Karen Ann Myers, "Pink Diamonds", 2011 ]

[ Follow Us ]



PRESS CONTACT

Marc Mitchell, Gallery Director  
[marcmitchell@georgiasouthern.edu](mailto:marcmitchell@georgiasouthern.edu)



Center for Art & Theatre

Betty Foy Sanders Department of Art, Georgia Southern University  
233 Pittman Drive // PO Box 8032  
Statesboro, Georgia 30460

[ [map](#) ]

912.GSU.ARTS | [art@georgiasouthern.edu](mailto:art@georgiasouthern.edu)

**Hours:** Monday - Friday: 9 a.m. - 5 p.m. & by appointment

Gallery Programming is supported by Student Activity Fees. **All events are free and open to the public.** In compliance with the Americans with Disabilities Act, Georgia Southern University will honor reasonable requests for accommodations. Docent tours are welcome and available upon request by calling (912)GSU-ARTS. For more information on this exhibition and other gallery programming provided by the Betty Foy Sanders Department of Art, visit <http://class.georgiasouthern.edu/art>.

You are receiving this email because you are either currently enrolled with the Betty Foy Sanders Department of Art or signed up to be a part of our mailing list at one of our events.

Copyright (C) 2013 Betty Foy Sanders Department of Art, Georgia Southern University All rights reserved.

---

Feel free to [UPDATE YOUR PROFILE](#) or [FORWARD THIS TO A FRIEND](#) and if it's *absolutely necessary* - [UNSUBSCRIBE](#), but we'll be sad to see you go!