

Georgia Southern University

Digital Commons@Georgia Southern

---

The George-Anne Newsletters

Student Media

---

3-30-2018

## The George-Anne Daily

Student Media, Georgia Southern University

Follow this and additional works at: <https://digitalcommons.georgiasouthern.edu/george-anne-newsletter>

---

### Recommended Citation

Student Media, Georgia Southern University, "The George-Anne Daily" (2018). *The George-Anne Newsletters*. 45.

<https://digitalcommons.georgiasouthern.edu/george-anne-newsletter/45>

This newsletter is brought to you for free and open access by the Student Media at Digital Commons@Georgia Southern. It has been accepted for inclusion in The George-Anne Newsletters by an authorized administrator of Digital Commons@Georgia Southern. For more information, please contact [digitalcommons@georgiasouthern.edu](mailto:digitalcommons@georgiasouthern.edu).

# THE GEORGE-ANNE DAILY

**\$7** *From Erk Russell to the GoDaddy Bowl!*  
**THE JOURNEY**  
SPECIAL EDITION MAGAZINE [CLICK TO ORDER](#)



## Top Stories From March 30, 2018

---



### **RAC closes conditioning room for the remainder of the semester**

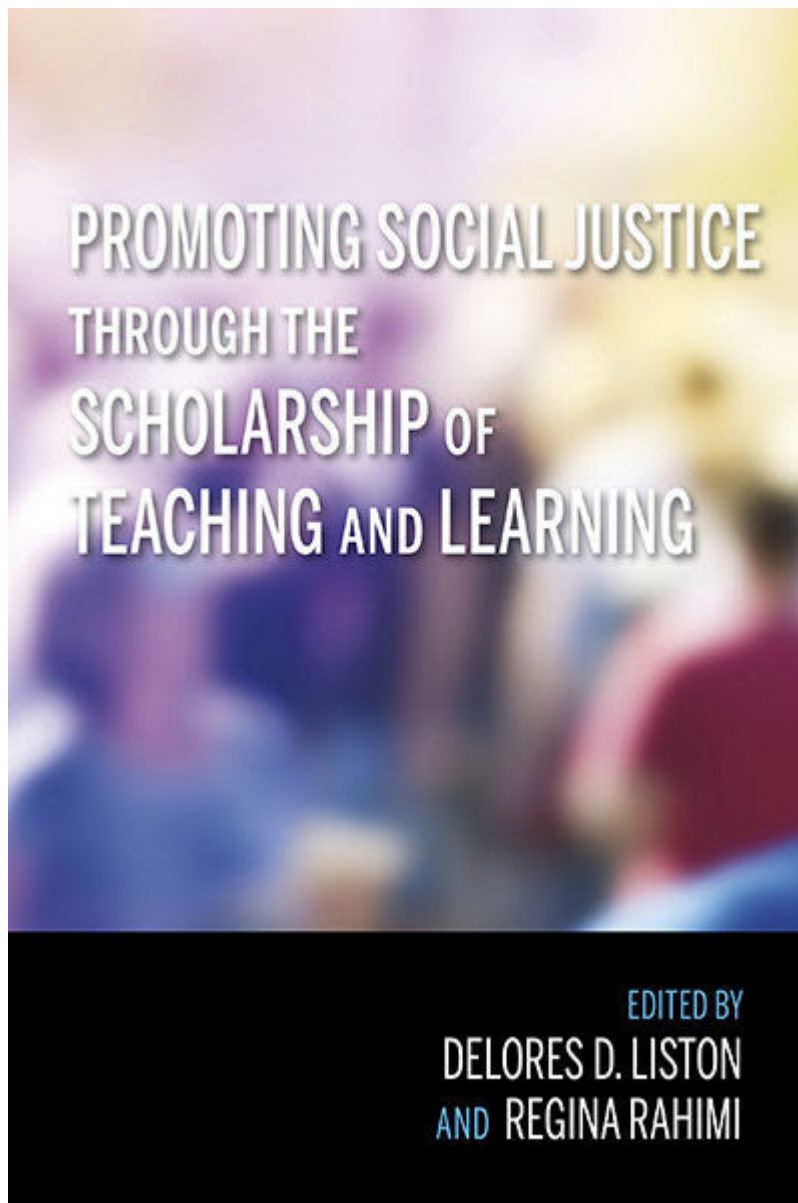
The conditioning room located at the RAC will be closed for drop-in workouts for the rest of the semester. The conditioning room is being closed to drop-in

workouts because the main fitness center is expected to be able to accommodate all students. [Full Story](#).



## **A look at Georgia Southern's 'Welfare Checks'**

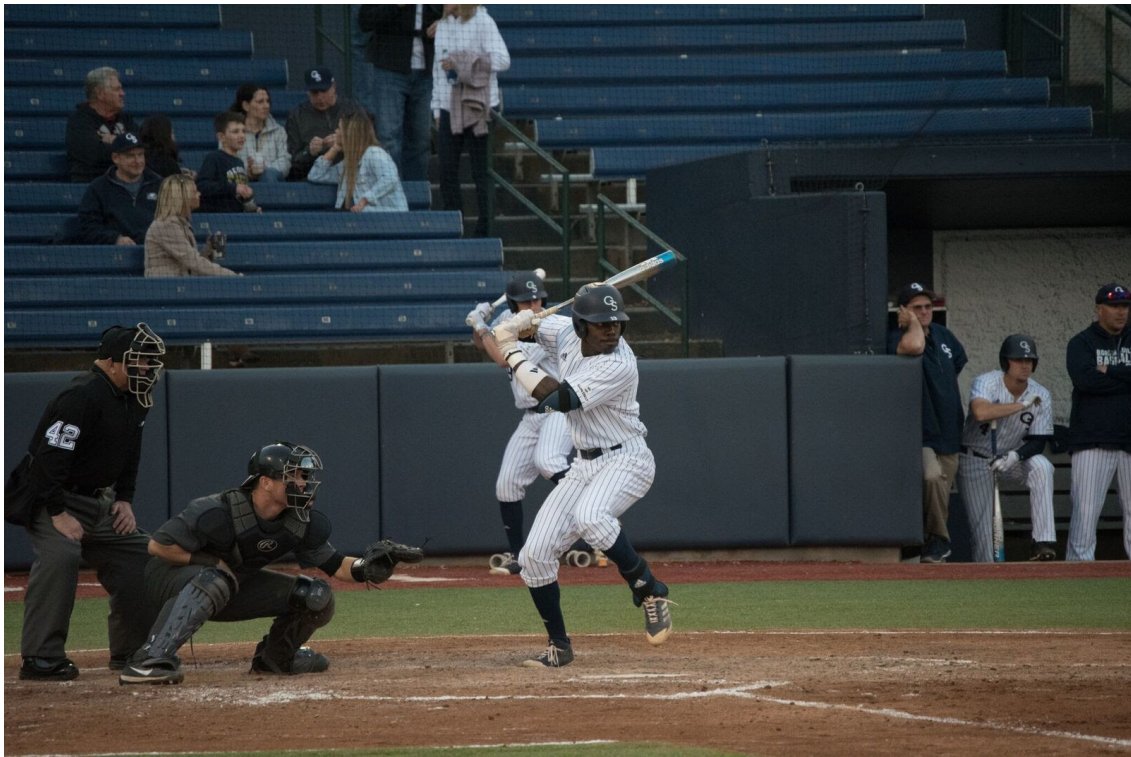
Georgia Southern University provides a way for concerned students to check up on their fellow students through a "welfare check." A welfare check is a request that a person can make if they have concerns for another person's well-being or mental health. These concerns must be a legitimate reason for concern such as talk of suicide or have not heard from them for a while. [Full Story](#).



## **GS professors contribute to higher education compilation**

Two Georgia Southern University College of Education professors edited and contributed to a book included in an education compilation called “The Chronicle of Higher Education.” [Full Story](#).





## Eagles unable to keep the lead, fall to Coastal Carolina in game one of series

The Eagles stayed competitive with their conference foes early, taking a two run lead off of a Matt Anderson single with the bases loaded in the bottom half of the first inning. [Full Story](#)



## Eagles travel to San Marcos with a chance to knock off top of the Sun Belt

Coming off of their third Sun Belt series win, the Georgia Southern softball team looks to add another series win to their record as they take on intense opponent Texas State. [Full Story](#)



## Eagles drop first of six match homestand

In their first match of a six match homestand, the Georgia Southern men's tennis team fell 4-1 to the Troy Trojans on Tuesday afternoon. The lone win on the day for the Eagles came from doubles pair Eddie Landin and Diego Finkelstein. The duo was able to outlast their Trojan opponents, defeating them 6-2. [Full Story](#)

---

# THE GEORGE-ANNE REPORT

The George-Anne Report is our weekly podcast about all things regarding Georgia Southern. Take a listen to [our fourth episode here!](#)



Available on [Apple Store](#).



GEORGIA SOUTHERN UNIVERSITY  
**STUDENT MEDIA**  
STUDENT LED • STUDENT READ

# PHOTO BOOTH

Let us take your event to the next level. Contact **smmarketing@georgiasouthern.edu** for more information

---

*Copyright © 2018 The George-Anne Daily | Georgia Southern Student Media, All rights reserved.*  
You are receiving this email because you have opted in during an event or through a form on our website.

**Our mailing address is:**

The George-Anne Daily | Georgia Southern Student Media  
1332 Southern Drive  
PO Box 8001  
Statesboro, GA 30458

Add us to your address book

Want to change how you receive these emails?  
You can update your preferences or unsubscribe from this list.

The MailChimp logo, featuring the word "MailChimp" in a white, cursive script font, centered within a dark gray rounded rectangular background.