

Georgia Southern University

Digital Commons@Georgia Southern

The George-Anne Inkwell Edition Newsletter

Student Media

4-1-2022

The George-Anne Inkwell Edition

Georgia Southern University

Follow this and additional works at: <https://digitalcommons.georgiasouthern.edu/ga-inkwell-newsletter>

Recommended Citation

Georgia Southern University, "The George-Anne Inkwell Edition" (2022). *The George-Anne Inkwell Edition Newsletter*. 38.

<https://digitalcommons.georgiasouthern.edu/ga-inkwell-newsletter/38>

This newsletter is brought to you for free and open access by the Student Media at Digital Commons@Georgia Southern. It has been accepted for inclusion in The George-Anne Inkwell Edition Newsletter by an authorized administrator of Digital Commons@Georgia Southern. For more information, please contact digitalcommons@georgiasouthern.edu.



The Kinkwell: Must-Read News From April 1, 2022

Welcome to perhaps the most important newsletter you will ever receive. The future of the Armstrong Campus depends on you reading this newsletter and sharing it with everyone you know, even if they have nothing to do with Georgia Southern. You have been warned.*

*Editor's Note: This newsletter is satirical. Or is it?

THE LATEST NEWS FROM THE KINKWELL

Gossip Gus: The Carrie Cult

The folks in the Armstrong Theatre department have been working hard, and mysteriously. Find out their darkest secrets from The Kinkwell's investigative journalist, Gossip Gus.



[Read Here](#)



Inkwell Confidential

The George-Anne Inkwell is a reputable organization full of straight-laced and well-doing staff... or is it?

[Read Here](#)

Armstrong Creates New, Oddly Specific Mandatory Classes

Classes included "Nickelback Photograph" and "Blocking out the Haters." The reason for these new classes is still unknown and Georgia Southern officials refuse to comment.

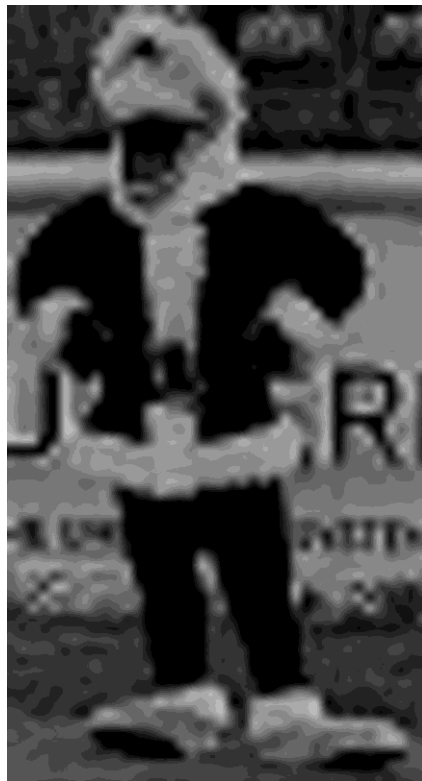
[Read Here](#)



The Armstrong Campus CATastrophe

Aggressively organized cats have been spotted prowling around the Armstrong Campus. Who are they? What do they want? What are they planning? Nobody knows. Everyone is afraid.

[Read Here](#)



The Bean Bandit: Armstrong's Newest Menace

The Kinkwell has a new lead on who has been leaving cans of beans around campus. The answer may or may not surprise you.

[Read Here](#)



The George-Anne | Box 8001 , Statesboro, GA 30460