

Georgia Southern University

Georgia Southern Commons

Armstrong Women's Basketball Team Archives

Armstrong Women's Basketball Archives

2013

2013 AASU Women's Basketball Guide

Armstrong State University

Follow this and additional works at: <https://digitalcommons.georgiasouthern.edu/armstrong-basket-wmn-team>

Recommended Citation

Armstrong State University, "2013 AASU Women's Basketball Guide" (2013). *Armstrong Women's Basketball Team Archives*. 38.

<https://digitalcommons.georgiasouthern.edu/armstrong-basket-wmn-team/38>

This media guide is brought to you for free and open access by the Armstrong Women's Basketball Archives at Georgia Southern Commons. It has been accepted for inclusion in Armstrong Women's Basketball Team Archives by an authorized administrator of Georgia Southern Commons. For more information, please contact digitalcommons@georgiasouthern.edu.

ARMSTRONG ATLANTIC STATE UNIVERSITY

SENIOR DEMISHA MILLS

SENIOR KAROLINA RYKOWSKA

SENIOR MARISSA RIMBERT

SENIOR ANGELIA HILL

SENIOR BRIANA MCFARLAND

2012-13 PIRATE BASKETBALL





2012-13 ARMSTRONG PIRATES ROSTER



2012-13 Armstrong Women's Basketball Squad. Standing (l-r): Candace Carreras, Karolina Rykowska, Marissa Rimbart, Hanna Bognar, Mauri Wells, Demisha Mills, Capt. George Armstrong. Sitting (l-r): Briana McFarland, Bryonna Davis, Tyler Carlson, Stephenie Coney, Angelia Hill, Tori Klewicki-McNutt, Dee Hayward.

2012-13 ARMSTRONG ATLANTIC STATE UNIVERSITY PIRATE WOMEN'S BASKETBALL ROSTER

No.	NAME	Ht.	Cl.	Pos.	HOMETOWN / PREVIOUS SCHOOL
0	Demisha Mills	5-9	Sr.	G/F	Gray Court, S.C. / Santa Fe CC
2	Morgan Mitchell	5-9	Jr.	F	Lilburn, Ga. / Parkview HS
10	Dee Hayward	5-7	Soph.	G	Glasgow, Scotland / Leeds Met University
12	Stephenie Coney	5-2	Jr.	G	Miami, Fla. / Santa Fe CC
14	Angelia Hill	5-6	Sr.	G	Macon, Ga. / Florida State College at Jacksonville
15	Karolina Rykowska	5-11	Sr.	G	Ostroleka, Poland / Iowa Western CC
21	Tyler Carlson	5-6	Jr.	G	Richmond Hill, Ga. / Mars Hill
22	Bryonna Davis	5-8	Jr.	G	Gary, Ind. / Michigan State
23	Mauri Wells	6-0	Jr.	F/C	Rome, Ga. / Rome HS
24	Tori Klewicki-McNutt	5-8	Jr.	G	DeWitt, Mich. / Grand Valley State
30	Briana McFarland	5-6	Sr.	G	Dallas, Ga. / East Paulding HS
31	Candace Carreras	5-10	Sr.	G/F	Boca Raton, Fla. / Florida Gulf Coast
32	Hanna Bognar	6-2	Jr.	C	Tata, Hungary / Seward CC
51	Marissa Rimbart	6-0	Sr.	F/C	Suwanee, Ga. / Collins Hill HS

HEAD COACH: Matt Schmidt

ASSISTANT COACHES: Fallon Rehmert, Chris Gillett

STUDENT ASSISTANT COACH: Jazmin Walker

TABLE OF CONTENTS



CONTENTS

2012-13 Roster/Team Photo	IFC
2012-13 Outlook	2-3
Head Coach Matt Schmidt	4
Assistant Coaches Fallon Rehmert and Chris Gillett.....	5
2012-13 Player Profiles	6-15
Armstrong Atlantic State University	16
Armstrong Administration	17
Athletic Department Staff	18
Alumni Arena	19
Armstrong Athletic Training	20
2012-13 Opponents	21-23
Armstrong Basketball Media Services.....	24
2011-12 Season Review	25
2011-12 Results/Statistics	26
2011-12 Armstrong Player/Team Highs.....	27
The Peach Belt Conference	28-35
Armstrong Records	36-39
Honors	40
All-Time Records	41
All-Time Results	41-46
This Is Savannah	48
2012-13 Schedule.....	BC

QUICK FACTS

Location	Savannah, Ga. 31419
Founded.....	1935
Enrollment.....	7,650
Nickname	Pirates
Colors	Maroon and Gold
Athletics Webpage	www.armstrongpirates.com
Affiliation	NCAA Division II
Conference	Peach Belt
Home Gym	Alumni Arena
Capacity	4,000
President.....	Dr. Linda M. Bleicken
Athletic Director	Lisa Sweany
Women's Basketball Head Coach	Matt Schmidt
Record at Armstrong (Years)	47-59 (4)
Overall Coaching Record (Years)	47-59 (4)
2011-12 Overall Record	13-13
2011-12 PBC Record/Finish	7-11 / t4th East
Assistant Coaches	Fallon Rehmert, Chris Gillett

CREDITS

The 2012-13 Armstrong Atlantic State University media guide was published by the Armstrong Office of Sports Communications, Chad Jackson, director. Armstrong head coach Matt Schmidt also contributed to this publication. For more information regarding the Armstrong women's basketball program, please contact:

Chad Jackson Director of Sports Communications Phone: 912-344-3114 Fax: 912-344-3422 E-Mail: Chad.Jackson@armstrong.edu	Matt Schmidt Head Women's Basketball Coach Phone: 912-344-3110 Fax: 912-344-3422 E-Mail: Matt.Schmidt@armstrong.edu
---	---



ARMSTRONG ATHLETIC DEPARTMENT PHONE DIRECTORY

Main Numbers

Athletic Department	912-344-2813
Athletics FAX	912-344-3422

Administration

Lisa Sweany Athletic Director	912-344-2730
Jennifer Rushton, Assoc. AD/Compliance	912-344-3368
Chad Jackson, Sports Communications	912-344-3114
Michael Smoose, Assistant AD / Marketing	912-344-3236
Adam Tom, Assistant AD / Facilities	912-713-7397
Dr. Donald Anderson, Student Services	912-344-2726
Ken Tessier, Head Athletic Trainer	912-344-2866
Caroline Trier, Asst. Athletic Trainer	912-344-2866
Kirsten Boessnick, Graduate Assistant	912-344-2813

Coaching Staff

Joe Roberts, Baseball	912-344-2694
Calvain Culberson, Asst. Baseball	912-344-3147
Jeremy Luther, Men's Basketball	912-344-2992
Evans Davis, Asst. Men's Basketball	912-344-2690
Coleman Young, Asst. Men's Basketball	912-344-2598
Matt Schmidt, Women's Basketball	912-344-3110
Fallon Rehmert, Asst. Wm. Basketball	912-344-2674
Chris Gillett, Asst. Wm. Basketball	912-344-3117
Michael Sergi, Men's Cross Country	912-344-2371
Michael Butler, Men's & Women's Golf	912-344-2752
Simon Earnshaw, Tennis	912-344-3195
Eric Faulconer, Women's Soccer	912-344-3095
Ted Evans, Softball	912-344-2727
Will Condon, Volleyball	912-344-3239
Alli Arbogast, Asst. Volleyball	912-344-3206

Other Numbers

Press Table (Basketball)	912-344-3200
	912-344-2729
Armstrong Training Room	912-344-2866





PIRATES HOPE THE FUTURE IS NOW

As the Armstrong women's basketball team fashioned a 13-13 record in 2011-12 with a roster that did not sport a single senior, conventional wisdom says that the Pirates may be a year away from contending in the Peach Belt Conference.

But head coach Matt Schmidt's additions to the Pirate squad for 2012-13, combined with key returning players from last season's squad, have Armstrong thinking that the future might be right now for Armstrong women's basketball.

The Pirates return four starters from last season's squad that missed out on returning to the Peach Belt Conference tournament on a tie-breaker and add to that mix a talented group of six newcomers for this season's squad.

The key returnees for Armstrong in 2012-13 begin with third-team All-Peach Belt Conference selection



Mauri Wells (6-0, Jr., Rome, Ga.), who led the Peach Belt in rebounding last season at 13.0 rebounds per game while also notching 17 double-doubles, ranking in the Top 10 in NCAA Division II in both categories. Wells set the Alumni Arena record for rebounds last year and already ranks seventh all-time in Armstrong history in that category, while also scoring a team-best 12.2 points per game last season.

JUNIOR MAURI WELLS LED THE PBC IN REBOUNDING AT 13.0 RPG, RANKING FOURTH IN NCAA DIVISION II IN THAT CATEGORY. SHE ALSO RANKED AMONG THE TOP 10 IN THE NATION IN DOUBLE-DOUBLES WITH 17.

Fellow forward **Demisha Mills** (5-9, Sr., Gray Court, S.C.) was a pleasant surprise last season for the Pirates after

transferring from Santa Fe CC as she averaged 11.0 points per game while also averaging 5.7 rebounds per game.

Those two players, forced to play the 4 and the 5 throughout much of the season last year, will get plenty of support with the return of **Marissa Rimbart** (6-0, Sr., Suwanee, Ga.) after missing last season with an injury, as well as the addition of Seward CC transfer

Hanna Bognar (6-2, Jr., Tata, Hungary), who ranked among the nation's leaders in blocked shots in her two seasons in junior college. Also joining the mix in the frontcourt for the Pirates will be senior **Candace Carreras** (5-10, Sr., Boca Raton, Fla.), who plays her final season of competition for the Pirates after playing for three seasons at Florida Gulf Coast University in 2005-08.

The added depth up front also means that senior **Karolina Rykowska** (5-11, Sr., Ostroleka, Poland) will have the opportunity to move back to the small forward spot. Rykowska averaged 5.5 points per game, making 11 starts and leading the Pirates in both three-point baskets made and blocked shots during the season.

The point guard spot should be solid in 2012-13 with returning sophomore **Dee Hayward** (5-7, Soph., Glasgow, Scotland) seeing good competition with Santa Fe CC transfer **Stephenie Coney** (5-2, Jr., Miami, Fla.). Coney scored 683 points and dished out 244 assists in two seasons at Santa Fe CC, while Hayward saw action in 25 games as a true freshman last year for



SENIOR DEMISHA MILLS AVERAGED 11.0 PPG IN HER FIRST SEASON WITH THE PIRATES, REACHING DOUBLE FIGURES IN 17 GAMES AND NOTCHING THREE DOUBLE-DOUBLES





FOR ARMSTRONG BASKETBALL IN 2012-13



SENIOR KAROLINA RYKOWSKA LED THE PIRATES IN THREE-POINTERS MADE (19) AND BLOCKED SHOTS (19) IN HER FIRST SEASON WITH ARMSTRONG, AVERAGING 5.5 POINTS PER GAME

the Pirates, averaging 4.8 points and 2.1 assists per game.

Senior **Angel Hill** (5-6, Sr., Macon, Ga.) averaged 8.7 ppg last season, making 25 starts after transferring from Florida State College at Jacksonville, but will have to fend off a couple of exciting transfers as junior **Bryonna Davis** (5-8, Jr., Gary, Ind.) comes to the Pirates from Michigan State and **Tyler Carlson** (5-6, Jr., Richmond Hill, Ga.) returns

while the Pirates will also take on Eckerd College, Trinity Baptist, Palm Beach Atlantic and Saginaw Valley State in its other non-conference action.

Defending PBC regular season champion Clayton State was picked to tie for the league's title in 2012-13 with PBC Tournament champion USC Aiken in a pre-season vote of the league's coaches. Columbus State was picked to finish third, followed by Lander, UNC Pembroke, North Georgia and Georgia Southwestern. Conference newcomer Young Harris was picked to finish eighth, followed by Augusta State, Armstrong, Montevallo, Georgia College, Francis Marion and Flagler. Mauri Wells was named one of the five PBC Preseason All-Conference Team honorees in another vote of the league's coaches.

The Pirates open the 2012-13 season on Friday, November 9, hosting Eckerd College at 6:00 p.m. Armstrong plays its first nine games at home in 2012-13 and 11 of its first 12, giving Pirate fans an extended look early on at how the women's basketball team will fare this season.

home after playing two seasons at Mars Hill College. Davis played in 17 games over two seasons for the Spartans while Carlson averaged 12.0 points per game as a sophomore for the Lions last year.

Senior guard **Briana McFarland** (5-6, Sr., Dallas, Ga.) registered career highs in minutes and points per game last season and will continue to add experience off the bench, while sharpshooter **Tori Klewicki-McNutt** (5-8, Jr., DeWitt, Mich.) is another option for coach Schmidt after transferring from Grand Valley State.

The Pirates will also eagerly await the services of junior **Morgan Mitchell** (5-9, Jr., Lilburn, Ga.), who will join the squad after the conclusion of the Armstrong women's soccer season.

The schedule for coach Schmidt and the Lady Pirates begins with an exhibition contest at cross-town rival Savannah State on November 1st. Armstrong will host the 2012 Fairfield Inn & Suites Pirate Classic in November, featuring Anderson (SC) and Lynn,



First-place votes in parenthesis. As voted on by the PBC Women's Coaches; Coaches could not vote for own team.

2012-13 PEACH BELT PRESEASON WOMEN'S BASKETBALL POLL

RK	SCHOOL	VOTES
1.	USC Aiken	150 (7)
	Clayton State	150 (6)
3.	Columbus State	124
4.	Lander	115
5.	UNC Pembroke	106
6.	North Georgia	102
7.	Georgia Southwestern	75
8.	Young Harris	72
9.	Augusta State	64
10.	Armstrong	62
11.	Montevallo	57
12.	Georgia College	50
13.	Francis Marion	40
14.	Flagler	15

2012-13 PBC PRESEASON ALL-CONFERENCE TEAM

Jaymee Carnes, North Georgia
 Kayla Harris, USC Aiken
 Drameka Griggs, Clayton State
Mauri Wells, Armstrong
 Shanteona Keys, Georgia College





MATT SCHMIDT

HEAD WOMEN'S BASKETBALL COACH

Matt Schmidt begins his fifth season as the head women's basketball coach at Armstrong Atlantic State University.

In four seasons at the helm of the Lady Pirates, Schmidt has compiled a 47-59 overall record, including a 25-31 mark in the Peach Belt.

Last season, the Pirates increased their overall win total by five from the previous season, going 13-13 overall and tying for fourth in the Peach Belt Conference East Division standings, missing out on the PBC Tournament via a tiebreaker. Sophomore Mauri Wells earned third-team All-Conference honors and ranked fourth in NCAA Division II in rebounding at 13.0 rebounds per game, leading the Peach Belt.

Armstrong went 8-18 overall and 4-14 in the Peach Belt under Schmidt in 2010-11 and 9-17 overall and 6-12 in the Peach Belt in 2009-10.

Schmidt's first season with the Pirates in 2008-09 saw Armstrong go 17-11 overall and 12-8 in the Peach Belt Conference, winning six of its last eight games heading into the PBC Tournament. The team featured first-team All-PBC selection and All-Region performer Lacey Willis.



Schmidt joined Armstrong in 2008-09 from Northern Kentucky, where he served as an assistant coach from 2004-08. He was instrumental in helping the Norse achieve its second NCAA Division II National Championship in 2007-08 as Northern Kentucky went 28-8 and defeated South Dakota 63-58, in the national championship game.

During his four seasons with the Norse, he assisted head coach Nancy Winstel in all aspects of the Northern Kentucky program, including recruiting, scouting, practice and game-day coaching, and helped the Norse to a 92-32 record during that span.

A native of Johnstown, Pa., Schmidt spent three seasons as an assistant coach at the University of Findlay prior to joining the Northern Kentucky coaching staff. He also previously served as an assistant coach at both West Virginia and the University of Maryland-Baltimore County.

Schmidt played basketball at West Liberty State College in West Virginia, graduating in 1996 with a bachelor's degree in health and physical education. He earned his master's degree in physical education from West Virginia University in 2000.

Schmidt and his wife, Brittany, were married in May of 2009 and reside in Savannah.



ARMSTRONG COACHING RECORDS

COACH	YRS	RECORD	PCT.
B.J. Ford	10	121-121	.500
Larry Tapp	2	8-39	.170
Lenny Passink	5	72-55	.567
Kim Bynum	2	21-35	.389
Lynn Jarrett	4	46-63	.422
Roger Hodge	7	138-97	.587
Matt Schmidt	4	47-59	.443
Total	34	453-469	.491





FALLON REHMERT

ASSISTANT COACH



Fallon Rehmert begins her first season as an assistant coach for the Armstrong Atlantic State University women's basketball program in 2011-12.

Rehmert joins Armstrong from Limestone College, where she served as an assistant coach for the 2011-12 season. Limestone earned its first NCAA Championships berth last season, going 25-7 overall, setting a school record for wins and capturing the Conference Carolinas regular season and tournament championships.

Prior to Limestone, Rehmert served as the interim head coach for the women's basketball team at Division III Oglethorpe University midway through the 2009-10 season after spending two years as the assistant women's basketball coach for the Stormy Petrels.

A native of Gerald, Missouri, Rehmert earned her bachelor's degree in business administration from Maryville University in 2006, where she was a four-year standout for the Saints. As a student-athlete, she helped Maryville to three conference championships and three NCAA Division III tournament appearances, setting the single-season free throw percentage record (87%) while ranking sixth all-time in games played and fifth in career free-throw percentage.

Rehmert completed her master's degree in sports management studies from California University of Pennsylvania in August.

After graduating from Maryville University, Rehmert served as a graduate assistant for her alma mater for one season, then moved to Vassar College in Poughkeepsie, N.Y., serving as an assistant coach for one year before taking the assistant job at Oglethorpe University in 2007-08.

CHRIS GILLETT

GRADUATE ASSISTANT COACH



Chris Gillett begins his second year as a graduate assistant coach for the Armstrong women's basketball staff for the 2012-13 season.

Gillett joined Armstrong from Grand Valley State University in Allendale, Mich., where he graduated in 2011 with a bachelor's degree in sport leadership. Gillett served as a student assistant for the Lakers' women's basketball squad during his junior and senior seasons under head coach Janel Burgess.

A native of Pellston, Mich., and a graduate of Pellston High School, Gillett also interned with the Detroit Pistons Summer Camps & Clinics program in 2010, traveling throughout the state of Michigan to direct 4-day long basketball camps.

Gillett is currently pursuing a master's degree in adult higher education from Armstrong.





BRIANA MCFARLAND

30

SENIOR GUARD

5-9 • DALLAS, GA.



2011-12

Played in all 26 games, making 13 starts, for the Pirates as a junior ... Averaged 4.3 points and 1.2 rebounds per game ... Notched a career-high 14 points on 7-of-12 shooting from the floor against Montevallo on Jan. 19 ... Scored 12 points against Converse on Nov. 14 ... Dished out four assists against Allen on Jan. 28 ... Member of the PBC All-Academic Team and the PBC Presidential Honor Roll.

2010-11

Played in 22 games, making two starts, for the Pirates as a sophomore ... Averaged 2.5 points and 1.1 rebounds per game ... Scored a season-high six points four times during the year, against Columbia on Dec. 14, against Flagler on Jan. 3, at UNC Pembroke on Feb. 23 and at Francis Marion on Feb. 26 ... Member of the PBC Presidential Honor Roll.

2009-10

Saw action in 13 games as a freshman for the Pirates ... Averaged 2.5 points and 0.9 rebounds per game ... Scored eight points vs. nationally-ranked Lander on Feb. 8.

MCFARLAND'S GAME HIGHS

POINTS:
14 vs. Montevallo, 1/19/12

ASSISTS:
4 vs. Allen, 1/28/12

HIGH SCHOOL

Played for four years at East Paulding HS ... Named team's MVP as a senior and also named the Raiders' best offensive player ... Set three scoring records while at East Paulding HS



PERSONAL

Born Briana Lavern McFarland on July 2, 1991, in Atlanta, Ga. ... Hometown is Dallas, Ga. ... Daughter of Bryan and Karen McFarland ... Majoring in radiologic sciences ... Enjoys singing and drawing ... Lists Allen Iverson as a favorite sports personality.

BRIANA MCFARLAND'S CAREER STATISTICS

Year	GP-GS	MIN	FG-FGA	PCT	3PM-3PA	PCT	FTM-FTA	PCT	OR-DR-TR	RPG	TP	PPG	AST	TO	BS	ST
2009-2010	13-0	78	13-36	.361	0-2	.000	7-11	.636	8-4-12	0.9	33	2.5	3	8	1	7
2010-2011	22-2	231	24-69	.348	0-4	.000	8-10	.800	10-15-25	1.1	56	2.5	16	22	1	12
2011-12	26-13	394	50-142	.352	3-13	.231	8-12	.667	15-16-31	1.2	111	4.3	20	26	2	10
3 Years	61-15	703	87-247	.352	3-19	.158	23-33	.697	33-35-68	1.1	200	3.3	39	56	4	29



MCFARLAND WAS NAMED TO THE PBC ALL-ACADEMIC TEAM IN 2011-12



MARISSA RIMBERT

SENIOR FORWARD

6-0 • SUWANEE, GA.

2011-12

Missed the 2011-12 season due to injury.

2010-11

Played in all 26 games, making three starts, for the Pirates as a sophomore ... Averaged 5.0 points and 3.8 rebounds per game ... Tied a career high with 16 points against Columbia (SC) on Dec. 14 ... Also scored 11 points at Augusta State on Jan. 12.

2009-10

Played in 20 games, starting six, for the Pirates as a freshman ... Averaged 6.4 points and 5.4 rebounds per game ... Shot a team-best 45.4 percent from the floor (49-of-108) ... Also blocked a team-high 14 shots ... Collected a double-double with 16 points and 14 rebounds in Armstrong's 83-56 win over Edward Waters on 12/18 ... Also scored 16 points against Georgia College on 1/16.

HIGH SCHOOL

Played for three years at Collins Hill HS ... Earned All-Region and All-Gwinnett County honors as a senior ... Member of the 2007 State champions ... Also earned Scholar-Athlete honors in 2009.



RIMBERT'S GAME HIGHS

POINTS:

16 vs. Edward Waters, 12/18/09
vs. Georgia College, 1/16/10
vs. Columbia (SC), 12/14/10

REBOUNDS:

14 vs. Edward Waters, 12/18/09



PERSONAL

Born Marissa M. Rimbert on March 20, 1991, in Suwanee, Ga., her hometown ... Daughter of Peggy and Larry Rimbert ... Majoring in early childhood education ... Enjoys reading and spending time with friends and family ... Lists Maya Moore and Serena Williams as favorite sports personalities.

MARISSA RIMBERT'S CAREER STATISTICS

Year	GP-GS	MIN	FG-FGA	PCT	3PM-3PA	PCT	FTM-FTA	PCT	OR-DR-TR	RPG	TP	PPG	AST	TO	BS	ST
2009-2010	20-6	396	49-108	.454	0-0	.000	29-50	.580	44-64-108	5.4	127	6.4	6	34	14	4
2010-2011	26-3	450	55-129	.426	0-0	.000	21-43	.488	40-59-99	3.8	131	5.0	12	33	14	8
2011-2012							Did Not Play									
2 Years	46-9	846	104-237	.439	0-0	.000	50-93	.538	84-123-207	4.5	258	5.6	18	67	28	12

RIMBERT NOTCHED HER FIRST CAREER DOUBLE-DOUBLE ON DEC. 18, 2009, VS. EDWARD WATERS





ANGELIA HILL

SENIOR GUARD

5-6 • MACON, GA.

14



2011-12

Played in all 26 games, starting 25, for the Pirates as a junior ... Averaged 8.7 points and 2.8 rebounds per game ... Scored in double digits in her first seven games as a Pirate, including a season-high 17 points against Young Harris on Nov. 18 ... Matched that high with 17 points at Augusta State on Jan. 4 ... Dished out six assists twice, against Flagler on Dec. 3 and at Francis Marion on Feb. 20 ... Grabbed nine rebounds against Converse on Nov. 14 ... Notched four steals at Lander on Feb. 1 ... Member of the PBC Presidential Honor Roll.

JUNIOR COLLEGE

Played for two seasons at Florida State College in Jacksonville ... Averaged 8.3 points and 3.0 rebounds in 24 games as a sophomore ... Scored a season-high 19 points against Central Florida CC on Feb. 19 ... Averaged 7.0 points and 1.6 rebounds per game in 23 games as a freshman for the Stars.

HIGH SCHOOL

Played for four years at Southwest HS in Macon, Ga. ... Named the Region 4-AA Player of the Year as a senior for the Patriots ... GHSA All-Star and also a member of the 1,000 point club ... Also excelled in softball.

HILL'S GAME HIGHS

POINTS:

17 vs. Young Harris, 11/18/11

ASSISTS:

6 vs. Flagler, 12/3/11 & at FMU, 2/20/12



PERSONAL

Born Angela R. Hill on September 17, 1990, in Macon, Ga., her hometown ... Daughter of Angela R. Hill ... Mother, Angela, played basketball collegiately for Hiwassee and Missouri-Kansas City ... Majoring in rehabilitation sciences ... Enjoys shopping, talking on the phone and spending time with loved ones ... Lists Kevin Durant, Diana Taurasi and Tamika Catchings as favorite sports personalities.

ANGEL HILL'S CAREER STATISTICS

Year	GP-GS	MIN	FG-FGA	PCT	3PM-3PA	PCT	FTM-FTA	PCT	OR-DR-TR	RPG	TP	PPG	AST	TO	BS	ST
2011-2012	26-25	740	87-224	.388	13-51	.255	38-60	.633	29-43-72	2.8	225	8.7	63	42	3	27
1 Year	26-25	740	87-224	.388	13-51	.255	38-60	.633	29-43-72	2.8	225	8.7	63	42	3	27



HILL SCORED IN DOUBLE FIGURES IN HER FIRST SEVEN GAMES WITH THE PIRATES IN 2011-12



DEMISHA MILLS



SENIOR GUARD/FORWARD

5-9 • GRAY COURT, S.C.



2011-12

Played in all 26 games, making 24 starts, for the Pirates as a junior ... Averaged 11.0 points and 5.7 rebounds per game ... Scored in double figures in 17 games and notched three double-doubles ... Collected 22 points, 10 rebounds and five steals in her first appearance for the Pirates on Nov. 11 against Bluefield College ... Also scored 22 points against Mars Hill on Dec. 30 ... Notched a double-double with 16 points and a season-high 13 rebounds against Montevallo on Jan. 19 ... Scored in double digits in seven straight games from Dec. 30 through Jan. 21.

JUNIOR COLLEGE

Played for two years at Santa Fe College in Florida ... Two-time All-Mid-Florida Conference honoree ... Averaged 8.0 points and 2.7 rebounds per game as a sophomore for the Saints ... Averaged 7.0 points and 4.0 rebounds per game in 26 games as a freshman.

HIGH SCHOOL

Played for four years at Hillcrest HS in Simpsonville, S.C. ... Two-time All-Region performer for the Rams.

MILLS' GAME HIGHS

POINTS:

22 vs. Bluefield, 11/11/11 & Mars Hill, 12/30/11

REBOUNDS:

13 vs. Montevallo, 1/19/12



PERSONAL

Born Demisha Mills on March 2, 1991, in Laurens, S.C. ... Hometown is Fountain Inn, S.C. ... Daughter of Mattie Connor and David Mills ... Brother, Derrell, played football at Newberry College ... Majoring in liberal studies ... Enjoys playing Call of Duty ... Lists Derrick Rose, Michael Jordan, Dwayne Wade and Michael Vick as favorite sports personalities.

DEMISHA MILLS' CAREER STATISTICS

Year	GP-GS	MIN	FG-FGA	PCT	3PM-3PA	PCT	FTM-FTA	PCT	OR-DR-TR	RPG	TP	PPG	AST	TO	BS	ST
2011-12	26-24	711	125-287	.436	0-4	.000	36-103	.350	54-93-147	5.7	286	11.0	38	69	6	41
1 Year	26-24	711	125-287	.436	0-4	.000	36-103	.350	54-93-147	5.7	286	11.0	38	69	6	41

MILLS SCORED IN DOUBLE FIGURES IN SEVEN STRAIGHT GAMES FROM DEC. 30 THROUGH JAN. 21





KAROLINA RYKOWSKA

15

SENIOR GUARD

5-11 • OSTROLEKA, POLAND



2011-12

Played in all 26 games, making 11 starts for the Pirates as a junior ... Averaged 5.5 points and 2.3 rebounds per game ... Made a team-high 19 three-pointers while also blocking a team-high 19 shots ... Scored a season-high 15 points at North Georgia on Jan. 25 ... Collected 14 points against Augusta State on Feb. 25 ... Blocked four shots against Coastal Georgia on Nov. 22 and at Flagler on Feb. 8 ... Reached double digit scoring in six games.

JUNIOR COLLEGE

Played for two seasons at Iowa Western CC ... Averaged 7.2 points, 3.8 rebounds and 2.1 assists per game in 31 games for the Reivers as a sophomore in 2010-11 ... Did not play in 2009-10 ... Averaged 6.2 points and 6.2 rebounds per game as a freshman in 2008-09.

PERSONAL

Born Karolina Rykowska on June 30, 1988, in Ostroleka, Poland, her hometown ... Daughter of Wieslawa Rykowska ... Majoring in liberal studies ... Enjoys playing basketball, shopping and listening to music ... Lists Diana Taurasi, Dwayne Wade and Rajon Rondo as favorite sports personalities.

RYKOWSKA'S GAME HIGHS

POINTS:

15 at North Georgia, 1/25/12

BLOCKED SHOTS:

4 vs. Coastal Ga., 11/22/11 & at Flagler, 2/8/12



KAROLINA RYKOWSKA'S CAREER STATISTICS

Year	GP-GS	MIN	FG-FGA	PCT	3PM-3PA	PCT	FTM-FTA	PCT	OR-DR-TR	RPG	TP	PPG	AST	TO	BS	ST
2011-2012	26-11	593	53-169	.314	19-75	.253	19-23	.826	5-55-60	2.3	144	5.5	40	55	19	21
1 Year	26-11	593	53-169	.314	19-75	.253	19-23	.826	5-55-60	2.3	144	5.5	40	55	19	21



RYKOWSKA LED THE PIRATES IN BOTH THREE-POINT SHOTS AND BLOCKED SHOTS IN 2011-12



MAURI WELLS

JUNIOR FORWARD/CENTER

6-0 • ROME, GA.



WELLS' GAME HIGHS

POINTS:

22 at Lander, 2/1/12

REBOUNDS:

24 vs. Edward Waters, 11/29/11

2011-12

Started all 26 games for the Pirates as a sophomore ... Averaged a team-leading 12.2 points and 13.0 rebounds per game ... Earned third team All-Peach Belt Conference honors ... PBC Player of the Week (Nov. 21) ... Led the Peach Belt and ranked fourth in NCAA Division II in total rebounding ... Also ranked second in the PBC in free throw percentage at 78.2 percent (79-of-101) ... Ranked 11th in scoring ... Notched 17 double-doubles on the season, sixth-most in NCAA Division II ... Reached double digit scoring in 19 games and double digit rebounds in 22 games ... Scored a career-high 22 points at Lander on Feb. 1 ... Grabbed an Alumni Arena-record 24 rebounds against Edward Waters on Nov. 29 ... Also had 20 rebounds at Flagler on Feb. 8 ... Scored 21 points with 13 rebounds against Bluefield College on Nov. 11 ... Notched 19 points with 15 rebounds against Francis Marion on Dec. 17 ... Member of the PBC Presidential Honor Roll.

2010-11

Played in all 26 games, starting 23, for the Lady Pirates as a freshman ... Averaged 11.9 points and 9.7 rebounds per game ... Ranked third in the Peach Belt Conference in rebounding, eighth in field goal percentage (.481), 11th in free throw percentage (.743) and 16th in scoring ... Notched a double-double in her Armstrong debut with 15 points and 10 rebounds at Converse on Nov. 12 ... Scored a season-high 21 points against Flagler on Jan. 3 ... Grabbed a season-high 15 rebounds three times, at Flagler on Feb. 2, against Georgia Southwestern on Feb. 10 and against Francis Marion on Feb. 5 ... Notched 12 double-doubles during the season ... Member of the PBC Presidential Honor Roll.

... Scored a season-high 21 points against Flagler on Jan. 3 ... Grabbed a season-high 15 rebounds three times, at Flagler on Feb. 2, against Georgia Southwestern on Feb. 10 and against Francis Marion on Feb. 5 ... Notched 12 double-doubles during the season ... Member of the PBC Presidential Honor Roll.



HIGH SCHOOL

Played for four years at Rome High School ... Earned second-team All-State honors as a senior, as well as Region and Area Player of the Year honors ... Georgia Player of the Game in the GA/TENN All-Star Game in 2010 ... Region Tournament MVP ... Scored 1,000+ career points for the Wolves.

PERSONAL

Born Mauri Wells on November 15, 1991, in Rome, Ga., her hometown ... Daughter of Deidra and Jeff Wells ... Majoring in physical therapy ... Enjoys playing basketball and drawing ... Lists Candace Parker and LeBron James as favorite sports personalities.

MAURI WELLS' CAREER STATISTICS

Year	GP-GS	MIN	FG-FGA	PCT	3PM-3PA	PCT	FTM-FTA	PCT	OR-DR-TR	RPG	TP	PPG	AST	TO	BS	ST
2010-2011	26-23	804	112-233	.481	10-28	.357	75-101	.743	94-159-253	9.7	309	11.9	24	72	19	25
2011-2012	26-26	887	110-241	.456	17-47	.362	79-101	.782	119-219-338	13.0	316	12.2	33	56	17	43
2 Years	52-49	1691	222-474	.468	27-75	.360	154-202	.762	213-378-591	11.4	625	12.0	57	128	36	68

WELLS RANKED FOURTH IN NCAA DIVISION II IN REBOUNDING AT 13.0 RPG IN 2011-12





SENIOR CANDACE CARRERAS AND JUNIOR MORGAN MITCHELL

CANDACE CARRERAS

SENIOR GUARD/FORWARD

5-10 • BOCA RATON, FLA.

31



PREVIOUS SCHOOL

Played for three seasons at Florida Gulf Coast University ... Saw action in 21 games as a freshman, averaging 3.0 points and 1.7 rebounds per game in 2005-06 ... Averaged 4.3 points and 1.3 rebounds in 19 games as a sophomore in 2006-07 ... Averaged 2.4 points and 1.6 rebounds in seven games as a junior in 2007-08.

HIGH SCHOOL

Played for four years at Pope John Paul II HS in Boca Raton, Fla. ... Earned first-team All-County and second-team 3A All-State honors for the Eagles.

PERSONAL

Born Candace Carreras on March 1, 1987, in Queens, N.Y. ... Hometown is Boca Raton, Fla. ... Daughter of Sandra and Jon Cooper ... Majoring in liberal studies ... Enjoys going to the beach, dancing, playing cards and all sports ... Lists Chris Paul and Gabby Douglas as favorite sports personalities.

MORGAN MITCHELL

JUNIOR FORWARD

5-9 • LILBURN, GA.

2



2011-12

Played in seven games as a sophomore for the Pirates ... Notched three points, 10 rebounds and five assists in 34 minutes of action.

2010-11

Joined the Lady Pirates in December and played in 20 games, starting 18, for the Pirates ... Averaged 2.2 points, 3.6 rebounds and 2.6 assists per game ... Scored a season-high eight points with a season-high 10 rebounds at Georgia College on Jan. 15 ... Also grabbed 10 rebounds at Augusta State on Jan. 12 ... Dished out five assists twice, against Mount Olive on Dec. 17 and against Lander on Jan. 19 ... Member of the PBC Presidential Honor Roll.

HIGH SCHOOL

Played for three seasons at Parkview HS ... Also played women's soccer.

MITCHELL'S GAME HIGHS

POINTS:

8 at Georgia College, 1/15/11

REBOUNDS:

10 at Georgia College, 1/15/11
at Augusta State, 1/12/11

Born Morgan Leigh Mitchell on March 17, 1991, in Lilburn, Ga., her hometown ... Daughter of Sheila and Charlie Mitchell ... Majoring in criminal justice ... Mother, Sheila, played basketball and father, Charlie, played football and ran track at Chadron State University ... Enjoys snowboarding, wakeboarding, skateboarding and working with animals ... Lists Michael Jordan as a favorite sports personality.

MORGAN MITCHELL'S CAREER STATISTICS

Year	GP-GS	MIN	FG-FGA	PCT	3PM-3PA	PCT	FTM-FTA	PCT	OR-DR-TR	RPG	TP	PPG	AST	TO	BS	ST
2010-2011	20-18	527	18-38	.474	7-18	.389	1-2	.500	17-54-71	3.6	44	2.2	46	59	3	23
2011-2012	7-0	34	1-3	.333	0-1	.000	1-2	.500	4-6-10	1.4	3	0.4	5	6	0	2
2 Years	27-18	561	19-41	.463	7-19	.368	2-4	.500	21-60-81	3.0	47	1.7	51	65	3	25



MITCHELL IS ALSO A MEMBER OF ARMSTRONG'S TWO-TIME PBC CHAMPION SOCCER SQUAD



HANNA BOGNAR

JUNIOR CENTER

6-2 • TATA, HUNGARY

32



JUNIOR COLLEGE

Played for two seasons at Seward County Community College in Kansas ... Averaged 5.2 points and 5.0 rebounds per game as a sophomore for the Saints ... Blocked a team-high 68 shots (2.19/gm), ranking 13th in the nation in that category ... Averaged 4.3 points and 4.4 rebounds as a freshman ... Blocked 88 shots (2.75/gm), ranking eighth in the nation.

IN HUNGARY

Attended Berzsenyi Dániel Evangélikus Gimnázium in Sopron, Hungary and played for coach Jozset Horvath ... Two-time All-Star and recorded the most blocked shots in the world school championships in Istanbul in 2009 ... Team won the Hungarian School Championships twice and finished runner-up a third year.

PERSONAL

Born Hanna Bognar on February 29, 1992, in Kaposvar, Hungary ... Hometown is Tata, Hungary ... Daughter of Tibor Bognar and Erika Sill ... Father, Tibor, played basketball professionally in Hungary ... Majoring in psychology ... Enjoys listening to music, traveling and talking with her family through Skype ... Lists Candace Parker and Kevin Durant as favorite sports personalities.

TYLER CARLSON

JUNIOR GUARD

5-6 • RICHMOND HILL, GA.

21



PREVIOUS SCHOOL

Played for two seasons at Mars Hill College ... Averaged 10.0 points and 2.7 rebounds per game as a freshman ... Dished out a season-high nine assists against Newberry on Feb. 2, 2011 ... Averaged 12.0 points, 3.5 rebounds and 2.5 assists per game as a sophomore ... Scored a career-high 24 points against Carson-Newman on Feb. 25, 2012 ... Named to the SAC All-Freshman Team in 2010-11.

HIGH SCHOOL

Played for four years at Richmond Hill HS for former Armstrong assistant coach Elizabeth Bennett ... Earned honorable mention All-State honors in 2010 ... Two-time All-Region first team honoree ... 2008 Bryan County Athlete of the Year ... Three-time team MVP ... Also a standout cross country runner.

PERSONAL

Born Tyler Nicole Carlson on February 11, 1992, in Mount Kisco, New York ... Hometown is Richmond Hill, Ga. ... Daughter of Glenn and Denise Carlson ... Majoring in history ... Enjoys working out, listening to music and hanging out with friends ... Lists Diana Taurasi as a favorite sports personality.





JUNIOR STEPHENIE CONEY AND BRYONNA DAVIS

STEPHENIE CONEY

JUNIOR GUARD

5-2 • MIAMI, FLA.

12



JUNIOR COLLEGE

Played for two seasons at Santa Fe CC ... Earned first-team All-Conference honors as a freshman and sophomore ... Scored 683 points in two seasons for the Saints, 14th all-time in Santa Fe CC history, and set a school record by playing in 61 games in two seasons ... Also dished out 244 assists in two seasons, seventh-most all-time.

HIGH SCHOOL

Played for Miami Horland HS ... Second-team Miami Herald All-Dade selection as a senior ... Vikings won state championships in 2009 and 2010 ... Team MVP as a junior and team captain as a senior.

PERSONAL

Born Stephenie Coney on November 25, 1991, in Miami, Fla., her hometown ... Daughter of Toscha and Steven Coney ... Majoring in elementary education ... Enjoys watching TV and listening to music ... Lists Dwayne Wade and Rajon Rondo as favorite sports personalities.

BRYONNA DAVIS

JUNIOR GUARD

5-8 • GARY, IND.

22



PREVIOUS SCHOOL

Played for two seasons at Michigan State University ... Saw action in seven games as a sophomore in 2011-12, averaging 1.9 points per game ... Played in nine games as a freshman in 2010-11, averaging 2.3 points per game ... Scored a career-high nine points vs. Dartmouth on Dec. 18, 2010.

HIGH SCHOOL

Played for three seasons at Merrillville HS in Merrillville, Ind. ... Named Indiana Basketball Coaches Association First-Team All-State honoree and second-team AP All-State honoree as a senior ... 2010 Northwest Indiana Times and Post-Tribune Player of the Year ... Averaged 20.7 points, 3.4 rebounds, 1.9 assist and 3.6 steals as a senior for the Pirates ... Scored a school-record 559 points and 46 three-pointers in 2010 ... MVP of the Duneland Conference ... Named to the Indiana All-Star Team.

PERSONAL

Born Bryonna Davis on December 16, 1991, in Gary, Ind., her hometown ... Daughter of Kimberly Adams and Chris Thomas ... Majoring in criminal justice ... Enjoys watching television and playing video games ... Lists Steve Nash and Kevin Durant as favorite sports personalities.



CONEY SET A SANTA FE CC RECORD BY PLAYING IN 61 GAMES IN TWO SEASONS

JUNIOR TORI KLEWICKI-McNUTT AND SOPHOMORE DEE HAYWARD



TORI KLEWICKI-McNUTT

24

JUNIOR GUARD

5-8 • DE WITT, MICH.



PREVIOUS SCHOOL

Played for two seasons at Grand Valley State University ... Played in three games as a sophomore with 11 points and nine rebounds ... Played in all 28 games as a freshman, averaging 4.4 points and 1.3 rebounds per game ... Scored a career-high 13 points against Saginaw Valley State on Jan. 6, 2011.

HIGH SCHOOL

Played for two seasons at DeWitt HS ... Averaged 12.8 points and 4.2 rebounds per game as a junior for the Panthers, earning All-Conference, All-State and BCAM All-State honors ... Named to the Lansing State Journal Dream Team ... Also played at East Lansing HS for the state runner-up team in 2007-08.

PERSONAL

Born Tori Klewicki-McNutt on July 30, 1992, in Lansing, Mich. ... Hometown is DeWitt, Mich. ... Daughter of Heather and Vic McNutt ... Majoring in criminal justice ... Grandfather, Tom Klewicki, played basketball at Michigan State ... Enjoys listening to country music and being outdoors ... Lists Manu Ginobili and Michael Jordan as favorite sports personalities.

DEE HAYWARD

10

SOPHOMORE GUARD

5-7 • GLASGOW, SCOTLAND



2011-12

Played in 25 games as a freshman, averaging 4.8 points, 1.8 rebounds and 2.2 assists per game ... Shot 49.4 percent from the floor (39-of-79) and 73.9 percent from the free throw line (34-of-46) ... Scored a season-high 12 points against Montevallo on Jan. 19 ... Also notched 10 points at Columbus State on Jan. 12 and against Allen on Jan. 28 ... Dished out a season-high six assists at Georgia Southwestern on Jan. 14.

IN SCOTLAND

Attended Leeds Metropolitan University in Scotland ... Member of the Great Britain U-20 National Team, playing in nine games at the 2011 U-20 European Championship Division A and averaging 24.7 minutes, 5.6 points and 2.6 rebounds per game ... Helped Great Britain to an 8th place finish out of the 16 teams competing in Division A.

HIGH SCHOOL

Attended Barrhead High in Glasgow, Scotland ... Played club for Saint Mirren, where she was the Player of the Year and team MVP in 2009, as well as the club's best defensive player in 2008.

PERSONAL

Born Deanne Hayward on July 4, 1991, in Aberdeen, Scotland ... Hometown is Glasgow, Scotland ... Daughter of Marianne Hayward ... Majoring in physical therapy ... Enjoys playing basketball and horse riding ... Lists Usain Bolt as a favorite sports personality.

DEE HAYWARD'S CAREER STATISTICS

Year	GP-GS	MIN	FG-FGA	PCT	3PM-3PA	PCT	FTM-FTA	PCT	OR-DR-TR	RPG	TP	PPG	AST	TO	BS	ST
2011-2012	25-0	478	39-79	.494	7-24	.292	34-46	.739	11-35-46	1.8	119	4.8	55	71	10	23
1 Year	25-0	478	39-79	.494	7-24	.292	34-46	.739	11-35-46	1.8	119	4.8	55	71	10	23

HAYWARD WAS A MEMBER OF THE GREAT BRITAIN U-20 NATIONAL TEAM IN 2011





Since its founding in 1935 - more than 75 years ago - Armstrong Atlantic State University has continued to develop to meet the Savannah community's educational needs. From its first location in Armstrong House in downtown Savannah to its current home on a scenic 268-acre lot off of Abercorn, the university has become one of the finest educational institutions in the Southeastern United States. Last year, Armstrong celebrated its 75th anniversary as a premier institution of higher education in the Coastal Empire.

Armstrong Junior College was established by the Mayor of Savannah and other public officials in 1935. Housed in the beautiful and historic Armstrong House, a gift to the city from the family of George F. Armstrong, Armstrong Junior College grew over the years to occupy eight additional buildings in the Forsyth Park and Monterey Square areas.

In 1959, as Armstrong College of Savannah, it became a two-year unit of the University System. The Board of Regents conferred four-year status on Armstrong in 1964 and the college moved to a 250-acre location, a gift from Donald Livingston and the Mills B. Lane Foundation, in December of 1965. Additional buildings joined the eight original structures as Armstrong added professional and graduate programs and tripled in size.

In July of 1996, the Board of Regents voted to rename the college to Armstrong Atlantic State University to reflect its mission and identity. The university's reputation of excellence is still evident in its dedication to students, with a supportive environment.

Armstrong Atlantic State University was fully accredited as a senior institution by the Southern Association of Colleges and Schools in December, 1968, with accreditation retroactive to January 1, 1968, and was last reaccredited in December, 2002.

The university offers more than seventy-five academic programs and majors in the College of Arts and Sciences, College of Health Professions, College of Education and School of Comput-



ing. The academic community includes approximately 7,650 students and more than 400 faculty members. Enrollment has more than doubled in the last 20 years, from 3,700 students in 1990 to its current number.

Across campus, evidence of the university's growth can be found in its facilities. Recently completed projects include the \$31 million Windward Commons, a 567-bed, freshman-dedicated residence hall completed over the summer, which brings the number of students living on campus to more than 1,400, and the new \$16 million, 60,180 square-foot Armstrong Student Union that was built entirely through student fees and opened in fall of 2010. Construction began this summer on a new Learning Commons that is slated to open in Fall of 2013.

The athletic department of Armstrong Atlantic State University is housed in the Armstrong Sports Center, completed in 1995. The Sports Center includes offices for the physical education department, training room and weight room areas, basketball courts, indoor track and offices for coaches and athletic department personnel. The building played host to the Peach Belt Conference's basketball tournament in 1998 and 1999 and hosts several in-season tournaments each year. Construction of a women's fieldhouse for soccer and softball was completed in the spring of 2007.

Armstrong sponsors 11 intercollegiate sports and is a charter member of the Peach Belt Conference, formed in 1991. Women's soccer and women's golf debuted in 2005 and men's cross country was reinstated in 2009, joining men's and women's basketball, volleyball, baseball, men's and women's tennis, men's golf and softball as sports that Armstrong sponsors. In 2011-12, Armstrong men's and women's tennis teams captured NCAA Division II National Championships, giving the Pirates seven national championships in the last five years.

Continuing a mission begun in 1935, Armstrong Atlantic State University today serves a rich gamut of traditional and non-traditional students. Forty-three percent of Armstrong's student body are from the Savannah-Chatham area, while others come from around the state, nation and world. All have come to Savannah to experience and thrive on the campus of one of the fastest developing higher learning institutions in the nation - to be a part of Armstrong Atlantic State University.





DR. LINDA M. BLEICKEN UNIVERSITY PRESIDENT

Dr. Linda M. Bleicken joined Armstrong in 2009 after serving at Georgia Southern for 19 years. She is the seventh Armstrong president and the first woman to lead the institution since the establishment of Armstrong Junior College in 1935.

A woman with deep roots in Iowa farm country, Bleicken began her career at Georgia Southern as an assistant professor of management in 1990. Over the following years she would serve as acting chair of the department of management, associate dean of the College of Business Administration, vice president for student affairs, acting provost and vice president for academic affairs and lastly provost, a position she held since 2005.

A marketing major from Georgia State University who graduated magna cum laude, Bleicken's experiences in the business arena include a foray into real estate in Atlanta as owner and manager of residential properties and serving as a sales representative for Innerface International. She also spent two years in marketing research for BellSouth and Brittain Associates, both in Atlanta.

It was her experiences in marketing research that led her back to higher education. In 1987, she chose to continue her education in a university campus, this time as a teaching instructor at her alma mater, Georgia State University. Three years later she earned her academic credentials, a master's and Ph.D. in management, once again from Georgia State.

A long-time resident of Savannah—she commuted to Georgia Southern all those years—Bleicken knows and cares deeply about Savannah and the Coastal Georgia region. She has served on the Ossabaw Island Foundation Board since 2007 and been involved with the Savannah Downtown Neighborhood Association.



LISA SWEANY ATHLETIC DIRECTOR

Lisa M. Sweany begins her second season as Director of Athletics at Armstrong Atlantic State University for the 2012-13 academic year.

During her first year at the helm of the Armstrong athletic department, the Pirates experienced unprecedented success, winning a league-record seven Peach Belt Conference championships and capturing the Commissioner's Cup, the league's all-sports trophy for the first time in school history. The Pirates also added their ninth and 10th NCAA DII National Championships in men's and women's tennis, respectively, at the DII Spring Sports Festival in Louisville.

Sweany joined Armstrong in July of 2011, coming from fellow NCAA Division II school Grand Valley State, where she served as assistant AD and then senior associate AD for ten years. With the Lakers, Sweany was responsible for budget, personnel and facilities management. Her other duties included direct supervision of seven coaches, overseeing game and event operations, as well as management of all athletics personnel. In addition, Sweany coordinated all aspects of compliance and eligibility for more than 500 student athletes.

Prior to joining GVSU, she served at Tri-State University in Angola, Indiana, starting in 1995 as athletics facilities director. During her five-year stint at Tri-State, she served in various capacities of increasing responsibility, including assistant basketball coach, head coach of softball and associate athletics director, a position she was named to in March 1995.

Sweany is a member of the National Association of Collegiate Women Athletics Administrators and the National Association of Collegiate Directors of Athletics, as well as the president of the CEFMA (Collegiate Event and Facility Management Association) for 2012-13. From 2010, she served as chair of the NCAA Midwest Regional for Softball, helping to oversee rankings in the region.

She holds a master's degree in physical education with a concentration in sports management from Ball State University in Muncie, Indiana and a bachelor's degree with honors in business administration with a concentration in accounting from Tri-State University in Angola, Indiana.





ARMSTRONG ATHLETIC STAFF



JENNIFER
RUSHTON

ASSOCIATE AD FOR
COMPLIANCE & STUDENT SERVICES



CHAD
JACKSON

DIRECTOR OF SPORTS
COMMUNICATIONS



MICHAEL
SMOOSE

ASSISTANT AD FOR
BUSINESS & MARKETING



ADAM
TOM

ASSISTANT AD FOR FACILITIES
AND GAME OPERATIONS



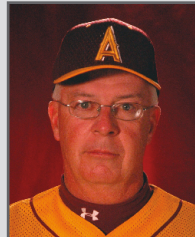
DR. DONALD
ANDERSON

COMPLIANCE & STUDENT
SERVICES CONSULTANT



DR. WILL
LYNCH

FACULTY ATHLETIC
REPRESENTATIVE



JOE

ROBERTS
HEAD BASEBALL
COACH



CALVAN
CULBERSON

ASSISTANT BASEBALL
COACH



JEREMY
LUTHER

HEAD MEN'S
BASKETBALL COACH



EVANS
DAVIS

ASSISTANT MEN'S
BASKETBALL COACH



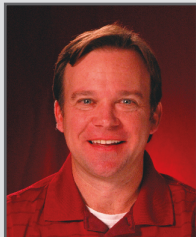
MATT
SCHMIDT

HEAD WOMEN'S
BASKETBALL COACH



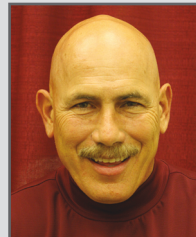
FALLON
REHMERT

ASSISTANT WOMEN'S
BASKETBALL COACH



MICHAEL
BUTLER

HEAD MEN'S & WOMEN'S
GOLF COACH



TED
EVANS

HEAD SOFTBALL
COACH



ERIC

FAULCONER
HEAD WOMEN'S
SOCCER COACH



SIMON

EARNSHAW
HEAD MEN'S & WOMEN'S
TENNIS COACH



ARMSTRONG HAD EIGHT TEAMS REPRESENTED IN NCAA CHAMPIONSHIPS IN 2011-12

ALUMNI ARENA @ ARMSTRONG SPORTS CENTER



The Armstrong Atlantic State University's athletic department prides itself on having one of the finest athletic facilities not only in the conference, but in the region as well.

Armstrong's Sports Center, completed in July of 1995, immediately became a top basketball complex by hosting the 1998 and 1999 Peach Belt Conference basketball tournaments.

This 82,000 square foot multi-purpose building provides expanded academic offerings in spacious, modern surroundings. Students have a three-station computer lab; a 1,965 square foot weight training/fitness center with more than 30 Cybex machine exercise stations, stair climbers, treadmills, upright and semi-recumbent bike, elliptical trainer and a free weight area; four new classrooms and two 3,535 square foot activity areas.

Armstrong's athletic teams play home events in a 4,000 seat arena that contains theatre-type seating for all spectators, and also plays host to a wide variety of social and sporting events.



PIRATES @ ALUMNI ARENA

YEAR	RECORD
1995-96	5-8
1996-97	8-5
1997-98	6-6
1998-99	9-6
1999-2000	6-6
2000-01	7-8
2001-02	7-6
2002-03	13-0
2003-04	12-2
2004-05	11-2
2005-06	9-5
2006-07	11-3
2007-08	12-1
2008-09	9-6
2009-10	6-7
2010-11	5-9
2011-12	9-8
14 YEARS	145-88

ALUMNI ARENA WOMEN'S BASKETBALL HIGHS

Team

Most Points: 104

Francis Marion vs. Armstrong, 2/27/10

Most Points, Both Teams, Overtime: 200

Augusta St. (102) vs. Clayton St. (98), 2/19/99

Most Points, Both Teams, Regulation: 185

Francis Marion (104) vs. Armstrong (81), 2/27/10

Largest Victory Margin: 49

Francis Marion (92) vs. Clayton State (43), 2/24/98

Largest Victory Margin, Armstrong: 45

Armstrong (90) vs. Allen (45), 1/6/10

Individual

Most Points: 43

Demetria McClouden vs. Florida Tech, 12/3/98

Most Rebounds: 24

Mauri Wells vs. Edward Waters, 11/29/11

Most Points by Opposing Player: 41

JaToya Kemp (UNCP), 2/24/10

Most Rebounds by Opposing Player: 17

Tisha London (UNCP), 1/28/98



ARMSTRONG SPORTS CENTER EVENTS

- 1998 & 1999 PBC Basketball Championships
- Georgia Special Olympics
- Georgia HS Basketball Regional Tournament
- Atlanta Hawks training camp
- Chamber of Commerce South Side Socials
- 2001 5A Region Championships
(Featuring No. 1 NBA pick Kwame Brown)
- 2012 Fairfield Inn & Suites Pirate Classic
- 2012 Georgia JUCO Women's Final Four
- Annual Armstrong Fall Graduation Ceremonies
- Various Youth Athletic Events such as Gymnastics, Taekwando, Baton Twirling & Cheerleading

ARMSTRONG WOMEN'S BASKETBALL IS 145-88 ALL-TIME AT ALUMNI ARENA





Armstrong athletic teams benefit from the fine athletic training staff, headed by medical director Dr. John George and head athletic trainer Ken Tessier.

Armstrong's training room, part of the Armstrong Sports Center, sits adjacent to the fitness center and across the hall from the Pirate locker rooms. The room offers the most modern and advanced equipment to help players deal with injuries and rehabilitation.

ARMSTRONG ATHLETIC TRAINING CENTER ADMINISTRATION



DR. JOHN GEORGE
TEAM PHYSICIAN

Dr. John George begins his second year in the role of team physician for the Pirates. A 1983 graduate of the Medical College of Georgia, Dr. George is board certified by the America Board of Orthopedic Surgery and is a member of the AMA, the National Board of Medical Examiners, the Georgia Medical Society, the Medical Association of Georgia, the American Academy of Orthopedic Surgeons and the Georgia Orthopedic Society.



KEN TESSIER
HEAD ATHLETIC TRAINER

Ken Tessier begins his second season as the head athletic trainer for the Armstrong Atlantic State University athletic department. Tessier joins the Pirates from Savannah State University, where he served as the Tigers' head athletic trainer for the last three years. Prior to SSU, Tessier was the athletic trainer at St. Andrew's in Savannah as well as an assistant athletic trainer at USC Aiken for two years.

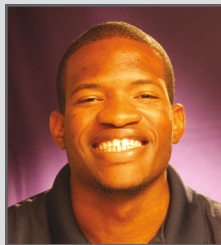
Tessier is a native of North Smithfield, Rhode Island and earned a his bachelors of science degree in physical education with a concentration in sports medicine from Endicott College in 2002.



CAROLINE TRIER
ASSISTANT
ATHLETIC TRAINER



JUSTIN BULLARD
GRADUATE ASSISTANT
ATHLETIC TRAINER



TARIK CHURCH
GRADUATE ASSISTANT
ATHLETIC TRAINER



KELSEY CURLEN
GRADUATE ASSISTANT
ATHLETIC TRAINER





AUGUSTA STATE

Saturday, January 12, 2013 1:30 p.m.
Christenberry Fieldhouse, Augusta, Ga.

Thursday, January 31, 2013 5:30 p.m.
Alumni Arena @ Armstrong Sports Center

Location: Augusta, GA
Enrollment: 6,741
Colors: Royal Blue and White
Conference: Peach Belt
President: Dr. William A. Bloodworth
Athletic Director: Clint Bryant
Home Court (capacity):
George A. Christenberry Fieldhouse (2,216)
2011-12 Record: 12-15
2011-12 PBC Record: 7-11 (t4th East)
Letterwinners Returning/Lost: 10/3
Head Coach: Nate Teymer
Career Record: 110-100
Record at ASU: 20-33, 2 years
Coach's Office Phone: (706) 731-7915
Assistant Coaches:
Courtney Boyd, Amber Peterson
SID: Joey Warren
SID Phone: (706) 731-7925
SID FAX: (706) 737-1782
Web Address: www.jaguarsroar.com
Series Record: Armstrong leads 29-28
Last Meeting: Augusta State 55-53 (2/25/12)

CLAYTON STATE

Thursday, January 3, 2013 5:30 p.m.
Clayton State Athletics Center, Morrow, Ga.

Location: Morrow, GA
Enrollment: 6,900
Colors: Blue and Orange
Conference: Peach Belt
President: Dr. Thomas Hynes
Athletic Director: Carl McAloose
Home Court (capacity):
Clayton State Athletics Center (1,200)
2011-12 Record: 29-4
2011-12 PBC Record: 16-1 (1st West)
Letterwinners Returning/Lost: 6/8
Head Coach: Dennis Cox
Career Record: 213-49
Record at Clayton: 213-40, 8 years
Coach's Office Phone: (678) 466-4674
Assistant Coach:
Kaleena Coleman
SID: Gid Rowell
SID Phone: (678) 466-4681
SID FAX: (678) 466-4699
Web Address: claytonstatesports.com
Series Record: Clayton leads 23-10
Last Meeting: Clayton 93-48 (1/21/12)

COLUMBUS STATE

Saturday, January 19, 2013 1:30 p.m.
Alumni Arena @ Armstrong Sports Center

Location: Columbus, GA
Enrollment: 8,300
Colors: Red, White and Blue
Conference: Peach Belt
President: Dr. Tim Mescon
Athletic Director: Jay Sparks
Home Court (capacity):
Frank G. Lumpkin Jr. Center (4,500)
2011-12 Record: 16-11
2011-12 PBC Record: 11-6 (2nd West)
Letterwinners Returning/Lost: 6/6
Head Coach: Jonathan Norton
Career Record: 173-121
Record at CSU: 48-34, 3 years
Coach's Office Phone: (706) 568-2010
Assistant Coaches:
Quacy Timmons, Erica Crumley, Brittni Young
SID: Manny Nieves
SID Phone: (706) 569-3032
SID FAX: (706) 569-2594
Web Address: csucougars.com
Series Record: Columbus State leads 28-20
Last Meeting: Columbus State 80-69 (1/12/12)

FLAGLER

Thursday, February 7, 2013 5:30 p.m.
Flagler Gym, St. Augustine, Fla.

Saturday, February 16, 2013 1:30 p.m.
Alumni Arena @ Armstrong Sports Center

Location: St. Augustine, FL
Enrollment: 2,678
Colors: Red and Yellow
Conference: Peach Belt
President: Dr. William T. Abare, Jr.
Athletic Director: Jud Damon
Home Court (capacity):
Flagler Gym (1,760)
2011-12 Record: 4-22
2011-12 PBC Record: 2-16 (7th East)
Letterwinners Returning/Lost: 7/7
Head Coach: Erika Lang-Montgomery
Career Record: 18-61
Record at Flagler: 18-61, 3 years
Coach's Office Phone: (904) 819-6388
Assistant Coaches:
Joe Harding, Shamesha Smith
SID: John Jordan
SID Phone: (904) 819-6252
SID FAX: (904) 810-2369
Web Address: flaglerathletics.com
Series Record: Armstrong leads 20-3
Last Meeting: Armstrong 64-52 (2/8/12)

FRANCIS MARION

Saturday, January 5, 2013 1:30 p.m.
Alumni Arena @ Armstrong Sports Center

Thursday, January 17, 2013 5:30 p.m.
Smith University Center, Florence, S.C.

Location: Florence, SC
Enrollment: 4,093
Colors: Red, White and Blue
Conference: Peach Belt
President: Dr. Fred Carter
Athletic Director: Murray Hartzler
Home Court (capacity):
Smith University Center (3,027)
2011-12 Record: 9-17
2011-12 PBC Record: 4-14 (6th East)
Letterwinners Returning/Lost: 3/9
Head Coach: Kate Glusko
Career Record: 27-27
Record at FMU: 27-27, 2 years
Coach's Office Phone: (843) 661-1249
Assistant Coaches:
Tim Wilson, Jackie Simon
SID: Michael G. Hawkins
SID Phone: (843) 661-1222
SID FAX: (843) 661-4645
Web Address: www.fmupatriots.com
Series Record: FMU leads 23-15
Last Meeting: FMU 66-63 (2/20/12)

GEORGIA COLLEGE

Saturday, March 2, 2013 1:30 p.m.
Centennial Center, Milledgeville, Ga.

Location: Milledgeville, GA
Enrollment: 6,500
Colors: Hunter Green and Navy Blue
Conference: Peach Belt
President: Dr. Stas Preczewski
Athletic Director: Wendell Staton
Home Court (capacity):
Centennial Center (4,071)
2011-12 Record: 4-22
2011-12 PBC Record: 2-15 (6th West)
Letterwinners Returning/Lost: 8/6
Head Coach: Maurice Smith
Career Record: 26-29
Record at GC: 26-29, 2 years
Coach's Office Phone: (478) 445-1788
Assistant Coach:
Toby Wagoner, Huguette Yanga
SID: Al Weston
SID Phone: (478) 445-1779
SID FAX: (478) 445-1790
Web Address: gcsubobcats.com
Series Record: GC leads 46-23
Last Meeting: GC 57-45 (1/9/12)





GEORGIA SOUTHWESTERN

Monday, January 21, 2013 5:30 p.m.
Alumni Arena @ Armstrong Sports Center

Location: Americus, GA
Enrollment: 3,050
Colors: Navy Blue and Old Gold
Conference: Peach Belt
President: Dr. Kendall A. Blanchard
Athletic Director: Jaclyn Donovan
Home Court (capacity):
The Storm Dome (2,200)
2011-12 Record: 18-9
2011-12 PBC Record: 10-7 (3rd West)
Letterwinners Returning/Lost: 2/10
Head Coach: Kelly Britsky
Career Record: 135-210
Record at GSW: 51-84, 5 years
Coach's Office Phone: (229) 931-2231
Assistant Coach:
Kelly Turman
SID: Keith Michlig
SID Phone: (229) 931-2217
SID FAX: (229) 931-2143
Web Address: www.gswcanes.com
Series Record: Armstrong leads 15-11
Last Meeting: Armstrong 80-73 (1/14/12)

LANDER

Thursday, January 10, 2013 5:30 p.m.
Alumni Arena @ Armstrong Sports Center

Thursday, February 14, 2013 5:30 p.m.
Finis Horne Arena, Greenwood, S.C.
Location: Greenwood, SC
Enrollment: 3,100
Colors: Royal Blue and Gold
Conference: Peach Belt
President: Dr. Daniel W. Ball
Athletic Director: Dr. Jeff May
Home Court (capacity):
Finis Horne Arena (2,500)
2011-12 Record: 24-8
2011-12 PBC Record: 15-3 (2nd East)
Letterwinners Returning/Lost: 2/12
Head Coach: Kevin Pederson
Career Record: 245-105
Record at LU: 143-75, 7 years
Coach's Office Phone: (864) 388-8257
Assistant Coach:
DeCole Shoemate
SID: Bob Stoner
SID Phone: (864) 388-8962
SID FAX: (864) 388-8889
Web Address: www.landerbearcats.com
Series Record: Armstrong leads 25-15
Last Meeting: Lander 85-52 (2/15/12)

MONTEVALLO

Saturday, January 26, 2013 5:30 p.m.
BankTrust Arena, Montevallo, Ala.

Location: Montevallo, AL
Enrollment: 3,200
Colors: Purple and Gold
Conference: Peach Belt
President: Dr. John W. Stewart III
Athletic Director: Jim Herlihy
Home Court (capacity):
BankTrust Arena (2,200)
2011-12 Record: 11-16
2011-12 PBC Record: 6-11 (14th West)
Letterwinners Returning/Lost: 4/6
Head Coach: Cindy Hilbrich
Career Record: 11-16
Record at Montevallo: 11-16, 1 year
Coach's Office Phone: (205) 665-6599
Assistant Coach:
Tiffany Morton
SID: Wesley Hallman
SID Phone: (205) 665-6592
SID FAX: (205) 665-6587
Web Address: www.montevallofalcons.com
Series Record: Montevallo leads 2-1
Last Meeting: Armstrong 58-56 (1/19/12)

UNC PEMBROKE

Saturday, February 2, 2013 1:30 p.m.
Jones Athletic Complex, Pembroke, N.C.

Wednesday, February 20, 2013 5:30 p.m.
Alumni Arena @ Armstrong Sports Center

Location: Pembroke, NC
Enrollment: 6,249
Colors: Black and Gold
Conference: Peach Belt
Chancellor: Dr. Kyle Carter
Athletic Director: Dan Kenney
Home Court (capacity):
Jones Athletic Complex (3,000)
2011-12 Record: 16-12
2011-12 PBC Record: 12-6 (3rd East)
Letterwinners Returning/Lost: 7/6
Head Coach: John Haskins
Career Record: 110-113
Record at UNCP: 110-113, 8 years
Coach's Office Phone: (910) 521-6345
Assistant Coach:
Kapica Davis
SID: Todd Anderson
SID Phone: (910) 521-6371
SID FAX: (910) 521-6551
Web Address: www.uncpbraves.com
Series Record: Armstrong leads 24-12
Last Meeting: UNCP 74-48 (2/18/12)

NORTH GEORGIA

Saturday, December 15, 2012 1:30 p.m.
Alumni Arena @ Armstrong Sports Center

Location: Dahlonega, GA
Enrollment: 5,853
Colors: Royal Blue and White
Conference: Peach Belt
President: Dr. Bonita Jacobs
Athletic Director: Lindsay Reeves
Home Court (capacity):
Memorial Hall Gymnasium (2,500)
2011-12 Record: 12-14
2011-12 PBC Record: 6-11 (14th West)
Letterwinners Returning/Lost: 5/5
Head Coach: Buffie Burson
Career Record: 369-188
Record at NGA: 369-188, 19 Years
Coach's Office Phone: (706) 867-2849
Assistant Coach:
Bryan Hendley
SID: Milledge Austin
SID Phone: (706) 867-3250
SID FAX: (706) 867-2865
Web Address: www.saintssports.com
Series Record: Armstrong leads 19-11
Last Meeting: Armstrong 66-61 (1/25/12)

USC AIKEN

Saturday, February 9, 2013 1:30 p.m.
Alumni Arena @ Armstrong Sports Center

Saturday, February 23, 2013 5:30 p.m.
Convocation Center, Aiken, S.C.

Location: Aiken, SC
Enrollment: 3,250
Colors: Cardinal, Navy and White
Conference: Peach Belt
Chancellor: Dr. Sandra Jordan
Athletic Director: Randy Warrick
Home Court (capacity):
Convocation Center (3,600)
2011-12 Record: 27-4
2011-12 PBC Record: 16-2 (1st East)
Letterwinners Returning/Lost: 8/3
Head Coach: Mike Brandt
Career Record: 447-238
Record at USCA: 194-109, 10 years
Coach's Office Phone: (803) 641-3491
Assistant Coach:
Jennifer Brock
SID: Brian Hand
SID Phone: (803) 641-3252
SID FAX: (803) 641-3759
Web Address: www.pacersports.com
Series Record: USCA leads 22-20
Last Meeting: USCA 65-55 (2/4/12)





YOUNG HARRIS

Monday, December 17, 2012 5:30 p.m.
Alumni Arena @ Armstrong Sports Center

Location: Young Harris, GA
Enrollment: 1,035
Colors: Purple and White
Conference: Peach Belt
President: Cathy Cox
Athletic Director: Randy Dunn
Home Court (capacity):
 YHC Basketball Arena (1,000)
2011-12 Record: 23-3
First Season Of Peach Belt Competition
Letterwinners Returning/Lost: 9/4
Head Coach: Brenda Paul
Career Record: 475-444
Record at Young Harris: 34-16, 2 years
Coach's Office Phone: (706) 379-5298
Assistant Coach:
 Matt Stearsman
SID: Michael MacEachern
SID Phone: (706) 379-5106
SID FAX: (706) 379-4304
Web Address: www.yhcatletics.com
Series Record: Armstrong leads 1-0
Last Meeting: Armstrong 62-60 (11/19/11)

ECKERD

Friday, November 9, 2012 6:00 p.m.
Alumni Arena @ Armstrong Sports Center

Location: St. Petersburg, Fla.
Enrollment: 1,840
Colors: Teal, Navy, Black and White
Conference: Sunshine State
President: Donald R. Eastman III
Athletic Director: Dr. Bob Fortosis
Home Court (capacity):
 McArthur Physical Education Center (1,300)
2011-12 Record: 15-11
2011-12 SSC Record: 8-8 (4th)
Letterwinners Returning/Lost: 4/7
Head Coach: Paul Honsinger
Career Record: 81-84
Record at Eckerd: 81-84, 6 years
Coach's Office Phone: (727) 864-8586
Assistant Coach:
 Sarah Gaffney
SID: Ben Schlesselman
SID Phone: (727) 864-8242
SID FAX: (727) 864-8968
Web Address: www.eckerdtritons.com
Series Record: Armstrong leads 5-1
Last Meeting: Armstrong 64-59 (11/18/06)

PALM BEACH ATLANTIC

Sunday, November 25, 2012 1:30 p.m.
Alumni Arena @ Armstrong Sports Center

Location: West Palm Beach, FL
Enrollment: 3,264
Colors: Navy Blue and White
Conference: DII Independent
President: William M.B. Fleming Jr.
Athletic Director: Carolyn Stone
Home Court (capacity):
 Rubin Arena (2,000)
2011-12 Record: 7-19
Letterwinners Returning/Lost: 7/6
Head Coach: Carlos Palacios
Career Record: First Season
Record at PBAC: First Season
Coach's Office Phone: (561) 803-2364
Assistant Coach:
 Boderick Johnson
SID: Michael Brown
SID Phone: (561) 803-2529
SID FAX: (828) 835-4329
Web Address: www.pbasailfish.com
Series Record: First Meeting

SAGINAW VALLEY STATE

Sunday, December 30, 2012 1:30 p.m.
Alumni Arena @ Armstrong Sports Center

Location: University Center, MI
Enrollment: 10,498
Colors: Red, White and Blue
Conference: Great Lakes Intercollegiate
President: Dr. Eric Glibertson
Athletic Director: Mike Watson
Home Court (capacity):
 O'Neill Arena (4,000)
2011-12 Record: 6-20
2011-12 SAC Record: 10-8 (5th)
Letterwinners Returning/Lost: 6/3
Head Coach: Jamie Pewinski
Career Record: 83-81
Record at Saginaw Valley: 6-20, 1 years
Coach's Office Phone: (989) 964-7312
Assistant Coach:
 Darin Thrun, Matt Hammer
SID: Matthew Woodbury
SID Phone: (989) 964-4053
SID FAX: (989) 964-7389
Web Address: athletics.svsu.edu
Series Record: First Meeting

2012 FAIRFIELD INN & SUITES PIRATE CLASSIC

November 16-17, 2012
Alumni Arena @ Armstrong Sports Center

ANDERSON (SC)

Location: Anderson, SC
Enrollment: 2,300
Colors: Gold and Black
Conference: South Atlantic
2011-12 Record: 10-17
2011-12 SAC Record: 7-11 (8th)
Web Address: autrojans.com
Series Record: Series tied 2-2
Last Meeting: Armstrong 53-50 (11/19/11)

LYNN

Location: Boca Raton, FL
Enrollment: 2,010
Colors: Blue and White
Conference: Sunshine State
2010-11 Record: 12-15
2011-12 SSC Record: 7-8 (7th)
Web Address: lynnfightingknights.com
Series Record: Armstrong leads 1-0
Last Meeting: Armstrong 74-56 (11/29/97)

ALLEN

Tuesday, December 27, 2012 6:30 p.m.
Alumni Arena @ Armstrong Sports Center

Location: Columbia, SC
Enrollment: 600
Colors: Blue and Gold
Affiliation: NAIA
2011-12 Record: 6-21
Web Address: www.allenuniversity.edu
Series Record: Armstrong 3-0
Last Meeting: Armstrong 74-47 (1/28/12)

TRINITY BAPTIST

Monday, November 12 6:00 p.m.
Alumni Arena @ Armstrong Sports Center

Location: Jacksonville, FL
Enrollment: 800
Colors: Royal Blue, Gold and Black
Affiliation: NCCAA
Web Address: www.tbathletics.com
Series Record: First Meeting





ARMSTRONG WOMEN'S BASKETBALL MEDIA SERVICES

The Office of Sports Communications at Armstrong Atlantic State University thank you for your interest in Armstrong women's basketball. Should you need any further assistance in covering the Pirates during the 2012-13 season, please do not hesitate to contact us:

Office of Sports Communications
Armstrong Atlantic State University
Chad Jackson, Director
11935 Abercorn Street
Savannah, GA 31419
Phone: (912) 344-3114
Fax: (912) 344-3422
email: Chad.Jackson@armstrong.edu

Thanks again for your coverage of the Pirates throughout the season.

Chad Jackson
Director of Sports Communications

MEDIA CREDENTIALS

Media credentials for photo and press are not needed, however seating on press row is limited. Requests for press row seating must be made in advance to Director of Sports Communications Chad Jackson via fax, email or phone at least two (2) days prior to each contest.

RADIO BROADCASTS

Opposing teams wishing to broadcast from Alumni Arena at the Armstrong Sports Center are welcome, however lines are limited. If you are planning on broadcasting an upcoming game, please contact Chad Jackson at least two (2) days prior to your contest.

PRE-GAME INTERVIEWS

Requests for interviews with Armstrong Atlantic State University players and coaches should be directed to Director of Sports Communications Chad Jackson. Arrangements will be made for players to call media members if a phone interview is requested - it is Armstrong Athletic Department policy not to publicize student-athlete's home phone numbers.

GAME SERVICES

The Office of Sports Communications staff will furnish media representatives with game programs, pregame notes and statistics, in addition to halftime and final game statistics and play-by-play.



PRESS AREA

The designated press area for Alumni Arena at the Armstrong Sports Center are on either side of the court. Seats are marked prior to each game and we ask that members of the media adhere to seating arrangements during the contest. Photo areas are at the baseline of either basket, but not directly behind the basket. The balconies above each basket are also acces-

sible for photographers - an elevator is located at the south-east corner of the Arena.

Two press row phone lines are available for media members or visiting radio broadcasters. The numbers are (912) 927-1384 and (912) 927-1429. Wireless internet is also available with prior notice.

POST-GAME INTERVIEWS

The Armstrong Atlantic State University women's basketball locker rooms are closed to the media. Head coach Matt Schmidt and requested players will be brought out for postgame interviews following a 10-minute cooling off period.

ARMSTRONG LOCAL MEDIA COVERAGE

Print:

Savannah Morning News
Beat Writer: Nathan Dornitz
Phone: (912) 652-0350
Fax: (912) 525-0796

The Inkwell
Armstrong Campus Newspaper
Phone: (912) 344-3252
Fax: (912) 344-3475

Broadcast:

WSAV-TV 3 (NBC)
Sports Director: Ken Slats
Phone: (912) 644-6842
WTOG-TV 11 (CBS)
Sports Director: Rick Snow and Ken Griner
Phone: (912) 234-1111
WJCL-TV 22 (ABC) / WTGS-TV 28 (Fox)
Sports Director: Frank Sulkowski and Stephanie Frerotte
Phone: (912) 921-2222



MATT SCHMIDT IS THE SEVENTH HEAD COACH IN ARMSTRONG WOMEN'S BASKETBALL HISTORY



The Armstrong Atlantic State women's basketball squad finished the 2011-12 season with a 13-13 overall record and a 7-11 record in Peach Belt Conference play, increasing its overall win total by five from the previous season

The Lady Pirates opened the season with four straight wins, including going an unbeaten 2-0 at the Wingate by Wyndham Pirate Classic, notching wins over Young Harris - on sophomore Mauri Wells' basket with 1.2 seconds left - and Anderson (SC). The start was the best for Armstrong since 2002-03.

Armstrong continued the hot streak into the Christmas break, knocking off Edward Waters and Flagler to finish the fall 7-4.

In the spring, the Pirates notched an early league win at Augusta State, then shot a season-high 53 percent from the field in beating Georgia Southwestern, 80-73, in Americus. Armstrong erased a 12-point second-half deficit to knock off Montevallo, 58-56, while also picking up key road wins at North Georgia and Flagler.

Sophomore Mauri Wells followed up on her debut season by leading the Peach Belt Conference and rank-



ARMSTRONG SOPHOMORE FORWARD MAURI WELLS BECAME JUST THE THIRD ARMSTRONG PLAYER TO LEAD THE LEAGUE IN REBOUNDING, AVERAGING 13.0 RPG IN 2011-12 AND EARNING THIRD-TEAM ALL-PBC HONORS

ing fourth in NCAA Division II in rebounding, averaging 13.0 boards per game. She also ranked 11th in the league in scoring at 12.2 points per game and finished sixth in the nation in double-doubles with 17, earning All-Conference honors. Wells joins Zandrique Cason (2000-02) and Kaneetha Gordon (2006-08) as Armstrong women's basketball players to lead the Peach Belt Conference in rebounding. Wells also set the Alumni Arena women's basketball rebounding record, grabbing 24 in a win over Edward Waters on Nov. 29.

Juniors Demisha Mills (11.0 ppg) and D.D. Gipson (9.6 ppg, .495 FG%) each had an impact in their first seasons with the Pirates after transferring in, while the Pirates also got solid contributions from junior guard Angel Hill (1.50 assist/TO ratio), junior guard/forward Karolina Rykowska (led team in blocked shots and three-point baskets) and freshman point guard Dee Hayward, a member of the U20 Great Britain national team.

As a team, the Pirates ranked fifth in the Peach Belt Conference in field goal percentage (.402) and sixth in rebounding margin (+2.4) as Armstrong ranked fifth in both rebounding offense and defense. Armstrong also ranked sixth in steals and seventh in assists and blocked shots

The Pirates had no seniors in 2011-12 and returned eight players for the 2012-13 season.



JUNIOR DEMISHA MILLS (FAR LEFT) SCORED IN DOUBLE FIGURES IN 17 GAMES IN 2011-12 FOR THE PIRATES, INCLUDING THREE DOUBLE-DOUBLES, WHILE JUNIOR BRIANA MCFARLAND (LEFT) SET CAREER HIGHS FOR POINTS AND MINUTES PLAYED, EARNING PBC ALL-ACADEMIC TEAM HONORS.

MAURI WELLS RANKED SIXTH NATIONALLY IN DOUBLE-DOUBLES WITH 17 IN 2011-12





2011-12 RESULTS AND STATISTICS

2011-12 ARMSTRONG ATLANTIC STATE GAME RESULTS

OVERALL: 13-13 • HOME: 9-8 • AWAY: 4-5 • NEUTRAL: 0-0 • PBC: 7-11

DATE	OPPONENT	SCORE	HIGH SCORER	HIGH REBOUNDER
11/11/11	BLUEFIELD COLLEGE	W 84-65	Demisha Mills (22)	Mauri Wells (13)
11/14/11	CONVERSE	W 67-43	Mills and McFarland (12)	Mauri Wells (18)
11/18/11	@ YOUNG HARRIS	W 62-60	Angelia Hill (17)	Mauri Wells (13)
11/19/11	@ ANDERSON (SC)	W 53-50	Wells and Mills (13)	Mauri Wells (14)
11/22/11	COASTAL GEORGIA	L 72-61	Wells and Rykowska (12)	Mauri Wells (18)
11/29/11	EDWARD WATERS	W 80-62	Demisha Mills (17)	Mauri Wells (24)
12/3/11	* FLAGLER	W 88-64	D.D. Gipson (19)	Mauri Wells (16)
12/14/11	* at USC Aiken	L 73-54	D.D. Gipson (17)	Mauri Wells (8)
12/17/11	* FRANCIS MARION	L 77-70 ot	Mauri Wells (19)	Mauri Wells (15)
12/19/11	* UNC PEMBROKE	W 54-52	Mauri Wells (14)	Mauri Wells (11)
12/30/11	MARS HILL	L 73-69	Demisha Mills (22)	Mauri Wells (13)
1/4/12	* at Augusta State	W 73-64	Angelia Hill (17)	Mauri Wells (10)
1/9/12	* GEORGIA COLLEGE	L 57-45	Demisha Mills (13)	Mauri Wells (8)
1/12/12	* at Columbus State	L 80-69	Demisha Mills (14)	Mauri Wells (13)
1/14/12	* at Georgia Southwestern	W 80-73	Mauri Wells (17)	Mauri Wells (12)
1/19/12	* MONTEVALLO	W 58-56	Demisha Mills (16)	Demisha Mills (13)
1/21/12	* CLAYTON STATE	L 93-48	Mauri Wells (12)	Mauri Wells (12)
1/25/12	* at North Georgia	W 66-61	Karolina Rykowska (15)	Mauri Wells (12)
1/28/12	ALLEN	W 74-47	Demisha Mills (15)	Mauri Wells (14)
2/1/12	* at Lander	L 98-48	Mauri Wells (22)	Mauri Wells (10)
2/4/12	* USC AIKEN	L 65-55	Karolina Rykowska (13)	D.D. Gipson (9)
2/8/12	* at Flagler	W 64-52	Wells and Mills (16)	Mauri Wells (20)
2/15/12	* LANDER	L 85-52	Mauri Wells (14)	Mauri Wells (8)
2/18/12	* at UNC Pembroke	L 74-48	D.D. Gipson (12)	Mauri Wells (13)
2/20/12	* at Francis Marion	L 66-63	D.D. Gipson (17)	Mauri Wells (13)
2/25/12	* AUGUSTA STATE	L 55-53	Karolina Rykowska (14)	Mauri Wells (140)

* - Peach Belt Conference Games

@ - 2011 Wingate by Wyndham Pirate Classic

2011-12 PIRATE CUMULATIVE STATISTICS

Player	GP/GS	MIN	FG-FGA	PCT	3PMG-3PA	PCT	FT-FTA	PCT	OR-DR-TR	RPG	TP	PPG	AST	TO	BS	ST
Mauri Wells	26/26	887	110-241	.456	17-47	.362	79-101	.782	119-219-339	13.0	316	12.2	33	56	17	43
Demisha Mills	26/24	711	125-287	.435	0-4	.000	36-103	.350	54-93-147	5.7	286	11.0	38	69	6	41
D.D. Gipson	26/5	590	95-192	.495	4-12	.333	55-73	.753	46-96-142	5.5	249	9.6	14	48	17	15
Angelia Hill	26/25	740	87-224	.388	13-51	.255	38-60	.633	29-43-72	2.8	225	8.7	63	42	3	27
Karolina Rykowska	26/11	593	53-169	.314	19-75	.253	19-23	.826	5-55-60	2.3	144	5.5	40	55	19	21
Jazmin Walker	26/26	581	47-149	.315	4-28	.143	36-75	.480	26-47-73	2.8	134	5.2	60	87	1	35
Dee Hayward	25/0	478	39-79	.494	7-24	.292	34-46	.739	11-35-46	1.8	119	4.8	55	71	10	23
Briana McFarland	26/13	394	50-142	.352	3-13	.231	8-12	.667	15-16-31	1.2	111	4.3	20	26	2	10
Amber Ford	23/0	134	10-42	.238	4-14	.286	3-7	.429	3-20-23	1.0	27	1.2	6	24	1	10
Danielle Zuercher	10/0	35	4-16	.250	1-5	.200	1-2	.500	1-7-8	0.8	10	1.0	1	2	1	2
Sonny Canady	8/0	27	3-6	.500	3-5	.600	0-0	.000	0-0-0	0.0	9	1.1	3	2	1	0
Noelle Zletni	7/0	17	0-1	.000	0-0	.000	5-5	1.000	0-1-1	0.1	5	0.7	1	4	0	0
Morgan Mitchell	7/0	34	1-3	.333	0-1	.000	1-2	.500	4-6-10	1.4	3	0.4	5	6	0	2
Priscilla Westfield	3/0	4	0-0	.000	0-0	.000	0-0	.000	1-0-1	0.3	0	0.0	0	1	0	0
TOTALS	26	5225	624-1551	.402	75-279	.269	315-500	.619	352-706-1058	40.7	1638	63.0	339	500	78	229



ARMSTRONG BEGAN THE 2011-12 SEASON WITH A 4-0 MARK, ITS BEST START SINCE 2002-03



2011-2012 PLAYER HIGHS

POINTS	22	Mauri Wells at Lander (2-1-12)
	22	Demisha Mills vs. Mars Hill (12/30/11) & vs. Bluefield (11/11/11)
FIELD GOALS MADE.....	11	Demisha Mills vs. Mars Hill (12/30/11) & vs. Bluefield (11/11/11)
FIELD GOALS ATTEMPTED	20	Demisha Mills vs. Mars Hill (12/30/11)
3 PT FG MADE.....	4	Angelia Hill vs. Young Harris (11/18/11)
3 PT FG ATTEMPTS	8	Karolina Rykowska vs. USC Aiken (2/4/12) & Angelia Hill vs. Young Harris (11/18/11)
FREE THROWS MADE.....	8	Dee Hayward vs. Montevallo (1/19/12)
FREE THROW ATT.....	10	Dee Hayward vs. Montevallo (1/19/12)
REBOUNDS.....	24	Mauri Wells vs. Edward Waters (11/29/11)
ASSISTS.....	7	Mauri Wells at Francis Marion (2/20/12)
	7	Jazmin Walker vs. Edward Waters (11/29/11) & vs. Bluefield (11/11/11)
STEALS	5	Jazmin Walker at Augusta State (1/4/12)
	5	Demisha Mills vs. Bluefield (11/11/11)
	5	Karolina Rykowska vs. Bluefield (11/11/11)
BLOCKED SHOTS.....	4	D.D. Gipson vs. Augusta State (2/25/12)
	4	Karolina Rykowska at Flagler (2/8/12)

2011-2012 TEAM HIGHS

Armstrong

POINTS.....	88	Flagler	12-3-11	Armstrong 88-64
FIELD GOALS MADE	31	Allen	1-28-12	Armstrong 74-47
FIELD GOAL ATTEMPTS	78	Mars Hill	12-30-11	Mars Hill 73-69
FIELD GOAL PERCENTAGE.....	.534	Allen	1-28-12	Armstrong 74-47
3 PT FIELD GOALS MADE.....	7	USC Aiken	2-4-12	USC Aiken 65-55
3 PT FG ATTEMPTS	20	USC Aiken	2-4-12	USC Aiken 65-55
3 PT FG PERCENTAGE571	Allen	1-28-12	Armstrong 74-47
FREE THROWS MADE	27	Flagler	12-3-11	Armstrong 88-64
FREE THROW ATTEMPTS.	31	Georgia College	1-9-12	Georgia College 57-45
	31	Flagler	12-3-11	Armstrong 88-64
FREE THROW PERCENTAGE.....	.871	Flagler	12-3-11	Armstrong 88-64
REBOUNDS	62	Converse	11-14-11	Armstrong 67-43
ASSISTS	20	at Francis Marion	2-20-12	Francis Marion 66-63
	20	Edward Waters	11-29-11	Armstrong 80-62
STEALS	17	Allen	1-28-12	Armstrong 74-47
BLOCKED SHOTS.....	8	Converse	11-14-11	Armstrong 67-43
TURNOVERS.....	35	at Lander	2-1-12	Lander 98-48
FOULS.....	21	at Columbus State	1-12-12	Columbus State 80-69
	21	Bluefield	11-11-11	Armstrong 84-65

OPPONENTS

POINTS.....	98	at Lander	2-1-12	Lander 98-48
FIELD GOALS MADE	38	Clayton State	1-21-12	Clayton State 93-48
FIELD GOAL ATTEMPTS	76	at Lander	2-1-12	Lander 98-48
FIELD GOAL PERCENTAGE.....	.545	at USC Aiken	12-14-11	USC Aiken 73-54
3 PT FIELD GOALS MADE.....	14	at Lander	2-1-12	Lander 98-48
3 PT FG ATTEMPTS	29	at Lander	2-1-12	Lander 98-48
3 PT FG PERCENTAGE500	at Columbus State	1-12-12	Columbus State 80-69
FREE THROWS MADE	18	Bluefield	11-11-11	Armstrong 85-64
FREE THROW ATTEMPTS.	28	at Columbus State	1-12-12	Columbus State 80-69
FREE THROW PERCENTAGE.....	1.000	at UNC Pembroke	2-18-12	UNC Pembroke 74-48
	1.000	USC Aiken	2-4-12	USC Aiken 65-55
REBOUNDS	57	Mars Hill	12-30-11	Mars Hill 73-69
ASSISTS	26	at Lander	2-1-12	Lander 98-48
STEALS	22	at Lander	2-1-12	Lander 98-48
BLOCKED SHOTS	9	Clayton State	1-21-12	Clayton State 93-48
TURNOVERS.....	30	Allen	1-28-12	Armstrong 74-47
FOULS	24	Flagler	12-3-11	Armstrong 88-64

THE PIRATES HIT 27-OF-31 FREE THROWS IN AN 88-64 WIN OVER FLAGLER ON 12-3-11





2011-12 PEACH BELT CONFERENCE FINAL STANDINGS



EAST DIVISION

SCHOOL	PBC GAMES	DIVISION GAMES	ALL GAMES
USC Aiken	16-2 .889	11-1 .917	27-4 .871
Lander	15-3 .833	9-3 .750	24-8 .750
UNC Pembroke	12-6 .667	8-4 .667	16-12 .571
Augusta State	7-11 .389	5-7 .417	12-15 .444
Armstrong	7-11 .389	4-8 .333	13-13 .500
Francis Marion	4-14 .222	4-8 .333	9-17 .346
Flagler	2-16 .111	1-11 .083	4-22 .154

WEST DIVISION

SCHOOL	PBC GAMES	DIVISION GAMES	ALL GAMES
Clayton State	16-1 .941	10-0 1.000	29-4 .879
Columbus State	11-6 .647	6-4 .600	16-11 .593
Georgia Southwestern	10-7 .588	7-3 .700	18-9 .667
North Georgia	6-11 .353	4-6 .400	12-14 .462
Montevallo	6-11 .353	3-7 .300	11-16 .407
Georgia College	2-15 .118	0-10 .000	4-22 .154

2011-12 PBC STATISTICAL LEADERS

SCORING

PLAYER (TEAM)	G	FG	3FG	FT	Pts	PPG
1. Jaymee Carnes (NGA)	25	214	16	180	624	25.0
2. Shanteona Keys (GC)	26	138	44	111	431	16.6
3. Kayla Harris (USCA)	31	186	4	115	491	15.8
4. Terra Branch (GSW)	27	143	51	88	425	15.7
5. Dominique Gilbert (CSU)	27	163	0	64	390	14.4
6. Brittini Johnson (Lander)	29	140	68	44	392	13.5
7. Ciara Lyons (Lander)	32	162	1	103	428	13.4
8. Hannah DeGraffinreed (USCA)	31	153	0	102	408	13.2
9. Brittany Christian (FMU)	24	97	59	44	297	12.4
10. Jasmine Judge (Lander)	31	127	115	13	382	12.3

REBOUNDING

PLAYER (TEAM)	RPG
1. Wells (Armstrong)	13.0
2. Carnes (NGA)	11.2
3. Randall (GSW)	10.2
4. Gilbert (CSU)	9.3
5. Belcher (FMU)	9.0
6. Thompson (FMU)	8.2
7. Small (Lander)	8.1
8. Mason (Flagler)	7.6
9. Schreiber (ASU)	7.3
10. Schaafsma (GC)	7.3

ASSISTS

PLAYER (TEAM)	APG
1. Woodard (Clayton)	5.3
2. Hill (USCA)	5.2
3. Thompson (FMU)	5.0
4. White (ASU)	4.9
5. Johnson (Lander)	4.2
6. Walters (GSW)	4.0

FREE THROW PERCENTAGE

PLAYER (TEAM)	FT%
1. Branch (GSW)	.822
2. Wells (Armstrong)	.782
3. Carnes (NGA)	.779
4. Keys (GC)	.776
5. Walters (GSW)	.772
6. Kemp (UNCP)	.769

FIELD GOAL PERCENTAGE

PLAYER (TEAM)	FG%
1. Small (Lander)	.585
2. DeGraffinreed (USCA)	.567
3. Bolton (UNC)	.533
4. Gipson (Armstrong)	.495
5. Mobley (Clayton)	.486
6. Harris (USCA)	.483
White (ASU)	.483

2011-12 ALL-PEACH BELT TEAM

FIRST TEAM

Jaymee Carnes, North Georgia
 Hannah DeGraffinreed, USC Aiken
 Dominique Gilbert, Columbus State
 Kayla Harris, USC Aiken
 Tanisha Woodard, Clayton State

SECOND TEAM

Terra Branch, Georgia Southwestern
 Brittini Johnson, Lander
 Brittini Johnson, Lander
 Jasmine Judge, Lander
 Ciara Lyons, Lander

THIRD TEAM

Courtney Bolton, UNC Pembroke
 Drameka Griggs, Clayton State
 Shanteona Keys, Georgia College
 Adrian Randall, Georgia Southwestern
Mauri Wells, Armstrong

PLAYER OF THE YEAR: Jaymee Carnes, North Georgia
 DEFENSIVE PLAYER OF THE YEAR: Tanisha Woodard, Clayton
 FRESHMAN OF THE YEAR: Shanteona Keys, Georgia College
 COACH OF THE YEAR: Dennis Cox, Clayton

2011-12 PLAYERS OF THE WEEK

Nov. 21	Mauri Wells	Armstrong
Nov. 28	Jaymee Carnes	North Georgia
Dec. 5	Adrian Randall	Georgia Southwestern
Dec. 12	Jasmine Judge	Lander
Dec. 19	Brittany Hill	USC Aiken
Jan. 3	Jaymee Carnes	North Georgia
Jan. 9	Ciara Lyons	Lander
Jan. 16	Dominique Gilbert	Columbus State
Jan. 23	Tanisha Woodard	Clayton State
Jan. 30	Dominique Gilbert	Columbus State
Feb. 6	Jaymee Carnes	North Georgia
Feb. 13	Kayla Harris	USC Aiken
Feb. 20	Jazmine Kemp	UNC Pembroke
Feb. 27	Tanisha Woodard	Clayton State



PEACH BELT CONFERENCE YEAR-BY-YEAR

1990-1991

TEAM	PBC	YEAR
1. USCA	9-3	24-6
2. USCS	7-5	18-10
GC	7-5	18-11
4. <i>Armstrong</i>	5-7	10-14
Lander	5-7	20-8
FMU	5-7	17-12
7. Columbus	3-9	8-17

PLAYER OF THE YEAR
Tisha England, USCA

COACH OF THE YEAR
Tammy Holder, USCS

FIRST TEAM ALL-PBC
Tisha England, USCA
Jametria Hannah, USCS
Leslie Morgan, FMU
Sherita Ballard, GC
Deedra Howard, USCS

SECOND TEAM ALL-PBC
Angelina Tate, USCA
Bernadette Hill, GC
Toni Bell-Yon, Armstrong
Melissa Lewis, Lander
Mary Jackson, FMU

1991-1992

TEAM	PBC	YEAR
1. Augusta	12-2	23-6
GC	12-2	22-7
3. USCA	9-5	18-11
4. FMU	6-8	18-12
5. <i>Armstrong</i>	5-9	14-13
USCS	5-9	12-16
7. Columbus	4-10	10-16
8. Lander	3-11	13-15

ROOKIE OF THE YEAR
Yolanda Oliver, Armstrong

PLAYER OF THE YEAR
Renee Rice, Armstrong

COACH OF THE YEAR
Lowell Barnhart, AC

FIRST TEAM ALL-PBC
Renee Rice, Armstrong
Tisha England, USCA
Mary Jackson, FMU
Jametria Hannah, USCS
Lorain Truesdale, LU

SECOND TEAM ALL-PBC
Allison Barry, GC
Tracey Strange, AC
Kay Sanders, AC
Angie Davis, CC
Robin Edwards, AC
Fenissa Rice, FMU

1992-1993

TEAM	PBC	YEAR
1. USCS *	16-0	28-3
2. Augusta	14-2	24-5
3. <i>Armstrong</i>	10-6	16-10
4. GC	8-8	17-11
5. Lander	7-9	11-16
6. Columbus	6-10	12-15
7. Pembroke	5-11	10-17
8. FMU	3-13	11-17
9. USCA	3-13	8-18
Kennesaw	0-0	19-11

* NCAA participant

ROOKIE OF THE YEAR
April Haskins, CC

PLAYER OF THE YEAR
Deedra Howard, USCS

COACH OF THE YEAR
Peggy Sells, USCS

FIRST TEAM ALL-PBC
Deedra Howard, USCS
Lorian Truesdale, LU
Jeanette Polk, AC
LaTanya Sandifer, GC
Valerie Scott, USCS
Kay Sanders, AC

SECOND TEAM ALL-PBC
April Haskins, CC
Yolanda Oliver, Armstrong
Tracey Strange, AC
Iris Bethea, PSC
Jennifer Teeple, Armstrong
Vivian Edwards, CC

1993-1994

TEAM	PBC	YEAR
1. USCS *	15-1	27-4
2. Columbus	12-4	20-9
3. <i>Armstrong</i>	11-5	17-9
4. Augusta	9-7	16-11
5. GC	8-8	16-12
USCA	8-8	15-12
7. Pembroke	4-12	6-19
8. Lander	3-13	9-18
9. FMU	2-14	6-21
Kennesaw	0-0	18-11

* NCAA participant

ROOKIE OF THE YEAR
Meredith Sisson, USCS

PLAYER OF THE YEAR
Valerie Scott, USCS

COACH OF THE YEAR
Jay Sparks, CC

FIRST TEAM ALL-PBC
Valerie Scott, USCS
Iris Bethea, PSC
Jeanette Polk, AC
Kathleen Shriver, CC
Dwanna Gardner, AC
Kim Moody, GC

SECOND TEAM ALL-PBC
Oni Tyler, CC
Yolanda Oliver, Armstrong
Sonya Cato, USCA
Amy Totten, GC
Jennifer Teeple, Armstrong
Paula Blackwell, USCS

1994-1995

TEAM	PBC	YEAR
1. USCS *	14-4	25-6
Augusta	14-4	19-9
Columbus	14-4	21-7
4. Kennesaw	12-6	15-12
5. FMU	8-10	11-15
6. <i>Armstrong</i>	8-10	12-17
7. USCA	7-11	12-15
GC	7-11	11-17
9. Pembroke	5-13	8-18
10. Lander	1-17	4-22

* NCAA participant

ROOKIE OF THE YEAR
Lawanna Monday, AC

PLAYER OF THE YEAR
Dwanna Gardner, AC

COACH OF THE YEAR
Lowell Barnhart, AC

FIRST TEAM ALL-PBC
Dwanna Gardner, AC
Heather Abrams, USCS
Nicole Smith, Armstrong
Sharon Lee, CC
Sarah McAllister, KSC
Meredith Sisson, USCS

SECOND TEAM ALL-PBC
Amanda Manning, GC
Kisha Conway, FMU
Barbara Hester, CC
Shawn Blassingame, USCA
Hayley Lystlund, AC
Faye Wright, LU

1995-1996

TEAM	PBC	YEAR
1. GC*	14-4	21-9
2. FMU	13-5	18-9
3. KSC	12-6	17-12
4. Augusta	11-7	19-9
5. USCS	10-8	14-13
6. Pembroke	9-9	15-12
Columbus	9-9	13-15
8. <i>Armstrong</i>	7-11	9-18
9. Lander	3-15	9-15
10. USCA	2-16	3-23
Clayton	0-0	13-15

* NCAA participant

ROOKIE OF THE YEAR
Carrie Long, CC

PLAYER OF THE YEAR
Sarah McAllister, KSC

COACH OF THE YEAR
Wes Moore, FMU

FIRST TEAM ALL-PBC
Hayley Lystlund, AC
Kisha Conway, FMU
Andrea Cox, PSC
Alicia Wilson, GC
Sarah McAllister, KSC
Lawanna Monday, AC

SECOND TEAM ALL-PBC
Christy Walker, GC
Rachel Garner, PSC
Heather Abrams, USCS
Jennifer Puckett, FMU
Christa Vaughan, Armstrong
Faye Wright, LU

1996-1997

TEAM	PBC	YEAR
1. KSU*	17-1	30-2
2. FMU*	14-4	21-8
3. GCSU*	13-5	23-8
4. CSU	11-7	17-11
5. ASU	10-8	18-9
<i>Armstrong</i>	10-8	14-13
7. USCS	5-13	11-17
Lander	5-13	8-19
9. USCA	4-14	7-21
10. UNCP	1-17	1-25
Clayton	0-0	14-13

* NCAA participant

ROOKIE OF THE YEAR
Chiffonia Adderson, FMU

PLAYER OF THE YEAR
Joanna Cuprys, KSU

COACH OF THE YEAR
Colby Tilley, KSU

FIRST TEAM ALL-PBC
Que Gilliam, CSU
Christy Walker, GC&SU
Joanna Cuprys, KSU
Lawanna Monday, ASU
Sarah McAllister, KSU
Chiffonia Adderson, FMU

SECOND TEAM ALL-PBC
Tammy Smith, USCS
Jennifer Brabson, FMU
Christale Spain, USCA
Alicia Wilson, GC&SU
Christy Bromley, ASU
Faye Wright, LU

1997-1998

NORTH		
TEAM	PBC	YEAR
1. FMU*	15-1	30-3
2. ASU	9-7	18-10
3. USCS	7-9	14-13
Lander	7-9	12-14
5. USCA	6-10	10-17
6. UNCP	0-16	5-22

SOUTH		
TEAM	PBC	YEAR
1. CSU*	16-0	25-6
2. GCSU	11-5	19-8
3. KSU	10-6	18-10
4. UNF	6-10	11-17
5. <i>Armstrong</i>	5-11	12-16
6. Clayton	4-12	14-15

FRESHMAN OF THE YEAR
Damita Bullock, FMU

PLAYER OF THE YEAR
Jennifer Brabson, FMU

COACH OF THE YEAR
Jay Sparks, CSU

FIRST TEAM ALL-PBC
Dion Thornton, KSU
Toeshia Campfield, CSU
Chiffonia Adderson, FMU
Tamarra Brown, GC&SU
Que Gilliam, CSU
Jennifer Brabson, FMU

SECOND TEAM ALL-PBC
Lawanna Monday, ASU
Tracy Davis, GC&SU
Janet Chadwick, KSU
Christale Spain, USCA
Tammy Smith, USCS
Cindy Koone, LU

1998-1999

NORTH		
TEAM	PBC	YEAR
1. FMU*	16-0	27-3
2. Lander *	11-5	20-10
3. ASU	7-9	13-15
USCA	7-9	16-11
5. USCS	3-13	6-21
6. UNCP	0-16	5-22

SOUTH		
TEAM	PBC	YEAR
1. KSU*	14-2	28-4
2. CSU	12-4	25-7
3. GCSU	9-7	17-11
4. UNF	7-9	18-10
5. <i>Armstrong</i>	6-10	13-15
6. Clayton	4-12	9-18

FRESHMAN OF THE YEAR
Ginnell Curtis, UNCP

PLAYER OF THE YEAR
Jennifer Brabson, FMU

COACH OF THE YEAR
Sheila Rhodes, LU

FIRST TEAM ALL-PBC
Chiffonia Adderson, FMU
Jennifer Brabson, FMU
Rima Petronyte, KSU
Justyna Stanioch, KSU
Dion Thornton, KSU
Christy Wright, FMU

SECOND TEAM ALL-PBC
Sylvia Allen, CSU
Ginnell Curtis, UNCP
Quintina Harris, GC&SU
Reagan Housch, CSU
Cindy Koone, LU
Demetria McClouden, Armstrong

RENEE RICE WAS THE PBC PLAYER OF THE YEAR IN 1991-92



PEACH BELT CONFERENCE YEAR-BY-YEAR



1999-2000

NORTH		
TEAM	PBC	YEAR
1. FMU*	13-3	25-8
2. Lander*	12-4	22-8
3. USCA	7-9	15-12
4. ASU	5-11	10-15
5. UNCP	3-13	11-15
6. USCS	2-14	5-21

FIRST TEAM ALL-PBC
Chiffonia Adderson, FMU
Jennifer Brabson, FMU
Rima Brazenas, KSU
Jackie Entzminger, LU
Amie Kane, KSU
Kinesha Harden, CSU

SOUTH		
TEAM	PBC	YEAR
1. KSU*	14-2	25-5
2. CSU*	12-4	28-8
3. UNF	10-6	16-11
4. GCSU	10-6	17-10
5. Clayton	4-12	8-18
6. <i>Armstrong</i> 4-12	7-19	

SECOND TEAM ALL-PBC
Joya Collier, Clayton
Jami Cornwell, USCA
Ginnell Curtis, UNCP
Janell Gerk, USCA
Rosslon Horton, GC&SU
Kamilah Moss, GC&SU
Christy Wright, FMU

* NCAA participant
PLAYER OF THE YEAR
Rima Brazenas, KSU

COACH OF THE YEAR
Phil Stern, USCA

FRESHMAN OF THE YEAR
Jami Cornwell, USCA

2000-2001

NORTH		
TEAM	PBC	YEAR
1. USCA	14-2	22-7
2. FMU*	13-3	24-7
3. UNCP	6-10	14-13
4. ASU	5-11	12-15
5. Lander	2-14	6-17
6. USCS	2-14	7-19

FIRST TEAM ALL-PBC
Zandrique Cason, *Armstrong*
Jami Cornwell, USCA
Kinesha Harden, CSU
Amie Kane, KSU
Shemika Turner, GC&SU
Christy Wright, FMU

SOUTH		
TEAM	PBC	YEAR
1. CSU*	16-0	32-1
2. GCSU	11-5	21-7
3. KSU	10-6	19-8
4. UNF	8-8	14-13
5. <i>Armstrong</i> 5-11	10-16	
6. Clayton	4-12	6-20

SECOND TEAM ALL-PBC
Abby Boone, CSU
Ginnell Curtis, UNCP
Monica Dajksler, KSU
Beth Heyer, GC&SU
Lashawn Mincey, CSU
Julie Szabo, USCA

* NCAA participant
CO-PLAYERS OF THE YEAR
Kinesha Harden, CSU
Amie Kane, KSU

COACH OF THE YEAR
Jay Sparks, CSU

FRESHMAN OF THE YEAR
Kia Manuel, USCS

2001-2002

NORTH		
TEAM	PBC	YEAR
1. USCA*	16-3	22-6
2. FMU	12-7	16-11
3. UNCP	12-7	18-9
4. ASU	5-14	10-17
5. USCS	4-15	6-21
6. Lander	1-18	2-25

FIRST TEAM ALL-PBC
Skye Barber, UNF
Denisha Ferguson, KSU
Ginnell Curtis, UNCP
Jami Cornwell, USCA
Julie Szabo, USCA
Betsy Foy, GC&SU

SOUTH		
TEAM	PBC	YEAR
1. KSU	13-6	17-10
2. UNF	13-6	20-9
3. CSU	12-7	21-11
4. GCSU*	11-8	19-12
5. Clayton	8-11	13-15
6. <i>Armstrong</i> 7-12	11-18	

SECOND TEAM ALL-PBC
Zandrique Cason, *Armstrong*
Jennifer Lance, UNCP
Christy Thomas, FMU
Mikel Taylor, UNF
Catreia Shaw, CC&SU
Candace Turner, CSU

* NCAA participant
PLAYER OF THE YEAR
Skye Barber, UNF

COACH OF THE YEAR
Phil Stern, USC Aiken

FRESHMAN OF THE YEAR
Aprily Brown, Clayton

2002-2003

NORTH		
TEAM	PBC	YEAR
1. ASU*	13-6	19-10
2. USCA	9-10	19-13
3. USCS	7-12	13-15
4. Lander	6-12	12-15
5. FMU	5-14	12-18
6. UNCP	3-16	8-19

FIRST TEAM ALL-PBC
Skye Barber, UNF
Denisha Ferguson, KSU
Sabrina Jones, ASU
Tishay Lewis, *Armstrong*
Catreia Shaw, CC&SU
Candace Turner, CSU

SOUTH		
TEAM	PBC	YEAR
1. <i>Armstrong</i> * 17-2	27-4	
2. CSU*	17-2	28-4
3. UNF*	12-7	20-12
4. Clayton	10-9	16-11
5. KSU	9-10	16-13
6. GCSU	6-13	13-16

SECOND TEAM ALL-PBC
Jami Cornwell, USCA
Jontell Johnson, FMU
Andrea Lee, GC&SU
Ebony Orr, UNCP
Julie Szabo, USCA

* NCAA participant
PLAYER OF THE YEAR
Tishay Lewis, *Armstrong*

COACH OF THE YEAR
Roger Hodge, *Armstrong*

FRESHMAN OF THE YEAR
Yakeeshia Ross, USCS

2003-2004

NORTH		
TEAM	PBC	YEAR
1. Lander*	14-2	24-6
2. ASU*	11-5	24-8
3. FMU	7-9	14-13
4. USCA	6-10	14-14
5. USCS	4-12	9-18
6. UNCP	2-14	8-20

FIRST TEAM ALL-PBC
Skye Barber, UNF
Denisha Ferguson, KSU
Tracy Jacobs, Lander
Antionette Long, GC&SU
Latia Love, GC&SU
Tasha Washington, *Armstrong*

SOUTH		
TEAM	PBC	YEAR
1. <i>Armstrong</i> * 12-4	23-8	
2. UNF*	12-4	24-6
3. GCSU*	11-5	28-6
4. KSU	10-6	19-10
5. CSU	5-11	11-17
6. Clayton	2-14	10-18

SECOND TEAM ALL-PBC
Natasha Hemphill, Lander
Alshaa' Hodges, ASU
Vandy Noldon, *Armstrong*
Latisha Perry, UNF
Natasha Stotler, UNCP
Ernesia Wideman, ASU

* NCAA participant
PLAYER OF THE YEAR
Denisha Ferguson, KSU

COACH OF THE YEAR
Jonathan Norton, Lander

FRESHMAN OF THE YEAR
Kaneetha Gordon, *Armstrong*

2004-2005

NORTH		
TEAM	PBC	YEAR
1. UNCP	10-6	18-10
2. USCA*	9-7	19-3
3. ASU	8-8	14-14
4. FMU	7-9	11-17
Upstate	7-9	14-14
Lander	7-9	14-15

FIRST TEAM ALL-PBC
Lindsay Bartholf, UNCP
Shavonder Clarke, KSU
Lucia Heston, CSU
Jamika Hindsman, CSU
Kasey Mills, USCA
Danielle Richardson, UNCP

SOUTH		
TEAM	PBC	YEAR
1. Clayton*	13-3	25-7
2. CSU*	12-4	21-10
3. GCSU	9-7	18-10
4. KSU	8-8	18-12
5. UNF	6-10	13-16
6. <i>Armstrong</i> 7-9	17-13	

SECOND TEAM ALL-PBC
Shelcey Harp, Clayton
Kirsti Jones, GCSU
Jasmine Patterson, Clayton
Yakeeshia Ross, Upstate
Creshenda Singletary, FMU
Jacquay White, Lander

* NCAA participant
PLAYER OF THE YEAR
Danielle Richardson, UNCP

COACH OF THE YEAR
John Haskins, UNCP

FRESHMAN OF THE YEAR
Creshenda Singletary, FMU

2005-2006

TEAM	PBC	YEAR
1. NGCSU	19-1	23-4
2. Clayton*	17-3	25-6
3. Upstate*	12-8	16-14
4. <i>Armstrong</i> 10-10	15-13	
UNCP	10-10	15-13
6. CSU	9-11	17-15
FMU	9-11	13-16
GCSU*	9-11	17-14
9. ASU	7-13	13-18
USCA	7-13	11-17
11. Lander	1-19	5-23

* NCAA participant

ALL-PBC HONORS
Shelcey Harp, Clayton
Audosha Kelley, *Armstrong*
LaWanna Leon, GCSU
Syretha Marble, NGCSU
Danielle Moore, FMU
Jasmine Patterson, Clayton
Yakeeshia Ross, Upstate
Natasha Stotler, UNCP
Cherwonna Walker, CSU
Sharon Wiles, Clayton
Katie Williamson, NGCSU

PLAYER OF THE YEAR
Yakeeshia Ross, USC Upstate

COACH OF THE YEAR
Buffie Burson, NGCSU

FRESHMAN OF THE YEAR
Syretha Marble, NGCSU

2006-2007

NORTH		
TEAM	PBC	YEAR
1. USCA	11-5	20-9
2. UNCP	10-6	13-15
3. Lander	9-7	15-13
4. NGA	7-9	12-14
5. Upstate	6-10	11-17
6. FMU	3-15	6-22

ALL-PBC HONORS
Mindy Allee, USCA
Marquita Driskell, GCSU
Tiara Good, Lander
Kaneetha Gordon, *Armstrong*
Megan Huffman, NGA
Syretha Marble, NGA
Deo Ngulela, ASU
Stephanie Ponds, Lander
Shantel Ragin, Clayton
Natasha Stotler, UNCP
Cherwonna Walker, CSU
Sharon Wiles, Clayton

SOUTH		
TEAM	PBC	YEAR
1. Clayton*	12-4	29-6
2. CSU*	10-6	21-11
3. GCSU*	10-6	22-10
4. ASU	9-7	18-10
5. <i>Armstrong</i> 8-8	15-14	
6. GSW	1-15	4-21

* NCAA participant

PLAYER OF THE YEAR
Yakeeshia Ross, USC Upstate

COACH OF THE YEAR
Buffie Burson, NGCSU

FRESHMAN OF THE YEAR
Syretha Marble, NGCSU



KANEETHA GORDON WAS ARMSTRONGS FOURTH TWO-TIME ALL-PBC HONOREE





PEACH BELT CONFERENCE YEAR-BY-YEAR

2007-08

TEAM	PBC	YEAR
1. ASU *	13-7	20-10
Clayton *	13-7	20-11
FMU *	13-7	21-9
Lander *	13-7	23-12
USCA	13-7	20-8
6. CSU	12-8	17-12
7. Armstrong	11-9	20-11
8. NGA	9-11	17-12
9. GCSU	8-12	13-15
10. UNCP	5-15	10-18
11. GSW	0-20	1-26

* NCAA participant

FRESHMAN OF THE YEAR

Dominique Huffin, GCSU

ALL-PBC HONORS

LaShonda Chiles, Lander
 Tiara Good, Lander
Kaneetha Gordon, Armstrong
 Maria Grimes, CSU
 Megan Huffman, NGA
 Meredith Legg, USCA
 Syretha Marble, NGA
 Deo Ngulela, ASU
 Shantel Ragin, Clayton
 Kourtney Singleton, NGA
 Brittany Young, FMU

PLAYER OF THE YEAR

Tiara Good, Lander

COACH OF THE YEAR

Heather Macy, FMU

2008-09

TEAM	PBC	YEAR
1. FMU *	17-3	27-5
2. Clayton *	16-4	26-7
3. Armstrong	12-8	17-11
Lander *	12-8	20-11
USCA *	12-8	22-12
6. GCSU	11-8	16-11
7. CSU	10-10	18-14
8. UNCP	8-12	12-16
9. NGA	5-15	9-20
10. ASU	3-17	5-23
GSW	3-17	8-19

* NCAA participant

FRESHMAN OF THE YEAR

Ciara Lyons, Lander

PLAYER OF THE YEAR

Phebe Smith, CSU

COACH OF THE YEAR

Heather Macy, FMU

FIRST TEAM ALL-PBC

Morgan Johnson, USCA
 Syretha Marble, NGA
 Kevina Ransom, FMU
 Shannon Singleton-Bates, FMU
 Phebe Smith, CSU
Lacey Willis, Armstrong

SECOND TEAM ALL-PBC

Tiauna Brantley, GCSU
 Meredith Legg, USCA
 Shannon McKeever, Lander
 Shandrea Moore, GCSU
 Nikkisha Pritchett, Clayton

THIRD TEAM ALL-PBC

TaSheba Butler, Lander
 Jasmine Godwin, ASU
 JaToya Kemp, UNCP
 Ciara Lyons, Lander
 Whitney Randolph, NGA

2009-10

EAST		
TEAM	PBC	YEAR
1. Lander *	17-1	27-4
2. FMU *	16-2	27-5
3. USCA	10-8	15-13
4. UNCP	8-10	14-14
5. Armstrong	6-12	9-17
6. Flagler	3-15	8-19
7. ASU	0-18	1-26

WEST

1. GC	13-4	21-8
2. Clayton *	12-5	24-7
3. CSU	11-6	17-11
4. Mvallo	7-10	14-13
GSW	7-10	12-16
6. NGA	4-13	9-17

* NCAA participant

FRESHMAN OF THE YEAR

Janyce Ealey, NGA

DEF. PLAYER OF THE YEAR

Robin Colbert, FMU

PLAYER OF THE YEAR

Phebe Smith, CSU

COACH OF THE YEAR

Kevin Pederson, Lander

FIRST TEAM ALL-PBC

Shannon McKeever, Lander
 Whitney Randolph, NGA
 Shannon Singleton-Bates, FMU
 Phebe Smith, CSU
 Teshymia Tillman, Clayton

SECOND TEAM ALL-PBC

Catherine Cain, USCA
 Eboni Fields, FMU
 Brittini Johnson, Lander
 Chimere Jordan, GC
 JaToya Kemp, UNCP

THIRD TEAM ALL-PBC

Janyce Ealey, NGA
 Alicia Lewis, Montevallo
 Ciara Lyons, Lander
 Antoinette Reames, GC
 Tanisha Woodard, CSU

2010-11

EAST		
TEAM	PBC	YEAR
1. Lander *	16-2	29-4
USCA *	16-2	27-6
3. FMU	11-7	18-10
4. UNCP	8-10	12-15
5. Armstrong	4-14	8-18
6. Flagler	3-15	6-20
7. ASU	2-16	8-18

WEST

1. Clayton *	17-0	35-1
2. GC	11-6	22-7
3. CSU	8-9	15-12
4. NGA	6-11	15-13
GSW	6-11	12-14
Mvallo	6-11	10-17

* NCAA participant

FRESHMAN OF THE YEAR

Kayla Harris, USCA

DEF. PLAYER OF THE YEAR

Tanisha Woodard, Clayton

PLAYER OF THE YEAR

Shannon McKeever, Lander

COACH OF THE YEAR

Dennis Cox, Clayton

FIRST TEAM ALL-PBC

Chimere Jordan, GC
 Shannon McKeever, Lander
 Shannon Singleton-Bates, FMU
 Teshymia Tillman, Clayton
 Tanisha Woodard, Clayton

SECOND TEAM ALL-PBC

Hannah DeGraffinreed, USCA
 Dominique Gilbert, CSU
 Dominique Huffin, GC
 JaToya Kemp, UNCP
 Lindsey Moss, NGA

THIRD TEAM ALL-PBC

Robin Colbert, FMU
 Janyce Ealey, NGA
 Kayla Harris, USCA
 Jasmine Judge, Lander
 Courtney Mealing, FMU

YEAR-BY-YEAR PEACH BELT CONFERENCE CHAMPIONS

REGULAR SEASON

1990-91	USC Aiken
1991-92	Augusta State
	Georgia College
1992-93	USC Spartanburg
1993-94	USC Spartanburg
1994-95	USC Spartanburg
	Augusta State
	Columbus State
1995-96	Georgia College
1996-97	Kennesaw State
1997-98	Columbus State
1998-99	Francis Marion
1999-2000	Kennesaw State
2000-01	Columbus State
2001-02	USC Aiken
2002-03	Armstrong
	Columbus State
2003-04	Lander
2004-05	Clayton State
2005-06	North Georgia
2006-07	Clayton State
2007-08	Five Teams
2008-09	Francis Marion
2009-10	Lander
2010-11	Clayton State
2011-12	Clayton State

TOURNAMENT

1992	Augusta State
1993	Augusta State
1994	USC Spartanburg
1995	USC Spartanburg
1996	Georgia College
1997	Kennesaw State
1998	Francis Marion
1999	Lander
2000	Columbus State
2001	Columbus State
2002	Georgia College
2003	Armstrong
2004	Georgia College
2005	Clayton State
2006	Georgia College
2007	Clayton State
2008	Lander
2009	Lander
2010	Clayton State
2011	Georgia College
2012	USC Aiken



ARMSTRONG WON THE PBC FOR THE FIRST TIME IN 2002-03



**SAVANNAH FEDERAL
CREDIT UNION**

**GO
PIRATES!**

admin@savannahfederal.org

124 Barnard Street
Rm. B110
Savannah, GA 31401
(912) 234-8978
www.savannahfederal.org

Bill Payment Services • Internet Banking
24 Hour Audio Response Line
On Line Loan Applications
VISA Check Cards/ATM Cards



TYLER
CONSTRUCTION GROUP
GENERAL CONTRACTORS

www.tyler-construction.com

433 Rabon Road
P.O. Box 25037
Columbia, SC 29224

803.865.1404 phone
803.865.1415 fax

**COGDELL & MENDRALA
ARCHITECTS PC**

517 East Congress Street
Savannah, Georgia 31401

P: 912.234.6318
F: 912.236.8414

n|o|s national office systems



Herman Miller



contract furnishing / interior design

120 East 42 Street
912.238.0539 • www.natoffsys.com



(912) 234-1329
FAX (912) 234-1042

HUTSON PLUMBING CO., INC.

329 Bonaventure Road
Savannah, Georgia 31404

JOHN R. HUTSON
ROBERT L. HUTSON

LYNN MOODY
Estimator



11506-A Abercorn Expressway
Savannah, GA 31419
enterprise.com

Matthew Stroud

Branch Manager
matthew.s.stroud@erac.com
912-920-1093 tel
912-920-1006 fax



Clark & Sons, Inc.

Established 1952
Structural Steel
Ornamental Iron

2819 Tremont Road
Savannah, GA 31405
Phone: 912-234-2623
Fax: 912-234-2624

Ron Clark, Jr



a technology company



Rudy LOMONACO

Director of New Business Development
Vice President - IT Professional Assoc.
FBI/Infragard Board Member

entresolutions.com
51 west fairmont avenue
savannah georgia 31406 USA
t. 912.352.1600x103 f. 912.352.2046
rlomonaco@entresolutions.com



**TURF SERVICES
UNLIMITED**

Commercial - Golf - Sports - Residential
Irrigation, Construction, Renovation, Maintenance

David Schambach

(912) 210-2099 cell
(912) 897-2061 office
(912) 897-0601 fax

AR/AP P.O. Box 1927
Richmond Hill, GA 31324
Mailing: 16 Clarendon Rd.
Savannah, GA 31410

schambachd@aol.com • www.turfservicesunltd.com

MORGAN AND YARBROUGH COMPANY LLC

Protective Relay Testing • Thermographic Heat Scan • Hipot Testing • Breaker & Switchgear Testing
Fiber Optic Installation • Power System Load Study • Power Quality • Metering • High Voltage
Termination & Repair • Arc Flash Studies • Relay Coordination Studies • Short Circuit Studies • Auto CAD

GARY YARBROUGH | Owner
Email: gary.yarbrough@comcast.net



P.O. Box 339
Eden, Georgia 31307

Cell: (912) 656-4702
Office: (912) 748-0695
Fax: (912) 748-8277



**Mansion
Decorating**

of South Carolina, Inc.
P.O. Box 1119
Lugoff, S.C. 29078-1119

Phone (803) 438-1382
Fax (803) 438-6858

Special Coatings

Wallpaper and Vinyl Wall Covering

Airless Spraying

Sandblasting

Power Washing



PEACH BELT CONFERENCE TOURNAMENT HISTORY

1992 (AUGUSTA, GA.)

QUARTERFINALS
USCA 79, Columbus 56

SEMIFINALS
Augusta 71, Armstrong 63
GC 72, USCA 68

CHAMPIONSHIP
Augusta 74, GC 46

ALL-TOURNAMENT TEAM
Tisha England, USCA
Kay Sanders, Augusta
Allison Barry, GC
Angie Long, Augusta

TOURNAMENT MVP
Tracey Strange, Augusta

1993 (AUGUSTA, GA.)

FIRST ROUND
FMU 93, USCA 89 (2ot)

QUARTERFINALS
USCS 73, FMU 60
GC 64, Lander 54
Columbus 70, Armstrong 60
Augusta 66, UNC Pembroke 60

SEMIFINALS
USCS 80, GC 63
Augusta 73, Columbus 60

CHAMPIONSHIP
Augusta 69, USCS 60

ALL-TOURNAMENT TEAM
Deedra Howard, USCS
Valerie Scott, USCS
Tracey Strange, Augusta
Dwana Gardner, Augusta
April Haskins, Columbus

TOURNAMENT MVP
Jeanette Polk, Augusta

1994 (AUGUSTA, GA.)

FIRST ROUND
Lander 58, FMU (ot)

QUARTERFINALS
Columbus 87, UNC Pembroke 54
Armstrong 72, USCA 60
USCS 77, Lander 57
GC 72, Augusta 63

SEMIFINALS
USCS 63, GC 58
Columbus 71, Armstrong 64

CHAMPIONSHIP
USCS 61, Columbus 60

ALL-TOURNAMENT TEAM
Meredith Sisson, USCS
Faye Wright, Lander
Jennifer Teeple, Armstrong
Kim Moody, GC
Kathleen Shriver, Columbus

TOURNAMENT MVP
Katie Otis, Columbus

1995 (AUGUSTA, GA.)

FIRST ROUND
GC 75, Lander 59
UNC Pembroke 73, USCA 54

QUARTERFINALS
USCS 70, GC 63
Columbus 71, FMU 57
Armstrong 67, KSC 65
Augusta 84, Pembroke 71

SEMIFINALS
USCS 70, Columbus 63
Armstrong 82, Augusta 65

CHAMPIONSHIP
USCS 69, Armstrong 49

ALL-TOURNAMENT TEAM
Heather Abrams, USCS

Dwana Gardner, Augusta
Yolanda Oliver, Armstrong
Sharon Lee, Columbus
Mary Ann Merritt, Armstrong

TOURNAMENT MVP
Sherry Clark, USCS

1996 (MILLEDGEVILLE, GA.)

QUARTERFINALS
Columbus 82, FMU 78
KSC 86, UNC Pembroke 71
Augusta 58, USCS 54
GC 76, Armstrong 60

SEMIFINALS
KSC 70, Columbus 57
GC 69, Augusta 66

CHAMPIONSHIP
GC 55, KSC 52

ALL-TOURNAMENT TEAM
April Haskins, Columbus
Claire Servy, Augusta
Christy Walker, GC
Kim Watts, KSC
Alicia Wilson, GC

TOURNAMENT MVP
Sarah McAllister, KSC

1997 (MILLEDGEVILLE, GA.)

FIRST ROUND
USCA 58, Lander 47
USCS 73, UNCP 66

QUARTERFINALS
KSU 88, USCA 63
CSU 78, ASU 75 (ot)
FMU 66, USCS 63
GC 68, Armstrong 54

SEMIFINALS
KSU 62, CSU 61
GC&SU 70, FMU 48

CHAMPIONSHIP
KSU 78, GC&SU 77

ALL-TOURNAMENT TEAM
Que Gilliam, CSU
Tamarra Brown, GC&SU
Chiffonia Adderson, FMU
Sarah McAllister, KSU
Christy Walker, GC

TOURNAMENT MVP
Joanna Cuprys, KSU

1998 (SAVANNAH, GA.)

FIRST ROUND
UNF 71, USCA 57
Clayton 75, USCS 64
KSU 56, UNCP 40
Armstrong 71, Lander 65

QUARTERFINALS
FMU 63, UNF 60
Clayton 78, GC&SU 67
ASU 77, KSU 71
CSU 81, Armstrong 71

SEMIFINALS
FMU 92, Clayton 43
CSU 97, ASU 96 (ot)

CHAMPIONSHIP
FMU 71, CSU 67

ALL-TOURNAMENT TEAM
Lawanna Monday, ASU
Joya Collier, Clayton
Damita Bullock, FMU
Chiffonia Adderson, FMU
Reagan Housch, CSU

TOURNAMENT MVP
Que Gilliam, CSU

1999 (SAVANNAH, GA.)

FIRST ROUND
UNF 71, USCS 58
ASU 102, Clayton 98 (ot)
GC&SU 90, USCA 73
Armstrong 69, UNCP 60

QUARTERFINALS
FMU 57, UNF 43
CSU 87, ASU 69
Lander 90, GC&SU 72 (ot)
KSU 78, Armstrong 75

SEMIFINALS
CSU 67, FMU 65
Lander 80, KSU 66

CHAMPIONSHIP
Lander 73, CSU 69

ALL-TOURNAMENT TEAM
Jennifer Brabson, FMU
Justyna Stanioch, KSU
Reagan Housch, CSU
Jackie Entzminger, Lander
Robyn Davis, CSU

TOURNAMENT MVP
Cindy Koone, Lander

2000 (GREENWOOD, S.C.)

QUARTERFINALS
FMU 72, GCSU 66
CSU 87, USCA 48
KSU 98, ASU 65
Lander 79, UNF 68

SEMIFINALS
CSU 99, FMU 91
Lander 69, KSU 65

CHAMPIONSHIP
CSU 83, Lander 68

ALL-TOURNAMENT TEAM
Jennifer Brabson, FMU
Amie Kane, KSU
Jackie Entzminger, Lander
Haley Cook, CSU
Christy Burrows, Lander

TOURNAMENT MVP
Kinesha Harden, CSU



ARMSTRONG IS 1-2 IN PBC TOURNAMENT CHAMPIONSHIP GAMES

PEACH BELT CONFERENCE TOURNAMENT HISTORY



2001 (GREENWOOD, S.C.)

QUARTERFINALS
USCA 63, UNF 42
GCSU 75, UNCP 69
CSU 79, ASU 63
FMU 69, KSU 57

SEMIFINALS
USCA 63, GCSU 59
CSU 101, FMU 57

CHAMPIONSHIP
CSU 56, USCA 38

ALL-TOURNAMENT TEAM
Christy Wright, FMU
Shenika Turner, GCSU
Jami Cornwell, USCA
Julie Szabo, USCA
Kinesha Harden, CSU

TOURNAMENT MVP
LaShawn Mincey, CSU

2002 (COLUMBUS, GA.)

FIRST ROUND
GC&SU 72, USCS 50
Armstrong 83, UNCP 73
Clayton 68, ASU 65
CSU 83, Lander 76

QUARTERFINALS
GCSU 69, USCA 60
Armstrong 62, KSU 57
UNF 64, Clayton 62
CSU 82, FMU 80 (ot)

SEMIFINALS
GCSU 72, Armstrong 64
UNF 76, CSU 61

CHAMPIONSHIP
GCSU 68, UNF 66

ALL-TOURNAMENT TEAM
Betsy Foy, GCSU
Skye Barber, UNF
Mikel Taylor, UNF
Zandrique Cason, Armstrong
Ginnell Curtis, UNCP

TOURNAMENT MVP
Andrea Lee, GCSU

2003 (COLUMBUS, GA.)

FIRST ROUND
KSU 78, Lander 60
UNCP 95, UNF 88 (2ot)
FMU 59, Clayton 47
GCSU 76, USCS 69 (ot)

QUARTERFINALS
Armstrong 65, KSU 60
USCA 67, UNCP 51
FMU 61, ASU 55 (ot)
CSU 74, GCSU 63

SEMIFINALS
Armstrong 69, USCA 63
CSU 58, FMU 46

CHAMPIONSHIP
Armstrong 56, CSU 55

ALL-TOURNAMENT TEAM
Candace Turner, CSU
Courtney Favors, CSU
Denisha Ferguson, KSU
Jontell Johnson, FMU
Tasha Washington, Armstrong

TOURNAMENT MVP
Tishay Lewis, Armstrong

2004 (AUGUSTA, GA.)

FIRST ROUND
KSU 84, USCS 76
FMU 65, Clayton 63
CSU 59, USCA 53
GCSU 76, UNCP 62

QUARTERFINALS
Lander 66, KSU 61
Armstrong 63, FMU 52
UNF 63, CSU 45
GCSU 68, ASU 47

SEMIFINALS
Lander 67, Armstrong 64
GCSU 61, UNF 59

CHAMPIONSHIP
GCSU 79, Lander 67

ALL-TOURNAMENT TEAM
Jennifer Beamon, LU
Antionette Long, GCSU
Latisha Perry, GCSU
Tasha Washington, Armstrong
Jacquay White, Lander

TOURNAMENT MVP
Latia Love, GCSU

2005 (AUGUSTA, GA.)

FIRST ROUND
Lander 72, GCSU 59
UNF 59, Upstate 57
KSU 70, FMU 69

QUARTERFINALS
Lander 71, USCA 62
Clayton 89, UNF 72
KSU 78, UNCP 66
CSU 65, Armstrong 61

SEMIFINALS
Clayton 74, Lander 68
CSU 79, KSU 51

CHAMPIONSHIP
Clayton 83, CSU 76 ot

ALL-TOURNAMENT TEAM
Jacquay White, Lander
Shavonder Clarke, KSU
Lucia Heston, CSU
Cherwonna Walker, CSU
Jamika Hindsman, Clayton

TOURNAMENT MVP
Jasmine Patterson, Clayton

2006 (GREENWOOD, S.C.)

FIRST ROUND
ASU 53, USCA 52
CSU 71, Lander 37

QUARTERFINALS
Clayton 57, ASU 46
GCSU 63, Armstrong 60
FMU 65, UNCP 58
Upstate 69, CSU 62

SEMIFINALS
GCSU 67, Clayton 61
FMU 63, Upstate 58

CHAMPIONSHIP
GCSU 89, FMU 83 2ot

ALL-TOURNAMENT TEAM
Cassie Miliner, GCSU
Danielle Moore, FMU
Brittany Young, FMU
Shelcey Harp, Clayton
Yakeeshia Ross, Upstate

TOURNAMENT MVP
LaWanna Leon, GCSU

2007 (GREENWOOD, S.C.)

FIRST ROUND
Armstrong 76, Upstate 63
ASU 56, FMU 46

QUARTERFINALS
GCSU 56, UNCP 47
Clayton 73, Armstrong 70
USCA 59, ASU 49
CSU 72, Lander 60

SEMIFINALS
Clayton 70, GCSU 60
CSU 70, USCA 64 ot

CHAMPIONSHIP
Clayton 50, CSU 43

ALL-TOURNAMENT TEAM
Robertta Phillips, Clayton
Cherwonna Walker, CSU
Shanrika Hardeman, CSU
Kaneetha Gordon Armstrong
Marquita Driskell, GCSU

TOURNAMENT MVP
Shantel Ragin, Clayton

2008 (GREENWOOD, S.C.)

FIRST ROUND
Armstrong 74, UNCP 68
North Ga. 74, GCSU 64

QUARTERFINALS
Armstrong 68, Clayton State 66
CSU 68, ASU 57
FMU 84, North Ga. 75
Lander 68, USCA 67

SEMIFINALS
Armstrong 78, CSU 68
Lander 93, FMU 73

CHAMPIONSHIP
Lander 68, Armstrong 65

ALL-TOURNAMENT TEAM
Syretha Marble, North Ga.
Kevina Ransom, FMU
Kaneetha Gordon Armstrong
Lacey Willis, Armstrong
Shannon McKeever, Lander

TOURNAMENT MVP
Tiara Good, Lander

2009 (GREENWOOD, S.C.)

FIRST ROUND
North Ga. 55, UNCP 50
CSU 82, ASU 79

QUARTERFINALS
FMU 80, North Ga. 61
Lander 83, Armstrong 63
Clayton State 55, CSU 52
USCA 62, GCSU 48

SEMIFINALS
Lander 70, FMU 63
USCA 73, Clayton St. 57

CHAMPIONSHIP
Lander 64, USCA 53

ALL-TOURNAMENT TEAM
Jasmine Judge, Lander
Kendra Chandler, USCA
Morgan Johnson, USCA
Shanrika Hardeman, Clayton St.
Phebe Smith, CSU

TOURNAMENT MVP
Shannon McKeever, Lander





INDIVIDUAL RECORDS

MOST POINTS

First Half: 30, Renee Rice vs. Brewton-Parker, 2-19-92
 Second Half: 23, Renee Rice vs. Brewton-Parker, 2-19-92
 Game: 53, Renee Rice vs. Brewton-Parker, 2-19-92
 Season: 653, Terralyn Edwards, 1981-82
 Career: 1,401, Kaneetha Gordon, 2003-08

BEST SCORING AVERAGE

Season: 24.4, Terralyn Edwards, 1979-80
 Career: 24.0, Renee Rice, 1991-92

MOST FIELD GOALS MADE

Game: 24, Renee Rice vs. Brewton-Parker, 2-19-92
 Season: 276, Renee Rice, 1991-92
 Career: 566, Gigi Gibson, 1980-84

MOST CONSECUTIVE FIELD GOALS

Game: 13, Renee Rice at USC Spartanburg, 2-1-92
 Season: 17, Renee Rice vs. GC&SU, 1-29-92 (4)
 and at USC Spartanburg, 2-1-92 (13)

MOST FIELD GOALS ATTEMPTED

Game: 34, Renee Rice vs. Brewton-Parker, 2-19-92
 Season: 667, Terralyn Edwards, 1981-82
 Career: 1,376, Gigi Gibson, 1980-84

BEST FIELD GOAL PERCENTAGE

Game (min. 8 attempts):
 1.000 (8-8), Kim Pitts vs. ASU, 1-20-86
 Kim Pitts vs. GC&SU, 2-21-86
 (min. 10 attempts):
 .933 (14-15), Demetria McClouden vs. Fla. Tech, 12-3-98
 Season: .643 (137-213), Christa Vaughan, 1995-96
 Career: .601 (302-502), Christa Vaughan, 1995-98



THE PBC FRESHMAN OF THE YEAR IN 1991-92, YOLANDA OLIVER MADE A SCHOOL RECORD 99 CAREER STARTS.

MOST 3-POINTERS MADE

Game: 9, Debra Morrell vs. Lander, 1-28-95
 Season: 90, Lindsey Holmes, 2007-08
 Career: 183, Michelle Hubbard, 1995-98, 00-01

MOST 3-POINTERS ATTEMPTED

Game: 18, Debra Morrell vs. Lander, 1-28-95
 Season: 256, Lindsey Holmes, 2007-08
 Career: 543, Michelle Hubbard, 1995-98, 00-01

BEST 3-POINT PERCENTAGE

Game (min. 6 att.):
 .857 (6-7), Sheri Hanners vs. USC Aiken, 2-13-99
 Season: .436 (41-94), Jamie Townsend, 1996-97
 Career: .384 (56-146), Duanda Ball, 1999-2000

MOST FREE THROWS

Game: 17, Terralyn Edwards vs. Savannah State, 2-18-80
 Season: 199, Terralyn Edwards, 1981-82
 Career: 361, Terralyn Edwards, 1978-82

MOST FREE THROWS ATTEMPTED

Game: 20, Terralyn Edwards vs. Savannah State, 2-18-80
 Season: 263, Terralyn Edwards, 1981-82
 Career: 484, Terralyn Edwards, 1979-83

BEST FREE THROW PERCENTAGE

Game (min. 10 attempts):
 1.000 (12-12), Debra Danielson vs. Edward Waters, 11-21-83
 (11-11), Tasha Washington vs. Fayetteville St., 11-22-03
 Season: .825 (94-114), Dartayvia Thomas, 2008-09
 Career: .768 (228-297), Lexie Martin, 1998-02

MOST REBOUNDS

Offensive: 14, Renee Rice at Lander, 1-11-92
 Defensive: 18, Zandrique Cason vs. Lenoir-Rhyne, 12-15-00
 Game: 27, Cindy Pound at Tift, 1-12-79
 Season: 373, Gigi Gibson, 1981-82
 Career: 1,158, Kaneetha Gordon, 2003-08

BEST REBOUND AVERAGE

Season: 17.0, Cindy Pound, 1978-79
 Career: 14.1, Cindy Pound, 1978-80

MOST ASSISTS

Game: 15, Yolanda Oliver vs. Kennesaw State, 12-13-94
 Season: 174, Yolanda Oliver, 1994-95
 Career: 448, Yolanda Oliver, 1991-95

MOST STEALS

Game: 10, Norma Faison at Tift, 11-17-84
 Season: 106, Tasha Washington, 2003-04
 Career: 302, Yolanda Oliver, 1991-95

MOST BLOCKED SHOTS

Game: 8, Kelly Versluis at Columbus State, 1-22-09
 Season: 59, Michelle Phillips, 1987-88
 Kelly Versluis, 2008-09
 Career: 101, Kelly Versluis, 2007-09

MOST GAMES

Season: 32, Beth Benefield, Gigi Gibson, Lee Harmer, 1981-82
 Career: 119, Alicia Durham, 2002-06

MOST MINUTES PLAYED

Game: 49, Toni Bell-Yon at Francis Marion, 1-26-91 (2ot)
 Season: 1,000 (29 games), Debra Morrell, 1994-95
 Career: 3,511 (108 games), Yolanda Oliver, 1991-95

MOST CONSECUTIVE STARTS

Career: 99, Yolanda Oliver, 1991-95

SCORING RECORDS

MOST GAMES W/20 OR MORE POINTS

Season: 22, Terralyn Edwards, 1981-1982
 Career: 38, Terralyn Edwards, 1979-1983

MOST GAMES IN DOUBLE FIGURES

Season: 30 (30 games), Tasha Washington, 2003-04
 Career: 73 (109 games), Gigi Gibson, 1980-1984

CONSECUTIVE GAMES W/DOUBLE FIGURES

31, Tasha Washington, 2002-03 (last game) & 2003-04 (all 30)

30-POINT GAMES

Date	Player	Pts. Against	Score
1/27/78	Carmen Escartin	38 at Piedmont	W 85-75
1/12/79	Cindy Pound	34 Tift	W 79-69
2/20/79	Cindy Pound	38 at Charleston So.	W 76-63
11/19/79	Cindy Pound	38 at Savannah St.	W 80-71
11/26/79	Cindy Pound	41 at Central Fla.	W 98-77
1/5/80	Terralyn Edwards	31 Ga. Southwestern	W 71-59
1/14/80	Terralyn Edwards	32 at GC&SU	L 68-59
2/8/80	Terralyn Edwards	31 Fort Valley State	L 84-77
2/9/80	Terralyn Edwards	37 at Charleston So.	W 82-55
2/18/80	Terralyn Edwards	39 Savannah State	W 98-75
12/19/80	Debra David	35 at North Georgia	W 81-74
1/8/82	Terralyn Edwards	36 Shorter	W 70-62
1/23/82	Gigi Gibson	30 at Shorter	W 74-70
3/11/82	Terralyn Edwards	31 Fla. International	L 81-77
2/2/85	Cynthia Hargrove	38 Tift	W 105-66
11/23/85	Norma Faison	33 Rollins	W 72-51
11/26/85	Norma Faison	32 Flagler	W 105-68
12/8/85	Norma Faison	30 North Georgia	W 83-78
12/8/87	Heather Poppell	38 at West Georgia	L 95-69
1/18/88	Heather Poppell	31 Flagler	W 74-68
2/13/88	Heather Poppell	35 at Columbia	W 79-67
2/16/88	Heather Poppell	30 Fort Valley State	L 109-68
2/22/88	Heather Poppell	36 Savannah State	L 78-66
12/9/88	Melissa Pettway	31 at West Georgia	L 96-68
1/8/92	Renee Rice	31 Francis Marion	L 66-64
2/1/92	Renee Rice	42 at USC Upstate	W 69-56
2/5/92	Renee Rice	37 Columbus State	W 60-52
2/17/92	Renee Rice	31 Spelman	W 79-49
2/19/92	Renee Rice	53 Brewton-Parker	W 89-84
12/11/93	Jennifer Teeple	34 Florida Tech	W 69-60
1/31/94	Jennifer Teeple	30 at Augusta State	W 66-59
12/13/94	Nicole Smith	34 Kennesaw State	L 87-86
1/31/98	Demetria McClouden	31 at Augusta State	L 83-79
12/3/98	Demetria McClouden	43 Florida Tech	W 78-72
1/2/99	Demetria McClouden	30 at GC&SU	L 85-73
2/19/99	Demetria McClouden	33 UNC Pembroke	W 69-60
11/29/00	Zandrique Cason	31 at Spelman	W 79-61
1/4/03	Tishay Lewis	30 at Lander	W 82-72
1/15/03	Tishay Lewis	34 at USC Aiken	W 80-69
2/5/03	Tishay Lewis	30 Augusta State	W 86-53
2/12/03	Tishay Lewis	32 at North Florida	W 69-58
2/11/04	Tasha Washington	34 at North Florida	L 62-61
2/21/04	Tasha Washington	32 at USC Spartnbg	W 78-76
12/4/05	Audoshia Kelley	37 at Presbyterian	W 75-68
3/1/08	Lacey Willis	35 at Lander	L 97-87
11/29/08	Lacey Willis	32 Limestone	W 66-47
12/6/10	Arpine Amirkhanyan	30 Augusta State	W 77-73

20-REBOUND GAMES

Date	Player	Reb. Against	Score
1/31/78	Carmen Escartin	20 at Augusta State	L 87-67
2/17/78	Patty Rountree	23 Georgia Baptist	W 74-59
11/18/78	Cindy Pound	20 Spartanburg Meth.	W 79-64
12/4/78	Cindy Pound	24 at GC&SU	W 77-44
1/12/79	Cindy Pound	27 Tift	W 79-69
1/27/79	Cindy Pound	23 at Georgia Tech	W 61-51
2/11/79	Cindy Pound	23 Ga. Southwestern	W 70-54
2/14/79	Cindy Pound	23 at Augusta State	L 79-76
2/20/79	Cindy Pound	23 at Baptist	W 76-63
11/26/79	Cindy Pound	25 at Central Fla.	W 98-77
11/17/80	Debra David	20 Savannah State	L 74-54
1/13/84	Debra Danielson	20 Shorter	L 86-71
1/28/84	Debra Danielson	22 North Georgia	W 76-69
2/4/84	Debra Danielson	20 at Tift	W 82-76
	Gigi Gibson	20 at Tift	W 82-76
1/29/92	Renee Rice	23 at GC&SU	L 66-59
12/15/00	Zandrique Cason	20 Lenoir-Rhyne	L 69-56
11/21/01	Zandrique Cason	24 at Fort Valley St.	L 53-47
2/13/02	Zandrique Cason	23 at North Florida	L 67-59
2/28/07	Kaneetha Gordon	23 vs. USC Upstate	W 76-63
11/19/11	Mauri Wells	24 Edward Waters	W 80-62
2/8/12	Mauri Wells	20 at Flagler	W 64-52

WELLS HAD TWO 20-REBOUND GAMES IN 2011-12, MOST IN A SEASON SINCE 2001-02



SEASON TOP 10s



DOUBLE-DOUBLE SEASONS

Carmen Escartin, 77-78	17.2 ppg	10.6 rpg
Cindy Pound, 78-79	19.7 ppg	17.0 rpg
Terralyn Edwards, 79-80	24.4 ppg	11.8 rpg
Cindy Pound, 79-80	20.6 ppg	11.7 rpg
Gigi Gibson, 81-82	13.8 ppg	11.6 rpg
Gigi Gibson, 82-83	17.4 ppg	10.4 rpg
Debra Danielson, 83-84	15.6 ppg	11.4 rpg
Dee Burns, 85-86	15.3 ppg	10.5 rpg
Renee Rice, 91-92	24.0 ppg	13.1 rpg
Zandrique Cason, 00-01	16.7 ppg	10.3 rpg
Zandrique Cason, 01-02	15.4 ppg	10.6 rpg
Kaneetha Gordon, 06-07	15.6 ppg	11.6 rpg
Kaneetha Gordon, 07-08	14.2 ppg	10.2 rpg
Mauri Wells, 11-12	12.2 ppg,	13.0 rpg

POINTS

1. Terralyn Edwards, 81-82	653
2. Renee Rice, 91-92	648
3. Tasha Washington, 03-04	641
4. Terralyn Edwards, 79-80	585
5. Tishay Lewis, 02-03	557
6. Heather Poppell, 87-88	511
7. Demetria McClouden, 98-99	492
8. Audosha Kelley, 04-05	473
9. Gigi Gibson, 82-83	470
10. Norma Faison, 84-85	463

POINTS PER GAME

1. Terralyn Edwards, 79-80	24.4
2. Renee Rice, 91-92	24.0
3. Heather Poppell, 87-88	22.2
4. Terralyn Edwards, 81-82	21.8
5. Tasha Washington, 03-04	21.4
6. Cindy Pound, 79-80	20.6
7. Cindy Pound, 78-79	19.7
8. Norma Faison, 85-86	19.2
9. Audosha Kelley, 04-05	18.2
10. Tishay Lewis, 02-03	18.0

REBOUNDS

1. Gigi Gibson, 81-82	373
2. Renee Rice, 91-92	354
3. Cindy Pound, 78-79	340
4. Mauri Wells, 11-12	338
5. Kaneetha Gordon, 06-07	335
6. Kaneetha Gordon, 07-08	316
7. Zandrique Cason, 01-02	308
8. Debra Danielson, 83-84	307
9. Terralyn Edwards, 79-80	283
10. Gigi Gibson, 82-83	282

REBOUNDS PER GAME

1. Cindy Pound, 78-79	17.0
2. Patty Rountree, 77-78	13.8
3. Renee Rice, 91-92	13.1
4. Mauri Wells, 11-12	13.0
5. Terralyn Edwards, 79-80	11.8
6. Cindy Pound, 79-80	11.7
7. Gigi Gibson, 81-82	11.6
Kaneetha Gordon, 06-07	11.6
9. Debra Danielson, 83-84	11.4
10. Carmen Escartin, 77-78	10.6
Zandrique Cason, 01-02	10.6

FIELD GOALS MADE

1. Renee Rice, 91-92	276
2. Terralyn Edwards, 81-82	227
3. Terralyn Edwards, 79-80	215
4. Tasha Washington, 03-04	205
5. Demetria McClouden, 98-99	201
6. Cindy Pound, 79-80	196
7. Gigi Gibson, 82-83	193
8. Norma Faison, 84-85	189
9. Tishay Lewis, 02-03	183
Lacey Willis, 08-09	183

FIELD GOAL % (MIN. 150 ATT.)

1. Christa Vaughan, 95-96643 (137-213)
2. Demetria McClouden, 98-99604 (201-333)
3. Dee Burns, 85-86601 (152-253)
4. Christa Vaughan, 96-97588 (137-233)
5. Renee Rice, 91-92584 (276-473)
6. Sonia Oliver, 97-98577 (138-239)
7. Angela Foote, 93-94571 (88-154)
8. Sonia Oliver, 96-97550 (93-169)
9. Debra Danielson, 83-84543 (164-302)
10. Sonya Mintz, 99-00532 (84-158)

3-POINT FIELD GOALS MADE

1. Lindsey Holmes, 07-08	90
2. Tana Griffiths, 06-07	87
3. Debra Morrell, 94-95	82
4. Jennifer Teeple, 93-94	62
5. Lindsey Holmes, 08-09	61
6. Jennifer Teeple, 92-93	59
Lauren Hall, 09-10	59
8. Michelle Hubbard, 95-96	58
9. Duanda Ball, 99-00	56
10. Vandy Noldon, 03-04	54

3-POINT % (MIN. 1 3PM/GM)

1. Jamie Townsend, 96-97436 (41-94)
2. Ashley Slade, 10-11402 (33-82)
3. Vandy Noldon, 02-03392 (29-74)
4. Tishay Lewis, 02-03389 (42-108)
Audosha Kelley, 04-05389 (37-95)
6. Tasha Washington, 02-03386 (49-127)
7. Duanda Ball, 99-00384 (56-146)
8. Toni Bell-Yon, 89-90383 (49-128)
9. Jennifer Teeple, 92-93381 (59-155)
10. Lexie Martin, 98-99371 (52-140)
Sarah Brown, 06-07371 (36-97)

FREE THROWS MADE

1. Terralyn Edwards, 81-82	199
2. Tasha Washington, 03-04	190
3. Terralyn Edwards, 79-80	155
Heather Poppell, 87-88	155
5. Tishay Lewis, 02-03	149
6. Zandrique Cason, 00-01	139
7. Zandrique Cason, 01-02	132
Audosha Kelley, 04-05	132
9. Kaneetha Gordon, 07-08	120
10. Cindy Pound, 79-80	103

FREE THROW % (MIN. 2 FTM/GM)

1. Dartayvia Thomas, 08-09825 (94-114)
2. Norma Faison, 84-85810 (85-105)
3. Arpine Amirkhanyan, 10-11808 (80-99)
4. Lexie Martin, 00-01789 (71-90)
5. Tishay Lewis, 02-03788 (149-189)
6. Mauri Wells, 11-12782 (79-101)
7. Arpine Amirkhanyan, 09-10771 (84-109)
8. Lexie Martin, 01-02767 (66-86)
9. Tasha Washington, 03-04763 (190-249)
Audosha Kelley, 04-05763 (132-173)

ASSISTS

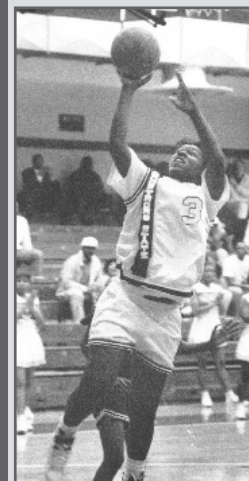
1. Yolanda Oliver, 94-95	174
2. Catherine Shields, 95-96	130
3. Jasmine Herron, 07-08	128
4. Michelle Hubbard, 95-96	120
5. Michelle Hubbard, 97-98	118
6. Michelle Hubbard, 96-97	117
7. Renee Johnson, 83-84	115
8. Jasmine Herron, 06-07	108
9. Cheryl Pierce, 90-91	105
Andrea Popwell, 91-92	105
Tasha Washington, 03-04	105

STEALS

1. Tasha Washington, 03-04	106
2. Marva Lindsay, 92-93	97
3. Yolanda Oliver, 94-95	93
4. Tishay Lewis, 02-03	91
5. Yolanda Oliver, 92-93	89
6. Norma Faison, 83-84	87
7. Renee Rice, 91-92	80
8. Tasha Washington, 02-03	79
Alicia Durham, 05-06	79
10. Marva Lindsay, 93-94	78

BLOCKED SHOTS

1. Michelle Phillips, 87-88	59
Kelly Versluis, 08-09	59
3. Dina Mulholland, 90-91	45
4. Kelly Versluis, 07-08	42
5. Aurora Campbell, 81-82	33
6. Zandrique Cason, 01-02	31
Kaneetha Gordon, 06-07	31
8. Terralyn Edwards, 81-82	30
9. Tishay Lewis, 02-03	29
10. Lavonne Thomas, 04-05	28



RENEE RICE, THE 1991-92 PBC PLAYER OF THE YEAR, AVERAGED 24.0 POINTS PER GAME THAT SEASON. THE SECOND-BEST SINGLE-SEASON SCORING AVERAGE IN PEACH BELT CONFERENCE WOMEN'S BASKETBALL HISTORY. SHE ALSO OWNS THE PBC RECORD FOR POINTS IN ONE GAME WITH 53.

WELLS' 13.0 REBOUNDING PER GAME AVERAGE WAS THE FOURTH-HIGHEST IN ARMSTRONG WOMEN'S BASKETBALL HISTORY





CAREER TOP 10s

GAMES PLAYED

1. Alicia Durham, 02-06	119
Kaneetha Gordon, 03-08	119
3. Jasmine Herron, 04-08	118
4. Lacey Willis, 05-09	114
Dartayvia Thomas, 06-10	114
6. Marloes Renskers, 00-04	113
7. Gigi Gibson, 80-84	109
8. Yolanda Oliver, 91-95	108
Kristi Steele, 92-96	108
10. Michelle Hubbard, 95-98, 00-01	106

POINTS

1. Kaneetha Gordon, 03-08	1401
2. Gigi Gibson, 80-84	1360
3. Terralyn Edwards, 79-83	1275
Yolanda Oliver, 91-95	1275
5. Lacey Willis, 05-09	1240
6. Zandrique Cason, 00-03	1212
7. Lexie Martin, 98-02	1119
8. Michelle Hubbard, 95-98, 00-01	1114
9. Norma Faison, 83-86	1091
10. Tasha Washington, 02-04	1064

POINTS PER GAME

1. Renee Rice, 91-92	24.0
2. Heather Poppell, 87-88	22.2
3. Terralyn Edwards, 79-83	22.0
4. Cindy Pound, 78-80	20.2
5. Tishay Lewis, 02-03	18.0
6. Audosha Kelley, 04-06	17.7
7. Tasha Washington, 02-04	17.4
8. Carmen Escartin, 77-78	17.2
9. Debra David, 78-80	16.3
10. Kim Pitts, 85-86	16.0

REBOUNDS

1. Kaneetha Gordon, 03-08	1158
2. Gigi Gibson, 80-84	963
3. Zandrique Cason, 00-03	774
4. Cindy Pound, 78-80	621
5. Sonia Oliver, 94-98	618
6. Lacey Willis, 05-09	597
7. Mauri Wells, 10-	572
8. Terralyn Edwards, 79-83	555
9. Kristi Steele, 92-96	547
10. Dartayvia Thomas, 06-10	508

REBOUNDS PER GAME

1. Cindy Pound, 78-80	14.1
2. Renee Rice, 91-92	13.1
3. Patty Rountree, 76-78	12.3
4. Mauri Wells, 10-	11.0
5. Carmen Escartin, 77-78	10.6
6. Kaneetha Gordon, 03-08	9.7
7. Terralyn Edwards, 79-83	9.6
8. Sharleen Hamilton, 80-83	9.2
Debra Danielson, 83-85	9.2
10. Zandrique Cason, 00-03	9.0

FIELD GOALS MADE

1. Gigi Gibson, 80-84	566
2. Kaneetha Gordon, 03-08	525
3. Yolanda Oliver, 91-95	520
4. Lacey Willis, 05-09	485
5. Terralyn Edwards, 79-83	457
6. Norma Faison, 83-86	443
7. Zandrique Cason, 00-03	416
8. Michelle Hubbard, 95-98, 00-01	374
9. Lexie Martin, 98-02	356
10. Lee Harmer, 78-82	355

FIELD GOAL % (MIN. 250 ATT.)

1. Christa Vaughan, 95-98601 (302-502)
2. Renee Rice, 91-92584 (276-473)
3. Dee Burns, 84-86570 (233-409)
4. Demetria McClouden, 97-99566 (341-602)
5. Sonia Oliver, 95-99559 (313-559)
6. Debra Danielson, 83-85528 (333-631)
7. Shaletra Hodge, 01-03487 (130-267)
8. Lacey Willis, 05-09484 (485-1003)
9. Marva Lindsay, 92-94475 (215-453)
10. Mauri Wells, 10-468 (222-474)

3-POINT FIELD GOALS MADE

1. Michelle Hubbard, 95-98, 00-01	183
2. Lexie Martin, 98-02	179
3. Lindsey Holmes, 04-05, 07-09	159
4. Tana Griffiths, 05-07	122
5. Debra Morrell, 90-95	123
6. Jennifer Teeple, 92-94	121
7. Portia Jones, 07-10	98
8. Toni Bell-Yon, 89-91	94
Alicia Durham, 02-06	94
10. Tasha Washington, 02-04	90

3-POINT % (MIN. 40 MADE)

1. Tishay Lewis, 02-03389 (42-108)
2. Duanda Ball, 99-00384 (56-146)
3. Vandy Noldon, 02-04367 (83-226)
4. Lexie Martin, 98-02351 (179-510)
5. Jamie Townsend, 94-98348 (87-250)
6. Tasha Washington, 02-04345 (90-261)
7. Jennifer Teeple, 92-94339 (121-357)
8. Michelle Hubbard, 95-01337 (183-543)
Tana Griffiths, 05-07337 (122-362)
10. Lindsey Holmes, 04-09335 (159-474)

FREE THROWS MADE

1. Zandrique Cason, 00-03	370
2. Terralyn Edwards, 79-83	361
3. Kaneetha Gordon, 03-08	300
4. Tasha Washington, 02-04	290
5. Gigi Gibson, 80-84	258
6. Lacey Willis, 05-09	257
7. Alicia Durham, 02-06	236
8. Lexie Martin, 98-02	228
9. Yolanda Oliver, 91-95	226
10. Lee Harmer, 78-82	217

FREE THROW % (MIN. 100 ATT.)

1. Arpine Amirkhanyan, 09-11789 (164-208)
2. Tishay Lewis, 02-03788 (149-189)
3. Dartayvia Thomas, 06-09774 (202-261)
4. Lexie Martin, 98-02768 (228-297)
5. Mauri Wells, 10-762 (154-202)
6. Audosha Kelley, 04-06753 (192-255)
7. Tasha Washington, 02-04749 (190-387)
8. Terralyn Edwards, 79-83746 (361-484)
9. Michelle Hubbard, 95-01732 (183-250)
10. Kristin Brewer, 99-02731 (95-130)

ASSISTS

1. Yolanda Oliver, 91-95	448
2. Michelle Hubbard, 95-98, 00-01	413
3. Jasmine Herron, 04-08	364
4. Lexie Martin, 98-02	291
5. Alicia Durham, 02-06	285
6. Marloes Renskers, 00-04	280
7. Jazmin Walker, 09-12	235
8. Lee Harmer, 78-82	226
9. Katy Ballance, 83-88	174
10. Tasha Washington, 02-04	173

STEALS

1. Yolanda Oliver, 91-95	302
2. Alicia Durham, 02-06	268
3. Lexie Martin, 98-02	213
4. Norma Faison, 83-86	197
5. Jasmine Herron, 04-08	196
6. Tasha Washington, 02-04	185
7. Michelle Hubbard, 95-98, 00-01	179
8. Marva Lindsay, 92-94	175
9. Lee Harmer, 78-82	162
10. Gigi Gibson, 80-84	153

BLOCKED SHOTS

1. Kelly Versluis, 07-09	101
2. Zandrique Cason, 00-03	84
3. Kaneetha Gordon, 03-08	69
4. Dina Mulholland, 89-91	62
5. Michelle Phillips, 85-88	61
6. Lacey Willis, 05-09	38
7. Rachel Baker, 00-02	37
8. Melissa Germany, 98-02	36
Mauri Wells, 10-	36
10. Aurora Campbell, 80-82	33



LEXIE
MARTIN



ALICIA
DURHAM



MAURI WELLS ALREADY RANKS SEVENTH ON THE ARMSTRONG ALL-TIME REBOUNDING CHART



SCORING

MOST POINTS

First Half: 58, vs. USC Aiken, 2-13-99
 Second Half: 58, vs Columbia, 1-23-88
 Overtime: 19, vs Augusta, 1-12-85
 Game: 105, vs Tift, 2-2-85 and vs Flagler, 11-26-85
 Season: 2,328 (31 games), 2002-2003

FEWEST POINTS

First Half: 7, at Valdosta State (52), 2-11-89
 Second Half: 4, vs West Georgia (40), 1-27-88
 Overtime: 2, at Savannah State, 12-5-87
 Game: 24, vs West Georgia, 1-27-88
 Season: 757 (15 games), 1976-1977

MOST POINTS ALLOWED

First Half: 63, at Georgia College, 2-20-88
 Second Half: 67, vs Fort Valley State, 2-16-88
 Overtime: 16 (1ot), at Georgia College, 2-27-93
 19 (2ot) at Francis Marion, 1-26-91
 Game: 114, at Georgia College, 2-20-88
 Season: 2,176, 1981-1982

FEWEST POINTS ALLOWED

First Half: 9, vs. Allen, 11-15-10
 Second Half: 15, at Voorhees, 12-12-92
 Overtime: 4, vs. Augusta, 1-12-85 and at Brewton-Parker, 1-6-92
 Game: 26, at Rollins, 11-14-80
 Season: 1,046, 1976-1977

POINTS

Most Points Game, Both Teams:
 201, Armstrong (102), at Tift (99) ot, 2-17-79
 Fewest Points Game, Both Teams:
 85, Armstrong (48) at Coker (37), 12-8-93
 Largest margin of victory:
 57, Armstrong (83) at Rollins (26), 11-14-80
 Largest margin of defeat:
 64, Armstrong (28) at Valdosta State (92), 2-11-89
 Most Points in a win:
 105, vs Tift, 2-2-85 and vs Flagler, 11-26-85
 Most Points in a road win: 102 at Tift (99) ot, 2-17-79
 Fewest Points in a win:
 46, Armstrong (46) at Savannah State (45), 12-10-01
 Fewest Points in a home win:
 47, Armstrong (47) vs. Columbus State (43), 1-28-06
 Most Points in a loss:
 87, Armstrong (87) at Lander (97), 3-1-08
 Most Points in a home loss:
 86, Armstrong (86) vs Kennesaw State (87), 12-13-94
 Most Points in a road loss:
 87, Armstrong (87) at Lander (97), 3-1-08
 Fewest Points in a loss:
 24, Armstrong (24) vs West Georgia (79), 1-27-88
 Fewest Points in a road loss:
 28, Armstrong (28) at Valdosta State (92), 2-11-89

WINS AND LOSSES

Most Wins: 27, 2002-2003
 Best Winning Percentage: .870 (27-4), 2002-2003
 Most Consecutive Wins: 14, 1-25-03 - 3-9-03
 Most Consecutive Season Opening Wins: 5, 1978 to 1982
 Most Consecutive Wins to start a season: 8, 1984-1985
 Most Consecutive Home Wins: 15, 2-9-02 to 2-26-03
 Most Consecutive Road Wins: 6 (three times)
 2-17-79 to 12-8-79; 1-25-80 to 11-15-80; 1-29-03 to 3-1-03
 Most Losses: 21, 1988-1989
 Worst Winning Percentage: .125 (3-21), 1988-89
 Most Consecutive Losses: 22, 1987-88 & 1988-89
 Most Consecutive Losses in Season Openers: 2,
 1976 to 1977, 1993 to 1994, 2003 to 2004
 Most Consecutive Losses to start a season: 17, 1988-1989
 Most Consecutive Home Losses: 13, 1-27-88 to 2-4-89
 Most Consecutive Road Losses: 12, 1-27-86 to 1-9-88

FIELD GOALS

MOST FIELD GOALS

Game: 45, vs Tift, 2-2-85
 Season: 930, (28 games), 1984-1985

MOST FIELD GOALS ATTEMPTED

Game: 108, vs Tift, 2-2-85
 Season: 2,304 (32 games), 1981-1982

BEST FIELD GOAL PERCENTAGE

Half: .810 (17-21), 1st Half vs Augusta, 1-20-86
 Game: .636 (28-44) at Lynn University, 11-29-97
 (28-44) at GC&SU, 1-24-98
 Season: .4464 (708-1,586), 1985-1986

FEWEST FIELD GOALS

Game: 6, at Valdosta State, 2-11-89
 Season: 275 (15 games), 1976-1977

FEWEST FIELD GOALS ATTEMPTED

Game: 30, at Florida Atlantic, 12-9-89
 Season: 937 (15 games), 1976-1977

LOWEST FIELD GOAL PERCENTAGE

First Half: .056 (1-18), at Valdosta State, 2-11-89
 Second Half: .087 (2-23), vs West Georgia, 1-27-88
 Game: .154 (6-39), at Valdosta State, 2-11-89
 Season: .293 (275-937), 1976-1977

3-POINT FIELD GOALS

MOST 3-POINTERS MADE

Game: 13 vs. UNC Pembroke, 2-24-10
 Season: 203 (29 games) 2006-2007

MOST 3-POINTERS ATTEMPTED

Game: 37, at GCSU, 2-6-06
 Season: 648 (29 games), 2006-2007

BEST 3-POINT PERCENTAGE

Game: .750 (6-8), vs. Mount Olive, 11-17-00
 Season: .369 (69-187), 1989-1990

FREE THROWS

MOST FREE THROWS MADE

Game: 44, vs South Florida, 1-30-82
 Season: 531 (31 games), 2002-2003

MOST FREE THROWS ATTEMPTED

Game: 57, vs South Florida, 1-30-82
 Season: 836 (32 games), 1981-1982

BEST FREE THROW PERCENTAGE

Game: .923 (12-13) vs. Clayton State, 3-6-08
 Season: .729, 2008-09

FEWEST FREE THROWS MADE

Game: 1, at Berry, 2-18-84
 Season: 201 (27 games), 1995-96

FEWEST FREE THROWS ATTEMPTED

Game: 3, at Berry, 2-18-84 and vs Ala.-Huntsville, 12-6-96
 Season: 343 (27 games), 1995-96

LOWEST FREE THROW PERCENTAGE

Game: .222 (4-18), at Rollins, 12-10-94
 Season: .516 (330-640), 1982-1983

REBOUNDS

MOST OFFENSIVE REBOUNDS

Game: 45, vs Tift, 2-4-84
 Season: 571 (28 games), 1984-1985

MOST DEFENSIVE REBOUNDS

Game: 45, vs Tift, 2-4-84
 Season: 876 (28 games), 1984-1985

MOST REBOUNDS

Game: 90, vs Tift, 2-4-84
 Season: 1,447 (28 games), 1984-1985

FEWEST OFFENSIVE REBOUNDS

Game: 0, vs Valdosta State, 12-14-87
 Season: 196 (15 games), 1976-1977

FEWEST DEFENSIVE REBOUNDS

Game: 11, at Georgia College, 2-20-88
 Season: 291 (15 games), 1976-1977

FEWEST TOTAL REBOUNDS

Game: 14, vs Valdosta State, 12-14-87
 Season: 487 (15 games), 1976-1977

REBOUND MARGIN

Game: 50, Armstrong (62), Atlanta Christian (12), 2-12-77
 Season: 5.2, Armstrong (43.4), Opp (38.2), 2007-08

OTHER RECORDS

MOST PERSONAL FOULS

Game: 32, vs Gardner-Webb, 12-30-00
 Season: 620 (31 games), 2002-2003

FEWEST PERSONAL FOULS

Game: 8, six times. Last: vs. Lander, 3-9-08
 Season: 337 (15 games), 1976-1977

MOST ASSISTS

Game: 30, vs USC Aiken, 1-3-96
 Season: 438 (31 games), 2002-2003; (29 games), 2006-07

MOST STEALS

Game: 29, at Tift, 11-17-84
 Season: 421 (31 games), 2002-2003

MOST BLOCKED SHOTS

Game: 9, vs Clayton State, 12-7-03
 Season: 117 (32 games), 1981-1982

MOST TURNOVERS

Game: 45 vs. Fayetteville State, 11-26-99
 Season: 669 (31 games), 2003-04

FEWEST TURNOVERS

Game: 6, at USC Spartanburg, 2-1-92
 Season: 354 (24 games), 1985-1986

SEASON AVERAGES

Highest Offensive Average: 80.7, 1984-1985
 Lowest Offensive Average: 50.5, 1976-1977
 Best Defensive Average: 56.5, 1990-1991
 Worst Defensive Average: 84.8, 1987-1988
 Victory Margin: 15.8 (Armstrong: 75.1 Opp: 59.3), 2002-2003
 Losing Margin: 28.5 (Armstrong: 52.3 Opp: 80.8), 1988-1989
 Best Rebound Average: 51.7, 1984-1985
 Best Assist Average: 15.5, 1991-1992
 Best Steals Average: 15.9, 1980-1981





PEACH BELT CONFERENCE HONORS

FIRST TEAM

Renee Rice (1991-92)
 Nicole Smith (1994-95)
 Zandrique Cason (2000-01)
 Tishay Lewis (2002-03)
 Tasha Washington (2003-04)
 Audosha Kelley (2005-06)
 Kaneetha Gordon (2006-07, 2007-08)
 Lacey Willis (2008-09)

SECOND TEAM

Toni Bell-Yon (1990-91)
 Yolanda Oliver (1992-93, 1993-94)
 Jennifer Teeple (1993-94)
 Christa Vaughan (1995-96)
 Demetria McClouden (1998-99)
 Zandrique Cason (2001-02)
 Tasha Washington (2002-03)
 Vandy Noldon (2003-04)

THIRD TEAM

Mauri Wells (2011-12)

PLAYER OF THE YEAR

Renee Rice (1991-92)
 Tishay Lewis (2002-03)

COACH OF THE YEAR

Roger Hodge (2002-03)

FRESHMAN OF THE YEAR

Yolanda Oliver (1991-92)
 Kaneetha Gordon (2003-04)

PBC PLAYER OF THE WEEK

Renee Rice
 (Dec. 15, 1991, Jan. 6, 13 & 20, 1992, Feb. 3, 17 & 24, 1992)
 Nicole Smith
 (Dec. 5 & 19, 1994)
 Demetria McClouden
 (Jan. 4, 1999)
 Zandrique Cason
 (Dec. 4 & 18, 2000, Jan. 14, 2002)
 Tishay Lewis
 (Jan. 6, 2003, Feb. 3 & 10, 2003)
 Tasha Washington
 (Dec. 8, 2003, Feb. 9, 23 & 29, 2004)
 Audosha Kelley
 (Jan. 10, 2005, Feb. 6 & 13, 2006)
 Alicia Durham
 (Nov. 21, 2005)
 Tana Griffiths
 (Nov. 27, 2006)
 Kaneetha Gordon
 (Dec. 11, 2006, Feb. 26, 2007, Dec. 3, 2007, Mar. 2, 2008)
 Lacey Willis
 (Nov. 24, 2008, Dec. 1 & 8 2008, March 2, 2009)
 Lauren Hall
 (Nov. 30, 2009)
 Arpine Amirkhanyan
 (Dec. 6, 2010)
 Mauri Wells
 (Nov. 21, 2011)

KODAK/WBCA DII

ALL-AMERICA



FIRST TEAM
 Tishay Lewis
 (2002-03)



HONORABLE MENTION
 Audosha Kelley
 (2005-06)



HONORABLE MENTION
 Kaneetha Gordon
 (2006-07)

PBC TOURNEY HONORS

ALL-TOURNAMENT TEAM

Jennifer Teeple (1993-94)
 Mary Ann Merritt (1994-95)
 Yolanda Oliver (1994-95)
 Zandrique Cason (2001-02)
 Tishay Lewis (2002-03)
 Tasha Washington (2002-03, 2003-04)
 Kaneetha Gordon (2006-07, 2007-08)
 Lacey Willis (2007-08)

PBC TOURNAMENT MVP

Tishay Lewis (2002-03)

ALL-REGION HONORS

WBCA ALL-REGION 3

Tishay Lewis (2002-03)
 Roger Hodge (2002-03)
 Region Coach of the Year
 Tasha Washington (2003-04)
 Audosha Kelley (2005-06)
 Kaneetha Gordon (2006-07)

DAKTRONICS ALL-REGION

Tishay Lewis (2002-03)
 Tasha Washington (2003-04)
 Kaneetha Gordon (2006-07, 2007-08)
 Lacey Willis (2008-09)

A.I.A.W. ALL-REGION III

Terralyn Edwards (1981-82)
 Aurora Campbell (1981-82)

NAIA ALL-DISTRICT 25

Gigi Gibson (1982-83)
 Debra Danielson (1983-84, 1984-85)
 Norma Faison (1984-85)

GIAC HONORS

ALL-CONFERENCE

Debra Danielson (1983-84, 1984-85)
 Norma Faison (1984-85)

DII BULLETIN

ALL-AMERICA

Tishay Lewis (2002-03) - Third Team
 Tasha Washington (2003-04) - Fourth Team

DAKTRONICS

ALL-AMERICA

Tishay Lewis (2002-03) - Third Team
 Tasha Washington (2003-04) - Honorable Mention

NCAA TMT HONORS

ALL-TOURNAMENT TEAM

Tasha Washington (2003-04)

GAIAW HONORS

ALL-CONFERENCE

Cindy Pound (1978-79, 1979-80)
 Terralyn Edwards (1979-80, 1981-82)
 Sharleen Hamilton (1980-81)
 Lee Harmer (1981-82)

ALL-TOURNAMENT TEAM

Terralyn Edwards (1981-82)
 Aurora Campbell (1981-82)

PLAYER OF THE YEAR

Cindy Pound (1979-80)
 Terralyn Edwards (1981-82)

COACH OF THE YEAR

B.J. Ford (1978-79, 1981-82)



SEASON-BY-SEASON RECORDS

YEAR	RECORD	PCT.	CONFERENCE	COACH
76-77	2-13	.133	GIAIW	B.J. Ford
77-78	4-16	.202	2-6	B.J. Ford
78-79	12-8	.600	7-3	B.J. Ford
79-80	17-7	.708	11-4	B.J. Ford
80-81	10-16	.385	3-9	B.J. Ford
81-82	20-12	.625	5-3	B.J. Ford
82-83	11-16	.407	GIAC	B.J. Ford
83-84	15-11	.577	5-7	B.J. Ford
84-85	21-7	.750		B.J. Ford
85-86	9-15	.375		B.J. Ford
86-87			NO TEAM	
87-88	5-18	.217		Larry Tapp
88-89	3-21	.125		Larry Tapp
89-90	15-9	.625	PBC	Lenny Passink
90-91	10-14	.417	5-7 (T4th)	Lenny Passink
91-92	14-13	.519	5-9 (T5th)	Lenny Passink
92-93	16-10	.615	10-6 (3rd)	Lenny Passink
93-94	17-9	.654	11-5 (3rd)	Lenny Passink
94-95	12-17	.414	8-10 (T5th)	Kim Bynum
95-96	9-18	.333	7-11 (T8th)	Kim Bynum
96-97	14-13	.519	10-9 (T5th)	Lynn Jarrett
97-98	12-16	.429	6-12 (T5th)	Lynn Jarrett
98-99	13-15	.464	6-10 (T4th-S)	Lynn Jarrett
99-00	7-19	.269	4-12 (T5th-S)	Lynn Jarrett
2000-01	10-16	.385	5-11 (5th-S)	Roger Hodge
2001-02	11-18	.379	7-12 (6th-S)	Roger Hodge
2002-03	27-4	.871	17-2 (T1st-S)	Roger Hodge
2003-04	23-8	.742	12-4 (T1st-S)	Roger Hodge
2004-05	17-13	.567	7-9 (T4th-S)	Roger Hodge
2005-06	15-13	.536	10-10 (T4th)	Roger Hodge
2006-07	15-14	.517	8-8 (5th-S)	Roger Hodge
2007-08	20-11	.645	11-9 (7th)	Roger Hodge
2008-09	17-11	.607	12-8 (t3rd)	Matt Schmidt
2009-10	9-17	.346	6-12 (t5th-E)	Matt Schmidt
2010-11	8-18	.308	4-14 (5th-E)	Matt Schmidt
2011-12	13-13	.500	7-11 (t4th-E)	Matt Schmidt
	453-469	.491	188-191	

HOME-AWAY-NEUTRAL

YEAR	HOME	AWAY	NEUTRAL
76-77	1-3	1-7	0-3
77-78	2-6	2-10	0-0
78-79	7-3	5-2	0-3
79-80	9-2	7-2	1-3
80-81	6-6	3-8	1-2
81-82	11-3	9-4	1-0
82-83	6-7	5-8	0-1
83-84	7-4	8-6	0-1
84-85	11-3	9-4	1-0
85-86	6-6	3-9	0-0
86-87			NO TEAM
87-88	3-8	2-8	0-2
88-89	2-10	1-10	0-1
89-90	10-2	5-7	0-0
90-91	5-6	5-8	0-0
91-92	8-5	6-8	0-0
92-93	9-3	7-5	0-2
93-94	8-3	7-4	2-2
94-95	8-4	3-11	1-2
95-96	5-8	2-10	2-0
96-97	8-5	5-7	1-1
97-98	6-6	3-9	3-1
98-99	9-6	3-8	1-1
99-00	6-6	1-10	0-3
2000-01	7-8	3-7	0-1
2001-02	7-6	2-11	2-1
2002-03	13-0	10-3	4-1
2003-04	12-2	8-4	3-2
2004-05	11-2	5-8	1-3
2005-06	9-5	5-7	1-1
2006-07	11-3	3-9	1-2
2007-08	12-1	4-9	4-1
2008-09	9-6	7-4	1-1
2009-10	6-7	3-9	0-1
2010-11	5-9	3-8	0-1
2011-12	9-8	4-5	0-0
	274-171	157-273	32-45
	.609	.365	.416

ARMSTRONG WOMEN'S BASKETBALL ALL-TIME VS. OPPONENTS

Alabama-Huntsville	2-4
Allen	3-0
Anderson (SC)	2-2
Atlanta Christian	1-0
Augusta State	29-28
Barry University	2-2
Barton	0-2
Bellarmino	0-1
Belmont Abbey	0-1
Berry College	3-10
Bluefield College	1-0
Brewton-Parker	8-1
Brunswick CC	2-0
Cal Poly Pomona	1-0
Cal State Los Angeles	1-0
Carson-Newman	2-1
Catawba	0-2
Central Florida	2-1
Charleston (W. Va.)	0-1
Charleston Southern	7-4
Claffin	0-3
Clayton State	10-23
Coastal Georgia	0-1
Coker	4-2
Columbia	4-1
Columbus State	20-28
Concord (W. Va.)	1-0
Converse	2-2
Cumberland (Ky.)	0-2
Davis & Elkins	1-0
Eckerd	5-1
Edinboro (Pa.)	0-1
Edward Waters	9-1
Elizabeth City State	0-2
Fairmont State	1-0
Fayetteville State	3-5
Ferris State	0-1

Fort Valley State	1-10
Flagler	20-3
Florida	0-1
Florida Atlantic	0-2
Florida Memorial	3-1
Florida Southern	0-2
Florida Tech	7-9
Francis Marion	15-23
Gardner-Webb	0-1
Georgia Baptist	1-1
Georgia College	23-46
Georgia Southern	0-8
Georgia Southwestern	15-11
Georgia Tech	1-4
Kennesaw State	16-17
Knoxville	0-2
Lander	25-15
Lenoir-Rhyne	2-4
Limestone	1-1
Livingstone	0-1
Lynn	1-0
Mars Hill	4-2
Mesa State	1-0
Miami Dade North	0-1
Michigan-Dearborn	0-1
Montevallo	1-2
Morris College	3-1
Mount Olive	1-1
Newberry	0-2
Nicholls State	0-1
North Alabama	1-1
North Carolina Central	1-1
North Florida	7-13
North Georgia	19-11
Northern Michigan	0-1
Northwood (Mich.)	1-0

Nova Southeastern	2-1
Paine	2-5
Palm Beach Atlantic	0-0
Pfeiffer	3-0
Piedmont	13-4
Presbyterian (S.C.)	3-3
Queens (N.C.)	1-0
Quincy	1-0
Rollins	5-4
Saginaw Valley State	0-0
Savannah State	14-20
Shaw	2-1
Shorter	3-6
South Florida	1-1
Spartanburg Methodist	1-1
Spelman	5-2
Stetson	2-0
Saint Leo	9-3
Tampa	1-3
Tennessee Wesleyan	0-1
Tift	14-4
Trinity Baptist	0-0
Troy State	0-1
Tusculum	2-0
UNC Asheville	1-2
UNC Pembroke	24-12
USC Aiken	20-22
USC Upstate	15-17
Valdosta State	4-9
Voorhees	1-0
West Georgia	1-11
Wingate	1-1
Winthrop	3-4
Young Harris	1-0
Overall	453-469
Bold indicates 2012-13 opponent.	





1976-77 (2-13)

Table with 3 columns: Date, Opponent, Score. Includes games from Nov. 16 to Feb. 22, such as Paine (L 48-59) and Georgia Southern (L 48-74).

1977-78 (4-16, 2-6 GAIW)

Table with 3 columns: Date, Opponent, Score. Includes games from Nov. 12 to Feb. 18, such as Tift* (L 68-83) and Georgia Tech* (W 71-69).

1978-79 (12-8, 7-3 GAIW)

Table with 3 columns: Date, Opponent, Score. Includes games from Nov. 18 to Feb. 22, such as Spartanburg Methodist (W 79-64) and North Georgia (W 62-59).

1979-80 (17-7, 11-4 GAIW)

Table with 3 columns: Date, Opponent, Score. Includes games from Nov. 19 to Dec. 14, such as Savannah State (W 80-71) and Georgia Southern (L 78-87).

Table with 3 columns: Date, Opponent, Score. Includes games from Jan. 5 to Feb. 18, such as Georgia Southwestern* (W 71-59) and West Georgia** (W 73-62).

GAIAW State Tournament (Rome) Feb. 20 vs. Piedmont W 78-77 Feb. 21 vs. West Georgia L 64-67 * GAIAW South Conference ** GAIAW North Conference

1980-81 (10-16, 3-9 GAIW)

Table with 3 columns: Date, Opponent, Score. Includes games from Nov. 14 to Feb. 20, such as Rollins (W 83-26) and North Georgia (W 81-74 ot).

GAIAW State Tournament (Carrollton) Feb. 25 vs. North Georgia W 63-56 Feb. 26 vs. Fort Valley State L 56-82 * GAIAW Conference

1981-82 (20-12, 5-3 GAIW)

Table with 3 columns: Date, Opponent, Score. Includes games from Nov. 17 to Jan. 29, such as Savannah State (W 90-86) and Georgia Southern (L 49-74).

Table with 3 columns: Date, Opponent, Score. Includes games from Jan. 30 to Feb. 22, such as South Florida (W 78-74) and Georgia College (W 69-60).

GAIAW State Tournament (Savannah) Feb. 26 Augusta W 64-59 Feb. 27 West Georgia L 57-70 AIAW Region III Tournament (Orlando) Mar. 12 vs. Florida International L 77-81 * GAIAW Conference

1982-83 (11-16)

Table with 3 columns: Date, Opponent, Score. Includes games from Nov. 20 to Feb. 28, such as Brunswick JC (W 53-52) and Georgia College (W 68-56).

NAIA District 25 Playoffs Feb. 28 at Berry L 59-82

1983-84 (15-11, 5-7 GIAC)

Table with 3 columns: Date, Opponent, Score. Includes games from Nov. 16 to Feb. 28, such as Georgia Southwestern (L 64-72) and Georgia College* (L 79-88).



ALL-TIME RESULTS



1984-85 (21-7)

Nov. 16	at Georgia College	W 85-76
Nov. 17	at Tift	W 78-59
Nov. 27	Berry	W 66-65
Dec. 7	at Rollins	W 86-61
Dec. 8	at Flagler	W 96-46
Dec. 10	North Georgia	W 92-52
Dec. 12	Kennesaw State	W 93-55
Jan. 4	at Kennesaw State	W 80-68
Jan. 5	at Georgia Southwestern	L 62-75
Jan. 7	Carson Newman	L 63-73
Jan. 11	Winthrop	W 78-67
Jan. 12	Paine	W 82-65
Jan. 15	Augusta	W 92-77 ot
Jan. 18	at North Georgia	W 74-59
Jan. 19	at Piedmont	W 90-72
Jan. 22	Edward Waters	W 86-75
Jan. 25	Piedmont	W 98-70
Jan. 26	Flagler	W 83-47
Feb. 1	Shorter	L 68-87
Feb. 2	Tift	W 105-66
Feb. 6	Georgia Southwestern	L 66-69
Feb. 8	at Paine	W 79-70
Feb. 13	Georgia College	W 95-86
Feb. 15	at Shorter	W 69-68
Feb. 16	at Berry	L 67-98
Feb. 22	at Augusta	L 86-96
NAIA District 25 Playoffs		
Feb. 25	Georgia College	W 79-77
Feb. 27	at Berry	L 61-72

1985-86 (9-15)

Nov. 23	Rollins	W 72-51
Nov. 26	Flagler	W 105-68
Nov. 30	Piedmont	W 62-59
Dec. 2	Georgia Southwestern	L 66-83
Dec. 8	North Georgia	W 83-78
Dec. 10	Berry	L 69-92
Dec. 13	at UNC Asheville	L 72-77
Jan. 4	Shorter	L 72-84
Jan. 8	Fort Valley State	L 65-89
Jan. 10	at Piedmont	W 86-78
Jan. 11	at North Georgia	L 53-61
Jan. 13	at Kennesaw State	W 94-86
Jan. 18	at Flagler	W 88-54
Jan. 20	Augusta	W 88-82
Jan. 24	Kennesaw State	L 77-78
Jan. 25	UNC Asheville	W 85-71
Jan. 27	at Fort Valley State	L 79-80
Jan. 30	at Berry	L 71-83
Feb. 1	at Shorter	L 61-62
Feb. 5	at Georgia Southwestern	L 68-88
Feb. 15	at Georgia College	L 77-84
Feb. 17	at Winthrop	L 52-72
Feb. 21	Georgia College	L 78-87
Feb. 22	at Augusta	L 57-63

1986-87 NO TEAM

1987-88 (5-18)

Nov. 21	Florida Memorial	L 56-65
Nov. 24	at Fort Valley State	L 52-90
Dec. 5	at Savannah State	L 70-76 ot
Dec. 8	at West Georgia	L 69-95
Dec. 12	at Edward Waters	L 70-91
Dec. 14	Valdosta State	L 62-113
Jan. 8	Paine	L 49-77
Jan. 9	at Valdosta State	L 42-103
Jan. 14	Edward Waters	W 62-51
Jan. 18	Flagler	W 74-68
Jan. 21	Georgia Southern	L 55-93
Jan. 23	Columbia	W 98-84
Jan. 27	West Georgia	L 24-79
Jan. 30	Georgia College	L 51-102
Feb. 4	Savannah State	L 48-81

Feb. 6	at Flagler	W 58-49
Feb. 11	N Savannah State	L 52-69
Feb. 13	at Columbia	W 79-67
Feb. 16	Fort Valley State	L 68-109
Feb. 18	at Paine	L 47-108
Feb. 20	at Georgia College	L 76-114
Feb. 22	N Savannah State	L 66-78
Feb. 25	at Georgia Southern	L 34-89

1988-89 (3-21)

North Georgia Invitational

Nov. 18	at North Georgia	L 56-84
Nov. 19	vs. Cumberland (Ky.)	L 55-112
Nov. 21	Georgia College	L 65-97
Nov. 23	Florida Atlantic	L 43-106
Nov. 26	Valdosta State	L 48-98
Dec. 6	at Savannah State	L 42-60
Dec. 9	at West Georgia	L 68-96
Dec. 10	at Alabama-Huntsville	L 45-59
Jan. 7	Converse	L 44-88
Jan. 13	Edinboro (Pa.)	L 48-97
Jan. 17	at Eckerd	L 43-77
Jan. 18	at Tampa	L 69-81
Jan. 21	West Georgia	L 32-95
Jan. 24	Flagler	L 56-67
Jan. 25	at Savannah State	L 44-71
Jan. 28	Columbia	L 66-73
Feb. 4	Alabama-Huntsville	L 51-81
Feb. 6	Savannah State	W 67-60
Feb. 8	at Columbia	W 54-53
Feb. 11	at Valdosta State	L 28-92
Feb. 14	at Flagler	L 52-65
Feb. 16	Florida Memorial	W 84-81
Feb. 18	at Georgia College	L 36-79
Feb. 21	Savannah State	L 60-67

1989-90 (15-9)

Nov. 21	Florida Tech	W 83-78 ot
Nov. 25	Saint Leo	W 67-45
Nov. 30	at Coker	W 67-59
Dec. 3	at Tampa	W 56-52
Dec. 9	Florida Atlantic	L 35-73
Dec. 11	at Saint Leo	W 78-56
Dec. 13	at Florida Tech	L 46-69
Jan. 11	Savannah State	W 63-57
Jan. 13	at Rollins	L 63-87
Jan. 20	at Columbus	L 76-79
Jan. 22	Eckerd	W 75-65
Jan. 24	USC Spartanburg	L 57-70
Jan. 27	Alabama-Huntsville	W 64-45
Jan. 30	Coker	W 70-62
Feb. 3	at USC Spartanburg	L 38-63
Feb. 5	Georgia College	W 73-65
Feb. 7	at Flagler	W 76-44
Feb. 10	at Piedmont	W 64-46
Feb. 12	at USC Aiken	L 49-70
Feb. 15	at Savannah State	L 52-66
Feb. 17	Piedmont	W 72-40
Feb. 19	at Georgia College	L 54-71
Feb. 21	Flagler	W 69-51
Feb. 24	Columbus	W 75-57

1990-91 (10-14, 5-7 PBC)

Nov. 17	at Coker	L 57-68
Nov. 20	Florida Tech	L 46-49
Nov. 27	at Savannah State	L 66-72
Dec. 1	Coker	L 52-53
Dec. 6	at Alabama-Huntsville	L 42-62
Dec. 8	Saint Leo	W 73-48
Dec. 12	at Saint Leo	W 83-48
Dec. 14	at Florida Tech	W 54-53
Dec. 29	at Georgia College *	L 50-62
Jan. 5	at Lander *	W 64-54
Jan. 7	USC Spartanburg *	W 72-64
Jan. 10	Rollins	L 43-62

Jan. 12	USC Aiken *	L 43-61
Jan. 19	Columbus *	W 57-55
Jan. 23	Savannah State	L 37-52
Jan. 26	at Francis Marion *	L 81-85 2ot
Jan. 30	at USC Spartanburg *	L 37-52
Feb. 2	Lander *	W 51-49
Feb. 5	Flagler	W 69-40
Feb. 9	at USC Aiken *	L 38-49
Feb. 12	at Flagler	W 77-48
Feb. 16	Francis Marion *	W 56-54
Feb. 20	Georgia College *	L 52-54
Feb. 23	at Columbus *	L 52-64

* Peach Belt Athletic Conference

1991-92 (14-13, 5-9 PBC)

Nov. 24	Saint Leo	L 74-77
Nov. 27	at Spelman	W 70-51
Dec. 9	at Flagler	W 63-38
Dec. 11	at Saint Leo	W 76-60
Dec. 14	at Florida Tech	L 55-72
Jan. 4	Georgia College *	L 68-76
Jan. 6	at Brewton-Parker	W 70-69 ot
Jan. 8	Francis Marion *	L 64-66
Jan. 11	at Lander *	L 61-63 ot
Jan. 13	Savannah State	W 69-64
Jan. 15	at Augusta *	L 45-61
Jan. 18	USC Aiken *	L 69-75
Jan. 22	at Columbus *	L 59-81
Jan. 25	USC Spartanburg *	L 58-75
Jan. 27	Savannah State	L 62-63
Jan. 29	at Georgia College *	L 59-66
Feb. 1	at USC Spartanburg *	W 69-56
Feb. 5	Columbus *	W 60-52
Feb. 8	Lander *	W 81-44
Feb. 10	Flagler	W 66-38
Feb. 12	Augusta *	W 63-46
Feb. 15	at Francis Marion *	L 54-58
Feb. 17	Spelman	W 79-49
Feb. 19	Brewton-Parker	W 89-84
Feb. 22	at USC Aiken *	W 56-53

Peach Belt Athletic Conference Tmt (Augusta)

Feb. 26	USC Spartanburg	W 72-53
Feb. 28	at Augusta	L 63-71

1992-93 (16-10, 10-6 PBC)

North Georgia Invitational

Nov. 20	North Georgia	W 68-53
Nov. 21	vs. Cumberland (Ky.)	L 67-68
Nov. 24	Brewton-Parker	W 62-55
Nov. 29	Presbyterian	L 70-74 ot
Dec. 3	at Brewton-Parker	L 58-80
Dec. 5	Saint Leo	W 75-53
Dec. 10	North Georgia	W 69-65
Dec. 12	at Voorhees	W 58-33
Dec. 17	at Saint Leo	W 67-49
Jan. 7	Georgia College *	W 68-51
Jan. 9	at USC Spartanburg *	L 57-83
Jan. 11	at Lander *	W 63-53
Jan. 16	at Columbus *	L 62-69
Jan. 18	Augusta *	L 49-62
Jan. 23	UNC Pembroke *	W 73-61
Jan. 25	at Francis Marion *	W 56-39
Jan. 30	at USC Aiken *	W 65-57
Feb. 1	at Augusta *	L 57-69
Feb. 6	USC Spartanburg *	L 68-79
Feb. 8	Columbus *	W 82-56
Feb. 11	Francis Marion *	W 52-42
Feb. 15	Lander *	W 75-44
Feb. 20	at UNC Pembroke *	W 74-42
Feb. 22	USC Aiken *	W 71-59
Feb. 27	at Georgia College *	L 63-69 ot

Peach Belt Athletic Conference Tmt (Augusta)

Mar. 4	vs. Columbus	L 60-70
--------	--------------	---------

ARMSTRONG WON ITS FIRST PBC GAME, 64-54, OVER LANDER ON 1/5/91





1993-94 (17-9, 11-5 PBC)

North Georgia Rotary Classic

Nov. 19	vs. Clafin	L 71-92
Nov. 20	vs. Piedmont	W 78-60
Nov. 23	at Savannah State	L 68-75 ot
Dec. 2	Brewton-Parker	W 54-45
Dec. 6	at Brewton-Parker	W 53-44
Dec. 8	at Coker	W 48-37
Dec. 11	Florida Tech	W 69-60
Jan. 6	at Georgia College *	L 60-62
Jan. 8	USC Spartanburg *	L 56-70
Jan. 10	Lander *	W 83-35
Jan. 15	Columbus *	L 56-63
Jan. 17	Augusta *	W 67-56
Jan. 22	at UNC Pembroke *	W 64-55
Jan. 24	at Francis Marion *	L 43-45
Jan. 26	Savannah State	L 77-79 ot
Jan. 29	USC Aiken *	W 61-55
Jan. 31	at Augusta *	W 66-59
Feb. 5	at USC Spartanburg *	L 42-69
Feb. 10	Francis Marion *	W 72-56
Feb. 14	at Lander *	W 60-59
Feb. 16	at Columbus *	W 62-61
Feb. 19	UNC Pembroke *	W 74-44
Feb. 21	at USC Aiken *	W 59-48
Feb. 26	Georgia College *	W 66-64

Peach Belt Athletic Conference Tmt (Augusta)

Mar. 3	vs. USC Aiken	W 72-60
Mar. 5	vs. Columbus	L 64-71

* Peach Belt Athletic Conference

1994-95 (12-17, 8-10 PBC)

Savannah News Press Holiday Classic

Nov. 23	vs. Savannah State	L 65-82
Nov. 26	at North Florida	L 59-76
Nov. 30	Coker	W 77-75
Dec. 3	at Valdosta State	L 62-80
Dec. 10	at Rollins	L 53-80
Dec. 13	Kennesaw State *	L 86-87

Lady Pirate Invitational

Dec. 17	North Florida	W 79-70
Dec. 18	Mars Hill	L 56-81
Dec. 30	at Georgia Southern	L 47-97
Jan. 4	at USC Aiken *	W 58-53
Jan. 11	Augusta *	L 77-74
Jan. 14	at Francis Marion *	L 58-76
Jan. 16	Georgia College *	W 75-45
Jan. 18	at Columbus *	L 53-70
Jan. 21	USC Spartanburg *	L 72-77
Jan. 25	at UNC Pembroke *	L 78-79
Jan. 28	Lander *	W 69-59
Feb. 1	USC Aiken *	W 67-55
Feb. 4	at Kennesaw State *	L 70-80
Feb. 8	at Augusta *	L 65-72
Feb. 11	Francis Marion *	W 59-54
Feb. 13	at Georgia College *	L 70-75
Feb. 15	Columbus *	L 70-75
Feb. 18	at USC Spartanburg *	L 46-68
Feb. 22	UNC Pembroke *	W 63-60
Feb. 25	at Lander *	W 64-61

Peach Belt Athletic Conference Tmt (Augusta)

Mar. 1	vs. Kennesaw State	W 67-65
Mar. 3	at Augusta	W 82-65
Mar. 4	vs. USC Spartanburg	L 49-69

1995-96 (9-18, 7-11 PBC)

Bellarmine Invitational

Nov. 18	vs. North Alabama	W 69-65
Nov. 29	at Bellarmine	L 50-83

Savannah News Press Holiday Classic

Nov. 22	vs. Savannah State	W 71-57
Nov. 29	Lenoir-Rhyne	L 75-80

Lady Pirate Invitational

Dec. 2	Barton	L 70-73
Dec. 3	Clayton State	L 55-70

Dec. 16	at Saint Leo	L 71-78
Dec. 31	Michigan - Dearborn	L 63-67 ot
Jan. 3	USC Aiken *	W 85-50
Jan. 6	at Kennesaw State *	L 59-80
Jan. 10	at Augusta *	L 59-68
Jan. 13	Francis Marion *	L 54-69
Jan. 15	at Georgia College *	L 70-74
Jan. 17	Columbus *	L 53-59
Jan. 20	at USC Spartanburg *	L 61-95
Jan. 24	UNC Pembroke *	W 80-71
Jan. 27	at Lander *	W 57-55
Jan. 31	at USC Aiken *	W 69-59
Feb. 3	Kennesaw State *	W 74-63
Feb. 7	Augusta *	L 72-74
Feb. 10	at Francis Marion *	L 57-65
Feb. 12	Georgia College *	W 75-65
Feb. 14	at Columbus *	L 62-88
Feb. 17	USC Spartanburg *	L 70-73 ot
Feb. 21	at UNC Pembroke *	L 81-82
Feb. 24	Lander *	W 69-60

Peach Belt Athletic Conference Tmt (Milledgeville)

Feb. 28	at Georgia College	L 60-76
---------	--------------------	---------

1996-97 (14-13, 10-8 PBC)

Nov. 23	at Charleston Southern	L 44-67
Nov. 25	Saint Leo	W 65-62
Dec. 1	Barry	W 59-51

North Florida Tournament

Dec. 6	vs. Alabama-Huntsville	L 53-68
Dec. 7	vs. Brewton-Parker	W 75-57
Dec. 10	at Clayton State	L 67-76
Dec. 14	Presbyterian	W 58-54
Dec. 17	Clayton State	L 43-52
Jan. 2	at USC Aiken *	W 64-47
Jan. 4	Kennesaw State *	W 78-63
Jan. 8	Augusta State *	L 61-76
Jan. 11	at Francis Marion *	L 33-69
Jan. 13	Georgia C&SU *	L 54-72
Jan. 15	at Columbus State *	W 70-65
Jan. 18	USC Spartanburg *	L 63-72
Jan. 22	at UNC Pembroke *	W 80-72
Jan. 25	Lander *	W 54-46
Jan. 29	USC Aiken *	L 51-79
Feb. 1	at Kennesaw State *	L 58-76
Feb. 6	at Augusta State *	L 61-63
Feb. 8	Francis Marion *	W 61-58
Feb. 10	at Georgia C&SU *	L 60-79
Feb. 12	Columbus State *	W 58-56
Feb. 15	at USC Spartanburg *	W 84-78
Feb. 19	UNC Pembroke *	W 78-62
Feb. 22	at Lander *	W 68-52

Peach Belt Athletic Conference Tmt (Milledgeville)

Feb. 26	vs. Georgia C&SU	L 54-68
---------	------------------	---------

1997-98 (12-16, 5-11 PBC)

Nov. 19	at Presbyterian	L 55-69
Nov. 22	at Savannah State	W 66-61
Nov. 24	Barton	L 60-65
Nov. 29	at Lynn	W 74-56
Nov. 30	at Barry	L 40-82

Horton Home Christmas Classic

Dec. 5	vs. Georgia Southwestern	W 66-59
Dec. 6	vs. Piedmont	W 54-43
Dec. 10	at Kennesaw State *	L 59-81
Dec. 13	Clayton C&SU *	W 58-49
Dec. 15	Florida Tech	W 59-47
Dec. 17	Augusta State *	L 56-80
Dec. 30	Davis & Elkins	W 69-55
Jan. 3	Georgia C&SU *	L 55-74
Jan. 8	at Francis Marion *	L 53-69
Jan. 10	Lander *	L 72-55
Jan. 17	at Columbus State *	L 52-90
Jan. 21	North Florida *	L 38-52
Jan. 24	at Georgia C&SU *	L 77-93
Jan. 28	UNC Pembroke *	W 56-48

Jan. 31	at Augusta State *	L 79-83
Feb. 2	USC Spartanburg *	W 75-64
Feb. 4	at North Florida *	L 42-58
Feb. 7	Columbus State *	L 82-84
Feb. 11	Kennesaw State *	L 50-74
Feb. 14	at USC Aiken *	W 58-50
Feb. 17	at Clayton C&SU *	L 58-61

Peach Belt Athletic Conference Tmt (Savannah)

Feb. 20	Lander	W 71-65
Feb. 22	Columbus State	L 71-81

1998-99 (13-15, 6-10 PBC)

North Florida Tip-Off Classic

Nov. 14	vs. Florida Tech	L 78-80
Nov. 15	vs. Florida Memorial	W 69-56
Nov. 18	at Augusta State *	W 58-54
Nov. 22	at Valdosta State	L 60-78
Nov. 24	Morris College	W 59-56
Nov. 28	at Belmont Abbey	L 58-79
Dec. 3	Florida Tech	W 78-72
Dec. 5	Savannah State	W 74-61
Dec. 9	Kennesaw State *	L 52-76
Dec. 12	at Clayton C&SU *	W 75-41
Dec. 18	Quincy	W 71-62
Dec. 19	Lenoir-Rhyne	L 57-60
Jan. 2	at Georgia C&SU *	L 73-85
Jan. 6	Francis Marion *	L 65-76
Jan. 9	at Lander *	L 56-69
Jan. 16	Columbus State *	L 78-85
Jan. 20	at North Florida *	L 61-64
Jan. 23	Georgia C&SU *	L 41-68
Jan. 27	at UNC Pembroke *	L 67-71
Jan. 30	Augusta State *	W 68-52
Feb. 1	at USC Spartanburg *	W 59-44
Feb. 3	North Florida *	W 51-50
Feb. 6	at Columbus State *	L 59-96
Feb. 10	at Kennesaw State *	L 39-60
Feb. 13	USC Aiken *	W 103-61
Feb. 17	Clayton C&SU *	W 84-62

Peach Belt Athletic Conference Tmt (Savannah)

Feb. 19	UNC Pembroke	W 69-60
Feb. 21	Kennesaw State	L 75-78

1999-2000 (7-19, 4-12 PBC)

Lady Pirate/Chatham Orthopaedic TipOff Classic

Nov. 19	Florida Memorial	W 86-53
Nov. 20	Presbyterian	L 51-61
Nov. 23	Valdosta State	W 58-56

Mount Olive Thanksgiving Classic (Mt. Olive, N.C.)

Nov. 26	vs. Fayetteville State	L 58-69
Nov. 27	vs. Elizabeth City State	L 51-59
Dec. 1	at Morris College	L 67-70
Dec. 4	at Savannah State	L 58-64
Dec. 11	at Kennesaw State *	L 57-70

Eckerd College Holiday Sunspree Classic

Dec. 17	at Eckerd	W 74-57
Dec. 18	vs. Rollins	L 66-89
Dec. 30	Catawba	L 44-57
Jan. 2	Georgia College & State *	L 78-82
Jan. 5	at Francis Marion *	L 56-76
Jan. 8	Lander *	L 58-62
Jan. 15	at Columbus State *	L 56-75
Jan. 19	North Florida *	L 68-77
Jan. 22	at Georgia College & State *	L 64-69
Jan. 26	UNC Pembroke *	W 64-63
Jan. 29	Kennesaw State *	L 59-68
Feb. 2	at North Florida *	L 54-60
Feb. 5	Columbus State *	W 77-75
Feb. 12	at USC Aiken *	L 76-87
Feb. 16	at Clayton College & State *	L 76-78
Feb. 19	USC Spartanburg *	W 53-45
Feb. 23	at Augusta State *	L 59-62
Feb. 26	Clayton College & State *	W 74-65



ALL-TIME RESULTS



2000-01 (10-16, 5-11 PBC)

Lady Pirate/Chatham Orthopaedic TipOff Classic

Nov. 17	Mount Olive	W 81-68
Nov. 18	Northern Michigan	L 64-80

Catawba AllSport Classic

Nov. 24	at Catawba	L 63-75
Nov. 25	vs. Livingstone	L 48-66
Nov. 29	at Spelman	W 79-61
Dec. 6	Spelman	W 90-56
Dec. 9	Kennesaw State *	L 54-78
Dec. 12	Savannah State	W 78-64
Dec. 15	Lenoir-Rhyne	L 56-69
Dec. 30	Gardner-Webb	L 81-88
Jan. 3	Francis Marion *	W 75-72 ot
Jan. 6	at Lander *	W 76-74
Jan. 8	Nova Southeastern	W 84-71
Jan. 13	Columbus State *	L 58-84
Jan. 17	at North Florida *	L 69-71
Jan. 20	at Georgia College & State *	L 64-75
Jan. 24	at UNC Pembroke *	L 72-77
Jan. 27	at Kennesaw State *	L 60-87
Jan. 31	North Florida *	W 57-54
Feb. 3	at Columbus State *	L 41-96
Feb. 5	Georgia College & State *	L 67-83
Feb. 10	USC Aiken *	L 60-61
Feb. 14	Clayton College & State *	L 51-76
Feb. 17	at USC Spartanburg *	W 73-58
Feb. 21	Augusta State *	W 66-61
Feb. 24	at Clayton College & State *	L 58-61

2001-02 (11-18, 7-12 PBC)

2001 Armstrong/Chatham Orthopaedics TipOff Classic

Nov. 16	Fayetteville State	L 76-91
Nov. 17	Ferris State	L 65-76
Nov. 21	at Fort Valley State	L 47-53
Nov. 24	at Nicholls State	L 51-62
Nov. 28	at Francis Marion *	L 56-80
Dec. 1	Lander *	W 57-52
Dec. 4	Savannah State	W 69-48
Dec. 10	at Savannah State	W 46-45
Dec. 19	at Lenoir-Rhyne	L 62-76
Jan. 5	USC Spartanburg *	W 66-52
Jan. 7	at UNC Pembroke *	L 75-77 ot
Jan. 9	USC Aiken *	L 61-74
Jan. 12	Columbus State *	W 61-45
Jan. 16	Francis Marion *	W 50-48
Jan. 19	at USC Spartanburg *	L 54-67
Jan. 23	GC&SU *	L 58-66
Jan. 26	UNC Pembroke *	L 53-56
Jan. 30	at Augusta State *	W 70-69
Feb. 2	at Kennesaw State *	L 69-72
Feb. 4	at Clayton State *	L 50-64
Feb. 6	North Florida *	L 64-71
Feb. 9	Clayton State *	W 65-53
Feb. 13	at North Florida *	L 59-67
Feb. 16	at Columbus State *	L 63-73
Feb. 20	at GC&SU *	L 65-68
Feb. 23	Kennesaw State *	W 75-68

Peach Belt Conference Tournament (Columbus, Ga.)

Feb. 26	vs. UNC Pembroke	W 82-73
Feb. 28	vs. Kennesaw State	W 62-57
Mar. 2	vs. GC&SU	L 64-72

2002-03 (27-4, 17-2 PBC)

2002 FMU/Sleep Inn Classic (Florence, S.C.)

Nov. 22	vs. Pfeiffer	W 54-49
Nov. 23	vs. Anderson	W 96-61
Dec. 4	at Rollins	W 65-54
Dec. 7	Clayton State *	W 72-53
Dec. 17	at Shaw	L 43-64

2002 Chatham Orthopaedics Christmas Classic

Dec. 20	Wingate	W 91-55
Dec. 21	Fort Valley State	W 89-73
Dec. 30	Valdosta State	W 69-45
Jan. 2	Francis Marion *	W 81-48

Jan. 4	at Lander *	W 82-72
Jan. 8	Spelman	W 85-41
Jan. 11	at USC Spartanburg *	W 84-49
Jan. 13	UNC Pembroke *	W 84-61
Jan. 15	at USC Aiken *	W 80-69
Jan. 18	at Columbus State *	L 68-71
Jan. 22	at Francis Marion *	L 61-62 ot
Jan. 25	USC Spartanburg *	W 78-46
Jan. 29	at GC&SU *	W 85-73
Feb. 1	at UNC Pembroke *	W 88-63
Feb. 5	Augusta State *	W 86-53
Feb. 8	Kennesaw State *	W 77-61
Feb. 12	at North Florida *	W 69-58
Feb. 15	at Clayton State *	W 82-73
Feb. 19	North Florida *	W 78-68
Feb. 22	Columbus State *	W 75-55
Feb. 26	GC&SU *	W 76-53
Mar. 1	at Kennesaw State *	W 76-64

Peach Belt Conference Tournament (Columbus, Ga.)

Mar. 6	vs. Kennesaw State	W 65-60
Mar. 8	vs. USC Aiken	W 69-63
Mar. 9	at Columbus State	W 56-55

NCAA South Atlantic Regional (Salisbury, N.C.)

Mar. 14	vs. North Florida	L 64-65
---------	-------------------	---------

2003-04 (23-8, 12-4 PBC)

2003 Armstrong/Chatham Orthopaedics TipOff Classic

Nov. 21	Charleston (W. Va.)	L 77-62
Nov. 22	Fayetteville State	W 78-70
Nov. 25	Morris	W 75-59
Nov. 29	at Valdosta State	L 74-58
Dec. 3	Rollins	W 62-56
Dec. 6	Presbyterian	W 74-51
Dec. 16	at Tusculum	W 76-61
Dec. 18	at Mars Hill	W 75-69

2003 Barry University Holiday Invitational (Miami, Fla.)

Dec. 29	vs. Nova Southeastern	W 80-64
Dec. 30	at Barry	W 63-56
Jan. 2	Shaw	W 72-61
Jan. 7	at GC&SU *	W 78-67
Jan. 10	at Augusta State *	L 77-58
Jan. 14	Clayton State *	W 75-63
Jan. 17	Francis Marion *	W 74-46
Jan. 21	at Kennesaw State *	W 70-69
Jan. 24	Lander *	W 62-58
Jan. 28	at Clayton State *	L 84-77
Jan. 31	at UNC Pembroke *	W 51-48
Feb. 4	Kennesaw State *	W 76-71
Feb. 7	USC Aiken *	W 67-54
Feb. 11	at North Florida *	L 62-61
Feb. 14	at Columbus State *	W 57-54
Feb. 18	GC&SU *	W 82-78
Feb. 21	at USC Spartanburg *	W 78-76
Feb. 25	North Florida *	L 73-68
Feb. 28	Columbus State *	W 72-41

Peach Belt Conference Tournament (Augusta, Ga.)

Mar. 4	vs. Francis Marion	W 63-52
Mar. 6	vs. Lander	L 67-64

NCAA South Atlantic Regional (Raleigh, N.C.)

Mar. 12	vs. North Florida	W 75-68
Mar. 13	vs. Augusta State	L 79-74

2004-05 (17-13, 7-9 PBC)

Disney's Division II TipOff Classic (Orlando, Fla.)

Nov. 5	vs. Anderson	L 84-77
Nov. 6	vs. Mesa State	W 65-45
Nov. 7	vs. USC Aiken	L 67-60
Nov. 20	Northwood (Mich.)	W 71-59
Nov. 23	at Morris	W 71-59

Eckerd College SunSpree Invitational (St. Petersburg, Fla.)

Nov. 26	vs. Florida Southern	L 82-60
Nov. 27	at Eckerd	W 61-47
Nov. 30	Valdosta State	W 58-47
Dec. 4	at Presbyterian	W 75-68
Dec. 13	Fayetteville State	W 86-78

2004 Chatham Orthopaedics Holiday Classic

Dec. 17	Lenoir-Rhyne	W 67-62 ot
Dec. 18	Mars Hill	W 60-46
Dec. 21	at Florida Tech	L 68-64
Dec. 30	at Fayetteville State	W 72-62
Jan. 5	GC&SU *	W 72-69
Jan. 8	Augusta State *	W 55-51
Jan. 12	at Clayton State *	L 77-63
Jan. 15	at Francis Marion *	L 77-72
Jan. 19	Kennesaw State *	W 74-70
Jan. 22	at Lander *	W 72-65
Jan. 26	Clayton State *	L 69-67
Jan. 29	UNC Pembroke *	W 72-52
Feb. 2	at Kennesaw State *	L 76-71
Feb. 5	at USC Aiken *	L 64-54
Feb. 9	North Florida *	W 64-44
Feb. 12	Columbus State *	W 76-73
Feb. 16	at GC&SU *	L 92-81
Feb. 19	USC Upstate *	L 61-56
Feb. 23	at North Florida *	L 75-47
Feb. 26	at Columbus State *	L 92-83

2005-06 (15-13, 10-10 PBC)

C-N Lady Eagle Classic (Jefferson City, Tenn.)

Nov. 18	vs. Mars Hill	W 80-69
Nov. 19	at Carson-Newman	W 72-61
Nov. 22	at Valdosta State	L 71-49
Nov. 30	Clayton State *	L 78-60
Dec. 3	at Columbus State *	L 76-54
Dec. 13	Fayetteville State	L 84-66

2005 Chatham Orthopaedics Holiday Classic

Dec. 16	Tusculum	W 86-84 ot
Dec. 17	Carson-Newman	W 58-53
Dec. 20	Florida Tech	W 57-55
Dec. 30	at USC Aiken *	W 75-70
Jan. 4	Francis Marion *	W 64-47
Jan. 7	at UNC Pembroke *	L 70-59
Jan. 11	Lander *	W 68-40
Jan. 18	USC Upstate *	L 60-56
Jan. 21	at North Georgia *	L 93-85
Jan. 23	Augusta State *	L 54-47
Jan. 25	at Clayton State *	L 78-60
Jan. 28	Columbus State *	W 47-43
Feb. 1	at Augusta State *	W 65-54
Feb. 4	USC Aiken *	W 67-62
Feb. 6	at GCSU *	L 63-62
Feb. 8	at Francis Marion *	L 58-56
Feb. 11	UNC Pembroke *	W 58-48
Feb. 15	at Lander *	W 78-64
Feb. 20	GCSU *	W 75-61
Feb. 22	at USC Upstate *	W 73-71
Feb. 25	North Georgia *	L 74-61

Peach Belt Conference Tournament (Greenwood, S.C.)

Mar. 2	vs. GCSU	L 63-60
--------	----------	---------



ARMSTRONG AVERAGED 16 WINS A SEASON IN THE 2000S





2006-2007 (15-14, 8-8 PBC)

Nov. 18	Eckerd	W 64-59
Nov. 21	at Lenoir-Rhyne	W 85-81
Nov. 25	Shaw	W 74-59
Nov. 28	at Florida Tech	L 72-63
2006 NC Central Classic (Raleigh, N.C.)		
Dec. 1	vs. Elizabeth City State	L 70-53
Dec. 2	at NC Central	L 77-70
Dec. 5	Lenoir-Rhyne	W 69-66
2006 Chatham Orthopedics Holiday Classic		
Dec. 15	Lander	W 73-71
Dec. 16	Fayetteville State	L 87-74
Dec. 19	Florida Tech	W 72-56
Dec. 30	at Fayetteville State	L 89-83
Jan. 3	GCSU *	W 71-67
Jan. 6	North Georgia *	W 71-65
Jan. 10	at Clayton State *	L 80-58
Jan. 13	at Francis Marion *	W 65-51
Jan. 17	Augusta State *	W 73-71
Jan. 20	at Lander *	L 85-80
Jan. 24	Clayton State *	L 82-72
Jan. 27	UNC Pembroke *	L 81-66
Jan. 31	at Augusta State *	L 67-64 ot
Feb. 3	at USC Aiken *	L 78-58
Feb. 7	Georgia Southwestern State *	W 78-48
Feb. 10	Columbus State *	W 74-63
Feb. 14	at GCSU *	L 79-71
Feb. 17	USC Upstate *	W 81-74
Feb. 22	at Georgia Southwestern State *	W 65-59
Feb. 24	at Columbus State *	L 70-60
2007 Peach Belt Conference Championships (Greenwood, S.C.)		
Feb. 28	vs. USC Upstate	W 76-63
March 1	vs. Clayton State	L 73-70

2007-2008 (20-11, 11-9 PBC)

2007 Manwell Produce Lady Blazer Classic (Valdosta)		
Nov. 16	vs. Alabama-Huntsville	W 74-57
Nov. 17	at Valdosta State	L 66-54
Nov. 20	at Cal Poly Pomona	W 66-59
Nov. 21	at Cal State Los Angeles	W 66-60
Nov. 28	North Georgia *	W 63-62
Dec. 1	at USC Aiken *	L 74-68
Dec. 5	North Carolina Central	W 54-44
2007 Chatham Orthopedics Holiday Classic		
Dec. 18	Queens (NC)	W 77-60
Dec. 19	Mars Hill	W 66-64
Jan. 5	UNC Pembroke *	W 61-58
Jan. 9	at Georgia Southwestern St. *	W 72-54
Jan. 12	Augusta State *	L 79-67
Jan. 16	at GCSU *	L 71-67
Jan. 21	at North Georgia *	L 78-66
Jan. 23	at Columbus State *	L 80-49
Jan. 26	Lander *	W 66-52
Jan. 30	at Clayton State *	L 62-47
Feb. 2	USC Aiken *	W 77-65
Feb. 4	at Francis Marion *	L 73-69
Feb. 6	Georgia Southwestern State *	W 59-43
Feb. 9	at UNC Pembroke *	W 66-59 ot
Feb. 13	GCSU *	W 67-61
Feb. 16	at Augusta State *	L 65-42
Feb. 18	Clayton State *	W 67-63
Feb. 21	Columbus State *	W 73-54
Feb. 27	Francis Marion *	W 78-65
March 1	at Lander *	L 97-87
2008 Peach Belt Conference Championships (Aiken, S.C.)		
March 5	vs. UNC Pembroke	W 74-68
March 6	vs. Clayton State	W 68-66
March 8	vs. Columbus State	W 78-68
March 9	vs. Lander	L 68-65

2008-2009 (17-11, 12-8 PBC)

2008 Concord Lady Lion Classic (Concord, W. Va.)		
Nov. 15	vs. Fairmont State	W 71-58
Nov. 16	at Concord (W. Va.)	W 78-76
Nov. 20	Pfeiffer	W 70-58
Nov. 25	Newberry	L 63-57
Nov. 29	Limestone	W 66-47
Dec. 2	at UNC Pembroke *	W 72-67
Dec. 4	USC Aiken *	W 63-55
2008 Chatham Orthopedics Holiday Classic		
Dec. 19	Wingate	L 73-61
Dec. 20	Valdosta State	W 61-48
Jan. 5	at North Georgia *	W 81-60
Jan. 7	Georgia Southwestern State *	W 78-60
Jan. 10	at Augusta State *	W 57-54
Jan. 14	GCSU *	L 74-45
Jan. 19	North Georgia *	L 62-46
Jan. 22	at Columbus State *	W 56-53
Jan. 24	at Lander *	L 85-71
Jan. 28	Clayton State *	L 76-42
Jan. 31	at USC Aiken *	L 60-56
Feb. 2	Francis Marion *	L 75-61
Feb. 4	at Georgia Southwestern St. *	L 76-71
Feb. 7	UNC Pembroke *	W 58-56
Feb. 11	at GCSU *	L 70-58
Feb. 14	Augusta State *	W 64-41
Feb. 16	at Clayton State *	L 90-41
Feb. 19	Columbus State *	W 57-48
Feb. 25	at Francis Marion *	W 92-91 ot
Feb. 28	Lander *	W 71-60
2009 Peach Belt Conference Championships (Aiken, S.C.)		
March 5	vs. Lander	L 83-63

2009-2010 (9-17, 6-12 PBC)

Nov. 15	at Limestone	L 82-75
2009 Nova Southeastern / Mariott Tip-Off Classic		
Nov. 20	at Nova Southeastern	L 70-69
Nov. 21	vs. Barry	L 69-60
Nov. 25	at Newberry	L 64-61
Nov. 29	Pfeiffer	W 88-81
Dec. 5	at Augusta State *	W 76-63
2009 Hampton Inn & Suites Fall Finals Classic		
Dec. 18	Edward Waters	W 84-56
Dec. 19	Tampa	L 80-72
Jan. 2	at Flagler *	W 72-53
Jan. 6	Allen	W 90-45
Jan. 9	USC Aiken *	L 64-60
Jan. 13	Augusta State *	W 61-51
Jan. 16	GCSU *	L 58-50
Jan. 18	Montevallo *	L 62-54
Jan. 20	at Lander *	L 89-60
Jan. 23	at UNC Pembroke *	L 63-48
Jan. 27	at Clayton State *	L 83-64
Jan. 30	North Georgia *	L 68-60
Feb. 3	Flagler *	W 64-43
Feb. 6	at Francis Marion *	L 84-67
Feb. 8	Lander *	L 101-55
Feb. 11	at Georgia Southwestern *	W 55-53
Feb. 13	at Columbus State *	L 64-51
Feb. 20	at USC Aiken *	L 75-58
Feb. 24	UNC Pembroke *	W 83-80 ot
Feb. 27	Francis Marion *	L 104-81

* Peach Belt Conference

2010-2011 (8-18, 4-14 PBC)

Nov. 12	at Converse	W 56-47
Nov. 15	Allen	W 72-47
2010 Saint Leo Sleep Inn Classic		
Nov. 19	at Saint Leo	L 67-63
Nov. 20	vs. Florida Southern	L 82-65
Nov. 30	Edward Waters	W 70-58
Dec. 4	Augusta State *	W 77-73
Dec. 14	Columbia (S.C.)	W 95-59
2010 Hampton Inn & Suites Fall Finals Classic		
Dec. 17	Mount Olive	L 86-66
Dec. 18	Anderson (S.C.)	L 70-61
Jan. 3	Flagler *	W 70-67
Jan. 8	at USC Aiken *	L 91-61
Jan. 12	at Augusta State *	W 74-52
Jan. 15	at Georgia College *	L 70-57
Jan. 17	at Montevallo *	L 78-63
Jan. 19	Lander *	L 88-71
Jan. 22	UNC Pembroke *	L 87-56
Jan. 26	Clayton State *	L 87-65
Jan. 29	at North Georgia *	W 55-48 ot
Feb. 2	at Flagler *	L 66-52
Feb. 5	Francis Marion *	L 75-70
Feb. 7	at Lander *	L 113-81
Feb. 10	Georgia Southwestern *	L 71-47
Feb. 12	Columbus State *	L 67-50
Feb. 19	USC Aiken *	L 73-65
Feb. 23	at UNC Pembroke *	L 82-53
Feb. 26	at Francis Marion *	L 98-56

2011-2012 (13-13, 7-11 PBC)

Nov. 11	Bluefield College	W 84-65
Nov. 14	Converse	W 67-43
2011 Wingate by Wyndham Pirate Classic		
Nov. 18	Young Harris	W 62-60
Nov. 19	Anderson (S.C.)	W 53-50
Nov. 22	Coastal Georgia	L 72-61
Nov. 29	Edward Waters	W 80-62
Dec. 3	Flagler *	W 88-64
Dec. 14	at USC Aiken *	L 73-54
Dec. 17	Francis Marion *	L 77-70 ot
Dec. 19	UNC Pembroke *	W 54-52
Dec. 30	Mars Hill	L 73-69
Jan. 4	at Augusta State *	W 73-64
Jan. 9	Georgia College *	L 57-45
Jan. 12	at Columbus State *	L 80-69
Jan. 14	at Georgia Southwestern *	W 80-73
Jan. 19	Montevallo *	W 58-56
Jan. 21	Clayton State *	L 93-48
Jan. 25	at North Georgia *	W 66-61
Jan. 28	Allen	W 74-47
Feb. 1	at Lander *	L 98-48
Feb. 4	USC Aiken *	L 65-55
Feb. 8	at Flagler *	W 64-52
Feb. 15	Lander *	L 85-52
Feb. 18	at UNC Pembroke *	L 74-48
Feb. 20	at Francis Marion *	L 66-63
Feb. 25	Augusta State *	L 55-53

ARMSTRONG ATLANTIC
STATE UNIVERSITY



WOMENS BASKETBALL CAMPS

2012

ARMSTRONG HIGH SCHOOL TEAM CAMP

AND

ARMSTRONG INDIVIDUAL CAMP

BOTH WILL BE OFFERED

FOR DATES AND TIMES

CALL 344-2674



Historic Savannah, Georgia, is located on the Atlantic Coast, at the confluence of the Savannah River and the Atlantic Ocean. Throughout its history, there has been one adjective consistently used to describe Savannah: beautiful.

The reason? There's something about the unique beauty of Savannah that cannot be forgotten. Streets with canopies of moss-laden trees are honored venues for scores of historic homes. The town squares that Savannah's founding father, James Oglethorpe, laid out as public meeting places are now treasured "pocket parks" located throughout the downtown area.

A renovated waterfront area serves as the hub for shopping and entertainment. Nearby sandy beaches draw streams of visitors with persistent cool breezes and the endless lure of the rolling sea. Finally, there's an indescribable - but readily discernible - feeling in the air that pervades Savannah, a kind of "laid back" approach to the world, a "rootedness" that makes living or working in Savannah an experience second to none.

By way of affirmation, *Le Monde*, the leading French newspaper, called Savannah "the most beautiful city in North America."

Savannah has recently captured the imagination of a nation through its history and its appearance in several feature films, including "Glory," "Forrest Gump," "Something to Talk About," "Midnight In The Garden of Good and Evil," "The Legend of Bagger Vance," and the 2009 hit "The Last Song," starring Miley



Cyrus. Savannah also hosted the yachting events of the 1996 Summer Olympics and most recently served as the media home for the G-8 Summit. As a result, tourism has become one of the leading industries in the area.

Savannah hosts over six million tourists each year. Tourism impacts the Savannah area by more than \$634 million. The city boasts over 7,000 rooms and more than 100 restaurants as folks have learned that Savannah is more than just a convenient rest stop on the interstate to Florida.

The climate of Savannah features warm, and sometimes hot, weather for most of the year. There are seven months in which the average temperature is 70 degrees or higher. The lowest average high is in January at 60.3 degrees.

The population in Savannah is roughly 130,000 and Chatham County is the fifth most populous county in Georgia.

Savannah also sits centrally located to some of the Southeast's finest beaches. Tybee Island, located less than 30 minutes from Armstrong Atlantic State's campus, offers six miles of unspoiled sands, tempting seafood and gracious accommodations. Resort areas such as Hilton Head, South Carolina, are less than one hour away and provide even more relaxing getaway options.

Whether it's the lure of historic settings, the friendliness of a Southern community or the beautiful climate of southeast Georgia, Savannah is the place for you.

THE ARMSTRONG ATHLETIC DEPARTMENT WISHES TO THANK THE FOLLOWING FOR THEIR SUPPORT OF PIRATE ATHLETICS !



2012-13 ARMSTRONG PIRATES WOMENS BASKETBALL SCHEDULE

DATE	DAY	OPPONENT	TIME
Nov. 1	Thurs.	at Savannah State (Exhibition)	6:15 p.m.
Nov. 9	Fri.	Eckerd	6:00 p.m.
Nov. 12	Mon.	Trinity Baptist	6:00 p.m.
Nov. 16-17	Fri.-Sat.	2012 Fairfield Inn & Suites Pirate Classic	
Nov. 16	Fri.	Lynn	7:00 p.m.
Nov. 17	Sat.	Anderson (S.C.)	3:30 p.m.
Nov. 25	Sun.	Palm Beach Atlantic	1:30 p.m.
Nov. 27	Tues.	Allen	6:00 p.m.
Dec. 15	Sat.	North Georgia *	1:30 p.m.
Dec. 17	Mon.	Young Harris *	5:30 p.m.
Dec. 30	Sun.	Saginaw Valley State	1:30 p.m.
Jan. 3	Thurs.	at Clayton State *	5:30 p.m.
Jan. 5	Sat.	Francis Marion *	1:30 p.m.
Jan. 10	Thurs.	Lander *	5:30 p.m.
Jan. 12	Sat.	at Augusta State *	1:30 p.m.
Jan. 17	Thurs.	at Francis Marion *	5:30 p.m.
Jan. 19	Sat.	Columbus State *	1:30 p.m.
Jan. 21	Mon.	Georgia Southwestern State *	5:30 p.m.
Jan. 26	Sat.	at Montevallo *	2:30 p.m.
Jan. 31	Thurs.	Augusta State *	5:30 p.m.
Feb. 2	Sat.	at UNC Pembroke *	1:30 p.m.
Feb. 7	Thurs.	at Flagler *	5:30 p.m.
Feb. 9	Sat.	USC Aiken *	1:30 p.m.
Feb. 14	Thurs.	at Lander *	5:30 p.m.
Feb. 16	Sat.	Flagler *	1:30 p.m.
Feb. 20	Wed.	UNC Pembroke *	5:30 p.m.
Feb. 23	Sat.	at USC Aiken *	5:30 p.m.
March 2	Sat.	at Georgia College *	1:30 p.m.
March 7-10	Thurs.-Sun.	PBC Championships (Columbus, Ga.)	
March 15-18	Fri.-Mon.	at NCAA DII Southeast Regional (Site TBA)	
March 26-29	Tues.-Fri.	at NCAA DII Elite Eight (San Antonio, Texas)	

Bold denotes home game. * - Peach Belt Conference game

All home games webcast live on the internet at: <http://ustream.tv/armstrongpirates>