

Georgia Southern University

Digital Commons@Georgia Southern

Covid-19 Resources

Covid-19 Response and Resources

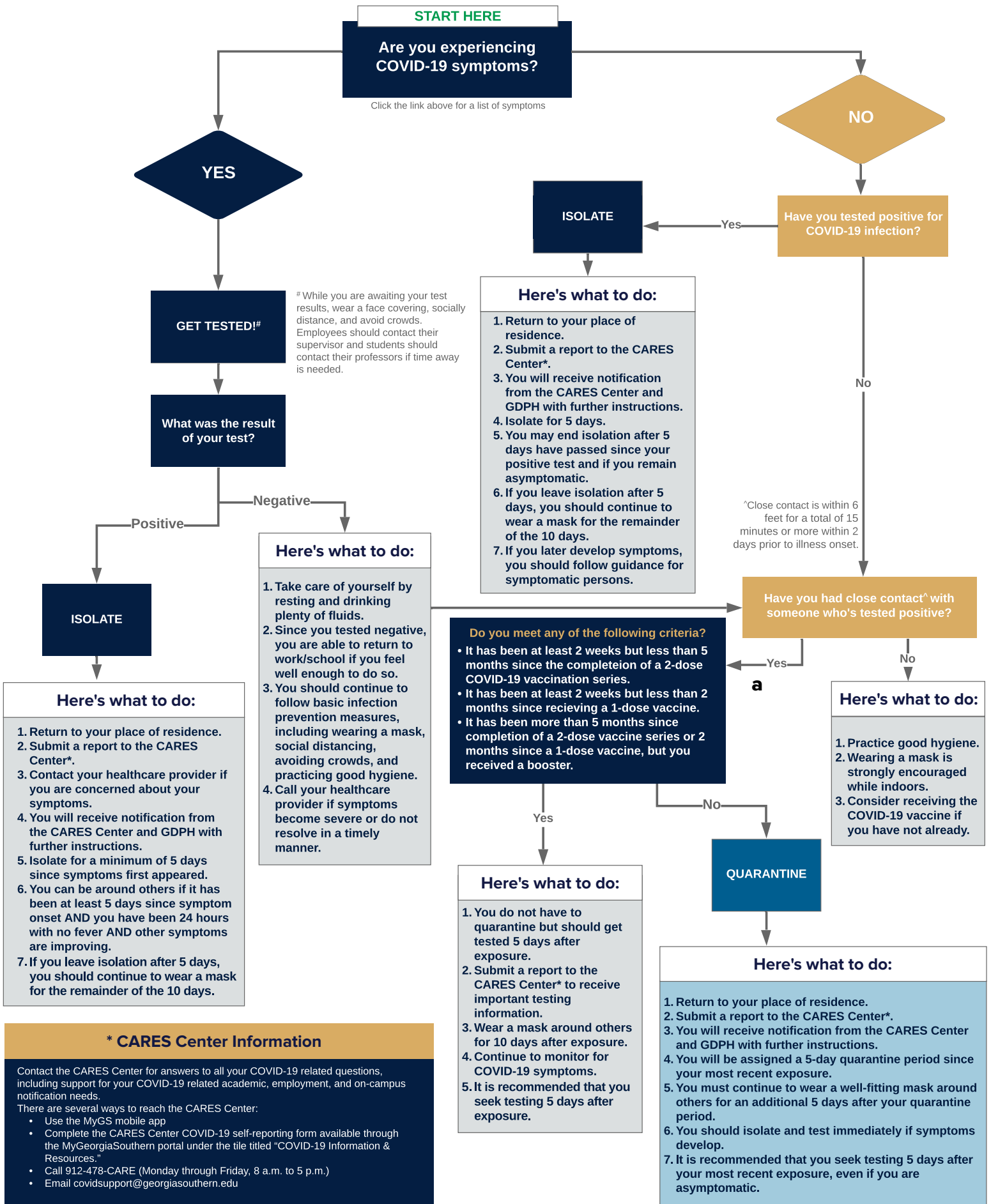
1-10-2022

Guidance on Covid-19

Georgia Southern University

Follow this and additional works at: <https://digitalcommons.georgiasouthern.edu/covid19-resources>

This article is brought to you for free and open access by the Covid-19 Response and Resources at Digital Commons@Georgia Southern. It has been accepted for inclusion in Covid-19 Resources by an authorized administrator of Digital Commons@Georgia Southern. For more information, please contact digitalcommons@georgiasouthern.edu.



*** CARES Center Information**

Contact the CARES Center for answers to all your COVID-19 related questions, including support for your COVID-19 related academic, employment, and on-campus notification needs.

There are several ways to reach the CARES Center:

- Use the MyGS mobile app
- Complete the CARES Center COVID-19 self-reporting form available through the MyGeorgiaSouthern portal under the tile titled "COVID-19 Information & Resources."
- Call 912-478-CARE (Monday through Friday, 8 a.m. to 5 p.m.)
- Email covidsupport@georgiasouthern.edu