

Georgia Southern University

Georgia Southern Commons

Armstrong Women's Volleyball Team Archives

Armstrong Women's Volleyball Archives

2003

2003 AASU Volleyball Guide

Armstrong State University

Follow this and additional works at: <https://digitalcommons.georgiasouthern.edu/armstrong-volley-wmn-team>

Recommended Citation

Armstrong State University, "2003 AASU Volleyball Guide" (2003). *Armstrong Women's Volleyball Team Archives*. 29.

<https://digitalcommons.georgiasouthern.edu/armstrong-volley-wmn-team/29>

This media guide is brought to you for free and open access by the Armstrong Women's Volleyball Archives at Georgia Southern Commons. It has been accepted for inclusion in Armstrong Women's Volleyball Team Archives by an authorized administrator of Georgia Southern Commons. For more information, please contact digitalcommons@georgiasouthern.edu.



**2003 Armstrong Atlantic State University
Volleyball Media Guide**



2003 AASU Roster



2003 AASU Volleyball Squad. Front Row (l-r): Shannon Tracey, Cindy Haynes, Kelly Asbury, Ashley Lavender, Jessica Lilly, Carlyn Dickerson. Back Row (l-r): Alexia Piche-Hatch, Christina Flores, Darcey Krug, Candice Modlinski, Lauren Good, Gillian Johnson, Traci Knuth, Caitlin Smyth.

2003 Armstrong Atlantic State University Pirate Volleyball Roster

#	Name	Yr.	Pos.	Ht.	Hometown/School
1	Lauren Good	6-0	Fr.	MH/RS	Richmond, Va. / Mills E. Godwin HS
2	Gillian Johnson	5-11	Fr.	MH	North Bay, Ontario / Widdifield Secondary
3	Candice Modlinski	6-0	Jr.	MH/OH	St. Charles, Ill. / St. Charles East HS
5	Cindy Haynes	5-10	Soph.	OH	Huntingtown, Md. / Northern HS
6	Alexia Piche-Hatch	5-11	Jr.	OH	Laloche, Saskatchewan / St. Joseph's HS
7	Carlyn Dickerson	5-8	Fr.	OH	Athens, Ga. / Clarke Central HS
8	Ashley Lavender	5-10	Jr.	OH	Leawood, Kan. / Blue Valley HS
9	Jessica Lilly	5-9	Jr.	OH	Altamont, Ill. / Rend Lake College
10	Darcey Krug	6-0	Jr.	RS	Owings, Md. / Northern HS
11	Traci Knuth	5-11	Fr.	MH	Columbus, Neb. / Columbus HS
12	Kelly Asbury	5-8	Fr.	S	Roanoke, Va. / William Byrd HS
13	Christina Flores	5-10	Fr.	OH	Addison, Ill. / Addison HS
15	Shannon Tracey	5-9	Soph.	S	Littleton, Colo. / J.K. Mullen HS
16	Caitlin Smyth	5-10	Fr.	OH	Mechanicsville, Va. / Atlee HS

Head Coach: Alan Segal (Cal State Sacramento, '82)

Assistant Coach: Jen Michael (Francis Marion, '02)

Table of Contents



Contents

Armstrong Atlantic State University	2
Administration	3
Head Coach Alan Segal	4
Assistant Coach Jen Michael	5
2003 Season Preview	6
2003 Player Profiles	7-15
2002 Season Review	16
2002 Season Results / Statistics	17
2002 Peach Belt Conference In Review	18
2003 Opponents	19-20
AASU Records	21-24
AASU Honors	25
All-Time Results	26-27
Athletic Facilities / Athletic Training	28
This Is Savannah	IBC

Quick Facts

Location	Savannah, Ga. 31419
Founded	1935
Enrollment	6,014
Nickname	Pirates
Colors	Maroon and Gold
Athletics Webpage	www.athletics.armstrong.edu
Affiliation	NCAA Division II
Conference	Peach Belt
Home Gym	Aquatics & Recreation Center
Capacity	1,000
President	Dr. Thomas Z. Jones
Athletic Director	Dr. Eddie Aenchbacher
Volleyball Head Coach	Alan Segal
Record at AASU (Years)	124-35 (4)
Overall Coaching Record (Years)	164-67 (6)
2002 Overall Volleyball Record	30-10
2002 PBC Record (Finish)	12-2 (2nd) / PBC Tmt Champs
Assistant Coach	Jen Michael

On the Cover

The 2003 AASU volleyball squad poses on top of Fort Pulaski, an important historic National Monument in Georgia and the Savannah area. Union troops successfully captured Fort Pulaski in 1862 using an experimental new cannon. After capturing the fort, Major General David Hunter ordered the immediate release of area slaves, many of whom were recruited into the Union army, comprising the First South Carolina Colored Regiment.

Credits

The 2003 Armstrong Atlantic State University media guide was published by the AASU Office of Sports Communications, Chad Jackson, director. AASU head coach Alan Segal and assistant coach Jen Michael also contributed to this publication. For more information regarding the AASU volleyball program, please contact:

Chad Jackson Director of Sports Communications Phone: 912-961-3255 Fax: 912-921-5571 E-Mail: jacksoch@mail.armstrong.edu	Alan Segal Head Volleyball Coach Phone: 912-921-3785 Fax: 912-921-5571 E-Mail: segalala@mail.armstrong.edu
--	--



AASU Athletic Department Phone Directory

Main Numbers	
Athletic Department	912-927-5336
Athletics FAX	912-921-5571
	912-921-5852
Administration	
Dr. Eddie Aenchbacher, A.D.	912-921-5854
Dr. Donald Anderson, Asst. A.D.	912-921-5863
Chad Jackson, Sports Communications	912-961-3255
Mylene Ray, Athletic Trainer	912-927-5200
Dianne Lane, Athletic Secretary	912-921-5849
Coaching Staff	
Joe Roberts, Baseball	912-921-5686
Calvain Culberson, Asst. Baseball	912-921-5687
Jeff Burkhamer, Basketball (Men's)	912-921-5683
Steve Ray, Asst. Men's Basketball	912-921-5684
Travis Priddy, Asst. Men's Basketball	912-921-7311
Roger Hodge, Basketball (Women's)	912-921-5861
Mandy Kinder, Asst. Wm. Basketball	912-921-5862
Beth Lyons, Grad Asst. WBKB	912-921-7310
Michael Butler, Men's Golf	912-921-5841
Simon Earnshaw, Tennis	912-921-5842
Jo Ward, Asst. Tennis	912-921-5842
Marty McDaniel, Softball	912-921-2391
Ansley Paschal, Asst. Softball	912-921-2391
Alan Segal, Volleyball	912-921-3785
Jen Michael, Asst. Volleyball	912-921-3786
Other Numbers	
Press Table (Basketball)	912-921-5473
	912-921-5572
AASU Training Room	912-921-5860
Sports Center Weight Room	912-921-5858

AASU has made three straight trips to the NCAA Championships





Armstrong Atlantic State University

Since its founding in 1935, Armstrong Atlantic State University has continued to develop to meet the Savannah community's educational needs. From its first location in Armstrong House in downtown Savannah to its current home on a scenic 250-acre lot off of Abercorn, the university has become one of the finest educational institutions in the Southeastern United States.

Armstrong Junior College was established by the Mayor of Savannah and other public officials in 1935. Housed in the beautiful and historic Armstrong House, a gift to the city from the family of George F. Armstrong, Armstrong Junior College grew over the years to occupy eight additional buildings in the Forsyth Park and Monterey Square areas.

In 1959, as Armstrong College of Savannah, it became a two-year unit of the University System.

The Board of Regents conferred four-year status on Armstrong in 1964 and the college moved to its present 250-acre location, a gift from Donald Livingston and the Mills B. Lane Foundation, in December of 1965. Additional buildings joined the eight original structures as Armstrong added professional and graduate programs and tripled in size.

In July of 1996, the Board of Regents voted to rename the college to Armstrong Atlantic State University to reflect its mission and identity. The university's reputation of excellence is still evident in its dedication to students, with a supportive environment.

Armstrong Atlantic State University was fully accredited as a senior institution by the Southern Association of Colleges and Schools in December, 1968, with accreditation retroactive to January 1, 1968, and was last reaccredited in December, 2001.

The university offers more than seventy-five academic programs and majors in its School of Arts and Sciences, School of Health Professions and School of Education.

The academic community includes approximately 6,000 students and more than 250 faculty members. Enrollment has more than doubled in the last 15 years, from 2,740 students in 1987 to its current number.

Across campus, evidence of the university's growth can be



found in its facilities. Recently completed buildings include the Fine Arts Center, with a 1,000 seat theatre/auditorium, the Health Professions Building and an academic computing center, along with 84,400 square foot University Hall, built to make room for a student population of 8,000. A 115,000 square foot, \$28 million dollar science building opened in 2002. This fall, the campus welcomes the second phase of Compass Point, an addition to the school's first dormitory buildings. Phase two provides an additional 300 beds to the already existing 275 beds from phase one and campus leaders are in talks for a planned phase three addition to Compass Point.

The athletic department of Armstrong Atlantic State University is housed in the Armstrong Sports Center, completed in 1995. The Sports Center includes offices for the physical education department, training room and weight room areas, basketball courts, indoor track and offices for coaches and athletic department personnel. The building played host to the Peach Belt Conference's basketball tournament in 1998 and 1999 and hosts several in-season tournaments each year.

AASU sponsors eight intercollegiate sports and is a charter member of the Peach Belt Conference, formed in 1991. The Pirates have not finished below fourth in the league's all-sports competition since joining the league and finished third in 2002-03, behind North Florida and Kennesaw State.

Continuing a mission begun in 1935, Armstrong Atlantic State University today serves a rich gamut of traditional and non-traditional students. Sixty percent of AASU's student body are from the Savannah-Chatham area, while others come from around the state, nation and world. All have come to Savannah to experience and thrive on the campus of one of the fastest developing higher learning institutions in the nation - to be a part of Armstrong Atlantic State University.



AASU Volleyball began as an intercollegiate sport in 1986



Dr. Thomas Z. Jones University President

Thomas Z. Jones, the sixth president to serve at Armstrong Atlantic State University, begins his third year at AASU. Hired on August 1, 2000, Jones was selected by the Board of Regents and University System of Georgia Chancellor Stephen R. Portch after an exhaustive national search.

Dr. Jones served on the faculty and administration at Columbus State University, as its vice president for academic affairs from 1988-2000, prior to coming to Armstrong Atlantic State. A 30-year veteran of university teaching and administration, Dr. Jones has taught at Indiana State University, Emory and Henry College and the West Virginia Institute of Technology. While at West Virginia Tech, Dr. Jones served as the Westmoreland Professor of Mining, an endowed professorship, and vice president of academic affairs.

Dr. Jones received his bachelor's degree in physics from Fairmont State College, his master of arts degree in geology from West Virginia University and his Ph.D in Geology from Miami (Ohio) University.

From 1980-1988, he owned and served as president of Technical Evaluation Consultants, Inc., a privately owned business specializing in providing science, technical and engineering services for business, industry, government agencies and the legal community.

Dr. Jones and his wife, Joyce, have two sons, Matthew and Michael.



Dr. Eddie Aenchbacher Athletic Director

Dr. Eddie Aenchbacher begins his eighth full year as the athletic director for Armstrong Atlantic State University.

Dr. Aenchbacher's responsibilities include overseeing the entire athletic department and promoting Armstrong Atlantic State athletics in the community of Savannah.

Dr. Aenchbacher received his bachelor's degree in physical education from Armstrong Atlantic State in 1979, where he was a standout student-athlete for the baseball team as a pitcher. He received his Master's degree and Doctorate of Education from the University of Georgia.

Along with his student-athlete experience at AASU, Dr. Aenchbacher also coached the Pirate cross country teams for five years and started the first AASU men's soccer team, which he coached for seven years.

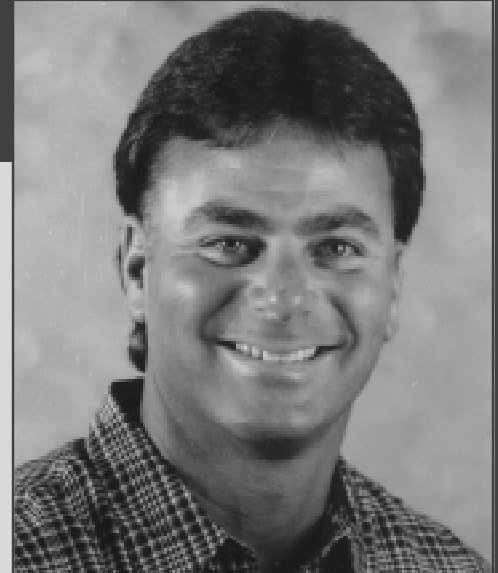
During Dr. Aenchbacher's tenure as athletic director, AASU's athletic programs have had tremendous success in the classroom and on the playing field. Student-athletes at AASU have excelled in academics with 48 percent earning a 3.0 grade point average or better. The overall grade point average of AASU student-athletes is 2.87, higher than the overall institutional GPA. In 2002-03, the AASU athletic department sent seven of eight teams to the NCAA DII Championships, the best ratio in the nation. The Pirates also collected the third-most points per sport sponsored in the annual NACDA Director's Cup competition, which tracks the performance of Division II schools in all sports. AASU accumulated its most Director's Cup points ever (297) and averaged 37.1 points per sport, behind only Grand Valley State (MI) and BYU-Hawaii.

Dr. Aenchbacher has been married for 12 years to Michele and together they are the proud parents of two children, Jesse and Lainey.





Alan Segal Head Volleyball Coach



Alan Segal begins his fifth season as head coach of the Armstrong Atlantic State University volleyball squad after leading the Pirates to a Peach Belt Conference tournament title and an automatic bid to the NCAA Championships, both program firsts. The Pirates have now made three straight trips to the NCAA postseason in his four years at Armstrong Atlantic State.

The 1999 and 2000 Peach Belt Conference Coach of the Year, Segal led the Pirates to 30 victories in 2003, just the second time in school history that an AASU squad has won 30 or more matches in one season. The Pirates defeated No. 1-seed North Florida, 3-0, to win the school's first-ever conference tournament title in four tries and earn an automatic bid to the NCAA Championships. For the second straight year, three AASU players - seniors Sarah Haynes, Erin Melius and Sofie Hakansson - earned All-PBC and All-AVCA honors and together the four-year seniors helped put AASU volleyball on the map.

In four seasons, Segal has compiled a 124-35 overall record at AASU and has a 164-67 overall head coaching record in six seasons.

In his first season as the Pirates' head coach, Segal directed the Pirates to 29 consecutive victories to start the season and finished the year with a school-record 36 wins. Segal also directed a 23 and a half-game turnaround from a team that finished 8-24 the year before, the best single-season turnaround in the NCAA that season.

Segal's second season at AASU saw the Pirates achieve their first AVCA Division II national ranking (No. 24) and advance to their first NCAA Division II National Championship appearance. AASU won its first post-season match, 3-1 over USC Spartanburg, and also had one of its players earn AVCA All-Region honors for the first time in school history in middle hitter Sarah Haynes.

The Pirates matched their 29-10 record in Segal's third season and made their second-straight trip to the NCAAs.

Prior to joining the AASU coaching ranks, Segal coached for two years at Michigan Tech, where he led the Huskies to a 40-32 record over two seasons and a No. 23 national ranking at the end of the 1997 season. Before his inaugural collegiate head coaching position, Segal was an assistant coach at Florida Southern College from 1994-96, where the Mocs advanced to NCAA Tournament play two of three seasons.

Segal has also accumulated coaching experience as head girls' volleyball coach at Agoura High School (1989-92), where he led the team to the Division 3A finals in the California Interscholastic Federation in 1989; assistant men's coach for Pierce Junior College in Woodland Hills, Calif. (1989-91); assistant women's coach at Western Illinois University in Macomb, Ill. (1988-89); assistant women's coach at Delta Junior College in Stockton, Calif. (1983-84); assistant women's coach at Cosummes River College in Sacramento, Calif. (1982); and assistant girls' coach at Cordova High School in Rancho Cordova, Calif. (1980).

Segal is a 1982 graduate of California State University at Sacramento, where he earned a bachelor of science degree in recreation administration. An active member of the American Volleyball Coaches Association, Segal is on the 40-member coaches panel that determines the AVCA Division II Top 25 each week.

Segal is also a veteran volleyball official. He officiated the National Junior College Championships in both 1994 and 1995 and for the past ten years has been one of the top-rated officials on the AVP Professional Beach Tour.

Born March 16, 1959, Segal is single and resides in Savannah, Ga.

The Alan Segal Ledger

Year	Team	Overall	Conference	Highlights
1997	Michigan Tech	23-13	14-4 / 2nd GLIAC North	NCAA Great Lakes Region participant
1998	Michigan Tech	17-19	11-8 / 4th GLIAC North	
1999	Armstrong Atlantic State	36-5	11-3 / 2nd PBC	Began season 29-0, school record in wins
2000	Armstrong Atlantic State	29-10	12-2 / 2nd PBC	No. 24 AVCA DII Ranking / NCAA South Region
2001	Armstrong Atlantic State	29-10	11-3 / 2nd PBC	NCAA South Region semifinals
2002	Armstrong Atlantic State	30-10	12-2 / 2nd PBC	PBC Tournament Champions / NCAA South Region
Total	6 Years	164-67		



Alan Segal was the PBC Coach of the Year in 1999 and 2000



Jen Michael Assistant Volleyball Coach

Former Francis Marion University standout setter Jen Michael enters her second season as the Pirates' assistant volleyball coach.

A four-year letterwinner for Francis Marion, Michael also competed for the Patriot track and field and cross country squads. The 2000 team MVP, Michael was a member of the 1998 Patriot squad (27-6 record) that won the PBC Tournament and advanced to the NCAA Division II national tournament. During her four-year career, she appeared in 120 matches (394 games) and recorded 228 kills, 985 assists, 135 service aces, and 880 digs. As a senior, she ranked sixth in the PBC in assists per game and 10th in service aces per game.

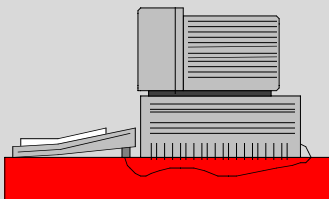
Michael earned her bachelor's degree in mathematics in May of 2002 and graduated magna cum laude. She received the Secondary Education Award at the university's 2002 Academic Awards Day program. She was named to the Peach Belt Conference Presidential Honor Roll four times, was a member of Phi Kappa Phi and Chi Alpha Sigma honor societies, was a Francis Marion Scholar, and was selected to Who's Who Among Students in American Universities and Colleges.

A native of Canal Fulton, Ohio Michael was an All-League and All-District performer at Jackson High School, and a senior played in the Ohio East-West All-Star Match.

Michael, 23, will complete her master's degree in math education at Armstrong Atlantic State University in 2004.



AASU Volleyball Live On The Web !



The Armstrong Atlantic State athletic department will continue to bring home all of the exciting volleyball action in 2003 right to your computer as the Pirates stream live audio and video of all 12 home matches over the Internet.

Fans will be able to catch all of the action from the official Website of AASU Athletics, www.athletics.armstrong.edu, using the power of Windows Media Player.

AASU debuted its Internet broadcasting system in 2001 with incredible success as every home men's and women's basketball game, volleyball match, the majority of the Pirates' baseball and softball games and the NCAA Mid-Atlantic Women's Tennis Regional were available last season.

For more information about the AASU Web broadcast, visit the AASU Athletics Web Site or contact Director of Sports Communications Chad Jackson at jacksoc@mail.armstrong.edu



Peach Belt Conference Tournament Champion Pirates Have Eye On Another League Crown In 2003

The Armstrong Atlantic State volleyball squad embarks on a new era in 2003. The departure of five seniors, including three of the most-decorated players in Pirate volleyball history - Sarah Haynes, Sofie Hakansson and Erin Melius - brings head coach Alan Segal full-circle from his first year in Savannah five years ago.

That season, Segal relied on a core group of juniors and eight freshman to lead AASU to the most victories in school history, a 36-5 record and the beginning of a successful volleyball tradition where there was none. Five years later, Segal again finds himself relying on four returning juniors and an incoming recruiting class of eight players to help defend the Pirates' Peach Belt Conference tournament crown.

Unlike 1999, though, the returning juniors on Segal's roster have plenty of experience

in Peach Belt Conference play. Junior outside hitters Alexia Piche-Hatch, the PBC Tournament MVP in 2002, and Ashley Lavender combined for 410 kills last season and have each played in 65 career matches for the Pirates. The duo will lead a talented group of outside hitters that also includes returning sophomore Cindy Haynes, junior college transfer Jessica Lilly (Altamont, Ill. / Rend Lake College) and freshmen Christina Flores (Addison, Ill. / Addison HS), Caitlin Smyth (Mechanicsville, Ill. / Atlee HS) and Carlyn Dickerson (Athens, Ga. / Clarke Central HS). Junior middle hitter Candice Modlinski returns as the team's leading hitter in 2002, as the Illinois native hit .301 with 265 kills last season. She will be joined by a pair of freshman in the middle in 2003 - Traci Knuth (Columbus, Neb. / Columbus HS) and Gillian Johnson (North Bay, Ontario / Widdifield Secondary).



Alexia Piche-Hatch earned PBC Tournament MVP honors in 2002, collecting 48 kills in three games, hitting .317.

The right side will be manned by junior Darcey Krug, who contributed 221 kills and 68 blocks in 2003. Freshman Lauren Good (Richmond, Va. / Mills E. Godwin HS) will compete for time on the right side with Krug, but can also fill in the middle if necessary.

The setting position will make coach Segal feel like he's back in 1999 again as freshman Kelly Asbury (Roanoke, Va. / William Byrd HS) will begin this season as the primary setter. Asbury has big shoes to fill, taking over for the school's all-time assist leader in Erin Melius. Sophomore Shannon Tracey, still recovering from a leg injury that forced her to miss all of 2002, is expected to return by late September and provide another option heading into conference play.

The 2003 schedule features five matches against AVCA Top 25 ranked teams and nine matches against teams that advanced to the 2002 NCAA Championships. The Pirates again will host the Chatham Orthopaedics Volleyball Classic on Sept. 12-13, featuring 24 matches over two days and including top teams such as Tampa, Florida Southern and Rockhurst. AASU will also take part in tournaments in Chicago (Lewis University) and Omaha (Nebraska-Omaha) as well as taking on non-conference foes Eckerd, Saint Leo, Florida Southern, Tampa and Nova Southeastern.

AASU has been picked to finish second in a preseason poll of the Peach Belt Conference coaches, behind four-time PBC champion North Florida.

2003 AVCA Division II Preseason Coaches Poll

School	Points
1. BYU-Hawaii (34)	874
2. Tampa	800
3. CS-San Bernardino (1)	770
4. Truman State	747
5. Minnesota-Duluth	669
6. UC San Diego	627
7. Grand Valley State	603
8. Barry	580
9. North Alabama	516
10. Western Washington	484
11. Rockhurst	451
12. West Texas A&M	433
13. Metro State	375
14. Nebraska-Kearney	367
15. South Dakota State	355
16. Northern Colorado	349
17. Northwood	344
18. North Dakota State	297
19. Minn. St. Mankato	293
20. North Florida	292
21. Central Missouri State	285
22. Hawaii Pacific	154
23. CS-Los Angeles	153
24. Washburn	138
25. Augustana	92

Also receiving votes: Northern Kentucky (85), Findlay (36), North Dakota (34), CS-Bakersfield (27), St. Edward's (27), New Haven (25), Harding (23), Concordia (Minn.) (16), Chaminade (15), Florida Southern (11), Pittsburg State (8), Ferris State (7), Wheeling Jesuit (2).

Italics represent 2003 opponents

2003 Peach Belt Preseason Poll

(Coaches could not vote for own team)

School	Total
1. North Florida	49 (7)
2. Armstrong Atlantic	42 (1)
3. USC Spartanburg	34
4. USC Aiken	33
5. Francis Marion	23
6. UNC Pembroke	19
7. Augusta State	13
8. Lander	11



AASU plays 8 matches against AVCA-ranked opponents in 2003

Junior Darcey Krug



10 Darcey Krug

Junior Rightside Hitter

6-0 • Owings, Md. • Northern HS

2002

Played in 36 matches and 97 games as a sophomore for the Pirates ... Hit .245 with 221 kills ... Third on team with 68 blocks (0.70/gm) and fifth on team in kills ... Reached double-figure kills four times ... Registered career-high 18 digs and four aces at Francis Marion on 10/4 ... Tied career high with six blocks at USC Spartanburg on 10/26.

2001

Played in 22 matches and 40 games as a freshman ... Hit .137 with 147 kills ... Reached double-figure kills three times, including 18 kills against USC Spartanburg on 10/27.

HIGH SCHOOL

Attended Northern High School in Owings, Md., the same high school as teammate Cindy Haynes ... Played for three seasons and twice earned All-Metro second-team honors, *Washington Post* All-Extra honors and second-team all-SMAC honors for the two-time state champion Patriots ... Team captain as a senior.

PERSONAL

Born Darcey Corinne Krug on June 17, 1982, in Washington, D.C. ... Hometown is Owings, Md. ... Daughter of John and Marsha Krug ... Uncle, Bill, was a two-time AP All-America defensive back for the University of Georgia from 1975-77 ... Majoring in economics.



Krug's Game Highs

Kills:

18 vs. USC Spartanburg, 10/27/01

Hitting Percentage:

.571 (8-0-14) vs. USC Spartanburg, 11/15/02
.538 (15-1-28) at UNC Pembroke, 10/5/02

Blocks:

6 vs. Angelo State, 9/1/01
at USC Spartanburg, 10/26/02

Digs:

18 at Francis Marion, 10/4/02

Service Aces:

4 at Francis Marion, 10/4/02

Darcey Krug's Career Statistics

Year	MP/GP	Kills	Errors	Attacks	Pct.	Assists	SA	SE	Digs	BS	BA	BE	BHE
2001	22/40	71	29	176	.239	3	14	5	58	4	26	7	2
2002	36/97	221	81	572	.245	37	19	45	204	16	52	20	3
2 Years	58/137	292	110	748	.243	40	33	50	262	20	78	27	5

Darcey Krug hit .302 in Peach Belt Conference play in 2002





8

Ashley Lavender

Junior Outside Hitter

5-10 • Leawood, Kan. • Blue Valley HS



2002

Played in 36 matches and 86 games as a sophomore for the Pirates ... Hit .209 with 184 kills ... Recorded double-figure kills four times, including a season-high 11 against UNC Pembroke on 10/5 ... Collected 192 digs ... Recorded double-figure digs six times, including a career-high 12 twice against USC Aiken on 9/25 and Francis Marion on 10/4 ... Recorded double-doubles (10+ kills/digs) against Francis Marion and UNC Pembroke on 10/4 and 10/5 ... Hit .243 in Peach Belt Conference play, averaging 2.47 kills per game ... PBC Commissioner's Honor Roll and AASU Dean's List honoree.

2001

Played in 29 matches and 57 games as a freshman ... Hit .106 with 66 kills ... Collected 12 kills and 13 digs against Valdosta State on 10/3 ... Hit season-high .455 with 12 kills at Florida Southern on 10/15 ... Also collected 11 kills and 8 digs against Southeast Oklahoma State on 9/1.

Lavender's Game Highs

Kills:

12, twice. Last at Fla. Southern, 10/15/01

Hitting Percentage:

.600 (6-0-10) vs. Tusculum, 9/13/02

.455 (12-2-22) at Fla. Southern, 10/15/01

Blocks:

4 at Fla. Southern, 10/15/01

Digs:

12, twice. Last vs. Francis Marion, 10/4/02

Service Aces:

4 vs. East Stroudsburg, 9/6/02

HIGH SCHOOL

Attended Blue Valley High School in Stillwell, Kansas ... Earned All-Tournament honors three times for the Tigers ... Member of the National Honor and Spanish Honor Societies ... Senior captain of the Tigers in 2000.

PERSONAL

Born Ashley Kristine Lavender on February 7, 1983, in Kansas City, Mo. ... Hometown is Leawood ... Daughter of Karl and Linda Lavender ... Sister, Jocelyn, is a junior on the AASU softball squad ... Majoring in health science.



Ashley Lavender's Career Statistics

Year	MP/GP	Kills	Errors	Attacks	Pct.	Assists	SA	SE	Digs	BS	BA	BE	BHE
2001	29/57	66	45	199	.106	2	17	17	78	2	16	8	0
2002	36/86	184	86	469	.209	15	25	31	192	2	18	6	5
2 Years	65/143	250	131	668	.178	17	42	48	270	4	34	14	5



Lavender is the sister of AASU softball player Jocelyn Lavender

Junior Candice Modlinski



Candice Modlinski

Junior Middle Hitter

6-0 • St. Charles, Ill. • St. Charles East HS



2002

Played in 38 matches and 104 games as a sophomore ... Hit a team-best .301 with 265 kills ... Registered double-figure kills on eight occasions, including a career-high 16 against Catawba on 9/14 ... Earned PBC Player of the Week honors on 10/2, hitting .500 on the week in two key Peach Belt Conference wins over Lander and USC Spartanburg ... Hit a career-high .529 against Lander on 10/25 and hit .479 with 12 kills, five blocks and a career-high 16 digs at USCS on 10/26 ... Notched career-high eight blocks vs. North Florida on 11/6.

2001

Played in all 39 matches as a freshman for the Pirates ... Hit .184 with 199 kills, fourth-most on the squad ... Collected 20 solo and 57 assisted blocks, averaging 0.73 blocks per game, second-best on the team ... Notched 10 or more kills seven times, including a season-high 13 kills on three occasions ... Registered 12 kills, 12 digs and six service aces at Catawba on 10/19 ... Hit .444 (10-2-18) against USC Aiken on 9/22 ... Hit .228 in Peach Belt Conference play, including averaging 2.5 kills per game.

Modlinski's Game Highs

Kills:

16 vs. Catawba, 9/14/02

Hitting Percentage:

.529 (9-0-17) at Lander, 10/25/02

.455 (12-2-22) vs. Lander, 9/28/02

Blocks:

8 at North Florida, 11/6/02

Digs:

16 at USC Spartanburg, 10/26/02

Service Aces:

4, twice. Last vs. Fla. Southern, 9/13/02

HIGH SCHOOL

Attended St. Charles East High School in St. Charles, Ill. ... Played two years for the Saints.

PERSONAL

Born Candice Ann Modlinski on January 16, 1983, in Skokie, Ill. ... Hometown is St. Charles, Ill. ... Daughter of Cheryl and Dan Modlinski ... Majoring in psychology and would like to become a psychologist after college ... Enjoys playing soccer ... Kristine Lilly is a favorite sports personality.



Candice Modlinski's Career Statistics

Year	MP/GP	Kills	Errors	Attacks	Pct.	Assists	SA	SE	Digs	BS	BA	BE	BHE
2001	39/106	199	95	564	.184	11	45	35	181	20	57	17	6
2002	38/104	265	88	588	.301	11	41	35	187	13	69	10	1
2 Years	77/210	464	183	1152	.244	22	86	70	368	33	126	27	7

Modlinski earned PBC Player of the Week honors on 10/29/02





Junior Alexia Piche-Hatch



Alexia Piche-Hatch

Junior Outside Hitter

5-11 • LaLoche, Saskatchewan • St. Joseph's HS



2002

Played in 34 matches and 79 games as a sophomore ... Hit .273 with 226 kills (2.6 per game) ... Earned PBC Tournament MVP honors by collecting 48 kills in three matches (4.8 kills/gm) and hitting .317 in leading the Pirates to their first-ever Peach Belt tournament title and automatic NCAA bid ... Notched double-digit kills in seven matches, including a career-high 20 kills against Catawba on 9/14 ... Collected 187 digs, including a season-high 16 against Catawba.

2001

Played in 31 matches and 51 games as a freshman ... Hit .165 with 94 kills ... Recorded a season-high 10 kills against Augusta State on 9/21 ... Hit .875 (7-0-8) vs. Georgia Southwestern on 8/29 ... Notched eight kills, four blocks and 17 digs at Texas Woman's on 8/31.

HIGH SCHOOL

Attended St. Joseph's High School in Saskatoon, Saskatchewan ... Played for the 4A Provincial Champion Guardians ... Also played for Club Saskatoon Impact, the National Juvenile Women's Champion club team in Canada.

PERSONAL

Born Alexia Gillian Piche-Hatch on May 9, 1983, in LaLoche, Saskatchewan, her hometown ... Daughter of Greg Hatch and Albertine Piche ... Father, Greg, played ice hockey at Bowling Green State University from 1971-75 ... Majoring in nursing ... Enjoys working out, shopping and being with friends.

Piche-Hatch's Game Highs

Kills:

20 vs. Catawba, 9/14/02

Hitting Percentage:

.692 (9-0-13) vs. Milligan, 8/30/02

.556 (17-2-27) vs. Augusta State, 11/15/02

Digs:

17 at Texas Woman's, 8/31/01

Blocks:

3 vs. Catawba, 9/14/02

Service Aces:

3 vs. Francis Marion, 11/2/02



Alexia Piche-Hatch's Career Statistics

Year	MP/GP	Kills	Errors	Attacks	Pct.	Assists	SA	SE	Digs	BS	BA	BE	BHE
2001	31/51	94	50	267	.165	4	8	18	108	3	15	1	1
2002	34/79	226	87	509	.273	19	17	18	187	3	16	8	1
2 Years	65/130	320	137	776	.326	23	25	36	295	6	31	9	2



Piche-Hatch earned AASU's first PBC Tournament MVP honors

Junior Jessica Lilly and Sophomore Shannon Tracey



9

Jessica Lilly

Junior Outside Hitter

5-9 • Altamont, Ill. • Rend Lake College



JUNIOR COLLEGE

Played two seasons at Rend Lake College in Ina, Ill. ... Earned best defensive player honors for the Lady Warriors as a sophomore in 2002.

HIGH SCHOOL

Played for four years at Altamont HS in Altamont, Ill. ... Two-time First-Team All-Conference honoree for the Indians ... Also earned All-Tournament honors three times.

PERSONAL

Born Jessica Dillon Lilly on November 16, 1982, in Champaign, Ill. ... Hometown is Altamont, Ill. ... Daughter of Kathy and Lem Lilly ... Kathy competed intercollegiately on the Eastern Illinois University track and field squad ... Majoring in art ... Enjoys sports and photography ... Logan Tom is a favorite sports personality.

15

Shannon Tracey

Sophomore Setter

5-9 • Littleton, Colo. • J.K. Mullen HS



2001

Played in 22 matches and 39 games as a freshman ... Recorded 164 assists (4.2 per game), including a season-high 36 assists and 10 digs against Southeastern Oklahoma State on 9/1 ... Notched 29 assists against Valdosta State on 10/3 ... Tallied 20 assists vs. Converse on 8/25.

HIGH SCHOOL

Attended J.K. Mullen High School in Littleton, Colo. ... Played for four years for the Mustangs ... Earned *Denver Post* and *Rocky Mountain News* 4A Honorable Mention honors as a senior ... Also was team captain as a senior ... Also played for the Front Range Volleyball Club.

PERSONAL

Born Shannon Marie Tracey on April 2, 1983, in Littleton, Colo., her hometown ... Daughter of John and Sherry Tracey ... Majoring in physical therapy ... Enjoys water skiing, boating and camping ... Lists her sister, Katelyn, as a favorite role model.

Tracey's Game Highs

Assists:

36 vs. SE Oklahoma State, 9/1/01

Digs:

10 vs. SE Oklahoma State, 9/1/01

Service Aces:

3 vs. Augusta State, 9/21/01

Shannon Tracey's Career Statistics

Year	MP/GP	Kills	Errors	Attacks	Pct.	Assists	SA	SE	Digs	BS	BA	BE	BHE
2001	22/39	11	7	33	.121	164	10	15	43	1	7	2	9
1 Year	22/39	11	7	33	.121	164	10	15	43	1	7	2	9

Shannon Tracey received a medical redshirt for 2002





Sophomore Cindy Haynes and Freshman Kelly Asbury

5 Cindy Haynes

Sophomore Middle Hitter

5-10 • Huntingtown, Md. • Northern HS

2002

Played in 28 matches and 46 games for the Pirates as a freshman ... Hit .226 with 53 kills (0.50/gm) ... Collected season-high six kills, hitting .625 (6-1-8) against NC Central on 8/31 ... Had season-high 11 attempts and six service aces against West Georgia on 9/20.

HIGH SCHOOL

Played for three-time Maryland state champion Northern HS in Owings, Md. ... Earned second-team All-SMAC (Southern Maryland Athletic Conference) honors as a senior for the Patriots.

PERSONAL

Born Cynthia Ann Haynes on July 22, 1984, in Prince Frederick, Md. ... Hometown is Huntingtown ... Daughter of Steve and Teresa Haynes ... Brother, Matt, plays baseball for the University of Maryland and sister, Sarah, was a three-time All-AVCA South Region volleyball player for AASU from 1999-2002 ... Undecided in major ... Enjoys ceramics.



Haynes' Game Highs

Kills:

6 vs. NC Central, 8/31/02

Digs:

8 vs. Augusta State, 10/16/02

Service Aces:

6 vs. West Georgia, 9/20/02

Cindy Haynes' Career Statistics

Year	MP/GP	Kills	Errors	Attacks	Pct.	Assists	SA	SE	Digs	BS	BA	BE	BHE
2002	28/46	23	11	53	.226	4	18	22	66	0	1	2	0
1 Year	28/46	23	11	53	.226	4	18	22	66	0	1	2	0

12 Kelly Asbury

Freshman Setter

5-8 • Roanoke, Va. • William Byrd HS

HIGH SCHOOL

Earned First Team All-District, All-Region and All-State honors at William Byrd HS as a senior ... Played for four seasons for the Terriers, who advanced to the Virginia AA Final Four all four seasons and captured a state title in 2000 ... Team captain as a junior and senior, as well as the team's MVP in 2003 ... Named Blue Ridge District Player of the Year ... Also competed in basketball, cross country and track and field.

PERSONAL

Born Kristen Kelly Asbury on January 24, 1985, in Roanoke, Va., her hometown ... Daughter of Randy and Cindy Asbury ... Majoring in engineering ... Enjoys the outdoors, including mountain biking and water skiing ... Lance Armstrong is a favorite sports personality.



AASU has seven freshman for the first time since 2000

Freshmen Carlyn Dickerson and Christina Flores



Carlyn Dickerson

Freshman Outside Hitter

5-8 • Athens, Ga. • Clarke Central HS

HIGH SCHOOL

Played for three seasons at Clarke Central HS in Athens, Ga. ... Named Area 8-AAAA Player of the Year in 2003 and was a two-time team MVP for the Lady Gladiators ... Clarke Central captured the Area 8-AAAA Championship in 2003.

PERSONAL

Born Carlyn Dickerson on December 5, 1984, in Athens, Ga., her hometown ... Daughter of Harry and Madelon Dickerson ... Majoring in pre-medicine ... Enjoys horseback riding ... Lists current UGA volleyball player Luresa Forsythe as a favorite sports personality.



Christina Flores

Freshman Outside Hitter

5-10 • Addison, Ill. • Addison Trail HS

HIGH SCHOOL

Played for three seasons at Addison Trail HS ... Two-time All-Conference honoree for the Blazers ... Earned All-Area and All-Academic honors as a senior, as well as Senior Athlete of the Year honors at Addison Trail in 2003 ... Team captain in junior and senior year.

PERSONAL

Born Christina Marie Flores on August 7, 1985, in Arlington Heights, Ill. ... Hometown is Addison ... Daughter of Bari and Ernie Flores ... Bari was a gymnast at the University of Kentucky, while Ernie played intercollegiate basketball at North Park University ... Undecided in major ... Would like to pursue a career in sports marketing after college ... Enjoys beach volleyball, shopping and hanging out with friends ... Annika Sorenstam is a favorite sports personality.





Freshmen Lauren Good and Gillian Johnson

1

Lauren Good

Freshman Middle/Rightside Hitter

6-0 • Richmond, Va. • Mills E. Godwin HS



HIGH SCHOOL

Played for three seasons at Mills E. Godwin HS in Richmond, Va. ... Earned All-District honors for the Eagles ... Mills E. Godwin advanced to the Virginia State Quarterfinals in both 2001 and 2002.

PERSONAL

Born Lauren Ashley Good on April 7, 1985, in Richmond, Va., her hometown ... Daughter of Rick and Ginny Good ... Undecided in major ... Would like to enter marketing or be an interior decorator after college ... Enjoys swimming ... Logan Tom is a favorite sports personality.

2

Gillian Johnson

Freshman Middle Hitter

5-11 • North Bay, Ontario • Widdifield Secondary



HIGH SCHOOL

Played for four years at Widdifield Secondary in North Bay, Ontario ... Two-time team MVP for the Wildcats, as well as a two-time All-Ontario honoree ... Widdifield Secondary's Athlete of the Year in 2003 ... Triple-sport standout who was also a two-time team MVP in women's basketball and a league and regional alpine skiing champion.

PERSONAL

Born Gillian Johnson on February 9, 1984, in Bathurst, New Brunswick ... Hometown is North Bay, Ontario ... Daughter of Dean and Alanna Johnson ... Majoring in physical therapy ... Enjoys playing guitar and water skiing ... Logan Tom is a favorite sports personality.



AASU hit a team-record .259 in 2003

Freshmen Traci Knuth and Caitlin Smyth



11 Traci Knuth

Freshman Middle Hitter

5-11 • Columbus, Neb. • Columbus HS



HIGH SCHOOL

Four-year starter for Columbus HS in Columbus, Neb. ... Two-time Class A second-team All-State honoree for the Discoverers, as well as a two-time All-Conference honoree ... Named team MVP in 2001 and 2002 and was selected to the Columbus Area and Nebraska All-Star teams as a senior ... Also a standout hoops player for Columbus HS.

PERSONAL

Born Traci Ann Knuth on June 27, 1985, in Lexington, Neb. ... Hometown is Columbus, Neb. ... Daughter of Lyle and Jane Knuth ... Lyle played intercollegiate football for Nebraska-Kearney ... Majoring in physical therapy ... Enjoys snow and water skiing, swimming and playing all sports.

1 Caitlin Smyth

Freshman Outside Hitter

5-10 • Mechanicsville, Va. • Atlee HS



HIGH SCHOOL

Three-year starter at Atlee HS in Mechanicsville, Va. ... Named District Player of the Year as a junior and senior, as well as first-team All-Region and Academic All-Region ... *Richmond Times-Dispatch* Scholar Athlete of the Month winner ... Team captain for the Raiders in junior and senior seasons.

PERSONAL

Born Caitlin T. Smyth on October 17, 1974, in Falls Church, Va. ... Hometown is Mechanicsville, Va. ... Daughter of Kevin and Melinda Smyth ... Undecided in major ... Participated in foreign exchange program, living in Spain for 10 months ... Lists USA Volleyball player Stacy Sykora as a favorite sports personality.

AASU is 8-1 in five-game matches over the last four years



AASU Captures First-Ever PBC Tournament Title Makes Third Straight Trip To NCAAs



AASU's all-time assist leader (Erin Melius) sets the Pirates' all-time kills leader (Sarah Haynes) at USC Aiken on 9/25.

With a squad sporting five seniors, including a quartet of four-year seniors who came to Armstrong Atlantic State University at the same time that head coach Alan Segal took over the program in 1999, the 2002 volleyball season promised to be an exciting one. Nobody knew just how exciting, however, until the Pirates entered the 2002 Peach Belt Conference tournament.

AASU had advanced to the title game each of the last three seasons, but North Florida had turned away the Pirates' bid for the school's first tournament crown and automatic NCAA berth each time. 2002 looked to be much the same as the Pirates dropped games to Augusta State and USC Spartanburg in the first round and semifinals, while UNF breezed through 3-0 wins over Lander and UNC Pembroke.

But this time the Pirates would not be denied.

Sparked by the play of PBC Tournament MVP Alexia Piche-Hatch and strong play from seniors Erin Melius and Sofie Hakansson, the Pirates defeated the Ospreys, 30-27, 30-22, 37-35, to capture the school's first-ever PBC tournament title and an automatic bid to the NCAA Championships. It was also the first time an AASU athletic team other than the women's tennis squad had captured a PBC tournament title in any sport.

With the victory, the Pirates earned their third-straight berth to the NCAAs and also won their 30th game of the season, just the second time in school history an AASU volleyball squad has won 30 matches.

AASU's quartet of fourth-year seniors - Melius, Hakansson, Sarah Haynes and Shelley Weekes - completed outstanding careers that helped place the Pirate program on the

college volleyball map. The four players completed their careers with a 124-35 mark and rewrote the AASU record books. Melius set a new single-season assist mark in 2002 with 1,708, and her 5,582 career assists are more than double of anyone's in Pirate volleyball history and rank 18th all-time in NCAA Division II history. Melius again earned All-PBC and All-AVCA South Region honors in 2002 as well.

Haynes concluded her career as AASU's all-time leader in kills (1,383), blocks (420) and games played (496). The three-time AVCA All-Region performer played in 157 straight matches in her four-year career, the 10th-best streak in NCAA Division II history. Haynes also earned All-PBC honors three times in her career and was the 2000 PBC Player of the Year.

Hakansson finished her playing days with the Pirates as AASU's all-time service ace leader with 244 and finished second all-time in kills (1,265) and digs (1,301), joining Tracy Fowler as the only two players to record 1,000+ kills and digs in a career for AASU.

Weekes again earned Verizon Academic All-District III honors and also earned the 2003 AASU President's Cup, given to AASU's top male and female student-athlete.

The breakout seasons of Piche-Hatch (2.86 kills/gm), Candice Modlinski (team-best .301 hitting percentage) and Darcey Krug (221 kills, 68 blocks) - all sophomores - mean that the cupboard is far from bare for head coach Alan Segal next season.

As a team, the Pirates set a new school record in 2002 in kills (2,101), attacks (5,031), hitting percentage (.359) and assists (1,911) and ranked nationally in kills per game (15.93, 23rd NCAA), service aces per game (2.60, 25th NCAA) and assists per game (14.49, 16th NCAA).



AASU's five seniors celebrate the school's first-ever PBC Tournament title - from left to right, Sarah Haynes, Erin Melius, Shelley Weekes, Kinsey Ross and Sofie Hakansson.

2002 Season Results & Statistics



2002 Armstrong Atlantic State Volleyball Results

Overall: 30-10 • Home: 10-4 • Away: 7-4 • Neutral: 13-2

Date	Opponent	Result	Kills	Assists	Digs	Blocks
8/30	vs. Milligan *	W 3-0 (30-13, 30-23, 30-10)	Three with 9	Melius (40)	Hakansson (11)	Hakansson (4)
	vs. Pfeiffer *	W 3-0 (30-17, 30-16, 30-16)	S. Haynes (10)	Melius (31)	Melius (10)	Three with 1
8/31	vs. NC Central *	W 3-0 (30-10, 30-18, 30-18)	Weekes (9)	Melius (31)	Melius (9)	Modlinski (4)
	vs. Converse *	W 3-0 (30-18, 30-8, 30-22)	Three with 8	Melius (39)	Modlinski (9)	Modlinski (3)
9/4	Georgia Southwestern	W 3-0 (30-12, 30-17, 30-19)	Two with 7	Melius (39)	Two with 8	Krug (2)
9/6	vs. East Stroudsburg !	W 3-0 (30-23, 30-22, 30-24)	Piche-Hatch (11)	Melius (43)	Two with 10	Three with 2
	vs. New York Tech !	W 3-0 (30-12, 30-18, 30-11)	Hakansson (11)	Melius (41)	S. Haynes (13)	Krug (4)
9/7	vs. Bentley !	W 3-0 (30-20, 30-22, 30-15)	Hakansson (14)	Melius (44)	Hakansson (12)	Modlinski (3)
	at Bryant !	W 3-2 (35-33, 29-31, 25-30, 30-22, 15-13)	Modlinski (13)	Melius (56)	S. Haynes (15)	Three with 5
9/13	Tusculum &	W 3-0 (30-14, 30-10, 30-21)	Two with 8	Melius (42)	Piche-Hatch (11)	Krug (2)
	Florida Southern &	W 3-1 (30-23, 23-30, 30-27, 30-25)	Weekes (19)	Melius (52)	Weekes (21)	Modlinski (4)
9/14	Catawba &	W 3-1 (30-32, 30-22, 30-18, 30-20)	Piche-Hatch (20)	Melius (59)	Weekes (18)	S. Haynes (5)
	Lewis &	L 3-0 (32-34, 26-30, 27-30)	Hakansson (12)	Melius (41)	Two with 8	S. Haynes (6)
9/20	vs. West Georgia @	W 3-0 (30-23, 30-22, 30-24)	Piche-Hatch (15)	Melius (40)	Piche-Hatch (11)	Krug (3)
	vs. Harding @	W 3-0 (32-30, 30-26, 30-22)	S. Haynes (17)	Melius (58)	Hakansson (21)	S. Haynes (5)
9/21	vs. Incarnate Word @	L 3-1 (23-30, 32-30, 20-30, 22-30)	Two with 13	Melius (47)	Hakansson (15)	S. Haynes (3)
	at St. Edward's @	L 3-0 (26-30, 20-30, 17-30)	Hakansson (9)	Melius (33)	Hakansson (14)	Krug (2)
9/25	at USC Aiken	W 3-0 (30-25, 38-36, 30-23)	Krug (13)	Melius (32)	Lavender (12)	Three with 5
9/27	USC Spartanburg	W 3-0 (30-21, 30-24, 30-20)	Two with 13	Melius (38)	S. Haynes (11)	Piche-Hatch (2)
9/28	Lander	W 3-1 (30-23, 28-30, 30-28, 30-19)	Hakansson (18)	Melius (55)	Melius (15)	S. Haynes (4)
10/2	North Florida	L 3-0 (17-30, 23-30, 26-30)	Hakansson (9)	Melius (24)	S. Haynes (10)	Two with 2
10/4	at Francis Marion	W 3-0 (30-12, 30-25, 30-21)	Hakansson (11)	Melius (35)	Krug (18)	Two with 2
10/5	at UNC Pembroke	W 3-0 (30-21, 30-25, 31-29)	Krug (15)	Melius (44)	Krug (13)	Two with 4
10/10	at Tampa	L 3-0 (16-30, 16-30, 17-30)	Hakansson (9)	Melius (31)	Krug (9)	Two with 1
10/12	vs. Nova Southeastern ^	W 3-0 (30-16, 30-23, 30-20)	Two with 9	Melius (42)	Hakansson (14)	Three with 3
	at Florida Southern ^	L 3-0 (20-30, 22-30, 31-33)	Hakansson (14)	Melius (45)	Modlinski (8)	S. Haynes (2)
10/16	at Augusta State	W 3-1 (30-20, 29-31, 30-19, 30-25)	Hakansson (19)	Melius (49)	Two with 15	Welty (5)
10/19	Tampa	L 3-1 (19-30, 18-30, 30-28, 23-30)	S. Haynes (11)	Melius (44)	Hakansson (10)	Two with 4
10/20	Barry	L 3-0 (28-30, 27-30, 26-30)	Modlinski (12)	Melius (32)	Three with 10	Two with 4
10/25	at Lander	W 3-0 (30-27, 30-20, 30-17)	Hakansson (13)	Melius (41)	Two with 11	S. Haynes (7)
10/26	at USC Spartanburg	W 3-1 (28-30, 30-21, 30-23, 31-29)	Hakansson (18)	Melius (63)	Modlinski (16)	Krug (6)
11/1	UNC Pembroke	W 3-0 (31-29, 30-14, 30-25)	Hakansson (11)	Melius (37)	Hakansson (12)	Two with 3
11/2	Francis Marion	W 3-0 (30-17, 30-12, 30-20)	Weekes (12)	Melius (35)	Hakansson (8)	None
11/6	at North Florida	L 3-1 (30-25, 28-30, 25-30, 30-23)	Hakansson (17)	Melius (52)	Ross (14)	Modlinski (8)
11/8	USC Aiken	W 3-0 (30-20, 32-30, 30-24)	Hakansson (12)	Melius (36)	Hakansson (11)	S. Haynes (4)
11/9	Augusta State	W 3-0 (30-16, 30-20, 33-31)	S. Haynes (11)	Melius (40)	S. Haynes (11)	Three with 1
11/15	vs. Augusta State #	W 3-1 (30-28, 21-30, 30-25, 30-18)	Two with 17	Melius (64)	Two with 12	Modlinski (3)
	vs. USC Spartanburg #	W 3-1 (25-30, 30-21, 30-15, 30-27)	Hakansson (19)	Melius (56)	S. Haynes (12)	Two with 3
11/16	vs. North Florida #	W 3-0 (30-27, 30-22, 37-35)	Piche-Hatch (16)	Melius (42)	Hakansson (12)	Two with 3
11/22	vs. Florida Southern \$	L 3-0 (22-30, 27-30, 15-30)	S. Haynes (7)	Melius (35)	Piche-Hatch (5)	Two with 1

* Catawba Invitational (Salisbury, N.C.) ! Bryant Invitational (Bryant, R.I.) & AASU Classic @ St. Edward's Invitational (Austin, Texas)

^ FSC Moccasin Invitational (Lakeland, Fla.) # PBC Tournament (Aiken, S.C.) \$ NCAA South Regional (Tampa, Fla.)

2002 Pirate Season Statistics

Player	MP/GP	Kills	Errors	Attacks	Pct.	Assists	SA	SE	Digs	BS	BA	BE	BHE
Sofie Hakansson	40/128	440	150	1046	.277	79	67	55	377	10	56	24	9
Cindy Haynes	28/46	23	11	53	.226	4	18	22	66	0	1	2	0
Sarah Haynes	40/127	368	135	790	.295	18	42	47	297	17	77	11	3
Darcey Krug	36/97	221	81	572	.245	37	19	45	204	16	52	20	3
Ashley Lavender	36/86	184	86	469	.209	15	25	31	192	2	18	6	5
Erin Melius	40/132	117	68	373	.131	1708	79	89	299	7	41	22	44
Candice Modlinski	38/104	265	88	588	.301	11	41	35	187	13	69	10	3
Alexia Piche-Hatch	34/79	226	87	509	.273	19	17	18	187	3	16	8	1
Kinsey Ross	12/35	8	3	23	.217	8	8	12	67	0	0	0	2
Shelley Weekes	27/66	192	61	455	.288	10	21	21	197	2	20	10	4
Erin Welty	24/42	57	30	153	.176	2	6	5	38	1	16	11	2
TOTALS	40/132	2101	800	5031	.259	1911	343	380	2111	71	366	124	76
Opponents	40/132	1557	765	4526	.175	1402	226	328	1853	76	386	108	89

Since 1999, the Pirates have compiled a 52-13 home record





2002 Peach Belt Conference In Review



2002 Peach Belt Conference Standings

School	PBC Games	Home	Away	All Games	Home	Away	Neut
North Florida	14-0 1.000	7-0	7-0	29-6 .829	15-3	9-0	5-3
Armstrong Atl. State	12-2 .857	6-1	6-1	30-10 .750	10-4	7-4	13-2
USC Spartanburg	9-5 .643	5-2	4-3	22-10 .688	10-4	6-3	6-3
USC Aiken	6-8 .429	4-3	2-5	14-18 .438	9-5	4-6	1-7
UNC Pembroke	5-9 .357	4-3	1-6	12-21 .375	5-6	5-7	2-8
Francis Marion	5-9 .357	3-4	2-5	13-21 .382	6-5	2-7	4-10
Augusta State	3-11 .273	3-4	0-7	15-18 .455	9-6	2-8	4-4
Lander	2-12 .143	2-5	0-7	8-19 .296	5-8	3-8	0-3

2002 PBC Statistical Leaders

Hitting Percentage

Player/School	GP	K-E-Att.	Pct.
Jackie Struck, UNF	118	447-103-811	.424 (7th NCAA)
Lauren Westervelt, UNF	104	395-102-770	.381 (13th NCAA)
Amber Glass, USCS	111	358-101-805	.319
Stacy Rood, USCA	78	217-63-486	.317
Tina Talsma, UNCP	127	454-122-1054	.315

Kills Per Game

Player/School	GP	K	K/Game
Lauren Westervelt, UNF	104	395	3.80
Jackie Struck, UNF	118	447	3.79
Tina Talsma, UNCP	127	454	3.57
Sofie Hakansson, AASU	128	440	3.44
Amber Glass, USCS	111	358	3.23

Assists Per Game

Player/School	GP	AST	AST/Game
Valerie Martinez, UNF	119	1594	13.39 (8th NCAA)
Erin Melius, AASU	132	1708	12.94 (16th NCAA)
Erin Kopec, USCS	115	1345	11.70
Rachel Dalitz, USCA	122	1286	10.54
Jill Wilson, UNCP	127	1329	10.46

Blocks Per Game

Player/School	GP	BS-BA-TB	Blk/Gm
Jackie Struck, UNF	118	23-128-151	1.28
Tina Talsma, UNCP	127	42-95-137	1.08
Lori Sweeney, UNCP	127	41-86-127	1.00
Summer Mathews, LU	91	40-48-88	0.97
Melonie Allin, UNCP	127	29-93-122	0.96

Digs Per Game

Player/School	GP	DIG	DIG/Game
Casey Dennard, ASU	126	525	4.17
Chrissy Bruce, USCA	110	401	3.65
Marcie Holden, UNCP	127	421	3.31
Stacy Norton, UNCP	126	410	3.25
Jessica Bosacki, UNF	114	370	3.25

Service Aces Per Game

Player/School	GP	Aces	Aces/Game
Erin Melius, AASU	132	79	0.60
Rachel Dalitz, USCA	122	65	0.53
Sofie Hakansson, AASU	128	67	0.52
Heather Peden, LU	48	24	0.50
Jackie Struck, LU	118	58	0.49

2002 All-Peach Belt Team

Player/School	Ht.	Yr.	Pos.	Hometown
Sofie Hakansson, AASU	5-11	Sr.	OH	Vingaker, Sweden
Sarah Haynes, AASU	5-11	Sr.	MH	Huntingtown, Md.
Erin Kopec, USCS	5-7	Jr.	S	West Chicago, Ill.
Erin Melius, AASU	5-7	Sr.	S	Colorado Springs, Co.
Jackie Struck, UNF	6-0	Soph.	MB	Spring, Texas
Lauren Westervelt, UNF	5-11	Sr.	MB	Boca Raton, Fla.
Tina Talsma, UNCP	6-0	Fr.	MH	Orono, Ontario
Valerie Martinez, UNF	5-9	Soph.	S	Ft. Lauderdale, Fla.
Amber Glass, USCS	6-2	Soph.	MH	Spartanburg, S.C.
Amy Long, USCA	6-1	Fr.	MB	Redland, Calif.

Freshmen of the Year: Tina Talsma, UNCP & Amy Long, USCA

Player of the Year: Jackie Struck, North Florida

Coach of the Year: Bryan Bunn, North Florida

2002 PBC Tournament Team

Mandy Dreiling, USC Spartanburg
 Tina Talsma, UNC Pembroke
 Valerie Martinez, North Florida
 Lauren Westervelt, North Florida
 Sofie Hakansson, Armstrong Atlantic

Most Valuable Player: Alexia Piche-Hatch, Armstrong Atlantic

2002 PBC Players of the Week

Date	Player	School
September 10	Sarah Haynes	Armstrong Atlantic State
September 17	Tina Talsma	UNC Pembroke
September 24	Stacy Rood	USC Aiken
October 1	Jackie Struck	North Florida
October 8	Jackie Struck	North Florida
October 14	Kristen Jansen	North Florida
October 22	Valerie Martinez	North Florida
October 29	Candice Modlinski	Armstrong Atlantic State
November 5	Amy Long	USC Aiken
November 12	Lauren Westervelt	North Florida

AASU In PBC/NCAA Statistics

Hitting Percentage: .258, 2nd **Digs Per Game:** 16.03, 7th

Blocks Per Game: 1.94, 6th

Kills Per Game: 15.93, 2nd (23rd NCAA)

Aces Per Game: 2.60, 1st (25th NCAA)

Assists Per Game: 14.49, 1st (16th NCAA)



AASU has had 3 or more All-PBC honorees the last four years

2003 PBC Opponents



Augusta State

@Wed., Oct. 16 7:00 p.m.
Sat., Nov. 9 4:00 p.m.

Location: Augusta, GA
Enrollment: 5,500
Nickname: Jaguars
Colors: Royal Blue, White
2002 Record: 15-19
Peach Belt: 3-11 / 7th
Series: AASU leads 26-13

Head Coach: Tess Graham
Phone: (706) 667-4766
SID: Joey Warren
Phone: (706) 731-7925
Fax: (706) 737-1782
Web: www.aug.edu

Francis Marion

@Fri., Oct. 4 7:00 p.m.
Sat., Nov. 2 7:00 p.m.

Location: Florence, SC
Enrollment: 3,684
Nickname: Patriots
Colors: Red, White & Blue
2002 Record: 13-22
Peach Belt: 5-9 / 15th
Series: FMU leads 17-11

Head Coach: Sonny Kirkpatrick
Phone: (843) 661-1246
SID: Michael Hawkins
Phone: (843) 661-1222
Fax: (843) 661-1219
Web: www.fmarion.edu

Lander

Sat., Sept. 28 4:00 p.m.
@Fri., Oct. 25 7:00 p.m.

Location: Greenwood, SC
Enrollment: 2,900
Nickname: Bearcats
Colors: Royal Blue & Gold
2002 Record: 8-20
Peach Belt: 2-12 / 8th
Series: AASU leads 11-0

Head Coach: Angela Kearns
Phone: (864) 388-8963
SID: Bob Stoner
Phone: (864) 388-8962
Fax: (864) 388-8889
Web: www.lander.edu

North Florida

Wed., Oct. 2 7:00 p.m.
@Wed., Nov. 6 7:00 p.m.

Location: Jacksonville, FL
Enrollment: 12,086
Nickname: Ospreys
Colors: Navy Blue & Gray
2002 Record: 29-6
Peach Belt: 14-0 / 1st
Series: UNF leads 21-2

Head Coach: Bryan Bunn
Phone: (904) 620-2897
SID: Shawn Lafata
Phone: (904) 620-4025
Fax: (904) 620-2836
Web: www.unf.edu

UNC Pembroke

@Sat., Oct. 5 3:00 p.m.
Fri., Nov. 1 7:00 p.m.

Location: Pembroke, NC
Enrollment: 3,100
Nickname: Braves
Colors: Black and Gold
2002 Record: 12-21
Peach Belt: 5-9 / 15th
Series: AASU leads 16-8

Head Coach: Beverly Justice
Phone: (910) 521-6273
SID: Rikki Cockrell
Phone: (910) 521-6371
Fax: (910) 521-6551
Web: www.uncp.edu

USC Aiken

@Wed., Sept. 25 7:00 p.m.
Fri., Nov. 8 7:00 p.m.

Location: Aiken, SC
Enrollment: 3,390
Nickname: Pacers
Colors: Cardinal, Navy & White
2002 Record: 14-18
Peach Belt: 6-8 / 4th
Series: USCA leads 17-13

Head Coach: Will Condon
Phone: (803) 641-3373
SID: Brad Fields
Phone: (803) 641-3252
Fax: (803) 641-3759
Web: www.pacersports.com

USC Spartanburg

Fri., Sept. 27 7:00 p.m.
@Sat., Oct. 26 3:00 p.m.

Location: Spartanburg, SC
Enrollment: 3,700
Nickname: Rifles
Colors: Green, Black, White
2002 Record: 22-10
Peach Belt: 9-5 / 3rd
Series: USCS leads 19-13

Head Coach: Jennifer Calloway
Phone: (864) 503-5161
SID: Bill English
Phone: (864) 503-5129
Fax: (864) 503-5127
Web: www.uscs.edu



Composite Peach Belt W-L Records

North Florida	79-3	.963
USC Spartanburg ..	82-44	.650
USC Aiken	78-48	.619
AASU	70-56	.556
Francis Marion	67-59	.523
UNC Pembroke	33-89	.279
Augusta State	33-93	.262
Lander	10-60	.143

Tampa

Sat., Sept. 13 7:00 p.m.
@Sun., Oct. 19 2:00 p.m.

Location: Tampa, FL
Enrollment: 3,800
Nickname: Spartans
Colors: Red, Gold & Black
2002 Record: 27-4
Sunshine State: 13-1 / 11st
Series: Tampa leads 6-1

Head Coach: Chris Catanach
Phone: (813) 253-6240
SID: Gil Swalls
Phone: (813) 253-6241
Fax: (813) 253-6288
Web: www.ut.edu

Barry

@Fri., Sept. 19 8:00 p.m.

Location: Miami Shores, FL
Enrollment: 8,691
Nickname: Buccaneers
Colors: Red, Black & Silver
2002 Record: 18-9
Sunshine State: 11-3 / 2nd
Series: Barry leads 5-1

Head Coach: Dave Nichols
Phone: (305) 899-3563
SID: Dennis Jezek, Jr.
Phone: (305) 899-3897
Fax: (305) 899-3556
Web: www.gobarrybucs.com

Nova Southeastern

@Sat., Sept. 20 7:00 p.m.

Location: Ft. Lauderdale, FL
Enrollment: 4,218
Nickname: Knights
Colors: Navy Blue & Gold
2002 Record: 9-18
Series: AASU leads 1-0

Head Coach: Lori Rambe
Phone: (954) 262-8264
SID: Robert Prior
Phone: (954) 262-8261
Fax: (954) 262-3926
Web: nsuathletics.nova.edu

Eckerd

Tues., Nov. 4 3:00 p.m.

Location: St. Petersburg, FL
Enrollment: 1,682
Nickname: Tritons
Colors: Red, Black & White
2002 Record: 15-19
Sunshine State: 3-11 / 7th
Series: Eckerd leads 1-0

Head Coach: A.J. Joseph
Phone: (727) 864-7875
SID: Katherine Turnbow
Phone: (727) 864-8242
Fax: (727) 864-8968
Web: www.eckerd.edu

The Pirates are picked to finish 2nd in the Peach Belt in 2003



2003 Opponents

Saint Leo

@Thurs., Oct. 16 7:00 p.m.

Location: Saint Leo, FL
Enrollment: 11,000
Nickname: Lions
Colors: Green and Gold
2002 Record: 16-18
Sunshine State: 5-9 / 5th
Series: AASU leads 3-1

Head Coach: Stephanie Radecki
Phone: (352) 588-8448
SID: Walt Riddle
Phone: (352) 588-8506
Fax: (352) 588-8290
Web: www.saintleo.edu

Florida Southern

@Fri., Oct. 17 7:00 p.m.

Location: Lakeland, FL
Enrollment: 1,800
Nickname: Moccasins
Colors: Scarlet and White
2002 Record: 25-12
Sunshine State: 10-4 / 3rd
Series: Fla. Southern leads 5-3

Head Coach: Jill Stephens
Phone: (863) 680-4474
SID: Tim Carpenter
Phone: (863) 680-5955
Fax: (863) 680-5953
Web: www.flsouthern.edu

2003 Lewis University Flyer Festival

Fri., August 29 - Sat., August 30
Romeoville, Ill.

Lewis

Location: Romeoville, IL
Nickname: Flyers
Affiliation: NCAA II
2002 Record: 25-5
GLVC: 12-3 / 1st

Wisc.-Parkside

Location: Kenosha, WI
Nickname: Rangers
Affiliation: NCAA II
2002 Record: 16-11
GLVC: 9-6 / 5th

Wheeling Jesuit

Location: Wheeling, WV
Nickname: Cardinals
Affiliation: NCAA II
2002 Record: 36-9
WVIAC: 16-0 / 1st

Hillsdale

Location: Hillsdale, MI
Nickname: Chargers
Affiliation: NCAA II
2002 Record: 13-17
GLIAC: 2-14 / t4th South

2003 AASU/Chatham Orthopaedics Volleyball Classic

Friday, September 12- Saturday, September 13
Savannah, Ga.

Friday, September 13

9:00 a.m. Francis Marion vs. Wingate (Court 1)
Florida Tech vs. Catawba (Court 2)
11:00 a.m. Rollins vs. USC Spartanburg (Court 1)
Florida Southern vs. Augusta State (Court 2)
1:00 p.m. AASU vs. Presbyterian (Court 1)
Tampa vs. Wingate (Court 2)
3:00 p.m. Florida Tech vs. Francis Marion (Court 1)
USC Spartanburg vs. Rockhurst (Court 2)
5:00 p.m. Rollins vs. Catawba (Court 1)
Presbyterian vs. Augusta State (Court 2)
7:00 p.m. AASU vs. Florida Southern (Court 1)
Tampa vs. Rockhurst (Court 2)

Saturday, September 14

9:00 a.m. Rollins vs. Presbyterian (Court 1)
Rockhurst vs. Francis Marion (Court 2)
11:00 a.m. Florida Tech vs. Wingate (Court 1)
Florida Southern vs. USC Spartanburg (Court 2)
1:00 p.m. AASU vs. Catawba (Court 1)
Tampa vs. Augusta State (Court 2)
3:00 p.m. Rollins vs. Wingate (Court 1)
Florida Tech vs. USC Spartanburg (Court 2)
5:00 p.m. Augusta State vs. Catawba (Court 1)
Presbyterian vs. Francis Marion (Court 2)
7:00 p.m. AASU vs. Tampa (Court 1)
Florida Southern vs. Rockhurst (Court 2)

Court 1 - Aquatics & Recreation Center

Court 2 - Alumni Arena @ Armstrong Sports Center

2003 Nebraska-Omaha Classic

Friday, September 5- Saturday, September 6
Omaha, Neb.

Arkansas Tech

Location: Russellville, AR
Nickname: Golden Suns
Affiliation: NCAA II
2002 Record: 20-13
Gulf South: 8-4 / 3rd West

Christian Brothers

Location: Memphis, TN
Nickname: Buccaneers
Affiliation: NCAA II
2002 Record: 12-17
Gulf South: 4-8 / 6th West

Emporia State

Location: Emporia, KS
Nickname: Eagles
Affiliation: NCAA II
2002 Record: 22-15
NSIC: 7-9 / 5th

Colorado Christian

Location: Lakewood, CO
Nickname: Cougars
Affiliation: NCAA II
2002 Record: 3-26
RMAC: 3-16 / 6th East

Wingate

Location: Wingate, NC
Nickname: Bulldogs
Affiliation: NCAA II
2002 Record: 22-8
SAC: 9-5 / t3rd

Catawba

Location: Salisbury, NC
Nickname: Indians
Affiliation: NCAA II
2002 Record: 25-7
SAC: 13-1 / t1st

Rockhurst

Location: Kansas City, MO
Nickname: Hawks
Affiliation: NCAA II
2002 Record: 37-5
Heartland: 14-0 / 1st

Presbyterian

Location: Clinton, SC
Nickname: Blue Hose
Affiliation: NCAA II
2002 Record: 22-14
SAC: 9-5 / t3rd

Rollins

Location: Winter Park, FL
Nickname: Tars
Affiliation: NCAA II
2002 Record: 23-14
Sunshine State: 7-7 / 4th



AASU will face 3 teams ranked in the AVCA Preseason Top 25 in 2002

AASU Individual Records - Career



Games Played

1. Sarah Haynes, 1999-2002	496
2. Erin Melius, 1999-2002	485
3. Sofie Hakansson, 1999-2002	483
4. Tracy Fowler, 1994-97	429
5. Jennifer Grundy, 1991-94	388
6. Betsy Richardson, 1994-96	313
7. Nicole Pappas, 1996-98	298
8. Mylene Ray, 1992, 1994-96	290
9. Amanda Shelton, 1995-97	272
10. Sherrene Benedict, 1992-93	255

Assists

1. Erin Melius, 1999-2002	5582
2. Amanda Shelton, 1995-97	2582
3. Christine Ladewski, 1997-98	1715
4. Hui Gibbs, 1992, 1994	1653
5. Jennifer Grundy, 1991-94	1073
6. Ellen Sipes, 1991	626
7. Marcia Morgan, 1993	612
8. Colleen Fitzsimons, 1999-2000	571
9. Tracy Fowler, 1994-97	293
10. Sofie Hakansson, 1999-2002	266

Service Aces

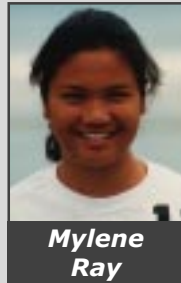
1. Sofie Hakansson, 1999-2002	244
2. Erin Melius, 1999-2002	201
3. Tracy Fowler, 1994-97	177
4. Koreena Kaminski, 1991-92	136
5. Sarah Haynes, 1999-2002	131
6. Amanda Shelton, 1995-97	122
7. Jennifer Grundy, 1991-94	106
8. Micah Roman, 1999-2000	105
9. Dionne Benito, 1995-97	101
10. Mylene Ray, 1992, 1994-96	88

Kills

1. Sarah Haynes, 1999-2002	1383
2. Sofie Hakansson, 1999-2002	1265
3. Tracy Fowler, 1994-97	1087
4. Sherrene Benedict, 1992-93	939
5. Nicole Smith, 1993-94	822
6. Koreena Kaminski, 1991-92	769
7. Betsy Richardson, 1994-96	727
8. Micah Roman, 1999-2000	681
9. Lindsay Ehlers, 1999-2000	657
10. Shelley Weekes, 1999-2002	613



Micah Roman



Mylene Ray

Total Blocks

1. Sarah Haynes, 1999-2002	420
2. Christy Johansen, 1991-1992	403
3. Christy Spires, 1997-98	258
4. Sofie Hakansson, 1999-2002	229
5. Mylene Ray, 1992, 1994-96	202
6. Nicole Smith, 1993-94	200
7. Kris Bringewatt, 1999-2000	195
8. Sherrene Benedict, 1992-93	181
9. Koreena Kaminski, 1991-92	171
10. Erin Melius, 1999-2002	162

Kills Per Game (min. 150 GP)

1. Nicole Smith, 1993-94	4.47
2. Sherrene Benedict, 1992-93	3.68
3. Koreena Kaminski, 1991-92	3.51
4. Lindsay Ehlers, 1999-2000	3.32
5. Sarah Haynes, 1999-2002	2.78
6. Micah Roman, 1999-2000	2.72
7. Sofie Hakansson, 1999-2002	2.62
8. Kris Bringewatt, 1999-2000	2.57
9. Tracy Fowler, 1994-97	2.53
10. Shelley Weekes, 1999-2002	2.41

Digs

1. Tracy Fowler, 1994-97	1360
2. Sofie Hakansson, 1999-2002	1301
3. Erin Melius, 1999-2002	1054
4. Sarah Haynes, 1999-2002	985
5. Sherrene Benedict, 1992-93	791
6. Micah Roman, 1999-2000	776
7. Nicole Pappas, 1996-98	727
8. Shelley Weekes, 1999-2002	657
9. Koreena Kaminski, 1991-92	624
10. Betsy Richardson, 1994-96	600

Total Blocks Per Game (Min. 150 GP)

1. Christy Johansen, 1991-92	1.77
2. Christy Spires, 1997-98	1.15
3. Nicole Smith, 1993-94	1.09
4. Kris Bringewatt, 1999-2000	0.90
5. Sarah Haynes, 1999-2002	0.85
6. Koreena Kaminski, 1991-92	0.78
7. Candice Modlinski, 2001-	0.76
8. Sherrene Benedict, 1992-93	0.71
9. Mylene Ray, 1992, 1994-96	0.70
10. Cheryl Pierce, 1992-93	0.63
Christine Ladewski, 1997-98	0.63

Hitting Percentage (Min. 500 Kills)

1. Nicole Smith, 1993-94	.347
2. Kris Bringewatt, 1999-2000	.319
3. Sarah Haynes, 1999-2002	.300
4. Sherrene Benedict, 1992-93	.281
5. Sofie Hakansson, 1999-2002	.274
6. Lindsay Ehlers, 1999-2000	.271
7. Koreena Kaminski, 1991-92	.245
8. Micah Roman, 1999-2000	.242
9. Christy Spires, 1997-98	.212
10. Tracy Fowler, 1994-97	.199

Digs Per Game (min. 150 GP)

1. Tracy Fowler, 1994-97	3.17
2. Sherrene Benedict, 1992-93	3.10
Micah Roman, 1999-2000	3.10
4. Koreena Kaminski, 1991-92	2.84
5. Lindsay Ehlers, 1999-2000	2.78
6. Colleen Fitzsimons, 1999-2000	2.74
7. Sofie Hakansson, 1999-2002	2.69
8. Christine Ladewski, 1997-98	2.52
9. Nicole Pappas, 1996-98	2.44
10. Shelley Weekes, 1999-2002	2.36

All-Time AASU Coaching Records

Coach	Years	W-L	Pct.
Roger Hansen	1986-88	10-41	.196
William Buckley	1989-90	6-27	.182
Carol Wilson	1991-92	42-25	.627
Alvin Jones	1993	17-19	.472
Carol Meegan	1994-98	69-69	.500
B.J. Ford	1998	7-22	.241
Alan Segal	1999-	124-35	.780
OVERALL	17 Years	275-238	.536

Most Wins, Single Season: 36, Alan Segal (1999)

Best Winning Percentage, Single Season: 36-5, .878, Alan Segal (1999)

Most Losses, Single Season: 27, Carol Meegan (1995)

Lowest Winning Percentage, Single Season: 2-22, .083, Roger Hansen (1986)



Nicole Smith

Hakansson is AASU's second player with 1,000+ kills and digs





AASU Records - Season

Games Played

1. Sarah Haynes, 2000	136
2. Christy Johansen, 1992	133
Jennifer Grundy, 1993	133
Sara Stroud, 1993	133
5. Erin Melius, 2002	132
Sofie Hakansson, 2000	132
6. Marcia Morgan, 1993	131
Betsy Richardson, 1995	131
Sofie Hakansson, 2001	131
Sarah Haynes, 2001	131

Assists

1. Erin Melius, 2002	1708
2. Erin Melius, 2000	1417
3. Erin Melius, 2001	1397
4. Amanda Shelton, 1996	1107
5. Erin Melius, 1999	1060
6. Amanda Shelton, 1995	991
7. Hui Gibbs, 1992	964
8. Christine Ladewski, 1998	876
9. Christine Ladewski, 1997	839
10. Hui Gibbs, 1994	689

Total Blocks

1. Christy Johansen, 1992	226
2. Christy Johansen, 1991	177
3. Monika Beldzinska, 1998	154
4. Andrea Jany, 1996	148
5. Sarah Haynes, 2001	134
6. Kate Schuchardt, 1991	132
7. Christy Spires, 1997	130
8. Christy Spires, 1998	128
9. Nicole Smith, 1994	111
10. Kris Bringewatt, 1999	107

Kills

1. Nicole Smith, 1994	620
2. Sherrene Benedict, 1992	494
3. Andrea Jany, 1996	483
4. Koreena Kaminski, 1992	452
5. Sherrene Benedict, 1993	445
6. Sofie Hakansson, 2002	440
7. Meike Behrensen, 1997	430
8. Sofie Hakansson, 2001	415
9. Sarah Haynes, 2001	406
10. Lindsay Ehlers, 1999	380

Digs

1. Sofie Hakansson, 2001	428
2. Koreena Kaminski, 1992	422
3. Sherrene Benedict, 1993	404
4. Micah Roman, 2000	400
5. Andrea Jany, 1996	388
Tracy Fowler, 1997	388
7. Sherrene Benedict, 1992	387
8. Sofie Hakansson, 2002	377
9. Sandra Gluchy, 1997	376
Micah Roman, 1999	376



Amanda Shelton



Tracy Fowler

Kills Per Game

1. Nicole Smith, 1994	5.49
2. Andrea Jany, 1996	4.51
3. Sherrene Benedict, 1992	3.86
4. Meike Behrensen, 1997	3.77
5. Lindsay Ehlers, 1999	3.58
6. Koreena Kaminski, 1991	3.52
7. Koreena Kaminski, 1992	3.50
Sherrene Benedict, 1993	3.50
9. Betsy Richardson, 1996	3.46
10. Sofie Hakansson, 2002	3.44

Digs Per Game

1. Andrea Jany, 1996	3.63
2. Sandra Gluchy, 1997	3.42
3. Tracy Fowler, 1997	3.40
4. Tracy Fowler, 1995	3.37
5. Tracy Fowler, 1996	3.29
6. Koreena Kaminski, 1992	3.27
Sofie Hakansson, 2001	3.27
8. Sherrene Benedict, 1993	3.18
9. Micah Roman, 2000	3.13
10. Lindsay Ehlers, 2000	3.10

Total Blocks Per Game

1. Christy Johansen, 1991	1.86
2. Christy Johansen, 1992	1.70
3. Kate Schuchardt, 1991	1.42
4. Andrea Jany, 1996	1.38
5. Monika Beldzinska, 1998	1.36
6. Nicole Smith, 1993	1.34
7. Christy Spires, 1997	1.16
8. Christy Spires, 1998	1.13
9. Sarah Haynes, 2001	1.02
10. Nicole Smith, 1994	0.98

Hitting Percentage

1. Andrea Jany, 1996	.444
2. Nicole Smith, 1994	.381
3. Kris Bringewatt, 1999	.337
4. Sarah Haynes, 2000	.333
5. Monika Beldzinska, 1998	.314
6. Sandra Gluchy, 1997	.307
7. Christy Johansen, 1992	.304
8. Candice Modlinski, 2002	.301
9. Sarah Haynes, 1999	.296
10. Kris Bringewatt, 2000	.295
Sarah Haynes, 2002	.295

Service Aces

1. Sofie Hakansson, 2001	84
2. Koreena Kaminski, 1992	83
3. Erin Melius, 2002	79
4. Sofie Hakansson, 2002	67
Amanda Shelton, 1995	67
6. Tracy Fowler, 1996	59
7. Micah Roman, 2000	58
8. Andrea Jany, 1996	56
9. Koreena Kaminski, 1991	53
10. Erin Melius, 2001	52

AASU Team Single-Season Records

Kills

2,101, 2002

Total Blocks

542, 1992

Total Attacks

5,031, 2002

Assists

1,911, 2002

Attack Percentage

.259, 2002

Digs

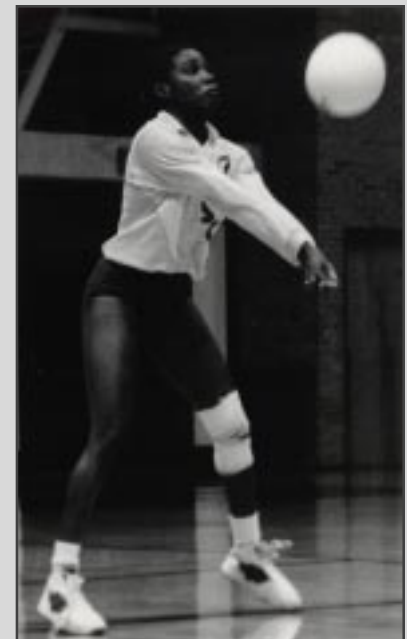
2,224, 1999

Service Aces

355, 1992

Victories

36, 1999



Sherrene Benedict



Nicole Smith's 620 kills in 1994 are a PBC record

AASU Individual Game Records



Most Kills - 3 Game Match

41, Andrea Jany at SCAD, 9/17/96
 27, Nicole Smith at West Georgia, 10/9/94
 22, Koreena Kaminski at Augusta State, 10/5/91
 22, Nicole Smith vs. Mars Hill, 10/8/94
 21, Nicole Smith vs. Augusta State, 10/1/94
 21, Lindsay Ehlers vs. Mars Hill, 9/10/99
 21, Nicole Smith vs. Columbia, 10/30/94
 20, Koreena Kaminski at Augusta State, 11/8/91
 20, Micah Roman vs. Saginaw Valley St., 9/1/00
 20, Andrea Jany vs. USC Aiken, 10/15/96

Most Kills - 4 Game Match

35, Nicole Smith vs. Francis Marion, 9/30/94
 33, Nicole Smith vs. UNC Pembroke, 10/1/94
 31, Betsy Richardson vs. Elon, 9/28/96
 30, Nicole Smith vs. High Point, 9/24/94
 29, Sherrere Benedict vs. Augusta State, 11/14/92
 28, Nicole Smith at USC Aiken, 10/11/94
 28, Koreena Kaminski vs. Bentley, 9/26/92
 28, Tracy Fowler vs. Elon, 9/28/96
 27, Nicole Smith vs. USC Aiken, 9/30/94
 26, Nicole Smith vs. Francis Marion, 11/12/94

Most Kills - 5 Game Match

33, Sherrere Benedict at FMU, 11/14/92
 29, Sherrere Benedict vs. USC Aiken, 11/6/93
 28, Tracy Fowler vs. Francis Marion, 9/29/95
 28, Nicole Smith vs. UNC Pembroke, 9/24/94
 27, Lindsay Ehlers vs. Western State, 8/25/00
 26, Koreena Kaminski vs. Paine, 9/23/91
 26, Sherrere Benedict vs. Tusculum, 10/29/93
 26, Betsy Richardson at Augusta St., 9/26/96
 25, Andrea Jany at Augusta St., 9/26/96
 24, Betsy Richardson vs. UNCP, 9/30/95

Best Hitting % - Min. 10 Att.

.818 (9-0/11) Cindy Pound at Voorhees, 9/14/92
 .769 (10-0/13) Sarah Haynes vs. Rollins, 10/14/00
 .769 (10-0/13) Sarah Haynes vs. USCA, 11/10/00
 .750 (9-0/12) Sherrere Benedict at Voorhees, 9/14/92
 .737 (16-2/19) Nicole Smith vs. FVSVU, 10/21/94
 .722 (14-1/18) Kris Bringewatt vs. FMU, 11/12/99
 .706 (14-2/17) K. Kaminski vs. Voorhees, 10/1/91
 .700 (7-0/10) Sarah Haynes at USC Aiken, 9/23/00
 .700 (7-0/10) Sarah Haynes vs. Tusculum, 9/13/02
 .692 (9-0/13) Kris Bringewatt vs. Rollins, 10/14/00
.692 (9-0/13) Alexia Piche-Hatch vs. Milligan, 8/30/02
 .692 (9-0/13) Shelley Weekes vs. NC Central, 8/30/02

Best Hitting % - Min. 20 Att.

.727 (16-0/22) Sarah Haynes vs. W. Georgia, 9/9/00
 .708 (17-0/24) Sarah Haynes vs. ASU, 10/21/00
 .700 (16-2/20) Sherrere Benedict vs. ASU, 9/25/93
 .679 (21-2/28) Nicole Smith vs. Columbia, 10/30/94
 .679 (19-0/28) Nicole Smith vs. West Ga., 9/25/94
 .607 (18-1/28) Sofie Hakansson vs. Lander, 9/28/02
 .577 (18-1/26) Koreena Kaminski vs. Lee, 10/3/92
 .577 (17-2/26) Sarah Haynes vs. Harding, 9/20/02
 .571 (12-0/21) Kris Bringewatt at UNCP, 10/7/00
 .565 (14-1/23) Sherrere Benedict at Paine, 10/1/93

Best Hitting % - Min. 30 Att.

.645 (20-0/31) Sofie Hakansson vs. FT, 10/15/01
 .545 (28-4/44) K. Kaminski vs. Bentley, 9/26/92
 .543 (21-2/35) Lindsay Ehlers vs. MHC, 9/10/99
 .500 (23-2/42) Nicole Smith vs. SAPC, 9/10/94
 .500 (18-2/32) Lindsay Ehlers at ASU, 10/13/99
 .489 (27-5/45) Nicole Smith vs. USCA, 9/30/94
 .474 (19-1/38) Shelley Weekes vs. FSC, 9/13/02
 .472 (18-1/36) Nicole Smith vs. FMU, 11/5/93
 .471 (19-3/34) Lindsay Ehlers vs. USCS, 10/17/99
 .452 (15-1/31) Emily Vent vs. Erskine, 9/22/95

Service Aces - 3 Game Match

8, Erin Melius vs. Pfeiffer, 8/30/02
 8, Erin Melius vs. Georgia Southwestern, 9/4/02
 7, Angie Michel vs. Augusta State, 9/25/93
 6, Koreena Kaminski at Wesleyan, 9/28/91
 6, Koreena Kaminski vs. B-CC, 9/26/92
 6, Mylene Benito at Francis Marion, 9/24/94
 6, Emily Vent vs. Augusta State, 9/29/95
 6, Keila Nelson vs. Oglethorpe, 10/28/95
 6, Sofie Hakansson vs. Seton Hill, 8/27/99
 6, Shelley Weekes vs. Savannah State, 9/4/99
 6, Sofie Hakansson vs. USC Aiken, 10/16/99
 6, Sofie Hakansson vs. Lander, 11/9/01
6, Cindy Haynes vs. West Georgia, 9/20/02

Service Aces - 4 Game Match

9, Koreena Kaminski vs. Troy State, 9/26/92
 8, Koreena Kaminski vs. SCAD, 9/23/92
 8, Erin Melius vs. North Florida, 11/13/99
 7, Michelle Cope vs. Francis Marion, 11/12/94
 7, Amanda Shelton vs. Flagler, 10/3/95
 6, Koreena Kaminski vs. LaGrange, 10/25/91
 6, Sara Stroud at Albany State, 9/28/93
 6, Tracy Fowler vs. Wofford, 9/24/94
 6, Kelly Wertz at Fort Valley State, 9/25/95
 6, Sarah Haynes at West Georgia, 8/25/01
6, Candice Modlinski at Catawba, 10/19/01
 6, Sofie Hakansson at Catawba, 10/19/01

Service Aces - 5 Game Match

6, Koreena Kaminski vs. PBAC, 10/16/92
 6, Koreena Kaminski vs. FMU, 11/14/92
 6, Nicole Smith vs. PBAC, 9/16/93
 5, Nicole Smith vs. Alabama State, 10/1/93
 5, Keila Nelson vs. North Alabama, 9/22/95
 5, Sarah Haynes vs. Western State, 8/25/00
 5, Micah Roman vs. North Florida, 10/25/00
 5, Micah Roman at USC Spartanburg, 10/28/00
 4, several times

Assists - 3 Game Match

59, Erin Melius vs. Mars Hill, 9/10/99
 58, Erin Melius vs. Harding, 9/20/02
 56, Erin Melius vs. Saginaw Valley St., 9/1/00
 48, Colleen Fitzsimons vs. SCAD, 9/28/99
 48, Erin Melius at North Florida, 11/10/99
 48, Erin Melius vs. USC Spartanburg, 9/28/01
 46, Erin Melius vs. Presbyterian, 9/5/99
 46, Colleen Fitzsimons at Augusta St., 10/13/99
 45, Erin Melius vs. Tusculum, 10/20/01
 44, Erin Melius vs. Florida Tech, 10/2/00
 44, Erin Melius vs. USC Spartanburg, 11/15/01
 44, Erin Melius vs. Bentley, 9/7/02
 44, Erin Melius at UNC Pembroke, 10/5/02

Assists - 4 Game Match

76, Amanda Shelton vs. USCS, 9/14/96
 70, Erin Melius at Catawba, 10/19/01
 69, Christine Ladewski at USCS, 9/13/97
 67, Christine Ladewski vs. Augusta St., 10/28/97
 67, Erin Melius vs. USC Spartanburg, 11/16/00
 64, Hui Gibbs vs. Francis Marion, 9/30/94
 64, Erin Melius vs. Augusta State, 11/15/02
 63, Erin Melius at USC Spartanburg, 10/26/02
 62, Erin Melius vs. Florida Tech, 10/15/01
 59, Erin Melius vs. West Georgia, 9/18/99
 59, Erin Melius vs. Catawba, 9/14/02

Assists - 5 Game Match

73, Amanda Shelton vs. UNCP, 9/30/95
 67, Erin Melius vs. Western State, 8/25/00
 63, Amanda Shelton vs. FMU, 9/29/95
 61, Erin Melius vs. Florida Tech, 9/18/99
 59, Amanda Shelton at Augusta State, 9/26/96
 56, Erin Melius vs. North Florida, 10/25/00
 56, Erin Melius at Bryant, 9/7/02
 54, Erin Melius at USCS, 10/28/00
 54, Erin Melius vs. Fla. Southern, 10/15/01
 52, Hui Gibbs vs. Francis Marion, 11/14/92
 52, Erin Melius vs. Angelo State, 9/1/01

Digs - 3 Game Match

29, Micah Roman vs. Mars Hill, 9/10/99
 25, Andrea Jany at North Florida, 9/11/96
 23, Hui Gibbs vs. Francis Marion, 11/14/92
 21, Angie Michel at Charleston Sthrn., 10/5/93
 21, Tracy Fowler vs. Saint Leo, 9/15/95
 21, Micah Roman vs. Saint Leo, 9/10/99
 21, Sofie Hakansson vs. Harding, 9/20/02
 20, Koreena Kaminski at FMU, 11/14/92
 20, Colleen Fitzsimons vs. SVSU, 9/1/00
 19, Lindsay Ehlers at USC Aiken, 9/23/00
 18, Sherrere Benedict at LaGrange, 10/3/92

Digs - 4 Game Match

31, Micah Roman vs. Barry, 9/1/00
 30, Tracy Fowler vs. USC Spartanburg, 9/14/96
 29, Andrea Jany vs. USCS, 9/14/96
 28, Kinsey Ross vs. Florida Tech, 10/15/01
 27, Tracy Fowler vs. Elon, 9/29/96
 26, Sherrere Benedict vs. North Florida, 10/9/92
 26, Colleen Fitzsimons vs. North Fla., 11/13/99
 25, Kris Bringewatt vs. North Florida, 11/13/99
 23, Sara Stroud vs. North Alabama, 10/30/93
 23, Sandra Gluchy at USCS, 9/13/97

Digs - 5 Game Match

39, Koreena Kaminski at FMU, 9/25/91
 33, Sara Stroud vs. Tusculum, 10/29/93
 32, Melanie Methe vs. Tusculum, 10/29/93
 29, Melanie Methe vs. USC Aiken, 10/30/93
 29, Sara Stroud vs. USC Aiken, 10/30/93
 28, Melanie Methe vs. USC Aiken, 11/6/93
 27, Angie Michel vs. Tusculum, 10/29/93
 27, Meike Behrensen vs. USCA, 10/24/97
 26, Micah Roman vs. Western State, 8/25/00
 25, Sherrere Benedict vs. Ga. Southern, 10/6/92
 25, Marcia Morgan vs. Tusculum, 10/29/93
 25, Marcia Morgan vs. USC Aiken, 10/30/93

Andrea Jany's 41 kills are an NCAA DII single-match record





AASU Team Match Records

Most Kills - 3 Game Match

64 vs. Harding, 9/20/02
 63 vs. Mars Hill, 9/10/99
 61 vs. Saginaw Valley State, 9/1/00
 60 vs. USC Spartanburg, 10/17/99
 59 vs. SCAD, 9/28/99
 58 vs. Tusculum, 10/20/01
 56 at North Florida, 11/10/99
 56 at UNC Pembroke, 10/5/02
 54 vs. Lake Superior State, 9/2/00
 54 at Augusta State, 10/13/99
 54 vs. Tusculum, 9/13/02
 54 at Florida Southern, 10/12/02

Most Kills - 4 Game Match

81 at Catawba, 10/19/01
 79 vs. Augusta State, 11/14/92
 77 vs. Francis Marion, 9/30/94
 76 vs. USC Spartanburg, 11/16/00
 74 vs. High Point, 9/24/94
 73 vs. Catawba, 9/14/02
 73 vs. Augusta State, 11/15/02
 72 vs. Lander, 9/28/02
 70 vs. Bentley, 9/26/92
 70 vs. West Georgia, 9/18/99

Most Kills - 5 Game Match

89 vs. UNC Pembroke, 9/30/95
 78 vs. Francis Marion, 9/29/95
 76 vs. USC Aiken, 11/6/93
 75 vs. SCAD, 11/3/93
 75 at Francis Marion, 11/14/92
 74 vs. Tusculum, 10/29/93
 73 vs. Western State, 8/25/00
 70 vs. Florida Tech, 9/18/99
 70 vs. USC Aiken, 10/30/93
 68 vs. Georgia Southern, 10/6/92

Best Hitting % - 3 Game Match

.581 (20-2/31) at Voorhees, 10/14/91
 .508 (37-6/61) at Voorhees, 9/14/92
 .492 (41-10/63) vs. Augusta State, 9/25/93
 .486 (23-5/37) vs. Millsaps, 10/3/92
 .454 (50-10/88) vs. Rollins, 10/14/00
 .452 (38-10/62) at Albany State, 9/28/93
 .446 (42-13/65) vs. Voorhees, 10/1/91
 .426 (35-6/68) vs. Columbia, 10/30/94
 .421 (61-13/114) vs. Saginaw Valley St., 9/1/00
 .400 (54-14/100) vs. Tusculum, 9/13/02

Best Hitting % - 4-Game Match

.448 (52-9/96) at Paine, 10/1/93
 .419 (70-13/136) vs. Bentley, 9/26/92
 .389 (58-14/113) vs. Cal State Chico, 8/26/00
 .363 (79-21/160) vs. Augusta State, 11/14/92
 .321 (74-24/156) vs. High Point, 9/24/94
 .318 (72-23/154) vs. Lander, 9/28/02
 .316 (76-21/174) vs. USC Spartanburg, 11/16/00
 .314 (58-15/137) vs. North Florida, 10/9/92
 .308 (68-19/159) at USC Spartanburg, 10/26/02
 .305 (56-16/131) vs. West Alabama, 9/17/99

Best Hitting % - 5 Game Match

.344 (62-40-128) vs. PBAC, 10/16/92
 .309 (44-14-97) vs. SCAD, 9/21/94
 .289 (75-25-173) vs. SCAD, 11/3/93
 .288 (68-22-160) vs. Georgia Southern, 10/6/92
 .247 (57-19-154) vs. USC Aiken, 10/9/92
 .246 (66-24-171) at Florida Southern, 10/15/01
 .241 (58-23-145) vs. UNC Pembroke, 11/10/92
 .237 (58-21-156) vs. Alabama State, 10/1/93
 .233 (65-28-159) vs. PBAC, 9/16/93
 .230 (67-27-174) vs. North Florida, 10/25/00

Service Aces - 3 Game Match

20 at Savannah State, 9/23/91
 20 vs. Savannah State, 9/4/99
 18 vs. NC Central, 8/31/02
 16 at Voorhees, 9/14/92
 16 vs. Savannah State, 10/23/92
 16 vs. Milligan, 8/30/02
 16 vs. Pfeiffer, 8/30/02
 16 vs. Georgia Southwestern, 9/4/02
 16 vs. East Stroudsburg, 9/6/02
 15 at SCAD, 10/25/91
 15 vs. Bethune-Cookman, 9/26/92
 15 vs. Carson-Newman, 9/8/95

Service Aces - 4 Game Match

21 vs. LaGrange, 10/25/91
 17 vs. SCAD, 9/23/92
 17 vs. Troy State, 9/26/92
 17 vs. Francis Marion, 10/5/01
 16 vs. Valdosta State, 8/24/01
 15 vs. Albany State, 10/1/93
 15 at Paine, 10/1/93
 15 vs. Augusta State, 11/12/94
 15 vs. Saint Leo, 9/8/01
 14 vs. Francis Marion, 11/12/94
 14 at UNC Pembroke, 10/19/95

Service Aces - 5 Game Match

18 vs. Paine, 9/23/91
 17 vs. SCAD, 10/9/91
 15 vs. North Alabama, 9/22/95
 15 vs. USC Spartanburg, 9/30/95
 15 vs. Angelo State, 9/1/01
 14 vs. Palm Beach Atlantic, 10/16/92
 14 vs. Palm Beach Atlantic, 9/16/93
 12 vs. SCAD, 11/3/93
 12 vs. UNC Pembroke, 9/30/95
 11 vs. Francis Marion, 9/29/95

Assists - 3 Game Match

62 vs. Mars Hill, 9/10/99
 59 vs. Saginaw Valley State, 9/1/00
 58 vs. Harding, 9/20/02
 54 at North Florida, 11/10/99
 54 vs. Fort Valley State, 8/24/01
 53 vs. USC Spartanburg, 10/17/99
 52 at Augusta State, 10/27/93
 52 vs. Florida Tech, 10/2/00
 52 vs. Tusculum, 10/20/01
 51 vs. SCAD, 9/28/99

Assists - 4 Game Match

76 vs. USC Spartanburg, 9/14/96
 75 vs. Francis Marion, 9/30/94
 74 at Catawba, 10/19/01
 69 at USC Spartanburg, 9/13/97
 69 vs. Lander, 9/28/02
 69 vs. Augusta State, 11/15/02
 68 vs. USC Spartanburg, 11/16/00
 67 vs. Augusta State, 10/28/97
 67 vs. Florida Tech, 10/15/01
 67 vs. Catawba, 9/14/02

Assists - 5 Game Match

81 vs. UNC Pembroke, 9/30/95
 71 vs. Western State, 8/25/00
 68 vs. Francis Marion, 9/29/95
 66 vs. Florida Tech, 9/18/99
 64 vs. North Florida, 10/25/00
 62 at Bryant, 9/7/02
 60 vs. USC Aiken, 11/6/93
 58 at Francis Marion, 11/14/92
 58 vs. Tusculum, 10/29/93
 58 vs. North Alabama, 9/22/95

Digs - 3 Game Match

83 vs. Francis Marion, 11/14/92
 81 vs. Harding, 9/20/02
 78 at Augusta State, 10/27/93
 76 at Charleston Southern, 10/5/93
 75 vs. Saint Leo, 9/10/99
 75 vs. UNC Pembroke, 10/6/01
 69 vs. Saginaw Valley State, 9/1/00
 68 at Francis Marion, 10/6/00
 67 at USC Aiken, 9/23/00
 67 vs. Central Oklahoma, 8/31/01

Digs - 4 Game Match

123 vs. North Florida, 11/13/99
 110 vs. North Alabama, 10/30/93
 107 vs. Florida Tech, 10/15/01
 104 vs. Augusta State, 11/14/92
 102 vs. USC Spartanburg, 10/27/01
 99 vs. Barry, 9/8/00
 95 vs. Jacksonville State, 10/30/93
 94 vs. AU-Rio Pedras, 10/14/00
 91 vs. North Florida, 10/9/92
 90 at Converse, 10/15/93

Digs - 5 Game Match

163 vs. Tusculum, 10/29/93
 136 vs. USC Aiken, 10/30/93
 116 at Francis Marion, 9/25/91
 108 vs. UNC Pembroke, 9/30/95
 106 at Francis Marion, 11/14/92
 106 vs. USC Aiken, 11/6/93
 106 vs. Western State, 8/25/00
 106 vs. Angelo State, 9/1/01
 103 vs. Francis Marion, 9/29/95
 100 vs. USC Spartanburg, 9/30/95



AASU recorded 64 kills in a 3-game win over Harding on 9/20

AASU Honor Roll



All-Peach Belt Conference

- 1991 Koreena Kaminski
- 1992 Koreena Kaminski
Sherrene Benedict
- 1993 Sherrene Benedict
- 1994 Nicole Smith
- 1996 Andrea Jany
- 1997 Meike Behrensen
Sandra Gluchy
- 1999 Kris Bringewatt
Lindsay Ehlers
Colleen Fitzsimons
Micah Roman
- 2000 Lindsay Ehlers
Sarah Haynes
Micah Roman
- 2001 Sofie Hakansson
Sarah Haynes
Erin Melius
- 2002 Sofie Hakansson
Sarah Haynes
Erin Melius



PBC Coach of the Year

- 1997 Carol Meegan
- 1999 Alan Segal
- 2000 Alan Segal (Co-Winner)

PBC Freshman of the Year

- 1996 Andrea Jany (Co-Winner)
- 1999 Lindsay Ehlers

PBC Player of the Week

- 1991 Koreena Kaminski (Sept. 29)
Ellen Sipes (Oct. 13)
Koreena Kaminski (Oct. 20)
Christy Johansen (Oct. 27)
- 1992 Koreena Kaminski (Sept. 21)
Sherrene Benedict (Oct. 5)
- 1993 Sherrene Benedict (Oct. 3)
Sherrene Benedict (Oct. 31)
- 1994 Nicole Smith (Sept. 7)
Nicole Smith (Oct. 11)
- 1996 Andrea Jany (Sept. 17)
Andrea Jany (Oct. 1)
- 1997 Sandra Gluchy (Oct. 14)
- 1999 Lindsay Ehlers (Oct. 19)
- 2000 Sarah Haynes (Oct. 24)
- 2001 Sofie Hakansson (Oct. 16)
- 2002 Candice Modlinski (Oct. 29, 2002)
Sarah Haynes (Sept. 10, 2002)

AVCA All-South Region



Sarah Haynes
2000-2003



Erin Melius
2001, 2002



Sofie Hakansson
2001, 2002

All-PBC Tournament Team

- 1992 Sherrene Benedict
- 1996 Andrea Jany
- 1999 Lindsay Ehlers
Erin Melius
- 2000 Sarah Haynes
Micah Roman
- 2001 Sofie Hakansson
Erin Melius
- 2002 Alexia Piche-Hatch (MVP)
Sofie Hakansson

PBC Player of the Year

- 1999 Kris Bringewatt
- 2000 Sarah Haynes



Sofie Hakansson

Verizon Academic All-District III Volleyball Team



Lindsay Ehlers
2000



Shelley Weekes
2001, 2002

Daktronics All-South Region Volleyball Team

- 2001 Sarah Haynes
- 2002 Erin Melius
Sofie Hakansson



AASU had the 1999 PBC Coach, Player and Freshman of the Year



All-Time Results

1986 (2-22)

9/19	UNC Asheville	L 3-0
9/20	Radford	L
10/4	at Campbell	L
	North Carolina A&T	L
10/7	Paine	L
10/10	* at UNC Asheville	L 2-0
	* vs. Baptist	L 2-0
10/11	* vs. UNC Charlotte	L 2-0
	* vs. UNC Wilmington	L 2-0
10/13	Savannah State	W 3-0
10/15	at Paine	L 2-0
	Augusta	L 3-0
10/17	Campbell	L 3-1
10/18	Jacksonville	L 2-0
10/20	Savannah State	W 3-0
10/22	at Savannah State	L
10/24	Savannah State	L 2-1
10/28	Georgia Southern	L
10/31	% at Jacksonville	L 3-0
	% vs. Mississippi State	L 3-0
11/1	% vs. Long Island	L 3-0
	% vs. Fla. International	L 3-0
11/4	at Georgia Southern	L 3-0
11/7	\$ Baptist	L 3-0
	* - UNC Asheville Tournament	
	% - Jacksonville Tournament	
	\$ - Big South Conference Tournament	

1987 (4-10)

9/26	Winthrop	L 3-0
	at Augusta	L 3-1
9/29	Augusta	L 3-0
9/30	at Georgia Southern	L 3-0
	at Paine	L 3-1
10/6	Jacksonville	L 3-0
	Georgia Southern	L 3-0
10/8	at Savannah State	W 3-0
10/13	Savannah State	W 2-0
	at Paine	L 2-0
10/15	Savannah State	W 2-1
10/20	at Savannah State	L 2-1
10/24	Benedict	L 2-1
	Savannah State	W 2-0

1988 (4-9)

9/27	at Augusta	L 3-0
	USC Aiken	L 2-0
9/29	Jacksonville	L 3-0
	Savannah State	W 3-0
10/4	at Georgia Southern	L 2-1
	Paine	L
10/7	Coker	L
	at Benedict	L
10/10	Savannah State	W 3-0
	Augusta	L 3-0
10/12	at Savannah State	W
	Paine	L
10/14	Savannah State	W 3-1

1989 (2-13)

9/26	Georgia Southern	L 2-0
9/30	Mercer	L 2-0
10/2	at Augusta	L 2-0
	Anderson	L 2-0
10/4	Paine	L 2-0
	at Savannah State	W 2-1
10/5	Augusta	L 2-0
	Jacksonville	L 2-0
10/10	Emory	L 2-0
	at Georgia Southern	L 3-0
10/11	at Baptist	L 3-0
10/13	Coker	L 2-0
	Savannah State	W 2-0
10/20	Alabama-Huntsville	L 2-0
	Georgia Southern	L 3-0

1990 (4-14)

9/21	at Georgia Southern	L 3-0
9/22	USC Spartanburg	L 3-0
9/25	Coker	W 3-0
	Savannah State	W 3-0
9/26	at Augusta	L 3-0
9/29	Augusta	L 3-0

	SCAD	W 3-0
10/1	Jacksonville	L 3-0
	Georgia Southern	L 3-1
10/2	at USC Aiken	L 3-0
10/3	at Coker	L 2-0
	North Greenville	L 2-0
10/4	SCAD	L 3-1
	Savannah State	L 2-0
10/8	at Savannah State	W 2-0
	Paine	L 2-1
10/9	USC Aiken	L 3-0
10/10	Florida CC	L 3-0

1991 (15-13, 1-3 PBC)

9/19	Charleston Southern	L 3-0
9/20	SCAD	W 3-1
	Wesleyan	W 3-0
9/23	Paine	W 3-2
	at Savannah State	W 3-0
9/25	at Francis Marion	L 3-2
9/28	at Wesleyan	W 3-0
9/30	Jacksonville	L 3-0
	Georgia Southern	L 3-2
10/1	Savannah State	W 3-0
	Voorhees	W 3-0
10/4	USC Spartanburg	L 3-1
	at USC Aiken	L 3-0
10/5	at Augusta	W 3-0
10/7	at Emory	L 3-0
10/9	Florida CC	L 3-1
	SCAD	W 3-2
10/14	at Voorhees	W 3-0
10/15	at Georgia Southern	L 3-2
10/17	Augusta	W 3-1
	Wesleyan	W 3-0
10/25	at SCAD	W 3-0
	LaGrange	W 3-1
10/28	at Coker	L 3-1
10/30	Coker	L 3-0
11/8	\$ at Augusta	W 3-0
11/9	\$ vs. USC Aiken	L 3-0
	\$ vs. USC Spartanburg	L 3-0
	\$ - PBC Tournament (Augusta, Ga.)	

1992 (27-12, 2-3 PBC)

9/14	at Voorhees	W 3-0
	Barber Scotia	W
9/16	at Georgia Southern	L 3-1
9/17	Columbia	W 3-0
	at SCAD	W 3-0
9/23	Converse	L 3-1
	SCAD	W 3-1
9/25	* vs. Saint Leo	W 3-0
	* vs. Ala.-Huntsville	L 3-0
9/26	* vs. Troy State	W 3-1
	* vs. Bethune-Cookman	W 3-0
	* vs. Bentley	W 3-1
10/2	at Wesleyan	W 3-0
10/3	Lee	W 3-0
	at LaGrange	W 3-0
	Millsaps	W 3-0
10/6	Georgia Southern	L 3-2
10/7	Augusta	W 3-0
10/9	USC Aiken	L 3-2
	North Florida	L 3-1
10/12	at Savannah State	W 3-0
10/14	Francis Marion	L 3-2
10/16	Palm Beach Atlantic	W 3-0
	Palm Beach Atlantic	W 3-2
10/20	at Florida CC	W 3-0
10/23	Savannah State	W 3-0
	Flagler	W 3-0
10/24	Voorhees	W 3-0
10/27	at Emory	W 3-1
10/30	Augusta	W 3-1
	LaGrange	W 2-0
10/31	USC Spartanburg	W 3-1
11/3	Florida CC	W 3-1
11/7	at Charleston Southern	L 3-0
	East Carolina	L 3-1
11/10	UNC Pembroke	L 3-2
11/14	\$ at Francis Marion	L 3-0
	\$ vs. Augusta	W 3-1
	\$ at Francis Marion	L 3-2
	* - Eckerd Invitational	
	\$ - PBC Tournament (Florence, S.C.)	

1993 (17-19, 1-4 PBC)

9/14	Flagler	W 3-0
	at North Florida	L 3-0
9/16	Palm Beach Atlantic	L 3-2
9/18	at Emory	W 3-2
9/23	West Georgia	W 3-0
	Georgia Southern	L 3-0
9/25	Augusta	W 3-0
9/28	at Albany State	W 3-0
9/30	at USC Aiken	L 3-0
10/1	* vs. Albany State	W 3-1
	* at Paine	W 3-1
	* vs. Alabama State	W 3-2
10/2	* vs. Benedict	W 3-0
	* vs. Alabama State	W 3-1
10/5	at Charleston Southern	L 3-0
10/7	Savannah State	W 3-0
10/12	at Mercer	L 3-0
	Florida A&M	L 3-1
	at Converse	L 3-1
10/15	at USC Spartanburg	L 3-0
10/16	Charleston Southern	L 3-0
10/19	at Francis Marion	L 3-1
10/22	at UNC Pembroke	L 3-0
10/23	at Augusta	W 3-0
10/27	% vs. Miss. Univ. Wmn	L 3-1
10/29	% at West Georgia	W 3-1
	% vs. Tusculum	L 3-2
10/30	% vs. USC Aiken	W 3-2
	% vs. Jacksonville State	L 3-1
	% vs. North Alabama	L 3-1
11/2	at Georgia Southern	L 3-0
11/3	SCAD	W 3-2
11/5	\$ vs. Francis Marion	L 3-1
11/6	\$ vs. USC Aiken	L 3-2
	* - Paine Invitational	
	% - West Georgia Invitational	
	\$ - PBC Tournament (Pembroke, N.C.)	

1994 (18-14, 4-6 PBC)

9/10	* vs. Presbyterian	L 3-0
	* vs. St. Andrews	L 3-1
	* vs. USC Spartanburg	L 3-0
9/14	at Flagler	W 3-0
9/20	Georgia Southern	L 3-0
9/21	SCAD	W 3-2
9/24	% vs. Wofford	W 3-1
	% at Francis Marion	W 3-0
	% vs. High Point	W 3-1
	% vs. UNC Pembroke	L 3-2
9/25	West Georgia	W 3-0
9/27	at Georgia Southern	L 3-1
9/30	& vs. USC Aiken	W 3-1
	& vs. Francis Marion	L 3-1
	& vs. UNC Pembroke	L 3-1
10/1	& vs. Augusta	W 3-0
	& at USC Spartanburg	L 3-0
10/8	Mars Hill	W 3-0
	at West Georgia	W 3-0
10/11	at USC Aiken	W 3-1
10/15	USC Spartanburg	L 3-0
10/18	at Francis Marion	L 3-1
10/21	Fort Valley State	W 3-0
10/26	Augusta	W 3-1
10/28	UNC Pembroke	L 3-0
10/30	Columbia	W 3-0
	at SCAD	W 3-0
11/2	at Newberry	W 3-0
11/12	\$ vs. Francis Marion	W 3-1
	\$ vs. USC Spartanburg	L 3-1
	\$ vs. Augusta	W 3-1
	\$ vs. UNC Pembroke	L 3-0
	* - Catawba Classic	
	% - Francis Marion Invitational	
	& - PBC Round Robin (Spartanburg)	
	\$ - PBC Tournament (Aiken, S.C.)	

1995 (12-27, 3-7 PBC)

9/8	# vs. North Alabama	L 3-1
	# vs. Carson-Newman	W 3-0
9/9	# vs. Anderson	W 3-0
	# vs. Lenoir-Rhyne	W 3-2
9/11	at North Florida	L 3-0
9/15	% vs. Valdosta State	L 3-0
	% vs. Saint Leo	L 3-0
9/16	% vs. West Georgia	L 3-0

9/19	% at Florida Tech	L 3-0
9/22	! vs. North Alabama	L 3-2
	! vs. Erskine	W 3-1
9/23	! at USC Aiken	L 3-0
	! vs. Erskine	W 3-1
9/25	at Fort Valley State	L 3-1
9/29	* Augusta	W 3-0
	* Francis Marion	W 3-2
9/30	* USC Aiken	L 1-3
	* USC Spartanburg	L 2-3
	* UNC Pembroke	L 2-3
10/3	Flagler	W 3-1
10/7	USC Aiken	L 3-0
10/10	Francis Marion	L 3-1
10/12	Florida Tech	L 3-0
10/13	@ Savannah State	W 3-0
	@ NC Central	W 3-0
10/14	@ Eckerd	L 3-0
	@ Valdosta State	L 3-1
10/16	at Augusta	L 3-0
10/19	at UNC Pembroke	W 3-1
10/21	at USC Spartanburg	L 3-0
10/28	at SCAD	L 3-0
	vs. Oglethorpe	W 3-0
11/3	at Flagler	L 3-0
11/4	^ vs. Tampa	L 3-0
	^ vs. Rollins	L 3-0
11/5	^ at North Florida	L 3-0
11/11	\$ vs. UNC Pembroke	L 3-1
	# - Lady Patriot Invitational (Florence)	
	% - Florida Tech Invitational	
	! - USCA Invitational	
	* - PBC Round Robin (Savannah)	
	@ - Armstrong Invitational	
	^ - South Region Classic (Jacksonville)	
	\$ - PBC Tournament (Spartanburg)	

1996 (15-16, 4-6 PBC)

9/7	% vs. Oglethorpe	W 3-0
9/8	% vs. Ga. Southwestern	W 3-0
	% at Valdosta State	W 3-1
9/11	at North Florida	L 3-0
9/13	UNC Pembroke	W 3-0
9/14	USC Spartanburg	W 3-1
9/17	at SCAD	L 3-0
9/18	at USC Aiken	L 3-0
9/26	at Augusta State	L 3-2
9/28	! Rollins	W 3-0
	! Elon	L 3-1
9/29	! Presbyterian	L 3-0
10/1	Flagler	W 3-0
10/4	at UNC Pembroke	W 3-0
10/5	at Francis Marion	L 3-2
10/8	at Fort Valley State	W 3-0
10/12	Albany State	W 3-0
10/15	USC Aiken	L 3-0
10/19	& Coker	W 3-0
10/20	& USC Spartanburg	L 3-0
	& Valdosta State	W 3-0
10/22	SCAD	L 3-1
10/23	Francis Marion	L 3-2
10/26	USC Spartanburg	L 3-0
10/29	Augusta State	W 3-1
11/1	at Flagler	W 3-2
11/9	* vs. Barry	L 3-0
	* vs. Florida Southern	L 3-0
11/10	* at North Florida	L 3-0
11/16	\$ Augusta State	W 3-0
	\$ Francis Marion	L 3-1
	% - All-Georgia Invitational (Valdosta)	
	! - Tri-Conf. Invitational (Savannah)	
	* - Lady Pirate Invitational (Savannah)	
	& - South Region Classic (Jacksonville)	
	\$ - PBC Tournament (Savannah, Ga.)	

1997 (22-10, 5-7 PBC)

9/3	at Savannah State	W 3-0
9/6	* vs. Ga. Southwestern	W 3-0
	* vs. Brenau	W 3-0
	* at Valdosta State	W 3-1
9/10	at Flagler	W 3-2
9/13	at USC Spartanburg	W 3-1
9/16	at USC Aiken	L 3-0
9/19	Florida Tech	L 3-1
9/20	^ Rollins	W 3-1
	^ Lenoir-Rhyne	W 3-1



AASU's first winning season came in 1991, its first in the PBC

All-Time Results



9/26	at Francis Marion	L 3-0
9/27	at UNC Pembroke	W 3-1
9/30	at SCAD	W 3-2
10/1	Flagler	W 3-0
10/5	Valdosta State	W 3-1
	Savannah State	W 3-0
10/6	at Augusta State	W 3-0
10/10	Francis Marion	L 3-0
10/11	UNC Pembroke	W 3-0
10/15	North Florida	L 3-0
10/17	% vs. Paine	W 3-0
	% vs. Gardner-Webb	L 3-1
10/18	% vs. NC Central	W 3-0
10/24	USC Aiken	L 3-2
10/25	USC Spartanburg	L 3-0
10/28	Augusta State	W 3-1
10/31	! vs. Gardner-Webb	W 3-2
	! at Presbyterian	W 3-1
11/1	! vs. Augusta State	W 3-0
11/4	SCAD	W 3-0
11/5	at North Florida	L 3-0
11/14	\$ vs. USC Spartanburg	L 3-1

* - Georgia Challenge (Valdosta, Ga.)
 ^ - Kaleigh Challenge (Savannah, Ga.)
 % - USC Aiken Invitational
 ! - Presbyterian Invitational
 \$ - PBC Tournament (Augusta, Ga.)

1998 (9-24, 4-10 PBC)

9/4	% vs. Albany State	W 3-1
9/5	% vs. Piedmont	W 3-0
	% at Valdosta State	L 3-0
9/8	at Augusta State	L 3-0
9/12	* vs. Central Oklahoma	L 3-0
	* at Rollins	L 3-1
9/13	* vs. Valdosta State	L 3-0
9/16	North Florida	L 3-0
9/18	! Florida Tech	L 3-2
9/19	! Catawba	L 3-0
9/19	! Newberry	W 3-0
9/25	at Francis Marion	L 3-1
9/26	at UNC Pembroke	W 3-0
10/2	at Lander	W 3-1
10/3	at USC Spartanburg	L 3-0
10/7	at North Florida	L 3-0
10/9	= vs. King College	L 3-0
10/10	= vs. Newberry	W 3-1
	= at Wingate	L 3-0
	= vs. Bluefield	L 3-0
10/13	Augusta State	L 3-2
10/17	at USC Aiken	L 3-0
10/18	Francis Marion	L 3-0
10/23	# vs. Fayetteville State	L 3-0
10/24	# vs. Catawba	L 3-2
	# vs. Gardner-Webb	L 3-0
10/25	Lander	W 3-0
10/28	SCAD	L 3-0
11/3	USC Aiken	L 3-1
11/6	USC Spartanburg	L 3-1
11/8	UNC Pembroke	W 3-0
11/10	at Newberry	W 3-1
11/12	!! vs. USC Spartanburg	L 3-0

= - Georgia Challenge (Valdosta, Ga.)
 * - Rollins Invitational (Winter Park, FL)
 ! - Kaleigh Klassic (Savannah, Ga.)
 # - Wingate Invitational (Wingate, N.C.)
 !! - USC Aiken Halloween Invitational
 ! - PBC Tournament (Florence, S.C.)

1999 (36-5, 11-3 PBC)

8/27	* vs. Seton Hill	W 3-0
	* vs. Mercyhurst	W 3-0
8/28	* vs. Shippensburg	W 3-0
	* at California (Pa.)	W 3-1
9/3	\$ Fayetteville State	W 3-0
	\$ Wingate	W 3-0
9/4	\$ Savannah State	W 3-0
	\$ Presbyterian	W 3-0
9/10	% vs. Mars Hill	W 3-0
	% vs. Saint Leo	W 3-0
9/11	% vs. Lenoir-Rhyne	W 3-0
	% vs. Carson-Newman	W 3-0
9/17	^ vs. West Alabama	W 3-1
	^ vs. Montevallo	W 3-0
9/18	^ vs. Florida Tech	W 3-2
	^ vs. West Georgia	W 3-1
9/24	at USC Aiken	W 3-0

9/25	Fort Valley State	W 3-0
9/28	SCAD	W 3-0
10/1	at Lander	W 3-0
10/2	at USC Spartanburg	W 3-1
10/8	& vs. NC Central	W 3-0
	& vs. Mount Olive	W 3-0
10/9	& vs. St. Augustine's	W 3-0
	& vs. Benedict	W 3-0
	& vs. Barton	W 3-0
10/13	at Augusta State	W 3-0
10/16	USC Aiken	W 3-0
10/17	USC Spartanburg	W 3-0
10/22	at Francis Marion	L 3-1
10/23	at UNC Pembroke	W 3-0
10/26	at SCAD	L 3-0
10/27	North Florida	L 3-0
10/30	Augusta State	W 3-1
10/31	Lander	W 3-0
11/5	UNC Pembroke	W 3-0
11/6	Francis Marion	W 3-0
11/10	at North Florida	L 3-0
11/12	! vs. USC Aiken	W 3-0
	! vs. Francis Marion	W 3-1
11/13	! vs. North Florida	L 3-1

* California (Pa.) Tournament
 \$ AASU Pirate Invitational (Savannah)
 % Lady Pacer Invitational (Aiken, S.C.)
 ^ VSU Days Invitational (Valdosta)
 & Fayetteville State Invitational
 ! PBC Tournament (Greenwood, S.C.)

2000 (29-10, 12-2 PBC)

8/25	* vs. Western State	W 3-2
	* vs. UC Davis	W 3-0
8/26	* at Mesa State	W 3-1
	* vs. CS Chico	W 3-1
9/1	% vs. Saginaw Valley St.	W 3-0
	% at Grand Valley St.	L 3-0
9/2	% vs. MS Mankato	W 3-0
	% vs. Lake Superior St.	W 3-0
9/8	\$ Barry	W 3-1
9/9	\$ West Georgia	W 3-0
	\$ Tampa	L 3-0
9/10	\$ Florida Southern	W 3-1
9/15	at North Alabama	L 3-0
9/16	vs. Lincoln Memorial	W 3-1
9/22	at Augusta State	W 3-1
9/23	at USC Aiken	W 3-0
9/27	at North Florida	L 3-1
9/29	USC Spartanburg	W 3-0
9/30	Lander	W 3-0
10/2	Florida Tech	W 3-0
10/6	at Francis Marion	W 3-0
10/7	at UNC Pembroke	W 3-0
10/12	at Tampa	W 3-2
10/13	^ at Florida Southern	L 3-0
10/14	^ vs. Rollins	W 3-0
	^ vs. AU Rio Pedras	L 3-1
10/20	USC Aiken	W 3-0
10/21	Augusta State	W 3-0
10/25	North Florida	W 3-2
10/27	at Lander	W 3-0
10/28	at USC Spartanburg	L 3-2
11/3	UNC Pembroke	W 3-0
11/4	Francis Marion	W 3-1
11/6	at Barry	L 3-0
11/10	! at UNC Pembroke	W 3-0
	! vs. USC Aiken	W 3-0
11/11	! vs. North Florida	L 3-1
11/16	& vs. USC Spartanburg	W 3-1
11/17	& vs. North Florida	L 3-0

* Mesa State (Colo.) Invitational
 % Grand Valley St. (Mich.) Invitational
 \$ AASU Pirate Classic
 ^ Fla. Southern Invitational (Lakeland)
 ! PBC Tournament (Pembroke, N.C.)
 & NCAA South Regional (Tampa, Fla.)

2001 (29-10, 11-3 PBC)

8/24	* vs. Fort Valley State	W 3-0
	* vs. Valdosta State	W 3-1
8/25	* at West Georgia	L 3-0
	* vs. Converse	W 3-0
8/29	Georgia Southwestern	W 3-0
8/31	% at Texas Woman's	W 3-2
	% vs. Central Oklahoma	L 3-0
9/1	% vs. SE Okla. State	W 3-0

9/7	% vs. Angelo State	W 3-2
9/8	\$ Florida Southern	L 3-0
	\$ Saint Leo	W 3-1
	\$ North Alabama	L 3-0
9/21	Augusta State	W 3-0
9/22	USC Aiken	W 3-0
9/26	North Florida	L 3-0
9/28	at USC Spartanburg	L 3-0
9/29	at Lander	W 3-0
10/3	Valdosta State	W 3-0
10/5	Francis Marion	W 3-1
10/6	UNC Pembroke	W 3-0
10/11	at Tampa	L 3-0
10/15	^ vs. Florida Tech	W 3-1
	^ at Florida Southern	W 3-2
10/17	at USC Aiken	W 3-0
10/19	@ at Catawba	W 3-1
	@ vs. Slippery Rock	W 3-0
10/20	@ vs. Converse	W 3-0
	@ vs. Tusculum	W 3-0
10/24	at North Florida	L 3-0
10/26	Lander	W 3-0
10/27	USC Spartanburg	W 3-1
10/30	at Augusta State	W 3-0
11/2	at UNC Pembroke	W 3-1
11/3	at Francis Marion	W 3-0
11/9	! vs. Lander	W 3-0
	! vs. USC Spartanburg	W 3-0
11/10	! at North Florida	L 3-0
11/15	& vs. USC Spartanburg	W 3-0
11/16	& at Tampa	L 3-0

* West Georgia Invitational (Carrollton)
 % Texas Woman's Invitational (Denton)
 \$ AASU Invitational
 @ Fla. Southern Invitational (Lakeland)
 @ Catawba adidas Inv. (Salisbury, N.C.)
 ! PBC Tournament (Jacksonville, Fla.)
 & NCAA South Regional (Tampa, Fla.)

2002 (30-10, 12-2 PBC)

8/30	* vs. Milligan	W 3-0
	* vs. Pfeiffer	W 3-0
8/25	* vs. NC Central	W 3-0
	* vs. Converse	W 3-0
9/4	Georgia Southwestern	W 3-0
9/6	% vs. East Stroudsburg	W 3-0
	% vs. New York Tech	W 3-0
9/7	% vs. Bentley	W 3-0
	% at Bryant	W 3-2
9/13	\$ Tusculum	W 3-0
	\$ Florida Southern	W 3-1
9/14	\$ Catawba	W 3-1
	\$ Lewis	L 3-0
9/20	@ vs. West Georgia	W 3-0
	@ vs. Harding	W 3-0
9/21	@ vs. Incarnate Word	L 3-1
	@ at St. Edward's	L 3-0
9/25	at USC Aiken	W 3-0
9/27	USC Spartanburg	W 3-0
9/28	Lander	W 3-1
10/2	North Florida	L 3-0
10/4	at Francis Marion	W 3-0
10/5	at UNC Pembroke	W 3-0
10/10	at Tampa	L 3-0
10/12	^ vs. Nova Southeastern	W 3-0
	^ at Florida Southern	L 3-0
10/16	at Augusta State	W 3-1
10/19	Tampa	L 3-1
10/20	Barry	L 3-0
10/25	at Lander	W 3-0
10/26	at USC Spartanburg	W 3-1
11/1	UNC Pembroke	W 3-0
11/2	Francis Marion	W 3-0
11/6	at North Florida	L 3-1
11/8	USC Aiken	W 3-0
11/9	Augusta State	W 3-0
11/15	! vs. Augusta State	W 3-1
	! vs. USC Spartanburg	W 3-1
11/16	! vs. North Florida	W 3-0
11/22	& vs. Florida Southern	L 3-0

* Catawba Invitational (Salisbury, N.C.)
 % Bryant Invitational (Bryant, R.I.)
 \$ AASU Invitational
 @ St. Edward's Classic (Austin, Texas)
 ^ Fla. Southern Invitational (Lakeland)
 ! PBC Tournament (Jacksonville, Fla.)
 & NCAA South Regional (Tampa, Fla.)

All-Time Records vs. Opponents

Alabama-Huntsville	0-2
Alabama State	2-0
Albany State	5-0
Anderson	1-1
AU Rio Pedras	0-1
Angelo State	1-0
Arkansas Tech	0-0
Augusta State	26-13
Baptist	0-3
Barber Scotia	1-0
Barry	1-3
Barton	1-0
Benedict	2-2
Bentley	2-0
Bethune-Cookman	1-0
Bluefield	0-1
Brenau	1-0
California (Pa.)	1-0
Cal State Chico	1-0
Campbell	0-2
Carson-Newman	2-0
Catawba	2-2
Central Oklahoma	0-2
Charleston Southern	0-4
Christian Brothers	0-0
Coker	2-5
Colorado Christian	0-0
Columbia	2-0
Converse	3-2
East Carolina	0-1
East Stroudsburg	0-1
Eckerd	1-0
Elon	0-1
Emory	2-2
Emporia State	0-0
Erskine	2-0
Fayetteville State	1-1
Flagler	7-1
Florida CC	2-2
Florida A&M	0-2
Florida International	0-1
Florida Southern	3-5
Florida Tech	3-4
Fort Valley State	4-1
Francis Marion	11-17
Gardner-Webb	1-2
Georgia Southern	0-18
Georgia Southwestern	4-0
Grand Valley State	0-1
Greenville CC	0-1
Harding	1-0
Hillsdale	0-0
High Point	1-0
Incarnate Word	0-1
Jacksonville	0-7
Jacksonville State	0-1
King College	0-1
LaGrange	1-0
Lake Superior State	1-0
Lander	11-0
Lee	1-0
Lenoir-Rhyne	3-0
Lewis	0-1
Lincoln Memorial	1-0
Long Island	0-1
Mars Hill	2-0
Mercer	0-2
Mercyhurst	1-0
Mesa State	1-0
Milligan	1-0
Mississippi	1-0
Mississippi State Mankato	1-0
Mississippi College	0-1
Mississippi Univ. for Women	0-1
Montevallo	1-0
Mount Olive	1-0
Newberry	4-0
New York Tech	1-0
North Alabama	0-5
North Carolina A&T	0-1
North Carolina Central	4-0
North Florida	2-21
Nova Southeastern	1-0
Oglethorpe	2-0
Paine	3-8
Palm Beach Atlantic	2-1
Pfeiffer	1-0
Piedmont	1-0
Presbyterian	2-2
Radford	0-1
Rollins	3-2
Saginaw Valley State	1-0
St. Andrews	0-1
St. Augustine's	1-0
St. Edward's	0-1
Saint Leo	3-1
Savannah Coll. A&D	12-7
Savannah State	24-4
Seton Hill	1-0
Shippensburg	1-0
Slippery Rock	1-0
Southeast Oklahoma State	1-0
Tampa	1-6
Texas Woman's	2-1
Troy State	1-0
Tusculum	1-1
UC Davis	1-0
UNC Asheville	0-2
UNC Charlotte	0-1
UNC Pembroke	16-8
UNC Wilmington	0-1
USC Aiken	13-17
USC Spartanburg	13-19
Valdosta State	6-4
Voorhees	4-0
Wesleyan	4-0
West Alabama	1-0
West Georgia	7-2
Western State	1-0
Wheeling Jesuit	0-0
Wingate	1-1
Winthrop	0-1
Wisconsin-Parkside	0-0
Wofford	1-0

Bold - 2003 Opponent

AASU has had four straight years of winning 29 or more matches **27**



AASU Facilities and Athletic Training

The Armstrong Atlantic State University's athletic department prides itself on having one of the finest athletic facilities not only in the conference, but in the region.

AASU's Sports Center, completed in July of 1995, immediately became a top basketball complex by hosting the 1998 and 1999 Peach Belt Athletic Conference basketball tournaments.

This 82,000-square-foot multi-purpose building provides expanded academic offerings in spacious, modern surroundings. Students have a three-station computer lab, a 1,965-square-foot weight training/fitness center with 21 Cybex machine exercise stations and a free weight area; four new classrooms, and two 3,535-square-foot activity areas.



AASU's athletic teams play home events in a 4,000-seat arena that contains theater-type seating for all spectators, and also plays host to a wide variety of social and sporting events.

Directly behind the Armstrong Sports Center sits the home fields for the baseball and softball teams.

Pirate Field seats 750 fans for the Armstrong Atlantic State University's highly successful baseball program. Generally regarded as one of the best playing surfaces in the conference, Pirate Field has seen the baseball squad advance to 10 NCAA

regionals over the past 15 seasons.

To the west of Pirate Field sits the brand new AASU Softball Complex, home to the Pirate softball squad.

The **Aquatics and Recreation Center** serves as the host of the AASU volleyball squad. The 1,000 seat arena features newly renovated bleacher seating and scoreboards and is the sole volleyball-only facility in the Peach Belt Conference. The AASU volleyball team has advanced to three consecutive NCAA championships and captured the 2003 PBC Tournament title.

AASU Athletic Training



Dr. Spencer Wheeler



Mylene Ray, ATC

AASU athletic teams benefit from the fine athletic training staff, headed by medical director Dr. Spencer Wheeler and head athletic trainer Mylene Ray.

AASU's training room, part of the Armstrong Sports Center, sits adjacent to the fitness center and across the hall from the Pirate locker rooms. The room offers the most modern and advanced equipment to help players deal with injuries and rehabilitation.

Three other graduate assistant trainers aid Dr. Wheeler and Ray in helping treat and prevent injuries to AASU athletes - Luke Hensel, ATC, Kerrie Evans, ATC, and Stacey Foust, ATC.

Strength & Conditioning



Henry Myers

The AASU volleyball team also benefits from a fine strength and conditioning program, headed by Olympic Weightlifting champion Team Savannah's head coach, Henry Myers.

As the strength and conditioning coach of the volleyball squad, Myers has been integral to the team's fitness and strength for the past two seasons.

Myers, a native of Savannah and a graduate of Jenkins HS in 1989, was named the 2000 USOC Coach of the Year for Weightlifting as five of Team Savannah's lifters represented the United States in the 2000 Olympic Games in Sydney, Australia.

Myers, 32, is married to Michelle Powell-Myers.



★ **TEAM SAVANNAH** ★

This Is Savannah



Historic Savannah, Georgia, is located on the Atlantic Coast, at the confluence of the Savannah River and the Atlantic Ocean. Throughout its history, there has been one adjective consistently used to describe Savannah: beautiful.

The reason? There's something about the unique beauty of Savannah that cannot be forgotten. Streets with canopies of moss-laden trees are honored venues for scores of historic homes. The town squares that Savannah's founding father, James Oglethorpe, laid out as public meeting places are now treasured "pocket parks" located throughout the downtown area.

A renovated waterfront area serves as the hub for shopping and entertainment. Nearby sandy beaches draw streams of visitors with persistent cool breezes and the endless lure of the rolling sea. Finally, there's an indescribable - but readily discernible - feeling in the air that pervades Savannah, a kind of "laid back" approach to the world, a "rootedness" that makes living or working in Savannah an experience second to none.

By way of affirmation, *Le Monde*, the leading French newspaper, called Savannah "the most beautiful city in North America."

Savannah has recently captured the imagination of a nation through its history and its appearance in several feature films, including "Glory," "Forrest Gump," "Something to Talk About," "Midnight In The Garden of Good and Evil" and the 2000 hit film "The Legend of Bagger Vance," starring Will Smith and



Matt Damon. Also, Savannah hosted the yachting events of the 1996 Summer Olympics. As a result, tourism has become one of the leading industries in the area.

Savannah hosts over six million tourists each year. Tourism impacts the Savannah area by more than \$634 million. The city boasts over 7,000 rooms and more than 100 restaurants as folks have learned that Savannah is more than just a convenient rest stop on the interstate to Florida.

The climate of Savannah features warm, and sometimes hot, weather for most of the year. There are seven months in which the average temperature is 70 degrees or higher. The lowest average high is in January at 60.3 degrees.

The population in Savannah is roughly 130,000 and Chatham County is the fifth most populous county in the state of Georgia.

Savannah also sits centrally located to some of the Southeast's finest beaches. Tybee Island, located less than 30 minutes from Armstrong Atlantic State's campus, offers six miles of unspoiled sands, tempting seafood and gracious accommodations. Resort areas such as Hilton Head, South Carolina, are less than one hour away and provide even more relaxing getaway options.

Whether it's the lure of historic settings, the friendliness of a Southern community or the beautiful climate of southeast Georgia, Savannah is the place for you.

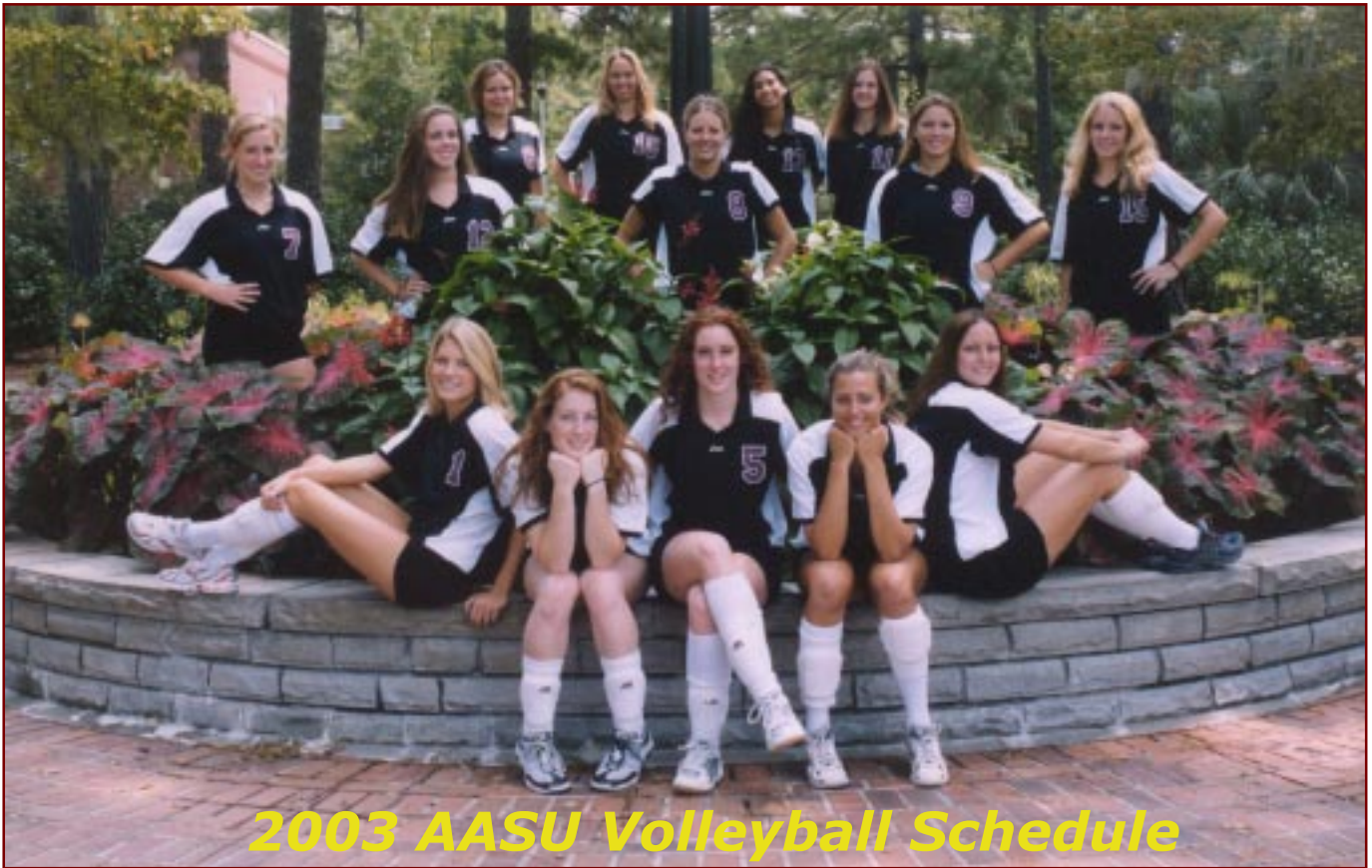
Worth Checking Into.

- Spacious, comfortable room, complete with coffeemaker, hair dryer and more
- Complimentary breakfast bar
- Guest voice mail and free local calls
- Pay-per-view movies and free cable TV
- Outdoor pool


BAYMONT
INN & SUITES

Savannah • 8484 Abercorn Street
I-95 Exit 94 to Hwy 204 E
(912) 927-7660

www.baymontinns.com



2003 AASU Volleyball Schedule

Date	Day	Opponent	Time
Aug. 29-30	Fri.-Sat.	at 2003 Lewis University Flyer Festival (Romeoville, Ill.)	
Aug. 29	Fri.	at Lewis	3:00 p.m.
		vs. Wheeling Jesuit	5:00 p.m.
Aug. 30	Sat.	vs. Wisconsin-Parkside	10:00 a.m.
		vs. Hillsdale	Noon
Sept. 5-6	Fri.-Sat.	at 2003 Nebraska-Omaha Classic (Omaha, Neb.)	
Sept. 5	Fri.	vs. Arkansas Tech	Noon
		vs. Emporia State	4:00 p.m.
Sept. 6	Sat.	vs. Christian Brothers	Noon
		vs. Colorado Christian	6:00 p.m.
Sept. 12-13	Fri.-Sat.	2003 AASU/Chatham Orthopaedic Volleyball Classic	
Sept. 12	Fri.	Presbyterian	1:00 p.m.
		Florida Southern	7:00 p.m.
Sept. 13	Sat.	Catawba	1:00 p.m.
		Tampa	7:00 p.m.
Sept. 19	Fri.	at Barry	8:00 p.m.
Sept. 20	Sat.	at Nova Southeastern	6:30 p.m.
Sept. 26	Fri.	at Lander *	7:00 p.m.
Sept. 27	Sat.	at USC Spartanburg *	3:00 p.m.
Oct. 3	Fri.	UNC Pembroke *	7:00 p.m.
Oct. 4	Sat.	Francis Marion *	4:00 p.m.
Oct. 8	Wed.	at North Florida *	7:00 p.m.
Oct. 10	Fri.	Augusta State *	7:00 p.m.
Oct. 11	Sat.	USC Aiken *	4:00 p.m.
Oct. 16	Thurs.	at Saint Leo	7:00 p.m.
Oct. 17	Fri.	at Florida Southern	7:00 p.m.
Oct. 19	Sun.	at Tampa	2:00 p.m.
Oct. 24	Fri.	Lander *	7:00 p.m.
Oct. 25	Sat.	USC Spartanburg *	4:00 p.m.
Oct. 29	Wed.	North Florida *	7:00 p.m.
Oct. 31	Fri.	at UNC Pembroke *	7:00 p.m.
Nov. 1	Sat.	at Francis Marion *	3:00 p.m.
Nov. 4	Tues.	Eckerd	3:00 p.m.
Nov. 7	Fri.	at USC Aiken *	7:00 p.m.
Nov. 8	Sat.	at Augusta State *	3:00 p.m.
Nov. 13-15	Thurs.-Sat.	at PBC Tournament (Spartanburg, S.C.)	
Nov. 20-22	Thurs.-Sat.	at NCAA DII South Regional (Site TBA)	
Dec. 4-6	Thurs.-Sat.	at NCAA DII Elite Eight (Site TBA)	

Bold denotes home game.

* - Peach Belt Conference game