

Georgia Southern University

Georgia Southern Commons

Armstrong Women's Basketball Team Archives

Armstrong Women's Basketball Archives

2004

2004 AASU Women's Basketball Guide

Armstrong State University

Follow this and additional works at: <https://digitalcommons.georgiasouthern.edu/armstrong-basket-wmn-team>

Recommended Citation

Armstrong State University, "2004 AASU Women's Basketball Guide" (2004). *Armstrong Women's Basketball Team Archives*. 29.

<https://digitalcommons.georgiasouthern.edu/armstrong-basket-wmn-team/29>

This media guide is brought to you for free and open access by the Armstrong Women's Basketball Archives at Georgia Southern Commons. It has been accepted for inclusion in Armstrong Women's Basketball Team Archives by an authorized administrator of Georgia Southern Commons. For more information, please contact digitalcommons@georgiasouthern.edu.



**2003-04 Armstrong Atlantic State
Women's Basketball Media Guide**



2003-04 AASU Roster



2003-04 AASU Women's Basketball Squad. Back row (l-r): Briana Milam, Vandy Noldon, Aiste Slenyte, Veronica Campbell, Ramona Wright. Front row (l-r): Marloes Renskers, Meghan Jones, Sarah Brown, Pam Mayes, Alicia Durham, Tasha Washington, Jamie Sheridan, Kaneetha Gordon.

2003-04 Armstrong Atlantic State Lady Pirate Basketball Roster

#	Name	Ht.	Yr.	Pos.	Hometown/School
10	Alicia Durham	5-6	Soph.	G	Macon, Ga. / Southwest HS
12	Meghan Jones	5-7	Fr.	G	Savannah, Ga. / Calvary Baptist HS
14	Tasha Washington	5-8	Sr.	G	Phoenix, Ariz. / Scottsdale CC
20	Pam Mayes	5-8	Sr.	F	Columbia, S.C. / Hutchinson (Kan.) CC
22	Veronica Campbell	6-0	Jr.	F/C	Sumner, Ill. / Olney Central College
23	Briana Milam	5-8	Jr.	G	Wittmann, Ariz. / Yavapai College
24	Sarah Brown	5-4	Fr.	G	Richmond Hill, Ga. / Richmond Hill HS
25	Aiste Slenyte	5-10	Soph.	F	Vilnius, Lithuania / Vilnius University
30	Marloes Renskers	5-7	Sr.	G	Enschede, The Netherlands / Southern Idaho
32	Vandy Noldon	5-11	Sr.	F	Wasco, Calif. / Porterville CC
33	Kaneetha Gordon	5-10	Fr.	F	Savannah, Ga. / Liberty County HS
34	Ramona Wright	6-0	Jr.	C	Clyo, Ga. / Mecer University

Head Coach: Roger Hodge

Assistant Coaches: Mandy Kinder, Elizabeth Lyons

Table of Contents



Contents

2003-04 Roster/Team Photo	IFC
2003-04 Outlook	2-3
Head Coach Roger Hodge	4
Assistant Coaches Mandy Kinder and Dawn Cason	5
2003-04 Player Profiles	6-13
Armstrong Atlantic State University	14
AASU Administration	15
Athletic Department Staff	16
Alumni Arena	17
AASU Athletic Training	18
2003-04 Opponents	19-22
AASU Basketball Media Services	24
2002-03 Season Review	25
2002-03 Results/Statistics	26
2002-03 AASU Player/Team Highs	27
The Peach Belt Conference	28-33
AASU Records	34-37
Honors	38
All-Time Records	39
All-Time Results	40-43
This Is Savannah	48
Media Spot Chart	IBC

Quick Facts

Location	Savannah, Ga. 31419
Founded	1935
Enrollment	6,047
Nickname	Pirates
Colors	Maroon and Gold
Athletics Webpage	www.athletics.armstrong.edu
Affiliation	NCAA Division II
Conference	Peach Belt
Home Gym	Alumni Arena
Capacity	5,000
President	Dr. Thomas Z. Jones
Athletic Director	Dr. Eddie Aenchbacher
Women's Basketball Head Coach	Roger Hodge
Record at AASU (Years)	48-39 (3)
Overall Coaching Record (Years)	48-39 (3)
2002-03 Overall Record	27-4
2002-03 PBC Record (Finish)	17-2 (1st South)
Assistant Coaches	Mandy Kinder, Elizabeth Lyons

On the Cover

The 2003-04 AASU women's basketball squad poses on the pavilion at Tybee Island. Tybee Island is a popular beach destination for tourist and Savannah natives alike comprising of 2.6 square miles of area.

Credits

The 2003-04 Armstrong Atlantic State University media guide was published by the AASU Office of Sports Communications, Chad Jackson, director. AASU head coach Roger Hodge and assistant coaches Mandy Kinder and Elizabeth Lyons also contributed to this publication. For more information regarding the AASU women's basketball program, please contact:

Chad Jackson
Director of Sports Communications
 Phone: 912-961-3255
 Fax: 912-921-5571
 E-Mail: jacksoch@mail.armstrong.edu

Roger Hodge
Head Women's Basketball Coach
 Phone: 912-921-5861
 Fax: 912-921-5571
 E-Mail: hodgerog@mail.armstrong.edu



AASU Athletic Department Phone Directory

Main Numbers	
Athletic Department	912-927-5336
Athletics FAX	912-921-5571
	912-921-5852
Administration	
Dr. Eddie Aenchbacher, A.D.	912-921-5854
Dr. Donald Anderson, Asst. A.D.	912-921-5863
Chad Jackson, Sports Communications	912-961-3255
Mylene Benito, Athletic Trainer	912-927-5200
Dianne Lane, Athletic Secretary	912-921-5849
Coaching Staff	
Joe Roberts, Baseball	912-921-5686
Calvain Culberson, Asst. Baseball	912-921-5687
Jeff Burkhamer, Basketball (Men's)	912-921-5683
Steve Ray, Asst. Men's Basketball	912-921-5684
Travis Priddy, Asst. Men's Basketball	912-921-7311
Roger Hodge, Basketball (Women's)	912-921-5861
Mandy Kinder, Asst. Wm. Basketball	912-921-7310
Elizabeth Lyons, Grad Asst. WBKB	912-921-5862
Michael Butler, Men's Golf	912-921-5841
Simon Earnshaw, Tennis	912-921-5842
Jo Ward, Asst. Tennis	912-921-5842
Marty McDaniel, Softball	912-921-2391
Ansley Paschal, Asst. Softball	912-921-2391
Alan Segal, Volleyball	912-921-3785
Jen Michael, Asst. Volleyball	912-921-3786
Other Numbers	
Press Table (Basketball)	912-921-5473
	912-921-5572
AASU Training Room	912-921-5860
Sports Center Weight Room	912-921-5858

AASU made its first-ever NCAA Championships appearance in 2003



After First PBC Title, Lady Pirate

When the Armstrong Atlantic State women's basketball squad became the first No. 6 seed in Peach Belt Conference Tournament history - men's or women's - to reach the semifinals in 2001-02, little did the league know that it would be simply a small preview of what would be the finest women's basketball season in school history.

The upstart Lady Pirates smashed many school records en route to a 27-4 season in 2002-03, a PBC title, a PBC Tournament title and an NCAA championship berth, all firsts for the AASU women's basketball program.

The three-year climb to the top of the PBC was a hard one, but it pales in comparison to the task now ahead of the Lady Pirates - staying on top. No longer can AASU sneak up on schools and the bullseye of the preseason No. 1 pick in the conference and No. 10 national ranking from the *Division II Bulletin* will make sure that every other team will bring their "A" game into matchups with the Lady Pirates.

And despite the loss of a few key components, including 1,000-point scorer Zandrique Cason, the talented twins Shanetra and Shalettra Hodge and the PBC's Player of the Year, Tishay Lewis, AASU has

several talented players returning, including three starters from last season's squad, and has brought in an exciting corps of newcomers charged with the task of helping the Pirates repeat as PBC Champions.

Heading the list of returnees is second-team All-PBC guard **Tasha Washington** (5-8, Sr., Phoenix, Ariz.). Washington averaged 13.6 points per game and also earned All-PBC Tournament honors for AASU. The sharpshooter led the squad in three-point baskets with 49, and helped the Lady Pirates set a new school record in three-point shots made. The shooting guard will again be a major offensive threat this season.

Last year's starting small forward, senior **Pam Mayes** (5-8, Sr., Columbia, S.C.), also returns. Mayes averaged 4.9 points and 2.6 rebounds per game in her first season as a Lady Pirate after transferring from Hutchinson (Kan.) CC and brings a tenacious defense and quickness to the floor.

The third returning starter for the Lady Pirates is sophomore point guard **Alicia Durham** (5-6, Soph., Macon, Ga.). The Southwest HS product handled the pressure of starting at the point as a true freshman admirably, dishing out 56 assists while turning the ball over just 39 times, and averaged 3.9 points and 2.4 rebounds per game.

Replacing an All-America player like Tishay Lewis in the starting lineup would normally be a tough task, but senior forward **Vandy Noldon** (5-11, Sr., Wasco, Calif.) is ready to step up to the challenge. Noldon was the Lady Pirates' leading scorer off the bench in 2002-



Senior Tasha Washington earned second-team All-PBC honors in 2002-03, averaging 13.6 points per game and hitting 49 three-pointers.



Head coach Roger Hodge directed the NCAA's best single-season turnaround in 2002-03, leading the Lady Pirates to the PBC Championship. He was named the PBC Coach of the Year and the WBCA Region 3 Coach of the Year.



AASU captured its first PBC Tournament title in 2003



Basketball Now A League Power



Senior Vandy Noldon hit 29-of-73 three-point shots in 2002-03 (39.2%), the second-best three-point percentage in the Peach Belt.

03, averaging 5.9 points per game and draining 29-of-73 three-pointers (39.2%), the second-best three-point shooting percentage in the Peach Belt.

Fifth-year senior guard **Marloes Renskers** (5-7, Sr., Enschede, The Netherlands) received a medical redshirt for her first collegiate season and returns for her fourth as a Lady Pirate. Already the fifth all-time leader in assists at AASU, Renskers will see extensive action at both guard positions in 2003-04.

Junior guard **Briana Milam** (5-8, Jr., Wittmann, Ariz.) will also be in the mix at the point guard position after redshirting the 2002-03 season, and forward **Aiste**

Slenyte (5-11, Soph., Vilnius, Lithuania) - a January addition to the team last season - will see extended time this year as a backup to both forward positions.

Five newcomers join the Lady Pirates in 2003-04, including several from the Coastal Empire area, following on the success of players like Lewis and Anita Griffin, who returned home to play for AASU.

Mercer University transfer and former *Savannah Morning News* Coastal Empire Player of the Year **Ramona Wright** (6-0, Jr., Clyn, Ga.) will have the difficult task of replacing Cason as the Lady Pirates' starting center. Wright averaged 4.3 points and 2.6 rebounds in her two seasons at Mercer, but averaged 18 points and 10 rebounds a game as a senior at nearby Effingham County HS in 2000-01.

Another local standout staying home to play for AASU is freshman forward **Kaneetha Gordon** (5-10, Fr., Savannah, Ga.), a first-team *Savannah Morning News* All-Coastal Empire selection as a senior. Gor-

don led Liberty County HS to the Georgia state playoffs for the third straight year and was the region's leading scorer, averaging 20.2 points per game, earning honorable mention All-State honors.

A pair of Savannah area guards also join the Lady Pirates as freshmen. **Meghan Jones** (5-7, Fr., Savannah, Ga.) is a two-time *Savannah Morning News* All-Coastal Empire selection who averaged 18.4 points per game as a senior at Calvary Baptist HS. **Sarah Brown** (5-4, Fr., Richmond Hill, Ga.) earned third-team *Savannah Morning News* All-Coastal Empire area honors for Richmond Hill HS as a senior.

The final newcomer is forward/center **Veronica Campbell** (6-0, Jr. Sumner, Ill.), who averaged 11.9 points and 6.1 rebounds for Olney Central College.

The 2003-04 schedule includes 16 league games and several tough non-conference matchups, including opening the season against Charleston (W. Va.) and NCAA Regional participant Fayetteville State in the Chatham Orthopaedics Tip-Off Classic. AASU will also host NCAA participant Shaw and travel for games at Tusculum, Mars Hill and Barry.

Coming off of the school's first PBC crown, the Lady Pirates are picked to repeat as league champions, garnering nine of the 11 available first-place votes - further proof that, despite the rapid rise to prominence under head coach Roger Hodge, the Lady Pirates will continue to be one of the elite teams in the Peach Belt.



2003-2004 Peach Belt Preseason Women's Basketball Poll

First-place votes in parenthesis. As voted on by the PBC Women's Coaches; Coaches could not vote for own team.

Rk	School	Votes
1.	Armstrong Atlantic State	119 (9)
2.	Columbus State	103 (1)
3.	North Florida	100 (1)
4.	Kennesaw State	95 (1)
5.	Augusta State	66
6.	USC Spartanburg	63
7.	Lander	55
8.	Clayton State	52
	GC&SU	52
10.	USC Aiken	39
11.	Francis Marion	36
12.	UNC Pembroke	12





Roger Hodge Head Women's Basketball Coach

Roger Hodge begins his fourth season at the helm of the Armstrong Atlantic State women's basketball program after leading the Lady Pirates to their first-ever Peach Belt Conference title, tournament title and NCAA Championships berth. Hodge, who directed AASU to a school-record 27-4 record in 2002-03, was also named the Peach Belt Conference Coach of the Year for his efforts.

Hodge also directed NCAA Division II's best single-season turnaround last season, taking an 11-18 squad that had advanced to the PBC Tournament semifinals and improving on the record by an incredible 15 games. The Lady Pirates turned in their first-ever undefeated season at home, going 13-0, and enter the 2003-04 season with a 15-game home winning streak.

The sixth AASU women's basketball coach in school history, Hodge succeeded Lynn Jarrett in 2000-2001 and was hired from Division I Liberty University, where he served as an assistant on the highly successful Flames program.

Coach Hodge led the Lady Pirates to a 10-16 record in his first season - a three-win improvement over the previous season - and also registered the program's first win over a ranked team in over four years with a 75-72 win over No. 22 Francis Marion on January 3, 2001. In 2001-02, he directed the Lady Pirates to a Peach Belt Conference tournament semifinal appearance, becoming the first No. 6 seed in league tournament history to advance that far.

Hodge entered the collegiate coaching ranks in 1997 with Liberty University, Hodge assisted Lady Flames head coach Rick Reeves on two Big South Conference championship squads in 1997-98 and 1998-99 and assisted head coach Carey Green in 1999-2000 when Liberty compiled a 23-8 overall record and a 12-2 mark in the Big South, capturing the conference tournament for the fourth straight season and advancing to the NCAA Championships.

Prior to Liberty, Hodge was an assistant coach at Mercer Christian Academy in Princeton, W. Va., and helped lead the

school to the 1996 Class A state championship. Hodge also assisted at Hinton/Summers County High School from 1987-1994 and 1997, while the school captured three West Virginia Class AA State Championships in 1988, 1992 and 1994. Hodge also directed the Southern West Virginia AAU team that finished runner-up in the YBOA National Championships in 1990 and finished second in the state of West Virginia in 1990 and 1992.

A graduate of Concord College in Athens, W.Va., Hodge received a bachelor of arts degree in 1992. He also received a bachelor's of science degree in education with a concentration in business principles in 1997. Hodge and his wife, Kristen, have two daughters, Madison and Emma, and the family resides in Savannah.



Assistant Coaches Mandy Kinder and Elizabeth Lyons



Mandy Kinder **Assistant Women's Basketball Coach**

Mandy Kinder, daughter of former Armstrong Atlantic State baseball head coach Tom Kinder, begins her second season as the Lady Pirates' head assistant coach.

Last year she assisted head coach Roger Hodge in helping the Lady Pirates to their first-ever PBC Championship and NCAA Tournament appearance.

Kinder joined the Pirates from the University of Charleston (W.Va.), where she was a standout four-year player for the Golden Eagles. A native of Bridgewater, Va., Kinder graduated in May, 2002 with a double major in mass media/broadcasting and sport science/management.

As a player, she was named to the West Virginia Intercollegiate Athletic Conference's all-freshman team in 1998-99.

Kinder is an active member of the Fellowship of Christian Athletes and currently resides in Savannah.



Elizabeth Lyons **Graduate Assistant Coach**

Elizabeth Lyons begins her first season with the AASU women's basketball program in 2003-2004, serving as the Lady Pirates' graduate assistant coach.

Lyons joins the Pirate staff from Ashland University, where she served as a student assistant for two seasons for head coach Sue Ramsey. Prior to that, she served as a student assistant for the Ashland men's team under her father, AU head coach Roger Lyons.

A native of Akron, Ohio, Lyons is a certified high school official who also interned with the WNBA's Cleveland Rockers. She graduated from Ashland with a bachelor's degree in English in 2003 and is currently pursuing her master's degree in English education from AASU.



AASU Women's Basketball Support Staff



**Erin
Gex
Team
Manager**



**Robert
Johnson
Team
Manager**



**Rick Mohr
Strength &
Conditioning
Coach**

Kinder is the daughter of former AASU baseball coach Tom Kinder





#30 Marloes Renskers Senior Guard

5-7 • Enschede, Netherlands • Southern Idaho

2002-03

Received a medical redshirt for her injury-shortened freshman year at Southern Idaho, so Renskers returns as a fifth-year senior in 2003-04 ... Played in 27 games for the Lady Pirates as a senior ... Averaged 11.7 minutes, 1.8 point sand 1.1 rebounds per game ... Hit 18-of-41 shots from the floor (43.9%) and 5-of-13 shots from three-point range (38.5%) ... Dished out 31 assists and now ranks fifth on AASU's all-time assist chart with 195.

2001-02

Averaged 5.0 points, 3.2 rebounds and a team-best 3.4 assists per game as a junior for the Pirates ... 98 assists ranks as the 10th-best single-season assist performance in school history ... Played in all 29 games, starting 25, and ranked second on the squad in steals with 49 ... Tied her career high with 12 points in AASU's 57-52 win over Lander on 12/1 ... Scored eight points and dished out six assists at Francis Marion on 11/28 ... Reached double figures in points two other occasions, scoring 10 points against USC Spartanburg (1/5) and against Clayton State (2/9) ... Recorded five steals and a career-high nine rebounds against Ferris State on 11/17.

2000-01

Played in all 26 games, starting 25, for the Lady Pirates as a sophomore ... Averaged 3.6 points, 2.7 rebounds and 2.5 assists per game ... Scored a season-high 12 points and dished out five assists in her first game as a Lady Pirate, an 81-68 win over Mount Olive on 11/17/00 ... Collected 11 points and seven steals in AASU's 76-74 win at Lander on 1/6/01 ... Hit all four shots from the floor and tallied five assists in the Lady Pirates' 84-71 win over Nova Southeastern on 1/8/01.

AT COLLEGE OF SOUTHERN IDAHO

Played in six games for the Golden Eagles before sustaining a season-ending ACL knee injury.

DUTCH NATIONAL TEAM EXPERIENCE

Played for the 1999 Dutch National team and the 1997 Dutch Junior National team.

PERSONAL

Born Marloes Renskers on April 3, 1981, in Enschede, The Netherlands, her hometown ... Daughter of Jan and Anneke Renskers ... Majoring in general studies ... Played club ball from 1997-99 with the Jolly Jumpers, a club that travelled all over the country ... Allen Iverson is a favorite sports personality.



Renskers' Game Highs

Points:

12, twice. Last vs. Lander, 12/1/01

Rebounds:

9 vs. Ferris State, 11/17/01

Field Goal Percentage:

.667 (6-of-9) vs. Lander, 12/1/01

Assists:

6, twice. Last at Francis Marion, 11/28/01

Steals:

7 at Lander, 1/6/01



Marloes Renskers' Career Statistics

Year	GP-GS	MIN	FG-FGA	PCT	3PM-3PA	PCT	FTM-FTA	PCT	OR-DR-TR	RPG	TP	PPG	AST	TO	BS	ST
2000-2001	26-25	619	30-81	.370	0-11	.000	33-47	.702	28-43-71	2.7	93	3.6	66	58	4	39
2001-2002	29-25	826	61-123	.496	3-21	.143	20-36	.556	20-73-93	3.2	145	5.0	98	87	4	49
2002-2003	27-0	315	18-41	.439	5-13	.385	7-11	.636	8-23-31	1.1	48	1.8	31	26	4	19
3 Years	82-50	1760	109-245	.445	8-45	.178	60-94	.638	56-139-195	2.4	286	3.5	195	171	12	107



Renskers' 195 assists are the fifth-most all-time in AASU history

Senior Tasha Washington



#14 Tasha Washington Senior Guard

5-8 • Phoenix, Ariz. • Scottsdale CC

2002-03

Second-team All-PBC honoree and All-PBC Tournament honoree for the Lady Pirates ... Played in all 31 games, starting 30, and ranked second on the squad in scoring, averaging 13.6 ppg ... Top three-point shooter on the squad, hitting 49-of-127 treys (38.6%), ranking fifth in PBC ... 10th in league in scoring and eighth in steals (79, 2.55/gm) ... Reached double figures in 21 of 31 contests ... Scored season-high 28 points in AASU's 78-68 win over North Florida on 2/19 ... Scored 23 points on 9-of-11 shooting in AASU's semifinal PBC tournament win over USC Aiken on 3/8.

AT SCOTTSDALE JC

Played for two seasons for Scottsdale CC ... Averaged 15.7 points, 6.8 rebounds, 5.8 steals and 4.7 assists per game as a sophomore for the Artichokes, earning first-team All-Region and All-Conference honors ... Averaged 9.7 points and 4.3 rebounds per game as a freshman.



HIGH SCHOOL

Played for two years for South Mountain HS in Phoenix, Ariz. ... Named 5A Metro Player of the Year in Phoenix for the Jaguars.

PERSONAL

Born Latasha Juanita Washington on May 17, 1980, in Munday, Texas ... Hometown is Phoenix, Ariz ... Daughter of Linda K. Hill and Frederick Washington ... Majoring in communications ... Enjoys hanging out with friends ... Michael Jordan and Dirk Nowitzki are favorite sports personalities.



Washington's Game Highs

Points:

28 vs. North Florida, 2/19/03

Rebounds:

9 vs. Columbus State, 2/22/03

Field Goal Percentage:

.818 (9-for-11) vs. USC Aiken, 3/8/03
(PBC Tournament Semifinals)

Steals:

6 vs. USC Spartanburg, 1/25/03

Assists:

5 at Lander, 1/4/03

Tasha Washington's Career Statistics

Year	GP-GS	MIN	FG-FGA	PCT	3PM-3PA	PCT	FTM-FTA	PCT	OR-DR-TR	RPG	TP	PPG	AST	TO	BS	ST
2002-2003	31-30	798	137-347	.395	49-127	.386	100-138	.725	49-85-134	4.3	423	13.6	68	108	4	79
1 Year	31-30	798	137-347	.395	49-127	.386	100-138	.725	49-85-134	4.3	423	13.6	68	108	4	79

Washington earned second-team All-PBC honors in 2002-03





#32 Vandy Noldon

Senior Forward

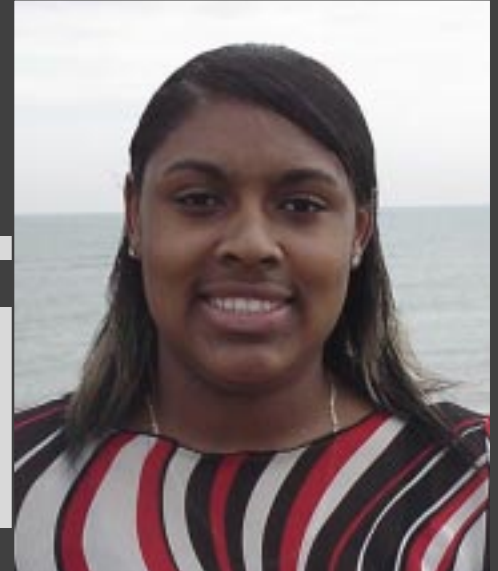
5-11 • Wasco, Calif. • Porterville CC

2002-03

Played in 29 games for the Lady Pirates as a junior ... Leading bench scorer, averaging 15.7 minutes, 5.9 points and 3.4 rebounds ... Second-most accurate three-point shooter in the PBC, hitting 29-of-74 treys (39.2%) ... Scored season-high 21 points on 7-of-12 shooting from the floor, including 5-of-7 three-pointers, in AASU's 82-73 win at Clayton State on 2/15 ... Scored 16 points on 7-of-10 shooting from the floor in AASU's 82-72 win at Lander on 1/4.

AT PORTERVILLE CC

Played for two seasons at Porterville College in Porterville, Calif. ... Averaged 17.8 points, 11.1 rebounds and 4.6 assists as a sophomore for the Pirates ... Earned first-team All-Central Valley Conference honors.



Noldon's Game Highs

Points:

21 at Clayton State, 2/15/03

Rebounds:

7, three times. Last at UNCP, 2/1/03

Three-Point FG:

5 at Clayton State, 2/15/03

Assists:

4 vs. Francis Marion, 1/2/03



HIGH SCHOOL

Played for four years at Wasco High School in Wasco, Calif. ... Earned All-League honors three times and All-Area honors twice, in her junior and senior seasons.

PERSONAL

Born Vaniesha Noldon on December 9, 1982, in Bakersfield, Calif.. ... Hometown is Wasco ... Daughter of Marla Roberts and Vincent Noldon ... Majoring in health science ... Would like to become a doctor after college ... Magic Johnson is a favorite sports personality..

Vandy Noldon's Career Statistics

Year	GP-GS	MIN	FG-FGA	PCT	3PM-3PA	PCT	FTM-FTA	PCT	OR-DR-TR	RPG	TP	PPG	AST	TO	BS	ST
2002-2003	27-0	454	62-142	.437	29-74	.392	18-24	.750	27-72-99	3.4	171	5.9	28	40	9	22
1 Year	27-0	454	62-142	.437	29-74	.392	18-24	.750	27-72-99	3.4	171	5.9	28	40	9	22



Noldon was the league's second-leading 3-point shooter in '02-'03

Senior Pam Mayes



#20 Pam Mayes Senior Forward

5-8 • Columbia, S.C. • Hutchinson CC

2002-03

Played in all 31 games, starting 30, as a junior for the Pirates ... Averaged 19.4 minutes, 4.9 points and 2.6 rebounds per game ... Hit 57-of-188 shots from the floor (30.3%) and 11-of-45 shots from three-point range (21.9%) ... Scored season-high 12 points in AASU's 72-53 win over Clayton State on 12/7 ... Dished out season-high five assists at Kennesaw State on 3/1 ... Scored at least two points in 30 of 31 contests.

AT HUTCHINSON CC

Averaged 12.7 points and 6.8 rebounds a game as a sophomore for the Lady Dragons ... Led the Jayhawk Conference and ranked third in the NJCAA in three-point field goal shooting (42-of-80, 52 percent).

HIGH SCHOOL

Played three seasons at Columbia High School in Columbia, S.C. ... Member of the two-time South Carolina state champions (1998 and 2000) ... Also a star volleyball player for the Capitals ... Earned "Best Hustle" award as a senior.



Mayes' Game Highs

Points:

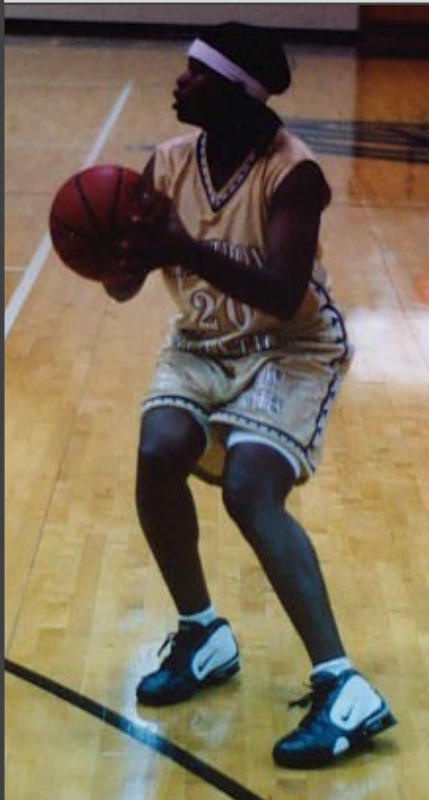
12 vs. Clayton State, 12/7/02

Rebounds:

6 at Lander, 1/4/03

Assists:

5 at Kennesaw State, 3/1/03



PERSONAL

Born Pamela Vanessa Mayes on February 16, 1981, in Columbia, S.C., her hometown ... Daughter of Alvin and Valyrie Mayes ... Majoring in pre-education ... Tina Thompson is a favorite sports personality.

Pam Mayes' Career Statistics

Year	GP-GS	MIN	FG-FGA	PCT	3PM-3PA	PCT	FTM-FTA	PCT	OR-DR-TR	RPG	TP	PPG	AST	TO	BS	ST
2002-2003	31-30	602	57-188	.303	11-45	.244	28-46	.609	39-42-81	2.6	153	4.9	30	33	4	20
1 Year	31-30	602	57-188	.303	11-45	.244	28-46	.609	39-42-81	2.6	153	4.9	30	33	4	20

Mayes scored at least two points in 30 of 31 contests in '02-'03





Juniors Briana Milam and Veronica Campbell

#23 Briana Milam

Junior Guard

5-8 • Wittmann, Ariz. • Yavapai College



2002-03

Redshirted the 2002-03 season for the Pirates.

AT YAVAPAI

Played for two seasons for the Rough Riders ... Named team MVP in 2000-2001 after averaging 14.6 points, 3.5 rebounds, 5.0 assists and 4.2 steals per game ... 97 steals in 2000-2001 ranks as the fifth-best single-season steal performance at Yavapai and she collected 169 career steals in her two-year career.

HIGH SCHOOL

Played for four seasons at Centennial High School in Peoria, Ariz. ... All-time leading scorer in Centennial HS history with 1,497 ... Averaged 22 points per game as a senior, earning All-Region honors ... Three-time team MVP and All-Region honoree for the Coyotes.

PERSONAL

Born Briana Milam on July 8, 1981, in Kansas City, Mo. ... Hometown is Wittmann, Ariz. ... Daughter of Paula and Lee Milam ... Majoring in sports medicine ... Enjoys skateboarding and playing pool ... Lists Michael Jordan and Kobe Bryant as favorite sports personalities.

#22 Veronica Campbell

Junior Forward/Center

6-0 • Sumner, Ill. • Olney Central College



AT OLNEY CENTRAL COLLEGE

Averaged 11.9 points and 6.1 rebounds per game as a sophomore at Olney Central ... NJCAA Academic All-America honoree, as well as a Great Rivers Athletic Conference All-Academic honoree for the Blue Knights.

HIGH SCHOOL

Played for four seasons at Red Hill HS in Sumner, Ill. ... Earned All-Conference honors and was the team MVP as a senior for the Salukis.

PERSONAL

Born Veronica Suzanne Campbell on April 2, 1983, in Vincennes, Ind. ... Hometown is Sumner. ... Daughter of Donald and Rebecca Campbell ... Majoring in biology education ... Enjoys baseball and riding horses ... Cousin, Elyssia Kitchen, played basketball at Kentucky Wesleyan ... Lists Tracy McGrady and Sheryl Swoopes as favorite sports personalities.

Junior Ramona Wright and sophomore Alicia Durham



#34 Ramona Wright

Junior Center

6-0 • Clyo, Ga. • Mercer University



AT MERCER

Played two seasons at Mercer University in Macon, Ga., averaging 4.3 points and 2.6 rebounds per game during her career ... Played in 25 of 29 games as a freshman in 2001-02, hitting 41-of-103 shots from the floor (39.8%) and 8-of-25 shots from the foul line (32.0%) ... Played in 26 of 27 games as a sophomore in 2002-03, starting six ... Hit 55-of-137 shots from the floor (40.1%) and 13-of-27 shots from the foul line (48.1%).

HIGH SCHOOL

Savannah Morning News Coastal Empire Player of the Year at Effingham County HS in 2000-2001 ... Naismith Tip-Off Club State 2AAA Player of the Year ... Averaged 18 points and 10 rebounds a game as a senior ... Also named the WTOC TV-11 Player of the Year for the Rebels.

PERSONAL

Born Ramona Lafaye Wright on October 25, 1982, in Savannah, Ga. ... Hometown is Clyo ... Daughter of Robert Jr. and Janice Wright ... Majoring in communications ... Enjoys collecting cds and spending time with friends ... Kobe Bryant and Lisa Leslie are favorite sports personalities.

#10 Alicia Durham

Sophomore Guard

5-6 • Macon, Ga. • Southwest HS



2002-03

Played in all 31 games, starting 30, for the Lady Pirates as a freshman ... Averaged 22.9 minutes, 3.9 points and 2.4 rebounds per game ... Hit 35-of-123 shots from the floor (28.5%) and 14-of-64 three-point shots (21.9%) ... Had an excellent 56-39 assist-turnover ratio and recorded 50 steals, third-best on squad ... Scored season-high 13 points at UNC Pembroke on 2/1 ... Scored 11 points at Columbus State on 1/18.

HIGH SCHOOL

Played for four years at Southwest High School in Macon, Ga. ... Earned All-City and All-Middle Georgia honors for the district champion Patriots ... Averaged 15 points, eight rebounds, three assists and five steals as a senior ... Named team MVP as a senior and also competed on the Patriot track and softball squads.

PERSONAL

Born Alicia Marie Durham on December 20, 1984, in Macon, Ga., her hometown ... Daughter of Eddie and Carolyn Durham ... Majoring in physical therapy ... Enjoys hanging out with friends and going to the movies ... Sheryl Swoopes and Vince Carter are favorite sports personalities.

Durham's Game Highs

Points:

13 at UNC Pembroke, 2/1/03

Rebounds:

6, twice. Last vs. UNF, 2/19/03

Steals:

5 at USC Spartanburg, 1/11/03

Alicia Durham's Career Statistics

Year	GP-GS	MIN	FG-FGA	PCT	3PM-3PA	PCT	FTM-FTA	PCT	OR-DR-TR	RPG	TP	PPG	AST	TO	BS	ST
2002-2003	31-30	710	35-123	.285	14-64	.219	36-56	.643	28-45-73	2.4	120	3.9	56	39	2	50
1 Year	31-30	710	35-123	.285	14-64	.219	36-56	.643	28-45-73	2.4	120	3.9	56	39	2	50

Durham had an excellent 1.43 assist/turnover ratio as a freshman





Sophomore Aiste Slenyte and freshman Sarah Brown

#25 Aiste Slenyte

Sophomore Forward

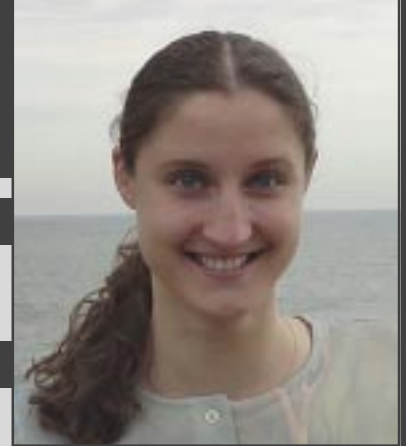
5-10 • Vilnius, Lithuania • Vilnius University

2002-03

Joined the Lady Pirates in January and saw action in five games as a freshman ... Played eight minutes and grabbed two rebounds and recorded one steal.

LITHUANIAN JUNIORS

Member of the Lithuanian Junior National Team ... Participated in Lithuanian Women's A Basketball League and was a gold and silver medalist.



PERSONAL

Born Aiste Slenyte on October 16, 1981, in Vilnius, Lithuania, her hometown ... Daughter of Grazina and Gintaras Sleniai ... Majoring in economics ... Enjoys swimming and traveling ... Lists Kobe Bryant as a favorite sports personality.

Aiste Slenyte's Career Statistics

Year	GP-GS	MIN	FG-FGA	PCT	3PM-3PA	PCT	FTM-FTA	PCT	OR-DR-TR	RPG	TP	PPG	AST	TO	BS	ST
2002-2003	5-0	8	0-2	.000	0-1	.000	0-0	.000	1-1-2	0.4	0	0.0	0	2	0	1
1 Year	5-0	8	0-2	.000	0-1	.000	0-0	.000	1-1-2	0.4	0	0.0	0	2	0	1

#24 Sarah Brown

Freshman Guard

5-4 • Richmond Hill, Ga. • Richmond Hill HS

HIGH SCHOOL

Played four seasons at Richmond Hill High School in Richmond Hill, Ga. ... Third-team *Savannah Morning News* All-Coastal Empire area selection as a senior ... Also earned first-team All-Region honors as well ... Two-time team MVP who scored 1,078 career points for the Wildcats.

PERSONAL

Born Sarah Beth Brown on September 27, 1984, in Huntington, W. Va. ... Hometown is Richmond Hill ... Daughter of Mike and Claudia Brown ... Majoring in physical therapy ... Enjoys playing softball and hanging out with friends ... Jason Kidd is a favorite sports personality.



Brown scored 1,078 career points at Richmond Hill HS

Freshmen Kaneetha Gordon and Meghan Jones



#33 Kaneetha Gordon

Freshman Forward

5-10 • Savannah, Ga. • Liberty County HS

HIGH SCHOOL

Played for four seasons at Liberty County HS in Hinesville, Ga. ... Averaged 20.2 points and 10.1 rebounds per game as a senior, leading Liberty County HS to the Georgia state playoffs for the third consecutive season ... First-team *Savannah Morning News* All-Coastal Empire selection as a senior ... Also earned All-Region honors as she led the region in scoring ... Two-time WTOC-TV 11 Player of the Week honoree.

PERSONAL

Born Kaneetha Arlese Gordon on April 8, 1985, in Hinesville, Ga. ... Daughter of Ray and Mahalia Gordon ... Majoring in economics ... Enjoys playing the keyboard and hanging out with friends ... Cousin of current USA Basketball player and L.A. Sparks standout Delisha Milton ... Also lists Lisa Leslie as a favorite sports personality.



#12 Meghan Jones

Freshman Guard

5-7 • Savannah, Ga. • Calvary Baptist HS

HIGH SCHOOL

Played for three years at Calvary Baptist HS ... Earned second-team *Savannah Morning News* All-Coastal Empire honors as a senior, averaging 18.4 points per game ... Third-team *Savannah Morning News* All-Coastal Empire selection as a junior in 2001-02, averaging 16.6 points and 7.4 rebounds per game ... Two-time All-State honorable mention.

PERSONAL

Born Meghan Lani Jones on September 10, 1985, in Savannah, Ga., her hometown ... Daughter of Glenn and Lynda Jones ... Majoring in nursing ... Enjoys playing all sports and shopping.



Kaneetha Gordon led the region in scoring as a HS senior





Armstrong Atlantic State University

Since its founding in 1935, Armstrong Atlantic State University has continued to develop to meet the Savannah community's educational needs. From its first location in Armstrong House in downtown Savannah to its current home on a scenic 250-acre lot off of Abercorn, the university has become one of the finest educational institutions in the South-eastern United States.

Armstrong Junior College was established by the Mayor of Savannah and other public officials in 1935. Housed in the beautiful and historic Armstrong House, a gift to the city from the family of George F. Armstrong, Armstrong Junior College grew over the years to occupy eight additional buildings in the Forsyth Park and Monterey Square areas.

In 1959, as Armstrong College of Savannah, it became a two-year unit of the University System.

The Board of Regents conferred four-year status on Armstrong in 1964 and the college moved to its present 250-acre location, a gift from Donald Livingston and the Mills B. Lane Foundation, in December of 1965. Additional buildings joined the eight original structures as Armstrong added professional and graduate programs and tripled in size.

In July of 1996, the Board of Regents voted to rename the college to Armstrong Atlantic State University to reflect its mission and identity. The university's reputation of excellence is still evident in its dedication to students, with a supportive environment.

Armstrong Atlantic State University was fully accredited as a senior institution by the Southern Association of Colleges and Schools in December, 1968, with accreditation retroactive to January 1, 1968, and was last reaccredited in December, 2001.

The university offers more than seventy-five academic programs and majors in its School of Arts and Sciences, School of Health Professions and School of Education.

The academic community includes approximately 6,000 students and more than 250 faculty members. Enrollment has more than doubled in the last 15 years, from 2,740 students in 1987 to its current number.

Across campus, evidence of the university's growth can be



found in its facilities. Recently completed buildings include the Fine Arts Center, with a 1,000 seat theatre/auditorium, the Health Professions Building and an academic computing center, along with 84,400 square foot University Hall, built to make room for a student population of 8,000. A 115,000 square foot, \$28 million dollar science building opened in 2002. This fall, the campus welcomes the second phase of Compass Point, an addition to the school's first dormitory buildings. Phase two provides an additional 300 beds to the already existing 275 beds from phase one and campus leaders are in talks for a planned phase three addition to Compass Point.

The athletic department of Armstrong Atlantic State University is housed in the Armstrong Sports Center, completed in 1995. The Sports Center includes offices for the physical education department, training room and weight room areas, basketball courts, indoor track and offices for coaches and athletic department personnel. The building played host to the Peach Belt Conference's basketball tournament in 1998 and 1999 and hosts several in-season tournaments each year.

AASU sponsors eight intercollegiate sports and is a charter member of the Peach Belt Conference, formed in 1991. The Pirates have not finished below fourth in the league's all-sports competition since joining the league and finished third in 2002-03, behind North Florida and Kennesaw State.

Continuing a mission begun in 1935, Armstrong Atlantic State University today serves a rich gamut of traditional and non-traditional students. Sixty percent of AASU's student body are from the Savannah-Chatham area, while others come from around the state, nation and world. All have come to Savannah to experience and thrive on the campus of one of the fastest developing higher learning institutions in the nation - to be a part of Armstrong Atlantic State University.



AASU first sponsored intercollegiate women's basketball in '76-'77



Dr. Thomas Z. Jones University President

Thomas Z. Jones, the sixth president to serve at Armstrong Atlantic State University, begins his third year at AASU. Hired on August 1, 2000, Jones was selected by the Board of Regents and University System of Georgia Chancellor Stephen R. Portch after an exhaustive national search.

Dr. Jones served on the faculty and administration at Columbus State University, as its vice president for academic affairs from 1988-2000, prior to coming to Armstrong Atlantic State. A 30-year veteran of university teaching and administration, Dr. Jones has taught at Indiana State University, Emory and Henry College and the West Virginia Institute of Technology. While at West Virginia Tech, Dr. Jones served as the Westmoreland Professor of Mining, an endowed professorship, and vice president of academic affairs.

Dr. Jones received his bachelor's degree in physics from Fairmont State College, his master of arts degree in geology from West Virginia University and his Ph.D in Geology from Miami (Ohio) University.

From 1980-1988, he owned and served as president of Technical Evaluation Consultants, Inc., a privately owned business specializing in providing science, technical and engineering services for business, industry, government agencies and the legal community.

Dr. Jones and his wife, Joyce, have two sons, Matthew and Michael.



Dr. Eddie Aenchbacher Athletic Director

Dr. Eddie Aenchbacher begins his eighth full year as the athletic director for Armstrong Atlantic State University.

Dr. Aenchbacher's responsibilities include overseeing the entire athletic department and promoting Armstrong Atlantic State athletics in the community of Savannah.

Dr. Aenchbacher received his bachelor's degree in physical education from Armstrong Atlantic State in 1979, where he was a standout student-athlete for the baseball team as a pitcher. He received his Master's degree and Doctorate of Education from the University of Georgia.

Along with his student-athlete experience at AASU, Dr. Aenchbacher also coached the Pirate cross country teams for five years and started the first AASU men's soccer team, which he coached for seven years.

During Dr. Aenchbacher's tenure as athletic director, AASU's athletic programs have had tremendous success in the classroom and on the playing field. Student-athletes at AASU have excelled in academics with 48 percent earning a 3.0 grade point average or better. The overall grade point average of AASU student-athletes is 2.87, higher than the overall institutional GPA. In 2002-03, the AASU athletic department sent seven of eight teams to the NCAA DII Championships, the best ratio in the nation. The Pirates also collected the third-most points per sport sponsored in the annual NACDA Director's Cup competition, which tracks the performance of Division II schools in all sports. AASU accumulated its most Director's Cup points ever (297) and averaged 37.1 points per sport, behind only Grand Valley State (MI) and BYU-Hawaii.

Dr. Aenchbacher has been married for 12 years to Michele and together they are the proud parents of two children, Jesse and Lainey.





Dr. Donald Anderson *Asst. Athletic Director / Services*



Dr. Anderson's association with AASU since 1966 includes stints as an Associate Professor, Acting Head of the Department of Education, Dean for Community Services and Registrar/Director of Admissions. Dr. Anderson joined the Athletic Department in 1992 and currently assists the AD with athletic eligibility and serves as academic advisor to AASU student-athletes. He was inducted to the AASU Athletic Hall of Fame as a Citation Award winner in 1996.

Dr. Will Lynch *Faculty Athletic Representative*



Dr. Will Lynch begins his sixth full year as AASU's Faculty Athletic Representative. A native of northern Michigan, Dr. Lynch came to AASU in 1993 and serves as an assistant professor in the Department of Chemistry and Physics. A three-year men's basketball starter and all-conference performer at Kalamazoo College, he earned undergraduate degrees in mathematics and chemistry in 1986, then received his Doctorate from Wayne State in 1991.

Marty McDaniel *Head Softball Coach*



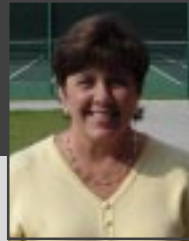
Marty McDaniel is in his seventh season as AASU's head softball coach. In six years, McDaniel's teams have compiled a 234-73 mark and earned three NCAA Championships berths in 2000, 2002 and 2003. McDaniel joined the AASU coaching ranks from UT-Chattanooga, where he served as an assistant coach to U.S. Olympic assistant Ralph Weekly for three seasons. McDaniel received his Bachelor's of Science degree from Carson Newman in 1989.

Chad Jackson *Director of Sports Communications*



Chad Jackson begins his fifth year at AASU as Director of Sports Communications. A Jacksonville, Fla., native, Jackson joined the Pirates from UNC Wilmington, where he served as assistant SID for the 1998-99 year. He graduated from the University of North Florida in 1995 with a Bachelor's Degree in history. His wife of three years, Melissa, also works at AASU at the Lane Library and the couple reside in Pooler.

Lynn Roberts *Senior Women's Administrator*



Lynn Roberts begins her fourth year as the Senior Women's Administrator for the AASU athletic department. A former women's tennis coach from 1988-1991 for the Pirates, she currently serves as an assistant professor in the Department of Health and Physical Education and also serves as the chair of AASU's Student Athlete Advisory Committee. She is married to current AASU baseball coach Joe Roberts and together the couple have two sons, Brian and Eric.

Simon Earnshaw *Head Tennis Coach*



Simon Earnshaw begins his fifth season as the head coach of the highly successful men's and women's tennis programs. A talented player, Earnshaw competed collegiately at GC&SU and helped the Bobcats to four Top 10 seasons. Earnshaw earned his Bachelor's of Science degree in chemistry and Master's of Education in health and physical education from Georgia College & State. He and his wife, Nicki, have two daughters - Abigail and Ella- and a son, Luke.

Dianne Lane *Athletic Secretary*



A native Savannahian, Dianne Lane has been at AASU for the past sixteen years. Lane attended the University of Georgia and has been married to Ken Lane for 37 years. She has three children and five grandchildren, including two sets of twins - Tyler and Evan, and Parker and Dylan.

Joe Roberts *Head Baseball Coach*



Joe Roberts begins his 25th season as head baseball coach. Compiling an overall record of 971-442 (.687) in 23 seasons, Roberts became the NCAA's youngest coach to reach 900 wins in 2001. A graduate of St. Andrews College, Roberts has led the Pirates to NCAA Division II regional play 10 times, three trips to the DII College World Series and 24 consecutive winning seasons.

Alan Segal *Head Volleyball Coach*



Alan Segal begins his fifth season as head volleyball coach after leading AASU to the PBC Tournament Title in 2002 and three consecutive NCAA postseason appearances, the first berths in school history. A graduate of Cal-State Sacramento, Segal is active in officiating as well, serving as one of the AVP's top-rated officials over the past 10 years.

Mylene Ray *Head Athletic Trainer*



Mylene Ray begins her third season as the head athletic trainer for AASU. A former AASU student-athlete, Benito played for the Pirate volleyball squad from 1992 to 1996 and earned her bachelor's of science degree in health and physical education in 1998. She married AASU assistant basketball coach Steve Ray in the summer of 2003 and the couple reside in Savannah.

Jeff Burkhamer *Head Men's Basketball Coach*



Jeff Burkhamer begins his second season as head coach of the AASU men's basketball squad after leading the Pirates back from a 1-7 start to a 14-14 overall record and a 12-7 record in the Peach Belt. Burkhamer joined the Pirates from Marshall University, where he served as associate head coach for the last three seasons, and is a former junior college Coach of the Year while at Santa Fe CC in Gainesville, Fla.

Michael Butler *Head Men's Golf Coach*



Michael Butler begins his fourth year as head men's golf coach, leading the Pirates to two straight NCAA Championships appearances in 2002 and 2003. A former junior college All-America, Butler also runs the Southbridge Golf Academy at Southbridge Golf Club. A native of Savannah, Butler was named the 2001 Georgia PGA East Chapter Teacher of the Year.

Alumni Arena @ Armstrong Sports Center



The Armstrong Atlantic State University's athletic department prides itself on having one of the finest athletic facilities not only in the conference, but in the region as well.

AASU's Sports Center, completed in July of 1995, immediately became a top basketball complex by hosting the 1998 and 1999 Peach Belt Conference basketball tournaments.

This 82,000 square foot multi-purpose building provides expanded academic offerings in spacious, modern surroundings. Students have a three-station computer lab, a 1,965 square foot weight training/fitness center with 21 Cybex machine exercise stations and a free weight area; four new classrooms, and two 3,535 square foot activity areas.

AASU's athletic teams play home events in a 4,000 seat arena that contains theatre-type seating for all spectators, and also plays host to a wide variety of social and sporting events.



Lady Pirates @ Alumni Arena

Year	Record
1995-96	5-8
1996-97	8-5
1997-98	6-6
1998-99	9-6
1999-2000	6-6
2000-01	7-8
2001-02	7-6
2002-03	13-0
8 Years	61-45

Armstrong Sports Center Events

- 1998 & 1999 Peach Belt Conference Basketball Championships
- Georgia Special Olympics
- Georgia High School Basketball Regional Tournament
- Atlanta Hawks training camp
- Chamber of Commerce South Side Socials
- 5A Region Championships (Featuring 2001 No. 1 NBA pick Kwame Brown)
- 2003 AASU/Chatham Orthopaedic Tip Off Classic

Alumni Arena Women's Basketball Highs

Individual

Most Points: 43

Demetria McClouden vs. Florida Tech, 12/3/98

Most Rebounds: 18

Demetria McClouden vs. Savannah St., 12/5/98

Most Points by Opposing Player: 38

Joanna Cuprys (KSU), 1/4/97

Most Rebounds by Opposing Player: 17

Tisha London (UNCP), 1/28/98

Team

Most Points: 103

AASU vs. USC Aiken, 2/13/99

Most Points, Both Teams, Overtime: 200

Augusta St. (102) vs. Clayton St. (98), 2/19/99

Most Points, Both Teams, Regulation: 164

AASU (103) vs. USC Aiken (61), 2/13/99

Largest Victory Margin: 49

Francis Marion (92) vs. Clayton State (43), 2/24/98

Largest Victory Margin, AASU: 44

AASU (85) vs. Spelman (41), 1/8/03



AASU enters the 2003-04 season with a 15-game home win streak





AASU Athletic Training

AASU athletic teams benefit from the fine athletic training staff, headed by medical director Dr. Spencer Wheeler and head athletic trainer Mylene Ray.

AASU's training room, part of the Armstrong Sports Center, sits adjacent to the fitness center and across the hall from the Pirate locker rooms. The room offers the most modern and advanced equipment to help players deal with injuries and rehabilitation.



Training Center Administration



Dr. Spencer Wheeler
Team Physician

Dr. Spencer Wheeler is the medical director and team physician for Armstrong Atlantic's athletic teams. Dr. Wheeler completed his medical school training at the Medical College of Georgia in 1985, and his orthopaedic training at the University of Florida. Wheeler served two sports medicine fellowships; one at Johns Hopkins Institute and one in Sydney, Australia. Dr. Wheeler served as the head of athletic care in Atlanta for the 1996 Summer Olympics.



Mylene Ray, ATC
Head Athletic Trainer

Mylene Ray begins her third season as the head athletic trainer for AASU. A member of the National Athletic Trainers Association (N.A.T.A.), Ray's responsibilities include the rehabilitation and prevention of injuries to AASU athletes, and assigning athletic training coverage for all practices and games of the Pirates eight intercollegiate athletic teams.

A former AASU student-athlete, Ray played for the Pirate volleyball squad in 1992 and from 1994-1997 and earned her bachelor's of science degree in health and physical education in 1998. From Georgetown, Ontario, Mylene worked as a student and graduate assistant trainer in AASU's athletic training room from 1996-2000 and earned her master's degree in health science in 2000.

Training Room Staff



*Kerrie Evans, ATC
Graduate Assistant*



*Stacey Foust, ATC
Graduate Assistant*



*Luke Hensel, ATC
Graduate Assistant*



AASU had win streaks of nine and 14 games last season

2003-04 Opponents - Peach Belt Conference



Augusta State

Saturday, January 10, 2004 5:30 p.m.
George A. Christenberry Fieldhouse, Augusta, Ga.

Location: Augusta, GA
Enrollment: 6,096
Colors: Royal Blue and White
Conference: Peach Belt
President: Dr. William A. Bloodworth
Athletic Director: Clint Bryant
Home Court (capacity):
George A. Christenberry Fieldhouse (2,216)
2002-2003 Record: 19-10
2002-2003 PBC Record: 13-6 (1st - North)
Letterwinners Returning/Lost: 4/7
Head Coach: Greg Wilson
Career Record: 101-64
Record at ASU: 51-17, 4 years
Coach's Office Phone: (706) 731-7915
Assistant Coaches:
JoAnne Hassel, Kaye Waldrep
SID: Joey Warren
SID Phone: (706) 731-7925
SID FAX: (706) 737-1782
Web Address: www.aug.edu
Series Record: Series Tied, 20-20
Last Meeting: AASU 86-53 (2/5/03)

Clayton State

Wednesday, January 14, 2004 5:30 p.m.
Alumni Arena @ Armstrong Sports Center

Wednesday, January 28 5:30 p.m.
CC&SU Athletic Center, Morrow, Ga.

Location: Morrow, GA
Enrollment: 6,000
Colors: Blue and Orange
Conference: Peach Belt
President: Dr. Thomas K. Harden
Athletic Director: Mason Barfield
Home Court (capacity):
Athletic Center (2,000)
2002-2003 Record: 16-11
2002-2003 PBC Record: 10-9 (4th - South)
Letterwinners Returning/Lost: 6/6
Head Coach: A.C. McCullers
Career Record: 43-64
Record at CC&SU: 43-64, 4 years
Coach's Office Phone: (770) 961-3669
Assistant Coaches:
Greg Shook, Doug Crane
SID: Gid Rowell
SID Phone: (770) 960-4319
SID FAX: (770) 960-5127
Web Address: www.athletics.clayton.edu
Series Record: CCSU leads 8-7
Last Meeting: AASU 82-73 (2/15/03)

Columbus State

Saturday, February 14, 2004 1:00 p.m.
Frank G. Lumpkin Jr. Center, Columbus, Ga.

Saturday, February 28, 2004 2:00 p.m.
Alumni Arena @ Armstrong Sports Center

Location: Columbus, GA
Enrollment: 6,500
Colors: Red, White and Blue
Conference: Peach Belt
President: Dr. Frank D. Brown
Athletic Director: Herbert Greene
Home Court (capacity):
Frank G. Lumpkin Jr. Center (4,500)
2002-2003 Record: 28-4
2002-2003 PBC Record: 17-2 (1st - South)
Letterwinners Returning/Lost: 7/5
Head Coach: Jay Sparks
Career Record: 263-151
Record at CSU: 263-151, 14 years
Coach's Office Phone: (706) 565-3669
Assistant Coaches:
Nikki Davis, Candace Turner
SID: Mike Peacock
SID Phone: (706) 569-3434
SID FAX: (706) 569-3435
Web Address: athletics.colstate.edu
Series Record: CSU leads 21-11
Last Meeting: AASU 56-55 (3/9/03)

Francis Marion

Saturday, January 17, 2004 5:30 p.m.
Alumni Arena @ Armstrong Sports Center

Location: Florence, SC
Enrollment: 3,684
Colors: Red, White and Blue
Conference: Peach Belt
President: Dr. Fred Carter
Athletic Director: Murray Hartzler
Home Court (capacity):
Smith University Center (3,027)
2002-2003 Record: 12-18
2002-2003 PBC Record: 5-14 (5th - North)
Letterwinners Returning/Lost: 9/4
Head Coach: Valecia Tedder
Career Record: 12-18
Record at FMU: 12-18, 1 year
Coach's Office Phone: (803) 661-1249
Assistant Coach:
Janna Magette
SID: Michael G. Hawkins
SID Phone: (803) 661-1222
SID FAX: (803) 661-1219
Web Address: www.fmarion.edu
Series Record: FMU leads 12-9
Last Meeting: FMU 62-61 (1/22/03)

GC&SU

Wednesday, January 7, 2004 5:30 p.m.
Centennial Center, Milledgeville, Ga.

Wednesday, February 18, 2004 5:30 p.m.
Alumni Arena @ Armstrong Sports Center

Location: Milledgeville, GA
Enrollment: 5,500
Colors: Hunter Green and Navy Blue
Conference: Peach Belt
Interim President: David G. Brown
Athletic Director: Dr. J. Stanley Aldridge
Home Court (capacity):
Centennial Center (4,071)
2002-2003 Record: 13-16
2002-2003 PBC Record: 6-13 (6th - South)
Letterwinners Returning/Lost: 9/3
Head Coach: John Carriek
Career Record: 340-230
Record at GC&SU: 340-230, 20 years
Coach's Office Phone: (478) 445-1788
Assistant Coach:
Jonathon Babaree
SID: Brad Muller
SID Phone: (478) 445-1779
SID FAX: (478) 445-1790
Web Address: www.gcsu.edu
Series Record: GC&SU leads 36-17
Last Meeting: AASU 76-53 (2/26/03)

Kennesaw State

Wednesday, January 21, 2004 5:30 p.m.
Spec Landrum Centre, Kennesaw, Ga.

Wednesday, February 4, 2004 5:30 p.m.
Alumni Arena @ Armstrong Sports Center

Location: Kennesaw, GA
Enrollment: 13,700
Colors: Black and Gold
Conference: Peach Belt
President: Dr. Betty L. Siegel
Athletic Director: Dr. Dave Waples
Home Court (capacity):
Spec Landrum Centre (1,008)
2002-2003 Record: 16-13
2002-2003 PBC Record: 9-10 (5th - South)
Letterwinners Returning/Lost: 7/6
Head Coach: Colby Tilley
Career Record: 622-184
Record at KSU: 170-64, 8 years
Coach's Office Phone: (770) 423-6413
Assistant Coaches:
Paula Skinner, Sarah Coleman
SID: Mark Toma
SID Phone: (770) 499-3217
SID FAX: (770) 423-6665
Web Address: www.ksuowls.com
Series Record: KSU leads 16-13
Last Meeting: AASU 65-60 (3/6/03)

AASU has beaten Columbus State three of the last four years at home





2003-04 Opponents - Peach Belt Conference

Lander

Saturday, January 24, 2004 4:00 p.m.
Alumni Arena @ Armstrong Sports Center

Location: Greenwood, SC
Enrollment: 2,900
Colors: Royal Blue and Gold
Conference: Peach Belt
President: Dr. Daniel W. Ball
Athletic Director: Dr. Jeff May
Home Court (capacity):
Finis Horne Arena (2,500)
2002-2003 Record: 12-15
2002-2003 PBC Record: 6-12 (4th - North)
Letterwinners Returning/Lost: 3/8
Head Coach: Jonathan Norton
Career Record: 12-15
Record at LU: 12-15, 1 year
Coach's Office Phone: (864) 388-8257
Assistant Coach:
Toni Leopard
SID: Bob Stoner
SID Phone: (864) 388-8962
SID FAX: (864) 388-8889
Web Address: www.lander.edu
Series Record: AASU leads 18-3
Last Meeting: AASU 82-72 (1/4/03)

North Florida

Wednesday, February 11, 2004 5:30 p.m.
UNF Arena, Jacksonville, Fla.

Wednesday, February 25, 2004 5:30 p.m.
Alumni Arena @ Armstrong Sports Center
Location: Jacksonville, FL
Enrollment: 13,700
Colors: Navy Blue and Gray
Conference: Peach Belt
President: John Delaney
Athletic Director: Dr. Richard Gropper
Home Court (capacity):
UNF Arena (5,800)
2002-2003 Record: 20-12
2002-2003 PBC Record: 12-7 (3rd - South)
Letterwinners Returning/Lost: 7/5
Head Coach: Mary Tappmeyer
Career Record: 395-342
Record at UNF: 170-139, 11 years
Coach's Office Phone: (904) 620-4667
Assistant Coach:
Nancy Miller
SID: Shawn Lafata
SID Phone: (904) 620-4027
SID FAX: (904) 620-2836
Web Address: www.unf.edu
Series Record: UNF leads 10-5
Last Meeting: UNF 65-64 (3/14/03)

UNC Pembroke

Saturday, January 31, 2004 5:30 p.m.
Jones Athletic Complex, Pembroke, N.C.

Location: Pembroke, NC
Enrollment: 3,100
Colors: Black and Gold
Conference: Peach Belt
Chancellor: Dr. Allen C. Meadors
Athletic Director: Dr. Dan Kenney
Home Court (capacity):
Jones Athletic Complex (3,000)
2002-2003 Record: 8-19
2002-2003 PBC Record: 3-16 (6th - North)
Letterwinners Returning/Lost: 7/8
Head Coach: Sandi Mitchell
Career Record: 51-56
Record at UNCP: 51-56, 5 years
Coach's Office Phone: (910) 521-6348
Assistant Coach:
Temekia Moses
SID: Rikki Cockrell
SID Phone: (910) 521-6371
SID FAX: (910) 521-6551
Web Address: www.uncp.edu
Series Record: AASU leads 14-6
Last Meeting: AASU 88-63 (2/1/03)

USC Aiken

Saturday, February 7, 2004 4:00 p.m.
Alumni Arena @ Armstrong Sports Center

Location: Aiken, SC
Enrollment: 3,390
Colors: Cardinal, Navy and White
Conference: Peach Belt
Chancellor: Dr. Thomas Hallman
Athletic Director: Randy Warrick
Home Court (capacity):
The Courthouse (2,500)
2002-2003 Record: 19-13
2002-2003 PBC Record: 9-10 (2nd - North)
Letterwinners Returning/Lost: 5/7
Head Coach: Mike Brandt
Career Record: 19-13
Record at USCA: 19-13, 1 year
Coach's Office Phone: (803) 641-3491
Assistant Coach:
Dana Richter
SID: Brad Fields
SID Phone: (803) 641-3252
SID FAX: (803) 641-3759
Web Address: www.usca.edu
Series Record: Series Tied, 13-13
Last Meeting: AASU 69-63 (3/8/03)

USC Spartanburg

Saturday, February 21, 2004 2:00 p.m.
G.B. Hodge Center, Spartanburg, S.C.

Location: Spartanburg, SC
Enrollment: 3,700
Colors: Green, Black and White
Conference: Peach Belt
Chancellor: Dr. John C. Stockwell
Athletic Director: Mike Hall
Home Court (capacity):
G.B. Hodge Center (1,535)
2002-2003 Record: 13-15
2002-2003 PBC Record: 7-12 (3rd - North)
Letterwinners Returning/Lost: 13/3
Head Coach: Laura Timmons
Career Record: 63-71
Record at USCS: 13-15, 1 year
Coach's Office Phone: (864) 503-5173
Assistant Coaches:
Nikki Blassingame, Kristy Ray
SID: Bill English
SID Phone: (864) 503-5129
SID FAX: (864) 503-5127
Web Address: www.uscs.edu
Series Record: USCS leads 15-11
Last Meeting: AASU 78-46 (1/25/03)

Barry University Holiday Classic

Tournament Pairings

Monday, Dec. 29, 2003

AASU vs. Nova Southeastern, 4:00 p.m.
Barry vs. Valdosta St., 6:00 p.m.

Tuesday, Dec. 30, 2003

Valdosta St. vs. Nova Southeastern, 4:00 p.m.
AASU vs. Barry, 6:00 p.m.

Nova Southeastern

Location: Ft. Lauderdale, Fla.
Nickname: Knights
Head Coach: Marilyn Rule-Heinrich
2002-2003 Record: 12-15
Series Record: AASU leads 1-0

Barry

Location: Miami Shores, Fla.
Nickname: Bucs
Head Coach: Russ Gregg
2002-2003 Record: 9-19
Series Record: Series Tied, 1-1



AASU meets four teams for the first time ever in 2002-03

2003-04 Opponents - Non-Conference



Mars Hill

Thursday, December 18, 2003 7:00 p.m.
Stanford Arena, Mars Hill, N.C.

Location: Mars Hill, N.C.
Enrollment: 1,100
Colors: Royal Blue and Gold
Conference: South Atlantic
President: Dr. Dan Lunsford
Athletic Director: David Riggins
Home Court (capacity):
Stanford Arena (2,800)
2002-2003 Record: 15-14
2002-2003 SAC Record: 7-7 (t3rd)
Letterwinners Returning/Lost: 6/8
Head Coach: Mandy Mattox
Career Record: 41-19
Record at MHC: 41-19, 2 years
Coach's Office Phone: (828) 689-1229
Assistant Coaches:
Kiya Griffin
SID: Rick Baker
SID Phone: (828) 689-1373
SID FAX: (828) 689-1440
Web Address: sports.mhc.edu
Series Record: Mars Hill leads 1-0
Last Meeting: MHC 81-56 (12/18/94)

Presbyterian

Saturday, December 6, 2003 2:00 p.m.
Alumni Arena @ Armstrong Sports Center

Location: Clinton, S.C.
Enrollment: 1,200
Colors: Garnet and Blue
Conference: South Atlantic
President: Dr. John V. Griffith
Athletic Director: Dr. William B. Carlton
Home Court (capacity):
Ross E. Templeton Arena (2,500)
2002-2003 Record: 12-15
2002-2003 SAC Record: 7-7 (t3rd)
Letterwinners Returning/Lost: 7/4
Head Coach: Leigh Irwin
Career Record: 12-15
Record at PC: 12-15, 1 year
Coach's Office Phone: (864) 833-8248
Assistant Coaches:
Stephanie Butler, Michelle Carlon
SID: Al Ansley
SID Phone: (864) 833-8252
SID FAX: (864) 833-8323
Web Address: www.presby.edu
Series Record: Presbyterian leads 3-1
Last Meeting: PC 61-51 (11/20/99)

Rollins

Wednesday, December 3, 2003 7:00 p.m.
Alumni Arena @ Armstrong Sports Center

Location: Winter Park, FL
Enrollment: 1,730
Colors: Royal Blue and Gold
Conference: Sunshine State
President: Dr. Rita Bornstein
Athletic Director: Dr. J. Phillip Roach
Home Court (capacity):
Rollins Athletic Complex (5,000)
2002-2003 Record: 22-9
2002-2003 SSC Record: 9-5 (3rd)
Letterwinners Returning/Lost: 12/2
Head Coach: Glen Wilkes, Jr.
Career Record: 368-125
Record at RC: 368-125, 17 years
Coach's Office Phone: (407) 646-2476
Assistant Coaches:
Tami Stark, Eddie Cole, Jessica Walker
SID: Dean Hybl
SID Phone: (407) 646-2661
SID FAX: (407) 646-1555
Web Address: www.rollins.edu
Series Record: Series Tied, 4-4
Last Meeting: AASU 65-54 (12/4/02)

Shaw

Friday, January 2, 2004 7:00 p.m.
Alumni Arena @ Armstrong Sports Center

Location: Raleigh, N.C.
Enrollment: 2,500
Colors: Maroon and White
Conference: CIIAA
President: Dr. Clarence Newsome
Athletic Director: Alfonza L. Carter
Home Court (capacity):
C.C. Spaulding Gym (900)
2002-2003 Record: 31-3
2002-2003 CIIAA Record: 15-1 (1st - East)
Letterwinners Returning/Lost: 6/5
Head Coach: Jacques Curtis
Career Record: 52-37
Record at Shaw: 52-37, 3 years
Coach's Office Phone: (919) 546-8597
Assistant Coach:
Dolmesha Stallings, James Hill
SID: Donal Ware
SID Phone: (919) 546-8279
SID FAX: (919) 546-8299
Web Address: www.shawbears.com
Series Record: Shaw leads 1-0
Last Meeting: Shaw 64-43 (12/17/02)

Tusculum

Thursday, December 16, 2003 5:00 p.m.
Alpine Arena, Greeneville, Tenn.

Location: Greeneville, Tenn.
Enrollment: 1,800
Colors: Orange and Black
Conference: South Atlantic
President: Dr. Dolphus Henry
Athletic Director: Ed Hoffmeyer
Home Court (capacity):
Alpine Arena (2,000)
2002-2003 Record: 15-13
2002-2003 SAC Record: 7-7 (t3rd)
Letterwinners Returning/Lost: 8/4
Head Coach: Suzanne McBride
Career Record: 106-185
Record at TC: 32-49, 3 years
Coach's Office Phone: (423) 636-7329
Assistant Coach:
Nikki Sullivan
SID: Dom Donnelly
SID Phone: (423) 636-7326
SID FAX: (423) 636-7370
Web Address: www.tusculum.edu
Series Record: First Meeting

Valdosta State

Saturday, November 29, 2003 7:00 p.m.
The Complex, Valdosta, Ga.

Location: Valdosta, Ga.
Enrollment: 9,250
Colors: Red and Black
Conference: Gulf South
President: Dr. Ronald M. Zaccari
Athletic Director: Herb Reinhard
Home Court (capacity):
The Complex (5,350)
2002-2003 Record: 15-12
2002-2003 GSC Record: 10-6 (4th - East)
Letterwinners Returning/Lost: 10/3
Head Coach: Kiley Hill
Career Record: 55-51
Record at VSU: 40-40, 3 years
Coach's Office Phone: (229) 333-5892
Assistant Coaches:
Jennifer Head, Tracy Henry, Deanna Earl
SID: Steve Roberts
SID Phone: (229) 333-5903
SID FAX: (229) 333-5972
Web Address: www.valdosta.edu
Series Record: VSU leads 6-2
Last Meeting: AASU 69-45 (12/30/02)

AASU plays three region foes from the SAC in 2003-04





2003 Chatham Orthopaedics Tip-Off Classic



AASU/Chatham Orthopaedic Women's Basketball Tip-Off Classic

**Friday, Nov. 21 and
Saturday, Nov. 22**

**Alumni Arena at
Armstrong Sports Center**

*Special thanks to the Chatham
Orthopaedic Associates for spon-
soring this exciting women's bas-
ketball tournament !*



Charleston

Location: Charleston, W. Va.
Enrollment: 1,200
Colors: Maroon and Old Gold
Conference: WVIAC
President: Dr. Edwin Welch
Athletic Director: Tom Nozica
Home Court (capacity):
Eddie King Gymnasium (2,080)
2002-2003 Record: 20-10
2002-2003 WVIAC Record: 14-4 (t2nd)
Letterwinners Returning/Lost: 10/6
Head Coach: Sherry M. Winn
Career Record: 236-160
Record at Charleston: 31-26, 2 years
Coach's Office Phone: (304) 357-4821
Assistant Coach:
Lynne Fitzgerald
SID: Drew Meighen
SID Phone: (304) 357-4820
SID FAX: (304) 357-4989
Web Address: www.ucwv.edu
Series Record: First Meeting

Fayetteville State

Location: Fayetteville, N.C.
Enrollment: 5,307
Colors: Royal Blue and Lily White
Conference: CIAA
Chancellor: Dr. T. J. Bryan
Athletic Director: William Carver, Jr.
Home Court (capacity):
J. Capel PE & Recreation Complex (1,500)
2002-2003 Record: 22-8
2002-2003 CIAA Record: 16-2 (1st - West)
Letterwinners Returning/Lost: 11/4
Head Coach: Eric Tucker
Career Record: 203-103
Record at FSU: 203-103, 11 years
Coach's Office Phone: (910) 672-1961
Assistant Coaches:
Mike Rich, Doris Moncrief, Byron Powell
SID: Marion Crowe, Jr.
SID Phone: (910) 672-1349
SID FAX: (910) 672-1241
Web Address: www.uncfsu.edu
Series Record: FSU leads 2-0
Last Meeting: FSU 91-76 (11/16/01)

Pairings

Friday, November 21

Fayetteville State vs. UNC Pembroke, 5:00 p.m.
AASU vs. Charleston (W. Va.), 7:00 p.m.

Saturday, November 22

Charleston (W. Va.) vs. UNC Pembroke, 2:00 p.m.
AASU vs. Fayetteville State, 4:00 p.m.

About The Field: AASU hosts a pair of 20-game winners in Charleston (W. Va.) and Fayetteville State ... UNC Pembroke will also face both of these schools ... Fayetteville State played in the 2001 Tip-Off Classic and lost to Presbyterian in the championship game ... This is Charleston's first visit to Savannah to play the Lady Pirates ... UNC Pembroke went 8-19 last season and is picked to finish 8th in the Peach Belt this year.



Chatham Orthopaedics has sponsored AASU's tournament since '99



**Bring This Ad
In For A
Buy One, Get One
FREE ENTREE !!**



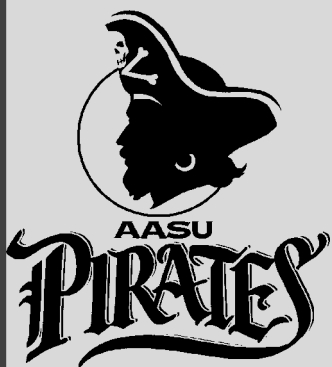
Abercorn at I-95 (Exit 94)

961-0424

6 am to 10 pm Daily

Meetings • Banquets • Parties • Catering

**Armstrong Atlantic State University
Continues Webcasting For 2003-2004**



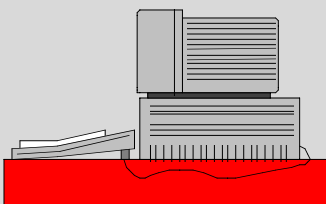
The Armstrong Atlantic State athletic department will continue to bring home all of the exciting basketball action in 2003-2004 right to your computer as the Pirates will stream live audio and video of all 14 home games over the internet.

Fans will be able to catch all of the action from the official website of Armstrong Atlantic State University Athletics, www.athletics.armstrong.edu, by using the power of Windows Media Player.

Also, Pirate fans will be able to keep up with all of the in-game statistics during the games as well from the Pirates' website.

AASU debuts its internet broadcasting system in 2001-2002 with incredible success as every home men's and women's basketball games, plus the majority of the Pirates' baseball and softball games were available last season.

For more information about the AASU web broadcast, visit the AASU Athletics Web Site or contact Director of Sports Communications Chad Jackson at jacksoc@mail.armstrong.edu



AASU broadcasts all home games live on the internet





AASU Women's Basketball Media Services

The Office of Sports Communications at Armstrong Atlantic State University thank you for your interest in AASU women's basketball. Should you need any further assistance in covering the Pirates during the 2003-2004 season, please do not hesitate to contact us:

Office of Sports Communications
Armstrong Atlantic State University
Chad Jackson, Director
11935 Abercorn Street
Savannah, GA 31419
Phone: (912) 961-3255
Fax: (912) 921-5571
email: jacksoch@mail.armstrong.edu

Thanks again for your coverage of the Pirates throughout the season.

Chad Jackson
Director of Sports Communications

Media Credentials

Media credentials for photo and press are not needed, however seating on press row is limited. Requests for press row seating must be made in advance to Director of Sports Communications Chad Jackson via fax, email or phone at least two (2) days prior to each contest.

Radio Broadcasts

Opposing teams wishing to broadcast from Alumni Arena at the Armstrong Sports Center are welcome, however lines are limited. If you are planning on broadcasting an upcoming game, please contact Chad Jackson at least two (2) days prior to your contest.

Pre-Game Interviews

Requests for interviews with Armstrong Atlantic State players and coaches should be directed to Director of Sports Communications Chad Jackson. Arrangements will be made for players to call media members if a phone interview is requested - it is the AASU Athletic Department policy not to publicize student-athlete's home phone numbers.

Game Services

The Office of Sports Communications staff will furnish media representatives with game programs, pregame notes and statistics, in addition to halftime and final game statistics and play-by-play.



Press Area

The designated press area for Alumni Arena at the Armstrong Sports Center are on either side of the court. Seats are marked prior to each game and we ask that members of the media adhere to seating arrangements during the contest. Photo areas are at the baseline of either basket, but not directly behind the basket. The balconies above each

basket are also accessible for photographers - an elevator is located at the southeast corner of the Arena.

Two press row phone lines are available for media members wishing to file from courtside. The numbers are (912) 921-5572 and (912) 921-5473. One phone will be provided on the officials' side of the court for each contest.

Post-Game Interviews

The Armstrong Atlantic State women's basketball locker rooms are closed to the media. Head coach Roger Hodge and requested players will be brought out for postgame interviews following a 10-minute cooling off period.

AASU Local Media Coverage

Print:

Savannah Morning News
Beat Writer: Jim Thomas
Phone: (912) 652-0350
Fax: (912) 234-6522

Broadcast:

WSAV-TV 3 (NBC)
Sports Director: Dave Williams
Phone: (912) 651-0300
WTOG-TV 11 (CBS)
Sports Director: Rick Snow
Phone: (912) 234-1111
WJCL-TV 22 (ABC) / WTGS-TV 28 (Fox)
Sports Director: Brady Pocsik
Phone: (912) 921-2222



The Lady Pirates defeated four ranked opponents in 2002-03

2002-03 Season Review



To call the Lady Pirates' 2003-04 season merely a successful one would be an understatement.

AASU easily experienced the best women's basketball season in the 26-year history of the program last year, accomplishing several firsts for the program and laying the groundwork for continued success at a high level, both within the Peach Belt Conference and on a national stage.

The Lady Pirates opened the season with 13 wins in their first 14 contests, including wins over nationally-ranked Rollins College, USC Aiken and Fort Valley State. After a two-game slide, AASU reeled off a school-record 14-game winning streak that culminated with AASU's first-ever Peach Belt Conference tournament title and first-ever berth in the NCAA DII championships.

The 15-game turnaround from an 11-18 season in 2001-02 to last year's 27-4 record was the best in the nation and ranked as one of the best single-season turnarounds in NCAA DII history. AASU also finished the season ranked No. 21 in the WBCA DII rankings, the first national ranking ever for an AASU women's hoops squad.

The Lady Pirates went a perfect 13-0 at home, the school's first-ever undefeated home season, and carries a 15-game home winning streak into 2003-04.

The 27 wins easily broke the school record for wins

(21, set in 1984-85) and AASU also set marks for points scored, three-pointers made, free throws made, free throw percentage and average victory margin.

AASU finished the season ranked nationally six separate categories, including 11th in scoring margin (+15.8), 12th in winning percentage, 23rd in scoring defense (59.3 ppg) and 30th in scoring offense (75.1 ppg).



Tishay Lewis hit the game-winning three-pointer with 6.3 seconds left to give AASU a 56-55 win over CSU in the PBC Championship game. Lewis was the PBC Player of the Year and PBC Tournament Most Valuable Player.



Two-time All-PBC honoree Zandrique Cason finished her AASU career with 1,212 points (4th all-time) and 774 rebounds (2nd all-time)

The list of accomplishments was not limited to just the team. Savannah native Tishay Lewis, whose three-pointer gave the Pirates the PBC Tournament Championship against Columbus State, was named the PBC's Player of the Year, the PBC Tournament MVP and became AASU's first-ever DII All-America honoree, earning Kodak/WBCA First-Team All-America honors. Lewis averaged a stellar 18.0 points and 8.3 rebounds per game and averaged an amazing 20.4 points per game in Peach Belt contests. She finished the year ranked 36th in NCAA DII in scoring and 37th in steals with 2.94 per game.

Senior Zandrique Cason

- the leading scorer in the previous two seasons for AASU - wrapped up her outstanding Lady Pirate career by averaging 10.7 points and 6.4 rebounds per game and finished as the Lady Pirates' all-time blocked shot leader (84), second all-time leading rebounder (774) and fourth all-time leading scorer (1,212).

Three other seniors - twins Shaetra and Shanetra Hodge and Anita Griffin - wrapped up their Pirate careers with a PBC title.

Head coach Roger Hodge, in his third season as the Lady Pirates' head coach, also earned honors for directing the AASU turnaround. Hodge was named the PBC Coach of the Year and was the WBCA's Region 3 Coach of the Year for Division II.

Although the Lady Pirates' season ended prematurely with an opening-round loss to eventual region champion North Florida in the NCAA tournament, AASU's first trip to the postseason and first PBC title should not be its last.

AASU returns three starters and seven regulars from last season's squad, including second-team All-PBC honoree Tasha Washington and the conference's second-leading three-point shooter in Vandy Noldon, and adds several talented area players, including Mercer transfer and former area high school Player of the Year Ramona Wright.

Zandrique Cason finished as AASU's all-time blocked shots leader



2002-03 Results and Statistics

2002-2003 Armstrong Atlantic State Game Results

Overall: 27-4 • Home: 13-0 • Away: 10-3 • Neutral: 4-1 • PBC: 17-2

DATE	OPPONENT	SCORE	HIGH SCORER	HIGH REBOUNDER
11/22/02	% vs. Pfeiffer	W 54-49	Tasha Washington (14)	Tishay Lewis (7)
11/23/02	% vs. Anderson	W 96-61	Tishay Lewis (20)	Tishay Lewis (9)
12/4/02	at Rollins	W 65-54	Zandrique Cason (19)	Zandrique Cason (9)
12/7/02	* CLAYTON STATE	W 72-53	Tishay Lewis (19)	Vandy Noldon (7)
12/17/02	at Shaw	L 43-64	Tasha Washington (8)	Lewis and Perpich (5)
12/20/02	& WINGATE	W 91-55	Tishay Lewis (14)	Tishay Lewis (8)
12/21/02	& FORT VALLEY STATE	W 89-73	Tishay Lewis (24)	Zandrique Cason (9)
12/30/02	VALDOSTA STATE	W 69-45	Tasha Washington (16)	Tishay Lewis (9)
1/2/03	* FRANCIS MARION	W 81-48	Emily Perpich (19)	Zandrique Cason (7)
1/4/03	* at Lander	W 82-72	Tishay Lewis (30)	Tishay Lewis (9)
1/8/03	SPELMAN	W 81-48	Shalettra Hodge (13)	Tishay Lewis (7)
1/11/03	* at USC Spartanburg	W 84-49	Tasha Washington (17)	Tasha Washington (8)
1/13/03	* UNC Pembroke	W 84-61	Tasha Washington (19)	Zandrique Cason (10)
1/15/03	* at USC Aiken	W 80-69	Tishay Lewis (34)	Tishay Lewis (9)
1/18/03	* at Columbus State	L 68-71	Tishay Lewis (16)	Three with 6
1/22/03	* at Francis Marion	L 61-62 ot	Tishay Lewis (27)	Tishay Lewis (15)
1/25/03	* USC SPARTANBURG	W 78-46	Tishay Lewis (17)	Washington and Cason (8)
1/29/03	* at GC&SU	W 85-73	Tishay Lewis (29)	Tishay Lewis (11)
2/1/03	* at UNC Pembroke	W 88-63	Tishay Lewis (22)	Tishay Lewis (11)
2/5/03	* AUGUSTA STATE	W 86-53	Tishay Lewis (30)	Tishay Lewis (17)
2/8/03	* KENNESAW STATE	W 77-61	Tishay Lewis (24)	Tishay Lewis (11)
2/12/03	* at North Florida	W 69-58	Tishay Lewis (32)	Tishay Lewis (11)
2/15/03	* at Clayton State	W 82-73	Vandy Noldon (21)	Lewis and Washington (6)
2/19/03	* NORTH FLORIDA	W 78-68	Tasha Washington (28)	Tishay Lewis (8)
2/22/03	* COLUMBUS STATE	W 75-55	Shanetra Hodge (14)	Tishay Lewis (10)
2/26/03	* GC&SU	W 76-53	Zandrique Cason (19)	Zandrique Cason (11)
3/1/03	* at Kennesaw State	W 76-64	Zandrique Cason (19)	Tishay Lewis (9)
3/6/03	\$ vs. Kennesaw State	W 65-60	Tishay Lewis (17)	Tishay Lewis (8)
3/8/03	\$ vs. USC Aiken	W 69-63	Tasha Washington (23)	Zandrique Cason (8)
3/9/03	\$ at Columbus State	W 56-55	Tishay Lewis (16)	Tishay Lewis (9)
3/14/03	# vs. North Florida	L 64-65	Zandrique Cason (17)	Tishay Lewis (7)

* - Peach Belt Conference Games

% - FMU/Sleep Inn Classic (Florence, S.C.)

\$ - Peach Belt Conference Championships (Columbus, Ga.)

& - Chatham Orthopaedics Christmas Classic

- 2003 NCAA DII South Atlantic Regional (Salisbury, N.C.)

2002-2003 Lady Pirate Cumulative Statistics

Player	GP/GS	MIN	FG-FGA	PCT	3PMG-3PA	PCT	FT-FTA	PCT	OR-DR-TR	RPG	TP	PPG	AST	TO	BS	ST
Tishay Lewis	31/31	849	183-386	.474	42-108	.389	149-189	.788	101-156-257	8.3	557	18.0	64	76	29	91
Tasha Washington	31/30	798	137-347	.395	49-127	.386	100-138	.725	49-85-134	4.3	423	13.6	68	108	4	79
Zandrique Cason	31/31	781	115-255	.451	2-10	.200	99-137	.723	73-124-197	6.4	331	10.7	33	64	27	32
Shanetra Hodge	31/1	531	64-160	.400	25-73	.342	20-31	.645	28-40-68	2.2	173	5.6	33	31	2	30
Vandy Noldon	29/0	454	62-142	.437	29-74	.392	18-24	.750	27-72-99	3.4	171	5.9	28	40	9	22
Pam Mayes	31/30	602	57-188	.303	11-45	.244	28-46	.609	39-42-81	2.6	153	4.9	30	33	4	20
Alicia Durham	31/30	710	35-123	.285	14-64	.219	36-56	.643	28-45-73	2.4	120	3.9	45	38	2	50
Anita Griffin	29/1	380	36-98	.367	10-34	.294	29-41	.707	10-29-39	1.3	111	3.8	55	73	3	45
Emily Perpich	31/0	421	38-97	.392	5-18	.278	21-27	.778	30-63-93	3.0	102	3.3	20	40	3	19
Shalettra Hodge	27/1	265	44-84	.524	1-9	.111	12-29	.414	15-30-45	1.7	101	3.7	13	30	2	8
Marloes Renskers	27/0	315	18-41	.439	5-13	.385	7-11	.636	8-23-31	1.1	48	1.8	31	26	4	19
Lee Gloyd	7/0	61	7-28	.250	0-0	.000	8-11	.727	6-14-20	2.9	22	3.1	2	8	0	2
Carena Thomas	12/0	51	6-18	.333	0-2	.000	4-6	.667	4-5-9	0.8	16	1.3	5	8	0	3
Aiste Slenyte	5/0	8	0-2	.000	0-1	.000	0-0	.000	1-1-2	0.4	0	0.0	0	2	0	1
TOTALS	31/31	6226	802-1969	.407	193-578	.334	531-746	.712485-797-128241.4	2328	75.1	438	588	89	421		



AASU had win streaks of nine and 14 games in 2002-03

2002-03 Player and Team Highs



2002-2003 Player Highs

POINTS	34	Tishay Lewis at USC Aiken (1/15/03)
FIELD GOALS MADE	11	Tishay Lewis vs. Augusta State (2/5/03)
FIELD GOALS ATTEMPTED ..	23	Tishay Lewis at Francis Marion (1/22/03)
3 PT FIELD GOALS MADE ...	5	Vandy Noldon at Clayton State (2/15/03)
3 PT FIELD GOAL ATTEMPTED	9	Tasha Washington and Tishay Lewis at Francis Marion (1/22/03)
FREE THROWS MADE	11	Washington vs. UNF (2/19/03); Lewis at Lander (1/4/03)
FREE THROW ATTEMPTS	15	Tishay Lewis at Lander (1/4/03)
REBOUNDS	17	Tishay Lewis vs. Augusta State (2/5/03)
ASSISTS	6	Lewis at KSU (3/1/03); Griffin vs. Anderson (11/23/02)
STEALS	8	Tishay Lewis at Rollins (12/4/02)
BLOCKED SHOTS	6	Tishay Lewis vs. Clayton State (12/7/02)
TURNOVERS	10	Tasha Washington at USC Aiken (1/15/03)
FOULS	5	Three times.

2002-2003 Team Highs

Armstrong Atlantic State

POINTS	96	vs. Anderson	11/23/02	AASU 96-61
FIELD GOALS MADE	37	vs. Anderson	11/23/02	AASU 96-61
FIELD GOAL ATTEMPTS	82	vs. Wingate	12/20/02	AASU 91-55
FIELD GOAL PERCENTAGE493	vs. Anderson	11/23/02	AASU 96-61 (37-of-75)
	.493	vs. Spelman	1/8/03	AASU 85-41 (33-of-67)
3 PT FIELD GOALS MADE	11	at Clayton State	2/15/03	AASU 82-73
	11	at Columbus State	1/18/03	CSU 71-68
3 PT FG ATTEMPTS	32	at Clayton State	2/15/03	AASU 82-73
3 PT FG PERCENTAGE563	vs. Columbus State	1/18/03	CSU 71-68 (9-of-16)
	.563	vs. Fort Valley State	12/21/02	AASU 89-73 (9-of-16)
FREE THROWS MADE	29	vs. North Florida	2/19/03	AASU 78-68
FREE THROW ATTEMPTS	38	vs. North Florida	2/19/03	AASU 78-68
FREE THROW PERCENTAGE857	at Shaw	12/17/02	Shaw 64-43
REBOUNDS	56	vs. GC&SU	2/26/03	AASU 76-53
ASSISTS	23	vs. Francis Marion	1/2/03	AASU 81-48
STEALS	22	vs. USC Spartanburg	1/25/03	AASU 78-46
TURNOVERS	33	vs. Valdosta State	12/30/02	AASU 69-45
FOULS	27	at Columbus State	1/18/03	CSU 71-68
	27	vs. Wingate	12/20/02	AASU 91-55

OPPONENTS

POINTS	73	Three times		
FIELD GOALS MADE	31	at Clayton State	2/15/03	AASU 82-73
FIELD GOAL ATTEMPTS	77	at Lander	1/4/03	AASU 82-72
FIELD GOAL PERCENTAGE500	at Shaw	12/17/02	Shaw 64-43 (27-of-54)
3 PT FIELD GOALS MADE	9	at GC&SU	1/29/03	AASU 85-73
3 PT FG ATTEMPTS	25	at GC&SU	1/29/03	AASU 85-73
3 PT FG PERCENTAGE636	vs. UNC Pembroke	1/13/03	AASU 84-61 (7-of-11)
FREE THROWS MADE	26	at Columbus State	1/18/03	CSU 71-68
	26	at USC Aiken	1/15/03	AASU 80-69
FREE THROW ATTEMPTS	36	vs. Wingate	12/20/02	AASU 91-55
FREE THROW PERCENTAGE913	at USC Aiken	1/15/03	AASU 80-69 (21-of-23)
REBOUNDS	50	at Lander	1/4/03	AASU 82-72
ASSISTS	18	at Shaw	12/17/02	Shaw 64-43
STEALS	16	at North Florida	2/12/03	AASU 69-58
	16	vs. Valdosta State	12/30/02	AASU 69-45
TURNOVERS	36	vs. USC Spartanburg	1/25/03	AASU 78-46
FOULS	30	vs. Fort Valley State	12/21/02	AASU 89-73

AASU set its single-game 3-point mark twice in 2002-03





The Peach Belt Conference

Since its inception in 1991, the Peach Belt Conference has worked tirelessly to become one of the elite conferences in NCAA Division II. Now entering its 13th season with 18 national championships and 16 national finalists, the PBC has accomplished that goal.

Starting with only two championships in 1991, in men's and women's basketball, the conference has expanded to 12 championship sports with the addition of women's soccer in the fall of 2000.

The conference traces its roots back to November of 1988 when 11 schools first met in Greenville, S.C. to form a Division II conference. Following a second meeting on Dec. 3, 1989, five of those 11 schools, plus two others, formed the Peach Belt and began play in 1991.

The Peach Belt was less than a year old before capturing a national championship. The Columbus State golf team took the honor by winning the 1992 national crown, the first of three golf championships the Cougars own.

The PBC has seen continued success in all sports with national rankings and multiple NCAA appearances in every sport last season, including a national championship for the Columbus State baseball team and a national championship finals appearance by the Armstrong Atlantic State women's tennis team.

The seven charter members of the conference were Armstrong Atlantic State University, Columbus State University,

Francis Marion University, Georgia College & State University, Lander University, USC Aiken and USC Spartanburg. The name Peach Belt Athletic Conference was adopted in January of 1990 and modified to Peach Belt Conference in May of 2000.

Augusta State joined the conference in 1991 and UNC Pembroke became the ninth member on July 1, 1992. They were followed by Kennesaw State University on July 1, 1994, Clayton College & State University on July 1, 1995 and the University of North Florida on July 1, 1997, to bring the current membership to 12 institutions.

Former Augusta State basketball coach and athletic director Marvin Vanover was named the interim commissioner in April, 1990, and served in that capacity until his appointment as the conference's first full-time commissioner in July of 1991. He established the conference office in Augusta, Ga., which houses the commissioner and his staff.

Dr. Thomas Hallman, president of the University of South Carolina at Aiken, is the president of the Peach Belt in 2003-04.

The conference currently holds championships in 12 sports, six for men and six for women. They are men's and women's cross country, men's and women's soccer, volleyball, men's and women's basketball, men's and women's tennis, baseball, softball and men's golf.

Peach Belt Members

Armstrong Atlantic State University
Augusta State University
Clayton State College & University
Columbus State University
Francis Marion University
Georgia College & State University
Kennesaw State University
Lander University
University of North Carolina at Pembroke
University of North Florida
University of South Carolina at Aiken
University of South Carolina at Spartanburg



Peach Belt Conference Quick Facts

Address: P.O. Box 204290
Augusta, GA 30917-4290

Founded: December 3, 1989

Phone Number: (706) 860-8499

Fax Number: (706) 650-8113

Website: www.peachbelt.com

Commissioner

Marvin Vanover

Director of Media Relations

Ken Gerlinger

Director of Compliance

Michelle Bronner

Administrative Assistant

Kay Allen

Peach Belt Conference National Champions

Baseball

Kennesaw State 1994
Kennesaw State 1996
Columbus State 2002

Men's Golf

Columbus College 1992
Columbus College 1994
Columbus State 1997
Francis Marion 2003

Men's Tennis

Lander University 1991
Lander University 1992
Lander University 1993
Lander University 1994
Lander University 1995
Lander University 1996
Lander University 1997
Lander University 1998
Lander University 1999
Lander University 2000

Women's Tennis

Armstrong State 1995
Armstrong State 1996

Softball

Kennesaw State 1995
Kennesaw State 1996



AASU is one of the charter members of the Peach Belt Conference

The Peach Belt Conference



2002-03 Peach Belt Conference Standings

North Division

School	PBC Games	Home	Away	All Games	Home	Away	Neut
Augusta State	13-6 .684	8-2	5-4	19-10 .655	11-3	6-5	2-2
USC Aiken	9-10 .474	4-5	5-5	19-13 .594	8-5	8-6	3-2
USC Spartanburg	7-12 .368	5-4	2-8	13-15 .464	9-4	4-9	0-2
Lander	6-12 .333	5-4	1-8	12-15 .444	8-5	2-9	2-1
Francis Marion	5-14 .263	5-3	0-11	12-18 .400	9-4	1-12	2-2
UNC Pembroke	3-16 .158	3-7	0-9	8-19 .296	5-7	1-10	2-2

South Division

School	PBC Games	Home	Away	All Games	Home	Away	Neut
Armstrong Atl. State	17-2 .895	9-0	8-2	27-4 .871	13-0	10-3	4-1
Columbus State	17-2 .895	11-0	6-2	28-4 .875	18-1	8-2	2-1
North Florida	12-7 .632	8-2	4-5	20-12 .625	12-3	5-6	3-3
Clayton State	10-9 .526	8-2	2-7	16-11 .593	13-3	3-7	0-1
Kennesaw State	9-10 .474	4-5	5-5	16-13 .552	9-5	6-7	1-1
GC&SU	6-13 .316	5-4	1-9	13-16 .448	7-4	2-11	4-1

2003 NCAA Division II South Atlantic Regional

First Round
UNF 65, AASU 64
CSU 68, ASU 59
Second Round
UNF 57, CSU 56
Championship
UNF 71, Shaw 58

2002-03 PBC Statistical Leaders

2002-03 All-Peach Belt Team

Scoring

Player (Team)	G	FG	3FG	FT	Pts	PPG
1. Denisha Ferguson (KSU)	29	212	2	125	551	19.0
2. Tishay Lewis (AASU)	31	183	42	149	557	18.0
3. Skye Barber (UNF)	32	214	1	138	567	17.7
4. Catreia Shaw (CCSU)	27	166	0	126	458	17.0
5. Ebony Orr (UNCP)	27	179	14	64	436	16.1
6. Jontell Johnson (FMU)	28	152	0	118	422	15.1
7. Sabrina Jones (ASU)	29	160	0	110	430	14.8
8. Khalilah Henderson (LU)	27	142	0	109	393	14.6
9. Andrea Lee (GCSU)	28	156	23	72	407	14.5
10. Candace Turner (CSU)	32	127	30	180	464	14.5

Rebounding

Player (Team)	RPG
1. Shaw (CCSU)	10.9
2. Ferguson (KSU)	9.7
3. Barber (UNF)	8.8
4. Brown (CCSU)	8.3
Ross (USCS)	8.3
Lewis (AASU)	8.3
7. Johnson (FMU)	8.2
8. Little (CSU)	7.6
Henry (KSU)	7.6
10. Henderson (LU)	7.3

Assists

Player (Team)	APG
1. Cleaveland (GCSU)	5.21
2. Gaines (KSU)	4.55
3. Puckett (CCSU)	4.04
4. Perry (UNF)	4.03
5. Cornwell (USCA)	3.94

Steals

Player (Team)	SPG
1. Lomax (LU)	3.89
2. Puckett (CCSU)	3.50
3. Turner (CSU)	3.34
4. Cornwell (USCA)	3.09
5. Heston (CSU)	2.97

Blocked Shots

Player (Team)	BPG
1. Johnson (FMU)	2.39
2. Ross (USCS)	1.61
3. Johnson (ASU)	1.45
4. Cooper (CSU)	1.29
5. Jones (ASU)	1.07

Field Goal Pct.

Player (Team)	PCT
1. Shaw (CCSU)	.610
2. Barber (UNF)	.569
3. Jones (ASU)	.561
4. Ferguson (KSU)	.549
5. Johnson (FMU)	.521

First Team

Skye Barber, North Florida
Denisha Ferguson, Kennesaw State
Sabrina Jones, Augusta State
Tishay Lewis, Armstrong Atlantic State
Catreia Shaw, Clayton State
Candace Turner, Columbus State

Second Team

Jami Cornwell, USC Aiken
Jontell Johnson, Francis Marion
Andrea Lee, GC&SU
Ebony Orr, UNC Pembroke
Julie Szabo, USC Aiken
Tasha Washington, Armstrong Atlantic State

Player of the Year: Tishay Lewis, AASU

Freshman of the Year: Yakeeshia Ross, USCS

Coach of the Year: Roger Hodge, AASU

2002-03 Players of the Week

Dec. 2	Catreia Shaw	Clayton State
Dec. 9	Candace Turner	Columbus State
Dec. 16	Ebony Orr	UNC Pembroke
Jan. 6	Tishay Lewis	Armstrong Atlantic State
Jan. 13	Catreia Shaw	Clayton State
Jan. 20	Denisha Ferguson	Kennesaw State
Jan. 27	Jontell Johnson	Francis Marion
Feb. 3	Tishay Lewis	Armstrong Atlantic State
Feb. 10	Tishay Lewis	Armstrong Atlantic State
Feb. 17	Denisha Ferguson	Kennesaw State
Feb. 24	Skye Barber	North Florida
Mar. 3	Jontell Johnson	Francis Marion

Lewis was AASU's second-ever PBC Player of the Year honoree





Peach Belt Conference Year-By-Year

1990-1991

TEAM	PBC YEAR
1. USCA	9-3 24-6
2. USCS	7-5 18-10
GC	7-5 18-11
4. ASC	5-7 10-14
Lander	5-7 20-8
FMU	5-7 17-12
7. Columbus	3-9 8-17

First Team All-PBC
Tisha England, USCA
Jametria Hannah, USCS
Leslie Morgan, FMU
Sherita Ballard, GC
Deedra Howard, USCS

Player of the Year
Tisha England, USCA

Coach of the Year
Tammy Holder, USCS

Second Team All-PBC
Angelina Tate, USCA
Bernadette Hill, GC
Toni Bell-Yon, ASC
Melissa Lewis, Lander
Mary Jackson, FMU

1991-1992

TEAM	PBC YEAR
1. Augusta	12-2 23-6
GC	12-2 22-7
3. USCA	9-5 18-11
4. FMU	6-8 18-12
5. ASC	5-9 14-13
USCS	5-9 12-16
7. Columbus	4-10 10-16
8. Lander	3-11 13-15

First Team All-PBC
Renee Rice, ASC
Tisha England, USCA
Mary Jackson, FMU
Jametria Hannah, USCS
Lorain Truesdale, LU

Rookie of the Year
Yolanda Oliver, ASC

Player of the Year
Renee Rice, ASC

Coach of the Year
Lowell Barnhart, AC

Second Team All-PBC
Allison Barry, GC
Tracey Strange, AC
Kay Sanders, AC
Angie Davis, CC
Robin Edwards, AC
Fenissa Rice, FMU

1992-1993

TEAM	PBC YEAR
1. USCS *	16-0 28-3
2. Augusta	14-2 24-5
3. ASC	10-6 16-10
4. GC	8-8 17-11
5. Lander	7-9 11-16
6. Columbus	6-10 12-15
7. Pembroke	5-11 10-17
8. FMU	3-13 11-17
9. USCA	3-13 8-18
Kennesaw	0-0 19-11

* NCAA participant

First Team All-PBC
Deedra Howard, USCS
Lorian Truesdale, LU
Jeanette Polk, AC
LaTanya Sandifer, GC
Valerie Scott, USCS
Kay Sanders, AC

Rookie of the Year
April Haskins, CC

Player of the Year
Deedra Howard, USCS

Coach of the Year
Peggy Sells, USCS

Second Team All-PBC
April Haskins, CC
Yolanda Oliver, ASC
Tracey Strange, AC
Iris Bethea, PSC
Jennifer Teeple, ASC
Vivian Edwards, CC

1993-1994

TEAM	PBC YEAR
1. USCS *	15-1 27-4
2. Columbus	12-4 20-9
3. ASC	11-5 17-9
4. Augusta	9-7 16-11
5. GC	8-8 16-12
USCA	8-8 15-12
7. Pembroke	4-12 6-19
8. Lander	3-13 9-18
9. FMU	2-14 6-21
Kennesaw	0-0 18-11

* NCAA participant

First Team All-PBC
Valerie Scott, USCS
Iris Bethea, PSC
Jeanette Polk, AC
Kathleen Shriver, CC
Dwanna Gardner, AC
Kim Moody, GC

Rookie of the Year
Meredith Sisson, USCS

Player of the Year
Valerie Scott, USCS

Coach of the Year
Jay Sparks, CC

Second Team All-PBC
Oni Tyler, CC
Yolanda Oliver, ASC
Sonya Cato, USCA
Amy Totten, GC
Jennifer Teeple, ASC
Paula Blackwell, USCS

1994-1995

TEAM	PBC YEAR
1. USCS *	14-4 25-6
Augusta	14-4 19-9
Columbus	14-4 21-7
4. Kennesaw	12-6 15-12
5. FMU	8-10 11-15
6. ASC	8-10 12-17
7. USCA	7-11 12-15
GC	7-11 11-17
9. Pembroke	5-13 8-18
10. Lander	1-17 4-22

* NCAA participant

First Team All-PBC
Dwanna Gardner, AC
Heather Abrams, USCS
Nicole Smith, ASC
Sharon Lee, CC
Sarah McAllister, KSC
Meredith Sisson, USCS

Rookie of the Year
Lawanna Monday, AC

Player of the Year
Dwanna Gardner, AC

Coach of the Year
Lowell Barnhart, AC

Second Team All-PBC
Amanda Manning, GC
Kisha Conway, FMU
Barbara Hester, CC
Shawn Blassingame, USCA
Hayley Lystlund, AC
Faye Wright, LU

1995-1996

TEAM	PBC YEAR
1. GC*	14-4 21-9
2. FMU	13-5 18-9
3. KSC	12-6 17-12
4. Augusta	11-7 19-9
5. USCS	10-8 14-13
6. Pembroke	9-9 15-12
Columbus	9-9 13-15
8. ASC	7-11 9-18
9. Lander	3-15 9-15
10. USCA	2-16 3-23
Clayton	0-0 13-15

* NCAA participant

First Team All-PBC
Hayley Lystlund, AC
Kisha Conway, FMU
Andrea Cox, PSC
Alicia Wilson, GC
Sarah McAllister, KSC
Lawanna Monday, AC

Rookie of the Year
Carrie Long, CC

Player of the Year
Sarah McAllister, KSC

Coach of the Year
Wes Moore, FMU

Second Team All-PBC
Christy Walker, GC
Rachel Garner, PSC
Heather Abrams, USCS
Jennifer Puckett, FMU
Christa Vaughan, ASC
Faye Wright, LU

1996-1997

TEAM	PBC YEAR
1. KSU*	17-1 30-2
2. FMU*	14-4 21-8
3. GC&SU*	13-5 23-8
4. CSU	11-7 17-11
5. ASU	10-8 18-9
AASU	10-8 14-13
7. USCS	5-13 11-17
Lander	5-13 8-19
9. USCA	4-14 7-21
10. UNCP	1-17 1-25
Clayton	0-0 14-13

* NCAA participant

First Team All-PBC
Que Gilliam, CSU
Christy Walker, GC&SU
Joanna Cuprys, KSU
Lawanna Monday, ASU
Sarah McAllister, KSU

Rookie of the Year
Chiffonia Adderson, FMU

Player of the Year
Joanna Cuprys, KSU

Coach of the Year
Colby Tilley, KSU

Second Team All-PBC
Tammy Smith, USCS
Jennifer Brabson, FMU
Christale Spain, USCA
Alicia Wilson, GC&SU
Christy Bromley, ASU
Faye Wright, LU

1997-1998

NORTH		
TEAM	PBC YEAR	
1. FMU*	15-1	30-3
2. ASU	9-7	18-10
3. USCS	7-9	14-13
Lander	7-9	12-14
5. USCA	6-10	10-17
6. UNCP	0-16	5-22

SOUTH		
TEAM	PBC YEAR	
1. CSU*	16-0	25-6
2. GC&SU	11-5	19-8
3. KSU	10-6	18-10
4. UNF	6-10	11-17
5. AASU	5-11	12-16
6. Clayton	4-12	14-15

* NCAA participant

First Team All-PBC
Dion Thornton, KSU
Tocshia Campfield, CSU
Chiffonia Adderson, FMU
Tamarra Brown, GC&SU
Que Gilliam, CSU
Jennifer Brabson, FMU

Rookie of the Year
Lawanna Monday, ASU

Player of the Year
Jennifer Brabson, FMU

Coach of the Year
Jay Sparks, CSU

Second Team All-PBC
Tracy Davis, GC&SU
Janet Chadwick, KSU
Christale Spain, USCA
Tammy Smith, USCS
Cindy Koone, LU

1998-1999

NORTH		
TEAM	PBC YEAR	
1. FMU*	16-0	27-3
2. Lander *	11-5	20-10
3. ASU	7-9	13-15
USCA	7-9	16-11
5. USCS	3-13	6-21
6. UNCP	0-16	5-22

SOUTH		
TEAM	PBC YEAR	
1. KSU*	14-2	28-4
2. CSU	12-4	25-7
3. GC&SU	9-7	17-11
4. UNF	7-9	18-10
5. AASU	6-10	13-15
6. Clayton	4-12	9-18

* NCAA participant

First Team All-PBC
Chiffonia Adderson, FMU
Jennifer Brabson, FMU
Rima Petronyte, KSU
Justyna Stanioch, KSU
Dion Thornton, KSU
Christy Wright, FMU

Rookie of the Year
Ginnell Curtis, UNCP

Player of the Year
Jennifer Brabson, FMU

Coach of the Year
Sheila Rhodes, LU

Second Team All-PBC
Sylvia Allen, CSU
Ginnell Curtis, UNCP
Quintina Harris, GC&SU
Reagan Housch, CSU
Demetria McClouden, AASU
Cindy Koone, LU



Renee Rice was the PBC Player of the Year in 1991-92

Peach Belt Conference Year-By-Year



1999-2000

NORTH

TEAM	PBC	YEAR
1. FMU*	13-3	25-8
2. Lander *	12-4	22-8
3. USCA	7-9	15-12
4. ASU	5-11	10-15
5. UNCP	3-13	11-15
6. USCS	2-14	5-21

SOUTH

1. KSU*	14-2	25-5
2. CSU*	12-4	28-8
3. UNF	10-6	16-11
4. GC&SU	10-6	17-10
5. Clayton	4-12	8-18
6. AASU	4-12	7-19

* NCAA participant

First Team All-PBC

Chiffonia Adderson, FMU
Jennifer Brabson, FMU
Rima Brazenas, KSU
Jackie Entzminger, LU
Amie Kane, KSU
Kinesha Harden, CSU

Second Team All-PBC

Joya Collier, Clayton
Jami Cornwell, USCA
Ginnell Curtis, UNCP
Janell Gerck, USCA
Rosslon Horton, GC&SU
Kamilah Moss, GC&SU
Christy Wright, FMU

Freshman of the Year

Jami Cornwell, USCA

Player of the Year

Rima Brazenas, KSU

Coach of the Year

Phil Stern, USCA

2000-2001

NORTH

TEAM	PBC	YEAR
1. USCA	14-2	22-7
2. FMU *	13-3	24-7
3. UNCP	6-10	14-13
4. ASU	5-11	12-15
5. Lander	2-14	6-17
6. USCS	2-14	7-19

SOUTH

1. CSU *	16-0	32-1
2. GC&SU	11-5	21-7
3. KSU	10-6	19-8
4. UNF	8-8	14-13
5. AASU	5-11	10-16
6. Clayton	4-12	6-20

* NCAA participant

First Team All-PBC

Zandrique Cason, AASU
Jami Cornwell, USCA
Kinesha Harden, CSU
Amie Kane, KSU
Shemika Turner, GC&SU
Christy Wright, FMU

Second Team All-PBC

Abby Boone, CSU
Ginnell Curtis, UNCP
Monica Dajksler, KSU
Beth Heyer, GC&SU
Lashawn Mincey, CSU
Julie Szabo, USCA

Freshman of the Year

Kia Manuel, USCS

Co-Players of the Year

Kinesha Harden, CSU
Amie Kane, KSU

Coach of the Year

Jay Sparks, CSU

2001-2002

NORTH

TEAM	PBC	YEAR
1. USCA *	16-3	22-6
2. FMU	12-7	16-11
3. UNCP	12-7	18-9
4. ASU	5-14	10-17
5. USCS	4-15	6-21
6. Lander	1-18	2-25

SOUTH

1. KSU	13-6	17-10
2. UNF	13-6	20-9
3. CSU	12-7	21-11
4. GC&SU *	11-8	19-12
5. Clayton	8-11	13-15
6. AASU	7-12	11-18

* NCAA participant

First Team All-PBC

Skye Barber, UNF
Denisha Ferguson, KSU
Ginnell Curtis, UNCP
Jami Cornwell, USCA
Julie Szabo, USCA
Betsy Foy, GC&SU

Second Team All-PBC

Zandrique Cason, AASU
Jennifer Lance, UNCP
Christy Thomas, FMU
Mikel Taylor, UNF
Catreia Shaw, CC&SU
Candace Turner, CSU

Freshman of the Year

Apryl Brown, CC&SU

Player of the Year

Skye Barber, UNF

Coach of the Year

Phil Stern, USC Aiken

2001-2002

NORTH

TEAM	PBC	YEAR
1. ASU *	13-6	19-10
2. USCA	9-10	19-13
3. USCS	7-12	13-15
4. Lander	6-12	12-15
5. FMU	5-14	12-18
6. UNCP	3-16	8-19

SOUTH

1. AASU *	17-2	27-4
2. CSU *	17-2	28-4
3. UNF *	12-7	20-12
4. Clayton	10-9	16-11
5. KSU	9-10	16-13
6. GC&SU	6-13	13-16

* NCAA participant

First Team All-PBC

Skye Barber, UNF
Denisha Ferguson, KSU
Sabrina Jones, ASU
Tishay Lewis, AASU
Catreia Shaw, CC&SU
Candace Turner, CSU

Second Team All-PBC

Jami Cornwell, USCA
Jontell Johnson, FMU
Andrea Lee, GC&SU
Ebony Orr, UNCP
Julie Szabo, USCA
Tasha Washington, AASU

Freshman of the Year

Yakeeshia Ross, USCS

Player of the Year

Tishay Lewis, AASU

Coach of the Year

Roger Hodge, AASU



TEAM	W-L	PCT.
Armstrong Atlantic	172-182	.486
Augusta State	201-131	.605
Clayton State	66-97	.405
Columbus State	259-127	.676
Francis Marion	236-144	.621
GC&SU	234-139	.627
Kennesaw State	222-98	.694
Lander	148-202	.423
North Florida	94-65	.591
UNC Pembroke	112-180	.384
USC Aiken	180-183	.496
USC Spartanburg	185-179	.508

TEAM	W-L	PCT.
Armstrong Atlantic	95-107	.470
Augusta State	114-88	.564
Clayton State	34-68	.333
Columbus State	144-70	.673
Francis Marion	125-89	.584
GC&SU	127-87	.593
Kennesaw State	111-45	.712
Lander	66-147	.310
North Florida	56-46	.549
UNC Pembroke	55-133	.293
USC Aiken	91-120	.431
USC Spartanburg	97-117	.453

TEAM	W-L	PCT.
Armstrong Atlantic	11-9	.550
Augusta State	9-9	.500
Clayton State	3-4	.429
Columbus State	20-10	.667
Francis Marion	9-9	.500
GC&SU	16-9	.640
Kennesaw State	8-7	.533
Lander	4-7	.364
North Florida	4-5	.444
UNC Pembroke	2-10	.167
USC Aiken	5-10	.333
USC Spartanburg	9-8	.529

Roger Hodge was AASU's first PBC Coach of the Year honoree





Peach Belt Conference Tournament History

1992 (Augusta, Ga.)

Quarterfinals

USCA 79, Columbus 56

Semifinals

Augusta 71, ASC 63
GC 72, USCA 68

Championship All-Tournament Team

Augusta 74, GC 46

Tisha England, USCA
Kay Sanders, Augusta
Allison Barry, GC
Angie Long, Augusta

Tournament MVP

Tracey Strange, Augusta

1993 (Augusta, Ga.)

First Round

FMU 93, USCA 89 (2ot)

Quarterfinals

USCS 73, FMU 60
GC 64, Lander 54
Columbus 70, ASC 60
Augusta 66, Pembroke 60

Semifinals

USCS 80, GC 63
Augusta 73, Columbus 60

Championship

Augusta 69, USCS 60

All-Tournament Team

Deedra Howard, USCS
Valerie Scott, USCS
Tracey Strange, Augusta
Dwanna Gardner, Augusta
April Haskins, Columbus

Tournament MVP

Jeanette Polk, Augusta

1994 (Augusta, Ga.)

First Round

Lander 58, FMU (ot)

Quarterfinals

Columbus 87, Pembroke 54
ASC 72, USCA 60
USCS 77, Lander 57
GC 72, Augusta 63

Semifinals

USCS 63, GC 58
Columbus 71, ASC 64

Championship

USCS 61, Columbus 60

All-Tournament Team

Meredith Sisson, USCS
Faye Wright, Lander
Jennifer Teeple, ASC
Kim Moody, GC
Kathleen Shriver, Columbus

Tournament MVP

Katie Otis, Columbus

1995 (Augusta, Ga.)

First Round

GC 75, Lander 59
Pembroke 73, USCA 54

Quarterfinals

USCS 70, GC 63
Columbus 71, FMU 57
ASC 67, KSC 65
Augusta 84, Pembroke 71

All-Tournament Team

Heather Abrams, USCS
Dwanna Gardner, Augusta

Semifinals

USCS 70, Columbus 63
ASC 82, Augusta 65

Yolanda Oliver, ASC
Sharon Lee, Columbus
Mary Ann Merritt, ASC

Championship

USCS 69, ASC 49

Tournament MVP

Sherry Clark, USCS

1996 (Milledgeville, Ga.)

Quarterfinals

Columbus 82, FMU 78
KSC 86, Pembroke 71
Augusta 58, USCS 54
GC 76, ASC 60

Semifinals

KSC 70, Columbus 57
GC 69, Augusta 66

Championship

GC 55, KSC 52

All-Tournament Team

April Haskins, Columbus
Claire Servy, Augusta
Christy Walker, GC
Kim Watts, KSC
Alicia Wilson, GC

Tournament MVP

Sarah McAllister, KSC

1997 (Milledgeville, Ga.)

First Round

USCA 58, Lander 47
USCS 73, UNCP 66

Quarterfinals

KSU 88, USCA 63
CSU 78, ASU 75 (ot)
FMU 66, USCS 63
GC&SU 68, AASU 54

Semifinals

KSU 62, CSU 61
GC&SU 70, FMU 48

Championship

KSU 78, GC&SU 77

All-Tournament Team

Que Gilliam, CSU
Tamarra Brown, GC&SU
Chiffonia Adderson, FMU
Sarah McAllister, KSU
Christy Walker, GC&SU

Tournament MVP

Joanna Cuprys, KSU

1998 (Savannah, Ga.)

First Round

UNF 71, USCA 57
Clayton 75, USCS 64
KSU 56, UNCP 40
AASU 71, Lander 65

Quarterfinals

FMU 63, UNF 60
Clayton 78, GC&SU 67
ASU 77, KSU 71
CSU 81, AASU 71

All-Tournament Team

Lawanna Monday, ASU
Joya Collier, Clayton
Damita Bullock, FMU
Chiffonia Adderson, FMU
Reagan Housch, CSU

Semifinals

FMU 92, Clayton 43
CSU 97, ASU 96 (ot)

Tournament MVP

Que Gilliam, CSU

Championship

FMU 71, CSU 67

1999 (Savannah, Ga.)

First Round

UNF 71, USCS 58
ASU 102, Clayton 98 (ot)
GC&SU 90, USCA 73
AASU 69, UNCP 60

Quarterfinals

FMU 57, UNF 43
CSU 87, ASU 69
Lander 90, GC&SU 72 (ot)
KSU 78, AASU 75

Semifinals

CSU 67, FMU 65
Lander 80, KSU 66

Championship

Lander 73, CSU 69

All-Tournament Team

Jennifer Brabson, FMU
Justyna Stanioch, KSU
Reagan Housch, CSU
Jackie Entzminger, Lander
Robyn Davis, CSU

Tournament MVP

Cindy Koone, Lander

2002 (Columbus, Ga.)

First Round

GC&SU 72, USCS 50
AASU 62, UNCP 73
Clayton 68, ASU 65
CSU 83, Lander 76

Quarterfinals

GC&SU 69, USCA 60
AASU 62, KSU 57
UNF 64, Clayton 62
CSU 82, FMU 80 (ot)

Semifinals

GC&SU 72, AASU 64
UNF 76, CSU 61

Championship

GC&SU 68, UNF 66

All-Tournament Team

Betsy Foy, GC&SU
Skye Barber, UNF
Mikel Taylor, UNF
Zandrique Cason, AASU
Ginnell Curtis, UNCP

Tournament MVP

Andrea Lee, GC&SU

2003 (Columbus, Ga.)

First Round

KSU 78, Lander 60
UNCP 95, UNF 88 (2ot)
FMU 59, CCSU 47
GCSU 76, USCS 69 (ot)

Quarterfinals

AASU 65, KSU 60
USCA 67, UNCP 51
FMU 61, ASU 55 (ot)
CSU 74, GCSU 63

Semifinals

AASU 69, USCA 63
CSU 58, FMU 46

Championship

AASU 56, CSU 55

All-Tournament Team

Candace Turner, CSU
Courtney Favors, CSU
Denisha Ferguson, KSU
Jontell Johnson, FMU
Tasha Washington, AASU

Tournament MVP

Tishay Lewis, AASU



AASU made its second appearance in the Peach Belt Conference tournament championship game in 2003 and used Tishay Lewis' three-pointer with 6.3 seconds remaining to come away with a 56-55 victory over host Columbus State, giving the Lady Pirates their first-ever PBC Tournament championship and their first-ever automatic bid into the NCAA Championships.



AASU is now 1-1 in PBC Tournament Championship games

2003-04 Peach Belt Conference Schedule



November

15	Clayton State at North Alabama	12:00
	GC&SU at Montevallo	2:00
	West Georgia at Kennesaw State	2:00
	USC Aiken vs. Florida Tech	2:00
	Virginia State at North Florida	4:00
	USC Spartanburg at Limestone	5:30
16	USC Aiken vs. Virginia State	2:00
	Florida Tech at North Florida	4:00
17	Voorhees at Augusta State	7:00
18	Lander at North Greenville	5:30
19	Saint Leo at GC&SU	7:00
	Pfeiffer at USC Spartanburg	7:00
21	UNC Pembroke vs. Fayetteville State	5:00
	Augusta State vs. West Alabama	5:30
	GC&SU vs. Catawba	6:00
	Lander vs. Tusculum	6:00
	Charleston (W.V.) at AASU	7:00
	Elizabeth City State at Columbus State	8:00
	Barber-Scotia at Clayton State	8:00
	USC Spartanburg at Carson-Newman	8:00
	Mars Hill at Kennesaw State	8:00
22	Augusta State at Montevallo	2:00
	N.C. Central at Francis Marion	2:00
	GC&SU vs. Mars Hill	2:00
	Flagler at North Florida	2:00
	UNC Pembroke vs. Charleston (W.V.)	2:00
	Brewton-Parker/Eckerd at Clayton State	2:4:00
	Virginia Union at Columbus State	4:00
	USC Spartanburg vs. Tusculum	4:00
	Catawba at Kennesaw State	4:00
	Fayetteville State at AASU	4:00
	USC Aiken at Georgia Southern	5:15
	Lander at Carson-Newman	6:00
25	Morris at Armstrong Atlantic St.	6:00
	Columbus State at Clark Atlanta	6:00
	Bennett at UNC Pembroke	6:00
	Francis Marion at Presbyterian	6:30
	Montevallo at GC&SU	7:00
26	N.C. Central at USC Spartanburg	7:00
28	Presbyterian at Lander	2:00
	Francis Marion at Eckerd	3:00
	North Florida vs. Miles	3:00
	Augusta State vs. Newberry	5:30
	Clayton State vs. Alabama-Huntsville	5:30
	Saint Pauls at USC Aiken	7:30
	Kennesaw State vs. Alabama-Huntsville	7:30
29	Francis Marion vs. Tampa	11:00 am
	Augusta State vs. St. Paul's	1:00
	North Florida vs. Grand Valley State	1:00
	Clayton State at West Georgia	2:00
	Columbus State at Presbyterian	2:00
	Newberry at USC Aiken	3:00
	Kennesaw State at West Georgia	4:00
	Armstrong Atlantic St. at Valdosta State	7:00
30	Columbus State at Lander (non-conf.)	2:00

December

1	Allen at UNC Pembroke	6:00
2	USC Aiken at Catawba	6:00
	West Georgia at GC&SU	7:00
	Kennesaw State at Montevallo	7:00
3	Voorhees at Lander	5:30
	Rollins at Armstrong Atlantic St.	7:00
	USC Spartanburg at Presbyterian	7:00
4	North Florida at Florida Tech	5:30
	UNC Pembroke at Morris	6:00
5	GC&SU vs. Saint Leo	2:00
	Mars Hill at USC Aiken	7:00
6	UNC Pembroke at Columbus State	1:00
	Presbyterian at Armstrong Atlantic St.	2:00
	West Alabama at Clayton State	2:00
	GC&SU vs. Eckerd	2:00
	Carson-Newman at USC Aiken	5:30
	Erskine at Lander	5:30
8	USC Spartanburg at Mars Hill	5:30
9	UNC Pembroke at Queens	6:00
	Wingate at Francis Marion	7:30
12	Pfeiffer at UNC Pembroke	6:00
13	Lander at Furman	3:00
	GC&SU at West Georgia	5:30
15	Columbus State at West Georgia	3:00
16	Armstrong Atlantic St. at Tusculum	5:00

16	Augusta State vs. Fort Valley St.	5:30
	Fayetteville State at Francis Marion	7:30
	Allen at USC Aiken	7:30
17	Columbus State vs. Rollins	2:00
	Catawba at North Florida	4:00
	Augusta State vs. Allen	5:30
	Livingstone at UNC Pembroke	6:00
	Clayton State vs. Bellarmine	6:00
	Fort Valley State at USC Aiken	7:30
18	Columbus State vs. Catawba	2:00
	Rollins at North Florida	4:00
	Shaw at Augusta State	5:30
	Clayton State vs. Nova Southeastern	6:00
	Armstrong Atlantic St. at Mars Hill	7:00
	Belmont Abbey at USC Spartanburg	7:00
	UNC Pembroke vs. Florida Southern	3:30
19	Kennesaw State at West Alabama	3:00
20	UNC Pembroke at Barry	5:30
	Augusta State vs. Hillsdale	6:00
21	Augusta State vs. Savannah Art & Design	2:00
28	St. Paul's at Clayton State	3:00
29	Carson-Newman/SUWG at Clayton State	1/3:00
	AASU vs. Nova Southeastern	4:00
	GC&SU vs. Tuskegee	6:00
	North Florida at Bowie State	8:00
	Central State at Columbus State	8:00
30	North Florida vs. N.C. Central	2:00
	GC&SU vs. Central State	3:00
	Francis Marion at Fayetteville State	5:00
	UNC Pembroke at Mt. Olive	5:30
	Armstrong Atlantic St. at Barry	6:00
	Montevallo at Kennesaw State	7:00
	Tuskegee at Columbus State	7:30

January

2	Kennesaw State vs. North Dakota State	2:00
	Lander at Newberry	2:00
	Shaw at Armstrong Atlantic St.	7:00
3	St. Andrews at Francis Marion	2:00
	Kennesaw State vs. Claffin	2:00
	Presbyterian at USC Aiken	2:00
	Lander at Tusculum	2:00
	Edward Waters at North Florida	2:00
	West Georgia at Columbus State	3:00
	Paine at Augusta State	6:00
5	Clayton State at Newberry	6:00
	West Alabama at Kennesaw State	7:00
	Lincoln Memorial at USC Spartanburg	7:00
7	Armstrong Atlantic St. at GC&SU	5:30
	Augusta State at UNC Pembroke	5:30
	Kennesaw State at Columbus State	5:30
	North Florida at Clayton State	5:30
	Francis Marion at Lander	5:30
	USC Aiken at USC Spartanburg	5:30
10	Clayton State at Francis Marion	2:00
	USC Aiken at Kennesaw State	2:00
	USC Spartanburg at North Florida	2:00
	Armstrong Atlantic St. at Augusta State	5:30
	Lander at GC&SU	5:30
12	Francis Marion at Longwood	5:00
14	Clayton State at Armstrong Atlantic St.	5:30
	Augusta State at Lander	5:30
	North Florida at Columbus State	5:30
	USC Spartanburg at Francis Marion	5:30
	GC&SU at Kennesaw State	5:30
17	UNC Pembroke at USC Aiken	5:30
	GC&SU at UNC Pembroke	2:00
	Kennesaw State at USC Spartanburg	2:00
	Francis Marion at AASU	5:30
	Augusta State at North Florida	5:30
	Columbus State at USC Aiken	5:30
	Clayton State at Lander	5:30
19	Converse at USC Spartanburg	7:00
21	AASU at Kennesaw State	5:30
	USC Spartanburg at Augusta State	5:30
	Columbus State at Clayton State	5:30
	Francis Marion at USC Aiken	5:30
	GC&SU at North Florida	5:30
	UNC Pembroke at Lander	5:30
24	USC Spartanburg at Columbus State	1:00
	Lander at Armstrong Atlantic St.	2:00
	UNC Pembroke at Clayton State	2:00
	North Florida at Francis Marion	2:00
	Augusta State at Kennesaw State	2:00
	USC Aiken at GC&SU	5:30

28	Armstrong Atlantic St. at Clayton State	5:30
	Lander at Augusta State	5:30
	Columbus State at North Florida	5:30
	Francis Marion at USC Spartanburg	5:30
	Kennesaw State at GC&SU	5:30
	USC Aiken at UNC Pembroke	5:30
31	Francis Marion at Kennesaw State	2:00
	GC&SU at USC Spartanburg	2:00
	North Florida at Lander	2:00
	AASU at UNC Pembroke	5:30
31	Columbus State at Augusta State	5:30
	Clayton State at USC Aiken	5:30

February

4	Kennesaw State at AASU	5:30
	Augusta State at USC Spartanburg	5:30
	Clayton State at Columbus State	5:30
	USC Aiken at Francis Marion	5:30
	North Florida at GC&SU	5:30
	Lander at UNC Pembroke	5:30
7	GC&SU at Augusta State	12:30
	Columbus State at Francis Marion	2:00
	UNC Pembroke at North Florida	2:00
	USC Aiken at Armstrong Atlantic St.	4:00
	USC Spartanburg at Clayton State	5:30
	Lander at Kennesaw State	5:30
11	Armstrong Atlantic St. at North Florida	5:30
	Augusta State at USC Aiken	5:30
	Columbus State at GC&SU	5:30
	Kennesaw State at Clayton State	5:30
	UNC Pembroke at Francis Marion	5:30
	Lander at USC Spartanburg	5:30
14	AASU at Columbus State	1:00
	North Florida at Kennesaw State	2:00
	USC Spartanburg at UNC Pembroke	2:00
	Francis Marion at Augusta State	5:30
	Clayton State at GC&SU	5:30
	USC Aiken at Lander	5:30
18	GC&SU at Armstrong Atlantic St.	5:30
	UNC Pembroke at Augusta State	5:30
	Columbus State at Kennesaw State	5:30
	Clayton State at North Florida	5:30
	Lander at Francis Marion	5:30
	USC Spartanburg at USC Aiken	5:30
21	AASU at USC Spartanburg	2:00
	Kennesaw State at UNC Pembroke	2:00
	Lander at Columbus State	4:00
	Augusta State at Clayton State	5:30
	Francis Marion at GC&SU	5:30
	North Florida at USC Aiken	5:30
25	North Florida at Armstrong Atlantic St.	5:30
	USC Aiken at Augusta State	5:30
	GC&SU at Columbus State	5:30
	Clayton State at Kennesaw State	5:30
	Francis Marion at UNC Pembroke	5:30
	USC Spartanburg at Lander	5:30
28	Columbus State at AASU	2:00
	Augusta State at Francis Marion	2:00
	Kennesaw State at North Florida	2:00
	UNC Pembroke at USC Spartanburg	2:00
	GC&SU at Clayton State	5:30
	Lander at USC Aiken	5:30

March

2004 Peach Belt Conference Men's Basketball Tournament

March 2-7
Augusta, Ga.

NCAA Regionals

March 13-16
TBA

NCAA Elite Eight

March 24-27
Bakersfield, Ca.

The PBC returns to a 16-game league slate in 2003-04



Individual and Scoring Records

Individual Records

Most Points

First Half: 30, Renee Rice vs. Brewton-Parker, 2-19-92
 Second Half: 23, Renee Rice vs. Brewton-Parker, 2-19-92
 Game: 53, Renee Rice vs. Brewton-Parker, 2-19-92
 Season: 653, Terralyn Edwards, 1981-82
 Career: 1,360, Gigi Gibson, 1980-84

Best Scoring Average

Season: 24.4, Terralyn Edwards, 1979-80
 Career: 24.0, Renee Rice, 1991-92

Most Field Goals Made

Game: 24, Renee Rice vs. Brewton-Parker, 2-19-92
 Season: 276, Renee Rice, 1991-92
 Career: 566, Gigi Gibson, 1980-84

Most Consecutive Field Goals

Game: 13, Renee Rice at USC Spartanburg, 2-1-92
 Season: 17, Renee Rice vs. GC&SU, 1-29-92 (4)
 and at USC Spartanburg, 2-1-92 (13)

Most Field Goals Attempted

Game: 34, Renee Rice vs. Brewton-Parker, 2-19-92
 Season: 667, Terralyn Edwards, 1981-82
 Career: 1,376, Gigi Gibson, 1980-84

Best Field Goal Percentage

Game (min. 8 attempts):
 1.000 (8-8), Kim Pitts vs. ASU, 1-20-86
 Kim Pitts vs. GC&SU, 2-21-86
 (min. 10 attempts):
 .933 (14-15), Demetria McCloudon vs. Fla. Tech, 12-3-98
 Season: .643 (137-213), Christa Vaughan, 1995-96
 Career: .601 (302-502), Christa Vaughan, 1995-98



The PBC Freshman of the Year in 1991-92, Yolanda Oliver made a school record 99 career starts.

Most 3-Pointers Made

Game: 9, Debra Morrell vs. Lander, 1-28-95
 Season: 82, Debra Morrell, 1994-95
 Career: 183, Michelle Hubbard, 1995-98, 00-01

Most 3-Pointers Attempted

Game: 18, Debra Morrell vs. Lander, 1-28-95
 Season: 240, Debra Morrell, 1994-95
 Career: 543, Michelle Hubbard, 1995-98, 00-01

Best 3-Point Percentage

Game (min. 6 att.):
 .857 (6-7), Sheri Hanners vs. USC Aiken, 2-13-99
 Season: .436 (41-94), Jamie Townsend, 1996-97
 Career: .384 (56-146), Duanda Ball, 1999-2000

Most Free Throws

Game: 17, Terralyn Edwards vs. Savannah State, 2-18-80
 Season: 199, Terralyn Edwards, 1981-82
 Career: 361, Terralyn Edwards, 1978-82

Most Free Throws Attempted

Game: 20, Terralyn Edwards vs. Savannah State, 2-18-80
 Season: 263, Terralyn Edwards, 1981-82
 Career: 484, Terralyn Edwards, 1979-83

Best Free Throw Percentage

Game (min. 10 attempts):
 1.000 (12-12), Debra Danielson vs. Edward Waters, 11-21-83
 Season: .810 (85-105), Norma Faison, 1984-85
 Career: .768 (228-297), Lexie Martin, 1998-02

Most Rebounds

Offensive: 14, Renee Rice at Lander, 1-11-92
 Defensive: 18, Zandrique Cason vs. Lenoir-Rhyne, 12-15-00
 Game: 27, Cindy Pound at Tift, 1-12-79
 Season: 373, Gigi Gibson, 1981-82
 Career: 963, Gigi Gibson, 1980-84

Best Rebound Average

Season: 17.0, Cindy Pound, 1978-79
 Career: 14.1, Cindy Pound, 1978-80

Most Assists

Game: 15, Yolanda Oliver vs. Kennesaw State, 12-13-94
 Season: 174, Yolanda Oliver, 1994-95
 Career: 448, Yolanda Oliver, 1991-95

Most Steals

Game: 10, Norma Faison at Tift, 11-17-84
 Season: 97, Marva Lindsay, 1992-93
 Career: 302, Yolanda Oliver, 1991-95

Most Blocked Shots

Game: 6, Michelle Phillips at Georgia Southern, 2-26-88
 Dina Mulholland vs. Francis Marion, 2-16-91
 Tishay Lewis vs. Clayton State, 12-7-02
 Season: 59, Michelle Phillips, 1987-88
 Career: 84, Zandrique Cason, 2001-03

Most Games

Season: 32, Beth Benefield, Gigi Gibson, Lee Harmer, 1981-82
 Career: 109, Gigi Gibson, 1980-84

Most Minutes Played

Game: 49, Toni Bell-Yon at Francis Marion, 1-26-91 (2ot)
 Season: 1,000 (29 games), Debra Morrell, 1994-95
 Career: 3,511 (108 games), Yolanda Oliver, 1991-95

Most Consecutive Starts

Career: 99, Yolanda Oliver, 1991-95

Scoring Records

Most Games w/20 Or More Points

Season: 22, Terralyn Edwards, 1981-1982
 Career: 38, Terralyn Edwards, 1979-1983

Most Games In Double Figures

Season: 29 (30 games), Terralyn Edwards, 1981-1982
 Career: 73 (109 games), Gigi Gibson, 1980-1984

Cons. Games In Double Figures

30, Zandrique Cason, 2001-2002 (last 27) & 2002-03 (first 3)

30-Point Games

Date	Player	Pts. Against	Score
1/27/78	Carmen Escartin	38 at Piedmont	W 85-75
1/12/79	Cindy Pound	34 Tift	W 79-69
2/20/79	Cindy Pound	38 at Charleston So.	W 76-63
11/19/79	Cindy Pound	38 at Savannah St.	W 80-71
11/26/79	Cindy Pound	41 at Central Fla.	W 98-77
1/5/80	Terralyn Edwards	31 Ga. Southwestern	W 71-59
1/14/80	Terralyn Edwards	32 at GC&SU	L 68-59
2/8/80	Terralyn Edwards	31 Fort Valley State	L 84-77
2/9/80	Terralyn Edwards	37 at Charleston So.	W 82-55
2/18/80	Terralyn Edwards	39 Savannah State	W 98-75
12/19/80	Debra David	35 at North Georgia	W 81-74
1/8/82	Terralyn Edwards	36 Shorter	W 70-62
1/23/82	Gigi Gibson	30 at Shorter	W 74-70
3/11/82	Terralyn Edwards	31 Fla. International	L 81-77
2/2/85	Cynthia Hargrove	38 Tift	W 105-66
11/23/85	Norma Faison	33 Rollins	W 72-51
11/26/85	Norma Faison	32 Flagler	W 105-68
12/8/85	Norma Faison	30 North Georgia	W 83-78
12/8/87	Heather Poppell	38 at West Georgia	L 95-69
1/18/88	Heather Poppell	31 Flagler	W 74-68
2/13/88	Heather Poppell	35 at Columbia	W 79-67
2/16/88	Heather Poppell	30 Fort Valley State	L 109-68
2/22/88	Heather Poppell	36 Savannah State	L 78-66
12/9/88	Melissa Pettway	31 at West Georgia	L 96-68
1/8/92	Renee Rice	31 Francis Marion	L 66-64
2/1/92	Renee Rice	42 at USC Spartanburg	W 69-56
2/5/92	Renee Rice	37 Columbus State	W 60-52
2/17/92	Renee Rice	31 Spelman	W 79-49
2/19/92	Renee Rice	53 Brewton-Parker	W 89-84
12/11/93	Jennifer Teeple	34 Florida Tech	W 69-60
1/31/94	Jennifer Teeple	30 at Augusta State	W 66-59
12/13/94	Nicole Smith	34 Kennesaw State	L 87-86
1/31/98	Demetria McCloudon	31 at Augusta State	L 83-79
12/3/98	Demetria McCloudon	43 Florida Tech	W 78-72
1/2/99	Demetria McCloudon	30 at GC&SU	L 85-73
2/19/99	Demetria McCloudon	33 UNC Pembroke	W 69-60
11/29/00	Zandrique Cason	31 at Spelman	W 79-61
1/4/03	Tishay Lewis	30 at Lander	W 82-72
1/15/03	Tishay Lewis	34 at USC Aiken	W 80-69
2/5/03	Tishay Lewis	30 Augusta State	W 86-53
2/12/03	Tishay Lewis	32 at North Florida	W 69-58

20-Rebound Games

Date	Player	Reb. Against	Score
1/31/78	Carmen Escartin	20 at Augusta State	L 87-67
2/17/78	Patty Rountree	23 Georgia Baptist	W 74-59
11/18/78	Cindy Pound	20 Spartanburg Meth.	W 79-64
12/4/78	Cindy Pound	24 at GC&SU	W 77-44
1/12/79	Cindy Pound	27 Tift	W 79-69
1/27/79	Cindy Pound	23 at Georgia Tech	W 61-51
2/11/79	Cindy Pound	23 Ga. Southwestern	W 70-54
2/14/79	Cindy Pound	23 at Augusta State	L 79-76
2/20/79	Cindy Pound	23 at Baptist	W 76-63
11/26/79	Cindy Pound	25 at Central Florida	W 98-77
11/17/80	Debra David	20 Savannah State	L 74-54
1/13/84	Debra Danielson	20 Shorter	L 86-71
1/28/84	Debra Danielson	22 North Georgia	W 76-69
2/4/84	Debra Danielson	20 at Tift	W 82-76
	Gigi Gibson	20 at Tift	W 82-76
1/29/92	Renee Rice	23 at GC&SU	L 66-59
12/15/00	Zandrique Cason	20 Lenoir-Rhyne	L 69-56
11/21/01	Zandrique Cason	24 at Fort Valley St.	L 53-47
2/13/02	Zandrique Cason	23 at North Florida	L 67-59

Tishay Lewis had four 30+ point games in 2002-03



Season Top 10s



Double-Double Seasons

Carmen Escartin, 77-78	17.2 ppg	10.6 rpg
Cindy Pound, 78-79	19.7 ppg	17.0 rpg
Terralyn Edwards, 79-80	24.4 ppg	11.8 rpg
Cindy Pound, 79-80	20.6 ppg	11.7 rpg
Gigi Gibson, 81-82	13.8 ppg	11.6 rpg
Gigi Gibson, 82-83	17.4 ppg	10.4 rpg
Debra Danielson, 83-84	15.6 ppg	11.4 rpg
Dee Burns, 85-86	15.3 ppg	10.5 rpg
Renee Rice, 91-92	24.0 ppg	13.1 rpg
Zandrique Cason, 00-01	16.7 ppg	10.3 rpg
Zandrique Cason, 01-02	15.4 ppg	10.6 rpg

Points

1. Terralyn Edwards, 81-82	653
2. Renee Rice, 91-92	648
3. Terralyn Edwards, 79-80	585
4. Tishay Lewis, 02-03	557
5. Heather Poppell, 87-88	511
6. Demetria McClouden, 98-99	492
7. Gigi Gibson, 82-83	470
8. Norma Faison, 84-85	463
9. Zandrique Cason, 01-02	448
10. Gigi Gibson, 81-82	442

Points Per Game

1. Terralyn Edwards, 79-80	24.4
2. Renee Rice, 91-92	24.0
3. Heather Poppell, 87-88	22.2
4. Terralyn Edwards, 81-82	21.8
5. Cindy Pound, 79-80	20.6
6. Cindy Pound, 78-79	19.7
7. Norma Faison, 85-86	19.2
8. Tishay Lewis, 02-03	18.0
9. Demetria McClouden, 98-99	17.6
10. Gigi Gibson, 82-83	17.4

Rebounds

1. Gigi Gibson, 81-82	373
2. Renee Rice, 91-92	354
3. Cindy Pound, 78-79	340
4. Zandrique Cason, 01-02	308
5. Debra Danielson, 83-84	307
6. Terralyn Edwards, 79-80	283
7. Gigi Gibson, 82-83	282
8. Patty Rountree, 77-78	276
9. Zandrique Cason, 00-01	269
10. Nicole Smith, 94-95	263

Rebounds Per Game

1. Cindy Pound, 78-79	17.0
2. Patty Rountree, 77-78	13.8
3. Renee Rice, 91-92	13.1
4. Terralyn Edwards, 79-80	11.8
5. Cindy Pound, 79-80	11.7
6. Gigi Gibson, 81-82	11.6
7. Debra Danielson, 83-84	11.4
8. Carmen Escartin, 77-78	10.6
Zandrique Cason, 01-02	10.6
10. Dee Burns, 85-86	10.5

Field Goals Made

1. Renee Rice, 91-92	276
2. Terralyn Edwards, 81-82	227
3. Terralyn Edwards, 79-80	215
4. Demetria McClouden, 98-99	201
5. Cindy Pound, 79-80	196
6. Gigi Gibson, 82-83	193
7. Norma Faison, 84-85	189
8. Tishay Lewis, 02-03	183
9. Heather Poppell, 87-88	178
10. Nicole Smith, 94-95	173

Field Goal % (Min. 150 att.)

1. Christa Vaughan, 95-96643 (137-213)
2. Demetria McClouden, 98-99604 (201-333)
3. Dee Burns, 85-86601 (152-253)
4. Christa Vaughan, 96-97588 (137-233)
5. Renee Rice, 91-92584 (276-473)
6. Sonia Oliver, 97-98577 (138-239)
7. Angela Foote, 93-94571 (88-154)
8. Sonia Oliver, 96-97550 (93-169)
9. Debra Danielson, 83-84543 (164-302)
10. Sonya Mintz, 99-00532 (84-158)

3-Point Field Goals Made

1. Debra Morrell, 94-95	82
2. Jennifer Teeple, 93-94	62
3. Jennifer Teeple, 92-93	59
4. Michelle Hubbard, 95-96	58
5. Duanda Ball, 99-00	56
6. Michelle Hubbard, 96-97	53
7. Lexie Martin, 98-99	52
8. Toni Bell-Yon, 89-90	49
Tasha Washington, 02-03	49
10. Lexie Martin, 00-01	48

3-Point % (min. 1 3PM/gm)

1. Jamie Townsend, 96-97436 (41-94)
2. Vandy Noldon, 02-03392 (29-74)
3. Tishay Lewis, 02-03389 (42-108)
4. Tasha Washington, 02-03386 (49-127)
5. Duanda Ball, 99-00384 (56-146)
6. Toni Bell-Yon, 89-90383 (49-128)
7. Jennifer Teeple, 92-93381 (59-155)
8. Lexie Martin, 98-99371 (52-140)
9. Lexie Martin, 00-01369 (48-130)
10. Michelle Hubbard, 96-97	..	.356 (53-149)

Free Throws Made

1. Terralyn Edwards, 81-82	199
2. Terralyn Edwards, 79-80	155
Heather Poppell, 87-88	155
4. Tishay Lewis, 02-03	149
5. Zandrique Cason, 00-01	139
6. Zandrique Cason, 01-02	132
7. Cindy Pound, 79-80	103
8. Gigi Gibson, 81-82	102
9. Tasha Washington, 02-03	100
10. Zandrique Cason, 02-03	99

Free Throw % (min. 2 FTM/gm)

1. Norma Faison, 84-85810 (85-105)
2. Lexie Martin, 00-01789 (71-90)
3. Tishay Lewis, 02-03788 (149-189)
4. Lexie Martin, 01-02767 (66-86)
5. Dee Burns, 85-86759 (63-83)
6. Terralyn Edwards, 81-82	..	.757 (199-263)
7. Lee Harmer, 81-82750 (84-112)
8. Kim Pitts, 85-86747 (74-99)
9. Terralyn Edwards, 79-80	..	.738 (155-210)
10. Carmen Escartin, 77-78736 (53-72)

Assists

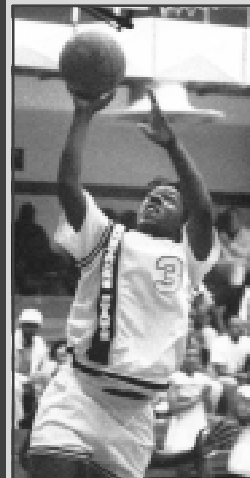
1. Yolanda Oliver, 94-95	174
2. Catherine Shields, 95-96	130
3. Michelle Hubbard, 95-96	120
4. Michelle Hubbard, 97-98	118
5. Michelle Hubbard, 96-97	117
6. Renee Johnson, 83-84	115
7. Cheryl Pierce, 90-91	105
Andrea Poppell, 91-92	105
9. Yolanda Oliver, 92-93	99
10. Marloes Renskers, 01-02	98

Steals

1. Marva Lindsay, 92-93	97
2. Yolanda Oliver, 94-95	93
3. Tishay Lewis, 02-03	91
4. Yolanda Oliver, 92-93	89
5. Norma Faison, 83-84	87
6. Renee Rice, 91-92	80
7. Tasha Washington, 02-03	79
8. Marva Lindsay, 93-94	78
9. Norma Faison, 83-84	76
Cynthia Hargrove, 84-85	76

Blocked Shots

1. Michelle Phillips, 87-88	59
2. Dina Mulholland, 90-91	45
3. Aurora Campbell, 81-82	33
4. Zandrique Cason, 01-02	31
5. Terralyn Edwards, 81-82	30
6. Tishay Lewis, 02-03	29
7. Zandrique Cason, 02-03	27
8. Zandrique Cason, 00-01	26
Rachel Baker, 01-02	26
10. Dorthell Little, 99-00	24



Renee Rice, the 1991-92 PBC Player of the Year, averaged 24.0 points per game that season, the second-best single-season scoring average in Peach Belt Conference women's basketball history. She also owns the PBC record for points in one game with 53.

Tishay Lewis scored the 4th-most points in a season in 2002-03





Career Top 10s

Games Played

1. Gigi Gibson, 80-84	109
2. Yolanda Oliver, 91-95	108
Kristi Steele, 92-96	108
4. Michelle Hubbard, 95-98, 00-01	106
5. Lexie Martin, 98-02	105
6. Becky Dyson, 95-99	102
7. Robin Gray, 94-98	101
8. Lee Harmer, 78-82	99
9. Walette Widener, 88-92	98
10. Tee Dixon, 82-86	97
Detra Thomas, 80-84	97
Sonia Oliver, 94-98	97

Points

1. Gigi Gibson, 80-84	1360
2. Terralyn Edwards, 79-83	1275
Yolanda Oliver, 91-95	1275
4. Zandrique Cason, 00-03	1212
5. Lexie Martin, 98-02	1119
6. Michelle Hubbard, 95-98, 00-01	1114
7. Norma Faison, 83-86	1091
8. Lee Harmer, 78-82	921
9. Cindy Pound, 78-80	889
10. Debra Danielson, 83-85	847

Points Per Game

1. Renee Rice, 91-92	24.0
2. Heather Poppell, 87-88	22.2
3. Terralyn Edwards, 79-83	22.0
4. Cindy Pound, 78-80	20.2
5. Tishay Lewis, 02-03	18.0
6. Carmen Escartin, 77-78	17.2
7. Debra David, 78-80	16.3
8. Kim Pitts, 85-86	16.0
9. Debra Danielson, 83-85	15.7
10. Norma Faison, 83-86	15.6

Rebounds

1. Gigi Gibson, 80-84	963
2. Zandrique Cason, 00-03	774
3. Cindy Pound, 78-80	621
4. Sonia Oliver, 94-98	618
5. Terralyn Edwards, 79-83	555
6. Kristi Steele, 92-96	547
7. Debra Danielson, 83-85	496
8. Sharleen Hamilton, 80-83	490
9. Yolanda Oliver, 91-95	448
10. Patty Rountree, 76-78	431

Rebounds Per Game

1. Cindy Pound, 78-80	14.1
2. Renee Rice, 91-92	13.1
3. Patty Rountree, 76-78	12.3
4. Carmen Escartin, 77-78	10.6
5. Terralyn Edwards, 79-83	9.6
6. Sharleen Hamilton, 80-83	9.2
Debra Danielson, 83-85	9.2
8. Zandrique Cason, 00-03	9.0
9. Gigi Gibson, 80-84	8.8
10. Kim Pitts, 85-86	8.6

Field Goals Made

1. Gigi Gibson, 80-84	566
2. Yolanda Oliver, 91-95	520
3. Terralyn Edwards, 79-83	457
4. Norma Faison, 83-86	443
5. Zandrique Cason, 00-03	416
6. Michelle Hubbard, 95-98, 00-01	374
7. Lexie Martin, 98-02	356
8. Lee Harmer, 78-82	355
9. Walette Widener, 88-92	348
10. Cindy Pound, 78-80	347

Field Goal % (Min. 250 att.)

1. Christa Vaughan, 95-98	.601 (302-502)
2. Renee Rice, 91-92	.584 (276-473)
3. Dee Burns, 84-86	.570 (233-409)
4. Demetria McClouden, 97-99	.566 (341-602)
5. Sonia Oliver, 95-99	.559 (313-559)
6. Debra Danielson, 83-85	.528 (333-631)
7. Shaetra Hodge, 01-03	.487 (130-267)
8. Marva Lindsay, 92-94	.475 (215-453)
9. Cindy Pound, 78-80	.463 (347-750)
10. Heather Poppell, 87-88	.460 (178-387)

3-Point Field Goals Made

1. Michelle Hubbard, 95-98, 00-01	183
2. Lexie Martin, 98-02	179
3. Debra Morrell, 90-95	123
4. Jennifer Teeple, 92-94	121
5. Toni Bell-Yon, 89-91	94
6. Jamie Townsend, 94-98	87
7. Kristin Brewer, 99-02	60
8. Duanda Ball, 99-00	56
9. Dana Cummings, 95-97	52
Shanetra Hodge, 01-03	52

3-Point % (min. 20 made)

1. Vandy Noldon, 02-03	.392 (29-74)
2. Tishay Lewis, 02-03	.389 (42-108)
3. Tasha Washington, 02-03	.386 (49-127)
4. Duanda Ball, 99-00	.384 (56-146)
5. Lexie Martin, 98-02	.351 (179-510)
6. Jamie Townsend, 94-98	.348 (87-250)
7. Jennifer Teeple, 92-94	.339 (121-357)
8. Michelle Hubbard, 95-01	.337 (183-543)
9. Toni Bell-Yon, 89-91	.331 (94-284)
10. Kristin Brewer, 99-02	.324 (60-185)

Free Throws Made

1. Zandrique Cason, 00-	370
2. Terralyn Edwards, 79-83	361
3. Gigi Gibson, 80-84	258
4. Lexie Martin, 98-02	228
5. Yolanda Oliver, 91-95	226
6. Lee Harmer, 78-82	217
7. Marie Dotson, 76-79	213
8. Norma Faison, 83-86	205
9. Cindy Pound, 78-80	195
10. Michelle Hubbard, 95-98, 00-01	183

Free Throw % (min. 100 att.)

1. Tishay Lewis, 02-03	.788 (149-189)
2. Lexie Martin, 98-02	.768 (228-297)
3. Terralyn Edwards, 79-83	.746 (361-484)
4. Michelle Hubbard, 95-01	.732 (183-250)
5. Kristin Brewer, 99-02	.731 (95-130)
6. Norma Faison, 83-86	.727 (205-282)
7. Tasha Washington, 02-03	.725 (100-138)
8. Lee Harmer, 78-82	.700 (217-310)
9. Heather Poppell, 87-88	.695 (155-223)
10. Katy Ballance, 83-88	.686 (96-140)

Assists

1. Yolanda Oliver, 91-95	448
2. Michelle Hubbard, 95-98, 00-01	413
3. Lexie Martin, 98-02	291
4. Lee Harmer, 78-82	226
5. Marloes Renskers, 00-	195
6. Katy Ballance, 83-88	174
7. Walette Widener, 88-92	166
8. Norma Faison, 83-86	165
9. Marva Lindsay, 92-94	143
10. Toni Bell-Yon, 89-91	139

Steals

1. Yolanda Oliver, 91-95	302
2. Lexie Martin, 98-02	213
3. Norma Faison, 83-86	197
4. Michelle Hubbard, 95-98, 00-01	179
5. Marva Lindsay, 92-94	175
6. Lee Harmer, 78-82	162
7. Gigi Gibson, 80-84	153
8. Tee Dixon, 82-86	151
9. Michelle Shinholster, 89-92	134
10. Marie Dotson, 76-79	127

Blocked Shots

1. Zandrique Cason, 00-	84
2. Dina Mulholland, 89-91	62
3. Michelle Phillips, 85-88	61
4. Rachel Baker, 00-02	37
5. Melissa Germany, 98-02	36
6. Aurora Campbell, 80-82	33
7. Kristi Steele, 92-96	32
8. Terralyn Edwards, 79-83	30
9. Misty DeGross, 82-85	29
Tishay Lewis, 02-03	29



Melissa Germany



Michelle Hubbard

Team Records



Scoring

Most Points

First Half: 58, vs. USC Aiken, 2-13-99
Second Half: 58, vs Columbia, 1-23-88
Overtime: 19, vs Augusta, 1-12-85
Game: 105, vs Tift, 2-2-85 and vs Flagler, 11-26-85
Season: 2,328 (31 games), 2002-2003

Fewest Points

First Half: 7, at Valdosta State (52), 2-11-89
Second Half: 4, vs West Georgia (40), 1-27-88
Overtime: 2, at Savannah State, 12-5-87
Game: 24, vs West Georgia, 1-27-88
Season: 757 (15 games), 1976-1977

Most Points Allowed

First Half: 63, at Georgia College, 2-20-88
Second Half: 67, vs Fort Valley State, 2-16-88
Overtime: 16 (1ot), at Georgia College, 2-27-93
19 (2ot) at Francis Marion, 1-26-91
Game: 114, at Georgia College, 2-20-88
Season: 2,176, 1981-1982

Fewest Points Allowed

First Half: 10, at Rollins, 11-14-80
Second Half: 15, at Voorhees, 12-12-92
Overtime: 4, vs. Augusta, 1-12-85 and at Brewton-Parker, 1-6-92
Game: 26, at Rollins, 11-14-80
Season: 1,046, 1976-1977

Points

Most Points Game, Both Teams:
201, AASU (102), at Tift (99) ot, 2-17-79
Fewest Points Game, Both Teams:
85, AASU (48) at Coker (37), 12-8-93
Largest margin of victory:
57, AASU (83) at Rollins (26), 11-14-80
Largest margin of defeat:
64, AASU (28) at Valdosta State (92), 2-11-89
Most Points in a win:
105, vs Tift, 2-2-85 and vs Flagler, 11-26-85
Most Points in a road win: 102 at Tift (99) ot, 2-17-79
Fewest Points in a win:
46, AASU (46) at Savannah State (45), 12-10-01
Fewest Points in a home win:
50, AASU (50) vs. Francis Marion (48), 1-16-02
Most Points in a loss:
86, AASU (86) at Augusta (96), 2-22-85
AASU (86) vs Kennesaw State (87), 12-13-94
Most Points in a home loss:
86, AASU (86) vs Kennesaw State (87), 12-13-94
Most Points in a road loss:
86, AASU (86) at Augusta (96), 2-22-85
Fewest Points in a loss:
24, AASU (24) vs West Georgia (79), 1-27-88
Fewest Points in a road loss:
28, AASU (28) at Valdosta State (92), 2-11-89

Wins and Losses

Most Wins: 27, 2002-2003
Best Winning Percentage: .870 (27-4), 2002-2003
Most Consecutive Wins: 14, 1-25-03 - 3-9-03
Most Consecutive Season Opening Wins: 5, 1978 to 1982
Most Consecutive Wins to start a season: 8, 1984-1985
Most Consecutive Home Wins: 15, 2-9-02 to Present
Most Consecutive Road Wins: 6 (three times)
2-17-79 to 12-8-79; 1-25-80 to 11-15-80; 1-29-03 to Present
Most Losses: 21, 1988-1989
Worst Winning Percentage: .125 (3-21), 1988-89
Most Consecutive Losses: 22, 1987-88 & 1988-89
Most Consecutive Losses in Season Openers: 2,
1976 to 1977 & 1993 to 1994
Most Consecutive Losses to start a season: 17, 1988-1989
Most Consecutive Home Losses: 13, 1-27-88 to 2-4-89
Most Consecutive Road Losses: 12, 1-27-86 to 1-9-88

Field Goals

Most Field Goals

Game: 45, vs Tift, 2-2-85
Season: 930, (28 games), 1984-1985

Most Field Goals Attempted

Game: 108, vs Tift, 2-2-85
Season: 2,304 (32 games), 1981-1982

Best Field Goal Percentage

Half: .810 (17-21), 1st Half vs Augusta, 1-20-86
Game: .636 (28-44) at Lynn University, 11-29-97
(28-44) at GC&SU, 1-24-98
Season: .4464 (708-1,586), 1985-1986

Fewest Field Goals

Game: 6, at Valdosta State, 2-11-89
Season: 275 (15 games), 1976-1977

Fewest Field Goals Attempted

Game: 30, at Florida Atlantic, 12-9-89
Season: 937 (15 games), 1976-1977

Lowest Field Goal Percentage

First Half: .056 (1-18), at Valdosta State, 2-11-89
Second Half: .087 (2-23), vs West Georgia, 1-27-88
Game: .154 (6-39), at Valdosta State, 2-11-89
Season: .293 (275-937), 1976-1977

3-Point Field Goals

Most 3-Pointers Made

Game: 11, twice, 1-18-03 at CSU; 2-15-03 at Clayton State
Season: 193 (31 Games) 2002-2003

Most 3-Pointers Attempted

Game: 32, 2-15-03 at Clayton State
Season: 578 (31 games), 2002-2003

Best 3-Point Percentage

Game: .750 (6-8), vs. Mount Olive, 11-17-00
Season: .369 (69-187), 1989-1990

Free Throws

Most Free Throws Made

Game: 44, vs South Florida, 1-30-82
Season: 531 (31 games), 2002-2003

Most Free Throws Attempted

Game: 57, vs South Florida, 1-30-82
Season: 836 (32 games), 1981-1982

Best Free Throw Percentage

Game: .900 (9-10), at Piedmont, 2-10-90
Season: .712, 2002-2003

Fewest Free Throws Made

Game: 1, at Berry, 2-18-84
Season: 201 (27 games), 1995-96

Fewest Free Throws Attempted

Game: 3, at Berry, 2-18-84 and vs Ala.-Huntsville, 12-6-96
Season: 343 (27 games), 1995-96

Lowest Free Throw Percentage

Game: .222 (4-18), at Rollins, 12-10-94
Season: .516 (330-640), 1982-1983

Rebounds

Most Offensive Rebounds

Game: 45, vs Tift, 2-4-84
Season: 571 (28 games), 1984-1985

Most Defensive Rebounds

Game: 45, vs Tift, 2-4-84
Season: 876 (28 games), 1984-1985

Most Rebounds

Game: 90, vs Tift, 2-4-84
Season: 1,447 (28 games), 1984-1985

Fewest Offensive Rebounds

Game: 0, vs Valdosta State, 12-14-87
Season: 196 (15 games), 1976-1977

Fewest Defensive Rebounds

Game: 11, at Georgia College, 2-20-88
Season: 291 (15 games), 1976-1977

Fewest Total Rebounds

Game: 14, vs Valdosta State, 12-14-87
Season: 487 (15 games), 1976-1977

Rebound Margin

Game: 50, AASU (62), Atlanta Christian (12), 2-12-77
Season: 4.6, AASU (51.7), Opp (47.1), 1984-1985

Other Records

Most Personal Fouls

Game: 32, vs Gardner-Webb, 12-30-00
Season: 620 (31 games), 2002-2003

Fewest Personal Fouls

Game: 8, vs Spelman, 2-17-92 and vs FMU, 2-10-97
Season: 337 (15 games), 1976-1977

Most Assists

Game: 30, vs USC Aiken, 1-3-96
Season: 438 (31 games), 2002-2003

Most Steals

Game: 29, at Tift, 11-17-84
Season: 421 (31 games), 2002-2003

Most Blocked Shots

Game: 9, vs Clayton State, 12-7-03
Season: 117 (32 games), 1981-1982

Most Turnovers

Game: 45 vs. Fayetteville State, 11-26-99
Season: 652 (23 games), 1987-1988

Fewest Turnovers

Game: 6, at USC Spartanburg, 2-1-92
Season: 354 (24 games), 1985-1986

Season Averages

Highest Offensive Average: 80.7, 1984-1985
Lowest Offensive Average: 50.5, 1976-1977
Best Defensive Average: 56.5, 1990-1991
Worst Defensive Average: 84.8, 1987-1988
Victory Margin: 15.8 (AASU: 75.1 Opp: 59.3), 2002-2003
Losing Margin: 28.5 (AASU: 52.3 Opp: 80.8), 1988-1989
Best Rebound Average: 51.7, 1984-1985
Best Assist Average: 15.5, 1991-1992
Best Steals Average: 15.9, 1980-1981

AASU set school records for points, steals and assists in 2002-03





Honor Roll

Peach Belt Conference Honors

First Team

Renee Rice (1991-92)
Nicole Smith (1994-95)
Zandrique Cason (2000-2001)
Tishay Lewis (2002-2003)

Second Team

Toni Bell-Yon (1990-91)
Yolanda Oliver (1992-93, 1993-94)
Jennifer Teeple (1993-94)
Christa Vaughan (1995-96)
Demetria McClouden (1998-99)
Zandrique Cason (2001-2002)
Tasha Washington (2002-2003)

Player of the Year

Renee Rice (1991-92)
Tishay Lewis (2002-2003)

Coach of the Year

Roger Hodge (2002-03)

Rookie of the Year

Yolanda Oliver (1991-92)

PBC Player of the Week

Renee Rice
Dec. 15, 1991
Jan. 6, 1992
Jan. 13, 1992
Jan. 20, 1992
Feb. 3, 1992
Feb. 17, 1992
Feb. 24, 1992
Dec. 5, 1994
Dec. 19, 1994
Jan. 4, 1999
Dec. 4, 2000
Dec. 18, 2000
Jan. 14, 2002
Jan. 6, 2003
Feb. 3, 2003
Feb. 10, 2003

Nicole Smith
Demetria McClouden
Zandrique Cason
Tishay Lewis

PBC Tmt Honors

All-Tournament Team

Jennifer Teeple (1993-94)
Mary Ann Merritt (1994-95)
Yolanda Oliver (1994-95)
Zandrique Cason (2001-02)
Tishay Lewis (2002-03)
Tasha Washington (2002-03)

PBC Tournament MVP

Tishay Lewis (2002-03)

Kodak/WBCA DII All-America



First Team

Tishay Lewis
(2002-03)

GAIAW Honors

All-Conference

Cindy Pound (1978-79, 1979-80)
Terralyn Edwards (1979-80, 1981-82)
Sharleen Hamilton (1980-81)
Lee Harmer (1981-82)

All-Tournament Team

Terralyn Edwards (1981-82)
Aurora Campbell (1981-82)

Player of the Year

Cindy Pound (1979-80)
Terralyn Edwards (1981-82)

Coach of the Year

B.J. Ford (1978-79, 1981-82)



Cindy Pound
1979-80 GAIAW
Player of the Year

All-Region Honors

WBCA All-Region 3

Tishay Lewis (2002-03)
Roger Hodge (2002-03)
Region Coach of the Year

A.I.A.W.

All-Region III

Terralyn Edwards (1981-82)
Aurora Campbell (1981-82)

NAIA

All-District 25

Gigi Gibson (1982-83)
Debra Danielson (1983-84, 1984-85)
Norma Faison (1984-85)

GIAC Honors

All-Conference

Debra Danielson (1983-84, 1984-85)
Norma Faison (1984-85)

DII Bulletin

All-America

Tishay Lewis (2002-03) - Third Team

Daktronics

All-America

Tishay Lewis (2002-03) - Third Team



AASU's first head coach,
B.J. Ford led the AASU
Lady Pirates to NAIA
National Tournament
appearances in four straight
seasons from 1982 to 1985.

AASU Coaching Records

Coach	Years	Record	Pct.
B.J. Ford	10	121-121	.500
Larry Tapp	2	8-39	.170
Lenny Passink	5	72-55	.567
Kim Bynum	2	21-35	.389
Lynn Jarrett	4	46-63	.422
Roger Hodge	3	48-38	.558
Total	26	316-351	.474



Cindy Pound was AASU's first conference Player of the Year in '79-'80

All-Time Records



Season-By-Season Records

Year	Record	Pct.	Conference	Coach
76-77	2-13	.133	GIAIW	B.J. Ford
77-78	4-16	.202	2-6	B.J. Ford
78-79	12-8	.600	7-3	B.J. Ford
79-80	17-7	.708	11-4	B.J. Ford
80-81	10-16	.385	3-9	B.J. Ford
81-82	20-12	.625	5-3	B.J. Ford
82-83	11-16	.407	GIAC	B.J. Ford
83-84	15-11	.577	5-7	B.J. Ford
84-85	21-7	.750		B.J. Ford
85-86	9-15	.375		B.J. Ford
86-87			NO TEAM	
87-88	5-18	.217		Larry Tapp
88-89	3-21	.125		Larry Tapp
89-90	15-9	.625	PBC	Lenny Passink
90-91	10-14	.417	5-7 (T4th)	Lenny Passink
91-92	14-13	.519	5-9 (T5th)	Lenny Passink
92-93	16-10	.615	10-6 (3rd)	Lenny Passink
93-94	17-9	.654	11-5 (3rd)	Lenny Passink
94-95	12-17	.414	8-10 (T5th)	Kim Bynum
95-96	9-18	.333	7-11 (T8th)	Kim Bynum
96-97	14-13	.519	10-9 (T5th)	Lynn Jarrett
97-98	12-16	.429	6-12 (T5th)	Lynn Jarrett
98-99	13-15	.464	6-10 (T4th-S)	Lynn Jarrett
99-00	7-19	.269	4-12 (T5th-S)	Lynn Jarrett
2000-01	10-16	.385	5-11 (5th-S)	Roger Hodge
2001-02	11-18	.379	7-12 (6th-S)	Roger Hodge
2002-03	27-4	.871	17-2 (T1st-S)	Roger Hodge
316-351	.474		111-106	

Home-Away-Neutral

Year	Home	Away	Neutral
76-77	1-3	1-7	0-3
77-78	2-6	2-10	0-0
78-79	7-3	5-2	0-3
79-80	9-2	7-2	1-3
80-81	6-6	3-8	1-2
81-82	11-3	9-4	1-0
82-83	6-7	5-8	0-1
83-84	7-4	8-6	0-1
84-85	11-3	9-4	1-0
85-86	6-6	3-9	0-0
86-87		NO TEAM	
87-88	3-8	2-8	0-2
88-89	2-10	1-10	0-1
89-90	10-2	5-7	0-0
90-91	5-6	5-8	0-0
91-92	8-5	6-8	0-0
92-93	9-3	7-5	0-2
93-94	8-3	7-4	2-2
94-95	8-4	3-11	1-2
95-96	5-8	2-10	2-0
96-97	8-5	5-7	1-1
97-98	6-6	3-9	3-1
98-99	9-6	3-8	1-1
99-00	6-6	1-10	0-3
2000-01	7-8	3-7	0-1
2001-02	7-6	2-11	2-1
2002-03	13-0	10-3	4-1
	180-128	115-190	21-33
	.584	.377	.389

AASU Women's Basketball All-Time Vs. Opponents

Alabama-Huntsville	1-4
Anderson	1-0
Atlanta Christian	1-0
Augusta State	20-20
Barry University	1-1
Barton	0-2
Bellarmino	0-1
Belmont Abbey	0-1
Berry College	3-10
Brewton-Parker	8-1
Brunswick CC	2-0
Carson Newman	0-1
Catawba	0-2
Central Florida	2-1
Charleston (W. Va.)	0-0
Charleston Southern	7-4
Clafin	0-3
Clayton College & State	7-8
Coker	4-2
Columbia	3-1
Columbus State	11-21
Converse	0-2
Cumberland (Ky.)	0-2
Davis & Elkins	1-0
Eckerd	3-1
Edinboro (Pa.)	0-1
Edward Waters	6-1
Elizabeth City State	0-1
Fayetteville State	0-2
Ferris State	0-1

Fort Valley State	1-10
Flagler	15-2
Florida	0-1
Florida Atlantic	0-2
Florida Memorial	3-1
Florida Tech	5-7
Francis Marion	9-13
Gardner-Webb	0-1
Georgia Baptist	1-1
Georgia College & State	17-36
Georgia Southern	0-8
Georgia Southwestern	7-10
Georgia Tech	1-4
Kennesaw State	13-16
Knoxville	0-2
Lander	18-3
Lenoir-Rhyne	0-4
Livingstone	0-1
Lynn	1-0
Mars Hill	0-1
Miami Dade North	0-1
Michigan-Dearborn	0-1
Morris College	1-1
Mount Olive	1-0
Nicholls State	0-1
North Alabama	1-1
North Florida	5-10
North Georgia	14-6
Northern Michigan	0-1
Nova Southeastern	1-0

Paine	2-5
Pfeiffer	1-0
Piedmont	13-4
Presbyterian (S.C.)	1-3
Quincy	1-0
Rollins	4-4
Savannah State	14-20
Shaw	0-1
Shorter	3-6
South Florida	1-1
Spartanburg Methodist	1-1
Spelman	5-2
Stetson	2-0
Saint Leo	9-2
Tampa	1-2
Tennessee Wesleyan	0-1
Tift	14-4
Troy State	0-1
Tusculum	0-0
UNC Asheville	1-2
UNC Pembroke	14-6
USC Aiken	15-11
USC Spartanburg	11-15
Valdosta State	2-6
Voorhees	1-0
West Georgia	1-11
Wingate	1-0
Winthrop	3-4
Overall	316-351
Bold indicates 2003-2004 opponent.	

AASU opens the 2003-04 season against a first-time opponent



All-Time Results



2000-01 (10-16, 5-11 PBC)

Lady Pirate/Chatham Orthopaedic TipOff Classic

Nov. 17	Mount Olive	W 81-68
Nov. 18	Northern Michigan	L 64-80

Catawba AllSport Classic

Nov. 24	at Catawba	L 63-75
Nov. 25	vs. Livingstone	L 48-66
Nov. 29	at Spelman	W 79-61
Dec. 6	Spelman	W 90-56
Dec. 9	Kennesaw State *	L 54-78
Dec. 12	Savannah State	W 78-64
Dec. 15	Lenoir-Rhyne	L 56-69
Dec. 30	Gardner-Webb	L 81-88
Jan. 3	Francis Marion *	W 75-72 ot
Jan. 6	at Lander *	W 76-74
Jan. 8	Nova Southeastern	W 84-71
Jan. 13	Columbus State *	L 58-84
Jan. 17	at North Florida *	L 69-71
Jan. 20	at Georgia College & State *	L 64-75
Jan. 24	at UNC Pembroke *	L 72-77
Jan. 27	at Kennesaw State *	L 60-87
Jan. 31	North Florida *	W 57-54
Feb. 3	at Columbus State *	L 41-96
Feb. 5	Georgia College & State *	L 67-83
Feb. 10	USC Aiken *	L 60-61
Feb. 14	Clayton College & State *	L 51-76
Feb. 17	at USC Spartanburg *	W 73-58
Feb. 21	Augusta State *	W 66-61
Feb. 24	at Clayton College & State *	L 58-61

Jan. 4	at Lander *	W 82-72
Jan. 8	Spelman	W 85-41
Jan. 11	at USC Spartanburg *	W 84-49
Jan. 13	UNC Pembroke *	W 84-61
Jan. 15	at USC Aiken *	W 80-69
Jan. 18	at Columbus State *	L 68-71
Jan. 22	at Francis Marion *	L 61-62 ot
Jan. 25	USC Spartanburg *	W 78-46
Jan. 29	at GC&SU *	W 85-73
Feb. 1	at UNC Pembroke *	W 88-63
Feb. 5	Augusta State *	W 86-53
Feb. 8	Kennesaw State *	W 77-61
Feb. 12	at North Florida *	W 69-58
Feb. 15	at Clayton State *	W 82-73
Feb. 19	North Florida *	W 78-68
Feb. 22	Columbus State *	W 75-55
Feb. 26	GC&SU *	W 76-53
Mar. 1	at Kennesaw State *	W 76-64

Peach Belt Conference Tournament (Columbus, Ga.)

Mar. 6	vs. Kennesaw State	W 65-60
Mar. 8	vs. USC Aiken	W 69-63
Mar. 9	at Columbus State	W 56-55

NCAA South Atlantic Regional (Salisbury, N.C.)

Mar. 14	vs. North Florida	L 64-65
---------	-------------------	---------



2001-02 (11-18, 7-12 PBC)

2001 AASU/Chatham Orthopaedics TipOff Classic

Nov. 16	Fayetteville State	L 76-91
Nov. 17	Ferris State	L 65-76
Nov. 21	at Fort Valley State	L 47-53
Nov. 24	at Nicholls State	L 51-62
Nov. 28	at Francis Marion *	L 56-80
Dec. 1	Lander *	W 57-52
Dec. 4	Savannah State	W 69-48
Dec. 10	at Savannah State	W 46-45
Dec. 19	at Lenoir-Rhyne	L 62-76
Jan. 5	USC Spartanburg *	W 66-52
Jan. 7	at UNC Pembroke *	L 75-77 ot
Jan. 9	USC Aiken *	L 61-74
Jan. 12	Columbus State *	W 61-45
Jan. 16	Francis Marion *	W 50-48
Jan. 19	at USC Spartanburg *	L 54-67
Jan. 23	GC&SU *	L 58-66
Jan. 26	UNC Pembroke *	L 53-56
Jan. 30	at Augusta State *	W 70-69
Feb. 2	at Kennesaw State *	L 69-72
Feb. 4	at Clayton State *	L 50-64
Feb. 6	North Florida *	L 64-71
Feb. 9	Clayton State *	W 65-53
Feb. 13	at North Florida *	L 59-67
Feb. 16	at Columbus State *	L 63-73
Feb. 20	at GC&SU *	L 65-68
Feb. 23	Kennesaw State *	W 75-68

Peach Belt Conference Tournament (Columbus, Ga.)

Feb. 26	vs. UNC Pembroke	W 82-73
Feb. 28	vs. Kennesaw State	W 62-57
Mar. 2	vs. GC&SU	L 64-72

2002-03 (27-4, 17-2 PBC)

2002 FMU/Sleep Inn Classic (Florence, S.C.)

Nov. 22	vs. Pfeiffer	W 54-49
Nov. 23	vs. Anderson	W 96-61
Dec. 4	at Rollins	W 65-54
Dec. 7	Clayton State *	W 72-53
Dec. 17	at Shaw	L 43-64

2002 Chatham Orthopaedics Christmas Classic

Dec. 20	Wingate	W 91-55
Dec. 21	Fort Valley State	W 89-73
Dec. 30	Valdosta State	W 69-45
Jan. 2	Francis Marion *	W 81-48

**The AASU Athletic Department
Wishes To Thank The Following For Their
Support Of Pirate Athletics !**



Better Ingredients.
Better Pizza.



feel better.



Worth Checking Into.

- Spacious, comfortable room, complete with coffeemaker, hair dryer and more
- Complimentary breakfast bar
- Guest voice mail and free local calls
- Pay-per-view movies and free cable TV
- Outdoor pool

BAYMONT.
INN & SUITES

Savannah • 8484 Abercorn Street
I-95 Exit 94 to Hwy 204 E
(912) 927-7660

www.baymontinns.com

The Lady Pirates were the first No. 6 seed to reach the PBC Semifinals





RAMSAY SHERRILL ARCHITECTS
221 East York Street
Savannah, GA 31401
(912) 238-5906

Aiken, Aiken, Beauchamp & Sheetz Architects, Inc.

Stewart W. Aiken
President

P.O. Box 52639 • Atlanta, Ga. 30355 Fax 404-233-7396
2722 Piedmont Rd., N.E. • Atlanta, Ga. 30305 404-233-4466
E Mail: genoffice@aabsarchitects.com
saiken@aabsarchitects.com



406 Willow Avenue
Knoxville, TN 37915

865 546 8880

www.sscservicesolutions.com

Fax: 865-523-5560

NATIONWIDE FACILITY SUPPORT



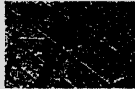
national
office
systems



contract furnishing | interior design

scott center, president • 125 mlk blvd. • savannah, ga 31401
tel 912.238.0539 • fax 912.238.0628 • scott@natoffsys.com

Contractors specializing in Multi-family dwellings



Michael Olender
Owner

Cell: 816-738-9222

Email: Olendersconst@aol.com



Olender's Construction Company, Inc.
30015 Lonetree Rd Harrisonville, MO 64701 (816) 380-2031 (816) 380-3379

KYU SUNG WOO ARCHITECT, INC.

www.kswa.com



CONSULTING ENGINEERS

333 Commercial Drive, Savannah, GA 31406
Phone: 912-355-0235 • Fax: 912-355-7807 • www.dwginc.com

ROSSER

Rosser International/Savannah
(A Division of Rosser International, Inc.)

128 West Bay Street

Post Office Box 2343

Savannah, Georgia 31402

Telephone (912) 232-1146

Facsimile (912) 232-4853

E-Mail engineering@rosser-sav.com



ENGINEERING, ENVIRONMENTAL
& CONSTRUCTION SERVICES

5205 Waters Ave • Savannah, GA 31404
Phone: 912-629-4000 Fax: 912-629-4001



CUMULUS SAVANNAH



Savannah's Hip Hop and R&B Leader!



News/Talk
©CBS NEWS



Savannah's Soul & Rhythm



Savannah's Country Leader



Savannah's Best Variety



THE ROCK OF SAVANNAH



The Light

(912) 234-1329
FAX (912) 234-1042



HUTSON PLUMBING CO., INC.

329 Bonaventure Road
Savannah, Georgia 31404

JOHN R. HUTSON
ROBERT L. HUTSON

LYNN MOODY
Estimator

CONTRACTORS BUILDING FOR THE FUTURE OF ARMSTRONG ATLANTIC

NEXTEL
8792

24 Hour Service

LICENSED

INSURED



6203 Abercorn St. Suite #102
Savannah, GA 31405

Allison (Ray) Nease
President
Pager: (912) 239 8250 Digital
Phone: (912) 691-1982
Fax: (912) 691-1983

"We Put Quality Back In Service"

Savannah Abatement Services

1201 Lincoln Street
Savannah, GA 31401
912-233-9926



Locally Owned & Operated

- Blue Circle & Holman Mortars
- Masonry Fireplace Supplies
- Foundation Materials
- Block

"Competitive Prices
& Superior Service"

"Savannah's Leading
Brick Supplier"

- Boral Brick
- Cherokee
- Richtex
- Brick Pavers

964-9000

128 Prosperity Dr.
Next Door To U.P.S.



TIMOTHY J. THURESON

31 Park of Commerce Way • Suite 100
Savannah, Georgia 31405
Telephone (912) 650-1850 • Fax (912)650-1851
E-mail: tthureson@pioneersavannah.com



Artistic Enterprises, Inc.

Commercial Construction-Exterior Surfaces

Daniel Moraru
President

Phone: (770)277-1003
Fax: (770) 995-9933

www.artisticenterprises.biz



Consolidated Plumbing Services, Inc.

Rt. 3, Box 219 A • Savannah, Georgia 31406
(912) 354-6898 • Fax (912) 353-7141



SHREVE LAND CONSTRUCTION

The General Contractor who brought you

COMPASS POINT

PHASE 2 IN 2003

76 Apartments

Room for 176 People



SHREVE LAND CONSTRUCTION - www.shreveland.com

CONTRACTORS BUILDING FOR THE FUTURE OF ARMSTRONG ATLANTIC



ROOFING PROFESSIONALS, INC.

POST OFFICE BOX 995
RICHMOND HILL, GEORGIA 31324
PHONE: (912) 756-7663
FAX (912) 756-7665



GEORGIA BALANCE COMPANY, INC.
INDEPENDENT TEST & BALANCE

Stephen Garner
President / NEBB Supervisor
2260 A Hwy 16 East
Newnan, GA 30263

Office (770) 254-0515
(770) 254-0526
FAX (770) 254-0562

LOCALLY OWNED & OPERATED BY OFFICE (912) 450-GLAS
AARON WALKER, JR. (912) 450-4527

505 HWY. 80
POOLER, GA 31322

All American Glass Co. Inc.
WE DO ALL TYPES OF GLASS WORK

PETE MOFFATT
ESTIMATOR

Beckner
painting associates inc.

DAVE BECKNER

OFFICE: (813) 935-1999 9420 LAZY LN., B-17
FAX: (813) 935-1980 TAMPA, FL 33614

All
Electric &
Specialty
Systems

COMMERCIAL INDUSTRIAL
24 HOUR EMERGENCY

(912) 238-9005 OFFICE
(912) 238-0053 FAX

Specializing in Local Area
Networks
Fiber Optic Splicing
Termination & Phone Lines

Patrick All
General Manager
patrickall@bellsouth.net

THE
PINYAN
COMPANY
GENERAL CONTRACTORS

GOOD LUCK!

DANIEL PINYAN, JR.

130 Stephenson Avenue
Suite 202
Savannah, Georgia 31405
912.352.7212
912.352.7215 fax



11750 Abercorn Street
(912) 927-7720

***Proud to be the official hotel of
Armstrong Atlantic
Women's Basketball***

Located in the busy Southside of Savannah, nestled away from all the traffic, surrounded by oak trees, crape myrtles, magnolia trees and azaleas. Adjacent to St. Joseph's Hospital and 1/4 mile from Armstrong Atlantic State University. One mile from Savannah Mall, four miles from Oglethorpe Mall and within walking distance of several restaurants. We pride ourselves in taking care of our guests!



This Is Savannah

Historic Savannah, Georgia, is located on the Atlantic Coast, at the confluence of the Savannah River and the Atlantic Ocean. Throughout its history, there has been one adjective consistently used to describe Savannah: beautiful.

The reason? There's something about the unique beauty of Savannah that cannot be forgotten. Streets with canopies of moss-laden trees are honored venues for scores of historic homes. The town squares that Savannah's founding father, James Oglethorpe, laid out as public meeting places are now treasured "pocket parks" located throughout the downtown area.

A renovated waterfront area serves as the hub for shopping and entertainment. Nearby sandy beaches draw streams of visitors with persistent cool breezes and the endless lure of the rolling sea. Finally, there's an indescribable - but readily discernible - feeling in the air that pervades Savannah, a kind of "laid back" approach to the world, a "rootedness" that makes living or working in Savannah an experience second to none.

By way of affirmation, *Le Monde*, the leading French newspaper, called Savannah "the most beautiful city in North America."

Savannah has recently captured the imagination of a nation through its history and its appearance in several feature films, including "Glory," "Forrest Gump," "Something to Talk About," "Midnight In The Garden of Good and Evil" and the 2000 hit film "The Legend of Bagger Vance" starring Will Smith and Matt



Damon. Also, Savannah hosted the yachting events of the 1996 Summer Olympics. As a result, tourism has become one of the leading industries in the area.

Savannah hosts over six million tourists each year. Tourism impacts the Savannah area by over \$634 million. The city boasts over 7,000 rooms and more than 100 restaurants as folks have learned that Savannah is more than just a convenient rest stop on the interstate to Florida.

The climate of Savannah features warm, and sometimes hot, weather for most of the year. There are seven months in which the average temperature is 70 degrees or higher. The lowest average high is in January at 60.3 degrees.

The population in Savannah is roughly 130,000 and Chatham County is the fifth most populous county in the state of Georgia.

Savannah also sits centrally located to some of the southeast's finest beaches. Tybee Island, located less than 30 minutes from Armstrong Atlantic State's campus, offers six miles of unspoiled sands, tempting seafood and gracious accommodations. Resort areas such as Hilton Head, South Carolina, are less than one hour away and provide even more relaxing getaway options.

Whether it's the lure of historical settings, the friendliness of a southern community or the beautiful climate of southeast Georgia, Savannah is the place for you.



The Armstrong Atlantic State women's basketball team enjoys a walk on the beach at Tybee Island. Just minutes away from downtown Savannah, Tybee Island is a popular attraction for Savannah natives and tourists alike, adding to the six million visitors that experience the Coastal Empire area each year.



AASU is picked to repeat as PBC Champions this season

Media Spot Chart



10



Alicia DURHAM

5-6, Sophomore, Guard
Macon, Ga.

12



Meghan JONES

5-7, Freshman, Guard
Savannah, Ga.

14



Tasha WASHINGTON

5-8, Senior, Guard
Phoenix, Ariz.

20



Pam MAYES

5-8, Senior, Guard/Forward
Columbia, S.C.

22



Veronica CAMPBELL

6-0, Junior, Forward/Center
Sumner, Ill.

23



Briana MILAM

5-8, Junior, Guard
Wittmann, Ariz.

24



Sarah BROWN

5-4, Freshman, Guard
Richmond Hill, Ga.

25



Aiste SLENYTE

5-10, Sophomore, Forward
Vilnius, Lithuania

30



Marloes RENSKERS

5-7, Senior, Guard
Enschede, The Netherlands

32



Vandy NOLDON

5-11, Senior, Forward
Wasco, Calif.

33



Kaneetha GORDON

5-10, Freshman, Forward
Savannah, Ga.

34



Ramona WRIGHT

6-0, Junior, Center
Clyo, Ga.



Elizabeth Lyons

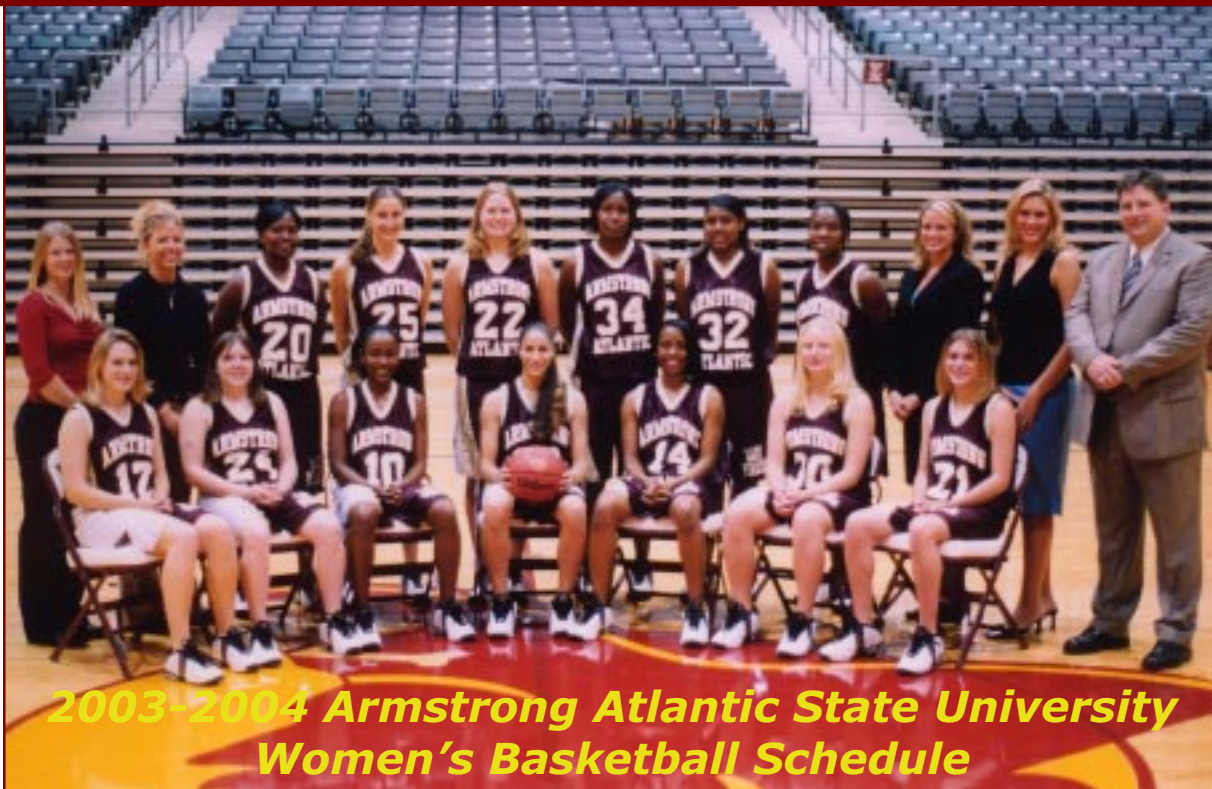
Assistant Coach

Roger Hodge

Head Coach

Mandy Kinder

Assistant Coach



2003-2004 Armstrong Atlantic State University Women's Basketball Schedule

Date	Day	Opponent	Time
Nov. 21-22	Fri.-Sat.	2003 AASU/Chatham Orthopaedics Basketball Classic	
Nov. 21	Fri.	<i>Fayetteville State vs. UNC Pembroke</i>	5:00 p.m.
		<i>AASU vs. Charleston (W. Va.)</i>	7:00 p.m.
Nov. 22	Sat.	<i>Charleston (W. Va.) vs. UNC Pembroke</i>	2:00 p.m.
		<i>AASU vs. Fayetteville State</i>	4:00 p.m.
Nov. 25	Tues.	Morris College	6:00 p.m.
Nov. 29	Sat.	at Valdosta State	7:00 p.m.
Dec. 3	Wed.	Rollins	7:00 p.m.
Dec. 6	Sat.	Presbyterian	2:00 p.m.
Dec. 16	Tues.	at Tusculum	5:00 p.m.
Dec. 18	Thurs.	at Mars Hill	7:00 p.m.
Dec. 29-30	Mon.-Tues.	<i>at Barry University Holiday Invitational</i>	
Dec. 29	Mon.	<i>vs. Nova Southeastern</i>	4:00 p.m.
Dec. 30	Tues.	<i>at Barry</i>	6:00 p.m.
Jan. 2	Fri.	Shaw	7:00 p.m.
Jan. 7	Wed.	at GC&SU *	5:30 p.m.
Jan. 10	Sat.	at Augusta State *	5:30 p.m.
Jan. 14	Wed.	Clayton College & State *	5:30 p.m.
Jan. 17	Sat.	Francis Marion *	5:30 p.m.
Jan. 21	Wed.	at Kennesaw State *	5:30 p.m.
Jan. 24	Sat.	Lander *	2:00 p.m.
Jan. 28	Wed.	at Clayton College & State *	5:30 p.m.
Jan. 31	Sat.	at UNC Pembroke *	5:30 p.m.
Feb. 4	Wed.	Kennesaw State *	5:30 p.m.
Feb. 7	Sat.	USC Aiken *	4:00 p.m.
Feb. 11	Wed.	at North Florida *	5:30 p.m.
Feb. 14	Sat.	at Columbus State *	1:00 p.m.
Feb. 18	Wed.	GC&SU *	5:30 p.m.
Feb. 21	Sat.	at USC Spartanburg *	2:00 p.m.
Feb. 25	Wed.	North Florida *	5:30 p.m.
Feb. 28	Sat.	Columbus State *	2:00 p.m.
Mar. 2-7	Tues.-Sun.	PBC Tournament (Augusta, Ga.)	

Bold denotes home game. * - Peach Belt Conference game

All home games webcast live on the internet at: <http://www.athletics.armstrong.edu>.