

Georgia Southern University

## Georgia Southern Commons

---

Armstrong Women's Volleyball Team Archives

Armstrong Women's Volleyball Archives

---

2001

### 2001 AASU Volleyball Guide

Armstrong State University

Follow this and additional works at: <https://digitalcommons.georgiasouthern.edu/armstrong-volley-wmn-team>

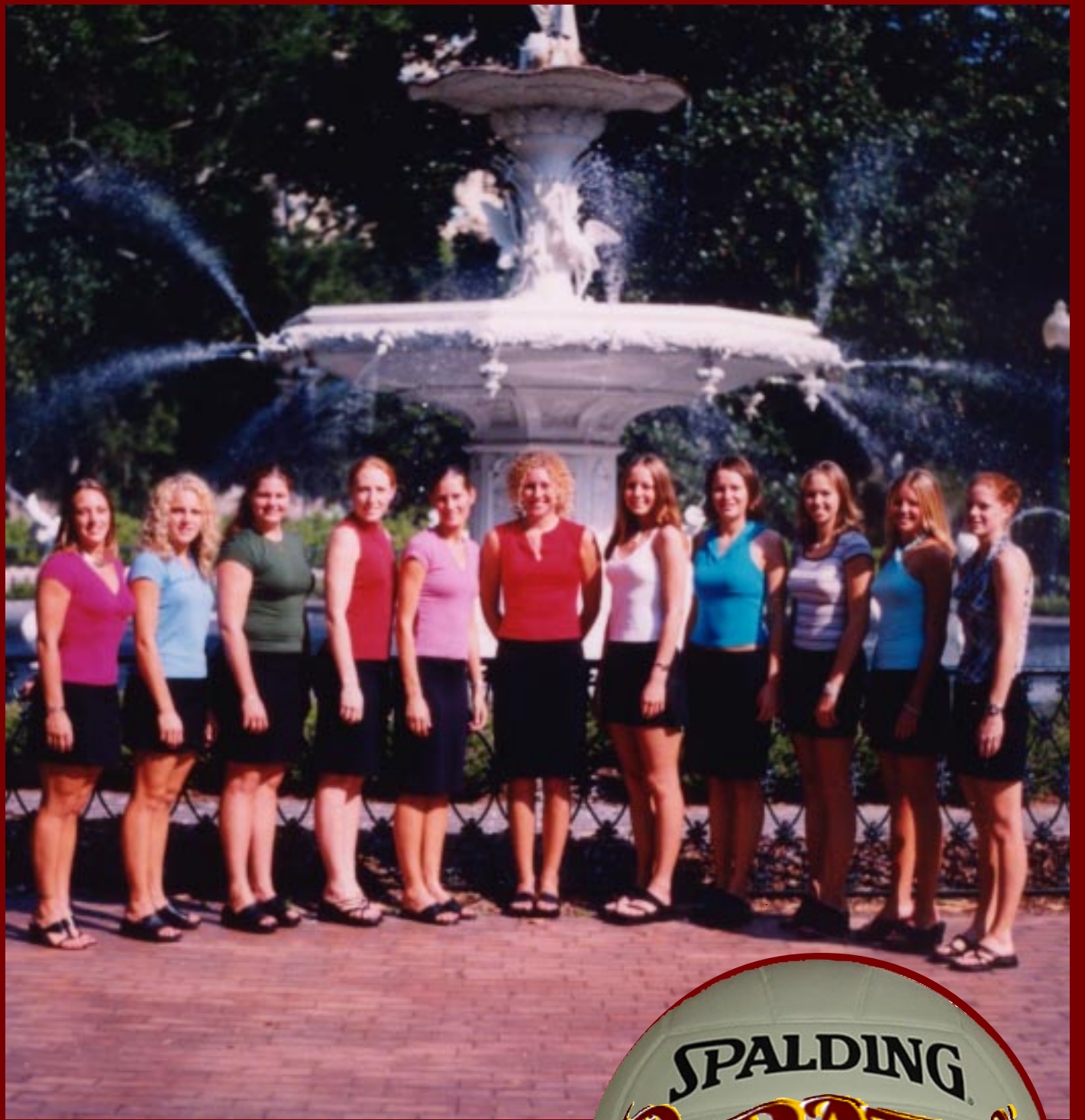
---

#### Recommended Citation

Armstrong State University, "2001 AASU Volleyball Guide" (2001). *Armstrong Women's Volleyball Team Archives*. 28.

<https://digitalcommons.georgiasouthern.edu/armstrong-volley-wmn-team/28>

This media guide is brought to you for free and open access by the Armstrong Women's Volleyball Archives at Georgia Southern Commons. It has been accepted for inclusion in Armstrong Women's Volleyball Team Archives by an authorized administrator of Georgia Southern Commons. For more information, please contact [digitalcommons@georgiasouthern.edu](mailto:digitalcommons@georgiasouthern.edu).



# 2001 AASU Volleyball Media Guide





2001 AASU Volleyball Squad. Front Row (l-r): Sofie Hakansson, Erin Melius, Erin Welty, Sarah Haynes, Shelley Weekes. Back Row (l-r): Alexia Piche-Hatch, Kinsey Ross, Candice Modlinski, Darcey Krug, Shannon Tracey, Ashley Lavender.

## 2002 Armstrong Atlantic State University Pirate Volleyball Roster

#	Name	Yr.	Pos.	Ht.	Hometown/School
2	Shelley Weekes	5-11	Jr.	OH	Glencoe, Ontario / Glencoe District HS
3	Candice Modlinski	6-0	Fr.	MH/OH	St. Charles, Ill. / St. Charles East HS
4	Sarah Haynes	5-11	Jr.	MH	Huntingtown, Md. / Northern HS
6	Alexia Piche-Hatch	5-11	Fr.	OH	Laloche, Saskatchewan / St. Joseph's HS
7	Erin Melius	5-7	Jr.	S	Colorado Springs, Colo. / Doherty HS
8	Ashley Lavender	5-10	Fr.	OH	Leawood, Kan. / Blue Valley HS
9	Sofie Hakansson	5-11	Jr.	OH	Vingaker, Sweden / Katrineholm
10	Darcey Krug	6-0	Fr.	RS	Owings, Md. / Northern HS
12	Kinsey Ross	5-10	Jr.	OH	Anaheim, Calif. / Golden West College
15	Shannon Tracey	5-9	Fr.	S	Littleton, Colo. / J.K. Mullen HS
16	Erin Welty	6-0	Soph.	MH	Wichita, Kan. / Wichita Northwest HS

**Head Coach:** Alan Segal (Cal State Sacramento, '82)

**Assistant Coach:** Janelle Torres (New Mexico, '00)

# Table of Contents



## Contents

Armstrong Atlantic State University .....	2
Administration .....	3
Head Coach Alan Segal .....	4
2001 Player Profiles .....	5-10
2000 Review .....	11
2000 Results / Statistics .....	12
Peach Belt Conference .....	13
2001 Opponents .....	14-15
AASU Records .....	16
AASU Honors .....	17
All-Time Results .....	18-19
Athletic Facilities / Athletic Training .....	20
This Is Savannah .....	IBC

## Quick Facts

Location .....	Savannah, Ga. 31419
Founded .....	1935
Enrollment .....	5,600
Nickname .....	Pirates
Colors .....	Maroon and Gold
Affiliation .....	NCAA Division II
Conference .....	Peach Belt
Home Gym .....	Aquatics & Recreation Center
Capacity .....	1,000
President .....	Dr. Thomas Z. Jones
Athletic Director .....	Dr. Eddie Aenchbacher
Volleyball Head Coach .....	Alan Segal
Record at AASU (Years) .....	61-15 (2)
Overall Coaching Record (Years) .....	105-47 (4)
2000 Volleyball Record / Rank .....	29-10 / No. 24 AVCA
2000 PBC Record (Finish) .....	12-2 (2nd)
Assistant Coach .....	Janelle Torres

## On the Cover

The 2001 AASU volleyball squad poses by the Forsyth Park fountain in historic downtown Savannah. The fountain has been a landmark in the Savannah area since 1858, providing visitors to the park with a tranquil setting amidst the beautiful flora.

## Credits

The 2000 Armstrong Atlantic State University media guide was published by the AASU Office of Sports Communications, Chad Jackson, director. AASU head coach Alan Segal and assistant coach Janelle Torres also contributed to this publication. For more information regarding the AASU volleyball program, please contact:

### Chad Jackson

**Director of Sports Communications**

Phone: 912-961-3255

Fax: 912-921-5571

E-Mail: jacksoch@mail.armstrong.edu

### Alan Segal

**Head Volleyball Coach**

Phone: 912-921-3785

Fax: 912-921-5571

E-Mail: segalala@mail.armstrong.edu



## AASU Athletic Department Phone Directory

### Main Numbers

**Athletic Department** 912-927-5336

**Athletics FAX** 912-921-5571

912-921-5852

### Administration

Dr. Eddie Aenchbacher, A.D. 912-921-5854

Dr. Donald Anderson, Asst. A.D. 912-921-5863

George Bedwell, Facilities 912-921-5685

Chad Jackson, Sports Communications 912-961-3255

Mylene Benito, Athletic Trainer 912-927-5200

Dianne Lane, Athletic Secretary 912-921-5849

### Coaching Staff

Joe Roberts, Baseball 912-921-5686

Calvain Culberson, Asst. Baseball 912-921-5687

John Marhefka, Basketball (Men's) 912-921-5683

Steve Ray, Asst. Men's Basketball 912-921-5684

Robert Campbell, Grad. Asst. MBKB 912-921-7311

Roger Hodge, Basketball (Women's) 912-921-5861

Andy Bloodworth, Asst. Wm. Basketball 912-921-7310

Dawn Cason, Grad Asst. WBKB 912-921-5862

Michael Butler, Men's Golf 912-921-5841

Simon Earnshaw, Tennis 912-921-5842

Natalia Alekhova, Asst. Tennis 912-921-5842

Marty McDaniel, Softball 912-921-2391

Maria Winn, Asst. Softball 912-921-2391

Alan Segal, Volleyball 912-921-3785

Janelle Torres, Asst. Volleyball 912-921-3786

### Other Numbers

Press Table (Basketball) 912-921-5473

912-921-5572

AASU Training Room 912-921-5860

Sports Center Weight Room 912-921-5858

**AASU Advanced To The NCAA Championships In 2000 For The First Time Ever**





# Armstrong Atlantic State University

Since its founding in 1935, Armstrong Atlantic State University has continued to develop to meet the Savannah community's educational needs. From its first location in Armstrong House in downtown Savannah to its current home on a scenic 250-acre lot off of Abercorn, the university has become one of the finest educational institutions in the Southeastern United States.

Armstrong Junior College was established by the Mayor of Savannah and other public officials in 1935. Housed in the beautiful and historic Armstrong House, a gift to the city from the family of George F. Armstrong, Armstrong Junior College grew over the years to occupy eight additional buildings in the Forsyth Park and Monterey Square areas.

In 1959, as Armstrong College of Savannah, it became a two-year unit of the University System.

The Board of Regents conferred four-year status on Armstrong in 1964 and the college moved to its present 250-acre location, a gift from Donald Livingston and the Mills B. Lane Foundation, in December of 1965. Additional buildings joined the eight original structures as Armstrong added professional and graduate programs and tripled in size.

In July of 1996, the Board of Regents voted to rename the college to Armstrong Atlantic State University to reflect its mission and identity. The university's reputation of excellence is still evident in its dedication to students, with a supportive environment.

Armstrong Atlantic State University was fully accredited as a senior institution by the Southern Association of Colleges and Schools in December, 1968, with accreditation retroactive to January 1, 1968, and was last reaccredited in December, 1992.

The university offers over seventy-five academic programs and majors in its School of Arts and Sciences, School of Health Professions and School of Education.

The academic community includes approximately 5,600 students and more than 250 faculty members. Enrollment has more



than doubled in the last decade, from 2,740 students in 1987 to its current number.

Across campus, evidence of the university's growth can be found in its facilities. A Fine Arts Center, including a 1,000 seat theatre/auditorium, the Health Professions Building and an academic computing center are recent completed buildings, along with 84,400 square foot University Hall, built to make room for a student population of 8,000. A new 115,000 square foot, \$28 million dollar science building has been under construction and is slated to open in January 2002.

The athletic department of Armstrong Atlantic State University is housed in the Armstrong Sports Center, completed in 1995. The Sports Center includes offices for the physical education department, training room and weight room areas, basketball courts, indoor track and offices for coaches and athletic department personnel. The building played host to the Peach Belt Conference's basketball tournament in 1998 and 1999 and hosts several in-season tournaments each year. AASU sponsors eight intercollegiate sports and is a charter member of the Peach Belt Conference, formed in 1991.

Continuing a mission begun in 1935, Armstrong Atlantic State University today serves a rich gamut of traditional and non-traditional students. Sixty percent of AASU's student body are from the Savannah-Chatham area, while others come from around the state, nation and world. All have come to Savannah to experience and thrive on the campus of one of the fastest developing higher learning institutions in the nation - all have come to be a part of Armstrong Atlantic State University.



**AASU Volleyball Began As An Intercollegiate Sport In 1986**



## **Dr. Thomas Z. Jones** *University President*

Thomas Z. Jones, the sixth president to serve at Armstrong Atlantic State University, begins his second year at AASU. Hired on August 1, 2000, Jones was selected by the Board of Regents and University System of Georgia Chancellor Stephen R. Portch after an exhaustive national search.

Dr. Jones served on the faculty and administration at Columbus State University, as its vice president for academic affairs from 1988-2000, prior to coming to Armstrong Atlantic State. A 30-year veteran of university teaching and administration, Dr. Jones has taught at Indiana State University, Emory and Henry College and the West Virginia Institute of Technology. While at West Virginia Tech, Dr. Jones served as the Westmoreland Professor of Mining, an endowed professorship, and vice president of academic affairs.

Dr. Jones received his Bachelor's degree in physics from Fairmont State College, his Master's of Arts degree in geology from West Virginia University and his Ph.D in Geology from Miami (Ohio) University.

From 1980-1988, he owned and served as president of Technical Evaluation Consultants, Inc., a privately owned business specializing in providing science, technical and engineering services for business, industry, government agencies and the legal community.

Dr. Jones and his wife, Joyce, have two sons, Matthew and Michael.



## **Dr. Eddie Aenchbacher** *Athletic Director*

Dr. Eddie Aenchbacher begins his sixth full year as the athletic director for Armstrong Atlantic State University.

Dr. Aenchbacher's responsibilities include overseeing the entire athletic department and promoting Armstrong Atlantic State athletics in the community of Savannah.

Dr. Aenchbacher received his Bachelor's degree in physical education from Armstrong Atlantic State in 1979, where he was a standout student-athlete for the baseball team as a pitcher. He received his Master's degree and Doctorate of Education from the University of Georgia.

Along with his student-athlete experience at AASU, Dr. Aenchbacher also coached the Pirate cross country teams for five years and started the first AASU men's soccer team, which he coached for seven years.

During Dr. Aenchbacher's tenure as athletic director, AASU's athletic programs have had tremendous success in the classroom and on the playing field. Student-athletes at AASU have excelled in academics with 52 percent earning a 3.0 grade point average or better. The overall grade point average of AASU student-athletes is 2.93, higher than the overall institutional GPA. AASU athletic teams are consistently ranked near the top of one of the nation's premier NCAA Division II conferences, the Peach Belt Conference, and in 1999-2000, achieved its best ever Sears Director's Cup final standing, 22nd.

Dr. Aenchbacher has been married for 10 years to Michele and together they are the proud parents of two children, Jesse and Lainey.





# Head Coach Alan Segal

## Alan Segal Head Volleyball Coach

Alan Segal begins his third season as head coach of the Armstrong Atlantic State University volleyball squad after leading the Pirates to their first-ever national ranking and NCAA Championships appearance in 2000.

The 1999 and 2000 Peach Belt Conference Coach of the Year, Segal's Pirates cracked the AVCA/Division II Top 25 poll in October and finished the season ranked No. 24 in the country. AASU also advanced to the NCAA South Regional semifinals, defeating USC Spartanburg in a first-round match.

In two seasons, Segal has compiled a 61-15 overall record at AASU and has a 105-47 overall head coaching record in four seasons.

Prior to joining the AASU coaching ranks, Segal coached for two years at Michigan Tech, where he led the Huskies to a 40-32 record over two seasons and a No. 23 national ranking at the end of the 1997 season.

Before his inaugural collegiate head coaching position, Segal was an assistant coach at Florida Southern College from 1994-96, where the Mocs advanced to NCAA Tournament play two of three seasons.

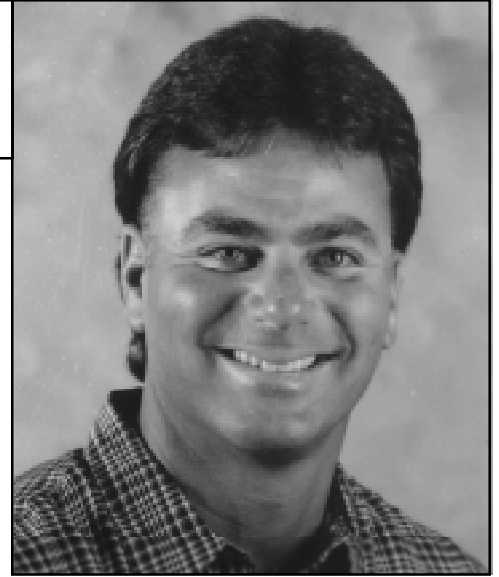
Segal has also accumulated coaching experience as head girls' volleyball coach at Agoura High School (1989-92), where he led the team to the Division 3A finals in the California Interscholastic Federation in 1989; assistant men's coach for Pierce Junior College in Woodland Hills, Calif. (1989-91); assistant women's coach at Western Illinois University in Macomb, Ill. (1988-89); assistant women's coach at Delta Junior College in Stockton, Calif. (1983-84); assistant women's coach at Cosummes River College in Sacramento, Calif. (1982); and assistant girls' coach at Cordova High School in Rancho Cordova, Calif. (1980).

Segal is a 1982 graduate of California State University at Sacramento, where he earned a bachelor of science degree in recreation administration.

An active member of the American Volleyball Coaches Association, Segal is on the 35-member coaches panel that weekly determines the AVCA Division II Top 25.

Segal is also a veteran volleyball official. He officiated the National Junior College Championships in both 1994 and 1995 and for the past ten years has been one of the top-rated officials on the AVP Professional Beach Tour.

Born March 16, 1959, Segal is single and resides in Savannah, Ga.



## Janelle Torres Assistant Volleyball Coach

Janelle Torres begins her second season as assistant coach for the Armstrong Atlantic State volleyball squad.

Torres joined the Pirate program in 2000 from the University of New Mexico, where she started all four years at setter. At the UCONN Husky Classic on Sept. 24-25, 1999, she became New Mexico's all-time assist leader, breaking Alicia Bergmann's school mark of 3,283 with her 111 assists in the tournament. She finished her playing career with 3,794 assists.

A two-time All-State player and former 3AAAA Player of the Year at St. Pius HS, Torres hails from Albuquerque, New Mexico, and has five siblings. She is the daughter of Anna Marie and Elizar Torres and enjoys working out, reading and cooking.

Torres graduated in 2000 from the University of New Mexico with a degree in communications and is pursuing her master's degree at AASU in public health.



**Head Coach Alan Segal Has Earned PBC Coach Of The Year Honors Twice**



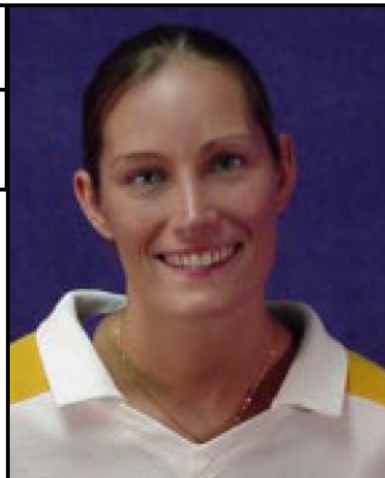
## 9 Sofie Hakansson

**5-11 • Junior • Outside Hitter**  
**Vingaker, Sweden • Duveholmsskolan**

**2000:** Hit .268, 10th-best in the Peach Belt, with 271 kills and 297 digs ... Collected 50 service aces ... Hit .769 in AASU's PBC Tournament win over USC Aiken on 11/10 ... Registered 12 or more kills five times during the season.  
**1999:** Hit .220 on the year with 139 kills ... Notched 43 service aces, third-best on squad, and ranked third in the Peach Belt with 0.47 service aces per game ... Registered a season-high six service aces in AASU's 3-0 win over USC Aiken on 10/16. **HIGH SCHOOL:** Attended

### Hakansson's Game Highs

**Kills:**  
 19 vs. USC Spartanburg, 10/28/00  
**Hitting Percentage:**  
 .769 (10-0-13) vs. USC Aiken, 11/10/00  
**Digs:**  
 21 vs. Puerto Rico-Rio Pedras, 10/14/00  
**Blocks:**  
 6 vs. Lincoln Memorial, 9/16/00



Duveholmsskolan School in Katrineholm ... Played for the Swedish National Junior Team ... Also attended an athletics school for volleyball for three years during high school. **PERSONAL:** Born Sofie Elisabeth Hakansson on December 16, 1977, in Katrineholm ... Daughter of Conny Hakansson ... Majoring in chemistry ... Has two siblings, Andreas and Patrik ... Enjoys shopping and nature.

### Sofie Hakansson's Career Statistics

Year	MP/GP	Kills	Errors	Attacks	Pct.	Assists	SA	SE	Digs	BS	BA	BE	BHE
1999	38/92	139	57	372	.220	51	43	27	199	4	33	2	8
2000	39/132	271	98	646	.268	68	50	65	297	9	49	15	10
<b>2 Years</b>	<b>77/224</b>	<b>410</b>	<b>155</b>	<b>1018</b>	<b>.250</b>	<b>119</b>	<b>93</b>	<b>92</b>	<b>496</b>	<b>13</b>	<b>82</b>	<b>17</b>	<b>18</b>

## 4 Sarah Haynes

**5-11 • Junior • Middle Hitter**  
**Huntingtown, Md. • Northern HS**

**2000:** Named the Peach Belt Conference Player of the Year after hitting a team-best .333 with 364 kills as a sophomore ... Ranked third in the PBC in hitting percentage and 10th in blocks ... Set new school mark by hitting .769 (10-0-13) vs. Rollins on 10/14/00 ... Named PBC Player of the Week on 10/24 ... Became first AASU player in school history to earn AVCA All-South Region honors ... Also named to PBC All-Tournament Team. **1999:** Hit .296 with 245 kills as a freshman ... Ranked fifth in the Peach Belt in hitting

### Haynes' Game Highs

**Kills:**  
 23 vs. USC Spartanburg, 11/16/00  
**Hitting Percentage:**  
 .769 (10-0-13) vs. Rollins, 10/14/00  
 .727 (16-0-22) vs. West Georgia, 9/9/00  
**Blocks:**  
 6, three times  
 Last vs. Minn. State Mankato, 9/2/00



percentage ... Collected 92 blocks and tied for third in the Peach Belt with 0.90 blocks per game ... Earned All-Tournament honors at the California (Pa.) Tournament. **HIGH SCHOOL:** Attended Northern High School ... 1998 All-Metro Area team ... 1998 Southern Maryland team ... Earned Calvert County first team honors twice ... Northern High School won 1996 and 1997 Region and State Championships ... Member of National Honor Society. **PERSONAL:** Born Sarah Elizabeth Haynes on November 12, 1981 ... Daughter of Steve and Teresa Haynes ... Majoring in art/interior design ... Has two siblings, Matt and Cindy ... Enjoys pottery and shopping.

### Sarah Haynes' Career Statistics

Year	MP/GP	Kills	Errors	Attacks	Pct.	Assists	SA	SE	Digs	BS	BA	BE	BHE
1999	41/102	245	91	520	.296	4	7	16	125	26	66	3	2
2000	39/136	364	108	768	.333	9	31	44	231	32	68	17	7
<b>2 Years</b>	<b>80/238</b>	<b>609</b>	<b>199</b>	<b>1288</b>	<b>.318</b>	<b>13</b>	<b>38</b>	<b>60</b>	<b>356</b>	<b>58</b>	<b>134</b>	<b>20</b>	<b>9</b>

**Sarah Haynes Has Three Of AASU's Top Five Single-Game Hitting Percentages**







# AASU Player Profiles

## 7 Erin Melius

5-7 • Junior • Setter  
Colorado Springs, Colo. • Doherty HS

**2000:** Set the AASU single-season assist mark with 1,417 as a sophomore ... Ranked second in the Peach Belt in assists per game (10.90) ... Set the Pirates' single-game assist mark of 67 in season-opening win against No. 24 Western State, then tied the mark in AASU's NCAA South Region win over USC Spartanburg on 11/16 ... Needs just 105 assists to set the all-time AASU mark. **1999:** Led the Pirates as a freshman with 1,060 assists (10.71 per game) in 34 matches ... Ranked third in the Peach Belt in assists per game ... Registered 50+ assists in four matches ... Earned All-Peach Belt Tournament honors and California (Pa.) All-Tournament honors. **HIGH SCHOOL:** Attended Doherty High School ... Three-year team captain ... Doherty High was two-year district champions and regional champions in 1997-98 ... *Rocky Mountain News* honorable mention twice ... Played club volleyball with Match Point VBC, who finished third at nationals in 1997 ... Earned *Gazette Telegraph* First-Team honors two seasons ... Also played soccer and basketball. **PERSONAL:** Born Erin Lynn Melius on June 20, 1981, in Colorado Springs, Colo. ... Daughter of Theresa Melius ... Has one brother, Matt ... Majoring in economics and Spanish ... Enjoys cooking, baking, traveling and swimming.

### Melius' Game Highs

#### Assists:

67 vs. Western State, 8/27/00  
vs. USC Spartanburg, 11/16/00

#### Digs:

16 vs. Florida Tech, 9/18/99  
vs. Western State, 8/27/00

#### Kills:

6 vs. Barry, 9/8/00



... Earned All-Peach Belt Tournament honors and California (Pa.) All-Tournament honors. **HIGH SCHOOL:** Attended Doherty High School ... Three-year team captain ... Doherty High was two-year district champions and regional champions in 1997-98 ... *Rocky Mountain News* honorable mention twice ... Played club volleyball with Match Point VBC, who finished third at nationals in 1997 ... Earned *Gazette Telegraph* First-Team honors two seasons ... Also played soccer and basketball. **PERSONAL:** Born Erin Lynn Melius on June 20, 1981, in Colorado Springs, Colo. ... Daughter of Theresa Melius ... Has one brother, Matt ... Majoring in economics and Spanish ... Enjoys cooking, baking, traveling and swimming.

### Erin Melius' Career Statistics

Year	MP/GP	Kills	Errors	Attacks	Pct.	Assists	SA	SE	Digs	BS	BA	BE	BHE
1999	34/99	57	23	164	.207	1060	42	44	228	5	24	12	35
2000	39/130	70	34	222	.162	1417	28	48	246	8	35	13	41
<b>2 Years</b>	<b>73/229</b>	<b>127</b>	<b>57</b>	<b>386</b>	<b>.181</b>	<b>2477</b>	<b>70</b>	<b>92</b>	<b>474</b>	<b>13</b>	<b>59</b>	<b>25</b>	<b>76</b>

## 12 Kinsey Ross

5-10 • Junior • Outside Hitter  
Anaheim, Calif. • Golden West College

**PREVIOUS COLLEGE:** Played for two seasons at Golden West College in Huntington Beach, Calif. ... The Rustlers finished the 1999 season ranked No. 4 in NJCAA and were ranked as high as No. 2 in 2000 ... Earned All-Tournament honors at the California State championships in 2000. **HIGH SCHOOL:** Attended Katella High School in Anaheim, Calif. ... Played for four season and was a three-time first-team All-League selection for the Knights ... Katella HS Athlete of the Year as a senior. **PERSONAL:** Born Kinsey Joanne Ross on June 29, 1981, in Orange, Calif. ... Daughter of Judy Pollock and Phil Ross ... Majoring in public health ... Enjoys boating ... Lists Shaquille O'Neal as a favorite sports personality.



**Setter Erin Melius Twice Recorded 67-Assist Games In 2000, A New School Mark**



## 2 Shelley Weekes

**5-11 • Junior • Outside Hitter**  
**Glencoe, Ontario • Glencoe District HS**

**2000:** Played in 15 matches as a sophomore ... Registered a career high 12 kills and 15 digs in AASU's 3-0 win over Lincoln Memorial on 9/16. **1999:** Saw action in 27 matches for the Pirates as a freshman ... Registered 69 kills and 84 digs on the year. **HIGH SCHOOL:** Attended Glencoe District High School ... Team captain for two years ... Three-time All-Conference honoree ... Named Team MVP as a senior ... Awarded the Ontario Volleyball Association Award of Excellence ... Ontario 'A' Champions team member ... Played for Forest City Volleyball Club ... Four-year honor roll member. **PERSONAL:** Born Shelley Lorraine Weekes on February 12, 1980, in Strathroy, Ontario ... Daughter of Donald and Lorraine Weekes of Glencoe, Ontario ... Has two older brothers, Rob and Greg ... Majoring in health science ... Hobbies include swimming, watching movies and going to the beach.

### Weekes' Game Highs

**Kills:**  
12 vs. Lincoln Memorial, 9/16/00  
**Hitting Percentage:**  
.333 (6-1-13) vs. GVSU, 9/1/00  
**Digs:**  
15 vs. Lincoln Memorial, 9/16/00  
**Service Aces:**  
6 vs. Savannah State, 9/4/99



### Shelley Weekes' Career Statistics

Year	MP/GP	Kills	Errors	Attacks	Pct.	Assists	SA	SE	Digs	BS	BA	BE	BHE
1999	27/39	69	35	189	.180	3	16	13	84	0	10	1	0
2000	15/29	38	20	96	.188	2	2	5	51	3	5	1	0
<b>2 Years</b>	<b>42/68</b>	<b>107</b>	<b>55</b>	<b>285</b>	<b>.182</b>	<b>5</b>	<b>18</b>	<b>18</b>	<b>135</b>	<b>3</b>	<b>15</b>	<b>2</b>	<b>0</b>

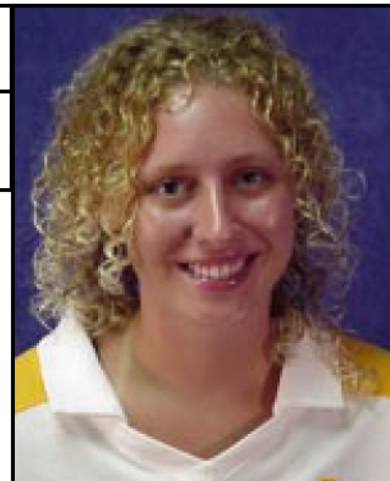
## 16 Erin Welty

**6-0 • Sophomore • Middle Hitter**  
**Wichita, Kan. • Wichita Northwest HS**

**2000:** Played in 24 matches for the Pirates as a freshman ... Hit .667 (7-1-9) in AASU's 3-0 win over Augusta State on 10/21 ... Hit .272 (5-2-11) with four aces in AASU's 3-0 win over Minnesota State Mankato on 9/2. **HIGH SCHOOL:** Played for three years at Wichita Northwest HS ... Two-time All-City honoree for the Grizzlies ... Four-time member of the honor roll. **PERSONAL:** Born Erin Michelle Welty on June 2, 1982, in Wichita, Kan., her hometown ... Daughter of Mark and Debbie Welty ... Majoring in sports medicine ... Enjoys water skiing and hanging out with friends ... Raef Lafrentz is a favorite sports personality.

### Welty's Game Highs

**Kills:**  
7 vs. Augusta State, 10/21/00  
**Blocks:**  
7 vs. USC Spartanburg, 10/28/00  
**Digs:**  
7 vs. Lander, 10/27/00  
**Service Aces:**  
4 vs. Minn. State Mankato, 9/2/00



### Erin Welty's Career Statistics

Year	MP/GP	Kills	Errors	Attacks	Pct.	Assists	SA	SE	Digs	BS	BA	BE	BHE
2000	24/56	54	27	139	.194	5	10	8	42	6	27	17	1
<b>1 Year</b>	<b>24/56</b>	<b>54</b>	<b>27</b>	<b>139</b>	<b>.194</b>	<b>5</b>	<b>10</b>	<b>8</b>	<b>42</b>	<b>6</b>	<b>27</b>	<b>17</b>	<b>1</b>





# AASU Player Profiles

## 10 Darcey Krug

**6-0 • Freshman • Rightside Hitter**  
**Owings, Md. • Northern HS**

**HIGH SCHOOL:** Attended Northern High School in Owings, Md., the same high school as teammate and 2000 PBC Player of the Year Sarah Haynes ... Played for three seasons and twice earned All-Metro second-team honors, *Washington Post* All-Extra honors and second-team all-SMAC honors for the two-time state champion Patriots ... Team captain as a senior. **PERSONAL:** Born Darcey Corinne Krug on June 17, 1982, in Washington, D.C. ... Hometown is Owings, Md. ... Daughter of John and Marsha Krug ... Uncle, Bill, was a two-time AP All-America defensive back for the University of Georgia from 1975-77 ... Undecided in major ... Enjoys shopping and surfing the internet.



## 8 Ashley Lavender

**5-10 • Freshman • Outside Hitter**  
**Leawood, Kan. • Blue Valley HS**

**HIGH SCHOOL:** Attended Blue Valley High School in Stillwell, Kansas ... Earned All-Tournament honors three times for the Tigers ... Member of the National Honor and Spanish Honor Societies ... Senior captain of the Tigers in 2000. **PERSONAL:** Born Ashley Kristine Lavender on February 7, 1983, in Kansas City, Mo. ... Hometown is Leawood ... Undecided in major ... Enjoys working out and shopping.



**The 2001 Pirates Feature Players From Six US States And Three Countries**

## 3 Candice Modlinski

**6-0 • Freshman • Middle/Outside Hitter**  
**St. Charles, Ill. • St. Charles East HS**

**HIGH SCHOOL:** Attended St. Charles East High School in St. Charles, Ill. ... Played two years for the Saints. **PERSONAL:** Born Candice Ann Modlinski on January 16, 1983, in Skokie, Ill. ... Hometown is St. Charles, Ill. ... Daughter of Cheryl and Dan Modlinski ... Majoring in psychology and would like to become a psychologist after college ... Enjoys playing soccer ... Kristine Lilly is a favorite sports personality.



## 6 Alexia Piche-Hatch

**5-11 • Freshman • Outside Hitter**  
**LaLoche, Saskatchewan • St. Joseph's HS**

**HIGH SCHOOL:** Attended St. Joseph's High School in Saskatoon, Saskatchewan ... Played for the 4A Provincial Champion Guardians ... Also played for Club Saskatoon Impact, the National Juvenile Women's Champion club team in Canada. **PERSONAL:** Born Alexia Gillian Piche-Hatch on May 9, 1983, in LaLoche, Saskatchewan, her hometown ... Daughter of Greg Hatch and Albertine Piche ... Father, Greg, played ice hockey at Bowling Green State University from 1971-75 ... Undecided in major ... Enjoys working out, shopping and being with friends.





# AASU Player Profiles

## 15 Shannon Tracey

5-9 • Freshman • Setter  
Littleton, Colo. • J.K. Mullen HS

**HIGH SCHOOL:** Attended J.K. Mullen High School in Littleton, Colo. ... Played for four years for the Mustangs ... Earned *Denver Post* and *Rocky Mountain News* 4A Honorable Mention honors as a senior ... Also was team captain as a senior ... Also played for the Front Range Volleyball Club. **PERSONAL:** Born Shannon Marie Tracey on April 2, 1983, in Littleton, Colo., her hometown ... Daughter of John and Sherry Tracey ... Majoring in physical therapy ... Enjoys water skiing, boating and camping ... Lists John Elway as a favorite sports personality.



### 2001 PBC Preseason Coaches Poll

(Coaches could not vote for own team)



School	1st	2nd	3rd	4th	5th	6th	7th	Total
1. North Florida	5	2	0	0	0	0	0	47
2. Armstrong Atlantic	2	4	1	0	0	0	0	43
t3. USC Spartanburg	0	1	5	1	0	0	0	35
t3. USC Aiken	1	1	2	3	0	0	0	35
5. Augusta State	0	0	0	4	3	0	0	25
6. Francis Marion	0	0	0	0	4	2	1	17
7. Lander	0	0	0	0	1	3	3	12
8. UNC Pembroke	0	0	0	0	0	3	4	10

## Worth Checking Into.

- Spacious, comfortable room, complete with coffeemaker, hair dryer and more
- Complimentary breakfast bar
- Guest voice mail and free local calls
- Pay-per-view movies and free cable TV
- Outdoor pool



Savannah • 8484 Abercorn Street  
I-95 Exit 94 to Hwy 204 E  
(912) 927-7660

[www.baymontinns.com](http://www.baymontinns.com)



**AASU Was Picked Second In The 2001 Preseason Poll Of PBC Coaches**

## Pirates Make First-Ever Trip To NCAA Championships Finish The Season Ranked No. 24 In NCAA Division II



*Sophomore Erin Melius set a school record by recording 1,417 assists in 2001.*

Completing a spectacular season of firsts, the Armstrong Atlantic State volleyball team capped the 2000 season by earning the program's first bid to the NCAA Championships, competing in the South Regional on November 16-18 in Tampa.

As the No. 3 seed in the South Region, AASU defeated the No. 6 seed, USC Spartanburg, 3-1, before falling to No. 2 seed North Florida, 3-0, in the region semifinals.

The Pirates ended the season with a 29-10 record and a No. 24 ranking in the AVCA Division II Top 25 Poll, capping a rise to national prominence never seen before by an Armstrong Atlantic State volleyball team.

AASU began the season much as it ended the 1999 campaign - on the outside looking in. But after a tournament championship at the Mesa State Coca-Cola Invitational, a runner-up finish at the GVSU Amerihost Invitational and key wins over ranked Barry and Florida Southern squads in the AASU Invitational, the Pirates cracked the AVCA poll for the first time in school history on September 12, coming in at No. 22.

The Pirates remained in the Top 25 for the rest of the season, picking up several key wins along the way, including a first-ever win against No. 21-ranked North Florida on Oct. 25 and a thrilling come-from-behind five-set win at No. 8 Tampa on Oct. 12.

AASU entered the PBC Tournament as the second seed and finished runner-up to North Florida for the second straight season, but the Pirates' No. 3 ranking in the South Region assured that AASU would experience NCAA postseason play for the first time since volleyball was added as a varsity sport in 1986.

Individually, sophomore Sarah Haynes was named the Peach Belt Conference's Player of the Year for 2000 and was joined on the All-Conference squad by Ehlers and senior Micah Roman. Head coach Alan Segal, who picked up his 100th career coaching victory against Lander on October 27th, was named PBC Coach of the Year for the second straight year.

Haynes also earned AVCA All-South Region honors, the first AVCA All-Region honors in school history, and sophomore outside hitter Lindsay Ehlers earned Verizon Academic All-District III honors as voted on by the members of CoSIDA.



*Sophomores Sarah Haynes (4, left) and Sofie Hakansson (9, right) block an attack during the Pirates' match at No. 23-ranked North Florida on Sept. 27.*

## NCAA Adopts NAGWS Rule Changes For 2001

The NCAA, in accordance with the National Association for Girls and Women in Sports (NAGWS), has adopted several rule changes to take effect in the 2001 collegiate volleyball season.

The most noticeable difference this season will be the move from sideout volleyball to a rally scoring format where each play will result in a point. The first four games will be scored to 30 points, with the winner holding a two-point lead. The fifth and deciding game will be played to 15 with the winner leading by two points.

Other significant changes involve the serve. Players must serve the ball within eight seconds after the referee authorizes service and will not be allowed a second toss for service. Further, the collegiate game will mimic the international game with the let serve. A served ball will remain in play if it hits the net and continues its path to the opposition's court. A service ace can be earned if the ball falls to the opposition's side of the court on the serve, despite contact with the net on service.



# 2000 Results / Statistics

## 2000 Armstrong Atlantic State Volleyball Results

Overall: 29-10 • Home: 11-1 • Away: 7-6 • Neutral: 11-3

Date	Opponent	Result	Kills	Assists	Digs	Blocks
8/25	vs. Western State *	W 3-2 (14-16, 15-12, 10-15, 15-12, 15-15)	Ehlers (27)	Melius (67)	Roman (26)	Bringewatt (6)
	vs. UC Davis *	W 3-0 (15-11, 15-13, 15-12)	Ehlers (9)	Taylor (31)	Burrell (13)	Bringewatt (7)
8/26	at Mesa State *	W 3-1 (13-15, 15-5, 15-5, 15-8)	Haynes (13)	Melius (39)	Two with 13	Haynes (6)
	vs. Cal State Chico *	W 3-1 (12-15, 15-0, 15-4, 15-11)	Roman (12)	Melius (52)	Haynes (7)	Bringewatt (5)
9/1	vs. Saginaw Valley St. !	W 3-0 (15-4, 15-10, 15-9)	Roman (20)	Melius (56)	Fitzsimons (20)	Haynes (6)
	at Grand Valley St. !	L 3-0 (3-15, 8-15, 14-16)	Haynes (8)	Taylor (26)	Weekes (10)	Hakansson (3)
9/2	vs. Minn. St. Mankato !	W 3-0 (15-5, 15-10, 15-8)	Three with 10	Melius (34)	Hakansson (14)	Haynes (6)
	vs. Lake Superior St. !	W 3-0 (15-6, 15-8, 15-10)	Three with 12	Melius (31)	Roman (12)	Welty (5)
9/8	Barry &	W 3-1 (9-15, 16-14, 15-13, 15-11)	Ehlers (20)	Melius (50)	Roman (31)	Bringewatt (5)
9/9	West Georgia &	W 3-0 (15-10, 15-6, 15-11)	Haynes (16)	Melius (21)	Two with 10	Three with 2
	Tampa &	L 3-0 (7-15, 3-15, 2-15)	Haynes (8)	Melius (24)	Melius (12)	Two with 3
9/10	Florida Southern &	W 3-1 (15-9, 6-15, 15-9, 15-10)	Haynes (14)	Melius (51)	Fitzsimons (15)	Fitzsimons (4)
9/15	at North Alabama	L 3-0 (9-15, 5-15, 3-15)	Ehlers (8)	Melius (25)	Two with 6	Two with 2
9/16	vs. Lincoln Memorial	W 3-1 (15-5, 7-15, 15-7, 15-10)	Ehlers (16)	Melius (44)	Weekes (15)	Hakansson (6)
9/22	at Augusta State	W 3-1 (15-7, 11-15, 15-12, 15-9)	Haynes (12)	Melius (42)	Melius (15)	Bringewatt (8)
9/23	at USC Aiken	W 3-0 (15-11, 15-2, 15-8)	Roman (15)	Melius (39)	Ehlers (19)	Three with 2
9/27	at North Florida	L 3-1 (12-15, 7-15, 15-12, 8-15)	Bringewatt (15)	Melius (42)	Ehlers (17)	Bringewatt (5)
9/29	USC Spartanburg	W 3-0 (15-5, 15-7, 15-10)	Hakansson (12)	Melius (36)	Roman (12)	Three with 2
9/30	Lander	W 3-0 (15-5, 15-5, 15-9)	Roman (7)	Melius (17)	Weekes (6)	Bringewatt (2)
10/2	Florida Tech	W 3-0 (15-13, 15-3, 15-10)	Haynes (14)	Melius (44)	Melius (11)	Bringewatt (5)
10/6	at Francis Marion	W 3-0 (15-3, 15-4, 15-7)	Ehlers (9)	Melius (32)	Two with 13	Bringewatt (4)
10/7	at UNC Pembroke	W 3-0 (15-5, 15-8, 15-3)	Bringewatt (12)	Melius (30)	Hakansson (8)	Two with 3
10/12	at Tampa	W 3-2 (10-15, 4-15, 17-15, 16-14, 15-13)	Ehlers (19)	Melius (49)	Two with 13	Bringewatt (7)
10/13	at Florida Southern ^	L 3-0 (12-15, 9-15, 5-15)	Ehlers (10)	Melius (26)	Hakansson (12)	Haynes (3)
10/14	vs. Rollins ^	W 3-0 (15-7, 15-5, 15-9)	Haynes (10)	Melius (42)	Bringewatt (9)	Welty (3)
	vs. PR-Rio Pedras ^	L 3-1 (4-15, 15-9, 9-15, 15-17)	Roman (16)	Melius (49)	Bringewatt (22)	Haynes (5)
10/20	USC Aiken	W 3-0 (15-3, 15-5, 15-3)	Roman (17)	Melius (36)	Haynes (13)	Welty (3)
10/21	Augusta State	W 3-0 (15-5, 15-6, 15-9)	Haynes (17)	Melius (30)	Roman (14)	Welty (2)
10/25	North Florida	W 3-2 (10-15, 15-8, 15-5, 10-15, 15-8)	Ehlers (17)	Melius (56)	Roman (15)	Haynes (4)
10/27	at Lander	W 3-0 (15-5, 15-11, 15-4)	Ehlers (12)	Melius (25)	Ehlers (15)	Ehlers (4)
10/28	at USC Spartanburg	L 3-2 (15-10, 12-15, 7-15, 15-13, 10-15)	Hakansson (19)	Melius (54)	Ehlers (18)	Welty (7)
11/3	UNC Pembroke	W 3-0 (15-8, 15-4, 15-10)	Roman (11)	Melius (19)	Roman (7)	Welty (2)
11/4	Francis Marion	W 3-1 (12-15, 15-1, 15-8, 15-3)	Roman (13)	Melius (21)	Roman (12)	Welty (4)
11/6	at Barry	L 3-0 (5-15, 6-15, 6-15)	Hakansson (9)	Melius (24)	Haynes (8)	Three with 1
11/10	at UNC Pembroke #	W 3-0 (15-3, 15-1, 15-8)	Baker (9)	Melius (25)	Burrell (8)	Haynes (4)
	vs. USC Aiken #	W 3-0 (15-4, 15-3, 15-4)	Two with 10	Melius (28)	Roman (13)	Six with 1
11/11	vs. North Florida #	L 3-1 (10-15, 9-15, 15-8, 8-15)	Roman (14)	Melius (42)	Ehlers (19)	Two with 4
11/16	vs. USC Spartanburg \$	W 3-1 (15-10, 15-5, 8-15, 15-10)	Haynes (23)	Melius (67)	Roman (11)	Haynes (4)
11/17	vs. North Florida \$	L 3-0 (6-15, 12-15, 9-15)	Haynes (10)	Melius (33)	Three with 7	Four with 1

\* Mesa State Invitational ! GVSU Invitational & AASU Classic ^ FSC Moccasin Invitational # PBC Tournament \$ NCAA South Regional

## 2000 Pirate Season Statistics

Player	MP/GP	Kills	Errors	Attacks	Pct.	Assists	SA	SE	Digs	BS	BA	BE	BHE
Shelley Weekes	15/29	38	20	96	.188	2	2	5	51	3	5	1	0
Micah Roman	39/128	349	122	1015	.224	27	58	59	400	7	15	15	1
Sarah Haynes	39/136	364	108	768	.333	9	31	44	231	32	68	17	7
Lindsay Ehlers	26/92	277	97	719	.250	13	12	29	286	17	28	4	0
Erin Melius	39/130	70	34	222	.162	1417	28	48	246	8	35	13	41
Colleen Fitzsimons	21/53	123	61	321	.193	21	8	12	144	5	16	9	4
Sofie Hakansson	39/132	271	98	646	.268	68	50	65	297	9	49	15	10
Jamie Burrell	28/65	108	39	349	.198	6	14	9	145	1	8	0	0
Candace Buckley	11/14	6	8	27	-.074	1	3	3	7	1	0	3	0
Julia Baker	20/51	25	9	66	.242	6	17	19	30	3	1	2	0
Amanda Taylor	26/42	8	3	23	.217	189	9	6	54	0	2	2	6
Kris Bringewatt	28/97	228	73	525	.295	11	12	22	196	29	59	16	4
Erin Welty	24/56	54	27	139	.194	5	10	8	42	6	27	17	1
<b>TOTALS</b>	<b>39/136</b>	<b>1922</b>	<b>698</b>	<b>4914</b>	<b>.249</b>	<b>1775</b>	<b>254</b>	<b>328</b>	<b>2130</b>	<b>121</b>	<b>313</b>	<b>113</b>	<b>76</b>



The Pirates Registered Four Wins Over Top 25-Ranked Teams In 2000

# Peach Belt Conference



## 2000 Peach Belt Conference Standings

School	PBC Games	Home	Away	All Games	Home	Away	Neut
North Florida	13-1 .929	7-0	6-1	27-7 .794	13-3	8-3	6-1
<b>Armstrong Atl. State</b>	<b>12-2 .786</b>	<b>7-0</b>	<b>5-2</b>	<b>29-10 .744</b>	<b>11-1</b>	<b>7-6</b>	<b>10-3</b>
USC Aiken	9-5 .643	4-3	5-2	24-10 .706	4-3	8-3	12-4
USC Spartanburg	9-5 .643	5-2	4-3	24-11 .686	12-3	5-3	7-4
Augusta State	5-9 .357	3-4	2-5	19-18 .514	9-9	5-5	5-4
Francis Marion	4-10 .286	2-5	2-5	13-21 .382	2-6	3-7	8-8
UNC Pembroke	3-11 .214	1-6	0-7	16-19 .457	3-6	3-10	10-3
Lander	1-13 .071	1-6	0-7	11-19 .367	7-7	2-10	2-2

## 2000 PBC Statistical Leaders

### Hitting Percentage

Player/School	GP	K-E-Att.	Pct.
Angie Chervestad, USCA	112	432-118-869	.361 (26th NCAA)
Kim Pitman, USCS	121	341- 84-733	.351
<b>Sarah Haynes, AASU</b>	<b>136</b>	<b>364-108-768</b>	<b>.333</b>
Andrea Emmons, USCA	122	446-140-962	.318
Lauren Westervelt, UNF	92	337-108-744	.308

### Kills Per Game

Player/School	GP	K	K/Game
Angie Chervestad, USCA	112	432	3.86
Lauren Westervelt, UNF	92	337	3.663
Andrea Emmons, USCA	122	446	3.656
Julie Bekker, UNF	114	402	3.53
Kristin Korte, USCS	130	432	3.25

### Assists Per Game

Player/School	GP	AST	AST/Game
Alysia Kern, UNF	114	1284	11.26
<b>Erin Melius, AASU</b>	<b>130</b>	<b>1417</b>	<b>10.90</b>
Erin Kopec, USCS	127	1321	10.40
Candice Anderson, USCA	112	1107	9.88
Bria Handran, UNCP	107	1008	9.42

### Blocks Per Game

Player/School	GP	BS-BA-TB	Blk/Gm
Julie Bekker, UNF	114	26- 89- 124	1.09
Avonay Williams, ASU	131	47- 88- 135	1.03
Kim Pitman, USCS	121	57- 66- 123	1.02
Kelly Kidd, ASU	132	56- 72- 128	0.97
Becky Greiling, USCS	130	53- 65- 118	0.908

### Digs Per Game

Player/School	GP	DIG	DIG/Game
Kristin Korte, USCS	130	455	3.50
Kim Abercrombie, LU	109	356	3.26
<b>Micah Roman, AASU</b>	<b>128</b>	<b>400</b>	<b>3.13</b>
Jessica Bosacki, UNF	118	366	3.10
Julie Bekker, UNF	114	350	3.07

### Service Aces Per Game

Player/School	GP	Aces	Aces/Game
Katie Baker, UNCP	110	64	0.582
Amanda Parker, LU	106	61	0.575 (24th NCAA)
Andrea Emmons, USCA	122	68	0.56
Nikki Rhodes, ASU	117	64	0.55
Erin Chandler, ASU	134	69	0.51

## 2000 All-Peach Belt Team

Player/School	Ht.	Yr.	Pos.	Hometown
Julie Bekker, UNF	5-11	Sr.	MH	Palm Harbor, Fla.
Angie Chervestad, USCA	6-2	Jr.	MB	Oklee, Minn.
<b>Lindsay Ehlers, AASU</b>	<b>5-10</b>	<b>Soph.</b>	<b>OH</b>	<b>Boulder, Colo.</b>
Andrea Emmons, USCA	5-10	Jr.	OH	Coralville, Iowa
<b>Sarah Haynes, AASU</b>	<b>5-11</b>	<b>Soph.</b>	<b>MH</b>	<b>Huntingtown, Md.</b>
Alysia Kern, UNF	5-6	Sr.	S	Bellevue, Neb.
Kristin Korte, USCS	5-9	Jr.	OH	Germantown, Ill.
Kim Pitman, USCS	6-0	Jr.	MH	Collinsville, Ill.
<b>Micah Roman, AASU</b>	<b>5-10</b>	<b>Sr.</b>	<b>OH</b>	<b>Wichita, Kan.</b>
Lauren Westervelt, UNF	5-11	Jr.	MB	Boca Raton, Fla.

**Freshman of the Year:** Erin Kopec, USCS

**Player of the Year:** Sarah Haynes, AASU

**Co-Coach of the Year:** Bryan Bunn, UNF & Alan Segal, AASU

## 2000 PBC Tournament Team

Julie Bekker, North Florida  
 Erin Chandler, Augusta State  
 Angie Chervestad, USC Aiken  
**Sarah Haynes, Armstrong Atlantic State**  
 Alysia Kern, North Florida  
**Micah Roman, Armstrong Atlantic State**

**Most Valuable Player:** Julie Bekker, North Florida

## 2000 PBC Players of the Week

September 5	Andrea Emmons	USC Aiken
September 12	Diana Caldarone	Francis Marion
September 19	Andrea Emmons	USC Aiken
September 26	Lauren Westervelt	North Florida
October 3	Julie Bekker	North Florida
October 10	Angie Chervestad	USC Aiken
October 17	Andrea Emmons	USC Aiken
<b>October 23</b>	<b>Sarah Haynes</b>	<b>Armstrong Atlantic State</b>
October 30	Kim Pitman	USC Spartanburg
November 7	Angie Chervestad	USC Aiken

## AASU In PBC Statistics

<b>Hitting Percentage:</b> .249, 2nd	<b>Blocks Per Game:</b> 2.04, 4th
<b>Kills Per Game:</b> 14.13, 3rd	<b>Digs Per Game:</b> 15.66, 4th
<b>Assists Per Game:</b> 13.05, 1st	<b>Aces Per Game:</b> 1.87, 6th

**Sarah Haynes Was The Second Straight Sophomore To Be PBC Player of the Year**







# 2001 Peach Belt Opponents



## Augusta State

Fri., Sept. 21 7:00 p.m.  
@ Tues., Oct. 30 7:00 p.m.

**Location:** Augusta, GA  
**Enrollment:** 5,350  
**Nickname:** Jaguars  
**Colors:** Royal Blue, White  
**2000 Record:** 19-18  
**Peach Belt:** 5-9 / 5th  
**Series:** AASU leads 21-13

**Head Coach:** Tess Lott  
**Phone:** (706) 667-4766  
**SID:** John Bush III  
**Phone:** (706) 731-7925  
**Fax:** (706) 737-7719  
**Web:** www.aug.edu



## Francis Marion

Fri., Oct. 5 7:00 p.m.  
@ Sat., Nov. 3 4:00 p.m.

**Location:** Florence, SC  
**Enrollment:** 3,684  
**Nickname:** Patriots  
**Colors:** Red, White & Blue  
**2000 Record:** 13-21  
**Peach Belt:** 4-10 / 6th  
**Series:** FMU leads 17-7

**Head Coach:** Sonny Kirkpatrick  
**Phone:** (843) 661-1246  
**SID:** Michael Hawkins  
**Phone:** (843) 661-1222  
**Fax:** (843) 661-1219  
**Web:** www.fmarion.edu



## Lander

@ Sat., Sept. 29 2:00 p.m.  
Fri., Oct. 26 7:00 p.m.

**Location:** Greenwood, SC  
**Enrollment:** 2,900  
**Nickname:** Senators  
**Colors:** Royal Blue & Gold  
**2000 Record:** 11-19  
**Peach Belt:** 1-13 / 8th  
**Series:** AASU leads 6-0

**Head Coach:** Doug Spears  
**Phone:** (864) 388-8691  
**SID:** Bob Stoner  
**Phone:** (864) 388-8962  
**Fax:** (864) 388-8889  
**Web:** www.lander.edu



## North Florida

Wed., Sept. 26 7:00 p.m.  
@ Wed., Oct. 24 7:00 p.m.

**Ranked #22 In Preseason**  
**Location:** Jacksonville, FL  
**Enrollment:** 12,086  
**Nickname:** Ospreys  
**Colors:** Navy Blue & Gray  
**2000 Record:** 27-7  
**Peach Belt:** 13-1 / 1st  
**Series:** UNF leads 16-1

**Head Coach:** Bryan Bunn  
**Phone:** (904) 620-2897  
**SID:** Joel Chaitovicz  
**Phone:** (904) 620-4025  
**Fax:** (904) 620-2836  
**Web:** www.unf.edu



## UNC Pembroke

Sat., Oct. 6 4:00 p.m.  
@ Fri., Nov. 2 7:00 p.m.

**Location:** Pembroke, NC  
**Enrollment:** 3,100  
**Nickname:** Braves  
**Colors:** Black and Gold  
**2000 Record:** 16-19  
**Peach Belt:** 3-11 / 7th  
**Series:** AASU leads 12-8

**Head Coach:** Beverly Justice  
**Phone:** (910) 521-6273  
**SID:** Pamela Mason  
**Phone:** (910) 521-6371  
**Fax:** (910) 521-6551  
**Web:** www.uncp.edu



## USC Aiken

Sat, Sept. 22 4:00 p.m.  
@ Wed., Oct. 17 7:00 p.m.

**Location:** Aiken, SC  
**Enrollment:** 3,200  
**Nickname:** Pacers  
**Colors:** Cardinal & White  
**2000 Record:** 24-10  
**Peach Belt:** 9-5 / t3rd  
**Series:** USCA leads 17-9

**Head Coach:** Will Condon  
**Phone:** (803) 641-3373  
**SID:** Brad Fields  
**Phone:** (803) 641-3252  
**Fax:** (803) 641-9517  
**Web:** www.usca.sc.edu



## USC Spartanburg

@ Fri., Sept. 29 7:00 p.m.  
Sat., Oct. 27 4:00 p.m.

**Location:** Spartanburg, SC  
**Enrollment:** 3,700  
**Nickname:** Rifles  
**Colors:** Green, Black, White  
**2000 Record:** 24-11  
**Peach Belt:** 9-5 / t3rd  
**Series:** USCS leads 18-7

**Head Coach:** Jennifer Calloway  
**Phone:** (864) 503-5161  
**SID:** Bill English  
**Phone:** (864) 503-5129  
**Fax:** (864) 503-5127  
**Web:** www.uscs.edu

## 2001 AASU/ Chatham Orthopaedics VB Classic

Fri., Aug. 24 - Sat., Aug. 25

## Florida Southern

**Location:** Lakeland, FL  
**Nickname:** Moccasins  
**2000 Record:** 21-15

## Saint Leo

**Location:** Saint Leo, FL  
**Nickname:** Lions  
**2000 Record:** 19-18

## North Alabama

**Ranked #2 In Preseason**  
**Location:** Florence, AL  
**Nickname:** Lions  
**2000 Record:** 40-3



**AASU Has Advanced To The PBC Tournament Title Game In Two Straight Years**

# 2001 Opponents & Tournaments



## Ga. Southwestern

Wed., Aug. 29 7:00 p.m.

**Location:** Americus, GA  
**Enrollment:** 2,500  
**Nickname:** Hurricanes  
**Colors:** Navy Blue & Old Gold  
**2000 Record:** 29-10  
**GACC:** 6-2 / 2nd  
**Series:** AASU leads 2-0

**Head Coach:** Michelle Haywood  
**Phone:** (229) 931-2217  
**SID:** Ann Planas  
**Phone:** (229) 931-2174  
**Fax:** (229) 931-2931  
**Web:** www.gsw.edu



## Barry

Sat., Sept. 15 4:00 p.m.

**Ranked #14 In Preseason**  
**Location:** Miami Shores, FL  
**Enrollment:** 7,772  
**Nickname:** Buccaneers  
**Colors:** Red, Black & Silver  
**2000 Record:** 24-10  
**Sunshine State:** 10-4 / 3rd  
**Series:** Barry leads 2-1

**Head Coach:** Dave Nichols  
**Phone:** (305) 899-3563  
**SID:** Dennis Jezek, Jr.  
**Phone:** (305) 899-3553  
**Fax:** (305) 899-3556  
**Web:** www.barry.edu



## Tampa

Sun., Sept. 16 4:00 p.m.  
 @ Thurs., Oct. 11 7:00 p.m.

**Ranked #5 In Preseason**  
**Location:** Tampa, FL  
**Enrollment:** 3,200  
**Nickname:** Spartans  
**Colors:** Red, Gold & Black  
**2000 Record:** 29-4  
**Sunshine State:** 14-0 / 1st  
**Series:** Tampa leads 2-1

**Head Coach:** Chris Catanach  
**Phone:** (813) 253-6240  
**SID:** Gil Swalls  
**Phone:** (813) 253-6241  
**Fax:** (813) 253-6288  
**Web:** www.ut.edu



## Valdosta State

Wed., Oct. 3 6:00 p.m.

**Location:** Valdosta, GA  
**Enrollment:** 8,650  
**Nickname:** Blazers  
**Colors:** Red and Black  
**2000 Record:** 22-8  
**Gulf South:** 10-6 / 4th East  
**Series:** Series Tied 4-4

**Head Coach:** Jon Teetzel  
**Phone:** (229) 333-5894  
**SID:** Steve Roberts  
**Phone:** (229) 333-5890  
**Fax:** (229) 333-5972  
**Web:** www.valdosta.edu

## 2001 West Georgia Braves Invitational

Fri., Aug. 24 - Sat., Aug. 25

### Valdosta State

**Location:** Valdosta, GA  
**Nickname:** Blazers  
**2000 Record:** 22-8

### Fort Valley State

**Location:** Fort Valley, GA  
**Nickname:** Wildcats  
**2000 Record:** 34-4

### West Georgia

**Location:** Carrollton, GA  
**Nickname:** Braves  
**2000 Record:** 7-27

### Converse

**Location:** Spartanburg, SC  
**Nickname:** All-Stars  
**2000 Record:** 24-19

## 2001 Texas Woman's Labor Day Classic

Fri., Aug. 31 - Sat., Sept. 1

### Texas Woman's

**Location:** Denton, TX  
**Nickname:** Pioneers  
**2000 Record:** 6-26

### Central Oklahoma

**Location:** Edmond, OK  
**Nickname:** Bronchos  
**2000 Record:** 20-12

### Angelo State

**Location:** San Angelo, TX  
**Nickname:** Rambelles  
**2000 Record:** 17-13

### SE Oklahoma St.

**Location:** Durant, OK  
**Nickname:** Lady Savages  
**2000 Record:** 4-26

## 25th Florida Southern Moccasin Invitational

Sat., Oct. 13

### Florida Tech

**Location:** Melbourne, FL  
**Nickname:** Panthers  
**2000 Record:** 10-15

### Florida Southern

**Location:** Lakeland, FL  
**Nickname:** Moccasins  
**2000 Record:** 21-15



## 2001 Catawba adidas Invitational

Fri., Oct. 19 - Sat., Oct. 20

### Catawba

**Location:** Salisbury, NC  
**Nickname:** Lady Indians  
**2000 Record:** 34-7

### Slippery Rock

**Location:** Slippery Rock, PA  
**Nickname:** The Rock  
**2000 Record:** 16-17

### Converse

**Location:** Spartanburg, SC  
**Nickname:** All-Stars  
**2000 Record:** 24-19

### Tusculum

**Location:** Greeneville, TN  
**Nickname:** Pioneers  
**2000 Record:** 24-13

**AASU Will Play At Least Seven Matches Against Preseason Top 25-Ranked Teams**





# AASU Records

Single Season Leaders			Career Leaders			Individual Match Leaders		
<b>Kills</b>			<b>Kills</b>			<b>Kills</b>		
<b>Player</b>	<b>Year</b>	<b>Kills</b>	<b>Player</b>	<b>Years</b>	<b>Kills</b>	41, Andrea Jany vs. SCAD, 9/17/96 (3-game match - NCAA DII Record)		
Nicole Smith	1994	620	Tracy Fowler	1994-97	1,087	<b>Attack Percentage</b>		
Sherrene Benedict	1992	494	Sherrene Benedict	1992-93	939	.769, Sarah Haynes vs. Rollins, 10/14/00		
Andrea Jany	1996	483	Nicole Smith	1993-94	822	.737, Nicole Smith vs. FVSU, 10/21/94		
Sherrene Benedict	1993	445	Koreena Kaminski	1991-92	769	<b>Service Aces</b>		
Meike Behrensen	1997	430	Micah Roman	1999-00	681	9, Koreena Kaminski vs. FMU, 11/14/92		
<b>Attack Percentage</b>			<b>Attack Percentage</b>			<b>Blocks</b>		
<b>Player</b>	<b>Year</b>	<b>Pct.</b>	<b>Player</b>	<b>Year</b>	<b>Pct.</b>	22, Christy Johansen vs. FMU, 9/25/91 (PBC record)		
Andrea Jany	1996	.444	Nicole Smith	1993-94	.347	<b>Assists</b>		
Nicole Smith	1994	.381	Kris Bringewatt	1999-00	.319	67, Erin Melius vs. Western State, 8/25/00 vs. USC Spartanburg, 11/16/00		
Kris Bringewatt	1999	.337	Sarah Haynes	1999-	.318	<b>Digs</b>		
Sarah Haynes	2000	.333	Meike Behrensen	1997	.285	39, Koreena Kaminski vs. FMU, 9/25/91		
Monika Beldzinska	1998	.314	Sherrene Benedict	1992-93	.282	 		
<b>Total Blocks</b>			<b>Total Blocks</b>					
<b>Player</b>	<b>Year</b>	<b>Blks</b>	<b>Player</b>	<b>Year</b>	<b>Blks</b>	<b>Team Records</b>		
Christy Johansen	1992	226	Christy Johansen	1991-92	403	<b>Kills</b>		
Christy Johansen	1991	177	Christy Spires	1997-98	258	<b>Match:</b> 98 vs. SCAD, 9-17-98 (3 gms)		
Monika Beldzinska	1998	154	Nicole Smith	1993-94	200	<b>Season:</b> 1,922, 2000		
Andrea Jany	1996	148	Kris Bringewatt	1999-00	195	<b>Total Attacks</b>		
Christy Spires	1997	130	Sarah Haynes	1999-	192	<b>Match:</b> 256 vs. Tusculum, 10/29/93 (5 gms)		
<b>Digs</b>			<b>Digs</b>			<b>Season:</b> 4,914, 2000		
<b>Player</b>	<b>Year</b>	<b>Digs</b>	<b>Player</b>	<b>Year</b>	<b>Digs</b>	<b>Attack Percentage</b>		
Koreena Kaminski	1992	422	Tracy Fowler	1994-97	1,360	<b>Match:</b> .581 (20-2/31) vs. Voorhees 10/14/91 (3 gms)		
Sherrene Benedict	1993	404	Sherrene Benedict	1992-93	791	<b>Season:</b> .255, 1999		
Micah Roman	2000	400	Micah Roman	1999-00	776	<b>Service Aces</b>		
Andrea Jany	1996	388	Koreena Kaminski	1991-92	624	<b>Match:</b> 21 vs. LaGrange, 10/25/91 (4 gms)		
Tracy Fowler	1997	388	Melanie Methe	1992-93	591	<b>Season:</b> 355, 1992		
<b>Assists</b>			<b>Assists</b>			<b>Total Blocks</b>		
<b>Player</b>	<b>Year</b>	<b>Asts</b>	<b>Player</b>	<b>Year</b>	<b>Asts</b>	<b>Match:</b> 36.5 vs. Paine, 9/23/91 (5 gms)		
Erin Melius	2000	1,417	Amanda Shelton	1995-97	2,582	<b>Season:</b> 355, 1992		
Amanda Shelton	1996	1,107	Erin Melius	1999-	2,477	<b>Assists</b>		
Erin Melius	1999	1,060	Christine Ladewski	1997-98	1,715	<b>Match:</b> 75 vs. FMU, 9/30/94 (4 gms)		
Amanda Shelton	1995	991	Hui Gibbs	1992,94	1,653	<b>Season:</b> 1,775, 2000		
Hui Gibbs	1992	964	Jennifer Grundy	1991-94	1,073	<b>Digs</b>		
<b>Service Aces</b>			<b>Service Aces</b>			<b>Match:</b> 163 vs. Tusculum, 10/29/93		
<b>Player</b>	<b>Year</b>	<b>Aces</b>	<b>Player</b>	<b>Year</b>	<b>Aces</b>	<b>Season:</b> 2,224, 1999		
Koreena Kaminski	1992	83	Tracy Fowler	1994-97	192			
Amanda Shelton	1995	67	Koreena Kaminski	1991-92	136			
Tracy Fowler	1996	59	Amanda Shelton	1995-97	122			
Micah Roman	2000	58	Jennifer Grundy	1991-94	106			
Andrea Jany	1996	56	Micah Roman	1999-00	105			
<b>All-Time AASU Coaching Records</b>								
<b>Coach</b>	<b>Years</b>	<b>W-L</b>	<b>Pct.</b>					
Roger Hansen	1986-88	10-41	.196					
William Buckley	1989-90	6-27	.182					
Carol Wilson	1991-92	42-25	.627					
Alvin Jones	1993	17-19	.472					
Carol Meegan	1994-98	69-69	.500					
B.J. Ford	1998	7-22	.241					
Alan Segal	1999-	61-15	.803					



**Nicole Smith Earned All-PBC Honors In Both Volleyball And Basketball In 1994-95**



## Peach Belt Conference Honors

### All-Peach Belt Conference

- 1991 Koreena Kaminski
- 1992 Koreena Kaminski  
Sherrene Benedict
- 1993 Sherrene Benedict
- 1994 Nicole Smith
- 1996 Andrea Jany
- 1997 Meike Behrensen  
Sandra Gluchy
- 1999 Kris Bringewatt  
Lindsay Ehlers  
Colleen Fitzsimons  
Micah Roman
- 2000 Lindsay Ehlers  
Sarah Haynes  
Micah Roman



*Sherrene Benedict*

### All-PBC Tournament Team

- 1992 Sherrene Benedict
- 1996 Andrea Jany
- 1999 Lindsay Ehlers  
Erin Melius
- 2000 Sarah Haynes  
Micah Roman

### PBC Coach of the Year

- 1997 Carol Meegan
- 1999 Alan Segal
- 2000 Alan Segal (Co-Winner)



*Kris Bringewatt*

### PBC Player of the Year

- 1999 Kris Bringewatt
- 2000 Sarah Haynes

### PBC Freshman of the Year

- 1996 Andrea Jany (Co-Winner)
- 1999 Lindsay Ehlers

### PBC Player of the Week

- 1991 Koreena Kaminski (Sept. 29)  
Ellen Sipes (Oct. 13)  
Koreena Kaminski (Oct. 20)  
Christy Johnson (Oct. 27)
- 1992 Koreena Kaminski (Sept. 21)  
Sherrene Benedict (Oct. 5)
- 1993 Sherrene Benedict (Oct. 3)  
Sherrene Benedict (Oct. 31)
- 1994 Nicole Smith (Sept. 7)  
Nicole Smith (Oct. 11)
- 1996 Andrea Jany (Sept. 17)  
Andrea Jany (Oct. 1)
- 1997 Sandra Gluchy (Oct. 14)
- 1999 Lindsay Ehlers (Oct. 19)
- 2000 Sarah Haynes (Oct. 24)



**2000 AVCA  
All-South Region  
Sarah Haynes**



**2000 Verizon  
Academic All-District III  
Volleyball Team  
Lindsay Ehlers**





# All-Time Results

1986 (2-22)			1990 (4-14)			1993 (17-19, 1-4 PBC)			1995 (12-27, 3-7 PBC)		
9/19	UNC Asheville	L 3-0	9/21	at Georgia Southern	L 3-0	10/27	at Emory	W 3-1	11/12	\$ Francis Marion	W 3-1
9/20	Radford	L	9/22	USC Spartanburg	L 3-0	10/30	Augusta	W 3-1		\$ USC Spartanburg	L 3-1
10/4	at Campbell	L	9/25	Coker	W 3-0		LaGrange	W 2-0		\$ Augusta	W 3-1
	North Carolina A&T	L		Savannah State	W 3-0	10/31	USC Spartanburg	W 3-1		\$ UNC Pembroke	L 3-0
10/7	Paine	L	9/26	at Augusta	L 3-0	11/3	Florida CC	W 3-1		* - Catawba Classic	
10/10	* UNC Asheville	L 2-0	9/29	Augusta	L 3-0	11/7	at Charleston Southern	L 3-0		% - Francis Marion Invitational	
	* Baptist	L 2-0		SCAD	W 3-0		East Carolina	L 3-1		& - PBC Round Robin (Spartanburg)	
10/11	* UNC Charlotte	L 2-0	10/1	Jacksonville	L 3-0	11/10	UNC Pembroke	L 3-2		\$ - PBC Tournament (Aiken, S.C.)	
	* UNC Wilmington	L 2-0	10/2	Georgia Southern	L 3-1	11/14	\$ Francis Marion	L 3-0			
10/13	Savannah State	W 3-0	10/3	at USC Aiken	L 3-0		\$ Augusta	W 3-1			
10/15	at Paine	L 2-0	10/3	at Coker	L 2-0		\$ Francis Marion	L 3-2			
10/17	Augusta	L 3-0	10/4	North Greenville	L 2-0		\$ - PBC Tournament (Florence, S.C.)				
10/18	Campbell	L 3-1	10/4	SCAD	L 3-1						
10/20	Jacksonville	L 2-0		Savannah State	L 2-0						
10/22	Savannah State	W 3-0	10/8	at Savannah State	W 2-0						
10/24	Savannah State	L		Paine	L 2-1						
10/28	Savannah State	L 2-1	10/9	USC Aiken	L 3-0						
10/31	Georgia Southern	L	10/10	Florida CC	L 3-0						
11/1	% Jacksonville	L 3-0									
	% Mississippi State	L 3-0									
11/1	% Long Island	L 3-0									
11/4	% Florida International	L 3-0									
11/7	at Georgia Southern	L 3-0									
	\$ Baptist	L 3-0									
	* - UNC Asheville Tournament										
	% - Jacksonville Tournament										
	\$ - Big South Conference Tournament										
1987 (4-10)			1991 (15-13, 1-3 PBC)			1994 (18-14, 4-6 PBC)			1996 (15-16, 4-6 PBC)		
9/26	Winthrop	L 3-0	9/19	Charleston Southern	L 3-0	9/14	Flagler	W 3-0	9/7	% Oglethorpe	W 3-0
	at Augusta	L 3-1	9/20	SCAD	W 3-1		at North Florida	L 3-0	9/8	% Georgia Southwestern	W 3-0
9/29	Augusta	L 3-0	9/23	Wesleyan	W 3-0		Palm Beach Atlantic	L 3-2		% at Valdosta State	W 3-1
9/30	at Georgia Southern	L 3-0		Paine	W 3-2	9/16	at Emory	W 3-2		at North Florida	L 3-0
	at Paine	L 3-1	9/25	at Savannah State	W 3-0	9/18	at West Georgia	W 3-0		UNC Pembroke	W 3-0
10/6	Jacksonville	L 3-0	9/28	at Francis Marion	L 3-2	9/23	Georgia Southern	L 3-0	9/14	USC Spartanburg	W 3-1
	Georgia Southern	L 3-0	9/30	at Wesleyan	W 3-0	10/2	* Albany State	W 3-1	9/17	at SCAD	L 3-0
10/8	at Savannah State	W 3-0	10/1	Jacksonville	L 3-0	10/5	* Paine	W 3-1	9/18	at USC Aiken	L 3-0
10/13	Savannah State	W 2-0	10/1	Georgia Southern	L 3-2	10/7	* Alabama State	W 3-2	9/26	at Augusta State	L 3-2
	at Paine	L 2-0	10/4	Savannah State	W 3-0	10/12	* Benedict	W 3-0	9/28	! Rollins	W 3-0
10/15	Savannah State	W 2-1	10/4	USC Spartanburg	L 3-1	10/5	* Alabama State	W 3-1		! Elon	L 3-1
10/20	at Savannah State	L 2-1	10/5	at USC Aiken	L 3-0	10/7	* USC Aiken	L 3-0	9/29	! Presbyterian	L 3-0
10/24	Benedict	L 2-1	10/7	at Emory	L 3-0	10/12	% West Georgia	W 3-1	10/1	Flagler	W 3-0
	Savannah State	W 2-0	10/9	Florida CC	L 3-1	10/16	% Tusculum	L 3-2	10/4	at UNC Pembroke	W 3-0
			10/14	SCAD	W 3-2	10/19	% USC Aiken	W 3-2	10/5	at Francis Marion	L 3-2
			10/14	at Vorhees	W 3-0	10/22	% Jacksonville State	L 3-0	10/8	at Fort Valley State	W 3-0
			10/15	at Georgia Southern	L 3-2	10/27	% North Alabama	L 3-1	10/12	Albany State	W 3-0
			10/17	Augusta	W 3-1	10/29	at Georgia Southern	L 3-0	10/15	USC Aiken	L 3-0
			10/25	Wesleyan	W 3-0	11/2	SCAD	W 3-2	10/19	USC Aiken	L 3-0
			10/28	at SCAD	W 3-0	11/3	\$ Francis Marion	L 3-1	10/20	& Coker	W 3-0
			10/30	LaGrange	W 3-1	11/6	\$ USC Aiken	L 3-2	10/20	& USC Spartanburg	L 3-0
			11/8	Coker	L 3-1		* - Paine Invitational		10/22	& Valdosta State	W 3-0
			11/9	\$ USC Aiken	L 3-0		% - West Georgia Invitational		10/23	SCAD	L 3-1
			11/9	\$ USC Spartanburg	L 3-0		\$ - PBC Tournament (Pembroke, N.C.)		10/23	Francis Marion	L 3-2
				\$ - PBC Tournament (Augusta, Ga.)					10/26	USC Spartanburg	L 3-0
1988 (4-9)			1992 (27-12, 2-3 PBC)			1994 (18-14, 4-6 PBC)			1996 (15-16, 4-6 PBC)		
9/27	at Augusta	L 3-0	9/14	at Vorhees	W 3-0	9/10	* Presbyterian	L 3-0	9/7	% Oglethorpe	W 3-0
	USC Aiken	L 2-0		Barber Scotia	W		* St. Andrews	L 3-1	9/8	% Georgia Southwestern	W 3-0
9/29	Jacksonville	L 3-0	9/16	at Georgia Southern	L 3-1		* USC Spartanburg	L 3-0		% at Valdosta State	W 3-1
	Savannah State	W 3-0	9/17	Columbia	W 3-0	9/14	at Flagler	W 3-0		at North Florida	L 3-0
10/4	at Georgia Southern	L 2-1		at SCAD	W 3-0	9/20	Georgia Southern	L 3-0	9/11	at North Florida	L 3-0
	Paine	L	9/23	Converse	L 3-1	9/21	SCAD	W 3-2	9/13	UNC Pembroke	W 3-0
10/7	Coker	L		SCAD	W 3-1	9/24	% Wofford	W 3-1	9/14	USC Spartanburg	W 3-1
	at Benedict	L	9/25	* Saint Leo	W 3-0		% Francis Marion	W 3-0	9/17	at SCAD	L 3-0
10/10	Savannah State	W 3-0		* Alabama-Huntsville	L 3-0		% High Point	W 3-1	9/18	at USC Aiken	L 3-0
	Augusta	L 3-0	9/26	* Troy State	W 3-1		% UNC Pembroke	L 3-2	9/26	at Augusta State	L 3-2
10/12	at Savannah State	W		* Bethune-Cookman	W 3-0	9/25	West Georgia	W 3-0	9/28	! Rollins	W 3-0
	Paine	L		* Bentley	W 3-1	9/27	at Georgia Southern	L 3-1		! Elon	L 3-1
10/14	Savannah State	W 3-1		at Wesleyan	W 3-0	9/30	& USC Aiken	W 3-1	9/29	! Presbyterian	L 3-0
			10/2	Lee	W 3-0		& Francis Marion	L 3-1	10/1	Flagler	W 3-0
			10/3	at LaGrange	W 3-0	10/1	& UNC Pembroke	L 3-1	10/4	at UNC Pembroke	W 3-0
				Millsaps	W 3-0		& Augusta	W 3-0	10/5	at Francis Marion	L 3-2
			10/6	Georgia Southern	L 3-2	10/8	& USC Spartanburg	L 3-0	10/8	at Fort Valley State	W 3-0
			10/7	Augusta	W 3-0		Mars Hill	W 3-0	10/12	Albany State	W 3-0
			10/9	USC Aiken	L 3-2		at West Georgia	W 3-0	10/15	USC Aiken	L 3-0
			10/12	North Florida	L 3-1	10/11	at USC Aiken	W 3-1	10/19	USC Aiken	L 3-0
			10/12	at Savannah State	W 3-0	10/15	USC Spartanburg	L 3-0	10/20	& Coker	W 3-0
			10/14	Francis Marion	L 3-2	10/18	at Francis Marion	L 3-1	10/20	& USC Spartanburg	L 3-0
			10/16	Palm Beach Atlantic	W 3-0	10/21	Fort Valley State	W 3-0	10/22	& Valdosta State	W 3-0
			10/20	Palm Beach Atlantic	W 3-2	10/26	Augusta	W 3-1	10/23	SCAD	L 3-1
			10/20	at Florida CC	W 3-0	10/28	UNC Pembroke	L 3-0	10/23	Francis Marion	L 3-2
			10/23	Savannah State	W 3-0	10/30	Columbia	W 3-0	10/26	USC Spartanburg	L 3-0
				Flagler	W 3-0	11/2	at Newberry	W 3-0			
			10/24	Voorhees	W 3-0						



**AASU's First Winning Season Came In Its First Year In The Peach Belt, 1991**

# All-Time Results



## All-Time Record Vs. Opponents

10/29 Augusta State W 3-1					
11/1 at Flagler W 3-2					
11/9 * Barry L 3-0					
* Florida Southern L 3-0					
11/10 * at North Florida L 3-0					
11/16 \$ Augusta State W 3-0					
\$ Francis Marion L 3-1					
% - All-Georgia Invitational (Valdosta)					
! - Tri-Conf. Invitational (Savannah)					
& - Lady Pirate Invitational (Savannah)					
* - South Region Classic (Jacksonville)					
\$ - PBC Tournament (Savannah, Ga.)					
<b>1997 (22-10, 5-7 PBC)</b>					
9/3 at Savannah State W 3-0					
9/6 * Georgia Southwestern W 3-0					
* Brenau W 3-0					
* at Valdosta State W 3-1					
9/10 at Flagler W 3-2					
9/13 at USC Spartanburg W 3-1					
9/16 at USC Aiken L 3-0					
9/19 Florida Tech L 3-1					
9/20 ^ Rollins W 3-1					
^ Lenoir-Rhyne W 3-1					
9/26 at Francis Marion L 3-0					
9/27 at UNC Pembroke W 3-1					
9/30 at SCAD W 3-2					
10/1 Flagler W 3-0					
10/5 Valdosta State W 3-1					
Savannah State W 3-0					
10/6 at Augusta State W 3-0					
10/10 Francis Marion L 3-0					
10/11 UNC Pembroke W 3-0					
10/15 North Florida L 3-0					
10/17 % Paine W 3-0					
% Gardner-Webb L 3-1					
10/18 % NC Central W 3-0					
10/24 USC Aiken L 3-2					
10/25 USC Spartanburg L 3-0					
10/28 Augusta State W 3-1					
10/31 ! Gardner-Webb W 3-2					
! Presbyterian W 3-1					
11/1 ! Augusta State W 3-0					
11/4 SCAD W 3-0					
11/5 at North Florida L 3-0					
11/14 \$ USC Spartanburg L 3-1					
* - Georgia Challenge (Valdosta, Ga.)					
^ - Kaleigh Challenge (Savannah, Ga.)					
% - USC Aiken Invitational					
! - Presbyterian Invitational					
\$ - PBC Tournament (Augusta, Ga.)					
<b>1998 (9-24, 4-10 PBC)</b>					
9/4 % vs. Albany State W 3-1					
9/5 % vs. Piedmont W 3-0					
% at Valdosta State L 3-0					
9/8 at Augusta State L 3-0					
9/12 * vs. Central Oklahoma L 3-0					
* at Rollins L 3-1					
9/13 * vs. Valdosta State L 3-0					
9/16 North Florida L 3-0					
9/18 ! Florida Tech L 3-2					
9/19 ! Catawba L 3-0					
! Newberry W 3-0					
9/25 at Francis Marion L 3-1					
9/26 at UNC Pembroke W 3-0					
10/2 at Lander W 3-1					
10/3 at USC Spartanburg L 3-0					
10/7 at North Florida L 3-0					
10/9 = vs. King College L 3-0					
10/10 = vs. Newberry W 3-1					
= at Wingate L 3-0					
= vs. Bluefield L 3-0					
10/13 Augusta State L 3-2					
10/17 at USC Aiken L 3-0					
10/18 Francis Marion L 3-0					
10/23 # vs. Fayetteville State L 3-0					
10/24 # vs. Catawba L 3-2					
# vs. Gardner-Webb L 3-0					
10/25 Lander W 3-0					
10/28 SCAD L 3-0					
11/3 USC Aiken L 3-1					
11/6 USC Spartanburg L 3-1					
11/8 UNC Pembroke W 3-0					
11/10 at Newberry W 3-1					
11/12 !! vs. USC Spartanburg L 3-0					
* - Georgia Challenge (Valdosta, Ga.)					
* - Rollins Invitational (Winter Park, Fla.)					
! - Kaleigh Klassic (Savannah, Ga.)					
= - Wingate Invitational (Wingate, N.C.)					
# - USC Aiken Halloween Invitational					
!! - PBC Tournament (Florence, S.C.)					
<b>1999 (36-5, 11-3 PBC)</b>					
8/27 * vs. Seton Hill W 3-0					
* vs. Mercyhurst W 3-0					
8/28 * vs. Shippensburg W 3-0					
* at California (Pa.) W 3-1					
9/3 \$ Fayetteville State W 3-0					
\$ Wingate W 3-0					
9/4 \$ Savannah State W 3-0					
\$ Presbyterian W 3-0					
9/10 % vs. Mars Hill W 3-0					
% vs. Saint Leo W 3-0					
9/11 % vs. Lenoir-Rhyne W 3-0					
% vs. Carson-Newman W 3-0					
9/17 ^ vs. West Alabama W 3-1					
^ vs. Montevallo W 3-0					
9/18 ^ vs. Florida Tech W 3-2					
^ vs. West Georgia W 3-1					
9/24 at USC Aiken W 3-0					
9/25 Fort Valley State W 3-0					
9/28 SCAD W 3-0					
10/1 at Lander W 3-0					
10/2 at USC Spartanburg W 3-1					
10/8 & vs. NC Central W 3-0					
& vs. Mount Olive W 3-0					
10/9 & vs. St. Augustine's W 3-0					
& vs. Benedict W 3-0					
& vs. Barton W 3-0					
10/13 at Augusta State W 3-0					
10/16 USC Aiken W 3-0					
10/17 USC Spartanburg W 3-0					
10/22 at Francis Marion L 3-1					
10/23 at UNC Pembroke W 3-0					
10/26 at SCAD L 3-0					
10/27 North Florida L 3-0					
10/30 Augusta State W 3-1					
10/31 Lander W 3-0					
11/5 UNC Pembroke W 3-0					
11/6 Francis Marion W 3-0					
11/10 at North Florida L 3-0					
11/12 ! vs. USC Aiken W 3-0					
! vs. Francis Marion W 3-1					
11/13 ! vs. North Florida L 3-1					
* California (Pa.) Tournament					
\$ AASU Pirate Invitational (Savannah)					
% Lady Pacer Invitational (Aiken, S.C.)					
^ VSU Days Invitational (Valdosta, Ga.)					
& Fayetteville State Invitational					
! PBC Tournament (Greenwood, S.C.)					
<b>2000 (29-10, 12-2 PBC)</b>					
8/25 * vs. Western State W 3-2					
* vs. UC Davis W 3-0					
8/26 * at Mesa State W 3-1					
* vs. CS Chico W 3-1					
9/1 % vs. Saginaw Valley St. W 3-0					
% at Grand Valley St. L 3-0					
9/2 % vs. MS Mankato W 3-0					
% vs. Lake Superior St. W 3-0					
9/8 \$ Barry W 3-1					
9/9 \$ West Georgia W 3-0					
\$ Tampa L 3-0					
9/10 \$ Florida Southern W 3-1					
9/15 at North Alabama L 3-0					
9/16 vs. Lincoln Memorial W 3-1					
9/22 at Augusta State W 3-1					
9/23 at USC Aiken W 3-0					
9/27 at North Florida L 3-1					
9/29 USC Spartanburg W 3-0					
9/30 Lander W 3-0					
10/2 Florida Tech W 3-0					
10/6 at Francis Marion W 3-0					
10/7 at UNC Pembroke W 3-0					
10/12 at Tampa W 3-2					
10/13 ^ at Florida Southern L 3-0					
10/14 ^ vs. Rollins W 3-0					
^ vs. AU Rio Pedras L 3-1					
10/20 USC Aiken W 3-0					
10/21 Augusta State W 3-0					
10/25 North Florida W 3-2					
10/27 at Lander W 3-0					
10/28 at USC Spartanburg L 3-2					
11/3 UNC Pembroke W 3-0					
11/4 Francis Marion W 3-1					
11/6 at Barry L 3-0					
11/10 ! at UNC Pembroke W 3-0					
! vs. USC Aiken W 3-0					
11/11 ! vs. North Florida L 3-1					
11/16 & vs. USC Spartanburg W 3-1					
11/17 & vs. North Florida L 3-0					
* Mesa State (Colo.) Invitational					
% Grand Valley St. (Mich.) Invitational					
\$ AASU Pirate Clasic					
^ Fla. Southern Invitational (Lakeland)					
! PBC Tournament (Pembroke, N.C.)					
& NCAA South Regional (Tampa, Fla.)					

**AASU Picked Up Its First-Ever Wins Over Nationally-Ranked Tampa & UNF In 2001**





# Facilities / Athletic Training

The Armstrong Atlantic State University's athletic department prides itself on having one of the finest athletic facilities not only in the conference, but in the region as well.

AASU's Sports Center, completed in July of 1995, immediately became a top basketball complex by hosting the 1998 and 1999 Peach Belt Athletic Conference basketball tournaments.

This 82,000 square foot multi-purpose building provides expanded academic offerings in spacious, modern surroundings. Students have a three-station computer lab, a 1,965 square foot weight training/fitness center with 21 Cybex machine exercise stations and a free weight area; four new classrooms, and two 3,535 square foot activity areas.



AASU's athletic teams play home events in a 4,000 seat arena that contains theatre-type seating for all spectators, and also plays host to a wide variety of social and sporting events.

Directly behind the Armstrong Sports Center sits the home fields for the baseball and softball teams.

Pirate Field seats 750 fans for the Armstrong Atlantic State University's highly successful baseball program. Generally regarded as one of the best playing surfaces in the conference, Pirate Field has seen the baseball squad advance to nine NCAA

regionals over the past 13 seasons.

To the west of Pirate Field sits the brand new AASU Softball Complex, home to the Pirate softball squad. In just its third year of competition, the AASU softball team ascended to No. 1 in the nation in the NFCA Division II Top 25 poll.

The **Aquatics and Recreation Center** serves as the host of the AASU volleyball squad. The 1,000 seat arena features newly renovated bleacher seating and scoreboards and is the sole volleyball-only facility in the Peach Belt Conference.

## AASU Athletic Training



*Dr. Spencer Wheeler*



*Mylene Benito, A.T.C.*

AASU athletic teams benefit from the fine athletic training staff, headed by medical director Dr. Spencer Wheeler and head athletic trainer Mylene Benito.

AASU's training room, part of the Armstrong Sports Center, sits adjacent to the fitness center and across the hall from the Pirate locker rooms. The room offers the most modern and advanced equipment to help players deal with injuries and rehabilitation.

Two other graduate assistant trainers aid Dr. Wheeler and Benito in helping treat and prevent injuries to AASU athletes - Sam Chapman and Kristin Gibson.

## Strength & Conditioning



*Henry Myers*

The AASU volleyball team also benefits from a fine strength and conditioning program, headed by Olympic Weightlifting champion Team Savannah's head coach, Henry Myers.

As the strength and conditioning coach of the volleyball squad, Myers has been integral to the team's fitness and strength for the past two seasons.

Myers, a native of Savannah and a graduate of Jenkins HS in 1989, was named the 2000 USOC Coach of the Year for Weightlifting as five of Team Savannah's lifters represented the United States in the 2000 Olympic Games in Sydney, Australia.

Myers, 30, is married to Michelle Powell-Myers.



★ **TEAM SAVANNAH** ★



**Since 1999, AASU Has Compiled A 23-2 Home Record Under Coach Alan Segal**

# This Is Savannah



Historic Savannah, Georgia, is located on the Atlantic Coast, at the confluence of the Savannah River and the Atlantic Ocean. Throughout its history, there has been one adjective consistently used to describe Savannah: beautiful.

The reason? There's something about the unique beauty of Savannah that cannot be forgotten. Streets with canopies of moss-laden trees are honored venues for scores of historic homes. The town squares that Savannah's founding father, James Oglethorpe, laid out as public meeting places are now treasured "pocket parks" located throughout the downtown area.

A renovated waterfront area serves as the hub for shopping and entertainment. Nearby sandy beaches draw streams of visitors with persistent cool breezes and the endless lure of the rolling sea. Finally, there's an indescribable - but readily discernable - feeling in the air that pervades Savannah, a kind of "laid back" approach to the world, a "rootedness" that makes living or working in Savannah an experience second to none.

By way of affirmation, *Le Monde*, the leading French newspaper, called Savannah "the most beautiful city in North America."

Savannah has recently captured the imagination of a nation through its history and its appearance in several feature films, including "Glory," "Forrest Gump," "Something to Talk About," "Midnight In The Garden of Good and Evil" and the 2000 hit film "The Legend of Bagger Vance" starring Will Smith and Matt Damon. Also, Savannah hosted the yachting events of the 1996 Summer Olympics. As a result, tourism has become one of the leading industries in the area.

Savannah hosts over six million tourists each year. Tourism impacts the Savannah area by over \$634 million. The city boasts over



7,000 rooms and more than 100 restaurants as folks have learned that Savannah is more than just a convenient rest stop on the interstate to Florida.

The climate of Savannah features warm, and sometimes hot, weather for most of the year. There are seven months in which the average temperature is 70 degrees or higher. The lowest average high is in January at 60.3 degrees.

The population in Savannah is roughly 130,000 and Chatham County is the fifth most populous county in the state of Georgia.

Savannah also sits centrally located to some of the southeast's finest beaches. Tybee Island, located less than 30 minutes from Armstrong Atlantic State's campus, offers six miles of unspoiled sands, tempting seafood and gracious accommodations. Resort areas such as Hilton Head, South Carolina, are less

than one hour away and provide even more relaxing getaway options.

Whether it's the lure of historical settings, the friendliness of a southern community or the beautiful climate of southeast Georgia, Savannah is the place for you.



**Inn & Suites**

®

**Brenda Rennolds, C.T.P.**  
**Director of Sales**

**17 Gateway Blvd. E**  
**Savannah, GA 31419**

**Home Of The Pirates!**







## **2001 Armstrong Atlantic State University Volleyball Schedule**

<b>Date</b>	<b>Day</b>	<b>Opponent</b>	<b>Time</b>
Aug. 24-25	Fri.-Sat.	at <u>2001 West Georgia Braves Invitational</u> (Carrollton, Ga.)	
Aug. 24	Fri.	vs. Fort Valley State	11:00 a.m.
		vs. Valdosta State	5:00 p.m.
Aug. 25	Sat.	at West Georgia	11:00 a.m.
		vs. Converse	2:00 p.m.
<b>Aug. 29</b>	<b>Wed.</b>	<b>Georgia Southwestern</b>	<b>7:00 p.m.</b>
Aug. 31-Sept. 1	Fri.-Sat.	at <u>2001 Texas Woman's Labor Day Classic</u> (Dallas, Tex.)	
Aug. 31	Fri.	at Texas Woman's	3:00 p.m.
		vs. Central Oklahoma	7:00 p.m.
Sept. 1	Sat.	vs. Angelo State	10:00 a.m.
		vs. Southeastern Oklahoma	2:00 p.m.
<b>Sept. 7-8</b>	<b>Fri.-Sat.</b>	<b><u>2001 AASU/Chatham Orthopaedics VB Classic</u></b>	
<b>Sept. 7</b>	<b>Fri.</b>	<b>Florida Southern</b>	<b>7:00 p.m.</b>
<b>Sept. 8</b>	<b>Sat.</b>	<b>Saint Leo</b>	<b>2:00 p.m.</b>
		<b>North Alabama</b>	<b>6:30 p.m.</b>
<b>Sept. 15</b>	<b>Sat.</b>	<b>Barry</b>	<b>4:00 p.m.</b>
<b>Sept. 16</b>	<b>Sun.</b>	<b>Tampa</b>	<b>4:00 p.m.</b>
<b>Sept. 21</b>	<b>Fri.</b>	<b>Augusta State *</b>	<b>7:00 p.m.</b>
<b>Sept. 22</b>	<b>Sat.</b>	<b>USC Aiken *</b>	<b>4:00 p.m.</b>
<b>Sept. 26</b>	<b>Wed.</b>	<b>North Florida *</b>	<b>7:00 p.m.</b>
Sept. 28	Fri.	at USC Spartanburg *	7:00 p.m.
Sept. 29	Sat.	at Lander *	2:00 p.m.
<b>Oct. 3</b>	<b>Wed.</b>	<b>Valdosta State</b>	<b>6:00 p.m.</b>
<b>Oct. 5</b>	<b>Fri.</b>	<b>Francis Marion *</b>	<b>7:00 p.m.</b>
<b>Oct. 6</b>	<b>Sat.</b>	<b>UNC Pembroke *</b>	<b>4:00 p.m.</b>
Oct. 11	Thurs.	at Tampa	7:00 p.m.
Oct. 13	Sat.	at <u>25th FSC Moccasin Invitational</u> (Lakeland, Fla.)	
Oct. 13	Sat.	vs. Florida Tech	10:00 a.m.
		at Florida Southern	6:30 p.m.
Oct. 17	Wed.	at USC Aiken *	7:00 p.m.
Oct. 19-20	Fri.-Sat.	at <u>2001 Catawba adidas Invitational</u> (Salisbury, N.C.)	
Oct. 19	Fri.	at Catawba	2:00 p.m.
		vs. Slippery Rock	6:00 p.m.
Oct. 20	Sat.	vs. Converse	Noon
		vs. Tusculum	4:00 p.m.
Oct. 24	Wed.	at North Florida *	7:00 p.m.
<b>Oct. 26</b>	<b>Fri.</b>	<b>Lander *</b>	<b>7:00 p.m.</b>
<b>Oct. 27</b>	<b>Sat.</b>	<b>USC Spartanburg *</b>	<b>4:00 p.m.</b>
Oct. 30	Wed.	at Augusta State *	7:00 p.m.
Nov. 2	Fri.	at UNC Pembroke *	7:00 p.m.
Nov. 3	Sat.	at Francis Marion *	4:00 p.m.
Nov. 8-10	Thurs.-Fri.	PBC Tournament (Jacksonville, Fla.)	

**Bold** denotes home game.

\* - Peach Belt Conference game