

Reflector

1954

Georgia Southern University

Follow this and additional works at: <https://digitalcommons.georgiasouthern.edu/reflector-yearbook>



Part of the [Higher Education Commons](#)

Recommended Citation

Georgia Southern University, "Reflector" (1954). *Reflector Yearbook*. 27.
<https://digitalcommons.georgiasouthern.edu/reflector-yearbook/27>

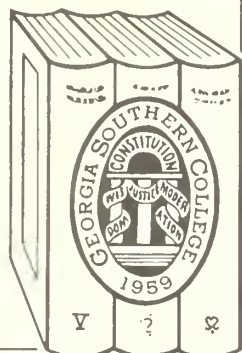
This book is brought to you for free and open access by the Student Media at Digital Commons@Georgia Southern. It has been accepted for inclusion in Reflector Yearbook by an authorized administrator of Digital Commons@Georgia Southern. For more information, please contact digitalcommons@georgiasouthern.edu.



the 1954

REFLECTOR

GEORGIA
SOUTHERN COLLEGE
LIBRARY



Georgia Southern College

Zach S. Henderson Library

Georgia Southern University
Zach S. Henderson Library



Digitized by the Internet Archive
in 2014

<https://archive.org/details/reflector1954na>

The 1954 Reflector

Presents

The professor and 'Life at T.C.'

DORIS AND DOROTHY FORD

Co-Editors

JACK GAY

Business Manager



C O N T E N T S

"LIFE AT T.C."	Page 3
DEDICATION	Page 8
IN MEMORY	Page 10
BUILDINGS	Page 12
ADMINISTRATION	Page 16
FACULTY	Page 22
CLASSES	Page 28
SENIOR	Page 30
JUNIOR	Page 44
SOPHOMORE	Page 48
FRESHMEN	Page 54
ORGANIZATIONS	Page 62
SPORTS	Page 90
FEATURES	Page 104
ADVERTISEMENTS	Page 119





PLAYS, DANCES, CLUB
INITIATION, & BEAUTY
REVUES...ALL PLAY A
VITAL PART IN ONE'S
LIFE WHILE AT T. C.

Lights! Camera! Action! We're ready, Mr. DeMille

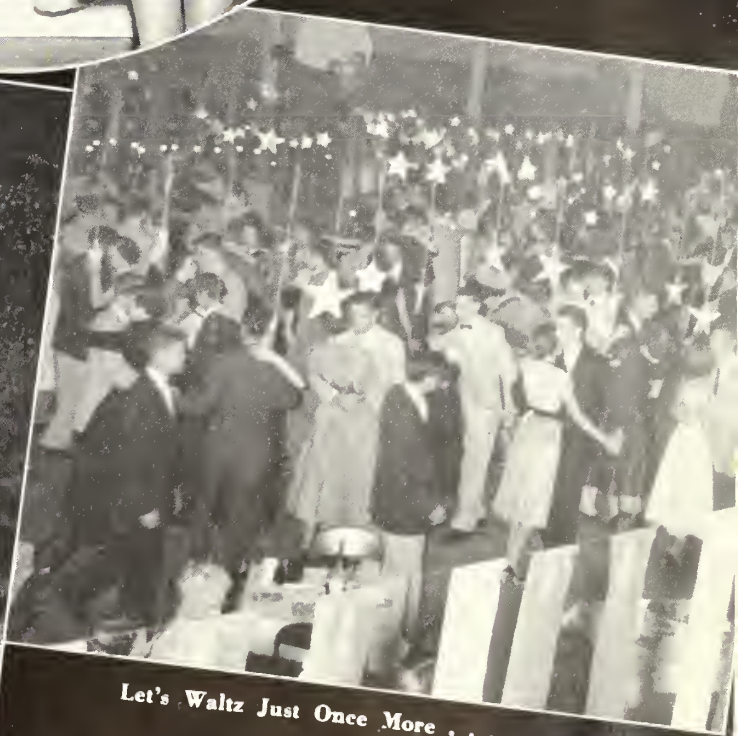
A sample of our beauty



Hollywood?? Invades T.C.



65991



Let's Waltz Just Once More . . .



Peabody—they will serve breakfast



Santa's been here



**RAT DAY, CHRISTMAS PARTY AND
SOCIALS ARE A MUST AT COLLEGE.**

Remember . . . You couldn't forget



All dressed up and excited too!



Our Daisy Mae . . .

TEAS AREN'T QUITE SO POPULAR
AS MIDNIGHT SNACKS

Tidbits at six

Tidbits at ten

Tidbits



**BEAUTIES
YULETIDE SEASON
AND FORMALS
HIGHLIGHT THE ACTIVITIES
ON OUR CAMPUS**



. . . you freshmen will be introduced to a very essential part of your life here at T.C.—
rat caps. The little blue cap with the white T is to be worn until rat day is over.
. . . then came the day the “rats became college freshmen, with an entire day spent in
their honor.

Joy Hatcher and Dot Hamilton call on the President



Wilkins Twins get double dose at rat court.



ZACK L. STRANGE, SR.

D E D I C A T I O N

In this lovely place we have found a sprite of goodwill. He writes us notes about our "husbands" and he calls us "brides"; he is a punster and always writes us *billets-doux*.

After four years he has become Our Hero. He has inspired us to greater endeavor; he has encouraged us to have more zeal; and he has (nearly) always filled those dusty vacant boxes that have meant so much in our lives for these four years.

For this, and because of our love and devotion to him,

WE, THE SENIOR CLASS OF 1954, DEDICATE THIS, OUR
1954 REFLECTOR TO

Z. L. Strange, Sr.

Postmaster



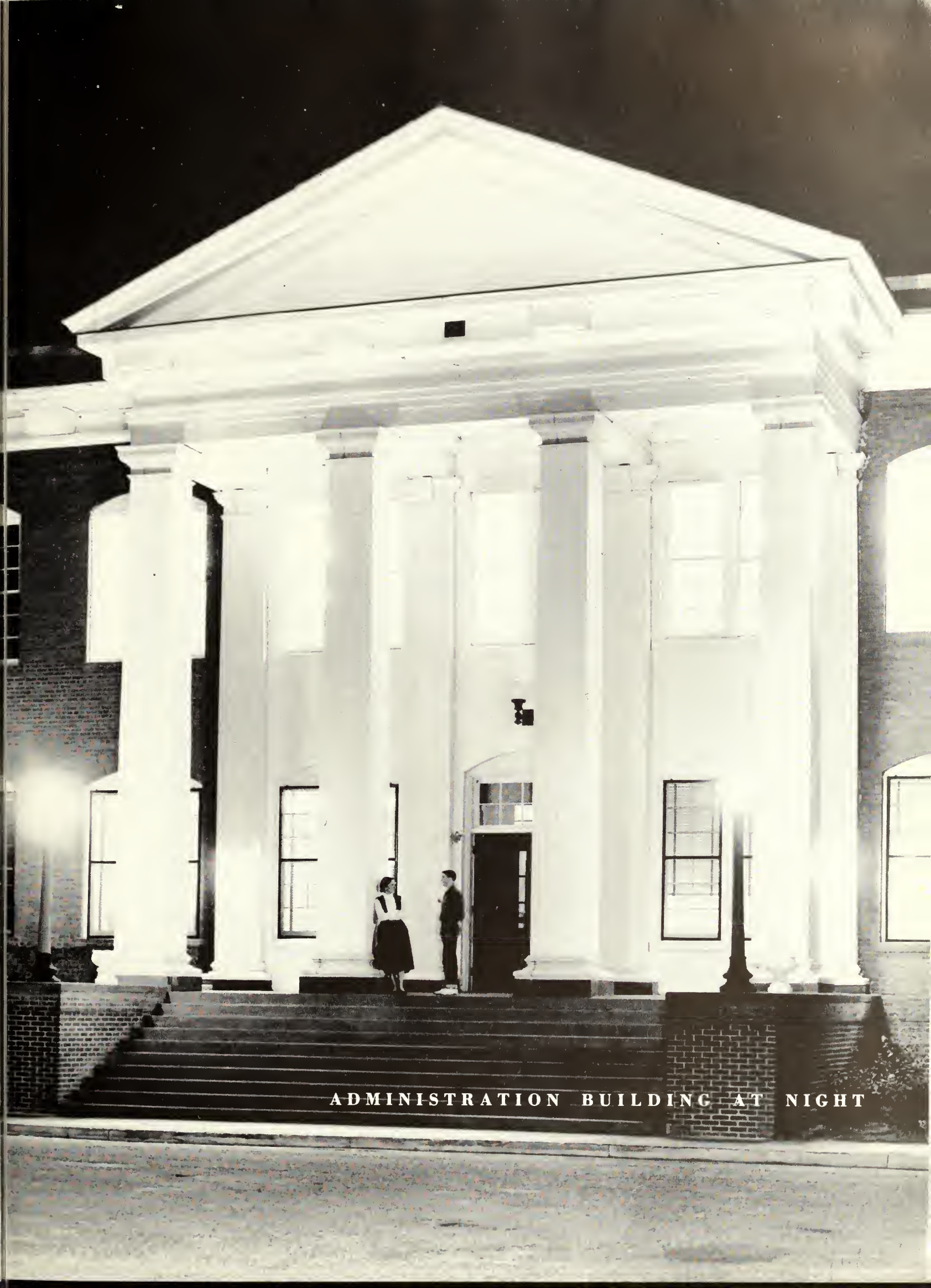
I N M E M O R Y

In memory of Dr. Marvin S. Pittman, who was devoted to Georgia Teachers College and a better education for the entire realm of humanity.

Born April 12, 1882, Embry, Mississippi, he excelled in many phases of education with special interest being in the fields of social science and rural education.

Dr. Pittman came to T.C. in 1934 as its president and maintained constant affiliation with this institution until his death on February 27, 1954.

Recognized as a prominent national educator he made extensive studies in Europe, Mexico, and Cuba, and contributed much of his information to the oncoming generations permanently through numerous books.



ADMINISTRATION BUILDING AT NIGHT

Where we recuperate.



HEALTH COTTAGE

Here we practice what they preached.



LABORATORY SCHOOL

From a microscopic viewpoint.



BIOLOGY

*Where We
Work . . .*



CLOSE UP

Atoms in action.



CHEMISTRY

And Live . . .

The House of Many Skills . . .



INDUSTRIAL ARTS BUILDING

The Professor's Paradise.



GYMNASIUM



The men live here!!!
SANFORD HALL

The Dignified Dorm . . .



LEWIS HALL

A Home Away from Home . . .



EAST HALL

Practice Makes Perfect????

MUSIC-BUSINESS BUILDING





And Spend . . .

WEST HALL

The age of innocence dwells herein???



HOME MANAGEMENT HOUSE

The place of practical experience.



ANDERSON HALL

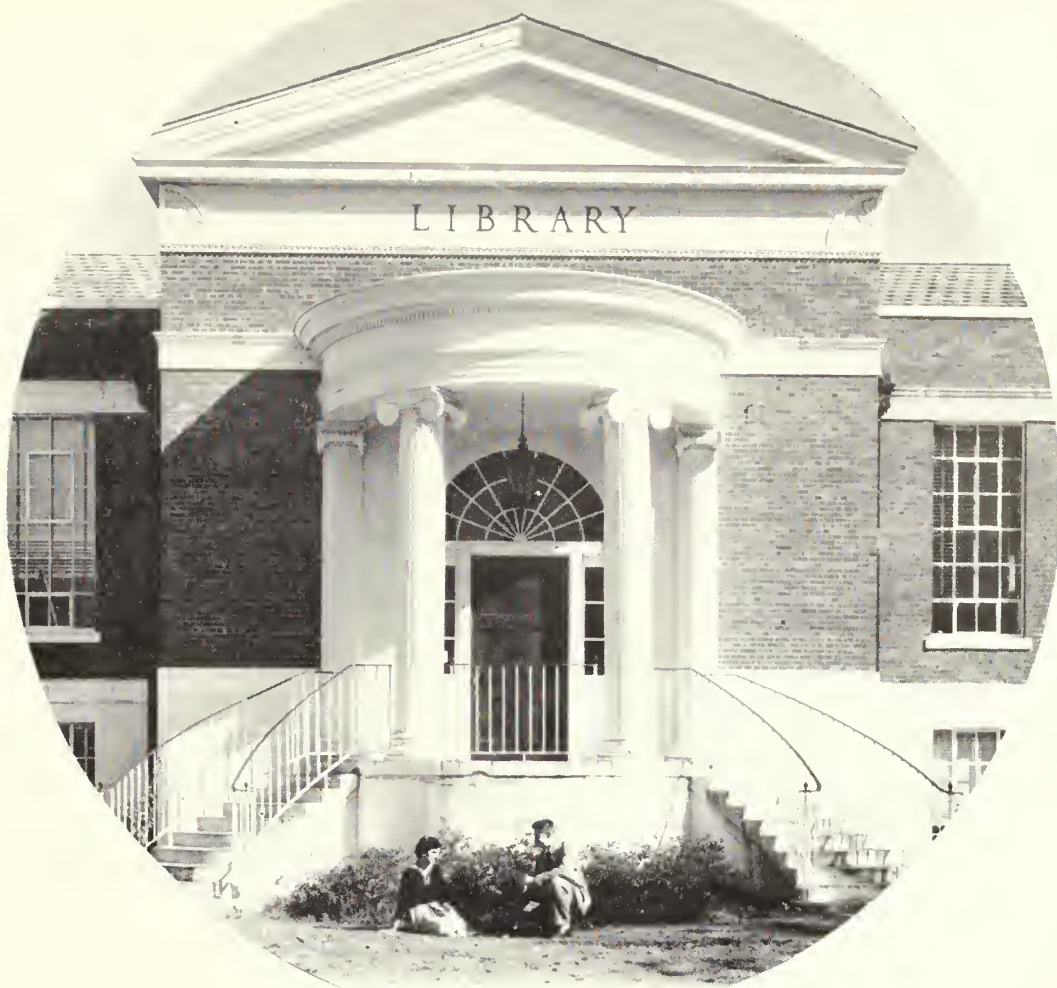


Chow!!

CONE HALL

The new addition.

... *Many*
Hours



LIBRARY

Books galore!!

The meetin' place.

NURSERY SCHOOL

—Just beginning—



LITTLE STORE

Faculty Administration Personnel

MAY I HAVE THIS DANCE?



AND THE FACULTY STEP OUT . . .





TIME OUT FOR REFRESHMENTS





ZACK S. HENDERSON
President

A D M I N I S T R A T I O N

PAUL CARROLL
Dean



VIOLA PERRY
Registrar



DON McDOUGALD
Comptroller



A D M I N I S T R A T I O N

THOMAS C. LITTLE
Education Head



IDA LONG ROGERS
Dean of Women



JULIAN A. PAFFORD
Principal, Laboratory School



HASSIE McELVEEN
Librarian



GEORGIA WATSON
Guidance and Alumni Director



ROY F. POWELL
English, Public Relations



SOPHIE JOHNSON
Dean of Men



MRS. FLORINE MYERS
House Director



A D M I N I S T R A T I O N



MRS. ARCHIE JACKSON
House Director



MRS. J. B. JOHNSON
House Director



MRS. LUCIAN FRANKLIN
House Director



MRS. ANNIE MELTON
Dietician



MRS. FRANCES ROCQUEMORE
Nurse



B. E. TAYLOR
Supt. of Buildings and Grounds



MISS QUEEN COLLINS
Laboratory School Secretary



TOMMIE JEAN CORBETT
Secretary to President

A D M I N I S T R A T I O N

LIZZIE NORMAN
Secretary to Dean and Registrar



MRS. PAT DARLEY
*Secretary to Dean of Women
and Guidance Director*

MARY JANE MOORE
Business Office Assistant



BETTY SUE ROUNTREE
Business Office Assistant

Z. L. STRANGE, SR.
Postmaster



Z. L. STRANGE, JR.
Postmaster

MARGIE JONES
Manager, Blue Tide



JOHN HUDSON
Film Librarian

T H E F A C U L T Y



THOMAS B. ALEXANDER
Social Science Head



HENRY L. ASHMORE
Education



RUTH BOLTON
Home Economics



CAMERON BREMSETH
Business Head



JACK W. BROUCEK
Music



DONALD CAPLENOR
Exact Science



J. I. CLEMENTS
Physical Education

T H E F A C U L T Y

JOHN ERICKSON
Industrial Arts



DOROTHY FEW
English, Speech



BERTHA FREEMAN
Education

FRIEDA GERNANT
Fine Arts



EDGAR GODFREY
Industrial Arts

MARJORIE T. GUARDIA
English



DONALD HACKETT
Industrial Arts Head

W. S. HANNER
Exact Science Head

T H E F A C U L T Y



DANIEL S. HOOLEY
Music



ELA JOHNSON
English



MARJORIE KEATON
Business



DANA M. KING
Music



CLARK S. KNOWLTON
Social Science



DR. ROBERT S. LAMBERT
Social Science



FRED LENFESTEY
Education



BETSYE MEADOWS
Nursery School Director

T H E F A C U L T Y

SHELBY H. MONROE
Education



MIRIAM MOORE
Home Economics



WILLIAM B. MOYE
Exact Science



DR. RONALD J. NEIL
Music Head



ROXIE REMLEY
Fine Arts



DR. GEORGE A. ROGERS
Social Science



DR. FIELDING D. RUSSELL
English Head



J. B. SCEARCE
Physical Education Head





MARGARET STANION
Physical Education

HAROLD C. STEELE
Exact Science

DR. LELAND WILSON
Exact Science

CAROLYN WINGO
Home Economics



MRS. REBA CLEMENTS
Film Librarian



LUCILLE HOWARD, *Assistant Librarian*

GRACE COOPER, *Assistant Librarian*

MARY McCAIN, *Assistant Librarian*

LABORATORY SCHOOL FACULTY



First Row: Mrs. Ruth Knowlton, Miss Rebecca Parks, Miss Leona Newton, Miss Marjorie Crouch, Miss Marie O'Neal, Mrs. Edna Mae Joiner, Miss Constance Cone, Mrs. Mary Bruce, Mrs. S. C. Carter. *Second Row:* Mrs. Gladys DeLoach, Miss JoAnn Surrency, Miss Marie Wood, Miss Gladys Waller, Miss Cleo Edenfield, Miss Betty Lane. *Third Row:* Roger Parsons, Daniel Hooley, Mr. Pafford, Jordan P. Folds, James Hart, Rudy Mills, Harold Steele, and John Pelts.



Phases of Life ~



classes

"... AND THEN THEY VOTED"



NEED WE SAY MORE



REGISTRATION DAY IN THE GYM



SENIOR CLASS OFFICERS



Standing, left to right: Don Thomas, Secretary; Larry Cook, Vice President; Jack Gay, Treasurer. Seated: Mike Genevrino, President.

Who tricked our President into this????

Oh! You beautiful dolls.



SARALENE AKRIDGE—Sale City, Ga.

Elementary Education

Masquers 1, 2; SCA 1, 2; Wesley Foundation 4; BSU 3; House Council 3; Elementary Club 3, 4.

REYNOLDS ALLEN—Eastman, Ga.

Physical Education

MARY HELEN ALTMAN—Waycross, Ga.

English—Speech

George-Anne 1, 2, 3, 4; Editor 3; Associate Editor 2; "F" Book Editor 2; Kappa Delta Pi 3, 4; Secretary Junior Class; Wesley Foundation Council 1, 2, 3, 4; Masquers 2, 3, 4; English Club 3, 4; SCA 1, 2; Cave Club 4; Who's Who 4.

FRANCES AMMONS—Brunswick, Ga.

English—History

English Club; Masquers; FIA; House Council 1, 2, 3.

ROSE MARY AMMONS—Brunswick, Ga.

Exact Science

Secretary Freshman Class; FIA 3, 4; Pres. 4; State Pres. 4; Science Club 1, 2, 3, 4; Sec. 2; Pres. 3; Masquers 1, 2, 3, 4; Vice-Pres. 1, 2; WRA 1, 4; George-Anne Staff 1, 2; Reflector 3, 4; Who's Who 4.

PATSY WOLFE ANDERSON—Uvalda, Ga.

Physical Education—English

WRA 3, 4; Intramural Co-ordinator 3; Women's Official Club 3; English Club 3; Transfer Brewton Parker Junior College.

BARBARA BARINEAU—Cairo, Ga.

Elementary Education

Transfer VSC, Valdosta, Ga. Art Club 4; Elementary Education Club 4; Wesley Foundation 4; Masquers 4; FIA 4.

HORACE BELFLOWER—Cochran, Ga.

Physical Education

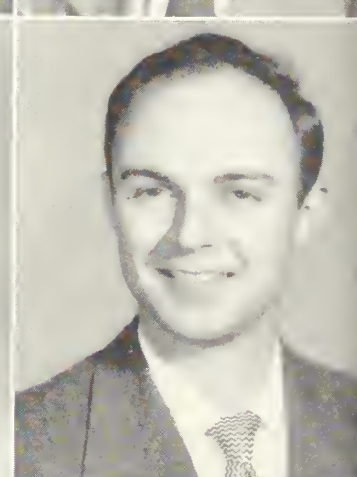
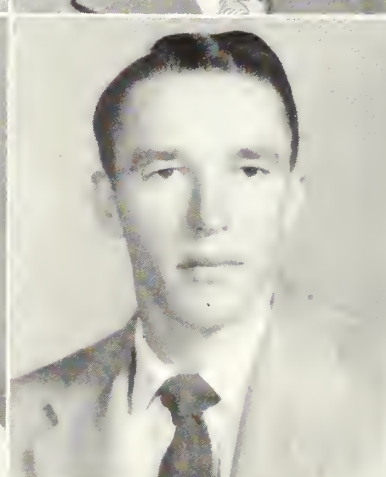
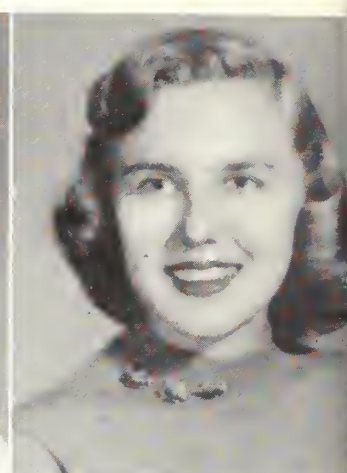
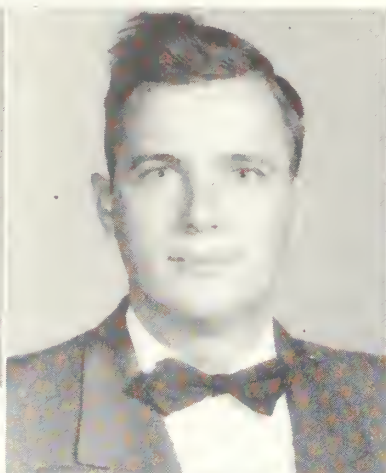
Basketball 1, 3, 4.



SARALENE AKRIDGE
MARY HELEN ALTMAN
ROSIE AMMONS
BARBARA BARINEAU

REYNOLDS ALLEN
FRANCES AMMONS
PATSY ANDERSON
HORACE BELFLOWER

SENIOR CLASS OF '54



JO SHARON BLACK
DOROTHY BROWN
VIVIEN COWART
MORRIS DAVIS

OTIS BOYER
JULIUS BYERS
EUGENE CRAIG
VIRGINIA DAVIS

SUE BRANNEN
JANICE CHASTAIN
AL CRUMPLER
DELANO DEEN

ELEANOR BROOKS
LARRY COOK
HUGH DARLEY
HAROLD DeLOACH

D I R E C T O R Y



JO SHARON BLACK—Cochran, Ga.

Elementary Education

Transfer Middle Georgia College. Choir 3, 4; Elementary Education Club 3, 4; Art Club 3, 4; Wesley Foundation 4; House Council 3.



SUE BRANNEN—Statesboro, Ga.

Elementary Education

Transfer Bessie Tilt College. House Council 3; Art Club 3; Masquers 3, 4; FFA 4; Elementary Education Club 4.



C. TRUMAN BROWN—Guyton, Ga.

Special Major in Business

Transfer Emory University.



VIVIEN GOULD COWART—Savannah, Ga.

Special Major in Social Sciences

Wesley Foundation Council 3; SCA Council 2; IRC 1, 2, Vice-Pres. 2; Masquers 1, 2; Kappa Delta Pi 3; English Club 2, 3; George-Anne Stall 2, 3.

EUGENE CRAIG—Columbus, Ga.

Special Major in Exact Science

Science Club 2, 3; Masquers 2, 3.

AL R. CRUMPLER—Hagan, Ga.

Social Science

Kappa Delta Pi 4.

HUGH EDISON DARLEY—Statesboro, Ga.

Industrial Education

Industrial Arts Club 3, 4.

BOBBY DAVIS—Cordele, Ga.

Physical Education

DOROTHY BROWN—Twin City, Ga.

Home Economics

Home Ec. Club 1, 2, 3, 4, Reporter 2, Vice-Pres. 4; Kappa Delta Pi 3, 4, Sec. 4; Honors Day 2; Wesley Foundation 3, 4.

JULIUS BYERS—Savannah, Ga.

Special Major in Social Science

JANICE CHASTAIN—Albany, Ga.

Elementary Education

Elementary Education Club 4; FFA 4; Wesley Foundation 1, 2, 3, 4; SCA 1, 2; Social Council 3, 4; Student Council 3, 4, Treas. 4; Sophomore Class Treas.; Junior Class Pres.; House Council 4; Reflector Staff, Associate Editor 4; Philharmonic Choir 2, 3; Who's Who 4.

ERNEST LAWRENCE COOK—Newington, Ga.

Exact Science

Science Club 3, 4; Vice-Pres. Senior Class.

TOMMIE JEAN CORBETT—Vidalia, Ga.

English—Speech

BSU 1, 2, 3, 4, Vice-Pres. 3, Council 1, 2, 3, 4; Masquers 1, 2, 3, 4, Vice-Pres. 1, 2, Pres. 3, 4; Alpha Psi Omega 3, 4, Pres. 4; English Club 3, 4, Pres. 4; FFA 4; Reflector Staff 4; House Council, Vice-Pres. 2; Sophomore Class Sec.; Who's Who 4; Kappa Delta Pi 4.

MORRIS DAVIS—Tifton, Ga.

Exact Science

VIRGINIA DAVIS—Rome, Ga.

Business Education

Transfer Atlanta Division U. of Ga. FBLA 3; FFA 4.

DELANO DEEN—Alma, Ga.

Exact Science

HAROLD DeLOACH—Statesboro, Ga.

Industrial Arts

Industrial Arts Club 2, 3, Sec. 3; Veterans Club 2, 3, Vice-Pres. 2, Pres. 3; Transfer U. of Ga.

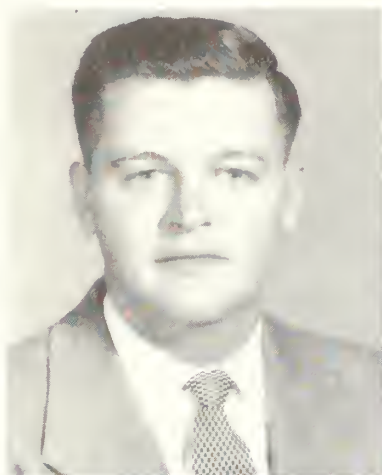
JOHNNY DENITTO—Brooklet, Ga.

Music

Philharmonic Choir 2, 3, 4, Co-chairman 4; Concert Band 3, 4; Phi Mu Alpha 3, 4, Vice-Pres. 3, 4; Organ Guild 4, Sec. Treas. 4; Music Education Club 3, 4, Pres. 4; Mu Sigma 2, 3; Dance Band 4; Who's Who 4.

C. TRUMAN BROWN
TOMMIE JEAN CORBETT
BOBBY DAVIS
JOHNNY DENITTO

SENIOR CLASS OF '54



BILL DENNY
LOTHAIR EASTERLING
MARY FLANDERS
CAROLYN FULMER

JOAN DIX
JANE EDGY
GERALD FLETCHER
JACK GAY

ROBERT DIXON
MAX ESTES
DORIS FORD
MICK GENEVRINO

JUANITA DOWDY
BETTY H. FABRIS
DOROTHY FORD
BETTY GORDY

D I R E C T O R Y



BILL DENNY—Louisville, Ga.
Business Education

Transfer Emory-at-Oxford, Veterans Club 1, 2, 3; House Council 2, 3, 4.



JOAN DIX—Abbeville, Ga.
English—Home Economics

Transfer Middle Georgia College, English Club 3, Sec. Treas. 3; BSU 2, 3; SCA 2, 3; Home Ec. Club 2, 3.



ROBERT NICHOLAS DIXON—Kite, Ga.
Exact Science—Math

Science Club 3, 4; BSU; SCA 4.



JUANITA DOWDY—Baxley, Ga.
Elementary Education

Transfer South Georgia College, Art Club 3, 4; BSU 3, 4; WRA 3, 4; House Council 3; BSU Council 4; Elementary Education Club 4; FFA 4; Masquers 4; SCA 3, 4.

PAUL MALOY DOWDY—Milan, Ga.
Business Education

FBLA 3, 4; BSU 4; SCA 4.

MARY FLANDERS—Rockledge, Ga.
Home Economics

House Council 1, 2, 3, 4; Vice-Pres. 4; Wesley Foundation 1, 2, 3, 4; Pres. 3, 4; Home Ec. Club 1, 2, 3, 4; Sec. 2; Parliamentarian 3; Pres. 4; FFA 3, 4; GFIA Member-at-large 4; SCA 1, 2, 3; Council 1, 2; Student Council 4; Junior Class Treas.; WRA 1, 2; Reflector Stall 4; Who's Who 4.

OLLIS GERALD FLETCHER—Tifton, Ga.
Social Science

DORIS FORD—Sylvester, Ga.
Elementary Education

Masquers 2, 3, 4; Sec. 3, 4; Wesley Foundation 1, 2, 3, 4; SCA 1, 2; Student Council 4; House Council, Sec. 4; May Court 3; FFA 4; Reflector Stall 2, 3, 4; Associate Editor 2, 3; Co-editor 4; WRA 1, 2, 3, 4; Elementary Education Club 3, 4; Alpha Psi Omega 3, 4.

DOROTHY FORD—Sylvester, Ga.
Elementary Education

Masquers 2, 3, 4; Treas. 3, 4; Wesley Foundation 1, 2, 3, 4; Treas. 3; SCA 1; WRA 1, 2, 3, 4; Sec. Treas. 3; Elementary Education Club 3, 4; May Court 3; FFA 4; Student Council 4; House Council, Treas. 4; Reflector Staff 2, 3, 4; Co-editor 4; Alpha Psi Omega 3, 4.

BARBARA FOSSETT—Chickamauga, Ga.
Elementary Education

BSU 1, 2, 3; Council 2, Sec. 3; SCA 2; WRA 1; Masquers 1, 2, 3; Co-historian 2; Vice-Pres. 3; Elementary Education Club 2, 3; Treas. 2; House Council 1, 2, 3; Sec. 2; Assistant 3.

LOTHAIR EASTERLING—Glennville, Ga.
Elementary Education

Elementary Education Club 2, 3, 4; Masquers 2, 3; WRA 1, 2; PBVF 1, 2, 3; Pres. 1.

JANE EDGY—Nahunta, Ga.
Physical Education—Biology

WRA 4; Masquers 4.

MAX C. ESTES—Gay, Ga.
Social Science—Speech

Masquers 4; English Club 4; IRC 4; House Council 4.

BETTY HENDRIX FABIS—Metter, Ga.
English—Speech

Cheerleader 1, Co-captain 2, 3; Reflector Stall 4; PBVF 1, 2; Vice-Pres. 3; English Club 1, 2, 3, 4; Masquers 1; Beauty Revue 1; "Miss T. C." 2; Sophomore Class Sec.; May Court 2; Student Council 3.

OPHELIA FIELDS—Grovettown, Ga.
Elementary Education

Transfer Augusta Junior College, SCA 3, 4; Elementary Education Club 3, 4; WRA 4.

CAROLYN FULMER—Mt. Vernon, Ga.
English

Transfer Brewton Parker Junior College, English Club 3, 4; Art Club 3, 4; Masquers 3, 4.

JACK NORMAN GAY—Sylvester, Ga.
Business Education

FBLA 2, 3, 4; Reporter 3; Vice-Pres. 4; FFA 4; BSU 1, 2, 3, 4; Council 3, 4; Senior Class Treas.; Reflector Stall, Business Manager 4.

MICHAEL ANGELO GENEVRINO—Newark, N. J.
Physical Education

Transfer Georgia Southwestern College; House Council 1, 2, 4; Sec. 4; "I" Club 3, 4; Senior Class Pres.

BETTY GORDY—Midville, Ga.
English—Physical Education

Reflector Stall 4; English Club 1, 2, 3; SCA 4; Wesley Foundation 4; WRA 4; PEMM 2; WRA 4.

JOE ED GREEN—Pulaski, Ga.
Physical Education—Math

"I" Club 1, 2, 3, 4; Vice-Pres. 2; Treas. 3; Pres. 4; Baseball 1, 2, 3, 4.

PAUL DOWDY
OPHELIA FIELDS
BARBARA FOSSETT
JOE ED GREEN

SENIOR CLASS OF '54



SYLVIA GRINER
ROBERT HURST
DEVON KELHEAR
JEAN LAMBERT

EUGENE HARPER
GENEVIEVE HUNTER
JACK KERR
WILLIAM LAMBERT

GEORGIA HARPER
SARA JOHNSON
CORDELIA KIDD
TOMMY LANIER

DAVID HARRIS
YVONNE JONES
HARRY KING
MARY LIDDELL

D I R E C T O R Y

SYLVIA VIRGINIA GRINER—Fitzgerald, Ga.

English

Transfer U. of Ga. Art Club 1; Masquers 4; Philharmonic Choir 4; FIA 4.

FRANKLIN EUGENE HARPER—Crosland, Ga.

Industrial Arts—Art

Industrial Arts Club 2, 3, 4, Sgt. at Arms 3, Pres. 4; SCA 2, 3; BSU 1.

GEORGIA FLORENCE HARPER—Savannah, Ga.

Music Education

Transfer Wesleyan Conservatory, FIA 2; Band 2, 3, 4; Philharmonic Choir 2, 3, 4; Mu Sigma 2, 3; En Melodie 1; Music Education Club 1; BSU 2, 3, 4.

DAVID HARRIS—Ballground, Ga.

Physical Education—History

Transfer Brewton Parker Junior College; "I" Club 3, 4, Vice-Pres. 4; Basketball 3, 4, Captain 4; Baseball 3, 4.

FAYE HODGES—Statesboro, Ga.

Business

FBLA 1, 2, 3, 4; Art Club 3, 4; George-Anne Staff 3.

DEVON L. KELHEAR—Vidalia, Ga.

Exact Science

Science Club 2, 3, 4, Reporter 3, 4; George-Anne Staff 2, 3.

PAUL JACK KERR—Glennville, Ga.

Industrial Arts—History

Transfer Gordon Military College.

CORDELIA KIDD—Camilla, Ga.

Elementary Education

Elementary Education Club 1; House Council 4; SCA 3; Wesley Foundation 1, 2, 3, 4; WRA 1, 2, 3, 4.

HENRY LEE KING—Columbus, Ga.

Exact Science

Transfer Emory University, Science Club 3, 4; Vets Club, Treas. 3; House Council 3, 4.

BOBBY GENE KINGERY—Pulaski, Ga.

Exact Science

Science Club 1, 2, 3, 4, Pres. 1; Band 1, 2, 3, 4, Marching Band 1, 2, 3, 4; Philharmonic Choir 2, 3, 4; BSU 1, 2, 3; Science Radio Station 1; Kappa Delta Pi 4.

ROBERT LATIMER HURST—Waycross, Ga.

English—Art

Art Club 2, 3, 4, Sec. 3, Treas. 4; English Club 3, 4; Masquers 1; Philharmonic Choir 1, 2, 3, 4; George-Anne Staff 1, 2, 3, 4; BSU 1, 2, 3, 4; Phi Mu Alpha 3, 4.

GENEVIEVE HUNTER—Collins, Ga.

Elementary Education

BSU 1, 2, 4; SCA 1, 2, 4; House Council 2; Elementary Education Club 2, 4.

SARA JOHNSON—McBean, Ga.

Exact Science

Transfer Junior College, Augusta, FIA 2, Treas. 2; Science Club 3, 4, Librarian 1; BSU 3, 4, Historian 4.

YVONNE JONES—Jesup, Ga.

Home Economics

Student Council 1, 2, 3, 4, Sec. 2, 4; Home Ec. Club 2, 3, 4, Vice-Pres. 3, Sec. 1, Delegate to Province 111; SCA 1, 2, 3, 4, Sec. 2, Vice-Pres. 3, Dorm. Rep. 4; BSU 1, 2, 3, 4, Sec. 3, Corresp. Sec. 4; Band 1, 2; WRA 1; May Court 2; FIA 1; Beauty Revue 1, 2, 3, "Miss I. C." 3; Social Council 4; Who's Who 4.

PEGGY JONES—Jesup, Ga.

Elementary Education

House Council 1; Elementary Education Club 1, 2, 3, 4; Masquers 2, 3, 4; FIA 1.

MRS. JEAN B. LAMBERT—Hilltonia, Ga.

Elementary Education

Transfer Berry College, Art Club 3; Elementary Education Club 3, 4.

WILLIAM EDWARD LAMBERT—Hilltonia, Ga.

Industrial Arts

Industrial Arts Club 1, 2, 3, 4, Sec. 3, Pres. 4.

TOMMY LANIER—Metter, Ga.

Business Education

FBLA 1, 2, 3, 4.

MARY FRANCES LIDDELL—Atlanta, Ga.

Social Science

Transfer Atlanta Division U. of Ga. IRC 2, 3, Sec. 3.

FAYE LUNSFORD—Richland, Ga.

Music Education

Band 1, 2, 3, 4; Philharmonic Choir 1, 2, 3, 4, Accompanist 2, 3, 4, Board of Directors 1; House Council 2, 4; Organ Guild 2, 3, 4, Sec. 1, Treas. 3, Dean 1; En Melodie Pres. 1; Mus Sigma 1, 2, 3.

FAYE HODGES

PEGGY JONES

BOBBY GENE KINGERY

FAYE LUNSFORD

SENIOR CLASS OF '54



MARTHA JANE MANNING
MARILU MILLS
EARL PARKER
FRANCES RACKLEY

CHRISTINE MARTIN
RUDY MILLS
NAN PARRISH
ANN RAMSEY

PAT MEEKS
BARRY OWENS
MELVIN PEACOCK
MARZEE RICHARDS

SUE MILLER
J. L. PADGETT
BOBBY PHILLIPS
BOBBY RICHARDSON

D I R E C T O R Y



MARTHA JANE MANNING—Ellaville, Ga.

English—Physical Education

Transfer Georgia Southwestern College. English Club 1; Wesley Foundation 3, 4.



PATRICIA ALICE MEEKS—Nichols, Ga.

English—Speech

Masquers 1, 2, 3; Mus Sigma 1, 2; Philharmonic Choir 2, 3; House Council 1, 2, Sec. 2; English Club 2, 3; Alpha Psi Omega 3, 4.



SUE MILLER—Toombsboro, Ga.

Business—Home Economics

BSU 1, 2, 3; Pianist 3; SCA 1, 2, 3; FBLA 2, 3; Publicity Chr. 3; Home Ec. Club 1; FIA 3; WRA 1.



MRS. GLADYS FOWLER MURPHY—Augusta, Ga.

Elementary Education

Elementary Education Club 1; FIA 1; Philharmonic Choir 1.

EARL STANLEY PARKER—Plains, Ga.

Exact Science

Transfer Georgia Southwestern College. Science Club 3, 4; SCA 3, 4; BSU 1; George Anne Stall 1; Cave Club 4.

LAURA NAN PARRISH—Cordele, Ga.

Elementary Education

SCA 1, 2, 3; Wesley Foundation Council 1, 2, 3; Elementary Education Club 2, 3; Masquers 1; FIA 3.

MELVIN C. PEACOCK—Savannah, Ga.

English—History

Transfer Armstrong Junior College; Kappa Delta Pi 3, 4; Treas. 4.

ROBERT B. PHILLIPS—Albany, Ga.

Industrial Arts—Math

Basketball 1, 2, 3, 4, Captain 3; Class Vice-Pres. 1; "F" Club 2, 3, 4, Sec. 3; Industrial Arts Club 2, 3, 4, Sec. 4; House Council 3.

JOHN FRED PIERCE—Savannah, Ga.

Physical Education—Math

Pres. Student Council 1; Class Pres. 1; House Council 1; "F" Club 1, 2, 3, 4, Pres. 2, Vice-Pres. 3; Reflector Stall, Sports Editor 3, 4; George Anne Stall, Sports Editor 2; Trainer Basketball Team 1, 2, 3, 4; Trainer Baseball Team 1, 2, 3; Philharmonic Choir 2; Who's Who 4.

MRS. MARILU H. MILLS—Avondale Estates, Ga.

History—Business

Art Club 1, 2; Reflector Stall 1, 2, 3; Art Editor 2, 3; SCA Council 1, 2; Kappa Delta Pi 2, 3, Vice-Pres. 3; Alpha Psi Omega 2, 3, Vice-Pres. 3; Who's Who 3.

RUDOLPH W. MILLS—Macon, Ga.

Music

Class Pres. 2; Band 1, 2, 3, 1, Pres. 2; Dance Band 1, 2, 3, 1, Manager 4; Philharmonic Choir 1, 2, 3, 1, Board of Directors 4; MEMC 3, 4, Pres. 3; Mu Sigma 1, 2, 3, Treas. 3; Phi Mu Alpha 3, 1, Pres. 3, 4; House Council 3.

BARRY OWENS—Brunswick, Ga.

English—History

Transfer Brewton Parker Junior College. Masquers 3; Kappa Delta Pi 4.

JAMES LUTHER PADGETT—Baxley, Ga.

Physical Education—English

Transfer Middle Georgia College.

BILLY JOE PARKER—Ludowici, Ga.

Industrial Arts

Industrial Arts Club 2, 3, 1; Vets Club 2, 3; SCA 1, 2.

FRANCES RACKLEY—Statesboro, Ga.

Social Science

Philharmonic Choir 1; IRC 3, 4.

ANN RAMSEY—Covington, Ga.

Elementary Education

Transfer West Georgia College. FIA 1, 2, 3, 4, Vice-Pres. 4; House Council 1, 2, 3, 4, Pres. 4; Art Club 3, 4, Treas. 3; Elementary Education Club 3, 1.

MARZEE RICHARDS—Augusta, Ga.

Science—Math

BOBBY RICHARDSON—LaFayette, Ga.

Exact Science

Masquers 1, 2, Pres. 2; Philharmonic Choir 2; Science Club 1, 2, Vice-Pres. 2; Wesley Foundation 2; SCA 2.

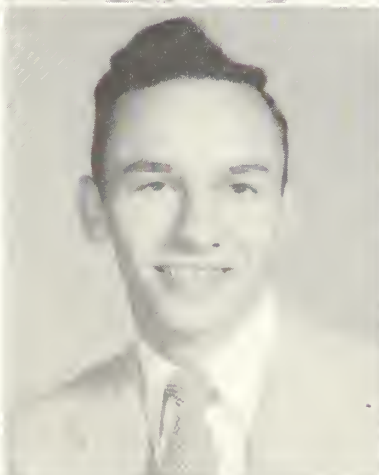
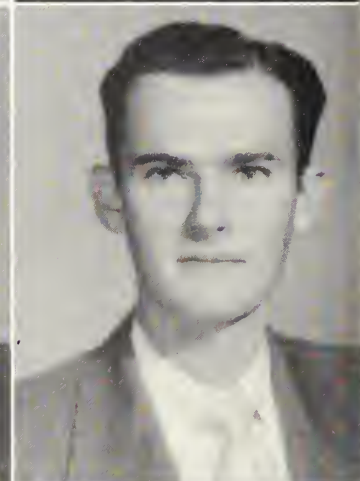
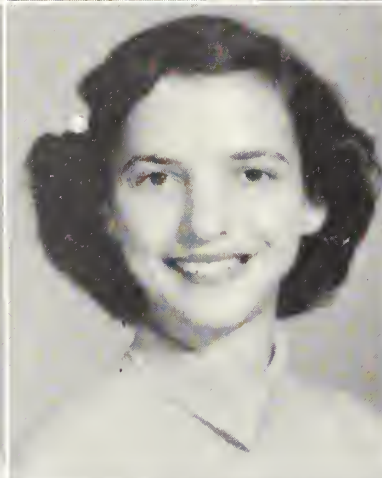
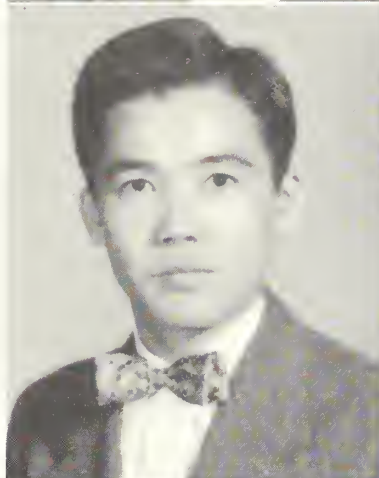
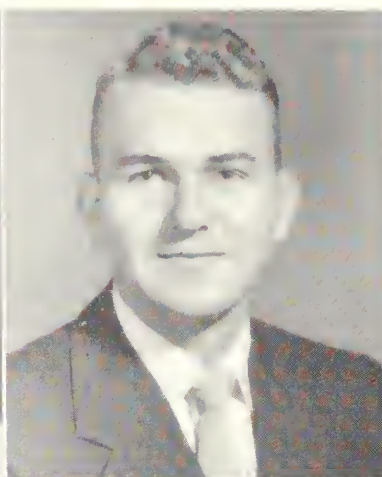
BERNARD EUGENE ROBERTS, JR.—Wadley, Ga.

Music—English

Student Council 3; Philharmonic Choir 1, 2, 3, 4, Board of Directors 3, 1; Phi Mu Alpha 4; Masquers 1, 2, 3, 4; Wesley Foundation 1, 2, 3, 4; House Council Treas. 4; FIA 1; English Club 4; Band 3, 4; MEMC 1, Vice-Pres. 4; Who's Who 4.

GLADYS F. MURPHY
BILLY JO PARKER
FRED PIERCE
GENE ROBERTS

SENIOR CLASS OF '54



JOSEPH L. ROBERTSON
SATOSHI SHIMABUKURO
WINIFRED STUBBS
DON THOMAS

HELEN ROBERTSON
SARA DOT SIMPSON
JO ANNE SURRENCY
ERNESTINE THOMPSON

TALMADGE RUSHING
BETTY RUTH SMITH
EARL SWICORD
JOYCE THOMPSON

PEGGY SATURDAY
PHYLLIS SMITH
CLYDE TANNER
BILL THORTON

D I R E C T O R Y



JOSEPH L. ROBERTSON—Americus, Ga.

English—Physical Education

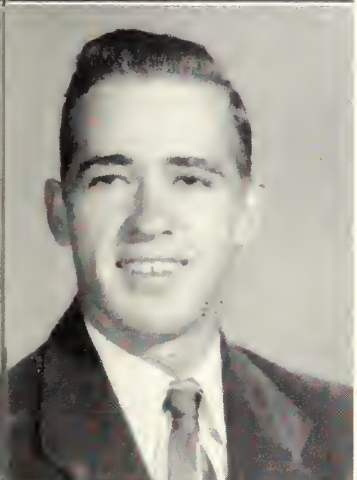
Football '38, '39; English Club '40; Masquers '40; Delta Sigma Fraternity.



HELEN ROBERTSON—Lyons, Ga.

Elementary Education

BSU 1, 3, 4; SCA 2, 4; House Council 2; WRA 2, 4; Reflector Staff 2, 4; Elementary Education Club 4.



TALMADGE RUSHING—Statesboro, Ga.

Industrial Arts

PEGGY SATURDAY—Collins, Ga.

Elementary Education

BSU 1, 2, 3, 4; Council 2, 3; Pres. 1; State Vice-Pres. 4; SCA 1, 2, 3, 4; Pres. 3; House Council 1, 2; Pres. 2; Elementary Education Club 2, 3, 4; Vice-Pres. 3; Pres. 4; Philharmonic Choir 1.



EDWARD AUGUST SCHROEDER

Port Wentworth, Ga.

Transfer Armstrong Junior College; Industrial Arts Club; Vets Club.

MRS. WINIFRED SMITH STUBBS—Claxton, Ga.

JO ANN SURRENCY—Glennville, Ga.

Elementary Education

Art Club 3; Elementary Education Club 3, 4.

EARL SWICORD—Statesboro, Ga.

History—Physical Education

Basketball 1, 3.

CLYDE TANNER—Douglas, Ga.

Exact Science

Transfer South Georgia College; Science Club; Treas. 4; BSU 3, 4; FFA 3; Treas. 3.

ROBERT A. TAYLOR—Sparta, Ga.

Industrial Arts

Industrial Art Club 2, 3, 4; Sec.-Treas. 2; Pres. 3; Rep. 4; FFA 4; Wesley Foundation 1; George-Anne Stall 3.

SATOSHI SHIMABUKURO—Shuri, Okinawa

Elementary Education

SARAH DOT SIMPSON—Kingsland, Ga.

Home Economics

Home Ec. Club 1, 2, 3; WRA 1, 2, 3; Sec.-Treas. 2, 3; Wesley Foundation 1, 2; SCA 1, 2, 3; FFA 3.

BETTY RUTH SMITH—Cedartown, Ga.

Elementary Education

Transfer Mercer University; Elementary Education Club 3, 4; BSU 3, 4; Masquers 3, 4; Art Club 4; FFA 4.

PHYLLIS McLENDON SMITH—Arlington, Ga.

English—History

Transfer Berry College; English Club 1; Vice-Pres. 4.

SHIRLEY ANNE SMITH—Glennville, Ga.

Elementary Education

Art Club 2, 3; Masquers 2, 3; Elementary Education Club 2, 3; George-Anne Stall 1, 2; WRA 2.

DONALD THOMAS—Dalton, Ga.

Exact Science

Transfer Berry College; Science Club 3, 4; Vice-Pres. 4; Class Sec. 4.

ERNESTINE THOMPSON—Attapulgus, Ga.

Elementary Education

Transfer Berry College; Elementary Education Club 4; House Council 3, 4.

REBA JOYCE THOMPSON—Toombsboro, Ga.

Elementary Education

SCA 1, 2, 3; Council 3; Wesley Foundation 1, 2, 3; Council 3; Elementary Education Club 3; House Council 1, 2.

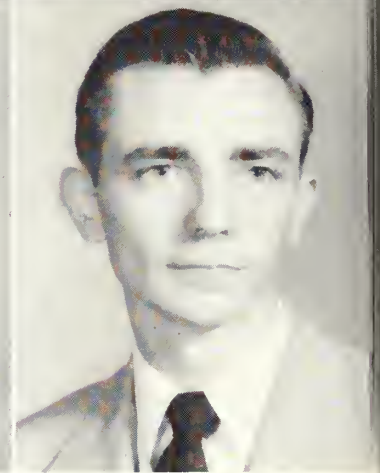
WILLIAM H. THORTON—Cordele, Ga.

ARCHIE O'HARA TOLER—Soperton, Ga.

Business Education

FFA 3, 4; Masquers 3, 4.

SENIOR CLASS OF '54



JEAN WARNOCK
AUDLEY WOFFORD, JR.

CHRISTY TROWELL
WATSON WEATHERS
LAMAR WYNN, JR.

JULIAN TUCKER
DOYLE WEBB
DAN YOUNG

BARBARA J. VOIGT
HUGH WELLS, JR.
DAN WILSON, JR.

D I R E C T O R Y

CHRISTY TUTTLE TROWELL—Oliver, Ga.

Social Science

Masquers 1, 2; Art Club 2; Treas. 2; Associate Editor "I" Book 1; IRC 2, 3, Pres. 3; George Anne Staff, Associate Editor 3; Cave Club, Vice-Pres. 3.

JULIAN TUCKER—Fitzgerald, Ga.

Social Science

Philharmonic Choir 1; Masquers 1; Wesley Foundation 2; Ministerial Club 1.

BARBARA JACOBS VOIGT—Savannah Beach, Ga.

Elementary Education

Transfer Armstrong Junior College, Elementary Education Club 1, 2, 3; IRC 1; SCA 1, 3, 4; Art Club 4; Masquers 4.

JEAN WARNOCK—Pelham, Ga.

Home Economics

Home Ec. Club 1, 2, 3; SCA 1; FIA 3; BSU 1, 2, 3; House Council 2.

NANCY WARNOCK—Tarrytown, Ga.

Elementary Education

Transfer Brewton Parker Junior College, House Council 3; Alpha Rho Tau 3, 1, Sec. 1; Elementary Education Club 3, 4, Sec. 1.

ELLIS LAMAR WYNN, JR.—Fitzgerald, Ga.

Physical Education—English

Transfer South Georgia College, House Council 1; English Club 1.

DANIEL H. YOUNG—Statesboro, Ga.

Physical Education

DAN FRANK WILSON, JR.—Waynesboro, Ga.

Exact Science

Science Club 1, 2; BSU 1, 2, 3, 4; IRC 2, 3, 1, Pres. 3; Kappa Delta Pi 3, 1, Historian 1; Philharmonic Choir 3, 1; Band 2.

EDGAR WATSON WEATHERS, JR.—Dearing, Ga.

Business Education

Student Council 1; Masquers 1; FBLA 3, 1; FIA 4; Transfer University Ga.

THOMAS DOYLE WEBB—Boston, Ga.

History—Math

HUGH G. WELLS, JR.—Guyton, Ga.

Business Education

Wesley Foundation Council; SCA 1, 2, 3, 4, Treas. 2; Class Vice-Pres. 2; FBLA 3, 4, Pres. 1; State FBLA Vice-Pres. 4; FIA 4; House Council 2, 3, Treas. 3.

NOBLE AUDLEY WOFFORD, JR.—Remerton, Ga.

Industrial Art

BARBARA JEAN WOODS—Marlow, Ga.

Business Education



NANCY WARNOCK
BARBARA WOODS



Left to right: Jane Seabolt, Secretary; Annegene Culbreth, President; Don King, Vice-President; and Jean Cannon, Treasurer.

Junior Class Officers

The veep takes a night out.



Let's dance.



Hi or high?



Nancy Armstrong Decatur, Ga.
 Midge Bentley Tallapoosa, Ga.
 Wendell Bowen Thomasville, Ga.
 Ernest Brannen Statesboro, Ga.



Emma-Jean Brock Climax, Ga.
 William Brown Wrightsville, Ga.
 Jean Cannon Colquitt, Ga.
 Mary L. Cartee Wrens, Ga.



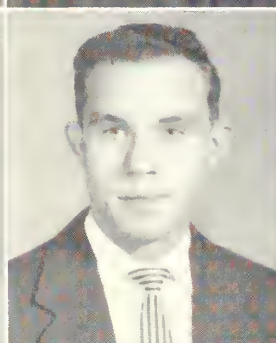
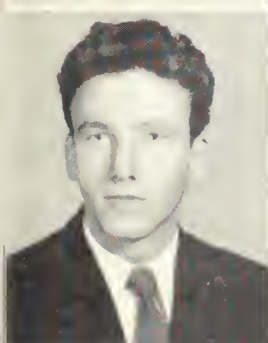
Fey Carter Surrency, Ga.
 Malone Childs Cuba, Ga.
 Mrs. Betty P. Clary Savannah, Ga.
 James Allen Clary Savannah, Ga.



J U N I O R S



Mary Frances Cox Bainbridge, Ga.
 Angene Culbreth Edison, Ga.
 Jean R. DeLoach Claxton, Ga.
 Mallie Denmark Savannah, Ga.



Warnell Denmark Brooklet, Ga.
 Annelle Dent Douglas, Ga.
 Charles Dill Waycross, Ga.
 Mary Dilworth Carnesville, Ga.



Marguerite Dye Elberton, Ga.
 Vaughn Dyer Statesboro, Ga.
 Shirley Dykes Savannah, Ga.
 Jeanine English Gordon, Ga.



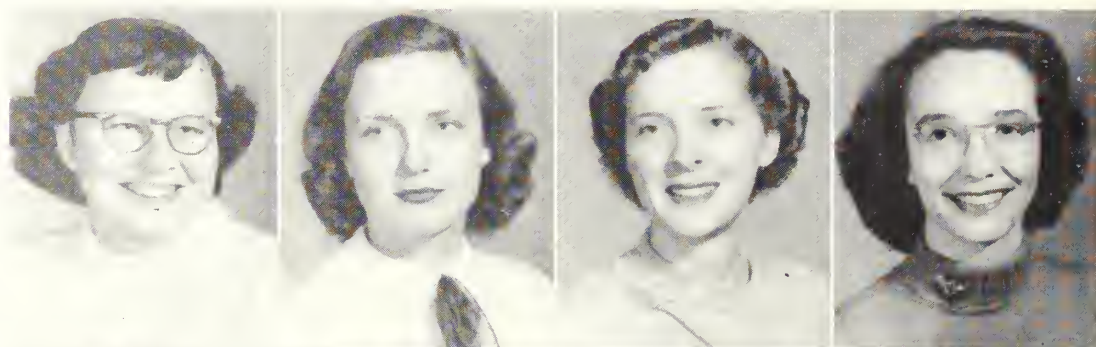
Sara Fletcher Chula, Ga.
 Betty Ruth Folsom Nashville, Ga.
 Eugene Frazier Atlanta, Ga.
 Kenneth Gale Darien, Ga.

Joyce Ginn Ludowici, Ga.
 Ronald Ginn Edison, Ga.
 Mrs. Jolynn Griggers Stonewall, Ga.
 William M. Griggers Stonewall, Ga.

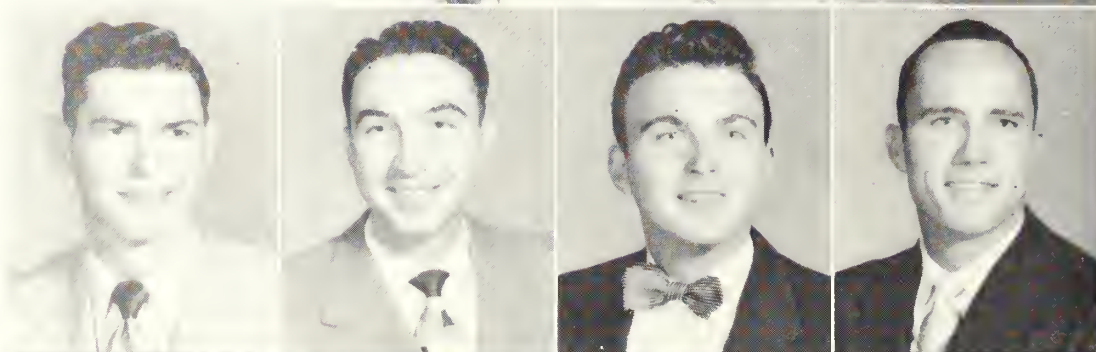
Charles Grovenstein Savannah, Ga.
 Shirley Hanson Avondale Estates, Ga.
 Jim Harley Perry, Ga.
 Rita Harper Savannah, Ga.

J U N I O R S

Bobbie Jean Hooks Savannah, Ga.
 Ruby Houston Blakely, Ga.
 Mary Joe Jackson Attapulgus, Ga.
 Carolyn Johnson Quitman, Ga.



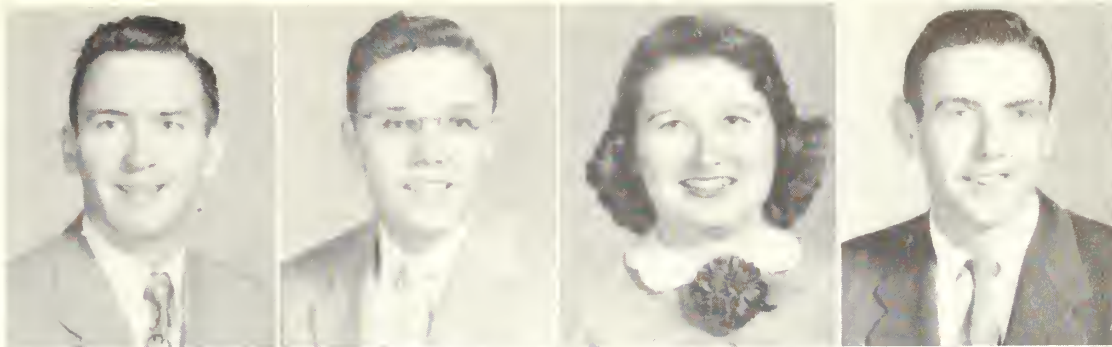
George Kemp Bowdon, Ga.
 Jerry Kicklighter Glennville, Ga.
 Don King Wrens, Ga.
 Clyde Little Canton, Ga.



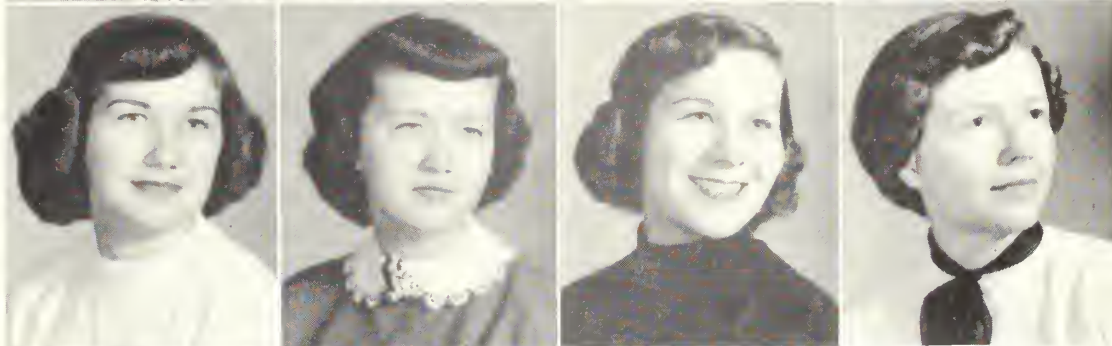
Peggy Ann Marriott Augusta, Ga.
 Joyce Mason Smyrna, Ga.
 Voncile Moody Alma, Ga.
 Phil Norton Griffin, Ga.



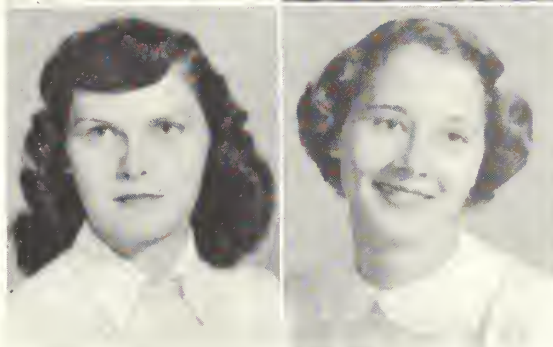
Roy Tanner Collegeboro, Ga.
 Beeler Thompson Gordon, Ga.
 Ann Thrash Gay Ga.
 Carl Tyson Lenox, Ga.



Betty Vardeman Waverly Hall, Ga.
 Jeanette Wallace Pooler, Ga.
 Daphen Watson Reidsville, Ga.
 Cherrell Williams Perry, Ga.



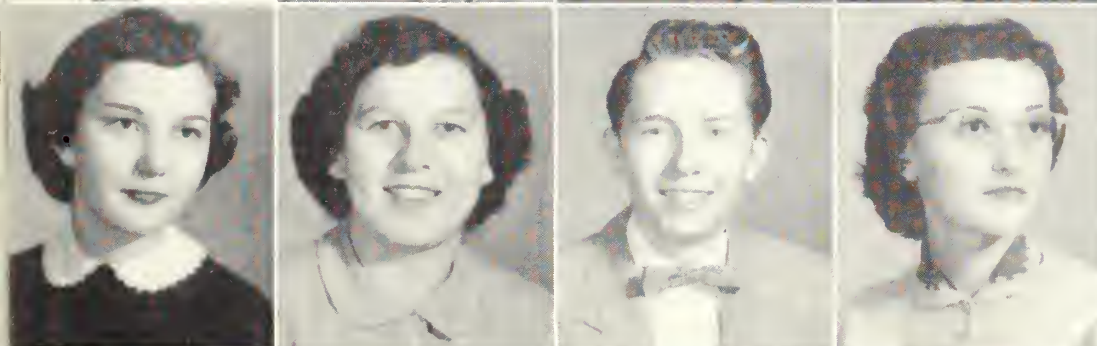
Eloise Wingate Ludowici, Ga.
 Mary Lula Peagler Homerville, Ga.



of nineteen hundred and fifty-four



Ray Parker Gamesville, Ga.
 Rachel Powe Camilla, Ga.
 Melba Prosser Statesboro, Ga.
 Martha Quick Statesboro, Ga.



Virginia Ragsdale Holly Springs, Ga.
 Mary Jack Ramsey Doernn, Ga.
 Albert Rogers Claxton, Ga.
 Mary Frances Sapp Manassas, Ga.



Jane Seabolt Acworth, Ga.
 Gene Stallards Brunswick, Ga.
 Kirbylene Stephens Waycross, Ga.
 Joe Sullivan Atlanta, Ga.



Left to right: Nancy McIntosh, Treasurer; Etta Ann Akins, Vice-President; Kelly Powell, President; and Fayerene Sturgis, Secretary.

Sophomore Class Officers

The singing bombshell.

Now *you* gotta catch him, rats.



Creative art—just look at all those shapes.

Etta Ann Akins
Statesboro, Ga.

Fay Akins
Statesboro, Ga.

Betty Altman
Waycross, Ga.

Rebecca Anglin
Wadley, Ga.

Betty Barnard
Waycross, Ga.

Billie Zean Bazemore
Statesboro, Ga.

Jimmy Becton
Pooler, Ga.

Lottie Faye Bentley
Cairo, Ga.

Patricia Blake
Midway, Ga.

Kathleen Boyd
Statesboro, Ga.

Shirley Bragg
Sylvania, Ga.

Carolyn Branch
Baxley, Ga.

Tommy Blich
Statesboro, Ga.

James Brinson
Lyons, Ga.

Mary Annette Brock
Folkston, Ga.

S O P H O M O R E S



George Carr
Hinesville, Ga.

Eulita Carter
Baxley, Ga.

Ivey Chance
Augusta, Ga.

Betty Claxton
Girard, Ga.

Doy Collins
Rocky Ford, Ga.

Sue Marie Collins
Americus, Ga.

Howell Dawson
Ludowici, Ga.

James Denny
Canton, Ga.

Jeanette Dobbs
Atlanta, Ga.

Eugene Drury
Waynesville, Ga.

Josh Durden
Metter, Ga.

Don Flanders
Statesboro, Ga.

Bertie Franklin
Townsend, Ga.

Warren Gailbreath
Waycross, Ga.

James Glasgow
Dublin, Ga.



Heyward Gnann
Waynesboro, Ga.

Jeanette Gnann
Clyo, Ga.

Hilda Grogan
Sale City, Ga.

Betty Harden
Stilson, Ga.

Mary Jayne Hardison
Tifton, Ga.

Jewell Hart
Statesboro, Ga.

Peggy Henderson
Fitzgerald, Ga.

Cathy Holt
Albany, Ga.

James Hood
Statesboro, Ga.

Ed Hotchkiss
Statesboro, Ga.

Carlton Humphrey
Milledgeville, Ga.

Dan Hutchins
Sandersville, Ga.

Margene Jenkins
Hilltonia, Ga.

Leon Johnson
Boneville, Ga.

Gene Jones
Jesup, Ga.

S O P H O M O R E S

Mary Alice Jones
Hazlehurst, Ga.

Nina Jones
Matthews, Ga.

June Kennedy
Statesboro, Ga.

Peggy Kilpatrick
Fitzgerald, Ga.

Betty Knight
Stilson, Ga.

Clyde Lane
Sylvester, Ga.

Gwen Lanier
Metter, Ga.

Joan Letson
Winder, Ga.

Janice McGoogan
Brunswick, Ga.

Anna McHugh
Allendale, S. C.

Marie McKendree
St. Simons, Ga.

Nancy McIntosh
Waycross, Ga.

George McLeod
Reidsville, Ga.

June Miller
Brooklet, Ga.

John Mitchell
Statesboro, Ga.



Bette Mooney
Glennville, Ga.

Edna Morgan
St. Marys, Ga.

Leona Newman
Stilson, Ga.

Kelly Powell
Kite, Ga.

Mary Louise Rimes
Statesboro, Ga.

Loretta Roach
Statesboro, Ga.

Betty Roan
Fitzgerald, Ga.

Myrna Robson
Townsend, Ga.

Mary Salter
Soperton, Ga.

Faye Sanders
Stilson, Ga.

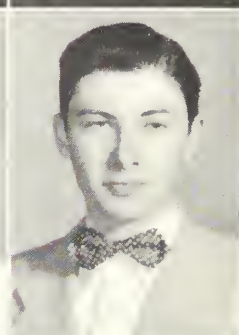
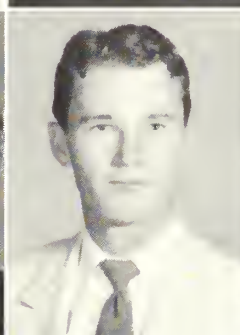
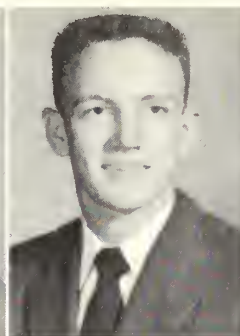
Frank Saunders
Rocky Ford, Ga.

Laurien Seanor
Fitzgerald, Ga.

Joyce Sercer
Rochelle, Ga.

R. L. Smith
Waycross, Ga.

Tab Smith
Daisy, Ga.



of nineteen hundred and fifty-four

Ferrell Sparks
Canton, Ga.

James Snooks
Springfield, Ga.

Fayrene Sturgis
Statesboro, Ga.

Farries Taylor
Nashville, Ga.

Betty Thigpen
Soperton, Ga.

Carol Thomas
Waycross, Ga.

Marie Thomas
Milledge, Ga.

Glenn Thomas
Jesup, Ga.

Mrs. Frances Groover Tillman
Statesboro, Ga.

Lawanna Tillman
Glennville, Ga.

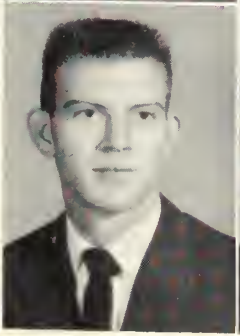
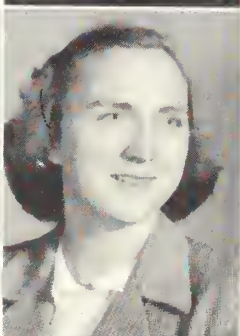
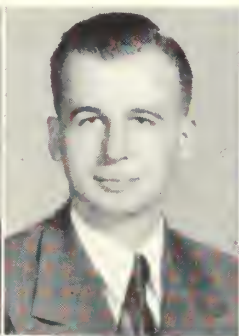
Remer Tyson
Statesboro, Ga.

Patricia Underwood
Fitzgerald, Ga.

Jack Upchurch
Statesboro, Ga.

Weita Wall
Dawson, Ga.

Doris Warnock
Soperton, Ga.



Jean Watson
Dublin, Ga.

Ronnie West
Canton, Ga.

Chester Webb
Elberton, Ga.

Frank Willis
Tifton, Ga.

Jo Ann Womble
Waycross, Ga.

Harriet Woodard
Hazlehurst, Ga.

Pat Becton
Herndon, Ga.

Betty Jo Brown
Fitzgerald, Ga.

Wadene Mimbs
Adrian, Ga.

Christine Shumans
Baxley, Ga.



Betty Jo Woodard
Statesboro, Ga.



What prof is she sidling up to??

WHEW! OUT OF BREATH.



Having a good ole' time.

We like them too, Donnie.



We can't quite get the hang of this dance . . .



How did this happen??



Pig versus RATS.



Hats off! not rats—FRESH MEN!



Remember the holocaust?



Heave ho!





Left to right: Lois Hammond, Secretary; Lorene Brown, Treasurer; Larry Evans, President; Gene Meadows, Vice-President; (standing) Jimmy Prentice, Student Council Representative.

Freshman Class Officers

Was this true?

Right this way boys . . .



I'M ALONE
FRESHMAN

Mickey Addison
Avondale Estates, Ga.

Jo Ann Akins
Statesboro, Ga.

Betty Joyce Akins
Portal, Ga.

Judy Allen
Louisville, Ga.

Joe Anderson
Brunswick, Ga.

Don Avery
Ballground, Ga.

Betty Jean Beasley
Register, Ga.

Charles Beddingfield
Tennille, Ga.

Marianne Bevan
Waynesboro, Ga.

Louise Bird
Metter, Ga.

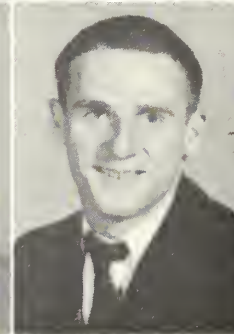
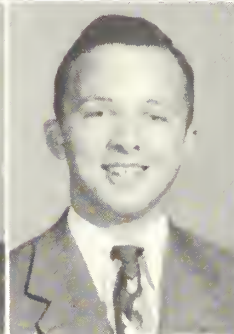
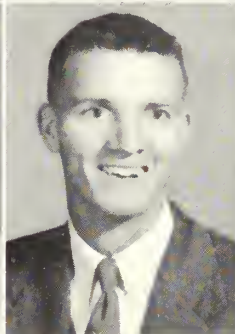
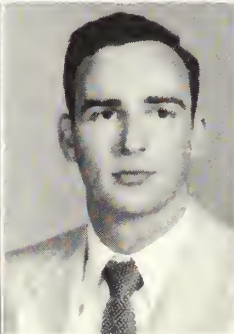
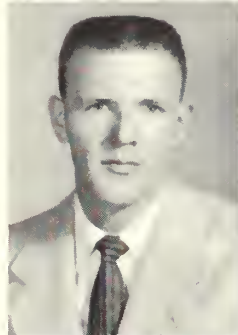
Mary Ellen Blizzard
Tennille, Ga.

Jimmy Blocker
Kite, Ga.

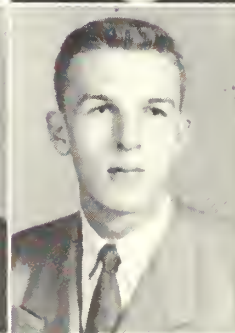
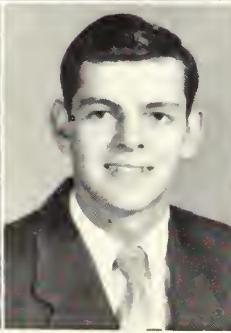
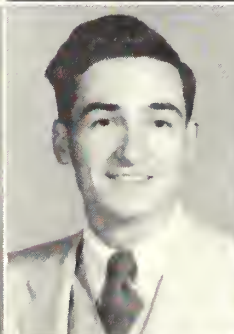
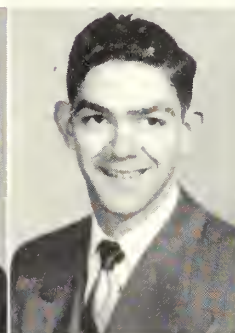
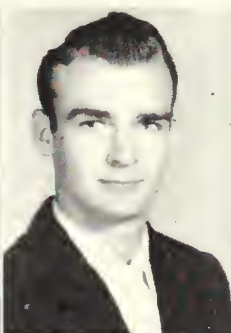
Hayward Boyd
Statesboro, Ga.

Edwin Brannen
Statesboro, Ga.

Robert Brewster
Waycross, Ga.



F R E S H M E N



Lou Nell Brockington
St. Simons, Ga.

William Brookerd
Cordele, Ga.

Linda Brown
St. Simons, Ga.

Jan Brown
Statesboro, Ga.

Roger Brown
Sycamore, Ga.

Lorene Brown
Eldorado, Ga.

Joyce Byrd
Pooler, Ga.

Lila Ann Canuette
Statesboro, Ga.

Gay Canuette
Statesboro, Ga.

Joyce Carr
Glennville, Ga.

Clare Cason
Blackshear, Ga.

George Chapman
Collins, Ga.

Royce Childs
Tifton, Ga.

Harry Clark
Statesboro, Ga.

Elwyn Coleman
Suainsboro, Ga.



Joan Coleman
Rocky Ford, Ga.

Ann Colley
Blackshear, Ga.

Julia Corry
Robinson, Ga.

Douglas Corry
Union Point, Ga.

Glenn Coston
Metter, Ga.

Wanda Coulson
St. Marys, Ga.

Barbara Sue Cowart
Rocky Ford, Ga.

Sara Cunnard
Conyers, Ga.

Eleanor Curry
Oconee, Ga.

Ann Davis
Odom, Ga.

Ann Deloach
Glennville, Ga.

Claudette Deloach
Glennville, Ga.

Charlie Denham
Sycamore, Ga.

Sara Frances Driggers
Stilson, Ga.

Edmund Dukes
Sandersville, Ga.

F R E S H M E N

Mary Sue Durrance
Reidsville, Ga.

Marion Dwelle
Millen, Ga.

June Edenfield
Statesboro, Ga.

Patsy Edenfield
Portal, Ga.

Juanette Ellington
Montrose, Ga.

June Eunice
Hinesville, Ga.

Herschel Evans
Ogeechee, Ga.

Larry Evans
Crawfordville, Ga.

Janel Fields
Garfield, Ga.

Jimmy Ford
Augusta, Ga.

Ruth Fordham
Pooler, Ga.

Bill Freeman
Reidsville, Ga.

Sandra Glasgow
Dublin, Ga.

Marvin Griffin
Dublin, Ga.

Raymond Hagin
Statesboro, Ga.



Roger Hagin
Statesboro, Ga.

Vondall Hall
Melvin, Ky.

Dot Hamilton
Brunswick, Ga.

Lois Hammond
Augusta, Ga.

Carlos Hand
Hazlehurst, Ga.

Fred Harrell
Bavley, Ga.

Owen Harris
Blackshear, Ga.

Ann Harrison
Kite, Ga.

Jo Anne Hartley
Alamo, Ga.

Robert Harvey
Lanier, Ga.

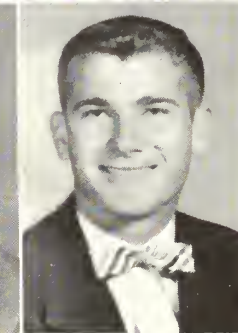
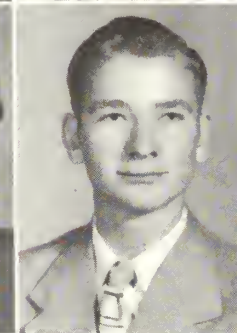
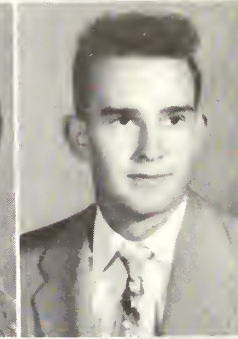
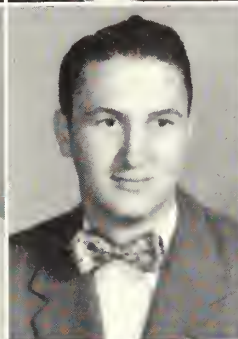
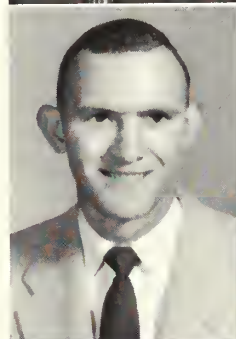
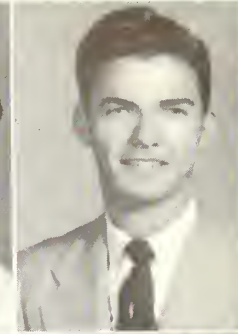
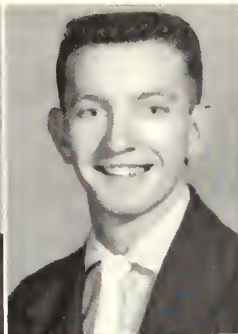
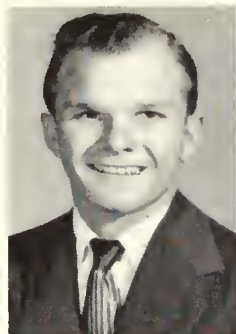
Joy Hatcher
Jesup, Ga.

Mary Henderson
Collegeboro, Ga.

Eubie Lee Hendrix
Statesboro, Ga.

Sampson Herndon
Surrency, Ga.

Billy Hobbs
Dexter, Ga.



of nineteen hundred and fifty-four



Kate Hodges
Glennville, Ga.

Eugene Humphrey
Millen, Ga.

Charlie Iddins
Reidsville, Ga.

Annie Ruth Jones
Lumber City, Ga.

Henrietta Jones
Savannah, Ga.



Ina Jones
Matthews, Ga.

Patricia Ann Jones
Sandersville, Ga.

Sara Ann Jordan
Bartow, Ga.

Betty Kemp
Jonesboro, Ga.

Mary Ann Kemp
Sylvania, Ga.



Marilyn Kent
Glennwood, Ga.

Billy Kinchen
Hazlehurst, Ga.

Sally Kingman
Dublin, Ga.

Martha Lacey
Hazlehurst, Ga.

Joan Lane
Sylvania, Ga.



Bobby Lassetter
Newnan, Ga.

Gene Lewis
Hazlehurst, Ga.

Charles Litvaney
Pittsburgh, Pa.

Betty Lott
Atlanta, Ga.

Alice McCord
Sylvester, Ga.

Patricia Ann McCorkle
White Plains, Ga.

Betty Jo McDonald
Scotland, Ga.

Frances Belle McGirt
Ponlan, Ga.

Peggy McNair
Sylvania, Ga.

Lena Sue McNeal
Newton, Ga.

Libby Ann Martin
Brunswick, Ga.

Clarke Maxwell
Cairo, Ga.

Allie Jean Meadows
Baxley, Ga.

Eugene Meadows
Register, Ga.

Jackie Mikell
Statesboro, Ga.

F R E S H M E N

Joyce Mitchell
Garden City, Ga.

Shirley Morgan
Waycross, Ga.

Marilyn Moxley
Cobbtown, Ga.

Van Murray
Bunnell, Fla.

Mary Nell Nichols
Baxley, Ga.

Gerald Nobles
Glennville, Ga.

Beverly O'Connor
Lumpkin, Ga.

Kenneth Parker
Statesboro, Ga.

Geraldine Phillips
Elmodel, Ga.

Lucille Phillips
Statesboro, Ga.

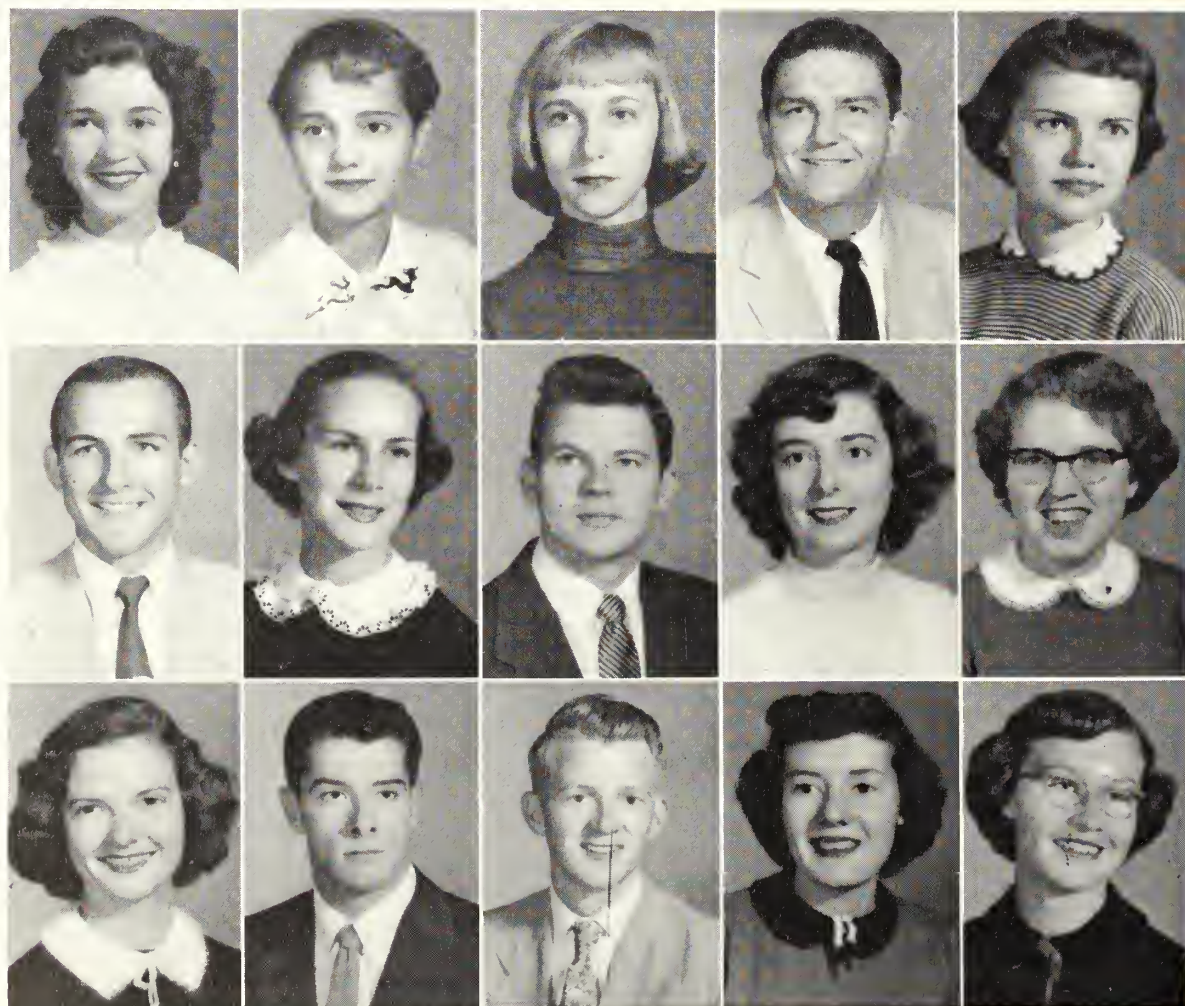
Wynelle Pirkle
Douglas, Ga.

Jimmy Prentice
St. Simons Island, Ga.

Bobby Presley
Toccoa, Ga.

Julia Pryor
Fitzgerald, Ga.

Shirley Rabun
Thomson, Ga.



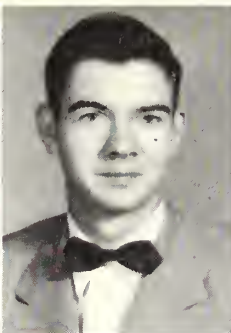
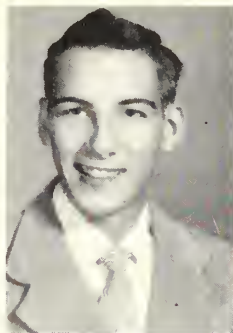
Arthus Richards
Daytona Beach, Fla.

Edward Robbins
Dover, Ga.

June Roberts
Hinesville, Ga.

Shirley Rountree
Twin City, Ga.

Betty Ann Rowell
Statesboro, Ga.



Althea Rutland
Macon, Ga.

Shirley Scott
Reidsville, Ga.

Carolyn Sears
Alamo, Ga.

Melvin Seidel
Vidalia, Ga.

Rebecca Sheffield
Newton, Ga.



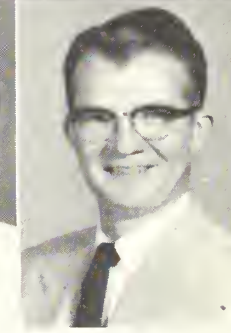
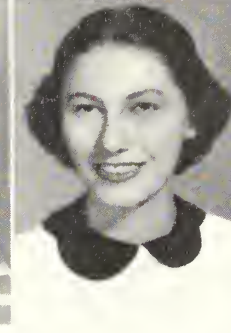
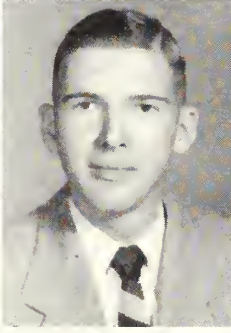
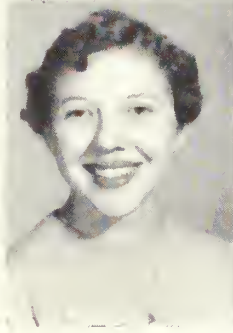
Jeanne Shine
Sea Island, Ga.

Charles Simmons
Statesboro, Ga.

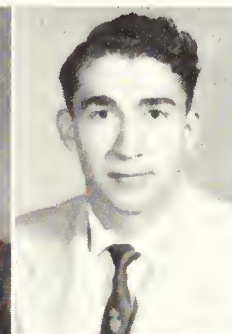
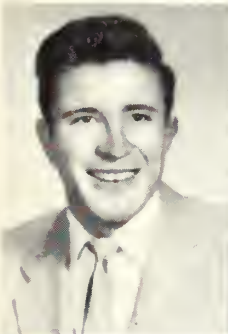
Maggie Simpson
Kingsland, Ga.

Ann Sims
Pembroke, Ga.

Daniel Smith
Glennville, Ga.



of nineteen hundred and fifty-four



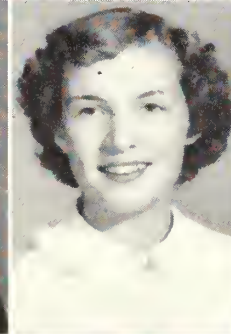
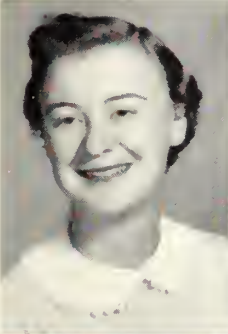
Henry Smith
Statesboro, Ga.

Larry Smith
Portal, Ga.

Leila Smith
Dublin, Ga.

Phyllis Smith
St. Simons Island, Ga.

Walter Stephens
Swainsboro, Ga.



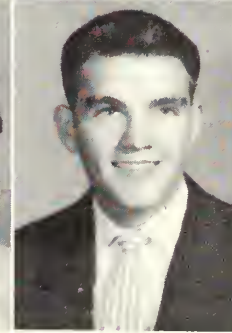
Ann Strickland
Statesboro, Ga.

Wanda Strickler
Statesboro, Ga.

Joyce Tanner
Collegeboro, Ga.

Lee Ellen Tebeau
Springfield, Ga.

Julia Thigpen
Lyons, Ga.



Nancy Thomas
Jesup, Ga.

Mary Tippins
Bellville, Ga.

Jean Tremon
Gordon, Ga.

Loretta Tucker
Pulaski, Ga.

Don Wallen
Wheelwright, Ky.



Bobbie Jean Warren
Stillmore, Ga.

Quincy Waters
Statesboro, Ga.

Rabun Waters
Sylvania, Ga.

Rose Watkins
Hinesville, Ga.

Maralon Westbrook
Union, S. C.

Don Whaley
Statesboro, Ga.

Ann Whiddon
McRae, Ga.

Joan Whitley
Baxley, Ga.

Ida Whittle
Statesboro, Ga.

Ethelyne Williamson
Cobbtown, Ga.

Barbara Wilkins
St. Simons Island, Ga.

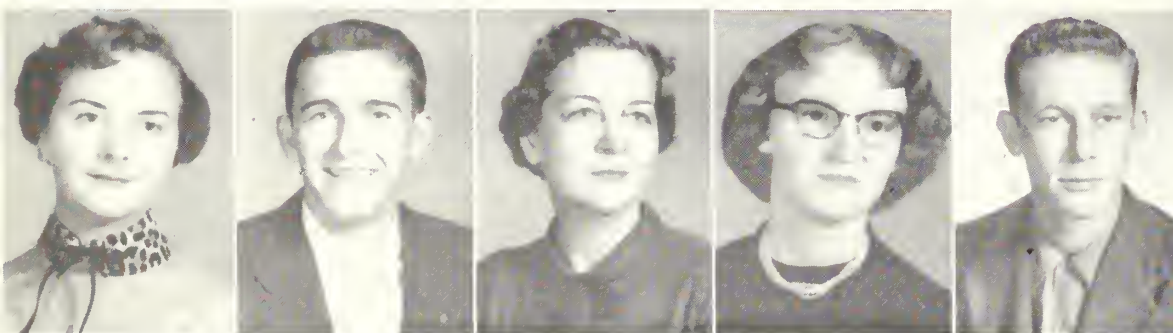
Marcia Wilkins
St. Simons Island, Ga.

Barbara Wisenbaker
Savannah, Ga.

Joan Wood
Waycross, Ga.

Bonnie Wren
Louisville, Ga.

F R E S H M E N



Shirley Wynn
Rockledge, Ga.

Robert Young
Atlanta, Ga.

Mrs. Hilda Vaughan
Savannah, Ga.

Juanette Ellington
Montrose, Ga.

Franklin Hagin
Statesboro, Ga.

So! This is life at T. C.!



Wonder who they are fooling?



W I N T E R Q U A R T E R S T U D E N T S

BOB CARDELL

Junior Lumber City, Ga.

JIMMY FULFORD

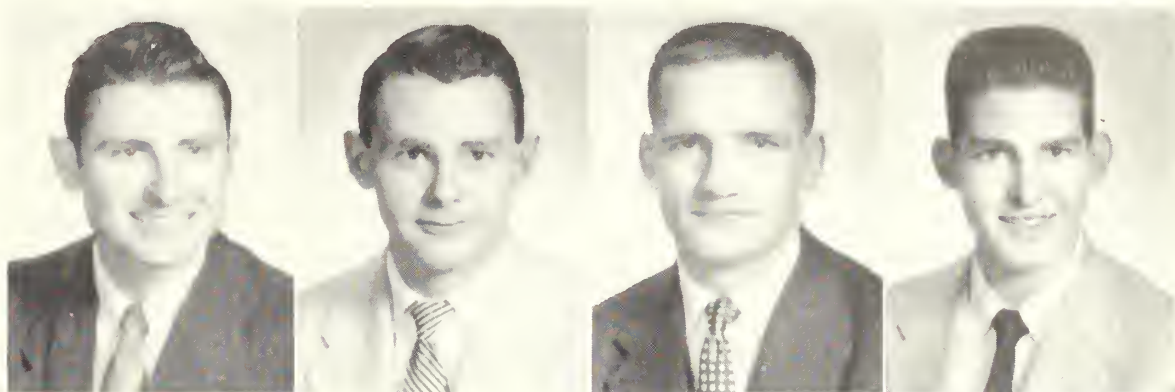
Junior Cuthbert, Ga.

JACK HARRIS

Junior Harlan, Ky.

LANNY HEATH

Junior Junction City, Ga.



SAMMIE LAMB

Junior Louisville, Ga.

DONA JO LIVINGSTON

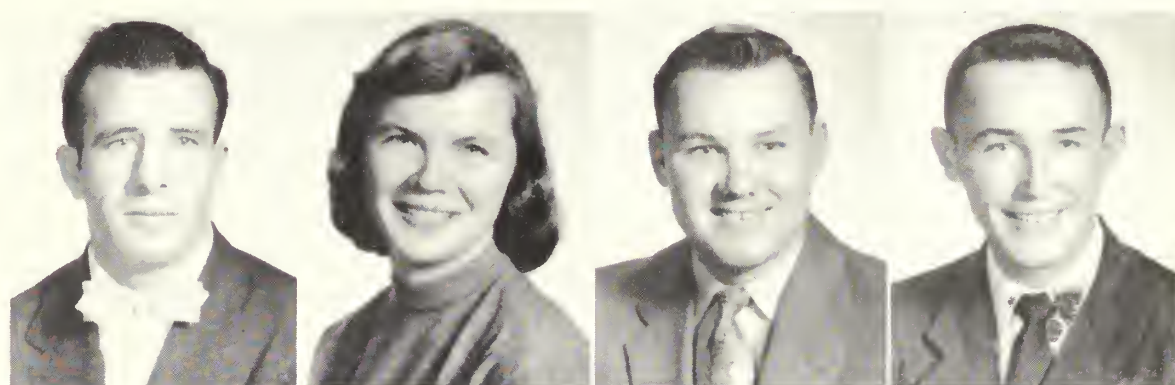
Freshman St. Simon, Ga.

L. C. MOCK

Senior Statesboro, Ga.

HUGH NOBLES

Junior Ludowici, Ga.



TOM PERRY

Junior Savannah, Ga.

MURRY SMITH

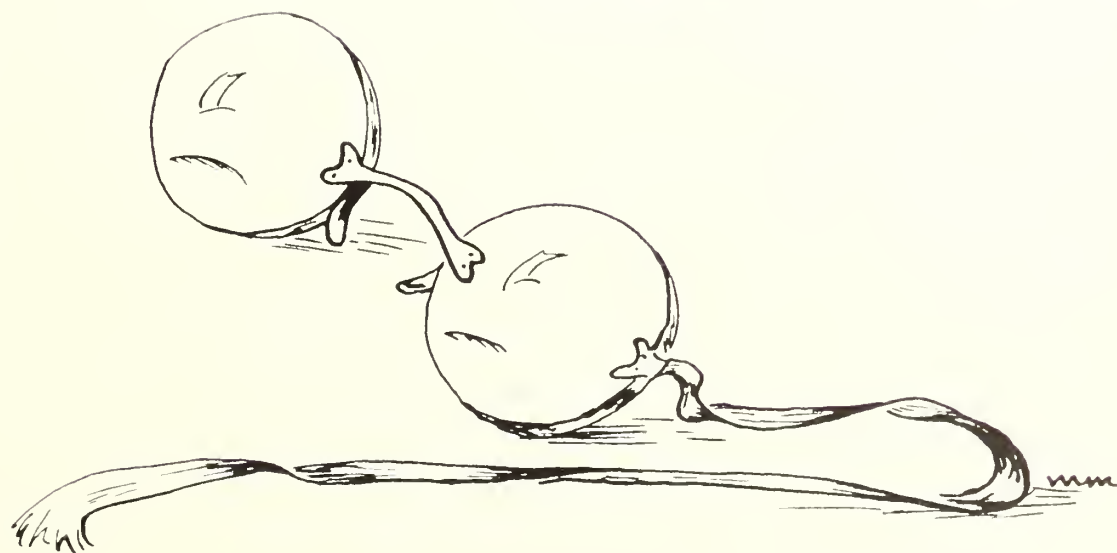
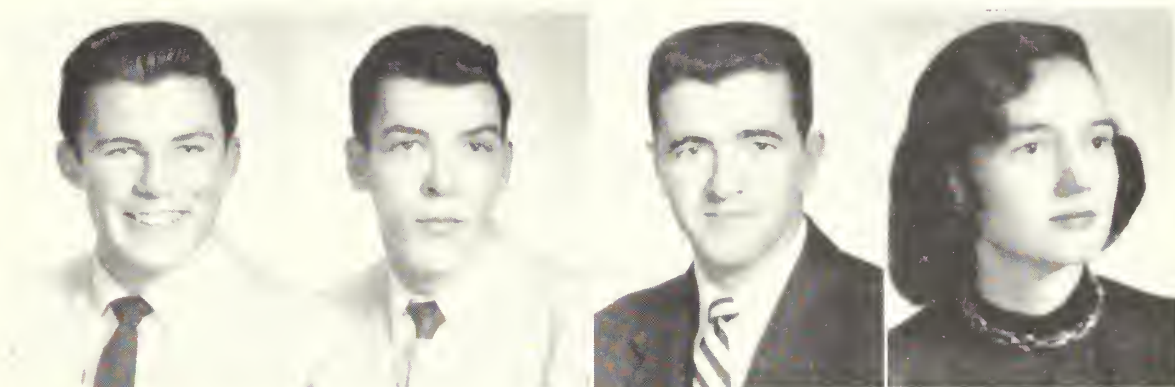
Junior Plains, Ga.

RALPH SPURLOCK

Junior Harlan, Ky.

JEAN WALL

Junior Atlanta, Ga.



organizations



SWING A TUNE WITH THE PROFESSORS



THE PAUSE THAT REFRESHES!



FOR MURDER



DESCRIPTION: VERY FRENCH
About 4'11"
Brown hair

CRIME: MURDER OF

SEE: LADIES

December
BULLOCH CO



"COME ON HERE, LI'L ABNER, LET'S GO"

ER
WANTED:
AUTIFUL:
s.: DARK
BAND
The JURY
4th.
Y. COURTHOUSE





First Row: Rosie Ammons, Dorothy Ford, Doris Ford, Janice Chastain, Marilu Mills. *Second Row:* Tommie Jean Corbett, Fred Pierce, Anngene Culbreth, Charles Grovenstein, Cherrell Williams, Robert Hurst, Jack Gay, and Kirbylene Stephens.

T H E R E F L E C T O R S T A F F



DOROTHY FORD
Co-Editor



DORIS FORD
Co-Editor

Staff



JACK GAY
Business Manager



ANNGENE CULBRETH
Associate Editor



MARILU MILLS
Art Editor

FRED PIERCE
Sports Editor

KIRBYLENE STEPHENS
Assistant Editor

TOMMIE JEAN CORBETT
Feature Editor

CHARLES GROVENSTEIN
Assistant Editor



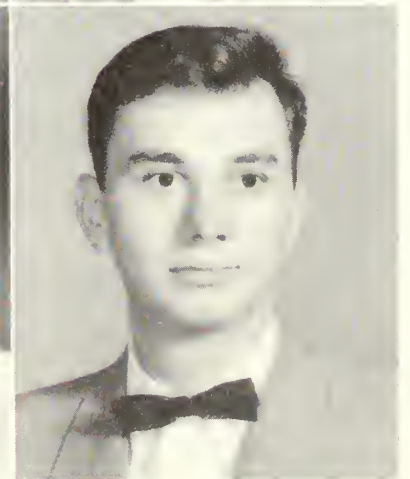
ROSIE AMMONS
Assistant Editor



JANICE CHASTAIN
Assistant Editor



CHERRELL WILLIAMS
Assistant Editor



ROBERT HURST
Assistant Editor



First Row: Christy Trowell, Charlie Grovenstein, Remer Tyson, Cherrell Williams, Gwen Lanier. *Second Row:* Marzee Richards, Phil Norton, Ida Whittle, Earl Parker, Vivian Cowart, Carl Tyson, Lou Nell Brockington and Cathy Holt.

T H E G E O R G E A N N E



REMER TYSON
Editor



CHARLES GROVENSTEIN
Business Manager



CHRISTY TROWELL
Associate Editor



CHERRELL WILLIAMS
Make-Up Editor



CARL TYSON
Circulation Manager



CATHY HOLT
Society Editor

Staff

EARL PARKER
Sports Editor

PHIL NORTON
Reporter

RITA HARPER
Reporter

MARY ALICE JONES
Reporter



LOU NELL BROCKINGTON
Reporter



MARY HELEN ALTMAN
Reporter



GWEN LANIER
Typist



MARZEE RICHARDS
Typist

THE STUDENT COUNCIL

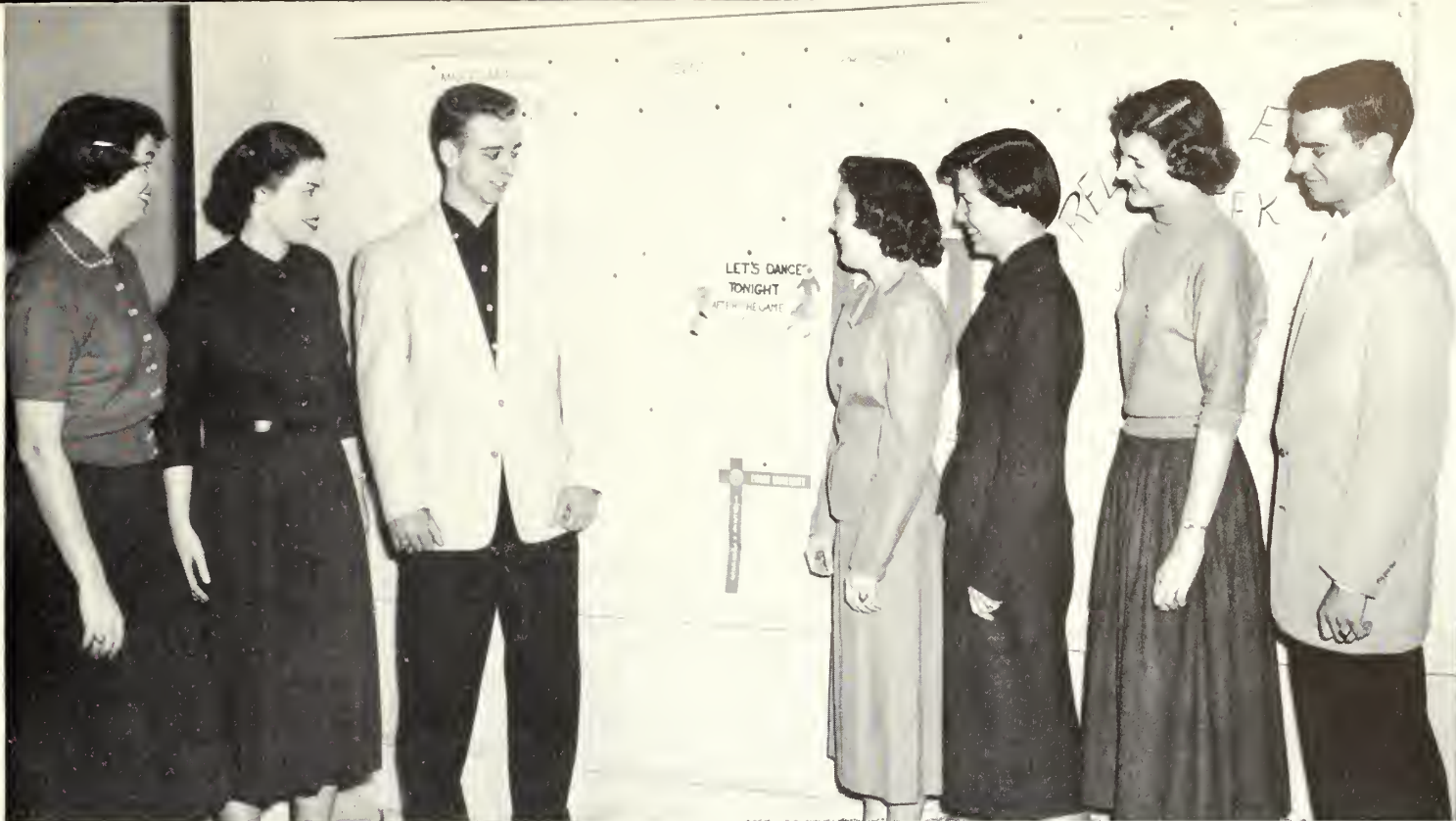


First Row: Phil Norton, Yvonne Jones, Fred Pierce, Janice Chastain. Second Row: James Prentice, Shirley Dykes, Doris Ford, Fayrene Sturgis, Ann Colley, Dorothy Ford, Kelly Powell. Not Pictured: Charles Grovenstein, Tim Carson, Mary Flanders, Julian Tucker.



OFFICERS

Left to right: Phil Norton, Vice-President; Janice Chastain, Treasurer; Yvonne Jones, Secretary; Fred Pierce, President.



S O C I A L C O M M I T T E E

Janice McGoogan, Miss Rogers, Fred Pierce, Chairman; Cathy Holt, Cherrell Williams, Janice Chastain, Phil Norton.



I N T E R - D O R M I T O R Y C O U N C I L

Seated: Nina Jones, Jean Cannon, Secretary; Jeanette Wallace, Peggy Henderson, Mrs. Johnson, Miss Rogers, Chairman; Beverly O'Conner, Mrs. Jackson, Barbara Wilkins, Mickey Addison, Lois Hammond. *Standing:* Mrs. Franklin, Ivey Chance, John Kennedy, Carlton Humphery, Aunt Sophie, Gene Roberts, Fred Pierce, Mrs. Myers, Doris Ford.

WEST HALL HOUSE COUNCIL

Seated: Lou Nell Brockington, Mrs. Jackson, Lois Hammond, Secretary; Beverly O'Conner, President; Barbara Wilkins, Vice-President; Jean Shine, Lila Ann Canuett. *Standing:* Shirley Rountree, Kate Hodges, Betty Lott, Ann Whiddon, Ann Davis, Jane Roberts, Joan Wood, Leila Smith, Mickey Addison, Treasurer.



EAST HALL HOUSE COUNCIL

Seated: Pat Blake, Betty Barnard, Carolyn Tally, Jewell Hart, Betty Harden. *Standing:* Jeanette Wallace, President; Ann McHugh, Jean Cannon, Pat Underwood, Joyce Sercer, Vice-President; Peggy Henderson, Secretary-Treasurer; Fey Carter.





LEWIS HALL HOUSE COUNCIL

Seated: Anngene Culbreth, Nancy Armstrong, Ann Ramsey, President; Mary Flanders, Vice-President; Ernestine Thompson. *Standing:* Dorothy Ford, Treasurer; Fay Lunsford, Doris Ford, Secretary; Janice Chastain, Mrs. Myers.



CONE HALL HOUSE COUNCIL

Left to right: Charles Grovenstein, Doyle Webb, Secretary; Warren Gailbreath, Fred Pierce, President; Aunt Sophie, Gene Roberts, Treasurer; Lamar Wynn, Max Estes, Royce Mock, Vice-President.

SANFORD HALL HOUSE COUNCIL

Seated (left to right): Earl Rodenbough, Carlton Humphrey, Kelly Powell, President; Jimmy Becton, Thomas Mock. *Standing:* Bobby Lassetter, Mrs. Franklin, House Director; Harry Clark.



PRIMITIVE BAPTIST YOUTH FELLOWSHIP

Seated (from left): Sara Frances Driggers, President; Lothair Easterling, Etta Ann Akin, Patsy Edenfield, Betty Harden, Secretary-Treasurer. *Standing:* Leona Newman, Vice-President; Jeanette Dobbs, June Miller, Miss McElveen, Kelly Powell, J. A. Durden, Louise Bird.



W E S L E Y F O U N D A T I O N

OFFICERS

MARY FLANDERS
President

CHERRELL WILLIAMS
Vice-President

CATHY HOLT
Secretary

ANNELLE DENT
Treasurer



MEMBERS

First Row: Cathy Holt, Cherrell Williams, Annelle Dent, Doris Ford, Charles Mobley, Dorothy Ford, Nan Parrish, Jeanine English, Joyce Thompson.
Second Row: Sara Fletcher, Barbara Barineau, Barbara Voigt, Cordelia Kidd, Emma Jean Brock, Mary Frances Cox, Bertie Franklin, Betty Altman, Betty Vardeman, Shirley Morgan, Sarah Ann Jordan, Vivien Cowart, Saralene Akridge, Kenneth Gale.



BAPTIST STUDENT UNION



OFFICERS

PEGGY SATURDAY
President

ANNGENE CULBRETH
First Vice-President

TOMMIE JEAN CORBETT
Second Vice-President

JEAN CANNON
Third Vice-President

BARBARA FOSSETT
Secretary

RONALD GINN
Treasurer

MEMBERS

First Row: Bo Ginn, Anngene Culbreth, Jean Cannon, Peggy Saturday, Tommie J. Corbett. *Second Row:* Lauwanna Tillman, Betty Ruth Smith, Genevieve Hunter, Mary Frances Sapp, Georgia Harper, Wynell Pirkle, Carol Thomas, Hilda Grogan, Jane Seabolt, Lorene Brown. *Third Row:* Ann McHugh, Gene Meadows, Juanita Dowdy, Beverly O'Connor, Ruby Houston, Ophelia Fields, Shirley Dykes, Jeanette Wallace. *Fourth Row:* Kirbylene Stephens, Sara Johnson, Helen Robertson, Carolyn Branch, Joyce Mason, James Becton. *Fifth Row:* Dan Wilson, Bobby Gene Kingery, Robert Hurst, Van Murray.



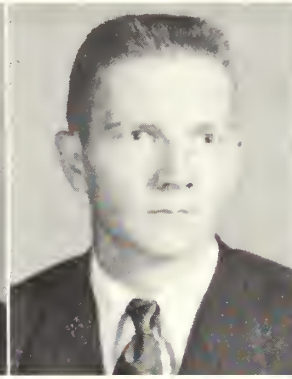
WESTMINSTER FELLOWSHIP



JIM HARLEY
President



JOAN LETSON
Secretary



CHARLES LITVANEY
Treasurer



JANICE MCGOOGAN
Program Chairman

This is the organization of Presbyterian students on the campus in connection with the Presbyterian Church in Statesboro. This active group enjoys a year filled with various activities.

MEMBERS



Seated: Joan Letson, Jean Watson, Ann Strickland, Betty Barnard, Jane Hardison, Frances Belle McGirt, Libby Ann Martin. *Standing:* Artie Richards, Don Wallen, Charles Litvaney, Morris Davis, Douglas Corry, Jim Harley, Miss Gernant, Peggy Kilpatrick, Janice McGoogan.

STUDENT CHRISTIAN ASSOCIATION



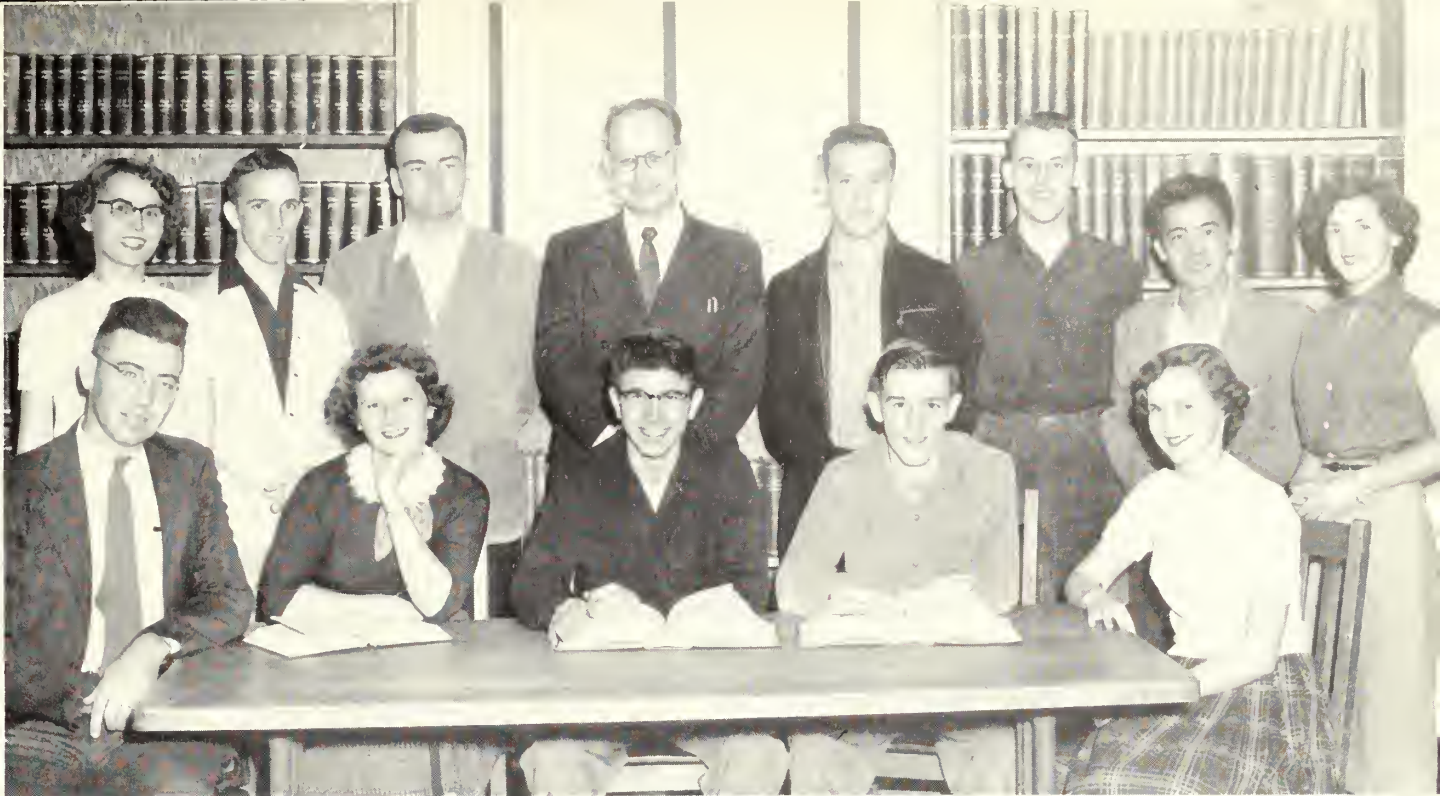
Seated (from left): Anngene Culbreth, Gene Meadows, Melba Prosser, Jeannine English, Joyce Thompson, Cathy Holt, Treasurer; Jimmy Becton, Second Vice-President; Kirbylene Stephens, First Vice-President; Jean Cannon, Secretary; Jeanette Wallace, Genevieve Hunter. *Standing (from left):* Peggy Saturday, Marzee Richards, Emma Jean Brock, Margene Jenkins, Ann McHugh, Lois Hammond, Ruby Houston, Mary Frances Sapp, Helen Robertson, Fayrene Sturgis, Barbara Voigt. *Second Row, Standing:* Vivien Cowart, Dr. Russell, Gene Roberts, Roger Brown, Kelly Powell, Mary Frances Cox, Julius Byers. (*Not Shown:* Don Welch, President.)

ENGLISH CLUB



Seated (from left): Anngene Culbreth, Reporter; Jane Seabolt, Treasurer; Kirbylene Stephens, Secretary; Tommie Jean Corbett, President; Mrs. Guardia, Dr. Russell. *Standing (from left):* Marzee Richards, Jo Griggers, Vivien Cowart, Frances Ammons, Joyce Sercher, Larmar Wynn, Max Estes, Carl Tyson, Melvin Peacock, Mary J. Ramsey, Sylvia Griner.

INTERNATIONAL
RELATIONS
CLUB



ALPHA
PSI
OMEGA



INTERNATIONAL RELATIONS CLUB

Dr. Rogers, Vivien Cowart, Vice-President; Christy Trowell, President; Heywood Gnann, Treasurer; Frances Anthony. *Standing:* Betty Altman, Gene Meadows, Julius Byers, Mr. Knowleton, Charles Dill, Dan Wilson, Satoshi Shimabukuro, Barbara Voigt.

ALPHA PSI OMEGA

Seated: Miss Gernant, Tommie Jean Corbett, Director. *Standing:* Jane Seabolt, Dorothy Ford, Phil Norton, Doris Ford. *Not pictured:* Marilu Mills, Business Manager.



ROSIE AMMONS
President



ANNE RAMSEY
Vice-President



MARY FLANDERS
Secretary



NANCY ARMSTRONG
Treasurer

FUTURE TEACHERS OF AMERICA

The main purpose of this organization is to acquaint students with the problems that will arise in their chosen profession. Field trips to high schools, with programs originated and produced by members of this and other campus organizations, are designed to encourage high school students to become teachers.



First Row: Mary Flanders, Rosie Ammons, Ann Ramsey, Nancy Armstrong, Dr. Watson, Nan Parrish, Pat McCorkle, Clara Cason, Lorene Brown. *Second Row:* Barbara Bareneau, Jeannette Gnann, Sue Miller, Marzee Richards, Virginia Ragsdale, Bertie Franklin, Farries Taylor, Georgia Harper, Ann Colley. *Third Row:* Ann Barry, Shirley Rountree, Frances Anthony, Betty Ruth Smith, Joyce Mason, Ann Thrash, Mrs. Gladys Murphy, Juanita Dowdy, Mary Lou Cartee, Joan Letson. *Fourth Row:* Gene Meadows, Watson Weathers, Peggy Jones, Shirley Hanson, Annegene Culbreth, Fayrene Sturgis, Joyce Sercer, Kirbylene Stephens, Frances Ammons, Tommy Jean Corbett, Doris Ford, Dorothy Ford. *Fifth Row:* Charles Dill, Hugh Wells, Janice Chastain, Eloise Wingate, Joyce Ginn, Betty Lott, Robert Taylor, Jack Gay, Bobby Gene Kingery.



PEGGY SATURDAY
President

NAN PARRISH
Vice-President

NANCY WARNOCK
Secretary

FAYRENE STURGIS
Treasurer

DORIS FORD
Reporter

DOROTHY FORD
Reporter

The local Chapter of this club, the full name for which is the Association for Childhood Education International, is the largest organization on campus. It is made up of students majoring in Elementary education. Its purpose is to give students an insight into elementary school work, including opportunities to serve and to see problems which will confront them as teachers.

ELEMENTARY EDUCATION CLUB



First Row: Christine Shuman, Jeanette Gnann, Frances B. McGirt, Lorene Brown, Eubie L. Hendris, Sally Kingman, Nancy Warnock, Peggy Saturday, Nan Parrish, Fayrene Sturgis, Shirley Rabun, Leona Newman, Malone Childs, Jeanene English, Clara Cason, Joyce Thompson. *Second Row:* Althea Ruthland, Joan Womble, Lothair Easterling, Libby Ann Martin, Juannette Ellington, Ernestine Thompson, Betty Akins, Shirley Scott, Loris Hammond, Ophelia Fields, Pat McCorkle, Betty Harden, Ann Colley, Barbara Akins, Betty R. Smith, Satoshj Shimabukuro. *Third Row:* Gene Roberts, Jeanette Wilson, Cherrell Williams, Annelle Dent, Shirley Dykes, Genevieve Hunter, Joyce Ginn, Nancy Armstrong, Ann Ramsey, Gladys Murphy, Beverly O'Connor, Henriatta Jones, Doris Warnock, Sue Cowart, June Edenfield, Betty R. Folsom, Betty Roan, Farries Taylor, Shirley Smith, Miss Freeman. *Fourth Row:* Shirley Bragg, Pat Underwood, Jean Lambert, Eloise Wingate, Shirley Hanson, Janice Chastain, Peggy Jones, Helen Robertson, Juanita Dowdy, Jan Brown, Dorothy Ford, Doris Ford, Ruby Houston, Eultia Carter, Emma Jean Brock, Jean Cannon, Saralene Akridge, Nancy McIntosh, Marguerite Dye, Barbara Barineau.

FUTURE BUSINESS LEADERS OF AMERICA



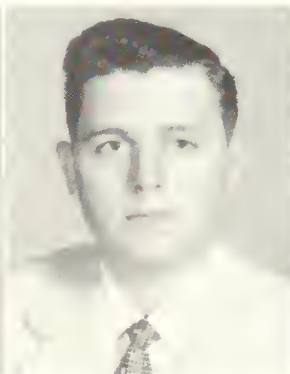
First Row: Phyllis Smith, Joan Wood, Lou Nell Brockington, Carolyn Thompson, Betty Kemp, Joyce Mason, Miss Keaton. *Second Row:* Rose Watkins, Daffin Watson, Hilda Grogan, Sue Miller, Jack Gay, Ida Whittle, Hugh Wells, Ann Berry, Kirbylene Stephens, June Roberts, Lucille Phillips. *Third Row:* O'Hara Toler, Sampson Herndon, Wendell Bowen, Watson Weathers, Jerry Kicklighter, Bobby Gene Spivey, Paul Dowdy.

All business majors and minors are eligible for membership in the Future Business Leaders of American organization. This organization is affiliated with the Georgia Federation of College Business Students. The FBLA operates the book exchange on the campus.

OFFICERS



HUGH WELLS
President



JACK GAY
Vice-President



MALLIE DENMARK
Treasurer



SUE MILLER
Publicity

Not Pictured:
ANN BERRY
Secretary

INDUSTRIAL ARTS CLUB



First Row: Dr. Erickson, Harold DeLoach, Robert Taylor, Gene Harper, Leon Johnson, Mr. Godfrey. *Second Row:* J. A. Durden, Thomas Godbee, Clyde Lane, Charles Bedingfield, Bobby Phillips, Billy Jo Parker, Ed Hotchkiss, Bobby Lassetter, William Lambert. *Third Row:* Joe Anderson, Ed Wise, Don King, Don Whaley.

"Fellowship, Scholarship and Service" is the motto of the Industrial Arts Club. They strive to promote professional interest, fellowship, and growth among the students of industrial arts on the campus. These fellows are always ready to put things together for those who need their talents.

FUN NIGHT FOR THE IAC



Where's that donkey?

We didn't construct this one!





Seated: Devon Keeler, Sara Fletcher, Mary Tippins, Rosie Ammons, Ina Jones, Marzee Richards, Sara Johnson, Mary Lou Cartee, Don Thomas.
Standing: Mr. Hanner, Bobby Gene Kingery, Mr. Caplenor, Earl Parker, Morris Davis, Clyde Tanner, Jimmy Becton, Lawrence Cook, Dr. Wilson.

Exact science majors and minors, and other students who are interested in the science fields, make up the Science Club. During the year they enjoy various activities including field trips and outdoor parties.

OFFICERS

BOBBY GENE KINGERY *President*
 DON THOMAS *Vice-President*
 LAURIEN SEANOR *Secretary*
 CLYDE TANNER *Treasurer*
 SARA JOHNSON *Librarian*
 DEVON KELHEAR *Reporter*

SPONSORS

MR. CAPLENOR	MR. HANNER
MR. STEELE	DR. WILSON



Seated: Tanner, Thomas. *Standing:* Kelhear, Kingery, Johnson.

S C I E N C E C L U B



Seated: Betty Smith, Jean Watson, Marzee Richards, Nancy Warnock, Frances Anthony, Carol Thomas, Ann Ramsey, Juanita Dowdy, Betty Ruth Folsom, Jeanette Dobbs. *Standing:* Marie McKendree, Shirley Smith, Jeannette Wallace, Ina Jones, Don King, Janice McGoogan, Jimmy Printice, Miss Remley, Miss Gernant.

The members of Alpha Rho Tau are those persons who are especially interested in, or have a special talent for art. The general purpose of the club is to further the appreciation of art on our campus. Outstanding events sponsored by this organization are the annual Beauty Revue and the Starlight Club dance.



Left to right: Ramsey, King, McKendree, Warnock.

OFFICERS

DON KING	<i>President</i>
MARIE MCKENDREE	<i>Vice-President</i>
NANCY WARNOCK	<i>Secretary</i>
ROBERT HURST	<i>Treasurer</i>
ANN RAMSEY	<i>Reporter</i>

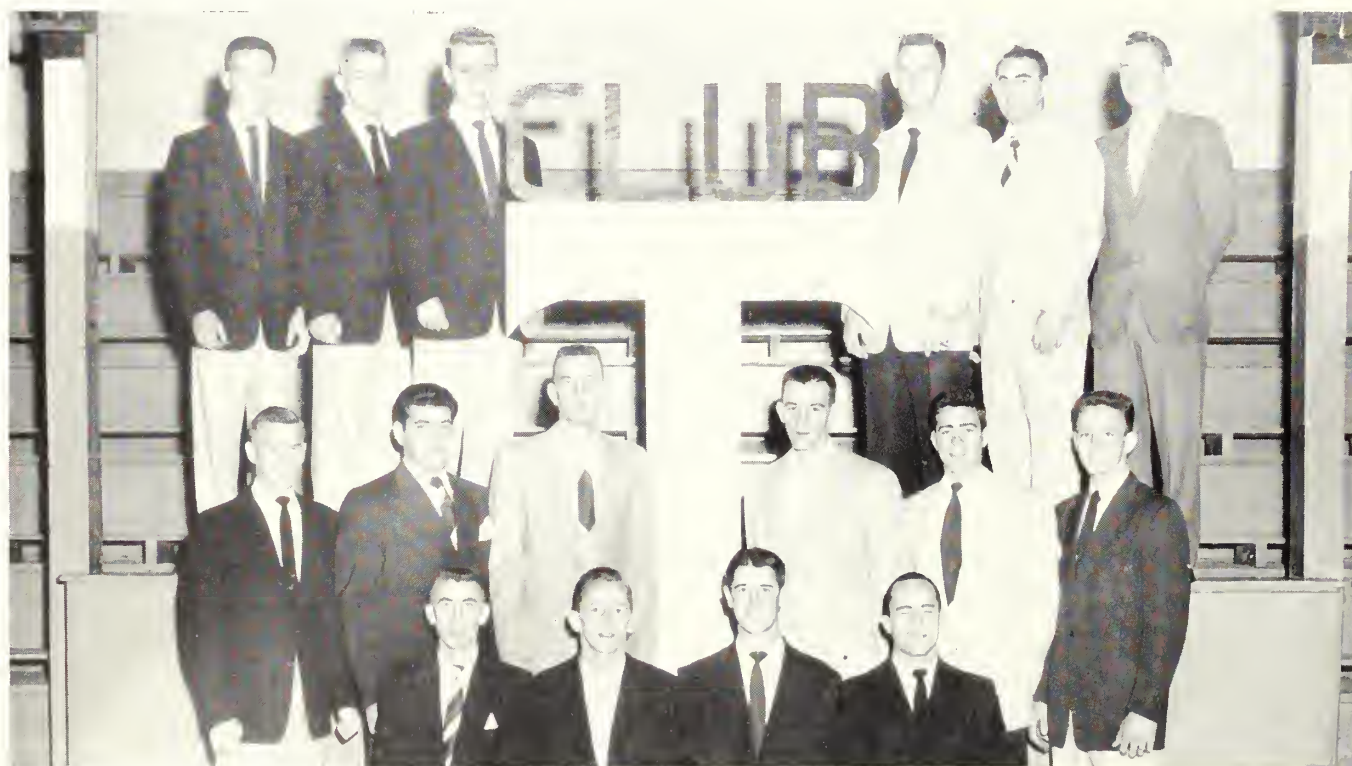
T H E A R T C L U B

WOMEN'S RECREATION ASSOCIATION



First Row: Sara Fletcher, Beverly O'Connor, Miss Stanion, Weita Wall, Carolyn Talley. *Second Row:* Phyllis Smith, Julia Thigpen, Jean Tremon, Annette Brock, Doris Warnock, Betty Hardin, Allie Jean Meadows, Babs Wisenbaker, Leona Newman. *Third Row:* Mary Lou Cartee, Jane Edgy, Ophelia Fields, Helen Robertson, Juanita Dowdy, Patsy Edenfield, Janice McGoogan, Rebecca Anglin, Marie Thomas, Daphne Watson. *Fourth Row:* Joan Letson, Pat McCorkle, Lois Hammond, Joan Hartley, Ann DeLoach, Rose Watkins, Carolyn Sears, Kate Hodges, June Roberts, Carol Thomas. *Fifth Row:* Shirley Rabon, Ina Jones, Lucille Phillips, Sara Ann Jordon, Lorene Brown.

• T • C L U B



First Row: Jim Harley, David Harris, Joe Ed Greene, Clyde Little. *Second Row:* Buddy Ward, Mike Genevrino, Chester Webb, Bobby Phillips, Ferrell Sparks, Kelly Powell. *Third Row:* Joe Sullivan, Horace Belflower, Fred Pierce, Royce Mock, Jerry Silverman, Williard Martin.

OFFICERS

JOE ED GREENE President
DAVID HARRIS Vice-President

JIM HARLEY Secretary
CLYDE LITTLE Treasurer

E N M E L O D I E



Seated: Betty Claxton, Cathy Holt, Treasurer; Harriet Woodard, Mary Alice Jones, Vice-President; Faye Lunsford, President; Nancy McIntosh, Martha Lacey, Maralon Westbrook, Mary Tippins, Jane Hardison, Shirley Morgan, Billie Kitchen, Nell Pirkle, Sara Cunnard, Georgia Harper.

En Melodie is the girl's music club open to all women majors and minors and those interested in music. The club is working to become affiliated with a national music sorority.

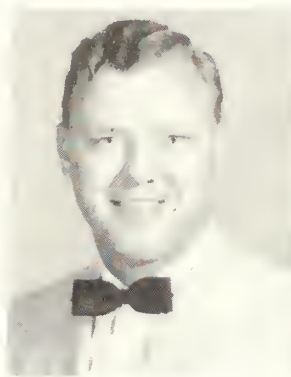
P H I M U A L P H A

Phi Mu Alpha-Sintonia was organized on the campus during the past year, and is the Zeta Omicron Chapter of the National Music fraternity. A student is eligible for membership "who shall show a love for music either by adopting music as a profession or by working to advance the cause of music in America." Membership is by invitation.



Seated: Don Flanders, Johnny DeNitto, Vice-President; Rudy Mills, President; Heyward Gnann, Secretary; Frank Willis, Treasurer; Tab Smith. *Standing:* Bobby Brewster, Gene Roberts, Reporter; Clark Maxwell, Jimmy Snooks. *Second Row, standing:* Melvin Seidel, Robert Hurst, James Glasgow, Jimmy Prentice.

V E T E R A N S C L U B



CHARLES GROVENSTEIN
President



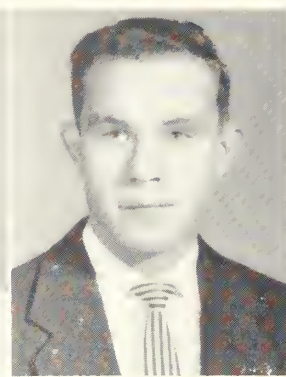
WENDELL BOWEN
Vice-President



BILL FREEMAN
Secretary



WARREN GAILBRETH
Treasurer



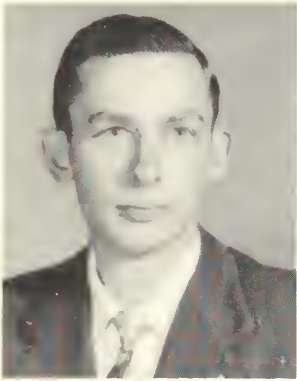
CHARLES DILL
Master-at-Arms

Any person who has served a period of ninety days in the Armed Forces of the U.S.A. and attending college here is eligible for membership in this organization. The purpose of this organization is to promote the rapid social and educational readjustment of all veterans attending college. We propose to do this by encouraging and stimulating interest in all forms of campus life by actively engaging in social and educational projects which will better the college and the members.



Seated: Charles Dill, Harold Wynn, Warren Gailbreth, Marzee Richards, Sweetheart; Charlie Grovenstein, Wendell Bowen, Harry Clark. *Standing:* Johnny Sorrell, George Kemp, R. L. Smith, Bill Freeman.

K A P P A D E L T A P I



MORRIS DAVIS
President



MARILU MILLS
Vice-President



DOT BROWN
Secretary



MELVIN PEACOCK
Treasurer



DAN WILSON
Reporter

Kappa Delta Pi is a National Educational Honorary Society whose members are selected from outstanding students and faculty members. They are selected on the basis of high scholastic average and leadership qualities. Students are eligible in their junior and senior years of college.



First Row: Bobby Gene Kingery, Betty Clary, Dan Wilson. *Second Row:* Ruth Knowleton, Betty H. Fabris, Faye Lunsford, Dr. Watson, Dot Brown, Morris Davis, Mary Helen Altman, Marilu H. Mills, President Henderson, Mr. Lenfestey. *Third Row:* Al Crumpler, Melvin Peacock, Miss Gernant, Miss Rogers, Vivian Coward, Miss Bolton, Tommie Jean Corbett, Mrs. Guardia.

H O M E E C O N O M I C S C L U B

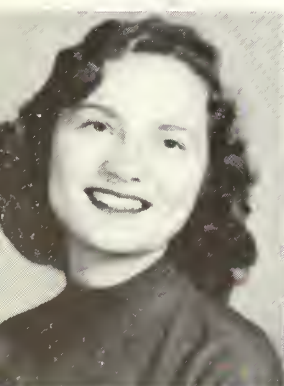


First Row: Jean Shine, Lee Ellen Tebeau, Betty Jean Beasley, Patsy Edenfield. *Second Row:* Mary Jo Jackson, Marilyn Kent, Ann Harrison, Ann Davis, Yvonne Jones, Lila Anne Canuette, Linda Brown, Sara Fletcher, Bertie Franklin, Rachel Powe, Etta Ann Akins, Mary Flanders.

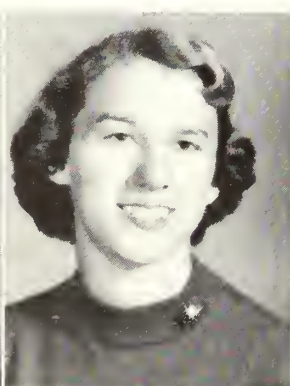


OFFICERS
MARY FLANDERS
President

Students majoring or minoring in home economics hold membership in this organization. The organization is affiliated with the American Home Economics Association, Province III College Club Section, and Georgia Home Economics Association. They sponsor interesting home making activities, and this year a nursery school is providing learning and working opportunities in the study of child development.



DOROTHY BROWN
Vice-President



JUNE MILLER
Treasurer



ETTA ANN AKINS
Reporter



BETTY JEAN BEASLEY
Historian

Not pictured:
YVONNE JONES
Secretary
BERTIE FRANKLIN
Parliamentarian



M A S Q U E R S



TOMMIE JEAN CORBETT
President



BARBARA FOSSETT
Vice-President



DORIS FORD
Secretary



DOROTHY FORD
Treasurer



CHARLIE GROVENSTEIN
Reporter

Acting, building sets, applying make-up, designing clothes, selling tickets, and becoming an electrician are some of the various interests of the members of Masquers, the dramatic organization on campus. This group is working to make it one of its most successful years. Already, they have produced "Ladies of the Jury"; three one-act plays, "Overtones," "Mindset," and "Hello, Out There." And sponsored the Barter Theatre of Virginia. After completing a required amount of work, members may apply for membership in Alpha Psi Omega, the national honorary dramatic fraternity.



First Row: Shirley Morgan, Hilda Grogan, Cathy Holt, Miss Few, Phil Norton, Bo Ginn, Max Estes, Carl Tyson, Ida Whittle, Libby A. Martin, Eulita Carter, Babs Wisenbaker, Lorene Brown. *Second Row:* Luwana Tillman, Barbara Voigt, Virginia Ragsdale, Emma Jean Brock, Rebecca Anglin, Fey Carter, Pat McCorkle, Barbara Wilkins, Marcia Wilkins, Pat Becton, Jane Seabolt, Barbara Fossett, Gwen Lanier. *Third Row:* Shirley Rountree, Midge Bentley, Alyce McCord, Anngene Culbreth, Cherrell Williams, Patsy Edenfield, Juanita Dowdy, Beverly O'Connor, Betty Ruth Smith, Sara Ann Jordon, Shirley Smith, Lothair Easterling. *Fourth Row:* Rosie Ammons, Tommie Jean Corbett, Betty Jean Lott, Dorothy Ford, Kirbylene Stephens, Doris Ford, O'Hara Toler, Joyce Sercher, Ann Berry, Carolyn Branch, Frances Ammons, Barbara Barineau. *Fifth Row:* Janice Chastain, Shirley Hanson, Nancy Armstrong, Peggy Jones, Charles Grovenstein, Van Murray, Carlton Humphrey, Kenneth Gale, Robert Hurst, Remer Tyson, Gene Roberts.

THURSDAY, DECEMBER 24, 1986
Savannah Morning News
GTC Beats Florida, 99-86, in Gator Tournament
SECTION 2-PAGES 11 TO 12

**T. C. Dominates
 All-Tournament
 Gator Bowl Team**

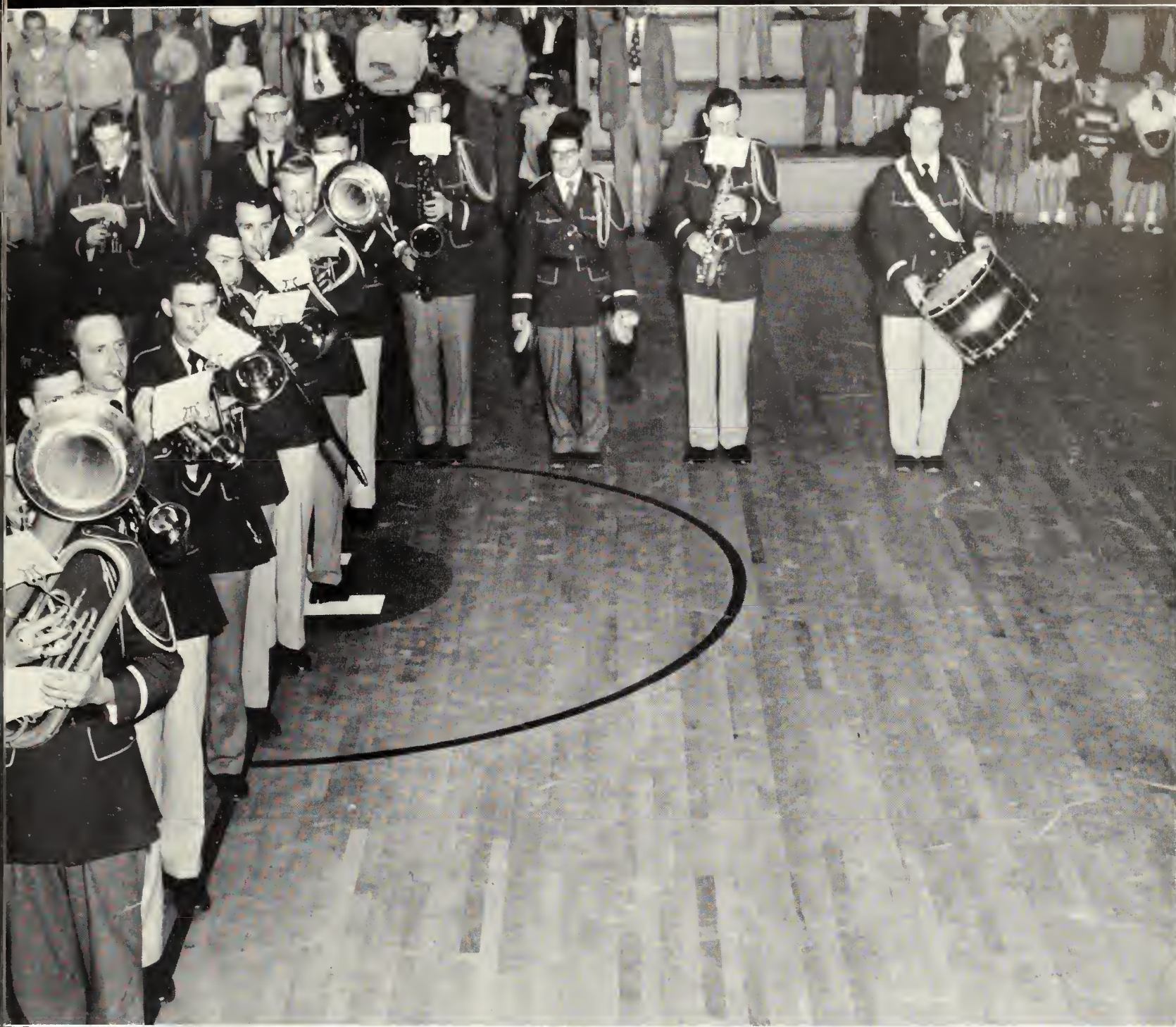
T. C. basketball players dominated the all-tournament Gator Bowl roster. On the first team were Horace Belflower, Cochran, 5'8" guard and Chester Webb, Elberton, 6'6" center. Webb was picked on the all-state first team last year. Three other players were picked on the "



sports



T.C. Upsets

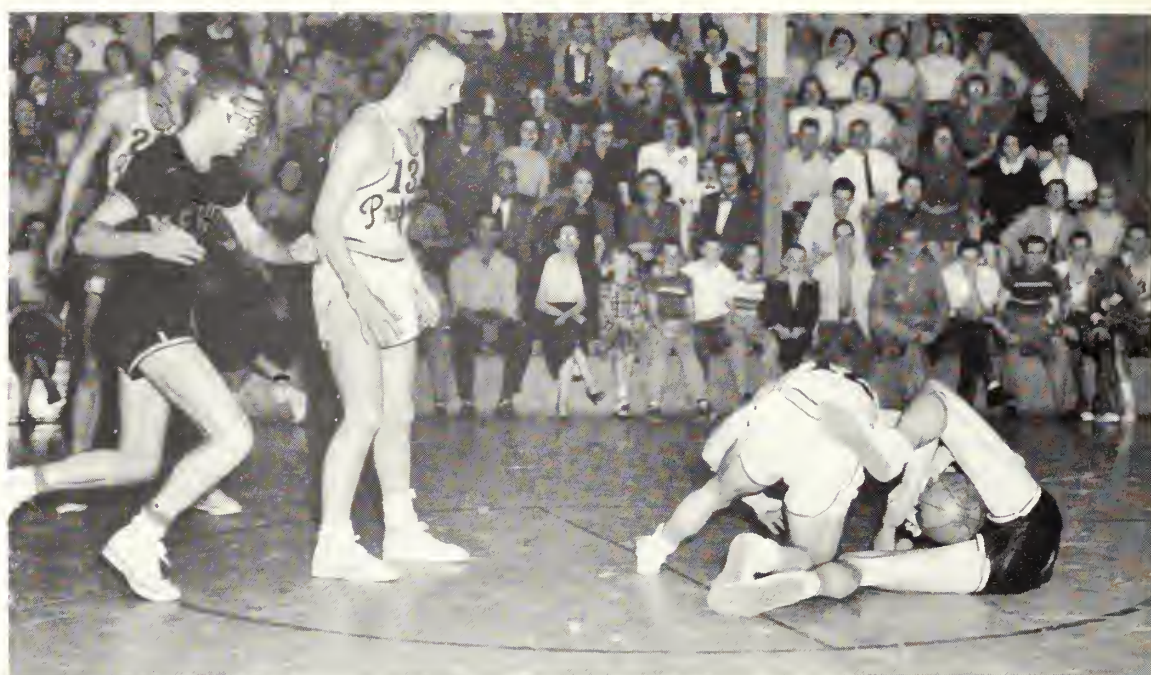


THE T. C. MARCHING BAND DURING ONE OF THEIR PERFORMANCES AT BASKETBALL GAME.
(forming top of T are) Warren Gailbreth; Heyward Gnann; Gene Roberts; Morris Davis; Jim Brinson; Don Flanders.
(Vertical) Bobby G. Kingery; Frank Willis; Carlos Hand; Gene Frazier; Rudy Mills; Bobby Presley; Mel Seidel.

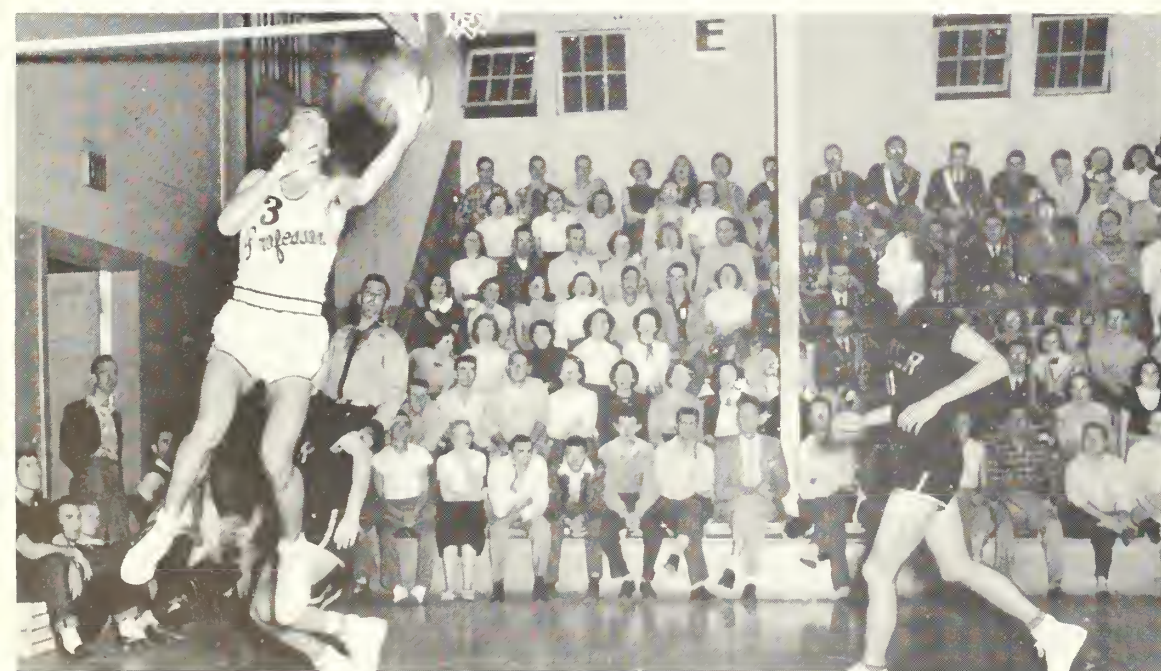
Heavily Favored PI 88-76



Chester hooks two for Teachers.



Hoss fights a Bear for ball.



Jim shoots ?? two as T. C. tames Bears.

B A S K E T B A L L I N ' 5 4

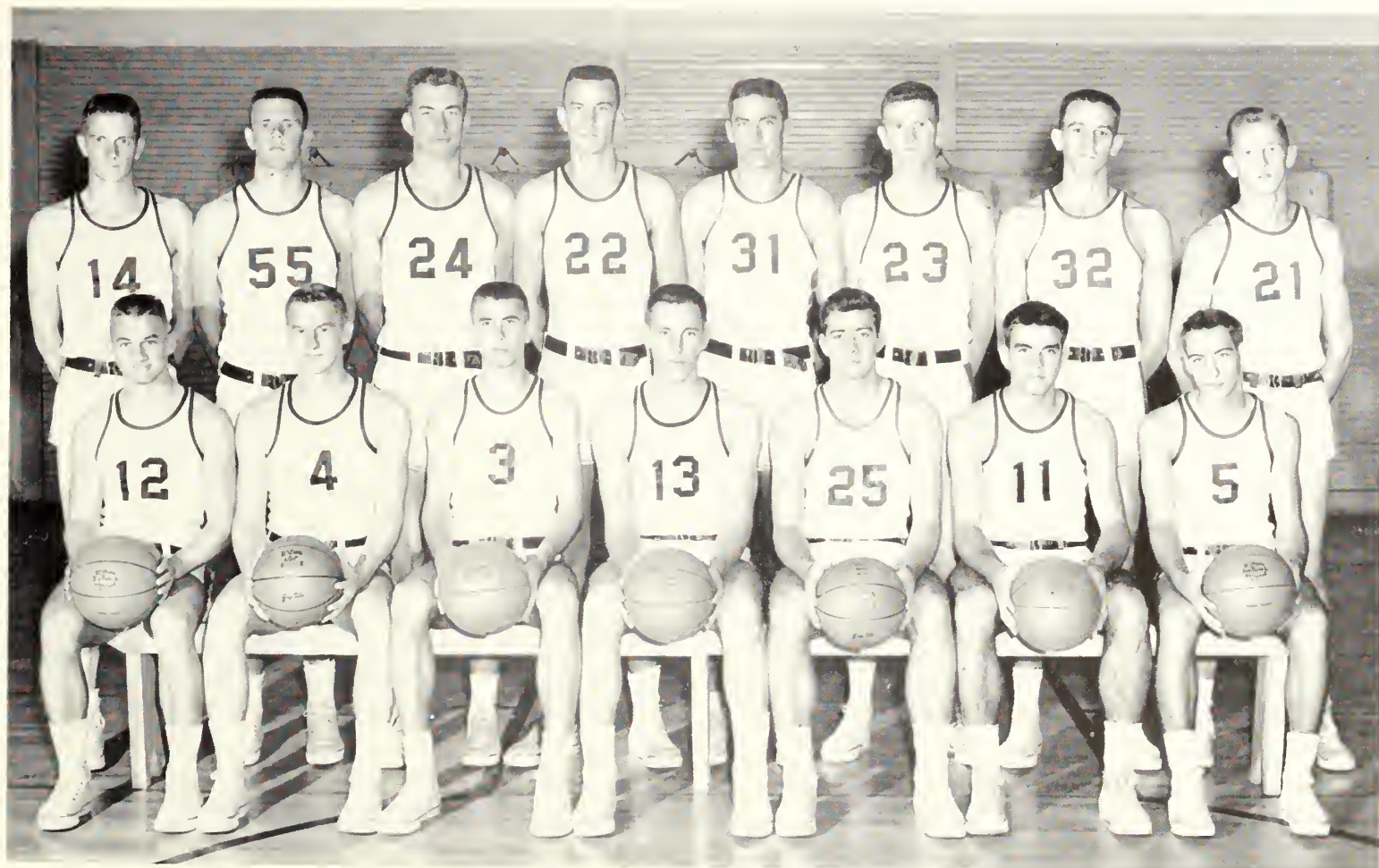


THE COACH
J. B. SCEARCE



THE CAPTAIN
DAVID HARRIS

THE TEAM



Seated (from left): Horace Belflower, Buddy Ward, Jim Harley, Bo Warren, Ferrel Sparks, Don Wallen, Artie Richards. *Standing (from left):* Chuck Litvaney, Don Avery, Doug Corry, Chester Webb, James Denny, Ken Everett, Bobby Phillips, David Harris. *Not pictured:* Jack Harris.



DAVID HARRIS



CHESTER WEBB



BOBBY PHILLIPS

HORACE BELFLOWER



JIM HARLEY



BO WARREN





BUDDY WARD



"Everybody wants it."



CHUCK LITVANEY

JAMES DENNY



BASKETBALL RESULTS

1953-54

Date	GTC Score	Opponent	Opponent Score
Dec. 4	78	North Georgia College	57
Dec. 5	88	Piedmont College	69
Dec. 9	63	Stetson University	73
Dec. 11	58	Florida State University	66
Dec. 14	85	Newberry College	55
Dec. 19	108	Rollins College	88

Gator Bowl Basketball Tournament

December 28, 29, 30

	99	University of Florida	86
	101	Georgia Institute of Technology	81
	69	University of Georgia	80
Jan. 8	85	Newberry College	55
Jan. 9	68	Erskine College	83
Jan. 16	90	Jacksonville Alabama State	68
Jan. 20	81	Mercer University	67
Jan. 22	60	Stetson University	82
Jan. 23	83	Rollins College	63
Jan. 28	48	Mercer University	63
Jan. 30	97	(overtime) Piedmont College	94
Feb. 4	62	Troy Teachers College	76
Feb. 5	85	Mississippi Southern College	103
Feb. 6	64	Spring Hill College	76
Feb. 11	74	Erskine College	87
Feb. 13	78	North Georgia College	59
Feb. 17	85	Florida State University	89
Feb. 20	81	Troy Teachers College	63

ARTIE RICHARDS





DON WALLEN



Boney tries for rebound.



KEN EVERETT

DOUG CORRY



Four against one.



DON AVERY



*Everybody
At
Work for...*



COACH SCEARCE
and
COACH CLEMENTS



SONNY LAMB
Manager



FRED PIERCE
Trainer

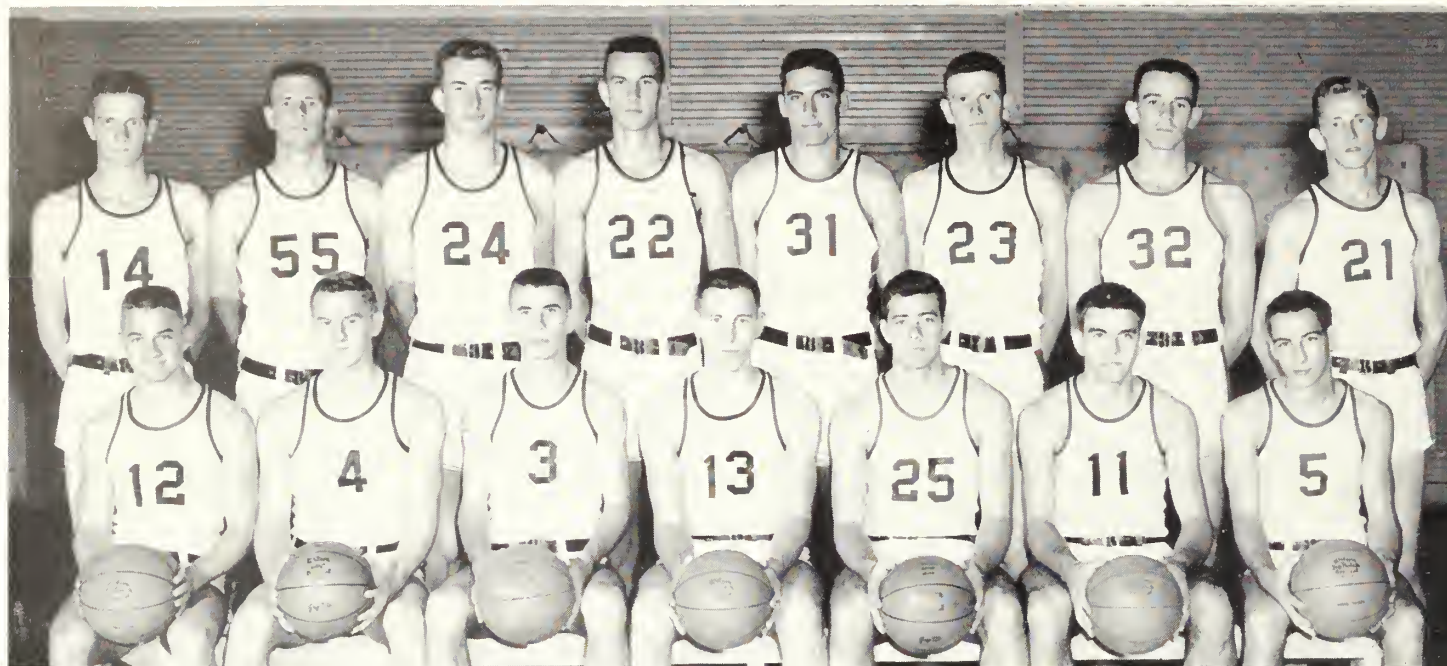


*... The
Big
Pay Off*

Bo scores two against Mercer Bears.

The 'Gator Bowl Tourney, Jacksonville, Florida

T H E T E A M



T H E A C T I O N



Hey David wake up, it's me, Bo!

Horace gets two against Bulldogs.

Boney and Jim rebound, David hopes.

Boney shoots two as Georgia wins.



T H E O U T C O M E

SECOND PLACE

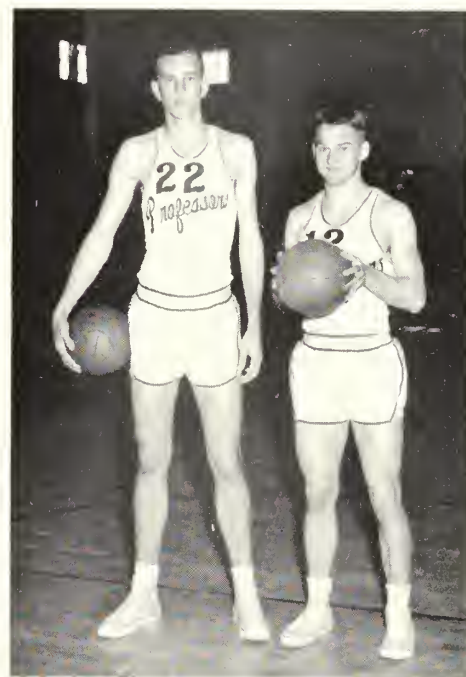
Our contribution to All Tourney Team—

BO WARREN
DAVID HARRIS
CHESTER WEBB
BOBBY PHILLIPS
HORACE BELFLOWER



FIRST STRING ALL TOURNEY TEAM

CHESTER WEBB
HORACE BELFLOWER



The team that never loses.

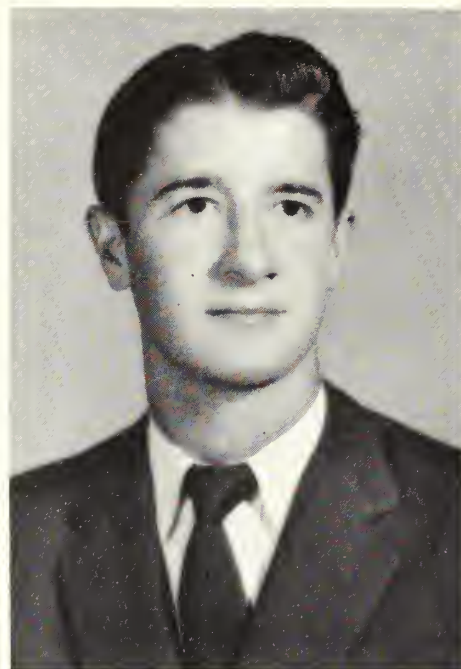
Back Row: Sally Kingman, Betty Ruth Folsom. Fr
ont: Shirley Willis, Carolyn Tally, Melba Prosser.



B A S E B A L L 54



THE COACH
J. I. CLEMENTS



THE CAPTAIN
JOE ED GREEN



THE TEAM

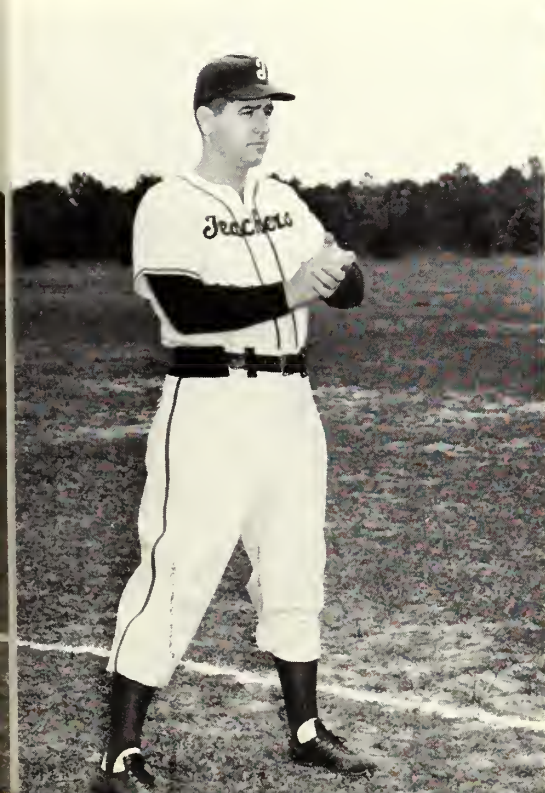
Kneeling (from left): Jim Prentice, Manager; Ace Little, Buddy Ward, Ferrel Sparks, Herschel Evans, Don Wallen, Ansel Callo-
way, Tom Perry, Ed Potts, Bob Cordell. *Standing:* Coach Clements, Kelly Powell, Kenneth Gale, Joe Ed Greene, David Harris,
Ken Everett, Vondall Hall, Jim Ford, Bo Warren, Larry Evans, Trainer.



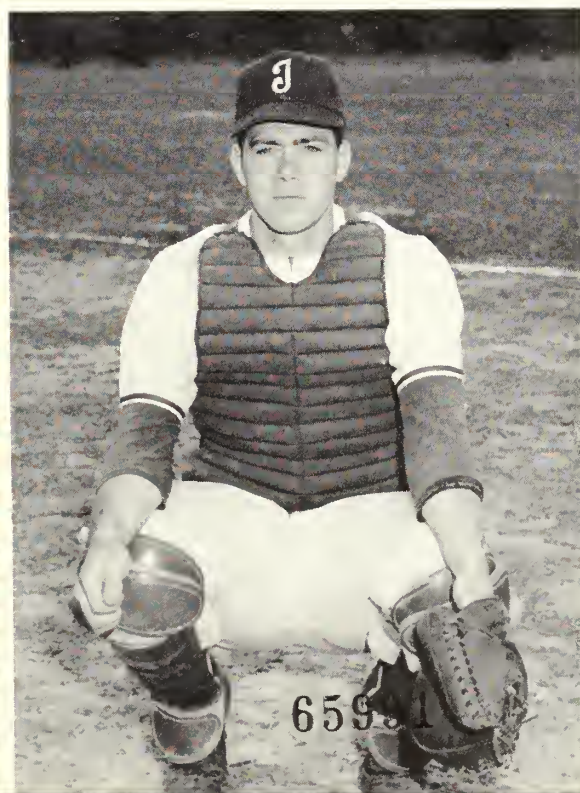
Kneeling: Ace Little, Buddy Ward, Ferrel Sparks. Standing: David Harris, Kelly Powell, Joe Ed Greene.

RETURNING
LETTERMEN
FOR
1954

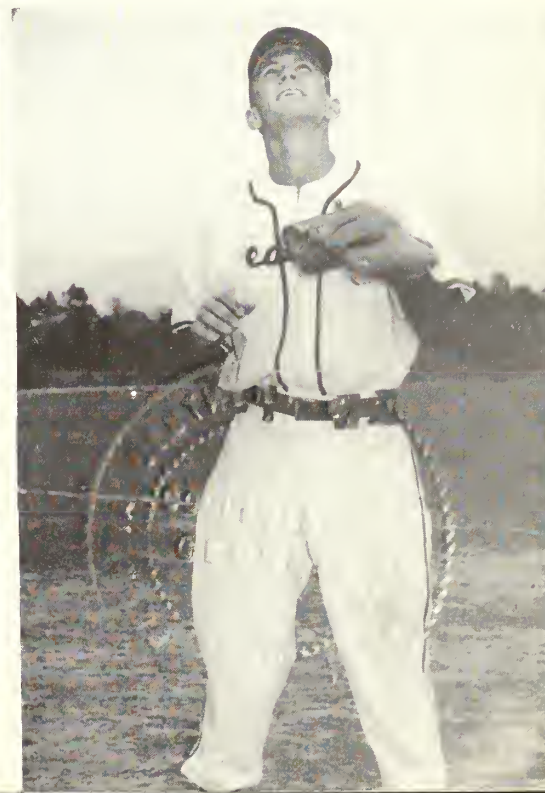
COACH CLEMENTS



FERREL SPARKS
Catcher



KELLY POWELL
Left Field



T H E I N F I E L D



EDDIE POTTS
Shortstop

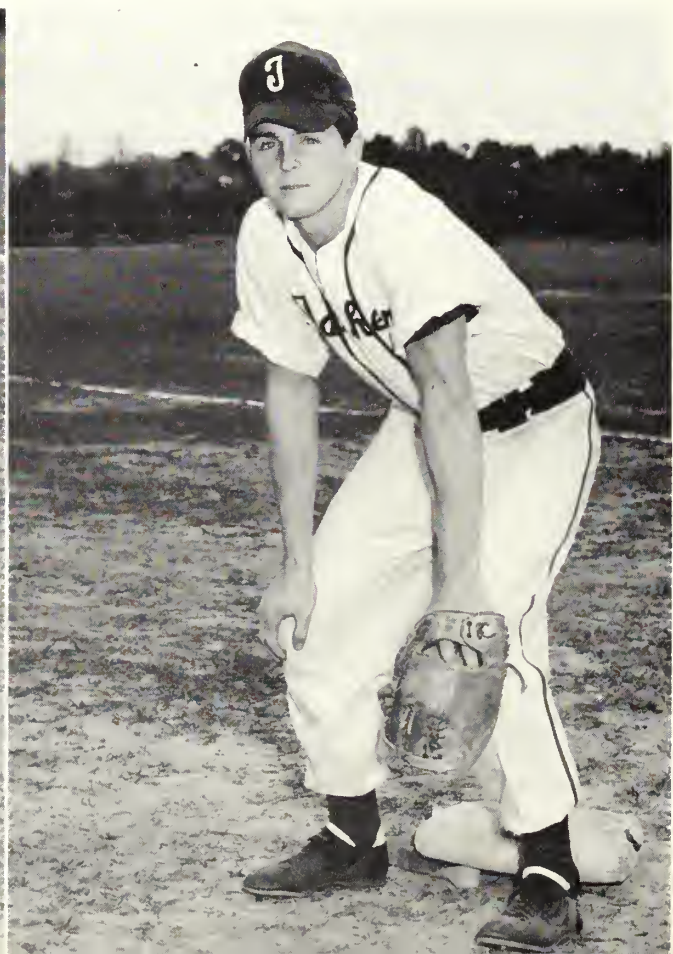


HERSCHEL EVANS
Second Base

DON WALLEN
Third Base



JIM FORD
First Base





Left to right: Joe Ed Greene, Vondall Hall, Ace Little, Ken Everett, Kenneth Gale.

T H E M O U N D C O R P

BASEBALL SCHEDULE

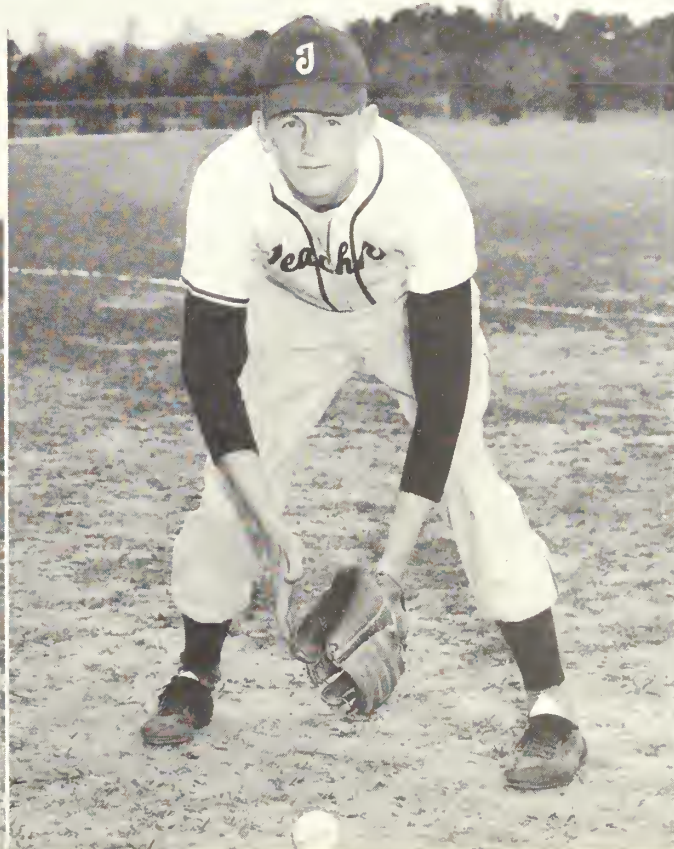
March	26	Erskine	Collegeboro
	27	Erskine	Collegeboro
April	2	Piedmont	Collegeboro
	3	Piedmont	Collegeboro
	6	Camp Gordon	Collegeboro
	9	North Georgia	Collegeboro
	10	North Georgia	Collegeboro
	14	Mercer	Macon
	15	Florida State	Tallahassee
	16	Florida State	Tallahassee

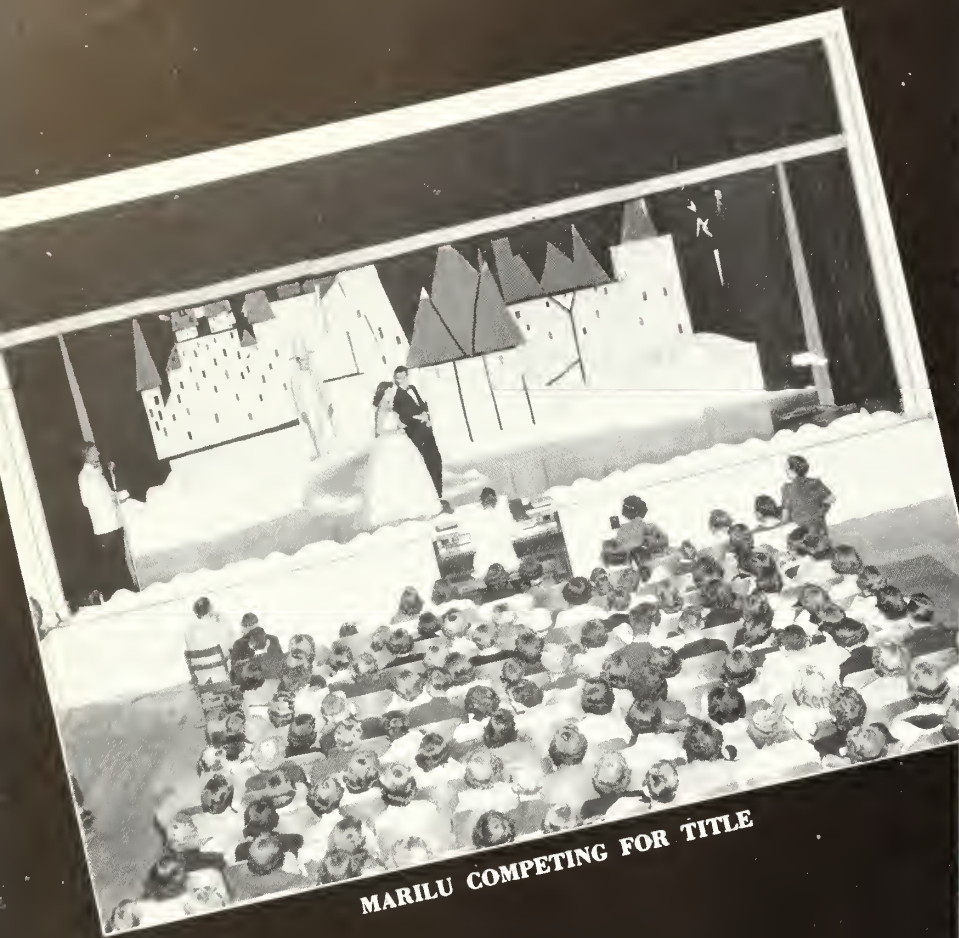
	22	Newberry	Newberry, S. C.
	23	Erskine	Due West, S. C.
	24	Erskine	Due West, S. C.
	29	P. I.	Collegeboro
	30	Parris Island	Collegeboro
May	6	Piedmont	Demorest
	7	Piedmont	Demorest
	8	North Georgia	Dahlonega
	12	Mercer	Collegeboro
	14	Newberry	Collegeboro
	15	Newberry	Collegeboro

BO WARREN
Center Field

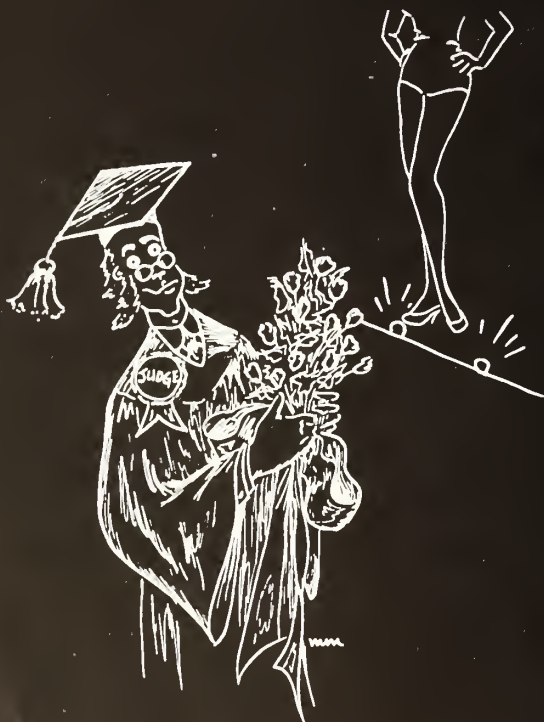


DAVID HARRIS
Right Field





MARILU COMPETING FOR TITLE



Features



"MISS T.C." AND HER COURT IN WINTER WONDERLAND

THE CAST APPEARING IN "WINTER WONDERLAND"





Shirley is crowned by Yvonne Jones, Miss T. C. of 1953.

When she was told . . .



E I G H T H A N N U A L

Beauty Revue

Shirley Hanson, junior of Avondale Estates, was crowned "Miss T. C. of 1954," and queen of the second annual Homecoming festivities.

Sponsored by the English Club and escorted by Charles Bedingfield, Shirley was crowned in a setting of Winter Wonderland. Each of the five finalists appeared from behind three dimensional snowflakes, with the largest displaying the "Snow Queen." "Miss T. C. of 1954."



Shirley Hanson
· · MISS T. C. OF '54' · ·

Sponsored by The English Club
Escorted by Charles Bedingfield



Shirley Dykes

SECOND PLACE

Sponsored by Philharmonic Choir

Escorted by Carlos Hand



Janel Fields

THIRD PLACE

Sponsored by George-Ann
Escorted by Henry Smith



Billie Jean Bazemore

FOURTH PLACE

Sponsored by "T" Club

Escorted by George McLeod



Betty Ruth Folsom

FIFTH PLACE

Sponsored by Alpha Psi Omega

Escorted by Fred Pierce

•• MISS T. C. GATOR MAID ••



Remer Tyson presents bouquet to Janel as Patsy Edenfield, alternate, looks on. From a group of eleven beauties, Janel Fields was selected "Miss T. C. Gator Maid" for 1953. With this title went the honor of representing T. C. for the Miss Gator Bowl title in Jacksonville, Florida.

Q U E E N O F T H E M A Y 1 9 5 4



MARILU HURT MILLS
Queen

C O U R T O F 1 9 5 3

JO STARR
Queen



Homecoming In '54 . . .



HOMECOMING FOR FORMER "MISS T. C. QUEENS"

From left: Dean Howard Robinson, '47; Jo Starr, '51; Betty Hendrix Fabris, '52; Shirley Hanson, '54; Yvonne Jones, '53; Lonadine Morgan Webb, '50; Jean Hodges, '48.

The second annual Teachers College Homecoming, under the direction of Dr. Georgia Watson, was a huge success. A variety of festivities filled the week-end for the returning Alumni. The eighth annual Beauty Revue, Parade of student-made floats; dedication of Howall Cone Hall; a show of fireworks as a salute to Collegeboro from Statesboro Civic Clubs, Basketball game with North Georgia College followed by a dance were many of the Highlights of Homecoming in 1954.

Taking part in ground-breaking ceremony for the new physical education building were (from left): J. B. Searce, Coach; Horace Belflower, Dr. Zack Henderson, President; David Harris, Captain; Dr. Harmon Caldwell, Chancellor of University System; Jim Harley, Bobby Phillips, Mr. Evans, Contractor.



. . . "Georgia's Heritage"

was the theme of the floats and dormitory decorations for Homecoming.



FIRST PLACE—FBLA

Winning first place in the parade of floats was the Future Business Leaders of America, with their version of a river boat carrying a typical Georgia cargo.

Second place went to Masquers with their "Scenic Georgia," a scene from Okefenokee Swamp.



ENGLISH CLUB—FLOAT

W H O · S W H O



MARY HELEN ALTMAN



ROSE MARY AMMONS



JANICE ELEANOR CHASTAIN



MARY ELIZABETH FLANDERS



HATTIE YVONNE JONES



MARILU HURT MILLS



TOMMIE JEAN CORBETT



MORRIS DAVIS

As a result of their years of devotion to the school and the students, these seniors have been selected to appear in the publication—Who's Who Among Students in American Universities and Colleges. The selection was made by the campus organizations, the faculty and the Who's Who committee, on the basis of scholarship, leadership, citizenship, service and promise of future usefulness to society.



JOHN FRANCIS DeNITTO



JOHN FRED PIERCE



BERNARD EUGENE ROBERTS



CHRISTY TUTTLE TROWELL



MOSE BASS



JAMES WALKER

Personalities . . .



Juanita Dowdy, Barbara Barineau, Carol Thomas



GENE ROBERTS

advertisements



Meet Your Friends at the

College Pharmacy

"Where the Crowds Go"

Prompt, Courteous Service

PHONE 414

PHONE 416



The College Grill

Milk Shakes

Sundaes

Ice Cream

"Good Foods"

Phone 640-L

U. S. Routes 301 & 25

STATESBORO, GEORGIA



THE BEST IN COLLEGE CLOTHES

for

STUDENTS AND FACULTY

HENRY'S

Statesboro, Georgia



HOKE S. BRUNSON

BUICK AUTOMOBILES

ALLIS-CHALMERS

FARM EQUIPMENT

Phone 237

Statesboro, Georgia

CENTRAL GA.
GAS CO., INC.

BUTANE — PROPANE
BOTTLED GAS SERVICE

STATESBORO SWAINSBORO
MILLEN CLAXTON

LANNIE F. SIMMONS

DODGE — PLYMOUTH

Dodge "Job-Rated" Trucks

Sales and Service

29 N. Main Street Phone 20
STATESBORO, GA.

Best Wishes to the Senior Class

* * *

Alfred Dorman Co.

Wholesale Grocers

Statesboro - Sylvania - Jesup - Eastman

Best Wishes to the Senior Class

Statesboro Grocery Co.

Wholesale Grocers

STATESBORO, GA.

Compliments of . . .

**THE ALDRED
HOTEL - COURT**



STATESBORO

GEORGIA

BULLOCH TRACTOR CO.

JOHN DEERE

*Farm Implements
Tractors*

Phone 378

STATESBORO

36 W. Main Street

GEORGIA

**Standard Tractor and
Equipment Co., Inc.**

FORD TRACTOR DEALERS

L. E. Tyson, *Owner*



Statesboro

Georgia

Diamonds — Watches

Jewelry — Gifts

Watch Repairing

LANIER JEWELERS

"Home of Hallmark Cards"

**Savannah Morning News
SAVANNAH EVENING PRESS**

SAVANNAH, GEORGIA

Congratulations to the Seniors

HARRY W. SMITH

JEWELER

20 South Main Street

Established 1919

**THREE REASONS FOR SAVING AT THIS
FRIENDLY ASSOCIATION:**

1. Your savings are insured up to \$10,000 by the Federal Savings and Loan Insurance Corporation.
2. We offer a liberal return on your savings.
3. Convenient location. Stop in for information.

**FIRST FEDERAL SAVINGS AND LOAN
ASSOCIATION**

STATESBORO

GEORGIA

Your Friendly Store

**HOME FURNISHING
COMPANY, INC.**

Stores

SAVANNAH - CLAXTON - STATESBORO

D. Clark Abbott, *Mgr.*

37 W. Main Street

STATESBORO

GEORGIA

•
"Service With a Smile"

**BULLOCH COUNTY
BANK**

NEW ACCOUNTS WELCOMED

MEMBER FEDERAL DEPOSIT INSURANCE CORPORATION

•



*THE FINEST IN
MOVIE ENTERTAINMENT
AT THE*

**Georgia Theater
State Theater
Family Auto Theater**

HAL MACON, JR., Mgr.

STATESBORO

GEORGIA

THAYER MONUMENT COMPANY

45 WEST MAIN

Phone 439

STATESBORO

GEORGIA

MEN'S AND BOYS' STORE

*EVERYTHING FOR
COLLEGE STUDENTS
DRESS and SPORTSWEAR*

East Main Street

Statesboro

Favorite Shoe Store Inc.

Shoes Fitted by X-Ray

WEATHERBIRD

VELVETSTEP

CITY CLUB

SHOES

EAST MAIN

STATESBORO

Statesboro's only exclusive shoe store

Compliments

. . . of . . .

Collins Frozen Foods, Inc.

DISTRIBUTOR OF
DULANY FROZEN FOODS

Statesboro, Georgia

RADIO CAB WHITE TOP CAB and BUS STATION CABS

313 PHONES 303

PROMPT
SERVICE

COURTEOUS
SERVICE

Bus Service Station
STATESBORO

GLOBE SHOE CO.



Distinctive Footwear and Hosiery



17 Broughton Street, East

SAVANNAH

GEORGIA

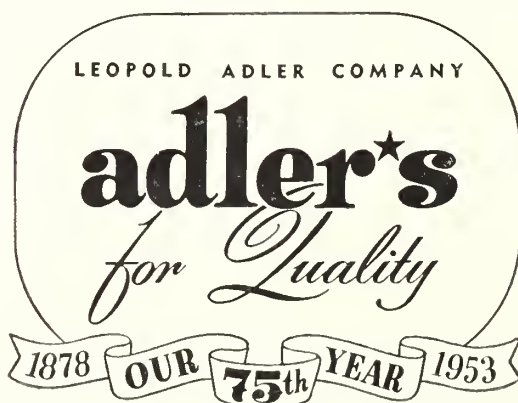
SKATE-R-BOWL and NATH'S T. V. SALES & SERVICE

Phone 519-M1

U. S. 301 — 1½ Miles South

STATESBORO

GEORGIA



Compliments of . . .

S. W. LEWIS, INC.

STATESBORO, GEORGIA

ELLIS FURNITURE CO., Inc.

COMPLETE HOME FURNISHINGS

Get The Best For Less

39 West Main Street

Statesboro

Georgia

Franklin Rexall Drugs

Statesboro Owned — Statesboro Operated

P. G. FRANKLIN, SR.

P. G. FRANKLIN, JR.

Est. 1908

"YOU CAN DEPEND ON ANY DRUG
THAT BEARS THE NAME REXALL"

Compliments

. . . of . . .

**FRANKLIN CHEVROLET
COMPANY, INC.**



STATESBORO

GEORGIA

**STATESBORO PROVISION
COMPANY**

Manufacturers and Dealers

ICE—COAL—COLD STORAGE

Phone 292

STATESBORO, GA.

United 5¢ to \$5.00 Store

"Your Small Dime Store

With the Big Bargains"

Phone 52

19 North Main St.

STATESBORO, GA.

Grimes Jewelry Company

Jewelry and Silverware

Diamonds and Watches

Glassware and China

Fountain Pens

23 South Main Street

Statesboro

Georgia

Compliments of

**SORRIER INSURANCE
AGENCY**

Established 1888

Phone 58

STATESBORO

GEORGIA

Compliments of
THE JAECKEL HOTEL

"Statesboro's Largest and Best"

STATESBORO

GEORGIA

Johnston and Donaldson
INSURANCE SERVICE

Bulloch County Bank Building

Phone 310

STATESBORO

GEORGIA

Clothes

For the Family

ROSENBERG'S

"Statesboro's Busy Department Store"

17 South Main St.

Phone 555

STATESBORO, GEORGIA

Compliments of . . .

W. E. HELMLY



LIFE INSURANCE



Statesboro

Georgia

The Whitney Hotel

Air-Conditioned

Facing Johnson Square

Home of the Famous—

Town House Buffet

I. Fincher Williams, Manager

Savannah

Georgia

THE STORE OF FASHION AUTHORITY



Bull and Perry

SAVANNAH

GEORGIA

All Forms of Insurance

Curry Insurance Agency



15 Courtland Street

STATESBORO

Phone 798

GEORGIA

Compliments

of

WILDES MOTEL

Statesboro

Georgia

**DONALDSON-SMITH
CLOTHING CO.**

7 South Main Street

STATESBORO

GEORGIA

The Best in Town for . . .

PROMPT SERVICE

ELLIS DRUG CO.

Fountain Service DeLuxe

and

Prescriptions Filled Quickly and Correctly
By Professional Pharmacists

**B R O O K L E T
LAUNDRY AND DRY CLEANING
SERVICE**

Owned and Operated by Jack Watts

PHONE 51

BROOKLET, GEORGIA

**SMITH-TILLMAN
MORTUARY**

AMBULANCE SERVICE

Day Phone 340

Night Phone 344

STATESBORO, GEORGIA

THE BEAUTY CENTER

"Make Ours Your Beauty Shoppe"

Phone 428

STATESBORO

GEORGIA

CITY DAIRY COMPANY

GRADE "A" DAIRY PRODUCTS

Pasteurized and Homogenized Milk

—Ice Cream—

Phone 269

STATESBORO

GEORGIA

THE BULLOCH HERALD

BULLOCH COUNTY'S LEADING
NEWSPAPER

Holder of Twenty Georgia Press Association
Awards and one National Editorial Association
Award for Newspaper Proficiency.

COMPLIMENTS

THE FAIR STORE

*"Your Style Headquarters in Statesboro
For Ladies'—Men—Children's Wear"*

Success is what happens when preparation
meets opportunity

**The Friendly
SEA ISLAND BANK**

Safety --- Courtesy --- Service

MEMBER F.D.I.C.

FROM THE TREE TO THE FINISHED PRODUCTS

As operators of the "World's Largest Integrated Kraft Container Plant" we are advocates of better forestry — because a major portion of the 35 million bags and 1,350 tons of paper we produce each day are made from pine trees grown in Bulloch and other Georgia Counties.

**U N I O N B A G
& PAPER CORPORATION
S A V A N N A H G E O R G I A**

Statesboro and Bulloch County
CHAMBER OF COMMERCE

31 North Main

Telephone 694

STATESBORO, GEORGIA

*Your Total Food
 Bill is Less When
 You Shop at Your*

**Friendly
 Colonial Store**

STATESBORO
 GEORGIA



Compliments of . . .

PARKWOOD COURT

Routes 301 and 25



STATESBORO

GEORGIA

Compliments of . . .

Tobacco Trail Court



Statesboro

Georgia

BRADY FURNITURE CO.

"YOUR HOME FURNISHER"

—EASY TERMS—

48 East Main St.

Phone 779

STATESBORO, GA.

*Compliments
 . . . of . . .*

HINES DRY CLEANERS



Phone 375

27 West Vine St.

STATESBORO, GEORGIA

W. C. AKINS & SON



Hardware — Sporting Goods

Fertilizer

Farm Implements



30 East Main Street

STATESBORO

GEORGIA



When...

HUNGRY, THIRSTY AND TIRED

...Visit...

THE BLUE TIDE

WHERE BOY MEETS GIRL

FOR

Books — Refreshments — Fun

GEORGIA TEACHERS COLLEGE

COLLEGEBORO GEORGIA



**Producers Cooperation
Association**

FEED — SEED — FERTILIZER

Farm Supplies and Insurance

Telephone 449

Statesboro

Georgia

Compliments of

JONES THE FLORIST

Statesboro

Georgia

Howard Lumber Company

LUMBER & BUILDERS SUPPLIES

31 Mulberry Street

Statesboro, Georgia

G.T.C. SENIOR RINGS

Designed and Manufactured by

HERFF-JONES CO.

H. S. CANFIELD, Representative

468 Blackland Road

Atlanta

*Invitations . . . Cards . . . Medals . . . Trophies
Diplomas . . . Caps and Gowns . . .
. . . School Annuals . . .*

Compliments of . . .

STILES MOTEL

STATESBORO, GEORGIA

Southern Auto Stores

"Stores Covering the South"

Phone 394

38 E. Main Street

STATESBORO, GEORGIA

EVERETT MOTOR CO.

DESOTO—PLYMOUTH

Phone 194

45 N. Main Street

Statesboro, Georgia

E. A. Smith Grain Company

Owners and Operators of

SMITH FERTILIZER COMPANY

High Grade Fertilizer

WHOLESALE and RETAIL BUILDERS SUPPLIES

Phone 171

Statesboro

Georgia

*Covering Southeast Georgia With
Nationally Advertised Brands for the Entire Family*

H. MINKOVITZ & SONS

DEPARTMENT STORE

SYLVANIA

STATESBORO

DOUGLAS

THE LINOLEUM SHOP

Floor Covering Experts

Manufacturers of

VENETIAN BLINDS

STATESBORO

GEORGIA

B. B. MORRIS CO.

FANCY AND STAPLE GROCERIES

Quality Meats

Barbecue

Phones 132 and 131

STATESBORO

GEORGIA

Bowen Furniture Co.

QUALITY COMFORT ECONOMY

STATESBORO, GEORGIA

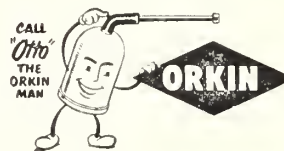
MOHAWK—KELVINATOR

BEAUTYREST—KROEHLER

SAMSON—RCA—WHITE—EMPIRE

CONTINENTAL—WARE

Compliments of



Orkin Exterminating Co., Inc.

World's Largest Pest Control Co.

Call 2-6444

2505 Skidaway Road

SAVANNAH

GEORGIA

Macon Grocery Company

Institutional Wholesale Grocers Catering to

SCHOOLS - HOSPITALS - RESTAURANTS - CLUBS

HOTELS - BAKERS - INSTITUTIONS

340-6 Oglethorpe St.

Phone 2-7126

MACON

GEORGIA



C. R. POUND

Supplier of Sinclair Products

and Goodyear Tires

2 East Cherry Street

Office Phone 145

Home Phone 144

STATESBORO

GEORGIA

WHEN YOU WANT

BETTER ICE CREAM . . .

SANCKEN'S ICE CREAM COMPANY

GEORGIA-CAROLINA

DAIRIES

AUGUSTA

GEORGIA

Automobile, Life, and Fire Insurance

State Farm Insurance Companies

BLOOMING, ILLINOIS

C. C. Slater, Agent

Phone: 790

Bulloch County Bank Bldg.

STATESBORO

GEORGIA

The drink everybody
knows



STATESBORO

GEORGIA

SAVANNAH HOTEL

R. A. BOVELL, Manager

"In the Heart of Historic Savannah"

SAVANNAH

GEORGIA

Bradley and Cone Seed and Feed Company

Baby Chicks

Fairway Seed

Good Germinated Co.

Hardware

Poultry Supplies

STATESBORO

GEORGIA

FARMERS TRACTOR AND EQUIPMENT CO.

49 East Main St.

Phone: 733

STATESBORO

GEORGIA

Fine Pianos

Sheet Music

Alnut Music Company

240 W. Broughton Street

SAVANNAH, GEORGIA

PHONOGRAPHS

MUSICAL

RECORDS

MERCHANDISE

Compliments
of
**DARBY LUMBER
COMPANY**

Suppliers of
ALL YOUR BUILDING NEEDS

Phone 380
Statesboro, Georgia

DuBose Dry Cleaners

"Cleaning Is Our Business"

Office Phone 538 Plant Phone 368-J
STATESBORO GEORGIA

J. L. HODGES

— Popular Priced Better Clothing —

LADIES'—MEN'S and CHILDREN'S WEAR

Phone 722 S. Main Street
STATESBORO GEORGIA



Sears, Roebuck and Co.
ORDER HOUSE

"Shop at Sears and Save"

Telephone 510

19 West Main

STATESBORO

GA.

For 88 years the graduates of G.T.C. have looked to us for the finest in HOME FURNISHINGS. Your charge account is welcomed. Free interior decorator service.

Lindsay and Morgan Co.
SAVANNAH, GEORGIA

CHARLES BRYANT

FRUITS and VEGETABLES

Wholesale Only

STATESBORO

GEORGIA

HODGES MOTEL

Home cooked food in ultra-modern

AIR CONDITIONED RESTAURANT

4 mi. N. on U. S. 301

Phone 3213

MR. & MRS. LOYD HODGES, Owners-Mgrs.

Statesboro, Georgia

Consult Us for Custom Mixing

BULLOCH MILLING CO.

USE YOUR HOME GROWN GRAINS

— Feeds for Every Need —

DINE AT . . .

**Franklin's Drive-In
Restaurant**

"Enjoy Our Dining Room, Fountain Service"

Phone 747

U. S. 301-25-30

STATESBORO, GA.

MORRIS LEVY'S

SAVANNAH'S FINEST

Store for Men and Shop for Women

**Statesboro Truck & Tractor
Co.**

*Farmall Tractors and Machines
International Trucks
International Freezers
and Refrigerators*

Phone 362

Vine St.

Statesboro, Georgia

Womacks Food Store

Groceries
Fresh Meats
Produce

Phone 698-L 460 South Main

STATESBORO, GEORGIA

Dixie Pig Drive Inn

"We Take Orders By Phone"

SHORT ORDERS SANDWICHES
PIT BAR-B-Q

Phone 4L 2 mi. South on 301

"Red" Thrasher, Mgr.

STATESBORO GEORGIA

Compliments of
. . . The Store that
CONFIDENCE
is building . . .

Men's Quality Shop

JOE LESSER

Home of KUPPENHEIMER — Good Clothes
SAVANNAH, GEORGIA

Best Wishes to the Seniors

Darley's Billiards

Compliments of

Woodcock Motor Company

Authorized Dealer

OLDSMOBILE—CADILLAC—G.M. TRUCKS

Statesboro, Georgia

Bringing Statesboro the Finest in
Radio Programs

The Statesboro Broadcasting System

W W N S

1490 on your dial
STATESBORO



STATESBORO, GEORGIA

Denmark Candy Company

WHOLESALE MERCHANDISE
CANDY and NOTIONS

N. Zetterower Ave.

Phone 760

Statesboro

Georgia

THE SOUTH'S FINEST
Annual Photographers

C
L
I
F
T
O
N

PHOTO SERVICE

STATESBORO

GEORGIA



annuals of distinction . . .



Original layouts, distinctive typography and sparkling reproduction that give your annual the luxurious appearance impossible to obtain by standard layout, mass-production methods.

Bowen, Long & Young, Inc.

110 TRINITY PLACE
DECATUR, GEORGIA



RESERVE

LH

1

.G43

R4

1954

ZACH S. HENDERSON LIBRARY



0 2001 0407702 5

you do be 27 on from this world

