

Georgia Southern University

Georgia Southern Commons

Armstrong Women's Basketball Team Archives

Armstrong Women's Basketball Archives

2001

2001 AASU Women's Basketball Guide

Armstrong State University

Follow this and additional works at: <https://digitalcommons.georgiasouthern.edu/armstrong-basket-wmn-team>

Recommended Citation

Armstrong State University, "2001 AASU Women's Basketball Guide" (2001). *Armstrong Women's Basketball Team Archives*. 26.

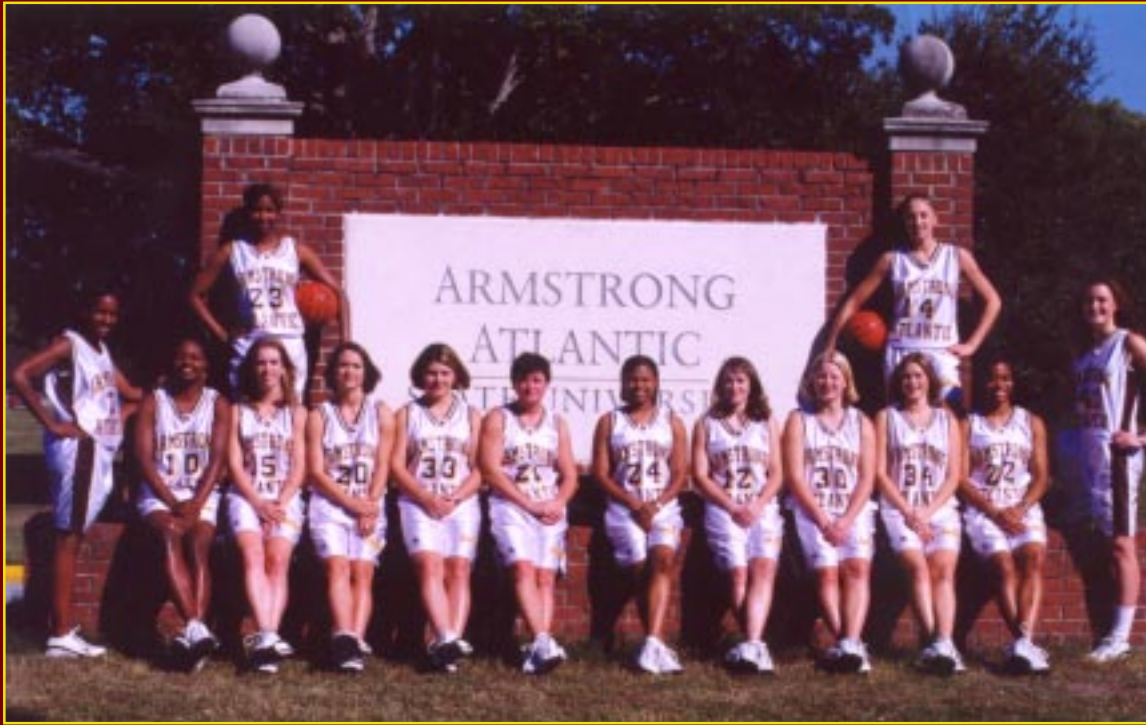
<https://digitalcommons.georgiasouthern.edu/armstrong-basket-wmn-team/26>

This media guide is brought to you for free and open access by the Armstrong Women's Basketball Archives at Georgia Southern Commons. It has been accepted for inclusion in Armstrong Women's Basketball Team Archives by an authorized administrator of Georgia Southern Commons. For more information, please contact digitalcommons@georgiasouthern.edu.

Armstrong Atlantic State University



2000-2001 Women's Basketball



2000-2001 Armstrong Atlantic State University Pirate Women's Basketball Team: Back Row (l-r): Melissa Germany, Catherine Compton. Front Row (l-r): Zandrique Cason, Lori Green, Becky Thrift, Melissa Brooks, Kristin Brewer, Michelle Hubbard, Shawnte Craig, Lexie Martin, Marloes Renskers, Nicole Joffrion, Dawn Baldwin, Rachel Baker.

2000-2001 Armstrong Atlantic State University Lady Pirates

#	Name	Ht.	Cl.	Pos.	Hometown/School
10	Lori Green	6-1	Jr.	F	Columbia, S.C. / Richmond Hill HS
12	Lexie Martin	5-7	Jr.	G	Youngsville, La. / St. Thomas More
14	Catherine Compton	6-1	Jr.	F	Lexington, S.C. / Clemson University
15	Becky Thrift	6-0	Soph.	F	Rincon, Ga. / Middle Georgia College
20	Melissa Brooks	5-7	Fr.	G	Savannah, Ga. / Calvary Baptist HS
22	Dawn Baldwin	5-11	Fr.	F	Jonesboro, Ga. / Westlake HS
23	Melissa Germany	5-9	Jr.	G/F	Macon, Ga. / Northeast HS
24	Shawnte Craig	5-5	Soph.	G	Hinesville, Ga. / Bradwell Institute
25	Michelle Hubbard	5-6	Sr.	G	Beaufort, S.C. / Thomas Heyward Academy
30	Marloes Renskers	5-7	Soph.	G	Enschede, The Netherlands / Southern Idaho
32	Zandrique Cason	6-0	Soph.	F	Tempe, Ariz. / Liberty University
33	Kristin Brewer	5-6	Soph.	G	Lumber City, Ga. / Jeff Davis HS
34	Nicole Joffrion	5-9	Fr.	G	Otsego, Mich. / Otsego HS
40	Rachel Baker	6-3	Fr.	C	Santa Rosa Beach, Fla. / Freeport HS

Head Coach: Roger Hodge (Concord College, '92)

Assistant Coaches: Flori Willie (Liberty, '98), Andrea Bloodworth (Calvin, '98)

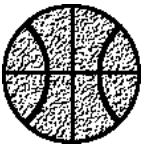


Table of Contents



Contents

2000-2001 Roster	IFC
2000-2001 Outlook	2-3
Head Coach Roger Hodge	4
AASU Coaching Staff	5
2000-2001 Player Profiles	6-14
Armstrong Atlantic State University	15
AASU Administration	16
Athletic Department Staff	17
Alumni Arena	18
AASU Athletic Training	19
2000-2001 Opponents	20-22
Women's Basketball Media Services	23
1999-2000 Results/Statistics	24
1999-2000 Player/Team Highs	25
Peach Belt Athletic Conference	26-27
PBC Year-by-Year	28
PBC Tournament History	29
AASU Records	30-32
Honors	33
All-Time Records	34
All-Time Results	35-38
This is Savannah	42
Media Spot Chart	IBC

Quick Facts

Location	Savannah, Ga. 31419
Founded	1935
Enrollment	5,600
Nickname	Pirates
Colors	Maroon and Gold
Affiliation	NCAA Division II
Conference	Peach Belt
Home Gym	Armstrong Sports Center
Capacity	5,000
President	Dr. Frank Butler (Interim)
Athletic Director	Dr. Eddie Aenchbacher
Women's Basketball Head Coach	Roger Hodge
Record at AASU (Years)	First Season
Overall Coaching Record (Years)	First Season
1999-2000 Overall Record	7-19
1999 PBC Record (Finish)	4-12 (t-5th, South)
Assistant Coach	Flori Willie
Graduate Assistant Coach	Andrea Bloodworth
Athletics Web Page	www.athletics.armstrong.edu

Credits

The 2000-2001 Armstrong Atlantic State University women's basketball media guide was published by the AASU Office of Sports Communications, Chad Jackson, director. AASU head coach Roger Hodge and assistant coaches Flori Willie and Andrea Bloodworth also contributed to this publication.



AASU Athletic Department Phone Directory

Main Numbers

Athletic Department	912-927-5336
Athletics FAX	912-921-5571
	912-921-5852

Administration

Dr. Eddie Aenchbacher, A.D.	912-921-5854
Dr. Donald Anderson, Asst. A.D.	912-921-5863
George Bedwell, Facilities	912-921-5685
Chad Jackson, Sports Communications	912-961-3255
William Buckley, A.T.C.	912-927-5200
Dianne Lane, Athletic Secretary	912-921-5849

Coaching Staff

Joe Roberts, Baseball	912-921-5686
Calvain Culberson, Asst. Baseball	912-921-5687
Griff Mills, Basketball (Men's)	912-921-5683
John Marhefka, Asst. Men's Basketball	912-921-5684
Steve Ray, Asst. Men's Basketball	912-921-7311
Roger Hodge, Basketball (Women's)	912-921-5861
Flori Willie, Asst. Women's Basketball	912-921-7310
Julie Long, Cross Country/Track	912-921-5841
Michael Butler, Men's Golf	912-921-5841
Simon Earnshaw, Tennis	912-921-5842
Marty McDaniel, Softball	912-921-2391
Alan Segal, Volleyball	912-921-3785
Janelle Torres, Asst. Volleyball	912-921-3786

Other Numbers

Press Table (Basketball)	912-921-5473
	912-921-5572
AASU Training Room	912-921-5860
Sports Center Weight Room	912-921-5858



Lady Pirates Look To Coach

Head Coach Roger Hodge, fresh from success as an assistant coach at perennial NCAA Division I Championship participant Liberty University, begins his first season at the helm of the Armstrong Atlantic State women's basketball team in 2000-2001. Promising an upbeat tempo on offense and a pressure defense, Hodge has a mixture of talented returnees and newcomers ready to make the first year of this "New Era In Savannah" a successful one.

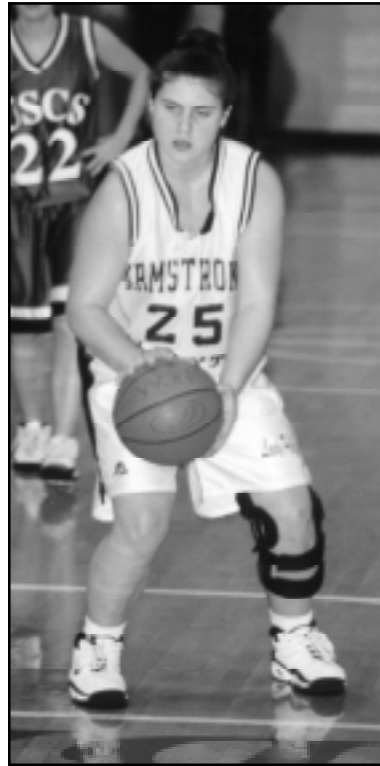
Last season, the Pirates finished 7-19, 4-12 in the Peach Belt Conference, tying for fifth in the PBC's South Division. Enter Roger Hodge, a fresh new face on the women's basketball head coaching scene, bringing a tradition of hard-nosed play and fundamentals to the Low Country, dedicated to the task of turning the Lady Pirate program into a consistent winner.

Six players return from last season's squad that, despite the record, turned in some quality wins during the season, including the school's first-ever win over Valdosta State, a 58-56, and an emotional 77-75 win over Columbus State -

the last loss CSU would experience until getting knocked out in the Elite Eight.

The player who hit the winning shot over CSU last season - point guard **Lexie Martin** (5-7, Jr., Youngsville, La.) - returns to anchor an experienced backcourt for coach Hodge and make the transition easier.

Martin was the second-leading scorer for the Pirates last season, averaging 11.0 points per game, and at 75.2 percent, is the Lady Pirates' all-time leading free throw shooter. A two-year starter for the Lady Pirates at point



Sophomore Kristin Brewer was a surprise for the Lady Pirates last season as the walk-on started 10 of the last 11 games at forward and responded with 7.9 points and 6.3 rebounds per game in that stretch.

guard, Martin can be used at both guard spots and will be a fixture in the starting lineup in this, her third season for the Pirates.

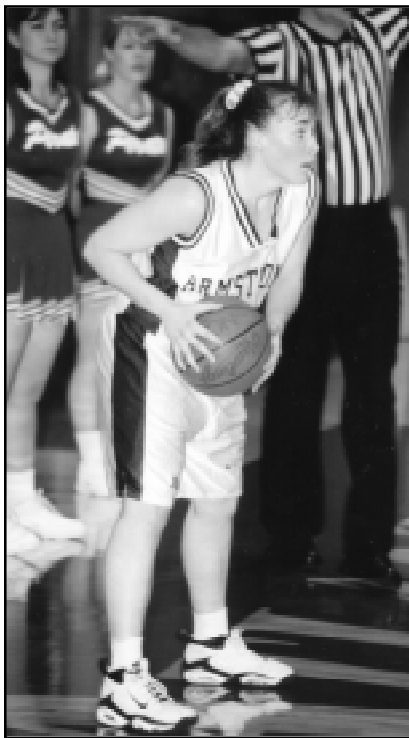
Also returning in the backcourt for AASU are **Shawnte Craig** (5-5, Soph., Hinesville, Ga.) and **Kristin Brewer** (5-6, Soph., Lumber City, Ga.). The duo of sophomores turned in solid freshman campaigns for AASU as Craig finished second on the squad in assists (73) and Brewer averaged 7.9 points and 6.3 rebounds over the Lady Pirates' last 11 games in 1999-2000. Craig will see time at point guard this season while Brewer will alternate

from two-guard and small forward.

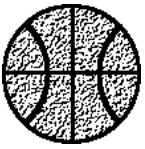
Coach Hodge also welcomes back another guard for the Lady Pirates this year as all-time AASU three-point leader **Michelle Hubbard** (5-6, Sr., Beaufort, S.C.) returns after a two-year absence from the team for her senior season. Hubbard, who has connected on 145 three-pointers and dished out 355 assists in her career, will compete for a starting spot at the two guard but could also see time at the point during the season.

The frontcourt returns two players from last season - **Lori Green** (6-1, Jr., Richmond Hill, Ga.) and **Melissa Germany** (5-9, Jr., Macon, Ga.). Green averaged 4.6 points and 4.0 rebounds for the Lady Pirates as a sophomore and should see plenty of time at the power forward position this season for coach Hodge. Germany, who excelled at both guard and forward last season, suffered an injury in the preseason and will be out for most of the 2000-2001 campaign.

Eight newcomers from across the country sail into



Junior Lexie Martin is the Lady Pirates' all-time leader in free throw percentage and has connected on 99 three pointers in two seasons for AASU.



Hodge For Success In New Era

Savannah with coach Hodge this season to add considerable talent and depth to the Lady Pirates.

Chief among the newcomers are two transfers from NCAA Division I programs - **Zandrique Cason** (6-0, Soph., Tempe, Ariz.) and **Catherine Compton** (6-1, Jr., Lexington, S.C.). Cason starred for NCAA Tournament participant Liberty University as a freshman last season, averaging 6.9 points and 4.6 rebounds per game for the Lady Flames. Compton was an ACC Academic Honor Roll honoree for the Lady Tigers, who captured an ACC Championship in 1998-99. Cason will most likely begin the season playing center for the Lady Pirates, while Compton will see time at power forward.

Two junior college transfers join the Lady Pirates this season, guard/forward **Marloes Renskers** (5-7, Soph., Enschede, The Netherlands) and forward **Becky Thrift** (6-0, Soph., Rincon, Ga.). Renskers comes from the College of Southern Idaho and should see time at the small forward spot this season for the Lady Pirates, while Thrift, a hard-nosed rebounder from Middle Georgia College, will see action at both forward spots.

Four freshmen round out the newcomers for the Lady Pirates. Guard **Nicole Joffrion** (5-9, Fr., Otsego, Mich.) is a pure long-distance threat who will work into the mix at shooting guard. Guard **Melissa Brooks** (5-7, Fr., Savannah, Ga.) is a local product who earned All-City honors while at Calvary Baptist HS in Savannah. Forward **Dawn Baldwin** (5-11, Fr., Jonesboro, Ga.) comes from the highly touted Atlanta prep scene and will be counted on to provide

quality minutes at power forward for the Lady Pirates, and center **Rachel Baker** (6-3, Fr., Santa Rosa Beach, Fla.) is the tallest women's basketball player at Armstrong in the past five years, since Mary Ann Merritt manned the middle for AASU in 1995-96.

The Lady Pirates open the 2000-2001 season by hosting the Chatham Orthopaedic Associates/Days Inn Oglethorpe TipOff Classic on Fri., Nov. 17 and Sat., Nov. 18. Regionally-ranked squads Northern Michigan and Catawba join Mount Olive and AASU in the tournament, making it one of the strongest Classics ever.

Following the Classic, AASU returns the favor for Catawba by traveling to the Catawba/All Sports Classic on Fri., Nov. 24 and Sat., Nov. 25. AASU will face Catawba and Livingstone during the tournament.

AASU then has home-and-away dates with Spelman College out of Atlanta before opening up its Peach Belt Conference schedule with 1999-2000 PBC champion Kennesaw State on Dec. 9.

Crosstown rival Savannah State comes calling on Dec. 12, then the Lady Pirates entertain Lenoir-Rhyne on Dec. 15 and Gardner-Webb on Dec. 30 before the start of the new year. A Jan. 8 matchup with Nova Southeastern wraps up the Lady Pirates' challenging non-conference schedule for 2000-2001.

The Pirates' conference schedule, always challenging, features four teams who advanced to the NCAA Division II Championships last season - Kennesaw State, Lander, Columbus State and Francis Marion. AASU hosts USC Aiken on Sat., Feb. 10 for homecoming, always an exciting time on campus at Armstrong Atlantic State.

Expectations around the league are calling for another tightly-contested race for the conference title, and the Lady Pirates, despite their youth and unfamiliarity, feel they can be in the mix for a berth in the Peach Belt Conference championships in Greenwood, S.C., on Feb. 28 to March 3. Coach Hodge and the Pirates are excited about beginning a new era in Armstrong Atlantic State women's basketball!



Sophomore Shawnte Craig started nine games as a freshman and finished second on the squad in assists (73) and third in steals (29).





Head Coach Roger Hodge



Roger Hodge Head Women's Basketball Coach

Roger Hodge begins his first season at the helm of the Armstrong Atlantic State women's basketball program in 2000-2001, coming to Savannah after a successful stint as an assistant coach for perennial NCAA Tournament participant Liberty University.

Hodge succeeds Lynn Jarrett, who led the Lady Pirate basketball program for four seasons. Hodge becomes the sixth AASU women's basketball coach in the program's history.

Entering the collegiate coaching ranks in 1997 with Liberty University, Hodge assisted Lady Flames head coach Rick Reeves on two Big South Conference championship squads in 1997-98 and 1998-99 and last year assisted head coach Carey Green. Liberty finished the 1999-2000 season with a 23-8 overall record and a 12-2 mark in the Big South, capturing the conference tournament for the fourth straight season and advancing to the NCAA Women's Basketball National Championships.

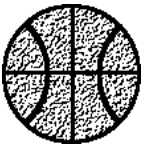
Prior to Liberty, Hodge was an assistant coach at Mercer Christian Academy in Princeton, W. Va., and helped lead the school to the 1996 Class A state championship. Hodge also assisted at Summers County High School from 1987-1994 and 1997, while the school captured three West Virginia Class AA State Championships in 1988, 1992 and 1994. Hodge also directed the Southern West Virginia AAU team that finished runner-up in the AAU National Championships in 1990 and finished second in the state of West Virginia in 1990 and 1992.

A graduate of Concord College in Athens, W.Va., Hodge received a bachelor of arts degree in 1992. He also received a bachelor's of science degree in education with a concentration in business principles in 1997. Hodge and his wife, Kristen, recently celebrated the birth of their first child, Madison.



AASU Athletic Director Dr. Eddie Aenchbacher introduces Roger Hodge as the Lady Pirates' sixth head women's basketball coach at a press conference on May 22, 2000.

Liberty University with Coach Hodge		
Year	Record	Postseason
1997-98	28-1 (10-0 BSC)	NCAA 64
	Big South Regular Season, Tournament Champions Flames lost to eventual national champion Tennessee, 102-58, in NCAA First Round	
1998-99	21-8 (9-1 BSC)	NCAA 64
	Big South Regular Season, Tournament Champions Flames lost to Georgia, 73-52, in NCAA First Round	
1999-2000	23-8 (12-2 BSC)	NCAA 64
	Big South Regular Season, Tournament Champions Flames lost to LSU, 77-54, in NCAA First Round	



Flori Willie ***Assistant Coach***

Flori Willie joins the Armstrong Atlantic State women's basketball coaching staff for the 2000-2001 season, joining her former collegiate coach from Liberty.

Willie comes to Savannah from the University of North Alabama, where she served as a graduate assistant to head coach Jeri Porter for the past two seasons. A former four-year standout at Liberty University, Willie played for both Hodge and Porter while at the Lynchburg, Va., school and was a two-time All-Big South Conference Academic honoree with the Lady Flames. One of the top rebounders for the Lady Flames, Willie helped lead Liberty to three NCAA Tournament appearances in three seasons.

Willie graduated from Liberty in 1998 with a bachelor's degree in exercise science.



Andrea Bloodworth ***Graduate Assistant Coach***

Andrea Bloodworth begins her first season on the Armstrong Atlantic State women's basketball coaching staff in 2000-2001, serving as the Lady Pirates' graduate assistant.

Bloodworth comes to Savannah after serving as an assistant coach at Ferris State University in 1998-99 and working with the Athletes in Action women's basketball squad during the fall of 1999.

A former standout at Lake Michigan Community College and Calvin College, Bloodworth earned All-MIAA honors for Calvin as a senior and led them to the NCAA Division III Regionals in each of her two seasons. She graduated from Calvin in 1998 with a bachelor's degree in physical education and is currently pursuing her master's degree in sports medicine/health science at Armstrong Atlantic State.



Team Managers



Robert Johnson



Nikki Garland



Lori Green

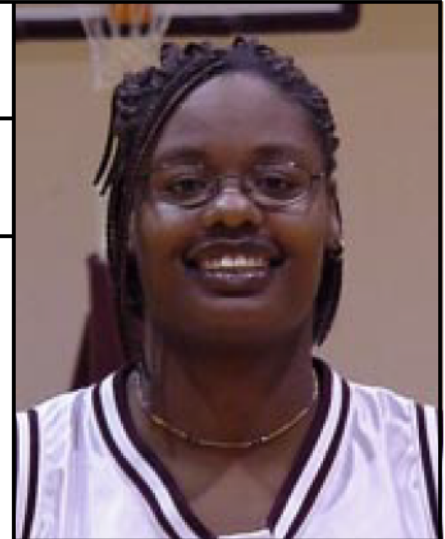
6-1 • Junior • Forward

Columbia, S.C. • Richmond Hill HS

The tallest returner for the Lady Pirates in 2000-2001, Lori will look to secure a starting spot as a junior ... Has an effective mid-range jump shot to go along with a good post game.

1999-2000: Averaged 4.6 points, 4.0 rebounds and 0.7 steals as a sophomore ... Played in 25 games, starting 4 ... Scored in double figures five times ... Notched second career double-double with 14 points and 13 rebounds at Morris College on 12/2/99 ... Hit 7-of-8 shots from the field en route to 16 points at Kennesaw State on 12/11/99.

1998-99: Played in 26 games as a freshman ... Averaged 3.0 points and 2.9 rebounds per game ... Recorded first career double-double with 12 points and 12 rebounds in AASU's 103-61 win over USC Aiken on 2/13/99.



Green's Game Highs

Points:

16 at Kennesaw State (12/11/99)

Rebounds:

13 at Morris College (12/1/99)

Assists:

2, twice. Last vs. GC&SU (1/2/00)

Steals:

3, five times. Last at KSU (12/11/99)



HIGH SCHOOL: Played at Richmond Hill HS for the Wildcats ... Earned best defensive player award ... Honor student who was also the track team's MVP.

PERSONAL: Born Lori Almetrius Green on October 30, 1980, in Hopkins, S.C. ... Hometown is Columbia, Ga. ... Daughter of Allen and Carolyn Green ... Undecided in major ... Has one brother, Patrick, and two sisters, Bridgette and Courtney ... Lists reading as a favorite hobby.

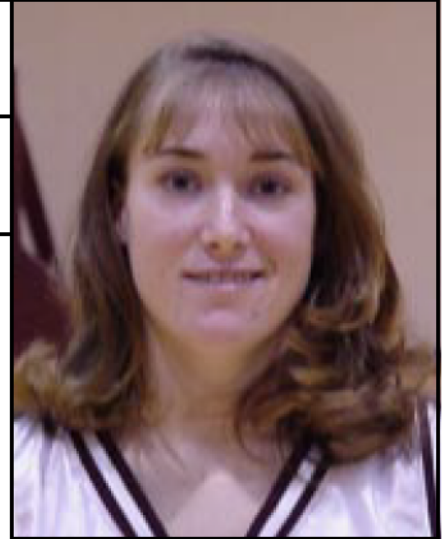
Lori Green's Career Statistics

Year	GP-GS	MIN	FG-FGA	PCT	3PM-3PA	PCT	FTM-FTA	PCT	OR-DR-TR	RPG	TP	PPG	AST	TO	BS	ST
1998-99	26-0	294	26-83	.313	0-1	.000	26-42	.619	35-41-76	2.9	78	3.0	6	28	6	17
1999-2000	25-4	294	49-101	.485	0-1	.000	16-32	.500	53-48-101	4.0	114	4.6	9	33	3	17
2 Years	51-4	588	75-184	.408	0-2	.000	42-74	.568	88-89-177	3.5	192	3.8	15	61	9	34



Lexie Martin

5-7 • Junior • Guard
Youngsville, La. • St. Thomas More



Martin's Game Highs

Points:
26 vs. Columbus State (2/5/00)
Rebounds:
7, twice. Last at North Florida (2/2/00)
Assists:
8 vs. UNC Pembroke (1/27/99)
Steals:
5, twice. Last at Francis Marion (1/5/00)

Two-year starter for the Lady Pirates at guard, Lexie is the most experienced returning player for AASU and will likely stay at the two-guard position for 2000-2001 ... All-time leader in free throw percentage for AASU and ranks fourth among the Lady Pirates' all-time leaders in three-pointers made with 99 career treys.

1999-2000: Averaged 11.0 points, 3.1 rebounds and 3.3 assists per game as a sophomore ... Played in 24 games, starting 22 ... Led the Lady Pirates in assists for the second consecutive season and ranked second on team in scoring and three-point shooting ... 48 steals also led team ... Ranked 23rd in the Peach Belt in scoring, 13th in assists, 12th in steals and 13th in three-point percentage ... Hit for season-high 26 points, including the game-winning jumper with four seconds left in 77-75 win over eventual Elite Eight participant Columbus State on 2/5 ... Hit a season-high six three-pointers en route to 21 points at Georgia College & State on 1/22.

1998-99: Started all 28 games for the Pirates as a freshman guard ... Averaged 10.7 points and 2.4 rebounds per game ... Led squad in assists with 86 ... Hit 52 of 140 three-pointers and led team in free throw percentage (80.3 percent).

HIGH SCHOOL: Played for three years at St. Thomas More HS ... Earned All-District and All-Academic honors for three seasons for the Cougars ... Member of four-time AAU Champion Kenner Angels ... Earned the Knights of Columbus award.

PERSONAL: Born Lexie Lynn Martin on April 7, 1980, in Houma, La. ... Daughter of Bryan and Lorraine Martin ... Has one brother, Brady ... Undecided in major ... Hobbies include sports and sleeping.



Lexie Martin's Career Statistics

Year	GP-GS	MIN	FG-FGA	PCT	3PM-3PA	PCT	FTM-FTA	PCT	OR-DR-TR	RPG	TP	PPG	AST	TO	BS	ST
1998-99	28-28	825	99-268	.369	52-140	.371	49-61	.803	15-51-66	2.4	299	10.7	86	103	2	56
1999-2000	24-22	785	87-245	.355	47-136	.346	42-60	.700	16-59-75	3.1	263	11.0	78	75	1	48
2 Years	52-50	1610	186-513	.363	99-276	.359	91-121	.752	31-110-141	2.7	562	10.8	164	178	3	104



Melissa Germany

5-9 • Junior • Guard/Forward
Macon, Ga. • Northeast HS

Versatile guard/forward who is one of the Lady Pirates' most experienced players ... Will most likely miss the 2000-2001 season with a knee injury suffered in the preseason ... Among the AASU career leaders in blocked shots.

1999-2000: Averaged 3.3 points, 4.5 rebounds and 1.3 assists per games as a sophomore ... Blocked 19 shots, second-best on squad ... Played in all 26 games, starting 14 ... Tied career high with 12 rebounds in AASU's 64-63 win over UNC Pembroke on 1/26 ... Scored season-high 11 points and grabbed eight rebounds against North Florida on 1/19.

1998-99: Played in 27 games, starting three, as a freshman ... Averaged 4.3 points and 5.0 rebounds per game ... Led team in blocked shots with 17 swats.

HIGH SCHOOL: Played for four years at Northeast High School. ...Earned coaches' and leadership awards for the Raiders and was also a standout cross country runner.

PERSONAL: Born Melissa Vernice Germany on November 27, 1979, in Macon, Ga., her hometown ... Daughter of Lizzie and Jeff Germany, Jr. ... Majoring in childhood education ... Lists Michael Jordan and Cynthia Cooper as favorite sports personalities ... Enjoys attending church and making new friends.



Germany's Game Highs

Points:

12 vs. Georgia College & State (1/23/98)

Rebounds:

12, twice. Last vs. UNCP (1/26/00)

Assists:

5 at Columbus State (2/6/99)

Steals:

4, three times. Last at CSU (2/6/99)



Melissa Germany's Career Statistics

Year	GP-GS	MIN	FG-FGA	PCT	3PM-3PA	PCT	FTM-FTA	PCT	OR-DR-TR	RPG	TP	PPG	AST	TO	BS	ST
1998-99	27-3	582	44-131	.336	9-36	.250	19-32	.594	35-99-134	5.0	116	4.3	39	80	17	42
1999-2000	26-14	556	33-96	.344	4-10	.400	17-33	.515	37-80-117	4.5	87	3.3	35	70	19	20
2 Years	53-17	1138	77-227	.339	13-46	.283	36-65	.554	72-179-251	4.7	203	3.8	74	150	36	62



Shawnte Craig

5-5 • Sophomore • Guard
Hinesville, Ga. • The Bradwell Institute

Returning point guard who made nine starts for the Lady Pirates as a freshman ... Had 73 assists last season, second-most for the Pirates, and will compete for time at the point guard position in 2000-2001.

1999-2000: Played in 26 games, starting nine ... Averaged 6.0 points, 2.4 rebounds and 2.8 assists per game ... Scored season-high 16 points against Clayton C&SU on 2/16 ... Dished out seven assists in season-opening win over FMC on 11/19.

HIGH SCHOOL: Played for four years at the Bradwell Institute in Hinesville, Ga. ... Earned Offensive and Defensive MVP awards for the Tigers ... Member of Super 11 All-Star team and All-Region honoree.

PERSONAL: Born Shawnte Nicole Craig on September 8, 1980, in Honolulu, Hawaii ... Hometown is Hinesville, Ga. ... Daughter of Howard and Margaret Craig ... Majoring in health science ... Enjoys attending church, music and playing basketball ... Cynthia Cooper and Michael Jordan are favorite sports personalities.



Craig's Game Highs

Points:
16 at Clayton C&SU (2/16/00)
Rebounds:
6 vs. Valdosta State (11/23/99)
Assists:
7 vs. Florida Memorial (11/19/99)
Steals:
3, five times.

Shawnte Craig's Career Statistics

Year	GP-GS	MIN	FG-FGA	PCT	3PM-3PA	PCT	FTM-FTA	PCT	OR-DR-TR	RPG	TP	PPG	AST	TO	BS	ST
1999-00	26-9	589	57-175	.326	11-37	.297	30-51	.588	14-49-63	2.4	155	6.0	73	84	1	29
1 Year	26-9	589	57-175	.326	11-37	.297	30-51	.588	14-49-63	2.4	155	6.0	73	84	1	29



Kristin Brewer

5-6 • Sophomore • Guard
Lumber City, Ga. • Jeff Davis HS

Walk-on guard who saw increasing minutes down the stretch for the Lady Pirates at small forward ... Technically sound player who plays hard underneath the basket.

1999-2000: Played in 23 games, starting 10 ... Averaged 4.1 points, 3.5 rebounds and 0.9 assists per game ... Started 10 of the Lady Pirates' last 11 games of the year and averaged 7.9 points and 6.3 rebounds during the last 11 games ... Recorded a double-double with 17 points and 10 rebounds in 64-63 win over UNC Pembroke on 1/26.

HIGH SCHOOL: Played four seasons for Jeff Davis HS in Hazlehurst, Ga. ... Named team MVP for the Jackets and honored with the coaches' "Pride of the Jackets" award as a senior ... Broke the 1,000 point plateau as a senior as well.

PERSONAL: Born Kristin Rae Brewer on April 8, 1981, in McRae, Ga. ... Hometown is Lumber City ... Daughter of Randy and Renee Brewer ... Majoring in radiology ... Enjoys softball, basketball and "being a country girl."



Brewer's Game Highs

Points:
17 vs. UNC Pembroke (1/26/00)
Rebounds:
10, twice. Last vs. KSU (1/29/00)
Assists:
4 vs. UNC Pembroke (1/26/00)
Steals
3 at USC Aiken (2/12/00)

Kristin Brewer's Career Statistics

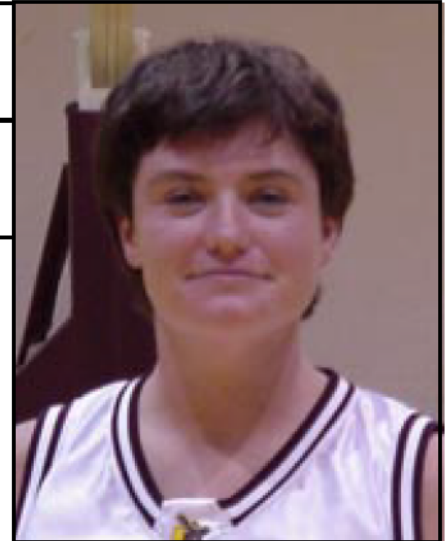
Year	GP-GS	MIN	FG-FGA	PCT	3PM-3PA	PCT	FTM-FTA	PCT	OR-DR-TR	RPG	TP	PPG	AST	TO	BS	ST
1999-00	23-10	382	34-86	.395	10-34	.294	16-21	.762	31-49-80	3.5	94	4.1	20	37	0	9
1 Year	23-10	382	34-86	.395	10-34	.294	16-21	.762	31-49-80	3.5	94	4.1	20	37	0	9



Michelle Hubbard

5-6 • Senior • Guard

Beaufort, S.C. • Thomas Heyward Acad.



Hubbard's Game Highs

Points:

29 vs. Francis Marion (2/8/97)

Assists:

9, twice - vs. Brewton-Parker (12/7/96)

vs. Clayton C&SU (12/13/97)

Steals:

4, twice.

Senior point guard who returns to the Lady Pirates for her final year of eligibility after two years away from the game ... Ranks among the Lady Pirates' Top 10 in scoring and is AASU's all-time three-point basket leader ... Should see time at both guard positions and provide a spark for the Lady Pirate offense.

1997-98: Played in 27 games, starting 18 ... Averaged 9.2 points, 3.6 rebounds and 4.4 assists as a junior ... Became the Lady Pirates' all-time three-point shooter during the season, hitting 34 of 100 treys ... Tied career high with nine assists in 58-49 win over Clayton College & State on 12/13.

1996-97: Played in all 27 games, starting 24 ... Averaged 12.1 points, 2.6 rebounds and 4.3 assists as a sophomore ... Sank a team-best 53-of-149 three-pointers ... Recorded career-high 29 points on 10-of-17 shooting from the field on 2/8 against Francis Marion ... Dished out nine assists against Brewton Parker on 12/7.

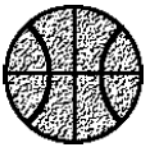
1995-96: Started all 26 games as a freshman ... Averaged 12.2 points, 4.2 rebounds and 4.6 assists ... Second on team in scoring and assists and led squad in three-point shooting, hitting 58 of 182 treys ... Scored season-high 28 points against USC Spartanburg on 2/17 ... Hit on 11-of-11 free throws en route to 26 points against UNC Pembroke on 1/24.

HIGH SCHOOL: *USA Today* All-America selection at Thomas Heyward Academy ... Averaged 26 points, six rebounds and four assists per game as a senior ... Women's Basketball News Service All-America, All-Region and All-Area Most Valuable Player and South Carolina Independent School Association (SCISA) Player of the Year as a senior.

PERSONAL: Born Linda Michelle Hubbard on October 14, 1977, in Savannah, Ga. ... Hometown is Beaufort, S.C. ... Daughter of Perry and Yvette Hubbard ... Has three sisters: Ashley (29), Dixie (27) and Jessica (15) ... Majoring in biology ... Enjoys fishing, playing tennis and boating .

Michelle Hubbard's Career Statistics

Year	GP-GS	MIN	FG-FGA	PCT	3PM-3PA	PCT	FTM-FTA	PCT	OR-DR-TR	RPG	TP	PPG	AST	TO	BS	ST
1995-96	26-26	905	108-302	.358	58-182	.319	44-58	.759	34-76-110	4.2	318	12.2	120	158	1	50
1996-97	27-24	838	114-278	.418	53-149	.356	47-68	.691	14-55-69	2.6	328	12.1	117	154	1	49
1997-98	27-18	753	77-214	.360	34-100	.340	60-82	.732	8-89-97	3.6	248	9.2	118	128	2	36
3 Years	80-68	2496	299-794	.377	145-431	.336	151-208	.726	56-220-276	3.5	894	11.2	355	440	4	135



Catherine Compton

6-1 • Junior • Forward

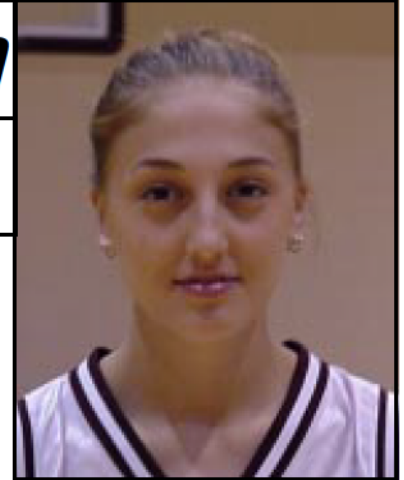
Lexington, S.C. • Clemson University

Junior forward who transfers from 1998-99 ACC champion Clemson Lady Tigers ... Will compete for time at forward for the Lady Pirates this season.

AT CLEMSON: Played for one season for the Lady Tigers ... Earned ACC Academic Honor Roll honors ... Saw action in four games as a sophomore, scoring two points and grabbing one rebound ... Clemson won the ACC regular season championship in 1998-99.

HIGH SCHOOL: Played for three season at Lexington High School in Lexington, S.C. for the Wildcats ... Was an athletic ambassador to Ireland.

PERSONAL: Born Catherine Jordan Compton on December 28, 1979, in Lexington, S.C., her hometown ... Daughter of Jim and Charlotte Compton ... Majoring in health science ... Enjoys lifting weights and would like to be a strength coach after college ... Father, Jim, played football for Clemson University ... Michael Jordan and Gabrielle Reece are favorite sports personalities.



Becky Thrift

6-0 • Sophomore • Forward

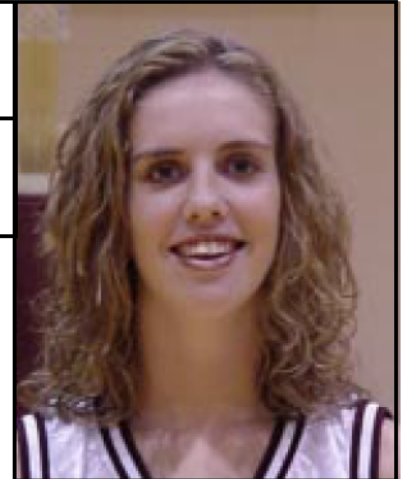
Rincon, Ga. • Middle Georgia College

Sophomore transfer from Middle Georgia College who will try and become a rebounding presence for the Lady Pirates in the frontcourt ... Workaholic in the paint and a good team player.

AT MIDDLE GEORGIA: Played for the Lady Warriors and helped lead the team to the NJCAA Region XVII Tournament Semifinals ... Scored season-high 15 points in 59-51 win over Truett-McConnell on 2/12.

HIGH SCHOOL: Three-year team MVP at South Effingham HS in Guyton, Ga. ... Scored over 1,200 career points for the Mustangs ... Averaged 21 points, 10 rebounds, six assists and six steals per game as a senior ... Two-time team MVP in softball and team MVP for soccer as well at South Effingham.

PERSONAL: Born Rebecca Leighe Thrift on September 15, 1980, in Savannah, Ga. ... Hometown is Rincon, Ga. ... Daughter of Ricky and Debbie Thrift ... Undecided in major ... Enjoys softball, soccer and playing clarinet ... Former Univ. of Georgia standout Kedra Holland-Corn is a favorite sports personality.





Marloes Renskers

5-7 • Sophomore • Guard

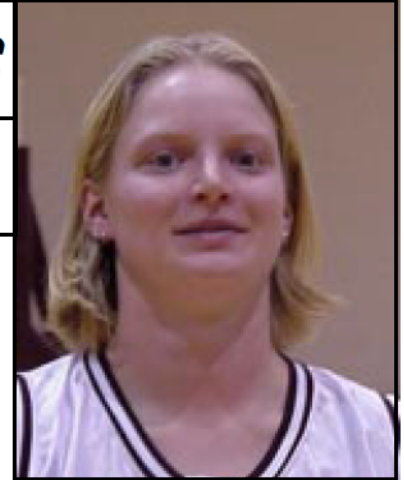
Enschede, Netherlands • Southern Idaho

Sophomore guard who transfers to AASU after one year at the College of Southern Idaho ... Dutch playmaking guard who will look to earn a starting spot in the backcourt.

AT COLLEGE OF SOUTHERN IDAHO: Played for the Golden Eagles as a freshman ... Played in six games before sustaining an ACL knee injury ... CSI went 14-17 during the 1999-2000 season.

NATIONAL TEAM: Played for the 1999 Dutch National team and the 1997 Dutch Junior National team.

PERSONAL: Born Marloes Renskers on April 3, 1981, in Enschede, The Netherlands, her hometown ... Daughter of Jan and Anneke Renskers ... Undecided in major ... Played club ball from 1997-99 with the Jolly Jumpers, a club that travelled all over the country ... Vince Carter is a favorite sports personality.



Zandrique Cason

6-0 • Sophomore • Forward

Tempe, Ariz. • Liberty University

Sophomore forward who follows Coach Hodge to AASU after a solid freshman year for the Big South champion Liberty University ... Will look to make an immediate impact in the Lady Pirates' frontcourt.

AT LIBERTY: Played in 31 games, starting 20, as a freshman for the Liberty University Lady Flames ... Averaged 6.9 points, 4.6 rebounds and 1.0 steals per game ... Scored season-high 18 points in 72-58 win over Winthrop on 1/20 ... Collected season-high 12 rebounds in win over West Virginia on 1/2 ... Scored 17 points against No. 8 Notre Dame on 12/5 ... Named to the Dean's List.

HIGH SCHOOL: Played for three seasons at Mesa Mountain View HS in Tempe, Ariz. ... Started for two seasons for coach Greg Sessions and the Toros ... Second-team All-East Valley honors, averaging 15 points and 7.8 rebounds per game as a senior ... Also lettered in volleyball and track and field.

PERSONAL: Born Zandrique Cason on June 28, 1981, in Tempe, Ariz., her hometown ... Daughter of Dalton and Ann Cason ... Majoring in psychology/health science ... Enjoys cooking and shopping ... Cynthia Cooper and Delisha Milton are favorite sports personalities.





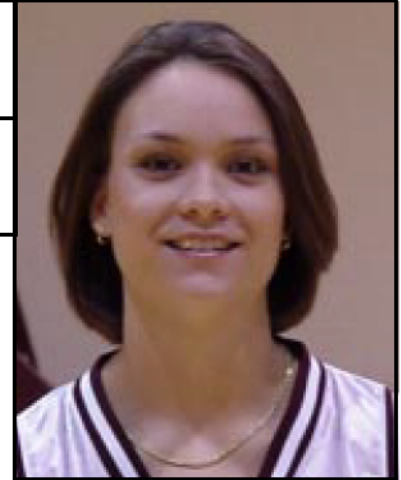
Melissa Brooks

5-7 • Freshman • Guard
Savannah, Ga. • Calvary Baptist HS

Freshman guard who will add depth to the backcourt in her first season ... Local product who starred for the Calvary Baptist Cavaliers in high school.

HIGH SCHOOL: Played for four seasons for Calvary Baptist HS ... Named second-team All-City as a junior and senior for the Cavaliers ... Also a standout softball and track athlete ... Gatorade's Will To Win Athlete in women's basketball in 2000.

PERSONAL: Born Melissa Christine Brooks on June 15, 1982, in Savannah, Ga., her hometown ... Daughter of Alan and Judy Brooks ... Majoring in early childhood education ... Enjoys basketball, softball, track and hanging out with friends ... Michael Jordan and Sheryl Swoopes are favorite sports personalities.



Dawn Baldwin

5-11 • Freshman • Forward
Jonesboro, Ga. • Westlake HS

Freshman forward who joins the Lady Pirates after a standout high school career at Westlake HS in Atlanta ... Athletic player who can fill in at a variety of positions, but who will look to see playing time at both forward positions.

HIGH SCHOOL: Played four seasons for Westlake HS in Atlanta ... Averaged 10 points and nine rebounds a game as a senior ... Earned Nike All-Star and Honorable Mention South Fulton County honors as a senior ... Member of the Honor Roll.

PERSONAL: Born Dawn LaToye Baldwin on March 10, 1982, in Atlanta, Ga. ... Hometown is Jonesboro ... Daughter of Donald and Glenda Baldwin ... Majoring in physical therapy ... Enjoys reading and talking on the phone ... Cousin Michael Baldwin played football for Albany State and another cousin, Isaac Conner, played basketball at UT-Chattanooga ... Vince Carter and Kevin Garnett are favorite sports personalities.





Nicole Joffrion

5-9 • Freshman • Guard
Otsego, Mich. • Otsego HS

Talented freshman guard from Michigan who comes from a strong basketball program in Otsego ... Holds school records at Otsego for steals and three-pointers in one game.

HIGH SCHOOL: Played four seasons for Otsego HS in Otsego, Mich. ... Three-year All-Conference and four-year All-District honoree for the Bulldogs ... Averaged 18.5 points, 8.5 rebounds and 4 steals per game as a senior ... Two-year team captain who also excelled as a volleyball player for the 1999 district champion squad.

PERSONAL: Born Nicole Danielle Joffrion on January 20, 1982, in Ypsilanti, Mich. ... Hometown is Otsego ... Daughter of Don and Barb Joffrion ... Has two brothers, Ryan (16) and Dustin (15) ... Majoring in pre-medicine ... Enjoys playing basketball, volleyball and softball ... Michael Jordan is a favorite sports personality.



Rachel Baker

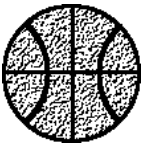
6-3 • Freshman • Center
Santa Rosa Beach, Fla. • Freeport HS

Rangy center who is the tallest player on the Lady Pirates' squad ... Tallest women's basketball player at AASU since Mary Ann Merritt, also 6'3", patrolled the center spot in 1995-96.

HIGH SCHOOL: Played one season at Freeport HS in Santa Rosa Beach, Fla. ... Earned All-State and All-Area honors for the Bulldogs ... Averaged 17 points, 11 rebounds, eight blocks and 2.2 steals per game as a senior ... Shot 73 percent from the free throw line ... Team MVP as a senior and also an All-A Honor Roll student.

PERSONAL: Born October 31, 1981, in Houston, Texas ... Hometown is Santa Rosa Beach, Fla. ... Daughter of Leah Croxton and David Baker ... Majoring in English ... Would like to pursue a career in radio or television after college ... Enjoys music and working with computers ... Kobe Bryant is a favorite sports personality.





This Is Armstrong Atlantic



Since its founding in 1935, Armstrong Atlantic State University has continued to develop to meet the Savannah community's educational needs. From its first location in Armstrong House in downtown Savannah to its current home on a scenic 250-acre lot off of Abercorn, the university has become one of the finest educational institutions in the South-eastern United States.

Armstrong Junior College was established by the Mayor of Savannah and other public officials in 1935. Housed in the beautiful and historic Armstrong House, a gift to the city from the family of George F. Armstrong, Armstrong Junior College grew over the years to occupy eight additional buildings in the Forsyth Park and Monterey Square areas.

In 1959, as Armstrong College of Savannah, it became a two-year unit of the University System.

The Board of Regents conferred four-year status on Armstrong in 1964 and the college moved to its present 250-acre location, a gift from Donald Livingston and the Mills B. Lane Foundation, in December of 1965. Additional buildings joined the eight original structures as Armstrong added professional and graduate programs and tripled in size.

In July of 1996, the Board of Regents voted to rename the college to Armstrong Atlantic State University to reflect its mission and identity. The university's reputation of excellence is still evident in its dedication to students, with a supportive environment.

AASU was fully accredited as a senior institution by the Southern Association of Colleges and Schools in December, 1968, with accreditation retroactive to January 1, 1968, and was last reaccredited in December, 1992.

The university offers over seventy-five academic



programs and majors in its School of Arts and Sciences, School of Health Professions and School of Education.

The academic community includes approximately 5,600 students and more than 250 faculty members. Enrollment has more than doubled in the last decade, from 2,740 students in 1987 to its current number.

Across campus, evidence of the university's growth can be found in its facilities. A Fine Arts Center, including a 1,000 seat theatre/auditorium, the Health Professions Building and an academic computing center are recent completed buildings, along with 84,400 square foot University Hall, built to make room for a student population of 8,000. A new 115,000 square foot, \$28 million dollar science building is currently under construction on campus as well.

The athletic department of Armstrong Atlantic State University is housed in the Armstrong Sports Center, completed in 1995. The Sports Center includes offices for the physical education department, training room and weight room areas, basketball courts, indoor track and offices for coaches and athletic department personnel. The building played host to the Peach Belt Conference's basketball tournament in 1998 and 1999. AASU sponsors nine intercollegiate sports and is a charter member of the Peach Belt Conference, formed in 1991.

Continuing a mission begun in 1935, Armstrong Atlantic State University today serves a rich gamut of traditional and non-traditional students. Sixty percent of AASU's student body are from the Savannah-Chatham area, while others come from around the state, nation and world. All have come to Savannah to experience and thrive on the campus of one of the fastest developing higher learning institutions in the nation - all have come to be a part of Armstrong Atlantic State University.





Dr. Thomas Z. Jones

University President

Thomas Z. Jones, the sixth president to serve at Armstrong Atlantic State University, began his first year at the helm of AASU on August 1, 2000. Jones was selected by the Board of Regents and University System of Georgia Chancellor Stephen R. Portch after an exhaustive national search.

Dr. Jones served on the faculty and administration at Columbus State University, as its vice president for academic affairs from 1988-2000, prior to coming to Armstrong Atlantic State. A 30-year veteran of university teaching and administration, Dr. Jones has taught at Indiana State University, Emory and Henry College and the West Virginia Institute of Technology. While at West Virginia Tech, Dr. Jones served as the Westmoreland Professor of Mining, an endowed professorship, and vice president of academic affairs.

Dr. Jones received his Bachelor's degree in physics from Fairmont State College, his Master's of Arts degree in geology from West Virginia University and his Ph.D. in Geology from Miami (Ohio) University.

From 1980-1988, he owned and served as president of Technical Evaluation Consultants, Inc., a privately owned business specializing in providing science, technical and engineering services for business, industry, government agencies and the legal community.

Dr. Jones and his wife, Joyce, have two sons, Matthew and Michael.



Dr. Eddie Aenchbacher

Athletic Director

Dr. Eddie Aenchbacher begins his fifth full year as the athletic director for Armstrong Atlantic State University.

Dr. Aenchbacher's responsibilities include overseeing the entire athletic department and promoting Armstrong Atlantic State athletics in the community of Savannah.

In addition to his administrative duties, Dr. Aenchbacher is an associate professor in the school's physical education program.

Dr. Aenchbacher received his Bachelor's degree in physical education from Armstrong Atlantic State in 1979, where he was a standout student-athlete for the baseball team as a pitcher. He received his Master's degree in 1980 and Doctorate of Education in 1990 from the University of Georgia.

Along with his student-athlete experience at AASU, Dr. Aenchbacher also coached the Pirate cross country teams for five years and started the first AASU men's soccer team, which he coached for seven years.

During Dr. Aenchbacher's tenure as athletic director, AASU's athletic programs have had tremendous success in the classroom and on the playing field. Student-athletes at AASU have excelled in academics with 55 percent earning a 3.0 grade point average or better. The overall grade point average of AASU student-athletes is 2.93, higher than the overall institutional GPA. AASU athletic teams are consistently ranked near the top of one of the nation's premier NCAA Division II conferences and just this past year achieved its best ever Sears Director's Cup final standing, 22nd.

Dr. Aenchbacher has been married for seven years to the former Michele O'Donnell of Savannah. They are the proud parents of two children, Jesse and Lainey.





AASU Athletic Department



Dr. Donald Anderson *Asst. Athletic Director / Services*



Dr. Anderson's association with AASU since 1966 includes stints as an Associate Professor, Acting Head of the Department of Education, Dean for Community Services and Registrar/Director of Admissions. Dr. Anderson joined the Athletic Department in 1992 and currently assists the AD with athletic eligibility and serves as academic advisor to AASU student-athletes. He was inducted to the AASU Athletic Hall of Fame as a Citation Award winner in 1996..

Chad Jackson *Director of Sports Communications*



Chad Jackson begins his second year at AASU as Director of Sports Communications. A Jacksonville, Fla., native, Jackson joined the Pirates from UNC Wilmington, where he served as assistant SID for the 1998-99 year. He graduated from the University of North Florida in 1995 with a Bachelor's Degree in history and served as the primary matrix board operator for the NFL's Jacksonville Jaguars in the team's first three seasons.

George Bedwell *Director of Facilities*



George Bedwell begins his second year as AASU's Director of Facilities, overseeing the Armstrong Sports Center, the ARC (Aquatics & Recreation Center), the baseball, softball and intramural fields and the AASU Tennis Complex. A former AASU professor and athletic coach from 1966-1980, Bedwell was the recipient of the first Dean Probst award for outstanding faculty in 1971.

Dianne Lane *Athletic Secretary*



A native Savannahian, Dianne Lane has been at AASU for the past thirteen years. Lane attended the University of Georgia and has been married to Ken Lane for 35 years. She has three children and five grandchildren, including two sets of twins - Tyler and Evan, and Parker and Dylan.

Dr. Will Lynch *Faculty Athletic Representative*



Dr. Will Lynch begins his third full year as AASU's Faculty Athletic Representative. A native of northern Michigan, Dr. Lynch came to AASU in 1993 and serves as an assistant professor in the Department of Chemistry and Physics. A three-year men's basketball starter and all-conference performer at Kalamazoo College, he earned undergraduate degrees in mathematics and chemistry in 1986, then received his Doctorate from Wayne State in 1991.

Lynn Roberts *Senior Women's Administrator*



Lynn Roberts begins her first year as the Senior Women's Administrator for the AASU athletic department. A former women's tennis coach from 1988-1991 for the Pirates, she currently serves as the Director of Intramurals & Recreation and is an assistant professor in the Department of Health and Physical Education. She is married to current AASU baseball coach Joe Roberts and together the couple have two sons, Brian and Eric.

Joe Roberts *Head Baseball Coach*



Joe Roberts begins his 22nd season as head baseball coach. Compiling an overall record of 873-391 (.691) in 21 seasons, Roberts became the NCAA's youngest coach to reach 850 wins in 2000. A graduate of St. Andrews College, Roberts has led the Pirates to NCAA Division II regional play nine times and three trips to the DII College World Series. A three-time South Atlantic Region coach of the year, Roberts' teams have had 21 consecutive winning seasons.

Roger Hodge *Head Women's Basketball Coach*



Roger Hodge begins his first season at the helm of the AASU women's basketball program in 2000-2001, coming to Savannah after a successful stint as an assistant coach for perennial NCAA Tournament participant Liberty University. A graduate of Concord College in Athens, W.Va., Hodge and his wife, Kristen, recently celebrated the birth of their first child, Madison.

Julie Long *Women's Cross Country Coach*



Julie Long joins the AASU coaching ranks for the 2000-2001 season as the women's cross country coach. Taking over from her brother, Dr. Greg Wimer, Long is a two-time All-Peach Belt runner who graduated from Armstrong Atlantic State with a bachelor's degree in nursing in 1996. Long also earned All-Southeast Region honors for the Pirates as a senior.

Marty McDaniel *Head Softball Coach*



Marty McDaniel is in his fourth season as AASU's head softball coach. In three seasons, McDaniel's teams have compiled a 120-39 mark and achieved the program's first No. 1 national ranking last season. McDaniel joined the AASU coaching ranks from UT-Chattanooga, where he served as an assistant coach to U.S. Olympic assistant Ralph Weekly for three seasons. McDaniel received his Bachelor's of Science degree from Carson Newman in 1989.

Simon Earnshaw *Head Tennis Coach*



Simon Earnshaw begins his second season as the head coach of the highly successful men's and women's tennis programs. A talented player, Earnshaw competed collegiately at Georgia College & State University and helped the Bobcats to four Top 10 seasons. Earnshaw earned his Bachelor's of Science degree in chemistry and Master's of Education in health and physical education from Georgia College & State.

Alan Segal *Head Volleyball Coach*



Alan Segal begins his second season as head volleyball coach after leading AASU to a 36-5 record in his first season. Segal joined the Pirates after a two-year stint as head coach at Michigan Tech. Segal graduated from Cal-State Sacramento in 1982 with a Bachelor's of Science degree in recreation administration and is active in officiating as well, serving as one of the AVP's top-rated officials over the past 10 years.



Alumni Arena @ Armstrong Sports Center



The Armstrong Atlantic State University athletic department prides itself on having one of the finest athletic facilities not only in the conference, but in the region as well.

AASU's Sports Center, completed in July of 1995, immediately became a top basketball complex by hosting the 1998 and 1999 Peach Belt Athletic Conference basketball tournaments.

This 82,000 square foot multi-purpose building provides expanded academic offerings in spacious, modern surroundings. Students have a three-station computer lab, a 1,965 square foot weight training/fitness center with 21 Cybex machine exercise stations and a free weight area, four new classrooms and two 3,535 square foot activity areas.

AASU's athletic teams play home events in a 4,000 seat arena that contains theatre-type seating for all spectators, and also plays host to a wide variety of social and sporting events.



Lady Pirates @ Alumni Arena

Year	Record
1995-96	5-8
1996-97	8-5
1997-98	6-6
1998-99	9-6
1999-2000	6-6
5 Years	34-31

Armstrong Sports Center Events

- 1998 & 1999 Peach Belt Athletic Conference Basketball Championships
- Georgia Special Olympics
- Georgia High School Basketball Regional Tournament
- Atlanta Hawks training camp
- Chamber of Commerce South Side Social
- 2000 Armstrong Atlantic State Pirate Volleyball Classic
- 1999 & 2000 Lady Pirate/Chatham Orthopaedic Associates Classic

Alumni Arena Women's Basketball Highs

Individual

Most Points: 43

Demetria McCloudon vs. Florida Tech, 12/3/98

Most Rebounds: 18

Demetria McCloudon vs. Savannah St., 12/5/98

Most Points by Opposing Player: 38

Joanna Cuprys (KSU), 1/4/97

Most Rebounds by Opposing Player: 17

Tisha London (UNC), 1/28/98

Team

Most Points: 103

AASU vs. USC Aiken, 2/13/99

Most Points, Both Teams, Overtime: 200

Augusta St. (102) vs. Clayton St. (98), 2/19/99

Most Points, Both Teams, Regulation: 164

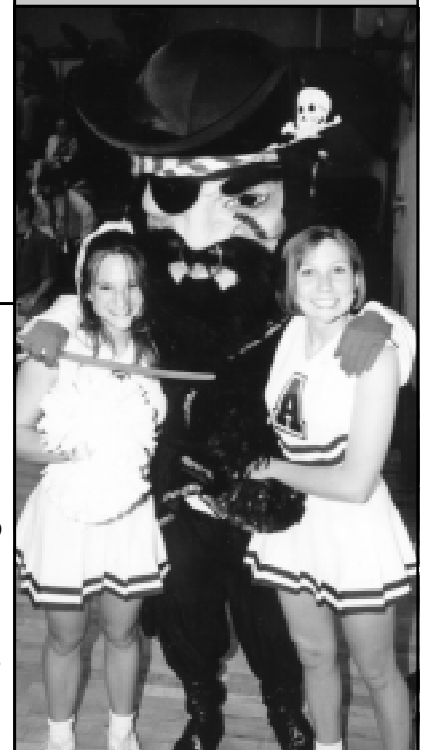
AASU (103) vs. USC Aiken (61), 2/13/99

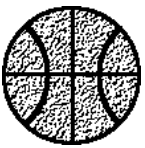
Largest Victory Margin: 49

Francis Marion (92) vs. Clayton St. (43), 2/24/98

Largest Victory Margin, AASU: 42

AASU (103) vs. USC Aiken (61), 2/13/99





AASU athletic teams benefit from the fine athletic training staff, headed by medical director Dr. Spencer Wheeler and head athletic trainer William Buckley.

AASU's training room, part of the Armstrong Sports Center, sits adjacent to the fitness center and across the hall from the Pirate locker rooms. The room offers the most modern and advanced equipment to help players deal with injuries and rehabilitation.



Training Center Administration



Dr. Spencer Wheeler

Team Physician

Dr. Spencer Wheeler is the medical director and team physician for Armstrong Atlantic's athletic teams. Dr. Wheeler completed his medical school training at the Medical College of Georgia in 1985, and his orthopaedic training at the University of Florida. Wheeler served two sports medicine fellowships; one at Johns Hopkins Institute and one in Sydney, Australia. Dr. Wheeler served as the head of athletic care in Atlanta for the 1996 Summer Olympics.



William Buckley, ATC

Head Athletic Trainer

William Buckley begins his eighth year as the head athletic trainer at Armstrong Atlantic State University.

A member of the National Athletic Trainers Association, Buckley's responsibilities include the rehabilitation and prevention of injuries to AASU athletes, and the assigning of athletic training coverage for all practices and games of the Pirates' nine intercollegiate athletic teams.

Buckley earned a Bachelor's of Science degree in liberal arts from AASU in 1988 and a Master's degree in health science from Georgia Southern University in 1991.

Training Room Staff



*Mylene Benito, ATC
Asst. Athletic Trainer*



*J.C. Anderson, PT, ATC
Curriculum Advisor*



*Sam Chapman, ATC
Graduate Assistant*



*John Ellis, ATC
Graduate Assistant*



2000-2001 PBC Opponents



A Jaguars



AUGUSTA STATE

Wed., Feb. 21
5:30 p.m. (AASU)

Location: Augusta, GA
Enrollment: 5,405
Colors: Royal Blue & White
Conference: Peach Belt
President: Dr. William Bloodworth, Jr.
Athletic Director: Clint Bryant
Home Court (capacity):
ASU Athletic Complex (2,216)
1999-2000 Record: 10-15
1999-2000 PBC Record: 5-11 (4th N)
Letterwinners Returning/Lost: 6/8
Head Coach: Greg Wilson
Career Record: 60-22
Record at ASU: 10-15, One Year
Coach's Office Phone: (706) 731-7915
Assistant Coaches:
Temekia Morton, Rick Elrod
SID: John Bush III
SID Phone: (706) 731-7925
SID FAX: (706) 737-1782
Web Address: www.aug.edu
Series Record: ASU leads 20-17
Last Meeting: AASU 62-59 (2/23/00)

C Lakers



CLAYTON STATE

Wed., Feb. 14
5:30 p.m. (AASU)
Sat., Feb. 24
5:30 p.m. (CC&SU)

Location: Morrow, GA
Enrollment: 4,500
Colors: Blue & Orange
Conference: Peach Belt
President: Mr. Michael F. Vollmer
Athletic Director: Mason Barfield
Home Court (capacity):
Athletic Center (1,000)
1999-2000 Record: 8-18
1999-2000 PBC Record: 4-12 (T-5th S)
Letterwinners Returning/Lost: 6/4
Head Coach: A.C. McCullers
Career Record: 8-18
Record at CC&SU: 8-18, One Year
Coach's Office Phone: (770) 961-3669
Assistant Coaches:
Greg Shock, Doug Crane
SID: Gid Rowell
SID Phone: (770) 961-4319
SID FAX: (770) 960-5127
Web Address: www.athletics.clayton.edu
Series Record: CSU leads 5-4
Last Meeting: AASU 74-65 (2/26/00)

C Cougars



COLUMBUS STATE

Sat., Jan. 13
2:00 p.m. (AASU)
Sat., Feb. 3
2:00 p.m. (CSU)

Location: Columbus, GA
Enrollment: 5,500
Colors: Red, White & Blue
Conference: Peach Belt
President: Dr. Frank D. Brown
Athletic Director: Herbert Greene
Home Court (capacity):
Frank G. Lumpkin Jr. Center (4,500)
1999-2000 Record: 25-7
1999-2000 PBC Record: 12-4 (2nd S)
Letterwinners Returning/Lost: 8/4
Head Coach: Jay Sparks
Career Record: 158-128
Record at CSU: 158-128, 11 Years
Coach's Office Phone: (706) 565-3669
Assistant Coaches:
Jonathan Norton, Toeshia Campfield, Robyn Davis
SID: Mike Peacock
SID Phone: (706) 569-3434
SID FAX: (706) 569-3435
Web Address: cougarnet.colstate.edu
Series Record: CSU leads 17-8
Last Meeting: AASU 77-75 (2/5/00)

F Patriots



FRANCIS MARION

Wed., Jan. 3
5:30 p.m. (AASU)

Location: Florence, SC
Enrollment: 3,814
Colors: Red, White & Blue
Conference: Peach Belt
President: Dr. Fred Carter
Athletic Director: Murray Hartzler
Home Court (capacity):
Smith University Center (3,027)
1999-2000 Record: 25-8
1999-2000 PBC Record: 13-3 (1st N)
Letterwinners Returning/Lost: 9/4
Head Coach: Lee Buchanan
Career Record: 282-129
Record at FMU: 52-11, Two Years
Coach's Office Phone: (803) 661-1249
Assistant Coach:
Mandy Decker
SID: Michael G. Hawkins
SID Phone: (803) 661-1222
SID FAX: (803) 661-1219
Web Address: www.fmarion.edu
Series Record: FMU leads 11-6
Last Meeting: FMU 76-56 (1/5/00)

G Bobcats



GEORGIA STATE

Sat., Jan. 20
5:30 p.m. (GC&SU)
Mon., Feb. 5
5:30 p.m. (AASU)

Location: Milledgeville, GA
Enrollment: 5,000
Colors: Hunter Green & Navy Blue
Conference: Peach Belt
President: Dr. Rosemary DePaolo
Athletic Director: Dr. J. Stanley Aldridge
Home Court (capacity):
Centennial Center (4,071)
1999-2000 Record: 17-10
1999-2000 PBC Record: 10-6 (T-3rd S)
Letterwinners Returning/Lost: 7/3
Head Coach: John Carrick
Career Record: 287-195
Record at GC&SU: 287-195, 17 years
Coach's Office Phone: (912) 445-1788
Assistant Coach:
Jonathan Babaree
SID: Brad Muller
SID Phone: (912) 445-1779
SID FAX: (912) 445-1790
Web Address: www.gcsu.edu
Series Record: GC&SU leads 31-15
Last Meeting: GC&SU 69-64 (1/22/00)

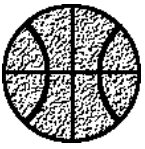
K Owls



KENNESAW STATE

Sat., Dec. 9
2:00 p.m. (AASU)
Sat., Jan. 27
2:00 p.m. (AASU)

Location: Kennesaw, GA
Enrollment: 13,152
Colors: Black & Gold
Conference: Peach Belt
President: Dr. Betty L. Siegel
Athletic Director: Dr. Dave Waples
Home Court (capacity):
Spec Landrum Centre (1,008)
1999-2000 Record: 25-5
1999-2000 PBC Record: 14-2 (1st S)
Letterwinners Returning/Lost: 3/7
Head Coach: Colby Tilley
Career Record: 570-153
Record at KSU: 118-33, 5 Years
Coach's Office Phone: (770) 423-6413
Assistant Coaches:
Paula Skinner, Sarah Coleman
SID: John Withrow (Interim)
SID Phone: (770) 499-3217
SID FAX: (770) 423-6665
Web Address: www.ksuowls.com
Series Record: KSU leads 13-8
Last Meeting: KSU 68-59 (1/29/00)



2000-2001 PBC Opponents



L Senators

L
a
n
d
e
r

Sat., Jan. 6
5:30 p.m. (LU)



Location: Greenwood, SC
Enrollment: 2,900
Colors: Royal Blue & Gold
Conference: Peach Belt
President: Dr. Daniel W. Ball
Athletic Director: Dr. Jeff May
Home Court (capacity):
Finis Horne Arena (2,500)
1999-2000 Record: 22-8
1999-2000 PBC Record: 12-4 (2nd N)
Letterwinners Returning/Lost: 5/6
Head Coach: Sheila Rhodes
Career Record: 54-32
Record at LU: 54-32, 3 Years
Coach's Office Phone: (864) 388-8257
Assistant Coach:
Matt Acton
SID: Bob Stoner
SID Phone: (864) 388-8962
SID FAX: (864) 388-8889
Web Address: www.lander.edu
Series Record: AASU leads 15-3
Last Meeting: LU 62-58 (1/8/00)

N Ospreys

N
o
r
t
h
F
l
o
r
i
d
a

Wed., Jan. 17
5:30 p.m. (UNF)
Wed., Jan. 31
5:30 p.m. (AASU)



Location: Jacksonville, FL
Enrollment: 12,086
Colors: Navy Blue & Gray
Conference: Peach Belt
President: Dr. Anne H. Hopkins
Athletic Director: Dr. Richard Gropper
Home Court (capacity):
UNF Arena (5,800)
1999-2000 Record: 16-11
1999-2000 PBC Record: 10-6 (T-3rd S)
Letterwinners Returning/Lost: 7/2
Head Coach: Mary Tappmeyer
Career Record: 211-190
Record at UNF: 116-105, 8 Years
Coach's Office Phone: (904) 620-4667
Assistant Coach:
Nancy Miller
SID: Bonnie Senappe
SID Phone: (904) 620-4025
SID FAX: (904) 620-2836
Web Address: www.unf.edu
Series Record: UNF leads 6-2
Last Meeting: UNF 60-54 (2/2/00)

U Braves

U
n
c
P
e
m
b
r
o
k
e

Wed., Jan. 24
5:30 p.m. (UNCP)



Location: Pembroke, NC
Enrollment: 3,100
Colors: Black & Gold
Conference: Peach Belt
Chancellor: Dr. Allen C. Meadors
Athletic Director: Dr. Dan Kenney
Home Court (capacity):
Jones Athletic Complex (3,000)
1999-2000 Record: 11-15
1999-2000 PBC Record: 3-13 (5th N)
Letterwinners Returning/Lost: 10/4
Head Coach: Sandi Mitchell
Career Record: 11-15
Record at UNCP: 11-15, One Year
Coach's Office Phone: (910) 521-6342
Assistant Coach:
Amy Mazner
SID: Matthew Sullivan
SID Phone: (910) 521-6371
SID FAX: (910) 521-6551
Web Address: www.uncp.edu
Series Record: AASU leads 14-8
Last Meeting: AASU 64-63 (1/26/00)

U Pacers

U
s
c

Sat., Feb. 10
5:30 p.m. (AASU)



Location: Aiken, SC
Enrollment: 3,200
Colors: Cardinal & White
Conference: Peach Belt
Chancellor: Dr. Thomas Hallman (interim)
Athletic Director: Randy Warrick
Home Court (capacity):
The Courthouse (2,500)
1999-2000 Record: 15-12
1999-2000 PBC Record: 7-9 (4th N)
Letterwinners Returning/Lost: 10/1
Head Coach: Phil Stern
Career Record: 50-59
Record at USCA: 20-32, Two Years
Coach's Office Phone: (803) 641-3373
Assistant Coach:
Tracy Abromavage
SID: Brad Fields
SID Phone: (803) 641-3252
SID FAX: (803) 641-3759
Web Address: www.usca.sc.edu
Series Record: AASU leads 13-9
Last Meeting: USCA 87-76 (2/12/00)

U Rifles

U
s
c
S
p
a
r
t
a
n
b
u
r
g

Sat., Feb. 17
5:30 p.m. (USCS)



Location: Spartanburg, SC
Enrollment: 3,800
Colors: Green, Black, & White
Conference: Peach Belt
Chancellor: Dr. John C. Stockwell
Athletic Director: Mike Hall
Home Court (capacity):
G.B. Hodge Center (1,535)
1999-2000 Record: 5-21
1999-2000 PBC Record: 2-14 (6th N)
Letterwinners Returning/Lost: 4/8
Head Coach: Gene Hill
Career Record: 5-21
Record at USCS: 5-21, One Year
Coach's Office Phone: (864) 503-5173
Assistant Coaches:
Katie Pate, Charmaine Sealy
SID: Jeremy Richardson
SID Phone: (864) 503-5129
SID FAX: (864) 503-5130
Web Address: www.uscs.edu
Series Record: USCS leads 14-7
Last Meeting: AASU 53-45 (2/19/00)

L Tip-Off Classic

L
a
d
y
P
i
r
a
t
e

Tournament Pairings

Friday, Nov. 17
Northern Mich. vs. Catawba, 6 p.m.
AASU vs. Mount Olive, 8 p.m.
Saturday, Nov. 18
Consolation Game, 6 p.m.
Championship Game, 8 p.m.

Mount Olive

Location: Mount Olive, NC
Nickname: Trojans
Head Coach: Wendy Lawrence
1999-2000 Record: 6-20
Series Record: First Meeting

Northern Michigan

Location: Marquette, MI
Nickname: Wildcats
Head Coach: Mike Geary
1999-2000 Record: 25-6
Series Record: First Meeting

Catawba

Location: Catawba, NC
Nickname: Lady Indians
Head Coach: John Duncan
1999-2000 Record: 19-8
Series Record: CC Leads 1-0



2000-2001 Non-Conf. Opponents



S Jaguars



Spelman
Wed., Nov. 29
6:00 p.m. (SC)
Wed., Dec. 6
6:00 p.m. (AASU)

Location: Atlanta, GA
Enrollment: 3,000
Colors: Columbia Blue & White
Conference: Independent
President: Dr. Audrey F. Manley
Athletic Director: Dr. Dorothy Richey
Home Court (capacity):
Read Hall (350)
1999-2000 Record: 6-17
Letterwinners Returning/Lost: 3/8
Head Coach: LaVon Mercer
Career Record: 32-38
Record at SC: 32-38, 2 Years
Coach's Office Phone: (404) 215-7924
Assistant Coach:
Quincy Atkinson
SID Contact: Antron Freeman
SID Phone: (404) 223-7595
SID FAX: (404) 223-7646
Web Address: www.spelman.edu
Series Record: Tied, 2-2
Last Meeting: AASU 79-49 (2/17/92)

S Tigers



Savannah
Tues., Dec. 12
7:00 p.m. (AASU)

Location: Savannah, GA
Enrollment: 3,600
Colors: Blue & Orange
Conference: Southern Intercollegiate
President: Dr. Carlton Brown
Athletic Director: Charles Elmore
Home Court (capacity):
Wiley Gym (2,100)
1999-2000 Record: 7-16
Letterwinners Returning/Lost: 3/7
Head Coach: Anita Walsh
Career Record: N/A
Record at SSU: 7-16, One Year
Coach's Office Phone: (912) 353-5274
SID: Lee Grant Pearson
SID Phone: (912) 356-2446
SID FAX: (912) 353-5287
Web Address: www.savstate.edu
Series Record: SSU leads 20-11
Last Meeting: SSU 64-58 (12/4/99)

L Bears



Lenoir
Fri., Dec. 22
8:00 p.m. (AASU)

Location: Hickory, NC
Enrollment: 1,600
Colors: Red & Black
Conference: South Atlantic
President: Dr. Ryan LaHurd
Athletic Director: Dr. Jane Jenkins
Home Court (capacity):
Shuford Gym (3,200)
1999-2000 Record: 15-12
1999-2000 SAC Record: 10-6 (T-3rd)
Letterwinners Returning/Lost: 10/1
Head Coach: Kris Ruffo
Career Record: 98-77
Record at LRC: 37-44, 3 Years
Coach's Office Phone: (828) 328-7132
Assistant Coaches:
Amy Dellinger, Bobby Rowe
SID: Michael MacEachern
SID Phone: (828) 328-7174
SID FAX: (828) 322-9265
Web Address: www.lrc.edu
Series Record: LRC leads 2-0
Last Meeting: LRC 60-57 (12/19/98)

G Bulldogs



Gardner
Sat., Dec. 30
Noon (AASU)

Location: Boiling Springs, NC
Enrollment: 3,015
Colors: Scarlet, White & Black
Conference: Independent
President: Dr. M. Christopher White
Athletic Director: Chuck Burch
Home Court (capacity):
Lutz-Yelton Convocation Center (5,500)
1999-2000 Record: 17-10
Letterwinners Returning/Lost: 9/4
Head Coach: Eddie McCurley
Career Record: 79-56
Record at LRC: 79-56, 5 Years
Coach's Office Phone: (704) 406-4352
Assistant Coaches:
Mandy Mattox, Tammy Gilliam
SID: Thomas A. Goodwin
SID Phone: (704) 406-4355
SID FAX: (704) 406-3523
Web Address: www.gardner-webb.edu
Series Record: First Meeting

N Knights



Nova
Mon., Jan. 8
5:30 p.m. (AASU)

Location: Ft. Lauderdale, FL
Enrollment: 4,218
Colors: Navy Blue & White
Conference: Florida Sun
President: Ray Ferrero, Jr.
Athletic Director: Corey Johnson
Home Court (capacity):
George Mayer Gymnasium (1,000)
1999-2000 Record: 12-16
1999-2000 FSC Record: 7-3 (2nd)
Starters Returning/Lost: 2/3
Head Coach: Marilyn Rule
Career Record: 25-23
Record at Nova: 25-23, 2 Years
Coach's Office Phone: (954) 262-8078
Assistant Coaches:
Jeff Heinrich, Gina Graziani
SID: Vicki Greenbaum
SID Phone: (954) 262-8261
SID FAX: (954) 699-4035
Web Address: www.nova.edu
Series Record: First Meeting

C All Sport a Classic

Tournament Pairings

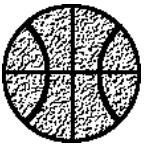
Friday, Nov. 24
USC Aiken vs. Livingstone, 6 p.m.
AASU at Catawba, 8 p.m.
Saturday, Nov. 25
AASU vs. Livingstone, 2 p.m.
USC Aiken at Catawba, 4 p.m.

Catawba

Location: Catawba, NC
Nickname: Lady Indians
Head Coach: John Duncan
1999-2000 Record: 19-8
Series Record: CC Leads 1-0

Livingstone

Location: Salisbury, NC
Nickname: Blue Bears
Head Coach: Andrew Mitchell
1999-2000 Record: 18-11
Series Record: First Meeting



AASU Basketball Media Services



The Office of Sports Communications at Armstrong Atlantic State University thank you for your interest in AASU women's basketball. Should you need any further assistance in covering the Pirates during the 2000-2001 season, please do not hesitate to contact us:

Office of Sports Communications
Armstrong Atlantic State University
Chad Jackson, Director
11935 Abercorn Street
Savannah, GA 31419
Phone: (912) 961-3255
Fax: (912) 921-5571
email: jacksoch@mail.armstrong.edu

Thanks again for your coverage of the Pirates throughout the season.

Chad Jackson
Director of Sports Communications

Game Services

The Office of Sports Communications staff will furnish media representatives with game programs, pregame notes and statistics, in addition to halftime and final game statistics and play-by-play.

Press Area

The designated press area for Alumni Arena at the Armstrong Sports Center are on either side of the court. Seats are marked prior to each game and we ask that members of the media adhere to seating arrangements during the contest. Photo areas are at the baseline of either basket, but not directly behind the basket. The balconies above each



basket are also accessible for photographers - an elevator is located at the southeast corner of the Sports Center.

Two press row phone lines are available for media members wishing to file from courtside. The numbers are (912) 921-5572 and (912) 921-5473. One phone will be provided on the officials' side of the court for each contest.

Post-Game Interviews

The Armstrong Atlantic State women's basketball locker rooms are closed to the media. Head coach Roger Hodge and requested players will be brought out to those needing interviews following a 10-minute cooling off period.

Media Credentials

Media credentials for photo and press are not needed, however seating on press row is limited. Requests for press row seating must be made in advance to Director of Sports Communications Chad Jackson via fax, email or phone at least two (2) days prior to each contest.

Radio Broadcasts

Oposing teams wishing to broadcast from Alumni Arena at the Armstrong Sports Center are welcome, however lines are limited. If you are planning on broadcasting an upcoming game, please contact Chad Jackson at least two (2) days prior to your contest.

Pre-Game Interviews

Requests for interviews with Armstrong Atlantic State players and coaches should be directed to Director of Sports Communications Chad Jackson. Arrangements will be made for players to call media members if a phone interview is requested - it is the AASU Athletic Department policy not to publicize student-athlete's home phone numbers.

AASU Local Media Coverage

Print:

Savannah Morning News
Beat Writer: Jim Thomas
Phone: (912) 652-0350
Fax: (912) 234-6522

Broadcast:

WSAV-TV 3 (NBC)
Sports Director: Erny Bonistall
Phone: (912) 651-0300
WTOG-TV 11 (CBS)
Sports Director: Rick Snow
Phone: (912) 234-1111
WJCL-TV 22 (ABC) / WTGS-TV 28 (Fox)
Sports Director: Brady Poscik / Rick Nyman
Phone: (912) 921-222 / (912) 925-2287





1999-2000 Results/Statistics



1999-2000 Armstrong Atlantic State University Game Results

Overall: 9-17 • Home: 6-6 • Away: 1-10 • Neutral: 0-3 • PBC: 4-12

DATE	OPPONENT	SCORE	HIGH SCORER	HIGH REBOUNDER
11/19/99	% FLORIDA MEMORIAL	W 86-53	(16) Duanda Ball	(8) Melissa Germany
11/20/99	% PRESBYTERIAN	L 51-61	(12) Craig/Mintz	(8) Lori Green
11/23/99	VALDOSTA STATE	W 58-56	(13) Kimberly Brooker	(12) Sonya Mintz
11/26/99	@ vs. Fayetteville State	L 58-69	(15) Duanda Ball	(7) Lori Green
11/27/99	@ vs. Elizabeth City State	L 51-59	(10) Lexie Martin	(8) Lori Green
12/1/99	at Morris College	L 67-70	(14) Lori Green	(13) Lori Green
12/4/99	at Savannah State	L 58-64	(17) Duanda Ball	(7) Kimberly Brooker
12/11/99	* at Kennesaw State	L 57-70	(16) Lori Green	(4) Green/Ball
12/17/99	# at Eckerd	W 74-57	(19) Duanda Ball	(9) Sonya Mintz
12/18/99	# vs. Rollins	L 66-89	(17) Duanda Ball	(7) Sonya Mintz
12/30/99	CATAWBA	L 44-57	(12) Lori Green	(14) Dorthell Little
1/2/00	* GEORGIA COLLEGE & STATE	L 78-82	(25) Dorthell Little	(14) Dorthell Little
1/5/00	* at Francis Marion	L 56-76	(12) Lexie Martin	(9) Sonya Mintz
1/8/00	* LANDER	L 58-62	(12) Duanda Ball	(10) Sonya Mintz
1/15/00	* at Columbus State	L 56-75	(9) Lexie Martin	(8) Melissa Germany
1/19/00	* NORTH FLORIDA	L 68-77	(26) Duanda Ball	(8) Germany/Mintz
1/22/00	* at Georgia College & State	L 64-69	(21) Lexie Martin	(11) Melissa Germany
1/26/00	* UNC PEMBROKE	W 64-63	(17) Kristin Brewer	(12) Melissa Germany
1/29/00	* KENNESAW STATE	L 59-68	(15) Lexie Martin	(10) Kristin Brewer
2/2/00	* at North Florida	L 54-60	(14) Duanda Ball	(8) Duanda Ball
2/5/00	* COLUMBUS STATE	W 77-75	(26) Lexie Martin	(8) Sonya Mintz
2/12/00	* at USC Aiken	L 76-87	(22) Duanda Ball	(7) Dorthell Little
2/16/00	* at Clayton College & State	L 76-78	(20) Lexie Martin	(9) Dorthell Little
2/19/00	* USC SPARTANBURG	W 53-45	(11) Kristin Brewer	(12) Dorthell Little
2/23/00	* at Augusta State	L 59-62	(20) Lexie Martin	(6) Three Players
2/26/00	* CLAYTON COLLEGE & STATE	W 74-65	(28) Duanda Ball	(6) Dorthell Little

* - Peach Belt Conference Games

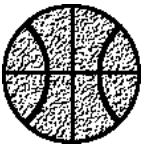
% - AASU Lady Pirate/Chatham Orthopaedic TipOff Classic

@ - Mount Olive College Thanksgiving Classic

- Eckerd College Holiday Classic

1999-2000 Lady Pirate Cumulative Statistics

Player	GP/GS	MIN	FG-FGA	PCT	3PMG-3PA	PCT	FT-FTA	PCT	OR-DR-TR	RPG	TP	PPG	AST	TO	BS	ST
Duanda Ball	26/25	802	119-289	.412	56-146	.384	55-76	.724	14-69-83	3.2	349	13.4	31	98	0	30
Lexie Martin	24/22	785	87-245	.355	47-136	.346	42-60	.700	16-59-75	3.1	263	11.0	78	75	1	48
Sonya Mintz	26/19	633	84-158	.532	0-0	.000	46-76	.605	44-105-149	5.7	214	8.2	23	52	5	19
Dorthell Little	23/14	525	68-158	.430	8-25	.320	40-68	.588	49-85-134	5.8	184	8.0	28	49	24	30
Shawnte Craig	26/9	589	57-175	.326	11-37	.297	30-51	.588	14-49-63	2.4	155	6.0	73	84	1	29
Lori Green	25/4	294	49-101	.485	0-1	.000	16-32	.500	53-48-101	4.0	114	4.6	9	33	3	17
Kristin Brewer	23/10	382	34-86	.395	10-34	.294	16-21	.762	31-49-80	3.5	94	4.1	20	37	0	9
Melissa Germany	26/14	556	33-96	.344	4-10	.400	17-33	.515	37-80-117	4.5	87	3.3	35	70	19	20
Kimberly Brooker	10/10	224	22-43	.512	0-0	.000	31-45	.689	14-23-37	3.7	75	7.5	3	20	0	1
Rica Bush	10/3	165	17-51	.333	0-0	.000	20-28	.714	10-22-32	3.2	54	5.4	5	11	0	4
Rebecca Hubbard	19/0	144	14-51	.275	5-23	.217	8-10	.800	14-11-25	1.3	41	2.2	2	11	2	4
Dana Baxter	14/0	101	5-20	.250	2-12	.167	0-0	.000	3-5-8	0.6	12	0.9	5	6	0	2
TOTALS	26/26	5200	589-1473	.400	143-424	.337	321-500	.642	342-659-1001	38.5	1642	63.2	312	556	55	213



1999-2000 Player/Game Highs



1999-2000 Player Highs

POINTS	28	Duanda Ball vs. Clayton College & State (2/26/00)
FIELD GOALS MADE	11	Dorthell Little vs. Georgia College & State (1/2/00)
FIELD GOALS ATTEMPTED	17	Lexie Martin, twice; at Georgia Coll. & St. (1/22/00) and at Clayton Coll. & St. (2/16/00)
3 PT FIELD GOALS MADE	6	Twice; Martin at Georgia Coll. & St. (1/22/00) and Ball vs. Clayton Coll. & St. (2/16/00)
3 PT FIELD GOAL ATTEMPTED ..	12	Lexie Martin at Georgia College & State (1/22/00)
FREE THROWS MADE	9	Dorthell Little at USC Aiken (2/12/00)
FREE THROW ATTEMPTS	12	Twice; Little at USC Aiken (2/12/00) and Martin vs. Columbus State (2/5/00)
REBOUNDS	14	Dorthell Little, twice; vs. Catawba (12/30/99) and vs. Georgia Coll. & St. (1/2/00)
ASSISTS	7	Shawnte Craig vs. Florida Memorial (11/19/99)
STEALS	5	Three times; Ball and Little vs. Fla. Memorial (11/19/99) and Martin at FMU (1/5/00)
BLOCKED SHOTS	4	Melissa Germany vs. USC Spartanburg (2/19/00)
TURNOVERS	11	Lexie Martin at Kennesaw State (12/11/99)
FOULS	5	Three times; Craig vs. PC (11/20/99), Martin vs. CC (12/30/99) and Germany vs. LU (1/8/00)

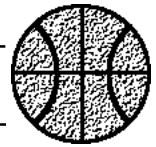
1999-2000 Team Highs

Armstrong Atlantic State

POINTS	86	vs.	Florida Memorial	11/19/99	AASU 86-53
FIELD GOALS MADE	30	vs.	Georgia College & St.	1/2/00	GC&SU 82-78
FIELD GOAL ATTEMPTS	68	at	Clayton College & St.	2/16/00	CC&SU 78-76
FIELD GOAL PERCENTAGE528	at	Morris College	12/1/99	MC 70-67 (28-of-53)
3 PT FIELD MADE	11	at	Georgia College & St.	1/22/00	GC&SU 69-64
3 PT FG ATTEMPTS	24	at	Georgia College & St.	1/22/00	GC&SU 69-64
	24	vs.	Clayton College & St.	2/26/00	AASU 74-65
3 PT FG PERCENTAGE636	vs.	Rollins	12/18/99	RC 89-66 (7-of-11)
FREE THROWS MADE	28	vs.	Florida Memorial	11/19/99	AASU 86-53
FREE THROW ATTEMPTS	39	vs.	Florida Memorial	11/19/99	AASU 86-53
FREE THROW PERCENTAGE864	vs.	Rollins	12/18/99	RC 89-66 (19-of-22)
REBOUNDS	56	vs.	Valdosta State	11/23/99	AASU 58-56
ASSISTS	19	vs.	Clayton College & St.	2/26/00	AASU 74-65
STEALS	18	vs.	Florida Memorial	11/19/99	AASU 86-53
BLOCKED SHOTS	8	vs.	USC Spartanburg	2/19/00	AASU 53-45
TURNOVERS	45	vs.	Fayetteville State	11/26/99	FSU 69-58
FOULS	26	vs.	Florida Memorial	11/19/99	AASU 86-53
OPPONENTS					
POINTS	89	vs.	Rollins	12/18/99	RC 89-66
FIELD GOALS MADE	33	at	Clayton College & St.	2/16/00	CC&SU 78-76
FIELD GOAL ATTEMPTS	80	vs.	Valdosta State	11/23/99	AASU 58-56
FIELD GOAL PERCENTAGE534	vs.	North Florida	1/19/00	UNF 77-68 (31-of-58)
3 PT FIELD GOALS MADE	9	vs.	Catawba	12/30/99	CC 57-44
	9	at	Georgia College & St.	1/22/00	GC&SU 69-64
	9	at	USC Aiken	2/12/00	USCA 87-76
3 PT FG ATTEMPTS	28	vs.	Florida Memorial	11/19/99	AASU 86-53
3 PT FG PERCENTAGE667	at	Kennesaw State	12/11/99	KSU 70-57 (2-of-3)
FREE THROWS MADE	22	at	Columbus State	1/15/00	CSU 75-56
	22	at	Georgia College & St.	1/22/00	GC&SU 69-64
	22	at	USC Aiken	2/12/00	USCA 87-76
FREE THROW ATTEMPTS	34	vs.	Georgia College & St.	1/2/00	GC&SU 82-78
FREE THROW PERCENTAGE	1.000	vs.	Kennesaw State	1/29/00	KSU 68-59 (10-for-10)
REBOUNDS	52	vs.	Elizabeth City State	11/27/99	ECSU 59-51
ASSISTS	22	vs.	Rollins	12/18/99	RC 89-66
STEALS	20	vs.	Valdosta State	11/23/99	AASU 58-56
	20	vs.	Fayetteville State	11/26/99	FSU 69-58
BLOCKED SHOTS	8	vs.	Valdosta State	11/23/99	AASU 58-56
TURNOVERS	31	vs.	Florida Memorial	11/19/99	AASU 86-53
FOULS	31	vs.	Florida Memorial	11/19/99	AASU 86-53



Peach Belt Conference



The Peach Belt Conference concludes its first decade of competition this season as the 2000-2001 athletic year marks its 10th year of existence.

In its short history, the league has established itself as one of the premiere Division II conferences in the country.

The 1999-2000 season was no exception with Lander University bringing home its eighth consecutive NCAA Division II men's tennis national championship and Kennesaw State University advancing to the NCAA Division II softball finals.

Peach Belt schools have now won 19 national championships and finished second 13 times in the past five years.

The seven charter members were

Armstrong State College, Columbus College, Francis Marion College, Georgia College, Lander College, The University of South Carolina at Aiken, and The University of South Carolina at Spartanburg. The name Peach Belt Athletic Conference was adopted in January, 1990, then modified in the summer of 2000 with the dropping of the word 'Athletic' to its current name, the Peach Belt Conference.

Augusta College applied and was accepted in November, 1990, with the effective date of membership on July 1, 1991. Another college joined the Peach Belt on July 1, 1992, when Pembroke (N.C.) State University officially became a member. Kennesaw State University located in Marietta, GA, became the tenth full member of the conference on July 1, 1994. The league accepted its 11th member when Clayton State College, located in Morrow, GA., was accepted in June of 1995.

Armstrong Atlantic State has fared very well in the Peach Belt, capturing conference championships in baseball, men's basketball, men's and women's tennis and last year adding its first-ever softball conference championship. Last season also saw four of the conference's Players of the Year come from Armstrong Atlantic State: Kris Bringewatt (volleyball), Robert Campbell (men's

Peach Belt Members

- Armstrong Atlantic State University
- Augusta State University
- Clayton State College & University
- Columbus State University
- Francis Marion University
- Georgia College & State University
- Kennesaw State University
- Lander University
- University of North Carolina at Pembroke
- University of North Florida
- University of South Carolina at Aiken
- University of South Carolina at Spartanburg

basketball), Stephanie Kovacic (women's tennis) and Annie Sells (softball).

Former Augusta College basketball coach and athletic director Marvin Vanover was named the interim commissioner in April, 1990, and served in that capacity until his appointment as the conference's first full-time commissioner in July, 1991. The conference has established an office in Augusta, GA, which houses the commissioner and his staff.

Peach Belt National Champions

Men's Baseball

Kennesaw State	1994*
Kennesaw State	1996

Men's Golf

Columbus College	1992
Columbus College	1994
Columbus State	1997

Men's Tennis

Lander University	1991*
Lander University	1992*
Lander University	1993
Lander University	1994
Lander University	1995
Lander University	1996
Lander University	1997
Lander University	1998
Lander University	1999
Lander University	2000

Women's Tennis

Armstrong State	1995
Armstrong State	1996

Women's Softball

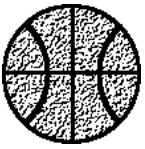
Kennesaw State	1995
Kennesaw State	1996



Peach Belt Conference Quick Facts

Address: P.O. Box 204290
Augusta, GA 30917-4290
Founded: December 3, 1989
Phone Number: (706) 860-8499
Fax Number: (706) 650-8113
Website: www.peachbelt.com

Commissioner: Marvin Vanover
Media Relations: Ken Gerlinger
Admin. Asst.: Susan Curwen



Peach Belt Conference



1999-2000 Peach Belt Conference Final Standings



North Division

School	PBC	Home	Away	Overall	Home	Away	Neutral
xFrancis Marion	13-3 .813	7-1	7-2	25-8 .758	11-1	8-3	6-4
xLander	12-4 .750	6-2	6-2	22-8 .733	14-4	7-3	1-1
USC Aiken	7-9 .438	4-4	3-5	15-12 .556	8-4	5-7	2-1
Augusta State	5-11 .313	3-5	2-7	10-15 .400	7-6	3-7	0-2
UNC Pembroke	3-13 .188	3-5	0-8	11-15 .423	7-6	4-8	0-1
USC Spartanburg	2-14 .125	2-5	0-9	5-21 .192	4-10	1-11	0-0

South Division

School	PBC	Home	Away	Overall	Home	Away	Neutral
xKennesaw State	14-2 .875	7-1	7-1	25-5 .833	11-1	9-3	5-1
*Columbus State	12-4 .750	7-1	5-3	28-8 .778	9-1	7-5	12-2
North Florida	10-6 .625	5-3	5-3	16-11 .593	10-4	5-6	1-1
Georgia College & State	10-6 .625	5-3	5-3	17-10 .629	9-4	6-5	2-1
Clayton College & State	4-12 .250	2-6	2-6	8-18 .308	4-9	3-8	1-1
Armstrong Atlantic State	4-12 .250	4-4	0-8	7-19 .269	6-6	1-10	0-3

South Atlantic Regional

KSU 77, Livingstone 62
 FMU 76, Lander 66
 CSU 82, KSU 72
 FMU 82, Presbyterian 79
 CSU 101, FMU 99 (OT)
NCAA DII Elite Eight
 CSU 76, Emporia State 67
 North Dakota St. 72, CSU 56

1999-2000 Peach Belt Conference Statistical Leaders

Scoring

Player (Team)	G	FG	3FG	FT	Pts	PPG
1. Jennifer Brabson (FMU)	32	164	50	223	601	18.8
2. Amie Kane (KSU)	29	209	21	84	523	18.0
3. Ginnell Curtis (UNCP)	26	161	36	98	456	17.5
4. Janell Gerk (USCA)	27	128	111	47	414	15.3
5. Kamilah Moss (GC&SU)	27	173	3	63	412	15.3
6. Rosslon Horton (GC&SU)	27	141	28	101	411	15.2
7. Jami Cornwell (USCA)	25	107	19	140	373	14.9
8. Joya Collier (CC&SU)	26	163	0	61	387	14.9
9. Betsy Foy (GC&SU)	27	106	44	134	390	14.4
10. Kinesha Harden (CSU)	36	187	0	133	507	14.1

Rebounding

Player (Team)	RPG
1. Entzminger (LU)	9.7
2. Collier (CC&SU)	8.9
3. Harden (CSU)	8.5
4. Cowan (CC&SU)	8.3
5. Lance (UNCP)	7.6
6. Adderson (FMU)	7.3
7. Moss (GC&SU)	7.1
McDowell (USCS)	7.1
9. Taylor (CSU)	7.0
10. Bright (UNF)	6.8

Blocked Shots

Player (Team)	BPG
1. Zmuda (KSU)	2.40
2. Collier (CC&SU)	2.27
3. Entzminger (LU)	1.80
4. Pivac (ASU)	1.28
5. Johnson (FMU)	1.24

Assists

Player (Team)	APG
1. Cornwell (USCA)	6.28
2. Brazenas (KSU)	5.87
3. Curtis (UNCP)	5.85
4. Mincey (CSU)	4.83
5. Warren (CC&SU)	4.73

Steals

Player (Team)	SPG
1. Brazenas (KSU)	4.80
2. Curtis (UNCP)	4.54
3. Cornwell (USCA)	2.88
4. Bright (UNF)	2.85
5. Kane (KSU)	2.66

Field Goal Pct.

Player (Team)	PCT
1. Moss (GC&SU)	.546
2. Butery (UNF)	.540
3. Nold (USCA)	.535
4. Mintz (AASU)	.532
5. Brazenas (KSU)	.525

1999-2000 Peach Belt All-Conference Teams

First Team

Chiffonia Adderson, Francis Marion
 Jennifer Brabson, Francis Marion
 Rima Brazenas, Kennesaw State
 Jackie Entzminger, Lander
 Amie Kane, Kennesaw State
 Kinesha Harden, Columbus State

Second Team

Joya Collier, Clayton State
 Jami Cornwell, USC Aiken
 Ginnell Curtis, UNC Pembroke
 Janell Gerk, USC Aiken
 Rosslon Horton, Ga. Col. & St. Univ.
 Kamilah Moss, Ga. Col. & St. Univ.
 Christy Wright, Francis Marion

Player of the Year: Rima Brazenas, KSU
Freshman of the Year: Jami Cornwell, USCA
Coach of the Year: Phil Stern, USCA

2000-2001 PBC Players of the Week

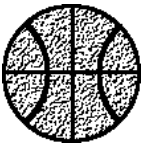
Dec. 6	Kamilah Moss	Georgia C&SU
Dec. 13	Jami Cornwell	USC Aiken
Jan. 3	Ginnell Curtis	UNC Pembroke
Jan. 10	Joya Collier	Clayton C&SU
Jan. 17	Kinesha Harden	Augusta State
Jan. 24	Rima Brazenas	Kennesaw State
Jan. 31	Rima Brazenas	Kennesaw State
Feb. 7	Rima Brazenas	Kennesaw State
Feb. 14	Betsy Foy	Georgia C&SU
Feb. 21	Joya Collier	Clayton C&SU
Feb. 28	Amie Kane	Kennesaw State



Peach Belt Conference Year-By-Year



1990-1991			1991-1992			1992-1993			1993-1994			1994-1995		
TEAM	PBC	YEAR	TEAM	PBC	YEAR	TEAM	PBC	YEAR	TEAM	PBC	YEAR	TEAM	PBC	YEAR
1. USCA	9-3	24-6	1. Augusta	12-2	23-6	1. USCS *	16-0	28-3	1. USCS *	15-1	27-4	1. USCS *	14-4	25-6
2. USCS	7-5	18-10	GC	12-2	22-7	2. Augusta	14-2	24-5	2. Columbus	12-4	20-9	Augusta	14-4	19-9
GC	7-5	18-11	3. USCA	9-5	18-11	3. ASC	10-6	16-10	3. ASC	11-5	17-9	Columbus	14-4	21-7
4. ASC	5-7	10-14	4. FMU	6-8	18-12	4. GC	8-8	17-11	4. Augusta	9-7	16-11	4. Kennesaw	12-6	15-12
Lander	5-7	20-8	5. ASC	5-9	14-13	5. Lander	7-9	11-16	5. GC	8-8	16-12	5. FMU	8-10	11-15
FMU	5-7	17-12	USCS	5-9	12-16	6. Columbus	6-10	12-15	USCA	8-8	15-12	6. ASC	8-10	12-17
7. Columbus	3-9	8-17	7. Columbus	4-10	10-16	7. Pembroke	5-11	10-17	7. Pembroke	4-12	6-19	7. USCA	7-11	12-15
			8. Lander	3-11	13-15	8. FMU	3-13	11-17	8. Lander	3-13	9-18	GC	7-11	11-17
						9. USCA	3-13	8-18	9. FMU	2-14	6-21	9. Pembroke	5-13	8-18
						Kennesaw	0-0	19-11	Kennesaw	0-0	18-11	10. Lander	1-17	4-22
						* NCAA participant			* NCAA participant			* NCAA participant		
All-Conference First Team			All-Conference First Team			All-Conference First Team			All-Conference First Team			All-Conference First Team		
Tisha England, USCA Jametria Hannah, USCS Leslie Morgan, FMU Sherita Ballard, GC Deedra Howard, USCS			Renee Rice, ASC Tisha England, USCA Mary Jackson, FMU Jametria Hannah, USCS Lorain Truesdale, LU			Deedra Howard, USCS Lorian Truesdale, LU Jeanette Polk, AC LaTanya Sandifer, GC Valerie Scott, USCS Kay Sanders, AC			Valerie Scott, USCS Iris Bethea, PSC Jeanette Polk, AC Kathleen Shriver, CC Dwana Gardner, AC Kim Moody, GC			Dwana Gardner, AC Heather Abrams, USCS Nicole Smith, ASC Sharon Lee, CC Sarah McAllister, KSC Meredith Sisson, USCS		
Second Team			Second Team			Second Team			Second Team			Second Team		
Angelina Tate, USCA Bernadette Hill, GC Toni Bell-Yon, ASC Melissa Lewis, Lander Mary Jackson, Francis Marion			Allison Barry, GC Tracey Strange, AC Kay Sanders, AC Angie Davis, CC Robin Edwards, AC Fenissa Rice, FMU			April Haskins, CC Yolanda Oliver, ASC Tracey Strange, AC Iris Bethea, PSC Jennifer Teeple, ASC Vivian Edwards, CC			Oni Tyler, CC Yolanda Oliver, ASC Sonya Cato, USCA Amy Totten, GC Jennifer Teeple, ASC Paula Blackwell, USCS			Amanda Manning, GC Kisha Conway, FMU Barbara Hester, CC Shawn Blessingame, USCA Hayley Lystlund, AC Faye Wright, LU		
Player of the Year			Rookie of the Year			Rookie of the Year			Rookie of the Year			Rookie of the Year		
Tisha England, USCA			Yolanda Oliver, ASC			April Haskins, CC			Meredith Sisson, USCS			Lawanna Monday, AC		
Coach of the Year			Player of the Year			Player of the Year			Player of the Year			Player of the Year		
Tammy Holder, USCS			Renee Rice, ASC			Deedra Howard, USCS			Valerie Scott, USCS			Dwana Gardner, AC		
			Coach of the Year			Coach of the Year			Coach of the Year			Coach of the Year		
			Lowell Barnhart, AC			Peggy Sells, USCS			Jay Sparks, CC			Lowell Barnhart, AC		
1995-1996			1996-1997			1997-1998			1998-1999					
TEAM	PBC	YEAR	TEAM	PBC	YEAR	NORTH			NORTH					
1. Georgia College*	14-4	21-9	1. Kennesaw State*	17-1	30-2	1. Francis Marion*	15-1	30-3	1. Francis Marion*	16-0	27-3			
2. Francis Marion	13-5	18-9	2. Francis Marion*	14-4	21-8	2. Augusta State	9-7	18-10	2. Lander *	11-5	20-10			
3. Kennesaw State	12-6	17-12	3. GC&SU*	13-5	23-8	3. USC Spartanburg	7-9	14-13	3. Augusta State	7-9	13-15			
4. Augusta	11-7	19-9	4. Columbus State	11-7	17-11	Lander	7-9	12-14	UNC Pembroke	7-9	16-11			
5. USC Spartanburg	10-8	14-13	5. Augusta State	10-8	18-9	5. USC Aiken	6-10	10-17	5. USC Spartanburg	3-13	6-21			
6. Pembroke State	9-9	15-12	Armstrong Atl. St.	10-8	14-13	6. UNC Pembroke	0-16	5-22	6. UNC Pembroke	0-16	5-22			
Columbus	9-9	13-15	7. USC Spartanburg	5-13	11-17	SOUTH			SOUTH					
8. Armstrong State	7-11	9-18	Lander	5-13	8-19	1. Columbus State*	16-0	25-6	1. Kennesaw State*	14-2	28-4			
9. Lander	3-15	9-15	9. USC Aiken	4-14	7-21	2. GC&SU	11-5	19-8	2. Columbus State	12-4	25-7			
10. USC Aiken	2-16	3-23	10. UNC Pembroke	1-17	1-25	3. Kennesaw State	10-6	18-10	3. GC&SU	9-7	17-11			
Clayton State	0-0	13-15	Clayton State	0-0	14-13	4. North Florida	6-10	11-17	4. North Florida	7-9	18-10			
* NCAA participant			* NCAA participant			5. Armstrong Atl. St.			5. Armstrong Atl. St.					
						5-11			6-10					
						4-12			4-12					
						14-15			9-18					
						* NCAA participant			* NCAA participant					
All-Conference First Team			All-Conference First Team			All-Conference First Team			All-Conference First Team					
Hayley Lystlund, AC Kisha Conway, FMU Andrea Cox, PSC Alicia Wilson, GC Sarah McAllister, KSC Lawanna Monday, AC			Que Gilliam, CSU Christy Walker, GC&SU Joanna Cuprys, KSU Lawanna Monday, ASU Sarah McAllister, KSU Chiffonia Adderson, FMU			Dion Thornton, KSU Toeshia Campfield, CSU Chiffonia Adderson, FMU Tamarra Brown, GC&SU Que Gilliam, CSU Jennifer Brabson, FMU			Chiffonia Adderson, FMU Jennifer Brabson, FMU Rima Petronyte, KSU Justyna Stanioch, KSU Dion Thornton, KSU Christy Wright, FMU					
Second Team			Second Team			Second Team			Second Team					
Christy Walker, GC Rachel Garner, PSC Heather Abrams, USCS Jennifer Puckett, FMU Christa Vaughan, ASC Faye Wright, LU			Tammy Smith, USCS Jennifer Brabson, FMU Christale Spain, USCA Alicia Wilson, GC&SU Christy Bromley, ASU Faye Wright, LU			Lawanna Monday, ASU Tracy Davis, GC&SU Janet Chadwick, KSU Christale Spain, USCA Tammy Smith, USCS Cindy Koone, LU			Sylvia Allen, CSU Ginnell Curtis, UNCP Quintina Harris, GC&SU Reagan Housch, CSU Demetria McClouden, AASU Cindy Koone, LU					
Rookie of the Year			Rookie of the Year			Rookie of the Year			Rookie of the Year					
Carrie Long, CC			Chiffonia Adderson, FMU			Damita Bullock, FMU			Ginnell Curtis, UNCP					
Player of the Year			Player of the Year			Player of the Year			Player of the Year					
Sarah McAllister, KSC			Joanna Cuprys, KSU			Jennifer Brabson, FMU			Jennifer Brabson, FMU					
Coach of the Year			Coach of the Year			Coach of the Year			Coach of the Year					
Wes Moore, FMU			Colby Tilley, KSU			Jay Sparks, CSU			Sheila Rhodes, LU					



PBC Tournament History



1992
(at Augusta)

Quarterfinals
USC Aiken 79, Columbus College 56
Armstrong St. 72, USC Spartanburg 53

Semifinals
Augusta College 71, Armstrong St. 63
Georgia College 72, USC Aiken 68

Championship
Augusta College 64, Georgia College 46

All-Tournament Team
Tisha England, USC Aiken
Kay Sanders, Augusta College
Allison Barry, Georgia College
Angie Long, Augusta College

Tournament MVP
Tracey Strange, Augusta College

1993
(at Augusta)

First Round
Francis Marion 93, USC Aiken 89 (2ot)

Quarterfinals
USC Spartanburg 73, Francis Marion 60
Georgia College 64, Lander 54
Columbus College 70, Armstrong St. 60
Augusta College 66, Pembroke State 60

Semifinals
USC Spartanburg 80, Georgia College 63
Augusta Coll. 73, Columbus Coll. 60

Championship
Augusta Coll. 69, USC Spartanburg 60

All-Tournament Team
Deedra Howard, USC Spartanburg
Valerie Scott, USC Spartanburg
Tracey Strange, Augusta College
Dwana Gardner, Augusta College
April Haskins, Columbus College

Tournament MVP
Jeanette Polk, Augusta College

1994
(at Augusta)

First Round
Lander 58, Francis Marion 57 (ot)

Quarterfinals
Columbus College 87, Pembroke State 54
Armstrong St. 72, USC Aiken 60
USC Spartanburg 77, Lander 57
Georgia College 72, Augusta College 63

Semifinals
USC Spartanburg 63, Georgia College 58
Columbus College 71, Armstrong St. 64

Championship
USC Spartanburg 61, Columbus 60

All-Tournament Team
Meredith Sisson, USC Spartanburg
Faye Wright, Lander
Jennifer Teeple, Armstrong State
Kim Moody, Georgia College
Kathleen Shriver, Columbus College

Tournament MVP
Katie Otis, Columbus College

1995
(at Augusta)

First Round
Georgia College 75, Lander 59
Pembroke State 73, USC Aiken 54

Quarterfinals
USC Spartanburg 70, Georgia College 63
Columbus College 71, Francis Marion 57
Armstrong State 67, Kennesaw State 65
Augusta College 84, Pembroke State 71

Semifinals
USC Spartanburg 70, Columbus 63
Armstrong State 82, Augusta College 65

Championship
USC Spartanburg 69, Armstrong St. 49

All-Tournament Team
Heather Abrams, USC Spartanburg
Dwana Gardner, Augusta College
Yolanda Oliver, Armstrong State
Sharon Lee, Columbus College
Mary Ann Merritt, Armstrong State

Tournament MVP
Sherry Clark, USC Spartanburg

1996
(at Milledgeville)

Quarterfinals
Columbus 82, Francis Marion 78
Kennesaw St. 86, Pembroke St. 71
Augusta 58, USC Spartanburg 54
Georgia College 76, Armstrong St. 60

Semifinals
Kennesaw St. 70, Columbus 57
Georgia College 69, Augusta 66

Championship
Georgia College 55, Kennesaw St. 52

All-Tournament Team
April Haskins, Columbus College
Claire Servy, Augusta College
Christy Walker, Georgia College
Kim Watts, Kennesaw State
Alicia Wilson, Georgia College

Tournament MVP
Sarah McAllister, Kennesaw State

1997
(at Milledgeville)

First Round
USC Aiken 58, Lander 47
USC Spartanburg 73, UNC Pembroke 66

Quarterfinals
Kennesaw State 88, USC Aiken 63
Columbus State 78, Augusta State 75 ot
Francis Marion 66, USC Spartanburg 63
Georgia C&SU 68, Armstrong Atl. St. 54

Semifinals
Kennesaw State 62, Columbus State 61
Georgia C&SU 70, Francis Marion 48

Championship
Kennesaw State 78, Georgia C&SU 77

All-Tournament Team
Que Gilliam, Columbus State
Tamarra Brown, GC&SU
Chiffonia Adderson, Francis Marion
Sarah McAllister, Kennesaw State
Christy Walker, GC&SU

Tournament MVP
Joanna Cuprys, Kennesaw State

1998
(at Savannah)

First Round
North Florida 71, USC Aiken 57
Clayton State 75, USC Spartanburg 64
Kennesaw State 56, UNC Pembroke 40
Armstrong Atl. St. 71, Lander 65

Quarterfinals
Francis Marion 63, North Florida 60
Clayton State 78, Georgia C&SU 67
Augusta State 77, Kennesaw State 71
Columbus State 81, Armstrong Atl. St. 71

Semifinals
Francis Marion 92, Clayton State 43
Columbus State 97, Augusta State 96 ot

Championship
Francis Marion 71, Columbus State 67

All-Tournament Team
Lawanna Monday, Augusta State
Joya Collier, Clayton State
Damita Bullock, Francis Marion
Chiffonia Adderson, Francis Marion
Reagan Housch, Columbus State

Tournament MVP
Que Gilliam, Columbus State

1999
(at Savannah)

First Round
North Florida 71, USC Spartanburg 58
Augusta State 102, Clayton State 98 ot
Georgia C&SU 90, USC Aiken 73
Armstrong Atl. St. 69, UNCP 60

Quarterfinals
Francis Marion 57, North Florida 43
Columbus State 87, Augusta State 69
Lander 90, Georgia C&SU 72 ot
Kennesaw St. 78, Armstrong Atl. St. 75

Semifinals
Columbus State 67, Francis Marion 65
Lander 80, Kennesaw State 66

Championship
Lander 73, Columbus State 69

All-Tournament Team
Jennifer Brabson, Francis Marion
Justyna Stanioch, Kennesaw State
Reagan Housch, Columbus State
Jackie Entzminger, Lander
Robyn Davis, Columbus State

Tournament MVP
Cindy Koone, Lander

Records as Member of Peach Belt Conference	Overall			Conference Play			PBC Tournament		
	TEAM	W-L	PCT.	TEAM	W-L	PCT.	TEAM	W-L	PCT.
	Armstrong Atlantic	124-144	.463	Armstrong Atlantic	71-89	.444	Armstrong Atlantic	6-8	.429
	Augusta State	160-89	.643	Augusta State	91-57	.615	Augusta State	9-6	.600
	Clayton State	31-51	.378	Clayton State	12-36	.250	Clayton State	2-2	.500
	Columbus State	179-111	.617	Columbus State	99-59	.627	Columbus State	13-8	.619
	Francis Marion	184-108	.630	Francis Marion	95-65	.594	Francis Marion	6-6	.500
	Georgia C&SU	181-104	.635	Georgia C&SU	99-61	.619	Georgia C&SU	10-7	.588
	Kennesaw State	170-67	.717	Kennesaw State	79-23	.775	Kennesaw State	7-4	.636
	Lander	128-145	.469	Lander	57-103	.356	Lander	4-5	.444
	North Florida	40-31	.563	North Florida	23-25	.479	North Florida	2-2	.500
	UNC Pembroke	72-139	.341	UNC Pembroke	34-100	.254	UNC Pembroke	1-7	.125
	USC Aiken	117-157	.427	USC Aiken	55-105	.344	USC Aiken	2-7	.222
	USC Spartanburg	159-124	.562	USC Spartanburg	84-76	.525	USC Spartanburg	9-6	.600



Individual Records

Most Points

First Half: 30, Renee Rice vs. Brewton-Parker, 2-19-92
 Second Half: 23, Renee Rice vs. Brewton-Parker, 2-19-92
 Game: 53, Renee Rice vs. Brewton-Parker, 2-19-92
 Season: 653, Terralyn Edwards, 1981-82
 Career: 1,360, Gigi Gibson, 1980-84

Best Scoring Average

Season: 24.4, Terralyn Edwards, 1979-80
 Career: 24.0, Renee Rice, 1991-92

Most Field Goals Made

Game: 24, Renee Rice vs. Brewton-Parker, 2-19-92
 Season: 276, Renee Rice, 1991-92
 Career: 566, Gigi Gibson, 1980-84

Most Consecutive Field Goals

Game: 13, Renee Rice at USC Spartanburg, 2-1-92
 Season: 17, Renee Rice vs. GC, 1-29-92 (4) and
 at USCS, 2-1-92 (13).

Most Field Goals Attempted

Game: 34, Renee Rice vs. Brewton-Parker, 2-19-92
 Season: 667, Terralyn Edwards, 1981-82
 Career: 1,376, Gigi Gibson, 1980-84

Best Field Goal Percentage

Game (min. 8 attempts): 1.000 (8-8),
 Kim Pitts vs. Augusta, 1-20-86 & Georgia College, 2-21-86
 (min. 10 attempts): .933 (14-15)
 Demetria McClouden vs. Florida Tech, 12-3-98
 Season: .643 (137-213), Christa Vaughan, 1995-96
 Career: .601 (302-502), Christa Vaughan, 1995-98

Most 3-Pointers Made

Game: 9, Debra Morrell vs. Lander, 1-28-95
 Season: 82, Debra Morrell, 1994-95
 Career: 145, Michelle Hubbard, 1995-98

Most 3-Pointers Attempted

Game: 18, Debra Morrell vs. Lander, 1-28-95
 Season: 240, Debra Morrell, 1994-95
 Career: 377, Debra Morrell, 1990-95

Best 3-Point Percentage

Game (min. 6 att.): .857 (6-7)
 Sheri Hanners vs. USC Aiken, 2-13-99
 Season: .383 (49-128), Toni Bell-Yon, 1989-90
 Career: .384 (56-246), Duanda Ball, 1999-2000

Most Free Throws

Game: 17, Terralyn Edwards vs. Savannah State, 2-18-80
 Season: 199, Terralyn Edwards, 1981-82
 Career: 347, Terralyn Edwards, 1978-82

Most Free Throws Attempted

Game: 20, Terralyn Edwards vs. Savannah State, 2-18-80
 Season: 263, Terralyn Edwards, 1981-82
 Career: 484, Terralyn Edwards, 1979-83

Best Free Throw Percentage

Game: 1.000 (12-12)
 Debra Danielson vs. Edward Waters, 11-21-83
 Season: .810, Norma Faison, 1984-85
 Career: .746, Terralyn Edwards, 1978-82

Most Rebounds

Offensive: 14, Renee Rice at Lander, 1-11-92
 Defensive: 17, Cindy Pound at Tift, 1-12-79
 Renee Rice at Georgia College, 1-29-92
 Game: 27, Cindy Pound at Tift, 1-12-79
 Season: 373, Gigi Gibson, 1981-82
 Career: 963, Gigi Gibson, 1980-84

Best Rebound Average

Season: 17.0, Cindy Pound, 1978-79
 Career: 14.1, Cindy Pound, 1978-80

Most Assists

Game: 15, Yolanda Oliver vs. Kennesaw Stae, 12-13-94
 Season: 174, Yolanda Oliver, 1994-95
 Career: 448, Yolanda Oliver, 1991-95

Most Steals

Game: 10, Norma Faison at Tift, 11-17-84
 Season: 97, Marva Lindsay, 1992-93
 Career: 302, Yolanda Oliver, 1991-95

Most Blocked Shots

Game: 6, Michelle Phillips at Georgia Southern, 2-26-88
 Dina Mulholland vs. Francis Marion, 2-16-91
 Season: 59, Michelle Phillips, 1987-88
 Career: 62, Dina Mulholland, 1989-91

Most Games

Season: 32, Beth Benefield, Gigi Gibson, Lee Harmer, 1981-82
 Career: 109, Gigi Gibson, 1980-84

Most Minutes Played

Game: 49, Toni Bell-Yon at Francis Marion, 1-26-91 (2ot)
 Season: 1,000 (29 games), Debra Morrell, 1994-95
 Career: 3,511 (108 games), Yolanda Oliver, 1991-95

Most Consecutive Starts

Career: 99, Yolanda Oliver, 1991-95

Scoring Records

Most Games w/20 Or More Points

Season: 22, Terralyn Edwards, 1981-1982
 Career: 38, Terralyn Edwards, 1979-1983

Most Games w/30 Or More Points

Season: 5, Terralyn Edwards, 1979-1980
 Heather Poppell, 1987-1988
 Career: 7, Terralyn Edwards, 1979-1983

Most Games w/40 Or More Points

Season: 2, Renee Rice, 1991-1992
 Career: 2, Renee Rice, 1991-1992

Most Games w/50 Or More Points

Season: 1, Renee Rice, 1991-1992
 Career: 1, Renee Rice, 1991-1992

Most Games In Double Figures

Season: 29 (30 games), Terralyn Edwards, 1981-1982
 Career: 73 (109 games), Gigi Gibson, 1980-1984

Consecutive Games In Double Figures

29, Cindy Pound, 1978-1979 (last 5) & 1979-1980 (first 24)



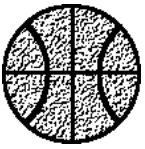
Terralyn Edwards

The 1981-82 Georgia Association of Intercollegiate Athletics for Women (GAIAW) Player of the Year, Terralyn Edwards was one of the most talented women's basketball players ever to put on an Armstrong uniform.

As a freshman in 1979-80, Edwards averaged 24.4 points per game, still the single-season standard for AASU women's basketball. Although injuries limited her to just three games the following year, her junior season saw the standout score 653 points and lead the Lady Pirates to their finest season ever, a 20-12 record and a berth in the AIAW Region III Tournament. Even though injuries hampered her again in her senior season, limiting her to just one game, Edwards' lasting impression on the AASU program was complete.

The first AASU player to score 1,000 career points, Edwards finished her career with 1,275 points, second-most all-time. Her scoring average of 22.0 points per game is third best and she is still the AASU all-time leader in free throws made (361).

In 1995, Edwards, along with her head coach, B.J. Ford, were inducted into the Armstrong Atlantic State Athletics Hall of Fame in the inaugural class.



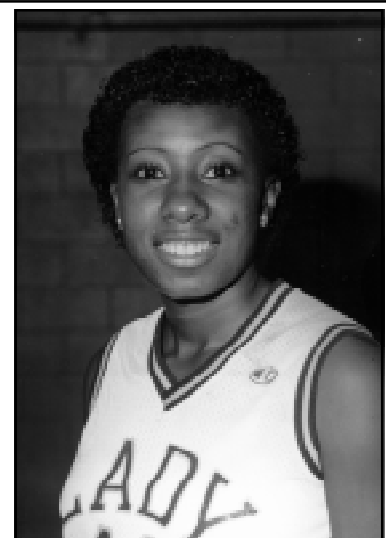
AASU Records - Career Top 10s



Games Played	Field Goals Made	Free Throw Percentage (min. 100 att.)
1. Gigi Gibson, 80-84 109 2. Yolanda Oliver, 91-95 108 Kristi Steele, 92-96 108 4. Becky Dyson, 95-99 102 5. Robin Gray, 94-98 101 6. Lee Harmer, 78-82 99 7. Walette Widener, 88-92 98 8. Tee Dixon, 82-86 97 Detra Thomas, 80-84 97 Sonia Oliver, 94-98 97	1. Gigi Gibson, 80-84 566 2. Yolanda Oliver, 91-95 520 3. Terralyn Edwards, 79-83 457 4. Norma Faison, 83-86 443 5. Lee Harmer, 78-82 355 6. Walette Widener, 88-92 348 7. Cindy Pound, 78-80 347 8. Demetria McClouden, 97-99 341 9. Debra Danielson, 83-85 333 10. Debra David, 78-80 312	1. Lexie Martin, 98-752 (91-121) 2. Terralyn Edwards, 79-83746 (361-484) 3. Norma Faison, 83-86727 (205-282) 4. Michelle Hubbard, 95-98-.725 (151-208) 5. Lee Harmer, 78-82700 (217-310) 6. Heather Poppell, 87-88695 (155-223) 7. Katy Ballance, 83-88686 (96-140) 8. Aurora Campbell, 80-82673 (101-150) 9. Toni Bell-Yon, 89-91664 (87-131) 10. Cindy Pound, 78-80660 (107-162)
Points	Field Goal Percentage (Min. 250 att.)	Assists
1. Gigi Gibson, 80-84 1360 2. Terralyn Edwards, 79-83 1275 Yolanda Oliver, 91-95 1275 4. Norma Faison, 83-86 1091 5. Lee Harmer, 78-82 921 6. Michelle Hubbard, 95-98,- 894 7. Cindy Pound, 78-80 889 8. Debra Danielson, 83-85 847 9. Demetria McClouden, 97-99 844 10. Walette Widener, 88-92 821	1. Christa Vaughan, 95-98601 (302-502) 2. Renee Rice, 91-92584 (276-473) 3. Dee Burns, 84-86570 (233-409) 4. Demetria McClouden, 97-99 .566 (341-602) 5. Sonia Oliver, 95-99559 (313-559) 6. Debra Danielson, 83-85528 (333-631) 7. Marva Lindsay, 92-94475 (215-453) 8. Cindy Pound, 78-80463 (347-750) 9. Heather Poppell, 87-88460 (178-387) 10. Linda Waters, 83-85446 (254-569)	1. Yolanda Oliver, 91-95 448 2. Michelle Hubbard, 95-98- 355 3. Lee Harmer, 78-82 226 4. Katy Ballance, 83-88 174 5. Walette Widener, 88-92 166 6. Norma Faison, 83-86 165 7. Lexie Martin, 98- 164 8. Marva Lindsay, 92-94 143 9. Toni Bell-Yon, 89-91 139 10. Cheryl Pierce, 91-93 136
Points Per Game	3-Point Field Goals Made	Steals
1. Renee Rice, 91-92 24.0 2. Heather Poppell, 87-88 22.2 3. Terralyn Edwards, 79-83 22.0 4. Cindy Pound, 78-80 20.2 5. Carmen Escartin, 77-78 17.2 6. Debra David, 78-80 16.3 7. Kim Pitts, 85-86 16.0 8. Debra Danielson, 83-85 15.7 9. Norma Faison, 83-86 15.6 10. Demetria McClouden, 97-99 15.3	1. Michelle Hubbard, 95-98, - 145 2. Debra Morrell, 90-95 123 3. Jennifer Teeple, 92-94 121 4. Lexie Martin, 98- 99 5. Toni Bell-Yon, 89-91 94 6. Jamie Townsend, 94-98 87 7. Duanda Ball, 99-00 56 8. Dana Cummings, 95-97 52 9. Cherie Conner, 87-88 33 10. Rebecca Hubbard, 98-00 29	1. Yolanda Oliver, 91-95 302 2. Norma Faison, 83-86 197 3. Marva Lindsay, 92-94 175 4. Lee Harmer, 78-82 162 5. Gigi Gibson, 80-84 153 6. Tee Dixon, 82-86 151 7. Michelle Shinholster, 89-92 134 8. Marie Dotson, 76-79 127 9. Sharleen Hamilton, 80-83 125 10. Cindy Pound, 78-80 117
Rebounds	3-Point Percentage (min. 20 made)	Blocked Shots
1. Gigi Gibson, 80-84 963 2. Cindy Pound, 78-80 621 3. Sonia Oliver, 94-98 618 4. Terralyn Edwards, 79-83 555 5. Kristi Steele, 92-96 547 6. Debra Danielson, 83-85 496 7. Sharleen Hamilton, 80-83 490 8. Yolanda Oliver, 91-95 448 9. Patty Rountree, 76-78 431 10. Lee Harmer, 78-82 419	1. Duanda Ball, 99-00384 (56-146) 2. Lexie Martin, 98-359 (99-276) 3. Jamie Townsend, 94-98348 (87-250) 4. Jennifer Teeple, 92-94339 (121-357) 5. Michelle Hubbard, 95-98-.336 (145-431) 6. Toni Bell-Yon, 89-91331 (94-284) 7. Debra Morrell, 90-95326 (123-377) 8. Rebecca Hubbard, 98-00312 (29-93) 9. Robin Gray, 94-98307 (20-65) 10. Cherie Conner, 87-88289 (33-114)	1. Dina Mulholland, 89-91 62 2. Michelle Phillips, 85-88 61 3. Melissa Germany, 98- 36 4. Aurora Campbell, 80-82 33 5. Kristi Steele, 92-96 32 6. Terralyn Edwards, 79-83 30 7. Misty DeGross, 82-85 29 8. Dee Burns, 84-86 27 9. Norma Faison, 83-86 25 10. Dorthell Little, 99-00 24
Rebounds Per Game	Free Throws Made	
1. Cindy Pound, 78-80 14.1 2. Renee Rice, 91-92 13.1 3. Patty Rountree, 76-78 12.3 4. Carmen Escartin, 77-78 10.6 5. Terralyn Edwards, 79-83 9.6 6. Sharleen Hamilton, 80-83 9.2 Debra Danielson, 83-85 9.2 8. Gigi Gibson, 80-84 8.8 9. Kim Pitts, 85-86 8.6 Marva Lindsay, 92-94 8.2	1. Terralyn Edwards, 79-83 361 2. Gigi Gibson, 80-84 258 3. Yolanda Oliver, 91-95 226 4. Lee Harmer, 78-82 217 5. Marie Dotson, 76-79 213 6. Norma Faison, 83-86 205 7. Cindy Pound, 78-80 195 8. Debra Danielson, 83-85 181 9. Tee Dixon, 82-86 170 10. Heather Poppell, 87-88 155	

Norma Faison

One of only four players to score 1,000 points in a career for AASU, Norma averaged 15.6 points per game over her three-year career as a Lady Pirate and still ranks among the Top 10 lists in eight separate categories. Her 1,091 points ranks fourth all-time and her 197 steals ranks second among Lady Pirate players.





AASU Records - Team



Scoring		Fewest Field Goals Attempted	Fewest Total Rebounds	
<p>Most Points First Half: 58, vs. USC Aiken, 2-13-99 Second Half: 58, vs Columbia, 1-23-88 Overtime: 19, vs Augusta, 1-12-85 Game: 105, vs Tift, 2-2-85 and vs Flagler, 11-26-85 Season: 2,259 (28 games), 1984-1985</p> <p>Fewest Points First Half: 7, at Valdosta State (52), 2-11-89 Second Half: 4, vs West Georgia (40), 1-27-88 Overtime: 2, at Savannah State, 12-5-87 Game: 24, vs West Georgia, 1-27-88 Season: 757 (15 games), 1976-1977</p> <p>Most Points Allowed First Half: 63, at Georgia College, 2-20-88 Second Half: 67, vs Fort Valley State, 2-16-88 Overtime: 16 (1ot), at Georgia College, 2-27-93 19 (2ot) at Francis Marion, 1-26-91 Game: 114, at Georgia College, 2-20-88 Season: 2,176, 1981-1982</p> <p>Fewest Points Allowed First Half: 10, at Rollins, 11-14-80 Second Half: 15, at Voorhees, 12-12-92 Overtime: 4, vs Augusta, 1-12-85 and at Brewton-Parker, 1-6-92 Game: 26, at Rollins, 11-14-80 Season: 1,046, 1976-1977</p> <p>Points Most Points Game, Both Teams: 201, AASU (102), at Tift (99) ot, 2-17-79 Fewest Points Game, Both Teams: 85, AASU (48) at Coker (37), 12-8-93 Largest margin of victory: 57, AASU (83) at Rollins (26), 11-14-80 Largest margin of defeat: 64, AASU (28) at Valdosta State (92), 2-11-89 Most Points in a win: 105, vs Tift, 2-2-85 and vs Flagler, 11-26-85 Most Points in a road win: 102 at Tift (99) ot, 2-17-79 Fewest Points in a win: 48, AASU (48) at Coker (37), 12-8-93 Fewest Points in a home win: 52, AASU (52) Francis Marion (42), 2-11-93 Most Points in a loss: 86, AASU (86) at Augusta (96), 2-22-85 AASU (86) vs Kennesaw State (87), 12-13-94 Most Points in a home loss: 86, AASU (86) vs Kennesaw State (87), 12-13-94 Most Points in a road loss: 86, AASU (86) at Augusta (96), 2-22-85 Fewest Points in a loss: 24, AASU (24) vs West Georgia (79), 1-27-88 Fewest Points in a road loss: 28, AASU (28) at Valdosta State (92), 2-11-89</p>	<p>Game: 30, at Florida Atlantic, 12-9-89 Season: 937 (15 games), 1976-1977</p> <p>Lowest Field Goal Percentage First Half: .056 (1-18), at Valdosta State, 2-11-89 Second Half: .087 (2-23), vs West Georgia, 1-27-88 Game: .154 (6-39), at Valdosta State, 2-11-89 Season: .293 (275-937), 1976-1977</p>	<p>Game: 14, vs Valdosta State, 12-14-87 Season: 487 (15 games), 1976-1977</p> <p>Rebound Margin Game: 50, AASU (62), Atlanta Christian (12), 2-12-77 Season: 4.6, AASU (51.7), Opp (47.1), 1984-1985</p>		
		3-Point Field Goals		Other Records
		<p>Most 3-Pointers Made Game: 10, three times. Last vs USC Spartanburg, 1-18-97 Season: 130 (27 Games) 1996-97</p> <p>Most 3-Pointers Attempted Game: 26 vs USC Spartanburg, 1-18-97 Season: 428 (27 games), 1995-1996</p> <p>Best 3-Point Percentage Game: .714 (5-7), at Saint Leo, 12-11-89 Season: .369 (69-187), 1989-1990</p>	<p>Most Personal Fouls Game: 30, four times: Last vs. USC Spartanburg, 2-17-96 Season: 576 (28 games), 1984-1985</p> <p>Fewest Personal Fouls Game: 8, vs Spelman, 2-17-92 and vs FMU, 2-10-97 Season: 337 (15 games), 1987-1977</p> <p>Most Assists Game: 30, vs USC Aiken, 1-3-96 Season: 422 (29 games), 1994-1995</p> <p>Most Steals Game: 29, at Tift, 11-17-84 Season: 414 (26 games), 1980-1981</p> <p>Most Blocked Shots Game: 8, at Georgia Southern, 2-25-88 Season: 117 (32 games), 1981-1982</p> <p>Most Turnovers Game: 40, vs Fort Valley State, 2-16-88 and at Florida Atlantic, 12-9-89 Season: 652 (23 games), 1987-1988</p> <p>Fewest Turnovers Game: 6, at USC Spartanburg, 2-1-92 Season: 354 (24 games), 1985-1986</p>	
		Free Throws		
		<p>Most Free Throws Made Game: 44, vs South Florida, 1-30-82 Season: 516 (32 games), 1981-1982</p> <p>Most Free Throws Attempted Game: 57, vs South Florida, 1-30-82 Season: 836 (32 games), 1981-1982</p> <p>Best Free Throw Percentage Game: .900 (9-10), at Piedmont, 2-10-90 Season: .673, 1979-1980</p>		
		<p>Fewest Free Throws Made Game: 1, at Barry, 2-18-84 Season: 201 (27 games), 1995-96</p> <p>Fewest Free Throws Attempted Game: 3, at Berry, 2-18-84 and vs Ala.-Huntsville, 12-6-96 Season: 343 (27 games), 1995-96</p> <p>Lowest Free Throw Percentage Game: .222 (4-18), at Rollins, 12-10-94 Season: .516 (330-640), 1982-1983</p>		
		Rebounds		
		<p>Most Offensive Rebounds Game: 45, vs Tift, 2-4-84 Season: 571 (28 games), 1984-1985</p> <p>Most Defensive Rebounds Game: 45, vs Tift, 2-4-84 Season: 876 (28 games), 1984-1985</p> <p>Most Rebounds Game: 90, vs Tift, 2-4-84 Season: 1,447 (28 games), 1984-1985</p> <p>Fewest Offensive Rebounds Game: 0, vs Valdosta State, 12-14-87 Season: 196 (15 games), 1976-1977</p> <p>Fewest Defensive Rebounds Game: 11, at Georgia College, 2-20-88 Season: 291 (15 games), 1976-1977</p>		
		Field Goals		Wins and Losses
	<p>Most Field Goals Game: 45, vs Tift, 2-2-85 Season: 930, (28 games), 1984-1985</p> <p>Most Field Goals Attempted Game: 108, vs Tift, 2-2-85 Season: 2,304 (32 games), 1981-1982</p> <p>Best Field Goal Percentage Half: .810, (17-21), 1st Half vs Augusta, 1-20-86 Game: .636 (28-44) at Lynn University, 11-29-97 (28-44) at Georgia College & State, 1-24-98 Season: .4464 (708-1,586), 1985-1986</p> <p>Fewest Field Goals Game: 6, at Valdosta State, 2-11-89 Season: 275 (15 games), 1976-1977</p>		<p>Most Wins: 21, 1984-1985 Best Winning Percentage: .750 (21-7), 1984-1985 Most Consecutive Wins: 8, 1981-1982 & 1984-1985 (twice) Most Consecutive Season Opening Wins: 5, 1978 to 1982 Most Consecutive Wins to start a season: 8, 1984-1985 Most Consecutive Home Wins: 12, 12-19-81 to 2-26-82 Most Consecutive Road Wins: 6, 2-17-79 to 12-8-79 and 1-25-80 to 11-15-80 Most Losses: 21, 1988-1989 Worst Winning Percentage: .125 (3-21), 1988-89 Most Consecutive Losses: 22, 1987-88 & 1988-89 Most Consecutive Losses in Season Openers: 2, 1976 to 1977 & 1993 to 1994 Most Consecutive Losses to start a season: 17, 1988-1989 Most Consecutive Home Losses: 13, 1-27-88 to 2-4-89 Most Consecutive Road Losses: 12, 1-27-86 to 1-9-88</p>	
	Season Averages			
		<p>Highest Offensive Average: 80.7, 1984-1985 Lowest Offensive Average: 50.5, 1976-1977 Best Defensive Average: 56.5, 1990-1991 Worst Defensive Average: 84.8, 1987-1988 Victory Margin: 11.0 (AASU: 80.7 Opp: 69.7), 1984-1985 Losing Margin: 28.5 (AASU: 52.3 Opp: 80.8), 1988-1989 Best Rebound Average: 51.7, 1984-1985 Best Assist Average: 15.5, 1991-1992 Best Steals Average: 15.9, 1980-1981</p>		



Peach Belt Conference Honors



First Team

Renee Rice (1991-92)
Nicole Smith (1994-95)

Second Team

Toni Bell-Yon (1990-91)
Yolanda Oliver (1992-93, 1993-94)
Jennifer Teeple (1993-94)
Christa Vaughan (1995-96)
Demetria McCloudon (1998-99)

Player of the Year

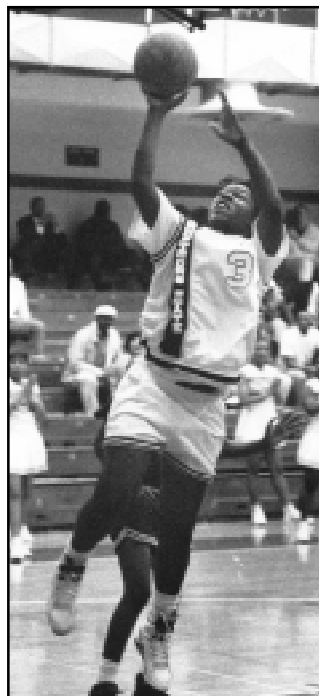
Renee Rice (1991-92)

Rookie of the Year

Yolanda Oliver (1991-92)

All-Tournament Team

Jennifer Teeple (1993-94)
Mary Ann Merritt (1994-95)
Yolanda Oliver (1994-95)



Renee Rice
1991-92 PBC
Player of the Year

GAIAW Honors

All-Conference

Cindy Pound (1978-79, 1979-80)
Terralyn Edwards (1979-80, 1981-82)
Sharleen Hamilton (1980-81)
Lee Harmer (1981-82)

All-Tournament Team

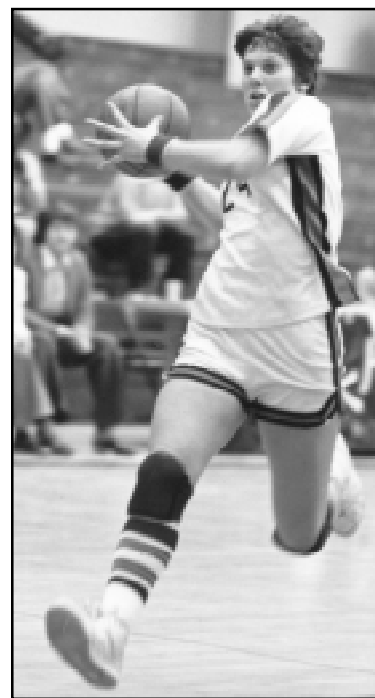
Terralyn Edwards (1981-82)
Aurora Campbell (1981-82)

Player of the Year

Cindy Pound (1978-79)
Terralyn Edwards (1981-82)

Coach of the Year

B.J. Ford (1978-79, 1981-82)



Cindy Pound
1979-80 GAIAW
Player of the Year

All-Region Honors

A.I.A.W.

All-Region III

Terralyn Edwards (1981-82)
Aurora Campbell (1981-82)

NAIA

All-District 25

Gigi Gibson (1982-83)
Debra Danielson (1983-84, 1984-85)
Norma Faison (1984-85)

GIAC Honors

All-Conference

Debra Danielson (1983-84, 1984-85)
Norma Faison (1984-85)



AASU's first head coach, **B.J. Ford** led the AASU Lady Pirates to NAIA National Tournament appearances in four straight seasons from 1982 to 1985.

AASU Coaching Records

Coach	Years	Record	Pct.
B.J. Ford	10	121-121	.500
Larry Tapp	2	8-39	.170
Lenny Passink	5	72-55	.567
Kim Bynum	2	21-35	.389
Lynn Jarrett	4	46-63	.422
Total	23	268-313	.461



AASU All-Time Records

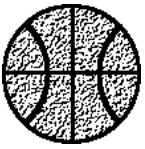


Season Records					Home-Away-Neutral			
Year	Record	Pct.	Conference	Coach	Year	Home	Away	Neutral
76-77	2-13	.133	GIAIW	B.J. Ford	76-77	1-3	1-7	0-3
77-78	4-16	.202	2-6	B.J. Ford	77-78	2-6	2-10	0-0
78-79	12-8	.600	7-3	B.J. Ford	78-79	7-3	5-2	0-3
79-80	17-7	.708	11-4	B.J. Ford	79-80	9-2	7-2	1-3
80-81	10-16	.385	3-9	B.J. Ford	80-81	6-6	3-8	1-2
81-82	20-12	.625	5-3	B.J. Ford	81-82	11-3	9-4	1-0
82-83	11-16	.407	GIAC	B.J. Ford	82-83	6-7	5-8	0-1
83-84	15-11	.577	5-7	B.J. Ford	83-84	7-4	8-6	0-1
84-85	21-7	.750		B.J. Ford	84-85	11-3	9-4	1-0
85-86	9-15	.375		B.J. Ford	85-86	6-6	3-9	0-0
86-87	No Team				86-87		NO TEAM	
87-88	5-18	.217		Larry Tapp	87-88	3-8	2-8	0-2
88-89	3-21	.125		Larry Tapp	88-89	2-10	1-10	0-1
89-90	15-9	.625	PBC	Lenny Passink	89-90	10-2	5-7	0-0
90-91	10-14	.417	5-7 (T4th)	Lenny Passink	90-91	5-6	5-8	0-0
91-92	14-13	.519	5-9 (T5th)	Lenny Passink	91-92	8-5	6-8	0-0
92-93	16-10	.615	10-6 (3rd)	Lenny Passink	92-93	9-3	7-5	0-2
93-94	17-9	.654	11-5 (3rd)	Lenny Passink	93-94	8-3	7-4	2-2
94-95	12-17	.414	8-10 (T5th)	Kim Bynum	94-95	8-4	3-11	1-2
95-96	9-18	.333	7-11(T8th)	Kim Bynum	95-96	5-8	2-10	2-0
96-97	14-13	.519	10-9 (T5th)	Lynn Jarrett	96-97	8-5	5-7	1-1
97-98	12-16	.429	6-12 (T5th)	Lynn Jarrett	97-98	6-6	3-9	3-1
98-99	13-15	.464	6-10 (T4th-S)	Lynn Jarrett	98-99	9-6	3-8	1-1
99-00	7-19	.269	4-12 (T5th-S)	Lynn Jarrett	99-00	6-6	1-10	0-3
	268-313	.461	72-81			153-114	100-169	15-30
						.573	.372	.333

AASU Women's Basketball All-Time Vs. Opponents

Alabama-Huntsville	1-4	Fort Valley State	0-9	Nova Southeastern	0-0
Atlanta Christian	1-0	Flagler	15-2	Paine	2-5
Augusta State	17-20	Florida	0-1	Piedmont	13-4
Barry University	1-1	Florida Atlantic	0-2	Presbyterian (S.C.)	1-3
Barton	0-2	Florida Memorial	3-1	Quincy	1-0
Bellarmino	0-1	Florida Tech	5-7	Rollins	3-4
Belmont Abbey	0-1	Francis Marion	6-11	Savannah State	11-20
Berry College	3-10	Gardner-Webb	0-0	Shorter	3-6
Brewton-Parker	8-1	Georgia Baptist	1-1	South Florida	1-1
Brunswick CC	2-0	Georgia College & State	15-31	Spartanburg Methodist	1-1
Carson Newman	0-1	Georgia Southern	0-8	Spelman	2-2
Catawba	0-1	Georgia Southwestern	7-10	Stetson	2-0
Central Florida	2-1	Georgia Tech	1-4	Saint Leo	9-2
Charleston Southern	7-4	Kennesaw State	8-13	Tampa	1-2
Clafin	0-3	Knoxville	0-2	Tennessee Wesleyan	0-1
Clayton College & State	4-5	Lander	15-3	Tift	14-4
Coker	4-2	Lenoir-Rhyne	0-2	Troy State	0-1
Columbia	3-1	Livingstone	0-0	UNC Asheville	1-2
Columbus State	8-17	Lynn	1-0	UNC Pembroke	11-3
Converse	0-2	Mars Hill	0-1	USC Aiken	13-9
Cumberland (Ky.)	0-2	Miami Dade North	0-1	USC Spartanburg	7-14
Davis & Elkins	1-0	Michigan-Dearborn	0-1	Valdosta State	1-6
Eckerd	3-1	Morris College	1-1	Voorhees	1-0
Edinboro (Pa.)	0-1	Mount Olive	0-0	West Georgia	1-11
Edward Waters	6-1	North Alabama	1-1	Winthrop	3-4
Elizabeth City State	0-1	North Florida	2-6	Overall	268-313
Fayetteville State	0-1	North Georgia	14-6		

Bold indicates 2000-2001 opponent.



AASU All-Time Results



1976-77 2-13 Overall

Nov. 16	Paine	L 48-59
Dec. 1	at Paine	L 53-80
Jan. 8	Tift	W 62-61
Jan. 14	at Claflin	L 50-103
Jan. 17	at Georgia Southern	L 48-74
Jan. 27	at Georgia Tech	L 54-57
Jan. 28	at Piedmont	L 57-70
Flagler Invitational		
Feb. 4	vs. Miami Dade North	L 59-73
Feb. 5	vs. Central Florida	L 48-62
Feb. 5	vs. Florida	L 47-82
Feb. 11	at Spelman	L 44-48 ot
Feb. 12	at Atlanta Christian	W 76-38
Feb. 15	Georgia Southern	L 40-58
Feb. 19	at Tift	L 39-98
Feb. 22	Claflin	L 32-83

1977-78 4-16 Overall • 2-6 GAIW

Nov. 12	at Tift *	L 68-83
Nov. 18	Piedmont	L 39-62
Nov. 19	Georgia Baptist	L 52-57
Dec. 2	Georgia College *	W 71-69
Dec. 3	at Georgia Tech *	L 36-90
Dec. 9	at Charleston Baptist	L 42-61
Jan. 7	North Georgia	L 46-82
Jan. 13	Georgia Tech *	L 73-90
Jan. 17	Augusta *	L 64-75
Jan. 20	at Spartanburg Methodist	L 60-77
Jan. 21	at Converse	L 58-63
Jan. 27	at Piedmont	W 85-75
Jan. 28	at North Georgia	L 52-60
Jan. 31	at Augusta *	L 67-87
Feb. 3	Tift *	W 71-55
Feb. 4	at Georgia College *	L 57-71
Feb. 9	at USC Aiken	L 47-75
Feb. 10	Charleston Baptist	L 39-49
Feb. 17	at Georgia Baptist	W 70-59
Feb. 18	at Spelman	L 66-76

* GAIW Conference

1978-79 12-8 Overall • 7-3 GAIW

Nov. 18	Spartanburg Methodist	W 79-64
Dec. 2	at Georgia Southwestern *	W 83-59
Dec. 4	at Georgia College *	W 77-44
Dec. 9	USC Aiken	L 63-66
North Georgia Christmas Invitational		
Dec. 11	vs. Berry	L 67-79
Dec. 12	vs. Troy State	L 55-81
Jan. 5	Berry	W 79-73
Jan. 6	Georgia Tech *	L 71-80
Jan. 10	Augusta *	L 57-60
Jan. 12	Tift *	W 79-69
Jan. 13	North Georgia	W 62-59
Jan. 25	Georgia College *	W 78-66
Jan. 27	at Georgia Tech *	W 61-51
Jan. 29	Charleston Baptist	W 71-55
Feb. 2	at USC Aiken	L 79-88
Feb. 11	Georgia Southwestern *	W 70-54
Feb. 14	at Augusta *	L 76-79
Feb. 17	at Tift *	W 102-99 ot
Feb. 20	at Charleston Baptist	W 76-63
GAIW State Tournament		
Feb. 22	vs. North Georgia	L 60-85

1979-80 17-7 Overall • 11-4 GAIW

Nov. 19	at Savannah State	W 80-71
Nov. 26	at Central Florida	W 98-77
Nov. 28	Georgia College *	L 65-73
Dec. 1	at Georgia Southwestern *	W 84-64
Dec. 8	Winthrop	W 78-70
North Georgia Christmas Invitational		
Dec. 13	vs. Georgia Southern	L 78-87
Dec. 14	vs. Tennessee Wesleyan	L 75-90
Jan. 5	Georgia Southwestern *	W 71-59
Jan. 8	Augusta **	W 80-72
Jan. 12	West Georgia **	W 73-62
Jan. 14	at Georgia College *	L 59-68
Jan. 16	at Fort Valley State *	L 71-82
Jan. 22	Central Florida	W 87-74
Jan. 25	at Tift *	W 81-62
Jan. 26	at Berry **	W 76-73
Feb. 1	Tift *	W 78-67
Feb. 2	North Georgia **	W 65-52
Feb. 8	Fort Valley State *	L 77-84
Feb. 9	at Charleston Baptist	W 86-56
Feb. 13	at Augusta **	W 77-76
Feb. 16	Charleston Baptist	W 86-56
Feb. 18	Savannah State *	W 98-75
GAIW State Tournament (Rome)		
Feb. 20	vs. Piedmont	W 78-77
Feb. 21	vs. West Georgia	L 64-67

* GAIW South Conference
** GAIW North Conference

1980-81 10-16 Overall • 3-9 GAIW

Nov. 14	at Rollins	W 83-26
Nov. 14	vs. Tampa	L 45-50
Nov. 15	at Stetson	W 78-68
Nov. 17	Savannah State	L 54-74
Dec. 5	Berry *	L 72-84
Dec. 11	Fort Valley State *	L 71-75
Dec. 13	at Winthrop	L 51-81
North Georgia Christmas Invitational		
Dec. 18	vs. North Alabama	L 60-70
Dec. 19	at North Georgia	W 81-74 ot
Jan. 5	Augusta *	W 66-61
Jan. 9	Shorter *	L 61-66
Jan. 10	Winthrop	W 70-52
Jan. 12	at Savannah State	L 61-77
Jan. 16	Georgia Southwestern *	W 77-74 ot
Jan. 17	Flagler	W 82-67
Jan. 23	Georgia College *	L 78-79
Jan. 30	Tift *	W 79-76
Feb. 6	at Fort Valley State *	L 62-63
Feb. 7	West Georgia *	L 54-71
Feb. 9	Charleston Baptist	W 55-48
Feb. 13	at Tift *	L 67-80
Feb. 14	at Georgia College *	L 60-62
Feb. 16	at Charleston Baptist	L 57-69
Feb. 20	at Georgia Southwestern *	L 58-63
GAIW State Tournament (Carrollton)		
Feb. 25	vs. North Georgia	W 63-56
Feb. 26	vs. Fort Valley State	L 56-82

1981-82 20-12 Overall • 5-3 GAIW

Nov. 17	at Savannah State	W 90-86
Georgia Southern Tipoff Tournament		
Nov. 20	vs. North Georgia	W 65-63
Nov. 21	at Georgia Southern	L 49-74
Nov. 23	at Georgia Southwestern	L 65-84
Nov. 30	at Winthrop	L 74-88
Dec. 3	at Georgia Southern	L 58-73
Dec. 5	West Georgia *	L 70-89

Dec. 10	at Stetson	W 85-80
Dec. 11	at South Florida	L 58-65
Dec. 16	at Augusta *	W 60-57
Dec. 17	Winthrop	L 59-69
Dec. 19	North Georgia	W 72-59
Jan. 8	Shorter *	W 70-62
Jan. 11	Augusta *	W 77-70
Jan. 13	Brewton-Parker	W 71-52
Jan. 16	Piedmont	W 74-58
Jan. 20	Savannah State	W 65-60
Jan. 22	at Berry	L 54-77
Jan. 23	at Shorter *	W 74-70
Jan. 25	at Brewton-Parker	W 67-56
Jan. 29	Tift *	W 60-45
Jan. 30	South Florida	W 78-74
Feb. 1	Georgia Southwestern	W 79-71
Feb. 5	Georgia College	W 69-60
Feb. 8	at Charleston Baptist	W 65-53
Feb. 12	at Georgia College	W 75-61
Feb. 13	at Tift *	L 68-72
Feb. 19	at West Georgia *	L 69-77
Feb. 22	Charleston Baptist	W 68-61
GAIW State Tournament (Savannah)		
Feb. 26	Augusta	W 64-59
Feb. 27	West Georgia	L 57-70
AIW Region III Tournament (Orlando)		
Mar. 12	vs. Florida International	L 77-81

* GAIW Conference

1982-83 11-16 Overall

Nov. 20	at Brunswick JC	W 53-52
Nov. 22	Edward Waters	W 70-63
Nov. 27	at Florida International	L 59-83
Nov. 29	at Flagler	W 80-58
Dec. 1	Piedmont	L 51-70
Dec. 4	Georgia Southwestern	L 52-65
Dec. 6	Savannah State	L 44-63
Dec. 8	at Augusta	W 70-68
Dec. 13	Kennesaw State	W 66-53
Dec. 14	North Georgia	W 62-58
Jan. 7	at North Georgia	L 65-79
Jan. 8	at Kennesaw State	L 50-65
Jan. 11	at Edward Waters	W 66-58
Jan. 14	UNC Asheville	L 58-67
Jan. 17	Augusta	L 63-77
Jan. 24	Brunswick JC	W 62-43
Jan. 28	Tift	W 78-51
Jan. 29	West Georgia	L 56-67
Feb. 1	at Savannah State	L 41-71
Feb. 4	Georgia College	W 68-56
Feb. 5	Knoxville	L 65-85
Feb. 12	at Knoxville	L 78-96
Feb. 18	at Tift	W 87-64
Feb. 19	at Piedmont	L 69-82
Feb. 25	at West Georgia	L 66-89
Feb. 26	at Georgia Southwestern	L 51-71
NIAA District 25 Playoffs		
Feb. 28	at Berry	L 59-82

1983-84 15-11 Overall • 5-7 GIAC

Nov. 16	Georgia Southwestern	L 64-72
Nov. 21	Edward Waters	W 83-72
Nov. 29	Berry *	L 64-79
Dec. 1	Georgia College *	L 79-88
Dec. 9	at Central Florida	L 60-85
Dec. 10	at Flagler	W 77-72 ot
Dec. 14	at Augusta	L 68-80
Dec. 15	Kennesaw State	W 71-62
Jan. 6	at Piedmont *	W 88-63
Jan. 7	at North Georgia *	W 71-59
Jan. 11	Augusta	W 87-85
Jan. 13	Shorter *	L 71-86
Jan. 14	Tift	W 85-72



All-Time Results



Jan. 16	at Edward Waters	W 87-72
Jan. 18	Savannah State	W 83-80
Jan. 21	at Eckerd	W 79-47
Jan. 22	at Saint Leo	W 70-68
Jan. 28	North Georgia *	W 76-69
Jan. 30	at Georgia Southwestern *	L 55-86
Feb. 3	at Georgia College *	W 91-76
Feb. 4	at Tift	W 82-76
Feb. 6	at Savannah State	L 62-79
Feb. 17	at Shorter *	L 63-78
Feb. 18	at Berry *	L 51-81
Feb. 25	Piedmont *	W 76-59
NAIA District 25 Playoffs		
Feb. 28	at Paine	L 66-72
* GIAC Conference		

1984-85 21-7 Overall

Nov. 16	at Georgia College	W 85-76
Nov. 17	at Tift	W 78-59
Nov. 27	Berry	W 66-65
Dec. 7	at Rollins	W 86-61
Dec. 8	at Flagler	W 96-46
Dec. 10	North Georgia	W 92-52
Dec. 12	Kennesaw State	W 93-55
Jan. 4	at Kennesaw State	W 80-68
Jan. 5	at Georgia Southwestern	L 62-75
Jan. 7	Carson Newman	L 63-73
Jan. 11	Winthrop	W 78-67
Jan. 12	Paine	W 82-65
Jan. 15	Augusta	W 92-77 ot
Jan. 18	at North Georgia	W 74-59
Jan. 19	at Piedmont	W 90-72
Jan. 22	Edward Waters	W 86-75
Jan. 25	Piedmont	W 98-70
Jan. 26	Flagler	W 83-47
Feb. 1	Shorter	L 68-87
Feb. 2	Tift	W 105-66
Feb. 6	Georgia Southwestern	L 66-69
Feb. 8	at Paine	W 79-70
Feb. 13	Georgia College	W 95-86
Feb. 15	at Shorter	W 69-68
Feb. 16	at Berry	L 67-98
Feb. 22	at Augusta	L 86-96
NAIA District 25 Playoffs		
Feb. 25	Georgia College	W 79-77
Feb. 27	at Berry	L 61-72

1985-86 9-15 Overall

Nov. 23	Rollins	W 72-51
Nov. 26	Flagler	W 105-68
Nov. 30	Piedmont	W 62-59
Dec. 2	Georgia Southwestern	L 66-83
Dec. 8	North Georgia	W 83-78
Dec. 10	Berry	L 69-92
Dec. 13	at UNC Asheville	L 72-77
Jan. 4	Shorter	L 72-84
Jan. 8	Fort Valley State	L 65-89
Jan. 10	at Piedmont	W 86-78
Jan. 11	at North Georgia	L 53-61
Jan. 13	at Kennesaw State	W 94-86
Jan. 18	at Flagler	W 88-54
Jan. 20	Augusta	W 88-82
Jan. 24	Kennesaw State	L 77-78
Jan. 25	UNC Asheville	W 85-71
Jan. 27	at Fort Valley State	L 79-80
Jan. 30	at Berry	L 71-83
Feb. 1	at Shorter	L 61-62
Feb. 5	at Georgia Southwestern	L 68-88
Feb. 15	at Georgia College	L 77-84
Feb. 17	at Winthrop	L 52-72
Feb. 21	Georgia College	L 78-87
Feb. 22	at Augusta	L 57-63

1986-87 NO TEAM

1987-88 5-18 Overall

Nov. 21	Florida Memorial	L 56-65
Nov. 24	at Fort Valley State	L 52-90
Dec. 5	at Savannah State	L 70-76 ot
Dec. 8	at West Georgia	L 69-95
Dec. 12	at Edward Waters	L 70-91
Dec. 14	Valdosta State	L 62-113
Jan. 8	Paine	L 49-77
Jan. 9	at Valdosta State	L 42-103
Jan. 14	Edward Waters	W 62-51
Jan. 18	Flagler	W 74-68
Jan. 21	Georgia Southern	L 55-93
Jan. 23	Columbia	W 98-84
Jan. 27	West Georgia	L 24-79
Jan. 30	Georgia College	L 51-102
Feb. 4	Savannah State	L 48-81
Feb. 6	at Flagler	W 58-49
Feb. 11	N Savannah State	L 52-69
Feb. 13	at Columbia	W 79-67
Feb. 16	Fort Valley State	L 68-109
Feb. 18	at Paine	L 47-108
Feb. 20	at Georgia College	L 76-114
Feb. 22	N Savannah State	L 66-78
Feb. 25	at Georgia Southern	L 34-89

1988-89 3-21 Overall

North Georgia Invitational		
Nov. 18	at North Georgia	L 56-84
Nov. 19	vs. Cumberland (Ky.)	L 55-112
Nov. 21	Georgia College	L 65-97
Nov. 23	Florida Atlantic	L 43-106
Nov. 26	Valdosta State	L 48-98
Dec. 6	at Savannah State	L 42-60
Dec. 9	at West Georgia	L 68-96
Dec. 10	at Alabama-Huntsville	L 45-59
Jan. 7	Converse	L 44-88
Jan. 13	Edinboro (Pa.)	L 48-97
Jan. 17	at Eckerd	L 43-77
Jan. 18	at Tampa	L 69-81
Jan. 21	West Georgia	L 32-95
Jan. 24	Flagler	L 56-67
Jan. 25	at Savannah State	L 44-71
Jan. 28	Columbia	L 66-73
Feb. 4	Alabma-Huntsville	L 51-81
Feb. 6	Savannah State	W 67-60
Feb. 8	at Columbia	W 54-53
Feb. 11	at Valdosta State	L 28-92
Feb. 14	at Flagler	L 52-65
Feb. 16	Florida Memorial	W 84-81
Feb. 18	at Georgia College	L 36-79
Feb. 21	Savannah State	L 60-67

1989-90 15-9 Overall

Nov. 21	Florida Tech	W 83-78 ot
Nov. 25	Saint Leo	W 67-45
Nov. 30	at Coker	W 67-59
Dec. 3	at Tampa	W 56-52
Dec. 9	Florida Atlantic	L 35-73
Dec. 11	at Saint Leo	W 78-56
Dec. 13	at Florida Tech	L 46-69
Jan. 11	Savannah State	W 63-57
Jan. 13	at Rollins	L 63-87
Jan. 20	at Columbus	L 76-79
Jan. 22	Eckerd	W 75-65
Jan. 24	USC Spartanburg	L 57-70
Jan. 27	Alabama-Huntsville	W 64-45
Jan. 30	Coker	W 70-62

Feb. 3	at USC Spartanburg	L 38-63
Feb. 5	Georgia College	W 73-65
Feb. 7	at Flagler	W 76-44
Feb. 10	at Piedmont	W 64-46
Feb. 12	at USC Aiken	L 49-70
Feb. 15	at Savannah State	L 52-66
Feb. 17	Piedmont	W 72-40
Feb. 19	at Georgia College	L 54-71
Feb. 21	Flagler	W 69-51
Feb. 24	Columbus	W 75-57

1990-91 10-14 • 5-7 PBC (T-4th)

Nov. 17	at Coker	L 57-68
Nov. 20	Florida Tech	L 46-49
Nov. 27	at Savannah State	L 66-72
Dec. 1	Coker	L 52-53
Dec. 6	at Alabama-Huntsville	L 42-62
Dec. 8	Saint Leo	W 73-48
Dec. 12	at Saint Leo	W 83-48
Dec. 14	at Florida Tech	W 54-53
Dec. 29	at Georgia College *	L 50-62
Jan. 5	at Lander *	W 64-54
Jan. 7	USC Spartanburg *	W 72-64
Jan. 10	Rollins	L 43-62
Jan. 12	USC Aiken *	L 43-61
Jan. 19	Columbus *	W 57-55
Jan. 23	Savannah State	L 37-52
Jan. 26	at Francis Marion *	L 81-85 2ot
Jan. 30	at USC Spartanburg *	L 37-52
Feb. 2	Lander *	W 51-49
Feb. 5	Flagler	W 69-40
Feb. 9	at USC Aiken *	L 38-49
Feb. 12	at Flagler	W 77-48
Feb. 16	Francis Marion *	W 56-54
Feb. 20	Georgia College *	L 52-54
Feb. 23	at Columbus *	L 52-64

* Peach Belt Athletic Conference

1991-92 14-13 • 5-9 PBC (T-5th)

Nov. 24	Saint Leo	L 74-77
Nov. 27	at Spelman	W 70-51
Dec. 9	at Flagler	W 63-38
Dec. 11	at Saint Leo	W 76-60
Dec. 14	at Florida Tech	L 55-72
Jan. 4	Georgia College *	L 68-76
Jan. 6	at Brewton-Parker	W 70-69 ot
Jan. 8	Francis Marion *	L 64-66
Jan. 11	at Lander *	L 61-63 ot
Jan. 13	Savannah State	W 69-64
Jan. 15	at Augusta *	L 45-61
Jan. 18	USC Aiken *	L 69-75
Jan. 22	at Columbus *	L 59-81
Jan. 25	USC Spartanburg *	L 58-75
Jan. 27	Savannah State	L 62-63
Jan. 29	at Georgia College *	L 59-66
Feb. 1	at USC Spartanburg *	W 69-56
Feb. 5	Columbus *	W 60-52
Feb. 8	Lander *	W 81-44
Feb. 10	Flagler	W 66-38
Feb. 12	Augusta *	W 63-46
Feb. 15	at Francis Marion *	L 54-58
Feb. 17	Spelman	W 79-49
Feb. 19	Brewton-Parker	W 89-84
Feb. 22	at USC Aiken	W 56-53

Peach Belt Athletic Conference Tmt

Feb. 26	USC Spartanburg	W 72-53
Feb. 28	at Augusta	L 63-71





All-Time Results



1992-93 16-10 • 10-6 PBC (3rd)

North Georgia Invitational

Nov. 20	North Georgia	W 68-53
Nov. 21	vs. Cumberland (Ky.)	L 67-68
Nov. 24	Brewton-Parker	W 62-55
Nov. 29	Presbyterian	L 70-74 ot
Dec. 3	at Brewton-Parker	L 58-80
Dec. 5	Saint Leo	W 75-53
Dec. 10	North Georgia	W 69-65
Dec. 12	at Voorhees	W 58-33
Dec. 17	at Saint Leo	W 67-49
Jan. 7	Georgia College *	W 68-51
Jan. 9	at USC Spartanburg *	L 57-83
Jan. 11	at Lander *	W 63-53
Jan. 16	at Columbus *	L 62-69
Jan. 18	Augusta *	L 49-62
Jan. 23	UNC Pembroke *	W 73-61
Jan. 25	at Francis Marion *	W 56-39
Jan. 30	at USC Aiken *	W 65-57
Feb. 1	at Augusta *	L 57-69
Feb. 6	USC Spartanburg *	L 68-79
Feb. 8	Columbus *	W 82-56
Feb. 11	Francis Marion *	W 52-42
Feb. 15	Lander *	W 75-44
Feb. 20	at UNC Pembroke *	W 74-42
Feb. 22	USC Aiken *	W 71-59
Feb. 27	at Georgia College *	L 63-69 ot
Peach Belt Athletic Conference Tmt		
Mar. 4	vs. Columbus	L 60-70

1993-94 17-9 • 11-5 PBAC (3rd)

North Georgia Rotary Classic

Nov. 19	vs. Clafin	L 71-92
Nov. 20	vs. Piedmont	W 78-60
Nov. 23	at Savannah State	L 68-75 ot
Dec. 2	Brewton-Parker	W 54-45
Dec. 6	at Brewton-Parker	W 53-44
Dec. 8	at Coker	W 48-37
Dec. 11	Florida Tech	W 69-60
Jan. 6	at Georgia College *	L 60-62
Jan. 8	USC Spartanburg *	L 56-70
Jan. 10	Lander *	W 83-35
Jan. 15	Columbus *	L 56-63
Jan. 17	Augusta *	W 67-56
Jan. 22	at UNC Pembroke *	W 64-55
Jan. 24	at Francis Marion *	L 43-45
Jan. 26	Savannah State	L 77-79 ot
Jan. 29	USC Aiken *	W 61-55
Jan. 31	at Augusta *	W 66-59
Feb. 5	at USC Spartanburg *	L 42-69
Feb. 10	Francis Marion *	W 72-56
Feb. 14	at Lander *	W 60-59
Feb. 16	at Columbus *	W 62-61
Feb. 19	UNC Pembroke *	W 74-44
Feb. 21	at USC Aiken *	W 59-48
Feb. 26	Georgia College *	W 66-64
Peach Belt Athletic Conference Tmt		
Mar. 3	vs. USC Aiken	W 72-60
Mar. 5	vs. Columbus	L 64-71
* Peach Belt Athletic Conference		

1994-95 12-17 • 8-10 PBC (6th)

Savannah News Press Holiday Classic

Nov. 23	vs. Savannah State	L 65-82
Nov. 26	at North Florida	L 59-76
Nov. 30	Coker	W 77-75
Dec. 3	at Valdosta State	L 62-80
Dec. 10	at Rollins	L 53-80
Dec. 13	Kennesaw State *	L 86-87
Lady Pirate Invitational		
Dec. 17	North Florida	W 79-70

Dec. 18	Mars Hill	L 56-81
Dec. 30	at Georgia Southern	L 47-97
Jan. 4	at USC Aiken *	W 58-53
Jan. 11	Augusta *	L 77-74
Jan. 14	at Francis Marion *	L 58-76
Jan. 16	Georgia College *	W 75-45
Jan. 18	at Columbus *	L 53-70
Jan. 21	USC Spartanburg *	L 72-77
Jan. 25	at UNC Pembroke *	L 78-79
Jan. 28	Lander *	W 69-59
Feb. 1	USC Aiken *	W 67-55
Feb. 4	at Kennesaw State *	L 70-80
Feb. 8	at Augusta *	L 65-72
Feb. 11	Francis Marion *	W 59-54
Feb. 13	at Georgia College *	L 70-75
Feb. 15	Columbus *	L 70-75
Feb. 18	at USC Spartanburg *	L 46-68
Feb. 22	UNC Pembroke *	W 63-60
Feb. 25	at Lander *	W 64-61

Peach Belt Athletic Conference Tmt

Mar. 1	vs. Kennesaw State	W 67-65
Mar. 3	at Augusta	W 82-65
Mar. 4	vs. USC Spartanburg	L 49-69

1995-96 9-18 • 7-11 PBC (8th)

Bellarmine Invitational

Nov. 18	vs. North Alabama	W 69-65
Nov. 29	at Bellarmine	L 50-83

Savannah News Press Holiday Classic

Nov. 22	vs. Savannah State	W 71-57
Nov. 29	Lenoir-Rhyne	L 75-80

Lady Pirate Invitational

Dec. 2	Barton	L 70-73
Dec. 3	Clayton State	L 55-70
Dec. 16	at Saint Leo	L 71-78
Dec. 31	Michigan - Dearborn	L 63-67 ot
Jan. 3	USC Aiken *	W 85-50
Jan. 6	at Kennesaw State *	L 59-80
Jan. 10	at Augusta *	L 59-68
Jan. 13	Francis Marion *	L 54-69
Jan. 15	at Georgia College *	L 70-74
Jan. 17	Columbus *	L 53-59
Jan. 20	at USC Spartanburg *	L 61-95
Jan. 24	UNC Pembroke *	W 80-71
Jan. 27	at Lander *	W 57-55
Jan. 31	at USC Aiken *	W 69-59
Feb. 3	Kennesaw State *	W 74-63
Feb. 7	Augusta *	L 72-74
Feb. 10	at Francis Marion *	L 57-65
Feb. 12	Georgia College *	W 75-65
Feb. 14	at Columbus *	L 62-88
Feb. 17	USC Spartanburg *	L 70-73 ot
Feb. 21	at UNC Pembroke *	L 81-82
Feb. 24	Lander *	W 69-60

Peach Belt Athletic Conference Tmt

Feb. 28	at Georgia College	L 60-76
---------	--------------------	---------

1996-97 14-13 • 10-8 PBC (T-5th)

Nov. 23	at Charleston Southern	L 44-67
Nov. 25	Saint Leo	W 65-62
Dec. 1	Barry	W 59-51
North Florida Tournament		
Dec. 6	vs. Alabama-Huntsville	L 53-68
Dec. 7	vs. Brewton-Parker	W 75-57
Dec. 10	at Clayton State	L 67-76
Dec. 14	Presbyterian	W 58-54
Dec. 17	Clayton State	L 43-52
Jan. 2	at USC Aiken *	W 64-47
Jan. 4	Kennesaw State *	W 78-63
Jan. 8	Augusta State *	L 61-76
Jan. 11	at Francis Marion *	L 33-69
Jan. 13	Georgia C&SU *	L 54-72
Jan. 15	at Columbus State *	W 70-65

Jan. 18	USC Spartanburg *	L 63-72
Jan. 22	at UNC Pembroke *	W 80-72
Jan. 25	Lander *	W 54-46
Jan. 29	USC Aiken *	L 51-79
Feb. 1	at Kennesaw State *	L 58-76
Feb. 6	at Augusta State *	L 61-63
Feb. 8	Francis Marion *	W 61-58
Feb. 10	at Georgia C&SU *	L 60-79
Feb. 12	Columbus State *	W 58-56
Feb. 15	at USC Spartanburg *	W 84-78
Feb. 19	UNC Pembroke *	W 78-62
Feb. 22	at Lander *	W 68-52
Peach Belt Athletic Conference Tmt		
Feb. 26	vs. Georgia C&SU	L 54-68

1997-98 12-16 • 5-11 PBC (T-5th S)

Nov. 19	at Presbyterian	L 55-69
Nov. 22	at Savannah State	W 66-61
Nov. 24	Barton	L 60-65
Nov. 29	at Lynn	W 74-56
Nov. 30	at Barry	L 40-82
Horton Home Christmas Classic		
Dec. 5	vs. Georgia Southwestern	W 66-59
Dec. 6	vs. Piedmont	W 54-43
Dec. 10	at Kennesaw State *	L 59-81
Dec. 13	Clayton C&SU *	W 58-49
Dec. 15	Florida Tech	W 59-47
Dec. 17	Augusta State *	L 56-80
Dec. 30	Davis & Elkins	W 69-55
Jan. 3	Georgia C&SU *	L 55-74
Jan. 8	at Francis Marion *	L 53-69
Jan. 10	Lander *	W 72-55
Jan. 17	at Columbus State *	L 52-90
Jan. 21	North Florida *	L 38-52
Jan. 24	at Georgia C&SU *	L 77-93
Jan. 28	UNC Pembroke *	W 56-48
Jan. 31	at Augusta State *	L 79-83
Feb. 2	USC Spartanburg *	W 75-64
Feb. 4	at North Florida *	L 42-58
Feb. 7	Columbus State *	L 82-84
Feb. 11	Kennesaw State *	L 50-74
Feb. 14	at USC Aiken *	W 58-50
Feb. 17	at Clayton C&SU *	L 58-61
Peach Belt Athletic Conference Tmt		
Feb. 20	Lander	W 71-65
Feb. 22	Columbus State	L 71-81

1998-99 13-15 • 6-10 PBC (5th S)

North Florida Tip-Off Classic

Nov. 14	vs. Florida Tech	L 78-80
Nov. 15	vs. Florida Memorial	W 69-56
Nov. 18	at Augusta State *	W 58-54
Nov. 22	at Valdosta State	L 60-78
Nov. 24	Morris College	W 59-56
Nov. 28	at Belmont Abbey	L 58-79
Dec. 3	Florida Tech	W 78-72
Dec. 5	Savannah State	W 74-61
Dec. 9	Kennesaw State *	L 52-76
Dec. 12	at Clayton C&SU *	W 75-41
Dec. 18	Quincy	W 71-62
Dec. 19	Lenoir-Rhyne	L 57-60
Jan. 2	at Georgia C&SU *	L 73-85
Jan. 6	Francis Marion *	L 65-76
Jan. 9	at Lander *	L 56-69
Jan. 16	Columbus State *	L 78-85
Jan. 20	at North Florida *	L 61-64
Jan. 23	Georgia C&SU *	L 41-68
Jan. 27	at UNC Pembroke *	L 67-71
Jan. 30	Augusta State *	W 68-52
Feb. 1	at USC Spartanburg *	W 59-44
Feb. 3	North Florida *	W 51-50
Feb. 6	at Columbus State *	L 59-96
Feb. 10	at Kennesaw State *	L 39-60



All-Time Results

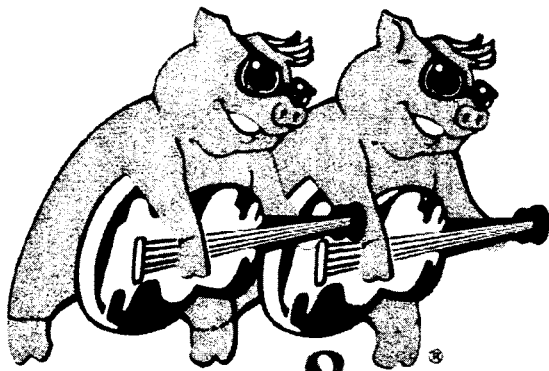


Feb. 13	USC Aiken *	W 103-61
Feb. 17	Clayton C&SU *	W 84-62
<i>Peach Belt Athletic Conference Tmt</i>		
Feb. 19	UNC Pembroke	W 69-60
Feb. 21	Kennesaw State	L 75-78

1999-2000 7-19 • 4-12 PBC (T-5th S)

<i>Lady Pirate/Chatham Orthopaedic TipOff Classic</i>		
Nov. 19	Florida Memorial	W 86-53
Nov. 20	Presbyterian	L 51-61
Nov. 23	Valdosta State	W 58-56
<i>Mount Olive Thanksgiving Classic (Mt. Olive, N.C.)</i>		
Nov. 26	vs. Fayetteville State	L 58-69
Nov. 27	vs. Elizabeth City State	L 51-59
Dec. 1	at Morris College	L 67-70
Dec. 4	at Savannah State	L 58-64
Dec. 11	at Kennesaw State *	L 57-70
<i>Eckerd College Holiday Sunspree Classic</i>		
Dec. 17	at Eckerd	W 74-57
Dec. 18	vs. Rollins	L 66-89
Dec. 30	Catawba	L 44-57
Jan. 2	Georgia College & State *	L 78-82
Jan. 5	at Francis Marion *	L 56-76
Jan. 8	Lander *	L 58-62
Jan. 15	at Columbus State *	L 56-75
Jan. 19	North Florida *	L 68-77
Jan. 22	at Georgia College & State *	L 64-69
Jan. 26	UNC Pembroke *	W 64-63
Jan. 29	Kennesaw State *	L 59-68
Feb. 2	at North Florida *	L 54-60
Feb. 5	Columbus State *	W 77-75
Feb. 12	at USC Aiken *	L 76-87
Feb. 16	at Clayton College & State *	L 76-78
Feb. 19	USC Spartanburg *	W 53-45
Feb. 23	at Augusta State *	L 59-62
Feb. 26	Clayton College & State *	W 74-65

The AASU Athletic Department Would Like To Thank The Following Sponsors For Their Continued Support Of Pirate Athletics !



RED HOT & BLUE
MEMPHIS PIT BAR-B-QUE

DINE IN – CARRYOUT
MON-THUR • 11am-11pm
FRI & SAT • 11am-12pm
SUN • 11am-10pm

Featuring:

Slow Smoked BBQ Ribs & Pulled Pork Shoulder

**Catfish • Salads • Sandwiches
Full Service Bar**

961-7422

**11108 Abercorn St. • Savannah, GA
In Front of Lowe's**

It's time for everyone to feel better.

Memorial
H E A L T H

Memorial
H E A L T H

feel better.

***Memorial Health Is A
Proud Sponsor Of
AASU Athletics!***

Go Pirates!

A LOT
GOES INTO
BEING
THE BEST.

THE SAME IS TRUE
OF THE PRODUCTS
HE CHOOSES
TO PLAY WITH.

Rawlings

Rawlings is the Official Basketball
of the Peach Belt Conference.



**GROUND UP OR
UP GRADE
CONVENIENCE
FOOD GAS STORE**



- Up Front Cash
- Financing Assistance
- Merchandising Help
- Store Blueprints
- Owner-Manager Training Courses



EMERALD PETROLEUM COMPANY, INC.

POST OFFICE BOX 2281
SAVANNAH, GA. 31402
PHONE: (912) 964-1846
E-MAIL: Empetro@aol.com



Score Big With SUBWAY

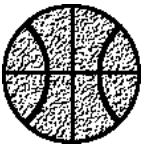
We bake our bread FRESH everyday.
Our veggies are sliced FRESH everyday.
Each and every sandwich and salad
Is prepared to your exact taste.
Stop in before or after the game and see for yourself!

1305 Abercorn St.
Savannah, Georgia
927-8450

Sun. - Thurs. 10 a.m. - 10 p.m.
Fri. - Sat. 10 a.m. - 11 p.m.

SUBWAY

Proud Sponsor of Subway 3-Pointers !!



Chatham/Days Inn TipOff Classic



AASU Chatham Orthopaedic/Days Inn Oglethorpe TipOff Classic

**Friday, Nov. 17 and
Saturday, Nov. 18**

**Alumni Arena at Armstrong
Sports Center**



Special thanks to the Chatham Orthopaedic Associates and the Days Inn Oglethorpe for sponsoring the Lady Pirates' season-opening tournament !

Catawba

Friday, Nov. 17 6:00 p.m.

Northern Michigan

Mount Olive

Friday, Nov. 17 8:00 p.m.

Armstrong Atlantic State

*Championship
Saturday, Nov. 18
8:00 p.m.*

*Consolation
Saturday, Nov. 20
6:00 p.m.*

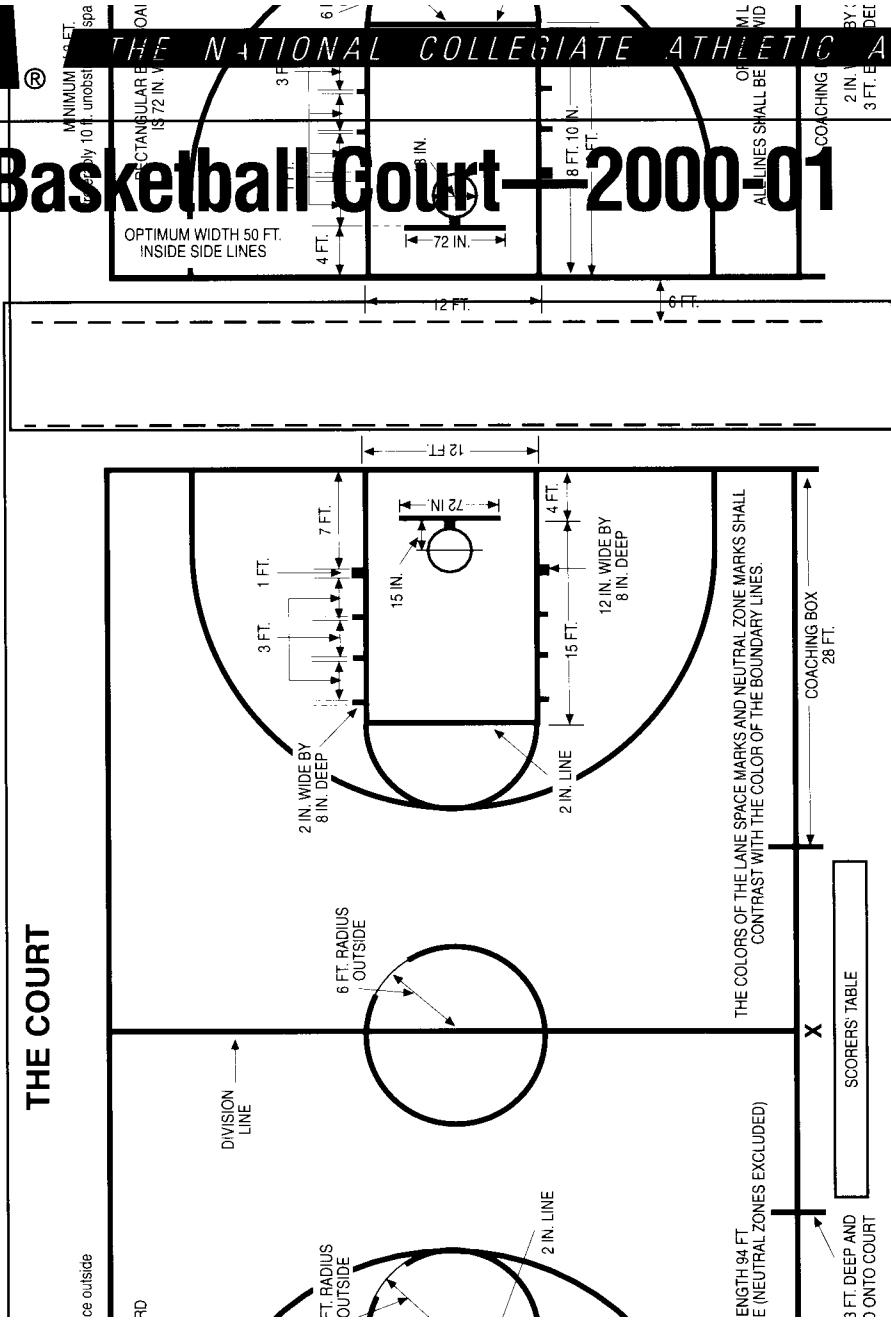
INFORMATION

Official Basketball Signals—2000-01

<p>START CLOCK</p> <p>Directional signal</p>	<p>STOP CLOCK</p> <p>Throw-in, free throw or designated spot</p>	<p>Visible counts</p>	<p>Beacon substitution or ball dead-clock's error</p>	<p>Not closely guarded</p>	<p>Shot clock reset</p>	<p>WOMEN ONLY Last-second shot</p>
<p>SHOOTING</p> <p>Start clock</p>	<p>Stop clock</p>	<p>3-point field goal</p>	<p>WOMEN ONLY</p> <p>Check for foul using other hand</p>	<p>Stop clock for jump ball</p>	<p>WOMEN ONLY FULL TIMEOUT</p>	<p>Place fingertips & thumb together in front of chest & signal hand out to shoulder with</p>
<p>SCORER</p> <p>No score</p>	<p>Goal counts or is awarded</p>	<p>Point(s) awarded use 1 or 2 fingers (for 3 points see No. 35)</p>	<p>Attempt and successful</p>	<p>Bonus free throw for 2nd throw, drop one arm - for 2 throws use 1 arm with 2 fingers - for three throws use 1 arm with 3 fingers</p>	<p>Withheld whistle on a lane violation by defensive team</p>	
<p>MEDIA TIMEOUT</p> <p>Point towards the scorers' table for radio/TV</p>	<p>Traveling</p>	<p>Illegal dribble</p>	<p>3-second violation</p>	<p>Over and back or palming/carrying the ball</p>	<p>5-second violation</p>	<p>Excessive swinging of elbow</p>
<p>FOULS</p> <p>Blocking</p>	<p>Holding</p>	<p>Hack/hit on arm</p>	<p>Pushing or charging</p>	<p>Hand check</p>	<p>Player-control foul</p>	<p>Double foul</p>
<p>FOULS</p> <p>Bird-dogging</p>	<p>Intentional foul</p>	<p>Technical foul</p>	<p>Flagrant foul</p>	<p>Flagrant foul</p>	<p>NOTE: Bird-dogging is optional for men's game</p>	

*There is no stop clock signal prior to an out-of-bounds violation.

Official Basketball Court — 2000-01





Historic Savannah, Georgia, is located on the Atlantic Coast, at the confluence of the Savannah River and the Atlantic Ocean. Throughout its history, there has been one adjective consistently used to describe Savannah: beautiful.

The reason? There's something about the unique beauty of Savannah that cannot be forgotten. Streets with canopies of moss-laden trees are honored venues for scores of historic homes. The town squares that Savannah's founding father, James Oglethorpe, laid out as public meeting places are now treasured "pocket parks" located throughout the downtown area.

A renovated waterfront area serves as the hub for shopping and entertainment. Nearby sandy beaches draw streams of visitors with persistent cool breezes and the endless lure of the rolling sea. Finally, there's an indescribable - but readily discernible - feeling in the air that pervades Savannah, a kind of "laid back" approach to the world, a "rootedness" that makes living or working in Savannah an experience second to none.

By way of affirmation, *Le Monde*, the leading French newspaper, called Savannah "the most beautiful city in North America."

Savannah has recently captured the imagination of a nation through its history and its appearance in several feature films including "Glory," "Forrest Gump," "Something to Talk About," "Midnight In The Garden of Good and Evil" and the upcoming fall film "The Legend of Bagger Vance" starring Will Smith and Matt Damon. Also, Savannah hosted the yachting events of the 1996 Summer Olympics. As a result, tourism has become one of the leading industries of the city.

Savannah hosts over six million tourists each year. Tourism impacts the Savannah area by over \$634 million. The city boasts over 7,000 rooms and more than 100 restaurants as folks have



learned that Savannah is more than just a convenient rest stop on the interstate to Florida.

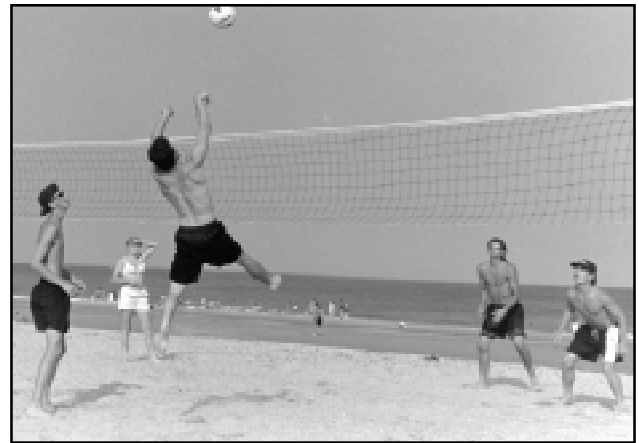
The climate of Savannah features warm, and sometimes hot, weather for most of the year. There are seven months in which the average temperature is 70 degrees or higher. The lowest average high is in January at 60.3 degrees.

The population in Savannah is roughly 130,000 and Chatham County is the fifth most populous county in the state of Georgia.

Savannah also sits centrally located to some of the southeast's finest beaches. Tybee Island, located less than 30 minutes from Armstrong Atlantic State's campus, offers six miles of unspoiled sands, tempting seafood and gracious accommodations. Resort areas such as Hilton Head, South Carolina, are less than one hour away and provide even more

relaxing getaway options.

Whether it's the lure of historical settings, the friendliness of a southern community or the beautiful climate of southeast Georgia, Savannah is the place for you.



Worth Checking Into.

- Spacious, comfortable rooms, complete with coffeemaker, hair dryer and more
- Complimentary breakfast bar
- Guest voice mail and free local calls
- Pay-per-view movies and free cable TV
- Outdoor pool


BAYMONT
 INN & SUITES

Savannah • 8484 Abercorn Street
 I-95 Exit 94 to Hwy 204 E
 (912) 927-7660

www.baymontinns.com

10



Lori GREEN

6-1, Junior, Forward
Richmond Hill, Ga.

12



Lexie MARTIN

5-7, Junior, Guard
Youngsville, La.

14



Catherine COMPTON

6-1, Junior, Forward
Lexington, S.C.

15



Becky THRIFT

6-0, Sophomore, Forward
Rincon, Ga.

20



Melissa BROOKS

5-7, Freshman, Guard
Savannah, Ga.

22



Dawn BALDWIN

5-11, Freshman, Forward
Jonesboro, Ga.

23



Melissa GERMANY

5-9, Junior, Guard/Forward
Macon, Ga.

24



Shawnte CRAIG

5-5, Sophomore, Guard
Hinesville, Ga.

25



Michelle HUBBARD

5-6, Senior, Guard
Ridgeland, S.C.

30



Marloes RENSKERS

5-7, Sophomore, Guard
Enschede, The Netherlands

32



Zandrique CASON

6-0, Sophomore, Forward
Tempe, Ariz.

33



Kristin BREWER

5-6, Sophomore, Guard
Lumber City, Ga.



Roger Hodge

Head Coach

34



Nicole JOFFRION

5-9, Freshman, Guard
Otsego, Mich.

40



Rachel BAKER

6-3, Freshman, Center
Santa Rosa Beach, Fla.



Flori Willie

Assistant Coach



Andy Bloodworth

Graduate Assistant

Pronunciation Guide

- #24 SHONN-tay Craig
- #30 marr-LOOSE Renskers
- #32 ZANN-dreek Cason
- #34 Nicole JAHFF-ree-onn



2000-2001 Armstrong Atlantic State University Women's Basketball Schedule

Date	Day	Opponent	Time
Nov. 17-18	Fri.-Sat.	<u>2000 Chatham Orthopaedic/Days Inn Oglethorpe</u>	<u>Tip-Off Classic</u>
Nov. 17	Fri.	Northern Michigan vs. Catawba	6:00 p.m.
		AASU vs. Mount Olive	8:00 p.m.
Nov. 18	Sat.	Consolation/Championship Game	6/8:00 p.m.
Nov. 24-25	Fri.-Sat.	at <u>Catawba College Tournament (Catawba, N.C.)</u>	
Nov. 24	Fri.	at Catawba	8:00 p.m.
Nov. 25	Sat.	vs. Livingstone	2:00 p.m.
Nov. 29	Wed.	at Spelman	6:00 p.m.
Dec. 6	Wed.	Spelman	6:00 p.m.
Dec. 9	Sat.	Kennesaw State *	2:00 p.m.
Dec. 12	Tues.	Savannah State	7:00 p.m.
Dec. 15	Fri.	Lenoir-Rhyne	7:00 p.m.
Dec. 30	Sat.	Gardner-Webb	Noon
Jan. 3	Wed.	Francis Marion *	5:30 p.m.
Jan. 6	Sat.	at Lander *	5:30 p.m.
Jan. 8	Mon.	Nova Southeastern	5:30 p.m.
Jan. 13	Sat.	Columbus State *	2:00 p.m.
Jan. 17	Wed.	at North Florida *	5:30 p.m.
Jan. 20	Sat.	at Georgia College & State *	5:30 p.m.
Jan. 24	Wed.	at UNC Pembroke *	5:30 p.m.
Jan. 27	Sat.	at Kennesaw State *	2:00 p.m.
Jan. 31	Wed.	North Florida *	5:30 p.m.
Feb. 3	Sat.	at Columbus State *	2:00 p.m.
Feb. 5	Mon.	Georgia College & State *	5:30 p.m.
Feb. 10	Sat.	USC Aiken *	5:30 p.m.
Feb. 14	Wed.	Clayton College & State *	5:30 p.m.
Feb. 17	Sat.	at USC Spartanburg *	2:00 p.m.
Feb. 21	Wed.	Augusta State *	5:30 p.m.
Feb. 24	Sat.	at Clayton College & State *	5:30 p.m.
Feb. 28-Mar. 3	Wed.-Sat.	PBAC Tournament (Greenwood, S.C.)	TBA

Bold denotes home game.

* - Peach Belt Conference game