

# Reflector

1952

Georgia Southern University

Follow this and additional works at: <https://digitalcommons.georgiasouthern.edu/reflector-yearbook>



Part of the [Higher Education Commons](#)

---

## Recommended Citation

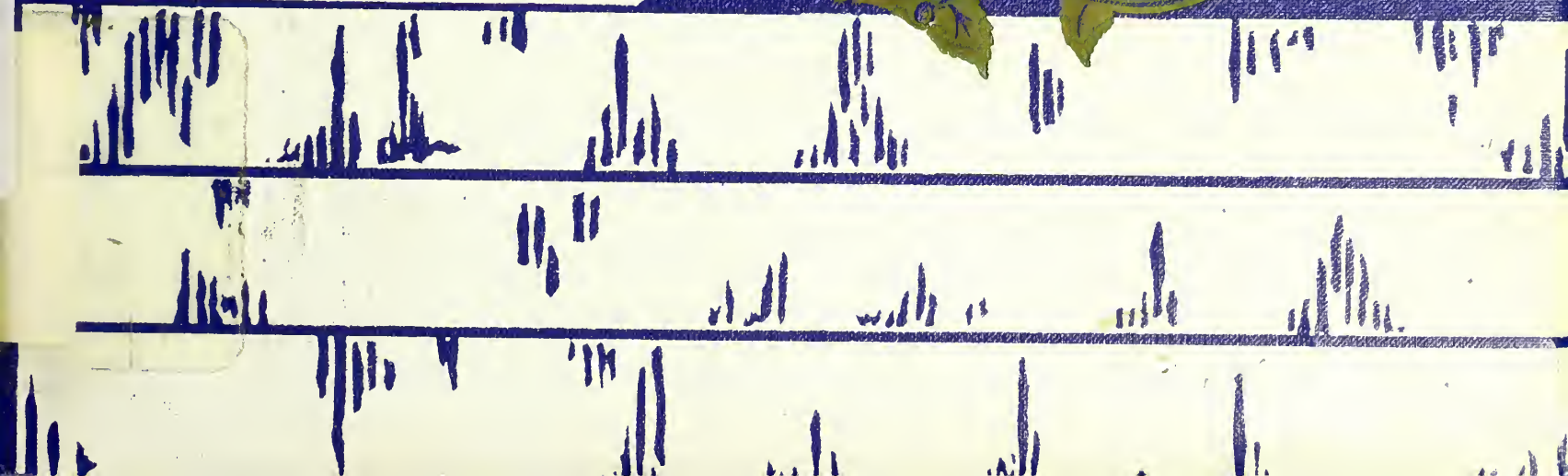
Georgia Southern University, "Reflector" (1952). *Reflector Yearbook*. 25.  
<https://digitalcommons.georgiasouthern.edu/reflector-yearbook/25>

This book is brought to you for free and open access by the Student Media at Digital Commons@Georgia Southern. It has been accepted for inclusion in Reflector Yearbook by an authorized administrator of Digital Commons@Georgia Southern. For more information, please contact [digitalcommons@georgiasouthern.edu](mailto:digitalcommons@georgiasouthern.edu).



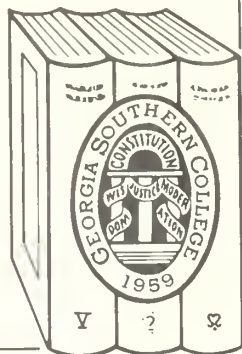
# REFLECTOR

1952





GEORGIA  
SOUTHERN COLLEGE  
LIBRARY



Georgia Southern College

Zach S. Henderson Library

Georgia Southern University  
Zach S. Henderson Library

Registrar





Digitized by the Internet Archive  
in 2014

<https://archive.org/details/reflector1952na>

**T H E   S E N I O R   C L A S S   S A Y S :**

*“Welcome to - - -*

**T H E   1 9 5 2**

**R E F L E C T O R ’ ’**

“Grow old along with me,  
The best is yet to be—”

—Browning



“E  
A  
R  
T  
H



SANFORD HALL

H A S N O T



LEWIS HALL





EAST HALL

# ANYTHING TO



WEST HALL

S  
H  
O  
W





ADMINISTRATION BUILDING



LABORATORY SCHOOL

M O R E   F A I R''

—Wordsworth



C S  
A C  
M E  
P N  
U E  
S S



The East Hall Gang



Leap Year comes but every four years.



Those Saturday night dances!



The dean's "night out"!





MISS HESTER NEWTON

---

---

## **D E D I C A T I O N**

Somewhere along the way we had lost the zeal and the fire that should go along with learning and were plodding up the steep trail to the peak of knowledge. It was then, happily, that we found ourselves walking side by side with you. You opened our amazed eyes to the beauty and the wonder that lay about us in our own environment, the purple crags looming like jagged castle towers above us, the peaceful valleys asleep in the sunshine below us, even the little violet at our feet that we had almost crushed in our haste. When we had seen and felt and heard all, then it was that we turned back to you with shining eyes and exclamations of gratitude. It is for this, the revelation of the beauty, the wonder, and even the ugliness of our native state, as much as for your unswerving devotion to the institution of which we are a part, that we, the senior class of 1952, wish to dedicate this Reflector and bid you Godspeed in the years ahead.

---

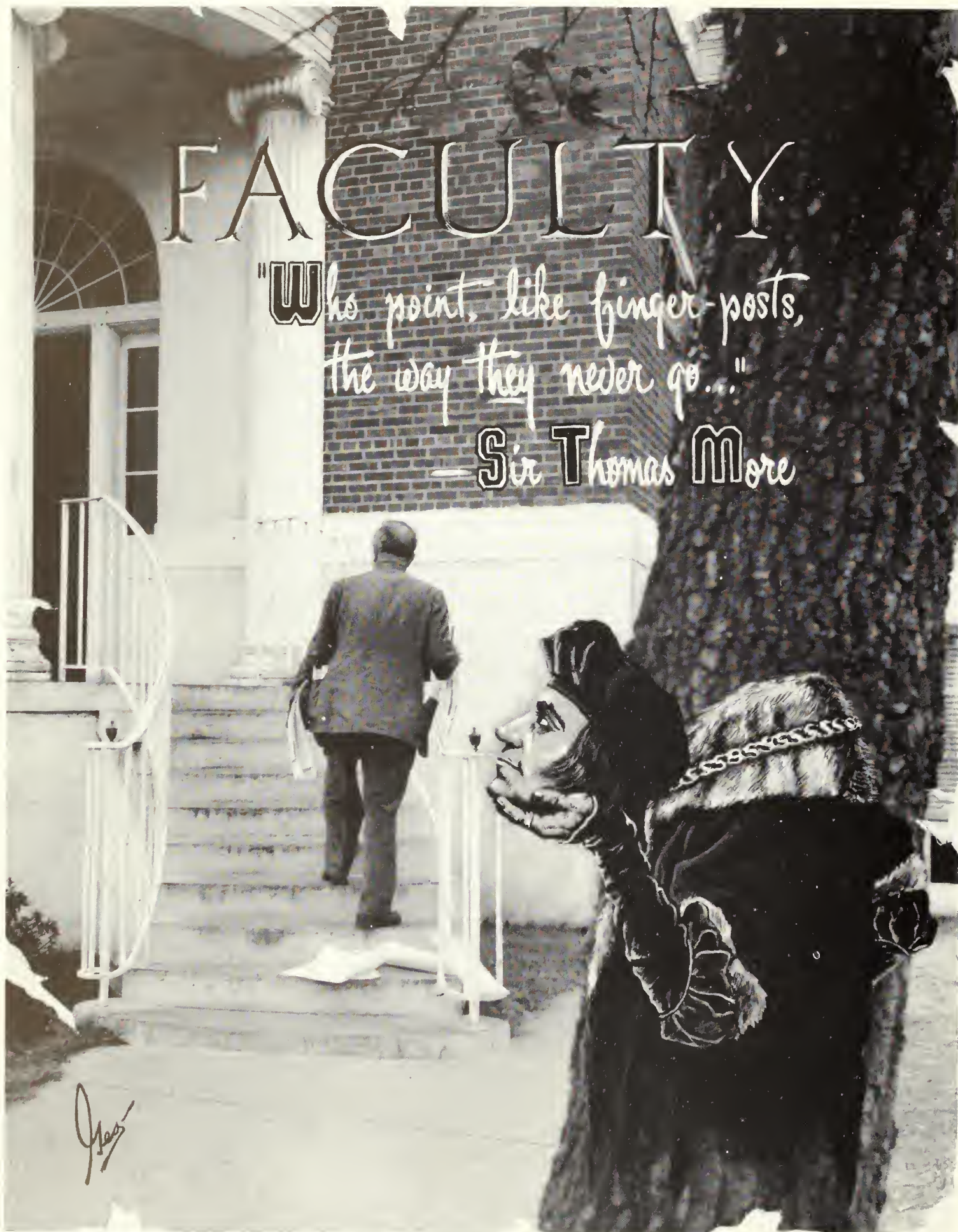
---



# FACULTY

"Who point, like finger-posts,  
the way they never go..."

— Sir Thomas More



*John*



# THE ADMINISTRATION



**ZACH S. HENDERSON**  
*President*



**PAUL CARROLL**  
*Dean*



**MAMIE VEAZEY**  
*Dean of Women*



**SOPHIE JOHNSON**  
*Dean of Men*

## AND PERSONNEL



**Queen E. Collins**  
*Secretary of  
Laboratory School*



**Mrs. Archie Jackson**  
*West Hall*



**Mrs. J. B. Johnson**  
*East Hall*



**Marjorie Jones**  
*Manager,  
Blue Tide*



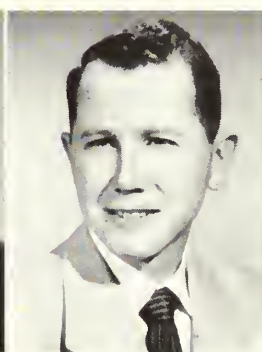
**Mrs. Morris A. King**  
*Alumni Office*



**Mary Jane Moore**  
*Business Office*



**Mrs. Eva Simmons**  
*Business Office*



**Don McDougald**  
*Counptroller*



**Mrs. M. M. Melton**  
*Dietician*



**Mae Michael**  
*Secretary to  
President*



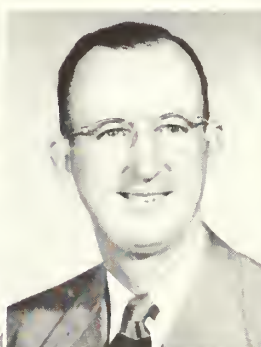
**Lizzie Norman**  
*Secretary to Dean  
and Registrar*



**Viola Perry**  
*Registrar*



**Frances Rocquemore**  
*Nurse*



**B. E. Taylor**  
*Supt. of Buildings  
and Grounds*



**Annie Thompson**  
*Assistant  
Dietician*





THOMAS B. ALEXANDER  
*Social Science,  
Chairman*



W. S. HANNER  
*Exact Science,  
Chairman*



THOMAS C. LITTLE  
*Director of  
Laboratory School*



RONALD J. NEIL  
*Music,  
Chairman*



FIELDING RUSSELL  
*English,  
Chairman*

## THE FACULTY



J. B. SEARCE  
*Physical Education,  
Chairman*



HENRY L. ASHMORE  
*Education*



MAZIE AUGLEY  
*Education*



RUTH BOLTON  
*Home Economics*



JACK BROUCEK  
*Music*



ANNE G. BRUCE  
*Education*



J. I. CLEMENTS  
*Physical Education*



CONSTANCE CONE  
*Education*



MARJORIE CROUCH  
*Education*



LANELLE DAVIS  
*Education*





**MRS. GLADYS DELOACH**  
*Librarian*



**DOROTHY DAHONEY**  
*Education*



**CLEO EDENFIELD**  
*Education*



**JOHN ERICKSON**  
*Industrial Arts*



**HORACE FLANDERS**  
*Education*



**BERTHA FREEMAN**  
*Education*



**FREIDA GERNANT**  
*Fine Arts*



**EDGAR GODFREY**  
*Industrial Arts*



**MARJORIE GUARDIA**  
*English*



**DOROTHY C. HILLIARD**  
*Physical Education*



**ELA JOHNSON**  
*English*



**MARJORIE KEATON**  
*Business Education*



**ELIZABETH KESSLER**  
*Education*



**DANA M. KING**  
*Music*



**MORRIS A. KING**  
*Principal of  
Laboratory School*



**CHARLES B. KOPP**  
*Public Relations,  
English*



**EDNA LUKE**  
*Music*



**EMERY A. MADDOX, JR.**  
*Film Librarian*



**HASSIE MCELVEEN**  
*Librarian*





W. B. MOYE  
*Mathematics*



HESTER NEWTON  
*Social Science*



MARGARET STRAHLMANN  
*Home Economics*



DOROTHY STEWART  
*Speech*



TULLY PENNINGTON  
*Biology*



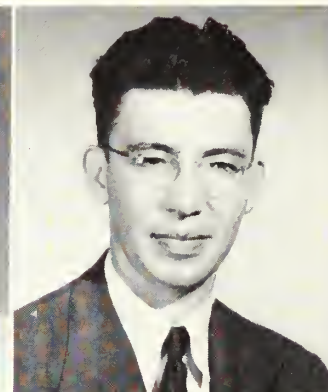
BILL PHARIS  
*Education*



MARVIN S. PITTMAN  
*President, Emeritus*



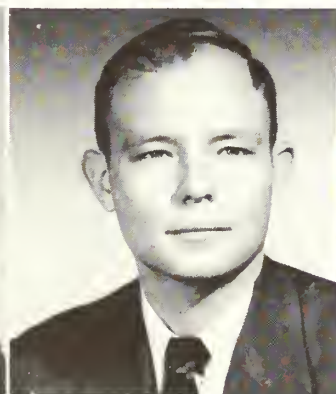
ROXIE REMLEY  
*Fine Arts*



GEORGE A. ROGERS  
*Social Science*



GEORGIA WATSON  
*Education*



TAYLOR SCOTT  
*Social Science*



JOHN H. WHEELER  
*Education*



ROBERT SHERRILL, JR.  
*Exact Science*



MARGARET STANION  
*Physical Education*



MARIE WOOD  
*Education*





The band helps out between halves.



The Star-lite Club and trumpeteer, "Sonny."

## CAMPUS H I - L I T E S



Billie and the guinea pig.



Escape from study.

## A N D L O - L I T E S





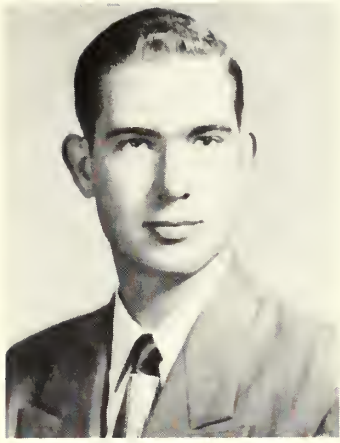
"And what is so rare as a day in June?"

— James Russell Lowell

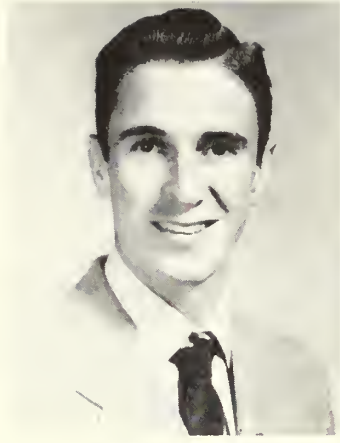
SENIORS

1897

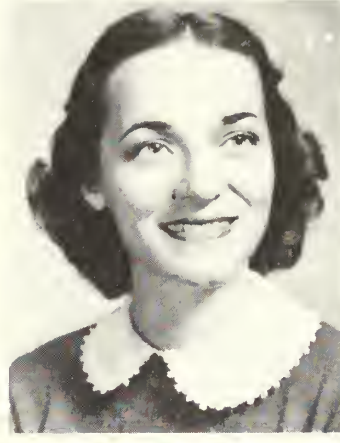




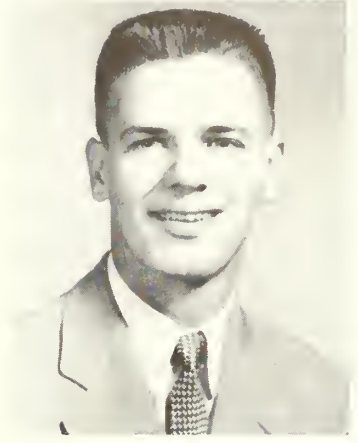
**SPENCER OVERSTREET**  
*President*



**JIMMY OLIVER**  
*Vice-President*



**BETTY ANN BEDINGFIELD**  
*Secretary*



**RALPH PARSONS**  
*Treasurer*



**DR. FIELDING RUSSELL**  
*Sponsor*

## *The Senior Class*



**Adamson**



**Altman**



**Bedingfield**



**Bell**

**EMILY ADAMSON—Morrow, Ga.**  
*English*

BSU 1, 2, 3, 4; SCA 1, 2, 3; FBLA 3, Publicity chairman 3; English Club 3; WAA 1, 2, 3.

**ANN ALTMAN—Sylvania, Ga.**  
*Elementary Education*

Transfer from University of Georgia; Mu Sigma 2; Philharmonic Choir 2, 3, 4; FTA 4.

**BETTY ANNE BEDINGFIELD—Dublin, Ga.**  
*Business Education*

Cheerleader 1, 2, 3, 4; house council 2, 3, 4; Philharmonic Choir 1; WAA 1, 2; George-Anne 1, 2, 3; class officer 3, 4; Masquers 1, 2, 3; FBLA Vice-President 4; Reflector business manager 4.

**GROVER BELL—Munneryn, Ga.**  
*English*

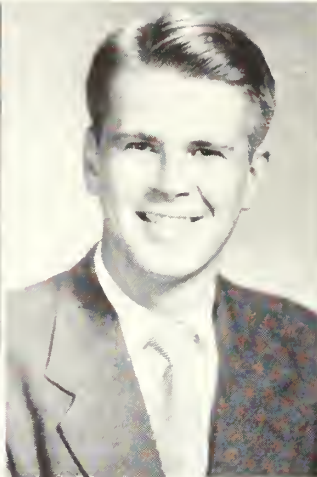
Wesley Foundation 1, council 2, 3, 4, president 4; SCA 1, council 2, 3, 4, Vice-president 4; English Club 3, 4; Philharmonic Choir 4; Who's Who 4.



Bennett



Bentley



Biggers



Bowen

## T H E S E N I O R S

**JOAN BENNETT**—St. Simons Island, Ga.

*Physical Education*

Chorus 1; Masquers 2; WWA 1, 2, 3; PEMM Club 3, 4; FTA 4; Cheerleader 1, 2, 3, 4; George-Anne 4; House Council 2; Reflector 4.

**ANNE BENTLEY**—Dawson, Ga.

*History*

Transfer from Georgia Southwestern; FTA 3, 4; BSU 3, 4; SCA 3, 4; IRC 3, 4.

**DAN UPSHAW BIGGERS**—Toccoa, Ga.

*English*

Student Council 1, 2, 3, 4; treasurer 2; BSU Council 1, 2, 3, 4, state officer 4; Masquers 1, 2, 3, 4, vice-president 2, president 3, 4; Alpha Psi Omega 2, 3, 4; FTA 4; Who's Who 4; English Club.

**WALDO BOWEN**—Thomasville, Ga.

*Business Education*

BSU; FBLA, president.

**JACK M. BOZEMAN**—Cochran, Ga.

*History*

IRC.

**MARTHA WYNN BRADDY**—Lyons, Ga.

*Elementary Education*

**NELL BOWEN**—Register, Ga.

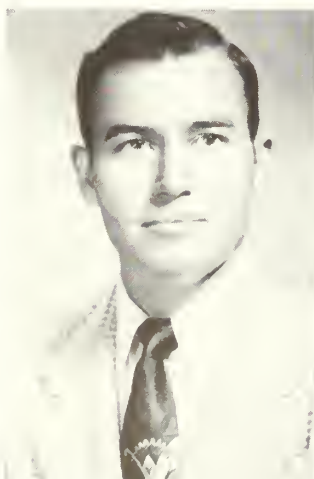
*Elementary Education*

House Council, secretary-treasurer 2, vice-president 3, 4; SCA 2, 3; May Day 3; FTA 4.

**MRS. CAROLYN B. BRANNEN**—Statesboro, Ga.

*Elementary Education*

Transfer from South Georgia College.



Bozeman



Braddy

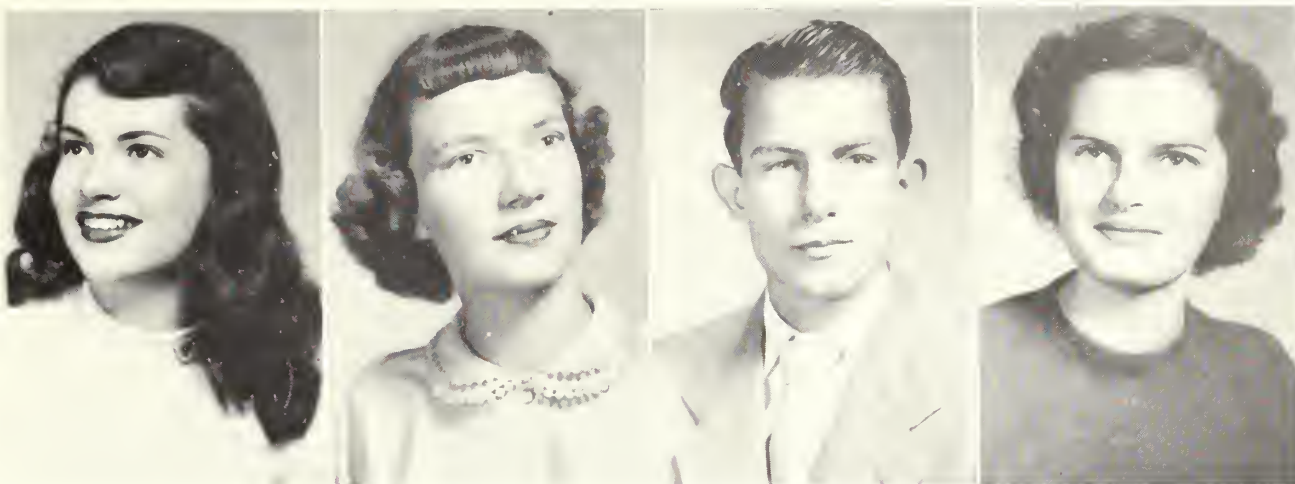


Bowen



Brannen





Brantley

Brock

Brown

Brown

## *of nineteen hundred and fifty-two*

**ROSALYN BRANTLEY**—Wrightsville, Ga.  
*Elementary Education*

Transfer GSCW; PBYF 2, 3, 4; Chorister 2, 3, vice-president 4; Masquers 2, 3, 4; Alpha Rho Tau 2, 3, 4, vice-president 4; WAA 2, 3, 4; SCA 3, 4; Reflector 3, 4, Ads, Clubs 4; FTA 4.

**ELAINE BROCK**—Bainbridge, Ga.  
*English*

Transfer South Georgia College; English Club.

**FRED BROWN**—Stilson, Ga.  
*Exact Science*

**JACQUELINE BROWN**—Helena, Ga.  
*Elementary Education*

Transfer South Georgia College.

**MILDRED BROWN**—Portal, Ga.  
*Elementary Education*

**LARUE BRUCE**—White Oak, Ga.  
*Industrial Arts*

**LAWRENCE R. BRYANT**—Chester, Ga.  
*English*

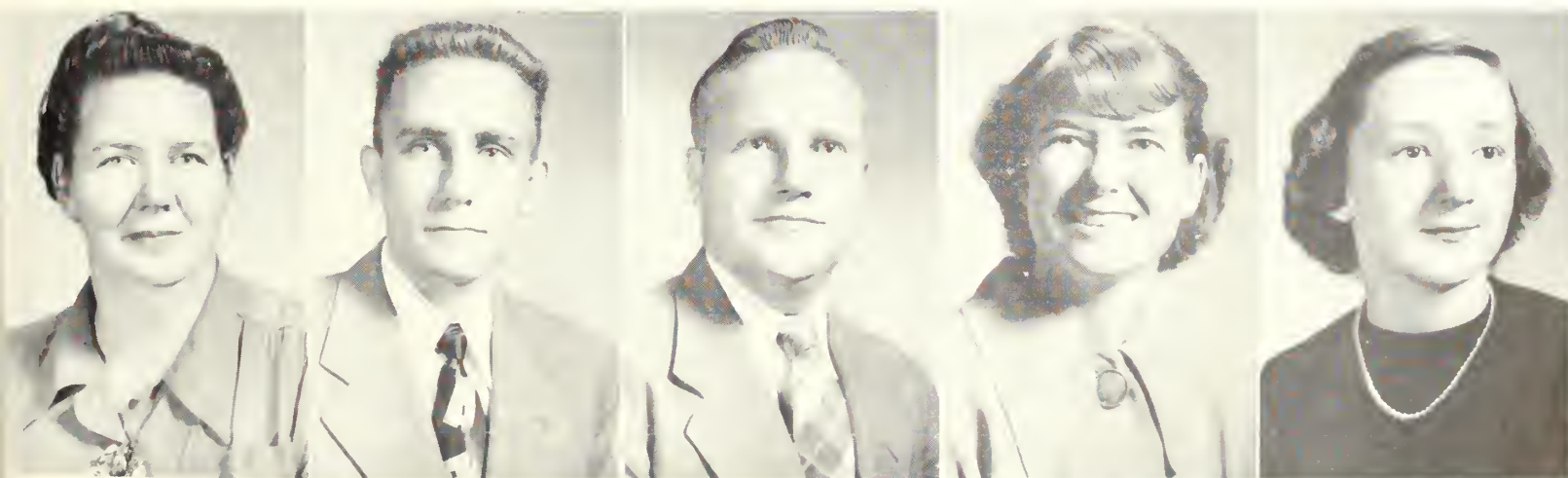
Transfer Middle Georgia College; English Club; FTA.

**EDITH CARPENTER**—Tifton, Ga.  
*English*

Masquers 2, 3, 4; Philharmonic Choir 4; George-Anne 1, 2, 3, 4, feature editor 3, 4; Reflector 3, 4, editor 4; Alpha Psi Omega 4; Kappa Delta Pi 3, 4, president 4; Who's Who 4.

**JULIA CARWILE**—Rome, Ga.  
*Elementary Education*

Transfer West Georgia College; Wesley Foundation Council; SCA 3, 4; FTA 3, 4.



Brown

Bruce

Bryant

Carpenter

Carwile



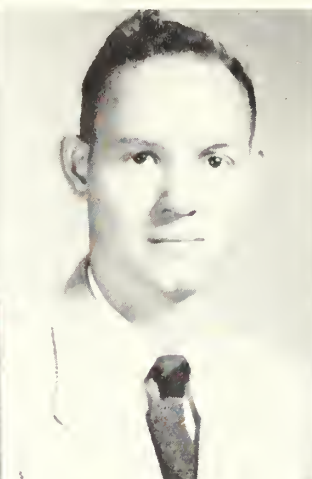
Cash



Chalker



Childres



Clark



Clements

## T H E S E N I O R S

**DORIS REBECCA CASH**—Mountville, Ga.  
*Elementary Education*

Transfer from Young Harris and Lagrange College; FTA; WAA.

**EDITH CHALKER**—Warrenton, Ga.  
*Elementary Education*

SCA 1, 2, 3; Wesley Foundation 1, 2, 3; WAA 1, 2, 3; Lewis House Council 3; Art Club 3; FTA 3.

**WILLIAM FERRELL CHILDRES**—Butler, Ga.  
*History*

English Club; Philharmonic Choir; SCA.

**GEORGE HENRY CLARK**—Attapulgua, Ga.  
*Exact Science*

House Council 3, 4.

**FRANK MIZELL CLEMENTS**—Rhine, Ga.  
*Physical Education*

Basketball 1, 2, 3, 4; baseball 1, 2, 3, 4; "T" Club, president 3, 4; secretary 3; class president 2; House Council 1.

**SUE COFFIA**—Statesboro, Ga.  
*Home Economics*

Transfer from North Georgia College; PEMM Club; Home Economics Club.

**J. H. COLLINS**—Collins, Ga.  
*Exact Science*

FTA 3; Exact Science Club 3.

**LILLIAN ANITA DANIELS**—Arlington, Ga.  
*Home Economics*

Home Economics Club 1, 2, 3, 4; YWCA 1, 2; SCA 3.

**LOWELL DASHER**—Marlow, Ga.  
*Social Science*

Transfer from Newberry College, S. C.; IRC 4; FTA 4.



Coffia



Collins

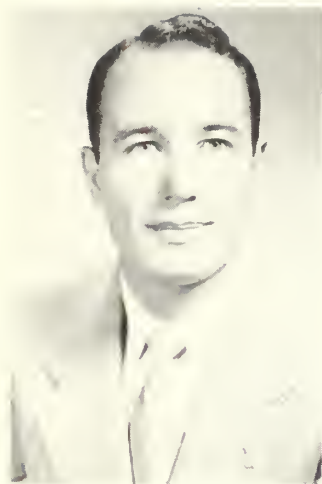


Daniels



Dasher





Deen



Dix



Dobbs



Donaldson

## *of nineteen hundred and fifty-two*

**JAMES DEAN**—Alma, Ga.

*Exact Science*

Science Club.

**ALBERTA EMILY DIX**—Abbeville, Ga.

*Home Economics*

Home Economics Club; BSU; House Council.

**ELIZABETH DOBBS**—Covington, Ga.

*Elementary Education*

Transfer from West Georgia College; Art Club 3, 4, secretary 4; FTA 4; George-Ann Staff 4; West Hall House Council 2.

**MARY ELIZABETH DONALDSON**—Metter, Ga.

*Home Economics*

Transfer from Martha Berry.

**BETTY DRAKE**—Collins, Ga.

*Elementary Education*

SCA 2, 3, 4; FTA 3, 4.

**MARTHA DUFFIELD**—Columbus, Ga.

*Home Economics*

BSU 1, 2, 3, 4, secretary 3; SCA 3, 4; Home Economics Club 1, 2, 3, 4; WAA 1; Reflector Staff 1, 4; FTA 4.

**BETTY EASON**—Surrency, Ga.

*Business Education*

Wesley Foundation 1, 2, 3, 4; George-Anne 3, 4; Masquers 3, 4; Kappa Delta Pi 3, 4.

**JAMES ELLIS**—Savannah, Ga.

*Elementary Education*

**WILLIAM PARKER EVANS**—Thomasville, Ga.

*History*

Organ Guild 1, 2; Reflector 2, 3.



Drake



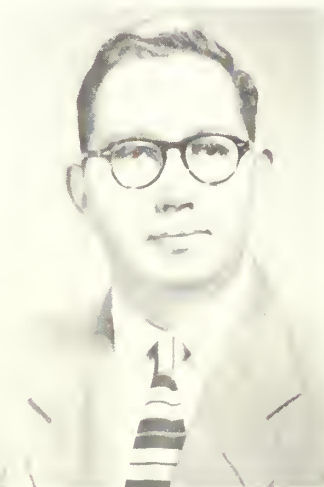
Duffield



Eason



Ellis



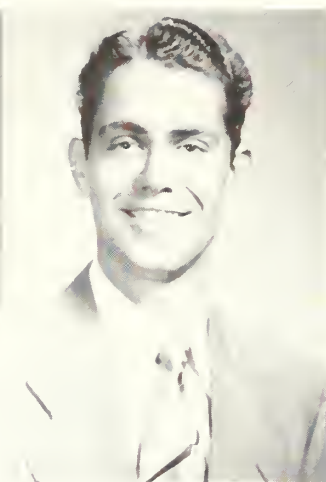
Evans



Ewing



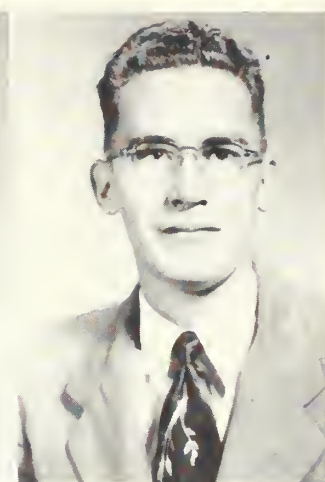
Flanders



Fox



Fuller



Gaines

## T H E S E N I O R S

**WALTON ZITTROUNER EWING**—Rincon, Ga.

*Elementary Education*

Philharmonic Choir 1, 2, 3; WAA 1, 2, vice-president 2; Masquers 1, 3; Art Club 3; FTA 3; Kappa Delta Pi 3, 4.

**EVELYN WOLFE FLANDERS**—Savannah, Ga.

*Elementary Education*

Philharmonic Choir

**WILLIAM H. FOX**—Blairsville, Ga.

*Music*

Transfer Young Harris College; Mu Sigma 3, 4; Art Club 1; Masquers 3, 4; Philharmonic Choir 3, 4; Concert and Marching Bands 3, 4; SCA 3, 4; Wesley Foundation 4.

**SAM D. FULLER**—Fitzgerald, Ga.

*Business Education*

**CLAYTON JACKSON GAINES**—Rome, Ga.

*Industrial Arts*

**CAROLYN GILDER**—Glenwood, Ga.

*English*

English Club; FTA; House Council

**FAINE GREEN**—Stockton, Ga.

*Elementary Education*

Philharmonic Choir 1; FTA 4.

**LOIS GRINER**—Lyons, Ga.

*Business Education*

House Council 2; SCA 2; FBLA 3.

**TED GRINER**—Rocky Ford, Ga.

*Sociology*

Transfer Valdosta State College.



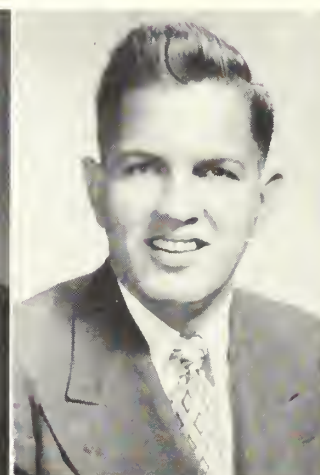
Gilder



Green



Griner

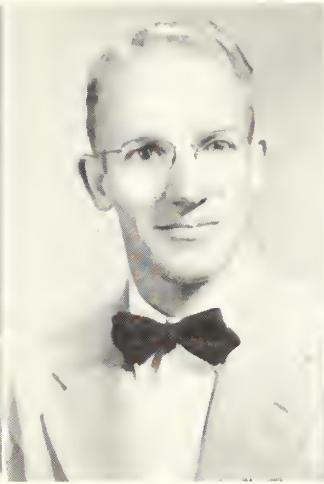


Griner





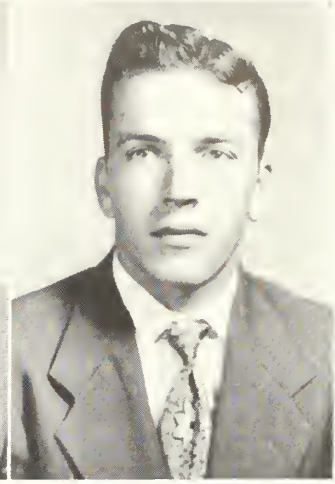
Groover



Hagin



Harper



Harrell

## *of nineteen hundred and fifty-two*

**JOANNE GROOVER**—Statesboro, Ga.

*Home Economics*

Home Economics Club 1, 2, 3, 4, reporter 2, president 4, vice-president Province III 4; Kappa Delta Pi 3, 4, secretary 4; Masquers 1; WAA 1; FTA 4; SCA 1, 2, 3 BSU 1, 2, 3, 4; Honors Day 3.

**DURELLE HAGIN**—Marlow, Ga.

*Exact Science*

Transfer from Armstrong Jr. College; FBLA 1, 2; Science Club 2, 3; YMCA, 2, 3; SCA 4; Men's Chorus 2; Intramural 1, 2, 3, 4.

**LOUIS EUGENE HARPER**—Fitzgerald, Ga.

*History*

**LARRY KITCHENS HARRELL**—Mitchell, Ga.

*Industrial Arts*

Industrial Arts Club 2, 3, 4.

**"PAT" D. M. HATTON**—Odum, Ga.

*History*

Transfer from Gordon Military College.

**RICHARD LEE "SONNY" HAWKINS**—Albany, Ga.

*Music*

Transfer from ABAC; Band 2, 3, 4, planning board 4; Philharmonic choir 2, 3, 4; Dance Band 2, 3, 4; leader 3, 4; Director Lab Hi Band 4; Outstanding Junior Band Member 3; Outstanding Senior Band Member 4; BSU 2, 3, 4.

**WILLIAM R. HENDRY**—Adel, Ga.

*Physical Education*

Philharmonic Choir 1, 2, 3, 4.

**RAYMA TYSON HENSLEY**—Statesboro, Ga.

*Home Economics*

Home Economics Club.

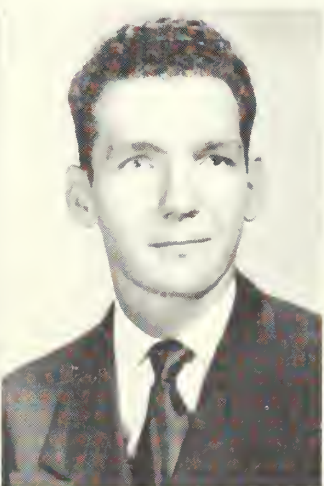
**JOHN CLINTON HERNDON**—Surrency, Ga.

*History*

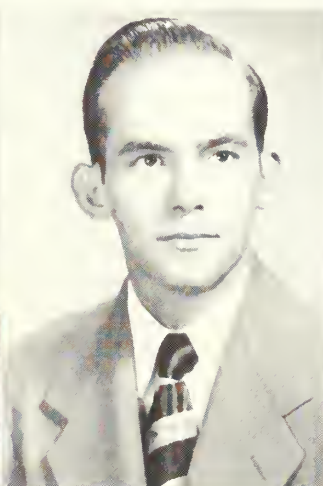
Philharmonic Choir 2; IRC 1.



Hatton



Hawkins



Hendry



Hensley



Herndon



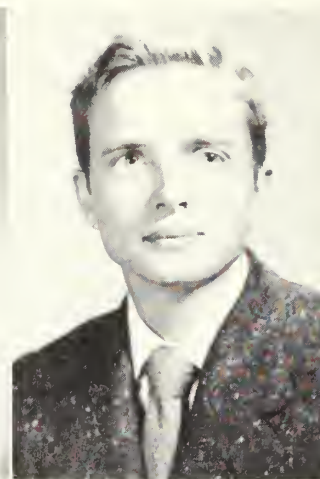
Hinely



Hitchcock



Hodges



Jackson



Jackson

## T H E S E N I O R S

**PEGGY WINNIFRED HINELY**—Rincon, Ga.

*Business Education*

Transfer from South Georgia College; WAA 2; Masquers 3; FBLA 3; Art Club 3; FTA 3.

**GLENN LAMAR HITCHCOCK**—Cordele, Ga.

*English*

Transfer from Georgia Southwestern; English Club; IRC; BSU.

**JIM HODGES**—Statesboro, Ga.

*English*

Veteran's Club 1; English Club President 1; House Council 4; George-Ann Business Manager 4.

**CHARLES JACKSON**—Attapulgus, Ga.

*Elementary Education*

Class Officer 1; House Council secretary 3; Student Council vice-president 3; Wesley Foundation 2, 3, 4; FTA 4; Who's Who 4.

**MARGIE JACKSON**—Dublin, Ga.

*Music*

SCA Council 4; Wesley Foundation 1, 2, 3, 4; Philharmonic Choir 1, 2, 3, 4; English Club 3, 4; Organ Guild 3, 4, secretary, treasurer, 4; House Council treasurer 4; FTA program Chairman 4; Mu Sigma 2, 3, 4; Music Educators of America 4.

**HAZEL JARRIEL**—Register, Ga.

*Elementary Education*

**EUGENE JENKINS**—Statesboro, Ga.

*History*

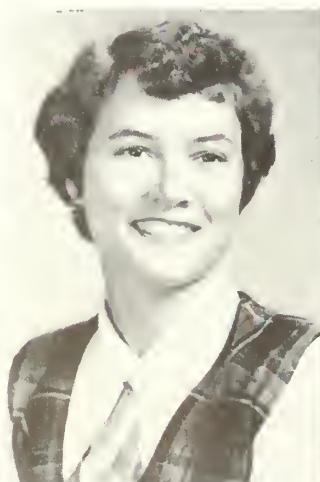
**MRS. EDNA MAE JOINER**—Statesboro, Ga.

*Elementary Education*

**BARBARA JANE JONES**—Brooklet, Ga.

*Elementary Education*

Wesley Foundation 1; Alpha Rho Tau 2, 3, 4; WAA 2, 3, 4; FTA, 4.



Jarriel



Jenkins



Joiner

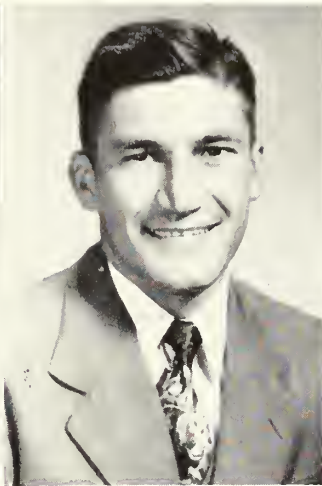


Jones

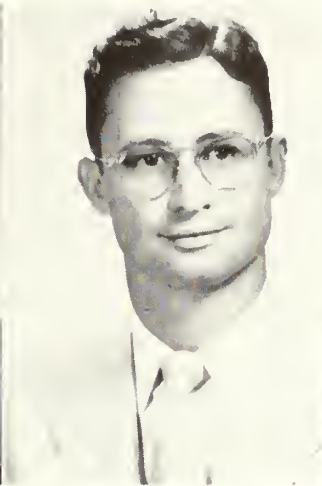




Jones



Kersey



Key



Kight

## *of nineteen hundred and fifty-two*

**POLLY JONES**—Millen, Ga.  
*Elementary Education*

**EDWIN ANDREW KERSEY**—McRae, Ga.  
*Exact Science*  
Wesley Foundation; Masquers; VFW; GEA.

**JOHN CLIFTON KEY**—Parish, Ala.  
*History*  
Orchestra 2.

**DAISY R. KIGHT**—Metter, Ga.  
*English*  
Transfer from Lee Junior College, Tenn.; minister.

**MARY HADDOCK KIGHT**—Kite, Ga.  
*Elementary Education*

Masquers 1; SCA 1, 2, 3, 4; Weley Foundation 1, 2, 3, 4; FTA 4.

**VAN ROBERSON LAYSON**—Eatonton, Ga.  
*Exact Science*  
Transfer from Young Harris College.

**JEROME LEE**—Hoboken, Ga.  
*Exact Science*

**JESSIE CARROL LEGETTE**—Hahira, Ga.  
*Elementary Education*

Wesley Foundation 2; WAA 2; FTA 4; May Court 3.

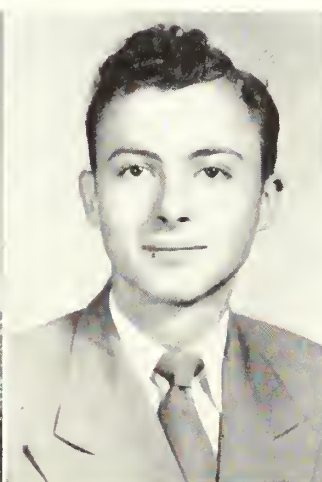
**WILLIAM E. LEWIS, JR.**—Moultrie, Ga.  
*English*



Kight



Layson



Lee



LeGette



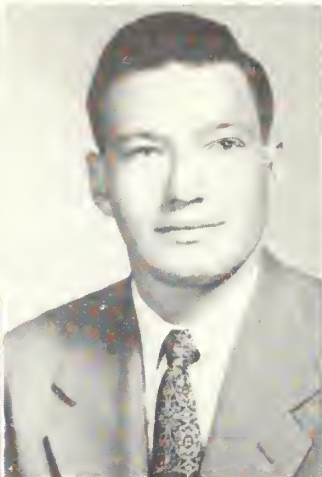
Lewis



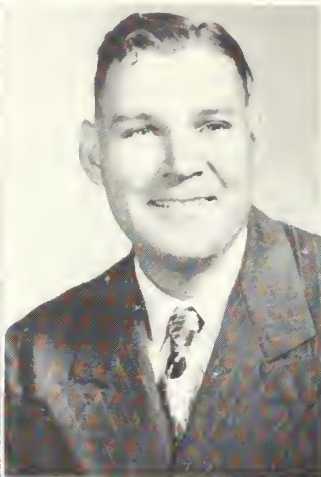
McLoon



McMahon



McTier



Mallard



Mathew

## T H E S E N I O R S

**ELBERTA McLOON**—Hazelhurst, Ga.  
*Home Economics*

Home Economics Club 3; House Council.

**WALTER E. McMAHON**—Barnsville, Ga.  
*Exact Science*

Transfer from Georgia Military College; FTA 1; Science Club 4.

**ROY McTIER, JR.**—Dublin, Ga.  
*Physical Education*

"T" Club 2, 3, 4; Basketball trainer 2, 3; Baseball Trainer 2; Men's Chorus 2; George-Anne.

**BARNEY TROY MALLARD**—Statesboro, Ga.  
*Industrial Arts*

Industrial Arts Club 1, 2, 3, 4, sergeant-at-arms 3.

**JEANETTE MATHEW**—Denton, Ga.  
*Home Economics*

Transfer from South Georgia College; Home Economics Club 4; FTA 1; BSU 4.

**MADLYN JUNE MEEKS**—Soperton, Ga.  
*Business Education*

Philharmonic Choir 1, 2, 3, 4; BSU 1, 2, 3, 4; Council 3, 4; Masquers 2; FBLA 3, 4; House Council 2, 3, 4.

**BETTY MIKELL**—Statesboro, Ga.  
*Physical Education*

Masquers 1, 2; WAA 1, 2, 3, 4; PEMM Club 3, 4; FTA 4; Reflector 3.

**BETTY MOCK**—Sylvania, Ga.  
*Elementary Education*

**CHARLES C. "SNAKIE" MORGAN, JR.**—Macon, Ga.  
*Economics*

FTA.



Meeks



Mikell



Mock



Morgan





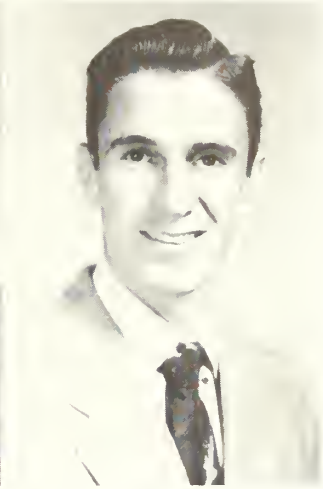
Morgan



Moye



Nipper



Oliver

## of nineteen hundred and fifty-two

### GINGER MORGAN—Stillmore, Ga.

#### *Business Education*

FBLA 3, 4; House Council secretary 2; Masquers 1, 2, 3, 4, treasurer 2, 3; SCA 1, 2; George-Anne 3; BSU 1, 2, 3, 4; English Club 3; Reflector 4; WAA 1, 2.

### CAROLYN MOYE—Wrightsville, Ga.

#### *Home Economics*

Home Economics Club 1, 2, 3, 4; Parliamentarian 3, 4; WAA 1; Masquers 1; House Council 1, 2, 3, secretary-treasurer 2; Wesley Foundation 1, 2, 3, 4; Council 4; Science Club 4; FTA 4; SCA 1, 2, 3, 4.

### DON NIPPER—Ashburn, Ga.

#### *Industrial Arts*

### JIMMY H. OLIVER—Waynesboro, Ga.

#### *Exact Science*

Student Council 2, 3, 4; Science Club president 4; Class vice-president 4; SCA 3; FTA President 4; Philharmonic Choir 4; Who's Who 4.

### SPENCER W. OVERSTREET, JR.—Wadley, Ga.

#### *Industrial Education*

Student Council 2, president 3; House Council 1; FTA 4; Philharmonic Choir 4; Wesley Foundation Council 1; Industrial Arts Club 1, 2, 3, president 4; Reflector 4; Class president 4; Who's Who 4.

### MITCHELL B. OWENS—Collins, Ga.

#### *History*

Transfer from Brewton-Parker Junior College; Kappa Delta Pi 4.

### CHARLES PARKER—Columbus, Ga.

#### *Exact Science*

Transfer from Georgia Southwestern; House Council 3; BSW 3.

### MRS. SARA PARKER—Columbus, Ga.

#### *Elementary Education*

Transfer from Georgia Southwestern.

### GEORGE PARRISH, JR.—Jesup, Ga.

#### *English*

Who's Who 4; Reflector Art Editor 3, 4; George-Anne 1, 2, 3, 4, art editor 3, 4; Philharmonic Choir 4; BSU 1, 2; Council 2; Masquers 1, 2; Art Club 1, 2.



Overstreet



Owens



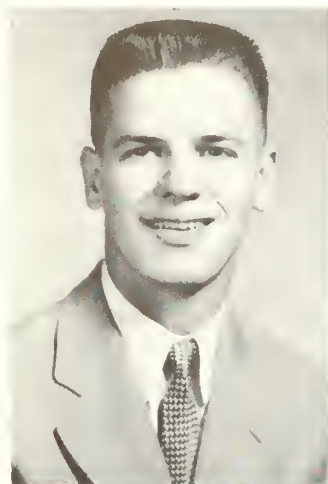
Parker



Parker



Parrish



Parsons



Ponder



Pryor



Reid



Reid

## T H E S E N I O R S

**RALPH PARSONS**—Yancy, Ky.

*Physical Education*

Transfer Eastern Kentucky State College; Basketball 2, 3, 4; Basketball 2, 3, 4; "T" Club 2, 3, 4, president 3; House Council 3, 4, secretary 3; Class treasurer 4.

**GE DELLE PONDER**—Whigham, Ga.

*Business Education*

**CHARLES R. PRYOR**—Ogeechee, Ga.

*Business Education*

**MRS. DORIS REID**—Columbus, Ga.

*Business Education*

**SAM REID**—Columbus, Ga.

*Exact Science*

**JOHNNY RENFRO**—Williamsburg, Ky.

*Physical Education*

Transfer; Basketball 3, 4.

**EDNA RUTH SANDERS**—Summit, Ga.

*Home Economics*

Home Economics Club 1, 2, 3, 4; BSU 1, 2, 3, 4, council 4; SCA 2, 3, 4; Reflector 4; FTA 4; Kappa Delta Pi 4; Treasurer 4; Masquers 1, 2, 3, 4; House Council 2.

**GARY CLIFFOR SAPP**—Manassas, Ga.

*Exact Science*

Science Club 3, 4.

**CARLENE SHANKLIN**—Gardi, Ga.

*Elementary Education*

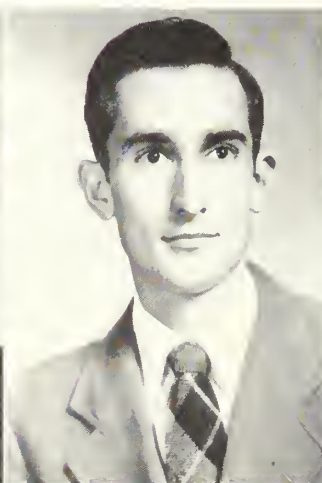
WAA 1, 2, 3, 4; Masquers 2; FTA 4.



Renfro



Sanders

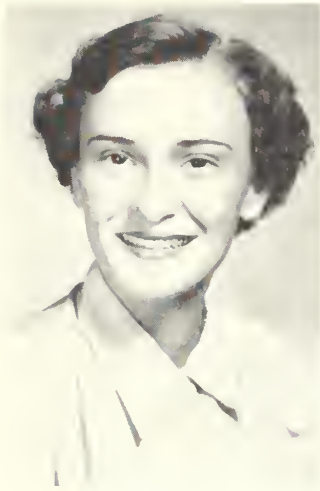


Sapp



Shanklin





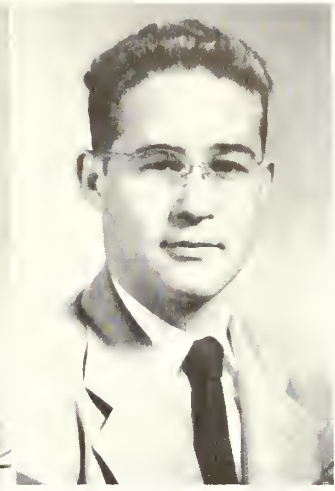
Sherman



Shuman



Silverman



Simons

## *of nineteen hundred and fifty-two*

**BETTY SHERMAN**—Angusta, Ga.

*Physical Education*

English Club 3; WAA 3; PEMM Club 2; Intramural captain 2; manager 3; Transfer from Saint Genevieve's Junior College.

**SHIRLEY ANN SHUMAN**—Savannah, Ga.

*Business*

George-Ann 1, 2, 3; WAA 1, 2; Reflector 4; English Club 4, secretary 4; FBLA 4; House Council 1, 2; Kappa Delta Pi 4.

**JEROME SILVERMAN**—St. Petersburg, Fla.

*Physical Education*

House Council "T" Club; Baseball 1, 2.

**CLARENCE G. SIMONS**—Savannah, Ga.

*Music*

Band 1, 2, 3.

**JACKQUELYN SIMPSON**—Kingsland, Ga.

*Elementary Education*

SCA 2, 3; FTA 4; WFA 3, 4; PEMM Club 4; WAA 3, 4.

**JAMES JOSEPH SIZEMORE**—Nashville, Ga.

*Exact Science*

**GENE NELSON SMITH**—Claxton, Ga.

*History*

Philharmonic Choir 1, 2.

**MARY FRANCES SMITH**—Claxton, Ga.

*Exact Science*

Philharmonic Choir 1, 2, 4; FTA 4; Science Club 4; House Council 1, 2; WAA 1, 2.

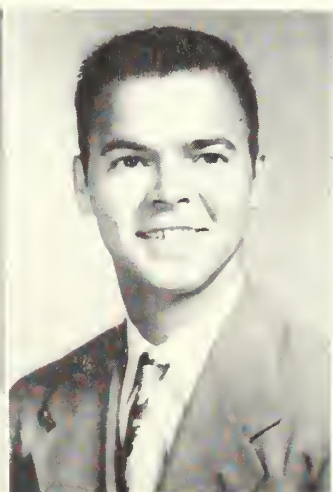
**MARY JANE SMITH**—Arlington, Ga.

*Home Economics*

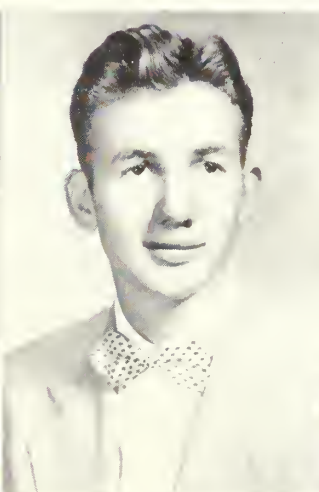
Transfer from Berry College; Home Economics Club 1, 2, 3, 4; Kappa Delta Pi 4.



Simpson



Sizemore



Smith



Smith



Smith



Speir



Steedley



Steedley



Stewart



Stewart

## T H E S E N I O R S

**CAMILA MILDRED SPEIR**—Dawson, Ga.  
*Home Economics*

Home Economics Club; SCA; Wesley Foundation Council; House Council.

**BARBARA ANN STEEDLY**—Argyle, Ga.  
*Elementary Education*

Transfer from Valdosta State College; Art Club 4; FTA 4; SCA 4.

**MARY LOVE STEEDLEY**—Homerville, Ga.  
*Elementary Education*

House Council

**CHARLES A. STEWART**—Savannah, Ga.  
*Social Science*

Creative Writers 1; Wesley Foundation 1; Reflector 1; IRC 1, 2, 3, 4, vice-president 4; George-Anne 2; business manager 3, editor 4.

**THOMAS HOUGH STEWART**—Ashburn, Ga.  
*Social Science*

IRC 3, 4, secretary 4; Science Club 4; FTA 4; Transfer from Middle Georgia College.

**HARRY BROOKS STRICKLAND**—Statesboro, Ga.  
*Physical Education*

Band 1, 2; Masquers 1, 2, 3; FBLA 1, 2, 3, 4, vice-president 3; "T" Club 3, 4; FTA 4; George-Anne 3, 4, sports editor 4; Reflector 4, sports editor 4.

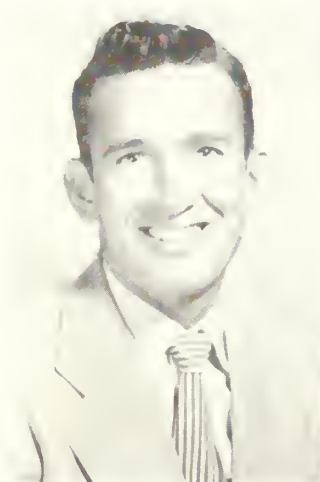
**NORRIS B. STRICKLAND**—Blackshear, Ga.  
*Physical Education*

Transfer from South Georgia College; baseball 3; basketball 4; "T" Club 4.

**EUNICE CLAIRE THOMAS**—Jesup, Ga.  
*Elementary Education*

Philharmonic Choir 1, 2, 3, 4; SCA 1, 2, 3, 4; Home Economics Club 1; Wesley Foundation 1, 2, 3, 4, council 3; Art Club 3, 4; FTA 4.

**GLENN F. THOMAS**—Nahunta, Ga.  
*Industrial Education*



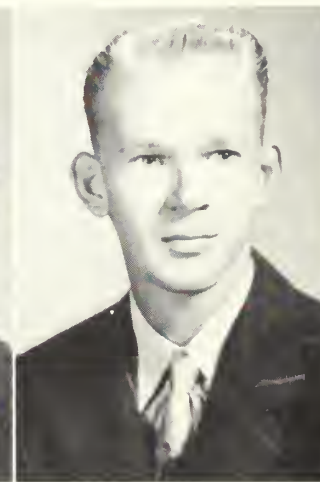
Strickland



Strickland



Thomas



Thomas

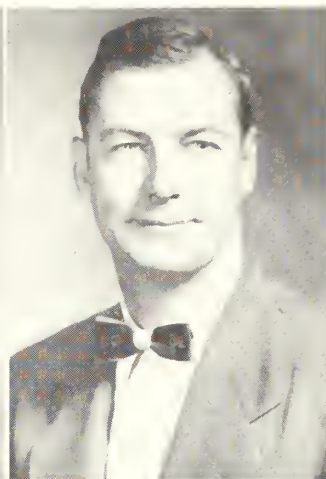




Trice



Turner



Wade



Walea

## *of nineteen hundred and fifty-two*

**ANNE TRAWEEK TRICE**—Greenville, Ala.

*Music*

Mu Sigma 1, 2, 3, 4, secretary 1, 2; Philharmonic Choir 1, 2, 3, 4, board of directors 2, 4; Band 1, 3; Music Educators vice-president 4; House Council president 2, 4; English Club 3, 4; Masquers 1, 2, 3, 4; Student Council 3; FTA vice-president 4; Wesley Foundation Council 1, 2, 3, 4, president 2; SCA 1, 2, 3, 4; Reflector Staff 1, 2, 3, 4; Who's Who 4.

**E. D. TURNER**—Coffee, Ga.

Transfer from South Georgia College; FTA.

**JACK WADE**—Charleston, S. C.

*Elementary Education*

Transfer from Middle Georgia College; Masquers 3, 4; House Council 3, 4; Wesley Foundation Council 3, 4; SCA 3; FTA 4 Alpha Psi Omega 4.

**EDNA KENT WALEA**—Millen, Ga.

*Elementary Education*

Home Economics Club; Vesper Choir; National Music Association.

**CLAXTON WALKER**—Lovett, Ga.

*Physical Education*

Men's Chorus 1; YMCA 1; Science Club; FTA 4.

**BARBARA WARNOCK**—Tarrytown, Ga.

*Elementary Education*

Transfer from Brewton Parker Junior College; FTA.

**MARJORIE WEATHERFORD**—Graymont, Ga.

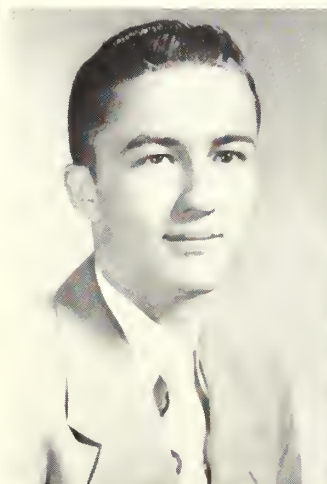
*Music*

Student Council 3; Philharmonic Choir 1, 2, 3, 4, board of directors 3; YWCA 1; SCA 2, 3, council 2, 3; Wesley Foundation 1, 2, 3, council 2, 3; Home Economics Club 3; Mu Sigma 2, 3, 4; Organ Guild 3, 4; FTA 4; Dance Orchestra 3, 4.

**MARGARET JEANNETTE WILDER**—Vidalia, Ga.

*Home Economics*

Home Economics Club 1, 2, 3; FTA 4; Wesley Foundation 1, 2, 3, 4; SCA 4.



Walker



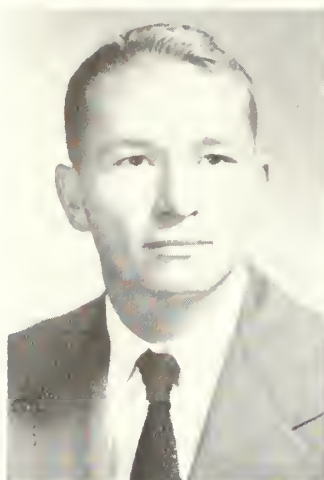
Warnock



Weatherford



Wilder



Wilkins



Williams



Williams



Williams

## T H E S E N I O R S

**JOHN WRIGHT WILKINS**—Fort Gaines, Ga.  
*Physical Education*

**BILLIE WILLIAMS**—Sylvania, Ga.  
*Exact Science*  
Science Club 1, 2, 3; FTA 3.

**CAROLYN WILLIAMS**—Rockmart, Ga.  
*Physical Education*  
WAA 1, 4; Wesley Foundation 1, 4; FTA treasurer 4; PEMM Club 1; SCA 4.

**ELEASE WILLIAMS**—Summertown, Ga.  
*Home Economics*  
Home Economics Club 1, 2, 3, 4, secretary 4; SCA 1, 2; Masquers 1; FTA 3, 4.

**JACK WILLIAMS**—Wrens, Ga.  
*History*

**BETTY ANN WITHROW**—Albany, Ga.  
*English*  
Transfer GSCW; English Club 3; FTA 4; Masquers 2, 3, 4; Alpha Psi Omega 3, 4; Class vice-president 3; House Council 3; Student Council 1, secretary 4; Wesley Foundation Council 2, 3, 4; SCA 2, 3, 4, council 4; Who's Who 4.

**ALENE WOODS**—Marlow, Ga.  
*Business Education*  
Philharmonic Choir 1; House Council 2; FTA 3, 4.

**WILLIAM C. WYATT, JR.**—Fort Valley, Ga.  
*Exact Science*  
Science Club 1, 2, 3, vice-president 2; Masquers 1, 2, 3; Alpha Psi Omega 3, 4, director 3; BSU 1, 2, 3; FTA 3; George-Anne Circulation 2; Reflector 2, 3, Circulation 2.



Williams



Withrow



Woods



Wyatt





Wynn



Youngblood



Townsend

**SUE WYNN—Brooklet, Ga.**  
*Home Economics*

Home Economics Club 1, 2, 3, 4; treasurer 3; Masquers 2; FTA 4; Reflector 4; House Council 4; BSU 1, 2, 3, 4.

**MRS. CLARA YOUNGBLOOD—Portal, Ga.**  
*Elementary Education*

**DORIS TOWNSEND—Kite, Ga.**  
*Business Education*



The dignified senior.



Hitch Sue's wagon to a star



# JUNIORS

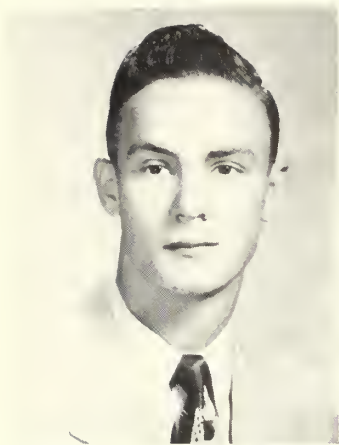
"Nowhere so busy a man as he there was,  
and yet he seemed busier than he was."

—Geoffrey Chaucer

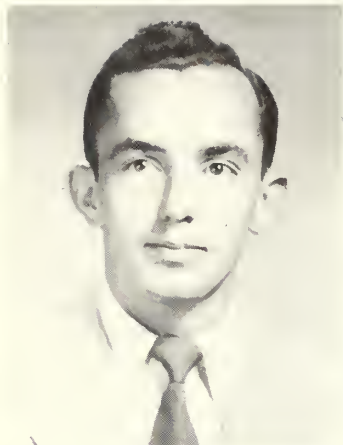


Yes

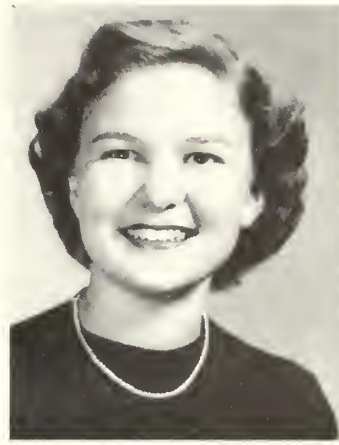




HOLLIS RAY POWELL  
*President*



JOHNNY MALLARD  
*Vice-President*



BETTY HART  
*Secretary*



ANN BROOME  
*Treasurer*



DOROTHY STEWART  
*Class Sponsor*

## *The Junior Class*



The leap-year dance.



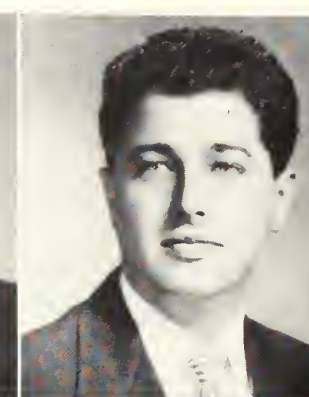
# T H E J U N I O R S

Frances Armstrong  
*Statesboro, Ga.*

Martha Ruth Arrowood  
*Cochran, Ga.*

Daphne Ash  
*Statesboro, Ga.*

Marvin J. Barnett  
*Savannah, Ga.*

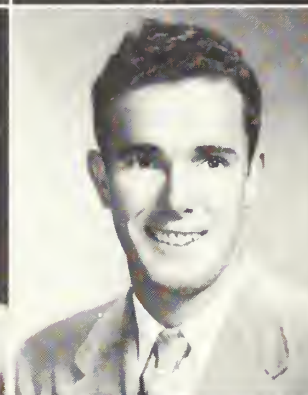


Hilda Jane Benjamin  
*Dry Branch, Ga.*

Faye Coleman  
*Hartsfield, Ga.*

Charles G. Bostwick, Jr.  
*Blakely, Ga.*

Betty Burney Brannen  
*Statesboro, Ga.*

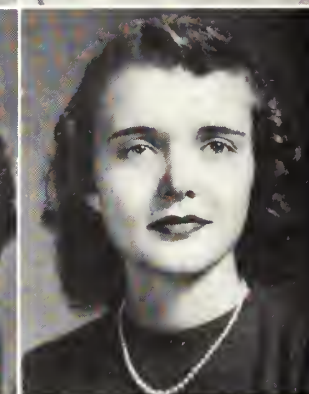
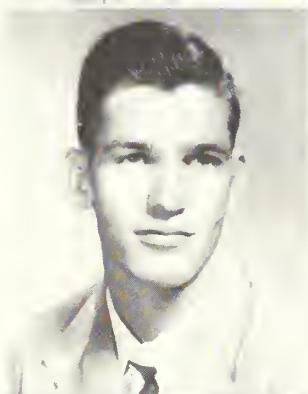


Robert L. Brannen  
*Statesboro, Ga.*

Betty Sue Brannen  
*Statesboro, Ga.*

Sue Brannen  
*Statesboro, Ga.*

Angelyn Brantley  
*Wrightsville, Ga.*

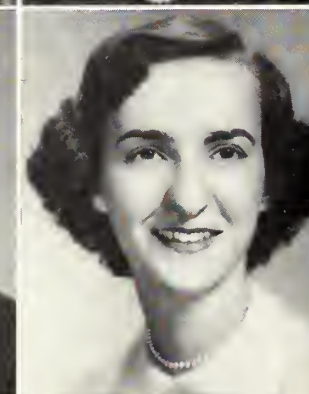
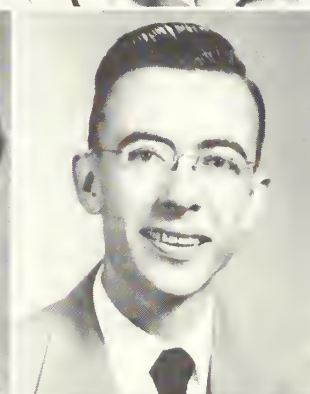


Ann Broom  
*Dalton, Ga.*

William David Brown Jr.  
*Fitzgerald, Ga.*

Herman Brudnell Huff  
*Jacksonville Beach, Fla.*

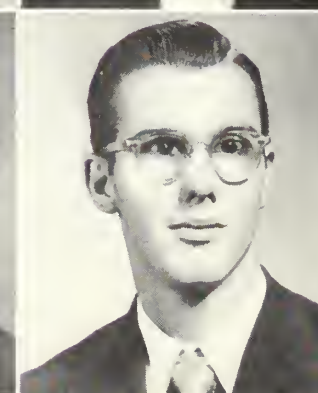
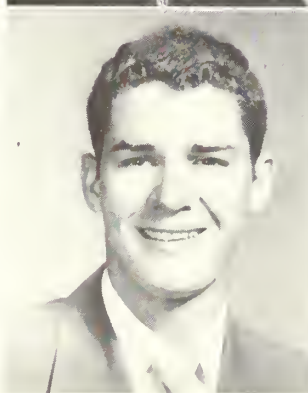
Peggy Jo Burke  
*Statesboro, Ga.*



Jerry Burrows  
*Waycross, Ga.*

Mary Ann Carter  
*Waycross, Ga.*

Joe Clark  
*Abbeville, Ga.*





*of nineteen hundred and fifty-two*



Mary Wyl Conner  
*Hackinsville, Ga.*

Dorothy Corbitt  
*Irwinton, Ga.*

JoAnn Darden  
*Waycross, Ga.*

Peggy Joyce Davis  
*Blun, Ga.*



Martha Driskell  
*Waycross, Ga.*

Wendall Duncan  
*Douglas, Ga.*

Emma Jean Dutton  
*Glennville, Ga.*

Russell H. Everitt, Jr.  
*Statesboro, Ga.*

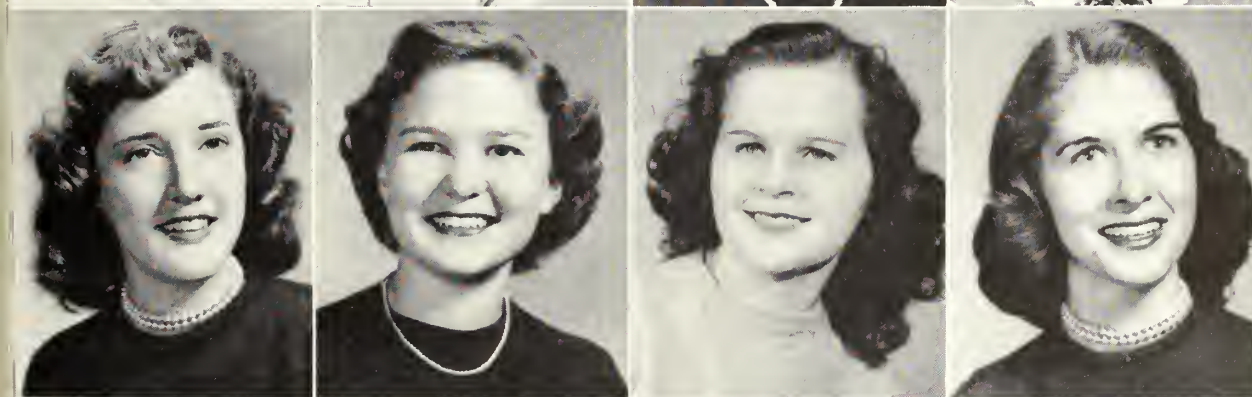


Marilyn Folsom  
*Barney, Ga.*

Roy Goolsby  
*Woodland, Ga.*

Ann Greenway  
*Kite, Ga.*

Margaret Hagin  
*Statesboro, Ga.*

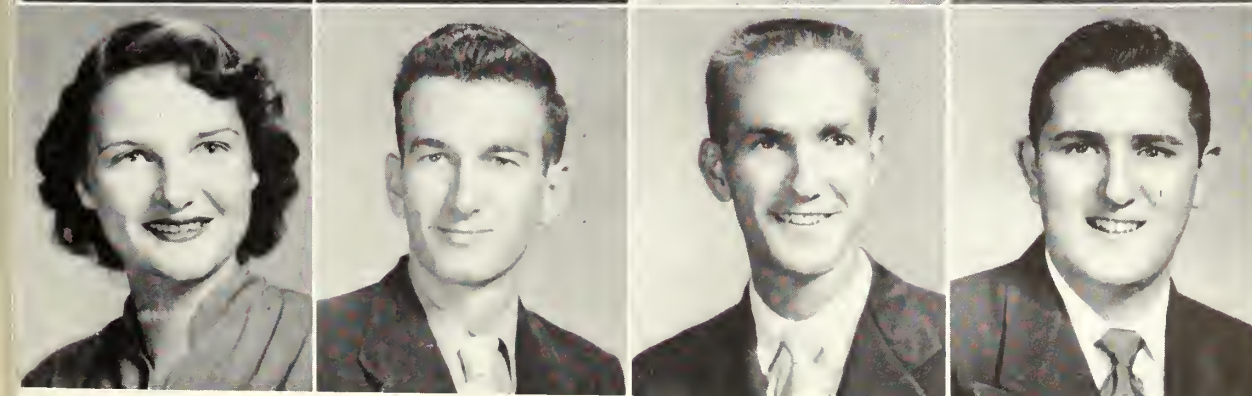


Joan Griffin  
*Dublin, Ga.*

Betty Hart  
*Macon, Ga.*

Evelyn Hart  
*Statesboro, Ga.*

Elizabeth Hartley  
*Sylvania, Ga.*



Novie Hickman  
*Girard, Ga.*

Harvie Hogan  
*Augusta, Ga.*

Otis Honston  
*Blakely, Ga.*

Gilbert C. Hughes, III  
*Homerville, Ga.*



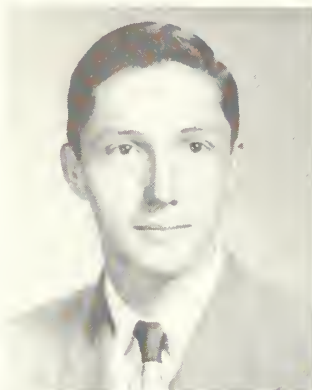
# T H E J U N I O R S

Robert Hughes  
*Ailey, Ga.*

James Hutto  
*Fort Valley, Ga.*

June Cantrell James  
*Tifton, Ga.*

Valdaree Jennings  
*Attapulgus, Ga.*

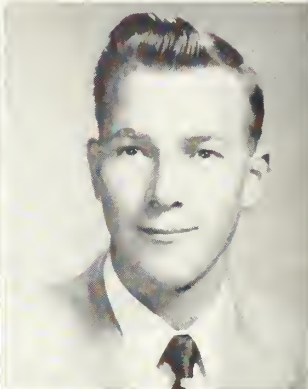


Alex M. Johnson  
*Mt. Vernon, Ga.*

Lois Johnson  
*Warrenton, Ga.*

Rosemary Johnson  
*Ashburn, Ga.*

R. T. Johnson  
*Alma, Ga.*



William M. Johnson  
*Jesup, Ga.*

Virginia Joiner  
*Statesboro, Ga.*

Joanne Jones  
*Metter, Ga.*

Elizabeth Ann Keene  
*Abbeville, Ga.*

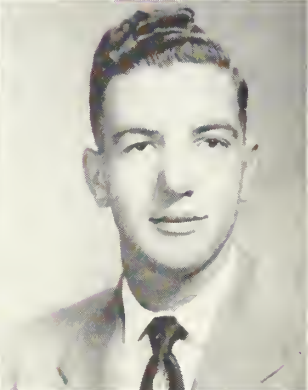
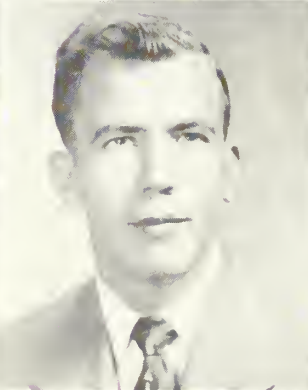


Nancy Jane Kelly  
*Chauncy, Ga.*

Sue Kennedy  
*Statesboro, Ga.*

William Lambert  
*Hiltonia, Ga.*

Thomas Felton Lanier  
*Metter, Ga.*

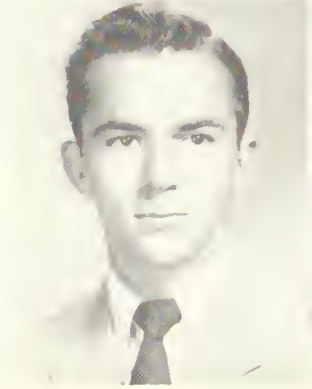


Tommy L. Lanier  
*Metter, Ga.*

Gertie Mae Layson  
*Eatonton, Ga.*

Annabel Leverenz  
*Garfield, Ga.*

Ennis Lewis  
*Damascus, Ga.*





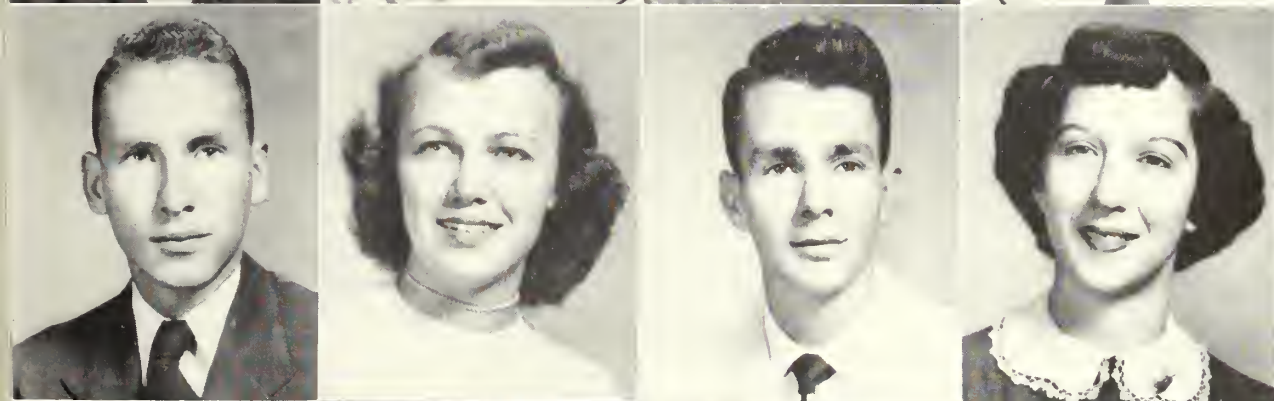
*of nineteen hundred and fifty-two*



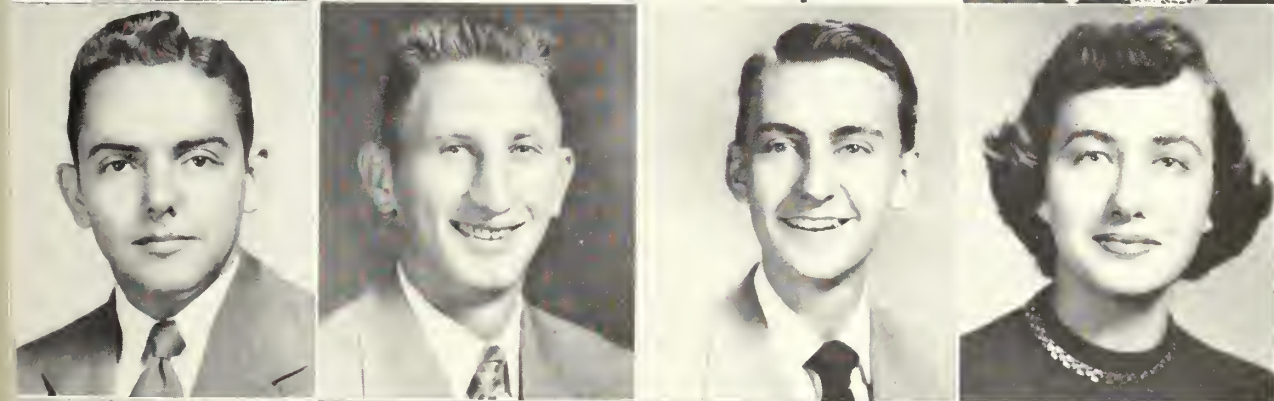
Mary Lidell  
*Atlanta, Ga.*  
Ann McKinley  
*Siloam, Ga.*  
Mrs. Martha McLendon  
*Statesboro, Ga.*  
Gretchen Heers  
*Decatur, Ga.*



Hortense McMillan  
*Enigma, Ga.*  
Lewis Lee McNair  
*Wrens, Ga.*  
Catherine McNally  
*Chickamauga, Ga.*  
John G. Mallard  
*Sardis, Ga.*



Willard B. Martin  
*Americus, Ga.*  
Mynette May  
*Sumner, Ga.*  
Rudy Mills  
*Macon, Ga.*  
Ann Mitchell  
*Lumber City, Ga.*



Ed Mitchell  
*Sylvania, Ga.*  
Royce Mock  
*Colquitt, Ga.*  
William R. Moore  
*Waycross, Ga.*  
Ann Nevil  
*Register, Ga.*



Virginia Newby  
*Cochran, Ga.*  
Virginia Newton  
*Tifton, Ga.*  
Mrs. Claire O'Quinn  
*St. Simons Island*



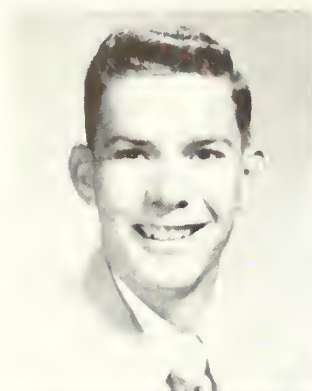
# T H E J U N I O R S

Billy Pafford  
*Lakeland, Ga.*

Betty Parrish  
*Brooklet, Ga.*

Joanne Patterson  
*Tifton, Ga.*

Johnny Patterson  
*Fitzgerald, Ga.*

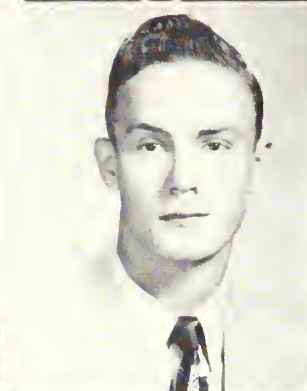
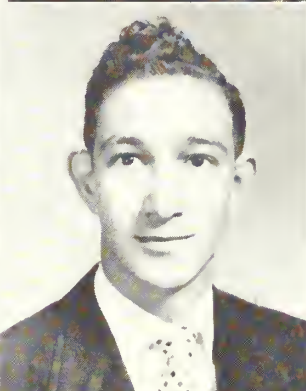


Robert Pickens  
*Fitzgerald, Ga.*

Chester Poole  
*Waycross, Ga.*

Hollis Ray Powell  
*Wrightsville, Ga.*

Trudie Pridgen  
*Waycross, Ga.*

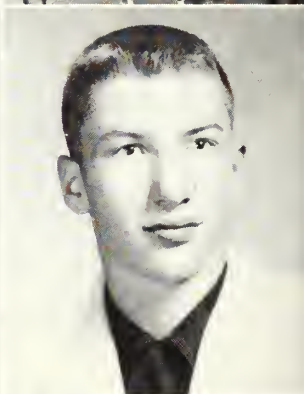


Ennetta Purvis  
*Tallapoosa, Ga.*

Winifred Pyles  
*Lizella, Ga.*

Frankie M. Quick  
*Midville, Ga.*

George Patton Rahn  
*Springfield, Ga.*

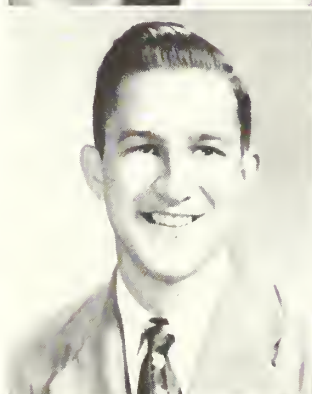


Robert L. Ramsey  
*Springfield, Ga.*

Ann Remington  
*Statesboro, Ga.*

Charles R. Richardson  
*LaFayette, Ga.*

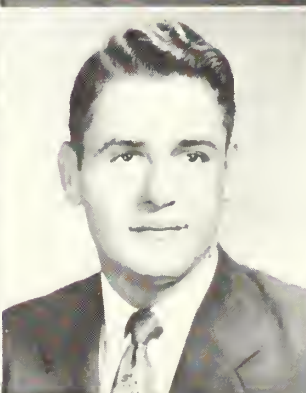
Robert E. Rigsby  
*Warner Robins, Ga.*



Ann Sell  
*Sylvania, Ga.*

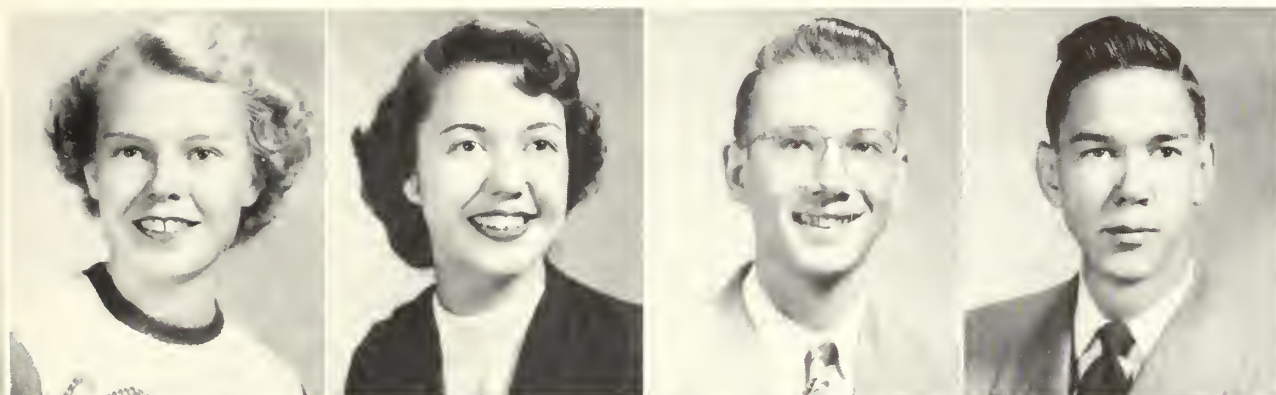
Charles Sims  
*Statesboro, Ga.*

Nell Smith  
*Sylvania, Ga.*





*of nineteen hundred and fifty-two*

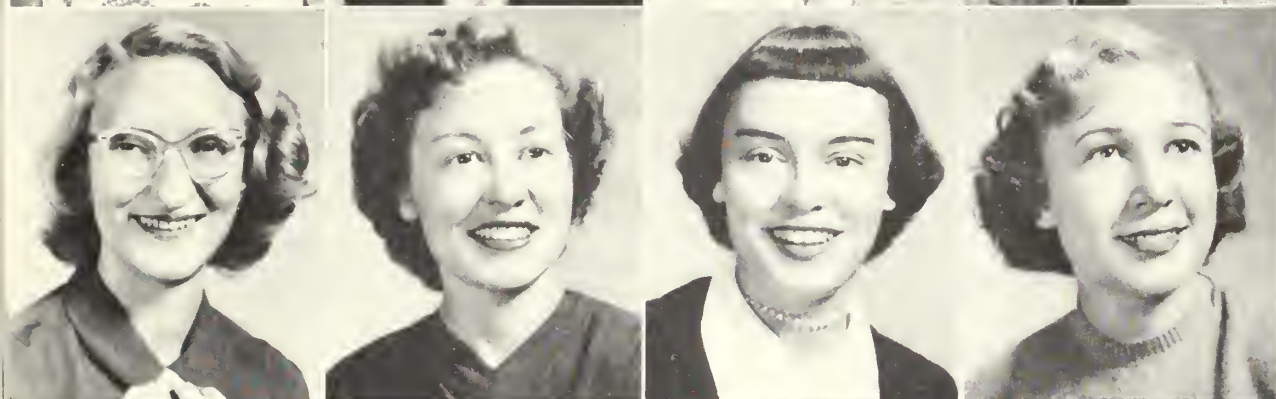


Shirley Smith  
Thomas, Ga.

Jo Starr  
Greensboro, Ga.

Joel Stowers  
Elberton, Ga.

Clarence Taylor  
Bainbridge, Ga.

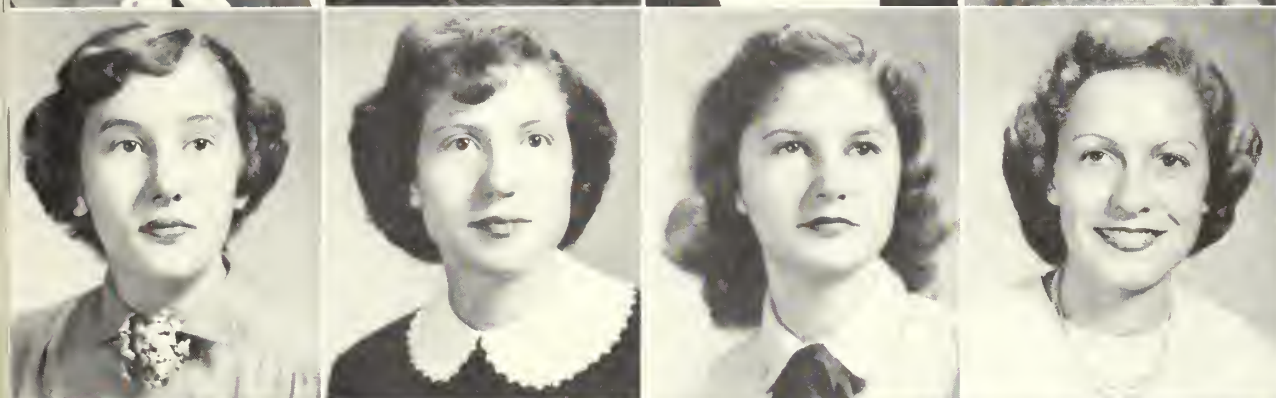


Betsy Tippens  
Claxton, Ga.

Deloris Turner  
Alma, Ga.

Elwanda Tyre  
Bristol, Ga.

Doris Walden  
Gidson, Ga.

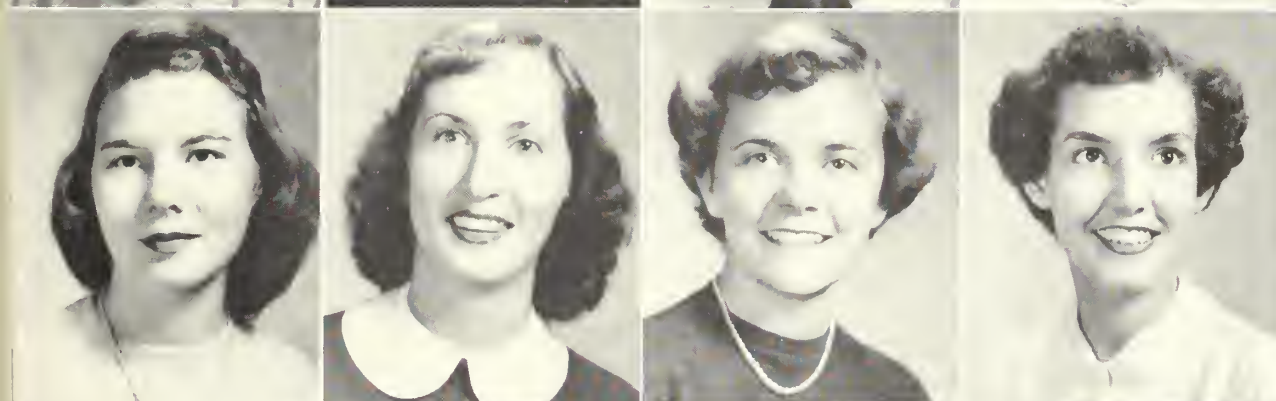


Melba Warnock  
Soperton, Ga.

Diane Waters  
Statesboro, Ga.

Harriette Whitecomb  
Canulla, Ga.

Virginia Leigh Wilkes  
Stillmore, Ga.

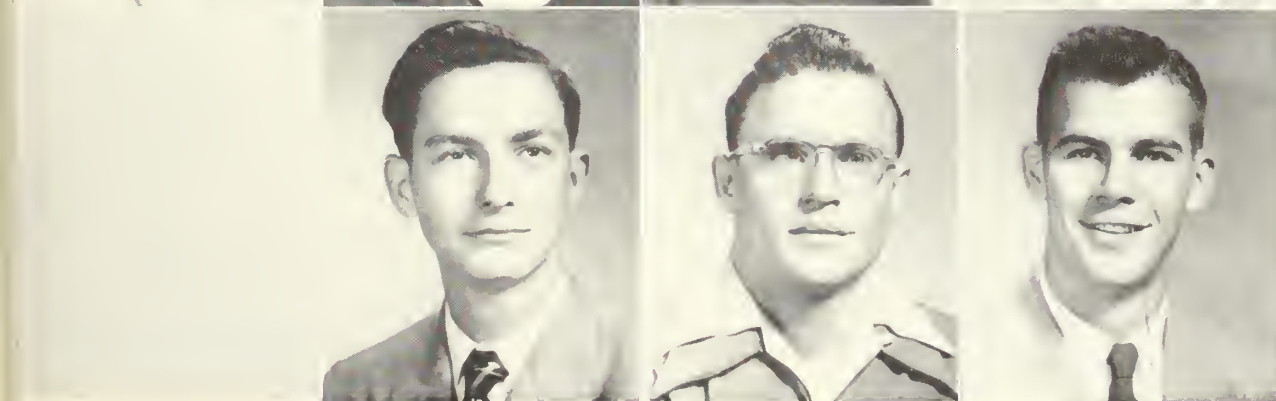


Marion Wilkinson  
McRae, Ga.

Gwen Williams  
Calhoun, Ga.

Beth Wimberly  
Albany, Ga.

Martha Wood  
Waycross, Ga.



L. N. "Poe" Woodrum  
Statesboro, Ga.

Carlton Weaver  
Sylvania, Ga.

Daniel Harold Young  
Ocilla, Ga.



# SOPHOMORES

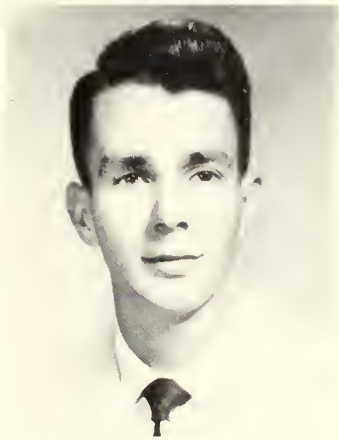
"Romance should never begin with sentiment. It should begin with science and end with a settlement..."

—Oscar Wilde



Greg





RUDY MILLS  
*President*



HUGH WELLS  
*Vice-President*



BETTYE HENDRIX  
*Secretary*



JANICE CHASTAIN  
*Treasurer*



MR. TULLY PENNINGTON  
*Class Sponsor*

# *The Sophomore Class*



"Those famous P. J. Parties."





## SOPHOMORES OF FIFTY-TWO

### FIRST ROW:

Saraline Akridge, Sale City, Georgia; Mary Helen Altman, Waycross, Georgia; Beverly Barger, Sardis, Georgia; Joyce Brantley, Manor, Georgia; Emma Ruth Bray, Wrightsville, Georgia; Mary Ann Brinson, Graymont, Georgia.

### SECOND ROW:

Dorothy Brown, Summit, Georgia; William G. Brown, Wrightsville, Georgia; Janice Chastain, Albany, Georgia; Clara Coffey, Fleming, Georgia; Dorothy Crasford, Pelham, Georgia; Elaine Cross, Millen, Georgia.

### THIRD ROW:

Hugh Edison Darley, Statesboro, Georgia; Morris Davis, Tifton, Georgia; Sara Ann Denham, Sycamore, Georgia; Johnny E. DeNitto, Brooklet, Georgia; Jo Ann Dix, Abbeville, Georgia; Lothair Easterling, Glennville, Georgia.

### FOURTH ROW:

Ann Eubank, Appling, Georgia; Ann Evans, Sylvania, Georgia; Betty Ewing, Waycross, Georgia; Mary Flanders, Rockledge, Georgia; Barbara Fossett, Chickamauga, Georgia; Miriam Floyd, Baxley, Georgia.





*FIRST ROW:*

Jack Gay, Sylvester, Georgia; Michael A. Genevrino, Newark, New Jersey; Loretta Green, Albany, Georgia; Evelyn Ruth Greene, Rockmart, Georgia; Joe Ed Green, Pulaski, Georgia; Joan Griffin, Dublin, Georgia.

*SECOND ROW:*

Shirley Gullledge, Statesboro, Georgia; Patricia Ham, Nahunta, Georgia; Betty Connell Hames, Claxton, Georgia; Eugene F. Harper, Crosland, Georgia; Georgia Florence Harper, Savannah, Georgia; Bettye Hendrix, Metter, Georgia.

*THIRD ROW:*

Nancy Hickman, Savannah, Georgia; Ann Higginbotham, Waycross, Georgia; Reba Hinton, Waynesboro, Georgia; Fay Hodges, Statesboro, Georgia; Bobby Holley Matthews, Georgia; Annie Lee Hunter, Collins, Georgia.

*FOURTH ROW:*

Genevieve Hunter, Collins, Georgia; Robert Hurst, Waycross, Georgia; Mary Louise Hurt, Avondale Estates, Georgia; Robert Paul James, Douglas, Georgia; Marion Jenkins, Reidsville, Georgia; Sally Ree Jones, Louisville, Georgia.

*FIFTH ROW:*

Yvonne Jones, Waycross, Georgia; Norma Jean Kelly, Camilla, Georgia; Cordelia Kidd, Camilla, Georgia; Patsy Kilpatrick, Fitzgerald, Georgia; Bobby Gene Kingery, Pulaski, Georgia; Virginia Leotis, Brunswick, Georgia.





## SOPHOMORES OF FIFTY-TWO

### FIRST ROW:

May Belle Lewis, Atlanta, Georgia; Faye Lunsford, Richland, Georgia; Sadis J. McBride, Graymont, Georgia; Wink McCall, Cordele, Georgia; Basil Leo McCallister, Richmond Hills, Georgia; Henry Daniel McCleudon, Lyons, Georgia.

### SECOND ROW:

Patricia Meeks, Nicholls, Georgia; Sue Miller, Toombsboro, Georgia; Carolyn Moore, Tifton, Georgia; Alice Faye Mosley, Oak Park, Georgia; Julia Moxley, Wadley, Georgia; Marilyn Nevils, Statesboro, Georgia.

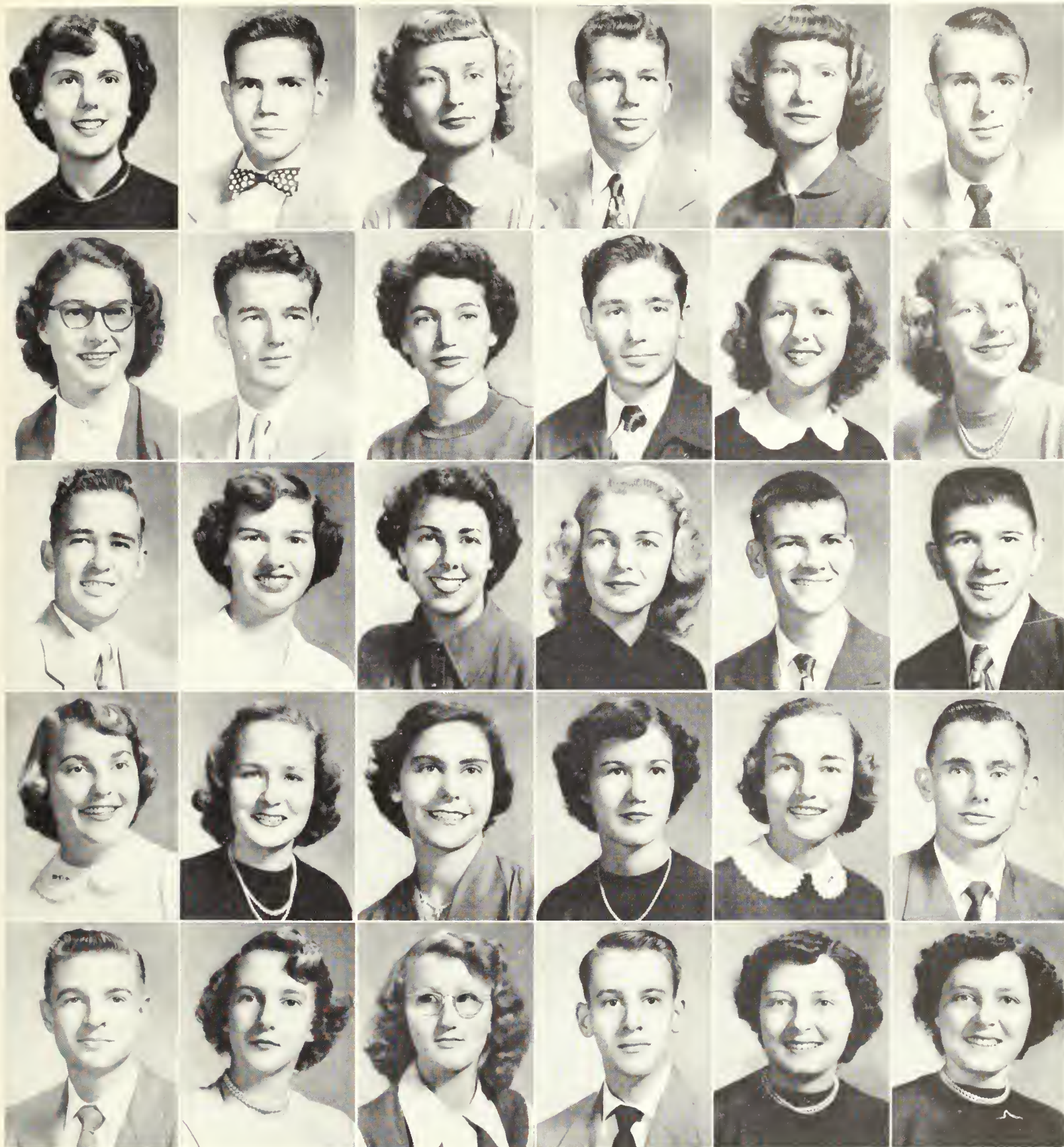
### THIRD ROW:

Genie Owens, Waycross, Georgia; Eugene Page, Vidalia, Georgia; John Fred Pierce, Savannah, Georgia; Hugh B. Pharis, Columbus, Georgia; Bobby Phillips, Albany, Georgia; Alan Pope, Waycross, Georgia.

### FOURTH ROW:

Frances Rackley, Statesboro, Georgia; Jean Richey, Claxton, Georgia; Gene Roberts, Wadley, Georgia; William F. Robertson, Brooklet, Georgia; Billy Rushing, Statesboro, Georgia; Robert Sanders, Pembroke, Georgia.





*FIRST ROW:*

Peggy Saturday, Collins, Georgia; Jack Shellmott, Atlanta, Georgia; Sadie Sikes, Claxton, Georgia; Harvey Simpson, Sylvester, Georgia; Sarah Dot Simpson, Kingsland, Georgia; Jerry Edward Singleton, Rockmart, Georgia.

*SECOND ROW:*

Diane Sizemore, Ray City, Georgia; Johnny Spence, Waynesboro, Georgia; Charlene Smith, Claxton, Georgia; Eddy Strickland, Savannah, Georgia; Jo Ann Snrrency, Glennville, Georgia; Patricia Ann Wilson, Lake Worth, Florida.

*THIRD ROW:*

Robert Taylor, Hephzibah, Georgia; Elizabeth Thomas, Milan, Georgia; Betty Jane Thompson, Wrens, Georgia; Martha Ann Todd, Glennville, Georgia; Hara Toler, Soperton, Georgia; Christy Trowell, Oliver, Georgia.

*FOURTH ROW:*

Debra Maurice Vann, Swainsboro, Georgia; Helen Joyce Vaughan, Atlanta, Georgia; Pauline Vickers, Eastman, Georgia; Jean Warnock, Pelham, Georgia; Faye Waters, Statesboro, Georgia; Frederick Weitman, Springfield, Georgia.

*FIFTH ROW:*

Hugh Wells, Jr., Gnyton, Georgia; Mary Wilkins, Jesup, Georgia; Mrs. Curtis Williford, Tifton, Georgia; Dan Frank Wilson, Jr., Waynesboro, Georgia; Doris Ford, Sylvester, Georgia; Dorothy Ford, Sylvester, Georgia.



# FRESHMEN

U S  
POST OFFICE



"That unletter'd, small-knowing soul..."  
— William Shakespeare

*Yes*





PHIL NORTON  
*President*



MARY JO JACKSON  
*Vice-President*



ROSE MARY AMMONS  
*Secretary*



CARL S. TYSON  
*Treasurer*



DR. TOM ALEXANDER  
*Class Sponsor*

## *The Freshman Class*



"The long trek home."



*FIRST ROW :*

Frances Ann Ammons, Brunswick; Rose Mary Ammons, Brunswick; Martha Jean Cannon, Damascus; Margaret Chambers, Bainbridge.

*SECOND ROW :*

Betty Jean Clark, Hinesville; Angene Culbreth, Edison; Vivien Gould Cowart, Savannah; Lester Davis, Tifton; Shirley Loretta Dykes, Savannah.

*THIRD ROW :*

Martha Finley, Hazlehurst; Sara Fletcher, Irwinville; Betty Ruth Folsom, Nashville; Patty Gay, Sylvester; Mary Jo Jackson, Attapulgus.

*FOURTH ROW :*

Glenda Hall, LaGrange; Shirley Hanson, Avondale Estates; Johnny Marilyn Harper, Blakely; Betty Rose Hatcher, Irwington; Fran Hawkins, Macon.

*FIFTH ROW :*

Faye Henry, Savannah Beach; Martha Hinely, Savannah; Mary Lucille Hodges, Springfield; Ruby Lee Houston, Blakely.

# T H E F R E S H M E N





*FIRST ROW:*  
Earl Jones, Nahunta; Margaret Jones, Midville; Peggy Jones, Jesup; Winzell Jordan, Reidsville; John Kennedy, Reidsville.

*SECOND ROW:*  
Don King, Wrens; Shirley Lagerbald, Savannah; James S. Little, Brunswick; Shirley Carolyn Maner, Marlow; John Mitchell, Statesboro.

*THIRD ROW:*  
Betty Myers, Dublin; Phil Norton, Griffin; Lucy Olmstead, Hinesville; Laura Nan Parrish, Hoboken; Joe Sullivan, Atlanta.

*FOURTH ROW:*  
Bonnie Sue Pickron, Damascus; Molly Potts, Gabbetville; Nancy Beth Purvis, Pembroke; Ann Marzee Richards, Augusta; Joyce Thompson, Toombsboro.

*FIFTH ROW:*  
Barbara Ann Robert, Richmond Hill; Jane Seabolt, Ackworth; Floyd Simmons, Dearing; Shirley Ann Smith, Glennville; Ferrell Sparks, Canton.

*of nineteen hundred and fifty-two*



# T H E S E N I O R S



*FIRST ROW :*

Carl S. Tyson, Lenox; Frances Jeanette Wallace, Pooler; Daphen Watson, Reidsville; James Milton Wells, Statesboro; Claudette Wilkinson, Mendes.

*SECOND ROW :*

Cherrell Williams, Perry; Alice Willingham, Camilla; Bobby Wright, Newnan; Rheta Grace Young, Ocilla.



Mrs. Jackson reads to the kids



The Kampus Kid



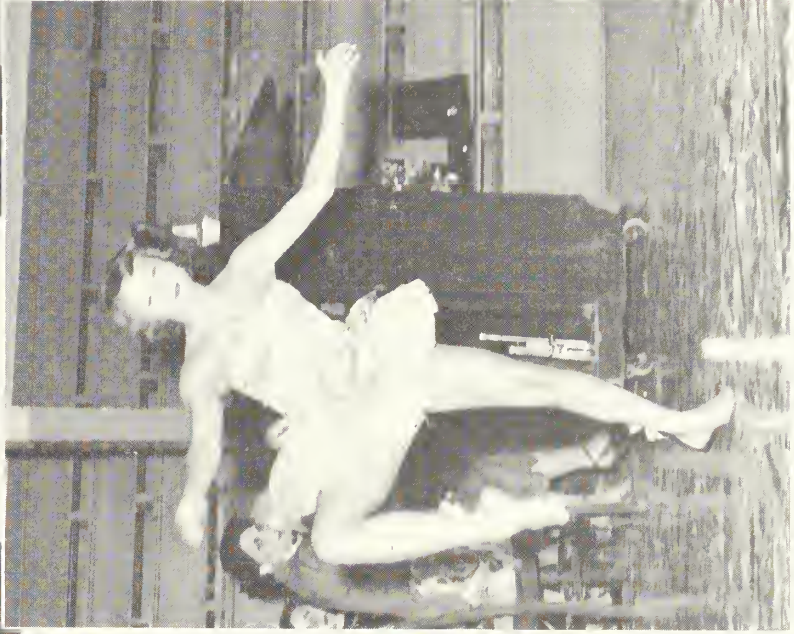
A-HA!



BETTY ANNE and MAJORIE  
HAUNT THE HALLS



COULD THIS  
BE FOR ME?



GABE AND HER GALLEY  
VARIANTE



WHY, MISS  
HILLIARD!



OH, WHERE IS MY  
WANDERING MOLLY TONIGHT?





Jim Duncan rebounds against Presbyterian



Ralph Parsons scores against Erskine



John Renfro drives in for two for T. C.



Jim Duncan fights for ball

Randy Whaley tips in for T. C. against Camp Gordon



Sonny Clements scores against Moody Air Base





"Makes slaves of man, and of the  
human frame a mechanized automaton..."  
—Percy Bysshe Shelley

# SPORTS

Pres



# · · P R O F E S S O R S · ·



## GEORGIA TEACHERS COLLEGE RECORD

LOST 6

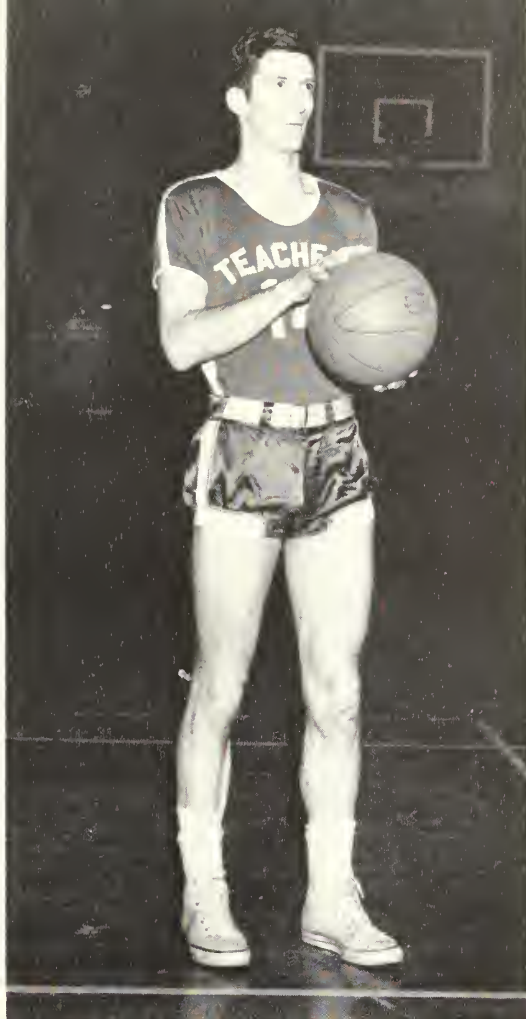
WON 22

T. C.	63	Parris Island Marines	83
T. C.	76	Moody Air Base	32
T. C.	89	North Georgia College	63
T. C.	85	Piedmont College	62
T. C.	82	Wofford College	73
T. C.	87	Turner Air Force Base	53
T. C.	62	Parris Island Marines	82
T. C.	94	Camp Gordon	78
T. C.	95	Turner Air Force Base	65
T. C.	80	Moody Air Force Base	35
T. C.	104	Pelzer Mills	96
T. C.	88	Jacksonville Navy	68
T. C.	90	Maxwell Air University	44
T. C.	70	Presbyterian College	80
T. C.	101	Mercer University	83
T. C.	96	Piedmont College	58
T. C.	76	Jacksonville Navy	65
T. C.	93	Florida State University	75
T. C.	102	Pelzer Mills	73
T. C.	67	Erskine College	56
T. C.	92	Mercer University	82
T. C.	66	Florence Alabama Teachers College	72
T. C.	105	Maxwell Air University	66
T. C.	98	Troy Alabama Teachers College	57
T. C.	76	Quantico Marine School	85
T. C.	78	Erskine College	61
T. C.	67	Presbyterian College	78
T. C.	105	Troy Alabama Teachers College	55





**RALPH PARSONS**  
*Guard*



**JOHN RENFRO**  
*Forward*



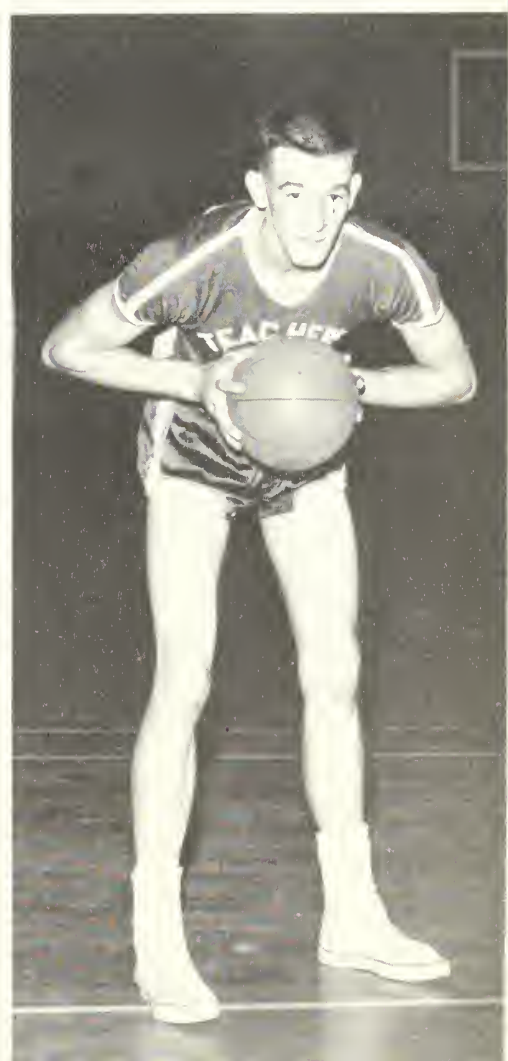
**SONNY CLEMENTS**  
*Forward*



**JIM DUNCAN**  
*Forward*



**RANDY WHALEY**  
*Center*



**BOBBY PHILLIPS**  
*Center*





**BOB BOND**  
*Guard*



**MARVIN VANOVER**  
*Forward*



**BOB SHORT**  
*Forward*

**BILLY PAFFORD**  
*Forward*



**HAL GRINER**  
*Guard*



**FERRELL SPARKS**  
*Guard*







**MIKE GENEVRINO**  
*Guard*

**FRANK TIPPETT**  
*Guard*



Whaley hooks two against Mercer University



Jim Duncan tips one in against Erskine



Sonny Clements receives trophy from T. C. students





*Top: Pat Wilson, Joan Bennett. Middle: Mynette May, Betty Ann Bedingfield. Bottom: Betty Hendrix, Ann Nevil.*



**Cheerleaders perform at half-time**

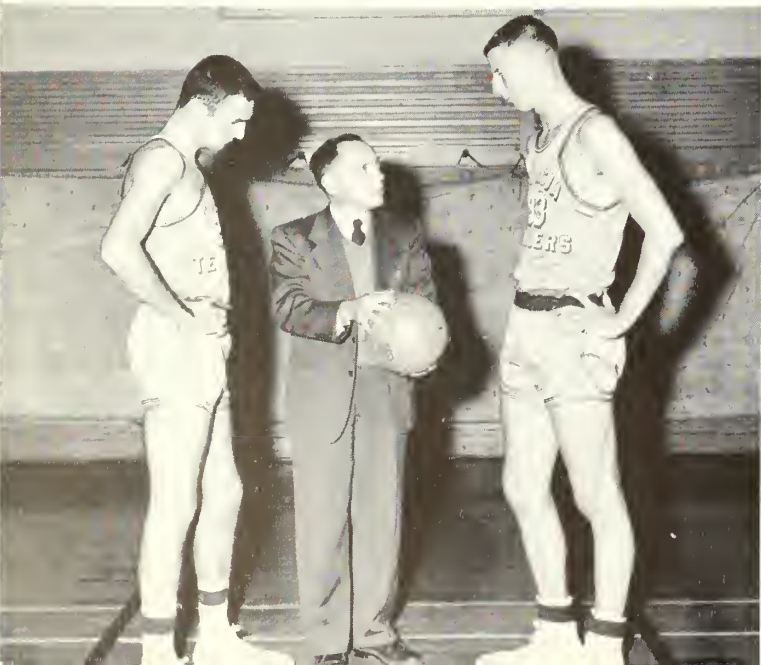


**Senior Cheerleaders Presentation**



**O'Neal Register drives around guard**

**Coach Secaree gives his view point**



**What do I do next?**

**Sonny Clements scores two against Camp Gordon**







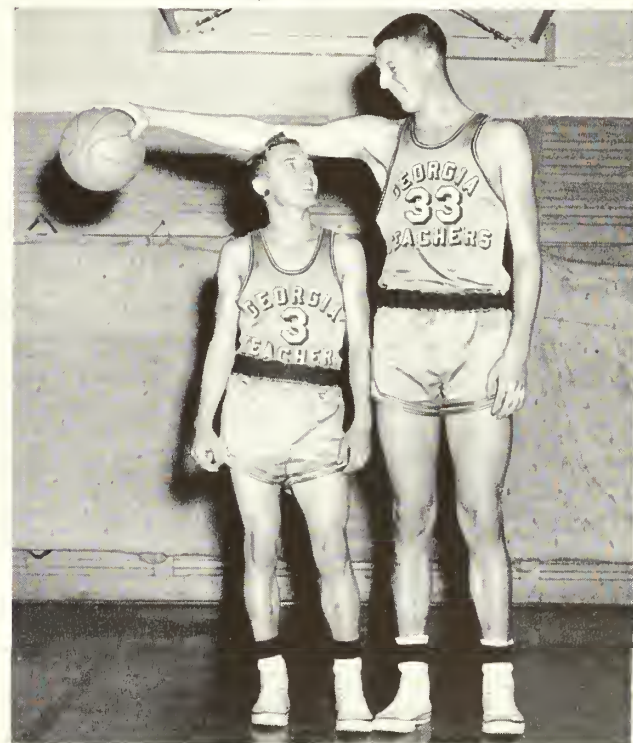
HARRY STRICKLAND  
*Trainer*



GEORGE RAHM  
*Manager*



The Ky. Boys



The small and the big



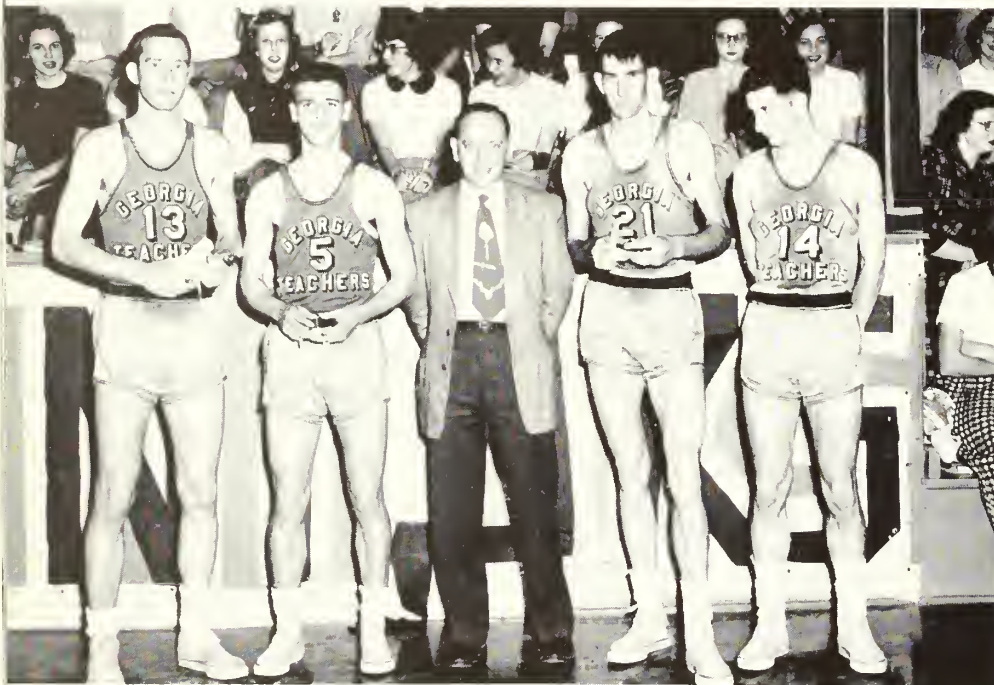




J. B. SCEARCE  
*Head Coach*



The squad in warm-ups



Four Senior players receive awards



J. I. CLEMENTS, JR.  
*Assistant Coach*





# 51 BASEBALL



Top Row, Left to Right: Jo Ed Greene, Hollis Ray Powell, Norris Strickland, Jim Duncan, Frank Clements, Edwin Smith. Second Row: George Rahn, Manager; Hugh Ayers, Wilber Peacock, Charles Sims, Ralph Parsons, Harry Strickland, Trainer. Bottom Row: Fred Pierce, Assistant Trainer; Johnny Mallard, Hal Griner, Fred Weitman, Coach J. I. Clements, Jr.

## GEORGIA TEACHERS COLLEGE RECORD LOST 11 WON 11

T. C. .... 6	Presbyterian College ... 16
T. C. .... 7	Presbyterian College ... 20
T. C. .... 1	Erskine College ... 3
T. C. .... 10	Erskine College ... 9
T. C. .... 3	North Georgia College ... 7
T. C. .... 15	North Georgia College ... 3
T. C. .... 10	Mercer University ... 5
T. C. .... 18	Mercer University ... 7
T. C. .... 3	Parris Island Marines ... 10
T. C. .... 3	Parris Island Marines ... 5
T. C. .... 0	Erskine College ... 10
T. C. .... 2	Erskine College ... 7
T. C. .... 5	Presbyterian College ... 6
T. C. .... 18	Parris Island Marines ... 8
T. C. .... 11	Piedmont College ... 4
T. C. .... 3	Parris Island Marines ... 6
T. C. .... 1	Jacksonville Navy ... 4
T. C. .... 6	Jacksonville Navy ... 5
T. C. .... 8	Jacksonville Navy ... 7
T. C. .... 8	Jacksonville Navy ... 7
T. C. .... 1	Piedmont College ... 12
T. C. .... 3	North Georgia College ... 2
T. C. .... 9	North Georgia College ... 12
T. C. .... 9	Quantico Marines ... 11
T. C. .... 6	Quantico Marines ... 8



We got the team.  
We got the steam!  
Remember?

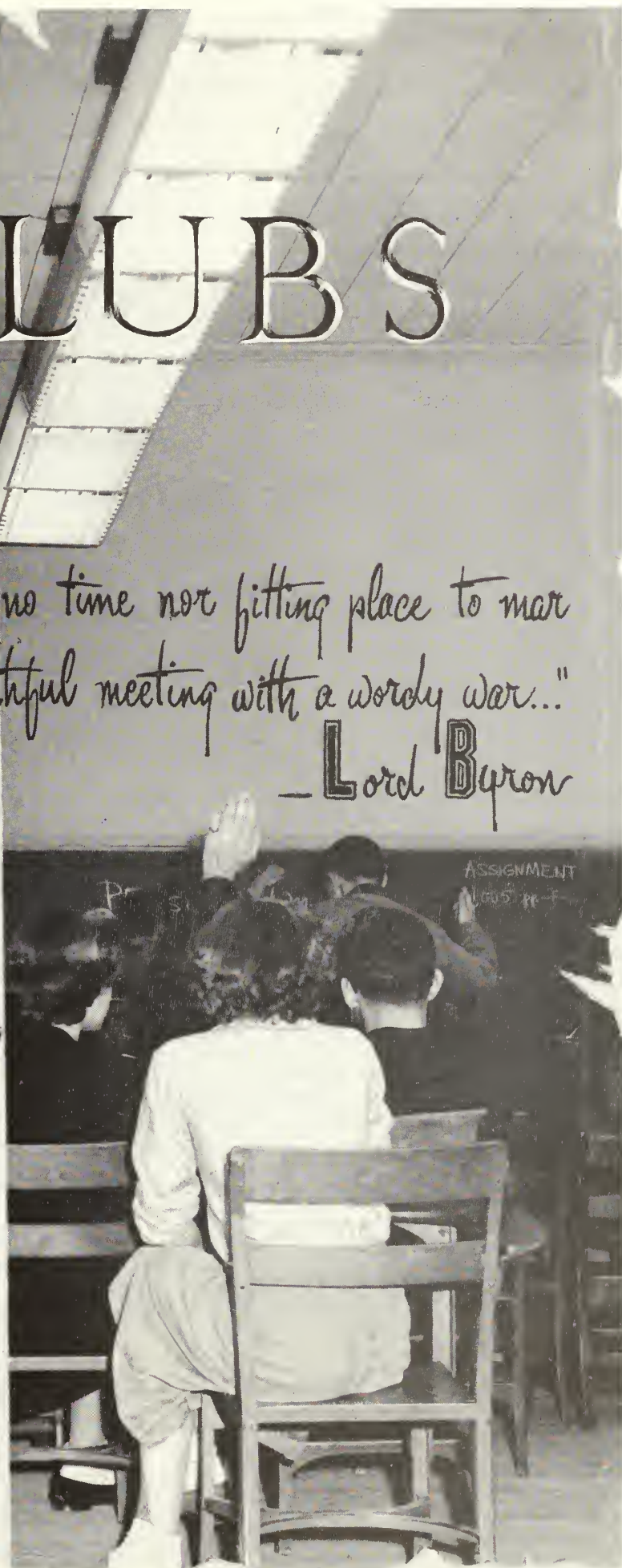


Santa Claus comes to West Hall



# CLUBS

*"This is no time nor fitting place to mar  
the mirthful meeting with a wordy war..."*  
— Lord Byron





**EDITH CARPENTER**  
*Editor*



**BETTY ANNE BEDINGFIELD**  
*Business Manager*



**Doris Ford**  
*Associate Editor*



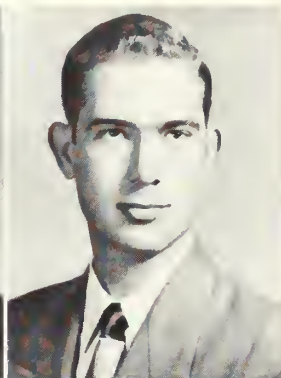
**Frankie Quicke**  
*Circulation*



**George Parrish**  
*Art Editor*



**Spencer Overstreet**  
*Assistant Editor*



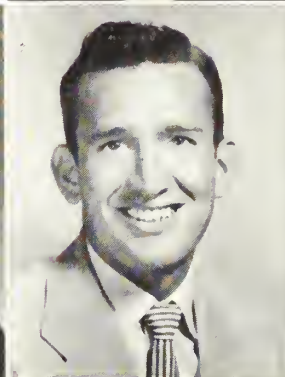
**Rosalyn Brantley**  
*Club Editor*



**Marilon Hurt**  
*Advertising Staff*



**Harry Strickland**  
*Sports Editor*



**W. C. Wyatt**  
*Feature Editor*

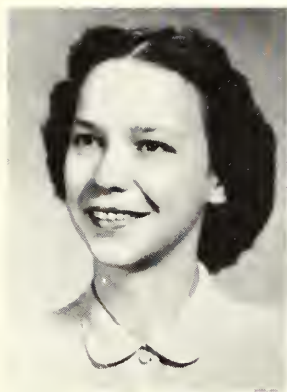


## THE REFLECTOR STAFF

*"The thorn in the cushion of the editorial chair."*  
—Wm. Makepeace Thackeray.







Martha Duffield



Peggy Jo Burke



Betty B. Brannen



Dorothy Ford



Edna Ruth Sanders



Faine Green



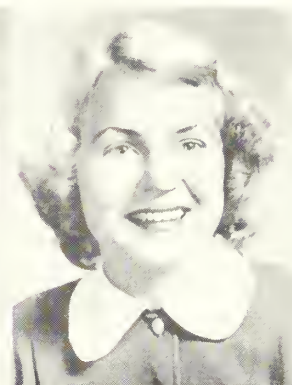
Nell Bowen



Carlene Shanklin



Shirley Shuman



Elaine Cross



Shirley Lagerbald



Martha Hinely



Joan Bennett



Martha Wood



Ginger Morgan



Betty Eason



Peggy Davis



Evelyn Greene



Ann Trice



Mary Helen Altman

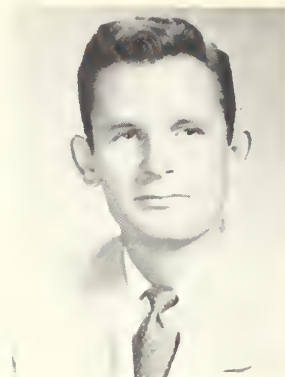


"This folio of four pages, happy work!  
Which not even critics criticize—"

—William Cowper



CHARLES STEWART  
*Editor*



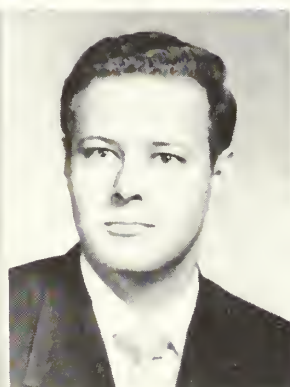
JIM HODGES  
*Business Manager*



Jo Ann Darden  
*Columnist*



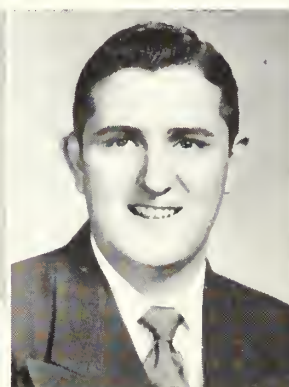
Edith Carpenter  
*Feature Editor*



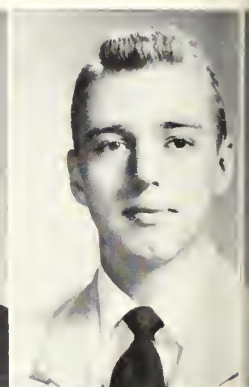
George Parrish  
*Art Editor*



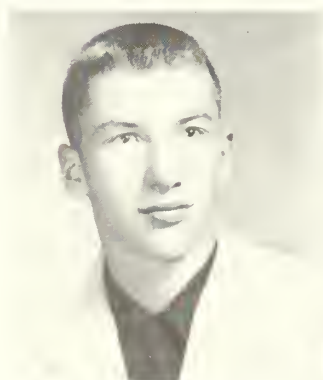
Martha Wood  
*Columnist*



Gilbert C. Hughes  
*Circulation Manager*



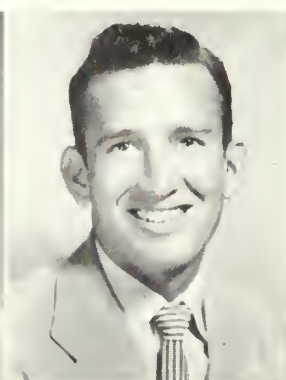
Fred Pierce  
*Sports Editor*



George Rahn  
*Sports Editor*



Robert Hurst  
*Editorials*



Harry Strickland  
*Columnist*

*Not Shown*

Frankie Quicke  
*Associate Editor*

Mary Helen Altman  
*News Editor*

Peggy Dobbs  
*Photographer*



# Reporters



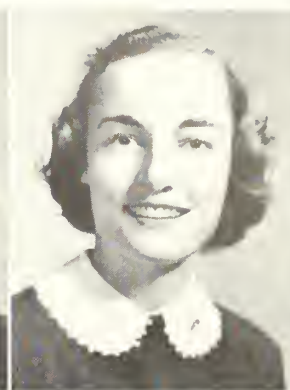
Shirley Hanson



Margaret Jones



Liz Hartley



Faye Waters



Betty B. Brannen



Betty Ruth Folsom



Alice Willingham



Martha Hinely

## T H E G E O R G E - A N N E

Betsy Tippens

Betty Eason

Peggy Davis



Faye Lunsford

Barbara Waters

Shirley Lagerblad





# SANFORD HALL HOUSE COUNCIL

JOHNNY MALLARD  
*President*

HOLLIS RAY POWELL  
*Vice-President*

CHARLES JACKSON  
*Secretary*

JEROME LEE  
*Treasurer*

## MONITORS

Spencer Overstreet  
Walter McMahon  
George Clark  
Ralph Parsons  
Bill Hendry  
Jerry Silverman  
Jim Hodges  
Sonny Clements  
Mike Genevrino  
Bill Brown  
Jack Wade



# WEST HALL HOUSE COUNCIL

PEGGY SATURDAY  
*President*

ANNE KEENE  
*Vice-President*

JEAN WARNOCK  
*Secretary and Treasurer*

## MONITORS

Genevieve Hunter  
Joan Pittman  
Miriam Floyd  
Carolyn Moore  
Shirley Smith  
Catherine McNally  
Alberta Dix





# LEWIS HALL HOUSE COUNCIL



ANNE TRICE  
*President*

NELL BOWEN  
*Vice-President*

CAROLYN GILDER  
*Secretary*

MARGIE JACKSON  
*Treasurer*

## MONITORS

Sue Wynn  
Trudie Prigden  
Edith Chalker  
Mynett May  
Jo Ann Darden  
Betty Hart  
Mildred Spier  
Betty Ann Bedenfield

# EAST HALL HOUSE COUNCIL



ANN EUBANKS  
*President*

MARY ANN CARTER  
*Vice-President*

EVELYN GREENE  
*Secretary and Treasurer*

## MONITORS

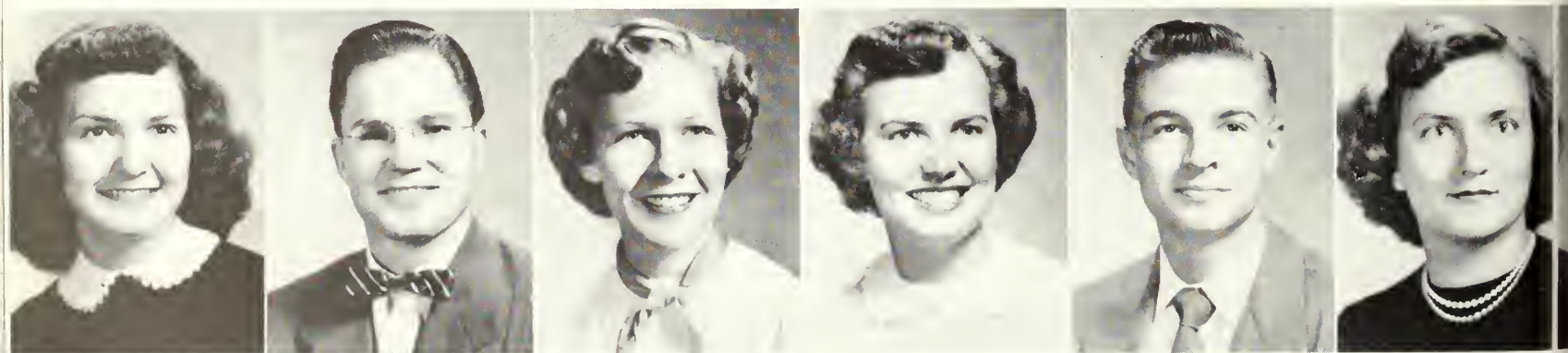
Bert McLoon  
Ann Mitchell  
Sue Kennedy  
Emma Jean Dutton  
Mary Flanders  
Pat Meeks  
Shirley Hanson  
Annegene Sulbreth  
Peggy Jones  
Frankie Ammons

Mrs. J. B. Johnson,  
*House Mother*





## STUDENT CHRISTIAN ASSOCIATION



**ANN EVANS**  
*President*

**GROVER BELL**  
*First Vice-President*

**ANN HIGGINBOTHAM**  
*Second Vice-President*

**YVONNE JONES**  
*Secretary*

**HUGH WELLS**  
*Treasurer*

**MARY FLANDERS**  
*Vespers*





# PHILHARMONIC CHOIR

DR. RONALD J. NEIL  
*Director*

## Sopranos

Beverly Bargerion  
Betty B. Brannen  
Ann Broome  
Peggy Jo Burke  
Vivien Cowart  
Betty Ewing  
Betty Ruth Folsom  
Loretta Green  
Joan Griffin  
Shirley Gullledge  
Georgia Harper  
\*Betty Hart  
Elizabeth Hartley  
Martha Hinely  
Margie Jackson  
Virginia Joiner  
Patsy Kilpatrick  
Annabel Leverenz  
Ann Higginbotham

Madlyn Meeks  
Virginia Newby  
Marilyn Nevils  
Ennetta Purvis  
Jo Starr  
Claire Thomas  
\*Ann Trice  
Faye Waters  
Rheta Young

## Altos

Ann Altman  
June James  
Edith Carpenter  
Janice Chastain  
Aungene Culbreth  
Jo Ann Darden  
Martha Driskell  
Shirley Dykes  
Ann Eubanks

\*\*\*Faye Lunsford  
Mynette May  
Genie Owen  
Trudie Pridgen  
Mary F. Smith  
Jeanette Wallace  
Marjorie Weatherford

## Tenors

Bill Childress  
Robert Hurst  
Sonny Hawkins  
Robert Paul James  
John Kennedy  
Rudy Mills  
Ed Mitchell  
Billy Moore  
Spencer Overstreet  
Hugh Pharis  
Bobby Richardson

Gene Roberts  
Harvey Simpson  
James Wells

## Bass

Grover Bell  
Dan Biggers  
Jerry Burrows  
Morris Davis  
\*Russ Everitt  
\*Bill Fox  
Gilbert Hughes  
Bobby Kingery  
James Little  
Jimmy Oliver  
George Parrish  
Bobby Pickens  
Fred Pierce  
Chester Poole  
Don Reinsmith  
Bobby Wright

\*Board of Directors  
\*\*Chairman  
\*\*\*Accompanist



# FUTURE BUSINESS LEADERS OF AMERICA



## M E M B E R S

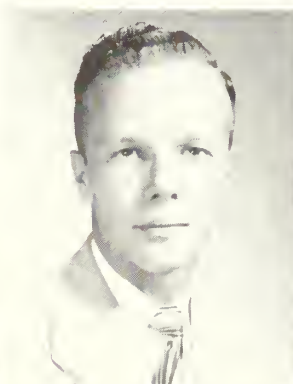
Bill Brown  
Mary Wyl Conner  
Betty Eason  
Jack Gay  
Betty Rose Hatcher  
Fran Hawkins  
Peggy Hinely  
Faye Hodges  
Margaret Jones  
Lucy Olmstead

Thomas Lanier  
Eunis Lewis  
Virginia Leotis  
Mynette May  
Wink McCall  
Madlyn Meeks  
Ginger Morgan  
Charles Prior  
Doris Reed

Ann Remington  
Shirley Shuman  
Neil Smith  
Harry Strickland  
Johnny Spence  
Opal Tyre  
Daphne Watson  
Harriette Whitcomb  
Virginia Wilkes  
Sally Ree Jones



**MARJORIE KEATON**  
*Sponser*



**WALDO BOWEN**  
*President*



**BETTY ANN  
BEDINGFIELD**  
*Vice-President*



**ALENE WOODS**  
*Secretary*



**MARY ANN CARTER**  
*Treasurer*





## OFFICERS

ED MITCHELL  
*President*

CHARLES JACKSON  
*Vice-President*

YVONNE JONES  
*Secretary*

BILLY MOORE  
*Treasurer*

# STUDENT COUNCIL

## MEMBERS

Dan Biggers  
Jimmy Oliver  
Hollis Ray Powell  
Lester Davis  
Johnny Mallard  
Ann Nevil  
Anngene Culbreth  
Frankie Quick  
Joyce Vaughn  
Martha Driskell  
Ann Trice



# W E S L E Y F O U N D A T I O N

## OFFICERS

GROVER BELL  
*President*

JANICE CHASTAIN  
*Vice-President*

MARY FLANDERS  
*Secretary*

MARTHA WOOD  
*Treasurer*



Bill Brown  
Sonny Clements  
Joe Ed Greene  
Bobby Wright  
Charles Jackson  
Edwin Kersey  
Johnny Mallard  
Spencer Overstreet  
Ralph Parsons  
Bobby Phillips  
Joel Stowers  
Christy Trowell  
Marvin Vanover  
Jack Wade  
Hugh Wells  
Robert Hughes  
Roy Goolsby  
Alex Johnson  
China Altman  
Beverly Bargerou  
Betty Brannen

Ruth Bray  
Janice Chastain  
Vivien Cowart  
Mary Flanders  
Doris Ford  
Dorothy Ford  
Shirley Gullledge  
Liz Hartley  
Novine Hickman  
Mary Jo Jackson  
Margaret Jones  
Sue Kennedy  
Faye Lunsford  
Alice Mosley  
Genie Owen  
Nan Parrish  
Nancy Purvis  
Sara Simpson  
Jo Starr  
Joyce Thompson  
Dianne Waters

Faye Waters  
Cherrell Williams  
Miriam Floyd  
Fran Hawkins  
Faye Henry  
Mary Lucille Hodges  
Marion Jenkins  
Cordelia Kidd  
Pat Kilpatrick  
Mary Liddell  
Catherine McNally  
Annie Ruth Moody  
Lucy Olmstead  
Delores Turner  
Shirley Smith  
Doris Cash  
Betty Ann Bedingfield  
Joan Bennett  
June James  
Judy Carwyle  
Dot Corbitt

Betty Drake  
Marilyn Folsom  
Margaret Hagin  
Betty Hart  
Mary Knight  
Melba McAllister  
Carolyn Moye  
Betty Parrish  
Joanne Patterson  
Jackie Simpson  
Mildred Spiers  
Ann Trice  
Jeannette Wilder  
Carolyn Williams  
Betty A. Withrow  
Martha Wood  
Barbara Roberts  
Ann Greenway  
Eunetta Purvis  
Edith Chaiker





# A R T C L U B

BETH WIMBERLY  
*President*

ROSALYN BRANTLEY  
*Vice-President*

PEGGY DOBBS  
*Secretary*

FRANKIE QUICK  
*Treasurer*



## M E M B E R S

Fraunces Armstrong  
Dan Biggers  
Betty B. Brannen  
Rosalyn Brantley  
Peggy Jo Burke  
Edith Chalker  
Elaine Cross  
Peggy Dobbs  
Walton Ewing  
Bill Fox

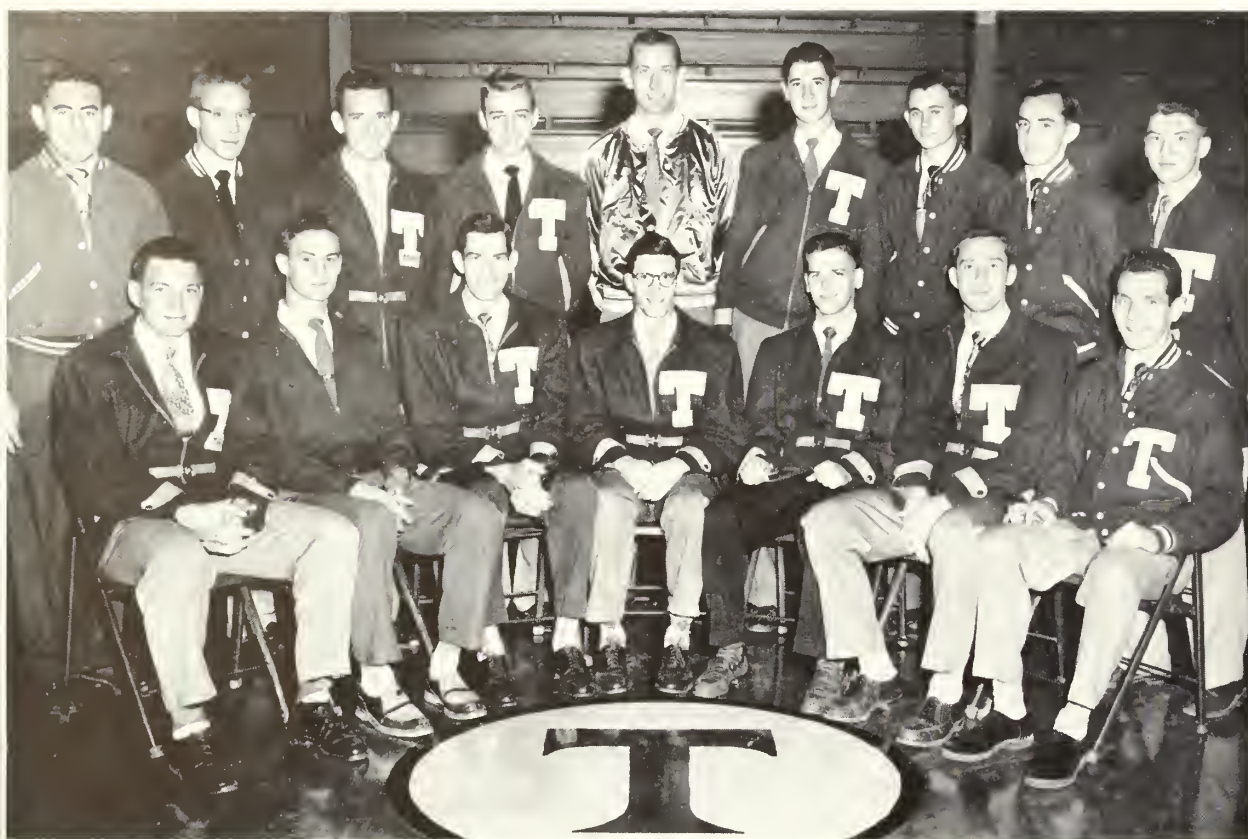
Margaret Hagin  
Liz Hartley  
Peggy Hinely  
Bobbie Jones  
Margaret Jones  
Lois Johnson  
Winzell Jordan  
Cordelia Kidd  
Betty Parrish  
Frankie Quick

Robert Sanders  
Shirley Smith  
Claire Thomas  
Faye Waters  
Daphene Watson  
Beth Wimberly  
Bobby Wright  
Cherrell Williams  
Bobbie Steedley  
Marilyn Nevils





# ..T.. CLUB



## OFFICERS

**SONNY CLEMENTS**  
*President*

**NORRIS STRICKLAND**  
*Vice-President*

**JOHNNY MALLARD**  
*Secretary*

**JOHNNY RENFRO**  
*Treasurer*

## MEMBERS

Charles Sims  
Roy McTier  
Fred Pierce  
Jerry Silverman  
George Rahn  
Sonny Hawkins  
Ralph Parsons  
Jo Ed Greene  
Hollis Ray Powell  
Jim Duncan  
Fredrich Weitman  
Harry Strickland  
George Roeluck

# PRIMITIVE BAPTIST FELLOWSHIP

## OFFICERS

**HOLLIS RAY POWELL**  
*President*

**ROSALYN BRANTLEY**  
*Vice-President*

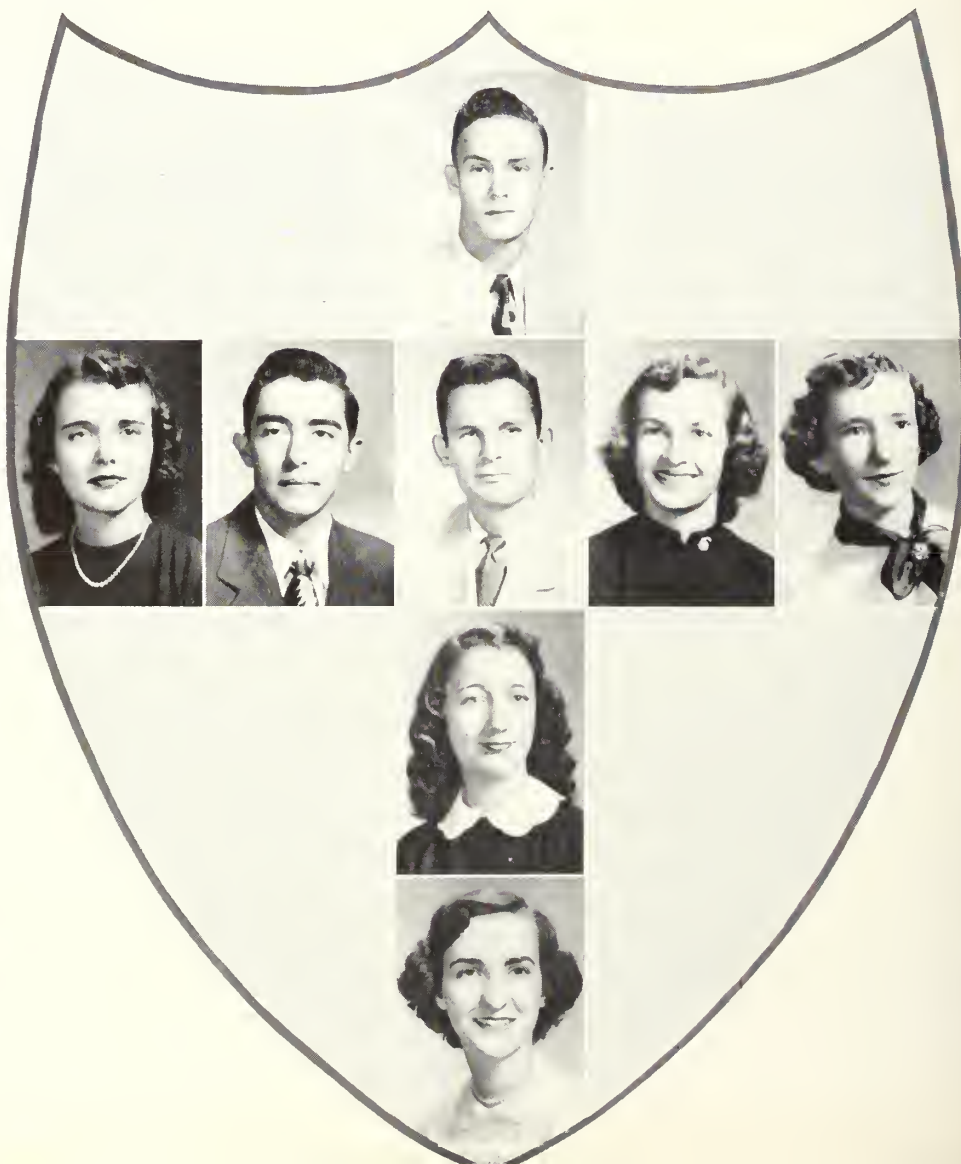
**ANGELYN BRANTLEY**  
*Secretary*

**JOHN KENNEDY**  
*Treasurer*

Jim Hodges  
Bettye Hendrix  
Sara Fletcher  
Lothair Easterling  
Peggy Jo Burke



**MISS HASSIE MAUDE McELVEEN**  
*Counsellor*





# FUTURE TEACHERS OF AMERICA

## OFFICERS

JIMMY OLIVER  
*President*

ANN NEVIL  
*Secretary*

ANN TRICE  
*Vice-President*

CAROLYN WILLIAMS  
*Treasurer*

JO STARR  
*Reporter*





# WOMEN'S ATHLETIC ASSOCIATION

## OFFICERS

CATHERINE McNALLY  
*President*

ANN NEVIL  
*Vice-President*

SARAH DOT SIMPSON  
*Secretary and Treasurer*

CORDELIA KIDD  
*Reporter*

CARLENE SHANKLIN  
*Co-ordinator*



## KAPPA DELTA PI







JOAN GROOVER  
*President*

# HOME ECONOMICS CLUB



ANN BROOME  
*Vice-President*



ELEASE WILLIAMS  
*Secretary*



NORMA KELLEY  
*Treasurer*



JEAN WARNOCK  
*Historian*



DOT BROWN  
*Reporter*



CAROLYN MOYE  
*Parliamentarian*

## *Sponsors*

Ruth Bolton and Margaret Strahlman





# BAPTIST STUDENT UNION



## OFFICERS

**Ed Mitchell**  
*President*

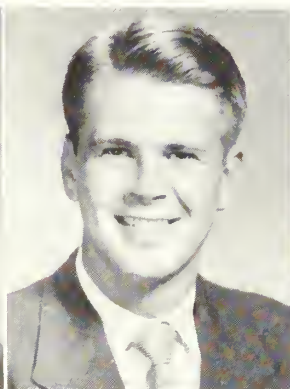
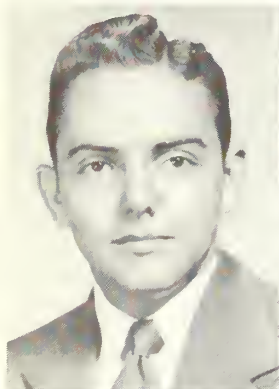
**TRUDIE PRIGDEN**  
*Enlistment Chairman*

**DAN BIGGERS**  
*Social Chairman*

**ANN EVANS**  
*Devotional Chairman*

**MADLYN MEEKS**  
*Secretary*

**BETSY TIPPINS**  
*Treasurer*



**JOAN GRIFFIN**  
*Music Director*

**Loretta Green**  
*Publicity*

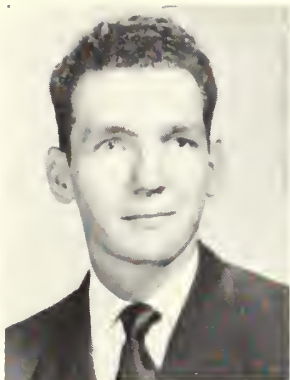
**MELBA WARNOCK**  
*Deputation Chairman*

**FRANKIE QUICK**  
*S. S. Representative*

**PEGGY SATURDAY**  
*B.T.U. Representative*

**ANN HIGGINBOTHAM**  
*Historian*





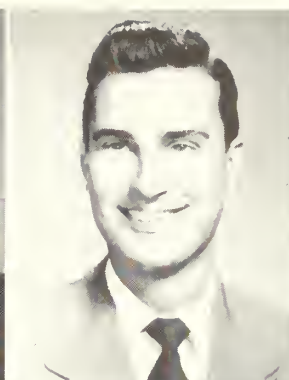
**SONNY HAWKINS**  
*President*



**BILLY MOORE**  
*Vice-President*



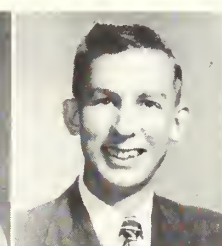
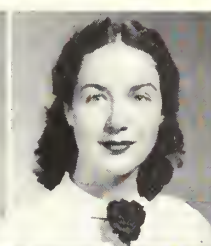
**MARTHA DRISKELL**  
*Secretary*



**RUSSELL EVERITT**  
*Treasurer*



**JO ANN DARDEN**  
*Reporter*

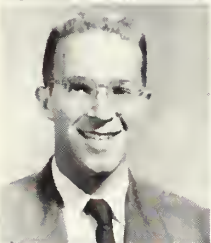


## M U S I G M A

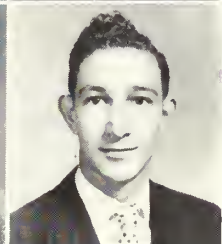
Beverly Barger  
Peggy Jo Burke  
June Cantrell  
Morris Davis



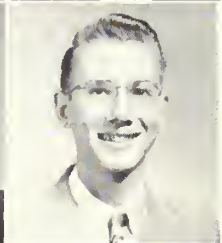
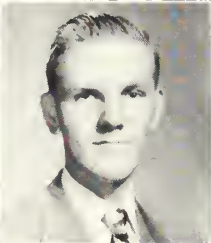
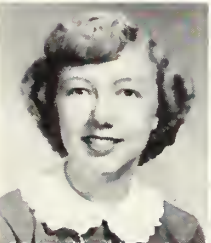
Bill Fox  
Loretta Green  
Jo Ann Griffin  
Shirley Gullege



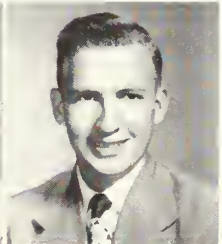
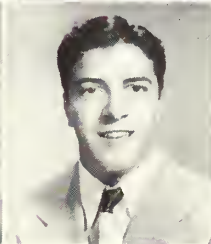
Bobby Wright  
Margie Jackson  
Faye Lunsford  
Pat Meeks



Rudy Mills  
Ann Mitchell  
Hugh Pharis  
Chester Poole



Trudie Pridgen  
Gene Roberts  
Jo Starr  
Joel Stowers



Ann Trice  
Marjorie Weatherford  
Johnny DeNitto  
Bobby Gene Kingery

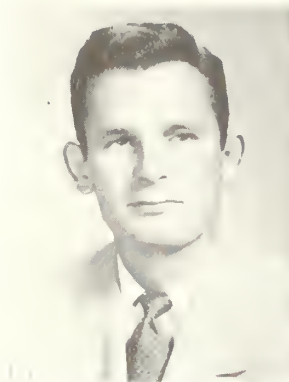


Georgia Harper  
Virginia Newby

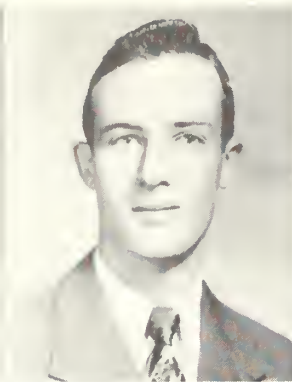
*Not Shown:*

Betty Hart  
Bobby Pickens





**JIM HODGES**  
*President*



**ROBERT PICKENS**  
*Vice-President*



**SHIRLEY SHUMAN**  
*Secretary*



**MARTHA WOOD**  
*Reporter*

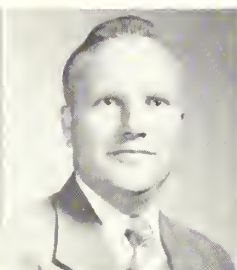


**MRS. MARJORIE  
GUARDIA**  
*Sponsor*



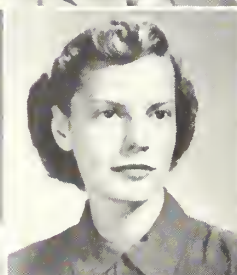
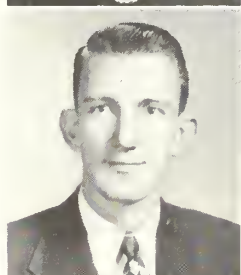
**DR. FIELDING  
RUSSELL**  
*Sponsor*

## ENGLISH CLUB

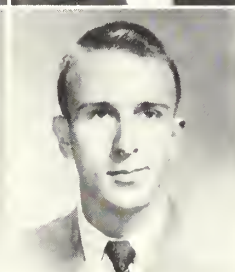
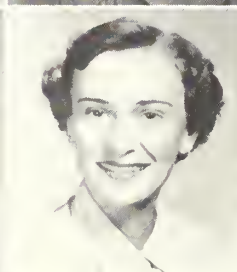
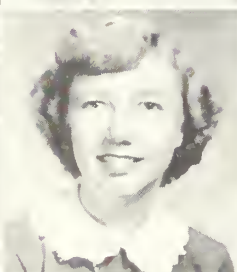


### MEMBERS

Martha Ruth Arrowwood  
Elaine Brock  
Lawrence Bryant  
Edith Carpenter



Bill Childres  
Dorothy Corbitt  
Carolyn Gilder  
Rosemary Johnson



Jane Kelly  
Trudie Prigden  
Betty Sherman  
Jerry Singleton



**Ann Trice**



# M A S Q U E R S

"The play's the thing!"—William Shakespeare



## OFFICERS

DAN BIGGERS	President
BOBBY RICHARDSON	Vice-President
LORETTA GREEN	Secretary
CATHERINE McNALLY	Treasurer
EDITH CARPENTER	Publicity
BETTY ANNE WITHROW	Historian

## MEMBERS

Peggy Davis  
Shirley Gullledge  
Ginger Morgan  
Jo Starr  
Ann Trice  
Jack Wade  
W. C. Wyatt  
Edna Ruth Sanders  
Rose Mary Ammons  
Janice Chastain  
Aungene Culbreth

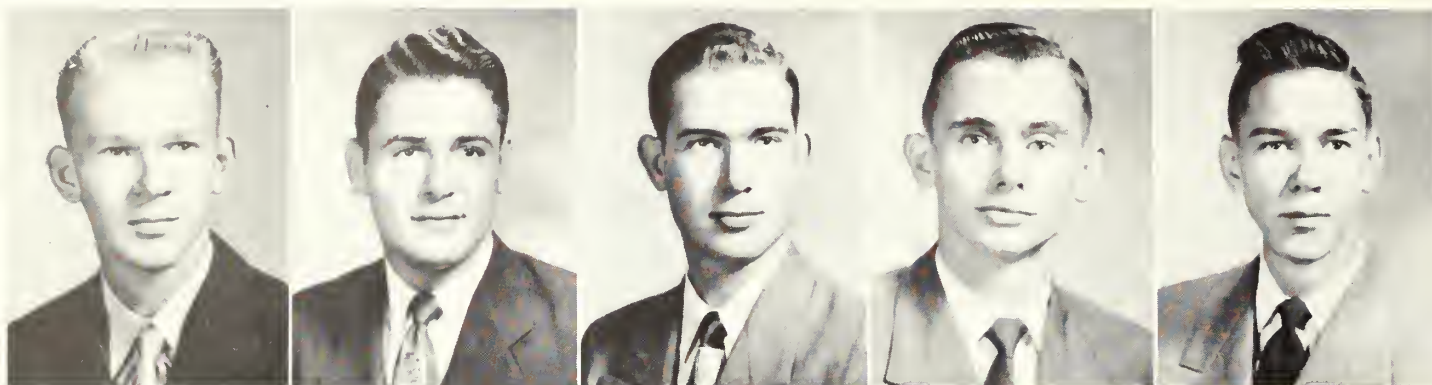
Walton Ewing  
Doris Ford  
Dorothy Ford  
Barbara Fossett  
Ann Higginbotham  
Martha Hinely  
Mary Jo Jackson  
Margaret Jones  
Edwin A. Kersey  
Cordelia Kidd

Pat Kilpatrick  
Virginia Newby  
Gene Roberts  
Phil Norton  
Betsy Tippins  
Carl Tyson  
Jimmy Wells  
Bobby Wright  
Sue Wynn  
Otis Houston

Christy Trowell  
Faye Henry  
Mary Hodges  
Ed Mitchell  
Nan Parrish  
Jane Seabolt  
Saralene Akridge  
Dorothy Cranford  
Bill Fox  
Hugh Pharis  
Rosalyn Brantley



# INDUSTRIAL ARTS CLUB



GLENN THOMAS  
*President*

CHARLES SIMMS  
*Vice-President*

SPENCER OVERSTREET  
*Secretary and Treasurer*

FREDERICK WEITMAN  
*Reporter*

CLARENCE TAYLOR  
*Sergeant-at-Arms*

*Standing:* Robert Lee James, E. D. Turner, Spencer Overstreet, Glenn Thomas, Barney Troy Mallard. *Seated:* Don Nipper, Don Reinsmith, Clarence Taylor, Charles Simms, Larry Harrell, Robert Taylor.





# INTERNATIONAL RELATIONS CLUB



*Standing:* Nancy Hickman, Faye Henry, Mary Liddell, Shirley Lagerblad, Dorothy Corbitt, Martha Ruth Arrowood, Grace Young, Jack Bozeman, Don Nipper, Bobby Pickens, Carl Tyson, Dan Wilson, Gene Page, "Poc" Woodrum. *Seated:* Dorothy Cranford, Thomas Stewart, Herman Huff, Charles Stewart, Dr. George A. Rogers, *Sponsor*.

## OFFICERS

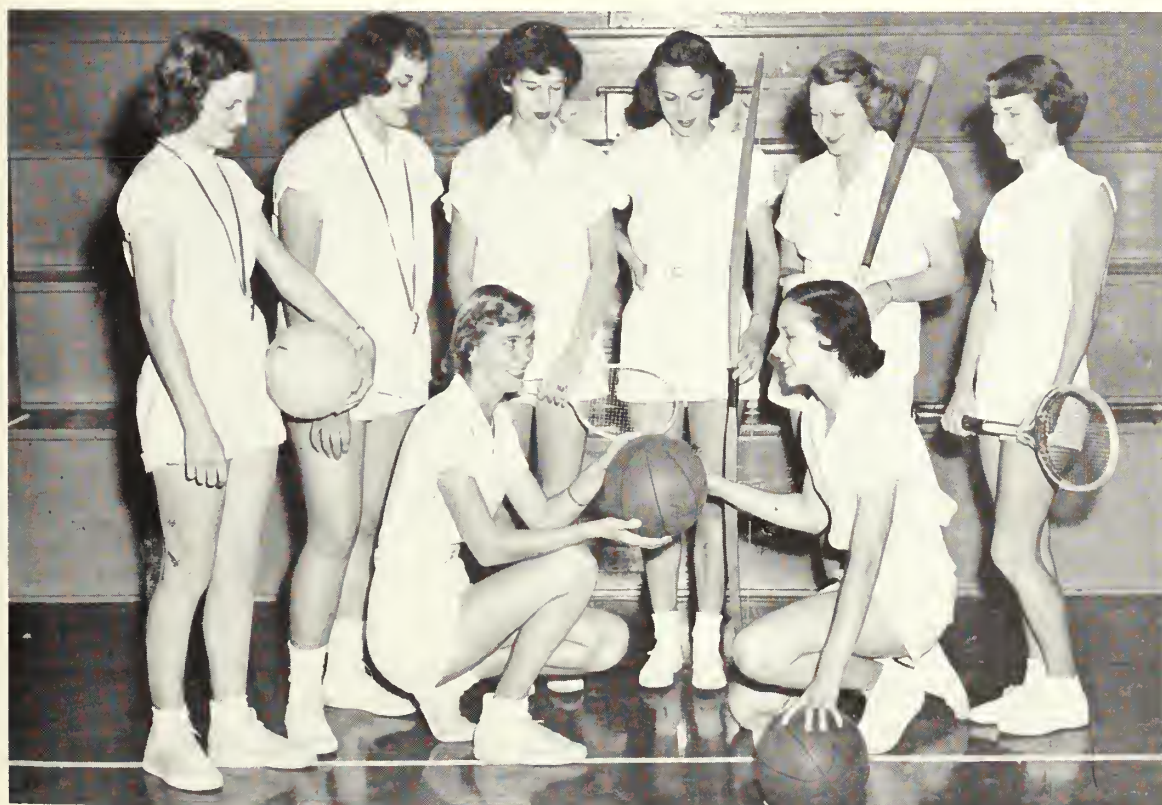
HERMAN HUFF  
*President*

CHARLES STEWART  
*Vice-President*

DOROTHY CRANFORD  
*Treasurer*

THOMAS STEWART  
*Secretary*

# P. E. M. M. CLUB



## OFFICERS

JOAN BENNETT  
*President*

MYNETTE MAY  
*Vice-President*

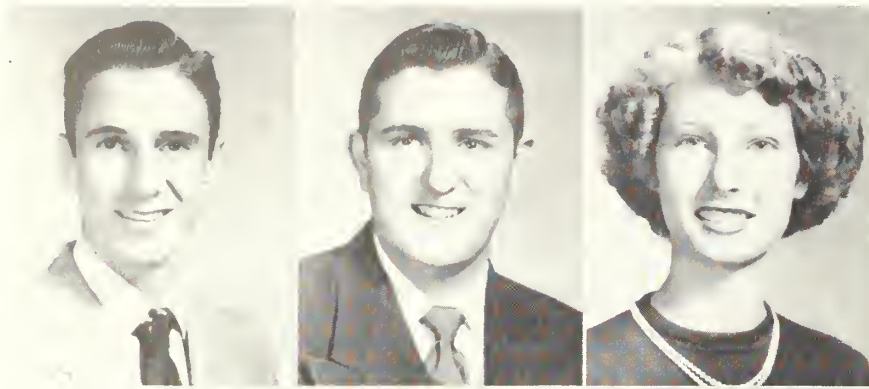
VIRGINIA NEWTON  
*Secretary and Treasurer*

## MEMBERS

Pat Wilson  
Ruby Huston  
Martha Finley  
Gretchen Heers  
Barbara Roberts  
Catherine McNally  
Betty Mikell  
Carolyn Williams  
Betty Sherman



# SCIENCE CLUB



## OFFICERS

JIMMY OLIVER ..... *President*  
 GILBERT HUGHES ..... *Vice-President*  
 GENIE OWEN ..... *Secretary-Treasurer*

## SPONSORS

MR. HANNER  
 MR. PENNINGTON  
 MR. SHERRELL



*"Science is the topography of ignorance."*—Oliver W. Holmes

## MEMBERS

Rosemary Ammons  
 Beverly Barger  
 Jerry Burrows  
 Joe Clark  
 J. H. Collins  
 Morris Davis  
 James Deen  
 Wendell Duncan

Miriam Floyd  
 Shirley Gullledge  
 A. T. Johnson  
 A. T. Johnson  
 Edwin Kersey  
 Morris Lee  
 Walter McMahon  
 Lewis McNair

Carolyn Moye  
 Ann Nevill  
 Donald Nipper  
 Billy Pafford  
 Gene Page  
 Don Reinsmith  
 Thomas Stewart  
 Edna Sanders

Felton Rhodes  
 Marzee Richards  
 Bobby Richards  
 Gary Sapp  
 Harvey Simpson  
 Mary Frances Smith  
 Billie Williams  
 Dorothy Williford  
 Dan Wilson





# T. C. C O N C E R T B A N D



## OFFICERS

**RUDY MILLS**  
*President*

**JO ANN DARDEN**  
*Vice-President*

**MARTHA DRISKELL**  
*Secretary*

**TRUDIE PRIDGEN**  
*Treasurer*

**JUNE JAMES**  
*Librarian*

**MORRIS DAVIS**  
*Property*

**DANA M. KING, JR.**  
*Director*



## M E M B E R S

**Bill Brown**  
**Lester Davis**  
**Johnny Denitto**  
**Russell Everitt**  
**Bill Fox**  
**Evelyn Greene**  
**Georgia Harper**  
**Sonny Hawkins**  
**Betty Hart**  
**Ann Higginbotham**  
**Yvonne Jones**  
**Bobby Kingery**  
**Bill Lewis**  
**Faye Lunsford**  
**Ann Mitchell**  
**Billy Moore**  
**Bobby Pickens**  
**Chester Poole**  
**Alan Pope**  
**Ennetta Purvis**  
**Robert Rigsby**  
**Gene Roberts**  
**Clarence Simmons**  
**Jerry Singleton**  
**Ann Trice**  
**Dan Wilson**  
**Bobby Wright**



# DANCE ORCHESTRA



*Manager*  
SONNY HAWKINS

*Assistant Managers*  
BILL BROWN  
FAYE LUNSFORD  
RUDY MILLS  
DANA KING

*Trumpets:*  
SONNY HAWKINS  
RUSSELL EVERITT

*Trombone:*  
BOBBY WRIGHT

*Rhythm*  
MORRIS DAVIS  
BILLY MOORE  
CHESTER POOLE  
ROBERT RIGSBY



The Complete Cast



# WESTMINSTER FELLOWSHIP

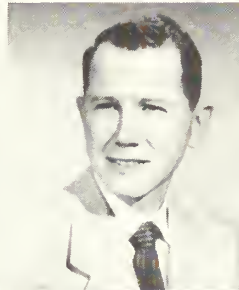
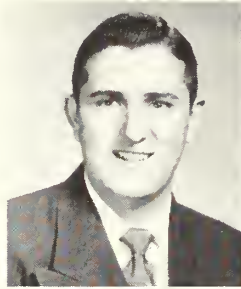
## OFFICERS

GILBERT HUGHES  
*President*

MARY WILKINS  
*Vice-President*

FRANCES ARMSTRONG  
*Secretary-Treasurer*

DON McDOUGALD  
*Faculty Advisor*

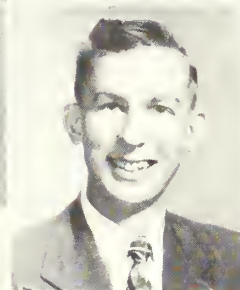


## MEMBERS

May Belle Lewis

Sara Fletcher

Morris Davis



## QUEEN OF THE MAY 1951



BETTY REAGAN  
*Queen*



*Here  
And  
There - -*



The hayseeds spront up everywhere.



Live and learn.



Smile now!



The Powell "Twins."



The long halls of Sanford





Confession . . .



"Once there were three bears . . ."

## - *And Everywhere*



Those wild West parties!



What we *do* remember from tumbling!



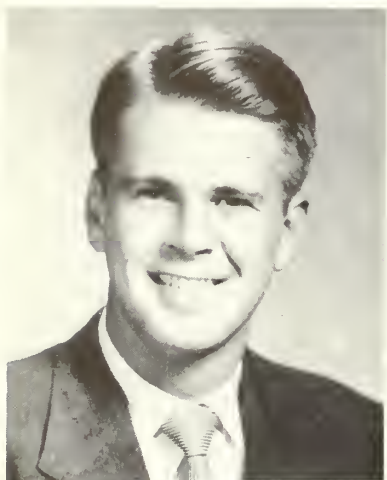
Tuck me in and tell me good-night.





GROVER BELL

## *Who's Who*



DAN BIGGERS



EDITH CARPENTER



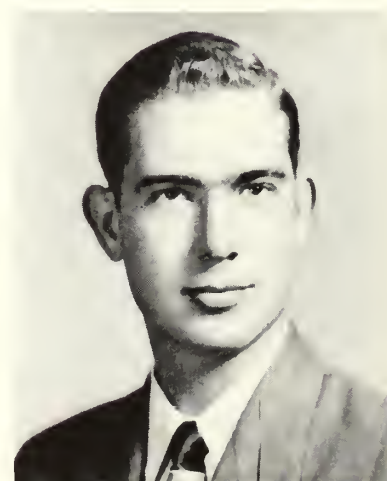
Dan Biggers, Spencer Overstreet, George Parish, Grover Bell, Charles Jackson, Betty Ann Withrow, Edith Carpenter, Ann Trice, Jimmy Oliver.



CHARLES JACKSON



JIMMY OLIVER



SPENCER OVERSTREET



*In* 1952

WHO'S WHO AMONG STUDENTS IN  
AMERICAN UNIVERSITIES AND  
COLLEGES

As a result of four years of devotion to the school and their fellow students, these students have been selected for a place in the publication: WHO'S WHO AMONG STUDENTS IN AMERICAN UNIVERSITIES AND COLLEGES. These students were selected by the campus organizations, the faculty, the Who's Who committee, and the Senior class as having been outstanding in leadership, extracurricular activities, and scholarship.

The standards that these nine have followed, each lower classman may set for his own. It is what the student does in college that most often determines what he will do once he is on his own.



GEORGE PARISH



ANN TRICE



BETTY ANN WITHROW





## *The 1952 Beauty Parade*

*"If eyes were made for seeing,  
Then Beauty is its own excuse for being."*

—Ralph Waldo Emerson



*Bettye Hendrix*

F I R S T P L A C E





*Ann Nevil*

T I E F O R S E C O N D P L A C E





*Lois Johnson*

*T I E F O R S E C O N D P L A C E*





*Yvonne Jones*

F O U R T H P L A C E





*Joyce Vaughn*

F I F T H P L A C E





IT FINALLY HAPPENED!





# I N D E X      O F      S T U D E N T S

- Adamson, Emily 15  
 Akridge, Saralene 42, 43  
 Alderman, Robert  
 Altman, Dorothy Ann 15, 71  
 Altman, Mary Helen 42, 65, 66, 74  
 Amons, Rose May 47, 48, 67, 83, 86  
 Ammons, Rose Mary 47, 48, 67, 83, 86  
 Anderson, Gloria  
 Armstrong, Frances May 34, 75, 89  
 Arrowwood, Martha Ruth 34, 82  
 Ash, Daphne Anita 34  
 Augley, Richard Manning
- Bacon, Herbert T.  
 Bargerion, Beverly Elizabeth 42, 71, 74, 81, 86  
 Barefield, Mr. R. H.  
 Barfield, Mrs. Lois  
 Barnett, Marvin J. 34  
 Bass, Eugenia E.  
 Bedingfield, Betty Anne 15  
 Bedingfield, Betty Anne 15, 64, 69, 72, 74  
 Bell, G. Grover 15, 70, 71, 74, 92, 93  
 Bell, John Clayton  
 Benjamin, Hilda Jane 34  
 Bennett, Joan Carolyn 16, 65, 74, 85  
 Bently, Mary Ann 16  
 Berry, Burchard, 16  
 Berry, Burchard, 16  
 Biggers, Dan Upshow 16, 71, 73, 75, 80, 83, 92, 93  
 Blount, John B.  
 Bohannon, Joe L.  
 Bond, Bob  
 Bostwick, Charles Gregory, Jr. 34  
 Bowen, Alvin Waldo 16, 72  
 Bowen, Nell 16, 65, 69  
 Bozman, Jack Milton 16  
 Braddy, Mrs. Martha 16  
 Brannen, Betty Burney 34, 65, 67, 71, 75  
 Brannen, Betty Sue 16, 34, 74  
 Brannen, Carolyn Billings 16  
 Brannen, Carrie Sue 34  
 Brannen, Robert Lovein 34  
 Brantley, Angelyn 34, 76  
 Brantley, Jonnie Rosalyn 17, 64, 75, 76, 83  
 Brantley, Joyce Lynette 42  
 Bray, E. Ruth 42, 74  
 Brewton, Gwinette  
 Brinson, Mary Ann 42  
 Brock, Frances Elaine 17, 82  
 Broome, Margaret Ann 33, 34, 71, 79  
 Brown, Dorothy 42, 79  
 Brown, Fred Waldo 17  
 Brown, Jacqueline Rachel 17  
 Brown, Mildred 17  
 Brown, Sanford  
 Brown, William David, Jr., 34  
 Brown, William George 12, 68, 72, 87, 88  
 Bruce, Owen LaRue 17  
 Bryant, Lawrence R. 17, 82  
 Brinson, Ben S.
- Burke, Peggy Jo 34, 65, 67, 71, 75, 76, 81  
 Burkhalter, Brunel  
 Bruns, Ernest Tarver 48  
 Burrows, Gerald Lee 34, 71, 86  
 Cannon, Martha Jean 48  
 Cantrell, June 36, 71, 74, 81, 87  
 Carpenter, Edith 17, 64, 66, 71, 78, 82, 83, 92, 93  
 Cartee, Bob Gene  
 Cartee, Marye Lou  
 Carter, Mary Ann 34, 69, 72  
 Cash, Doris Rebecca 18, 74  
 Cavender, Mrs. Bea Phillips  
 Carwile, Julia Dangerfield 17, 74  
 Chalker, Edith 18, 69, 74, 75  
 Chambers, Lois Margaret 48  
 Chastain, Janice 41, 42, 71, 74, 83  
 Cheshire, William B.  
 Childres, William Ferrell 18, 71, 82  
 Clark, Alfred Joseph 34, 86  
 Clark, Betty Jean 48  
 Clark, Alfred Joseph 34, 86  
 Clark, Betty Jean 48  
 Clark, George Henry 18, 68  
 Clements, Frank Mizell 18, 68, 74, 76  
 Cleveland, Charles Foy  
 Coffey, Clara Elizabeth 42  
 Coffia, B. Sue 18  
 Coleman, Doris Faye 34  
 Collins, J. H. 18, 86  
 Conner, Herbert  
 Conner, Mary Wyl 35, 72  
 Corbitt, Dorothy 35, 74, 82  
 Corbitt, Maxine  
 Cowart, Vivien Gould 48, 71, 74  
 Craig, Eugene L.  
 Cranford, Dorothy 42, 83, 85  
 Cross, Sara Elaine 42, 65, 75  
 Crowell, Betty A.  
 Culbreth, Annagene 48, 69, 71, 73, 83
- Daniel, Dorothy S.  
 Daniels, Lillian Anita 18  
 Darden, Jo Ann 31, 35, 66, 69, 71, 81, 87  
 Darley, Hugh Edison 42  
 Dasher, Lowell Hobart 18  
 Davis, Frank Morris 42, 71, 81, 86, 87, 88, 89  
 Davis, Lester Howard 48, 73, 87  
 Davis, Peggy Joyce 35, 65, 67, 83  
 Deen, James 19, 86  
 DeLoach, Billy  
 Denham, Sara Ann 42  
 DeNitto, John Francis 42, 81, 87  
 Denmark, Mallie A.  
 Dix, Alberta Emily 19, 68  
 Dix, Joe Ann 42  
 Dobbs, Elizabeth Ruth 19, 66, 75  
 Donaldson, Mary Elizabeth 19  
 Driggers, Richard  
 Driskell, Martha Eugenia 35, 71, 73, 81, 87  
 Duffield, Martha Frances 19, 65  
 Duncan, James R. 76
- Duncan, Lucius Wendell 35, 86  
 Dunford, Lelia Winters  
 Durrence, Aubrey Elwayne 48  
 Dutton, Emma Jean 35, 69  
 Dykes, Abner  
 Dykes, Shirley Loretta 48, 71
- Eason, Betty Jean 19, 65, 67, 72, 72  
 Easterling, Lothair 42, 76  
 Ellis, James 19  
 Ellis, John  
 Eubank, Margaret Ann 41, 70, 80  
 Evans, William P. 19  
 Everitt, Russell Hardy, Jr., 35, 71, 81, 87, 88  
 Ewing, Bettie Sue 42, 71  
 Ewing, Walton Zittrover 20, 71, 75, 78, 83
- Flanders, Mary Elizabeth 42, 69, 70, 74  
 Finley, Martha Deen 48, 85  
 Flanders, Evelyn Wolfe 20  
 Fletcher, Sara Frances 48, 76, 89  
 Floyd, Dorothy Miriam 42, 68, 74, 86  
 Folsom, Betty Ruth 48, 67, 71  
 Folsom, Marilyn 35, 74  
 Ford, Doris 45, 64, 74, 83  
 Ford, Dorothy 45, 65, 74, 83  
 Ford, Harriet Roberts  
 Fossett, Barbara Joyce 42, 83  
 Fox, William Howard 20, 71, 75, 81, 83, 87  
 Friday, Cliff V.  
 Fuller, Samuel Day 20
- Garnto, Carolyn  
 Gaines, Clayton Jackson 20  
 Gay, Jack Norman 43, 72  
 Gay, Sarah Patricia 48  
 George, Mrs. Lois  
 George, Marion  
 Gee, Henry  
 Genevrino, Michael Angelo 43, 68  
 Gilder, Carolyn PePggy 20, 69, 82  
 Goolsby, Roy Franklin 35, 74  
 Greene, Evelyn Ruth 43, 65, 69, 87  
 Greene, Joe 43, 74, 76  
 Green, Loretta Lucille 43, 71, 80, 81, 83  
 Green, Mary Faine 20, 65  
 Greenway, Mary Ann 35, 74  
 Griffin, Joan 43, 71, 80, 81  
 Griner, A. Lois 20  
 Griner, Hal  
 Griner, Ted Perry 20  
 Groover, Charles Gus  
 Groover, Joanne 21, 78, 79  
 Cullledge, Shirley Ann 43, 71, 74, 81, 83, 86  
 Gunter, Carlton Verner
- Hadaway, Robert Neal  
 Hagin, James D. 21  
 Hagin, Margaret Corene 35, 74, 75  
 Hall, Glenda Carolyn 48  
 Ham, Patricia M. 43  
 Hanson, Shirley Blanche 48, 67, 69  
 Harden, Deward



Harper, Georgia Florence 13, 71, 81, 87  
 Harper, Johnnie Marilyn 48  
 Harper, Louis Eugene 21  
 Harrell, Larry Kitchens 21  
 Harrell, Sara Ann  
 Harris, Jacqueline E'Wanna  
 Harris, Thomas L.  
 Hart, Betty 33, 35, 69, 71, 74, 81, 87  
 Hart, Eveyln 35  
 Hartley, Elizabeth Anne 35, 67, 71, 74, 75  
 Hatcher, Betty Rose 48, 72  
 Hatton, Mary Frances 48, 72, 74  
 Hawkins, Richard Lee 21, 71, 76, 81, 87, 83  
 Heers, Gretchen Ann 85  
 Hendley, Robbie  
 Hendrix, Bettye Jane 41, 13, 76  
 Hendry, William R. 21, 68  
 Henry, Faye 48, 74, 83  
 Hensley, Rayma Tyson 21  
 Herndon, John Clinton 21  
 Hickman, Alice Novine 35, 74  
 Higginbotham, Annie Mozelle 43, 70, 71, 80, 83, 87  
 Hill, David M.  
 Hinely, Martha Ann 48, 65, 67, 71, 83  
 Hinely, Peggy Winnifred 22, 72, 75  
 Hinton, Reha 43  
 Hitchcock, Glenn Lamar 22  
 Hodges, Fay Rosamond 13, 72  
 Hodges, James Eli 22, 66, 68, 76, 82  
 Hodges, Mary Lucile 48, 71, 83  
 Hogan, Harvie Jordan 35  
 Holland, Bobby  
 Holley, Bobbie Jewel 43  
 Horne, Charles Edward  
 Houston, Cherry Ottis 35, 83  
 Houston, Ruby Lee 48, 85  
 Hughes, Robert B. 36, 71  
 Hunter, Annie Lee 43  
 Huff, Herman Brudnell 34, 85  
 Hughes, Gilbert C., III 35, 66, 71, 78, 86, 89  
 Hunter, Genevieve 43, 68  
 Hurst, Robert Latimer 43, 66, 71  
 Hurt, Mary Louise 43, 64  
 Hutto, James Lamar 36  
  
 Jackson, Charles G. 22, 68, 73, 74, 92, 93  
 Jackson, Margie 22, 69, 71, 81  
 Jackson, Mary Jo 47, 48, 74, 83  
 James, Robert Lee  
 James, Robert Paul 43, 71  
 Jarriel, Hazel 22  
 Jenkins, Eugene 22  
 Jenkins, Marian 43, 74  
 Jennings, Clarice Valdaree 36  
 Jessup, Roger Wynne  
 Johnson, Alex Jones 36, 74  
 Johnson, Edwin Don  
 Johnson, Lois 36, 75  
 Johnson, John Paul  
 Johnson, Richard C.  
 Johnson, Rosemary 36, 78, 82  
 Johnson, R. T.  
 Johnson, William Malcom 36  
  
 Joiner, Mrs. Edna Mae 22  
 Joiner, Virginia Will 36, 71  
 Jones, Alice  
 Jones, Barbara Jane 22, 75  
 Jones, Betty J.  
 Jones, Earl Leo 49  
 Jones, H. Yvonne 43, 70, 73, 87  
 Jones, Joanne 36  
 Jones, Margaret 49, 67, 72, 74, 83  
 Jones, Pegg Elizabeth 49, 69  
 Jones, Polly 23  
 Jones, Sally Ree 43, 72  
 Jordan, Winzell Loyce 49, 75  
  
 Keene, Elizabeth Ann 36, 68  
 Kelly, Nancy Jane 36, 82  
 Kelly, Norma Jean 43, 79  
 Kennedy, John Delano 49, 71, 76  
 Kennedy, Sue 36, 69, 74  
 Kersey, Edwin Andrew 23, 74, 83, 86  
 Key, John Clifton 23  
 Kidd, Cordelia Frances 43, 74, 75, 78, 83  
 Kilpatrick, Patsy W. 43, 71, 74, 83  
 King, Donald Lee 49  
 Kingery, Bobby Gene 43, 71, 81, 87  
 Kight, Daisy Ragsdale 23  
 Kight, Mary Haddock 23, 74  
 Knight, James Edward  
  
 Lagerblad, Shirley Yvonne 49, 65, 67  
 Lamhart, William Edward 36  
 Lanier, Thomas Fulton 36, 72  
 Lanier, Tommy L. 36  
 Layson, Gertie Mae Holmes 36  
 Layson, Van Roberson 23  
 Lee, Elkin Jerome 23, 68  
 Lee, Morris Leon 86  
 LeGette, Jessie Carrol 23  
 Leotis, Virginia Mary 43, 72  
 Levernz, Annabel Helen 36, 71  
 Lewis, Enis L. 36, 72  
 Lewis, May Belle 44, 89  
 Lewis, Oldin Victor  
 Lewis, William Edward 23, 87  
 Liddell, Mary Frances 37, 74  
 Little, James Saxon 49, 71  
 Lunsford, Faye 44, 67, 71, 74, 81, 87, 88  
  
 McAllister, Melba Ellen 37, 74  
 McBride, Sadis J. 44  
 McCall, Wink E. 44, 72  
 McCallister, Basil Leo 44  
 McArthur, Donald A.  
 McClellan, Pearl K.  
 McClendon, Henry Daniel 37, 44  
 McKinley, Elizabeth Ann 37  
 McLendon, Martha D. 37  
 McLoon, Elberta 24, 69  
 McMahon, Walter Edward 21, 68, 86  
 McMillan, Hortense 37  
 McNair, Lewis Lee 37, 86  
 McNally, Catherine L. 37, 68, 71, 78, 83, 85  
 McTier, Roy 24, 76  
 Mallard, Barney Troy 24  
  
 Mallard, John G. 33, 37, 68, 73, 74, 76  
 Maner, Shirley C. 49  
 Manley, Jerry Lee  
 Martin, Harry C.  
 Martin, Willard B. 37  
 Mathew, E. Jeanette 24  
 May, Mynette 37, 69, 71, 72, 85  
 Meeks, Madlyn June 24, 71, 72, 80  
 Meeks, Patricia Alice 41, 69, 71, 81  
 Mikell, Betty Jean 21, 85  
 Miller, Sallie Sue 44  
 Mills, Rudy W. 37, 41, 71, 81, 87, 88  
 Mitchell, John Sims 49  
 Mitchell, L. Ann 37, 9, 81, 87  
 Mitchell, Mims Edward 37, 71, 3, 80, 83  
 Mobley, Frances A.  
 Mock, Betty 24  
 Mock, James Royce 37  
 Moody, Annie Ruth 74  
 Moore, Edward Earl 49  
 Moore, John W.  
 Moore, Mary Carolyn 44, 68  
 Moore, William Raymond 37, 71, 73, 81, 87, 88  
 Morgan, Charles Crowford, Jr., 24  
 Morgan, Virginia, 25, 65, 72, 83  
 Norboge, Peter  
 Mosley, Alice Faye 44, 71  
 Moxley, Julia 44  
 Moye, Carolyn Elizabeth 25, 74, 79, 85  
 Myers, Mabel Elizabeth 49  
  
 Neverla, Jos. R.  
 Nevil, Margaret Ann 37, 73, 76, 78, 86  
 Nevils, Marilyn Ann 44, 71, 75  
 Newby, Virginia Dare 37, 71, 81, 83  
 Newton, Alice Virginia 37, 85  
 Nipper, Don W. 25, 86  
 Norton, Phillip Biles 47, 49, 83  
  
 Oliver, Jimmy H. 15, 25, 71, 73, 77, 85, 92, 93  
 Olmstead, Lucy Elizabeth 49, 72, 74  
 O'Quinn, Brantly  
 Overstreet, Spencer Wesley, Jr., 15, 25, 61, 68, 71, 74, 84, 92, 93  
 Owen, Eugenia Culler 44, 71, 74, 85  
 Owens, Mitchell B. 25  
 O'Quinn, Claire Adams 37  
  
 Pafford, William Emory 38, 86  
 Parker, Ray Clifford  
 Parker, Charles Allen 25  
 Page, Joseph Eugene 44, 86  
 Parrish, Betty 38, 74, 75  
 Parker, Sara A. 25  
 Parrish, George I, Jr., 25, 61, 66, 71, 92, 93  
 PaPrish, Laura Nan 49, 74, 83  
 Parrish, Walter Guy, Jr., 38  
 Parsons, Ralph Harold 15, 26, 68, 74, 76  
 Patterson, Joanne 38, 74  
 Patterson, Johnny Harrell 38  
 Pharis, Hugh B. 44, 71, 81, 83  
 Phillips, Robert B. 41, 71  
 Pickens, Robert Clarence 38, 71, 81, 82, 87  
 Pickron, Bonnie Sue 49  
 Pierce, John Fred 41, 66, 71, 76



Pittman, Joan Covington 68  
 Ponder, GeDelle 26  
 Poole, Chester W. 38, 71, 81, 87, 88  
 Pope, Alan G. 44, 87  
 Potts, Mary Fanning 49  
 Powell, Hollis Ray, 33, 38, 68, 73, 76  
 Powell, Ralph Lewis  
 Price, Margaret Ann  
 Prigden, Trudie Ann 33, 69, 71, 80, 81, 82, 87  
 Pryor, Charles Robert 26, 72, 81  
 Purvis, Eunetta 38, 71, 74, 87  
 Purvis, Nancy Beth 49, 74  
 Pyles, Winifred Fay 38  
  
 Quick, Frankie M. 38, 64, 66, 73, 75, 80  
  
 Rabon, Barbara  
 Rackley, Frances Carolyn 44  
 Rahn, George 38, 66, 76  
 Ramsey, Robert 38  
 Register, William O'Neal  
 Reid, Doris Bentley 26, 72  
 Reid, Sanford F. 26  
 Reinsmith, Donald Alwin 71, 86, 89  
 Remington, Ann 38, 72  
 Renfro, John Edwin 26, 76, 78  
 Rhodes, Felton Leon 86  
 Richards, Anne Marzee 49, 86  
 Richardson, Charles Robert 38, 71, 83, 86  
 Richey, Marilyn Jean 44  
 Rigsby, Robert Edgar 38, 87  
 Roberts, Barbara Ann 49, 74, 85  
 Roberts, Bernard Eugene 44, 71, 83, 87  
 Robertson, William Franklin 44  
 Roebuck, George A. 76  
 Rogers, Charles E.  
 Rogers, William Albert  
 Rushing, Charles William 44  
 Rustin, William Olin  
  
 Sanders, Alan L.  
 Sanders, Edna Ruth 26, 65, 78, 83, 86  
 Sanders, Robert Elliott 44, 75  
 Sapp, Gary C. 26, 86  
 Saturday, Peggy Joyce 45, 68, 80  
 Schelle, Samuel Mosley  
 Seabolt, Alva Jane 49, 83  
 Sell, P. Ann 38  
 Shanklin, Carlene Patricia 26, 65, 78  
 Shellnutt, Gilbert Jackson 45  
 Sherman, Mar Elizabeth 27, 82, 85  
 Sherrer, Henry Sanford  
 Short, Charles Robert  
 Shuman, Shirley Ann 27, 65, 72, 78, 82  
 Sikes, Sadie 45  
 Silverman, Jerome 27, 68, 76  
 Simons, G. Clarence 27, 87  
 Simons, William Floyd 49  
 Simpson, Jackquelyn Dell 27, 74  
 Simpson, Harvey Lee 45, 71, 86  
 Simpson, Sara Dot 45, 74, 78  
 Sims, Charles Winfrey 38, 76, 84  
 Sims, Mary Jean  
 Singleton, Jerry Edward 45, 82, 87  
 Sizemore, James Joseph 27  
 Sizemore, Patricia Diane 45  
 Smith, Blanche Joyce  
 Smith, Frank Edwin  
 Smith, Gene Nelson 27  
 Smith, Harvey  
 Smith, Mary Frances 27, 71, 86  
 Smith, Mary Jane, 27, 78  
 Smith, M. Nell 38, 72  
 Smith, Nellie Ruth  
 Smith, Shirley Anne 39, 49, 68, 74, 75  
 Smith, S. Charlene 45  
 Smith, Shirley Elizabeth  
 Smith, William Neil  
 Sparks, Ferrell Claude 49  
 Speir, Camilla Mildred 28, 69, 74  
 Spence, Johnny Austin 45, 72  
 Starr, Martha Jo 39, 71, 74, 77, 81, 82, 83  
 Steedley, Barbara Ann 28, 75  
 Steedley, Betty Jeanne  
 Steedley, Mary Love 28  
 Stewart, Charles Ashley 28, 66, 85  
 Stewart, Thomas H. 28, 85, 86  
 Stewart, Thomas H. 28, 85, 86  
 Story, Conrad L.  
 Stowers, Joel Adams 39, 74, 81  
 Strickland, Francis Edward 45  
 Strickland, Harry Brooks 28, 64, 66, 72, 76  
 Strickland, John Clinton 89  
 Strickland, Norris B. 28, 76  
 Styles, E. Travis  
 Sullivan, Joseph Charles  
 Summerlin, Margaret Shearouse  
 Surrency, Jo Ann 45  
 Swicord, Earl L.  
 Swift, Annie Joyce  
  
 Tanner, Mattie Barlow  
 Taylor, Robert Arnold 45  
 Thomas, Eunice Claire 28, 74, 75  
 Thomas, Glenn F. 28, 84  
 Thomas, Julia Elizabeth 45  
 Thompson, Betty Jane 45  
 Thompson, Reba Joyce 74  
 Timmerman, Edwin  
 Tippens, Frances Elizabeth 39, 67, 80, 83  
 Todd, Martha Ann 45  
 Toler, Archie O'Hara 45  
 Townsend, Doris Maxine 31  
 Treman, Mary Joyce  
 Trice, Anne 29, 65, 69, 71, 73, 74, 76, 81, 82, 83, 87, 92, 93  
 Trowell, Christy Tuttle 45, 74, 83  
 Turner, Deloris C. 39, 74  
 Turner, E. D. 29  
 Tyre, Opal C. 72  
 Tyson, Carl Shepherd 47, 50, 83  
  
 Vann, Debra Maurice 45  
 Vanover, Marvin 74  
 Vaughn, Helen Joyce 45, 73  
 Vickers, Pauline 45  
  
 Wade, Jack 29, 68, 74, 83  
 Walden, Doris 39  
 Walca, Edna Kent 29  
 Walker, Claxton 29  
 Wallace, Frances Jeanette 50, 71  
 Warnock, Barbara Claire 29  
 Warnock, Jean 45, 68, 79  
 Warnock, Melba Louise 39, 80  
 Warren, Iris Wynona  
 Warren, Laura Virginia  
 Waters, Gloria Diane 39, 74  
 Waters, Minnie Faye 45, 67, 71, 74, 75  
 Watson, Daphen Romell 50, 72, 75  
 Weatherford, Marjorie LaVerne 29, 71, 81  
 Weaver, Carlton Earl  
 Weitman, Frederick D. 45, 76, 84  
 Wells, Hugh Gordon, Jr., 41, 55, 70, 74  
 Wells, James Milton 50, 71, 83  
 West, Robert Ernest  
 Whaley, Charles Randy  
 Whitcombe, Harriette Ann 39, 72  
 Wilder, Margaret Jeannette 29, 71  
 Wilkins, Virginia Leigh, 39, 72  
 Wilkins, Fleur Powell  
 Wilkins, Joseph Henry, Jr.  
 Wilkins, Mary Elizabeth 45, 69, 89  
 Wilkinson, Marion Wade 39  
 Wilkinson, Mary Claudette 50  
 Williams, Billie Walter 30, 86  
 Williams, Carolyn June 30, 74, 76, 85  
 Williams, Cherrell Jean 50, 74, 75  
 Williams, Elease 30, 79  
 Williams, Gwendolyn Carl 39  
 Williams, Jack E. 30  
 Williford, Dorothy Virginia 45, 86  
 Willingham, Alice Jean 50, 67  
 Wilson, Dan Frank, Jr., 45, 86, 87  
 Wilson, Patricia Ann 45, 85  
 Wimberly, Frances Elizabeth 39, 75  
 Wimberly, Leon Cecil  
 Withrow, Betty Anne 30, 31, 74, 83, 92, 93  
 Withrow, Gene Franklin  
 Wood, Martha Alice 39, 65, 66, 74, 78, 82  
 Woods, Barbara Jean  
 Woods, Alene 30, 72  
 Woodrum, Lewis N. 39  
 Wren, Thomas Joseph, Jr.  
 Wright, Robert Busha 50, 71, 74, 75, 81, 83, 87, 88  
 Wyatt, William C., Jr., 30, 64, 83, 86  
 Wynn, James A.  
 Wynn, Martha Sue 31, 69, 83  
 Wynne, Lewis K., Jr.  
  
 Youmans, Glenn Perry  
 Young, Daniel Harold  
 Young, Daniel Harold  
 Young, Rheta Grace 50, 71  
 Youngblood, Clara 31



THE BEST IN COLLEGE CLOTHES

for

STUDENTS AND FACULTY

HENRY'S



STATESBORO, GEORGIA



*Meet Your Friends at the*

College  
Pharmacy

*"Where the Crowds Go"*

Prompt, Courteous Service

PHONE 414

PHONE 416



*Best Wishes to the Senior Class*

\* \* \*

Alfred Dorman Co.

*Wholesale Grocers*



Statesboro - Sylvania - Jesup - Eastman

COMPLIMENTS

OF

BUGGY & WAGON  
COMPANY



STATESBORO  
G E O R G I A



*Compliments*

*of*

**Jones The Florist**

STATESBORO

GEORGIA

**STANDARD PROCESSING  
COMPANY**

*Processors of Crude Pine Gum,  
Gum Rosin and Turpentine  
STATESBORO, GEORGIA*

WHEN YOU COME TO

SAVANNAH

Always Think of

The

**LEOPOLD ADLER CO.**

*For*

*It's Adler's for Quality*

*in Savannah*

*Compliments*

*. . . of . . .*

**EVERETT MOTOR  
COMPANY**

STATESBORO

GEORGIA

**GRIMES JEWELRY COMPANY**

JEWELRY and SILVERWARE  
DIAMONDS and WATCHES  
GLASSWARE and CHINA  
FOUNTAIN PENS

23 SOUTH MAIN STREET  
Statesboro, Georgia



G. T. C. SENIOR RINGS  
*Pin with Guard — Student Council Keys*  
*Graduation Announcements*  
*— Designed and Supplied by —*

**HERFF-JONES CO.**

H. S. Canfield — 1560 N. Decatur Rd.  
*Complete Graduation Service*  
*Diplomas — Caps and Gowns*  
*School Annuals*

*Compliments*

**THE FAIR STORE**

*"Statesboro's Finest Shop*

*For Ladies-Men-Children's Wear"*

STATESBORO

GEORGIA

*Where Fashions Make Their Debut*

*Tine's*

IN SAVANNAH

*Compliments of*

. . . The Store that

CONFIDENCE

is building . . .

**Men's Quality Shop**

Joe Lesser

*home of Kuppenheimer Good Clothes*  
 SAVANNAH, GEORGIA

**ALNUTT MUSIC CO.**

240 Broughton St. West,  
 SAVANNAH, GEORGIA

*— Steinway Pianos — Knabe Pianos —*

*— Wurlitzer Pianos —*

*— Wurlitzer Electronic Organs —*

**THE BULLOCH HERALD**

Bulloch County's Leading Newspaper

*Holder of Fourteen Georgia*

*Press Association Awards*

*for Newspaper Proficiency*



DRINK *Coca-Cola*

No. 28-7

**HOWARD LUMBER  
 COMPANY**

*— Lumber & Builders Supplies —*

30 Mulberry Street

STATESBORO, GEORGIA



# LANNIE F. SIMMONS

DODGE — PLYMOUTH  
DODGE "JOB-RATED" TRUCKS  
*Sales and Service*

29 N. Main Street  
STATESBORO

Phone 20  
GEORGIA

*Compliments of*

**HARRY W. SMITH**  
Jeweler

20 S. MAIN STREET  
ESTABLISHED 1919

**DONALDSON-SMITH**

**CLOTHING CO.**

STATESBORO

GEORGIA

**DIAMONDS — WATCHES**

**JEWELRY — GIFTS**

Watch Repairing

**LANIER JEWELERS**

*"Home of Hallmark Cards"*

**MILLIONS OF STUDENTS IN  
AMERICA LOOK TO**

**PENNEY'S**

**For Young America Styled Togs for  
Campus, Sports and Dress**

*Covering Southeast Georgia With  
Nationally Advertised Brands for the Entire Family*

**H. MINKOVITZ & SONS**  
**DEPARTMENT STORE**

SYLVANIA

STATESBORO

DOUGLAS



Foresight today means security tomorrow.  
Protect your future by practicing the  
habit of thrift and economy today.

*One of a series of timely suggestions by*

*The Friendly*

## SEA ISLAND BANK

SAFETY — COURTESY — SERVICE

A Member of the F. D. I. C.

Who is definitely interested in the future of our youth

### FROM THE TREE TO FINISHED PRODUCTS

As operators of the "World's Largest Integrated Kraft Container Plant" we are advocates of better forestry — because a major portion of the 35 million bags and 1,350 tons of paper we produce each day are made from pine trees grown in Bulloch and other Georgia Counties.

UNION BAG  
& PAPER CORPORATION  
SAVANNAH GEORGIA



*When...*

*HUNGRY, THIRSTY AND TIRED*

*...Visit...*

## THE BLUE TIDE

*WHERE BOY MEETS GIRL*

FOR

Books — Refreshments — Fun

GEORGIA TEACHERS COLLEGE

COLLEGEBORO

GEORGIA





*Bringing Statesboro the Finest in  
Radio Programs*

The Statesboro Broadcasting System

**W W N S**

*1490 on your Dial*  
STATESBORO

**MEN and BOY'S STORE**

*EVERYTHING FOR*

*COLLEGE STUDENTS*

DRESS and SPORTSWEAR

East Main Street

Statesboro

**B R O O K L E T**

**LAUNDRY AND DRY CLEANING  
SERVICE**

Owned and Operated by Jack Watts  
PHONE 51                      BROOKLET, GEORGIA

*Savannah Morning News  
Savannah Evening Press*

◆  
SAVANNAH, GEORGIA

*Compliments*

*of . . .*

**C O L L I N S  
FREEZER LOCKER**

COLILNS, INC.

Compliments

of . . .

**S. W. LEWIS, INC.**

STATESBORO

GEORGIA

**CLAUDE HOWARD  
LUMBER CO.**

*Lumber Manufacturers*

STATESBORO, GA.

*Compliments  
of*

**CONCRETE PRODUCTS  
COMPANY**

STATESBORO

GEORGIA

**Johnston and Donaldson**  
*INSURANCE*

*"Good Coverage Plus Service"*

Bulloch County Bank Bldg. — Phone 310  
STATESBORO                      GEORGIA

*CLOTHES...*

FOR THE FAMILY

**ROSENBERG'S**

*"Statesboro's Busy Department Store"*

STATESBORO                      GEORGIA

**HOKE. S. BRUNSON**

BUICK AUTOMOBILES

ALLIS-CHALMERS

FARM EQUIPMENT



STATESBORO, GEORGIA



*Safety*

*Service*

*The Bank with the  
Pleasant Atmosphere*

**BULLOCH COUNTY  
BANK**

NEW ACCOUNTS WELCOMED

Member

Federal Deposit

Insurance Corporation



Compliments of

**WOODCOCK MOTOR CO.**

AUTHORIZED DEALER

*Oldsmobile — Cadillac — G.M. Trucks*

Statesboro

Georgia

COMPLIMENTS OF . . .

**ROBBINS PACKING CO.**

*"Makers of Robbins Red Breast Sausage"*

STATESBORO

GEORGIA





THE FINEST IN  
MOVIE ENTERTAINMENT  
AT THE  
**Georgia Theater  
State Theater  
Family Auto Theater**

HAL MACON, JR., Mgr.

STATESBORO

GEORGIA

**REACH  
FOR...**



**STATESBORO'S FAVORITE BREAD FOR  
YEARS AND YEARS!**

*Compliments  
of . . .*

**WATERS FURNITURE  
COMPANY**

STATESBORO

GEORGIA

*Compliments of*

**SORRIER INSURANCE  
AGENCY**

Established 1888

STATESBORO

Phone 58

GEORGIA

**D U B O S E  
DRY CLEANERS**

*"Cleaning Is Our Business"*

Phone 538

Statesboro, Ga.

**Goodrum & Moore Distributing Co.**

120 WEST BAY STREET

SAVANNAH, GEORGIA

PHONE 2-4236

*Distributors of*

Bordens Fine Cheese

Durkee's AA Grade Margarine

*Compliments of*

**E. A. SMITH GRAIN CO.**

*BUILDING SUPPLIES*

STATESBORO

GEORGIA

*Compliments of*

**THE JACKEL HOTEL**

*"Statesboro's Largest and Best"*

STATESBORO

GEORGIA

**THAYER MONUMENT  
COMPANY**

45 WEST MAIN

Phone 439

STATESBORO

GEORGIA

**SMITH-TILLMAN  
MORTUARY**

*AMBULANCE SERVICE*

Day Phone 340

Night Phone 344

STATESBORO, GEORGIA



## CHARLES BRYANT

FRUITS and VEGETABLES  
*Wholesale Only*

STATESBORO, GEORGIA

## THE COLLEGE GRILL

*Formerly "301"*

MILK SHAKES  
SUNDAES  
ICE CREAM

*"GOOD FOODS"*

STATESBORO

GEORGIA

*Compliments*

*of*

## CITY DAIRY COMPANY

*Homogenized and Pasteurized Milk*

*Compliments*

*. . . of . . .*

## FRANKLIN CHEVROLET COMPANY, INC.



STATESBORO

GEORGIA

*Compliments of*

## M. E. ALDERMAN ROOFING COMPANY

*Manufacturers of Windows and Doors*

28 West Main

Statesboro, Georgia

## THE

## ALDRED HOTEL

## AND COURT

*The Best in Town for . . .*

*PROMPT SERVICE*

## ELLIS DRUG CO.

Fountain Service DeLuxe

*and*

Prescriptions Filled Quickly and Correctly  
By Professional Pharmacists

## YE OLDE WAGON WHEEL

ANTIQUES

*Lamps — Furniture — China*

U.S. 301

South Main Extension

STATESBORO, GEORGIA

# JOHN SEXTON & CO.

*Manufacturing Wholesale Grocers*

P.O. Box J5

Sexton Square

Chicago 90, Ill.

## FAVORITE SHOE STORE

INC.

*Shoes Fitted by X-Ray*

WEATHERBIRD

VELVETSTEP

CITY CLUB

East Main

Statesboro, Ga.

## PATRONIZE

## YOUR

## ADVERTISERS

## PATRONIZE

## YOUR

## ADVERTISERS

## Bradley and Cone Seed and Feed Co.

BABY CHICKS

FAIRWAY SEED

Good Germinated Seed

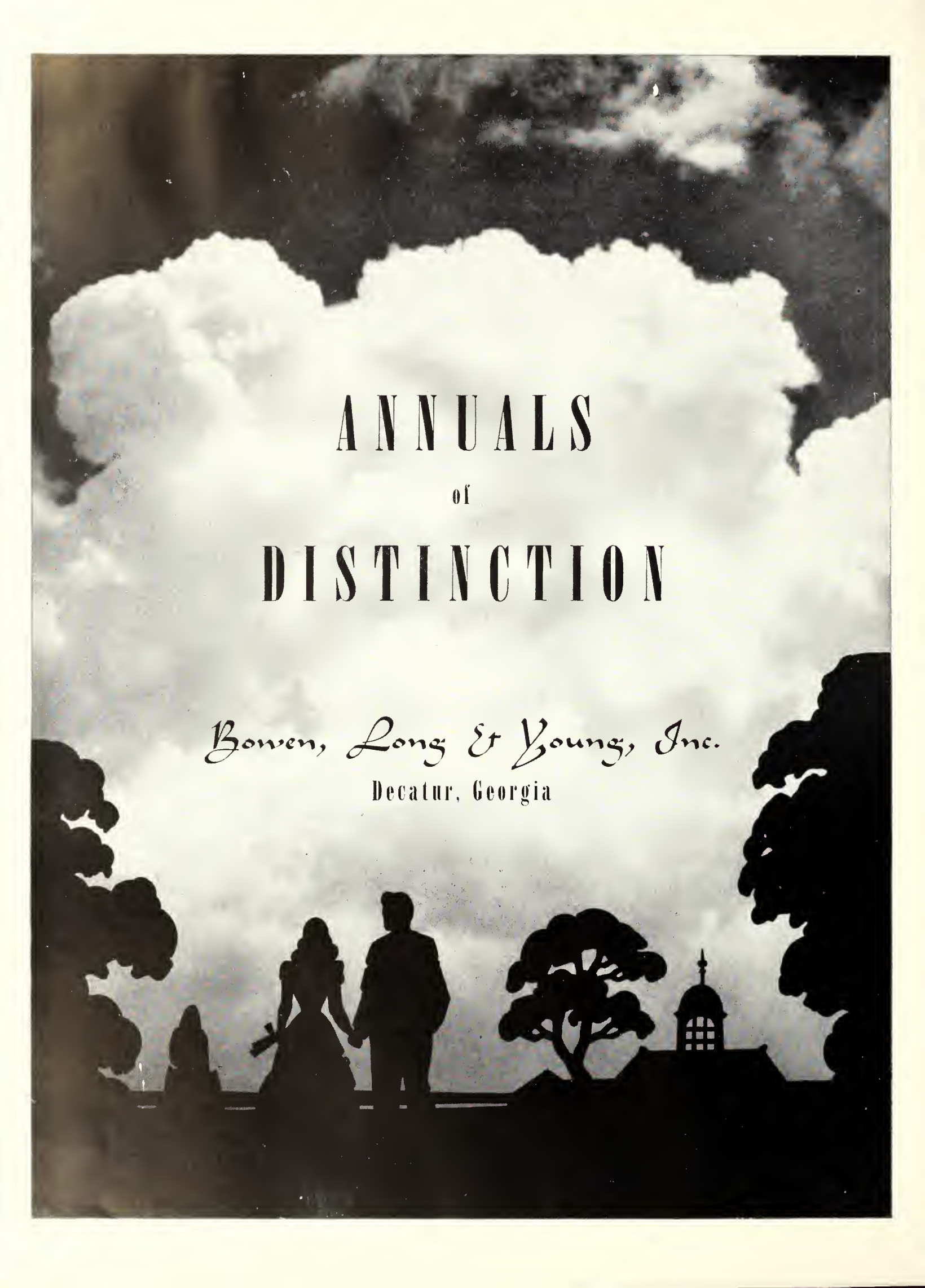
Hardware — Poultry Supplies

STATESBORO

GEORGIA

# Claussen's



The background of the entire page is a black and white photograph. It shows a large, bright, fluffy cloud in the center of the sky. Above and below this cloud are darker, more textured clouds. In the foreground, there are dark silhouettes of trees on the left and right sides. In the center foreground, there is a silhouette of a man and a woman standing close together, possibly holding hands. To the right of the couple, there is a silhouette of a building with a small dome or cupola. The overall mood is romantic and elegant.

# ANNUALS of DISTINCTION

*Bowen, Long & Young, Inc.*  
Decatur, Georgia







RESERVE

LH

1

.G43

R4

1952

ZACH S. HENDERSON LIBRARY



0 2001 0407700 9

**For Reference**

**Not to be taken from this room**

DEMCO



