

Reflector

1951

Georgia Southern University

Follow this and additional works at: <https://digitalcommons.georgiasouthern.edu/reflector-yearbook>



Part of the [Higher Education Commons](#)

Recommended Citation

Georgia Southern University, "Reflector" (1951). *Reflector Yearbook*. 24.
<https://digitalcommons.georgiasouthern.edu/reflector-yearbook/24>

This book is brought to you for free and open access by the Student Media at Digital Commons@Georgia Southern. It has been accepted for inclusion in Reflector Yearbook by an authorized administrator of Digital Commons@Georgia Southern. For more information, please contact digitalcommons@georgiasouthern.edu.



Reflector

1951

PRESENTED TO
Georgia Southern College
Zach S. Henderson Library
GIFT OF
THE ESTATE OF
DR. RONALD J. NEIL
THROUGH
DR. JACK N. AVERITT

Georgia Southern University
Zach S. Henderson Library



Digitized by the Internet Archive
in 2014

<https://archive.org/details/reflector1951na>



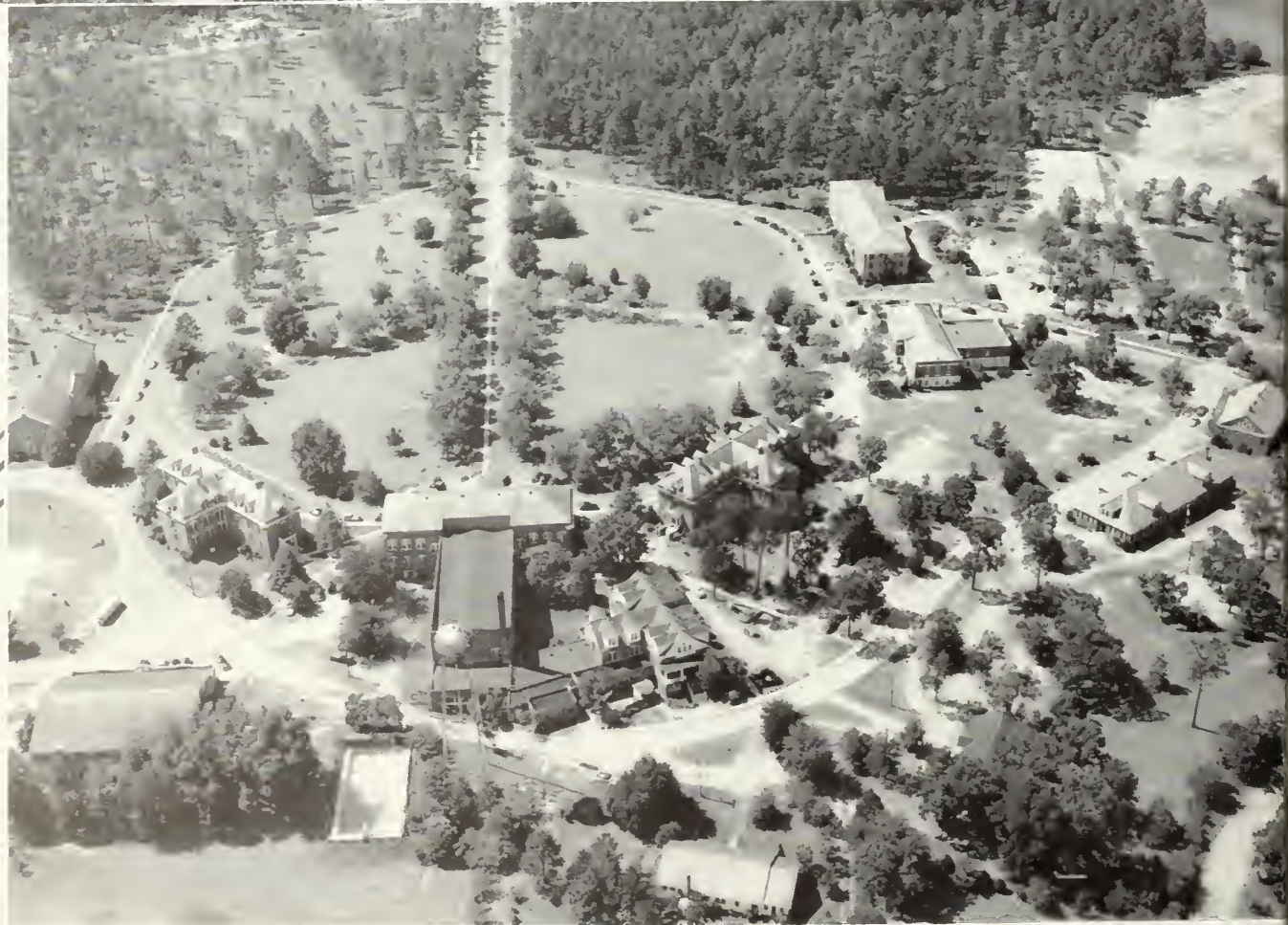
The 1951 Reflector

Published by

T h e S e n i o r C l a s s o f
G E O R G I A T E A C H E R S C O L L E G E

Collegeboro, Georgia

SUBURB OF STATESBORO

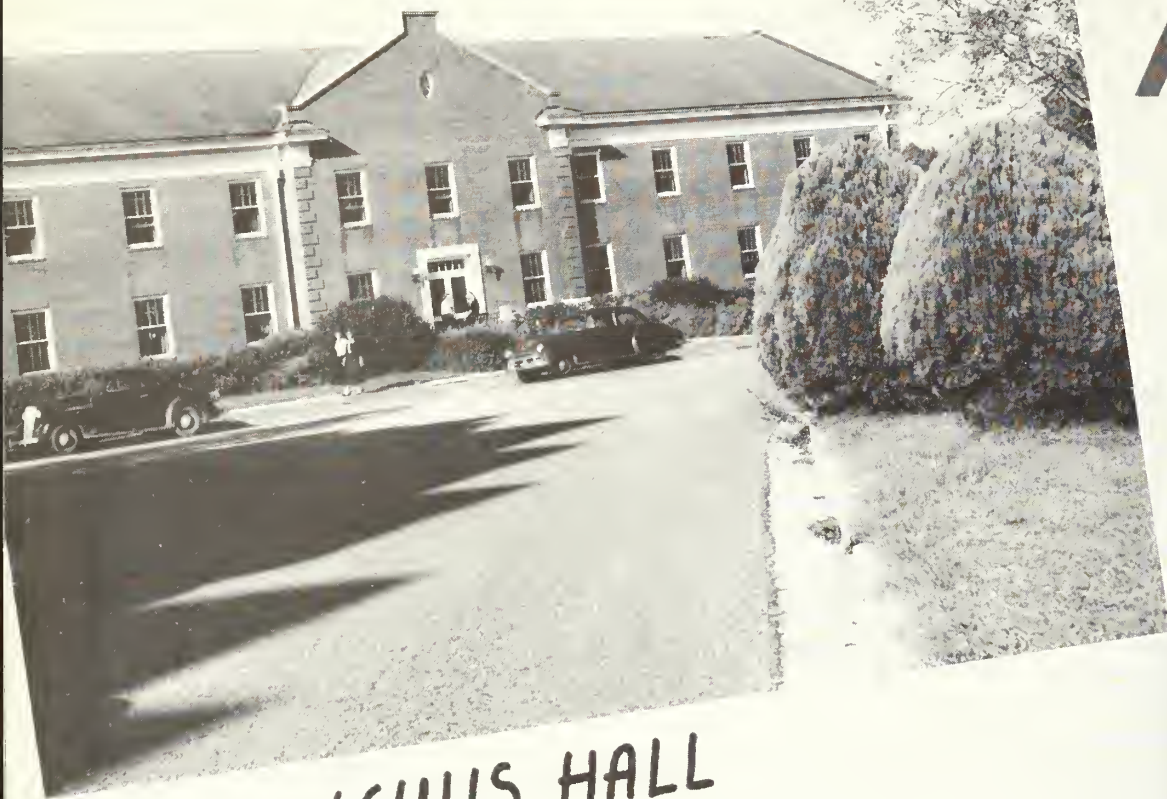


THE CAMPUS FROM THE AIR



ADMINISTRATION
BUILDING

AS WE
INTO



LEWIS HALL



SANFORD HALL

LOOK THE *Future*



EAST HALL



WEST HALL

**WE
UPON**



LABORATORY HIGH SCHOOL



ELEMENTARY LABORATORY SCHOOL

REFLECT THE *Past*



ANDERSON HALL



LIBRARY

DEDICATION

When we were lost in the intricacies of mathematics or physical science, when we needed an example of noble living to keep before us as an inspiration, when we needed a cheerful word or a witty remark to bring us out of the gloom of a bad day, and, most of all, when we needed a friend who would always be loyal and true, you were always there to help and guide us. For four years we have followed your teaching and allowed ourselves to be molded just a little after the pattern of your character. For four years we have looked up to you and admired you for your strong will, your unshakable character, and your high purposes. When we consider this, we, the seniors of 1951, can do no less than dedicate to you, Mr. Moye, this Reflector for the year 1950-51.

W . B . M O Y E



They are



H U M A N !



REFLECTIONS OF AN OLD GRAD . . .



... THE
ADMINISTRATION



ZACH S. HENDERSON
President



PAUL CARROL
Dean



SOPHIE JOHNSON
Dean of Men



FIRST ROW:

MRS. ANNE CAMP HENDRICK, General Extension
 KATE KENNEDY, Assistant to Bursar
 LIZZIE NORMAN, Secretary to Dean and Registrar
 B. E. TAYLOR, Superintendent of Buildings and Grounds

SECOND ROW:

MRS. ARCHIE JACKSON, West Hall
 DON McDOUGALD, Assistant to Bursar
 VIOLA PERRY, Registrar
 ANNIE THOMPSON, Assistant Dietitian

THIRD ROW:

MRS. J. B. JOHNSON, East Hall
 MRS. M. M. MELTON, Dietitian
 MRS. FRANCES ROQUEMORE, Nurse
 MAMIE VEAZY, Dean of Women

FOURTH ROW:

MARGIE JONES, Manager, Blue Tide
 MAE MICHAEL, Secretary to President
 ZACH STRANGE, Postmaster, Collegeboro
 ROBERT L. WINBURN, Bursar

A N D P E R S O N N E L



DR. THOMAS B. ALEXANDER
Head: Social Science



DR. HENRY L. ASHMORE
Education

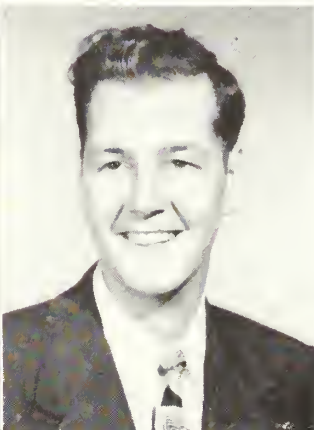


LOUISE BENNETT
Education

T H E F A C U L T Y



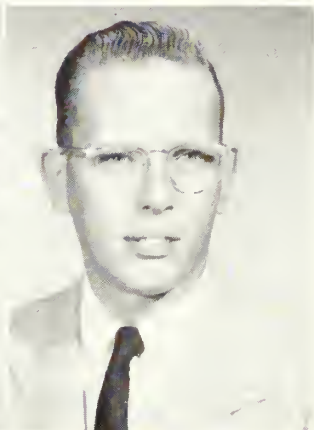
RUTH BOLTON
Home Economics



CAMERON BREMSETH
Head: Business



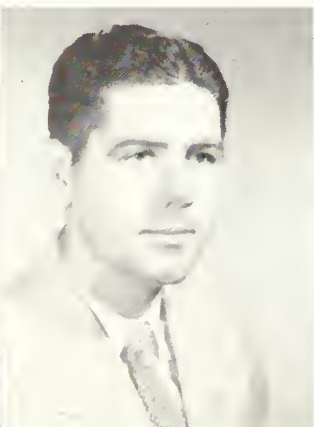
MRS. EDNA H. BROWN
Business



JACK BROUCEK
Music



HUGH C. CALDWELL
Exact Science



J. I. CLEMENTS
Physical Education



QUEEN E. COLLINS
Secretary Lab. School



MARJORIE CROUCH
Education



MRS. GLADYS DeLOACH
Library



BUFORD DYE
Education



JOHN ERICKSON
Industrial Arts

T H E F A C U L T Y



J. F. FOLDS
Education



BERTHA FREEMAN
Education



FREIDA GERNANT
Art



EDGAR GODFREY
Industrial Arts



MRS. MARJORIE GUARDIA
English



D. F. HACKETT
Head: Industrial Arts



W. S. HANNER
Head: Exact Science



THOMAS HILL
Education



DOROTHY C. HILLIARD
Physical Education



DR. W. J. HOUCK
Exact Science



ELA JOHNSON
English

T H E F A C U L T Y



MARJORIE KEATON
Business



DANA M. KING
Music



MARION KNAPP
Education



CHARLES B. KOPP
Publicity, English



DR. THOMAS C. LITTLE
Head, Education



EDNA LUKE
Music



HASSIE M. McELVEEN
Librarian



EMERY MADDOX
Library



SHELBY MONROE
Education



W. B. MOYE
Exact Science



DR. RONALD J. NEIL
Music

T H E F A C U L T Y



LEONA NEWTON
Education



HESTER NEWTON
Social Science



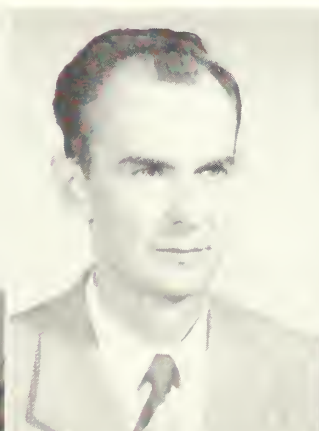
WILDA ORTKIESE
Education



SAM PEDEN
Education



J. R. PELTS
Education



TULLY PENNINGTON
Exact Science



DR. MARVIN S. PITTMAN
President Emeritus



DR. BERNARD POOLE
Social Science



ROXIE REMLEY
Art



DR. GEORGE A. ROGERS
Social Science



DR. FIELDING D. RUSSELL
Head: English



J. B. SCEARCE
Head: Physical Education

T H E F A C U L T Y



TAYLOR C. SCOTT
Social Science



MARGARET STANION
Physical Education



LEILA STEVENS
Education



DOROTHY STEWART
Speech



MARGARET STRAHLMAN
Home Economics



YEWELL R. THOMPSON
Education



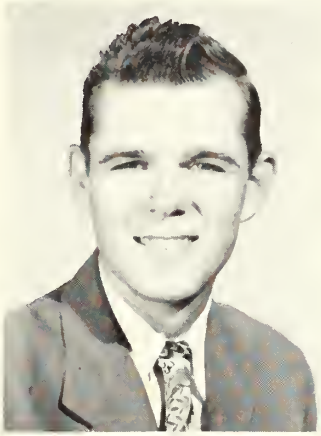
DR. GEORGIA WATSON
Education



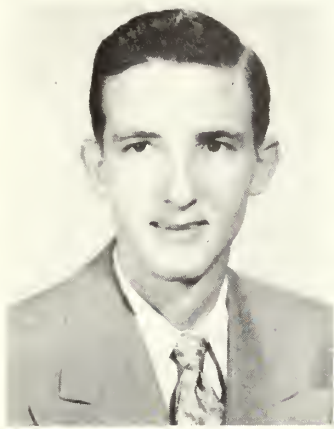
MARIE WOOD
Education



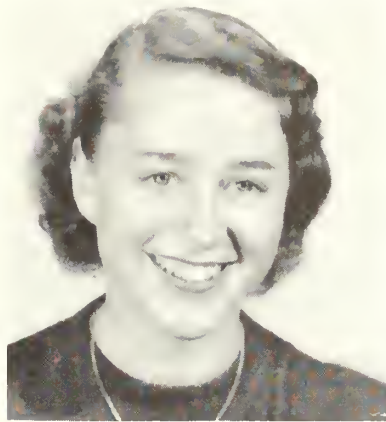
MRS. VERA R. WYNNE
Education



WILBUR PEACOCK
President



BILL PHARIS
Vice-President



BETTY REAGEN
Secretary



DOUG COLEY
Treasurer



DR. FIELDING D. RUSSELL
Class Sponsor

THE SENIOR CLASS





Alderman

Altman

Anderson

Bacon

S E N I O R S

MIKE ALDERMAN Portal, Georgia
Physical Education: History
T Club 3, 4

MAXWELL BARLOW Cairo, Georgia
English: Mathematics
Transfer from Young Harris. English Club 3, 4

VIOLET E. ALTMAN Alma, Georgia
Business Education: English
Transfer from Queens College, Charlotte, N. C. SCA 4, Wesley Foundation 4, F.B.L.A. 4

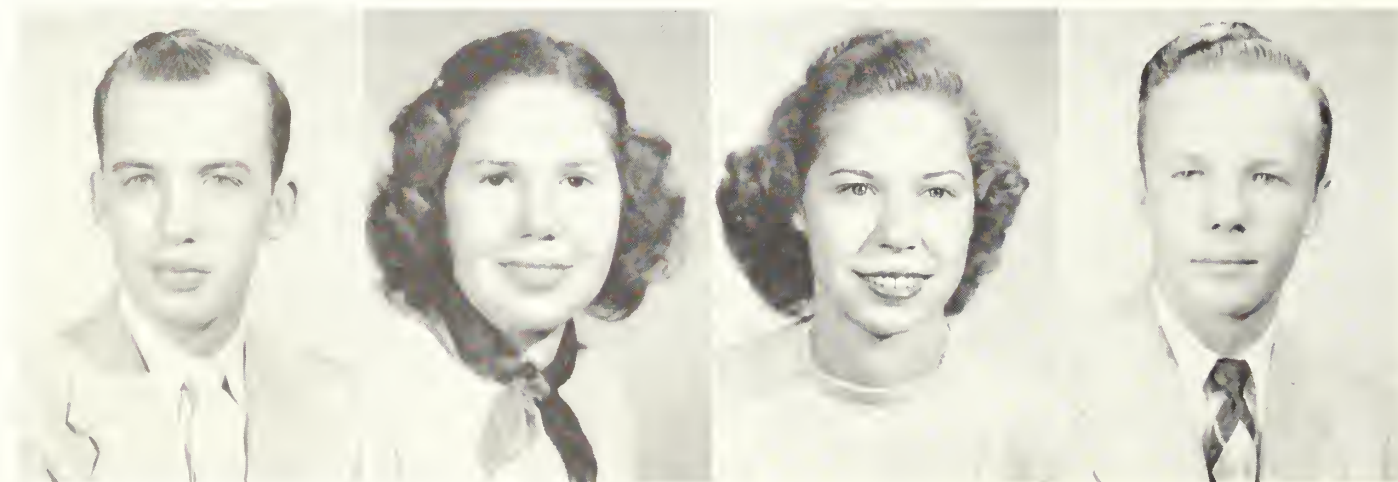
IVEY B. BEARDSLEE Pembroke, Georgia
English: Business Education

LYNEVE ANDERSON Kite, Georgia
Physical Education: Math
House Council 2, W.A.A. 4, P.E.M.M. 4

JANE BLITCH Glennville, Georgia
Business Education: Home Economics
F.B.L.A. 4, Masquers 1

RALPH BACON Pembroke, Georgia
Social Science

ALVIN WADE BOWEN Thomasville, Georgia
Business Education
B.S.U., F.B.L.A.

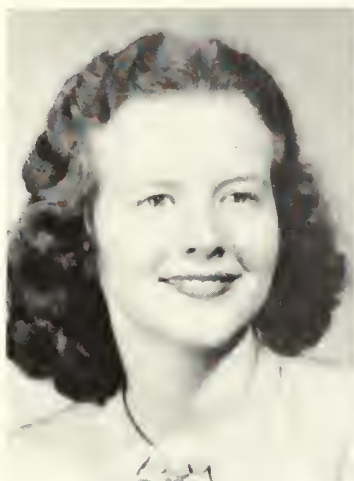


Barlow

Beardslee

Blitch

Bowen



Boykin



Brannen



Brewton



Brinson

OF NINETEEN FIFTY-ONE

BILLIE BOYKIN

Sylvania, Georgia

English: History

ANN BRITT

Darien, Georgia

Social Science

TALMADGE E. BRANNEN

Statesboro, Georgia

Social Science

Transfer from North Georgia College

HANS BROSSMAN

Ulm, Germany

English: History

English Club 4, I. R. C. 4

BEN BREWTON

Claxton, Georgia

Industrial Arts: Physical Science

ELIZABETH E. BROWN

Savannah, Georgia

Social Science

Masquers 3, 4; George Anne 3, 4; Reflector 4

WENDELL A. BRINSON

Soperton, Georgia

Physical Education: History

Veterans Club 1, 2, 3, 4, Secretary 2, 3; House Council Treasurer 3, 4; Veterans Basketball 1, 2

DOYLE BURCH

Rentz, Georgia

Business Education



Britt



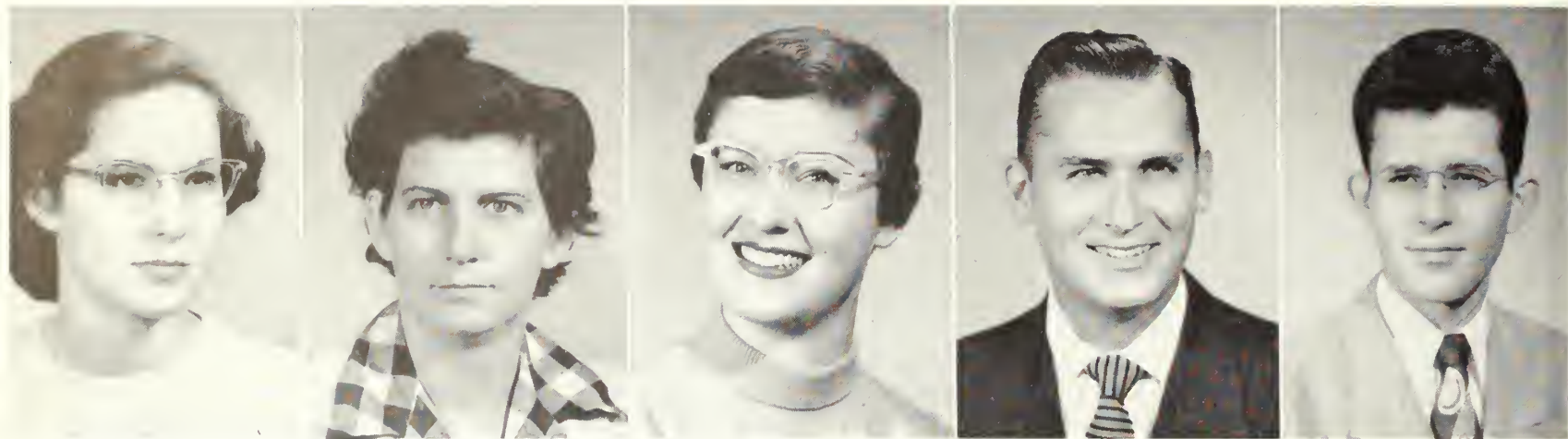
Brossman



Brown



Burch



Burkett

Byington

Carraway

Coley

Cone

S E N I O R S

LAQUITA BURKETT

Jakin, Georgia

Home Economics

Home Economics Club 1, 2, 3, 4, Secretary 4; Y.W.C.A. 1, SCA 2, 3, 4, Council 4; Wesley Foundation 1, 2, 3, 4; Reflector Staff 4

EULA C. BYINGTON

Irwinton, Georgia

Physical Education: Physical Science

WAA 3, 4, President 4. Transfer from Middle Georgia

PAT CARRAWAY

Blackshear, Georgia

English: Speech

Transfer from South Georgia. IRC 2, Masquers 3, English Club 4

DOUGLAS COLEY

Pembroke, Georgia

History: Physical Education

ROBERT L. CONE, JR.

Brooklet, Georgia

Exact Science

Y.M.C.A. 1, 2, Treasurer 1; Science Club 1, 2, 3, 4; Philharmonic Choir 1, 2, 3; FTA 4

J. D. CORBITT, JR.

Irwinton, Georgia

Social Science

Transfer from South Georgia. Who's Who 4, Wesley Foundation 3, 4, President 4; SCA 3, 4

MAXINE CORBITT

Irwinton, Georgia

Home Economics

Transfer from Andrew College. Who's Who 4, Wesley Foundation 3, 4; SCA 3, 4; Home Ec. 3, 4

JAMES E. COUNCIL

Midville, Georgia

Business Education: English

FBLA 4

WILLIAM C. CURRIE

Uvalda, Georgia

History: Physical Education

Veterans Club 3, 4; I.R.C. 3, 4



Corbitt

Corbitt



Council



Currie



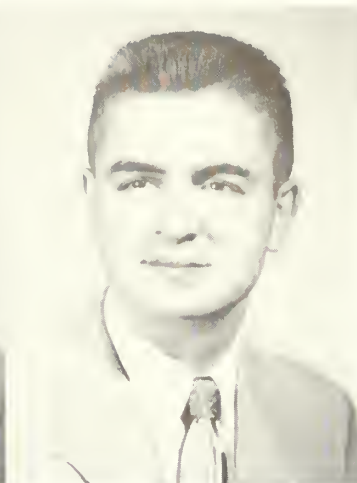
Daniel



Deen



Durrence



Durden

OF NINETEEN FIFTY-ONE

SYBIL DANIEL

Girard, Georgia

Home Economics

Transfer from G.S.C.W. Home Ec. Club 2, 3, 4, President 3; WAA 2, 3, 4, President 3; SCA 3, 4, President 3

WILLIAM HOWARD EVANS

Milan, Georgia

History: Physical Education

Transfer from Middle Georgia College. Veterans Club 1, 2, 3, 4; I.R.C. 3, 4

ALVIN MORRIS DEEN

Ridgeland, South Carolina

Physical Ed: History

MARY FLOYD

Hazelhurst, Georgia

Elementary Education

JESSE DURRENCE

Glenville, Georgia

Exact Science

Science Club 4

MARTHA FUNDERBURKE

Cobbtown, Georgia

Elementary Education

WALTER LANFORD DURDEN

Colquitt, Georgia

Social Science

Transfer from South Georgia College. I.R.C. 3, 4, President 4

LEWIS H. GRINER

Metter, Georgia

Business Education

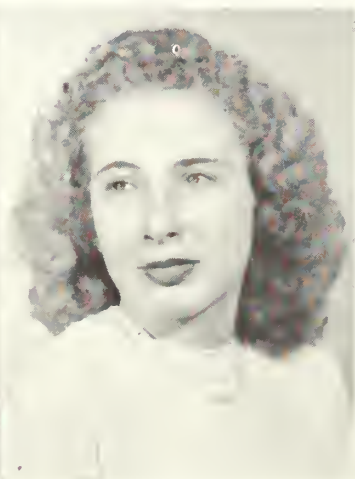
F.T.A. 4



Evans



Floyd



Funderburke



Griner



Hadaway

Hagin

Hall

Hall

S E N I O R S

ROBERT N. HADAWAY Atlanta, Georgia

Industrial Arts: Physical Education

Transfer from Georgia Southwestern College. Wesley Foundation 4, SCA 4

WILLIAM D. HAGIN Marlaw, Georgia

Elementary Education

Masquers 3, Veterans Club 1, 2, 3,

LEWIS C. HALL Miller, Georgia

Business Education

WILLS H. HALL Americus, Georgia

Business Education

Transfer from Georgia Southwestern College. FBLA 3, 4; FTA 4

JAMES R. HARGRAVES Statesboro, Georgia

Business Education: Math

FBLA 3, 4; Veterans Club 3, 4

ARTHUR WILLIS HARPER Ambrose, Georgia

History: English

Transfer from South Georgia College. BSU 3, 4; SCA 3, 4; IRC 4

MARGARET HARRISON Blackshear, Georgia

Home Economics

Philharmonic Choir 1, 2; YWCA 1, 2; West Hall House Council 2, George Anne 2, 3, 4, Assistant Editor 3, 4; Home Ec. Club 2, 3, 4, Vice-President 4; Associate Editor Reflector 4, Who's Who 4, Kappa Delta Pi 4

ARCHIE C. HAYGOOD, JR. Macon, Georgia

Social Science: English

Transfer from Reinhardt Junior College. IRC 3, Mu Sigma 4, Wesley Foundation Organist 3, 4; Men's Chorus 3, Sanford Hall House Council 4, Philharmonic Choir 3, 4



Hargraves

Harper

Harrison

Haygood



Henderson



Herrington



Hill



Hill

OF NINETEEN FIFTY-ONE

GENE C. HENDERSON Collegebara, Georgia

History: Industrial Arts

Philharmonic Choir 1, 2, 3, 4; Men's Chorus 1, 2, 3; Y.M.C.A. 1, Council 2, S.C.A. Council 3, 4; Vesper Choir 2, I.R.C. 1, 2; Industrial Arts Club 4, Business Manager George Ann 2, Business Manager Reflector 4, Mu Sigma 1

WILLIAM O. HERRINGTON Branwood, Georgia

Social Science

I.R.C. 3, Veterans Club 3, M.Y.F. 3

ANNE HILL Cachran, Georgia

Business Education: Art

Transfer from Middle Georgia College. House Council Secretary, Kappa Delta Pi, Art Club, W. A. A., S.C.A. Membership Chairman

WALTER M. HILL Albany, Georgia

Social Science

Transfer from Georgia Southwestern. I.R.C. 3, S.C.A. Council 3, Vice-President 4, Wesley Foundation 3, Vice-President 4

BETTY SUE HITSON

Dublin, Georgia

Elementary Education

LOUIS D. HODGES

Hilliard, Georgia

Physical Education: Biology

Kappa Delta Pi 4, Veterans Club 1, 2, 3, 4; F.T.A. 1, 2; Science Club 1, 2. Transfer from South Georgia College.

SHEILA B. HORNE

Cochran, Georgia

English; Physical Science

Transfer from Middle Georgia College. Science Club 4, F.T.A. 4

JAMES A. HUGHEY

Carrolltan, Georgia

Industrial Arts: English

Industrial Club 4
4, Treasurer 4; Dance Orchestra 2, 3, 4



Hitson



Hodges



Horne



Hughey



Humphery

Humphery

Hutchinson

Jarrad

S E N I O R S

ROBERT LEE HUMPHREY Tifton, Georgia

Music: English

Transfer from Abraham Baldwin. Band 2, 3, 4, President 2, 3; Philharmonic Choir 2, 3, 4, President 4; Mu Sigma 2, 3, 4, Treasurer 3, Vice-President 4; Treasurer Mosquers 3, B.S.U. 2, 3,

THOMAS W. HUMPHERY Vidalia, Georgia

Physical Education: History

RAY HUTCHINSON Savannah, Georgia

Social Science

Veterans Club 1, 2, 3; I.R.C. 3, F.T.A. 4

JACK D. JARRED Chauncey, Georgia

Physical Education: Biology

EUGENE JENKINS Statesboro, Georgia

Business Education: English

F.B.L.A. 2, 3, 4; English Club 4, Veterans Club 3

EUEL JOHNSON Blackshear, Georgia

Social Science

FAY JOYNER Augusta, Georgia

Elementary Education

Transfer from G.S.C.W.

ARTHUR E. JUSTICE Fitzgerald, Georgia

History: Math

Transfer from South Georgia College. Masquers 3, 4; I.R.C. 4, Mu Sigma 3, Philharmonic Choir 3, 4; Concert Band 3, Men's Chorus, Associate Editor George Anne 3, Veterans Club 3, 4

J. BERT JUSTICE Albany, Georgia

Social Science

Transfer from University of Georgia. Band 1, 2, 4



Jenkins

Johnson

Joyner

Justice

Justice



Kennedy

Kendrick

Kimbrough

Klenk

OF NINETEEN FIFTY-ONE

FRED M. KENNEDY, JR. Statesboro, Georgia

Industrial Education

Industrial Arts Club 4, Vice-President 4; Kappa Delta Pi 4

GAY KIMBROUGH Red Oak, Georgia

Elementary Education

Transfer from Atlanta Division, University of Georgia. B.S.U. 2, 3, 4; Music Director 4, Philhormanic Chair, 2, 3, 4; Executive Committee 4, Masquers 3, 4, Secretary 4; Alpha Psi Omega 4, Business Manager 4; George Anne Stoff 3, S.C.A. 2, 3, 4, Secretary 4; Lewis Hall Council 4

MRS. LILLIE KLENK Brunswick, Georgia

Elementary Education

EUGENE KENDRICK Jonesboro, Georgia

Physical Education

Who's Who 4

JACQUELYN D. KNIGHT Brooklet, Georgia

Business: Music

Philhormanic Chair 1 2; F.B.L.A. 4, F.T.A. 4, Mu Sigma 2, Orgon Guild 2, 4, Secretary 2; Wesley Foundation 1, 2; East Hall House Council 2

LONNIE LEWIS LADSON, JR. Moultrie, Georgia

Industrial Education

Art Club 1, Industriol Arts 3, F.T.A. 4

DOT LANCASTER Wrens, Georgia

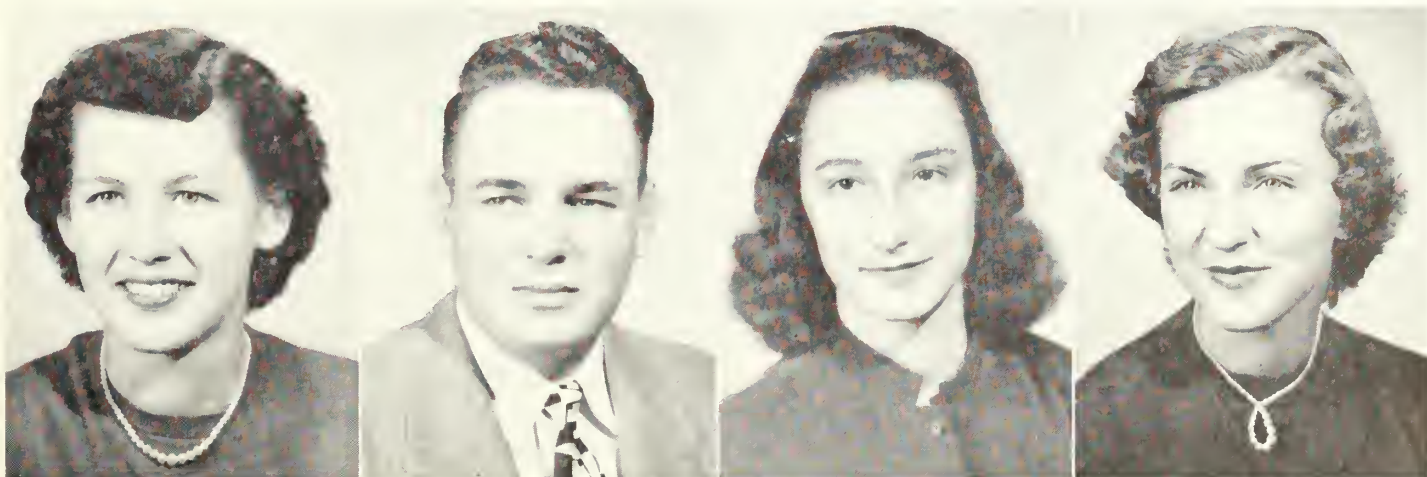
Elementary Education

Philhormanic Choir 2, 3, 4; W.A.A. 1, 2, 3, 4; S.C.A. 3, 4; Lewis Hall House Council 3, 4; F.T.A. 4

BETTYE LEWIS Quitman, Georgia

Elementary Education

B.S.U. Council 1, 2, 3, 4; Masquers 1, 2, President 3, 4; Alpha Psi Omega 2, 3, 4, Director 3 4; Philhormanic Chair 1, 2, 4; George Anne Staff 2, W.A.A. 1, S.C.A. 3, 4; State B.S.U. Council 4, F.T.A. 4, Third Annual Beauty Revue Who's Who in American Colleges

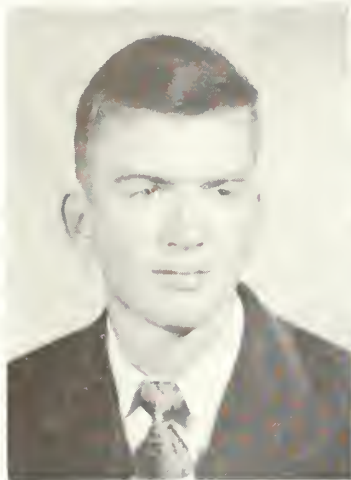


Knight

Ladson

Lancaster

Lewis



Littlefield



Lovett



McClellan



McElveen

S E N I O R S

JOSEPH C. LITTLEFIELD Americus, Georgia
Physical Education: Math

BETTY LOVETT Statesboro, Georgia
English: Business
Transfer from Wesleyan English Club 4, F.B.L.A. 2, 4; F.T.A. 4, Wesley Foundation 2

DONALD McCLELLAN Gough, Georgia
Social Science
Y.M.C.A. 1, 3; I.R.C. 3, 4; F.T.A. Treasurer 4, S.C.A. 4

LANE McELVEEN Claxton, Georgia
Business: Physical Education

MADLYN JUNE MEEKS Soperton, Georgia
Business Education

Philharmonic Choir 1, 2, 3, 4; West Holl President 2, 3; Masquers 2, F.B.L.A. 4, B.S.U. 4

LAURIE METZGER, JR. Clyo, Georgia
English: History
Y.M.C.A. 1, 2; Philharmonic Choir 1, 2; Wesley Foundation 2, 4; Council 2, English Club 4, Vice-President 4; I.R.C. 4, F.T.A. 4

JACK MERCER Coolidge, Georgia
Social Science

CHARLES S. MILLER Toombsboro, Georgia
Business Education: Math
F.B.L.A. 2, 3, 4



Meeks



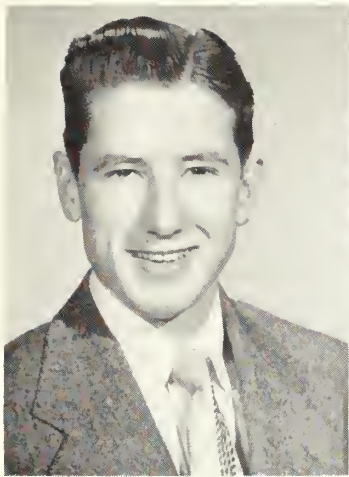
Metzger



Mercer



Miller



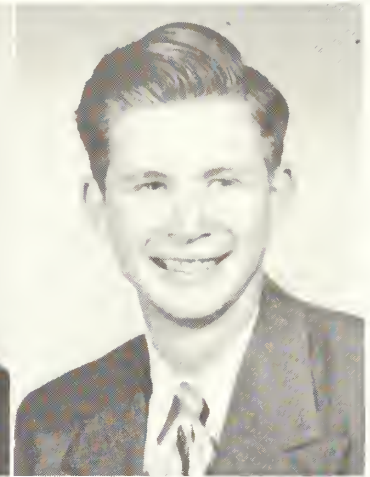
Mills



Mitchell



Mixon



Moreland

OF NINETEEN FIFTY-ONE

HAROLD ALLEN MILLS Toombsboro, Georgia

Business Education: Math

F.B.L.A., Y.M.C.A. 1

BETTY MITCHELL Statesboro, Georgia

Elementary Education

Philhormonic Choir 2, Wesley Foundation Treasurer 3, 4

EDWARD MIXON Vidalia, Georgia

History: Physical Education

ALVIN F. MORELAND Wrens, Georgia

Exact Science

Vice-President Class 2, Mosquers 2, 3; Alpo Psi Omega 4, F.T.A. 4, Rodio Stoff 2, 3, 4; House Council 2, 3, 4; Student Council 4, Treasurer 4; Science Club 3, 4, President 4

A. J. MORRIS Vidalia, Georgia

Exact Science

Transfer from University of Georgia. Mosquers 3, 4, Mu Sigma 4, Alpo Psi Omega 3, 4, Vice-President 4; Science Club 3, 4, Secretary-Treasurer 4; Philhormonic Choir 3, 4; B.S.U. Council 3, 4; Koppo Delto Pi 4

JAN MURPHY Statesboro, Georgia

English: Library Science

Science Club 1, 2, 3; English Club 2, 3; Reflector Stoff 2, 3; F.T.A. 3, S.C.A. 1, P.B.Y.F. 1, 2

FRANCES MURRAY Sardis, Georgia

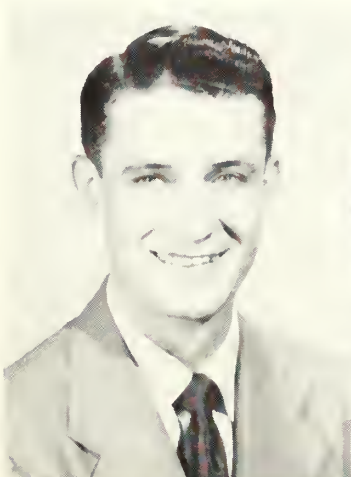
Business Education

F.B.L.A. 3, W.A.A. 3

JOE MUSSELWHITE Cordele, Georgia

Physical Education: History

Transfer from Middle Georgia College. Vice-President Class 3, Veterans Club 3



Morris



Murphy



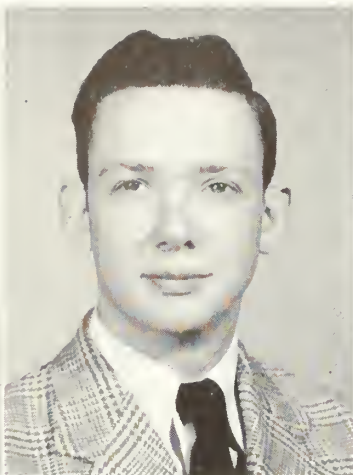
Murray



Musselwhite



NeSmith



Newby



Oliver



Owen

S E N I O R S

E. ARCHIE NeSMITH, JR. Oliver, Georgia

Business: Music

Organ Guild 3, 4, Dean 4; Mu Sigma 2, 3; Wesley Foundation 1, 2, 3; Council 3; Men's Chorus 2, 3; Y.M.C.A. 1, 2, Pianist 2; Masquers 1, F.B.L.A. 3

IDUS NEWBY Cochran, Georgia

Social Science

JULIET OLIVER Glennville, Georgia

Elementary Education

W.A.A. 1, 2, 3, 4, Vice-President 2; Y.W.C.A. 1, S.C.A. 3, 4; House Council 2, 4; Student Council 4, F.T.A.

WILLIAM C. OWEN Waycross, Georgia

ROBERT PAFFORD Lakeland, Georgia

Physical Education: Math

WILLIE M. PARK, JR. West Green, Georgia

Industrial Arts; Business

Transfer from South Georgia College. Industrial Arts Club

CHARLES PARKER Columbus, Georgia

Exact Science

Transfer from Georgia Southwestern. B.S.U.

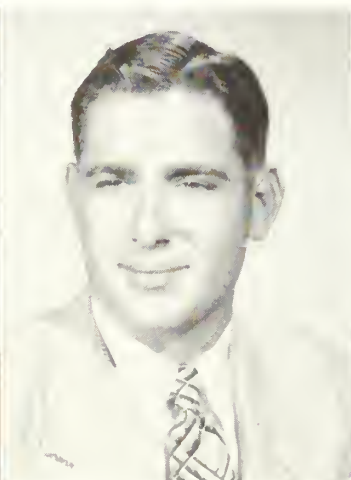
WILBUR PEACOCK Morrow, Georgia

Physical Education: Math

Student Council 1, 2, 3; Science Club 1, Class President 4, Who's Who 4



Pafford



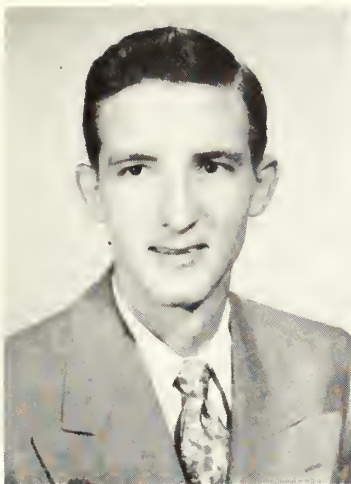
Park



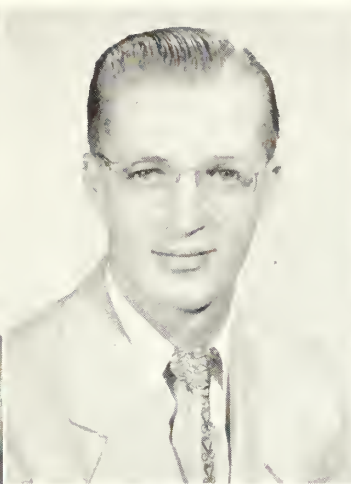
Parker



Peacock



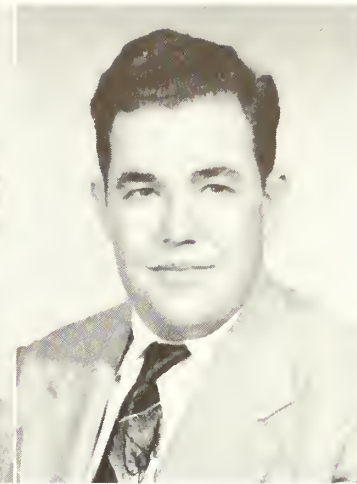
Pharis



Phillips



Powell



Rawlins

OF NINETEEN FIFTY-ONE

WILLIAM L. PHARIS, JR. Columbus, Georgia

Elementary Education

Who's Who 4, Vice President Class 4, Mu Sigma President 4, Koppo Delto Pi 4, Coordinator of Intramural Sports 4, Philharmonic Choir 3, 4; Concert Band 3, House Council 4, Veterans Club 3

H. LEMUEL PHILLIPS Ellenwood, Georgia

Physical Education: History

Transfer from West Georgia College.

GLORIA RAMONA POWELL Brinson, Georgia

Business Education: English

Transfer from G.S.C.W. F.B.L.A. 3, 4; English Club 4, F.T.A. 4, B.S.U. 4

JOHN H. RAWLINS Douglas, Georgia

Social Science

CHARLES RAINES Elberton, Georgia

Exact Science

BETTY REAGEN Wadley, Georgia

Home Economics

Transfer from G.S.C.W. Home Ec. Club 2, 3, President 4, S.C.A. 2, 3, 4; W.A.A. 2, 3, 4; F.T.A. 4, Class Secretary 4, Lewis Hall Treasurer 4, Who's Who 4

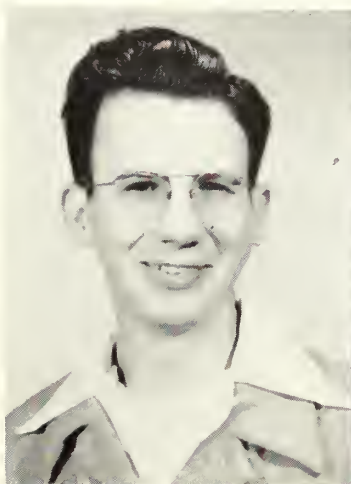
DONALD REINSMITH Decatur, Georgia

Industrial Arts: Physical Science

Mosquers 3, 4; Philharmonic Choir 4, Bond 4

EARLE M. REYNOLDS Ardmore, Pennsylvania

Who's Who 4, Koppo Delto Pi 4, Reflector Editor 4, George-Anne 4, Veterans Club Treasurer 3, I.R.C. 3, 4, Treasurer 4; F.T.A. President 4



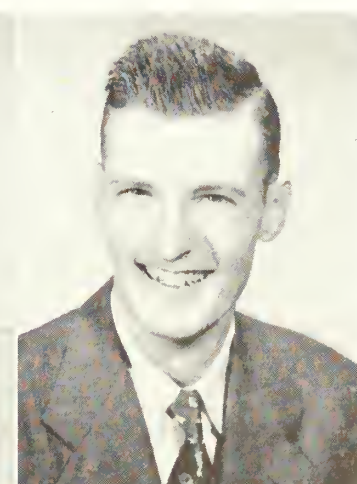
Raines



Reagen



Reinsmith



Reynolds



Rigdon



Rigdon



Rockett



Roebuck

S E N I O R S

O. R. RIGDON Waycross, Georgia

Physical Education: History

Transfer from University of Georgia. Veterans Club 3, 4

RALPH L. RIGDON, JR. Sylvania, Georgia

Industrial Arts: Math

Industrial Arts Club 2, 3, 4, Reporter 4

GEORGE ROEBUCK Mt. Vernon, Georgia

Physical Education: History

Basketball 2, 3; T. Club 2, 3; House Council 3, 4, President 4; Veterans Club 2, 3

CHARLES ROCKETT Vidalia, Georgia

Physical Education: Physical Science

ALLEN W. RODGERS Yeadon, Pennsylvania

Physical Education: Biology

Transfer from South Georgia. Veterans Club 3, 4, President 3; Veterans Basketball 3, Anderson Hall House Council 3, F.B.L.A. 4, President 4; F.T.A. 4, Kappa Delta Pi President 4

MURRAY A. ROGERS Ochlochnee, Georgia

Exact Science

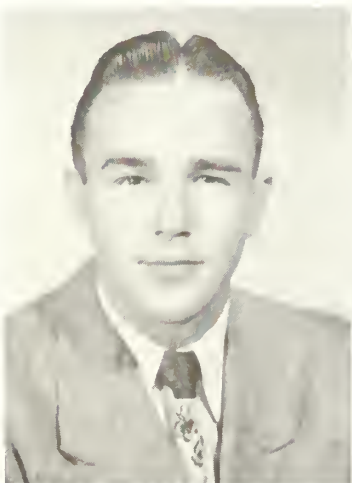
Veterans Club 1, Kappa Delta Pi 4

JANE ROBERTSON Brooklet, Georgia

Business Education

AZALEAN ROSS Lincolnton, Georgia

History: English



Rodgers



Rogers



Robertson



Ross



Sanders



Saturday



Sheffield



Sheerer

OF NINETEEN FIFTY - ONE

WILLIAM A. SANDERS

Albany, Georgia

Exact Science

I.R.C., Science Club

HARVEY SMITH, JR.

Norristown, Georgia

Physical Education: History

Veterans Club 1, 2, 3; I.R.C. 1

HELEN L. SATURDAY

Collins, Georgia

Elementary Education

Philharmonic Choir 2, 4; Y.W.C.A. 1, 2; S.C.A. 4, B.S.U. 1, 2, 4, President 1, 2; House Council 2, Vice-President 2; Home Ec. Club 1

JOSEPH E. SMITH

Claxton, Georgia

History: Physical Education

Philharmonic Choir 1, 2, 3; Men's Chorus 1, 2, 3, Secretary-Treasurer 3; Y.M.C.A. 1, 2, Secretary-Treasurer 2; S.C.A. 3, B.S.U. 3, Student Council 4, House Council 4

BETTY STONE

Wrens, Georgia

Elementary Education

George Anne 3, 4; West Hall House Council 2, Reflector 4

ROY T. SHEFFIELD

Cordele, Georgia

Physical Education: Math

JOHN W. STONE

Wrens, Georgia

Physical Education: Math

Who's Who 4, George Anne 3, 4, Editor 4; Dramatic Club 1, Y.M.C.A. 1, Veterans Club 2, Reflector Sports Editor 4

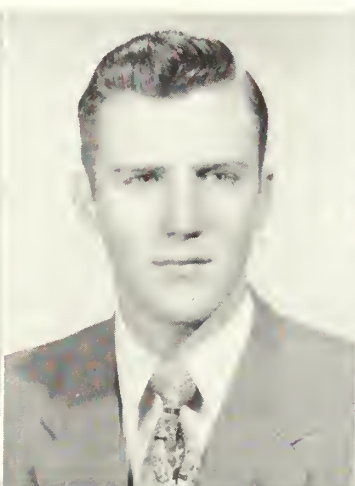
MRS. EDNA O. SHERRER

Fitzgerald, Georgia

Elementary Education



Smith



Smith



Stone



Stone



Strickland



Strickland



Strickland



Sturgis

S E N I O R S

AUDREY STRICKLAND

Screven, Georgia

English: Business Education

Y.W.C.A. 1, Science Club 2, English Club 3, 4; F.B.L.A. 4, S.C.A. 4, F.T.A. Secretary 4

ANDY SUTTON

Odum, Georgia

Industrial Arts

HARRY B. STRICKLAND

Statesboro, Georgia

Business Administration

Masquers 1, 2, 3, 4; Band 1, 2; F.B.L.A. 3, 4; Veterans Club 3, 4; Industrial Arts 4, Vice-President 4

ROBERT L. TAYLOR

Statesboro, Georgia

Exact Science

Band 1, 2, 3

SIDNEY N. STRICKLAND

Blakely, Georgia

Physical Education: Industrial Arts

EDWARD J. THOMAS

Waycross, Georgia

Physical Education: Biology

NINETTE STURGIS

Statesboro, Georgia

Social Science

Who's Who 4

MYRA A. TIPPINS

Claxton, Georgia

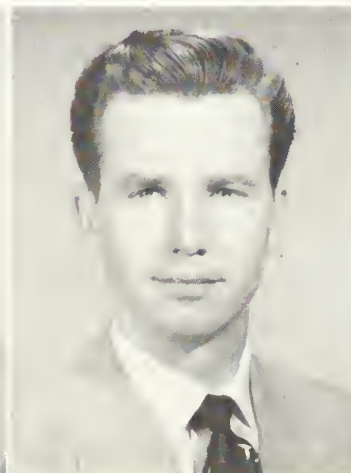
Elementary Education



Sutton



Taylor



Thomas



Tippins



Tyre

Tomberlin

Touchton

Upchurch

OF NINETEEN FIFTY-ONE

MRS. BETTY B. TYRE

Odum, Georgia

Elementary Education

ALFRED H. WADE, JR.

Tavares, Florida

Social Science

F.T.A. 4

CURT TOMBERLIN

Rhine, Georgia

Physical Education: History

ROBERT WARE

Savannah, Georgia

Physical Education: Math

Transfer from Armstrong Junior College. Business Manager George Anne 3, President B.D.S. Club 3, Art Club 3, F.T.A. Vice-President 4, House Council 4

NORMA FAY TOUCHTON

Barney, Georgia

Elementary Education

Transfer from G.S.C.W. House Council 4

LEMUEL WATKINS

Hinesville, Georgia

Industrial Arts: Physical Education

Transfer from Auburn, Industrial Arts Club 2, 3, 4, President 4; House Council 2, 3, 4, Vice-President 4

CALVIN K. UPCHURCH

Stilsan, Georgia

Physical Education: Biology

WADE H. WATERS

Sylvania, Georgia

Elementary Education



Wade

Ware

Watkins

Waters



Weaver



Wells



White



Whitaker

S E N I O R S

VONDA WEAVER

Pavo, Georgia

English: Math

Transfer from Georgia Southwestern. F.T.A. 4, Masquers 4

BLAIR WELLS

Guyton, Georgia

Elementary Education

West Hall House Council 1, President 2; Lewis Hall Vice-President 3, President 4; W.W.A. 1, 2, 3; Philharmonic Chair 1, 2; F.T.A. 4, Y.W.C.A. 12, Council 2, S.C.A. 3, 4, Vice-President 4; Wesley Foundation 1, 3, 4, Secretary 4; Student Council 3, 4, Secretary 4, Editor "T" Book

CHERRY ANN WHITE

Montrose, Georgia

Elementary Education

Alpha Rho Tau, S.C.A., B.T.U.

CAROLYN WHITAKER

Montrose, Georgia

Elementary Education

S.C.A., B.T.U.

JIMMIE LOU WILLIAMS

Brooklet, Georgia

Business Education: English

F.B.L.A. 3, 4; Philharmonic Chair 2, English Club 4

RICHARD V. WILLIAMS

Quitman, Georgia

Social Science

REBA DEAN WILSON

Glennville, Georgia

Elementary Education

Philharmonic Chair 2, 3, 4; W.A.A. 1, 2, 3, 4, Vice-President East Hall 2, Vice-President Lewis Hall 4; S.C.A. 3, 4; F.T.A. Reporter 4, W.A.A. Secretary-Treasurer 3.

ALBERT WINTER

Pooler, Georgia

Industrial Arts: Art

Transfer from West Georgia College. Industrial Arts Club 3, 4; Art Club 4, Men's Chorus 2, 3



Williams



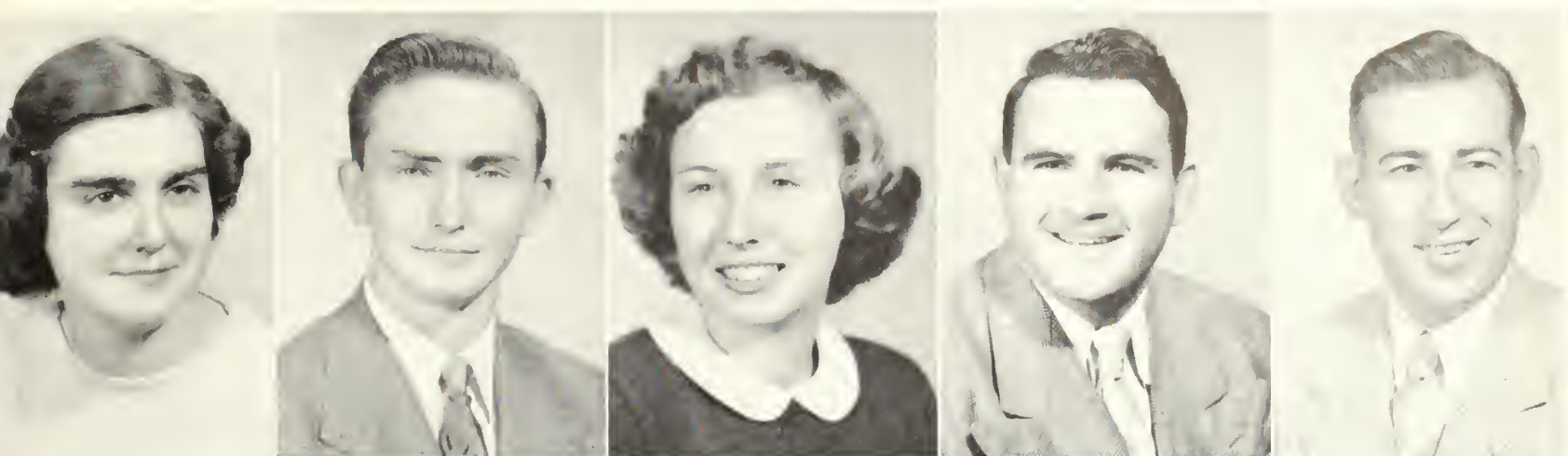
Williams



Wilson



Winter



Winter

Woodrum

Woods

Wren

Young

OF NINETEEN FIFTY-ONE

THELMA WINTER

Pooler, Georgia

Home Economics

Transfer from West Georgia College. Home Ec. Club 1, 2, 3, 4, Vice-President 3; Y.W.C.A. 2, Philhormanic Choir 2, B.D.S. 3, Reflector Stoff 4, F.T.A. 4

THOMAS WREN

Sovonnoh, Georgia

History: Physical Education

ROBERT YOUNG

Tennille, Georgia

Industrial Arts: Business Education

Industrial Arts Club 3, 4; House Council 4

W. G. WOODRUM

Stotesboro, Georgia

History: English

ALENE WOODS

Morlow, Georgia



EAST HALL GIRLS HAVE P. J. PARTY





SANFORD BROWN
President



BETTY ANNE WITHROW
Vice-President



NORMA SWANN
Secretary



BETTY ANN BEDINGFIELD
Treasurer



DOROTHY STEWART
Class Sponsor

THE JUNIOR CLASS



J U N I O R S

EMILY ADAMSON
Morrow, Georgia

DOROTHY ANN ALTMAN
Sylvonio, Georgia

GLORIA ANDERSON
Glenwood, Georgia

MRS. MAZIE B. AUGLEY
Foirfox, South Carolino

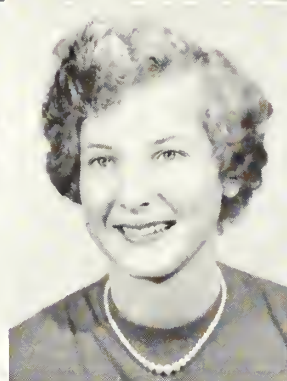


RICHARD AUGLEY
Foirfox, South Carolina

MARTHA JANE BANKS
Glennville, Georgia

MARILYN BARWICK
Adrian, Georgia

BETTY ANNE BEDINFIELD
Dublin, Georgia



JOAN C. BENNETT
St. Simons, Georgia

MARY PAULINE BENTON
Meigs, Georgia

DAN U. BIGGERS
Toccoo, Georgia

CAROLYN JOAN BILLINGS
Colquitt, Georgia



NAOMI BLANTON
Surrency, Georgia

CHRISTINE BONNETT
Portol, Georgia

NELL BOWEN
Register, Georgia

JACK MILTON BOZEMAN
Cochron, Georgia

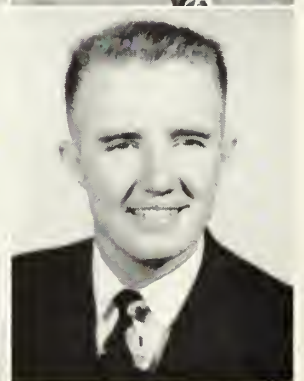
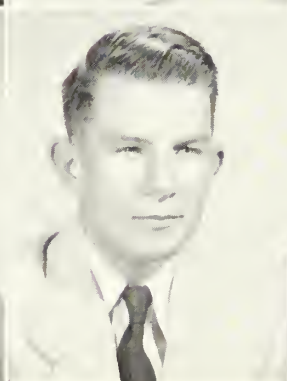


JONNIE ROSALYN
BRANTLEY
Wrightsville, Georgia

BENJAMIN S. BRINSON
Groymont, Georgia

FRED WALDO BROWN
Stilson, Georgia

SANFORD V. BROWN
Dowson, Georgia



OF NINETEEN FIFTY - ONE



BRUNEL B. BURKHALTER
Metter, Georgia

JULIAN D. CANNON
Crosland, Georgia

WILLIAM F. CHILDRES
Butler, Georgia

GEORGE HENRY CLARK
Attapulugus, Georgia

CHARLOTTE LoVERNE
CLEMENTS
Statesbora, Georgia

FRANK MIZELL CLEMENTS
Rhine, Georgia

ERNEST LAWRENCE COOK
Glennville, Georgia

ROBERT L. CROMARTIE
Hazelhurst, Georgia

LILLIAN ANITA DANIELS
Arlington, Georgia

LOWELL H. DASHER
Marlaw, Georgia

ELIZABETH RUTH DOBBS
Covington, Georgia

JAMES DEEN
Almo, Georgia

MARTHA F. DUFFIELD
Augusta, Georgia

JAMES R. DUNCAN
Statesboro, Georgia

JAMES ELLIS
Statesbora, Georgia

BETTY J. EUBANK
Appling, Georgia

WILLIAM P. EVANS
Thamasville, Georgia

TAYLOR L. EVERETT
Woycross, Georgia

BETTY JEAN FIELDS
McDanaugh, Georgia

SUMPTER FOSTER
Stillmore, Georgia

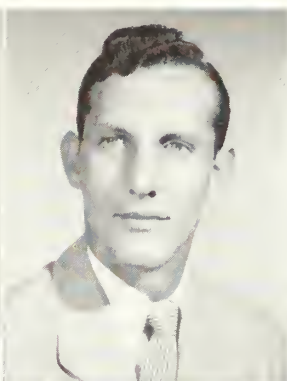
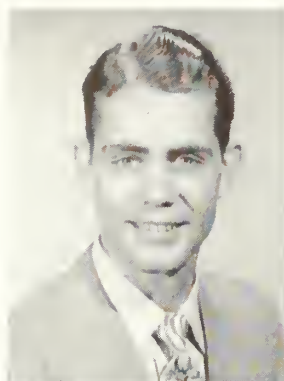
J U N I O R S

WILLIAM HOWARD FOX
Blairsville, Georgia

CLIFFORD VINCENT FRIDAY
Tampo, Florida

SAMUEL D. FULLER
Fitzgerold, Georgia

DOROTHY FUNDERBURKE
Cobbtown, Georgia

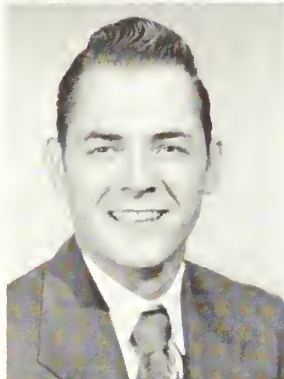


JOHN LESTER GARDNER
Boxley, Georgia

TIP GAMBLE
Voldosto, Georgia

CAROLYN PEGGY GELDER
Glenwood, Georgia

RUBY ANNETTE GIBSON
Folkston, Georgia



ANNA LOIS GRINER
Lyons, Georgia

CHARLES GUS GROOVER
Summit, Georgia

DURELLE HAGIN
Morlow, Georgia

IDA REE HAGIN
Bloomingdale, Georgia

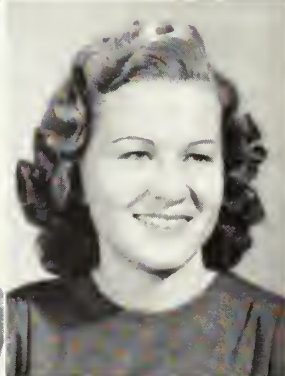


JOAN HARPER
Dublin, Georgia

LOUIS EUGENE HARPER
Fitzgerold, Georgia

LARRY KITCHENS HARRELL
Mitchell, Georgia

BETTY JEAN HARRIS
Ronger, Georgia

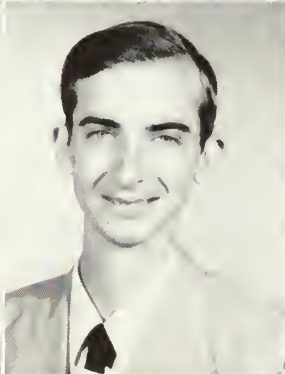
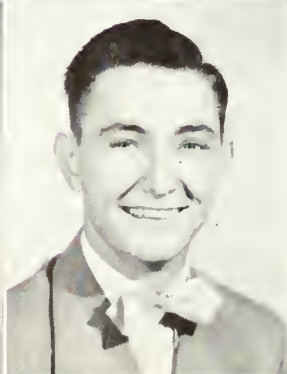


RICHARD LEE HAWKINS
Albony, Georgia

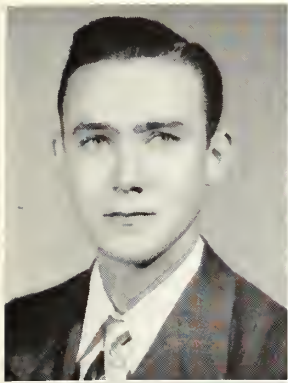
**CHARLES GRADY
HENDERSON**
Americus, Georgia

JOHN CLINTON HERNDON
Surrency, Georgia

NELLE HICKS
Wrightsville, Georgia



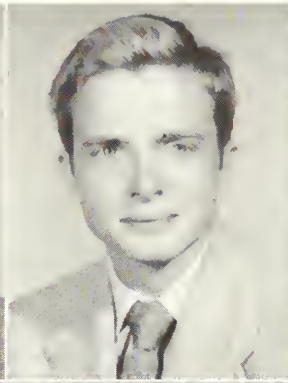
OF NINETEEN FIFTY - ONE



GLENN LAMAR
HITCHCOCK, JR.
Cordele, Georgia



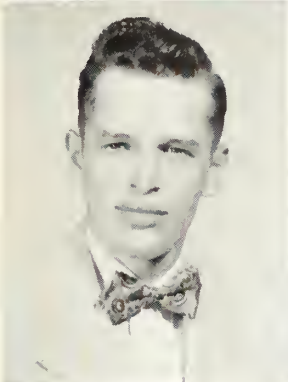
JACQUELINE L. HOBBY
Ashburn, Georgia



CHARLES G. JACKSON
Attapulgus, Georgia



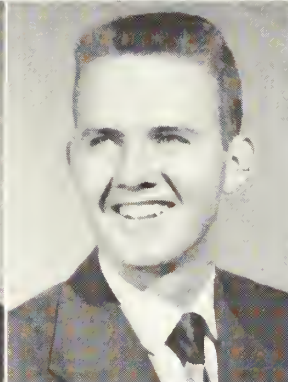
MARGIE JACKSON
Dublin, Georgia



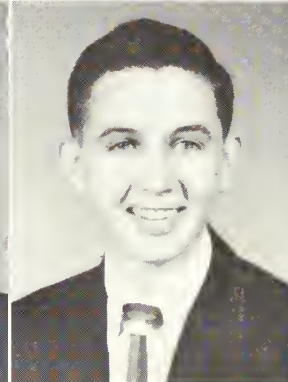
JAMES DOUGLAS JENKINS
Hilltonia, Georgia



BOBBY B. JETER
Ashburn, Georgia



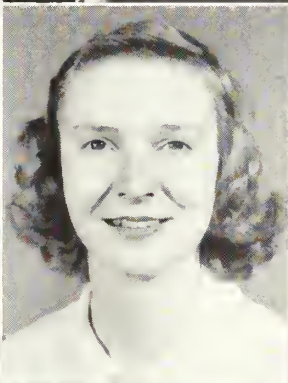
EDWIN DONALD JOHNSON
Statesboro, Georgia



JOHN GIBSON JOHNSON
Swoinsboro, Georgia



BARBARA JANE JONES
Brooklet, Georgia



BEULAH PAULINE JONES
Millen, Georgia



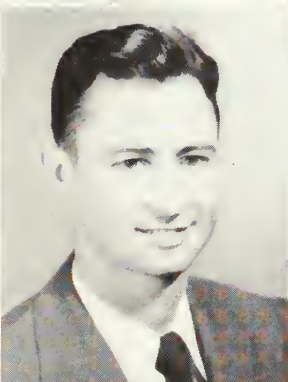
SARA BETTY JONES
Statesboro, Georgia



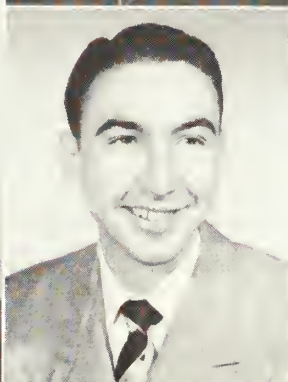
HAROLD KENNEDY
Statesboro, Georgia



MARY KENNEDY
Coalidge, Georgia



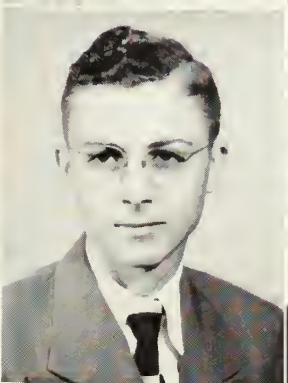
CLIFTON KEY
Porrish, Alabama



JERRY KICKLIGHTER
Glennville, Georgia



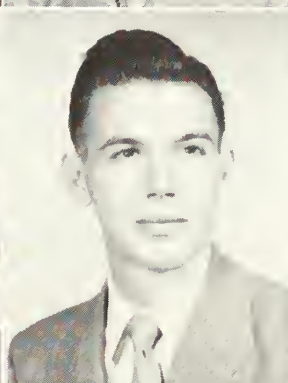
DAISY KIGHT
Metter, Georgia



E. JEROME LEE
Hoboken, Georgia



TALLULAH LESTER
Statesboro, Georgia



OLDIN LEWIS
Glennville, Georgia



WILLIAM EDWARD LEWIS
Maultrie, Georgia

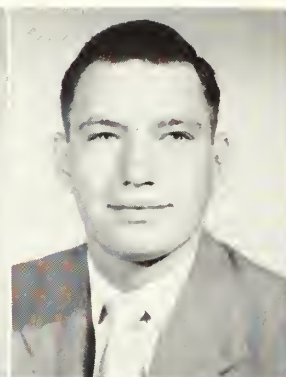
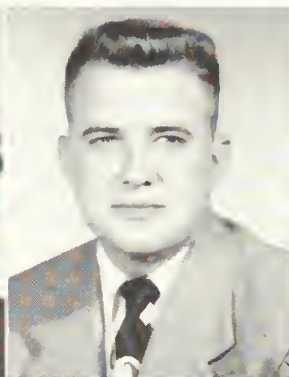
J U N I O R S

DOROTHY LINDSEY
Kite, Georgio

WALTER McMAHON
Bornesville, Georgio

MRS. CAROLYN McPIPKIN
Savonnah, Georgio

ROY McTIER
Moultrie, Georgio

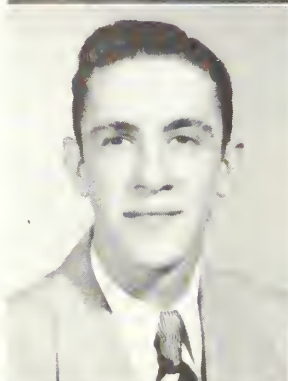


ASHLEY MADRAY
Odum, Georgio

PATSY MADRAY
Jesup, Georgio

BARNEY TROY MALLARD
Register, Georgio

BETTY JEAN MIKELL
Stotesboro, Georgio



JOAN MILLER
Toombsboro, Georgio

EUGENE MIXON
Vidolio, Georgio

VIRGINIA MORGAN
Stillmore, Georgio

JOSEPH R. NEVERLA
Goinesville, Georgio



JULE DARL NEWSOME
Stotesboro, Georgia

JAMES EDWARD NEWTON
Tifton, Georgia

TOMMIE NEWTON
Hilltonio, Georgia

DONALD NIPPER
Ashburn, Georgia

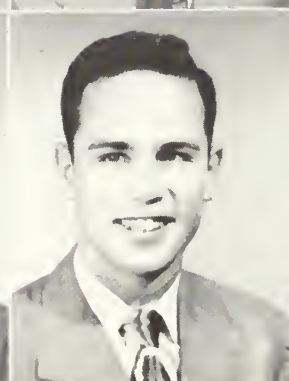
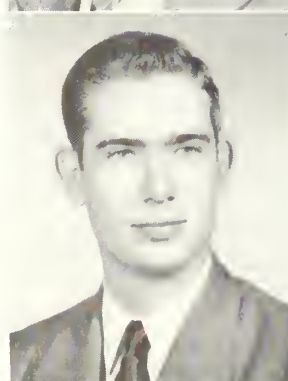


SPENCER W. OVERSTREET, Jr.
Wodley, Georgia

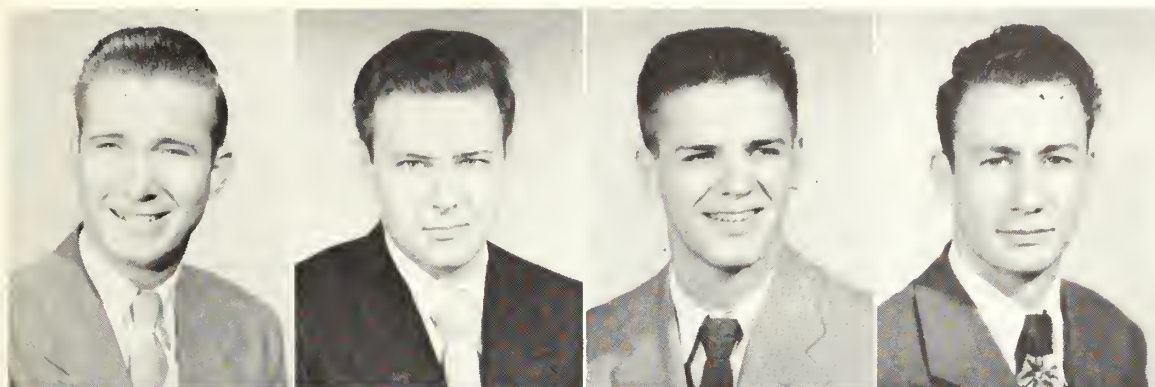
EDDIE POWER ORT III
Albony, Georgia

BILLY ODUM
Cloxton, Georgia

JAMES H. OLIVER
Woynesboro, Georgia



OF NINETEEN FIFTY-ONE

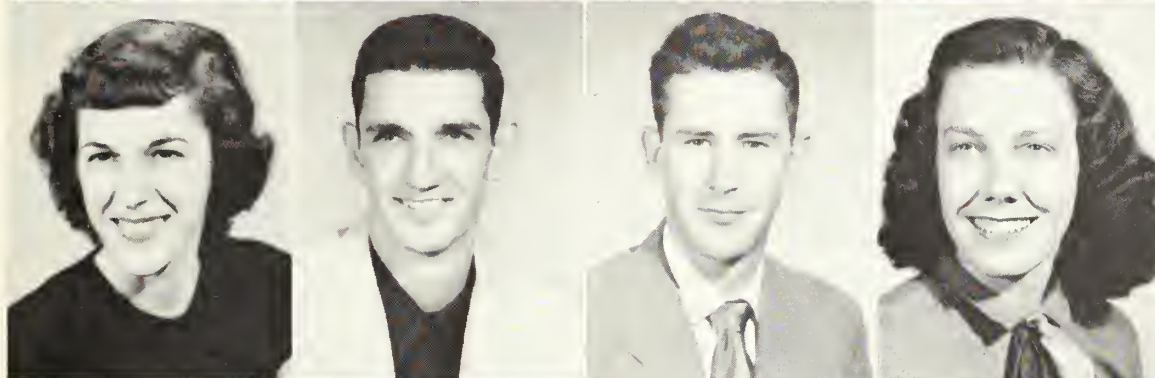


MITCHELL BURNS OWENS
Collins, Georgia

GEORGE I. PARRISH, Jr.
Jesup, Georgia

RALPH HAROLD PARSONS
Yoncey, Kentucky

GEORGE R. PAULK
Willacoochee, Georgia

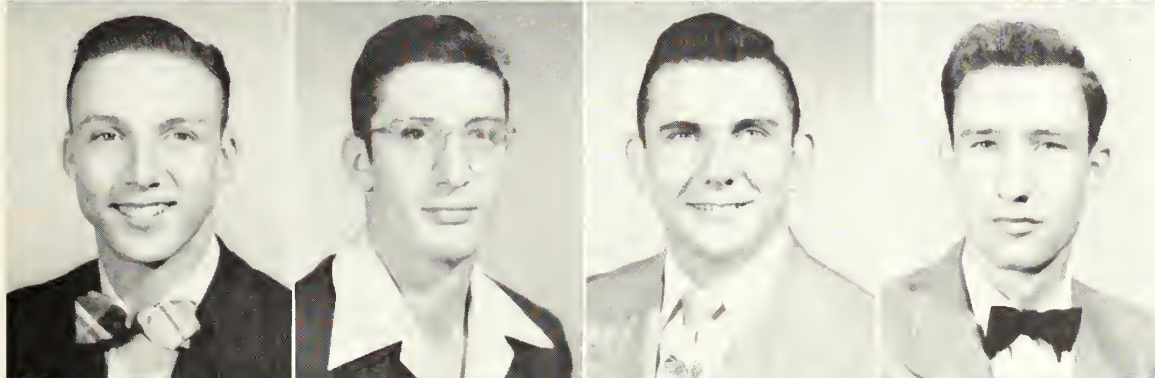


RUTH PEEBLES
Claxton, Georgia

WADE SCOTT PERKINS
Williamsburg, Kentucky

JOHN PETERMAN, Jr.
Butler, Georgia

MARGARET ANN PRICE
Wrightsville, Georgia

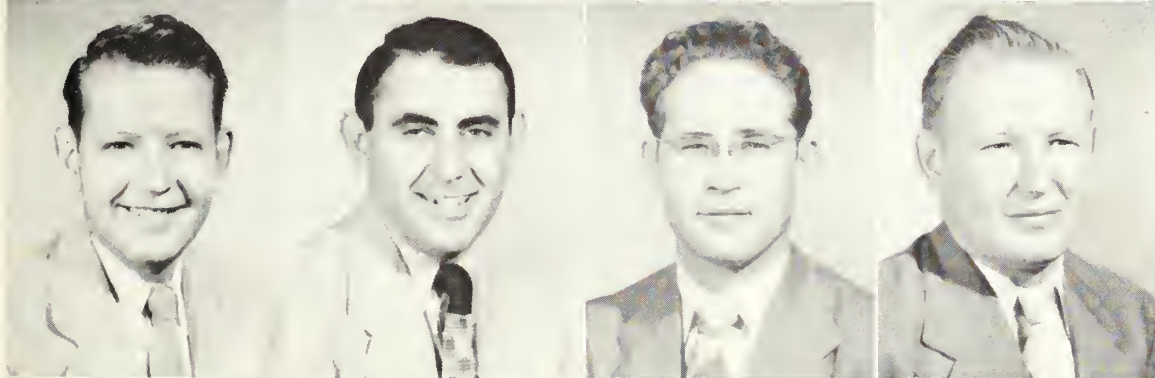


SANFORD F. REID
Columbus, Georgia

JOHN EDWIN RENFRO
Williamsburg, Kentucky

ALAN L. SANDERS
Sylvester, Georgia

FRANK SCHOPFER
Brunswick, Georgia

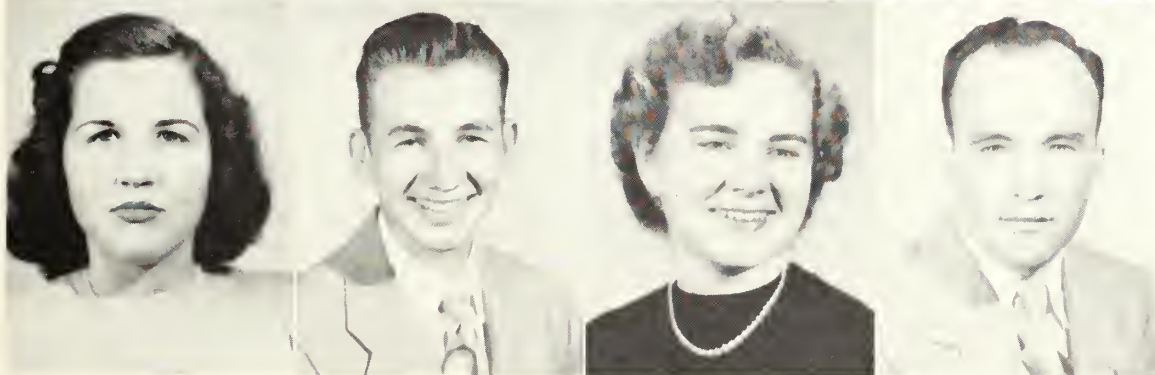


HENRY S. SHERRER
Fitzgerald, Georgia

JEROME SILVERMAN
St. Petersburg, Florida

CLARENCE SIMONS
Savannah, Georgia

ROA H. SKINNER
Adrian, Georgia



MARY JANE SMITH
Arlington, Georgia

GENE SMITH
Claxton, Georgia

MARY LOVE STEEDLEY
Homerville, Georgia

TROY STEPHENS
Lyons, Georgia

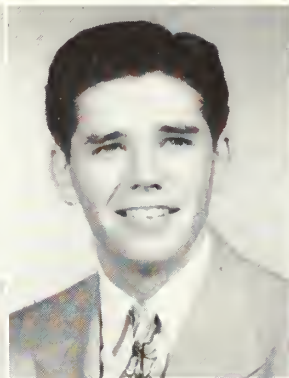
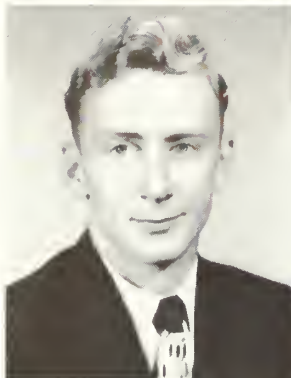
J U N I O R S

CHARLES A. STEWART
Savannah, Georgia

THOMAS STEWART
Ashburn, Georgia

FRANK SUMMEROUR
Lawrenceville, Georgia

NORMA SWANN
Wrens, Georgia



MRS. MATTIE B. TANNER
Statesboro, Georgia

WILLIAM E. TEETS
Statesboro, Georgia

CLAIRE THOMAS
Jesup, Georgia

MARIAN TODD
Gileron, Georgia



DORIS TOWNSEND
Kite, Georgia

ANNE TRICE
Greenville, Alabama

E. D. TURNER
Caffee, Georgia

JACK WADE
Navol Bose, South Carolina

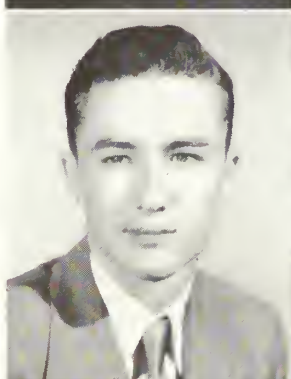


CLAXTON WALKER
Lovett, Georgia

BARBARA WARNOCK
Tarrytown, Georgia

MARJORIE WEATHERFORD
Graymont, Georgia

ROBERT WEEKS
Narman Park, Georgia

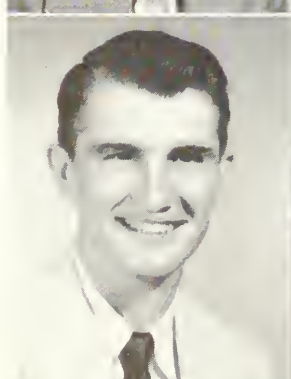


HAROLD WHITMAN
Bawdon, Georgia

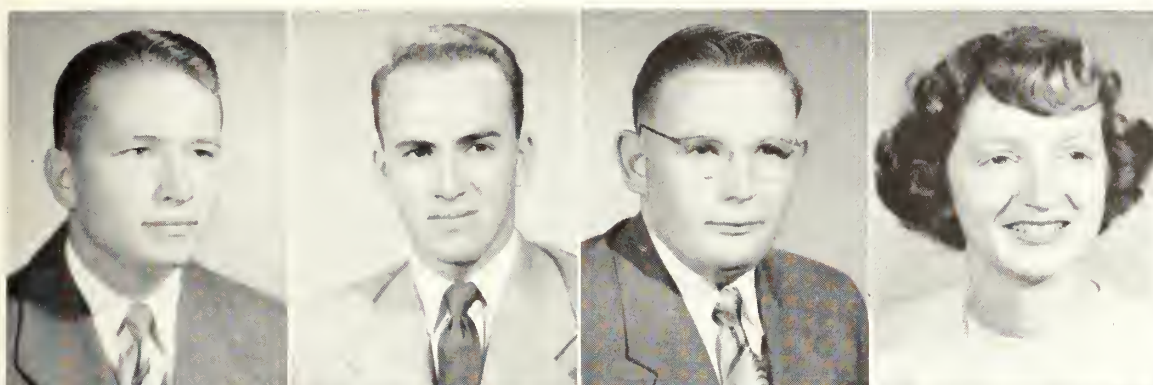
MARGARET J. WILDER
Vidalia, Georgia

JACK L. WILKERSON
Nashville, Georgia

JOE WILKINS
Jesup, Georgia



OF NINETEEN FIFTY-ONE

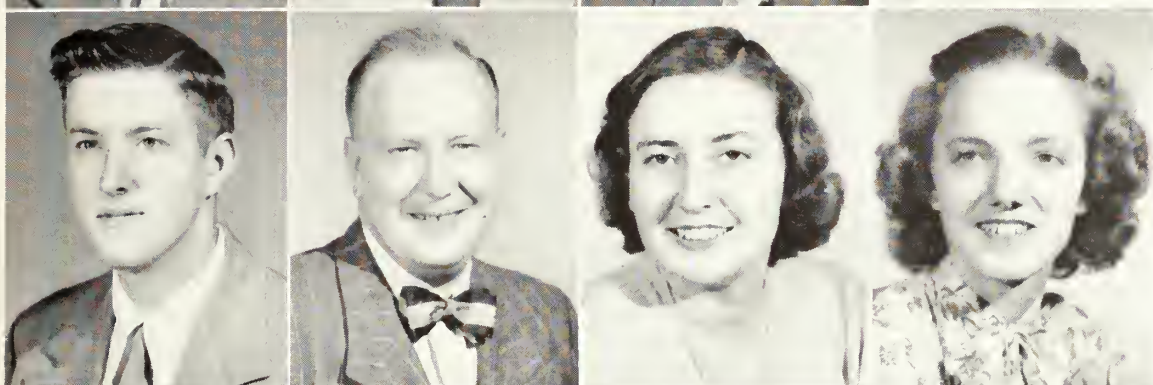


JOHN WRIGHT WILKINS
Ft. Gaines, Georgia

JACK WILLIAMS
Wrens, Georgia

W. C. WYATT
Fort Valley, Georgia

BETTY ANN WITHROW
Albany, Georgia



JAMES WOODCOCK
Glennville, Georgia

LEWIS WYNNE
Sandersville, Georgia

MARTHA SUE WYNN
Brooklet, Georgia

RENA MAE WOODS
Stotesboro, Georgia



MRS. CLARA YOUNGBLOOD
Portal, Georgia

MARY YOUMANS
Stillmore, Georgia





THOSE

SATURDAY



DANCES



ED MITCHELL
President



PATSY ODUM
Vice-President



TOMIE JEAN CORBETT
Secretary



ANN NEVILS
Treasurer



TULLY PENNINGTON
Class Sponsor

THE SOPHOMORE CLASS



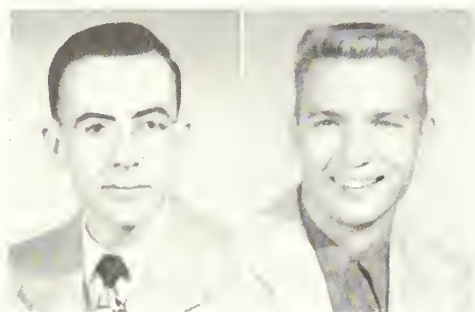


FIRST ROW:

Robert L. Allen, *Thomasville, Georgia*; Beulah Allmond, *Summit, Georgia*; Frances Armstrong, *Statesboro, Georgia*; Eugenia Bass, *Warwick, Georgia*; Betty Ann Bedingfield, *Dublin, Georgia*; Johnny Blalock, *Claxton, Georgia*

SECOND ROW:

Rena Joyce Black, *Sylvania, Georgia*; Mrs. Martha W. Braddy, *Lyons, Georgia*; Betty Sue Brannen, *Statesboro, Georgia*; Carrie Sue Brannen, *Statesboro, Georgia*; A. B. Brewton, *Claxton, Georgia*; Margaret Ann Broome, *Dalton, Georgia*.



THIRD ROW:

W. D. Brown, Jr., *Fitzgerald, Georgia*; Jack C. Bryan, *Brooklet, Georgia*.

SOPHOMORES



FOURTH ROW:

Peggy Jo Burke, *Statesboro, Georgia*; Earl Cannon, *Dublin, Georgia*; Deloris C. Cannon, *Dublin, Georgia*; June Cantrell, *Tifton Georgia*; Mary Ann Carter, *Waycross, Georgia*; Edith Carpenter, *Tifton, Georgia*.

FIFTH ROW:

Edith Chalker, *Warrenton, Georgia*; Tomie Jean Corbitt, *Vidalia, Georgia*; Sue Coffia, *Statesboro, Georgia*; J. H. Collins, *Collins, Georgia*; Elizabeth Connor, *Sylvania, Georgia*; Joel Webb Cooper, *Bainbridge, Georgia*.



FIRST ROW:

Reba Creekmore, Statesboro, Georgia; Jimmy Crittenden, Attapulgus, Georgia; Evelyn L. Cravey, Lyons, Georgia; Jo Ann Darden, Waycross, Georgia; Ann Daniel, Bellville, Georgia; Julia Rushing Davis, Statesboro, Georgia.

SECOND ROW:

Edgar H. DeLoach, Statesboro, Georgia; Betty Drake, Collins, Georgia; Martha Driskell, Waycross, Georgia; Emmo Jean Dutton, Glennville, Georgia; Elizabeth Eason, Collins, Georgia; Winnie Mae Eason, Claxton, Georgia.

1 9 5 1



THIRD ROW:

Betty June Hooks, Lexsy, Georgia; Jo Anne Edwards, Doerun, Georgia; Wolton Ewing, Rincon, Georgia.



FOURTH ROW:

Gwen Forehand, Metter, Georgia; Warren S. Gailbreath, Waycross, Georgia; Denice J. Gardner, Homerville, Georgia; Betty Jane Gordy, Midville, Georgia; Joanne Groover, Statesboro, Georgia; Margaret C. Hagin, Statesboro, Georgia.

FIFTH ROW:

Miriam Hall, Rincon, Georgia; Guydell Harn, Claxton, Georgia; Betty Hart, Macon, Georgia; Evelyn P. Hart, Statesboro, Georgia; Olin Moyo Hortley, Wrightsville, Georgia; Earl Clifton Hickmon, Girard, Georgia.



FIRST ROW:

Peggy Winnifred Hinely, *Rincon, Georgia*; Mary Sue Hodges, *Wrightsville, Georgia*; James Eli Hodges, *Savannah, Georgia*; Lynette Hunnicutt, *Metter, Georgia*; Gilbert Hughes III, *Homerville, Georgia*; Margaret V. Hurst, *Sardis, Georgia*.

SECOND ROW:

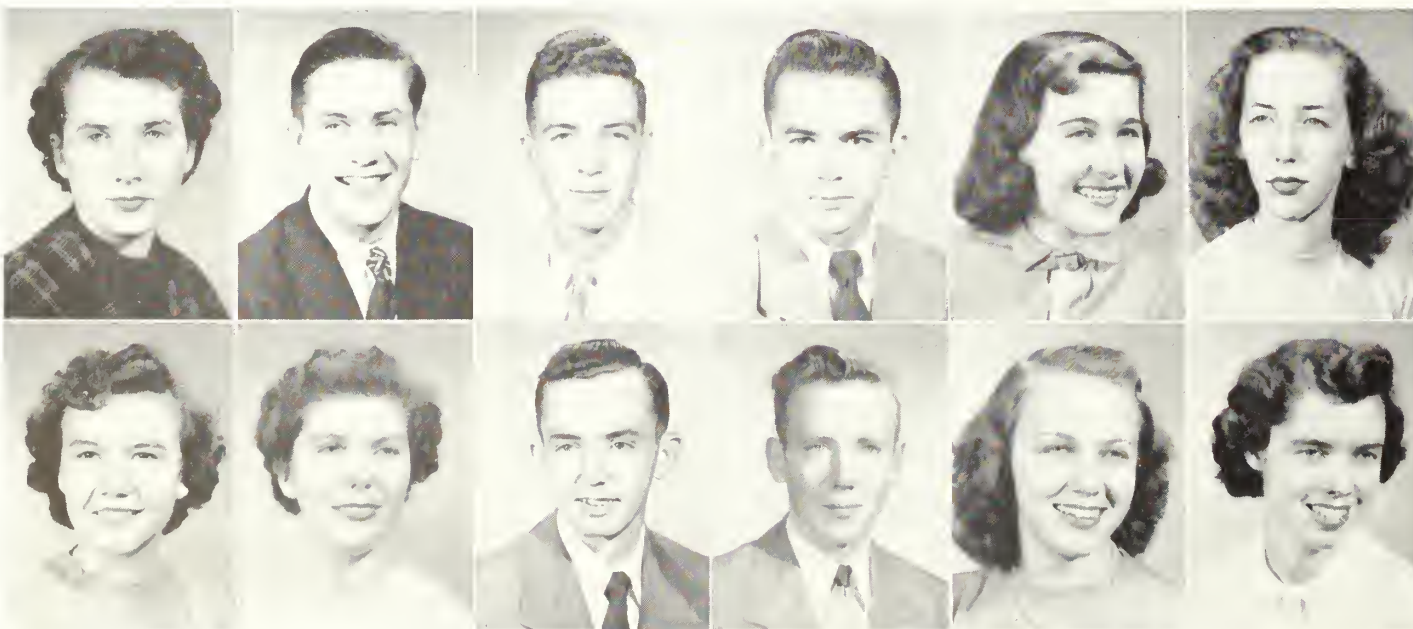
Hazel Jarriel, *Register, Georgia*; Anna Ruth Johnston, *Sparta, Georgia*; Lois Eugene Johnson, *Warrenton, Georgia*; Rosemary Johnson, *Ashburn, Georgia*; William M. Johnson, *Jesup, Georgia*; Jo Anne Jones, *Metter, Georgia*.



SOPHOMORES

THIRD ROW:

Marilyn Jean Jones, *Statesboro, Georgia*; Mary Kight, *Kite, Georgia*; Clyde Little, *Canton, Georgia*.



FOURTH ROW:

Cornelia Kirkland, *Statesboro, Georgia*; Winton Lacey, *Hazelhurst, Georgia*; Thomas Lanier, *Statesboro, Georgia*; Tommy Lanier, *Metter, Georgia*; Annabel Leverenz, *Garfield, Georgia*; Eunis Lewis, *Demascus, Georgia*.

FIFTH ROW:

Elizabeth Ann McKinley, *Greensboro, Georgia*; Catherine McNally, *Chickamauga, Georgia*; John Mallard, *Sardis, Georgia*; Leon May, *Mitchell, Georgia*; Mynette May, *Sumner, Georgia*; Rose Meighen, *Savannah, Georgia*.



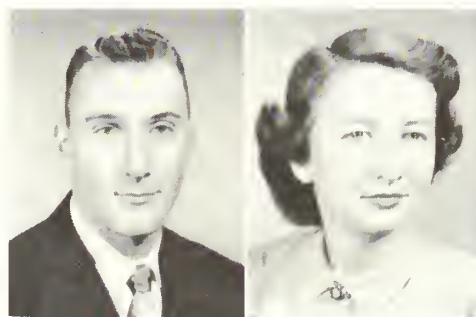
FIRST ROW:

Ed. Mitchell, *Sylvania, Georgia*; Francis Mobley, *Statesboro, Georgia*; June Moore, *Claxton, Georgia*; William Raymond Moore, *Fitzgerald, Georgia*; Walton Morris, *Lyons, Georgia*; Robert Morriss, *Brunswick, Georgia*.

SECOND ROW:

Carolyn Moye, *Wrightsville, Georgia*; Ann Nevil, *Register, Georgia*; Jane Odum, *Statesboro, Georgia*; Blanche Jeanette Parker, *Ogeechee, Georgia*; Betty Parrish, *Brooklet, Georgia*; Guy W. Parrish, *Oliver, Georgia*.

. . . 1 9 5 1



THIRD ROW:

Johnny H. Patterson, *Fitzgerald, Georgia*; Fannie Jo Phillips, *Soperton, Georgia*.



FOURTH ROW:

Robert C. Pickens, *Fitzgerald, Georgia*; Chester Poole, *Waycross, Georgia*; Beth Poppell, *Odum, Georgia*; Helen Poppell, *Jesup, Georgia*; Fleur Powell, *Kite, Georgia*; Hollis Ray Powell, *Wrightsville, Georgia*.

FIFTH ROW:

Mary Earle Powell, *Albany, Georgia*; Mary Lou Powell, *Fitzgerald, Georgia*; Trudy Pridgen, *Waycross, Georgia*; Carolyn Porter, *Hinesville, Georgia*; Frankie M. Quick, *Midville, Georgia*; George P. Rahn, *Glyo, Georgia*.



FIRST ROW:

Ann Remington, Statesboro, Georgia; Harold Rhoden, Lyons, Georgia; Helen Robertson, Lyons, Georgia; W. A. Rogers, Claxton, Georgia; Edna Ruth Sanders, Summit, Georgia; Gary C. Sapp, Manassas, Georgia.

SECOND ROW:

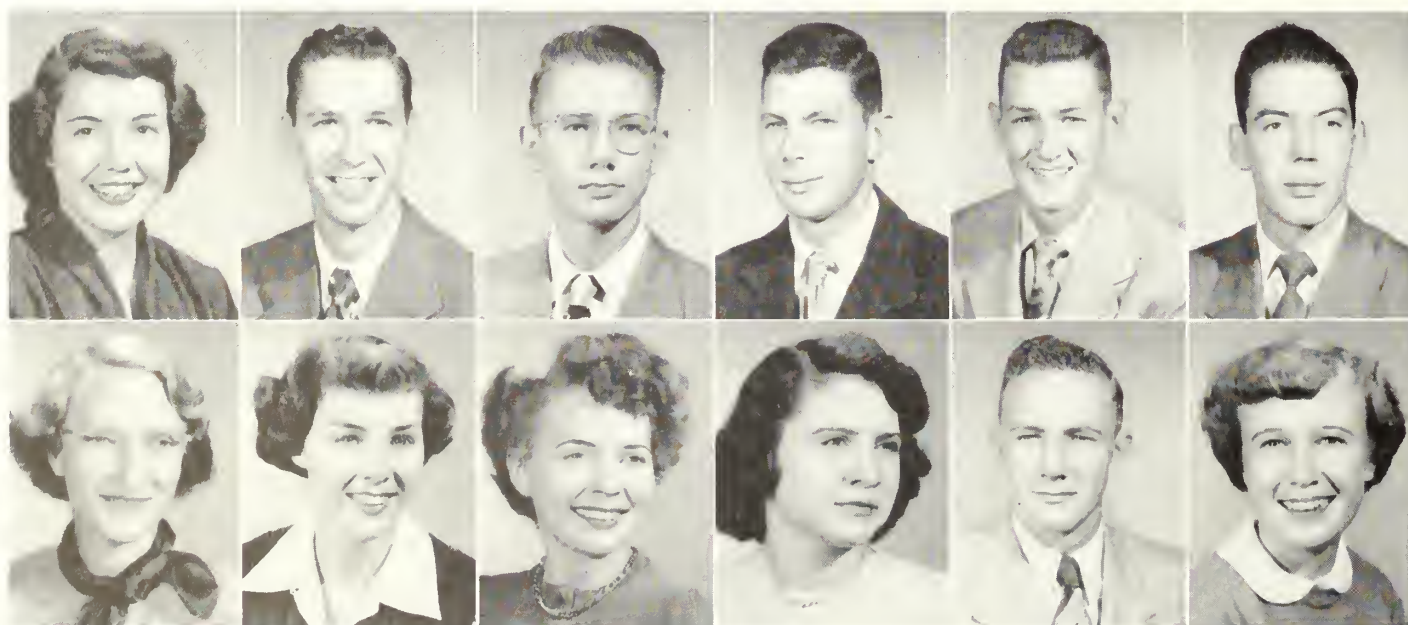
Ann Sell, Sylvania, Georgia; Betty Ann Sherman, Statesboro, Georgia; Mary Elizabeth Sherman, Augusta, Georgia; Shirley Shuman, Savannah, Georgia; Charles Sims, Statesboro, Georgia; Sue Simmons, Register, Georgia.



SOPHOMORES

THIRD ROW:

Jacquelyn Simpson, Kingsland, Georgia; Nell Smith, Sylvania, Georgia; Glenn Thomas, Nahunta, Georgia.



FOURTH ROW:

Jo. Starr, Greensboro, Georgia; Billy Stapleton, Lumber City, Georgia; Joel A. Stowers, Elberton, Georgia; John C. Strickland, Statesboro, Georgia; Earl Swicord, Quitman, Georgia; Douglas Taylor, Hinesville, Georgia.

FIFTH ROW:

Frances E. Tippins, Claxton, Georgia; Jane Thompson, Sylvania, Georgia; Opal Tyre, Bristol, Georgia; Rayma Carolyn Tyson, Statesboro, Georgia; Sammie Varnadoe, Glennville, Georgia; Doris Walden, Gibson, Georgia.



FIRST ROW:

Henry Scott Walker, *Fitzgerald, Georgia*; Dione Waters, *Statesboro, Georgia*; Carlton Weaver, *Sylvania, Georgia*; Frederick Weitman, *Springfield, Georgia*; Horriet Ann Whitcomb, *Camilla, Georgia*; Billy W. Williams, *Sylvania, Georgia*.

SECOND ROW:

Eleose Williams, *Summertown, Georgia*; Emily Williams, *Statesboro, Georgia*; Frances E. Wimberly, *Albany, Georgia*; Eugene Withrow, *Odum, Georgia*; Martha Waad, *Waycross, Georgia*; James Wynn, *Braklet, Georgia*.

1 9 5 1





RAT DAY



Air Raid!!! In Position, Rat!





FRED PIERCE	President
BOBBY PHILLIPS	Vice-President
FAYE WATERS	Secretary
GENIE OWEN	Treasurer
WATSON WEATHERS, YVONNE JONES	Student Council

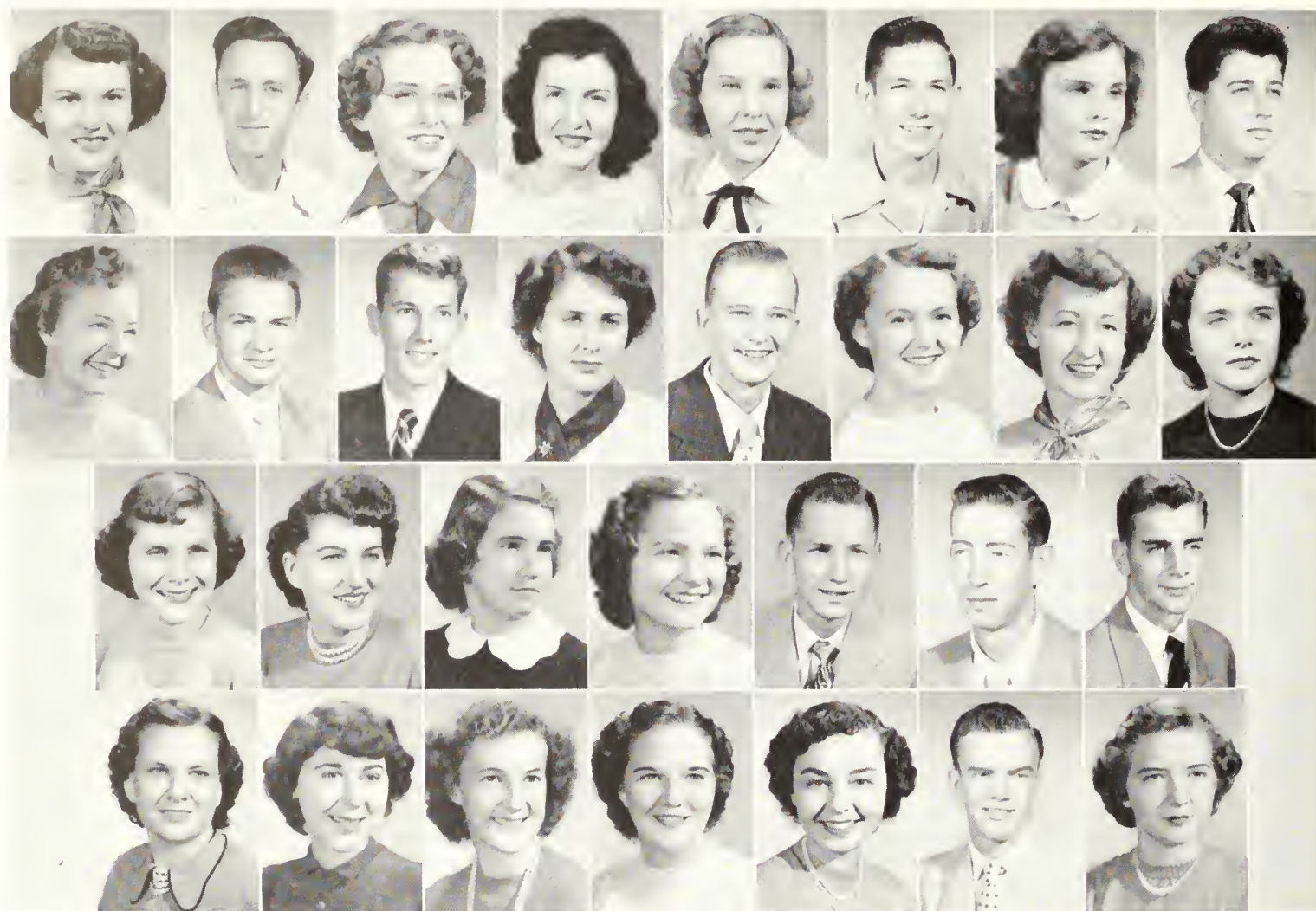


DR THOMAS ALEXANDER
Class Sponsor

THE FRESHMAN CLASS



F R E S H M E N



FIRST ROW:

Saralene Akridge, Bristol, Georgia; Robert Alderman, Brokoleet, Georgia; Mary Helen Altman, Waycross, Georgia; Duanne Anderson, Glennville, Georgia; Daphne Anita Ash, Wesley, Georgia; Harry O Bacon, Pembroke, Georgia; Beverley E. Barger, Sardis, Georgia; Marvin Barnett, Savannah, Georgia.

SECOND ROW:

Harriette Beasley, Register, Georgia; Horace Belflower, Cochran, Georgia; Robert Belton Eustis, Florida; Doris Bentley, Cairo, Georgia; Jimmy Blackman, Summertown, Georgia; Betty Sue Boyett, Bristol, Georgia; Nadine Brannen, Surrency, Georgia; Angelyn Brontley, Wrightsville, Georgia.

THIRD ROW:

Emma Ruth Bray, Wrightsville, Georgia; Barbara Brown, Statesboro, Georgia; Mary Ann Brinson, Graymont, Georgia; Dorothy Brown, Summit, Georgia; James B. Brown, Wrightsville, Georgia; Larry Fisher Brown, Nahunta, Georgia; John G. Corter, Wrightsville, Georgia.

FOURTH ROW:

Beatrice P. Cavender, Millwood, Georgia; Emily E. Chandler, Millen, Georgia; Janice Chastain, Albany, Georgia; Audrey Nell Childers, Arabi, Georgia; Betty Jo. Claxton, Swainsboro, Georgia; Carroll D. Cobb, Glennville, Georgia; Clara Elizabeth Coffey, Fleming, Georgia.

OF NINETEEN FIFTY-ONE

FIRST ROW:

Herbert Connor, *Collins, Georgia*; Dorothy Ann Cranford, *Pelham, Georgia*; Elaine Cross, *Millen, Georgia*; William T. Cross, *Milan, Georgia*; Hugh E. Darley, *Statesboro, Georgia*; Lewis A. Davis, *Wrightsville, Georgia*; Morris Davis, *Tifton, Georgia*.

SECOND ROW:

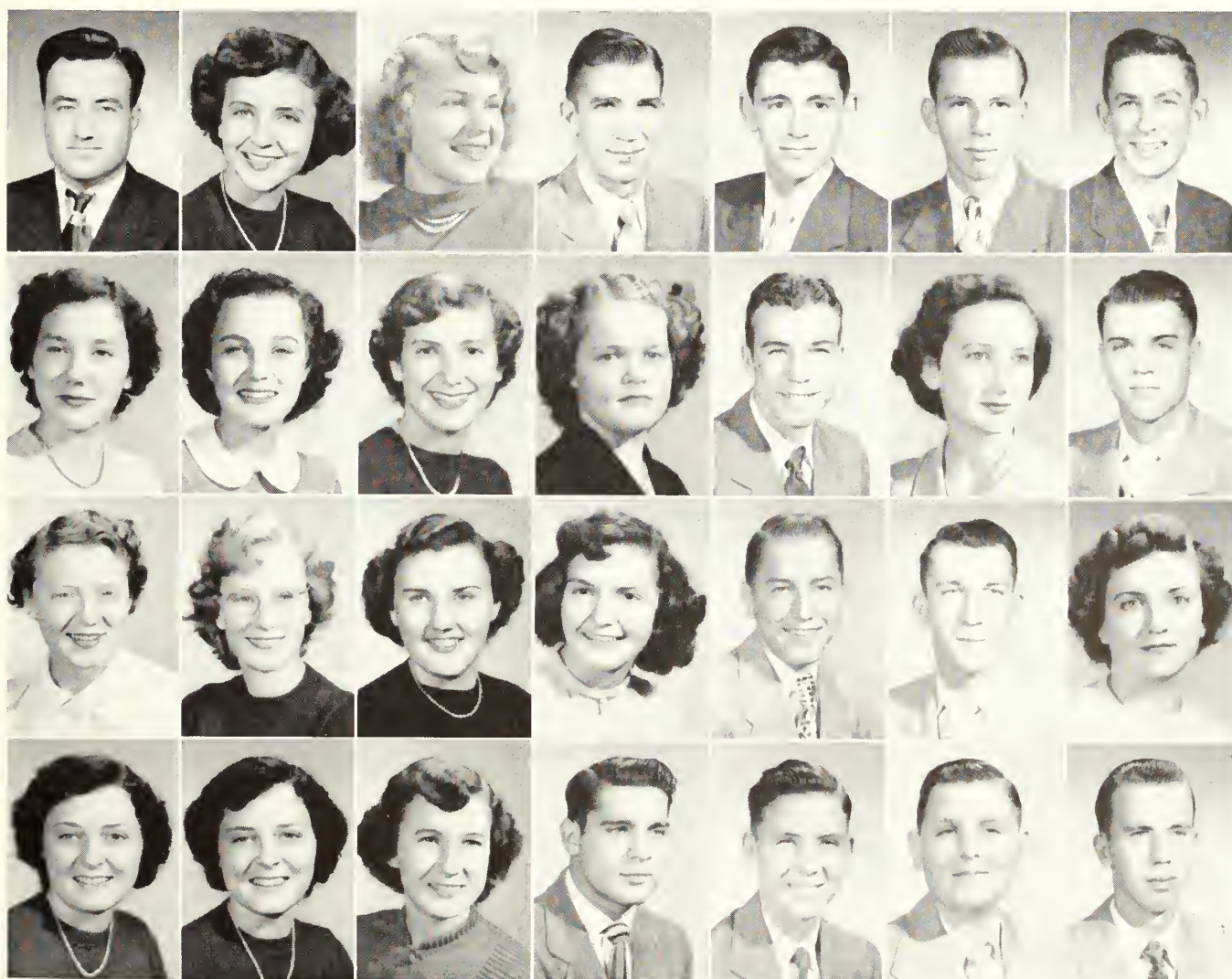
Peggy J. Davis, *Blun, Georgia*; Sara Ann Denham, *Sycamore, Georgia*; Carol Yvonne Denty, *Brunswick, Georgia*; Ella J. Dickens, *Collins, Georgia*; Robert N. Dixon, *Kite, Georgia*; Helen W. Duke, *Bainbridge, Georgia*; William Jared Durrence, *Glennville, Georgia*.

THIRD ROW:

Louise Edwards, *Claxton, Georgia*; Juanita C. Ellis, *Statesboro, Georgia*; Margaret Ann Eubank, *Appling, Georgia*; Elizabeth Ann Evons, *Sylvania, Georgia*; Henry H. Evans, *Soperton, Georgia*; Jesse F. Finch, *Glennville, Georgia*; Mary E. Flanders, *Rockledge, Georgia*.

FOURTH ROW:

Doris Ford, *Sylvester, Georgia*; Dorothy Ford, *Sylvester, Georgia*; Cynthio J. Forehond, *Sylvania, Georgia*; Joseph D. Fulford, *Waycross, Georgia*; Angus Gillis, *Soperton, Georgia*; Jack N. Gay, *Sylvester, Georgia*; Charles C. Gilpin, *Swoinsboro, Georgia*.



F R E S H M E N



FIRST ROW:

Doris Garnto, *Wrightsville, Georgia*; Loretta L. Green, *Albany, Georgia*; Evelyn Green, *Rockmart, Georgia*; Joe E. Green, *Puloski, Georgia*; Mary Ann Greenway, *Kite, Georgia*; Joan Griffin, *Dublin, Georgia*; Hal Griner, *Savannah, Georgia*.

SECOND ROW:

Mary Ann Groover, *Kingsland, Georgia*; Shirley A. Gullledge, *Statesboro, Georgia*; Edward J. Hamby, *Columbus, Georgia*; Betty C. Hames, *Cloxtan, Georgia*; Eugene F. Harper, *Crosland, Georgia*; Cornelia F. Harrison, *Savannah, Georgia*; Elizabeth Hartley, *Sylvania, Georgia*.

THIRD ROW:

Betty Jane Hendrix, *Metter, Georgia*; Alice M. Hickman, *Girard, Georgia*; Nancy Hickman, *Savannah, Georgia*; Byron Hicks, *Gorfield, Georgia*; Thelma Hicks, *Adel, Georgia*; Masonori Higa, *Tomori, Kochinda, Okinawa*; Annie M. Higginbotham, *Waycross, Georgia*.

FOURTH ROW:

Green W. Higgs, *Soperton, Georgia*; Barbara C. Hill, *Reidsville, Georgia*; Thelma C. Hill, *Hilltonio, Georgia*; Reba Hinton, *Waynesboro, Georgia*; Fay R. Hodges, *Statesboro, Georgia*; Bobbie J. Holley, *Matthews, Georgia*; George A. Howard, *Sylvonio, Georgia*.

OF NINETEEN FIFTY-ONE

FIRST ROW:

Herman B. Huff, Jacksonville Beach, Florida; Annie Lee Hunter, Collins, Georgia; Genevieve Hunter, Collins, Georgia; Barbara Jean Jacobs, Savannah Beach, Georgia; Robert Lee James, Nahunta, Georgia; Clarice V. Jennings, Amsterdam, Georgia; Rita Booth Johnston, Swainsboro, Georgia.

SECOND ROW:

Virginia W. Joiner, Statesboro, Georgia; Yvonne Jones, Waycross, Georgia; Norma J. Kelly, Camilla, Georgia; Mamie Sue Kennedy, Statesboro, Georgia; Cordelia Kidd, Camilla, Georgia; Patsy Kilpatrick, Fitzgerald, Georgia; Bobby G. Kingery, Pulaski, Georgia.

THIRD ROW:

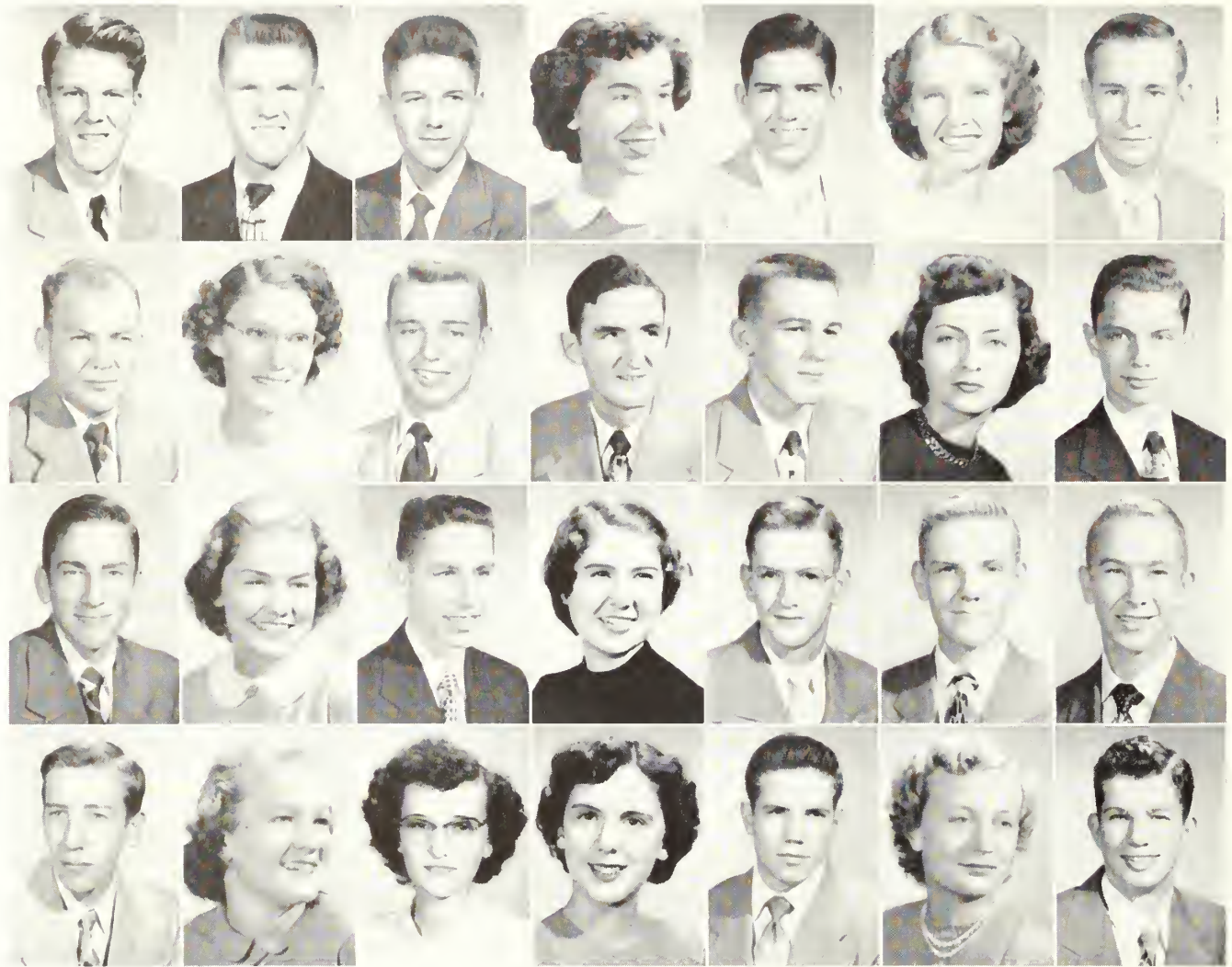
William E. Lambert, Hilltonia, Georgia; Catherine Lester, Statesboro, Georgia; Mary Lewis, Moultrie, Georgia; Virginia Loetis, Brunswick, Georgia; Faye Lunsford, Richland, Georgia; Basil L. McCallister, Richmond Hill, Georgia; Sadie McBride, Portal, Georgia.

FOURTH ROW:

Pat Meeks, Nichols, Georgia; Rudy Mills, Macon, Georgia; Leah A. Mitchell, Lumber City, Georgia; Mary Carolyn Moore, Chula, Georgia; Alice Faye Mosley, Oak Park, Georgia; Annie Ruth Moody, Baxley, Georgia; Voncile Moody, Alma, Georgia.



F R E S H M E N



FIRST ROW:

Oscar M. Neeley *Chattahoochee, Florida*; Emory NeSmith, *Statesboro, Georgia*; Jack D. Newsome, *Statesboro, Georgia*; Betty M. O'Quinn, *Jesup, Georgia*; William F. Oswald, *Brookhaven, Georgia*; Eugenia Owen, *Waycross, Georgia*; William D. Page, *Augusta, Georgia*.

SECOND ROW:

Clifford Ray Parker, *Gainesville, Georgia*; Leda C. Patrick, *Waycross, Georgia*; John Fred Pierce, *Savannah, Georgia*; Hugh B. Pharis, *Columbus, Georgia*; Robert B. Phillips, *Albany, Georgia*; Joan C. Pittman, *Lumpkin, Georgia*; Alan Pope, *Waycross, Georgia*.

THIRD ROW:

Emerson Proctor, *Stilson, Georgia*; Melba Prosser, *Statesboro, Georgia*; Byron Quick, *Waynesboro, Georgia*; Frances C. Rockley, *Statesboro, Georgia*; Charles R. Richardson, *Lafayette, Georgia*; Bernard E. Roberts, *Wadley, Georgia*; William Robertson, *Brooklet, Georgia*.

FOURTH ROW:

Robert Sanders, *Pembroke, Georgia*; Joe A. Sapp, *Pulaski, Georgia*; Mary Frances Sapp, *Manassas, Georgia*; Peggy Saturday, *Collins, Georgia*; Jackson Shellnut, *Atlanta, Georgia*; Sadie Sikes, *Manassas, Georgia*; Harvey Lee Simpson, *Sylvester, Georgia*.

OF NINETEEN FIFTY-ONE

FIRST ROW:

Sarah Simpson, Kingsland, Georgia; Beverley I. Smith, Swainsboro, Georgia; Frank E. Smith, Sylvania, Georgia; Harry D. Smith, Brunswick, Georgia; Mary Ellen Smith, Glennville, Georgia; Nellie Ruth Smith, Ashburn, Georgia; Ralph Smith, Jesup, Georgia.

SECOND ROW:

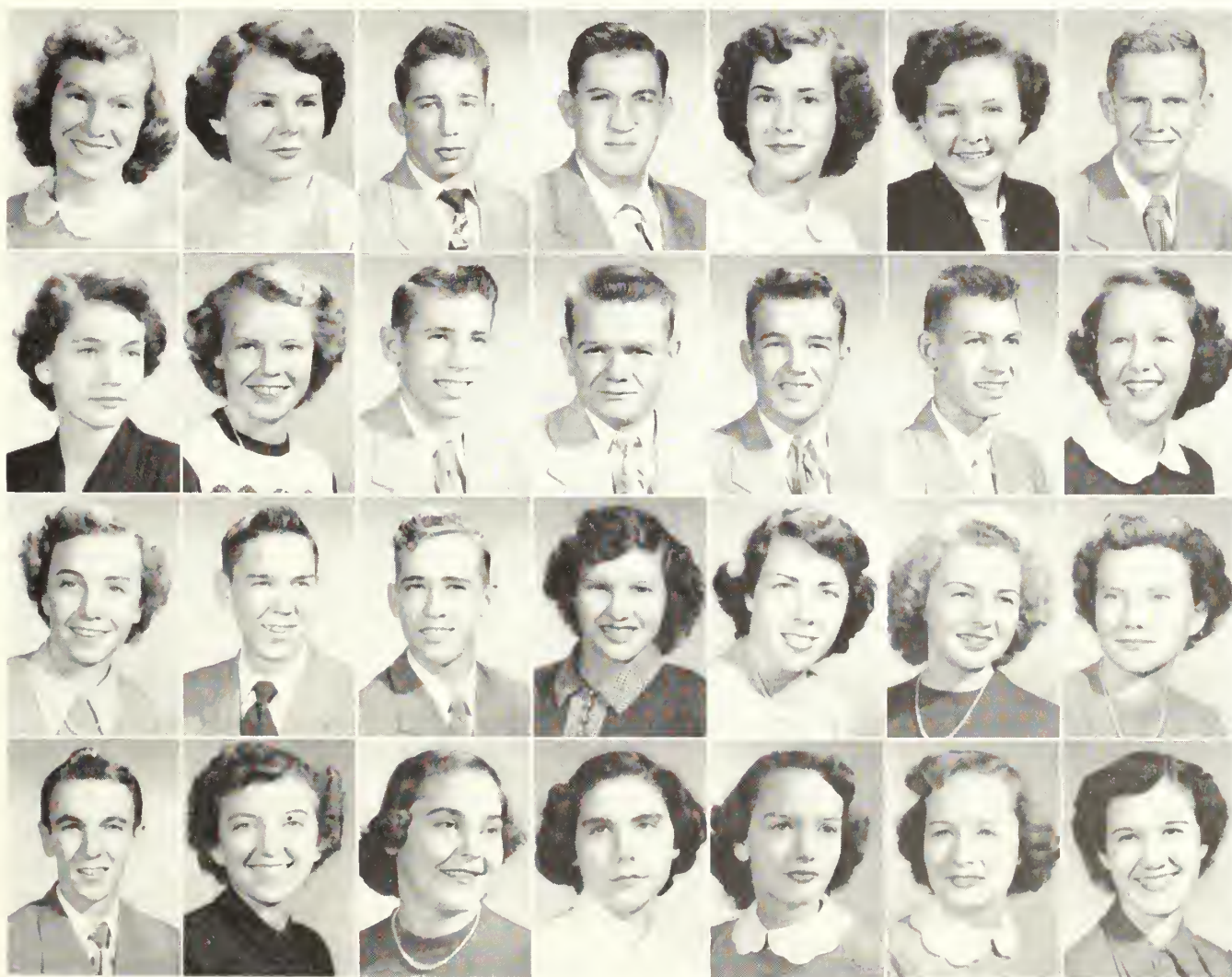
Sara C. Smith, Claxton, Georgia; Shirley Smith, Thompson, Georgia; William N. Smith, Glennville, Georgia; Eugene T. Span, Hazlehurst, Georgia; Johnny A. Spence, Waresboro, Georgia; Gerald C. Story, Ashburn, Georgia; Jo Ann Surrency, Glennville, Georgia.

THIRD ROW:

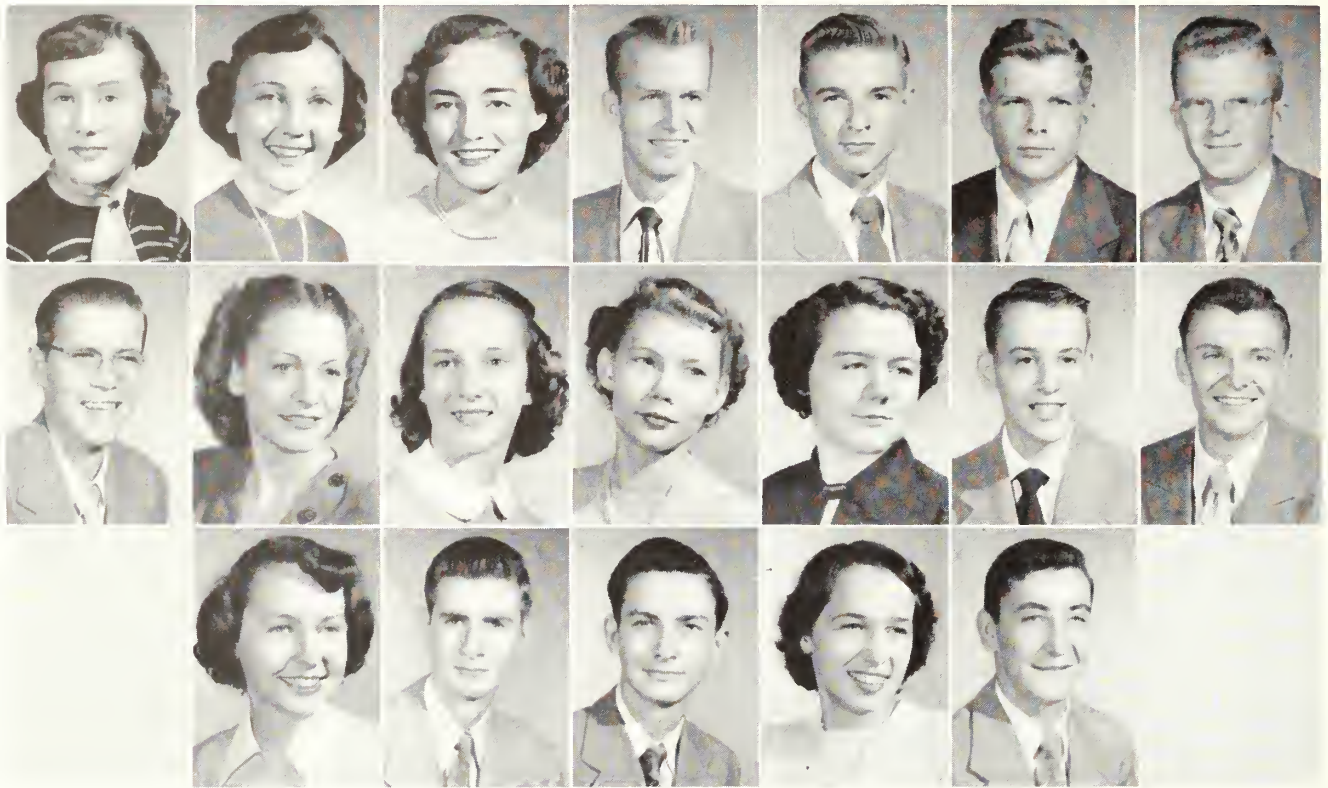
Ruby Tanner, Nichols, Georgia; Clarence H. Taylor, Bainbridge, Georgia; Robert A. Taylor, Hephzibah, Georgia; Elizabeth Thomas, Milan, Georgia; Betty Jane Thompson, Wrens, Georgia; Martha Ann Todd, Glennville, Georgia; Eugenia A. Townsend, Wrens, Georgia.

FOURTH ROW:

Jesse Tucker, Pulaski, Georgia; Uldine Underwood, Statesboro, Georgia; Maurice Vann, Swainsboro, Georgia; Pauline Vickers, Eastman, Georgia; Bobby Vaughn, Atlanta, Georgia; Joyce Vaughn, Atlanta, Georgia; Jean Warnock, Pelham, Georgia.



F R E S H M E N



FIRST ROW:

Melba Warnock, Tarrytown, Georgia; Iris Warren, Kingsland, Georgia; Faye Waters, Statesboro, Georgia; Watson Weathers, Dearing, Georgia; Hugh Wells, Sylvania, Georgia; Donald R. West, Ashburn, Georgia; John R. West, Ashburn, Georgia.

SECOND ROW:

Alfred H. Whitner, Brunswick, Georgia; Virginia Lee Wilkes, Stillmore, Georgia; Mary E. Wilkins, Jesup, Georgia; Betty G. Williams, Blackshear, Georgia; Carolyn Williams, Rockmart, Georgia; Dan Wilson, Waynesboro, Georgia; De'bert L. Wilson, Glennville, Georgia.

THIRD ROW:

Marguerite Wilson, Statesboro, Georgia; Herbert Paul Womack, Statesboro, Georgia; Louis N. Woodrum, Statesboro, Georgia; Barbara Jean Wood, Malow, Georgia; Glenn Youmans, Metter, Georgia.



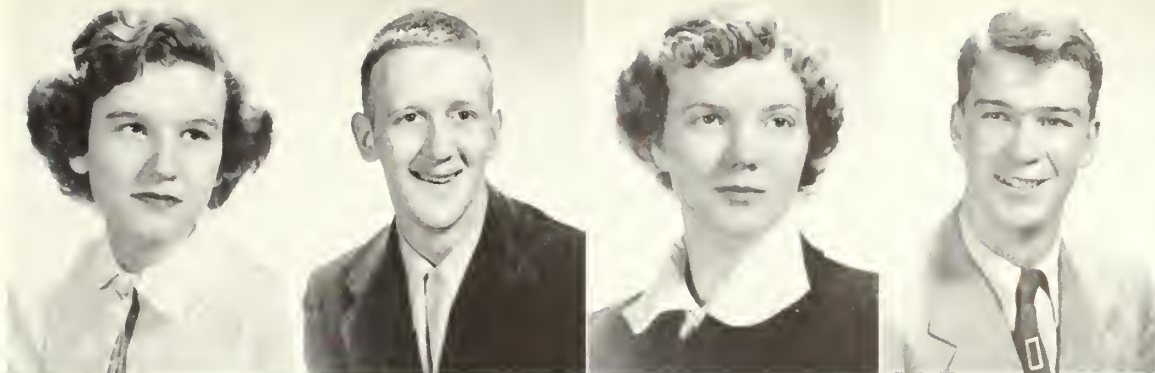
W
I
N
T
E
R
Q
U
A
R
T
E
R
E
N
T
R
A
N
T
S

Betty B. Brannen
Freshman
Statesboro, Georgia

Bob Gene Cortee
Freshman
Olive Hill, Kentucky

Marye L. Cartee
Freshman
Olive Hill, Kentucky

Jerry Cleveland
Sophomore
Hartwell, Georgia

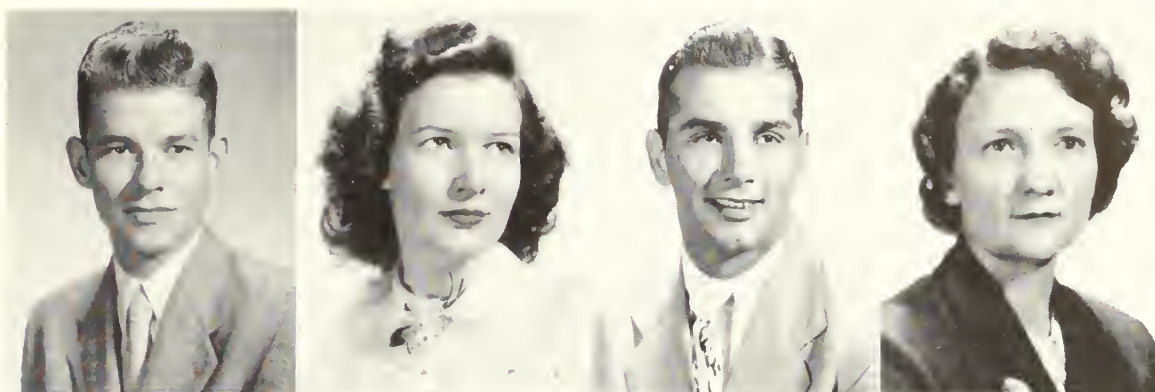


Tim Cockfield
Senior
Graymont, Georgia

Christine Dye
Freshman
Statesboro, Georgia

Frank Hammond
Senior
South Bend, Indiana

Mrs. Rubye Hollingsworth
Senior
Fernandina, Florida

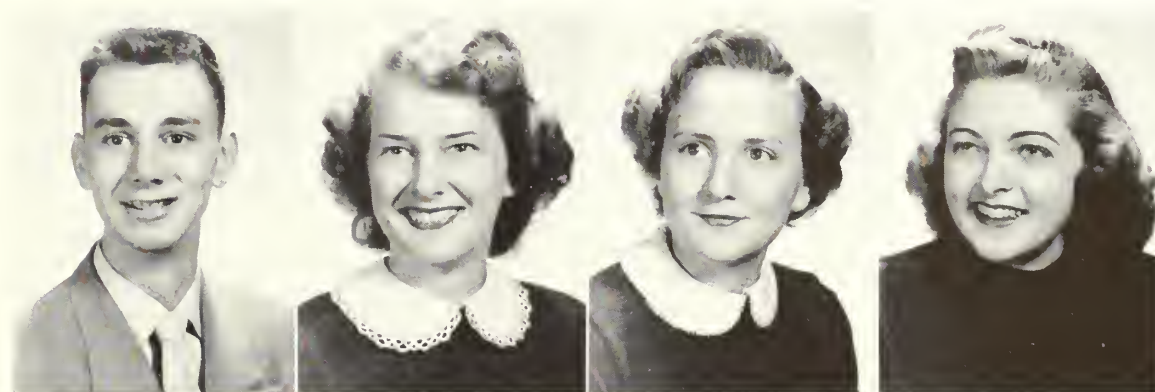


Robert L. Hurst
Freshman
Waycross, Georgia

Sally Ree Jones
Freshman
Louisville, Georgia

Julia Moxley
Freshman
Wadley, Georgia

Peggy R. Normon
Junior
Millhaven, Georgia

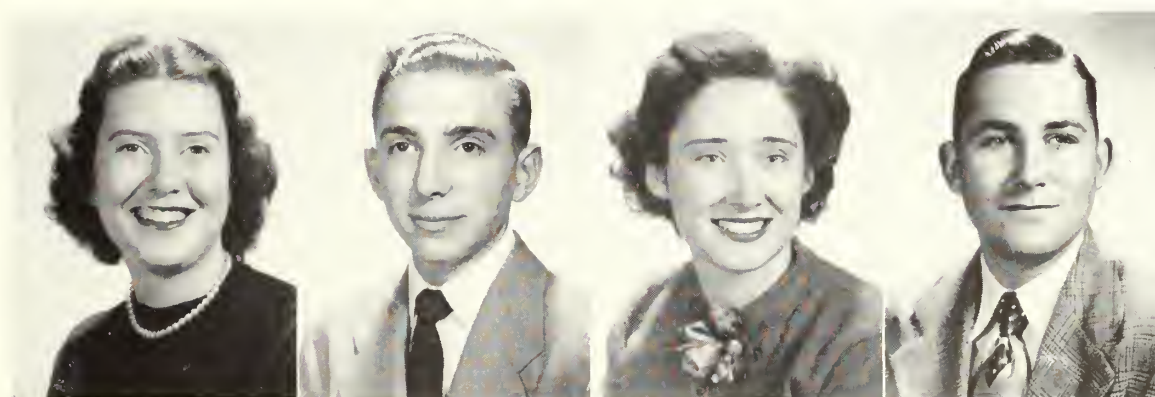


Charlotte Phillips
Freshman
Soperton, Georgia

Carlton L. Purvis
Freshman
Pembroke, Georgia

Jeonette Quarles
Freshman
Dalton, Georgia

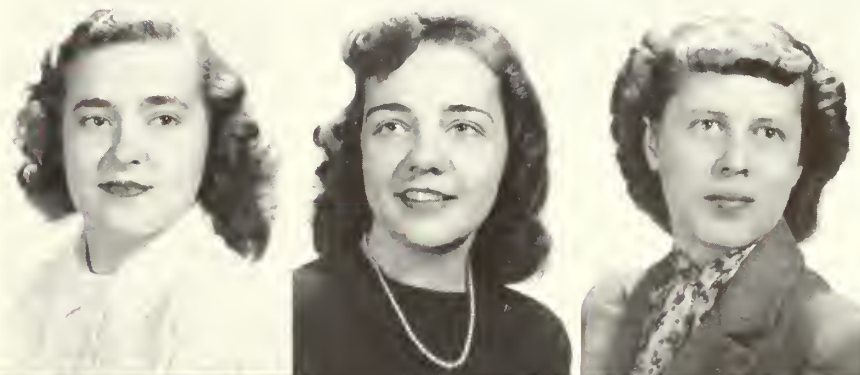
John R. Rogers
Sophomore
Reidsville, Georgia



Mildred Speir
Junior
Dawson, Georgia

Nancy Welborn
Freshman
Hinesville, Georgia

Berta Woodard
Sophomore
Eastman, Georgia

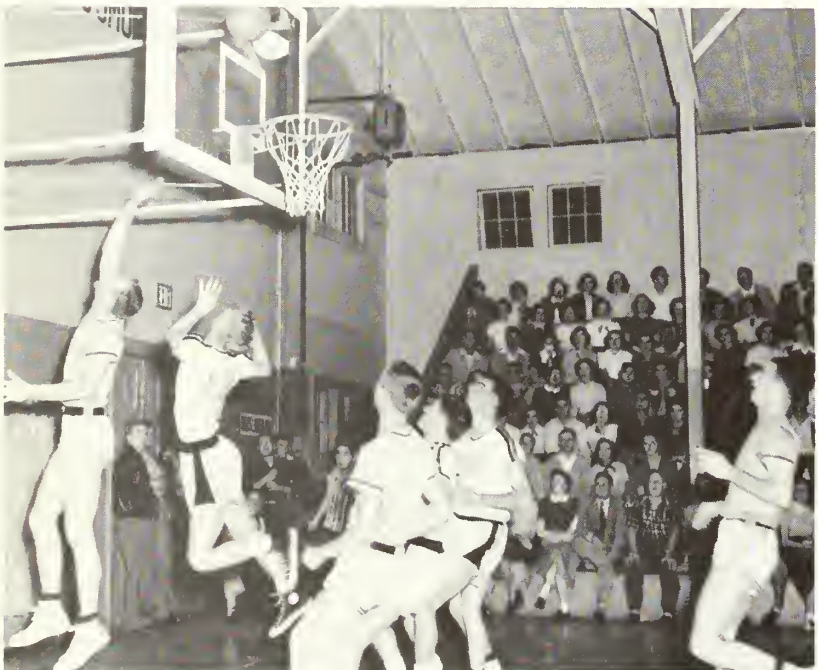




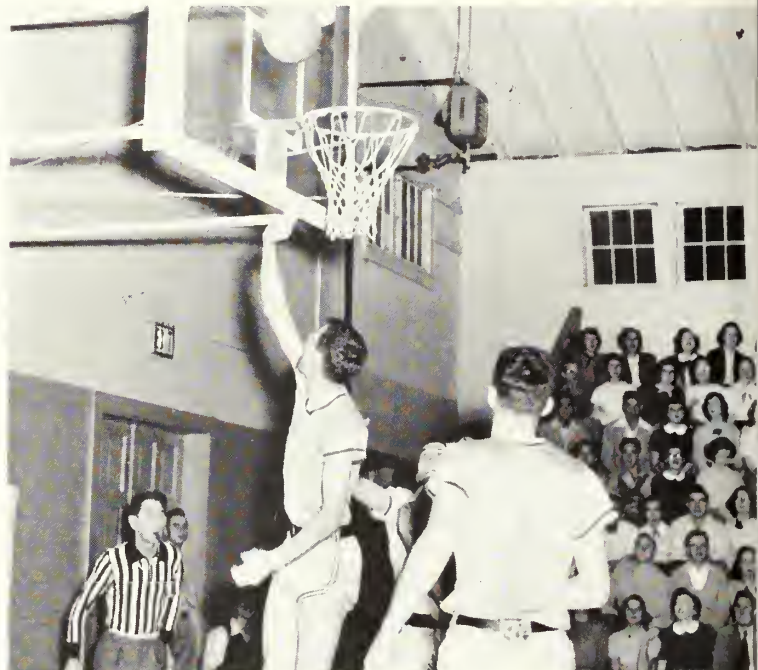
Ralph fires a round against North Georgia



Perkins goes on up as the Codets go down

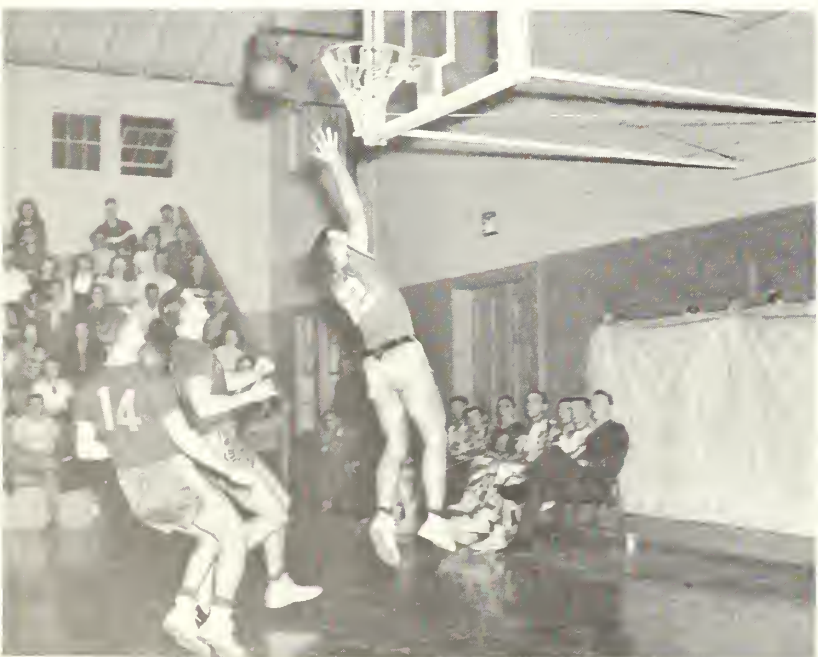


Sonny does one the hard way against Wofford



Jim shoots two to help beat Wofford

"Buster" sinks a lay-up against the P.I. Marines



Renfroe drives in to score as the "Tide" sinks P.I.





S P O R T S

V A R S I T Y



GEORGIA TEACHERS COLLEGE RECORD

WON 24 LOST 5

SCORES

G. T. C.	77	PARRIS ISLAND	59
G. T. C.	88	UNIVERSITY OF GEORGIA (Atlanta Division)	47
G. T. C.	83	NORTH GEORGIA COLLEGE	63
G. T. C.	90	PIEDMONT COLLEGE	47
G. T. C.	99	CAMP GORDON	53
G. T. C.	79	TENNESSEE POLY, TECH.	71
G. T. C.	99	MAXWELL FIELD	61
G. T. C.	53	SPRING HILL COLLEGE	66
G. T. C.	83	WOFFORD COLLEGE	61
G. T. C.	81	GREEN COVE NAVY	53
G. T. C.	76	PRESBYTERIAN COLLEGE	66
G. T. C.	98	JACKSONVILLE NAVAL AIR	54
G. T. C.	81	NORTH GEORGIA COLLEGE	32
G. T. C.	69	MERCER UNIVERSITY	44
G. T. C.	92	PELZER MILLS	81
G. T. C.	57	ERSKINE COLLEGE	49
G. T. C.	64	QUANTICO MARINES	70
G. T. C.	78	PARRIS ISLAND	67
G. T. C.	87	PIEDMONT COLLEGE	40
G. T. C.	88	GREEN COVE NAVY	49
G. T. C.	89	PELZER NAVY	66
G. T. C.	83	WOFFORD COLLEGE	101
G. T. C.	59	MERCER COLLEGE	61
G. T. C.	67	JACKSONVILLE NAVAL AIR	41
G. T. C.	104	ERSKINE COLLEGE	51
G. T. C.	88	PRESBYTERIAN COLLEGE	76
G. T. C.	134	UNIVERSITY OF GEORGIA (Atlanta Division)	45
G. T. C.	75	TAMPA UNIVERSITY	71
G. T. C.	67	FLORIDA STATE UNIVERSITY	69



PARSONS
Guard



PERKINS
Forward



CLEMENTS
Forward



DUNCAN
Center

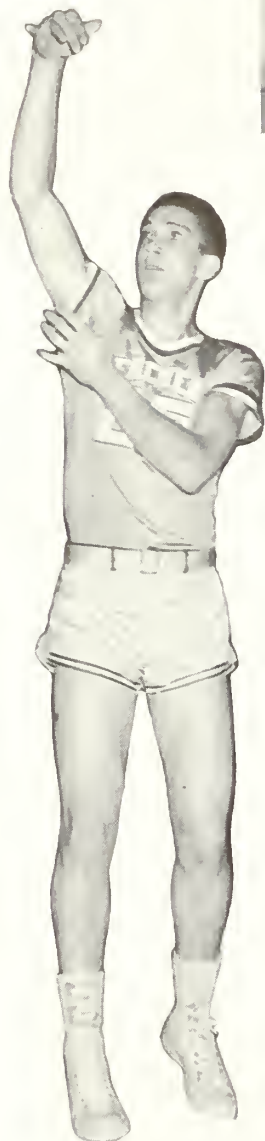


"Scotty" sinks one to lead the "Professors" over Comp Gordon

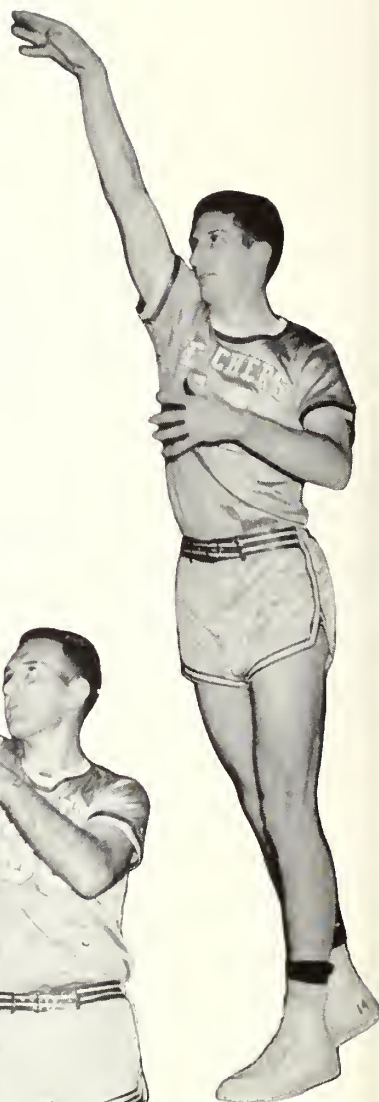


Fire-ball in a lay up

RENFRO
Forward



CROSS
Guard



PAGE
Guard



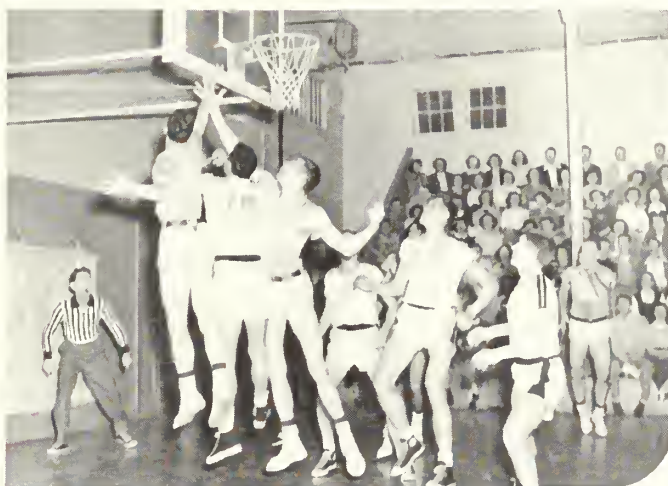
CARTEE
Guard



J. B. SCEARCE
Coach



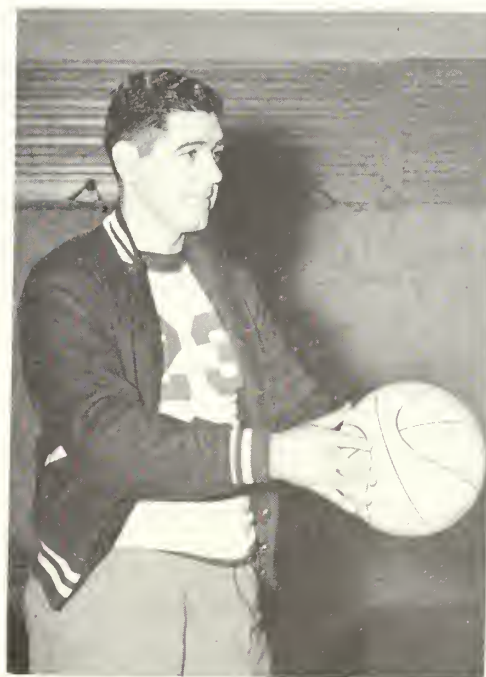
OSWALD
Center



John Renfroe in action



PHILLIPS
Forward



J. I. CLEMENTS
Assistant Coach



FRESHMAN SCHEDULE

WON 3

LOST 3

G. T. C.	47	BREWTON PARKER	79
G. T. C.	61	SOUTH GEORGIA	57
G. T. C.	68	ELBERTON V. F. W.	75
G. T. C.	38	SOUTH GEORGIA	65
G. T. C.	73	JAX. JR. COLLEGE	65
G. T. C.	79	GA. SOUTH. WEST.	59



Phillips shoots two points as the Frosh edge South Georgia



The team that never loses.



ROY MCTIER
Trainer

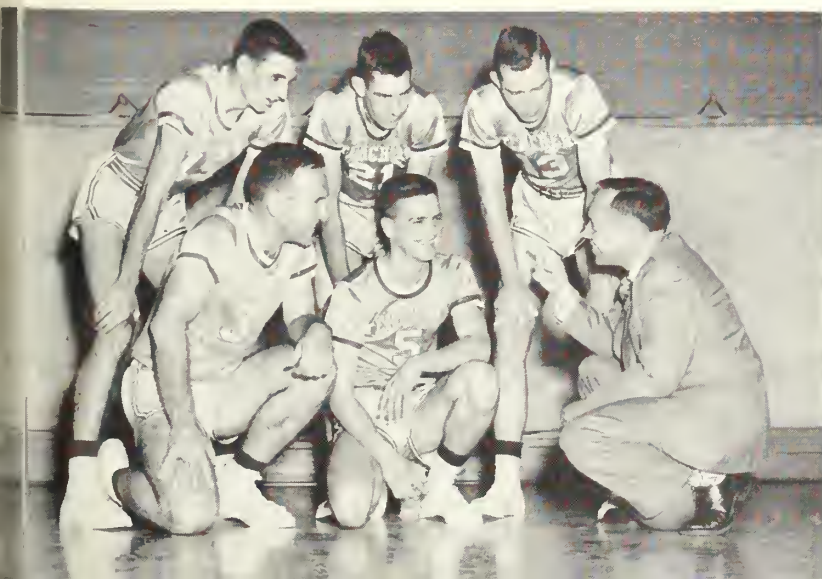


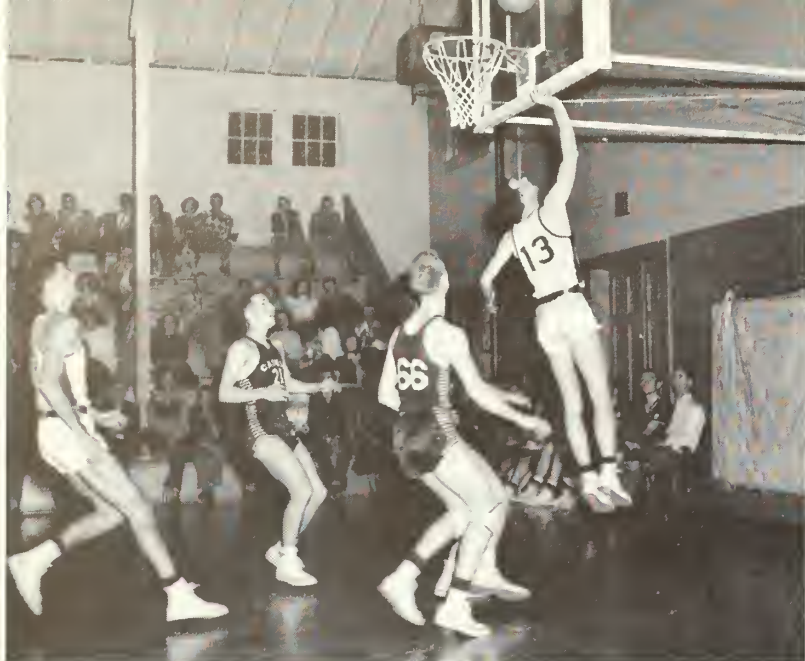
Coach Sceore in action

GEORGE RAHN
Manager



"The 'Big Blue' gets the final word.





"Sonny" tosses in one and holds down



"Scotty" pushes in one from way up



Finch tosses one as pros beat North Georgia



"Sonny" shoots two against Mercer

Page backs up Perkins



They all look at the ball





' 5 0 B A S E B A L L



GEORGIA TEACHERS COLLEGE RECORD

Won 8 Lost 13

G. T. C. 5	ERSKINE COLLEGE	8
G. T. C. 4	NORTH GEORGIA COLLEGE	3
G. T. C. 3	NORTH GEORGIA COLLEGE	2
G. T. C. 3	MERCER UNIVERSITY	1
G. T. C. 2	PRESBYTERIAN COLLEGE	3
G. T. C. 4	ERSKINE COLLEGE	5
G. T. C. 8	ERSKINE COLLEGE	9
G. T. C. 1	NEWBERRY COLLEGE	12
G. T. C. 6	PRESBYTERIAN COLLEGE	7
G. T. C. 3	NORTH GEORGIA COLLEGE	9
G. T. C. 9	NORTH GEORGIA TRADE SCHOOL	8
G. T. C. 1	JACKSONVILLE NAVAL AIR STATION	6
G. T. C. 11	JACKSONVILLE NAVAL AIR STATION	4
G. T. C. 3	JACKSONVILLE NAVAL AIR STATION	4
G. T. C. 8	JACKSONVILLE NAVAL AIR STATION	6
G. T. C. 2	PIEDMONT COLLEGE	1
G. T. C. 0	NORTH GEORGIA COLLEGE	5
G. T. C. 4	NORTH GEORGIA COLLEGE	6
G. T. C. 4	NEWBERRY COLLEGE	6
G. T. C. 5	PIEDMONT COLLEGE	6
G. T. C. 2	PIEDMONT COLLEGE	1



C L U B S



EARLE M. REYNOLDS
Editor-in-Chief



MARGARET HARRISON
Associate Editor



GEORGE PARRISH
Art Editor



WILLIAM EVANS
Assistant Editor



MARTHA WOOD
Club Editor

T H E R E F L E C T O R

Thelma Winter
Bunny Brown



Ann Trice
Dan Fulford



Betty Gordy
Elaine Cross



Betty Mitchell
Jan Murphy



Edith Carpenter
Paul Womack

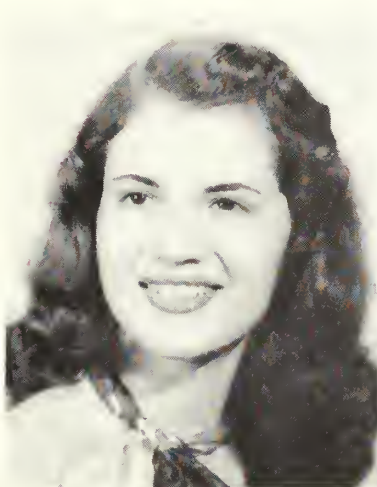




W. C. WYATT
Circulation Manager



GENE HENDERSON
Business Manager



ROSELYN BRANTLEY
Advertising Staff



BUD STONE
Sports Editor



BETTY STONE
Feature Editor

S T A F F O F 1 9 5 1

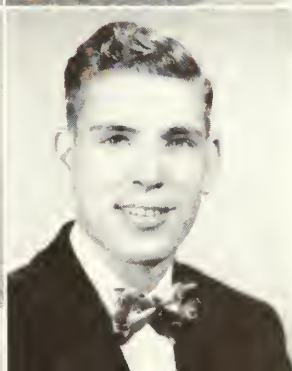
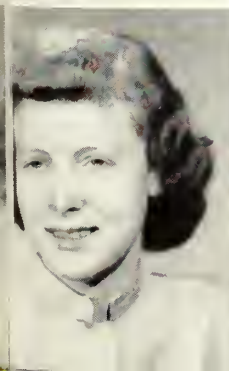
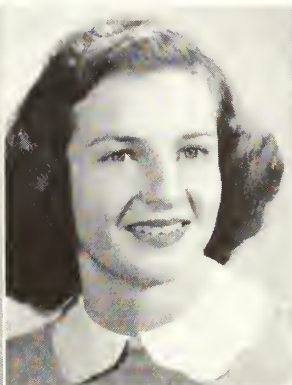
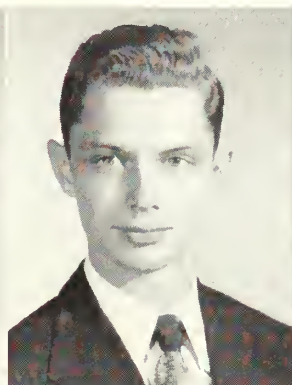
Loquito Burkett
Helen Robertson

Alon Pope
Betty Mikell

Beth Poppell
Helen Poppell

Betty Hendrix
Moyo Hartley

Frankie Quick



Members not shown:
Bobby Jeter
Anno Ruth Johnston
Gib Johnson
Charlotte Clements
Robert Allen



BUD STONE
Editor



MARGARET HARRISON
Associate Editor



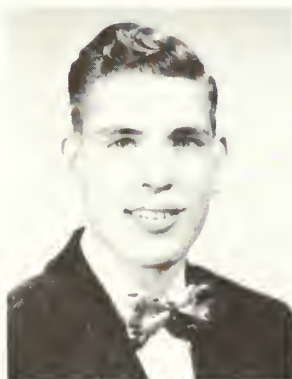
FRANKIE QUICK
News Editor



EDITH CARPENTER
Feature Editor



CHARLES STEWART
Business Manager



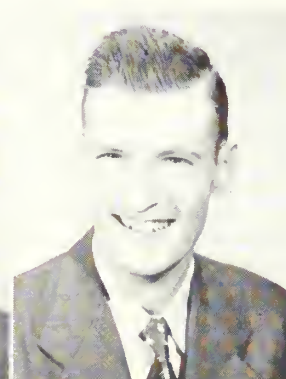
MAYO HARTLEY
Makeup Editor



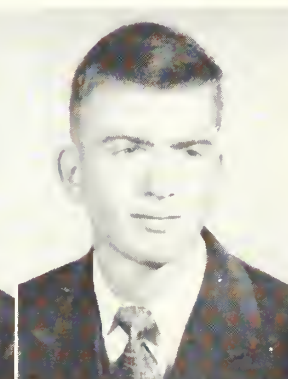
HAROLD RHODEN
Associate Makeup Editor



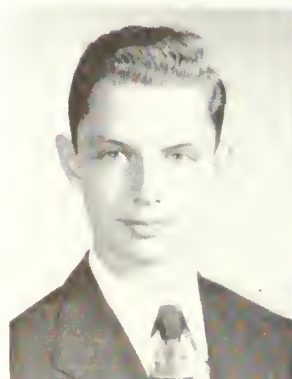
JOAN BENNETT
Associate Sports Editor



EARLE REYNOLDS
Editorial Editor



JOE LITTLEFIELD
Sports Editor



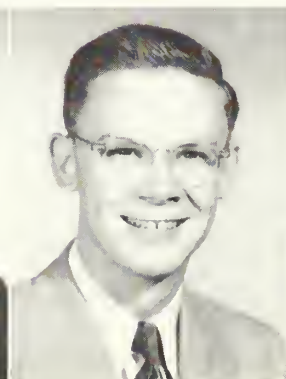
ALAN POPE
Photography Editor



MORRIS DAVIS
Associate Photography Editor



GEORGE PARRISH
Art Editor



ROBERT ALLEN
Associate Circulation Manager



W. C. WYATT, JR.
Circulation Manager

THE GEORGEANNE STAFF

REPORTERS



Altman



Bedingfield



Brown



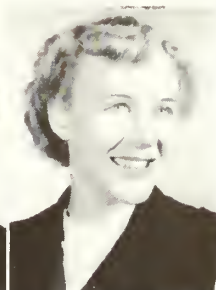
Burke



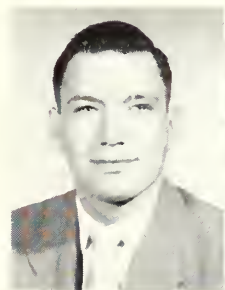
Corbitt



Darden



Johnson



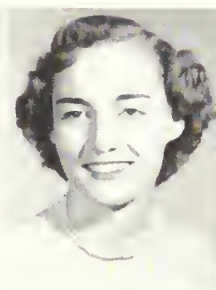
McTIER



OWEN



SHUMAN



WATERS



WITHROW



WOOD

TYPISTS



TIPPINS



STONE



PITTMAN



MORGAN

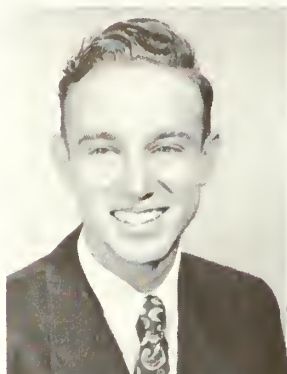


HINTON

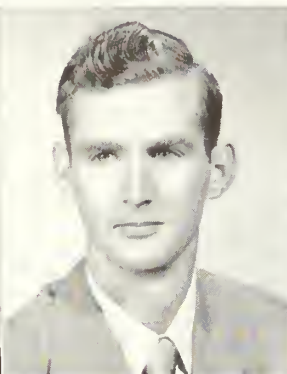


GREENE

INDUSTRIAL ARTS CLUB



LOUIS WINTER
President



RALPH RIGDON
Vice-President



LEMUEL WATKINS
Secretary-Treasurer



HARRY STRICKLAND
Reporter



SIDNEY STRICKLAND
Sergeant-at-Arms

MEMBERS

Joe Wilkins
Ralph Rigdon
Ben Brewton
Louis Winter
Sidney Strickland
Lonnie Ladson
Douglas Taylor
Bobby Young
Larry Harroll
Sanford Sherrod

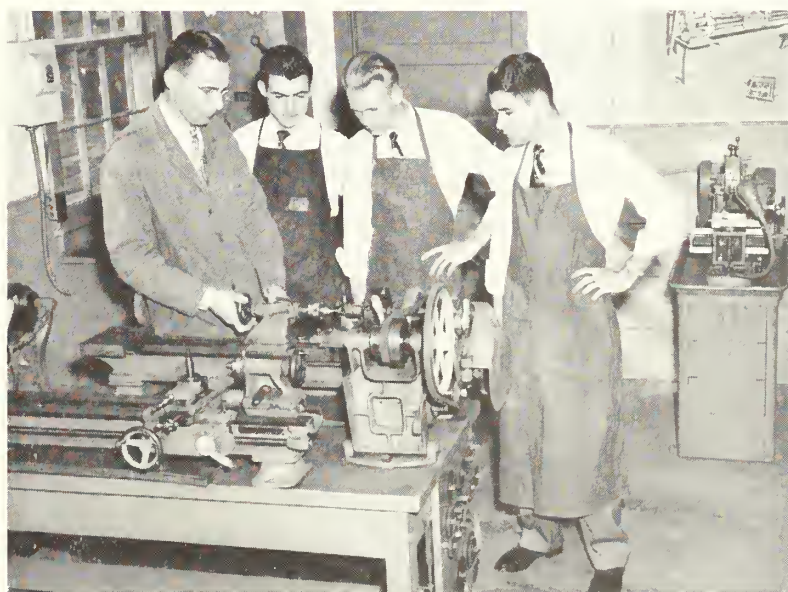
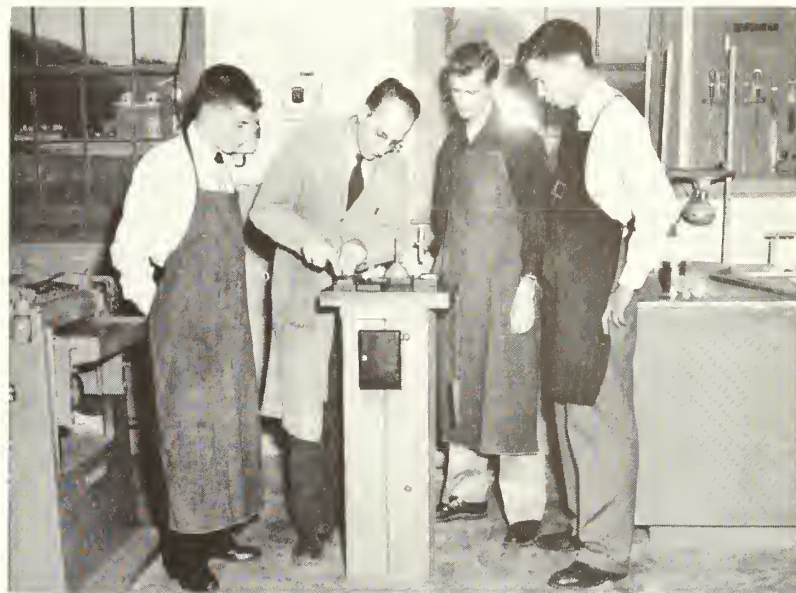
Fred Kennedy
Glen Thomas
Fred Wietman
Spencer Overstreet
Harry Strickland
Charles Sims
Harold DeLoach
George Rahn
Clarence Taylor

Lemuel Watkins
Gene Henderson
Dub Rodgers
Jack Williams
J. A. Wynn
Robert Hadaway
Harold Kennedy
Sanford Brown
Gene Harper
Troy Mallard

SPONSORS

Mr. Erickson, Mr. Hackett, and Mr. Godfrey





EAST HALL HOUSE COUNCIL



OFFICERS

ANN NEVIL *President*
 TOMMIE JEAN CORBETT *Vice-President*
 CAROLYN MOYE *Secretary & Treasurer*

MONITORS

Faith Harrison
 Ann Higgenbotham
 Ann McKinley
 Betty Ann Withrow
 Mary Ann Carter
 Mary Flanders
 Jo Starr

HOUSE MOTHER

Mrs. J. B. Johnson

WEST HALL HOUSE COUNCIL



OFFICERS

CAROLYN PORTER *President*
 MARTHA WOOD *Vice-President*
 CATHERINE McNALLY . . . *Sec. & Treas.*

MONITORS

Mary Lou Powell
 Jo Phillips
 Ann Broome
 Jane Thompson
 Edna Ruth Sanders
 Helen Robertson
 Frankie Quick
 Patsy Kilpatrick
 Elizabeth Connor
 Peggy Saturday

HOUSE MOTHER

Mrs. Archie Jackson

SANFORD HALL HOUSE COUNCIL

OFFICERS

GEORGE ROEBUCK *President*
 LEMUEL WATKINS *Vice-President*
 RALPH PARSONS *Secretary*
 WENDELL BRINSON *Treasurer*

PROCTORS

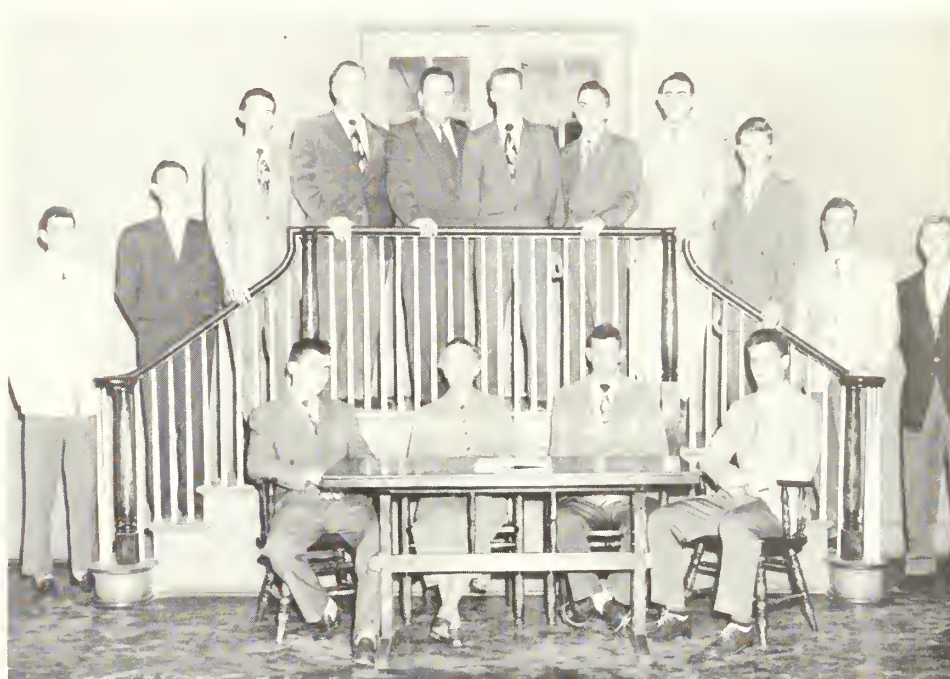
Lemuel Watkins
 George Clark
 Lewis Wynne

MONITORS

Jack Wade
 Jack Kelley
 Johnny Patterson
 Scotty Perkins
 Ed Mitchell
 Lemuel Phillips
 Al Moreland
 Jerry Silverman
 Charles Parker
 Archie Haygood

HOUSE MOTHER

Miss Sophie Johnson



LEWIS HALL HOUSE COUNCIL

OFFICERS

BLAIR WELLS *President*
 REBA WILSON *Vice-President*
 ANNE HILL *Secretary*
 MARILYN BARWICK *Treasurer*

MONITORS

Helen Poppell
 Betty Anne Beddingfield
 Gay Kimbrough
 Nell Bowen
 Polly Jones
 Norma Touchton

HOUSE MOTHER

Miss Mamie Veazy



OFFICERS

SANFORD BROWN *President*

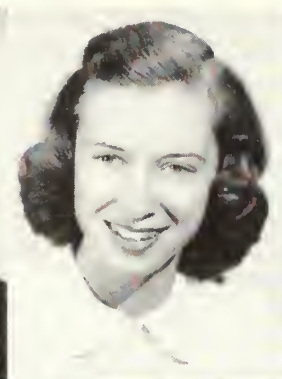
BLAIR WELLS *First Vice-President*

MAX HILL *Second Vice-President*

GAY KIMBROUGH *Secretary*

MARILYN BARWICK *Treasurer*

DR. FIELDING RUSSELL *Faculty Advisor*



STUDENT CHRISTIAN ASSOCIATION



A R T C L U B

OFFICERS

HELEN POPPELL *President*
 BETTY TYRE *Vice-President*
 ANN DANIEL *Secretary*
 BETH WIMBERLY *Treasurer*

MEMBERS

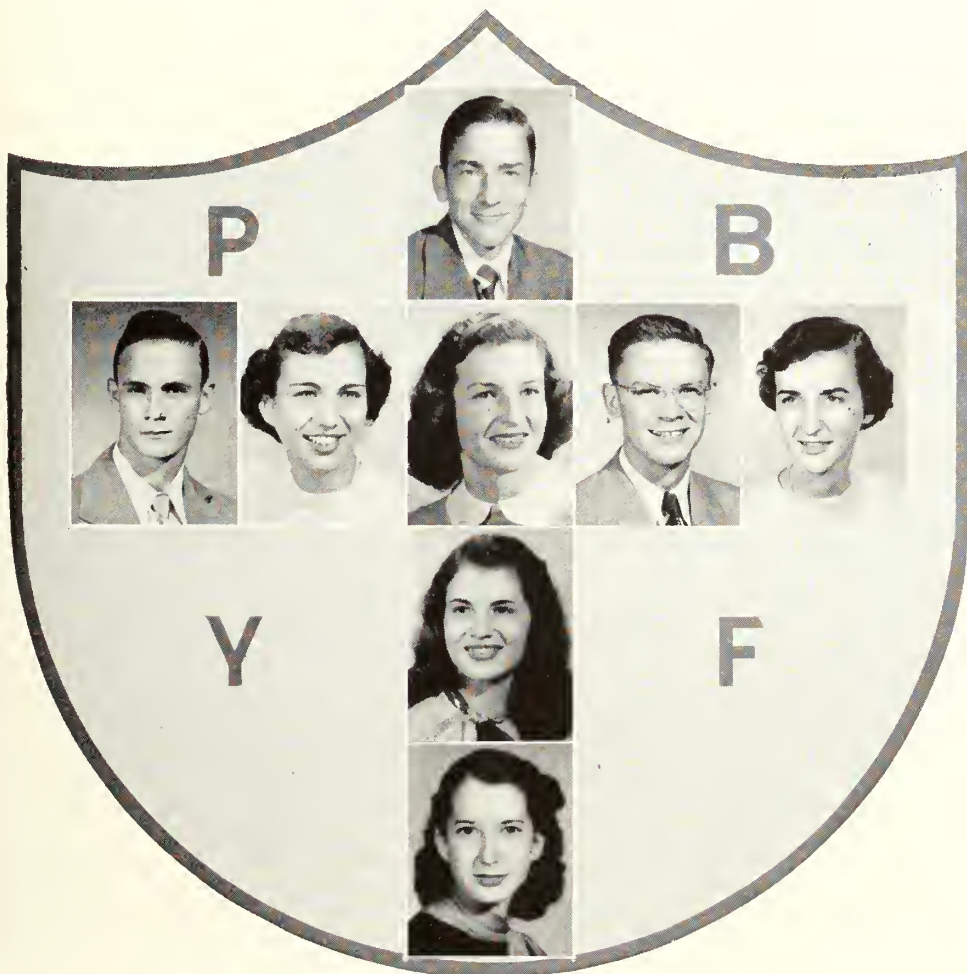
Lonnie Ladson	Louis Winter
Peggy Dobbs	Mary Kennedy
Katherine Floyd	Sara Ann Denham
Jan Murphy	Roselyn Brantley
Claire Thomas	Boots Beasley
Barbara Jones	June Cantrell
Cherry White	Alan Pope
Connie Kirkland	Robert Sanders
Mary Ann Carter	



PRIMITIVE BAPTIST YOUTH FELLOWSHIP

OFFICERS

HOLLIS RAY POWELL *President*
 MARTHA BANKS *First Vice-President*
 BETTY HENDRIX *Second Vice-President*
 BOB ALLEN *Third Vice-President*
 PEGGY JO BURKE *Secretary*
 BETTY SUE BRANNEN *Treasurer*
 EMERSON PROCTER *Reporter*
 ROSELYN BRANTLEY *Chorister*
 ANGELLYN BRANTLEY *Pianist*



MISS HASSIE McELVEEN
 Counsellor

"If we walk in the light, as He is in the light, we
 have fellowship one with another."

WESLEY FOUNDATION

OFFICERS

J. D. CORBITT	President
MAX HILL	Vice-President
BLAIR WELLS	Secretary
BETTY MITCHELL	Treasurer

MEMBERS

Grover Bell	Cordelia Kidd
Betty Mitchell	Carolyn Williams
Blair Wells	Pat Fitzpatrick
Gene Henderson	Dorothy Ford
Max Hill	Genie Owen
Laquita Burkett	Doris Ford
Cathryn McNally	Shirley Gulledge
Jack Wade	Bill Childers
Betty Jean Harris	Jo Starr
Marjorie Jackson	Janice Chastine
Marilyn Barwick	Elaine Cross
Martha Wood	Claire Thomas
Betty Parrish	Ann Trice
Violet Altman	June Cantrell
Faye Waters	Ann Mitchell
Evelyn Cravey	L. B. Metzger
Masanori Higa	Marjorie Weatherford





PHILHARMONIC CHOIR

MEMBERS

Beverly Barger
 Peggy Jo Burke
 June Cantrell
 Walton Ewing
 Loretta Green
 Joan Griffin
 Miriam Hall
 Betty Hart
 Margie Jackson
 Virginia Joiner
 Gay Kimbrough
 Dot Lancaster
 Annabell Leverenz
 Betty Lewis
 Madlyn Meeks
 Jeanette Quarles
 Jo Starr
 Claire Thomas
 Anne Trice

Reba Wilson
 Ann Altman
 Jo Ann Darden
 Shirley Gullledge
 Faye Lunsford
 Patsy Odom
 Mary Lou Powell
 Trudie Pridgen
 Helen Saturday
 Betty Ann Sherman
 Marjorie Weatherford
 Bill Childres
 Archie Haygood
 Sonny Hawkins
 Robert Hurst
 Jack Mercer
 Billy Moore
 Hugh Pharis

Bill Pharis
 Gene Roberts
 Billy Welles
 Joel Cooper
 Bill Fox
 Gene Henderson
 Byron Hicks
 Gilbert Hughes
 Bobby Humphrey
 Gibson Johnston
 Arthur Justice
 Winton Lacey
 Rudy Mills
 A. J. Morris
 Eddie Ort
 Robert Pickens
 Chester Poole
 Donald Reinsmith
 Jack Wilkerson

RONALD J. NEIL Director
 MARTHA DRISCOLL Accompanist



'T' CLUB

OFFICERS

RALPH PARSONS *President*
 GEORGE ROEBUCK . . . *Vice-President*
 FRANK CLEMENTS *Secretary*
 ROY MCTIER *Treasurer*

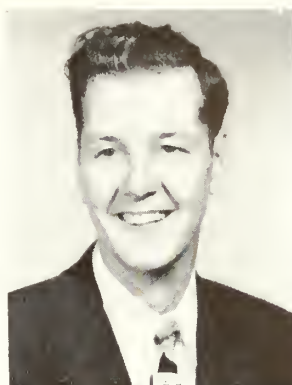
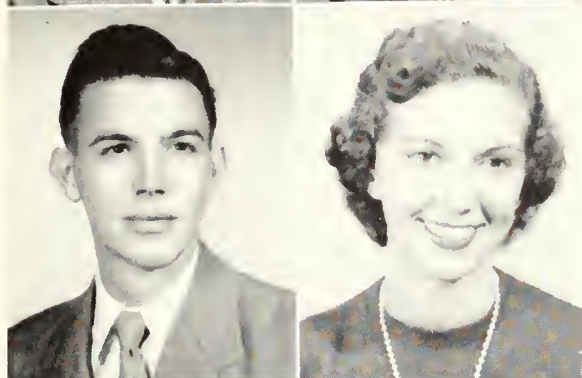
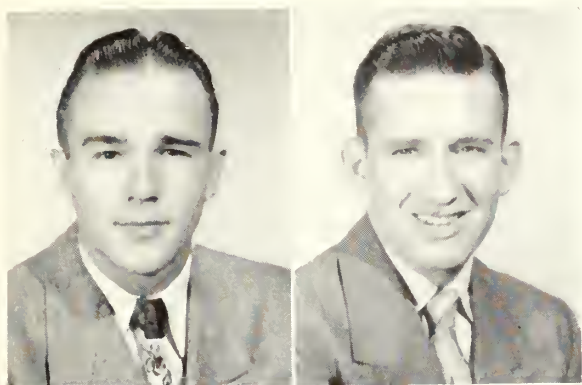
MEMBERS

Wade Scott Perkins
 Johnny Mallard
 Richard Lee Hawkins
 Jerry Silverman
 Jim Duncan



THE PEP CLUB IN ACTION





MR. BREMSETH
Sponsor

OFFICERS

ALAN ROGERS	President
HARRY STRICKLAND	Vice-President
OLDIN LEWIS	Treasurer
JOAN HARPER	Secretary

FUTURE BUSINESS LEADERS

MEMBERS

Emily Adomson
Al Rogers
Joon Horper
Normo Swonn
Cecil Council
Romono Powell
Jone Blich
Violet Altmon
Jone Robertson

Horry Strickland
Oldin Lewis
Neil Smith
Jerry Kicklighter
Eugene Jenkins
Charles Miller
Willis Holl
Lone McElveen

Lois Griner
Rolph Horgroves
Woldo Bowen
Troy Stephens
Jones Woodcock
Lewis Holl
Doug Rogers
Morgoret Price
Jimmie Lou Williams



FUTURE TEACHERS OF AMERICA

OFFICERS

EARLE REYNOLDS *President*

ROBERT WARE *Vice-President*

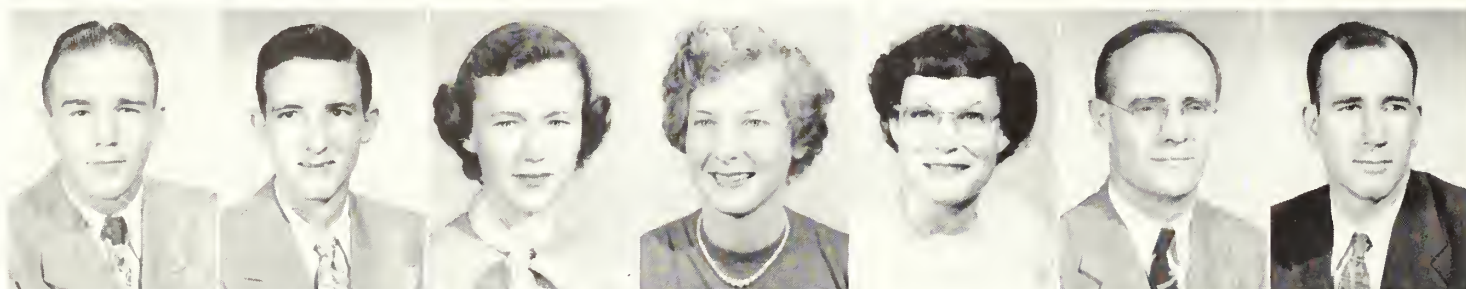
AUDREY STRICKLAND *Secretary*

DONALD McCLELLAN *Treasurer*

Viola Brack	Willis Hall
Betty Lovett	E. D. Turner
Blair Wells	Ray Hutchinson
Sybil Daniels	Andrew Sutton
Reba Wilson	Thelma Winter
Dot Lancaster	Robert Cone
Jackie Knight	Sheila Horne
L. B. Metzger	Lyneve Anderson
Ralph Hargreaves	



K A P P A D E L T A P I



ALLEN RODGERS
President

BILL PHARIS
Vice-President

ANNE HILL
Secretary

MARILYN BARWICK
Treasurer

MARGARET HARRISON
Historian

DR. RUSSELL
Sponsor

DR. ASHMORE
Sponsor

CHARTER MEMBERS



Lewis Hodges

Al Moreland

A. J. Morris

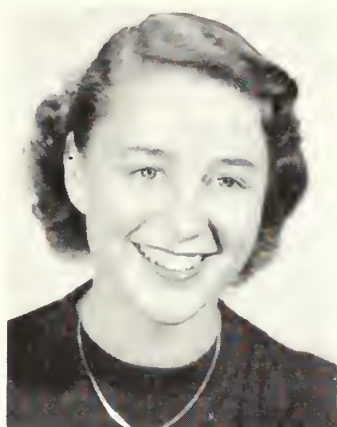
Fred M. Kennedy

Idus Newby

Earle M. Reynolds

Murray Rogers

HOME ECONOMICS CLUB



BETTY REAGEN
President



MARGARET HARRISON
Vice-President



LACQUITA BURKETT
Secretary

Angelyn Brantley
Byrta Woodard
Jean Warnock
Diane Waters
Margie Weatherford
Mary Ann Brinson
Ruth Bray
Ann Broome
Dorothy Brown
Sue Coffia
Maxine Corbitt
Reba Creekmore

MEMBERS

Anita Daniel
Sybil Daniels
Martha Duffield
Joanne Edwards
Gwen Forehand
Evelyn Hart
Peggy Hill
Ruth Johnston
Norma Jean Kelly
Annabel Leverenz
Carolyn Moore
Nancy Welborn

Jeanette Wilder
Elease Williams
Thelma Winter
Carolyn Moya
Ann Nevil
Betty Parrish
Jo Phillips
Trudie Pridgen
Edna Ruth Sanders
Sara Simpson
Mary Jane Smith
Rayma Tyson



SUE WYNN
Treasurer



WOMENS' ATHLETIC ASSOCIATION



CORNELIA BYINGTON
President



WALTON EWING
Vice-President



CATHERINE McNALLY
Secretary-Treasurer



JULIET OLIVER
Sports Manager



MISS HILLIARD
Sponsor



MEMBERS

Angelyn Brontley
 Shirley Smith
 Ruby Tanner
 Genie Owen
 Iris Warren
 Noncy Hickmon
 Patsy Kilpatrick
 Ann Evons
 Betty Williams
 Sarah Simpson
 Ann Higginbotham
 Yvonne Jones
 Maxine O'Quinn
 Morilyn Nevil
 Mory Flonders
 Dorothy Ford
 Doris Ford
 Mory Wilkins
 Jonet Wright
 Edith Cholker
 Polly Benton
 Patsy Odom
 Betty Porrish
 Walton Ewing
 Cordelio Kidd
 Borboro Brown
 Ann Greenwoy
 Carolyn Garnto
 Bobby Holly
 Ello Jeon Dickens
 Virginio Leotis
 Joon Phillips
 Helen Robertson
 Evelyn Crovey
 Doris Bentley
 Peggy Hinely
 Corolyn Williams
 Lois Johnson
 Cotherine McNally
 Sue Simmons
 Morion Jenkins
 Miriom Hall
 Ann Nevils
 Emily Adomson
 Joan Bennett
 Jeanette Broddy
 Joon Horper
 Lyneve Anderson
 Juliet Oliver
 Cornelio Byington



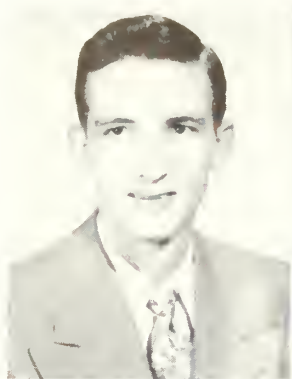
BAPTIST STUDENT UNION

OFFICERS

EDDIE ORT President
 BETTYE LEWIS Enlistment Chairman
 DAN BIGGERS Social Chairman
 TOMIE JEAN CORBITT Devotional Chairman
 FRANKIE QUICK — Secretary
 BOBBY HUMPHERY Treasurer
 GAY KIMBROUGH Music Director
 MARY EARLE POWELL Publicity
 HELEN SATURDAY Deputation Chairman
 TRUDY PRIDGEN S. S. Representative
 MADALYN MEEKS B.S.U. Representative
 MISS MARJORIE CROUCH Faculty Advisor



M U S I G M A



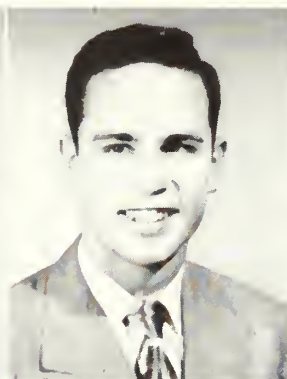
BILL PHARIS
President



BOBBY HUMPHERY
Vice-President



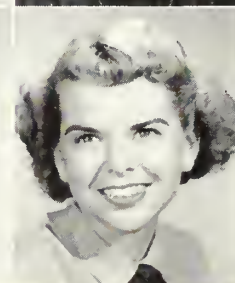
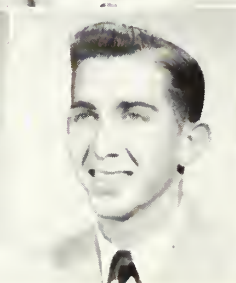
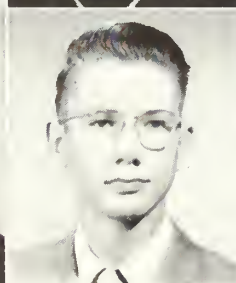
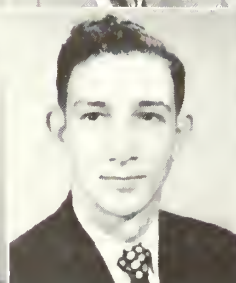
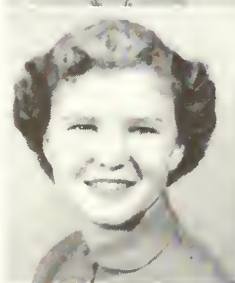
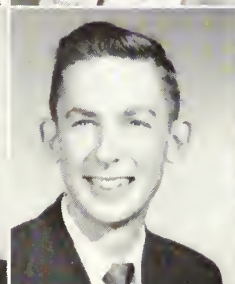
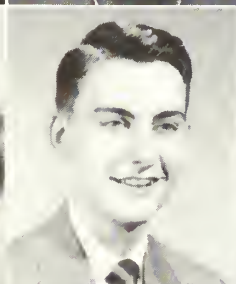
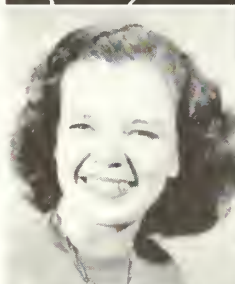
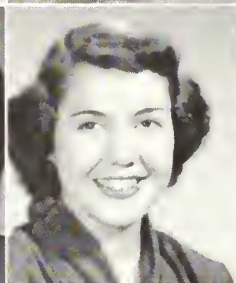
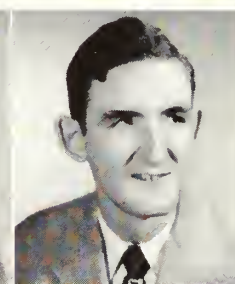
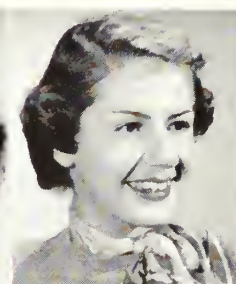
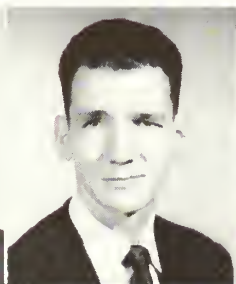
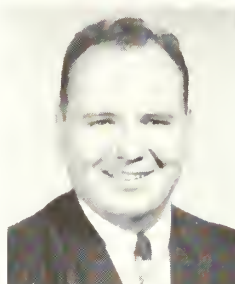
JUNE CANTRELL
Secretary



EDDIE ORT
Treasurer



TRUDIE PRIDGEN
Reporter



Archie Haygood
Jo Ann Darden
Martha Driskell
Betty Hart

Sonny Hawkins
Margie Jackson
Billy Moore
Chester Poole

Mary Lu Powell
Jo Starr
Ann Trice
Joel Stowers

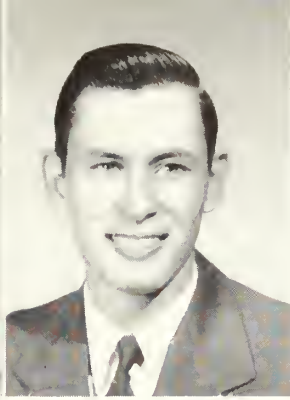
Marjorie Weatherford
Shirley Gullledge
Morris Davis
Faye Lundsford

Pat Meeks
Joan Griffen
Beverly Bargerion
Byron Hicks

Hugh Pharis
Bill Fox
Ann Mitchell
Loretta Green



PAT CARRAWAY
President



L. B. METZGER
Vice-President



MARILYN BARWICK
Secretary



DON JOHNSON
Treasurer

ENGLISH

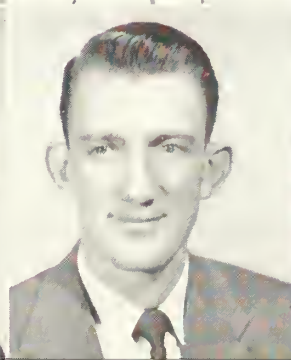
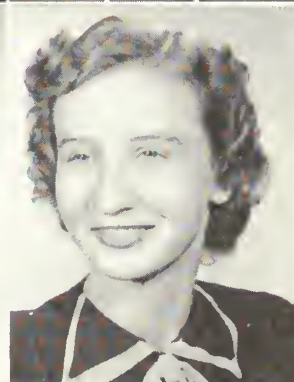
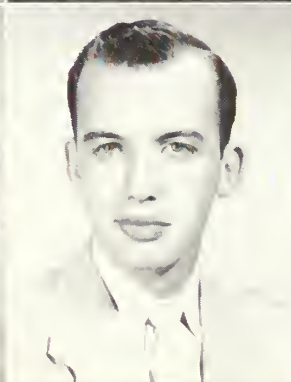
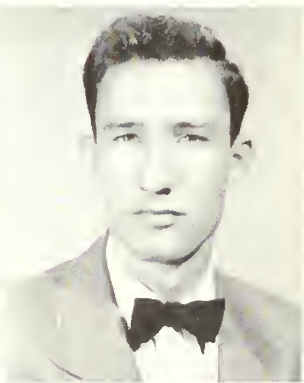
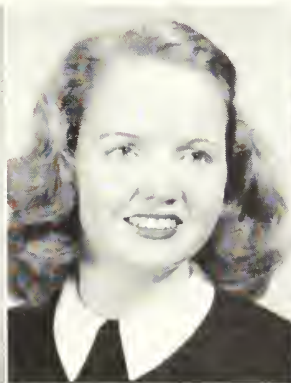
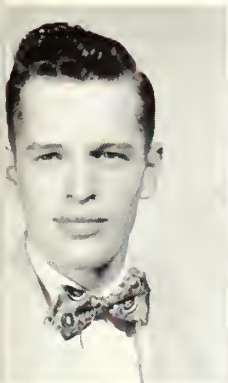


MRS. GUARDIA
Advisor



DR. RUSSELL
Advisor

CLUB



T H E M A S Q U E R S



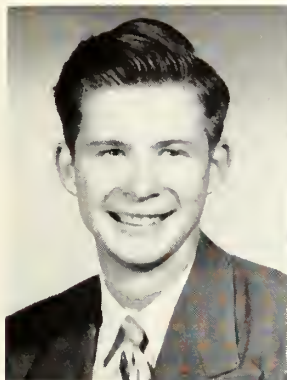
OFFICERS

DAN BIGGERS	President
TOMIE JEAN CORBITT	Vice-President
SHIRLEY GULLEDGE	Secretary
GINGER MORGAN	Treasurer

MEMBERS

Saralene Akridge	Edith Carpenter	Gay Kinbrough	Edna Ruth Sanders
Robert Allen	Tomie Jean Corbitt	Pat Meeks	Jo Starr
Beulah Allmond	Dorothy Cranford	Annie Ruth Moody	Betty Ann Sherman
Marilyn Barwick	Peggy Davis	Voncile Moody	Ann Trice
Boots Beasely	Ella Jean Dickens	Carolyn Moore	Jack Wade
Betty Ann Bedingfield	Bill Fox	Ginger Morgan	Vonda Weaver
Dan Biggers	Loretta Green	A. J. Morris	Watson Weathers
Angelyn Brantley	Shirley Gulledge	Patsy Odum	Harold Whitman
Bunny Brown	Betty Hendrix	Carolyn Porter	Betty Ann Withrow
Jimmy B. Brown	Bobbie Holley	Mary Lu Powell	W. C. Wyatt
Peggy Jo Burke	Arthur Justice	Don Reinsmith	Martha Wood

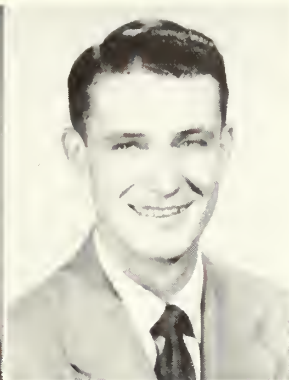




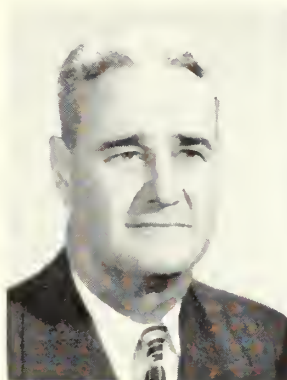
AL MORELAND
President



W. C. WYATT
Vice-President



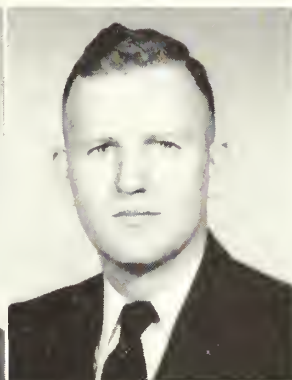
A. J. MORRIS
Secretary-Treasurer



MR. HANNER
Sponsor



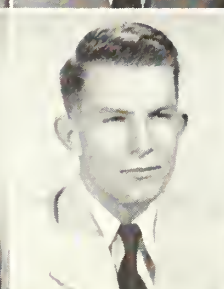
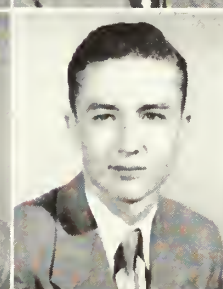
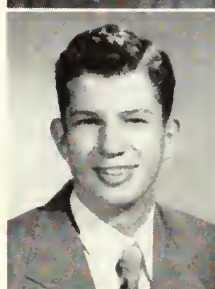
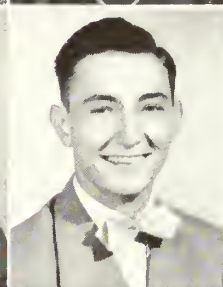
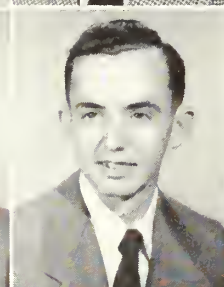
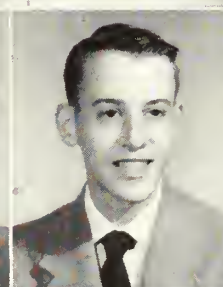
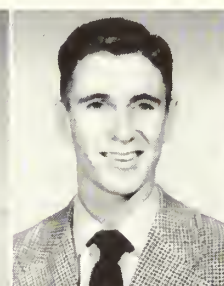
MR. CALDWELL
Sponsor



DR. HOUCK
Sponsor



MR. PENNINGTON
Sponsor



MEMBERS

Genie Owens
Sheila Horne
Lawrence Cook
Jimmy Oliver
Rita Johnston
Gib Johnston

Emily Chandler
Dan Wilson
Gilbert Hughes
Johnny Mallard
Charles H. Henderson
Sam Reid
Harvey Simpson

Billie Williams
Claxton Walker
Fred Brown
Mickey Mobley
Jesse Durrence
Lenette Hunicutt

SCIENCE CLUB

INTERNATIONAL RELATIONS CLUB

MEMBERS

Dorothy Cranford
Faith Harrison
Earle Reynolds
Thomas Stewart
L. B. Metzger
Archie Haygood
Margaret Price
Charles Stewart
Don McClellan
Sanford Brown
Masonori Higa
Donald Nipper
Bobby Pickens
Norma Jean Kelly
Bill Childres
Lewis Davis
Arthur Justice



OFFICERS

WALTER DURDEN, *President*; DOUG COLEY, *Vice-President*;
JOANNE HICKS, *Treasurer*; HERMAN HUFF, *Secretary*.

PHYSICAL EDUCATION MAJORS & MINORS

OFFICERS

JOAN BENNETT, *President*; MYNETTE MAY, *Vice-President*; PATSY
ODOM, *Secretary-Treasurer*; CAROLYN WILLIAMS, *Program*; FAY
LUNSFORD, *Publicity*.



MEMBERS

Betty Sherman
Ann Nevil
Sue Simmons
Sue Kenedy
Kathryn McNally
Sue Coffia
Betty Gordy
Iris Warren
Gloria Anderson
Jackie Simpson
Cornelia Byington
Betty Jean Mikell





T. C. CONCERT BAND

MEMBERS

Eddie Ort
Eleanor Quarles
Betty Williams
June Cantrell
Trudie Pridgen
Bill Lewis
Yvonne Lewis
Winnie Eason
Thelma Hicks
Ann Broome
Leah Ann Mitchell

Ann Higgenbotham
Bob Pickens
Barbara Hill
Martha Driskell
Evelyn Greene
Bobby Humphrey
Bill Fox
Bill Brown
Hugh Ayers
Faye Lundsford
Rudy Mills

Sonny Hawkins
Bob Taylor
Johnny Fitzgerald
Alan Pope
Joan Phillips
Dale Rush, Assistant Director
Bobby Kingery
Chester Poole
Jo Ann Darden
Morris Davis
Bert Justice

OFFICERS

BOBBY HUMPHREY	President
MARTHA DRISKEL	Vice-President
JUNE CANTRELL	Secretary and Librarian
CHESTER POOLE	Treasurer

T. C. MARCHING BAND



DANCE ORCHESTRA



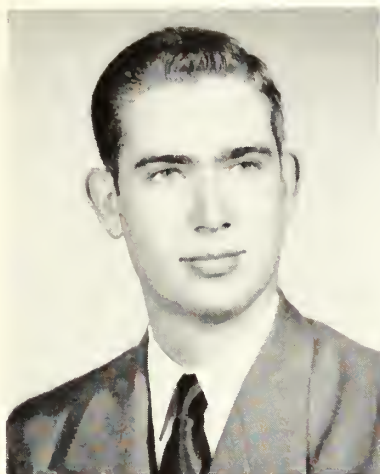
MEMBERS

Sonny Hawkins	Chester Poole
Bobby Taylor	Eddie Ort
Johnny Fitzgerald	Bill Brown
Dale Rush	Rudy Mills
Bobby Humphrey	Morris Davis
Faye Lundsford	Bert Justice
Marjorie Weatherford	Jo Starr, Vocalist

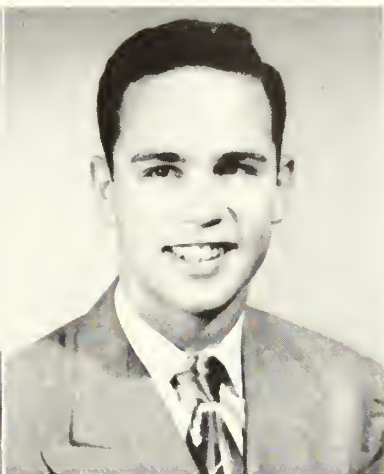


In action





SPENCER OVERSTREET
President



EDDIE ORT
Vice-President



BLAIR WELLS
Secretary



ALVIN MORELAND
Treasurer



DEAN PAUL CARROLL
Sponsor

STUDENT COUNCIL

MEMBERS

Juliet Oliver
Yvonne Jones
Billy Moore
Dan Biggers

Charlotte Crittendon
Jimmy Oliver
Walter Durden
Watson Weathers

Marjorie Weatherford







FEATURES



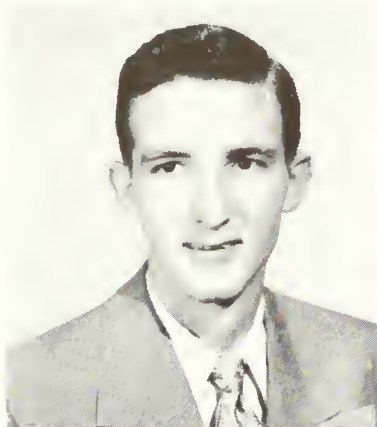
J. D. CORBITT, JR
Iverington, Georgia



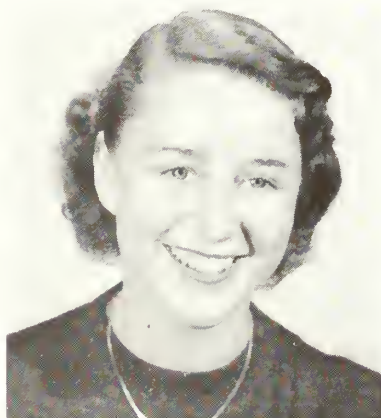
NINETTE STURGIS
Statesboro, Georgia



MARGARET M. HARRISON
Blackshear, Georgia



WILLIAM L. PHARIS, JR.
Columbus, Georgia



BETTY REAGAN
Wadley, Georgia



MARY MAXINE CORBITT
Iverington, Georgia

W H O ' S W H O



H. EUGENE KENDRICK
Jonesboro, Georgia



BETTYE J. LEWIS
Quitman, Georgia



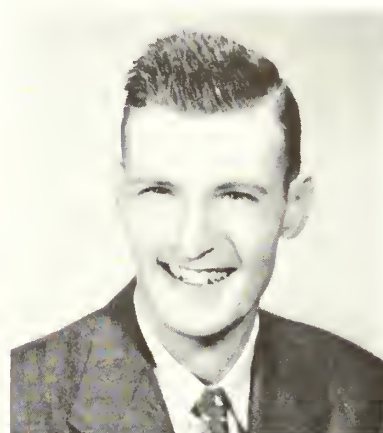
WILBUR H. PEACOCK
Morrow, Georgia

Those chosen for Who's Who among students in American Universities and Colleges are: **J. D. Corbitt, Jr., Mary Maxine Corbitt, Margaret M. Harrison, H. Eugene Kendrick, Bettye J. Lewis, Wilbur H. Peacock, William L. Pharis, Jr., Earle M. Reynolds, Betty Reagan, John W. Stone, Ninette Sturgis, Blair G. Wells.**

Each year a selected number are chosen by a committee made up of the faculty and members of the junior and senior classes.

They were chosen above other students for their outstanding work in leadership, extracurricula activities, scholarship, and whole-hearted devotion to their school and fellow students.

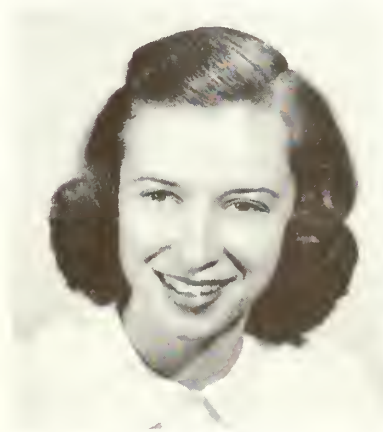
With such a standard as this set up each student may aim toward his own goals with Who's Who heading the list for those with the initiative to reach it.



EARLE M. REYNOLDS
Odum, Georgia



JOHN W. STONE
Wrens, Georgia



BLAIR G. WELLS
Guyton, Georgia

I N 1 9 5 1

BEAUTIFUL REFLECTIONS



Q U E E N O F T H E M A Y



THE QUEEN AND HER COURT



THE 1951

BEAUTY REVIEW



The crowning of the Queen

5TH ANNUAL BEAUTY REVIEW

Jo Starr from Greensboro, Georgia, was crowned "Miss T. C. of 1951" at the fifth annual Beauty Review. Sponsored by Mu Sigma and escorted by Johnny Patterson, Jo captured the crown with her beauty, her poise and her lovely smile.

The four other finalists shown with Jo are Rita Johnson, Bobbie Vaughn, Loretta Green, and Martha Driskell.

The Beauty Review was originated by Mr. Jack N. Averitt, and this year was under the direction of Miss Frieda Gernant and Miss Helen Poppell. The decorations were furnished by Alpha Rho Tau, the student art club. The scene was laid on T. C.'s Sweetheart Campus. Music was furnished by the college orchestra, with Mr. Jack Broucek at the organ. Don Johnson was master of ceremonies.

The FIVE FINALISTS





Jo Starr



Rita Johnston



Loretta Green



Bobbie Vaughn



Martha Driskell



The revolving stage.



The cast.

T H E M A S Q U E R S

present

"DON'T GO AWAY MAD,,

THE CAST

"Bo" Ware

Charles Jackson

Dan Biggers

Bobby Humphery

George Parrish

Masanori Higa

Don Johnson

Polly Benton

Robert Allen

Betty Anne Withrow



BACKSTAGE

TOMIE JEAN CORBETT, JACK WADE Stage Managers

Grover Bell
Dan Biggers
Pat Carroway
Edith Carpenter
Betty Ann Withrow
Jo Starr

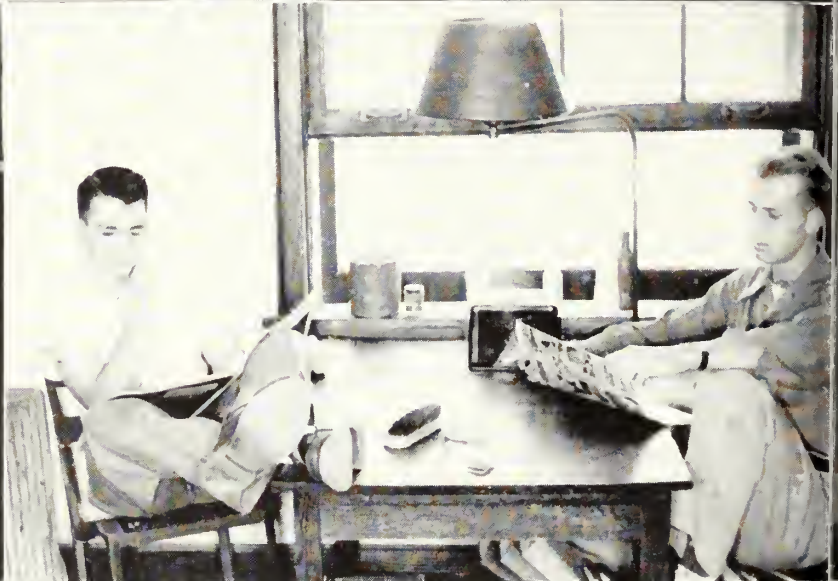
Mary Lou Powell
W. C. Wyatt
June Cantrell
Art Justice
Gay Kimbrough
Martha Wood
Loretta Green



Directed by
MISS DOROTHY STEWART



STUDENTS AND FACULTY





W E
S T U D Y



W H E N



N E C E S S A R Y





THE STAFF OF THE 1951 REFLECTOR
SINCERELY HOPES THAT, IN YEARS TO
COME, THIS BOOK WILL GIVE YOU, AS AN
"OLD GRAD", MANY HAPPY "REFLECTIONS"
OF THE GOOD OLD DAYS AT G.T.C....

Earle M. Reynolds



THE SOUTH'S FINEST
Annual Photographers



Clifton Photo Service

STATESBORO, GEORGIA

**SMITH-TILLMAN
MORTUARY**

AMBULANCE SERVICE

Day Phone 340 Night Phone 344
STATESBORO, GEORGIA

Compliments of

E. A. SMITH GRAIN CO.

BUILDING SUPPLIES

STATESBORO

GEORGIA



**REACH
FOR...**



STATESBORO'S FAVORITE BREAD

COMPLIMENTS
... OF ...

**COLLEGIATE BARBER
SHOP**

SHAVES — HAIRCUTS

East Main Street
STATESBORO, GEORGIA

Compliments of

**SORRIER INSURANCE
AGENCY**

Established 1888

STATESBORO

Phone 58

GEORGIA

Where Fashions Make Their Debut

Fine's

IN SAVANNAH

*Savannah Morning News
Savannah Evening Press*

SAVANNAH, GEORGIA

Foresight today means security tomorrow.

**Protect your future by practicing the
habit of thrift and economy today.**

One of a series of timely suggestions by

The Friendly

SEA ISLAND BANK

SAFETY — COURTESY — SERVICE

A Member of the F. D. I. C.

Who is definitely interested in the future of our youth

WOLF'S

SPORTING GOODS

LUGGAGE - JEWELRY - CAMERAS

C. E. Conn Band Instruments

Leedy Drums and Accessories

Gibson Guitars

Broughton at Montgomery

SAVANNAH

GEORGIA

Goodrum & Moore Distributing Co.

120 WEST BAY STREET

SAVANNAH, GEORGIA

PHONE 2-4236

Distributors of

Bordens Fine Cheese

Durkee's AA Grade Margarine

B R O O K L E T
LAUNDRY AND DRY CLEANING
SERVICE

Owned and Operated by Jack Watts
PHONE 51 BROOKLET, GEORGIA

Compliments of
THE JACKEL HOTEL

"Statesboro's Largest and Best"
STATESBORO GEORGIA

FROM THE TREE TO FINISHED PRODUCTS

As operators of the "World's Largest Integrated Kraft Container Plant" we are advocates of better forestry — because a major portion of the 35 million bags and 1,350 tons of paper we produce each day are made from pine trees grown in Bulloch and other Georgia Counties.

U N I O N B A G
& PAPER CORPORATION
SAVANNAH GEORGIA

Compliments
of . . .

C O L L I N S
FREEZER LOCKER
COLILNS, INC.

THAYER MONUMENT
COMPANY

45 WEST MAIN
Phone 439
STATESBORO GEORGIA

- WHERE MEN FIND THEIR FAVORITE •
FAMOUS BRANDS

Men's Quality Shop

JOE LESSER

Home of Kuppenheimer Good Clothes

24 Broughton Street, E. Savannah, Georgia

- PAY A VISIT TO THE COLLEGE SHOP •

Compliments of

M. E. ALDERMAN ROOFING COMPANY

28 West Main

Statesboro, Georgia



THE FINEST IN
MOVIE ENTERTAINMENT
AT THE

Georgia Theater State Theater Family Auto Theater

HAL MACON, JR., Mgr.

STATESBORO

GEORGIA

BULLOCH TRACTOR CO.

JOHN DEERE
FARM IMPLEMENTS
TRACTORS

PHONE 378

36 West Main Street

STATESBORO

GEORGIA

MILLIONS OF STUDENTS IN
AMERICA LOOK TO

PENNEY'S

For Young America Styled Togs for
Campus, Sports and Dress

Compliments of
WOODCOCK MOTOR CO.

AUTHORIZED DEALER

Sales and Service

Statesboro

Georgia

**STANDARD PROCESSING
COMPANY**

Processors of Crude Pine Gum,

Gum Rosin and Turpentine

STATESBORO, GEORGIA

Best Wishes to the Senior Class

* * *

Alfred Dorman Co.

Wholesale Grocers

Statesboro - Sylvania - Jesup - Eastman

THE BEST IN COLLEGE CLOTHES

for

STUDENTS AND FACULTY

HENRY'S

STATESBORO, GEORGIA

Compliments
of . . .

MODEL LAUNDRY

COURTHOUSE SQUARE

STATESBORO

GEORGIA

Johnston and Donaldson
INSURANCE

"Good Coverage Plus Service"

7 West Main St. — Phone 310

STATESBORO

GEORGIA

Compliments

of . . .

S. W. LEWIS, INC.

STATESBORO

GEORGIA

CLOTHES...

FOR THE FAMILY

ROSENBERG'S

"Statesboro's Busy Department Store"

STATESBORO

GEORGIA



SAFETY

SERVICE

The Bank With the Pleasant Atmosphere

BULLOCH COUNTY BANK

NEW ACCOUNTS WELCOMED

Member

Federal Deposit Insurance Corporation



DIAMONDS — WATCHES

JEWELRY — GIFTS

Watch Repairing

LANIER JEWELERS

"Home of Hallmark Cards"

Sales — NORGE — Service

EARL M. LEE

Records

Radios

PHONE 550

44 EAST MAIN

Compliments of

HARRY W. SMITH
Jeweler

20 S. MAIN STREET
ESTABLISHED 1919

Compliments

. . . of . . .

**FRANKLIN CHEVROLET
COMPANY, INC.**



STATESBORO

GEORGIA

Claussen's

*Covering Southeast Georgia With
Nationally Advertised Brands for the Entire Family*

H. MINKOVITZ & SONS
DEPARTMENT STORE

SYLVANIA

STATESBORO

DOUGLAS

**CLAUDE HOWARD
LUMBER CO.**

Lumber Manufacturers

STATESBORO, GA.

**Bradley and Cone
Seed and Feed Co.**

BABY CHICKS

-

PURINA CHOWS

Good Germinated Seed

Hardware — Poultry Supplies

STATESBORO

GEORGIA

CLOTHES . . .

FOR THE CAMPUS

THE FAIR STORE

"Statesboro's Smartest Shop"

STATESBORO

GEORGIA

PATRONIZE

THE IDEAL SHOE SHOP

and always be sure to get

THE BEST

in Shoe Repairing

COMPLIMENTS

OF

BUGGY & WAGON COMPANY



STATESBORO

G E O R G I A

HOKE. S. BRUNSON

BUICK AUTOMOBILES

ALLIS-CHALMERS

FARM EQUIPMENT



STATESBORO, GEORGIA

Compliments

of . . .

WATERS FURNITURE COMPANY

STATESBORO

GEORGIA

GRIMES JEWELRY COMPANY

JEWELRY and SILVERWARE

DIAMONDS and WATCHES

GLASSWARE and CHINA

FOUNTAIN PENS

23 SOUTH MAIN STREET
Statesboro, Georgia

THE COLLEGE GRILL

Formerly "301"

MILK SHAKES
SUNDAES
ICE CREAM

"GOOD FOODS"

STATESBORO

GEORGIA

DONALDSON-SMITH

CLOTHING CO.

STATESBORO

GEORGIA

The Best in Town for . . .

PROMPT SERVICE

ELLIS DRUG CO.

Fountain Service DeLuxe

and

Prescriptions Filled Quickly and Correctly

By Professional Pharmacists

CHARLES BRYANT

FRUITS and VEGETABLES

Wholesale Only

STATESBORO, GEORGIA

Bringing Statesboro the Finest in Radio Programs

THE STATESBORO BROADCASTING SYSTEM

W W N S

1490 ON YOUR DIAL

STATESBORO

Skating — Bowling — Dancing

at the

SKATE-R-BOWL

FIRST CLASS

A NIGHT OF FUN

FOR ANYONE

Compliments

. . . of . . .

LANNIE F. SIMMONS

AUTOMOBILES



When...

HUNGRY, THIRSTY AND TIRED

...Visit...

THE BLUE TIDE

WHERE BOY MEETS GIRL

FOR

Books — Refreshments — Fun

GEORGIA TEACHERS COLLEGE

COLLEGEBORO

GEORGIA



COMPLIMENTS

OF

JONES THE FLORIST

STATESBORO

GEORGIA

Compliments of

of

CITY DAIRY COMPANY

Homogenized and Pasteurized Milk



Meet Your Friends at the

**College
Pharmacy**

"Where the Crowds Go"

Prompt, Courteous Service

PHONE 414

PHONE 416



**G. T. C.
SENIOR RINGS**

(for any graduation year)

Designed and Manufactured by

Herff-Jones Co.

H. S. CANFIELD, *Representative*

1560 N. Decatur Rd.

Atlanta

"A Complete Graduation Service"

INVITATIONS — CARDS — MEDALS — TROPHIES

DIPLOMAS — CAPS AND GOWNS

. . . . SCHOOL ANNUALS

Compliments

. . . of . . .

**EVERETT MOTOR
COMPANY**

STATESBORO

GEORGIA

MEN and BOY'S STORE

*EVERYTHING FOR
COLLEGE STUDENTS*

DRESS and SPORTSWEAR

East Main Street

Statesboro

FAVORITE SHOE STORE

INC.

Shoes Fitted by X-Ray

WEATHERBIRD

VELVETSTEP

CITY CLUB

South Main

Statesboro, Georgia

HOWARD LUMBER COMPANY

Wholesale & Retail Lumber

Builders Supplies

31 MULBERRY, ST.

STATESBORO, GA.

Guest Coffee

Rich body, Pleasing aroma,
Exquisite flavor.



If you cannot purchase this in your home
town—write us—P. O. Box J. S., Chicago (90)



Compliments of

YE OLD WAGON WHEEL

STATESBORO

GEORGIA

DENMARK CANDY COMPANY

WHOLESALE MERCHANDISE

N. Zetterowen, Ave

Phone 539-J

STATESBORO

PATRONIZE

YOUR

ADVERTISERS

THE BULLOCH HERALD

1950-51 WINNER OF

GEORGIA PRESS ASSOCIATION'S

TOP THREE NEWSPAPER AWARDS

COMPLIMENTS

OF

**DARBY LUMBER
COMPANY**

Suppliers of

ALL YOUR BUILDING NEEDS



*Compliments
of*

**CONCRETE PRODUCTS
COMPANY**

STATESBORO

GEORGIA

PATRONIZE

YOUR

ADVERTISERS

**D U B O S E
DRY CLEANERS**

"Cleaning Is Our Business"

PHONE 538-J

STATESBORO, GA.

COMPLIMENTS OF . . .

ROBBINS PACKING CO.

"Makers of Robins Red Breast Sausage"

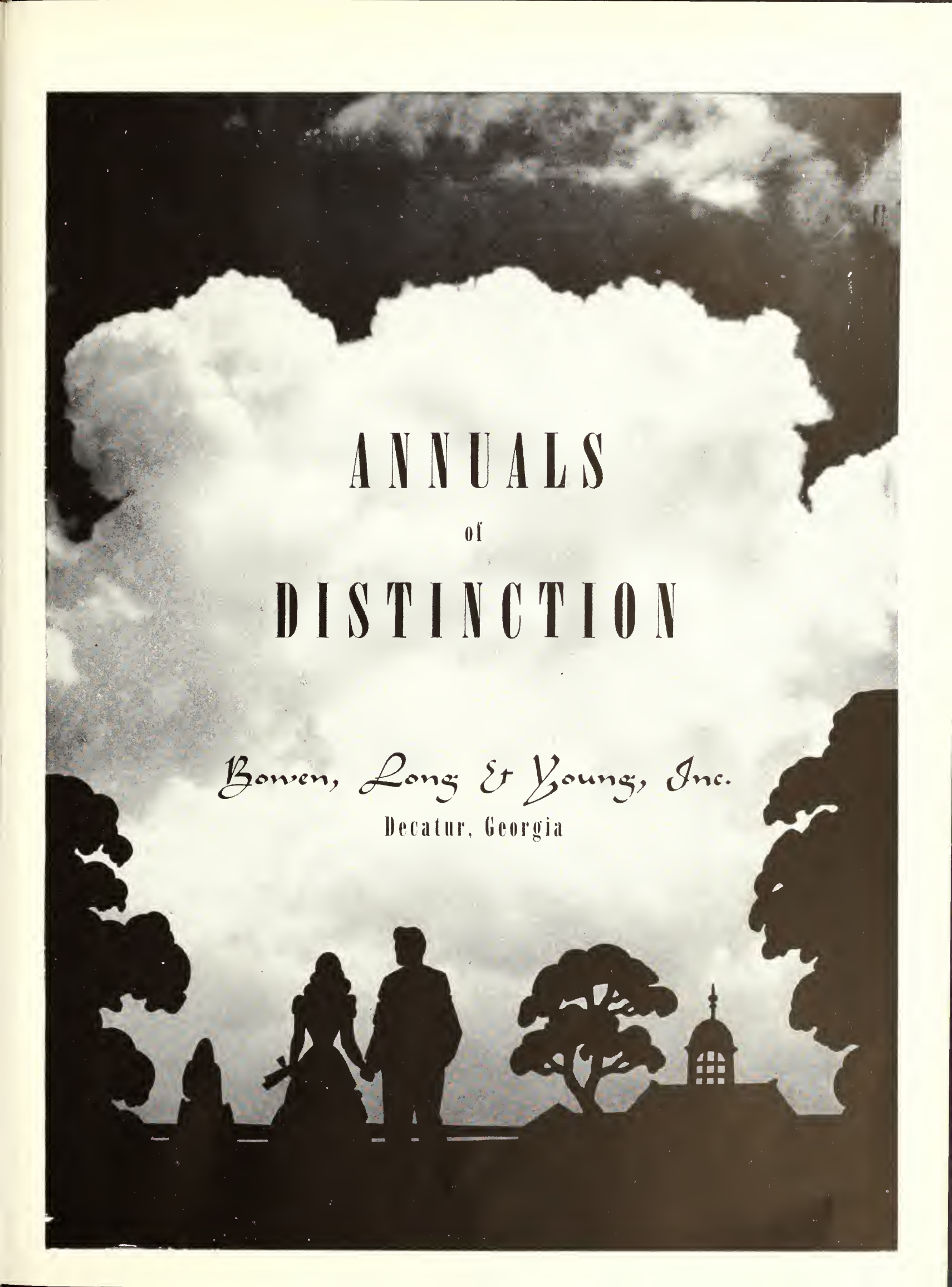
STATESBORO

GEORGIA



PHOTO PROCESS
Engraving Company
— ATLANTA —



The background of the entire page is a black and white photograph. The upper two-thirds of the image is filled with large, bright, puffy clouds against a darker sky. The bottom third of the image shows dark silhouettes of trees and a building. In the center of this silhouette area, a man and a woman are standing and holding hands, looking out towards the horizon. To their right, a building with a small dome is visible. The overall mood is romantic and serene.

ANNUALS of DISTINCTION

Bowen, Long & Young, Inc.
Decatur, Georgia



PE 364 .E6

199

2

. 217

211

1991

ZACH S. HENDERSON LIBRARY



0 2001 0488995 7

DEMCO

