

Reflector

1949

Georgia Southern University

Follow this and additional works at: <https://digitalcommons.georgiasouthern.edu/reflector-yearbook>



Part of the [Higher Education Commons](#)

Recommended Citation

Georgia Southern University, "Reflector" (1949). *Reflector Yearbook*. 22.
<https://digitalcommons.georgiasouthern.edu/reflector-yearbook/22>

This book is brought to you for free and open access by the Student Media at Digital Commons@Georgia Southern. It has been accepted for inclusion in Reflector Yearbook by an authorized administrator of Digital Commons@Georgia Southern. For more information, please contact digitalcommons@georgiasouthern.edu.



reflector

49



Georgia Southern University
Zach S. Henderson Library

Pat Hanley

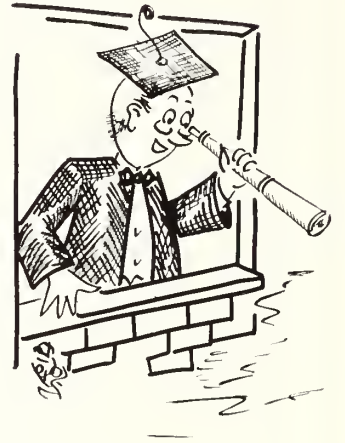


Through the Gates

and into these buildings



sanford hall



east hall

ad building





lewis hall

come our students

west hall

where we practice



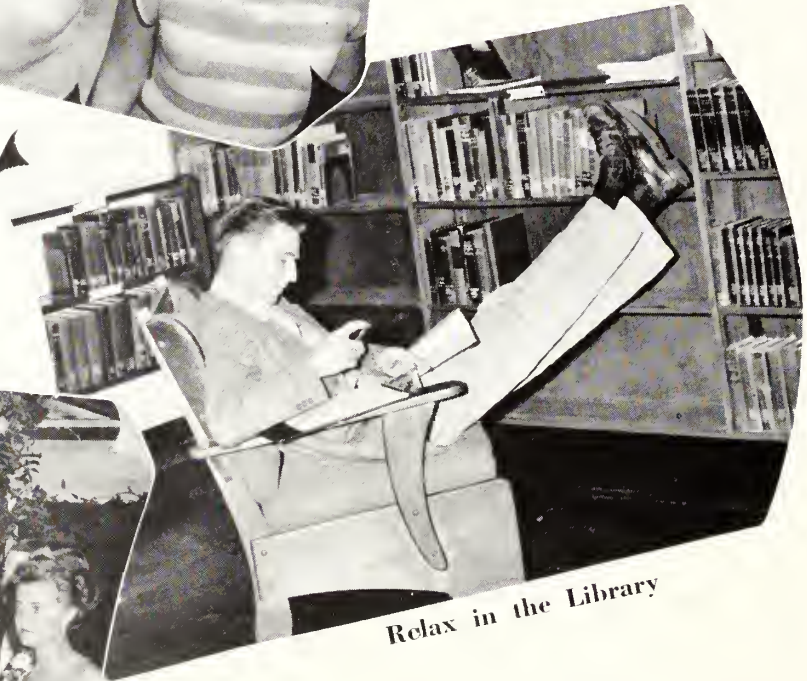
*the things they
do . . .*



F.B.L.A. meet at
T.C. Campus



The Freshmen Officers
look forward



Relax in the Library



Attend the Faculty Formal

and . . .



Gunter smiles through registration



Rehearse and rehearse for "Claudia"



A gay foursome at the Vets' Dance

The new Shag — natch!



the things they don't

make this . . .



G E O R G I A



The

1 9 4 9

Reflector

published by the

senior class

of

T E A C H E R S C O L L E G E



which we dedicate to



dr. herbert weaver

We, the Seniors of '49, want to present our loving cup to Dr. Weaver. We dedicate this *Reflector* with fond reflections on what Dr. Weaver has meant to us. He has led us in and out of the classroom in his usual quiet, efficient way. It is easy to follow Dr. Weaver for it can be done without the knowledge that your efforts are being directed, and never once has it been a dead end street.

Prior to the time Dr. Weaver came to T. C. he served in schools in Alabama as teacher and track coach. He came to T. C. in 1940 and was here for two years when he enlisted in the army and was attached to the Medical Corps. Later he attended an officer candidate school and was commissioned a second lieutenant. He was transferred to the Historical Section of the Army Air Forces where he worked on a history of the Army Air Forces, two volumes of which have been published. He was holding the rank of Major when discharged.

He married Dr. Blanche Henry Clarke, of Lexington, Kentucky, who was Dean of Women at Vanderbilt University.

Dr. Weaver received his A.B. and M.A. Degrees from Birmingham Southern College and his Ph.D. from Vanderbilt University. His thesis was published by the Vanderbilt University Press in 1945 under the title, "Mississippi Farmers, 1850-1860". He is a member of the Southern Historical Association, American Historical Association, Mississippi Valley Historical Association, and has contributed articles based on Southern history to periodicals published by these organizations.

What we really want to say is, "Thank you, Dr. Weaver." We sincerely hope that the influence that we have felt will be handed on to those who follow.



ZACH S. HENDERSON
President



here

ADMINI

Mae Michael
Secretary to President

Robert L. Winburn
Burser

Sophie Johnson
Dean of Men



B. E. Taylor
*Superintendent of Buildings
and Grounds*

Mrs. Marward P. Daniels
Assistant to Burser

Mrs. J. B. Johnson
East Hall



are the
“big wheels”



PAUL CARROLL
Dean

STRATTON



Mamie Veasey
Dean of Women



Viola Perry
Registrar



Lizzie Norman
Secretary to Dean and Registrar



Mrs. Archie Jackson
West Hall



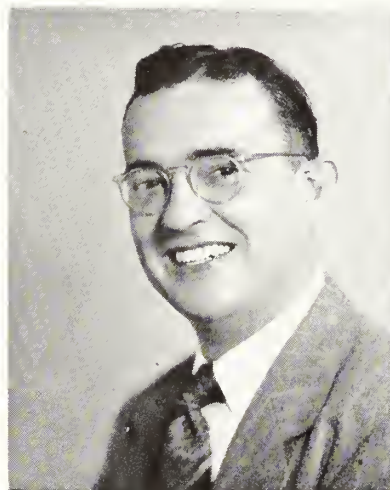
Mrs. A. C. Stacey
Dietitian



Annie Thompson
Assistant Dietitian

d i v i s i o n o f

e d u c a t i o n



Dr. Thomas C. Little
Head



Powell Whitfield
Education



Marvin S. Pittman
President Emeritus
Director of Extension Service



Mrs. Powell Whitfield
Secretary to Extension Division



Marjorie Crouch
Principal of High School



Bertha Freeman
Principal of Elementary School

Leila Stevens
Education

Marie Woods
Laboratory School Faculty

Leona Newton
Laboratory Faculty

J. R. DeLoach
Laboratory School Faculty

Delia Jernigan
Laboratory School Faculty

Mrs. Sam Josey
Laboratory School Faculty



Queen Elizabeth Collins
Secretary to Laboratory School

Vera Richardson
Laboratory School Faculty

Lonise Bennett
Laboratory School Faculty

W. G. Talbert
Laboratory School Faculty

division of fine and practical arts



Donald Hackett
Head



John Erickson
Industrial Arts



Frieda Gernant
Art



Ruth Bolton
Home Economics



Margaret Strahlmann
Home Economics

division of music

Ronald J. Neil
Head



Jack W. Broucek
Piano and Organ



Glen Rasmussen
Band and Orchestra



John G. Zaffuta
Public School Music



division of english



Fielding Russell
Head

Marjorie Guardia
English

Mike L. Goldwire
Journalism—Publicity

Dorothy Dean Stewart
Speech

Ela Johnson
English

Clandia D. Rice
Language

division of exact science



Malvina Trussell
Exact Science

W. S. Hauner
Head

W. B. Moye
Exact Science

Tully Pennington
Exact Science

division of social science



Dr. Herbert Weaver
Head



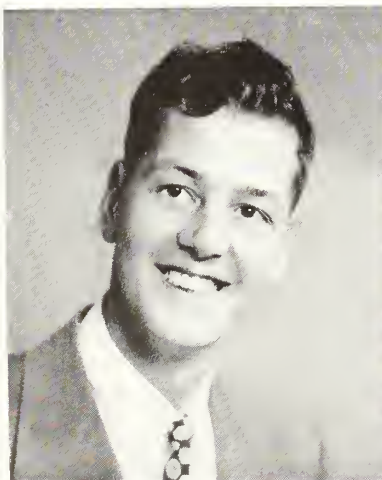
Jack N. Averitt
Social Science

Hester Newton
Social Science

David B. Hawk
Social Science



division of business education



Cameron Bremseth
Head



Vera Bell
Business Education



Marjorie Keaton
Business Education

library staff



Hassie M. McElveen
Librarian



Mrs. Jack N. Averitt
Library

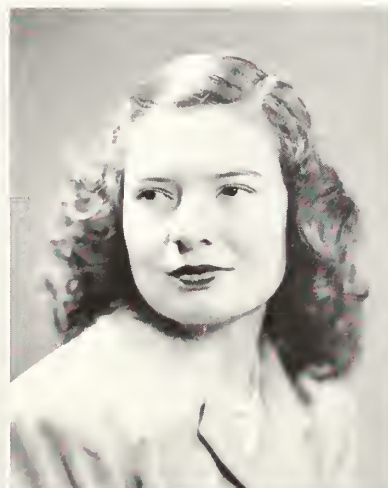


Mrs. Gladys DeLoach
Library

physical education



J. B. Secaree
Head



Betty Jane Trotter
Physical Education

Jakie Upshaw
Physical Education

J. I. Clements
Physical Education



student council



Jimmy Gunter, *President*

Ben Darsey, *Vice-President*

Dean Paul Carroll
Advisor

Fred Waters, *Secretary*

Willbur Peacock, *Treasurer*





Seniors





senior **class officers**

WILLIAM C. FORDHAM
Gibson, Georgia
Physical Education—
Business
Football 1
"T" Club 3-4, Vice-President 3-4
Veterans' Club 3-4
Intramural Sports President 4
President Senior Class
Who's Who 4



DOROTHY FORBES
Cave Spring, Georgia
Elementary Education
Transfer West Georgia
College
Vice-President, Senior Class
Vice-President, Lewis Hall 4
W.A.A. 3
I.R.C. 3
Masquers 4

BERNARD S. MORRIS
Statesboro, Georgia
Exact Science
Business Manager,
Reflector 4
Science Club 2, 3, 4
Masquers 2, 3, 4
Student Council 4
Secretary of Senior Class
Glee Club 2

MILLARD M. GREEN, JR.
Waynesboro, Georgia
Physical Education, History
House Council 1, 2, 3
Vice-President, Sophomore
Class
Treasurer, Senior Class
Student Council 3, 4
Y.M.C.A. 1, 2, 3
George-Anne Staff 3, 4



seniors '49



JULIE TURNER ALLEN
Statesboro, Georgia

English, Business
Transfer Mercer University
Masquers 2, 3, 4, Vice-President 4
Alpha Psi Omega 4, Vice-President 4
Student Council 3, 4
Reflector Staff 3, 4
Who's Who 4



CLYDE ANDERSON
Statesboro, Georgia
Industrial Arts, Mathematics



EVELYN ARNOLD
Pembroke, Georgia
Business, Home Economics
Transfer Brewton-Parker Junior College
Chorus 2
Home Ec. Club 3, 4
Business Club 3, 4
Student Council 4
House Council, Lewis Hall; Treasurer 4
Junior Class Treasurer 3

ROSS ATKINSON
Statesboro, Georgia
English, Biological Science

EDDIE O. BACON
Pembroke, Georgia
Business Education
Veterans' Club 3
Y.M.C.A. 1
Business Club 2

LAYSEL H. BANCROFT
Savannah, Georgia
Music, English
Veterans' Club 1, 2, 3, 4
Chorus 1, 2, 3, 4
Men's Glee Club 3, 4
Mu Sigma 3, 4; President 3
Y.M.C.A. 1, 2, 3, 4
English Club 1





JAMES BISHOP
Greymont, Georgia
History, Math



ELIZABETH BLAND
Dover, Georgia
English, Home Economics
Philharmonic Choir 1, 2, 3, 4
Wesley Foundation 3-4; Secretary 3-4
Y.W.C.A. 1, 2, 3, 4, Vice-President 4
English Club 3, 4
Vesper Choir 3, 4, Secretary 3, 4
Masquers 1, 2, 3, 4



CHARLES EMORY BOHLER
Statesboro, Georgia
Exact Sciences
Vice-President, Sophomore Class 2
Transfer from University of Georgia

BETTE JENE BOYKIN
Sylvania, Georgia
Business, English

LILA BRADY
Statesboro, Georgia
English, History
English Club 3, 4
W.A.A. 3, 4
I.R.C. 3, 4

SUE BURKS
Griffin, Georgia
Elementary Education
House Council 2
Intramural Manager 4
W.A.A. 4



seniors '49



DREW F. BURTON, JR.
Oak Ridge, Tennessee
Business, Mathematics
Veterans' Club 3, 4



JOYCE CALLAWAY
Collins, Georgia
Elementary Education
Alphas Psi Omega 2, 3, 4
Masquers 1, 2, 3, 4, Secretary 2,
Vice-President 3
W.A.A. 2, 3, 4, Secretary 2, President 3
Science Club 2
P.B.Y.F. 3, 4, Third Vice-President 4



MARY IDA CARPENTER
Gnyton, Georgia
Music, Physical Education
Transfer from Wesleyan Conservatory
Chorus 3
Mu Sigma 3
Organ Guild 4
House Council 4
Secretary 4
Student Council 4

EUGENIE CHAPMAN
Junction City, Georgia
Elementary Education
George-Anne Staff 1
Masquers 1, 2, 3
Science Club 2, 3, President 3
Reflector Staff 3
W.A.A. 3

EARL K. CHERRY
Fitzgerald, Georgia
History, Physical Education
Transfer from University of Colorado
I.R.C. 3, 4, President 4
Member of *George-Anne* 3

MARY CLEMENTS
Sylvester, Georgia
Elementary Education
Transfer from Andrew College
Y.W.C.A. 3, 4
Lewis Hall House Council 4





RICHARD CHARLES COHAN
Hinesville, Georgia

Exact Science
Transfer, North Georgia College
Band 2, 3, 4; Orchestra 2, 3, 4
Chorus 2, 3, 4; Men's Chorus 2, 3, 4
Mu Sigma 2, 3, 4
Science Club 3, 4
Reflector Staff 3, 4
Veterans' Club 2, 3, 4

MARGARET LOUISE COLEMAN
Swainsboro, Georgia

Home Economics, Transfer G.S.C.W.
Home Ec. Club 3, 4
W.A.A. 3, 4; Treasurer 4

JIMMIE CONNOR
Harlem, Georgia

Physical Education, History
Varsity Basketball 3, 4
"T" Club 4
Sanford House Council 3

MITCHELL CONNOR
Harlem, Georgia

Physical Education, History
Varsity Basketball 3, 4
"T" Club 4
Sanford House Council 4

DELMAR COWART

Rocky Ford, Georgia

Industrial Arts, Physical Science
George-Anne 1
Y.M.C.A. 1
Sanford House Council 2, 3, 4
Industrial Arts Club 2, 3, 4; Vice-President
3; Secretary-Treasurer 3

DOUGLAS DENT DANIEL
Odam, Georgia

History, Physical Education
"T" Club 3, 4
Veterans' Club 1, 2, 3, 4
Baseball 1, 2, 3, 4



seniors '49



BEN DARSEY
Hinesville, Georgia
Business, History
Y.M.C.A. 1, 2
Sanford House Council 2, 3, 4
Masquers 2, 3, 4
Alpha Psi Omega 3, 4
Student Council 4
Veterans' Club 3, 4
Who's Who 4
Reflector Staff 4



J. MARVIN DAVIS, JR.
Wrightsville, Georgia
Social Science
Veterans' Club 1, 2, 3, 4



L. AINSWORTH DAVIS
Patterson, Georgia
Physical Education, History
Veterans' Club 2, 3, 4
Sanford House Council 3, 4
Varsity Basketball Team '46
Veterans' Basketball Team '47

MELVIN M. DAVIS
Blun, Georgia
Industrial Arts
Industrial Arts Club 1, 2, 3, 4; Sergeant-at-Arms 4
Veterans' Club 1, 2, 3, 4; Vice-President 3
B.S.U. 3, 4
Y.M.C.A. 2, 3, 4

ALTON DAVIS
Ludowici, Georgia
Business Education
Veterans' Club 1, 2, 3, 4
Business Club 1, 2, 3, 4; President 4

IRENE DEESE
Bainbridge, Georgia
Elementary Education
Y.W.C.A. 1, 2, 3, 4
Evening Watch Chairman 3, 4
President West Hall 2
Wesley Foundation Council 2
Chorus 4
House Council, Lewis Hall, 4





JOYCE DENMARK
 Brooklet, Georgia
 Business, Home Economics
 Chorus 1
 Home Ec. Club 3
 Business Club 2, 3
 Masquers 1
 Band 1, 2
 Lewis Hall House Council 4
Reflector Staff 4



MARVIN M. DIXON
 Millen, Georgia
 Social Science
 Veterans' Club 1, 2, 3, 4; Vice-President 2;
 President 3
 Sanford House Council 4



JACK CECIL DOUGLAS
 Millwood, Georgia
 History, English
 Transfer from South Georgia College
 James Allen Bunce Award 3
 English Club 3, 4
 I.R.C. 4
 Y.M.C.A. 3, 4

ERNEST DRURY
 Brunswick, Georgia
 English, Business

GEORGE H. EANES
 Woodcliff, Georgia
 Physical Education, History
 Veterans' Club 2, 3, 4
 College Basketball Team 1, 2, 3, 4
 T Club 3, 4
 Y.M.C.A. 1, 2, 3
 House Council 1

JAMES T. ETHERIDGE
 Amsterdam, Georgia
 English, History
 Transfer from North Georgia College
 English Club 3-4; President 4
 Band 3, 4
 Philharmonic Choir 3, 4
 Men's Chorus 4



seniors '49



JAMES H. EVANS
Statesboro, Georgia
Business, Speech
Art Club 3, 4; President 4
Masquers 2, 3, 4; Secretary 3; President 4
Alpha Psi Omega 3, 4; President 4
Veterans' Club 2, 3
Reflector Staff 3, 4; Art Editor 3; Editor 4
Business Club 3, 4
Who's Who 4
Associate Editor, "T" Book

H. M. FULBRIGHT
Tooeoa, Georgia
Business, English
Transfer from Brewton-Parker Junior
College
Veterans' Club 2, 3, 4
Philharmonic Choir 2, 3, 4
Men's Chorus 3, 4; President 4
B. S. U. Council 2, 3, 4
Y.M.C.A. Council 2, 3, 4
Business Club 2, 3, 4



BILLY FINCH
Glennville, Georgia
General Science
Masquers 2
Science Club 3, 4

GROVER C. FUTCH, JR.
Pembroke, Georgia
Social Science
International Relations Club 1, 2, 3, 4
Veterans' Club 1, 2, 3, 4
Treasurer 3, 4
Y.M.C.A. 2, 4
Men's Chorus 3, 4; Vice-President 3, 4



MARY NELL FOREHAND
Sylvester, Georgia
Elementary Education
Transfer G.S.C.W.
Chorus 3, 4
Masquers 3, 4
Alpha Rho Tau 4
Y.W.C.A. 3, 4
W.A.A. 3, 4
Lewis Hall House Council 4

MRS. WUDIE GAY
Statesboro, Georgia
Home Economics
Home Economics Club





MARY FRANCES GEIGER
McRae, Georgia
Home Economics
Transfer from G.S.C.W.
Home Ec. Club 3, 4; Historian 4
Vice-President for Georgia Home Economics Association



RAYMOND SYLVESTER GINN, JR.
Ludowici, Georgia
Industrial Arts, Math
Industrial Arts Club 2, 3, 4; Secretary and Treasurer 4
Veterans' Club 1, 2, 3, 4



S. A. GRAY
Waynesboro, Georgia
Social Sciences
Veterans' Club 2, 3, 4
I.R.C. 4
Y.M.C.A. 1, 2, 3, 4

JAMES L. GRIFFIS
Homerville, Georgia
Business, Math
Future Business Leaders 3, 4; President 3
Veterans' Club 4

JAMES WEYMAN GUNTER
St. Simons Island, Georgia
Exact Sciences
Science Club 2, 3, 4
Masquers 1, 2, 3, 4
Iota Pi Nu 1
Bachelor's Club 1
Alpha Psi Omega 1, 2, 3, 4; President 3
B.S.U. President 4
Student Council 1; President 4
President, Sophomore Class
Editor "T" Book
Associate Editor of *Reflector* 4
Veterans' Club 2, 3, 4
Sauford Hall House Council 3
Who's Who 4

CHARLES L. GROUVER, JR.
Pembroke, Georgia
Business Administration
Treasurer Watson Manor 1
Treasurer Freshman Class
House Council 2
Y.M.C.A. 2, 3, 4; President 2
George-Anne Staff 2
Business Club 3, 4
Veterans' Club 3, 4
Treasurer, Georgia Federation College Business Students' Association 4



seniors '49



CYRIL FRANK HAMM
Sylvania, Georgia
Social Science
Day Student



J. E. HARGROVE
Eastman, Georgia
Industrial Arts, History
Industrial Arts Club 2, 3, 4



GLYNN HARRISON
Statesboro, Georgia
Industrial Arts, Math
Industrial Arts Club 2, 3, 4
Veterans' Club 1, 2, 3, 4

CALHOUN HENDRIX
Valdosta, Georgia
Industrial Arts, Math

WILSON J. HERSCHELL
Collegeboro, Georgia
Industrial Arts
Veterans' Club 1, 2, 3, 4
"T" Club 3, 4
Industrial Arts Club 2, 3, 4; Vice-President 4
Baseball 2, 3

THOMAS J. HILL
Reidsville, Georgia
Exact Sciences
Veterans' Club 1, 2, 3
Science Club 1, 2, 3





THOMAS HILLIARD
Rhine, Georgia
Physical Education, History



BARBARA HILLIS
Sylvania, Georgia
English, Spanish

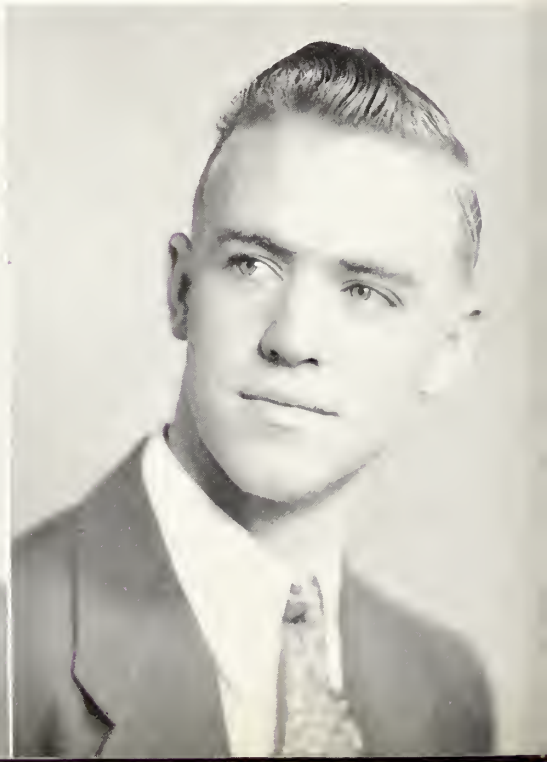


WILLIAM WYCLIFFE HILLIS, JR.
Sardis, Georgia
Exact Science
Transfer from Emory University
Veterans' Club 3, 4
Mn Sigma 3, 4
Science Club 1
Baud 3, 4; Treasurer 1
Orchestra 3, 4

LAMAR HOLLOWAY
Metter, Georgia
Industrial Arts, Physical Education
Industrial Arts Club 2, 3, 4
Veterans Club 1, 2, 3, 4

ALBERT R. HOWARD
Sylvania, Georgia
Exact Sciences
Sigma Chi
Feature Editor, *George-Anne* 2

RALPH HUFF
Milledgeville, Georgia
History, Business



seniors '49



JESSE OSGOOD HURST
Sylvester, Georgia
Veterans' Club 1, 2, 3, 4; Chaplain 4
Science Club 3, 4; Vice-President 4



TOM HUTCHINSON
Savannah, Georgia
Business, History
Veterans' Club
Future Business Leaders' Club



CLEMENTINE W. HUTCHINSON
Savannah, Georgia
Business
Veterans' Club 1, 2, 3, 4; Secretary 1, 3
West Hall House Council 1
Masquers 3
Business Club 3, 4

FRANK A. IRWIN
Alamo, Georgia
History, Business
Transfer from Middle Georgia College
International Relations Club 4

ROYCE VAN JACKSON
Atapulgus, Georgia
Transfer from Berry College
Exact Science
Science Club 3, 4; President 4
Y.M.C.A. 3
Wesley Foundation 3, 4; Treasurer 3

PAUL HULAND JACOBS
Nahunta, Georgia
English, History
Transfer from South Georgia College
Masquers 3, 4
Y.M.C.A. 3, 4
B.S.U. 3, 4
B.S.U. Council 4
Publicity Director 4
English 3, 4; Treasurer 1
Vesper Choir 4; Treasurer 1
Philharmonic Choir 4





CECIL PHILLIP JENNINGS, JR.
 Soperton, Georgia
 Business, English
 Business Club 3, 4



FRANCES CLARK JOHNSON
 Garfield, Georgia
 Home Economics, Exact Science
 Home Economics Club 4



JAMES A. JOHNSON
 Dublin, Georgia
 Exact Science
 Transfer from Mercer
 Masquers 3, 4
 Science Club 3, 4
 Veterans' Club 3, 4
 Y.M.C.A. 4
George-Anne, Feature Editor 4

WILLIAM H. JOHNSON, JR.
 Pinchurst, Georgia
 English, Social Studies
 English Club 4
 Veterans' Club 3, 4

JOYCE ANNE JOHNSTON
 Brunswick, Georgia
 English, History, Speech
 Transfer from South Georgia College
 Chorus 3, 4
 Masquers 3, 4
 Alpha Psi Omega 4
 W.A.A. 3
 English Club 3, 4
 Creative Writers 4
 Y.W.C.A. 3, 4
 Wesley Foundation 4

EDSEL JOINER
 Alamo, Georgia
 Social Science



seniors '49



NATHAN B. JONES
Statesboro, Georgia
Industrial Arts, Math
Industrial Arts Club 2, 3, 4
Veterans' Club 2, 3, 4



WALTER HERBERT JONES
Statesboro, Georgia
Industrial Arts, Math
Industrial Arts Club 1, 2, 3, 4



SAM JOSEY
Adel, Georgia
Social Science



MRS. ANN H. KENNEDY
Brooklet, Georgia
English, Home Economics



KATE KENNEDY
Statesboro, Georgia
English, History
English Club 1



GEORGE PAUL LEE, JR.
Statesboro, Georgia
Business Education



GEORGE W. LONG
College Park, Georgia
Physical Education, Business
Transfer from Gordon
Business Club 3, 4
Veterans' Club 3, 4; Treasurer 4
Y.M.C.A. 3, 4
Wesley Foundation 3, 4; Treasurer 4
Vesper Choir 3
Manager, Intramural Athletics 4



GEORGE A. McMILLAN
Nashville, Georgia
Transfer from South Georgia College
Physical Education
History
Veterans' Club



DEWEESE MARTIN
Statesboro, Georgia
General Science

CURTIS P. MELTON
Edison, Georgia
Business
Business Club 4
Veterans' Club 1



ANNE MILLER
Toombsboro, Georgia
Home Economics, Exact Science
Home Economics Club 1, 2, 3, 4
Y.W.C.A. 1, 2, 3, 4
Philharmonic Choir 4



ANNE MOORE
Valdosta, Georgia
English, History
Transfer from G.S.W.C.
English Club 4
Masquers 4
George-Anne Staff 4



seniors '49



MARY SUE MORRIS
Collins, Georgia
English, Library Science
English 3, 4
Lewis House Council 3
B.S.U. Council 3, 4



CLARENCE MURRAY
Serevent, Georgia
English, History
George-Anne, Exchange Editor, 1, 3, 4
International Relations Club 1, 3, 4; Vice-President 4
House Council 2
Y.W.C.A. 3, 4
Baptist Student Council 3, 4
Masquers 4



E. ARLO NESMITH, JR.
Albany, Georgia
History, Biology
Y.M.C.A. 1, 2
Philharmonic Choir 1, 2, 3, 4
Men's Chorus 3, 4
George-Anne Staff 2, 3, 4; Associate Editor 4
Reflector Staff 3

JOEL NEWSOME
Statesboro, Georgia
Industrial Arts, Math
Industrial Arts Club 2, 3, 4; Vice-President 3
Y.M.C.A.

MARVIN S. NORMAN
Auburndale, Florida
Industrial Arts, Art
Transfer from Young Harris College
Veterans' Club 3
Y.M.C.A. 3
Alpha Rho Tau 3, 4; Secretary-Treasurer 4
Industrial Arts 4
Masquers 3, 4
Wesley Foundation Council 3, 4
Reflector Staff 4

ALBERT ODUM
Hinesville, Georgia
Industrial Arts, History





HERBERT POPPELL
Odum, Georgia
History, Physical Education
Veterans' Club 2, 3, 4
I.R.C. 3, 4



JOHN C. PROCTOR, JR.
Brooklet, Georgia
History, Physical Education
Transfer from North Georgia College,
Dahlonia, Georgia
Treasurer of Freshman Class
Basketball 1, 2, 4
Physical Education Club 1
Men's Chorus 3



HERBERT LEE REEVES
Rockholds, Kentucky
Physical Education and History; minor,
English
Transfer from Cumberland College
Varsity Basketball 2, 3, 4
Varsity Baseball 2, 3, 4
Veterans' Club 1, 2, 3, 4
"T" Club 3, 4
I.R.C. 1, 2
Men's Chorus 4

LEON RINER
Augusta, Georgia
Business, History
Veterans' Club 1, 2, 3; Secretary 4
Y.M.C.A. 2, 3, 4
F.B.I.A. 2, 3, 4; Vice-President 4
I.R.C. 3

WILLIAM M. ROACH
Macon, Georgia
Industrial Arts, History
Industrial Arts Club 2, 3, 4

DEAN H. ROBERSON
Screven, Georgia
Business, Art
Masquers 2, 3, 4
Business Club 2, 4
Alpha Rho Tau 3, 4; President 4
W.A.A. 2, 3



seniors '49



MASSEY ROBERSON, JR.
Odum, Georgia

Science
Vets 1, 2, 3, 4
Science Club 3, 4
House Council 4



QUILLON GLEN ROBERSON
Sereven, Georgia

Industrial Arts, Physical Education
Industrial Arts Club 3, 4; President 4
Masquers 2
Alpha Rho Tau 3, 4
Varsity Ball Team 3



RALPH ROBERSON
Sereven, Georgia

Industrial Arts, Physical Education
Varsity Basketball 3
George-Anne Staff 2
Art Club 4

DERRELL ROBERTS
Ocilla, Georgia

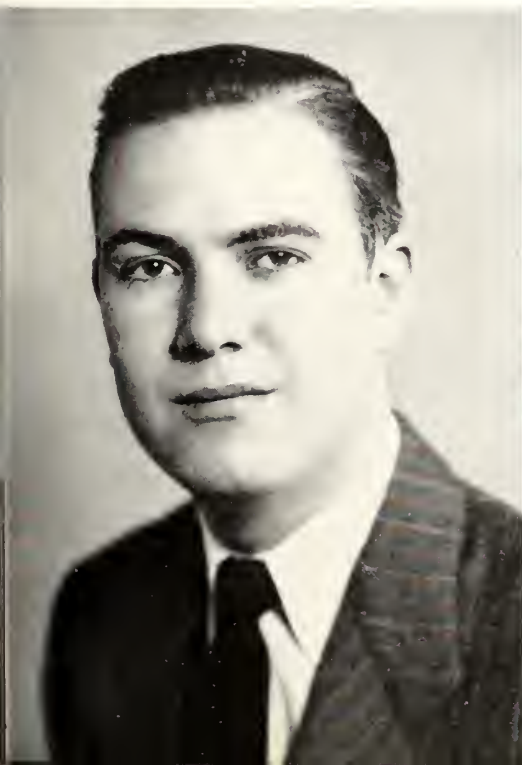
Transfer from South Georgia College
Veterans' Club 3
I.R.C. 4

RAY ROUNTREE
Summit, Georgia

Industrial Arts, English
Industrial Arts Club 1, 2, 3, 4
Reporter 3; President 4
Vice-President, Sophomore Class
Sanford House Council 4

JACK ROGERS
Reidsville, Georgia

History, Physical Science
President of Sophomore Class





REGIS ROWELL

Sylvania, Georgia

George-Anne Staff 1, 2, 3, 4; Business Manager 3

Vesper Choir 2, 3, 4

Philharmonic Choir 1, 2, 3, 4

I.R.C. 1, 2, 3, 4; Vice-President 3; Secretary 4

Y.W.C.A. 1, 2, 3, 4; Vice-President 4

B.S.U. Council 3; Secretary and Treasurer 3

Lewis Hall House Council 4; President 4

Who's Who 4

ANNA BELL SIMMS

Vidalia, Georgia

Elementary Education



BILL SARRATT

Tifton, Georgia

English, French

Transfer from Emory

Editor, *George-Anne* 4

English Club 3, 4

Masquers 3, 4

Who's Who 4

HIOKE BROOKS SMITH, JR.

Savannah, Georgia

Music, English

Band 1, 2, 3, 4

Mu Sigma 3, 4; Vice-President 3

Dance Orchestra 1, 2, 3, 4

Y.M.C.A. 1, 2, 3, 4

Chorus 1, 2, 3, 4

Who's Who 4

Band President 1, 2

Class Secretary 1

Y.M.C.A., Secretary-Treasurer 1



CHARLIE CECIL SAUNDERS

Statesboro, Georgia

Exact Sciences

Science Club 4

HOWARD SMITH

Reidsville, Georgia

English, French

Philharmonic Choir 1

Men's Chorus 2, 3

English Club 2, 3



seniors '49



THOMAS J. SMITH
Hinesville, Georgia
Social Science
Chorus 1
Veterans' Club 1, 2
Masquers 1
I.R.C. 4



WILLIAM R. SMITH
Statesboro, Ga.
History, Math
I.R.C. 4
Reflector 4; *George-Anne* 4
Masquers 3, 4



JUDGE C. SORRELLS, JR.
Macon, Georgia
History, Physical Education
Transfer from Middle Georgia College
Masquers 3, 4
I.R.C. 3, 4
Veterans' Club 4

DUDLEY D. SPELL
Adrian, Georgia
Physical Education, History
Veterans' Club 1, 2, 3; Vice-President 3
"T" Club 2, 3
I.R.C. 2

VERA STEWART
Portal, Georgia
English, Home Economics
Chorus 1, 2
Lewis Hall House Council 1, 3
Y.W.C.A. 1, 2, 3
English Club 3, 4; Secretary 4
Home Economics Club 1, 2, 3, 4; Secretary 4

MARY RUSHING
Register, Georgia
Business, English
Business Club 2, 3, 4
Chorus 1, 2, 3
House Council 1
Y.W.C.A. 1, 2, 3
W.A.A. 3





RUTH ETNA SWINSON
Statesboro, Georgia
History, English
I.R.C. 3, 4
English Club 4
B.S.U. Council 4



VIRGINIA TAYLOR WILLIAMSON
Pembroke, Georgia
History, English
I.R.C. 1, 2, 3, 4
Y.W.C.A. 1, 2, 3



ENOCH E. THOMAS, JR.
Columbus, Georgia
History Business
Transferred from Alabama Polytechnic
Institute
Middle Georgia College

ROBERT N. THRASH
Gay, Georgia
Transfer, West Georgia College

HAZEL THILLMAN
Surrency, Georgia
Home Ec.
Chorus 1
Masquers 1, 2, 3
Home Ec. Club 1, 2, 3
Y.W.C.A. 1, 2, 3
W.A.A. 2
Wesley Foundation, Vice-President

FRED WATERS
Collins, Georgia
Student Council Secretary 4
Proctor Sanford Hall 4
Veterans' Club 1, 3, 4; Treasurer 2
Monitor, Sanford Hall, 3
Sophomore Class Secretary and Treasurer 2
Veterans' Club Treasurer 2 (1, 2, 3, 4)
Who's Who 4



seniors '49



ERNEST WEEKS
Norman Park, Georgia
Social Science
Transfer, Norman Park
Veterans' Club 4



JUANITA WEEKS
Norman Park, Georgia
History, English
Transfer, Norman Park

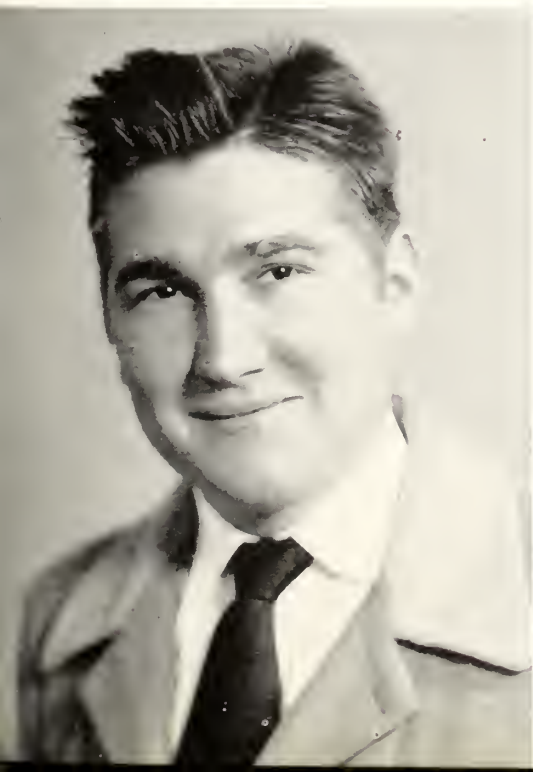


JANE MARIE WHEELER
Savannah, Georgia
Elementary Education
Armstrong Junior College
University of Georgia
Alpha Rho Tau 4
Masquers 3, 4

THOMAS E. WHITE
Fitzgerald, Georgia
Physical Education, History

DONALD E. WILKES
Rome, Georgia
Music, History
Concert Band 1, 2, 3, 4; Secretary 1
Dance Orchestra 1, 2, 3, 4
Mu Sigma 2, 3, 4
George-Anne Staff 2
Masquers 2
Chorus 2

BETTY JEAN WILLIAMS
Statesboro, Georgia
English, History
English Club 4



seniors '49



TASCAR WILLIAMS
Albany, Georgia
Music, English
Mu Sigma 3, 4
Band 3, 4; President 3
Orchestra 3, 4
Veterans' Club 3, 4



BILL WILLIAMS
Sylvania, Georgia
Transfer from Auburn
Music, English
Veterans' Club 2, 3, 4
Concert Band 2, 3, 4; Secretary 3, 4
Dance Orchestra 3, 4
Philharmonic Choir 2, 3, 4
English Club 4
Mu Sigma 3, 4; President 4



JOSEPH P. WILLIAMSON
Pembroke, Georgia
History, Business
Veterans 1, 2, 3, 4
I.R.C. 1, 2, 3
Y.M.C.A. 2, 3
Business Club 1, 2, 3, 4; Treasurer 4

VELMA LORENE WOODARD
Eastman, Georgia
Home Economics, Exact Sciences
Transfer from Berry College
Y.W.C.A. 1, 2, 3, 4
Home Economics Club 1, 2, 3, 4
Chorus 1, 2, 3

EDWIN L. WYNN
Portals, Georgia
Exact Sciences
Transfer, University of Georgia

ARTHUR YARBROUGH
Mitchell, Georgia
Exact Science
Y.M.C.A. 1, 2, 3, 4; President 3
Wesley Foundation 3, 4; Vice-President 3
Science Seminar 2, 3, 4
Masquers 1, 2, 3, 4; Vice-President 3;
Treasurer 4
Alpha Psi Omega 2, 3, 4
Reflector Staff 4
Who's Who 4





TOM W. DYKES
Cochran, Georgia
Physical Education
Industrial Arts



SHELDON CHAPMAN
Waveross, Georgia
Industrial Arts
Math



CECIL HAWLEY
Union Point, Georgia
History, Math



LAWRENCE PARKER
LaGrange, Georgia
Physical Education
History



MORGAN LEE
Statesboro, Georgia
Industrial Arts



MRS. AUBRY WATERS
Stilson, Georgia
Social Science



BETTY ZETTEROWER
Brooklet, Georgia
Business, English
English Club 2, 3, 4
Business Club 2, 3, 4
Y.W.C.A. 2, 3
Organ Guild 4



BEN DARSEY

JAMES H. EVANS

BILL FORDHAM



JULIE T. ALLEN

Hoke SMITH

FRED WATERS

ARTHUR YARBROUGH

who's

The ten TC students accepted for recognition in the 1948-49 edition of "Who's Who Among Students in American Universities and Colleges" are Ben Darsey, Hinesville; James Evans, Statesboro; Bill Fordham, Gibson; James Gunter, Statesboro; Regis Rowell, Sylvania; Bill Sarratt, Tifton; Hoke Smith, Summit; Julie Turner Allen, Statesboro; Fred Waters, Collins, and Arthur Yarbrough, Mitchell.

Selections were made from candidates chosen by members of the junior and senior classes, and the faculty from students classified as seniors of a faculty committee composed of Chairman Viola Perry, Dr. Herbert Weaver, Dean Paul Carroll, Dr. Fielding Russell, Dr. Malvina Trussell, and Miss Sophie Johnson.

Who's Who is designed as a standard measurement for students comparable to such agencies as Phi Beta Kappa and the Rhodes Scholarship Award.

Who's Who is also designed as an incentive for students to get the most out of their college careers and as a means of compensation to the students for what they have already done. Special attention is given Who's Who as a recommendation to the business world. The publication corresponds with hundreds of companies each year in regard to their placing students.

Who's Who students are judged on character, scholarship, leadership in extra-curricula of future usefulness to business and society.



JIMMY GUNTER



REGIS ROWELL



BILL SARRATT



w h o



NEWS FLASH



The latter part of December saw the formation on the TC Campus of a student group of the American Guild of Organists. The charter came from the national headquarters in New York City. The TC Chapter is under the supervision of Professor Broucek of the Music Division.

Mary Ida Carpenter, dean; Archie Nesmith, secretary-treasurer; Martha Ann Vaughn, Betty Zetterower, Bill Evans, Eva Brown, Annella Wells, and Douglas Moore.

LATE NEWS

Mr. Averett's class discovers Savannah.



T. C. Building and Remodeling Program nears completion.





Clubs



sanford hall house council



OFFICERS

ROBBY HODGES

President

BEN DARSEY

Vice-President

FRED McLENDON

Secretary

MASON CLEMENTS

Treasurer

Proctors:

WILLIS F. DENNY
FRED WATERS

Monitors:

Delmar Cowart
Clyde Poole
Mitchell Conner
John Wheeler

Jack Brady
Joe Honston
Ray Roundtree
Marvin Dixon

lewis hall house council



OFFICERS

REGIS ROWELL

President

DOROTHY FORBES

Vice-President

MARY IDA CARPENTER

Secretary

EVELYN ARNOLD

Treasurer

Monitors:

Mary Clements
Irene Deese
Bobby Quick

Mary Nell Forehand
Mary Rushing
Virginia Lawson
Joyce Denmark

east hall house council

OFFICERS

NORMA COWART
President

REBA WILSON
Vice-President

CATHERINE ANDERSON
Secretary and Treasurer



Monitors:

Betty Walden
Mary Frances Smith
Juliet Oliver
Betty Louise Brown
Mary Webb
Carolyn Mallard

Betty Williams
Imogene Smith
Elizabeth McDaniel
Wynelle Maury
Anne Odom
Callie Martin

west hall house council

OFFICERS

BLAIR WELLS
President

FLORENCE FOREHAND
Vice-President

MARTHA ANN VAUGHAN
Secretary and Treasurer



Members:

Margaret Harrison
Betty Thigpen
Charlotte Brinson
Methyl Parker
Marilyn Barwick

Caroline Smith
Mabel Smith
Linda Hodges
Lola Robbins
Ruth Bauquiss

alpha rho tau



OFFICERS

DEAN ROBERSON
President

REBA BARNES
Vice-President

MARVIN NORMAN
Secretary and Treasurer

FRIEDA GERNANT
Sponsor

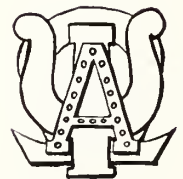
Members:

Ike Hussey, Marvin S. Norman, Bennie Spell, Mary Nelle Forehand, Reba Barnes, Jane Wheeler, Quillon Roberson, Dean Roberson, James H. Evans, Georgeanne Howard, Ralph Roberson, George Parrish.

alpha psi omega



JAMES EVANS
Cast Director



JULIE T. ALLEN
Cast Stage Manager



BOBBYE QUICK
Cast Business Manager



JIMMY GUNTER
BENNY SPELL
JOYCE CALLAWAY
BEN DARSEY
DOROTHY STEWART
Sponsor

mens chorus

Howard Smith
Gene Henderson
Joe Smith
Gib Johnson
Grover Futch
Arlo Nesmith
Henry Coursey
Harry Newman
Eddie Ort
Laysel Baneroft
Claxton Walker
Eddie Rush
H. M. Fulbright
Douglas Moore



Sanford Brown
Dwight Todd
Charlie Milligan
Eschol Gay
Joel Cooper
Ambrose Martin
James Hagin
Zephoe Belcher
Fielding
Russell, Jr.
Carl Wilkinson
Jim Etheridge
Newsome
Summerlin
Arthur
Yarbrongh

H. M. FULBRIGHT
President

GROVER C. FUTCH
Vice-President

NEWSOME SUMMERLIN
Secretary and Treasurer

HOWARD SMITH
Reporter

HARRY NEWMAN
Music Custodian

english club

JAMES ETHERIDGE
President

BERNEY ANNA MANN
Vice-President

VERA STEWART
Secretary

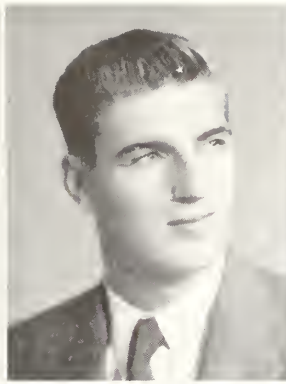
PAUL JACOBS
Treasurer

Elizabeth Bland
Frances Chester
Jack Douglas
George Herndon
William Johnson
Joyce Johnson
Ann Hendrix Kennedy
Kate Kennedy
Anne Moore
Mary Sue Morris
Bobbie Quick
Bill Sarratt
Howard Smith
Ruth Swinson
Letha Tyson
Betty Williams
Bill Williams
Betty Zetterower
Laysel Baneroft

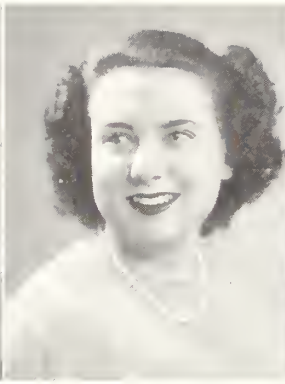




Bill Williams
President



I. E. THIGPEN
Vice-President



ANN TRICE
Secretary



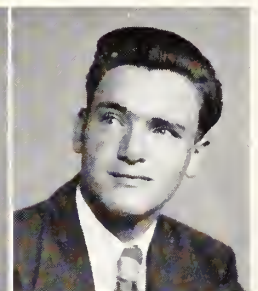
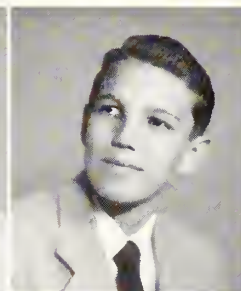
DOUGLAS MOORE
Treasurer



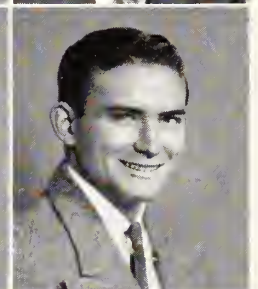
WYCLIFF HILLIS
Reporter

mu sigma

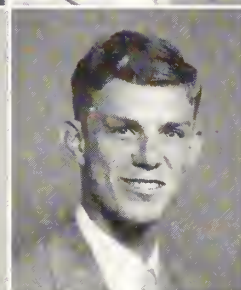
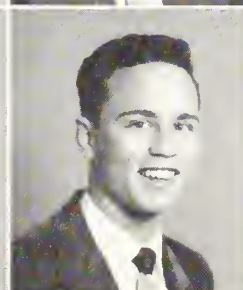
Laysel Bancroft
John Barr
Richard Cohan



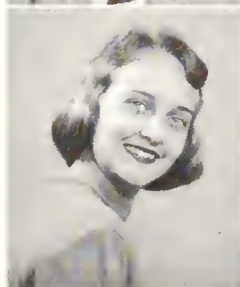
Gene Henderson
James Hagan
Bobby Humphrey
Arthur Justice



Andy Odum
Eddie Ort
James Scriews
Hoke Smith



Anna Marie Tippins
Martha Ann Vaughan
Donald Wilkes
Tascar Williams





ROYCE V. JACKSON
President



OSGOOD HURST
Vice-President



CHARLOTTE BRINSON
Secretary



BILLY CARTER
Treasurer

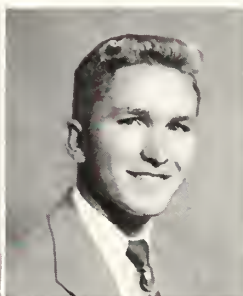


HARRY NEWMAN
Program Chairman

science club



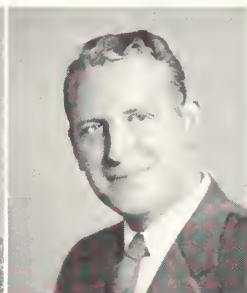
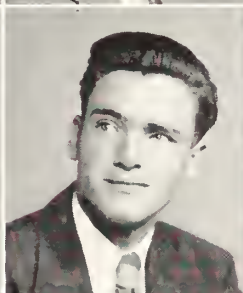
Gene Barnes



Bobbie Brown



Mildred Clott
Richard Cohan
Elton Eason
Jimmy Guter



Joe Honston
James Johnson
Bill Jones
Eugene Kendrick
Burney Ann Mann



Betty Mock
Bernard Morris
Charlie Saunders
Andrey Strickland
Carol Hillis

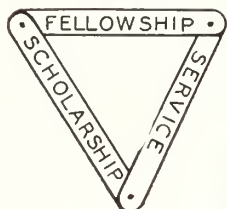


Jan Murphy
Tom H. Jenkins
Leon Thigpen
Ernestine Whitley
Arthur Yarbrough



i n d u s t r i a l a r t s c l u b

Ray Roundtree
Bill Herschel
Raymond Ginn
Melvin Davis
Henry Rahn
Delmar Cowart
Joel Newsome
Herbert Jones
Lamar Holloway
Glynn Harrison
Andy Sutton
Ellis Hargrove
Thomas Rakley
Jesse Durden
A. J. Woods



JOHN ERICKSON, DONALD HACKETT
Faculty Advisors

Nathan Jones
Quillian Roberson
Charles Neal
Carroll Smiley
Norris Underwood
Tommy Dugger
William Roach
Marvin Norman
John Martin
Lewis Johnson
Esther Croley
Morgan Lee
Gerald Hooks
Ralph Roberson
Bill Jones



The George-Anne



BILL SARRATT
Editor-in-Chief



GENE HENDERSON
Business Manager



ANNE MOORE
News Editor

ARLO NESMITH
Associate Editor

JAMES JOHNSON
Feature Editor

REGIS ROWELL
Society Editor



CLARENCE MURRAY
Exchange Editor

BOBBYE QUICK
Circulation Editor

GEORGE PARRISH
Make-Up Editor

REPORTERS

Anna Marie Tippins

Latha Tyson

Margaret Harrison

Bettye Lewis

Bobby Smith

Lola Robbins

reflector



JAMES EVANS

Editor-in-Chief

JOYCE DENMARK

Editorial Staff

FACULTY

Frieda Gernant

M. L. Goldwire



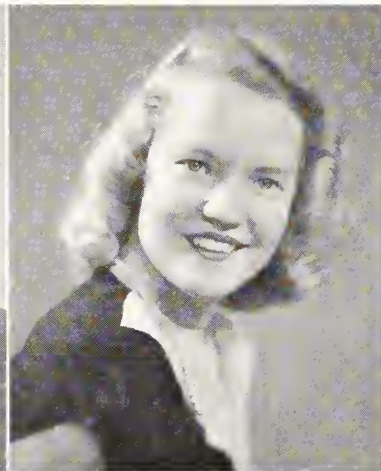
JAMES GUNTER

Assistant Editor



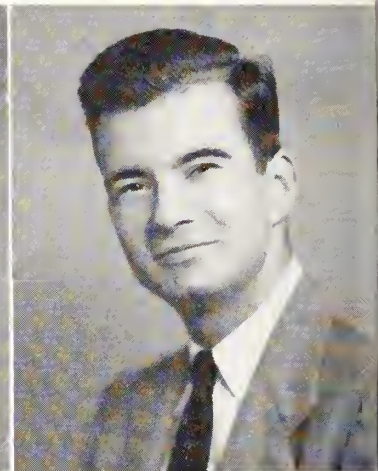
JULIE T. ALLEN

Class Editor



BOBBYE QUICK

Class Editor



BEN DARSEY

Club Editor

EDITORIAL STAFF

Joyce Denmark
Martha Duffield
Marvin Norman
Cecil Jennings
Ann Trice



WELL, HERE IT
WILL LIKE IT.
AND YOUR STAFF
THE MISCHIEF
ON TIME. WE
WILL SERVE TO
... "WHO WAS
IN SOCIAL

staff '49

BERNARD MORRIS
Business Manager



Advisors

MARJORIE KEATON
JACK AVERITT



ARTHUR YARBROUGH
Club Editor



CHARLOTTE CLEMENTS
Club Editor



REBA BARNES
Art Editor

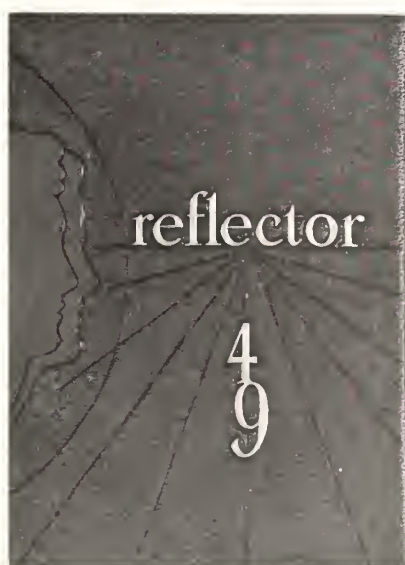


QUILLIAN ROBERSON
Sports Editor

IS...HOPE YOU
IT HAS BEEN FUN
WORKED LIKE ———
TO HAVE IT READY
ALL HOPE THAT IT
HELP YOU REMEMBER
THAT WHO SAT BY ME
STUDIES WAY BACK IN

'49"

J. H. E.



home economics club



HOME EC. MEMBERS

Lucy Abell
Evelyn Arnold
Dot Aycock
Joyce Bowen
Betty Ware Brown
Carolyn Brown
Laquita Burkett
Margaret Coleman
Sybil Daniel
Kathleen Dent
Martha Duffield
Margaret Elmore
Florence Foreband
Wudie Gay
Frances Geiger
Ione Ham

Margaret Harrison
Linda Hodges
Ila Holton
Mila Holton
Mildred Hamby
Frances Johnson
Tallulah Lester
Jean Lord
Jeannette Lord
Patsy Madray
Anne Miller
Lonadine Morgan
Eleanor Ogden
Ann Elizabeth Oliver
Betty Paul
Ruth Smith
Lucy Abell

Vera Stewart
Claire Thomas
Geraldine Thrash
Hazel Tillman
Mary Webb
Annella Wells
Jeannette Wilder
Inez Wilson
Jean Williams
Lorene Woodard
Sue Wynn
Betty Reagan
Betty Brady
Ernestine Whitley
Inez Roberts
Mary West

OFFICERS

MILDRED HAMBY
President

INEZ WILSON
Vice-President

VERA STEWART
Secretary

MARGARET COLEMAN
Treasurer

HAZEL TILLMAN
Reporter

FRANCES GEIGER
Historian



JAMES EVANS
President

JULIE ALLEN
First Vice-President

BEN DARSEY
Second Vice-President

BOBBY QUICK
Secretary

ARTHUR YARBROUGH
Treasurer

masquers

MEMBERS

Paul Jacobs
Mary West
Julie T. Allen
Ben Darsey
Latha Tyson
Miriam Todd
Dorothy Forbes
Burney Ann Mann
Mary Nell Forehand
Frances Chester
Harry Newman
Bernard Morris
Carl Wilkinson
Jean Fordham
Betty Lewis
George Parish
Jane Wheeler

Bobbie Quick
Elizabeth Bland
Benny Spell
Ann Trice
George Anne Howard
Monty Springhorn
Bobby Smith
Judge Sorrells
Joyce Callaway
Betty Zane Caswell
Harold Brabham
Anne Moore
Archie Nesmith
Mary Smith
Charlotte Clemmons
James Gunter
Inez Wilson
James Evans



“claudia”



This is practice?



That's an egg?



BAAAAAA!

t. c. concert band



Pat

Barbara Jean

Lois

HOKE SMITH, BILL WILLIAMS, AND TASCAR WILLIAMS
Directors

OFFICERS

BOBBY HUMPHREY
President

BILL WILLIAMS
Secretary

WYCLIFF HILLIS
Treasurer

JAMES SCREWS
Librarian



Members:

John Barr, Linton Sammons, Eddie Ort, I. E. Thigpen, Donald Wilkes, Tom Dugger, Laysel Baneroft, Arthur Justice, Eva Brown, Paul Melvia, W. Forrest Howard, Professor John Zaffuta, Methyl Parker, Andy Odum, William E. Lewis, Martha Vaughan, Ann Trice, Douglas Moore, David Sparks, Ninette Sturgis, Fielding Russell, Bobby Taylor, Bob Gaskins, Jimmy Etheridge.

philharmonic choir

DR. RONALD J. NEIL, *Conductor*

MR. JACK W. BROUCEK, *Accompanist*

BOARD OF DIRECTORS

Hoke Smith, *Chairman*; LAYSEL BANCROFT, JOEL COOPER, H. M. FULBRIGHT,
DOUGLAS MOORE

The Philharmonic Choir presents a Christmas program at the close of the Fall quarter and a standard oratorio at the close of the Winter quarter. The oratorio chosen for performance this year was Dubois' "The Seven Last Words of Christ." Previous performances have included Handel's "The Messiah", Haydn's "The Creation", Mendelssohn's "Elijah", Stainer's "The Crucifixion", and Gounod's "Gallia."



Members:

Soprano: Marylyn Barwick, Betty Anne Bedingfield, Joan Bennett, Elizabeth Bland, Joyce Blanton, Bobbie Brown, Glenda Brown, Louise Burch, Norma Cowart, Irene Deese, Joyce DeLoach, Martha Jean Eason, Jean Fordham, Martha Funderburk, Mary Hart, Betty Hurn, Margie Jackson, Gay Kimbrough, Jackie Knight, Dot Lancaster, Iris Lee, Betty Lewis, Carolyn Martin, Mary McCrary, Anne Miller, Betty Mitchell, Anne Odom, Methyl Parker, Bobbye Quick, Peggy Robinson, Jackie Rushing, Mabel Smith, Mary Ruth Smith, Ninette Sturgis, Claire Thomas, Anne Trice, Martha Vaughan, Marty Webb, Betty Williams, Jimmy Lou Williams, Reba Dean Wilson, Thelma Winter, Rena Mae Woods, Ruth Bauguss, Betty J. Brown, Mildred Clatt, Faine Green, Mary Jordan, Betty Lightfoot, Madeline Meeks, Dell Morris, Jane Robertson, Jackie Smith, Ruth Smith, Miriam Todd, Margaret Warnock, Annella Wells, Jean Williams, Alene Woods. *Alto:* Virginia Braddy, Gretchen Bredenber, Eva Brown, Betty Zane Caswell, Frances Chester, Florence Forehand, Mary Nell Forehand, Anne Griffin, Joan Harper, Margaret Harrison, Betty Sue Hitson, Joyce Johnston, Billie J. Kirkland, Mildred Mercer, Regis Rowell, Peggy Shuman, Caroline Smith, Mary Frances Smith, Betty Strange, Anna Maria Tippins, Geraldine Thrash, Carolyn Wannock, Marjorie Weatherford, Blair Wells, Azalea Ross, Mary West. *Tenor:* L. H. Bancroft, Harold Brabham, Richard Cohan, Henry Coursey, H. M. Fulbright, James Hagan, Ernest Hensley, Jr., Paul Jacobs, A. E. Justice, Douglas Moore, Archie Nesmith, Jr., Bob Thrash, Lee Chapman. *Bass:* Joel Cooper, James Ethridge, Gene Henderson, Bobby Humphrey, Don Johnson, Arlo Nesmith, Eddie Ort, Eddie Rush, Fielding Russell, Jr., Hoke Smith, Joseph Smith, Bill Williams, Forest Howard, Paul Melvin, Alex Summerlin, Graham Woodell.



ALTON DAVIS *President*

LEON RINER *Vice-President*

ED EDWARDS *Publicity Chairman*

VIRGINIA BRADDY *Secretary*

JANE BLITCH *Treasurer*



future business leaders club

Alton Davis receives charter for the T. C. Chapter of F. B. L. A. during State Convention held on campus of Georgia Teachers College.

Evelyn Arnold, Mildred Beasley, Virginia Brady, Betty Brown, Barbara Jean Brown, Gladys Cannon, Ben Darsey, James Evans, H. M. Fulbright, Georgeanne Howard, Darell Hagan, Ernest Hensley, Tom Hutchinson, Clem Hutchinson, Cecil Jennings, Beverly Jones, George Long, Betty Lovett, Callie Martin, Dana Stevens, Curtis Melton, Geneva Mixon, Russell Mercer, Ellen Parrish, Pat Pretorious, Mary Rushing, Lois Stockdale, Betty Zetterower, Jean Hodges, Charles Groover, Henry Coursey, Joe Williams, Leon Riner, Betty Rowland, Calvin Brewton, James Calhoun, Ed Edwards, Jane Blitch, Dean Roberson, Alton Davis.



dance orchestra



THE PROFESSORS GIVE OUT AT THE SATURDAY HOP



Glenn Rasmussen, J. S. Screws, Bill Williams, Tascar Williams, Donald Wilkes, Eddie Ort, John Zafutta, Anna Marie Tippins, Paul Melvin, Bobby Humphrey, Johnny Barr, I. E. Thigpen, Wycliff Hillis, Linton Sammons, Andy Odum, Dick Cohen.

young women's and men's christian association



Y.W.C.A. Members:

Pansy Abbott, Emily Adamson, Jane Ashurst, Marilyn Barwick, Joyce Blanton, Christine Bonnett, Charlotte Brinson, Betty Brown, Eva Brown, Laquita Burkett, Betty Zane Caswell, Ruth Carver, Mary Clements, Mary Alice Coleman, Inez Dasher, Joyce DeLoach, Lueile Easterling, Marynell Forehand, Betty Fuller, Doris Hagin, Frances Hankinson, Joan Harper, Margaret Harrison, Carol Hillis, Margie Jackson, Bernice Johnson, Joyce Johnston, Marjorie Key, Margaret Kicklighter, Tallulah Lester, Betty Loyett, Geneva Mixon, Ann Miller, Virginia Morgan, Betty Mock, Jan Murphy, Ann Odum, Geraldine Oglesby, Methyl Parker, Elizabeth Paul, Betty Jean Riner, Peggy Robinson, Carlene Shanklin, Mary Smith, Mary Frances Smith, Jackie Smith, Ruth Smith, Claire Thomas, Ann Trice, Latha Tyson, Marion Wade, Marjorie Weatherford, Ernestine Whitley, Carolyn Womach, Lorene Woodard, Annabeth Woods, Jeau Williams, Rena Mae Woods, Jean Williams, Sue Wynn, Thelma Winter, Betty Zetterower.

Y.M.C.A. Members:

Ambrose Martin, Tully Pennington, Ernest Hensley, George Lon, Jack Douglas, Paul Jacobs, Zephoe Belcher, Eddie Rush, Bill Purcell, Claxton Walker, Bobby Brown, Douglas Moore, Fielding Russell, Jr., Leon Riner, Henry Coursey, James Johnson, Billy Odum, Charles Groover, Roy Bragg, J. E. Calhoun, G. C. Futch, Jr.

ywca and ymca

HAZEL TILLMAN
President

ELIZABETH BLAND
Vice-President

REGIS ROWELL
Vice-President

DOT AYCOCK
Secretary and Treasurer

BLAIR WELLS

BETTY WILLIAMS

CLARICE MURRY
Vesper Committee

MABEL SMITH
Dormitory Representative



vesper choir



Laysel Bancroft, Paul Jacobs, *Treasurer*; George Herndon, Ann Trice, Joyce Johnston, Regis Rowell, Douglas Moore, *President*; Betty Lewis, Elizabeth Bland, *Secretary*; Ernestine Whitley, Jean Fordham, Arthur Justice, Archie Nesmith, Gene Henderson, *Vice-President*.

councils



IRENE DEESE

BOBBY BROWN
Dormitory Representatives

FLORENCE FOREHAND

BOBBY QUICK
Entertainment Chairman

Y. M. C. A.

FRED McLENDON
President

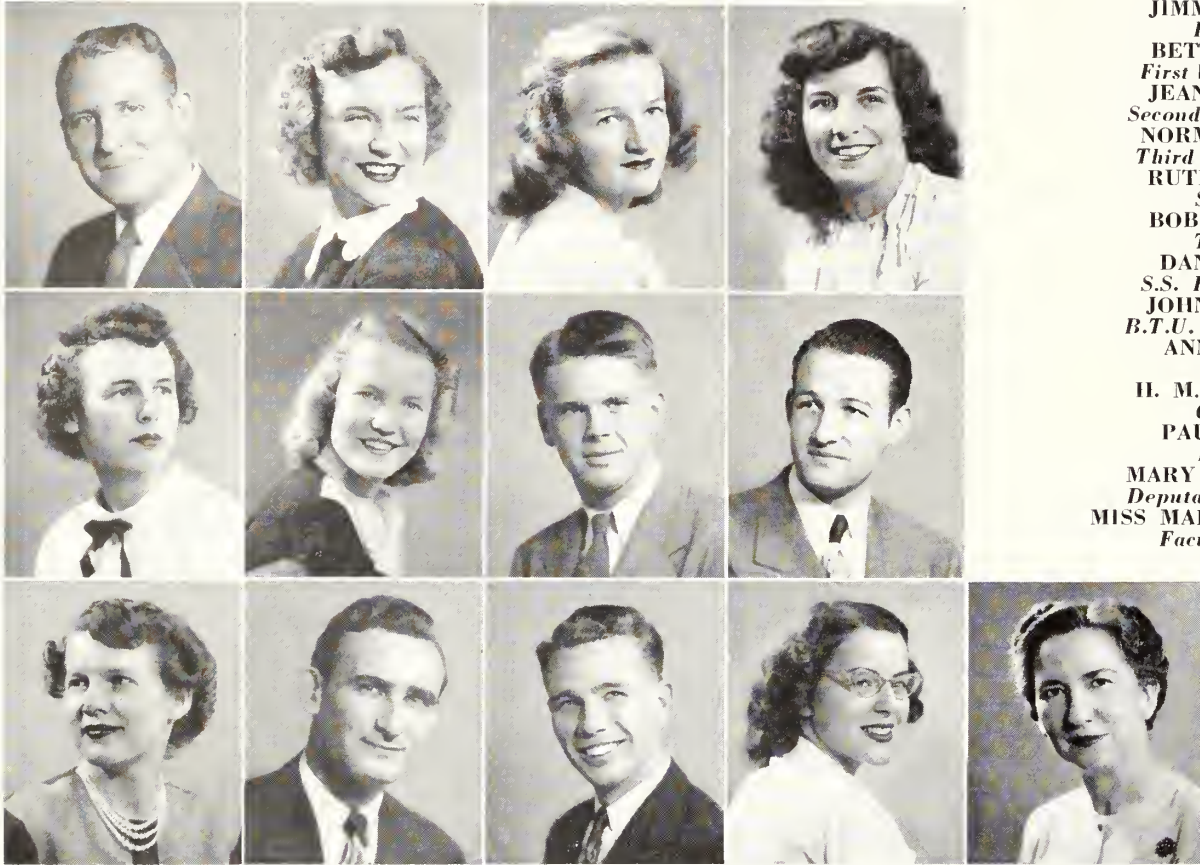
SANFORD BROWN
Vice-President

JOSEPH SMITH
Secretary

DON McCLELLAN
Treasurer

GENE HENDERSON
Vesper Choir

baptist student union



JIMMY GUNTER
President
BETTIE LEWIS
First Vice-President
JEAN GROOVER
Second Vice-President
NORMA COWART
Third Vice-President
RUTH SWINSON
Secretary
BOBBYE QUICK
Treasurer
DAN BIGGERS
S.S. Representative
JOHN GROOVER
B.T.U. Representative
ANN GRIFFIN
Pianist
H. M. FULBRIGHT
Chorister
PAUL JACOBS
Reporter
MARY SUE MORRIS
Deputation Chairman
MISS MARJORIE CROUCH
Faculty Advisor

primitive baptist youth fellowship



Joyce Calloway
 Frances Hankerson
 Lucille Easterlin
 Joyce DeLoach
 Margaret Kicklighter

Jan Murphy
 Audry Braddy
 John F. Brannon
 Caroline Mallard
 Iris Lee

C. J. Williams
 Margaret Jones
 Russell Mercer
 Howard Daughtry
 Anne Belle Sims

Mary Nell Willis
 Claire Thomas
 Jean Williams



EARL CHERRY *President*

CLARECE MURRAY *Vice-President*

REGIS ROWELL *Secretary and Treasurer*

JACK BRADY *Corresponding Secretary*

international relations club



Jack Brady
Regis Rowell
Earl Cherry
Clarence Murry
Bill Roach
Judge Sarrell

Gene Henderson
Eschol Gay
Carl O'Neil
Jack Douglas
Tom Smith
Jack Rogers

Darrell Roberts
Virginia Williams
Barbara Hillis
Louise Burch
Van Harrison
Edsel Joyner

Virginia Lawson
Bobbie Smith
Jimmie Bishop
Frank Irwin
William Hixon
G. C. Futch

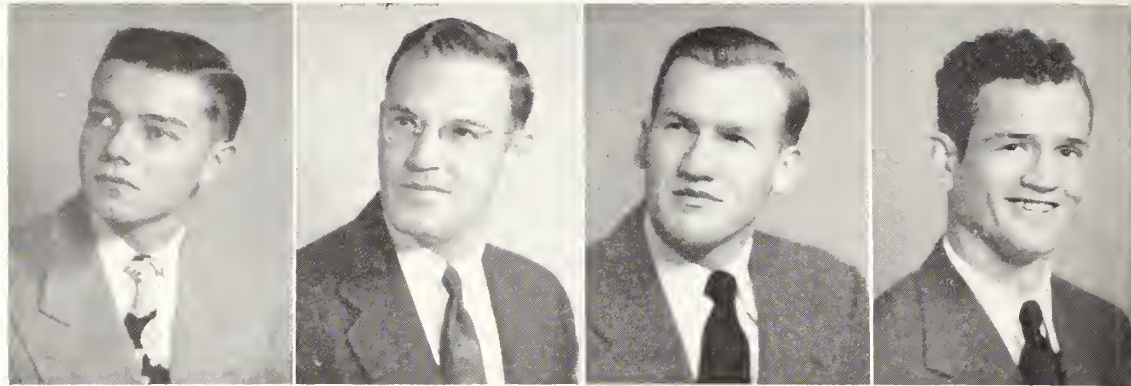
the "t" club

ALVIN WILLIAMS
President

BILL FORDHAM
Vice-President

MITCHELL CONNER
Secretary

TOM DYKES
Treasurer



MEMBERS

Mitchell Connor
Walker Whaley
James Conner
Jerry Conner
George Lindsey
George Eanes
Cliff Hill
Edgar G. Daniel

John M. Morgan
Bill Fordham
Tom Dykes
Dudley Spell
Frank Bagley
L. D. Bowen
Herbert Reeves
Carlton Adams

Jack Murphy
Charles Wireman
James Hall
Rhed Prosser
Al Williams
Bill Hershel
Billy Tyre



womens athletic association



HAZEL NEVILS
President

JULIET OLIVER
Vice-President

MARY HART
Secretary and Treasurer

SUE BURKS
Intramural Manager

Reba Barnes, Joan Bennett, Joyce Bowen, Sue Burks, Joyce Calloway, Kathleen Dent, Jo Ellis, Mary Nell Forehand, Mary Ann Harper, Van Harrison, Mary Hart, Iris Lee, Bettye Lewis, Betty Lord, Patsy Madray, Virginia Morgan, Hazel Nevil, Juliet Oliver, Betty Paul, Peggy Shuman, Imogene Smith, Jackie Smith, Norma Swan, Mary Webb, Barbara Jean Brown, Gwen Netherland, Shirley Carr, Caroline Smith, Betty Fuller, Joan Harper, Dot Hollaway, Tennie Bennett, Jean Fordham.



the wesley foundation

HAROLD BRABHAM *President*

MRS. FRANK HODGES *Director*

HAZEL TILLMAN *Vice-President*

ELIZABETH BLAND *Secretary*

GEORGE LONG *Treasurer*

REMEMBER NOW THY CREATOR IN THE DAYS OF THY YOUTH.—Ecclesiastes 12:1.



Lonadine Morgan, Mabel Smith, Marlyn Barwick, Jackie Knight, Lola Robbins, Elizabeth Bland, Joyce Johnston, Betty Mitchell, Ann Trice, Hazel Tillman, Ernestine Whitley, Douglas Moore, Harold Brabham, Arthur Yarbrough, Marvin Norman, George Herndon, Laysel Bancroft, Gene Henderson, George Long, Archie Nesmith, Mrs. Sarah Hodges, Sanford Brown.



OFFICERS

FRED WATERS
President

DUDLEY SPELL
Vice-President

LEON RINER
Secretary

GEORGE LONG
Treasurer

CHARLES NEIL
Chaplain

Otis Mobley, Walton Morris, Weyman Morris, Roy Moxley, Albert Odom, Robert Odom, William Peacock, Clyde Poole, Irwin Rahn, Herb Reeves, Palmer Rimes, Massy Roberson, George Roebuck, Ray Rountree, James Rouse, Eddie Rush, Charlie Slaton, Carrol Smiley, Harvey Smith, Monty Springhorn, Lankford Stephenson, John Stone, Billie Tyre, Bobbie Tyre, Ernest Tarver, Bennie Walters, Emmett Warnock, James Watson, Ernest Weeks, Ronald Weitman, Bill Williams, Joe Williams, Woo Woo Wilson, Charles Wireman, Joe Middlebrooks, Charles Milligan.

veterans club

Robert Abel, Eddie Bacon, Laysel Baneroft, Bill Bell, Huby Bently, Jimmie Bishop, Lloyd Braddy, Pearl Brantly, Calvin Brewton, Wendell Brinson, Edsel Burch, Drew Burton, Al Coursey, James Calhoun, William Caphton, George Clark, Keith Clements, Mason Clements, Richard Cohen, Wallace Collins, George Cook, James Council, Andrew Cuneo, Ainsworth Davis, Alton Davis, Marvin Davis, Marvin Dixon, Jesse Durden, Eldridge Durrence, George Eanes, Carrol Edwards, Earl Edwards, Ed Edwards, H. W. Ely, Jim Faglier, Homer Foreman, G. C. Futch, Eschol Gay, Raymond Ginn, S. A. Gray, James Griffiths, Charles Gruver, James Gunter, Charles Hall, Gene Hall, C. W. Hendrix, Bill Herschell, William Hillis, Lamar Holloway, Gerald Hooks, Joe Houston, J. O. Hurst, Ray Hutchinson, J. B. Jackson, Leslie Jenkins, Thomas Jenkins, James Johnson, Shaddy Johnson, Bill Johnson, Willie Jones, Arthur Justice, John Kelly, Morgan Lee, George McMillan, Russell Mercer.





THAT LUSH THRUSH



"ANDY" TAKES A CHORUS

orchestra stuff



SLIDE 'EM



WHAT BRASS



AFTER HOUR STUFF



US ON A BUS



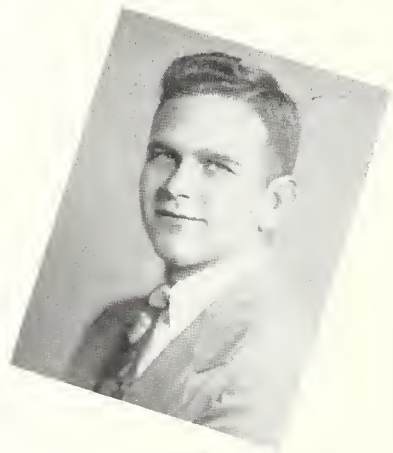
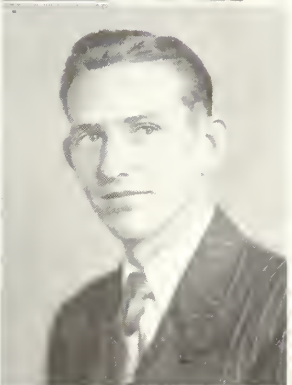
Juniors





THE FAMOUS "BLUE TIDE"

junior **officers**



CARLTON ADAMS
Valdosta, Georgia
President

FRED McLENDON, Dawson, Georgia
Vice-President

INEZ WILSON, Statesboro, Georgia
Secretary

BILLY TYRE, Odum, Georgia
Treasurer

juniors

ROBERT A. ABELL, JR.
Richland, Georgia

DOROTHY M. AYCOCK
Waycross, Georgia

ANNA REBA BARNES
Statesboro, Georgia

WILLIAM LEE BELL
Savannah, Georgia

HUBY S. BENTLEY
Toombsboro, Georgia

JANE BLITCH
Glennville, Georgia

NONA JOYCE BOWEN
Rhine, Georgia

HAROLD BRABHAM
Savannah, Georgia

JACK W. BRADY
Waycross, Georgia

CLENNIE BRANCH
Baxley, Georgia

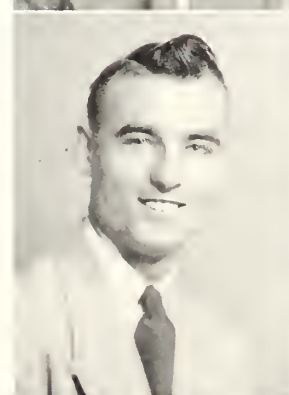
ROY F. BRAGG
Pinhurst, Georgia

JOHN THOMAS BRANNEN
Statesboro, Georgia

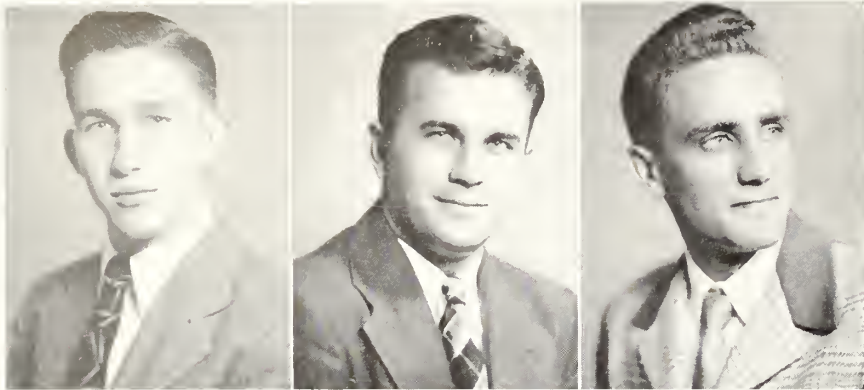
CALVIN BREWTON
Claxton, Georgia

BARBARA J. BROWN
Statesboro, Georgia

BETTIE WARE BROWN
Macon, Georgia



juniors



EDWIN D. DAVIDSON
Rentz, Georgia

LEWIS V. JOHNSON
Statesboro, Georgia

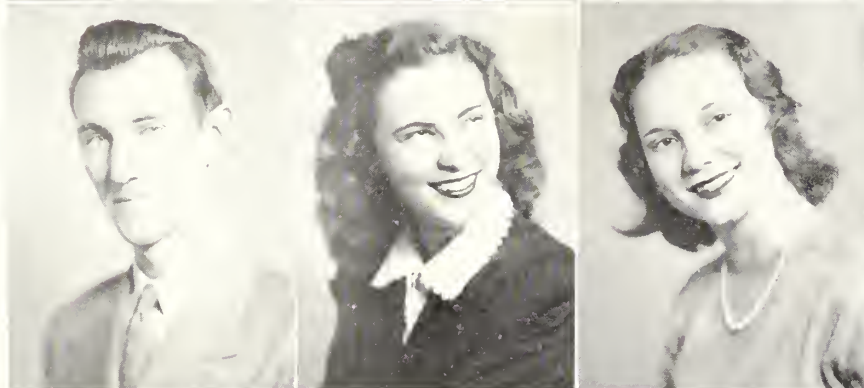
LA RUE BRUCE
White Oak, Georgia



LOUISE VIRGINIA BURCH
Eastman, Georgia

ERNESTINE CALHOUN
Statesboro, Georgia

JAMES E. CALHOUN
Colquitt, Georgia



JAMES R. CALHOUN
Tarrytown, Georgia

BETTY JANE CASWELL
Roopville, Georgia

MARY FRANCES CHESTER
Whigham, Georgia



MASON C. CLEMENTS
Ray City, Georgia

KEITH CLEMENTS
Ray City, Georgia

JOHNNIE D. CONNELL
Statesboro, Georgia



GEORGE A. COOK
Guyton, Georgia

ESTER CROLEY, JR.
Williamsburg, Ky.

ANDREW CUNEO
Rockaway, N. J.

juniors

PATRICIA P. DARLEY
Statesboro, Georgia

JESSE A. DURDEN
Graymont, Georgia

ELTON A. EASON
Matthews, Georgia

MARTHA JEAN EASON
Reidsville, Georgia

LUCILLE EASTERLING
Glennville, Georgia

CARROLL SMITH EDWARDS
Claxton, Georgia

EDGAR MILLEN EDWARDS
Claxton, Georgia

CAROLYN A. FORDHAM
Mitchell, Georgia

HOMER D. FOREMAN, JR.
Norman Park, Georgia

ALETHIA STUCKEY
Brunswick, Georgia

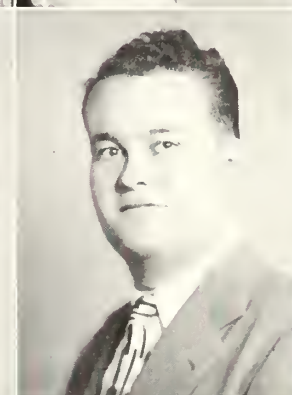
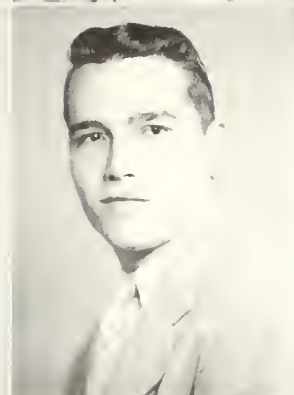
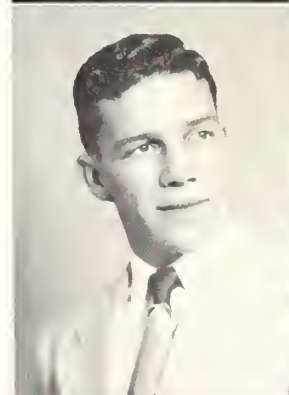
ROBERT ESCHOL GAY
Cadwell, Georgia

PRISCILLA ANNE GRIFFIN
Jeffersonville, Georgia

JEAN GROOVER
Statesboro, Georgia

JOHN T. GROOVER
Statesboro, Georgia

ARNOLD W. GUTERIZ
Collegeboro, Georgia



juniors



JAMES L. HAGAN
Newington, Georgia



DORIS J. HAGIN
Marlow, Georgia



FRANCES HANKINSON
Girard, Georgia



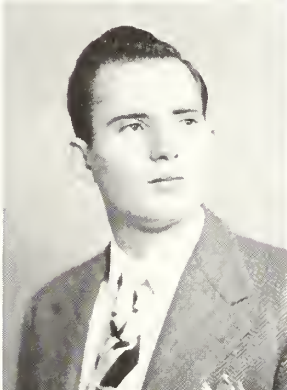
REBECCA J. HARRIS
Millen, Georgia



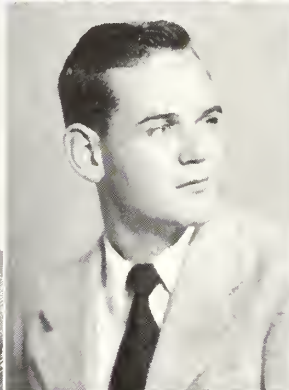
VANNILU HARRISON
Adrian, Georgia



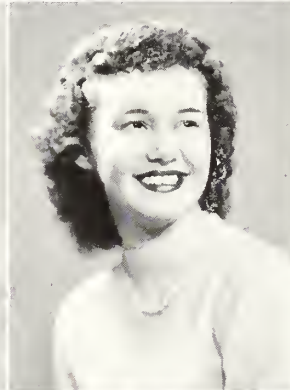
MARY AGNES HART
Statesboro, Georgia



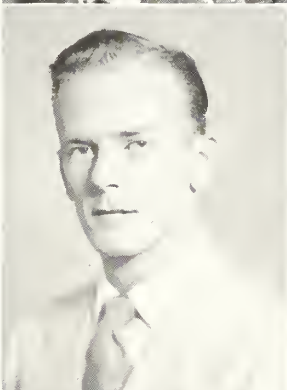
GEORGE W. HERNDON
Sardis, Georgia



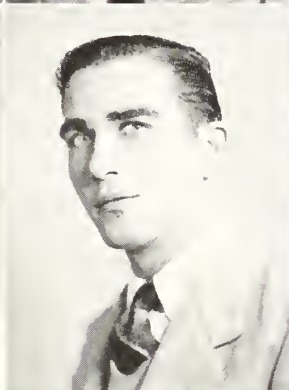
CLIFF RUSSELL HILL
Sparta, Georgia



JEAN MARILYN HODGES
Glennville, Georgia



JOSEPH S. HOUSTON
St. Augustine, Florida



J. B. JACKSON
Lakeland, Florida



JOE ANN JACKSON
Statesboro, Georgia



JIMMY R. JENKINS
Sylvester, Georgia



THOMAS HILLIS JENKINS
Waynesboro, Georgia



WILLIE EDWARD JONES
Statesboro, Georgia

juniors

ARTHUR EDWARD JUSTICE
Fitzgerald, Georgia

CHARLES F. KELLY
Sylvania, Georgia

JOHN L. KELLY
Collegeboro, Georgia

CHARLES D. KIRKLAND
Collegeboro, Georgia

LONNIE L. LADSON
Moultrie, Georgia

MARY VIRGINIA LAWSON
Climax, Georgia

GEORGE LINDSEY
Rentz, Georgia

J. C. LINDSEY, JR.
Rentz, Georgia

HELEN JEANETTE LORD
Dudley, Georgia

MARY McCRARY
Roberta, Georgia

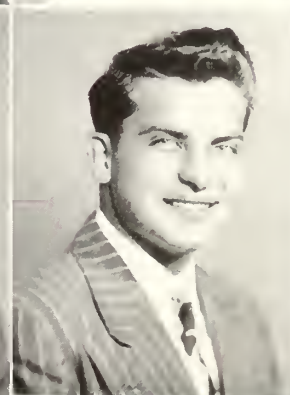
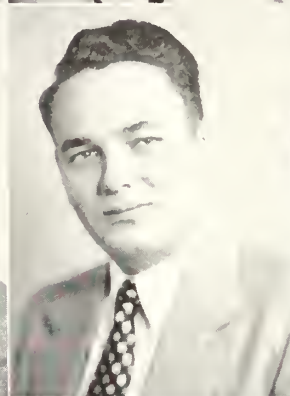
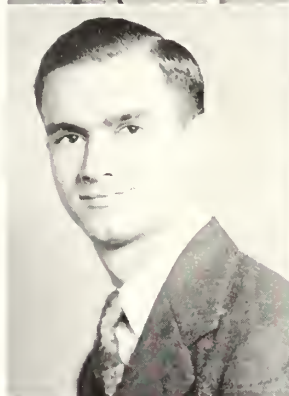
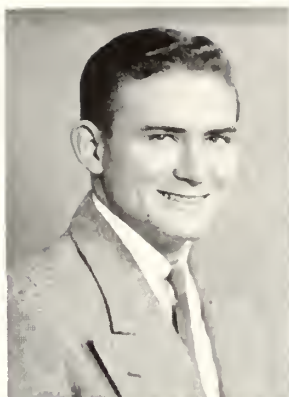
BURNEY ANNA MANN
Glennville, Georgia

CRAIG MARSH
Portal, Georgia

JOHN SHELTON MIKELL
Brooklet, Georgia

CHARLES R. MILLICAN, JR.
Lindale, Georgia

HAROLD ALLEN MILLS
Toombsboro, Georgia



juniors



JAMES M. MINCEY
Statesboro, Georgia

OTIS W. MOBLEY
Waynesboro, Georgia

TOMMY E. DUGGER
Statesboro, Georgia



WILLIS DENNY
Louisville, Georgia

RAYMOND DOUGLAS MOORE
Juniper, Georgia

LAWRENCE B. MOUNTJOY
Danville, Georgia



JAMES D. MULLIS
Camilla, Georgia

JACK W. MURPHEY
East Point, Georgia

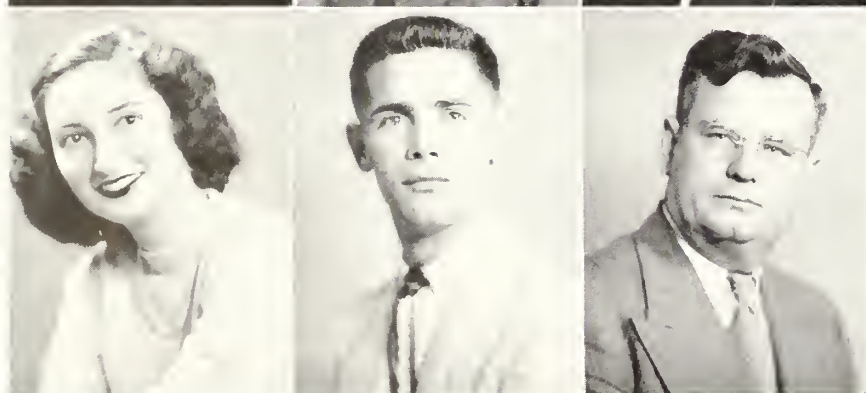
CHARLES E. NEAL
Graymont, Georgia



HAZEL J. NEVIL
Register, Georgia

HARRY A. NEWMAN, JR.
Savannah, Georgia

FOY MANASSAS OLIFF
Statesboro, Georgia



ELLEN PARISH
Brooklet, Georgia

ROGER PARSONS
Yancey, Kentucky

WILLIAM J. PEACOCK
Statesboro, Georgia

juniors

JAMES C. PENNINGTON
Portal, Georgia

BETTY JO PHILLIPS
Hinesville, Georgia

CLYDE POOLE
Soperton, Georgia

BOBBYE QUICK
Midville, Georgia

JOHN QUATTLEBAUM
Statesboro, Georgia

EVELYN M. SCHLINGLOFF
Hinesville, Georgia

ALBERT L. SHUMAN
Statesboro, Georgia

CHARLIE H. SLATON, JR.
Arlington, Georgia

BENNIE SPELL
Wrightsville, Georgia

DANA STEVENS, JR.
Dorchester, Georgia

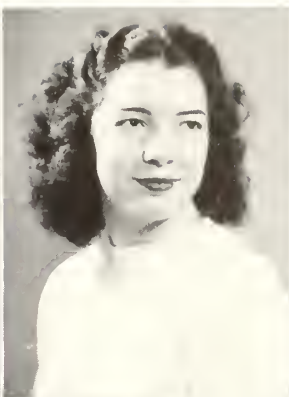
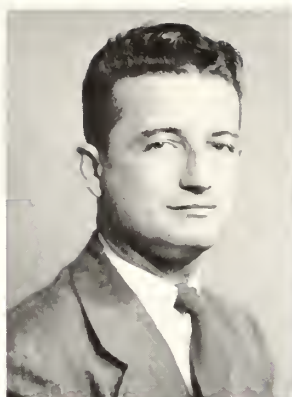
ROY R. STYLES
Bellville, Georgia

ANDREW L. SUTTON
Odum, Georgia

I. E. THIGPEN, JR.
Dublin, Georgia

LEON EARL THIGPEN
Lakeland, Georgia

LATHA TYSON
Adrian, Georgia



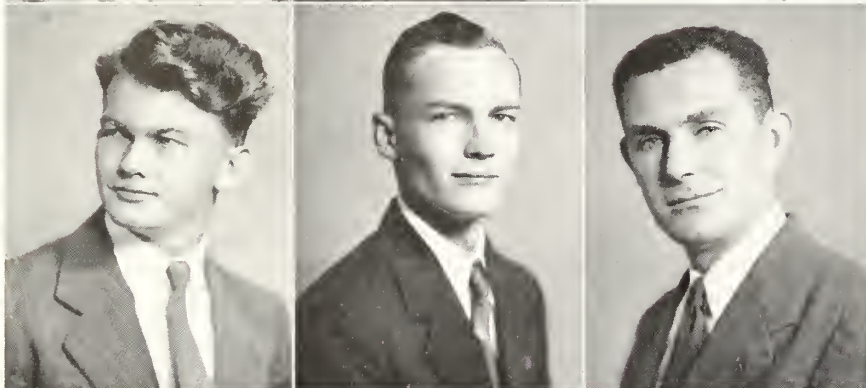
juniors



ROBERT H. TYRE
Odum, Georgia

WILLIAM J. TYRE
Odum, Georgia

BETTY G. WALDEN
Gibson, Georgia



EMMIT WARNOCK
Tarrytown, Georgia

PAUL E. WATERS
Statesboro, Georgia

JAMES F. WATSON
Gainesville, Georgia



RONALD E. WEITMAN
Glennville, Georgia

JOHN H. WHEELER
Waynesboro, Georgia

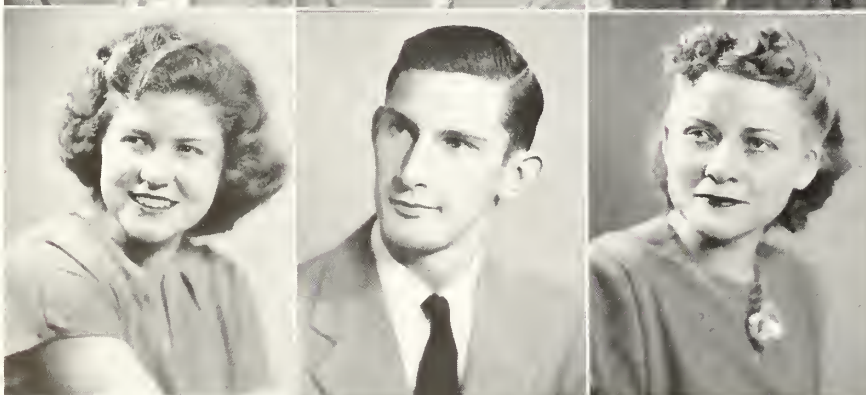
ERNESTINE S. WHITLEY
Tignall, Georgia



BILLY WILKINSON
Ludowici, Georgia

ALVIN C. WILLIAMS
Pulaski, Georgia

ZACK T. WILLIAMS
Barney, Georgia



MARY NELL WILLIS
Glennville, Georgia

A. J. WOOD, JR.
Portal, Georgia

NOLIE B. WYSE
Savannah, Georgia



Beauties..

third annual *beauty review*

Miss "T. C." with her escort, Keith Clements

Betty Fuller, Freshman from McRae, was named "Miss T. C. of 1949" at the third annual Beauty Revue held in an overflowing T. C. auditorium. Sponsored by Sanford Hall and escorted by Keith Clements, Betty reached the finals with a natural poise and her winning dimpled smile.

The four other finalists featured here in the Beauty section with Betty are second-place winner Joyce Bowen of Rhine, third place winner Mary Ida Carpenter of Guyton, fourth place winner Mary West of Greymont, and Fay Joyner of Augusta who placed fifth.

The Beauty Revue was originated by and has been directed by Mr. Jack N. Averitt, for the past three years. The Art Club, under the direction of Miss Freida Gernant, was in charge of the stage decorations, which featured this year an oriental garden. The Men's Chorus gave the intermission entertainment, and Mr. Jack Broucek provided the music for the entire program. Mr. James H. Evans acted as the master of ceremonies for the evening.

The "5" Finalists

Mrs. Dean Roberson,
Miss T. C. of '47

Miss Betty Fuller,
Miss T. C. of '49

Keith Clements

Miss Jean Hodges,
Miss T. C. of '48





betty fuller



joyce bowen



mary ida carpenter



mary west



fay joyner

portrait of *loveliness*



the *grand finale*





Sophomores





JOHN S. MARTIN
Statesboro, Georgia
President



H. EUGENE KENDRICK
Jonesboro, Georgia
Vice-President



NINETTE STURGIS
Statesboro, Georgia
Secretary and Treasurer

sophomore **officers**



PINE TREES,

PINE TREES,



More PINE TREES!

sophomores



CATHERINE ANDERSON
Register, Georgia
JAMES EDWARD AVERY
Augusta, Georgia
MARY LILLIAN BACON
Richmond Hill, Georgia
HERBERT LARRY BARNES
Savannah, Georgia
ANNIE RUTH BAUGUSS
Wadley, Georgia

ZEPHORE BELCHER, JR.
Bartow, Georgia
JAMES WILLIAM BLALOCK
Claxton, Georgia
MARY ELLEN BLOCKER
Kite, Georgia
BILLIE BOYKIN
Sylvania, Georgia
MARY EMILY BOYKIN
Sylvania, Georgia

LLOYD WINTON BRADY
Blun, Georgia
BETTY BRADY
Swainsboro, Georgia
PEARLIE ENOS BRANTLEY
Kite, Georgia
RUTH PEEBLES
BRANTLEY
Swainsboro, Georgia
BENJAMIN COY
BREWTON, JR.
Claxton, Georgia

CHARLOTTE ANNETTE
BRINSON
Woodcliff, Georgia
CLAUDIA ANNE BRITT
Darien, Georgia
BOBBIE LOUISE BROWN
Sylvania, Georgia
SANFORD VANDIVER
BROWN
Dawson, Georgia
JOHN W. CARTER
Vidalia, Georgia





REITA OLITA CLIFTON
Statesboro, Georgia
JAMES T. COCKFIELD
Graymont, Georgia
JOEL WEBB COOPER
Bainbridge, Georgia
NORMA SHEARER
COWART
Collins, Georgia
RUBY PARRISH CROOM
Pembroke, Georgia

SYBIL ANN DANIEL
Girard, Georgia
WALTER H. DAUGHTRY
Metter, Georgia
WARNELL OLEN
DENMARK
Brooklet, Georgia
LOLA CONSTANCE
DILLARD, JR.
Thomasville, Georgia
DORIS TERESA DIXON
Kite, Georgia

MARY ANN EASTERLING
Eulonia, Georgia
BETTY JEAN FIELDS
McDonough, Georgia
FLORENCE JEAN
FOREHAND
Sylvester, Georgia
MARTHA FUNDERBURK
Collins, Georgia
BETTY JEAN GARRETT
Richmond Hill, Georgia

BILLY ERWIN HAGAN
Statesboro, Georgia
JAMES DURELLE HAGIN
Marlow, Georgia
MARGARET MOORE
HARRISON
Blackshear, Georgia
BETTY ANNE HENDERSON
Wrens, Georgia
GENE CLARK HENDERSON
Collegeboro, Georgia

sophomores



sophomores



"Baby Little" "Baby Weaver"
"Baby Russell" "Ma Clem"
"Baby Hanner"

ERNEST ALBERT HENSLEY
Gibson, Georgia

MARY ANN HODGES
Glennville, Georgia

GEORGANNE HOWARD
Statesboro, Georgia

ROBERT LEE HUMPHREY
Tifton, Georgia

RAY H. HUTCHINSON
Savannah, Georgia

SAMUEL EUGENE JENKINS
Statesboro, Georgia

SAMUEL JOHNSON
Garfield, Georgia

SHEDDY MULKEY
JOHNSON
Millen, Georgia

ANNA MARGARET JONES
Reidsville, Georgia

BETTY FAY JOYNER
Augusta, Georgia

BERT JUSTICE
Albany, Georgia

GUERRY DELL
KIMBROUGH
Red Oak, Georgia

DOT LANCASTER
Sylvania, Georgia

IRIS LEE
Stilson, Georgia

BETTYE JEANINE LEWIS
Quitman, Georgia

BETTY RUTH LIGHTFOOT
Statesboro, Georgia

TOM JOSEPH LIGHTSEY
Bristol, Georgia

BETTY LOVETT
Statesboro, Georgia

DONALD MARTIN
McCLELLAN
Gough, Georgia

FRANCES ELIZABETH
McDANIEL
Mitchell, Georgia





CAROLYN MALLARD
Cobbtown, Georgia
SARA W. MANKY
Edison, Georgia
W. AMBROSE MARTIN
Helton, Georgia
JOHNSON RUSSELL
MERCER, JR.
Cobbtown, Georgia
JOE FRANK
MIDDLEBROOKS
Warwick, Georgia

BETTY LOUISE
MITCHELL
Statesboro, Georgia
WILEY H. MONTAGUE, JR.
Rome, Georgia
EDWIN DONALD MOORE
Vidalia, Georgia
Roy LEONARD MOXLEY
Midville, Georgia
EMMA LOU NESMITH
Oliver, Georgia

GLENYS ALETHIA NEWSOM
Tarrytown, Georgia
BARRY ELWOOD NICHOLS
Screven, Georgia
DELLA MAE ODOM
Collegeboro, Georgia
ROBERT H. ODOM
Hinesville, Georgia
BILLY ODUM
Claxton, Georgia

JOHN MONROE ODUM
Albany, Georgia
JULIET RUTH OLIVER
Glennville, Georgia
MILDRED PAGE
Vidalia, Georgia
GERALDINE PARKER
Statesboro, Georgia
METHIL REBECCA
PARKER
Nilan, Georgia

sophomores



THE IVY
TWINES



WHAT'S A
FEW EXTRA
POUNDS
MORE OR
LESS?

sophomores

LILLIAN PARRAMORE
Coolidge, Georgia
MARION ELIZABETH
PAUL
Wadley, Georgia
WILBUR HAROLD
PEACOCK
Morrow, Georgia
HELEN PHILLIPS
Statesboro, Georgia
WILLIAM AUBREY
RANDALL
Lyons, Georgia

BETTY REAGAN
Wadley, Georgia
LOLA LANIER ROBBINS
Sylvania, Georgia
JANE ROBERTSON
Beaufort, South Carolina
CHARLES W. ROCKETT
Vidalia, Georgia
PAUL N. ROHRABAUGH
Statesboro, Georgia

BETTY SUE ROLAND
Atlanta, Georgia
JAMES LAMAR SCREWS
Statesboro, Georgia
REN E. SHUGART
Calhoun, Georgia
J. CARROLL SMILEY
Ludowici, Georgia
HARVEY SMITH
Norristown, Georgia

IMOGENE SMITH
Covington, Georgia
JOSEPH E. SMITH
Claxton, Georgia
MABEL SMITH
Adrian, Georgia
MARY RUTH SMITH
Harlem, Georgia
MONTY H. SPRINGHORN
Princeton, N. J.





FRANCES MURRAY
Sardis, Georgia

M. LOIS STOCKDALE
Statesboro, Georgia
AUDREY STRICKLAND
Sereven, Georgia
MARIE MADELINE
SUTTON
Wareboro, Georgia
NORMA JEAN SWANN
Wrens, Georgia
ERNEST MILLS TARVER
Millen, Georgia

CHARLES WILLIAM
TAYLOR
Statesboro, Georgia
BETTY THIGPEN
Rockledge, Georgia
SYBIL JEAN THOMPSON
Wrens, Georgia
FRANCES GERALDINE
THRASH
Gay, Georgia
JAMES DWIGHT TODD
Gibson, Georgia

CURTIS ODOM
TOMBERLIN
Rhine, Georgia
BETTY J. UPCHURCH
Brooklet, Georgia
MARTHA ANN VAUGHAN
Metter, Georgia
ANNELLA WELLS
Mount Vernon, Georgia
BLAIR GORDON WELLS
Gnyton, Georgia

ELAINE WEST
Statesboro, Georgia
MICHAEL ASHLEY
WIGGINS
Millen, Georgia
CARL CLINTON
WILKINSON
Ludowici, Georgia
BETTY JEAN WILLIAMS
Milhaver, Georgia
JIMMIE LOU WILLIAMS
Brooklet, Georgia

sophomores



WHERE DID
YOU FIND
THAT!



GIRLS
AND
CURLS

EDWARD WOODROW
WILSON

Millen, Georgia

REBA DEAN WILSON

Glennville, Georgia

THELMA STANLEY

WINTER

Pooler, Georgia

CARL CLAUDIE WITHEROW

Odum, Georgia

CHARLES ALBERT

WITHEROW

Odum, Georgia



GIRLS AND CURLERS

candid

"MR. FARLEY"
SENDS OFF
OUR SUGAR
REPORTS



THE CLASSICS ON THE "NEW JUKE"

campus

shots

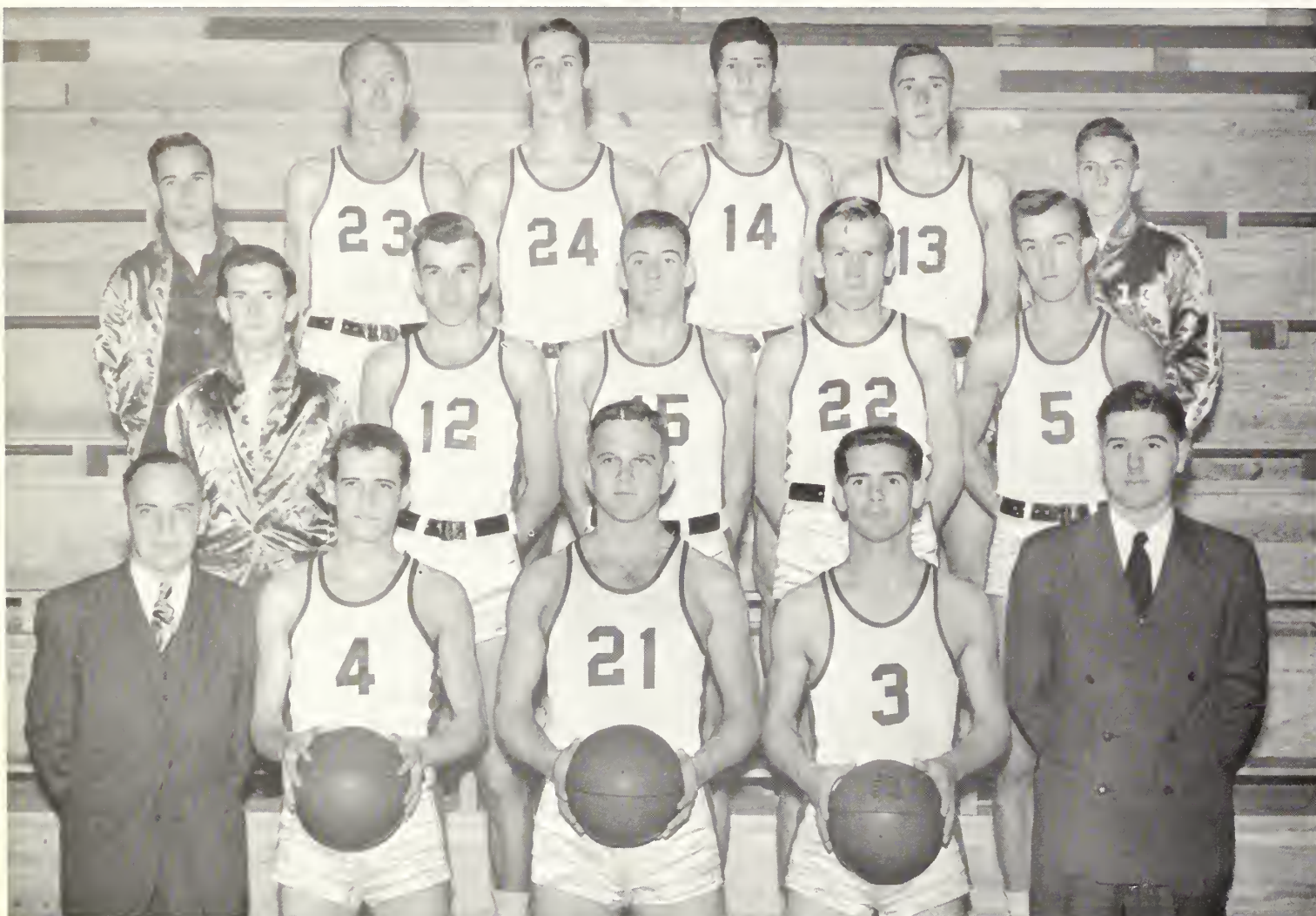
THE
SMOKE
PIT





Sports





First row, left to right: J. B. Seearce, Jr., Coach; Lawrence Mountjoy, Carlton Adams, Roger Parsons, and J. I. Clements, Jr., Assistant Coach. Second row: Jack Murphy, Manager; George Eanes, Herbert Reeves, Mitchell Connor, and Jimmy Connor. Third row: Cliff Hill, Trainer; George Roebuck, Tommy Lyons, Bucky Helton, Sonny Clements, and Billy Carter, Assistant Manager.

CHEER LEADERS

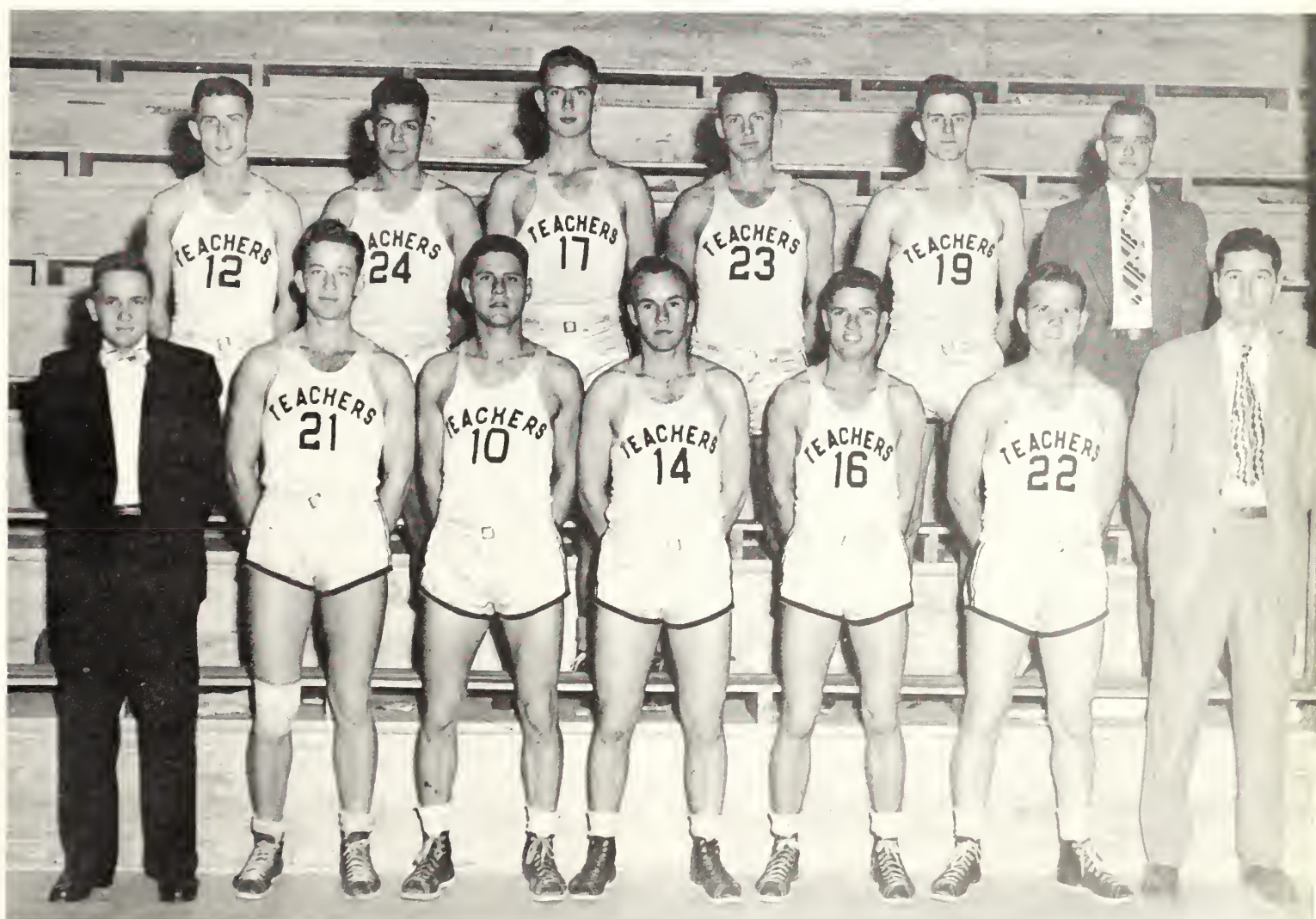


rts

"We got the coach . . .
 We got the team . . .
 We got the pep . . .
 We got the steam."



the "b" boys



First row: Proctor, Hooks, Montague, Calhoun, Hilliard, and Coach J. I. Clements. Second row: Bragg, Gutierrez, Overstreet, Roberson, and Croley.

v
e
t
e
r
a
n
s'
t
e
a
m



Members of the Vets' Team: Brewton, Wireman, Spell, *Manager*; Drury, Brinson, King, Waters, Stevens, Collins, Poole, Tyre, Bell and Burch.



OII! THE MEATBALLS
AND THE SQUIRTS

WATCH THAT
GRIP, LARD!



BILL AND
THE
WAYWARD
BUS!

the cheerleaders



Maggie Jones
Joan Bennet
Patsy Madray
Betty Fuller
Betty Beddingfield
Jo Ellis
Hazel Nevils
Calopia Martin
Geneva Mixon

our successful

TEACHERS

OPPONENTS

63	North Georgia College	50
79	College of Charleston	54
54	Milligan College	42
51	Newberry College	52
67	Erskine College	64
36	North Georgia College	50
86	Turner Air Force	39
58	Appalachian Teachers	72
30	Milligan College	74
61	Western Carolina Teachers College	45
60	Alabama Teachers College, Jacksonville	49
68	Alabama Teachers College, Jacksonville	74

Won 21 — Lost 3



"BUCKY" SINKS ONE

WHO'S GOT IT?



'49 season

TEACHERS OPPONENTS

66	Stetson University	61
57	Florida Southern College	55
75	N.A.S. Jacksonville, Florida	71
75	Erskine College	55
54	N.A.S. Jacksonville, Florida	45
76	Atlanta Branch of University of Georgia	57
79	Piedmont College	55
87	Florida Southern College	65
73	Stetson University	45
78	College of Charleston	65
56	Atlanta Branch of University of Georgia	44
61	Piedmont College	47



"BULLDOG" TOSSES ONE



WATCH THE BALL, "HERB"

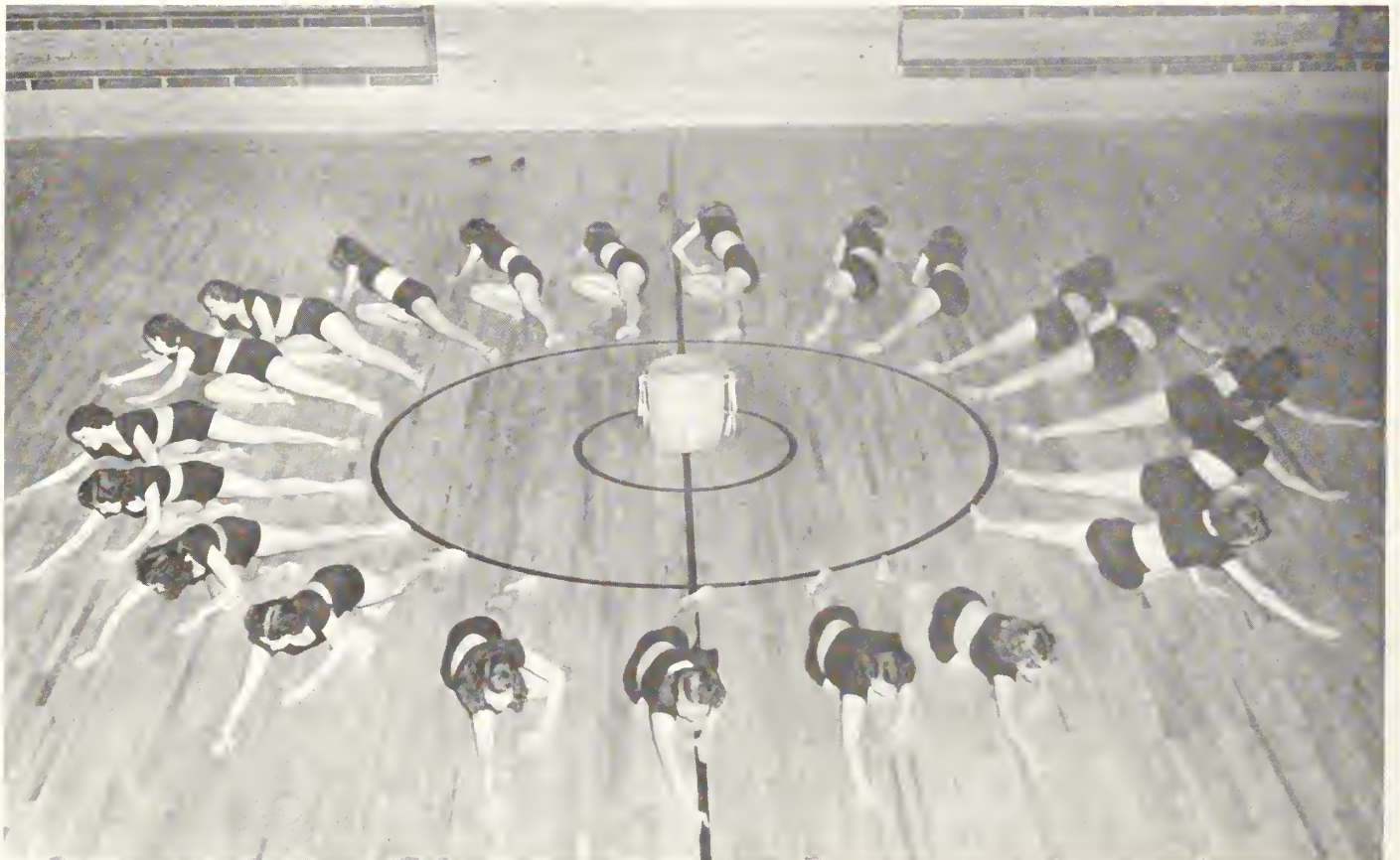
modern dance



TABLEAU

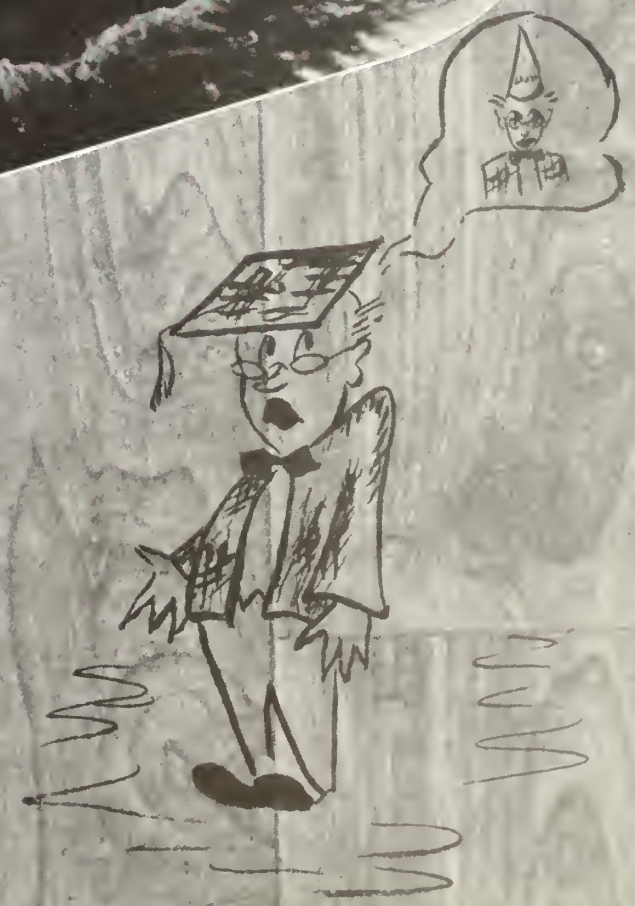
MISS BETTY JANE TROTTER, *Director*

THE LOVELY CIRCLE





Freshmen





EDDIE ORT
Albany, Georgia
President

DON JOHNSON
Statesboro, Georgia
Vice-President

JEAN FORDHAM
Gibson, Georgia
Secretary

DOT HOLLOWAY
Cobbtown, Georgia
Treasurer

JOYCE BLANTON
Hazelhurst, Georgia
Student Council

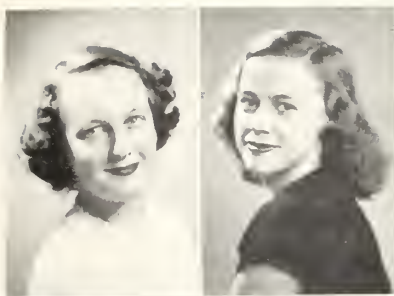
DAN BIGGERS
Toccoa, Georgia
Student Council

freshmen

officers

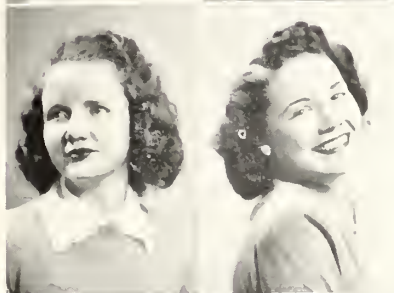


WHERE THE FRESHMEN GIRLS LIVE



PANSY ABBOTT
Waynesboro, Georgia

LUCY ABELL
Richland, Georgia



EMILY ADAMSON
Morrow, Georgia

VIRGINIA AKINS
Statesboro, Georgia



JOHNNY ALDRICH
Statesboro, Georgia

JOSEPH H. ANDERSON
Starrsville, Georgia



FRESHMAN RECEPTION

freshmen

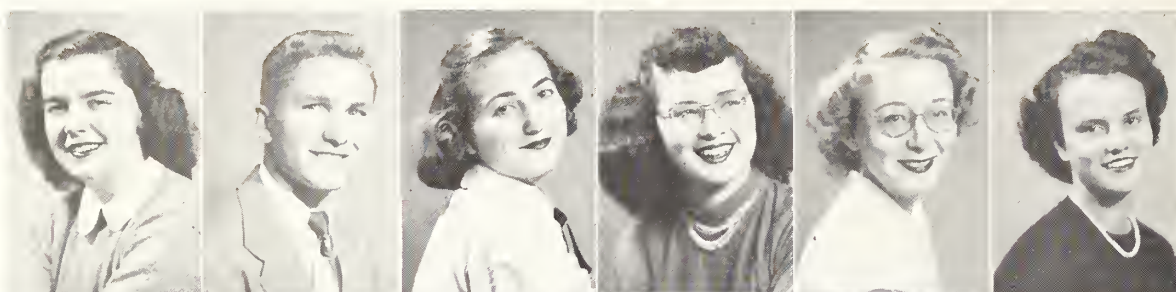


First row:
JANE LAURA ASHURST
Ocilla, Georgia
HILDA M. BACON
Hinesville, Georgia
MARION BARNES
Augusta, Georgia
JOHN BARR
Statesboro, Georgia
MARILYN BARWICK
Adrian, Georgia
MILDRED BEASLEY
Register, Georgia

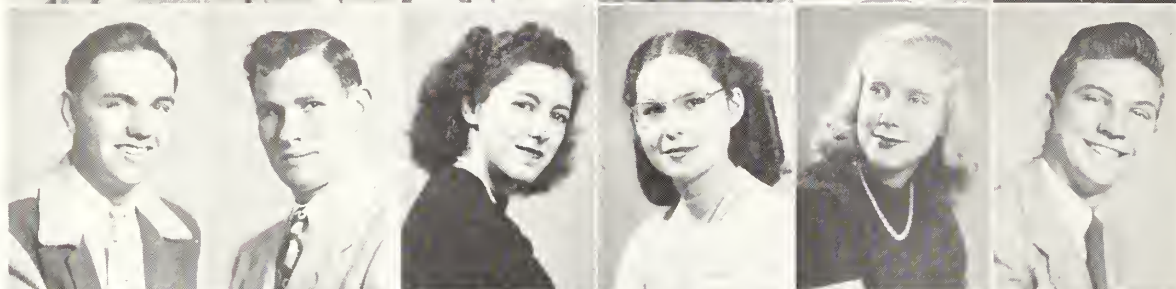
Second row:
BETTY A. BEDDINGFIELD
Dublin, Georgia
JOAN BENNETT
St. Simons Island, Georgia
JOE L. BOHANNON
Hiltonia, Georgia
CHRISTINE BONNETT
Portal, Georgia
ANNIE BOWEN
Register, Georgia
LAURIE BOWEN
Rhine, Georgia

Third row:
JOHN L. BOYKIN
Haley, Georgia
AUDREY BRADY
Ailey, Georgia
VIRGINIA BRADY
Metter, Georgia
JOHN F. BRANNEN, JR.
Statesboro, Georgia
WENDELL BRINSON
Soperton, Georgia
BETTY JEAN BROWN
Dudley, Georgia

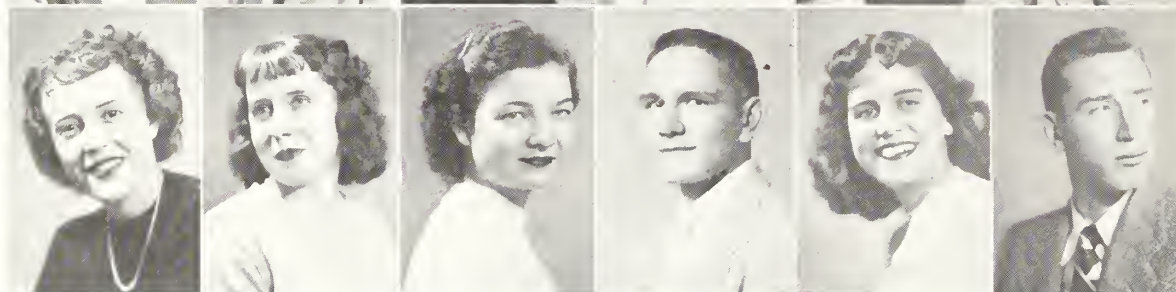
First row:
BETTY LOUISE BROWN
 Dry Branch, Georgia
BOBBY BROWN
 Garfield, Georgia
CAROL BROWN
 Statesboro, Georgia
EVA LOUISE BROWN
 Fitzgerald, Georgia
GLENDAM. BROWN
 Nahunta, Georgia
MILDRED J. BROWN
 Sylvania, Georgia



Second row:
DAVID BRUNSON
 Columbus, Georgia
EDSEL BURCH
 Rentz, Georgia
DOROTHY BURKE
 Sylvania, Georgia
LAQUITA BURKETT
 Jakin, Georgia
GLADYS CANNON
 Clayton, Georgia
BRUCE E. CARPENTER
 Guyton, Georgia



Third row:
SHIRLEY CARR
 Hinesville, Georgia
MAYMIE JOE CARTER
 Uvalda, Georgia
MARY RUTH CARVER
 Alma, Georgia
THADDEOUS CHAMBLESS
 Sylvania, Georgia
CHARLOTTE CLEMENTS
 Statesboro, Georgia
FRANK M. CLEMENTS
 Rhine, Georgia



freshmen



CHRISTMAS PARTY

BETTY CLEMMONS
 Tusculum, Georgia

MILDRED CLIATT
 Lincolnton, Georgia

MARY ALICE COLEMAN
 Indian Springs, Georgia

JIM E. COLLINS
 Odum, Georgia

WALLACE COLLINS
 Rentz, Georgia

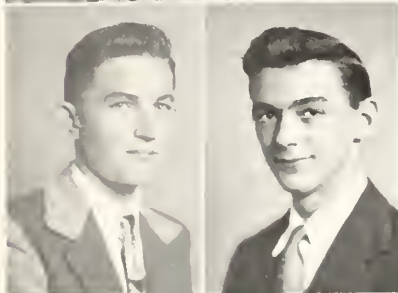
JAMES C. COUNCIL
 Midvale, Georgia





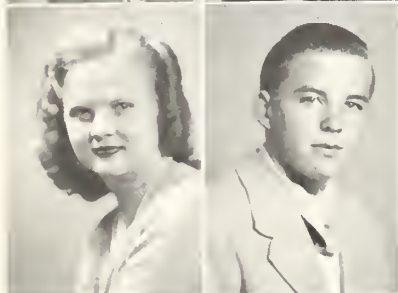
HENRY COURSEY
Oliver, Georgia

JAMES AL COURSEY
Pulaski, Georgia



FRANKLIN CREASY
Brooklet, Georgia

ROBERT DANIELS
Dexter, Georgia



HELEN INEZ DASHER
Hinesville, Georgia

GEORGE S. DAVIS
Garfield, Georgia



PUNCH IS SERVED

1949



First row:
ED DECHAU
Wrens, Georgia
JOYCE DeLOACH
Statesboro, Georgia
KATHLEEN DENT
Jesup, Georgia
HELEN DOWNIE
Uvalda, Georgia
MARTHA DUFFIELD
Columbus, Georgia
ELDRIDGE DURRENCE
Glennville, Georgia

Second row:
JESSE DURRENCE
Glennville, Georgia
MARTHA JO ELLIS
Gaston, Georgia
MARGARET ELMORE
Millen, Georgia
WILLIAM PARKER EVANS
Thomasville, Georgia
TAYLOR L. EVERITT, JR.
Waycross, Georgia
HELEN ELEY
Springfield, Georgia

Third row:
JAMES M. FAGLIER
Midville, Georgia
BETTY JEAN FULLER
McRae, Georgia
FAINE GREEN
Stockton, Georgia
LOIS GRINER
Lyons, Georgia
JOSEPH GROOMS
Brooklet, Georgia
DANIEL GROOVER
Statesboro, Georgia

First row:

LEWIS C. HALL
Millen, Georgia
RUFUS E. HALL
Millen, Georgia
DAISY IONE HAM
Nahunta, Georgia
ALICE JOAN HAMIL
Griffin, Georgia
JAMES RALPH
HARGROVES
Metter, Georgia
LILA JOAN HARPER
Dublin, Georgia

Second row:

MARY ANN HARPER
Blakely, Georgia
LARRY K. HARRELL
Mitchell, Georgia
MILTON HARRIS
HATCHER
Vidalia, Georgia
MARY ELLEN HEATH
Alapaha, Georgia
LOIS CAROL HILLIS
Sylvania, Georgia
BETTY SUE HITSON
Dublin, Georgia

Third row:

CHARLES FRED HODGES
Oliver, Georgia
LINDA E. HODGES
Newington, Georgia
BARBARA LEE HOLMES
Sandersville, Georgia
CAROLYN HOLMES
Sandersville, Georgia
ILA AND MILA HOLTON
Lyons, Georgia
WILLIAM HUGGINS
Oliver, Georgia



freshmen



FROSH GO FORMAL FIRST WEEK

BETTY LOUISE HURN
Gardi, Georgia

REMA GLENN HURST
Sylvester, Georgia

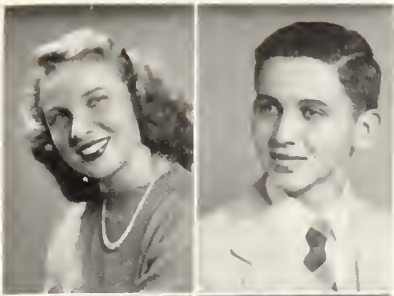
IKE HUSSEY
Lyons, Georgia

MARGIE JACKSON
Dublin, Georgia

DOUGLAS JENKINS
Hiltonia, Georgia

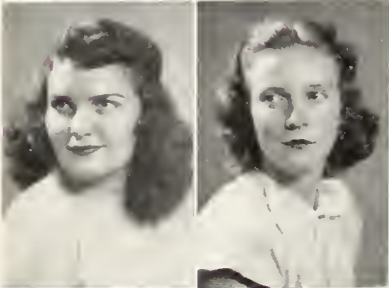
DOROTHY JOYCE
JOHNSON
McRae, Georgia





BERNICE JOHNSON
Warrenton, Georgia

**JOHN GIBSON
JOHNSTON, JR.**
Swainsboro, Georgia



BARBARA JANE JONES
Brooklet, Georgia

BEULAH PAULINE JONES
Millen, Georgia



BEVERLY ANNE JONES
Jesup, Georgia

**MARY ELIZABETH
JORDAN**
Stapleton, Georgia



MR. PRESIDENT!

1949



First row:
JACK W. KELLY
Louisville, Georgia
BOBBY C. KICKLIGHTER
Glennville, Georgia
JERRY A. KICKLIGHTER
Glennville, Georgia
**MARGARET
KICKLIGHTER**
Glennville, Georgia
HELEN G. KIMBROUGH
Sylvania, Georgia
BILLIE J. KIRKLAND
Vidalia, Georgia

Second row:
JACKIE D. KNIGHT
Stilson, Georgia
S. TALLULAH LESTER
Statesboro, Georgia
BYRON BERT LEWIS
Louisville, Georgia
OLDIN VICTOR LEWIS
Glennville, Georgia
WILLIAM E. LEWIS
Moultrie, Georgia
ALICE JEAN LORD
Wrightsville, Georgia

Third row:
RAY F. McNEELY
Wadley, Georgia
ROY McTIER, JR.
Moultrie, Georgia
CLAUDE A. MADRAY
Odum, Georgia
PATSY L. MADRAY
Jesup, Georgia
JACK T. MAHAFFEY
Swainsboro, Georgia
BILLY T. MARCHMAN
Sandersville, Georgia

First row:
CALOPIA MARY MARTIN
 Waynesboro, Georgia
MADelyn MEEKS
 Soperton, Georgia
WALTER W. MEEKS
 Ludowici, Georgia
MILDRED MAXINE
MERCER
 Jeffersonville, Georgia
BETTY JEAN MIKELL
 Statesboro, Georgia
CHARLES S. MILLER
 Toombsboro, Georgia

Second row:
JOAN MILLER
 Toombsboro, Georgia
ROBERT E. MINICK
 Brooklet, Georgia
GENEVA MIXON
 Waynesboro, Georgia
WILMA CARLEEN MIXON
 Statesboro, Georgia
BETTY F. MOCK
 Sylvania, Georgia

Third row:
ALVIN F. MORELAND
 Graymont, Georgia
LONADINE MORGAN
 Egypt, Georgia
VIRGINIA MORGAN
 Stillman, Georgia
WALTON MORRIS
 Reidsville, Georgia
WEYMON MORRIS
 Hinesville, Georgia
JAN MURPHEY
 Statesboro, Georgia
ARCHIE NESMITH, JR.
 Oliver, Georgia



freshmen



WHAT THEY WEAR

JONGELYN NEWTON
 Millen, Georgia

PRISCILLA ANN ODOM
 Glennville, Georgia

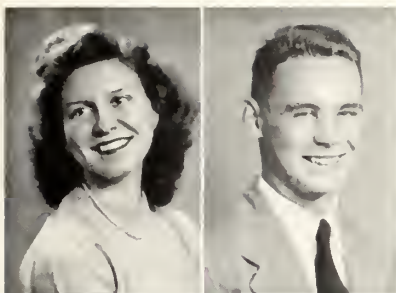
ELEANOR O. OGDEN
 Odum, Georgia

GROVEREAN OGLESBY
 Statesboro, Georgia

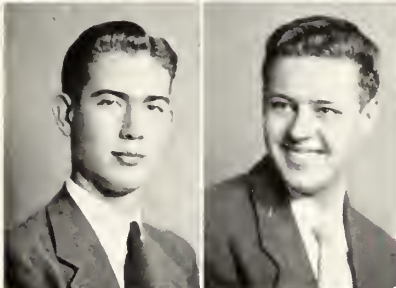
ANNE ELIZABETH
OLIVER
 Statesboro, Georgia

JIMMY OLIVER
 Waynesboro, Georgia

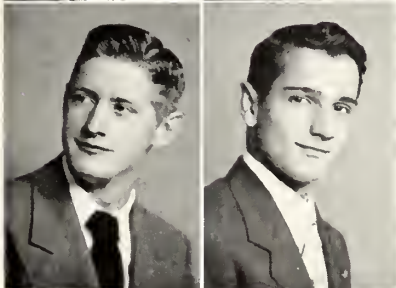




BETTY JUNE OLLIFF
Statesboro, Georgia



CARL S. O'NEAL
Blackshear, Georgia



**SPENCER
OVERSTREET, JR.**
Wadley, Georgia

GEORGIA I. PARRISH, JR.
Jesup, Georgia

ED. C. PATTERSON
Fort Valley, Georgia

GRIFFIN G. POLLARD, JR.
Appling, Georgia



WHICH TWIN HAS THE PHONY?

1949



First row:

WILLIAM H. PURCELL
Glenville, Georgia
CLAUDE ROLAND REID
Statesboro, Georgia
**RALPH LINCOLN
RIGDON, JR.**
Sylvania, Georgia
BETTY JEAN RINER
Lyons, Georgia
PEGGY ZANE ROBINSON
Millhaven, Georgia
JOHN RICHARD ROGERS
Reidsville, Georgia

Second row:

AZALEAN ROSS
Amity, Georgia
JACQUELINE RUSHING
Statesboro, Georgia
**FIELDING D.
RUSSELL, JR.**
Statesboro, Georgia
**LINTEN LEE
SAMMONS, JR.**
Statesboro, Georgia
ELWIN JOHNSON SASSER
McIntosh, Georgia
ROBERT C. SERRA
Havana, Cuba

Third row:

**CARLENE PATRICIA
SHANKLIN**
Gardi, Georgia
PEGGY C. SHUMAN
Vidalia, Georgia
BETTY JEAN SHUMAN
Vidalia, Georgia
LOIS JACQUELYN SMITH
Helena, Georgia
MARY FRANCES SMITH
Claxton, Georgia
**LANGFORD W.
STEPHENSON**
Valdosta, Georgia

First row:
 VIOLA STEWART
 Portal, Georgia
 JOHN WILBUR STONE
 Wrens, Georgia
 BETTY STRANGE
 Cobbtown, Georgia
 CHARLES RICHARD
 STRAWN
 Hampton, Georgia
 JIMMIE CARTER STYLES
 Bellville, Georgia
 ROBERT LLOYD TAYLOR
 Statesboro, Georgia
Second row:
 W. EDWARD TEETS
 Statesboro, Georgia
 EUNICE CLAIRE THOMAS
 Jesup, Georgia
 BETTY LOU THOMPSON
 Mount Vernon, Georgia
 ANNA MARIA TIPPINS
 Claxton, Georgia
 ANNE T. TRICE
 Statesboro, Georgia
 EUGENIA TUTTLE
 Oliver, Georgia
Third row:
 BETTY B. TYRE
 Odum, Georgia
 CALVIN K. UPCHURCH
 Stilson, Georgia
 MARION E. WADE
 McRae, Georgia
 CLAXTON WALKER
 Lovett, Georgia
 JAMES WALKER
 Irwinton, Georgia
 THELMA CAROLYN
 WAMMOCK
 Sylvania, Georgia



freshmen



HONEY BEARS

MARGARET WARNOCK
Tarrytown, Georgia

LEE INEZ WATERS
Sylvania, Georgia

LEMUEL A. WATKINS
Hinesville, Georgia

MARJORIE
WEATHERFORD
Graymont, Georgia

MARY MANRY WEBB
Edison, Georgia

MARGARET WILDER
Vidalia, Georgia





C. J. WILLIAMS
Pembroke, Georgia

JEAN E. WILLIAMS
Register, Georgia

ANNEBETH WOODS
Garfield, Georgia

BETTY Q. WOODS
Waynesboro, Georgia



ALENE WOOD
Marlow, Georgia

HETTIE J. WOODS
Kite, Georgia

RENA MAE WOODS
Statesboro, Georgia

MARTHA SUE WYNN
Brooklet, Georgia



1949



GOING HOME

GERALDINE OGLESBY
Portal, Georgia





"WHITE CHRISTMAS"
(A La Gym)



OUR PERFECT SPECIMENS



"NOW LET'S GET THIS LAST GOOD PICTURE"



CAN THEY BE MODERN DANCE PARTNERS?

*THE BEST IN COLLEGE CLOTHES
FOR
STUDENTS AND FACULTY*

HENRY'S

Statesboro, Georgia

RUSHING HOTEL

ON THE COURTESY ROUTE

Statesboro, Georgia

Rex Hodges
Owner and Manager

Howard Lumber Company

RETAIL LUMBER AND BUILDERS SUPPLY



31 Mulberry Street

Statesboro, Georgia



ALWAYS A GOOD SHOW

at the

**State Theater
and
Georgia Theater**

Completely Air-Conditioned

STATESBORO

GEORGIA



City Dairy Company

Grade A Pasteurized and

Homogenized Milk

*DRINK MILK FOR HEALTH'S
SAKE*

52 W. Main St.

Statesboro Ga.

Statesboro Grocery Co.

A Good Wholesale Grocer

*Courtesy — Service
Is Our Motto*

STATESBORO

GEORGIA

Foresight today means security tomorrow.

Protect your future by practicing the
habit of thrift and economy today.

One of a series of timely suggestions by

The Friendly

SEA ISLAND BANK

SAFETY — COURTESY — SERVICE

A Member of the F. D. I. C.

Who is definitely interested in the future of our youth

CHARLES BRYANT

WHOLESALE

FRUIT

AND

PRODUCE

Phone 136

Statesboro, Georgia

B. B. Morris & Co.

Fancy and Staple Groceries

Quality Meats

BARBECUE

Phone 131-132

31 W. Main Street



Meet Your Friends at the

College Pharmacy

"Where the Crowds Go"

Prompt, Courteous Service

PHONE 414

PHONE 416



H. W. SMITH, JEWELER

FOR YOUR GIFT NEEDS . . .

See Our

JEWELRY — SILVER — CHINA

GLASS — LUGGAGE

Also

Visit Our Expert Repair Department

20 South Main Street Statesboro, Georgia

MILLIONS OF STUDENTS IN
AMERICA LOOK TO

PENNEY'S

For Young America Styled Togs for
Campus, Sports and Dress

MEN and BOY'S STORE

EVERYTHING FOR
COLLEGE STUDENTS

DRESS and SPORTSWEAR

East Main Street

Statesboro

Hobson Dubose Men's Store

Home of *TIMELY* (Plateau Suit and
Slacks)

* * *

DUBOSE DRY CLEANER

*"PROMPT AND COURTEOUS
SERVICE"*

One Day Service If Desired

Plant North Zett

11 West Main Street

Phone 368-R or 538-J

Compliments
of . . .

S. W. LEWIS, INC.

STATESBORO

GEORGIA

SODA SHOP

Ice Cream - Sherbets - Sundaes

Banana Splits - Milk Shakes

Frosted Malts - Soft Drinks

Coffee - Hot Dogs - Hamburgers

Sandwiches

Bradley and Cone Seed and Feed Co.

BABY CHICKS - PURINA CHOWS

— INSECTICIDES —

Good Germinated Seed

Hardware — Poultry Supplies

STATESBORO

GEORGIA

Compliments
of . . .

HINES DRY CLEANERS

PHONE 375

STATESBORO

GEORGIA

Serving Savannah Since 1868

Hogan's

BROUGHTON and BERNARD STREETS

THAYER MONUMENT COMPANY

45 WEST MAIN

Phone 439

STATESBORO

GEORGIA

THE REVIEW CO.

2 - 6 WEST BAY STREET

SAVANNAH GEORGIA

Office Equipment and Supplies

Printing — Lithographing

Authorized Distributor for A. B. Dick

Brand Mimeograph Products

FOR HEALTH'S SAKE —

Skate or Bowl at the

SKATE - R - BOWL

Student Room for Dancing TOO

Nathan Foss, Owner

STATESBORO

GEORGIA

HARRIS

The  Hub

(THE HUB)

Established 1896 — Savannah

Hart Schaffner & Marx Clothes

Arrow Shirts — Dobbs Hats

Freeman Shoes

CLOTHES . . .

FOR THE CAMPUS

THE FAIR STORE

STATESBORO

GEORGIA

BULLOCH TRACTOR CO.

JOHN DEERE
FARM IMPLEMENTS
TRACTORS

36 West Main Street

STATESBORO

GEORGIA

DIAMONDS — WATCHES

JEWELRY — GIFTS

Watch Repairing

LANIER JEWELERS

"Home of Hallmark Cards"

Compliments

. . . of . . .

LANNIE F. SIMMONS

AUTOMOBILES

Johnston and Donaldson

INSURANCE

"Good Coverage Plus Service"

7 WEST MAIN ST. — PHONE 310

STATESBORO

GEORGIA

The Best in Town for . . .

PROMPT SERVICE

ELLIS DRUG CO.

Fountain Service DeLuxe
and

Prescriptions Filled Quickly and Correctly
By Professional Pharmacists

WATERS BARBER SHOP

HAIRCUTS

ANY STYLE YOU WANT

Under Bulloch County Bank

Compliments
of . . .

MODEL LAUNDRY

COURTHOUSE SQUARE

STATESBORO

GEORGIA



SECURITY

SERVICE

The Bank With the Friendly Atmosphere

BULLOCH COUNTY BANK

NEW ACCOUNTS WELCOMED

Member

Federal Deposit Insurance Corporation



1920

1949

ALFRED DORMAN COMPANY

WHOLESALE DISTRIBUTORS

*YUKON'S BEST and QUEEN OF THE WEST
FLOUR*

Statesboro

Jesup

Sylvania

Eastman





When...

HUNGRY, THIRSTY AND TIRED

...Visit...

THE BLUE TIDE

WHERE BOY MEETS GIRL

FOR

Books — Refreshments — Fun

GEORGIA TEACHERS COLLEGE

COLLEGEBORO

GEORGIA



301 GRILL

STEAKS — CHICKENS
and
SANDWICHES

GAS and OIL
J. B. ILER

DONALDSON-SMITH

OUTFITTERS FOR MEN and BOYS
SINCE 1922

STATESBORO

GEORGIA

ROCKER APPLIANCE CO.

Complete Line of
HOME APPLIANCES, PLUMBING
and
ELECTRICAL CONTRACTING

420 South Main Street Andersonville
STATESBORO GEORGIA

CLOTHES...

FOR THE FAMILY

ROSENBERG'S

"Statesboro's Busy Department Store"

STATESBORO

GEORGIA



COVERING SOUTHEAST GEORGIA WITH
DEPENDABLE SERVICE AT LOWEST
POSSIBLE PRICES

H. Minkovitz & Sons DEPARTMENT STORES

STATESBORO

SYLVANIA

DOUGLAS



Compliments

. . . of . . .

**EVERETT MOTOR
COMPANY**

STATESBORO

GEORGIA

Brady's Department Store

SMART STYLES

for

COLLEGE BOYS AND GIRLS

Come In and See Our Display

17 NORTH MAIN STREET

Statesboro, Georgia

IDEAL SHOE SHOP

"The College Shop"

Shoes Fixed the Way YOU Like Them

POLISHES — LACES — ETC.

STATESBORO

GEORGIA

OUR COMPLIMENTS

MEN'S QUALITY SHOP

24 E. BROUGHTON STREET

Savannah, Georgia

FORD FARMING HEADQUARTERS

**Standard Tractor &
Equipment Company**

West Main Street — Box 24

Statesboro, Georgia

FORD TRACTOR

DEARBORN FARM EQUIPMENT

**GRIMES JEWELRY
COMPANY**

SILVERWARE — GLASSWARE

DIAMONDS — WATCHES

CHINA

Fountain Pens

Compliments

Sorrier Insurance Agency

ESTABLISHED 1888 — PHONE 58

STATESBORO

GEORGIA

- WHERE MEN FIND THEIR FAVORITE •
FAMOUS BRANDS

Men's Quality Shop

Joe Lesser
home of Kuppenheimer Good Clothes

24 Broughton Street, E. Savannah, Georgia

- PAY A VISIT TO THE COLLEGE SHOP •

Denmark Candy Co.

WHOLESALE MERCHANDISE

N. Zetterower Avenue

Phone 539-L

STATESBORO

GEORGIA

THE BARGAIN CORNER

GROCERIES — FRESH MEATS
VEGETABLES

Rufus Anderson

Jessie Mikell

PHONE 29

NORTH MAIN STREET

Where Fashions Make Their Debut

Fine's

IN SAVANNAH

Statesboro Provision Co.

ICE — COAL

STATESBORO

GEORGIA

Compliments
of . . .

First Federal Savings and Loan Assn. of Statesboro

SAFETY — COURTESY — SERVICE

Deposits Insured \$5,000

STATESBORO, GEORGIA

Savannah Morning News
SAVANNAH EVENING PRESS

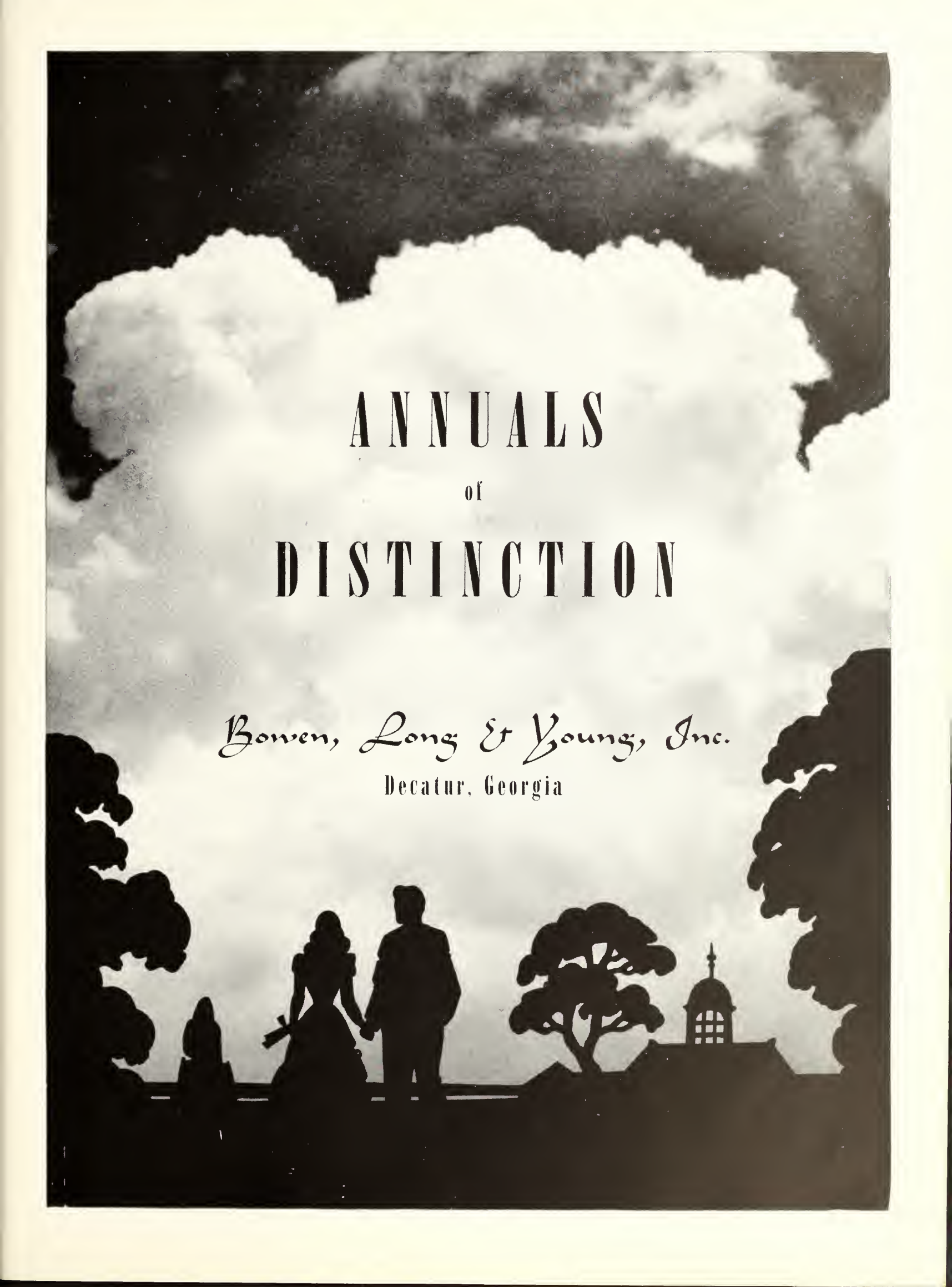
SAVANNAH

GEORGIA

Compliments of

NuGrape

A FLAVOR YOU CAN'T FORGET

The background of the entire page is a black and white photograph. The upper two-thirds of the image is dominated by a large, bright, fluffy cloud against a darker sky. The lower third of the image shows dark silhouettes of trees and a building. On the left, there are several rounded tree shapes. In the center, a man and a woman are standing and holding hands, their forms silhouetted against the lighter sky. To their right is a single, more detailed tree silhouette. Further right, the silhouette of a building with a prominent dome is visible. The overall mood is romantic and elegant.

ANNUALS of DISTINCTION

Bowen, Long & Young, Inc.
Decatur, Georgia

ZACH S. HENDERSON LIBRARY



0 2001 0488993 2

DEMCO

