

Georgia Southern University

Georgia Southern Commons

Faculty Center Newsletter (2017- 2023)

The Faculty Center

3-2019

Center for Teaching Excellence Newsletter

Georgia Southern University

Follow this and additional works at: <https://digitalcommons.georgiasouthern.edu/ctls-scholar-newsletter>

Recommended Citation

Georgia Southern University, "Center for Teaching Excellence Newsletter" (2019). *Faculty Center Newsletter (2017- 2023)*. 22.

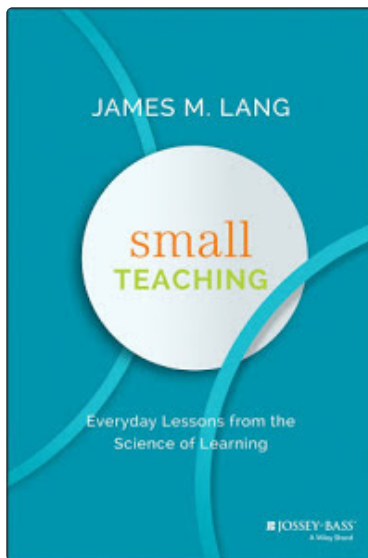
<https://digitalcommons.georgiasouthern.edu/ctls-scholar-newsletter/22>

This newsletter is brought to you for free and open access by the The Faculty Center at Georgia Southern Commons. It has been accepted for inclusion in Faculty Center Newsletter (2017- 2023) by an authorized administrator of Georgia Southern Commons. For more information, please contact digitalcommons@georgiasouthern.edu.

Teaching at Southern

March 2019, The Center for Teaching Excellence

Upcoming Workshops



Small Teaching, Big Impact

Author of *Small Teaching*, James Lang, suggests that there are many small strategies that instructors can incorporate into classroom design and delivery that will have a significant impact on student learning.

Participants will use an Inventory of Small Teaching Practices to identify techniques that can help prepare students to learn, that can be incorporated into the first 5 minutes of class or can be incorporated into the last 5 minutes of class. All 40 of the the strategies discussed in this presentation will take 5 minutes or less of your classroom time, but can have long-term effects!

Tuesday, March 5 from 12:30-1:30 pm in Cone 2029 (Statesboro)

[Register Here](#)

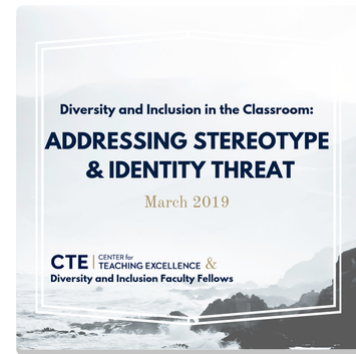
Diversity & Inclusion in the Classroom: Addressing Stereotype & Identity Threat

Diversity is an essential component of our personal and professional lives. Yet, so many of us shy away from embracing and addressing the full diversity that our university has to offer. In this

workshop, we will discuss the impact of stereotype threat and identity threat on student learning and explore tools/strategies that can help us create a more inclusive classroom experience for all.

Wednesday, March 6 from 11 am-12:30 pm in Solms 207 (Armstrong)

[Register Here](#)



Service-Learning: Forms, Facts, & Facilitation

This workshop is designed to facilitate a discussion on the various facets of utilizing service-learning. Panelists will discuss the different types of service-learning, how it differs from volunteering, next steps for incorporating this high impact practice into the classroom, and support available to assist in the use of this pedagogy.

Wednesday, March 6 from 12:30-1:30 pm in Solms 207 (Armstrong)

Thursday, March 7 from 12:30-1:30 pm in Cone 2029 (Statesboro)

[Register Here](#)

Google Friday Workshops

Facilitated by Hollie Sisk

Explore the Google applications with the CTE in our new Google Friday Workshop Series! These occur almost every Friday on the Statesboro campus in Cone 2027 from 10:10-11:10 am.



Be on the lookout for the Armstrong campus schedule!

Statesboro Campus Schedule

March 8 | Google Hangouts Meet Updates

March 15 | Showcase Learning with Google Sites

April 5 | Extend the Experience & Build a Googley Professional Learning Network

April 12 | Keep It Together with Google Keep

April 19 | Highlight How Students Learn with HyperDocs, Part 1

April 26 | Highlight How Students Learn with HyperDocs, Part 2

[Register Here](#)



Documenting Effective Teaching Behaviors

Make the most of your professional development experiences and showcase your teaching innovations and accomplishments!

Using our Critical Teaching Behaviors framework, we'll discuss how you can create a reflective narrative of effective teaching with evidence from artifacts created throughout the CTE faculty recognition process, including CTE badges and certificates as well as teaching observations, students feedback.

Tuesday, March 12 from 3:30-4:30 pm in Solms 207 (Armstrong)
Thursday, March 14, Thursday from 2-3 pm in Cone 2029 (Statesboro)

[Register Here](#)

Supporting Success for All Students

Universal Design for Learning (UDL) is an instructional theory and design practice that enables diverse students to engage with subject matter while also enabling faculty to teach more efficiently and effectively. UDL not only promotes a more inclusive learning environment, but also preserves the privacy of students who require learning accommodations.



This series of workshops will illustrate how UDL principles apply to instruction in face-to-face and digital environments. This workshop examines the way UDL principles inform the use of classroom space.

Friday, March 15 from 2:30-3:30 pm in Solms 207 (Armstrong) / Cone 2019 (Statesboro) [livestream]

[Register Here](#)



Web Accessibility Workshop - Online

This self-paced, fully online workshop covers methods to help you meet Americans with Disabilities Act standards by making online course documents and files accessible to learners with disabilities.

Participants may complete the activities at any time while the workshop is open. Participants can expect to spend four to six hours to complete the workshop. Certificates of Completion are awarded to faculty who complete the workshop successfully.

The workshop is open from March 25 to April 15. Online seats are limited to 12 participants.

[Register Here](#)

Open Education Week 2019

Open Education Week: March 4-8, 2019

Founded in 2013 by the [Open Education Consortium](#), the goal is to raise awareness and showcase impact of open education on teaching and learning.



For more information on OER, check out [Affordable Learning Georgia](#) (ALG) and this [GS library guide](#).

Explore Open Educational Resources on GS campuses with:

Debbie Walker: dwalker@georgiasouthern.edu

Nikki Cannon-Rech: dcannonrech@georgiasouthern.edu

Lauren McMillan: lmcmillan@georgiasouthern.edu

2019 Faculty Awards Deadlines

Applications for Professional Travel in Summer Awards

The Faculty Development Committee is accepting applications for summer travel awards. **The application deadline is March 15, 2019.** Applications for these travel funds must be for travel taking place between June 21, 2019 and November 1, 2019.

The committee recommends that applicants demonstrate a strong need for travel that can tie directly to student support. [Specific guidelines are on the CTE website.](#) Applicants should submit

proposals to the CTE via e-mail at phendrix@georgiasouthern.edu.



Armstrong Faculty Development Awards

The CTE is currently accepting nominations for the following 2019 Armstrong Campus Faculty Awards. An Armstrong faculty member is one who teaches 75% of his/her course load on the Armstrong/Liberty campuses.

All awards listed below are due by **5 PM on March 25, 2019**.

- Kristina Brockmeier Award
- Judge Ron Ginsberg Faculty Excellence Award
- Award for Distinguished Faculty Service to the Community
- Alumni Award for Distinguished Faculty Service to the Academic Discipline
- Award for Distinguished Faculty Service to the University
- Award for Distinguished Faculty Service by a Part-Time Faculty Member

For guidelines and documents to submit, see our [Faculty Awards](#) page.

Submit applications online to the CTE via email to tocte@georgiasouthern.edu.

If you do not receive a confirmation receipt for your submissions within 48 hours, please inquire to cte@georgiasouthern.edu or call (912) 344-3607.

Observations & Mid-semester Feedback

If you are looking for a way to document your dedication to teaching and teaching effectiveness, we can help. CTE staff are available to:

- conduct classroom observations for non-evaluative feedback on your teaching practices and
- facilitate midterm-student feedback focus groups in your classes so you can gain an insight into your students' learning experience before the semester is over.



Contact cte@georgiasouthern.edu or your college liaison (see below) to schedule a consultation and discuss what an observation or mid-semester student feedback can do for you!

Lauren Barbeau | lbarbeau@georgiasouthern.edu | CAH, CBSS

Claudia Cornejo Happel | ccornejohappel@georgiasouthern.edu | JPH-COPH, PCOB, WCHP

Nancy Remler | nremler@georgiasouthern.edu | COE, Liberty Campus
Debbie Walker | dwalker@georgiasouthern.edu | CEC, COSM

Register for CTE Events & Workshops

Events may be cancelled if fewer than 5 participants register.

Upcoming CTE Calendar Overview

March 4, Monday

[Small Teaching, Big Impact](#) | 10-11 am | Solms 207 (Armstrong)

[Diversity & Inclusion Faculty Fellows Workshop](#) | 11 am-12:30 pm | Cone 2029 (Statesboro)

[Leveraging the e-portfolio for Integrative Learning](#) | 2:30-3:30 pm | Cone 2029 (Statesboro)

March 5, Tuesday

[Folio Foundations: Quizzes](#) | 9:30-10:30 am | Cone 2027 (Statesboro)

[Small Teaching, Big Impact](#) | 10-11 am | Cone 2029 (Statesboro)

March 6, Wednesday

[Service-Learning: Forms, Facts, & Facilitation](#) | 12:30-1:30 pm | Solms 207 (Armstrong)

March 7, Thursday

[Folio Foundations: Groups](#) | 9:30-10:30 am | Cone 2027 (Statesboro)

[Service-Learning: Forms, Facts, & Facilitation](#) | 12:30-1:30 pm | Cone 2029 (Statesboro)

March 8, Friday

[Reacting to the Past](#) | 10 am-2 pm | Nessmith-Lane 2904 & 2911 (Statesboro)

March 11, Monday

[Objective Tests I: Design & Development](#) | 2:30-4 pm | Solms 207 (Armstrong)

March 12, Tuesday

[Documenting Effective Teaching Behaviors](#) | 3:30-4:30 pm | Solms 207 (Armstrong)

March 13, Wednesday

[Folio Foundations: Build a Learning Module](#) | 9:15-10:45 am | Cone 2027 (Statesboro)

[Folio Foundations: Build a Learning Module](#) | 1:30-2:30 pm | Solms 207 (Armstrong)

March 14, Thursday

[Folio Foundations: Grade Book](#) | 9:30-10:30 am | Cone 2027 (Statesboro)

[Objective Tests I: Design & Development](#) | 11:30 am-1 pm | Cone 2029 (Statesboro)

[Documenting Effective Teaching Behaviors](#) | 2-3 pm | Cone 2029 (Statesboro)

[Folio Foundations: Build a Learning Module](#) | 1:30-2:30 pm | Solms 207 (Armstrong)

March 15, Friday

[Google-Showcase Learning with Google Sites](#) | 10:10-11:10 am | Cone 2029 (Statesboro)
[livestream]

[Universal Design for Learning, Part 2](#) | 2:30-3:30 pm | Solms 207 (A) / Cone 2029 (S)



Connect with CTE@ Georgia Southern

CTE@ is using Smore newsletters to spread the word online.