

Reflector

1948

Georgia Southern University

Follow this and additional works at: <https://digitalcommons.georgiasouthern.edu/reflector-yearbook>



Part of the [Higher Education Commons](#)

Recommended Citation

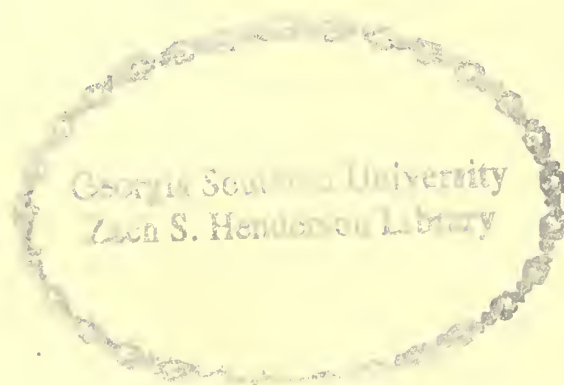
Georgia Southern University, "Reflector" (1948). *Reflector Yearbook*. 21.
<https://digitalcommons.georgiasouthern.edu/reflector-yearbook/21>

This book is brought to you for free and open access by the Student Media at Digital Commons@Georgia Southern. It has been accepted for inclusion in Reflector Yearbook by an authorized administrator of Digital Commons@Georgia Southern. For more information, please contact digitalcommons@georgiasouthern.edu.

REFLECTOR

1948





Georgia Southern University
Zach S. Henderson Library

Jacksonville



Digitized by the Internet Archive
in 2014

<https://archive.org/details/reflector1948na>

Introducing

"Mr. First Nighter..."



*....Who invites you to
attend the premiere
performance of*

REFLECTIONS



but before the curtain is raised....

Here is the Leading Lady, the Leading Man



DR. AND MRS. JUDSON C. WARD, JR.

May your performance in the future mean as much in friendship, understanding, ideas and progress as the role you have completed here means to us.

Georgia Teachers College
the
Senior Class
presents

REFLECTIONS

of

1948

A play in 4 acts
produced by

Reflector Staff of 48

Directed by

Parnish Blitch - Editor

Hazel Hamm - Bus Mgr.

James Evans - Art

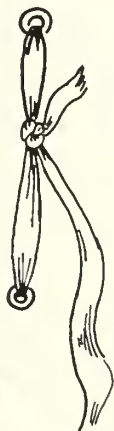
Faculty Advisers:

Mr. Mike Goldwire

Mr. Jack N. Averitt

Miss Frieda Gennant

A Souvenir Program



The Scene: Campus of G. T. C. 1947-48



"BULL" SESSION



THE CIRCLE



CHAPERONES



LITTLE-STORE TIME



BIG LINE-UP



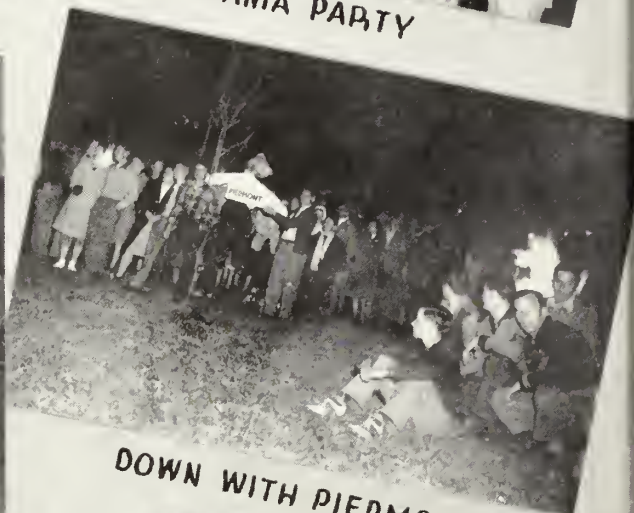
PAJAMA PARTY



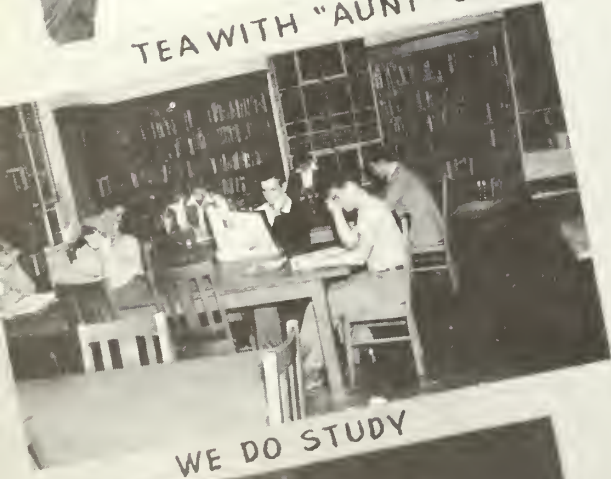
TEA WITH "AUNT" SOPHIE



FACULTY MEMBER



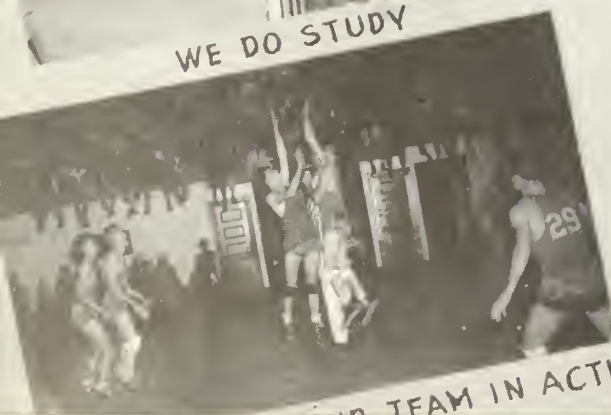
DOWN WITH PIEDMONT



WE DO STUDY



BETWEEN CLASSES



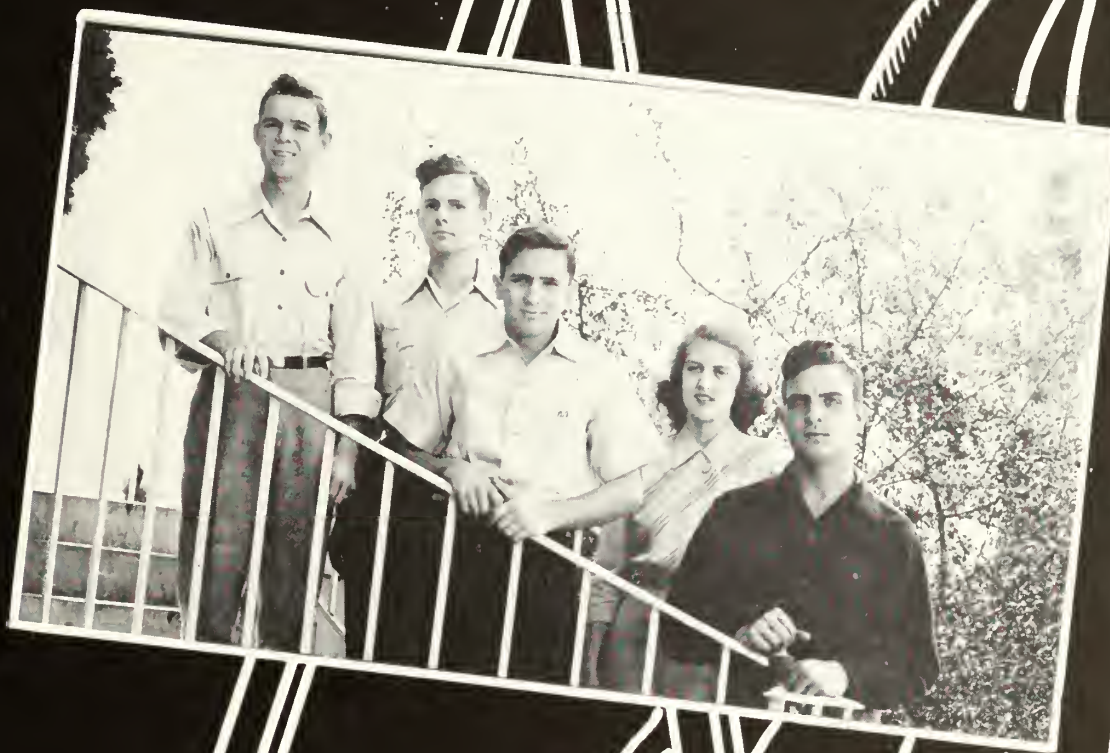
OUR TEAM IN ACTION



OUR "BEAUTIFUL" WATER TANK

and the
curtain rises
ON —

ART ONE



Freshmen

*Eugene Kendrick, President ; Paul Geiger, Vice-President
Caroline Smith, Secretary ; Arnie Page, Treasurer
Wilbur Peacock, Student Council Representative.*



GRAYSON ADAMS Hortense, Ga.
 CATHERINE ANDERSON Register, Ga.
 J. T. BAILEY Kite, Ga.
 SAM B. BARNARD Savannah, Ga.
 RUTH BAUGUSS Wadley, Ga.
 DOROTHY BAXTER Ludowici, Ga.
 ETWINDA BAXTER Glennville, Ga.
 WYMON BAZEMORE Sylvania, Ga.
 ELOISE BELCHER Statesboro, Ga.
 GROVER BELL Munneryn, Ga.
 BOBBIE C. BENTON Lyons, Ga.
 GERALDINE BLAND Lambert, Ga.

MARY ELLEN BLOCKER Kite, Ga.
 J. L. BOYKIN Halcyondale, Ga.
 EMILY BOYKIN Sylvania, Ga.
 LLOYD BRADY Blun, Ga.
 BETTY BRADY Swainsboro, Ga.
 JACK BRADY Waycross, Ga.
 WILLIE BRAGAN Brooklet, Ga.
 TALMADGE BRANNEN Statesboro, Ga.
 PEARLIE BRANTLEY Swainsboro, Ga.
 RUTH BRANTLEY Swainsboro, Ga.
 JANNELL BREWTON Manassas, Ga.
 CHARLOTTE BRINSON Woodcliff, Ga.

FRESHMEN - 1948

ANNE BRITT Darien, Ga.
 BETTIE BROOKS Tarrytown, Ga.
 HENRY BROOKS Swainsboro, Ga.
 BOBBIE BROWN Sylvania, Ga.
 THU VIA BROWN Nahunta, Ga.
 SONNY BRYAN Albany, Ga.
 BILLY CARTER Vidalia, Ga.
 MARION CHAUNCEY Screven, Ga.
 REITA CLIFTON Statesboro, Ga.
 JIM COLLINS Odum, Ga.
 VIRGINIA COLLINS Cobbtown, Ga.
 HENRY COURSEY Oliver, Ga.

JAMES COURSEY Pulaski, Ga.
 NORMA COWART Collins, Ga.
 BETTY L. CROOM Pembroke, Ga.
 HELEN DANIEL Bellville, Ga.
 RAY DAUGHTRY Metter, Ga.
 WALTER DAUGHTRY Metter, Ga.
 EDWIN DAVIDSON Rentz, Ga.
 MYRTLE DICKEY Statesboro, Ga.
 LULA C. DILLARD Thomasville, Ga.
 TERESA D. DIXON Kite, Ga.
 BETTY J. DONALDSON Register, Ga.
 MARY E. DRAKE Herndon, Ga.





LUCILE EASTERLING Glennville, Ga.
 MARY EASTERLING Eulonia, Ga.
 BETTY FIELDS McDonough, Ga.
 FRANCIS FLETCHER Statesboro, Ga.
 FLORENCE FOREHAND Sylvester, Ga.
 JEAN FOSS Pulaski, Ga.
 JIMMIE GALLAWAY Waynesboro, Ga.
 PAUL GEIGER Riceboro, Ga.
 ELAINE GNANN Waynesboro, Ga.
 GERTRUDE GNANN Clio, Ga.
 GUERRY GOODE Jacksonville, Fla.
 ANNE GRIFFIN Jeffersonville, Ga.

MARGARET GROOVER Statesboro, Ga.
 HILDA GROSS Statesboro, Ga.
 ARNOLD GUTIERREZ Glennville, Ga.
 BILLY HAGEN Statesboro, Ga.
 DURELLE HAGIN Marlow, Ga.
 AVIS HALL Collegeboro, Ga.
 JOAN HAMIL Griffin, Ga.
 JAMES HAMMETT Marrow, Ga.
 CLAUDIA HARPER Claxton, Ga.
 MARGARET HARRISON Blackshear, Ga.
 BETTY HENDERSON Wrens, Ga.
 GENE HENDERSON Collegeboro, Ga.

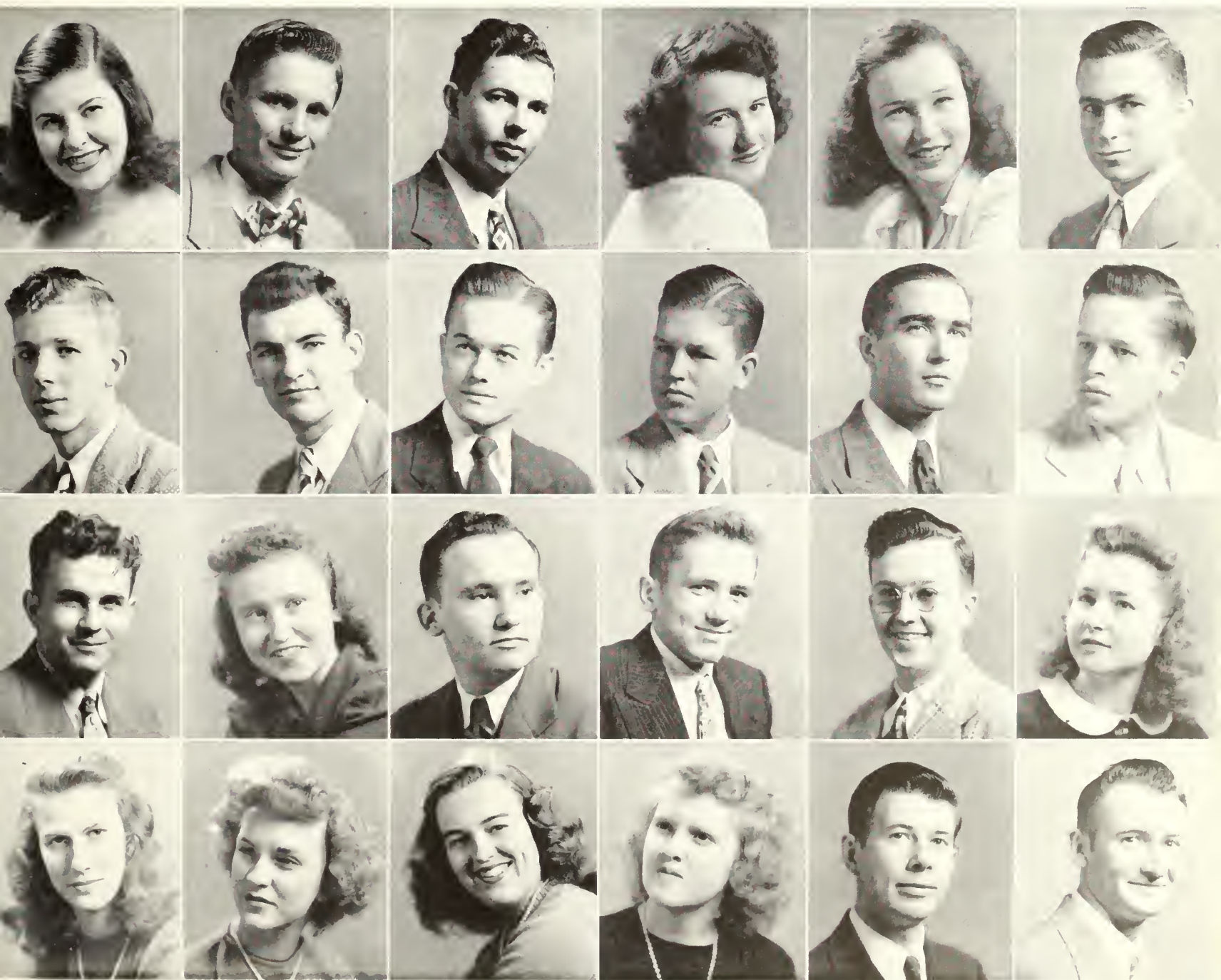
FRESHMEN - 1948

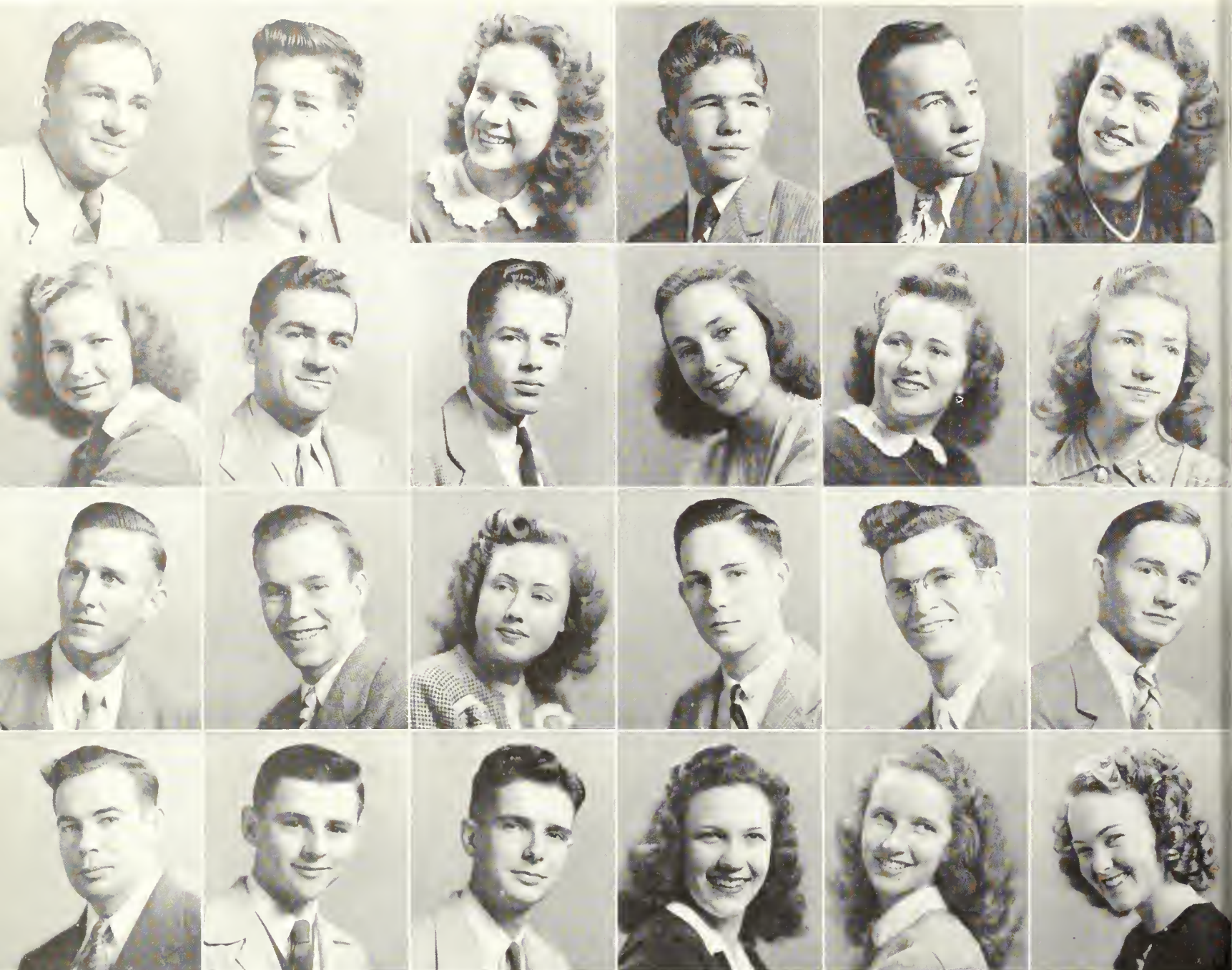
SYBIL HERRINGTON Waynesboro, Ga.
 ELBERT HICKS Wrightsville, Ga.
 —THOMAS HILL Reidsville, Ga.
 BETTY HODGES Statesboro, Ga.
 —MARY ANNE HODGES Glennville, Ga.
 —RAY HODGES Statesboro, Ga.

 THOMAS HOWARD Brooklet, Ga.
 —WILLIAM FORREST HOWARD Sylvania, Ga.
 —RAY HUTCHINSON Savannah, Ga.
 BILLY JACKSON Wrightsville, Ga.
 —J. B. JACKSON Lakeland, Ga.
 DOUGLAS JENKINS Hilltonia, Ga.

—LEWIS JOHNSON Summitt, Ga.
 GLORIA JOINER Sylvania, Ga.
 HAROLD JOINER Sylvania, Ga.
 —EUGENE KENDRICK Jonesboro, Ga.
 ROBERT C. KERR Glennville, Ga.
 LENNIE KESSLER Rincon, Ga.

 —IRIS LEE Stilson, Ga.
 —BETTY J. LEWIS Quitman, Ga.
 BETTY O. LEWIS Waynesboro, Ga.
 —BETTY LIGHTFOOT Statesboro, Ga.
 —TOM LIGHTSEY Bristol, Ga.
 —GEORGE LINDSEY Rentz, Ga.





SAMMY A. LOWE Hinesville, Ga.
DONALD McCLELLAN Gough, Ga.
GANELL McELVEEN Stilson, Ga.
MOULTRIE McINTYRE Vidalia, Ga.
RAY McNEELY Wadley, Ga.
CAROLYN MALLARD Cobbtown, Ga.
WYNELLE MANRY Edison, Ga.
JOHN MARTIN Statesboro, Ga.
RUSSELL MERCER Cobbtown, Ga.
ELSIE MESSEN Scarboro, Ga.
MIRIAM MIMS Hartsfield, Ga.
BETTY MITCHELL Statesboro, Ga.

DURMAN MIXON Statesboro, Ga.
WILEY MONTAGUE Atlanta, Ga.
DOROTHY MOODY Ludowici, Ga.
MAURICE MOORE Metter, Ga.
BILLY MULLIS Metter, Ga.
GEORGE MURKENS Metter, Ga.
CHARLES NEAL Graymont, Ga.
WILLIAM W. NELSON Reidsville, Ga.
ARCHIE NESMITH Oliver, Ga.
GWEN NETHERLAND Rosier, Ga.
EUGENIA NEWMAN Stilson, Ga.
GLENYS NEWSOME Tarrytown, Ga.

FRESHMEN - 1948

ELWOOD NICHOLS Screven, Ga.
 FRIEDA NOBLES Ludowici, Ga.
 DELLA MAE ODOM Hinesville, Ga.
 JULIET OLIVER Glenville, Ga.
 ARNIE PAGE Vidalia, Ga.
 GERALDINE PARKER Statesboro, Ga.
 METHYL PARKER Milan, Ga.
 RUBY PARRISH Pembroke, Ga.
 ELIZABETH PAUL Wadley, Ga.
 WILBUR PEACOCK Morrow, Ga.
 CARREL POPE Bristol, Ga.
 LAMAR POWELL Kite, Ga.

EUNICE PRESCOTT Munneryn, Ga.
 ELDWYN PROCTOR Brooklet, Ga.
 LESTER RAINS Wadley, Ga.
 WILLIAM RANDALL Lyons, Ga.
 BRANNEN RICHARDSON Statesboro, Ga.
 LOLA ROBBINS Sylvania, Ga.
 PEGGY ROBERTSON Brooklet, Ga.
 JANE ROBERTSON Beaufort, S. C.
 JIMMY ROBINSON Sardis, Ga.
 BOBBY ROGERS Pulaski, Ga.
 BETTY ROWLAND Atlanta, Ga.
 OUIDA SAPP Pulaski, Ga.





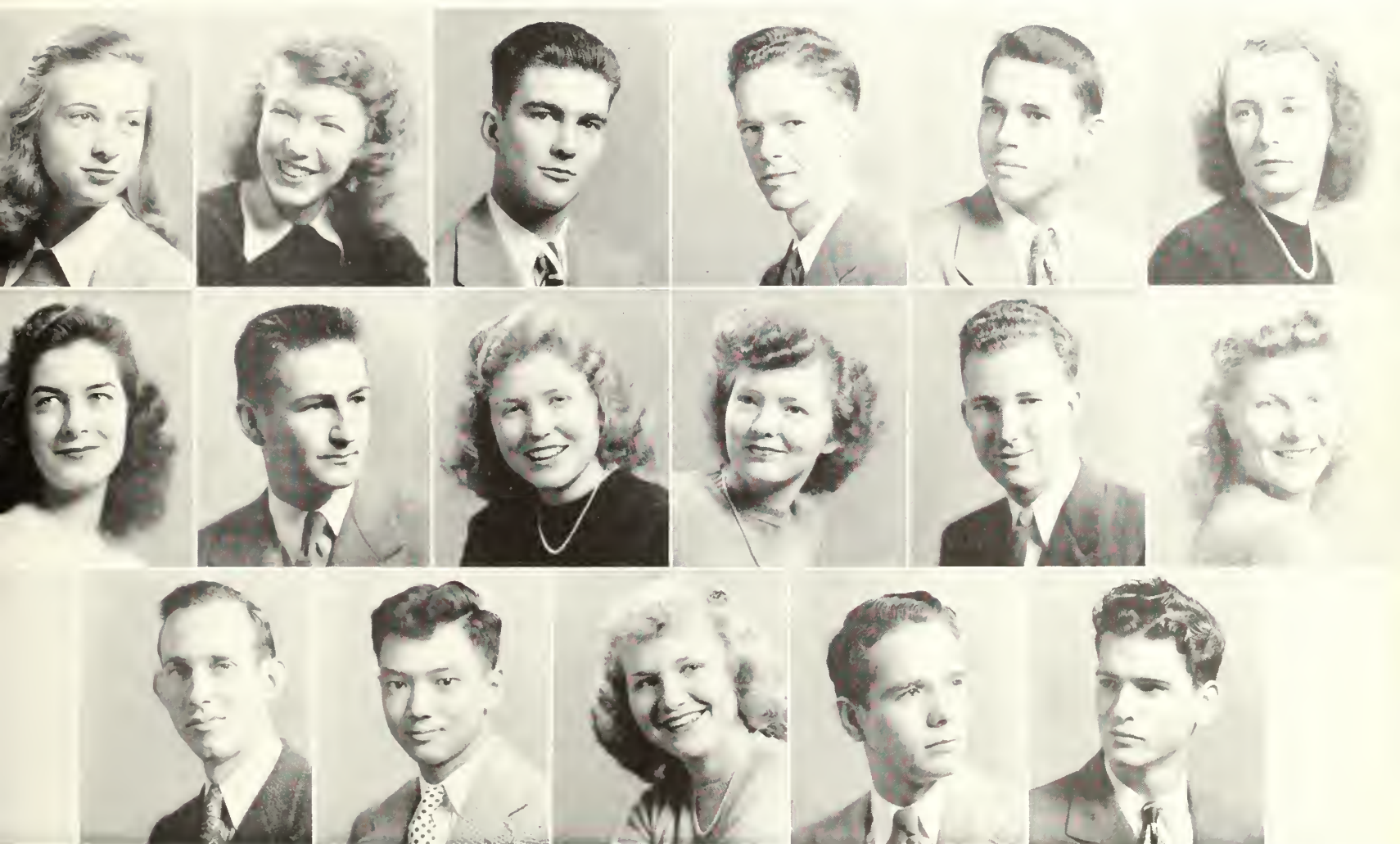
SARA SCHWALLS Summit, Ga.
 JAMES SCRIEWS Statesboro, Ga.
 SIDNEY SHEPPARD Brooklet, Ga.
 PATRICIA SIMMONS Dearing, Ga.
 ZUBIE SLOAN Hortense, Ga.
 CARROLL SMILEY Ludowici, Ga.
 CAROLINE SMITH Metter, Ga.
 IMOGENE SMITH Covington, Ga.
 JOSEPH SMITH Claxton, Ga.
 MABEL SMITH Adrian, Ga.
 MARY RUTH SMITH Harlem, Ga.
 ALEX STANFIELD Reidsville, Ga.

IRIS STRICKLAND Screven, Ga.
 NINETTE STURGIS Summit, Ga.
 MARJORIE SWEERUS Townsend, Ga.
 BILLY TAYLOR Statesboro, Ga.
 SYBIL THOMPSON Wrens, Ga.
 NATALIE TILLMAN Pearson, Ga.
 WILLIAM TYRE Odum, Ga.
 BETTY UPCHURCH Brooklet, Ga.
 JOANNE VAN BRACKLE Adel, Ga.
 MARTHA VAUGHN Metter, Ga.
 JACKIE WATERS Statesboro, Ga.
 CAROLYN WATERS Reidsville, Ga.

FRESHMEN - 1948

BLAIR WELLS Guyton, Ga.
 JOYCE WHITWORTH Gainesville, Ga.
 JOHNNY WIGGINS Vidalia, Ga.
 GENE WILDS Glennville, Ga.
 CARL WILKINSON Ludowici, Ga.
 BETTY JEAN WILLIAMS Millhaven, Ga.
 JIMMY LOU WILLIAMS Brooklet, Ga.
 LARRY WILLIAMSON Oak Park, Ga.
 MARY NELL WILLIS Moultrie, Ga.
 REBA DEAN WILSON Glennville, Ga.
 TOREY WINGATE Doerun, Ga.

JUNE WIREMAN Collegeboro, Ga.
 CHARLES WITHROW Odum, Ga.
 BOBBY WONG Augusta, Ga.
 BETTY JOYCE WOODS Statesboro, Ga.
 HEYWARD WYNN Varnville, S. C.
 CHARLES ZOUCKS Hinesville, Ga.



Going to church, Mary?



"Mother" Marie



What'cha got, Calvin?

Backstage the Production

Adminis



JUDSON CLEMENTS WARD, JR.

President

A.B. Emory University. M.A. Emory University.
Ph.D. University of North Carolina.



ZACH S. HENDERSON
Dean



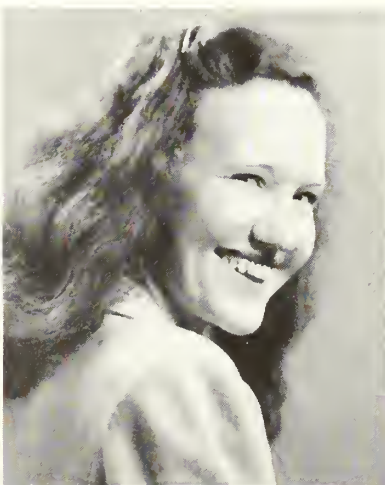
MARVIN S. PITTMAN
President Emeritus
Director of Extension Work



VIOLA PERRY
Registrar



MAE MICHAEL
Secretary to the President



FRANCES REEVES WHITE
*Secretary to the Dean
and Registrar*



JEAN KING
Secretary to Bursar

Crew is Hard at Work!

tration



MRS. C. A. STACY
Dietitian



ANNIE THOMPSON
Assistant Dietitian



SOPHIE JOHNSON
Dean of Men



ROBERT L. WINBURN
Bursar



MAMIE VEAZEY
Dean of Women



MRS. J. B. JOHNSON
East Hall



MRS. ARCHIE JACKSON
West Hall

Division of Education



RALPH M. LYON
Head



QUEEN ELIZABETH COLLINS
Secretary of Lab School



POWELL WHITFIELD
Education



MRS. POWELL WHITFIELD
Secretary of Extension Department



LEILA STEVENS
Education



LEONA NEWTON
Lab School Faculty



MARJORIE CROUCH
Lab School Faculty



BERTHA FREEMAN
Lab School Faculty



MARIE WOOD
Lab School Faculty

Division of Education



DELIA JERNIGAN
Lab School Faculty



ROBERT MOORMAN
Lab School Faculty



JUANITA TILLMAN
Lab School Faculty

MRS. ROBERT BOLTON
Lab School Faculty



MRS. VIRGINIA EVANS
Lab School Faculty

Division of Fine and Practical Arts

IVAN HOSTETLER
Head



JOHN H. ERICKSON
Industrial Arts

FREIDA GERNANT
Art

MARGARET STRAHLMAN
Home Economics

RUTH BOLTON
Home Economics



Division of English



FIELDING D. RUSSELL
Head



CLAUDIA D. RICE
Language



MIKE L. GOLDWIRE
Journalism — Publicity



MARJORIE T. GUARDIA
English



MRS. DAVID HAWK
English



ELA JOHNSON
English



DOROTHY D. STEWART
Speech

Division of Music



RONALD J. NEIL
Head



JACK W. BROUCEK
Music



J. C. LOOMIS
Music

Division of Social Science



HERBERT WEAVER
Head



HESTER NEWTON
Social Science



JACK N. AVERITT
Social Science



DAVID B. HAWK
Social Science

Division of Exact Science



W. S. HANNER
Head



MALVINA TRUSSELL
Exact Science



W. B. MOYE
Exact Science

Division of Business Education



CAMERON BREMSETH
Head



ALDINE BARNHILL
Business Education



JAMES L. WHITE
Business Education

Division of Physical Education



J. B. SCEARCE
Head



JAKIE UPSHAW
Physical Education



BETTY JANE TROTTER
Physical Education



DELLOYD STRANAHAN
Physical Education

Library



HASSIE M. McELVEEN
Librarian



ADDIE D. AVERITT
Library Staff



RACHAEL BRANCH
Library Staff



MRS. RALEIGH BRANNEN
Library Staff



EAST HALL
"Ima Snoop"



"Miss Mae"



"The bride of the year"

ART TWO



Sophomores

*Jimmy Gunter, President
Ray Roundtree, Vice President
Pat Prestorious, Secretary, Treasurer*



FOSTINE AKINS Statesboro, Ga.
 RAMONA ALTMAN Statesboro, Ga.
 EUGENIA ALDERMAN Brooklet, Ga.
 JOSEPH ANDERSON Summit, Ga.
 BRYAN BALL Waycross, Ga.
 REBA WOOD BARNES Statesboro, Ga.
 BURCHARD BERRY Savannah, Ga.
 JANE BLITCH Glennville, Ga.
 BILLY BOHANNON Hilltonia, Ga.
 HAROLD BRABHAM Savannah, Ga.
 JOHN T. BRANNEN Statesboro, Ga.
 JACK BRANNON Swainsboro, Ga.

CLAVIN BREWTON Claxton, Ga.
 BARBARA J. BROWN Statesboro, Ga.
 DOLAN E. BROWN Garfield, Ga.
 LA RUE BRUCE White Oak, Ga.
 Q. L. BRYANT Lewisville, Ga.
 SUE BURKS Griffin, Ga.
 DREW BURTON Oak Ridge, Tenn.
 IRIS BUTLER Fort Valley, Ga.
 S. B. CAMPBELL Waycross, Ga.
 JOHN W. CATO Doerun, Ga.
 CARO CHAMBLESS Sylvania, Ga.
 HORTENSE CLAXTON Uvalda, Ga.

SOPHOMORES - 1948

JACK CLANTON Glennville, Ga.
 MASON C. CLEMENTS Ray City, Ga.
 KEITH CLEMENTS Ray City, Ga.
 RICHARD COHAN Hinesville, Ga.
 GENE COLLINS Glennville, Ga.
 IRIS COLLINS Cobbtown, Ga.
 ALVIN COLSTON Wrightsville, Ga.
 ROBERT CONE Brooklet, Ga.
 JERRY E. CONNER Harlem, Ga.
 ESTER CROLEY Williamsburg, Ky.
 ANDREW CUNEO Rockaway, N. J.
 DOUGLAS DANIEL Odum, Ga.

EDGAR G. DANIEL Millen, Ga.
 AINSWORTH DAVIS Patterson, Ga.
 HILDA DAVIS Riceboro, Ga.
 NAN DAVIS Wrightsville, Ga.
 IRENE DEESE Bainbridge, Ga.
 WILLIS F. DENNY Lewisville, Ga.
 MARVIN M. DIXON Millen, Ga.
 JESSE A. DURDEN Graymont, Ga.
 BILLY DURRENCE Glennville, Ga.
 ELTON A. EASON Matthews, Ga.
 MARTHA JEAN EASON Reidsville, Ga.
 EDGAR EDWARDS Claxton, Ga.





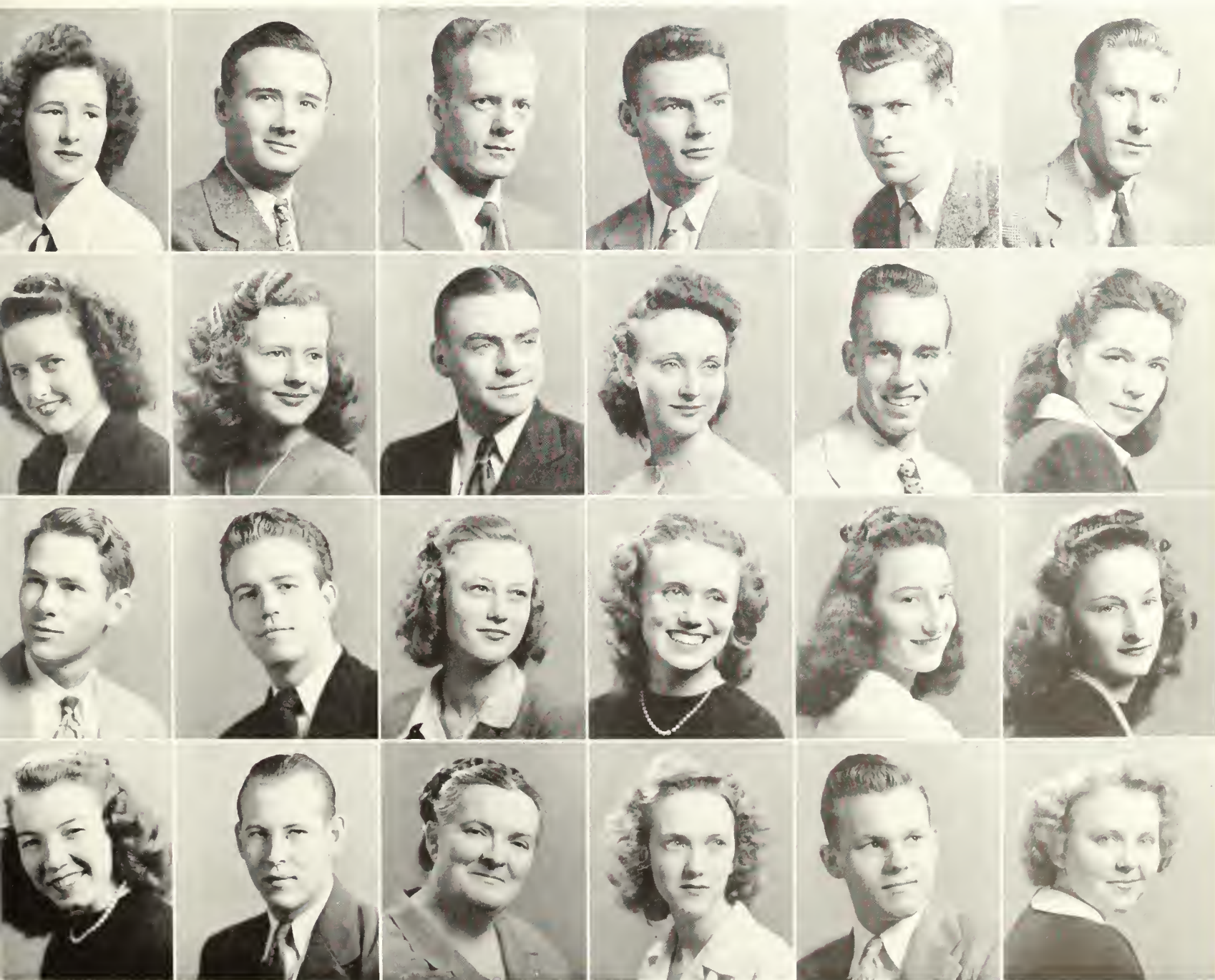
WILLIAM FORDHAM Gibson, Ga.
 KATHERINE FOREHAND Lilly, Ga.
 TERRENCE FOREHAND Hilltonia, Ga.
 VONCILE FREEMAN Toombsboro, Ga.
 ESCHOL GAY Cadwell, Ga.
 CHARLES GILLIS Vidalia, Ga.
 BILL GLENN Swainsboro, Ga.
 WRAY GODBEE Millen, Ga.
 JEAN GROOVER Statesboro, Ga.
 JOHN GROOVER Statesboro, Ga.
 JIMMY GUNTER Statesboro, Ga.
 DORIS HAGIN Marlow, Ga.

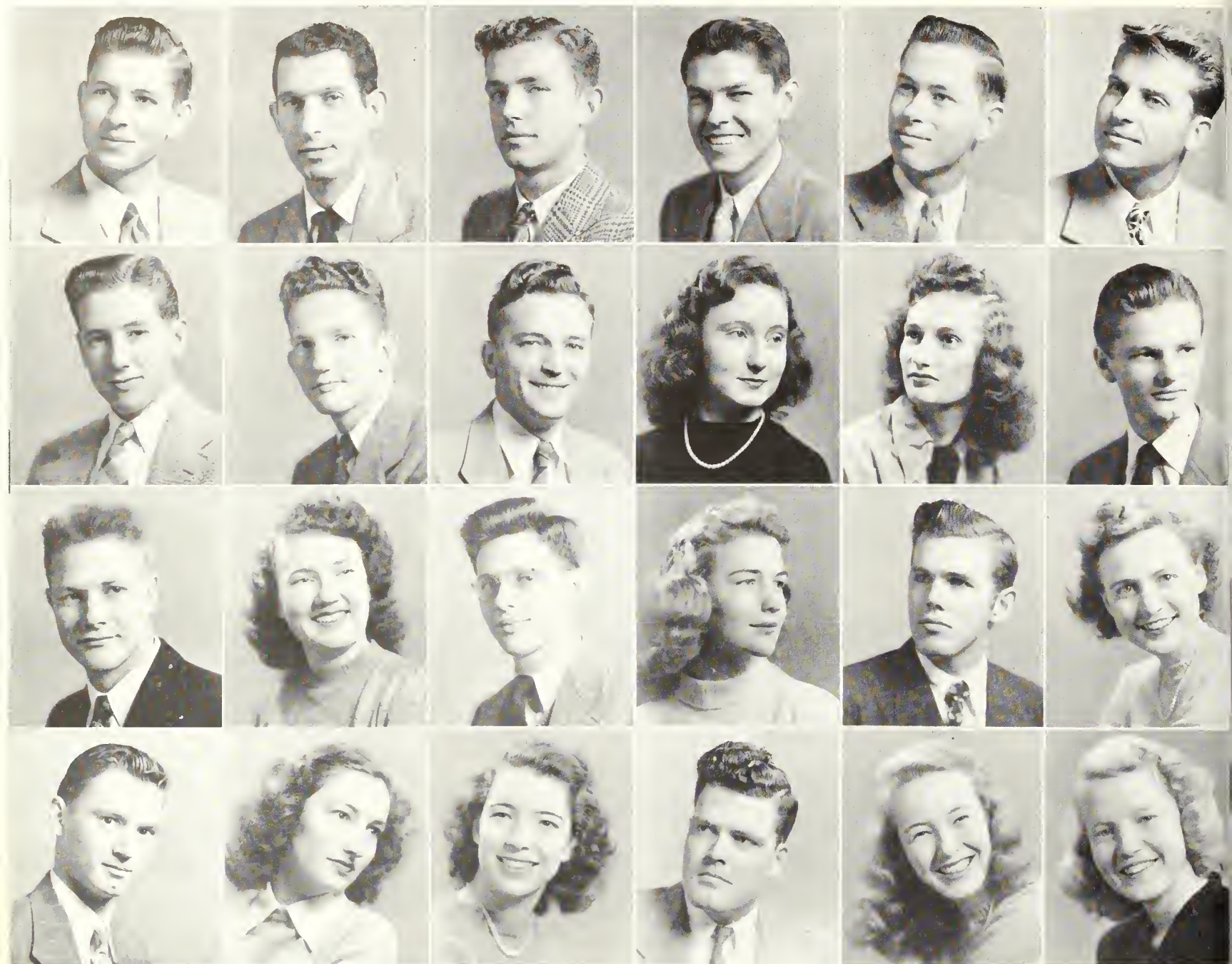
GLYNN HARRISON Savannah, Ga.
 VANNILU HARRISON Adrian, Ga.
 MARY HART Statesboro, Ga.
 ELOISE HEIDT Marlow, Ga.
 ANN HENDRIX Brooklet, Ga.
 ANN HENSLEY Cobbtown, Ga.
 ERNEST HENSLEY Gibson, Ga.
 BETTY HINLEY Savannah, Ga.
 JEAN HODGES Glennville, Ga.
 LENA MAE HODGES Springfield, Ga.
 STEPHEN HODGES Bainbridge, Ga.
 MARY JO HORTON Jesup, Ga.

SOPHOMORES - 1948

RIXIE HORTON Norristown, Ga.
 FRANCIS HOUSTON Blackshear, Ga.
 JOSEPH HOUSTON St. Augustine, Fla.
 DANIEL H. HOWARD Sylvania, Ga.
 FRANCIS HUSSEY Lyons, Ga.
 ERNEST IVEY Millen, Ga.
 EVA JARIEL Collins, Ga.
 BILLIE JARRELL Sylvania, Ga.
 EUGENE JENKINS Statesboro, Ga.
 MARTHA JENKINS Alamo, Ga.
 ROBERT JENKINS Brunswick, Ga.
 JOYCE JOHNSTON Brunswick, Ga.

BILL JONES Statesboro, Ga.
 BERT JUSTICE Albany, Ga.
 KATE KENNEDY Statesboro, Ga.
 ANNETTE KICKLIGHTER Claxton, Ga.
 DOT LANCASTER Wrens, Ga.
 ELIZABETH LANIER Statesboro, Ga.
 OLLIE MAE LEE Statesboro, Ga.
 ROBERT E. LEE Statesboro, Ga.
 MRS. W. J. LEWIS Kingsland, Ga.
 RUTH McKINNEY Arabi, Ga.
 FRED McLENDON Dawson, Ga.
 BURNEY ANNE MANN Glennville, Ga.





CRAIG MARSH Portal, Ga.
 J. G. MARTIN Statesboro, Ga.
 KERMIT MARTIN Collins, Ga.
 CURTIS MELTON Edison, Ga.
 L. B. METZGER, JR. Clyo, Ga.
 CHARLES MILLICAN Lindale, Ga.

 ALLEN MILLS Toombsboro, Ga.
 JAMES MINCEY Statesboro, Ga.
 JACK MOBLEY Sylvania, Ga.
 BOBBIE MONTGOMERY Dearing, Ga.
 RAMONA MORRIS Swainsboro, Ga.
 JIMMY MORRIS Statesboro, Ga.

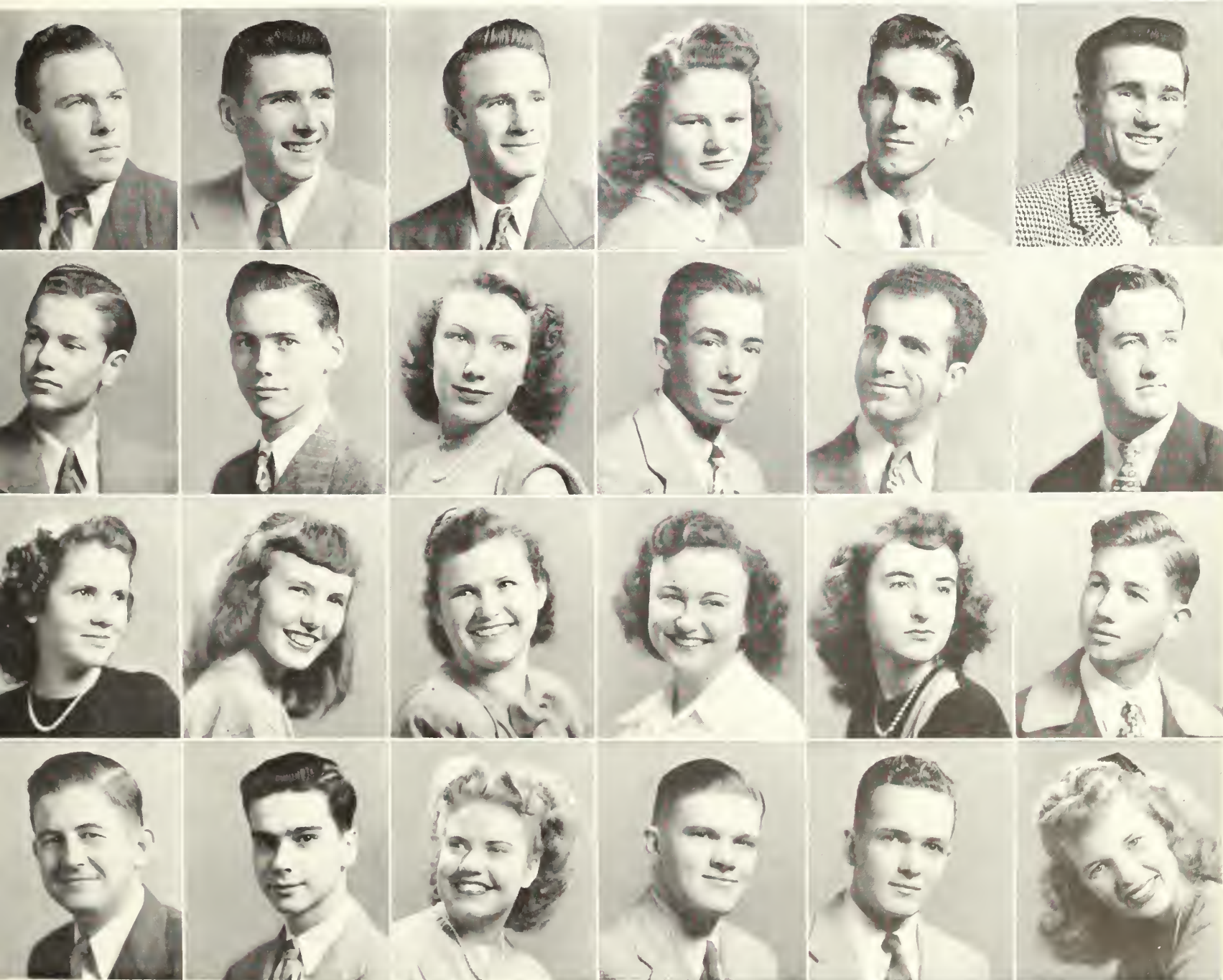
JAMES MULLIS Camilla, Ga.
 CLARECE MURRAY Screven, Ga.
 ARLO NESMITH Albany, Ga.
 MARGARET NEWTON Millen, Ga.
 ROBERT ODOM Hinesville, Ga.
 MILDRED PAGE Vidalia, Ga.

 BILLY J. PARKER Ludowici, Ga.
 ELLEN PARRISH Brooklet, Ga.
 BETTY JO PHILLIPS Hinesville, Ga.
 CLYDE POOLE Soperton, Ga.
 PAT PREETORIUS Statesboro, Ga.
 BOBBYE QUICK Midville, Ga.

SOPHOMORES - 1948

THOMAS RACKLEY Waynesboro, Ga.
 GEORGE M. RILEY Statesboro, Ga.
 ALVIN H. RINER Oak Park, Ga.
 ROSE ROBBINS Dover, Ga.
 MASSEY ROBERTSON Odum, Ga.
 C. W. ROCKETT Vidalia, Ga.
 JIMMY ROGERS Claxton, Ga.
 FRED ROLLISON Waycross, Ga.
 LA VERNE ROWAN Adel, Ga.
 JAMES RUSHING Register, Ga.
 BILL SALEM Glennville, Ga.
 JOHN D. SAPP Pulaski, Ga.

HELEN SATURDAY Collins, Ga.
 EVELYN SCHLINGLOFF Hinesville, Ga.
 H. EVELYN SEALS Kingsland, Ga.
 PEARL SELIGMAN Claxton, Ga.
 HELEN SIMPSON Lyons, Ga.
 GENE SMITH Claxton, Ga.
 HARVEY SMITH Norristown, Ga.
 HOWARD SMITH Reidsville, Ga.
 BENNIE SPELL Wrightsville, Ga.
 JAMES STANFIELD Glennville, Ga.
 DANA STEVENS Dorchester, Ga.
 LOIS STOCKDALE Statesboro, Ga.





ALETHIA STUCKEY Brunswick, Ga.
 ROY STYLES Belleville, Ga.
 ANDY SUTTON Odum, Ga.
 MARIE SUTTON Odum, Ga.
 NADINE SWINDELL Ludowici, Ga.
 RUTH SWINSON Statesboro, Ga.
 VIRGINIA TAYLOR Sylvania, Ga.
 I. E. THIGPEN, JR. Dublin, Ga.
 JAMES THOMPSON Dixie, Ga.
 LORA BETH THOMPSON Glennville, Ga.
 JO ANN THOMPSON West Palm Beach, Fla.
 PEGGY THOMPSON Swainsboro, Ga.

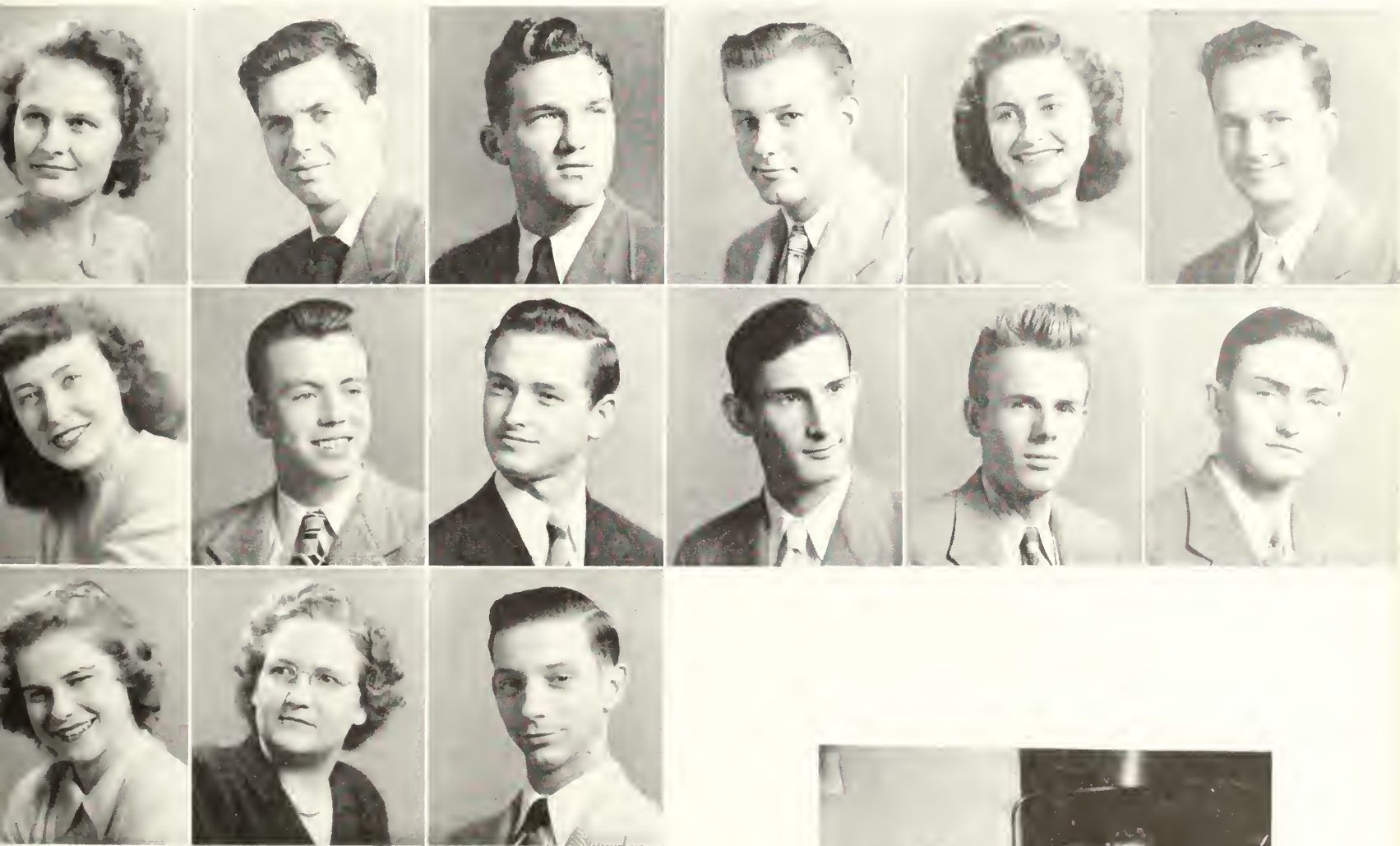
DOT TOWNSEND Kite, Ga.
 BETTY WALDEN Gibson, Ga.
 PAUL WATERS Statesboro, Ga.
 SARA WATERS Hinesville, Ga.
 LEE WATSON Griffin, Ga.
 JAMES WATSON Gainesville, Ga.
 MARY WEST Graymont, Ga.
 EMORY WHEELER Kite, Ga.
 JOHN WHEELER Waynesboro, Ga.
 DONALD WILKES Rome, Ga.
 ALVIN WILLIAMS Pulaski, Ga.
 BETTY JEAN WILLIAMS Statesboro, Ga.

SOPHOMORES - 1948

MARTHA WILLIAMS Register, Ga.
TASCAR WILLIAMS Albany, Ga.
WILLIE JOE WILLIAMS Doerun, Ga.
ZACK WILLIAMS Barney, Ga.
ANNIZU WILLIAMSON Soperton, Ga.
EDWARD WILSON Millen, Ga.

INEZ WILSON Statesboro, Ga.
ALLEN WOMBLE Richmond Hill, Ga.
WILLIAM WOODRUM Statesboro, Ga.
A. J. WOODS Portal, Ga.
HUBERT WOOD Statesboro, Ga.
WALTER WOODRUM Statesboro, Ga.

RAMONA WYNN Portal, Ga.
GLADYS YATES Statesboro, Ga.
STEVE ZALUMAS Thomasville, Ga.



Is it good, girls?



"Studying"

Let's Take a Look Around



LIBRARY

The Practice Stage
LAB SCHOOL



MAIN
ADMINISTRATION



MOONLIGHT SCENE



Our Theater During Intermission



STAGE
BUILDING



AT THE LAKE



Actress' Dressing Rooms
LEWIS HALL

SANFORD HALL
Entrance to Actors' Dressing Rooms



FLASHBACK . . .



THE FIRST COLLEGE BUS—1917

Nineteen forty-eight marking the Fortieth Anniversary of the founding of the school which is today Georgia Teachers College, we take pleasure in presenting a few scenes which give the reader some idea of the progress made through the years both in building and larger enrollment. In 1908 the school was known as the First District A. & M. School; in 1921 the school was renamed Georgia Normal School; in 1929 the school became South Georgia Teachers College, and finally in 1939 the school became known as Georgia Teachers College.

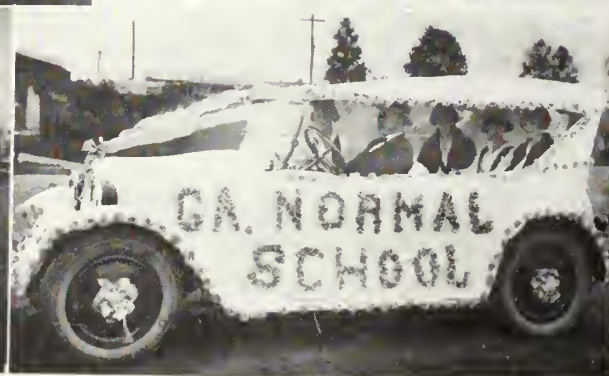
EAST HALL—1925
OLD CIRCLE—1932



ENTRANCE—1929
STUDENTS—19??



L-R. DINING HALL, EAST.
PRESIDENT'S HOME
BIG PARADE—19??

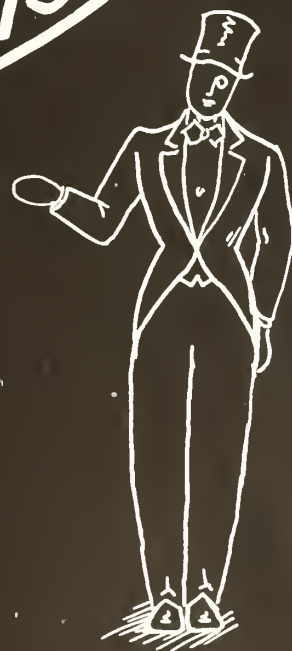




Club

- & -

Activities



Lewis Hall House Council



Martha Lee, Peggy Stanfield, Miss Mamie Veazey, Lawana Daves, Myrtice Prosser, Patricia Green, Vivian Hudson, Marie Pitts, Doris Tillman, Mary Sue Morris.

MISS VEAZEY, *House Director*

LAWANA DAVES, *President*; PEGGY STANFIELD, *Vice-President*; MARTHA LEE, *Secretary and Treasurer*.

Sanford Hall House Council



Joe Anderson, Eddie Rush, H. M. Fulbright, Miss Sophie Johnson, Millard Green, Joe Houston, Calvin Brewton, Rosco Padgett, James Watson, Lee Bowen, James Conner, Max Lockwood, James Gunter, Delmar Cowart, Ben Page.

"AUNT SOPHIE", *House Director*

EDDIE RUSH, *President*; JOE ANDERSON, *Vice-President*; MILLARD GREEN, *Secretary and Treasurer*.

East Hall House Council



Thuvia Brown, Pearle Seligman, Bobbie Montgomery, Mrs. J. B. Johnson, Janelle Brewton, Patricia Preetorius, Bobbye Quick, Helen Saturday, Burney Ann Mann, Mary Jo Horton, Lora Beth Thompson, Ruby Parrish, Peggy Thompson, Ninette Sturgis *not in picture*.

MRS. JOHNSON, *House Director*

BOBBYE QUICK, *President*; HELEN SATURDAY, *Vice-President*; PAT PREETORIOUS *Secretary and Treasurer*.

West Hall House Council



Evelyn Seals, Caro Chambliss, Carolyn Mallard, Mrs. Archie Jackson, Irene Deese, Vannilu Harrison, Betty Hinely, Ruth McKinney, Blair Welles, Martha Jean Eason, Doris Hagan.

MRS. JACKSON, *House Director*

IRENE DEESE, *President*; MARTHA JEAN EASON, *Vice-President*; BETTY HINELY, *Secretary and Treasurer*.

Student Council



Front Row: Peggy Stanfield, Max Lockwood, Myrtice Prosser, Jay Sarratt. Second Row: Eddie Rush, Frances Barfield, Parrish Blich, Florence Forehand, Lewis Brinson, Julie Turner, Wilbur Peacock not in picture, Marvin Prosser.



MAX LOCKWOOD
President



JAY SARRATT
Vice-President

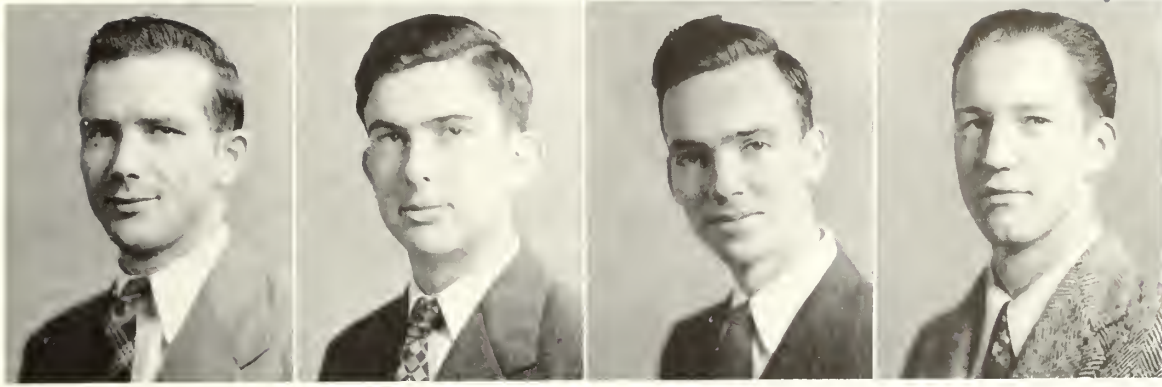


EDDIE RUSH
Secretary and Treasurer



DEAN HENDERSON
Advisor

Industrial Arts Club



CLINTON DAVIS
President

DELMAR COWART
Vice-President

HAL KING
Secretary and Treasurer

HERBERT JONES
Sergeant-at-Arms

Sponsors

DR. IVAN HOSTETLER

J. H. ERICKSON

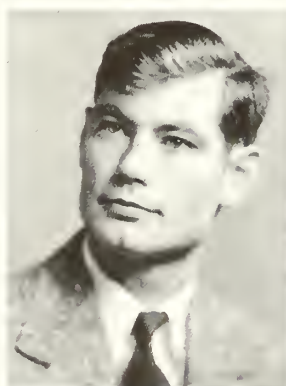


Front Row: Dr. Hostetler, Lamar Hollaway, Joel Newsome, Clinton Davis, Wertz Zipperer, Ellis Hargrove, Henry Rahn, Herbert Jones. *Second Row:* Glenn Harrison, Lewis Brinson, Hal King, Don Coleman, Melvin Davis, Lee Chapman, Raymond Ginn, George Williams, Andy Sutton, John Erickson. *Third Row:* Hugh Newton, Eddie Rush, Quillian Roberson, Delmar Cowart, A. J. Woods, Bill Hershel, Arthur Morgan, Thomas Rackley.

International Relations Club



Front Row: Jay Sarratt, Regis Rowell, Marie Pitts, Caro Chambless, Ramona Nesmith, Frances Barfield, Dot Forbes, Comer Yates. *Second Row:* Max Lockwood, Leon Riner, Gene Henderson, Harold McCarty, Ruth Swinson, Edsel Joiner, Virginia Taylor, Clarece Murray, Jack Brady. *Third Row:* Joe Williamson, Joe Anderson, Eschol Gay, Miss Newton, Dudley Spell, G. C. Futch.



JAY SARRATT
President



REGIS ROWELL
Vice-President



CARO CHAMBLESS
Secretary-Treasurer

SPONSOR
HESTER NEWTON

The George-Anne



MR. M. L. GOLDWIRE
Faculty Advisor

MISS FRIEDA GERNANT *and* MR. J. N. AVERITT

Left to Right:
MARGARET WARREN
Society Editor
ARLO NESMITH
Make-up Editor
ROSS ATKINSON
Advertising Mgr.
CLARICE MURRAY
Exchange Editor

REPORTERS



Left to Right:

FOSTINE AKINS
HAZEL HAMM
CAROLYN MALLARD
LEE CHAPMAN

Left to Right:

JAY SARRATT
Associate Editor
REGIS ROWELL
Business Manager
BILL SARRATT
News Editor
JERRY CONNER
Sports Editor

Left to Right:

EDSEL JOYNER
PEGGY THOMPSON
GENE HENDERSON
JAMES CONNER
LEE WATSON

Mu Sigma

LAYSEL BANCROFT

HOKE SMITH

DONALD WILKES

MARY CARPENTER

MADISON SHORT

IDA VINCENT



RUTH QUARRELS

ZONA LONG

"MARTY" SMITH

TASCAR WILLIAMS

BILL WILLIAMS

LAYSEL BANCROFT, *President*
HOKE SMITH, *Vice-President*
RUTH QUARLES, *Secretary*
ZONA LONG, *Treasurer*

Alpha Rho Tau

JAMES EVANS
FREIDA GERNANT
QUEEN COLLINS
MARJORIE CROUCH
RUTH BOLTON
DELIA JERNIGAN



ADDIE AVERITT
QUILLIAN ROBERSON
DEAN ROBERSON
MARVIN NORMAN
LILA BRADY
PEARLE SELIGMAN

GEORGE RILEY
REBA W. BARNES
FOSTINE AKINS
RUTH QUARRELS
WILLIE BRAGAN
LEE CHAPMAN

JAMES EVANS, *President*

FREIDA GERNANT, *Sponsor*

Alpha-Psi-Omega

Left to Right:

BOBBYE QUICK
JAMES GUNTER
PARRISH BLITCH
PEGGY STANFIELD



HAZEL HAMM
BEN DARSEY
PEGGY THOMPSON
JAMES EVANS

JOYCE CALLAWAY
ARTHUR YARBROUGH
DORIS TILLMAN
JERRY CONNER

JAMES GUNTER, *President*
PARRISH BLITCH, *Vice-President*
PEGGY STANFIELD, *Secretary-Treasurer*

Primitive Baptist Youth Fellowship

Left to Right:

RAMONA NESMITH
JOHNNIE HEATH
LUCILLE EASTERLING
HUBERT DAUGHTRY

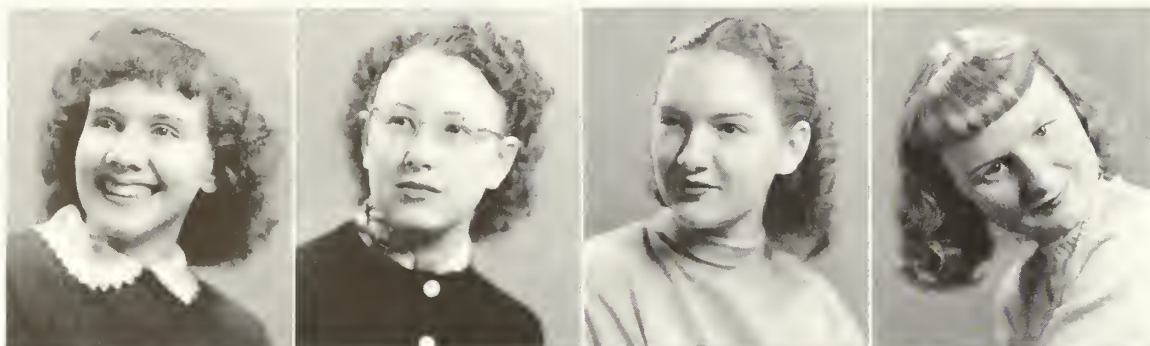


HOWARD DAUGHTRY
J. T. BAILEY
EUGENIA ALDERMAN
JOYCE CALLOWAY

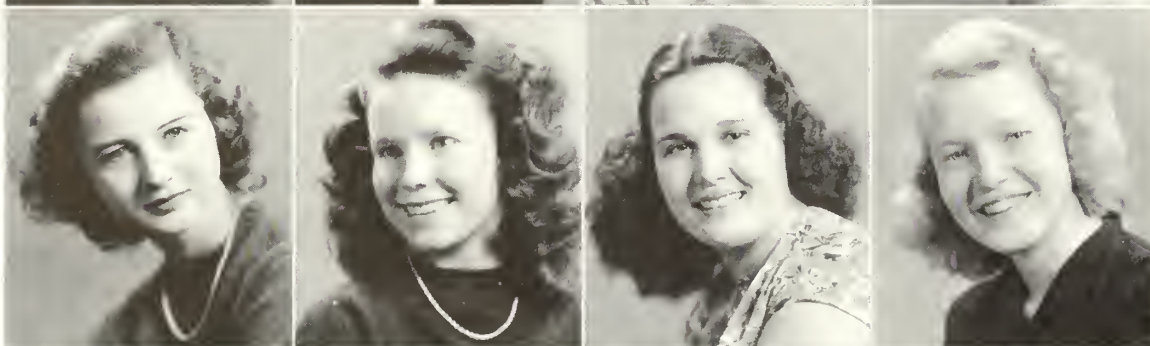
EMILY KENNEDY
MISS McELVEEN

JOHNNIE HEATH, *President*
LUCILLE EASTERLING, *First Vice-President*
HOWARD DAUGHTRY, *Secretary-Treasurer*

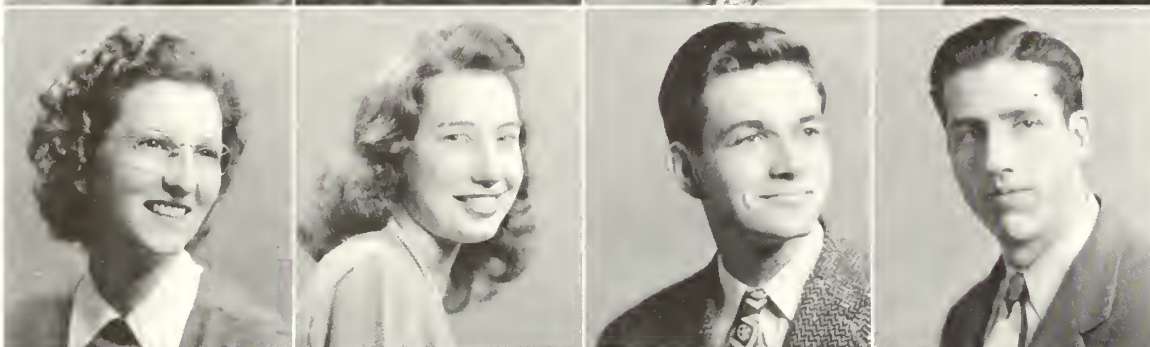
Y.W. and Y.M.C.A. Councils



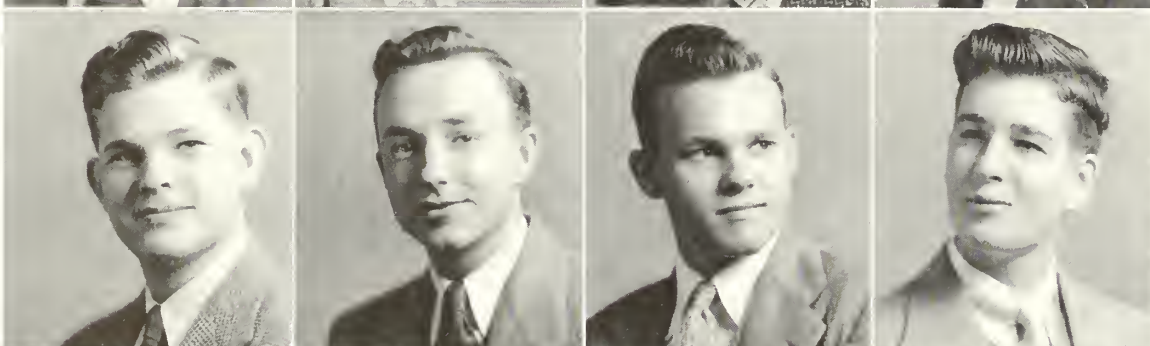
CARO CHAMBLESS
President
BARBARA JOHNSON
1st Vice-President
SARAH A. MAY
2nd Vice-President
"ROZ" TILLOTSON
Secretary and Treasurer



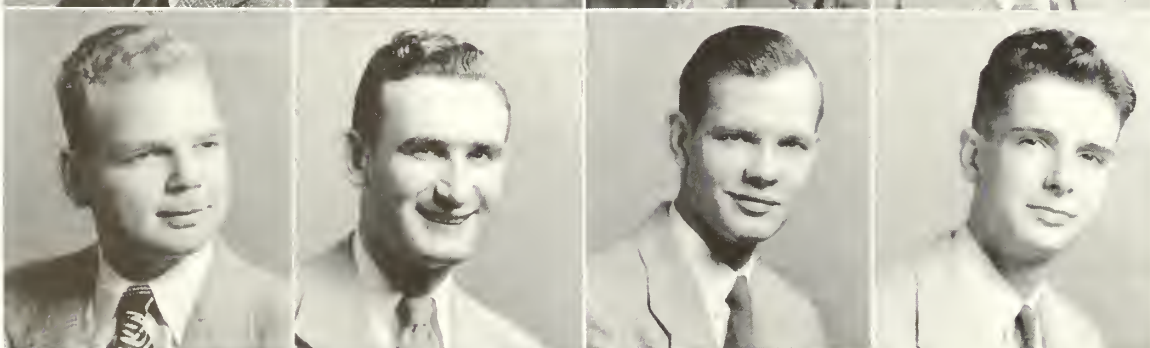
VIRGINIA TAYLOR
Vesper Chairman
HAZEL TILLMAN
Vesper Chairman
REGIS ROWELL
Social Chairman
BOBBYE QUICK
Evening Watch Chairman



IRENE DEESE
Evening Watch Chairman
MARTHA LEE
Evening Watch Chairman
ARTHUR YARBROUGH
President
EDDIE RUSH
Vice-President



HAROLD BRABHAM
Secretary
LEO WEEKS
Treasurer
FRED MCLENDON
Vespers
DON MCCLELLAN
Vespers



MARVIN NORMAN
Social Chairman
H. M. FULBRIGHT
Evening Watch Chairman
JOHN WHEELER
Entertainment
ARCHIE NESMITH
Pianist

Young Women's and Men's Christian Association



Front Row: Edgar Daniel, J. T. Bailey, Russell Mercer, Donald McClellan, James Stanfield, Imogene Smith, Eunice Prescott, Sybil Herrington, Regis Rowell, Hazel Hamm, Bobbye Quick, Catherine Anderson, Mabel Smith, Caro Chambless, Alethia Stucky, Dolan Brown, Alethia Edwards. *Second Row:* Charles Grouver, Max Lockwood, James Thompson, Henry Coursey, Jack Douglas, Betty Lewis, Clarice Murray, Boz Tillotson, Betty Joyce Wood, Betty Donaldson, Peggy Robertson, Pansy Johnson, Vera Stewart, Irene Deese, Anne Hendrix, Wynelle Maury, Ellen Parrish, Joan Hamil, Hazel Tillman, Virginia Taylor, Charlotte Brinson, Fred McLendon, Sarah Ann May, Edsel Joiner. *Third Row:* H. M. Fulbright, Joe Anderson, George Long, Laysal Bancroft, Marvin Norman, Evelyn Seals, Elizabeth Bland, Joyce Johnston, Eleanor Eason, Florence Forehand, Blair Wells, Ruth Quarrels, Johnnie Heath Zona Long, Martha Lee, Leo Weeks, Ernest Veal. *Fourth Row:* Eddie Rush, Eschol Gay, Arthur Yarbrough, Roy Moxley, Wertz Zipperer, Gene Henderson, Mary Rushing, Frances Barfield, Leon Riner, Ida Blanche Vincent, Margaret Harrison, Paul Jacobs, Willie O'Neal Bragan, Mary Nelle Forehand, Archie Nesmith. *Fifth Row:* Billy Jones, Grover Futch, Joe Williamson, Ramona Nesmith, Dorothy Forbes, Harold Brabham, Wynell Eason, Ray Hutchinson, Richard Cohan, Betty Fields, Gertrude Gnann, L. B. Metzger.



Left: Ruth Quarrels, Regis Rowell, Joyce Johnston, Elizabeth Bland, Ida Vincent, Laysal Bancroft, Eschol Gay, Gene Henderson. *Right:* Ramona Nesmith, Martha Lee, Evelyn Seals, Sarah Ann May, Lee Chapman, Arthur Yarbrough, Eddie Rush.

Veteran's Club



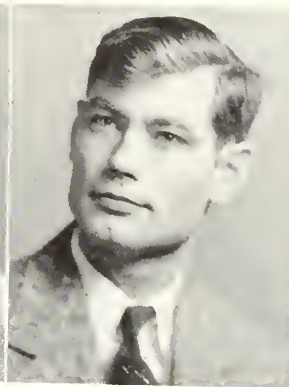
MARVIN DIXON
President



MELVIN DAVIS
Vice-President



G. C. FUTCH
Secretary



JAY SARRATT
Publicity Agent



LEE CHAPMAN
Chaplain

Sponsors

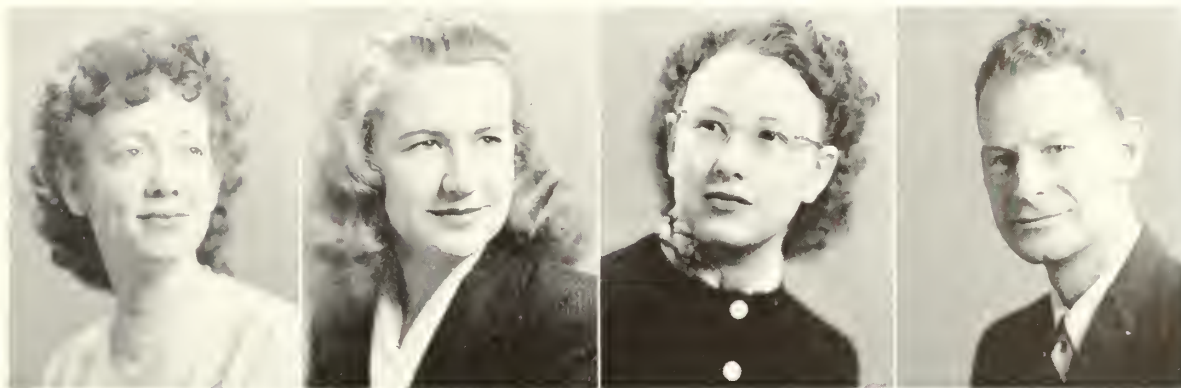
HERBERT WEAVER

W. S. HANNER



Front Row: Ginn, M. Davis, Weeks, Brantly, M. Davis, Coursey, Brady, Edwards, Womack, Poppel, Dixon, Coleman, C. Davis, Long, Holloway, Lockwood, Sarrat. *Second Row:* Rahn, Rogers, Key, Futch, Joiner, Hutchinson, Chapman, Ivey, Godbee, Houston, Roberts, McCarty, Harrison, L. Brinson. *Third Row:* Hill, Gunter, H. Coursey, J. Thompson, J. Brady, Collins, Smith, Brewton, Grouver, Williamson, Wood, Winn, Riner, Spell. *Fourth Row:* Bancroft, Fullbright, Rush, Waters, Anderson, A. Davis, Norman, Mullis, A. Davis, Tascar William, Tyre, Hurst, Veal, Hutchinson. *Fifth Row:* Roundtree, Holland, Watson, Blich, Hargrove, White, B. Williams, Daniel, Jones, Mercer, Denny, Griffis, White, Cohan.

English Club



MARIE PITTS
President

PEGGY STANFIELD
Vice-President

BARBARA JOHNSON
Secretary

JACK MORGAN
Treasurer



ELIZABETH BLAND
JOHNIE HEATH
BETTY SANDERS
VERA STEWART

LILA BRADY
PAUL JACOBS
BILL SARRATT
ERNEST VEAL

JACK DOUGLAS
JOYCE JOHNSTON
MARTHA SETTLE
IDA B. VINCENT

JAMES ETHERIDGE
MARY SUE MORRIS
HOWARD SMITH
BETTY ZETTEROWER

Future Business Leaders



Front Row: Clara Lewis, James Griffis, Myrtice Prosser. *Second Row:* Wynelle Eason, Martha Lee, Hazel Hamm, Bobbie Montgomery, Carolyn Waters, Etwindia Baxter, Eleanor Eason, George Long. *Third Row:* Calvin Brewton, Sarah Anne May, Jonnie Heath, Zona Long, Clementine Womack, Marwood Pearce, Leon Riner, Mr. White, Joe Williamson. *Fourth Row:* Alton Davis, Janell Brewton, Peggy Thompson, Charles Gruver, Barbara Jean Brown, Patricia Prectorious, Mr. Bremseth.



JAMES GRIFFIS
President



LAURA M. GODBEE
Vice-President



CLARA LEWIS
Secretary



MYRTICE PROSSER
Treasurer

Sponsors

CAMERON BREMSETH ALDINE BARNHILL
JAMES L. WHITE

Masquers



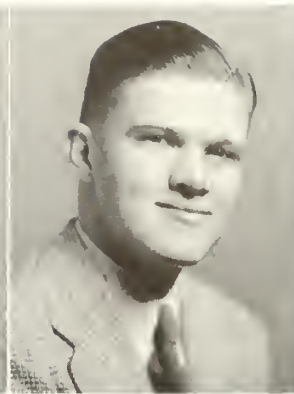
PARRISH BLICH
President



JOYCE CALLOWAY
Vice-President



JAMES EVANS
Secretary



JAMES STANFIELD
Treasurer

Sponsor

MISS DOROTHY D. STEWART

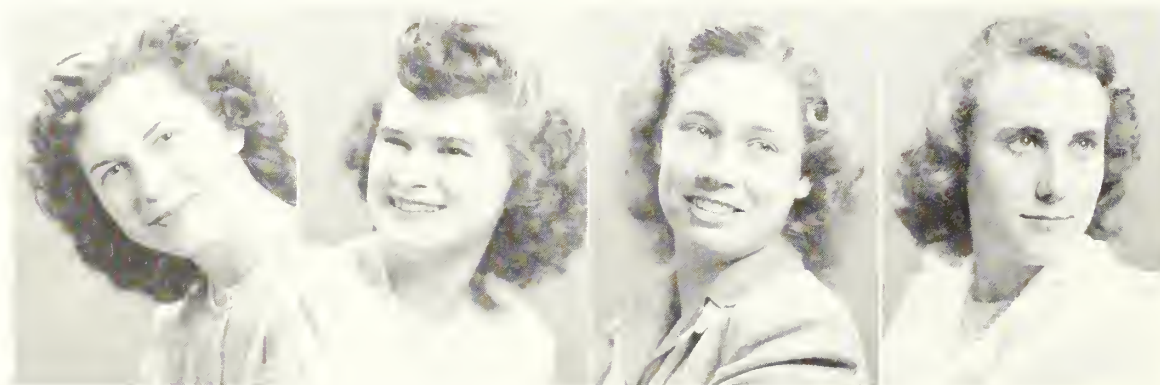


Front Row: Pearl Seligman, Bobbye Quick, Roz Tillotson. *Second Row:* Julie Turner, Peggy Stanfield, Marie Pitts, Myrtice Prosser, James Stanfield, Willie Bragan, Clementine Womack, Marvin Norman, Lola Robbins, Wynelle Eason. *Third Row:* Jimmie Gunter, Hazel Tillman, Betty Donaldson, Joyce Callaway, Marty Webb, Evelyn Seals, Norma Cowart, Doris Tillman, Paul Jacobs, Eugenia Wimberly, Florence Forehand, Annette Kicklighter, Parrish Blich. *Fourth Row:* Ann Hendricks, Elizabeth Bland, Harold Brabham, JoAnne Thompson, James Evans, Mary West, Martha Ann Vaughn, Donald Wilkes, Hazel Hamm.

Womens' Athletic Association



Front Row: Forbes, Rushing, Simons, Quick, Seligman, Montgomery, Barnes, Brown. *Second Row:* Tillman, Brady, Brewton, Baxter, Waters, Williams, Gnann, Kessler. *Third Row:* Smith, Lewis, Prescott, Paul, Oliver, Johnston, Thompson, McElveen, Newman, Preetorious. *Fourth Row:* Manry, Anderson, Smith, Robbins, Bragan, Cowart, Calloway, Wimberly, Tootle, Blocker, Woods. *Fifth Row:* Brown, Wells, Wilson, Forehand, Vaughn, Robertson, Swalls, Tillman. *Sixth Row:* Lancaster, Harrison, Thompson, West, Smith, Hart.



JOYCE CALLOWAY
President

JO ANNE THOMPSON
Vice-President

VANNILU HARRISON
Secretary and Treasurer

MARTHA TOOTLE
Intramural Manager

Sponsors

BETTY JANE TROTTER

JAKIE UPSHAW

Philharmonic Choir

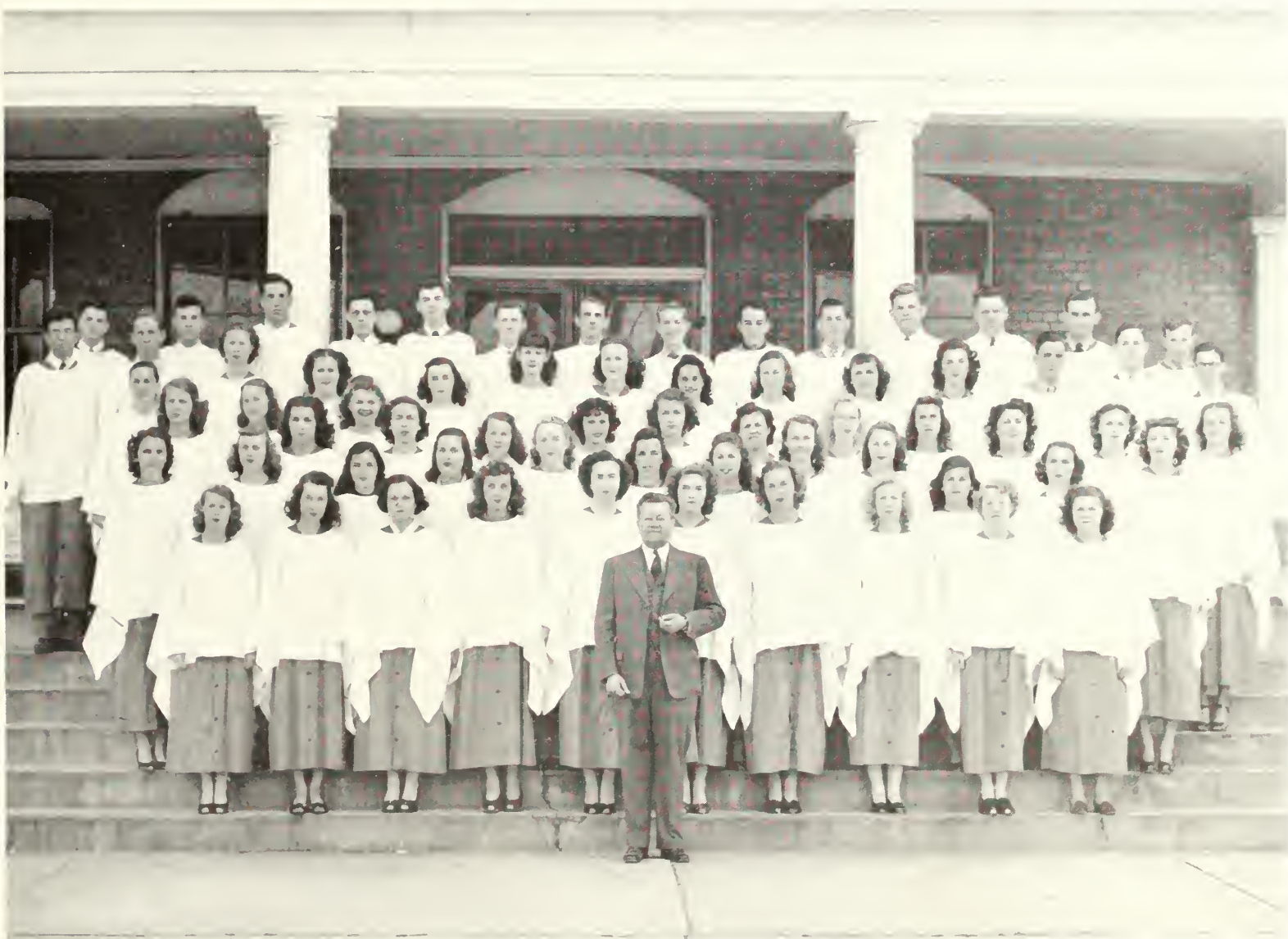
DR. RONALD J. NEIL, *Director*

MR. JACK W. BROUCEK, *Accompanist*

Board of Directors: RUTH QUARLES (*Chairman*), LAYSEL

BANCROFT, MARTHA LEE, HOKE SMITH, ELINOR SMITH

The program of the Philharmonic Choir includes a Christmas concert at the close of the Fall quarter, the presentation of a standard oratorio at the close of the Winter quarter, and out-of-town appearances in the Spring quarter. The oratorio chosen for performance this year was Mendelssohn's "Elijah." Previous performances have included "The Creation," "The Crucifixion," "The Messiah," "The Seven Last Words of Christ."



Front Row: Anne Griffin, Martha Lee, Margaret Harrison, Mary Nell Forehand, Emily Boykin, Reita Clifton, Bettye Lewis, Zona Long, Bobbye Quick, Gertrude Gnam. *Second Row:* Helen Saturday, Katherine Forehand, Alethia Edwards, Regis Rowell, Mary West, Joyce Johnston, Patricia Simons, Mary Elleen Blocker, Betty Donaldson, Betty Jean Williams, Sara Ann May. *Third Row:* Caroline Smith, Glenys Newsome, Norma Cowart, Martha Webb, Johnnie Heath, Frances Barfield, Mary Rushing, Martha Vaughn, Evelyn Seals, Ida Blanche Vincent, Iris Lee, Ruth Quarrels, Ruby Parrish, Ramon Nesmith. *Fourth Row:* Anne Hensly, Thuvia Brown, Geraldine Parker, Elaine Gnan, Natalie Tillman, Ninette Sturgis, Katherine Newton, Blair Wells, Mary Smith, Elizabeth Bland, Richard Cohen, Maurice Moore, Lee Chapman. *Fifth Row:* Gene Henderson, Arthur Yarbrough, Bobby Holland, Wertz Zipperer, Eddie Rush, Arlo Nesmith, Forest Howard, Joseph Smith, Bill Williams, Sonny Bryan, Donald Wilkes, L. B. Metzger, Harold Brabham, Laysal Bancroft, H. Max Fullbright, Henry Coursey.

The Wesley Foundation



Wesley Foundation Council

First Row: Irene Deese, Dolan Brown, Willie O'Neal Bragan, Mabel Smith, Leo Weeks, Peggy Robertson, Betty Sanders, Frances Geiger. *Second Row:* Elizabeth Bland, Ray Hutchinson, Ray Warnock, Ida Vincent, Martha Lee, Arthur Yarbrough, Marvin Norman, Gene Henderson, Eugenia Wimberly, Jane Robertson, "Roz" Tillotson, Harold Brabham, Hazel Tillman, L. B. Metzger, Doris Tillman.

OFFICERS: Leo Weeks, *President*; Arthur Yarbrough, *Vice-President*; Elizabeth Bland, *Secretary*; and Royce Jackson, *Treasurer*.

The Wesley Foundation, on state and independent college campuses, is an organized fellowship of the Methodist Student Movement through which the Methodist Church seeks to provide for the spiritual, moral, and social needs of students. The W. F. in its first year on the T. C. Campus has undertaken many activities, among them are the Sunday school program and a fellowship hour each Sunday, exchange of deputations with other colleges, community service, adoption of a fellow college, banquet, and retreats.

"To have friends we must be friends. And to be friends, we must be willing to share."



Baptist Student Union



RUTH DOWLING
Student Secretary



MISS CROUCH
Faculty Advisor

HELEN SATURDAY *President*
BOBBYE QUICK *1st V.-Pres.*
NORMA COWART *2nd V.-Pres.*
MARY SUE MORRIS *3rd V.-Pres.*
REGIS ROWELL *Sec. and Treas.*

ANN GRIFFIN *S. S. Rep.*
H. M. FULBRIGHT *B. T. U. Rep.*
ELINOR SMITH *Pianist*
JOE ANDERSON *Reporter*
SARAH ANN MAY *Chorister*



"Be Still, The Lord Is On Our Side"

Home Economics Club



Back Row: Mary Allen, Ann Parker, Frances Geiger, Jo Muther, Margaret Warren, Marty Webb, Evelyn Seals, Ann Miller, Vera Stewart, Mary West, Hazel Tillman, Doris Tillman. *Front Row:* Miss Strahlmann, Miss Bolton.



DORIS TILLMAN
President



HAZEL TILLMAN
Vice-President



INEZ WILSON
Secretary



JO MUTHER
Treasurer



MARY WEST
Reporter

Sponsors

MISS RUTH BOLTON
MISS MARGARET STRAHLMANN

Science Club



BEN PAGE
President



MARY HART
Vice-President



LEO WEEKS
Secretary



BERT FULFORD
Treasurer



JOE HOUSTON
Program Chairman

Sponsors

MALVINA TRUSSELL

W. S. HANNER

H. J. McCORMICK



Front Row: Eugene Kendrick, Charlotte Brinson, Dolan Brown, Mary Hart, Edgar Joyner, Martha Tootle, Billy Carter. *Second Row:* Alonzo Hammett, Vanilu Harrison, Mr. Hanner, Evelyn Seals, Billy Jenkins, Ben Page, Joseph Houston, Leo Weeks. *Third Row:* Wilber Peacock, Arnie Page, James Gunter, Carl Wilkerson, Robert Woodall, Wray Warnock, James Thompson. *Fourth Row:* J. O. Hurst, Billy Randall, Arthur Yarbrough, James Bryan, Royce Jackson, Burt Fullford, Thomas Hill. *Not in Picture:* Massey Roberson.

GJC Band



PAT PREETORIOUS

BARBARA J. BROWN
Drum Major

LOIS STOCKDALE



Zona Long, Jean Groover, Richard Cohan, James Ethridge, Johnnie Heath, Billy Williams, Donald Wilkes, Madison Short, Forest Howard, Hoke Smith, I. E. Thigpen, Fred McLendon, Tascar Williams, Sonny Bryan, Bert Justice, Mr. G. R. Rasmussen.





A history lesson in costume

For three gay and nostalgic days the golden ante-bellum era of the Old South was revived in Statesboro by the Southern History class of G. T. C. Under the direction of Professor Jack N. Averitt the class presented a "Pageant of the Old South" which depicted the life, dress, and customs of the ladies and gentlemen of that time.

In the gardens at Birdsville



On the veranda at Birdsville

Late in May of 1947 the members of the class dressed in period costumes and driving in carriages of the era began the event with a trip to the historic plantation of "Birdsville", the mansion of which was spared by Sherman in his march to the sea. After exploring the house and gardens, examining the lovely antique furnishings and clothing and touring the estate, pictures were made, some of which are on this page.

We Saw of the South"



Notice the early American carpet



The next day the class was entertained at a tea given by Dr. and Mrs. Lem Nevils, of Metter. On the last afternoon of the pageant a parade featuring the high school band and the old-style carriages in them and beautiful floats depicting scenes of by gone days was staged. Following the parade a reception was held at the Georgian home of Mr. and Mrs. Olin Smith.

Examining a piece of antique lace work



Antique silver and lace form a perfect setting

Climax of the festival was a glamorous ball held in the beautiful old Doneho mansion now owned by Mr. and Mrs. Irving Brannen, and Hollywood couldn't have planned a better setting. In fact there was a Hollywoodian flair to the carriages that rolled in out of the night bearing lovely young ladies and handsome young gentlemen — all in ante-bellum dress.

The most picturesque feature of the evening was the dancing of the waltzes and minuets of the times by the history students who turned out a stately and graceful performance on the broad white columned veranda of the mansion.



Front Row: Griffin Thompson, Jimmy Conner, Donald Durden, Professor Jack N. Averitt, Frank Bagley, Albert Johnson. *Back Row:* Pat Hatton, Gould Mosely, Ed Mixon, J. M. Nall, Vernon Edwards, Bill Cheshire.



Front Row: Agnes Jordan, Mardette Neal, Dan Robertson, Alethia Brown. *On Stairs:* Agnes Blitch, Margaret Sherman, Jean Hodges, Joan Cameron.



A SCENE AT THE HOME OF MR. & MRS. OLIN SMITH

*Here are Some Scenes From the
Big Events on the Campus*

First came the Freshmen



Hardly were they settled before Dr. Ward was inaugurated —



Mrs. Ward, Governor M. E. Thompson, and Dr. Ward
at inaugural banquet.



Dr. Ward, Dr. Guy H. Wells (former president),
and Chancellor Paty at inaugural ceremony.

*Now it was our Time to Shine in
The First Dance of the Year!*



*Bells Started Ringing and we had our
First Fire Drill - - -*



Little Store "burns" furiously!

Then the New Organ was Dedicated

On November 10 the new Hammond electric organ in the auditorium was dedicated with the formal ceremony conducted by Dr. J. C. Ward, Jr., and an organ-piano recital given by Professor J. W. Broucek at the organ and Professor J. C. Loomis at the piano. The 80-voice student chorus under the direction of Dr. Ronald J. Neil sang Handel's "Hallelujah Chorus" during the ceremonies.



Mr. Broucek at organ.

The "Vets" Womanless Wedding was Not Quite so Formal ---

To equip their basketball team with new uniforms the Veterans Club presented a "Womanless Wedding" on Nov. 12.

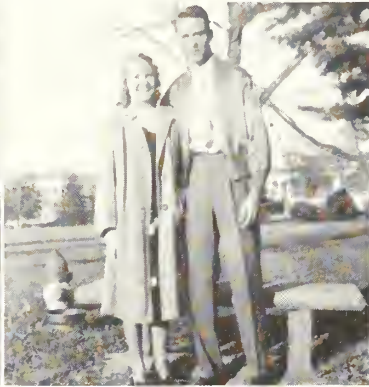


A few of the wedding "guests."



The "climax" of the wedding.

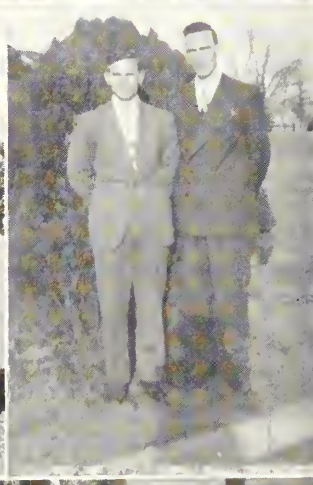
Meanwhile, Life on the



Campus Goes on, the



Students at Work and Play,



But Mostly Play!



WHO'S



PARRISH BLITCH



LAWANA DAVES



CLINTON DAVIS



MAX LOCKWOOD



MARVIN PROSSER



MYRTIS PROSSER



EDDIE RUSH

JAY SARRATT



PEGGY STANFIELD



LEO WEEKS





Left to right: Marvin Prosser, Eddie Rush, Leo Weeks, Parrish Blitch, Myrtis Prosser, Jay Sarratt, Lawana Daves, Max Lockwood, Peggy Stanfield, Clinton Davis.

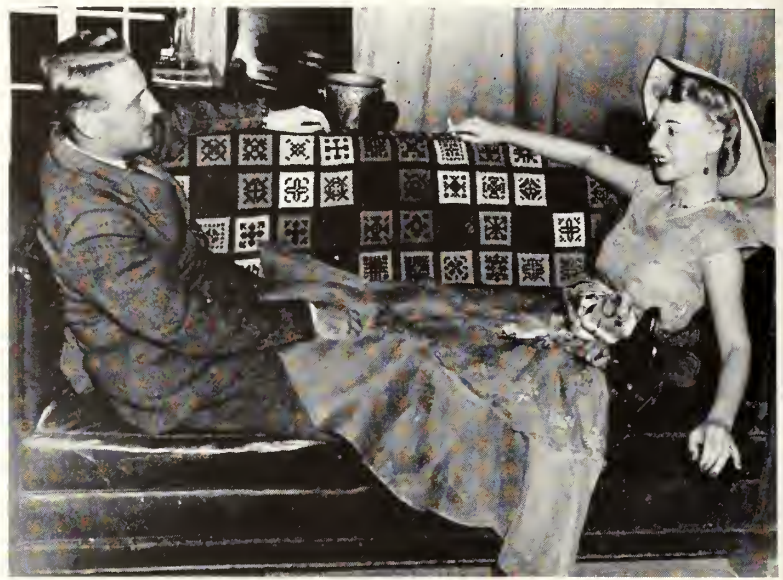
Ten Georgia Teachers College Seniors were named this year to be included in the 1947-48 edition of "Who's Who Among Students In American Universities and Colleges." The students were selected on the qualities of character, scholarship, leadership in extra-curricular activities and potentiality for future usefulness to business and society. Students named for the high scholastic honor included Parrish Blitch, Lawana Daves, Clinton Davis, Max Lockwood, Marvin Prosser, Myrtice Prosser, Eddie Rush, Jay Sarratt, Peggy Stanfield, and Leo Weeks. The final selections were made by a com-

mittee chosen from members of the faculty. Members of the senior class indicated their choice, and their opinions were taken into consideration by the committee. Membership in "Who's Who" is the appropriate climax of a student's career, summing up all the other honors, scholastic or social, that he has obtained. "Who's Who" serves as an incentive, means of compensation, standard of measurement, and recommendation of successful students. The recipients of this honor were awarded handsomely engraved certificates at a chapel program.

It's "Hay Fever"



Simon, Sorel and Clara



"Do you punt?"

On November 19 and 20 the "Masquers" under the direction of Miss Dorothy Stewart presented "Hay Fever," a comedy in three acts written by Noel Coward. The play dealt with the life of Judith Bliss, a retired actress, and her rather peculiar family. The Bliss family entertained some guests for the week-end and so confused and angered them that the guests slip away during one



"How do you do?"

of the family's many heated arguments, almost unnoticed. Members of the cast were Julie Turner as Judith Bliss, Ben Darsey as David Bliss, Jo Ann Thompson as Sorel Bliss, Bill Sarratt as Simon Bliss, Lola Robbins as Clara, Rosalyn Tillotson as Myra Arundel, Jimmy Gunter as Sandy Tyrell, Parrish Blitch as Richard Greatham, and Wynelle Eason as Jackie Coryton.

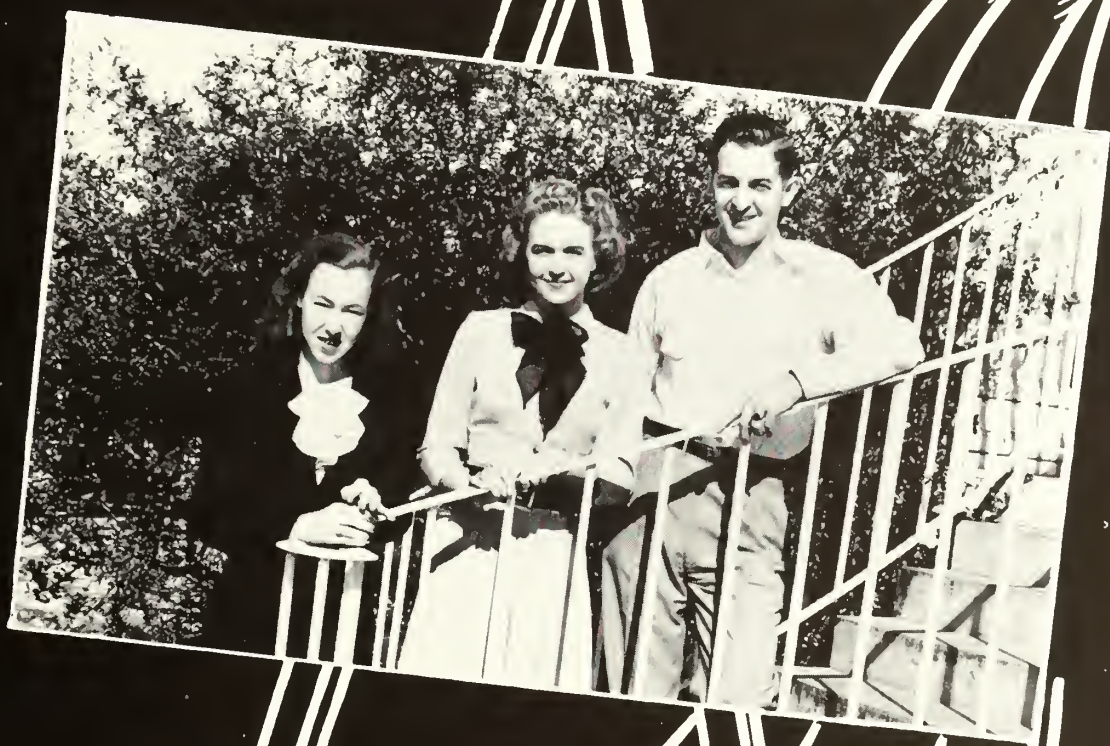


"Am I interrupting anything?"



The guests depart

ART THREE



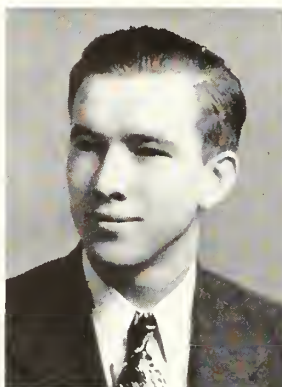
Juniors
Ed Sheppard, President
Millard Green, Vice President
Marward Pearce, Secretary
Evelyn Arnold, Treasurer

JUNIORS - 1948

CLYDE ANDERSON Statesboro, Ga.

EVELYN ARNOLD Pembroke, Ga.

EDDIE O. BACON Pembroke, Ga.



LAYSEL BANCROFT Savannah, Ga.

FRANCES BARFIELD Ashburn, Ga.

JIMMY BISHOP Graymont, Ga.



ELIZABETH BLAND Dover, Ga.

ROBERT BOLTON Norman Park, Ga.

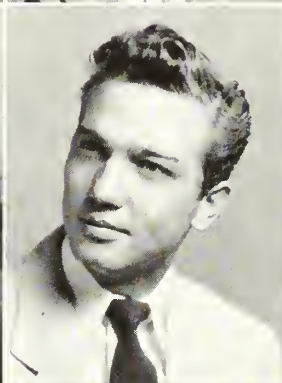
BETTE JANE BOYKIN Sylvania, Ga.



LILA BRADY Statesboro, Ga.

BOBO BRYAN Brooklet, Ga.

JOYCE CALLOWAY Collins, Ga.

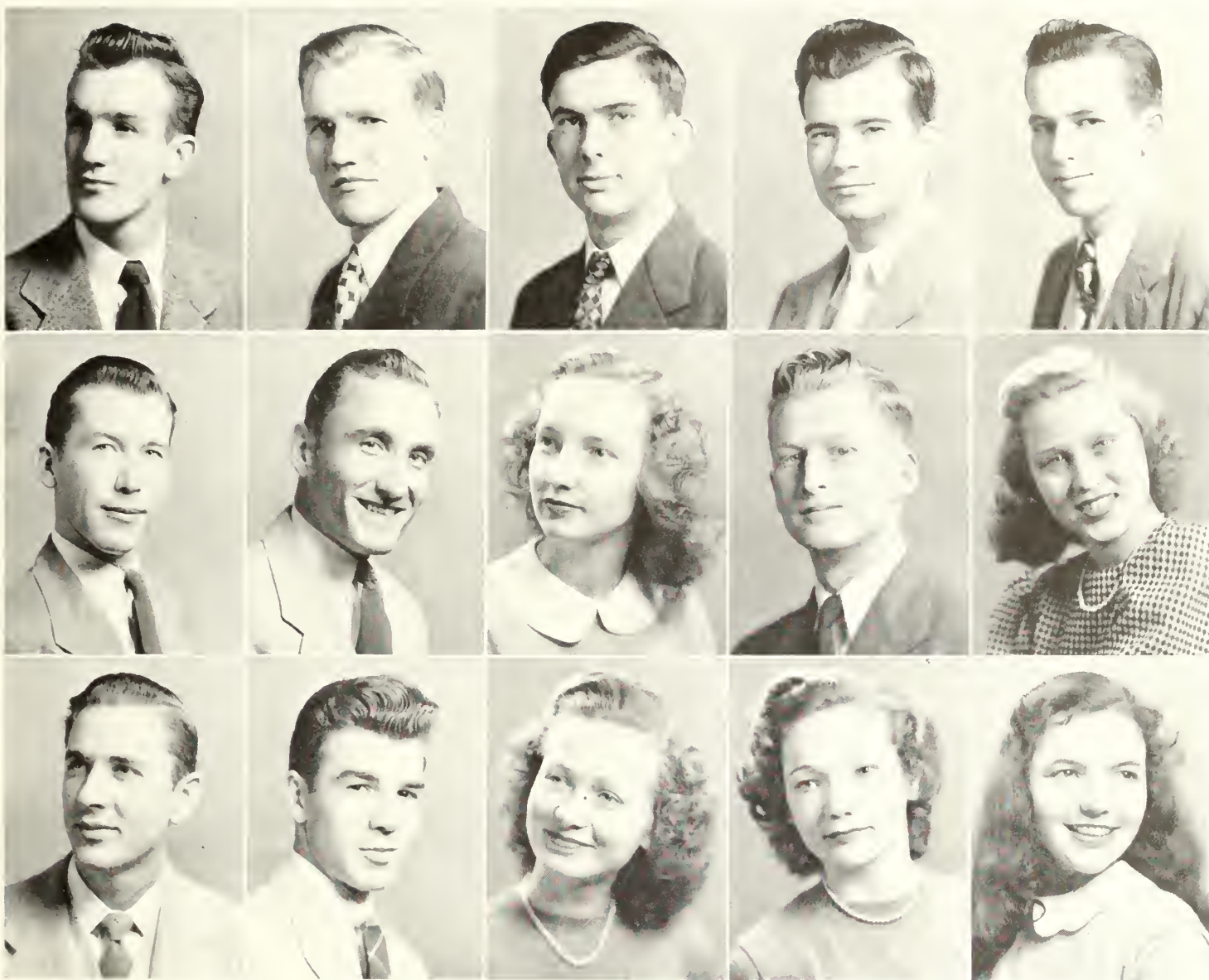


MARY IDA CARPENTER Guyton, Ga.

MARY CLEMENTS Sylvester, Ga.

MARGARET COLEMAN Swainsboro, Ga.





JIMMY CONNER Harlem, Ga.
 MITCHELL CONNER Harlem, Ga.
 DELMAR COWART Rocky Ford, Ga.
 BEN DARSEY Hinesville, Ga.
 MARVIN DAVIS Wrightsville, Ga.

MELVIN M. DAVIS Blun, Ga.
 TROY A. DAVIS Ludowici, Ga.
 JOYCE DENMARK Brooklet, Ga.
 JACK DOUGLAS Millwood, Ga.
 DOROTHY DOWNS Claxton, Ga.

ERNEST E. DRURY Brunswick, Ga.
 GEORGE EANES Woodcliff, Ga.
 ELEANOR EASON Surrency, Ga.
 WYNELLE EASON Surrency, Ga.
 ALETHIA EDWARDS Claxton, Ga.

JUNIORS - 1948

JAMES ETHERIDGE Amsterdam, Ga.

JAMES EVANS Statesboro, Ga.

DOROTHY FORBES Cave Spring, Ga.

MARY NELL FOREHAND Sylvester, Ga.

H. M. FULBRIGHT Eastanollee, Ga.

ANNE FUSSELL Augusta, Ga.

GROVER C. FUTCH Pembroke, Ga.

MARY GEIGER McRae, Ga.

RAYMOND GINN Ludowici, Ga.

S. A. GRAY Waynesboro, Ga.

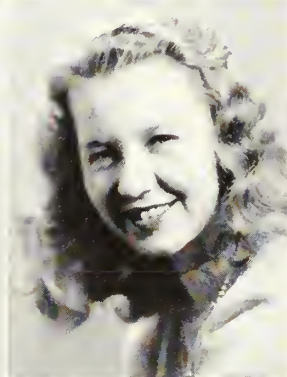
MILLARD GREEN Waynesboro, Ga.

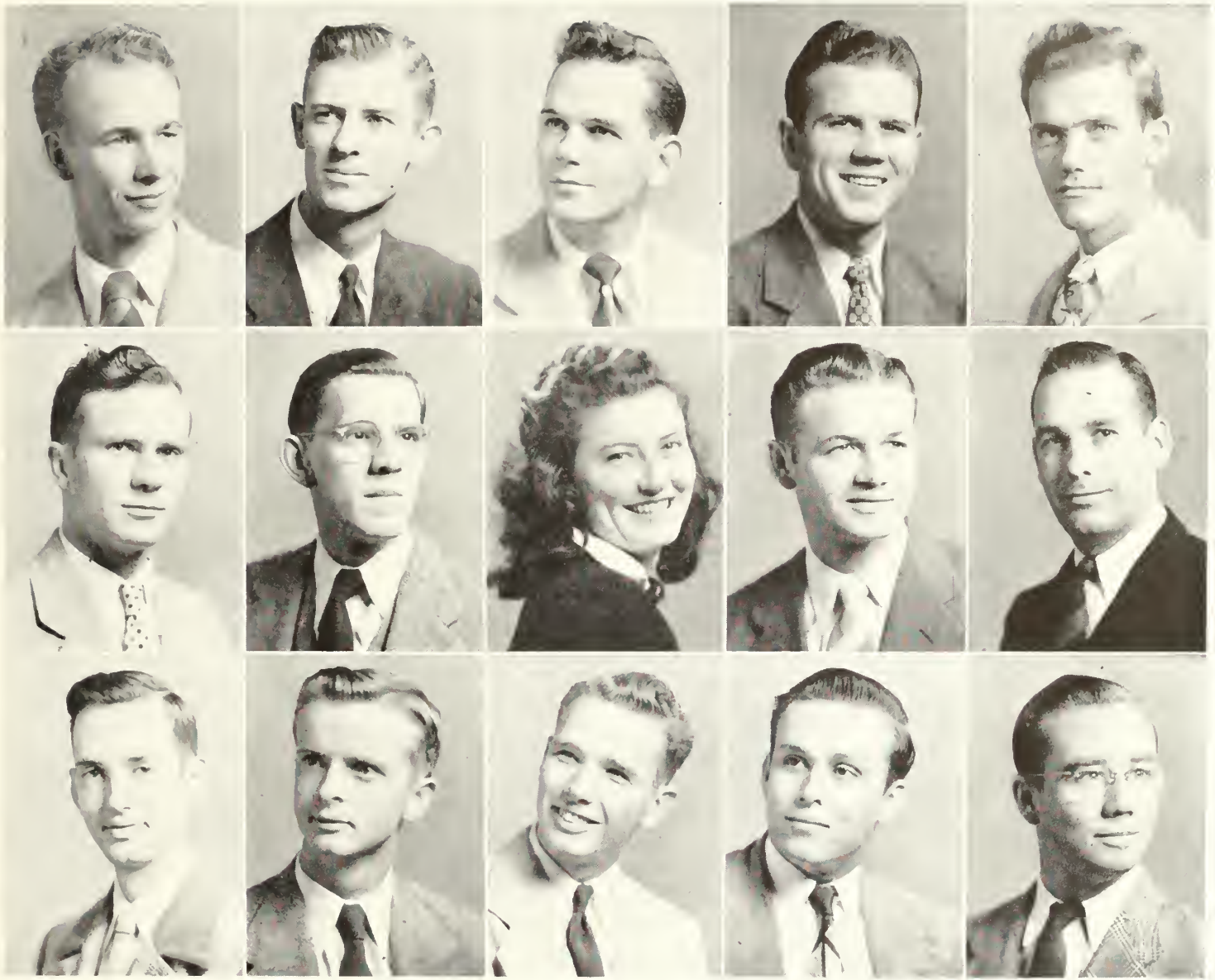
PAT GREEN Covington, Ga.

EUGENE GREESON Adairsville, Ga.

JAMES L. GRIFFIS Homerville, Ga.

CHARLES GRUVER Pembroke, Ga.





RICHARD GULLEDGE Statesboro, Ga.
 J. E. HARGROVE Statesboro, Ga.
 CLIFF HILL Sparta, Ga.
 THOMAS HILLIARD Rhine, Ga.
 JOHN HODGES Bainbridge, Ga.

JAMES HOLLOWAY Metter, Ga.
 ALBERT HOWARD Sylvania, Ga.
 VIVIAN HUDSON Stillmore, Ga.
 THOMAS HUTCHINSON Savannah, Ga.
 OSCOD HURST Collegeboro, Ga.

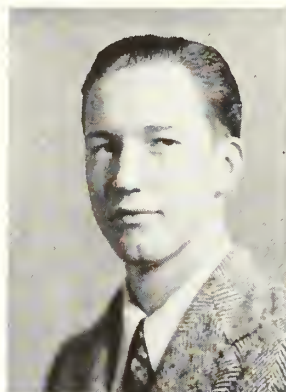
FRANK A. IRWIN Alamo, Ga.
 ROYEE JACKSON Attapulgus, Ga.
 PAUL JACOBS Nahunta, Ga.
 CECIL JENNINGS Soperton, Ga.
 EDSSEL JOINER Alamo, Ga.

JUNIORS - 1948

HERBERT JONES Statesboro, Ga.

NATHAN JONES Statesboro, Ga.

EDGAR JOYNER Screven, Ga.



EMILY KENNEDY Statesboro, Ga.

GEORGE P. LEE Statesboro, Ga.

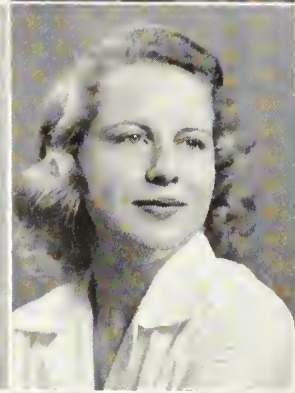
MORGAN LEE Statesboro, Ga.



GEORGE W. LONG College Park, Ga.

DEWEESE MARTIN Statesboro, Ga.

PAT McCOLLOUGH Woodbine, Ga.



ANNE MILLER Toombsboro, Ga.

ARTHUR MORGAN Fitzgerald, Ga.

BERNARD MORRIS Statesboro, Ga.

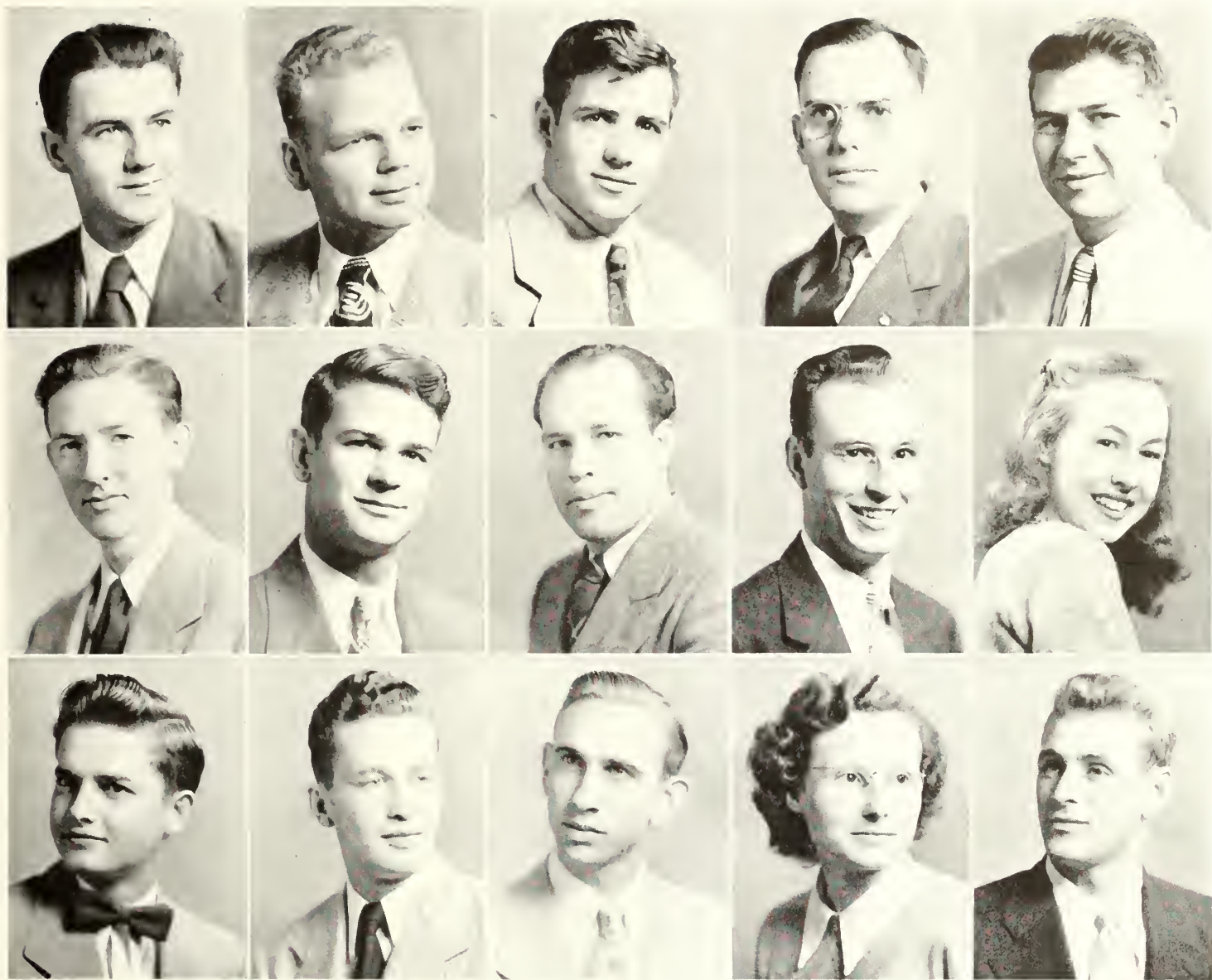


MARY SUE MORRIS Collins, Ga.

JACK MURPHY East Point, Ga.

RAMONA NESMITH Statesboro, Ga.





JOEL NEWSOME Statesboro, Ga.
 MARVIN NORMAN Auburndale, Fla.
 ALBERT ODOM Hinesville, Ga.
 WILLIAM ODOM Vidalia, Ga.
 FOY OLLIFF Statesboro, Ga.

GEORGE OLLIFF Statesboro, Ga.
 BENJAMIN PAGE Vidalia, Ga.
 BO PAGETT Macon, Ga.
 GILBERT PARKER Rocky Ford, Ga.
 MARWARD PEARCE Odum, Ga.

HERBERT POPPELL Odum, Ga.
 JOHN PROCTOR Brooklet, Ga.
 HENRY I. RAHN, JR. Flemington, Ga.
 VIRGINIA RAUTON Lyons, Ga.
 HERBERT REEVES Rockhold, Ky.

JUNIORS - 1948

LEON RINER Augusta, Ga.

WILLIAM ROACH Macon, Ga.

JACKIE ROBBINS Millen, Ga.

DEAN ROBERSON Screven, Ga.

DERRELL ROBERTS Ocilla, Ga.

JACK ROGERS Reidsville, Ga.

RAY ROUNTREE Summit, Ga.

REGIS ROWELL Ogeechee, Ga.

MARY RUSHING Register, Ga.

CARL E. SAMPEY Statesboro, Ga.

BETTY SANDERS Jeffersonville, Ga.

BILL SARRATT Tifton, Ga.

ED SHEPPARD Millen, Ga.

HUGH SINGLETARY Thomasville, Ga.

BOBBY SMITH Statesboro, Ga.





HOKE B. SMITH Summit, Ga.
 MARTY SMITH Fitzgerald, Ga.
 DUDLEY SPELL Adrian, Ga.
 VERA STEWART Portal, Ga.
 GENE STRICKLAND Glennville, Ga.

ENOCH THOMAS Columbus, Ga.
 HAZEL TILLMAN Surrency, Ga.
 ROZZ TILLOTSON Stilson, Ga.
 MARTHA TOOTLE Manassas, Ga.
 JULIE TURNER Statesboro, Ga.

ROBERT TYRE Odum, Ga.
 RAY WARNOCK Statesboro, Ga.
 FRED WATERS Collins, Ga.
 WALKER WHALEY Metter, Ga.
 BILL WILLIAMS Sylvania, Ga.

JUNIORS - 1948

JOSEPH WILLIAMSON Groveland, Ga.

CHARLES WIREMAN Collegeboro, Ga.

EUGENIA WIMBERLY . . . Junction City, Ga.

CLEM WOMACK Millen, Ga.

DAVID WOODS Adrian, Ga.

ARTHUR YARBROUGH Mitchell, Ga.

BETTE ZETTEROWER Brooklet, Ga.

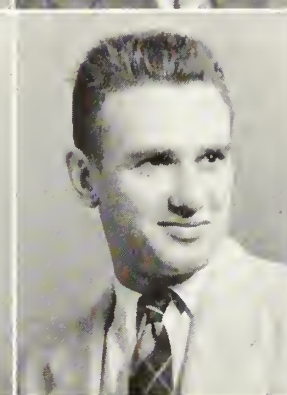
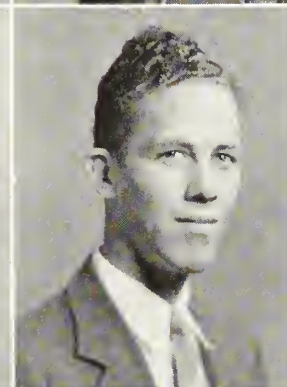
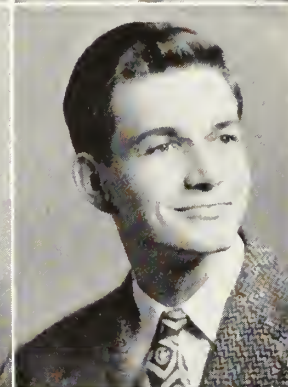
WERTZ ZIPPERER Rincon, Ga.

WILLIS ELMORE Claxton, Ga.

ROBERT GROOVER Statesboro, Ga.

C. W. HENDRIX Valdosta, Ga.

BETTY ODUM Reidsville, Ga.



Quit tickling me, Dudley!



Ain't love grand!

Beauty Revue



The Second Annual Beauty Revue



The "Queen", Jean Hodges, and her escort, L. D. Bowen.

Set in a bay of orchids and flowers of beauty themselves, five young ladies were chosen to represent campus loveliness in the beauty section of the 1948 REFLECTOR. These lucky girls were chosen from among 23 contestants representing the various organizations on the campus. The Second Annual Beauty Revue was presented January 22 in the college auditorium under the direction of Professor Jack N. Averitt. During the staging of the show the girls were presented first with their escorts in a drawing room scene, then in a garden scene, the finalists in the orchid bay scene and the grand finale in the drawing room. The stage sets were under the direction of Miss Frieda Gernant assisted by James Evans, Ruth Quarles, Willie Bragan, Marvin Norman, and Pearl Seligman. Parrish Blich was master of ceremonies. The winner and crowned as Queen of T. C. was Jean Hodges, representing the Business Club. Others placing were Mary Ida Carpenter, representing the Veterans Club, Alethia Edwards representing the Industrial Arts Club, Gwen West representing Sanford Hall, and Alethia Stueky representing Wesley Foundation.

The Beauties, Seated: Mary Ida Carpenter, Jean Hodges, Alethia Edwards. *Standing:* Alethia Stueky and Gwen West.





Jean Hodges



Mary Ida Carpenter



Alethia Edwards



Gwen West



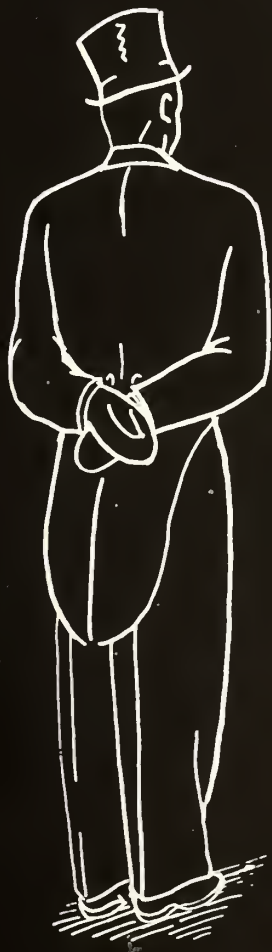
Alethia Stucky

The Beauties and Their Escorts



Left to Right: Mary Rushing, Mason Clements, Jerry Comer, Betty Lovett, Joe Anderson, Juliette Oliver, Archie Nesmith, Barbara Johnson, Wilbur Peacock, Florence Forehand, Eddie Rush, Ninette Sturgis, H. M. Fullbright, Jeanette Handley, George Eanes, Barbara Brown, Willie Williams, Gwen West, Clinton Davis, Alethia Edwards, Jean Hodges, L. D. Bowen, Mary Carpenter, Fred Waters, Alethia Stucky, Fred McLendon, Frances Barfield, Thomas Hillard, Martha Vaughn, Sonny Bryan, Margaret Warren, Herbert Reeves, Betty Zetterower, Bill Sarratt, Evelyn Arnold, Marvin Prosser, Mary Forehand, Arnie Page, Fostine Akins, Wray Godbee, Mary Allen, Bobby Holland, Ouida Sapp, Walker Whaley.

SPORTS



Basketball

1948

SCHEDULE

1949

Teachers

Opponents

- | | |
|----|--------------------------------|
| 54 | Oglethorpe University |
| 9 | Piedmont College |
| 44 | North Georgia College |
| 9 | Brewton-Parker Institute |
| 17 | University of Georgia—Savannah |
| 53 | Piedmont College |
| 55 | Brewton-Parker Institute |
| 50 | Naval Air Station—Jacksonville |
| 52 | Newberry College |
| 45 | Erskine College |
| 50 | Florida State University |
| 16 | Fort Benning Doughboys |



"Bo" Whaley



Tom Dykes



"Rhed" Prosser



Cliff Hill "Lard" Green
Managers



Frank Bagley

Alabama Teachers College—Troy	55
University of Georgia—Savannah	48
University of Ga. Medical College	17
University of Ga. Medical College	36
Marine Recruit Depot—Parris Is.	36
Marine Recruit Depot—Parris Is.	36
North Georgia College	46
Florida State University	17
Naval Air Station—Jacksonville	73
Erskine College	60
Oglethorpe University	12

Team



J.B. Searce
Coach



"Bulldog" Adams



George Lindsey



Jack Murphy - Billy Carter
Managers



Charlie Wireman

Basketball Team



Jerry Conner



Jimmy Conner



Mitchell Conner



L.D. Bowen



George Eaves



Herb Reeves

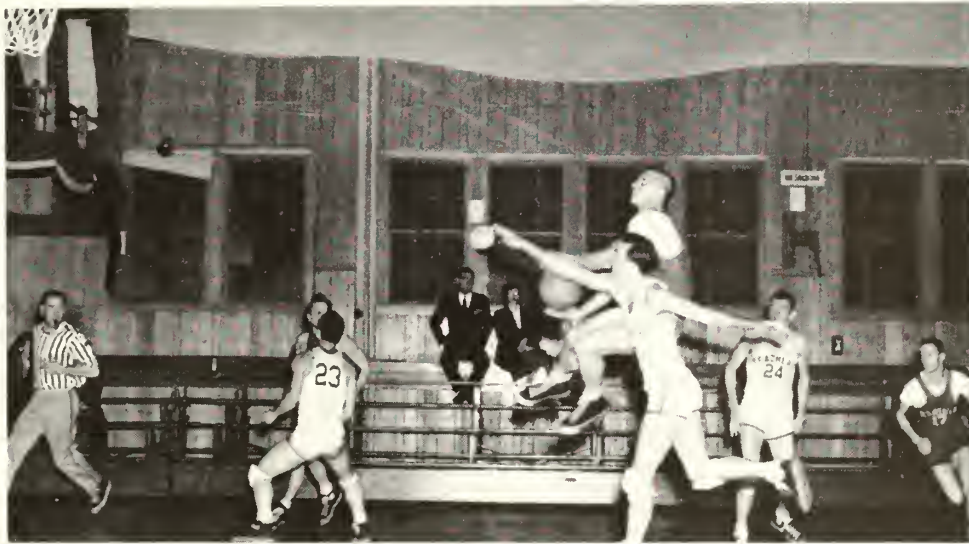
OUR TEAM IN ACTION



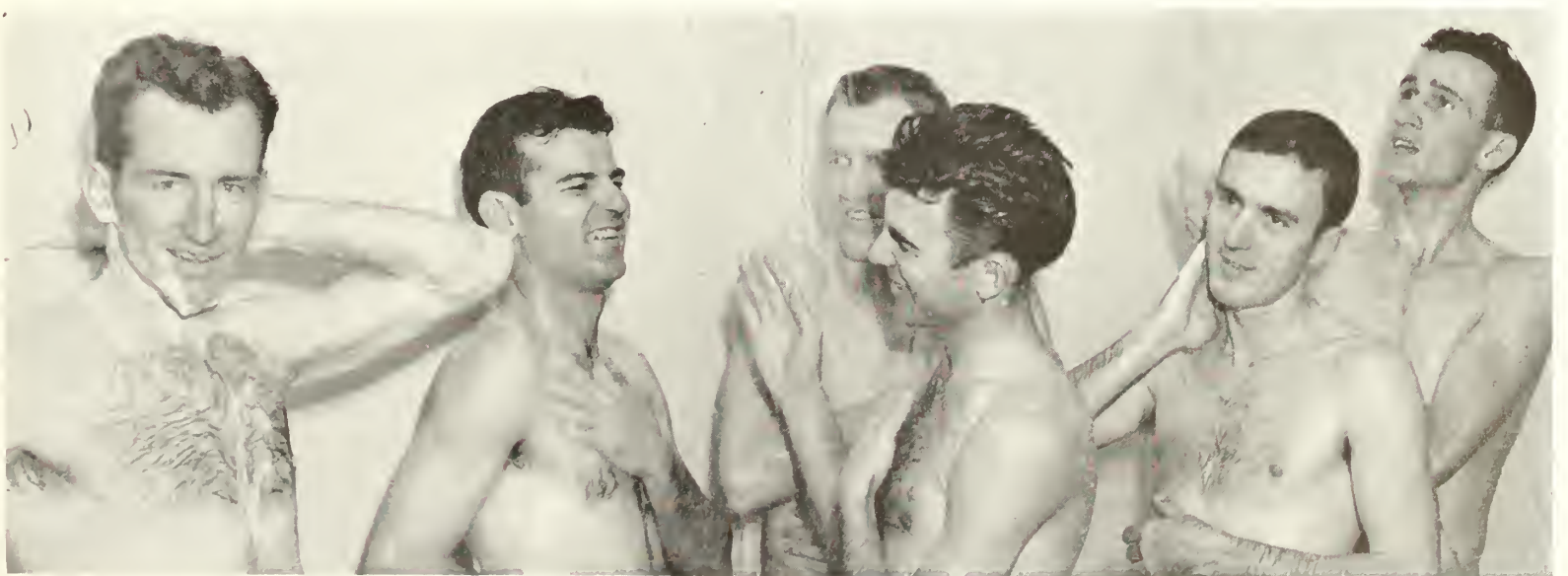
Where Did He Come From?



It's In The Basket!



Get That Gyrene, Charlie!



Bathing Beauties

1948 VARSITY SQUAD



First Row, L. to R.: J. B. Searce, C. Wireman, F. Bagley, T. Dykes, Jerry Conner, M. Conner, Jimmy Conner, H. Reeves, M. Greene;
Second Row: J. Murphy, B. Carter, C. Adams, G. Lindsey, G. Eanes, L. D. Bowen, M. Prosser, W. Whaley, C. Hill.

VETERAN'S BASKETBALL TEAM



First Row, L. to R.: Dudley Spell, Jack Rogers, Thomas Hilliard, Mason Clements. Second Row: Ainsworth Davis, David Woods, James Hall, Fred Waters, Bo Padgett, Manager. Third Row: Calvin Brewton, John Hodges, Billy Tyre, Clyde Poole.

GRAND FINALE

SENIORS



*Marvin
Prosser
President,*

*Leo
Weeks
Vice President*

*Marie
Pitts
Secretary*

*Ernest
Veal
Treasurer*

S
E
N
I
O
R
S



MARY ALLEN

Statesboro, Georgia

Home Economics; Exact Science

Home Economics Club 3, 4; Band 1, 2, 3, 4.



ROSS ATKINSON, JR.

Statesboro, Georgia

English; Biological Science

George-Anne Staff 2, 3, 4; College Dance Band 3.



BEN ANDERSON

Claxton, Georgia

Social Science

Transfer University of Georgia; Veterans' Club 4.



FRANKLIN BAGLEY

Glennville, Georgia

History; Physical Education

Transfer From Oglethorpe University; Veterans' Club 3, 4; College Baseball Team 3, 4; College Basketball Team 3, 4.

1
9
4
8

S E N I O R S



JAMES M. BECK, JR.
Eastman, Georgia
Social Science

Transfer From South Georgia College; I. R. C. 3, 1.



CHARLES PARRISH BLITCH
Statesboro, Georgia
Business; Mathematics

Iota Pi Nu 1; Masquers 1, 2, 3, 1, President 1;
Reporter, Sophomore Class; Veterans' Club 3, 1,
Publicity 3; Student Council 4; Alpha Psi Omega
3, 1, Vice-President 1; Who's Who 1; Editor-in-
Chief, REFLECTOR 1.

1 9 4 8



LEE DUKE BOWEN
Rhine, Georgia
History; Physical Education

Transfer from Middle Georgia College; House
Council 1; REFLECTOR Staff 1; Veterans' Club 3,
4; Y. M. C. A. 3, 1; College Basketball Team, 3, 1;
College Baseball Team 3, 1.



LEWIS BRINSON
Summit, Georgia
Industrial Arts; Physical Education

Y. M. C. A. 1; Vice-President of Sophomore Class;
Veterans' Club 1, 2, 3, 1; Publicity Agent 2;
Science Club 1, 2; Masquers 3; Student Council 1;
House Council 3.



JAMES BRYAN
Brooklet, Georgia
Exact Science

Delta Sigma 1, 2; Science Club 3, 4; Y. M. C. A.
1; *George-Anne* Staff 1, 2, 3, 4, Associate Editor 3,
Editor 4; Veterans' Club 3, 4.



LOUISE CHAMPION
Collegeboro, Georgia
Music; Home Economics
Chorus 1; Home Ec Club 4.

S
E
N
I
O
R
S



LEE CHAPMAN
Waycross, Georgia
Industrial Arts; Mathematics

Glee Club 1, 2, 4; Industrial Arts Club 4; Art
Club 4; Veterans Club 4; Vesper Choir 1, 2, 4.

1
9
4
8



WILLIAM B. CHESHIRE
Jesup, Georgia
History; Physical Education
Iota Pi Nu 1; Student Council 1; Veterans Club 4.



MALCOLM A. COLEMAN

Forsyth, Georgia

History; English

Transfer Young Harris College; Y. M. C. A. 3, 4, President 3; Chorus 3, 4; Wesley Foundation Council 4.



LAWANA DAVES

Brooklet, Georgia

Business; Home Economics

Mu Sigma 1, 2; Chorus 4; Masquers 4; Home Economics Club 1, 2, 4; House Council, East Hall, 3; President Lewis Hall 4; REFLECTOR 4; Who's Who 4.

S
E
N
I
O
R
S



CLINTON R. DAVIS

Blun, Georgia

Industrial Arts; History

Industrial Arts Club 1, 2, 3, 4, President 4; Veterans Club 3, 4, President 4; Y. M. C. A. 1, 2, 3, 4; Bugger Dagger Club; Who's Who.



TOM WATSON DYKES

Cochran, Georgia

Industrial Arts; Physical Education

Transfer Mercer University; Basketball 4; Veterans Club 4.

1
9
4
3



BARBARA A. ELMORE
Claxton, Georgia
History; English

S
E
N
I
O
R
S



JOHN G. FLETCHER
Statesboro, Georgia
Music; English
Orchestra 1, 2, 3, 4.



ROSWELL FREEMAN
Toombsboro, Georgia
Business; Mathematics

Y. M. C. A. 1, 2, 3; Future Business Leaders 1, 2.

1
9
4
8



BERT W. FULFORD
Summit, Georgia
Exact Science
Science Club 4. Treasurer 4.



LAURA MARGARET GODBEE
Statesboro, Georgia
Business; English

Transfer from Wesleyan Conservatory; Business Leaders Club 3, 1, Secretary 3, Vice-President 4; Vice-President of Junior Class; Y. W. C. A. 3, 1; Junior Representative of May Court; House Council 3; Secretary of House Council 3.

S
E
N
I
O
R
S



KATHERINE GRIFFIS
Fargo, Georgia
Exact Science



JAMES HALL
Collegeboro, Georgia

History; Physical Education

Delta Sigma 1, 2; Veterans Club 1; Baseball 3, 1.

1
9
4
3



HAZEL HAMM
Cobbtown, Georgia

Business; Home Economics

Alpha Psi Omega 1; Future Business Leaders 1; George-Anne Staff 1, 1; REFLECTOR Staff 1; Y. W. C. A. 1, 2, 3, 1; Masquers 1, 2, 3, 1; Home Economics Club 1, 2, 3; B. S. U. 2, 3; House Council 3.



JOHNNIE ALINE HEATH
Glenwood, Georgia
Business; English

Transfer from Martha Berry Florida State College for Women; Future Business Leaders Club 3, 4; English Club 4; Chorus 2, 3, 4; Band 2, 3, 4; Reporter 4; Received Letter in Band 4; Y. W. C. A. 1, 2, 3, 4; Georgia Literary Society 1; P. B. Y. F. 3, 4; President 3, 4; Pianist 3, 4; National P. B. Y. F. Reporter 3, 4.



BILLY JENKINS
Sylvester, Georgia
Exact Science



BARBARA JOHNSON
Lake Park, Georgia
English; History

Transfer from Georgia Southwestern, Americus, Ga.; I. R. C. 3; Chorus 3, 4; Y. W. C. A. 3, 4; Vice-President 4; English Club 4, Vice-President 4; Second Annual Beauty Revue.



BILLY W. JONES
Dry Branch, Georgia
Social Science

Transfer from Abraham Baldwin Junior College; Veterans Club 3, 4; Y. M. C. A. 3, 4.

S
E
N
I
O
R
S

1
2
4
3



GEORGE WALDO JONES
LaFayette, Georgia
History; English
Transfer from West Georgia College.



HAL FOSTER KING
Cusseta, Georgia
Industrial Arts; Mathematics
Transfer Georgia Tech; Delta Sigma 2; *George-Anne* 2; Industrial Arts Club 3, 4, President 4; Veterans Club 3, 4.



BERNARD KINGERY
Pulaski, Georgia
Exact Science
Science Club 3, 4; Veterans Club 2, 3, 4;
Y. M. C. A. 1.



MARTHA LEE
Rockyford, Georgia
Business
Chorus 1, 2, 3; Future Business Leaders 3; Y. W. C. A. 1, 2, 3; Council 3; Wesley Foundation 3; Recreation Chairman 3; House Council 3; Secretary and Treasurer Vesper Choir 3.

S
E
N
I
O
R
S

1
9
4
3

S E N I O R S



CLARA LEWIS
Statesboro, Georgia

Business

Future Business Leaders 3, 4, Secretary 4.



MAX LOCKWOOD
Doerun, Georgia
Social Science

Student Council 1, 2, 3, 4, President 4, Secretary-Treasurer 3; Y. M. C. A. 1, 2, 3, 4, President 2; I. R. C. 3, 4, Vice-President 4; Business Manager of *George-Anne* 2; Manager College Basketball Team 3; Veterans Club 3, 4; Masquers; Secretary-Treasurer of Bugger Dagger Club; President of Sophomore Class; Who's Who.

1 9 4 3



ZONA LONG
Girard, Georgia
Music; Business

Transfer from Georgia State College for Women; Band 3, 4; Chorus 3, 4; Mu Sigma 4, Treasurer; Future Business Leaders 3, 4; Treasurer of Georgia Federation of College Business Students Ass'n, 4.



SARAH ANN MAY
Pembroke, Georgia
Business; English

Future Business Leaders 3, 4; *George-Anne* Staff 2, 3, 3; Philharmonic Choir 1, 2, 3, 4; Vesper Choir 3, 4; East Hall House Council 2; I. R. C. 1, 2, 3, 4; Vice-President of Y. W. C. A.; B. S. U. Council 1, 2, 3, 4.



JOHN F. MAYS
Statesboro, Georgia
Exact Science
Veterans Club 3, 4; Iota Pi Nu 1.

S
E
N
I
O
R
S



HAROLD A. McCARTY
Attapulgus, Georgia
Social Science
I. R. C. 1, 2, 3, 4; Veterans Club 3, 4.



JOHN M. MORGAN
Valdosta, Georgia
English; Physical Education
Iota Pi Nu Fraternity; Bachelors Club; Dramatic Club 3; English Club 3, 4; Vice-President of Junior Class.

1
9
4
3



JOSEPHINE S. MUTHER
Statesboro, Georgia
Home Economics
Transfer University of Georgia; Home Ec Club 3, 4; President 3.



ROBERT E. ODUM
Reidsville, Georgia
Social Science

Transfer from Brewton-Parker Junior College;
Veterans Club 3, 4.

S
E
N
I
O
R
S



ANN PARKER
Ludowici, Georgia

Home Economics; Mathematics

Home Economics Club 3, 4; House Council, East
Hall 3.



JOHN PERRY
Collegeboro, Georgia
History; Physical Education
Veterans Club 3, 4; Baseball 3.

1
9
4
8



ALICE PETERSON
Ailey, Georgia
Elementary Education

Y. W. C. A. 1, 2, 3, 4; Phi-harmonic Choir 1, 2,
3, 4; House Council 4.

SENIORS



MARIE FAULKNER PITTS
Adrian, Georgia
English; History

Transfer Middle Georgia College, Cochran, Georgia.
Senior Class Secretary 4; English Club President 4;
House Council 4; I. R. C. 1; Masquers 1; Y. W.
C. A. 4; REFLECTOR Advertising Manager 1.



S. MARVIN PROSSER
Statesboro, Georgia
Exact Science

Veterans Club 3, 4; President Sophomore Class;
President Junior Class; President Senior Class;
Student Council 1, 2, 4; Masquers Club 1, 2, 3, 4;
Who's Who.



MYRTICE E. PROSSER
Statesboro, Georgia
Business; English

Dramatic Club 1, 2, 3, 4; I. R. C. 1, 2, 3, 4; East
Hall House Council 1, 2; Lewis Hall House Council
4; Y. W. C. A. 1, 2, 3, 4; REFLECTOR Staff 1;
Who's Who 1.



RUTH QUARLES
Dalton, Georgia
Music; Art

Band, President 1, Librarian 2, Secretary 3, Treas-
urer 4; Chorus 1, 2, 3, 4; Chairman 4; Mu Sigma
1, 2, 3, 4; Treasurer 2, 3, Secretary 4; Art Club
(Alpha Rho Tau) 4; Secretary 4; Y. W. C. A. 1,
2, 3, 4; Council; Vesper Choir, Director.



VERA RICHARDSON
LaFayette, Georgia
Elementary Education



ALBERT P. ROSS
Ocilla, Georgia
English; History
English Club 1; Veterans Club 1.



QUILLON C. ROBERSON
Screven, Georgia
Industrial Arts; Physical Education
Industrial Arts Club 3, 4; Art Club 3, 4; Veterans
Club 3, 4; Masquers 3.



EDDIE RUSH
Savannah, Georgia
Industrial Arts; Physical Education
Science Club 1, 2; Veterans Club 1, 2, 3, 4, Pres-
ident 3; Treasurer 1, 2; Chorus 2, 3, 4; Vesper
Choir 3, 1; Student Council Secretary 3, 1; House
Council Member 1, 2, 3, 4, President 3, 4; Indus-
trial Arts Club 3, 4; Y. M. C. A. 1, 2, 3, 4, Vice-
President 3, 4; Sophomore Class President; Volun-
teer Fire Department 1, 2, 3, 4; Who's Who 4.

S
E
N
I
O
R
S

1
9
4
3

S E N I O R S



JAY V. SARRATT
Tifton, Georgia
Social Science

Transfer from Abraham Baldwin; Sanford Hall House Council 3; Vice-President Sophomore Class; Vice-President Junior Class; *George-Anne* Staff 3, 4; News Editor 3; Associate Editor 4; Veterans Club 3, 4; I. R. C. 3, 4; President 3; Ida Hilton Seymour Award 3; Student Council 3, 4, Vice-President 4; Who's Who.



MARTHA SETTLE
Sumner, Georgia
English; History

Transfer Georgia Southwestern College; Y. W. C. A. 3, 4; English Club 4.



MADISON DORSEY SHORT, JR.
Claxton, Georgia
Music; English

Transfer from Young Harris College; Chorus 3, 4; Band 3, 4; Mu Sigma 3, 4.



ELINOR SMITH
Rentz, Georgia
Music; Home Economics

Band 3, 4; Chorus 3, 4; Y. W. C. A. 3, 4; B. S. U. Council 4.

1 9 4 8



PEGGY JOYCELYN STANFIELD
Glennville, Georgia

English; Speech

Student Council 4; Masquers, Treasurer, 1, 2, Member 1, 2, 3, 4; Alpha Psi Omega Secretary 4; Lewis Hall Vice-President 4; REFLECTOR Associate Editor 4; English Club Vice-President 4; I. R. C. 1, 2; Y. W. C. A. 1, 2, 3, 4; Who's Who 4.



DORIS TILLMAN
Surrency, Georgia

Home Economics; Exact Science

Home Economics Club 1, 2, 4, Vice-President 2, President 4; Masquers 1, 2, 4, Treasurer 2; Alpha Psi Omega 3, 4; Philharmonic Choir 1, 2; Lewis Hall House Council 4; West Hall House Council 2; W. A. A. 4; Y. W. C. A. 1, 2, 4; Council 2; Wesley Foundation Council 4.

S
E
N
I
O
R
S



ERNEST L. VEAL
Wrightsville, Georgia

History; English

Y. M. C. A. 1, 2, 3, 4; English Club 1, 2, 3, 4; Veterans Club 3, 4, Chaplain 4; Treasurer of Senior Class.



IDA BLANCHE VINCENT
Bainbridge, Georgia

Music; English

Chorus 1, 2, 3, 4.

1
9
4
8



MARGARET L. WARREN
Pulaski, Georgia

Business; Home Economics

George-Anne Staff 2, 3, 4; Chorus 2, 3; Dramatic Club 2; Business Club 3, 4; Home Economics Club 4; House Council, East Hall 2.



LEO WEEKS
Norman Park, Georgia
Exact Science

Transfer from Norman Junior College; Y. M. C. A. 3, 4; Treasurer 4; Science Club 3, 4; Secretary 4; Veterans Club 3, 4; Vice-President Senior Class; Wesley Foundation President 4; Who's Who 4.

S
E
N
I
O
R
S



JERRY ALAN WHITE
Fitzgerald, Georgia
English; Industrial Arts



COMER B. YATES
Bowden, Georgia
Social Science

Transfer West Georgia College; President I. R. C. 4.

1
2
4
8

We, Who Published

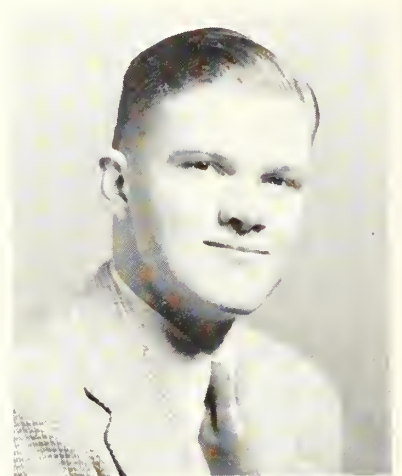
HOPE IT WILL BE A SOUVENIR OF ALL THE GOOD



PARRISH BLITCH
Editor-in-Chief



BOBBYE QUICK
Club Editor



JAMES STANFIELD
Club Editor



PEGGY STANFIELD
Associate Editor



MYRTICE PROSSER
Departmental Editor



JULIE TURNER
Class Editor



I. E. THIGPEN
Snapshot Editor



ARLO NESMITH
Snapshot Editor



MR. M. L. GOLDWIRE
Advisor



MR. JACK AVERITT
Advisor

This Book

TIMES AT T. C. DURING 1917-18



JAMES EVANS
Art Editor



LAWANA DAVES
Departmental Editor



HAZEL HAMM
Business Manager



ROSALYN TILLOTSON
Class Editor



MARVIN PROSSER
Sports Editor



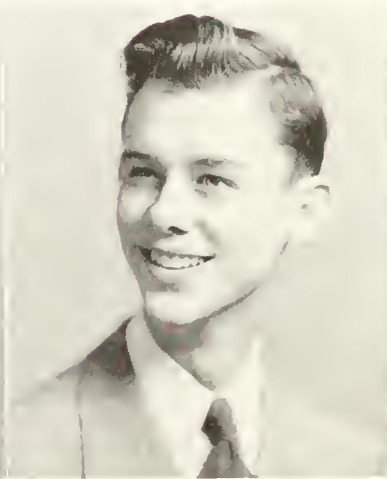
MARIE PITTS
Advertising Manager



MISS FREIDA GERNANT
Advisor



PATRICIA GREENE
Advertising Staff



JOHN T. BRANNEN
Advertising Staff



L. D. BOWEN
Advertising Staff



The Curtain is Down, The Play is Ended,



Mike has a Frown, And the Editor is Expended

SECURITY

SERVICE

The Bank With the Friendly Atmosphere

BULLOCH COUNTY BANK

NEW ACCOUNTS WELCOMED

MEMBER

FEDERAL DEPOSIT INSURANCE CORPORATION

HOWARD LUMBER COMPANY

Retail Lumber and Builders Supply



31 MULBERRY STREET

Statesboro

Georgia

When . . .

HUNGRY, THIRSTY AND TIRED

... Visit ...

THE BLUE TIDE

WHERE BOY MEETS GIRL

For . . .

Books - Refreshments - Fun



GEORGIA TEACHERS COLLEGE

Collegeboro, Ga.

L. A. Waters Furniture Co.

"EVERYTHING FOR THE HOME"



STATESBORO

MILLEN

PHONE 554

PHONE 378

Bradley and Cone

Seed and Feed Co.

BABY CHICKS - PURINA CHOWS

GOOD GERMINATED SEED

HARDWARE - POULTRY SUPPLIES

Statesboro

Georgia

The Best in Town for . . .

PROMPT SERVICE

ELLIS DRUG CO.

FOUNTAIN SERVICE DeLuxe

and

Prescriptions Filled Quickly and Correctly
By Professional Pharmacists.

DIAMONDS — WATCHES

JEWELRY — GIFTS

WATCH REPAIRING

LANIER JEWELERS

"Home of Hallmark Cards"

SODA SHOP



ICE CREAM - SHERBETS - SUNDAES

BANANA SPLITS - MILK SHAKES

FROSTED MALTS - SOFT DRINKS

COFFEE - HOT DOGS - HAMBURGERS

SANDWICHES

FAVORITE SHOE STORE, INC.

*"Shoes for the entire family
fitted by X-Ray"*



WEATHERBIRD—VELVET STEPS
CITY CLUB



19 N. MAIN ST.

STATESBORO

Compliments

... of ...

MODEL LAUNDRY

COURTHOUSE SQUARE



STATESBORO

GEORGIA

WATERS BARBER SHOP

HAIRCUTS

ANY STYLE YOU WANT



UNDER BULLOCH COUNTY BANK

MEET YOUR FRIENDS AT THE

COLLEGE PHARMACY

●
"Where the Crowds Go"
●

Prompt, Courteous Service

PHONE 414

PHONE 416

F. S. PRUITT

Statesboro Office Equipment Company

ROYAL TYPEWRITERS

SALES AND SERVICE

Office and School Supplies

39 E. MAIN ST.

PHONE 520

FORD FARMING HEADQUARTERS

Standard Tractor & Equipment Company

WEST MAIN ST. — BOX 24

STATESBORO, GEORGIA

FORD
TRACTOR

DEARBORN
FARM EQUIPMENT

M. E. Alderman Roofing Co.

WINDOWS — DOORS
ROOFING



20-22 W. MAIN ST.

STATESBORO

GEORGIA

*C o m p l i m e n t s
... o f ...*

HINES Dry Cleaners



PHONE 375



27 WEST VINE ST.

STATESBORO, GA.

Johnston and Donaldson

INSURANCE

"GOOD COVERAGE PLUS SERVICE"

7 WEST MAIN ST. — PHONE 310

STATESBORO

GEORGIA

BULLOCH TRACTOR CO.

JOHN DEERE
FARM IMPLEMENTS
TRACTORS

36 W. MAIN ST.

STATESBORO

GEORGIA

CLOTHES . . .

FOR THE CAMPUS



THE FAIR STORE



AND THE FAMILY, TOO

OLLIFF AND SMITH

*FANCY GROCERIES
FRESH MEATS*

GARDEN AND FIELD SEED — HAY AND GRAIN

POULTRY SUPPLIES

Statesboro

Georgia

*Compliments
... of ...*

LANNIE F. SIMMONS



AUTOMOBILES

SKATE-R-BOWL

WE PROMISE . . .

GOOD, CLEAN
ENTERTAINMENT



SOUTH MAIN

STATESBORO

**EAST GEORGIA PACKING
COMPANY**



STATESBORO

GEORGIA

**STATESBORO AUTO PARTS
COMPANY**

AUTOMOTIVE, TRUCK
AND
TRACTOR PARTS

7 OAK STREET

PHONE 423

YOUR OLDEST FRIEND

THE BULLOCH TIMES

— The Best in County News —



STATESBORO

GEORGIA

C o m p l i m e n t s
... o f ...

**EVERETT MOTOR
COMPANY**



STATESBORO

GEORGIA

Brady's Department Store

SMART STYLES
for
COLLEGE BOYS AND GIRLS
COME IN AND SEE OUR DISPLAY

17 NORTH MAIN STREET

STATESBORO

GEORGIA

FRANKLIN DRUG COMPANY

THE R E X A L L STORE

10 E. MAIN STREET



STATESBORO

GEORGIA

MEN and BOY'S STORE

EVERYTHING FOR
COLLEGE STUDENTS

DRESS AND SPORTSWEAR

East Main Street

Statesboro

C o m p l i m e n t s

SORRIER INSURANCE AGENCY

ESTABLISHED 1888 — PHONE 58

STATESBORO

GEORGIA

SMITH - TILLMAN MORTUARY

SUCCESSORS TO LANIER'S MORTUARY

J. E. (JAKE) SMITH

E. GRANT TILLMAN

AMBULANCE SERVICE

STATESBORO : : GEORGIA

THE BEST IN COLLEGE CLOTHES
FOR
STUDENTS AND FACULTY

HENRY'S

STATESBORO

GEORGIA

*Compliments
... of ...*

S. W. LEWIS, INC.



STATESBORO

GEORGIA

THE BARGAIN CORNER

GROCERIES — FRESH MEATS
VEGETABLES

RUFUS ANDERSON

JESSIE MIKELL

PHONE 29

NORTH MAIN ST.

**GRIMES JEWELRY
COMPANY**



SILVERWARE — GLASSWARE
DIAMONDS — WATCHES
CHINA

ALWAYS A GOOD SHOW

AT THE

**GEORGIA THEATER
and
STATE THEATER**



STATESBORO

GEORGIA

WE INVITE YOU TO VISIT OUR STORE
WHILE IN SAVANNAH

SHOES
for the
ENTIRE FAMILY

GLOBE SHOE CO.



17 EAST BROUGHTON

SAVANNAH

GEORGIA

THE SAVANNAH

A DINKLER HOTEL

SAVANNAH :: GEORGIA

GEORGE FOWLER
Manager

MANGEL'S

FEMININE APPAREL

Phone 7313

15 E. BROUGHTON ST.

SAVANNAH

GEORGIA

**WOLF'S
Sporting Goods**

SPORTING GOODS
LUGGAGE — JEWELRY

C. E. CONN BAND INSTRUMENTS
LEEDY DRUMS AND ACCESSORIES
PENZEL MUELLER CLARINETS

Broughton at Montgomery

SAVANNAH

GEORGIA

... Our Compliments ...

MEN'S QUALITY SHOP

24 E. BROUGHTON ST.

SAVANNAH

GEORGIA

MILLIONS OF STUDENTS IN
AMERICA LOOK TO

PENNEY'S

MORE THAN EVER

FOR YOUNG AMERICA STYLED TOGS FOR
CAMPUS, SPORTS AND DRESS.

PENNEY'S, Youth Center of the Coastal
Empire Section, with four floors of Ap-
parel, Accessories, Shoes and Home Fur-
nishings, is ever alert to style trends, and
at the same time we major in Fine Quality.

It's Smart To Be Thrifty

BUY PENNEY'S

Varsity Town Clothes

THE JONES CO.

QUALITY CLOTHING
for
MEN AND BOYS

TERRELL T. TUTEN — CARL J. KRAFT

Savannah

Georgia

SERVING SAVANNAH SINCE 1868

Hogan's

BROUGHTON AND BERNARD STS.

THE REVIEW CO.

2 - 6 WEST BAY ST.

SAVANNAH, GA.



Office Equipment
and Supplies

Printing
Lithographing

HARRIS

The  Hub

(THE HUB)

ESTABLISHED 1896 — SAVANNAH

Hart Shaffner & Marx Clothes
Arrow Shirts — Dobbs Hats

Freeman Shoes

F I N E ' S

"Where Fashions Make Their Debut"

EXTENDS TO YOU A CORDIAL INVITATION
TO MAKE YOUR HEADQUARTERS HERE,
WHEN SHOPPING IN SAVANNAH.
One of Savannah's Really

Smart Shops

**THAYER MONUMENT
COMPANY**

45 WEST MAIN

●
PHONE 439
●

STATESBORO

GEORGIA

LEOPOLD ADLER CO.

Savannah's Leading and Largest Department Store



STUDENT OUTFITTERS FOR 68 YEARS

*Compliments
... of ...*

PHEBUS MOTOR COMPANY

Sales F O R D Service

●
PHONE 29
●

BROOKLET

GEORGIA

HOKE S. BRUNSON

BUICK AUTOMOBILES
ALLIS CHALMERS FARM
EQUIPMENT

●
STATESBORO, GEORGIA

ROCKER APPLIANCE CO.

COMPLETE LINE OF
HOME APPLIANCES, PLUMBING
AND
ELECTRICAL CONTRACTING

420 S. MAIN ST.

ANDERSONVILLE

STATESBORO :: GEORGIA

*Compliments
... of ...*

STATESBORO STUDIO

EAST MAIN STREET
PORTRAITS AND KODAK FINISHING
JOHN A. GEE

Phone 433-J

Statesboro, Ga.

On the Courtesy Route..
FROM WASHINGTON, D.C. TO FLORIDA



FRANKLIN CHEVROLET COMPANY, INC.



STATESBORO

GEORGIA

F. W. *Darby*
LUMBER CO.

STATESBORO, GA.

L-P GAS CO., INC.

A. R. LANIER, *President*

C. A. LANIER, *Secretary-Treasurer*

P. O. Box 155 Phone 296

STATESBORO, GA.



IN MEMORY OF

B. H. RAMSEY, JR.

1936 - G. T. C. - 1939



SUPERIOR BAKERY

CAKES - PIES - DOUGHNUTS
BREAD - ROLLS
COOKIES

58 WEST MAIN ST. PHONE 317

STATESBORO

GEORGIA

DONALDSON - SMITH

OUTFITTERS FOR MEN AND BOYS

SINCE 1922



STATESBORO

GEORGIA

H. W. SMITH, JEWELER

FOR YOUR GIFT NEEDS . . .

SEE OUR
JEWELRY - SILVER - CHINA
GLASS - LUGGAGE

Also

Visit Our Expert Repair Department

20 SOUTH MAIN ST. STATESBORO, GA.

WALTER ALDRED CO.

EVERYTHING IN BUILDING
SUPPLIES

PHONE 224

STATESBORO

GEORGIA

STAR FOOD STORE

13 SOUTH MAIN

"STATESBORO'S FINEST FOOD STORE"

SERVICE QUALITY

STATESBORO

GEORGIA

CLOTHES . . .

FOR THE FAMILY

ROSENBERG'S

"Statesboro's Busy Department Store"



STATESBORO

GEORGIA



*Compliments
... of ...*

M c C O R M A C K
Gifts



16 S. MAIN ST.

STATESBORO

V I S I T

HOBSON DuBOSE

MEN'S STORE

for

NUNN-BUSH SHOES

CATALINA SWEATERS & SWIM WEAR

TIMELY CLOTHES

11 West Main Street

Phone 538-J

Statesboro :: Georgia

C E C I L ' S

WELCOMES ALL COLLEGE STUDENTS

"THE PLACE FOR YOUR DINNER DATE"



EXCELLENT FOOD - DANCING

Compliments

... of ...

Southern
AUTO STORES

38 EAST MAIN ST.

STATESBORO

FROM 1920 TO 1948

ALFRED DORMAN COMPANY

A GOOD WHOLESALE GROCER



STATESBORO

SYLVANIA

JESUP

EASTMAN

*COVERING SOUTHEAST GEORGIA WITH
DEPENDABLE SERVICE AT LOWEST
POSSIBLE PRICES*

H. MINKOVITZ & SONS

DEPARTMENT STORES



**STATESBORO
SAVANNAH**

**SYLVANIA
DOUGLAS**

1901

1948

Patronize The Friendly

SEA ISLAND BANK

For

SAFETY - COURTESY - SERVICE

**"SERVING THE BANKING NEEDS OF BULLOCH COUNTY
FOR ALMOST A HALF CENTURY."**

Member F. D. I. C.

STATESBORO

GEORGIA

N O R G E

SALES and SERVICE
RECORDS — RADIOS

STATESBORO EQUIPMENT &
SUPPLY COMPANY

44 EAST MAIN

PHONE 550

*Compliments
... of ...*

CO-ED BEAUTY SALON

YOUR NEWEST — MOST MODERNLY EQUIPPED
You Get the "New Look" in Our
New Location.

COURTLAND ST.

STATESBORO, GA.

PHONE 216

**ROBERTS GROCERY
AND MARKET**

CHOICE MEATS and GROCERIES
FRESH FRUITS and VEGETABLES

PHONE 264

STATESBORO

GEORGIA

Compliments of

FRANKLIN RADIO SERVICE

ZENITH - MOTOROLA - PHILCO
RADIOS

STATESBORO

GEORGIA

*Compliments
... of ...*

H. J. ELLIS COMPANY
Wholesale Grocer

STATESBORO

GEORGIA

*Compliments
... of ...*

**HODGES - ATWELL
BAKERY**

STATESBORO

GEORGIA

ALNUTT MUSIC CO.

FINE PIANOS — MUSIC

240 BROUGHTON ST., W.

SAVANNAH

GEORGIA

*Compliments
... of ...*

COLLEGIATE BARBER SHOP

SHAVES — HAIRCUTS

EAST MAIN STREET
STATESBORO

J O S E P H ' S

EXCLUSIVE WOMEN'S APPAREL

25 BROUGHTON ST., WEST

SAVANNAH

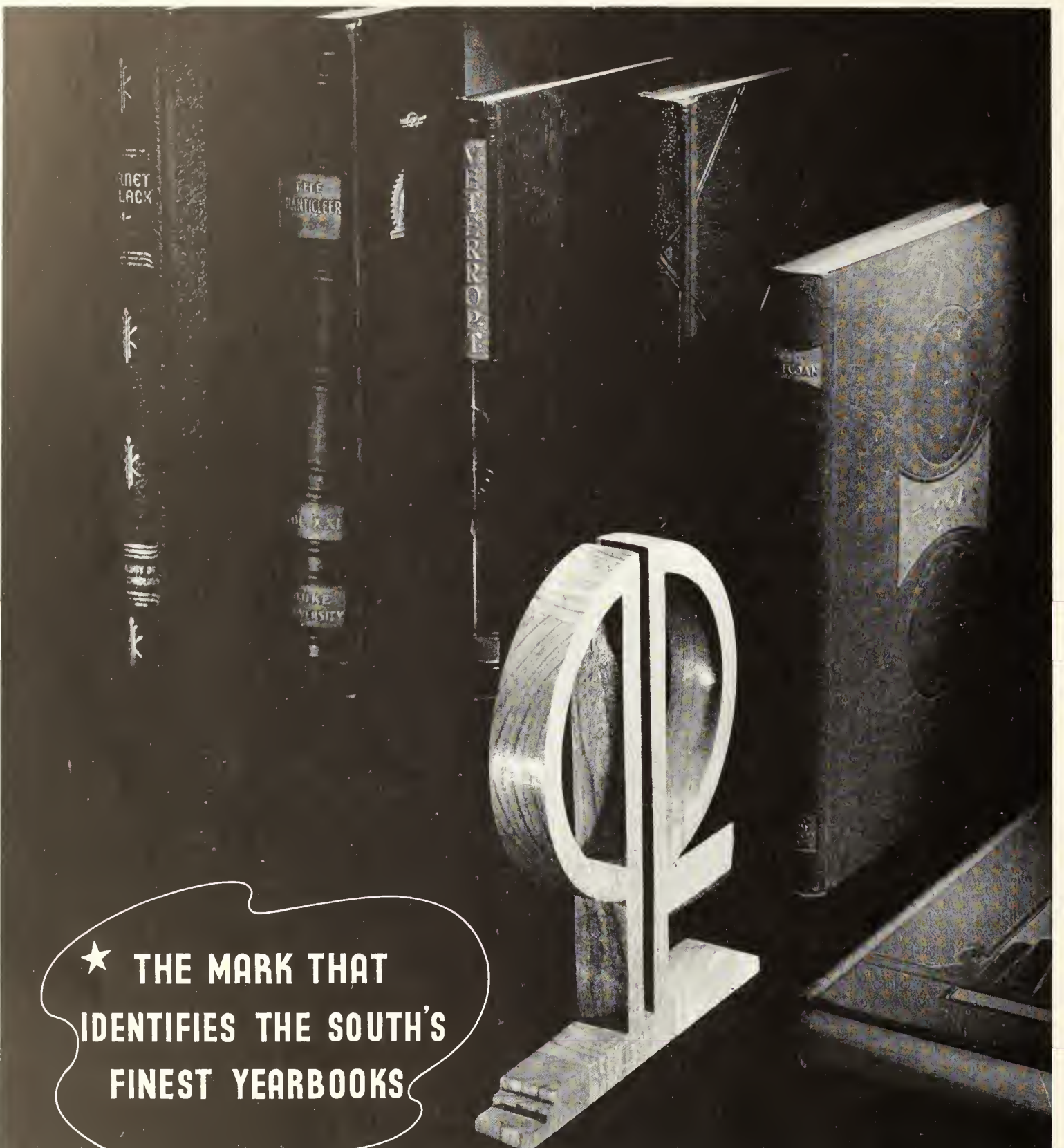
GEORGIA

W. C. AKINS & SON

HARDWARE - GROCERIES
PECANS

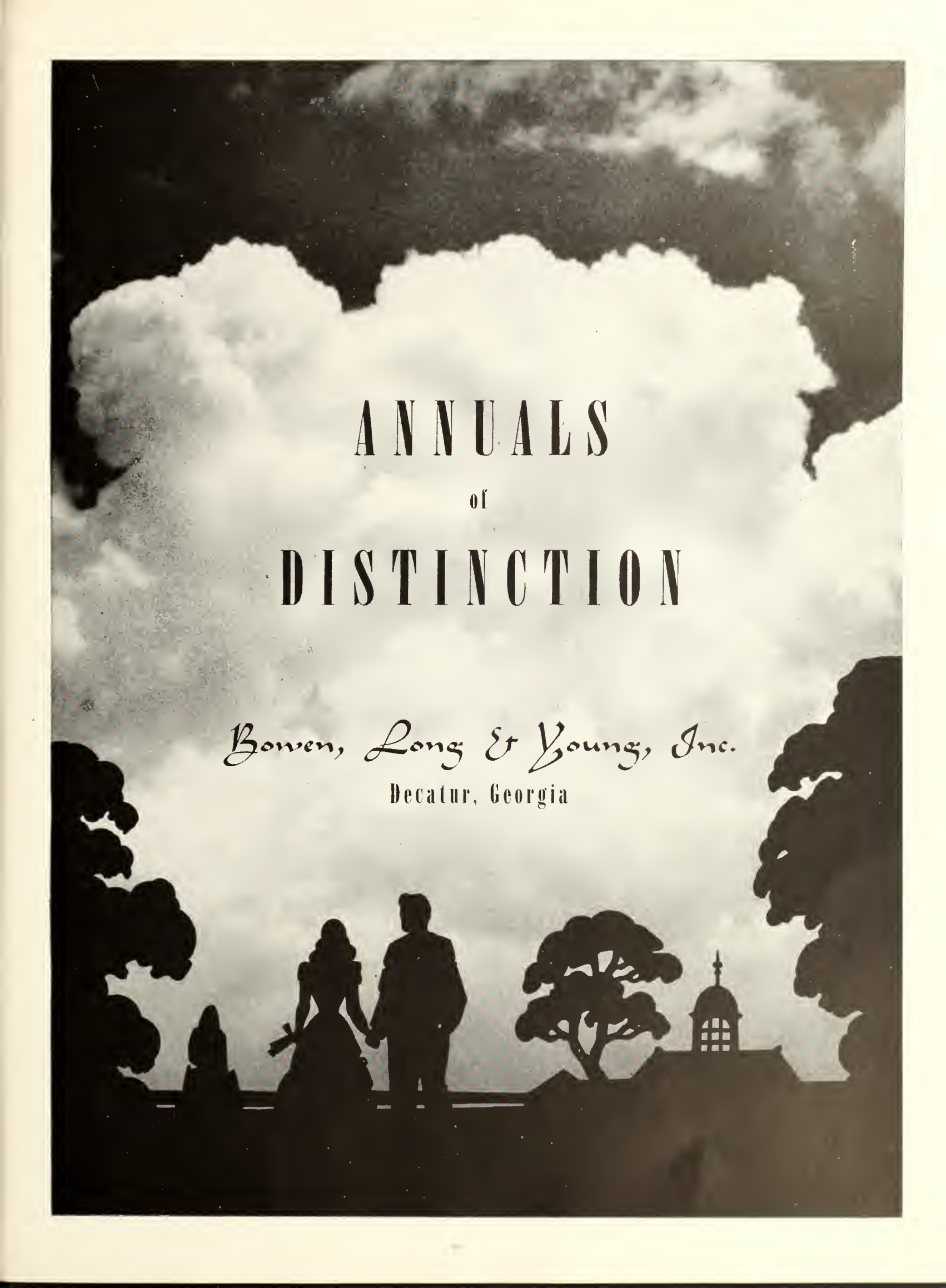
— Service Is Our Motto —

SEE US BEFORE YOU SELL YOUR PECANS



★ THE MARK THAT
IDENTIFIES THE SOUTH'S
FINEST YEARBOOKS

PHOTO-PROCESS ENGRAVING CO.
115 • 119 LUCKIE STREET
ATLANTA 3, GEORGIA

The background of the entire page is a black and white photograph. The upper two-thirds of the image is dominated by a large, bright, fluffy cloud against a darker sky. The lower third of the image shows dark silhouettes of trees and people. On the left and right sides, there are large, leafy trees. In the center, a man and a woman are standing and holding hands, looking towards the right. To their left, another person is partially visible. In the background, to the right of the couple, is a silhouette of a building with a prominent dome or cupola. The overall mood is serene and elegant.

ANNUALS of DISTINCTION

Bowen, Long & Young, Inc.
Decatur, Georgia

ZACH S. HENDERSON LIBRARY



0 2001 0488992 4

DEMCO

