

# Reflector

1946

Georgia Southern University

Follow this and additional works at: <https://digitalcommons.georgiasouthern.edu/reflector-yearbook>



Part of the [Higher Education Commons](#)

---

## Recommended Citation

Georgia Southern University, "Reflector" (1946). *Reflector Yearbook*. 19.  
<https://digitalcommons.georgiasouthern.edu/reflector-yearbook/19>

This book is brought to you for free and open access by the Student Media at Digital Commons@Georgia Southern. It has been accepted for inclusion in Reflector Yearbook by an authorized administrator of Digital Commons@Georgia Southern. For more information, please contact [digitalcommons@georgiasouthern.edu](mailto:digitalcommons@georgiasouthern.edu).

# REFLECTOR

1946

RESERVE  
LH  
1.G43  
R4  
1946

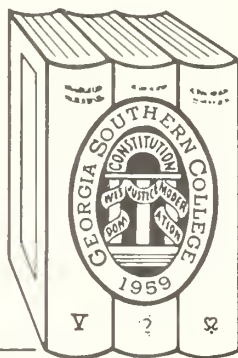
\*/

E





GEORGIA  
SOUTHERN COLLEGE  
LIBRARY



Georgia Southern College  
Zach S. Henderson Library

Georgia Southern University  
Zach S. Henderson Library











Digitized by the Internet Archive  
in 2014

<https://archive.org/details/reflector1946na>





... this is a book of Peace

... of work





... of play



... of hope





# DEDICATED

TO THOSE MEN OF THIS SCHOOL WHO WITH THEIR  
LIVES GAVE INSPIRATION FOR OUR FUTURE.

*This is the*

1946

REFLECTOR

*Published by the*

SENIOR CLASS

SELMA JAWOREK . . . . . *Editor*

HAZEL COWART . . . . . *Business Manager*

Copyright 1946

Stop





le



65985



*Peace rules the day.*





*where reason rules the mind.*—COLLINS.





# THE ADMINI



MARVIN S. PITTMAN  
*President*



MAE MICHAEL  
*Secretary to the President*



ROBERT L. WINBURN  
*Treasurer*

# STRATION



ZACH S. HENDERSON  
*Dean*



GENEVA HODGES  
*Secretary to the Dean and Registrar*



VIOLA PERRY  
*Registrar*



# The Faculty



BAILLIE  
*Librarian*



BOLTON  
*Home Economics*



BURKS  
*Principal Lab. High*



CARRUTH  
*Education*



COLLINS  
*Secretary Lab. High*



DeLOACH  
*Lab. High School*



BODIFORD  
*Industrial Arts*



EPTING  
*Music*



FLEKKE  
*Laboratory*



GIBSON  
*Business*

*Not pictured:*

BROUCEK

AVERITT

DeWITT





GUARDIA  
*English*



GUILL  
*Physical Education*



HANNER  
*Science*



HOSTETLER  
*Industrial Arts*



JONES  
*Lab. High School*



KIRBY  
*Arts*



LYON  
*Education*



JOHNSON  
*Dean of Men*



MARGADO  
*Spanish and History*



MCCORMACK  
*Science*



McELVEEN  
*Library*



MOYE  
*Physics*





NEIL  
*Music*



NEWTON  
*History*



RUSSELL  
*English*



SMITH  
*Director of Lewis Hall*



STARR  
*Lab. High School*



SWANSON  
*Speech*



VEAZEY  
*Dean of Women*



DUNCAN, WOOD, FREEMAN, JOYNER . . . *Elementary Lab. School*



# *Who's Who*

*Among Students in American Universities and Colleges*



JEANETTE BROWNING



HAZEL COWART



SELMA JAWOREK



ROBERT PADGETT



. . . . . *Seniors*



MARTHA ALLEN

Statesboro, Ga.

B.S., Secondary Education; Major: Business;  
Minor: Home Economics.



KATHLEEN BLANTON

Surrency, Ga.

Member I.R.C., '43-'44, '44-'45, '45-; Secretary  
Lewis Hall, Member Home Ec. Club; Y.W.C.A.;  
President B.S.U.

MARTHA







# . . . . . *Seniors*

## JEANETTE BROWNING

Glenwood, Ga.

Philharmonic Choir; Home Ec. Club; Who's Who Among Students in American Universities and Colleges; Member A.A.U.W., I.R.C.

## CATHERINE CAVE

Girard, Ga.

President Junior Class; Member of Student Council; House Council Y.W.C.A.; George-Anne Staff; Treasurer I.R.C.; REFLECTOR Staff.

## GENEVIEVE CONNER

Atlanta, Ga.

Philharmonic Choir.

## NELLENE COVINGTON

Ball Ground, Ga.

JEANETTE



"TAG"



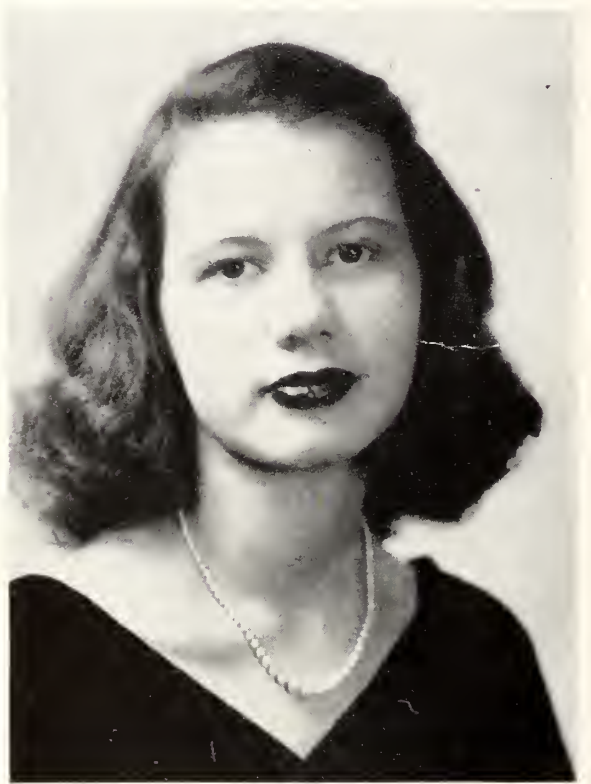
GENEVIEVE



"LITTLE NELL"







# . . . . . *Seniors*

## HAZEL COWART

Garfield, Ga.

B.S., Secondary Education; Major: English; Member of Student Council, Vice-President, '46; George-Anne Staff, '43-'46; Home Ec. Club, '43-'46; REFLECTOR Staff, Business Manager; Who's Who Among Students in American Universities and Colleges; Y.W.C.A.

## SARAH ALICE DARBY

Statesboro, Ga.

B.S., Elementary Education; Member Y.W.C.A.; B.S.U. Council; Pan-Hellenic Council; Fine Arts Club; Eupicurean Sorority; President Senior Class; House Council; I.R.C.; May Queen.

## RUTH DOWLING

Hoboken, Ga.

B.S., Elementary Education; Vice-President B.S.U.; Philharmonic Choir; I.R.C.; Y.W.C.A.

## MILDRED FORBES

Cave Spring, Ga.

B.S., Secondary Education; Major: English; Vice-President I.R.C.; REFLECTOR Staff.

HAZEL

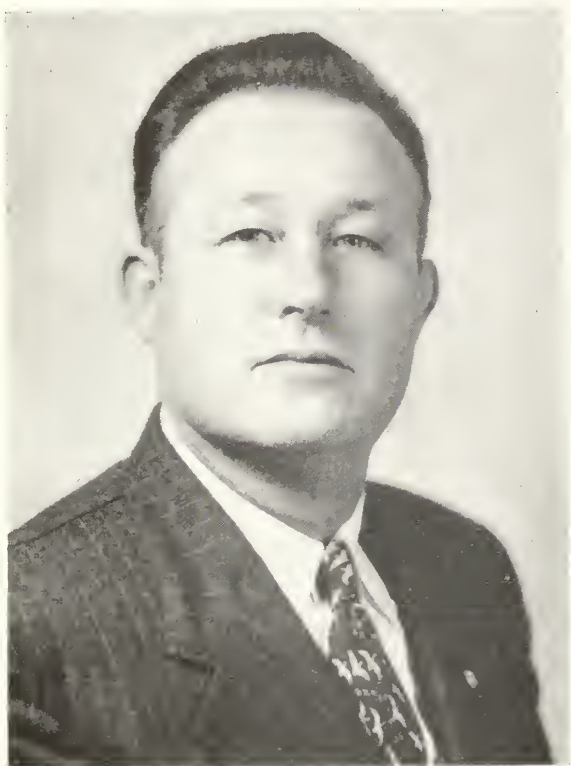


SARAH ALICE



RUTH







# . . . . . *Seniors*

DAN HART

Statesboro, Ga.

B.S., Secondary Education; Secretary-Treasurer Senior Class; Member of Veterans Club; I.R.C.

GALATA HARTLEY

Metter, Ga.

B.S., Elementary Education.

MELBA HUGGINS

Oliver, Ga.

B.S., Secondary Education; English; Alpha Psi Omega; Dramatic Club, '43-'46, Vice-President, '46; George-Anne Staff, '43-'45; Student Council, '46; Lewis House Council, Vice-President, '45, President, '46; REFLECTOR Staff.

SELMA JAWOREK

Savannah, Ga.

B.S., Secondary Education; English; President Student Council; President Dramatic Club; Vice-President Lewis House Council; Editor of REFLECTOR; Mu Sigma; I.R.C.; May Court; Who's Who Among Students in American Universities and Colleges.

DAN



GALATA

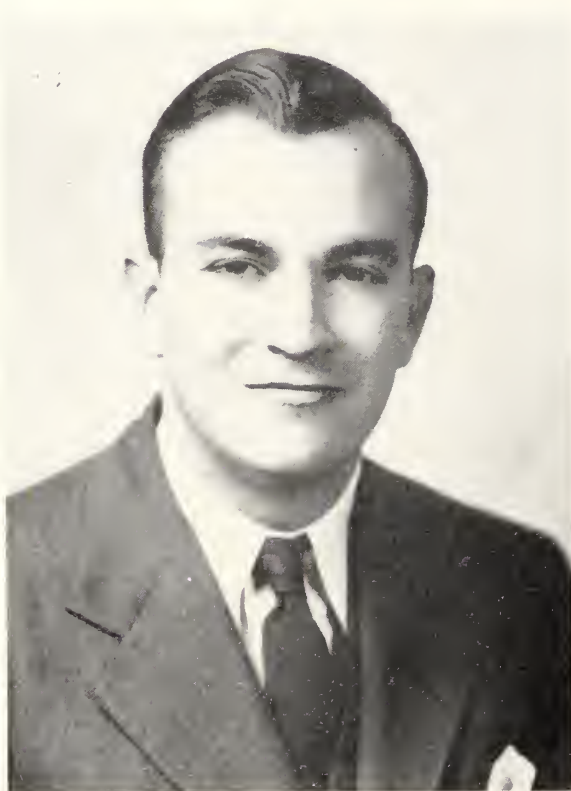
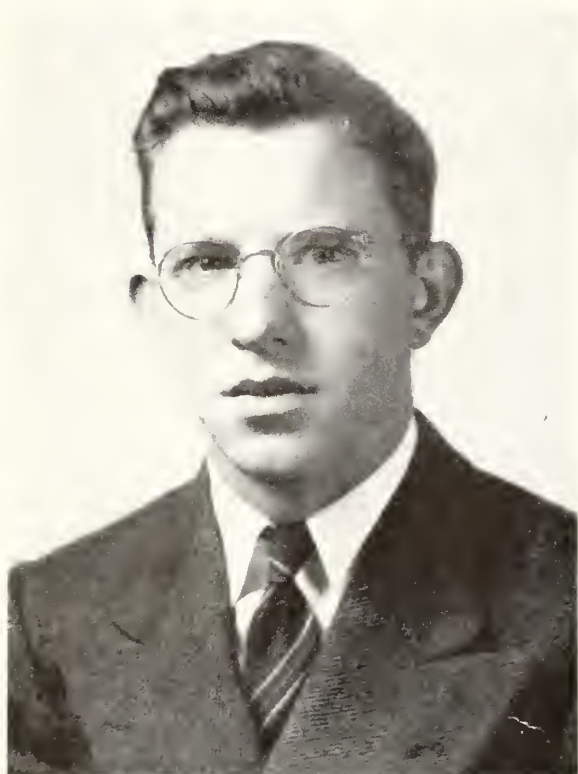


"Hug"



SELMA





# . . . . . *Seniors*

FRANK MILLER

Toomsboro, Ga.

B.S., Secondary Education; Industrial Arts; House Council; Y.M.C.A., Secretary, '45; Industrial Arts Club, Vice-President, '46.

MARJORIE ODUM

Arabi, Ga.

B.S., Secondary Education; History; House Council; Y.W.C.A.; Chorus; Mu Sigma; I.R.C.; Home Economics Club, Vice-President, '46.

ROBERT PADGETT

Collegeboro, Ga.

B.S., Secondary Education.

DONNIE JO REAGAN

Millen, Ga.

B.S., Secondary Education; History; Home Economics Club; I.R.C.; Chorus; George-Anne Staff; Y.W.C.A.

FRANK



"MARGIE"



BOB AND FAMILY



DONNIE







# . . . . . *Seniors*

ANNE SMITH

Metter, Ga.

B.S., Secondary Education; History.

FAY THEUS

Ludowici, Ga.

B.S., Secondary Education; English

VICKIE THOMPSON

Dawson, Ga.

B.S., Secondary Education; History.

MAGGIE VANN

Pembroke, Ga.

B.S., Secondary Education; Business; Home Ec. Club, President, '46; East House Council; Y.W. C.A., Secretary-Treasurer, '46; George-Anne Staff, '43-'46; I.R.C.; Masquers; B.S.U.; Treasurer Junior Class.

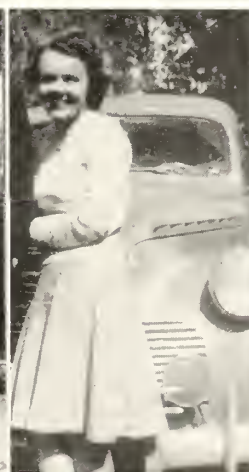
ANNE



FAY



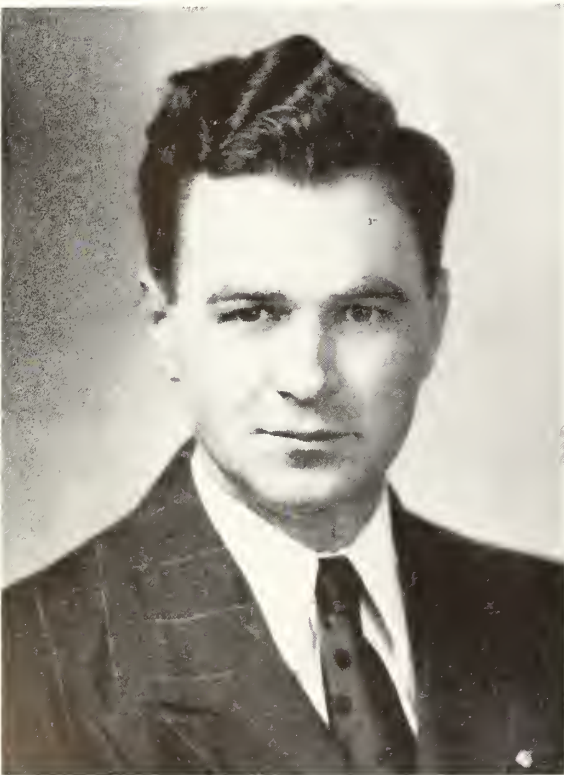
VICKIE



MAGGIE









. . . . . *Seniors*

PATE WARREN

Stillmore, Ga.

B.S., Secondary Education; Industrial Arts; Industrial Arts Club, President, '46; Basketball; Dramatics Club; Y.M.C.A.; Veteran's Club, '46; I.R.C.; Vice-President Sophomore Class, '40.

THELMA WARREN

Jesup, Ga.

B.S., Elementary Education; East House Council Vice-President, '46; Home Economics Club Secretary, '46; Y.W.C.A.

FLOYD WATKINS

B.S., Secondary Education; English.

JUANITA WYATT

Brooklet, Ga.

House Council, President, '46; Orchestra; Home Ec. Club, Vice-President, '45; Chorus; Mu Sigma; REFLECTOR Staff; Y.W.C.A.

PATE



THELMA



FLOYD AND ANNE



"Josie"



# JUNIORS

## OFFICERS

JACKIE ANDERSON STRANGE	.	.	.	.	.	.	.	.	.	<i>President</i>
ELDRED MANN	.	.	.	.	.	.	.	.	.	<i>Vice-President</i>
MAGGIE VANN	.	.	.	.	.	.	.	.	.	<i>Secretary-Treasurer</i>

## *Sponsors*

MR. JACK BROUCEK

MISS RUTH BOLTON

*"Those Christians best deserve the name  
Who studiously make peace their aim."*



GRACE AMERSON  
Lexsy, Ga.

FRANCES ANDERSON  
Statesboro, Ga.

HILDA CULBREATH  
Union Point, Ga.

BETTIE ANCHORS  
Augusta, Ga.

MARY LEE BRANNEN  
Statesboro, Ga.

ELEANOR BURGESS  
Ashburn, Ga.

BARBARA ANDERSON  
LaFayette, Ga.

ALETHIA BROWN  
Hinesville, Ga.

NORMAN CHAMPION  
Collegeboro, Ga.





JERRY HAMILTON  
Vidalia, Ga.

JOSEPH ALLEN JONES  
Waycross, Ga.

RITA McRAE  
Mt. Vernon, Ga.

EVELYN JAMES  
Blackshear, Ga.

MARY LOIS JONES  
Jesup, Ga.

ELDRED MANN  
Glenville, Ga.

BETTY JONES  
Nahunta, Ga.

LLOYD C. LEE  
Ft. Lauderdale, Fla.

FLOYD MEEDS  
Statesboro, Ga.



MARY MILES  
Baxley, Ga.

JACK MILLER  
Toombsboro, Ga.

MARDETTE NEEL  
Savannah, Ga.

JOYCE NEWTON  
Hilltonia, Ga.

MARY FRANCES PHILLIPS  
Soperton, Ga.

DOROTHY RAY  
Lyons, Ga.

JACKIE STRANGE  
Statesboro, Ga.

ALMA SMITH  
Lyons, Ga.



# SOPHOMORES



JOHN GODBY . . . . . *President*  
Sardis, Ga.

ANNE HENDRIX . . . . . *Vice-President*  
Cedartown, Ga.

SARAH SLATON . . . . . *Secretary*  
Edison, Ga.

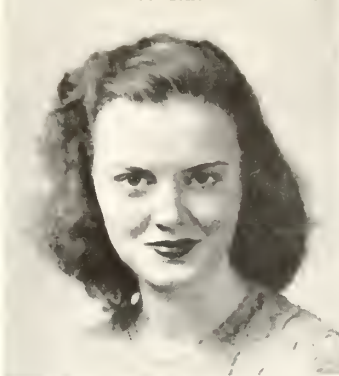
BILL HENDRY . . . . . *Treasurer*  
Adel, Ga.

## *Sponsors*

MR. G. S. BAILLIE  
MISS HESTER NEWTON  
MISS QUEEN COLLINS



BERTHA ALLEN  
Brunswick, Ga.



MARY ALLEN  
Statesboro, Ga.

MILDRED ANDERSON  
Grovetown, Ga.



MARJORIE ANDERSON  
Statesboro, Ga.

SARA ANDERSON  
Grovetown, Ga.



BETTY JANE BURKS  
Griffin, Ga.

LOUISE CHAMPION  
Collegeboro, Ga.



CAROLYN ELLINGTON  
Edison, Ga.

CORDELIA ELLIS  
Wrens, Ga.



JOHN G. FLETCHER  
Statesboro, Ga.



JIMMIE GILLIS  
Adrian, Ga.



JAMES COOLSBY  
Naylor, Ga.



INOGENE GROOVER  
Statesboro, Ga.



HAZEL HAMM  
Cobbtown, Ga.



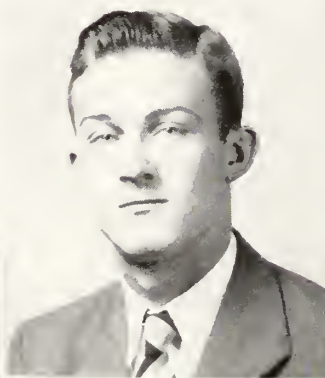
JOINNIE HEATH  
Jacksonville, Fla.



FRANCES HERRINGTON  
Hawkinsville, Ga.



MAYO HUDSON  
Stillmore, Ga.



BILLY JOHNSON  
Statesboro, Ga.



LAMBUTH KEY  
Statesboro, Ga.



GLORIA LAMB  
Swainsboro, Ga.

MAX LOCKWOOD  
Doerun, Ga.

SYBIL NEWTON  
Hilltonia, Ga.

SAMIE PADGETT  
Collegeboro, Ga.

ANN PARKER  
Ludowici, Ga.

MARY VIRGINIA PHILLIPS  
Reidsville, Ga.

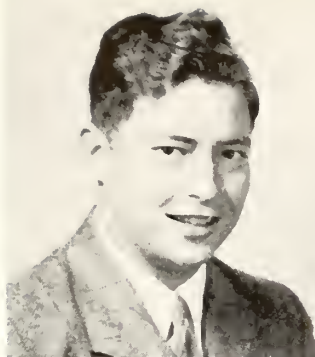
RUTH QUARLES  
Dalton, Ga.

FRANCES REEVES  
Fitzgerald, Ga.

JANELLE ROBINSON  
Sardis, Ga.

RICHARD ROWE  
Claxton, Ga.

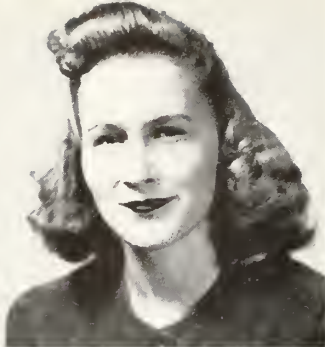
CHRISTINE SHUPTRINE  
Odum, Ga.







ELIZABETH SMITH  
Metter, Ga.



ELIZABETH RUTH SMITH  
Swainsboro, Ga.



JEAN COOPER SMITH  
Brunswick, Ga.



SUE SMITH  
Flovilla, Ga.



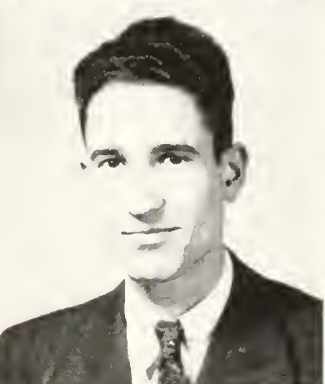
DORIS SPELL  
Wrightsville, Ga.



DOROTHY SPELL  
Wrightsville, Ga.



PEGGY STANFIELD  
Glenville, Ga.



Z. L. STRANGE  
Statesboro, Ga.



NELLIE SWANN  
Wrens, Ga.



BETTY THOMPSON  
Brooklet, Ga.

GRIFFIN THOMPSON  
Toombsboro, Ga.



MARION THOMPSON  
Patterson, Ga.

JUANITA THILMAN  
Surrency, Ga.



MARGARET WARREN  
Pulaski, Ga.

KARLYN WATSON  
Register, Ga.



VIRGINIA WELLS  
Harlem, Ga.

GUSSIE WILCOX  
Wray, Ga.

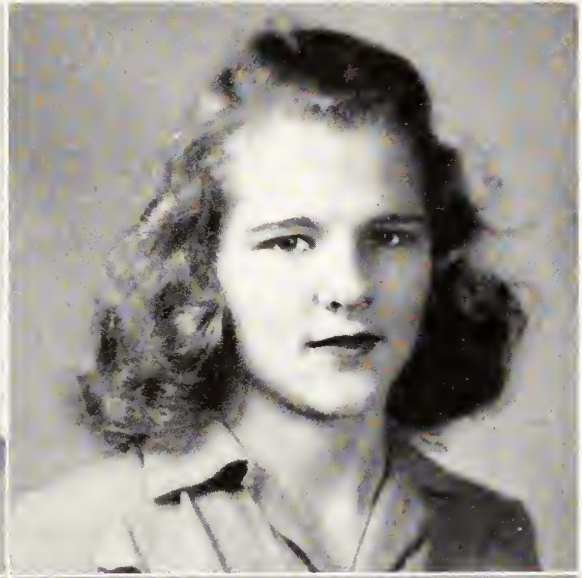


HELEN WITHROW  
Odum, Ga.

SARA BETH WOODS  
Statesboro, Ga.



# FRESHMEN



BILLY KENNEDY  
Statesboro, Ga.  
*President*

EMILY KENNEDY  
Statesboro, Ga.  
*Vice-President*

MARTHA TOOTLE  
Reidsville, Ga.  
*Treasurer*

HOKE SMITH  
Summit, Ga.  
*Secretary*

## *Student Representatives*

BETTY BEASLEY

JOHN BACON

## *Sponsors*

MR. W. S. HANNER

DR. IVAN HOSTETLER

MISS EDITH GULL



GEORGE ADAMSON  
Glenville, Ga.

JEWEL ANDERSON  
Claxton, Ga.

LYNEVE ANDERSON  
Kite, Ga.

JACQUELYN ARMSTRONG  
Oak Park, Ga.

ROSS ATKINSON  
Statesboro, Ga.

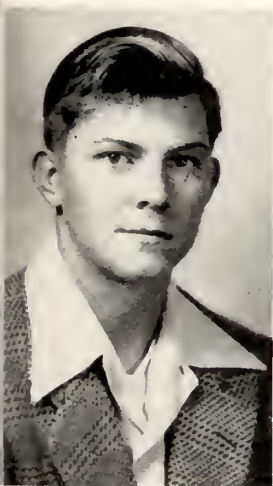
CAROLYN ATWELL  
Wrens, Ga.

JOHN BACON  
Glenville, Ga.

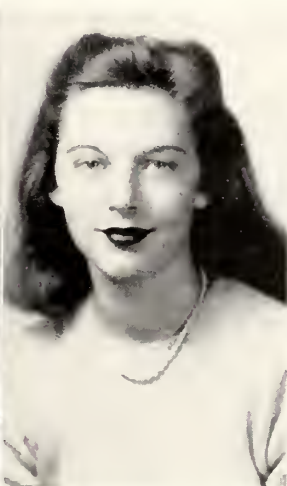
FRANCES BARFIELD  
Ashburn, Ga.

DORIS BAXTER  
Reidsville, Ga.

BETTY BEASLEY  
Stilson, Ga.



ADAMSON



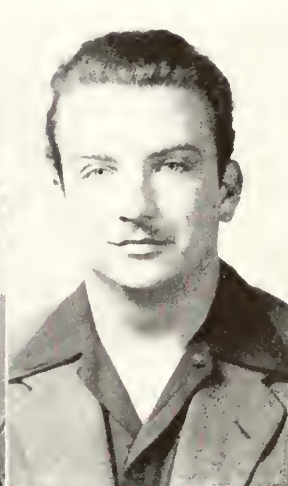
ANDERSON, J.



ANDERSON, L.



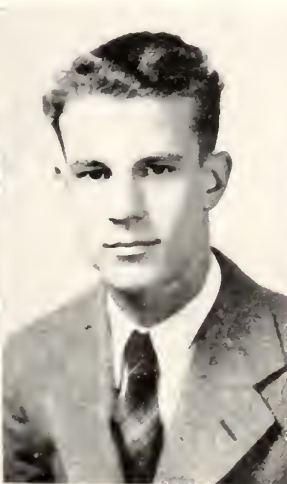
ARMSTRONG



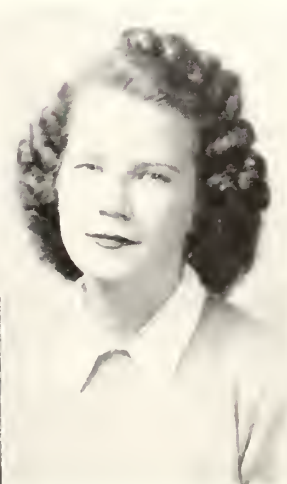
ATKINSON



ATWELL



BACON



BARFIELD



BAXTER



BEASLEY

JOSEPHINE BELCHER  
Statesboro, Ga.

AUSTEEN BOWEN  
Baxley, Ga.

JOSIE BRIGHAM  
Waynesboro, Ga.

BURCHARD BERRY  
Savannah, Ga.

BETTY JEAN BOYKIN  
Sylvania, Ga.

VERA BROCK  
Chimax, Ga.

BOBO BRYAN  
Brooklet, Ga.

EMMA JEAN BOHLER  
Statesboro, Ga.

LILA BRADY  
Statesboro, Ga.

BOBBYE BROWN  
Edison, Ga.



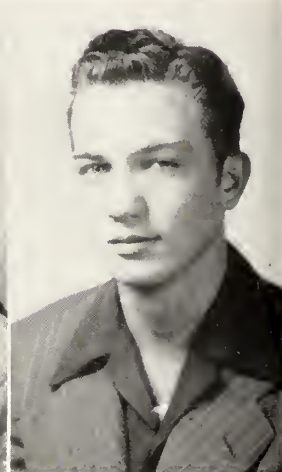
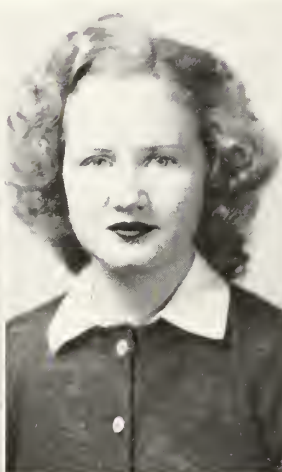
BELCHER

BERRY

BOHLER

BOWEN

BOYKIN



BRADY

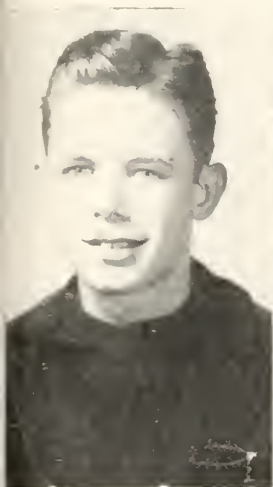
BRIGHAM

BROCK

BROWN

BRYAN





BURTON



CALLOWAY



CHANCE



CHESHIRE



CLARK



COBB



COLEMAN



COLLINS



COWART, C.



COWART, D.

DREW BURTON  
Statesboro, Ga.

WILLIAM B. CHESHIRE  
Jesup, Ga.

ELTO JO COLEMAN  
Claxton, Ga.

JOYCE CALLOWAY  
Collins, Ga.

PEGGY CLARK  
Richmond Hill, Ga.

WALLACE COLLINS  
Cadwell, Ga.

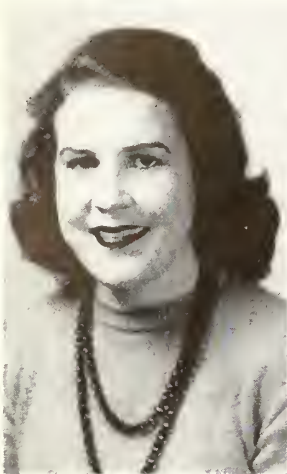
DELMAR COWART  
Rocky Ford, Ga.

GRACE CHANCE  
Statesboro, Ga.

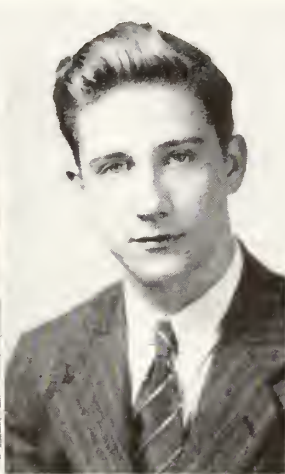
OUIDA COBB  
Glenville, Ga.

CALLIE COWART  
Reidsville, Ga.

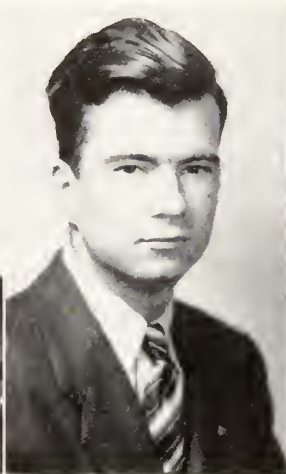




GRANFORD



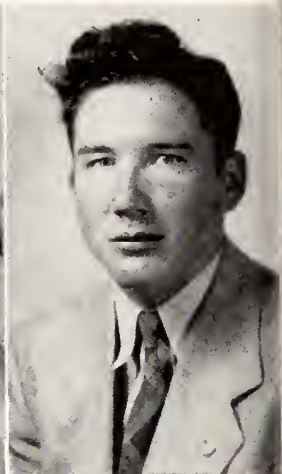
CROUCH



DARSEY



DAVIS, H.



DAVIS, P.



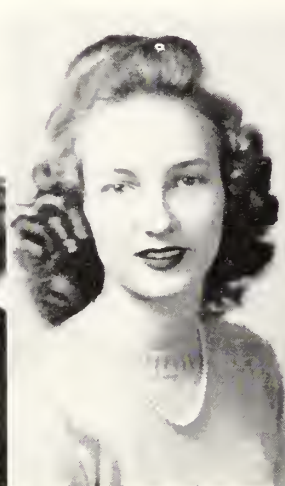
DEAL



DEAN, B.



DEAN, L.



DENMARK



DONALDSON

VELDA GRANFORD  
Baxley, Ga.

HELEN DAVIS  
Summertown, Ga.

BESSIE DEAN  
Odum, Ga.

ALFRED CROUCH  
Swainsboro, Ga.

PAUL DAVIS  
Summertown, Ga.

LOUISE DEAN  
Odum, Ga.

JAMES DONALDSON  
Statesboro, Ga.

J. BEN DARSEY  
Hinesville, Ga.

JESSE DEAL  
Statesboro, Ga.

JOYCE DENMARK  
Brooklet, Ga.

DOROTHY DOWNS  
Claxton, Ga.

CARLEEN ELLIS  
Claxton, Ga.

OLIVER FINCH  
Glenville, Ga.

CHRISTINE DRIGGERS  
Stilson, Ga.

SARA ETHRIDGE  
Leary, Ga.

RICHARD FISHER  
Sardis, Ga.

LESTER GILLIS  
Baxley, Ga.

HARRY DuBOIS  
Perry, Ga.

RUSSELL EVERITT  
Statesboro, Ga.

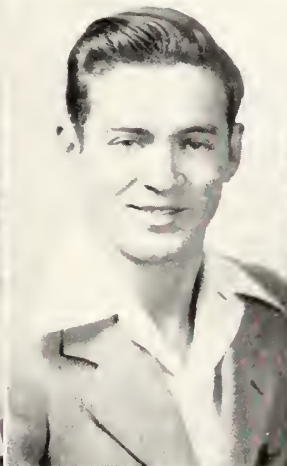
ROSWELL FREEMAN  
Toombsboro, Ga.



DOWNS



DRIGGERS



DuBois



ELLIS



ETHRIDGE



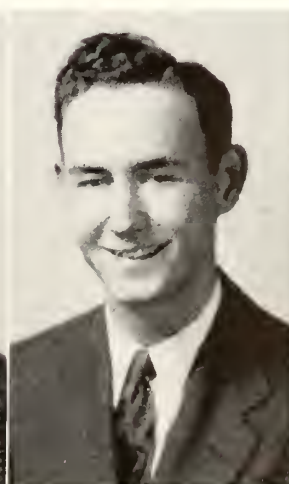
EVERITT



FINCH



FISHER



FREEMAN



GILLIS

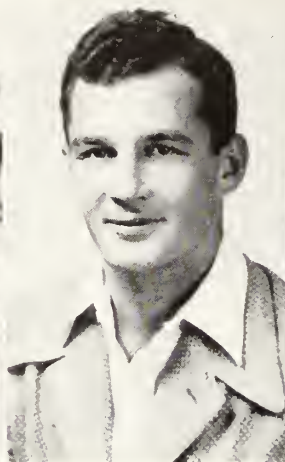




GREEN



GROOVER



HAGAN



HAMMI



HATCHER, B.



HATCHER, M.



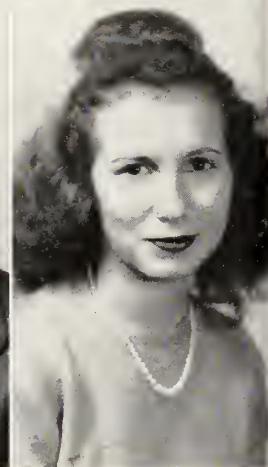
HEMPHILL



HERRINGTON



HINELY



JOHNSON

MILLER GREEN  
Waynesboro, Ga.

ANN GROOVER  
Claxton, Ga.

HAROLD HAGIN  
Statesboro, Ga.

MARGUARITE HAMMI  
Claxton, Ga.

BETTY HATCHER  
Vidalia, Ga.

MARTHA HATCHER  
Beaufort, S. C.

JANELLE HEMPHILL  
Grenada, Miss.

CARROLL HERRINGTON  
Waynesboro, Ga.

REGINOLD HINELY  
Marlow, Ga.

HELEN JOHNSON  
Statesboro, Ga.



RONALD JOSEY  
Roiser, Ga.

MARY KEITH  
Gay, Ga.

VICTOR LANCASTER  
Newington, Ga.

EDGAR JOYNER  
Screven, Ga.

CAROLYN KENNEDY  
Atlanta, Ga.

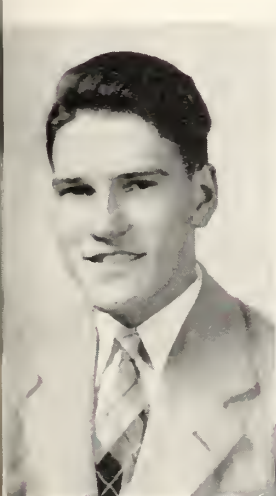
MARTHA LEE  
Rocky Ford, Ga.

AUDREY LIGHTSEY  
Bristol, Ga.

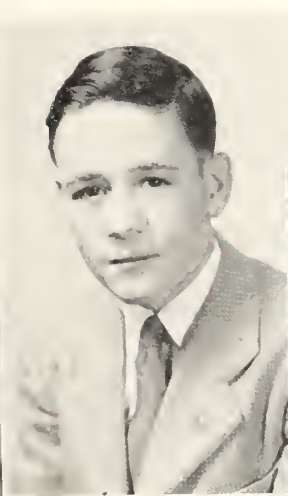
ROBERTA KEA  
Rocky Ford, Ga.

NAVEDA KENYON  
Lindale, Ga.

CLARA LEWIS  
Statesboro, Ga.



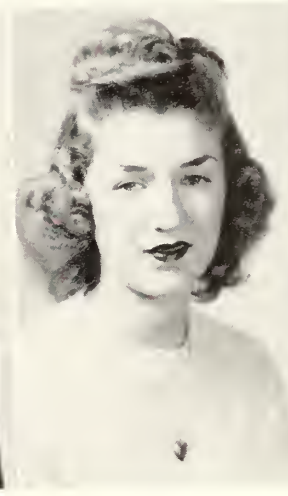
JOSEY



JOYNER



KEA



KEITH



KENNEDY



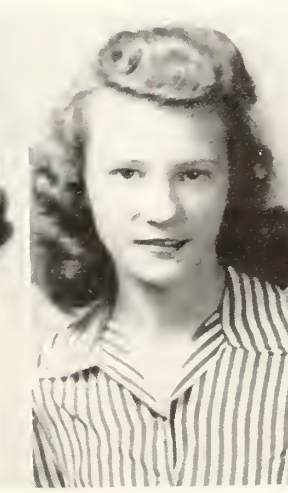
KENYON



LANCASTER



LEE



LEWIS



LIGHTSEY



LONG



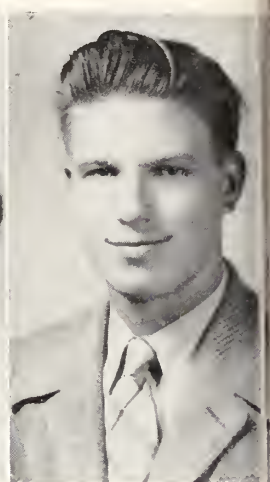
MCDONALD



MARCHMAN



MARTIN



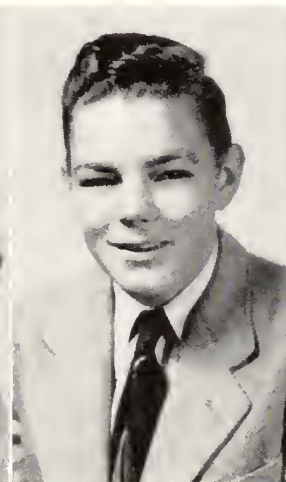
MASSEY



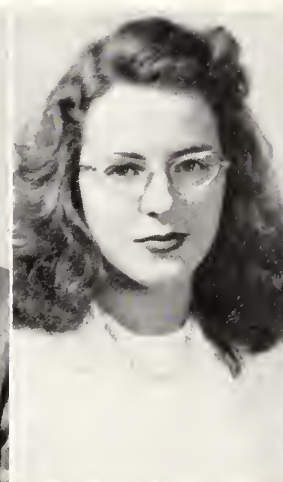
MAY



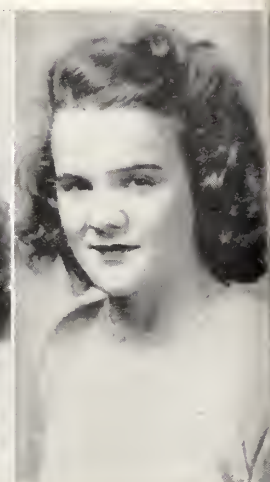
MEADOWS



MILLER



MORRIS



NESMITH

ZONA LONG  
Girard, Ga.

MAUDE MARTIN  
Patterson, Ga.

OPAL MEADOWS  
Oak Park, Ga.

ANN McDONALD  
Jacksonville, Fla.

JAMES MASSEY  
Barwick, Ga.

BILLY MILLER  
Rockyford, Ga.

RAMONA NESMITH  
Statesboro, Ga.

CLAIR MARCHMAN  
Hawkinsville, Ga.

SARAH ANN MAY  
Pembroke, Ga.

MARY MORRIS  
Collins, Ga.



ARLO NESSMITH  
Albany, Ga.

GILBERT PARKER  
Ogeechee, Ga.

MYRTICE PROSSER  
Statesboro, Ga.

JOEL NEWSOME  
Statesboro, Ga.

MAMIE JO PARKER  
Savannah, Ga.

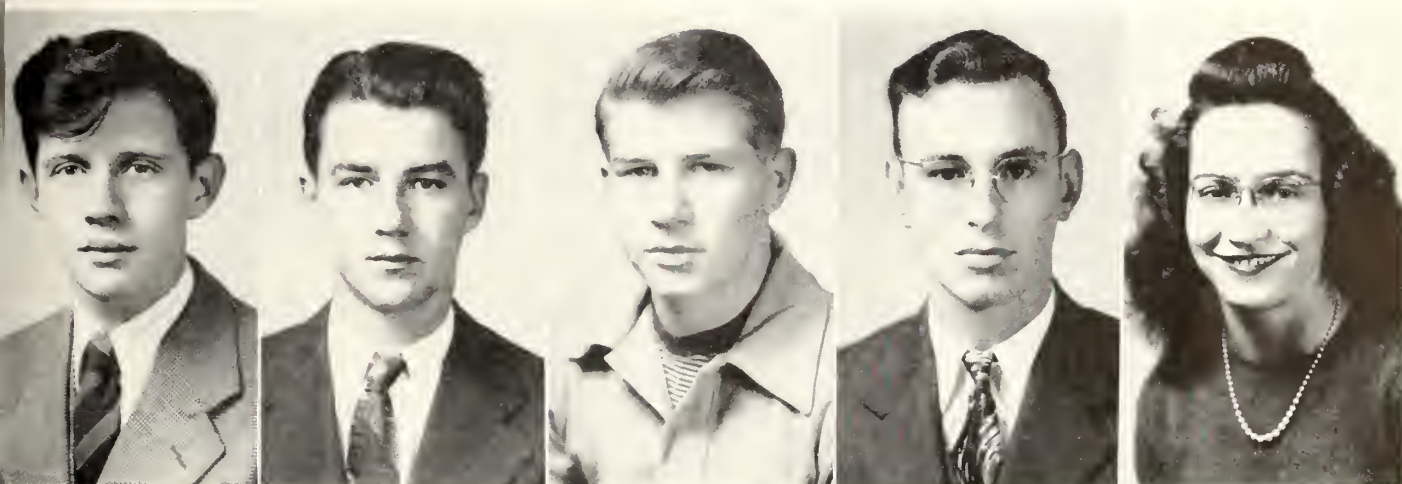
MARGARET PURCELL  
Glennville, Ga.

VIRGINIA RAWTON  
Lyons, Ga.

FOY OLLIFF  
Statesboro, Ga.

COLLEEN PARRISH  
Statesboro, Ga.

VIRGINIA PURVIS  
Glenwood, Ga.



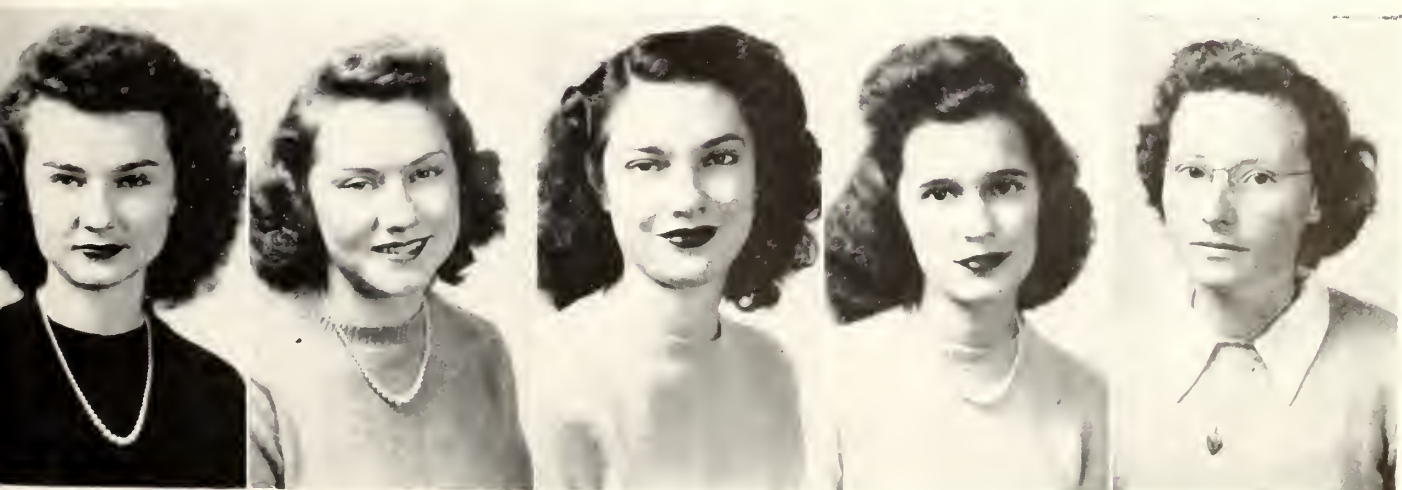
NESSMITH

NEWSOME

OLLIFF

PARKER, G.

PARKER, M. J.



PARRISH

PROSSER

PURCELL

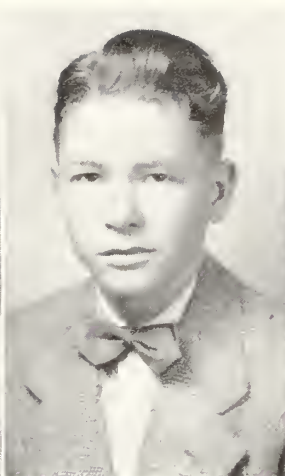
PURVIS

RAWTON





ROBBINS



RODDENBERRY



ROWELL



ROWSE



RUSHING



SANDEFORD



SCARABORO



SCRUGGS



SIHERMAN



SIMPSON

JACQUELINE ROBBINS  
Hilltonia, Ga.

BETTY ROWSE  
Statesboro, Ga.

ALICE SCARABORO  
Stillmore, Ga.

CHRIS RODDENBERRY  
Bristol, Ga.

MARY RUSHING  
Register, Ga.

ANNE SCRUGGS  
Naylor, Ga.

JEANETTE SIMPSON  
Glenwood, Ga.

REGIS ROWELL  
Ogeechee, Ga.

VIRGINIA SANDEFORD  
Waynesboro, Ga.

MARGARET SIHERMAN  
Statesboro, Ga.

KATHLEEN SMITH  
Wrightsville, Ga.

MARY STOKES  
Lakeland, Ga.

JAMES WATSON  
Register, Ga.

TOM SMITH  
Hinesville, Ga.

DORIS TILLMAN  
Surrency, Ga.

MURIEL WELCH  
McDonough, Ga.

IRIS WIGGINS  
Oak Park, Ga.

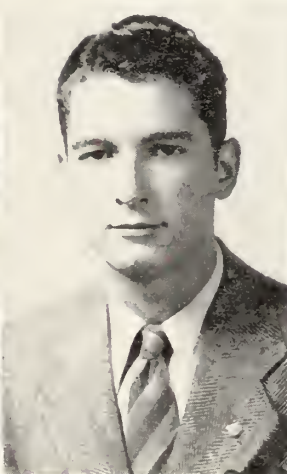
VERA STEWART  
Portal, Ga.

ROSALYN TILLOTSON  
Stilson, Ga.

GWEN WEST  
Statesboro, Ga.



SMITH



SMITH



STEWART



STOKES



TILLMAN



TILLOTSON



WATSON



WELCH



WEST

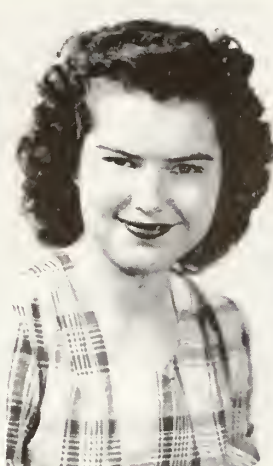


WIGGINS

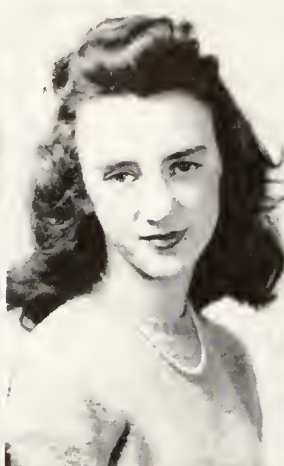




WILLIAMS



WILLIAMS



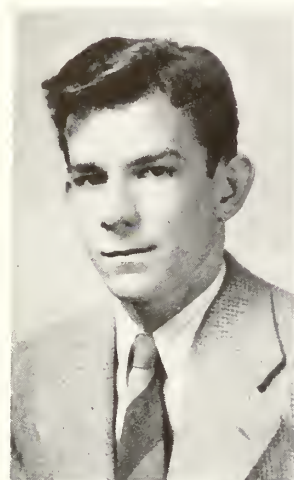
WILSON



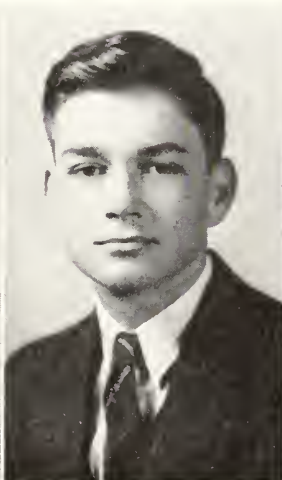
WIMBERLY



WOODS



WYNN



YARBROUGH



ZETTEROWER



ZETTEROWER



ZIPPERER

GERALDINE WILLIAMS  
Irwinton, Ga.

EUGENIA WIMBERLY  
Junction City, Ga.

ARTHUR YARBROUGH  
Mitchell, Ga.

HAZEL WILLIAMS  
Statesboro, Ga.

DORIS WOODS  
Hawkinsville, Ga.

BETTY ZETTEROWER  
Statesboro, Ga.

WERTZ ZIPPERER  
Rincon, Ga.

LOUISE WILSON  
Statesboro, Ga.

EDWIN WYNN  
Portal, Ga.

HILDA ZETTEROWER  
Statesboro, Ga.



# To Be Perfectly Candid



*The old familiar places*



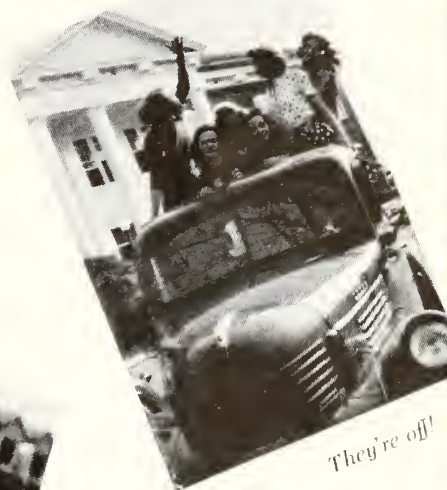
*Maggie and Josie supplement their diet.*



*The guys came back*



*Uplifting?*



*They're off!*

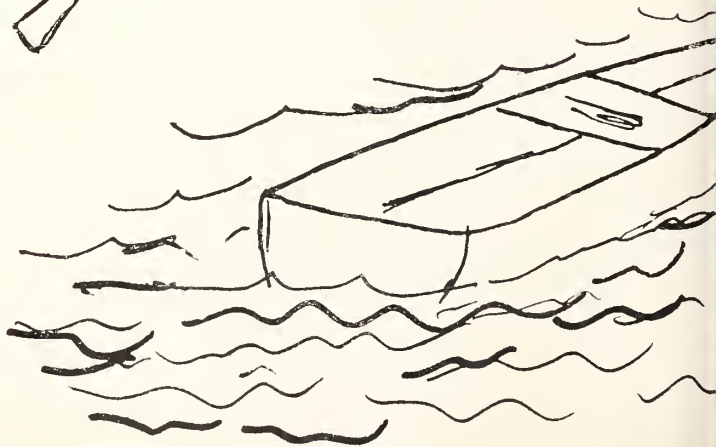
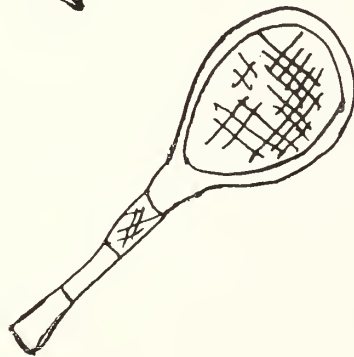
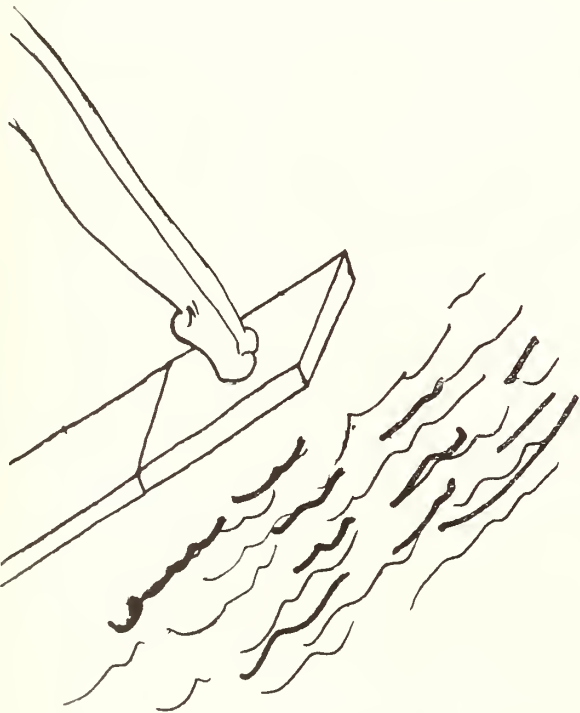
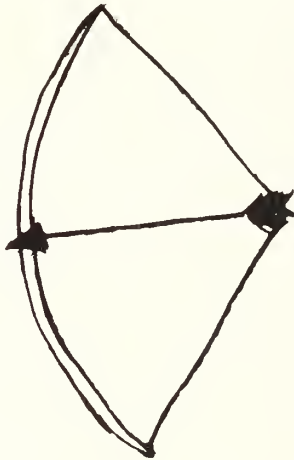
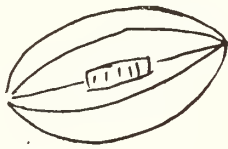


*And so they were married.*

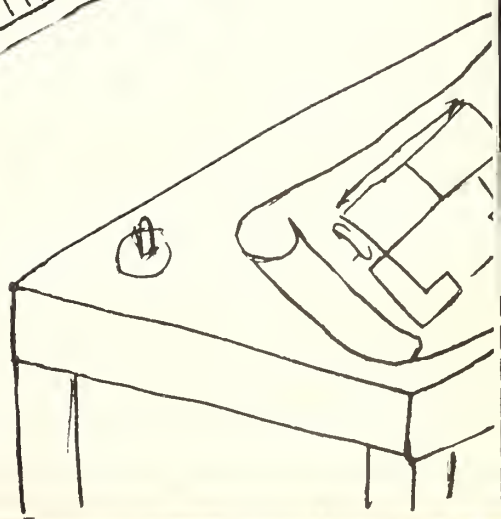
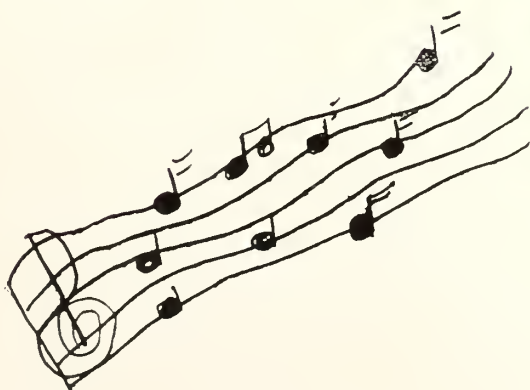
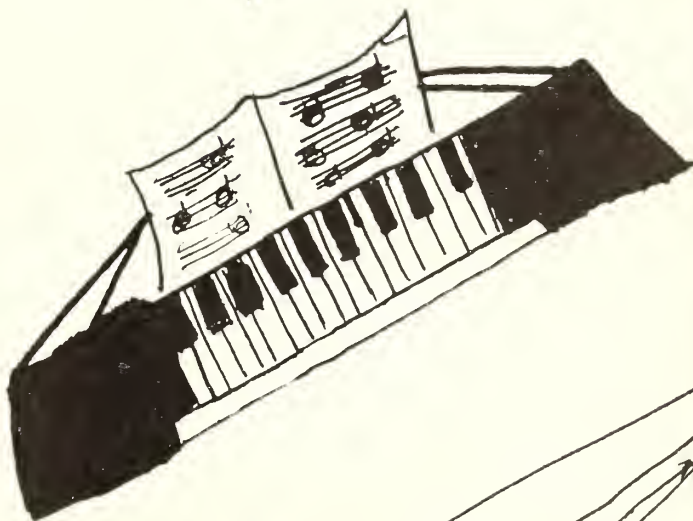
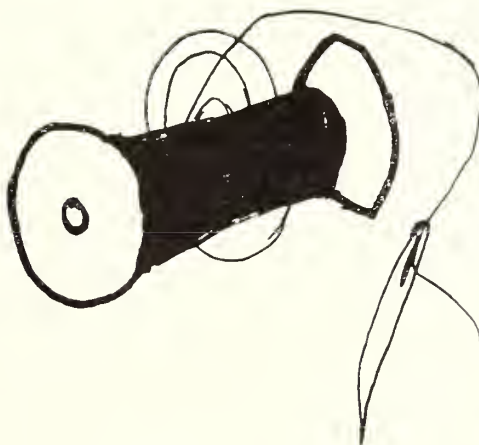


*Roughly speaking.*

# Activities



ties







"Hag" cuts a rug.



Maytime.



That "Strange" man.



The old ball game.



And it isn't even spring.



What are we waiting for?



Evening watch.



Mary





Mr. Beck



Where's Miss Varsity, girls?



What's the game?



Billy and Ben



Hot dates!



What did you see, Max?



All a-jitter.



Lewis Loulies

# THE RE



JAWOREK

SELMA JAWOREK	Editor-in-Chief
MILDRED FORBES	Associate Editor
FAY THEUS	Circulation Manager
MELBA HUGGINS	Photography Editor
JUANITA WYATT, KATHRYN CAVE	Club Editors
HAZEL COWART	Business Manager
SARA ALICE DARBY, THELMA WARREN	Advertising Managers



# FLECTOR



COWART



*Left to right: Darby, Wyatt, Forbes, Warren, Huggins, Theus.*

# Y. W. C. A.



*Standing:* Kennedy, McCrae, Reeves, Darby . . . *Seated:* Jones, Wilcox, Strange, Wells, Tillman, Watson, Hendrix.

## OFFICERS

JACKIE ANDERSON STRANGE	. . . . .	<i>President</i>
GUSSIE WILCOX	. . . . .	<i>Vice-President</i>
VIRGINIA WELLS	. . . . .	<i>Secretary-Treasurer</i>
JUANITA TILLMAN	. . . . .	<i>Reporter</i>
EMILY KENNEDY	. . . . .	<i>Recreation Chairman</i>
BETTY JONES	. . . . .	<i>Music Chairman</i>
KARLYN WATSON, ANNE HENDRIX	. . . . .	<i>Vespers</i>
RITA MCRAE	. . . . .	<i>Evening Watch, East Hall</i>
FRANCES REEVES	. . . . .	<i>Evening Watch, Lewis Hall</i>

## *Sponsors*

MISS MARIE WOODS

MRS. M. GUARLIA

MRS. BETH K. DUNCAN



# Y. M. C. A.



First row: Roddenberry, Lockwood, Johnson, Padgett, Miller, J. Freeman, Thompson, Joyner  
 . . . Second row: Dillard, Mann, S. Johnson, Darsey, F. Miller . . . Third row: Rushing,  
 Hinley, Nessmith, Bacon, B. Miller, Smith . . . Fourth row: Collins, Gunn, Bowen, Hudson,  
 Donaldson, Cooke, Crouch . . . Fifth row: Lancaster, Strange, Cowart . . . Sixth row: Ander-  
 son, Goodbee, McCormick, Green.

## OFFICERS

MAX LOCKWOOD	President
MAYO HUDSON	Vice-President
HOKE SMITH	Secretary-Treasurer
Z. L. STRANGE, JR.	Program Chairman
RICHARD STARR, MR. HENRY MCCORMICK	Sponsors



# STUDENT COUNCIL



*Left to right:* Carlyn Watson, Ann Hendrix, John Godbee, Selma Jaworek, Hazel Cowart, Billy Johnson, Melba Huggins, Alethia Brown, Betty Beasley.

## OFFICERS

[illegible]

# The George - Anne



*Left to right: Cowart, Vann, Phillips, Tootle, Tillman, Donaldson, Allen, Hamm, Jones.*

## EDITORIAL STAFF

RAMUS FREEMAN

*Editor-in-Chief*

## ASSOCIATE EDITORS

MARTHA TOOTLE, GWEN WEST, RICHARD FISHER, BETTY JONES









# Mu Sigma

## DELTA CHAPTER



### OFFICERS

BARBARA ANDERSON	President
MARJORIE ODOM	Vice-President
ANN HENDRIX	Secretary
RUTH QUARELLS	Treasurer



Back row: Hamilton, Anderson, Jones, Jaworek, Wyatt, Ellis Hendrix, Phillips, Jones . . . Front row: Ellington, Anderson, Quarrels, Swan, Jordan, Slate, Culbreth, Odom, Conner.



# International Relations Club



## OFFICERS

ALETHIA BROWN	President
MILDRED FORBES	Vice-President
KATHLEEN BLANTON	Secretary-Treasurer
KATHRYN CAVE	Treasurer
HESTER NEWTON	Sponsor

## MEMBERS

Grace Amerson, Kathleen Blanton, Alethia Brown, Sara Alice Darby, Bessie Deen, Louise Deen, Mildred Forbes, Mayo Hudson, Nevada Kenyon, Frances Tillman, Donnie Reagan, Gussie Wileox, Walter Dillard, Kathryn Cave, George Williams, Max Lockwood, Buzzie Daniel, Roy P. Warren, Joe Jones, Sue Smith, Joyce Newton, Eleanor Burgess, Jackie Robins, Hazel Hamm, Della Martin, Selma Jaworek.



# CHORUS



## OFFICERS

RONALD J. NEIL . . . . . *Director*  
 MISS EARLUTH EPTING, MR. JACK BROUCEK . . . . . *Accompanists*

## *Board of Directors*

BETTY JONES, HOKE SMITH, EVELYN JAMES, RICHARD STARR

## MEMBERS

Carolyn Atwell, Barbara Anderson, Marjorie Anderson, Frances Barfield, Betty Beasley, Bobbye Brown, Eleanor Burgess, Emma Jean Bohler, Burchard Berry, Queen Collins, Etta Jo Coleman, Genevieve Conner, Kathryn Cave, Hilda Culbreth, Peggy Clark, Helen Davis, Erma Dollar, Ruth Dowling, Christine Driggers, Jesse Deal, Joyee Denmark, Carleen Ellis, Carolyn Ellington, Cordelia Ellis, Sara Ethridge, Russel Everett, Shirley Forehand, Veda Gibson, Martha Hatcher, Janelle Hemphill, Honnie Heath, Galata Hartley, Jerry Hamilton, Evelyn James, Betty Jones, N. Kenyon, H. Kirby, M. Lee, E. Latham, J. Massey, S. May, M. Miles, S. Newton, R. Nesmith, Mrs. Neil, A. Nesmith, M. Parker, R. Quarles, D. Regan, J. Robinson, E. Ratcliff, M. Rushing, R. Rowell, B. Rowse, D. Spell, V. Stewart, M. Sherman, B. Smith, S. Slaton, J. Simpson, N. Swan, T. Smith, R. Starr, H. Smith, M. Stokes, D. Tillman, R. Tillotson, M. Tootle, M. Thompson, M. Vann, M. Warren, J. Wyatt, G. West, L. Wilson, I. Wiggins, S. Woods, M. Weleh. G. Wilcox, G. Williams, A. Yarbrough.

# THE BAND



## OFFICERS

HOKE SMITH	President
FRANCES ANDERSON	Secretary
BETTY HATCHER	Treasurer
RUTH QUARELS	Librarian
JACK BROUCEK	Sponsor
J. W. BROUCEK	Director

## MEMBERS

Ruth Quarrels, Carolyn Ellington, Peggy Clark, Lambeth Key, Frances Anderson, Joyce Denmark, John Fletcher, Hoke Smith, Richard Fisher, Sara Slaton, Mary Allen, Cussie Wilcox, John Godby, Betty Beasley, Jessie Deal, Betty Hatcher, Jimmie Gillis, Calvin Harrison, Iris Wiggins.

# Home Economics Club



## OFFICERS

MAGGIE VANN	President
MARJORIE ODOM	Vice-President
THELMA WARREN	Secretary
HILDA CULBRETH	Treasurer
MISS RUTH BOLTON	Sponsor

## MEMBERS

Betty Anchors, Hazel Cowart, Hilda Culbreth, Helen Davis, Lawana Daves, Hazel Hamm, Rita McRae, Joyce Newton, Marjorie Odom, Mamye Jo Parker, Mary V. Phillips, Alma Smith, Vera Stewart, Doris Tillman, Maggie Vann, Betty Thompson, Juanita Wyatt, Bessie Dean, Martha Tootle, Virginia Sandford, Emily Kennedy, Elouise Lathan, Christine Shruptrine, Emma Jean Bohler.



# Women's Athletic Association



*Left to right:* Helen Withro, Alma Smith, Miss Guill, Jean Smith, Betty Jones, Syble Newton  
Jackie Strange, Frances Anderson.

## OFFICERS

[illegible]

# Industrial Arts Club



*Left to right:* Harrison, Meeks, Hostetler, Miller, Hudson, Godby, Boddiford, Warren, Akins.

## OFFICERS

[illegible]

## East Hall House Council



*Back row:* Strange, Wyatt, Brown, Newton, Hendrix, Jones . . . *Middle row:* Watson, Darby, Clark . . . *Front row:* Vann, Scruggs, Smith, Miss Veazey.

### OFFICERS

JUANITA WYATT	. . . . .	<i>President</i>
THELMA WARREN	. . . . .	<i>Vice-President</i>
MAGGIE VANN	. . . . .	<i>Secretary-Treasurer</i>

## Lewis Hall House Council



*Left to right:* Blanton, Reeves, Jones, Smith, Jaworek, Miss Guill, Anderson, Huggins.

### OFFICERS

MELBA HUGGINS	. . . . .	<i>President</i>
SELMA JAWOREK	. . . . .	<i>Vice-President</i>
KATHILEEN BLANTON	. . . . .	<i>Secretary-Treasurer</i>



# SANFORD HALL HOUSE COUNCIL



*Standing:* Mann, Miller, Collins, Hudson, Godbee, Dillard . . . *Seated:* Aunt Sophie, Lockwood, Miller.

## OFFICERS

MAYO HUDSON	President
JOHN GODBEE	Vice-President
FRANK MILLER	Secretary-Treasurer

## Monitors

Eldred Mann, Frank Miller, Buzzie Daniel, Wallace Collins, Max Lockwood, Walter Dillard, Dick Futch.

# THE VETS



Moye, Hagan, Watson, Grail, Strange, Godbee, Hart, Lockwood, Davis.



# B E A U T I E S

## Division of The ARTS

GEORGE PEABODY COLLEGE FOR TEACHERS  
NASHVILLE, TENNESSEE

February 21, 1946

Dear Miss Jaworek:

To paraphrase Will Rogers, "all I know is what I read in the papers" — all I know is what I see in the pictures. How I could wish to see and know the fair contestants, for I would like to take into account additional factors representative of complete beauty — the poise, the voice, the grace of action, and the gracious manner. I find the task most difficult since I am to select only from photographs the five most beautiful co-eds. This difficulty is increased by the combined presentation of studio photographs and casual snapshots. Sometimes the studio picture fails to capture the aliveness of the subject; again the studio product is magnificent whereas the snapshot seems to have been taken under unfortunate conditions of pose and lighting.

Unable, then, to establish effective objective criteria I must resort to my questionable subjective basis of judgment and present alphabetically THE five of my choice:

Imogene Bohlar

Emily Kennedy

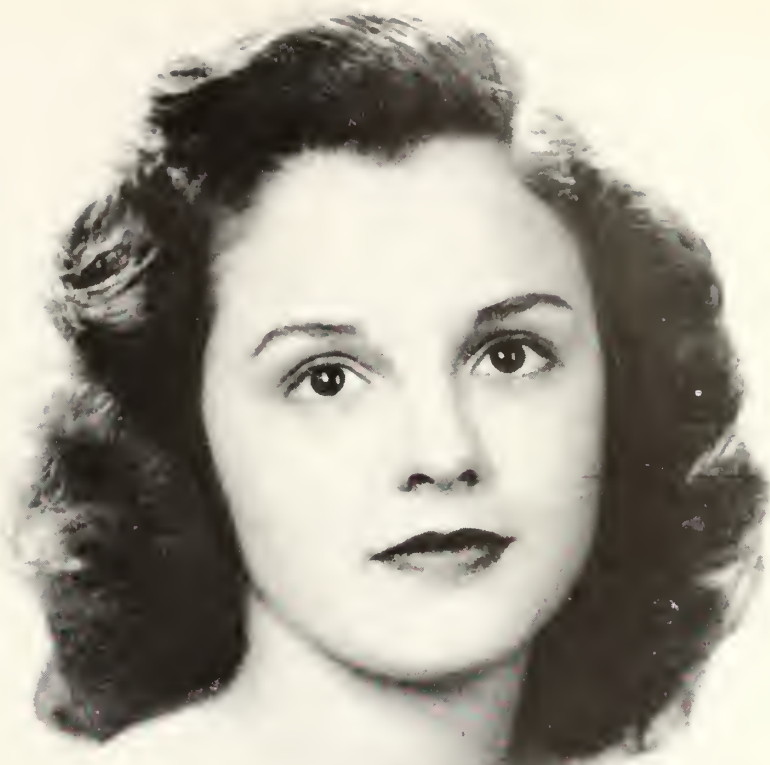
Mary Frances Phillips

Margaret Sherman

Owen West

Cordially yours,

*George A. Turate*



*Emma Jean Bohler*





*Emily Kennedy*







*Mary Frances Phillips*





*Margaret Sherman*





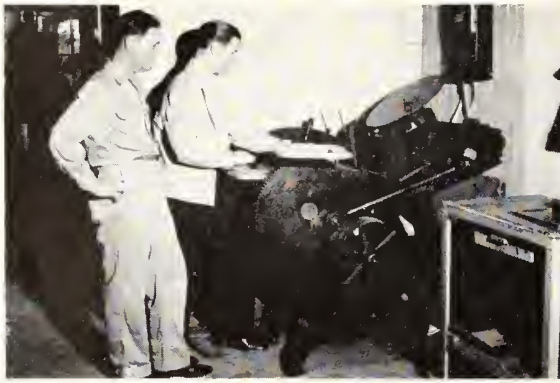
*Gwen West*







*Smoke gets in our eyes.*



*Pate shows Floyd  
how it's done.*



*Jim, Hoke, Ray*



*Sun and water.*



*No wonder khaki beams.*



*Who's "at work,"  
girls?*



*Thad*



*High on a windy hill.*



*'S love.*



*"Pokie"*



*Beasley*

# *Advertisements*

### CONGRATULATIONS...

... TO THE STAFF OF THE 1946 REFLECTOR for an outstanding edition of the GEORGIA TEACHERS COLLEGE yearbook. In this volume you have captured many reflections of your life at the Teachers College and set them down indelibly for the years to come.

... TO THE BUSINESS MEN OF STATESBORO for taking an active part in making this book possible through their advertising.

... TO THE STUDENTS OF THE TEACHERS COLLEGE for recognizing the values they may receive in patronizing the advertisers of the 1946 REFLECTOR who represent the leading businesses of the community and are loyal patrons and boosters of their college.

STUDENTS! FACULTY! Read these ads.  
Trade in Statesboro, in the heart of Bulloch County —  
*"Where nature smiles and progress has the right-of-way."*

STATESBORO  
CHAMBER OF COMMERCE



**FRANKLIN DRUG CO.**  
REXALL QUALITY DRUGS  
PROFESSIONAL PHARMACIST

Phone 2

STATESBORO

GEORGIA

**IDEAL SHOE SHOP**

Sea Island Bank Building

HOMER SIMMONS, Prop.

STATESBORO

GEORGIA

**STAR FOOD STORE**

FANCY AND STAPLE GROCERIES  
QUALITY MEATS

*Fresh Vegetables Daily*

E. O. LIGHTFOOT, Manager

**W. C. AKINS & SON**

HARDWARE — GROCERIES  
PECANS

*Service Is Our Motto*

See us before you sell your pecans.

ALWAYS A GOOD SHOW  
AT THE  
GEORGIA THEATER  
AND  
STATE THEATER

**L. A. WATERS  
FURNITURE  
COMPANY**

EVERYTHING FOR  
THE HOME

STATESBORO

GEORGIA

**OLLIFF & SMITH**

FANCY GROCERIES  
FRESH MEATS

GARDEN AND FIELD SEED  
HAY AND GRAIN  
POULTRY SUPPLIES

STATESBORO

GEORGIA

**B. B. MORRIS & CO.**

FANCY AND STAPLE GROCERIES  
QUALITY MEATS  
BARBECUE

*CLOTHES...*

FOR THE FAMILY

**ROSENBERG'S**

STATESBORO

GEORGIA

**F. S. PRUITT**

STATESBORO OFFICE EQUIPMENT CO.

ROYAL TYPEWRITERS

*Sales and Service*

OFFICE AND SCHOOL SUPPLIES

34 E. Main St.

Phone 520

**MODEL LAUNDRY AND  
DRY CLEANERS**

Phone 55

STATESBORO

GEORGIA

## SMITH-TILLMAN MORTUARY

Successor to Lanier's Mortuary

J. E. (Jake) Smith

E. Grant Tillman

AMBULANCE SERVICE

STATESBORO

GEORGIA

## BOWEN FURNITURE CO.

*QUALITY FURNITURE*  
COMFORTABLY SMART

## PRODUCERS CO-OP ASSOCIATION

FEEDS — SEED — COTTON

*Fire Insurance and Farm Supplies*

E. L. ANDERSON, Manager

## M. E. ALDERMAN ROOFING COMPANY

WINDOWS — DOORS — ROOFING  
ASBESTOS SIDING

20-22 West Main St.

STATESBORO

GEORGIA

## ELI HODGES COMPANY

FRESH SEA FOODS AND  
POULTRY

16 West Main Street

STATESBORO

GEORGIA

## WALTER ALDRED CO.

EVERYTHING IN  
BUILDING SUPPLIES

Phone 224

STATESBORO

GEORGIA

## THE BARGAIN CORNER

FRESH AND STAPLE  
GROCERIES

*QUALITY MEATS*



# HOWARD LUMBER COMPANY

ARTHUR HOWARD, Owner

A COMPLETE LINE OF  
LUMBER AND BUILDING SUPPLIES

•

•

•

Phone 353

STATESBORO

GEORGIA

*Compliments  
...of...*

**S. W. LEWIS, INC.**

STATESBORO

GEORGIA

*Insist On...*

GRADE "A" PASTEURIZED MILK

*... It's Safer*

**CITY DAIRY COMPANY**

STATESBORO

GEORGIA

**INSURE TODAY!**

**JOHNSTON AND DONALDSON**

Represent Reliable Companies With  
Reputations for Fair Dealing

*Your Oldest Friend...*

**THE BULLOCH TIMES**

The Best in Country News

STATESBORO

GEORGIA

**CONSERVATIVE MANAGEMENT**

**COURTEOUS SERVICE**

●  
*'BIG ENOUGH TO SERVE YOU'...  
SMALL ENOUGH TO KNOW YOU'*

●  
**BULLOCH COUNTY BANK**

**BUY AND HOLD UNITED STATES SAVINGS BONDS**

*Member of F. D. I. C.*

GLASSWARE  
CHINAWARE  
SPORTING GOODS

**SOUTHERN  
AUTO STORES**

TIRES  
BATTERIES  
SEAT COVERS  
AUTO PARTS

**GRIMES JEWELRY  
COMPANY**



SILVERWARE  
GLASSWARE  
DIAMONDS  
WATCHES  
CHINA

**E. A. SMITH GRAIN  
COMPANY**

*Everything in*

BUILDERS' SUPPLIES  
AND  
FERTILIZERS

14 East Vine Street

STATESBORO

GEORGIA

*Compliments  
...of...*

**LANNIE F. SIMMONS**

AUTOMOBILES  
TRACTORS  
FERTILIZERS  
EQUIPMENT

**HOKE S. BRUNSON**



*IF YOU LIVE AT SCHOOL...*

LET US GLAMORIZE YOUR ROOM WITH  
OUR HOME FURNISHINGS



*IF YOU WOULD GET THE MOST OUT OF SCHOOL...*

LET US GLAMORIZE YOU WITH THE  
LATEST IN FASHIONS



H. MINKOVITZ & SONS  
DEPARTMENT STORES

SYLVANIA

STATESBORO

SAVANNAH

**STATESBORO TRUCK AND  
TRACTOR COMPANY**

TRUCKS — TRACTORS

*Shop Service At Its Best*

Vine Street

Statesboro, Ga.

*Compliments*

*...of...*

**STATESBORO WOMAN'S  
CLUB**

•

**BRANNEN-THAYER  
MONUMENT COMPANY**

•

45 West Main Street

STATESBORO

GEORGIA

*Compliments of*

**STATESBORO FLORAL  
SHOP**

Authorized Florist

TELEGRAPH DELIVERY SHOP

Phone 319

Fair Road

**F. W. DARBY LUMBER CO.**

*Manufacturers of*

BAND SAWN YELLOW PINE

CYPRESS AND HARDWOOD

*Specializing in*

OAK, GUM, MAPLE AND PINE FLOORING

ALSO MOULDING AND FINISH

Located On Mill Street Between Statesboro and the College

Phone 380

STATESBORO

GEORGIA

**THE  
STATESBORO  
GROCERY  
COMPANY**

**WHOLESALE GROCERS**

•

**MILLIONS OF STUDENTS IN  
AMERICA LOOK TO  
PENNEYS**

for young America Styled Togs for the  
Campus, Sports and Dress.

Pennys, youth center of the coastal em-  
pire section, with four floors of apparel  
accessories, shoes, and home furnishings  
is ever alert to style trends and at the  
same time we major in fine quality.

*More Than Ever*

*"It's Smart To Be Thrifty"*

**BUY PENNEYS**

*"If It's Seed? If It's Feed?  
We Have It!"*

**BRADLEY AND CONE  
SEED AND FEED CO.**

•

**BABY CHICK  
GOOD GERMINATED SEEDS**

•

STATESBORO

GEORGIA

**THE BEST IN  
COLLEGE CLOTHES**

**FOR**

**STUDENTS AND  
FACULTY**

**HENRY'S**

•



**JOSEPH'S**

*EXCLUSIVE WOMEN'S  
APPAREL*

25 Broughton Street, West  
SAVANNAH GEORGIA

CLOTHES...

*For the Campus*

**THE FAIR STORE**

*And the Family, Too*



Fine Pianos Sheet Music

**ALNUTT MUSIC CO.**

240 W. Broughton St., Savannah, Ga.

PHONOGRAPH RECORDS  
MUSICAL MERCHANDISE

SAVANNAH'S LEADING  
DEPARTMENT STORE

**W. T. GRANT**

*See Us For Your Various Needs*

OLIN F. FULMER, *Manager*

**THE MUTUAL LIFE INSURANCE  
COMPANY OF NEW YORK**

SAVANNAH

GEORGIA

*Sporting Goods — Luggage — Jewelry*

**WOLF'S**

Broughton at Montgomery  
Savannah, Georgia

*Fishing Tackle, Diamonds and Watches*

Ben H. Portman, Mgr. Phone 5294

COMPLIMENTS OF

**THE FAVORITE SHOE STORE**

STATESBORO

GEORGIA

**BRADY'S DEPARTMENT STORE**

SMART STYLES FOR  
BOYS AND GIRLS

*Come in and See Our Display*

17 North Main Street

SAVANNAH'S FINEST STORE  
FOR MEN AND WOMEN

**MORRIS LEVY'S**

*The House of Fashion*

SAVANNAH

GEORGIA

DIAMONDS – WATCHES  
JEWELRY – GIFTS  
WATCH REPAIRING

**LANIER JEWELRY**

*"Gifts For All Occasions"*

*Compliments of the*

**JACKEAL HOTEL**



STATESBORO

GEORGIA

**BULLOCH EQUIPMENT CO.**  
OLIVER FARM EQUIPMENT

*Frick Distributed Equipment*

45 E. Main Street

STATESBORO

GEORGIA

*Compliments  
of the*

**COED BEAUTY SHOP**

Telephone 216

*Compliments*

**SORRIER INSURANCE  
AGENCY**

Established 1888      Phone 58

STATESBORO

GEORGIA

*Want Quick Service?*

**STATESBORO PROVISION  
COMPANY**

ICE AND MEAT CURING

STATESBORO

GEORGIA

*The Best in Town for . . .*

PROMPT SERVICE

**ELLIS DRUG CO.**

FOUNTAIN SERVICE DELUXE  
AND

PRESCRIPTIONS FILLED  
QUICKLY AND CORRECTLY  
BY PROFESSIONAL  
PHARMACISTS

**FIRESTONE**

HOME AND AUTO SUPPLIES

Ramsey Brothers, Proprietors

47 East Main Street

STATESBORO

GEORGIA

**H. W. SMITH**

*Statesboro's Leading Jewelers*

Teachers and Students Always Welcome

STATESBORO

GEORGIA

**FINE'S**

*"WHERE FASHIONS MAKE THEIR DEBUT"*

Extends to you a cordial invitation to make your headquarters here,  
when shopping in Savannah. One of Savannah's really smart shops.

Fine's is ready to serve you at all times with everything that's new  
and smart in fashions for women and children!



*Compliments*

*...of...*

**HODGES-ATWELL  
BAKERY**

STATESBORO

GEORGIA

*Compliments*

*...of...*

**DONALDSON-SMITH  
CLOTHING CO.**

•

**OUTFITTERS FOR  
MEN AND BOYS**

•

STATESBORO

GEORGIA

*Compliments*

*...of...*

**KENNEDY'S FURNITURE  
COMPANY**

STATESBORO

GEORGIA

*Meet Your Friends at the*

**COLLEGE  
PHARMACY**

*"Where the Crowds Go"*

**PROMPT, COURTEOUS  
SERVICE**

•

Phone 414

Phone 416

**L. B. DOBBS  
STUDIO**

*Portraits For Any Occasion*

31 N. Main Street

STATESBORO

GEORGIA

**CITY DRUG COMPANY**

**PHARMACISTS**

S. L. Lanier

STATESBORO

GEORGIA

*Compliments of*  
**RUSHING HOTEL**

120 South Main Street  
STATESBORO                      GEORGIA

**THE BLUE TIDE**  
ON THE CAMPUS

•  
"WHERE BOY MEETS GIRL"

**FRANKLIN CHEVROLET CO.,  
INC.**  
CHEVROLET PASSENGER CARS  
COMMERCIAL CARS AND TRUCKS  
12 Seibold Street      Phone 101  
STATESBORO                      GEORGIA

•  
**BOOTH  
AND  
PRESTON**  
•

WHEN YOU THINK OF A BANK WHICH GIVES  
YOU SAFETY, COURTESY AND  
SERVICE WITH A PERSONAL TOUCH . . .

•  
**SEA ISLAND BANK**

*SAFETY – COURTESY – SERVICE*

Member F. D. I. C.

**LEOPOLD ADLER CO.**

*Savannah's Leading and Largest  
Department Store*

•  
**STUDENT OUTFITTERS FOR  
67 YEARS**

*We Invite You To Visit Our Store  
While in Savannah*

**SHOES  
FOR ENTIRE FAMILY  
GLOBE SHOE CO.**

•  
**17 East Broughton  
SAVANNAH                      GEORGIA**

**DANIEL HOGAN. INC.**

**DRESS GOODS  
LINENS  
DOMESTICS  
DRAPERIES**

*Buttons, Trimmings and Everything  
for the Home Sewer*

*McCall and Advance Patterns  
Broughton and Barnard Streets*

**SAVANNAH                      GEORGIA**

**Quality Our Standard Since 1868**

**ROCKER APPLIANCE CO.  
ELECTRICAL APPLIANCES**

*Refrigeration Contracting*

**37 West Main Street  
STATESBORO                      GEORGIA**

**TODAY AS ALWAYS  
FOR CLEANING**

**IDEAL CLEANERS**

•  
**Vine Street                      Phone 548**



VARSITY TOWN CLOTHES

**THE JONES CO.**

*Quality Clothing for Men and Boys*

Terrell T. Tuten      Carl J. Kraft

SAVANNAH

GEORGIA

Phone 7313

**MANGEL'S**

FEMININE APPAREL

15 Broughton St., E.      Savannah, Ga.

"DINE AND DANCE"

CAMELLIA ROOM

**SAVANNAH HOTEL**

GEORGE FOWLER, Manager

PAINTS — VARNISHES — STAINS

**NEAL BLUM COMPANY**

14 West Bay Street

Savannah, Georgia

"Dependable Service for 50 Years"

READ THE BULLOCH HERALD

*"The Newspaper That Went To War"*

**BANNER STATES PRINTING CO.**

Quick Quality Printing

Jim Coleman      Leodel Coleman

27 W. Main St.

Statesboro, Ga.

**BULLOCH TRACTOR COMPANY**

JOHN DEERE

FARM IMPLEMENTS

36 West Main Street

STATESBORO

GEORGIA

*Compliments*

*... of ...*

**GEORGIA TEACHERS  
COLLEGE**



*Compliments*

*... of ...*

**THE REFLECTOR STAFF**



FROM WHERE IT IS  
TO  
WHERE IT ISN'T  
FOR MORE THAN A QUARTER OF A CENTURY



ALFRED DORMAN CO.

*WHOLESALE GROCERS*

1920 — 1946











RESERVE

LH

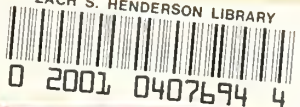
1

.G43

R4

1946

ZACH S. HENDERSON LIBRARY



For Reference

Not to be taken from this room



