

Reflector

1944

Georgia Southern University

Follow this and additional works at: <https://digitalcommons.georgiasouthern.edu/reflector-yearbook>



Part of the [Higher Education Commons](#)

Recommended Citation

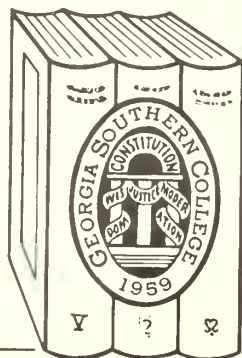
Georgia Southern University, "Reflector" (1944). *Reflector Yearbook*. 17.
<https://digitalcommons.georgiasouthern.edu/reflector-yearbook/17>

This book is brought to you for free and open access by the Student Media at Digital Commons@Georgia Southern. It has been accepted for inclusion in Reflector Yearbook by an authorized administrator of Digital Commons@Georgia Southern. For more information, please contact digitalcommons@georgiasouthern.edu.

RESERVE
LH
I.G43
R4
1944

Reflector *'44*

GEORGIA
SOUTHERN COLLEGE
LIBRARY



Georgia Southern College
Zach S. Henderson Library

Office of President





Digitized by the Internet Archive
in 2014

<https://archive.org/details/reflector1944na>

The 1944 Reflector

YEARBOOK OF
GEORGIA TEACHERS COLLEGE

Published by
SENIOR CLASS

RICHARD STARR
Editor

PRUELLA CROMARTIE
Business Manager

COPYRIGHT 1944

A WORD FROM THE EDITOR



During the year 1943-44 many things have taken place here on Georgia Teachers College campus. It was the duty of the REFLECTOR Staff under my editorship to compose an annual which would record these happenings for the future. After working under handicaps of limited photography and printing caused by wartime shortages, we are proud to present the 1944 REFLECTOR of Georgia Teachers College. It is our sincere hope that in it have been recorded all things which contributed to making the year of 1943-44 at Teachers College a year never to be forgotten.

In behalf of the Staff and myself, I wish to thank all individuals who in any way helped to make this a successful annual, and especially do I wish to express our sincerest appreciation to Major Leon Whittier, Commandant of the STAR Unit, for his cooperation and helpfulness in obtaining many of the photographs contained in this book.

Richard C. Starr

Editor



38964

Dedication



To one who has given us many excellent dramatic productions; to one who has worked long and untiringly in behalf of the Speech Department, and who has accomplished much through her efforts; to one who has always been the students' friend, companion, and advisor; to a very fine and accomplished lady . . .

MISS MAMIE JOSEPHINE JONES

. . . the REFLECTOR Staff of 1944 is very proud to dedicate this annual.

Miss Jones, working with the Masquers Club, has given us many fine productions which otherwise would not have been presented on Georgia Teachers College Campus. In 1939-40 "Three Cornered Moon" and "Death Takes A Holiday" were presented; in 1940-41, "Our Town" and "Quality Street;" in 1941-42, "You Can't Take It With You" and "Ladies In Retirement;" in 1942-43, "Lost Horizon," "Charm" and "The Old Lady Shows Her Medals;" and finally in 1943-44 "The Cradle Song," "The Happy Journey" and the hit production of "Junior Miss."

"Junior Miss"
1943-44



"You Can't Take It With You"
1941-42

"Death Takes a Holiday"
1939-40



"Ladies In Retirement"
1941-42



College



The Administration



ZACH S. HENDERSON
Dean



MARVIN S. PITTMAN
President



SOPHIE JOHNSON
Dean of Men



MAMIE VEAZEY
Dean of Women

GEORGIA TEACHERS COLLEGE STAFF

MRS. ESTHER W. BARNES *Music*
 MRS. KATHLEEN M. BARRON *Library*
 MISS RUTH BOLTON *Home Economics*
 JOHN B. BURKS *Laboratory School*
 MRS. MAUDE BOONI *Dietician*
 J. E. CARRUTH *Education*
 MISS QUEEN E. COLLINS *Secretary, Laboratory School*
 RAYMOND J. COLTHARP *Industrial Arts*
 MRS. R. J. COLTHARP *Laboratory School*
 ROBERT F. DONALDSON *English*
 MRS. ORIAN EVERETT *Nurse*
 MISS BERTHA FREEMAN *Laboratory School*
 MISS FRANCES GROVE *Art*
 MRS. MARJORIE GUARDIA *English*

MISS EDITH GUILL *Physical Education*
 W. S. HANNER *Science*
 MISS EVA HAYES *Dietician*
 MISS GENEVA HODGES *Secretary*
 F. WALTER HUFFMAN *Music*
 MRS. BLANCH A. JOINER *Laboratory School*
 MISS SARA ESTHER JONES *Laboratory School*
 MISS MAMIE JO JONES *Speech*
 MISS ZULIEME LANE *Library*
 MISS HASSIE McELVEEN *Library*
 MISS MAE MICHAEL *Secretary*
 ROLF E. MOSELEY *Science (Army Program)*
 W. B. MOYE *Mathematics (AP)*
 MRS. RONALD J. NEIL *Manager, Blue Tide*
 MRS. W. W. MANN *English (AP)*

MISS HESTER NEWTON *Social Science*
 MRS. FRANCES OLMSTEAD *Laboratory School*
 MISS VIOLA PERRY *Registrar and Mathematics*
 JOHN A. POOLE *Mathematics (AP)*
 R. D. PULLIAM *Manager, Farm*
 MRS. JANE R. ROBSON *Laboratory School*
 MRS. ARDELIA ROBINSON *Laboratory School*
 MISS MALVINA TRUSSELL *Science*
 C. R. WALKER *Physical Education (AP)*
 A. DRANE WATSON *Physical Education*
 MRS. ELIZABETH W. HAMIR *Business*
 J. H. WHITESIDE *Physician*
 R. L. WINBURN *Bursar*
 MISS MARIE WOOD *Laboratory School*

LEAVE OF ABSENCE

RONALD J. NEIL
 FIELDING D. RUSSELL
 B. L. SMITH



C l a s s e s



SENIOR OFFICERS



President
Winter and Spring Quarters

LEILA VIRGINIA WYATT

Cedartown, Ga.

ENGLISH

Dux Domina Sorority, 1, 2, 3, Vice-President, 3; Delta Sigma Sponsor, 3; The Masquers, 2, 3, 4, Treasurer, 3, 4; House Council, 2, 3, 4; College Chorus, 1, 3; Home Economics Club, 2, 3; Y. W. A., 2, 3; Y. W. C. A., 2, 3, 4, Vespers, 3; Pan-Hellenic Council, 3, 4, Social Chairman, 3, President, 4; REFLECTOR Staff, 4; May Court, 2, 3; Beauty Section, 1, 2, 3, 4; President, Senior Class; Sponsor of "Star Unit," 4.

DANIEL THOMAS CHAMBLESS

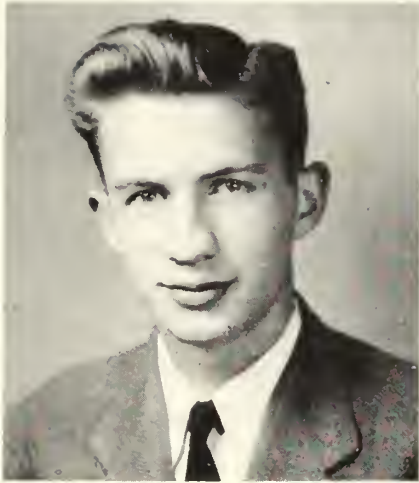
Dawson, Georgia

INDUSTRIAL ARTS

Bachelors Club; Band, 1, 2; Chorus, 3, 4; *George-Anne*, 1, 2, Circulation Manager 3, Editor, 4; President, Senior Class, Fall Quarter; Mu Sigma, 4; Industrial Arts Club, 1, 2, 3, 4; House Council, 3, 4; Y. M. C. A., 1, 2, 3, 4, Cabinet, 3.



President
Fall Quarter



Vice-President

RICHARD CAWTHON STARR
Greensboro, Ga.

GENERAЕ SCIENCE

Y. M. C. A., 1, 2, 3, Secretary, 2, Cabinet, 3; *George-Anne* Staff, 1, 2; I. R. C., 2; Vesper Choir, 1; Mu Sigma, 3, Treasurer, 3; Chorus, 1, 2, 3, Secretary, 2; Student Council Representative, Sophomore Class; The Masquers, 2, 3; President, Junior Class; Vice-President, Senior Class; Editor, REFLECTOR; Honor's Day 2; Student Councilor 3.

SUE BREEN

Jesup, Ga.

GENERAЕ SCIENCE

The Masquers, 1, 2, 3, Secretary, 2, President, 3; I. R. C., 1, 2, 3, Treasurer, 3; College Chorus, 1, 2; President, W. A. A. 3; Vice-President, House Council, 3; Treasurer, Senior Class; REFLECTOR, Associate Editor; Epicurean Sorority, 1, 2, Secretary 1, President 2; Pan-Hellenic, Secretary, 2; Honor's Day, 2; Who's Who Among Students in American Universities and Colleges; Student Councilor 3.



Secretary

MARTHA SIMMONS COLLMAN
Statesboro, Ga.

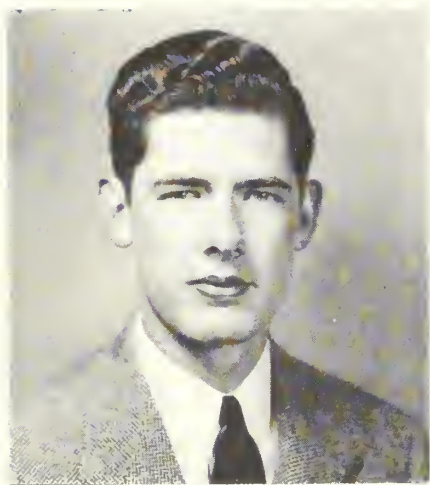
ENGLISH

Dramatic Club, 1, 2, 4; *George-Anne* Staff, 4; University of Georgia, 3; REFLECTOR Staff, 4; Secretary, Senior Class; Epicurean, 1, 2, 3, Secretary, 3.



Treasurer

Seniors...



JACK NELSON AVERITT

Statesboro, Ga.

ENGLISH

Transfer from University of Georgia; Mu Sigma, 3, 4; English Club, 3; The Masquers, 3, 4; B. S. U., 3; Glee Club, 4.

FRANCIS ESTELLE BLACKWELL

Homer, Ga.

ELEMENTARY EDUCATION

Home Economics Club, 1, 2, 3; Y. W. C. A. 1, 2, 3.



RUTH JOHNSON BRYAN

Alma, Ga.

ELEMENTARY EDUCATION

Transfer from Young Harris; Dux Domina Sorority, 3; House Council, 3, 4, Vice-President 3, Secretary and Treasurer 4; Chorus, 3, 4; The Masquers, 4; Y. W. C. A., 4, Cabinet 4.





ALMA LAVONIA CATO
Rincon, Ga.
GENERAL SCIENCE

Y. W. C. A., 1, 2, 3; I. R. C., 2, 3.



MARTHA PRUELLA CROMARTIE
Statesboro, Ga.
BUSINESS

Y. W. C. A., 1, 2, 3; College Trio, 1, 2; *George-Anne* Staff, Circulation Manager, 1, 2, 3; Student Council Representative, Junior Class; The Masquers, 3; Mu Sigma, 1, Vice-President, 2, President 3; College Chorus, 1, 2, Vice-President, 3; Business Manager of REFLECTOR; Who's Who Among Students in American Universities and Colleges; Delta Lambda Delta Sorority, 1, 2, Secretary, 1, President 2; Pan-Hellenic, 2.

DONNA THIGPEN EDWARDS
Dublin, Ga.
MUSIC

Sigma Gamma Sorority, 1, 2, 3; Mu Sigma, 1, 2, 3, 4, Vice-President, 3; Chorus, 1, 2, 3, 4, Co-Chairman, 3; Band, 2; *George-Anne* Staff, 2.



Seniors...



OUIDA WYATT INGRAM

Brooklet, Ga.

BUSINESS

Mu Sigma, 1, 2; Epicurean Sorority, 1, 2, Chaplain, 2; College Chorus, 1, 2; Y. W. C. A., 1, 2, Cabinet, 2; Dance Club, 1; Home Economics Club, 1, 2; Pan-Hellenic Council, 2; University of Georgia, 3; Student Councilor, 4.

DENVER LANIER

Rocky Ford, Ga.

GENERAL SCIENCE

President, Anderson Hall, 4; Science Seminar, 1; Y. M. C. A., Vice-President, 4; College Chorus; REFLECTOR Staff.



IDA LEE MOSLEY

Louisville, Ga.

HISTORY

Y. W. C. A., 1, 2, 3, 4, Vice-President, 3, 4; The Masquers, 2; Lewis Hall House Council, Secretary, 3, President, 4; I. R. C., 2, 3, President, 4; Who's Who Among Students in American Universities and Colleges.





GERALDINE MCCARTY ROUSE
Albany, Ga.
ELEMENTARY EDUCATION

Transfer Student, University of Georgia;
REFLECTOR Staff, 4; I. R. C., 4; Y. W.
C. A., 4; W. A. A., 4.



JESSIE NEVILLE McMILLAN
Statesboro, Ga.
ELEMENTARY EDUCATION

Chorus, 1; Home Economics Club, 1, 2, 3.

MARY HELEN THIGPEN
Garfield, Ga.
ENGLISH

Y. W. C. A., 1, 2, 3, 4; House Council,
3, President, 4; Lambda Theta Chi, Vice-
President, 3; Home Economics Club, 3,
4, President, 4.

ALVA DRANE WATSON
Wrens, Ga.
HISTORY

Transfer Student, Mercer University;
Who's Who Among Students in American
Universities and Colleges; I. R. C., 4;
Y. M. C. A., 4; REFLECTOR Staff.



JUNIOR CLASS



BETH STANFIELD . . . Glennville, Ga.
President

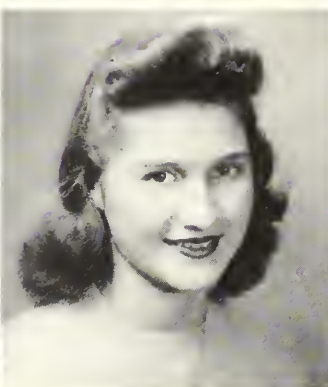
MARGARET STRICKLAND . . . Register, Ga.
Vice-President

ADILL CALLAWAY . . . Collins, Ga.
Secretary

HELLN HUTCHINSON . . . Adrian, Ga.
Treasurer



VENICE CLIFTON . . . Millen, Ga.
HARRIET GRANT . . . Andersonville, Ga.



MARY VIRGINIA GROOVER . . . Statesboro, Ga.
MILDRED GROOVER . . . Statesboro, Ga.

... Juniors



PEARL HENDRIX Statesboro, Ga.

MINNIE FRANCES HILL Alamo, Ga.

VIRGINIA LOVETT Girard, Ga.

CATHERINE ROWSE Statesboro, Ga.



HELEN ROWSE Statesboro, Ga.

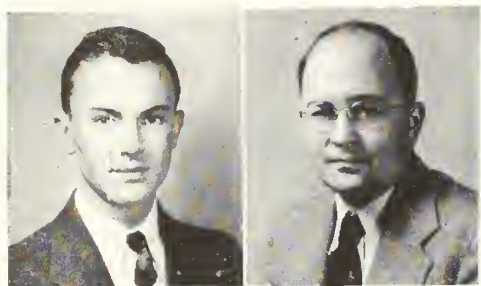
HENRY GRADY SHEAROUSE . . . Savannah, Ga.

*GRACE TRAPP Hamilton, Ga.

JAMES VARNELL Statesboro, Ga.

*No pictures

SOPHOMORE CLASS



DIXIE HATTON Odum, Ga.
President

WINTON WOODWARD Waycross, Ga.
Vice-President



BEVERLY EDWARDS Claxton, Ga.
Secretary and Treasurer



MARTHA EVELYN ALLEN Statesboro, Ga.

OMA LEE BRANCH Riceboro, Ga.

JEANITTE BROWNING Glenwood, Ga.

BERNICE CARENE DEAL Statesboro, Ga.

HAZEL EDITH DONALDSON Metter, Ga.

MARIAN V. DRIGGERS Stilson, Ga.

... Sophomores

JAMIE WYNELL FOWLER . . . Soperton, Ga.

SARA EMALYN GORDON . . . Hinesville, Ga.

THOMAS E. HARRELL . . . Mitchell, Ga.

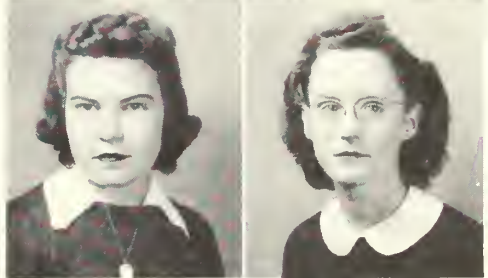
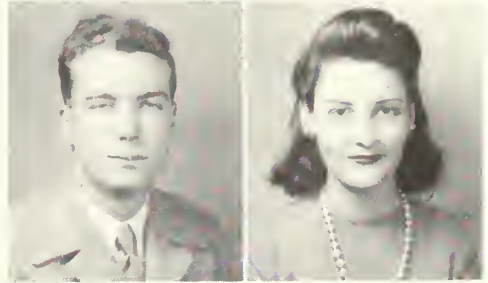
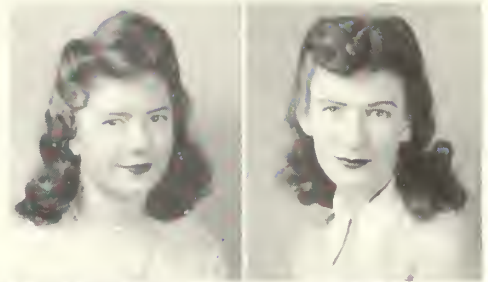
ERMA JLAN HENDRIX . . . Brooklet, Ga.

MELBA LUCILLE HUGGINS . . . Oliver, Ga.

SARA E. RIGGINS . . . Jesup, Ga.

JANIE JEWELL ROYAL . . . Sylvania, Ga.

JUANITA WYATT . . . Brooklet, Ga.



NO PICTURES

EMMETT W. BARNES . . . Statesboro, Ga.

WM. CHAPMAN CROMLEY, JR. . Brooklet, Ga.

BARBARA ANN EDGE . . . Statesboro, Ga.

ELMA FOSKEY . . . Soperton, Ga.

SARA YOUMANS . . . Swainsboro, Ga.

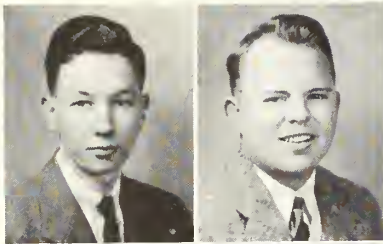
CHARLES WILLIAM HEARN . . . Bellville, Ga.

CHARLES MAX LOCKWOOD . . . Doerun, Ga.

RUTH LIGHTSLY SHIVER . . . Bristol, Ga.

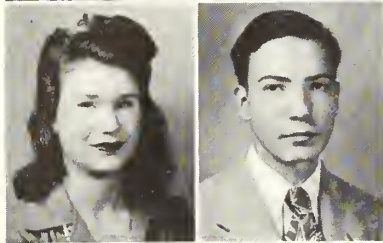
VINCE ALLEN THIGPEN . . . Summit, Ga.

FRESHMAN CLASS



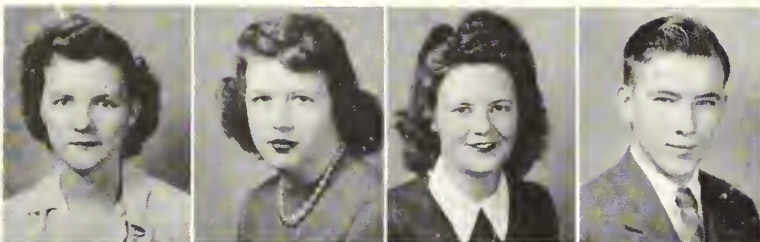
LONZO LAVERNE PHILLIPS Soperton, Ga.
President

ELDRÉD MANN Glennville, Ga.
Vice-President



JEROLINE HAMILTON Vidalia, Ga.
Secretary

CHARLES LANTY GRUVER Pembroke, Ga.
Treasurer

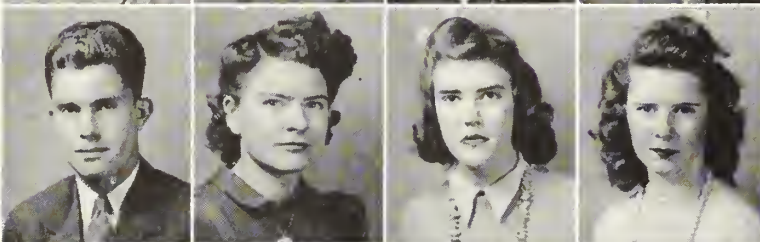


GRACE ELOISE AMERSON Lexey, Ga.

BARBARA HESS ANDERSON Lafayette, Ga.

JACQUIL ANDERSON Stuckey, Ga.

OLEN CLYDE ANDERSON Statesboro, Ga.



HUGH BIRD Portal, Ga.

KATHLEEN BLANTON Surrency, Ga.

EDITH BONNETT Portal, Ga.

MARY LEE BRANNEN Statesboro, Ga.

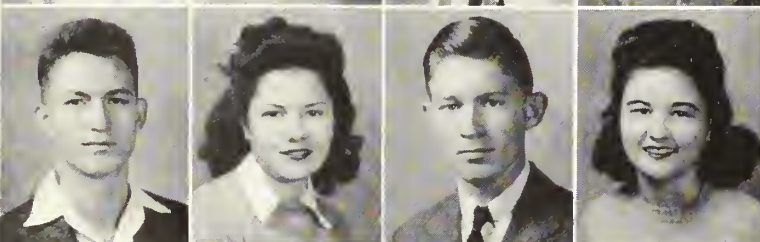


JEANETTE ELIZABETH BRINSON Woodcliff, Ga.

ALETHIA ANN BROWN Hinesville, Ga.

MARJORIE JACQUELINE BROWN Alamo, Ga.

SARAH AMANDA BROWNING Glenwood, Ga.



HUBERT C. CALLAWAY Collins, Ga.

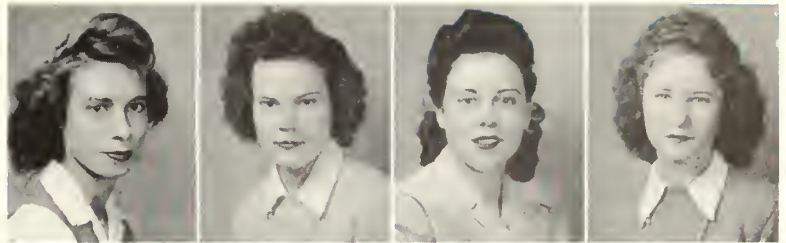
MILDRED M. CHAPMAN Adrian, Ga.

LAMAR GENE COLEMAN Garfield, Ga.

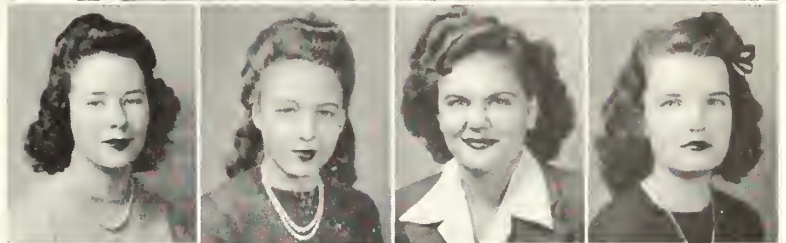
EMILY MARTIN CONNER Jesup, Ga.

... Freshmen

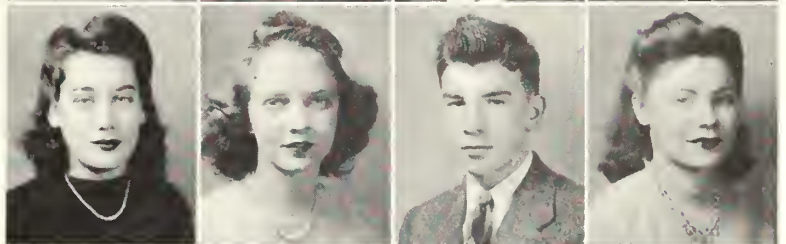
GENEVIEVE F. CONNER Atlanta, Ga.
HAZEL OLIVIA COWART Garfield, Ga.
DORIS COX Groveland, Ga.
JENIQUET CRUMLEY HARRELL Omega, Ga.



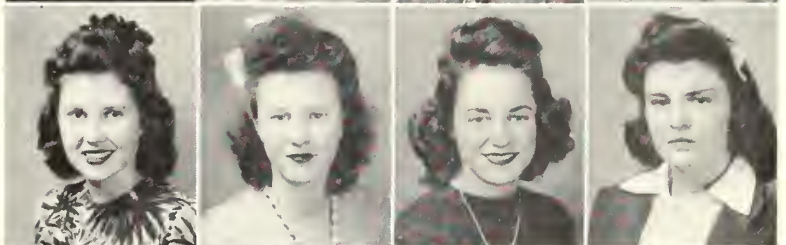
HILDA ELENORA CULBRIATH Union Point, Ga.
HILDA REE CURL Lyons, Ga.
JESSIE BYRD DANIEL Pulaski, Ga.
LOUISE NELL DANIEL Bellville, Ga.



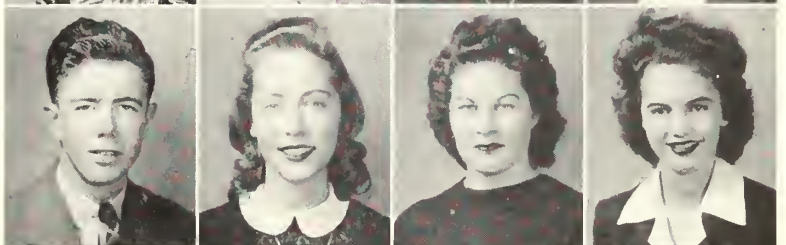
LILLIAN GRACE DAUGHTRY Metter, Ga.
EVA ELIZABETH DELOACH Savannah, Ga.
GEORGE HOMER EANES Woodcliff, Ga.
ADDIE RUTH EXLEY Springfield, Ga.



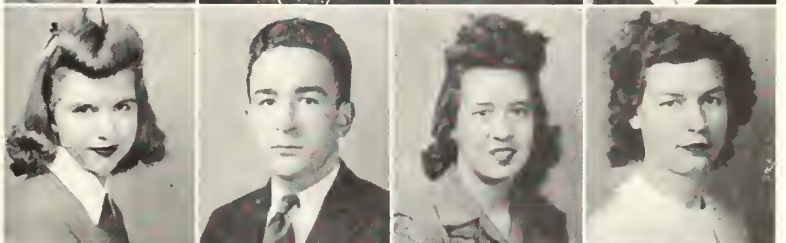
CLAIRE FLOYD Homerville, Ga.
BRUNELLE ALMA FOWLER Stuckey, Ga.
BETTY BIRD FOY Statesboro, Ga.
CARRIE NELL FREE Vienna, Ga.



JOHN FRANCIS GODBEE Sardis, Ga.
LEE DORIS GREER Cusseta, Ga.
GRACIE LOUISE HAIRE Colquitt, Ga.
BLTYE JANE HANEY Metter, Ga.



JOYCE HARRELL Swainsboro, Ga.
HENRY C. HEARN, JR. Bellville, Ga.
MARY HILDA HENDRIX Statesboro, Ga.
MERTIE EDELL HINELY Springfield, Ga.



OCEIL VIRGINIA HUDSON Stillmore, Ga.
VIRGINIA DARE JAMES Waycross, Ga.
MARY ELIZABETH JONES Nahunta, Ga.
MARY LOIS JONES Jesup, Ga.



Freshmen...



HUGH MILLER KEA Rocky Ford, Ga.
SARA FRANCES KENNEDY Statesboro, Ga.
CATHERINE J. LANIER Statesboro, Ga.
MATTIE RUTH LANIER Statesboro, Ga.

ANNIE RUTH MARTIN Stilson, Ga.
ALICE MAY Mitchell, Ga.
MARY ILA McELVEEN Claxton, Ga.
JOEL FRANK MILLER Toombsboro, Ga.

NORMA NEWTON Metter, Ga.
LUCILE SOPHRONIA OATTS Millen, Ga.
MARJORIE DAN ODOM Arabi, Ga.
CHARLES E. OVENS, JR. Claxton, Ga.

ANNE ELVIE PARRISH Pembroke, Ga.
ANN D. PEARCE Odum, Ga.
MARY FRANCES PHILLIPS Soperton, Ga.
MARY VIRGINIA PHILLIPS Reidsville, Ga.

ROBBIE LOU PHILLIPS Soperton, Ga.
FRANCES MARIAN RIGGINS Waycross, Ga.
JACKIE RIMES Glennville, Ga.
NANCY GRACE ROGERS Manassas, Ga.

HAZEL SAPP Pulaski Ga.
WINIFRED ANN SECKINGER Springfield, Ga.
BETTY FRANCES SIKES Cobbtown, Ga.
BETTY RUTH SIKES Collins, Ga.

JOHN EDWARD SIMMONS Eastman, Ga.
WALTER R. SIMS Dublin, Ga.
ANN SMITH Metter, Ga.
NELLIE SUE SMITH Flovilla, Ga.

... Freshmen

PAULINA ATHA SMITH Cadwell, Ga.
 ROBERT LINWOOD SMITH Screven, Ga.
 JLAN SPIERY HIGGINBOTTOM Reidsville, Ga.
 ANNIE INEZ STEVENS Statesboro, Ga.

JOHN WILBUR STONE Wrens, Ga.
 FAY MORINE THOMAS Ludowici, Ga.
 GRACE OLIVE THOMAS Gough, Ga.
 JACK TURNER Portal, Ga.

FRANCIS CHAPMAN TUTTLE Marlow, Ga.
 MAGGIE VANN Pembroke, Ga.
 CILLA HAZEL WILDES Alma, Ga.
 ALICE ANN WILCOX McRae, Ga.

WILLIAM H. WILCOX Garfield, Ga.
 DANA KATE WILLIAMS Collins, Ga.
 CELMA WOODS Dorchester, Ga.



NO PICTURES

CAROLYN PEGGY BRANNEN Statesboro, Ga.
 CHARLOTTE DASHER Stillmore, Ga.
 WALTER DOUGLAS DAVIS Soperton, Ga.
 LEE ELEANOR EDGE Statesboro, Ga.
 ROSE MARION HARRIS Vidalia, Ga.
 LUCY GODWIN HILL Washington, Ga.
 WILLIAM LEE HOLLAND Pulaski, Ga.
 JACK EDMUND KENNEDY Metter, Ga.
 HAZEL ELAINE KNIGHT Soperton, Ga.

RITA JUAN MCRAE Mt. Vernon, Ga.
 CAROLYN LUCIE MORRIS Waycross, Ga.
 GRADY WALLACE PHILLIPS Soperton, Ga.
 WILLIAM O. PHILLIPS Midville, Ga.
 ELEANOR J. SAVAGE Dover, Ga.
 FRANCIS COOPER SMITH Waycross, Ga.
 VIRGINIA STRICKLAND Statesboro, Ga.
 BASCOM GLENN TIPPINS Bellville, Ga.
 RUFUS CLARENCE TURNER Gay, Ga.

S n a p s . . .



1. "Junior Miss" . . . 2. "When the Major's away" . . . 3. "It's 10:30 a.m. again" . . .
4. "Oo-oo-ooo-oo-oo" . . . 5. A stimulus and its reaction "WOW" . . . 6. "Rayons."



1. "Inquisitive Freshman" . . . 2. "It's lots of fun just dreaming" . . . 3. "Pre-STAR-Unit romance" . . . 4. "What smiles! What poses! What le -- ! . . . 5. "Charter Members" . . . 6. "Taking Lessons" in Bushology.

S n a p s . . .



1. "We just love to smell a pipe" . . . 2. 'Twink' and J. B. "How romantic!" . . . 3. "Town, Mister?" . . . 4. "Original 'S' girls" . . . 5. "Won't someone help her?" . . . 6. "Ladies" . . . 7. 'Off Limits.'



1. "Sarge," I think . . . 2. "All smiles" . . . 3. Gee! Another 'S' . . . 4. "If this method fails, try walking to town" . . . 5. "The Stars must be going by" . . . 6. "All sweet things come in small packages" . . . 7 "Snow in Georgia?"



Organizations





LEWIS HALL

COUNCIL

IDA LEE MOSLEY	<i>President</i>
ADELL CALLAWAY	<i>Vice-President</i>
JAMIE FOWLER	<i>Secretary and Treasurer</i>
SARA YOUMANS	<i>Monitor</i>
MISS EDITH GUILL	<i>House Mother</i>

WEST HALL

COUNCIL

HELEN THIGPEN	<i>President</i>
SUE BREEN	<i>Vice-President</i>
RUTH BRYAN	<i>Secretary and Treasurer</i>
MISS MAMIE VEAZEY	<i>House Mother</i>



MONITORS

LEILA WYATT
CATHERINE ROUSE
BETTY DELOACH

BETH STANFIELD
MARGARET STRICKLAND
RUTH EXLEY
EMOLYN GORDON

MARJORIE ODOM
JEAN HIGGINBOTTOM
ALETHIA BROWN

ANDERSON HALL

OFFICERS

DENVER LANIER *President*
 THOMAS HARRELL *Vice-President*
 H. C. HEARN *Secretary and Treasurer*
 Miss SOPHIE JOHNSON *Dean of Men*



RESIDENTS

HUGH BIRD
 HUBERT CALLAWAY
 DAN CHAMBLESS
 GENE COLEMAN
 WILLIAM CROMLEY
 DOUGLAS DAVIS
 THOMAS HARRELL
 CHARLES HEARN

H. C. HEARN
 HUGH KIA
 JACK KENNEDY
 DENVER LANIER
 MAX LOCKWOOD
 FRANK MILLER
 WALLACE PHILLIPS
 HENRY SHEAROUSE
 ED SIMMONS
 R. C. TURNER

WALTER SIMS
 FRANCIS SMITH
 LINWOOD SMITH
 RICHARD STARR
 VINCE THIGPEN
 CHAPMAN TUTTLE
 BILL WILCOX
 WINTON WOODWARD



WATSON MANOR

OFFICERS

JOHN GODBEL *President*
 GEORGE EANES *Vice-President*
 DIXIE HATTON *Secretary*
 CHARLES GRUVER *Treasurer*
 Mr. DRANE WATSON *In Charge of Manor*

RESIDENTS

GEORGE EANES
 DIXIE HATTON
 JOHN GODBEL
 CHARLES GRUVER
 ELDRED MANN

CHARLES OVENS
 LAVERNE PHILLIPS
 JACKIE RIMES
 JOHN STONE
 B. G. TIPPINS

Y. M. C. A.



The Young Men's Christian Association of Georgia Teachers College has sought to help students preserve and apply whatever religious and moral values they may have developed before coming to college, and to make possible a spiritual growth in the lives of all these students. These things are accomplished by offering each a chance for religious thought and study; by providing opportunity for experience where ideals and principles may be lived in life situations; and by creating a consciousness of new trends and values in connection with our fellowman.

OFFICERS

WINTON WOODWARD	<i>President</i>
DENVER LANIER	<i>Vice-President</i>
DIXIE HATTON	<i>Secretary and Treasurer</i>
RICHARD STARR	<i>Vesper Chairman</i>
MR. JOHN BURKS	<i>Sponsor</i>
MR. FIELDING RUSSELL	<i>Sponsor</i>

Y. W. C. A.

"We, the members, unite in the desire to realize full and creative life through a growing knowledge of God."



OFFICERS

MARGARET STRICKLAND	<i>President</i>
IDA LEE MOSLEY	<i>Vice-President</i>
BETH STANFIELD	<i>Secretary and Treasurer</i>
MRS. MARJORIE GUARDIA	<i>Sponsor</i>
MISS MARIE WOODS	<i>Sponsor</i>

CABINET

RUTH BRYAN	<i>Membership and Publicity</i>
JEANETTE BROWNING	<i>Vespers</i>
ADELL CALLAWAY	<i>Evening Watch</i>
ANN SMITH	<i>Evening Watch</i>
HELEN HUTCHINSON	<i>Recreation</i>
BETTY JONES	<i>Music</i>

The 1944



RICHARD C. STARR
Editor

EDITORIAL STAFF

RICHARD C. STARR	Editor
SUE BRIEN	Associate Editor
IDA LEE MOSLEY	Club Editor
DENVER LANIER	Club Editor
LEILA WYATT	Photographic Editor



Reflector

PRUELLA CROMARTIE

Business Manager



BUSINESS STAFF

PRUELLA CROMARTIE	<i>Business Manager</i>
MARTHA SIMMONS COLEMAN	<i>Advertising Manager</i>
DRANE WATSON	<i>Advertising Manager</i>
GERALDINE ROUSE	<i>Circulation Manager</i>



THE GEORGE-ANNE

ESTABLISHED 1927

MEMBER GEORGIA COLLEGIATE PRESS ASSOCIATION

Represented for National Advertising by

NATIONAL ADVERTISING SERVICE, INC.

College Publishers Representative

Published Monthly from September till June, except during holidays by the students of Georgia Teachers College, Collegeboro, Ga.

420 Madison Avenue, New York, N. Y.

Chicago - Boston - Los Angeles - San Francisco

Subscription rate: 10c per copy; \$1.00 per year.

Entered as second-class matter at the postoffice at Collegeboro, Ga., under temporary permit.

EDITORIAL STAFF

DAN CHAMBLESS *Editor*

HUBERT CALLAWAY *Associate Editor*

BUSINESS STAFF

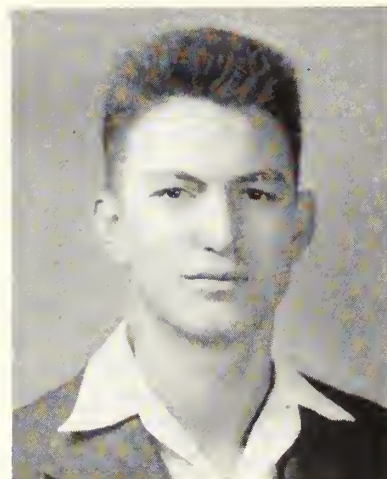
CHARLES OVENS *Business Manager*

BEVERLY EDWARDS *Assistant Business Manager*

PRUELLA CROMARTIE *Circulation Manager*

REPORTORIAL STAFF

Adell Callaway, Doris Greer, Hugh Bird, Hazel Wildes, Ruth Exley, Betty Jones, Betty Bird Foy, Beth Standfield, Claire Floyd, Jerry Hamilton.



HUBERT CALLAWAY
Associate Editor



The Staff

CHORUS



OFFICERS

BARBARA ANDERSON	<i>President</i>
PRUELLA CROMARTIE	<i>Vice-President</i>
JEROLINE HAMILTON	<i>Secretary and Treasurer</i>
HILDA CURL	<i>Accompanist</i>
MRS. E. L. BARNES	<i>Accompanist</i>
MR. F. WALTER HUFFMAN	<i>Director</i>

MEMBERS

Sopranos

BARBARA ANDERSON
 PRUELLA CROMARTIE
 HILDA CURL
 BETTY DeLOACH
 GRACE DAUGHTRY
 BETTY BIRD FOY
 DORIS GREER
 JEAN HIGGINBOTTOM
 BETTY JONES
 MARJORIE ODOM
 MARY VIRGINIA PHILIPS
 ANNE PIERCE
 GRACE ROGERS
 WINNIFRED SECKINGER
 INEZ STEVENS
 MARGARET STRICKLAND

Altos

GENEVIEVE CONNER
 HILDA CULBREATH
 JEROLINE HAMILTON
 LUCY HILL
 ANNIE RUTH MARTIN
 NORMA NEWTON

Tenors

JACK AVERITT
 CHARLES OVENS

Baritone's

RICHARD STARR

HOME ECONOMICS CLUB



OFFICERS

HELEN THIGPEN	<i>President</i>
DONNIE JO REAGAN	<i>Vice-President</i>
HAZEL COWART	<i>Treasurer</i>
HAZEL WILDES	<i>Secretary</i>
MISS RUTH BOLTON	<i>Sponsor</i>

MEMBERS

GRACE AMERSON	NELL DANIEL	DONNIE JO REAGAN
KATHLEEN BLANTON	GRACE DAUGHTRY	WINNIFRED SECKINGER
EDITH BONNETT	JEMIQUE HARRELL	PAULA SMITH
OMA LEE BRANCH	JOYCE HARRELL	HELEN THIGPEN
EMILY CONNER	EDELL HINELY	GRACE THOMAS
HAZEL COWART	MARJORIE ODOM	ALICE WILCOX
	SOPHRONIA OATTS	

INTERNATIONAL RELATIONS CLUB

OFFICERS

IDA LEE MOSLEY	<i>President</i>
ADELL CALLAWAY	<i>Vice-President</i>
MARGARET STRICKLAND	<i>Secretary</i>
SUE BREEN	<i>Treasurer</i>
MISS HESTER NEWTON	<i>Sponsor</i>

MEMBERS

SUE BREEN	FRANCES HILL	HENRY SHEAROUSI
ADELL CALLAWAY	EDELL HINELY	BETH STANTHILL
HUBERT CALLAWAY	HELEN HUTCHINSON	ANN SMITH
BETTY DELOACH	IDA LEE MOSLEY	MARGARET STRICKLAND
CLAIRE FLOYD	DONNA JO REAGAN	JAMES VARNELL
HARRIET GRANT	SARA RIGGINS	DRANE WATSON
JEAN HIGGINBOTTOM	GERALDINE ROUSE	WINTON WOODWARD
	ELLANOR SAVAGE	



M U S I G M A

NATIONAL MUSIC FRATERNITY

Delta Chapter Founded at Georgia Teachers College in 1939

MOTTO: "Music Exalts Life"

COLORS: Blue and Gold

SONG: "Hail to Thee Mu Sigma"

OFFICERS

PRUELLA CROMARTIE	President
LEE EDGE	Vice-President
JEAN HIGGINBOTTOM	Secretary
RICHARD STARR	Treasurer
MRS. E. L. BARNES	Sponsor
MR. F. WALTER HUFFMAN	Sponsor

MEMBERS

BARBARA ANDERSON
JACK AVERITT
DAN CHAMBLESS
GENEVIEVE CONNER
PRUELLA CROMARTIE
HILDA CURL

GRACE DAUGHTRY
LEE EDGE
DONNA EDWARDS
JEROLINE HAMILTON
JEAN HIGGINBOTTOM
LUCY HILL
BETTY JONES

MARY LOIS JONES
ANNIE RUTH MARTIN
CHARLES OVENS
MARJORIE ODUM
RICHARD STARR
INEZ STEVENS



W. A. A. COUNCIL



OFFICERS

SUE BREEN	<i>President</i>
BETH STANFIELD	<i>Vice-President</i>
ADELL CALLAWAY	<i>Secretary and Treasurer</i>
MISS EDITH GUILL	<i>Director</i>

COMMITTEE CHAIRMEN

HELLN HUTCHINSON	<i>Archery</i>
BEVERLY EDWARDS	<i>Tennis</i>
BETTY BIRD FOY	<i>Softball</i>
ALETHIA BROWN	<i>Basketball</i>

THE MASQUERS



OFFICERS

SUE BREEN	<i>President</i>
ADELL CALLAWAY	<i>Vice-President</i>
VENICE CLIFTON	<i>Secretary</i>
LEILA WYATT	<i>Treasurer</i>
MARGARET STRICKLAND	<i>Publicity Chairman</i>

MEMBERS

HUGH BIRD	H. C. HEARN	BETH STANFIELD	MARGARET STRICKLAND	BILL WILCOX
SUE BREEN	JEAN HENDRIX	RICHARD STARR	CHAPMAN TUTTLE	CLELMA WOOD
JACKIE BROWN	JEAN HIGGINBOTTOM	JOHN STONE	HAROLD WATERS	LEILA WYATT
RUTH BRYAN	FRANCES HILL			
ADELL CALLAWAY	MELBA HUGGINS			
VENICE CLIFTON	HELEN HUTCHINSON			
GENE COLEMAN	HUGH KEA			
MARTHA S. COLEMAN	ELDRED MANN			
EMILY CONNER	ANNIE RUTH MARTIN			
HAZEL COWART	ILA McELVEEN			
PRUELLA CROMARTIE	NORMA NEWTON			
HILDA CURL	CHARLES OVENS			
JESSIE BYRD DANIEL	LAVERNE PHILLIPS			
BETTY DELOACH	MARY FRANCES PHILLIPS			
MARION DRIGGERS	FRANCES RIGGINS			
BARBARA EDGE	CATHERINE ROWSE			
LEE EDGE	HELEN ROWSE			
BEVERLY EDWARDS	HAZEL SAPP			
JOHN GODBEE	ELEANOR SAVAGE			
DORIS GRIER	HENRY SHEAROUSE			
MARY VIRGINIA GROOVER	BETTY RUTH SIKES			
JEROLINE HAMILTON	WALTER SIMS			
BETTYE HANEY	ANN SMITH			
JEMIQUE HARRELL	LINWOOD SMITH			
CHARLES HEARN	PAULINA SMITH			



"The Happy Journey"

... Masquers

“Junior Miss”





PHYSICAL

The primary purpose in the physical education program this year was that of improving the physical fitness of each student. Compulsory participation for all students physically able was enforced, thereby avoiding the possibility of a student neglecting his physical needs.

The boys' basketball team, though not officially organized for other than intramural play, participated in games with teams from neighboring towns and schools. Softball, touch football, and track were included in program for the year.

The girls participated in intramural games of all sorts and spent much time outside on the drill field. Tennis, archery, dancing, and other forms of physical education were used by the girls in their classes.

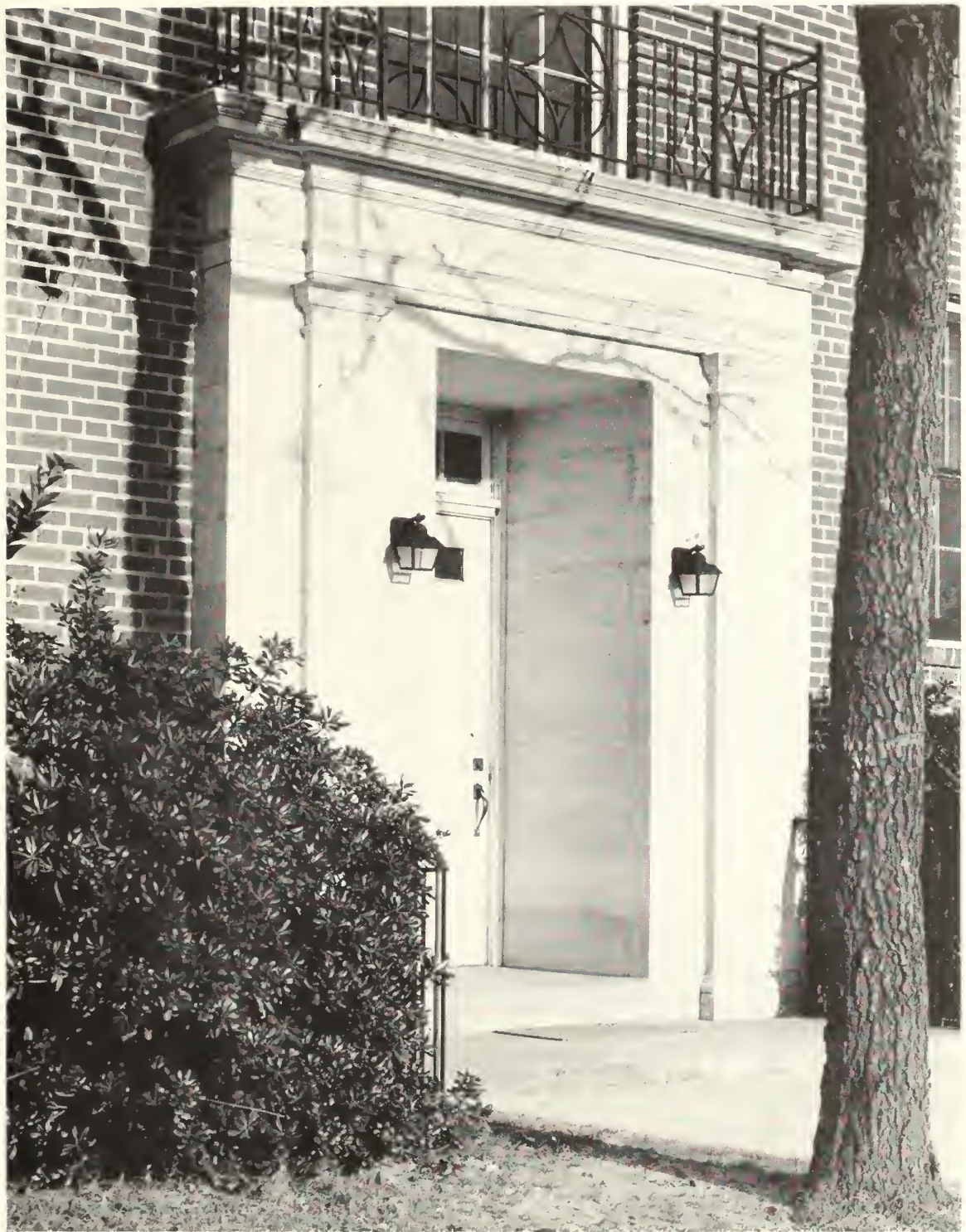


EDUCATION





Military





MAJOR LEON WHITTIER
Commandant

For seven months during the 1943-44 school year Georgia Teachers College had on the campus SCU No. 3414, STAR Unit of the A. S. T. P. program. At times there were 500 or more trainees here. The Stars that were here were "of the first magnitude." The unit was efficient and happy and the officers and trainees were a part of the college in spirit. The trainees were superior in intelligence and contributed much to the life of the college and the community.

The trainees added much also to the extra curricular life of the college students. They assisted with assembly programs, play productions, chorus work, musicals, dances, parties, and organized a "Community Forum." They also participated in athletics in this area.

The Staff





"Miss SCU No. 3414"



Sgt. James Dixon, a graduate of Teachers College, now one of the Enlisted Personnel stationed here.



"15 mis. per hr. please"

"Saturday Night"



"
S
T
A
R
S
"





Features



Acting as judge for our Feature Section, Lamar Dodd, Head of the Art Department of the University of Georgia, selected the six most beautiful girls on the Georgia Teachers College Campus. His selections were made from photographs submitted by ten girls chosen by the student body.

Catherine Rowse of Statesboro was selected by Mr. Dodd as the most beautiful. The other five Beauties are listed alphabetically.



CATHERINE ROWSE



BETTY BYRD FOY



LUCY HILL



SARA RIGGINS



CLELMA WOODS



LEILA WYATT

Advertisements

Congratulations

—to the Staff of the 1944 Reflector for an outstanding edition of the Georgia Teachers College yearbook. In this volume you have captured many reflections of your life at the Teachers College and set them down indelibly for the years to come.

—to the business men of Statesboro for taking an active part in making this book possible through their advertising.

—to the students of the Teachers College for recognizing the values they may receive in patronizing the advertisers of the 1944 REFLECTOR who represent the leading businesses of the community and are loyal patrons and boosters of their college.

Students! Faculty! Read these ads”.

Trade in Statesboro, in the heart of Bulloch County . . .

“Where Nature Smiles

and Progress Has the Right-of-way”

**STATESBORO
CHAMBER OF COMMERCE**

**ALDERMAN
ROOFING COMPANY**

"The Best in Roofing"

STATESBORO

GEORGIA

*Compliments
of*

HOUSE OF BEAUTY

MASONIC BUILDING

When You Want Better Ice Cream

**SANCKEN'S
ICE CREAM COMPANY**

GEORGIA-CAROLINA DAIRIES

AUGUSTA

GEORGIA

NU - GRAPE

BOTTLING COMPANY

L. M. DURDEN

STATESBORO

GEORGIA

1944 REFLECTIONS 1964

Will your station in life in 1964 reflect the proper preparation in your earlier years?

Will your financial position in 1964 reflect your strict adherence to the principles of thrift and economy in 1944 and subsequent years?

Consider these questions while you are young.

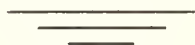
SEA ISLAND BANK

SAFETY — COURTESY — SERVICE

MEMBER FEDERAL DEPOSIT INSURANCE CORP.

If You Live At School . . .

LET US GLAMORIZE YOUR ROOM WITH
O U R H O M E F U R N I S H I N G S



If You Would Get The Most Out of School . . .

LET US GLAMORIZE YOU WITH THE
LATEST IN FASHIONS.



H. MINKOVITZ & SONS
DEPARTMENT STORES

SYLVANIA

STATESBORO

SAVANNAH

The Best in
COLLEGE
CLOTHES...

for
STUDENTS
and
FACULTY

•
HENRY'S

H. W. SMITH

Statesboro's Leading Jeweler

Teachers and Students
Always Welcome

STATESBORO

GEORGIA

FRANKLIN DRUG COMPANY

Revall Quality Drugs

Professional Pharmacists

PHONE 2

STATESBORO

GEORGIA

**THE STATESBORO GROCERY
COMPANY**

"WHOLESALE GROCERS"

**BRANNEN-THAYER
MONUMENT CO.**

45 West Main Street

STATESBORO

GEORGIA

PHONE 7313

MANGEL'S

Feminine Apparel

15 Broughton St., E.

SAVANNAH, GA.

*Where the 'out-of-town' folks are
'home' folks*

PLAZA CAFE

The Best In Foods

SAVANNAH

GEORGIA

LOOK STUDENTS
LOOK PROFESSORS—

If it is
CLOTHES
and
FURNISHINGS
you want,
we have it!

•

**DONALDSON-SMITH
CLOTHING COMPANY**

Lanier's Mortuary

ALLEN R. LANIER

AMBULANCE SERVICE — LADY ASSISTANT

STATESBORO, GEORGIA

DRINK

Coca-Cola

TRADE-MARK REG. U. S. PAT. OFF.

IN BOTTLES

"It's the Refreshing Thing To Do!"

STATESBORO COCA-COLA BOTTLING CO.

THE ACCESSORY SHOP

127 E. Broughton Street

SAVANNAH, GA.



Smart casuals for the
fashion-wise Miss

*Style-right
Value-right
Service-right*

**ABE EVANS DEPARTMENT
STORE**

South Main Street

STATESBORO

GEORGIA

W. C. AKINS AND SON

HARDWARE

GROCERIES

PECANS

Service is our motto

See us before you sell your pecans

JONES-HODGES COMPANY

SEAFOOD and POULTRY

16 West Main Street

STATESBORO

GEORGIA

B. B. MORRIS & CO.

FANCY AND STAPLE GROCERIES

QUALITY MEATS

BARBECUE

CITY DRUG COMPANY

PHARMACISTS

S. L. LANIER

STATESBORO

GEORGIA

*EVERYTHING
for the college lass*

ROSENBERG

South Main Street

STATESBORO

GEORGIA

*Compliments
of the*

COED BEAUTY SHOP

Telephone 216

Use . . .

YUKON'S BEST
or
**QUEEN OF WEST
FLOUR**

"Enriched"

•

Guaranteed. If for any reason not satisfied return to your
grocer and get your money back.

•

Sold by Independent Merchants Only

•

ALFRED DORMAN COMPANY

STATESBORO

SYLVANIA

JESUP

**GRIMES
JEWELRY COMPANY**

- SILVERWARE
- GLASSWARE
- DIAMONDS
- WATCHES
- CHINA

Compliments

of

Lannie F. Simmons

•
AUTOMOBILES -- FERTILIZERS

TRACTORS -- EQUIPMENT

•
Hoke S. Brunson

Fines

"Where Fashions Make Their Debut"

Extends to you a cordial invitation to make your headquarters here, when shopping in Savannah. One of Savannah's really smart shops. . . . Fine's is ready to serve you at all times . . . with everything that's new and smart in fashions for women . . . and children!

STEVENS
THE HOUSE OF FINE
WEDDING STATIONERY

ENGRAVED
INVITATIONS, ANNOUNCEMENTS, CARDS

Write for samples and prices

**J. P. STEVENS ENGRAVING
COMPANY**

110 PEACHTREE STREET ATLANTA

SALTED
PEANUTS

POTATO
CHIPS

GORDON FOODS

1075 Sylvan Rd., S. W., Atlanta, Ga.

CAKE
CANDIES

PEANUT BUTTER
SANDWICHES

**CENTRAL GEORGIA GAS
COMPANY, INC.**

STATESBORO, GEORGIA

Distributors of "Blue Flame Fuel"

SAFE - ECONOMICAL - DEPENDABLE
PREFERRED

Cooking - Water Heating - Refrigeration
House Heating

Compliments of

SILVERS 5c and 10c STORE

201 W. Broughton Street

SAVANNAH, GA.

ALWAYS A GOOD SHOW

AT THE

GEORGIA THEATER

AND

STATE THEATER

*Compliments
of*

S. W. LEWIS, INC.

STATESBORO

GEORGIA

"ONCE A TRIAL . . .

. . . ALWAYS A CUSTOMER

WATERS BARBER SHOP

UNDER THE BANK

Insist On

GRADE A PASTEURIZED
M I L K

It's Safer

CITY DAIRY COMPANY

STATESBORO

GEORGIA

Eat at . . .

PEARSON'S CAFE

42 S. Main Street

STATESBORO, GEORGIA

Real Home Cooking

Courteous Service

OLLIFF & SMITH

•

FANCY GROCERIES—FRESH MEATS

GARDEN AND FIELD SEED

HAY AND GRAIN

POULTRY SUPPLIES

•

STATESBORO

GEORGIA

**PRODUCERS CO-OP
ASSOCIATION**

FEEDS . . . SEED . . . COTTON

Fire Insurance and Farm Supplies

E. L. ANDERSON, Manager

Compliments of

HINTON BOOTH

“CRANE”

America's leading manufacturer of

HIGH GRADE BATH TUBS
LAVATORIES
KITCHEN SINKS

Visit our exhibit rooms

14 W. BROAD STREET SAVANNAH, GA.

Varsity - Town
CLOTHES

The Jones Co.

Quality Clothing for Men and Boys
Terrell T. Tuttle - Carl J. Kraft

SAVANNAH, GA.



LEOPOLD ADLER CO.

Savannah's Leading and Largest

Department Store

STUDENT OUTFITTERS FOR 66 YEARS

SENIOR RINGS

for

any year can be furnished by

HERFF-JONES CO.

H. S. CANFIELD

1560 NORTH DECATUR ROAD
ATLANTA, GA.

"We Have a Complete Graduation Service"

for

Colleges and High Schools

MEDALS — CUPS — TROPHIES

INVITATIONS — CARDS

DIPLOMAS

CAPS and GOWNS

We Invite You

to visit our store while in Savannah

S H O E S

For Entire Family

•

GLOBE SHOE STORE

17 EAST BROUGHTON

**E. A. SMITH GRAIN
COMPANY**

•

Everything in
BUILDERS SUPPLIES
and
FERTILIZERS

•

14 EAST VINE STREET
STATESBORO GEORGIA

**THE
SAVANNAH HOTEL**

A Dinkler Hotel

—

GEORGE FOWLER, *Mgr.*
CARLING DINKLER, *President*

GREETINGS FROM

THE STEEL PRODUCTS CO., INC.

•

Builders of

“GREAT DANE” TRAILERS

“Designed for appearance!”

“Engineered for strength!”

YOUR OLDEST FRIEND . . .

THE BULLOCH TIMES

The best in county news

STATESBORO

GEORGIA

Savannah's leading Department Store

W. T. GRANT

See us for your various needs

SAVANNAH

GEORGIA

IDEAL SHOE SHOP

Sea Island Bank Building

HOMER SIMMONS, *Prop.*

STATESBORO

GEORGIA

CHAS. E. CONE

R. M. BENSON

**CHARLES E. CONE REALTY
COMPANY**

STATESBORO, GEORGIA

Established 1915

FARM LANDS — CITY PROPERTY

Office: Cone Bldg.

Phone 86

Compliments

**SORRIER INSURANCE
AGENCY**

Established 1888

Phone 58

STATESBORO

GEORGIA

Compliments of

RUSHING HOTEL

120 South Main Street

STATESBORO

GEORGIA

CLOTHES . . .

For the Campus

THE FAIR STORE

And the Family, too

WALTER ALDRED COMPANY

EVERYTHING IN BUILDING SUPPLIES

PHONE 224

STATESBORO

GEORGIA

GOLD LEAF CAFE

*Make This Place Your
Home Away From Home*

**STATESBORO IMPLEMENT
COMPANY**

Tractors and Farm Implements
of all kinds

F. A. SMALLWOOD, Owner

BOWEN FURNITURE CO.

QUALITY FURNITURE

Comfortably Smart

We Buy and Sell Everything

"LOVETT'S"

The best in town for . . .

PROMPT SERVICE

ELLIS DRUG CO.

Fountain Service Deluxe

and

Prescriptions Filled Quickly and
Correctly

by

Professional Pharmacists

MILLIONS OF STUDENTS IN
AMERICA LOOK TO

PENNEYS

For Young America Styled Togs for the
Campus, Sports and Dress

Penneys, youth center of the coastal empire
section, with four floors of apparel, accesso-
ries, shoes and home furnishings is ever alert
to style trends and at the same time we
major in fine quality

*More than ever "It's Smart to
Be Thrifty"*

Buy PENNEYS

FINE PIANOS

SHEET MUSIC

ALNUT MUSIC CO.

240 W. Broughton Street

SAVANNAH, GA.

PHONOGRAPH

MUSICAL

RECORDS

MERCHANDISE

Sporting Goods - Luggage - Jewelry

WOLF'S

at Montgomery

SAVANNAH, GA.

Fishing Tackle, Diamonds and Watches

BEN H. PORTMAN, Mgr.

PHONE 5294

MEET YOUR FRIENDS AT THE

COLLEGE PHARMACY

"WHERE THE CROWDS GO"

PHONE
414

PROMPT - COURTEOUS SERVICE

PHONE
416

DANIEL HOGAN, Inc.

DRESS GOODS

LINENS

DOMESTICS

DRAPERIES

Buttons, Trimmings and Everything
for the Home Sewer

Butterick and Advance Patterns

BROUGHTON AND BARNARD STREETS

SAVANNAH, GA.

Quality Our Standard Since 1868

GLASSWARE

CHINAWARE

SPORTING GOODS

SOUTHERN

AUTO STORES

TIRES

BATTERIES

SEAT COVERS

AUTO PARTS

Serving G. T. C. with
FRESH FRUITS AND
VEGETABLES

CHARLES BRYANT

Lowest Prices Always

Want Quick Service?

**STATESBORO PROVISION
COMPANY**

ICE and MEAT CURING

STATESBORO

GEORGIA

A FRIEND

**L. A. WATERS FURNITURE
COMPANY**



✧ EVERYTHING FOR

THE HOME



STATESBORO

GEORGIA

Compliments of

**STATESBORO
WOMAN'S CLUB**

**GEORGIA TEACHERS
COLLEGE**

1944

First Summer Term June 7

Second Summer Term July 17

Fall Quarter 1944

Freshman Week—September 18

Upper Classman Registration—September 22

CONSERVATIVE
MANAGEMENT

•

COURTEOUS
SERVICE

•

*"Big Enough To Serve
You—Small Enough
To Know You"*

•

**BULLOCH
COUNTY
BANK**

BUY WAR BONDS

Member of

F. D. I. C.

FOR VARSITY CLOTHES . . .

**BRADY'S DEPARTMENT
STORE**

"Where Quality Is Higher Than Price"

17 North Main Street

STATESBORO

GEORGIA

BEST FOR YOUR 5c AND 10c NEEDS

UNITED

JIMMY ALLEN, *Manager*

STATESBORO

GEORGIA

INSURE TODAY!

**GROOVER & JOHNSTON
INSURANCE AGENCY**

Represent reliable companies with
reputations for fair dealing

*"If It's Seed, If It's Feed,
We Have It"*

**BRADLEY AND CONE
SEED AND FEED CO.**

Baby Chicks, Good Germinated Seeds

STATESBORO

GEORGIA



★ THE MARK THAT
IDENTIFIES THE SOUTH'S
FINEST YEARBOOKS

PHOTO-PROCESS ENGRAVING CO.

115 - 119 LUCKIE STREET ★ ATLANTA GEORGIA



SUCCESSFUL ANNUALS

Require the services of experienced and expert craftsmen, trained in every detail of the processes of creating • planning layout and design • typesetting • printing lithographing and binding... Throughout half a century this company has pioneered in the production of the highest type of printing... Our services include a special college annual sales and service organization... Abundant equipment • modern and complete... Prices representing maximum in value



FOOTE & DAVIES

PRINTING • LITHOGRAPHING • ENGRAVING

ATLANTA





RESERVE

LH

1

.G43

R4

1944

ZACH S. HENDERSON LIBRARY



0 2001 0407692 8

FOR REFERENCE

IS TO BE TAKEN FROM THIS ROOM

DEMCO

