

Reflector

1943

Georgia Southern University

Follow this and additional works at: <https://digitalcommons.georgiasouthern.edu/reflector-yearbook>



Part of the [Higher Education Commons](#)

Recommended Citation

Georgia Southern University, "Reflector" (1943). *Reflector Yearbook*. 16.
<https://digitalcommons.georgiasouthern.edu/reflector-yearbook/16>

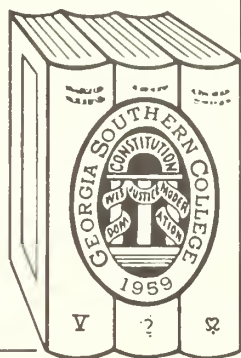
This book is brought to you for free and open access by the Student Media at Digital Commons@Georgia Southern. It has been accepted for inclusion in Reflector Yearbook by an authorized administrator of Digital Commons@Georgia Southern. For more information, please contact digitalcommons@georgiasouthern.edu.

Reflector

1949
1943

RESERVE
LH
I.G43
R4
1943

GEORGIA
SOUTHERN COLLEGE
LIBRARY



Georgia Southern College

Zach S. Henderson Library

Georgia Southern University
Zach S. Henderson Library



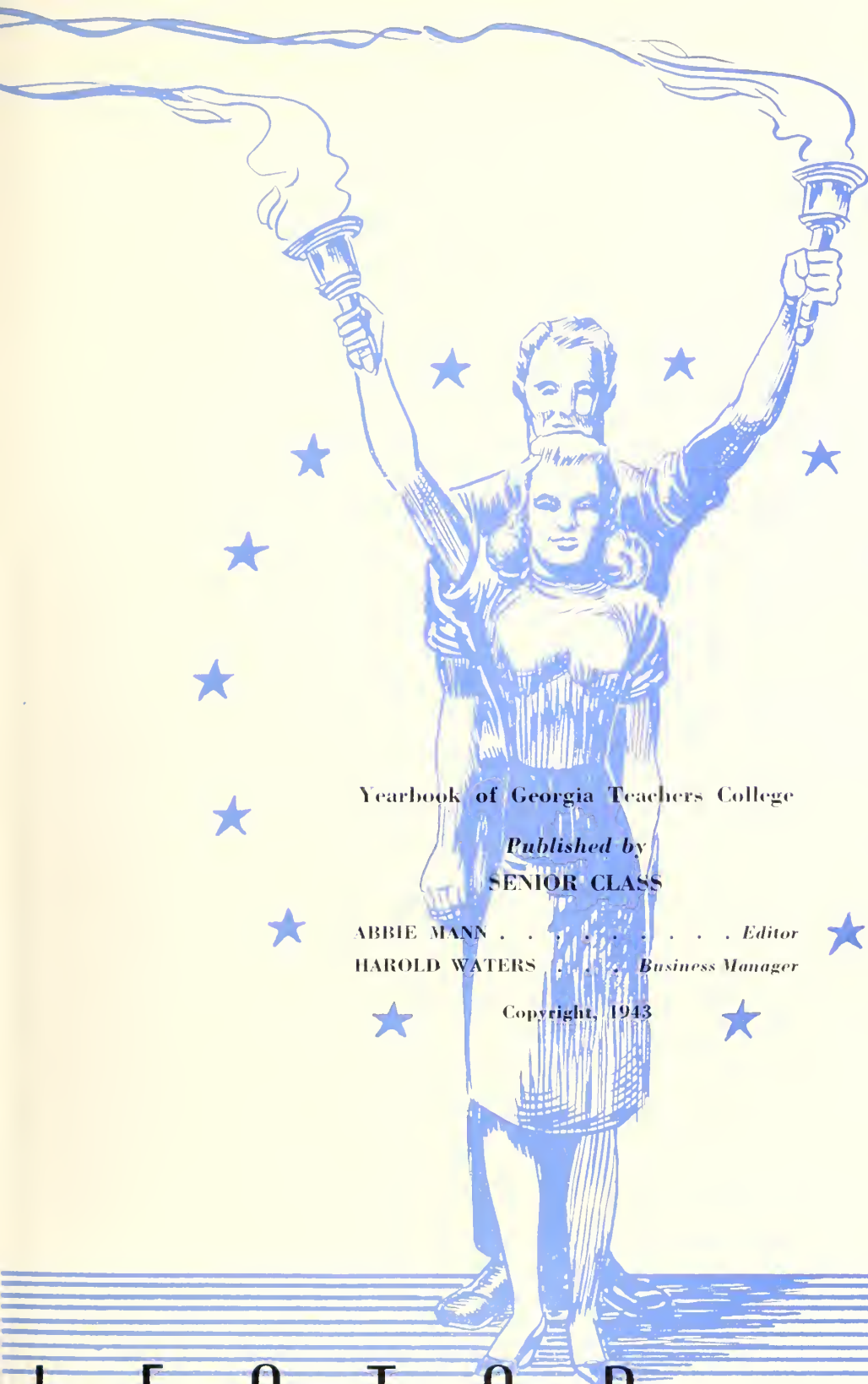
Digitized by the Internet Archive
in 2014

<https://archive.org/details/reflector1943na>

1943 REFLECTOR



1 9 4 3 R E F



Yearbook of Georgia Teachers College

Published by
SENIOR CLASS

ABBIE MANN *Editor*

HAROLD WATERS *Business Manager*

Copyright, 1943

L E C T O R



WAVES



MARINES

ON THE WAR FRONTS

With 365 stars on our service flag, Georgia Teachers College is well represented on the front. There are 146 graduates, of these 144 are men, two are women; 203 non-graduates, 194 men and nine women; and 16 members of the faculty, 15 men and one woman, who are in all branches of the service. Many of these are on foreign duty and some have been cited for distinguished service.

These men and women are giving their all in and effort to win the war. Some of them may never return home. Others, who are fortunate enough to return may be maimed for life. All of them will have the hard task of beginning life again in a virtually new world; a world entirely different from that in which they lived while in the service.



WAACS



ARMY



ON THE HOME FRONTS

It is up to us who are left at home to do our part by trying to keep this a place to which they will be glad to come. We must uphold the traditions and ideals that these who have gone may realize that they are not forgotten but are fondly remembered.

It is here at Georgia Teachers College that we are being trained to cope with life. Many changes have been made in the regular routine of things because of the present conditions, yet these changes are not met with a frown but with a cheerful smile from everyone; because we know that in this way we are doing our bit toward winning the war. Through our daily life on the campus, the hours of study, work and pleasure, we are always conscious of the fact that many of us must follow in the footsteps of those who have already entered the service and that the rest must carry on at home.

To you who are already in the service and to you who will be in before many months, we pledge to do our best!





C O L



L E G E



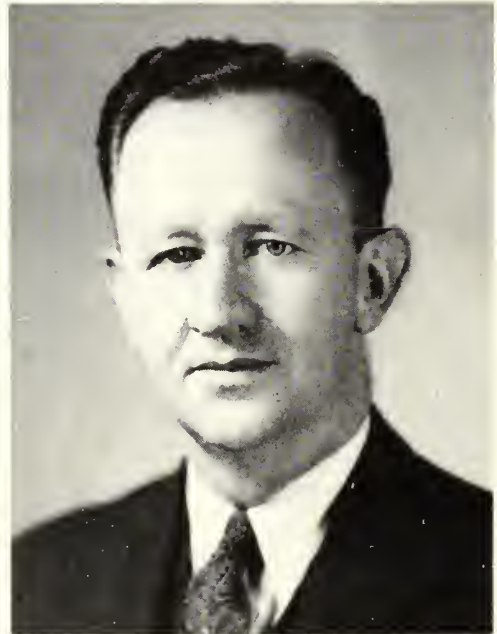
T H E A D M I N



MARVIN S. PITTMAN
President February, 1943— . . .



ALBERT M. GATES
President September, 1941—February, 1943



ZACH S. HENDERSON
Dean

I S T R A T I O N

MAE MICHAEL
"Pick up the paper"

BOB WINBURN
"Your balance is . . ."

VIOLA PERRY
"It's required"



CHARLES H. STONE
"Shhhhhhhhh . . ."

ZULIEME LANE
"It's overdue . . ."

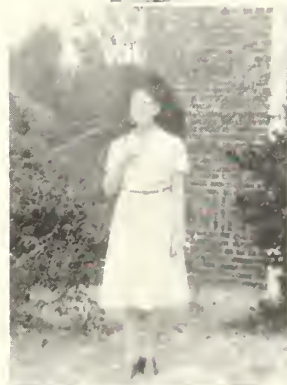
HASSIE MAUDE McELVEEN
"It helps to reduce"



SOPHIE JOHNSON
"Now, boys . . ."

EMMA MOATES
"My flashlight . . ."

FLORINE MYERS
"Time to go, boys"



ISA STANCIL
"That'll be . . . let me see"

EVA HAYES
"Bring your ration book"

RUBY CROUSE
"A picnic? Goody!"



FACULTY



COACH SMITH, "Fight, boys"; MARJORIE GUARDIA, "Simply beautiful"; JANE ROBSON, "Somebody's radio"; EDITH GUILL, "My bow and arrows"; W. S. HANNER, "It's just in the great scheme of things"; RUTH BOLTON, "My favorite hash recipe"; LELAND MOON, "If it's progressive . . ."; QUEEN COLLINS, "Report cards . . ."; WILLIE HUGH HINELY, "Call me professor"; FRANCES GROVE, "Color, balance . . ."; W. B. MOYE, "How're you coming on with your work?"; GUSSIE GOSS, "Ah, Robbie . . ."; MAMIE JO JONES, "Snap into it, gang"; ESTHER BARNES, "Practice makes perfect"; FIELDING RUSSELL, "I'm teaching history now."

FACULTY



SARA JONES, "Um, um, um . . ."; RUBY BRAZIEL, "Me, a chaperone?"; NAN HUCKABEE, "The fundamentals are . . ."; JEWELL SCALES, "My boy friend . . ."; JOE CARRUTH, "Now let me . . ."; IRIS DUKES, "I must go home . . ."; BOB DONALDSON, "Yes, yes, I'll do it"; JUANITA THOMAS, "Take a letter . . ."; RIFES PULLAM, "Let's dig this one up"; MALVINA TRUSSELL, "Sit near the front . . ."; BILLIE OPIE, "This newfangled education . . ."; BERTHA FREEMAN, "Get to work on those units . . ."; RONALD NEIL, "Ham and eggs . . ."; *R. J. H. DeLOACH, "A Georgia Problem."

*No picture.



CLASSE



SENIORS

JUNIORS

SOPHOMORES

FRESHMEN...—



S E N I O R S

GEORGE W. MULLING Baxley, Ga.
President

INDUSTRIAL ARTS

Iota Pi Nu, 2, 3, President, 4; Bachelors Club, 2, 3, Secretary and Treasurer, 4; Industrial Arts Club, 2, 3, 1; President Junior Class, 3; Student Council, 3, 1; Y. M. C. A., 2, 3, 4; Who's Who,

INMAN DAVID DAVIS Swainsboro, Ga.
Vice-President

INDUSTRIAL ARTS

Industrial Arts Club, 1, 2, 3, 4, President, 4; Bugger Dagger Club, 1; Masquers Club, 2, 3, 4; Y. M. C. A. Cabinet, 1, 2, 3, 4, Vice-President, 4; Bachelors Club, 4; Vesper Choir, 1, 2, 3; Student Council, 4; President Sanford House Council, 4; B. S. U. Council, 1, 2, 3, 4, President, 4; Who's Who,

EMILY LOUISE CROMLEY Brooklet, Ga.
Secretary and Treasurer

ELEMENTARY EDUCATION

Lambda Theta Chi, 1, 2, 3, 4, Secretary, 3, Vice-President, 4; Y. W. C. A., 1, 2, 3, 4, Vice-President, 3, President, 4; East Hall House Council, 3, 4, President, 4; College Chorus, 1, 2, 3, 4,

WAYNE CULBRETH Edison, Ga.
Student Council Representative

GENERAL SCIENCE

Iota Pi Nu; Bachelors Club, 2, 3; Glee Club, 1, 4; Football, 2, 3; Basketball, 2; Science Seminar, 2; Dramatic Club, 2, 3, 4,

THE 1943

CLASS OF 1943

PALMER G. EDENFIELD Wadley, Ga.
Student Council Representative

HISTORY

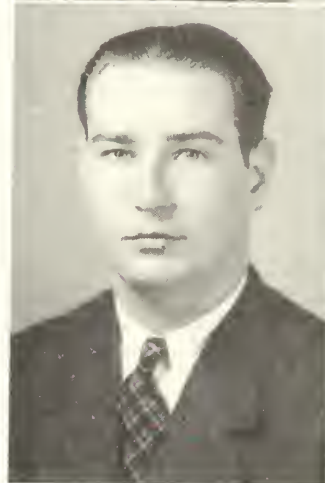
Art Editor of REFLECTOR, 4; Bugger Dagger, 4; President Junior Class, 3; Fine Arts Club, 2; Vice-President Vesper Choir, 2; Y. M. C. A., 1, 2, 3, 4; I. R. C., 2; *George-Anne* Staff, 4.



JOSEPH EUGENE FEASTER Bath, S. C.
Student Council Representative

INDUSTRIAL ARTS

Iota Pi Nu, 3, 4; Sergeant-at-arms, 1; Bachelors Club, 4; *George-Anne* Staff, 1; Football, 3; "T" Club, 3, 4; Industrial Arts Club, 3, 4; Y. M. C. A., 1, 2, 3, 4; Cabinet, 2; Rat Court Judge, 4; Sanford House Council, 1; REFLECTOR Staff, 4; Student Political League Representative, 3.



JAMES ALLEN JONES Statesboro, Ga.
Student Council Representative

GENERAL SCIENCE

Iota Pi Nu, 4; Editor *George-Anne*, 4, *George-Anne*, 1, 2; Managing Editor, 3; Secretary-Treasurer Georgia Collegiate Press Association, 4; Secretary Junior Class, 3; Y. M. C. A., 1, 2, 3, 4; Cabinet, 3, 4; Bugger Dagger Club, 3, 4; President, 4; Bachelors Club, 4; Mu Sigma, 2, 3, 4; Band, 1, 2, 3; Chorus, 2, 3, 4; Orchestra, 2, 3.



ALLIE JEAN ALDERMAN Portal, Ga.

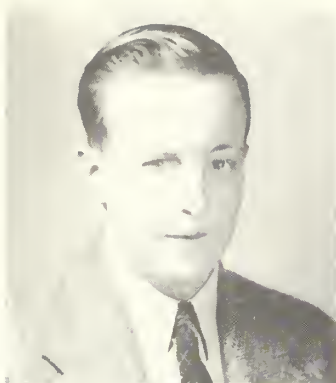
ENGLISH

Y. W. C. A., 1, 2, 3, 4; English Club, 3; Home Ec. Club, 4.



REFLECTOR

SENIORS



JAMES DORSEY BLALOCK Waycross, Ga.

SOCIAL SCIENCE

Bugger Dagger Club; Bachelors Club; Transfer Student,
South Georgia College.



JOHN DURWARD BRANNON Ashburn, Ga.

HISTORY

Bugger Dagger Club, 3, 4; Bachelors Club, 4; *George-Anne*
Staff, 3, 4; Sports Editor of REFLECTOR, 4; Y. M. C. A., 3;
Transfer Student, South Georgia College.



WILLIAM JOSEPH BYERS, JR. Savannah, Ga.

HISTORY

Delta Sigma; Transfer Student, Brewton Parker Institute.



ZEKE DAUGHTREY Adel, Ga.

GENERAL SCIENCE

Iota Pi Nu, 4; Bugger Dagger Club, 3, 4, President, 4;
Orchestra, 3; Basketball, 3; Glee Club, 3, 4; Bachelors
Club, 4; Prosecuting Attorney Rat Court, 4; Transfer Stu-
dent, North Georgia College.



DOROTHY EVELYNE FULCHER Harlem, Ga.

HISTORY

W. A. A. President, 4; Y. W. A. Cabinet, 3, 4; B. S. U.
Council, 4; Transfer Student, Junior College of Augusta.

SENIORS

DOROTHY GARNER Adel, Ga.

SOCIAL SCIENCE

"X" Club, 1, 2, 3, 4, President, 4; L. R. C., 1, 2, 3, 4, Vice-President, 3, President 4; Lewis Hall House Council, 3, 4, President, 4; W. A. A. Council, 2, 3, 4, Vice-President, 4; Y. W. C. A. Cabinet, 2, 3, 4, Secretary and Treasurer, 4; Vesper Choir, 2, 3; Masquers, 4; *George Anne* Staff, 2, 3, 4; REFLECTOR Staff, 4; Student Council, 4.



ROBERT HERMAN HARTLEY Tennille, Ga.

INDUSTRIAL ARTS

Industrial Arts Club, 4; Transfer Student, Middle Georgia College.



ALFRED HAROLD HERRINGTON Swainsboro, Ga.

GENERAL SCIENCE

Iota Pi Nu, 3, 4, Vice-President, 4; Bugger Dagger Club, 3, 4, Vice-President, 3; Y. M. C. A., 2, 3, 4, Football, 2, 3; "T" Club, 3; Science Seminar, 3; Student Council, 3; Sanford House Council, 3; Transfer Student, Emory Junior College.



WALTER THOMAS JOHNSTON Americus, Ga.

ENGLISH

I. R. C., 3, 4; B. S. U. Council, 3, 4; Y. M. C. A. Cabinet, 3, 4; Transfer Student, Georgia Southwestern College.



ROBBIE LEE MALLARD Cobbtown, Ga.

ELEMENTARY EDUCATION

"X" Club, 3, 4, Secretary, 4; Y. W. C. A., 1, 2, 3, 4.



REFLECTOR

SENIORS



ABBIE GOSS MANN Thomasville, Ga.

GENERAL SCIENCE

"X" Club, 2, 3, 4, Vice-President, 4; May Court, 1, 3; Y. W. C. A. Cabinet, 1, 2, 3, 4, Vice-President, 3, President, 4; Science Seminar, 2, 3, President, 3; *George-Anne*, 2, 3, 4; Student Council Secretary, 4; Vesper Choir, 2, 3; B. S. U. Council, 2, 3, 4; Masquers, 4; Student Sponsor of Bugger Dagger Club, 3, 4; Editor-in-Chief REFLECTOR, 4; Who's Who Among Students in American Universities and Colleges.



DIGHT BRUCE OLLIFF, JR. Statesboro, Ga.

HISTORY

Delta Sigma, 1, 2, 3, 4, Scribe, 2, Vice-President, 3, Secretary, 1; *George-Anne* Staff, 2; Vice-President Sophomore Class; President Sophomore Class in Spring Quarter.



EDWENA PARRISH Portal, Ga.

GENERAL SCIENCE

"X" Club, 1, 2, 3, 4, Secretary 2, Treasurer, 4; Lewis Hall House Council, 1, 2, 3, President, 3; Glee Club, 1, 2, 3; I. R. C. 2, 3, 4, Vice-President, 4; Science Seminar, 2, 3; Student Council, 3; Honors Day, 2, 3; Y. W. C. A., 1, 2, 3, 4, President, 3; Who's Who Among Students in American Universities and Colleges.



WALTER JULIUS PARRISH Adel, Ga.

INDUSTRIAL ARTS

Delta Sigma, 4; "T" Club, 3; Y. M. C. A. Cabinet, 3, 4; Football, 3; Basketball 3; Industrial Arts Club, 3, 4; Transfer Student, Middle Georgia College.

SENIORS

HAROLD L. PEARMAN Pavo, Ga.

INDUSTRIAL ARTS

Delta Sigma. 3, 4, Vice-President, 4; *George-Anne* Staff, 3; Industrial Arts Club, 3, 4; Bachelors Club, 4; Y. M. C. A., 3, 4; Transfer Student, Georgia Southwestern College.



MARY THOMAS PERRY Dover, Ga.

ENGLISH

Dux Domina. 1, 2, 3, 4, Secretary, 2, President, 3, 4; Masquers, 1, 2, 3, 4, Treasurer, 3, President, 4; Iota Pi Nu Sponsor, 2, 3; East Hall House Council, 3, 4, Vice-President, 4; Alpha Psi Omega, 3; English Club, 3, 4; *George-Anne* Staff, 3, 4; Fine Arts Club, 2; Student Council, 3; Pan-Hellenic, 3, 4; Vice-President, 3, President, 3; Y. W. C. A. Cabinet, 4; Beauty Section, 1, 2, 3; May Court, 3.



TINY RAMSEY States-boro, Ga.

HISTORY

Delta Sigma, 1, 2, 3, 4, President 3; Basketball, 3; Football, 2; Masquers, 4; "T" Club, 3.



JAMES HARGARET RAULERSON Lake Butler, Fla.

HISTORY

Iota Pi Nu, 3, 4; Secretary, 4; President Student Council, 4; Mu Sigma, 3, 4; Masquers, 3, 4; Bachelors Club, 4; Y. M. C. A., 3, 4, Pianist, 4; Board Directors of Chorus, 3; REFLECTOR Staff, 4; *George-Anne*, 4; Associate Judge Rat Court, 4; Transfer Student, South Georgia College.



REFLECTOR

SENIORS



HARRY LANDRUM ROBERTSON Waycross, Ga.

ENGLISH

Delta Sigma; *George-Anne* Staff, 1, 2, 3, 4; Managing Editor, 2, Editor, 3; Business Manager, 4; Y. M. C. A. Cabinet, 2, 3; Band, 1; Sanford House Council, 1, 2, 3, 4; Student Council, 2; Class President, 2; Masquers Club, 2, 3; Bachelors Club, 4; Delta Sigma, Treasurer, 2, 3, 4; Who's Who Among Students in American Universities and Colleges.



THOMAS L. ROBINSON Sardis, Ga.

GENERAL SCIENCE

Bachelors Club, 4; Sanford House Council, 3, 4; I. R. C., 1; Science Seminar, 2, 3; Y. M. C. A., 1, 2, 3, 4; Associate Editor REFLECTOR, 4.



REGINALD DEAN ROOKS Arlington, Ga.

INDUSTRIAL ARTS

Transfer Student, Georgia Southwestern; Y. M. C. A., 2, 3, 4; Industrial Arts Club, 2, 3, 4; Secretary and Treasurer, 4; Bachelors Club, 4.



*MARTHA WILMA SIMMONS Statesboro, Ga.

HOME ECONOMICS

Epicurean, 1, 2, 4; Dramatic Club, 1, 2, 4; Epicurean Secretary, 4; *George-Anne* Staff, 4.

JAMES CARLTON STEPHENS Sycamore, Ga.

GENERAL SCIENCE

Bugger Dagger Club, 4; Bachelors Club, 4; Y. M. C. A. Cabinet, 1, 2, 3, 4; Vice-President, 3; Sanford House Council, 1, 2, 3, 4; Vesper Choir, 1; Boxing Team, 2; Science Seminar, 3; President, Danforth Society, 3; REFLECTOR Staff, 4; *George-Anne* Staff, 3, 4; Defense Attorney, Rat Court, 4.

*No picture.

JUNIORS

*FRANCIS ALLEN Statesboro, Ga.

ESTHER LEE BARNES Statesboro, Ga.

FRED BEASLEY Statesboro, Ga.

ROY BEDENFIELD Dublin, Ga.

SUE BREEN Jesup, Ga.

*ALMA CATO Rincon, Ga.

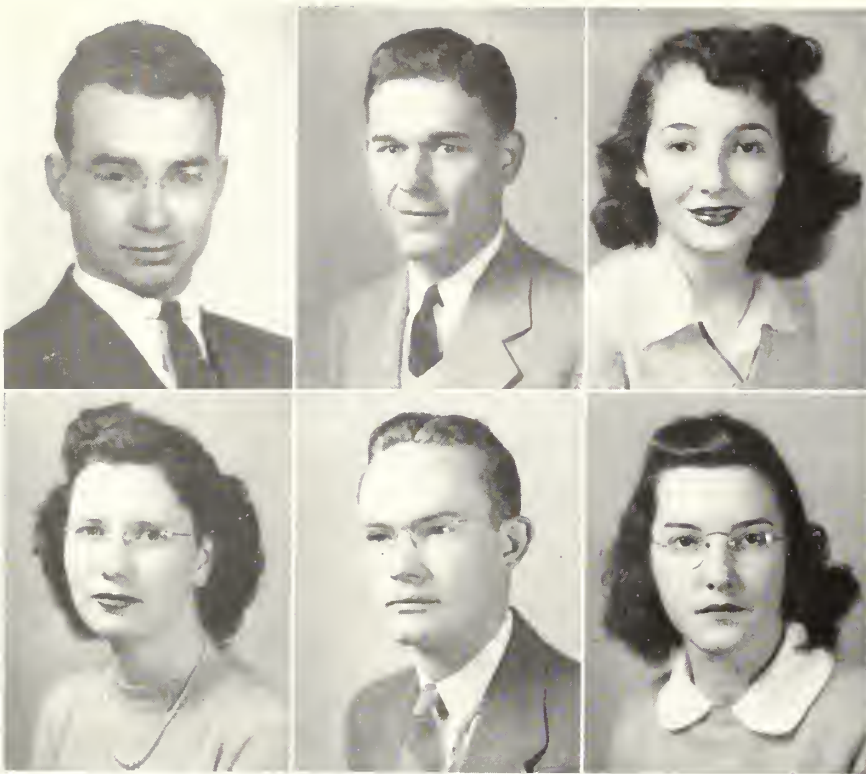
VIRGINIA GILDER Dublin, Ga.

JOSEPHINE GRIFFIN Girard, Ga.

*No Picture



JUNIORS



BILLY HAYES Fair Bluff, N. C.

LEWIS HINELY Springfield, Ga.

RUTH JOHNSON Alma, Ga.

FAY JONES Metter, Ga.

DENVER LANIER Rocky Ford, Ga.

IDA LEE MOSLEY Louisville, Ga.

JUNIORS

W. EUGENE PRICE Statesboro, Ga.

JAMES S. ROBERTS Ocilla, Ga.

HELEN THIGPEN Garfield, Ga.

REGINALD THOMPSON Glennville, Ga.

*SIBYL UNDERWOOD Statesboro, Ga.

*JOHN WALL Sylvester, Ga.

NANCY WARDLAW Ashburn, Ga.

HUBERT WELLS Climax, Ga.

LEILA WYATT Cedartown, Ga.

*No Picture



SOPHOMORES

MARVIN PROSSER, *President* Statesboro, Ga.

DOROTHY REMINGTON, *Vice-President* Statesboro, Ga.

CATHERINE ROWSE, *Secretary* Statesboro, Ga.

MARGARET BUNN, *Treasurer* Midville, Ga.

RICHARD STARR, *Student Council Representative* Greensboro, Ga.

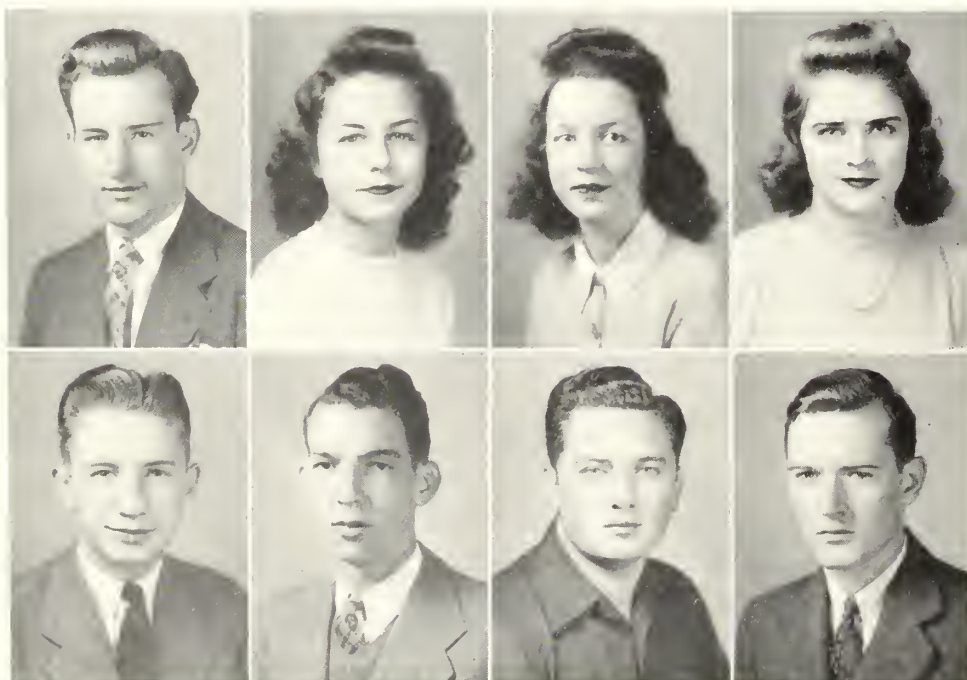
*FRANCES BLACKWELL Homer, Ga.

BILLY BROWN Statesboro, Ga.

JAMES BRYAN Brooklet, Ga.

PAUL BUNCE Statesboro, Ga.

*No Picture



SOPHOMORES

ADRIAN CALLAHAN Hinesville, Ga.

ADELLE CALLAWAY Collins, Ga.

*SCHIRM CARTER Lanier, Ga.

VENICE CLIFTON Millen, Ga.

GLORIDA DURRENCE Glennville, Ga.

WINONA DOWNS EASON Claxton, Ga.

BARBARA EDGE Statesboro, Ga.

LOUISE GLISSON Pembroke, Ga.

MILDRED GROOVER Statesboro, Ga.

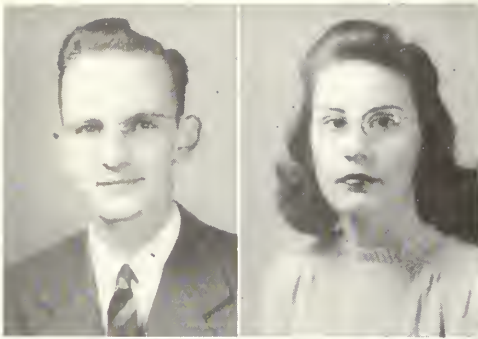
JESSE HAMBY Greenville, Ga.

ELAINE HERRIN Howell, Ga.

*No picture



SOPHOMORES



WILLIAM HOUSTON Swainsboro, Ga.

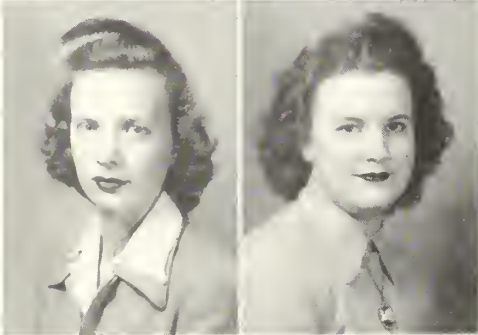
HELEN HUTCHINSON Adrian, Ga.



LOUISE KICKLIGHTER Glennville, Ga.

RAY LANIER Cobbtown, Ga.

*RALPH LIGHTSEY Bristol Ga.



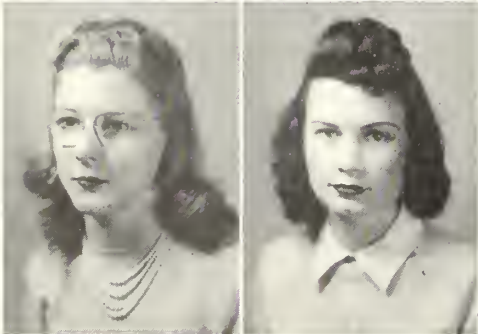
VIRGINIA LOVETT Girard, Ga.

WILLIE MAYERS Baxley, Ga.



HELEN MINCHEW Waycross, Ga.

FRANK MORRISON Statesboro, Ga.



NELLIE KATE NEWTON Millen, Ga.

SOPHIE OLIVER Millhaven, Ga.

*No picture

SOPHOMORES

DOROTHY RAWLINGS Vidette, Ga.

JEANETTE SEARS Lumber City, Ga.

BETH STANFIELD Glennville, Ga.

MARGARET STRICKLAND Register, Ga.

HATTIE SWANN Wrens, Ga.

LOUISE TOMPKINS Adrian, Ga.

*DOROTHY TWILLEY Mitchell, Ga.

JIMMIE VARNELL Springfield, Ga.

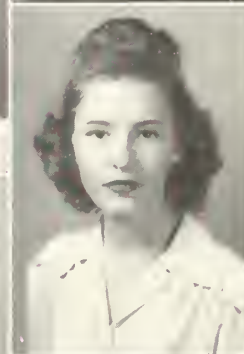
LILLIAN WATERS Sylvania, Ga.

GENEVA WITHROW Odum, Ga.

JUANITA WYATT Brooklet, Ga.

JACK WYNN Portal, Ga.

*No picture



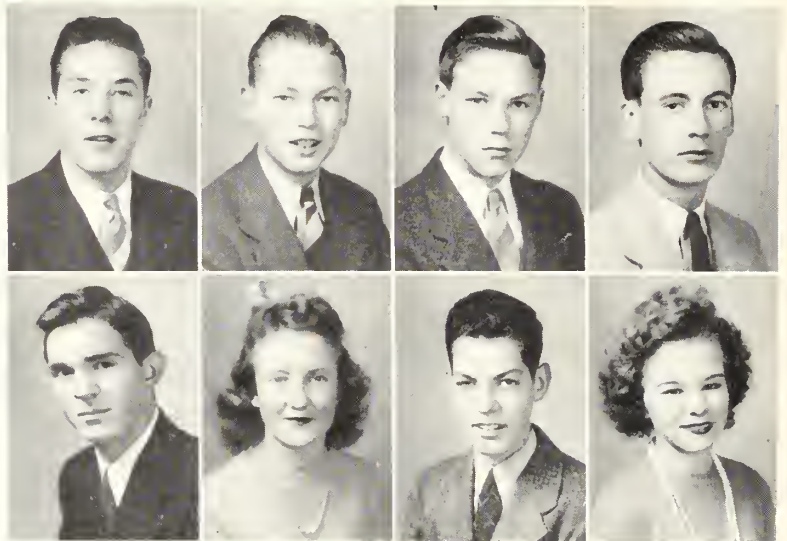
FRESHMAN CLASS OFFICERS

JACK RUTHERFORD . . . Nashville, Ga.
President

DEKLE BANKS . . . Statesboro, Ga.
Vice-President

JOHN DARLEY . . . Statesboro, Ga.
Treasurer

BILL CHESHIRE . . . Ashburn, Ga.
Student Council Representative



MARTHA ALLEN . . . Statesboro, Ga.

*BEN ANDERSON . . . Claxton, Ga.

*JACK BALLENGER . . . Waycross, Ga.

EMMETT W. BARNES . . . Statesboro, Ga.

JANE BATEMAN . . . Sylvester, Ga.

PARRISH BLITCH . . . Statesboro, Ga.

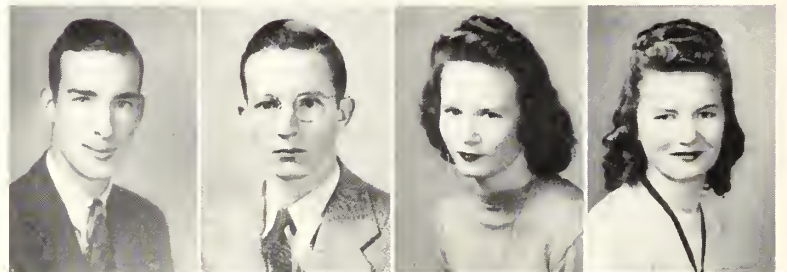
WILLIAM L. BROWN . . . Collins, Ga.

JEANETTE BROWNING . . . Glenwood, Ga.

CHRISTINE CARR . . . Guyton, Ga.

BRUCE CARRUTH . . . Statesboro, Ga.

KENNETH COWART . . . Statesboro, Ga.



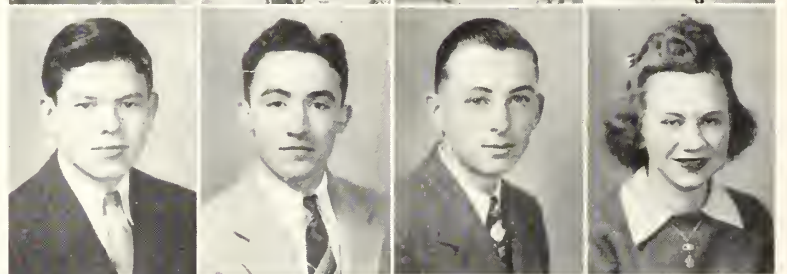
BENNIE EARL DEAL . . . Statesboro, Ga.

CARENE DEAL . . . Statesboro, Ga.

*JAMES L. DEAL . . . Statesboro, Ga.

C. E. DELOACH . . . Claxton, Ga.

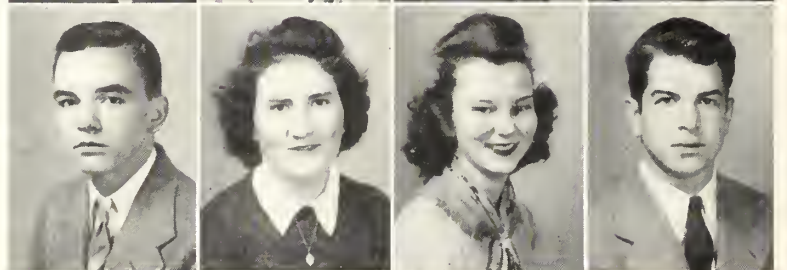
HAZEL DONALDSON . . . Pulaski, Ga.



BEVERLY EDWARDS . . . Claxton, Ga.

HAROLD ENGLISH . . . Dexter, Ga.

*CHARLIE FARR . . . Thomson, Ga.



*No picture

FRESHMAN CLASS

FREIDA FUNDERBURKE . . . Cobbtown, Ga.
 EMALYN GORDON . . . Hinesville, Ga.
 FRANCES GROOVER . . . Statesboro, Ga.
 ROBERT GROOVER . . . Statesboro, Ga.
 THOMAS HARRELL . . . Mitchell, Ga.
 WILLIE MAE HARRELL . . . White Oak, Ga.
 CHRISTINE HART . . . Statesboro, Ga.
 JEAN HENDRIX . . . Brooklet, Ga.
 HAZEL HENDRIX . . . Statesboro, Ga.
 *JEWELL HENDRIX . . . Statesboro, Ga.
 GEORGE P. LEE . . . Statesboro, Ga.
 MORGAN LEE . . . Statesboro, Ga.
 RUTH LIGHTSEY . . . Bristol, Ga.
 MAX LOCKWOOD . . . Doerun, Ga.
 FRANCES MARTIN . . . Statesboro, Ga.
 JOHN FORD MAYES . . . Statesboro, Ga.

HAROLD L. MOORE . . . Gordon, Ga.
 *THOMAS W. MOYE . . . Columbus, Ga.
 *MARTHA JEAN NESSMITH . . . Statesboro, Ga.
 WYNELLE NESMITH . . . Statesboro, Ga.
 DOROTHY NEWSOME . . . Statesboro, Ga.
 MARJORIE PARKERSON . . . Cadwell, Ga.
 *MARY ALICE PEEBLES . . . Gibson, Ga.
 JEAN POWELL . . . Manassas, Ga.
 MAZIE REYNOLDS . . . Harlem, Ga.
 *BETTY JO ROCKER . . . Brooklet, Ga.
 *VELMA ROCKER . . . Brooklet, Ga.
 JANIE ROYAL . . . Hilltonia, Ga.
 WILLIAM SCOTT . . . Ashburn, Ga.
 *HENRY SPEIR . . . Pembroke, Ga.
 EDITH WARNOCK . . . Statesboro, Ga.
 *No picture





Is this what the lovers see?

CAMPUS ORGANIZATIONS



MARVIN, ABBIE, HARGARET, HAROLD

The purpose of the Student Council is to create a spirit of loyalty to the college, to make living together happy, to promote a sense of personal responsibility in each student and to encourage a spirit of cooperation with every fellow student.

It represents the whole student body in matters affecting student interest, affording a suitable and convenient medium of communication between the students and the school authorities, directing the social activities of the students, and, in general, creating and preserving the customs and traditions of the school.

C O U N C I L

OFFICERS

MARGARET RAULERSON	<i>President</i>
HAROLD WATERS	<i>Vice-President</i>
ABBIE MANN	<i>Secretary</i>
MARVIN PROSSER	<i>Treasurer</i>
ZACH S. HENDERSON	<i>Advisor</i>

MEMBERS

GEORGE MULLING	<i>President of Senior Class</i>
JOE FEASTER	<i>Senior Representative</i>
PALMER EDENFIELD	<i>Senior Representative</i>
JIMMY JONES	<i>Senior Representative</i>
KATHRYN ELLISON	<i>President of Junior Class</i>
CHARLES BROOKS McALLISTER	<i>Junior Representative</i>
PRUELLA CROMARTIE	<i>Junior Representative</i>
MARVIN PROSSER	<i>President of Sophomore Class</i>
RICHARD STARR	<i>Sophomore Representative</i>
JACK RUTHERFORD	<i>President of Freshman Class</i>
BILL CHESHIRE	<i>Freshman Representative</i>
UHLMA WYNN ZITTROUER	<i>President of East Hall</i>
DOROTHY GARNER	<i>President of Lewis Hall</i>
LEWIS HINELY	<i>President of Sanford Hall</i>



H O U S E



LEWIS HALL

SANFORD HALL



EAST HALL

C O U N C I L

Lewis Hall

DOROTHY GARNER *President*
 DOROTHY RAWLINGS *Vice-President*
 IDA LEE MOSLEY *Secretary and Treasurer*
 MRS. FLORINE MYERS *House Mother*



Sanford Hall

MOTTO: "Behave Yourself"

LEWIS HINELY *President*
 LINDSEY PENNINGTON *Vice-President*
 GEORGE MULLING *Secretary and Treasurer*
 MISS SOPHIE JOHNSON *Dean of Men*

MONITORS

JESSE HAMBY	PETE PARRISH
HARRY ROBERTSON	MARGARET RAULERSON
HAROLD HERRINGTON	THOMAS ROBINSON
ROBERT WATERS	PAUL BUNCE
HAROLD TILLMAN	JOE FEASTER
TINY RAMSEY	BILLY BYERS



East Hall

UHLMA WYNN ZITTROUER *President*
 RUTH JOHNSON *Vice-President*
 MARGARET STRICKLAND *Secretary-Treasurer*
 MRS. EMMA MOTES *House Mother*

MONITORS

ESTHER LEE BARNES	JOSEPHINE GRIFFIN
EMOLYN GORDON	HELEN HUTCHINSON
HELEN THIGPEN	KATHRYN ELLISON
VIRGINIA GILDER	





Y. M. C. A.

The Young Men's Christian Association of Georgia Teachers College, since its organization in 1929, has sought to help students preserve and apply whatever religious and moral values they may have developed before coming to college, and to make possible a spiritual growth in the lives of all these students. These things are accomplished by offering each a chance for religious thought and study; by providing opportunity for experience where ideals and principles may be lived in life situations; and by creating a consciousness of new trends and values in connection with our fellow man.

During its existence here, the Y. M. C. A. has established for itself a fine reputation and strong support for its influence in bettering campus life.

OFFICERS

LEWIS HINELY	<i>President</i>
JIMMY VARNELL	<i>Vice-President</i>
RICHARD STARR	<i>Secretary and Treasurer</i>
FIELDING D. RUSSELL	<i>Faculty Adviser</i>

CABINET

JIMMY JONES	<i>Publicity</i>	WALTER JOHNSON	<i>Vespers</i>
CARLTON STEPHENS	<i>Membership</i>	HAROLD WATERS	<i>Chorister</i>
LINDSEY PENNINGTON	<i>Social</i>	HARGARET RAULERSON	<i>Pianist</i>
PETE PARRISH	<i>Athletics</i>	HAROLD TILLMAN	<i>Evening Watch</i>
HAROLD MOORE	<i>Evening Watch</i>		



Y. W. C. A.

The Young Women's Christian Association of Georgia Teachers College has as its purpose: "We, the members, unite in the desire to realize full and creative life through a growing knowledge of God. We determine to have a part in making this life possible for all people."

It strives to lead the students to a greater faith in God, to teach them a deeper sense of reverence, and to cultivate Christian fellowship on the campus.

OFFICERS

ABBIE MANN	<i>President</i>
IDA LEE MOSLEY	<i>Vice-President</i>
DOROTHY GARNER	<i>Secretary and Treasurer</i>
MRS. MARJORIE GUARDIE	<i>Faculty Adviser</i>

CABINET

DOROTHY REMINGTON	<i>Membership and Publicity</i>
LEILA WYATT	<i>Vespers</i>
ELAINE HERRING	<i>Morning Watch</i>
MARGARET STRICKLAND	<i>Morning Watch</i>
BETH STANFIELD	<i>Recreation</i>



THE 1943

ABBIE MANN
Editor

EDITORIAL STAFF

ABBIE MANN	<i>Editor</i>
THOMAS ROBINSON	<i>Associate Editor</i>
PALMER EDENFIELD	<i>Art Editor</i>
MARY THOMAS PERRY	<i>Club Editor</i>
MARGARET RAULERSON	<i>Club Editor</i>
DURWARD BRANNON	<i>Sports Editor</i>
CARLTON STEPHENS	<i>Photographic Editor</i>



REFLECTOR

HAROLD WATERS
Business Manager



BUSINESS STAFF

HAROLD WATERS	<i>Business Manager</i>
*ROBBIE LEE MALLARD	<i>Advertising Manager</i>
JOE FEASTER	<i>Advertising Manager</i>
DOROTHY GARNER	<i>Advertising Manager</i>
HAROLD TILLMAN	<i>Advertising Manager</i>
*GEORGE MULLING	<i>Circulation Manager</i>

*No picture



The GEORGE- ANNE



THE STAFF

The George-Anne

ESTABLISHED 1927

MEMBER GEORGIA COLLEGIATE PRESS ASSOCIATION
MEMBER ASSOCIATED COLLEGIATE PRESS

Represented for National Advertising by

National Advertising Service, Inc.

College Publishers Representative

420 MADISON AVE. NEW YORK, N. Y.
Chicago - Boston - Los Angeles - San Francisco

Published by-weekly from September till June, except during
the holidays, by the students of Georgia Teachers College,
Collegeboro, Ga.

Subscription rate: 10c per copy; \$1.00 per year.

Entered as second-class matter at the postoffice at Collegeboro,
Ga., under temporary permit.

JIMMY JONES

Editor



JIMMY JONES *Editor*

EDITORIAL STAFF

SAM STEPHENS *Managing Editor*
SOPHIE OLIVER *Typist*
LILLIAN WATERS *Typist*

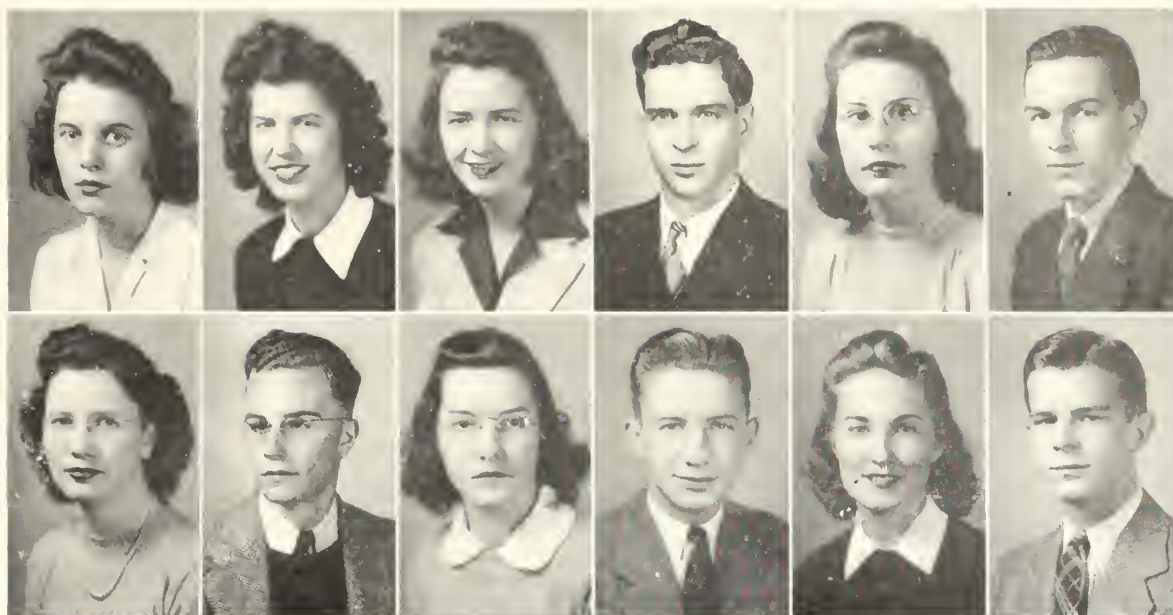
BUSINESS STAFF

HARRY ROBERTSON *Business Manager*
FRANCES GROOVER *Assistant Business Manager*
HAROLD TILLMAN *Assistant Business Manager*
PRUELLA CROMARTIE *Circulation Manager*
BEVERLY EDWARDS *Asst. Circulation Manager*

REPORTORIAL STAFF

Joe Feaster, "Shorty" Brannon, Beverly Edwards, Jane Bate-
man, Jimmy Varnell, Emolyn Gordon, Abbie Mann, Dorothy
Garner, Lillian Waters, Josephine Griffin, Margaret Strick-
land, Adel Calloway, Helen Hutchinson, Margaret Bunn,
Carlton Stephens, Richard Starr, Harold Waters, "Pop"
Raulerson.

I. R. C.



OFFICERS

DOROTHY GARNER *President*
 MARGARET STRICKLAND *Secretary*
 CHARLES BROOKS McALLISTER *Treasurer*

MEMBERS

SUE BREEN
 ADELL CALLOWAY
 *ALMA CATO
 DOROTHY GARNER
 WILLIE HUGH HINELY
 HELEN HUTCHINSON
 WALTER JOHNSTON
 FAYE JONES
 CHARLES BROOKS McALLISTER
 IDA LEE MOSLEY
 RICHARD STARR
 MARGARET STRICKLAND
 *JUANITA THOMAS
 JACK WYNN

**No picture.*



M A S Q

OFFICERS

MARY THOMAS PERRY *President*
 DOT REMINGTON *Vice-President*
 SUE BREEN *Secretary*
 LEILA WYATT *Treasurer*
 MISS MAMIE JO JONES *Sponsor*
 WAYNE CULBRETH *Stage Manager*
 *JIMMY GUNTER *Lights*



SUE, MISS JONES, MARY T., DOT, LEILA

MEMBERS

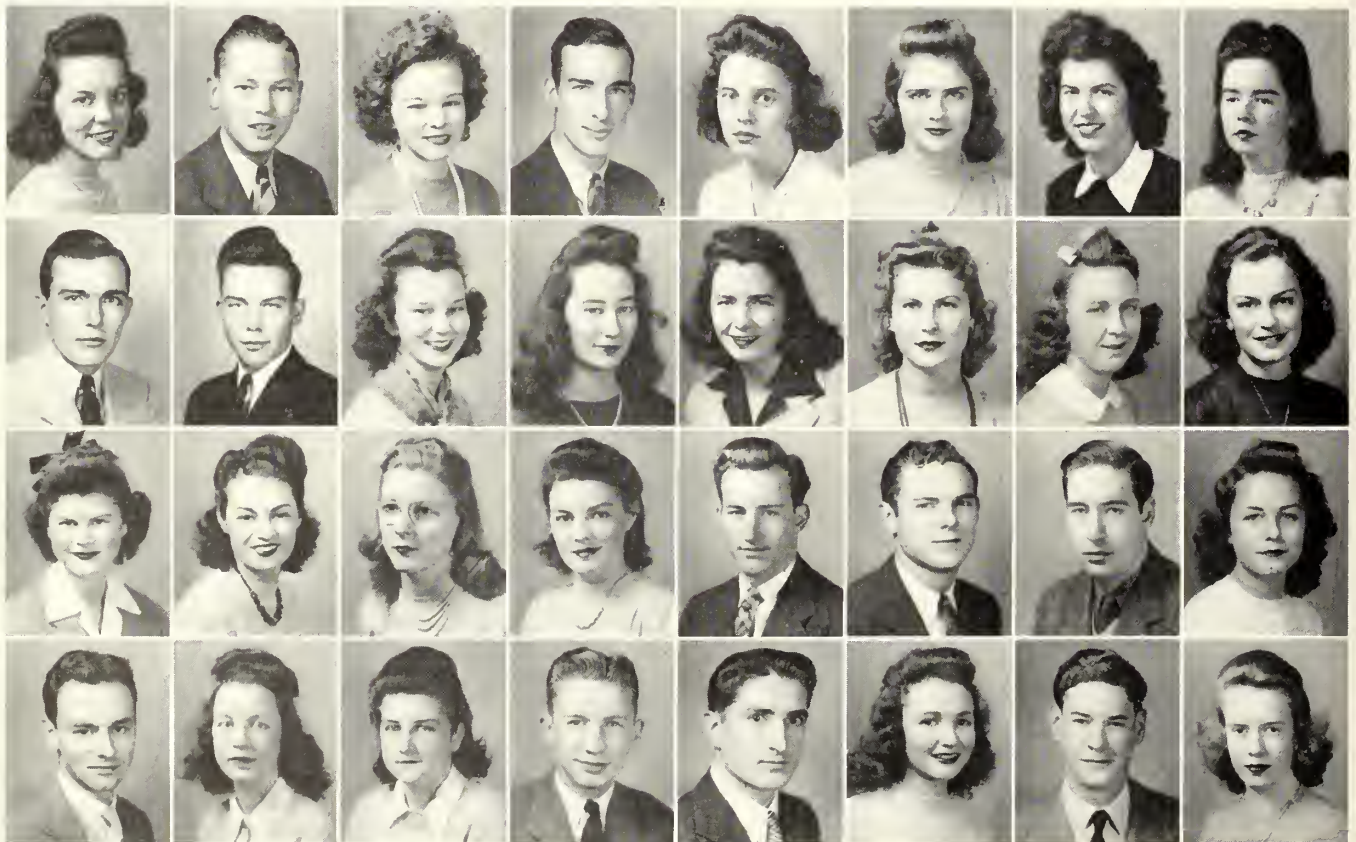
*JACH AVERITT
 ESTHER LEE BARNES
 DEKLE BANKS
 JANE BATEMAN
 PARRISH BLITCH
 SUE BREEN
 MARGARET BUNN
 ADEL CALLOWAY

*SCHIRM CARTER
 VENICE CLIFTON
 WAYNE CULBRETH
 INMAN DAVIS
 *BARBARA EDGE
 BEVERLY EDWARDS
 KATHRYN ELLISON
 DOROTHY GARNER

LOUISE GLISSON
 FRANCES GROOVER
 *JIMMY GUNTER
 ABBIE MANN
 FRANCES MARTIN
 WYNELL NESMITH
 *MARTHA GENE NESSMITH
 NELLIE KATE NEWTON

MARY THOMAS PERRY
 MARVIN PROSSER
 TINY RAMSEY
 HARGARET RAULERSON
 DOT REMINGTON
 HARRY ROBERTSON
 CATHERINE ROWSE
 *MARTHA WILMA SIMMONS

BETH STANFIELD
 RICHARD STARR
 HAROLD TILLMAN
 NANCY WARDLAW
 HAROLD WATERS
 LEILA WYATT
**No picture.*



U E R S



STRIKING THE SET



'LOST HORIZON'



MASTER MASQUERS

APPLYING GREASE PAINT



M U S I G M A

NATIONAL MUSIC FRATERNITY

Delta Chapter Founded At Georgia Teachers College In 1939

MOTTO: "*Music Exalts Life*"

COLORS: *Blue and Gold*

SONG: "*Hail To Thee Mu Sigma*"

OFFICERS

UHLMA WYNN ZITTROUER	<i>President</i>
PRUELLA CROMARTIE	<i>Vice-President</i>
ESTHER LEE BARNES	<i>Secretary and Treasurer</i>

MEMBERS

ESTHER LEE BARNES	JIMMY JONES	BETH STANFIELD
PRUELLA CROMARTIE	GEORGE LEE	LILLIAN WATERS
LOUISE GLISSON	MARJORIE PARKERSON	PETE WOLFE
FRANCES GROOVER		UHLMA WYNN ZITTROUER

SPONSORS

MRS. E. L. BARNES
MR. RONALD J. NEIL



CHORUS



RONALD J. NEIL *Director*
 UHLMA WYNN ZITTROUER *Accompanist*

OFFICERS

UHLMA WYNN ZITTROUER *President*
 DOT REMINGTON *Vice-President*
 RICHARD STARR *Secretary and Treasurer*

MEMBERS

SUE BREEN
 PRUELLA CROMARTIE
 BILLY DELOACH
 BEVERLY EDWARDS
 LOUISE GLISSON
 FRANCES MARTIN
 MRS. RONALD J. NEIL
 NELLIE KATE NEWTON
 MARJORIE PARKERSON

MARVIN PROSSER
 DOT REMINGTON
 WILLIAM SMITH
 RICHARD STARR
 LILLIAN WATERS
 PETE WOLFE
 JUANITA WYATT
 LEILA WYATT
 UHLMA WYNN ZITTROUER

MOTTO: "Service, Fellowship, Scholarship"

INDUSTRIAL ARTS CLUB

OFFICERS

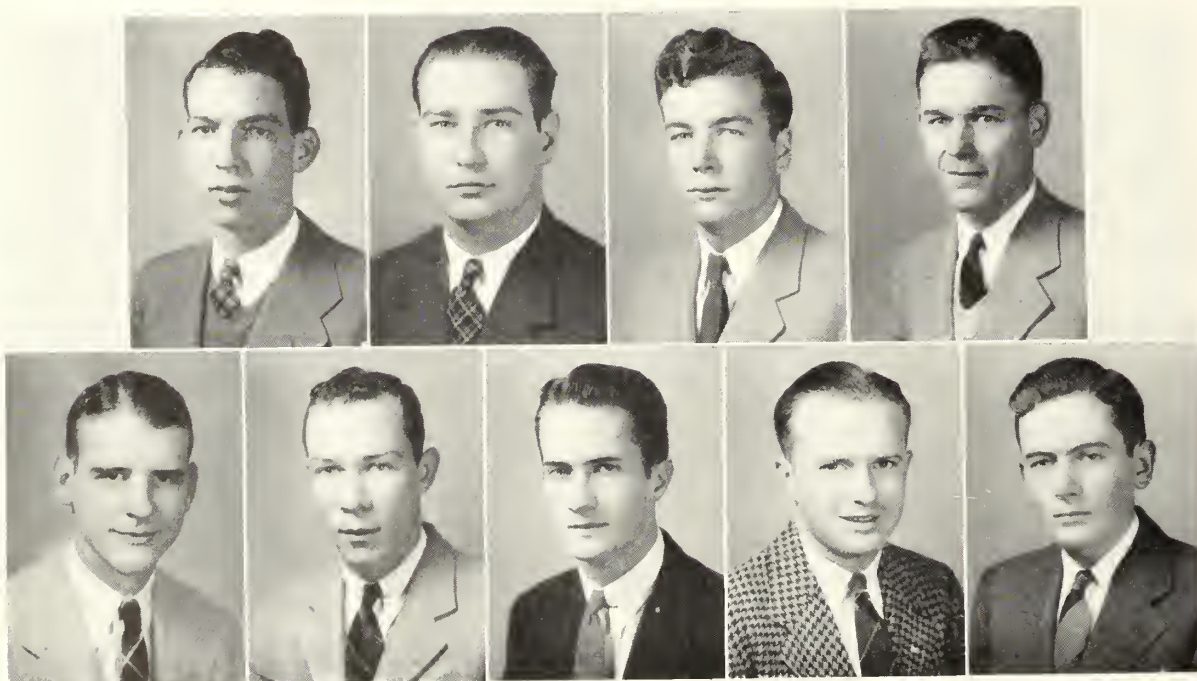
LEWIS HINELY *President*
LINDSEY PENNINGTON *Vice-President*
ROBERT WATERS *Secretary and Treasurer*
PETE PARRISH *Social Chairman*
WILLIE HUGH HINELY *Sponsor*

MEMBERS

BILL BROWN
JOE FEASTER
THOMAS HARRELL
LEWIS HINELY
GEORGE MULLING
PETE PARRISH
HAROLD PEARMAN
LINDLEY PENNINGTON
ROBERT WATERS



PENNINGTON, PARRISH, L. HINELY, W. HINELY, WATERS



HOME ECONOMICS CLUB

OFFICERS

HATTIE SWANN *President*
 JUANITA WYATT *Vice-President*
 JOSEPHINE GRIFFIN *Secretary*
 FAY JONES *Treasurer*
 Miss RUTH BOLTON *Sponsor*

MEMBERS

ALLIE JEAN ALDERMAN
 Miss RUTH BOLTON
 JEANETTE BROWNING
 CHRISTINE CARR
 VENICE CLIFTON
 HAZEL DONALDSON
 FRIEDA FUNDERBURKE
 EMOLYN GORDON
 JOSEPHINE GRIFFIN
 BILLIE HARRELL
 JEAN HENDRIX
 FAY JONES
 NELLIE KATE NEWTON
 JEAN POWELL
 JEANETTE SEARS
 HATTIE SWANN
 HELEN THIGPEN
 JUANITA WYATT



THIGPEN, GRIFFIN, BOLTON, WYATT, SWANN, JONES



Y. W. A.

OFFICERS

JEANETTE SEARS
President

WILLIE MAYERS
Vice-President

MARGARET BUNN
Secretary

MAZIE REYNOLDS
Treasurer

JUANITA WYATT
Pianist

ADEL CALLAWAY
Devotional Chairman

RUTH LIGHTSEY
Program Chairman



The Young Woman's Auxiliary has as its purpose the development of Christian young women. It all may be summed up in our motto: "Unified Christian living on our campus."

B. S. U.

OFFICERS

RUTH LIGHTSEY
President

ABBIE MANN
First Vice-President

LEWIS HINELY
Second Vice-President

RALPH LIGHTSEY
Third Vice-President

WALTER JOHNSTON
Secretary and Treasurer

ESTHER LEE BARNES
Pianist

SAM STEPHENS
Reporter

MARVIN PROSSER
Sunday School Representative

JEANETTE SEARS
Y. W. A. Representative



The purpose of the Baptist Student Union is to promote better spiritual life among the students—thus carrying out its motto: "Christ, the Master of our campus."

SPONSORS

MR. B. L. SMITH

DR. RUFUS HODGES

W A. A.



COUNCIL

OFFICERS

DOT FULCHER	<i>President</i>
DOT GARNER	<i>Vice-President</i>
BETH STANFIELD	<i>Secretary and Treasurer</i>
MISS EDITH GULL	<i>Sponsor</i>

MEMBERS

FRANCES GROOVER	<i>Volley Ball</i>
ESTHER LEE BARNES	<i>Tennis</i>
DOROTHY RAWLINGS	<i>Softball</i>

INTERCOLLEGIATE



First row: Groover, Brannon, Olliff, Stephens, Parrish. . . . Second row: Pennington, Prosser, Pearman, Wells, Ramsey.



Look out Japs and Jerries, here comes Dot.



Marjorie and Kathryn win a love match.

ATHLETICS

have gone to WAR...

Although intercollegiate athletics have seen their last day for the duration, T. C.'s unorganized basketball team was very successful, winning over such teams as Union Bag of Savannah and the "Enlisted" men and Officers of the Air Base at Statesboro.

The girls also participated in intramural activities. They played softball, basketball and many other sports. East Hall proved to have the best team in most of these contests.

The general idea of the Physical education program this year was to improve the physical fitness of the students. Exercises of all types were taken. All the facilities on the campus were used to the best advantage. Tennis, badminton, ping-pong, and shuffleboard are some of the games played regularly.

The world is up-side-down to him.



"Googie" has a lot of trust in Harold.



BACHELORS CLUB

HISTORY: *Founded in 1928*

COLORS: *Green and White*

MOTTO: *"Beware of Women"*

FLOWER: *Bachelor Button*

SONG: *"My Buddy"*

PURPOSE: *"The promotion of ideas, ideals and a comradeship of high integrity."*

OFFICERS

HAROLD WATERS *President*
 *JIMMY GUNTER *Vice-President*
 GEORGE MULLING *Secretary-Treasurer*
 HARRY ROBERTSON *Chaplain*
 MISS RUTH BOLTON *Sponsor*

MEMBERS

DORSEY BLALOCK	DENVER LANIER
DURWARD BRANNON	GEORGE MULLING
WAYNE CULBRETH	HAROLD PEARMAN
ZEKE DAUGHTREY	LINDSEY PENNINGTON
INMAN DAVIS	HARGARET RAULERSON
JOE FEASTER	HARRY ROBERTSON
*JIMMY GUNTER	THOMAS ROBINSON
JESSE HAMBY	REGINALD ROOKS
JAMES HARVEY	CARLTON STEPHENS
LEWIS HINELY	HAROLD TILLMAN
JIMMY JONES	HAROLD WATERS

ROBERT WATERS

*No picture



ROBERTSON, BOLTON, WATERS, MULLING

X CLUB

MOTTO: "Happiness is not perfected until it is shared."

COLORS: Yellow and Green

FLOWER: Daffodil

SONG: "Girl of My Dreams"



OFFICERS

DOROTHY GARNER *President*
 ABBIE MANN *Vice-President*
 MARGARET STRICKLAND *Secretary*
 WINONA EASON *Treasurer*
 BETH STANFIELD *Chaplain*
 MISS RUBY BRAZIEL *Sponsor*
 MISS IRIS DUKES *Sponsor*

MEMBERS

DOROTHY GARNER	*EDWENA PARRISH
LOUISE GLISSON	BETH STANFIELD
FAY JONES	MARGARET STRICKLAND
*ROBBIE LEE MALLARD	JUANITA THOMAS
ABBIE MANN	

PLEDGES

DOT REMINGTON	LOUISE KICKLIGHTER
WINONA EASON	CATHERINE ROWSE
*No picture	



EASON, MANN, GARNER, STRICKLAND



LINDSEY, SAM, HUBERT, JIMMY

BUGGER DAGGER CLUB

OFFICERS

JIMMY JONES	<i>President</i>
HUBERT WELLS	<i>Vice-President</i>
SAM STEPHENS	<i>Secretary and Treasurer</i>
LINDSEY PENNINGTON	<i>Sergeant-at-Arms</i>

Founded 1938

FLOWER: *Azalea*

COLORS: *Red and Black*

SONG: *"When You Come to the End of a Perfect Day"*

MOTTO: *"The overcoming of obstacles"*

SPONSORS

MR. W. B. MOYE

MISS ABBIE MANN

MEMBERS

JACK BALLENGER
DORSEY BLALOCK
DURWARD BRANNON
PAUL BUNCE
BILL CHESHIRE
ZEKE DAUGHTRY
PALMER EDENFIELD
HAROLD HERRINGTON
LEWIS HINELY
WILLIE HUGH HINELY
BILL HOUSTON

JIMMY JONES
MAX LOCKWOOD
LINDSEY PENNINGTON
MARVIN PROSSER
JIM ROBERTS
CARLTON STEPHENS
SAM STEPHENS
HAROLD TILLMAN
JIMMY VARNELL
ROBERT WATERS
HUBERT WELLS

*No picture



MAZIE, UHLMA WYNN, VIRGINIA, HELEN

LAMBDA THETA CHI

OFFICERS

UHLMA WYNN ZITTROUER *President*
 EMILY CROMLEY *Vice-President*
 MRS. BERTHA FREEMAN SMITH *Sponsor*

MOTTO: *"To strive, to seek, to find, and not to yield."*

COLORS: *Green and Gold*

SONG: *"I'll Be Faithful"*

FLOWER: *Sweetheart Rose*

MEMBERS

EMILY CROMLEY
 HELEN THIGPEN
 UHLMA WYNN ZITTROUER



PLEDGES

VIRGINIA GILDER
 MAZIE REYNOLDS



DELTA SIGMA

HISTORY: *Founded G. S. M. C. in 1929*

COLORS: *Blue and Gold*

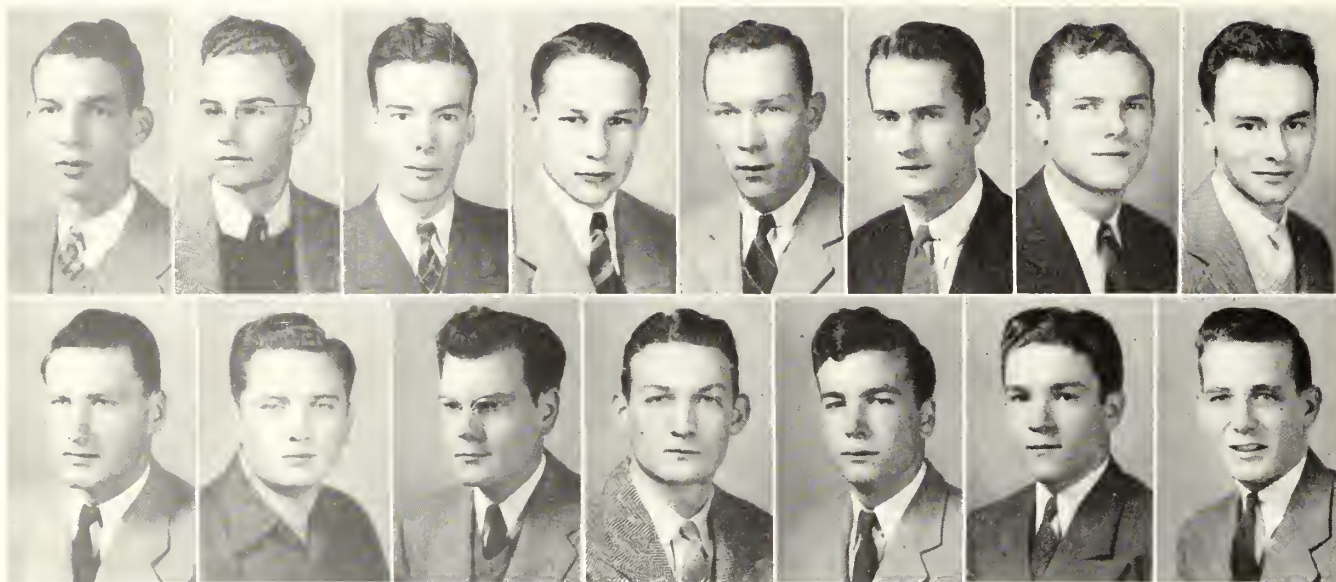
SONG: *"Auld Lang Syne"*

FLOWER: *Red Rose*

SPONSORS

DR. L. W. MOON

MISS LEILA WYATT



OFFICERS

HARRY ROBERTSON	<i>President</i>
HAROLD PEARMAN	<i>Vice-President</i>
CHARLES BROOKS McALLISTER	<i>Secretary</i>
BILL BROWN	<i>Treasurer</i>
PETE PARRISH	<i>Scribe</i>

MEMBERS

BILL BROWN
 CHARLES BROOKS McALLISTER
 FRANK MORRISON
 DIGHT OLLIFF
 PETE PARRISH
 HAROLD PEARMAN
 TINY RAMSEY
 HARRY ROBERTSON

PLEDGES

FREDERICK BEASLEY
 JAMES BRYAN
 BILLY BYERS
 ROBERT GROOVER
 THOMAS HARRELL
 RAY LANIER
 BILL SCOTT





NESMITH, JOHNSON, PERRY, HANNER, ROWSE, WYATT

DUX DOMINA

MOTTO: *"To lead rather than to be led."*

SONG: *"Gettin' Sentimental"*

COLORS: *Gold and White*

FLOWER: *Chrysanthemum*

SPONSORS

MR. AND MRS. W. S. HANNER

MEMBERS

MARY THOMAS PERRY

CATHERINE ROWSE

LEILA WYATT

PLEDGES

RUTH JOHNSON

WYNELL NESMITH

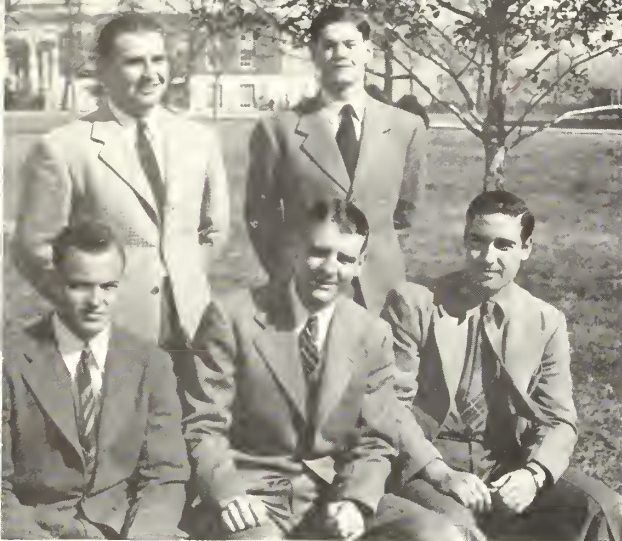
OFFICERS

MARY THOMAS PERRY *President*

LEILA WYATT *Vice-President*

CATHERINE ROWSE . . . *Secretary and Treasurer*





IOTA PI NU

HERRINGTON, FEASTER, MULLING, WATERS, RAULERSON

CROUSE, REMINGTON

HISTORY: *Founded in 1931*

COLORS: *Emerald and Scarlet*

SONG: *"My Dear"*

FLOWER: *Poinsettia*

MOTTO: *"In the Bonds Forever"*

OFFICERS

GEORGE MULLING	President
HAROLD HERRINGTON	Vice-President
HARGARET RAULERSON	Secretary
HAROLD WATERS	Treasurer
JACK WYNN	Sergeant-at-Arms
JOE FEASTER	Historian

MEMBERS

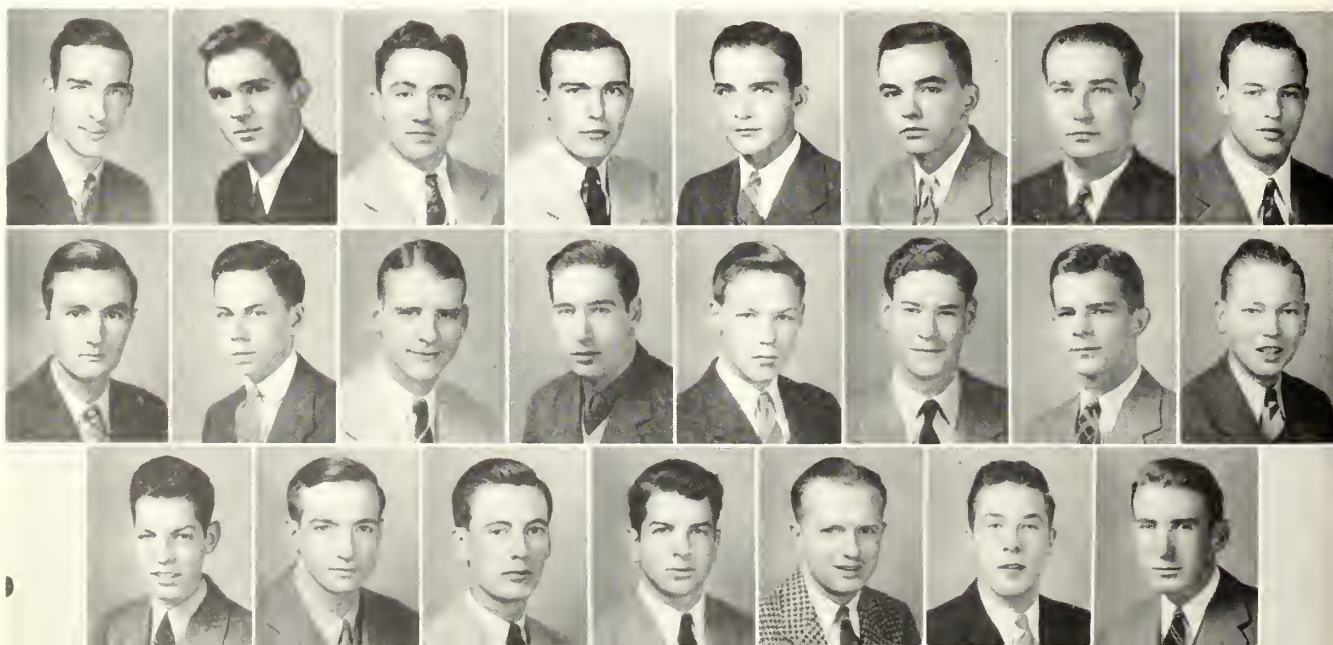
PARRISH BLITCH
BILL CHESHIRE
KENNETH COWART
WAYNE CULBRETH
ZEKE DAUGHTREY
*BILLY DELOACH
C. E. DELOACH
JOE FEASTER
*JIMMY GUNTER

HAROLD HERRINGTON
JIMMY JONES
JOHN FORD MAYS
GEORGE MULLING
HARGARET RAULERSON
VINCE THIGPEN
HAROLD WATERS
JACK WYNN

PLEDGES

DEKLE BANKS
BUDDY BARNES
ROY BEDENFIELD
JOHN DARLEY
HAROLD ENGLISH
LINDSEY PENNINGTON
JACK RUTHERFORD
PETE WOLFE

**No picture.*



EPICUREAN



DOT, HATTIE, SUE, ESTHER, JANE, NANCY, BEVERLY, FRANCES

MOTTO: "Eat, drink, and be merry"

SONG: "Stardust"

COLORS: Red and White

FLOWER: Carnation

OFFICERS

SUE BREEN	President
ESTHER LEE BARNES	Vice-President
DOT REMINGTON	Treasurer
*MARTHA WILMA SIMMONS	Secretary
MRS. E. L. BARNES	Sponsor

MEMBERS

ESTHER LEE BARNES
JANE BATEMAN
SUE BREEN
FRANCES GROOVER
DOT REMINGTON
*MARTHA WILMA SIMMONS
HATTIE SWANN

PLEDGES

BEVERLY EDWARDS
NANCY WARDLAW
*No picture

DOT, SUE, ESTHER



DELTA LAMBDA DELTA



MARGARET, PRUELLA, MARJORIE, KATHRYN

MOTTO: *"A good time in a good way"*

COLORS: *Crimson and Royal Blue*

SONG: *"Always"*

FLOWER: *Rose*

OFFICERS

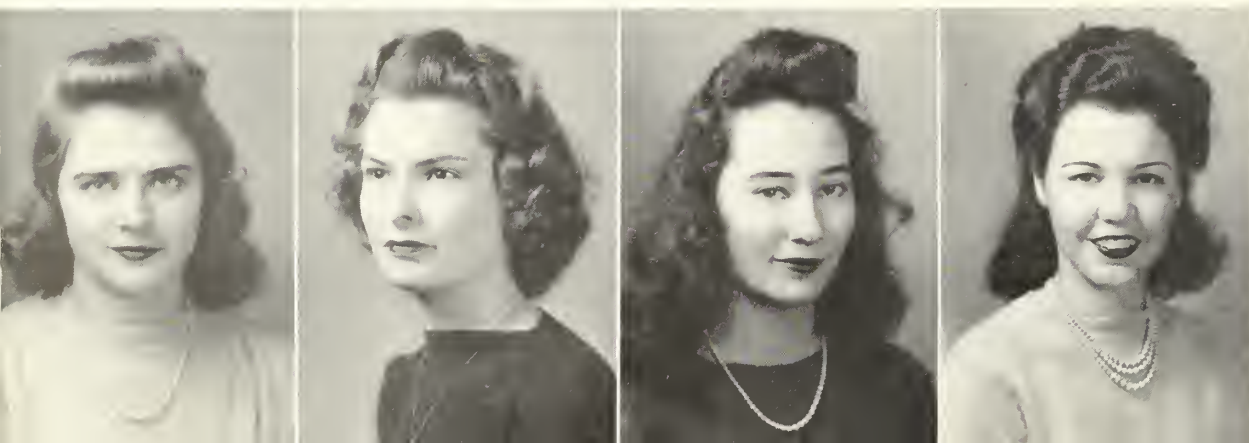
PRUELLA CROMARTIE	<i>President</i>
KATHRYN ELLISON	<i>Vice-President</i>
MARGARET BUNN	<i>Secretary and Treasurer</i>
MR. AND MRS. RONALD J. NEIL	<i>Sponsors</i>

MEMBERS

MARGARET BUNN
PRUELLA CROMARTIE
KATHRYN ELLISON

PLEDGES

MARJORIE PARKERSON
*BETTY JO ROCKER
*VELMA ROCKER
*No picture





SOPHIE, VENICE, MARGARET, NELLIE KATE

SIGMA GAMMA

COLORS: *Green and White* FLOWER: *Gardenia* SONG: *"Night and Day"*
MOTTO: *"Live for others as well as ourselves"*

OFFICERS

VENICE CLIFTON	<i>President</i>
MARGARET STRICKLAND	<i>Vice-President</i>
NELLIE KATE NEWTON	<i>Treasurer</i>
SOPHIE OLIVER	<i>Secretary</i>
MISS MALVINA TRUSSELL	<i>Sponsor</i>

MEMBERS

VENICE CLIFTON
NELLIE KATE NEWTON
MARGARET STRICKLAND

PLEDGES

JEAN HENDRIX
VIRGINIA LOVETT
SOPHIE OLIVER

TOT, NELL, VENICE, SOPHIE, JEAN, MARGARET



PAN-HELLENIC COUNCIL

PURPOSE: To promote closer cooperation among the sororities on the campus with the hope of providing a more comprehensive social program.



SONG: *Memories*

COLORS: *Pink and Blue*

MEMBERS

MARY THOMAS PERRY
SUE BREEN
PRUELLA CROMARTIE
MARGARET STRICKLAND
LEILA WYATT

UHLMA WYNN ZITTROUER
VENICE CLIFTON
ESTHER LEE BARNES
KATHRYN ELLISON
HELEN THIGPEN

OFFICERS

MARY THOMAS PERRY *President*
UHLMA WYNN ZITTROUER *Vice-President*
KATHRYN ELLISON *Treasurer*
SUE BREEN *Secretary*
LEILA WYATT *Social Chariman*





FEATURES



Eugene Speicher, nationally known portrait painter, acting as judge for our Beauty Section, selected the six most beautiful girls on the Georgia Teachers College Campus. His selections were made from photographs and snapshots submitted by the nine girls chosen by the student body.

Dorothy Remington was selected by Eugene Speicher as the most beautiful.

The other five Beauties are listed alphabetically.

Eugene Speicher



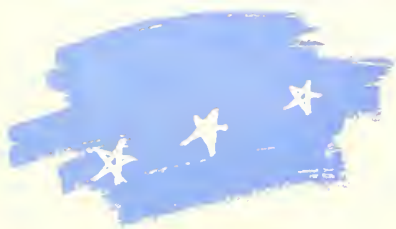


Dorothy Remington





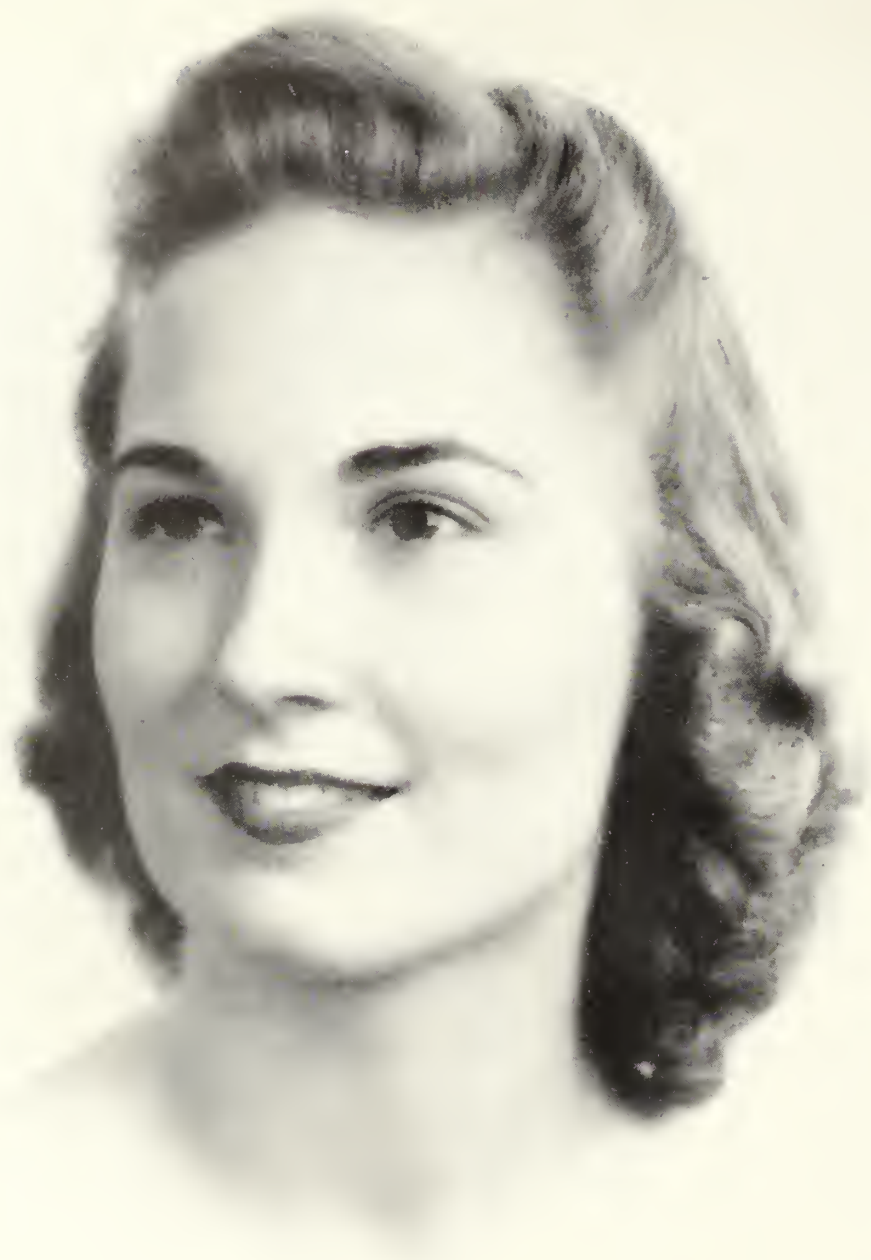
Esther Lee Barnes



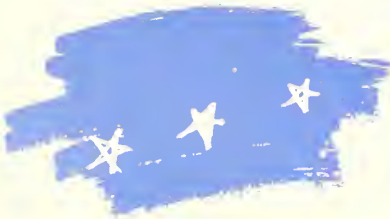


Abbie Mann





Margaret Strickland





Leila Wyatt





Uhlma Wynn Zittouer



S N A P S *and* A D S

Congratulations

—to the Staff of the 1943 Reflector for an outstanding edition of the Georgia Teachers College yearbook. In this volume you have captured many reflections of your life at the Teachers College and set them down indelibly for the years to come.

—to the business men of Statesboro for taking an active part in making this book possible through their advertising.

—to the students of the Teachers College for recognizing the values they may receive in patronizing the advertisers of the 1943 Reflector who represent the leading businesses of the community and are loyal patrons and boosters of their college.
Students! Faculty! Read these “ads”.

Trade in Statesboro, in the heart of Bulloch County . . .

“Where Nature Smiles

and Progress Has the Right-of-way”

S T A T E S B O R O

C H A M B E R O F C O M M E R C E

CONSERVATIVE
MANAGEMENT

•

COURTEOUS
SERVICE

•

*"Big Enough To Serve
You—Small Enough
To Know You"*

•

**BULLOCH
COUNTY
BANK**

Member
of
F. D. I. C.



Does she worry you that much, Tiny?



Devoted roommates.



The Army and Marines

The Best in
COLLEGE
CLOTHES...

for
STUDENTS
and
FACULTY

•

HENRY'S

**GEORGIA
POWER
COMPANY**

•

*"A Citizen Wherever
We Serve"*

Anything the Student

Needs

McLELLAN'S

STATESBORO

GA.

**Statesboro
Buggy and
Wagon Co.**

HARDWARE, FARM
IMPLEMENTS and GLASS

Phone 227

STATESBORO

GA.

**Franklin Drug
Company**

Rexall Quality Drugs

Professional Pharmacists

PHONE 2

STATESBORO

GA.



Announcement--

*Our Personal Care Is Your
Guarantee of Expert
Cleaning*

**Statesboro Dry
Cleaners**

HARRY BRUNSON, *Prop.*



Six students were chosen to represent G. T. C. in "Who's Who" for the year 1942-43. These students are: Inman Davis, Abbie Mann, George Mulling, Edwena Parrish, Harry Robertson, and Harold Waters.

The biographies of these students will be published in "Who's Who Among Students in American Universities and Colleges" along with those of students from more than 550 colleges.

Who's Who students are chosen on the basis of the combination of the following qualities: character, leadership, scholarship and potentialities. Students who are rated as seniors are eligible and are selected by a faculty committee of their respective schools.

1943

REFLECTIONS

1963

Will your station in life in 1963 reflect the proper preparation in your earlier years?

Will your financial position in 1963 reflect your strict adherence to the principles of thrift and economy in 1943 and subsequent years?

Consider these questions while you are young.

SEA ISLAND BANK

SAFETY — COURTESY — SERVICE

MEMBER FEDERAL DEPOSIT INSURANCE CORP.

ALDERMAN ROOFING CO.

"The Best in Roofing"

STATESBORO

GEORGIA



And after all that we didn't get a ride!

"ONCE A TRIAL . . .

. . . ALWAYS A CUSTOMER"

WATERS BARBER SHOP

—UNDER THE BANK

H. W. SMITH

*Statesboro's Leading
Jeweler*

Teachers and Students
Always Welcome

STATESBORO

GEORGIA



Don't be so forlorn, Dorsey!

NU - GRAPE BOTTLING COMPANY

L. M. DURDEN

STATESBORO

GEORGIA

MEET YOUR FRIENDS AT THE

COLLEGE PHARMACY

"WHERE THE CROWDS GO"

PHONE
414

PROMPT - COURTEOUS SERVICE

PHONE
416

BEST FOR YOUR 5c AND 10c NEEDS

UNITED

JIMMY ALLEN, *Manager*

STATESBORO

GEORGIA

CHAS. E. CONE

R. M. BENSON

Charles E. Cone Realty Company

STATESBORO, GEORGIA

Established 1915

FARM LANDS — CITY PROPERTY

INSURANCE

OFFICE: CONE BLDG.

PHONE 86



Harold and "Googie" . . . Are they waiting on the dinner bell?



It must be good, Esther and George!



Pennington and the "widow".

Brannen-Thayer Monument Co.

45 WEST MAIN STREET

STATESBORO

GEORGIA

Compliments

Sorrier Insurance Agency

Est. 1888

PHONE 58

STATESBORO

GEORGIA

*"If It's Seed, If It's Feed,
We Have It"*

Bradley and Cone Seed and Feed Co.

STATESBORO, GEORGIA

BABY CHICKS, GERMINATED SEEDS

FOR VARSITY CLOTHES . . .

Brady's Department Store

"Where Quality Is Higher Than Price"

17 NORTH MAIN STREET

STATESBORO

GEORGIA



Could this be the Bugger Dagger picnic that "Tarzan and His Mate" attended?



Margaret, Margie, Prue, Tag on the levee. Are they working?

Want Quick Service?

Statesboro Provision Company

ICE AND MEAT CURING
STATESBORO GEORGIA

YOUR OLDEST FRIEND . . .

THE BULLOCH TIMES

The best in county news

STATESBORO GEORGIA

THE BLUE TIDE

. . . ON THE CAMPUS

"WHERE BOY MEETS GIRL"

WALTER ALDRED COMPANY

EVERYTHING IN BUILDING SUPPLIES
PHONE 224

STATESBORO GEORGIA

*When You Want Better
DRY CLEANING
Send It To*

THACKSTON'S

JAMES W. JOHNSTON, Prop.
A COLLEGE REPRESENTATIVE IN EVERY
DORMITORY

THE STATESBORO GROCERY CO.

"WHOLESALE GROCERS"

INSURE TODAY!

Groover & Johnston Insurance Agency

Represent reliable companies with
reputations for fair dealing.

*For Quick, Courteous Service
At All Times—*

CALL

GRAY'S TAXI

PHONE 346

QUALITY MILLWORK

HOWARD LUMBER COMPANY

A COMPLETE LINE

OF

LUMBER

PHONE 353



It must be the rubber shortage!



We didn't know that the men on the campus were so effeminate!

A COMPLETE
LINE OF
COLLEGE CLOTHES

*Statesboro's
Largest
Department
Store*

**H. MINKOVITZ
& SONS**



How do you like this view of the gym and laboratory school?



Z. L. Strange, our postmaster.



A place that is only (?) frequented by Nature Study and Zoology Classes.



Approximately the center of all the activities on the campus as seen from the water tank.

Compliments of

LANNIE F. SIMMONS

AUTOMOBILES — FERTILIZERS

G. E. APPLIANCES — TRACTORS

Hoke S. Brunson

Don't say bread . . . SAY

Holsum

DERST BAKING CO.

SAVANNAH

GEORGIA

When You Want Better Ice Cream

**SANKEN'S
ICE CREAM COMPANY**

GEORGIA-CAROLINA DAIRIES

AUGUSTA, GA.

The Best Dressed College Men

Wear



26 W. BROUGHTON STREET

SAVANNAH

GEORGIA

From Where it Tis—

To

Where it Taint—

The Year Round—Since 1920



Alfred Dorman Co.

STATESBORO :- SYLVANIA :- JESUP

RADIOS
BICYCLES
SPORTING GOODS

S O U T H E R N A U T O S T O R E S

TIRES
BATTERIES
SEAT COVERS
AUTO PARTS

Varsity-Town

CLOTHES

The Jones Co.

Quality Clothing for Men and Boys
Jerrell T. Tulcn — Carl J. Kraft

SAVANNAH, GA.

Neal-Blun Company

Established 1897

BUILDERS SUPPLIES

12 TO 20 BAY ST., WEST
SAVANNAH, GA.



"Rat" Edwards.



Pop, was Dot the reason your
nose is bandaged?



Glorinda and Dot Twilley com-
ing from town.

Surely, this is a mistake!

PHONE 7313

M A N G E L ' S

Feminine Apparel

15 BROUGHTON ST., E. SAVANNAH, GA.

DANIEL HOGAN, Inc.

DRESS GOODS

LINENS

DOMESTICS

DRAPERIES

Buttons, Trimmings and Everything
for the Home Sewer

Butterick and Advance Patterns

BROUGHTON AND BARNARD STS.
SAVANNAH, GA.

Quality Our Standard Since 1868

FURNITURE — NORGE REFRIGERATORS
ZENITH and R. C. A. RADIOS — PIANOS

B. J. Sheppard Furniture Co.

220 W. BROUGHTON STREET
TELEPHONE 2-0682
SAVANNAH, GEORGIA

ALWAYS A GOOD SHOW

at the

**GEORGIA
THEATER**

AND

**STATE
THEATER**

FINE PIANOS

SHEET MUSIC

ALNUT MUSIC CO.

240 W. BROUGHTON ST.
SAVANNAH, GA.

PHONOGRAPH
RECORDS

MUSICAL
MERCHANDISE

SPORTING GOODS

JEWELRY

WOLF'S

402 W. BROUGHTON ST.
SAVANNAH, GA.

Fishing Tackle—Guns and Ammunition
BEN H. PORTMAN, *Mgr.* PHONE 5294



"Fraternal" love, that's all. Dr. and Mrs. Moon; why should they enjoy a picnic so much?



Sam, Ruby, and Pop at . . . NO! They can't be there!

Compliments of
HINTON BOOTH

STEVENS
THE HOUSE OF FINE
WEDDING STATIONERY
ENGRAVED

INVITATIONS, ANNOUNCEMENTS, CARDS

Write for samples and prices

**J. P. Stevens Engraving
Company**

110 PEACHTREE STREET, ATLANTA

Compliments of

M. B. SHEPHERD

121 W. BROUGHTON ST.

SAVANNAH

GEORGIA

PLUMBING AND HEATING
MATERIALS

CRANE COMPANY

14 W. BROAD ST. SAVANNAH, GA.

BARGAIN CORNER

SAVANNAH, GA.



*Savannah's Leading and Largest
Department Store*

LEOPOLD ADLER CO.

STUDENT OUTFITTERS FOR 65 YEARS

SENIOR RINGS

for
any year can be furnished by

HERFF-JONES CO.

H. S. CANFIELD

1560 NORTH DECATUR ROAD
ATLANTA, GA.

"We Have a Complete Graduation Service"

for
Colleges and High Schools

MEDALS — CUPS — TROPHIES

INVITATIONS — CARDS

DIPLOMAS

CAPS *and* GOWNS

Savannah's leading Department Store

W. T. GRANT

See us for your various needs

SAVANNAH

GEORGIA

*Where the 'out-of-town' folks are
'home' folks*

PLAZA CAFE

The Best In Foods

SAVANNAH

GEORGIA



Yes, here they are; together! Wonder what has the center
as usual.

Now, Percy . . .!

High on a windy hill.

It must be a handsome car
AND driver!

*Compliments
of*

S. W. LEWIS, Inc.

STATESBORO

GEORGIA



The three stooges.

CLOTHES . . .

For the Campus

THE FAIR STORE

And the Family, too.



Did we say three stooges, before?

Serving G. T. C. With Fresh
FRUITS AND VEGETABLES

Charles Bryant

Lowest Prices Always



Vince, in a favorite pose.

Give "No. 17" a longer life by
sending your shoes to—

Ideal Shoe Shop

HOMER SIMMONS, *Prop.*



Birds of a feather.

*The best in town for—
Prompt Service*

**ELLIS DRUG
COMPANY**

FOUNTAIN SERVICE
DELUX
AND
PRESCRIPTIONS
FILLED QUICKLY AND CORRECTLY
BY
PROFESSIONAL PHARMACISTS

We are the best in town—

- For your BANQUETS
- For your TEAS
- For your PARTIES

**RUSHING
HOTEL**

Convenient and Reasonable

THE SAVANNAH HOTEL

A Dinkler Hotel

R. W. RUSSELL, JR., *Mgr.*

CARLING DINKLER, *President*

Greetings from

The Steel Products Co., Inc.

SAVANNAH, GEORGIA

Compliments of

Statesboro Woman's Club



Hmm, hmm . . . !
A little help is all that was needed



Group Games?



Poor things!



Give me my Boots and Saddle!



Not the 20% Feaster!

GRIMES JEWELRY COMPANY

- SILVERWARE
- GLASSWARE
- DIAMONDS
- WATCHES
- CHINA

*Headquarters for Fraternity and
Sorority Jewelry*

GORDON FOODS, INC.

ATLANTA, GEORGIA

Delicious, Fresh
**POTATO CHIPS,
PEANUTS, CANDIES,
CRACKERS**

*Buy the food with the red truck
on the package.*

Compliments of

SCHULTE UNITED

Thrift Junior

Department Store

SAVANNAH

GEORGIA

LOOK STUDENTS—

LOOK PROFESSORS—

*If it is
S P O R T
C L O T H E S
you want,
we have it!*

**DONALDSON-SMITH
CLOTHING COMPANY**



Somebody forgot him.
Polishing up . . .

Women will be late!

It must be before the
game.

I know they aren't dis-
cussing zoology!

Sophie at it again
What has Mazie done this time?

Fines

“Where Fashions Make Their Debut”

Extends to you a cordial invitation to make your headquarters here, when shopping in Savannah. One of Savannah's really smart shops. . . . Fine's is ready to serve you at all times . . . with everything that's new and smart in fashions for women . . . and children!

“RAT” COURT



Judge Feaster



Judge Feaster and Associate Judges Hinely, Raulerson and Davis.

Defense Attorneys
Stephens and Waters



Prosecuting Attorneys Daughtery
and Robertson



Just one more case . . .



Judgment is passed.



Is court in session?

DRINK

Coca-Cola
TRADE MARK

IN BOTTLES

"It's the Refreshing Thing To Do!"

STATESBORO COCA-COLA BOTTLING CO.

MAÑANA
and
EVERY DAY!
use
SEXTON
CHILI
CON CARNE
PRODUCTS
For Flavor and Pleasure


 **GOOD FOOD FOR PLEASED GUESTS** **SEXTON**



Not Ruby Brazil on a picnic?



Such modesty!



What do you have behind you, Dot?



His thoughts must be of Mazie.



After classes—



Isn't that the wrong dormitory, Nell and Venice?



"Old Glory"



Spring—



Tee Hee!



Rock, did you break that one, too?

Lanier's Mortuary

ALLEN R. LANIER

AMBULANCE SERVICE — LADY ASSISTANT

STATESBORO, GEORGIA

We Invite You

to visit our store while in Savannah

S h o e s

For Entire Family

GLOBE SHOE STORE

17 EAST BROUGHTON

OLLIFF & SMITH

FANCY GROCERIES—FRESH MEATS

GARDEN AND FIELD SEED

HAY AND GRAIN

POULTRY SUPPLIES

STATESBORO

GEORGIA

Savannah's

Leading Furniture Store

H A V E R T Y

If it's furniture, we have it!



SUCCESSFUL ANNUALS


Require the services of experienced and expert craftsmen, trained in every detail of the processes of creating • planning layout and design • typesetting • printing lithographing and binding... Throughout half a century this company has pioneered in the production of the highest type of printing... Our services include a special college annual sales and service organization... Abundant equipment • modern and complete... Prices representing maximum in value



FOOTE & DAVIES

PRINTING • LITHOGRAPHING • ENGRAVING

ATLANTA



★ THE MARK THAT
IDENTIFIES THE SOUTH'S
FINEST YEARBOOKS

PHOTO-PROCESS ENGRAVING CO.

115 - 119 LUCKIE STREET ★ ATLANTA GEORGIA

ZACH S. HENDERSON LIBRARY



0 2001 0488989 0

DEMCO

IN REPLY

TO BE TAKEN FROM THIS

