

Summer 2010

Summer 2010 AASU Data Digest

Armstrong State University

Follow this and additional works at: <https://digitalcommons.georgiasouthern.edu/armstrong-data-digests>

Recommended Citation

Armstrong State University, "Summer 2010 AASU Data Digest" (2010). *Armstrong Data Digests*. 16.
<https://digitalcommons.georgiasouthern.edu/armstrong-data-digests/16>

This other is brought to you for free and open access by the Armstrong Office of Institutional Research at Digital Commons@Georgia Southern. It has been accepted for inclusion in Armstrong Data Digests by an authorized administrator of Digital Commons@Georgia Southern. For more information, please contact digitalcommons@georgiasouthern.edu.



Armstrong Atlantic State University

Summer 2010 Data Digest

Published by the Office of Institutional Research
912.344.3235
www.ir.armstrong.edu



Table of Contents

At A Glance

Armstrong at a Glance	1
Five Year Undergraduate & Graduate Enrollment Trends	3

Enrollment

Undergraduate Headcount Enrollment	4
Graduate Headcount Enrollment	5
Undergraduate Enrollment by FT/PT Status	6
Graduate Enrollment by FT/PT Status	7
Undergraduate Enrollment by Ethnic Group	8
Graduate Enrollment by Ethnic Group	9
Undergraduate Enrollment by County of Origin	10
Graduate Enrollment by County of Origin	12
Learning Support Enrollment	14

Student Credit Hours

Student Credit Hours by College and University	15
Total Student Credit Hours	16
Breakdown of University Credit Hour Comparison	17
Departmental Productivity Ratios	18

Lecture Section Size

Lecture Sections by Level	19
---------------------------	----

Armstrong Atlantic At A Glance

	<u>Undergraduates</u>	<u>Graduates</u>	<u>Overall</u> <u>Total</u>
Enrollment, Summer 2010	3,009	615	3,624
Enrollment, Summer 2009	2,980	631	3,611
Percent Change in Enrollment	0.97%	-2.54%	0.36%
Percent Full-Time*	11.2%	30.2%	14.6%
Percent Part-Time*	88.8%	69.8%	85.4%
Student Credit Hours, Summer 2009	21,746	4,054	25,800
FTE, Summer 2010**			2,149
FTE, Summer 2009**			1,993
Percent Change in FTE			7.8%
Percent Female	69.2%	81.0%	71.2%
Percent Male	30.8%	19.0%	28.8%

Enrollment by Level of Classification

Freshmen/Joint Enrollment	604	16.7%
Sophomore	534	14.7%
Junior	589	16.3%
Senior	909	25.1%
Transient/Other	373	10.3%
Graduate	615	17.0%

Enrollment by Ethnic Group

American Indian/Alaskan Native	16	0.4%
Asian/Pacific Islander	134	3.7%
Black/Non-Hispanic	931	25.5%
Hispanic	157	4.3%
Multi-Racial	119	3.3%
White/Non-Hispanic	2,243	62.8%

* Full-time status is based upon 12 or more SCH for undergraduates and 9 or more SCH for graduates. Part-time is less than 12 for undergraduates and less than 9 for graduates.

**Undergraduate FTE: Count each student as 1; Count all hours enrolled for the remaining undergraduates and divide those hours by 12; Add the two numbers together. Graduate FTE: Count each full-time student as 1; Count all hours enrolled for the remaining graduates and divide those hours by 9; Add the two numbers together. Add undergraduate FTE and graduate FTE to get the total FTE.

Enrollment by Type of Residency

Georgia Residents	3,104	85.7%
Out-of-State	476	13.1%
Foreign Students	44	1.2%

New Student Enrollment by Classification

Joint Enrollment	2	0.4%
Beginning Freshmen	72	13.7%
Transfer Freshmen	52	9.9%
Transfer Sophomore	46	8.7%
Transfer Junior	26	4.9%
Transfer Senior	13	2.5%
TransientOther	188	35.7%
Graduate	127	24.1%
Total	526	100.0%

Students Enrolled in Learning Support Courses

(Unduplicated Headcount)

Due to System Requirement	84
Due to Institution Requirement	4
Due to Voluntary Enrollment	3
Total	91

Average Age

Undergraduate	26.7
Graduate	34.4

Age by Gender

	Female	Male	Total
24 and younger	1,310	550	1,860
	35.9%	15.1%	50.9%
25-35	825	360	1,185
	22.6%	9.9%	32.4%
36-55	418	122	540
	11.4%	3.3%	14.8%
56 and older	47	20	67
	1.3%	0.5%	1.8%
TOTAL	2,600	1,052	3,652

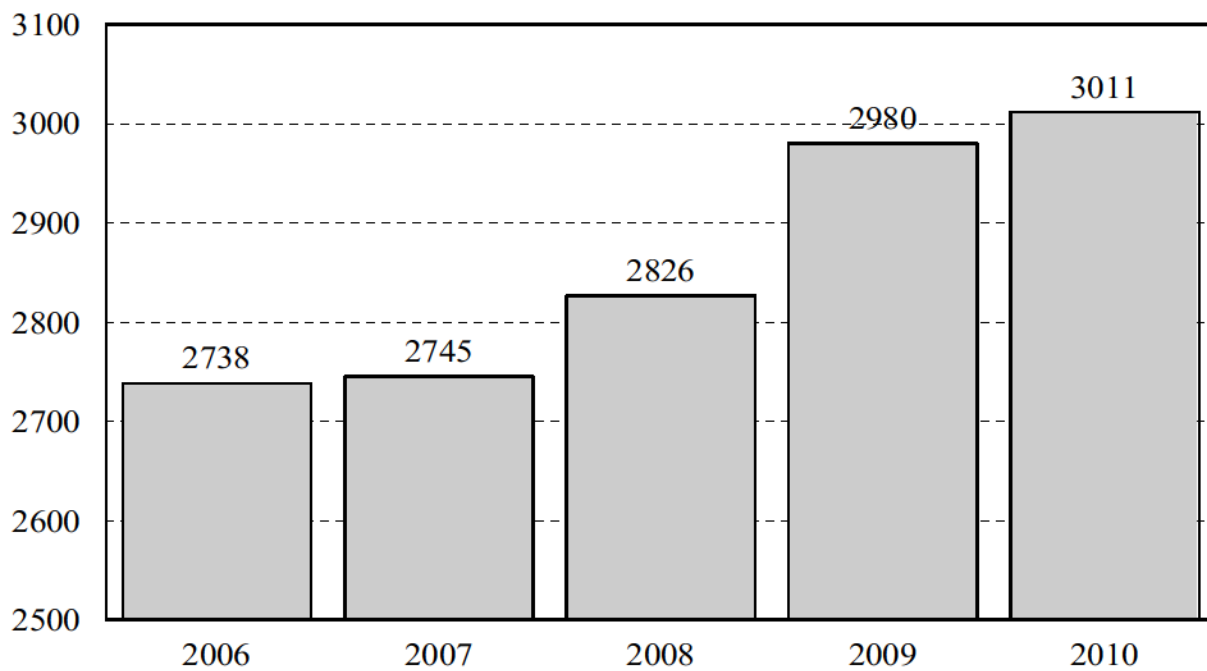
Five Year Undergraduate and Graduate Enrollment Trends At a Glance

	Summer 2006	Summer 2007	Summer 2008	Summer 2009	Summer 2010	# Change	% Change
Headcount	3,346	3,315	3,453	3,611	3,624	278	8.3%
FTE	1,768	1,786	1,894	1,993	2,149	381	21.5%
Ethnic Status							
American Indian	8	12	11	11	16	8	100.0%
Asian/Pacific Islander	127	125	127	139	134	7	5.5%
Black	881	827	829	904	931	50	5.7%
Hispanic	99	121	108	120	157	58	58.6%
Multi-Racial	150	198	221	12	119	-31	-20.7%
White	2,081	2,032	2,157	2,385	2,243	162	7.8%
County of Origin							
Chatham	1,484	1,423	1,464	1,524	1,858	374	25.2%
Bryan	176	216	214	235	241	65	36.9%
Camden	47	52	55	46	38	-9	-19.1%
Effingham	167	169	192	174	186	19	11.4%
Glynn	96	94	101	120	82	-14	-14.6%
Liberty	322	323	327	288	278	-44	-13.7%
Long/McIntosh	41	19	48	45	36	-5	-12.2%
Other GA Counties	678	687	726	803	799	121	17.8%
Out of State	335	332	326	340	134	-201	-60.0%

Undergraduate Headcount Enrollment

	Summer 2006	Summer 2007	Summer 2008	Summer 2009	Summer 2009	5 Year # Change	5 Year % Change
Total	2,738	2,745	2,826	2,980	3,011	273	10.0%
# Change		7	81	154	31		
% Change		0.3%	3.0%	5.4%	1.0%		

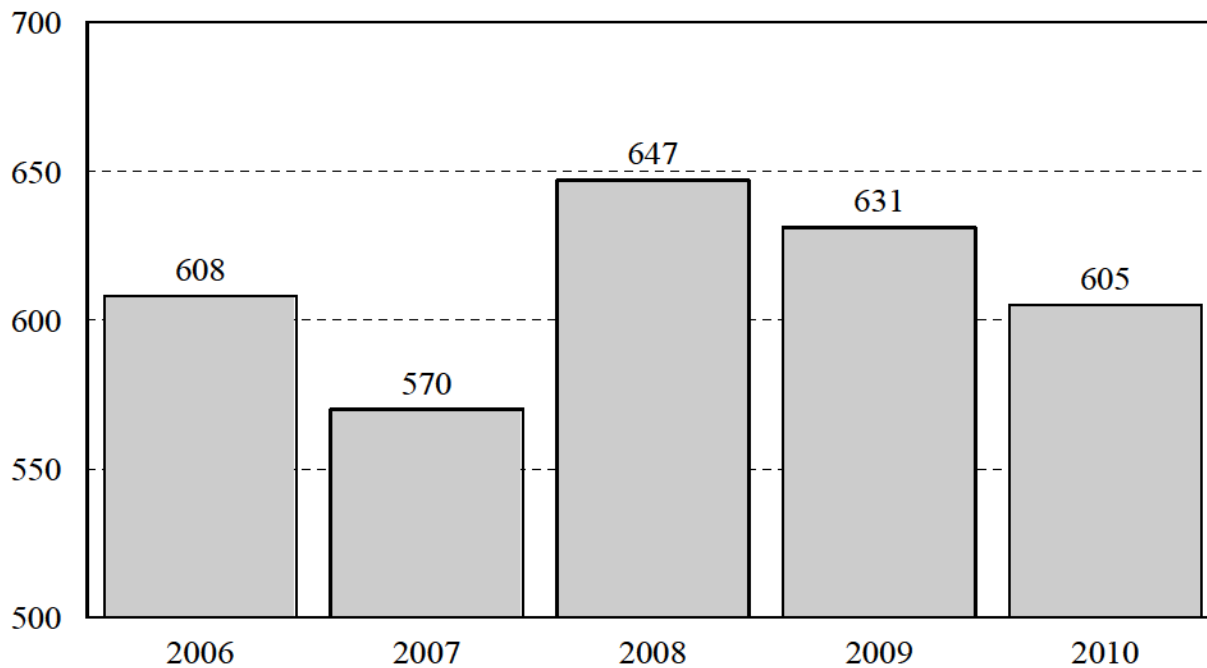
Undergraduate Headcount Enrollment



Graduate Headcount Enrollment

Graduate Enrollment							
	Summer 2006	Summer 2007	Summer 2008	Summer 2009	Summer 2010	5 Year # Change	5 Year % Change
Total	608	570	647	631	605	-3	-0.5%
# Change		-38	77	-16	-26		
% Change		-6.3%	13.5%	-2.5%	-4.1%		

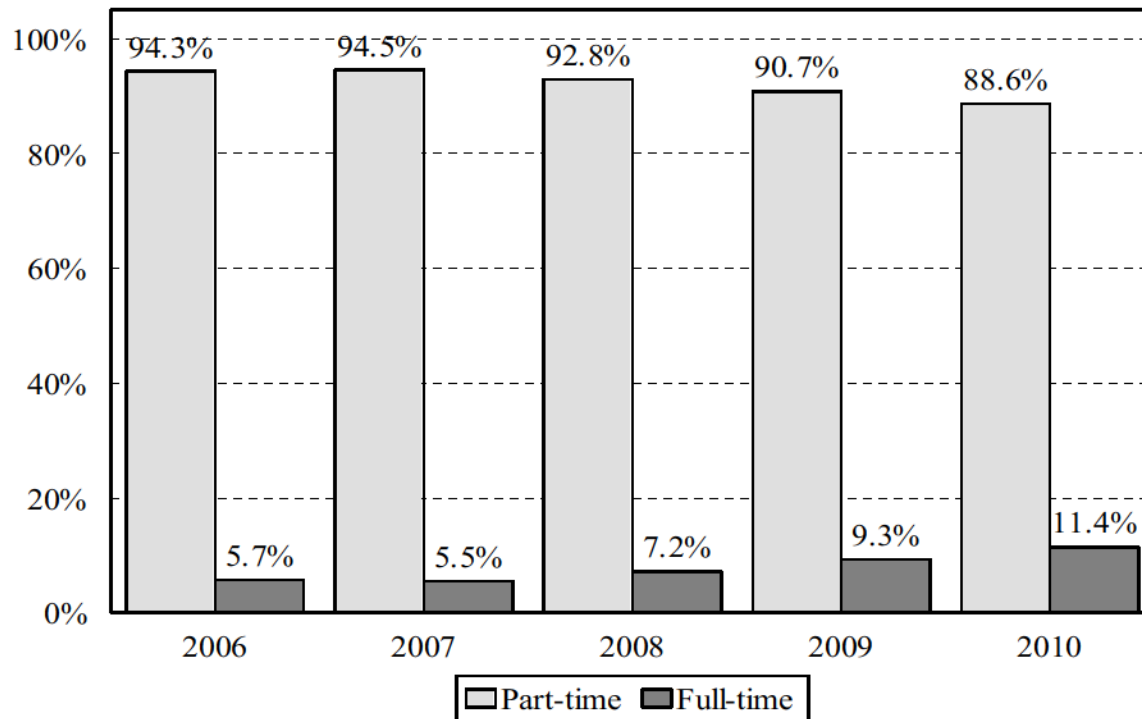
Graduate Headcount Enrollment



Undergraduate Enrollment by FT/PT Status

As a Percent of Undergraduates						
	Summer 2006	Summer 2007	Summer 2008	Summer 2009	Summer 2010	5 Year % Change
% Full Time	5.7%	5.5%	7.2%	9.3%	11.4%	100.0%
% Part Time	94.3%	94.5%	92.8%	90.7%	88.6%	-6.0%

Undergraduate Enrollment by Full-time/Part-time Status

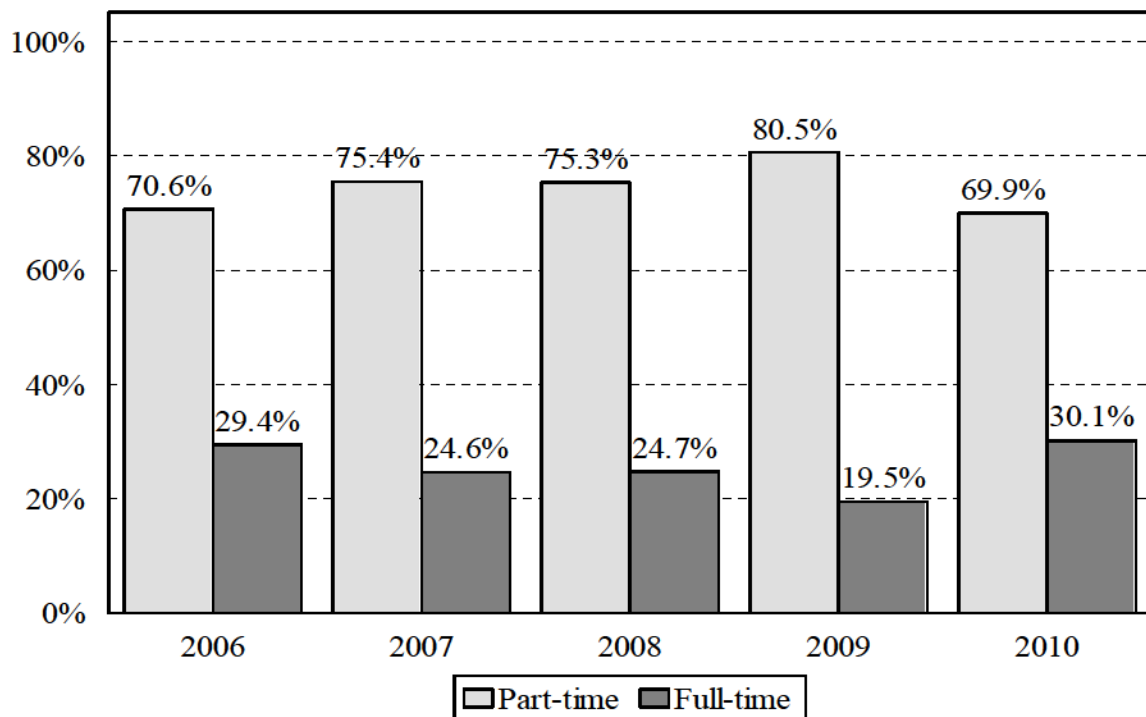


Note: Full-Time undergraduates are those students carrying 12 credit hours or more - Part-time students carry less than 12 hours.

Graduate Enrollment by FT/PT Status

As a Percent of Graduates						
	Summer 2006	Summer 2007	Summer 2008	Summer 2009	Summer 2010	5 Year % Change
% Full Time	29.4%	24.6%	24.7%	19.5%	30.1%	2.4%
% Part Time	70.6%	75.4%	75.3%	80.5%	69.9%	-1.0%

Graduate Enrollment by Full-time/Part-time Status

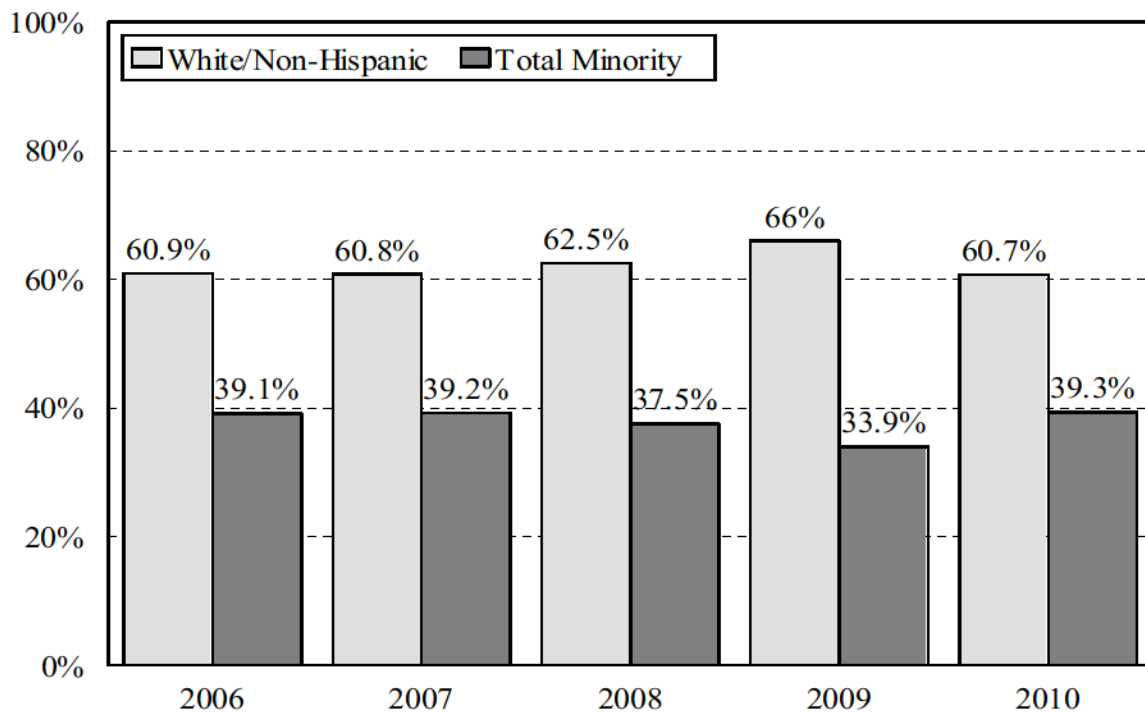


Note: Full-time graduate students are enrolled for 9 SCH or more and part-time graduates for less than 9 SCH.

Undergraduate Enrollment by Ethnic Group

As a Percentage of Undergraduates						
	Summer 2006	Summer 2007	Summer 2008	Summer 2009	Summer 2010	5 Year % Change
Amer. Indian/Alaskan	0.3%	0.4%	0.4%	0.3%	0.5%	95.6%
Asian/Pacific Islander	4.2%	4.2%	4.2%	4.3%	4.0%	-4.8%
Black/Non-Hispanic	26.2%	24.4%	23.6%	25.1%	26.1%	-0.3%
Hispanic	3.5%	4.1%	3.5%	3.8%	4.8%	36.9%
Multiracial	5.0%	6.1%	5.8%	0.4%	3.9%	-21.5%
Total Minority	39.1%	39.2%	37.5%	33.9%	39.3%	0.5%
White/Non-Hispanic	60.9%	60.8%	62.5%	66.0%	60.7%	-0.3%

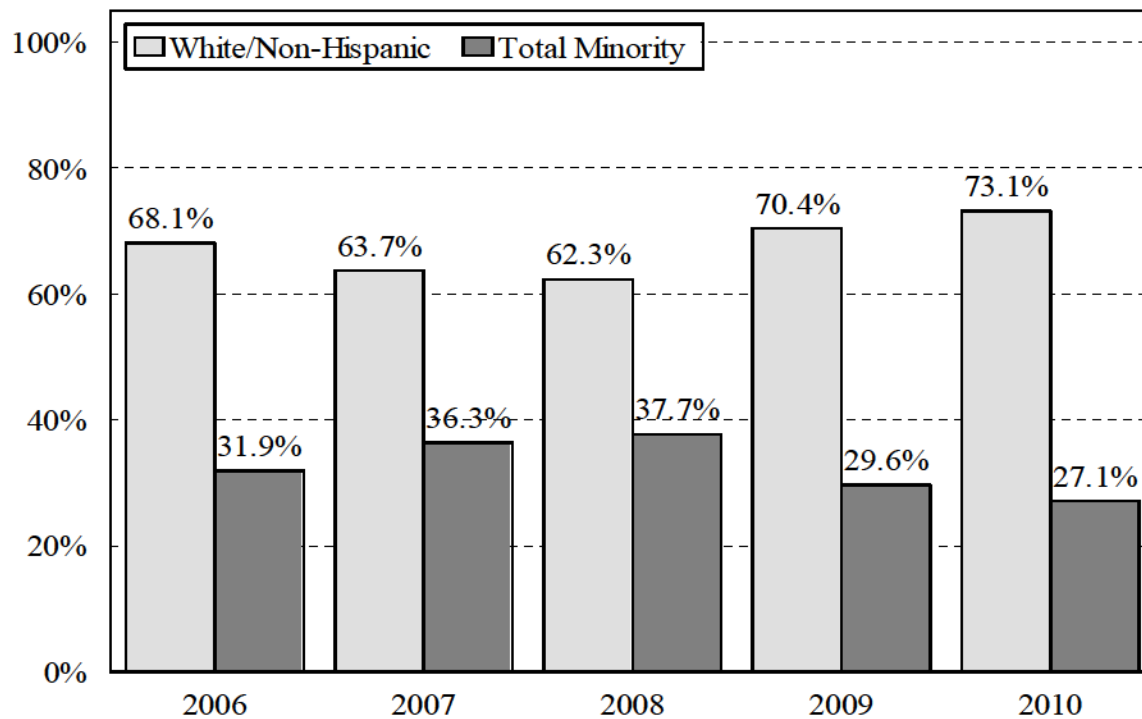
Undergraduate Enrollment by Ethnic Group



Graduate Enrollment by Ethnic Group

As a Percentage of Graduates						
	Summer 2006	Summer 2007	Summer 2008	Summer 2009	Summer 2010	5 Year % Change
Amer. Indian/Alaskan	0.2%	0.4%	0.2%	0.2%	0.2%	21.6%
Asian/Pacific Islander	2.0%	1.4%	1.4%	1.9%	1.7%	-13.9%
Black/Non-Hispanic	27.0%	27.7%	25.6%	26.4%	22.5%	-16.6%
Hispanic	0.5%	1.4%	1.7%	1.1%	2.0%	305.3%
Multiracial	2.3%	5.4%	8.9%	0.0%	0.7%	-69.6%
Total Minority	31.9%	36.3%	37.7%	29.6%	27.1%	-15.1%
White/Non-Hispanic	68.1%	63.7%	62.3%	70.4%	73.1%	7.4%

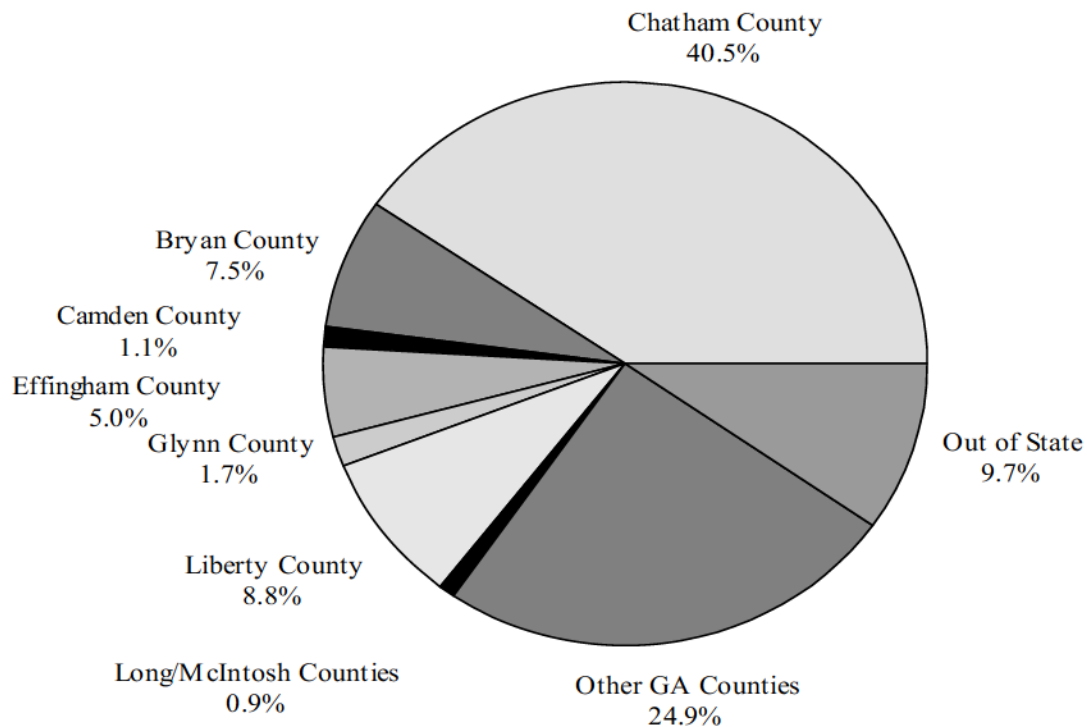
Graduate Enrollment by Ethnic Group



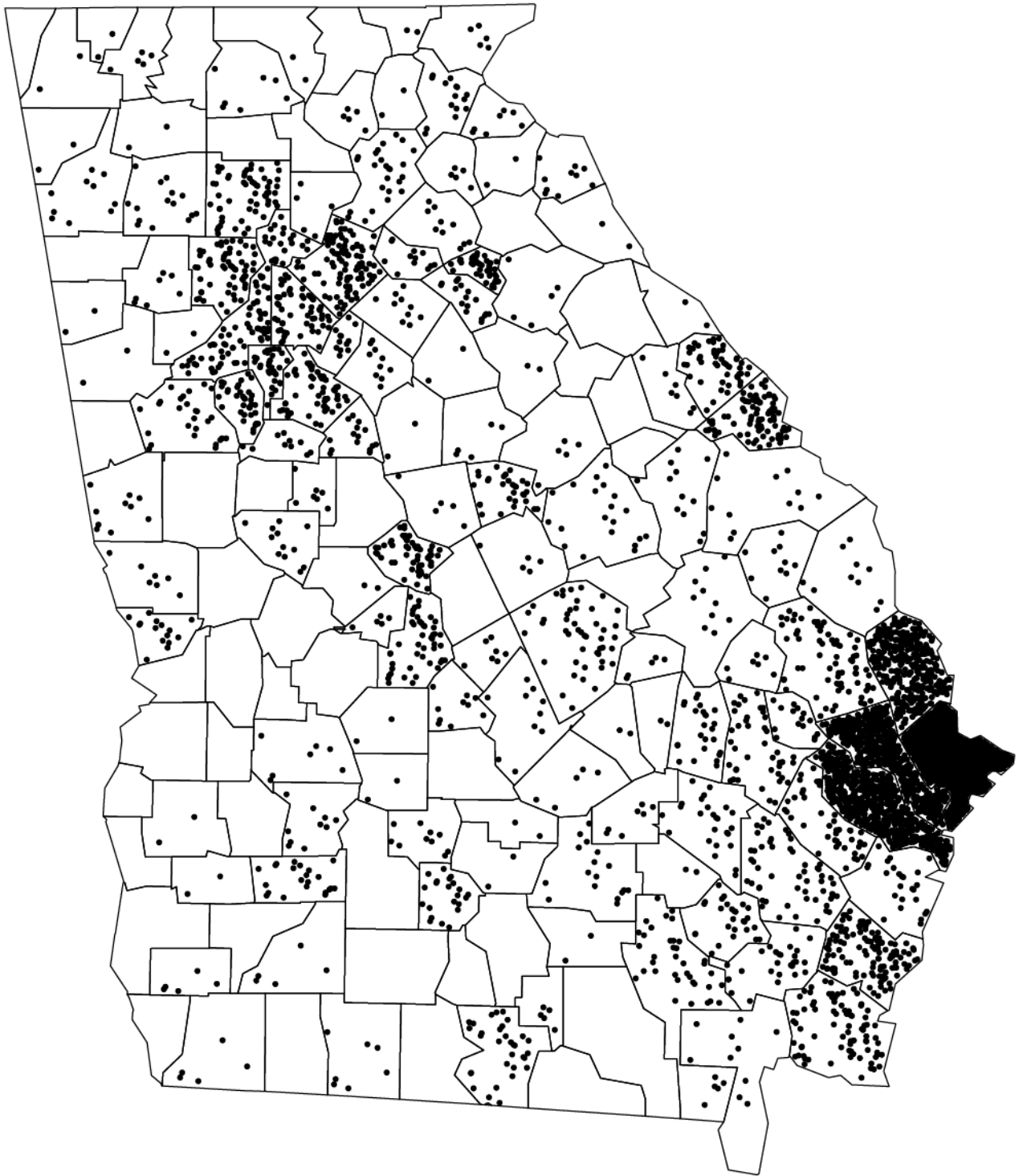
Undergraduate Enrollment by County of Origin

As a Percentage of Undergraduates						
	Summer 2006	Summer 2007	Summer 2008	Summer 2009	Summer 2010	5 Year % Change
Chatham County	45.1%	41.9%	41.5%	41.2%	40.5%	-10.3%
Bryan County	5.7%	7.0%	6.6%	7.1%	7.5%	30.3%
Camden County	1.2%	1.6%	1.5%	1.2%	1.1%	-9.1%
Effingham County	5.5%	5.4%	5.7%	4.9%	5.0%	-9.1%
Glynn County	2.7%	2.6%	2.3%	2.5%	1.7%	-37.7%
Liberty County	10.3%	10.7%	9.9%	8.6%	8.8%	-14.6%
Long/McIntosh Counties	1.2%	1.2%	1.5%	1.2%	0.9%	-27.8%
Other GA Counties	19.5%	19.6%	21.2%	23.3%	24.9%	27.5%
Out of State	8.7%	10.0%	9.8%	10.0%	9.7%	11.5%

Undergraduate Enrollment by County of Origin



Undergraduate Georgia Enrollment by County of Origin

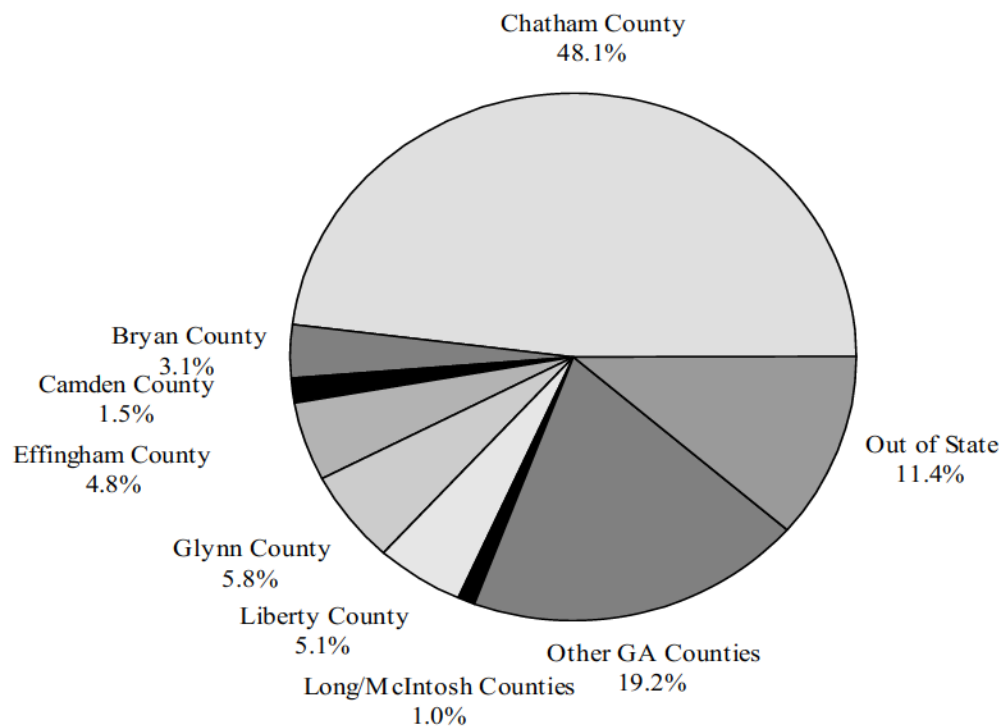


Source: University System of Georgia SIRS Report

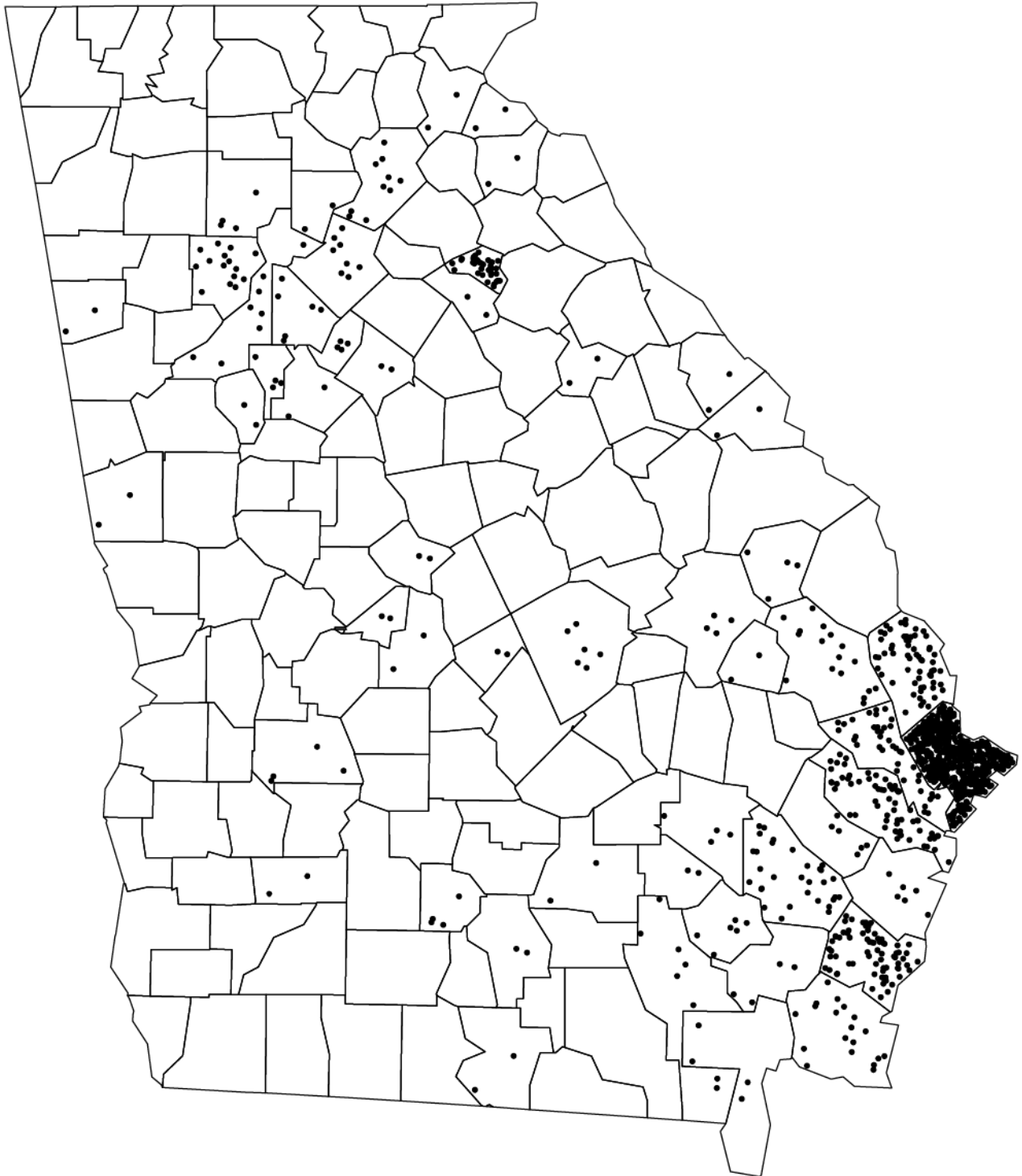
Graduate Enrollment by County of Origin

As a Percentage of Graduates						
	Summer 2006	Summer 2007	Summer 2008	Summer 2009	Summer 2010	5 Year % Change
Chatham County	40.8%	48.1%	46.4%	49.3%	48.1%	17.9%
Bryan County	3.1%	4.2%	4.7%	4.3%	3.1%	1.3%
Camden County	2.3%	1.4%	2.0%	1.9%	1.5%	-35.3%
Effingham County	2.8%	3.5%	5.0%	4.8%	4.8%	71.2%
Glynn County	3.8%	3.9%	5.4%	7.4%	5.8%	52.2%
Liberty County	6.7%	5.3%	7.6%	5.4%	5.1%	-23.5%
Long/McIntosh Counties	1.2%	1.1%	1.2%	1.0%	1.0%	-17.4%
Other GA Counties	23.5%	22.3%	19.9%	18.9%	19.2%	-18.4%
Out of State	15.8%	10.2%	7.8%	7.0%	11.4%	-27.8%

Graduate Enrollment by County of Origin



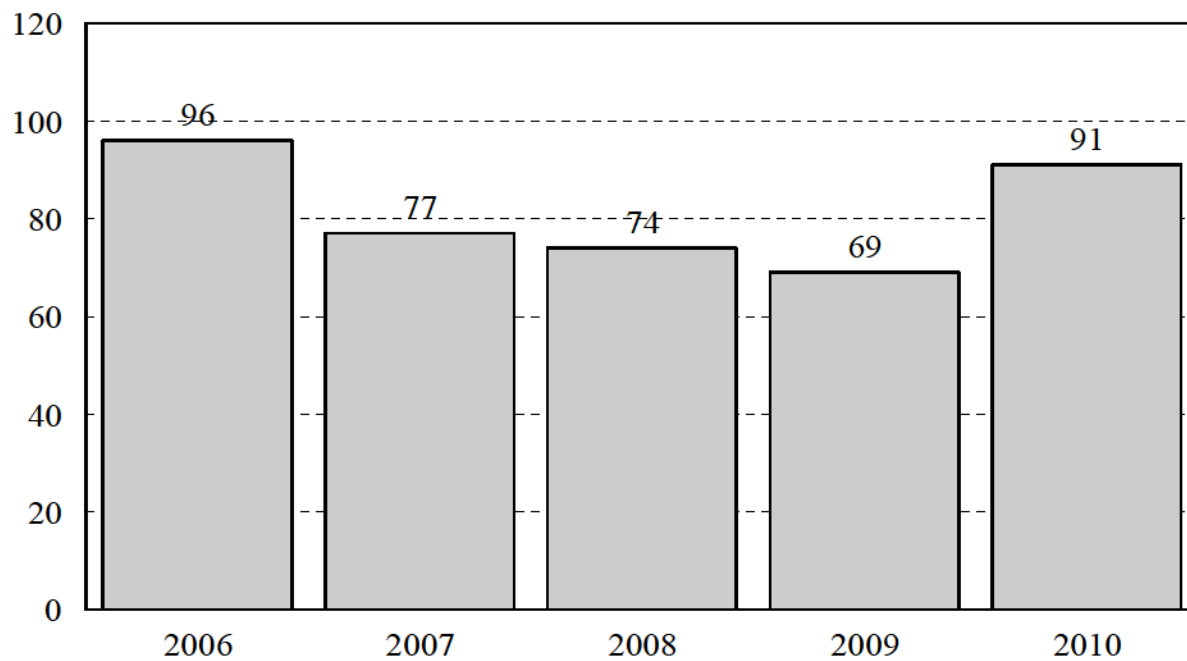
Graduate Georgia Enrollment by County of Origin



Source: University System of Georgia SIRS Report

Learning Support Enrollment

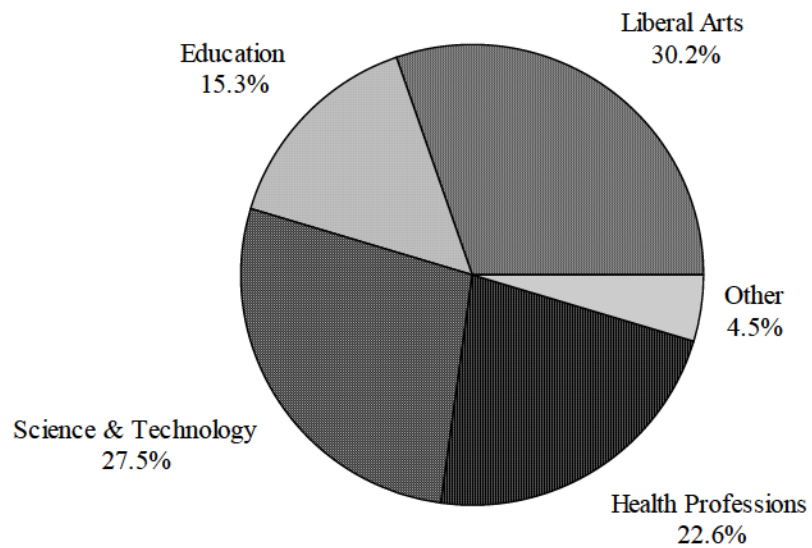
Enrollment						
	Summer 2006	Summer 2007	Summer 2008	Summer 2009	Summer 2010	
Learning Support	96	77	74	69	91	5 Year # Change
# Change		-19	-3	-5	22	5 Year % Change
% Change		-19.8%	-3.9%	-6.8%	31.9%	



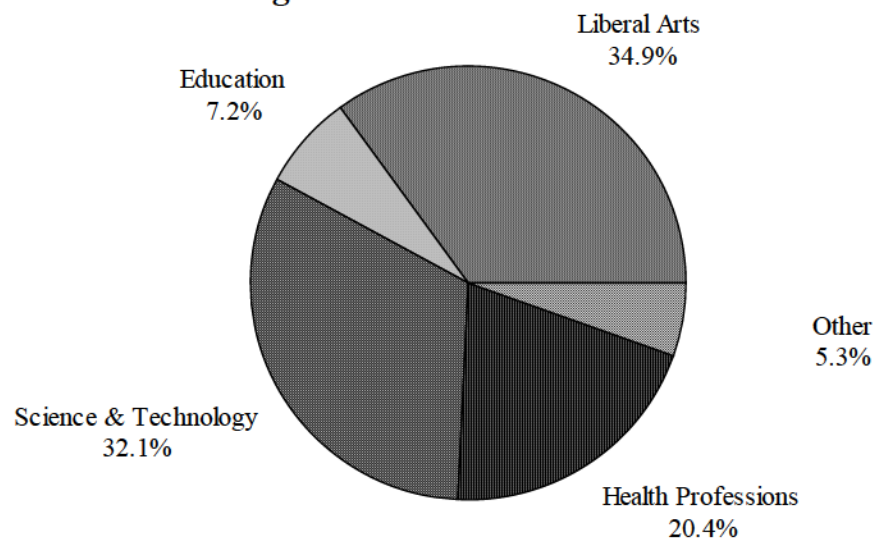
Graduate & Undergraduate Student Credit Hours by College and University

Summer 2010 Credit Hours					
	Undergrad SCH	Graduate SCH	Total SCH	Percent of College	Percent of University
Early Childhood Education	409	1170	1579	41.1%	6.4%
Health & Physical Education	750	0	750	19.5%	3.1%
Middle & Secondary Education	205	378	583	15.2%	2.4%
Special & Adult Education	172	760	932	24.2%	3.8%
Total: College of Education	1536	2308	3844	100.0%	15.7%
Communication Sciences & Disorders	0	108	108	1.9%	0.4%
Dental Hygiene	0	0	0	0.0%	0.0%
Health Sciences	1178	369	1547	27.2%	6.3%
Medical Technology	380	0	380	6.7%	1.5%
Nursing	1054	117	1171	20.6%	4.8%
Physical Therapy	0	756	756	13.3%	3.1%
Radiologic Sciences	1298	0	1298	22.9%	5.3%
Respiratory Therapy	420	0	420	7.4%	1.7%
Total: College of Health Professions	4330	1350	5680	100.0%	23.2%
Art, Music, & Theatre	1309	33	1342	17.7%	5.5%
C.J., Social & Political Science	2426	69	2495	32.8%	10.2%
Economics	294	0	294	3.9%	1.2%
History	1252	54	1306	17.2%	5.3%
Languages, Literature, & Philosophy	2142	18	2160	28.4%	8.8%
Total: College Liberal Arts	7423	174	7597	100.0%	31.0%
Biology	2270	0	2270	32.9%	9.3%
Chemistry & Physics	1015	36	1051	15.2%	4.3%
Information, Computing, & Engineering	276	3	279	4.0%	1.1%
Mathematics	2,055	36	2091	30.3%	8.5%
Psychology	1,209	9	1218	17.6%	5.0%
Total: College of Science & Technology	6825	84	6909	100.0%	28.2%
AASU 1101	0	0	0		0.0%
Interdisciplinary Studies	86	3	89		0.4%
Law Enforcement Training Center	1022	0	1022		4.2%
Military/Naval Science	26	0	26		0.1%
Total: AASU	21248	3919	25167		100.0%

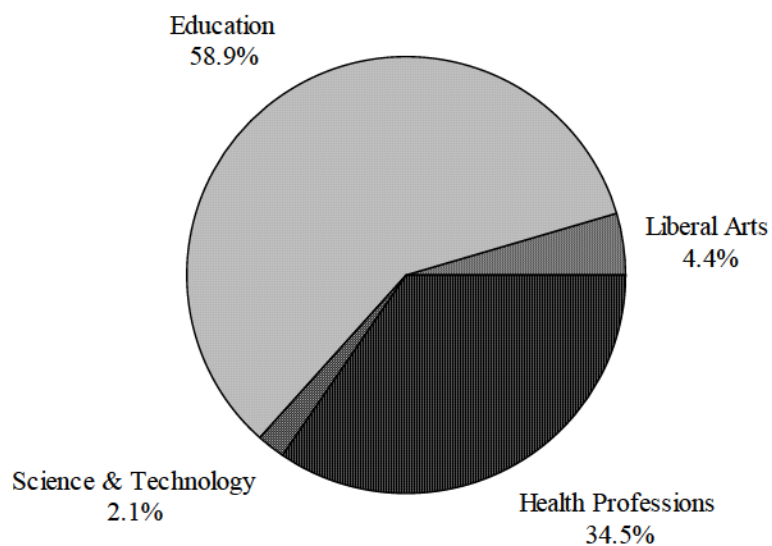
Total Student Credit Hours



Undergraduate Student Credit Hours



Graduate Student Credit Hours



Summer Breakdown of University Credit Hours

	Summer 2006	Summer 2007	Summer 2008	Summer 2009	Summer 2010	5 Year % Change
Early Childhood Education	6.7%	6.7%	8.7%	8.5%	6.4%	-4.5%
Health & Physical Education	3.2%	3.7%	2.6%	2.5%	3.1%	-3.1%
Middle & Secondary Education	2.8%	2.5%	3.3%	2.5%	2.4%	-14.3%
Special & Adult Education	5.7%	6.1%	4.9%	4.5%	3.8%	-33.3%
Total: College of Education	18.4%	19.0%	19.5%	18.0%	15.7%	-14.7%
% Change		0.6%	0.6%	-1.5%	-2.3%	
Communication Sciences & Disorders	0.1%	0.1%	0.2%	0.3%	0.4%	300.0%
Dental Hygiene	0.0%	0.0%	0.0%	0.0%	0.0%	---
Health Science	5.4%	5.9%	5.8%	5.3%	6.3%	16.7%
Medical Technology	0.9%	1.8%	2.1%	1.9%	1.5%	66.7%
Nursing	4.0%	5.6%	5.7%	4.6%	4.8%	20.0%
Physical Therapy	3.7%	3.6%	3.3%	3.4%	3.1%	-16.2%
Radiologic Sciences	5.3%	5.7%	4.5%	4.8%	5.3%	0.0%
Respiratory Therapy	1.1%	1.1%	1.0%	1.3%	1.7%	54.5%
Total: College of Health Professions	20.5%	23.9%	22.6%	21.5%	23.2%	13.2%
% Change		3.4%	-1.2%	-1.1%	1.7%	
Art, Music, & Theatre	4.4%	4.1%	3.9%	4.3%	5.5%	25.0%
CJ, Social, & Political Science	6.8%	6.0%	7.3%	7.3%	10.2%	50.0%
Economics	1.1%	1.4%	1.4%	1.0%	1.2%	9.1%
History	7.3%	5.8%	5.1%	6.5%	5.3%	-27.4%
Interdisciplinary Studies	0.4%	2.4%	2.6%	2.3%	0.4%	0.0%
Languages, Literature, & Philosophy	8.6%	8.3%	7.3%	8.7%	8.8%	2.3%
Total: College of Liberal Arts	28.6%	28.1%	27.5%	30.1%	31.0%	8.4%
% Change		-0.5%	-0.6%	2.6%	0.9%	
Biology	9.4%	9.2%	9.1%	9.1%	9.3%	-1.1%
Chemistry & Physics	6.5%	6.0%	5.2%	4.4%	4.3%	-33.8%
Computer Science	2.1%	1.7%	1.5%	0.9%	1.1%	-47.6%
Mathematics	9.2%	8.3%	8.1%	7.2%	8.5%	-7.6%
Psychology	2.7%	2.7%	3.5%	4.1%	5.0%	85.2%
Total: School of Science and Technology	29.9%	27.8%	27.4%	25.8%	28.2%	-5.7%
% Change		-2.1%	-0.5%	-1.6%	2.4%	
AASU 1101	0.0%	0.0%	0.0%	0.0%	0.0%	---
% Change		0.1%	0.1%	0.0%	0.0%	
Law Enforcement Training Center	2.5%	1.2%	2.9%	4.4%	4.2%	68.0%
% Change		-0.2%	-0.2%	2.6%	1.7%	
Military/Naval Science	0.0%	0.0%	0.0%	0.1%	0.1%	0.0%
% Change		0.0%	0.0%	0.1%	0.1%	

* Departmental changes were made which would result in inappropriate comparison

Note: Totals may not equal 100% due to rounding.

Departmental Productivity Ratios - Based on Proposed FY11 Budget

	Summer 2010 SCH	% University SCHs (A)	Fund Sources				% General Funds (B)	Productivity Ratio (Gen.)* (A)/(B)	Total Budget	% Total Budget
			General Fund*	Special Initiatives/ Lottery Funds	Sponsored/ Research Consortium					
Childhood & Exceptional Student Edu**	2020	8.6%	\$1,064,491	\$0	\$0		4.6%	1.90	\$1,064,491	4.6%
Adult & Adolescent Edu**	1824	7.8%	\$1,772,855	\$0	\$0		7.6%	1.03	\$1,772,855	7.6%
Total Education	3844	16.4%	\$2,837,346	\$0	\$0		12.1%	1.35	\$2,837,346	12.1%
Comm. Disorders & Sci.	108	0.5%	\$226,289	\$0	\$0		1.0%	0.48	\$226,289	1.0%
Dental Hygiene	0	0.0%	\$540,553	\$0	\$0		2.3%	0.00	\$540,553	2.3%
Health Sciences	1547	6.6%	\$1,225,737	\$0	\$0		5.2%	1.26	\$1,225,737	5.2%
Medical Technology	380	1.6%	\$430,944	\$0	\$0		1.8%	0.88	\$430,944	1.8%
Nursing	1171	5.0%	\$2,233,694	\$0	\$0		9.6%	0.52	\$2,233,694	9.6%
Physical Therapy	756	3.2%	\$734,920	\$0	\$0		3.1%	1.03	\$734,920	3.1%
Radiologic Sciences	1298	5.5%	\$1,066,501	\$0	\$0		4.6%	1.22	\$1,066,501	4.6%
Respiratory Therapy	420	1.8%	\$342,446	\$0	\$0		1.5%	1.22	\$342,446	1.5%
Total Health Professions	5680	24.3%	\$6,801,084	\$0	\$0		29.1%	0.83	\$6,801,084	29.1%
Art, Music & Theatre	1342	5.7%	\$1,628,089	\$0	\$0		7.0%	0.82	\$1,628,089	7.0%
C.J., Social & Political Sci.	2495	10.7%	\$1,100,498	\$0	\$0		4.7%	2.26	\$1,100,498	4.7%
Economics	294	1.3%	\$510,995	\$0	\$0		2.2%	0.57	\$510,995	2.2%
History	1306	5.6%	\$1,100,830	\$0	\$0		4.7%	1.18	\$1,100,830	4.7%
Lang., Lit., and Phil.	2160	9.2%	\$2,329,116	\$0	\$0		10.0%	0.93	\$2,329,116	10.0%
Total Liberal Arts	7579	32.4%	\$6,669,528	\$0	\$0		28.5%	1.13	\$6,669,528	28.5%
Biology	2270	9.7%	\$1,522,169	\$0	\$0		6.5%	1.49	\$1,522,169	6.5%
Chemistry & Physics	1051	4.5%	\$1,477,651	\$0	\$0		6.3%	0.71	\$1,477,651	6.3%
Inform., Comput., & Engin.	279	1.2%	\$1,995,788	\$0	\$0		8.5%	0.14	\$1,995,788	8.5%
Mathematics	2,091	8.9%	\$1,294,353	\$0	\$0		5.5%	1.61	\$1,294,353	5.5%
Psychology	1,218	5.2%	\$748,868	\$0	\$0		3.2%	1.62	\$748,868	3.2%
Total Science & Technology	6909	29.5%	\$7,038,829	\$0	\$0		30.1%	0.98	\$7,038,829	30.1%
Military Science	26	0.1%	\$40,891	\$0	\$0		0.2%	0.63	\$40,891	0.2%
Total University	24,038	100.0%	\$23,387,678	\$0	\$0		100%	1.00	\$23,387,678	100.0%

Note: Does not include Interdisciplinary Studies, A&SU 1101, or Law Enforcement Training Center credit hours.

*General funds consist of personal services, travel, operating supplies and expense, and equipment and/or books.

**College of Education departments were reorganized beginning July 1, 2010.



Lecture Sections by Level

Department by Level	Subject	Number of Sections	Number Enrolled	Average Class Size
COLLEGE OF EDUCATION				
Early Childhood Education				
Lower Level	EDUC	2	36	18.0
Upper Level	ECUG	5	110	22.0
Graduate	ECEG	6	86	14.3
	ECMT	5	137	27.4
	EDUC	2	40	20.0
	RDEN	5	132	26.4
	Totals	25	541	21.6
Health and Physical Education				
Lower Level	EDUC	1	26	26.0
	PEBC	6	178	29.7
Upper Level	PEEC	2	41	20.5
	PEHM	1	1	1.0
	Totals	10	246	24.6
Middle and Secondary Education				
Lower Level	EDUC	1	19	19.0
Upper Level	EDUC	1	13	13.0
	MGSE	2	39	19.5
Graduate	EDUC	1	41	41.0
	MGED	3	12	4.0
	MGSE	3	70	23.3
	SCED	1	3	3.0
	Totals	12	197	16.4
Special and Adult Education				
Lower Level	RGTR	1	12	12.0
Upper Level	EDUC	4	49	12.3
	SPED	1	8	8.0
Graduate	ADED	4	75	18.8
	EEXE	3	85	28.3
	EDUC	4	75	18.8
	FOUN	1	21	21.0
	HRVD	1	11	11.0
	Totals	19	336	17.7
College of Education Totals		66	1320	20

Department by Level	Subject	Number of Sections	Number Enrolled	Average Class Size
COLLEGE OF HEALTH PROFESSIONS				
Communication Sciences and Disorders				
Graduate	CSDS	2	24	12.0
	Totals	2	24	12.0
Health Science				
Lower Level	HSCC	2	56	28.0
	HSCP	1	24	24.0
Upper Level	HSCA	2	42	21.0
	HSCC	3	78	26.0
	HSCP	1	29	29.0
	PUBH	2	51	25.5
	SMED	4	64	16.0
	MHSA	3	46	15.3
Graduate	MHSA	8	56	7.0
	PUBH	4	23	5.8
	SMED	5	35	7.0
	Totals	35	504	14.4
Medical Technology				
Upper Level	MEDT	2	29	14.5
	Totals	2	29	14.5
Nursing				
Upper Level	NURS	12	331	27.6
Graduate	NURS	5	33	6.6
	Totals	17	364	21.4
Physical Therapy				
Upper Level	RHAB	9	176	19.6
	Totals	9	176	19.6
Radiologic Sciences				
Lower Level	HLPR	3	52	17.3
Upper Level	RADS	25	403	16.1
	Totals	28	455	16.8
Respiratory Therapy				
Lower Level	RESP	4	106	26.5
Upper Level	RESP	5	98	19.6
	Totals	9	204	22.7
College of Health Professions Totals		102	1756	17.2

Department by Level	Subject	Number of Sections	Number Enrolled	Average Class Size
COLLEGE OF LIBERAL ARTS				
Art, Music, and Theatre				
Lower Level	ARTS	5	138	27.6
	COMM	3	61	20.3
	MUSC	3	64	21.3
	THEA	2	21	10.5
Upper Level	ARTS	15	98	6.5
	COMM	2	36	18.0
	MUSC	1	7	7.0
	THEA	2	7	3.5
Graduate Level	ARTS	2	6	3.0
	COMM	1	5	5.0
	Totals	36	443	12.3
Criminal Justice, Political Science, and Social Science				
Lower Level	ANTH	1	36	36.0
	CRJU	9	187	20.8
	POLS	16	335	20.9
	SOCI	3	93	31.0
Upper Level	CRJU	12	125	10.4
	POLS	7	28	4.0
	SOCI	3	24	8.0
	CRJU	3	21	7.0
Graduate	POLS	2	2	1.0
	Totals	56	851	15.2
Economics				
Lower Level	ECON	4	98	24.5
Upper Level	ECON	1	0	0.0
	Totals	5	98	19.6
History				
Lower Level	HIST	12	351	29.3
Upper Level	HIST	4	64	16.0
Graduate	HIST	2	13	6.5
	Totals	18	428	23.8
Languages, Literature, & Philosophy				
Lower Level	ENGL	14	273	19.5
	FREN	2	20	10.0
	PHIL	4	99	24.8
	SPAN	10	75	7.5
	RGTE	1	7	7.0
Upper Level	ENGL	6	103	17.2
	FREN	1	6	6.0
	PHIL	1	12	12.0
	SPAN	24	86	3.6
Graduate	ENGL	2	6	3.0
	Totals	65	687	10.6
College of Liberal Arts Totals		180	2507	13.9

Department by Level	Subject	Number of Sections	Number Enrolled	Average Class Size
COLLEGE OF SCIENCE AND TECHNOLOGY				
Biology				
Lower Level	BIOL	16	507	31.7
	ISCI	1	13	13.0
Upper Level	BIOL	3	70	23.3
	Totals	20	590	29.5
Chemistry & Physics				
Lower Level	ASTR	2	38	19
	CHEM	6	133	22.2
	PHSC	1	22	22.0
	PHYS	2	44	22.0
	SCIE	1	18	18.0
Upper Level	CHEM	1	22	22.0
Graduate	PHSC	2	9	4.5
	Totals	15	286	19.1
Information, Computing, and Engineering				
Lower Level	CSCI	3	64	21.3
	ITEC	1	22	22.0
	WBIT	5	5	1.0
	Totals	9	91	10.1
Mathematics				
Lower Level	MATH	22	586	26.6
Upper Level	MATH	6	73	12.2
	STAT	1	1	1.0
Graduate	MATH	3	13	4.3
	Totals	32	673	21.0
Psychology				
Lower Level	PSYC	7	207	29.6
Upper Level	PSYC	8	195	24.4
Graduate	PSYC	2	3	1.5
	Totals	17	405	23.8
College of Science and Technology T		61	1372	22.5

Department by Level	Subject	Number of Sections	Number Enrolled	Average Class Size
Interdisciplinary Studies				
Lower Level	GWST	1	7	7.0
	HUMN	4	8	2.0
	SSCI	4	14	3.5
Upper Level	AFAS	2	6	3.0
Graduate	AFAS	1	1	1.0
	Totals	12	36	3.0
Law Enforcement Training Center				
Lower Level	LETC	60	191	3.2
	Totals	60	191	3.2