

Reflector

1942

Georgia Southern University

Follow this and additional works at: <https://digitalcommons.georgiasouthern.edu/reflector-yearbook>



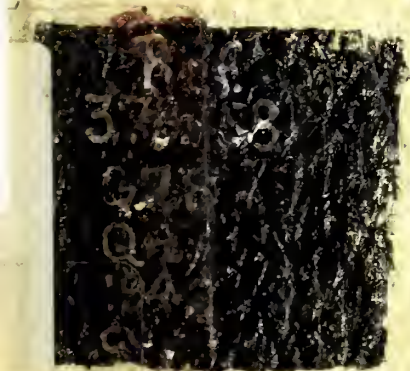
Part of the [Higher Education Commons](#)

Recommended Citation

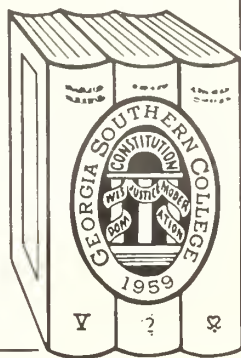
Georgia Southern University, "Reflector" (1942). *Reflector Yearbook*. 15.
<https://digitalcommons.georgiasouthern.edu/reflector-yearbook/15>

This book is brought to you for free and open access by the Student Media at Digital Commons@Georgia Southern. It has been accepted for inclusion in Reflector Yearbook by an authorized administrator of Digital Commons@Georgia Southern. For more information, please contact digitalcommons@georgiasouthern.edu.

Reflector



GEORGIA
SOUTHERN COLLEGE
LIBRARY



Georgia Southern College

Zach S. Henderson Library

Georgia Southern University
Zach S. Henderson Library



Digitized by the Internet Archive
in 2014

<https://archive.org/details/reflector1942na>



42 REFLECTOR



THE '42 RE

YEARBOOK OF
GEORGIA TEACHERS
COLLEGE

Published by

SENIOR CLASS

PILCHER KEMP *Editor*

DAVID BOWMAN *Business Mgr.*

RUTH CONE *Art Editor*

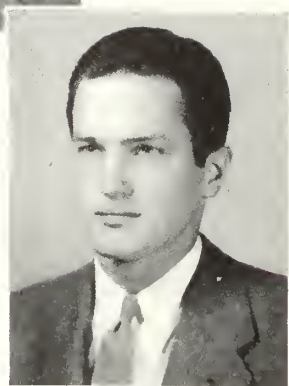
COPYRIGHT 1942



FLECTOR



A WORD FROM THE STAFF



Another year has passed, leaving memories that will not fade — memories of happy hours and friendships continuing through the years. To attempt to portray in picture and story a thing so indefinable and intangible as a glorious year of college life is indeed an ambitious undertaking. . . . As a part of that vast number who love this great institution, who have shared in her widespread activities and who have felt the profound influence which she exerts over those who choose her as their Alma Mater, we, the staff, are deeply appreciative of the privilege that has been ours. In future years, when reminiscing, should these modest pages arouse happy memories of friends and life at Teachers College, our purpose will be fulfilled — our task a success.

TABLE OF CONTENTS

COLLEGE

FACULTY

CLASSES

ORGANIZATIONS and ACTIVITIES

ATHLETICS

FEATURES

ADVERTISEMENTS

We Dedicate This Book



"Marcanne" — The Pittmans' Lovely Home

To Dr. Marvin S. Pittman, one of the nation's greatest educational leaders, and to his charming wife, this *Reflector* is dedicated. Their loyalty to high professional and personal ideals reflects the value of their services to mankind. Their devotion to the task of teaching truth, honor, and justice has been a guiding force in teacher training.

It was through their courageous and tireless efforts during their eight years of unselfish service at Georgia Teachers College that the college grew and took an outstanding place in the educational system of the State.

Not only as leaders do we honor them, but we know and love them as students' friends. They were never too busy to help "iron out" the complications which arose in students' lives.

So to you, Dr. and Mrs. Pittman, this *Reflector* is dedicated. Your ideals and principles will be reflected through our lives in the years to come.

THE EDITOR.



To the Pittmans

May this dedication serve as our expression of appreciation for all that the Pittmans have done for Georgia Teachers College and all that they shall do in the future.





COLLEGE



CAMPUS



SCIENCE





LIBRARY

SANFORD HALL





Albert M. Gates

PRESIDENT OF GEORGIA TEACHERS COLLEGE

THE ADMINISTRATION

DEAN OF GEORGIA TEACHERS COLLEGE



Zach S. Henderson



DEAN OF MEN

Sophie Johnson

THE



HOUSE MOTHERS

Emma Crawford Motes

Florine Myers

Mrs. H. S. Wimberly

BUSINESS ADMINISTRATION

VIOLA PERRY
Registrar

ROBERT LEE WINBURN
Bursar

CYNTHIA D. DAVIS
Dietitian

ISA STANCEL
Manager of Little Store

MAE MICHAEL
Secretary to the President

Q. ELIZABETH COLLINS
Secretary to Director of Laboratory Schools

RUBY N. CROUSE
Assistant—Registrar's Office



Stancel, Perry, Michael, Winburn, Crouse

FACULTY

DIVISION OF LIBRARY SCIENCE

WENDELL WAYNE SMILEY
Librarian

ZULIEME LANE

HASSIE MAUDE McELVEEN

ELEANOR RAY

DWIGHT WARD SHELBY

McElveen, Lane, Smiley, Shelby, Ray





Front row: Donovan, Collins, Joyner, Wood, Waters, Jones, Downs. Back row: Harvill, Moon, Wakeford, McLendon, Freeman, Robson, Carruth

DIVISION OF EDUCATION

MEMBERS

WALTER L. DOWNS
Chairman

JOSEPH E. CARRUTH
ELIZABETH DONOVAN
BERTHA FREEMAN
HARRIS E. HARVILL
LUCY V. JONES

FRANCES DEAL JOYNER
ALVIN L. McLENDON
LELAND W. MOON
JANE REID ROBSON
MARY WILL WAKEFORD
HOWARD D. WATERS
MARIE WOOD

DIVISION OF LANGUAGE ARTS

MEMBERS

FIELDING D. RUSSELL
Chairman

ROBERT F. DONALDSON, JR.

ROSALYN GARDNER

GUSSIE GOSS

MARJORIE THOMAS GUARDIA

MAMIE JO JONES

MARVIN A. OWINGS



Donaldson, Guardia, Russell, Goss, Owings

DIVISION OF SOCIAL STUDIES

MEMBERS

HERBERT WEAVER
Chairman

R. JOHN H. DeLOACH

GEORGE HENDRICKS

HESTER NEWTON



DeLoach, Weaver, Hendricks

DIVISION OF FINE AND PRACTICAL ARTS

MEMBERS

EVERETT G. LIVINGSTON
Chairman

J. WALLACE BEDWELL

RUTH BOLTON

R. J. COLTHARP

JANE REID ROBSON

LEON P. SMITH



Smith, Bolton, Livingston, Robson, Coltharp



Barnes, Parker, Neil, Bollinger

DIVISION OF MUSIC

MEMBERS

RONALD J. NEIL
Chairman

MRS. ESTHER W. BARNES

JOHN P. BOLLINGER

J. MALCOLM PARKER

DIVISION OF HEALTH AND PHYSICAL EDUCATION



Wright, Guill, Everett, Carithers, Smith

MEMBERS

BYRON L. SMITH
Chairman

MAYBETH CARITHERS
MRS. F. W. EVERETT
EDITH GUILL
DR. J. H. WHITESIDE
SIDNEY A. WRIGHT

DIVISION OF EXACT SCIENCES

MEMBERS

WILLIAM S. HANNER
Chairman

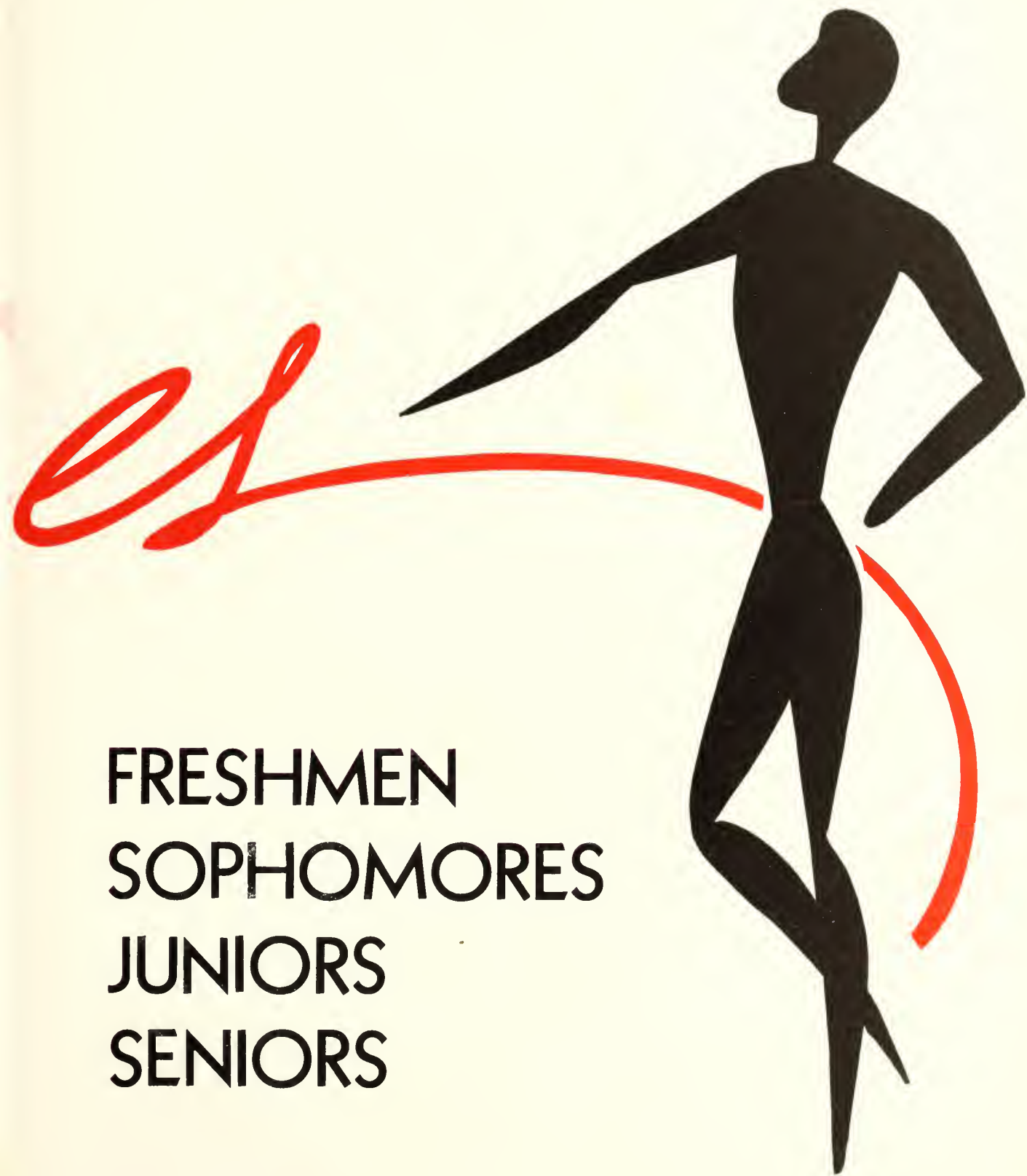
WILLIAM BURTON MOYE
VIOLA PERRY
EWELL GLEN PIGG
R. D. PULLIAM
MALVINA TRUSSELL



Front row: Trussell, Perry, Moye. Back row: Pulliam, Hanner, Pigg

Class





FRESHMEN
SOPHOMORES
JUNIORS
SENIORS

FRESHMEN



OFFICERS

BILL LOWE	<i>President</i>
E. B. RUSHING	<i>Vice-President</i>
RALPH FOSTER	<i>Secretary</i>
ED MIXON	<i>Treasurer</i>

STUDENT COUNCIL REPRESENTATIVE

JAMES DUNN

SPONSORS

MAMIE JO JONES

S. A. WRIGHT

MAXIE LOU ALDERMAN
Portal, Ga.

BILL ALDRED
Statesboro, Ga.

JACK WILKS BALLENGER
Waycross, Ga.

ESTHER LEE BARNES
Statesboro, Ga.

REUNETTE BENNETT
Washington, Ga.

FRANCES BLACKWELL
Homer, Ga.

SUE BREEN
Jesup, Ga.

RUBY BRINSON
Swainsboro, Ga.

MARJORIE POLK BROWN
Elberton, Ga.

MARY FRANCES BROWN
Statesboro, Ga.

WILLIAM ZACK BROWN
Statesboro, Ga.

PAUL BUNCE
Statesboro, Ga.

MARGARET BUNN
Midville, Ga.

ESSIE ADRIAN CALLAHAN
Senoia, Ga.

ADELL CALLAWAY
Collins, Ga.

SCHIRM CARTER
Lanier, Ga.

ALMA CATO
Rincon, Ga.

***HARLOW CAREY CLARK**
Ravenel, S. C.

VENICE CLIFTON
Millen, Ga.

MARTHA COBLE
Greer, S. C.

ELEANOR RAY CONE
Statesboro, Ga.

PRUELLA CROMARTIE
Statesboro, Ga.

CLINTON R. DAVIS
Swainsboro, Ga.

GLADYS DAVIS
Patterson, Ga.

JAMES LAMAR DEAL
Statesboro, Ga.

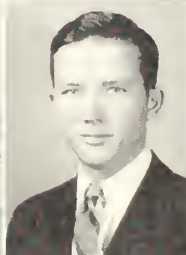
RUTH MILDRED DOMINY
Statesboro, Ga.

JAMES EARL DOWNING
Newington, Ga.

WINONA DOWNS
Claxton, Ga.

SARA KATHRYN DRAKE
Swainsboro, Ga.

JAMES DUNN
Devereux, Ga.



No picture



GLORIDA DURRENCE
Glenville, Ga.
CAROLYN EANES
Woodcliff, Ga.
LOUISE ECHOLS
Macon, Ga.
CHARLES EDGE
Cedartown, Ga.

JOHNNIE RALPH FOSTER
Waynesboro, Ga.
CECIL FREEMAN
Fitzgerald, Ga.
RALPH GARNER
Dublin, Ga.
MARCELLUS GAUGHF
Albany, Ga.

ESCHOL GAY
Cadwell, Ga.
RUBY LEE GAY
Millen, Ga.
LLOYD GLISSON
Millhaven, Ga.
LOUISE GLISSON
Daisy, Ga.

ANNIE MAUDE GRAHAM
Baxley, Ga.
ERNESTINE GRIFFIN
Nashville, Ga.
JUANITA GRIFFIN
Pulaski, Ga.
MARY VIRGINIA GROOVER
Statesboro, Ga.

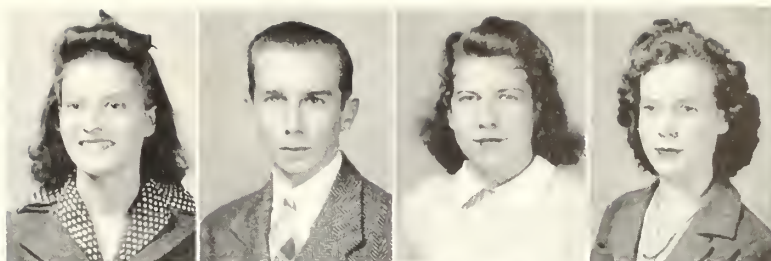
MILDRED GROOVER
Statesboro, Ga.
*JOHNNIE HALL
Wadley, Ga.
JESSE HAMBY
Greenville, Ga.
ELIZABETH HARTSFIELD
Stilson, Ga.
*WALLACE HEARON
Richland, Ga.
KENNETH HECKMAN
Lyons, Ga.

PEARL HENDRIX
Statesboro, Ga.
IVA HERRIN
Howell, Ga.
CAROL HILDA HERRINGTON
Evans, Ga.
HOWARD HUNNICUTT
Metter, Ga.
*DOROTHY HURST
LaGrange, Ga.

HELEN VIRGINIA HUTCHINSON
Adrian, Ga.
SARA LOUISE JACKSON
Dublin, Ga.
CHARLES STEPHEN JOHNSON
Rocky Ford, Ga.
MARION FAY JONES
Metter, Ga.

*No picture

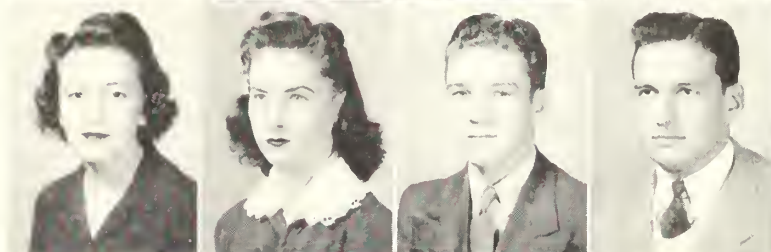
MIRIAM SHEPPARD JONES
Hoboken, Ga.
OTTIS MARION JONES
Pembroke, Ga.
BARBARA JORY
Brunswick, Ga.
RUBY LOUISE KICKLICHTER
Glennville, Ga.



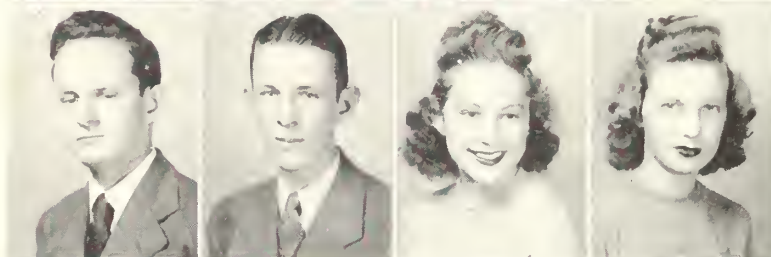
HAL FOSTER KING
Cusseta, Ga.
HELEN H. KING
Cusseta, Ga.
BERNARD TROY KINGERY
Pulaski, Ga.
ALVA KATHLEEN KNIGHT
Soperton, Ga.



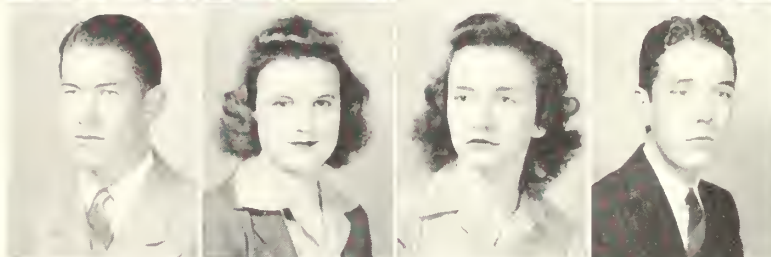
LUCY FAYE LANIER
Pembroke, Ga.
MARY HELEN LANIER
Statesboro, Ga.
RAY LANIER
Cobbtown, Ga.
CHARLES LAYTON
Statesboro, Ga.



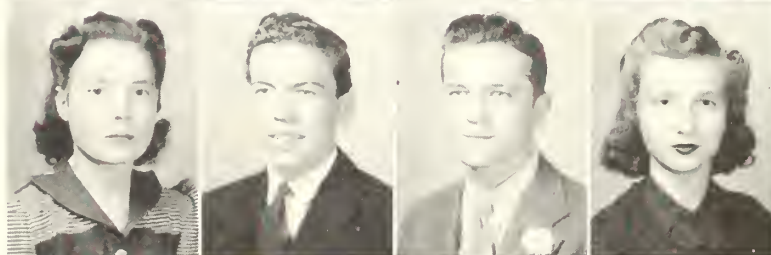
GEORGE PAUL LEE, JR.
Statesboro, Ga.
MORGAN LEE
Statesboro, Ga.
THELMA CLIFFORD LEE
Oliver, Ga.
VIRGINIA LOVETT
Girard, Ga.



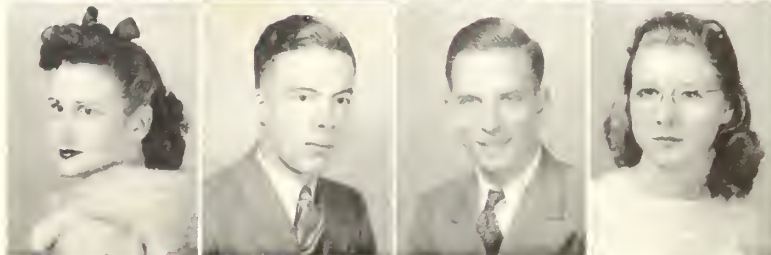
BILL WM. ARTHUR LOWE
Thomson, Ga.
WILLIE MAYERS
Baxley, Ga.
SARAH EVELYN McGARRITY
Meldrim, Ga.
DAN KIMSEY McNALLY, JR.
Chickamauga, Ga.

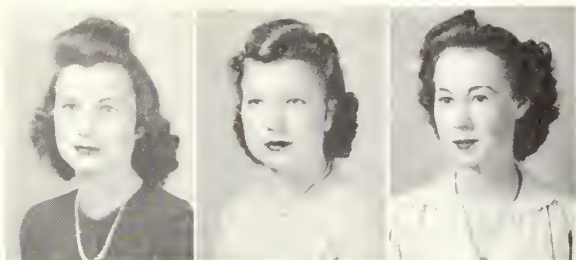


HELEN VIETTA MINCHEW
Waycross, Ga.
EDWARD HARRISS MIXON
Vidalia, Ga.
JACK MOBLEY
Sylvania, Ga.
MARTHA ANN MOONEY
Sylvania, Ga.

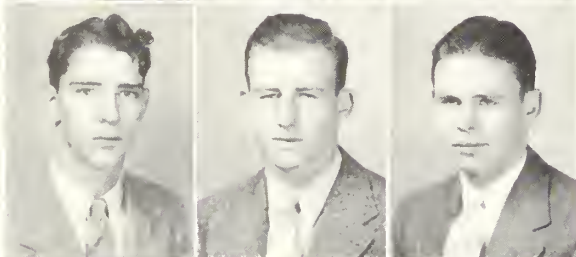


MARY ELIZABETH MORRIS
Wadley, Ga.
FRANK HOLDEN MORRISON
Statesboro, Ga.
JAMES PETTIGREW MYERS
Doerun, Ga.
NELLIE KATE NEWTON
Millen, Ga.





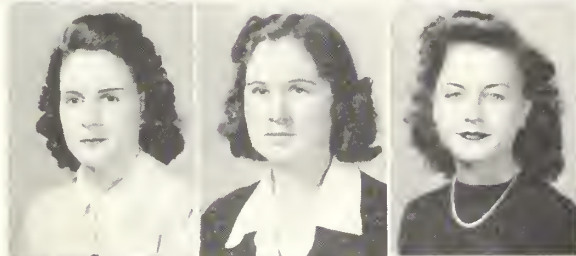
SOPHIE ELIZABETH OLIVER
Millhaven, Ga.
VIVIAN GRACE PARKER
Rocky Ford, Ga.
MARWARD BEDELL PEARCE
Odum, Ga.



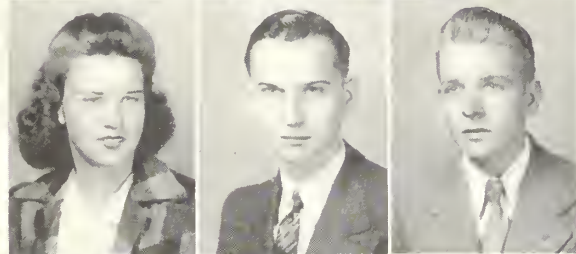
FRED PENNINGTON
Columbus, Ga.
JACK PIERCE
Sylvania, Ga.
JOHN SEWELL PITTARD
Monticello, Ga.



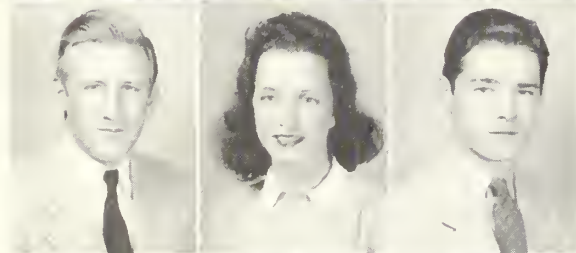
MARY LILLIAN POOLE
Matthews, Ga.
***HILDA PREETORIUS**
Statesboro, Ga.
MERRILYN PRICE
Monticello, Ga.
BALIS MARVIN PROSSER
Statesboro, Ga.



DAVID GIBBS RANDALL
Lyons, Ga.
DOROTHY RAWLINGS
Vidette, Ga.
MRS. JEWEL REGISTER
Waycross, Ga.
DOROTHY ELLEN REMINGTON
Statesboro, Ga.



LEONARD F. REYNOLDS, JR.
Fowlstown, Ga.
MARY LOUISE RIVIERE
Newington, Ga.
WATSON MELTON ROCKER
Metter, Ga.
JACK Q. RODDENBERRY
Bristol, Ga.



WILLIAM HILL ROGERS
Fortson, Ga.
CATHERINE ROWSE
Statesboro, Ga.
E. B. RUSHING, JR.
Statesboro, Ga.



JEANETTE SEARS
Lumber City, Ga.
DOROTHY LAVERN SHEFFIELD
Colquitt, Ga.
JACQUELYN SMITH
Lyons, Ga.

*No picture

JOYCE SMITH
Statesboro, Ga.
MRS. LOUISE ADDISON SMITH
Statesboro, Ga.
WILLIAM BEN STALVEY
Ocilla, Ga.
BETH STANFIELD
Glennville, Ga.

RICHARD CAWTHON STARR
Greensboro, Ga.
MARGARET LEVONIA
STRICKLAND
Register, Ga.
WILL HELEN STRICKLAND
Statesboro, Ga.

HATTIE SWANN
Wrens, Ga.
MARGARET HELEN TILLMAN
Statesboro, Ga.
JACK TIMMS
North Charleston, S. C.

LOUISE ANN TOMPKINS
Adrian, Ga.
GLADYS CARLESE TURNER
Gay, Ga.
DOROTHY VIRGINIA TWILLEY
Mitchell, Ga.

ARTHUR MILTON TYSON
Nashville, Ga.
CHRISTINE THISSELL
UPCHURCH
Stilson, Ga.
JAMES CLEVELAND VARNELL
Springfield, Ga.

JOHN KENDRICK WALL
Sylvester, Ga.
HARRY McFENTON WARREN
Wareboro, Ga.
LILLIAN ETHEL WATERS
Sylvania, Ga.
WALLACE EDWARDS WINTER
Millhaven, Ga.

CHARLES L. WIREMAN
Ashburn, Ga.
GENEVA MERRIS WITHROW
Portal, Ga.
SARA ELIZABETH WOMACK
Odum, Ga.

DORIS ELIZABETH WOODS
Richland, Ga.
JOSEPHINE JUANITA WYATT
Brooklet, Ga.
JACK WYNN
Portal, Ga.





SOPHOMORES

OFFICERS

BILLY DeLOACH
ATHLEY JORDON
FITZHUGH PENN
BETTY ANN MORGAN

President
Vice-President
Secretary
Treasurer

STUDENT COUNCIL REPRESENTATIVE

WORTH GREEN

SPONSORS

MALVINA TRUSSELL

B. L. SMITH

ANNELLE ALFORD Fort Valley, Ga.
 FRANCIS ALLEN Statesboro, Ga.
 PEARL ANDERSON Quitman, Ga.
 NORMA LOUISE BACON Pembroke, Ga.
 MARY ETHEL BANKS Sylvester, Ga.
 INEZ BARBER Bainbridge, Ga.
 LAURA JO BIGGERS Quitman, Ga.
 ROBBIE C. BRADY Adrian, Ga.
 LLOYD A. BRADEN Macon, Ga.
 SARA ALICE BRADLEY Statesboro, Ga.
 ELIZABETH BRAGG Springfield, Ga.
 DOROTHY J. BRANNEN Portal, Ga.

No picture.

NELL POPE BRANNEN Millen, Ga.
 NELLIE MAE BROOKS Soperton, Ga.
 MARCUS DELAINOR BRUNER Edison, Ga.
 MONTESE BUTLER Fort Valley, Ga.
 WILLIAM BYERS Savannah, Ga.
 WALTON CANDLER CHESHIRE Ashburn, Ga.
 MURIEL CHILDS Chula, Ga.
 HENRIETTA CLAXTON Kite, Ga.
 FRANCES MARION CLHETT Waynesboro, Ga.
 ANN CULLENS Waycross, Ga.
 GLADINE CULPEPPER Cordele, Ga.
 CAROLYN DANIEL Bellville, Ga.
 INMAN DAVID DAVIS Swainsboro, Ga.



ASA WILLIAM DeLOACH . . . Savannah, Ga.
 W. GRADY DONALDSON . . . Pulaski, Ga.
 MARGARET ARLENE DRURY . Brunswick, Ga.
 EVELAND FRANCES EDENFIELD . Wadley, Ga.
 PALMER G. EDENFIELD, JR. . . Wadley, Ga.
 HELEN FRANCES ELDER . . . Cedartown, Ga.
 KATHRYN ELLISON Girard, Ga.
 MARY EVELYN FIELDS . . . Swainsboro, Ga.
 RUBY DELL FLANDERS Kite, Ga.
 DOROTHY GARNER Adel, Ga.
 A. DUDLEY GATEWOOD . . . Americus, Ga.

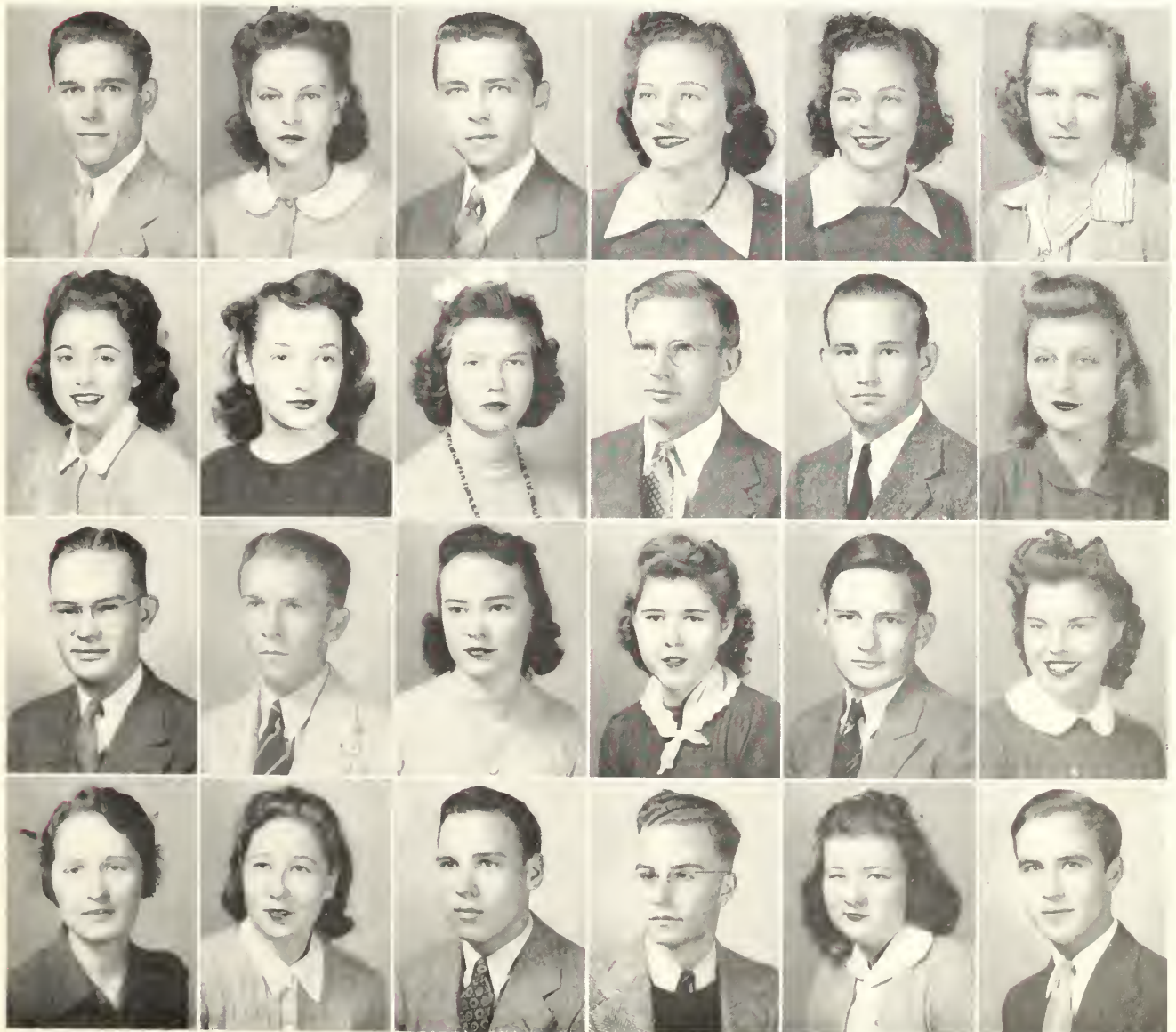
WORTH C. GREEN, JR. Waycross, Ga.
 M. WILMOTINE GRESHAM . . Union Point, Ga.
 JOSEPHINE CAROLYN GRIFFIN . Girard, Ga.
 S. EDWIN GROOVER Statesboro, Ga.
 MARY FRANCES GROOVER . . Statesboro, Ga.
 ANN GRUVER Pembroke, Ga.
 FLORRIE WILDRED HAGAN . . Statesboro, Ga.
 ANNIE LOIS HARRISON . . . Brooklet, Ga.
 JAMES DeLOACH HARVEY . . . Glennville, Ga.
 JOYCE LYNN HENDRIX . . . Brunswick, Ga.
 MRS. LORENA W. HERRIN . . . Nahutta, Ga.
 EVELYN GERTRUDE HESTER . . Soperton, Ga.



SOPHOMORES

LEWIS JOSHUA HINELY . . . Springfield, Ga.
 MARY LOUISE HOLLAND . . . Pulaski, Ga.
 BILL L. HOLLOWAY . . . Register, Ga.
 JANE S. IRVIN . . . Concord, Ga.
 JUNE S. IRVIN . . . Concord, Ga.
 MARY MARIE IVEY . . . Jakin, Ga.
 DOROTHEA RUTH JEREMIAS . Thomson, Ga.
 RUTH ELAINE JOHNSON . . . Alma, Ga.
 VIVIAN RUNELL JOHNSON . . Garfield, Ga.
 JOE ALLEN JONES . . . Waycross, Ga.
 ATHLEY REAVIS JORDAN . . . Waycross, Ga.
 DAPHNE KIRKLAND . . . Cobbtown, Ga.

DENVER LANIER . . . Rocky Ford, Ga.
 JOHN BYRON LANIER . . . Cobbtown, Ga.
 MARIE LANIER . . . Summit, Ga.
 BERNICE WANDA LAWRENCE . Molena, Ga.
 WILLIAM G. LAYTON . . . Statesboro, Ga.
 DAISY MAE LEAPHART . . . Union Point, Ga.
 DELLA MAE MARTIN . . . Hagan, Ga.
 EMILY LUCILE MARTIN . . . Alston, Ga.
 GEORGE FAIN MARTIN . . . Edison, Ga.
 CHARLES B. McALLISTER, JR. . Statesboro, Ga.
 THERESA VIRGINIA McBRIDE . . Alston, Ga.
 DAVID LAWRENCE McLEOD . . Brooklet, Ga.



GERTRUDE MEEKS Statesboro, Ga.
 EDWARD MILLER Iron City, Ga.
 BETTY ANN MORGAN Rockmart, Ga.
 ROBERT FRANKLIN MORRIS . Statesboro, Ga.
 IDA LEE MOSLEY Louisville, Ga.
 RUTH OLA MURCHISON Alma, Ga.
 *EDITH KYTLE MURRAY . . . Abbeville, Ga.
 ROBERT MERRILL NELSON . . Reidsville, Ga.
 MYRA E. NEWTON Leary, Ga.
 JAMES HAYLOW PARKER . . . Collins, Ga.
 FRANCES WILLEANE PARKES . . Millen, Ga.
 *LEON HUBERT PARRISH . . . Pulaski, Ga.

MAX PARRISH Pulaski, Ga.
 WALTER JULIUS PARRISH Adel, Ga.
 THOMAS HILL PASCHAL Albany, Ga.
 FITZHUGH LEE PENN Monticello, Ga.
 IVEY LINDSEY PENNINGTON . Oglethorpe, Ga.
 HARRY PIKE Statesboro, Ga.
 ELOISE POWELL Manassas, Ga.
 WILLIE EUGENE PRICE . . . Statesboro, Ga.
 THEONE IRENE ROBINSON . . . Sardis, Ga.
 SARA HELEN ROWSE Statesboro, Ga.
 *JIMMY ASBURY SCARBORO . . Dublin, Ga.
 LLOYD GEORGE SHUMAN . . . Statesboro, Ga.

*No pictures.



SOPHOMORES

ELIZABETH INEZ SMITH . . . Ellabell, Ga.
 LENA LEE SOWELL Hilltonia, Ga.
 BOBBY VIRGINIA STANFIELD Glennville, Ga.
 MARY HELEN THIGPEN Garfield, Ga.
 MARGARET CLAYDE THOMAS Rentz, Ga.
 LOUIE ALVIS THOMPSON Pembroke, Ga.
 REGINALD W. THOMPSON Glennville, Ga.
 WILLIAM PERRY THOMPSON Pembroke, Ga.
 MARY LOUISE TOWNSEND Climax, Ga.
 JAMES CARROLL TYSON Nashville, Ga.
 MARY FRANCES TYSON Oak Park, Ga.

SIBYL E. UNDERWOOD Statesboro, Ga.
 *OLAN USHER Brooklet, Ga.
 SYLVIA OZEALIA USHER Brooklet, Ga.
 JEANETTE WALKER Jesup, Ga.
 ROBERT C. WATERS Hilltonia, Ga.
 BLANCHE WESTBERRY Odum, Ga.
 FRANK BOWERS WIREMAN Ashburn, Ga.
 DORIS L. WITHROW Odum, Ga.
 LEILA VIRGINIA WYATT Cedartown, Ga.
 ROSEMARY WYNN Glenwood, Ga.
 UHLMA WYNN ZITTROUER Newington, Ga.

No picture.





JUNIORS

OFFICERS

GEORGE MULLING	<i>President</i>
WAYNE CULBRETH	<i>Vice-President</i>
JIMMY JONES	<i>Secretary</i>
HAROLD WATERS	<i>Treasurer</i>

STUDENT COUNCIL REPRESENTATIVES

MARY THOMAS PERRY

HAROLD HERRINGTON

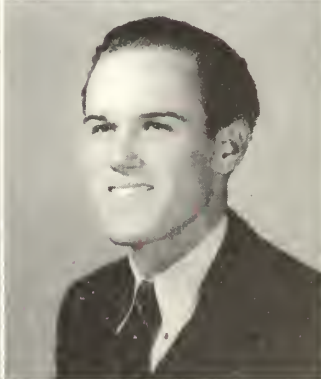
SPONSORS

SOPHIE JOHNSON

BOB WINBURN

W. B. AKINS Register, Ga.
 ALLIE JEAN ALDERMAN Portal, Ga.
 JACK NELSON AVERITT Statesboro, Ga.
 KENNETH R. BANDY Ringgold, Ga.
 JAMES DORSEY BLALOCK . . . Waycross, Ga.
 STANLEY HINTON BOOTH, JR. . . Madison, Ga.
 WILLIAM DANIEL BRADLEY . . . Hagan, Ga.
 No picture.

JOHN DURWARD BRANNON . . . Ashburn, Ga.
 MRS. ESTHER P. CANUETTE . . Statesboro, Ga.
 DANIEL THOMAS CHAMBLESS . . Dawson, Ga.
 EVELYN CHILDS Sycamore, Ga.
 EMILY CROMLEY Brooklet, Ga.
 WAYNE CULBRETH Edison, Ga.
 ZEKE DAUGHTREY Adel, Ga.

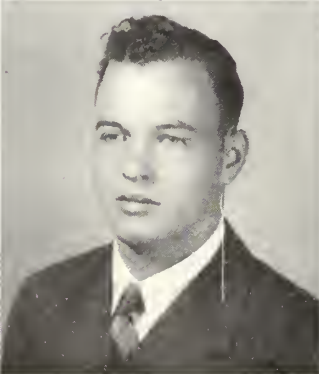
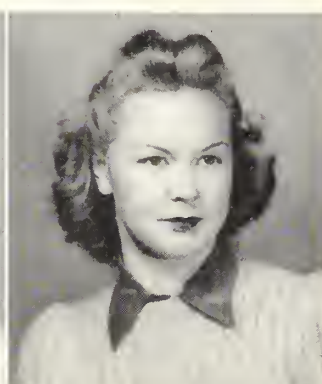


JUNIORS

*CHARLES KENDALL EVERETT . Dublin, Ga.
 JOE FARMER Augusta, Ga.
 JOSEPH EUGENE FEASTER . . . Bath, S. C.
 MAXANN FOY Statesboro, Ga.
 EMMIE FREEMAN Sylvania, Ga.
 DOROTHY EVELYNE FULCHER . Harlem, Ga.
 A. VIRGINIA GILDER Glennwood, Ga.

BESSIE GROOVER Statesboro, Ga.
 *DAN HART Statesboro, Ga.
 RUTH HART Statesboro, Ga.
 EVA MARILYN HAYES . . . Lake View, S. C.
 ALFRED H. HERRINGTON . . Swainsboro, Ga.
 MARY LOUISE HODGES . . . Claxton, Ga.
 JAMES ALLEN JONES Statesboro, Ga.

* No picture.





BETTY KNOWLES Ashburn, Ga.
 MARY GRACE LAKE Dublin, Ga.
 MADELYN E. LAMB Jesup, Ga.
 EVERETTE D. LOOSIER . . . Thomaston, Ga.
 ROBBIE LEE MALLARD . . . Cobbtown, Ga.
 ABBIE MANN Thomasville, Ga.

ROGER FRANCES McMILLAN . Fitzgerald, Ga.
 RALPH MIZE Cave Springs, Ga.
 GEORGE W. MULLING Baxley, Ga.
 ETHELYN NEWTON Garfield, Ga.
 JULIA CLAIRE ODOM Girard, Ga.
 DIGHT BRUCE OLLIFF, JR. . Statesboro, Ga.

JUNIORS

DORIS PARRISH Brooklet, Ga.

EDWENA PARRISH Portal, Ga.

HAROLD PEARMAN Pavo, Ga.

MARY THOMAS PERRY Dover, Ga.

HELEN PHILPOT Albany, Ga.

TINY RAMSEY Statesboro, Ga.

J. HARGARET RAULERSON . Lake Butler, Fla.

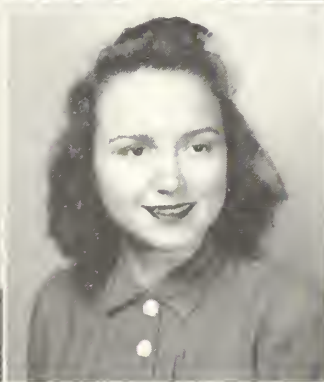
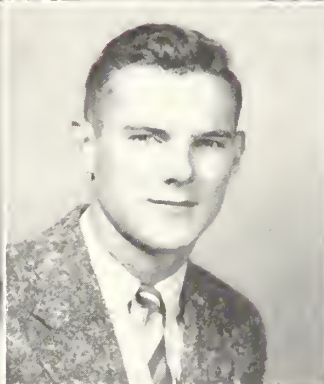
HARRY LANDRUM ROBERTSON . Waycross, Ga.

THOMAS L. ROBINSON Sardis, Ga.

SARA MAE SMITH Douglas, Ga.

ANNIE TOM SOWELL Hilltonia, Ga.

JAMES CARLTON STEPHENS . Sycamore, Ga.





Z. L. STRANGE, JR. Statesboro, Ga.

ELLEN LOUISE SUMNER Pearson, Ga.

MYRTIS NELL SWINSON Statesboro, Ga.

OLIVER BENJAMIN THOMAS . Georgetown, Ky.

IRENE GILLO TOS Claxton, Ga.

No picture

LILLIAN LEE WARNER Atlanta, Ga.

HAROLD LEWIS WATERS Statesboro, Ga.

LEE WILLIAMS Register, Ga.

DOROTHY WILSON Statesboro, Ga.

EARL ASHLEY WOLFE Savannah, Ga.

ERNEST TAYLOR YOUNGBLOOD . Jesup, Ga.



SENIORS

OFFICERS

DAVID BOWMAN	<i>President</i>
GENE WEATHERFORD	<i>Vice-President</i>
BILLIE TURNER	<i>Secretary</i>
TINY HENDERSON	<i>Treasurer</i>

STUDENT COUNCIL REPRESENTATIVES

FRANCIS C. GROOVER

LEON CULPEPPER

SPONSORS

MRS. MARJORIE GUARDIA

MR. FIELDING RUSSELL

SENIORS

ERNEST M. AGUIRRE . . . Cienfuegos, Cuba
Social Science

EDWARD ALLEN Eastman, Ga.
History
Forensic Council, 1, 2; Bird Club, 1, 2; *George Anne* Staff, 2, 3, 4; Y.M.C.A., 2, 3, 4.

THERON OSWELL ANGLIN . . . Wadley, Ga.
General Science
Iota Pi Nu, Bachelors Club, 1, 2, 3, 4, Treasurer, 3, 4; Buggar Dagger Club, 1, 2, 3, 4; Football, 2, 3, 4; Science Seminar, 2, 3, 4; Y.M.C.A.

MRS. KATHLEEN M. BARRON . Statesboro, Ga.

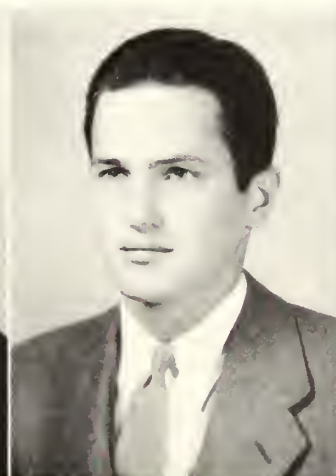
No picture.

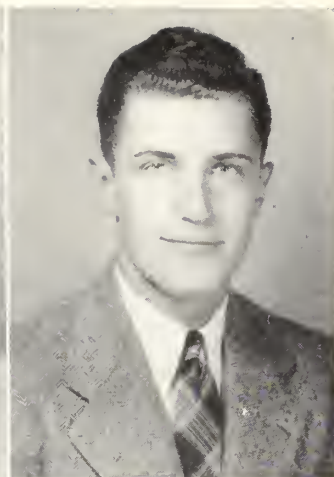
DAVID STROUD BOWMAN . . . Bromwood, Ga.
General Science

Iota Pi Nu, Secretary, 3, President, 4; Bachelors Club, 2, 3, 4, President, 1; President Senior Class; Science Seminar, 3, 4, Chairman, 3; Y.M.C.A., 1, 2, 3, 4, Cabinet, 2, 3; Vice-President Sophomore Class; President Junior Class; House Council, 2, 3, 4; Business Manager *Reflector*, 4; Band, 1, 2, 3, Secretary, 2, Vice-President, 3; Student Council, 3, 4.

LOIS BREWTON Groveland, Ga.
English

English Club, 3, 4; House Council, 3; Home Economics Club, 1, 2; The Masquers, 3, 4; Y.W.C.A., 1, 2, 3, 4; Vesper Choir, 1.





LUCY ELLEN BRINSON . . . Woodcliff, Ga.
English

Y. W. C. A., 1, 2, 3, 4; Home Economics Club, 3, 4, Treasurer, 4; English Club, 3, 4; East Hall House Council, 3, 4, Secretary-Treasurer, 4.

*JAMES BUNGE . . . Statesboro, Ga.
General Science
Honors Day Student, 3; Science Seminar.

LEON O'NEAL CAVE . . . Augusta, Ga.
Social Science

Iota Pi Nu; Football, 3, 4; Basketball, 3, 4; Sanford House Council, 4; Vice-President Bachelors Club, 4; International Relations Club, 4; "Rat Court Judge," 1; Y. M. C. A., Secretary-Treasurer, 4; President "T" Club, 4; Sports Editor *Reflector*, 4; Transfer.

* No picture.

RUTH CONE . . . Brooklet, Ga.
Music

"X" Club, Vice-President, 4; Chorus, 3, 4, Board of Directors, 4; Band, 2; Vesper Choir, 4, Secretary, 4; Art Editor *Reflector*, 4; Mu Sigma, 2, 3, 4, Vice-President, 4; Orchestra, 4, President, 4; Art Club, 3; Y. W. C. A., Cabinet, 4; Piano Certificate Recital, 4.

*MARIETA SHEILA COOK . . . Savannah, Ga.
Music

Transfer Student, Armstrong Junior College; Chorus, 3, 4; Orchestra, 4, Secretary-Treasurer, 4; Home Economics Club, 3, 4; House Council, 4; "X" Club; Mu Sigma.

LEON RAINES CULPEPPER . . . Cordele, Ga.
Music

Iota Pi Mu, Chaplain, 2, Treasurer, 3; Mu Sigma, 1, 2; Student Council, 3; Band, 1, 2, 3, President, 2; Symphony Orchestra, 3; College Chorus, 1, 2, 3, Board of Directors, 2; *George-Anne* Staff, 2; Club Editor of *Reflector*, 3; Y. M. C. A., Cabinet, 1, 2, 3; Bachelors Club, 2, 3; Dance Orchestra, 1, 2, 3; Vesper Choir, 1.

SENIORS



EVELYN CANNON DARLEY Statesboro, Ga.
Home Economics



AGNES LOUISE DENNARD Pineview, Ga.
English
Delta Lambda Delta; Transfer Student, Middle Georgia College.



JOHN HENRY DUNN Devereux, Ga.
General Science
Bugger-Dagger; Student Council, 3, 4, President, 4; President Bugger-Dagger, 3; Sanford House Council, 2, 3, 4, Vice-President, 3, 4; Football, 2, 3, 4; "T" Club, Treasurer, 4; Who's Who Among Students in American Universities and Colleges, 4.



VIRGINIA EASON Reidsville, Ga.
Elementary Education
College Chorus, 1, 2; West House Council, 2, 3, 4; President West Hall, 4; Student Council, 4.

SENIORS

JOHN FLOYD GRAHL Macon, Ga.

History
Delta Sigma.

FRANCIS CLARK GROOVER Stilson, Ga.

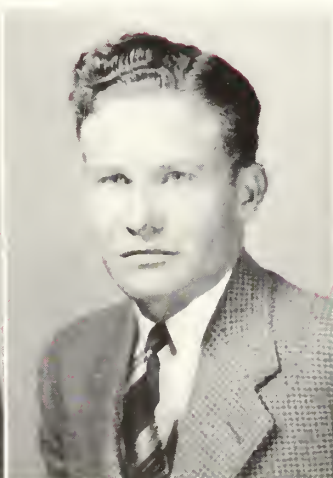
Art
Bugger-Dagger; College Chorus, 1, 2, 3, 4; Band, 2, 3; Industrial Arts Club, 3; Vesper Choir, 2, 3; T-Book Committee, 4; House Council, 4; Student Council, 4; International Relations Club, 4; Photographic Editor of *Reflector*.

ROBERT L. GRINER Sylvania, Ga.

Social Science

WM. "TINY" HENDERSON Thomasville, Ga.

History
Bugger-Dagger; Student Council, 4, Treasurer, 4; Sanford Hall House Council, 4, President, 4; President Bugger-Dagger, 4; Football, 3; "T" Club, Vice-President, 4; Y. M. C. A., 3, 4; *George-Aune*, Assistant Editor, 4; Industrial Arts Club, 3, 4, Publicity Chairman, 4; Transfer Middle Georgia College.





MARY KATHLEEN HENDRICKS . . . Savannah, Ga.
Elementary Education

JOE CLIFFORD HURST . . . Savannah, Ga.
Industrial Arts

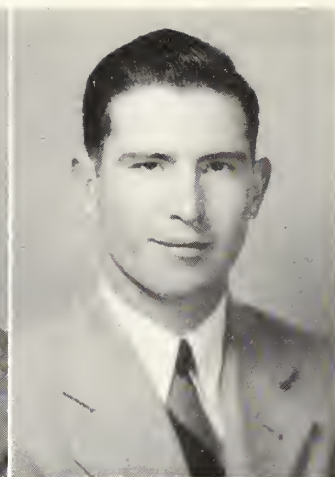
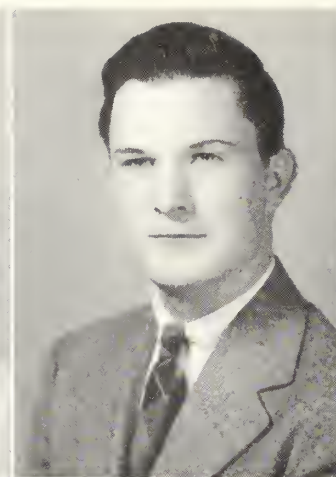
Bugger-Dagger, 3, 4; Bachelors Club, 3, 4; Industrial Arts Club, 3, 4, President, 3, Vice-President, 4.

WILLIE HUGH HINELE . . . Springfield, Ga.
Industrial Arts

Bugger-Dagger, 2, 3, Secretary, 2; Industrial Arts Club, 2, 3, President, 3; Baptist Student Union Council, 2, 3, President, 2; Sanford House Council, 3, Secretary, 3; International Relations Club, 3; Vesper Choir, 2, 3; Y. M. C. A., 1, 2, 3, Cabinet, 3.

EULA BETH JONES . . . Marshallville, Ga.
Language

Lambda Theta Chi, Secretary, 3, President, 4; Home Economics Club, 1; Chorus, 1; Music Club, 1, 2; Mn Sigma, 3, 4; Student Council, 3, 4, Secretary, 4; Y. W. C. A., 1, 2, 3, 4; W. A. A., Council, 3, 4, President, 4; Masquers, 2, 3, 4, Vice-President, 3, President, 4; Alpha Psi Omega, 4; East Hall House Council, 3, 4, President, 4; Delta Sigma Student Sponsor, 4; Beauty Section, 2, 3; May Court, 2, 3; Who's Who Among Students in American Universities and Colleges, 4; George-Anne Staff, 3, 4; Associate Editor *Reflector*, 4; Pan-Hellenic Council, 4.



MARTHA RUTH KAMMERER . Brunswick, Ga.
Social Science

"X" Club, 2, 3, 4, President, 4; International Relations Club, 2, 3, 4, Secretary, 4; Lewis Hall House Council, 4, Vice-President, 4; Y. W. C. A., 1, 2, 3, 4; Dramatic Club, 2; Archery Club, 3; Vesper Choir, 3; Sigma Gamma, 2, 3; *Reflector* Staff, 4; Transfer Student, Georgia State College for Women.

ERLE PILCHER KEMP . . . Statesboro, Ga.
General Science

Mu Sigma, 3, 4, Treasurer, 3, President, 4; Music Club, 1, 2; International Relations Club, 2, 3, 4, President, 4; College Chorus, 1, 2, 3, 4, Board of Directors, Co-Chairman, 4; Editor-in-Chief *Reflector*, 4; Who's Who Among Students in American Universities and Colleges, 4; *George-Anne* Staff, 3, 4; Vesper Choir, 3, 4, President, 4; Science Seminar, 2, 3, 4; Bird Club, 2, 3; Symphony Orchestra, 4; College Band, 3; Men's Glee Club, 1, 2; Fine Arts Club, 3; Library Staff, 3, 4; In Charge of Curriculum Laboratory, 3, 4, Assistant Librarian in Charge of Young People's Department, Spring Quarter, 2.

GERALDINE KEEFE . . . Waycross, Ga.
English

Delta Lambda Delta, President, 1; College Chorus, 1, 2, 3; English Club, 4, Vice-President, 4; *Reflector* Staff, 4; Home Economics Club, 1.

CHARLES FURMAN KNEECE . . . Monetta, S. C.
Industrial Arts

Iota Pi Nu; Bugger-Dagger; Industrial Arts Club, 3, 4; Transfer Student, South Georgia College; Y. M. C. A.

SENIORS



ALICE JO LANE Statesboro, Ga.

Elementary Education

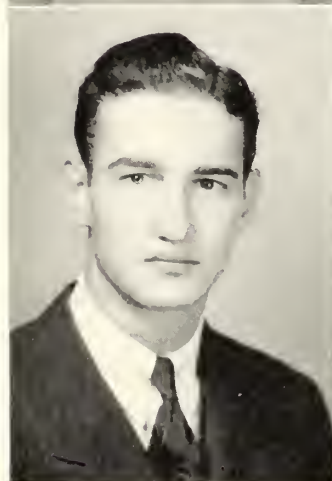
Sigma Gamma; Y. W. C. A., 1, 2, 3, 4; Home Economics Club, 1, 2, 3, 4, Vice-President, 2, President, 3; Dance Club, 1, 2; English Club, 3, 4, Vice-President, 4; College Chorus, 1, 2.



NELLORENE McCALLUM Broxton, Ga.

English

Transfer Student, North Georgia College; Y. W. C. A., 2, 3, 4; Home Economics Club, 2, 3; International Relations Club, 3, 4, Treasurer, 4; English Club, 3, 4, Secretary, 4; Y. W. A., 4, Secretary, 4, House Council, 3.



RAYMON JUDSON McKINNON Adel, Ga.

General Science

Basketball, 3, 4; Transfer Student.



SARA VERA MASON Mount Vernon, Ga.

Elementary Education

Transfer Student, Brewton-Parker Institute; Home Economics Club, 3; Science Seminar, 3.

SENIORS

JANE MATHIS Ashburn, Ga.

English

English Club, 3, 4, Treasurer, 4; W. A. A. Council, 4; Art Club, 3; International Relations Club, 4; West Hall House Council, 4, Secretary, 4; Transfer Student, North Georgia College.

FRANK OLLIFF Statesboro, Ga.

Industrial Arts

Delta Sigma, President, 4; Industrial Arts Club, 3, 4.

BARBARA CLARE MINCEY Ogeechee, Ga.

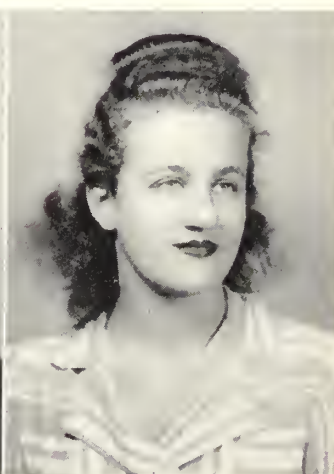
Languages

Y. W. C. A., 1, 2, 3, 4; Home Economics Club, 2, 3, 4, Secretary-Treasurer, 3; English Club, 3, 4; Association of Childhood Education, 3; House Council, 4; Dramatic Club, 4; Y. W. A., 4.

MARY ANNE PAULK Fitzgerald, Ga.

Music

Mu Sigma, 2, 3, 4; Orchestra, 4; Vesper Choir, 2, 3, 4, Secretary, 4; Bird Club, 2, 3; Y. W. C. A.; College Chorus, 2, 3, 4; Y. W. A.





MARY LILLIAN PERRY . . . Nashville, Ga.
English
English Club, 3, 4; W. A. A. Council, 4; Girl's
Tennis Team, 3; Art Club, 3; Transfer Student,
South Georgia College.

MERVIN SHIVERS . . . Americus, Ga.
English
Transfer Student, Georgia Southwestern; English
Club, Vice-President, 3, President, 4; Dramatic
Club, 3, 4, Secretary, 4; Y. W. C. A.; Who's Who
Among Students in American Universities and
Colleges.

*AUGUSTUS I. RIEDEL . . . Savannah, Ga.
History
International Relations Club, 4; Transfer Student,
Armstrong Junior College.

*MRS. IRENE SHUGART SMITH, Savannah, Ga.
Elementary Education

REGINALD DEAN ROOKS . . . Arlington, Ga.
Industrial Arts
Transfer Student, Georgia Southwestern; Indus-
trial Arts Club, 4; Vesper Choir, 3, 4.

DONNA SUZANN THIGPEN . . . Dublin, Ga.
Music
Sigma Gamma; College Chorus, 1, 2, 3, Board
of Directors, 3; Band, 2; Mu Sigma, 1, 2, 3, Vice-
President, 3; *George-Anne* Staff.

* No picture.



BEN COLUMBUS TILLMAN . . . Glenville, Ga.
General Science

BILLIE TURNER Garfield, Ga.
Music

Epiclean, President, 4; Band, 1; String Ensemble, 1, 2, 3; Orchestra, 4; Vice-President, 4; Y. W. C. A., Cabinet, 2, 3, 4; Secretary, 4; Mu Sigma, 1, 2, 3, 4; Treasurer, 4; Secretary-Treasurer of Senior Class; W. A. A., Council, 4; Pan-Hellenic Council, Treasurer, 4; College Chorus Pianist, 4; Violin Certificate Recital, 4; *Reflector* Staff.

ELLA SUE TRAYNHAM Broxton, Ga.
Elementary Education

Transfer Student, Georgia State Womans College; College Chorus, 3, 4; Y. W. C. A., 3, 4; Lambda Theta Chi, Vice-President, 4; Pan-Hellenic Council, 4, Secretary; May Court, 3.

ANNIE RAY VINCENT Whigham, Ga.
Elementary Education

Transfer Student, Andrew College; Y. W. C. A., 3, 4; West Hall House Council, 4; Y. W. A., 4.

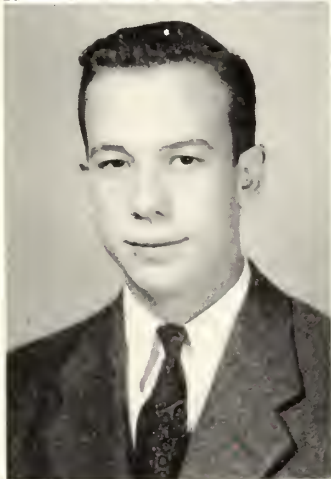
SENIORS



ROY PAYTON WARREN Stillmore, Ga.

Industrial Arts

Industrial Arts Club, 3, 4; Basketball, 2, 3, 4; Dramatic Club, 3, 4; Bird Club, 3; Y. W. C. A., 1, 2, 3, 4; Vice-President of Sophomore Class.



EUGENE WEATHERFORD Graymont, Ga.

Social Science

Iota Pi Nu; Vice-President Senior Class; International Relations Club, 4.

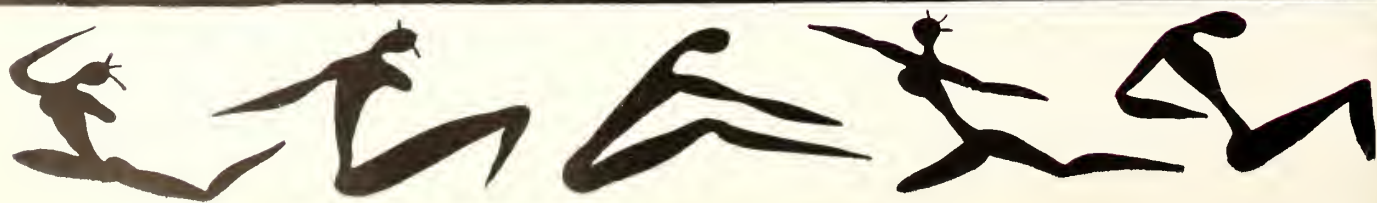


WILLIAM RANSOM WINGATE Pelham, Ga.

General Science

Mu Sigma, 2, 3, 4, Vice-President, 3, Treasurer, 4; College Chorus, 4; Music Club, 1; Science Seminar, 1, 2, 3.

ORGANIZ AND ACTIVITI



ATIONS

ES



STUDENT COUNCIL



Jones, Dunn, Cave, Henderson

OFFICERS

JOHN DUNN

President

O'NEAL CAVE

Vice-President

EULA BETH JONES

Secretary

WILLIAM "TINY" HENDERSON

Treasurer

MR. ZACH S. HENDERSON

Faculty Sponsor

The function of the Student Council is to represent the entire student body in matters of student interest; to afford a central and authoritative medium of communication between students and school authorities; to direct the social activities of the students; and in general to create and preserve the customs and traditions of the school.

MEMBERS



DAVID BOWMAN	<i>President of Senior Class</i>
FRANCIS GROOVER	<i>Senior Representative</i>
LEON CULPEPPER	<i>Senior Representative</i>
GEORGE MULLING	<i>President of Junior Class</i>
HAROLD HERRINGTON	<i>Junior Representative</i>
MARY THOMAS PERRY	<i>Junior Representative</i>
BILLY DeLOACH	<i>President of Sophomore Class</i>
ATHLEY JORDAN	<i>Sophomore Representative</i>
BILL LOWE	<i>President of Freshman Class</i>
JAMES DUNN	<i>Freshman Representative</i>
EULA BETH JONES	<i>President of East Hall</i>
VIRGINIA EASON	<i>President of West Hall</i>
EDWENA PARRISH	<i>President of Lewis Hall</i>
WILLIAM "TINY" HENDERSON	<i>President of Sanford Hall</i>

HOUSE

EAST



Seated: Lamb, Turner, Cromley, Jones, Zittrouer, Mrs. Wimberly, Morgan, L. Wyatt. Standing: Thomas, Brinson, Mincey, Perry, McMillan, Ivey, Tillman, Lanier, J. Wyatt.

EAST HALL HOUSE COUNCIL

EULA BETH JONES
President

BILLIE TURNER
Vice-President

LUCY BRINSON
Secretary-Treasurer

MONITORS

Judy Odom
Juanita Wyatt
Betty Ann Morgan
Uhlma Wynn Zittrouer
Roger McMillan
Marie Ivey
Helen King
Clare Mincey
Margaret Thomas
Marie Lanier
Beth Stanfield
Emily Cromley
Leila Wyatt
Annie Lois Harrison

LEWIS

LEWIS HALL HOUSE COUNCIL

EDWENA PARRISH
President

RUTH KAMMERER
Vice-President

MARY ETHIEL BANKS
Secretary-Treasurer

MONITORS

Mary Louise Townsend
Dorothy Garner
Elizabeth Smith
Elaine Herrin
Marieta Cook
Frances Edenfield



Seated: Kammerer, Parrish, Banks. Standing: Edenfield, Mrs. Myers, Townsend, Cook, Garner.

COUNCILS

SANFORD



First row: Hinely, Henderson, Dunn. Second row: Bowman, Hamby, Thomas, Groover, Robinson, Stephens, Cave, Robertson, Herrington.

SANFORD HOUSE COUNCIL

TINY HENDERSON
President

JOHN DUNN
Vice-President

WILLIE HUGH HINELY
Secretary-Treasurer

MONITORS

David Bowman
Jesse Hamby
Oliver Thomas
Francis Groover
Thomas Robinson
Carlton Stephens
O'Neal Cave
Harry Robertson
Harold Herrington

WEST

WEST HALL HOUSE COUNCIL

VIRGINIA EASON
President

HELEN PHILPOT
Vice-President

JANE MATHIS
Secretary

MARY LAKE
Treasurer

MONITORS

Evelyn Hester
Arlene Drury
Doris Withrow
Betty Knowles
Dorothea Jeremias
Robbie Braddy



First row: Mathis, Philpot, Braddy. Second row: Withrow, Knowles, Jeremias, Eason. Standing: Hester, Lake, Drury, Mrs. Motes.

THE Y. M. C. A.



Waters, Chambless, Groover, Thompson, Stevens, Thomas, Cave, W. Hinely, Culpepper, Jones. Standing: Robertson, L. Hinely, Pennington.

The Y. M. C. A. assumes a leading role in the activities of the college. Not only is it looked upon as the channel for the spiritual growth and development of the students, it is also active in athletics, social activities, and general functions.

Its purpose is to promote Christianity, through daily prayer services, bi-monthly "Y" meetings, and Sunday evening Vespers, and through participation in the whole program of the "Y".

Motto: "All for Christ."

OFFICERS

OLIVER THOMAS	President
CARLTON STEVENS	Vice-President
O'NEAL CAVE	Secretary-Treasurer
MR. FIELDING RUSSELL	Faculty Sponsor

CABINET

LEWIS HINELY	Evening Watch	PETE PARRISH	Recreation
MARCUS BRUNER	Vespers	DAN CHAMBLESS	Social Activities
WILLIE HUGH HINELY	Membership	LEON CULPEPPER	Chorister
MARCUS BRUNER	Pianist		

THE Y.W.C.A.



Cone, Mann, Guardia, Hendrix, Cromley, Parrish, Turner, Garner, McMillan, Bradley.

The Young Women's Christian Association of Georgia Teachers College, endeavors, through its daily morning watch services, the weekly Y. W. meetings and the joint vesper services, to fulfill the spiritual need of every girl on the campus.

It declares its purpose to be: "We unite in the desire to realize full and creative life through a growing knowledge of God. We determine to have a part in making this life possible for all people."

OFFICERS

EDWENA PARRISH	President
EMILY CROMLEY	Vice-President
BILLIE TURNER	Secretary
ROGER McMILLAN	Treasurer
MRS. MARJORIE GUARDIA	Faculty Advisor

CABINET

DOROTHY GARNER	Vespers	MARTHA COBLE	Publicity
BETH STANFIELD	Recreation	MARY ETHEL BANKS	Morning Watch
ABBIE MANN	Membership	JOYCE HENDRIX	Morning Watch
REUNETTE BENNETT	Morning Watch		

THE REF



PILCHER KEMP
Editor

EDITORIAL STAFF

PILCHER KEMP *Editor*
EULA BETH JONES *Associate Editor*
RUTH CONE *Art Editor*
BILLIE TURNER *Club Editor*
LEON CULPEPPER *Club Editor*
O'NEAL CAVE *Sports Editor*
FRANCIS GROOVER *Photographic Editor*
JIMMY SCARBORO *Photographic Editor*

THE EDITORIAL STAFF



Left to right: Cave, Kemp, Jones, Cone, Groover, Turner, Culpepper, Keefe

LECTOR

1942

BUSINESS STAFF

DAVID BOWMAN *Business Manager*
RUTH KAMMERER *Advertising Manager*
MARY THOMAS PERRY *Advertising Manager*
FRANK OLLIFF *Advertising Manager*
GERALDINE KEEFE *Circulation Manager*



DAVID BOWMAN
Business Manager

THE BUSINESS STAFF



Left to right: Bowman, Olliff, Perry, Kammerer, Keefe.

THE GEORGE - ANNE

The George-Anne

Established 1927.

MEMBER GEORGIA COLLEGIATE PRESS ASSOCIATION

Published bi-weekly from September till June, except during holidays by the students of Georgia Teachers College, Collegeboro, Ga.
Subscription rate: 10c per copy; \$1.00 per year.

Entered as second-class matter at the postoffice at Collegeboro, Ga., under temporary permit.

HARRY ROBERTSON Editor
JIMMY JONES Managing Editor

EDITORIAL STAFF

EDWIN GROOVER Sports Editor
TINY HENDERSON Assistant Sports Editor
EULA BETH JONES Society Editor
OLIVER THOMAS Religious Editor
ABBIE MANN Typist
RALPH FOSTER Typist
MARCUS BRUNER Proofreader
HAL KING Proofreader
HAROLD PEARMAN Proofreader

BUSINESS STAFF

JOE ALLEN JONES Business Manager
ROGER McMILLAN Assistant Business Manager
ELLA SUE TRAYNHAM Assistant Business Manager
DAN CHAMBLESS Circulation Manager
STANLEY BOOTH Assistant Circulation Manager

EDITOR



BUSINESS
MANAGER

EDITORIAL STAFF



REPORTERS



INTERNATIONAL RELATIONS CLUB



Kammerer, McCallum, Kemp, Garner

OFFICERS

PILCHER KEMP	<i>President</i>
DOROTHY GARNER	<i>Vice-President</i>
RUTH KAMMERER	<i>Secretary</i>
NELLORENE McCALLUM	<i>Treasurer</i>
DR. HERBERT WEAVER	<i>Sponsor</i>

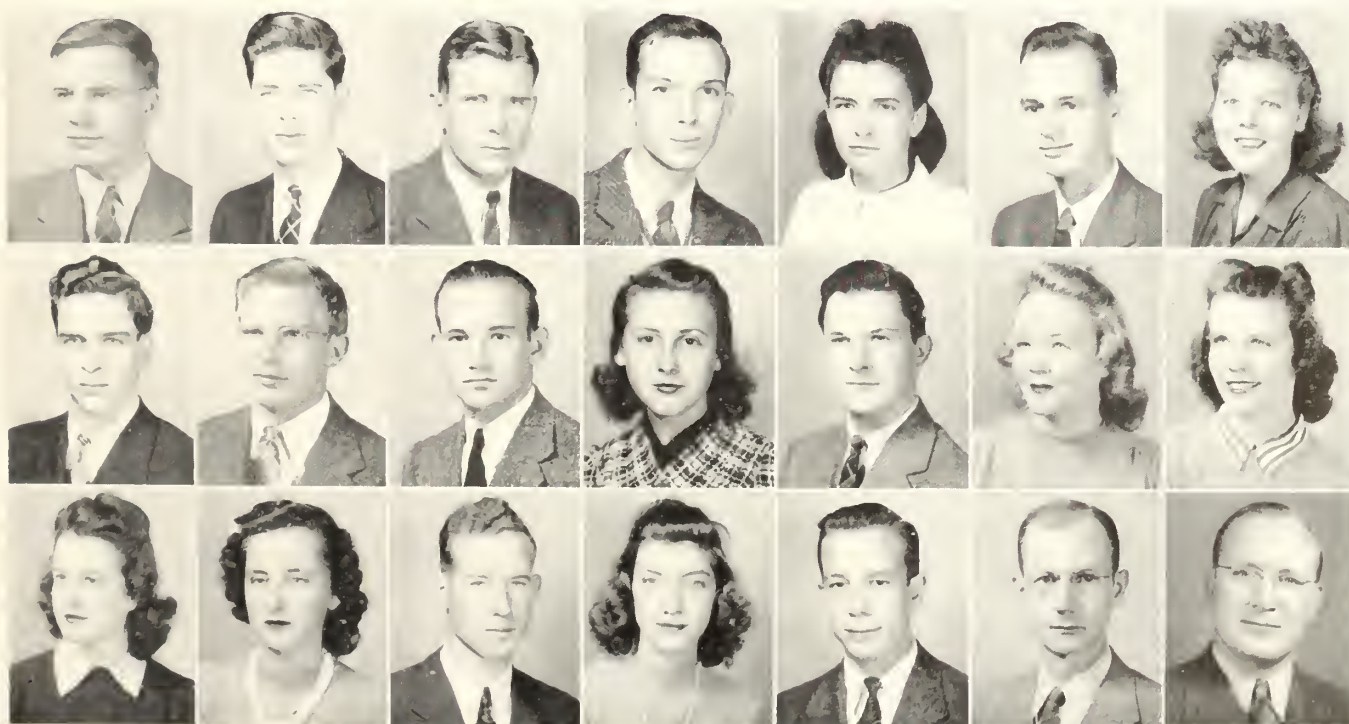
MEMBERS

Edward Allen
Jack Averitt
O'Neal Cave
Marieta Cook
Palmer Edenfield
Dorothy Garner

Francis Groover
Joyce Hendrix
Willie Hugh Hinely
Joe Allen Jones
Athley Jordan

Ruth Kammerer
Pilcher Kemp
Jane Mathis
Nellorene McCallum
Myra Newton

Edwena Parrish
Augustus Riedel
Louie Thompson
Lillian Warner
Gene Weatherford
Mr. George Hendricks



M A S Q U E R S



OFFICERS

EULA BETH JONES . . . *President*
 ROGER McMILLAN . . . *Vice-President*
 MERVIN SHIVERS . . . *Secretary*
 MARY THOMAS PERRY . . . *Treasurer*
 MISS MAMIE JO JONES . . . *Sponsor*

MEMBERS

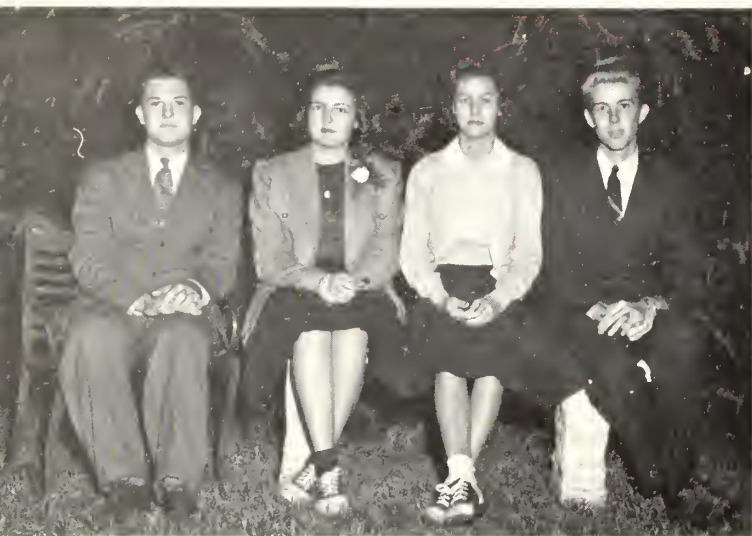
Esther Lee Barnes	Billy DeLoach	Dan McNally	Hargaret Raulerson
Nell Brannen	Joe Farmer	Clare Mincey	Dot Remington
Sue Breen	Howard Hinnicutt	Ida Lee Mosley	Dot Sheffield
Lois Brewton	Eula Beth Jones	Ruth Murchison	Mervin Shivers
Marcus Bruner	Barbara Jory	Edith Murray	Elizabeth Smith
Schirm Carter	Ramon McKinnon	James Parker	Jackie Smith
Wayne Culbreth	Roger McMillan	Mary Thomas Perry	Uhlma Wynn Zittroener





YOU CAN'T TAKE IT WITH YOU

M U S I G M A



Kemp, Thigpen, Foy, Wingate

MEMBERS

Jack Averitt	Lucy Faye Lanier
Marcus Bruner	Everett Loosier
Ruth Cone	Mary Paulk
Marieta Cook	Margaret "Pop" Raulerson
Leon Culpepper	Donna Thigpen
Maxann Foy	Billie Turner
Bill Holloway	Harold Waters
Dorothea Jeremias	Bill Wingate
Jimmy Jones	Uhlma Wynn Zittrouer
Pilcher Kemp	

NATIONAL MUSIC FRATERNITY

Alpha Chapter founded at Culver-Stockton College, Canton, Mo., 1931. Delta Chapter founded at Georgia Teachers College, 1939.

Motto: *Music Exalts Life*

Colors: *Blue and Gold*

Song: *"Hail to Thee Mu Sigma."*

OFFICERS

PILCHER KEMP	President
DONNA THIGPEN	Vice-President
MAXANN FOY	Secretary
BILL WINGATE	Treasurer

PLEDGES

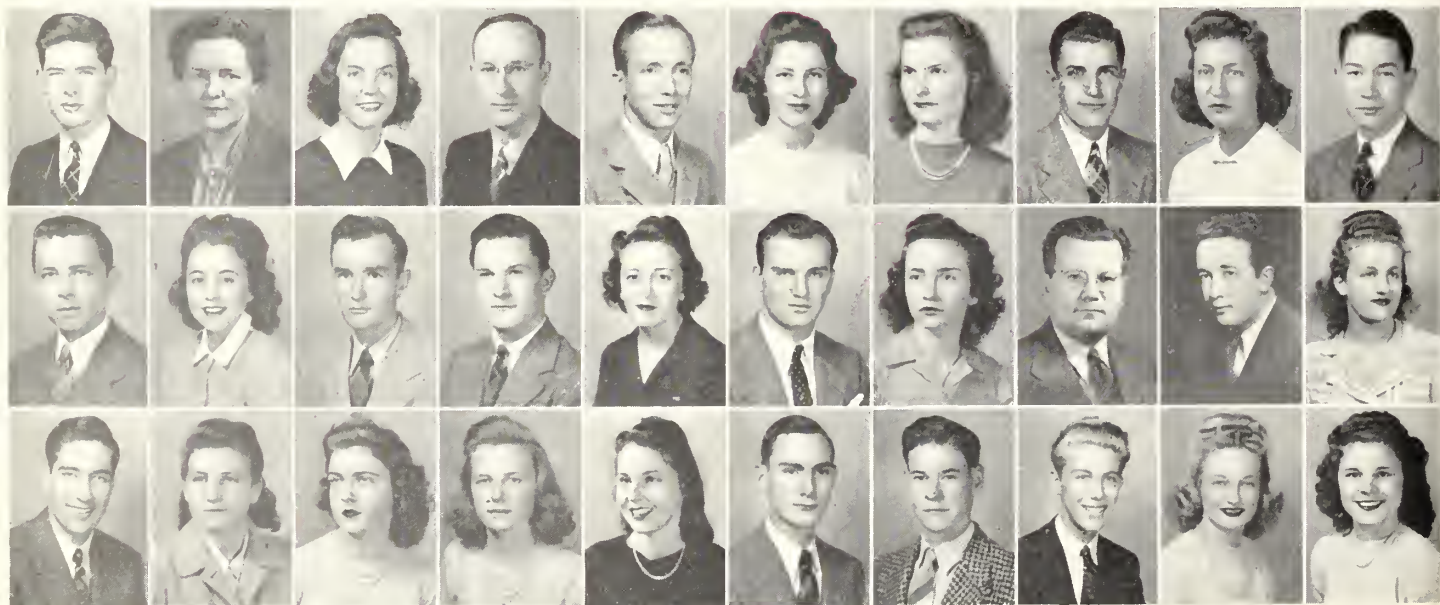
Esther Lee Barnes	Beth Stanfield
Prunella Cromartie	Margaret Helen Tillman
Marcellus Gaughf	Harry Warren
Evelyn McGarrity	Doris Woods

HONORARY MEMBERS

Mr. John P. Bollinger	J. Malcolm Parker
-----------------------	-------------------

SPONSORS

Mrs. E. L. Barnes	Mr. Ronald J. Neil
-------------------	--------------------





VESPER CHOIR

OFFICERS

PILCHER KEMP	<i>President</i>
PALMER EDENFIELD	<i>Vice-President</i>
RUTH CONE	<i>Secretary</i>
FRANCES EDENFIELD	<i>Treasurer</i>
MRS. Z. A. HENDERSON	<i>Director</i>

MEMBERS

Elizabeth Morris	Tina Gresham	Margaret Thomas
Evelyn McGarrity	Richard Starr	Frances Edenfield
Louise Townsend	Pilcher Kemp	Beth Stanfield
Henrietta Claxton	Mary Ethel Banks	Frances Cliett
Joyce Hendrix	Marcellus Gaughf	Barbara Jory
Jane Irvin	Daisy Mae Leaphart	Christine Upchurch
June Irvin	Inman Davis	Marie Ivey
Bernice Lawrence	Miriam Jones	James Myers
Jimmy Jones	Palmer Edenfield	Eschol Gay
Abbie Mann	Mary Paulk	Dorothy Garner
Marcus Bruner	Ralph Foster	Ruth Cone
Louise Echols	Jo Biggers	Jeanette Sears
Willie Hugh Hinely		Louise Glisson

ORCHESTRA

MR. JOHN P. BOLLINGER Director

OFFICERS

RUTH CONE *President*

BILLIE TURNER *Vice-President*

MARIETA COOK *Secretary and Treasurer*

MEMBERS

Billie Turner

Dr. John Mooney

Ruth Cone

Marieta Cook

Mrs. John P. Bollinger

Mr. John P. Bollinger

Dorothea Jeremias

Zeke Daughtrey

Jimmie Jones

Bill Holloway

Pileher Kemp

Beth Stanfield

Mary Paulk

Leon Culpepper

Mr. Averitt

Harold Waters

Ben Tillman

Mrs. Walter Downs

Marcellus Gaughf

Juanita Wyatt

Bruce Carruth

Miss Edith Guill

Ben Tillman

Frances Parkes

Everett Loosier



COLLEGE CHORUS

RONALD J. NEIL *Director*
BILLIE TURNER *Accompanist*

BOARD OF DIRECTORS

DONNA THIGPEN, *Co-Chairman* RUTH CONE
PILCHER KEMP, *Co-Chairman* MARGARET "POP" RAULERSON
MARCUS BRUNER

MEMBERS

Esther Lee Barnes
Jo Biggers
Nell Brannen
Marcus Bruner
Dan Chambless
Henrietta Claxton
Frances Cliett
Marieta Cook
Ruth Cone
Prunella Cromartie
Emily Cromley
Tina Gresham
Francis Groover
Joyce Hendrix
Jane Irvin
June Irvin
Jimmie Jones
Miriam Jones
Helen King

Pilcher Kemp
Lucy Faye Lanier
Daisy Mae Leaphart
Evelyn McGarrity
Bettie McLeMore
Pauline Neil
Edwena Parrish
Marward Pearce
Margaret Raulerson
Dorothy Remington
Theone Robinson
Jeanette Sears
Richard Starr
Hattie Swann
Donna Thigpen
Louise Townsend
Ella Sue Traynham
Bill Wingate
Doris Woods

Rosemary Wynn
Uhlma Wynn Zitttroner
Leon Culpepper
Frances Trapnell
Walton Cheshire
Charles Wireman
Harold Waters
Sophie Oliver
Margaret Strickland
Josephine Griffin
Virginia Lovett
Joyce Smith
Billy DeLoach
Ernestine Griffin
Virginia Gilder
Lorena Herrin
Sue Breen
Mary Pank
Gladine Culpepper



THE HOME ECONOMICS CLUB



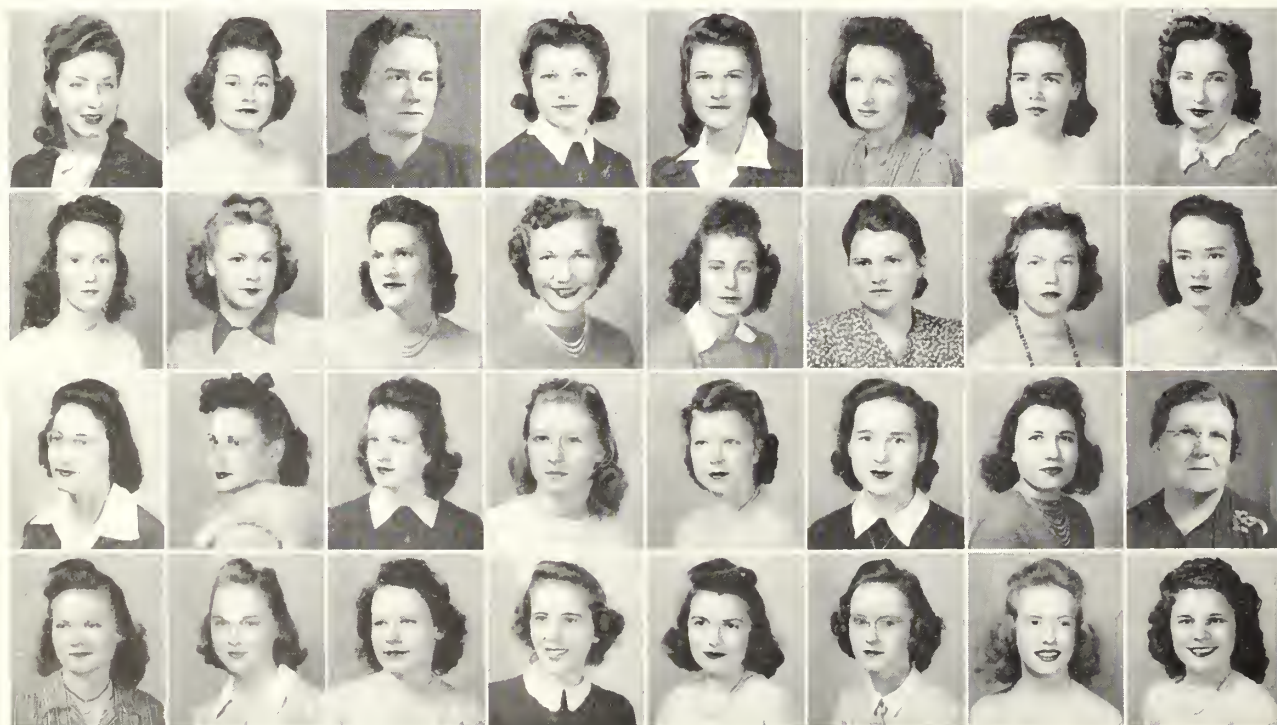
OFFICERS

MARIE LANIER	<i>President</i>
MYRA NEWTON	<i>Vice-President</i>
FRANCES EDENFIELD	<i>Secretary</i>
LUCY BRINSON	<i>Treasurer</i>
MISS RUTH BOLTON	<i>Spousor</i>
MRS. JANE ROBSON	<i>Spousor</i>

Seated: Lanier, Bolton, Edenfield. Standing: Newton, Brinson.

MEMBERS

Louise Bacon	Ruby Dell Flanders	Marie Lanier	Eloise Powell
Reunette Bennett	Emmie Freeman	Clare Mincey	Jeannette Sears
Elizabeth Bragg	Virginia Gilder	Elizabeth Morris	Hattie Swann
Lucy Brinson	Ernestine Griffin	Myra Newton	Margaret Thomas
Henrietta Claxton	Josephine Griffin	Nellie Kate Newton	Mary Frances Tyson
Venice Clifton	Pearl Hendrix	Vivian Parker	Rosemary Wynn
Mary Fields	Vivian Johnson	Lillian Poole	Juanita Wyatt
Leila Wyatt		Uhlma Wynn Zittrouer	



ENGLISH CLUB

OFFICERS

MERVIN SHIVERS *President*
 ALICE JO LANE *Vice-President*
 NELLORENE MCCALLUM *Secretary*
 JANE MATHIS *Treasurer*
 MRS. MARJORIE GUARDIA *Sponsor*



McCallum, Shivers, Mathis.

MEMBERS

Allie Jean Alderman
 Lois Brewton
 Lucy Brinson
 Ruth Hart
 Eva Hayes
 Eula Beth Jones

Geraldine Keefe
 Alice Jo Lane
 Nellorene McCallum
 Jane Mathis
 Clare Mincey
 Julia Odom

Doris Parrish
 Mary Lillian Perry
 Mervin Shivers
 Ellen Sumner
 Myrtis Swinson
 Oliver B. Thomas



INDUSTRIAL ARTS CLUB



OFFICERS

WILLIE HUGH HINELY
LINDSEY PENNINGTON

LEWIS HINELY
TINY HENDERSON

JOE HURST
DAN CHAMBLESS

SPONSORS

MR. E. G. LIVINGSTON

MR. R. J. COLTHARP

MEMBERS

W. B. Akins
Dan Chambliss
Clinton Davis
Inman Davis
Tiny Henderson
Lewis Hinely

Willie Hugh Hinely
Joe Hurst
Charlie Kneece
Ralph Mize
Merrill Nelson
Harold Pearman

Lindsey Pennington
Reginald Rooks
Oliver Thomas
Pate Warren
Robert Waters
Frank Wireman

Y. W. A.

The Young Women's Auxiliary, organized this school year, has for its purpose the development of Christian young women. The Word is studied and frequent use is made of dramatics, oratory, art, and music in attractive presentation of programs.

OFFICERS

EVA HAYES *President*
 ELOISE POWELL . . . *Vice-President*
 NELLORENE McCALLUM . *Secretary*
 MURIEL CHILDS *Treasurer*
 VIVIAN JOHNSON *Pianist*
 EVELYN CHILDS *Chorister*



B. S. U. COUNCIL

The purpose of the Baptist Student Union is summed up in its motto, "Christ, The Master of Our Campus."

OFFICERS

ANNELE ALFORD
President
 SARA ALICE BRADLEY
First Vice-President
 MARIETA COOK
Second Vice-President
 WILLIE HUGH HINELY
Third Vice-President
 JOYCE HENDRIX
Secretary and Treasurer
 JACK AVERITT
Pianist
 EVELYN CHILDS
Chorister
 LEWIS HINELY
Reporter
 MR. B. L. SMITH
Sponsor
 DR. C. M. COALSON
Sponsor





SCIENCE SEMINAR

OFFICERS

ABBIE MANN	<i>President</i>
STANLEY BOOTH	<i>Vice-President</i>
JOE FARMER	<i>Secretary</i>
WORTH GREENE	<i>Treasurer</i>
ANNA LOUISE PIGG	<i>Mascot</i>

SPONSORS

Mr. Ewell Glenn Pigg

Mr. W. S. Hanner

MEMBERS

Stanley Booth
David Bowman
Jimmy Bunce
Joe Farmer
Worth Greene

Harold Herrington
Pilcher Kemp
Denver Lanier
Edwena Parrish
Harry Pike
W. P. Thompson

John Wall
Wallace Winter
Fain Martin
Abbie Mann
Miriam Jones

HONORARY MEMBER

Mr. W. B. Moye

HISTORY
Founded in 1928

COLORS
Green and White

MOTTO
Beware of Women

FLOWER
Bachelor Button

SONG
"My Buddy"

PURPOSE
*The promotion of ideas, ideals, and
a comradeship of high integrity.*



Seated: Bolton, Bowman, Wood. Standing: Anglin, Cave, Parker

BACHELORS CLUB

OFFICERS

DAVID BOWMAN
O'NEAL CAVE
JIMMY GUNTER
THERON ANGLIN

President
Vice-President
Secretary
Treasurer

SPONSORS

Miss Marie Wood

Miss Ruth Bolton

MEMBERS

Theron Anglin
Stanley Booth
David Bowman
O'Neal Cave
Harold Waters

Howard Waters
Wayne Culbreth
Leon Culpepper
Billy DeLoach

Worth Greene
Joe Hurst
Ralph Mize
George Mulling
Fitzhugh Penn



BUGGER DAGGER

OFFICERS

JOHN DUNN
FITZHUGH PENN
STANLEY BOOTH
TINY HENDERSON
WILLIE HUGH HINELY
ZEKE DAUGHTREY

MR. W. B. MOYE Sponsor

ABBIE MANN Student Sponsor

COLORS

Red and Black



Dunn, Penn, Mann, Henderson, Booth

MEMBERS

Theron Anglin
Jack Ballenger
Stanley Booth
Durward Brannen
Zeke Daughtrey
Clinton Davis
John Dunn

Francis Groover
Tiny Henderson
Harold Herrington
Lewis Hinely
Willie Hugh Hinely
Joe Hurst
Jimmy Jones
Joe Allen Jones

Charlie Kneece
Fitzhugh Penn
Fred Pennington
Lindsey Pennington
Jack Roddenberry
Louie Thompson
Robert Waters





Eula Beth Jones



Robertson, Olliff, Coleman, Morris, Ramsey



DELTA SIGMA OFFICERS

FRANK OLLIFF
JAMES PARKER
EDWIN GROOVER
HARRY ROBERTSON
DR. HERBERT WEAVER
DR. R. J. IL DELOACH
EULA BETH JONES

President
Vice-President
Secretary
Treasurer
Faculty Sponsor
Faculty Sponsor
Student Sponsor

FOUNDED: G. S. M. C., 1929

SONG: "Auld Lang Syne"

COLORS: Blue and Gold

FLOWER: Red Rose

MEMBERS

Billy Brown
Edwin Groover
Marion Jones
Hal King
Robert Morris
Frank Morrison

Charles B. McAllister
Dight Olliff
Frank Olliff
James Parker
Harold Pearman

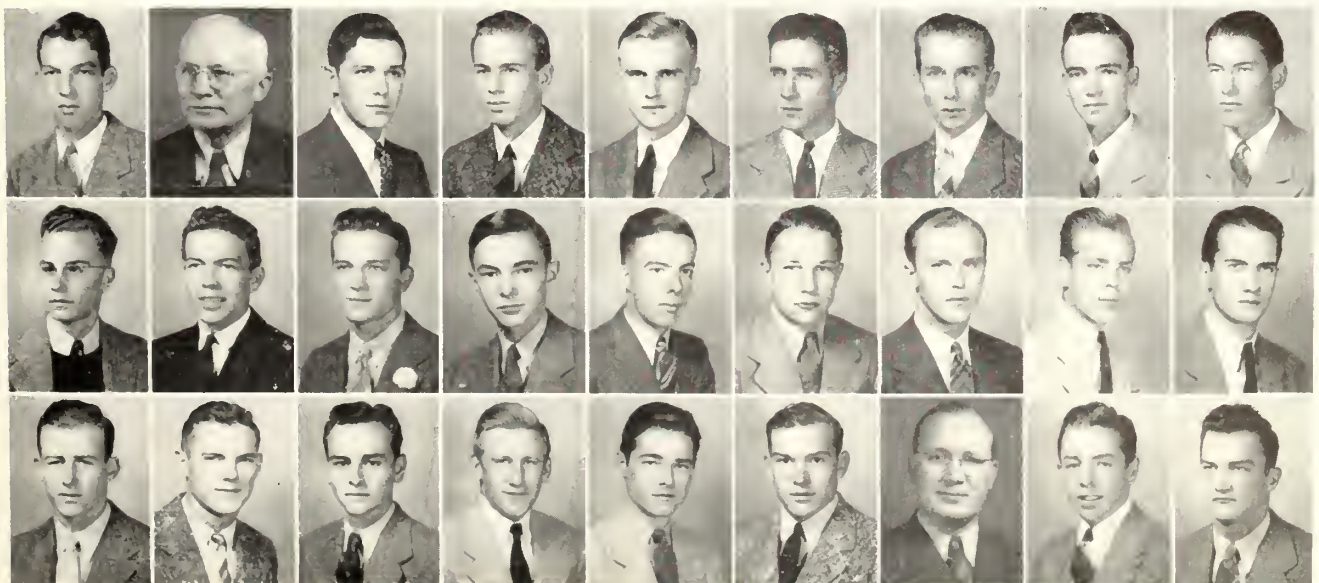
Tiny Ramsey
Harry Robertson
Jimmy Scarboro
Wallace Winters
E. T. Youngblood
G. C. Coleman

PLEDGES

Charles Edge
Dudley Gatewood
Charlie Johnson

Bill Lowe
Edward Mixon
Jack Mobley
Jack Pierce

Billy Rogers
E. B. Rushing
Jack Timms



ITN



Left to right: Culbreth, Cave, Mulling, Perry, Bowman, Walters, Culpepper

IOTA PI NU OFFICERS

DAVID BOWMAN	<i>President</i>
WAYNE CULBRETH	<i>Vice-President</i>
HAROLD WATERS	<i>Secretary</i>
LEON CULPEPPER	<i>Treasurer</i>
MARY THOMAS PERRY	<i>Student Sponsor</i>
MR. LEON P. SMITH	<i>Faculty Sponsor</i>

FOUNDED IN 1931

COLORS: *Scarlet and Emerald*

FLOWER: *Poinsettia*

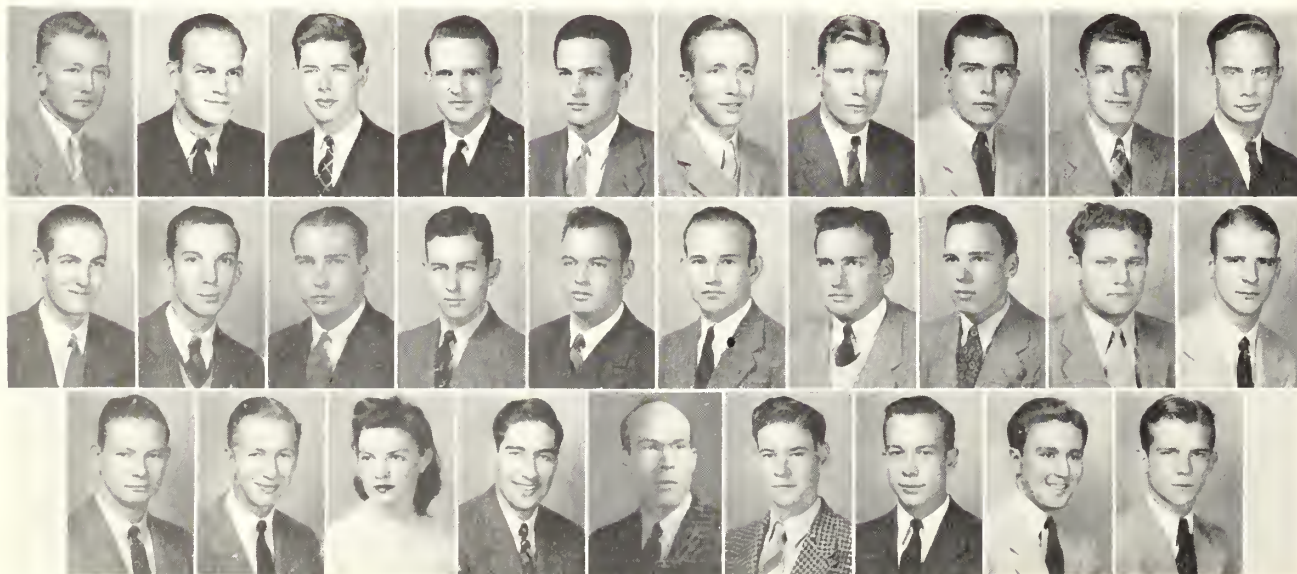
SONG: *"My Dear"*

MEMBERS

Bill Aldred	Leon Culpepper	Ralph Mize
Theron Anglin	Billy DeLoach	George Mulling
Stanley Booth	James Dunn	Fitzhugh Penn
David Bowman	Worth Greene	Hargaret Raulerson
Marens Bruner	Jimmy Gunter	Harold Waters
O'Neal Cave	Harold Herrington	Gene Weatherford
Wayne Culbreth	Athley Jordan	Jack Wynn
	Fain Martin	

PLEDGES

Jack Averitt	Charles Kneeee	Hill Paschal
Palmer Edenfield	Charles Layton	John Wall
Joe Feaster		Frank Wireman





Seated: Foy, Perry, McMillan, Traynham, Bradley, Turner. Standing: Lamb, Gresham, Demard, Jones

OFFICERS

ROGER McMILLAN	President
MARY THOMAS PERRY	Vice-President
EULA SUE TRAYNHAM	Secretary
BILLIE TURNER	Treasurer
MAXANN FOY	Social Chairman

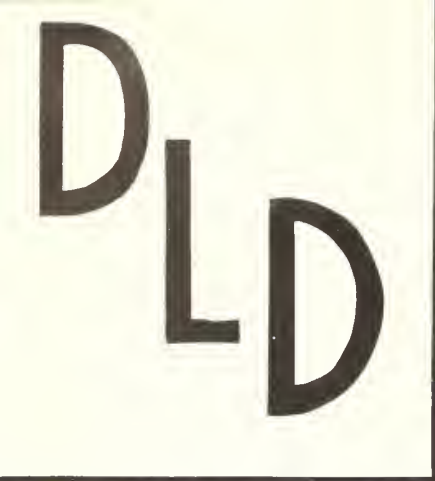
SONG: "Memories"

COLORS: Pink and Blue

PURPOSE: To promote closer cooperation among the sororities on the campus with the hope of providing a more comprehensive social program.

MEMBERS

Roger McMillan	Sara Alice Bradley	Madelyn Lamb
Tina Gresham	Eula Beth Jones	Mary Thomas Perry
Billie Turner	Ella Sue Traynham	Maxann Foy
	Agnes Demard	



Lamb, Dennard, Keefe, Odum

DELTA LAMBDA DELTA OFFICERS

AGNES DENNARD	President
MADELYN LAMB	Vice-President
GERALDINE KEEFE	Secretary and Treasurer
MR. AND MRS. RONALD J. NEIL	Sponsors

MOTTO: *A Good Time in a Good Way*

COLORS: *Crimson and Royal Blue*

SONG: *"Alcays"*

FLOWER: *Rose*

MEMBERS

Prueella Cromartie
Agnes Dennard

Geraldine Keefe

Madelyn Lamb
Jeanette Walker

PLEDGES

Carolyn Daniels
Kathryn Ellison

Dorothea Jeremias
Lucy Faye Lanier
Martha Ann Mooney

Julia Odum
Irene Tos





OFFICERS

MARY THOMAS PERRY
 MAXANN FOY
 BETTY ANN MORGAN
 MARY FRANCES GROOVER
 LEILA WYATT
 MR. AND MRS. W. S. HANNER

President
Vice-President
Secretary
Treasurer
Chaplain
Sponsors

MOTTO: "To lead rather than to be led"

COLORS: Gold and White

FLOWER: Chrysanthemum

SONG: "Gettin' Sentimental"



Foy, Morgan, Groover, Perry

MEMBERS

Helen Elder	Mary Thomas Perry
Maxann Foy	Catherine Rowse
Mary Frances Groover	Margaret Helen Tillman
Betty Ann Morgau	Leila Wyatt

PLEDGES

Clifford Lee	Helen Rowse
Rosemary Wynn	

D
U
X

D
O
M
I
N
A

EPICUREAN



OFFICERS

BILLIE TURNER	<i>President</i>
SARA ALICE BRADLEY	<i>Vice-President</i>
ESTHER LEE BARNES	<i>Treasurer</i>
SUE BREEN	<i>Secretary</i>
DOROTHY REMINGTON	<i>Chaplain</i>
MRS. E. L. BARNES	<i>Sponsor</i>
MRS. J. R. JOYNER	<i>Sponsor</i>

MEMBERS

Esther Lee Barnes
 Sue Breen
 Sara Alice Bradley
 Nell Brannen
 Dorothy Remington
 Joyce Smith
 Billie Turner
 Juanita Wyatt

PLEDGES

Gladine Culpepper
 Mary Virginia Groover
 Edith Murray
 Doris Woods

MOTTO

Eat, drink and be merry, for tomorrow you may die

COLORS

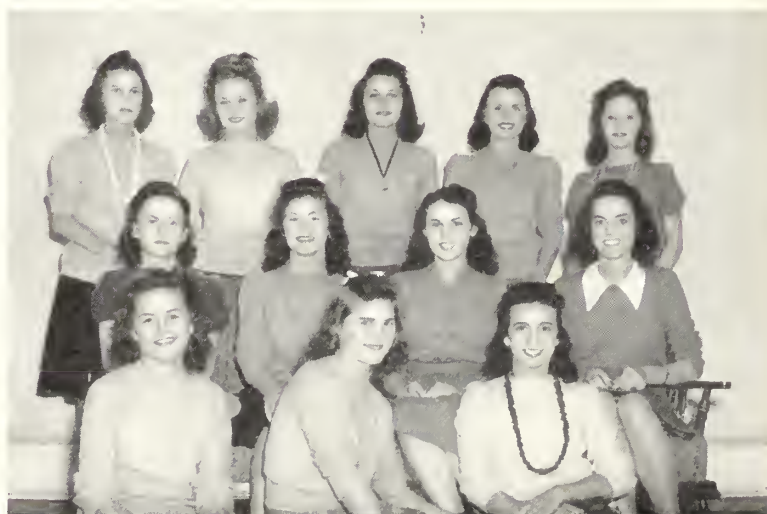
Red and White

SONG

"Stardust"

FLOWER

Carnation



LAMBDA THETA CHI OFFICERS

EULA BETH JONES
 ELLA SUE TRAYNHAM
 EMILY CROMLEY
 MRS. CYNTHIA DAVIS

President
Vice-President
Secretary and Treasurer
Sponsor

LTC



Cromley, Jones, Traynham

MOTTO: *To strive, to seek, to find, and not to yield*

COLORS: *Green and Gold* **SONG:** *"I'll Be Faithful"*

FLOWER: *Sweetheart Rose*

MEMBERS

Martha Coble
 Emily Cromley
 Eula Beth Jones
 Helen King

Marward Pearce
 Ella Sue Traynham
 Uhlma Wynn Zittrouer

PLEDGES

Pearl Anderson

Carolyn Eanes

Lucy Barber



SIGMA GAMMA



OFFICERS

ROGER McMILLAN	<i>President</i>
TINA GRESHAM	<i>Vice-President</i>
LILLIAN WARNER	<i>Secretary</i>
ELIZABETH SMITH	<i>Treasurer</i>
MRS. RUBY CROUSE	<i>Sponsor</i>

MEMBERS

Ann Callens	Dorothy Sheffield
Tina Gresham	Elizabeth Smith
Alice Jo Lane	Jacqueline Smith
Daisy Mae Leaphart	Margaret Strickland
Roger McMillan	Donna Thigpen
	Lillian Warner

PLEDGES

Venice Clifton	Virginia Lovett
Ruth Johnson	Nellie Kate Newton
	Vivian Parker

MOTTO

To live for others rather than ourselves

COLORS

Green and White

SONG

"Night and Day"

FLOWER

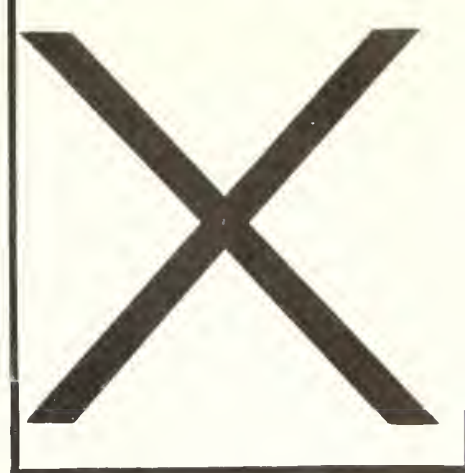
Gardenia



Seated: Smith, McMillan, Crouse.
Standing: Thigpen, Warner,
Gresham



Cone, Kammerer, Newton



OFFICERS

RUTH KAMMERER

RUTH CONE

MYRA NEWTON

MISS MAYBETH CARITHERS

MISS HASSIE MAUD McELVEEN

MISS EDITH GULL

President

Vice-President

Secretary and Treasurer

Sponsor

Sponsor

Sponsor

MEMBERS

Mary Ethel Banks

Ruth Cone

Dorothy Garner

Joyce Hendrix

Jane Irvin

June Irvin

Ruth Kammerer

Abbie Mann

Myra Newton

Edwena Parrish

PLEDGES

Marieta Cook

Frances Edenfield

Robbie Lee Mallard

Barbara Jory

Evelyn McGarrity

Beth Stanfield

Louise Townsend

MOTTO

*Happiness is not perfected until it
is shared*

COLORS

Yellow and Green

FLOWER

Daffodil

SONG

"Girl of My Dreams"



Seated: Newton, Kammerer, Carithers, Mann, Cone, Parrish. Standing:
Banks, Mallard, Garner, Irvin, Cook, Irvin, Hendrix, Edenfield.



ATHLETICS



WAA COUNCIL

ARLENE DRURY
 MAXANN FOY
 INEZ BARBER
 MARY LILLIAN PERRY
 JACQUELINE SMITH
 DOROTHY GARNER
 MARY LAKE
 BILLIE TURNER
 EDITH GULL
 MAYBETH CARITHERS

Basketball
Volleyball
Archery
Table Tennis
Badminton
Tennis
Softball
Music
Sponsor
Sponsor



OFFICERS

EULA BETH JONES *President*
 ROGER McMILLAN *Vice-President*
 HELEN PHILPOT *Secretary-Treasurer*
 JANE MATHIS *Publicity Chairman*

McMillan, Jones, Philpot

THE TEAM



PLAYERS

Theron Anglin
 Jack Ballenger
 Lloyd Braden
 O'Neal Cave
 Walton Cheshire
 Wayne Cullbreth
 Billy DeLoach
 John Dunn
 Charles Edge

Joe Feaster
 Dudley Gatewood
 Lloyd Glisson
 Harold Herrington
 Charlie Johnson
 Ralph Mize
 Jack Mobley
 Pete Parrish
 Hill Paschal

Fred Pennington
 Jack Pierce
 Marvin Prossor
 Billy Rogers
 Jimmy Scarboro
 Jack Timms
 Charles Wireman
 Frank Wireman
 E. T. Youngblood

FOOTBALL



Coach B. L. Smith

Although T. C.'s small and inexperienced team faced a hard season they fought gallantly, and if they "chalked up" more defeats than victories it may be remembered that in many games they were faced with a superior foe. With teams of their own class, however, they made an excellent showing and brought the season to a close with an impressive victory over their old rival, South Georgia College.







B A S K E T B A L L

The 1942 basketball season brought to a close all intercollegiate athletics at Teachers College for the duration of the war.

The team short in height and experience came through with a successful season. With victories over such teams as Newberry, Augusta Junior College, and Jewish Educational Alliance, the team displayed a superior brand of basketball dominated by sheer determination.

PLAYERS

Bill Aldred

Ramon McKinnon

Marvin Prosser

Durward Branuen

Pete Parrish

Tiny Ramsey

O'Neal Cave

Fred Pennington

Pate Warren

Zeke Daughtrey

Lindsey Pennington

Lee Williams



The Team



They jump for it!



Assistant Coach Wright

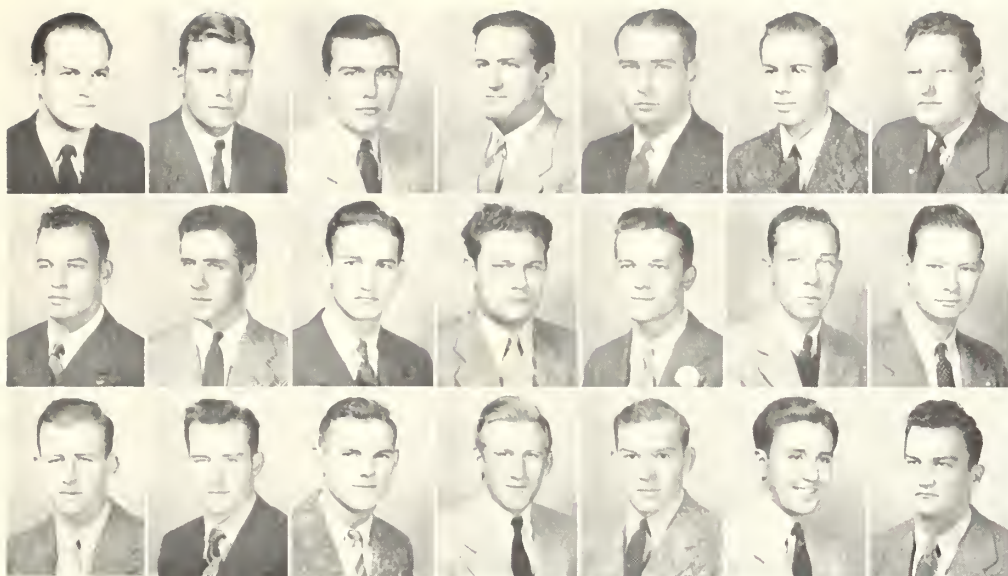
Winners Intramural Football

DELTA SIGMA

First row: Rushing, Jones, Winters, King, D. O'Hill, F. O'Hill, Second row: Mixon, Morrison, Ramsey, Parker, Groover, Lowe, Third row: Brown, Robertson, Pearman, McAllister, Coleman, Morris

Cheerleaders

Left to right: Smith, Bradley, Tillman, Mooney, Coble



MEMBERS

Theron Anglin

O'Neal Cave

Wayne Culbreth

John Dunn

Joe Feaster

Dudley Gatewood

Tiny Henderson

Harold Herrington

Charles Johnson

Raymond McKinnon

Ralph Mize

Jack Mobley

Pete Parrish

Hill Paschal

Jack Pierce

Marvin Prosser

Tiny Ramsey

Billy Rogers

Jimmy Scarboro

Jack Timms

Frank Wireman

E. T. Youngblood



McKinnon, Henderson, Cave, Dunn

OFFICERS

O'NEAL CAVE

President

TINY HENDERSON

Vice-President

RAYMOND MCKINNON

Secretary

JOHN DUNN

Treasurer

T
C
L
U
B

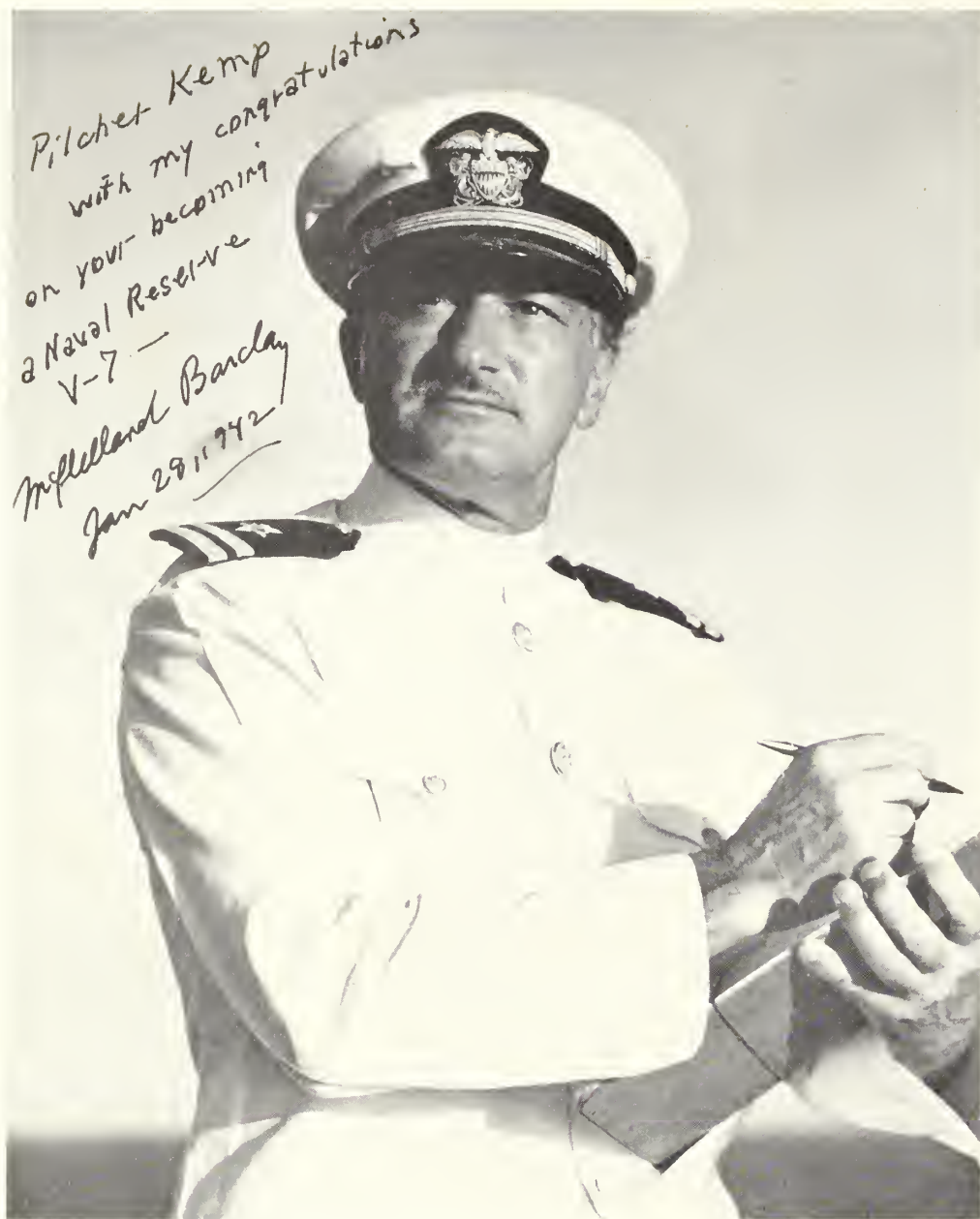


BEAUTIES
AND
THE
BEAST





FEATURES



Lieutenant McClelland Barclay, U. S. N. R.

McClelland Barclay, nationally known designer and illustrator, acted as judge for our Beauty Section. He made his selection of the eight most beautiful girls on the Georgia Teachers College campus from snapshots and pictures of the fifteen "beauties" chosen by the student body.

His selections follow:

Winner	Miss Rosemary Wynn
Runner-up	Miss Doris Woods

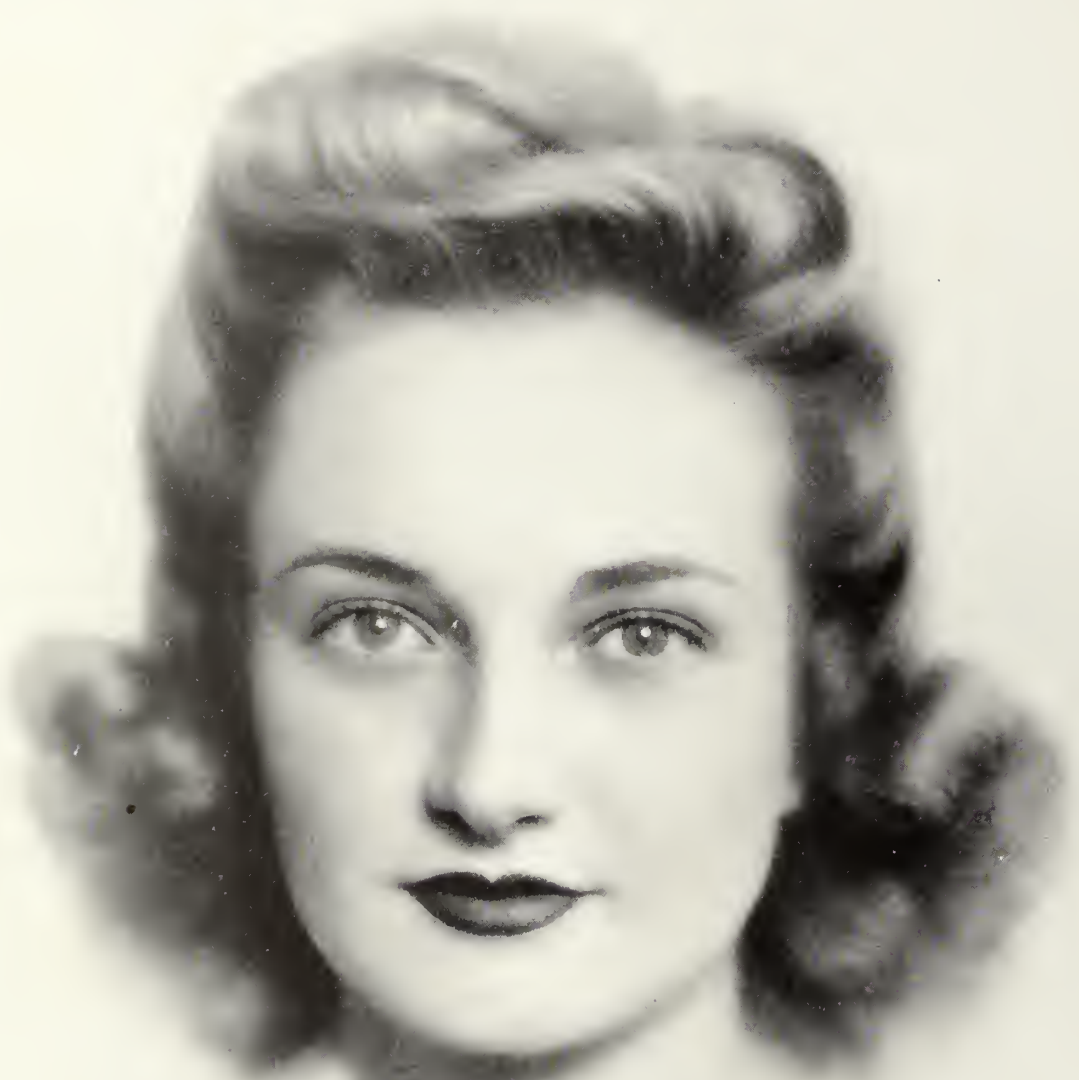
The other six Beauties are listed alphabetically.

EDITOR'S NOTE: McClelland Barclay and "Ye Olde Editor" are both enlisted in the United States Naval Reserve. This accounts for the congratulatory remarks.



39040

ROSEMARY WYNN



DORIS WOODS



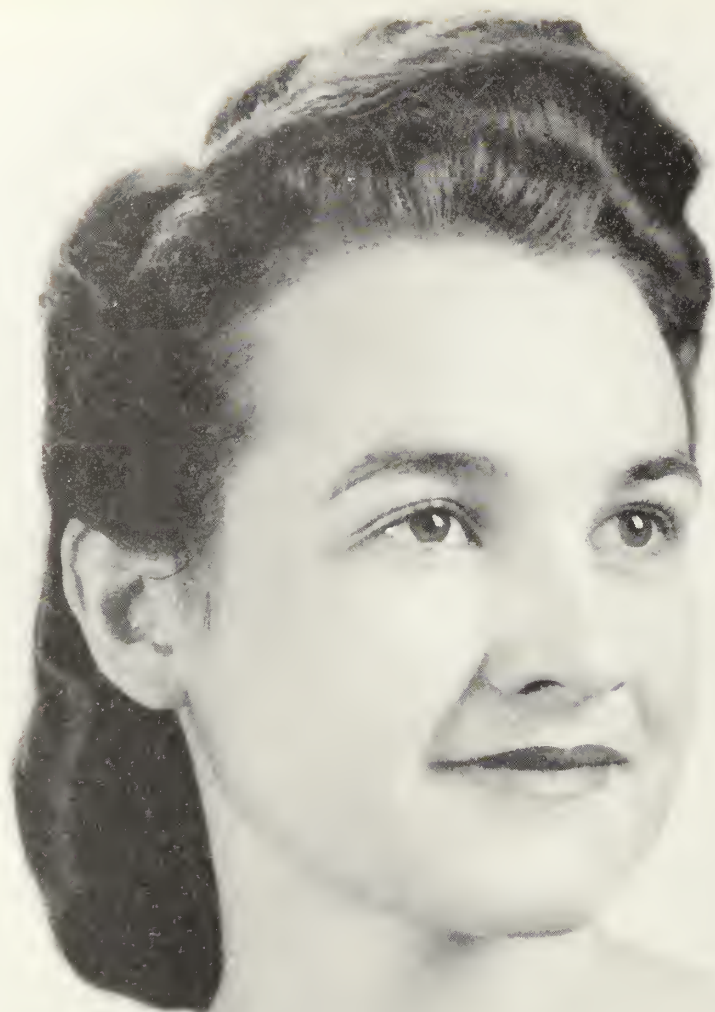
ABBIE MANN



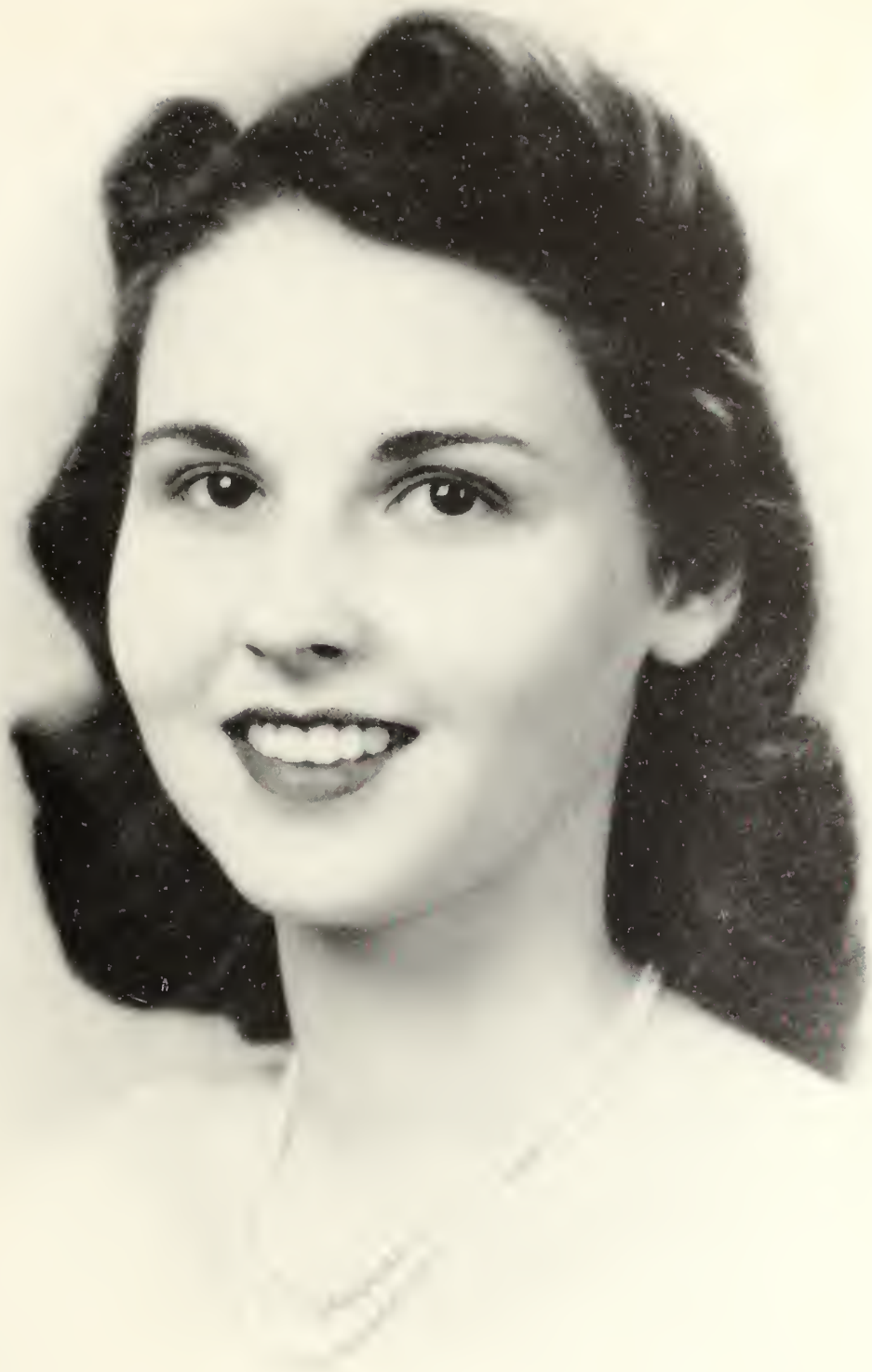
MARY THOMAS PERRY



DOROTHY REMINGTON



ELLA SUE TRAYNHAM



BILLIE TURNER



LEILA WYATT



Sue Hastings' Marionettes



Graff Ballet

LABORATORY SCHOOLS



Laboratory High School

The Laboratory Schools on the campus provide the opportunity for putting into practice and "trying out" the theories of education which are studied and debated upon in the various Education courses offered at T. C. The two schools are under the direction and supervision of W. L. Downes.



T C LABORATORY HIGH SCHOOL



In the lunch room



At work in the shop



ELEMENTARY LABORATORY SCHOOL



At work during Activity Period



In the lunch room



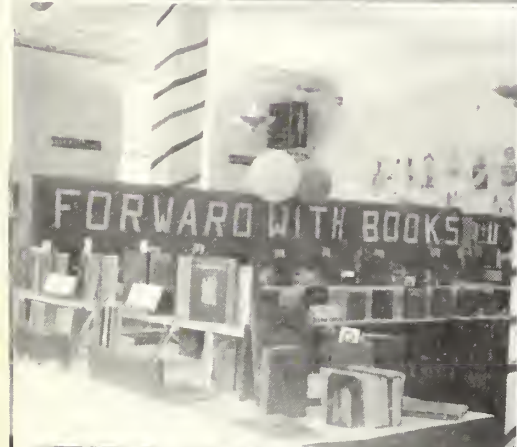
LADIES IN RETIREMENT



MASQUERS' PRODUCTION



S N A P S



Basketball . . . Sent, you lucky dog. . . The water's fine. . .
Book Week in the Library. . . If "Deneon" could see you
now! . . . Pittman parade, MORE POWER TO IT. . . Warm
weather. . . Home coming parade. . . Freshman fashions.
. . . Ole faithfuls. . . The eternal rat. . . Taking it easy.



Sun gets in your eyes. . . . Giving her the "hot-
 seat." . . . Just polishing up. . . . So this is what
 the girls do in their spare time, is it? . . . Look-
 ing forward? . . . Take warning girls. . . . Prize
 winner. . . . WE SURE DO. . . . Good luck kid. . . .
 WHAT! NOT IN EAST HALL! . . . An active
 student council. . . . Delta Sigs and Billy Goats.
 . . . Come on, James, give us a BIG smile. . . .
 Oh, la, la! . . . Looking for Rose?

S N A P S



Look at the birdie, girls. . . . The pause that refreshes. . . .
 The lone wolf. . . . Roses are red, Violets are blue, Dear
 Aunt Sophie, We love you. . . . "I shot an arrow." . . . Thomas
 gathering bugs for Malvina. . . . Ann, where's your locket?
 . . . Try a date here. . . . Little Miss Guardia. . . . Co-eds
 Parrish, Robinson, and McCallum.



You would never know it was "Green Eyes,"
would you. . . . Lewis Hall "rats," . . . Pi Nu
shindig. . . Boys, shame on you; what's that
in the window? . . . Puttin' on the Style. . .
"You Can't Take It With You," . . . Billie,
who is that by you? . . . Theone posin', . . .
"A good time was had by all," . . . What do
you see, Pop? . . . Chaperones.

S N A P S



Hands out of pockets, gentlemen. . . . Parade winners. . . . She must see Dr. Weaver. . . . Hey! . . . Campus confab; all present. . . . "And the band played on." . . . Wouldn't you like to know where that other hand is? Nope, you're wrong. . . . 670 in the draft. . . . Two gentlemen; girls look quicky. . . . My gosh, a nightmare. . . . Before. . . . After. . . . Gettin' up in the world. . . . Now ain't they cute. . . . Sell them ads, Marthy. . . . And goodbye.

ADVERTISEMENTS

CONGRATULATIONS

TO THE STAFF of the 1942 REFLECTOR for an outstanding edition of the Georgia Teachers College yearbook. In this volume you have captured many reflections of your life at the Teachers College and set them down indelibly for the years to come —

TO THE BUSINESS MEN of Statesboro for taking an active part in making this book possible through their advertising —

TO THE STUDENTS of the Teachers College for recognizing the values they may receive in patronizing the advertisers of the 1942 REFLECTOR who represent the leading businesses of the community and are loyal patrons and boosters of their college.

Students! Faculty! *Read these "Ads"*

Trade in Statesboro, in the heart of Bulloch County . . .

"Where Nature Smiles
and Progress Has the Right-of-Way"

STATESBORO
Chamber of Commerce

PREPAREDNESS — VICTORY!

Preparedness would have been a major contribution for the United Nations in attaining victory.

Prepare now for financial wars by adopting a plan of systematic savings, including buying United States War Bonds and Stamps!

SEA ISLAND BANK

Safety — Courtesy — Service

MEMBER F. D. I. C.

PATRONIZE OUR ADVERTISERS

BULLOCH TIMES

Your Home Newspaper

THE STATESBORO GROCERY COMPANY

Wholesale Grocers



H. P. JONES

Distributor

GULF REFINING COMPANY

STATESBORO

GEORGIA POWER
COMPANY

"A Citizen Wherever We Serve"

Compliments

of

HINTON BOOTH

S. W. LEWIS, Inc.



STATESBORO, GEORGIA

PATRONIZE OUR ADVERTISERS

SENIOR RINGS
for
any year can be furnished by

HERFF - JONES CO.

H. S. CANFIELD
1560 North Decatur Road Atlanta, Ga.

"We Have a Complete Graduation Service"
for
Colleges and High Schools

MEDALS — CUPS — TROPHIES
INVITATIONS — CARDS
DIPLOMAS
CAPS and GOWNS

The

BLUE TIDE

on the Campus

"Where Boy Meets Girl"

BETWEEN GLASSES FOR DELICIOUS

Coca-Cola

In Bottles

It's the Refreshing Thing to Do

STATESBORO COCA-COLA BOTTLING COMPANY

STATESBORO

PATRONIZE OUR ADVERTISERS

PECANS BOUGHT AND SOLD

W. C. AKINS & SON

HARDWARE *and* GROCERY

See Us Before You Buy!

HENRY'S

SHOP HENRY'S FIRST

LADIES' READY-TO-WEAR

MEN'S FURNISHINGS

CITY
DRUG COMPANY

Compliments

of

THE FAIR STORE

OLLIFF

and

SMITH

STATESBORO
PROVISION CO.

Manufacturers and Dealers

PURE CRYSTAL ICE
COLD STORAGE

E. A. SMITH
GRAIN COMPANY

Everything

BUILDERS' SUPPLIES

and

FERTILIZERS

Phone 171

PATRONIZE OUR ADVERTISERS

Quality Millwork

HOWARD
LUMBER COMPANY

PHONE 353

SMART CLOTHES FOR COLLEGE MEN



DONALDSON—SMITH
CLOTHING COMPANY

Up-to-Date College Wear

Brady's Department Store

"We're Home Folks"

CHAS. E. CONE

R. M. BENSON

Charles E. Cone Realty Co.

Statesboro, Georgia

ESTABLISHED 1915

Farm Lands

City Property

Insurance

Office:

Cone Building

Phone 86

PATRONIZE OUR ADVERTISERS

Meet Your Friends At The

COLLEGE PHARMACY

"Where the Crowds Go"

PHONE

414

PROMPT, COURTEOUS SERVICE

PHONE

416

"If it's Seed, If it's Feed, We have It"

Bradley and Cone
Seed and Feed Co.

Good Germinating Seed—Fresh Feed

STATESBORO

INSURE TODAY!

Groover and Johnston
Insurance Agency

PHONE 310

When You Want Better Ice Cream

SANCKEN'S
ICE CREAM COMPANY

AUGUSTA, GEORGIA

Headquarters for Student Needs

United 5c to \$5.00 Stores

JIMMIE ALLEN, *Manager*

Where T. G. Banquets are a Tradition

JAECKEL HOTEL

Your Comfort . . . Our Pleasure

PATRONIZE OUR ADVERTISERS

Blitch Radio Service

RCA Radios

General Electric Appliances
Radio Service on All Makes

TELEPHONE 147 43 E. MAIN ST.

A COMPLETE LINE

OF

COLLEGE CLOTHES

Statesboro's Largest Department Store

Our Personal Care Is Your Guarantee of

EXPERT CLEANING

Statesboro Dry Cleaners

HARRY BRUNSON, *Proprietor*

H. MINKOVITZ
& SONS

Conservative Management—Courteous Service
"BIG ENOUGH TO SERVE YOU—SMALL ENOUGH TO KNOW YOU"

BULLOCH COUNTY BANK

ESTABLISHED 1934

Member Federal Deposit Insurance Company

R. J. KENNEDY
President

W. G. COBB
Ex-Vice-President

W. D. ANDERSON
Cashier

PATRONIZE OUR ADVERTISERS

*"Once a Trial . . .
. . . Always a Customer"*

WATERS BARBER SHOP

—Under the Bank

McLELLAN'S

A Variety

of

5c and 10c Items to Fit Your Needs

Gifts That Last

Grimes Jewelry Company

Diamonds—Watches—Silverware

Glassware—China

Our Compliments

John Everett Company

QUALITY FOOD MERCHANTS

26—PHONES—29

Daily Delivery to the College



ALL PORTRAITS

IN THIS BOOK MADE BY

GASPAR-WARE

Studios

30-32 FIFTH STREET, N. W.

**ATLANTA
GEORGIA**



OFFICIAL PHOTOGRAPHERS FOR

Georgia Teachers' College

Reflector negatives are held in our files
for several years and portraits can be ob-
tained at any time.

Photography

by

GASPAR-WARE





SUCCESSFUL ANNUALS


Require the services of experienced and expert craftsmen, trained in every detail of the processes of creating • planning layout and design • typesetting • printing lithographing and binding ... Throughout half a century this company has pioneered in the production of the highest type of printing ... Our services include a special college annual sales and service organization ... Abundant equipment • modern and complete ... Prices representing maximum in value



FOOTE & DAVIES

PRINTING • LITHOGRAPHING • ENGRAVING

ATLANTA



★ THE MARK THAT
IDENTIFIES THE SOUTH'S
FINEST YEARBOOKS

PHOTO-PROCESS ENGRAVING CO

115 - 119 LUCKIE STREET ★ ATLANTA GEORGIA



REFER E

-H

1

.G43

R4

19-2

ZACH S. HENDERSON LIBRARY



0 2001 0407690 2



NOT TO BE TAKEN FROM THIS ROOM

