

Georgia Southern University

Georgia Southern Commons

Geechee Yearbook

Special Collections at Lane Library (Armstrong)

1951

Geechee 1951

Armstrong College

Follow this and additional works at: <https://digitalcommons.georgiasouthern.edu/armstrong-geechee-yearbook>

Recommended Citation

Armstrong College, "Geechee 1951" (1951). *Geechee Yearbook*. 15.
<https://digitalcommons.georgiasouthern.edu/armstrong-geechee-yearbook/15>


This book is brought to you for free and open access by the Special Collections at Lane Library (Armstrong) at Georgia Southern Commons. It has been accepted for inclusion in Geechee Yearbook by an authorized administrator of Georgia Southern Commons. For more information, please contact digitalcommons@georgiasouthern.edu.

'Geechee
1951









Digitized by the Internet Archive
in 2012 with funding from
LYRASIS Members and Sloan Foundation

<http://archive.org/details/geechee1951arms>

Foreword

Another memorable year at Armstrong College has ended and another 'Geechee staff is leaving a complete record of that year. While sharing in every phase of life at Armstrong, 'Geechee staff members have been impressed with the zeal for progress and beauty so typical of Savannah's youth.

In our yearbook we have endeavored to combine that spirit of youth, progress and beauty with the historical background of a southern seaboard city.

It is our sincere hope that you as our guest will share these impressions with us as you tour Savannah, Georgia, and Armstrong College through the pages of our

1951 'GEECHEE

If you chose to arrive by water, shortly before reaching the city you would see Fort Pulaski, a faithful sentinel near its entrance.



This fort now restored as a national park played an important part in the siege of Savannah during the War Between the States.

Presently, you sight the **skyline of Savannah**, one of the leading ports on the southeastern coastline of the United States. In the past many ships of many lands have visited this port.

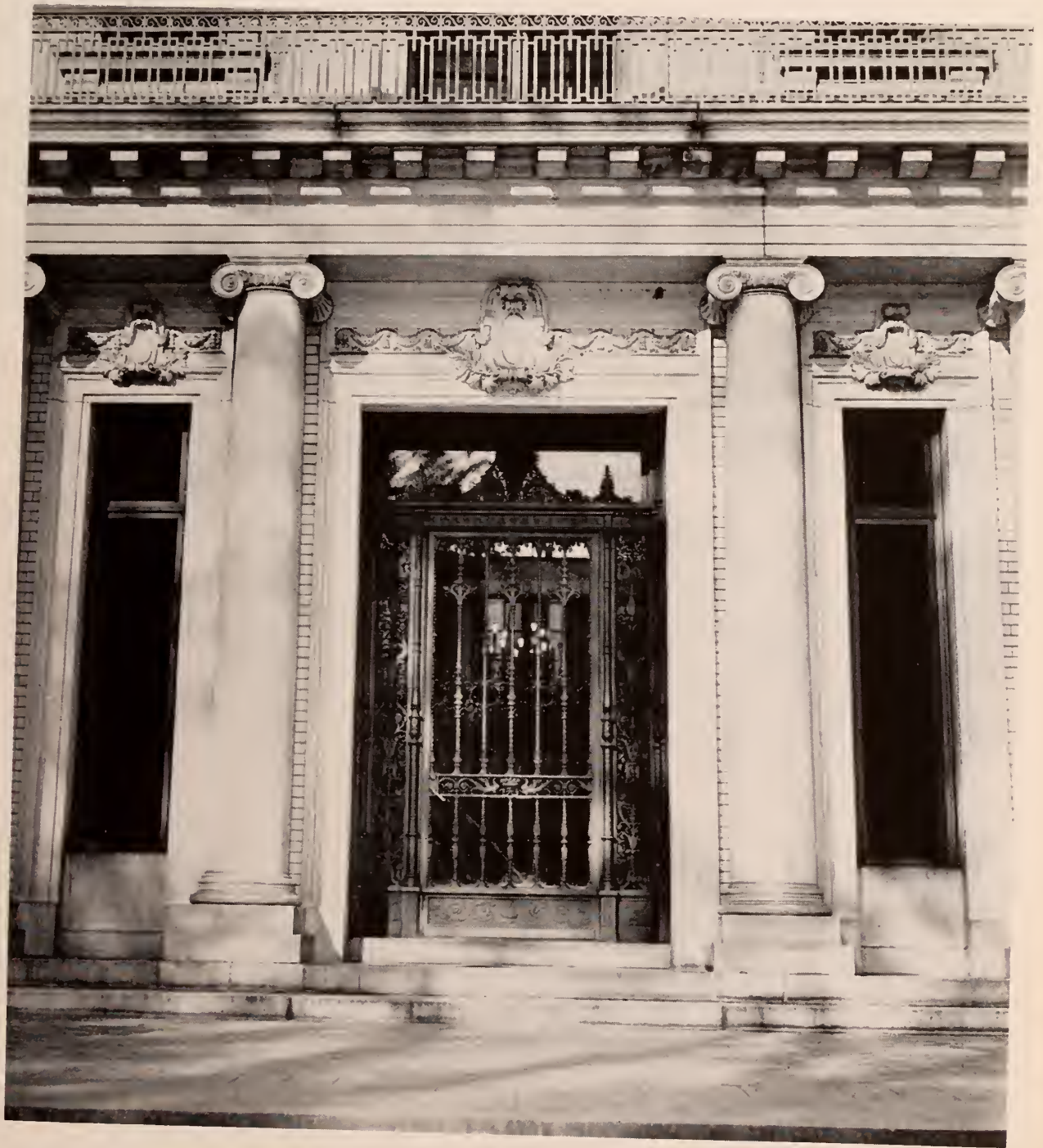
World War II with its demand for increased shipping created a scene of constant activity here.



Going south from the City Hall on Bull Street, you find yourself facing one of the lovely **park-squares**—a feature of the original plan of the Savannah of the early eighteenth century. Formerly the site of stockades for protection of the colonists from Indian attack, they are now an attractive source of pride and pleasure for citizens and visitors alike.



If you continue south from the riverfront along the same Bull Street, you will soon be in the vicinity of one of Savannah's greatest monuments to progress. Won't you enter these portals and witness for yourself the life as we see it at



ARMSTRONG COLLEGE



Hodson Hall



Hunt Building



Gamble Hall



Jenkins Hall



Lane Building

Dedication

—For his sincere and ceaseless efforts for a more prosperous and more progressive city of Savannah,

—For his successful and exemplary career, first as an outstanding citizen, in the business field, and now as an outstanding civic leader,

—For his constant interest and encouragement to Armstrong College during his earlier years as a member of the college commission, and now as an ex-officio member of that same commission,

—For the confidence we feel in the future of Savannah and Armstrong College under his leadership,

—we, the staff, wish to dedicate our 1951 'Gee-gee to



OLIN F. FULMER,

Mayor of Savannah



HERSCHEL V. JENKINS
Chairman



WILLIAM MURPHY
Vice-Chairman

ARMSTRONG COLLEGE COMMISSION



JAMES L. BARNETT



MORRIS BERNSTEIN



JACK J. COOK



MAYOR OLIN F. FULMER



J. P. HOULIHAN



G. PHILIP MORGAN



MRS. W. F. ROBERTSON



FRED SHEARHOUSE



ALFRED VICK

FACULTY



Hodgson Hall, housing the libraries of Armstrong College and the Georgia Historical Society, yields a vast store of knowledge to those students who desire it.



The faculty of Armstrong, combining youthful dignity with patience and mature understanding, lends a gentle, yet authoritative touch to student life at Armstrong.

FOREMAN M. HAWES
A.B., Mercer University
M.S., Emory University
President

ARTHUR M. GIGNILLIAT
A.B., M.A., U. of Georgia
Registrar
(On leave)



W. ORSON BEECHER
A.B., M.A., Emory University
M.A., University of Georgia
Dean of Students



BARBARA ANCHORS

A.A., Armstrong College
Library Assistant

LAURA BLAKELEY

B.S., M.A., Peabody College
Instructor in Mathematics

ARTHUR W. CASPER

B.S., Beloit; M.A., U. of Wisconsin
Instructor in Physics and Mathematics

ANNA T. CONE

B.S., U. of Georgia
Secretary to the Dean

ANNE KEHOE CROLLY

A.B., Ursuline College
Assistant to the Registrar

WILLIAM M. DABNEY

A.B., M.A., Ph.D., U. of Virginia
Instructor in History and Economics



LAMAR DAVIS

B.S., University of South Carolina
Instructor in Commerce

ELEANOR J. DOYLE

B.S., Immaculata; M.A., Catholic U.,
Graduate study, Tulane University
Publicity-Instructor in Spanish

ANCHORS

CASPER

CROLLY

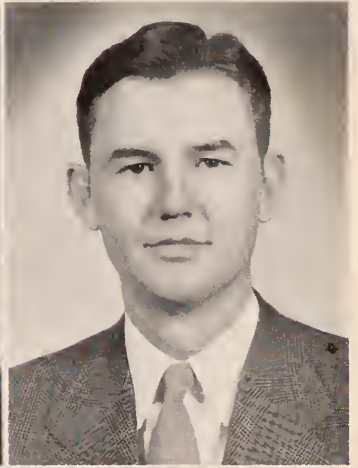
DAVIS

BLAKELEY

CONE

DABNEY

DOYLE



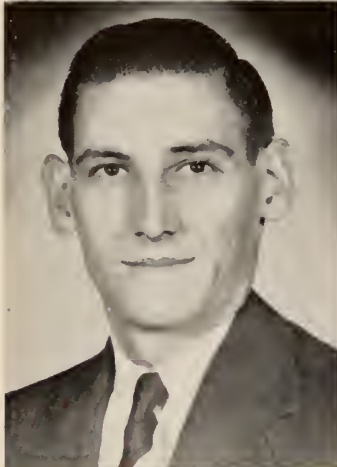


NOMA LEE GOODWIN
A.B., M.A., Duke University
Instructor in English

MARGARET SPENCER LUBS
A.B., U. of Georgia;
M.A., Columbia University
Instructor in French

ELMO M. McCRAY
B.S., M.A., U. of Alabama
Instructor in Biology

ROBERT MIZELL, JR.
A.B., U. of North Carolina;
M.S., Emory University
Instructor in Chemistry



DOROTHY MORRIS
B.S., University of Tennessee
Instructor in Physical Education

MARJORIE A. MOSLEY
A. in Finance and Commerce,
Armstrong College
Secretary to the President



HINCKLEY A. MURPHY
A.B., Vanderbilt; M.A., Columbia U.
Instructor in English

JOSIE R. NELSON
Banks Secretarial School
Bookkeeper



ELIZABETH POUND

Manager of Bookstore

IRVINE N. SMITH

A.B., M.A., U. of North Carolina
Masquers—Instructor in English

NANCY PAGE SMITH

B.Mus., Eastern Music School;
M.A., U. of North Carolina
Glee Club—Instructor in Music

MARGARET FORTSON STEPHENS

A.B., LL.B., M.A., U. of Georgia;
Certificate, Sorbonne, Paris
Instructor in English

DOROTHY M. THOMPSON

A.B., Monmouth; M.A., Northwestern;
Certificate of Psychiatric Social Work,
Western Reserve University
Instructor in Psychology

CARMEN TORRIE

B.S., Concord; M.S., U. of Tennessee
Instructor in Physical Education



HELEN C. WOLFE

B.S., Columbia University;
Graduate study, Florida State University
Instructor in Home Economics

GLADYS NICHOLS ZILCH

Diploma, Gregg C. (Normal School);
Special courses, U. of Florida, U. of Michigan
Instructor in Commerce

POUND

N. SMITH

THOMPSON

WOLFE

I. SMITH

STEPHENS

TORRIE

ZILCH





MRS. LILA HAWES, Director of the Georgia Historical Society, and MRS. BARBARA ANCHORS, Library assistant, Armstrong College Library. Both have their offices in Hodgson Hall.

Cooperation with other groups to further the intellectual life of the community has always been a feature of the Armstrong program.



LOUIS C. ALDERMAN, Director, and COLONEL AUGUSTUS C. WHITE, Assistant Director of the University of Georgia Off-Campus Center. This center has its offices in the Lane Building and its students attend evening classes in the other Armstrong buildings.

SOPHOMORES



Armstrong Building, which, since the inauguration of the college in 1935, safeguards the memories as well as the credentials of Armstrong alumni.



CHARLES T. ERNST
President



JOAN P. COPE
Acting President

SOPHOMORE OFFICERS

DIANE M. EVANS
Secretary



PATRICIA ANN ZOUCKS
Treasurer



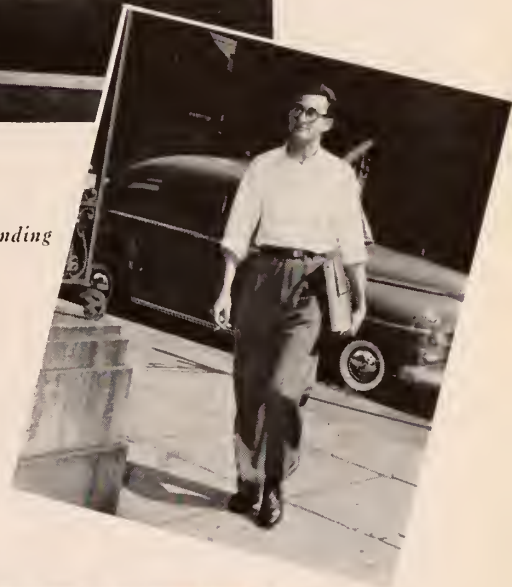


HELEN ALLRED

JOAN COPE

ROSS DURFEE

IRVING FOGLER
Most Outstanding



OUTSTANDING SOPHOMORES



DIANE EVANS

DOLORES HOWE

MARY MOREKIS



PAT ZOUCKS

JOAN SECKINGER

ESTHER OVERSTREET



NO EXPLANATION NEEDED!



ALLRED



ANDERSON

ALLRED, HELEN MYERS, 'Geehee Beauty Queen, '51; 'Geehee Beauty Court, '50; Delta Chi, '49-'51, Treasurer, '50-'51; Glee Club, '49-'51, Treasurer, '50-'51; Beta Lambda, '49-'51; Masquers, '50-'51; Dance Committee, '49-'51; Slick Chicks, '49-'51. ANDERSON, JOAN MARIE, Beta Lambda, '49-'51; Delta Chi, '50-'51; Glee Club, '49-'51; Slick Chicks, '49-'51; Masquers, '50-'51; Dance Committee, '49-'51; Student Senate, '50-'51. BANKS, RALPH ALTON, JR., Glee Club, '49-'51; Masquers, '50-'51; Terrapins, '49-'51. BAUGHN, PEGGY ELIOTT, Alpha Tau Beta, '49-'51, Treasurer, '50; Glamazons, '49-'50. BEASLEY, MARY BARBARA, 'Geehee, '49-'51, Business Manager, '49-'50, Associate Editor, '50-'51; Student Senate, '50-'51; Glee Club, '49-'51; Beta Lambda, '50-'51; Slick Chicks, '49-'51; Inkwell, '49-'50; Open House Committee, '50; Alpha Lambda Sigma, '50. BLACKBURN, GEORGE MORGAN, 'Gators, '49-'50; "A" Club, '51; Basketball Team, '50-'51. BROWN, NAOMI, Science Club, '50-'51. BROWN, RUTH, Science Club, '50-'51. BUTLER, WALLACE EDWARD, Terrapins, '49-'51; Student Senate, '50-'51; "A" Club, '50-'51; Glee Club, '49-'50; Basketball Team, Manager, '49-'51. CARTLIDGE, MARY AGNES, Beta Lambda, '49-'51, Secretary, '51; Newman Club, '49-'51, Vice-President, '50-'51; Glee Club, '49-'51; Alpha Tau Beta, '50-'51; Glamazons, '49-'51; Home-coming Committee, '50. CLARKE, RICHARD F. COLLINS, HERBERT EUGENE.

BANKS

BEASLEY

BROWN, N.

BUTLER

CLARKE

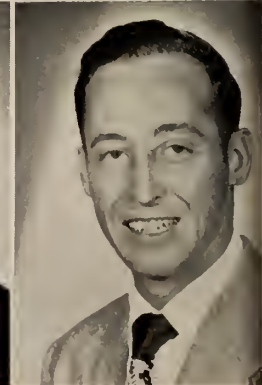
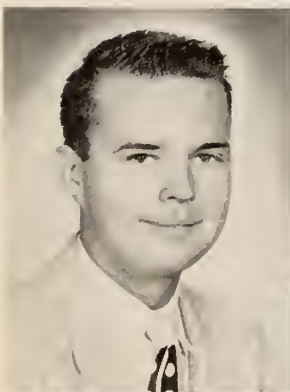
BAUGHN

BLACKBURN

BROWN, R.

CARTLIDGE

COLLINS





COPE, JEAN

COPE, JOAN



"I TELL YOU . . . !"

COPE, JEAN PARISH, Glee Club, '49-'50; Cheerleader, '49-'50; Dance Committee, '49-'50; Slick Chicks, '49-'51, co-capt., '50; Delta Chi, '49-'51, Vice-pres., '50-'51; Freshman Class Secretary, '49-'50. COPE, JOAN PARISH, Delta Chi, '49-'51; Student Senate, '49-'51; Masquers, '50-'51; Sophomore Class, Acting-President, '50-'51; Slick Chicks, '49-'51, co-capt., '50; Cheerleader, '49-'51; Dance Committee, '49-'50; Glee Club, '49-'50; Alpha Lambda Sigma, '50; Outstanding Sophomore, '51. COPPS, MARIANNA R., Dance Committee, '49-'51; Secretary, '50-'51; Masquers, '50; Newman Club, '49-'51; Student Senate, '50-'51; Delta Chi, '50-'51; Beta Lambda, '49-'51, Intramural Board, '50-'51; Glamazons, '49-'51, President, '50; Home-coming Committee, '50; Open House Committee, '50-'51; Permanent Dean's List, '50; Alpha Lambda Sigma, '50. CRUMBLEY, THOMAS CARLTON, Inkwell, '50; Loafers, '49-'50. DeLOACH, WILLIAM M., Eager Beavers, '49-'51; Permanent Dean's List, '50. DOWELL, ALPHENE WILLIAM, JR., Loafers, '49-'50. DONIGAN, NATHALIE, Co-eds, '49-'50; Dance Committee, '49. DREW, BETTY ANN, Masquers, Historian, '50-'51; Glee Club, '49-'51; Beta Lambda, '50-'51. DUNWODY, PAUL J., Student Senate, '49-'50; Glee Club, '49-'50; Intramural Board, '49-'50; "A" Club, '50. DURFEE, ROSS, Savannah Playhouse, '49-'50; Outstanding Sophomore, '51. EARNEST, CAROL, Alpha Tau Beta, '49-'51, President, '50-'51; Sassy Strutters, '49-'51; 'Geechee Beauty Court, '51. ERNST, CHARLES T., SPRO, '49-'50; Freshman Class Treasurer, '49-'50; Sophomore Class President, '50; Student Senate, '50; Eager Beavers, '49-'50; Inkwell, Business Manager, '50.

COPPS

DE LOACH

DOWELL

DUNWODY

EARNEST

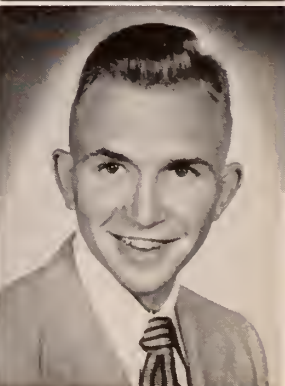
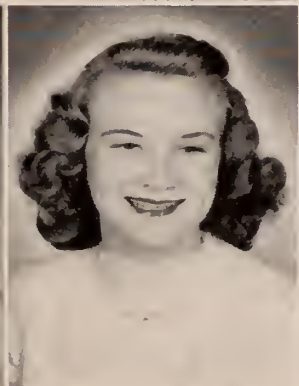
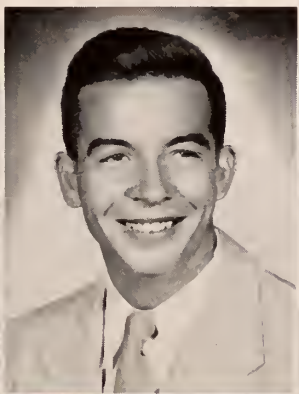
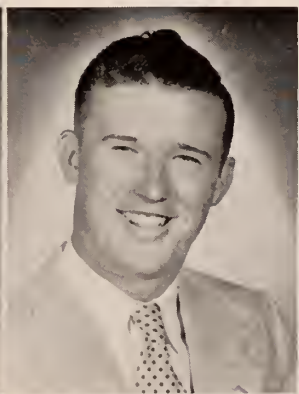
CRUMBLEY

DONIGAN

DREW

DURFEE

ERNST





YOU DON'T SAY!



EVANS

EVANS, DIANE MAE, 'Geehee Beauty Court, '51; Alpha Tau Beta, Treasurer, '49-'50, Secretary, '50-'51; Sophomore Class Secretary, '50-'51; Glee Club, '49-'51; Glamazons, '49-'51; Great Books Seminar, '50-'51. FITZSIMMONS, JOAN GLADYS, Co-eds, '49-'51; Glee Club, '50-'51; Masquers, '51; Music Club, '51. FOLGER, IRVING EFRIM, Inkwell editor, '50-'51; Make-up editor, '50; Chairman, Student Activities Committee, '50-'51; General Chairman, Home-coming, '50; Open House, '50; Student Senate, '50-'51; Masquers, '50; Publication Key, '50; Outstanding Sophomore, '51; Dean's List, '50-'51. FRETWELL, HOWARD JONES, Inkwell, '50-'51. GALIN, JOAN LEAH, Beta Lambda, '49-'51; Glamazons, '49-'51; Masquers, '50-'51; Glee Club, '49-'51; Co-editor, Mercury, '50-'51. GALIN, MURRAY ARMAND, Loafers, '49-'51. GERINER, HENRY BUTLER. GOODMAN, ADA DEWITT, Math Club, '49-'51, President, '50-'51; Science Club, '49-'51, Secretary, '50-'51; Slick Chicks, '49-'51. GREGSON, IVAN CYRIL. HARGETT, PATSY RUTH, Math Club, '49-'51, Secretary, '50-'51; Glee Club, '49-'51, Librarian, '50-'51; Science Club, '49-'51; Slick Chicks, '49-'51; Music Club, '49-'51. HARRELL, GEORGE WILLIAM, JR., Eager Beavers, '50-'51.

FITZSIMMONS

FRETWELL

GALIN, M.

GOODMAN

HARGETT

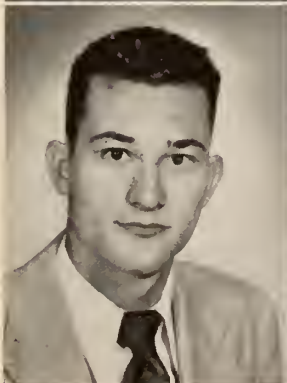
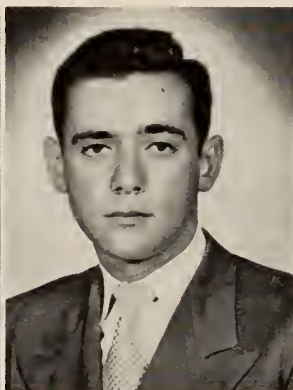
FOLGER

GALIN, J.

GERINER

GREGSON

HARRELL





HELMS



IN HIS HONOR'S HONOR!

HELMS, JACK JEFFREY. HILL, GLEN QUAY. HINELY, SHIRLEY ELIZABETH. HOBBS, EDWARD JAMES, Math Club, '50-'51. HOFFMAN, SHIRLEY BELL, Drama Club, Secretary, '49-'50; Assistant to Director of Masquers, '50-'51; Savannah Playhouse, '49-'50. HOLTON, ROBERT. HOPKINS, MARGUERITE HAYMANS. HOWE, MARY DOLORES, Beta Lambda, '49-'51, President, '50-'51; Dance Committee, '49-'51, Chairman, '50-'51; Delta Chi, '49-'51, Publicity Chairman, '50-'51; Masquers, '50-'51; Newman Club, '49-'51; Glamazons, '49-'51; Open House, '50; Home-coming Committee, '49, '50; Homecoming Court, '49. HULL, WILLIAM IRA, JR., Basketball Team, '49-'51; "A" Club, '51; Eager Beavers, '50-'51. JARRELL, CHARLES LaDESSE, JR. JEWETT, JEAN CLARA, Masquers, Treasurer, '50-'51; Co-eds, '49-'51; Dance Committee, '50-'51; Beta Lambda, '49-'51; Open House, '50; Co-chairman Home-coming Reception, '50.

HILL

HOBBS

HOLTON

HOWE

JARRELL

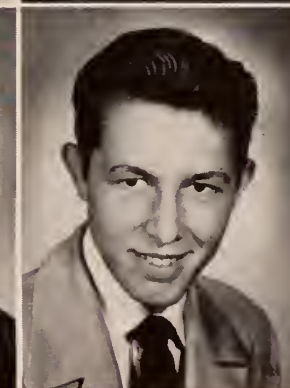
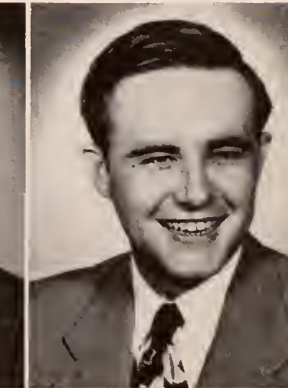
HINELY

HOFFMAN

HOPKINS

HULL

JEWETT

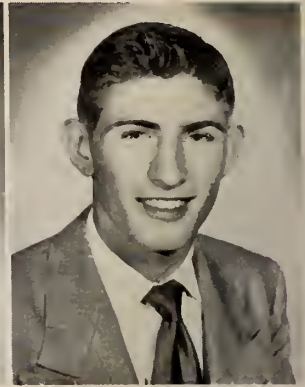




AT THE BAR!



JOHNSON



JONES, R.

JOHNSON, CONSTANCE JOYCE, Slick Chicks, '49-'51, Acting Manager, '50-'51; 'Geehee, '50-'51; Beta Lambda, '49-'51; Masquers, '50-'51; Intramural Board, '50-'51. **JONES, ROBERT S.**, Co-editor Mercury, '50-'51; Math Club, '50-'51, Vice-President; Glee Club, '49-'50; Inkwell, '49-'50; Loafers, '49-'51. **JONES, WARREN JEFFREY, JR.**, Science Club President, '50-'51; 'Gators, '50. **KING, DONALD F.**, Loafers, '49-'51; Masquers, '50-'51; Inkwell, '50-'51; Student Senate, '50-'51. **KUTCHEY, STEPHEN STRATE**. **LANDY, JO AN**, Music Club, '50-'51; Masquers, '50-'51; Inkwell, Managing editor, '50-'51, staff, '49-'50; Mercury, '49-'50. **LANGSTON, JEANNE ELIZABETH**, Secretary, Student Senate, '50-'51; Glee Club, '50-'51; Beta Lambda, '50-'51; Science Club, Secretary, '49-'50, Vice-President, '50-'51. **LEE, JOYCE LOUISE**, Alpha Tau Beta, '50-'51; Glamazons, '49-'51. **LEECH, RICHARD WAYMACK**. **LITTLE, PATRICIA BRANNON**, Slick Chicks, '49-'51, Manager, '50-'51; Alpha Tau Beta, Publicity Chairman, '49-'50, Vice-President, '50-'51. **LOWDEN, IMOGENE**, Masquers, '50-'51; Glee Club, '49-'50; Savannah Playhouse, '49-'50; Drama Club, '49-'50. **LYNCH, WADE TALMADGE**.

JONES, W. J.

KUTCHEY

LANGSTON

LEECH

LOWDEN

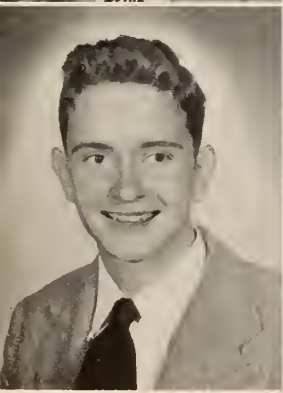
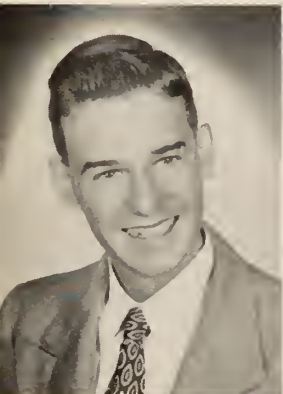
KING

LANDY

LEE

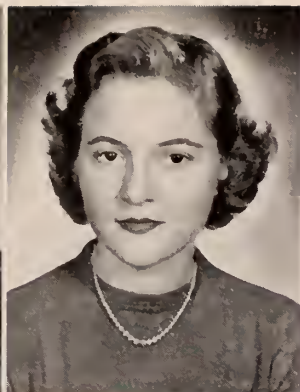
LITTLE

LYNCH





MADISON



MALONE



CAMERA SHY?

MADISON, MARGARET ALLEN, Co-eds, '49-'51; Glee Club, '50-'51; Music Club, '49-'50. MALONE, DIANE TRUTH, Glamazons, '49-'50; Glee Club, '49-'51; Beta Lambda, '49-'51; Dance Committee, '49-'51; Student Senate, '50-'51. MATTHEWS, JOHN GRAYSON, Freshman Class President, '49-'50; Student Senate, '49-'50; Eager Beavers, '49-'51; "A" Club, '51; Inkwell, '49-'50; Mercury, '49-'51; Basketball Team, '50-'51. MAURICE, THOMAS DELANO, Scholars, '49-'51. MENDEL, JOAN KATHRYN, Delta Chi, Sergeant-at-Arms, '49-'51; Masquers, Executive Secretary, '50-'51; Newman Club, '49-'50; Beta Lambda, '50-'51; Student Senate, '50-'51; Music Club, '49-'50; Glee Club, '50-'51; Dance Committee, '50-'51; Co-eds, '49-'50. MITCHELL, WILLIAM KENNETH. MOREKIS, MARY KATHARINE, 'Geechee' editor, '50-'51; Literary editor, '49-'50; Inkwell, assistant editor, '49-'50; Student Senate, '50-'51; Masquers, '50-'51; Glamazons, '49-'51; SPRO, '49-'50; 'Geechee' Beauty Court, '51; Outstanding Sophomore, '51; Publications Key, '50. MORRISON, JOSEPH EDWARD. MORRISON, MARGARET NELL, Co-eds, '49-'51, Captain, '50-'51; 'Geechee' Sports Editor, '50-'51; Student Senate, '50-'51; Glee Club, '50-'51. MURPHY, EARNEST WILLIE, JR., Glee Club, '49-'51, Vice-President, '50-'51; 'Geechee', Asst. Business Mgr., '50-'51; Music Club, '49-'51; Dance Committee, '50-'51; Student Senate '50-'51; Eager Beavers, '49-'51; Great Books Seminar, '50-'51; Inkwell, '49-'50. NEWTON, LOUISE WALDRON, Slick Chicks, '49-'51; 'Geechee', '50-'51; Beta Lambda, '50-'51; Masquers, '50-'51; Glee Club, '50-'51. NOBLE, ROBERT LEE, Masquers, '50-'51.

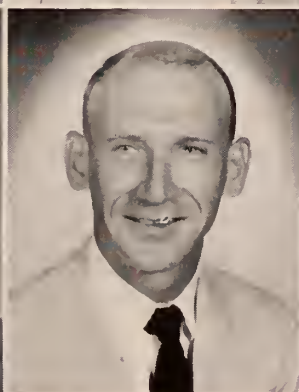
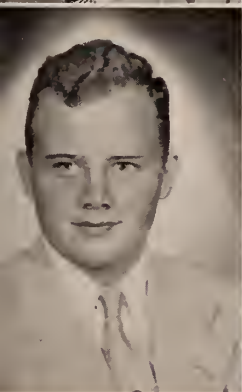
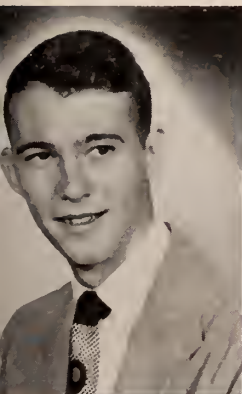
MATTHEWS
MAURICE

MENDEL
MITCHELL

MOREKIS
MORRISON, J.

MORRISON, M.
MURPHY

NEWTON
NOBLE





FRESHMEN ARE PEOPLE, TOO!



NORMAN



NUTTING

NORMAN, MARY LETITIA, Alpha Tau Beta, '50-'51; Inkwell, '50-'51; Sassy Strutters, '50-'51; Glee Club, '50-'51; Great Books Seminar, '50-'51. NUTTING, DOROTHY BONNEY, Beta Lambda, '49-'51; Science Club, '50-'51; Glee Club, '49-'51; Co-eds, '49; Home-coming Committee, '49. OVERSTREET, ARIE ESTHER, Intramural Board Manager, '50-'51; Masquers, '50-'51; Glee Club, '49-'51; Beta Lambda, '50-'51; Delta Chi, '50-'51; Dance Committee, '49; Science Club, '49-'50; Co-eds, '49-'50. OVERSTREET, DONALD HAMPTON, Scholars, '49-'51. PARKERSON, WILLIAM LAWRENCE, Eager Beavers, '49-'51; Basketball Team, '49-'51; "A" Club, '51. PARROTT, JOANNE, Dance Committee, '49-'51, Secretary, '50-'51; Glee Club, '50-'51; Masquers, '50-'51; Slick Chicks, '49-'51; Beta Lambda, '49-'51. PICKARD, PAUL MANNEY. PRECHT, HENRY, Scholars, '49-'51, Manager, '50-'51; Masquers, '50-'51; Inkwell, '50. PRIM, WARREN WALTER, JR., Terrapins, '50-'51; "A" Club, '51; Basketball Team, '50-'51. PRITCHARD, JOAN LUCILLE, Slick Chicks, '49-'51; Glee Club, '49-'51; Great Books Seminar, '50-'51; Debating Team, '49-'50. PROVENCE, JOSEPH. RANKIN, JOHN MCGREGOR.

OVERSTREET, A.

PARKERSON

PICKARD

PRIM

PROVENCE

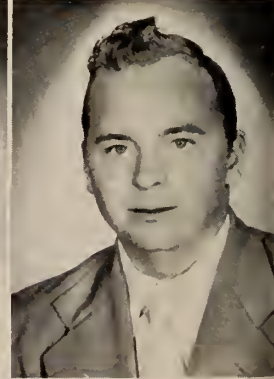
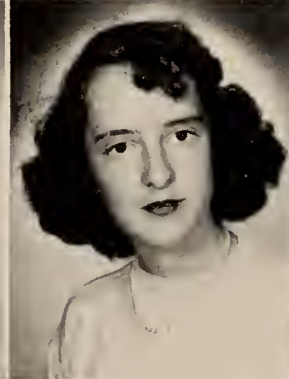
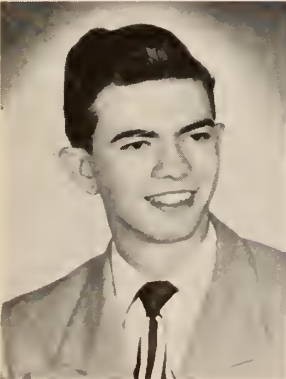
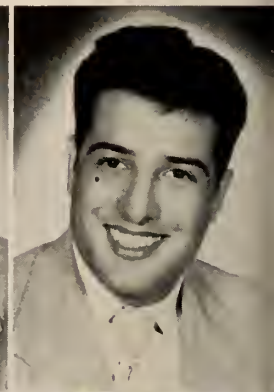
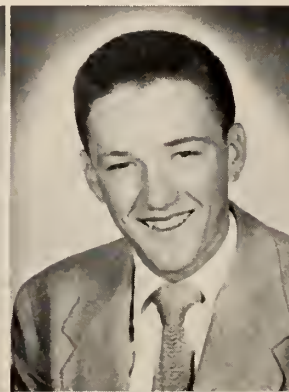
OVERSTREET, D.

PARROTT

PRECHT

PRITCHARD

RANKIN





REED



REHM



DABNEY AND HIS GIRLS!

REED, JOSEPHINE WINIFRED, Newman Club, '49-'51; Co-eds, '49-'51; Inkwell, '49-'50. REHM, EDITH THEODORA. ROSENTHAL, IRWIN. ROYCE, RICHARD DAY, Math Club, '50-'51. SECKINGER, JOAN MARIE, Student Senate, '49-'51; Glee Club, '49-'51, Secretary, President; Sassy Strutters, Co-capt., '49-'50, Capt., '50-'51; Masquers, '50-'51; Delta Chi, '49-'51, Secretary, '50-'51; Dance Committee, '49-'51; Home-coming Committee, '50-'51; Beta Lambda, '49-'51. SHEFFIELD, NORMA RUTH, Beta Lambda, '49-'51; Glee Club, '49-'51; Dance Committee, '49-'51; Masquers, '50-'51; Co-eds, '49-'51; Alpha Tau Beta, '50-'51. SIKES, JOHN McNAUGHTON, Loafers, '49-'51; SPRO, '49-'50. SILVERMAN, RAMON ALVIN, Loafers, '49-'51; Masquers, '50-'51. SIMS, HAROLD CLARK, Terrapins, '50-'51. SKEADAS, JOHNNY ANTHONY. TUCKER, RAY BRYANT, Scholars, '49-'51, Treasurer, '50-'51; "A" Club, '50-'51; Basketball Team Manager, '50-'51. TURNER, MARY ANN, Co-eds, '50-'51.

ROSENTHAL

SECKINGER

SIKES

SIMS

TUCKER

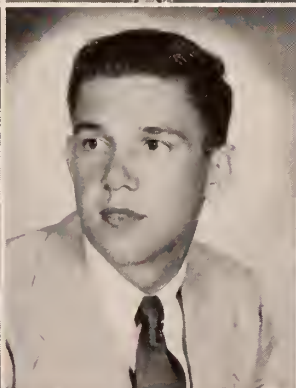
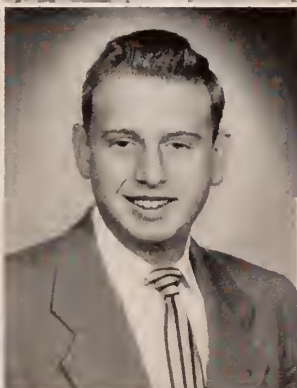
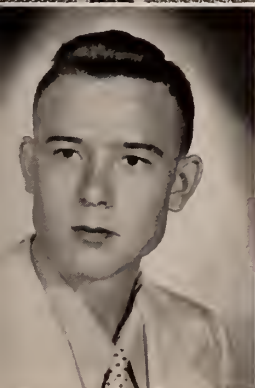
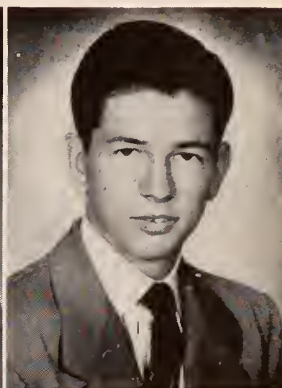
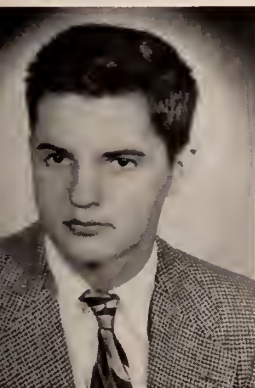
ROYCE

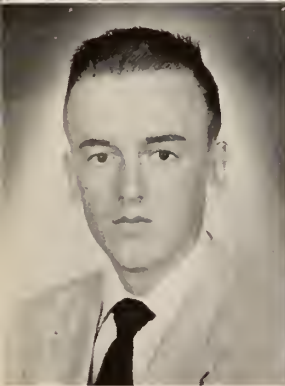
SHEFFIELD

SILVERMAN

SKEADAS

TURNER





WINN

YARLEY

ZOUCKS

TYNER, CARLEEN GADDY, Beta Lambda, '49-'51. UBELE, JOHN LEAR, Basketball, '49-'50; "A" Club, '50. WEITZ, MARY, Glee Club, '49-'51; Masquers, '50-'51; Glamazons, '49-'51; Inkwell, '50; Great Books' Seminar, '50-'51; Open House Committee, '50; Freshman-Sophomore Dance Committee. WINN, CATHERINE ELIZABETH, Glee Club, '49-'51; Masquers, '50-'51. YARLEY, DIBBLE BOYD, JR., Student Senate Treasurer, '50-'51; Election Manager, '50-'51; Terrapins, '49-'51; Debating Team, '49-'50. ZOUCKS, PATRICIA ANN, Sophomore Class Treasurer, '50-'51; Student Senate, '49-'50; Delta Chi, '49-'51, Historian, '50-'51; Glee Club, '49-'51, Publicity Director, '50-'51; Slick Chicks, '49-'50; Beta Lambda, '49-'51; Cheerleader, '49-'51; Masquers, '50-'51; Intramural Board, '49-'50; Home-coming Committee, '50; Open House Committee, '50; Alpha Lambda Sigma, '50; Dance Committee Treasurer, '50-'51.

TYNER

WEITZ

UBELE

WILLSON

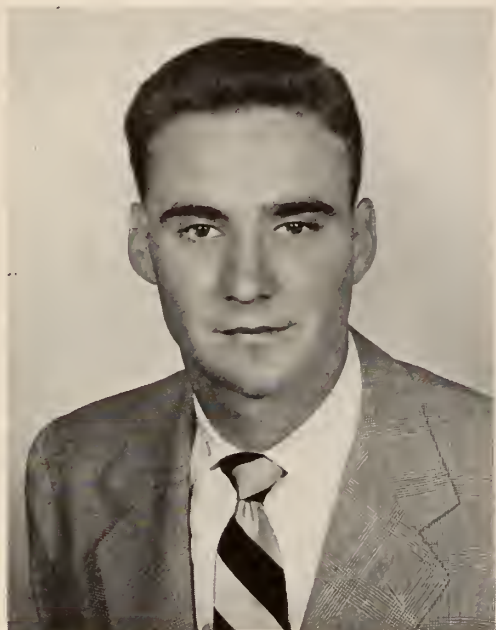
STUDENTS MAKING MERRY AT THE SOPHOMORE-FRESHMAN "GET-TO-GETHER" SOON AFTER THE START OF THE FALL QUARTER. REST ARE EATING HOT-DOGS IN THE PING-PONG ROOM DOWNSTAIRS.



FRESHMEN



Gamble Hall, Armstrong's newest building, where most Armstrong students are first introduced to the 'mysteries' of the sciences.



JAMES R. BARFIELD
President



JOHN EVANS NICHOLS
Acting President

FRESHMAN OFFICERS



JEAN E. WHITTINGTON
Secretary



JOHN C. LAUGHLIN
Treasurer

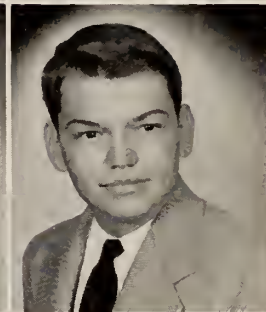
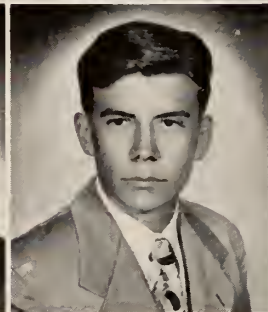
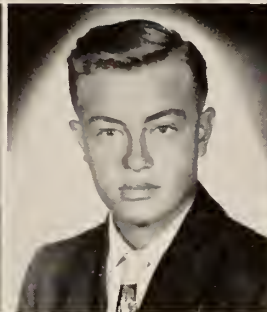


BILL KITCHENS and MARY ANN COLLINS

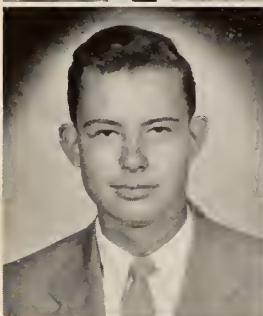
Freshman Royalty



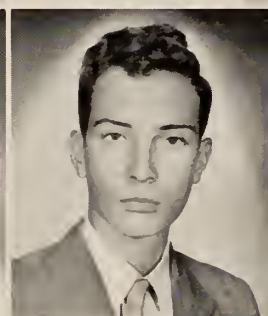
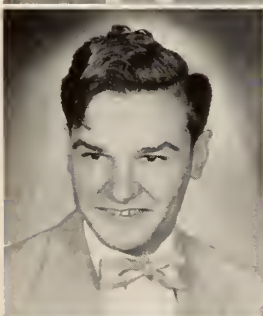
JOHN J. ALFIERI
ROBERT H. ANDREWS
MORGAN ASKEW, II



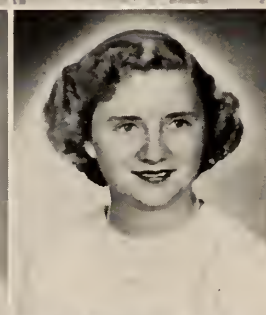
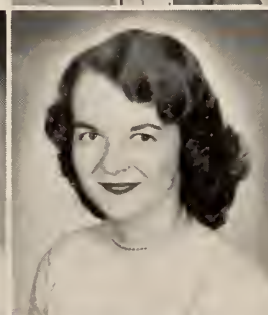
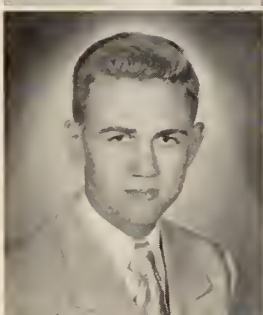
JAMES R. BARFIELD
BRETT L. BAXLEY, JR.
JULIUS H. BENNETT
NORMAN W. BLACKWELL



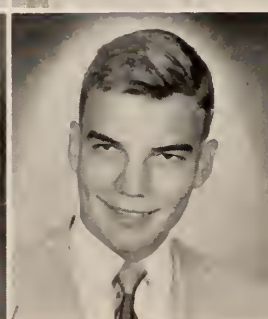
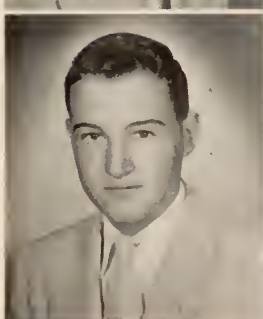
H. GERALD BLOCKER
WILLIAM C. BOSWELL
MARTHA RUTH BOYD
CHARLES F. BRADY



ARTHUR JULIAN BRANNEN
MERRELLE BRANNEN
ERNEST K. BRANTLEY
WILMER E. BREWER

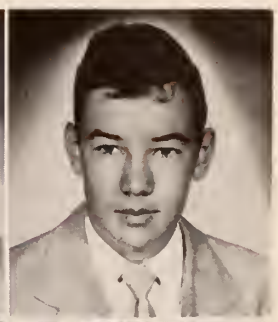


ROBERT D. BREWER
JANE THERESA BRUNSON
WINNIE FRANCES BRYANT
MARY LOU BYERLY

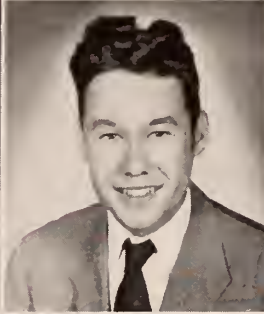
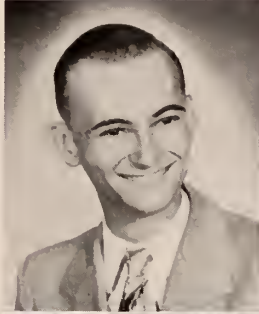


ELTON M. CALDER
LENORE RUTH CANTHEY
GLENN T. CARTHRON, JR.
CAROLE M. CASON

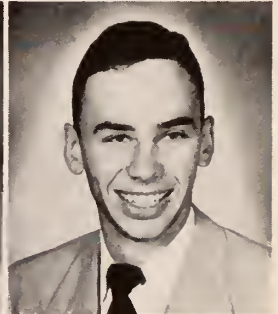
MARY ANN CHILDERS
 BARBARA A. CLER
 JOSEPH EUGENE CLONTS
 JAMES ROBERT COKER



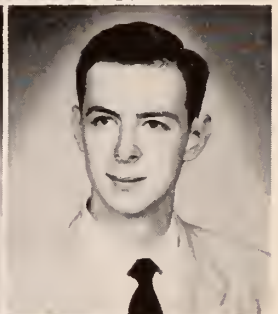
CORBETT L. COLEMAN
 MARY ANN COLLINS
 CLARENCE D. CONE
 WALTER PAYNE COPELAND



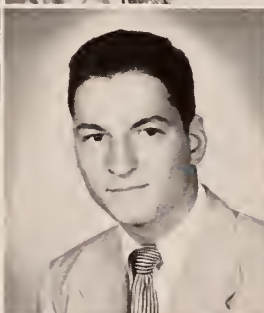
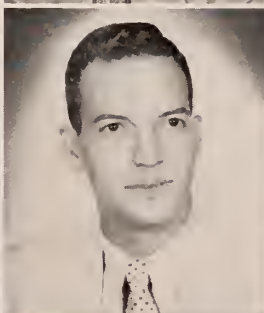
MIRIAM INEZ COWAN
 LOUISE MARIAN COWART
 ILLENA COX
 WILLIAM R. CROTWELL



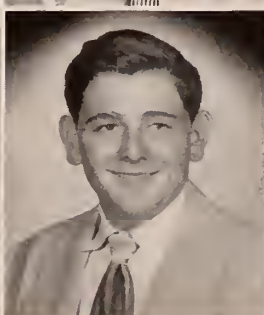
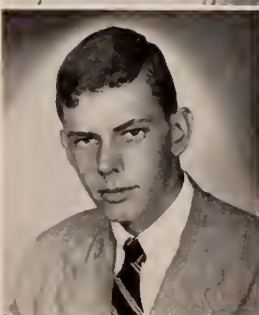
LAWRENCE W. CROVATT
 AL RAY CRUMPLER
 OSCAR DANIEL
 CECIL D. DELORME



CAROLINE DENDY
 SALVADOR J. DESPOSITO
 RALPH L. DOLGOFF
 DOROTHY DUKES

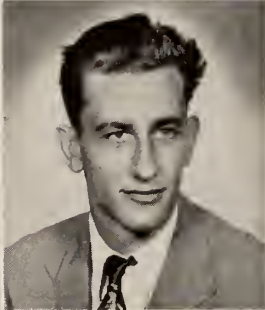
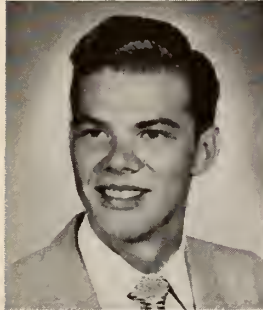


JOHN J. DUNN
 CHARLES W. DUPREE
 RONALD S. EDWARDS

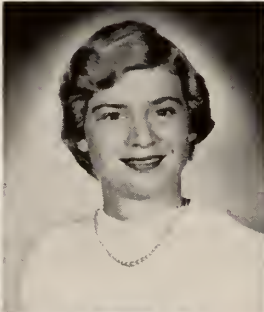
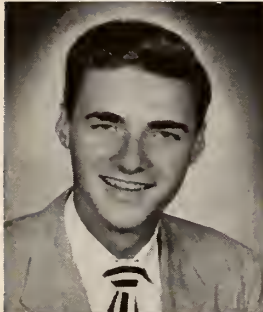




NANCY ELLIOTT
 MADELYN FEINBERG
 HELEN FENDER



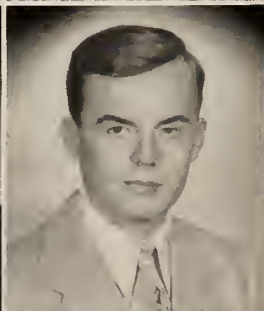
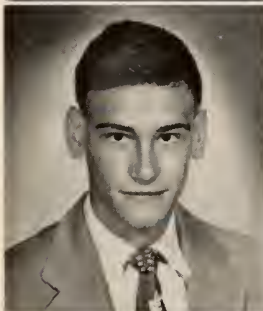
EDGAR FENN
 CAROLYN B. FLUKE
 SAM J. FOGLER
 DOLORES GARMER



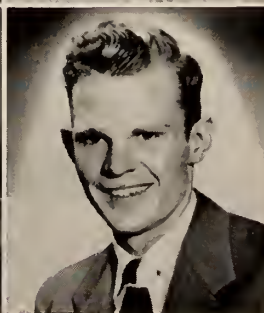
DANIEL RAY GASKIN
 ANNE GLANTZBURG
 JEANNE GLOVER
 ELEANOR GOLDBERG



PRISCILLA GOLDBERG
 SARA GOODMAN
 FRANCIS X. GRIFFIN
 MARGUERITE HALL



GEORGE E. HART
 GLORIA HARVEY
 LOUISE NEAL HARVEY
 EARNEST RALPH HEISE, JR.

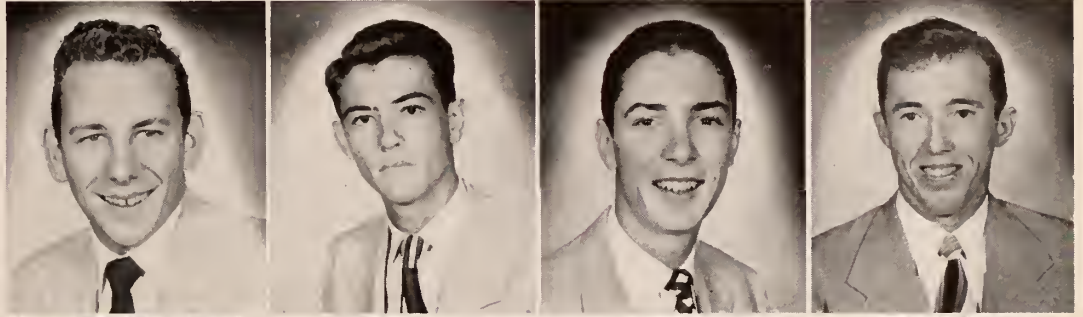


JOHN H. HENNESSY, JR.
 BETTY SUE HERNDON
 GLORIA HIGHSMITH
 STEVE ALTON HILL

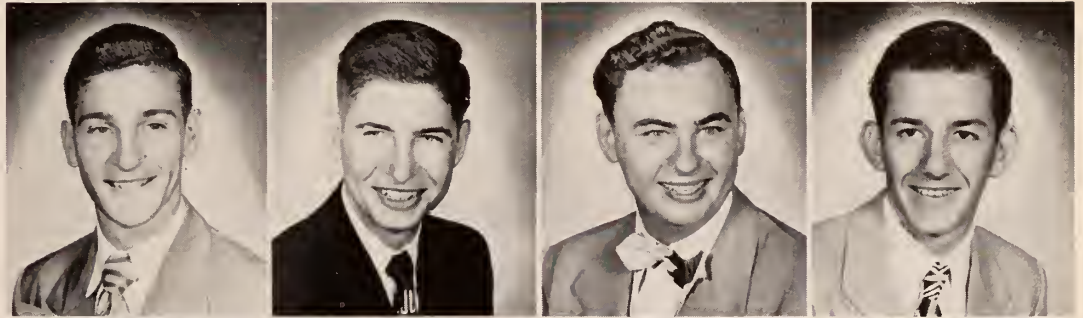
PAUL HOWARD
LUTIL H. HUEY
JOHN E. JAUDON
THEODORE JAUDON, JR.



WILLIAM J. KENNEY
WILLIAM R. KICKLIGHTER
WILLIAM L. KITCHENS
JAMES D. LAMB



JOHN E. LAMBERTSON
JOHN C. LAUGHLIN
BREVARD J. LAW
WILLIAM E. LEE, JR.



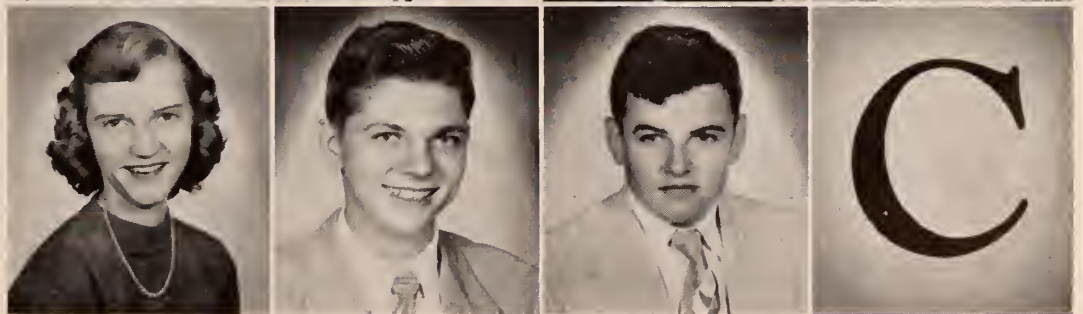
ANNIE LEVERETTE
WILLIAM L. LEWIS
ELIZABETH LORD
SOTERISO T. LYMON

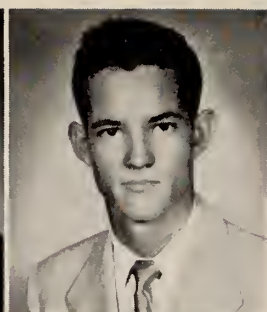
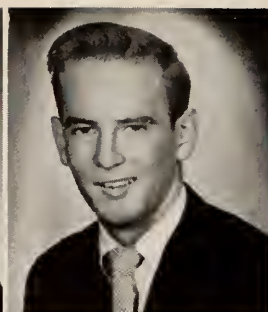


ANNE McCLELLAND
EUGENE L. McCracken
EDWINA McCUNE
CHARLOTTE McGAILLIARD

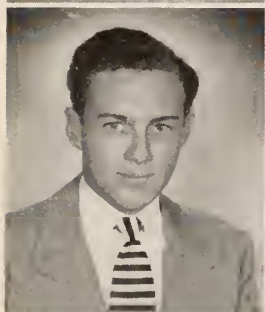


MARY ANN McGRADY
JOHN A. McKAY
JAMES E. MANUCY

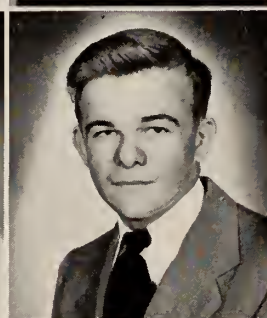
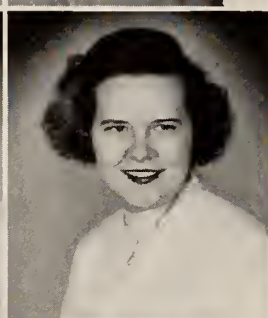




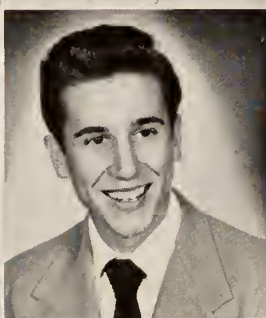
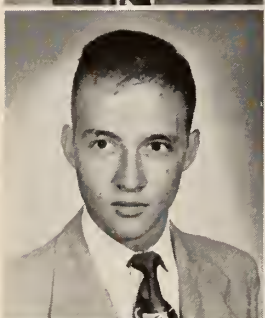
THOMAS A. MARCHMAN
 HUBERT R. MARTIN
 JAMES M. MEADOWS



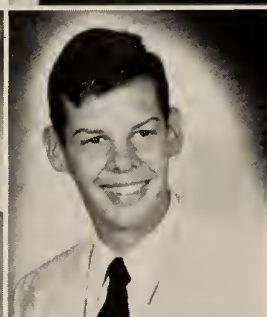
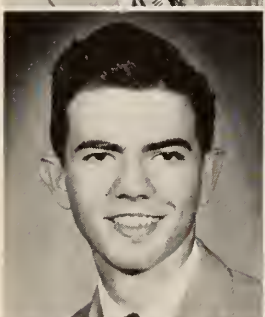
THEODORE MEDERNACH
 FRANK H. MELSON
 SALLY ANN MIRSKY
 RACHEL MONK



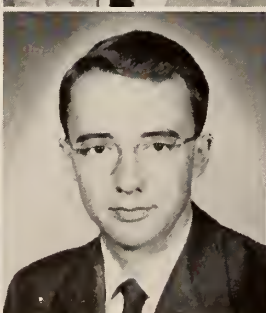
ROBERT H. MORELAND, JR.
 ELPIS MORELELI
 MARY EVA MORSE
 WILLIAM F. MURPHY



THERON S. NEASE
 JOHN EVANS NICHOLS
 MARY ANNA NIEMEIER
 HELEN O'CONNOR

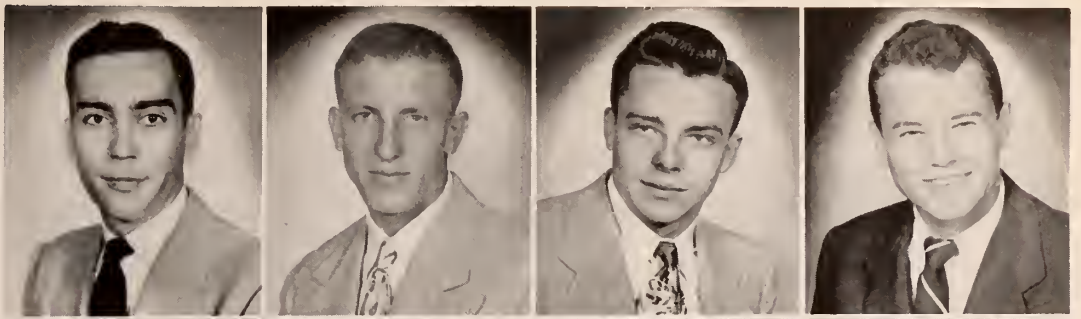


DONALD OVERSTREET
 KENNETH F. PALMER, JR.
 MELVIN C. PEACOCK
 QUITMAN NEAL POPE

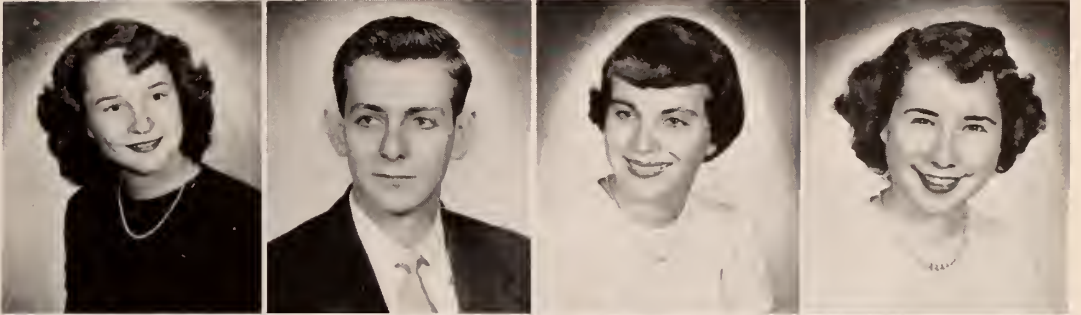


ANN PORTMAN
 MELTON POWELL
 MARY ANN PROCTOR
 MARY V. QUARLES

CECIL LEE RAHN
 HAROLD R. RAYMOND
 CLYDE J. REDDICK
 LOUIS ALLAN REYNOLDS



CHRISTINE ROBERDS
 ROBERT E. ROBINSON
 GAIL ROSEN
 KATHLEEN RYAN



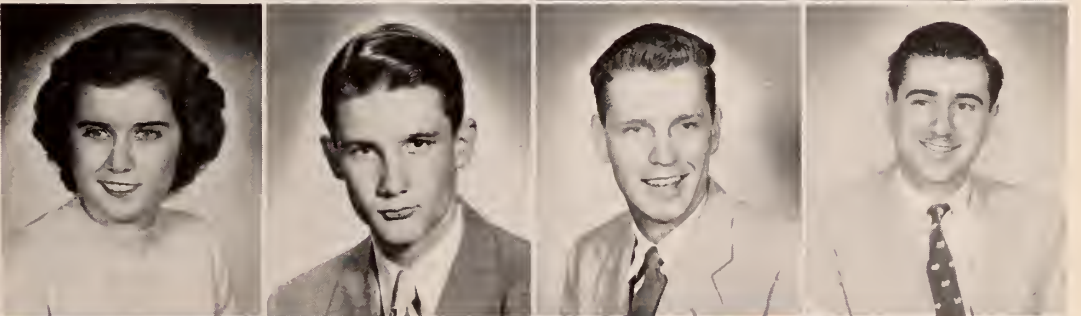
MARY RYAN
 FRANCES SAMUELS
 SALLY SCHOFIELD
 ROBERT SCHWALLS



DIANE SEMUELS
 GRACE SILVA
 RUTH SIMMONS
 FOY E. SMITH



PEGGY JEAN SMITH
 ROBERT C. SMITH
 ROBERT V. SMITH
 NICHOLAS SOTIROPOULOUS

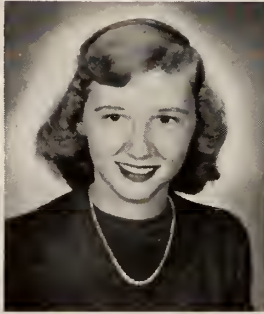
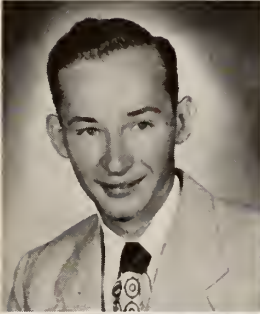


CAROLYN STANLEY
 JOYCE STEBBINS
 BERNHARD STEINER

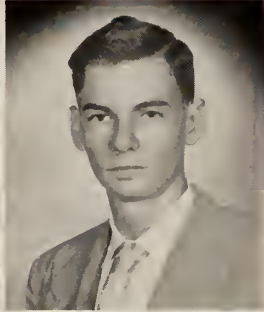




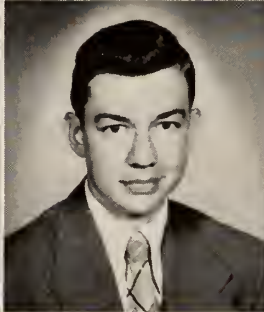
ANNE LORE STELLJES
MARGARET MARY STOREY
DEBRA SWARTZ



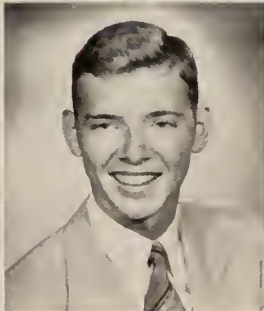
MELDRIM L. SYKES
ROBERT E. THIGPEN
ELSIE THORPE
SHIRLEY ANN TOMLINSON



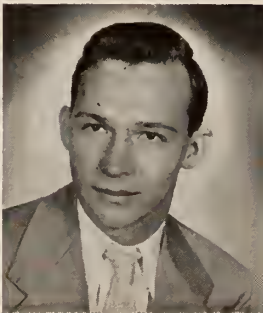
HENRY D. TULLIS, JR.
JULIA WADE
SARAH WADE
FREDERICK EARL WALLER



BARBARA WATTS
STANLEY I. WEISS
MACON DONIS WELLS
JACQUELINE WHELAN



JEAN WHITTINGTON
MARGARET ELLEN WILBURN
JOHN L. WILLIAMS, JR.
REBA WILLIAMSON



MARY FRANCES WOMBLE
JAMES B. YANCEY, JR.



One of the "shift" classes held especially for Union Bag Co. employees. Identical freshman classes are taught by the same instructors morning and night. Students may attend one or the other, depending on the shift they are working at the time. Here students seem amused by what Mr. Dabney is telling them.



An important part of Freshman Week is the testing program to which all new students are subjected.

Judging by the looks of consternation, amusement and concentration on the faces of these freshmen, there is more to this registration business than one would expect.





The 'Geechee staff hereby wishes to pay tribute to James Waring Horning, Jr., first Armstrong alumnus to be killed in action in Korea. He was one of a large number of Armstrong students and alumni called to active duty with the Savannah Marine Reserves in August. Waring was killed in action on December 2 fighting with the First Marine Division in Korea.

Roll of Honor

The staff also wishes to honor the Armstrong students and one faculty member who have been called to military duty since the beginning of this scholastic year. Some of these have been subject to the draft, or recalled to duty as members of the Army, Navy, Air Forces, Marines, and a large portion of them were summoned to duty as members of the 117th National Air Guard Unit.

Bobby Shuler Adams	William R. Kicklighter
Robert Henry Andrews	James D. Lamb
Morgan Askew, II	John E. Lambertson
James R. Barfield	Richard Waymack Leech
James E. Cobb	Soteriso T. Lymon
Walter Payne Copeland	Hubert E. Martin
William R. Crotwell	James M. Meadows
Thomas Carlton Crumbley	Theodore Medernach
Oscar Daniel	William Kenneth Mitchell
Cecil D. DeLorme	Joseph Edward Morrison
Alphene William Dowell, Jr.	Peter P. O'Million
Paul J. Dunwody	Charles S. Paulson
Ronald S. Edwards	Paul Pickard
Charles Thiot Ernst	John McGregor Rankin
Daniel Ray Gaskin	Harold R. Raymond
Paul C. Hernandez	Louis A. Reynolds
Francis Marion Hodge	Johnny Anthony Skeadas
Paul Howard	Robert E. Thigpen
John E. Jaudon	Carmen Torrie, Instructor
Theodore Jaudon, Jr.	James B. Yancey, Jr.

This list is composed of those who have been called to the armed services between September 1950 and March 15, 1951, and is as complete as possible.



Clonts



Jones and Hull



McGailliard



Hallowe'en Dance



Math Club Indians!



Nease, Brewer, Tullis

STUDENT SENATE



Members, left to right: Irving Fogler, Mary Morekis, Eleanor Goldberg, Marianna Copps, Joan Seckinger, Mary Ann Collins, Jeanne Langston, secretary; John Dunn, Evans Nichols, acting vice-president; Mr. Beecher, Joan Cope, acting president; Earl Waller, Boyd Yarley, treasurer; Peggy Wilburn, Earnest Murphy, Henry Precht, Barbara Beasley, Joan Mendel, Joan Anderson, and Diane Malone. Charles Ernst, president, and James Barfield, vice-president, were called into the service.

The Student Senate is composed of representatives from all recognized clubs in the school and the presidents of the two classes. The purpose of the Senate is to make and enforce the laws and regulations of Armstrong. It also formulates the school budget for the year. Any student is welcome to appear before the Senate to discuss any problem concerning the college and the students. Dean W. Orson Beecher is the faculty advisor.



Warren A. Candler Hospital

SCHOOL OF NURSING

MISS LOUISE LENHARDT
Superintendent



MRS. MARTHA C. SMITH
Director of Nurses



Formerly, student nurses from nearby Candler Hospital attended Armstrong College for a course or two. Now these student nurses take their freshman year's work at Armstrong. These credits may be used later towards nursing degrees at other colleges and universities.



DOROTHY N. BERILL
GLADYS LAVERNE BOYETTE
FAYE CLELAND
OLLIE JO CLEVELAND



JOSIE CROSBY
ALOHA LEE DAVIS
BETTY JANE DURDEN
DOROTHY NELL DURRANCE



MIRIAM MARIE ELLIS
HELEN J. EVANS
EULA MAE HERRINGTON
BEAULAH MYREE HOWELL



BETTY JANE HOWELL
NORMA JEAN KILPATRICK
MARIE BOBBIE McDONALD
DOROTHY ESTELLE MOCK



BETTY SUE NESMITH
SARAH CAROLYN NORMAN
CAROLYN ROGERS
LA FAYE LORETTA ROYAL



VIOLET ANN SANDERS
SUSIE DREWNELL SHEPPARD
JUANITA SHUMAN



GLORIA ZERA THOMPSON
CAROLYN A. UNGLESBEE
LOU WHELESS

On the way to Miss Wolfe's nutrition lab in the Hunt Building



ACTIVITIES



Jenkins Hall, the scene of the varied cultural and social activities of Armstrong students, is often used for the same purposes by community groups.



MARY MOREKIS
Editor-in-Chief



BARBARA BEASLEY
Associate Editor



MARY ANN McGRADY
Business Manager

'GEECHEE



BETTY LORD, MARY ANN McGRADY,
ERNEST MURPHY
Business Staff



BARBARA BEASLEY, JEAN WHITTINGTON
Sophomore Section Editors



SARA GOODMAN, CONNIE JOHNSON, LOUISE NEWTON
Photography



ELEANOR J. DOYLE
Faculty Advisor

STAFF

JULIA WADE, CAROL DENDY
Faculty Section Editors



BILL LEWIS
Literary Editor



MARGARET MORRISON
Sports Editor



PEGGY WILBURN, PEGGY STOREY
Freshman Section Editors

THE INKWELL



JOAN LANDY and IRVING FOGLER

Associate Editor and Editor-in-Chief for Fall and Winter Quarters

The Inkwell is published by and for the students of Armstrong, including news of college activities, feature stories, and a gossip column. Miss Eleanor Doyle is faculty advisor.

First row, left to right: JoAn Landy, Priscilla Goldberg, Mary Weitz, Eleanor Goldberg, Jane Brunson, Mary Norman, editor-in-chief for spring quarter. Second row, left to right: Henry Precht, Earl Waller, Howard Fretwell, Irving Fogler, Norman Blackwell, Miss Doyle.



DANCE COMMITTEE

All dances at Armstrong are planned and all decorating for them is done by the **Dance Committee** which is composed of representatives of the various clubs at the college. Miss Lee Goodwin is faculty chairman, assisted by Irvine N. Smith. Miss Dolores Howe is student chairman.



On stairs, left to right: Diane Malone, Dolores Howe, Polly Parrott, Mary Ann Collins, Peggy Wilburn, Mary Ann Proctor, Nancy Elliott, Jane Brunson, Helen Allred, Pat Zoucks, Joan Anderson, Norma Sheffield, Illena Cox, Joan Mendel, Nana Copps, Joan Jewett. *Near stairs,* Miss Goodwin, Mr. Smith.

Below: Dolores Howe and Miss Goodwin discuss plans for the next dance.





NEWMAN CLUB

Though the Newman Club has as its objective the promotion of spiritual, intellectual and social interests of the Catholic students of Armstrong, all students are invited to membership. Miss Eleanor Doyle is faculty advisor and the Rev. Donald A. Kiernan is moderator.



Members pictured above include, from left to right, Dolores Howe, Mary Ann Collins, Jane Brunson, Charlotte McGailliard, Miss Doyle, Peggy Wilburn, secretary-treasurer; Mary Ryan, president; Mary Cartlidge, vice-president; Josephine Reed, Kathleen Ryan, Peggy Smith, Shirley Tomlinson, Nana Copps. Standing, Ralph Heise, John Dunn, John Hennessey.



BETA LAMBDA

Beta Lambda is one of the largest service clubs on campus. Its membership includes many girls who intend to continue in Home Economics and many more who do not. This group prepares the refreshments for the Home-coming, Open House and other receptions during the year. Miss Helen Wolfe is faculty advisor.

Members include: Nancy Elliott, Pat Zoucks, Nana Copps, Esther Overstreet, Joan Mendel, Polly Parrott, Louise Cowart, Jean Whittington, Joan Anderson, Mary Ann Proctor, Mary Ann Childers, Mary Ann McGrady, Barbara Beasley, Lollie Stelljes, Edwina McCune, Dolores Garmer, Joan Jewett, Colleen Tyner, Diane Malone, Peggy Wilburn, Norma Sheffield, Louise Newton, Dolores Howe, Elsie Thorpe, Julia Wade, Peggy Hall, Frances Bryant, Miriam Cowan, Gloria Harvey, Mary Cartlidge, Illena Cox, Bonney Nutting, Joan Seckinger, Jean Langston, Connie Johnson.





SCIENCE CLUB

The **Science Club** serves as an excellent medium to cultivate originality of thought in the field of science, under the guidance of Mr. Elmo McCray, Mr. Arthur Casper and Mr. Robert Mizell. The club program includes social functions as well as scientific discussions.

Members below include: Patsy Hargett, Sara Goodman, Donald Cone, Peggy Storey, Naomi Brown, Ruth Brown, Ada Goodman, Jeanne Langston, Sally Schofield, Mary Ann Childers, Charlotte McGailliard, Bonney Nutting, Lenore Cantey, Jeffrey Jones, and Rachel Monk.



MATH CLUB

The primary aim of the **Math Club** is to further understanding of mathematics beyond ordinary college requirements. The student's interest in math often leads him to creative thinking on his own. This club gives students who have a special interest in the subject an opportunity to meet others like himself, and an interesting program is followed under the direction of Miss Laura Blakeley and Mr. Arthur Casper, faculty advisors.



Members, seated, left to right: Peggy Storey, Sara Goodman, Miss Blakeley, Ada Goodman, Lenore Cantey, Charlotte McGilliard. Standing, left to right: Corbett Coleman, Ralph Heise, Mr. Casper, John Dunn, Richard Royce.





GLEE



The Glee Club is a social organization as well as a means of entertainment to its members, the student body, and to the community. This year the Glee Club sang at assemblies, gave a Christmas concert, cooperated with the Masquers in presenting "The Mikado," gave a concert at Waycross, and last on their program for the year was a spring concert in May. Mrs. Nancy Page Smith is director, and she and the club are pictured above in their new robes.

Officers of Glee Club: Jean Whittington, secretary; Joan Seckinger, president, and Pat Zoucks, publicity director.



CLUB

The Music Club provides an opportunity for students who are interested in music to meet socially. Students usually meet at the home of one of the members and music is the order of the day. Mrs. Nancy Page Smith is also faculty advisor for the club.



Music Club members are pictured here at an informal daytime session with Mrs. Smith seated at the piano.



IRVINE N. SMITH
Director

Masquer officers

- JOAN MENDEL
NANA COPPS
JOHN DUNN
JOAN SECKINGER
JOAN JEWETT
BETTY ANN DREW



THE ARMSTRONG MASQUERS





The outlet for theatrical interests at Armstrong is this group whose members find opportunities either as actors or as crew members. During its first year in existence, the Masquers group, under the direction of Mr. Irvine Smith, have successfully presented one-act plays, an operetta, and a three-act play.





HELEN ALLRED
 JOAN ANDERSON
 JANE BRUNSON
 MARY ANN COLLINS



JEAN COPE
 JOAN COPE
 MARIANNA COPPS
 NANCY ELLIOTT



DOLORES HOWE
 MARY ANN McGRADY
 JOAN MENDEL
 ESTHER OVERSTREET



MARY ANN PROCTOR
 JOAN SECKINGER
 RUTH SIMMONS
 SARAH WADE



PEGGY WILBURN
 PATRICIA ZOUCKS

Delta Chi Sorority



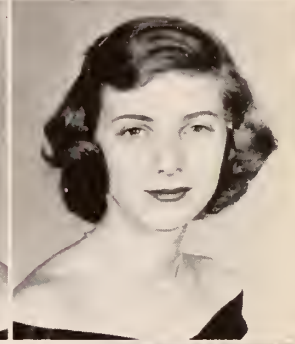
FRANCES BRYANT
MARY CARTLIDGE



CAROL CASON
BARBARA CLER



MIRIAM COWAN
CAROL DENDY



CAROL EARNEST
DIANE EVANS



JEANNE GLOVER
GLENDA HIGHSMITH



JOYCE LEE
PATRICIA LITTLE



ELIZABETH LORD
MARY NORMAN



HELEN O'CONNOR
MARY RYAN



NORMA SHEFFIELD
JOYCE STEBBINS



ELSIE THORPE
SHIRLEY TOMLINSON

Alpha Tau Beta Sorority



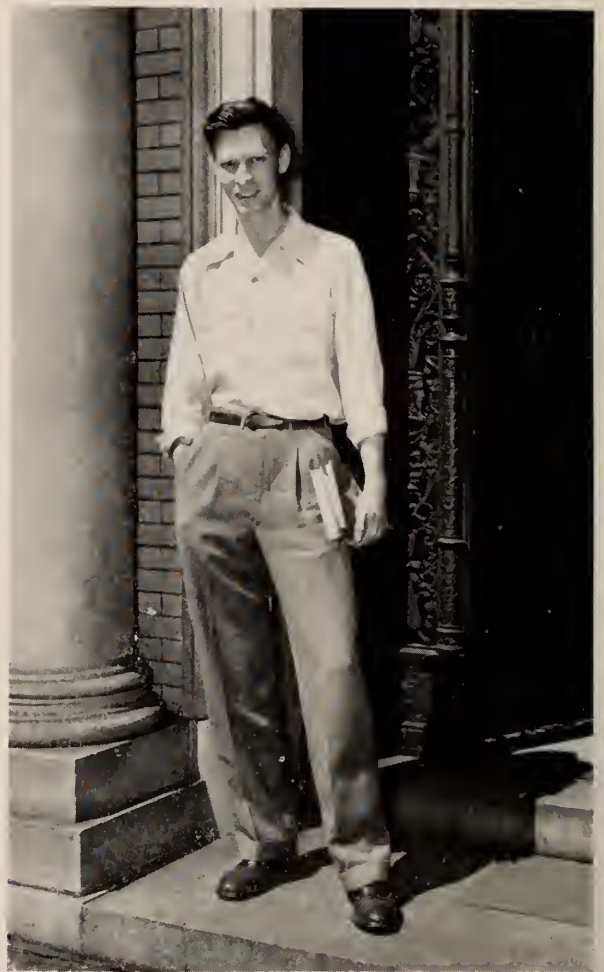
Long-to-be-remembered scenes from the Sophomore-Freshman social in the fall and the Hallowe'en Dance



1951 Home-coming Reception and Dance



John Dunne and Lollie Stelljes in "The Wedding"



Valedictorian Ed Hobbs

Below: Scene from the Masquer production "On a Summer's Day"



SPORTS



New Hellenic gym—Armstrong 'Geechees Home Court

Armstrong College endeavors to assure its students of a successful future by providing them with a spirit of sportsmanship, sound physical health, as well as an alert intellect.



Squad members are: Johnny Lambertson, John Matthews, Bill Kitchens, Bill Hull, Bill Parkerson, Glen Carthron, Morgan Blackburn, Bobby Adams, Johnny Alfieris, Charles Paulson, Warren Prim, James Mahany, Billy Lee, Sal Desposito.



SAL DESPOSITO
Captain



Newcomers JAMES MAHANY
and BILLY LEE

GEECHEES

BASKETBALL SCORES

<i>Armstrong</i>	<i>Opponent</i>	<i>Score</i>
60	Armstrong Alumni	44
44	Parris Island	70
54	College of Charleston	46
70	Jacksonville Jr. College	49
65	Brewton Parker Institute	59
42	Jacksonville Jr. College	39
80	Gordon Military Academy	40
61	Southern College of Pharmacy	29
72	West Georgia College	42
72	Georgia Southwestern College	35
50	South Georgia College	49
50	West Georgia College	34
51	Middle Georgia College	53
56	Georgia Southwestern College	79
29	South Georgia College	35
44	Brewton Parker Institute	78
53	Gordon Military Academy	33
95	Southern College of Pharmacy	45
45	117th Nat'l A.C.W. Air Guard	35
	Middle Georgia College	Cancelled



Coach Carmen Torrie

The Armstrong 'Geechees can report another successful year with fourteen wins and five losses to their credit. They placed third in the State Tournament.



Two of the high scorers prior to January 15th were Johnny Lambertson and Bill Kitchens, pictured at left. At the end of the season, players averaging the highest scores were Sal Desposito, Bill Kitchens, Johnny Alfieris.



Team Managers WALLY BUTLER and RAY TUCKER





Scenes from a basketball game between the Glamazons and the Co-Eds, two of the girls' intramural teams. This game was played as a preliminary to the Armstrong 'Geechees - Georgia Southwestern game on January 20 at the Hellenic gym.

GIRLS' INTRAMURAL BASKETBALL STANDINGS

	<i>Won</i>	<i>Lost</i>
Sassy Strutters	5	0
Co-Eds	3	2
Slick Chicks	0	3
Glamazons	0	4

In the pre-season games the Sophomores defeated the Freshmen in 2 out of 3 games.



"A" Club

The "A" Club is composed of students who have been outstanding in athletics during the current year. Membership to the club automatically accompanies the award of an athletic letter.



"A" Club members pictured here include: Ray Tucker, manager; Jack Ubele, John Alfieris, Morgan Blackburn, Bill Hull, Bill Parkerson, Billy Lee, Billy Adams, Bill Kitchens, Warren Prim, John Matthews, Sal Desposito. Those absent from the picture are: Wally Butler, manager; James Mahany, and Glenn Carthron.



Cheer- leaders

John McKay

Joan Cope

Pat Zoucks

Ruth Simmons

Men's Intramural Board

NEAL POPE
Loafers

HENRY PRECHT
Scholars

BOBBY BREWER
Eager Beavers



Women's Intramural Board



Sara Wade and Joan Seckinger, Sassy Strutters; Charlotte McGailliard and Margaret Morrison, Co-Eds; Esther Overstreet, Board Manager; Nana Copps, Glamazons; Miss Morris, Mary Ann Collins and Connie Johnson, Slick Chicks; Carol Cason, Glamazons.

Eager Beavers

First row, left to right: John Dunne, John Matthews, Bobby Brewer, Billy Lee, Morgan Blackburn, James Mahany. Second row: Richard Royce, Bill Harrell, Robert Fowler.



Loafers

First row: Billy Lee, Jack Laughlin, Ramon Silverman, Nick Chiotellis. Second row: Neal Pope, Murray Galin, Glen Hill, Donald King.



Scholars

First row: George Hart, Billy Murphy, Frank Melson, Delano Maurice, James Manucy. *Second row:* Ralph Heise, Gene McCracken, Henry Precht, and Gerald Blocker.

Terrapins

There is no photograph of the Terrapins because the majority of this intramural club's members have answered a call to the service. This is the second tour of duty for some of the members. Below is a list of the club members as of the Fall Quarter 1950.

Jack Jaudon, Russell Martin, Oscar Daniels, John Lambertson, Edgar Fenn, Morgan Askew, Ed Cobb, Billy Kenney, Bobby Andrews, Kenneth Palmer, Jr., Paul Howard, Foy Smith, Wilmer Brewer, Robert V. Smith, Boyd Yarley, Sal Desposito, Bill Kitchens, Bobby Adams, Jim Barfield, Julius Bennett, Warren Prim, Robert Kicklighter, John McKay, Evans Nichols, Jimmy Coker, Elton Calder, Meldrim Sykes, Norman Blackwell, Julian Brannan, Corbett Coleman, Ralph Banks.

Co-Eds

The Co-Eds won the volleyball tournament which was held during the fall quarter. They won five games while losing only one.

First row: Debra Swartz, Martha Boyd, Margaret Morrison, Charlotte McGailliard, Mary Lou Byerly, Ruth Simmons. *Second row:* Margaret Madison, Carol Dendy, Joan Fitzsimmons, Joan Jewett, Barbara Cler, Betty Lord, Norma Sheffield, Mary Frances Womble.



Glamazons

Diane Evans

Nana Copps

Carol Cason

Diane Malone

Dolores Howe

Louise Cowart

Sassy Strutters

The Sassy Strutters won two championships this year. Sarah Wade of this group won the Ping-pong crown. The club finished the basketball season undefeated.

Left to right: Frances Bryant, Kathleen Ryan, Priscilla Goldberg, Merelle Brannen, Carol Earnest, Mary Norman, Sarah Wade, Joan Seckinger, Eleanor Goldberg, Gloria Harvey, Elsie Thorpe, Mary Niemeyer, Illena Cox, Miriam Cowan, Mary Ann Proctor.



Slick Chicks

First row: Ada Goodman, Dolores Garmer, Joan Pritchard, Mary Ann Collins, Connie Johnson, Patsy Hargett, Louise Newton. *Second row:* Sara Goodman, Polly Parrott, Lollie Stelljes, Reba Williamson, Edwina McCune, Peggy Wilburn, Nancy Elliott.





BEAUTIES



No one scene in Savannah is lovelier than the one above—that of the fountain in Forsyth Park. As this park is almost a campus to us, the 1951 'Geechee Beauty Queen and her court have been photographed here.



Queen Helen Allred, Sponsor for Delta Chi Sorority



*Diane Evans, Masquers' Sponsor, and
Frances Bryant, Alpha Tau Beta Sorority*



*Carol Earnest, Eager Beavers' Sponsor, and
Gloria Harvey, Sassy Strutters' Intramural Club*



*Mary Morekis, 'Geechee Sponsor, and
Barbara Watts, Scholars*



Seven members of 'Geechee Beauty Court as they appeared at the Valentine Dance at which they and the queen were presented.



Earnest Murphy of the 'Geechee staff presents 'Geechee Queen Helen Allred with a corsage and an engraved compact at the Valentine Dance.

The eighteen candidates nominated by the various clubs at the college are presented here at a student assembly after which voting was held.



ADVERTISEMENTS



Broughton Street, Savannah's principal shopping district, generally bustling with casual shoppers, and many of the Savannahians who are employed in the surrounding commercial area.



THE CITY OF SAVANNAH CONGRATULATES

ARMSTRONG COLLEGE

It believes that the plan for a sound education and for scholastic attainment instituted by Armstrong since its inception has been of unusual benefit to the welfare of the city.

Its hope is for continued prestige and for the incentive of the youth of Savannah to avail themselves of the opportunity of acquiring knowledge and preparing for the future by taking advantage of the excellence of Armstrong College.

The Mayor and Aldermen
of the City of Savannah



**JOHN G. BUTLER
COMPANY**

PAINTS — GLASS
BUILDING MATERIALS
MILLWORK and HARDWARE

Store 2-1161 Plant 2-1164



Nearly a Century of Service



Compliments of

DESBOUILLONS

Jewelers

126 Broughton St., East

Agents for

GORHAM & TOWLE SILVER

Morris Levy's

SAVANNAH'S FINEST
STORE FOR MEN AND
SHOP FOR WOMEN

Compliments

of

S. H. KRESS & CO.

5-10-25c Variety Store

***It's Refreshment...
And It's All Value***



BOTTLED UNDER AUTHORITY OF THE COCA-COLA COMPANY BY

THE SAVANNAH COCA-COLA BOTTLING CO.

SAVANNAH GAS COMPANY



Savannah's Oldest Public Servant



TRIPLE XXX

THIRST STATION

Victory Drive across from Grayson
Stadium

Compliments

Men's Quality Shop

JOE LESSER

home of Kuppenheimer Good Clothes
OUR "COLLEGE SHOP" IS A SHOP
WITHIN A SHOP FOR YOUNG MEN



THE *Winged* SEED!

Equipped with a wing, the seed of the pine tree flies through the air with the greatest of ease, but unlike the man on the flying trapeze it affords no thrill to spectators and serves no purpose in remaining aloft.

It would be impossible to even estimate closely the number of seed produced annually by seed-bearing trees on Georgia's 25 million acres of forest land. Yet we know that many billions of these seed germinate and produce seedlings or young pines which, if protected from fire, will within a few years produce income for their owners and raw material for the state's expanding forest products industries.

Nature provided the pine seed with a wing and nature does a better job of reforestation than man, if adequate seed trees are left following a wood harvest and proper fire protection is afforded the cut-over area.

We cooperate with nature in the production of trees on our own lands and encourage our neighbors to do likewise. This is good business for us and good business for the landowners from whom we purchase pulpwood.



UNION BAG
& Paper Corporation
SAVANNAH **GEORGIA**

Fine's

Where Fashions Make Their Debut

*Compliments
of*

W D A R

*Compliments
of the*

**Ruth Goodman
Ballet School**

345 Bull St.

4-2860

Since 1878

Savannah's

*Leading and Largest
Department Store*

Leopold Adler Co.

Savannah Born

Savannah Owned

Savannah Operated

STATIONERY AND
OFFICE SUPPLIES

CARGILL CO.

GREETING CARDS

8 State St., East



A Great Name in Clothing

SCHWOBILT
CLOTHES REG. U.S. PAT. OFF.

"SUITS THE SOUTH"

SOUTHERN PHOTO SERVICE, INC.

CAWLEY'S STUDIO

Photo Finishing — Commercial — Portrait — Supplies

1209 BULL STREET

PHONE 4-4493

Nights — Sundays — Holidays - - - - 3-2280

SAVANNAH, GEORGIA



Official 'Geechee Photographer

CHATHAM PIPE & SUPPLY CO.

KOHLER PLUMBING FIXTURES

PIPE — VALVES — FITTINGS

Phones 2-0143 - 2-0144

513-519 West Jones Street

SAVANNAH

GEORGIA



"Where Superior Service, Quality Products and Better Values Prevail"



Shoes for the Entire Family

Quality Since 1892



Globe Shoe Company

17 EAST BROUGHTON



We Invite Your Patronage

Serving Savannah

Since 1868

Hogan's

Broughton and Barnard Streets
and 23 East Broughton Street

Compliments of

RASKIN'S

"WOMEN PREFER RASKIN'S
SHOES, BAGS, AND HOSE"

23½ BROUGHTON ST., W.

Best Wishes From

MERCER
INSURANCE AGENCY, INC.

"Personal Service"

ALL FORMS OF INSURANCE—EXCEPT LIFE

7 E. Bay St.

THE VOICE OF TODAY

The daily newspaper is the Voice of Today—the Herald of Tomorrow. Regardless of how many books one might read or how much of science, literature or philosophy may be learned from them, the daily newspaper and it only, can supply the current information on which knowledge may be applied to daily life. To students there can be truthfully said this—the newspaper is and always will be, the light of your future power.

Savannah Morning News
SAVANNAH EVENING PRESS
SAVANNAH, GEORGIA

OUTFITTERS TO YOUNG
AMERICA

J. C. PENNEY

Style and Value Center
of the Coastal Empire

Harms Photography



Tel. 3-3220

23 W. WAYNE

TOWN AND COUNTRY

Typically Jane Engel



Bull and Perry Streets

SAVANNAH

GEORGIA

Telephone 3-3214

Office Phone 4-5157

Res. Phone 4-5157

IDEAL
Plumbing – Heating

504 EAST LIBERTY STREET

SAVANNAH, GA.



“You Get a Square Deal at the IDEAL”

PATRONS

DON AULD'S PRESCRIPTION SHOP

340 Bull Street

ALNUTT MUSIC COMPANY

240 Broughton Street, West

MANGEL'S

15 Broughton Street, East

COLLEGE NOOK

Opposite the College on Bull

AL CHASKIN

121 East Broughton Street

SAVANNAH FLOOR COVERING COMPANY

409 East Broughton Street

JOE GARDNER'S

110 East Broughton Street



BUSCH PLUMBING CO.



PLUMBING AND REPAIR WORK



2011 Atlantic Avenue

Phone 3-1675

SAVANNAH, GEORGIA




Congratulations Graduates...

In this book we have done our utmost to help you recapture the spirit of your school days and the beauty and charm of your surroundings. We hope that it will be the means of recalling to you, the many pleasant associations and experiences that lie behind you, in the years to come.

**STANDARD
ENGRAVING CO.**

Savannah, Georgia





Since the dawn of the century...

WE HAVE SPECIALIZED
IN THE PRODUCTION OF
OUTSTANDING COLLEGE
AND HIGH SCHOOL
YEARBOOKS



FOOTE & DAVIES, INC.

PHONE WALNUT 4600

POST OFFICE BOX 5109

ATLANTA









